



United States  
Department of  
Agriculture

Foreign  
Agricultural  
Service

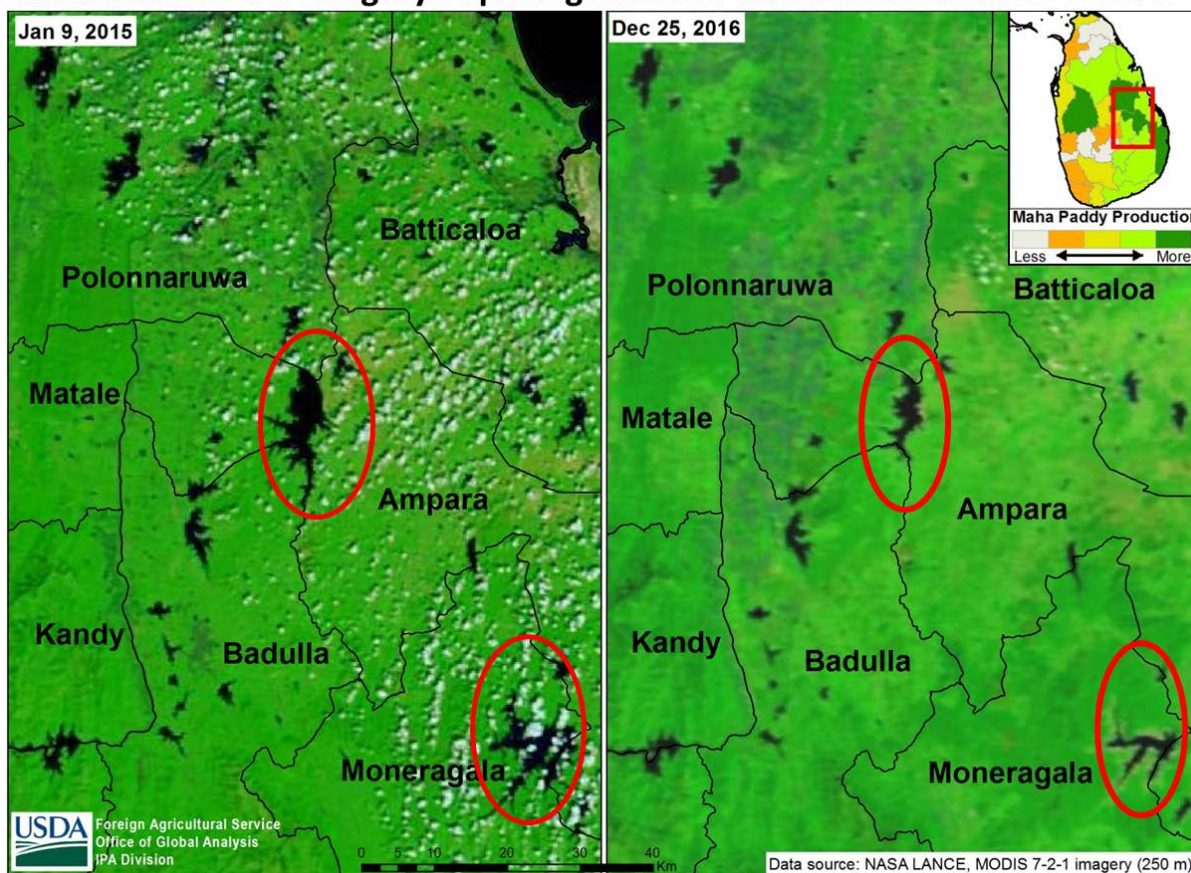
Circular Series  
WAP 01-17  
January 2017

# World Agricultural Production

## Sri Lanka Rice: Floods and Drought Reduce Production

USDA forecasts 2016/17 Sri Lanka rice production at 2.35 million tons milled (3.45 million tons rough), down 23 percent from last month and down 29 percent from last year. Area is estimated at 1.0 million hectares, down 23 percent from previous forecast and down 18 percent from last year. The decrease is attributed to two factors. Major floods in mid-May affected the 2016 *yala*-season and drought is currently affecting the *maha*-season.

### Sri Lanka: MODIS Imagery Depicting Reduced Water Levels in 2016 vs 2015



The *yala* crop experienced flooding in May, and the Government of Sri Lanka estimated 100,000 hectares were abandoned because the floods damaged irrigation infrastructure. The Government of Sri Lanka estimated the *yala* crop production at 0.49 million hectares and production at 1.96 million tons. The *yala* crop is planted in May and harvested in August.

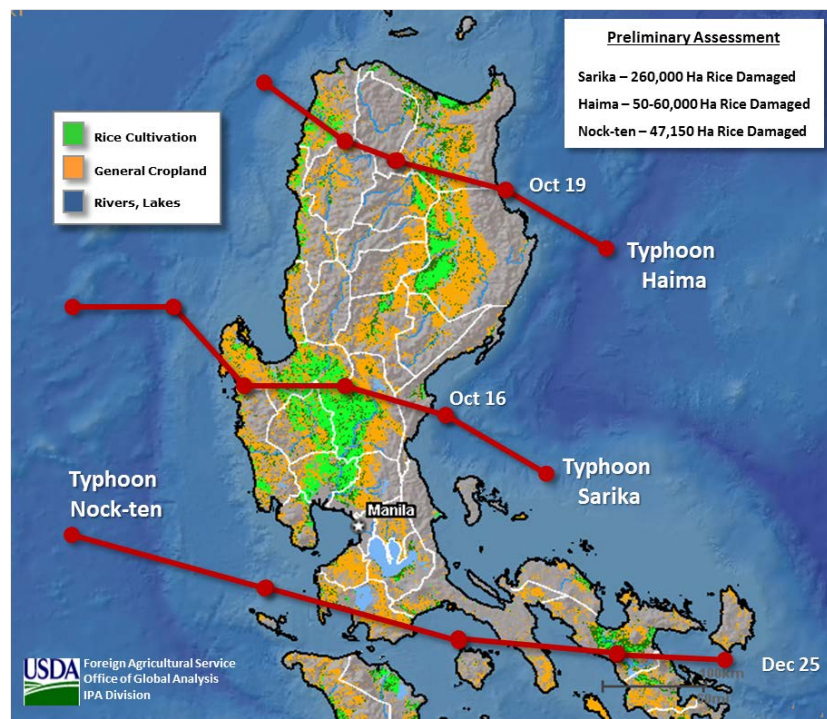
Approved by the World Agricultural Outlook Board

In addition, the 2016/17 *maha* crop, which accounts for 60 percent of total production, is being affected by drought. As of the end of December the *maha* crop had only received the minimum amount of rainfall required for cultivation. Although this is a mostly irrigated crop, satellite imagery shows reservoirs and rivers are shrinking. According to traders, the Government of Sri Lanka is prioritizing water for human consumption and restricting water for agricultural use. *Maha* rice is planted in October and harvested in April. (For more information, please contact [Arnella.Trent@fas.usda.gov](mailto:Arnella.Trent@fas.usda.gov)).

## Philippine Rice: Area Forecast Reduced Following Typhoons

USDA estimates 2016/17 Philippine rice production at 11.5 million metric tons (milled basis), unchanged from last month but up 1 percent from last year. Harvested area is estimated at 4.6 million hectares, down 0.2 million hectares from last month and marginally lower than last year. Yield is estimated above-average at 3.97 tons per hectare.

PHILIPPINES: Typhoon Locations and Damage Estimates

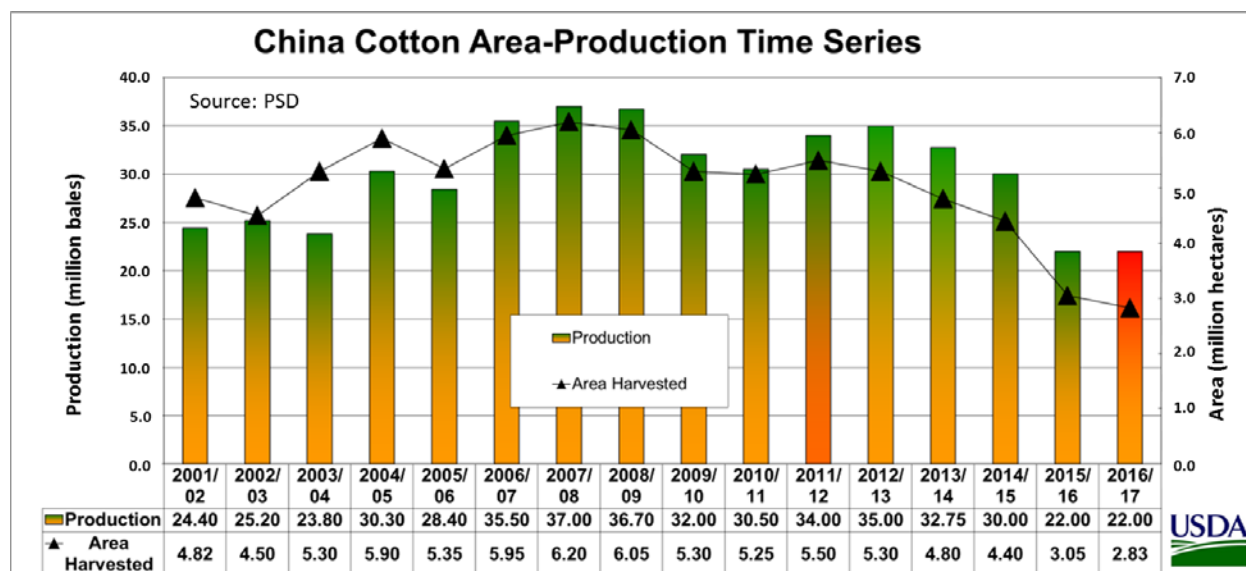


Three powerful typhoons plowed across the northern sections of the Philippines in October and December 2016, striking at the heart of the most important agricultural region of the country. Typhoon Sarika struck prime rice growing areas in mid-October 2016, causing widespread flooding and wind-related crop damage. It was followed several days later by Super Typhoon Haima, which struck further north. And finally, Super Typhoon Nock-Ten ravaged the minor producing region of Bicol southeast of the capital Manila on Christmas Day. These storms collectively impacted over 350,000 hectares of rice during the most important producing period of the year (October to December). Preliminary damage assessments by Philippine government agencies seem to indicate that much of the acreage damaged in the October storms may be recovered through replanting efforts, but USDA estimates that at least 150,000 hectares, or 43 percent of the storm-affected rice region, will be unable to fully recover. Approximately 40

percent of annual rice production occurs in the October to December period, which marks the end of the first half of the USDA 2016/17 marketing year. (For more information, please contact [Michael.Shean@fas.usda.gov](mailto:Michael.Shean@fas.usda.gov)).

### China Cotton: Production Revised Upward

China’s 2016/17 cotton production is estimated at 22 million 480-pound bales (4.79 million metric tons), up 1 million or 5.0 percent from last month, and unchanged from last year. According to ginning data collected by the China National Cotton Exchange (CNCE) in early January, 17.55 million bales have been produced. Nearly all (97 percent) of cotton is from Xinjiang, which is China’s major cotton growing province.



China’s cotton area has been declining since 2012/13 due largely to drastic changes in government agricultural policies aimed at managing excessive cotton stockpiles. The removal of cotton subsidies has resulted in lower profits and a subsequent reduction in planted area. The 2016/17 cotton area is estimated at 2.8 million hectares, down 7 percent from last year and down 39 percent from the 5-year average. There has been a significant area shift from cotton to other crops that offer higher returns. Since the introduction of new cotton policies in 2014, the overall trend for cotton area continues to decline, at a more rapid pace in eastern China than Xinjiang province; area reductions in eastern China are down approximately 34 percent by some estimates. In Xinjiang province, however, area reductions are less than 6 percent. China cotton yield is estimated at 1,696 kilograms per hectare (kg/ha), up 8 percent from last year and up 16 percent from the five year average of 1,465 kg/ha.

Harvest of the 2016/17 cotton crop is complete; the typical harvesting period is September and October. During the 2016/17 season most major growing regions received normal to above-average rainfall, generally resulting in favorable planting conditions and plant growth. In the Yellow River basin (Hebei, Shandong, and Anhui) precipitation for April and early May were generally normal. Some parts of the North China Plain, however reported below-average rainfall. (For more information, please contact [Dath.Mita@fas.usda.gov](mailto:Dath.Mita@fas.usda.gov)).

## Pakistan Cotton: Production Estimate Decreased Based on Arrival Data

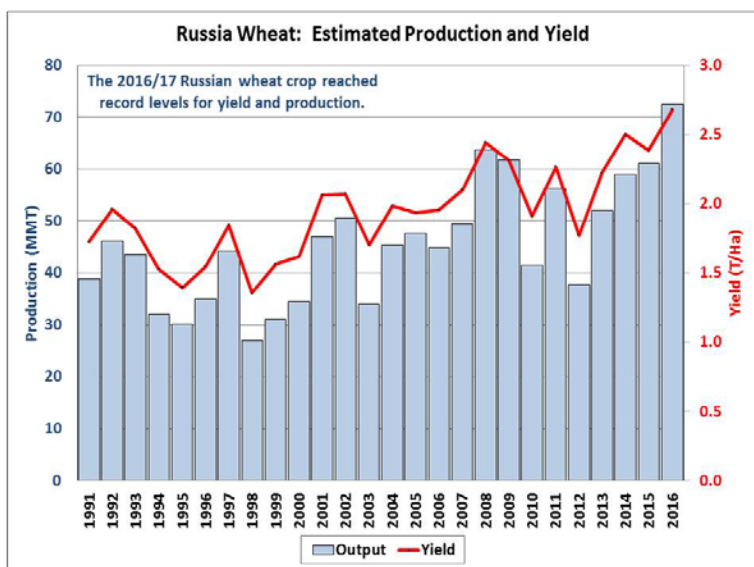
USDA forecasts Pakistan's 2016/17 cotton production at 7.9 million 480-pound bales, down 0.35 million bales or 4 percent from last month but up 0.9 million bales or 13 percent from last year. Harvested area is estimated at 2.4 million hectares, unchanged from last month, but down 0.4 million hectares or 14 percent from last year. Yield is estimated at 717 kilograms per hectare, down 4 percent from last month, but up 32 percent from last year's pest-ravaged crop.

Harvest of the main crop (planted in June) began in September, with peak harvest in October. Harvest is virtually complete, but seed-cotton arrivals will continue to trickle in at a slow pace over the next few weeks. According to the January 1, 2017 Pakistan Cotton Ginner's Association (PCGA) report, seed-cotton arrivals to date are up 12 percent over last season. At the provincial level, arrivals are up 12 percent in Punjab and 1 percent in Sindh province. Cumulative market arrivals for the month of December are lower than the same period last year and confirm the trend of diminishing supplies. The extent of the recovery in output compared to last season is now seen as more modest than previously anticipated.

Approximately 80 percent of Pakistan's total cotton crop is produced in Punjab province. In recent years farmers have faced increased prices of agricultural chemicals and relatively lower cotton prices. In addition, yield prospects are low due to the fact that farmers are reducing the number of cotton pickings in order to plant wheat early and take advantage of relatively profitable wheat prices. (For more information, please contact [James.Crutchfield@fas.usda.gov](mailto:James.Crutchfield@fas.usda.gov)).

## Russia Wheat: Harvest Surpasses Previous Record by 14 Percent

Russia wheat production for 2016/17 is estimated at a record 72.5 million metric tons (mmt), up 0.5 mmt from last month and up 11.5 mmt from last year. This surpasses the previous record of 63.7 million tons harvested in 2008 by 14 percent. The increased estimate is based on preliminary harvest data from Rosstat, the state statistical committee of Russia. The estimated yield of 2.68 tons per hectare is unchanged from last month, up 13 percent from last year, and 7 percent above the previous record achieved in 2014. All USDA crop production estimates for Russia exclude the estimated output of roughly 0.8 million tons from Crimea. (For more information, please contact [Mark.Lindeman@fas.usda.gov](mailto:Mark.Lindeman@fas.usda.gov)).



Source: USDA PS&D

Foreign Agricultural Service/USDA  
Office of Global Analysis  
IRA Division

## Argentina Wheat: Harvest Nearly Complete; Production Increased from Last Year

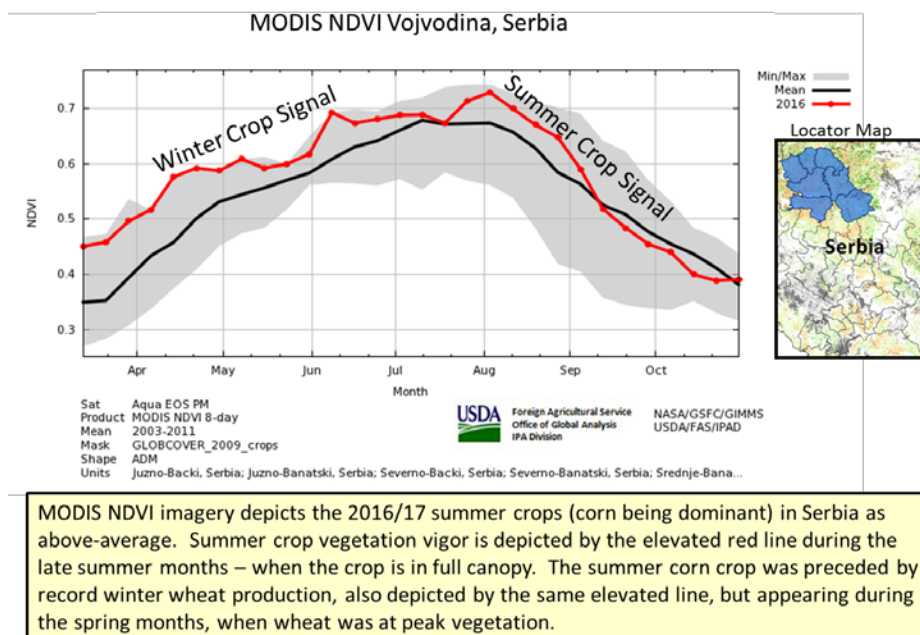
USDA forecasts Argentina wheat production for 2016/17 at 15 million metric tons, up 4 percent from last month and up 33 percent from last year. Area is estimated at 4.9 million hectares, up 2 percent from last month and up 24 percent from last year. Yield is forecast at 3.06 tons per hectare, up 2 percent from last month and up 7 percent from last year. Favorable soil moisture during emergence and establishment followed by timely rains as the crop was finishing grain-filling in central Argentina boosted yields. Harvest was complete before heavy rains occurred in late December 2016.

High production in the center of the country compensated for lower-yielding and late-harvested wheat in southeastern Buenos Aires and far northern Argentina. Harvest in southern Buenos Aires was interrupted for a short time at the end of December when dry conditions caused isolated fires from harvest equipment. Light rains relieved excessive dryness enabling harvesting to resume with completion by early January. The wheat crop harvest was 95 percent complete as of January 5, 2017. (For more information, please contact [Denise.McWilliams@fas.usda.gov](mailto:Denise.McWilliams@fas.usda.gov)).

## Serbia Corn: Near-Record Crop Realized

USDA estimates Serbia 2016/17 corn production at 7.5 million metric tons (mmt), 0.5 mmt above last month, and 1.5 mmt above 2015/16. Estimated production is 26 percent above the 5-year average. Area is estimated at 1.1 million hectares, unchanged from last month and up slightly from last year. Yield is estimated at a second-highest 6.82 tons per hectare, up 7.1 percent from last month, 19 percent above last year, and 35 percent above the 5-year average.

### Satellite Imagery Depicts Very Good Crops in Serbia

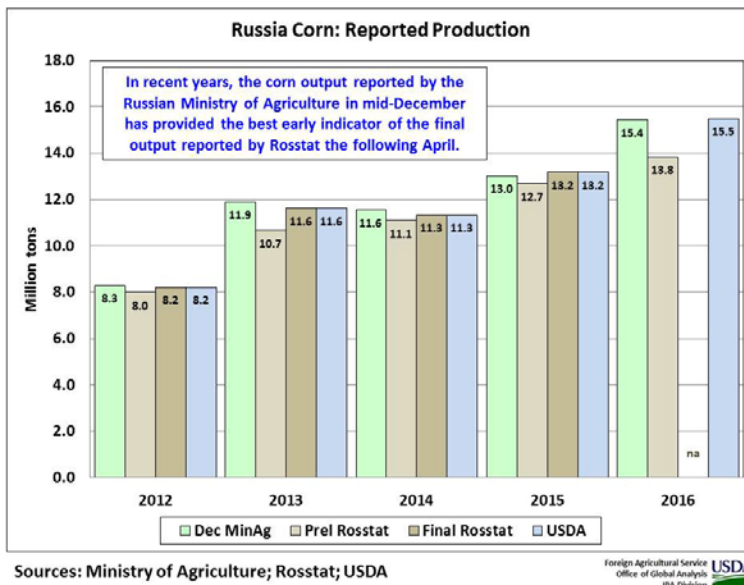


The USDA corn production estimate for Serbia is increased due to favorable late-summer conditions. Abundant and frequent rains from July through September in the Pannonian Plain of

Central Europe benefitted corn and sunflower crops in many countries, including Serbia's northern breadbasket region of Vojvodina. (See August trip report Serbia: [Record Wheat and Near-Record Corn Production for more information](#)). Corn is Serbia's primary field crop, and having receiving ample rainfall, 2016/17 output was second only to the 7.7 mmt harvest of 2014/15. Serbia is not a member country of the European Union. (For more information, please contact [Bryan.Purcell@fas.usda.gov](mailto:Bryan.Purcell@fas.usda.gov)).

### Russia Corn: Production Estimate Unchanged at a Record 15.5 Million Tons

USDA estimates Russia 2016/17 corn output at 15.5 million metric tons (mmt), unchanged from last month and 2.3 mmt above last year's record. The estimated yield of 5.54 tons per hectare exceeds the 2013/14 record by over 10 percent. Wet weather impeded this year's corn harvest, especially in the Central District. Daily harvest data from the Ministry of Agriculture indicate that the harvest campaign was virtually complete by December 23 with output reported at 15.4 million tons against 13.0 million by the same date last year.

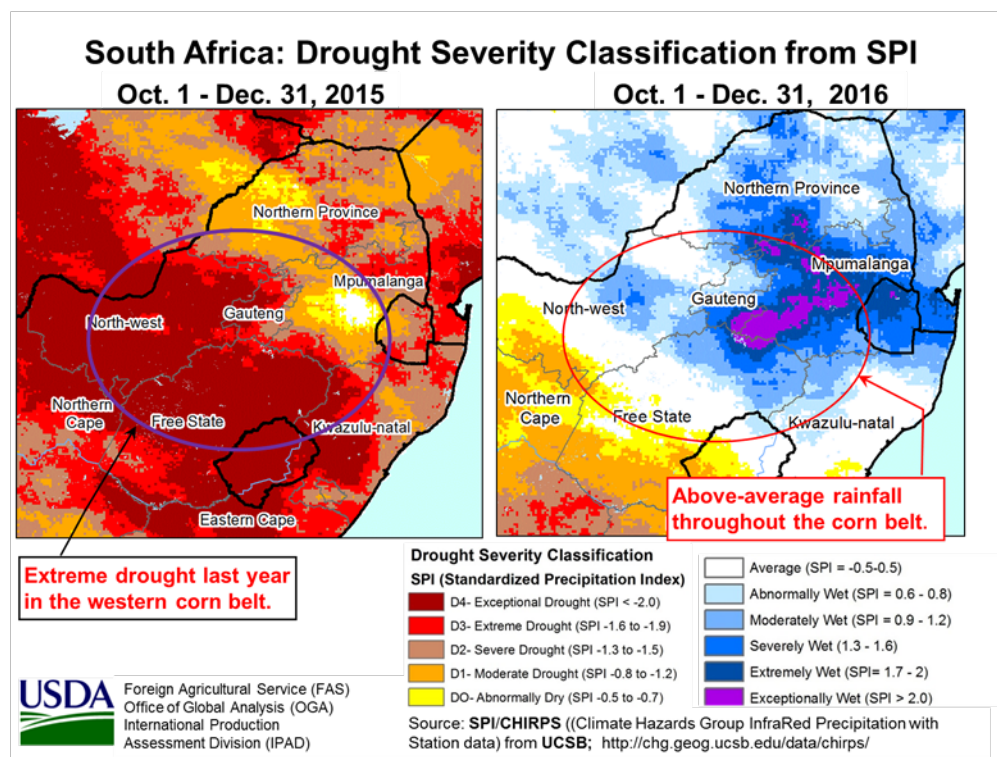


Rosstat, the state statistical agency of Russia, typically publishes preliminary harvest data in early January, followed by final data in April. The preliminary and final numbers are virtually identical for most crops in Russia. Corn, however, is the last major crop to be harvested, and the two numbers can differ significantly from each other, and can differ as well from the late-December number reported by the Ministry of Agriculture. In 2013, for example, the Ministry reported corn output at 11.9 million tons as of December 20. In January 2014, Rosstat reported preliminary output at 10.7 million, and in April the final output was pegged at 11.6 million.

For the 2016 corn crop, the Ministry reported output at 15.4 million tons as of December 23 compared to the preliminary Rosstat number of 13.8 million released in early January. Based on data from previous years and considering the late completion of this year's crop, USDA estimates that the final Rosstat corn-production number is likely to exceed the preliminary estimate and approach or surpass the preliminary estimate released in January. (For more information, please contact [Mark.Lindeman@fas.usda.gov](mailto:Mark.Lindeman@fas.usda.gov)).

## South Africa Corn: Area to Rebound by Over 40 Percent

South Africa's 2016/17 corn production is forecast at 13.0 million metric tons (mmt), unchanged from last month but up 5.1 million or 65 percent from last year. Area is forecast at 3.1 million hectares (mha), unchanged from last month but up 0.9 mha or 41 percent from last year. The forecast yield of 4.19 metric tons per hectare (mt/ha) is slightly above the 10-year trend of 4.13 mt/ha.



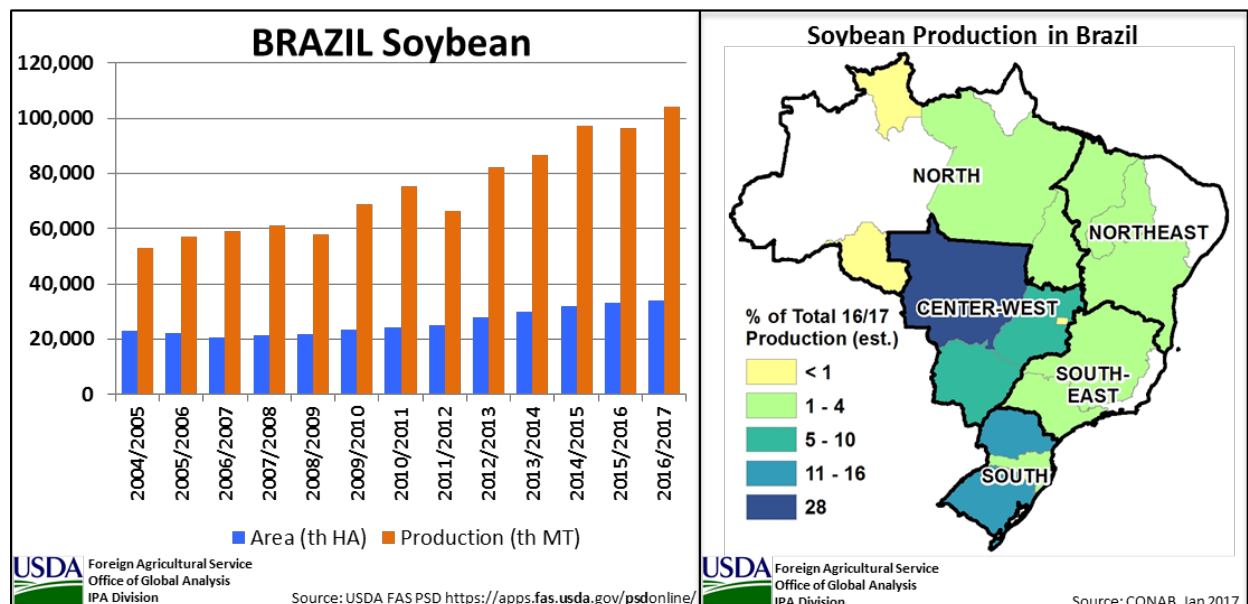
South Africa's corn area has much improved conditions for planting.

Corn area for 2015/16 was down by nearly 1 million hectares due to a severe El Niño drought that prevented corn planting and emergence during the optimal planting season from October through December. Insufficient rainfall last year prevented successful sowing and plant germination, especially in the western corn belt where a large portion of corn is typically grown. This year, however, rains arrived on time and rainfall was extremely favorable for planting during November and December. *(For more information, please contact [Curt.Reynolds@fas.usda.gov](mailto:Curt.Reynolds@fas.usda.gov)).*

## Brazil Soybean: Record Production

Brazil soybean production for 2016/17 is estimated at a record 104.0 million tons compared to 96.5 million last year. The increase is attributed to data from CONAB (Companhia Nacional de Abastecimento) and SEAB-DERAL (Secretaria de Estado da Agricultura e do Abastecimento-Departamento de Economia Rural). Harvested area is estimated at a record 33.9 million hectares, up 0.6 million hectares from last year's record, and up 2 percent from the 5-year average. Yield is estimated at 3.07 tons per hectare, 6 percent above both last year and the 5-year average.

Area is estimated to increase by 10 percent in the North and Northeast regions (which account for 14 percent of Brazil's total soybean output). Increased yields are estimated in the Center-



West (46 percent), and also in the North and Northeast regions. For the southern state of Parana (14 percent) record production and yields are forecast by DERAL. Planting of the 2016/17 soybean crop occurred at a rapid pace and was essentially complete in December. Harvest has recently begun in Mato Grosso, the top-producing state, and will continue throughout the country until June. (For more information, please contact [Maria.Anulacion@fas.usda.gov](mailto:Maria.Anulacion@fas.usda.gov)).





**World Agricultural Production  
U.S. Department of Agriculture**

Foreign Agricultural Service / Office of Global Analysis  
International Production Assessment Division (IPAD)  
Ag Box 1051, Room 4630, South Building  
Washington, DC 20250-1051  
<http://www.pecad.fas.usda.gov/>  
Telephone: (202) 720-1662 Fax: (202) 720-1158

This report uses information from the Foreign Agricultural Service’s (FAS) global network of agricultural attachés and counselors, official statistics of foreign governments and other foreign source materials, and the analysis of economic data and satellite imagery. Estimates of foreign area, yield, and production are from the International Production Assessment Division, FAS, and are reviewed by USDA’s Inter-Agency Commodity Estimates Committee. Estimates of U.S. area, yield, and production are from USDA’s National Agricultural Statistics Service. Numbers within the report may not add to totals because of rounding. This report reflects official USDA estimates released in the World Agricultural Supply and Demand Estimates (WASDE-561), January 12, 2017.

**Printed copies are available from the National Technical Information Service. Download an order form at [http://www.ntis.gov/products/specialty/usda/fas\\_a-g.asp](http://www.ntis.gov/products/specialty/usda/fas_a-g.asp), or call NTIS at 1-800-363-2068.**

The FAS International Production Assessment Division prepared this report. The next issue of World Agricultural Production will be released after 12:00 p.m. Eastern Time, February 9, 2017.

**Conversion Table**

Metric tons to bushels

Wheat, soybeans	=	MT * 36.7437
Corn, sorghum, rye	=	MT * 39.36825
Barley	=	MT * 45.929625
Oats	=	MT * 68.894438

Metric tons to 480-lb bales

Cotton	=	MT * 4.592917
--------	---	---------------

Metric tons to hundredweight

Rice	=	MT * 22.04622
------	---	---------------

Area & weight

1 hectare	=	2.471044 acres
1 kilogram	=	2.204622 pounds



For further information, contact:  
**U.S. Department of Agriculture**  
**Foreign Agricultural Service**  
**Office of Global Analysis**  
International Production Assessment Division  
Ag Box 1051, Room 4630, South Building  
Washington, DC 20250-1051

Telephone: (202) 720-1662

Fax: (202) 720-1158

### **GENERAL INFORMATION**

Director	Ronald Frantz	202-720-4056	ronald.frantz@fas.usda.gov
Deputy Director	Robert Tetrault	202-720-1071	robert.tetrault@fas.usda.gov
Administrative Assistant	Shelisa Johnson	202-720-1662	shelisa.johnson@fas.usda.gov
USDA Remote Sensing Advisor	Glenn Bethel	202-720-1280	glenn.bethel@fas.usda.gov
Sr. Analyst/Satellite Imagery	Curt Reynolds, Ph.D.	202-690-0134	curt.reynolds@fas.usda.gov
Archives Manager/Technical Lead			
Sr. Analyst/ Technical Lead	Dath Mita, Ph.D.	202-720-7339	dath.mita@fas.usda.gov
Sr. Analyst/ Global Special	Jim Crutchfield	202-690-0135	james.crutchfield@fas.usda.gov
Projects Manager/Technical Lead			
Sr. Analyst/Technical Lead	Vacant		
GIS Analyst/WAP Coordinator	Justin Jenkins	202-720-0419	justin.jenkins@fas.usda.gov

### **COUNTRY- AND REGION-SPECIFIC INFORMATION**

South America, Argentina, Venezuela, and Colombia	Denise McWilliams, Ph.D.	202-720-0107	denise.mcwilliams@fas.usda.gov
Western and Central Europe, and North Africa	Bryan Purcell	202-690-0138	bryan.purcell@fas.usda.gov
Russia, Kazakhstan, Ukraine, and other FSU-12 countries	Mark Lindeman	202-690-0143	mark.lindeman@fas.usda.gov
South Asia, Sri Lanka Bangladesh, India, and Nepal	Arnella Trent	202-720-0881	arnella.trent@fas.usda.gov
East Asia, China, and Japan	Dath Mita, Ph.D.	202-720-7339	dath.mita@fas.usda.gov
Sub-Saharan Africa, Nigeria and South Africa	Curt Reynolds, Ph.D.	202-690-0134	curt.reynolds@fas.usda.gov
S.E. Asia, Indonesia, Thailand, Malaysia, Cambodia and Vietnam	Michael Shean	202-720-7366	michael.shean@fas.usda.gov
Central America, Mexico, and Western United States	Justin Jenkins	202-720-0419	justin.jenkins@fas.usda.gov
Australia, New Zealand, Pakistan Papua New Guinea and South Pacific Islands	Jim Crutchfield	202-690-0135	james.crutchfield@fas.usda.gov
Middle East, Afghanistan, Iraq, Iran, Syria	Bill Baker, Ph.D.	202-260-8109	william.baker@fas.usda.gov
Canada, Caribbean, Eastern United States	Katie McGaughey	202-720-9210	katie.mcgaughey@fas.usda.gov
Brazil	Maria Anulacion	202-690-0133	maria.anulacion@fas.usda.gov



The Foreign Agricultural Service (FAS) updates its production, supply and distribution (PSD) database for cotton, oilseeds, and grains at 12:00 p.m. on the day the *World Agricultural Supply and Demand Estimates* (WASDE) report is released. This circular is released by 12:15 p.m.

### **FAS Reports and Databases:**

Current *World Market and Trade and World Agricultural Production* Reports:

<http://apps.fas.usda.gov/psdonline/psdDataPublications.aspx>

Archives *World Market and Trade and World Agricultural Production* Reports:

<http://usda.mannlib.cornell.edu/MannUsda/viewTaxonomy.do?taxonomyID=7>

Production, Supply and Distribution Database (PSD Online):

<http://apps.fas.usda.gov/psdonline/psdHome.aspx>

EU Countries Area & Production Estimates

<http://apps.fas.usda.gov/psdonline/psdDownload.aspx>

Global Agricultural Trade System (U.S. Exports and Imports):

<http://apps.fas.usda.gov/gats/default.aspx>

Export Sales Report:

<http://apps.fas.usda.gov/esrquery/>

Global Agricultural Information Network (Agricultural Attaché Reports):

<http://gain.fas.usda.gov/Pages/Default.aspx>

### **Other USDA Reports:**

World Agricultural Supply and Demand Estimates (WASDE):

<http://www.usda.gov/oce/commodity/wasde/>

Economic Research Service:

<http://www.ers.usda.gov/topics/crops>

National Agricultural Statistics Service:

<http://www.nass.usda.gov/Publications/>

**Table 01 World Crop Production Summary**

Million Metric Tons

Commodity	World -	Total Foreign	North America			Former Soviet		European	Asia (WAP)					South America		Selected Other			All Others
			United States	Canada -	Mexico -	Russia -	Ukraine -		China -	India -	Indonesia	Pakistan	Thailand	Argentina	Brazil -	Australia	South Africa	Turkey -	
---Million metric tons---																			
<b>Wheat</b>																			
2014/15	728.1	672.9	55.1	29.4	3.7	59.1	24.8	nr	126.2	95.9	0.0	26.0	0.0	13.9	6.0	23.7	1.8	15.3	247.3
2015/16 prel.	735.5	679.4	56.1	27.6	3.8	61.0	27.3	nr	130.2	86.5	0.0	25.1	0.0	11.3	5.5	24.5	1.4	19.5	255.6
2016/17 proj.																			
Dec	751.3	688.4	62.9	31.7	3.9	72.0	27.0	nr	128.9	90.0	0.0	25.3	0.0	14.4	6.7	33.0	1.8	17.5	236.3
Jan	752.7	689.8	62.9	31.7	3.9	72.5	27.0	nr	128.9	90.0	0.0	25.3	0.0	15.0	6.7	33.0	1.9	17.5	236.5
<b>Coarse Grains</b>																			
2014/15	1,307.2	929.9	377.2	22.0	32.7	40.4	39.4	nr	222.8	43.1	9.0	5.3	4.9	36.8	87.7	12.6	11.1	9.4	352.9
2015/16 prel.	1,249.7	882.6	367.0	25.6	32.2	37.4	33.4	nr	231.8	38.0	10.5	5.4	4.8	37.9	69.1	12.4	8.4	14.3	321.3
2016/17 proj.																			
Dec	1,329.4	925.2	404.1	25.6	31.8	41.0	38.1	nr	227.4	42.3	10.2	5.7	5.3	44.0	89.0	14.5	13.5	10.9	326.0
Jan	1,327.7	925.1	402.6	25.6	31.8	40.9	38.1	nr	227.4	42.3	10.2	5.7	5.3	43.8	89.0	14.5	13.5	10.9	326.1
<b>Rice, Milled</b>																			
2014/15	478.6	471.4	7.1	0.0	0.2	0.7	0.0	nr	144.6	105.5	35.6	6.9	18.8	1.0	8.5	0.5	0.0	0.5	148.9
2015/16 prel.	472.4	466.3	6.1	0.0	0.1	0.7	0.0	nr	145.8	104.3	36.2	6.8	15.8	0.9	7.2	0.2	0.0	0.5	147.7
2016/17 proj.																			
Dec	481.5	474.1	7.5	0.0	0.2	0.8	0.0	nr	144.9	106.5	36.6	6.9	18.6	1.0	8.0	0.7	0.0	0.5	149.5
Jan	480.0	472.9	7.1	0.0	0.2	0.7	0.0	nr	144.9	106.5	36.6	6.6	18.6	1.0	7.8	0.7	0.0	0.5	148.9
<b>Total Grains</b>																			
2014/15	2,513.8	2,074.3	439.5	51.4	36.6	100.1	64.2	nr	493.5	244.4	44.6	38.2	23.6	51.7	102.1	36.8	12.9	25.1	749.0
2015/16 prel.	2,457.5	2,028.3	429.3	53.2	36.1	99.2	60.7	nr	507.8	228.9	46.7	37.3	20.6	50.1	81.9	37.1	9.8	34.3	724.6
2016/17 proj.																			
Dec	2,562.1	2,087.7	474.4	57.3	35.9	113.8	65.1	nr	501.1	238.8	46.8	37.9	23.9	59.4	103.7	48.1	15.2	28.9	711.8
Jan	2,560.4	2,087.8	472.6	57.3	35.9	114.1	65.1	nr	501.1	238.8	46.8	37.6	23.9	59.8	103.5	48.1	15.3	28.9	711.5
<b>Oilseeds</b>																			
2014/15	536.9	420.8	116.0	22.5	1.1	12.1	16.3	nr	57.7	32.3	12.1	5.1	0.8	66.2	100.1	4.3	1.8	2.6	85.8
2015/16 prel.	522.4	406.6	115.9	24.8	1.0	12.9	17.6	nr	55.4	29.8	11.8	3.4	0.8	60.8	99.0	3.9	1.5	2.2	81.7
2016/17 proj.																			
Dec	554.7	425.9	128.8	25.0	1.0	14.5	18.7	nr	54.6	37.2	12.5	4.1	0.8	61.8	104.8	5.1	1.7	2.5	81.5
Jan	554.8	427.5	127.3	25.0	1.0	14.6	18.7	nr	55.5	37.2	12.5	3.9	0.8	61.8	106.8	5.1	1.7	2.5	80.3
<b>Cotton</b>																			
2014/15	119.2	102.9	16.3	0.0	1.3	0.0	0.0	1.7	30.0	29.5	0.0	10.6	0.0	1.1	7.0	2.3	0.1	3.2	16.1
2015/16 prel.	96.5	83.6	12.9	0.0	0.9	0.0	0.0	1.3	22.0	26.4	0.0	7.0	0.0	0.8	5.9	2.6	0.0	2.7	13.9
2016/17 proj.																			
Dec	104.2	87.7	16.5	0.0	0.7	0.0	0.0	1.2	21.0	27.0	0.0	8.3	0.0	0.7	6.5	4.5	0.1	3.2	14.6
Jan	105.3	88.4	17.0	0.0	0.7	0.0	0.0	1.2	22.0	27.0	0.0	7.9	0.0	0.7	6.5	4.5	0.1	3.2	14.6

1/ Includes wheat, coarse grains, and rice (milled) shown above.

**Table 02 Wheat Area, Yield, and Production**

Country / Region	Area (Million hectares)				Yield (Metric tons per hectare)				Production (Million metric tons)				Change in Production			
	2014/15	Prel.	2016/17 Proj.		2014/15	Prel.	2016/17 Proj.		2014/15	Prel.	2016/17 Proj.		From last month		From last year	
		2015/16	Dec	Jan		2015/16	Dec	Jan		2015/16	Dec	Jan	MMT	Percent	MMT	Percent
<b>World</b>	221.68	224.98	221.37	221.63	3.28	3.27	3.39	3.40	728.09	735.49	751.26	752.69	1.43	0.19	17.20	2.34
<b>United States</b>	18.77	19.15	17.76	17.76	2.94	2.93	3.54	3.54	55.15	56.12	62.86	62.86	0.00	0.00	6.74	12.01
<b>Total Foreign</b>	202.91	205.83	203.61	203.87	3.32	3.30	3.38	3.38	672.94	679.38	688.40	689.83	1.43	0.21	10.45	1.54
<b>European Union</b>	26.75	26.79	27.01	27.01	5.87	5.97	5.33	5.34	156.92	160.01	143.97	144.32	0.35	0.24	-15.69	-9.80
<b>China</b>	24.07	24.14	24.19	24.19	5.24	5.39	5.33	5.33	126.21	130.19	128.85	128.85	0.00	0.00	-1.34	-1.03
<b>South Asia</b>																
India	30.47	31.47	30.22	30.22	3.15	2.75	2.98	2.98	95.85	86.53	90.00	90.00	0.00	0.00	3.47	4.01
Pakistan	9.10	9.20	9.23	9.23	2.85	2.73	2.74	2.74	25.98	25.10	25.30	25.30	0.00	0.00	0.20	0.80
Afghanistan	2.56	2.55	2.55	2.55	1.96	1.96	2.00	2.00	5.03	5.00	5.10	5.10	0.00	0.00	0.10	2.00
Nepal	0.77	0.77	0.77	0.77	2.57	2.45	2.45	2.45	1.98	1.89	1.89	1.89	0.00	0.00	0.00	0.00
<b>Former Soviet Union - 12</b>																
Russia	23.64	25.58	26.90	27.05	2.50	2.39	2.68	2.68	59.08	61.04	72.00	72.50	0.50	0.69	11.46	18.77
Ukraine	6.30	7.12	6.50	6.50	3.93	3.83	4.15	4.15	24.75	27.27	27.00	27.00	0.00	0.00	-0.27	-1.00
Kazakhstan	11.92	11.57	12.00	12.00	1.09	1.19	1.38	1.38	13.00	13.75	16.50	16.50	0.00	0.00	2.75	20.02
Uzbekistan	1.40	1.40	1.40	1.40	5.11	5.14	5.14	5.14	7.15	7.20	7.20	7.20	0.00	0.00	0.00	0.00
Belarus	0.74	0.73	0.70	0.70	3.94	3.96	3.71	3.71	2.92	2.90	2.60	2.60	0.00	0.00	-0.30	-10.22
<b>Canada</b>	9.48	9.58	8.88	8.88	3.10	2.88	3.57	3.57	29.42	27.59	31.70	31.70	0.00	0.00	4.11	14.88
<b>South America</b>																
Argentina	4.96	3.95	4.80	4.90	2.81	2.86	3.00	3.06	13.93	11.30	14.40	15.00	0.60	4.17	3.70	32.74
Brazil	2.73	2.45	2.12	2.12	2.20	2.26	3.16	3.16	6.00	5.54	6.70	6.70	0.00	0.00	1.16	20.94
Uruguay	0.40	0.27	0.34	0.33	2.70	4.53	3.00	2.70	1.08	1.20	1.01	0.89	-0.12	-11.44	-0.31	-25.83
<b>Australia</b>	12.38	12.80	13.00	13.00	1.92	1.91	2.54	2.54	23.74	24.50	33.00	33.00	0.00	0.00	8.50	34.69
<b>Africa</b>																
Egypt	1.35	1.26	1.26	1.26	6.15	6.43	6.43	6.43	8.30	8.10	8.10	8.10	0.00	0.00	0.00	0.00
Morocco	3.06	3.20	2.11	2.11	1.67	2.50	1.29	1.29	5.10	8.00	2.73	2.73	0.00	0.00	-5.27	-65.86
Ethiopia	1.66	1.60	1.60	1.60	2.54	2.09	2.38	2.38	4.23	3.34	3.80	3.80	0.00	0.00	0.46	13.77
Algeria	1.70	2.10	1.30	1.30	1.12	1.29	1.54	1.54	1.90	2.70	2.00	2.00	0.00	0.00	-0.70	-25.93
<b>Middle East</b>																
Turkey	7.71	7.86	7.82	7.82	1.98	2.48	2.24	2.24	15.25	19.50	17.50	17.50	0.00	0.00	-2.00	-10.26
Iran	6.80	6.80	6.80	6.80	1.91	2.21	2.28	2.28	13.00	15.00	15.50	15.50	0.00	0.00	0.50	3.33
Iraq	2.46	2.45	2.30	2.30	1.42	1.35	1.48	1.48	3.50	3.30	3.40	3.40	0.00	0.00	0.10	3.03
Syria	1.30	1.45	1.10	1.10	1.92	2.41	2.18	2.18	2.50	3.50	2.40	2.40	0.00	0.00	-1.10	-31.43
<b>Mexico</b>	0.71	0.83	0.72	0.72	5.21	4.55	5.42	5.42	3.69	3.75	3.90	3.90	0.00	0.00	0.15	3.97
<b>Others</b>	8.49	7.94	8.01	8.02	2.64	2.67	2.73	2.74	22.44	21.17	21.85	21.95	0.09	0.42	0.78	3.68

World and Selected Countries and Regions

**Table 03 Total Coarse Grain Area, Yield, and Production**

Country / Region	Area (Million hectares)				Yield (Metric tons per hectare)				Production (Million metric tons)				Change in Production						
	2014/15	Prel.		2016/17 Proj.		2014/15	Prel.		2016/17 Proj.		2014/15	Prel.		2016/17 Proj.		From last month		From last year	
		2015/16	Dec	Jan	2015/16		Dec	Jan	2015/16	Dec		Jan	MMT	Percent	MMT	Percent			
<b>World</b>	325.25	320.83	322.39	322.29	4.02	3.90	4.12	4.12	1,307.17	1,249.66	1,329.36	1,327.66	-1.70	-0.13	78.00	6.24			
<b>United States</b>	37.77	37.80	39.19	39.20	9.99	9.71	10.31	10.27	377.23	367.01	404.11	402.60	-1.51	-0.37	35.59	9.70			
<b>Total Foreign</b>	287.48	283.04	283.20	283.09	3.23	3.12	3.27	3.27	929.93	882.65	925.25	925.06	-0.19	-0.02	42.41	4.81			
<b>China</b>	39.18	40.18	38.90	38.90	5.68	5.77	5.84	5.84	222.75	231.82	227.35	227.35	0.00	0.00	-4.47	-1.93			
<b>European Union</b>	30.77	30.34	30.15	30.15	5.55	5.00	5.05	5.05	170.85	151.81	152.39	152.36	-0.04	-0.02	0.54	0.36			
<b>South America</b>																			
Brazil	16.77	16.97	17.64	17.64	5.23	4.07	5.05	5.05	87.67	69.13	89.02	89.02	0.00	0.00	19.89	28.77			
Argentina	5.47	5.78	6.55	6.51	6.72	6.56	6.72	6.73	36.78	37.94	44.02	43.83	-0.19	-0.43	5.90	15.54			
<b>Former Soviet Union - 12</b>																			
Russia	16.73	15.23	15.10	15.16	2.41	2.46	2.72	2.70	40.39	37.43	41.00	40.92	-0.09	-0.21	3.49	9.32			
Ukraine	8.44	7.62	7.83	7.83	4.67	4.38	4.87	4.87	39.39	33.39	38.10	38.10	0.00	0.00	4.71	14.12			
Kazakhstan	2.31	2.46	2.27	2.27	1.47	1.51	1.66	1.66	3.39	3.73	3.76	3.76	0.00	0.00	0.04	0.94			
Belarus	1.13	0.95	1.22	1.22	3.52	3.48	3.37	3.37	3.98	3.32	4.10	4.10	0.00	0.00	0.78	23.61			
<b>Africa</b>																			
Nigeria	13.65	13.10	13.30	13.30	1.39	1.37	1.39	1.39	19.02	17.95	18.50	18.50	0.00	0.00	0.55	3.06			
South Africa	3.25	2.39	3.28	3.28	3.41	3.50	4.11	4.11	11.11	8.36	13.47	13.47	0.00	0.00	5.10	61.02			
Tanzania	5.29	5.15	5.35	5.35	1.48	1.39	1.24	1.24	7.84	7.17	6.65	6.65	0.00	0.00	-0.52	-7.25			
Burkina	3.49	3.85	3.85	3.85	1.18	1.00	1.14	1.14	4.11	3.85	4.40	4.40	0.00	0.00	0.55	14.23			
Ethiopia	5.36	5.21	5.64	5.64	2.69	1.92	2.26	2.26	14.44	9.99	12.75	12.75	0.00	0.00	2.77	27.69			
Egypt	0.97	0.97	0.97	0.97	7.09	7.05	7.05	7.05	6.87	6.86	6.86	6.86	0.00	0.00	0.00	0.00			
Mali	3.75	4.00	3.85	3.85	1.26	1.36	1.31	1.31	4.73	5.44	5.05	5.05	0.00	0.00	-0.39	-7.17			
<b>India</b>	25.14	23.81	24.61	24.61	1.71	1.60	1.72	1.72	43.08	38.04	42.26	42.26	0.00	0.00	4.22	11.08			
<b>Southeast Asia</b>																			
Indonesia	3.10	3.50	3.45	3.45	2.90	3.00	2.96	2.96	9.00	10.50	10.20	10.20	0.00	0.00	-0.30	-2.86			
Philippines	2.56	2.56	2.60	2.60	3.00	2.93	3.04	3.04	7.67	7.50	7.90	7.90	0.00	0.00	0.40	5.33			
Vietnam	1.18	1.18	1.10	1.10	4.40	4.48	4.50	4.50	5.19	5.28	4.95	4.95	0.00	0.00	-0.33	-6.27			
Thailand	1.13	1.12	1.20	1.20	4.30	4.25	4.39	4.39	4.86	4.76	5.25	5.25	0.00	0.00	0.50	10.41			
<b>Mexico</b>	9.41	9.24	9.16	9.16	3.47	3.48	3.47	3.47	32.69	32.19	31.83	31.83	0.00	0.00	-0.36	-1.13			
<b>Canada</b>	4.44	4.88	4.64	4.64	4.95	5.25	5.52	5.52	21.99	25.62	25.63	25.63	0.00	0.00	0.01	0.04			
<b>Australia</b>	5.80	5.76	5.55	5.55	2.17	2.16	2.61	2.61	12.61	12.44	14.48	14.48	0.00	0.00	2.05	16.46			
<b>Middle East</b>																			
Turkey	4.26	4.35	4.30	4.30	2.22	3.28	2.54	2.54	9.43	14.28	10.93	10.93	0.00	0.00	-3.35	-23.47			
Iran	2.01	2.08	2.09	2.09	2.87	3.07	3.05	3.05	5.76	6.36	6.36	6.36	0.00	0.00	0.00	0.00			
<b>Others</b>	71.91	70.34	68.62	68.50	1.45	1.39	1.43	1.43	104.36	97.51	98.04	98.16	0.13	0.13	0.65	0.67			

World and Selected Countries and Regions; Coarse Grain includes: Barley, Corn, Millet, Mixed Grains, Oats, Rye and Sorghum

**Table 04 Corn Area, Yield, and Production**

Country / Region	Area (Million hectares)				Yield (Metric tons per hectare)				Production (Million metric tons)				Change in Production			
	Prel.		2016/17 Proj.		Prel.		2016/17 Proj.		Prel.		2016/17 Proj.		From last month		From last year	
	2014/15	2015/16	Dec	Jan	2014/15	2015/16	Dec	Jan	2014/15	2015/16	Dec	Jan	MMT	Percent	MMT	Percent
<b>World</b>	179.69	177.76	181.18	181.03	5.65	5.41	5.74	5.73	1,015.06	961.10	1,039.73	1,037.93	-1.80	-0.17	76.82	7.99
<b>United States</b>	33.64	32.68	35.14	35.11	10.73	10.57	11.01	10.96	361.09	345.51	386.75	384.78	-1.97	-0.51	39.27	11.37
<b>Total Foreign</b>	146.04	145.08	146.04	145.92	4.48	4.24	4.47	4.48	653.97	615.60	652.98	653.15	0.17	0.03	37.55	6.10
<b>China</b>	37.12	38.12	36.76	36.76	5.81	5.89	5.97	5.97	215.65	224.63	219.55	219.55	0.00	0.00	-5.08	-2.26
<b>South America</b>																
Brazil	15.75	16.00	16.70	16.70	5.40	4.19	5.18	5.18	85.00	67.00	86.50	86.50	0.00	0.00	19.50	29.10
Argentina	3.50	3.50	4.50	4.50	8.50	8.29	8.11	8.11	29.75	29.00	36.50	36.50	0.00	0.00	7.50	25.86
Bolivia	0.32	0.32	0.20	0.09	2.30	2.31	2.15	1.38	0.73	0.73	0.43	0.12	-0.31	-72.09	-0.61	-83.56
<b>European Union</b>	9.57	9.47	8.76	8.76	7.93	6.17	6.93	6.93	75.84	58.48	60.70	60.68	-0.02	-0.03	2.20	3.77
<b>Africa</b>																
South Africa	3.05	2.20	3.10	3.10	3.49	3.59	4.19	4.19	10.63	7.90	13.00	13.00	0.00	0.00	5.10	64.56
Nigeria	4.15	3.80	4.00	4.00	1.81	1.84	1.80	1.80	7.52	7.00	7.20	7.20	0.00	0.00	0.20	2.86
Ethiopia	2.12	2.15	2.20	2.20	3.42	2.35	2.86	2.86	7.24	5.05	6.30	6.30	0.00	0.00	1.25	24.75
Egypt	0.75	0.75	0.75	0.75	8.00	8.00	8.00	8.00	5.96	6.00	6.00	6.00	0.00	0.00	0.00	0.00
Tanzania	4.20	4.00	4.20	4.20	1.60	1.50	1.31	1.31	6.74	6.00	5.50	5.50	0.00	0.00	-0.50	-8.33
Malawi	1.70	1.75	1.65	1.65	2.31	1.59	1.44	1.44	3.93	2.78	2.37	2.37	0.00	0.00	-0.41	-14.66
Zambia	1.21	0.96	1.16	1.16	2.78	2.78	2.48	2.48	3.35	2.68	2.87	2.87	0.00	0.00	0.19	7.12
Kenya	1.65	1.70	1.70	1.70	1.61	1.65	1.68	1.68	2.65	2.80	2.85	2.85	0.00	0.00	0.05	1.79
Uganda	1.11	1.10	1.10	1.10	2.50	2.36	2.36	2.36	2.76	2.60	2.60	2.60	0.00	0.00	0.00	0.00
Zimbabwe	1.50	1.53	0.80	0.80	0.97	0.48	0.64	0.64	1.46	0.74	0.51	0.51	0.00	0.00	-0.23	-31.00
<b>Former Soviet Union - 12</b>																
Ukraine	4.63	4.09	4.25	4.25	6.15	5.71	6.35	6.35	28.45	23.33	27.00	27.00	0.00	0.00	3.67	15.72
Russia	2.60	2.67	2.80	2.80	4.36	4.93	5.54	5.54	11.33	13.17	15.50	15.50	0.00	0.00	2.33	17.71
<b>South Asia</b>																
India	9.19	8.69	9.50	9.50	2.63	2.51	2.58	2.58	24.17	21.80	24.50	24.50	0.00	0.00	2.70	12.39
Pakistan	1.14	1.15	1.15	1.15	4.29	4.36	4.52	4.52	4.90	5.00	5.20	5.20	0.00	0.00	0.20	4.00
Nepal	0.91	0.90	0.90	0.90	2.54	2.22	2.22	2.22	2.30	2.00	2.00	2.00	0.00	0.00	0.00	0.00
<b>Southeast Asia</b>																
Indonesia	3.10	3.50	3.45	3.45	2.90	3.00	2.96	2.96	9.00	10.50	10.20	10.20	0.00	0.00	-0.30	-2.86
Philippines	2.56	2.56	2.60	2.60	3.00	2.93	3.04	3.04	7.67	7.50	7.90	7.90	0.00	0.00	0.40	5.33
Vietnam	1.18	1.18	1.10	1.10	4.40	4.48	4.50	4.50	5.19	5.28	4.95	4.95	0.00	0.00	-0.33	-6.27
Thailand	1.10	1.09	1.17	1.17	4.36	4.31	4.44	4.44	4.80	4.70	5.20	5.20	0.00	0.00	0.50	10.64
<b>Mexico</b>	7.33	7.21	7.10	7.10	3.48	3.58	3.45	3.45	25.48	25.80	24.50	24.50	0.00	0.00	-1.30	-5.04
<b>Canada</b>	1.23	1.31	1.33	1.33	9.36	10.33	9.96	9.96	11.49	13.56	13.20	13.20	0.00	0.00	-0.36	-2.65
<b>Turkey</b>	0.55	0.62	0.57	0.57	8.73	10.00	9.65	9.65	4.80	6.20	5.50	5.50	0.00	0.00	-0.70	-11.29
<b>Others</b>	22.87	22.77	22.55	22.55	2.41	2.34	2.41	2.44	55.21	53.36	54.44	54.94	0.50	0.92	1.57	2.95

World and Selected Countries and Regions

**Table 05 Barley Area, Yield, and Production**

Country / Region	Area (Million hectares)				Yield (Metric tons per hectare)				Production (Million metric tons)				Change in Production			
	2014/15	Prel.	2016/17 Proj.		2014/15	Prel.	2016/17 Proj.		2014/15	Prel.	2016/17 Proj.		From last month		From last year	
		2015/16	Dec	Jan		2015/16	Dec	Jan		2015/16	Dec	Jan	MMT	Percent	MMT	Percent
<b>World</b>	49.58	50.04	48.70	48.62	2.86	2.97	2.97	2.96	141.80	148.72	144.74	144.06	-0.68	-0.47	-4.67	-3.14
<b>United States</b>	1.01	1.28	1.04	1.04	3.91	3.72	4.19	4.19	3.95	4.75	4.34	4.34	0.00	0.00	-0.41	-8.65
<b>Total Foreign</b>	48.57	48.76	47.67	47.58	2.84	2.95	2.95	2.94	137.84	143.97	140.40	139.72	-0.68	-0.48	-4.25	-2.95
<b>European Union</b>	12.42	12.19	12.47	12.47	4.88	5.05	4.79	4.79	60.66	61.52	59.75	59.76	0.01	0.02	-1.76	-2.86
<b>Former Soviet Union - 12</b>																
Russia	8.80	8.04	8.00	7.95	2.27	2.12	2.25	2.20	20.03	17.08	18.00	17.50	-0.50	-2.78	0.42	2.44
Ukraine	3.20	3.00	3.05	3.05	2.95	2.92	3.21	3.21	9.45	8.75	9.80	9.80	0.00	0.00	1.05	11.99
Kazakhstan	1.91	2.04	1.85	1.85	1.26	1.31	1.46	1.46	2.41	2.68	2.70	2.70	0.00	0.00	0.03	0.93
Belarus	0.55	0.50	0.60	0.60	3.64	3.70	3.50	3.50	1.99	1.85	2.10	2.10	0.00	0.00	0.25	13.57
Azerbaijan	0.30	0.30	0.30	0.30	2.00	2.33	2.33	2.33	0.60	0.70	0.70	0.70	0.00	0.00	0.00	0.00
<b>Canada</b>	2.14	2.35	2.22	2.22	3.33	3.49	3.96	3.96	7.12	8.23	8.80	8.80	0.00	0.00	0.57	6.98
<b>Australia</b>	4.08	4.11	4.00	4.00	2.12	2.09	2.65	2.65	8.65	8.59	10.60	10.60	0.00	0.00	2.01	23.36
<b>Middle East</b>																
Turkey	3.40	3.40	3.40	3.40	1.18	2.18	1.40	1.40	4.00	7.40	4.75	4.75	0.00	0.00	-2.65	-35.81
Iran	1.58	1.64	1.65	1.65	2.03	2.32	2.30	2.30	3.20	3.80	3.80	3.80	0.00	0.00	0.00	0.00
Iraq	1.15	1.16	1.16	1.16	0.87	0.91	0.95	0.95	1.00	1.05	1.10	1.10	0.00	0.00	0.05	4.76
Syria	0.50	0.70	0.45	0.45	0.70	0.71	0.72	0.72	0.35	0.50	0.33	0.33	0.00	0.00	-0.18	-35.00
<b>Africa</b>																
Ethiopia	0.99	1.20	1.20	1.20	1.96	1.63	1.71	1.71	1.95	1.95	2.05	2.05	0.00	0.00	0.10	5.13
Morocco	1.44	1.60	1.14	1.14	1.18	2.19	0.95	0.95	1.70	3.50	1.08	1.08	0.00	0.00	-2.42	-69.26
Algeria	0.80	1.00	0.90	0.90	1.63	1.30	1.11	1.11	1.30	1.30	1.00	1.00	0.00	0.00	-0.30	-23.08
Tunisia	0.54	0.38	0.38	0.38	1.43	0.97	1.05	1.05	0.77	0.37	0.40	0.40	0.00	0.00	0.03	9.29
South Africa	0.09	0.09	0.09	0.09	3.55	3.53	3.48	3.48	0.30	0.33	0.31	0.31	0.00	0.00	-0.02	-6.63
<b>South America</b>																
Argentina	0.90	1.25	0.98	0.94	3.22	3.95	3.43	3.35	2.90	4.94	3.34	3.15	-0.19	-5.69	-1.79	-36.23
Uruguay	0.10	0.09	0.16	0.16	2.43	3.59	3.63	3.63	0.24	0.33	0.58	0.58	0.00	0.00	0.25	75.76
Brazil	0.10	0.10	0.10	0.10	2.60	2.60	3.47	3.47	0.26	0.26	0.33	0.33	0.00	0.00	0.07	26.92
<b>India</b>	0.67	0.71	0.59	0.59	2.72	2.28	2.56	2.56	1.83	1.61	1.51	1.51	0.00	0.00	-0.10	-6.39
<b>China</b>	0.47	0.45	0.50	0.50	3.86	4.18	4.00	4.00	1.81	1.87	2.00	2.00	0.00	0.00	0.13	6.95
<b>Mexico</b>	0.31	0.32	0.30	0.30	2.69	2.37	2.45	2.45	0.85	0.75	0.74	0.74	0.00	0.00	-0.02	-2.26
<b>Afghanistan</b>	0.28	0.28	0.28	0.28	1.43	1.43	1.50	1.50	0.40	0.40	0.42	0.42	0.00	0.00	0.02	5.00
<b>Others</b>	1.86	1.86	1.91	1.91	2.20	2.27	2.21	2.21	4.08	4.22	4.22	4.22	0.00	0.00	0.01	0.19

World and Selected Countries and Regions



**Table 06 Oats Area, Yield, and Production**

Country / Region	Area (Million hectares)				Yield (Metric tons per hectare)				Production (Million metric tons)				Change in Production			
	2014/15	Prel.	2016/17 Proj.		2014/15	Prel.	2016/17 Proj.		2014/15	Prel.	2016/17 Proj.		From last month		From last year	
		2015/16	Dec	Jan		2015/16	Dec	Jan		2015/16	Dec	Jan	MMT	Percent	MMT	Percent
<b>World</b>	9.56	9.59	9.22	9.27	2.35	2.37	2.47	2.46	22.50	22.74	22.76	22.81	0.05	0.22	0.06	0.28
<b>United States</b>	0.42	0.52	0.40	0.40	2.43	2.52	2.37	2.37	1.02	1.30	0.94	0.94	0.00	0.00	-0.36	-27.69
<b>Total Foreign</b>	9.14	9.08	8.83	8.88	2.35	2.36	2.47	2.46	21.48	21.44	21.82	21.87	0.05	0.23	0.42	1.97
<b>European Union</b>	2.51	2.48	2.50	2.50	3.12	3.03	3.13	3.13	7.83	7.50	7.81	7.81	0.00	0.00	0.30	4.05
<b>Former Soviet Union - 12</b>																
Russia	3.08	2.83	2.70	2.75	1.71	1.60	1.74	1.73	5.27	4.53	4.70	4.75	0.05	1.06	0.22	4.93
Ukraine	0.25	0.22	0.22	0.22	2.49	2.29	2.31	2.31	0.61	0.50	0.50	0.50	0.00	0.00	0.00	0.40
Belarus	0.15	0.15	0.14	0.14	3.46	3.26	2.86	2.86	0.52	0.49	0.40	0.40	0.00	0.00	-0.09	-18.70
Kazakhstan	0.19	0.20	0.20	0.20	1.18	1.20	1.38	1.38	0.23	0.24	0.28	0.28	0.00	0.00	0.03	12.70
<b>Canada</b>	0.93	1.06	0.90	0.90	3.21	3.25	3.35	3.35	2.98	3.43	3.00	3.00	0.00	0.00	-0.43	-12.49
<b>South America</b>																
Argentina	0.25	0.24	0.23	0.23	2.14	2.30	2.17	2.17	0.53	0.55	0.50	0.50	0.00	0.00	-0.05	-9.58
Brazil	0.19	0.29	0.26	0.26	1.85	2.69	2.50	2.50	0.35	0.78	0.65	0.65	0.00	0.00	-0.13	-16.99
Chile	0.09	0.11	0.12	0.12	4.68	4.94	5.04	5.04	0.42	0.53	0.60	0.60	0.00	0.00	0.07	12.57
Uruguay	0.01	0.03	0.03	0.03	1.64	1.38	1.48	1.48	0.02	0.04	0.04	0.04	0.00	0.00	0.00	2.78
<b>Oceania</b>																
Australia	0.85	0.83	0.90	0.90	1.40	1.57	2.00	2.00	1.20	1.31	1.80	1.80	0.00	0.00	0.49	37.61
New Zealand	0.01	0.01	0.01	0.01	5.00	5.67	5.00	5.00	0.04	0.03	0.03	0.03	0.00	0.00	0.00	-11.76
<b>China</b>	0.20	0.20	0.20	0.20	3.00	3.00	3.00	3.00	0.60	0.60	0.60	0.60	0.00	0.00	0.00	0.00
<b>Africa</b>																
Algeria	0.09	0.09	0.09	0.09	1.29	1.29	1.29	1.29	0.11	0.11	0.11	0.11	0.00	0.00	0.00	0.00
Morocco	0.04	0.05	0.05	0.05	0.88	1.19	1.44	1.44	0.04	0.06	0.07	0.07	0.00	0.00	0.01	16.07
South Africa	0.03	0.03	0.03	0.03	1.83	1.83	1.83	1.83	0.06	0.06	0.06	0.06	0.00	0.00	0.00	0.00
<b>Other Europe</b>																
Norway	0.07	0.07	0.07	0.07	3.42	3.42	3.43	3.43	0.24	0.24	0.24	0.24	0.00	0.00	0.00	1.69
Serbia	0.03	0.03	0.03	0.03	2.20	2.20	2.17	2.17	0.07	0.07	0.07	0.07	0.00	0.00	0.00	-1.52
Albania	0.01	0.01	0.01	0.01	2.08	2.08	2.08	2.08	0.03	0.03	0.03	0.03	0.00	0.00	0.00	0.00
Bosnia and Herzegovina	0.01	0.01	0.01	0.01	2.70	2.73	2.73	2.73	0.03	0.03	0.03	0.03	0.00	0.00	0.00	0.00
<b>Turkey</b>	0.09	0.09	0.09	0.09	2.33	2.33	2.33	2.33	0.21	0.21	0.21	0.21	0.00	0.00	0.00	0.00
<b>Mexico</b>	0.05	0.05	0.05	0.05	1.75	1.81	1.80	1.80	0.09	0.09	0.09	0.09	0.00	0.00	0.00	3.45
<b>Others</b>	0.01	0.01	0.01	0.01	2.00	1.93	1.79	1.79	0.03	0.03	0.03	0.03	0.00	0.00	0.00	-7.41

World and Selected Countries and Regions

**Table 07 Rye Area, Yield, and Production**

Country / Region	Area (Million hectares)				Yield (Metric tons per hectare)				Production (Million metric tons)				Change in Production			
	2014/15	Prel.	2016/17 Proj.		2014/15	Prel.	2016/17 Proj.		2014/15	Prel.	2016/17 Proj.		From last month		From last year	
		2015/16	Dec	Jan		2015/16	Dec	Jan		2015/16	Dec	Jan	MMT	Percent	MMT	Percent
<b>World</b>	4.95	4.14	4.41	4.46	2.92	2.93	2.93	2.94	14.44	12.12	12.91	13.12	0.21	1.65	1.00	8.24
<b>United States</b>	0.10	0.15	0.17	0.17	1.76	1.99	2.04	2.04	0.18	0.30	0.34	0.34	0.00	0.00	0.05	15.93
<b>Total Foreign</b>	4.85	3.99	4.24	4.29	2.94	2.96	2.96	2.98	14.26	11.83	12.56	12.78	0.21	1.70	0.95	8.05
<b>European Union</b>	2.12	1.96	2.16	2.16	4.20	4.01	3.77	3.75	8.87	7.84	8.12	8.10	-0.03	-0.33	0.26	3.32
<b>Former Soviet Union - 12</b>																
Russia	1.85	1.25	1.20	1.25	1.77	1.67	1.92	2.03	3.28	2.08	2.30	2.54	0.24	10.43	0.46	21.88
Belarus	0.32	0.25	0.33	0.33	2.71	3.01	2.46	2.46	0.87	0.75	0.80	0.80	0.00	0.00	0.05	6.24
Ukraine	0.19	0.15	0.14	0.14	2.57	2.59	2.62	2.62	0.48	0.39	0.38	0.38	0.00	0.00	-0.02	-4.82
Kazakhstan	0.04	0.04	0.04	0.04	1.42	0.97	1.29	1.29	0.06	0.04	0.05	0.05	0.00	0.00	0.01	21.62
<b>Turkey</b>	0.12	0.14	0.14	0.14	2.61	2.50	2.50	2.50	0.30	0.35	0.35	0.35	0.00	0.00	0.00	0.00
<b>Canada</b>	0.09	0.10	0.13	0.13	2.48	2.38	3.23	3.23	0.22	0.23	0.41	0.41	0.00	0.00	0.18	81.42
<b>South America</b>																
Chile	0.00	0.00	0.00	0.00	5.00	5.00	5.00	5.00	0.01	0.01	0.01	0.01	0.00	0.00	0.00	0.00
Argentina	0.05	0.03	0.04	0.04	1.90	1.79	2.00	2.00	0.10	0.06	0.07	0.07	0.00	0.00	0.01	14.75
<b>Other Europe</b>																
Bosnia and Herzegovina	0.00	0.00	0.00	0.00	2.25	2.67	3.00	3.00	0.01	0.01	0.01	0.01	0.00	0.00	0.00	12.50
Switzerland	0.00	0.00	0.00	0.00	5.50	5.50	5.50	5.50	0.01	0.01	0.01	0.01	0.00	0.00	0.00	0.00
Serbia	0.00	0.00	0.00	0.00	2.50	2.50	2.50	2.50	0.01	0.01	0.01	0.01	0.00	0.00	0.00	0.00
<b>Australia</b>	0.04	0.04	0.04	0.04	0.57	0.61	0.63	0.63	0.02	0.02	0.03	0.03	0.00	0.00	0.00	13.64
<b>Others</b>	0.03	0.03	0.03	0.03	1.07	0.97	1.03	1.03	0.03	0.03	0.03	0.03	0.00	0.00	0.00	10.34

World and Selected Countries and Regions

**Table 08 Sorghum Area, Yield, and Production**

Country / Region	Area (Million hectares)				Yield (Metric tons per hectare)				Production (Million metric tons)				Change in Production			
	Prel.		2016/17 Proj.		Prel.		2016/17 Proj.		Prel.		2016/17 Proj.		From last month		From last year	
	2014/15	2015/16	Dec	Jan	2014/15	2015/16	Dec	Jan	2014/15	2015/16	Dec	Jan	MMT	Percent	MMT	Percent
<b>World</b>	43.81	42.50	42.32	42.36	1.49	1.41	1.51	1.51	65.42	59.91	63.72	64.11	0.39	0.62	4.20	7.01
<b>United States</b>	2.59	3.18	2.45	2.49	4.24	4.77	4.80	4.89	10.99	15.16	11.74	12.20	0.46	3.91	-2.96	-19.52
<b>Total Foreign</b>	41.22	39.32	39.88	39.86	1.32	1.14	1.30	1.30	54.43	44.75	51.98	51.92	-0.07	-0.13	7.16	16.00
<b>Africa</b>																
Nigeria	5.50	5.30	5.30	5.30	1.22	1.16	1.23	1.23	6.70	6.15	6.50	6.50	0.00	0.00	0.35	5.69
Ethiopia	1.84	1.50	1.80	1.80	2.36	1.73	2.06	2.06	4.34	2.60	3.70	3.70	0.00	0.00	1.10	42.31
Sudan	8.38	8.00	8.00	8.00	0.75	0.30	0.69	0.69	6.28	2.39	5.50	5.50	0.00	0.00	3.11	130.32
Burkina	1.55	1.80	1.80	1.80	1.10	0.80	1.06	1.06	1.71	1.44	1.90	1.90	0.00	0.00	0.46	32.31
Mali	1.21	1.30	1.30	1.30	1.06	1.00	1.00	1.00	1.27	1.30	1.30	1.30	0.00	0.00	0.00	0.00
Niger	3.57	3.50	3.50	3.50	0.40	0.55	0.37	0.37	1.43	1.92	1.30	1.30	0.00	0.00	-0.62	-32.19
Cameroon	0.82	0.80	0.80	0.80	1.40	1.44	1.44	1.44	1.15	1.15	1.15	1.15	0.00	0.00	0.00	0.00
Tanzania	0.80	0.80	0.80	0.80	1.05	1.03	1.00	1.00	0.84	0.82	0.80	0.80	0.00	0.00	-0.02	-2.44
Egypt	0.14	0.14	0.14	0.14	5.74	5.36	5.36	5.36	0.80	0.75	0.75	0.75	0.00	0.00	0.00	0.00
Uganda	0.37	0.35	0.35	0.35	0.80	0.91	0.91	0.91	0.30	0.32	0.32	0.32	0.00	0.00	0.00	0.00
Ghana	0.23	0.25	0.25	0.25	1.14	1.05	1.20	1.20	0.26	0.26	0.30	0.30	0.00	0.00	0.04	14.07
Mozambique	0.30	0.30	0.30	0.30	0.76	0.72	0.67	0.67	0.23	0.22	0.20	0.20	0.00	0.00	-0.02	-6.98
South Africa	0.07	0.05	0.04	0.04	1.70	1.51	2.50	2.50	0.12	0.07	0.10	0.10	0.00	0.00	0.03	35.14
<b>Mexico</b>	1.72	1.67	1.71	1.71	3.66	3.32	3.80	3.80	6.27	5.55	6.50	6.50	0.00	0.00	0.95	17.12
<b>South America</b>																
Argentina	0.77	0.75	0.80	0.80	4.55	4.50	4.50	4.50	3.50	3.38	3.60	3.60	0.00	0.00	0.23	6.67
Brazil	0.72	0.58	0.58	0.58	2.84	1.86	2.64	2.64	2.06	1.08	1.53	1.53	0.00	0.00	0.45	41.67
<b>South Asia</b>																
India	6.16	5.58	5.80	5.80	0.88	0.79	0.95	0.95	5.45	4.41	5.50	5.50	0.00	0.00	1.09	24.72
Pakistan	0.17	0.24	0.20	0.20	0.60	0.60	0.65	0.65	0.10	0.15	0.13	0.13	0.00	0.00	-0.02	-10.34
<b>China</b>	0.62	0.57	0.66	0.66	4.66	4.79	5.00	5.00	2.89	2.75	3.30	3.30	0.00	0.00	0.55	20.00
<b>Australia</b>	0.73	0.68	0.50	0.50	3.02	2.99	3.00	3.00	2.21	2.04	1.50	1.50	0.00	0.00	-0.54	-26.36
<b>European Union</b>	0.15	0.14	0.13	0.13	6.03	5.22	5.72	5.72	0.89	0.73	0.74	0.74	0.00	0.00	0.01	1.78
<b>Others</b>	5.42	5.02	5.12	5.10	1.04	1.05	1.05	1.04	5.65	5.29	5.36	5.29	-0.07	-1.21	0.00	-0.04

World and Selected Countries and Regions

**Table 09 Rice Area, Yield, and Production**  
**World and Selected Countries and Regions**

Country / Region	Area (Million hectares)				Yield (Metric tons per hectare)				Production (Million metric tons)				Change in Production			
	Prel.		2016/17 Proj.		Prel.		2016/17 Proj.		Prel.		2016/17 Proj.		From last month		From last year	
	2014/15	2015/16	Dec	Jan	2014/15	2015/16	Dec	Jan	2014/15	2015/16	Dec	Jan	MMT	Percent	MMT	Percent
<b>World</b>	160.93	159.24	162.09	161.29	4.43	4.42	4.43	4.44	478.55	472.39	481.51	480.02	-1.49	-0.31	7.63	1.61
<b>United States</b>	1.19	1.05	1.27	1.25	8.49	8.38	8.40	8.11	7.11	6.13	7.45	7.12	-0.34	-4.52	0.98	16.04
<b>Total Foreign</b>	159.74	158.19	160.82	160.04	4.40	4.40	4.40	4.41	471.45	466.25	474.05	472.90	-1.15	-0.24	6.65	1.43
<b>East Asia</b>																
China	30.31	30.21	30.16	30.16	6.81	6.89	6.86	6.86	144.56	145.77	144.85	144.85	0.00	0.00	-0.92	-0.63
Japan	1.61	1.59	1.57	1.57	6.71	6.64	6.82	6.82	7.85	7.67	7.79	7.79	0.00	0.00	0.12	1.56
Korea, South	0.82	0.80	0.78	0.78	6.91	7.22	7.23	7.23	4.24	4.33	4.20	4.20	0.00	0.00	-0.13	-2.94
Korea, North	0.53	0.48	0.50	0.50	4.98	4.21	4.92	4.92	1.70	1.30	1.60	1.60	0.00	0.00	0.30	23.08
<b>South Asia</b>																
India	44.11	43.48	44.50	44.50	3.59	3.60	3.59	3.59	105.48	104.32	106.50	106.50	0.00	0.00	2.18	2.09
Bangladesh	11.79	11.77	11.70	11.70	4.39	4.40	4.43	4.43	34.50	34.50	34.52	34.52	0.00	0.00	0.02	0.04
Pakistan	2.85	2.74	2.80	2.66	3.63	3.72	3.70	3.74	6.90	6.80	6.90	6.64	-0.26	-3.77	-0.16	-2.35
Nepal	1.56	1.50	1.50	1.50	2.98	3.10	3.10	3.10	3.10	3.10	3.10	3.10	0.00	0.00	0.00	0.00
Sri Lanka	0.93	1.23	1.30	1.00	4.32	3.95	3.46	3.46	2.74	3.29	3.06	2.35	-0.71	-23.20	-0.94	-28.66
<b>Southeast Asia</b>																
Indonesia	11.83	12.10	12.16	12.16	4.73	4.71	4.74	4.74	35.56	36.20	36.60	36.60	0.00	0.00	0.40	1.10
Vietnam	7.82	7.67	7.69	7.69	5.76	5.72	5.78	5.78	28.17	27.46	27.80	27.80	0.00	0.00	0.34	1.25
Thailand	10.27	9.44	10.08	10.08	2.77	2.53	2.80	2.80	18.75	15.80	18.60	18.60	0.00	0.00	2.80	17.72
Burma	7.03	6.90	7.00	7.00	2.80	2.76	2.79	2.79	12.60	12.20	12.50	12.50	0.00	0.00	0.30	2.46
Philippines	4.71	4.62	4.75	4.60	4.02	3.90	3.84	3.97	11.92	11.35	11.50	11.50	0.00	0.00	0.15	1.32
Cambodia	3.03	3.03	3.00	3.00	2.42	2.43	2.45	2.45	4.70	4.71	4.70	4.70	0.00	0.00	-0.01	-0.11
Laos	0.96	0.97	0.97	0.97	3.11	3.17	3.19	3.19	1.88	1.93	1.95	1.95	0.00	0.00	0.03	1.30
Malaysia	0.69	0.69	0.70	0.70	4.02	4.01	4.03	4.03	1.80	1.80	1.82	1.82	0.00	0.00	0.02	1.11
<b>South America</b>																
Brazil	2.30	2.01	2.18	1.95	5.42	5.28	5.43	5.90	8.47	7.21	8.03	7.82	-0.21	-2.55	0.61	8.46
Peru	0.38	0.40	0.40	0.40	7.60	7.91	7.90	7.90	2.00	2.16	2.18	2.18	0.00	0.00	0.02	1.11
<b>Africa</b>																
Egypt	0.65	0.65	0.75	0.75	10.10	8.92	8.80	8.80	4.53	4.00	4.55	4.55	0.00	0.00	0.55	13.85
Madagascar	1.50	1.45	1.45	1.48	2.65	2.57	2.55	2.59	2.55	2.38	2.37	2.44	0.07	3.13	0.06	2.52
Nigeria	2.70	2.50	2.50	2.50	1.67	1.72	1.71	1.71	2.84	2.71	2.70	2.70	0.00	0.00	-0.01	-0.33
<b>European Union</b>	0.42	0.43	0.44	0.44	6.72	6.86	6.71	6.73	1.95	2.05	2.03	2.05	0.02	1.18	0.00	0.00
<b>Iran</b>	0.60	0.63	0.65	0.65	4.33	4.32	4.31	4.31	1.72	1.78	1.85	1.85	0.00	0.00	0.07	3.70
<b>Others</b>	10.36	10.94	11.31	11.31	3.07	2.98	3.00	2.99	20.97	21.45	22.37	22.29	-0.08	-0.34	0.84	3.94

Yield is on a rough basis, before the milling process. Production is on a milled basis, after the milling process.

**Table 10 Total Oilseed Area, Yield, and Production**

**World and Selected Countries and Regions**

Country / Region	Area (Million hectares)				Yield (Metric tons per hectare)				Production (Million metric tons)				Change in Production			
	Prel.		2016/17 Proj.		Prel.		2016/17 Proj.		Prel.		2016/17 Proj.		From last month		From last year	
	2014/15	2015/16	Dec	Jan	2014/15	2015/16	Dec	Jan	2014/15	2015/16	Dec	Jan	MMT	Percent	MMT	Percent
<b>World Total</b>	--	--	--	--	--	--	--	--	536.86	522.44	554.66	554.80	0.14	0.02	32.36	6.19
<b>Total Foreign</b>	--	--	--	--	--	--	--	--	420.83	406.56	425.88	427.49	1.61	0.38	20.93	5.15
<b>Oilseed, Copra</b>	--	--	--	--	--	--	--	--	5.43	5.31	5.51	5.51	0.00	0.00	0.20	3.69
<b>Oilseed, Palm Kernel</b>	--	--	--	--	--	--	--	--	16.57	15.85	17.22	17.22	0.00	0.00	1.37	8.65
<b>Major Oilseeds</b>	234.19	232.29	234.39	233.79	2.20	2.16	2.27	2.28	514.86	501.28	531.93	532.07	0.14	0.03	30.79	6.14
<b>United States</b>	38.98	38.40	39.47	39.27	2.98	3.02	3.26	3.24	116.03	115.88	128.79	127.31	-1.48	-1.15	11.43	9.86
<b>Foreign Oilseeds</b>	195.21	193.89	194.92	194.52	2.04	1.99	2.07	2.08	398.83	385.40	403.15	404.76	1.61	0.40	19.36	5.02
<b>South America</b>	61.20	62.18	63.09	62.77	2.96	2.81	2.89	2.92	181.22	175.01	182.63	183.26	0.63	0.34	8.25	4.71
Brazil	33.38	34.43	34.90	35.00	3.00	2.87	3.00	3.05	100.02	98.91	104.72	106.72	2.00	1.91	7.81	7.89
Argentina	21.66	21.50	21.79	21.79	3.06	2.83	2.83	2.83	66.24	60.78	61.78	61.78	0.00	0.00	1.00	1.64
Paraguay	3.34	3.41	3.57	3.57	2.47	2.69	2.61	2.61	8.25	9.17	9.31	9.31	0.00	0.00	0.14	1.53
Bolivia	1.28	1.50	1.40	1.08	2.30	2.30	2.38	2.09	2.95	3.45	3.33	2.25	-1.07	-32.24	-1.19	-34.60
Uruguay	1.36	1.16	1.24	1.14	2.45	1.95	2.46	2.42	3.34	2.27	3.07	2.77	-0.30	-9.78	0.50	22.12
<b>China</b>	24.34	22.74	22.59	22.72	2.37	2.44	2.42	2.44	57.66	55.43	54.61	55.51	0.90	1.65	0.08	0.14
<b>South Asia</b>	38.47	37.96	37.81	37.81	0.96	0.86	1.08	1.07	36.92	32.75	40.89	40.64	-0.25	-0.61	7.89	24.09
India	34.74	34.42	34.65	34.65	0.91	0.84	1.05	1.05	31.55	29.04	36.51	36.46	-0.05	-0.14	7.42	25.55
Pakistan	3.46	3.26	2.88	2.88	1.48	1.06	1.43	1.36	5.11	3.45	4.12	3.92	-0.20	-4.86	0.47	13.64
<b>European Union</b>	11.96	11.86	11.76	11.76	3.00	2.74	2.64	2.65	35.93	32.48	31.01	31.11	0.10	0.32	-1.37	-4.22
<b>Former Soviet Union - 12</b>	21.25	21.25	22.00	21.77	1.55	1.62	1.68	1.71	32.92	34.31	36.96	37.15	0.19	0.51	2.84	8.29
Russia	9.34	9.43	10.20	9.97	1.29	1.37	1.42	1.47	12.06	12.88	14.45	14.63	0.18	1.26	1.75	13.59
Ukraine	7.98	8.31	8.29	8.29	2.04	2.11	2.26	2.26	16.30	17.58	18.70	18.70	0.00	0.00	1.12	6.40
Uzbekistan	1.29	1.29	1.26	1.26	1.19	1.16	1.16	1.16	1.53	1.49	1.45	1.45	0.00	0.00	-0.04	-2.68
<b>Canada</b>	10.61	10.56	10.26	10.26	2.12	2.35	2.44	2.44	22.51	24.82	25.00	25.00	0.00	0.00	0.18	0.73
<b>Africa</b>	17.91	18.43	18.13	18.13	0.91	0.89	0.88	0.89	16.27	16.35	16.04	16.08	0.04	0.26	-0.27	-1.65
Nigeria	3.70	3.44	3.44	3.44	1.13	1.10	1.10	1.10	4.18	3.78	3.78	3.78	0.00	0.00	0.00	0.00
South Africa	1.34	1.25	1.24	1.24	1.37	1.23	1.37	1.37	1.83	1.54	1.70	1.70	0.00	0.00	0.16	10.38
Tanzania	1.24	1.24	1.14	1.14	0.75	0.74	0.78	0.78	0.94	0.92	0.89	0.89	0.00	0.00	-0.03	-3.27
<b>Southeast Asia</b>	3.45	3.39	3.38	3.38	1.39	1.39	1.39	1.39	4.81	4.70	4.70	4.70	0.00	0.00	0.00	0.04
Indonesia	1.14	1.11	1.09	1.09	1.57	1.55	1.55	1.55	1.79	1.71	1.69	1.69	0.00	0.00	-0.02	-1.17
Burma	1.92	1.87	1.88	1.88	1.19	1.18	1.18	1.18	2.29	2.22	2.22	2.22	0.00	0.00	0.01	0.23
<b>Australia</b>	3.15	2.73	2.99	3.02	1.36	1.43	1.71	1.69	4.29	3.89	5.11	5.11	0.00	0.00	1.22	31.45
<b>Turkey</b>	1.07	0.98	1.08	1.08	2.42	2.24	2.37	2.37	2.59	2.18	2.55	2.55	0.00	0.00	0.37	16.74
<b>Others</b>	1.80	1.83	1.84	1.84	2.06	1.90	1.99	1.99	3.71	3.48	3.66	3.66	0.00	0.00	0.17	4.91

World Total and Total Foreign: (Major Oilseeds plus copra and palm kernel) Major Oilseeds: (soybeans, sunflowerseeds, peanuts(inshell), cottonseed and rapeseed)

**Table 11 Soybean Area, Yield, and Production**

Country / Region	Area (Million hectares)				Yield (Metric tons per hectare)				Production (Million metric tons)				Change in Production						
	2014/15	Prel.		2016/17 Proj.		2014/15	Prel.		2016/17 Proj.		2014/15	Prel.		2016/17 Proj.		From last month		From last year	
		2015/16	Dec	Jan	2015/16		Dec	Jan	2015/16	Dec		Jan	MMT	Percent	MMT	Percent			
<b>World</b>	118.31	120.37	121.83	121.52	2.70	2.60	2.77	2.78	319.78	313.53	338.00	337.85	-0.15	-0.04	24.32	7.76			
<b>United States</b>	33.42	33.08	33.61	33.48	3.20	3.23	3.53	3.50	106.88	106.86	118.69	117.21	-1.48	-1.25	10.35	9.69			
<b>Total Foreign</b>	84.89	87.29	88.22	88.04	2.51	2.37	2.49	2.51	212.90	206.68	219.32	220.64	1.33	0.61	13.97	6.76			
<b>South America</b>																			
Brazil	32.10	33.30	33.80	33.90	3.03	2.90	3.02	3.07	97.20	96.50	102.00	104.00	2.00	1.96	7.50	7.77			
Argentina	19.34	19.53	19.45	19.45	3.17	2.91	2.93	2.93	61.40	56.80	57.00	57.00	0.00	0.00	0.20	0.35			
Paraguay	3.26	3.26	3.46	3.46	2.50	2.76	2.65	2.65	8.15	9.00	9.17	9.17	0.00	0.00	0.17	1.89			
Bolivia	1.08	1.28	1.25	1.00	2.45	2.42	2.50	2.20	2.65	3.10	3.13	2.20	-0.93	-29.60	-0.90	-29.03			
Uruguay	1.33	1.13	1.20	1.10	2.47	1.96	2.50	2.45	3.29	2.21	3.00	2.70	-0.30	-10.00	0.49	22.28			
<b>East Asia</b>																			
China	6.80	6.51	7.10	7.20	1.79	1.81	1.76	1.79	12.15	11.79	12.50	12.90	0.40	3.20	1.12	9.46			
Korea, South	0.08	0.06	0.07	0.07	1.85	1.82	1.76	1.76	0.14	0.10	0.12	0.12	0.00	0.00	0.02	15.38			
Korea, North	0.14	0.16	0.15	0.15	1.12	1.39	1.33	1.33	0.16	0.22	0.20	0.20	0.00	0.00	-0.02	-9.09			
Japan	0.13	0.14	0.14	0.14	1.71	1.70	1.71	1.71	0.23	0.24	0.24	0.24	0.00	0.00	0.00	-0.83			
<b>India</b>	10.91	11.60	11.40	11.40	0.80	0.61	1.01	1.01	8.71	7.13	11.50	11.50	0.00	0.00	4.38	61.40			
<b>Canada</b>	2.24	2.20	2.18	2.18	2.71	2.90	2.96	2.96	6.05	6.37	6.45	6.45	0.00	0.00	0.08	1.24			
<b>Former Soviet Union - 12</b>																			
Russia	1.91	2.08	2.15	2.09	1.24	1.30	1.40	1.48	2.36	2.71	3.00	3.10	0.10	3.30	0.39	14.48			
Ukraine	1.80	2.14	1.84	1.84	2.17	1.84	2.17	2.17	3.90	3.93	4.00	4.00	0.00	0.00	0.07	1.73			
<b>European Union</b>	0.57	0.85	0.89	0.89	3.21	2.66	2.71	2.71	1.83	2.26	2.42	2.42	0.00	0.00	0.16	7.05			
<b>Southeast Asia</b>																			
Indonesia	0.50	0.49	0.48	0.48	1.26	1.18	1.18	1.18	0.63	0.58	0.57	0.57	0.00	0.00	-0.02	-2.59			
Vietnam	0.10	0.11	0.12	0.12	1.46	1.46	1.43	1.43	0.15	0.16	0.17	0.17	0.00	0.00	0.00	2.48			
Thailand	0.04	0.03	0.03	0.03	1.61	1.73	1.70	1.70	0.06	0.06	0.06	0.06	0.00	0.00	0.00	-1.75			
Burma	0.15	0.15	0.15	0.15	1.07	1.07	1.07	1.07	0.16	0.16	0.16	0.16	0.00	0.00	0.00	0.00			
<b>Mexico</b>	0.18	0.25	0.29	0.29	1.88	1.33	1.51	1.51	0.35	0.33	0.43	0.43	0.00	0.00	0.10	30.30			
<b>Iran</b>	0.08	0.08	0.08	0.08	2.44	2.44	2.44	2.44	0.19	0.20	0.20	0.20	0.00	0.00	0.00	0.00			
<b>Africa</b>																			
South Africa	0.69	0.50	0.53	0.53	1.54	1.48	1.57	1.57	1.06	0.74	0.83	0.83	0.00	0.00	0.08	11.19			
Nigeria	0.72	0.70	0.70	0.70	0.94	0.96	0.96	0.96	0.68	0.68	0.68	0.68	0.00	0.00	0.00	0.00			
Zambia	0.11	0.11	0.11	0.14	1.88	2.02	1.88	1.94	0.21	0.23	0.21	0.27	0.05	25.23	0.04	18.58			
Uganda	0.16	0.16	0.16	0.16	1.19	1.19	1.19	1.19	0.19	0.19	0.19	0.19	0.00	0.00	0.00	0.00			
<b>Middle East</b>																			
Iran	0.08	0.08	0.08	0.08	2.44	2.44	2.44	2.44	0.19	0.20	0.20	0.20	0.00	0.00	0.00	0.00			
Turkey	0.04	0.03	0.03	0.03	3.86	3.70	3.64	3.64	0.14	0.10	0.12	0.12	0.00	0.00	0.02	20.00			
<b>Others</b>	0.35	0.37	0.38	0.38	1.90	1.93	2.10	2.10	0.67	0.72	0.81	0.81	0.00	0.00	0.09	12.73			

World and Selected Countries and Regions

**Table 12 Cottonseed Area, Yield, and Production**

Country / Region	Area (Million hectares)				Yield (Metric tons per hectare)				Production (Million metric tons)				Change in Production						
	2014/15	Prel.		2016/17 Proj.		2014/15	Prel.		2016/17 Proj.		2014/15	Prel.		2016/17 Proj.		From last month		From last year	
		2015/16	Dec	Jan	2015/16		Dec	Jan	2015/16	Dec		Jan	MMT	Percent	MMT	Percent			
<b>World</b>	33.08	29.66	28.75	28.74	1.34	1.24	1.37	1.39	44.37	36.79	39.37	39.81	0.44	1.11	3.02	8.22			
<b>United States</b>	3.78	3.27	3.91	3.85	1.23	1.12	1.22	1.28	4.65	3.67	4.79	4.92	0.13	2.72	1.25	34.00			
<b>Total Foreign</b>	29.30	26.39	24.84	24.89	1.36	1.25	1.39	1.40	39.73	33.12	34.59	34.89	0.31	0.89	1.78	5.37			
<b>South Asia</b>																			
India	12.70	11.90	10.75	10.75	0.99	0.94	1.07	1.07	12.53	11.21	11.46	11.46	0.00	0.00	0.26	2.28			
Pakistan	2.95	2.80	2.40	2.40	1.56	1.07	1.50	1.42	4.60	3.00	3.60	3.40	-0.20	-5.56	0.40	13.33			
<b>China</b>	4.40	3.05	2.80	2.83	2.67	3.14	3.25	3.40	11.76	9.58	9.10	9.60	0.50	5.49	0.02	0.21			
<b>Former Soviet Union - 12</b>																			
Uzbekistan	1.29	1.29	1.26	1.26	1.19	1.16	1.16	1.16	1.53	1.49	1.45	1.45	0.00	0.00	-0.04	-2.68			
Turkmenistan	0.55	0.50	0.55	0.55	1.10	1.14	1.02	1.02	0.60	0.57	0.56	0.56	0.00	0.00	-0.01	-1.93			
Tajikistan	0.18	0.15	0.15	0.15	1.10	1.08	0.98	0.98	0.19	0.16	0.15	0.15	0.00	0.00	-0.02	-9.26			
Kazakhstan	0.13	0.10	0.11	0.11	0.73	0.80	0.98	0.98	0.09	0.08	0.11	0.11	0.00	0.00	0.03	36.71			
<b>South America</b>																			
Brazil	1.02	0.96	0.93	0.93	2.31	2.03	2.39	2.39	2.36	1.94	2.22	2.22	0.00	0.00	0.28	14.43			
Argentina	0.48	0.38	0.31	0.31	0.81	0.75	0.77	0.77	0.39	0.28	0.24	0.24	0.00	0.00	-0.04	-14.29			
<b>Middle East</b>																			
Turkey	0.43	0.37	0.42	0.42	2.44	2.35	2.43	2.43	1.05	0.87	1.02	1.02	0.00	0.00	0.15	17.24			
Syria	0.06	0.04	0.05	0.05	1.62	1.60	1.78	1.78	0.10	0.06	0.08	0.08	0.00	0.00	0.02	25.00			
Iran	0.11	0.11	0.11	0.11	0.87	0.89	0.89	0.89	0.10	0.10	0.10	0.10	0.00	0.00	0.00	0.00			
<b>Australia</b>	0.21	0.31	0.53	0.55	3.24	2.58	2.67	2.55	0.66	0.80	1.40	1.40	0.00	0.00	0.60	74.13			
<b>European Union</b>	0.36	0.31	0.26	0.26	1.44	1.33	1.49	1.49	0.51	0.41	0.39	0.39	0.00	0.00	-0.02	-4.85			
<b>Africa</b>																			
Burkina	0.66	0.66	0.70	0.70	0.57	0.46	0.51	0.51	0.37	0.30	0.36	0.36	0.00	0.00	0.06	18.09			
Mali	0.54	0.55	0.70	0.70	0.54	0.51	0.50	0.50	0.29	0.28	0.35	0.35	0.00	0.00	0.07	25.72			
Cameroon	0.23	0.22	0.21	0.21	1.15	1.17	1.19	1.19	0.27	0.26	0.25	0.25	0.00	0.00	-0.01	-2.72			
Cote d'Ivoire	0.42	0.40	0.35	0.35	0.55	0.40	0.51	0.51	0.23	0.16	0.18	0.18	0.00	0.00	0.02	12.03			
Benin	0.40	0.41	0.42	0.42	0.60	0.41	0.55	0.55	0.24	0.17	0.23	0.23	0.00	0.00	0.06	38.18			
Tanzania	0.40	0.40	0.30	0.30	0.34	0.30	0.29	0.29	0.14	0.12	0.09	0.09	0.00	0.00	-0.03	-25.42			
Egypt	0.16	0.10	0.06	0.06	1.02	0.98	0.96	0.96	0.16	0.10	0.05	0.05	0.00	0.00	-0.05	-45.92			
Nigeria	0.22	0.24	0.24	0.24	0.40	0.45	0.45	0.45	0.09	0.11	0.11	0.11	0.00	0.00	0.00	0.00			
Uganda	0.06	0.06	0.06	0.06	1.27	1.27	1.27	1.27	0.07	0.07	0.07	0.07	0.00	0.00	0.00	0.00			
Zimbabwe	0.20	0.10	0.18	0.18	0.36	0.21	0.33	0.33	0.07	0.02	0.06	0.06	0.00	0.00	0.04	171.43			
Sudan	0.09	0.05	0.05	0.05	1.20	1.34	1.34	1.34	0.11	0.07	0.07	0.07	0.00	0.00	0.00	0.00			
<b>Mexico</b>	0.18	0.13	0.10	0.10	2.55	2.37	2.33	2.33	0.46	0.31	0.22	0.22	0.00	0.00	-0.09	-28.25			
<b>Burma</b>	0.30	0.24	0.24	0.24	1.24	1.21	1.23	1.23	0.37	0.29	0.30	0.30	0.00	0.00	0.01	1.72			
<b>Others</b>	0.61	0.59	0.64	0.64	0.65	0.54	0.61	0.62	0.40	0.32	0.39	0.40	0.01	2.05	0.08	23.99			

World and Selected Countries and Regions

**Table 13 Peanut Area, Yield, and Production**

Country / Region	Area (Million hectares)				Yield (Metric tons per hectare)				Production (Million metric tons)				Change in Production						
	2014/15	Prel.		2016/17 Proj.		2014/15	Prel.		2016/17 Proj.		2014/15	Prel.		2016/17 Proj.		From last month		From last year	
		2015/16	Dec	Jan	2015/16		Dec	Jan	2015/16	Dec		Jan	MMT	Percent	MMT	Percent			
<b>World</b>	24.00	24.70	25.48	25.43	1.66	1.63	1.67	1.66	39.83	40.32	42.49	42.22	-0.27	-0.62	1.90	4.71			
<b>United States</b>	0.54	0.63	0.64	0.63	4.40	4.31	4.41	4.12	2.35	2.72	2.83	2.58	-0.25	-8.93	-0.14	-5.25			
<b>Total Foreign</b>	23.47	24.07	24.83	24.81	1.60	1.56	1.60	1.60	37.47	37.60	39.65	39.64	-0.01	-0.03	2.04	5.44			
<b>China</b>	4.60	4.62	4.75	4.75	3.58	3.56	3.58	3.58	16.48	16.44	17.00	17.00	0.00	0.00	0.56	3.41			
<b>Africa</b>																			
Nigeria	2.77	2.50	2.50	2.50	1.23	1.20	1.20	1.20	3.41	3.00	3.00	3.00	0.00	0.00	0.00	0.00			
Sudan	1.25	2.18	1.80	1.80	0.77	0.86	0.78	0.78	0.96	1.87	1.40	1.40	0.00	0.00	-0.47	-25.17			
Senegal	0.88	1.14	1.10	1.10	0.76	0.94	0.91	0.91	0.67	1.07	1.00	1.00	0.00	0.00	-0.07	-6.28			
Cameroon	0.47	0.40	0.40	0.40	1.36	1.38	1.38	1.38	0.64	0.55	0.55	0.55	0.00	0.00	0.00	0.00			
Ghana	0.33	0.40	0.40	0.40	1.28	1.10	1.10	1.10	0.43	0.44	0.44	0.44	0.00	0.00	0.00	0.00			
Chad	0.50	0.50	0.50	0.50	0.80	0.80	0.80	0.80	0.40	0.40	0.40	0.40	0.00	0.00	0.00	0.00			
Malawi	0.35	0.37	0.37	0.37	1.02	0.79	0.71	0.71	0.35	0.29	0.26	0.26	0.00	0.00	-0.03	-10.34			
Congo (Kinshasa)	0.48	0.48	0.48	0.48	0.78	0.78	0.78	0.78	0.37	0.37	0.37	0.37	0.00	0.00	0.00	0.00			
Niger	0.78	0.74	0.74	0.74	0.52	0.47	0.47	0.47	0.40	0.35	0.35	0.35	0.00	0.00	0.00	0.00			
Mali	0.38	0.38	0.38	0.38	0.87	0.87	0.87	0.87	0.33	0.33	0.33	0.33	0.00	0.00	0.00	0.00			
Uganda	0.42	0.43	0.43	0.43	0.70	0.71	0.71	0.71	0.30	0.30	0.30	0.30	0.00	0.00	0.00	0.00			
Burkina	0.38	0.45	0.45	0.45	0.89	0.78	0.78	0.78	0.34	0.35	0.35	0.35	0.00	0.00	0.00	0.00			
Guinea	0.21	0.21	0.21	0.21	1.24	1.24	1.24	1.24	0.26	0.26	0.26	0.26	0.00	0.00	0.00	0.00			
Egypt	0.06	0.06	0.06	0.06	3.20	3.20	3.20	3.20	0.21	0.21	0.21	0.21	0.00	0.00	0.00	0.00			
Central African Republic	0.10	0.10	0.10	0.10	1.50	1.50	1.50	1.50	0.15	0.15	0.15	0.15	0.00	0.00	0.00	0.00			
South Africa	0.06	0.02	0.04	0.04	1.29	1.09	1.57	1.57	0.08	0.03	0.06	0.06	0.00	0.00	0.03	120.00			
Mozambique	0.42	0.29	0.29	0.29	0.34	0.38	0.38	0.38	0.14	0.11	0.11	0.11	0.00	0.00	0.00	0.00			
Cote d'Ivoire	0.08	0.08	0.08	0.08	1.51	1.13	1.13	1.13	0.12	0.09	0.09	0.09	0.00	0.00	0.00	0.00			
Benin	0.16	0.16	0.15	0.15	0.92	0.94	0.93	0.93	0.15	0.15	0.14	0.14	0.00	0.00	-0.01	-3.45			
<b>South Asia</b>																			
India	4.74	4.56	5.50	5.50	1.02	0.98	1.15	1.15	4.86	4.47	6.30	6.30	0.00	0.00	1.83	40.94			
Pakistan	0.10	0.11	0.09	0.09	0.89	0.90	0.94	0.94	0.09	0.10	0.09	0.09	0.00	0.00	-0.01	-10.53			
<b>Southeast Asia</b>																			
Indonesia	0.63	0.62	0.61	0.61	1.83	1.84	1.84	1.84	1.15	1.13	1.13	1.13	0.00	0.00	-0.01	-0.44			
Burma	0.89	0.89	0.89	0.89	1.55	1.55	1.55	1.55	1.38	1.38	1.38	1.38	0.00	0.00	0.00	0.00			
Vietnam	0.20	0.21	0.22	0.22	2.26	2.27	2.28	2.28	0.45	0.48	0.49	0.49	0.00	0.00	0.01	2.73			
Thailand	0.03	0.02	0.02	0.02	1.64	1.63	1.67	1.67	0.05	0.04	0.04	0.04	0.00	0.00	0.00	2.56			
<b>South America</b>																			
Argentina	0.34	0.29	0.37	0.37	3.48	3.21	3.29	3.29	1.19	0.93	1.20	1.20	0.00	0.00	0.27	29.03			
Brazil	0.11	0.12	0.12	0.12	3.15	3.38	3.46	3.46	0.35	0.41	0.43	0.43	0.00	0.00	0.02	4.68			
<b>Mexico</b>	0.06	0.07	0.07	0.07	1.62	1.60	1.60	1.60	0.10	0.11	0.11	0.11	0.00	0.00	0.00	0.00			
<b>Others</b>	1.70	1.71	1.75	1.72	1.00	1.07	1.00	1.01	1.71	1.83	1.75	1.74	-0.01	-0.68	-0.09	-4.97			



**Table 14 Sunflowerseed Area, Yield, and Production**

Country / Region	Area (Million hectares)				Yield (Metric tons per hectare)				Production (Million metric tons)				Change in Production						
	2014/15	Prel.		2016/17 Proj.		2014/15	Prel.		2016/17 Proj.		2014/15	Prel.		2016/17 Proj.		From last month		From last year	
		2015/16	Dec	Jan	2015/16		Dec	Jan	2015/16	Dec		Jan	MMT	Percent	MMT	Percent			
<b>World</b>	23.28	23.46	24.77	24.46	1.69	1.72	1.79	1.81	39.42	40.40	44.31	44.34	0.03	0.06	3.94	9.74			
<b>United States</b>	0.61	0.73	0.62	0.62	1.65	1.82	1.79	1.94	1.01	1.33	1.12	1.20	0.09	7.98	-0.12	-9.20			
<b>Total Foreign</b>	22.67	22.73	24.15	23.84	1.69	1.72	1.79	1.81	38.42	39.08	43.19	43.13	-0.06	-0.14	4.06	10.38			
<b>Former Soviet Union - 12</b>																			
Russia	6.37	6.45	7.20	6.96	1.31	1.42	1.46	1.51	8.37	9.17	10.50	10.54	0.04	0.34	1.36	14.86			
Ukraine	5.30	5.50	6.00	6.00	1.92	2.16	2.25	2.25	10.20	11.90	13.50	13.50	0.00	0.00	1.60	13.45			
Kazakhstan	0.77	0.70	0.75	0.75	0.67	0.76	0.73	0.73	0.51	0.53	0.55	0.55	0.00	0.00	0.02	3.00			
<b>European Union</b>	4.29	4.18	4.20	4.20	2.10	1.82	1.95	1.98	9.00	7.61	8.20	8.30	0.10	1.22	0.69	9.05			
<b>South America</b>																			
Argentina	1.44	1.27	1.65	1.65	2.19	2.13	2.00	2.00	3.16	2.70	3.30	3.30	0.00	0.00	0.60	22.22			
Uruguay	0.03	0.04	0.04	0.04	1.47	1.50	1.50	1.50	0.04	0.06	0.07	0.07	0.00	0.00	0.01	15.79			
Bolivia	0.20	0.22	0.15	0.08	1.50	1.60	1.38	0.67	0.30	0.35	0.20	0.05	-0.15	-73.50	-0.29	-84.64			
Brazil	0.15	0.05	0.05	0.05	0.73	1.24	1.40	1.40	0.11	0.06	0.07	0.07	0.00	0.00	0.01	12.90			
Paraguay	0.03	0.05	0.03	0.03	1.57	1.64	1.60	1.60	0.05	0.07	0.05	0.05	0.00	0.00	-0.03	-35.14			
<b>China</b>	0.95	1.04	0.94	0.94	2.63	2.60	2.67	2.67	2.49	2.70	2.51	2.51	0.00	0.00	-0.19	-6.97			
<b>South Asia</b>																			
India	0.58	0.55	0.50	0.50	0.66	0.58	0.90	0.80	0.38	0.32	0.45	0.40	-0.05	-11.11	0.08	25.00			
Pakistan	0.16	0.15	0.14	0.14	1.25	1.27	1.29	1.29	0.20	0.19	0.18	0.18	0.00	0.00	-0.01	-5.26			
<b>Middle East</b>																			
Turkey	0.53	0.51	0.55	0.55	2.26	1.98	2.18	2.18	1.20	1.00	1.20	1.20	0.00	0.00	0.20	20.00			
Iran	0.07	0.07	0.07	0.07	1.29	1.29	1.29	1.29	0.09	0.09	0.09	0.09	0.00	0.00	0.00	0.00			
Israel	0.01	0.01	0.01	0.01	1.60	1.60	1.60	1.60	0.02	0.02	0.02	0.02	0.00	0.00	0.00	0.00			
<b>Africa</b>																			
Egypt	0.01	0.01	0.01	0.01	2.43	2.43	2.43	2.43	0.02	0.02	0.02	0.02	0.00	0.00	0.00	0.00			
Morocco	0.02	0.02	0.02	0.02	1.29	1.29	1.29	1.29	0.03	0.03	0.03	0.03	0.00	0.00	0.00	0.00			
South Africa	0.58	0.72	0.67	0.67	1.15	1.05	1.19	1.19	0.66	0.76	0.80	0.80	0.00	0.00	0.05	5.96			
<b>Burma</b>	0.59	0.60	0.60	0.60	0.64	0.65	0.65	0.65	0.38	0.39	0.39	0.39	0.00	0.00	0.00	0.00			
<b>Canada</b>	0.03	0.04	0.03	0.03	1.90	1.92	1.82	1.82	0.06	0.07	0.05	0.05	0.00	0.00	-0.02	-30.14			
<b>Australia</b>	0.03	0.02	0.03	0.03	1.20	1.09	1.17	1.17	0.03	0.03	0.03	0.03	0.00	0.00	0.01	36.00			
<b>Others</b>	0.54	0.55	0.51	0.51	2.07	1.85	1.94	1.94	1.12	1.02	0.99	0.99	0.00	0.00	-0.02	-2.36			

World and Selected Countries and Regions

**Table 15 Rapeseed Area, Yield, and Production**

Country / Region	Area (Million hectares)				Yield (Metric tons per hectare)				Production (Million metric tons)				Change in Production			
	2014/15	Prel.	2016/17 Proj.		2014/15	Prel.	2016/17 Proj.		2014/15	Prel.	2016/17 Proj.		From last month		From last year	
		2015/16	Dec	Jan		2015/16	Dec	Jan		2015/16	Dec	Jan	MMT	Percent	MMT	Percent
<b>World</b>	35.52	34.10	33.58	33.64	2.01	2.06	2.02	2.02	71.45	70.24	67.76	67.85	0.09	0.13	-2.39	-3.40
<b>United States</b>	0.63	0.69	0.69	0.69	1.81	1.88	1.98	2.05	1.14	1.31	1.37	1.40	0.04	2.86	0.10	7.50
<b>Total Foreign</b>	34.89	33.40	32.89	32.95	2.02	2.06	2.02	2.02	70.31	68.93	66.40	66.45	0.05	0.07	-2.49	-3.61
<b>European Union</b>	6.75	6.52	6.40	6.40	3.64	3.41	3.13	3.13	24.59	22.20	20.00	20.00	0.00	0.00	-2.20	-9.91
<b>Canada</b>	8.34	8.32	8.05	8.05	1.97	2.21	2.30	2.30	16.41	18.38	18.50	18.50	0.00	0.00	0.12	0.67
<b>China</b>	7.59	7.53	7.00	7.00	1.95	1.98	1.93	1.93	14.77	14.93	13.50	13.50	0.00	0.00	-1.43	-9.58
<b>South Asia</b>																
India	5.80	5.81	6.50	6.50	0.88	1.02	1.05	1.05	5.08	5.92	6.80	6.80	0.00	0.00	0.88	14.86
Pakistan	0.25	0.20	0.25	0.25	0.88	0.80	1.00	1.00	0.22	0.16	0.25	0.25	0.00	0.00	0.09	56.25
Bangladesh	0.25	0.25	0.25	0.25	0.92	0.92	0.92	0.92	0.23	0.23	0.23	0.23	0.00	0.00	0.00	0.00
<b>Former Soviet Union - 12</b>																
Russia	1.06	0.90	0.85	0.92	1.25	1.12	1.12	1.09	1.32	1.00	0.95	1.00	0.05	4.95	0.00	-0.40
Ukraine	0.88	0.68	0.45	0.45	2.50	2.58	2.67	2.67	2.20	1.74	1.20	1.20	0.00	0.00	-0.54	-31.19
Belarus	0.40	0.17	0.17	0.17	1.82	1.82	1.82	1.82	0.73	0.30	0.30	0.30	0.00	0.00	0.00	0.00
Kazakhstan	0.24	0.22	0.15	0.15	0.99	0.62	1.00	1.00	0.24	0.14	0.15	0.15	0.00	0.00	0.01	8.70
<b>Australia</b>	2.90	2.36	2.40	2.40	1.22	1.27	1.50	1.50	3.54	2.99	3.60	3.60	0.00	0.00	0.61	20.24
<b>South America</b>																
Chile	0.05	0.05	0.05	0.05	4.10	4.00	4.10	4.10	0.20	0.21	0.21	0.21	0.00	0.00	-0.01	-3.30
Paraguay	0.03	0.09	0.07	0.07	1.28	1.00	1.20	1.20	0.04	0.09	0.08	0.08	0.00	0.00	-0.01	-6.67
<b>Switzerland</b>	0.02	0.02	0.02	0.02	3.14	3.14	3.14	3.14	0.07	0.07	0.07	0.07	0.00	0.00	0.00	0.00
<b>Ethiopia</b>	0.03	0.05	0.05	0.05	1.80	1.56	1.56	1.56	0.05	0.07	0.07	0.07	0.00	0.00	0.00	0.00
<b>Others</b>	0.29	0.24	0.23	0.23	2.10	2.08	2.10	2.10	0.61	0.50	0.49	0.49	0.00	0.00	-0.01	-1.60

World and Selected Countries and Regions

**Table 16 Copra, Palm Kernel, and Palm Oil Production**

Country / Region	Production (Million metric tons)				Change in Production			
	2014/15	Prel.	2016/17 Proj.		From last month		From last year	
		2015/16	Dec	Jan	MMT	Percent	MMT	Percent
<b>Oilseed, Copra</b>								
Philippines	2.23	2.10	2.30	2.30	0.00	0.00	0.20	9.52
Indonesia	1.60	1.59	1.58	1.58	0.00	0.00	-0.01	-0.63
India	0.71	0.72	0.72	0.72	0.00	0.00	0.00	0.00
Vietnam	0.24	0.25	0.26	0.26	0.00	0.00	0.01	4.00
Mexico	0.21	0.21	0.21	0.21	0.00	0.00	0.00	0.00
Papua New Guinea	0.10	0.09	0.10	0.10	0.00	0.00	0.01	11.11
Thailand	0.07	0.07	0.07	0.07	0.00	0.00	0.00	0.00
Sri Lanka	0.07	0.07	0.07	0.07	0.00	0.00	0.00	0.00
Solomon Islands	0.03	0.03	0.03	0.03	0.00	0.00	0.00	0.00
Cote d'Ivoire	0.03	0.03	0.03	0.03	0.00	0.00	0.00	0.00
World	5.43	5.31	5.51	5.51	0.00	0.00	0.20	3.77
<b>Oilseed, Palm Kernel</b>								
Indonesia	8.70	8.50	9.20	9.20	0.00	0.00	0.70	8.24
Malaysia	5.05	4.50	5.10	5.10	0.00	0.00	0.60	13.33
Nigeria	0.73	0.73	0.73	0.73	0.00	0.00	0.00	0.00
Thailand	0.63	0.61	0.67	0.67	0.00	0.00	0.06	9.84
Colombia	0.24	0.27	0.29	0.29	0.00	0.00	0.01	3.70
Papua New Guinea	0.15	0.15	0.13	0.13	0.00	0.00	-0.02	-13.33
Honduras	0.11	0.12	0.12	0.12	0.00	0.00	0.00	0.00
Cameroon	0.11	0.11	0.11	0.11	0.00	0.00	0.00	0.00
Ghana	0.11	0.11	0.11	0.11	0.00	0.00	0.00	0.00
Ecuador	0.10	0.10	0.11	0.11	0.00	0.00	0.01	10.00
World	16.57	15.85	17.22	17.22	0.00	0.00	1.37	8.64
<b>Oil, Palm</b>								
Indonesia	33.00	32.00	35.00	35.00	0.00	0.00	3.00	9.38
Malaysia	19.88	17.70	20.00	20.00	0.00	0.00	2.30	12.99
Thailand	2.07	2.10	2.30	2.30	0.00	0.00	0.20	9.52
Colombia	1.11	1.27	1.28	1.28	0.00	0.00	0.01	0.79
Nigeria	0.97	0.97	0.97	0.97	0.00	0.00	0.00	0.00
Papua New Guinea	0.52	0.58	0.52	0.52	0.00	0.00	-0.06	-10.34
Ecuador	0.48	0.50	0.56	0.56	0.00	0.00	0.06	12.00
Ghana	0.50	0.50	0.52	0.52	0.00	0.00	0.02	4.00
Honduras	0.47	0.49	0.55	0.55	0.00	0.00	0.06	12.24
Guatemala	0.45	0.47	0.52	0.52	0.00	0.00	0.05	10.64
World	61.63	58.84	64.50	64.50	0.00	0.00	5.66	9.62

World and Selected Countries and Regions

**Table 17 Cotton Area, Yield, and Production**

Country / Region	Area (Million hectares)				Yield (Kilograms per hectare)				Production (Million 480 lb. bales)				Change in Production			
	2014/15	Prel.	2016/17 Proj.		2014/15	Prel.	2016/17 Proj.		2014/15	Prel.	2016/17 Proj.		From last month		From last year	
		2015/16	Dec	Jan		2015/16	Dec	Jan		2015/16	Dec	Jan	MBales	Percent	MBales	Percent
<b>World</b>	34.21	30.49	29.28	29.27	759	689	775	783	119.19	96.46	104.24	105.34	1.11	1.06	8.88	9.20
<b>United States</b>	3.78	3.27	3.91	3.85	939	859	921	958	16.32	12.89	16.52	16.96	0.44	2.63	4.07	31.59
<b>Total Foreign</b>	30.43	27.22	25.37	25.42	736	668	753	757	102.87	83.57	87.71	88.38	0.67	0.76	4.81	5.75
<b>South Asia</b>																
India	12.85	11.90	10.50	10.50	500	483	560	560	29.50	26.40	27.00	27.00	0.00	0.00	0.60	2.27
Pakistan	2.95	2.80	2.40	2.40	782	544	748	717	10.60	7.00	8.25	7.90	-0.35	-4.24	0.90	12.86
<b>China</b>	4.40	3.05	2.80	2.83	1,484	1,570	1,633	1,696	30.00	22.00	21.00	22.00	1.00	4.76	0.00	0.00
<b>South America</b>																
Brazil	1.02	0.96	0.93	0.93	1,494	1,345	1,522	1,522	7.00	5.90	6.50	6.50	0.00	0.00	0.60	10.17
Argentina	0.48	0.38	0.31	0.31	499	479	502	502	1.10	0.83	0.72	0.72	0.00	0.00	-0.11	-13.33
Paraguay	0.02	0.01	0.01	0.01	435	419	416	416	0.03	0.03	0.02	0.02	0.00	0.00	0.00	-16.00
<b>Africa</b>																
Burkina	0.66	0.66	0.70	0.70	445	363	404	404	1.35	1.10	1.30	1.30	0.00	0.00	0.20	18.18
Mali	0.54	0.55	0.70	0.70	419	390	381	381	1.04	0.98	1.23	1.23	0.00	0.00	0.25	25.64
Cote d'Ivoire	0.42	0.40	0.35	0.35	449	321	411	411	0.86	0.59	0.66	0.66	0.00	0.00	0.07	11.86
Benin	0.40	0.41	0.42	0.42	395	269	362	362	0.73	0.50	0.69	0.69	0.00	0.00	0.19	38.00
Egypt	0.16	0.10	0.06	0.06	728	697	693	693	0.53	0.32	0.18	0.18	0.00	0.00	-0.15	-45.31
Cameroon	0.23	0.22	0.21	0.21	502	510	518	518	0.53	0.52	0.50	0.50	0.00	0.00	-0.02	-2.91
Tanzania	0.40	0.40	0.30	0.30	169	147	145	145	0.31	0.27	0.20	0.20	0.00	0.00	-0.07	-25.93
Nigeria	0.22	0.24	0.24	0.24	203	227	227	227	0.20	0.25	0.25	0.25	0.00	0.00	0.00	0.00
Zimbabwe	0.20	0.10	0.18	0.18	212	120	187	187	0.20	0.06	0.15	0.15	0.00	0.00	0.10	172.73
Ethiopia	0.10	0.07	0.08	0.08	409	586	544	544	0.18	0.18	0.20	0.20	0.00	0.00	0.03	14.29
<b>Former Soviet Union - 12</b>																
Uzbekistan	1.29	1.29	1.26	1.26	661	644	642	642	3.90	3.80	3.70	3.70	0.00	0.00	-0.10	-2.63
Turkmenistan	0.55	0.50	0.55	0.55	609	631	569	569	1.53	1.45	1.43	1.43	0.00	0.00	-0.03	-1.72
Tajikistan	0.18	0.15	0.15	0.15	611	599	544	544	0.49	0.41	0.38	0.38	0.00	0.00	-0.04	-9.20
Kazakhstan	0.13	0.10	0.11	0.11	408	440	544	544	0.24	0.20	0.28	0.28	0.00	0.00	0.08	37.50
<b>Middle East</b>																
Turkey	0.43	0.37	0.40	0.40	1,620	1,559	1,742	1,742	3.20	2.65	3.20	3.20	0.00	0.00	0.55	20.75
Syria	0.06	0.04	0.04	0.04	1,089	1,034	1,089	1,089	0.30	0.19	0.20	0.20	0.00	0.00	0.01	5.26
Iran	0.11	0.10	0.10	0.10	594	599	653	653	0.30	0.28	0.30	0.30	0.00	0.00	0.03	9.09
<b>Australia</b>	0.21	0.31	0.53	0.55	2,443	1,814	1,866	1,781	2.30	2.60	4.50	4.50	0.00	0.00	1.90	73.08
<b>Mexico</b>	0.18	0.13	0.10	0.10	1,578	1,521	1,490	1,490	1.32	0.91	0.65	0.65	0.00	0.00	-0.26	-28.41
<b>Burma</b>	0.30	0.24	0.24	0.24	652	656	662	662	0.90	0.72	0.73	0.73	0.00	0.00	0.01	1.39
<b>Others</b>	1.98	1.77	1.74	1.74	469	427	442	444	4.26	3.47	3.52	3.54	0.02	0.57	0.07	2.11

World and Selected Countries and Regions

**TABLE 18**

The table below presents a record of the differences between the *January* projection and the final Estimate. Using world wheat production as an example, the "root mean square error" means that chances are 2 out of 3 that the current forecast will not be above or below the final estimate by more than 0.7 percent. Chances are 9 out of 10 (90% confidence level) that the difference will not exceed 1.2 percent. The average difference between the January projection and the final estimate is 3.1 million tons, ranging from 0 million to 8.3 million tons. The January projection has been below the estimate 26 times and above 9 times.

**RELIABILITY OF PRODUCTION PROJECTIONS 1/**

COMMODITY AND REGION	Root mean square error	90 percent confidence interval	Difference between forecast and final estimate					
			Average	Smallest	Largest	Years		
						Below final	Above final	
	Percent		---Million metric tons---					
<b>WHEAT</b>								
World	0.7	1.2	3.1	0.0	8.3	26	9	
U.S.	0.2	0.3	0.1	0.0	0.3	15	9	
Foreign	0.8	1.3	3.1	0.1	8.3	25	10	
<b>COARSE GRAINS 2/</b>								
World	1.3	2.2	10.4	0.0	26.3	25	10	
U.S.	0.4	0.7	0.3	0.0	4.6	16	7	
Foreign	1.8	3.0	10.2	0.0	26.3	24	11	
<b>RICE (Milled)</b>								
World	1.7	2.8	4.7	0.0	13.9	29	5	
U.S.	1.7	2.9	0.1	0.0	0.3	13	7	
Foreign	1.7	2.8	4.7	0.1	13.9	30	5	
<b>SOYBEANS</b>								
World	3.4	5.8	4.7	0.0	22.4	20	15	
U.S.	1.4	2.4	0.7	0.0	2.5	15	15	
Foreign	5.8	9.9	4.8	0.2	22.6	20	15	
<b>COTTON</b>			---Million 480-lb. bales---					
World	2.6	4.5	2.0	0.0	5.4	22	12	
U.S.	1.0	1.7	0.1	0.0	0.3	13	21	
Foreign	3.2	5.4	2.0	0.0	5.7	24	10	
<b>UNITED STATES</b>			-----Million bushels-----					
<b>CORN</b>	0.4	0.7	11	0	148	4	2	
<b>SORGHUM</b>	1.1	1.8	2	0	53	1	3	
<b>BARLEY</b>	0.8	1.3	1	0	11	15	4	
<b>OATS</b>	0.3	0.6	0	0	2	4	4	

1/ Marketing years 1981/82 through 2015/16. Final for grains, soybeans and cotton is defined as the first *January* estimates following the marketing year for 1981/82 through 2014/15, and for 2015/16 last month's estimate.

2/ Includes corn, sorghum, barley, oats, rye, millet, and mixed grain

January 2017

Office of Global Analysis, FAS, USDA