



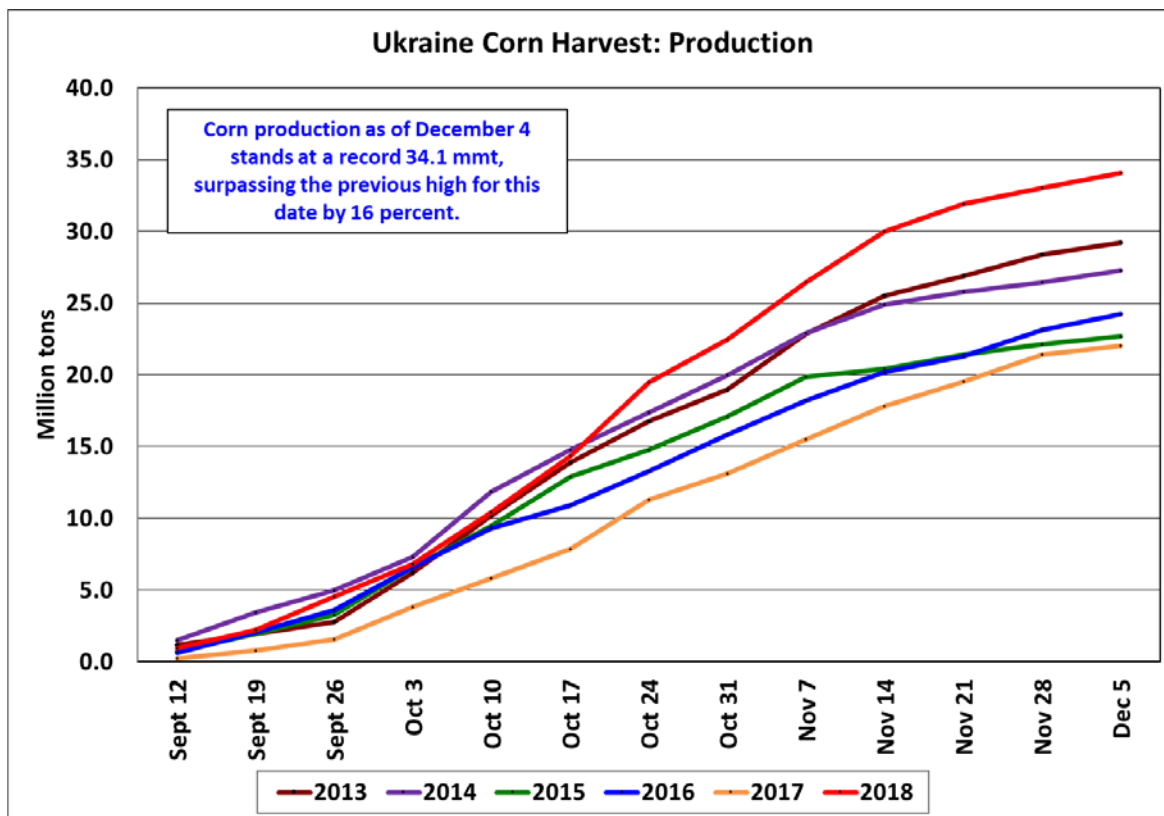
United States
Department of
Agriculture

Foreign
Agricultural
Service

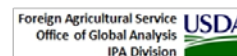
Circular Series
WAP 12-18
December 2018

World Agricultural Production

Ukraine Corn: Harvest Reports Cite Record Production



Source: Ministry of Agrarian Policy and Food



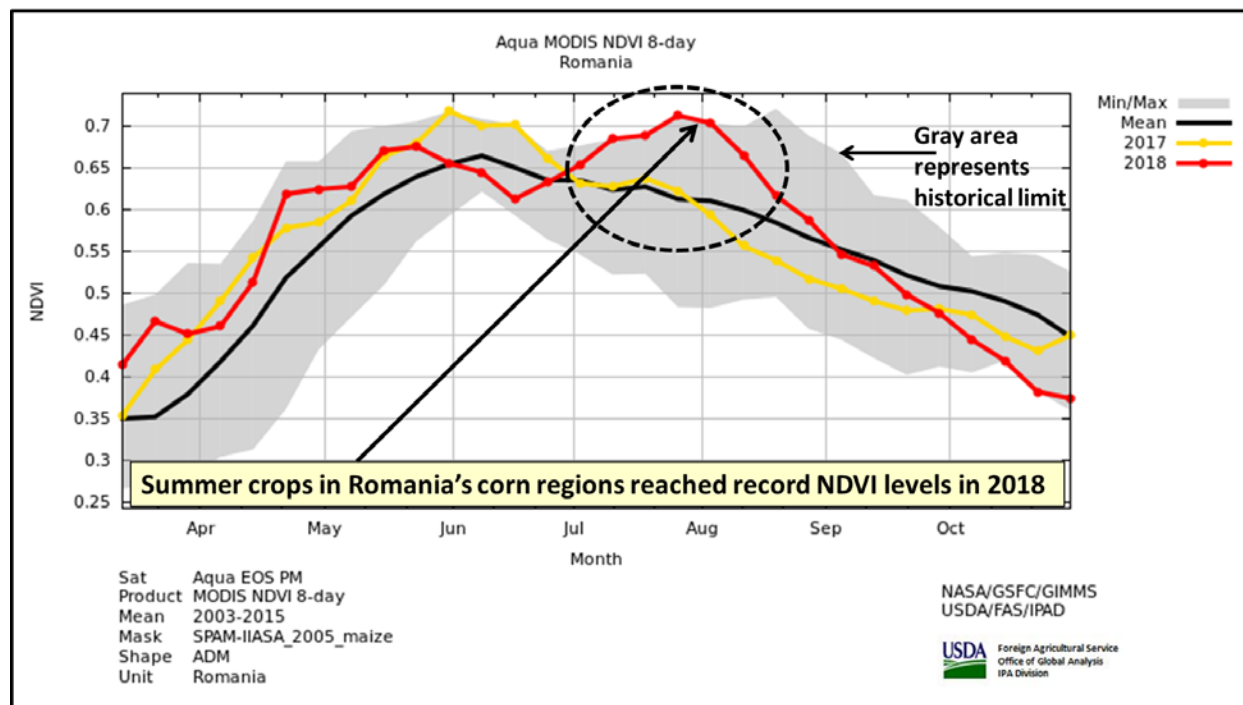
USDA estimates Ukraine corn production for 2018/19 at a record 35.0 million metric tons (mmt), up 1.5 mmt from last month, up 10.9 mmt from last year and 4.1 mmt above the previous record crop which was harvested in 2013. Yield is estimated at 7.78 metric tons per hectare, 4 percent above last month and 43 percent above last year. The high yield is attributed to favorable growing conditions throughout the season. The estimated harvested area is unchanged at 4.5 million hectares. The yield reported by the Ministry of Agrarian Policy and Food as of December 4, 2018 was 21 percent above the previous high for that date. Harvest is 97 percent complete and will continue until mid-December. (For more information, please contact Mark.Lindeman@fas.usda.gov.)

Approved by the World Agricultural Outlook Board

Romania Corn: Estimated Production Breaks 1984 Record

Romania corn production for 2018/19 is estimated at a record 13.5 million metric tons (mmt), up 0.9 mmt (7 percent) from last month, up 1.6 mmt (13 percent) from last year, and 26 percent above the 5-year average. Area is estimated at 2.4 million hectares (mha), unchanged from last month, down 0.1 mha (4 percent) from last year, and down 6 percent from the 5-year average. Yield is estimated at a record 5.63 tons per hectare, up 7 percent from last month, up 18 percent from last year and up 34 percent from the 5-year average.

Record NDVI in Romania

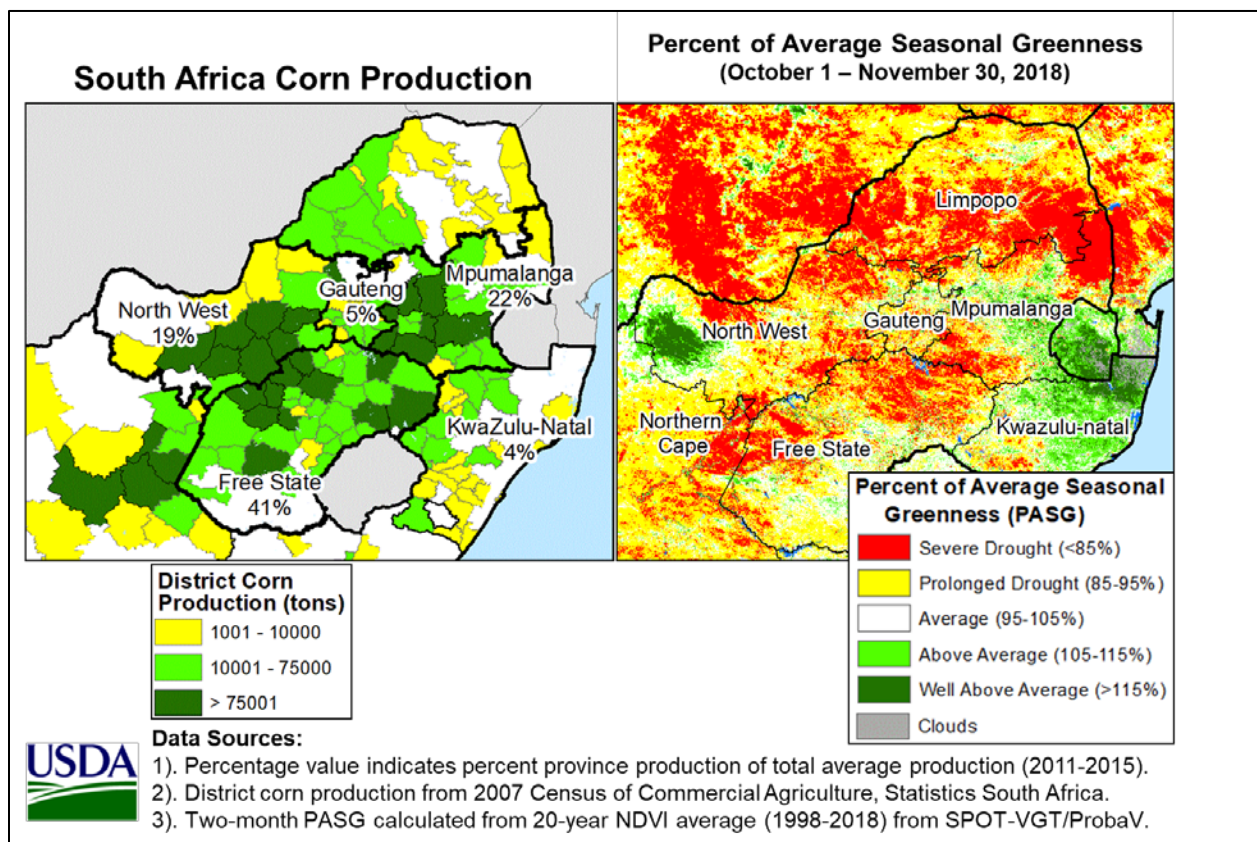


While Romania is rich in arable land, it lacks substantial irrigation. Summer is often hot and dry which results in large variations in annual production. Harvest reports depict a very large 2018 crop due to plentiful summer rainfall. Typically, some growing regions in Romania fare better than others, but this year rainfall was plentiful and widespread, benefitting all regions. This is also the third consecutive annual increase for both yield and production. At the beginning of August, when corn is at its peak greenness, MODIS Normalized Difference Vegetation Index (NDVI) was the highest in over 15 years of data. The corn harvest began in late August and ended in October. *(For more information, please contact Bryan.Purcell@fas.usda.gov.)*

For country-specific area, yield, and production estimates within the European Union (EU), please go to PSD Online at <https://apps.fas.usda.gov/PSDOnline/app/index.html#/app/home>, and select “Downloadable Data Sets.” Select the zipped file for “EU Countries Area & Production.”

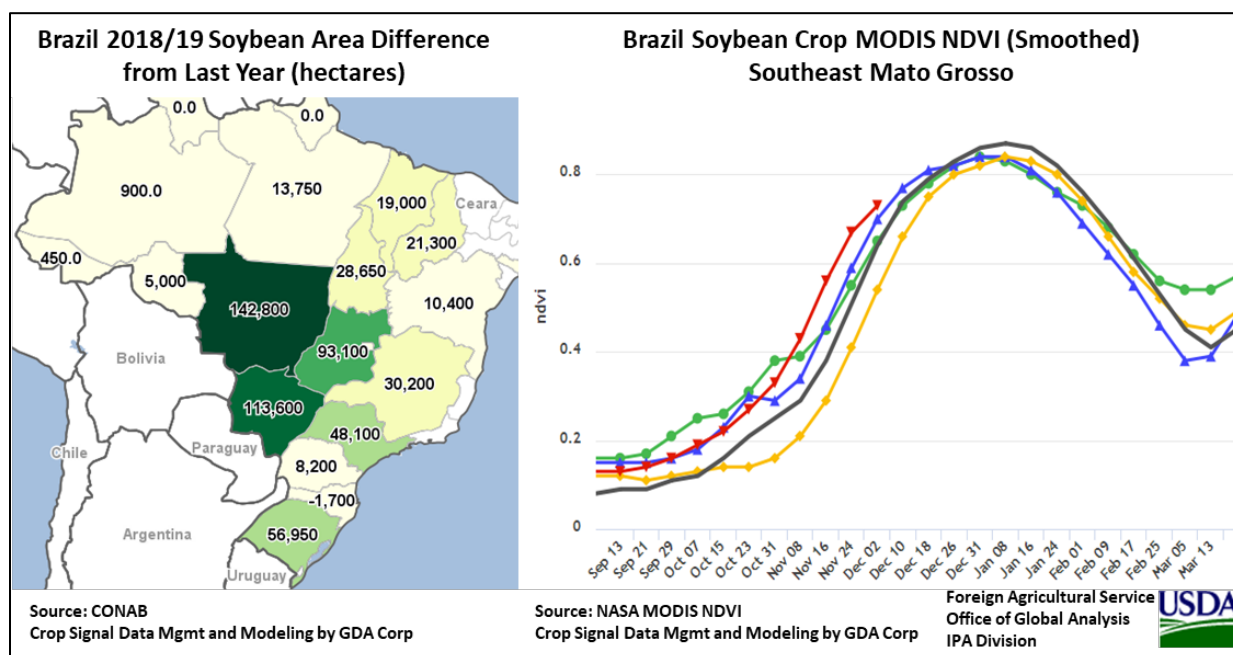
South Africa Corn: Planting Continues Under Drought Conditions

South Africa's 2018/19 corn production is forecast at 12.0 million metric tons (mmt), down 1 million tons from last month (8 percent) and down 1.5 mmt (11 percent) from last year. The USDA forecast includes output from both the developing and commercial sectors, with the commercial sector accounting for approximately 95 percent of the total crop. Area is estimated at 2.4 million hectares (mha), down 0.2 mha from last month (8 percent) and down 0.23 mha from last year (9 percent). Planting is currently underway but behind schedule due to below-average rainfall from October through early December. Additional rainfall is needed in December to improve soil moisture conditions for corn germination and establishment. Planting is expected to conclude by mid-January. Yield is forecast at 5.0 metric tons per hectare, slightly above the 10-year trend (2 percent) and it assumes normal weather for the remainder of the growing season.



According to the planting intentions survey released in late October by South Africa's Crop Estimates Committee (CEC), the total intended planted area is 2.83 mha with the commercial sector planting 2.45 mha and the developing sector planting 0.38 mha. Other industry sources estimate area below 2.83 mha due to the severe drought and because of low prices. The previous two seasons have had bumper crops which resulted in high carry-over stocks. Last year started off very dry too, but plentiful rains in January 2018 benefited the crop. South African farmers will harvest their corn crop from April through September and the bulk of the harvest (87 percent) is typically delivered to the silos from May through August. *(For more information, please contact Curt.Reynolds@fas.usda.gov.)*

Brazil Soybeans: Record Production Forecast due to Higher Yield

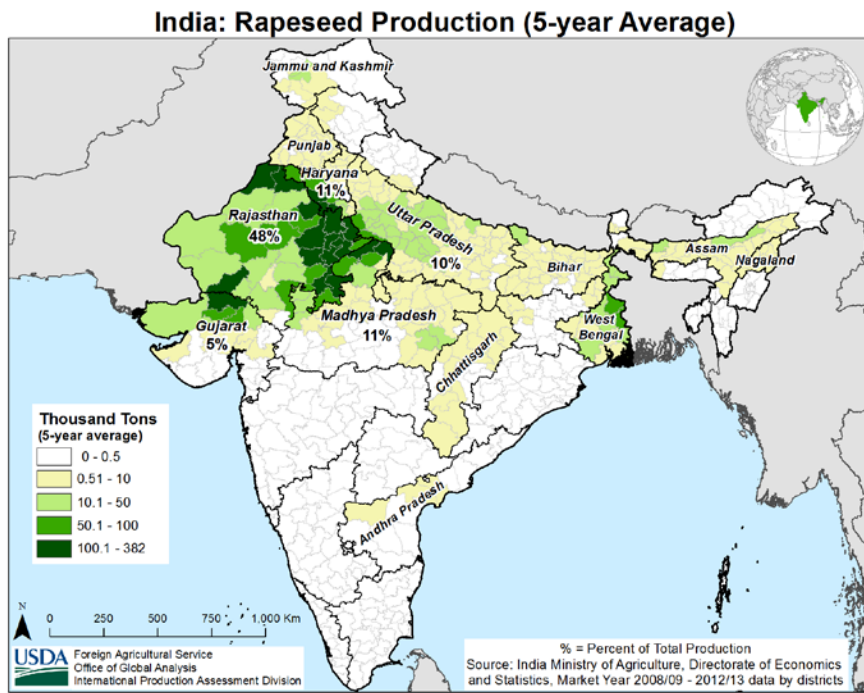


Brazil soybean production for 2018/19 is forecast at a record 122 million metric tons (mmt), up 1.5 mmt (1 percent) from last month and up 1 percent from the previous year. Harvested area is estimated at 36.2 million hectares, down 3 percent from last month, but up 3 percent from last year. Soybean area expansion continues for the thirteenth straight year, with the most significant 2018/19 gains forecast for the Center-West region and the state of Rio Grande do Sul. Planting has progressed at a faster-than-average pace, with planting already more than 90 percent complete.

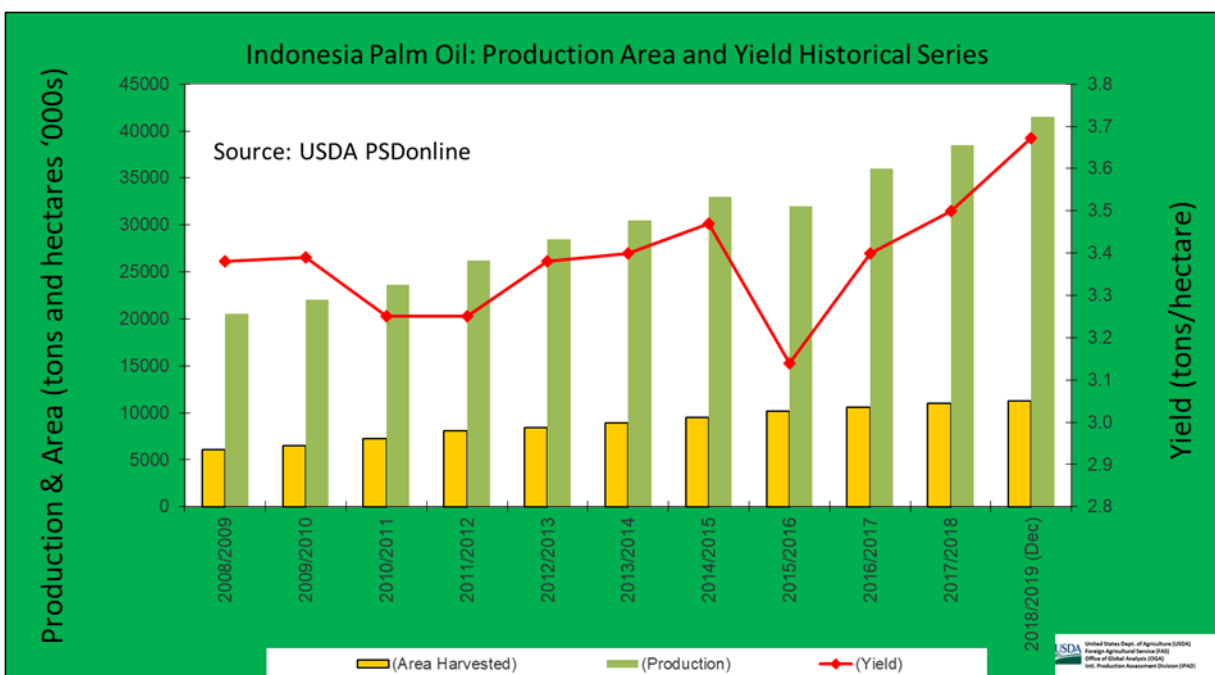
Yield is forecast at 3.37 metric tons per hectare, up 5 percent from last month but 2 percent below last year's record crop, which benefited from favorable weather and improved technology that raised yields to record levels almost everywhere. This year's crop has also benefited from favorable weather thus far and varies in development from late vegetative to flowering. In many soybean areas, MODIS Normalized Difference Vegetation Index (NDVI) reveals that the developing vegetation is at a more advanced stage than during the same time last year. Most of the soybean crop will be harvested from January to May. (*For more information, please contact Maria.Anulacion@fas.usda.gov*).

India Rapeseed: Production Forecast Down due to Drop in Area

USDA forecasts 2018/19 India rapeseed production at 6.0 million metric tons (mmt), down 0.45 mmt from 2017. Area is forecast at 6.0 million hectares (mha), down 0.5 mha from last month and unchanged from last year. This nearly 8-percent drop in area is due to drier and warmer conditions at planting. Yield is forecast at 1.0 metric ton per hectare, unchanged from last month and down nearly 7 percent from last year. As of November 11, 2018, the Ministry of Agriculture reported that rapeseed planting is 95 percent complete at 5.78 mha. The major rapeseed producers are Rajasthan, Madhya Pradesh, and Uttar Pradesh. *(For more information, please contact Arnella.Trent@fas.usda.gov.)*



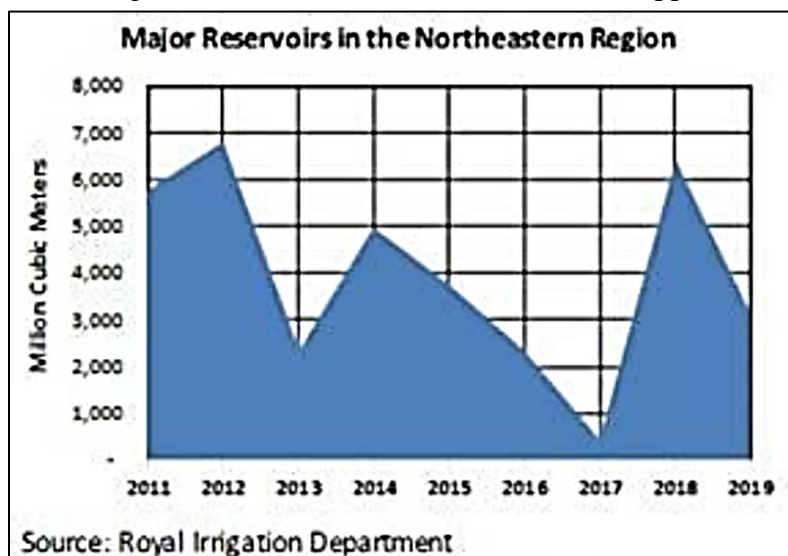
Indonesia Palm Oil: Estimated Production Increased Due to Higher Yield



USDA estimates Indonesia 2018/19 palm oil production at 41.5 million metric tons (mmt), up 1.0 mmt from last month and up 2.0 mmt from last year. The production increase is driven by high yields as favorable weather has benefited the crop. The estimated yield increase would mark the third consecutive year of rebounding yields following the 2015/16 El Niño event, which hit palm-producing areas in southern Sumatra and Kalimantan. Yield is estimated at 3.67 metric tons per hectare, up 2 percent from last month and up 2 percent from last year. Harvested area is estimated at 11.3 million hectares, unchanged from last month, but up 3 percent from last year. *(For more information, please contact Justin.Jenkins@fas.usda.gov.)*

Thailand Rice: Estimated Production Decreases on Limited Water Supplies

USDA estimates Thailand 2018/19 rice production at 20.7 million metric tons (milled basis), down 2 percent from last month but up 2 percent from last year. Harvested area is estimated at 11 million hectares, down 2 percent from last month but up 3 percent from last year. The month-to-month area change was attributed to insufficient water supplies for the dry-season (second-season) crop



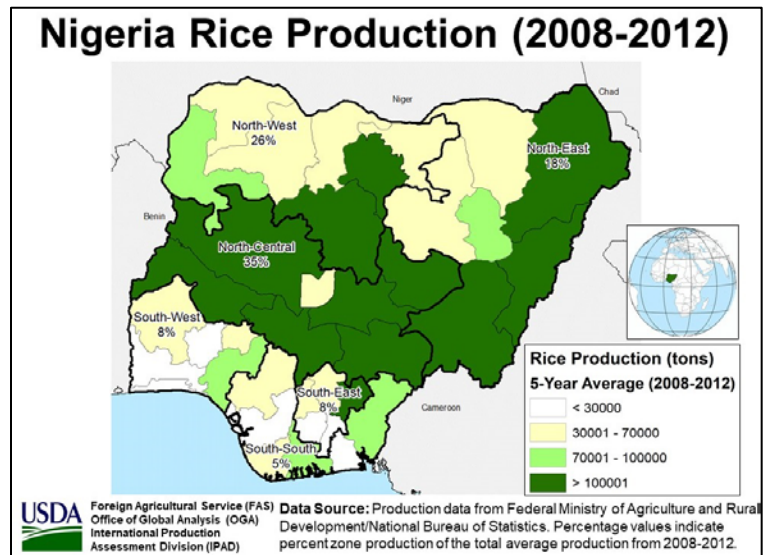
in the northern and northeastern regions, which accounts for 10 percent of the total dry-season rice production. The dry-season crop accounts for about 30 percent of total rice production. Reservoir levels in the northern and northeastern regions were reported by Thailand’s Royal Irrigation Department at 48 percent lower than last year’s levels due to unusually low rainfall, most notably in the southern part of the northern region. Yield is estimated at 2.86 tons per hectare, down slightly

from last month and last year. *(For more information, please contact Justin.Jenkins@fas.usda.gov.)*

Nigeria Rice: Record Production Expected

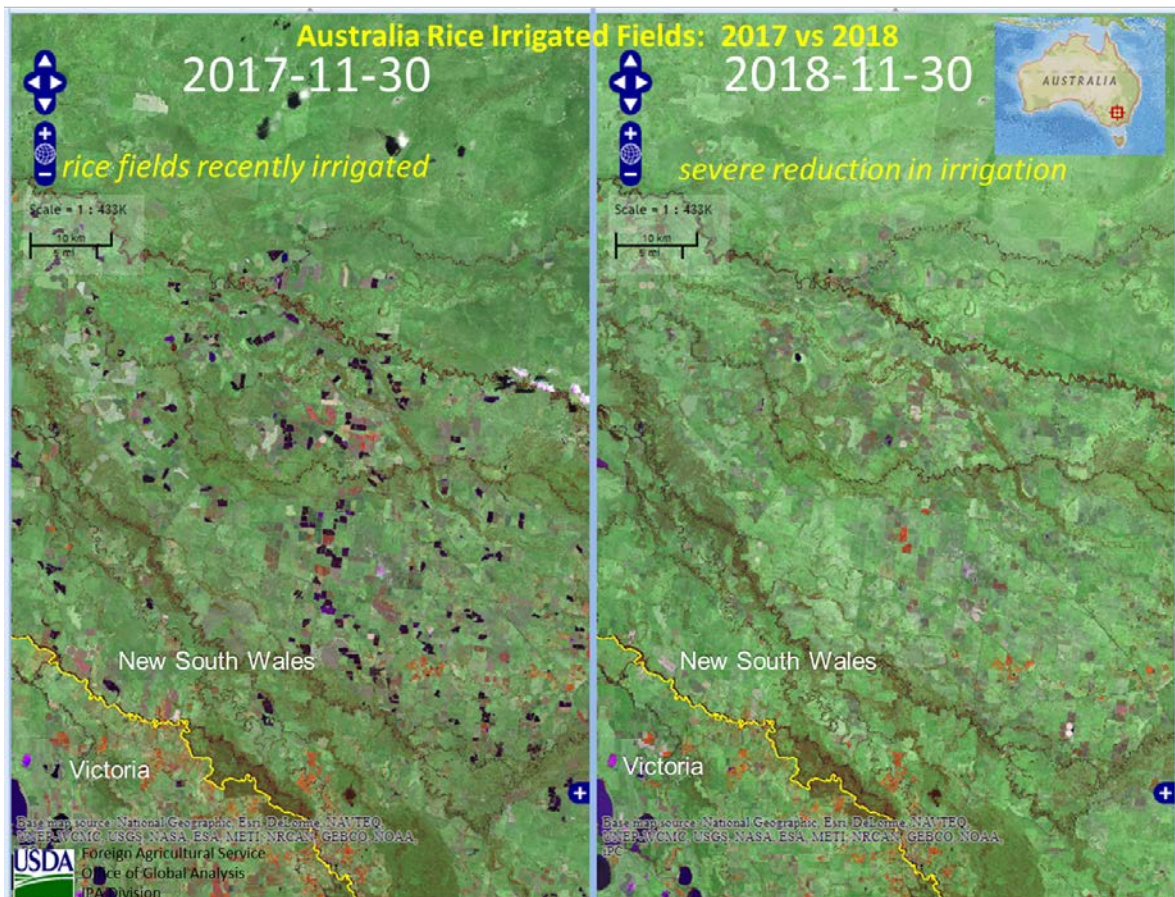
Nigeria’s 2018/19 milled rice production is estimated at a record 4.79 million metric tons (mmt), up 1.0 mmt (27 percent) from last month and up 0.1 mmt (3 percent) from last year. Area is estimated at 3.6 million hectares (mha), up 0.4 mha (13 percent) from last month and unchanged from last year. Yield is estimated at 2.11 metric tons per hectare, up 13 percent from last month and up 11 percent from the 5-year average. Seasonal rainfall was average to above average during the 2018 growing season, with September floods in the north-central part of the country slightly reducing potential output.

Nigeria's rice area and production have increased during the past five years due to numerous government policies that promote increased rice area, productivity, milling capacity, and dry-season production. Increases in irrigated dry-season production have reportedly occurred in the major rice producing regions in the north-central, northwest, and northeast parts of the country.

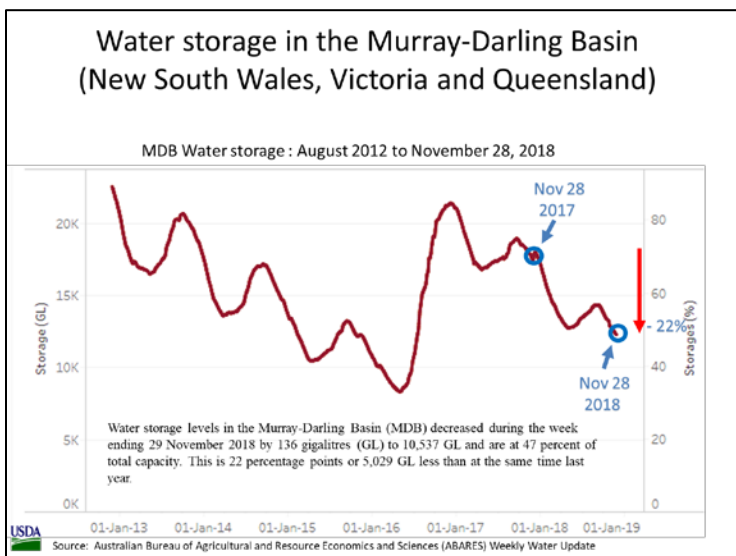


Nigeria is the largest rice producer in Africa and rice is planted in almost all administrative states. Rice is typically grown during the wet season from April through December and irrigated dry-season production is from October through June. (For more information, please contact Curt.Reynolds@fas.usda.gov.)

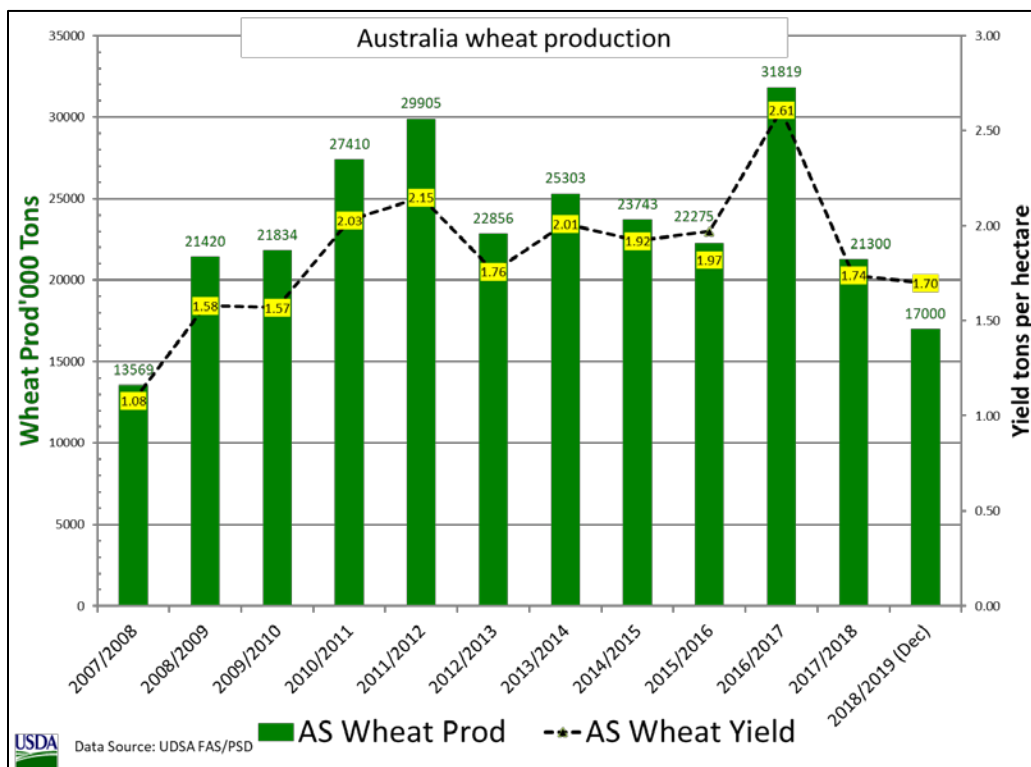
Australia Rice: Estimated Production Revised Down 76 Percent from Last Year



USDA estimates Australia's 2018/19 rice crop at 153,000 metric tons on a rough basis (110,000 tons milled), down 0.3 mmt (73 percent) from last month, and down 340,000 tons (76 percent) from last year. Harvested area is expected to total 15,000 hectares, down 40,000 hectares from last month and down 45,000 hectares (75 percent) from last year. Yield is forecast at 10.20 tons per hectare. The sharp decrease in estimated area is attributed to very limited availability of affordable water for irrigation and reduced water allocations in southern New South Wales. Water storage is down due to several months of drought in the catchment region. Rice is predominately produced in southern New South Wales as an irrigated crop. The Murray River and the Murrumbidgee River each contribute nearly half of the water used for irrigation. (For more information, please contact James.Crutchfield@fas.usda.gov.)

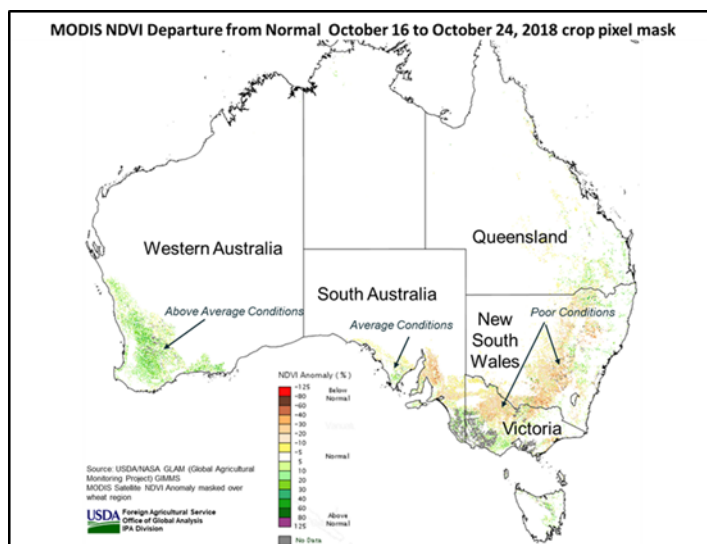


Australia Wheat: Estimated Production Revised Down



USDA estimates Australia's 2018/19 wheat crop at 17.0 million metric tons (mmt), down 0.5 mmt (3 percent) from last month, and down 4.3 mmt (20 percent) from last year. Harvested area is

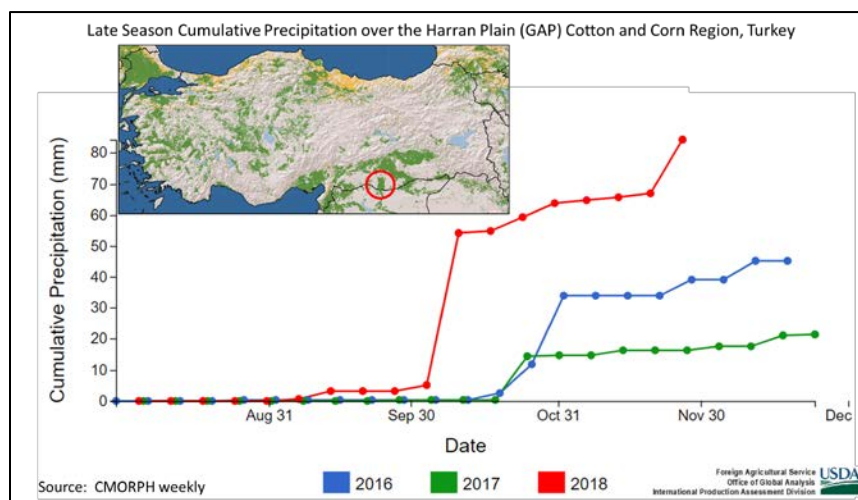
expected to total 10.0 million hectares (mha), down 0.8 mha from last month and down 2.25 mha (18 percent) from last year. Yield is forecast at 1.70 tons per hectare, 17 percent below the 5-year average. Persistent dryness and subsoil moisture deficits in major portions of Australia's winter crop region contributed to an estimated 17-percent drop in yield from the 5-year average. Precipitation has been well below average since major sowing operations commenced in May. Satellite-derived seasonal vegetation indices from October reveal the sharp differences in crop conditions between Western Australia and New South Wales, the two largest wheat producing states. Winter crops are sown in May and June. Harvest begins in November and is finished by the end of December. (For more information, please contact James.Crutchfield@fas.usda.gov.)



Western Australia and New South Wales, the two largest wheat producing states. Winter crops are sown in May and June. Harvest begins in November and is finished by the end of December. (For more information, please contact James.Crutchfield@fas.usda.gov.)

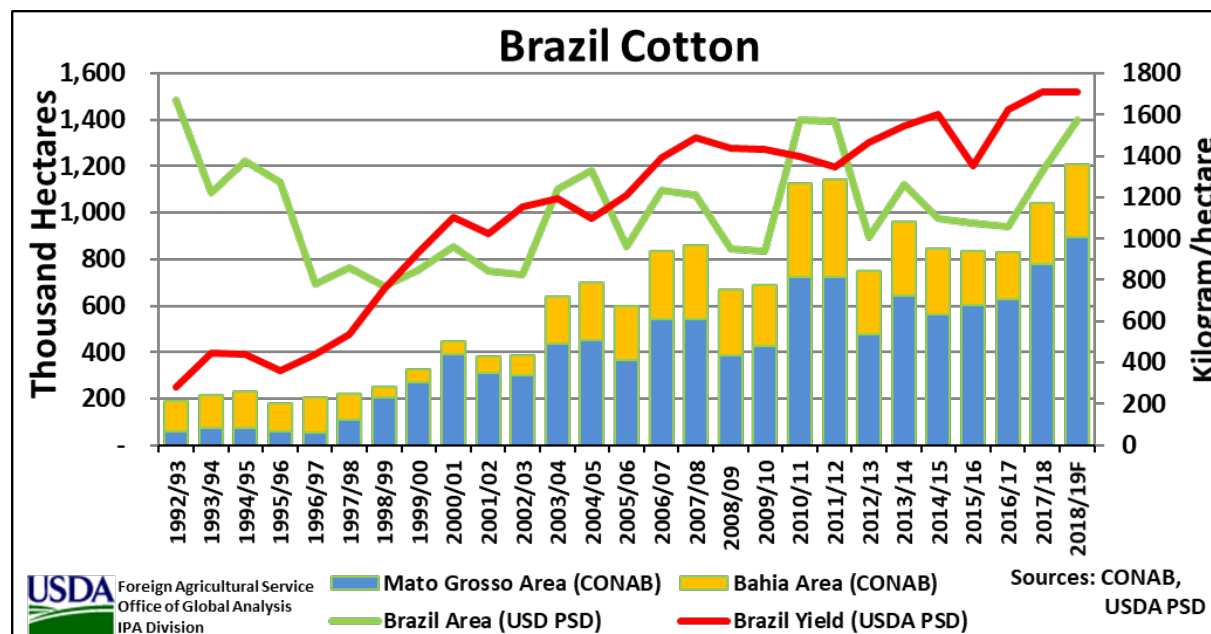
Turkey Cotton: Harvest Ends with Estimated Record Crop

USDA estimates 2018/19 Turkey cotton production at 4.3 million 480-pound bales, down 0.2 million from last month, up 8 percent from last year's record, and up 40 percent from the 5-year average. Harvested area is estimated at 520,000 hectares, unchanged from last month, up 11 percent from last year and up 30 percent from the 5-year average. Yield is estimated at 1,800 kilograms per hectare, down 4 percent from last month, down 3 percent from last year, but up 9 percent from the 5-year average. Planting began with ample soil moisture, and in some areas excessive rainfall necessitated replanting. Although weather was extremely favorable with exceptional growing conditions throughout the season, localized excessive rainfall and insect damage likely reduced yield in the Aegean and GAP (Southeastern Anatolia) regions. Harvest is complete. (For more information, please contact William.Baker@fas.usda.gov.)



Yield is estimated at 1,800 kilograms per hectare, down 4 percent from last month, down 3 percent from last year, but up 9 percent from the 5-year average. Planting began with ample soil moisture, and in some areas excessive rainfall necessitated replanting. Although weather was extremely favorable with exceptional growing conditions throughout the season, localized excessive rainfall and insect damage likely reduced yield in the Aegean and GAP (Southeastern Anatolia) regions. Harvest is complete. (For more information, please contact William.Baker@fas.usda.gov.)

Brazil Cotton: Record Production Forecast on Higher Area and Yield



Brazil cotton production for 2018/19 is forecast at a record 11.0 million 480-lb bales, up 1 million bales (10 percent) from last month, and up 1.8 million bales (19 percent) from last year. Harvested area is forecast at 1.4 million hectares, up 8 percent from last month and up 19 percent from last year. Yield is forecast at 1,711 kilograms per hectare, up 2 percent from last month and almost equal to last year's record.

Higher prices and two seasons of record yields have encouraged producers to increase area for the second consecutive year. Recent gains in yields are attributed to improved technology in the cotton sector, in combination with favorable weather. Planting of first-crop cotton began in November; however, the majority of cotton is second crop and is planted after soybeans are harvested in January and February. Most of the cotton crop will be harvested from May to August. *(For more information, please contact Maria.Anulacion@fas.usda.gov).*



**World Agricultural Production
U.S. Department of Agriculture**

Foreign Agricultural Service / Office of Global Analysis
International Production Assessment Division (IPAD)

Ag Box 1051, Room 4630, South Building
Washington, DC 20250-1051

<https://ipad.fas.usda.gov/>

Telephone: (202) 720-1662 Fax: (202) 720-1158

This report uses information from the Foreign Agricultural Service’s (FAS) global network of agricultural attachés and counselors, official statistics of foreign governments and other foreign source materials, and the analysis of economic data and satellite imagery. Estimates of foreign area, yield, and production are from the International Production Assessment Division, FAS, and are reviewed by USDA’s Inter-Agency Commodity Estimates Committee. Estimates of U.S. area, yield, and production are from USDA’s National Agricultural Statistics Service. Numbers within the report may not add to totals because of rounding. This report reflects official USDA estimates released in the World Agricultural Supply and Demand Estimates (WASDE-584), December 11, 2018.

Printed copies are available from the National Technical Information Service. Download an order form at http://www.ntis.gov/products/specialty/usda/fas_a-g.asp, or call NTIS at 1-800-363-2068.

The FAS International Production Assessment Division prepared this report. The next issue of World Agricultural Production will be released after 12:00 p.m. Eastern Time, January 11, 2019.

Conversion Table

Metric tons to bushels

Wheat, soybeans	=	MT * 36.7437
Corn, sorghum, rye	=	MT * 39.36825
Barley	=	MT * 45.929625
Oats	=	MT * 68.894438

Metric tons to 480-lb bales

Cotton	=	MT * 4.592917
--------	---	---------------

Metric tons to hundredweight

Rice	=	MT * 22.04622
------	---	---------------

Area & weight

1 hectare	=	2.471044 acres
1 kilogram	=	2.204622 pounds



For further information, contact:
U.S. Department of Agriculture
Foreign Agricultural Service
Office of Global Analysis
International Production Assessment Division
Ag Box 1051, Room 4630, South Building
Washington, DC 20250-1051

Telephone: (202) 720-1662

Fax: (202) 720-1158

GENERAL INFORMATION

Director	Ronald Frantz	202-720-4056	ronald.frantz@fas.usda.gov
Deputy Director	Robert Tetrault	202-720-1071	robert.tetrault@fas.usda.gov
Administrative Assistant	Vacant		
USDA Remote Sensing Advisor	Glenn Bethel	202-720-1280	glenn.bethel@fas.usda.gov
Sr. Analyst/Technical Lead	Curt Reynolds, Ph.D.	202-690-0134	curt.reynolds@fas.usda.gov
Sr. Analyst/ Satellite Imagery	Dath Mita, Ph.D.	202-720-7339	dath.mita@fas.usda.gov
Archives Manager/Technical Lead			
Sr. Analyst/ Global Special	Jim Crutchfield	202-690-0135	james.crutchfield@fas.usda.gov
Projects Manager/Technical Lead			
Sr. Analyst/Technical Lead	Vacant		
GIS Mapping/Imagery Analyst	Vacant		
WAP Coordinator	Katie McGaughey	202-720-9210	katie.mcgaughey@fas.usda.gov

COUNTRY- AND REGION-SPECIFIC INFORMATION

South America, Argentina, Venezuela, and Colombia	Denise McWilliams, Ph.D.	202-720-0107	denise.mcwilliams@fas.usda.gov
Western and Central Europe, and North Africa	Bryan Purcell	202-690-0138	bryan.purcell@fas.usda.gov
Russia, Ukraine, Kazakhstan	Mark Lindeman	202-690-0143	mark.lindeman@fas.usda.gov
South Asia, Sri Lanka	Arnella Trent	202-720-0881	arnella.trent@fas.usda.gov
Bangladesh, India, and Nepal			
East Asia, China, and Japan	Dath Mita, Ph.D.	202-720-7339	dath.mita@fas.usda.gov
Sub-Saharan Africa,	Curt Reynolds, Ph.D.	202-690-0134	curt.reynolds@fas.usda.gov
Nigeria and South Africa			
S.E. Asia, Indonesia, Thailand, Malaysia, Cambodia and Vietnam	Justin Jenkins	202-720-0419	justin.jenkins@fas.usda.gov
Central America, Mexico, and Western United States	Vacant		
Australia, New Zealand, Pakistan	Jim Crutchfield	202-690-0135	james.crutchfield@fas.usda.gov
Papua New Guinea and South Pacific Islands			
Middle East, Central Asia, Afghanistan	Bill Baker, Ph.D.	202-260-8109	william.baker@fas.usda.gov
Iraq, Iran, and Syria			
Canada, Caribbean,	Katie McGaughey	202-720-9210	katie.mcgaughey@fas.usda.gov
Eastern United States			
Brazil	Maria Anulacion	202-720-6878	maria.anulacion@fas.usda.gov



The Foreign Agricultural Service (FAS) updates its production, supply and distribution (PSD) database for cotton, oilseeds, and grains at 12:00 p.m. on the day the *World Agricultural Supply and Demand Estimates* (WASDE) report is released. This circular is released by 12:15 p.m.

FAS Reports and Databases:

Current *World Market and Trade and World Agricultural Production Reports*:

<http://apps.fas.usda.gov/psdonline/psdDataPublications.aspx>

Archives *World Market and Trade and World Agricultural Production Reports*:

<http://usda.mannlib.cornell.edu/MannUsda/viewTaxonomy.do?taxonomyID=7>

Production, Supply and Distribution Database (PSD Online):

<http://apps.fas.usda.gov/psdonline/psdHome.aspx>

EU Countries Area & Production Estimates

<http://apps.fas.usda.gov/psdonline/psdDownload.aspx>

Global Agricultural Trade System (U.S. Exports and Imports):

<http://apps.fas.usda.gov/gats/default.aspx>

Export Sales Report:

<http://apps.fas.usda.gov/esrquery/>

Global Agricultural Information Network (Agricultural Attaché Reports):

<http://gain.fas.usda.gov/Pages/Default.aspx>

Other USDA Reports:

World Agricultural Supply and Demand Estimates (WASDE):

<http://www.usda.gov/oce/commodity/wasde/>

Economic Research Service:

<http://www.ers.usda.gov/topics/crops>

National Agricultural Statistics Service:

<http://www.nass.usda.gov/Publications/>

Table 01 World Crop Production Summary

Million Metric Tons

Commodity	World -	Total Foreign	North America			Former Soviet		European	Asia (WAP)					South America		Selected Other			All Others
			United States	Canada	Mexico	Russia	Ukraine		China	India	Indonesia	Pakistan	Thailand	Argentina	Brazil	Australia	South Africa	Turkey	
			-	-	-	-	-		-	-	-	-	-	-	-	-	-	-	
---Million metric tons---																			
Wheat																			
2016/17	756.5	693.7	62.8	32.1	3.9	72.5	26.8	nr	133.3	87.0	0.0	25.6	0.0	18.4	6.7	31.8	1.9	17.3	236.3
2017/18 prel.	763.1	715.7	47.3	30.0	3.5	85.0	27.0	nr	134.3	98.5	0.0	26.7	0.0	18.5	4.3	21.3	1.5	21.0	244.1
2018/19 proj.																			
Nov	733.5	682.2	51.3	31.5	2.9	70.0	25.0	nr	132.5	99.7	0.0	25.5	0.0	19.5	4.8	17.5	1.9	19.0	232.5
Dec	733.4	682.1	51.3	31.8	3.0	70.0	25.0	nr	132.5	99.7	0.0	25.5	0.0	19.5	4.8	17.0	1.9	19.0	232.5
Coarse Grains																			
2016/17	1,413.7	1,011.1	402.6	26.6	33.3	40.8	39.2	nr	270.9	43.5	10.9	6.6	5.3	48.6	101.6	17.3	18.1	10.8	337.7
2017/18 prel.	1,357.3	973.0	384.3	26.2	33.1	41.7	34.1	nr	266.6	47.0	11.4	6.2	5.1	39.3	85.1	11.9	14.0	13.0	338.5
2018/19 proj.																			
Nov	1,373.3	988.2	385.1	27.0	31.5	34.7	42.2	nr	263.8	42.3	11.9	6.8	5.2	50.4	97.5	11.1	13.6	13.5	336.9
Dec	1,373.6	988.5	385.1	26.2	31.7	34.7	43.7	nr	263.8	42.3	11.9	6.8	5.4	50.4	97.4	10.8	12.6	13.5	337.4
Rice, Milled																			
2016/17	490.8	483.7	7.1	0.0	0.2	0.7	0.0	nr	147.8	109.7	36.9	6.8	19.2	0.9	8.4	0.6	0.0	0.5	152.1
2017/18 prel.	495.1	489.4	5.7	0.0	0.2	0.6	0.0	nr	148.9	112.9	37.0	7.5	20.4	0.9	8.2	0.5	0.0	0.5	151.9
2018/19 proj.																			
Nov	490.7	483.8	6.9	0.0	0.2	0.6	0.0	nr	143.6	111.0	37.3	7.4	21.2	0.8	8.2	0.4	0.0	0.5	152.5
Dec	491.1	484.2	6.9	0.0	0.2	0.7	0.0	nr	143.6	111.0	37.3	7.4	20.7	0.8	8.2	0.1	0.0	0.5	153.7
Total Grains																			
2016/17	2,661.0	2,188.5	472.6	58.8	37.3	114.0	66.1	nr	552.0	240.2	47.8	39.1	24.5	67.8	116.7	49.7	20.0	28.5	726.2
2017/18 prel.	2,615.4	2,178.2	437.3	56.2	36.7	127.3	61.1	nr	549.8	258.4	48.4	40.3	25.4	58.7	97.5	33.7	15.5	34.5	734.5
2018/19 proj.																			
Nov	2,597.5	2,154.2	443.3	58.5	34.6	105.4	67.2	nr	539.9	253.0	49.2	39.7	26.4	70.6	110.4	29.0	15.5	33.0	721.9
Dec	2,598.2	2,154.8	443.3	58.0	34.9	105.4	68.7	nr	539.9	253.0	49.2	39.7	26.1	70.6	110.4	28.0	14.5	33.0	723.5
Oilseeds																			
2016/17	572.8	445.9	126.9	26.2	1.1	15.0	20.7	nr	54.9	37.1	12.8	3.7	0.9	60.2	117.6	5.7	2.3	2.8	85.0
2017/18 prel.	575.4	443.9	131.5	29.1	1.3	15.5	19.8	nr	59.5	34.8	13.6	4.0	1.0	42.5	124.1	5.3	2.6	3.2	87.8
2018/19 proj.																			
Nov	599.6	464.1	135.4	28.7	1.3	17.4	22.1	nr	59.9	35.2	13.6	3.9	1.0	60.4	124.6	3.4	2.5	3.6	86.5
Dec	600.5	465.0	135.5	28.5	1.3	17.4	22.1	nr	59.7	34.5	13.9	3.6	1.0	60.4	126.4	3.2	2.5	3.5	87.0
Cotton																			
2016/17	106.7	89.5	17.2	0.0	0.8	0.0	0.0	1.3	22.8	27.0	0.0	7.7	0.0	0.8	7.0	4.1	0.1	3.2	14.9
2017/18 prel.	123.7	102.8	20.9	0.0	1.6	0.0	0.0	1.5	27.5	29.0	0.0	8.2	0.0	0.8	9.2	4.7	0.2	4.0	16.0
2018/19 proj.																			
Nov	119.4	101.0	18.4	0.0	1.7	0.0	0.0	1.7	27.5	28.0	0.0	8.0	0.0	1.1	10.0	2.5	0.2	4.5	15.8
Dec	118.7	100.2	18.6	0.0	1.7	0.0	0.0	1.7	27.0	27.5	0.0	7.4	0.0	1.2	11.0	2.5	0.2	4.3	15.7

1/ Includes wheat, coarse grains, and rice (milled) shown above.

Table 02 Wheat Area, Yield, and Production

Country / Region	Area (Million hectares)				Yield (Metric tons per hectare)				Production (Million metric tons)				Change in Production			
	2016/17	Prel.	2018/19 Proj.		2016/17	Prel.	2018/19 Proj.		2016/17	Prel.	2018/19 Proj.		From last month		From last year	
		2017/18	Nov	Dec		2017/18	Nov	Dec		2017/18	Nov	Dec	MMT	Percent	MMT	Percent
World	222.71	220.00	217.05	216.35	3.40	3.47	3.38	3.39	756.51	763.06	733.51	733.41	-0.10	-0.01	-29.65	-3.89
United States	17.75	15.19	16.03	16.03	3.54	3.12	3.20	3.20	62.83	47.35	51.29	51.29	0.00	0.00	3.94	8.33
Total Foreign	204.97	204.81	201.02	200.32	3.38	3.49	3.39	3.41	693.68	715.72	682.23	682.13	-0.10	-0.01	-33.59	-4.69
European Union - 28	27.23	26.08	25.55	25.55	5.34	5.80	5.39	5.39	145.37	151.26	137.60	137.60	0.00	0.00	-13.66	-9.03
China	24.69	24.51	24.21	24.21	5.40	5.48	5.47	5.47	133.27	134.33	132.50	132.50	0.00	0.00	-1.83	-1.36
South Asia																
India	30.22	30.79	30.00	30.00	2.88	3.20	3.32	3.32	87.00	98.51	99.70	99.70	0.00	0.00	1.19	1.21
Pakistan	9.22	8.97	8.75	8.75	2.78	2.97	2.91	2.91	25.63	26.67	25.50	25.50	0.00	0.00	-1.17	-4.40
Afghanistan	2.55	2.55	2.50	2.50	2.00	1.96	1.60	1.60	5.10	5.00	4.00	4.00	0.00	0.00	-1.00	-20.00
Nepal	0.76	0.77	0.76	0.76	2.41	2.31	2.35	2.35	1.83	1.78	1.79	1.79	0.00	0.00	0.01	0.34
Former Soviet Union - 12																
Russia	27.00	27.34	26.00	26.00	2.69	3.11	2.69	2.69	72.53	84.99	70.00	70.00	0.00	0.00	-14.99	-17.64
Russia Winter	13.64	14.64	14.35	14.35	3.78	4.17	3.55	3.55	51.54	60.99	51.00	51.00	0.00	0.00	-9.99	-16.38
Russia Spring	13.37	12.70	11.65	11.65	1.57	1.89	1.63	1.63	20.99	24.01	19.00	19.00	0.00	0.00	-5.01	-20.85
Ukraine	6.46	6.64	6.90	6.90	4.15	4.06	3.62	3.62	26.79	26.98	25.00	25.00	0.00	0.00	-1.98	-7.34
Kazakhstan	12.37	11.91	11.30	11.30	1.21	1.24	1.33	1.33	14.99	14.80	15.00	15.00	0.00	0.00	0.20	1.34
Uzbekistan	1.40	1.40	1.40	1.40	4.96	4.93	4.29	4.29	6.94	6.90	6.00	6.00	0.00	0.00	-0.90	-13.04
Belarus	0.71	0.72	0.70	0.70	3.29	3.65	3.71	3.71	2.34	2.62	2.60	2.60	0.00	0.00	-0.02	-0.76
Canada	8.98	8.98	9.80	9.90	3.58	3.34	3.21	3.21	32.14	29.98	31.50	31.80	0.30	0.95	1.82	6.06
South America																
Argentina	5.56	5.80	6.00	6.00	3.31	3.19	3.25	3.25	18.40	18.50	19.50	19.50	0.00	0.00	1.00	5.41
Brazil	2.12	1.92	2.04	2.04	3.17	2.23	2.35	2.35	6.73	4.26	4.80	4.80	0.00	0.00	0.54	12.57
Uruguay	0.22	0.19	0.20	0.20	3.52	2.28	3.50	3.50	0.76	0.44	0.70	0.70	0.00	0.00	0.26	59.09
Australia	12.19	12.25	10.80	10.00	2.61	1.74	1.62	1.70	31.82	21.30	17.50	17.00	-0.50	-2.86	-4.30	-20.19
Africa																
Egypt	1.26	1.32	1.32	1.32	6.43	6.40	6.40	6.40	8.10	8.45	8.45	8.45	0.00	0.00	0.00	0.00
Morocco	2.41	3.32	2.85	2.85	1.13	2.14	2.58	2.58	2.73	7.09	7.34	7.34	0.00	0.00	0.25	3.50
Ethiopia	1.70	1.70	1.70	1.70	2.68	2.65	2.65	2.65	4.54	4.50	4.50	4.50	0.00	0.00	0.00	0.00
Algeria	1.30	1.60	2.07	2.07	1.54	1.50	1.90	1.90	2.00	2.40	3.94	3.94	0.00	0.00	1.54	64.17
Middle East																
Turkey	7.82	7.80	7.62	7.62	2.21	2.69	2.50	2.50	17.25	21.00	19.00	19.00	0.00	0.00	-2.00	-9.52
Iran	6.70	6.70	6.70	6.70	2.16	2.09	2.16	2.16	14.50	14.00	14.50	14.50	0.00	0.00	0.50	3.57
Iraq	2.35	2.23	2.30	2.30	1.80	1.81	1.74	1.74	4.23	4.03	4.00	4.00	0.00	0.00	-0.03	-0.62
Syria	1.10	1.10	1.10	1.10	2.18	2.00	1.82	1.82	2.40	2.20	2.00	2.00	0.00	0.00	-0.20	-9.09
Mexico	0.72	0.67	0.54	0.54	5.34	5.24	5.37	5.56	3.87	3.49	2.90	3.00	0.10	3.45	-0.49	-14.14
Serbia	0.61	0.54	0.68	0.68	4.92	4.26	4.74	4.74	3.00	2.30	3.20	3.20	0.00	0.00	0.90	39.13
Others	7.31	7.01	7.24	7.24	2.66	2.55	2.58	2.58	19.43	17.91	18.71	18.71	0.00	0.00	0.80	4.47

Table 03 Total Coarse Grain Area, Yield, and Production

Country / Region	Area (Million hectares)				Yield (Metric tons per hectare)				Production (Million metric tons)				Change in Production			
	2016/17	Prel.	2018/19 Proj.		2016/17	Prel.	2018/19 Proj.		2016/17	Prel.	2018/19 Proj.		From last month		From last year	
		2017/18	Nov	Dec		2017/18	Nov	Dec		2017/18	Nov	Dec	MMT	Percent	MMT	Percent
World	337.19	326.49	325.47	325.23	4.19	4.16	4.22	4.22	1,413.71	1,357.30	1,373.28	1,373.61	0.34	0.02	16.31	1.20
United States	39.20	36.74	36.41	36.41	10.27	10.46	10.58	10.58	402.61	384.26	385.12	385.12	0.00	0.00	0.86	0.22
Total Foreign	297.99	289.75	289.06	288.82	3.39	3.36	3.42	3.42	1,011.10	973.05	988.16	988.50	0.34	0.03	15.45	1.59
China	46.29	44.58	43.76	43.76	5.85	5.98	6.03	6.03	270.93	266.57	263.81	263.81	0.00	0.00	-2.77	-1.04
European Union	29.49	29.13	29.19	29.14	5.18	5.24	5.02	5.05	152.83	152.49	146.69	147.19	0.50	0.34	-5.30	-3.48
South America																
Brazil	18.62	17.83	18.63	18.68	5.46	4.77	5.23	5.22	101.58	85.06	97.49	97.42	-0.06	-0.06	12.36	14.54
Argentina	6.84	7.10	7.20	7.20	7.11	5.54	6.99	6.99	48.57	39.32	50.35	50.35	0.00	0.00	11.03	28.06
Former Soviet Union - 12																
Russia	15.14	14.74	14.03	14.03	2.69	2.83	2.48	2.48	40.77	41.71	34.73	34.73	0.00	0.00	-6.99	-16.75
Ukraine	7.82	7.59	7.44	7.44	5.01	4.49	5.67	5.87	39.22	34.07	42.20	43.70	1.50	3.55	9.62	28.25
Kazakhstan	2.33	2.49	2.96	2.96	1.90	1.79	1.84	1.84	4.43	4.45	5.46	5.46	0.00	0.00	1.00	22.53
Belarus	0.96	1.00	1.05	1.05	3.16	3.30	3.34	3.34	3.03	3.29	3.51	3.51	0.00	0.00	0.22	6.69
Africa																
Nigeria	14.10	13.80	13.80	13.80	1.34	1.36	1.40	1.40	18.82	18.80	19.30	19.30	0.00	0.00	0.50	2.66
South Africa	3.18	2.80	2.83	2.63	5.69	4.99	4.81	4.79	18.12	14.00	13.61	12.61	-1.00	-7.35	-1.39	-9.94
Tanzania	5.31	5.35	5.35	5.35	1.11	1.21	1.22	1.22	5.90	6.50	6.55	6.55	0.00	0.00	0.05	0.77
Burkina	3.83	3.85	3.85	3.85	1.09	0.97	1.14	1.14	4.17	3.73	4.40	4.40	0.00	0.00	0.67	18.06
Ethiopia	5.43	5.69	5.71	5.71	2.78	2.45	2.48	2.48	15.09	13.96	14.18	14.18	0.00	0.00	0.22	1.58
Egypt	0.97	1.02	1.07	1.07	7.05	7.09	7.14	7.14	6.86	7.26	7.66	7.66	0.00	0.00	0.40	5.51
Mali	4.63	3.95	3.95	3.95	1.30	1.71	1.34	1.34	6.01	6.76	5.30	5.30	0.00	0.00	-1.46	-21.54
India	25.18	23.81	23.15	23.15	1.73	1.97	1.83	1.83	43.47	46.97	42.25	42.25	0.00	0.00	-4.72	-10.05
Southeast Asia																
Indonesia	3.40	3.45	3.50	3.50	3.21	3.30	3.40	3.40	10.90	11.40	11.90	11.90	0.00	0.00	0.50	4.39
Philippines	2.69	2.60	2.60	2.60	3.01	3.08	3.15	3.15	8.09	7.98	8.20	8.20	0.00	0.00	0.22	2.76
Vietnam	1.10	1.05	0.85	0.85	4.60	4.65	4.65	4.65	5.06	4.88	3.95	3.95	0.00	0.00	-0.93	-19.06
Thailand	1.20	1.15	1.18	1.23	4.39	4.39	4.40	4.36	5.25	5.05	5.18	5.35	0.17	3.28	0.30	5.94
Mexico	9.34	9.07	8.91	8.96	3.56	3.65	3.53	3.54	33.26	33.07	31.49	31.69	0.20	0.64	-1.38	-4.18
Canada	4.82	4.74	4.98	5.00	5.52	5.54	5.42	5.25	26.62	26.24	26.95	26.24	-0.71	-2.63	0.00	-0.01
Australia	6.38	5.31	5.47	5.32	2.71	2.24	2.03	2.04	17.27	11.91	11.10	10.85	-0.25	-2.25	-1.06	-8.92
Middle East																
Turkey	4.19	4.22	4.34	4.34	2.57	3.08	3.10	3.10	10.78	12.97	13.45	13.45	0.00	0.00	0.48	3.70
Iran	1.75	1.79	1.79	1.79	2.24	2.41	2.41	2.41	3.92	4.32	4.32	4.32	0.00	0.00	0.00	0.00
Others	73.01	71.65	71.48	71.47	1.51	1.54	1.60	1.60	110.17	110.29	114.16	114.15	-0.01	-0.01	3.86	3.50

World and Selected Countries and Regions; Coarse Grain includes: Barley, Corn, Millet, Mixed Grains, Oats, Rye and Sorghum

Table 04 Corn Area, Yield, and Production

Country / Region	Area (Million hectares)				Yield (Metric tons per hectare)				Production (Million metric tons)				Change in Production			
	2016/17	Prel.	2018/19 Proj.		2016/17	Prel.	2018/19 Proj.		2016/17	Prel.	2018/19 Proj.		From last month		From last year	
		2017/18	Nov	Dec		2017/18	Nov	Dec		2017/18	Nov	Dec	MMT	Percent	MMT	Percent
World	194.34	190.61	188.63	188.46	5.78	5.65	5.83	5.84	1,122.41	1,076.18	1,098.95	1,099.91	0.96	0.09	23.73	2.21
United States	35.11	33.47	33.09	33.09	10.96	11.08	11.23	11.23	384.78	370.96	371.52	371.52	0.00	0.00	0.56	0.15
Total Foreign	159.24	157.14	155.54	155.37	4.63	4.49	4.68	4.69	737.63	705.22	727.44	728.40	0.96	0.13	23.18	3.29
China	44.18	42.40	41.50	41.50	5.97	6.11	6.17	6.17	263.61	259.07	256.00	256.00	0.00	0.00	-3.07	-1.19
South America																
Brazil	17.60	16.60	17.50	17.50	5.60	4.94	5.40	5.40	98.50	82.00	94.50	94.50	0.00	0.00	12.50	15.24
Argentina	4.90	5.20	5.20	5.20	8.37	6.15	8.17	8.17	41.00	32.00	42.50	42.50	0.00	0.00	10.50	32.81
Bolivia	0.09	0.37	0.33	0.33	1.38	2.50	2.65	2.65	0.12	0.93	0.88	0.88	0.00	0.00	-0.05	-5.41
European Union	8.57	8.38	8.05	8.05	7.23	7.41	7.39	7.50	61.88	62.10	59.50	60.40	0.90	1.51	-1.70	-2.74
Africa																
South Africa	3.00	2.63	2.60	2.40	5.86	5.13	5.00	5.00	17.55	13.53	13.00	12.00	-1.00	-7.69	-1.53	-11.28
Nigeria	6.54	6.50	6.50	6.50	1.59	1.69	1.69	1.69	10.42	11.00	11.00	11.00	0.00	0.00	0.00	0.00
Ethiopia	2.14	2.23	2.25	2.25	3.42	3.14	3.16	3.16	7.30	7.00	7.10	7.10	0.00	0.00	0.10	1.43
Egypt	0.75	0.80	0.85	0.85	8.00	8.00	8.00	8.00	6.00	6.40	6.80	6.80	0.00	0.00	0.40	6.25
Tanzania	4.20	4.20	4.20	4.20	1.15	1.27	1.29	1.29	4.82	5.35	5.40	5.40	0.00	0.00	0.05	0.93
Malawi	1.67	1.70	1.70	1.70	1.42	2.04	1.65	1.65	2.37	3.46	2.80	2.80	0.00	0.00	-0.66	-19.17
Zambia	1.16	1.43	1.09	1.09	2.48	2.52	2.21	2.21	2.87	3.61	2.40	2.40	0.00	0.00	-1.21	-33.60
Kenya	2.34	2.10	2.20	2.20	1.43	1.40	1.82	1.82	3.34	2.95	4.00	4.00	0.00	0.00	1.05	35.59
Uganda	1.15	1.10	1.10	1.10	2.32	2.55	2.27	2.27	2.66	2.80	2.50	2.50	0.00	0.00	-0.30	-10.71
Zimbabwe	0.77	1.88	1.72	1.72	0.66	1.15	0.99	0.99	0.51	2.16	1.70	1.70	0.00	0.00	-0.46	-21.10
Former Soviet Union - 12																
Ukraine	4.24	4.43	4.50	4.50	6.60	5.44	7.44	7.78	27.97	24.12	33.50	35.00	1.50	4.48	10.89	45.14
Russia	2.78	2.70	2.35	2.35	5.51	4.90	4.79	4.79	15.31	13.23	11.25	11.25	0.00	0.00	-1.98	-14.96
South Asia																
India	9.63	9.22	9.20	9.20	2.69	3.12	2.83	2.83	25.90	28.72	26.00	26.00	0.00	0.00	-2.72	-9.47
Pakistan	1.35	1.23	1.32	1.32	4.55	4.63	4.77	4.77	6.13	5.70	6.30	6.30	0.00	0.00	0.60	10.51
Nepal	0.89	0.90	0.90	0.90	2.62	2.84	2.83	2.83	2.34	2.56	2.55	2.55	0.00	0.00	-0.01	-0.20
Southeast Asia																
Indonesia	3.40	3.45	3.50	3.50	3.21	3.30	3.40	3.40	10.90	11.40	11.90	11.90	0.00	0.00	0.50	4.39
Philippines	2.69	2.60	2.60	2.60	3.01	3.08	3.15	3.15	8.09	7.98	8.20	8.20	0.00	0.00	0.22	2.76
Vietnam	1.10	1.05	0.85	0.85	4.60	4.65	4.65	4.65	5.06	4.88	3.95	3.95	0.00	0.00	-0.93	-19.06
Thailand	1.17	1.12	1.15	1.20	4.45	4.45	4.46	4.42	5.20	5.00	5.13	5.30	0.17	3.31	0.30	6.00
Mexico	7.51	7.32	7.20	7.20	3.67	3.75	3.61	3.61	27.58	27.45	26.00	26.00	0.00	0.00	-1.45	-5.28
Canada	1.41	1.41	1.45	1.43	9.82	10.02	10.00	9.72	13.89	14.10	14.50	13.90	-0.60	-4.14	-0.20	-1.38
Turkey	0.57	0.60	0.53	0.53	9.65	10.00	10.38	10.38	5.50	6.00	5.50	5.50	0.00	0.00	-0.50	-8.33
Others	23.45	23.60	23.21	23.20	2.59	2.53	2.70	2.70	60.83	59.74	62.58	62.57	-0.01	-0.02	2.83	4.74

World and Selected Countries and Regions

Table 05 Barley Area, Yield, and Production

Country / Region	Area (Million hectares)				Yield (Metric tons per hectare)				Production (Million metric tons)				Change in Production						
	2016/17	Prel.		2018/19 Proj.		2016/17	Prel.		2018/19 Proj.		2016/17	Prel.		2018/19 Proj.		From last month		From last year	
		2017/18	Nov	Dec	2017/18		Nov	Dec	2017/18	Nov		Dec	MMT	Percent	MMT	Percent			
World	49.28	48.07	49.40	49.30	2.98	3.00	2.86	2.85	147.06	144.01	141.32	140.72	-0.60	-0.42	-3.29	-2.28			
United States	1.04	0.79	0.80	0.80	4.19	3.91	4.17	4.17	4.35	3.09	3.33	3.33	0.00	0.00	0.24	7.86			
Total Foreign	48.24	47.27	48.60	48.50	2.96	2.98	2.84	2.83	142.70	140.92	137.99	137.39	-0.60	-0.43	-3.53	-2.51			
European Union	12.31	12.09	12.50	12.45	4.86	4.87	4.59	4.57	59.87	58.84	57.35	56.95	-0.40	-0.70	-1.89	-3.21			
Former Soviet Union - 12																			
Russia	7.96	7.85	7.70	7.70	2.21	2.57	2.14	2.14	17.55	20.18	16.50	16.50	0.00	0.00	-3.68	-18.25			
Ukraine	3.05	2.65	2.50	2.50	3.24	3.28	3.04	3.04	9.87	8.70	7.60	7.60	0.00	0.00	-1.10	-12.59			
Kazakhstan	1.89	2.07	2.50	2.50	1.71	1.60	1.68	1.68	3.23	3.31	4.20	4.20	0.00	0.00	0.90	27.08			
Belarus	0.45	0.45	0.50	0.50	2.78	3.14	3.40	3.40	1.25	1.42	1.70	1.70	0.00	0.00	0.28	19.72			
Azerbaijan	0.36	0.32	0.35	0.35	2.69	2.55	2.49	2.49	0.95	0.82	0.87	0.87	0.00	0.00	0.06	6.75			
Canada	2.27	2.11	2.35	2.40	3.90	3.73	3.62	3.50	8.84	7.89	8.50	8.40	-0.10	-1.18	0.51	6.45			
Australia	4.83	3.90	3.90	3.80	2.79	2.28	1.90	1.92	13.51	8.90	7.40	7.30	-0.10	-1.35	-1.60	-17.98			
Middle East																			
Turkey	3.40	3.40	3.60	3.60	1.40	1.88	2.06	2.06	4.75	6.40	7.40	7.40	0.00	0.00	1.00	15.63			
Iran	1.61	1.60	1.60	1.60	1.86	1.94	1.94	1.94	3.00	3.10	3.10	3.10	0.00	0.00	0.00	0.00			
Iraq	1.20	1.07	1.00	1.00	1.29	1.24	1.00	1.00	1.55	1.33	1.00	1.00	0.00	0.00	-0.33	-24.53			
Syria	0.88	0.80	0.80	0.80	0.82	0.97	0.50	0.50	0.72	0.78	0.40	0.40	0.00	0.00	-0.38	-48.52			
Africa																			
Ethiopia	0.96	1.20	1.20	1.20	2.11	1.75	1.81	1.81	2.03	2.10	2.17	2.17	0.00	0.00	0.07	3.33			
Morocco	1.21	1.80	1.75	1.75	0.51	1.11	1.66	1.66	0.62	2.00	2.91	2.91	0.00	0.00	0.91	45.50			
Algeria	0.90	0.76	1.03	1.03	1.11	1.27	1.90	1.90	1.00	0.97	1.95	1.95	0.00	0.00	0.98	101.45			
Tunisia	0.28	0.36	0.34	0.34	1.34	1.31	1.31	1.31	0.38	0.47	0.45	0.45	0.00	0.00	-0.03	-5.32			
South Africa	0.09	0.09	0.12	0.12	3.99	3.37	3.33	3.33	0.36	0.31	0.40	0.40	0.00	0.00	0.09	30.29			
South America																			
Argentina	0.87	0.94	1.00	1.00	3.79	4.00	4.00	4.00	3.30	3.74	4.00	4.00	0.00	0.00	0.26	6.95			
Uruguay	0.19	0.15	0.17	0.17	3.57	2.52	4.00	4.00	0.68	0.39	0.66	0.66	0.00	0.00	0.28	71.43			
Brazil	0.10	0.11	0.12	0.12	3.91	2.61	2.88	2.88	0.38	0.28	0.35	0.35	0.00	0.00	0.06	22.34			
India	0.59	0.66	0.68	0.68	2.44	2.67	2.61	2.61	1.44	1.75	1.77	1.77	0.00	0.00	0.02	1.14			
China	0.43	0.43	0.45	0.45	4.08	4.19	4.11	4.11	1.75	1.80	1.85	1.85	0.00	0.00	0.05	2.78			
Mexico	0.33	0.36	0.36	0.36	2.96	2.81	2.78	2.78	0.98	1.00	1.00	1.00	0.00	0.00	0.00	-0.40			
Afghanistan	0.22	0.25	0.25	0.25	1.83	1.60	1.40	1.40	0.40	0.40	0.35	0.35	0.00	0.00	-0.05	-12.50			
Others	1.88	1.86	1.84	1.84	2.29	2.19	2.24	2.24	4.31	4.07	4.12	4.12	0.00	0.00	0.05	1.28			

World and Selected Countries and Regions

Table 06 Oats Area, Yield, and Production

Country / Region	Area (Million hectares)				Yield (Metric tons per hectare)				Production (Million metric tons)				Change in Production			
	2016/17	Prel.	2018/19 Proj.		2016/17	Prel.	2018/19 Proj.		2016/17	Prel.	2018/19 Proj.		From last month		From last year	
		2017/18	Nov	Dec		2017/18	Nov	Dec		2017/18	Nov	Dec	MMT	Percent	MMT	Percent
World	9.67	9.51	9.50	9.45	2.50	2.46	2.41	2.40	24.17	23.41	22.86	22.71	-0.15	-0.66	-0.70	-2.99
United States	0.40	0.32	0.35	0.35	2.37	2.21	2.33	2.33	0.94	0.72	0.82	0.82	0.00	0.00	0.10	13.67
Total Foreign	9.28	9.19	9.15	9.10	2.51	2.47	2.41	2.41	23.23	22.69	22.04	21.89	-0.15	-0.68	-0.80	-3.52
European Union	2.57	2.68	2.67	2.67	3.13	3.01	3.02	3.02	8.04	8.07	8.05	8.05	0.00	0.00	-0.02	-0.27
Former Soviet Union - 12																
Russia	2.75	2.78	2.75	2.75	1.73	1.96	1.75	1.75	4.75	5.44	4.80	4.80	0.00	0.00	-0.64	-11.78
Ukraine	0.21	0.21	0.20	0.20	2.38	2.31	2.38	2.38	0.51	0.48	0.48	0.48	0.00	0.00	-0.01	-1.25
Belarus	0.15	0.15	0.16	0.16	2.67	3.33	2.88	2.88	0.39	0.50	0.46	0.46	0.00	0.00	-0.04	-8.00
Kazakhstan	0.21	0.21	0.25	0.25	1.60	1.34	1.39	1.39	0.34	0.29	0.34	0.34	0.00	0.00	0.06	19.30
Canada	0.93	1.05	1.00	1.00	3.49	3.55	3.45	3.45	3.23	3.73	3.45	3.45	0.00	0.00	-0.28	-7.58
South America																
Argentina	0.32	0.22	0.25	0.25	2.45	2.24	2.40	2.40	0.79	0.49	0.60	0.60	0.00	0.00	0.11	21.95
Brazil	0.29	0.34	0.35	0.35	2.84	1.86	2.18	2.18	0.83	0.63	0.77	0.77	0.00	0.00	0.14	21.45
Chile	0.14	0.11	0.14	0.14	5.20	5.29	5.00	5.00	0.71	0.57	0.68	0.68	0.00	0.00	0.10	18.21
Uruguay	0.03	0.03	0.02	0.02	1.58	1.52	1.58	1.58	0.04	0.04	0.04	0.04	0.00	0.00	0.00	0.00
Oceania																
Australia	1.03	0.74	0.69	0.64	2.20	1.51	1.52	1.41	2.27	1.12	1.05	0.90	-0.15	-14.29	-0.22	-19.64
New Zealand	0.01	0.01	0.01	0.01	5.38	5.67	5.33	5.33	0.04	0.03	0.03	0.03	0.00	0.00	0.00	-5.88
China	0.21	0.21	0.22	0.22	1.41	1.43	1.42	1.42	0.29	0.30	0.31	0.31	0.00	0.00	0.01	1.67
Africa																
Algeria	0.09	0.09	0.09	0.09	1.29	1.29	1.29	1.29	0.11	0.11	0.11	0.11	0.00	0.00	0.00	0.00
Morocco	0.05	0.05	0.05	0.05	1.44	1.44	1.40	1.40	0.07	0.07	0.06	0.06	0.00	0.00	0.00	-3.08
South Africa	0.04	0.03	0.03	0.03	1.60	1.83	1.83	1.83	0.06	0.06	0.06	0.06	0.00	0.00	0.00	0.00
Other Europe																
Norway	0.08	0.08	0.08	0.08	4.34	4.00	4.00	4.00	0.33	0.30	0.30	0.30	0.00	0.00	0.00	0.00
Serbia	0.03	0.03	0.03	0.03	2.17	2.17	2.17	2.17	0.07	0.07	0.07	0.07	0.00	0.00	0.00	0.00
Albania	0.01	0.01	0.01	0.01	2.08	2.08	2.08	2.08	0.03	0.03	0.03	0.03	0.00	0.00	0.00	0.00
Bosnia and Herzegovina	0.01	0.01	0.01	0.01	2.90	2.57	3.00	3.00	0.03	0.02	0.03	0.03	0.00	0.00	0.01	66.67
Turkey	0.10	0.11	0.10	0.10	2.27	2.21	2.30	2.30	0.23	0.25	0.23	0.23	0.00	0.00	-0.02	-8.00
Mexico	0.04	0.04	0.05	0.05	1.89	1.64	1.80	1.80	0.07	0.07	0.09	0.09	0.00	0.00	0.02	25.00
Others	0.02	0.01	0.01	0.01	1.93	1.86	1.79	1.79	0.03	0.03	0.03	0.03	0.00	0.00	0.00	-3.85

World and Selected Countries and Regions

Table 07 Rye Area, Yield, and Production

Country / Region	Area (Million hectares)				Yield (Metric tons per hectare)				Production (Million metric tons)				Change in Production			
	2016/17	Prel.	2018/19 Proj.		2016/17	Prel.	2018/19 Proj.		2016/17	Prel.	2018/19 Proj.		From last month		From last year	
		2017/18	Nov	Dec		2017/18	Nov	Dec		2017/18	Nov	Dec	MMT	Percent	MMT	Percent
World	4.14	4.02	3.84	3.82	2.98	3.06	2.75	2.75	12.33	12.29	10.58	10.51	-0.07	-0.61	-1.78	-14.47
United States	0.17	0.12	0.11	0.11	2.04	2.12	1.95	1.95	0.34	0.25	0.21	0.21	0.00	0.00	-0.03	-13.01
Total Foreign	3.97	3.91	3.73	3.71	3.02	3.08	2.78	2.77	11.99	12.05	10.37	10.30	-0.07	-0.63	-1.75	-14.50
European Union	1.92	1.94	2.00	2.00	3.89	3.82	3.30	3.30	7.44	7.41	6.60	6.60	0.00	0.00	-0.81	-10.94
Former Soviet Union - 12																
Russia	1.25	1.17	0.98	0.98	2.03	2.17	1.90	1.90	2.54	2.54	1.85	1.85	0.00	0.00	-0.69	-27.28
Belarus	0.24	0.26	0.25	0.25	2.70	2.62	2.60	2.60	0.65	0.67	0.65	0.65	0.00	0.00	-0.02	-2.99
Ukraine	0.15	0.17	0.15	0.15	2.72	2.97	2.76	2.76	0.39	0.51	0.40	0.40	0.00	0.00	-0.11	-21.57
Kazakhstan	0.04	0.03	0.02	0.02	1.14	1.26	1.14	1.14	0.04	0.04	0.03	0.03	0.00	0.00	-0.01	-35.90
Turkey	0.12	0.10	0.11	0.11	2.61	3.17	2.91	2.91	0.30	0.32	0.32	0.32	0.00	0.00	0.00	0.00
Canada	0.14	0.10	0.10	0.08	3.11	3.39	3.00	2.97	0.44	0.34	0.30	0.24	-0.07	-21.67	-0.11	-31.29
South America																
Chile	0.00	0.00	0.00	0.00	5.00	5.00	5.00	5.00	0.01	0.01	0.01	0.01	0.00	0.00	0.00	0.00
Argentina	0.04	0.05	0.05	0.05	1.93	1.91	2.11	2.11	0.08	0.09	0.10	0.10	0.00	0.00	0.01	10.47
Other Europe																
Bosnia and Herzegovina	0.00	0.00	0.00	0.00	3.25	3.67	3.67	3.67	0.01	0.01	0.01	0.01	0.00	0.00	0.00	0.00
Switzerland	0.00	0.00	0.00	0.00	5.50	5.50	5.50	5.50	0.01	0.01	0.01	0.01	0.00	0.00	0.00	0.00
Serbia	0.00	0.00	0.00	0.00	2.50	2.50	2.50	2.50	0.01	0.01	0.01	0.01	0.00	0.00	0.00	0.00
Australia	0.04	0.04	0.04	0.04	0.63	0.65	0.65	0.65	0.03	0.03	0.03	0.03	0.00	0.00	0.00	0.00
Others	0.03	0.04	0.04	0.04	1.30	1.72	1.72	1.72	0.04	0.06	0.06	0.06	0.00	0.00	0.00	0.00

World and Selected Countries and Regions

Table 08 Sorghum Area, Yield, and Production

Country / Region	Area (Million hectares)				Yield (Metric tons per hectare)				Production (Million metric tons)				Change in Production						
	2016/17	Prel.		2018/19 Proj.		2016/17	Prel.		2018/19 Proj.		2016/17	Prel.		2018/19 Proj.		From last month		From last year	
		2017/18	Nov	Dec	2017/18		Nov	Dec	2017/18	Nov		Dec	MMT	Percent	MMT	Percent			
World	44.29	40.13	41.25	41.34	1.43	1.44	1.43	1.43	63.37	57.82	58.78	58.91	0.14	0.23	1.10	1.90			
United States	2.49	2.04	2.06	2.06	4.89	4.53	4.48	4.48	12.20	9.24	9.24	9.24	0.00	0.00	0.00	-0.04			
Total Foreign	41.80	38.09	39.18	39.28	1.22	1.28	1.26	1.26	51.17	48.57	49.54	49.68	0.14	0.28	1.10	2.27			
Africa																			
Nigeria	5.82	5.80	5.80	5.80	1.19	1.09	1.17	1.17	6.94	6.30	6.80	6.80	0.00	0.00	0.50	7.94			
Ethiopia	1.88	1.82	1.82	1.82	2.52	2.23	2.25	2.25	4.75	4.05	4.10	4.10	0.00	0.00	0.05	1.23			
Sudan	9.16	6.30	7.00	7.00	0.71	0.59	0.57	0.57	6.47	3.74	4.00	4.00	0.00	0.00	0.26	6.87			
Burkina	1.73	1.67	1.80	1.80	0.96	0.82	1.00	1.00	1.66	1.37	1.80	1.80	0.00	0.00	0.43	31.77			
Mali	1.56	1.35	1.35	1.35	0.89	1.26	0.96	0.96	1.39	1.71	1.30	1.30	0.00	0.00	-0.41	-23.75			
Niger	3.61	3.70	3.70	3.70	0.50	0.53	0.46	0.46	1.81	1.94	1.70	1.70	0.00	0.00	-0.24	-12.55			
Cameroon	0.86	0.85	0.85	0.85	1.56	1.65	1.65	1.65	1.34	1.40	1.40	1.40	0.00	0.00	0.00	0.00			
Tanzania	0.78	0.80	0.80	0.80	0.97	1.00	1.00	1.00	0.76	0.80	0.80	0.80	0.00	0.00	0.00	0.00			
Egypt	0.14	0.14	0.14	0.14	5.36	5.36	5.36	5.36	0.75	0.75	0.75	0.75	0.00	0.00	0.00	0.00			
Uganda	0.40	0.35	0.35	0.35	0.79	0.94	0.97	0.97	0.32	0.33	0.34	0.34	0.00	0.00	0.01	3.03			
Ghana	0.23	0.25	0.25	0.25	1.00	1.12	1.12	1.12	0.23	0.28	0.28	0.28	0.00	0.00	0.00	0.00			
Mozambique	0.26	0.37	0.32	0.32	0.45	0.68	0.67	0.67	0.12	0.25	0.22	0.22	0.00	0.00	-0.04	-14.00			
South Africa	0.04	0.03	0.06	0.06	3.62	3.79	2.50	2.50	0.15	0.11	0.15	0.15	0.00	0.00	0.04	36.36			
Mexico	1.47	1.35	1.30	1.35	3.17	3.37	3.38	3.41	4.64	4.55	4.40	4.60	0.20	4.55	0.06	1.21			
South America																			
Argentina	0.70	0.70	0.70	0.70	4.86	4.29	4.50	4.50	3.40	3.00	3.15	3.15	0.00	0.00	0.15	5.00			
Brazil	0.63	0.78	0.66	0.70	2.97	2.73	2.84	2.57	1.87	2.14	1.86	1.80	-0.06	-3.38	-0.34	-15.73			
South Asia																			
India	5.86	4.83	5.20	5.20	0.78	1.03	0.88	0.88	4.57	4.95	4.60	4.60	0.00	0.00	-0.35	-7.07			
Pakistan	0.26	0.20	0.23	0.23	0.58	0.65	0.62	0.62	0.15	0.13	0.14	0.14	0.00	0.00	0.01	7.69			
China	0.63	0.68	0.72	0.72	4.78	4.74	4.79	4.79	2.99	3.20	3.45	3.45	0.00	0.00	0.25	7.81			
Australia	0.37	0.53	0.75	0.75	2.70	2.71	2.93	2.93	0.99	1.44	2.20	2.20	0.00	0.00	0.76	52.88			
European Union	0.12	0.12	0.13	0.13	5.45	5.41	5.45	5.45	0.63	0.67	0.69	0.69	0.00	0.00	0.02	3.13			
Others	5.32	5.48	5.27	5.27	0.99	1.00	1.03	1.03	5.26	5.48	5.41	5.41	0.00	0.00	-0.07	-1.21			

World and Selected Countries and Regions

Table 09 Rice Area, Yield, and Production
World and Selected Countries and Regions

Country / Region	Area (Million hectares)				Yield (Metric tons per hectare)				Production (Million metric tons)				Change in Production			
	Prel.		2018/19 Proj.		Prel.		2018/19 Proj.		Prel.		2018/19 Proj.		From last month		From last year	
	2016/17	2017/18	Nov	Dec	2016/17	2017/18	Nov	Dec	2016/17	2017/18	Nov	Dec	MMT	Percent	MMT	Percent
World	162.37	162.62	162.60	162.75	4.51	4.54	4.51	4.51	490.82	495.07	490.70	491.14	0.44	0.09	-3.93	-0.79
United States	1.25	0.96	1.17	1.17	8.11	8.41	8.43	8.43	7.12	5.66	6.93	6.93	0.00	0.00	1.27	22.48
Total Foreign	161.12	161.66	161.42	161.58	4.49	4.52	4.48	4.48	483.70	489.41	483.77	484.21	0.44	0.09	-5.20	-1.06
East Asia																
China	30.75	30.75	30.06	30.06	6.87	6.92	6.82	6.82	147.77	148.87	143.58	143.58	0.00	0.00	-5.29	-3.55
Japan	1.57	1.56	1.56	1.56	6.94	6.87	6.78	6.78	7.93	7.79	7.70	7.70	0.00	0.00	-0.09	-1.12
Korea, South	0.78	0.76	0.74	0.74	7.18	7.01	7.00	6.99	4.20	3.97	3.88	3.87	-0.01	-0.18	-0.10	-2.62
Korea, North	0.47	0.48	0.50	0.50	5.49	5.09	4.92	4.92	1.67	1.57	1.60	1.60	0.00	0.00	0.03	1.72
South Asia																
India	43.99	43.79	44.00	44.00	3.74	3.87	3.78	3.78	109.70	112.91	111.00	111.00	0.00	0.00	-1.91	-1.69
Bangladesh	11.75	11.27	11.68	11.68	4.42	4.35	4.43	4.43	34.58	32.65	34.50	34.50	0.00	0.00	1.85	5.67
Pakistan	2.72	2.90	2.80	2.80	3.77	3.85	3.96	3.96	6.85	7.45	7.40	7.40	0.00	0.00	-0.05	-0.67
Nepal	1.50	1.49	1.50	1.50	3.48	3.34	3.33	3.53	3.48	3.31	3.33	3.53	0.20	6.01	0.22	6.65
Sri Lanka	0.69	0.77	0.90	0.90	4.36	4.30	4.30	4.30	2.03	2.25	2.63	2.63	0.00	0.00	0.38	17.04
Southeast Asia																
Indonesia	12.24	12.25	12.24	12.24	4.78	4.76	4.80	4.80	36.86	37.00	37.30	37.30	0.00	0.00	0.30	0.81
Vietnam	7.71	7.69	7.76	7.76	5.68	5.92	5.99	5.99	27.40	28.47	29.07	29.07	0.00	0.00	0.60	2.10
Thailand	10.25	10.68	11.14	10.96	2.84	2.89	2.88	2.86	19.20	20.37	21.20	20.70	-0.50	-2.36	0.33	1.62
Burma	7.03	7.10	7.10	7.10	2.81	2.90	2.89	2.89	12.65	13.20	13.12	13.12	0.00	0.00	-0.08	-0.61
Philippines	4.72	4.84	4.81	4.81	3.93	4.01	4.01	4.01	11.69	12.24	12.15	12.15	0.00	0.00	-0.09	-0.69
Cambodia	3.10	3.18	3.25	3.25	2.78	2.78	2.78	2.78	5.26	5.40	5.50	5.50	0.00	0.00	0.10	1.87
Laos	0.97	0.96	0.99	0.99	3.18	3.30	3.30	3.30	1.95	2.00	2.05	2.05	0.00	0.00	0.05	2.50
Malaysia	0.70	0.70	0.70	0.70	4.03	4.03	4.03	4.03	1.82	1.82	1.82	1.82	0.00	0.00	0.00	0.00
South America																
Brazil	1.98	1.97	1.96	1.96	6.22	6.12	6.12	6.12	8.38	8.21	8.16	8.16	0.00	0.00	-0.05	-0.58
Peru	0.42	0.42	0.41	0.41	7.54	7.20	7.35	7.35	2.19	2.10	2.10	2.10	0.00	0.00	0.00	0.14
Africa																
Egypt	0.85	0.76	0.46	0.46	8.18	8.18	8.78	8.78	4.80	4.30	2.80	2.80	0.00	0.00	-1.50	-34.88
Madagascar	1.48	1.43	1.50	1.50	2.59	2.18	2.87	2.87	2.44	1.98	2.75	2.75	0.00	0.00	0.77	38.71
Nigeria	3.17	3.60	3.20	3.60	2.21	2.06	1.88	2.11	4.41	4.66	3.78	4.79	1.01	26.67	0.13	2.70
European Union	0.44	0.43	0.42	0.42	6.83	6.69	6.79	6.89	2.09	2.00	1.96	1.99	0.03	1.53	-0.01	-0.30
Iran	0.63	0.63	0.63	0.63	4.03	4.16	4.12	4.12	1.66	1.72	1.70	1.70	0.00	0.00	-0.02	-0.93
Others	11.22	11.26	11.14	11.08	3.07	3.13	3.10	3.08	22.71	23.17	22.68	22.39	-0.29	-1.28	-0.78	-3.36

Yield is on a rough basis, before the milling process. Production is on a milled basis, after the milling process.

Table 10 Total Oilseed Area, Yield, and Production

World and Selected Countries and Regions

Country / Region	Area (Million hectares)				Yield (Metric tons per hectare)				Production (Million metric tons)				Change in Production			
	2016/17	Prel.	2018/19 Proj.		2016/17	Prel.	2018/19 Proj.		2016/17	Prel.	2018/19 Proj.		From last month		From last year	
		2017/18	Nov	Dec		2017/18	Nov	Dec		2017/18	Nov	Dec	MMT	Percent	MMT	Percent
World Total	--	--	--	--	--	--	--	--	572.84	575.35	599.57	600.47	0.90	0.15	25.12	4.37
Total Foreign	--	--	--	--	--	--	--	--	445.91	443.86	464.13	464.97	0.85	0.18	21.12	4.76
Oilseed, Copra	--	--	--	--	--	--	--	--	5.51	5.73	5.83	5.83	0.00	0.00	0.10	1.66
Oilseed, Palm Kernel	--	--	--	--	--	--	--	--	17.35	18.68	19.11	19.41	0.30	1.57	0.73	3.90
Major Oilseeds	234.57	244.85	249.22	247.68	2.34	2.25	2.31	2.32	549.98	550.93	574.63	575.23	0.60	0.10	24.30	4.41
United States	39.25	42.79	41.78	41.78	3.23	3.07	3.24	3.24	126.94	131.50	135.45	135.50	0.05	0.04	4.00	3.04
Foreign Oilseeds	195.32	202.05	207.44	205.89	2.17	2.08	2.12	2.14	423.04	419.44	439.19	439.73	0.55	0.12	20.29	4.84
South America	60.79	61.66	66.55	65.37	3.19	2.93	3.01	3.10	193.96	180.92	200.56	202.40	1.85	0.92	21.48	11.87
Brazil	35.03	36.56	39.05	37.85	3.35	3.39	3.19	3.34	117.47	123.98	124.45	126.28	1.83	1.47	2.30	1.86
Argentina	19.74	18.68	20.95	20.97	3.05	2.28	2.88	2.88	60.16	42.49	60.38	60.40	0.02	0.03	17.91	42.15
Paraguay	3.46	3.57	3.58	3.58	3.02	2.77	2.77	2.77	10.44	9.90	9.92	9.92	0.00	0.00	0.02	0.22
Bolivia	1.28	1.53	1.52	1.52	1.74	1.77	1.83	1.83	2.22	2.71	2.78	2.78	0.00	0.00	0.08	2.77
Uruguay	1.13	1.15	1.31	1.31	2.89	1.23	1.98	1.98	3.28	1.41	2.59	2.59	0.00	0.00	1.18	83.43
China	22.72	24.16	24.46	24.46	2.42	2.46	2.45	2.44	54.92	59.49	59.90	59.70	-0.20	-0.33	0.21	0.36
South Asia	37.06	37.52	38.19	37.66	1.09	1.02	1.01	1.00	40.43	38.37	38.75	37.73	-1.02	-2.62	-0.64	-1.66
India	33.83	34.06	35.03	34.50	1.07	1.00	0.98	0.98	36.32	33.99	34.44	33.70	-0.74	-2.14	-0.29	-0.86
Pakistan	2.88	3.11	2.80	2.80	1.29	1.27	1.39	1.29	3.70	3.96	3.89	3.61	-0.28	-7.14	-0.34	-8.67
European Union	11.79	12.36	12.41	12.41	2.71	2.83	2.63	2.64	31.96	34.98	32.58	32.73	0.15	0.46	-2.25	-6.44
Former Soviet Union - 12	22.94	24.37	25.21	25.36	1.74	1.66	1.76	1.75	39.91	40.42	44.36	44.28	-0.08	-0.18	3.86	9.55
Russia	10.20	10.66	11.85	11.70	1.47	1.45	1.47	1.49	14.99	15.48	17.40	17.40	0.00	0.00	1.92	12.40
Ukraine	9.11	9.57	9.20	9.50	2.28	2.07	2.40	2.33	20.74	19.81	22.10	22.10	0.00	0.00	2.29	11.58
Uzbekistan	1.18	1.25	1.20	1.20	1.19	1.21	1.00	1.00	1.40	1.51	1.20	1.20	0.00	0.00	-0.31	-20.63
Canada	10.52	12.23	11.68	11.68	2.49	2.38	2.45	2.44	26.25	29.10	28.66	28.46	-0.20	-0.69	-0.65	-2.22
Africa	20.09	20.21	19.97	20.38	0.94	0.97	0.95	0.95	18.84	19.61	18.96	19.39	0.43	2.28	-0.22	-1.10
Nigeria	3.90	3.97	3.61	3.97	1.04	1.08	1.08	1.08	4.07	4.30	3.90	4.30	0.40	10.25	0.00	0.00
South Africa	1.29	1.48	1.59	1.59	1.82	1.73	1.57	1.57	2.35	2.56	2.50	2.50	0.00	0.00	-0.06	-2.23
Tanzania	1.40	1.35	1.50	1.50	0.85	0.89	0.86	0.86	1.19	1.20	1.29	1.29	0.00	0.00	0.09	7.08
Southeast Asia	3.26	3.22	3.19	3.19	1.41	1.40	1.40	1.40	4.59	4.52	4.47	4.47	0.00	0.00	-0.06	-1.22
Indonesia	1.03	1.00	0.98	0.98	1.64	1.61	1.61	1.61	1.69	1.62	1.58	1.58	0.00	0.00	-0.04	-2.16
Burma	1.88	1.88	1.88	1.88	1.18	1.19	1.18	1.18	2.21	2.24	2.22	2.22	0.00	0.00	-0.02	-0.67
Australia	3.32	3.30	2.66	2.27	1.70	1.60	1.29	1.39	5.66	5.28	3.45	3.15	-0.30	-8.56	-2.13	-40.35
Turkey	1.11	1.25	1.36	1.36	2.49	2.53	2.67	2.60	2.76	3.17	3.64	3.55	-0.10	-2.61	0.38	12.04
Others	1.71	1.76	1.77	1.77	2.19	2.03	2.20	2.20	3.76	3.58	3.88	3.88	0.00	0.00	0.30	8.24

World Total and Total Foreign: (Major Oilseeds plus copra and palm kernel) Major Oilseeds: (soybeans, sunflowerseeds, peanuts(inshell), cottonseed and rapeseed)

Table 11 Soybean Area, Yield, and Production

Country / Region	Area (Million hectares)				Yield (Metric tons per hectare)				Production (Million metric tons)				Change in Production			
	2016/17	Prel.	2018/19 Proj.		2016/17	Prel.	2018/19 Proj.		2016/17	Prel.	2018/19 Proj.		From last month		From last year	
		2017/18	Nov	Dec		2017/18	Nov	Dec		2017/18	Nov	Dec	MMT	Percent	MMT	Percent
World	119.76	124.69	129.39	128.31	2.92	2.72	2.84	2.88	349.30	339.47	367.50	369.20	1.71	0.46	29.74	8.76
United States	33.47	36.23	35.75	35.75	3.49	3.31	3.50	3.50	116.92	120.04	125.18	125.18	0.00	0.00	5.14	4.28
Total Foreign	86.30	88.46	93.64	92.55	2.69	2.48	2.59	2.64	232.38	219.43	242.32	244.02	1.71	0.70	24.60	11.21
South America																
Brazil	33.90	35.15	37.50	36.20	3.38	3.42	3.21	3.37	114.60	120.30	120.50	122.00	1.50	1.24	1.70	1.41
Argentina	17.34	16.30	18.50	18.50	3.17	2.32	3.00	3.00	55.00	37.80	55.50	55.50	0.00	0.00	17.70	46.83
Paraguay	3.39	3.50	3.50	3.50	3.05	2.80	2.80	2.80	10.34	9.81	9.80	9.80	0.00	0.00	-0.01	-0.10
Bolivia	1.13	1.40	1.40	1.40	1.86	1.86	1.93	1.93	2.11	2.60	2.70	2.70	0.00	0.00	0.10	3.85
Uruguay	1.09	1.10	1.25	1.25	2.95	1.21	2.00	2.00	3.21	1.33	2.50	2.50	0.00	0.00	1.17	87.41
East Asia																
China	7.60	8.25	8.83	8.83	1.80	1.84	1.81	1.81	13.64	15.20	16.00	16.00	0.00	0.00	0.80	5.26
Korea, South	0.05	0.05	0.06	0.06	1.53	1.87	1.75	1.75	0.08	0.09	0.10	0.10	0.00	0.00	0.01	16.28
Korea, North	0.18	0.15	0.15	0.15	1.61	1.49	1.50	1.50	0.28	0.22	0.23	0.23	0.00	0.00	0.00	0.90
Japan	0.15	0.15	0.15	0.15	1.59	1.66	1.74	1.74	0.24	0.25	0.26	0.26	0.00	0.00	0.02	6.02
India	11.18	10.40	11.00	11.00	0.98	0.80	1.00	1.00	10.99	8.35	11.00	11.00	0.00	0.00	2.65	31.74
Canada	2.23	2.94	2.55	2.55	2.96	2.63	2.94	2.86	6.60	7.72	7.50	7.30	-0.20	-2.67	-0.42	-5.40
Former Soviet Union - 12																
Russia	2.12	2.57	2.85	2.70	1.48	1.41	1.37	1.44	3.13	3.62	3.90	3.90	0.00	0.00	0.28	7.71
Ukraine	1.86	1.98	1.70	1.70	2.31	1.97	2.59	2.59	4.29	3.89	4.40	4.40	0.00	0.00	0.51	13.11
European Union	0.80	0.93	0.93	0.93	3.00	2.88	2.90	2.90	2.41	2.67	2.70	2.70	0.00	0.00	0.03	1.24
Southeast Asia																
Indonesia	0.43	0.42	0.41	0.41	1.31	1.29	1.27	1.27	0.57	0.54	0.52	0.52	0.00	0.00	-0.02	-3.70
Vietnam	0.07	0.06	0.06	0.06	1.48	1.50	1.50	1.50	0.10	0.09	0.09	0.09	0.00	0.00	0.00	0.00
Thailand	0.03	0.04	0.03	0.03	1.78	1.57	1.47	1.47	0.06	0.06	0.05	0.05	0.00	0.00	-0.01	-9.09
Burma	0.15	0.15	0.15	0.15	1.07	1.07	1.07	1.07	0.16	0.16	0.16	0.16	0.00	0.00	0.00	0.00
Serbia	0.19	0.20	0.22	0.22	3.51	2.30	2.84	2.84	0.65	0.46	0.63	0.63	0.00	0.00	0.17	35.87
Mexico	0.28	0.26	0.21	0.21	1.85	1.65	1.62	1.62	0.52	0.43	0.34	0.34	0.00	0.00	-0.09	-21.48
Africa																
South Africa	0.57	0.79	0.90	0.90	2.29	1.97	1.75	1.75	1.32	1.55	1.58	1.58	0.00	0.00	0.02	1.55
Nigeria	0.94	1.00	0.64	1.00	1.00	1.00	0.94	1.00	0.94	1.00	0.60	1.00	0.40	66.67	0.00	0.00
Zambia	0.14	0.23	0.18	0.18	1.94	1.56	1.83	1.83	0.27	0.35	0.32	0.32	0.00	0.00	-0.03	-8.83
Uganda	0.05	0.05	0.05	0.05	0.60	0.60	0.60	0.60	0.03	0.03	0.03	0.03	0.00	0.00	0.00	0.00
Middle East																
Iran	0.06	0.07	0.07	0.07	2.25	2.29	2.29	2.29	0.14	0.16	0.16	0.16	0.00	0.00	0.00	0.00
Turkey	0.03	0.02	0.03	0.03	3.33	3.75	3.81	3.85	0.10	0.09	0.10	0.10	0.00	1.01	0.01	11.11
Others	0.34	0.33	0.33	0.33	1.78	2.03	2.03	2.02	0.61	0.66	0.66	0.67	0.01	0.76	0.00	0.61

World and Selected Countries and Regions

Table 12 Cottonseed Area, Yield, and Production

Country / Region	Area (Million hectares)				Yield (Metric tons per hectare)				Production (Million metric tons)				Change in Production			
	2016/17	Prel.	2018/19 Proj.		2016/17	Prel.	2018/19 Proj.		2016/17	Prel.	2018/19 Proj.		From last month		From last year	
		2017/18	Nov	Dec		2017/18	Nov	Dec		2017/18	Nov	Dec	MMT	Percent	MMT	Percent
World	29.18	32.91	32.46	32.63	1.34	1.37	1.35	1.33	39.08	45.13	43.83	43.39	-0.43	-0.99	-1.74	-3.85
United States	3.85	4.49	4.20	4.20	1.27	1.30	1.25	1.27	4.87	5.83	5.26	5.31	0.05	1.01	-0.51	-8.79
Total Foreign	25.33	28.42	28.26	28.43	1.35	1.38	1.36	1.34	34.21	39.30	38.56	38.08	-0.49	-1.26	-1.22	-3.11
South Asia																
India	10.85	12.40	12.40	12.40	1.06	0.99	0.96	0.94	11.46	12.31	11.89	11.68	-0.21	-1.78	-0.64	-5.17
Pakistan	2.50	2.70	2.40	2.40	1.33	1.32	1.46	1.34	3.34	3.55	3.50	3.22	-0.28	-7.94	-0.33	-9.29
China	2.90	3.40	3.35	3.35	3.03	3.18	3.22	3.16	8.80	10.80	10.80	10.60	-0.20	-1.85	-0.20	-1.85
Former Soviet Union - 12																
Uzbekistan	1.18	1.25	1.20	1.20	1.19	1.21	1.00	1.00	1.40	1.51	1.20	1.20	0.00	0.00	-0.31	-20.63
Turkmenistan	0.55	0.55	0.55	0.55	0.95	0.96	0.86	0.72	0.52	0.53	0.47	0.39	-0.08	-16.81	-0.13	-25.52
Tajikistan	0.17	0.19	0.19	0.19	1.02	0.97	0.93	0.93	0.17	0.18	0.18	0.18	0.00	0.00	0.00	-2.22
Kazakhstan	0.12	0.13	0.12	0.12	0.97	0.94	1.06	1.06	0.11	0.12	0.13	0.13	0.00	0.00	0.01	8.55
South America																
Brazil	0.94	1.18	1.30	1.40	2.44	2.57	2.52	2.57	2.30	3.02	3.27	3.60	0.33	9.99	0.58	19.28
Argentina	0.24	0.32	0.40	0.42	1.16	0.87	0.96	0.96	0.28	0.28	0.38	0.40	0.02	4.96	0.13	45.13
Middle East																
Turkey	0.40	0.47	0.52	0.52	2.63	2.77	2.88	2.70	1.05	1.30	1.50	1.40	-0.10	-6.40	0.10	8.00
Syria	0.04	0.03	0.03	0.03	2.00	2.17	2.12	2.12	0.08	0.07	0.05	0.05	0.00	0.00	-0.01	-18.46
Iran	0.10	0.09	0.09	0.09	0.98	0.96	1.06	1.06	0.10	0.08	0.09	0.09	0.00	0.00	0.01	9.76
Australia	0.58	0.53	0.30	0.30	2.16	2.83	2.50	2.50	1.25	1.50	0.75	0.75	0.00	0.00	-0.75	-49.93
European Union	0.27	0.30	0.31	0.31	1.53	1.67	1.70	1.70	0.42	0.49	0.53	0.53	0.00	0.00	0.04	7.51
Africa																
Burkina	0.70	0.85	0.75	0.75	0.52	0.42	0.52	0.52	0.36	0.36	0.39	0.39	0.00	0.00	0.03	7.80
Mali	0.66	0.73	0.74	0.74	0.54	0.52	0.54	0.54	0.35	0.38	0.40	0.40	0.00	0.00	0.01	3.66
Cameroon	0.23	0.23	0.23	0.23	1.04	1.11	1.11	1.11	0.24	0.25	0.25	0.25	0.00	0.00	0.00	0.00
Cote d'Ivoire	0.35	0.37	0.37	0.42	0.48	0.57	0.52	0.54	0.17	0.21	0.19	0.23	0.03	17.01	0.02	8.10
Benin	0.42	0.53	0.60	0.60	0.68	0.71	0.70	0.70	0.28	0.38	0.42	0.42	0.00	0.00	0.05	11.97
Tanzania	0.40	0.35	0.50	0.50	0.21	0.29	0.37	0.37	0.09	0.10	0.19	0.19	0.00	0.00	0.09	84.16
Egypt	0.06	0.09	0.14	0.14	0.95	1.00	1.01	1.01	0.05	0.09	0.14	0.14	0.00	0.00	0.05	50.55
Nigeria	0.28	0.27	0.27	0.27	0.36	0.38	0.38	0.38	0.10	0.10	0.10	0.10	0.00	0.00	0.00	0.00
Uganda	0.07	0.08	0.08	0.08	1.49	1.45	1.45	1.45	0.11	0.11	0.11	0.11	0.00	0.00	0.00	0.00
Zimbabwe	0.21	0.20	0.23	0.23	0.25	0.48	0.38	0.38	0.05	0.10	0.09	0.09	0.00	0.00	-0.01	-8.42
Sudan	0.10	0.12	0.12	0.12	1.93	2.03	2.13	2.13	0.19	0.24	0.26	0.26	0.00	0.00	0.01	5.35
Mexico	0.10	0.21	0.24	0.24	2.50	2.52	2.49	2.49	0.26	0.53	0.59	0.59	0.00	0.00	0.06	10.57
Burma	0.24	0.25	0.24	0.24	1.17	1.24	1.23	1.23	0.29	0.31	0.30	0.30	0.00	0.00	-0.02	-4.84
Others	0.70	0.64	0.63	0.63	0.59	0.64	0.67	0.67	0.42	0.41	0.42	0.42	0.00	0.00	0.01	1.71

World and Selected Countries and Regions

Table 13 Peanut Area, Yield, and Production

Country / Region	Area (Million hectares)				Yield (Metric tons per hectare)				Production (Million metric tons)				Change in Production			
	2016/17	Prel.	2018/19 Proj.		2016/17	Prel.	2018/19 Proj.		2016/17	Prel.	2018/19 Proj.		From last month		From last year	
		2017/18	Nov	Dec		2017/18	Nov	Dec		2017/18	Nov	Dec	MMT	Percent	MMT	Percent
World	26.43	25.90	25.26	25.26	1.67	1.73	1.66	1.66	44.15	44.91	41.95	41.95	0.00	0.00	-2.95	-6.58
United States	0.62	0.72	0.55	0.55	4.07	4.49	4.55	4.55	2.53	3.23	2.48	2.48	0.00	0.00	-0.75	-23.11
Total Foreign	25.81	25.18	24.71	24.71	1.61	1.66	1.60	1.60	41.62	41.68	39.47	39.47	0.00	0.00	-2.21	-5.30
China	4.45	4.61	4.56	4.56	3.68	3.71	3.73	3.73	16.36	17.09	17.00	17.00	0.00	0.00	-0.09	-0.54
Africa																
Nigeria	2.68	2.70	2.70	2.70	1.13	1.19	1.19	1.19	3.03	3.20	3.20	3.20	0.00	0.00	0.00	0.00
Sudan	2.32	1.80	1.80	1.80	0.79	0.78	0.78	0.78	1.83	1.40	1.40	1.40	0.00	0.00	0.00	0.00
Senegal	1.15	1.25	1.10	1.10	0.82	1.13	0.91	0.91	0.95	1.41	1.00	1.00	0.00	0.00	-0.41	-29.18
Cameroon	0.45	0.43	0.43	0.43	1.65	1.40	1.40	1.40	0.75	0.60	0.60	0.60	0.00	0.00	0.00	0.00
Ghana	0.34	0.34	0.34	0.34	1.24	1.31	1.31	1.31	0.42	0.44	0.44	0.44	0.00	0.00	0.00	0.00
Chad	0.97	0.95	0.95	0.95	1.07	1.05	1.05	1.05	1.04	1.00	1.00	1.00	0.00	0.00	0.00	0.00
Malawi	0.37	0.37	0.37	0.37	0.74	0.88	0.88	0.88	0.28	0.33	0.33	0.33	0.00	0.00	0.00	0.00
Congo (Kinshasa)	0.50	0.50	0.50	0.50	0.85	0.85	0.85	0.85	0.42	0.42	0.42	0.42	0.00	0.00	0.00	0.00
Niger	0.77	0.75	0.75	0.75	0.59	0.53	0.53	0.53	0.45	0.40	0.40	0.40	0.00	0.00	0.00	0.00
Mali	0.43	0.38	0.38	0.38	0.87	0.87	1.07	1.07	0.37	0.33	0.40	0.40	0.00	0.00	0.08	23.08
Uganda	0.43	0.43	0.43	0.43	0.71	0.71	0.71	0.71	0.30	0.30	0.30	0.30	0.00	0.00	0.00	0.00
Burkina	0.42	0.43	0.43	0.43	0.80	0.81	0.81	0.81	0.34	0.35	0.35	0.35	0.00	0.00	0.00	0.00
Guinea	0.27	0.30	0.30	0.30	1.39	1.20	1.20	1.20	0.38	0.36	0.36	0.36	0.00	0.00	0.00	0.00
Egypt	0.06	0.06	0.06	0.06	3.20	3.20	3.20	3.20	0.21	0.21	0.21	0.21	0.00	0.00	0.00	0.00
Central African Republic	0.11	0.10	0.10	0.10	1.21	1.50	1.50	1.50	0.14	0.15	0.15	0.15	0.00	0.00	0.00	0.00
South Africa	0.06	0.06	0.06	0.06	2.20	1.29	1.64	1.64	0.12	0.07	0.09	0.09	0.00	0.00	0.02	25.00
Mozambique	0.40	0.37	0.38	0.38	0.28	0.32	0.34	0.34	0.11	0.12	0.13	0.13	0.00	0.00	0.01	8.33
Cote d'Ivoire	0.08	0.08	0.08	0.08	1.35	1.38	1.38	1.38	0.11	0.11	0.11	0.11	0.00	0.00	0.00	0.00
Benin	0.16	0.15	0.15	0.15	0.86	0.93	0.93	0.93	0.14	0.14	0.14	0.14	0.00	0.00	0.00	0.00
South Asia																
India	5.34	4.93	4.70	4.70	1.30	1.35	1.00	1.00	6.92	6.65	4.70	4.70	0.00	0.00	-1.95	-29.32
Pakistan	0.09	0.09	0.10	0.10	0.90	0.94	0.95	0.95	0.09	0.09	0.09	0.09	0.00	0.00	0.00	2.27
Southeast Asia																
Indonesia	0.60	0.58	0.57	0.57	1.87	1.85	1.86	1.86	1.12	1.08	1.06	1.06	0.00	0.00	-0.02	-1.40
Burma	0.89	0.89	0.89	0.89	1.55	1.55	1.55	1.55	1.38	1.38	1.38	1.38	0.00	0.00	0.00	0.00
Vietnam	0.20	0.19	0.19	0.19	2.37	2.37	2.37	2.37	0.46	0.45	0.45	0.45	0.00	0.00	0.00	0.00
Thailand	0.02	0.02	0.02	0.02	1.67	1.67	1.67	1.67	0.04	0.04	0.04	0.04	0.00	0.00	0.00	0.00
South America																
Argentina	0.32	0.36	0.33	0.33	3.98	2.34	3.24	3.24	1.29	0.84	1.07	1.07	0.00	0.00	0.23	26.93
Brazil	0.13	0.14	0.15	0.15	3.61	3.69	3.50	3.50	0.47	0.51	0.53	0.53	0.00	0.00	0.01	2.34
Mexico	0.06	0.06	0.06	0.06	1.71	1.70	1.70	1.70	0.10	0.10	0.10	0.10	0.00	0.00	0.00	0.00
Others	1.75	1.88	1.86	1.86	1.16	1.13	1.10	1.10	2.04	2.13	2.04	2.04	0.00	0.00	-0.08	-3.91

Table 14 Sunflowerseed Area, Yield, and Production

Country / Region	Area (Million hectares)				Yield (Metric tons per hectare)				Production (Million metric tons)				Change in Production						
	2016/17	Prel.		2018/19 Proj.		2016/17	Prel.		2018/19 Proj.		2016/17	Prel.		2018/19 Proj.		From last month		From last year	
		2017/18	Nov	Dec	2017/18		Nov	Dec	2017/18	Nov		Dec	MMT	Percent	MMT	Percent			
World	25.82	25.98	26.19	26.46	1.86	1.83	1.93	1.91	48.01	47.41	50.44	50.47	0.03	0.05	3.06	6.46			
United States	0.62	0.54	0.50	0.50	1.94	1.81	1.75	1.75	1.20	0.98	0.88	0.88	0.00	0.00	-0.10	-10.22			
Total Foreign	25.20	25.44	25.69	25.96	1.86	1.83	1.93	1.91	46.81	46.43	49.57	49.59	0.03	0.05	3.16	6.81			
Former Soviet Union - 12																			
Russia	7.18	7.15	7.50	7.50	1.51	1.45	1.53	1.53	10.86	10.36	11.50	11.50	0.00	0.00	1.14	10.98			
Ukraine	6.80	6.80	6.50	6.80	2.24	2.01	2.31	2.21	15.20	13.70	15.00	15.00	0.00	0.00	1.30	9.49			
Kazakhstan	0.81	0.88	0.93	0.93	0.94	1.02	1.08	1.08	0.76	0.90	1.00	1.00	0.00	0.00	0.10	10.74			
European Union	4.13	4.31	4.29	4.29	2.08	2.25	2.30	2.31	8.60	9.68	9.85	9.90	0.05	0.51	0.22	2.28			
South America																			
Argentina	1.82	1.68	1.70	1.70	1.95	2.11	2.00	2.00	3.55	3.54	3.40	3.40	0.00	0.00	-0.14	-3.90			
Uruguay	0.04	0.05	0.06	0.06	1.50	1.56	1.61	1.61	0.07	0.08	0.09	0.09	0.00	0.00	0.01	15.38			
Bolivia	0.14	0.13	0.12	0.12	0.80	0.80	0.70	0.70	0.11	0.11	0.08	0.08	0.00	0.00	-0.03	-23.81			
Brazil	0.06	0.10	0.10	0.10	1.65	1.54	1.55	1.55	0.10	0.15	0.16	0.16	0.00	0.00	0.01	4.03			
Paraguay	0.03	0.03	0.03	0.03	1.60	1.66	1.69	1.69	0.05	0.05	0.05	0.05	0.00	0.00	0.00	1.89			
China	1.15	1.25	1.25	1.25	2.59	2.50	2.60	2.60	2.99	3.12	3.25	3.25	0.00	0.00	0.13	4.17			
South Asia																			
India	0.39	0.33	0.43	0.40	0.82	0.70	0.81	0.81	0.32	0.23	0.35	0.32	-0.03	-7.43	0.09	40.87			
Pakistan	0.07	0.08	0.07	0.07	1.07	1.13	1.07	1.07	0.08	0.09	0.08	0.08	0.00	0.00	-0.02	-16.67			
Middle East																			
Turkey	0.60	0.70	0.75	0.75	2.20	2.21	2.40	2.40	1.32	1.55	1.80	1.80	0.00	0.00	0.25	16.13			
Iran	0.04	0.04	0.04	0.04	0.98	1.08	1.08	1.08	0.04	0.04	0.04	0.04	0.00	0.00	0.00	0.00			
Israel	0.01	0.01	0.01	0.01	1.60	1.60	1.60	1.60	0.02	0.02	0.02	0.02	0.00	0.00	0.00	0.00			
Africa																			
Egypt	0.01	0.01	0.01	0.01	2.43	2.38	2.38	2.38	0.02	0.02	0.02	0.02	0.00	0.00	0.00	0.00			
Morocco	0.02	0.02	0.02	0.02	1.29	1.29	1.29	1.29	0.03	0.03	0.03	0.03	0.00	0.00	0.00	0.00			
South Africa	0.64	0.60	0.60	0.60	1.37	1.43	1.27	1.27	0.87	0.86	0.76	0.76	0.00	0.00	-0.10	-11.53			
Burma	0.60	0.60	0.60	0.60	0.65	0.65	0.65	0.65	0.39	0.39	0.39	0.39	0.00	0.00	0.00	0.00			
Canada	0.03	0.03	0.03	0.03	1.82	2.23	2.20	2.11	0.05	0.06	0.06	0.06	0.00	3.64	0.00	-1.72			
Australia	0.03	0.02	0.03	0.03	1.14	1.82	1.28	1.28	0.03	0.03	0.03	0.03	0.00	0.00	0.00	3.23			
Others	0.61	0.63	0.64	0.64	2.25	2.28	2.52	2.52	1.36	1.43	1.62	1.62	0.00	0.00	0.19	13.38			

World and Selected Countries and Regions

Table 15 Rapeseed Area, Yield, and Production

Country / Region	Area (Million hectares)				Yield (Metric tons per hectare)				Production (Million metric tons)				Change in Production						
	2016/17	Prel.		2018/19 Proj.		2016/17	Prel.		2018/19 Proj.		2016/17	Prel.		2018/19 Proj.		From last month		From last year	
		2017/18	Nov	Dec	2017/18		Nov	Dec	2017/18	Nov		Dec	MMT	Percent	MMT	Percent			
World	33.38	35.37	35.92	35.02	2.08	2.09	1.97	2.01	69.44	74.03	70.92	70.22	-0.70	-0.99	-3.81	-5.15			
United States	0.69	0.81	0.79	0.79	2.04	1.75	2.09	2.09	1.41	1.42	1.65	1.65	0.00	0.00	0.22	15.59			
Total Foreign	32.69	34.56	35.13	34.23	2.08	2.10	1.97	2.00	68.03	72.60	69.27	68.57	-0.70	-1.01	-4.03	-5.55			
European Union	6.58	6.83	6.88	6.88	3.12	3.24	2.83	2.85	20.54	22.15	19.50	19.60	0.10	0.51	-2.55	-11.49			
Canada	8.26	9.27	9.10	9.10	2.37	2.30	2.32	2.32	19.60	21.33	21.10	21.10	0.00	0.00	-0.23	-1.07			
China	6.62	6.65	6.47	6.47	1.98	2.00	1.99	1.99	13.13	13.27	12.85	12.85	0.00	0.00	-0.42	-3.19			
South Asia																			
India	6.07	6.00	6.50	6.00	1.09	1.08	1.00	1.00	6.62	6.45	6.50	6.00	-0.50	-7.69	-0.45	-6.98			
Pakistan	0.21	0.24	0.23	0.23	0.95	0.96	0.98	0.98	0.20	0.23	0.23	0.23	0.00	0.00	0.00	0.00			
Bangladesh	0.25	0.25	0.25	0.25	0.92	0.92	0.92	0.92	0.23	0.23	0.23	0.23	0.00	0.00	0.00	0.00			
Former Soviet Union - 12																			
Russia	0.91	0.95	1.50	1.50	1.10	1.58	1.33	1.33	1.00	1.50	2.00	2.00	0.00	0.00	0.50	33.60			
Ukraine	0.45	0.79	1.00	1.00	2.78	2.80	2.70	2.70	1.25	2.22	2.70	2.70	0.00	0.00	0.48	21.79			
Belarus	0.21	0.33	0.35	0.35	1.24	1.81	1.57	1.57	0.26	0.60	0.55	0.55	0.00	0.00	-0.05	-8.79			
Kazakhstan	0.16	0.25	0.25	0.25	1.06	1.11	1.10	1.10	0.17	0.28	0.28	0.28	0.00	0.00	0.00	-1.43			
Australia	2.68	2.70	2.30	1.90	1.61	1.36	1.13	1.21	4.31	3.67	2.60	2.30	-0.30	-11.54	-1.37	-37.33			
South America																			
Chile	0.05	0.06	0.05	0.05	3.98	3.86	4.20	4.20	0.18	0.22	0.23	0.23	0.00	0.00	0.01	3.18			
Paraguay	0.03	0.03	0.04	0.04	2.00	1.00	1.50	1.50	0.05	0.03	0.06	0.06	0.00	0.00	0.03	100.00			
Switzerland	0.02	0.02	0.02	0.02	3.14	3.14	3.14	3.14	0.07	0.07	0.07	0.07	0.00	0.00	0.00	0.00			
Ethiopia	0.02	0.04	0.04	0.04	1.79	1.71	1.57	1.57	0.04	0.06	0.06	0.06	0.00	0.00	-0.01	-8.33			
Others	0.17	0.15	0.15	0.15	2.26	2.09	2.20	2.20	0.38	0.31	0.33	0.33	0.00	0.00	0.02	7.49			

World and Selected Countries and Regions

Table 16 Copra, Palm Kernel, and Palm Oil Production

Country / Region	Production (Million metric tons)				Change in Production			
	2016/17	Prel.	2018/19 Proj.		From last month		From last year	
		2017/18	Nov	Dec	MMT	Percent	MMT	Percent
Oilseed, Copra								
Philippines	2.30	2.60	2.70	2.70	0.00	0.00	0.10	3.85
Indonesia	1.58	1.45	1.42	1.42	0.00	0.00	-0.03	-2.07
India	0.72	0.75	0.75	0.75	0.00	0.00	0.00	0.00
Vietnam	0.26	0.28	0.29	0.29	0.00	0.00	0.00	0.00
Mexico	0.21	0.21	0.22	0.22	0.00	0.00	0.01	4.76
Papua New Guinea	0.10	0.10	0.10	0.10	0.00	0.00	0.00	0.00
Thailand	0.07	0.07	0.07	0.07	0.00	0.00	0.00	0.00
Sri Lanka	0.07	0.07	0.07	0.07	0.00	0.00	0.00	0.00
Solomon Islands	0.03	0.03	0.03	0.03	0.00	0.00	0.00	0.00
Vanuatu/New Hebrides	0.03	0.03	0.03	0.03	0.00	0.00	0.00	0.00
World	5.51	5.73	5.83	5.83	0.00	0.00	0.10	1.75
Oilseed, Palm Kernel								
Indonesia	9.50	10.50	10.60	10.90	0.30	2.83	0.40	3.81
Malaysia	4.78	4.92	5.20	5.20	0.00	0.00	0.28	5.69
Thailand	0.75	0.82	0.87	0.87	0.00	0.00	0.05	6.10
Nigeria	0.73	0.73	0.73	0.73	0.00	0.00	0.00	0.00
Colombia	0.23	0.33	0.32	0.32	0.00	0.00	-0.01	-3.03
Papua New Guinea	0.16	0.17	0.17	0.17	0.00	0.00	0.00	0.00
Guatemala	0.15	0.15	0.15	0.15	0.00	0.00	0.00	0.00
Honduras	0.14	0.14	0.14	0.14	0.00	0.00	0.00	0.00
Brazil	0.12	0.13	0.14	0.14	0.00	0.00	0.01	7.69
Ecuador	0.11	0.12	0.12	0.12	0.00	0.00	0.00	0.00
World	17.35	18.68	19.11	19.41	0.30	1.57	0.73	3.91
Oil, Palm								
Indonesia	36.00	39.50	40.50	41.50	1.00	2.47	2.00	5.06
Malaysia	18.86	19.68	20.50	20.50	0.00	0.00	0.82	4.17
Thailand	2.50	2.70	2.90	2.90	0.00	0.00	0.20	7.41
Colombia	1.15	1.63	1.53	1.53	0.00	0.00	-0.10	-6.13
Nigeria	0.99	1.03	0.97	1.02	0.04	4.12	-0.01	-0.98
Guatemala	0.74	0.74	0.74	0.74	0.00	0.00	0.00	0.00
Papua New Guinea	0.65	0.63	0.63	0.63	0.00	0.00	0.00	0.00
Ecuador	0.57	0.59	0.61	0.61	0.00	0.00	0.02	3.39
Honduras	0.62	0.58	0.58	0.58	0.00	0.00	0.00	0.00
Ghana	0.52	0.52	0.52	0.52	0.00	0.00	0.00	0.00
World	65.27	70.37	72.26	73.30	1.04	1.44	2.94	4.18

World and Selected Countries and Regions

Table 17 Cotton Area, Yield, and Production

Country / Region	Area (Million hectares)				Yield (Kilograms per hectare)				Production (Million 480 lb. bales)				Change in Production			
	2016/17	Prel.	2018/19 Proj.		2016/17	Prel.	2018/19 Proj.		2016/17	Prel.	2018/19 Proj.		From last month		From last year	
		2017/18	Nov	Dec		2017/18	Nov	Dec		2017/18	Nov	Dec	MBales	Percent	MBales	Percent
World	29.81	33.56	33.10	33.27	779	803	785	777	106.66	123.70	119.39	118.74	-0.65	-0.54	-4.95	-4.00
United States	3.85	4.49	4.20	4.20	972	1,014	955	964	17.17	20.92	18.41	18.59	0.18	0.98	-2.34	-11.16
Total Foreign	25.97	29.07	28.91	29.08	750	770	761	750	89.49	102.77	100.98	100.15	-0.83	-0.82	-2.62	-2.55
South Asia																
India	10.85	12.40	12.40	12.40	542	509	492	483	27.00	29.00	28.00	27.50	-0.50	-1.79	-1.50	-5.17
Pakistan	2.50	2.70	2.40	2.40	671	661	726	671	7.70	8.20	8.00	7.40	-0.60	-7.50	-0.80	-9.76
China	2.90	3.40	3.35	3.35	1,708	1,761	1,787	1,755	22.75	27.50	27.50	27.00	-0.50	-1.82	-0.50	-1.82
South America																
Brazil	0.94	1.18	1.30	1.40	1,626	1,708	1,675	1,711	7.02	9.22	10.00	11.00	1.00	10.00	1.78	19.31
Argentina	0.24	0.32	0.40	0.42	680	558	599	596	0.75	0.82	1.10	1.15	0.05	4.55	0.33	40.24
Paraguay	0.01	0.01	0.01	0.01	416	416	416	416	0.02	0.02	0.02	0.02	0.00	0.00	0.00	0.00
Africa																
Burkina	0.70	0.85	0.75	0.75	407	333	406	406	1.31	1.30	1.40	1.40	0.00	0.00	0.10	7.69
Mali	0.66	0.73	0.74	0.74	412	403	412	412	1.24	1.35	1.40	1.40	0.00	0.00	0.05	3.70
Cote d'Ivoire	0.35	0.37	0.37	0.42	394	467	427	441	0.63	0.79	0.73	0.85	0.13	17.24	0.07	8.28
Benin	0.42	0.53	0.60	0.60	446	468	463	463	0.86	1.14	1.28	1.28	0.00	0.00	0.14	11.84
Egypt	0.06	0.09	0.14	0.14	673	718	726	726	0.17	0.30	0.45	0.45	0.00	0.00	0.15	50.00
Cameroon	0.23	0.23	0.23	0.23	455	484	484	484	0.47	0.50	0.50	0.50	0.00	0.00	0.00	0.00
Tanzania	0.40	0.35	0.50	0.50	106	143	185	185	0.20	0.23	0.43	0.43	0.00	0.00	0.20	84.78
Nigeria	0.28	0.27	0.27	0.27	182	190	190	190	0.23	0.24	0.24	0.24	0.00	0.00	0.00	0.00
Zimbabwe	0.21	0.22	0.23	0.23	146	247	218	218	0.14	0.25	0.23	0.23	0.00	0.00	-0.02	-8.00
Ethiopia	0.08	0.06	0.07	0.07	550	635	586	586	0.21	0.18	0.18	0.18	0.00	0.00	0.00	0.00
Former Soviet Union - 12																
Uzbekistan	1.18	1.25	1.20	1.20	687	672	599	599	3.73	3.86	3.30	3.30	0.00	0.00	-0.56	-14.51
Turkmenistan	0.55	0.55	0.55	0.55	529	535	479	399	1.33	1.34	1.20	1.00	-0.20	-16.67	-0.34	-25.37
Tajikistan	0.17	0.19	0.19	0.19	567	671	516	516	0.43	0.57	0.45	0.45	0.00	0.00	-0.12	-21.05
Kazakhstan	0.12	0.13	0.12	0.12	568	523	454	454	0.30	0.30	0.25	0.25	0.00	0.00	-0.05	-16.67
Middle East																
Turkey	0.40	0.47	0.52	0.52	1,742	1,853	1,884	1,800	3.20	4.00	4.50	4.30	-0.20	-4.44	0.30	7.50
Syria	0.04	0.03	0.03	0.03	1,089	1,161	1,132	1,132	0.20	0.16	0.13	0.13	0.00	0.00	-0.03	-18.75
Iran	0.10	0.09	0.09	0.09	653	640	704	704	0.30	0.25	0.28	0.28	0.00	0.00	0.03	10.00
Australia	0.58	0.53	0.30	0.30	1,520	1,931	1,814	1,814	4.05	4.70	2.50	2.50	0.00	0.00	-2.20	-46.81
Mexico	0.10	0.21	0.24	0.24	1,602	1,617	1,598	1,598	0.77	1.56	1.73	1.73	0.00	0.00	0.17	10.58
Burma	0.24	0.25	0.24	0.24	634	634	635	635	0.71	0.73	0.70	0.70	0.00	0.00	-0.03	-3.45
Others	1.69	1.69	1.70	1.70	490	552	578	578	3.80	4.28	4.51	4.51	0.00	0.00	0.23	5.39

World and Selected Countries and Regions

TABLE 18

The table below presents a record of the November projection and the final Estimate. Using world wheat production as an example, the "root mean square error" means that chances are 2 out of 3 that the current forecast will not be above or below the final estimate by more than 0.8 percent. Chances are 9 out of 10 (90% confidence level) that the difference will not exceed 1.4 percent. The average difference between the December projection and the final estimate is 4 million tons, ranging from 0.4 million to 10.2 million tons. The December projection has been below the estimate 28 times and above 9 times.

RELIABILITY OF PRODUCTION PROJECTIONS 1/

COMMODITY AND REGION	Root mean square error	90 percent confidence interval	Difference between forecast and final estimate				
			Average	Smallest	Largest	Years	
						Below final	Above final
	Percent		---Million metric tons---				
WHEAT							
World	0.8	1.4	4.0	0.4	10.2	28	9
U.S.	0.4	0.7	0.2	0.0	1.2	17	14
Foreign	0.9	1.6	3.9	0.3	10.3	28	9
COARSE GRAINS 2/							
World	1.5	2.5	12.2	0.0	36.0	27	10
U.S.	1.3	2.2	2.3	0.0	7.5	19	18
Foreign	2.0	3.5	12.3	0.3	37.5	26	11
RICE (Milled)							
World	2.0	3.3	5.7	0.0	16.2	30	7
U.S.	2.9	4.9	0.1	0.0	0.5	18	14
Foreign	2.0	3.4	5.7	0.1	16.2	31	6
SOYBEANS							
World	3.8	6.5	5.5	0.1	23.8	21	16
U.S.	2.0	3.4	1.1	0.1	2.7	15	22
Foreign	6.3	10.7	5.6	0.1	25.1	18	19
COTTON			---Million 480-lb. bales---				
World	3.2	5.4	2.4	0.0	7.2	21	15
U.S.	2.1	3.5	0.3	0.0	0.8	18	18
Foreign	3.8	6.4	2.3	0.0	7.1	20	16
UNITED STATES			-----Million bushels-----				
CORN	1.3	2.2	86	0	250	19	17
SORGHUM	4.2	7.1	15	1	53	19	18
BARLEY	1.5	2.6	4	0	24	15	10
OATS	1.1	1.9	2	0	18	7	9

1/ Marketing years 1981/82 through 2016/17. Final for grains, soybeans and cotton is defined as the first *November* estimates following the marketing year for 1981/82 through 2016/17, and for 2017/18 last month's estimate.

2/ Includes corn, sorghum, barley, oats, rye, millet, and mixed grain

December 2018

Office of Global Analysis, FAS, USDA