



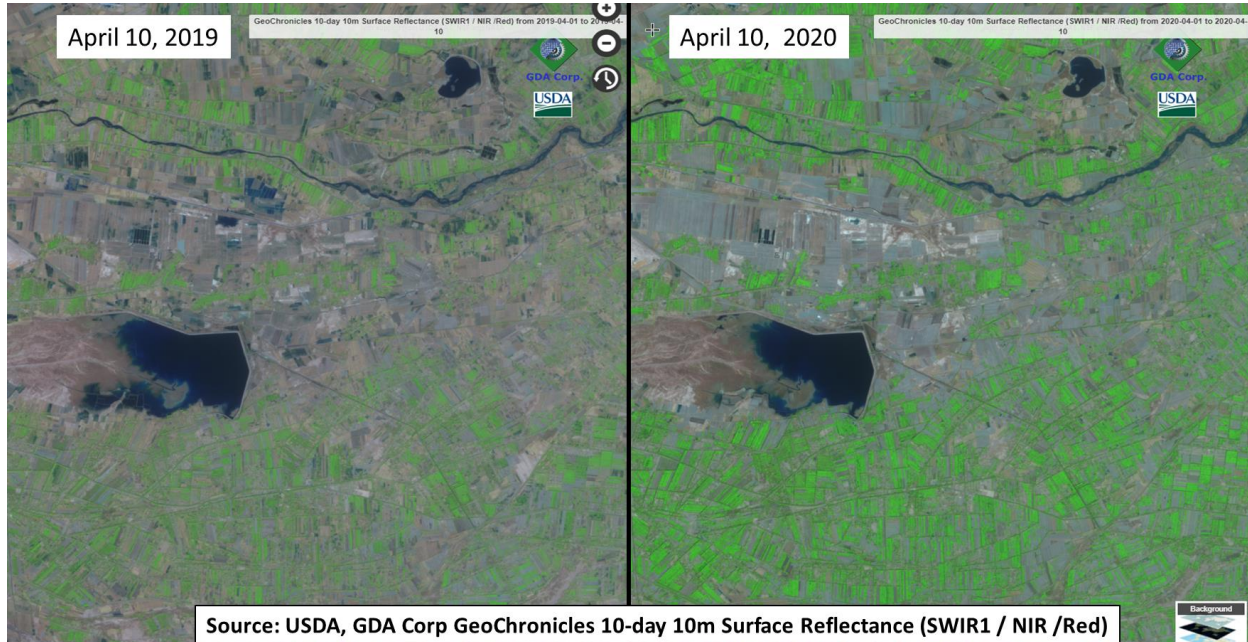
United States  
Department of  
Agriculture

Foreign  
Agricultural  
Service

Circular Series  
WAP 5-20  
May 2020

# World Agricultural Production

## China Cotton: 2020/21 Production Projected to Decrease from Last Year



USDA Foreign Agricultural Service  
Global Market Analysis  
International Production Assessment Division

The satellite images show advanced plant establishment (green fields) in 2020 and no significant differences in irrigation water availability between 2019 (left) and 2020 (right) seasons in Kashi Region of Xinjiang Province, China.

USDA forecasts China's 2020/21 cotton production at 26.5 million 480-pound bales (5.77 million metric tons), down 3 percent from last year, and down 4 percent from the 5-year average. Area is forecast at 3.3 million hectares, down 4 percent from last year, but up 1 percent from the 5-year average. Yield is forecast at 1,748 kilograms per hectare (kg/ha), up 2 percent from last year and up 3 percent from the 5-year average of 1,697 kg/ha. Yield is at the long-term trend due to the increasing share of cotton being planted in Xinjiang province where yield is nearly double elsewhere in the country. Approximately 85 percent of total China cotton is produced in Xinjiang. Total cotton area in China has been decreasing due to the decreases in eastern areas.

Cotton planting started in April and is expected to continue through May; the typical cotton growing season is April to October. In Xinjiang, planting begins in April while on the North China Plain provinces of Shandong, Hebei, and Jiangsu, planting begins in April and extends through May. The start of the 2020/21 season is characterized by favorable conditions - adequate irrigation water availability and rainfall in March to April. These conditions facilitated rapid planting and

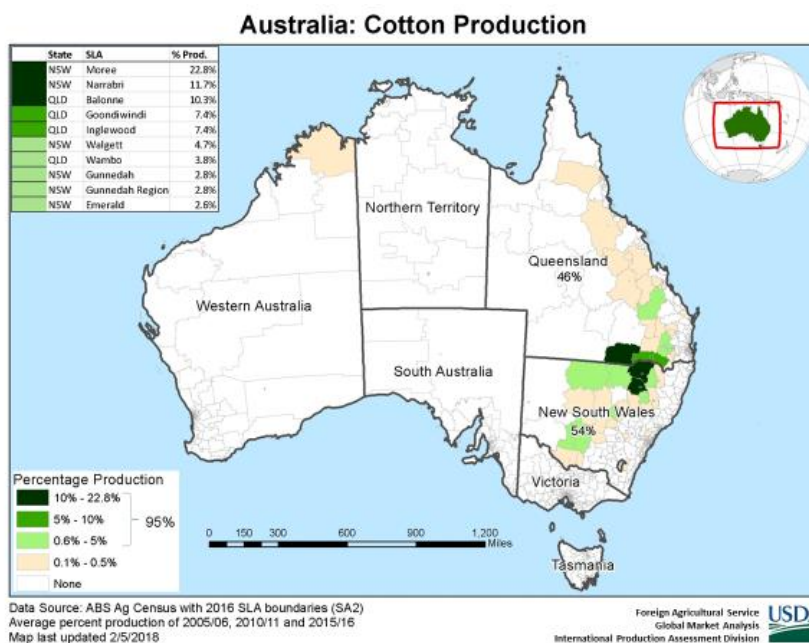
**Approved by the World Agricultural Outlook Board**

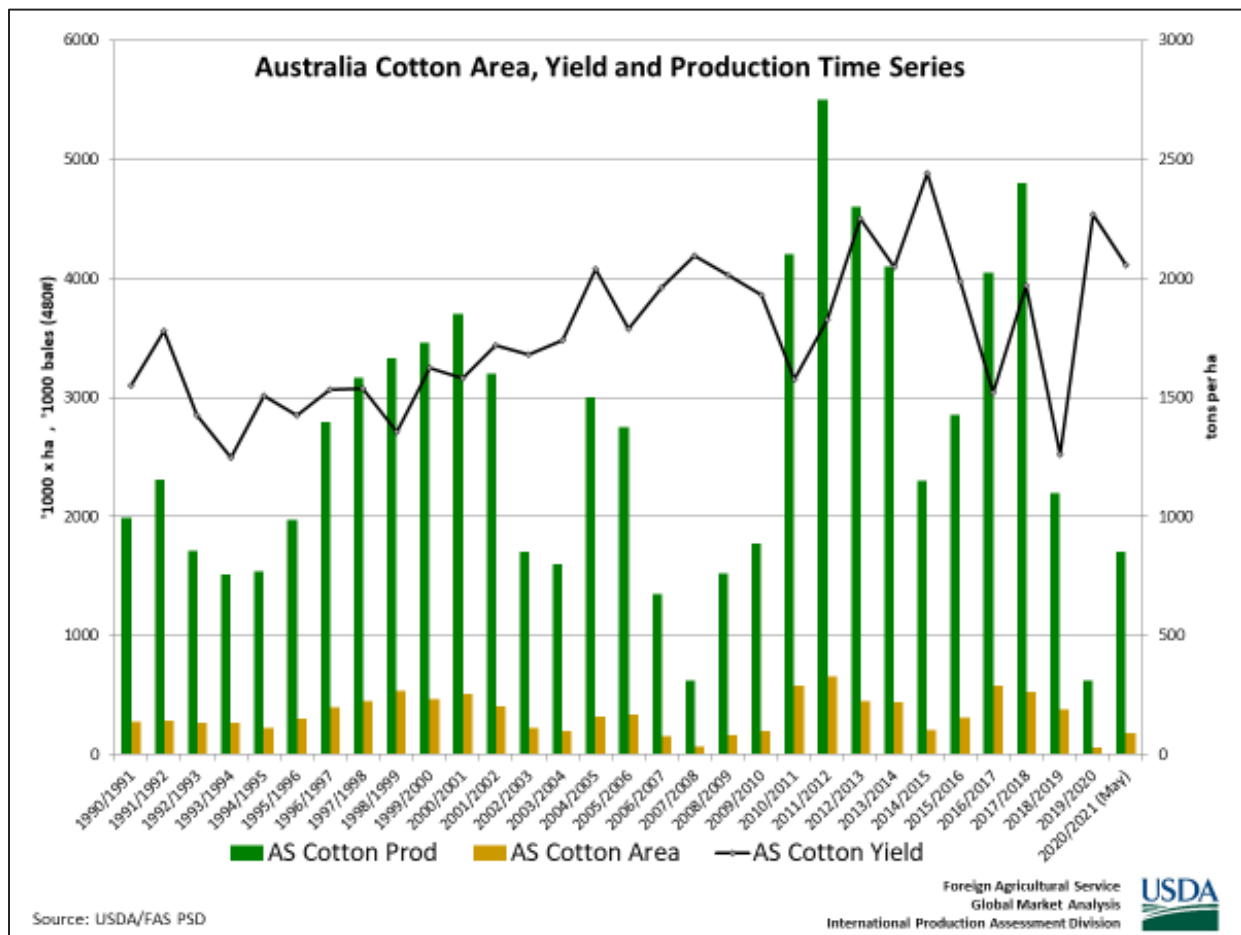
early crop establishment in Xinjiang as can be seen in the satellite imagery. The satellite images show no significant differences in irrigation water availability between 2019 and 2020 seasons in the Kashi Region of Xinjiang. According to industry sources, sowing was almost complete in Xinjiang by mid-April. In addition to the favorable planting conditions, farmers have also been encouraged by the government continuation of the target price-based cotton subsidy. On March 26, 2020, China's National Development and Reform Commission published a notice stating that the target price-based subsidy will continue through 2023. The subsidy program was established in 2017 and was originally planned to expire in 2020. *(For more information, please contact [Dath.Mita@usda.gov](mailto:Dath.Mita@usda.gov).)*

### Australia Cotton: Rains Help Refill Reservoirs; Forecast 2020/2021 Area Up 200 Percent

USDA forecasts 2020/21 Australia cotton production at 1.7 million 480-pound bales, up 1.08 million (172 percent) from last year. Harvested area is forecast at 180,000 hectares, up 200 percent from last year but 52 percent below the 5-year average. Yield is forecast at 2,056 kilograms per hectare, 14 percent above the 5-year average.

Abundant rainfall from January through April 2020 has markedly improved soil moisture in the drought-affected cotton growing regions. This precipitation has increased the runoff into rivers, catchments and reservoirs and is expected to increase irrigation availability at sowing. As a result, planted area is anticipated to expand, leading to higher production. Continued rainfall is necessary from now until sowing to further increase reservoir levels. Planting will commence in October.

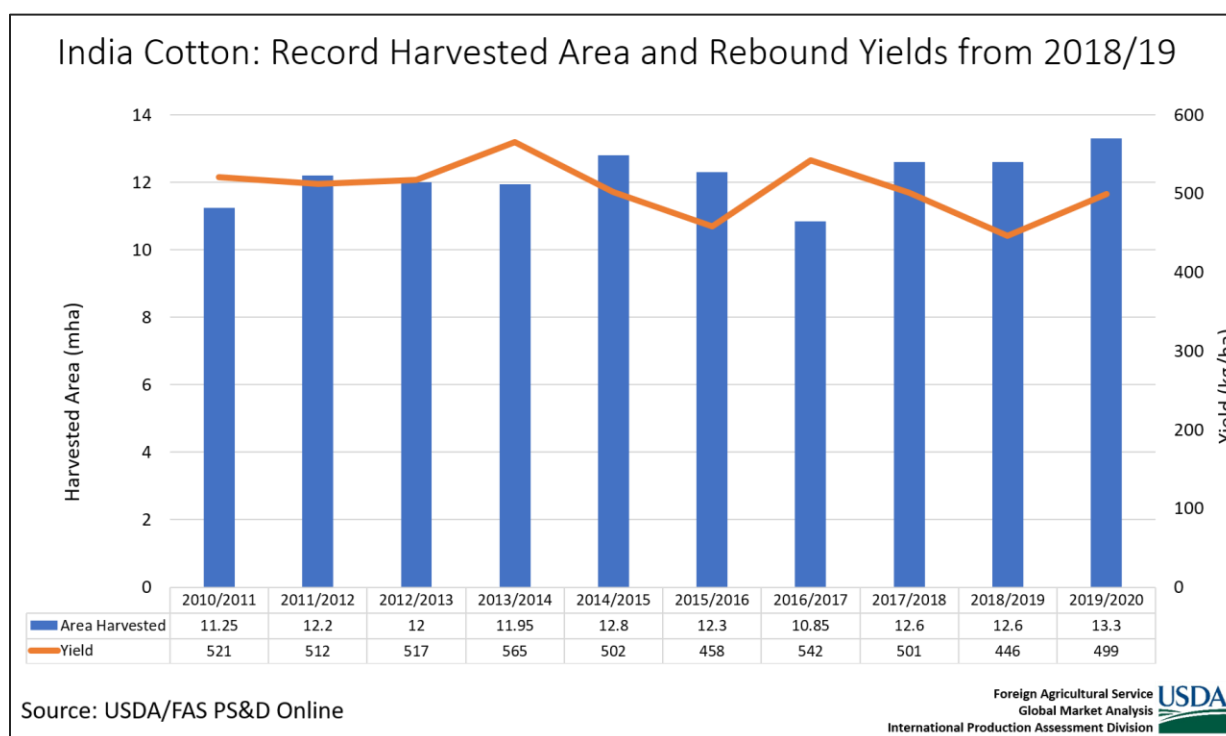




Irrigated cotton yields are substantially higher than dryland yields, and the difference widens in low-rainfall years. Dryland planting tends to vary with the seasonal weather forecast and prices at sowing. On average, irrigated cotton production accounts for about 90 percent of Australia’s total cotton output. Sorghum and cotton are the two dominant summer crops in eastern Australia. (*For more information, please contact [James.Crutchfield@usda.gov](mailto:James.Crutchfield@usda.gov).*)

### India Cotton: 2019/20 Production Revised Upward

USDA estimates India cotton production for 2019/20 at 30.5 million 480-pound bales, up 3 percent from last month and up 18 percent from last year. Harvested area is estimated at 13.3 million hectares, up 2 percent from last month and nearly 6 percent from last year. Yield is estimated at 499 kilograms per hectare, up 1 percent from last month and up almost 12 percent from last year. This 3 percent revision in production from last month is based on the India Ministry of Agriculture’s higher estimates in Telangana.

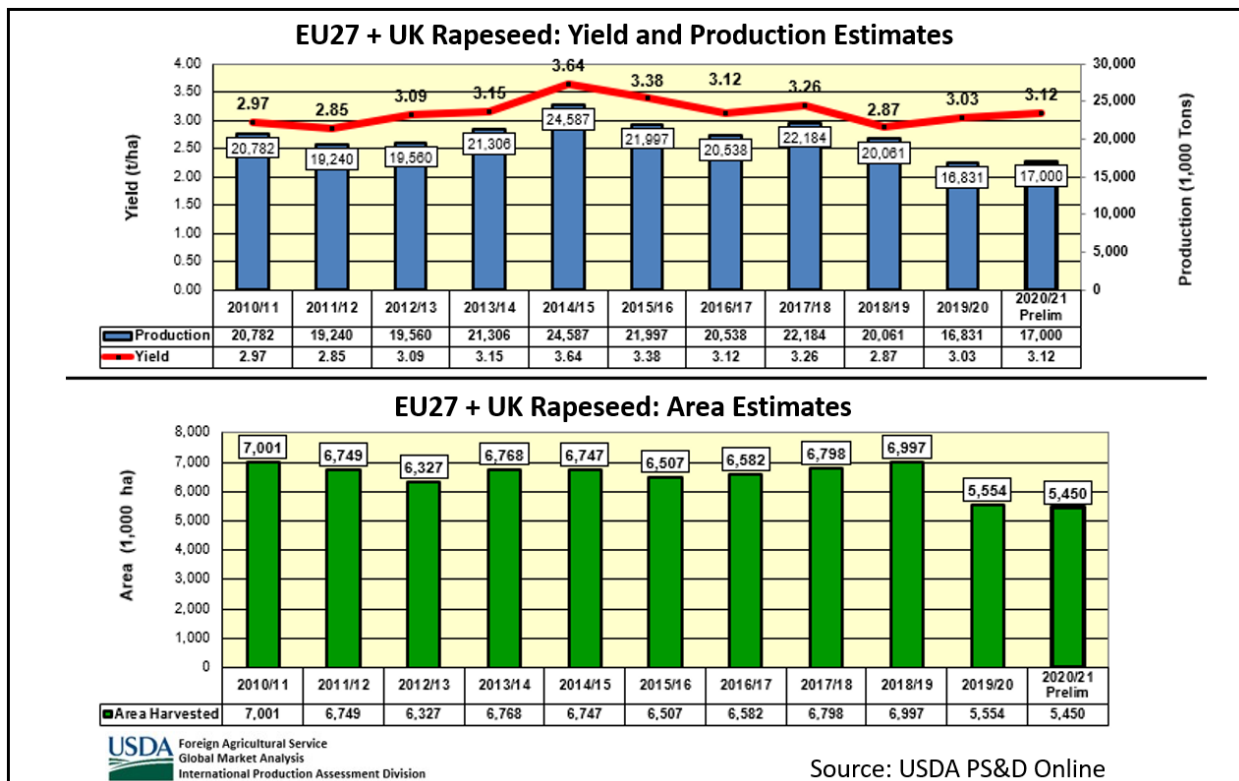


Yields bounced back from the previous 2018/19 drought-reduced crop. The 2019 southwest monsoon's late withdrawal benefited the crop planted later in southern India. The state of Telangana is the largest cotton producer in the south. The Ministry of Agriculture revised Telangana's production estimates up by 65 percent from their second advance estimate released in February 2020. The 65 percent increase is based on a greater area and ideal growing conditions.

Cotton is grown only in the *kharif* season from May to October, but harvest can continue into February. The southern region, which includes the states of Andhra Pradesh, Telangana, Karnataka, and Tamil Nadu, plants cotton in September and harvests in January or February. (*For more information, please contact [Arnella.Trent@usda.gov](mailto:Arnella.Trent@usda.gov).*)

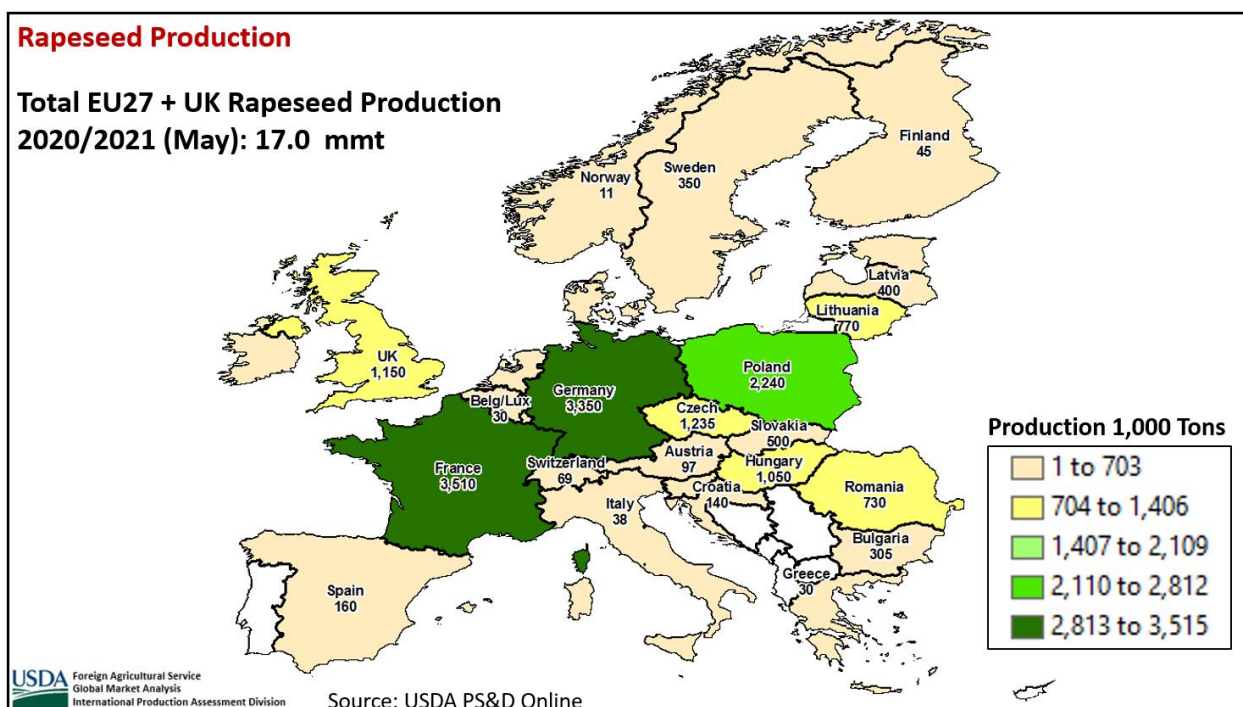
### **EU27 + UK\* Rapeseed: 2020/21 Production Similar to Last Year; Another Year of Low Area**

Rapeseed production in the European Union (EU27 + UK) for 2020/21 is forecast at 17.0 million metric tons (mmt), 0.2 mmt above last year, but 16 percent below the 5-year average. Harvested area is estimated at 5.5 million hectares, 0.1 million hectares (mha) or 2 percent below last year's area, and 16 percent below the 5-year average. Yield is forecast at 3.12 tons per hectare, up 3 percent from last year, but similar to the 5-year average.



Harvested area is estimated to be the lowest since 2006/07. Poor weather conditions and the continued ban of neonicotinoids have negatively affected rapeseed area. Extremely wet planting conditions last autumn in the UK, France and other northwestern EU countries delayed or prevented rapeseed planting, a crop that has a very narrow planting window from late August through early September. Excessive rainfall swamped especially hard-hit UK, where sown area is the lowest since 1989/90. Rapeseed is likely to be replaced by spring barley in the UK. In France, the largest rapeseed producer in Europe, heavy rains have limited area to the lowest since 2003/04. Planting was also challenging in other areas of Europe, with dryness concerns during autumn in Poland, Czech Republic, and Bulgaria. Winter throughout Europe was very mild with a few reports in March of possible scattered frost damage. The current yield concerns center around dryness in central Europe.

In addition to weather variables affecting rapeseed, many EU farmers are also seeing the profitability balance shift towards planting less rapeseed. Generally, market prices have not overcome the lower yields resulting from neonicotinoid restrictions.



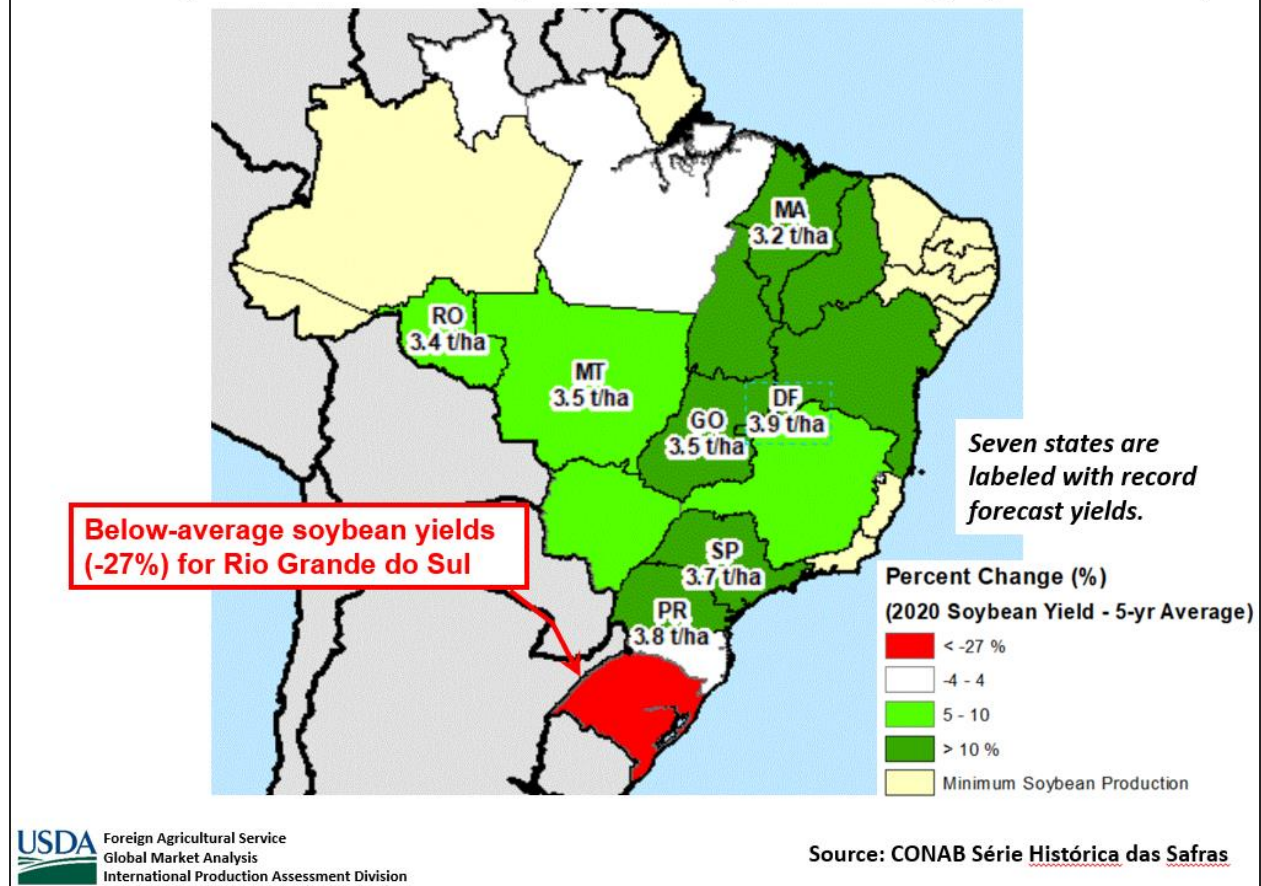
\* USDA is temporarily including the United Kingdom (UK) and the European Union as EU27 + UK. Although it is officially separated from the EU, the UK estimates remain included within USDA’s EU total. During its early transition out of the block, the UK is treated by other member states similarly to the current member states.

For country-specific area, yield, and production estimates within the European Union (EU), please go to PSD Online at <https://apps.fas.usda.gov/PSDOnline/app/index.html#/app/home>, and select “Downloadable Data Sets.” Select the zipped file for “EU Countries Area & Production.” (For more information, please contact [Bryan.Purcell@usda.gov](mailto:Bryan.Purcell@usda.gov).)

### **Brazil Soybeans: 2019/20 Record Output Expected Despite Severe Drought in Rio Grande do Sul**

Brazil’s 2019/20 soybean production is estimated at a record 124.0 million metric tons (mmt), down 0.5 mmt from last month but up 5.0 mmt (4 percent) from last year. Area is estimated at a record 36.8 million hectares (mha), down 0.1 mha from last month and up 0.9 mha (3 percent) from last year. Yield is estimated at 3.37 tons per hectare, unchanged from last month, up 3 percent from last year and up 5 percent from the 5-year average. Record output is expected despite weather-related production losses in Rio Grande do Sul. Brazil’s record output this year will overtake the United States as the world’s leading soybean producer.

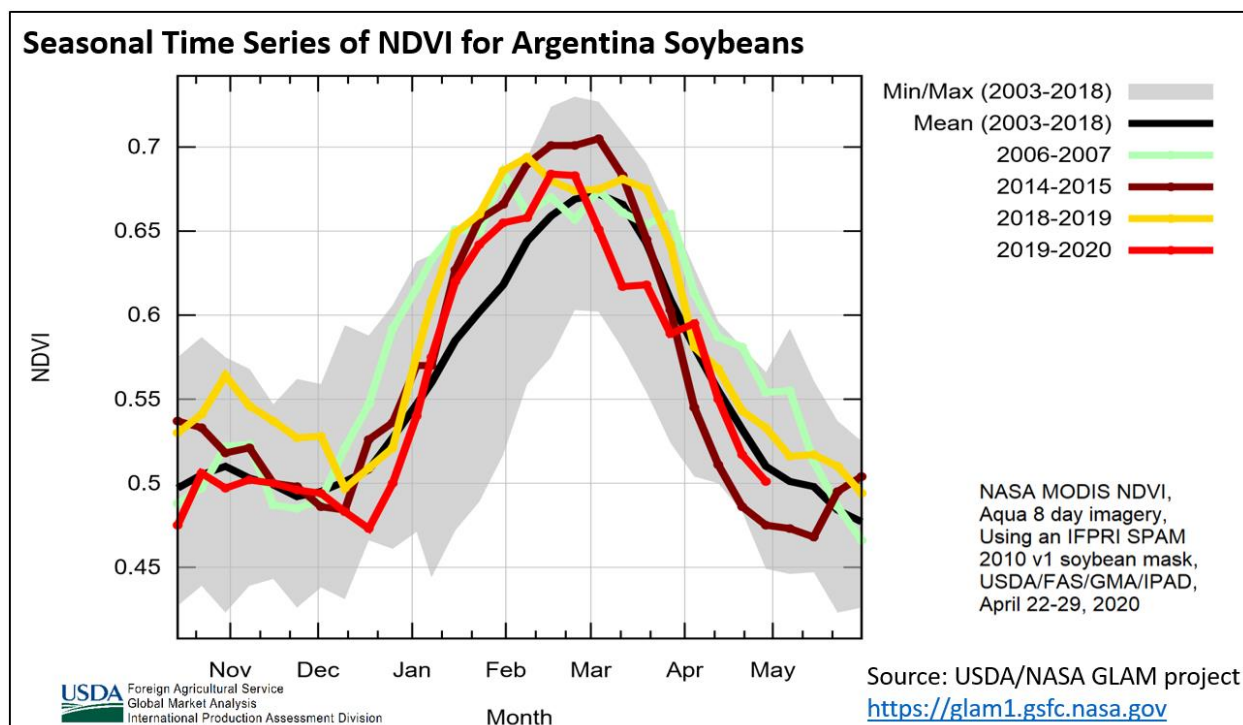
## 2020 Soybean Yields Compared to 5-year Average (2015-2019)



Planting progress for 2019 was behind the average national pace. Some soybeans were planted late in early January due to droughts in December for the northeast states (~14 mmt production) and Rio Grande do Sul (~13 mmt). All crops recovered due to favorable rains in January, but Rio Grande do Sul experienced another drought in late February, which reduced production by 6 mmt (30 percent) from last year's record output.

Harvest began in January for crops planted in mid-September. The harvest is almost complete with a few soybeans left to harvest in northeastern Brazil and Rio Grande do Sul. Record yields were reported in the top producing states of Mato Grosso (~34 mmt), Paraná (~20 mmt), and Goiás (~12 mmt). Harvest is approximately 90 percent complete in the northeast and reported yields are well above average. *(For more information, please contact [Curt.Reynolds@usda.gov](mailto:Curt.Reynolds@usda.gov).)*

## Argentina Soybeans: 2019/20 Production Revised Down

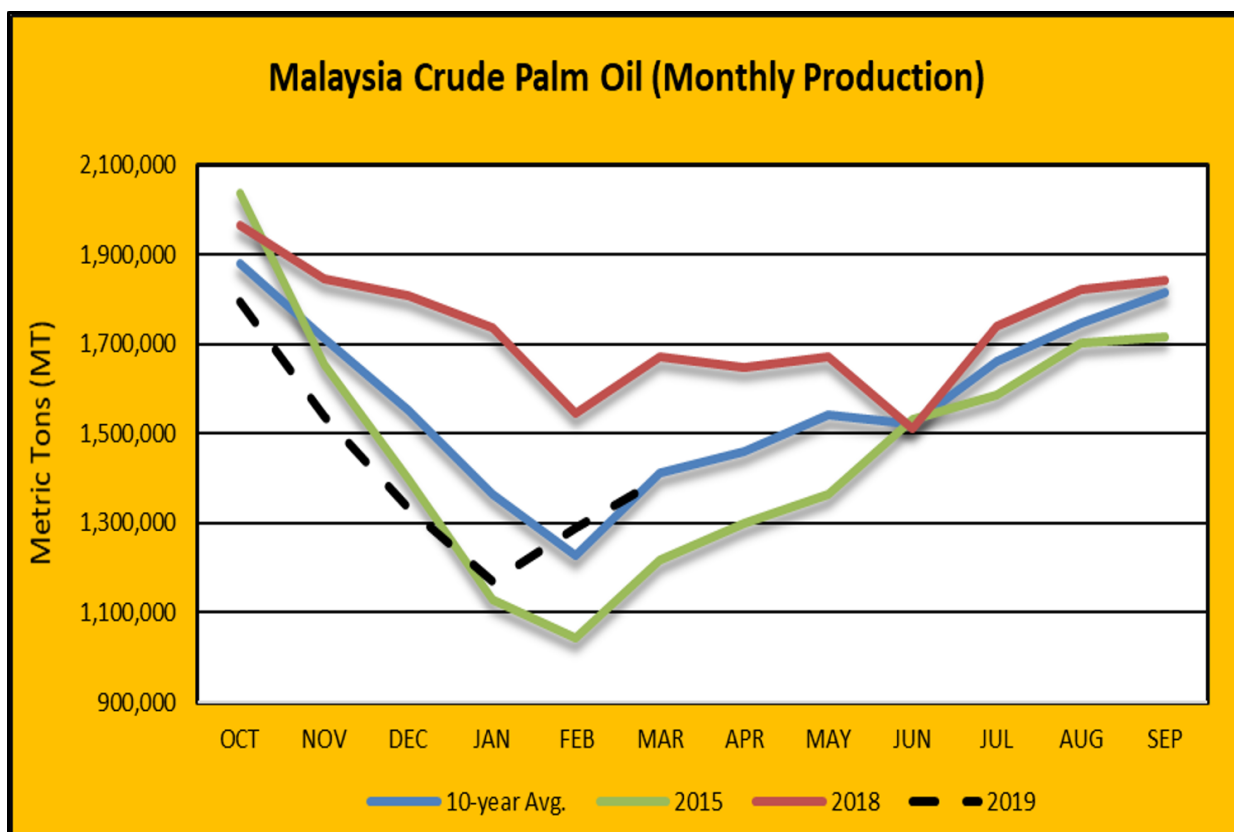



USDA estimates Argentina soybean production for 2019/20 at 51.0 million metric tons, down 2 percent from last month and down 8 percent from last year. Area is estimated at 17.0 million hectares, up 1 percent from last month and up 2 percent from last year. Yield is estimated at 3.00 tons per hectare, down 3 percent from last month and down 10 percent from last year. Comparing previous years to 2019/20, the satellite-derived Normalized Difference Vegetation Index (NDVI) supports an average yield of 3.00 tons per hectare for the season. Dry, hot conditions during the last half of February were followed by scattered showers throughout harvest. With harvesting over 65 percent complete, fieldwork can continue as rains stop and fields dry out. (For more information, please contact [Denise.McWilliams@usda.gov](mailto:Denise.McWilliams@usda.gov).)

## Malaysia Palm Oil: 2019/20 Estimated Production Down 12 Percent from Last Year

USDA estimates Malaysia 2019/20 palm oil production at 18.5 million metric tons (mmt), down 3 percent from last month and down 11 percent from last year. Harvested area is estimated at 5.35 million hectares, unchanged from last month, but up 1 percent from last year. Yield is estimated at 3.46 tons per hectare, down 3 percent from last month and down 12 percent from last year.






 Foreign Agricultural Service  
 Global Market Analysis  
 International Production Assessment Division

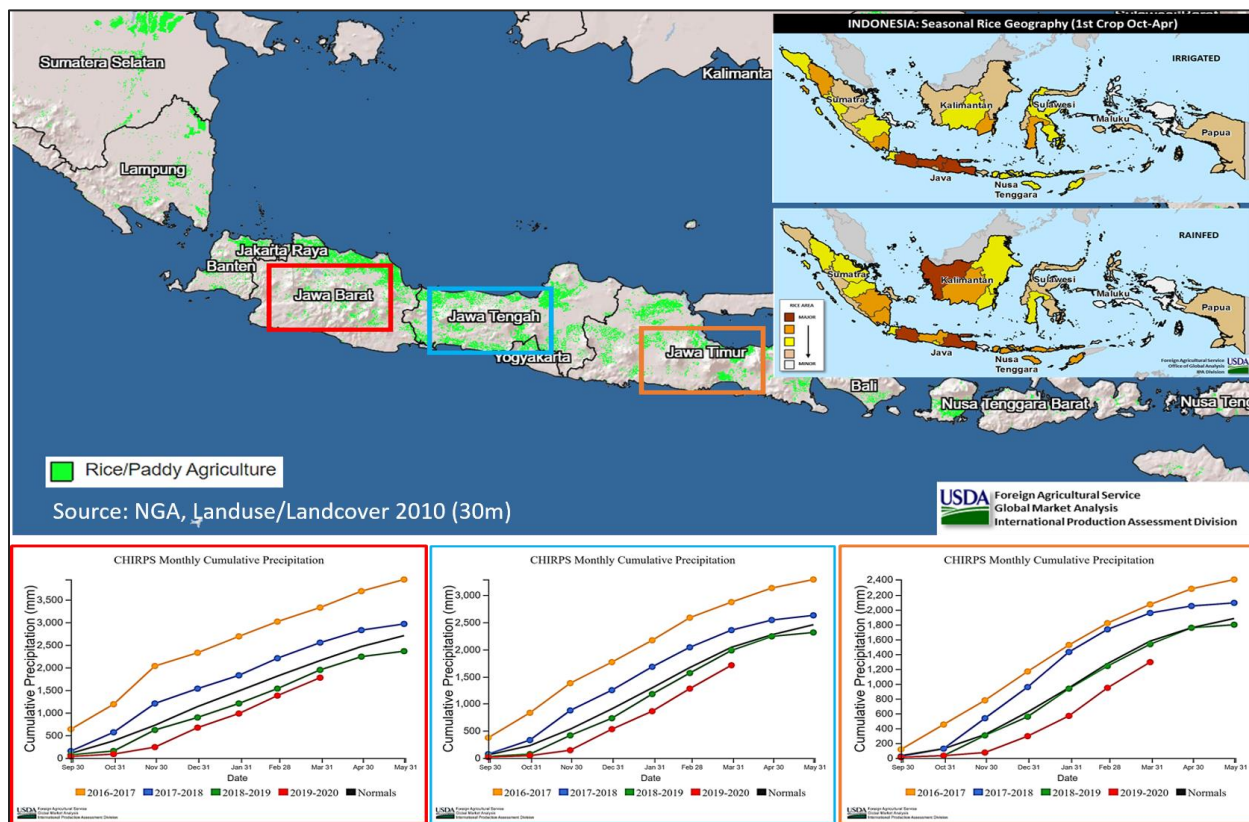
Source: Malaysia Palm Oil Board

Seasonal rains during 2019 underperformed, negatively impacting current palm oil production. Latest reports from the Malaysia Palm Oil Board indicate cumulative crude palm oil (CPO) production for October through March at 8.53 mmt, down 19 percent from last year. This would be the lowest cumulative total for October through March since 2015, when the El Niño negatively impacted palm oil production. USDA’s market year for Malaysia palm oil is October through September. *(For more information, please contact [Justin.Jenkins@usda.gov](mailto:Justin.Jenkins@usda.gov).)*

### Indonesia Rice: Estimated Harvested Area 2019/20 Downward Revision Supported by Indonesia’s Statistical Agency

USDA estimates Indonesia 2019/20 rice production at 33.5 million metric tons (milled basis), down 8 percent from last month and down 2 percent from last year. Harvested area is estimated at 11.3 million hectares, down 6 percent from last month and down 2 percent from last year. Yield is estimated at 4.67 metric tons per hectare (mt/ha), down 3 percent from last month and down marginally from last year.

Rice in Indonesia is cultivated in three different cycles. Cultivation for the first cycle (main) is dependent on the onset of the wet season, from October through December, and harvested from February to April. The main rice crop is 85 percent irrigated and represents about 45 percent of Indonesia total rice output. The second and third rice cycles are cultivated in the dry season, which begin cultivation March to June and July to October, respectively.

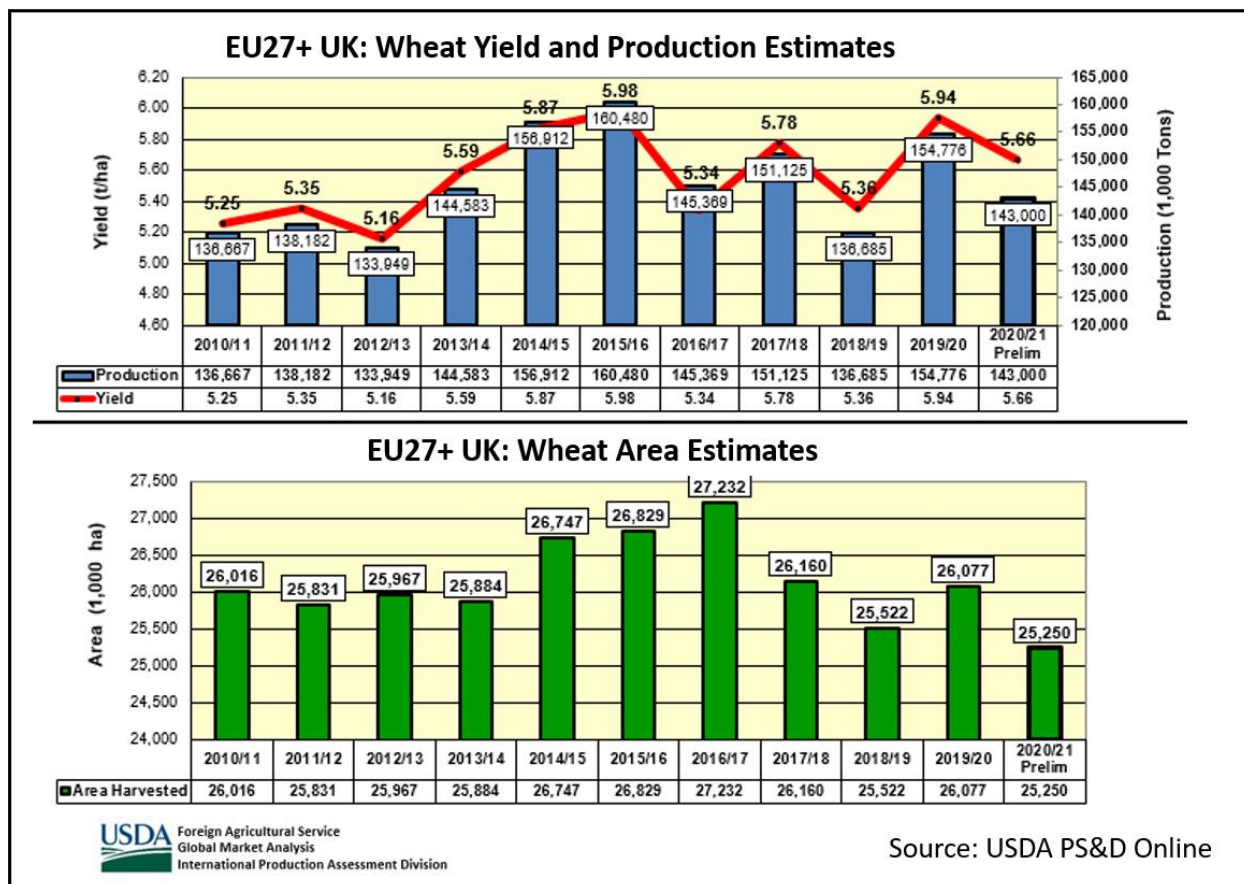


Harvested rice area has been revised downward which is supported by Indonesia's Statistical Agency Badan Pusat Statistik (BPS). The extent of the rice area reduction from last month is based on updated information from BPS statistical surveys, which indicate total available land for food crops is 400,000 hectares less than previously estimated for 2019. Additionally, due to the delayed onset of the 2019 rainy season, which was more significant compared to 2018, farmers in Java and Sumatra (main rice producing areas) started cultivation for the first crop in January 2020. As a result, harvest for the delayed first season rice crop will begin mid-April to May 2020. This in turn will create a domino effect in delaying second and third cycle cultivation, with the latter being impacted the most due to the cycle beginning later in the dry season. During that time, some irrigated areas may not receive enough water to continue growing paddy and farmers will switch to plant less water intensive crops.

USDA has revised 2018/19 Indonesia rice area, production and yield to reflect updated information from BPS. (For more information, please contact [Justin.Jenkins@usda.gov](mailto:Justin.Jenkins@usda.gov).)

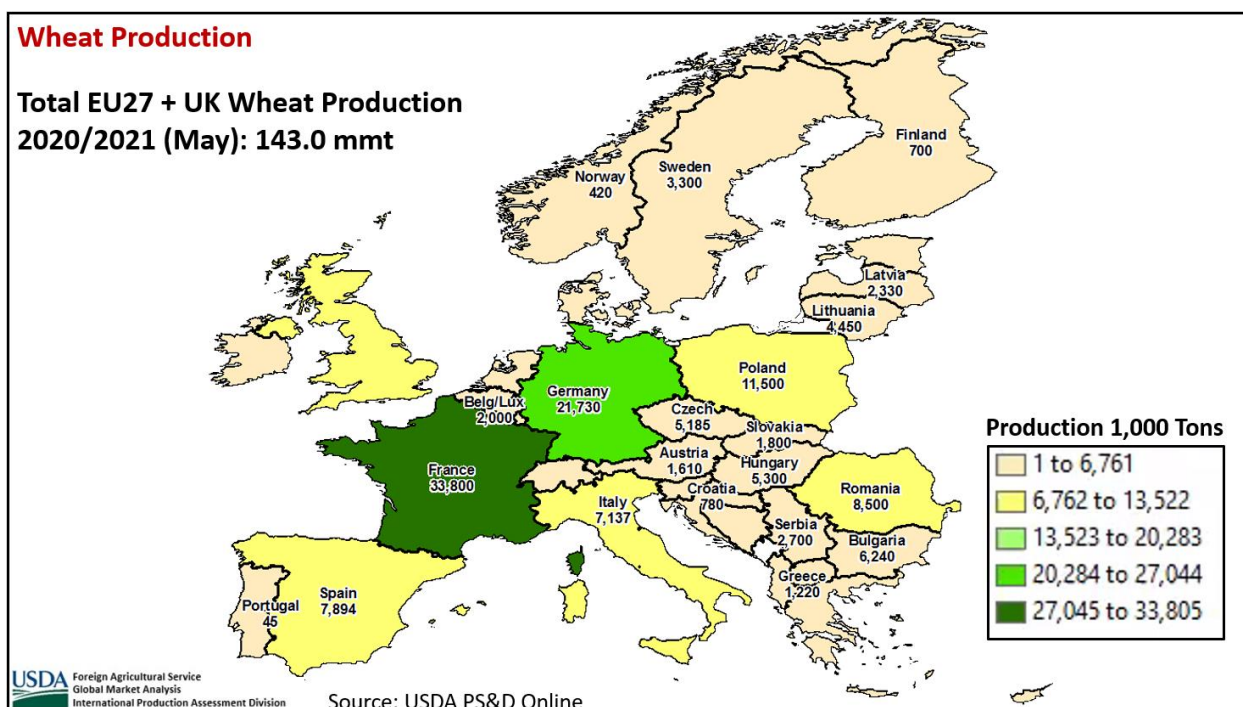
### EU 27+ UK\* Wheat 2020/21: Sharp Drop in Production; Lowest Planted Area in Years

USDA forecasts wheat production in the European Union (EU27 + UK) for 2020/21 at 143.0 million metric tons (mmt), down 11.8 mmt or 8 percent below last year, and down 4 percent from the 5-year average. Harvested area is estimated at 25.3 million hectares (mha), 0.8 mha or 3 percent below last year's low area, and 4 percent below the 5-year average. Yield is forecast at 5.66 tons per hectare, down 5 percent from last year but less than one percent from the 5-year average.



Harvested area is estimated to be the lowest since 2007/08. Extremely challenging planting conditions last autumn in the UK, France and other northwestern EU countries is the primary reason for the low planted area. Excessive rainfall swamped especially hard-hit UK, where winter wheat was frequently replaced by spring-planted barley. UK wheat area is the lowest since 1978/79. In France, by far the largest wheat producer in Europe, heavy rains during late winter prevented early spring input applications and fieldwork. Area is estimated to be the lowest since 2001/02. In addition, planting was also challenging in southeastern Europe, with dryness concerns during autumn in Romania, Bulgaria and Hungary.

Meanwhile, soil moisture conditions in Spain since November have been exceptional, bolstering record production expectations. Winter throughout Europe was very mild with a few reports in March of possible scattered frost damage. The current yield concerns center around dryness in central Europe.



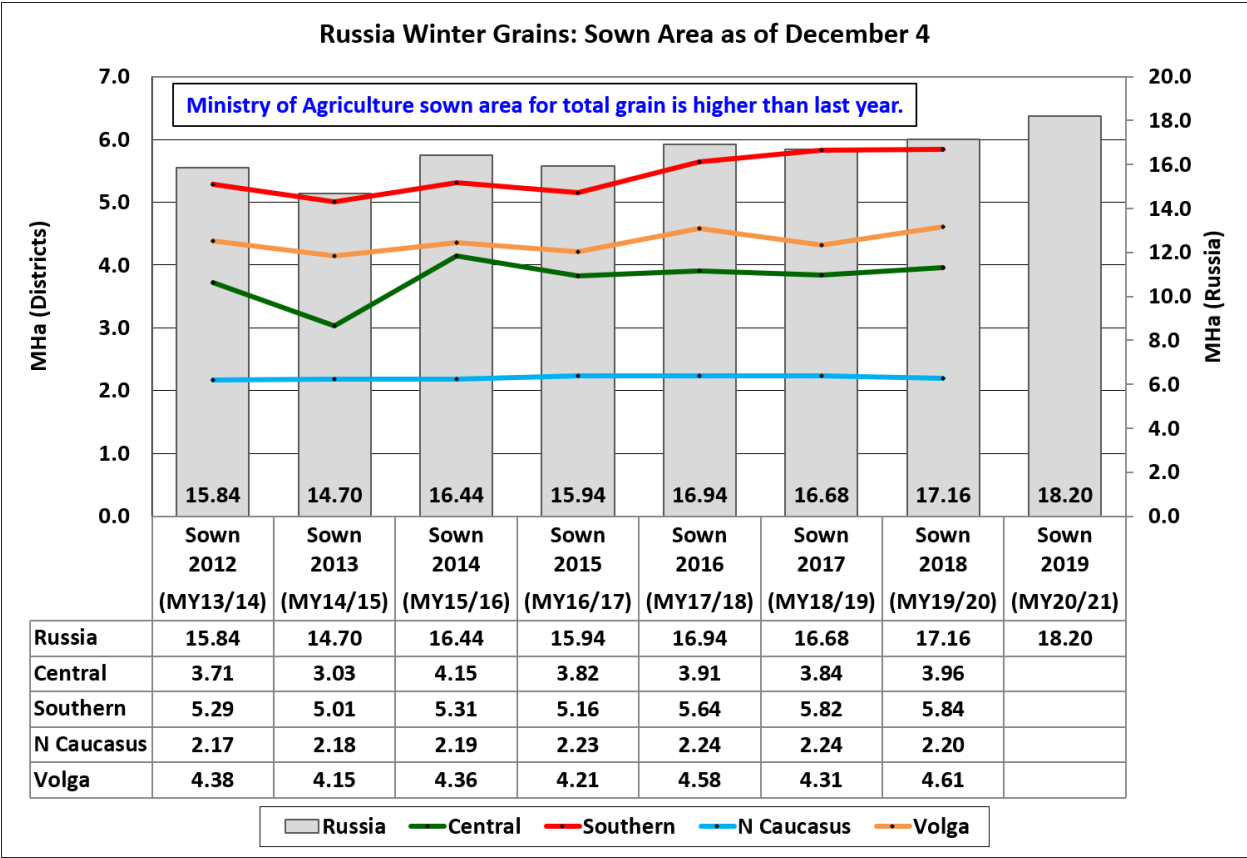
\* USDA is temporarily including the United Kingdom (UK) and the European Union as EU27 + UK. Although it is officially separated from the EU, the UK estimates remain included within USDA's EU total. During its early transition out of the block, the UK is treated by other member states similarly to the current member states.

For country-specific area, yield, and production estimates within the European Union (EU), please go to PSD Online at <https://apps.fas.usda.gov/PSDOnline/app/index.html#/app/home>, and select "Downloadable Data Sets." Select the zipped file for "EU Countries Area & Production." (For more information, please contact [Bryan.Purcell@usda.gov](mailto:Bryan.Purcell@usda.gov).)

### Russia Wheat: 2020/21 Forecast Yield is the Second Highest on Record

Russia wheat production for 2020/21 is forecast at 77.0 million metric tons (mmt), up 5 percent from last year. The forecast includes 57.0 mmt of winter wheat and 20.0 mmt of spring wheat. USDA crop production forecasts for Russia exclude forecast output from Crimea. Total wheat yield is forecast at 2.80 tons per hectare, up 4 percent from last year. Total area is expected to increase slightly from last year to 27.5 million hectares.

Winter wheat typically accounts for about 70 percent of production. According to data from the Russian Ministry of Agriculture published in the beginning of December 2019, the area planted to winter grains in 2020/21 is a record and is up year-to-year by 6 percent. Winter wheat accounts for about 85 percent of the total winter grains crop in Russia and the remainder is divided between barley, rye and triticale.

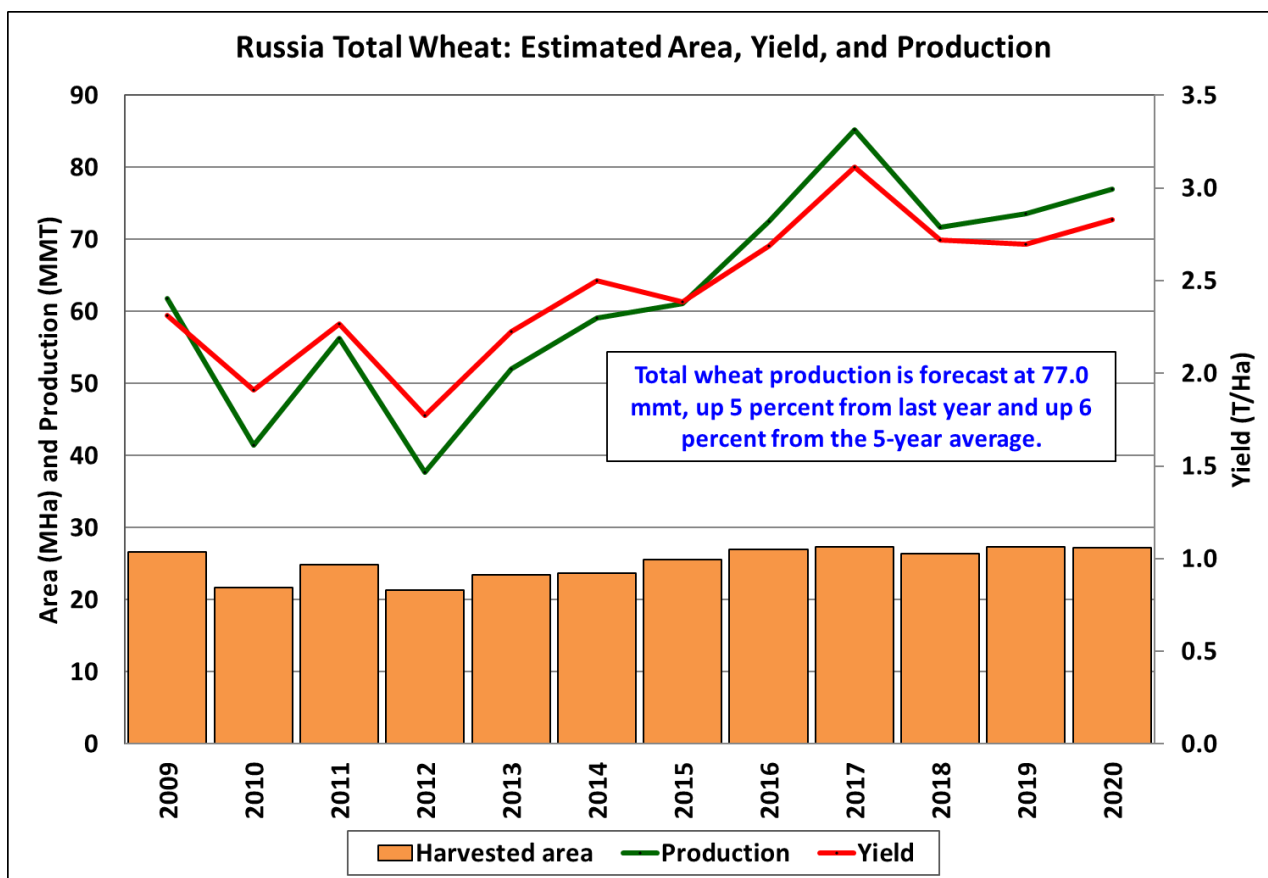


USDA Foreign Agricultural Service  
Global Market Analysis  
International Production Assessment Division

Source: Ministry of Agriculture

Early-season conditions for winter wheat are mixed. Planting occurred during drier-than-average weather in the autumn. Early spring conditions, especially in the Southern and North Caucasus Districts, have been drier-than-average as well. Timely rainfall, however, has occurred in the drier areas of concern in the Southern and North Caucasus Districts, which together account for almost 58 percent of production. Accelerated spring growth has stalled with a pattern of cooler temperatures that has slowed crop development. The potential winter wheat yields will hinge largely on weather during May and June.

Planting of spring wheat began in late April and is on track with the previous year at about 12 percent complete as of the 30<sup>th</sup> of April. Spring wheat is mainly planted in the regions bordering Kazakhstan: the Volga, Urals and Siberian Districts of Russia. Planting will accelerate in all districts in May.



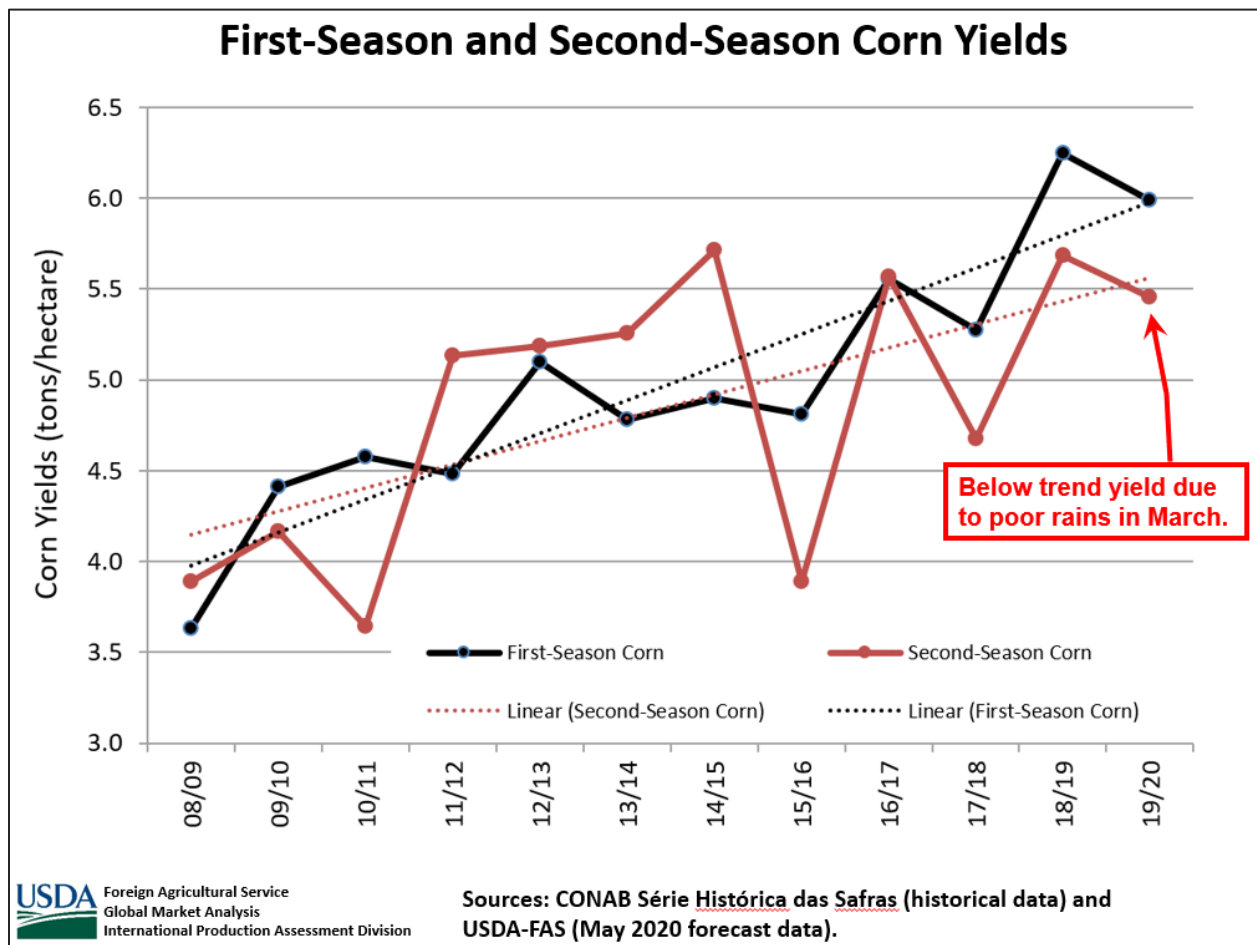
USDA Foreign Agricultural Service  
Global Market Analysis  
International Production Assessment Division

Source: USDA/FAS PS&D Online

Area, yield, and production estimates for Russia winter wheat and spring wheat are available on PSD Online. Select “Downloadable Data Sets” and open the zipped file for “Russia Wheat; Winter/Spring Area & Production.” (For more information, please contact [Katie.McGaughey@usda.gov](mailto:Katie.McGaughey@usda.gov).)

### Brazil Corn: Record 2019/20 Area Planted

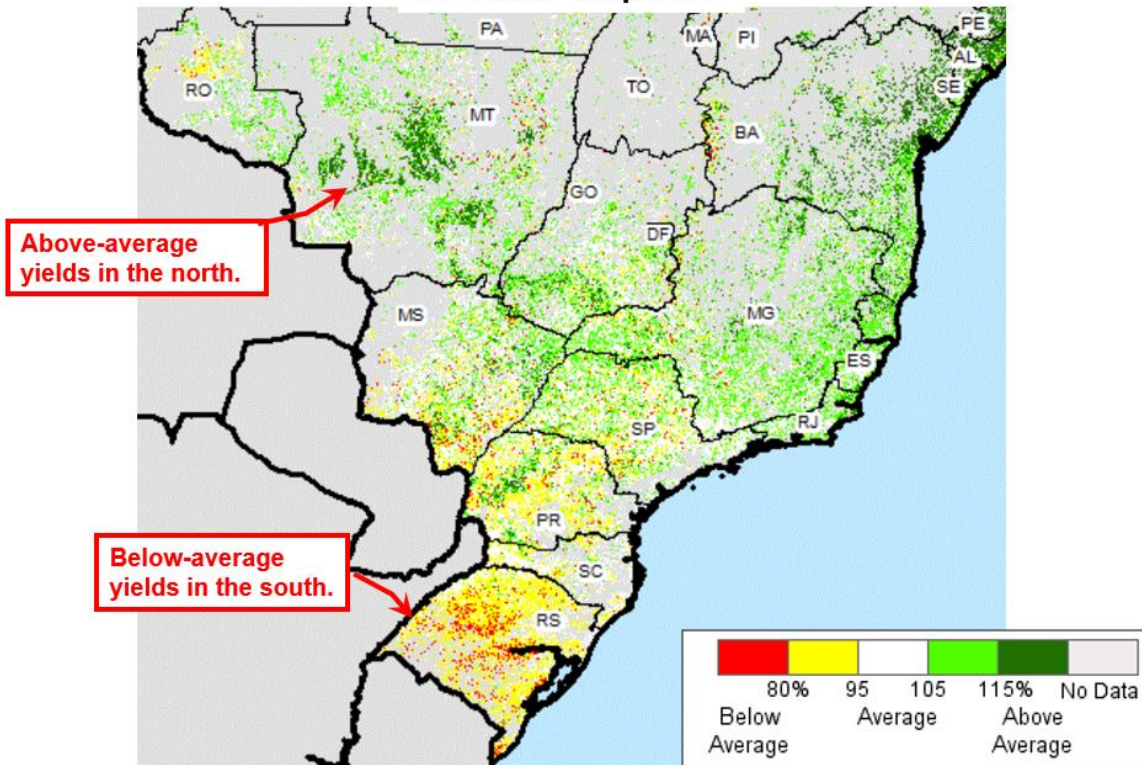
Brazil’s 2019/20 corn production is estimated at 101 million metric tons (mmt), unchanged from last month and last year’s record crop. Area is estimated at a record 18.2 million hectares (mha), up 0.1 mha (0.6 percent) from last month and up 0.7 mha (4 percent) from last year. Yield is estimated at 5.55 tons per hectare, down 0.5 percent from last month, down 4 percent from last year and up 7 percent from the 5-year average. Forecast yields for the second-season crop were lowered this month due to dry March and April weather conditions in southern Mato Grosso, Mato Grosso do Sul and Paraná.



Weather was favorable for the first-season crop in the central states, but corn production was down in Rio Grande do Sul where dry spells in December and late February reduced crop yields. First-season corn yields are estimated at the 10-year trend, and first-season output is estimated at 25.3 mmt by *Companhia Nacional de Abastecimento* (or CONAB, an agency in the Brazilian Ministry of Agriculture), down 0.4 mmt from last year's first-season output.

## Percent of Average Seasonal Greenness (PASG) from March 1-April 30, 2020

### PASG with Crop Mask



USDA Foreign Agricultural Service  
Global Market Analysis  
International Production Assessment Division

Source: SPOT-VEGETATION (2000-2013) and PROBA-V (2013-2020) products from Copernicus Service Information, European Commission.

A record second season (*safrinha*) crop was planted from January through early March, but rains were below-average in March for most of the corn-producing states located south of Mato Grosso. March and April rains were average to above-average for northern Mato Grosso, but below-average rains south of Mato Grosso reduced second-season crop prospects. Mato Grosso is the largest corn-producing state and the *Instituto Mato-grossense de Economia Agropecuária* (IMEA) forecasts a record output of 32.7 mmt, or approximately 45 percent of Brazil's second-season crop. (For more information, please contact [Curt.Reynolds@usda.gov](mailto:Curt.Reynolds@usda.gov).)





**World Agricultural Production  
U.S. Department of Agriculture**

Foreign Agricultural Service / Global Market Analysis  
International Production Assessment Division (IPAD)  
Ag Box 1051, Room 4630, South Building  
Washington, DC 20250-1051

<https://ipad.fas.usda.gov/>

Telephone: (202) 720-1662 Fax: (202) 720-1158

This report uses information from the Foreign Agricultural Service’s (FAS) global network of agricultural attachés and counselors, official statistics of foreign governments and other foreign source materials, and the analysis of economic data and satellite imagery. Estimates of foreign area, yield, and production are from the International Production Assessment Division, FAS, and are reviewed by USDA’s Inter-Agency Commodity Estimates Committee. Estimates of U.S. area, yield, and production are from USDA’s National Agricultural Statistics Service. Numbers within the report may not add to totals because of rounding. This report reflects official USDA estimates released in the World Agricultural Supply and Demand Estimates (WASDE-584), May 12, 2020.

**Printed copies are available from the National Technical Information Service. Download an order form at [http://www.ntis.gov/products/specialty/usda/fas\\_a-g.asp](http://www.ntis.gov/products/specialty/usda/fas_a-g.asp), or call NTIS at 1-800-363-2068.**

The FAS International Production Assessment Division prepared this report. The next issue of World Agricultural Production will be released after 12:00 p.m. Eastern Time, June 11, 2020.

**Conversion Table**

Metric tons to bushels

|                    |   |                |
|--------------------|---|----------------|
| Wheat, soybeans    | = | MT * 36.7437   |
| Corn, sorghum, rye | = | MT * 39.36825  |
| Barley             | = | MT * 45.929625 |
| Oats               | = | MT * 68.894438 |

Metric tons to 480-lb bales

|        |   |               |
|--------|---|---------------|
| Cotton | = | MT * 4.592917 |
|--------|---|---------------|

Metric tons to hundredweight

|      |   |               |
|------|---|---------------|
| Rice | = | MT * 22.04622 |
|------|---|---------------|

Area & weight

|            |   |                 |
|------------|---|-----------------|
| 1 hectare  | = | 2.471044 acres  |
| 1 kilogram | = | 2.204622 pounds |

**Approved by the World Agricultural Outlook Board**



For further information, contact:  
**U.S. Department of Agriculture**  
**Foreign Agricultural Service**  
**Global Market Analysis**  
International Production Assessment Division  
Ag Box 1051, Room 4630, South Building  
Washington, DC 20250-1051

Telephone: (202) 720-1662

Fax: (202) 720-1158

---

## **GENERAL INFORMATION**

|   |                      |              |                            |
|---|----------------------|--------------|----------------------------|
| Senior Director   | Ronald Frantz        | 202-720-4056 | ronald.frantz@usda.gov     |
| Director  | Robert Tetrault      | 202-720-1071 | robert.tetrault@usda.gov   |
| Administrative Assistant  | Dionndra Williams    | 202-720-1662 | dionndra.williams@usda.gov |
| USDA Remote Sensing Advisor                                       | Vacant               |              |                            |
| Sr. Analyst/Technical Lead  | Curt Reynolds, Ph.D. | 202-690-0134 | curt.reynolds@usda.gov     |
| Sr. Analyst/ Satellite Imagery<br>Archives Manager/Technical Lead | Dath Mita, Ph.D.     | 202-720-7339 | dath.mita@usda.gov         |
| Sr. Analyst/Technical Lead  | Jim Crutchfield      | 202-690-0135 | james.crutchfield@usda.gov |
| GIS Mapping/Imagery Analyst                                       | Lisa Colson          | 202-720-6652 | lisa.colson@usda.gov       |
| WAP Coordinators  | Ifeoma Collins       | 202-720-0240 | ifeoma.collins@usda.gov    |
|   | Aaron Mulhollen      | 202-690-0131 | aaron.mulhollen@usda.gov   |

## **COUNTRY- AND REGION-SPECIFIC INFORMATION**

|  |                              |              |                                |
|--|------------------------------|--------------|--------------------------------|
| South America, Argentina, Venezuela,<br>and Colombia                           | Denise McWilliams, Ph.D.     | 202-720-0107 | denise.mcwilliams@usda.gov     |
| Western and Central Europe,<br>and North Africa                                | Bryan Purcell                | 202-690-0138 | bryan.purcell@usda.gov         |
| Russia, Ukraine, Kazakhstan, Moldova,<br>and Belarus                           | Katie McGaughey              | 202-720-9210 | katie.mcgaughey@usda.gov       |
| South Asia, Sri Lanka<br>Bangladesh, India, and Nepal                          | Arnella Trent                | 202-720-0881 | arnella.trent@usda.gov         |
| East Asia, China, and Japan  | Dath Mita, Ph.D.             | 202-720-7339 | dath.mita@usda.gov             |
| Sub-Saharan Africa,<br>Nigeria and South Africa                                | Curt Reynolds, Ph.D.         | 202-690-0134 | curt.reynolds@usda.gov         |
| S.E. Asia, Indonesia, Thailand, Malaysia,<br>Cambodia and Vietnam              | Justin Jenkins               | 202-720-0419 | justin.jenkins@usda.gov        |
| Central America, Mexico,<br>and Western United States                          | Ifeoma Collins               | 202-720-0240 | ifeoma.collins@usda.gov        |
| Australia, New Zealand, Pakistan<br>Papua New Guinea and South Pacific Islands | Jim Crutchfield              | 202-690-0135 | james.crutchfield@usda.gov     |
| Middle East, Central Asia, Afghanistan<br>Iraq, Iran, and Syria                | Iliana Mladenova, Ph.D.      |              | iliana.mladenova@usda.gov      |
| Canada, Caribbean,<br>Eastern United States                                    | Aaron Mulhollen              | 202-690-0131 | aaron.mulhollen@usda.gov       |
| Brazil   | Sunita Yadav-Pauletti, Ph.D. |              | sunita.yadav-pauletti@usda.gov |



The Foreign Agricultural Service (FAS) updates its production, supply and distribution (PSD) database for cotton, oilseeds, and grains at 12:00 p.m. on the day the *World Agricultural Supply and Demand Estimates* (WASDE) report is released. This circular is released by 12:15 p.m.

### **FAS Reports and Databases:**

Current *World Market and Trade and World Agricultural Production Reports*:

<http://apps.fas.usda.gov/psdonline/psdDataPublications.aspx>

Archives *World Market and Trade and World Agricultural Production Reports*:

<http://usda.mannlib.cornell.edu/MannUsda/viewTaxonomy.do?taxonomyID=7>

Production, Supply and Distribution Database (PSD Online):

<http://apps.fas.usda.gov/psdonline/psdHome.aspx>

EU Countries Area & Production Estimates

<http://apps.fas.usda.gov/psdonline/psdDownload.aspx>

Global Agricultural Trade System (U.S. Exports and Imports):

<http://apps.fas.usda.gov/gats/default.aspx>

Export Sales Report:

<http://apps.fas.usda.gov/esrquery/>

Global Agricultural Information Network (Agricultural Attaché Reports):

<http://gain.fas.usda.gov/Pages/Default.aspx>

### **Other USDA Reports:**

World Agricultural Supply and Demand Estimates (WASDE):

<http://www.usda.gov/oce/commodity/wasde/>

Economic Research Service:

<http://www.ers.usda.gov/topics/crops>

National Agricultural Statistics Service:

<http://www.nass.usda.gov/Publications/>

**Table 01 World Crop Production Summary**

Million Metric Tons

| Commodity                 | World - | Total Foreign | North America |          |          | Former Soviet |           | European | Asia (WAP) |         |           |          |          | South America |          | Selected Other |              |          | All Others |
|---------------------------|---------|---------------|---------------|----------|----------|---------------|-----------|----------|------------|---------|-----------|----------|----------|---------------|----------|----------------|--------------|----------|------------|
|                           |         |               | United States | Canada - | Mexico - | Russia -      | Ukraine - |          | China -    | India - | Indonesia | Pakistan | Thailand | Argentina     | Brazil - | Australia      | South Africa | Turkey - |            |
|                           |         |               |               |          |          |               |           |          |            |         |           |          |          |               |          |                |              |          |            |
| ---Million metric tons--- |         |               |               |          |          |               |           |          |            |         |           |          |          |               |          |                |              |          |            |
| <b>Wheat</b>              |         |               |               |          |          |               |           |          |            |         |           |          |          |               |          |                |              |          |            |
| 2018/19                   | 730.5   | 679.2         | 51.3          | 32.2     | 3.0      | 71.7          | 25.1      | nr       | 131.4      | 99.9    | 0.0       | 25.1     | 0.0      | 19.5          | 5.4      | 17.3           | 1.9          | 19.0     | 227.8      |
| 2019/20 prel.             | 764.3   | 712.1         | 52.3          | 32.3     | 3.2      | 73.6          | 29.2      | nr       | 133.6      | 103.6   | 0.0       | 24.3     | 0.0      | 19.5          | 5.2      | 15.2           | 1.5          | 18.5     | 252.3      |
| 2020/21 proj.             |         |               |               |          |          |               |           |          |            |         |           |          |          |               |          |                |              |          |            |
| May                       | 768.5   | 717.7         | 50.8          | 34.0     | 3.3      | 77.0          | 28.0      | nr       | 135.0      | 103.0   | 0.0       | 26.1     | 0.0      | 21.0          | 5.5      | 24.0           | 1.7          | 18.5     | 240.6      |
| <b>Coarse Grains</b>      |         |               |               |          |          |               |           |          |            |         |           |          |          |               |          |                |              |          |            |
| 2018/19                   | 1,396.4 | 1,018.5       | 377.9         | 26.2     | 33.4     | 35.0          | 44.5      | nr       | 264.5      | 43.2    | 12.0      | 6.6      | 5.7      | 59.2          | 104.3    | 10.9           | 12.4         | 13.3     | 347.2      |
| 2019/20 prel.             | 1,406.1 | 1,045.6       | 360.5         | 28.5     | 30.4     | 40.5          | 46.5      | nr       | 268.2      | 45.4    | 11.9      | 7.4      | 5.3      | 56.8          | 104.6    | 10.6           | 16.5         | 14.5     | 358.7      |
| 2020/21 proj.             |         |               |               |          |          |               |           |          |            |         |           |          |          |               |          |                |              |          |            |
| May                       | 1,481.4 | 1,060.9       | 420.5         | 30.3     | 33.6     | 39.4          | 49.8      | nr       | 267.4      | 44.8    | 12.0      | 7.5      | 5.7      | 56.7          | 109.4    | 12.7           | 14.6         | 15.8     | 361.2      |
| <b>Rice, Milled</b>       |         |               |               |          |          |               |           |          |            |         |           |          |          |               |          |                |              |          |            |
| 2018/19                   | 496.5   | 489.4         | 7.1           | 0.0      | 0.2      | 0.7           | 0.0       | nr       | 148.5      | 116.5   | 34.2      | 7.3      | 20.3     | 0.8           | 7.1      | 0.0            | 0.0          | 0.6      | 153.1      |
| 2019/20 prel.             | 493.8   | 487.9         | 5.9           | 0.0      | 0.2      | 0.7           | 0.0       | nr       | 146.7      | 118.0   | 33.5      | 7.2      | 18.0     | 0.8           | 7.1      | 0.0            | 0.0          | 0.6      | 155.0      |
| 2020/21 proj.             |         |               |               |          |          |               |           |          |            |         |           |          |          |               |          |                |              |          |            |
| May                       | 502.0   | 495.1         | 6.9           | 0.0      | 0.2      | 0.7           | 0.0       | nr       | 149.0      | 118.0   | 34.9      | 7.5      | 20.4     | 0.8           | 6.9      | 0.3            | 0.0          | 0.6      | 155.8      |
| <b>Total Grains</b>       |         |               |               |          |          |               |           |          |            |         |           |          |          |               |          |                |              |          |            |
| 2018/19                   | 2,623.4 | 2,187.1       | 436.3         | 58.4     | 36.6     | 107.4         | 69.6      | nr       | 544.4      | 259.6   | 46.2      | 39.0     | 26.0     | 79.5          | 116.9    | 28.3           | 14.3         | 32.9     | 728.1      |
| 2019/20 prel.             | 2,664.2 | 2,245.6       | 418.6         | 60.9     | 33.8     | 114.8         | 75.8      | nr       | 548.5      | 267.0   | 45.4      | 38.9     | 23.3     | 77.0          | 116.9    | 25.8           | 18.0         | 33.6     | 766.0      |
| 2020/21 proj.             |         |               |               |          |          |               |           |          |            |         |           |          |          |               |          |                |              |          |            |
| May                       | 2,751.9 | 2,273.7       | 478.1         | 64.3     | 37.1     | 117.1         | 77.9      | nr       | 551.4      | 265.8   | 46.9      | 41.1     | 26.1     | 78.5          | 121.8    | 37.0           | 16.3         | 34.9     | 757.6      |
| <b>Oilseeds</b>           |         |               |               |          |          |               |           |          |            |         |           |          |          |               |          |                |              |          |            |
| 2018/19                   | 599.7   | 468.9         | 130.7         | 27.7     | 1.3      | 18.7          | 22.7      | nr       | 60.0       | 35.5    | 14.1      | 3.8      | 1.0      | 61.0          | 123.9    | 2.9            | 2.0          | 3.4      | 91.0       |
| 2019/20 prel.             | 575.2   | 468.1         | 107.1         | 25.1     | 1.1      | 21.7          | 23.7      | nr       | 62.6       | 37.1    | 14.4      | 3.3      | 1.1      | 55.9          | 129.1    | 2.6            | 2.1          | 3.3      | 85.0       |
| 2020/21 proj.             |         |               |               |          |          |               |           |          |            |         |           |          |          |               |          |                |              |          |            |
| May                       | 605.9   | 482.7         | 123.2         | 26.1     | 1.2      | 22.3          | 24.5      | nr       | 61.9       | 36.7    | 14.6      | 3.4      | 1.1      | 59.2          | 135.7    | 3.7            | 2.1          | 3.1      | 87.1       |
| <b>Cotton</b>             |         |               |               |          |          |               |           |          |            |         |           |          |          |               |          |                |              |          |            |
| 2018/19                   | 118.7   | 100.3         | 18.4          | 0.0      | 1.7      | 0.0           | 0.0       | 1.7      | 27.8       | 25.8    | 0.0       | 7.6      | 0.0      | 1.1           | 13.0     | 2.2            | 0.2          | 3.8      | 15.4       |
| 2019/20 prel.             | 122.7   | 102.8         | 19.9          | 0.0      | 1.6      | 0.0           | 0.0       | 2.0      | 27.3       | 30.5    | 0.0       | 6.2      | 0.0      | 1.0           | 13.2     | 0.6            | 0.1          | 3.6      | 16.7       |
| 2020/21 proj.             |         |               |               |          |          |               |           |          |            |         |           |          |          |               |          |                |              |          |            |
| May                       | 119.0   | 99.5          | 19.5          | 0.0      | 1.2      | 0.0           | 0.0       | 2.0      | 26.5       | 28.5    | 0.0       | 6.3      | 0.0      | 1.0           | 12.0     | 1.7            | 0.2          | 3.7      | 16.4       |

1/ Includes wheat, coarse grains, and rice (milled) shown above.

**Table 02 Wheat Area, Yield, and Production**

| Country / Region                | Area<br>(Million hectares) |         |               | Yield<br>(Metric tons per hectare) |         |               | Production<br>(Million metric tons) |         |               | Change in Production |         |                |         |
|---------------------------------|----------------------------|---------|---------------|------------------------------------|---------|---------------|-------------------------------------|---------|---------------|----------------------|---------|----------------|---------|
|                                 | 2018/19                    | Prel.   | 2020/21 Proj. | 2018/19                            | Prel.   | 2020/21 Proj. | 2018/19                             | Prel.   | 2020/21 Proj. | From last month      |         | From last year |         |
|                                 |                            | 2019/20 | May           |                                    | 2019/20 | May           |                                     | 2019/20 | May           | MMT                  | Percent | MMT            | Percent |
| <b>World</b>                    | 215.21                     | 216.54  | 220.24        | 3.39                               | 3.53    | 3.49          | 730.54                              | 764.32  | 768.49        |                      |         | 4.17           | 0.55    |
| <b>United States</b>            | 16.03                      | 15.04   | 15.24         | 3.20                               | 3.47    | 3.33          | 51.31                               | 52.26   | 50.78         |                      |         | -1.47          | -2.82   |
| <b>Total Foreign</b>            | 199.18                     | 201.50  | 205.00        | 3.41                               | 3.53    | 3.50          | 679.23                              | 712.06  | 717.71        |                      |         | 5.65           | 0.79    |
| <b>European Union - 28</b>      | 25.52                      | 26.08   | 25.25         | 5.36                               | 5.94    | 5.66          | 136.69                              | 154.78  | 143.00        |                      |         | -11.78         | -7.61   |
| <b>China</b>                    | 24.27                      | 23.73   | 24.00         | 5.42                               | 5.63    | 5.63          | 131.43                              | 133.59  | 135.00        |                      |         | 1.41           | 1.06    |
| <b>South Asia</b>               |                            |         |               |                                    |         |               |                                     |         |               |                      |         |                |         |
| India                           | 29.65                      | 29.32   | 31.05         | 3.37                               | 3.53    | 3.32          | 99.87                               | 103.60  | 103.00        |                      |         | -0.60          | -0.58   |
| Pakistan                        | 8.80                       | 8.80    | 9.13          | 2.85                               | 2.76    | 2.86          | 25.10                               | 24.30   | 26.10         |                      |         | 1.80           | 7.41    |
| Afghanistan                     | 2.00                       | 2.30    | 2.33          | 1.80                               | 2.17    | 2.15          | 3.60                                | 5.00    | 5.01          |                      |         | 0.01           | 0.20    |
| Nepal                           | 0.76                       | 0.76    | 0.76          | 2.55                               | 2.55    | 2.55          | 1.94                                | 1.94    | 1.94          |                      |         | 0.00           | 0.00    |
| <b>Former Soviet Union - 12</b> |                            |         |               |                                    |         |               |                                     |         |               |                      |         |                |         |
| Russia                          | 26.34                      | 27.31   | 27.50         | 2.72                               | 2.70    | 2.80          | 71.69                               | 73.61   | 77.00         |                      |         | 3.39           | 4.61    |
| Russia Winter                   | 14.91                      | 15.41   | 15.60         | 3.52                               | 3.41    | 3.65          | 52.47                               | 52.54   | 57.00         |                      |         | 4.46           | 8.49    |
| Russia Spring                   | 11.44                      | 11.91   | 11.90         | 1.68                               | 1.77    | 1.68          | 19.22                               | 21.07   | 20.00         |                      |         | -1.07          | -5.08   |
| Ukraine                         | 6.72                       | 7.02    | 6.75          | 3.73                               | 4.16    | 4.15          | 25.06                               | 29.17   | 28.00         |                      |         | -1.17          | -4.01   |
| Kazakhstan                      | 11.35                      | 11.34   | 11.25         | 1.23                               | 1.01    | 1.20          | 13.95                               | 11.45   | 13.50         |                      |         | 2.05           | 17.88   |
| Uzbekistan                      | 1.40                       | 1.40    | 1.40          | 4.29                               | 4.86    | 4.57          | 6.00                                | 6.80    | 6.40          |                      |         | -0.40          | -5.88   |
| Belarus                         | 0.66                       | 0.75    | 0.70          | 2.75                               | 3.83    | 3.29          | 1.82                                | 2.88    | 2.30          |                      |         | -0.58          | -20.00  |
| <b>Canada</b>                   | 9.88                       | 9.66    | 9.80          | 3.26                               | 3.35    | 3.47          | 32.20                               | 32.35   | 34.00         |                      |         | 1.65           | 5.11    |
| <b>South America</b>            |                            |         |               |                                    |         |               |                                     |         |               |                      |         |                |         |
| Argentina                       | 6.05                       | 6.50    | 6.50          | 3.22                               | 3.00    | 3.23          | 19.50                               | 19.50   | 21.00         |                      |         | 1.50           | 7.69    |
| Brazil                          | 2.04                       | 2.04    | 2.10          | 2.66                               | 2.55    | 2.62          | 5.43                                | 5.20    | 5.50          |                      |         | 0.30           | 5.77    |
| Uruguay                         | 0.20                       | 0.23    | 0.22          | 3.68                               | 3.30    | 3.36          | 0.73                                | 0.76    | 0.74          |                      |         | -0.02          | -2.63   |
| <b>Australia</b>                | 10.16                      | 10.10   | 12.10         | 1.70                               | 1.50    | 1.98          | 17.30                               | 15.20   | 24.00         |                      |         | 8.80           | 57.89   |
| <b>Africa</b>                   |                            |         |               |                                    |         |               |                                     |         |               |                      |         |                |         |
| Egypt                           | 1.32                       | 1.37    | 1.39          | 6.40                               | 6.40    | 6.40          | 8.45                                | 8.77    | 8.90          |                      |         | 0.13           | 1.48    |
| Morocco                         | 2.85                       | 2.75    | 2.70          | 2.58                               | 1.46    | 1.30          | 7.34                                | 4.03    | 3.50          |                      |         | -0.53          | -13.04  |
| Ethiopia                        | 1.75                       | 1.80    | 1.85          | 2.42                               | 2.74    | 2.72          | 4.24                                | 4.93    | 5.03          |                      |         | 0.10           | 2.03    |
| Algeria                         | 2.07                       | 2.07    | 2.08          | 1.90                               | 1.90    | 1.81          | 3.94                                | 3.95    | 3.75          |                      |         | -0.20          | -5.06   |
| <b>Middle East</b>              |                            |         |               |                                    |         |               |                                     |         |               |                      |         |                |         |
| Turkey                          | 7.62                       | 7.00    | 7.00          | 2.50                               | 2.64    | 2.64          | 19.00                               | 18.50   | 18.50         |                      |         | 0.00           | 0.00    |
| Iran                            | 6.70                       | 6.70    | 6.70          | 2.16                               | 2.51    | 2.50          | 14.50                               | 16.80   | 16.75         |                      |         | -0.05          | -0.30   |
| Iraq                            | 1.70                       | 2.40    | 2.40          | 1.76                               | 2.00    | 2.00          | 3.00                                | 4.80    | 4.80          |                      |         | 0.00           | 0.00    |
| Syria                           | 1.10                       | 1.60    | 1.60          | 1.82                               | 3.00    | 2.81          | 2.00                                | 4.80    | 4.50          |                      |         | -0.30          | -6.25   |
| <b>Mexico</b>                   | 0.54                       | 0.59    | 0.61          | 5.56                               | 5.42    | 5.45          | 3.00                                | 3.22    | 3.30          |                      |         | 0.09           | 2.64    |
| <b>Serbia</b>                   | 0.65                       | 0.57    | 0.57          | 4.92                               | 4.39    | 4.74          | 3.20                                | 2.50    | 2.70          |                      |         | 0.20           | 8.00    |
| <b>Others</b>                   | 7.08                       | 7.32    | 7.27          | 2.58                               | 2.69    | 2.68          | 18.28                               | 19.65   | 19.49         |                      |         | -0.16          | -0.82   |

**Table 03 Total Coarse Grain Area, Yield, and Production**

| Country / Region                | Area<br>(Million hectares) |         |               | Yield<br>(Metric tons per hectare) |         |               | Production<br>(Million metric tons) |          |               | Change in Production |         |                |         |
|---------------------------------|----------------------------|---------|---------------|------------------------------------|---------|---------------|-------------------------------------|----------|---------------|----------------------|---------|----------------|---------|
|                                 | 2018/19                    | Prel.   | 2020/21 Proj. | 2018/19                            | Prel.   | 2020/21 Proj. | 2018/19                             | Prel.    | 2020/21 Proj. | From last month      |         | From last year |         |
|                                 |                            | 2019/20 | May           |                                    | 2019/20 | May           |                                     | 2019/20  | May           | MMT                  | Percent | MMT            | Percent |
| <b>World</b>                    | 329.71                     | 331.19  | 337.67        | 4.24                               | 4.25    | 4.39          | 1,396.42                            | 1,406.08 | 1,481.45      |                      |         | 75.36          | 5.36    |
| <b>United States</b>            | 36.20                      | 36.18   | 39.92         | 10.44                              | 9.96    | 10.53         | 377.91                              | 360.45   | 420.50        |                      |         | 60.05          | 16.66   |
| <b>Total Foreign</b>            | 293.51                     | 295.01  | 297.75        | 3.47                               | 3.54    | 3.56          | 1,018.52                            | 1,045.63 | 1,060.94      |                      |         | 15.32          | 1.46    |
| <b>China</b>                    | 44.48                      | 43.72   | 44.42         | 5.95                               | 6.14    | 6.02          | 264.51                              | 268.20   | 267.38        |                      |         | -0.82          | -0.31   |
| <b>European Union</b>           | 29.25                      | 30.17   | 30.22         | 5.07                               | 5.34    | 5.40          | 148.27                              | 161.06   | 163.09        |                      |         | 2.03           | 1.26    |
| <b>South America</b>            |                            |         |               |                                    |         |               |                                     |          |               |                      |         |                |         |
| Brazil                          | 18.72                      | 19.47   | 19.98         | 5.57                               | 5.37    | 5.48          | 104.33                              | 104.57   | 109.41        |                      |         | 4.83           | 4.62    |
| Argentina                       | 8.22                       | 7.98    | 7.90          | 7.20                               | 7.12    | 7.18          | 59.22                               | 56.75    | 56.70         |                      |         | -0.05          | -0.09   |
| <b>Former Soviet Union - 12</b> |                            |         |               |                                    |         |               |                                     |          |               |                      |         |                |         |
| Russia                          | 14.03                      | 14.51   | 14.40         | 2.50                               | 2.79    | 2.74          | 35.00                               | 40.50    | 39.40         |                      |         | -1.10          | -2.70   |
| Ukraine                         | 7.58                       | 8.22    | 8.54          | 5.87                               | 5.67    | 5.84          | 44.50                               | 46.55    | 49.85         |                      |         | 3.30           | 7.09    |
| Kazakhstan                      | 2.97                       | 3.45    | 3.25          | 1.76                               | 1.47    | 1.75          | 5.23                                | 5.06     | 5.68          |                      |         | 0.62           | 12.24   |
| Belarus                         | 1.01                       | 0.90    | 0.93          | 2.91                               | 3.78    | 3.30          | 2.93                                | 3.40     | 3.07          |                      |         | -0.33          | -9.71   |
| <b>Africa</b>                   |                            |         |               |                                    |         |               |                                     |          |               |                      |         |                |         |
| Nigeria                         | 14.30                      | 14.40   | 14.40         | 1.39                               | 1.37    | 1.38          | 19.84                               | 19.67    | 19.90         |                      |         | 0.24           | 1.20    |
| South Africa                    | 2.81                       | 3.22    | 2.92          | 4.43                               | 5.13    | 5.01          | 12.42                               | 16.50    | 14.63         |                      |         | -1.87          | -11.33  |
| Tanzania                        | 5.22                       | 5.35    | 5.35          | 1.36                               | 1.37    | 1.34          | 7.12                                | 7.35     | 7.15          |                      |         | -0.20          | -2.72   |
| Burkina                         | 4.32                       | 3.90    | 3.90          | 1.12                               | 1.18    | 1.13          | 4.82                                | 4.59     | 4.40          |                      |         | -0.19          | -4.03   |
| Ethiopia                        | 5.64                       | 5.60    | 5.60          | 2.92                               | 3.05    | 3.07          | 16.47                               | 17.10    | 17.20         |                      |         | 0.10           | 0.58    |
| Egypt                           | 1.07                       | 1.02    | 1.02          | 7.14                               | 7.09    | 7.09          | 7.66                                | 7.26     | 7.26          |                      |         | 0.00           | 0.00    |
| Mali                            | 4.63                       | 4.70    | 4.70          | 1.50                               | 1.48    | 1.40          | 6.94                                | 6.94     | 6.60          |                      |         | -0.34          | -4.83   |
| <b>India</b>                    | 22.23                      | 22.43   | 23.40         | 1.94                               | 2.03    | 1.91          | 43.21                               | 45.43    | 44.75         |                      |         | -0.68          | -1.50   |
| <b>Southeast Asia</b>           |                            |         |               |                                    |         |               |                                     |          |               |                      |         |                |         |
| Indonesia                       | 3.70                       | 3.80    | 3.70          | 3.24                               | 3.13    | 3.24          | 12.00                               | 11.90    | 12.00         |                      |         | 0.10           | 0.84    |
| Philippines                     | 2.48                       | 2.55    | 2.60          | 3.07                               | 3.18    | 3.15          | 7.61                                | 8.10     | 8.20          |                      |         | 0.10           | 1.23    |
| Vietnam                         | 0.98                       | 0.94    | 0.95          | 4.74                               | 4.74    | 4.74          | 4.65                                | 4.46     | 4.50          |                      |         | 0.04           | 0.90    |
| Thailand                        | 1.32                       | 1.24    | 1.29          | 4.29                               | 4.23    | 4.39          | 5.68                                | 5.25     | 5.65          |                      |         | 0.40           | 7.62    |
| <b>Mexico</b>                   | 8.95                       | 8.53    | 9.06          | 3.73                               | 3.56    | 3.71          | 33.40                               | 30.41    | 33.60         |                      |         | 3.19           | 10.49   |
| <b>Canada</b>                   | 5.00                       | 5.53    | 5.56          | 5.24                               | 5.16    | 5.45          | 26.20                               | 28.51    | 30.30         |                      |         | 1.79           | 6.27    |
| <b>Australia</b>                | 5.03                       | 5.01    | 5.44          | 2.17                               | 2.11    | 2.34          | 10.93                               | 10.56    | 12.71         |                      |         | 2.15           | 20.31   |
| <b>Middle East</b>              |                            |         |               |                                    |         |               |                                     |          |               |                      |         |                |         |
| Turkey                          | 4.34                       | 4.53    | 4.61          | 3.05                               | 3.19    | 3.43          | 13.25                               | 14.45    | 15.81         |                      |         | 1.36           | 9.41    |
| Iran                            | 1.73                       | 1.91    | 1.91          | 2.32                               | 2.63    | 2.71          | 4.02                                | 5.02     | 5.17          |                      |         | 0.15           | 2.99    |
| <b>Others</b>                   | 73.49                      | 71.95   | 71.71         | 1.61                               | 1.61    | 1.63          | 118.31                              | 116.07   | 116.55        |                      |         | 0.49           | 0.42    |

World and Selected Countries and Regions; Coarse Grain includes: Barley, Corn, Millet, Mixed Grains, Oats, Rye and Sorghum

**Table 04 Corn Area, Yield, and Production**

| Country / Region                | Area<br>(Million hectares) |                  |                      | Yield<br>(Metric tons per hectare) |                  |                      | Production<br>(Million metric tons) |                  |                      | Change in Production |         |                |         |
|---------------------------------|----------------------------|------------------|----------------------|------------------------------------|------------------|----------------------|-------------------------------------|------------------|----------------------|----------------------|---------|----------------|---------|
|                                 | 2018/19                    | Prel.<br>2019/20 | 2020/21 Proj.<br>May | 2018/19                            | Prel.<br>2019/20 | 2020/21 Proj.<br>May | 2018/19                             | Prel.<br>2019/20 | 2020/21 Proj.<br>May | From last month      |         | From last year |         |
|                                 |                            |                  |                      |                                    |                  |                      |                                     |                  |                      | MMT                  | Percent | MMT            | Percent |
| <b>World</b>                    | 191.82                     | 192.13           | 197.65               | 5.86                               | 5.80             | 6.00                 | 1,123.41                            | 1,114.75         | 1,186.86             |                      |         | 72.11          | 6.47    |
| <b>United States</b>            | 32.89                      | 32.95            | 36.26                | 11.07                              | 10.53            | 11.20                | 364.26                              | 347.05           | 406.29               |                      |         | 59.24          | 17.07   |
| <b>Total Foreign</b>            | 158.93                     | 159.18           | 161.39               | 4.78                               | 4.82             | 4.84                 | 759.15                              | 767.71           | 780.57               |                      |         | 12.86          | 1.68    |
| <b>China</b>                    | 42.13                      | 41.28            | 42.00                | 6.11                               | 6.32             | 6.19                 | 257.33                              | 260.77           | 260.00               |                      |         | -0.77          | -0.30   |
| <b>South America</b>            |                            |                  |                      |                                    |                  |                      |                                     |                  |                      |                      |         |                |         |
| Brazil                          | 17.50                      | 18.20            | 18.70                | 5.77                               | 5.55             | 5.67                 | 101.00                              | 101.00           | 106.00               |                      |         | 5.00           | 4.95    |
| Argentina                       | 6.10                       | 6.20             | 6.20                 | 8.36                               | 8.06             | 8.06                 | 51.00                               | 50.00            | 50.00                |                      |         | 0.00           | 0.00    |
| Bolivia                         | 0.40                       | 0.35             | 0.35                 | 2.65                               | 2.80             | 2.83                 | 1.05                                | 0.98             | 0.99                 |                      |         | 0.01           | 1.02    |
| <b>European Union</b>           | 8.28                       | 8.88             | 9.00                 | 7.77                               | 7.50             | 7.59                 | 64.36                               | 66.63            | 68.30                |                      |         | 1.67           | 2.50    |
| <b>Africa</b>                   |                            |                  |                      |                                    |                  |                      |                                     |                  |                      |                      |         |                |         |
| South Africa                    | 2.60                       | 3.00             | 2.70                 | 4.55                               | 5.33             | 5.19                 | 11.82                               | 16.00            | 14.00                |                      |         | -2.00          | -12.50  |
| Nigeria                         | 6.50                       | 6.50             | 6.50                 | 1.69                               | 1.69             | 1.69                 | 11.00                               | 11.00            | 11.00                |                      |         | 0.00           | 0.00    |
| Ethiopia                        | 2.30                       | 2.30             | 2.30                 | 3.63                               | 3.70             | 3.74                 | 8.35                                | 8.50             | 8.60                 |                      |         | 0.10           | 1.18    |
| Egypt                           | 0.85                       | 0.80             | 0.80                 | 8.00                               | 8.00             | 8.00                 | 6.80                                | 6.40             | 6.40                 |                      |         | 0.00           | 0.00    |
| Tanzania                        | 4.10                       | 4.20             | 4.20                 | 1.46                               | 1.48             | 1.43                 | 5.99                                | 6.20             | 6.00                 |                      |         | -0.20          | -3.23   |
| Malawi                          | 1.69                       | 1.70             | 1.70                 | 1.60                               | 2.00             | 2.00                 | 2.70                                | 3.39             | 3.40                 |                      |         | 0.01           | 0.24    |
| Zambia                          | 1.09                       | 0.84             | 1.00                 | 2.21                               | 2.38             | 2.70                 | 2.40                                | 2.00             | 2.70                 |                      |         | 0.70           | 34.73   |
| Kenya                           | 2.14                       | 2.00             | 2.00                 | 1.87                               | 1.90             | 1.70                 | 4.01                                | 3.80             | 3.40                 |                      |         | -0.40          | -10.53  |
| Uganda                          | 1.13                       | 1.15             | 1.15                 | 2.30                               | 2.24             | 2.43                 | 2.60                                | 2.58             | 2.80                 |                      |         | 0.23           | 8.74    |
| Zimbabwe                        | 1.72                       | 1.62             | 1.50                 | 0.99                               | 0.48             | 0.57                 | 1.70                                | 0.78             | 0.85                 |                      |         | 0.07           | 9.40    |
| <b>Former Soviet Union - 12</b> |                            |                  |                      |                                    |                  |                      |                                     |                  |                      |                      |         |                |         |
| Ukraine                         | 4.57                       | 4.99             | 5.35                 | 7.84                               | 7.19             | 7.29                 | 35.81                               | 35.89            | 39.00                |                      |         | 3.11           | 8.67    |
| Russia                          | 2.37                       | 2.50             | 2.60                 | 4.81                               | 5.70             | 5.58                 | 11.42                               | 14.28            | 14.50                |                      |         | 0.23           | 1.58    |
| <b>South Asia</b>               |                            |                  |                      |                                    |                  |                      |                                     |                  |                      |                      |         |                |         |
| India                           | 9.03                       | 9.10             | 9.00                 | 3.07                               | 3.13             | 3.06                 | 27.72                               | 28.50            | 27.50                |                      |         | -1.00          | -3.51   |
| Pakistan                        | 1.32                       | 1.33             | 1.39                 | 4.62                               | 5.19             | 5.05                 | 6.10                                | 6.90             | 7.00                 |                      |         | 0.10           | 1.45    |
| Nepal                           | 0.90                       | 0.90             | 0.90                 | 2.83                               | 2.83             | 2.83                 | 2.55                                | 2.55             | 2.55                 |                      |         | 0.00           | 0.00    |
| <b>Southeast Asia</b>           |                            |                  |                      |                                    |                  |                      |                                     |                  |                      |                      |         |                |         |
| Indonesia                       | 3.70                       | 3.80             | 3.70                 | 3.24                               | 3.13             | 3.24                 | 12.00                               | 11.90            | 12.00                |                      |         | 0.10           | 0.84    |
| Philippines                     | 2.48                       | 2.55             | 2.60                 | 3.07                               | 3.18             | 3.15                 | 7.61                                | 8.10             | 8.20                 |                      |         | 0.10           | 1.23    |
| Vietnam                         | 0.98                       | 0.94             | 0.95                 | 4.74                               | 4.74             | 4.74                 | 4.65                                | 4.46             | 4.50                 |                      |         | 0.04           | 0.90    |
| Thailand                        | 1.30                       | 1.22             | 1.26                 | 4.34                               | 4.28             | 4.44                 | 5.63                                | 5.20             | 5.60                 |                      |         | 0.40           | 7.69    |
| <b>Mexico</b>                   | 7.20                       | 6.80             | 7.30                 | 3.83                               | 3.68             | 3.84                 | 27.60                               | 25.00            | 28.00                |                      |         | 3.00           | 12.00   |
| <b>Canada</b>                   | 1.43                       | 1.45             | 1.50                 | 9.70                               | 9.26             | 10.40                | 13.89                               | 13.38            | 15.60                |                      |         | 2.23           | 16.64   |
| <b>Turkey</b>                   | 0.53                       | 0.52             | 0.60                 | 10.75                              | 11.54            | 11.42                | 5.70                                | 6.00             | 6.85                 |                      |         | 0.85           | 14.17   |
| <b>Others</b>                   | 24.60                      | 24.06            | 24.15                | 2.70                               | 2.72             | 2.68                 | 66.38                               | 65.53            | 64.83                |                      |         | -0.70          | -1.07   |

World and Selected Countries and Regions

**Table 05 Barley Area, Yield, and Production**

| Country / Region                | Area<br>(Million hectares) |                  |                      | Yield<br>(Metric tons per hectare) |                  |                      | Production<br>(Million metric tons) |                  |                      | Change in Production |         |                |         |
|---------------------------------|----------------------------|------------------|----------------------|------------------------------------|------------------|----------------------|-------------------------------------|------------------|----------------------|----------------------|---------|----------------|---------|
|                                 | 2018/19                    | Prel.<br>2019/20 | 2020/21 Proj.<br>May | 2018/19                            | Prel.<br>2019/20 | 2020/21 Proj.<br>May | 2018/19                             | Prel.<br>2019/20 | 2020/21 Proj.<br>May | From last month      |         | From last year |         |
|                                 |                            |                  |                      |                                    |                  |                      |                                     |                  |                      | MMT                  | Percent | MMT            | Percent |
| <b>World</b>                    | 48.10                      | 51.56            | 50.36                | 2.89                               | 3.03             | 3.06                 | 138.79                              | 156.08           | 154.18               |                      |         | -1.90          | -1.21   |
| <b>United States</b>            | 0.80                       | 0.88             | 0.97                 | 4.17                               | 4.18             | 4.08                 | 3.34                                | 3.69             | 3.96                 |                      |         | 0.27           | 7.34    |
| <b>Total Foreign</b>            | 47.30                      | 50.68            | 49.38                | 2.86                               | 3.01             | 3.04                 | 135.45                              | 152.39           | 150.22               |                      |         | -2.17          | -1.42   |
| <b>European Union</b>           | 12.32                      | 12.38            | 12.30                | 4.54                               | 5.09             | 5.10                 | 55.98                               | 63.00            | 62.75                |                      |         | -0.25          | -0.40   |
| <b>Former Soviet Union - 12</b> |                            |                  |                      |                                    |                  |                      |                                     |                  |                      |                      |         |                |         |
| Russia                          | 7.78                       | 8.40             | 7.80                 | 2.15                               | 2.37             | 2.24                 | 16.74                               | 19.94            | 17.50                |                      |         | -2.44          | -12.23  |
| Ukraine                         | 2.57                       | 2.78             | 2.75                 | 2.96                               | 3.42             | 3.53                 | 7.60                                | 9.53             | 9.70                 |                      |         | 0.17           | 1.81    |
| Kazakhstan                      | 2.52                       | 2.98             | 2.80                 | 1.58                               | 1.29             | 1.57                 | 3.97                                | 3.83             | 4.40                 |                      |         | 0.57           | 14.88   |
| Belarus                         | 0.43                       | 0.40             | 0.38                 | 2.20                               | 3.50             | 2.76                 | 0.94                                | 1.40             | 1.05                 |                      |         | -0.35          | -25.00  |
| Azerbaijan                      | 0.34                       | 0.32             | 0.31                 | 2.72                               | 2.72             | 2.74                 | 0.92                                | 0.87             | 0.85                 |                      |         | -0.02          | -2.30   |
| <b>Canada</b>                   | 2.40                       | 2.73             | 2.60                 | 3.50                               | 3.81             | 3.73                 | 8.38                                | 10.38            | 9.70                 |                      |         | -0.68          | -6.58   |
| <b>Australia</b>                | 3.72                       | 3.95             | 4.10                 | 2.23                               | 2.23             | 2.37                 | 8.31                                | 8.80             | 9.70                 |                      |         | 0.90           | 10.23   |
| <b>Middle East</b>              |                            |                  |                      |                                    |                  |                      |                                     |                  |                      |                      |         |                |         |
| Turkey                          | 3.60                       | 3.80             | 3.80                 | 1.94                               | 2.08             | 2.21                 | 7.00                                | 7.90             | 8.40                 |                      |         | 0.50           | 6.33    |
| Iran                            | 1.55                       | 1.70             | 1.70                 | 1.81                               | 2.12             | 2.21                 | 2.80                                | 3.60             | 3.75                 |                      |         | 0.15           | 4.17    |
| Iraq                            | 0.60                       | 1.20             | 1.20                 | 1.30                               | 1.33             | 1.29                 | 0.78                                | 1.60             | 1.55                 |                      |         | -0.05          | -3.13   |
| Syria                           | 0.80                       | 1.50             | 1.50                 | 0.50                               | 1.33             | 1.27                 | 0.40                                | 2.00             | 1.90                 |                      |         | -0.10          | -5.00   |
| <b>Africa</b>                   |                            |                  |                      |                                    |                  |                      |                                     |                  |                      |                      |         |                |         |
| Ethiopia                        | 1.00                       | 1.00             | 1.00                 | 2.20                               | 2.30             | 2.30                 | 2.20                                | 2.30             | 2.30                 |                      |         | 0.00           | 0.00    |
| Morocco                         | 1.60                       | 1.45             | 1.10                 | 1.82                               | 0.80             | 0.68                 | 2.91                                | 1.16             | 0.75                 |                      |         | -0.41          | -35.40  |
| Algeria                         | 1.03                       | 1.03             | 1.03                 | 1.90                               | 1.95             | 1.80                 | 1.95                                | 2.00             | 1.85                 |                      |         | -0.16          | -7.75   |
| Tunisia                         | 0.31                       | 0.47             | 0.42                 | 0.99                               | 1.94             | 1.60                 | 0.31                                | 0.91             | 0.66                 |                      |         | -0.25          | -27.19  |
| South Africa                    | 0.12                       | 0.13             | 0.13                 | 3.55                               | 2.61             | 3.62                 | 0.42                                | 0.35             | 0.47                 |                      |         | 0.13           | 36.23   |
| <b>South America</b>            |                            |                  |                      |                                    |                  |                      |                                     |                  |                      |                      |         |                |         |
| Argentina                       | 1.20                       | 1.00             | 0.90                 | 4.22                               | 3.80             | 4.11                 | 5.06                                | 3.80             | 3.70                 |                      |         | -0.10          | -2.63   |
| Uruguay                         | 0.17                       | 0.16             | 0.17                 | 3.87                               | 3.75             | 3.70                 | 0.64                                | 0.60             | 0.61                 |                      |         | 0.01           | 1.67    |
| Brazil                          | 0.11                       | 0.12             | 0.12                 | 3.16                               | 3.61             | 3.21                 | 0.35                                | 0.43             | 0.39                 |                      |         | -0.04          | -10.26  |
| <b>India</b>                    | 0.66                       | 0.58             | 0.70                 | 2.69                               | 2.84             | 2.64                 | 1.78                                | 1.63             | 1.85                 |                      |         | 0.22           | 13.29   |
| <b>China</b>                    | 0.26                       | 0.26             | 0.26                 | 3.64                               | 3.46             | 3.46                 | 0.96                                | 0.90             | 0.90                 |                      |         | 0.00           | 0.00    |
| <b>Mexico</b>                   | 0.35                       | 0.36             | 0.36                 | 2.82                               | 2.81             | 2.80                 | 1.00                                | 1.01             | 1.00                 |                      |         | -0.01          | -0.99   |
| <b>Afghanistan</b>              | 0.08                       | 0.18             | 0.17                 | 0.68                               | 1.39             | 1.41                 | 0.06                                | 0.25             | 0.24                 |                      |         | -0.01          | -4.00   |
| <b>Others</b>                   | 1.79                       | 1.80             | 1.80                 | 2.24                               | 2.33             | 2.36                 | 4.00                                | 4.20             | 4.26                 |                      |         | 0.06           | 1.38    |

World and Selected Countries and Regions



**Table 06 Oats Area, Yield, and Production**

| Country / Region                | Area<br>(Million hectares) |         |               | Yield<br>(Metric tons per hectare) |         |               | Production<br>(Million metric tons) |         |               | Change in Production |         |                |         |
|---------------------------------|----------------------------|---------|---------------|------------------------------------|---------|---------------|-------------------------------------|---------|---------------|----------------------|---------|----------------|---------|
|                                 | 2018/19                    | Prel.   | 2020/21 Proj. | 2018/19                            | Prel.   | 2020/21 Proj. | 2018/19                             | Prel.   | 2020/21 Proj. | From last month      |         | From last year |         |
|                                 |                            | 2019/20 | May           |                                    | 2019/20 | May           |                                     | 2019/20 | May           | MMT                  | Percent | MMT            | Percent |
| <b>World</b>                    | 9.73                       | 9.30    | 9.93          | 2.26                               | 2.42    | 2.45          | 22.00                               | 22.48   | 24.36         |                      |         | 1.88           | 8.35    |
| <b>United States</b>            | 0.35                       | 0.33    | 0.45          | 2.33                               | 2.31    | 2.38          | 0.82                                | 0.77    | 1.06          |                      |         | 0.29           | 37.48   |
| <b>Total Foreign</b>            | 9.38                       | 8.96    | 9.48          | 2.26                               | 2.42    | 2.46          | 21.18                               | 21.71   | 23.30         |                      |         | 1.59           | 7.32    |
| <b>European Union</b>           | 2.73                       | 2.51    | 2.60          | 2.86                               | 3.09    | 3.12          | 7.79                                | 7.78    | 8.10          |                      |         | 0.32           | 4.17    |
| <b>Former Soviet Union - 12</b> |                            |         |               |                                    |         |               |                                     |         |               |                      |         |                |         |
| Russia                          | 2.73                       | 2.43    | 2.70          | 1.73                               | 1.82    | 1.85          | 4.72                                | 4.42    | 5.00          |                      |         | 0.58           | 13.12   |
| Ukraine                         | 0.20                       | 0.18    | 0.18          | 2.14                               | 2.32    | 2.50          | 0.42                                | 0.43    | 0.45          |                      |         | 0.02           | 5.39    |
| Belarus                         | 0.15                       | 0.15    | 0.15          | 2.26                               | 3.00    | 2.47          | 0.34                                | 0.45    | 0.37          |                      |         | -0.08          | -17.78  |
| Kazakhstan                      | 0.24                       | 0.24    | 0.23          | 1.43                               | 1.10    | 1.33          | 0.34                                | 0.27    | 0.30          |                      |         | 0.03           | 12.36   |
| <b>Canada</b>                   | 1.01                       | 1.16    | 1.26          | 3.42                               | 3.58    | 3.49          | 3.44                                | 4.16    | 4.40          |                      |         | 0.24           | 5.85    |
| <b>South America</b>            |                            |         |               |                                    |         |               |                                     |         |               |                      |         |                |         |
| Argentina                       | 0.24                       | 0.14    | 0.20          | 2.40                               | 2.31    | 2.50          | 0.57                                | 0.33    | 0.50          |                      |         | 0.17           | 51.52   |
| Brazil                          | 0.38                       | 0.40    | 0.40          | 2.11                               | 2.21    | 2.28          | 0.80                                | 0.88    | 0.91          |                      |         | 0.03           | 3.53    |
| Chile                           | 0.08                       | 0.08    | 0.08          | 5.13                               | 5.50    | 5.61          | 0.39                                | 0.44    | 0.46          |                      |         | 0.02           | 4.55    |
| Uruguay                         | 0.03                       | 0.01    | 0.02          | 2.04                               | 1.86    | 2.00          | 0.05                                | 0.03    | 0.04          |                      |         | 0.01           | 53.85   |
| <b>Oceania</b>                  |                            |         |               |                                    |         |               |                                     |         |               |                      |         |                |         |
| Australia                       | 0.68                       | 0.68    | 0.70          | 1.31                               | 1.39    | 1.64          | 0.89                                | 0.94    | 1.15          |                      |         | 0.22           | 22.99   |
| New Zealand                     | 0.01                       | 0.01    | 0.01          | 5.00                               | 5.50    | 5.50          | 0.03                                | 0.03    | 0.03          |                      |         | 0.00           | 0.00    |
| <b>China</b>                    | 0.50                       | 0.53    | 0.53          | 1.15                               | 1.19    | 1.19          | 0.58                                | 0.63    | 0.63          |                      |         | 0.00           | 0.00    |
| <b>Africa</b>                   |                            |         |               |                                    |         |               |                                     |         |               |                      |         |                |         |
| Algeria                         | 0.09                       | 0.09    | 0.09          | 1.29                               | 1.29    | 1.29          | 0.11                                | 0.11    | 0.11          |                      |         | 0.00           | 0.00    |
| Morocco                         | 0.05                       | 0.05    | 0.04          | 1.40                               | 0.89    | 0.88          | 0.06                                | 0.04    | 0.04          |                      |         | -0.01          | -12.50  |
| South Africa                    | 0.02                       | 0.02    | 0.02          | 1.65                               | 0.76    | 1.50          | 0.03                                | 0.02    | 0.03          |                      |         | 0.01           | 87.50   |
| <b>Other Europe</b>             |                            |         |               |                                    |         |               |                                     |         |               |                      |         |                |         |
| Norway                          | 0.07                       | 0.07    | 0.07          | 2.09                               | 4.29    | 4.29          | 0.14                                | 0.30    | 0.30          |                      |         | 0.00           | 0.00    |
| Serbia                          | 0.03                       | 0.03    | 0.03          | 2.17                               | 2.17    | 2.17          | 0.07                                | 0.07    | 0.07          |                      |         | 0.00           | 0.00    |
| Albania                         | 0.01                       | 0.01    | 0.01          | 2.08                               | 2.14    | 2.14          | 0.03                                | 0.03    | 0.03          |                      |         | 0.00           | 0.00    |
| Bosnia and Herzegovina          | 0.01                       | 0.01    | 0.01          | 2.79                               | 1.93    | 2.56          | 0.04                                | 0.03    | 0.02          |                      |         | 0.00           | -14.81  |
| <b>Turkey</b>                   | 0.10                       | 0.10    | 0.10          | 2.30                               | 2.30    | 2.40          | 0.23                                | 0.23    | 0.24          |                      |         | 0.01           | 4.35    |
| <b>Mexico</b>                   | 0.05                       | 0.05    | 0.05          | 2.06                               | 1.98    | 2.00          | 0.10                                | 0.10    | 0.10          |                      |         | 0.00           | 1.01    |
| <b>Others</b>                   | 0.02                       | 0.01    | 0.01          | 2.00                               | 1.86    | 1.86          | 0.03                                | 0.03    | 0.03          |                      |         | 0.00           | 0.00    |

World and Selected Countries and Regions

**Table 07 Rye Area, Yield, and Production**

| Country / Region                | Area<br>(Million hectares) |         |               | Yield<br>(Metric tons per hectare) |         |               | Production<br>(Million metric tons) |         |               | Change in Production |         |                |         |
|---------------------------------|----------------------------|---------|---------------|------------------------------------|---------|---------------|-------------------------------------|---------|---------------|----------------------|---------|----------------|---------|
|                                 | 2018/19                    | Prel.   | 2020/21 Proj. | 2018/19                            | Prel.   | 2020/21 Proj. | 2018/19                             | Prel.   | 2020/21 Proj. | From last month      |         | From last year |         |
|                                 |                            | 2019/20 | May           |                                    | 2019/20 | May           |                                     | 2019/20 | May           | MMT                  | Percent | MMT            | Percent |
| <b>World</b>                    | 3.74                       | 3.85    | 4.09          | 2.68                               | 3.12    | 3.12          | 10.01                               | 12.03   | 12.78         |                      |         | 0.75           | 6.24    |
| <b>United States</b>            | 0.11                       | 0.13    | 0.14          | 1.95                               | 2.16    | 1.90          | 0.21                                | 0.27    | 0.27          |                      |         | 0.00           | 0.00    |
| <b>Total Foreign</b>            | 3.63                       | 3.73    | 3.95          | 2.70                               | 3.16    | 3.17          | 9.80                                | 11.76   | 12.51         |                      |         | 0.75           | 6.39    |
| <b>European Union</b>           | 1.92                       | 2.20    | 2.20          | 3.24                               | 3.82    | 3.89          | 6.22                                | 8.41    | 8.55          |                      |         | 0.14           | 1.68    |
| <b>Former Soviet Union - 12</b> |                            |         |               |                                    |         |               |                                     |         |               |                      |         |                |         |
| Russia                          | 0.96                       | 0.82    | 1.00          | 2.00                               | 1.73    | 2.00          | 1.91                                | 1.42    | 2.00          |                      |         | 0.58           | 40.45   |
| Belarus                         | 0.25                       | 0.20    | 0.20          | 2.00                               | 3.25    | 2.75          | 0.50                                | 0.65    | 0.55          |                      |         | -0.10          | -15.38  |
| Ukraine                         | 0.15                       | 0.12    | 0.15          | 2.66                               | 2.90    | 3.00          | 0.40                                | 0.34    | 0.45          |                      |         | 0.11           | 32.74   |
| Kazakhstan                      | 0.02                       | 0.02    | 0.03          | 1.05                               | 1.00    | 1.12          | 0.02                                | 0.02    | 0.03          |                      |         | 0.01           | 21.74   |
| <b>Turkey</b>                   | 0.11                       | 0.11    | 0.11          | 2.91                               | 2.91    | 2.91          | 0.32                                | 0.32    | 0.32          |                      |         | 0.00           | 0.00    |
| <b>Canada</b>                   | 0.08                       | 0.10    | 0.12          | 2.99                               | 3.23    | 3.08          | 0.24                                | 0.33    | 0.37          |                      |         | 0.04           | 11.11   |
| <b>South America</b>            |                            |         |               |                                    |         |               |                                     |         |               |                      |         |                |         |
| Chile                           | 0.00                       | 0.00    | 0.00          | 5.00                               | 5.00    | 5.00          | 0.01                                | 0.01    | 0.01          |                      |         | 0.00           | 0.00    |
| Argentina                       | 0.05                       | 0.06    | 0.05          | 1.78                               | 2.14    | 2.00          | 0.09                                | 0.12    | 0.10          |                      |         | -0.02          | -16.67  |
| <b>Other Europe</b>             |                            |         |               |                                    |         |               |                                     |         |               |                      |         |                |         |
| Bosnia and Herzegovina          | 0.00                       | 0.00    | 0.00          | 2.75                               | 2.50    | 3.33          | 0.01                                | 0.01    | 0.01          |                      |         | 0.00           | 0.00    |
| Switzerland                     | 0.00                       | 0.00    | 0.00          | 5.50                               | 5.50    | 5.50          | 0.01                                | 0.01    | 0.01          |                      |         | 0.00           | 0.00    |
| Serbia                          | 0.00                       | 0.00    | 0.00          | 2.50                               | 2.50    | 2.50          | 0.01                                | 0.01    | 0.01          |                      |         | 0.00           | 0.00    |
| <b>Australia</b>                | 0.04                       | 0.04    | 0.04          | 0.68                               | 0.68    | 0.68          | 0.03                                | 0.03    | 0.03          |                      |         | 0.00           | 0.00    |
| <b>Others</b>                   | 0.03                       | 0.04    | 0.04          | 1.00                               | 1.92    | 1.90          | 0.03                                | 0.07    | 0.07          |                      |         | 0.00           | 1.37    |

World and Selected Countries and Regions

**Table 08 Sorghum Area, Yield, and Production**

| Country / Region      | Area<br>(Million hectares) |         |               | Yield<br>(Metric tons per hectare) |         |               | Production<br>(Million metric tons) |         |               | Change in Production |         |                |         |
|-----------------------|----------------------------|---------|---------------|------------------------------------|---------|---------------|-------------------------------------|---------|---------------|----------------------|---------|----------------|---------|
|                       | 2018/19                    | Prel.   | 2020/21 Proj. | 2018/19                            | Prel.   | 2020/21 Proj. | 2018/19                             | Prel.   | 2020/21 Proj. | From last month      |         | From last year |         |
|                       |                            | 2019/20 | May           |                                    | 2019/20 | May           |                                     | 2019/20 | May           | MMT                  | Percent | MMT            | Percent |
| <b>World</b>          | 40.60                      | 40.15   | 40.97         | 1.47                               | 1.43    | 1.46          | 59.74                               | 57.50   | 59.76         |                      |         | 2.27           | 3.94    |
| <b>United States</b>  | 2.05                       | 1.89    | 2.10          | 4.53                               | 4.58    | 4.24          | 9.27                                | 8.67    | 8.92          |                      |         | 0.24           | 2.80    |
| <b>Total Foreign</b>  | 38.55                      | 38.26   | 38.86         | 1.31                               | 1.28    | 1.31          | 50.47                               | 48.82   | 50.85         |                      |         | 2.03           | 4.15    |
| <b>Africa</b>         |                            |         |               |                                    |         |               |                                     |         |               |                      |         |                |         |
| Nigeria               | 5.80                       | 5.90    | 5.90          | 1.16                               | 1.13    | 1.17          | 6.72                                | 6.67    | 6.90          |                      |         | 0.24           | 3.53    |
| Ethiopia              | 1.83                       | 1.85    | 1.85          | 2.70                               | 2.81    | 2.81          | 4.93                                | 5.20    | 5.20          |                      |         | 0.00           | 0.00    |
| Sudan                 | 7.11                       | 7.00    | 7.00          | 0.70                               | 0.57    | 0.71          | 4.95                                | 4.00    | 5.00          |                      |         | 1.00           | 25.00   |
| Burkina               | 1.91                       | 1.80    | 1.80          | 1.01                               | 1.00    | 1.00          | 1.93                                | 1.80    | 1.80          |                      |         | 0.00           | 0.00    |
| Mali                  | 1.35                       | 1.50    | 1.50          | 1.09                               | 1.00    | 1.00          | 1.47                                | 1.50    | 1.50          |                      |         | 0.00           | 0.00    |
| Niger                 | 3.90                       | 3.70    | 3.70          | 0.54                               | 0.53    | 0.51          | 2.10                                | 1.97    | 1.90          |                      |         | -0.07          | -3.55   |
| Cameroon              | 0.87                       | 0.85    | 0.85          | 1.63                               | 1.41    | 1.41          | 1.42                                | 1.20    | 1.20          |                      |         | 0.00           | 0.00    |
| Tanzania              | 0.79                       | 0.80    | 0.80          | 1.02                               | 1.00    | 1.00          | 0.81                                | 0.80    | 0.80          |                      |         | 0.00           | 0.00    |
| Egypt                 | 0.14                       | 0.14    | 0.14          | 5.36                               | 5.36    | 5.36          | 0.75                                | 0.75    | 0.75          |                      |         | 0.00           | 0.00    |
| Uganda                | 0.45                       | 0.41    | 0.41          | 0.67                               | 0.98    | 0.98          | 0.30                                | 0.40    | 0.40          |                      |         | 0.00           | 0.00    |
| Ghana                 | 0.28                       | 0.25    | 0.25          | 1.12                               | 1.12    | 1.12          | 0.32                                | 0.28    | 0.28          |                      |         | 0.00           | 0.00    |
| Mozambique            | 0.25                       | 0.30    | 0.30          | 1.18                               | 1.08    | 0.67          | 0.30                                | 0.33    | 0.20          |                      |         | -0.13          | -38.46  |
| South Africa          | 0.05                       | 0.05    | 0.05          | 2.70                               | 2.96    | 2.50          | 0.14                                | 0.13    | 0.13          |                      |         | -0.01          | -6.02   |
| <b>Mexico</b>         | 1.35                       | 1.32    | 1.35          | 3.48                               | 3.26    | 3.33          | 4.70                                | 4.30    | 4.50          |                      |         | 0.20           | 4.65    |
| <b>South America</b>  |                            |         |               |                                    |         |               |                                     |         |               |                      |         |                |         |
| Argentina             | 0.63                       | 0.58    | 0.55          | 3.97                               | 4.35    | 4.36          | 2.50                                | 2.50    | 2.40          |                      |         | -0.10          | -4.00   |
| Brazil                | 0.73                       | 0.75    | 0.75          | 2.97                               | 3.03    | 2.80          | 2.18                                | 2.25    | 2.10          |                      |         | -0.15          | -6.83   |
| <b>South Asia</b>     |                            |         |               |                                    |         |               |                                     |         |               |                      |         |                |         |
| India                 | 4.09                       | 4.50    | 4.80          | 0.85                               | 0.98    | 0.92          | 3.48                                | 4.40    | 4.40          |                      |         | 0.00           | 0.00    |
| Pakistan              | 0.24                       | 0.24    | 0.25          | 0.59                               | 0.58    | 0.58          | 0.14                                | 0.14    | 0.15          |                      |         | 0.01           | 3.57    |
| <b>China</b>          | 0.72                       | 0.75    | 0.73          | 4.79                               | 4.80    | 4.86          | 3.45                                | 3.60    | 3.55          |                      |         | -0.05          | -1.39   |
| <b>Australia</b>      | 0.50                       | 0.25    | 0.50          | 2.58                               | 1.60    | 2.80          | 1.28                                | 0.40    | 1.40          |                      |         | 1.00           | 250.00  |
| <b>European Union</b> | 0.13                       | 0.16    | 0.17          | 5.70                               | 5.34    | 5.53          | 0.75                                | 0.88    | 0.94          |                      |         | 0.06           | 7.31    |
| <b>Others</b>         | 5.45                       | 5.17    | 5.21          | 1.08                               | 1.03    | 1.03          | 5.87                                | 5.33    | 5.36          |                      |         | 0.03           | 0.53    |

World and Selected Countries and Regions

**Table 09 Rice Area, Yield, and Production**  
**World and Selected Countries and Regions**

| Country / Region      | Area<br>(Million hectares) |         |               | Yield<br>(Metric tons per hectare) |         |               | Production<br>(Million metric tons) |         |               | Change in Production |         |                |         |
|-----------------------|----------------------------|---------|---------------|------------------------------------|---------|---------------|-------------------------------------|---------|---------------|----------------------|---------|----------------|---------|
|                       | 2018/19                    | Prel.   | 2020/21 Proj. | 2018/19                            | Prel.   | 2020/21 Proj. | 2018/19                             | Prel.   | 2020/21 Proj. | From last month      |         | From last year |         |
|                       |                            | 2019/20 | May           |                                    | 2019/20 | May           |                                     | 2019/20 | May           | MMT                  | Percent | MMT            | Percent |
| <b>World</b>          | 162.41                     | 160.59  | 163.04        | 4.56                               | 4.59    | 4.59          | 496.46                              | 493.79  | 501.96        |                      |         | 8.17           | 1.65    |
| <b>United States</b>  | 1.18                       | 1.00    | 1.14          | 8.62                               | 8.38    | 8.63          | 7.11                                | 5.86    | 6.86          |                      |         | 1.00           | 17.05   |
| <b>Total Foreign</b>  | 161.23                     | 159.59  | 161.90        | 4.53                               | 4.57    | 4.57          | 489.35                              | 487.93  | 495.09        |                      |         | 7.17           | 1.47    |
| <b>East Asia</b>      |                            |         |               |                                    |         |               |                                     |         |               |                      |         |                |         |
| China                 | 30.19                      | 29.69   | 30.20         | 7.03                               | 7.06    | 7.05          | 148.49                              | 146.73  | 149.00        |                      |         | 2.27           | 1.55    |
| Japan                 | 1.55                       | 1.54    | 1.54          | 6.79                               | 6.78    | 6.82          | 7.66                                | 7.61    | 7.65          |                      |         | 0.04           | 0.51    |
| Korea, South          | 0.74                       | 0.73    | 0.73          | 6.99                               | 6.84    | 6.84          | 3.87                                | 3.74    | 3.74          |                      |         | 0.00           | 0.00    |
| Korea, North          | 0.50                       | 0.50    | 0.50          | 4.18                               | 4.18    | 4.18          | 1.36                                | 1.36    | 1.36          |                      |         | 0.00           | 0.00    |
| <b>South Asia</b>     |                            |         |               |                                    |         |               |                                     |         |               |                      |         |                |         |
| India                 | 44.16                      | 43.80   | 44.00         | 3.96                               | 4.04    | 4.02          | 116.48                              | 118.00  | 118.00        |                      |         | 0.00           | 0.00    |
| Bangladesh            | 11.77                      | 11.83   | 11.90         | 4.45                               | 4.55    | 4.54          | 34.91                               | 35.85   | 36.00         |                      |         | 0.15           | 0.42    |
| Pakistan              | 2.88                       | 3.00    | 3.00          | 3.80                               | 3.60    | 3.75          | 7.30                                | 7.20    | 7.50          |                      |         | 0.30           | 4.17    |
| Nepal                 | 1.49                       | 1.48    | 1.49          | 3.75                               | 3.67    | 3.70          | 3.73                                | 3.62    | 3.68          |                      |         | 0.06           | 1.60    |
| Sri Lanka             | 0.98                       | 0.90    | 0.98          | 4.72                               | 4.44    | 4.30          | 3.13                                | 2.72    | 2.89          |                      |         | 0.17           | 6.36    |
| <b>Southeast Asia</b> |                            |         |               |                                    |         |               |                                     |         |               |                      |         |                |         |
| Indonesia             | 11.50                      | 11.30   | 11.50         | 4.68                               | 4.67    | 4.78          | 34.20                               | 33.50   | 34.90         |                      |         | 1.40           | 4.18    |
| Vietnam               | 7.54                       | 7.51    | 7.60          | 5.80                               | 5.83    | 5.79          | 27.34                               | 27.37   | 27.50         |                      |         | 0.13           | 0.48    |
| Thailand              | 10.83                      | 9.96    | 10.90         | 2.85                               | 2.74    | 2.84          | 20.34                               | 18.00   | 20.40         |                      |         | 2.40           | 13.33   |
| Burma                 | 7.08                       | 6.90    | 7.10          | 2.91                               | 2.88    | 2.88          | 13.20                               | 12.70   | 13.10         |                      |         | 0.40           | 3.15    |
| Philippines           | 4.74                       | 4.65    | 4.45          | 3.93                               | 3.89    | 3.92          | 11.73                               | 11.40   | 11.00         |                      |         | -0.40          | -3.51   |
| Cambodia              | 3.24                       | 3.26    | 3.28          | 2.91                               | 2.89    | 2.89          | 5.74                                | 5.74    | 5.78          |                      |         | 0.04           | 0.70    |
| Laos                  | 0.86                       | 0.97    | 0.98          | 3.12                               | 3.19    | 3.24          | 1.68                                | 1.95    | 2.00          |                      |         | 0.05           | 2.56    |
| Malaysia              | 0.70                       | 0.70    | 0.70          | 4.01                               | 4.01    | 4.01          | 1.83                                | 1.83    | 1.83          |                      |         | 0.00           | 0.00    |
| <b>South America</b>  |                            |         |               |                                    |         |               |                                     |         |               |                      |         |                |         |
| Brazil                | 1.70                       | 1.65    | 1.60          | 6.18                               | 6.36    | 6.31          | 7.14                                | 7.14    | 6.87          |                      |         | -0.27          | -3.81   |
| Peru                  | 0.44                       | 0.43    | 0.44          | 7.99                               | 7.53    | 7.59          | 2.42                                | 2.21    | 2.28          |                      |         | 0.07           | 3.13    |
| <b>Africa</b>         |                            |         |               |                                    |         |               |                                     |         |               |                      |         |                |         |
| Egypt                 | 0.46                       | 0.76    | 0.76          | 8.78                               | 8.20    | 8.20          | 2.80                                | 4.30    | 4.30          |                      |         | 0.00           | 0.00    |
| Madagascar            | 1.50                       | 1.50    | 1.50          | 2.69                               | 2.80    | 2.80          | 2.58                                | 2.69    | 2.69          |                      |         | 0.00           | 0.00    |
| Nigeria               | 3.35                       | 3.40    | 3.50          | 2.15                               | 2.20    | 2.25          | 4.54                                | 4.71    | 4.96          |                      |         | 0.25           | 5.28    |
| <b>European Union</b> | 0.41                       | 0.42    | 0.42          | 6.86                               | 6.81    | 6.76          | 1.97                                | 1.97    | 1.97          |                      |         | 0.00           | 0.00    |
| <b>Iran</b>           | 0.58                       | 0.58    | 0.58          | 5.25                               | 5.25    | 5.27          | 1.99                                | 1.99    | 2.00          |                      |         | 0.01           | 0.35    |
| <b>Others</b>         | 12.05                      | 12.15   | 12.27         | 2.89                               | 2.95    | 2.93          | 22.93                               | 23.60   | 23.70         |                      |         | 0.10           | 0.43    |

Yield is on a rough basis, before the milling process. Production is on a milled basis, after the milling process.

**Table 10 Total Oilseed Area, Yield, and Production**

**World and Selected Countries and Regions**

| Country / Region                | Area<br>(Million hectares) |         |               | Yield<br>(Metric tons per hectare) |         |               | Production<br>(Million metric tons) |         |               | Change in Production |         |                |         |
|---------------------------------|----------------------------|---------|---------------|------------------------------------|---------|---------------|-------------------------------------|---------|---------------|----------------------|---------|----------------|---------|
|                                 | 2018/19                    | Prel.   | 2020/21 Proj. | 2018/19                            | Prel.   | 2020/21 Proj. | 2018/19                             | Prel.   | 2020/21 Proj. | From last month      |         | From last year |         |
|                                 |                            | 2019/20 | May           |                                    | 2019/20 | May           |                                     | 2019/20 | May           | MMT                  | Percent | MMT            | Percent |
| <b>World Total</b>              | --                         | --      | --            | --                                 | --      | --            | 599.66                              | 575.21  | 605.91        |                      |         | 30.70          | 5.34    |
| <b>Total Foreign</b>            | --                         | --      | --            | --                                 | --      | --            | 468.95                              | 468.10  | 482.71        |                      |         | 14.61          | 3.12    |
| <b>Oilseed, Copra</b>           | --                         | --      | --            | --                                 | --      | --            | 5.98                                | 5.86    | 5.77          |                      |         | -0.09          | -1.59   |
| <b>Oilseed, Palm Kernel</b>     | --                         | --      | --            | --                                 | --      | --            | 20.17                               | 19.85   | 20.28         |                      |         | 0.44           | 2.19    |
| <b>Major Oilseeds</b>           | 248.80                     | 243.85  | 249.64        | 2.31                               | 2.25    | 2.32          | 573.51                              | 549.51  | 579.86        |                      |         | 30.36          | 5.52    |
| <b>United States</b>            | 41.33                      | 36.90   | 40.08         | 3.16                               | 2.90    | 3.07          | 130.72                              | 107.11  | 123.20        |                      |         | 16.09          | 15.02   |
| <b>Foreign Oilseeds</b>         | 207.48                     | 206.95  | 209.56        | 2.13                               | 2.14    | 2.18          | 442.80                              | 442.39  | 456.66        |                      |         | 14.27          | 3.23    |
| <b>South America</b>            | 63.41                      | 64.30   | 66.40         | 3.15                               | 3.12    | 3.18          | 199.83                              | 200.50  | 211.04        |                      |         | 10.53          | 5.25    |
| Brazil                          | 37.75                      | 38.68   | 40.06         | 3.28                               | 3.34    | 3.38          | 123.79                              | 129.01  | 135.54        |                      |         | 6.54           | 5.07    |
| Argentina                       | 19.20                      | 19.29   | 19.86         | 3.18                               | 2.90    | 2.98          | 61.00                               | 55.90   | 59.25         |                      |         | 3.34           | 5.98    |
| Paraguay                        | 3.77                       | 3.61    | 3.73          | 2.37                               | 2.77    | 2.78          | 8.94                                | 10.01   | 10.38         |                      |         | 0.37           | 3.68    |
| Bolivia                         | 1.52                       | 1.52    | 1.55          | 1.83                               | 1.90    | 1.93          | 2.78                                | 2.89    | 2.99          |                      |         | 0.10           | 3.29    |
| Uruguay                         | 1.02                       | 1.06    | 1.05          | 2.86                               | 2.17    | 2.35          | 2.92                                | 2.30    | 2.46          |                      |         | 0.16           | 6.96    |
| <b>China</b>                    | 24.01                      | 25.20   | 25.10         | 2.50                               | 2.49    | 2.47          | 59.95                               | 62.63   | 61.90         |                      |         | -0.73          | -1.16   |
| <b>South Asia</b>               | 39.56                      | 40.32   | 39.40         | 0.99                               | 0.99    | 1.01          | 39.00                               | 40.07   | 39.80         |                      |         | -0.28          | -0.69   |
| India                           | 36.40                      | 36.88   | 36.15         | 0.96                               | 0.98    | 0.99          | 34.78                               | 36.32   | 35.94         |                      |         | -0.38          | -1.06   |
| Pakistan                        | 2.80                       | 3.09    | 2.90          | 1.36                               | 1.08    | 1.19          | 3.81                                | 3.33    | 3.44          |                      |         | 0.11           | 3.21    |
| <b>European Union</b>           | 12.24                      | 11.11   | 10.92         | 2.68                               | 2.67    | 2.73          | 32.78                               | 29.71   | 29.82         |                      |         | 0.11           | 0.37    |
| <b>Former Soviet Union - 12</b> | 25.62                      | 25.75   | 26.24         | 1.80                               | 1.95    | 1.98          | 46.11                               | 50.33   | 52.00         |                      |         | 1.67           | 3.32    |
| Russia                          | 12.18                      | 12.56   | 12.90         | 1.54                               | 1.73    | 1.73          | 18.73                               | 21.70   | 22.30         |                      |         | 0.60           | 2.75    |
| Ukraine                         | 9.38                       | 9.35    | 9.40          | 2.42                               | 2.53    | 2.61          | 22.68                               | 23.66   | 24.50         |                      |         | 0.84           | 3.53    |
| Uzbekistan                      | 1.10                       | 1.01    | 1.00          | 1.17                               | 1.36    | 1.33          | 1.28                                | 1.37    | 1.33          |                      |         | -0.04          | -3.06   |
| <b>Canada</b>                   | 11.69                      | 10.63   | 10.91         | 2.37                               | 2.36    | 2.40          | 27.67                               | 25.06   | 26.14         |                      |         | 1.08           | 4.30    |
| <b>Africa</b>                   | 22.24                      | 21.53   | 21.78         | 1.02                               | 0.94    | 0.96          | 22.76                               | 20.28   | 20.93         |                      |         | 0.65           | 3.19    |
| Nigeria                         | 3.79                       | 3.78    | 3.79          | 1.37                               | 1.14    | 1.24          | 5.19                                | 4.30    | 4.70          |                      |         | 0.40           | 9.30    |
| South Africa                    | 1.31                       | 1.27    | 1.32          | 1.51                               | 1.68    | 1.60          | 1.97                                | 2.13    | 2.11          |                      |         | -0.03          | -1.17   |
| Tanzania                        | 1.42                       | 1.45    | 1.48          | 0.89                               | 0.91    | 0.88          | 1.26                                | 1.32    | 1.30          |                      |         | -0.02          | -1.67   |
| <b>Southeast Asia</b>           | 3.32                       | 3.13    | 3.21          | 1.39                               | 1.38    | 1.39          | 4.60                                | 4.31    | 4.47          |                      |         | 0.16           | 3.71    |
| Indonesia                       | 0.99                       | 0.95    | 0.94          | 1.56                               | 1.55    | 1.54          | 1.55                                | 1.47    | 1.45          |                      |         | -0.03          | -1.70   |
| Burma                           | 2.01                       | 1.87    | 1.97          | 1.20                               | 1.18    | 1.21          | 2.41                                | 2.21    | 2.38          |                      |         | 0.17           | 7.79    |
| <b>Australia</b>                | 2.33                       | 1.91    | 2.59          | 1.25                               | 1.36    | 1.43          | 2.92                                | 2.60    | 3.70          |                      |         | 1.10           | 42.46   |
| <b>Turkey</b>                   | 1.33                       | 1.39    | 1.30          | 2.53                               | 2.35    | 2.42          | 3.36                                | 3.27    | 3.14          |                      |         | -0.13          | -3.86   |
| <b>Others</b>                   | 1.73                       | 1.67    | 1.71          | 2.21                               | 2.16    | 2.17          | 3.82                                | 3.62    | 3.72          |                      |         | 0.10           | 2.79    |

World Total and Total Foreign: (Major Oilseeds plus copra and palm kernel) Major Oilseeds: (soybeans, sunflowerseeds, peanuts(inshell), cottonseed and rapeseed)

**Table 11 Soybean Area, Yield, and Production**

| Country / Region                | Area<br>(Million hectares) |                  |                      | Yield<br>(Metric tons per hectare) |                  |                      | Production<br>(Million metric tons) |                  |                      | Change in Production |         |                |         |
|---------------------------------|----------------------------|------------------|----------------------|------------------------------------|------------------|----------------------|-------------------------------------|------------------|----------------------|----------------------|---------|----------------|---------|
|                                 | 2018/19                    | Prel.<br>2019/20 | 2020/21 Proj.<br>May | 2018/19                            | Prel.<br>2019/20 | 2020/21 Proj.<br>May | 2018/19                             | Prel.<br>2019/20 | 2020/21 Proj.<br>May | From last month      |         | From last year |         |
|                                 |                            |                  |                      |                                    |                  |                      |                                     |                  |                      | MMT                  | Percent | MMT            | Percent |
| <b>World</b>                    | 125.33                     | 121.69           | 126.93               | 2.87                               | 2.76             | 2.86                 | 360.26                              | 336.11           | 362.76               |                      |         | 26.64          | 7.93    |
| <b>United States</b>            | 35.45                      | 30.35            | 33.51                | 3.40                               | 3.19             | 3.35                 | 120.52                              | 96.79            | 112.26               |                      |         | 15.47          | 15.98   |
| <b>Total Foreign</b>            | 89.88                      | 91.34            | 93.42                | 2.67                               | 2.62             | 2.68                 | 239.74                              | 239.32           | 250.49               |                      |         | 11.17          | 4.67    |
| <b>South America</b>            |                            |                  |                      |                                    |                  |                      |                                     |                  |                      |                      |         |                |         |
| Brazil                          | 35.90                      | 36.80            | 38.30                | 3.31                               | 3.37             | 3.42                 | 119.00                              | 124.00           | 131.00               |                      |         | 7.00           | 5.65    |
| Argentina                       | 16.60                      | 17.00            | 17.30                | 3.33                               | 3.00             | 3.09                 | 55.30                               | 51.00            | 53.50                |                      |         | 2.50           | 4.90    |
| Paraguay                        | 3.70                       | 3.54             | 3.65                 | 2.39                               | 2.80             | 2.81                 | 8.85                                | 9.90             | 10.25                |                      |         | 0.35           | 3.54    |
| Bolivia                         | 1.40                       | 1.40             | 1.43                 | 1.93                               | 2.00             | 2.03                 | 2.70                                | 2.80             | 2.90                 |                      |         | 0.10           | 3.57    |
| Uruguay                         | 0.97                       | 1.00             | 0.98                 | 2.93                               | 2.20             | 2.40                 | 2.83                                | 2.20             | 2.35                 |                      |         | 0.15           | 6.82    |
| <b>East Asia</b>                |                            |                  |                      |                                    |                  |                      |                                     |                  |                      |                      |         |                |         |
| China                           | 8.41                       | 9.30             | 9.30                 | 1.90                               | 1.95             | 1.88                 | 15.97                               | 18.10            | 17.50                |                      |         | -0.60          | -3.31   |
| Korea, South                    | 0.05                       | 0.06             | 0.06                 | 1.75                               | 1.81             | 1.80                 | 0.09                                | 0.11             | 0.11                 |                      |         | 0.00           | 2.86    |
| Korea, North                    | 0.15                       | 0.15             | 0.15                 | 1.50                               | 1.50             | 1.50                 | 0.23                                | 0.23             | 0.23                 |                      |         | 0.00           | 0.00    |
| Japan                           | 0.15                       | 0.14             | 0.14                 | 1.45                               | 1.47             | 1.65                 | 0.21                                | 0.21             | 0.24                 |                      |         | 0.02           | 10.85   |
| <b>India</b>                    | 11.33                      | 11.25            | 11.40                | 0.96                               | 0.83             | 0.92                 | 10.93                               | 9.30             | 10.50                |                      |         | 1.20           | 12.90   |
| <b>Canada</b>                   | 2.54                       | 2.30             | 2.17                 | 2.86                               | 2.61             | 2.83                 | 7.27                                | 6.00             | 6.15                 |                      |         | 0.15           | 2.50    |
| <b>Former Soviet Union - 12</b> |                            |                  |                      |                                    |                  |                      |                                     |                  |                      |                      |         |                |         |
| Russia                          | 2.74                       | 2.78             | 3.00                 | 1.47                               | 1.57             | 1.57                 | 4.03                                | 4.36             | 4.70                 |                      |         | 0.34           | 7.82    |
| Ukraine                         | 1.88                       | 1.62             | 1.45                 | 2.58                               | 2.29             | 2.41                 | 4.83                                | 3.70             | 3.50                 |                      |         | -0.20          | -5.38   |
| <b>European Union</b>           | 0.92                       | 0.92             | 0.92                 | 2.91                               | 2.87             | 2.83                 | 2.66                                | 2.63             | 2.60                 |                      |         | -0.03          | -1.22   |
| <b>Southeast Asia</b>           |                            |                  |                      |                                    |                  |                      |                                     |                  |                      |                      |         |                |         |
| Indonesia                       | 0.42                       | 0.40             | 0.39                 | 1.24                               | 1.20             | 1.22                 | 0.52                                | 0.48             | 0.48                 |                      |         | -0.01          | -1.04   |
| Vietnam                         | 0.05                       | 0.05             | 0.05                 | 1.62                               | 1.53             | 1.53                 | 0.08                                | 0.07             | 0.07                 |                      |         | 0.00           | 0.00    |
| Thailand                        | 0.04                       | 0.03             | 0.03                 | 1.57                               | 1.53             | 1.63                 | 0.06                                | 0.05             | 0.05                 |                      |         | 0.00           | 0.00    |
| Burma                           | 0.14                       | 0.14             | 0.14                 | 1.04                               | 1.04             | 1.04                 | 0.15                                | 0.15             | 0.14                 |                      |         | -0.01          | -3.45   |
| <b>Serbia</b>                   | 0.22                       | 0.22             | 0.22                 | 2.84                               | 2.73             | 2.73                 | 0.63                                | 0.60             | 0.60                 |                      |         | 0.00           | 0.00    |
| <b>Mexico</b>                   | 0.19                       | 0.15             | 0.23                 | 1.75                               | 1.57             | 1.74                 | 0.34                                | 0.24             | 0.40                 |                      |         | 0.17           | 70.21   |
| <b>Africa</b>                   |                            |                  |                      |                                    |                  |                      |                                     |                  |                      |                      |         |                |         |
| South Africa                    | 0.73                       | 0.71             | 0.72                 | 1.60                               | 1.80             | 1.81                 | 1.17                                | 1.27             | 1.30                 |                      |         | 0.03           | 2.36    |
| Nigeria                         | 0.70                       | 0.71             | 0.72                 | 0.96                               | 0.99             | 0.97                 | 0.67                                | 0.70             | 0.70                 |                      |         | 0.00           | 0.00    |
| Zambia                          | 0.19                       | 0.20             | 0.19                 | 1.58                               | 1.43             | 1.50                 | 0.30                                | 0.28             | 0.29                 |                      |         | 0.00           | 1.42    |
| Uganda                          | 0.05                       | 0.05             | 0.05                 | 0.60                               | 0.60             | 0.60                 | 0.03                                | 0.03             | 0.03                 |                      |         | 0.00           | 0.00    |
| <b>Middle East</b>              |                            |                  |                      |                                    |                  |                      |                                     |                  |                      |                      |         |                |         |
| Iran                            | 0.07                       | 0.07             | 0.07                 | 2.29                               | 2.43             | 2.41                 | 0.16                                | 0.17             | 0.17                 |                      |         | 0.00           | -0.59   |
| Turkey                          | 0.03                       | 0.03             | 0.03                 | 3.80                               | 3.89             | 3.79                 | 0.10                                | 0.11             | 0.11                 |                      |         | 0.01           | 4.76    |
| <b>Others</b>                   | 0.33                       | 0.34             | 0.34                 | 2.01                               | 1.90             | 1.89                 | 0.66                                | 0.65             | 0.64                 |                      |         | -0.01          | -1.08   |

World and Selected Countries and Regions

**Table 12 Cottonseed Area, Yield, and Production**

| Country / Region                | Area<br>(Million hectares) |                  |                      | Yield<br>(Metric tons per hectare) |                  |                      | Production<br>(Million metric tons) |                  |                      | Change in Production   |         |                       |         |
|---------------------------------|----------------------------|------------------|----------------------|------------------------------------|------------------|----------------------|-------------------------------------|------------------|----------------------|------------------------|---------|-----------------------|---------|
|                                 | 2018/19                    | Prel.<br>2019/20 | 2020/21 Proj.<br>May | 2018/19                            | Prel.<br>2019/20 | 2020/21 Proj.<br>May | 2018/19                             | Prel.<br>2019/20 | 2020/21 Proj.<br>May | From last month<br>MMT | Percent | From last year<br>MMT | Percent |
| <b>World</b>                    | 32.74                      | 34.08            | 32.77                | 1.32                               | 1.32             | 1.33                 | 43.28                               | 44.84            | 43.75                |                        |         | -1.09                 | -2.43   |
| <b>United States</b>            | 4.04                       | 4.70             | 4.59                 | 1.26                               | 1.15             | 1.23                 | 5.11                                | 5.39             | 5.67                 |                        |         | 0.27                  | 5.04    |
| <b>Total Foreign</b>            | 28.70                      | 29.38            | 28.18                | 1.33                               | 1.34             | 1.35                 | 38.18                               | 39.44            | 38.08                |                        |         | -1.36                 | -3.45   |
| <b>South Asia</b>               |                            |                  |                      |                                    |                  |                      |                                     |                  |                      |                        |         |                       |         |
| India                           | 12.60                      | 13.30            | 12.50                | 0.87                               | 0.97             | 0.97                 | 10.95                               | 12.95            | 12.10                |                        |         | -0.85                 | -6.56   |
| Pakistan                        | 2.30                       | 2.45             | 2.20                 | 1.43                               | 1.10             | 1.24                 | 3.29                                | 2.69             | 2.73                 |                        |         | 0.04                  | 1.60    |
| <b>China</b>                    | 3.50                       | 3.45             | 3.30                 | 3.11                               | 3.10             | 3.15                 | 10.88                               | 10.68            | 10.40                |                        |         | -0.28                 | -2.61   |
| <b>Former Soviet Union - 12</b> |                            |                  |                      |                                    |                  |                      |                                     |                  |                      |                        |         |                       |         |
| Uzbekistan                      | 1.10                       | 1.01             | 1.00                 | 1.17                               | 1.36             | 1.33                 | 1.28                                | 1.37             | 1.33                 |                        |         | -0.04                 | -3.06   |
| Turkmenistan                    | 0.55                       | 0.55             | 0.60                 | 0.65                               | 0.66             | 0.66                 | 0.36                                | 0.36             | 0.40                 |                        |         | 0.04                  | 9.72    |
| Tajikistan                      | 0.18                       | 0.18             | 0.18                 | 0.90                               | 1.27             | 1.25                 | 0.16                                | 0.23             | 0.23                 |                        |         | 0.00                  | -1.75   |
| Kazakhstan                      | 0.13                       | 0.13             | 0.11                 | 1.05                               | 1.16             | 1.12                 | 0.14                                | 0.15             | 0.12                 |                        |         | -0.02                 | -15.17  |
| <b>South America</b>            |                            |                  |                      |                                    |                  |                      |                                     |                  |                      |                        |         |                       |         |
| Brazil                          | 1.64                       | 1.67             | 1.55                 | 2.59                               | 2.62             | 2.53                 | 4.25                                | 4.38             | 3.93                 |                        |         | -0.46                 | -10.38  |
| Argentina                       | 0.38                       | 0.36             | 0.35                 | 1.09                               | 1.03             | 1.24                 | 0.41                                | 0.37             | 0.43                 |                        |         | 0.06                  | 17.30   |
| <b>Middle East</b>              |                            |                  |                      |                                    |                  |                      |                                     |                  |                      |                        |         |                       |         |
| Turkey                          | 0.52                       | 0.57             | 0.50                 | 2.35                               | 2.06             | 2.38                 | 1.22                                | 1.18             | 1.19                 |                        |         | 0.02                  | 1.45    |
| Syria                           | 0.03                       | 0.03             | 0.03                 | 2.36                               | 2.36             | 2.36                 | 0.06                                | 0.06             | 0.06                 |                        |         | 0.00                  | 0.00    |
| Iran                            | 0.08                       | 0.08             | 0.08                 | 1.16                               | 1.16             | 1.16                 | 0.09                                | 0.09             | 0.09                 |                        |         | 0.00                  | 0.00    |
| <b>Australia</b>                | 0.38                       | 0.06             | 0.18                 | 1.74                               | 3.12             | 2.83                 | 0.66                                | 0.19             | 0.51                 |                        |         | 0.32                  | 172.73  |
| <b>European Union</b>           | 0.31                       | 0.35             | 0.35                 | 1.75                               | 1.81             | 1.80                 | 0.55                                | 0.64             | 0.62                 |                        |         | -0.02                 | -2.50   |
| <b>Africa</b>                   |                            |                  |                      |                                    |                  |                      |                                     |                  |                      |                        |         |                       |         |
| Burkina                         | 0.63                       | 0.58             | 0.61                 | 0.37                               | 0.48             | 0.44                 | 0.24                                | 0.28             | 0.27                 |                        |         | -0.01                 | -2.54   |
| Mali                            | 0.73                       | 0.74             | 0.74                 | 0.50                               | 0.52             | 0.52                 | 0.36                                | 0.38             | 0.38                 |                        |         | 0.00                  | 0.00    |
| Cameroon                        | 0.25                       | 0.25             | 0.26                 | 1.20                               | 1.29             | 1.25                 | 0.30                                | 0.32             | 0.32                 |                        |         | 0.00                  | -0.62   |
| Cote d'Ivoire                   | 0.39                       | 0.41             | 0.41                 | 0.64                               | 0.66             | 0.69                 | 0.25                                | 0.27             | 0.28                 |                        |         | 0.01                  | 4.85    |
| Benin                           | 0.65                       | 0.68             | 0.71                 | 0.71                               | 0.71             | 0.67                 | 0.46                                | 0.48             | 0.48                 |                        |         | 0.00                  | 0.00    |
| Tanzania                        | 0.42                       | 0.45             | 0.48                 | 0.39                               | 0.49             | 0.41                 | 0.16                                | 0.22             | 0.20                 |                        |         | -0.02                 | -10.05  |
| Egypt                           | 0.14                       | 0.10             | 0.07                 | 1.06                               | 0.92             | 1.00                 | 0.15                                | 0.09             | 0.07                 |                        |         | -0.03                 | -29.35  |
| Nigeria                         | 0.27                       | 0.27             | 0.27                 | 0.38                               | 0.38             | 0.38                 | 0.10                                | 0.10             | 0.10                 |                        |         | 0.00                  | 0.00    |
| Uganda                          | 0.08                       | 0.09             | 0.10                 | 1.74                               | 1.67             | 1.40                 | 0.14                                | 0.15             | 0.14                 |                        |         | -0.01                 | -6.04   |
| Zimbabwe                        | 0.20                       | 0.20             | 0.21                 | 0.38                               | 0.36             | 0.36                 | 0.08                                | 0.07             | 0.08                 |                        |         | 0.00                  | 5.56    |
| Sudan                           | 0.18                       | 0.20             | 0.20                 | 1.42                               | 1.53             | 1.41                 | 0.26                                | 0.31             | 0.28                 |                        |         | -0.02                 | -7.84   |
| <b>Mexico</b>                   | 0.24                       | 0.23             | 0.18                 | 2.44                               | 2.37             | 2.39                 | 0.59                                | 0.53             | 0.42                 |                        |         | -0.12                 | -21.58  |
| <b>Burma</b>                    | 0.24                       | 0.25             | 0.24                 | 1.21                               | 1.22             | 1.25                 | 0.29                                | 0.30             | 0.30                 |                        |         | 0.00                  | 0.67    |
| <b>Others</b>                   | 0.59                       | 0.78             | 0.80                 | 0.84                               | 0.79             | 0.79                 | 0.49                                | 0.62             | 0.63                 |                        |         | 0.01                  | 1.62    |

World and Selected Countries and Regions

**Table 13 Peanut Area, Yield, and Production**

| Country / Region         | Area<br>(Million hectares) |         |               | Yield<br>(Metric tons per hectare) |         |               | Production<br>(Million metric tons) |         |               | Change in Production |         |                |         |
|--------------------------|----------------------------|---------|---------------|------------------------------------|---------|---------------|-------------------------------------|---------|---------------|----------------------|---------|----------------|---------|
|                          | 2018/19                    | Prel.   | 2020/21 Proj. | 2018/19                            | Prel.   | 2020/21 Proj. | 2018/19                             | Prel.   | 2020/21 Proj. | From last month      |         | From last year |         |
|                          |                            | 2019/20 | May           |                                    | 2019/20 | May           |                                     | 2019/20 | May           | MMT                  | Percent | MMT            | Percent |
| <b>World</b>             | 28.33                      | 26.97   | 27.31         | 1.66                               | 1.68    | 1.68          | 47.02                               | 45.38   | 45.88         |                      |         | 0.49           | 1.08    |
| <b>United States</b>     | 0.56                       | 0.56    | 0.59          | 4.48                               | 4.43    | 4.48          | 2.49                                | 2.49    | 2.66          |                      |         | 0.17           | 6.82    |
| <b>Total Foreign</b>     | 27.77                      | 26.40   | 26.72         | 1.60                               | 1.62    | 1.62          | 44.52                               | 42.89   | 43.21         |                      |         | 0.32           | 0.75    |
| <b>China</b>             | 4.62                       | 4.60    | 4.60          | 3.75                               | 3.80    | 3.80          | 17.33                               | 17.50   | 17.50         |                      |         | 0.00           | 0.00    |
| <b>Africa</b>            |                            |         |               |                                    |         |               |                                     |         |               |                      |         |                |         |
| Nigeria                  | 2.82                       | 2.80    | 2.80          | 1.57                               | 1.25    | 1.39          | 4.42                                | 3.50    | 3.90          |                      |         | 0.40           | 11.43   |
| Sudan                    | 3.07                       | 2.30    | 2.30          | 0.94                               | 0.78    | 0.78          | 2.88                                | 1.80    | 1.80          |                      |         | 0.00           | 0.00    |
| Senegal                  | 1.25                       | 1.10    | 1.20          | 1.16                               | 0.82    | 0.96          | 1.45                                | 0.90    | 1.15          |                      |         | 0.25           | 27.78   |
| Cameroon                 | 0.43                       | 0.43    | 0.43          | 1.40                               | 1.40    | 1.40          | 0.60                                | 0.60    | 0.60          |                      |         | 0.00           | 0.00    |
| Ghana                    | 0.79                       | 0.75    | 0.75          | 0.98                               | 0.87    | 0.87          | 0.77                                | 0.65    | 0.65          |                      |         | 0.00           | 0.00    |
| Chad                     | 0.79                       | 0.77    | 0.77          | 1.14                               | 1.10    | 1.10          | 0.89                                | 0.85    | 0.85          |                      |         | 0.00           | 0.00    |
| Malawi                   | 0.41                       | 0.40    | 0.40          | 0.85                               | 0.88    | 0.88          | 0.35                                | 0.35    | 0.35          |                      |         | 0.00           | 0.00    |
| Congo (Kinshasa)         | 0.50                       | 0.50    | 0.50          | 0.85                               | 0.85    | 0.85          | 0.42                                | 0.42    | 0.42          |                      |         | 0.00           | 0.00    |
| Niger                    | 0.93                       | 0.90    | 0.92          | 0.64                               | 0.56    | 0.65          | 0.59                                | 0.50    | 0.59          |                      |         | 0.09           | 18.80   |
| Mali                     | 0.38                       | 0.43    | 0.43          | 1.31                               | 1.00    | 1.00          | 0.49                                | 0.43    | 0.43          |                      |         | 0.00           | 0.00    |
| Uganda                   | 0.43                       | 0.43    | 0.43          | 0.71                               | 0.71    | 0.71          | 0.30                                | 0.30    | 0.30          |                      |         | 0.00           | 0.00    |
| Burkina                  | 0.39                       | 0.56    | 0.56          | 0.84                               | 0.80    | 0.80          | 0.33                                | 0.45    | 0.45          |                      |         | 0.00           | 0.00    |
| Guinea                   | 0.79                       | 0.75    | 0.75          | 0.98                               | 1.00    | 1.00          | 0.77                                | 0.75    | 0.75          |                      |         | 0.00           | 0.00    |
| Egypt                    | 0.06                       | 0.06    | 0.06          | 3.20                               | 3.20    | 3.20          | 0.21                                | 0.21    | 0.21          |                      |         | 0.00           | 0.00    |
| Central African Republic | 0.10                       | 0.10    | 0.10          | 1.50                               | 1.50    | 1.50          | 0.15                                | 0.15    | 0.15          |                      |         | 0.00           | 0.00    |
| South Africa             | 0.02                       | 0.04    | 0.04          | 1.30                               | 1.97    | 1.50          | 0.03                                | 0.08    | 0.06          |                      |         | -0.02          | -20.00  |
| Mozambique               | 0.38                       | 0.38    | 0.38          | 0.34                               | 0.34    | 0.34          | 0.13                                | 0.13    | 0.13          |                      |         | 0.00           | 0.00    |
| Cote d'Ivoire            | 0.15                       | 0.15    | 0.15          | 1.45                               | 1.45    | 1.45          | 0.21                                | 0.21    | 0.21          |                      |         | 0.00           | 0.00    |
| Benin                    | 0.23                       | 0.19    | 0.19          | 1.00                               | 0.92    | 0.92          | 0.23                                | 0.18    | 0.18          |                      |         | 0.00           | 0.00    |
| <b>South Asia</b>        |                            |         |               |                                    |         |               |                                     |         |               |                      |         |                |         |
| India                    | 4.99                       | 4.70    | 4.80          | 0.95                               | 1.32    | 1.15          | 4.72                                | 6.20    | 5.50          |                      |         | -0.70          | -11.29  |
| Pakistan                 | 0.12                       | 0.09    | 0.10          | 0.89                               | 0.98    | 0.92          | 0.10                                | 0.09    | 0.09          |                      |         | 0.00           | -1.10   |
| <b>Southeast Asia</b>    |                            |         |               |                                    |         |               |                                     |         |               |                      |         |                |         |
| Indonesia                | 0.57                       | 0.55    | 0.55          | 1.80                               | 1.80    | 1.78          | 1.03                                | 0.99    | 0.97          |                      |         | -0.02          | -2.02   |
| Burma                    | 1.03                       | 0.89    | 0.99          | 1.53                               | 1.55    | 1.57          | 1.58                                | 1.38    | 1.55          |                      |         | 0.18           | 12.73   |
| Vietnam                  | 0.18                       | 0.18    | 0.18          | 2.48                               | 2.48    | 2.48          | 0.44                                | 0.43    | 0.45          |                      |         | 0.01           | 3.00    |
| Thailand                 | 0.02                       | 0.02    | 0.02          | 1.67                               | 1.67    | 1.67          | 0.04                                | 0.04    | 0.04          |                      |         | 0.00           | 0.00    |
| <b>South America</b>     |                            |         |               |                                    |         |               |                                     |         |               |                      |         |                |         |
| Argentina                | 0.33                       | 0.35    | 0.33          | 4.35                               | 3.43    | 3.85          | 1.42                                | 1.20    | 1.27          |                      |         | 0.07           | 5.83    |
| Brazil                   | 0.15                       | 0.16    | 0.16          | 2.96                               | 3.47    | 3.38          | 0.44                                | 0.55    | 0.54          |                      |         | -0.01          | -0.92   |
| <b>Mexico</b>            | 0.06                       | 0.06    | 0.06          | 1.70                               | 1.73    | 1.73          | 0.10                                | 0.10    | 0.10          |                      |         | 0.00           | 0.00    |
| <b>Others</b>            | 1.83                       | 1.79    | 1.79          | 1.15                               | 1.10    | 1.14          | 2.12                                | 1.97    | 2.04          |                      |         | 0.06           | 3.09    |



**Table 14 Sunflowerseed Area, Yield, and Production**

| Country / Region                | Area<br>(Million hectares) |         |               | Yield<br>(Metric tons per hectare) |         |               | Production<br>(Million metric tons) |         |               | Change in Production |         |                |         |
|---------------------------------|----------------------------|---------|---------------|------------------------------------|---------|---------------|-------------------------------------|---------|---------------|----------------------|---------|----------------|---------|
|                                 | 2018/19                    | Prel.   | 2020/21 Proj. | 2018/19                            | Prel.   | 2020/21 Proj. | 2018/19                             | Prel.   | 2020/21 Proj. | From last month      |         | From last year |         |
|                                 |                            | 2019/20 | May           |                                    | 2019/20 | May           |                                     | 2019/20 | May           | MMT                  | Percent | MMT            | Percent |
| <b>World</b>                    | 25.83                      | 26.36   | 27.10         | 1.96                               | 2.09    | 2.09          | 50.54                               | 54.97   | 56.69         |                      |         | 1.72           | 3.13    |
| <b>United States</b>            | 0.49                       | 0.50    | 0.60          | 1.94                               | 1.75    | 1.84          | 0.96                                | 0.88    | 1.11          |                      |         | 0.23           | 25.51   |
| <b>Total Foreign</b>            | 25.34                      | 25.86   | 26.50         | 1.96                               | 2.09    | 2.10          | 49.58                               | 54.09   | 55.58         |                      |         | 1.50           | 2.77    |
| <b>Former Soviet Union - 12</b> |                            |         |               |                                    |         |               |                                     |         |               |                      |         |                |         |
| Russia                          | 7.94                       | 8.36    | 8.50          | 1.60                               | 1.83    | 1.82          | 12.71                               | 15.31   | 15.50         |                      |         | 0.20           | 1.27    |
| Ukraine                         | 6.50                       | 6.40    | 6.60          | 2.31                               | 2.58    | 2.58          | 15.00                               | 16.50   | 17.00         |                      |         | 0.50           | 3.03    |
| Kazakhstan                      | 0.85                       | 0.82    | 0.83          | 1.00                               | 1.13    | 1.20          | 0.85                                | 0.92    | 1.00          |                      |         | 0.08           | 8.93    |
| <b>European Union</b>           | 4.02                       | 4.29    | 4.20          | 2.37                               | 2.24    | 2.29          | 9.51                                | 9.61    | 9.60          |                      |         | -0.01          | -0.10   |
| <b>South America</b>            |                            |         |               |                                    |         |               |                                     |         |               |                      |         |                |         |
| Argentina                       | 1.88                       | 1.56    | 1.86          | 2.04                               | 2.12    | 2.15          | 3.83                                | 3.30    | 4.00          |                      |         | 0.70           | 21.21   |
| Uruguay                         | 0.06                       | 0.06    | 0.07          | 1.61                               | 1.67    | 1.69          | 0.09                                | 0.10    | 0.11          |                      |         | 0.01           | 10.00   |
| Bolivia                         | 0.12                       | 0.12    | 0.12          | 0.70                               | 0.75    | 0.74          | 0.08                                | 0.09    | 0.09          |                      |         | -0.01          | -5.56   |
| Brazil                          | 0.06                       | 0.05    | 0.05          | 1.67                               | 1.60    | 1.50          | 0.11                                | 0.08    | 0.08          |                      |         | -0.01          | -6.25   |
| Paraguay                        | 0.03                       | 0.03    | 0.03          | 1.58                               | 1.70    | 1.70          | 0.05                                | 0.05    | 0.05          |                      |         | 0.00           | 0.00    |
| <b>China</b>                    | 0.92                       | 1.25    | 1.25          | 2.71                               | 2.60    | 2.64          | 2.49                                | 3.25    | 3.30          |                      |         | 0.05           | 1.54    |
| <b>South Asia</b>               |                            |         |               |                                    |         |               |                                     |         |               |                      |         |                |         |
| India                           | 0.28                       | 0.23    | 0.25          | 0.61                               | 0.76    | 0.76          | 0.17                                | 0.17    | 0.19          |                      |         | 0.02           | 8.82    |
| Pakistan                        | 0.12                       | 0.14    | 0.15          | 1.20                               | 1.04    | 1.07          | 0.14                                | 0.15    | 0.16          |                      |         | 0.02           | 10.34   |
| <b>Middle East</b>              |                            |         |               |                                    |         |               |                                     |         |               |                      |         |                |         |
| Turkey                          | 0.72                       | 0.73    | 0.70          | 2.52                               | 2.40    | 2.27          | 1.80                                | 1.75    | 1.59          |                      |         | -0.16          | -9.14   |
| Iran                            | 0.04                       | 0.04    | 0.04          | 1.08                               | 1.08    | 1.08          | 0.04                                | 0.04    | 0.04          |                      |         | 0.00           | 0.00    |
| Israel                          | 0.01                       | 0.01    | 0.01          | 1.60                               | 1.60    | 1.60          | 0.02                                | 0.02    | 0.02          |                      |         | 0.00           | 0.00    |
| <b>Africa</b>                   |                            |         |               |                                    |         |               |                                     |         |               |                      |         |                |         |
| Egypt                           | 0.01                       | 0.01    | 0.01          | 2.38                               | 2.38    | 2.38          | 0.02                                | 0.02    | 0.02          |                      |         | 0.00           | 0.00    |
| Morocco                         | 0.02                       | 0.02    | 0.02          | 1.29                               | 1.25    | 1.25          | 0.03                                | 0.03    | 0.03          |                      |         | 0.00           | 0.00    |
| South Africa                    | 0.52                       | 0.50    | 0.52          | 1.32                               | 1.46    | 1.27          | 0.68                                | 0.73    | 0.66          |                      |         | -0.07          | -9.59   |
| <b>Burma</b>                    | 0.60                       | 0.60    | 0.60          | 0.65                               | 0.65    | 0.65          | 0.39                                | 0.39    | 0.39          |                      |         | 0.00           | 0.00    |
| <b>Canada</b>                   | 0.03                       | 0.03    | 0.04          | 2.11                               | 2.17    | 2.25          | 0.06                                | 0.06    | 0.09          |                      |         | 0.03           | 42.86   |
| <b>Australia</b>                | 0.02                       | 0.02    | 0.02          | 1.21                               | 1.25    | 1.26          | 0.02                                | 0.03    | 0.03          |                      |         | 0.00           | 16.00   |
| <b>Others</b>                   | 0.61                       | 0.60    | 0.65          | 2.49                               | 2.52    | 2.57          | 1.51                                | 1.51    | 1.66          |                      |         | 0.15           | 9.82    |

World and Selected Countries and Regions

**Table 15 Rapeseed Area, Yield, and Production**

| Country / Region                | Area<br>(Million hectares) |         |               | Yield<br>(Metric tons per hectare) |         |               | Production<br>(Million metric tons) |         |               | Change in Production |         |                |         |
|---------------------------------|----------------------------|---------|---------------|------------------------------------|---------|---------------|-------------------------------------|---------|---------------|----------------------|---------|----------------|---------|
|                                 | 2018/19                    | Prel.   | 2020/21 Proj. | 2018/19                            | Prel.   | 2020/21 Proj. | 2018/19                             | Prel.   | 2020/21 Proj. | From last month      |         | From last year |         |
|                                 |                            | 2019/20 | May           |                                    | 2019/20 | May           |                                     | 2019/20 | May           | MMT                  | Percent | MMT            | Percent |
| <b>World</b>                    | 36.58                      | 34.75   | 35.52         | 1.98                               | 1.96    | 1.99          | 72.42                               | 68.20   | 70.79         |                      |         | 2.59           | 3.80    |
| <b>United States</b>            | 0.79                       | 0.78    | 0.78          | 2.09                               | 2.00    | 1.92          | 1.64                                | 1.55    | 1.50          |                      |         | -0.05          | -3.28   |
| <b>Total Foreign</b>            | 35.79                      | 33.97   | 34.74         | 1.98                               | 1.96    | 1.99          | 70.78                               | 66.65   | 69.29         |                      |         | 2.64           | 3.96    |
| <b>European Union</b>           | 7.00                       | 5.55    | 5.45          | 2.87                               | 3.03    | 3.12          | 20.06                               | 16.83   | 17.00         |                      |         | 0.17           | 1.00    |
| <b>Canada</b>                   | 9.12                       | 8.30    | 8.70          | 2.23                               | 2.29    | 2.29          | 20.34                               | 19.00   | 19.90         |                      |         | 0.90           | 4.74    |
| <b>China</b>                    | 6.55                       | 6.60    | 6.65          | 2.03                               | 1.98    | 1.98          | 13.28                               | 13.10   | 13.20         |                      |         | 0.10           | 0.76    |
| <b>South Asia</b>               |                            |         |               |                                    |         |               |                                     |         |               |                      |         |                |         |
| India                           | 7.20                       | 7.40    | 7.20          | 1.11                               | 1.04    | 1.06          | 8.00                                | 7.70    | 7.65          |                      |         | -0.05          | -0.65   |
| Pakistan                        | 0.26                       | 0.40    | 0.45          | 1.04                               | 1.03    | 1.02          | 0.27                                | 0.41    | 0.46          |                      |         | 0.05           | 12.20   |
| Bangladesh                      | 0.25                       | 0.25    | 0.25          | 0.92                               | 0.92    | 0.92          | 0.23                                | 0.23    | 0.23          |                      |         | 0.00           | 0.00    |
| <b>Former Soviet Union - 12</b> |                            |         |               |                                    |         |               |                                     |         |               |                      |         |                |         |
| Russia                          | 1.50                       | 1.42    | 1.40          | 1.33                               | 1.44    | 1.50          | 1.99                                | 2.04    | 2.10          |                      |         | 0.06           | 2.94    |
| Ukraine                         | 1.00                       | 1.34    | 1.35          | 2.85                               | 2.59    | 2.96          | 2.85                                | 3.47    | 4.00          |                      |         | 0.54           | 15.44   |
| Belarus                         | 0.35                       | 0.34    | 0.35          | 1.31                               | 1.68    | 1.57          | 0.46                                | 0.58    | 0.55          |                      |         | -0.03          | -4.84   |
| Kazakhstan                      | 0.37                       | 0.27    | 0.28          | 1.08                               | 0.90    | 1.14          | 0.39                                | 0.24    | 0.32          |                      |         | 0.08           | 32.78   |
| <b>Australia</b>                | 1.89                       | 1.80    | 2.35          | 1.15                               | 1.29    | 1.32          | 2.18                                | 2.33    | 3.10          |                      |         | 0.77           | 33.05   |
| <b>South America</b>            |                            |         |               |                                    |         |               |                                     |         |               |                      |         |                |         |
| Chile                           | 0.05                       | 0.04    | 0.05          | 3.85                               | 4.10    | 4.00          | 0.19                                | 0.17    | 0.20          |                      |         | 0.03           | 16.28   |
| Paraguay                        | 0.03                       | 0.03    | 0.04          | 1.20                               | 1.87    | 1.88          | 0.04                                | 0.06    | 0.08          |                      |         | 0.02           | 33.93   |
| <b>Switzerland</b>              | 0.02                       | 0.02    | 0.02          | 3.14                               | 3.14    | 3.14          | 0.07                                | 0.07    | 0.07          |                      |         | 0.00           | 0.00    |
| <b>Ethiopia</b>                 | 0.04                       | 0.04    | 0.04          | 1.57                               | 1.86    | 1.86          | 0.06                                | 0.07    | 0.07          |                      |         | 0.00           | 0.00    |
| <b>Others</b>                   | 0.18                       | 0.17    | 0.17          | 2.14                               | 2.15    | 2.24          | 0.38                                | 0.36    | 0.37          |                      |         | 0.01           | 2.22    |

World and Selected Countries and Regions

**Table 16 Copra, Palm Kernel, and Palm Oil Production**

| Country / Region            | Production<br>(Million metric tons) |         |               | Change in Production |         |                |         |
|-----------------------------|-------------------------------------|---------|---------------|----------------------|---------|----------------|---------|
|                             | 2018/19                             | Prel.   | 2020/21 Proj. | From last month      |         | From last year |         |
|                             |                                     | 2019/20 | May           | MMT                  | Percent | MMT            | Percent |
| <b>Oilseed, Copra</b>       |                                     |         |               |                      |         |                |         |
| Philippines                 | 2.63                                | 2.50    | 2.40          |                      |         | -0.10          | -4.00   |
| Indonesia                   | 1.64                                | 1.66    | 1.66          |                      |         | 0.00           | 0.00    |
| India                       | 0.75                                | 0.75    | 0.75          |                      |         | 0.00           | 0.00    |
| Vietnam                     | 0.29                                | 0.29    | 0.30          |                      |         | 0.01           | 3.45    |
| Mexico                      | 0.22                                | 0.22    | 0.22          |                      |         | 0.00           | 0.00    |
| Papua New Guinea            | 0.10                                | 0.08    | 0.08          |                      |         | 0.00           | 0.00    |
| Thailand                    | 0.07                                | 0.07    | 0.07          |                      |         | 0.00           | 0.00    |
| Sri Lanka                   | 0.07                                | 0.07    | 0.07          |                      |         | 0.00           | 0.00    |
| Solomon Islands             | 0.03                                | 0.03    | 0.03          |                      |         | 0.00           | 0.00    |
| Cote d'Ivoire               | 0.03                                | 0.03    | 0.03          |                      |         | 0.00           | 0.00    |
| World                       | 5.98                                | 5.86    | 5.77          |                      |         | -0.09          | -1.54   |
| <b>Oilseed, Palm Kernel</b> |                                     |         |               |                      |         |                |         |
| Indonesia                   | 10.90                               | 11.25   | 11.46         |                      |         | 0.21           | 1.87    |
| Malaysia                    | 5.15                                | 4.60    | 4.80          |                      |         | 0.20           | 4.35    |
| Thailand                    | 0.87                                | 0.89    | 0.90          |                      |         | 0.01           | 1.12    |
| Nigeria                     | 0.73                                | 0.73    | 0.73          |                      |         | 0.00           | 0.00    |
| Ghana                       | 0.77                                | 0.65    | 0.65          |                      |         | 0.00           | 0.00    |
| Colombia                    | 0.33                                | 0.36    | 0.35          |                      |         | -0.01          | -2.78   |
| Guatemala                   | 0.20                                | 0.17    | 0.17          |                      |         | 0.00           | 0.00    |
| Papua New Guinea            | 0.18                                | 0.16    | 0.16          |                      |         | 0.00           | 0.00    |
| Brazil                      | 0.14                                | 0.14    | 0.14          |                      |         | 0.00           | 0.00    |
| Honduras                    | 0.14                                | 0.14    | 0.14          |                      |         | 0.00           | 0.00    |
| World                       | 20.17                               | 19.85   | 20.28         |                      |         | 0.43           | 2.17    |
| <b>Oil, Palm</b>            |                                     |         |               |                      |         |                |         |
| Indonesia                   | 41.50                               | 42.50   | 43.50         |                      |         | 1.00           | 2.35    |
| Malaysia                    | 20.80                               | 18.50   | 19.30         |                      |         | 0.80           | 4.32    |
| Thailand                    | 3.00                                | 2.80    | 3.10          |                      |         | 0.30           | 10.71   |
| Colombia                    | 1.63                                | 1.53    | 1.67          |                      |         | 0.14           | 9.15    |
| Nigeria                     | 1.02                                | 1.02    | 1.02          |                      |         | 0.00           | 0.00    |
| Guatemala                   | 0.85                                | 0.85    | 0.85          |                      |         | 0.00           | 0.00    |
| Honduras                    | 0.58                                | 0.58    | 0.58          |                      |         | 0.00           | 0.00    |
| Papua New Guinea            | 0.71                                | 0.56    | 0.56          |                      |         | 0.00           | 0.00    |
| Ecuador                     | 0.56                                | 0.55    | 0.62          |                      |         | 0.07           | 12.73   |
| Brazil                      | 0.53                                | 0.54    | 0.54          |                      |         | 0.00           | 0.00    |
| World                       | 74.02                               | 72.27   | 74.60         |                      |         | 2.33           | 3.22    |

World and Selected Countries and Regions

**Table 17 Cotton Area, Yield, and Production**

| Country / Region                | Area<br>(Million hectares) |                  |                      | Yield<br>(Kilograms per hectare) |                  |                      | Production<br>(Million 480 lb. bales) |                  |                      | Change in Production      |         |                          |         |
|---------------------------------|----------------------------|------------------|----------------------|----------------------------------|------------------|----------------------|---------------------------------------|------------------|----------------------|---------------------------|---------|--------------------------|---------|
|                                 | 2018/19                    | Prel.<br>2019/20 | 2020/21 Proj.<br>May | 2018/19                          | Prel.<br>2019/20 | 2020/21 Proj.<br>May | 2018/19                               | Prel.<br>2019/20 | 2020/21 Proj.<br>May | From last month<br>MBales | Percent | From last year<br>MBales | Percent |
| <b>World</b>                    | 33.40                      | 34.76            | 33.40                | 773                              | 768              | 775                  | 118.65                                | 122.67           | 118.95               |                           |         | -3.72                    | -3.03   |
| <b>United States</b>            | 4.04                       | 4.70             | 4.59                 | 989                              | 922              | 924                  | 18.37                                 | 19.91            | 19.50                |                           |         | -0.41                    | -2.07   |
| <b>Total Foreign</b>            | 29.36                      | 30.06            | 28.81                | 744                              | 744              | 752                  | 100.29                                | 102.76           | 99.45                |                           |         | -3.30                    | -3.22   |
| <b>South Asia</b>               |                            |                  |                      |                                  |                  |                      |                                       |                  |                      |                           |         |                          |         |
| India                           | 12.60                      | 13.30            | 12.50                | 446                              | 499              | 496                  | 25.80                                 | 30.50            | 28.50                |                           |         | -2.00                    | -6.56   |
| Pakistan                        | 2.30                       | 2.45             | 2.20                 | 719                              | 551              | 623                  | 7.60                                  | 6.20             | 6.30                 |                           |         | 0.10                     | 1.61    |
| <b>China</b>                    | 3.50                       | 3.45             | 3.30                 | 1,726                            | 1,720            | 1,748                | 27.75                                 | 27.25            | 26.50                |                           |         | -0.75                    | -2.75   |
| <b>South America</b>            |                            |                  |                      |                                  |                  |                      |                                       |                  |                      |                           |         |                          |         |
| Brazil                          | 1.64                       | 1.67             | 1.55                 | 1,726                            | 1,721            | 1,686                | 13.00                                 | 13.20            | 12.00                |                           |         | -1.20                    | -9.09   |
| Argentina                       | 0.38                       | 0.36             | 0.35                 | 642                              | 605              | 622                  | 1.12                                  | 1.00             | 1.00                 |                           |         | 0.00                     | 0.00    |
| Paraguay                        | 0.01                       | 0.01             | 0.01                 | 416                              | 416              | 416                  | 0.02                                  | 0.02             | 0.02                 |                           |         | 0.00                     | 0.00    |
| <b>Africa</b>                   |                            |                  |                      |                                  |                  |                      |                                       |                  |                      |                           |         |                          |         |
| Burkina                         | 0.63                       | 0.58             | 0.61                 | 294                              | 379              | 348                  | 0.85                                  | 1.00             | 0.98                 |                           |         | -0.03                    | -2.50   |
| Mali                            | 0.73                       | 0.74             | 0.74                 | 381                              | 400              | 397                  | 1.27                                  | 1.35             | 1.35                 |                           |         | 0.00                     | 0.00    |
| Cote d'Ivoire                   | 0.39                       | 0.41             | 0.41                 | 520                              | 528              | 531                  | 0.94                                  | 0.99             | 1.00                 |                           |         | 0.01                     | 1.01    |
| Benin                           | 0.65                       | 0.68             | 0.71                 | 469                              | 468              | 445                  | 1.40                                  | 1.45             | 1.45                 |                           |         | 0.00                     | 0.00    |
| Egypt                           | 0.14                       | 0.10             | 0.07                 | 757                              | 664              | 720                  | 0.49                                  | 0.31             | 0.22                 |                           |         | -0.09                    | -29.51  |
| Cameroon                        | 0.25                       | 0.25             | 0.26                 | 523                              | 562              | 546                  | 0.60                                  | 0.65             | 0.64                 |                           |         | -0.01                    | -0.78   |
| Tanzania                        | 0.42                       | 0.45             | 0.44                 | 194                              | 242              | 218                  | 0.38                                  | 0.50             | 0.44                 |                           |         | -0.06                    | -12.00  |
| Nigeria                         | 0.27                       | 0.27             | 0.27                 | 190                              | 190              | 190                  | 0.24                                  | 0.24             | 0.24                 |                           |         | 0.00                     | 0.00    |
| Zimbabwe                        | 0.20                       | 0.20             | 0.21                 | 218                              | 207              | 207                  | 0.20                                  | 0.19             | 0.20                 |                           |         | 0.01                     | 5.26    |
| Ethiopia                        | 0.08                       | 0.08             | 0.08                 | 687                              | 680              | 637                  | 0.24                                  | 0.25             | 0.24                 |                           |         | -0.01                    | -4.00   |
| <b>Former Soviet Union - 12</b> |                            |                  |                      |                                  |                  |                      |                                       |                  |                      |                           |         |                          |         |
| Uzbekistan                      | 1.10                       | 1.01             | 1.00                 | 648                              | 754              | 740                  | 3.28                                  | 3.50             | 3.40                 |                           |         | -0.10                    | -2.86   |
| Turkmenistan                    | 0.55                       | 0.55             | 0.60                 | 364                              | 368              | 367                  | 0.91                                  | 0.92             | 1.01                 |                           |         | 0.09                     | 9.78    |
| Tajikistan                      | 0.18                       | 0.18             | 0.18                 | 502                              | 708              | 696                  | 0.42                                  | 0.59             | 0.58                 |                           |         | -0.01                    | -1.71   |
| Kazakhstan                      | 0.13                       | 0.13             | 0.11                 | 587                              | 644              | 623                  | 0.35                                  | 0.37             | 0.32                 |                           |         | -0.06                    | -14.86  |
| <b>Middle East</b>              |                            |                  |                      |                                  |                  |                      |                                       |                  |                      |                           |         |                          |         |
| Turkey                          | 0.52                       | 0.57             | 0.50                 | 1,570                            | 1,375            | 1,589                | 3.75                                  | 3.60             | 3.65                 |                           |         | 0.05                     | 1.39    |
| Syria                           | 0.03                       | 0.03             | 0.03                 | 1,219                            | 1,219            | 1,219                | 0.14                                  | 0.14             | 0.14                 |                           |         | 0.00                     | 0.00    |
| Iran                            | 0.08                       | 0.08             | 0.08                 | 748                              | 748              | 748                  | 0.28                                  | 0.28             | 0.28                 |                           |         | 0.00                     | 0.00    |
| <b>Australia</b>                | 0.38                       | 0.06             | 0.18                 | 1,261                            | 2,268            | 2,056                | 2.20                                  | 0.63             | 1.70                 |                           |         | 1.08                     | 172.00  |
| <b>Mexico</b>                   | 0.24                       | 0.23             | 0.18                 | 1,555                            | 1,519            | 1,524                | 1.74                                  | 1.57             | 1.23                 |                           |         | -0.35                    | -21.97  |
| <b>Burma</b>                    | 0.24                       | 0.25             | 0.24                 | 637                              | 641              | 662                  | 0.70                                  | 0.72             | 0.73                 |                           |         | 0.01                     | 0.83    |
| <b>Others</b>                   | 1.73                       | 2.01             | 2.02                 | 585                              | 582              | 580                  | 4.65                                  | 5.36             | 5.37                 |                           |         | 0.01                     | 0.09    |

World and Selected Countries and Regions

**TABLE 18**

The table below presents a record of the May projection and the final Estimate. Using world wheat production as an example, the "root mean square error" means that chances are 2 out of 3 that the current forecast will not be above or below the final estimate by more than 3.1 percent. Chances are 9 out of 10 (90% confidence level) that the difference will not exceed 5.3 percent. The average difference between the May projection and the final estimate is 16.5 million tons, ranging from 1.7 million to 35 million tons. The May projection has been below the estimate 23 times and above 16 times.

**RELIABILITY OF PRODUCTION PROJECTIONS 1/**

| COMMODITY AND REGION    | Root mean square error | 90 percent confidence interval | Difference between forecast and final estimate |          |         |             |             |
|-------------------------|------------------------|--------------------------------|--|----------|---------|-------------|-------------|
|                         |                        |                                | Average  | Smallest | Largest | Years       |             |
|                         |                        |                                |  |          |         | Below final | Above final |
|                         | Percent                |                                | ---Million metric tons---                      |          |         |             |             |
| <b>WHEAT</b>            |                        |                                |  |          |         |             |             |
| World                   | 3.1                    | 5.3                            | 16.5   | 1.7      | 35.0    | 23          | 16          |
| U.S.                    | 6.6                    | 11.3                           | 3.0  | 0.0      | 9.8     | 21          | 18          |
| Foreign                 | 3.3                    | 5.6                            | 15.3   | 1.6      | 32.9    | 22          | 17          |
| <b>COARSE GRAINS 2/</b> |                        |                                |  |          |         |             |             |
| World                   | 3.7                    | 6.3                            | 26.6   | 1.1      | 103.6   | 19          | 20          |
| U.S.                    | 13.9                   | 23.7                           | 20.9   | 0.9      | 103.8   | 21          | 18          |
| Foreign                 | 2.7                    | 4.7                            | 14.7   | 0.2      | 42.8    | 18          | 21          |
| <b>RICE (Milled)</b>    |                        |                                |  |          |         |             |             |
| World                   | 2.4                    | 4.1                            | 6.9  | 0.0      | 21.8    | 23          | 16          |
| U.S.                    | 8.0                    | 13.6                           | 0.4  | 0.0      | 1.1     | 21          | 18          |
| Foreign                 | 2.4                    | 4.1                            | 6.9  | 0.4      | 22.0    | 23          | 16          |
| <b>SOYBEANS</b>         |                        |                                |  |          |         |             |             |
| World                   | NA                     | NA                             | 11.5   | 1.5      | 23.1    | 6           | 5           |
| U.S.                    | 9.1                    | 15.5                           | 4.9  | 0.0      | 16.1    | 20          | 19          |
| Foreign                 | NA                     | NA                             | 6.8  | 0.7      | 16.9    | 7           | 4           |
| <b>COTTON</b>           |                        |                                | ---Million 480-lb. bales---                    |          |         |             |             |
| World                   | 6.2                    | 10.6                           | 4.4  | 0.1      | 16.7    | 23          | 16          |
| U.S.                    | 11.1                   | 18.9                           | 1.6  | 0.1      | 5.5     | 19          | 20          |
| Foreign                 | 6.3                    | 10.7                           | 3.4  | 0.1      | 12.2    | 21          | 18          |
| <b>UNITED STATES</b>    |                        |                                | -----Million bushels-----                      |          |         |             |             |
| <b>CORN</b>             | 14.8                   | 25.1                           | 745  | 8        | 4,010   | 17          | 22          |
| <b>SORGHUM</b>          | 20.1                   | 34.1                           | 86   | 0        | 228     | 19          | 19          |
| <b>BARLEY</b>           | 14.1                   | 24.0                           | 27   | 1        | 206     | 16          | 23          |
| <b>OATS</b>             | 25.4                   | 43.1                           | 31   | 1        | 231     | 9           | 30          |

1/ Marketing years 1981/82 through 2019/20. Final for grains, soybeans and cotton is defined as the first *November* estimates following the marketing year for 1981/82 through 2018/19, and for 2019/20 last month's estimate.

2/ Includes corn, sorghum, barley, oats, rye, millet, and mixed grain

May 2020

Global Market Analysis, FAS, USDA