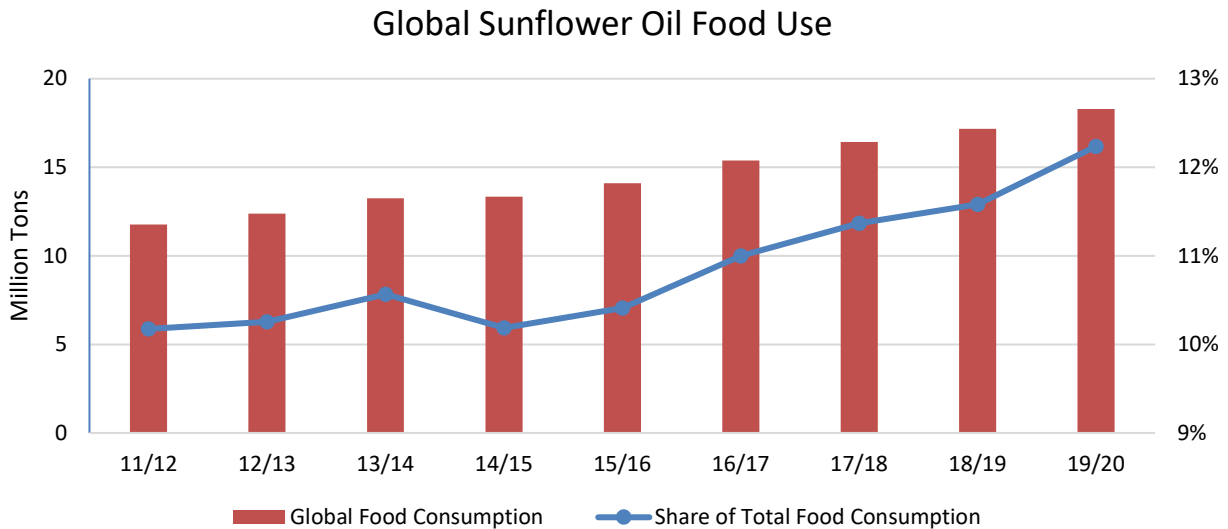


Oilseeds: World Markets and Trade

Sunflower Oil Claims Record Share of Food Use



Sunflower oil will claim a record share of global food use in MY 2019/20, rising to 12 percent. The shift towards sunflower is driven by demand for higher-quality oils as global incomes rise, resulting in consistent production growth particularly in Ukraine and Russia. Since 2011, sunflower oil production has expanded faster than any other oil, averaging almost 7 percent growth per year. This trend accelerated in 2019/20 as palm and rapeseed oil production fell due to unfavorable weather and planting decisions affected by China trade concerns, respectively.

Attractive prices made sunflower oil a good “value for price” option in early 2020, resulting in elevated imports. Vegetable oil prices converged at the start of 2020, encouraging expanded purchases of typically higher-value oils including sunflowerseed. Sunflower oil remained cheaper than rapeseed oil from mid-February to early April, which incentivized purchases.

China imports of sunflower oil hit an all-time high for the month of April, reaching 251,000 tons, up 85 percent from the previous record in April 2016. Sunflower oil has claimed a higher share of China’s oil for food use over time and will account for roughly 6 percent of the country’s food oil use in MY 2019/20, double its share in MY 2012/13.

Despite this flurry of trade, elevated imports of sunflower oil are unlikely to continue into the summer. The Eurasian Economic Union’s decision in April 2020 to ban sunflowerseed exports limits input for external crushers and is expected to slow sunflower oil production. As the ban is causing prices to rise, the restricted supply and higher cost may turn importers to substitute oils. Global demand for all oils is expected to slow in response to the economic impact of the pandemic and increase in-home cooking, holding oil consumption in MY 2019/20 flat from last year. While still short of the 3 percent food consumption growth prior to the pandemic, oil consumption is forecast to recover in MY 2020/21, growing at 2 percent.

PROJECTION FOR 2020/21

Global 2020/21 oilseed production is forecast at 606 million tons, largely unchanged from May. Oilseed trade volumes are mostly unchanged. Global ending stocks are down slightly on higher consumption. Protein meal and oil production are up slightly on higher projected crush, primarily soybeans.

PROJECTION FOR 2019/20

Global oilseed production is unchanged at 575 million tons. Oilseed trade volume is 2 million tons higher at 179 million tons exported, mostly on larger soybean trade. Crush is nearly 1 million tons higher at 498 million tons. Ending stocks are steady at 115 million tons.

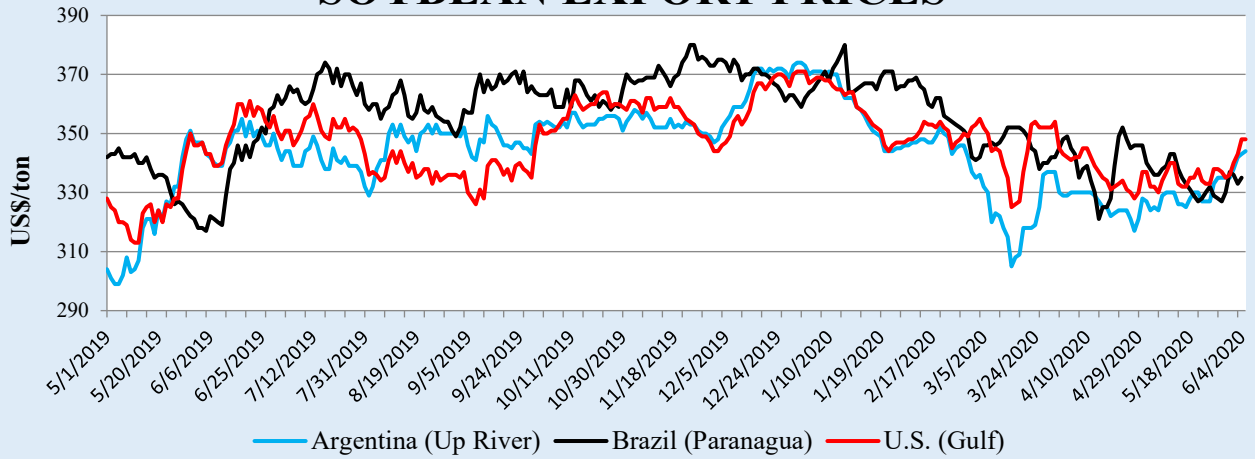
Protein meal production is pegged at 339 million tons, up marginally on larger crush volume. Meal consumption is projected higher at 337 million tons on increased demand and greater production. Oil production, trade, and consumption are up fractionally. The projected U.S. season-average farm price for soybeans is unchanged at \$8.50 per bushel.

EXPORT PRICES

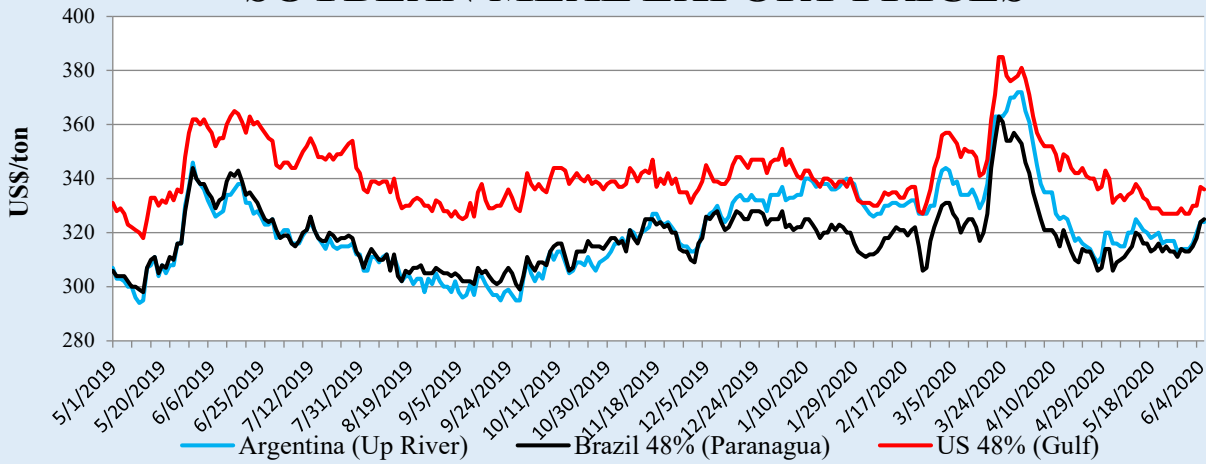
U.S. Gulf FOB soybean export bids in May averaged \$335/ton, down \$2 from April. Brazil Paranagua FOB averaged \$338/ton, up \$4 from last month while Argentina Up River FOB averaged \$329/ton, up \$2. Early June prices indicate a rising trend in U.S. prices relative to Brazil. Argentine farmers remain reluctant sellers in response to uncertainty over a possible devaluation of the peso.

Global soybean meal and oil demand remained weak for much of the month in response to COVID-19's impact. U.S. soybean meal export bids continued to fall in May, averaging \$331/ton, down \$18 from April. Brazil and Argentina export prices strengthened during the first half of May before weakening the rest of the month. Brazil Paranagua FOB averaged \$314/ton, down \$6 from April, and Argentina Up River FOB averaged \$318/ton, down \$10. Soybean oil prices rebounded as Argentina and Brazil average prices rose \$6 and \$8, respectively, to average \$595/ton, while the United States average remained unchanged from April at \$615/ton. Palm oil demand continued to decline as Malaysia and Indonesia reached its lowest price levels since October 2019. After mid-May, Malaysia and Indonesia palm oil prices rallied as global demand improved and economies began rebounding with a loosening of COVID-19 restrictions. Malaysia palm oil averaged \$529/ton, down \$32 from April and Indonesia averaged \$520, down \$39.

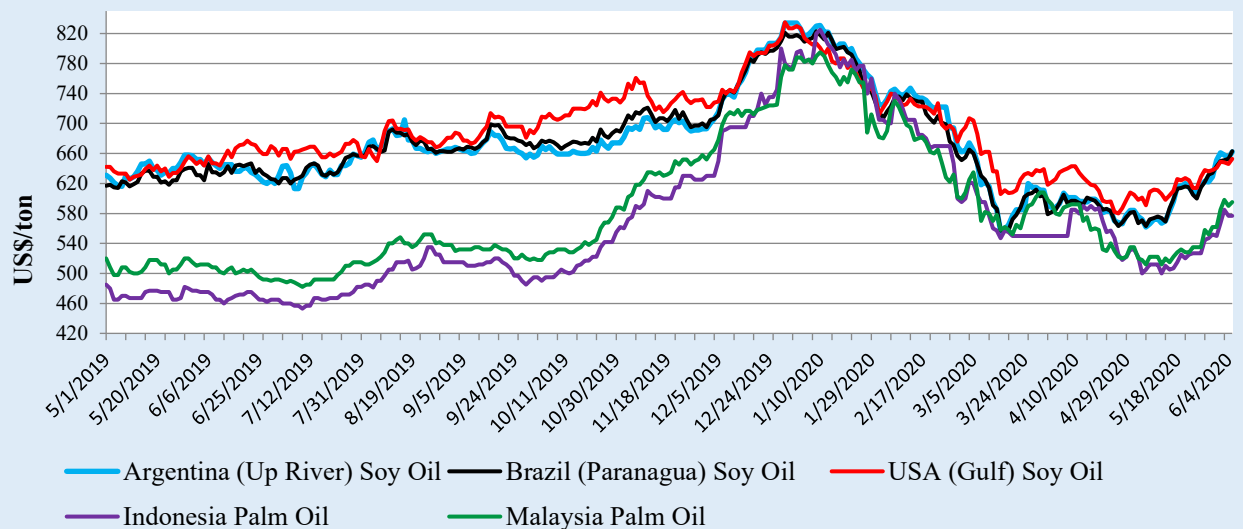
SOYBEAN EXPORT PRICES



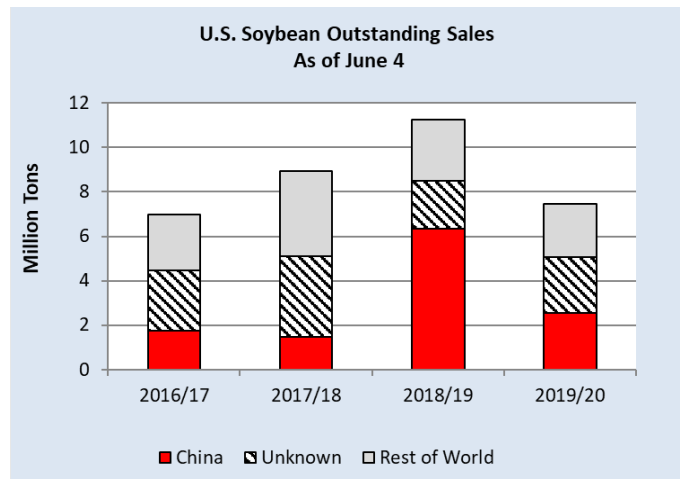
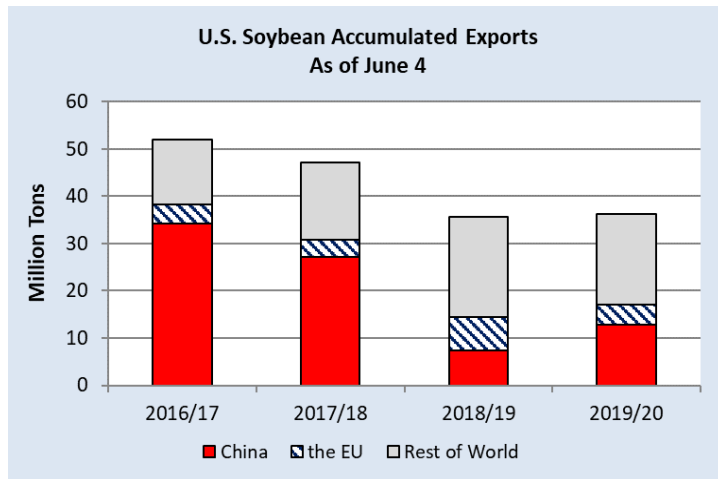
SOYBEAN MEAL EXPORT PRICES



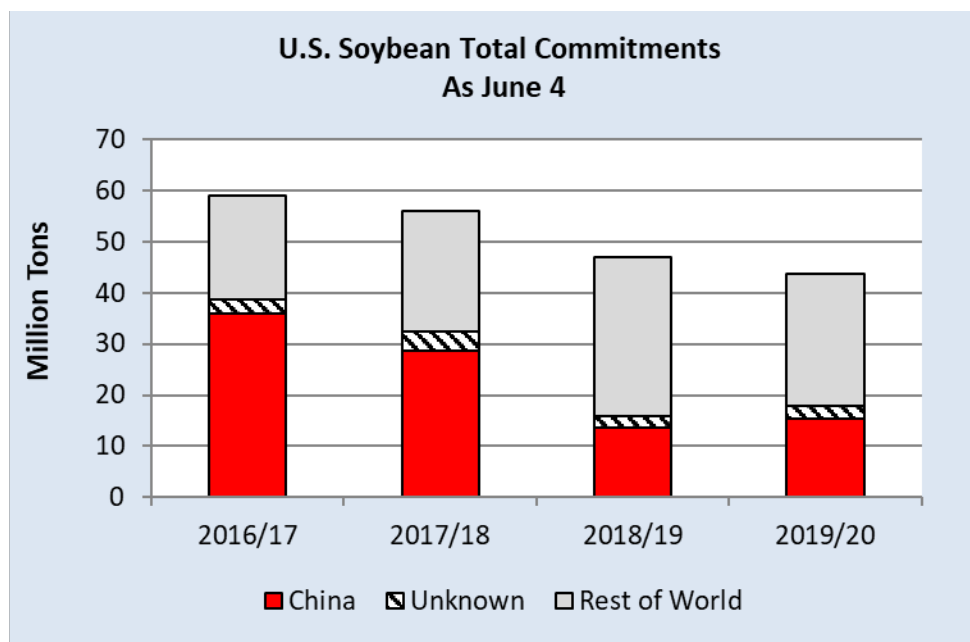
SOYBEAN AND PALM OIL EXPORT PRICES



EXPORT SALES



As of the week ending June 4, 2020, U.S. soybean accumulated exports (shipments) to China totaled 12.7 million tons and 23.5 million to the rest of the world. Outstanding sales have improved on recent sales to China but remain below 17/18 and 18/19 levels at 2.6 million tons to China and 4.9 million to the rest of the world. U.S. soybean export commitments (outstanding sales plus accumulated exports) to China are slightly higher than last year at 15.3 million tons but remain below historical levels on slow exports. Brazil exports to China remain high on a weak real and a record Brazilian soybean crop. Total commitments to the world lag behind last year, totaling 43.7 million tons as export commitments to markets outside China remain below 18/19 levels.



2020/21 OUTLOOK CHANGES

Note: All figures are in thousand metric tons.

Country	Commodity	Attribute	Previous	Current	Change	Reason
Canada	Oil, Rapeseed	Exports	3,330	3,430	100	Strong global demand and larger supplies
Sudan	Oilseed, Peanut	Exports	60	160	100	Reflecting 19/20 forecast change

2019/20 OUTLOOK CHANGES

Note: All figures are in thousand metric tons.

Country	Commodity	Attribute	Previous	Current	Change	Reason
Argentina	Meal, Soybean	Exports	29,000	28,000	-1,000	Slower exports with reduced crush volume
	Oilseed, Soybean	Imports	3,800	3,600	-200	Slower trade pace
	Oilseed, Soybean	Exports	8,000	9,000	1,000	Strong export volume forecast to China
	Oil, Soybean	Exports	5,500	5,350	-150	Reduced trade pace for remaining months
China	Meal, Sunflowerseed	Imports	1,325	1,425	100	Strong imports from Ukraine
	Oilseed, Soybean	Imports	92,000	94,000	2,000	Greater supplies from Brazil and Argentina
	Oilseed, Peanut	Imports	850	1,000	150	Strong pace of trade
Sudan	Oilseed, Peanut	Exports	60	210	150	Strong exports to China
European Union	Oilseed, Sunflowerseed	Imports	690	850	160	Record imports from Russia
Ukraine	Oilseed, Soybean	Exports	2,400	2,650	250	Strong pace of trade
Brazil	Meal, Soybean	Exports	16,300	16,800	500	Pace of trade
	Oilseed, Soybean	Imports	150	250	100	Larger imports from Paraguay
	Oilseed, Soybean	Exports	84,000	85,000	1000	Record monthly export volumes
Turkey	Oil, Sunflowerseed	Exports	375	475	100	Record March and April trade
United States	Oilseed, Soybeans	Exports	45,586	44,906	-680	Weaker-than-expected sales pace

Questions may be directed to:

Bill George	(202) 720-6234	Bill.George@usda.gov
Amy Caldwell	(202) 378-2560	Amy.S.Caldwell@usda.gov
Tani Lee	(202) 720-9180	Tani.Lee@usda.gov
Matt Snyder	(202) 378-1068	Matt.Snyder@usda.gov

To download the tables in the publication, go to the Production, Supply and Distribution Database (PSD Online): (<http://apps.fas.usda.gov/psdonline/psdHome.aspx>), scroll down to Reports, and click the plus sign [+] next to Oilseeds.

The Foreign Agricultural Service (FAS) updates its production, supply and distribution (PSD) database for cotton, oilseeds, and grains at 12:00 p.m. on the day the *World Agricultural Supply and Demand Estimates* (WASDE) report is released. This circular is released by 12:15 p.m.

FAS Reports and Databases:

Current *World Markets and Trade* and *World Agricultural Production* Reports:

<http://apps.fas.usda.gov/psdonline/psdDataPublications.aspx>

Archives *World Markets and Trade* and *World Agricultural Production* Reports:

<http://usda.mannlib.cornell.edu/MannUsda/viewTaxonomy.do?taxonomyID=7>

Production, Supply and Distribution Database (PSD Online):

<http://apps.fas.usda.gov/psdonline/psdHome.aspx>

Global Agricultural Trade System (U.S. Exports and Imports):

<http://apps.fas.usda.gov/gats/default.aspx>

Export Sales Report:

<http://apps.fas.usda.gov/esrquery/>

Global Agricultural Information Network (Agricultural Attaché Reports):

<http://gain.fas.usda.gov/Pages/Default.aspx>

Other USDA Reports:

World Agricultural Supply and Demand Estimates (WASDE):

<http://www.usda.gov/oce/commodity/wasde/>

Economic Research Service:

<http://www.ers.usda.gov/topics/crops>

National Agricultural Statistics Service:

<http://www.nass.usda.gov/Publications/>

List of Tables

SUMMARY TABLES

Table 01	Major Oilseeds: World Supply and Distribution (Commodity View)
Table 02	Major Protein Meals: World Supply and Distribution (Commodity View)
Table 03	Major Vegetable Oils: World Supply and Distribution (Commodity View)
Table 04	Major Oilseeds: World Supply and Distribution (Country View)
Table 05	Major Protein Meals: World Supply and Distribution (Country View)
Table 06	Major Vegetable Oils: World Supply and Distribution (Country View)

COMMODITY TABLES

Table 07	Soybeans: World Supply and Distribution
Table 08	Soybean Meal: World Supply and Distribution
Table 09	Soybean Oil: World Supply and Distribution
Table 10	Soybeans and Products: World Trade
Table 11	Palm Oil: World Supply and Distribution
Table 12	Rapeseed and Products: World Supply and Distribution
Table 13	Sunflowerseed and Products: World Supply and Distribution
Table 14	Minor Vegetable Oils: World Supply and Distribution

HISTORICAL TABLES

Table 15	World Oilseeds and Products Supply and Distribution
Table 16	World Soybeans and Products Supply and Distribution
Table 17	World Rapeseed and Products Supply and Distribution
Table 18	World Sunflowerseed and Products Supply and Distribution
Table 19	World Palm Oil, Coconut Oil, and Fish Meal Supply and Distribution

COUNTRY TABLES

Table 20	United States Oilseeds and Products Supply and Distribution Local Marketing Years
Table 21	United States Soybeans and Products Supply and Distribution Local Marketing Years
Table 22	Brazil Soybeans and Products Supply and Distribution Local Marketing Years
Table 23	Argentina Soybeans and Products Supply and Distribution Local Marketing Years
Table 24	South East Asia Oilseeds and Products Supply and Distribution
Table 25	Middle East Oilseeds and Products Supply and Distribution
Table 26	European Union Oilseeds and Products Supply and Distribution
Table 27	China Oilseeds and Products Supply and Distribution
Table 28	India Oilseeds and Products Supply and Distribution

PRICES

Table 29	Oilseed Prices
Table 30	Protein Meal Prices
Table 31	Vegetable Oil Prices

Table 01: Major Oilseeds: World Supply and Distribution (Commodity View)

Million Metric Tons

	2016/17	2017/18	2018/19	2019/20	May 2020/21	Jun 2020/21
Production						
Oilseed, Copra	5.52	5.94	5.98	5.86	5.77	5.77
Oilseed, Cottonseed	39.09	45.24	43.28	44.96	43.75	43.63
Oilseed, Palm Kernel	17.85	19.39	20.17	19.85	20.28	20.28
Oilseed, Peanut	45.26	47.09	47.09	46.05	45.88	46.06
Oilseed, Rapeseed	69.49	75.02	72.61	68.20	70.79	70.79
Oilseed, Soybean	348.30	341.74	360.26	335.35	362.76	362.85
Oilseed, Sunflowerseed	48.23	47.85	50.54	54.98	56.69	56.78
Total	573.75	582.26	599.92	575.23	605.91	606.15
Imports						
Oilseed, Copra	0.13	0.13	0.20	0.18	0.21	0.21
Oilseed, Cottonseed	0.96	0.75	0.58	0.61	0.63	0.63
Oilseed, Palm Kernel	0.07	0.14	0.13	0.11	0.10	0.10
Oilseed, Peanut	3.16	3.03	3.41	3.93	3.76	3.76
Oilseed, Rapeseed	15.51	15.48	14.33	14.66	15.05	15.05
Oilseed, Soybean	144.27	153.23	144.61	155.21	158.02	158.02
Oilseed, Sunflowerseed	2.19	2.15	2.49	2.83	2.72	2.72
Total	166.29	174.90	165.75	177.53	180.50	180.50
Exports						
Oilseed, Copra	0.17	0.16	0.17	0.25	0.24	0.24
Oilseed, Cottonseed	0.89	0.85	0.75	0.73	0.78	0.77
Oilseed, Palm Kernel	0.08	0.17	0.07	0.08	0.07	0.07
Oilseed, Peanut	3.67	3.36	3.60	4.15	3.92	4.02
Oilseed, Rapeseed	15.80	16.20	14.30	14.99	15.34	15.39
Oilseed, Soybean	146.93	153.08	148.30	155.54	161.93	161.98
Oilseed, Sunflowerseed	2.47	2.52	3.06	3.18	3.40	3.40
Total	170.00	176.33	170.26	178.90	185.67	185.87
Crush						
Oilseed, Copra	5.44	5.85	5.98	5.77	5.70	5.70
Oilseed, Cottonseed	28.86	33.62	32.98	33.91	33.50	33.37
Oilseed, Palm Kernel	17.72	19.27	20.08	19.75	20.17	20.17
Oilseed, Peanut	17.64	18.24	18.10	18.78	18.31	18.33
Oilseed, Rapeseed	67.38	68.41	67.89	66.79	66.65	66.90
Oilseed, Soybean	287.65	294.39	297.27	302.65	312.80	313.71
Oilseed, Sunflowerseed	43.12	44.01	45.90	50.59	51.00	51.10
Total	467.80	483.80	488.20	498.23	508.14	509.29
Ending Stocks						
Oilseed, Copra	0.09	0.11	0.10	0.08	0.08	0.08
Oilseed, Cottonseed	1.37	1.89	1.61	1.65	1.55	1.64
Oilseed, Palm Kernel	0.24	0.21	0.23	0.23	0.25	0.25
Oilseed, Peanut	4.01	5.12	5.44	4.48	3.55	3.67
Oilseed, Rapeseed	5.14	7.96	9.03	6.65	7.06	6.88
Oilseed, Soybean	94.47	98.60	112.52	99.19	98.39	96.34
Oilseed, Sunflowerseed	3.41	2.69	2.50	2.22	2.63	2.63
Total	108.72	116.59	131.43	114.50	113.51	111.49

Totals may not add due to rounding

Table 02: Major Protein Meals: World Supply and Distribution (Commodity View)

Million Metric Tons

	2016/17	2017/18	2018/19	2019/20	May 2020/21	Jun 2020/21
Production						
Meal, Copra	1.81	1.94	2.00	1.93	1.91	1.91
Meal, Cottonseed	13.27	15.46	15.11	15.60	15.40	15.32
Meal, Fish	4.87	4.76	4.76	4.85	4.87	4.87
Meal, Palm Kernel	9.14	10.04	10.41	10.24	10.45	10.45
Meal, Peanut	7.01	7.25	7.18	7.45	7.26	7.27
Meal, Rapeseed	38.81	39.48	39.12	38.54	38.48	38.62
Meal, Soybean	225.83	232.29	233.28	237.92	246.05	246.72
Meal, Sunflowerseed	19.40	19.95	20.67	22.68	22.87	22.93
Total	320.14	331.17	332.54	339.21	347.28	348.07
Imports						
Meal, Copra	0.48	0.69	0.57	0.55	0.54	0.54
Meal, Cottonseed	0.24	0.31	0.34	0.36	0.37	0.37
Meal, Fish	3.02	2.98	3.02	2.98	3.10	3.05
Meal, Palm Kernel	6.58	6.82	7.16	7.10	7.16	7.13
Meal, Peanut	0.14	0.05	0.10	0.13	0.11	0.11
Meal, Rapeseed	5.90	6.24	6.84	7.25	7.02	7.02
Meal, Soybean	60.18	61.13	62.05	63.41	64.43	64.43
Meal, Sunflowerseed	6.97	6.56	7.82	7.94	7.76	7.76
Total	83.50	84.79	87.90	89.72	90.48	90.40
Exports						
Meal, Copra	0.53	0.71	0.68	0.61	0.57	0.57
Meal, Cottonseed	0.38	0.45	0.41	0.42	0.40	0.41
Meal, Fish	2.53	2.58	2.56	2.65	2.67	2.67
Meal, Palm Kernel	6.67	7.10	7.81	7.41	7.55	7.55
Meal, Peanut	0.16	0.10	0.12	0.14	0.14	0.14
Meal, Rapeseed	5.99	6.39	6.92	7.29	7.11	7.11
Meal, Soybean	64.60	64.90	67.27	66.59	67.39	67.39
Meal, Sunflowerseed	7.43	6.98	8.00	8.31	8.35	8.35
Total	88.29	89.20	93.76	93.41	94.18	94.19
Domestic Consumption						
Meal, Copra	1.75	1.91	1.89	1.87	1.88	1.88
Meal, Cottonseed	13.10	15.28	15.11	15.54	15.37	15.28
Meal, Fish	5.38	5.17	5.22	5.20	5.32	5.27
Meal, Palm Kernel	8.99	9.63	9.95	9.91	10.00	9.97
Meal, Peanut	7.01	7.21	7.15	7.43	7.23	7.24
Meal, Rapeseed	38.80	39.29	39.05	38.64	38.52	38.59
Meal, Soybean	221.30	228.76	229.68	236.41	243.53	244.20
Meal, Sunflowerseed	19.10	19.41	20.70	21.95	22.30	22.35
Total	315.44	326.64	328.74	336.96	344.16	344.79
Ending Stocks						
Meal, Copra	0.12	0.13	0.14	0.14	0.13	0.13
Meal, Cottonseed	0.10	0.14	0.07	0.07	0.06	0.06
Meal, Fish	0.26	0.26	0.26	0.25	0.22	0.22
Meal, Palm Kernel	0.44	0.58	0.40	0.42	0.47	0.47
Meal, Peanut	0.03	0.03	0.03	0.04	0.04	0.04
Meal, Rapeseed	1.03	1.08	1.08	0.94	0.85	0.89
Meal, Soybean	13.71	13.47	11.86	10.18	9.90	9.74
Meal, Sunflowerseed	1.23	1.35	1.14	1.51	1.44	1.49
Total	16.93	17.05	14.98	13.54	13.11	13.03

Totals may not add due to rounding

Table 03: Major Vegetable Oils: World Supply and Distribution (Commodity View)

Million Metric Tons

	2016/17	2017/18	2018/19	2019/20	May 2020/21	Jun 2020/21
Production						
Oil, Coconut	3.41	3.67	3.74	3.62	3.58	3.58
Oil, Cottonseed	4.38	5.09	4.97	5.12	5.05	5.03
Oil, Olive	2.61	3.27	3.25	3.12	3.03	3.03
Oil, Palm	65.34	70.58	74.02	72.27	74.60	74.60
Oil, Palm Kernel	7.83	8.53	8.87	8.73	8.91	8.91
Oil, Peanut	5.72	5.92	5.87	6.09	5.94	5.94
Oil, Rapeseed	27.55	28.06	27.68	27.31	27.26	27.36
Oil, Soybean	53.82	55.09	55.64	56.60	58.53	58.70
Oil, Sunflowerseed	18.19	18.53	19.34	21.25	21.44	21.48
Total	188.85	198.72	203.38	204.09	208.34	208.63
Imports						
Oil, Coconut	1.49	1.70	1.82	1.83	1.88	1.88
Oil, Cottonseed	0.06	0.08	0.09	0.10	0.09	0.09
Oil, Olive	0.78	0.94	0.99	1.04	0.98	0.98
Oil, Palm	45.98	46.51	50.34	47.62	49.19	49.19
Oil, Palm Kernel	2.70	2.88	3.03	2.91	3.05	3.05
Oil, Peanut	0.23	0.24	0.29	0.34	0.35	0.35
Oil, Rapeseed	4.40	4.50	4.87	5.14	5.29	5.29
Oil, Soybean	10.97	9.86	10.43	10.79	11.12	11.12
Oil, Sunflowerseed	8.88	8.71	9.39	10.35	10.24	10.28
Total	75.48	75.42	81.26	80.13	82.20	82.24
Exports						
Oil, Coconut	1.76	1.73	2.11	1.93	1.95	1.88
Oil, Cottonseed	0.08	0.10	0.11	0.11	0.11	0.11
Oil, Olive	0.87	1.02	1.04	1.12	1.07	1.07
Oil, Palm	48.89	48.65	51.50	48.70	50.37	50.37
Oil, Palm Kernel	3.09	3.11	3.29	3.22	3.30	3.30
Oil, Peanut	0.27	0.28	0.31	0.36	0.36	0.36
Oil, Rapeseed	4.50	4.61	4.96	5.25	5.25	5.35
Oil, Soybean	11.36	10.54	11.18	11.43	11.75	11.80
Oil, Sunflowerseed	10.43	9.98	11.14	11.76	12.01	12.01
Total	81.23	80.03	85.64	83.88	86.17	86.24
Domestic Consumption						
Oil, Coconut	3.21	3.42	3.53	3.58	3.70	3.68
Oil, Cottonseed	4.34	5.05	4.99	5.08	5.08	5.06
Oil, Olive	2.74	2.81	2.92	2.97	3.05	3.05
Oil, Palm	61.60	66.99	73.06	71.53	74.06	74.06
Oil, Palm Kernel	7.42	8.09	8.65	8.50	8.74	8.74
Oil, Peanut	5.56	5.74	5.95	6.16	6.04	6.04
Oil, Rapeseed	28.90	28.86	28.16	27.61	27.68	27.68
Oil, Soybean	53.29	54.56	54.92	55.60	57.88	57.97
Oil, Sunflowerseed	16.33	17.41	18.20	19.36	19.67	19.72
Total	183.39	192.93	200.38	200.37	205.89	205.99
Ending Stocks						
Oil, Coconut	0.42	0.64	0.56	0.50	0.39	0.41
Oil, Cottonseed	0.11	0.14	0.10	0.12	0.09	0.09
Oil, Olive	0.31	0.69	0.98	1.05	0.96	0.96
Oil, Palm	9.57	11.01	10.82	10.48	9.83	9.83
Oil, Palm Kernel	0.71	0.91	0.87	0.79	0.71	0.71
Oil, Peanut	0.38	0.51	0.42	0.33	0.22	0.22
Oil, Rapeseed	4.20	3.29	2.72	2.31	1.98	1.94
Oil, Soybean	3.98	3.83	3.81	4.16	4.14	4.22
Oil, Sunflowerseed	2.19	2.05	1.44	1.93	1.98	1.96
Total	21.89	23.07	21.70	21.68	20.29	20.33

Totals may not add due to rounding

Table 04: Major Oilseeds: World Supply and Distribution (Country View)

Million Metric Tons

	2016/17	2017/18	2018/19	2019/20	May 2020/21	Jun 2020/21
Production						
Brazil	117.59	125.81	123.93	129.15	135.68	135.68
United States	126.94	131.48	130.72	107.00	123.20	123.20
China	55.09	59.60	59.95	62.63	61.90	61.90
Argentina	60.16	42.61	61.00	55.08	59.25	59.31
India	37.05	35.43	35.55	37.20	36.71	36.71
Other	176.91	187.34	188.78	184.17	189.18	189.36
Total	573.75	582.26	599.92	575.23	605.91	606.15
Imports						
China	98.42	99.28	86.74	97.84	99.75	99.75
European Union	19.17	20.20	20.69	22.69	22.47	22.47
Mexico	6.03	6.76	7.72	7.63	7.85	7.85
Japan	5.79	5.86	5.91	5.85	5.90	5.90
Turkey	3.01	3.54	3.46	3.68	3.79	3.79
Egypt	2.18	3.63	3.48	3.78	3.79	3.79
Argentina	1.67	4.70	6.41	3.60	3.60	3.60
Thailand	3.19	2.59	3.27	3.19	3.25	3.25
Indonesia	3.03	2.92	3.06	3.03	3.25	3.25
Pakistan	2.77	3.16	2.56	3.06	3.24	3.24
Other	21.04	22.25	22.45	23.20	23.60	23.60
Total	166.29	174.90	165.75	177.53	180.50	180.50
Exports						
Brazil	63.36	76.46	74.90	85.35	83.33	83.33
United States	60.08	59.32	48.70	46.14	57.01	57.01
Canada	15.63	15.80	14.50	13.48	12.94	12.94
Argentina	7.87	2.76	10.10	9.98	7.66	7.65
Paraguay	5.51	6.03	4.93	5.90	6.30	6.30
Ukraine	4.13	4.91	5.13	5.73	5.85	5.90
Uruguay	3.22	1.25	2.75	2.13	2.28	2.28
Other	10.19	9.81	9.25	10.20	10.31	10.46
Total	170.00	176.33	170.26	178.90	185.67	185.87
Crush						
China	122.62	127.55	121.37	123.52	128.75	129.25
United States	56.26	60.17	61.03	62.44	62.24	62.65
Brazil	42.90	47.40	46.81	48.74	49.24	49.24
European Union	46.67	48.48	48.14	47.40	47.19	47.19
Argentina	46.82	40.64	44.35	44.47	46.82	46.82
India	27.40	27.78	29.22	29.32	30.13	30.13
Russia	15.40	15.95	17.85	20.20	20.30	20.30
Ukraine	15.58	14.96	17.04	18.15	18.25	18.25
Indonesia	10.98	12.06	12.39	12.69	12.91	12.91
Canada	11.05	11.21	11.37	11.80	11.65	11.90
Mexico	6.40	6.99	7.85	7.75	8.01	8.01
Pakistan	5.88	6.25	6.17	6.29	6.40	6.40
Malaysia	5.38	5.48	5.77	5.27	5.49	5.49
Turkey	4.05	4.88	5.06	5.11	5.08	5.07
Japan	4.86	4.63	4.89	4.80	4.82	4.82
Other	45.57	49.38	48.89	50.29	50.88	50.88
Total	467.80	483.80	488.20	498.23	508.14	509.29
Ending Stocks						
China	21.66	24.61	20.74	27.49	28.48	28.98
Argentina	28.52	25.14	30.56	26.96	28.75	27.45
Brazil	33.36	32.91	32.67	25.07	26.38	25.48
United States	9.60	13.83	26.54	17.44	12.56	12.28
Canada	1.66	3.17	4.57	3.58	4.43	4.18
Other	13.93	16.93	16.34	13.96	12.92	13.11
Total	108.72	116.59	131.43	114.50	113.51	111.49

Major Oilseeds includes Copra, Cottonseed, Palm Kernel, Peanut, Rapeseed, Soybeans and Sunflowerseeds.

Table 05: Major Protein Meals: World Supply and Distribution (Country View)

Million Metric Tons

	2016/17	2017/18	2018/19	2019/20	May 2020/21	Jun 2020/21
Production						
China	87.67	90.57	85.87	87.55	91.84	92.22
United States	43.11	47.03	46.52	48.08	48.01	48.29
Brazil	32.45	35.82	34.97	36.48	36.91	36.91
Argentina	34.77	29.98	32.80	32.90	34.68	34.68
European Union	30.00	31.07	31.04	30.65	30.50	30.50
Other	92.14	96.72	101.34	103.57	105.34	105.47
Total	320.14	331.17	332.54	339.21	347.28	348.07
Imports						
European Union	24.90	24.67	25.48	25.04	25.33	25.33
Vietnam	5.65	5.80	6.13	6.22	6.36	6.36
Indonesia	4.35	4.61	4.56	4.87	4.92	4.92
China	3.18	3.59	5.04	5.25	4.51	4.46
United States	3.92	3.74	3.93	4.11	3.84	3.84
Thailand	3.32	3.77	3.63	3.61	3.66	3.66
Korea, South	3.03	3.28	3.40	3.45	3.51	3.51
Other	35.15	35.33	35.75	37.18	38.37	38.34
Total	83.50	84.79	87.90	89.72	90.48	90.40
Exports						
Argentina	32.13	27.05	29.73	28.75	30.50	30.50
Brazil	13.76	16.03	15.97	16.80	16.30	16.30
United States	10.83	13.00	12.60	12.52	12.20	12.20
Ukraine	5.19	4.67	5.75	5.85	5.67	5.67
Indonesia	4.51	5.02	5.46	5.41	5.56	5.56
Canada	4.93	4.90	5.07	5.38	5.23	5.23
India	2.51	2.79	3.18	2.36	2.78	2.78
Other	14.44	15.74	16.00	16.34	15.95	15.96
Total	88.29	89.20	93.76	93.41	94.18	94.19
Domestic Consumption						
China	89.69	92.92	89.95	91.79	95.32	95.65
European Union	54.41	54.76	54.67	54.68	54.79	54.79
United States	36.07	37.61	37.99	39.69	39.64	39.91
Brazil	18.12	18.83	19.71	20.21	20.51	20.51
India	13.55	14.19	14.61	15.52	15.66	15.66
Russia	6.57	7.13	7.62	8.09	8.50	8.50
Mexico	6.91	7.04	7.62	7.86	8.05	8.05
Vietnam	6.83	7.30	7.42	7.53	7.60	7.60
Thailand	5.45	5.51	5.82	5.74	5.84	5.84
Indonesia	5.30	5.52	5.62	5.75	5.83	5.83
Other	72.54	75.86	77.71	80.12	82.44	82.47
Total	315.44	326.64	328.74	336.96	344.16	344.79
SME						
China	85.11	87.76	84.42	86.24	90.02	90.33
European Union	46.53	46.65	46.77	46.87	47.03	47.03
United States	34.64	36.28	36.67	38.27	38.23	38.50
Brazil	17.88	18.52	19.29	19.79	20.11	20.11
India	11.65	12.17	12.48	13.26	13.41	13.41
Mexico	6.54	6.68	7.28	7.54	7.72	7.72
Vietnam	6.51	6.97	7.02	7.11	7.17	7.17
Other	80.14	83.82	86.41	89.06	91.52	91.56
Total	289.02	298.85	300.35	308.14	315.20	315.82
Ending Stocks						
Brazil	3.33	4.30	3.62	3.11	3.74	3.23
Argentina	3.43	2.62	1.84	1.94	1.59	1.94
European Union	1.11	0.65	1.10	0.74	0.60	0.60
Ukraine	0.21	0.36	0.48	0.55	0.53	0.53
India	1.13	0.66	0.88	0.62	0.53	0.53
Other	7.72	8.45	7.07	6.59	6.12	6.21
Total	16.93	17.05	14.98	13.54	13.11	13.03

Major Protein Meals include Copra, Cottonseed, Fish, Palm Kernel, Peanut, Rapeseed, Soybean, and Sunflower Meal.

Table 06: Major Vegetable Oils: World Supply and Distribution (Country View)

Million Metric Tons

	2016/17	2017/18	2018/19	2019/20	May 2020/21	Jun 2020/21
Production						
Indonesia	41.10	45.08	47.22	48.34	49.43	49.43
China	26.76	27.77	26.43	26.73	27.65	27.75
Malaysia	21.13	22.02	23.24	20.72	21.60	21.60
European Union	18.07	19.04	18.92	18.14	18.14	18.14
United States	11.43	12.11	12.20	12.49	12.54	12.62
Argentina	9.87	8.78	9.48	9.47	9.97	9.97
Brazil	8.73	9.60	9.47	9.85	9.95	9.95
Other	51.77	54.33	56.44	58.36	59.05	59.17
Total	188.85	198.72	203.38	204.09	208.34	208.63
Imports						
India	15.41	14.49	15.25	15.08	15.24	15.24
China	8.00	8.65	11.41	11.40	12.01	12.01
European Union	10.87	10.67	11.49	10.92	10.57	10.57
United States	4.73	4.78	4.71	5.05	4.97	4.99
Pakistan	3.25	3.20	3.27	3.26	3.54	3.54
Bangladesh	2.18	2.50	2.59	2.35	2.45	2.45
Egypt	2.16	1.81	1.60	1.72	1.82	1.82
Iran	1.21	1.21	1.59	1.43	1.49	1.49
Malaysia	1.13	1.12	1.66	1.29	1.45	1.45
Philippines	1.31	1.31	1.17	1.26	1.37	1.37
Other	25.23	25.69	26.54	26.37	27.31	27.33
Total	75.48	75.42	81.26	80.13	82.20	82.24
Exports						
Indonesia	29.86	29.28	30.78	29.96	31.27	31.27
Malaysia	17.47	17.70	19.65	17.53	18.02	18.02
Ukraine	6.11	5.60	6.55	6.79	6.93	6.93
Argentina	6.28	5.08	6.26	6.19	6.90	6.90
Russia	2.98	3.26	3.83	4.36	4.47	4.47
Canada	3.29	3.34	3.34	3.57	3.50	3.60
European Union	2.40	2.51	2.35	2.44	2.42	2.42
Other	12.84	13.26	12.88	13.05	12.67	12.64
Total	81.23	80.03	85.64	83.88	86.17	86.24
Domestic Consumption						
China	35.73	36.86	38.36	38.35	39.49	39.58
European Union	26.57	26.96	27.14	26.65	26.75	26.75
India	21.68	22.20	22.89	22.70	23.04	23.04
Indonesia	11.89	14.69	17.10	17.13	18.42	18.42
United States	14.72	15.54	15.89	15.98	16.35	16.37
Brazil	7.91	8.44	8.91	9.23	9.44	9.44
Malaysia	4.22	4.89	5.28	4.85	5.16	5.16
Pakistan	4.45	4.55	4.68	4.75	4.89	4.89
Russia	3.40	3.55	3.68	3.80	3.93	3.93
Thailand	2.72	2.88	3.25	3.21	3.39	3.39
Bangladesh	2.57	2.82	3.01	3.08	3.19	3.19
Argentina	3.64	3.74	3.23	3.06	3.07	3.07
Mexico	2.71	2.84	2.94	2.98	3.03	3.03
Japan	2.41	2.46	2.57	2.52	2.56	2.56
Turkey	2.34	2.37	2.40	2.41	2.51	2.52
Other	36.43	38.13	39.05	39.67	40.70	40.67
Total	183.39	192.93	200.38	200.37	205.89	205.99
Ending Stocks						
Indonesia	2.50	3.67	3.16	4.47	4.28	4.28
European Union	1.76	1.99	2.90	2.87	2.41	2.41
Malaysia	2.29	2.83	2.81	2.43	2.31	2.31
China	3.52	2.80	2.02	1.59	1.57	1.57
United States	1.23	1.24	1.16	1.28	1.25	1.31
Other	10.60	10.54	9.66	9.04	8.48	8.46
Total	21.89	23.07	21.70	21.68	20.29	20.33

Major Vegetable Oils includes Coconut, Cottonseed, Olive, Palm, Palm Kernel, Peanut, Rapeseed, Soybean, and Sunflowerseed oil.

Table 07: Soybeans: World Supply and Distribution

Thousand Metric Tons

	2016/17	2017/18	2018/19	2019/20	May 2020/21	Jun 2020/21
Production						
Brazil	114,600	122,000	119,000	124,000	131,000	131,000
United States	116,931	120,065	120,515	96,676	112,264	112,264
Argentina	55,000	37,800	55,300	50,000	53,500	53,500
China	13,596	15,283	15,967	18,100	17,500	17,500
India	10,992	8,350	10,930	9,300	10,500	10,500
Paraguay	9,163	10,478	8,850	9,900	10,250	10,250
Canada	6,597	7,717	7,267	6,000	6,150	6,150
Other	21,419	20,051	22,428	21,371	21,593	21,684
Total	348,298	341,744	360,257	335,347	362,757	362,848
Imports						
China	93,495	94,095	82,540	94,000	96,000	96,000
European Union	13,441	14,584	14,983	15,100	14,900	14,900
Mexico	4,126	4,873	5,867	6,000	6,100	6,100
Egypt	2,115	3,550	3,380	3,700	3,700	3,700
Argentina	1,674	4,703	6,408	3,600	3,600	3,600
Japan	3,175	3,256	3,314	3,390	3,410	3,410
Thailand	3,078	2,482	3,155	3,080	3,140	3,140
Taiwan	2,566	2,666	2,614	2,850	2,900	2,900
Indonesia	2,649	2,483	2,623	2,600	2,800	2,800
Turkey	2,271	2,777	2,405	2,800	2,800	2,800
Other	15,680	17,760	17,325	18,091	18,673	18,673
Total	144,270	153,229	144,614	155,211	158,023	158,023
Exports						
Brazil	63,137	76,136	74,594	85,000	83,000	83,000
United States	58,963	58,071	47,564	44,906	55,792	55,792
Argentina	7,025	2,132	9,104	9,000	6,500	6,500
Paraguay	5,500	6,029	4,901	5,900	6,300	6,300
Canada	4,592	4,925	5,258	4,250	4,000	4,000
Other	7,716	5,783	6,879	6,485	6,338	6,388
Total	146,933	153,076	148,300	155,541	161,930	161,980
Crush						
China	88,000	90,000	85,000	87,500	93,000	93,500
United States	51,742	55,926	56,935	58,241	57,969	58,377
Brazil	40,411	44,205	42,465	44,250	45,000	45,000
Argentina	43,309	36,933	40,567	40,800	43,000	43,000
European Union	14,400	14,950	15,600	15,800	15,700	15,700
India	9,000	7,700	9,600	8,300	9,400	9,400
Mexico	4,600	5,250	6,150	6,200	6,400	6,400
Russia	4,400	4,600	4,650	4,750	4,750	4,750
Paraguay	3,750	3,870	3,620	3,750	3,800	3,800
Egypt	2,200	3,200	3,400	3,600	3,700	3,700
Japan	2,392	2,400	2,470	2,500	2,520	2,520
Bolivia	2,550	2,300	2,550	2,550	2,500	2,500
Iran	2,050	2,700	2,400	2,430	2,500	2,500
Bangladesh	1,100	1,250	1,650	2,150	2,400	2,400
Pakistan	1,680	2,000	2,000	2,200	2,400	2,400
Other	16,067	17,107	18,211	17,625	17,762	17,762
Total	287,651	294,391	297,268	302,646	312,801	313,709
Ending Stocks						
China	20,120	23,064	19,455	26,235	27,230	27,735
Argentina	26,996	23,734	28,890	25,600	27,400	26,000
Brazil	33,212	32,740	32,481	24,831	26,231	25,331
United States	8,208	11,923	24,740	15,923	11,028	10,755
European Union	1,150	1,397	1,605	1,627	1,567	1,567
Other	4,786	5,745	5,350	4,972	4,936	4,952
Total	94,472	98,603	112,521	99,188	98,392	96,340

Most countries are on an October/September Marketing Year (MY). The United States, Mexico, and Thailand are on a September/August MY. Canada is on an August/July MY. Paraguay is on a Jan/Dec MY.

Table 08: Soybean Meal: World Supply and Distribution

Thousand Metric Tons

	2016/17	2017/18	2018/19	2019/20	May 2020/21	Jun 2020/21
Production						
China	69,696	71,280	67,320	69,300	73,656	74,052
United States	40,630	44,657	44,283	45,652	45,563	45,836
Brazil	31,280	34,300	32,910	34,350	34,900	34,900
Argentina	33,280	28,400	31,200	31,350	33,050	33,050
European Union	11,376	11,811	12,324	12,482	12,403	12,403
India	7,200	6,160	7,680	6,640	7,520	7,520
Mexico	3,635	4,152	4,860	4,900	5,060	5,060
Other	28,734	31,533	32,706	33,246	33,897	33,897
Total	225,831	232,293	233,283	237,920	246,049	246,718
Imports						
European Union	18,794	18,354	18,756	18,500	18,750	18,750
Vietnam	4,945	4,969	5,149	5,250	5,350	5,350
Indonesia	4,255	4,486	4,449	4,750	4,800	4,800
Philippines	2,660	2,927	2,929	2,950	3,095	3,095
Thailand	2,782	3,191	2,889	2,800	2,800	2,800
Iran	1,507	1,514	2,788	2,550	2,400	2,400
Korea, South	1,764	1,846	1,855	1,950	2,000	2,000
Mexico	1,991	1,818	1,836	1,925	2,000	2,000
Japan	1,621	1,728	1,596	1,625	1,621	1,621
Colombia	1,284	1,373	1,433	1,500	1,550	1,550
Other	18,575	18,924	18,370	19,605	20,059	20,059
Total	60,178	61,130	62,050	63,405	64,425	64,425
Exports						
Argentina	31,323	26,265	28,832	28,000	29,650	29,650
Brazil	13,762	16,032	15,973	16,800	16,300	16,300
United States	10,505	12,715	12,296	12,202	11,884	11,884
Paraguay	2,370	2,628	2,333	2,550	2,450	2,450
India	2,019	1,863	2,184	1,450	1,870	1,870
Other	4,622	5,399	5,648	5,585	5,236	5,236
Total	64,601	64,902	67,266	66,587	67,390	67,390
Domestic Consumption						
China	68,646	70,105	66,405	68,340	72,671	73,067
United States	30,314	32,239	32,746	34,019	34,019	34,292
European Union	30,242	30,092	30,442	30,792	30,942	30,942
Brazil	16,943	17,311	17,645	18,085	18,500	18,500
Mexico	5,770	5,950	6,575	6,900	7,050	7,050
Vietnam	5,740	6,110	6,020	6,120	6,170	6,170
India	4,675	4,740	5,280	5,490	5,790	5,790
Indonesia	4,250	4,450	4,625	4,700	4,750	4,750
Iran	3,300	3,700	4,350	4,472	4,600	4,600
Thailand	4,250	4,280	4,400	4,230	4,280	4,280
Russia	3,200	3,400	3,500	3,600	3,650	3,650
Japan	3,420	3,521	3,472	3,510	3,520	3,520
Argentina	2,853	2,996	3,127	3,280	3,400	3,400
Egypt	2,900	3,075	3,200	3,300	3,350	3,350
Philippines	2,700	3,000	3,025	3,050	3,180	3,180
Other	32,101	33,791	34,869	36,524	37,656	37,656
Total	221,304	228,760	229,681	236,412	243,528	244,197
Ending Stocks						
Brazil	3,320	4,296	3,610	3,100	3,735	3,225
Argentina	3,335	2,475	1,743	1,813	1,463	1,813
United States	363	504	365	340	363	363
Vietnam	493	363	329	286	331	331
European Union	535	213	477	367	278	278
Other	5,665	5,621	5,334	4,278	3,730	3,730
Total	13,711	13,472	11,858	10,184	9,900	9,740

Most countries are on an October/September Marketing Year (MY). The Mexico and Thailand are on a September/August MY. Canada is on an August/July MY. Paraguay, Vietnam and the Philippines are on a January/December MY and Bolivia is on a March/February MY.

Table 09: Soybean Oil: World Supply and Distribution

Thousand Metric Tons

	2016/17	2017/18	2018/19	2019/20	May 2020/21	Jun 2020/21
Production						
China	15,770	16,128	15,232	15,680	16,666	16,755
United States	10,035	10,783	10,976	11,154	11,197	11,276
Brazil	7,755	8,485	8,150	8,500	8,640	8,640
Argentina	8,395	7,236	7,910	7,950	8,385	8,385
European Union	2,736	2,841	2,964	3,002	2,983	2,983
India	1,620	1,386	1,730	1,495	1,692	1,692
Mexico	820	937	1,100	1,110	1,145	1,145
Other	6,692	7,292	7,582	7,704	7,825	7,825
Total	53,823	55,088	55,644	56,595	58,533	58,701
Imports						
India	3,534	2,984	3,000	3,200	3,236	3,236
China	711	481	783	1,000	1,200	1,200
Algeria	674	752	854	770	800	800
Bangladesh	830	859	1,017	800	800	800
Morocco	497	502	536	550	560	560
Peru	449	503	538	550	560	560
European Union	285	284	416	425	415	415
Colombia	352	344	343	360	370	370
Korea, South	306	276	328	340	340	340
Iran	257	213	346	265	280	280
Other	3,076	2,660	2,270	2,534	2,561	2,561
Total	10,971	9,858	10,431	10,794	11,122	11,122
Exports						
Argentina	5,387	4,164	5,261	5,350	6,000	6,000
Brazil	1,241	1,511	1,079	1,050	1,050	1,050
United States	1,159	1,108	881	1,225	953	998
European Union	819	902	788	800	825	825
Paraguay	681	702	653	665	672	672
Russia	529	568	572	620	600	600
Bolivia	338	380	390	370	373	373
Other	1,203	1,207	1,554	1,354	1,279	1,279
Total	11,357	10,542	11,178	11,434	11,752	11,797
Domestic Consumption						
China	16,350	16,500	15,885	16,573	17,574	17,663
United States	9,010	9,698	10,375	10,024	10,432	10,432
Brazil	6,570	6,940	7,165	7,450	7,650	7,650
India	5,150	4,670	4,750	4,707	4,900	4,900
European Union	2,215	2,225	2,455	2,465	2,605	2,605
Argentina	2,985	3,081	2,574	2,389	2,400	2,400
Mexico	1,070	1,120	1,230	1,280	1,320	1,320
Bangladesh	1,010	1,085	1,170	1,220	1,270	1,270
Algeria	710	730	760	775	785	785
Egypt	610	710	700	725	730	730
Iran	700	710	715	715	720	720
Peru	435	488	538	550	560	560
Morocco	480	510	520	540	555	555
Pakistan	470	485	490	505	530	530
Korea, South	450	470	505	505	510	510
Other	5,078	5,133	5,090	5,174	5,341	5,341
Total	53,293	54,555	54,922	55,597	57,882	57,971
Ending Stocks						
United States	776	905	805	880	846	907
China	670	568	501	458	600	600
Argentina	283	274	349	560	545	545
European Union	151	149	286	448	416	416
Brazil	291	370	300	360	300	330
Other	1,811	1,565	1,565	1,458	1,432	1,421
Total	3,982	3,831	3,806	4,164	4,139	4,219

Most countries are on an October/September Marketing Year (MY). Mexico is on a September/August MY. Paraguay and Peru are on an January/December MY and Bolivia is on a March/February MY.

Table 10: Soybeans and Products: World Trade
Thousand Metric Tons

Marketing Year	Meal, Soybean			Oil, Soybean			Oilseed, Soybean			
	2018/19	2019/20	2020/21	2018/19	2019/20	2020/21	2018/19	2019/20	2020/21	
Exports										
North America		12,729	12,587	12,269	1,064	1,400	1,168	52,822	49,156	59,792
Canada	(Aug-Jul)	425	375	375	173	160	155	5,258	4,250	4,000
United States	(Oct-Sep)	12,296	12,202	11,884	881	1,225	998	47,564	44,906	55,792
South America		48,809	49,005	50,105	7,446	7,500	8,165	91,367	102,048	98,098
Argentina	(Oct-Sep)	28,832	28,000	29,650	5,261	5,350	6,000	9,104	9,000	6,500
Brazil	(Oct-Sep)	15,973	16,800	16,300	1,079	1,050	1,050	74,594	85,000	83,000
Paraguay	(Jan-Dec)	2,333	2,550	2,450	653	665	672	4,901	5,900	6,300
South Asia		2,189	1,455	1,875	8	8	8	165	110	135
India	(Oct-Sep)	2,184	1,450	1,870	8	8	8	165	110	135
Other		3,539	3,540	3,141	2,660	2,526	2,456	3,946	4,227	3,955
World Total		67,266	66,587	67,390	11,178	11,434	11,797	148,300	155,541	161,980
Imports										
European Union	(Oct-Sep)	18,756	18,500	18,750	416	425	415	14,983	15,100	14,900
East Asia		3,531	3,660	3,708	1,308	1,528	1,737	89,843	101,507	103,602
China	(Oct-Sep)	17	15	15	783	1,000	1,200	82,540	94,000	96,000
Japan	(Oct-Sep)	1,596	1,625	1,621	13	10	12	3,314	3,390	3,410
Korea, South	(Oct-Sep)	1,855	1,950	2,000	328	340	340	1,373	1,265	1,290
Taiwan	(Oct-Sep)	26	30	30	0	0	0	2,614	2,850	2,900
Southeast Asia		16,724	17,181	17,502	242	273	274	8,325	8,571	8,976
Indonesia	(Oct-Sep)	4,449	4,750	4,800	34	34	38	2,623	2,600	2,800
Malaysia	(Oct-Sep)	1,278	1,400	1,425	83	110	100	747	810	850
Philippines	(Jan-Dec)	2,929	2,950	3,095	62	65	71	150	180	240
Thailand	(Sep-Aug)	2,889	2,800	2,800	1	1	1	3,155	3,080	3,140
Vietnam	(Jan-Dec)	5,149	5,250	5,350	45	45	45	1,596	1,850	1,890
North America		3,474	3,519	3,443	357	363	384	7,422	6,858	7,058
Canada	(Aug-Jul)	1,018	1,050	1,080	23	23	23	1,172	450	550
Mexico	(Sep-Aug)	1,836	1,925	2,000	154	170	180	5,867	6,000	6,100
South America		5,452	5,530	5,710	1,146	1,240	1,246	7,662	5,044	4,964
Brazil	(Oct-Sep)	22	25	25	24	60	30	140	250	150
Colombia	(Oct-Sep)	1,433	1,500	1,550	343	360	370	619	660	700
Central America		1,287	1,375	1,422	168	187	197	263	315	342
Caribbean		1,084	1,090	1,145	305	328	324	119	130	140
Middle East		5,569	5,645	5,748	434	358	392	5,727	6,080	6,225
Iran	(Oct-Sep)	2,788	2,550	2,400	346	265	280	2,346	2,230	2,350
Israel	(Oct-Sep)	182	200	200	8	10	9	392	415	420
Syria	(Jan-Dec)	12	15	18	5	2	6	15	15	15
Turkey	(Oct-Sep)	724	850	920	0	0	0	2,405	2,800	2,800
North Africa		2,231	2,785	2,720	1,560	1,560	1,580	3,921	4,385	4,440
Egypt	(Oct-Sep)	195	425	420	94	150	125	3,380	3,700	3,700
Other		3,942	4,120	4,277	4,495	4,532	4,573	6,349	7,221	7,376
World Total		62,050	63,405	64,425	10,431	10,794	11,122	144,614	155,211	158,023

Table 11: Palm Oil: World Supply and Distribution

Thousand Metric Tons

	2016/17	2017/18	2018/19	2019/20	May 2020/21	Jun 2020/21
Production						
Indonesia	36,000	39,500	41,500	42,500	43,500	43,500
Malaysia	18,858	19,683	20,800	18,500	19,300	19,300
Thailand	2,500	2,780	3,000	2,800	3,100	3,100
Colombia	1,146	1,627	1,632	1,529	1,670	1,670
Nigeria	990	1,025	1,015	1,015	1,015	1,015
Other	5,845	5,960	6,077	5,927	6,013	6,013
Total	65,339	70,575	74,024	72,271	74,598	74,598
Imports						
India	9,341	8,608	9,710	9,000	9,200	9,200
China	4,881	5,320	6,795	6,200	6,400	6,400
European Union	7,217	7,079	7,297	6,650	6,350	6,350
Pakistan	3,075	3,093	3,175	3,175	3,450	3,450
Bangladesh	1,347	1,637	1,569	1,550	1,650	1,650
United States	1,367	1,527	1,531	1,565	1,500	1,500
Philippines	1,165	1,167	1,055	1,130	1,225	1,225
Egypt	1,323	1,095	1,023	1,075	1,200	1,200
Burma	809	847	945	900	980	980
Kenya	767	764	915	920	960	960
Other	14,685	15,369	16,324	15,452	16,276	16,276
Total	45,977	46,506	50,339	47,617	49,191	49,191
Exports						
Indonesia	27,633	26,967	28,279	27,500	28,750	28,750
Malaysia	16,313	16,472	18,362	16,300	16,725	16,725
Guatemala	724	802	828	810	810	810
Colombia	502	697	677	770	775	775
Papua New Guinea	664	684	720	565	570	570
Other	3,052	3,031	2,634	2,757	2,739	2,739
Total	48,888	48,653	51,500	48,702	50,369	50,369
Domestic Consumption						
Indonesia	9,125	11,565	13,721	13,670	14,875	14,875
India	9,350	9,270	9,805	9,310	9,430	9,430
European Union	6,900	6,950	6,960	6,770	6,500	6,500
China	4,750	5,100	7,012	6,125	6,445	6,445
Malaysia	2,622	3,238	3,573	3,225	3,475	3,475
Pakistan	2,995	3,145	3,245	3,290	3,400	3,400
Thailand	2,135	2,343	2,640	2,586	2,750	2,750
Bangladesh	1,364	1,580	1,600	1,600	1,650	1,650
United States	1,355	1,563	1,501	1,556	1,495	1,495
Nigeria	1,240	1,290	1,390	1,390	1,400	1,400
Philippines	1,220	1,250	1,260	1,220	1,250	1,250
Egypt	1,150	1,155	1,175	1,150	1,175	1,175
Colombia	965	1,030	1,085	1,155	1,165	1,165
Burma	800	850	900	940	990	990
Vietnam	786	861	877	897	910	910
Other	14,842	15,801	16,313	16,642	17,153	17,153
Total	61,599	66,991	73,057	71,526	74,063	74,063
Ending Stocks						
Indonesia	2,110	3,079	2,663	3,993	3,868	3,868
Malaysia	2,016	2,529	2,449	2,074	1,974	1,974
Thailand	276	368	464	400	427	427
Russia	131	145	324	339	309	309
European Union	608	591	812	547	297	297
Other	4,432	4,298	4,104	3,123	2,958	2,958
Total	9,573	11,010	10,816	10,476	9,833	9,833

Table 12: Rapeseed and Products: World Supply and Distribution
Thousand Metric Tons

	Marketing Year	Meal, Rapeseed			Oil, Rapeseed			Oilseed, Rapeseed		
		2018/19	2019/20	2020/21	2018/19	2019/20	2020/21	2018/19	2019/20	2020/21
Production										
China	(Oct-Sep)	9,722	8,970	9,029	6,425	5,928	5,967	13,281	13,100	13,200
India	(Oct-Sep)	4,100	4,170	4,050	2,622	2,660	2,584	8,000	7,700	7,650
Canada	(Aug-Jul)	5,203	5,600	5,600	4,048	4,350	4,350	20,343	19,000	19,900
Japan	(Oct-Sep)	1,333	1,263	1,263	1,045	990	990	4	4	4
European Union	(Jul-Jun)	13,395	12,811	12,768	9,823	9,395	9,363	20,061	16,831	16,800
Other		5,369	5,726	5,912	3,717	3,988	4,106	10,917	11,565	13,236
World Total		39,122	38,540	38,622	27,680	27,311	27,360	72,606	68,200	70,790
Imports										
China	(Oct-Sep)	1,437	1,525	1,400	1,507	1,625	1,700	3,486	2,500	2,500
India	(Oct-Sep)	0	0	0	62	40	58	0	0	0
Canada	(Aug-Jul)	6	5	5	16	15	14	146	150	150
Japan	(Oct-Sep)	7	7	7	28	40	45	2,384	2,240	2,270
European Union	(Jul-Jun)	514	480	450	246	275	230	4,232	5,800	6,000
Other		4,876	5,237	5,159	3,014	3,141	3,245	4,084	3,969	4,133
World Total		6,840	7,254	7,021	4,873	5,136	5,292	14,332	14,659	15,053
Exports										
China	(Oct-Sep)	11	12	15	15	9	10	0	0	0
India	(Oct-Sep)	950	875	875	4	3	3	0	0	0
Canada	(Aug-Jul)	4,643	5,000	4,850	3,155	3,400	3,430	9,202	9,200	8,900
Japan	(Oct-Sep)	0	6	0	1	1	1	0	0	0
European Union	(Jul-Jun)	447	450	275	208	215	225	89	50	20
Other		868	946	1,092	1,577	1,620	1,680	5,012	5,735	6,468
World Total		6,919	7,289	7,107	4,960	5,248	5,349	14,303	14,985	15,388
Domestic Consumption										
China	(Oct-Sep)	11,148	10,483	10,414	8,387	7,976	7,746	16,925	15,650	15,750
India	(Oct-Sep)	3,200	3,300	3,180	2,730	2,705	2,730	7,900	7,950	7,750
Canada	(Aug-Jul)	613	645	685	995	1,015	1,020	9,955	10,650	10,650
Japan	(Oct-Sep)	1,330	1,275	1,270	1,065	1,030	1,035	2,411	2,275	2,275
European Union	(Jul-Jun)	13,300	13,025	13,050	9,710	9,375	9,450	24,400	23,425	23,100
Other		9,454	9,916	9,993	5,275	5,507	5,696	9,972	10,305	10,701
World Total		39,045	38,644	38,592	28,162	27,608	27,677	71,563	70,255	70,226
Ending Stocks										
China	(Oct-Sep)	0	0	0	1,271	839	750	1,195	1,145	1,095
India	(Oct-Sep)	397	392	387	218	210	119	469	219	119
Canada	(Aug-Jul)	70	30	100	401	351	265	3,831	3,131	3,631
Japan	(Oct-Sep)	74	63	63	29	28	27	179	148	147
European Union	(Jul-Jun)	373	189	82	409	489	407	1,632	788	468
Other		168	269	255	392	394	369	1,728	1,222	1,422
World Total		1,082	943	887	2,720	2,311	1,937	9,034	6,653	6,882

Table 13: Sunflowerseed and Products: World Supply and Distribution
Thousand Metric Tons

Marketing Year	Oilseed, Sunflowerseed			Meal, Sunflowerseed			Oil, Sunflowerseed			
	2018/19	2019/20	2020/21	2018/19	2019/20	2020/21	2018/19	2019/20	2020/21	
Production										
Argentina	(Mar-Feb)	3,825	3,300	4,000	1,435	1,360	1,440	1,425	1,350	1,413
Russia	(Sep-Aug)	12,710	15,305	15,500	4,870	5,748	5,765	4,875	5,782	5,804
Turkey	(Sep-Aug)	1,800	1,750	1,680	1,280	1,320	1,334	1,022	1,055	1,065
Ukraine	(Sep-Aug)	15,000	16,500	17,000	6,112	6,773	6,877	6,364	7,055	7,160
European Union	(Oct-Sep)	9,505	9,610	9,600	4,700	4,724	4,698	3,670	3,676	3,676
Other		7,695	8,511	9,000	2,277	2,759	2,811	1,979	2,334	2,361
World Total		50,535	54,976	56,780	20,674	22,684	22,925	19,335	21,252	21,479
Imports										
Argentina	(Mar-Feb)	1	0	0	0	0	0	0	0	0
Russia	(Sep-Aug)	52	50	15	10	10	5	10	5	20
Turkey	(Sep-Aug)	1,027	850	975	910	950	1,150	533	550	550
Ukraine	(Sep-Aug)	23	30	25	5	8	3	0	0	0
European Union	(Oct-Sep)	545	850	620	3,670	3,550	3,650	1,966	2,000	1,970
Other		838	1,050	1,088	3,227	3,421	2,948	6,878	7,799	7,743
World Total		2,486	2,830	2,723	7,822	7,939	7,756	9,387	10,354	10,283
Exports										
Argentina	(Mar-Feb)	173	100	175	883	725	825	855	690	750
Russia	(Sep-Aug)	358	650	650	1,573	1,850	1,725	2,651	3,100	3,250
Turkey	(Sep-Aug)	51	75	60	23	20	24	436	475	400
Ukraine	(Sep-Aug)	104	80	150	4,808	4,950	5,050	6,063	6,350	6,500
European Union	(Oct-Sep)	611	600	550	387	430	410	486	540	520
Other		1,763	1,673	1,815	329	334	318	649	602	592
World Total		3,060	3,178	3,400	8,003	8,309	8,352	11,140	11,757	12,012
Domestic Consumption										
Argentina	(Mar-Feb)	3,656	3,475	3,650	600	610	620	637	642	647
Russia	(Sep-Aug)	12,350	14,620	14,705	3,400	3,750	4,100	2,275	2,473	2,545
Turkey	(Sep-Aug)	2,527	2,612	2,632	2,150	2,250	2,485	1,095	1,120	1,190
Ukraine	(Sep-Aug)	14,950	16,540	16,795	1,350	1,600	1,850	540	545	545
European Union	(Oct-Sep)	9,765	9,790	9,700	7,960	7,910	7,880	5,063	5,073	5,139
Other		6,908	7,868	8,214	5,235	5,830	5,416	8,586	9,506	9,653
World Total		50,156	54,905	55,696	20,695	21,950	22,351	18,196	19,359	19,719
Ending Stocks										
Argentina	(Mar-Feb)	987	712	887	87	112	107	118	136	152
Russia	(Sep-Aug)	233	318	478	210	368	313	18	232	261
Turkey	(Sep-Aug)	300	213	176	225	225	200	47	57	82
Ukraine	(Sep-Aug)	141	51	131	293	524	504	40	200	315
European Union	(Oct-Sep)	339	409	379	247	181	239	386	449	436
Other		499	519	578	82	98	123	829	854	713
World Total		2,499	2,222	2,629	1,144	1,508	1,486	1,438	1,928	1,959

Table 14: Minor Vegetable Oils: World Supply and Distribution
Thousand Metric Tons

Marketing Year	Oil, Peanut			Oil, Cottonseed			Oil, Olive			
	2018/19	2019/20	2020/21	2018/19	2019/20	2020/21	2018/19	2019/20	2020/21	
Production										
China	(Oct-Sep)	2,928	3,040	2,928	1,374	1,356	1,339	4	5	5
India	(Oct-Sep)	1,090	1,139	1,106	1,225	1,390	1,390	nr	nr	nr
Turkey	(Nov-Oct)	7	7	7	215	202	191	183	235	190
United States	(Aug-Jul)	99	115	110	207	222	236	16	16	16
European Union	(Oct-Sep)	13	13	13	46	55	57	2,400	2,000	2,050
Other		1,734	1,771	1,779	1,900	1,890	1,819	647	859	771
World Total		5,871	6,085	5,943	4,967	5,115	5,032	3,250	3,115	3,032
Imports										
China	(Oct-Sep)	172	215	225	0	0	0	50	55	55
India	(Oct-Sep)	0	0	0	0	2	0	nr	nr	nr
Turkey	(Nov-Oct)	0	0	0	0	0	0	24	30	25
United States	(Aug-Jul)	27	32	27	0	0	0	355	349	360
European Union	(Oct-Sep)	70	70	70	1	1	1	179	225	175
Other		25	25	25	89	95	92	386	384	367
World Total		294	342	347	90	98	93	994	1,043	982
Exports										
China	(Oct-Sep)	9	7	7	4	2	2	0	0	0
India	(Oct-Sep)	9	40	40	0	0	0	nr	nr	nr
Turkey	(Nov-Oct)	0	0	0	8	10	3	58	60	55
United States	(Aug-Jul)	4	9	5	40	41	45	7	6	10
European Union	(Oct-Sep)	4	3	4	1	1	1	728	720	725
Other		284	296	301	60	58	55	245	333	275
World Total		310	355	357	113	112	106	1,038	1,119	1,065
Domestic Consumption										
China	(Oct-Sep)	3,091	3,248	3,146	1,370	1,354	1,337	54	60	60
India	(Oct-Sep)	1,150	1,170	1,162	1,227	1,385	1,395	nr	nr	nr
Turkey	(Nov-Oct)	7	7	7	214	185	192	175	177	175
United States	(Aug-Jul)	122	138	132	166	177	191	364	359	366
European Union	(Oct-Sep)	79	80	79	46	55	57	1,495	1,520	1,570
Other		1,502	1,514	1,518	1,964	1,921	1,885	828	851	875
World Total		5,951	6,157	6,044	4,987	5,077	5,057	2,916	2,967	3,046
Ending Stocks										
China	(Oct-Sep)	0	0	0	0	0	0	0	0	0
India	(Oct-Sep)	316	245	149	19	26	21	nr	nr	nr
Turkey	(Nov-Oct)	0	0	0	5	12	8	8	36	21
United States	(Aug-Jul)	11	11	11	16	20	20	0	0	0
European Union	(Oct-Sep)	5	5	5	0	0	0	822	807	737
Other		86	72	57	59	65	36	150	209	197
World Total		418	333	222	99	123	85	980	1,052	955

Table 15: World Oilseeds and Products Supply and Distribution

Million Metric Tons

	Area Harvested	Beginning Stocks	Production	Imports	Total Supply	Exports	Food Use Dom.	Domestic Consumption	Ending Stocks
Major Oilseeds									
2007/08	220.36	77.16	393.15	90.41	560.71	91.74	31.92	403.28	65.69
2008/09	230.88	65.69	399.75	94.54	559.98	94.15	33.78	405.31	60.52
2009/10	235.73	60.52	447.24	102.62	610.38	107.60	34.61	425.41	77.36
2010/11	245.74	77.36	460.50	105.01	642.87	108.32	35.86	446.02	88.53
2011/12	248.81	88.53	446.78	113.28	648.59	110.97	36.07	465.85	71.76
2012/13	256.67	71.76	474.65	114.81	661.23	118.11	36.44	471.15	71.97
2013/14	260.95	71.97	503.38	133.67	709.02	133.77	37.25	494.22	81.03
2014/15	267.41	81.03	538.73	143.49	763.25	147.20	38.79	520.80	95.25
2015/16	265.52	95.25	524.15	153.67	773.07	153.01	40.20	526.65	93.41
2016/17	268.34	93.41	573.75	166.29	833.45	170.00	41.67	554.72	108.72
2017/18	281.09	108.72	582.26	174.90	865.89	176.33	42.77	572.97	116.59
2018/19	282.77	116.59	599.92	165.75	882.26	170.26	43.76	580.57	131.43
2019/20	279.74	131.43	575.23	177.53	884.19	178.90	44.72	590.78	114.50
2020/21	284.64	114.50	606.15	180.50	901.16	185.87	45.98	603.80	111.49
Major Protein Meals									
2007/08	nr	10.31	231.90	70.53	312.75	72.93	0.29	229.40	10.41
2008/09	nr	10.41	230.08	68.36	308.84	70.15	0.32	230.14	8.55
2009/10	nr	8.55	244.47	70.39	323.41	72.70	0.40	240.53	10.18
2010/11	nr	10.18	257.27	75.07	342.51	77.88	0.33	251.67	12.97
2011/12	nr	12.97	267.40	79.19	359.56	81.10	0.40	263.83	14.64
2012/13	nr	14.64	269.15	74.81	358.60	79.37	0.43	266.36	12.87
2013/14	nr	12.87	282.55	80.16	375.59	83.34	0.44	277.87	14.38
2014/15	nr	14.38	300.41	81.92	396.71	86.38	0.45	292.61	17.71
2015/16	nr	17.71	305.29	82.74	405.74	87.04	0.48	301.69	17.02
2016/17	nr	17.02	320.14	83.50	420.66	88.29	0.51	315.44	16.93
2017/18	nr	16.93	331.17	84.79	432.89	89.20	0.59	326.64	17.05
2018/19	nr	17.05	332.54	87.90	437.48	93.76	0.67	328.74	14.98
2019/20	nr	14.98	339.21	89.72	443.91	93.41	0.69	336.96	13.54
2020/21	nr	13.54	348.07	90.40	452.01	94.19	0.71	344.79	13.03
Major Vegetable Oils									
2007/08	14.73	14.53	129.98	49.99	194.50	54.45	99.55	125.14	14.92
2008/09	15.61	14.92	135.20	53.64	203.75	56.65	103.29	131.25	15.86
2009/10	16.46	15.86	142.48	55.65	213.99	58.85	107.83	138.52	16.62
2010/11	17.50	16.62	149.10	57.05	222.77	60.81	109.86	142.50	19.46
2011/12	18.47	19.46	158.10	61.86	239.42	64.85	115.70	151.48	23.08
2012/13	19.12	23.08	161.26	65.42	249.76	68.39	120.74	158.21	23.16
2013/14	19.98	23.16	171.54	67.13	261.83	70.26	125.30	166.13	25.45
2014/15	20.78	25.45	177.12	70.89	273.45	76.59	130.96	170.51	26.36
2015/16	21.74	26.36	176.55	70.62	273.53	73.78	135.40	177.57	22.18
2016/17	22.41	22.18	188.85	75.48	286.51	81.23	139.79	183.39	21.89
2017/18	23.26	21.89	198.72	75.42	296.03	80.03	144.46	192.93	23.07
2018/19	23.75	23.07	203.38	81.26	307.72	85.64	148.29	200.38	21.70
2019/20	24.27	21.70	204.09	80.13	305.93	83.88	149.41	200.37	21.68
2020/21	24.53	21.68	208.63	82.24	312.56	86.24	153.13	205.99	20.33

Based on the aggregate of different marketing years

Table 16: World Soybeans and Products Supply and Distribution

Million Metric Tons

	Area Harvested	Beginning Stocks	Production	Imports	Total Supply	Exports	Crush	Domestic Consumption	Ending Stocks
Oilseed, Soybean									
2007/08	91.10	64.82	219.23	78.62	362.67	78.70	202.58	229.61	54.36
2008/09	96.57	54.36	212.23	77.87	344.46	76.71	194.82	222.41	45.34
2009/10	102.75	45.34	260.97	87.51	393.82	92.06	210.48	239.16	62.60
2010/11	103.63	62.60	264.73	89.75	417.08	91.58	222.19	252.51	72.99
2011/12	103.15	72.99	240.83	94.65	408.48	91.77	229.19	259.25	57.45
2012/13	110.29	57.45	268.96	97.21	423.62	100.38	231.87	265.15	58.09
2013/14	112.91	58.09	283.20	113.16	454.45	112.74	242.96	277.89	63.82
2014/15	118.74	63.82	320.59	124.24	508.65	126.23	264.70	303.74	78.69
2015/16	120.72	78.69	315.90	133.48	528.06	132.23	275.06	316.00	79.83
2016/17	119.54	79.83	348.30	144.27	572.40	146.93	287.65	330.99	94.47
2017/18	124.21	94.47	341.74	153.23	589.45	153.08	294.39	337.77	98.60
2018/19	125.33	98.60	360.26	144.61	603.47	148.30	297.27	342.65	112.52
2019/20	122.58	112.52	335.35	155.21	603.08	155.54	302.65	348.35	99.19
2020/21	126.98	99.19	362.85	158.02	620.06	161.98	313.71	361.74	96.34
Meal, Soybean									
2007/08	nr	7.43	158.96	54.88	221.27	56.50	202.60	156.99	7.77
2008/09	nr	7.77	153.05	51.59	212.41	53.27	194.90	153.83	5.31
2009/10	nr	5.31	165.78	53.48	224.58	55.94	210.56	161.71	6.93
2010/11	nr	6.93	175.00	56.85	238.78	58.89	222.28	170.56	9.34
2011/12	nr	9.34	180.94	57.02	247.29	58.71	229.30	177.87	10.72
2012/13	nr	10.72	182.30	54.19	247.21	58.39	232.10	179.00	9.82
2013/14	nr	9.82	190.53	57.76	258.10	60.67	243.21	186.51	10.93
2014/15	nr	10.93	208.45	60.44	279.82	64.41	264.98	201.37	14.03
2015/16	nr	14.03	215.93	62.04	292.00	65.56	275.45	212.83	13.61
2016/17	nr	13.61	225.83	60.18	299.62	64.60	288.17	221.30	13.71
2017/18	nr	13.71	232.29	61.13	307.13	64.90	295.19	228.76	13.47
2018/19	nr	13.47	233.28	62.05	308.81	67.27	298.13	229.68	11.86
2019/20	nr	11.86	237.92	63.41	313.18	66.59	303.57	236.41	10.18
2020/21	nr	10.18	246.72	64.43	321.33	67.39	314.68	244.20	9.74
Oil, Soybean									
2007/08	nr	4.05	37.78	10.30	52.13	10.88	202.58	37.28	3.97
2008/09	nr	3.97	36.16	9.01	49.14	9.22	194.82	36.32	3.60
2009/10	nr	3.60	38.97	8.49	51.06	9.23	210.48	38.14	3.70
2010/11	nr	3.70	41.47	9.38	54.56	9.68	222.19	40.43	4.44
2011/12	nr	4.44	42.83	8.01	55.28	8.57	229.19	42.42	4.30
2012/13	nr	4.30	43.36	8.52	56.18	9.39	231.97	42.55	4.23
2013/14	nr	4.23	45.26	9.28	58.77	9.49	243.05	45.28	4.00
2014/15	nr	4.00	49.29	10.03	63.32	11.18	264.80	47.65	4.49
2015/16	nr	4.49	51.56	11.70	67.75	11.82	275.21	52.09	3.84
2016/17	nr	3.84	53.82	10.97	68.63	11.36	287.87	53.29	3.98
2017/18	nr	3.98	55.09	9.86	68.93	10.54	294.62	54.56	3.83
2018/19	nr	3.83	55.64	10.43	69.91	11.18	297.52	54.92	3.81
2019/20	nr	3.81	56.60	10.79	71.20	11.43	302.92	55.60	4.16
2020/21	nr	4.16	58.70	11.12	73.99	11.80	314.01	57.97	4.22

Based on the aggregate of different marketing years, primarily October through September.

Table 17: World Rapeseed and Products Supply and Distribution

Million Metric Tons

	Area Harvested	Beginning Stocks	Production	Imports	Total Supply	Exports	Food Use Dom.	Domestic Consumption	Ending Stocks
Oilseed, Rapeseed									
2007/08	29.15	5.20	49.15	7.57	61.91	8.18	0.35	49.20	4.53
2008/09	31.20	4.53	58.17	12.15	74.84	12.20	0.40	54.99	7.66
2009/10	30.65	7.66	60.79	10.81	79.26	10.90	0.42	59.66	8.70
2010/11	33.58	8.70	60.52	10.18	79.40	10.93	0.45	59.79	8.68
2011/12	33.30	8.68	61.23	13.24	83.15	12.99	0.45	63.34	6.83
2012/13	35.79	6.83	63.31	12.83	82.97	12.57	0.47	64.89	5.50
2013/14	35.70	5.50	70.63	15.55	91.68	15.10	0.49	68.82	7.77
2014/15	35.03	7.77	70.42	14.32	92.51	15.11	0.55	70.11	7.29
2015/16	33.30	7.29	68.74	14.15	90.18	14.35	0.65	69.58	6.25
2016/17	33.42	6.25	69.49	15.51	91.25	15.80	0.65	70.31	5.14
2017/18	36.54	5.14	75.02	15.48	95.64	16.20	0.65	71.48	7.96
2018/19	36.81	7.96	72.61	14.33	94.90	14.30	0.65	71.56	9.03
2019/20	34.75	9.03	68.20	14.66	91.89	14.99	0.65	70.26	6.65
2020/21	35.57	6.65	70.79	15.05	92.50	15.39	0.65	70.23	6.88
Meal, Rapeseed									
2007/08	nr	0.75	27.22	3.88	31.85	3.93	0.00	27.27	0.64
2008/09	nr	0.64	30.36	3.77	34.78	3.75	0.00	30.22	0.80
2009/10	nr	0.80	32.90	3.88	37.59	3.63	0.00	32.71	1.25
2010/11	nr	1.25	33.39	5.33	39.97	5.28	0.00	33.64	1.06
2011/12	nr	1.06	34.92	5.56	41.54	5.56	0.00	34.88	1.10
2012/13	nr	1.10	35.97	5.61	42.69	5.70	0.00	36.00	0.99
2013/14	nr	0.99	38.32	6.50	45.81	6.35	0.00	38.52	0.94
2014/15	nr	0.94	38.72	6.01	45.66	6.07	0.00	38.59	1.00
2015/16	nr	1.00	38.60	5.72	45.32	5.69	0.00	38.51	1.11
2016/17	nr	1.11	38.81	5.90	45.83	5.99	0.00	38.80	1.03
2017/18	nr	1.03	39.48	6.24	46.76	6.39	0.00	39.29	1.08
2018/19	nr	1.08	39.12	6.84	47.05	6.92	0.00	39.05	1.08
2019/20	nr	1.08	38.54	7.25	46.88	7.29	0.00	38.64	0.94
2020/21	nr	0.94	38.62	7.02	46.59	7.11	0.00	38.59	0.89
Oil, Rapeseed									
2007/08	nr	0.81	18.95	2.05	21.81	1.91	13.52	18.80	1.10
2008/09	nr	1.10	21.33	2.48	24.91	2.47	14.41	20.99	1.45
2009/10	nr	1.45	23.23	2.96	27.63	2.75	15.23	22.75	2.13
2010/11	nr	2.13	23.41	3.38	28.92	3.43	15.66	23.20	2.28
2011/12	nr	2.28	24.72	4.08	31.08	3.98	16.42	23.79	3.30
2012/13	nr	3.30	25.39	3.94	32.63	3.95	16.47	23.73	4.94
2013/14	nr	4.94	27.02	3.81	35.77	3.83	17.76	25.67	6.27
2014/15	nr	6.27	27.41	3.95	37.63	4.07	18.76	26.93	6.63
2015/16	nr	6.63	27.34	4.12	38.09	4.17	19.90	28.27	5.66
2016/17	nr	5.66	27.55	4.40	37.60	4.50	20.33	28.90	4.20
2017/18	nr	4.20	28.06	4.50	36.76	4.61	20.27	28.86	3.29
2018/19	nr	3.29	27.68	4.87	35.84	4.96	20.08	28.16	2.72
2019/20	nr	2.72	27.31	5.14	35.17	5.25	19.84	27.61	2.31
2020/21	nr	2.31	27.36	5.29	34.96	5.35	19.82	27.68	1.94

Based on the aggregate of different marketing years.

Table 18: World Sunflower and Products Supply and Distribution

Million Metric Tons

	Area Harvested	Beginning Stocks	Production	Imports	Exports	Domestic Consumption	Ending Stocks
Oilseed, Sunflowerseed							
2007/08	21.44	4.02	27.62	1.29	1.46	27.75	3.72
2008/09	23.89	3.72	33.12	1.92	2.15	32.76	3.85
2009/10	22.97	3.85	31.59	1.56	1.55	32.86	2.60
2010/11	23.09	2.60	32.75	1.62	1.78	32.93	2.26
2011/12	24.64	2.26	38.71	1.70	1.93	38.20	2.54
2012/13	23.60	2.54	34.94	1.36	1.45	34.61	2.78
2013/14	24.02	2.78	41.11	1.62	1.96	40.32	3.24
2014/15	23.11	3.24	39.25	1.56	1.66	39.45	2.94
2015/16	23.47	2.94	40.71	1.87	2.01	40.70	2.80
2016/17	25.92	2.80	48.23	2.19	2.47	47.35	3.41
2017/18	25.92	3.41	47.85	2.15	2.52	48.19	2.69
2018/19	25.81	2.69	50.54	2.49	3.06	50.16	2.50
2019/20	26.38	2.50	54.98	2.83	3.18	54.91	2.22
2020/21	27.10	2.22	56.78	2.72	3.40	55.70	2.63
Meal, Sunflowerseed							
2007/08	nr	0.24	11.26	2.96	3.31	10.84	0.30
2008/09	nr	0.30	13.08	4.20	4.30	12.47	0.81
2009/10	nr	0.81	13.42	3.69	4.09	12.83	1.00
2010/11	nr	1.00	13.31	4.06	4.57	12.72	1.07
2011/12	nr	1.07	15.60	6.42	6.80	14.60	1.70
2012/13	nr	1.70	14.15	4.93	5.13	14.83	0.80
2013/14	nr	0.80	16.70	5.76	6.22	15.70	1.35
2014/15	nr	1.35	16.15	5.53	5.87	15.68	1.48
2015/16	nr	1.48	16.53	5.95	6.24	16.32	1.40
2016/17	nr	1.40	19.40	6.97	7.43	19.10	1.23
2017/18	nr	1.23	19.95	6.56	6.98	19.41	1.35
2018/19	nr	1.35	20.67	7.82	8.00	20.70	1.14
2019/20	nr	1.14	22.68	7.94	8.31	21.95	1.51
2020/21	nr	1.51	22.93	7.76	8.35	22.35	1.49
Oil, Sunflowerseed							
2007/08	nr	1.20	10.26	2.78	3.53	9.51	1.20
2008/09	nr	1.20	11.89	4.15	4.55	10.75	1.94
2009/10	nr	1.94	12.12	3.81	4.50	11.46	1.90
2010/11	nr	1.90	12.08	3.70	4.54	11.32	1.83
2011/12	nr	1.83	14.35	5.83	6.48	12.49	3.03
2012/13	nr	3.03	12.86	5.16	5.57	13.17	2.31
2013/14	nr	2.31	15.55	6.97	7.80	14.05	2.98
2014/15	nr	2.98	14.96	6.18	7.40	14.14	2.57
2015/16	nr	2.57	15.40	7.03	8.10	15.02	1.88
2016/17	nr	1.88	18.19	8.88	10.43	16.33	2.19
2017/18	nr	2.19	18.53	8.71	9.98	17.41	2.05
2018/19	nr	2.05	19.34	9.39	11.14	18.20	1.44
2019/20	nr	1.44	21.25	10.35	11.76	19.36	1.93
2020/21	nr	1.93	21.48	10.28	12.01	19.72	1.96

Based on the aggregate of different marketing years, primarily September through August.

Table 19: World Palm Oil, Coconut Oil, and Fish Meal Supply and Distribution

Million Metric Tons

	Beginning Stocks	Production	Imports	Total Supply	Exports	Industrial Dom.	Food Use Dom.	Domestic Consumpti	Ending Stocks
Oil, Palm									
2007/08	5.99	41.45	29.83	77.26	32.49	8.85	29.40	38.82	5.95
2008/09	5.95	44.49	33.02	83.47	35.00	9.63	32.01	42.29	6.18
2009/10	6.18	46.38	34.56	87.12	36.33	10.06	33.83	44.49	6.30
2010/11	6.30	49.21	35.35	90.86	37.34	10.73	34.18	45.48	8.04
2011/12	8.04	52.55	38.46	99.05	39.85	12.47	36.67	49.78	9.42
2012/13	9.42	56.37	41.97	107.75	43.05	14.65	40.03	55.33	9.37
2013/14	9.37	59.28	41.82	110.47	43.14	16.21	40.86	57.71	9.63
2014/15	9.63	61.78	44.61	116.02	47.37	14.33	43.04	58.00	10.65
2015/16	10.65	58.92	42.42	111.99	43.87	16.14	42.60	59.38	8.74
2016/17	8.74	65.34	45.98	120.06	48.89	16.37	44.57	61.60	9.57
2017/18	9.57	70.58	46.51	126.65	48.65	19.60	46.70	66.99	11.01
2018/19	11.01	74.02	50.34	135.37	51.50	22.77	49.59	73.06	10.82
2019/20	10.82	72.27	47.62	130.70	48.70	22.22	48.57	71.53	10.48
2020/21	10.48	74.60	49.19	134.27	50.37	23.28	50.17	74.06	9.83
Oil, Coconut									
2007/08	0.49	3.41	1.91	5.81	1.93	1.52	1.78	3.33	0.55
2008/09	0.55	3.37	1.67	5.60	1.48	1.57	1.66	3.26	0.86
2009/10	0.86	3.49	2.30	6.65	2.07	1.71	2.08	3.83	0.75
2010/11	0.75	3.61	1.78	6.14	1.80	1.67	1.86	3.57	0.77
2011/12	0.77	3.41	1.83	6.01	1.86	1.55	1.92	3.51	0.64
2012/13	0.64	3.63	1.89	6.16	1.93	1.70	1.99	3.72	0.52
2013/14	0.52	3.40	1.74	5.65	1.91	1.55	1.74	3.33	0.40
2014/15	0.40	3.38	1.82	5.60	1.94	1.51	1.74	3.29	0.38
2015/16	0.38	3.34	1.60	5.32	1.59	1.54	1.67	3.24	0.49
2016/17	0.49	3.41	1.49	5.39	1.76	1.61	1.57	3.21	0.42
2017/18	0.42	3.67	1.70	5.79	1.73	1.70	1.69	3.42	0.64
2018/19	0.64	3.74	1.82	6.20	2.11	1.75	1.74	3.53	0.56
2019/20	0.56	3.62	1.83	6.01	1.93	1.71	1.84	3.58	0.50
2020/21	0.50	3.58	1.88	5.96	1.88	1.79	1.86	3.68	0.41
Meal, Fish									
2007/08	0.97	5.14	3.17	9.27	2.94	0.05	0.00	5.50	0.83
2008/09	0.83	5.20	3.26	9.29	3.08	0.05	0.00	5.51	0.71
2009/10	0.71	4.24	2.76	7.71	2.41	0.05	0.00	5.03	0.28
2010/11	0.28	5.55	2.77	8.60	2.69	0.05	0.00	5.22	0.69
2011/12	0.69	4.71	3.05	8.44	2.80	0.05	0.00	5.36	0.28
2012/13	0.28	4.84	2.47	7.59	2.32	0.05	0.00	4.81	0.45
2013/14	0.45	4.45	2.74	7.64	2.47	0.05	0.00	4.94	0.23
2014/15	0.23	4.69	2.50	7.41	2.28	0.05	0.00	4.87	0.26
2015/16	0.26	4.51	2.44	7.22	2.21	0.05	0.00	4.73	0.27
2016/17	0.27	4.87	3.02	8.16	2.53	0.05	0.00	5.38	0.26
2017/18	0.26	4.76	2.98	8.00	2.58	0.05	0.00	5.17	0.26
2018/19	0.26	4.76	3.02	8.04	2.56	0.05	0.00	5.22	0.26
2019/20	0.26	4.85	2.98	8.09	2.65	0.05	0.00	5.20	0.25
2020/21	0.25	4.87	3.05	8.16	2.67	0.05	0.00	5.27	0.22

Based on the aggregate of different marketing years.

Table 20: United States Oilseeds and Products Supply and Distribution Local Marketing Year

Thousand Metric Tons

	Area Harvested	Beginning Stocks	Production	Imports	Total Supply	Exports	Crush	Domestic Consumption	Ending Stocks
Major Oilseeds									
2007/08	31,970	17,023	82,453	1,265	100,741	33,045	53,495	60,787	6,909
2008/09	35,265	6,909	89,201	1,295	97,405	35,694	49,342	56,091	5,620
2009/10	35,511	5,620	98,951	1,066	105,637	41,691	51,483	58,402	5,544
2010/11	37,179	5,544	100,432	945	106,921	41,938	49,323	57,664	7,319
2011/12	35,131	7,319	92,442	1,285	101,046	37,813	50,316	57,621	5,612
2012/13	36,676	5,612	93,323	1,605	100,540	37,156	50,250	57,621	5,763
2013/14	35,428	5,763	98,986	3,067	107,816	45,569	51,455	58,294	3,953
2014/15	38,991	3,953	116,050	1,851	121,854	51,109	55,108	63,989	6,756
2015/16	38,403	6,756	115,891	1,130	123,777	53,968	55,055	62,941	6,868
2016/17	39,247	6,868	126,942	1,502	135,312	60,083	56,257	65,628	9,601
2017/18	42,801	9,601	131,483	1,419	142,503	59,315	60,168	69,361	13,827
2018/19	41,328	13,827	130,716	1,109	145,652	48,703	61,032	70,409	26,540
2019/20	36,875	26,540	106,997	1,173	134,710	46,140	62,441	71,129	17,441
2020/21	40,078	17,441	123,201	1,176	141,818	57,009	62,652	72,527	12,282
Major Protein Meals									
2007/08	nr	385	40,786	1,992	43,163	8,706	53,495	34,123	334
2008/09	nr	334	37,631	1,817	39,782	7,940	49,342	31,596	246
2009/10	nr	246	39,992	1,344	41,582	10,308	51,483	30,933	341
2010/11	nr	341	38,032	2,241	40,614	8,488	49,323	31,748	378
2011/12	nr	378	39,450	3,032	42,860	9,170	50,316	33,354	336
2012/13	nr	336	38,592	3,393	42,321	10,460	50,250	31,547	314
2013/14	nr	314	39,291	3,798	43,403	10,803	51,455	32,308	292
2014/15	nr	292	43,210	3,873	47,375	12,144	55,108	34,941	290
2015/16	nr	290	42,777	4,070	47,137	11,178	55,055	35,684	275
2016/17	nr	275	43,112	3,920	47,307	10,826	56,257	36,073	408
2017/18	nr	408	47,027	3,736	51,171	13,003	60,168	37,605	563
2018/19	nr	563	46,522	3,930	51,015	12,602	61,032	37,991	422
2019/20	nr	422	48,076	4,109	52,607	12,519	62,441	39,686	402
2020/21	nr	402	48,287	3,843	52,532	12,196	62,652	39,911	425
Major Vegetable Oils									
2007/08	0	1,741	10,544	3,109	15,394	1,679	53,495	12,251	1,464
2008/09	0	1,464	9,667	3,230	14,361	1,457	49,342	11,167	1,737
2009/10	0	1,737	10,058	3,338	15,133	1,948	51,483	11,194	1,991
2010/11	0	1,991	9,775	3,612	15,378	1,861	49,323	11,794	1,723
2011/12	0	1,723	10,032	3,831	15,586	1,146	50,316	12,873	1,567
2012/13	0	1,567	10,231	3,801	15,599	1,387	50,250	13,068	1,144
2013/14	0	1,144	10,425	4,016	15,585	1,116	51,455	13,498	971
2014/15	0	971	10,938	4,230	16,139	1,174	55,108	13,679	1,286
2015/16	0	1,286	11,210	4,527	17,023	1,248	55,055	14,573	1,202
2016/17	0	1,202	11,434	4,731	17,367	1,415	56,257	14,721	1,231
2017/18	0	1,231	12,109	4,783	18,123	1,342	60,168	15,541	1,240
2018/19	0	1,240	12,196	4,706	18,142	1,096	61,032	15,886	1,160
2019/20	0	1,160	12,488	5,046	18,694	1,438	62,441	15,975	1,281
2020/21	0	1,281	12,617	4,989	18,887	1,211	62,652	16,368	1,308

Based on the aggregate of different marketing years

Table 21: United States Soybeans and Products Supply and Distribution Local Marketing Years

Thousand Metric Tons

	Area Harvested	Beginning Stocks	Production	Imports	Total Supply	Exports	Crush	Domestic Consumption	Ending Stocks
Oilseed, Soybean									
2007/08	25,959	15,617	72,859	269	88,745	31,538	49,081	51,627	5,580
2008/09	30,222	5,580	80,749	361	86,690	34,817	45,230	48,112	3,761
2009/10	30,907	3,761	91,470	397	95,628	40,798	47,673	50,724	4,106
2010/11	31,003	4,106	90,663	393	95,162	40,959	44,851	48,351	5,852
2011/12	29,856	5,852	84,291	439	90,582	37,186	46,348	48,786	4,610
2012/13	30,814	4,610	82,791	1,103	88,504	36,129	45,967	48,550	3,825
2013/14	30,850	3,825	91,363	1,953	97,141	44,594	47,192	50,043	2,504
2014/15	33,431	2,504	106,905	904	110,313	50,136	50,975	54,989	5,188
2015/16	33,080	5,188	106,869	641	112,698	52,869	51,335	54,475	5,354
2016/17	33,470	5,354	116,931	606	122,891	58,963	51,742	55,720	8,208
2017/18	36,236	8,208	120,065	594	128,867	58,071	55,926	58,873	11,923
2018/19	35,448	11,923	120,515	383	132,821	47,564	56,935	60,517	24,740
2019/20	30,332	24,740	96,676	408	121,824	44,906	58,241	60,995	15,923
2020/21	33,508	15,923	112,264	408	128,595	55,792	58,377	62,048	10,755
Meal, Soybean									
2007/08	nr	311	38,359	128	38,798	8,384	49,081	30,147	267
2008/09	nr	267	35,473	80	35,820	7,708	45,230	27,899	213
2009/10	nr	213	37,836	145	38,194	10,125	47,673	27,795	274
2010/11	nr	274	35,608	163	36,045	8,238	44,851	27,489	318
2011/12	nr	318	37,217	196	37,731	8,845	46,348	28,614	272
2012/13	nr	272	36,174	222	36,668	10,111	45,967	26,308	249
2013/14	nr	249	36,909	347	37,505	10,504	47,192	26,774	227
2014/15	nr	227	40,880	302	41,409	11,891	50,975	29,282	236
2015/16	nr	236	40,525	358	41,119	10,843	51,335	30,037	239
2016/17	nr	239	40,630	313	41,182	10,505	51,742	30,314	363
2017/18	nr	363	44,657	438	45,458	12,715	55,926	32,239	504
2018/19	nr	504	44,283	620	45,407	12,296	56,935	32,746	365
2019/20	nr	365	45,652	544	46,561	12,202	58,241	34,019	340
2020/21	nr	340	45,836	363	46,539	11,884	58,377	34,292	363
Oil, Soybean									
2007/08	nr	1,399	9,335	30	10,764	1,320	49,081	8,317	1,127
2008/09	nr	1,127	8,503	41	9,671	995	45,230	7,378	1,298
2009/10	nr	1,298	8,897	47	10,242	1,524	47,673	7,173	1,545
2010/11	nr	1,545	8,568	72	10,185	1,466	44,851	7,506	1,213
2011/12	nr	1,213	8,954	68	10,235	664	46,348	8,396	1,175
2012/13	nr	1,175	8,990	89	10,254	981	45,967	8,522	751
2013/14	nr	751	9,131	75	9,957	852	47,192	8,577	528
2014/15	nr	528	9,706	120	10,354	914	50,975	8,599	841
2015/16	nr	841	9,956	130	10,927	1,017	51,335	9,145	765
2016/17	nr	765	10,035	145	10,945	1,159	51,742	9,010	776
2017/18	nr	776	10,783	152	11,711	1,108	55,926	9,698	905
2018/19	nr	905	10,976	180	12,061	881	56,935	10,375	805
2019/20	nr	805	11,154	170	12,129	1,225	58,241	10,024	880
2020/21	nr	880	11,276	181	12,337	998	58,377	10,432	907

Data based on Local Marketing Year (MY). Soybeans are on a September/August MY, and Soybean Meal and Oil are on an October/September MY.

Table 22: Brazil Soybeans and Products Supply and Distribution Local Marketing Years

Thousand Metric Tons

	Area Harvested	Beginning Stocks	Production	Imports	Total Supply	Exports	Crush	Domestic Consumption	Ending Stocks
Oilseed, Soybean (Local)									
2007/08	21,300	6,625	61,000	83	67,708	24,515	31,895	34,365	8,828
2008/09	21,700	8,828	57,800	124	66,752	28,041	30,779	33,129	5,582
2009/10	23,500	5,582	69,000	150	74,732	29,188	35,700	38,100	7,444
2010/11	24,200	7,444	75,300	40	82,784	33,789	37,264	39,714	9,281
2011/12	25,000	9,281	66,500	298	76,079	31,905	36,230	38,730	5,444
2012/13	27,700	5,444	82,000	240	87,684	42,826	36,432	38,982	5,876
2013/14	30,100	5,876	86,700	579	93,155	45,747	38,195	40,795	6,613
2014/15	32,100	6,613	97,200	329	104,142	54,635	40,339	42,989	6,518
2015/16	33,300	6,518	96,500	362	103,380	52,100	39,967	42,617	8,663
2016/17	33,900	8,663	114,600	267	123,530	68,807	42,161	44,811	9,912
2017/18	35,150	9,912	122,000	185	132,097	83,729	43,384	45,716	2,652
2018/19	35,900	2,652	119,000	145	121,797	73,445	43,400	45,600	2,752
2019/20	36,900	2,752	124,000	245	126,997	77,000	44,250	46,897	3,100
2020/21	38,300	3,100	131,000	150	134,250	83,000	45,000	47,650	3,600
Meal, Soybean (Local)									
2007/08	nr	2,283	24,720	143	27,146	12,709	31,895	12,300	2,137
2008/09	nr	2,137	23,850	86	26,073	12,153	30,779	12,800	1,120
2009/10	nr	1,120	27,670	72	28,862	14,147	35,700	13,187	1,528
2010/11	nr	1,528	28,880	51	30,459	14,452	37,264	13,400	2,607
2011/12	nr	2,607	28,080	15	30,702	13,854	36,230	14,000	2,848
2012/13	nr	2,848	28,230	30	31,108	13,619	36,432	14,800	2,689
2013/14	nr	2,689	29,560	27	32,276	13,721	38,195	15,300	3,255
2014/15	nr	3,255	31,220	16	34,491	15,106	40,339	15,900	3,485
2015/16	nr	3,485	30,930	27	34,442	14,651	39,967	16,700	3,091
2016/17	nr	3,091	32,680	38	35,809	13,915	42,161	17,100	4,794
2017/18	nr	4,794	33,620	12	38,426	16,780	43,384	17,500	4,146
2018/19	nr	4,146	33,640	22	37,808	16,461	43,400	17,865	3,482
2019/20	nr	3,482	34,350	26	37,858	16,800	44,250	18,097	2,961
2020/21	nr	2,961	34,900	25	37,886	16,300	45,000	18,650	2,936
Oil, Soybean (Local)									
2007/08	nr	358	6,120	9	6,487	2,198	31,895	4,005	284
2008/09	nr	284	5,910	41	6,235	1,496	30,779	4,395	344
2009/10	nr	344	6,850	2	7,196	1,632	35,700	5,060	504
2010/11	nr	504	7,150	0	7,654	1,758	37,264	5,305	591
2011/12	nr	591	6,950	2	7,543	1,688	36,230	5,395	460
2012/13	nr	460	6,990	4	7,454	1,410	36,432	5,528	516
2013/14	nr	516	7,330	0	7,846	1,326	38,195	5,955	565
2014/15	nr	565	7,740	32	8,337	1,650	40,339	6,220	467
2015/16	nr	467	7,670	74	8,211	1,250	39,967	6,490	471
2016/17	nr	471	8,090	51	8,612	1,323	42,161	6,887	402
2017/18	nr	402	8,325	41	8,768	1,409	43,384	6,990	369
2018/19	nr	369	8,330	35	8,734	1,014	43,400	7,320	400
2019/20	nr	400	8,500	50	8,950	1,070	44,250	7,460	420
2020/21	nr	420	8,640	30	9,090	1,050	45,000	7,650	390

Data based on Brazil's local February/January Marketing Year (MY).
Where February 2012 - January 2013 is the 2011/12 MY.

Table 23: Argentina Soybeans and Products Supply and Distribution Local Marketing Years

Thousand Metric Tons

	Area Harvested	Beginning Stocks	Production	Imports	Total Supply	Exports	Crush	Domestic Consumption	Ending Stocks
Oilseed, Soybean (Local)									
2007/08	16,371	2,078	46,200	2,947	51,225	11,803	31,883	33,608	5,814
2008/09	16,000	5,814	32,000	157	37,971	3,486	28,555	30,405	4,080
2009/10	18,600	4,080	54,500	0	58,580	13,701	39,196	41,496	3,383
2010/11	18,300	3,383	49,000	13	52,396	10,389	37,521	39,901	2,106
2011/12	17,577	2,106	40,100	2	42,208	6,098	30,681	33,431	2,679
2012/13	19,750	2,679	49,300	2	51,981	7,817	35,009	40,009	4,155
2013/14	19,250	4,155	53,400	2	57,557	7,434	38,503	43,503	6,620
2014/15	19,350	6,620	61,450	141	68,211	11,670	45,110	50,360	6,181
2015/16	19,350	6,181	58,800	1,304	66,285	9,046	43,042	49,242	7,997
2016/17	17,335	7,997	55,000	2,631	65,628	7,247	40,940	47,440	10,941
2017/18	16,300	10,941	37,800	7,256	55,997	3,841	36,359	43,056	9,100
2018/19	16,600	9,100	55,300	3,789	68,189	10,255	40,929	47,824	10,110
2019/20	17,000	10,110	50,000	3,600	63,710	6,500	40,800	47,950	9,260
2020/21	17,300	9,260	53,500	3,500	66,260	6,500	43,000	50,260	9,500
Meal, Soybean (Local)									
2007/08	nr	734	24,839	3	25,576	24,389	31,883	652	535
2008/09	nr	535	22,519	4	23,058	21,303	28,555	750	1,005
2009/10	nr	1,005	30,493	0	31,498	28,384	39,196	850	2,264
2010/11	nr	2,264	29,181	0	31,445	27,485	37,521	1,085	2,875
2011/12	nr	2,875	23,946	0	26,821	21,973	30,681	1,550	3,298
2012/13	nr	3,298	27,150	0	30,448	23,937	35,009	1,950	4,561
2013/14	nr	4,561	29,528	0	34,089	27,473	38,503	2,200	4,416
2014/15	nr	4,416	34,737	1	39,154	31,873	45,110	2,524	4,757
2015/16	nr	4,757	33,102	0	37,859	30,984	43,042	2,756	4,119
2016/17	nr	4,119	31,450	0	35,569	29,255	40,940	2,930	3,384
2017/18	nr	3,384	27,950	1	31,335	25,848	36,359	3,137	2,350
2018/19	nr	2,350	31,450	27	33,827	28,921	40,929	3,227	1,679
2019/20	nr	1,679	31,350	0	33,029	28,000	40,800	3,350	1,679
2020/21	nr	1,679	33,050	0	34,729	29,650	43,000	3,400	1,679
Oil, Soybean (Local)									
2007/08	nr	212	6,037	0	6,249	4,987	31,883	1,125	137
2008/09	nr	137	5,448	0	5,585	3,709	28,555	1,716	160
2009/10	nr	160	7,460	0	7,620	5,180	39,196	2,215	225
2010/11	nr	225	7,148	0	7,373	4,227	37,521	2,755	391
2011/12	nr	391	5,840	35	6,266	3,433	30,681	2,550	283
2012/13	nr	283	6,616	59	6,958	4,281	35,009	2,375	302
2013/14	nr	302	7,191	26	7,519	4,296	38,503	2,843	380
2014/15	nr	380	8,753	5	9,138	6,312	45,110	2,308	518
2015/16	nr	518	8,382	0	8,900	5,386	43,042	3,055	459
2016/17	nr	459	7,925	0	8,384	4,721	40,940	3,190	473
2017/18	nr	473	7,150	0	7,623	4,567	36,359	2,760	296
2018/19	nr	296	8,000	0	8,296	5,106	40,929	2,575	615
2019/20	nr	615	7,950	0	8,565	5,350	40,800	2,400	815
2020/21	nr	815	8,385	0	9,200	6,000	43,000	2,415	785

Data based on Argentina's Local April/March Marketing Year (MY).
Where April 2012 - March 2013 is the 2011/12 MY.

Table 24: South East Asia Oilseeds and Products Supply and Distribution

Thousand Metric Tons

	2016/17	2017/18	2018/19	2019/20	May 2020/21	Jun 2020/21
Production						
Oilseed, Copra	4,251	4,626	4,656	4,552	4,465	4,465
Oilseed, Palm Kernel	15,058	16,274	16,954	16,770	17,190	17,190
Oilseed, Soybean	879	835	802	750	740	740
Other	3,850	3,871	3,802	3,564	3,734	3,734
Total	24,038	25,606	26,214	25,636	26,129	26,129
Domestic Consumption						
Meal, Fish	881	882	922	920	931	931
Meal, Rapeseed	387	485	634	656	681	681
Meal, Soybean	18,755	19,732	19,814	19,895	20,251	20,251
Other	3,366	3,531	3,726	3,878	3,978	3,978
Total	23,389	24,630	25,096	25,349	25,841	25,841
SME						
Meal, Fish	1,275	1,274	1,332	1,329	1,345	1,345
Meal, Rapeseed	275	345	451	467	485	485
Meal, Soybean	18,665	19,622	19,694	19,775	20,131	20,131
Other	1,720	1,785	1,851	1,921	1,964	1,964
Total	21,935	23,027	23,328	23,493	23,925	23,925
Imports						
Meal, Fish	310	332	335	323	335	335
Meal, Rapeseed	359	517	629	645	680	680
Meal, Soybean	16,165	17,210	16,724	17,181	17,502	17,502
Other	750	750	941	1,009	1,054	1,054
Total	17,584	18,809	18,629	19,158	19,571	19,571
Industrial Dom. Cons.						
Oil, Palm	6,801	9,705	12,190	12,071	12,990	12,990
Oil, Rapeseed	0	0	0	0	0	0
Oil, Soybean	46	49	54	49	54	54
Oil, Sunflowerseed	0	0	0	0	0	0
Other	4,291	4,712	4,958	4,923	5,078	5,063
Total	11,138	14,466	17,202	17,043	18,122	18,107
Food Use Dom. Cons.						
Oil, Palm	9,790	10,234	10,622	10,315	11,113	11,113
Oil, Rapeseed	31	18	13	13	13	13
Oil, Soybean	672	606	671	690	718	718
Oil, Sunflowerseed	131	146	156	151	156	156
Other	1,491	1,568	1,626	1,657	1,721	1,711
Total	12,115	12,572	13,088	12,826	13,721	13,711
Domestic Consumption						
Oil, Palm	16,954	20,322	23,194	22,778	24,500	24,500
Oil, Rapeseed	31	18	13	13	13	13
Oil, Soybean	718	655	725	739	772	772
Oil, Sunflowerseed	131	146	156	151	156	156
Other	5,792	6,290	6,594	6,590	6,809	6,784
Total	23,626	27,431	30,682	30,271	32,250	32,225
Imports						
Oil, Palm	3,732	3,671	4,276	3,847	4,207	4,207
Oil, Rapeseed	12	13	12	12	12	12
Oil, Soybean	272	246	242	273	274	274
Oil, Sunflowerseed	0	15	25	20	25	25
Other	503	643	671	671	696	696
Total	4,519	4,588	5,226	4,823	5,214	5,214

Southeast Asia includes Brunei, Burma, Cambodia, Indonesia, Laos, Malaysia, Philippines, Singapore, Thailand, and Vietnam.

SME - 44 Percent Protein Soybean Meal Equivalent

Table 25: Middle East Oilseeds and Products Supply and Distribution

Thousand Metric Tons

	2016/17	2017/18	2018/19	2019/20	May 2020/21	Jun 2020/21
Production						
Oilseed, Cottonseed	1,228	1,447	1,376	1,278	1,344	1,229
Oilseed, Rapeseed	263	200	228	228	235	235
Oilseed, Soybean	241	292	257	277	281	281
Oilseed, Sunflowerseed	1,376	1,609	1,859	1,809	1,649	1,739
Other	164	165	154	150	155	155
Total	3,272	3,713	3,874	3,742	3,664	3,639
Domestic Consumption						
Meal, Fish	124	123	182	168	173	173
Meal, Rapeseed	849	743	504	543	558	558
Meal, Soybean	7,816	8,260	9,145	9,789	10,046	10,046
Other	3,347	3,694	3,933	4,074	4,366	4,339
Total	12,136	12,820	13,764	14,574	15,143	15,116
SME						
Meal, Fish	179	178	263	243	250	250
Meal, Rapeseed	604	529	359	386	397	397
Meal, Soybean	7,814	8,258	9,144	9,787	10,044	10,044
Other	2,236	2,421	2,571	2,633	2,823	2,796
Total	10,833	11,385	12,337	13,049	13,514	13,487
Imports						
Meal, Fish	124	133	178	170	175	175
Meal, Rapeseed	173	169	171	209	218	218
Meal, Soybean	4,519	4,229	5,569	5,645	5,748	5,748
Other	1,766	1,855	1,931	2,017	2,293	2,293
Total	6,582	6,386	7,849	8,041	8,434	8,434
Imports						
Oil, Palm	2,571	2,559	2,766	2,677	2,888	2,888
Oil, Rapeseed	52	52	52	52	52	52
Oil, Soybean	374	331	434	358	392	392
Oil, Sunflowerseed	2,153	1,794	1,925	2,012	2,067	2,067
Other	171	175	244	209	211	211
Total	5,321	4,911	5,421	5,308	5,610	5,610
Industrial Dom. Cons.						
Oil, Palm	180	180	160	160	160	160
Oil, Rapeseed	30	14	10	7	6	6
Oil, Soybean	125	139	128	133	138	138
Oil, Sunflowerseed	20	20	20	20	20	20
Other	51	59	90	60	73	73
Total	406	412	408	380	397	397
Food Use Dom. Cons.						
Oil, Palm	1,940	2,127	2,316	2,325	2,432	2,432
Oil, Rapeseed	255	212	188	192	196	196
Oil, Soybean	920	939	939	946	963	963
Oil, Sunflowerseed	2,277	2,382	2,521	2,607	2,702	2,732
Other	639	679	660	662	696	676
Total	6,031	6,339	6,624	6,732	6,989	6,999
Domestic Consumption						
Oil, Palm	2,120	2,307	2,476	2,485	2,592	2,592
Oil, Rapeseed	285	226	198	199	202	202
Oil, Soybean	1,100	1,138	1,127	1,149	1,171	1,171
Oil, Sunflowerseed	2,307	2,412	2,551	2,637	2,732	2,762
Other	700	749	766	729	776	756
Total	6,512	6,832	7,118	7,199	7,473	7,483

Middle East includes Bahrain, Gaza Strip, Iran, Iraq, Israel, Jordan, Kuwait, Lebanon, Oman, Qatar, Saudi Arabia, Syria, Turkey, United Arab Emirates, West Banks, and Yemen.

SME - 44 Percent Protein Soybean Meal Equivalent

Table 26: European Union Oilseeds and Products Supply and Distribution

Thousand Metric Tons

	2016/17	2017/18	2018/19	2019/20	May 2020/21	Jun 2020/21
Production						
Oilseed, Rapeseed	20,538	22,184	20,061	16,831	17,000	16,800
Oilseed, Soybean	2,410	2,539	2,664	2,632	2,600	2,600
Oilseed, Sunflowerseed	8,651	10,128	9,505	9,610	9,600	9,600
Other	417	486	546	639	623	623
Total	32,016	35,337	32,776	29,712	29,823	29,623
Domestic Consumption						
Meal, Fish	536	587	649	635	650	650
Meal, Rapeseed	13,725	13,650	13,300	13,025	13,050	13,050
Meal, Soybean	30,242	30,092	30,442	30,792	30,942	30,942
Other	9,907	10,427	10,283	10,224	10,147	10,147
Total	54,410	54,756	54,674	54,676	54,789	54,789
SME						
Meal, Fish	775	848	938	918	939	939
Meal, Rapeseed	9,765	9,712	9,463	9,267	9,285	9,285
Meal, Soybean	30,200	30,050	30,400	30,750	30,900	30,900
Other	5,795	6,036	5,968	5,937	5,902	5,902
Total	46,534	46,646	46,769	46,872	47,026	47,026
Imports						
Meal, Fish	193	269	310	300	320	320
Meal, Rapeseed	219	242	514	480	450	450
Meal, Soybean	18,794	18,354	18,756	18,500	18,750	18,750
Other	5,691	5,805	5,895	5,756	5,805	5,805
Total	24,897	24,670	25,475	25,036	25,325	25,325
Industrial Dom. Cons.						
Oil, Palm	3,700	3,800	3,960	3,650	3,550	3,550
Oil, Rapeseed	7,100	7,090	6,700	6,325	6,400	6,400
Oil, Soybean	850	870	1,050	1,070	1,110	1,110
Oil, Sunflowerseed	450	470	500	510	510	510
Other	525	565	575	552	589	589
Total	12,625	12,795	12,785	12,107	12,159	12,159
Food Use Dom. Cons.						
Oil, Palm	3,000	2,950	2,800	2,900	2,850	2,850
Oil, Rapeseed	2,950	2,960	2,960	3,000	3,000	3,000
Oil, Soybean	1,310	1,300	1,350	1,340	1,440	1,440
Oil, Sunflowerseed	4,050	4,300	4,550	4,550	4,615	4,615
Other	2,301	2,318	2,365	2,403	2,457	2,457
Total	13,611	13,828	14,025	14,193	14,362	14,362
Domestic Consumption						
Oil, Palm	6,900	6,950	6,960	6,770	6,500	6,500
Oil, Rapeseed	10,100	10,100	9,710	9,375	9,450	9,450
Oil, Soybean	2,215	2,225	2,455	2,465	2,605	2,605
Oil, Sunflowerseed	4,510	4,783	5,063	5,073	5,139	5,139
Other	2,841	2,898	2,953	2,968	3,056	3,056
Total	26,566	26,956	27,141	26,651	26,750	26,750
Imports						
Oil, Palm	7,217	7,079	7,297	6,650	6,350	6,350
Oil, Rapeseed	153	158	246	275	230	230
Oil, Soybean	285	284	416	425	415	415
Oil, Sunflowerseed	1,791	1,529	1,966	2,000	1,970	1,970
Other	1,422	1,616	1,560	1,571	1,601	1,601
Total	10,868	10,666	11,485	10,921	10,566	10,566

European Union includes Austria, Belgium, Bulgaria, Croatia, Cyprus, Czech Republic, Denmark, Estonia, Finland, France, Germany, Greece, Hungary, Ireland, Italy, Latvia, Lithuania, Luxembourg, Malta, Netherlands, Poland, Portugal, Romania, Slovakia, Slovenia, Spain, Sweden, and United Kingdom.

Table 27: China Oilseeds and Products Supply and Distribution

Thousand Metric Tons

	2016/17	2017/18	2018/19	2019/20	May 2020/21	Jun 2020/21
Production						
Oilseed, Peanut	16,361	17,092	17,333	17,500	17,500	17,500
Oilseed, Rapeseed	13,128	13,274	13,281	13,100	13,200	13,200
Oilseed, Soybean	13,596	15,283	15,967	18,100	17,500	17,500
Oilseed, Sunflowerseed	3,201	3,149	2,494	3,250	3,300	3,300
Other	8,800	10,800	10,875	10,679	10,400	10,400
Total	55,086	59,598	59,950	62,629	61,900	61,900
Domestic Consumption						
Meal, Fish	2,019	1,867	1,788	1,775	1,850	1,800
Meal, Rapeseed	10,777	11,453	11,148	10,483	10,414	10,414
Meal, Soybean	68,646	70,105	66,405	68,340	72,671	73,067
Other	8,252	9,495	10,609	11,188	10,380	10,366
Total	89,694	92,920	89,950	91,786	95,315	95,647
SME						
Meal, Fish	2,917	2,698	2,584	2,565	2,673	2,601
Meal, Rapeseed	7,339	7,816	7,595	7,122	7,072	7,072
Meal, Soybean	67,596	69,005	65,255	67,100	71,421	71,817
Other	7,260	8,244	8,987	9,457	8,850	8,839
Total	85,113	87,763	84,421	86,244	90,016	90,328
Imports						
Meal, Fish	1,583	1,467	1,424	1,425	1,500	1,450
Meal, Rapeseed	875	1,258	1,437	1,525	1,400	1,400
Meal, Soybean	61	23	17	15	15	15
Other	657	842	2,161	2,280	1,590	1,590
Total	3,176	3,590	5,039	5,245	4,505	4,455
Food Use Dom. Cons.						
Oil, Palm	2,650	2,900	4,512	3,875	4,045	4,045
Oil, Peanut	2,807	2,966	3,091	3,248	3,146	3,146
Oil, Rapeseed	8,600	8,600	8,387	7,976	7,746	7,746
Oil, Soybean	16,350	16,500	15,885	16,573	17,574	17,663
Oil, Sunflowerseed	1,332	1,428	1,496	2,115	2,151	2,151
Other	1,296	1,569	1,601	1,564	1,573	1,577
Total	33,035	33,963	34,972	35,351	36,235	36,328
Domestic Consumption						
Oil, Palm	4,750	5,100	7,012	6,125	6,445	6,445
Oil, Peanut	2,807	2,966	3,091	3,248	3,146	3,146
Oil, Rapeseed	8,600	8,600	8,387	7,976	7,746	7,746
Oil, Soybean	16,350	16,500	15,885	16,573	17,574	17,663
Oil, Sunflowerseed	1,332	1,428	1,496	2,115	2,151	2,151
Other	1,891	2,270	2,491	2,314	2,423	2,427
Total	35,730	36,864	38,362	38,351	39,485	39,578
Imports						
Oil, Palm	4,881	5,320	6,795	6,200	6,400	6,400
Oil, Peanut	111	112	172	215	225	225
Oil, Rapeseed	802	1,067	1,507	1,625	1,700	1,700
Oil, Soybean	711	481	783	1,000	1,200	1,200
Oil, Sunflowerseed	725	785	1,032	1,400	1,400	1,400
Other	773	883	1,117	955	1,085	1,085
Total	8,003	8,648	11,406	11,395	12,010	12,010

SME - 44 Percent Protein Soybean Meal Equivalent

Table 28: India Oilseeds and Products Supply and Distribution

Thousand Metric Tons

	2016/17	2017/18	2018/19	2019/20	May 2020/21	Jun 2020/21
Production						
Oilseed, Cottonseed	11,463	12,312	10,953	12,949	12,100	12,100
Oilseed, Peanut	6,924	6,665	4,720	6,300	5,500	5,500
Oilseed, Rapeseed	6,620	7,100	8,000	7,700	7,650	7,650
Oilseed, Soybean	10,992	8,350	10,930	9,300	10,500	10,500
Oilseed, Sunflowerseed	318	230	172	182	185	185
Other	735	770	770	770	770	770
Total	37,052	35,427	35,545	37,201	36,705	36,705
Domestic Consumption						
Meal, Cottonseed	3,725	4,278	3,973	4,525	4,532	4,532
Meal, Peanut	1,506	1,538	1,378	1,439	1,394	1,394
Meal, Rapeseed	2,750	2,875	3,200	3,300	3,180	3,180
Meal, Soybean	4,675	4,740	5,280	5,490	5,790	5,790
Meal, Sunflowerseed	439	217	229	252	254	254
Other	458	539	552	509	511	511
Total	13,553	14,187	14,612	15,515	15,661	15,661
SME						
Meal, Cottonseed	3,018	3,466	3,219	3,667	3,672	3,672
Meal, Peanut	1,687	1,723	1,543	1,612	1,561	1,561
Meal, Rapeseed	1,957	2,046	2,277	2,348	2,263	2,263
Meal, Soybean	4,500	4,550	5,050	5,240	5,525	5,525
Meal, Sunflowerseed	293	145	153	168	169	169
Other	199	236	241	221	222	222
Total	11,654	12,166	12,483	13,255	13,412	13,412
Food Use Dom. Cons.						
Oil, Cottonseed	1,120	1,300	1,182	1,340	1,350	1,350
Oil, Palm	8,800	8,700	9,200	8,750	8,850	8,850
Oil, Peanut	1,050	1,080	1,140	1,160	1,152	1,152
Oil, Rapeseed	2,350	2,650	2,650	2,630	2,650	2,650
Oil, Soybean	5,150	4,670	4,750	4,707	4,900	4,900
Oil, Sunflowerseed	2,000	2,500	2,600	2,800	2,800	2,800
Other	240	295	305	304	304	304
Total	20,710	21,195	21,827	21,691	22,006	22,006
Domestic Consumption						
Oil, Cottonseed	1,165	1,345	1,227	1,385	1,395	1,395
Oil, Palm	9,350	9,270	9,805	9,310	9,430	9,430
Oil, Peanut	1,060	1,090	1,150	1,170	1,162	1,162
Oil, Rapeseed	2,435	2,730	2,730	2,705	2,730	2,730
Oil, Soybean	5,150	4,670	4,750	4,707	4,900	4,900
Oil, Sunflowerseed	2,000	2,500	2,600	2,800	2,800	2,800
Other	516	595	626	618	619	619
Total	21,676	22,200	22,888	22,695	23,036	23,036
Imports						
Oil, Cottonseed	0	3	0	2	0	0
Oil, Palm	9,341	8,608	9,710	9,000	9,200	9,200
Oil, Peanut	0	0	0	0	0	0
Oil, Rapeseed	317	278	62	40	58	58
Oil, Soybean	3,534	2,984	3,000	3,200	3,236	3,236
Oil, Sunflowerseed	2,136	2,496	2,328	2,700	2,600	2,600
Other	82	117	150	142	143	143
Total	15,410	14,486	15,250	15,084	15,237	15,237

SME - 44 Percent Protein Soybean Meal Equivalent

Table 29: Oilseed Prices
U.S. Dollars per Metric Ton

Year Beg Oct 1	Soybean					Peanut		Sunseed		Rapeseed	Copra
	U.S. 1/	U.S. 2/	Brz 3/	Arg 4/	Rott 5/	U.S. 6/	Rott 7/	U.S. 8/	Rott 9/	Hamb 10/	Rott 11/
Oct - Sep Average											
08/09-17/18	407	412	445	443	471	523	1480	476	480	484	806
2008/09	368	365	403	392	421	517	1,204	461	364	393	487
2009/10	354	357	390	395	429	467	1,209	342	452	419	613
2010/11	454	482	508	511	549	508	1,792	591	661	647	1188
2011/12	488	505	549	533	562	729	2,480	632	593	616	829
2012/13	530	537	538	543	592	635	1,391	546	580	579	570
2013/14	482	487	514	517	542	524	1,300	480	466	505	854
2014/15	362	356	388	401	407	482	1,294	506	432	417	749
2015/16	339	346	382	375	396	419	1,260	433	440	409	907
2016/17	347	351	385	376	404	437	1,554	386	408	432	1076
2017/18	343	337	396	386	403	508	1,317	381	403	425	784
2018/19											
Oct	315	291	412	393	368	481	1,315	368	375	432	558
Nov	308	301	382	368	373	476	1,250	375	377	427	511
Dec	315	313	351	357	382	452	1,275	362	370	424	535
Jan	317	315	349	347	382	500	1,255	384	381	425	520
Feb	313	315	353	347	380	492	1,300	397	396	422	478
Mar	313	311	344	335	373	437	1,325	392	397	409	451
Apr	304	306	336	319	364	448	1,294	388	393	412	456
May	295	288	338	320	345	452	1,305	403	405	409	452
Jun	305	312	367	347	371	474	1,325	395	380	417	430
Jul	308	316	358	341	374	454	1,313	399	370	417	444
Aug	302	305	364	347	362	452	1,325	395	362	420	481
Sep	307	309	362	348	365	437	1,344	408	355	425	483
Average	309	307	360	347	370	463	1,302	389	380	420	483
2019/20											
Oct	316	327	372	354	385	450	1,345	384	366	427	484
Nov	316	325	370	353	377	423	1,400	395	389	430	566
Dec	320	333	369	367	381	432	1,450	388	418	449	672
Jan	325	332	359	361	390	461	1,500	425	443	459	680
Feb	316	321	346	347	376	452	1,513	445	426	439	579
Mar	311	316	340	324	369	454	1,500	454	406	406	558
Apr	307	306	334	326	362	445	1,534	454	424	406	551
*May	N/A	305	338	329	360	N/A	1,473	N/A	433	409	560
Jun											
Jul											
Aug											
Sep											
Average	316	321	354	345	375	445	1,464	421	413	428	581

1/ U.S. Farm Price; USDA. 2/ U.S. NO.1 Yellow Cash Central Illinois; AMS.
3/ Brazil Paranagua, FOB; IGC 4/ Argentina Up River, FOB; IGC
5/ Rotterdam CIF; US origin; Oil World. 6/ US Farm Price, Inshell, USDA.
7/ Rotterdam CIF; US Runners 40/50%, Shelled Basis, Oilworld. 8/ US Farm Price; USDA
9/ Rotterdam/Amsterdam CIF; EU; Oil World 10/Hamburg CIF; Europe "00"; Oil World.
11/ Phil/Indo CIF NW Europe; Oil World
* Preliminary

6/11/2020 9:02:12 AM

Table 30: Protein Meal Prices
U.S. Dollars per Metric Ton

Year Beg Oct 1	Soybean				Cottonseed	Sunseed		Fish	Rapeseed
	U.S. 1/	Brz 2/	Arg 3/	Hamb 4/	U.S. 5/	U.S. 6/	Ukr 7/	Brem 8/	Hamb 9/
Oct - Sep Average									
08/09-17/18	407	387	388	421	305	213	245	1531	265
2008/09	365	333	290	401	281	168	178	1103	195
2009/10	343	327	311	391	244	167	222	1668	221
2010/11	381	383	386	418	302	242	254	1607	278
2011/12	434	442	442	461	303	272	263	1448	295
2012/13	516	489	506	538	366	266	318	1791	353
2013/14	540	500	509	533	416	263	315	1,660	323
2014/15	406	376	386	403	335	231	269	1,632	269
2015/16	358	335	349	351	288	169	233	1,517	232
2016/17	349	322	326	336	230	160	178	1,377	225
2017/18	380	368	375	382	287	191	224	1,506	259
2018/19									
Oct	352	349	340	347	274	181	235	1,483	272
Nov	342	335	332	340	265	189	240	1,478	276
Dec	344	325	326	344	269	207	213	1,479	274
Jan	347	361	334	343	273	210	211	1,484	273
Feb	338	325	326	330	259	207	214	1,471	266
Mar	338	319	320	320	249	209	204	1,470	249
Apr	335	315	313	318	239	184	205	1,505	244
May	328	312	311	320	237	156	212	1,511	232
Jun	358	334	331	337	238	158	228	1,521	237
Jul	343	318	317	322	240	157	226	1,496	225
Aug	327	308	306	314	244	159	224	1,438	216
Sep	326	304	299	315	238	157	210	1,384	204
Average	340	325	321	329	252	181	219	1,477	247
2019/20									
Oct	341	312	309	319	235	186	197	1,359	214
Nov	334	318	318	318	258	184	201	1,359	217
Dec	330	326	331	324	276	198	201	1,362	239
Jan	331	321	336	332	264	204	209	1,374	239
Feb	325	317	330	334	276	207	208	1,363	244
Mar	344	337	348	364	285	198	213	1,406	260
Apr	326	319	328	363	311	203	227	1,392	288
*May	318	314	318	328	278	199	231	1,395	260
Jun									
Jul									
Aug									
Sep									
Average	331	321	327	335	273	197	211	1,376	245

1/ Decatur, Average Wholesale 48% Protein; USDA. 2/ Brazil Paranagua, FOB; 48% Protein; IGC.

3/ Argentina Pellets, Up River, FOB; IGC; 4/ Hamburg FOB 44/45% Ex-Mill; Oil World.

5/ Memphis FOB; 41% Protein Solvent Extraction; USDA; 6/ Minneapolis FOB; 32% Protein; USDA.

7/ HiPro a.o. cif France or Ukraine DAF; Argentina Pellet 37-38% (Prior to Aug 2012); Oilworld.

8/ Bremen 64-65% Protein; Oil World. 9/ Hamburg FOB; Ex-Mill 34% Protein; Oil World.

* Preliminary

6/11/2020 9:02:12 AM

Table 31: Vegetable Oil Prices
U.S. Dollars per Metric Ton

Year Begin Oct 1	Soybean				Cottonseed	Sunseed		Peanut		Palm Malay	Canola	Coconut	Corn
	U.S. 1/	Brz 2/	Arg 3/	Rott 4/	U.S. 5/	U.S. 6/	Rott 7/	U.S. 8/	Rott 9/	10/	Rott 11/	Rott 12/	U.S. 13/
Oct - Sep Average													
08/09-17/18	844	874	872	957	1,012	1,389	985	1,583	1,580	778	980	1,209	924
2008/09	709	740	741	826	820	1,108	837	1,539	1,339	633	868	735	722
2009/10	793	848	829	924	888	1,164	956	1,353	1,291	793	927	921	866
2010/11	1,173	1,210	1,211	1,306	1,202	1,899	1,404	1,806	1,751	1,154	1,367	1,772	1,331
2011/12	1,144	1,162	1,164	1,241	1,173	1,834	1,254	2,247	2,455	1,032	1,258	1,244	1,236
2012/13	1,039	1,012	1,014	1,098	1,071	1,452	1,189	1,934	1,963	791	1,127	858	1,029
2013/14	843	871	870	950	1,337	1,304	929	1,430	1,355	803	954	1,278	869
2014/15	697	706	705	778	1,009	1,471	850	1,265	1,354	626	782	1,128	827
2015/16	658	704	698	774	1,011	1,275	849	1,294	1,443	628	798	1,362	865
2016/17	718	765	763	848	902	1,181	807	1,496	1,524	699	871	1,621	825
2017/18	662	722	722	822	703	1,203	776	1,470	1,326	626	844	1,175	669
2018/19													
Oct	637	676	658	760	674	1,190	712	1,469	1,225	539	875	841	599
Nov	606	645	633	734	693	1,164	678	1,429	1,191	492	858	767	581
Dec	620	633	617	726	707	1,179	676	1,372	1,180	489	831	806	583
Jan	627	652	651	746	748	1,179	689	1,364	1,174	538	834	782	578
Feb	652	683	693	770	803	1,168	706	1,348	1,161	556	823	713	565
Mar	631	641	653	734	787	1,173	700	1,345	1,179	523	800	681	589
Apr	614	627	629	733	819	1,190	701	1,439	N/A	538	802	675	616
May	594	626	637	733	786	1,177	726	1,455	1,370	511	820	669	612
Jun	423	637	639	726	809	1,124	738	1,455	1,374	502	833	643	604
Jul	610	638	637	742	827	1,157	772	1,458	1,370	494	836	665	590
Aug	626	676	674	775	804	1,177	772	1,455	1,365	536	877	718	602
Sep	635	677	669	760	839	1,213	756	1,477	1,365	532	896	724	606
Average	606	651	649	745	775	1,174	719	1,422	1,269	521	840	724	594
2019/20													
Oct	664	677	665	762	836	1,235	738	1,356	1,362	547	883	718	624
Nov	675	704	692	769	847	1,235	763	1,391	1,400	641	904	833	669
Dec	711	778	782	825	887	1,676	802	1,326	1,470	718	923	1,032	689
Jan	728	790	799	871	884	1,543	830	1,301	1,505	761	946	1,011	734
Feb	667	712	726	795	849	1,543	759	1,301	1,550	677	899	850	794
Mar	596	608	611	725	798	1,676	706	1,317	1,550	589	804	839	814
Apr	566	587	589	673	823	1,676	728	1,312	1,650	563	765	840	989
*May	557	595	595	672	820	1,631	751	1,369	1,750	529	798	832	1,050
Jun													
Jul													
Aug													
Sep													
Average	646	681	682	762	843	1,527	760	1,334	1,530	628	865	869	795

1/ Decatur; Average Wholesale Tank Crude; USDA. 2/ Brazil Paranagua, FOB Crude; IGC.
3/ Argentina Up River, FOB Crude; IGC 4/ Dutch FOB; Ex-Mill; Oil World. 5/ PPSY Greenwood MS; USDA.
6/ Minneapolis FOB; USDA. 7/ EU FOB NW Euro; Oil World. 8/ South East Mills FOB; Tank Cars Crude; USDA.
9/ Rotterdam CIF; Any Origin; Oil World. 10/ Malaysia FOB; RBD; Oil World. 11/ Rotterdam, Dutch FOB
Ex-Mill; Oilworld. 12/ Rotterdam CIF; Phil/Indo; Oil World. 13/ Chicago; Crude; AMS

* Preliminary

6/11/2020 9:02:12 AM