



United States
Department of
Agriculture

Foreign
Agricultural
Service

Circular Series
WAP 6-20
June 2020

World Agricultural Production

Ukraine Wheat: Drought in Southern Ukraine Lowers Yield

UKRAINE: NDVI Anomaly (June 1-8, 2020)



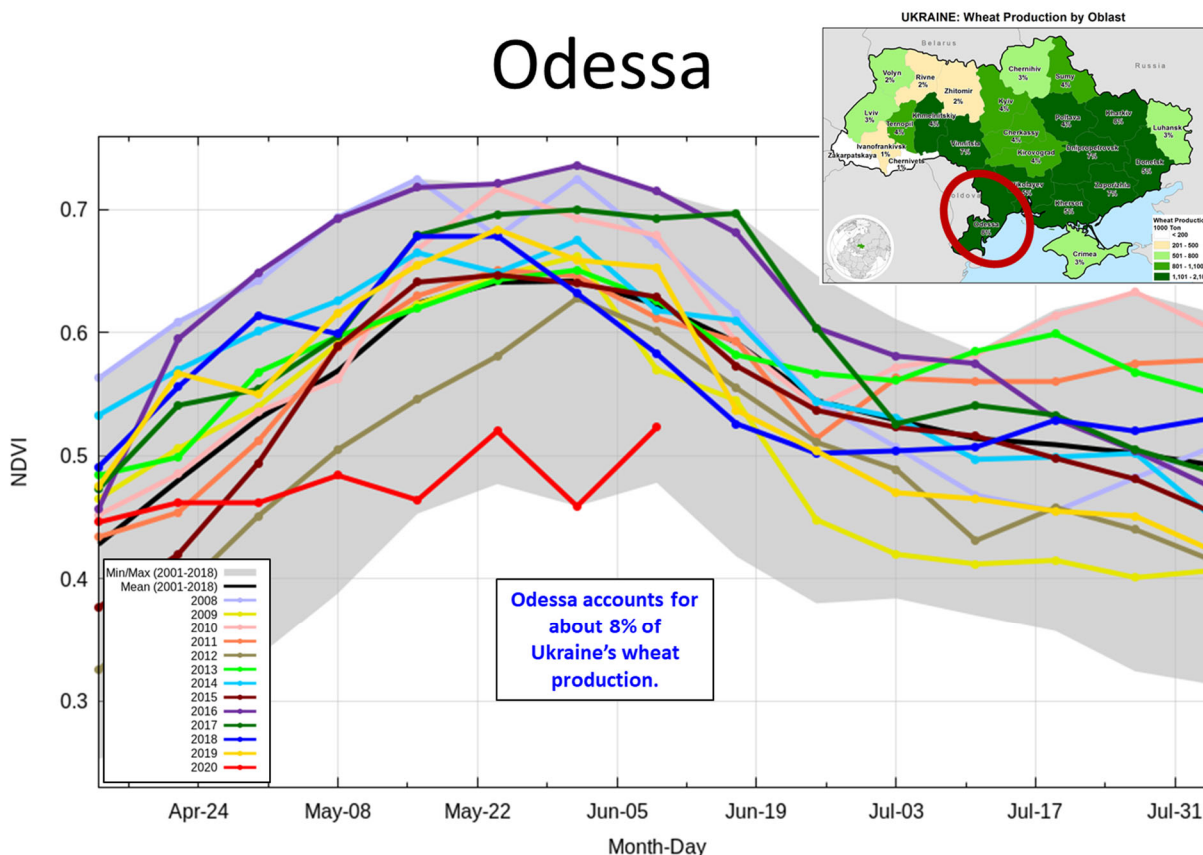
Sources: NASA MODIS Imagery
USDA/NASA Global Agricultural Monitoring (GLAM) project (<https://glam1.gsfc.nasa.gov/>)
State Statistical Service of Ukraine (Rosstat for Crimea Oblast)
Average Production 2013-2017

Foreign Agriculture Service
Global Market Analysis
International Production Assessment Division

Ukraine wheat production for 2020/21 is estimated at 26.5 million metric tons (mmt), down 5 percent from last month and down 9 percent from last year. Yield is estimated at 3.90 tons per hectare, down 6 percent from last month and last year. Harvested area is estimated at 6.8 million hectares, up 1 percent from last month but down 3 percent from last year.

Approved by the World Agricultural Outlook Board

Odessa



USDA Foreign Agricultural Service
Global Market Analysis
International Production Assessment Division

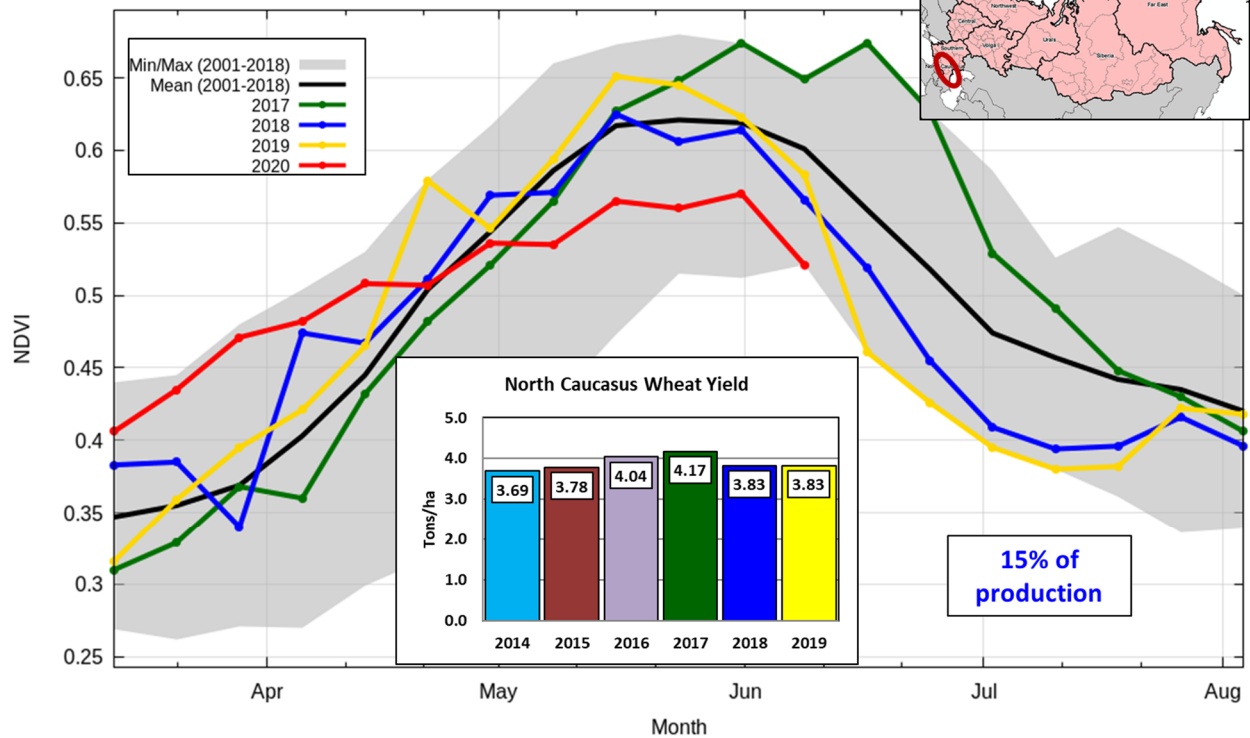
Sources: USDA/NASA Global Agriculture Monitoring Project (GLAM), GFSAD30 2015 Crop Mask
State Statistical Service of Ukraine (Rosstat for Crimea Oblast)
Average Production 2013-2017

The month-to-month decrease in yield is due to drier-than-average conditions throughout early spring, leading to deteriorating conditions most notably in Odessa and Crimea, which account for 8 percent and 3 percent of production, respectively (or about 3 mmt combined in 2019/20). Vegetation conditions, as of early June, in Odessa are the worst since 2007. Rainfall in the last week of May improved yields throughout the central region of the country, but not enough to offset the drier conditions in the southern regions. Spring wheat area has increased month-to-month based on updated forecasts from the Ukraine Ministry of Agriculture. This crop accounts for only about 3 percent of the total wheat production. USDA crop production estimates for Ukraine include estimated output from Crimea. *(For more information, please contact Katie.McGaughey@usda.gov.)*

Russia Wheat: Improving Conditions in Central and Volga Districts Offset Deteriorating Conditions in the North Caucasus District

Russia wheat production for 2020/21 is forecast at 77.0 million metric tons (mmt), unchanged from last month, but up 5 percent from last year. The forecast includes 57.0 mmt of winter wheat and 20.0 mmt of spring wheat. USDA crop production forecasts for Russia exclude forecast output from Crimea. Total wheat yield is forecast at 2.80 tons per hectare, unchanged from last month, but up 4 percent from last year. Total area is unchanged from last month at 27.5 million hectares.

North Caucasus: MODIS NDVI

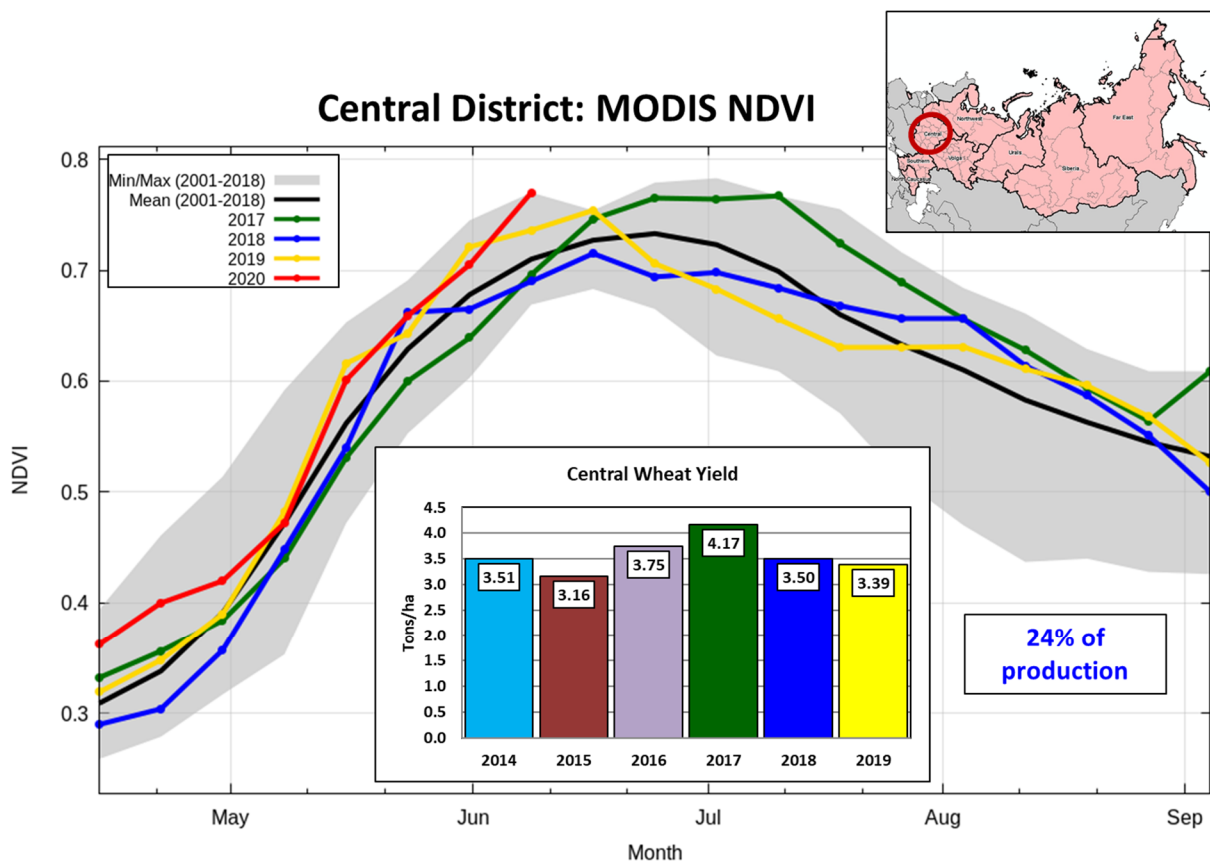


USDA Foreign Agricultural Service
Global Market Analysis
International Production Assessment Division

Source: USDA/NASA Global Agriculture Monitoring Project (GLAM),
GFSAD30 2015 Crop Mask

Early-season conditions for winter wheat continued to remain mixed. Planting occurred during drier-than-average conditions in the autumn. Early spring weather, especially in the North Caucasus and the Southern Districts, has been drier than average as well. Timely rainfall in the month of May, however, has occurred in the drier areas of concern in the North Caucasus District and southern portions of the Southern District, which together account for almost 58 percent of production. Concerns remained over dryness in Stavropol, which accounts for about 15 percent of total winter wheat production. Further north in the Central and Volga Districts, the improving conditions offset any yield reductions in the south. The Central District particularly benefited from cooler temperatures and increased rainfall during the month of May. The potential winter wheat yields hinge largely on the weather during May and June.

Planting of spring wheat began in late April and is essentially complete as of the beginning of June. Spring wheat is mainly planted in the regions bordering Kazakhstan: in the Volga, Urals and Siberian Districts of Russia. Conditions for planting in the Volga and Urals Districts have been largely favorable with enough soil moisture for seed germination. There are some concerns over dryness in Siberia and timely rainfall will be needed. At planting, there was ample soil moisture due to the plentiful amount of snowpack over the winter.



USDA Foreign Agricultural Service
Global Market Analysis
International Production Assessment Division

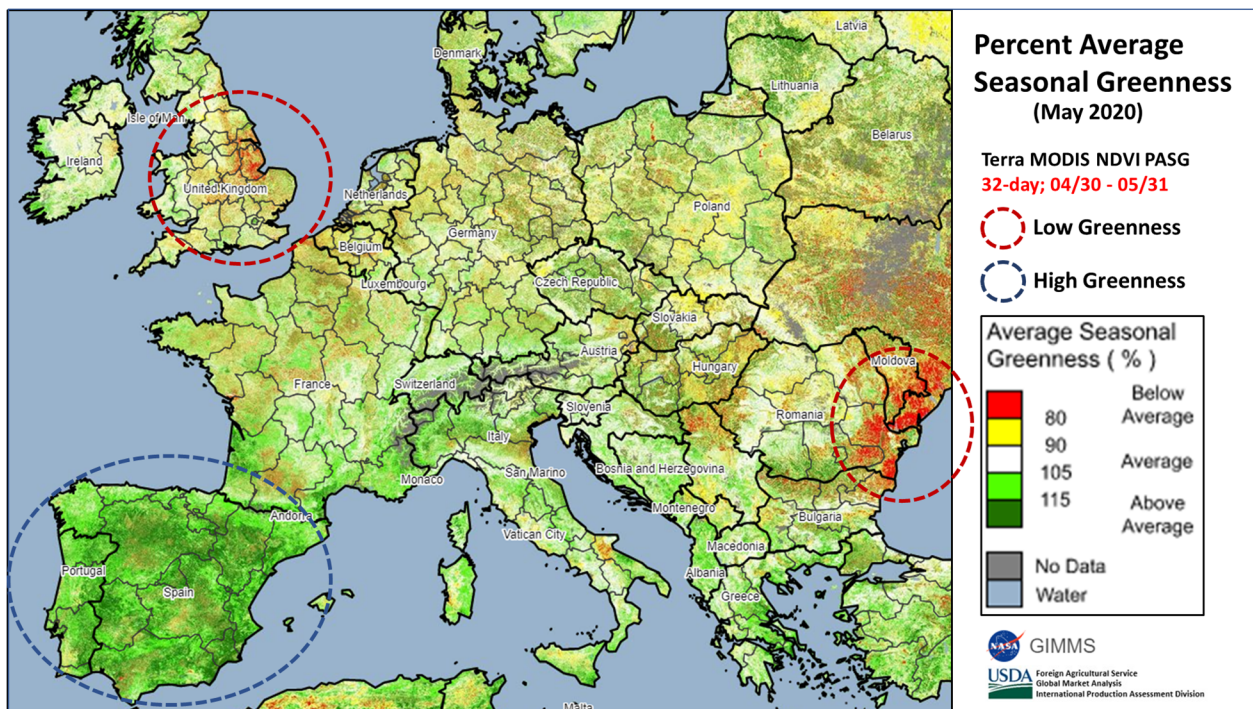
Source: USDA/NASA Global Agriculture Monitoring Project (GLAM),
GFSAD30 2015 Crop Mask

Area, yield, and production estimates for Russia winter wheat and spring wheat are available on PSD Online. Select “Downloadable Data Sets” and open the zipped file for “Russia Wheat; Winter/Spring Area & Production.” (For more information, please contact Katie.McGaughey@usda.gov.)

EU 27+ UK* Wheat: Production Estimated Down 2.0 mmt to 141.0 mmt

USDA estimates 2020/21 wheat production in the European Union (EU27 + UK) at 141.0 million metric tons (mmt), down 2.0 mmt, 1 percent below last month, 9 percent below last year, and down 6 percent from the 5-year average. Harvested area is estimated at 25.3 million hectares (mha), unchanged from May, but 0.8 mha or 3 percent below last year’s low area, and 4 percent below the 5-year average. Yield is estimated at 5.58 tons per hectare, down 1 percent from last month, down 6 percent from last year, and 2 percent below the 5-year average.

In Romania, long-term drought severely damaged the wheat crop in the southeast near the Black Sea. Satellite-derived Percent Average Seasonal Greenness (PASG) depicts low vegetation vigor in this agriculturally important region. USDA estimates the wheat crop in Romania at 7.4 mmt, down 1.1 mmt from last month, and down 14 percent compared to last year’s 8.6 mmt.



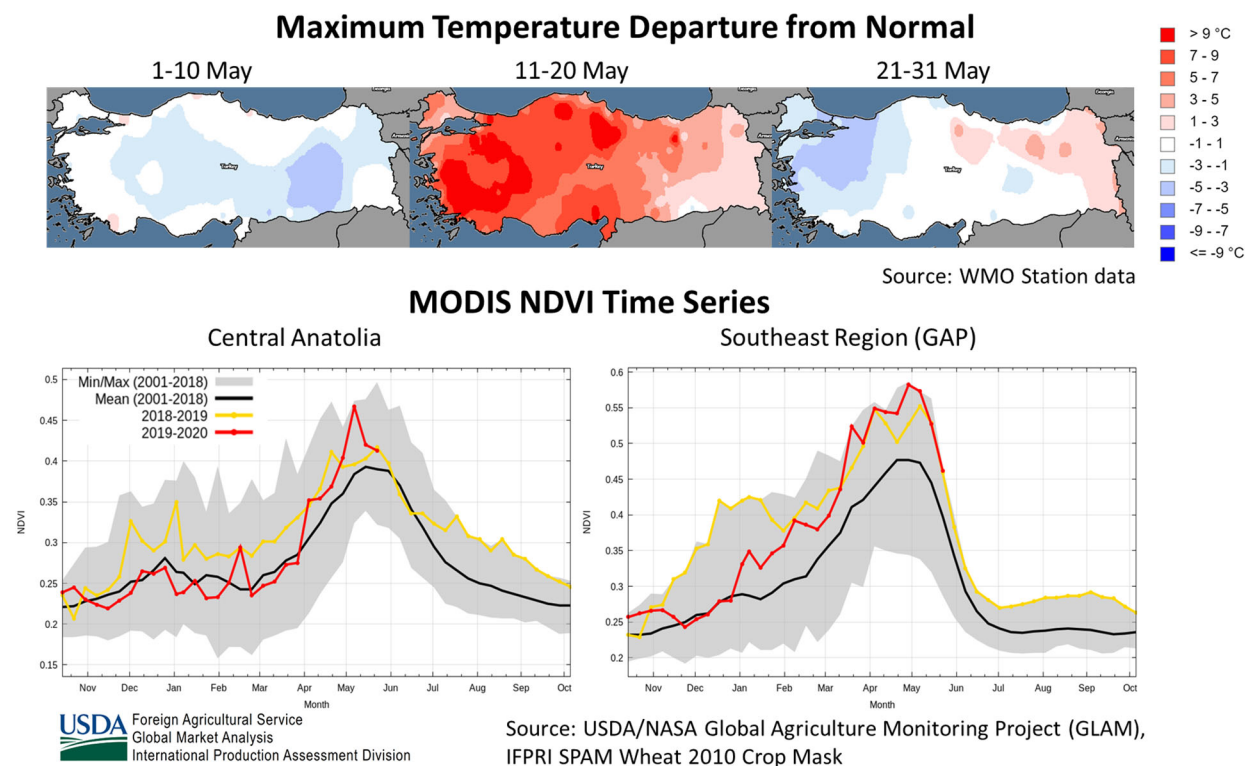
The wheat crop in the United Kingdom (UK) has also struggled. Drought has overtaken the country during late spring and caused extensive damage to the winter crops, leading to a further reduction in UK wheat. Production is lowered 0.8 mmt from last month to 10.0 mmt, far below (-38 percent) last year's 16.2 mmt crop, and the 5-year average of 15.0 mmt (-33 percent). In addition to the dryness problem, excessive rainfall prevented farmers from sowing the typical amount of winter wheat last autumn. The PASG depicts below-average vegetation greenness in the UK's primary growing area, likely capturing the combination of less winter acreage and stunted plants due to the recent drought. The 2020/21 wheat crop in the UK is estimated to be the lowest production since 1981/82, and the lowest harvested area since 1978/79. Additionally, some small changes were made to Hungary (-0.3 mmt) and Bulgaria (-0.1 mmt) due to drought, and to Poland (+0.2 mmt) due to increased rainfall.

* USDA is temporarily including the United Kingdom (UK) and the European Union as EU27 + UK. Although it is officially separated from the EU, the UK estimates remain included within USDA's EU total. During its early transition out of the block, the UK is treated by other member states similarly to the current member states.

For country-specific area, yield, and production estimates within the European Union (EU), please go to PSD Online at <https://apps.fas.usda.gov/PSDOnline/app/index.html#/app/home>, and select "Downloadable Data Sets." Select the zipped file for "EU Countries Area & Production." (For more information, please contact Bryan.Purcell@usda.gov.)

Turkey Winter Wheat: Near-Record Yield Forecast Due to Favorable Weather Conditions

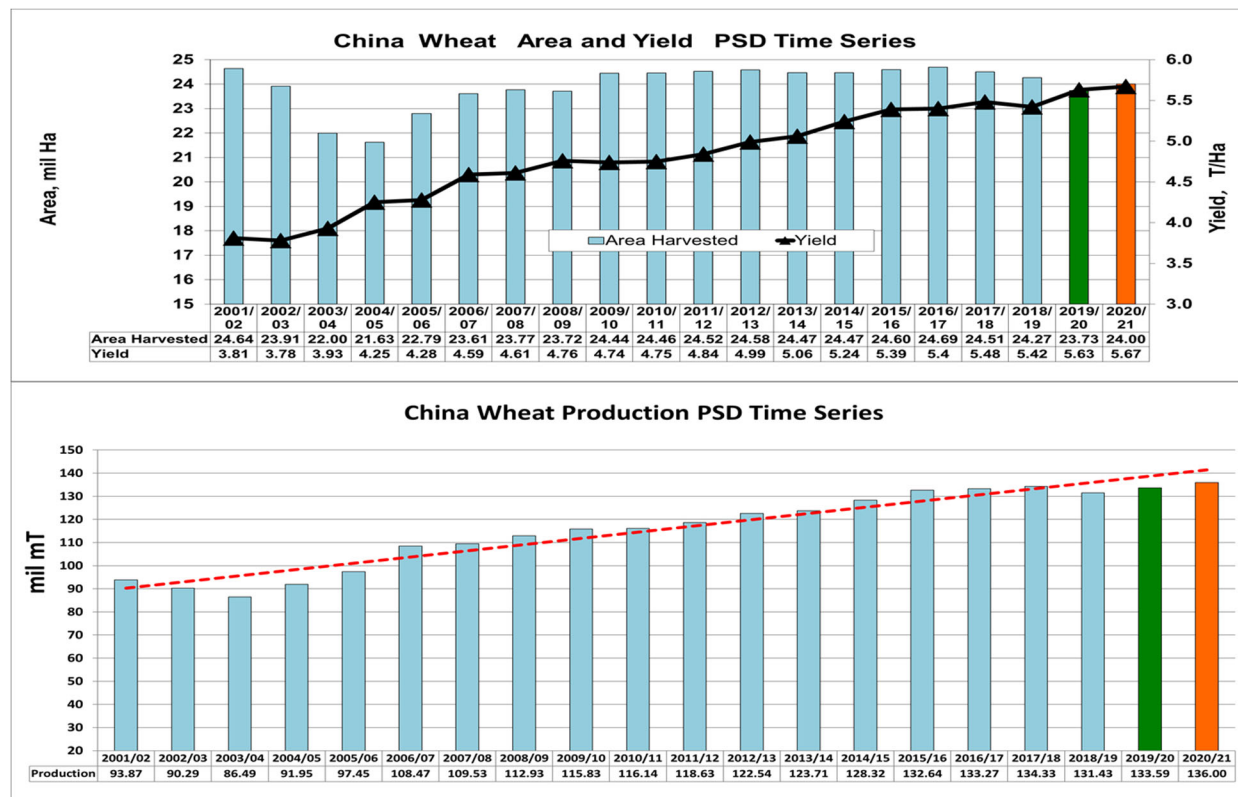
USDA forecasts Turkey wheat production for 2020/21 at 19.5 million metric tons (mmt), up 1 mmt or 5 percent from last month and from last year. The area is forecasted at 7.3 million hectares (mha), up 0.3 mha or 4 percent from last month and last year. The yield forecast of 2.69 tons per hectare is at a near-record level.



Winter wheat is mainly grown in Central Anatolia and the Southeast Region (GAP). The 2020/21 Turkey winter wheat planting finished in October of 2020 under dry autumn conditions. However, despite this early-season dryness, the wet winter and spring allowed replenishment of soil moisture and enhanced the winter wheat yield potential. The recent excessive heat that spread throughout the country in mid-May did not last long and is not expected to have impact on the winter wheat growth and yield formation as most crops are past filling or near maturity. In addition, temperature remained below 35°C (95°F) on the Anatolian Plateau due to its higher elevation. Satellite-derived Normalized Difference Vegetation Index (NDVI)-based analyses confirm the beneficial crop conditions indicating near-record winter wheat yield potential. *(For more information, please contact Iliana.Mladenova@usda.gov.)*

China Wheat: Record Yield and Production Projected

China Wheat Area-Yield-Production PSD Time Series



USDA Foreign Agricultural Service
Global Market Analysis
International Production Assessment Division

Source: USDA/FAS PS&D Online

China's 2020/21 wheat production is estimated at a record 136.0 million metric tons (mmt), up 1.0 million or approximately 1 percent from last month, and up 2 percent from last year and the 5-year average. The previous record production was set in 2017/18 at 134.3 mmt when planted area was significantly higher at 24.5 million hectares (mha). Wheat area in 2020/21 is estimated at 24.0 mha, unchanged from last month, but up 1 percent or 270,000 hectares from last year. Yield is estimated at a record 5.67 metric tons per hectare (mt/ha), up nearly 1 percent from last year.

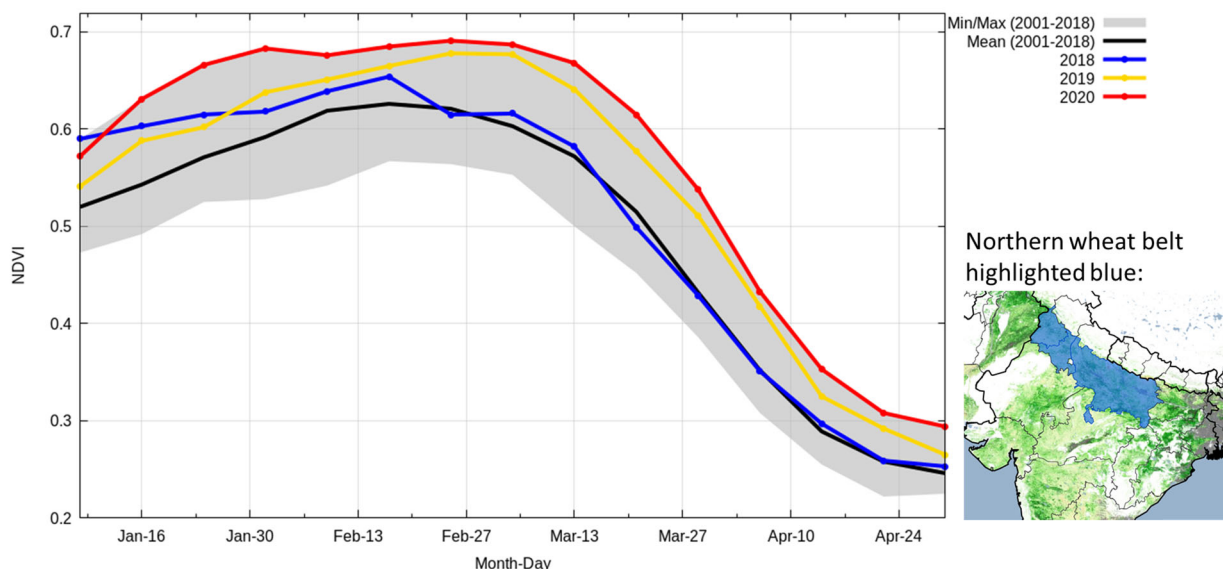
This season's wheat output is expected to exceed last year's bumper crop. Throughout the growing season, favorable weather and soil moisture conditions prevailed across the major wheat regions including Henan, Hebei, Shandong, Anhui, and Jiangsu provinces. Higher planted area and effective control of pests and diseases have also been major contributing factors for the estimated record yield and production. In-season crop monitoring using remotely sensed satellite data and statistical yield models of Normalized-Difference Vegetation Index (NDVI) and Vegetation Health Index (VHI) indicated substantially higher yield. The satellite data and model-based observations were consistent with local media reports of higher-than-average yields by farmers in Henan, Hebei, Shandong, Anhui, Jiangsu, and Hubei provinces. Harvest is underway and expected to be completed by the end of June. Most national reports indicate that the 2020 winter wheat harvest was about 25 percent complete as of June 2 and progressing rapidly. Near- to below-normal

precipitation is forecast for the next two weeks of June in the main wheat-growing provinces. This will aid harvest activities and limit the threat of late-season losses from storms or flooding. (*For more information, please contact Dath.Mita@usda.gov.*)

India Wheat: Production at Record Levels

USDA estimated 2020/21 India wheat production at 107.2 million metric tons (mmt), up 3 percent from 2019/20's record production. Despite some late-season wet weather and the limited availability of farm workers due to COVID-19 restrictions across India, 30.5 million hectares (mha) of wheat was harvested at the end of April 2020. Harvested area was up 4 percent with favorable market prices and with support pricing 5 percent higher than the previous year. Yield averaged 3.51 tons per hectare (t/ha), down slightly from the 2019/20 record, but up about 12 percent above the 5-year average.

NDVI: Northern Wheat Belt of India



USDA Foreign Agricultural Service
Global Market Analysis
International Production Assessment Division

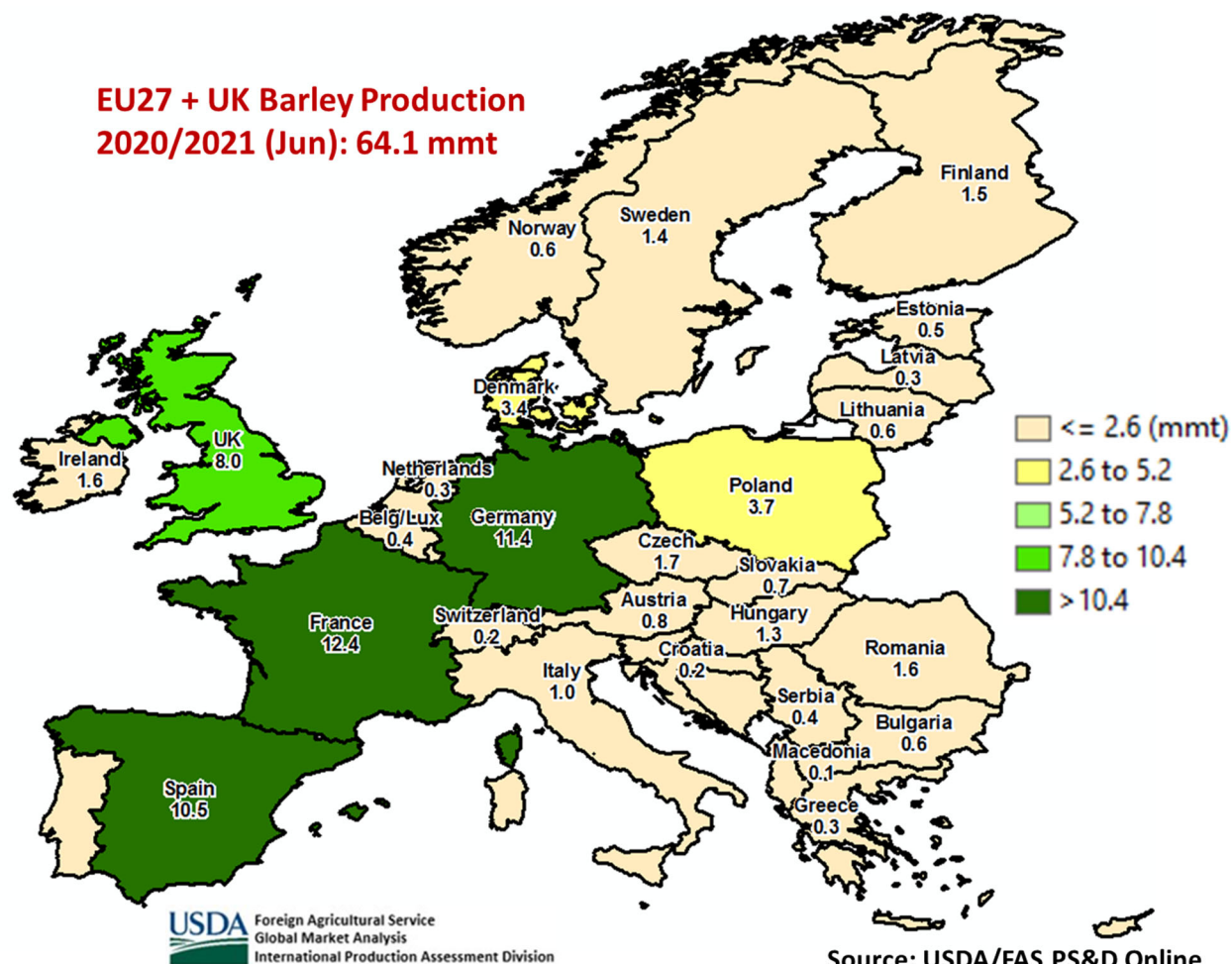
Source: USDA/NASA Global Agriculture Monitoring Project (GLAM),
MODIS-UMD 2013 Crop Mask

Wheat is grown only in the *rabi* season (winter). It is planted in late November through the end of January and harvested in April. Major wheat-producing states in India are Uttar Pradesh, Punjab, Haryana, Madhya Pradesh, and Rajasthan.

The 2020 wheat crop experienced ideal growing conditions until late February. Cooler weather coupled with widespread rains during December and January increased vegetation growth and tillering. Satellite-derived Normalized Difference Vegetation Index (NDVI) indicated strong crop vigor from January to April, with noticeably higher NDVI than in 2019 when record yields were recorded in the northern wheat belt. (*For more information, please contact Arnella.Trent@usda.gov.*)

EU 27+ UK* Barley: Production Up 1.4 mmt, Driven by UK Spring Barley Increase

USDA estimates barley production in the European Union (EU27 + UK) for 2020/21 at 64.1 million metric tons (mmt), up 1.4 mmt or 2 percent above last month, 2 percent above last year, and 7 percent above the 5-year average. Harvested area is estimated at 12.6 million hectares (mha), 0.3 mha or 2 percent above last month, 0.2 mha or 1 percent above last year, and 2 percent above the 5-year average. Yield is nearly unchanged from last month and last year at 5.11 tons per hectare, but 5 percent above the 5-year average.

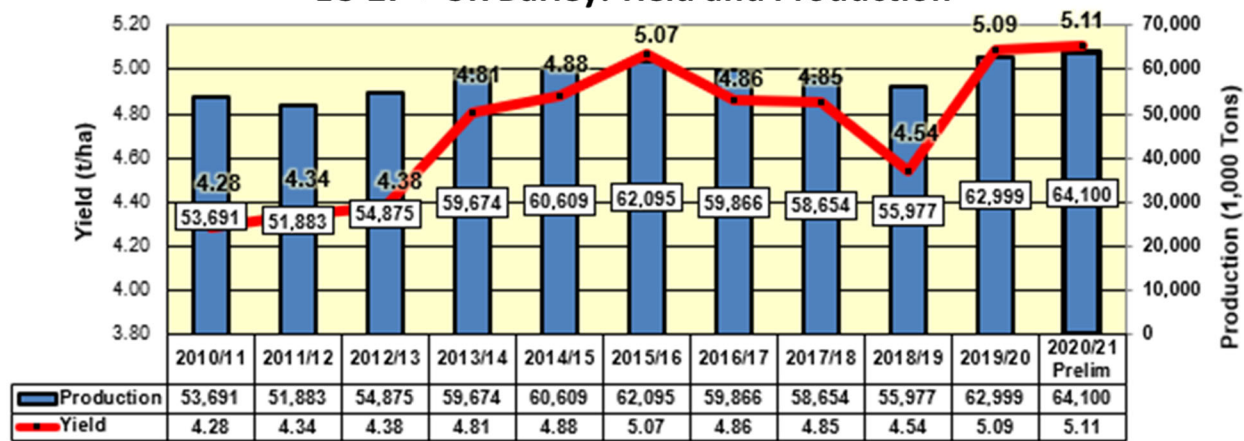


Excessive moisture prevented British farmers from planting a significant percentage of their winter crops – including winter barley – last autumn. With relatively few spring alternatives in their rotations, farmers decided to boost their spring barley mix in their 2020 scheme. Favorable early spring weather further encouraged an unprecedented surge in spring barley plantings. Total UK barley production is estimated at 8.0 mmt from 1.3mha, up 1.5 mmt and 0.3 mha from last month, based on new data.

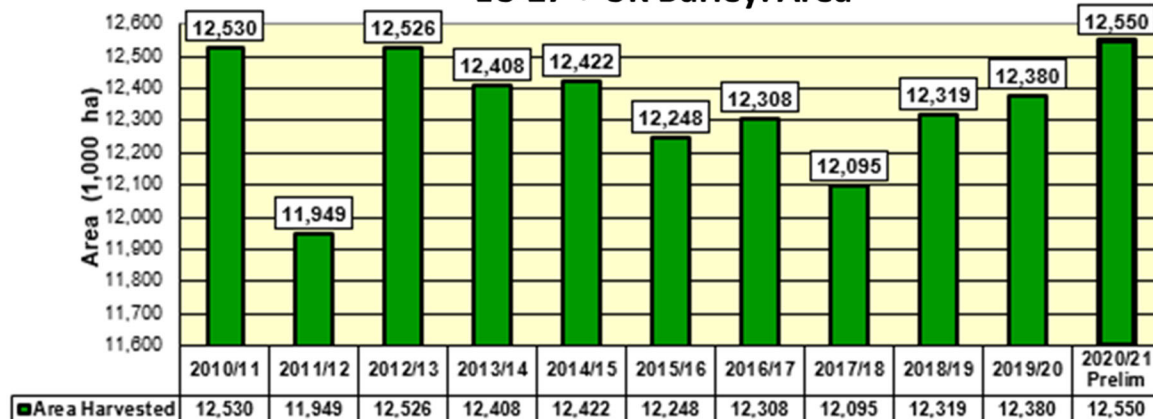
Although nearly unchanged from last month, Spain, with an estimated 10.5 mmt, has had near-optimal rainfall this season and is expecting a bumper harvest and record yields. Small, downward

revisions were made to production for France and Hungary due to dryness, while small increases were made to Poland and Lithuania where recent rains have been favorable.

EU 27 + UK Barley: Yield and Production



EU 27 + UK Barley: Area



USDA Foreign Agricultural Service
Global Market Analysis
International Production Assessment Division

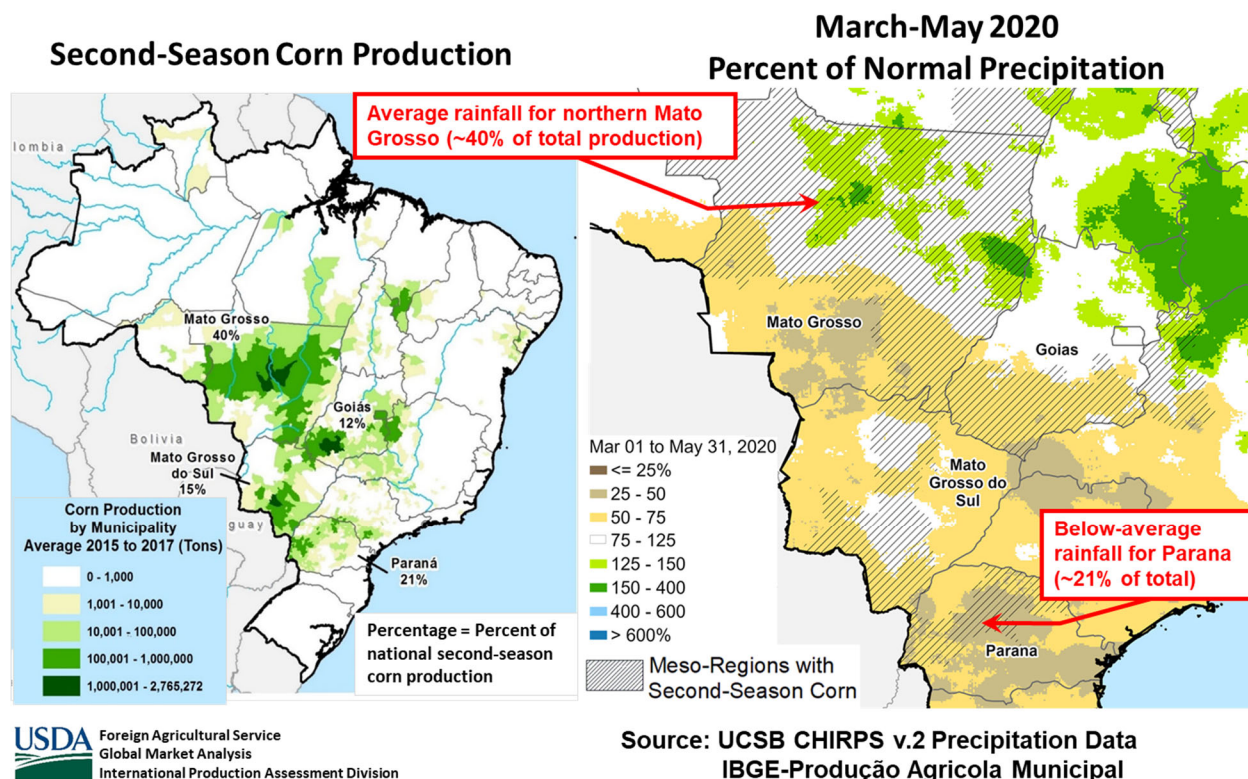
Source: USDA/FAS PS&D Online

* USDA is temporarily including the United Kingdom (UK) and the European Union as EU27 + UK. Although it is officially separated from the EU, the UK estimates remain included within USDA's EU total. During its early transition out of the block, the UK is treated by other member states similarly to the current member states.

For country-specific area, yield, and production estimates within the European Union (EU), please go to PSD Online at <https://apps.fas.usda.gov/PSDOnline/app/index.html#/app/home>, and select "Downloadable Data Sets." Select the zipped file for "EU Countries Area & Production." (For more information, please contact Bryan.Purcell@usda.gov.)

Brazil Corn: 2019/20 Record Production due to Second-Season Crop

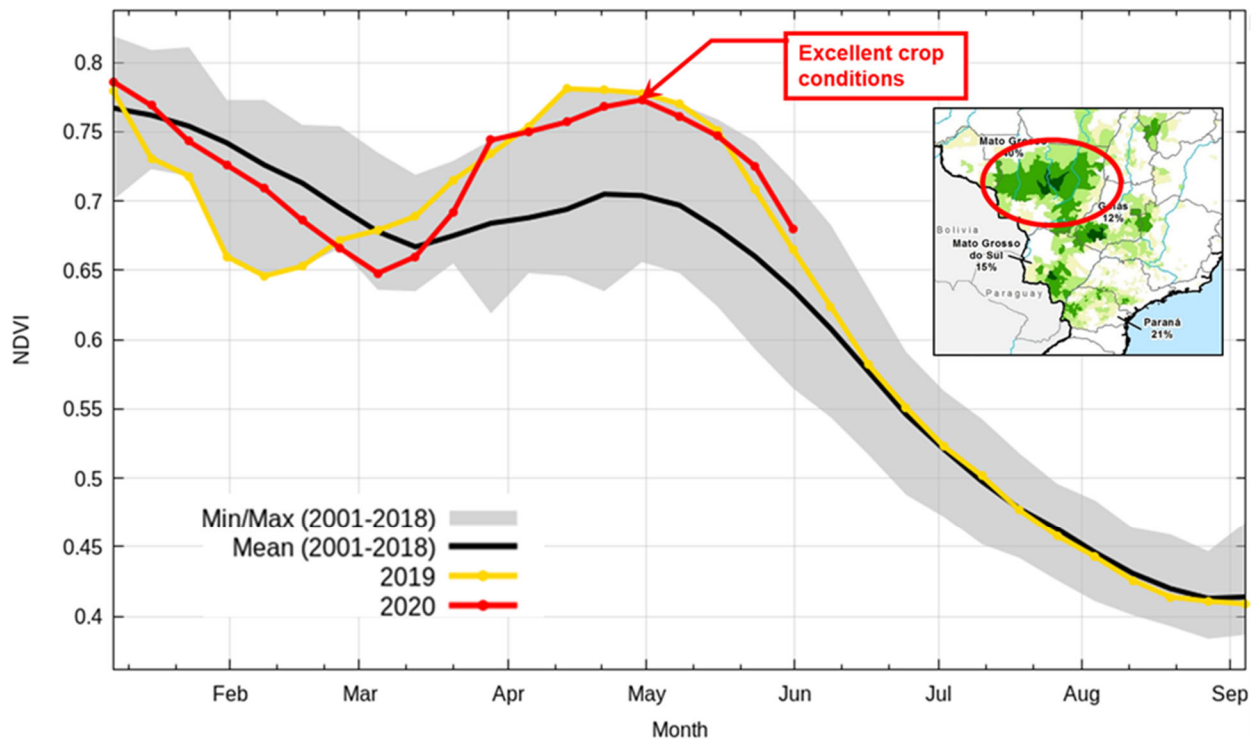
Brazil's 2019/20 corn production is estimated at 101 million metric tons (mmt), unchanged from last month and equal to last year's record crop. Area is estimated at a record 18.4 million hectares (mha), up 0.2 mha (1 percent) from last month, and up 1 mha (5 percent) from last year. Yield is estimated at 5.49 tons per hectare, down 1 percent from last month, down 5 percent from last year, and 5 percent above the 5-year average. Nationally, forecast yields were lowered due to the early season losses in states south of Mato Grosso.



Weather was favorable for the first-season crop in the central states, but corn production was down in Rio Grande do Sul where dry spells in December and late February reduced crop yields. First-season corn yields are estimated at the 10-year trend and first-season output is estimated at 25.4 mmt by *Companhia Nacional de Abastecimento* (CONAB, an agency in the Brazilian Ministry of Agriculture), down 0.1 mmt from last year's first-season output.

A record second-season *safrinha* crop was planted from January through early March. Rains were below average in March for most of the corn-producing states located south of Mato Grosso, particularly in Paraná, leading to significant reductions in second-season prospects in the southern states.

NDVI Time Series in Mato Grosso



USDA Foreign Agricultural Service
Global Market Analysis
International Production Assessment Division

Source: USDA/NASA Global Agriculture Monitoring Project (GLAM),
IFPRI SPAM Corn 2010 Crop Mask, <https://glam1.gsfc.nasa.gov/>

In contrast, from mid-April through the end of May, rains were above average for northern Mato Grosso, reflected in above-average crop conditions for the satellite-derived Normalized Difference Vegetation Index (NDVI). Mato Grosso is the largest corn-producing state and the *Instituto Mato-Grossense de Economia Agropecuária* (IMEA) forecasts a record output of 32.9 mmt (an increase of 9 percent from 2018/19), or approximately 45 percent of Brazil's second-season crop. The second-season corn NDVI for Mato Grosso is close to last year's trajectory that led to a record yield in that state. (For more information, please contact Sunita.Yadav-Pauletti@usda.gov.)

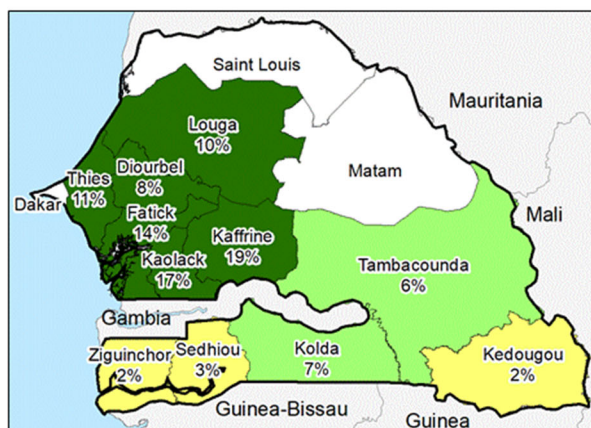
Senegal Peanuts: Planting Delayed in the South

Senegal peanut production for 2020/21 is forecast at 1.3 million metric tons (mmt), up 0.15 mmt from last month and down 0.12 mmt from last year. Harvested area is forecast at 1.2 million hectares (mha), unchanged from last month, but up 0.9 mha from last year. Yield is forecast at 1.08 metric tons per hectare or nearly equal to the 5-year average yield. Planting typically begins in southern Senegal in May, but a late onset of rains in May delayed planting.

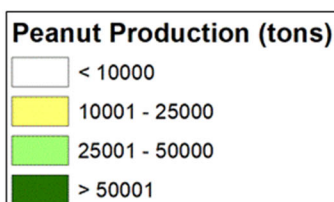
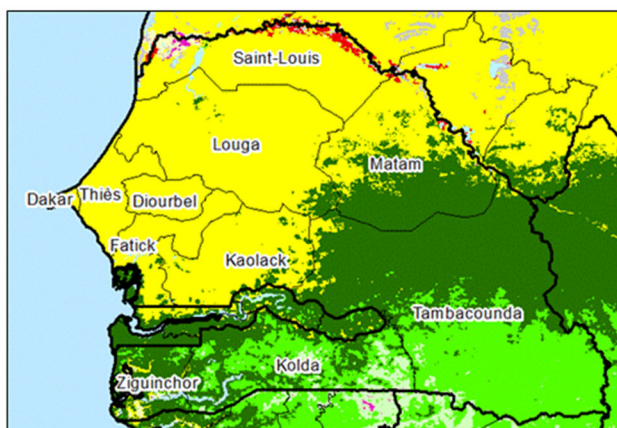
Senegal's planting season is from May through July and harvest is from September to the end of October. Most of Senegal lies along the Sahelian zone, where 80 percent of annual rainfall occurs between July and October. Rainfall is relatively dependable in the southern part of Senegal but becomes less reliable and highly variable towards the north. Senegal's annual rainfall is highly dependent on the migration of Africa's inter-tropical front (ITF). The current Africa ITF is behind

average at the end of May, indicating a delayed start of season in southern Senegal as measured by NOAA's Climate Prediction Center.

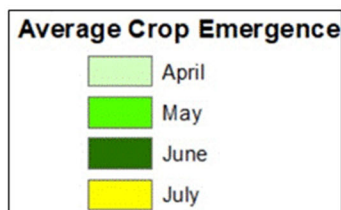
Senegal Peanut Production



Vegetation Green-up Model



Percentage values indicate percent regional production of total production in 2012/13.



Source: Production data from Direction de l'Analyse, de la Prevision et des Statistiques Agricoles (DAPSA).

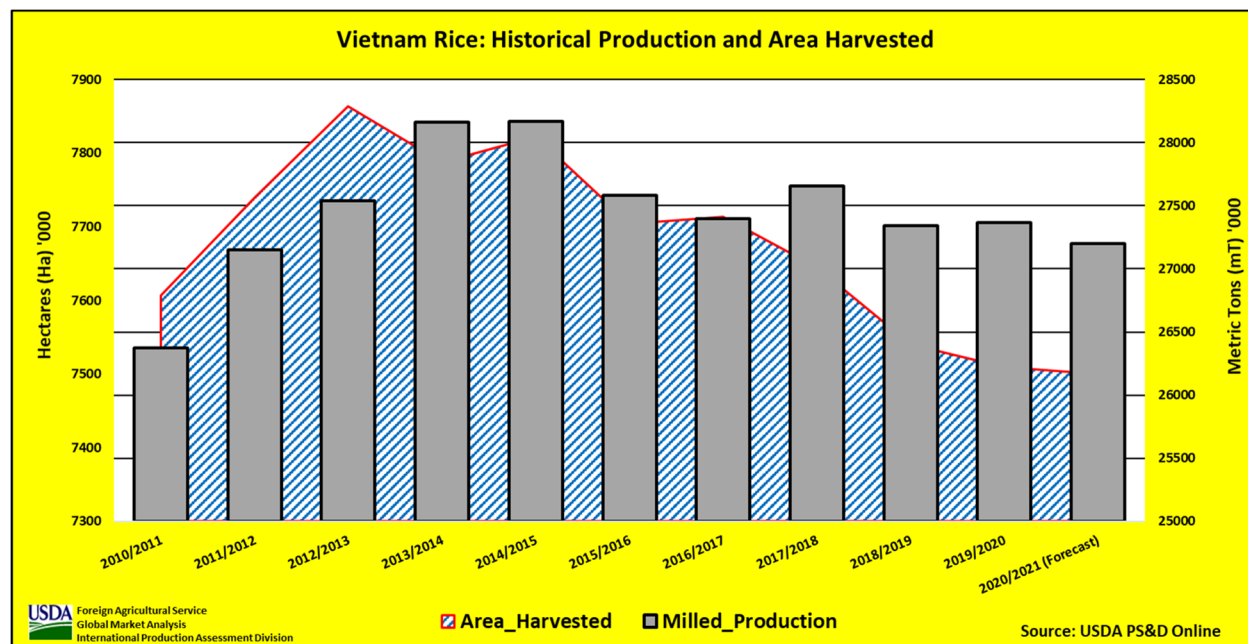
Source: NDVI Green-up Model from EC's MARS Project <https://mars.jrc.ec.europa.eu/asap/download.php>

USDA Foreign Agricultural Service
Global Market Analysis
International Production Assessment Division

Harvested peanut area has been over 1 million hectares during the past 5 years and yields were greatly reduced by a severe drought during the 2016 season. Peanuts are primarily produced in central Senegal where Kaffrine, Kaolack, Fatick, Thies, Louga, and Diourbel regions comprise approximately 80 percent of total production. An average vegetation green-up model derived from satellite imagery illustrates that crop emergence begins in May and June for southern Senegal and begins in July for the central Senegal peanut basin. (*For more information, please contact Curt.Reynolds@usda.gov.*)

Vietnam Rice: Estimated Production Reduced on Lowered Area

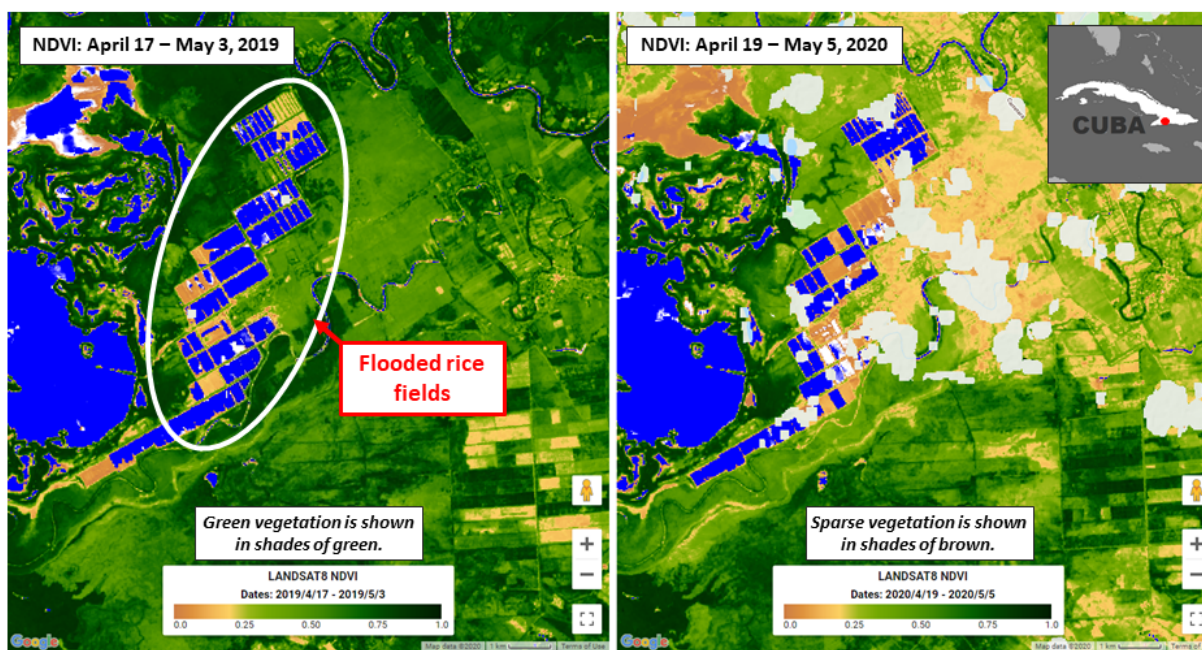
USDA forecasts 2020/21 rice production at 27.2 million metric tons (milled basis), down 1 percent from last month and last year. Area harvested is estimated at 7.5 million hectares, down 1 percent from last month and down marginally from last year. Yield is estimated at 5.80 tons per hectare up marginally from last month, but down 1 percent from last year.



Rice production in Vietnam has declined 2 percent since 2017/18. One of the major factors attributing to the reduction in rice output is lower area cultivated to rice. Rice land conversion to residential development, acreage losses to saltwater intrusion, as well as planting shifts to more profitable crops have all contributed to declines in rice area since 2016/17. Rice area is cultivated throughout the year. The winter or “Lua Mua” rice crop cycle is underway and is the first cycle to begin the 2020/21 market year. (For more information, please contact Justin.Jenkins@usda.gov.)

Cuba Rice: Production Limited Despite Improved Rainfall

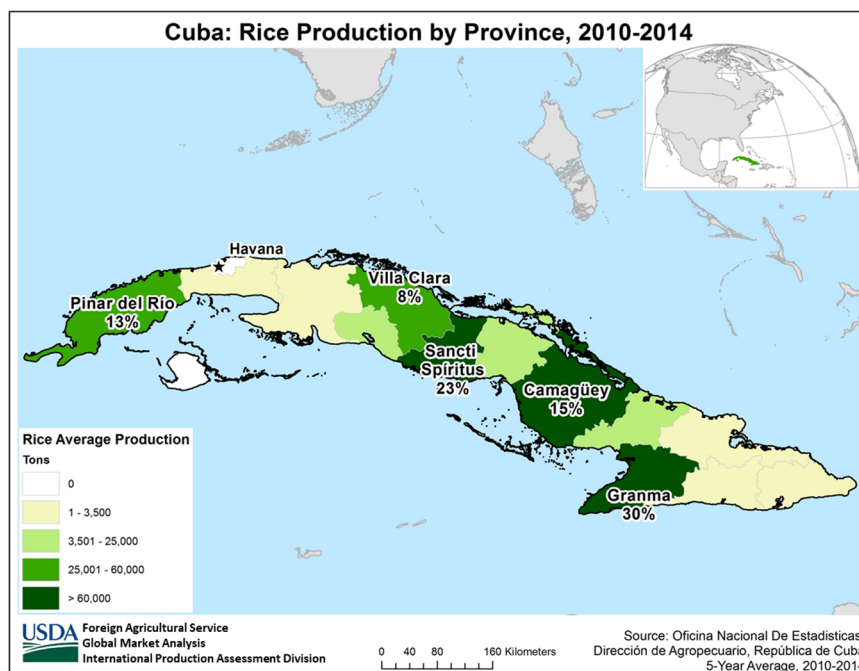
Abnormally Dry Conditions near Río Cauto, Cuba during the Spring 2020 Planting Season



USDA Foreign Agricultural Service
Global Market Analysis
International Production Assessment Division

Source: USGS, Landsat 8 Imagery with 30 meter resolution

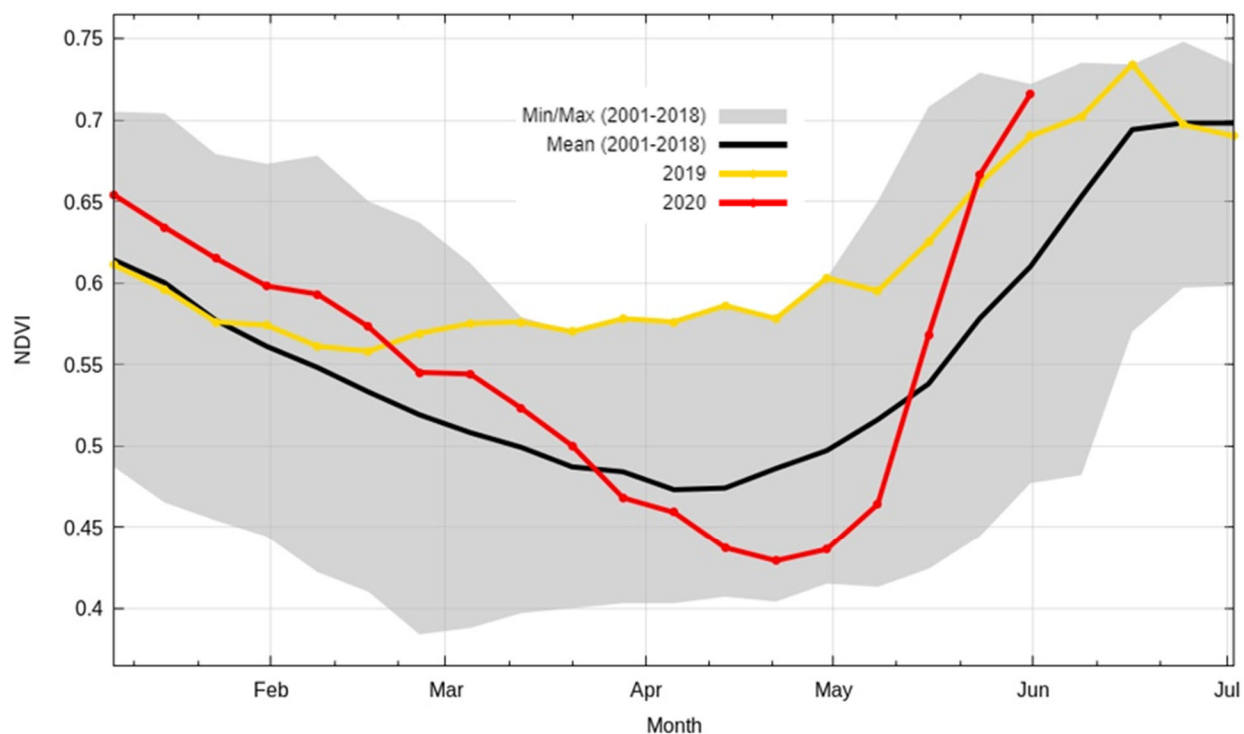
USDA forecasts Cuba rice production for 2020/21 at 280,000 metric tons (milled basis), unchanged from last month and unchanged from last year. Harvested area is estimated at 125,000 hectares, unchanged from last month and up 4 percent from last year. Yield is forecast at 3.45 tons per hectare, unchanged from last month and down 4 percent from last year and the 5-year average. Satellite-derived Normalized Difference Vegetation Index (NDVI) indicates drier conditions during the middle of the 2020 spring planting season (early May) than at the same time in 2019. NDVI analyses by late May indicate improving vegetative conditions.



Cuba's main rice crop is planted in March through early July and harvested in late July through December. The primary rice-producing regions are in the provinces of Granma, Sancti Spiritus, Camagüey, Villa Clara,

and Pinar del Río. Drought concerns were present in late April and early May during the middle of the planting season, particularly in eastern and western Cuba. However, recent rainfall has ameliorated the dryness; average to above-average precipitation is expected throughout the Caribbean this summer, assuaging concerns over long-term drought.

Seasonal Time Series for Terra MODIS 8-Day NDVI for Granma, Sancti Spíritus, Camagüey, Villa Clara, and Pinar del Río, Cuba



USDA Foreign Agricultural Service
Global Market Analysis
International Production Assessment Division

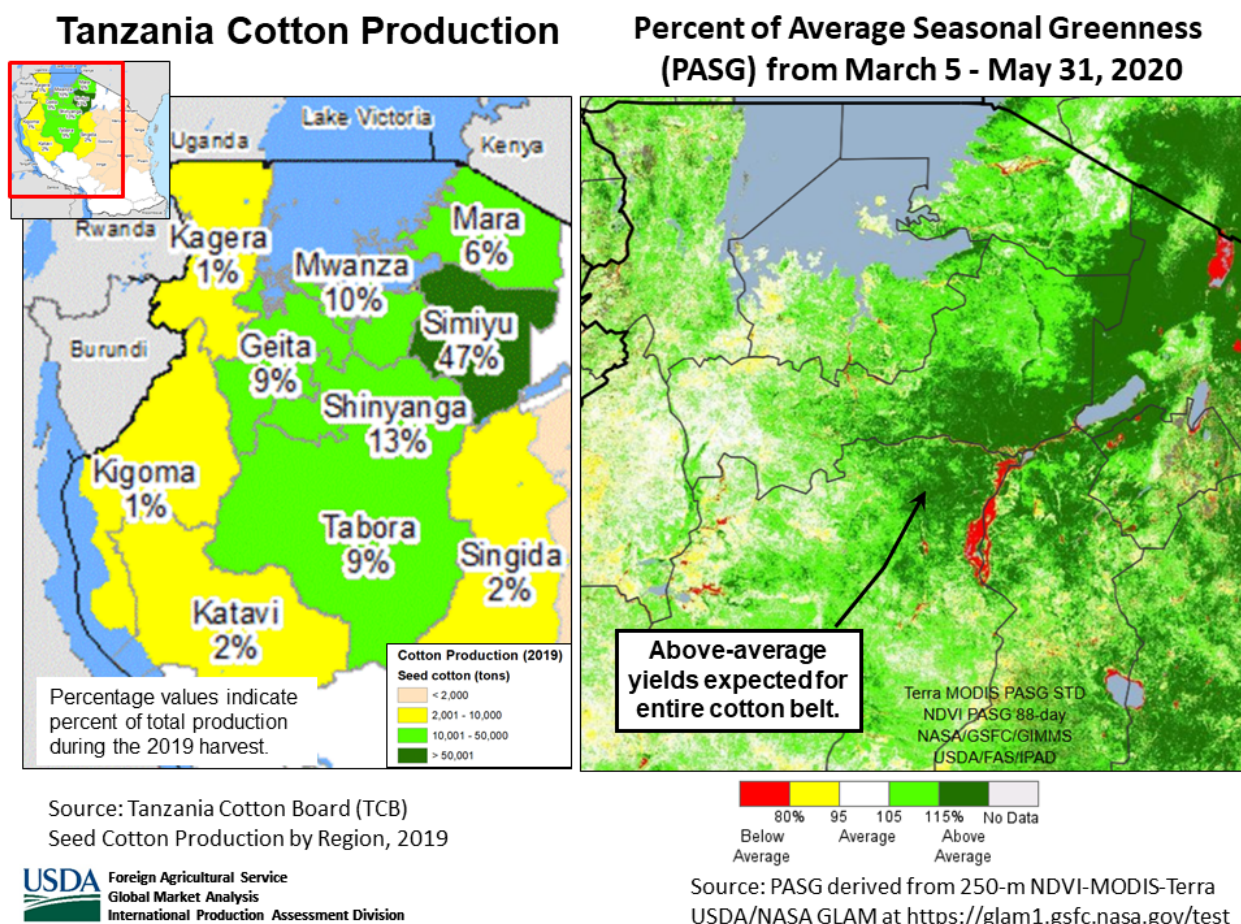
Crop Mask: GFSAD30 2015
Source: USDA/NASA Global Agriculture Monitoring (GLAM) Project
<http://glam1.gsfc.nasa.gov/>

While initiatives toward privatization to increase planted area and boost rice production have been implemented in recent years, production and yields have seen little improvement. Cuba continues to face challenges to agricultural production this season, especially within the context of the ongoing COVID-19 pandemic. Industry and media report fertilizer and pesticide shortages, and fuel shortages of up to 40 percent, increasing the likelihood of limited production this year. (For more information, please contact Aaron.Mulhollen@usda.gov.)

Tanzania Cotton: Bumper Harvest Expected from Abundant Rains

Tanzania 2020/21 cotton production is forecast at 550,000 480-lb bales, up 110,000 bales from last month but down 45,000 bales from last year's record crop. Cotton area is forecast at 580,000 hectares, up 140,000 hectares from last month but down 20,000 hectares from last year's record. Yield is forecast at 206 kilograms per hectare which is 28 percent above the 5-year average yield due to above-average rainfall during the entire growing season. The six-month growing period from planting through crop maturity (December 2019 through May 2020) was the wettest six-

month period since 1981. The abundant moisture is reflected in the Percent of Average Seasonal Greenness for May.

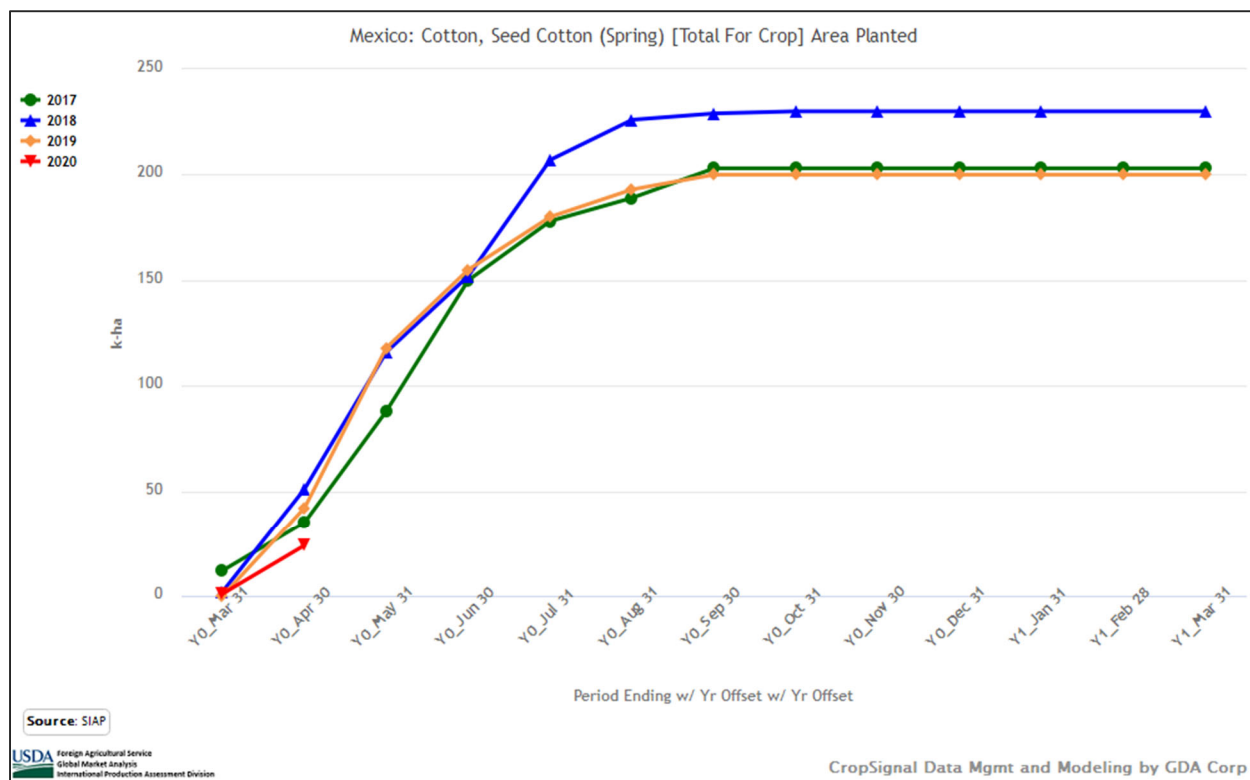


Cotton area and production have increased in recent years due to favorable prices and increased investment in inputs to raise productivity and profits. Nearly 99 percent of Tanzania’s cotton is grown in the northwest near Lake Victoria, with top producing regions in 2019 being Simiyu (47%), Shinyanga (13%), Mwanza (10%), Geita (9%), Tabora (9%), and Mara (6%). Cotton is produced primarily on small farms ranging from 0.5 to 10 hectares, with the average farm size being 1.5 hectares. Cotton area has increased during the past several years and it is estimated this year that approximately 600,000 farmers planted cotton on 580,000 hectares.

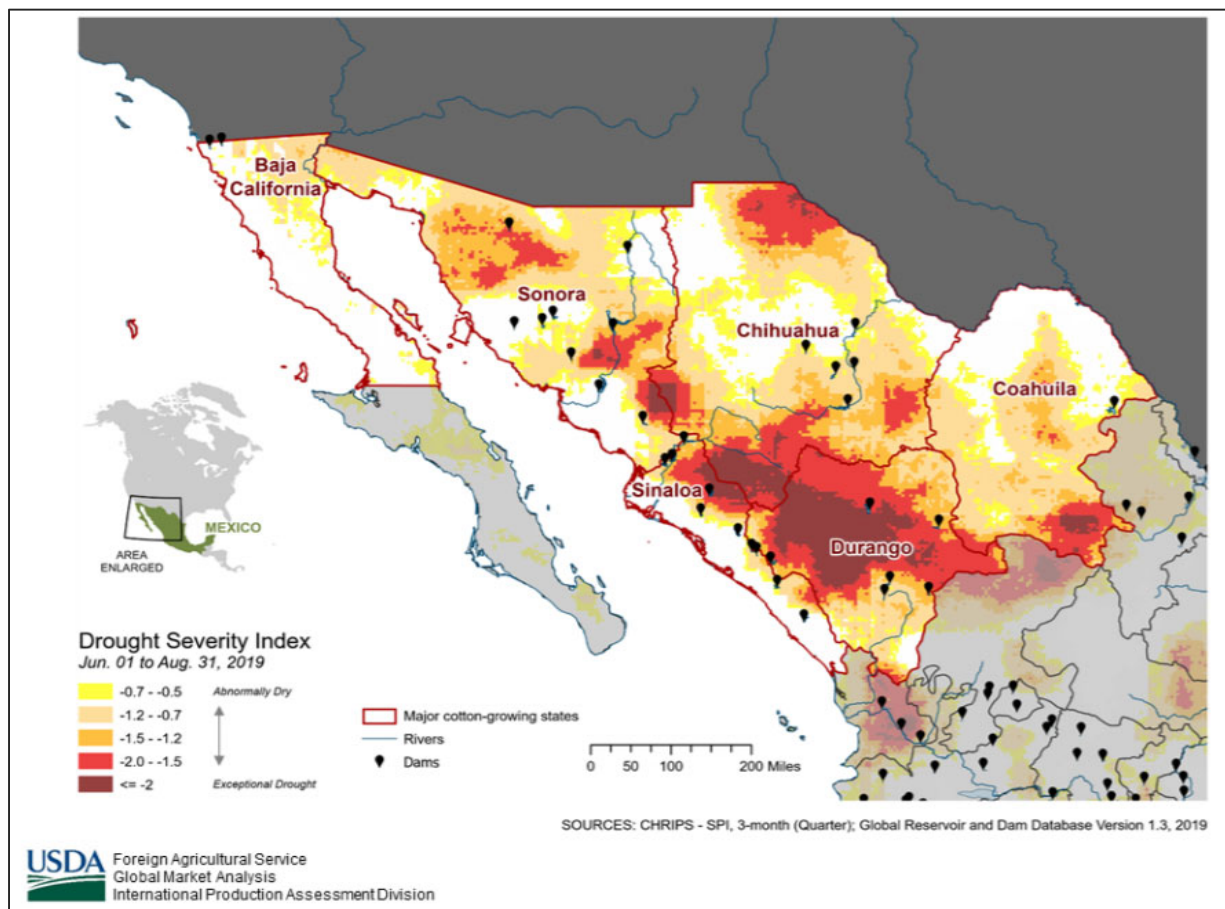
Cotton is generally planted from November through January, and harvesting occurs from late June through September. Onset of rains was timely but excessive rainfall during the growing season caused waterlogging that damaged some crops and lowered total area below last year. (For more information, please contact Curt.Reynolds@usda.gov.)

Mexico Cotton: Water and Seed Shortages Lead to Reduction in Planted Area

USDA forecasts Mexico's 2020/21 cotton production at 1.15 million 480-pound bales, down 27 percent from last year's production. Area has decreased 27 percent from last year and is forecast at 165,000 hectares (ha). The yield forecast is slightly lower than last year at 1,517 kilograms per hectare.



The main cotton growing states in Mexico include Chihuahua, Baja California, Sonora, Sinaloa, and Durango. Cotton is mostly irrigated in Mexico; however, 78 percent of the Tamaulipas spring crop is rainfed. Cotton has two planting seasons in Mexico: Spring (April through July) and Winter (November through February).



Planting is almost complete for the main spring cotton crop. According to the Agri-Food and Fisheries Information Service (SIAP), the cotton planted area is behind the most recent years with 23,798 ha planted as of April 30, 2020 for the spring-summer season. In Chihuahua, the largest cotton producing state, planting progress was the lowest since 2016 at the end of April with about 3,000 ha planted. The forecasted decrease in planted area is due to a variety of factors such as low prices and the limited funds that farmers have from last year's poor-quality cotton harvest. Cotton farmers also have limited water availability due to the slow delivery of irrigation permits and water shortages from the summer 2019 drought, as seen in the 3-month Drought Severity Index. In addition, farmers are dealing with cotton seed shortages due to the government delaying approvals for genetically modified seeds. (*For more information, please contact Ifeoma.Collins@usda.gov.*)



**World Agricultural Production
U.S. Department of Agriculture**

Foreign Agricultural Service / Global Market Analysis
International Production Assessment Division (IPAD)
Ag Box 1051, Room 4630, South Building
Washington, DC 20250-1051

<https://ipad.fas.usda.gov/>

Telephone: (202) 720-1662 Fax: (202) 720-1158

This report uses information from the Foreign Agricultural Service’s (FAS) global network of agricultural attachés and counselors, official statistics of foreign governments and other foreign source materials, and the analysis of economic data and satellite imagery. Estimates of foreign area, yield, and production are from the International Production Assessment Division, FAS, and are reviewed by USDA’s Inter-Agency Commodity Estimates Committee. Estimates of U.S. area, yield, and production are from USDA’s National Agricultural Statistics Service. Numbers within the report may not add to totals because of rounding. This report reflects official USDA estimates released in the World Agricultural Supply and Demand Estimates (WASDE-584), June 11, 2020.

Printed copies are available from the National Technical Information Service. Download an order form at http://www.ntis.gov/products/specialty/usda/fas_a-g.asp, or call NTIS at 1-800-363-2068.

The FAS International Production Assessment Division prepared this report. The next issue of World Agricultural Production will be released after 12:00 p.m. Eastern Time, July 10, 2020.

Conversion Table

Metric tons to bushels

Wheat, soybeans	=	MT * 36.7437
Corn, sorghum, rye	=	MT * 39.36825
Barley	=	MT * 45.929625
Oats	=	MT * 68.894438

Metric tons to 480-lb bales

Cotton	=	MT * 4.592917
--------	---	---------------

Metric tons to hundredweight

Rice	=	MT * 22.04622
------	---	---------------

Area & weight

1 hectare	=	2.471044 acres
1 kilogram	=	2.204622 pounds

Approved by the World Agricultural Outlook Board



For further information, contact:
U.S. Department of Agriculture
Foreign Agricultural Service
Global Market Analysis

International Production Assessment Division
 Ag Box 1051, Room 4630, South Building
 Washington, DC 20250-1051

Telephone: (202) 720-1662

Fax: (202) 720-1158

GENERAL INFORMATION

Senior Director	Ronald Frantz	202-720-4056	ronald.frantz@usda.gov
Director	Robert Tetrault	202-720-1071	robert.tetrault@usda.gov
Administrative Assistant	Dionndra Williams	202-720-1662	dionndra.williams@usda.gov
USDA Remote Sensing Advisor	Vacant		
Sr. Analyst/Technical Lead	Curt Reynolds, Ph.D.	202-690-0134	curt.reynolds@usda.gov
Sr. Analyst/ Satellite Imagery Archives Manager/Technical Lead	Dath Mita, Ph.D.	202-720-7339	dath.mita@usda.gov
Sr. Analyst/Technical Lead	Jim Crutchfield	202-690-0135	james.crutchfield@usda.gov
GIS Mapping/Imagery Analyst	Lisa Colson	202-720-6652	lisa.colson@usda.gov
WAP Coordinators	Ifeoma Collins	202-720-0240	ifeoma.collins@usda.gov
	Aaron Mulhollen	202-690-0131	aaron.mulhollen@usda.gov

COUNTRY- AND REGION-SPECIFIC INFORMATION

South America, Argentina, Venezuela, and Colombia	Denise McWilliams, Ph.D.	202-720-0107	denise.mcwilliams@usda.gov
Western and Central Europe, and North Africa	Bryan Purcell	202-690-0138	bryan.purcell@usda.gov
Russia, Ukraine, Kazakhstan, Moldova, and Belarus	Katie McGaughey	202-720-9210	katie.mcgaughey@usda.gov
South Asia, Sri Lanka Bangladesh, India, and Nepal	Arnella Trent	202-720-0881	arnella.trent@usda.gov
East Asia, China, and Japan	Dath Mita, Ph.D.	202-720-7339	dath.mita@usda.gov
Sub-Saharan Africa, Nigeria and South Africa	Curt Reynolds, Ph.D.	202-690-0134	curt.reynolds@usda.gov
S.E. Asia, Indonesia, Thailand, Malaysia, Cambodia and Vietnam	Justin Jenkins	202-720-0419	justin.jenkins@usda.gov
Central America, Mexico, and Western United States	Ifeoma Collins	202-720-0240	ifeoma.collins@usda.gov
Australia, New Zealand, Pakistan Papua New Guinea and South Pacific Islands	Jim Crutchfield	202-690-0135	james.crutchfield@usda.gov
Middle East, Central Asia, Afghanistan Iraq, Iran, and Syria	Iliana Mladenova, Ph.D.		iliana.mladenova@usda.gov
Canada, Caribbean, Eastern United States	Aaron Mulhollen	202-690-0131	aaron.mulhollen@usda.gov
Brazil	Sunita Yadav-Pauletti, Ph.D.		sunita.yadav-pauletti@usda.gov



The Foreign Agricultural Service (FAS) updates its production, supply and distribution (PSD) database for cotton, oilseeds, and grains at 12:00 p.m. on the day the *World Agricultural Supply and Demand Estimates* (WASDE) report is released. This circular is released by 12:15 p.m.

FAS Reports and Databases:

- Current *World Market and Trade and World Agricultural Production Reports*:
<http://apps.fas.usda.gov/psdonline/psdDataPublications.aspx>
- Archives *World Market and Trade and World Agricultural Production Reports*:
<http://usda.mannlib.cornell.edu/MannUsda/viewTaxonomy.do?taxonomyID=7>
- Production, Supply and Distribution Database (PSD Online):
<http://apps.fas.usda.gov/psdonline/psdHome.aspx>
- EU Countries Area & Production Estimates
<http://apps.fas.usda.gov/psdonline/psdDownload.aspx>
- Global Agricultural Trade System (U.S. Exports and Imports):
<http://apps.fas.usda.gov/gats/default.aspx>
- Export Sales Report:
<http://apps.fas.usda.gov/esrquery/>
- Global Agricultural Information Network (Agricultural Attaché Reports):
<http://gain.fas.usda.gov/Pages/Default.aspx>

Other USDA Reports:

- World Agricultural Supply and Demand Estimates (WASDE):
<http://www.usda.gov/oce/commodity/wasde/>
- Economic Research Service:
<http://www.ers.usda.gov/topics/crops>
- National Agricultural Statistics Service:
<http://www.nass.usda.gov/Publications/>

Table 01 World Crop Production Summary

Million Metric Tons

Commodity	World -	Total Foreign	North America			Former Soviet		European	Asia (WAP)					South America		Selected Other			All Others
			United States	Canada -	Mexico -	Russia -	Ukraine -		China -	India -	Indonesia	Pakistan	Thailand	Argentina	Brazil -	Australia	South Africa	Turkey -	
---Million metric tons---																			
Wheat																			
2018/19	730.8	679.5	51.3	32.2	3.0	71.7	25.1	nr	131.4	99.9	0.0	25.1	0.0	19.5	5.4	17.6	1.9	19.0	227.8
2019/20 prel.	764.4	712.1	52.3	32.3	3.2	73.6	29.2	nr	133.6	103.6	0.0	24.3	0.0	19.5	5.2	15.2	1.5	18.5	252.4
2020/21 proj.																			
May	768.5	717.7	50.8	34.0	3.3	77.0	28.0	nr	135.0	103.0	0.0	26.1	0.0	21.0	5.5	24.0	1.7	18.5	240.6
Jun	773.4	722.3	51.1	34.0	3.3	77.0	26.5	nr	136.0	107.2	0.0	26.1	0.0	21.0	5.5	26.0	1.7	19.5	238.6
Coarse Grains																			
2018/19	1,397.0	1,019.1	377.9	26.2	33.4	35.0	44.5	nr	264.5	43.2	12.0	6.6	5.7	59.2	104.3	11.5	12.4	13.3	347.2
2019/20 prel.	1,406.5	1,047.2	359.3	28.5	30.4	40.5	46.5	nr	268.2	47.5	11.9	7.4	5.3	56.8	104.6	10.4	16.7	14.5	358.1
2020/21 proj.																			
May	1,481.4	1,060.9	420.5	30.3	33.6	39.4	49.8	nr	267.4	44.8	12.0	7.5	5.7	56.7	109.4	12.7	14.6	15.8	361.2
Jun	1,484.6	1,064.1	420.5	30.3	33.6	39.2	49.5	nr	267.4	44.5	12.0	7.5	5.7	56.7	110.4	13.7	14.6	15.8	363.2
Rice, Milled																			
2018/19	496.5	489.4	7.1	0.0	0.2	0.7	0.0	nr	148.5	116.5	34.2	7.3	20.3	0.8	7.1	0.0	0.0	0.6	153.1
2019/20 prel.	494.3	488.4	5.9	0.0	0.2	0.7	0.0	nr	146.7	117.9	33.5	7.2	18.0	0.8	7.4	0.0	0.0	0.6	155.3
2020/21 proj.																			
May	502.0	495.1	6.9	0.0	0.2	0.7	0.0	nr	149.0	118.0	34.9	7.5	20.4	0.8	6.9	0.3	0.0	0.6	155.8
Jun	502.1	495.2	6.9	0.0	0.2	0.7	0.0	nr	149.0	118.0	34.9	7.5	20.4	0.8	7.2	0.3	0.0	0.6	155.6
Total Grains																			
2018/19	2,624.3	2,188.0	436.3	58.4	36.6	107.4	69.6	nr	544.4	259.6	46.2	39.0	26.0	79.5	116.9	29.2	14.3	32.9	728.1
2019/20 prel.	2,665.2	2,247.8	417.4	60.9	33.8	114.8	75.8	nr	548.5	269.0	45.4	38.9	23.3	77.0	117.2	25.7	18.3	33.6	765.7
2020/21 proj.																			
May	2,751.9	2,273.7	478.1	64.3	37.1	117.1	77.9	nr	551.4	265.8	46.9	41.1	26.1	78.5	121.8	37.0	16.3	34.9	757.6
Jun	2,760.1	2,281.7	478.5	64.3	37.1	116.9	76.1	nr	552.4	269.7	46.9	41.1	26.1	78.5	123.1	40.0	16.3	35.9	757.4
Oilseeds																			
2018/19	599.9	469.2	130.7	27.7	1.3	18.7	22.7	nr	60.0	35.5	14.1	3.8	1.0	61.0	123.9	3.1	2.0	3.4	91.1
2019/20 prel.	575.2	468.2	107.0	25.1	1.1	21.7	24.0	nr	62.6	37.2	14.4	3.3	1.1	55.1	129.1	2.6	2.1	3.2	85.6
2020/21 proj.																			
May	605.9	482.7	123.2	26.1	1.2	22.3	24.5	nr	61.9	36.7	14.6	3.4	1.1	59.2	135.7	3.7	2.1	3.1	87.1
Jun	606.2	483.0	123.2	26.1	1.1	22.3	24.6	nr	61.9	36.7	14.6	3.4	1.1	59.3	135.7	3.9	2.1	3.1	87.0
Cotton																			
2018/19	118.7	100.3	18.4	0.0	1.7	0.0	0.0	1.7	27.8	25.8	0.0	7.6	0.0	1.1	13.0	2.2	0.2	3.8	15.4
2019/20 prel.	123.0	103.1	19.9	0.0	1.6	0.0	0.0	2.0	27.3	30.5	0.0	6.2	0.0	1.4	13.2	0.6	0.1	3.5	16.7
2020/21 proj.																			
May	119.0	99.5	19.5	0.0	1.2	0.0	0.0	2.0	26.5	28.5	0.0	6.3	0.0	1.0	12.0	1.7	0.2	3.7	16.4
Jun	118.7	99.2	19.5	0.0	1.2	0.0	0.0	2.0	26.5	28.5	0.0	6.3	0.0	1.4	12.0	1.7	0.2	3.3	16.3

1/ Includes wheat, coarse grains, and rice (milled) shown above.

Table 02 Wheat Area, Yield, and Production

Country / Region	Area (Million hectares)				Yield (Metric tons per hectare)				Production (Million metric tons)				Change in Production			
	2018/19	Prel.	2020/21 Proj.		2018/19	Prel.	2020/21 Proj.		2018/19	Prel.	2020/21 Proj.		From last month		From last year	
		2019/20	May	Jun		2019/20	May	Jun		2019/20	May	Jun	MMT	Percent	MMT	Percent
World	215.45	216.66	220.24	220.96	3.39	3.53	3.49	3.50	730.84	764.41	768.49	773.43	4.94	0.64	9.03	1.18
United States	16.03	15.04	15.24	15.24	3.20	3.47	3.33	3.35	51.31	52.26	50.78	51.09	0.30	0.59	-1.17	-2.24
Total Foreign	199.42	201.62	205.00	205.72	3.41	3.53	3.50	3.51	679.53	712.15	717.71	722.35	4.64	0.65	10.20	1.43
European Union - 28	25.52	26.08	25.25	25.25	5.36	5.94	5.66	5.58	136.69	154.78	143.00	141.00	-2.00	-1.40	-13.78	-8.90
China	24.27	23.73	24.00	24.00	5.42	5.63	5.63	5.67	131.43	133.59	135.00	136.00	1.00	0.74	2.41	1.80
South Asia																
India	29.65	29.32	31.05	30.55	3.37	3.53	3.32	3.51	99.87	103.60	103.00	107.18	4.18	4.06	3.58	3.46
Pakistan	8.80	8.80	9.13	9.13	2.85	2.76	2.86	2.86	25.10	24.30	26.10	26.10	0.00	0.00	1.80	7.41
Afghanistan	2.00	2.30	2.33	2.33	1.80	2.17	2.15	2.15	3.60	5.00	5.01	5.01	0.00	0.00	0.01	0.20
Nepal	0.76	0.76	0.76	0.76	2.55	2.55	2.55	2.55	1.94	1.94	1.94	1.94	0.00	0.00	0.00	0.00
Former Soviet Union - 12																
Russia	26.34	27.31	27.50	27.50	2.72	2.70	2.80	2.80	71.69	73.61	77.00	77.00	0.00	0.00	3.39	4.61
Russia Winter	14.91	15.41	15.60	15.60	3.52	3.41	3.65	3.65	52.47	52.54	57.00	57.00	0.00	0.00	4.46	8.49
Russia Spring	11.44	11.91	11.90	11.90	1.68	1.77	1.68	1.68	19.22	21.07	20.00	20.00	0.00	0.00	-1.07	-5.08
Ukraine	6.72	7.02	6.75	6.80	3.73	4.16	4.15	3.90	25.06	29.17	28.00	26.50	-1.50	-5.36	-2.67	-9.16
Kazakhstan	11.35	11.34	11.25	11.25	1.23	1.01	1.20	1.20	13.95	11.45	13.50	13.50	0.00	0.00	2.05	17.88
Uzbekistan	1.40	1.40	1.40	1.40	4.29	4.86	4.57	4.65	6.00	6.80	6.40	6.51	0.11	1.72	-0.29	-4.26
Belarus	0.66	0.75	0.70	0.70	2.75	3.83	3.29	3.29	1.82	2.88	2.30	2.30	0.00	0.00	-0.58	-20.00
Canada	9.88	9.66	9.80	9.80	3.26	3.35	3.47	3.47	32.20	32.35	34.00	34.00	0.00	0.00	1.65	5.11
South America																
Argentina	6.05	6.50	6.50	6.50	3.22	3.00	3.23	3.23	19.50	19.50	21.00	21.00	0.00	0.00	1.50	7.69
Brazil	2.04	2.04	2.10	2.10	2.66	2.55	2.62	2.62	5.43	5.20	5.50	5.50	0.00	0.00	0.30	5.77
Uruguay	0.20	0.23	0.22	0.22	3.68	3.30	3.36	3.36	0.73	0.76	0.74	0.74	0.00	0.00	-0.02	-2.63
Australia	10.40	10.20	12.10	13.00	1.69	1.49	1.98	2.00	17.60	15.20	24.00	26.00	2.00	8.33	10.80	71.05
Africa																
Egypt	1.32	1.37	1.39	1.39	6.40	6.40	6.40	6.40	8.45	8.77	8.90	8.90	0.00	0.00	0.13	1.48
Morocco	2.85	2.75	2.70	2.70	2.58	1.46	1.30	1.30	7.34	4.03	3.50	3.50	0.00	0.00	-0.53	-13.04
Ethiopia	1.75	1.80	1.85	1.85	2.42	2.74	2.72	2.72	4.24	4.93	5.03	5.03	0.00	0.00	0.10	2.03
Algeria	2.07	2.07	2.08	2.08	1.90	1.90	1.81	1.81	3.94	3.95	3.75	3.75	0.00	0.00	-0.20	-5.06
Middle East																
Turkey	7.62	7.00	7.00	7.25	2.50	2.64	2.64	2.69	19.00	18.50	18.50	19.50	1.00	5.41	1.00	5.41
Iran	6.70	6.70	6.70	6.70	2.16	2.51	2.50	2.50	14.50	16.80	16.75	16.75	0.00	0.00	-0.05	-0.30
Iraq	1.70	2.40	2.40	2.40	1.76	2.00	2.00	2.00	3.00	4.80	4.80	4.80	0.00	0.00	0.00	0.00
Syria	1.10	1.60	1.60	1.60	1.82	3.00	2.81	2.81	2.00	4.80	4.50	4.50	0.00	0.00	-0.30	-6.25
Mexico	0.54	0.59	0.61	0.61	5.56	5.42	5.45	5.45	3.00	3.22	3.30	3.30	0.00	0.00	0.09	2.64
Serbia	0.65	0.57	0.57	0.57	4.92	4.39	4.74	4.74	3.20	2.50	2.70	2.70	0.00	0.00	0.20	8.00
Others	7.08	7.33	7.27	7.29	2.58	2.69	2.68	2.65	18.28	19.74	19.49	19.34	-0.15	-0.76	-0.40	-2.01

Table 03 Total Coarse Grain Area, Yield, and Production

Country / Region	Area (Million hectares)				Yield (Metric tons per hectare)				Production (Million metric tons)				Change in Production			
	2018/19	Prel.	2020/21 Proj.		2018/19	Prel.	2020/21 Proj.		2018/19	Prel.	2020/21 Proj.		From last month		From last year	
		2019/20	May	Jun		2019/20	May	Jun		2019/20	May	Jun	MMT	Percent	MMT	Percent
World	330.74	332.20	337.67	338.82	4.22	4.23	4.39	4.38	1,396.99	1,406.53	1,481.45	1,484.61	3.16	0.21	78.08	5.55
United States	36.20	36.14	39.92	39.92	10.44	9.94	10.53	10.53	377.91	359.30	420.50	420.50	0.00	0.00	61.20	17.03
Total Foreign	294.54	296.06	297.75	298.90	3.46	3.54	3.56	3.56	1,019.09	1,047.23	1,060.94	1,064.11	3.16	0.30	16.88	1.61
China	44.48	43.72	44.42	44.42	5.95	6.14	6.02	6.02	264.51	268.20	267.38	267.38	0.00	0.00	-0.82	-0.31
European Union	29.25	30.17	30.22	30.47	5.07	5.34	5.40	5.40	148.27	161.06	163.09	164.44	1.35	0.83	3.38	2.10
South America																
Brazil	18.72	19.67	19.98	20.18	5.57	5.32	5.48	5.47	104.33	104.57	109.41	110.41	1.00	0.91	5.83	5.58
Argentina	8.22	7.98	7.90	7.90	7.20	7.12	7.18	7.18	59.22	56.75	56.70	56.70	0.00	0.00	-0.05	-0.09
Former Soviet Union - 12																
Russia	14.03	14.51	14.40	14.40	2.50	2.79	2.74	2.72	35.00	40.50	39.40	39.20	-0.20	-0.51	-1.30	-3.20
Ukraine	7.58	8.22	8.54	8.54	5.87	5.67	5.84	5.80	44.50	46.55	49.85	49.55	-0.30	-0.60	3.00	6.45
Kazakhstan	2.97	3.45	3.25	3.25	1.76	1.47	1.75	1.75	5.23	5.06	5.68	5.68	0.00	0.00	0.62	12.24
Belarus	1.01	0.90	0.93	0.93	2.91	3.78	3.30	3.30	2.93	3.40	3.07	3.07	0.00	0.00	-0.33	-9.71
Africa																
Nigeria	14.30	14.40	14.40	14.40	1.39	1.37	1.38	1.38	19.84	19.67	19.90	19.90	0.00	0.00	0.24	1.20
South Africa	2.81	3.13	2.92	2.92	4.43	5.35	5.01	5.01	12.42	16.75	14.63	14.63	0.00	0.00	-2.12	-12.65
Tanzania	5.22	5.35	5.35	5.35	1.36	1.37	1.34	1.34	7.12	7.35	7.15	7.15	0.00	0.00	-0.20	-2.72
Burkina	4.32	3.90	3.90	3.90	1.12	1.18	1.13	1.13	4.82	4.59	4.40	4.40	0.00	0.00	-0.19	-4.03
Ethiopia	5.64	5.60	5.60	5.60	2.92	3.05	3.07	3.07	16.47	17.10	17.20	17.20	0.00	0.00	0.10	0.58
Egypt	1.07	1.02	1.02	1.02	7.14	7.09	7.09	7.09	7.66	7.26	7.26	7.26	0.00	0.00	0.00	0.00
Mali	4.63	4.70	4.70	4.70	1.50	1.48	1.40	1.40	6.94	6.94	6.60	6.60	0.00	0.00	-0.34	-4.83
India	22.23	23.36	23.40	23.32	1.94	2.03	1.91	1.91	43.21	47.51	44.75	44.49	-0.26	-0.58	-3.02	-6.35
Southeast Asia																
Indonesia	3.70	3.80	3.70	3.70	3.24	3.13	3.24	3.24	12.00	11.90	12.00	12.00	0.00	0.00	0.10	0.84
Philippines	2.48	2.55	2.60	2.60	3.07	3.18	3.15	3.15	7.61	8.10	8.20	8.20	0.00	0.00	0.10	1.23
Vietnam	0.98	0.94	0.95	0.94	4.74	4.74	4.74	4.68	4.65	4.46	4.50	4.40	-0.10	-2.22	-0.06	-1.35
Thailand	1.32	1.24	1.29	1.29	4.29	4.23	4.39	4.39	5.68	5.25	5.65	5.65	0.00	0.00	0.40	7.62
Mexico	8.95	8.53	9.06	9.06	3.73	3.56	3.71	3.71	33.40	30.41	33.60	33.60	0.00	0.00	3.19	10.49
Canada	5.00	5.53	5.56	5.56	5.24	5.16	5.45	5.45	26.20	28.51	30.30	30.30	0.00	0.00	1.79	6.27
Australia	6.06	5.01	5.44	5.89	1.90	2.08	2.34	2.32	11.51	10.44	12.71	13.66	0.95	7.48	3.22	30.85
Middle East																
Turkey	4.34	4.53	4.61	4.61	3.05	3.19	3.43	3.43	13.25	14.45	15.81	15.81	0.00	0.00	1.36	9.41
Iran	1.73	1.91	1.91	1.91	2.32	2.63	2.71	2.71	4.02	5.02	5.17	5.17	0.00	0.00	0.15	2.99
Others	73.49	71.95	71.71	72.06	1.61	1.60	1.63	1.63	118.31	115.47	116.55	117.28	0.72	0.62	1.81	1.57

World and Selected Countries and Regions; Coarse Grain includes: Barley, Corn, Millet, Mixed Grains, Oats, Rye and Sorghum

Table 04 Corn Area, Yield, and Production

Country / Region	Area (Million hectares)				Yield (Metric tons per hectare)				Production (Million metric tons)				Change in Production			
	2018/19	Prel.	2020/21 Proj.		2018/19	Prel.	2020/21 Proj.		2018/19	Prel.	2020/21 Proj.		From last month		From last year	
		2019/20	May	Jun		2019/20	May	Jun		2019/20	May	Jun	MMT	Percent	MMT	Percent
World	191.82	192.35	197.65	198.13	5.86	5.79	6.00	6.00	1,123.34	1,113.50	1,186.86	1,188.48	1.62	0.14	74.98	6.73
United States	32.89	32.91	36.26	36.26	11.07	10.51	11.20	11.20	364.26	345.89	406.29	406.29	0.00	0.00	60.40	17.46
Total Foreign	158.93	159.44	161.39	161.87	4.78	4.81	4.84	4.83	759.08	767.61	780.57	782.18	1.62	0.21	14.58	1.90
China	42.13	41.28	42.00	42.00	6.11	6.32	6.19	6.19	257.33	260.77	260.00	260.00	0.00	0.00	-0.77	-0.30
South America																
Brazil	17.50	18.40	18.70	18.90	5.77	5.49	5.67	5.66	101.00	101.00	106.00	107.00	1.00	0.94	6.00	5.94
Argentina	6.10	6.20	6.20	6.20	8.36	8.06	8.06	8.06	51.00	50.00	50.00	50.00	0.00	0.00	0.00	0.00
Bolivia	0.40	0.35	0.35	0.35	2.65	2.80	2.83	2.83	1.05	0.98	0.99	0.99	0.00	0.00	0.01	1.02
European Union	8.28	8.88	9.00	9.00	7.77	7.50	7.59	7.59	64.36	66.63	68.30	68.30	0.00	0.00	1.67	2.50
Africa																
South Africa	2.60	2.91	2.70	2.70	4.55	5.58	5.19	5.19	11.82	16.25	14.00	14.00	0.00	0.00	-2.25	-13.85
Nigeria	6.50	6.50	6.50	6.50	1.69	1.69	1.69	1.69	11.00	11.00	11.00	11.00	0.00	0.00	0.00	0.00
Ethiopia	2.30	2.30	2.30	2.30	3.63	3.70	3.74	3.74	8.35	8.50	8.60	8.60	0.00	0.00	0.10	1.18
Egypt	0.85	0.80	0.80	0.80	8.00	8.00	8.00	8.00	6.80	6.40	6.40	6.40	0.00	0.00	0.00	0.00
Tanzania	4.10	4.20	4.20	4.20	1.46	1.48	1.43	1.43	5.99	6.20	6.00	6.00	0.00	0.00	-0.20	-3.23
Malawi	1.69	1.70	1.70	1.70	1.60	2.00	2.00	2.00	2.70	3.39	3.40	3.40	0.00	0.00	0.01	0.24
Zambia	1.09	0.84	1.00	1.29	2.21	2.38	2.70	2.62	2.40	2.00	2.70	3.39	0.69	25.44	1.38	69.01
Kenya	2.14	2.00	2.00	2.00	1.87	1.90	1.70	1.70	4.01	3.80	3.40	3.40	0.00	0.00	-0.40	-10.53
Uganda	1.13	1.15	1.15	1.15	2.30	2.24	2.43	2.43	2.60	2.58	2.80	2.80	0.00	0.00	0.23	8.74
Zimbabwe	1.72	1.62	1.50	1.50	0.99	0.48	0.57	0.57	1.70	0.78	0.85	0.85	0.00	0.00	0.07	9.40
Former Soviet Union - 12																
Ukraine	4.57	4.99	5.35	5.35	7.84	7.19	7.29	7.29	35.81	35.89	39.00	39.00	0.00	0.00	3.11	8.67
Russia	2.37	2.50	2.60	2.60	4.81	5.70	5.58	5.58	11.42	14.28	14.50	14.50	0.00	0.00	0.23	1.58
South Asia																
India	9.03	9.27	9.00	9.00	3.07	3.12	3.06	3.06	27.72	28.90	27.50	27.50	0.00	0.00	-1.40	-4.84
Pakistan	1.32	1.33	1.39	1.39	4.62	5.19	5.05	5.05	6.10	6.90	7.00	7.00	0.00	0.00	0.10	1.45
Nepal	0.90	0.90	0.90	0.90	2.83	2.83	2.83	2.83	2.55	2.55	2.55	2.55	0.00	0.00	0.00	0.00
Southeast Asia																
Indonesia	3.70	3.80	3.70	3.70	3.24	3.13	3.24	3.24	12.00	11.90	12.00	12.00	0.00	0.00	0.10	0.84
Philippines	2.48	2.55	2.60	2.60	3.07	3.18	3.15	3.15	7.61	8.10	8.20	8.20	0.00	0.00	0.10	1.23
Vietnam	0.98	0.94	0.95	0.94	4.74	4.74	4.74	4.68	4.65	4.46	4.50	4.40	-0.10	-2.22	-0.06	-1.35
Thailand	1.30	1.22	1.26	1.26	4.34	4.28	4.44	4.44	5.63	5.20	5.60	5.60	0.00	0.00	0.40	7.69
Mexico	7.20	6.80	7.30	7.30	3.83	3.68	3.84	3.84	27.60	25.00	28.00	28.00	0.00	0.00	3.00	12.00
Canada	1.43	1.45	1.50	1.50	9.70	9.26	10.40	10.40	13.89	13.38	15.60	15.60	0.00	0.00	2.23	16.64
Turkey	0.53	0.52	0.60	0.60	10.75	11.54	11.42	11.42	5.70	6.00	6.85	6.85	0.00	0.00	0.85	14.17
Others	24.61	24.04	24.15	24.15	2.70	2.69	2.68	2.69	66.32	64.78	64.83	64.86	0.03	0.05	0.08	0.12

World and Selected Countries and Regions

Table 05 Barley Area, Yield, and Production

Country / Region	Area (Million hectares)				Yield (Metric tons per hectare)				Production (Million metric tons)				Change in Production			
	2018/19	Prel.	2020/21 Proj.		2018/19	Prel.	2020/21 Proj.		2018/19	Prel.	2020/21 Proj.		From last month		From last year	
		2019/20	May	Jun		2019/20	May	Jun		2019/20	May	Jun	MMT	Percent	MMT	Percent
World	48.82	51.66	50.36	50.72	2.85	3.03	3.06	3.06	139.30	156.28	154.18	155.26	1.08	0.70	-1.02	-0.65
United States	0.80	0.88	0.97	0.97	4.17	4.18	4.08	4.08	3.34	3.69	3.96	3.96	0.00	0.00	0.27	7.34
Total Foreign	48.02	50.78	49.38	49.75	2.83	3.00	3.04	3.04	135.96	152.59	150.22	151.30	1.08	0.72	-1.29	-0.85
European Union	12.32	12.38	12.30	12.55	4.54	5.09	5.10	5.11	55.98	63.00	62.75	64.10	1.35	2.15	1.10	1.75
Former Soviet Union - 12																
Russia	7.78	8.40	7.80	7.80	2.15	2.37	2.24	2.22	16.74	19.94	17.50	17.30	-0.20	-1.14	-2.64	-13.24
Ukraine	2.57	2.78	2.75	2.75	2.96	3.42	3.53	3.42	7.60	9.53	9.70	9.40	-0.30	-3.09	-0.13	-1.34
Kazakhstan	2.52	2.98	2.80	2.80	1.58	1.29	1.57	1.57	3.97	3.83	4.40	4.40	0.00	0.00	0.57	14.88
Belarus	0.43	0.40	0.38	0.38	2.20	3.50	2.76	2.76	0.94	1.40	1.05	1.05	0.00	0.00	-0.35	-25.00
Azerbaijan	0.34	0.32	0.31	0.31	2.72	2.72	2.74	2.74	0.92	0.87	0.85	0.85	0.00	0.00	-0.02	-2.30
Canada	2.40	2.73	2.60	2.60	3.50	3.81	3.73	3.73	8.38	10.38	9.70	9.70	0.00	0.00	-0.68	-6.58
Australia	4.44	4.05	4.10	4.30	1.99	2.22	2.37	2.37	8.82	9.00	9.70	10.20	0.50	5.15	1.20	13.33
Middle East																
Turkey	3.60	3.80	3.80	3.80	1.94	2.08	2.21	2.21	7.00	7.90	8.40	8.40	0.00	0.00	0.50	6.33
Iran	1.55	1.70	1.70	1.70	1.81	2.12	2.21	2.21	2.80	3.60	3.75	3.75	0.00	0.00	0.15	4.17
Iraq	0.60	1.20	1.20	1.20	1.30	1.33	1.29	1.29	0.78	1.60	1.55	1.55	0.00	0.00	-0.05	-3.13
Syria	0.80	1.50	1.50	1.50	0.50	1.33	1.27	1.27	0.40	2.00	1.90	1.90	0.00	0.00	-0.10	-5.00
Africa																
Ethiopia	1.00	1.00	1.00	1.00	2.20	2.30	2.30	2.30	2.20	2.30	2.30	2.30	0.00	0.00	0.00	0.00
Morocco	1.60	1.45	1.10	1.10	1.82	0.80	0.68	0.68	2.91	1.16	0.75	0.75	0.00	0.00	-0.41	-35.40
Algeria	1.03	1.03	1.03	1.03	1.90	1.95	1.80	1.80	1.95	2.00	1.85	1.85	0.00	0.00	-0.16	-7.75
Tunisia	0.31	0.47	0.42	0.42	0.99	1.94	1.60	1.60	0.31	0.91	0.66	0.66	0.00	0.00	-0.25	-27.19
South Africa	0.12	0.13	0.13	0.13	3.55	2.61	3.62	3.62	0.42	0.35	0.47	0.47	0.00	0.00	0.13	36.23
South America																
Argentina	1.20	1.00	0.90	0.90	4.22	3.80	4.11	4.11	5.06	3.80	3.70	3.70	0.00	0.00	-0.10	-2.63
Uruguay	0.17	0.16	0.17	0.17	3.87	3.75	3.70	3.70	0.64	0.60	0.61	0.61	0.00	0.00	0.01	1.67
Brazil	0.11	0.12	0.12	0.12	3.16	3.61	3.21	3.21	0.35	0.43	0.39	0.39	0.00	0.00	-0.04	-10.26
India	0.66	0.58	0.70	0.62	2.69	2.84	2.64	2.57	1.78	1.63	1.85	1.59	-0.26	-14.00	-0.04	-2.57
China	0.26	0.26	0.26	0.26	3.64	3.46	3.46	3.46	0.96	0.90	0.90	0.90	0.00	0.00	0.00	0.00
Mexico	0.35	0.36	0.36	0.36	2.82	2.81	2.80	2.80	1.00	1.01	1.00	1.00	0.00	0.00	-0.01	-0.99
Afghanistan	0.08	0.18	0.17	0.17	0.68	1.39	1.41	1.41	0.06	0.25	0.24	0.24	0.00	0.00	-0.01	-4.00
Others	1.79	1.80	1.80	1.80	2.24	2.33	2.36	2.35	4.00	4.20	4.26	4.24	-0.02	-0.35	0.04	1.02

World and Selected Countries and Regions

Table 06 Oats Area, Yield, and Production

Country / Region	Area (Million hectares)				Yield (Metric tons per hectare)				Production (Million metric tons)				Change in Production			
	2018/19	Prel.	2020/21 Proj.		2018/19	Prel.	2020/21 Proj.		2018/19	Prel.	2020/21 Proj.		From last month		From last year	
		2019/20	May	Jun		2019/20	May	Jun		2019/20	May	Jun	MMT	Percent	MMT	Percent
World	9.99	9.32	9.93	10.18	2.23	2.40	2.45	2.44	22.24	22.40	24.36	24.81	0.45	1.85	2.40	10.73
United States	0.35	0.33	0.45	0.45	2.33	2.31	2.38	2.38	0.82	0.77	1.06	1.06	0.00	0.00	0.29	37.48
Total Foreign	9.64	8.99	9.48	9.73	2.22	2.41	2.46	2.44	21.43	21.63	23.30	23.75	0.45	1.93	2.11	9.77
European Union	2.73	2.51	2.60	2.60	2.86	3.09	3.12	3.12	7.79	7.78	8.10	8.10	0.00	0.00	0.32	4.17
Former Soviet Union - 12																
Russia	2.73	2.43	2.70	2.70	1.73	1.82	1.85	1.85	4.72	4.42	5.00	5.00	0.00	0.00	0.58	13.12
Ukraine	0.20	0.18	0.18	0.18	2.14	2.32	2.50	2.50	0.42	0.43	0.45	0.45	0.00	0.00	0.02	5.39
Belarus	0.15	0.15	0.15	0.15	2.26	3.00	2.47	2.47	0.34	0.45	0.37	0.37	0.00	0.00	-0.08	-17.78
Kazakhstan	0.24	0.24	0.23	0.23	1.43	1.10	1.33	1.33	0.34	0.27	0.30	0.30	0.00	0.00	0.03	12.36
Canada	1.01	1.16	1.26	1.26	3.42	3.58	3.49	3.49	3.44	4.16	4.40	4.40	0.00	0.00	0.24	5.85
South America																
Argentina	0.24	0.14	0.20	0.20	2.40	2.31	2.50	2.50	0.57	0.33	0.50	0.50	0.00	0.00	0.17	51.52
Brazil	0.38	0.40	0.40	0.40	2.11	2.21	2.28	2.28	0.80	0.88	0.91	0.91	0.00	0.00	0.03	3.53
Chile	0.08	0.08	0.08	0.08	5.13	5.50	5.61	5.61	0.39	0.44	0.46	0.46	0.00	0.00	0.02	4.55
Uruguay	0.03	0.01	0.02	0.02	2.04	1.86	2.00	2.00	0.05	0.03	0.04	0.04	0.00	0.00	0.01	53.85
Oceania																
Australia	0.94	0.70	0.70	0.95	1.21	1.23	1.64	1.68	1.14	0.86	1.15	1.60	0.45	39.13	0.74	86.05
New Zealand	0.01	0.01	0.01	0.01	5.00	5.50	5.50	5.50	0.03	0.03	0.03	0.03	0.00	0.00	0.00	0.00
China	0.50	0.53	0.53	0.53	1.15	1.19	1.19	1.19	0.58	0.63	0.63	0.63	0.00	0.00	0.00	0.00
Africa																
Algeria	0.09	0.09	0.09	0.09	1.29	1.29	1.29	1.29	0.11	0.11	0.11	0.11	0.00	0.00	0.00	0.00
Morocco	0.05	0.05	0.04	0.04	1.40	0.89	0.88	0.88	0.06	0.04	0.04	0.04	0.00	0.00	-0.01	-12.50
South Africa	0.02	0.02	0.02	0.02	1.65	0.76	1.50	1.50	0.03	0.02	0.03	0.03	0.00	0.00	0.01	87.50
Other Europe																
Norway	0.07	0.07	0.07	0.07	2.09	4.29	4.29	4.29	0.14	0.30	0.30	0.30	0.00	0.00	0.00	0.00
Serbia	0.03	0.03	0.03	0.03	2.17	2.17	2.17	2.17	0.07	0.07	0.07	0.07	0.00	0.00	0.00	0.00
Albania	0.01	0.01	0.01	0.01	2.08	2.14	2.14	2.14	0.03	0.03	0.03	0.03	0.00	0.00	0.00	0.00
Bosnia and Herzegovina	0.01	0.01	0.01	0.01	2.79	1.93	2.56	2.56	0.04	0.03	0.02	0.02	0.00	0.00	0.00	-14.81
Turkey	0.10	0.10	0.10	0.10	2.30	2.30	2.40	2.40	0.23	0.23	0.24	0.24	0.00	0.00	0.01	4.35
Mexico	0.05	0.05	0.05	0.05	2.06	1.98	2.00	2.00	0.10	0.10	0.10	0.10	0.00	0.00	0.00	1.01
Others	0.02	0.01	0.01	0.01	2.00	1.86	1.86	1.86	0.03	0.03	0.03	0.03	0.00	0.00	0.00	0.00

World and Selected Countries and Regions

Table 07 Rye Area, Yield, and Production

Country / Region	Area (Million hectares)				Yield (Metric tons per hectare)				Production (Million metric tons)				Change in Production			
	2018/19	Prel.	2020/21 Proj.		2018/19	Prel.	2020/21 Proj.		2018/19	Prel.	2020/21 Proj.		From last month		From last year	
		2019/20	May	Jun		2019/20	May	Jun		2019/20	May	Jun	MMT	Percent	MMT	Percent
World	3.74	3.85	4.09	4.09	2.68	3.12	3.12	3.12	10.01	12.03	12.78	12.78	0.00	0.00	0.75	6.24
United States	0.11	0.13	0.14	0.14	1.95	2.16	1.90	1.90	0.21	0.27	0.27	0.27	0.00	0.00	0.00	0.00
Total Foreign	3.63	3.73	3.95	3.95	2.70	3.16	3.17	3.17	9.80	11.76	12.51	12.51	0.00	0.00	0.75	6.39
European Union	1.92	2.20	2.20	2.20	3.24	3.82	3.89	3.89	6.22	8.41	8.55	8.55	0.00	0.00	0.14	1.68
Former Soviet Union - 12																
Russia	0.96	0.82	1.00	1.00	2.00	1.73	2.00	2.00	1.91	1.42	2.00	2.00	0.00	0.00	0.58	40.45
Belarus	0.25	0.20	0.20	0.20	2.00	3.25	2.75	2.75	0.50	0.65	0.55	0.55	0.00	0.00	-0.10	-15.38
Ukraine	0.15	0.12	0.15	0.15	2.66	2.90	3.00	3.00	0.40	0.34	0.45	0.45	0.00	0.00	0.11	32.74
Kazakhstan	0.02	0.02	0.03	0.03	1.05	1.00	1.12	1.12	0.02	0.02	0.03	0.03	0.00	0.00	0.01	21.74
Turkey	0.11	0.11	0.11	0.11	2.91	2.91	2.91	2.91	0.32	0.32	0.32	0.32	0.00	0.00	0.00	0.00
Canada	0.08	0.10	0.12	0.12	2.99	3.23	3.08	3.08	0.24	0.33	0.37	0.37	0.00	0.00	0.04	11.11
South America																
Chile	0.00	0.00	0.00	0.00	5.00	5.00	5.00	5.00	0.01	0.01	0.01	0.01	0.00	0.00	0.00	0.00
Argentina	0.05	0.06	0.05	0.05	1.78	2.14	2.00	2.00	0.09	0.12	0.10	0.10	0.00	0.00	-0.02	-16.67
Other Europe																
Bosnia and Herzegovina	0.00	0.00	0.00	0.00	2.75	2.50	3.33	3.33	0.01	0.01	0.01	0.01	0.00	0.00	0.00	0.00
Switzerland	0.00	0.00	0.00	0.00	5.50	5.50	5.50	5.50	0.01	0.01	0.01	0.01	0.00	0.00	0.00	0.00
Serbia	0.00	0.00	0.00	0.00	2.50	2.50	2.50	2.50	0.01	0.01	0.01	0.01	0.00	0.00	0.00	0.00
Australia	0.04	0.04	0.04	0.04	0.68	0.68	0.68	0.68	0.03	0.03	0.03	0.03	0.00	0.00	0.00	0.00
Others	0.03	0.04	0.04	0.04	1.00	1.92	1.90	1.90	0.03	0.07	0.07	0.07	0.00	0.00	0.00	1.37

World and Selected Countries and Regions

Table 08 Sorghum Area, Yield, and Production

Country / Region	Area (Million hectares)				Yield (Metric tons per hectare)				Production (Million metric tons)				Change in Production			
	2018/19	Prel.	2020/21 Proj.		2018/19	Prel.	2020/21 Proj.		2018/19	Prel.	2020/21 Proj.		From last month		From last year	
		2019/20	May	Jun		2019/20	May	Jun		2019/20	May	Jun	MMT	Percent	MMT	Percent
World	40.66	40.20	40.97	40.98	1.47	1.43	1.46	1.46	59.62	57.63	59.76	59.77	0.01	0.01	2.14	3.71
United States	2.05	1.89	2.10	2.10	4.53	4.58	4.24	4.24	9.27	8.67	8.92	8.92	0.00	0.00	0.24	2.80
Total Foreign	38.61	38.31	38.86	38.88	1.30	1.28	1.31	1.31	50.35	48.96	50.85	50.85	0.01	0.01	1.90	3.87
Africa																
Nigeria	5.80	5.90	5.90	5.90	1.16	1.13	1.17	1.17	6.72	6.67	6.90	6.90	0.00	0.00	0.24	3.53
Ethiopia	1.83	1.85	1.85	1.85	2.70	2.81	2.81	2.81	4.93	5.20	5.20	5.20	0.00	0.00	0.00	0.00
Sudan	7.11	7.00	7.00	7.00	0.70	0.57	0.71	0.71	4.95	4.00	5.00	5.00	0.00	0.00	1.00	25.00
Burkina	1.91	1.80	1.80	1.80	1.01	1.00	1.00	1.00	1.93	1.80	1.80	1.80	0.00	0.00	0.00	0.00
Mali	1.35	1.50	1.50	1.50	1.09	1.00	1.00	1.00	1.47	1.50	1.50	1.50	0.00	0.00	0.00	0.00
Niger	3.90	3.70	3.70	3.70	0.54	0.53	0.51	0.51	2.10	1.97	1.90	1.90	0.00	0.00	-0.07	-3.55
Cameroon	0.87	0.85	0.85	0.85	1.63	1.41	1.41	1.41	1.42	1.20	1.20	1.20	0.00	0.00	0.00	0.00
Tanzania	0.79	0.80	0.80	0.80	1.02	1.00	1.00	1.00	0.81	0.80	0.80	0.80	0.00	0.00	0.00	0.00
Egypt	0.14	0.14	0.14	0.14	5.36	5.36	5.36	5.36	0.75	0.75	0.75	0.75	0.00	0.00	0.00	0.00
Uganda	0.45	0.41	0.41	0.41	0.67	0.98	0.98	0.98	0.30	0.40	0.40	0.40	0.00	0.00	0.00	0.00
Ghana	0.28	0.25	0.25	0.25	1.12	1.12	1.12	1.12	0.32	0.28	0.28	0.28	0.00	0.00	0.00	0.00
Mozambique	0.25	0.30	0.30	0.30	1.18	1.08	0.67	0.67	0.30	0.33	0.20	0.20	0.00	0.00	-0.13	-38.46
South Africa	0.05	0.05	0.05	0.05	2.70	2.96	2.50	2.50	0.14	0.13	0.13	0.13	0.00	0.00	-0.01	-6.02
Mexico	1.35	1.32	1.35	1.35	3.48	3.26	3.33	3.33	4.70	4.30	4.50	4.50	0.00	0.00	0.20	4.65
South America																
Argentina	0.63	0.58	0.55	0.55	3.97	4.35	4.36	4.36	2.50	2.50	2.40	2.40	0.00	0.00	-0.10	-4.00
Brazil	0.73	0.75	0.75	0.75	2.97	3.03	2.80	2.80	2.18	2.25	2.10	2.10	0.00	0.00	-0.15	-6.83
South Asia																
India	4.09	4.66	4.80	4.80	0.85	1.00	0.92	0.92	3.48	4.63	4.40	4.40	0.00	0.00	-0.23	-5.03
Pakistan	0.24	0.24	0.25	0.25	0.59	0.58	0.58	0.58	0.14	0.14	0.15	0.15	0.00	0.00	0.01	3.57
China	0.72	0.75	0.73	0.73	4.79	4.80	4.86	4.86	3.45	3.60	3.55	3.55	0.00	0.00	-0.05	-1.39
Australia	0.55	0.15	0.50	0.50	2.11	2.00	2.80	2.80	1.16	0.30	1.40	1.40	0.00	0.00	1.10	366.67
European Union	0.13	0.16	0.17	0.17	5.70	5.34	5.53	5.53	0.75	0.88	0.94	0.94	0.00	0.00	0.06	7.31
Others	5.45	5.17	5.21	5.23	1.08	1.03	1.03	1.03	5.87	5.33	5.36	5.36	0.01	0.09	0.03	0.62

World and Selected Countries and Regions

Table 09 Rice Area, Yield, and Production
World and Selected Countries and Regions

Country / Region	Area (Million hectares)				Yield (Metric tons per hectare)				Production (Million metric tons)				Change in Production						
	2018/19	Prel.		2020/21 Proj.		2018/19	Prel.		2020/21 Proj.		2018/19	Prel.		2020/21 Proj.		From last month		From last year	
		2019/20	May	Jun	2019/20		May	Jun	2019/20	May		Jun	MMT	Percent	MMT	Percent			
World	162.43	160.49	163.04	162.93	4.56	4.60	4.59	4.60	496.46	494.29	501.96	502.09	0.13	0.03	7.79	1.58			
United States	1.18	1.00	1.14	1.14	8.62	8.38	8.63	8.63	7.11	5.86	6.86	6.86	0.00	0.00	1.00	17.05			
Total Foreign	161.26	159.49	161.90	161.80	4.53	4.57	4.57	4.57	489.36	488.43	495.09	495.22	0.13	0.03	6.79	1.39			
East Asia																			
China	30.19	29.69	30.20	30.20	7.03	7.06	7.05	7.05	148.49	146.73	149.00	149.00	0.00	0.00	2.27	1.55			
Japan	1.55	1.54	1.54	1.54	6.79	6.78	6.82	6.82	7.66	7.61	7.65	7.65	0.00	0.00	0.04	0.51			
Korea, South	0.74	0.73	0.73	0.73	6.99	6.84	6.84	6.84	3.87	3.74	3.74	3.74	0.00	0.00	0.00	0.00			
Korea, North	0.50	0.50	0.50	0.50	4.18	4.18	4.18	4.18	1.36	1.36	1.36	1.36	0.00	0.00	0.00	0.00			
South Asia																			
India	44.16	43.60	44.00	44.00	3.96	4.06	4.02	4.02	116.48	117.94	118.00	118.00	0.00	0.00	0.06	0.05			
Bangladesh	11.77	11.83	11.90	11.90	4.45	4.55	4.54	4.54	34.91	35.85	36.00	36.00	0.00	0.00	0.15	0.42			
Pakistan	2.88	3.00	3.00	3.00	3.80	3.60	3.75	3.75	7.30	7.20	7.50	7.50	0.00	0.00	0.30	4.17			
Nepal	1.49	1.48	1.49	1.49	3.75	3.67	3.70	3.70	3.73	3.62	3.68	3.68	0.00	0.00	0.06	1.60			
Sri Lanka	0.98	0.90	0.98	0.98	4.72	4.44	4.30	4.30	3.13	2.72	2.89	2.89	0.00	0.00	0.17	6.36			
Southeast Asia																			
Indonesia	11.50	11.30	11.50	11.50	4.68	4.67	4.78	4.78	34.20	33.50	34.90	34.90	0.00	0.00	1.40	4.18			
Vietnam	7.54	7.51	7.60	7.50	5.80	5.83	5.79	5.80	27.34	27.37	27.50	27.20	-0.30	-1.09	-0.17	-0.62			
Thailand	10.83	9.96	10.90	10.90	2.85	2.74	2.84	2.84	20.34	18.00	20.40	20.40	0.00	0.00	2.40	13.33			
Burma	7.08	6.90	7.10	7.10	2.91	2.88	2.88	2.88	13.20	12.70	13.10	13.10	0.00	0.00	0.40	3.15			
Philippines	4.74	4.65	4.45	4.45	3.93	3.89	3.92	3.92	11.73	11.40	11.00	11.00	0.00	0.00	-0.40	-3.51			
Cambodia	3.24	3.26	3.28	3.28	2.91	2.89	2.89	2.89	5.74	5.74	5.78	5.78	0.00	0.00	0.04	0.70			
Laos	0.86	0.97	0.98	0.98	3.12	3.19	3.24	3.24	1.68	1.95	2.00	2.00	0.00	0.00	0.05	2.56			
Malaysia	0.70	0.70	0.70	0.70	4.01	4.01	4.01	4.01	1.83	1.83	1.83	1.83	0.00	0.00	0.00	0.00			
South America																			
Brazil	1.70	1.65	1.60	1.60	6.18	6.61	6.31	6.63	7.14	7.41	6.87	7.21	0.34	4.95	-0.20	-2.75			
Peru	0.44	0.43	0.44	0.44	7.99	7.53	7.59	7.59	2.42	2.21	2.28	2.28	0.00	0.00	0.07	3.13			
Africa																			
Egypt	0.46	0.76	0.76	0.76	8.78	8.20	8.20	8.20	2.80	4.30	4.30	4.30	0.00	0.00	0.00	0.00			
Madagascar	1.50	1.50	1.50	1.50	2.69	2.80	2.80	2.80	2.58	2.69	2.69	2.69	0.00	0.00	0.00	0.00			
Nigeria	3.35	3.50	3.50	3.50	2.15	2.29	2.25	2.29	4.54	5.04	4.96	5.04	0.08	1.59	0.00	0.00			
European Union	0.41	0.42	0.42	0.42	6.86	6.81	6.76	6.76	1.97	1.97	1.97	1.97	0.00	0.00	0.00	0.00			
Iran	0.58	0.58	0.58	0.58	5.25	5.25	5.27	5.27	1.99	1.99	2.00	2.00	0.00	0.00	0.01	0.35			
Others	12.08	12.15	12.27	12.26	2.88	2.95	2.93	2.93	22.94	23.56	23.70	23.71	0.01	0.05	0.15	0.64			

Yield is on a rough basis, before the milling process. Production is on a milled basis, after the milling process.

Table 10 Total Oilseed Area, Yield, and Production
World and Selected Countries and Regions

Country / Region	Area (Million hectares)				Yield (Metric tons per hectare)				Production (Million metric tons)				Change in Production			
	2018/19	Prel.	2020/21 Proj.		2018/19	Prel.	2020/21 Proj.		2018/19	Prel.	2020/21 Proj.		From last month		From last year	
		2019/20	May	Jun		2019/20	May	Jun		2019/20	May	Jun	MMT	Percent	MMT	Percent
World Total	--	--	--	--	--	--	--	--	599.92	575.23	605.91	606.15	0.25	0.04	30.92	5.38
Total Foreign	--	--	--	--	--	--	--	--	469.21	468.23	482.71	482.95	0.25	0.05	14.72	3.14
Oilseed, Copra	--	--	--	--	--	--	--	--	5.98	5.86	5.77	5.77	0.00	0.00	-0.09	-1.59
Oilseed, Palm Kernel	--	--	--	--	--	--	--	--	20.17	19.85	20.28	20.28	0.00	0.00	0.44	2.19
Major Oilseeds	248.59	245.11	249.64	249.76	2.31	2.24	2.32	2.32	573.77	549.52	579.86	580.11	0.25	0.04	30.58	5.57
United States	41.33	36.88	40.08	40.08	3.16	2.90	3.07	3.07	130.72	107.00	123.20	123.20	0.00	0.00	16.20	15.14
Foreign Oilseeds	207.27	208.24	209.56	209.68	2.14	2.13	2.18	2.18	443.06	442.53	456.66	456.90	0.25	0.05	14.38	3.25
South America	63.37	64.41	66.40	66.50	3.15	3.10	3.18	3.17	199.83	199.68	211.04	211.10	0.07	0.03	11.42	5.72
Brazil	37.75	38.68	40.06	40.06	3.28	3.34	3.38	3.38	123.79	129.01	135.54	135.54	0.00	0.00	6.54	5.07
Argentina	19.16	19.40	19.86	19.96	3.18	2.84	2.98	2.97	61.00	55.08	59.25	59.31	0.07	0.11	4.23	7.68
Paraguay	3.77	3.61	3.73	3.73	2.37	2.77	2.78	2.78	8.94	10.01	10.38	10.38	0.00	0.00	0.37	3.68
Bolivia	1.52	1.52	1.55	1.55	1.83	1.90	1.93	1.93	2.78	2.89	2.99	2.99	0.00	0.00	0.10	3.29
Uruguay	1.02	1.06	1.05	1.05	2.86	2.17	2.35	2.35	2.92	2.30	2.46	2.46	0.00	0.00	0.16	6.96
China	24.01	25.20	25.10	25.10	2.50	2.49	2.47	2.47	59.95	62.63	61.90	61.90	0.00	0.00	-0.73	-1.16
South Asia	39.29	41.19	39.40	39.41	0.99	0.98	1.01	1.01	39.03	40.22	39.80	39.83	0.03	0.08	-0.39	-0.96
India	36.12	37.74	36.15	36.15	0.96	0.97	0.99	0.99	34.78	36.43	35.94	35.94	0.00	0.00	-0.50	-1.36
Pakistan	2.80	3.09	2.90	2.90	1.36	1.08	1.19	1.19	3.81	3.33	3.44	3.44	0.00	0.00	0.11	3.21
European Union	12.24	11.11	10.92	10.92	2.68	2.67	2.73	2.71	32.78	29.71	29.82	29.62	-0.20	-0.67	-0.09	-0.30
Former Soviet Union - 12	25.62	25.90	26.24	26.24	1.80	1.96	1.98	1.98	46.11	50.68	52.00	52.01	0.01	0.02	1.33	2.62
Russia	12.18	12.56	12.90	12.90	1.54	1.73	1.73	1.73	18.73	21.70	22.30	22.30	0.00	0.00	0.60	2.75
Ukraine	9.38	9.51	9.40	9.45	2.42	2.53	2.61	2.60	22.68	24.01	24.50	24.60	0.10	0.41	0.59	2.44
Uzbekistan	1.10	1.01	1.00	0.98	1.17	1.36	1.33	1.31	1.28	1.37	1.33	1.27	-0.06	-4.43	-0.10	-7.35
Canada	11.69	10.63	10.91	10.91	2.37	2.36	2.40	2.40	27.67	25.06	26.14	26.14	0.00	0.00	1.08	4.30
Africa	22.12	21.69	21.78	21.80	1.03	0.96	0.96	0.97	22.81	20.82	20.93	21.12	0.20	0.94	0.30	1.46
Nigeria	3.79	3.78	3.79	3.79	1.37	1.14	1.24	1.24	5.19	4.30	4.70	4.70	0.00	0.00	0.40	9.30
South Africa	1.31	1.27	1.32	1.32	1.51	1.68	1.60	1.60	1.97	2.13	2.11	2.11	0.00	0.00	-0.03	-1.17
Tanzania	1.42	1.60	1.48	1.58	0.89	0.85	0.88	0.85	1.26	1.36	1.30	1.34	0.04	3.24	-0.02	-1.47
Southeast Asia	3.32	3.13	3.21	3.21	1.39	1.38	1.39	1.39	4.60	4.31	4.47	4.47	0.00	0.00	0.16	3.71
Indonesia	0.99	0.95	0.94	0.94	1.56	1.55	1.54	1.54	1.55	1.47	1.45	1.45	0.00	0.00	-0.03	-1.70
Burma	2.01	1.87	1.97	1.97	1.20	1.18	1.21	1.21	2.41	2.21	2.38	2.38	0.00	0.00	0.17	7.79
Australia	2.56	1.91	2.59	2.64	1.22	1.36	1.43	1.48	3.11	2.60	3.70	3.90	0.20	5.40	1.30	50.15
Turkey	1.33	1.39	1.30	1.25	2.53	2.31	2.42	2.50	3.36	3.22	3.14	3.12	-0.03	-0.80	-0.10	-3.17
Others	1.73	1.66	1.71	1.70	2.21	2.17	2.17	2.17	3.81	3.60	3.72	3.69	-0.03	-0.91	0.09	2.59

World Total and Total Foreign: (Major Oilseeds plus copra and palm kernel) Major Oilseeds: (soybeans, sunflowerseeds, peanuts(inshell), cottonseed and rapeseed)

Table 11 Soybean Area, Yield, and Production

Country / Region	Area (Million hectares)				Yield (Metric tons per hectare)				Production (Million metric tons)				Change in Production			
	2018/19	Prel.	2020/21 Proj.		2018/19	Prel.	2020/21 Proj.		2018/19	Prel.	2020/21 Proj.		From last month		From last year	
		2019/20	May	Jun		2019/20	May	Jun		2019/20	May	Jun	MMT	Percent	MMT	Percent
World	125.33	122.58	126.93	126.98	2.87	2.74	2.86	2.86	360.26	335.35	362.76	362.85	0.09	0.03	27.50	8.20
United States	35.45	30.33	33.51	33.51	3.40	3.19	3.35	3.35	120.52	96.68	112.26	112.26	0.00	0.00	15.59	16.12
Total Foreign	89.88	92.25	93.42	93.47	2.67	2.59	2.68	2.68	239.74	238.67	250.49	250.58	0.09	0.04	11.91	4.99
South America																
Brazil	35.90	36.80	38.30	38.30	3.31	3.37	3.42	3.42	119.00	124.00	131.00	131.00	0.00	0.00	7.00	5.65
Argentina	16.60	17.00	17.30	17.30	3.33	2.94	3.09	3.09	55.30	50.00	53.50	53.50	0.00	0.00	3.50	7.00
Paraguay	3.70	3.54	3.65	3.65	2.39	2.80	2.81	2.81	8.85	9.90	10.25	10.25	0.00	0.00	0.35	3.54
Bolivia	1.40	1.40	1.43	1.43	1.93	2.00	2.03	2.03	2.70	2.80	2.90	2.90	0.00	0.00	0.10	3.57
Uruguay	0.97	1.00	0.98	0.98	2.93	2.20	2.40	2.40	2.83	2.20	2.35	2.35	0.00	0.00	0.15	6.82
East Asia																
China	8.41	9.30	9.30	9.30	1.90	1.95	1.88	1.88	15.97	18.10	17.50	17.50	0.00	0.00	-0.60	-3.31
Korea, South	0.05	0.06	0.06	0.06	1.75	1.81	1.80	1.80	0.09	0.11	0.11	0.11	0.00	0.00	0.00	2.86
Korea, North	0.15	0.15	0.15	0.15	1.50	1.50	1.50	1.50	0.23	0.23	0.23	0.23	0.00	0.00	0.00	0.00
Japan	0.15	0.14	0.14	0.14	1.45	1.47	1.65	1.65	0.21	0.21	0.24	0.24	0.00	0.00	0.02	10.85
India	11.33	12.00	11.40	11.40	0.96	0.78	0.92	0.92	10.93	9.30	10.50	10.50	0.00	0.00	1.20	12.90
Canada	2.54	2.30	2.17	2.17	2.86	2.61	2.83	2.83	7.27	6.00	6.15	6.15	0.00	0.00	0.15	2.50
Former Soviet Union - 12																
Russia	2.74	2.78	3.00	3.00	1.47	1.57	1.57	1.57	4.03	4.36	4.70	4.70	0.00	0.00	0.34	7.82
Ukraine	1.88	1.77	1.45	1.50	2.58	2.29	2.41	2.40	4.83	4.05	3.50	3.60	0.10	2.86	-0.45	-11.09
European Union	0.92	0.92	0.92	0.92	2.91	2.87	2.83	2.83	2.66	2.63	2.60	2.60	0.00	0.00	-0.03	-1.22
Southeast Asia																
Indonesia	0.42	0.40	0.39	0.39	1.24	1.20	1.22	1.22	0.52	0.48	0.48	0.48	0.00	0.00	-0.01	-1.04
Vietnam	0.05	0.05	0.05	0.05	1.62	1.53	1.53	1.53	0.08	0.07	0.07	0.07	0.00	0.00	0.00	0.00
Thailand	0.04	0.03	0.03	0.03	1.57	1.53	1.63	1.63	0.06	0.05	0.05	0.05	0.00	0.00	0.00	0.00
Burma	0.14	0.14	0.14	0.14	1.04	1.04	1.04	1.04	0.15	0.15	0.14	0.14	0.00	0.00	-0.01	-3.45
Serbia	0.22	0.22	0.22	0.22	2.84	2.73	2.73	2.73	0.63	0.60	0.60	0.60	0.00	0.00	0.00	0.00
Mexico	0.19	0.15	0.23	0.23	1.75	1.57	1.74	1.74	0.34	0.24	0.40	0.39	-0.01	-2.25	0.16	66.38
Africa																
South Africa	0.73	0.71	0.72	0.72	1.60	1.80	1.81	1.81	1.17	1.27	1.30	1.30	0.00	0.00	0.03	2.36
Nigeria	0.70	0.71	0.72	0.72	0.96	0.99	0.97	0.97	0.67	0.70	0.70	0.70	0.00	0.00	0.00	0.00
Zambia	0.19	0.20	0.19	0.19	1.58	1.43	1.50	1.50	0.30	0.28	0.29	0.29	0.00	0.00	0.00	1.42
Uganda	0.05	0.05	0.05	0.05	0.60	0.60	0.60	0.60	0.03	0.03	0.03	0.03	0.00	0.00	0.00	0.00
Middle East																
Iran	0.07	0.07	0.07	0.07	2.29	2.43	2.41	2.41	0.16	0.17	0.17	0.17	0.00	0.00	0.00	-0.59
Turkey	0.03	0.03	0.03	0.03	3.80	3.89	3.79	3.79	0.10	0.11	0.11	0.11	0.00	0.00	0.01	4.76
Others	0.33	0.34	0.34	0.34	2.01	1.90	1.89	1.89	0.66	0.65	0.64	0.64	0.00	0.00	-0.01	-1.08

World and Selected Countries and Regions

Table 12 Cottonseed Area, Yield, and Production

Country / Region	Area (Million hectares)				Yield (Metric tons per hectare)				Production (Million metric tons)				Change in Production						
	2018/19	Prel.		2020/21 Proj.		2018/19	Prel.		2020/21 Proj.		2018/19	Prel.		2020/21 Proj.		From last month		From last year	
		2019/20	May	Jun	2019/20		May	Jun	2019/20	May		Jun	MMT	Percent	MMT	Percent			
World	32.70	34.33	32.77	32.78	1.32	1.31	1.33	1.33	43.28	44.96	43.75	43.63	-0.12	-0.27	-1.33	-2.95			
United States	4.04	4.70	4.59	4.59	1.26	1.15	1.23	1.23	5.11	5.39	5.67	5.67	0.00	0.00	0.27	5.04			
Total Foreign	28.66	29.63	28.18	28.19	1.33	1.34	1.35	1.35	38.18	39.56	38.08	37.96	-0.12	-0.31	-1.60	-4.04			
South Asia																			
India	12.60	13.30	12.50	12.50	0.87	0.97	0.97	0.97	10.95	12.95	12.10	12.10	0.00	0.00	-0.85	-6.56			
Pakistan	2.30	2.45	2.20	2.20	1.43	1.10	1.24	1.24	3.29	2.69	2.73	2.73	0.00	0.00	0.04	1.60			
China	3.50	3.45	3.30	3.30	3.11	3.10	3.15	3.15	10.88	10.68	10.40	10.40	0.00	0.00	-0.28	-2.61			
Former Soviet Union - 12																			
Uzbekistan	1.10	1.01	1.00	0.98	1.17	1.36	1.33	1.31	1.28	1.37	1.33	1.27	-0.06	-4.43	-0.10	-7.35			
Turkmenistan	0.55	0.55	0.60	0.60	0.65	0.66	0.66	0.66	0.36	0.36	0.40	0.40	0.00	0.00	0.04	9.72			
Tajikistan	0.18	0.18	0.18	0.16	0.90	1.27	1.25	1.22	0.16	0.23	0.23	0.20	-0.03	-13.33	-0.03	-14.85			
Kazakhstan	0.13	0.13	0.11	0.11	1.05	1.16	1.12	1.12	0.14	0.15	0.12	0.12	0.00	0.00	-0.02	-15.17			
South America																			
Brazil	1.64	1.67	1.55	1.55	2.59	2.62	2.53	2.53	4.25	4.38	3.93	3.93	0.00	0.00	-0.46	-10.38			
Argentina	0.34	0.46	0.35	0.45	1.24	1.14	1.24	1.11	0.41	0.52	0.43	0.50	0.07	14.98	-0.02	-3.67			
Middle East																			
Turkey	0.52	0.57	0.50	0.45	2.35	1.98	2.38	2.39	1.22	1.13	1.19	1.08	-0.12	-9.65	-0.05	-4.35			
Syria	0.03	0.03	0.03	0.03	2.36	2.36	2.36	2.36	0.06	0.06	0.06	0.06	0.00	0.00	0.00	0.00			
Iran	0.08	0.08	0.08	0.08	1.16	1.16	1.16	1.16	0.09	0.09	0.09	0.09	0.00	0.00	0.00	0.00			
Australia	0.38	0.06	0.18	0.18	1.74	3.12	2.83	2.83	0.66	0.19	0.51	0.51	0.00	0.00	0.32	172.73			
European Union	0.31	0.35	0.35	0.35	1.75	1.81	1.80	1.80	0.55	0.64	0.62	0.62	0.00	0.00	-0.02	-2.50			
Africa																			
Burkina	0.63	0.58	0.61	0.58	0.37	0.48	0.44	0.46	0.24	0.28	0.27	0.26	-0.01	-2.60	-0.01	-5.07			
Mali	0.73	0.74	0.74	0.74	0.50	0.52	0.52	0.52	0.36	0.38	0.38	0.38	0.00	0.00	0.00	0.00			
Cameroon	0.25	0.25	0.26	0.25	1.20	1.29	1.25	1.28	0.30	0.32	0.32	0.32	0.00	0.00	0.00	-0.62			
Cote d'Ivoire	0.39	0.41	0.41	0.41	0.64	0.66	0.69	0.69	0.25	0.27	0.28	0.28	0.00	0.00	0.01	4.85			
Benin	0.65	0.68	0.71	0.68	0.71	0.71	0.67	0.71	0.46	0.48	0.48	0.48	0.00	0.00	0.00	0.00			
Tanzania	0.42	0.60	0.48	0.58	0.39	0.43	0.41	0.41	0.16	0.26	0.20	0.24	0.04	21.32	-0.02	-7.72			
Egypt	0.14	0.10	0.07	0.07	1.06	0.92	1.00	1.00	0.15	0.09	0.07	0.07	0.00	0.00	-0.03	-29.35			
Nigeria	0.27	0.27	0.27	0.27	0.38	0.38	0.38	0.38	0.10	0.10	0.10	0.10	0.00	0.00	0.00	0.00			
Uganda	0.08	0.09	0.10	0.10	1.74	1.67	1.40	1.40	0.14	0.15	0.14	0.14	0.00	0.00	-0.01	-6.04			
Zimbabwe	0.20	0.20	0.21	0.21	0.38	0.36	0.36	0.36	0.08	0.07	0.08	0.08	0.00	0.00	0.00	5.56			
Sudan	0.18	0.20	0.20	0.20	1.42	1.53	1.41	1.41	0.26	0.31	0.28	0.28	0.00	0.00	-0.02	-7.84			
Mexico	0.24	0.23	0.18	0.17	2.44	2.37	2.39	2.38	0.59	0.53	0.42	0.39	-0.03	-5.98	-0.14	-26.27			
Burma	0.24	0.25	0.24	0.24	1.21	1.22	1.25	1.25	0.29	0.30	0.30	0.30	0.00	0.00	0.00	0.67			
Others	0.59	0.78	0.80	0.79	0.84	0.77	0.79	0.81	0.49	0.60	0.63	0.64	0.01	1.75	0.04	7.04			

World and Selected Countries and Regions

Table 13 Peanut Area, Yield, and Production

Country / Region	Area (Million hectares)				Yield (Metric tons per hectare)				Production (Million metric tons)				Change in Production						
	2018/19	Prel.		2020/21 Proj.		2018/19	Prel.		2020/21 Proj.		2018/19	Prel.		2020/21 Proj.		From last month		From last year	
		2019/20	May	Jun	2019/20		May	Jun	2019/20	May		Jun	MMT	Percent	MMT	Percent			
World	27.96	27.08	27.31	27.32	1.68	1.70	1.68	1.69	47.09	46.05	45.88	46.06	0.18	0.40	0.01	0.03			
United States	0.56	0.56	0.59	0.59	4.48	4.43	4.48	4.48	2.49	2.49	2.66	2.66	0.00	0.00	0.17	6.82			
Total Foreign	27.40	26.52	26.72	26.73	1.63	1.64	1.62	1.62	44.60	43.55	43.21	43.40	0.18	0.42	-0.16	-0.36			
China	4.62	4.60	4.60	4.60	3.75	3.80	3.80	3.80	17.33	17.50	17.50	17.50	0.00	0.00	0.00	0.00			
Africa																			
Nigeria	2.82	2.80	2.80	2.80	1.57	1.25	1.39	1.39	4.42	3.50	3.90	3.90	0.00	0.00	0.40	11.43			
Sudan	3.07	2.30	2.30	2.30	0.94	0.78	0.78	0.78	2.88	1.80	1.80	1.80	0.00	0.00	0.00	0.00			
Senegal	1.13	1.11	1.20	1.20	1.32	1.28	0.96	1.08	1.50	1.42	1.15	1.30	0.15	13.04	-0.12	-8.45			
Cameroon	0.43	0.43	0.43	0.43	1.40	1.40	1.40	1.40	0.60	0.60	0.60	0.60	0.00	0.00	0.00	0.00			
Ghana	0.79	0.75	0.75	0.75	0.98	0.87	0.87	0.87	0.77	0.65	0.65	0.65	0.00	0.00	0.00	0.00			
Chad	0.79	0.77	0.77	0.77	1.14	1.10	1.10	1.10	0.89	0.85	0.85	0.85	0.00	0.00	0.00	0.00			
Malawi	0.41	0.40	0.40	0.40	0.85	0.88	0.88	0.88	0.35	0.35	0.35	0.35	0.00	0.00	0.00	0.00			
Congo (Kinshasa)	0.50	0.50	0.50	0.50	0.85	0.85	0.85	0.85	0.42	0.42	0.42	0.42	0.00	0.00	0.00	0.00			
Niger	0.93	0.90	0.92	0.92	0.64	0.56	0.65	0.65	0.59	0.50	0.59	0.59	0.00	0.00	0.09	18.80			
Mali	0.38	0.43	0.43	0.43	1.31	1.00	1.00	1.00	0.49	0.43	0.43	0.43	0.00	0.00	0.00	0.00			
Uganda	0.43	0.43	0.43	0.43	0.71	0.71	0.71	0.71	0.30	0.30	0.30	0.30	0.00	0.00	0.00	0.00			
Burkina	0.39	0.56	0.56	0.56	0.84	0.80	0.80	0.80	0.33	0.45	0.45	0.45	0.00	0.00	0.00	0.00			
Guinea	0.79	0.75	0.75	0.75	0.98	1.00	1.00	1.00	0.77	0.75	0.75	0.75	0.00	0.00	0.00	0.00			
Egypt	0.06	0.06	0.06	0.06	3.20	3.20	3.20	3.20	0.21	0.21	0.21	0.21	0.00	0.00	0.00	0.00			
Central African Republic	0.10	0.10	0.10	0.10	1.50	1.50	1.50	1.50	0.15	0.15	0.15	0.15	0.00	0.00	0.00	0.00			
South Africa	0.02	0.04	0.04	0.04	1.30	1.97	1.50	1.50	0.03	0.08	0.06	0.06	0.00	0.00	-0.02	-20.00			
Mozambique	0.38	0.38	0.38	0.38	0.34	0.34	0.34	0.34	0.13	0.13	0.13	0.13	0.00	0.00	0.00	0.00			
Cote d'Ivoire	0.15	0.15	0.15	0.15	1.45	1.45	1.45	1.45	0.21	0.21	0.21	0.21	0.00	0.00	0.00	0.00			
Benin	0.23	0.19	0.19	0.19	1.00	0.92	0.92	0.92	0.23	0.18	0.18	0.18	0.00	0.00	0.00	0.00			
South Asia																			
India	4.73	4.80	4.80	4.80	1.00	1.31	1.15	1.15	4.72	6.30	5.50	5.50	0.00	0.00	-0.80	-12.70			
Pakistan	0.12	0.09	0.10	0.10	0.89	0.98	0.92	0.92	0.10	0.09	0.09	0.09	0.00	0.00	0.00	-1.10			
Southeast Asia																			
Indonesia	0.57	0.55	0.55	0.55	1.80	1.80	1.78	1.78	1.03	0.99	0.97	0.97	0.00	0.00	-0.02	-2.02			
Burma	1.03	0.89	0.99	0.99	1.53	1.55	1.57	1.57	1.58	1.38	1.55	1.55	0.00	0.00	0.18	12.73			
Vietnam	0.18	0.18	0.18	0.18	2.48	2.48	2.48	2.48	0.44	0.43	0.45	0.45	0.00	0.00	0.01	3.00			
Thailand	0.02	0.02	0.02	0.02	1.67	1.67	1.67	1.67	0.04	0.04	0.04	0.04	0.00	0.00	0.00	0.00			
South America																			
Argentina	0.33	0.36	0.33	0.33	4.35	3.42	3.85	3.85	1.42	1.23	1.27	1.27	0.00	0.00	0.04	3.25			
Brazil	0.15	0.16	0.16	0.16	2.96	3.47	3.38	3.38	0.44	0.55	0.54	0.54	0.00	0.00	-0.01	-0.92			
Mexico	0.05	0.05	0.06	0.06	1.75	1.74	1.73	1.73	0.09	0.08	0.10	0.10	0.00	0.00	0.02	24.39			
Others	1.84	1.80	1.79	1.80	1.16	1.12	1.14	1.15	2.15	2.01	2.04	2.07	0.03	1.57	0.06	3.09			

Table 14 Sunflowerseed Area, Yield, and Production

Country / Region	Area (Million hectares)				Yield (Metric tons per hectare)				Production (Million metric tons)				Change in Production			
	2018/19	Prel.		2020/21 Proj.		2018/19	Prel.		2020/21 Proj.		2018/19	Prel.		2020/21 Proj.		
		2019/20	May	Jun	2019/20		May	Jun	2019/20	May		Jun	MMT	Percent	MMT	Percent
World	25.81	26.38	27.10	27.10	1.96	2.08	2.09	2.09	50.54	54.98	56.69	56.78	0.09	0.16	1.80	3.28
United States	0.49	0.50	0.60	0.60	1.94	1.75	1.84	1.84	0.96	0.88	1.11	1.11	0.00	0.00	0.23	25.51
Total Foreign	25.32	25.87	26.50	26.50	1.96	2.09	2.10	2.10	49.58	54.09	55.58	55.67	0.09	0.16	1.58	2.92
Former Soviet Union - 12																
Russia	7.94	8.36	8.50	8.50	1.60	1.83	1.82	1.82	12.71	15.31	15.50	15.50	0.00	0.00	0.20	1.27
Ukraine	6.50	6.40	6.60	6.60	2.31	2.58	2.58	2.58	15.00	16.50	17.00	17.00	0.00	0.00	0.50	3.03
Kazakhstan	0.85	0.82	0.83	0.83	1.00	1.13	1.20	1.20	0.85	0.92	1.00	1.00	0.00	0.00	0.08	8.93
European Union	4.02	4.29	4.20	4.20	2.37	2.24	2.29	2.29	9.51	9.61	9.60	9.60	0.00	0.00	-0.01	-0.10
South America																
Argentina	1.88	1.56	1.86	1.86	2.04	2.11	2.15	2.15	3.83	3.30	4.00	4.00	0.00	0.00	0.70	21.21
Uruguay	0.06	0.06	0.07	0.07	1.61	1.67	1.69	1.69	0.09	0.10	0.11	0.11	0.00	0.00	0.01	10.00
Bolivia	0.12	0.12	0.12	0.12	0.70	0.75	0.74	0.74	0.08	0.09	0.09	0.09	0.00	0.00	-0.01	-5.56
Brazil	0.06	0.05	0.05	0.05	1.67	1.60	1.50	1.50	0.11	0.08	0.08	0.08	0.00	0.00	-0.01	-6.25
Paraguay	0.03	0.03	0.03	0.03	1.58	1.70	1.70	1.70	0.05	0.05	0.05	0.05	0.00	0.00	0.00	0.00
China	0.92	1.25	1.25	1.25	2.71	2.60	2.64	2.64	2.49	3.25	3.30	3.30	0.00	0.00	0.05	1.54
South Asia																
India	0.26	0.24	0.25	0.25	0.65	0.76	0.76	0.76	0.17	0.18	0.19	0.19	0.00	0.00	0.00	1.65
Pakistan	0.12	0.14	0.15	0.15	1.20	1.04	1.07	1.07	0.14	0.15	0.16	0.16	0.00	0.00	0.02	10.34
Middle East																
Turkey	0.72	0.73	0.70	0.70	2.52	2.40	2.27	2.40	1.80	1.75	1.59	1.68	0.09	5.66	-0.07	-4.00
Iran	0.04	0.04	0.04	0.04	1.08	1.08	1.08	1.08	0.04	0.04	0.04	0.04	0.00	0.00	0.00	0.00
Israel	0.01	0.01	0.01	0.01	1.60	1.60	1.60	1.60	0.02	0.02	0.02	0.02	0.00	0.00	0.00	0.00
Africa																
Egypt	0.01	0.01	0.01	0.01	2.38	2.38	2.38	2.38	0.02	0.02	0.02	0.02	0.00	0.00	0.00	0.00
Morocco	0.02	0.02	0.02	0.02	1.29	1.25	1.25	1.25	0.03	0.03	0.03	0.03	0.00	0.00	0.00	0.00
South Africa	0.52	0.50	0.52	0.52	1.32	1.46	1.27	1.27	0.68	0.73	0.66	0.66	0.00	0.00	-0.07	-9.59
Burma	0.60	0.60	0.60	0.60	0.65	0.65	0.65	0.65	0.39	0.39	0.39	0.39	0.00	0.00	0.00	0.00
Canada	0.03	0.03	0.04	0.04	2.11	2.17	2.25	2.25	0.06	0.06	0.09	0.09	0.00	0.00	0.03	42.86
Australia	0.02	0.02	0.02	0.02	1.21	1.25	1.26	1.26	0.02	0.03	0.03	0.03	0.00	0.00	0.00	16.00
Others	0.60	0.59	0.65	0.65	2.49	2.53	2.57	2.57	1.50	1.50	1.66	1.66	0.00	0.00	0.15	10.19

World and Selected Countries and Regions

Table 15 Rapeseed Area, Yield, and Production

Country / Region	Area (Million hectares)				Yield (Metric tons per hectare)				Production (Million metric tons)				Change in Production						
	2018/19	Prel.		2020/21 Proj.		2018/19	Prel.		2020/21 Proj.		2018/19	Prel.		2020/21 Proj.		From last month		From last year	
		2019/20	May	Jun	2019/20		May	Jun	2019/20	May		Jun	MMT	Percent	MMT	Percent			
World	36.81	34.75	35.52	35.57	1.97	1.96	1.99	1.99	72.61	68.20	70.79	70.79	0.00	0.00	2.59	3.80			
United States	0.79	0.78	0.78	0.78	2.09	2.00	1.92	1.92	1.64	1.55	1.50	1.50	0.00	0.00	-0.05	-3.28			
Total Foreign	36.02	33.97	34.74	34.79	1.97	1.96	1.99	1.99	70.96	66.65	69.29	69.29	0.00	0.00	2.64	3.96			
European Union	7.00	5.55	5.45	5.45	2.87	3.03	3.12	3.08	20.06	16.83	17.00	16.80	-0.20	-1.18	-0.03	-0.18			
Canada	9.12	8.30	8.70	8.70	2.23	2.29	2.29	2.29	20.34	19.00	19.90	19.90	0.00	0.00	0.90	4.74			
China	6.55	6.60	6.65	6.65	2.03	1.98	1.98	1.98	13.28	13.10	13.20	13.20	0.00	0.00	0.10	0.76			
South Asia																			
India	7.20	7.40	7.20	7.20	1.11	1.04	1.06	1.06	8.00	7.70	7.65	7.65	0.00	0.00	-0.05	-0.65			
Pakistan	0.26	0.40	0.45	0.45	1.04	1.03	1.02	1.02	0.27	0.41	0.46	0.46	0.00	0.00	0.05	12.20			
Bangladesh	0.25	0.25	0.25	0.25	0.92	0.92	0.92	0.92	0.23	0.23	0.23	0.23	0.00	0.00	0.00	0.00			
Former Soviet Union - 12																			
Russia	1.50	1.42	1.40	1.40	1.33	1.44	1.50	1.50	1.99	2.04	2.10	2.10	0.00	0.00	0.06	2.94			
Ukraine	1.00	1.34	1.35	1.35	2.85	2.59	2.96	2.96	2.85	3.47	4.00	4.00	0.00	0.00	0.54	15.44			
Belarus	0.35	0.34	0.35	0.35	1.31	1.68	1.57	1.57	0.46	0.58	0.55	0.55	0.00	0.00	-0.03	-4.84			
Kazakhstan	0.37	0.27	0.28	0.28	1.08	0.90	1.14	1.14	0.39	0.24	0.32	0.32	0.00	0.00	0.08	32.78			
Australia	2.12	1.80	2.35	2.40	1.12	1.29	1.32	1.38	2.37	2.33	3.10	3.30	0.20	6.45	0.97	41.63			
South America																			
Chile	0.05	0.04	0.05	0.05	3.85	4.10	4.00	4.00	0.19	0.17	0.20	0.20	0.00	0.00	0.03	16.28			
Paraguay	0.03	0.03	0.04	0.04	1.20	1.87	1.88	1.88	0.04	0.06	0.08	0.08	0.00	0.00	0.02	33.93			
Switzerland	0.02	0.02	0.02	0.02	3.14	3.14	3.14	3.14	0.07	0.07	0.07	0.07	0.00	0.00	0.00	0.00			
Ethiopia	0.04	0.04	0.04	0.04	1.57	1.86	1.86	1.86	0.06	0.07	0.07	0.07	0.00	0.00	0.00	0.00			
Others	0.18	0.17	0.17	0.17	2.14	2.14	2.24	2.24	0.38	0.36	0.37	0.37	0.00	0.00	0.01	2.50			

World and Selected Countries and Regions

Table 16 Copra, Palm Kernel, and Palm Oil Production

Country / Region	Production (Million metric tons)				Change in Production			
	2018/19	Prel.	2020/21 Proj.		From last month		From last year	
		2019/20	May	Jun	MMT	Percent	MMT	Percent
Oilseed, Copra								
Philippines	2.63	2.50	2.40	2.40	0.00	0.00	-0.10	-4.00
Indonesia	1.64	1.66	1.66	1.66	0.00	0.00	0.00	0.00
India	0.75	0.75	0.75	0.75	0.00	0.00	0.00	0.00
Vietnam	0.29	0.29	0.30	0.30	0.00	0.00	0.01	3.45
Mexico	0.22	0.22	0.22	0.22	0.00	0.00	0.00	0.00
Papua New Guinea	0.10	0.08	0.08	0.08	0.00	0.00	0.00	0.00
Thailand	0.07	0.07	0.07	0.07	0.00	0.00	0.00	0.00
Sri Lanka	0.07	0.07	0.07	0.07	0.00	0.00	0.00	0.00
Solomon Islands	0.03	0.03	0.03	0.03	0.00	0.00	0.00	0.00
Cote d'Ivoire	0.03	0.03	0.03	0.03	0.00	0.00	0.00	0.00
World	5.98	5.86	5.77	5.77	0.00	0.00	-0.09	-1.54
Oilseed, Palm Kernel								
Indonesia	10.90	11.25	11.46	11.46	0.00	0.00	0.21	1.87
Malaysia	5.15	4.60	4.80	4.80	0.00	0.00	0.20	4.35
Thailand	0.87	0.89	0.90	0.90	0.00	0.00	0.01	1.12
Nigeria	0.73	0.73	0.73	0.73	0.00	0.00	0.00	0.00
Ghana	0.77	0.65	0.65	0.65	0.00	0.00	0.00	0.00
Colombia	0.33	0.36	0.35	0.35	0.00	0.00	-0.01	-2.78
Guatemala	0.20	0.17	0.17	0.17	0.00	0.00	0.00	0.00
Papua New Guinea	0.18	0.16	0.16	0.16	0.00	0.00	0.00	0.00
Brazil	0.14	0.14	0.14	0.14	0.00	0.00	0.00	0.00
Honduras	0.14	0.14	0.14	0.14	0.00	0.00	0.00	0.00
World	20.17	19.85	20.28	20.28	0.00	0.00	0.43	2.17
Oil, Palm								
Indonesia	41.50	42.50	43.50	43.50	0.00	0.00	1.00	2.35
Malaysia	20.80	18.50	19.30	19.30	0.00	0.00	0.80	4.32
Thailand	3.00	2.80	3.10	3.10	0.00	0.00	0.30	10.71
Colombia	1.63	1.53	1.67	1.67	0.00	0.00	0.14	9.15
Nigeria	1.02	1.02	1.02	1.02	0.00	0.00	0.00	0.00
Guatemala	0.85	0.85	0.85	0.85	0.00	0.00	0.00	0.00
Honduras	0.58	0.58	0.58	0.58	0.00	0.00	0.00	0.00
Papua New Guinea	0.71	0.56	0.56	0.56	0.00	0.00	0.00	0.00
Ecuador	0.56	0.55	0.62	0.62	0.00	0.00	0.07	12.73
Brazil	0.53	0.54	0.54	0.54	0.00	0.00	0.00	0.00
World	74.02	72.27	74.60	74.60	0.00	0.00	2.33	3.22

World and Selected Countries and Regions

Table 17 Cotton Area, Yield, and Production

Country / Region	Area (Million hectares)				Yield (Kilograms per hectare)				Production (Million 480 lb. bales)				Change in Production			
	2018/19	Prel.	2020/21 Proj.		2018/19	Prel.	2020/21 Proj.		2018/19	Prel.	2020/21 Proj.		From last month		From last year	
		2019/20	May	Jun		2019/20	May	Jun		2019/20	May	Jun	MBales	Percent	MBales	Percent
World	33.36	35.00	33.40	33.45	774	765	775	773	118.65	122.97	118.95	118.74	-0.22	-0.18	-4.23	-3.44
United States	4.04	4.70	4.59	4.59	989	922	924	924	18.37	19.91	19.50	19.50	0.00	0.00	-0.41	-2.07
Total Foreign	29.31	30.30	28.81	28.85	745	741	752	749	100.29	103.06	99.45	99.24	-0.22	-0.22	-3.82	-3.71
South Asia																
India	12.60	13.30	12.50	12.50	446	499	496	496	25.80	30.50	28.50	28.50	0.00	0.00	-2.00	-6.56
Pakistan	2.30	2.45	2.20	2.20	719	551	623	623	7.60	6.20	6.30	6.30	0.00	0.00	0.10	1.61
China	3.50	3.45	3.30	3.30	1,726	1,720	1,748	1,748	27.75	27.25	26.50	26.50	0.00	0.00	-0.75	-2.75
South America																
Brazil	1.64	1.67	1.55	1.55	1,726	1,721	1,686	1,686	13.00	13.20	12.00	12.00	0.00	0.00	-1.20	-9.09
Argentina	0.34	0.46	0.35	0.45	728	670	622	653	1.12	1.40	1.00	1.35	0.35	35.00	-0.05	-3.57
Paraguay	0.01	0.01	0.01	0.01	416	416	416	416	0.02	0.02	0.02	0.02	0.00	0.00	0.00	0.00
Africa																
Burkina	0.63	0.58	0.61	0.58	294	379	348	360	0.85	1.00	0.98	0.95	-0.03	-2.56	-0.05	-5.00
Mali	0.73	0.74	0.74	0.74	381	400	397	400	1.27	1.35	1.35	1.35	0.00	0.00	0.00	0.00
Cote d'Ivoire	0.39	0.41	0.41	0.41	520	528	531	531	0.94	0.99	1.00	1.00	0.00	0.00	0.01	1.01
Benin	0.65	0.68	0.71	0.68	469	468	445	468	1.40	1.45	1.45	1.45	0.00	0.00	0.00	0.00
Egypt	0.14	0.10	0.07	0.07	757	664	720	720	0.49	0.31	0.22	0.22	0.00	0.00	-0.09	-29.51
Cameroon	0.25	0.25	0.26	0.25	523	562	546	557	0.60	0.65	0.64	0.64	0.00	0.00	-0.01	-0.78
Tanzania	0.42	0.60	0.44	0.58	194	216	218	206	0.38	0.60	0.44	0.55	0.11	25.00	-0.05	-7.56
Nigeria	0.27	0.27	0.27	0.27	190	190	190	190	0.24	0.24	0.24	0.24	0.00	0.00	0.00	0.00
Zimbabwe	0.20	0.20	0.21	0.21	218	207	207	207	0.20	0.19	0.20	0.20	0.00	0.00	0.01	5.26
Ethiopia	0.08	0.08	0.08	0.08	687	680	637	637	0.24	0.25	0.24	0.24	0.00	0.00	-0.01	-4.00
Former Soviet Union - 12																
Uzbekistan	1.10	1.01	1.00	0.98	648	754	740	726	3.28	3.50	3.40	3.25	-0.15	-4.41	-0.25	-7.14
Turkmenistan	0.55	0.55	0.60	0.60	364	368	367	367	0.91	0.92	1.01	1.01	0.00	0.00	0.09	9.78
Tajikistan	0.18	0.18	0.18	0.16	502	708	696	680	0.42	0.59	0.58	0.50	-0.08	-13.04	-0.09	-14.53
Kazakhstan	0.13	0.13	0.11	0.11	587	644	623	623	0.35	0.37	0.32	0.32	0.00	0.00	-0.06	-14.86
Middle East																
Turkey	0.52	0.57	0.50	0.45	1,570	1,318	1,589	1,597	3.75	3.45	3.65	3.30	-0.35	-9.59	-0.15	-4.35
Syria	0.03	0.03	0.03	0.03	1,219	1,219	1,219	1,219	0.14	0.14	0.14	0.14	0.00	0.00	0.00	0.00
Iran	0.08	0.08	0.08	0.08	748	748	748	748	0.28	0.28	0.28	0.28	0.00	0.00	0.00	0.00
Australia	0.38	0.06	0.18	0.18	1,261	2,268	2,056	2,056	2.20	0.63	1.70	1.70	0.00	0.00	1.08	172.00
Mexico	0.24	0.23	0.18	0.17	1,555	1,519	1,524	1,517	1.74	1.57	1.23	1.15	-0.08	-6.12	-0.42	-26.75
Burma	0.24	0.25	0.24	0.24	637	641	662	662	0.70	0.72	0.73	0.73	0.00	0.00	0.01	0.83
Others	1.73	2.01	2.02	2.01	585	577	580	583	4.65	5.32	5.37	5.37	0.00	0.00	0.05	0.94

World and Selected Countries and Regions

TABLE 18

The table below presents a record of the June projection and the final Estimate. Using world wheat production as an example, the "root mean square error" means that chances are 2 out of 3 that the current forecast will not be above or below the final estimate by more than 3.1 percent. Chances are 9 out of 10 (90% confidence level) that the difference will not exceed 5.2 percent. The average difference between the June projection and the final estimate is 16.4 million tons, ranging from 0.4 million to 32.2 million tons. The June projection has been below the estimate 24 times and above 15 times.

RELIABILITY OF PRODUCTION PROJECTIONS 1/

COMMODITY AND REGION	Root mean square error	90 percent confidence interval	Difference between forecast and final estimate				
			Average	Smallest	Largest	Years	
						Below final	Above final
	Percent		---Million metric tons---				
WHEAT							
World	3.1	5.2	16.4	0.4	32.2	24	15
U.S.	5.8	9.8	2.7	0.0	8.4	23	16
Foreign	3.2	5.5	15.3	1.1	31.9	23	15
COARSE GRAINS 2/							
World	3.6	6.2	26.8	0.6	103.3	22	17
U.S.	13.6	23.1	19.7	0.5	103.8	21	18
Foreign	2.8	4.8	15.3	0.4	45.6	20	18
RICE (Milled)							
World	2.4	4.1	7.2	0.3	21.8	25	14
U.S.	7.3	12.4	0.3	0.0	1.1	21	18
Foreign	2.4	4.1	7.1	0.4	21.9	24	14
SOYBEANS							
World	NA	NA	11.8	1.5	27.9	6	10
U.S.	9.2	15.6	5.0	0.0	16.2	20	19
Foreign	NA	NA	8.5	0.4	23.9	6	9
COTTON			---Million 480-lb. bales---				
World	6.0	10.2	4.1	0.0	16.4	22	16
U.S.	10.4	17.6	1.5	0.1	5.7	19	20
Foreign	6.1	10.4	3.3	0.2	12.4	22	16
UNITED STATES			-----Million bushels-----				
<i>CORN</i>	16.1	27.3	770	8	4,010	20	19
<i>SORGHUM</i>	20.0	33.9	85	0	228	19	19
<i>BARLEY</i>	14.1	24.0	27	1	206	16	23
<i>OATS</i>	24.0	40.8	30	1	231	8	31

1/ Marketing years 1981/82 through 2019/20. Final for grains, soybeans and cotton is defined as the first *November* estimates following the marketing year for 1981/82 through 2018/19, and for 2019/20 last month's estimate.

2/ Includes corn, sorghum, barley, oats, rye, millet, and mixed grain

June 2020

Global Market Analysis, FAS, USDA