



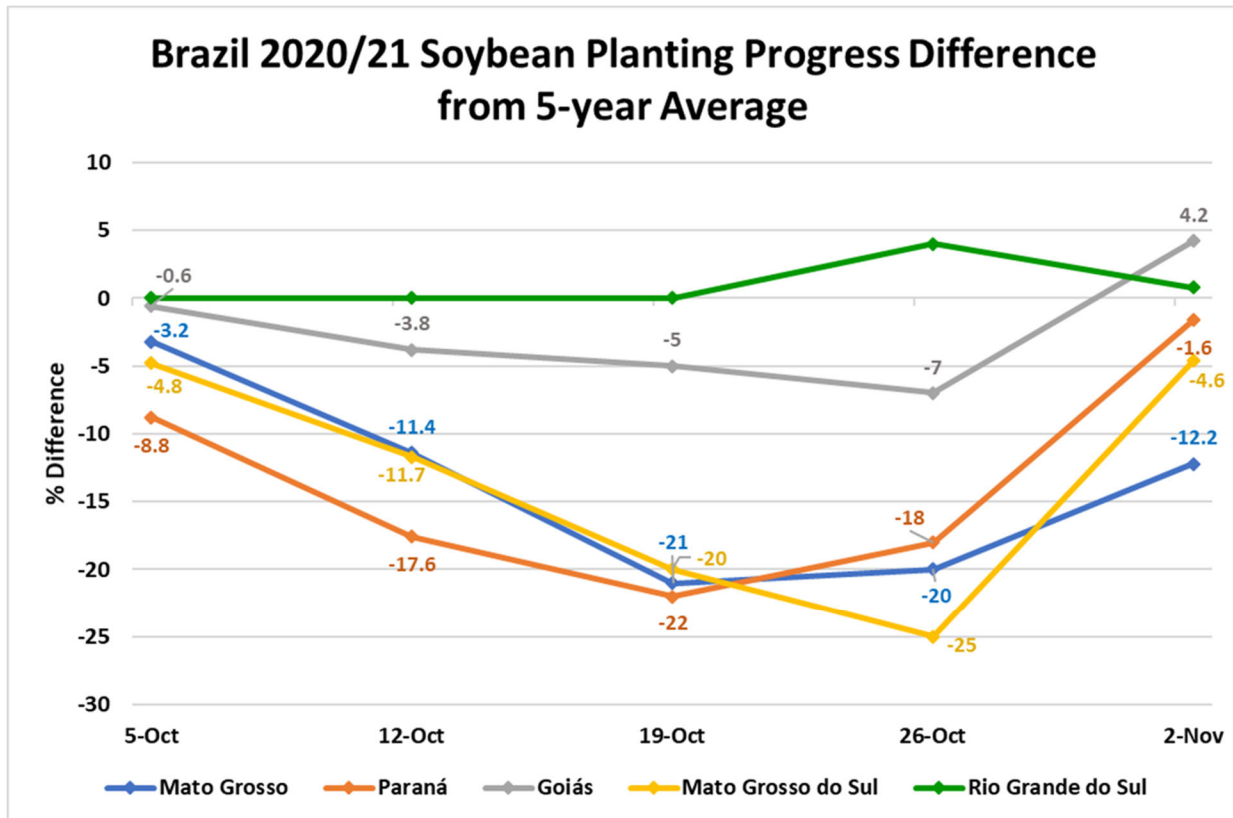
United States  
Department of  
Agriculture

Foreign  
Agricultural  
Service

Circular Series  
WAP 11-20  
November 2020

# World Agricultural Production

## Brazil Soybeans: Production Forecast Unchanged Despite Slow Start to Planting

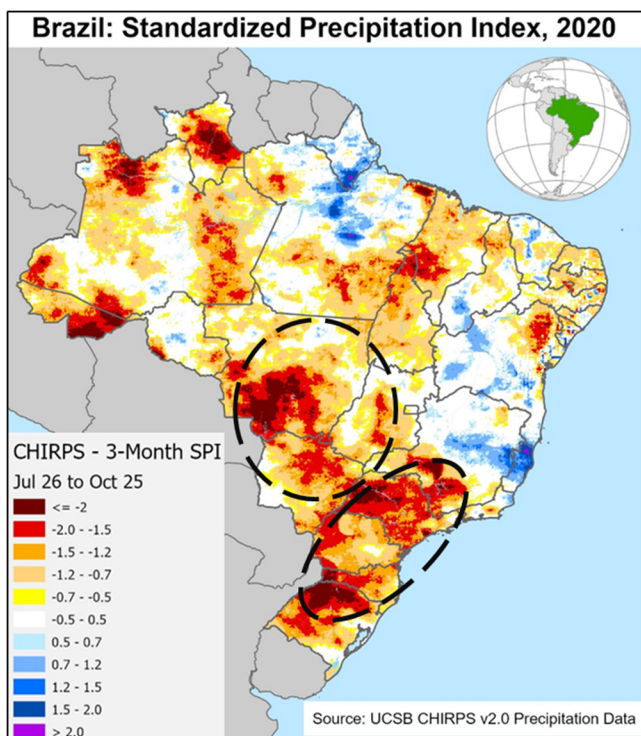


USDA Foreign Agricultural Service  
Global Market Analysis  
International Production Assessment Division

Source: Safras and Mercado

Brazil soybean production for 2020/21 is forecast at a record 133.0 million metric tons (mmt), unchanged despite the delay in planting and larger by 7.0 mmt (6 percent) from last season’s record crop of 126.0 mmt. The harvested area is forecast at a record 38.6 million hectares (mha), up 1.7 mha (5 percent) from last season’s record. Yield is forecast slightly below the 10-year trend at 3.45 tons per hectare (t/ha), up 1 percent from last year. This would be the second highest yield on record, with the prior record at 3.51 t/ha reached in 2017/18.

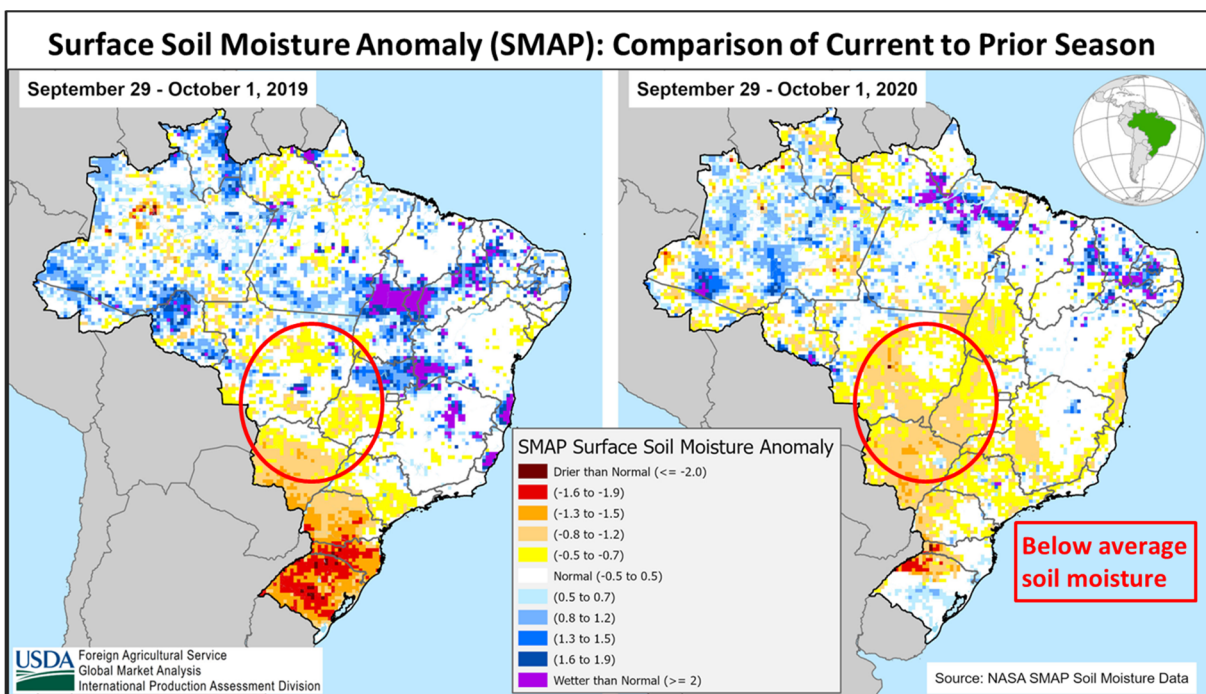
Approved by the World Agricultural Outlook Board



USDA Foreign Agricultural Service  
Global Market Analysis  
International Production Assessment Division

The 3-month Standardized Precipitation Index (SPI) reflects reduced precipitation and extremely dry soil conditions compared to the historical record at the start of the growing season. Once the delayed rains finally started in early October, they were scattered in the center-west states where a large majority of soybeans are grown. Soil moisture deficits from early October have been alleviated in some areas with more recent widespread rain in late October, which has led to a brisk pace in planting progress. The Mato Grosso Institute of Agricultural Economics (IMEA) is reporting that 54 percent of the area has been planted, a 46 percent increase during the last two weeks. The fastest rate of planting is in the western region and slowest in the southeast where rain has been sporadic. The overall planted area is below the five-year average of 68 percent and about two weeks slower than last season's pace. In the state of Paraná, the Department of Rural Economics

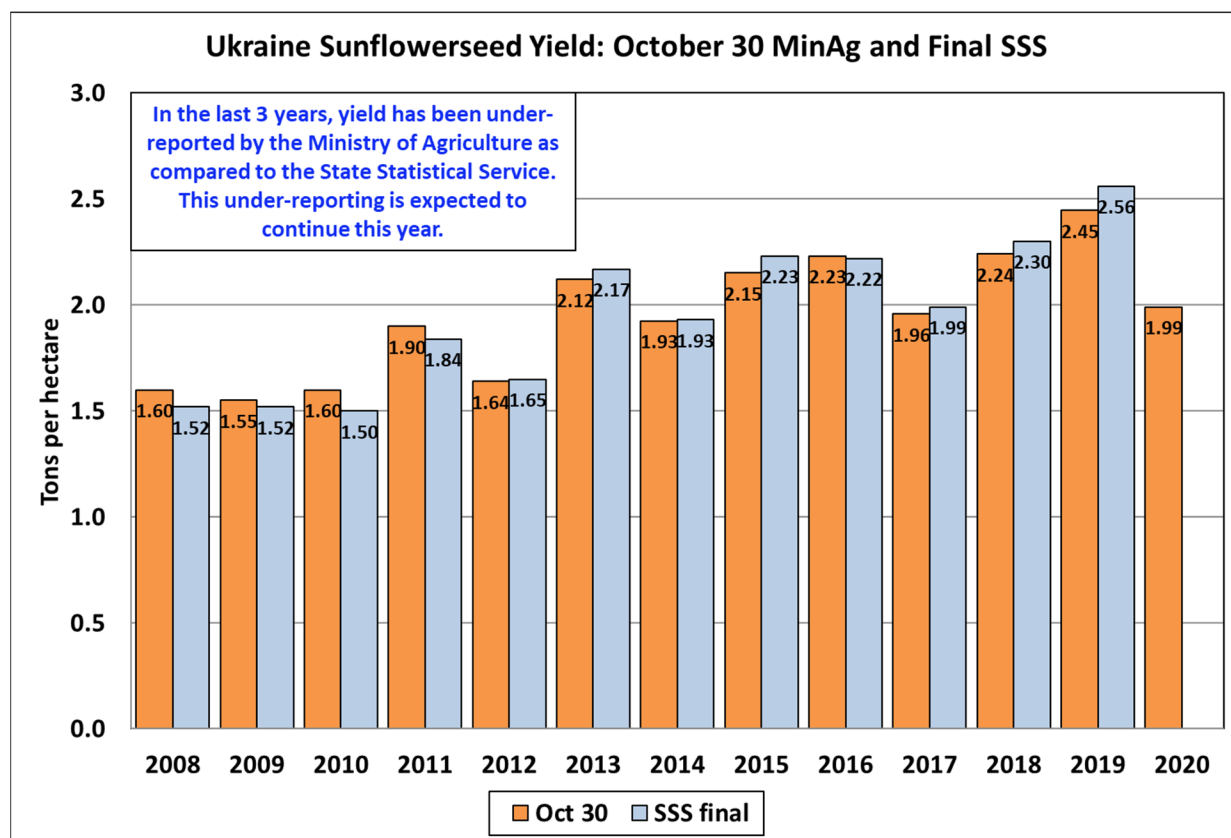
(DERAL) reports that area planted doubled in the last week of October to 60 percent. Planting in the southern region has also been delayed. Based on data from market newsletter, Safras and Mercado, until a week ago, the amount of area planted was between 10 to 20 percent below the 5-year average for the same week for three of the five large soybean producing states.



Despite the delayed planting, soybean yield prospects remain high, conditional on the weather remaining favorable for the remainder of the season. The concern now shifts to the effect that the delayed soybean planting may have on *safrinha* corn planting. (For more information, please contact [Sunita.Yadav-Pauletti@usda.gov](mailto:Sunita.Yadav-Pauletti@usda.gov)).

### Ukraine Sunflowerseed: Harvest Data Lowers Yield

Ukraine sunflowerseed production for 2020/21 is estimated at 14.0 million metric tons (mmt), down 7 percent from last month and down 15 percent from last year. Yield is estimated at 2.06 tons per hectare, down 7 percent from last month and down 20 percent from last year. Harvested area is estimated at 6.8 million hectares, unchanged from last month and up 6 percent from last year.



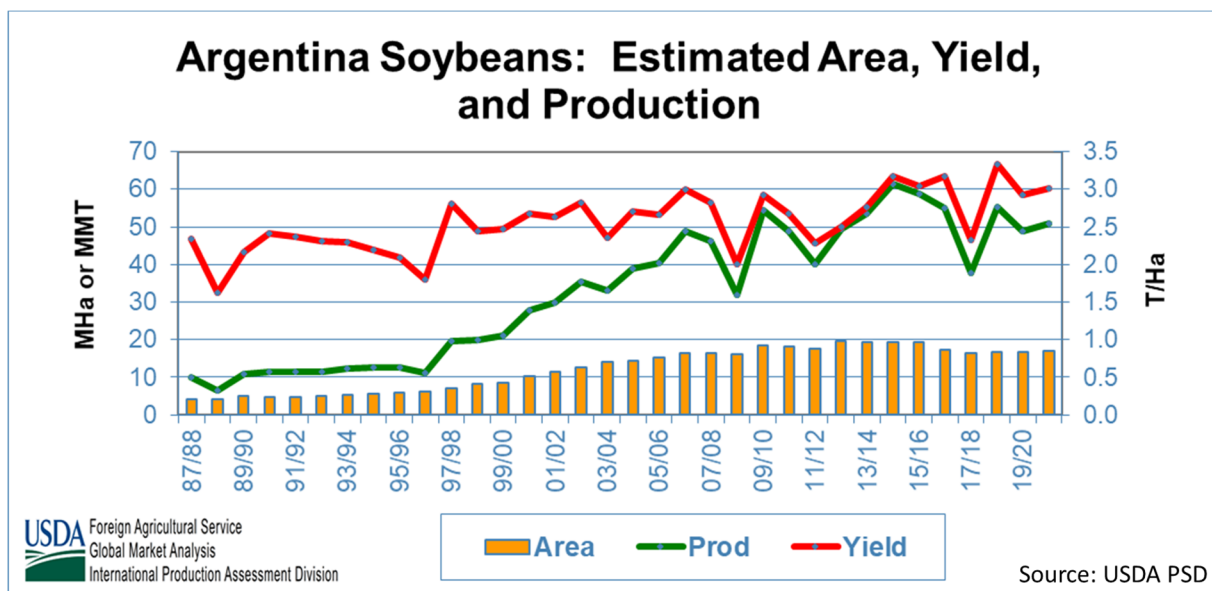
USDA Foreign Agricultural Service  
Global Market Analysis  
International Production Assessment Division

Sources: Ministry of Agriculture (MinAg) and State Statistical Service (SSS)

The month-to-month decrease in yield is based on harvest results from the Ukrainian Ministry of Agriculture. As of November 5<sup>th</sup>, harvest is about 96 percent complete. Assuming yields remain unchanged for the rest of the harvest and there is average abandonment, there is still a potential to harvest slightly less than 0.5 mmt. The Ministry of Agriculture has under-reported yield compared to the State Statistical Service of Ukraine for the last three years. Comparing data published on October 1<sup>st</sup> from both data sources, that trend is likely to continue this year. USDA crop production

estimates for Ukraine include estimated output from Crimea. (For more information, please contact [Katie.McGaughey@usda.gov](mailto:Katie.McGaughey@usda.gov).)

### Argentina Soybeans: Dry Conditions Slow Planting and Lower Expected Area



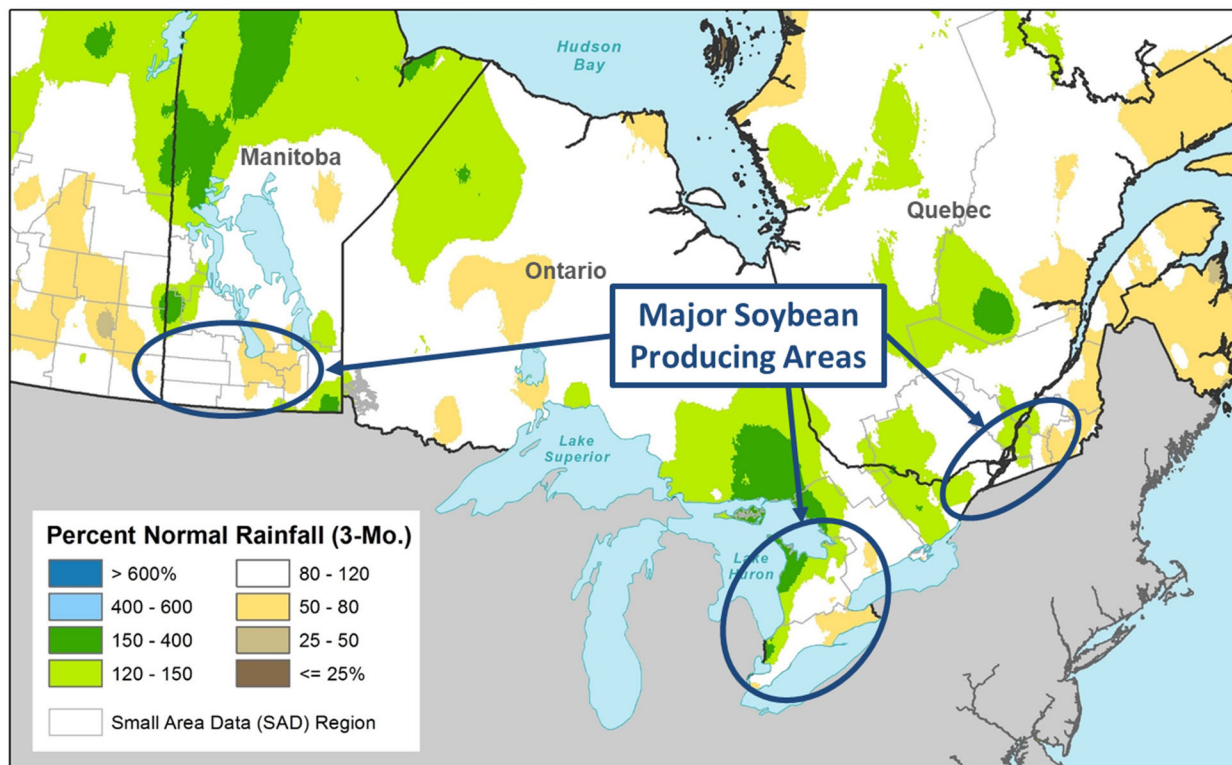
USDA forecasts Argentina soybean production for 2020/21 at 51.0 million metric tons (mmt), down 5 percent from last month, but up 4 percent from last year. Harvested area is estimated at 16.9 million hectares (mha), 2 percent less than last month, but up 1 percent from last year. Yield is forecast at 3.02 tons per hectare (t/ha), down 2 percent from last month, but up 3 percent from last year.

The prevailing La Niña weather has reduced rainfall in Argentina and lowered soil moisture reserves. Very low surface soil moisture has slowed the start of soybean planting, limiting area to be planted. Improved soil moisture supply is needed for good emergence and growth once planting is completed. Recent increases in export taxes on soybeans have also reduced expected soybean area. (For more information, please contact [Denise.McWilliams@usda.gov](mailto:Denise.McWilliams@usda.gov).)

## Canada Soybeans: Favorable Conditions Lead to Record Yield

USDA estimates Canada soybean production for 2020/21 at 6.1 million metric tons (mmt), up 0.1 mmt or 2 percent from last month, but down 1 percent from last year, and 11 percent below the 5-year average. Harvested area is estimated at 2.0 million hectares, unchanged from last month, but down 12 percent from last year, and 18 percent below the 5-year average. Yield is estimated at a record 3.05 metric tons per hectare, up 2 percent from last month, 13 percent over last year, and 8 percent above the 5-year average.

Percent Normal Rainfall – June 1 to August 31, 2020

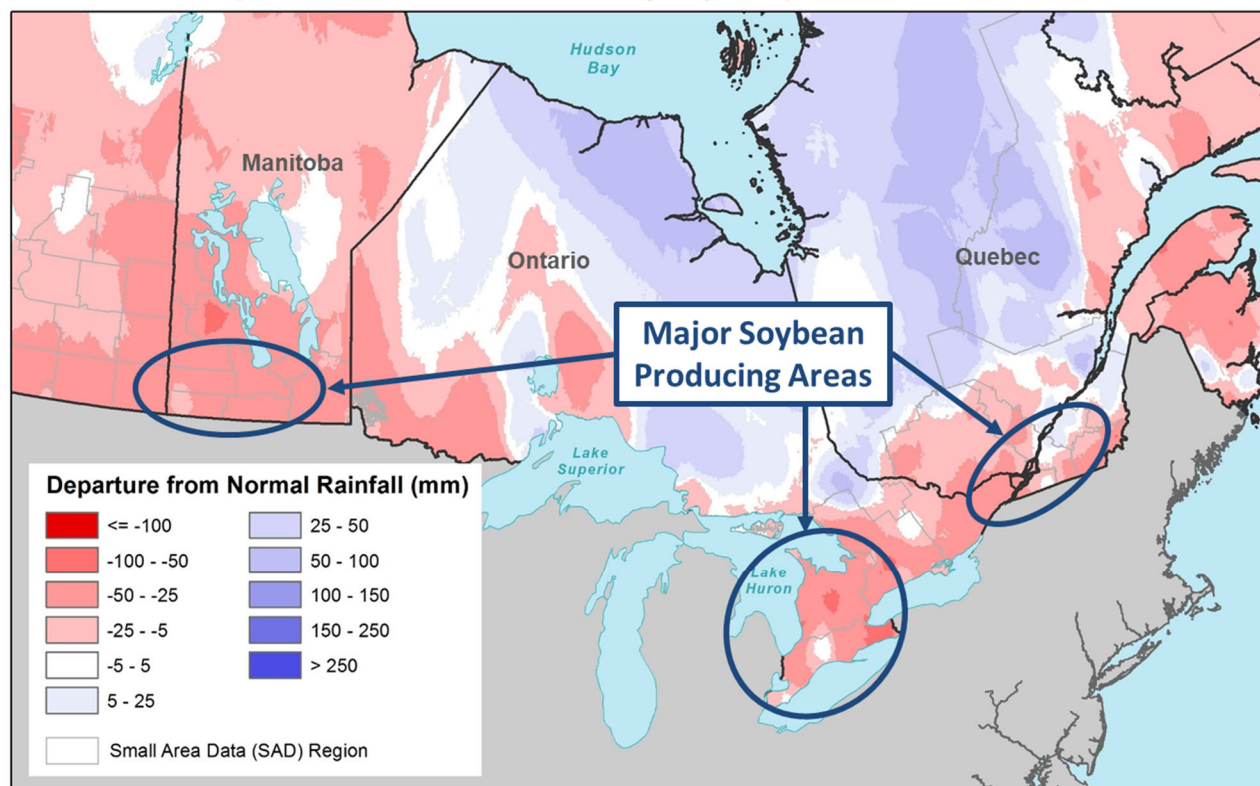


USDA Foreign Agricultural Service  
Global Market Analysis  
International Production Assessment Division

Sources: WMO; Statistics Canada

Canadian farmers reduced area planted to soybeans in 2020 by 11 percent below that of 2019, primarily due to high global stocks, uncertain market conditions, and several seasons of poor harvests due to dry conditions. Estimated production, however, has exceeded expectations as soil moisture conditions improved this season throughout much of the primary growing regions in Ontario, Quebec, and Manitoba.

## Departure from Normal Rainfall (mm) – September 1 to 30, 2020

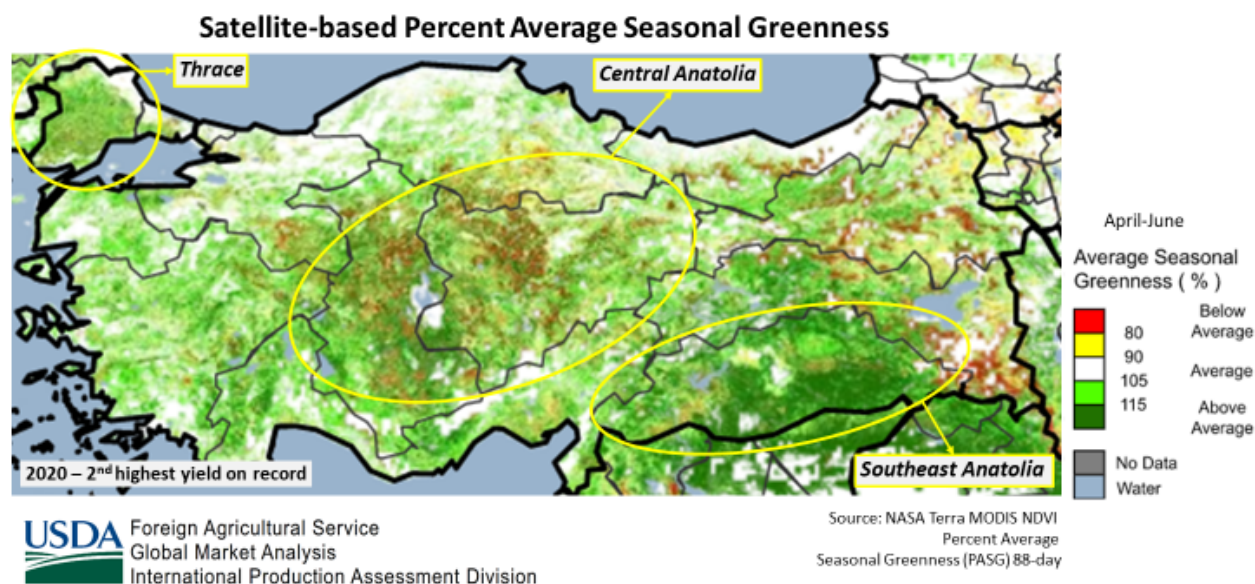


USDA Foreign Agricultural Service  
Global Market Analysis  
International Production Assessment Division

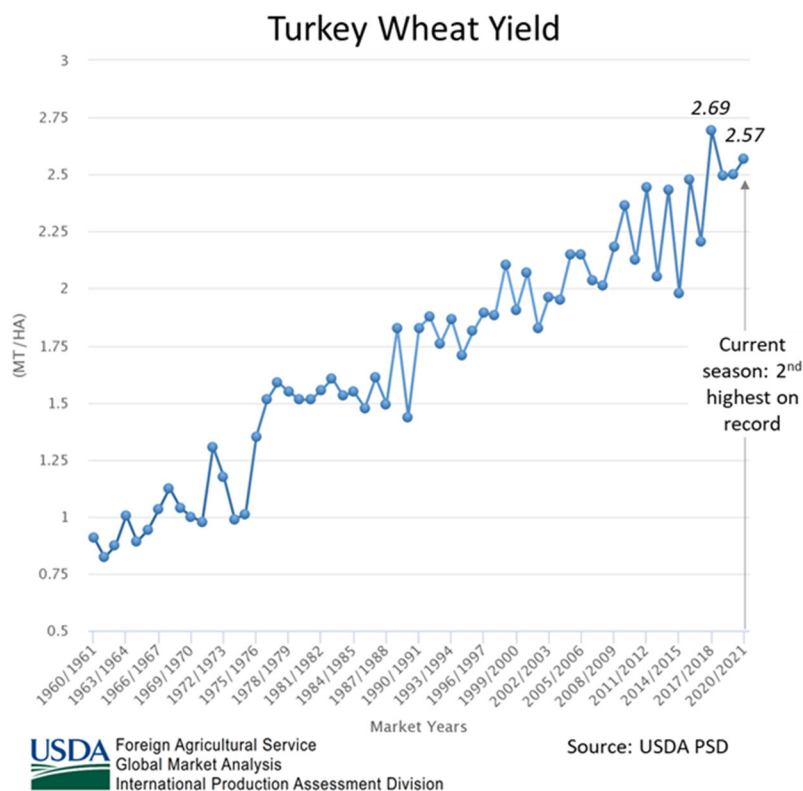
Sources: WMO; Statistics Canada

Warm, dry weather in September and October allowed farmers to begin harvest earlier than last year, the majority of which is now complete. Provincial and media reports, primarily in Ontario and Manitoba, indicate above-average or even record yields in these provinces, which account for nearly 80 percent of total production. Reports from Quebec and Saskatchewan are also favorable, and both Statistics Canada and USDA anticipate a record yield overall for soybeans in 2020. (For more information, please contact [Aaron.Mulhollen@usda.gov](mailto:Aaron.Mulhollen@usda.gov).)

## Turkey Wheat: Harvest Complete at Near-Record Yield



USDA estimates Turkey wheat production for 2020/21 at 18.3 million metric tons (mmt), down 0.3 mmt or 1 percent from last month and up 0.8 mmt and 4 percent from last year. The harvested area is estimated at 7.1 million hectares (mha), unchanged relative to last month and up 0.1 mha or 1 percent from last year. The yield is forecast at 2.57 tons per hectare (t/ha).



Wheat is mainly grown in Central Anatolia and the Southeast region (GAP). The 2020/21 Turkey wheat harvest finished in July of 2020. The season began with a dry autumn and below-average precipitation, which were offset by favorable spring weather allowing proper crop growth and leading to above-average vegetation health as depicted by the satellite-based Percent Average Seasonal Greenness.

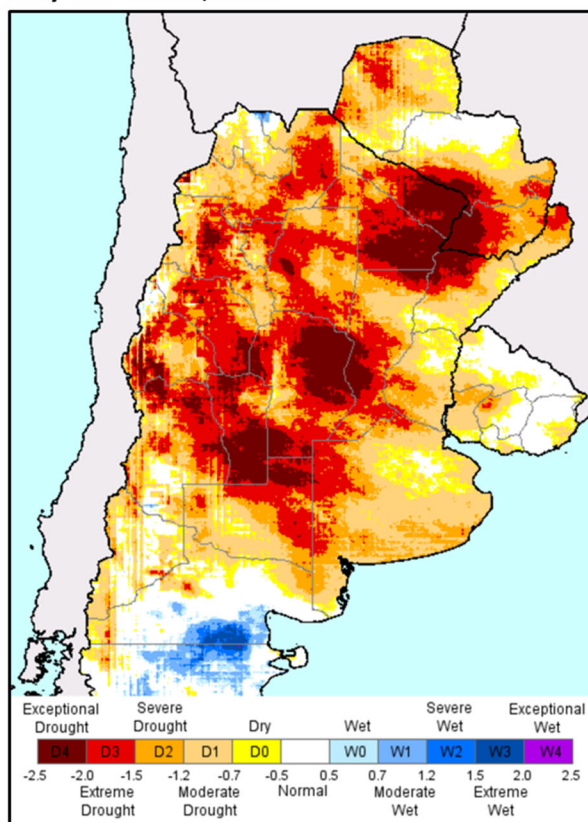
USDA's Agricultural Affairs Office in Turkey reported in a July 2020 [GAIN](#) report (Grain and Feed Update) that favorable weather conditions prevailed in the Southeast region throughout the growing

season and stated that there were some grain quality losses in Central Anatolia and the Thrace region due to drier weather in May and heavy rains in June, respectively. However, despite these intermittent weather-related setbacks, wheat in Turkey reached a yield of 2.57 t/ha, which is the second highest on record since 1960. *(For more information, please contact [Iliana.Mladenova@usda.gov](mailto:Iliana.Mladenova@usda.gov).)*

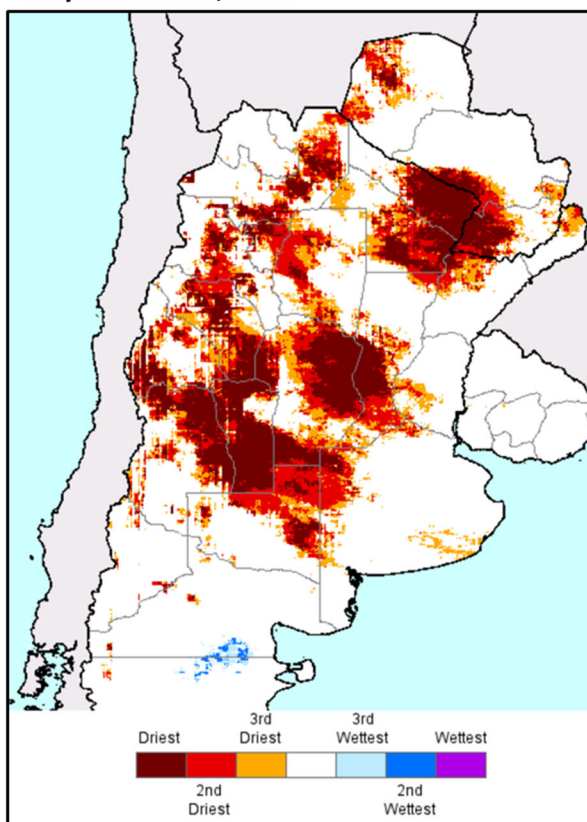
### Argentina Wheat: Dry Conditions Lower Production Expectations

## Drought Severity (CHIRPS) for Six Months

SPI 6-Month Drought Severity (CHIRPS)  
May 1 to Oct 31, 2020



Precipitation Rank 6-Month (CHIRPS)  
May 1 to Oct 31, 2020



**USDA** Foreign Agricultural Service  
Global Market Analysis  
International Production Assessment Division

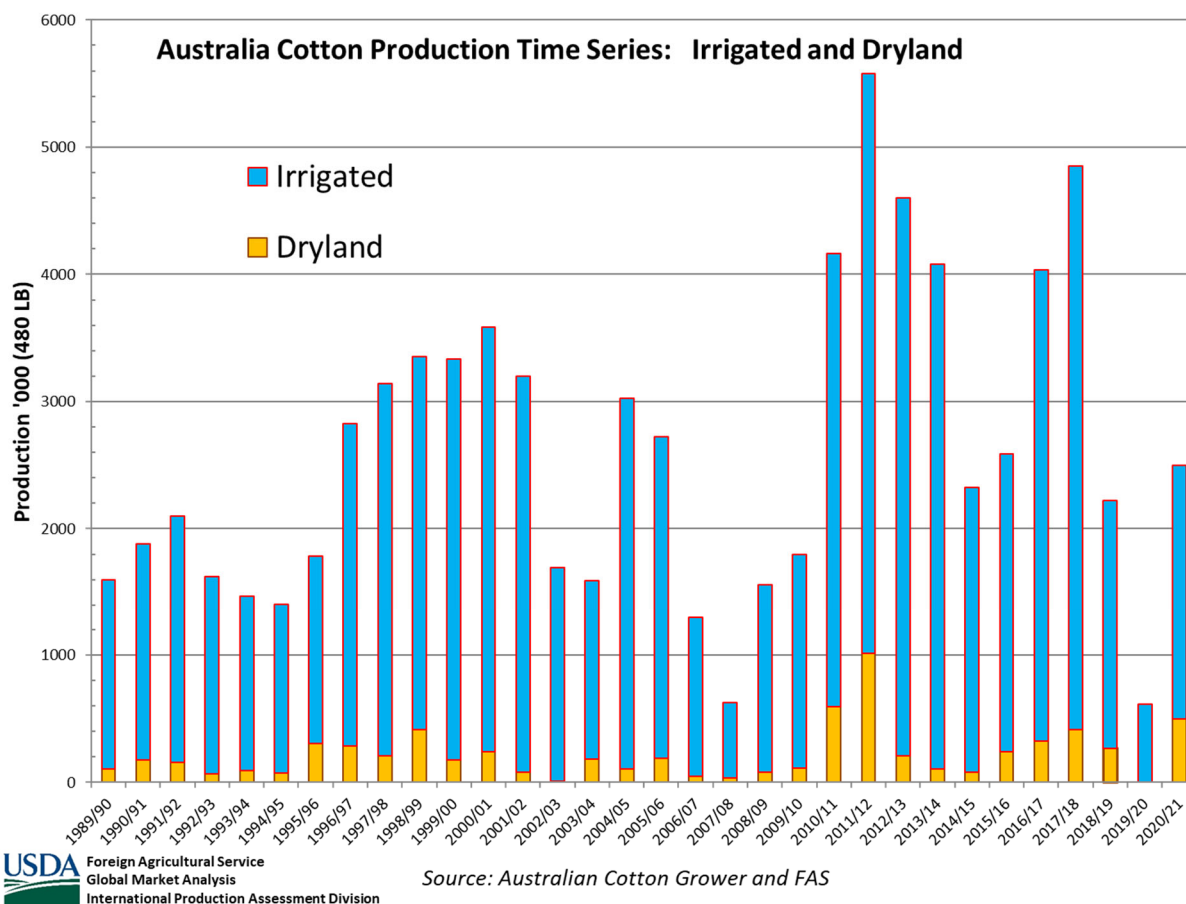
Source: Climate Hazards Group InfraRed  
Precipitation with Station data (CHIRPS)

USDA estimates Argentina wheat production for 2020/21 at 18.0 million metric tons, down 5 percent from last month and down 9 percent from last year. Area is estimated at 6.4 million hectares, 2 percent more than last month, but down 5 percent from last year. Yield is estimated at 2.81 tons per hectare, down 7 percent from last month and down 4 percent from last year. Lack of adequate soil moisture limited crop yield potential. Harvest typically begins in mid-November, however, in some fields, farmers have decided to leave the wheat crop for grazing or have collected grain for feed. In other cases, the wheat grain is being harvested for use in milling or for export but with less production than was harvested in each of the last four years. *(For more information, please contact [Denise.McWilliams@usda.gov](mailto:Denise.McWilliams@usda.gov).)*



## Australia Cotton: Production Revised Up on Improved Water Storage Levels

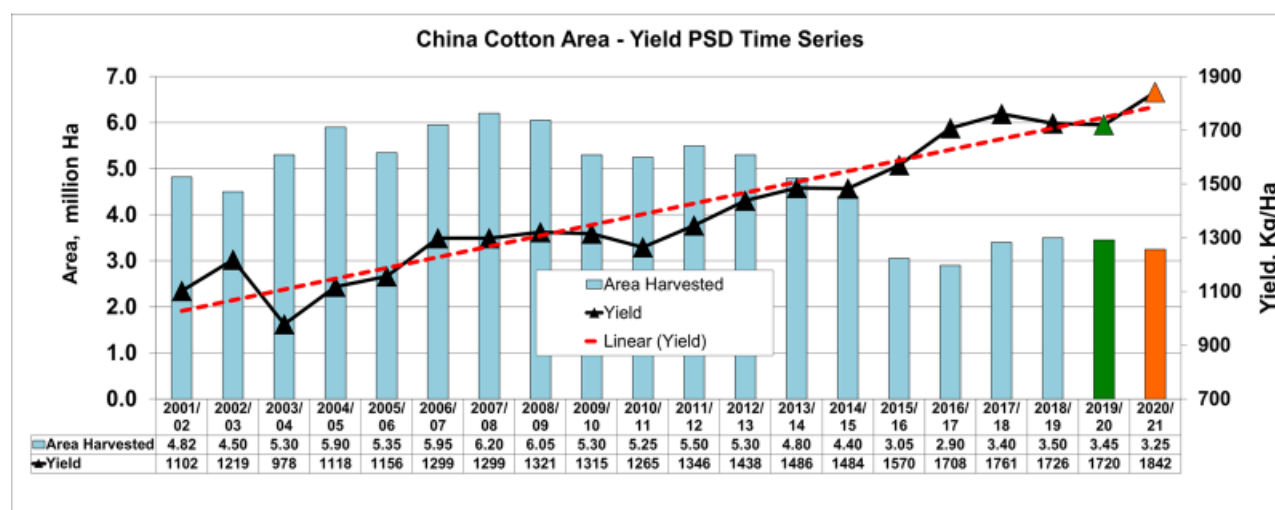
The 2020/21 Australia cotton crop production is forecast at 2.5 million bales, up 0.4 million bales from last month, and up 1.9 million bales or 300 percent from last year. Harvested area is forecast at 325,000 hectares (ha), up 25,000 ha from last month, and up 265,000 ha or 442 percent from last year. Yield is forecast at 1,675 kilograms per hectare. Yield is expected to decrease because of a forecast increase in the share of the total area sown to dryland cotton this season as compared to last. Irrigated cotton yields are substantially higher than dryland yields, and the difference widens in low rainfall years.



Irrigated cotton area comprises on average about 90 percent of Australia's total cotton production. Dryland cotton planting tends to vary with the seasonal weather forecast and prices at sowing. This will be the first time in several years that a significant area has been planted to dryland cotton. This season's above-average rainfall has increased water storage for irrigated cotton and provided adequate soil moisture in dryland cotton areas. Irrigated cotton area is forecast to increase, reflecting increased water storage levels in reservoirs supplying cotton growing regions. Also, higher cotton prices relative to sorghum will shift sorghum area to cotton. Sorghum and cotton are the two dominant summer crop options in eastern Australia. Cotton planting began in September. Harvest typically starts in March. Peak harvest typically occurs in April. The two major cotton producing states are New South Wales (54 percent) and Queensland (46 percent). (For more information, please contact [James.Crutchfield@usda.gov](mailto:James.Crutchfield@usda.gov).)

## China Cotton: Production Increased Due to Favorable Harvest Returns

USDA estimates China's 2020/21 cotton production at 27.5 million 480-pound bales (6.0 million metric tons), up roughly 1 percent from last month and last year, and up 8 percent from the 5-year average. Area is estimated at 3.25 million hectares (mha), down 6 percent from last year, but up 8 percent from the 5-year average. Yield is estimated at 1,842 kilograms per hectare (kg/ha), up approximately 1 percent from last month, 7 percent from last year and 9 percent from the 5-year average of 1,697 kg/ha. Yield continues to be at the long-term trend due to the increasing share of cotton being planted in Xinjiang province, where yield has nearly doubled compared to elsewhere in the country. Approximately 85 percent of total China cotton is now produced in Xinjiang province. In the past three years, China's cotton production continues to be determined, to a larger degree, by the marginal decrease in plantings in Xinjiang province and the relatively larger area decline in the North China Plain provinces of Shandong, Hebei, Anhui, and Jiangsu.



USDA Foreign Agricultural Service  
Global Market Analysis  
International Production Assessment Division

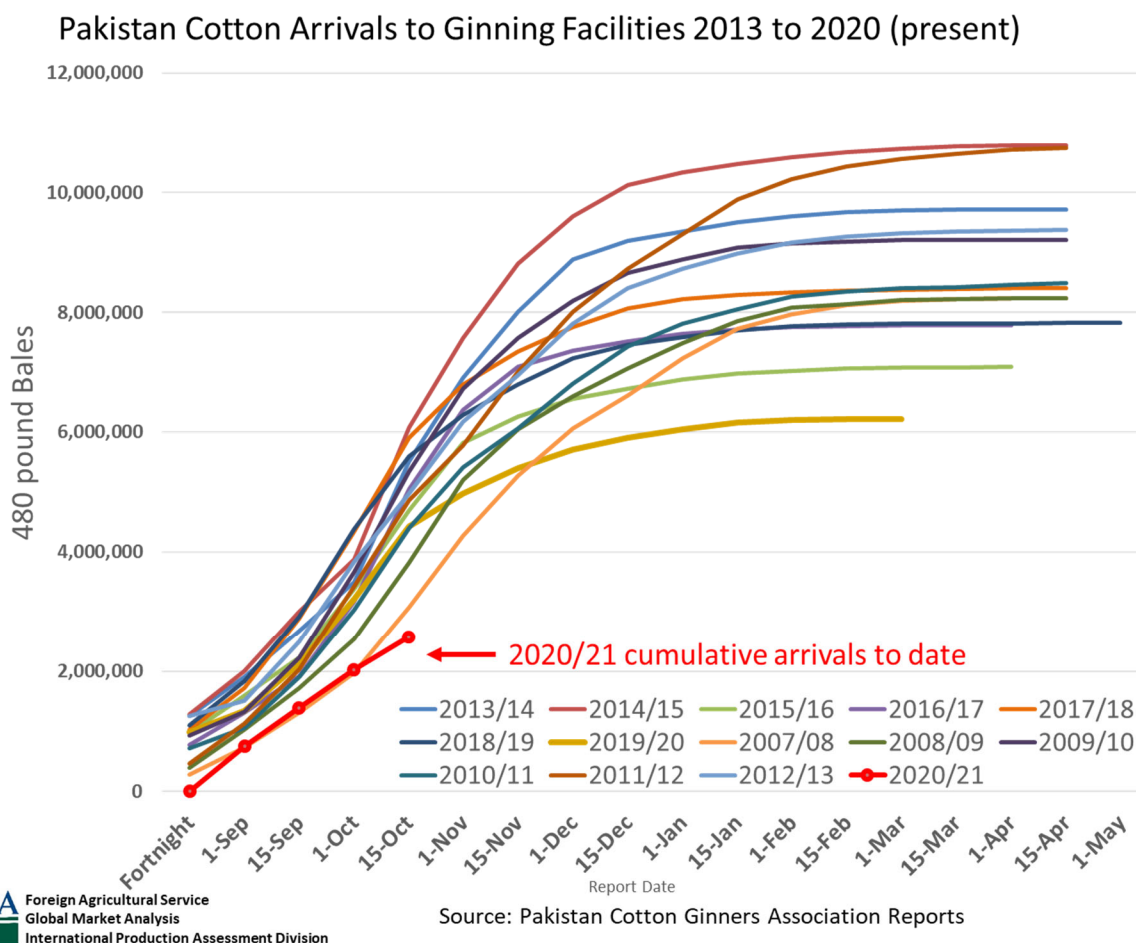
Source: USDA PSD

Cotton planting started in April and continued through May. The typical cotton growing season is April to October. According to USDA's FAS office in Beijing, harvest is complete across the major growing regions. Early harvest returns indicate favorable yields, higher than previously estimated. In Xinjiang, cotton is mostly machine-picked, and the harvest is less reliant on labor intensive hand-picking as was the case in the recent past.

The 2020/21 season has been characterized by favorable weather conditions and good water availability for irrigation. These conditions facilitated rapid planting and early crop establishment in Xinjiang resulting in favorable yield expectations. In addition to the favorable planting conditions, farmers were also encouraged by the government's continuation of the target price-based cotton subsidy. On March 26, 2020, China's National Development and Reform Commission (NDRC) published a notice stating that the target price-based subsidy will continue through 2023. The subsidy program was established in 2017 and was supposed to expire in 2020. (For more information, please contact [Dath.Mita@usda.gov](mailto:Dath.Mita@usda.gov).)

## Pakistan Cotton: Production Revised Down on Lower Arrivals

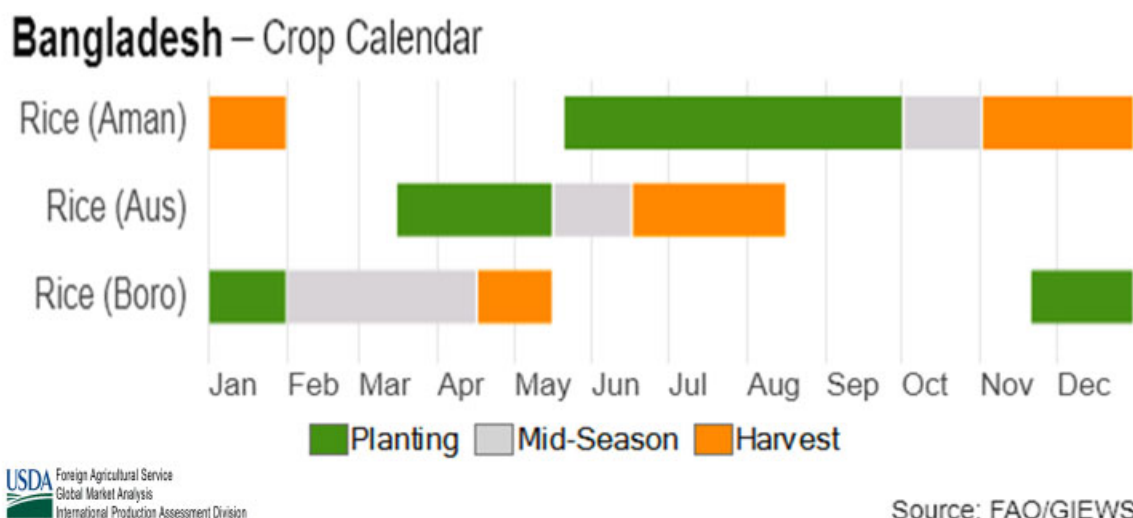
USDA estimates Pakistan's cotton production for 2020/21 at 5.0 million 480-pound bales, down 0.8 million bales from last month, and down 1.2 million bales from last year. Harvested area is estimated at 2.2 million hectares, unchanged from last month, but down 0.25 million hectares from last year. Yield is estimated at 495 kilograms per hectare, down 14 percent from last month and down 10 percent from last year.



Production is revised down due to lower arrivals. At the beginning of November, cumulative seed cotton arrivals at gins are 43 percent less than the same time last year, according to the Pakistan Cotton Ginner's Association. At the provincial level, the arrivals are down 46 percent in Punjab and down 41 percent in Sindh. Cotton planting begins in April. Harvest began in August and is now more than half complete. Peak harvest typically occurs in October. The two major cotton producing provinces are Punjab (72 percent) and Sindh (27 percent). *(For more information, please contact [James.Crutchfield@usda.gov](mailto:James.Crutchfield@usda.gov).)*

## Bangladesh Rice: Heavy Rain Decreases Production

USDA estimates 2020/21 Bangladesh rice production at 35.3 million metric tons (milled basis), down nearly 2 percent from last month, and down nearly 2 percent from last year. The revisions are due to additional information from the Bangladesh Ministry of Agriculture. Harvested area is estimated at 11.7 million hectares, down 1 percent from last month and from last year. Yield is estimated at 4.53 metric tons per hectare, down slightly from last year because excessive rains impacted the *Aus* and *Aman* crops, which account for roughly 50 percent of the total rice crop.



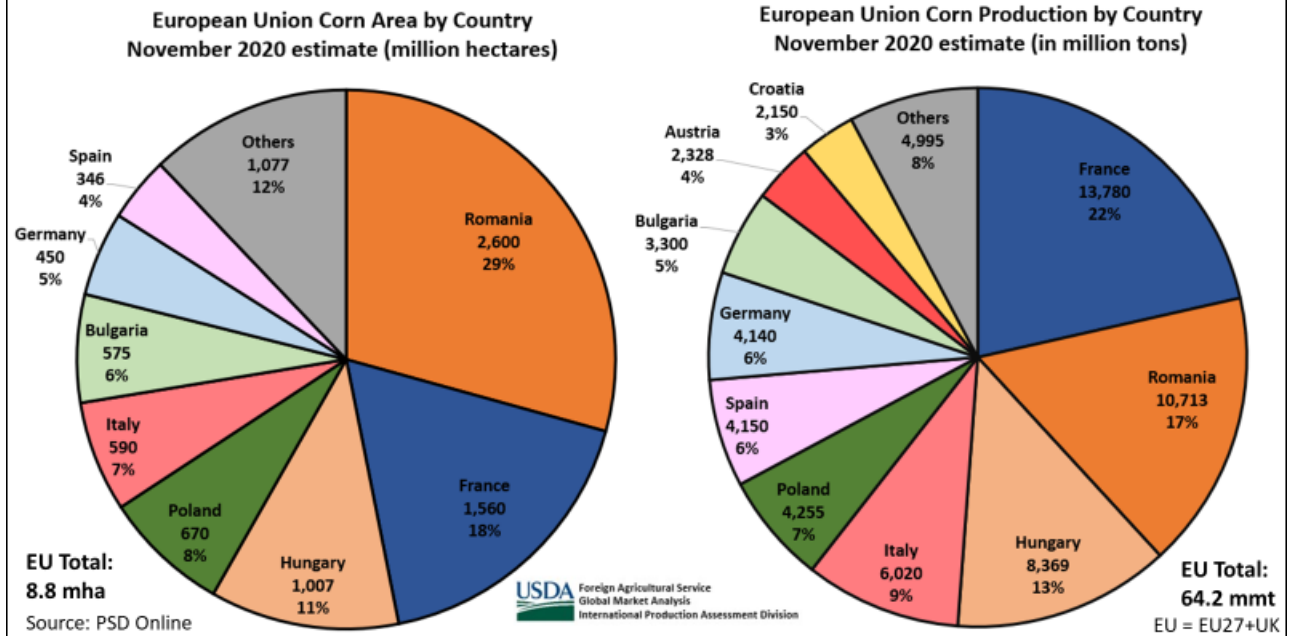
The Bangladesh Department of Disaster Management reported rice crop losses in August 2020. Cyclone Amphan hampered *Boro* harvest in May 2020. Excessive rainfall decreased yields in both the *Aman* and *Aus* growing season. Also, flooding in northern Bangladesh destroyed seedling beds during the *Aman* season. Farmers were unable to acquire seeds because of COVID restrictions, which caused distribution problems. Consequently, the late plantings outside of the optimum planting window resulted in reduced yields.

Rice is grown throughout the year. The growing season is divided into the *Boro*, which is the largest crop, followed by *Aus* and *Aman* crop. (For more information, please contact [Arnella.Trent@usda.gov](mailto:Arnella.Trent@usda.gov).)

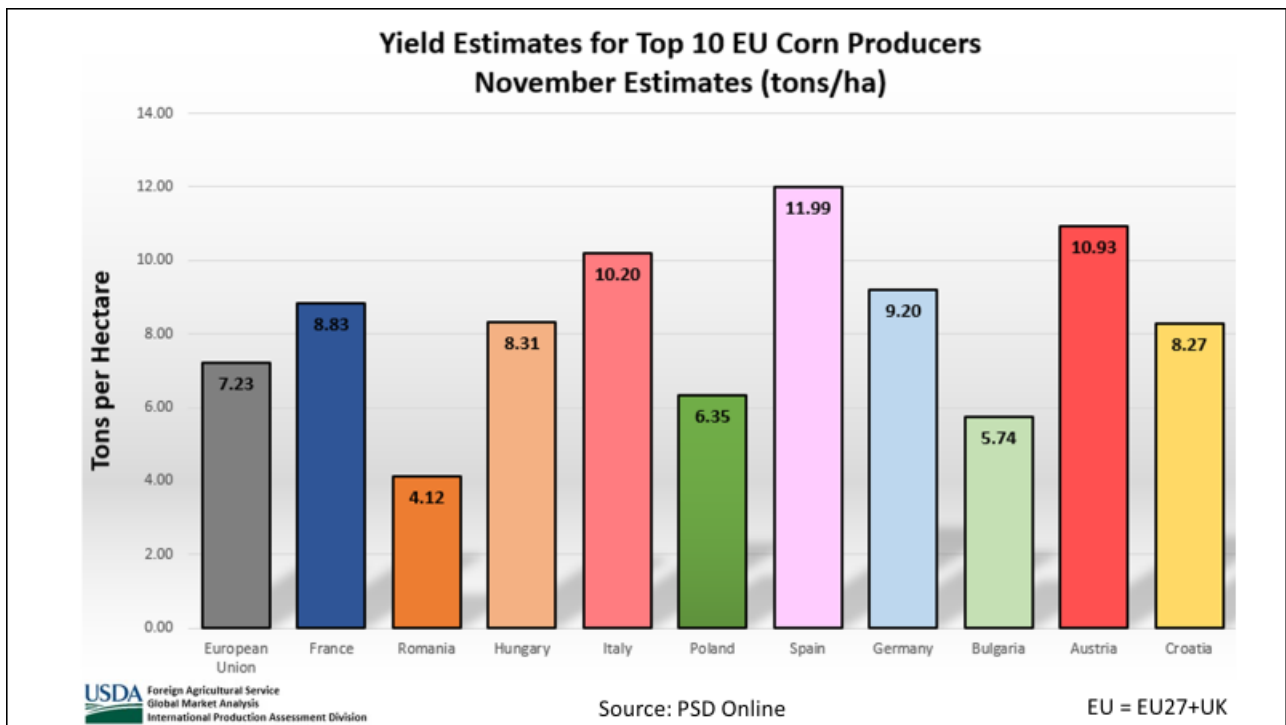
## European Union Corn: Production Lowered 1.9 mmt Due to Losses in France and Romania

European Union (EU27 + UK) corn production for 2020/21 is estimated at 64.2 million metric tons (mmt), down 1.9 mmt (3 percent) from the last month, down 2.5 mmt (4 percent) from last year, but 2 percent above the 5-year average. Harvested area is estimated at 8.9 million hectares (mha), down 0.1 mha from last month, but unchanged from last year, and up 3 percent from the 5-year average. Yield is estimated at 7.23 tons per hectare (t/ha), down 2 percent from October, down 4 percent from last year, and down 1 percent from the 5-year average.

## European Union: Corn Area and Production by EU Member State



Harvest is nearly finished in the European Union, including in the largest corn producers of France and Romania, where drought has been responsible for lowering the crop in both countries this year. In France, the crop is estimated to be down 0.6 mmt from last month to 13.8 mmt. France has a significant amount of irrigated corn in its southwest that helps mitigate yield losses. Yield is estimated at 8.83 t/ha.

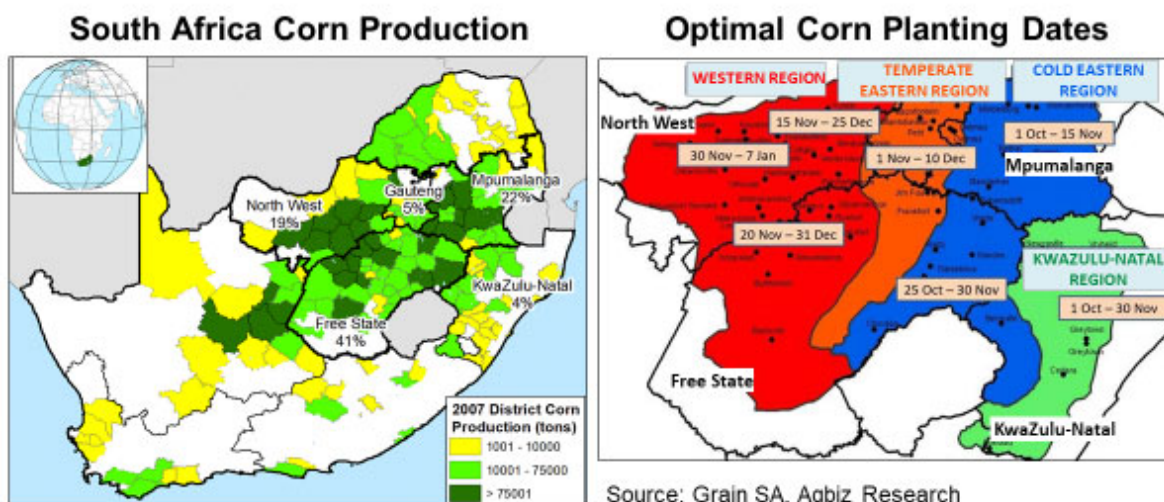


Romania is the single largest contributing-member to EU corn area, but with an average yield of 4.12 t/ha, Romania has the lowest corn yield in the EU27. Among other reasons, it has a low proportion of irrigated corn and a high normal summer temperature, which can quickly deplete soil moisture. This year, drought in Romania was most prominent in its largest corn producing region in the southeast. Romania corn is estimated at 10.7 mmt, down 0.6 mmt from last month, and 10 percent below its average production level. The 2020/21 crop is estimated to be 25 percent below last year's record crop. (For more information, please contact [Bryan.Purcell@usda.gov](mailto:Bryan.Purcell@usda.gov).)

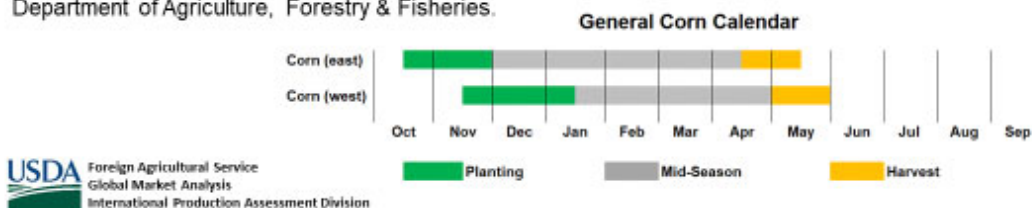
For country-specific area, yield, and production estimates within the European Union (EU), please go to PSD Online at <https://apps.fas.usda.gov/PSDOnline/app/index.html#/app/home>, and select "Downloadable Data Sets." Select the zipped file for "EU Countries Area & Production."

### South Africa Corn: Corn Planting Begins

South Africa's 2020/21 corn production is forecast at 16.0 million metric tons (mmt), up 2.0 mmt (14 percent) from last month and unchanged from last year. The USDA forecast includes output from both the developing and commercial sectors, with the commercial sector accounting for approximately 96 percent of the total crop. Area is forecast at 3.0 million hectares (mha), up 0.3 mha (11 percent) from last month and up 90,000 hectares (3 percent) from last year. Yield is forecast at 5.33 metric tons per hectare, slightly below the 10-year trend yield (1 percent), but up 8 percent from the 5-year average.

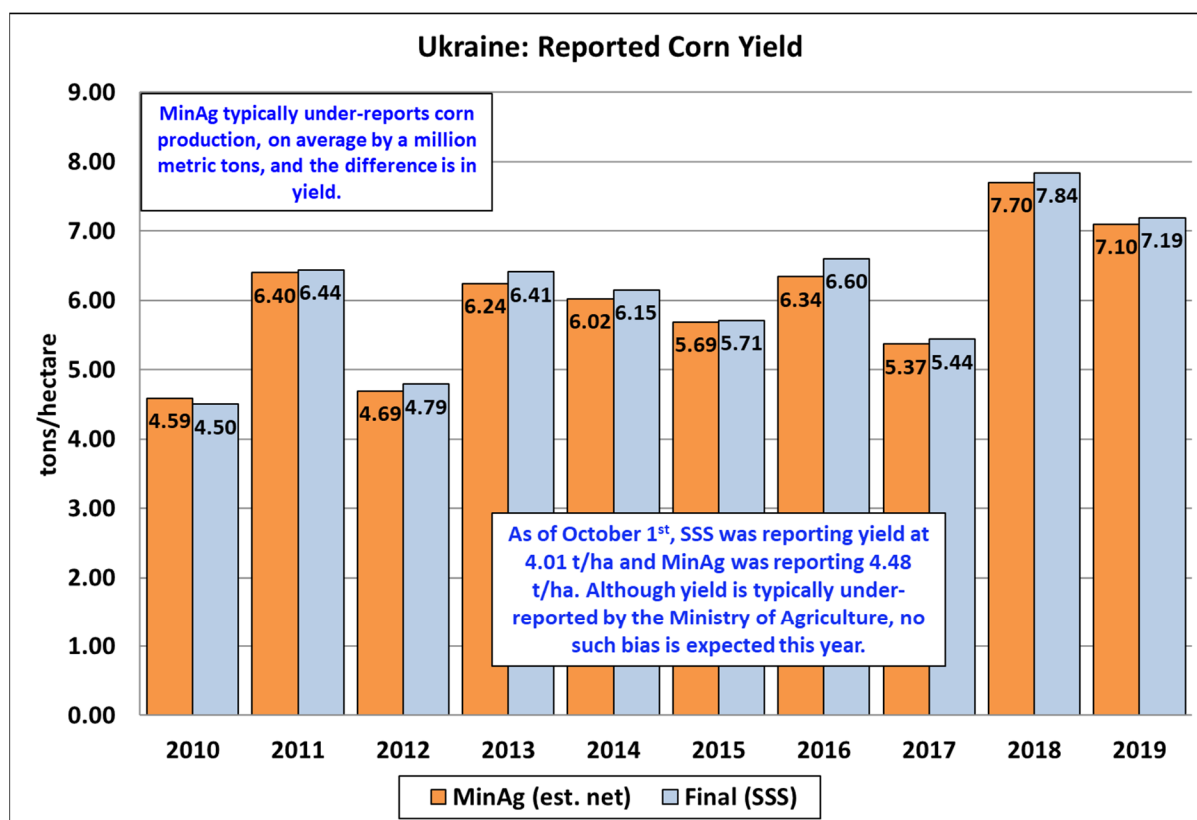


Source: Percentage value indicates percent province production of total average production (2011-2015) from South Africa's Crop Estimates Committee, Department of Agriculture, Forestry & Fisheries.



Planting is currently underway and on schedule with the timely arrival of October rains for most of the eastern corn belt. South Africa's Crop Estimates Committee (CEC) released a planting intentions report in late October which forecasted commercial corn area at 2.75 mha, or up 135,000 hectares (5 percent) from last year. The optimal planting season is from October through December, but the actual planting date is dependent on the arrival of rains. If rains are delayed, sowing can continue into mid-January and planting intentions may be reduced due to failed emergence or plant establishment. South African farmers typically begin harvest in late April and the bulk of the harvest (87 percent) is typically delivered to the silos from May through August. (For more information, please contact [Curt.Reynolds@usda.gov](mailto:Curt.Reynolds@usda.gov).)

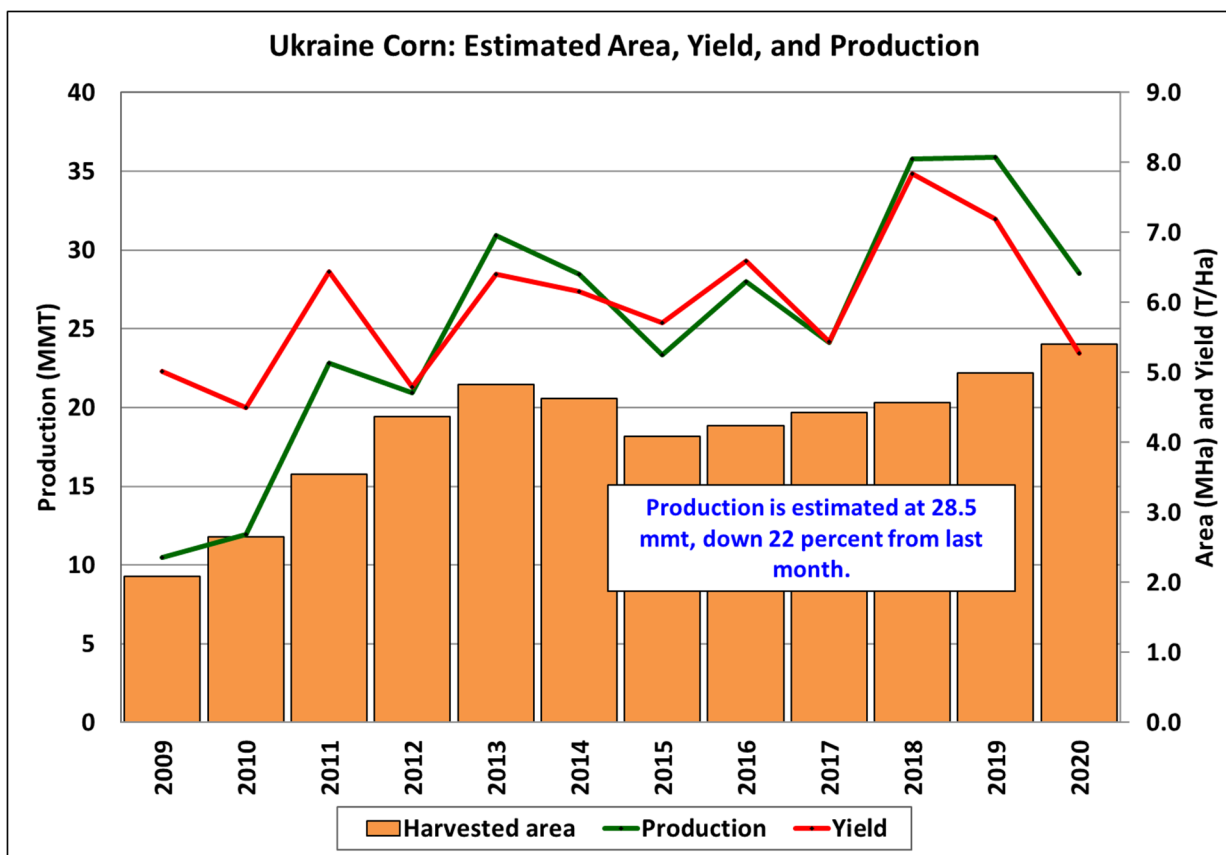
### Ukraine Corn: Persistent Seasonal Drought Lowers Yield 27 Percent from Last Year



USDA Foreign Agricultural Service  
Global Market Analysis  
International Production Assessment Division

Sources: Ministry of Agriculture (MinAg) and  
State Statistical Service (SSS)

Ukraine corn production for 2020/21 is estimated at 28.5 million metric tons (mmt), down 22 percent from last month, and down 21 percent from last year. Yield is estimated at 5.28 tons per hectare (t/ha), down 22 percent from last month and down 27 percent from last year. Harvested area is estimated at 5.4 million hectares, unchanged from last month and up 8 percent from last year.



Foreign Agricultural Service  
 Global Market Analysis  
 International Production Assessment Division

Source: PSD Online

The month-to-month decrease in yield is based on mid-harvest results from the Ukrainian Ministry of Agriculture. Unrelenting drought throughout the season lowered country level yields. Harvest is ongoing and as of November 5<sup>th</sup> is about 70 percent complete. The areas still to be harvested are the higher yielding northern regions. In previous years, the Ministry of Agriculture typically reported higher yields than the final State Statistical Service (SSS) data. This year, however, when comparing data published as of October 1<sup>st</sup>, the SSS published lower yields than the Ministry of Agriculture published on the same date. *(For more information, please contact [Katie.McGaughey@usda.gov](mailto:Katie.McGaughey@usda.gov).)*





**World Agricultural Production  
U.S. Department of Agriculture**

Foreign Agricultural Service / Global Market Analysis  
International Production Assessment Division (IPAD)

Ag Box 1051, Room 4630, South Building  
Washington, DC 20250-1051

<https://ipad.fas.usda.gov/>

Telephone: (202) 720-1662 Fax: (202) 720-1158

This report uses information from the Foreign Agricultural Service's (FAS) global network of agricultural attachés and counselors, official statistics of foreign governments and other foreign source materials, and the analysis of economic data and satellite imagery. Estimates of foreign area, yield, and production are from the International Production Assessment Division, FAS, and are reviewed by USDA's Inter-Agency Commodity Estimates Committee. Estimates of U.S. area, yield, and production are from USDA's National Agricultural Statistics Service. Numbers within the report may not add to totals because of rounding. This report reflects official USDA estimates released in the World Agricultural Supply and Demand Estimates (WASDE-584), November 10, 2020.

**Printed copies are available from the National Technical Information Service. Download an order form at [http://www.ntis.gov/products/specialty/usda/fas\\_a-g.asp](http://www.ntis.gov/products/specialty/usda/fas_a-g.asp), or call NTIS at 1-800-363-2068.**

The FAS International Production Assessment Division prepared this report. The next issue of World Agricultural Production will be released after 12:00 p.m. Eastern Time, December 10, 2020.

**Conversion Table**

Metric tons to bushels

Wheat, soybeans	=	MT * 36.7437
Corn, sorghum, rye	=	MT * 39.36825
Barley	=	MT * 45.929625
Oats	=	MT * 68.894438

Metric tons to 480-lb bales

Cotton	=	MT * 4.592917
--------	---	---------------

Metric tons to hundredweight

Rice	=	MT * 22.04622
------	---	---------------

Area & weight

1 hectare	=	2.471044 acres
1 kilogram	=	2.204622 pounds



For further information, contact:  
**U.S. Department of Agriculture**  
**Foreign Agricultural Service**  
**Global Market Analysis**

International Production Assessment Division  
 Ag Box 1051, Room 4630, South Building  
 Washington, DC 20250-1051

Telephone: (202) 720-1662

Fax: (202) 720-1158

**GENERAL INFORMATION**

Senior Director	Ronald Frantz	202-720-4056	ronald.frantz@usda.gov
Director	Robert Tetrault	202-720-1071	robert.tetrault@usda.gov
Administrative Assistant	Dionndra Williams	202-720-1662	dionndra.williams@usda.gov
USDA Remote Sensing Advisor	Vacant		
Sr. Analyst/Technical Lead	Curt Reynolds, Ph.D.	202-690-0134	curt.reynolds@usda.gov
Sr. Analyst/ Satellite Imagery Archives Manager/Technical Lead	Dath Mita, Ph.D.	202-720-7339	dath.mita@usda.gov
Sr. Analyst/Technical Lead	Jim Crutchfield	202-690-0135	james.crutchfield@usda.gov
GIS Mapping/Imagery Analyst	Lisa Colson	202-720-6652	lisa.colson@usda.gov
WAP Coordinators	Ifeoma Collins	202-720-0240	ifeoma.collins@usda.gov
	Aaron Mulhollen	202-690-0131	aaron.mulhollen@usda.gov

**COUNTRY- AND REGION-SPECIFIC INFORMATION**

South America, Argentina, Venezuela, and Colombia	Denise McWilliams, Ph.D.	202-720-0107	denise.mcwilliams@usda.gov
Western and Central Europe, and North Africa	Bryan Purcell	202-690-0138	bryan.purcell@usda.gov
Russia, Ukraine, Kazakhstan, Moldova, and Belarus	Katie McGaughey	202-720-9210	katie.mcgaughey@usda.gov
South Asia, Sri Lanka Bangladesh, India, and Nepal	Arnella Trent	202-720-0881	arnella.trent@usda.gov
East Asia, China, and Japan	Dath Mita, Ph.D.	202-720-7339	dath.mita@usda.gov
Sub-Saharan Africa, Nigeria and South Africa	Curt Reynolds, Ph.D.	202-690-0134	curt.reynolds@usda.gov
S.E. Asia, Indonesia, Thailand, Malaysia, Cambodia and Vietnam	Justin Jenkins	202-720-0419	justin.jenkins@usda.gov
Central America, Mexico, and Western United States	Ifeoma Collins	202-720-0240	ifeoma.collins@usda.gov
Australia, New Zealand, Pakistan Papua New Guinea and South Pacific Islands	Jim Crutchfield	202-690-0135	james.crutchfield@usda.gov
Middle East, Central Asia, Afghanistan Iraq, Iran, and Syria	Iliana Mladenova, Ph.D.		iliana.mladenova@usda.gov
Canada, Caribbean, Eastern United States	Aaron Mulhollen	202-690-0131	aaron.mulhollen@usda.gov
Brazil	Sunita Yadav-Pauletti, Ph.D.		sunita.yadav-pauletti@usda.gov



The Foreign Agricultural Service (FAS) updates its production, supply and distribution (PSD) database for cotton, oilseeds, and grains at 12:00 p.m. on the day the *World Agricultural Supply and Demand Estimates* (WASDE) report is released. This circular is released by 12:15 p.m.

## **FAS Reports and Databases:**

### **World Agricultural Production**

Current: <https://www.fas.usda.gov/data/world-agricultural-production>

Archive: <https://usda.library.cornell.edu/concern/publications/5q47rn72z?locale=en>

USDA's Foreign Agricultural Service (FAS) publishes a monthly report on crop acreage, yield and production in major countries worldwide. Sources include reporting from FAS's worldwide offices, official statistics of foreign governments, and analysis of economic data and satellite imagery. The reports reflect official USDA estimates released in the monthly *World Agricultural Supply and Demand Estimates* (WASDE).

### **World Markets and Trade**

Current: <https://www.fas.usda.gov/data>

Archive:

[https://usda.library.cornell.edu/catalog?f%5Bmember\\_of\\_collections\\_ssim%5D%5B%5D=Foreign+Agricultural+Service&locale=en](https://usda.library.cornell.edu/catalog?f%5Bmember_of_collections_ssim%5D%5B%5D=Foreign+Agricultural+Service&locale=en)

USDA's Foreign Agricultural Service (FAS) publishes monthly and quarterly reports which include data on U.S. and global trade, production, consumption and stocks, as well as analysis of developments affecting world trade in oilseeds, grains, cotton, livestock and poultry. The reports reflect official USDA estimates released in the monthly *World Agricultural Supply and Demand Estimates* (WASDE).

### **Global Agricultural Information Network (GAIN)**

<https://www.fas.usda.gov/databases/global-agricultural-information-network-gain>

USDA's Foreign Agricultural Service (FAS) provides timely reports on foreign markets through the Global Agriculture Information Network (GAIN) database. An average of 2,000 reports are added each year, with reports going back to 1995. GAIN reports are compiled by FAS' global market intelligence network, which includes FAS foreign service officers and locally engaged staff in over 90 overseas offices world-wide. They provide on-the-ground intelligence, insight, and analysis on nearly 200 countries, delivering information on foreign agricultural markets, crop conditions, and agro-political dynamics of interest to U.S. agriculture. GAIN reports contain assessments of commodity and trade issues made by USDA staff and are not necessarily statements of official U.S. government policy.

### **Production, Supply and Distribution (PS&D) Online**

<https://apps.fas.usda.gov/psdonline/app/index.html#/app/home>

PSD Online is the public repository for USDA's Official Production, Supply and Distribution forecast data and reports for key agricultural commodities. PSD Online data are reviewed and updated monthly by an interagency committee chaired by USDA's World Agricultural Outlook Board (WAOB). The committee consist of representatives from Foreign Agricultural Service (FAS), the Economic Research Service (ERS), the Farm Service Agency (FSA), and the Agricultural Marketing Service (AMS).

### **EU Countries and Russia Wheat: Area and Production Estimates**

<https://apps.fas.usda.gov/psdonline/app/index.html#/app/downloads> (click on PSD Datasets)

USDA's Foreign Agricultural Service (FAS) provides country-level area and production estimates for the nations of the European Union. For Russia, country-level area and production estimates are provided for Winter and Spring wheat. These datasets are reviewed and updated monthly by an interagency committee chaired by USDA's World Agricultural Outlook Board (WAOB) and can be downloaded through PSD datasets on PSD Online.



## FAS Reports and Databases:

### **International Production Assessment (IPAD)**

<https://ipad.fas.usda.gov/>

USDA's Foreign Agricultural Service (FAS) maintains a dynamic global crop production portal with key information including *World Agricultural Production* (WAP) briefs, Commodity Intelligence Reports (CIR), geospatial applications, crop production maps at a subnational level and crop calendars for the top-20 producing countries. Additionally, Crop Explorer (<https://ipad.fas.usda.gov/cropexplorer/>) displays rainfall, temperature, evapotranspiration, soil moisture, snow cover, and vegetation conditions in charts and maps.

### **USDA and NASA Global Agricultural Monitoring (GLAM)**

<https://glam1.gsfc.nasa.gov/>

The USDA and NASA Global Agricultural Monitoring (GLAM) system provides near real-time and science quality Moderate Resolution Imaging Spectroradiometer (MODIS) Normalized Difference Vegetation Index (NDVI) from the satellites Terra and Aqua. The public can view and retrieve MODIS 8-day composited, global NDVI satellite imagery and time series data. GLAM was developed by NASA's Global Inventory Modeling and Mapping Studies (GIMMS) group for USDA's Foreign Agricultural Service.

### **Global Agricultural and Disaster Assessment System (GADAS)**

<https://geo.fas.usda.gov/GADAS/index.html>

USDA's Foreign Agricultural Service (FAS) provides the Global Agricultural and Disaster Assessment System (GADAS), a web-based Geographic Information System (GIS) tool which integrates a vast array of highly detailed earth observation data streams, particularly targeted towards agricultural and disaster assessment analysis. GADAS is an interactive website which provides analysts with a wide variety of routine geospatial products (maps, charts, tables) they require for comprehensive situational investigations and recurring assessments.

### **Export Sales Reporting**

<https://apps.fas.usda.gov/esrquery/>

USDA's Export Sales Reporting Program monitors U.S. agricultural export sales on a daily and weekly basis. Export sales reporting provides a constant stream of up-to-date market information for 40 U.S. agricultural commodities sold abroad. The weekly U.S. Export Sales report is the most currently available source of U.S. exports sales data. The data is used to analyze overall levels of export demand, determine where markets exit, and assess the relative position of U.S. commodities in foreign markets.

### **Global Agricultural Trade System (GATS)**

<https://apps.fas.usda.gov/gats/default.aspx>

The Global Agricultural Trade System (GATS) is a searchable database containing monthly U.S. Census Bureau trade data organized by agricultural commodity and agricultural related product groups. Trade data is searchable by partner countries and partner groups. Historical U.S. agricultural trade data is available back to 1967. In addition, U.N. trade statistics (UN Comtrade) may be queried through GATS. UN trade data is available for nearly 200 countries or areas, dating from the inception of the Harmonized System (HS) of trade codes in 1989 to present. The database is continuously updated. U.S. trade data is updated monthly according to the U.S. Census Bureau's reporting system. UN Comtrade data are updated in GATS after nationally submitted data to the UN are standardized by the UN Statistical Division and added to the UN Comtrade database.

## **Other USDA Reports:**

World Agricultural Supply and Demand Estimates (WASDE):

<http://www.usda.gov/oce/commodity/wasde/>

Economic Research Service:

<http://www.ers.usda.gov/topics/crops>

National Agricultural Statistics Service:

<http://www.nass.usda.gov/Publications/>

**Table 01 World Crop Production Summary**

Million Metric Tons

Commodity	World	Total Foreign	North America			Former Soviet		European	Asia (WAP)					South America		Selected Other			All Others
			United States	Canada	Mexico	Russia	Ukraine		China	India	Indonesia	Pakistan	Thailand	Argentina	Brazil	Australia	South Africa	Turkey	
			-	-	-	-	-		-	-	-	-	-	-	-	-	-	-	
---Million metric tons---																			
<b>Wheat</b>																			
2018/19	730.9	679.6	51.3	32.4	3.0	71.7	25.1	nr	131.4	99.9	0.0	25.1	0.0	19.5	5.4	17.6	1.9	19.0	227.7
2019/20 prel.	764.9	712.4	52.6	32.7	3.3	73.6	29.2	nr	133.6	103.6	0.0	24.3	0.0	19.8	5.2	15.2	1.5	17.5	253.0
2020/21 proj.																			
Oct	773.1	723.4	49.7	35.0	3.1	83.0	25.5	nr	136.0	107.6	0.0	25.7	0.0	19.0	6.6	28.5	2.0	18.5	232.9
Nov	772.4	722.7	49.7	35.0	3.1	83.5	25.5	nr	136.0	107.6	0.0	25.7	0.0	18.0	6.6	28.5	2.1	18.3	232.9
<b>Coarse Grains</b>																			
2018/19	1,397.6	1,019.7	377.9	26.2	33.4	35.0	44.5	nr	264.0	43.2	12.0	6.6	5.7	59.2	104.3	11.5	12.4	13.3	348.4
2019/20 prel.	1,411.3	1,051.9	359.4	28.6	31.9	40.5	46.5	nr	268.2	47.4	12.0	7.4	4.6	58.1	105.6	10.4	16.5	14.5	359.7
2020/21 proj.																			
Oct	1,458.8	1,070.6	388.2	29.6	33.6	41.9	45.7	nr	267.4	45.6	12.0	7.5	5.6	56.7	113.4	14.3	14.7	15.8	367.0
Nov	1,447.7	1,065.0	382.8	29.6	33.6	40.9	37.7	nr	267.4	45.6	12.0	7.5	5.6	57.0	113.4	14.3	16.7	15.7	368.1
<b>Rice, Milled</b>																			
2018/19	497.0	489.9	7.1	0.0	0.2	0.7	0.0	nr	148.5	116.5	34.2	7.3	20.3	0.8	7.1	0.0	0.0	0.6	153.6
2019/20 prel.	496.1	490.2	5.9	0.0	0.2	0.7	0.0	nr	146.7	118.4	34.0	7.2	17.7	0.8	7.6	0.0	0.0	0.6	156.2
2020/21 proj.																			
Oct	501.5	494.3	7.2	0.0	0.2	0.7	0.0	nr	147.0	120.0	34.9	7.6	18.6	0.8	7.5	0.3	0.0	0.6	156.1
Nov	501.1	493.9	7.2	0.0	0.2	0.7	0.0	nr	147.0	120.0	34.9	7.6	18.6	0.8	7.5	0.3	0.0	0.6	155.7
<b>Total Grains</b>																			
2018/19	2,625.5	2,189.2	436.3	58.6	36.6	107.4	69.6	nr	543.9	259.6	46.2	39.0	26.0	79.5	116.9	29.2	14.3	32.9	729.8
2019/20 prel.	2,672.3	2,254.4	417.9	61.3	35.4	114.8	75.8	nr	548.5	269.4	46.0	38.9	22.2	78.7	118.4	25.7	18.0	32.6	768.8
2020/21 proj.																			
Oct	2,733.4	2,288.3	445.1	64.6	36.8	125.6	71.2	nr	550.4	273.2	46.9	40.8	24.2	76.5	127.5	43.1	16.7	34.9	756.0
Nov	2,721.2	2,281.6	439.6	64.6	36.8	125.1	63.2	nr	550.4	273.2	46.9	40.8	24.2	75.9	127.5	43.1	18.8	34.5	756.7
<b>Oilseeds</b>																			
2018/19	600.0	469.3	130.7	28.2	1.3	18.7	22.7	nr	60.0	35.5	14.1	3.8	1.0	60.8	124.6	3.1	2.0	3.4	90.1
2019/20 prel.	576.4	469.4	107.0	25.8	1.1	21.7	24.5	nr	63.0	36.7	14.4	3.3	1.1	53.9	131.3	2.6	2.2	3.2	84.7
2020/21 proj.																			
Oct	605.5	478.9	126.6	25.5	1.0	20.1	20.8	nr	62.2	39.2	14.6	3.2	1.1	58.1	137.7	4.0	2.1	2.9	86.3
Nov	597.3	473.3	124.0	25.6	1.0	19.8	19.6	nr	62.3	38.5	14.6	2.9	1.1	55.6	137.7	4.2	2.2	2.8	85.3
<b>Cotton</b>																			
2018/19	118.6	100.2	18.4	0.0	1.7	0.0	0.0	1.7	27.8	25.8	0.0	7.6	0.0	1.1	13.0	2.2	0.2	3.8	15.3
2019/20 prel.	122.2	102.2	19.9	0.0	1.6	0.0	0.0	2.0	27.3	29.5	0.0	6.2	0.0	1.3	13.8	0.6	0.1	3.5	16.4
2020/21 proj.																			
Oct	116.3	99.2	17.0	0.0	1.1	0.0	0.0	1.6	27.3	30.0	0.0	5.8	0.0	1.3	12.0	2.1	0.2	2.8	15.2
Nov	116.1	99.0	17.1	0.0	1.1	0.0	0.0	1.5	27.5	30.0	0.0	5.0	0.0	1.3	12.0	2.5	0.2	2.8	15.2

1/ Includes wheat, coarse grains, and rice (milled) shown above.

**Table 02 Wheat Area, Yield, and Production**

Country / Region	Area (Million hectares)				Yield (Metric tons per hectare)				Production (Million metric tons)				Change in Production			
	2018/19	Prel.	2020/21 Proj.		2018/19	Prel.	2020/21 Proj.		2018/19	Prel.	2020/21 Proj.		From last month		From last year	
		2019/20	Oct	Nov		2019/20	Oct	Nov		2019/20	Oct	Nov	MMT	Percent	MMT	Percent
<b>World</b>	215.45	217.04	222.20	222.63	3.39	3.52	3.48	3.47	730.90	764.94	773.08	772.38	-0.71	-0.09	7.43	0.97
<b>United States</b>	16.03	15.13	14.87	14.87	3.20	3.47	3.34	3.34	51.31	52.58	49.69	49.69	0.00	0.00	-2.89	-5.50
<b>Total Foreign</b>	199.42	201.90	207.33	207.76	3.41	3.53	3.49	3.48	679.59	712.36	723.39	722.68	-0.71	-0.10	10.32	1.45
<b>European Union - 28</b>	25.52	26.12	24.64	24.66	5.35	5.93	5.55	5.54	136.58	154.96	136.75	136.55	-0.20	-0.15	-18.41	-11.88
<b>China</b>	24.27	23.73	24.00	24.00	5.42	5.63	5.67	5.67	131.43	133.59	136.00	136.00	0.00	0.00	2.41	1.80
<b>South Asia</b>																
India	29.65	29.32	31.45	31.45	3.37	3.53	3.42	3.42	99.87	103.60	107.59	107.59	0.00	0.00	3.99	3.85
Pakistan	8.80	8.80	9.13	9.13	2.85	2.76	2.81	2.81	25.10	24.30	25.70	25.70	0.00	0.00	1.40	5.76
Afghanistan	2.00	2.30	2.33	2.33	1.80	2.17	2.15	2.15	3.60	5.00	5.01	5.01	0.00	0.00	0.01	0.20
Nepal	0.70	0.75	0.75	0.75	2.85	2.95	2.95	2.95	2.01	2.20	2.21	2.21	0.00	0.00	0.01	0.45
<b>Former Soviet Union - 12</b>																
Russia	26.34	27.31	28.30	28.60	2.72	2.70	2.93	2.92	71.69	73.61	83.00	83.50	0.50	0.60	9.89	13.44
Russia Winter	14.91	15.41	16.20	16.35	3.52	3.41	3.58	3.58	52.47	52.54	58.00	58.50	0.50	0.86	5.96	11.35
Russia Spring	11.44	11.91	12.10	12.25	1.68	1.77	2.07	2.04	19.22	21.07	25.00	25.00	0.00	0.00	3.93	18.65
Ukraine	6.72	7.02	6.80	6.80	3.73	4.16	3.75	3.75	25.06	29.17	25.50	25.50	0.00	0.00	-3.67	-12.58
Kazakhstan	11.35	11.34	11.80	11.80	1.23	1.01	1.06	1.06	13.95	11.45	12.50	12.50	0.00	0.00	1.05	9.15
Uzbekistan	1.40	1.40	1.40	1.40	4.29	4.86	4.65	4.65	6.00	6.80	6.51	6.51	0.00	0.00	-0.29	-4.26
Belarus	0.66	0.75	0.70	0.70	2.75	3.83	3.29	3.29	1.82	2.88	2.30	2.30	0.00	0.00	-0.58	-20.00
<b>Canada</b>	9.88	9.66	9.90	9.90	3.27	3.38	3.54	3.54	32.35	32.67	35.00	35.00	0.00	0.00	2.33	7.13
<b>South America</b>																
Argentina	6.05	6.73	6.30	6.40	3.22	2.94	3.02	2.81	19.50	19.76	19.00	18.00	-1.00	-5.26	-1.76	-8.91
Brazil	2.04	2.04	2.32	2.32	2.66	2.55	2.84	2.84	5.43	5.20	6.60	6.60	0.00	0.00	1.40	26.92
Uruguay	0.20	0.24	0.22	0.21	3.68	3.26	3.54	3.50	0.73	0.78	0.78	0.75	-0.03	-4.24	-0.03	-3.99
<b>Australia</b>	10.40	10.20	13.00	13.00	1.69	1.49	2.19	2.19	17.60	15.20	28.50	28.50	0.00	0.00	13.30	87.50
<b>Africa</b>																
Egypt	1.32	1.37	1.39	1.39	6.40	6.40	6.40	6.40	8.45	8.77	8.90	8.90	0.00	0.00	0.13	1.48
Morocco	2.85	2.75	2.76	2.76	2.58	1.46	0.93	0.93	7.34	4.03	2.56	2.56	0.00	0.00	-1.47	-36.40
Ethiopia	1.75	1.80	1.85	1.85	2.42	2.74	2.86	2.86	4.24	4.93	5.30	5.30	0.00	0.00	0.38	7.61
Algeria	2.07	2.07	2.08	2.08	1.90	1.90	1.88	1.88	3.94	3.95	3.90	3.90	0.00	0.00	-0.05	-1.27
<b>Middle East</b>																
Turkey	7.62	7.00	7.10	7.10	2.50	2.50	2.61	2.57	19.00	17.50	18.50	18.25	-0.25	-1.35	0.75	4.29
Iran	6.70	6.70	6.70	6.70	2.16	2.51	2.50	2.50	14.50	16.80	16.75	16.75	0.00	0.00	-0.05	-0.30
Iraq	1.70	2.40	2.40	2.40	1.76	2.00	1.93	1.93	3.00	4.80	4.64	4.64	0.00	0.00	-0.17	-3.44
Syria	1.10	1.60	1.60	1.60	1.82	3.00	2.81	2.81	2.00	4.80	4.50	4.50	0.00	0.00	-0.30	-6.25
<b>Mexico</b>	0.54	0.59	0.55	0.55	5.56	5.54	5.55	5.55	3.00	3.27	3.05	3.05	0.00	0.00	-0.22	-6.73
<b>Serbia</b>	0.65	0.57	0.57	0.57	4.92	4.39	4.74	4.74	3.20	2.50	2.70	2.70	0.00	0.00	0.20	8.00
<b>Others</b>	7.13	7.35	7.30	7.31	2.56	2.70	2.69	2.72	18.23	19.86	19.65	19.92	0.28	1.40	0.06	0.31

**Table 03 Total Coarse Grain Area, Yield, and Production**

Country / Region	Area (Million hectares)				Yield (Metric tons per hectare)				Production (Million metric tons)				Change in Production			
	2018/19	Prel.	2020/21 Proj.		2018/19	Prel.	2020/21 Proj.		2018/19	Prel.	2020/21 Proj.		From last month		From last year	
		2019/20	Oct	Nov		2019/20	Oct	Nov		2019/20	Oct	Nov	MMT	Percent	MMT	Percent
<b>World</b>	331.10	333.77	338.00	338.66	4.22	4.23	4.32	4.27	1,397.58	1,411.31	1,458.84	1,447.75	-11.09	-0.76	36.44	2.58
<b>United States</b>	36.20	36.17	36.82	36.82	10.44	9.94	10.54	10.39	377.91	359.43	388.20	382.75	-5.45	-1.40	23.32	6.49
<b>Total Foreign</b>	294.90	297.60	301.17	301.83	3.46	3.53	3.55	3.53	1,019.68	1,051.87	1,070.64	1,065.00	-5.64	-0.53	13.13	1.25
<b>China</b>	44.29	43.72	44.42	44.42	5.96	6.14	6.02	6.02	263.96	268.20	267.38	267.38	0.00	0.00	-0.83	-0.31
<b>European Union</b>	29.23	30.16	30.64	30.79	5.07	5.37	5.29	5.28	148.25	161.82	161.93	162.60	0.67	0.41	0.78	0.48
<b>South America</b>																
Brazil	18.72	19.77	20.78	20.78	5.57	5.34	5.46	5.46	104.33	105.57	113.41	113.41	0.00	0.00	7.83	7.42
Argentina	8.22	8.43	7.97	8.04	7.20	6.90	7.11	7.10	59.22	58.13	56.66	57.03	0.37	0.65	-1.09	-1.88
<b>Former Soviet Union - 12</b>																
Russia	14.03	14.51	14.35	14.35	2.50	2.79	2.92	2.85	35.00	40.50	41.93	40.93	-1.00	-2.39	0.43	1.06
Ukraine	7.58	8.22	8.51	8.52	5.87	5.67	5.37	4.43	44.50	46.55	45.70	37.71	-7.99	-17.47	-8.84	-18.98
Kazakhstan	2.97	3.45	3.16	3.16	1.76	1.47	1.61	1.61	5.23	5.06	5.10	5.10	0.00	0.00	0.04	0.71
Belarus	1.01	0.90	1.03	1.03	2.91	3.78	3.42	3.42	2.93	3.40	3.52	3.52	0.00	0.00	0.12	3.53
<b>Africa</b>																
Nigeria	14.30	14.40	14.40	14.40	1.39	1.37	1.42	1.42	19.84	19.67	20.40	20.40	0.00	0.00	0.74	3.74
South Africa	2.81	3.13	2.93	3.23	4.43	5.27	5.00	5.16	12.42	16.50	14.66	16.66	2.00	13.64	0.16	0.98
Tanzania	5.22	5.35	5.35	5.35	1.36	1.29	1.38	1.38	7.12	6.90	7.40	7.40	0.00	0.00	0.50	7.25
Burkina	4.32	3.90	3.90	3.90	1.12	1.19	1.26	1.26	4.82	4.66	4.90	4.90	0.00	0.00	0.25	5.26
Ethiopia	5.64	5.60	5.60	5.60	2.92	3.05	3.08	3.08	16.47	17.10	17.25	17.25	0.00	0.00	0.15	0.88
Egypt	1.07	1.02	1.02	1.02	7.14	7.09	7.09	7.09	7.66	7.26	7.26	7.26	0.00	0.00	0.00	0.00
Mali	4.63	4.70	4.70	4.70	1.50	1.48	1.45	1.45	6.94	6.94	6.80	6.80	0.00	0.00	-0.14	-1.95
<b>India</b>	22.23	23.99	23.20	23.20	1.94	1.98	1.96	1.96	43.21	47.42	45.59	45.59	0.00	0.00	-1.84	-3.87
<b>Southeast Asia</b>																
Indonesia	3.70	3.80	3.70	3.70	3.24	3.16	3.24	3.24	12.00	12.00	12.00	12.00	0.00	0.00	0.00	0.00
Philippines	2.48	2.51	2.60	2.60	3.07	3.20	3.15	3.15	7.61	8.03	8.20	8.20	0.00	0.00	0.17	2.12
Vietnam	1.03	0.99	0.97	0.97	4.72	4.80	4.68	4.68	4.87	4.76	4.54	4.54	0.00	0.00	-0.22	-4.56
Thailand	1.32	1.24	1.28	1.28	4.27	3.66	4.35	4.35	5.65	4.55	5.55	5.55	0.00	0.00	1.00	21.98
<b>Mexico</b>	8.95	8.35	9.05	9.05	3.73	3.82	3.71	3.71	33.40	31.91	33.59	33.59	0.00	0.00	1.68	5.27
<b>Canada</b>	5.00	5.54	5.64	5.64	5.24	5.16	5.25	5.25	26.20	28.61	29.60	29.60	0.00	0.00	0.98	3.44
<b>Australia</b>	6.06	5.01	6.09	6.09	1.90	2.08	2.34	2.34	11.51	10.44	14.26	14.26	0.00	0.00	3.82	36.60
<b>Middle East</b>																
Turkey	4.34	4.53	4.61	4.63	3.05	3.19	3.43	3.38	13.25	14.45	15.81	15.66	-0.15	-0.95	1.21	8.37
Iran	1.73	1.91	1.91	1.91	2.32	2.63	2.71	2.71	4.02	5.02	5.17	5.17	0.00	0.00	0.15	2.99
<b>Others</b>	74.00	72.48	73.38	73.49	1.61	1.61	1.66	1.67	119.28	116.45	122.07	122.52	0.46	0.37	6.07	5.21

World and Selected Countries and Regions; Coarse Grain includes: Barley, Corn, Millet, Mixed Grains, Oats, Rye and Sorghum

**Table 04 Corn Area, Yield, and Production**

Country / Region	Area (Million hectares)				Yield (Metric tons per hectare)				Production (Million metric tons)				Change in Production			
	2018/19	Prel.	2020/21 Proj.		2018/19	Prel.	2020/21 Proj.		2018/19	Prel.	2020/21 Proj.		From last month		From last year	
		2019/20	Oct	Nov		2019/20	Oct	Nov		2019/20	Oct	Nov	MMT	Percent	MMT	Percent
<b>World</b>	192.08	193.25	196.73	197.00	5.85	5.78	5.89	5.81	1,123.35	1,116.19	1,158.82	1,144.63	-14.18	-1.22	28.45	2.55
<b>United States</b>	32.89	32.92	33.40	33.40	11.07	10.51	11.20	11.03	364.26	345.96	373.95	368.49	-5.46	-1.46	22.53	6.51
<b>Total Foreign</b>	159.19	160.33	163.33	163.61	4.77	4.80	4.81	4.74	759.09	770.22	784.87	776.14	-8.73	-1.11	5.92	0.77
<b>China</b>	42.13	41.28	42.00	42.00	6.10	6.32	6.19	6.19	257.17	260.78	260.00	260.00	0.00	0.00	-0.78	-0.30
<b>South America</b>																
Brazil	17.50	18.50	19.50	19.50	5.77	5.51	5.64	5.64	101.00	102.00	110.00	110.00	0.00	0.00	8.00	7.84
Argentina	6.10	6.30	6.20	6.20	8.36	8.10	8.06	8.06	51.00	51.00	50.00	50.00	0.00	0.00	-1.00	-1.96
Bolivia	0.47	0.48	0.50	0.50	2.11	2.39	2.40	2.40	0.99	1.15	1.20	1.20	0.00	0.00	0.06	4.80
<b>European Union</b>	8.28	8.89	8.99	8.88	7.77	7.50	7.35	7.23	64.36	66.70	66.10	64.20	-1.90	-2.87	-2.50	-3.74
<b>Africa</b>																
South Africa	2.60	2.91	2.70	3.00	4.55	5.50	5.19	5.33	11.82	16.00	14.00	16.00	2.00	14.29	0.00	0.00
Nigeria	6.50	6.50	6.50	6.50	1.69	1.69	1.77	1.77	11.00	11.00	11.50	11.50	0.00	0.00	0.50	4.55
Ethiopia	2.30	2.30	2.30	2.30	3.63	3.70	3.74	3.74	8.35	8.50	8.60	8.60	0.00	0.00	0.10	1.18
Egypt	0.85	0.80	0.80	0.80	8.00	8.00	8.00	8.00	6.80	6.40	6.40	6.40	0.00	0.00	0.00	0.00
Tanzania	4.10	4.20	4.20	4.20	1.46	1.39	1.50	1.50	5.99	5.82	6.30	6.30	0.00	0.00	0.48	8.25
Malawi	1.69	1.70	1.70	1.70	1.60	1.78	2.22	2.22	2.70	3.03	3.78	3.78	0.00	0.00	0.75	24.75
Zambia	1.09	0.84	1.29	1.29	2.21	2.38	2.62	2.62	2.40	2.00	3.39	3.39	0.00	0.00	1.38	69.01
Kenya	2.14	2.00	2.00	2.00	1.87	1.90	2.00	2.00	4.01	3.80	4.00	4.00	0.00	0.00	0.20	5.26
Uganda	1.13	1.15	1.15	1.15	2.30	2.24	2.43	2.43	2.60	2.58	2.80	2.80	0.00	0.00	0.23	8.74
Zimbabwe	1.72	1.62	1.58	1.58	0.99	0.48	0.57	0.57	1.70	0.78	0.91	0.91	0.00	0.00	0.13	16.86
<b>Former Soviet Union - 12</b>																
Ukraine	4.57	4.99	5.40	5.40	7.84	7.19	6.76	5.28	35.81	35.89	36.50	28.50	-8.00	-21.92	-7.39	-20.58
Russia	2.37	2.50	2.75	2.75	4.81	5.70	5.45	5.09	11.42	14.28	15.00	14.00	-1.00	-6.67	-0.28	-1.93
<b>South Asia</b>																
India	9.03	9.72	9.20	9.20	3.07	2.95	3.04	3.04	27.72	28.64	28.00	28.00	0.00	0.00	-0.64	-2.22
Pakistan	1.32	1.33	1.39	1.39	4.62	5.19	5.05	5.05	6.10	6.90	7.00	7.00	0.00	0.00	0.10	1.45
Nepal	0.96	0.96	0.97	0.97	2.84	2.76	2.82	2.82	2.71	2.65	2.72	2.72	0.00	0.00	0.07	2.64
<b>Southeast Asia</b>																
Indonesia	3.70	3.80	3.70	3.70	3.24	3.16	3.24	3.24	12.00	12.00	12.00	12.00	0.00	0.00	0.00	0.00
Philippines	2.48	2.51	2.60	2.60	3.07	3.20	3.15	3.15	7.61	8.03	8.20	8.20	0.00	0.00	0.17	2.12
Vietnam	1.03	0.99	0.97	0.97	4.72	4.80	4.68	4.68	4.87	4.76	4.54	4.54	0.00	0.00	-0.22	-4.56
Thailand	1.30	1.22	1.25	1.25	4.32	3.70	4.40	4.40	5.60	4.50	5.50	5.50	0.00	0.00	1.00	22.22
<b>Mexico</b>	7.20	6.62	7.30	7.30	3.83	4.00	3.84	3.84	27.60	26.50	28.00	28.00	0.00	0.00	1.50	5.66
<b>Canada</b>	1.43	1.45	1.40	1.40	9.70	9.24	10.00	10.00	13.89	13.40	14.00	14.00	0.00	0.00	0.60	4.45
<b>Turkey</b>	0.53	0.52	0.60	0.62	10.75	11.54	11.42	11.29	5.70	6.00	6.85	7.00	0.15	2.19	1.00	16.67
<b>Others</b>	24.68	24.25	24.40	24.47	2.68	2.69	2.77	2.76	66.18	65.16	67.58	67.61	0.03	0.04	2.45	3.76

World and Selected Countries and Regions



**Table 05 Barley Area, Yield, and Production**

Country / Region	Area (Million hectares)				Yield (Metric tons per hectare)				Production (Million metric tons)				Change in Production			
	2018/19	Prel.	2020/21 Proj.		2018/19	Prel.	2020/21 Proj.		2018/19	Prel.	2020/21 Proj.		From last month		From last year	
		2019/20	Oct	Nov		2019/20	Oct	Nov		2019/20	Oct	Nov	MMT	Percent	MMT	Percent
<b>World</b>	48.84	51.83	51.31	51.39	2.85	3.03	3.05	3.04	139.42	156.89	156.75	156.38	-0.37	-0.24	-0.51	-0.33
<b>United States</b>	0.80	0.90	0.86	0.86	4.17	4.18	4.17	4.17	3.34	3.76	3.60	3.60	0.00	0.00	-0.16	-4.15
<b>Total Foreign</b>	48.04	50.93	50.45	50.53	2.83	3.01	3.04	3.02	136.08	153.14	153.15	152.78	-0.37	-0.24	-0.36	-0.23
<b>European Union</b>	12.32	12.36	12.73	12.77	4.55	5.12	5.00	4.97	55.98	63.24	63.70	63.50	-0.20	-0.31	0.26	0.41
<b>Former Soviet Union - 12</b>																
Russia	7.78	8.40	8.00	8.00	2.15	2.37	2.58	2.58	16.74	19.94	20.60	20.60	0.00	0.00	0.66	3.32
Ukraine	2.57	2.78	2.60	2.60	2.96	3.42	3.08	3.08	7.60	9.53	8.00	8.00	0.00	0.00	-1.53	-16.04
Kazakhstan	2.52	2.98	2.70	2.70	1.58	1.29	1.41	1.41	3.97	3.83	3.80	3.80	0.00	0.00	-0.03	-0.78
Belarus	0.43	0.40	0.38	0.38	2.20	3.50	2.76	2.76	0.94	1.40	1.05	1.05	0.00	0.00	-0.35	-25.00
Azerbaijan	0.34	0.34	0.31	0.35	2.80	2.97	2.74	2.81	0.94	1.02	0.85	0.97	0.12	14.12	-0.05	-4.53
<b>Canada</b>	2.40	2.73	2.75	2.75	3.50	3.81	3.78	3.78	8.38	10.38	10.40	10.40	0.00	0.00	0.02	0.16
<b>Australia</b>	4.44	4.05	4.40	4.40	1.99	2.22	2.39	2.39	8.82	9.00	10.50	10.50	0.00	0.00	1.50	16.67
<b>Middle East</b>																
Turkey	3.60	3.80	3.80	3.80	1.94	2.08	2.21	2.13	7.00	7.90	8.40	8.10	-0.30	-3.57	0.20	2.53
Iran	1.55	1.70	1.70	1.70	1.81	2.12	2.21	2.21	2.80	3.60	3.75	3.75	0.00	0.00	0.15	4.17
Iraq	0.60	1.20	1.20	1.20	1.30	1.33	1.29	1.29	0.78	1.60	1.55	1.55	0.00	0.00	-0.05	-3.13
Syria	0.80	1.50	1.50	1.50	0.50	1.33	1.27	1.27	0.40	2.00	1.90	1.90	0.00	0.00	-0.10	-5.00
<b>Africa</b>																
Ethiopia	1.00	1.00	1.00	1.00	2.20	2.30	2.35	2.35	2.20	2.30	2.35	2.35	0.00	0.00	0.05	2.17
Morocco	1.60	1.45	1.47	1.47	1.82	0.80	0.44	0.44	2.91	1.16	0.64	0.64	0.00	0.00	-0.52	-44.88
Algeria	1.03	1.03	1.03	1.03	1.90	1.95	1.80	1.80	1.95	2.00	1.85	1.85	0.00	0.00	-0.16	-7.75
Tunisia	0.31	0.47	0.42	0.42	0.99	1.94	1.60	1.60	0.31	0.91	0.66	0.66	0.00	0.00	-0.25	-27.19
South Africa	0.12	0.13	0.14	0.14	3.55	2.61	3.57	3.57	0.42	0.35	0.50	0.50	0.00	0.00	0.16	44.93
<b>South America</b>																
Argentina	1.20	1.12	0.85	0.85	4.22	3.39	4.06	4.06	5.06	3.80	3.45	3.45	0.00	0.00	-0.35	-9.21
Uruguay	0.17	0.17	0.17	0.17	3.82	3.68	3.70	3.70	0.64	0.61	0.61	0.61	0.00	0.00	0.00	0.49
Brazil	0.11	0.12	0.12	0.12	3.16	3.61	3.21	3.21	0.35	0.43	0.39	0.39	0.00	0.00	-0.04	-10.26
<b>India</b>	0.66	0.58	0.60	0.60	2.69	2.84	2.80	2.80	1.78	1.63	1.69	1.69	0.00	0.00	0.05	3.31
<b>China</b>	0.26	0.26	0.26	0.26	3.64	3.46	3.46	3.46	0.96	0.90	0.90	0.90	0.00	0.00	0.00	0.00
<b>Mexico</b>	0.35	0.36	0.36	0.36	2.82	2.81	2.80	2.80	1.00	1.01	1.00	1.00	0.00	0.00	-0.01	-0.99
<b>Afghanistan</b>	0.08	0.18	0.17	0.17	0.68	1.39	1.41	1.41	0.06	0.25	0.24	0.24	0.00	0.00	-0.01	-4.00
<b>Others</b>	1.81	1.83	1.81	1.81	2.26	2.38	2.42	2.42	4.09	4.35	4.38	4.39	0.01	0.23	0.04	0.85

World and Selected Countries and Regions

**Table 06 Oats Area, Yield, and Production**

Country / Region	Area (Million hectares)				Yield (Metric tons per hectare)				Production (Million metric tons)				Change in Production			
	2018/19	Prel.	2020/21 Proj.		2018/19	Prel.	2020/21 Proj.		2018/19	Prel.	2020/21 Proj.		From last month		From last year	
		2019/20	Oct	Nov		2019/20	Oct	Nov		2019/20	Oct	Nov	MMT	Percent	MMT	Percent
<b>World</b>	9.99	9.58	9.83	9.94	2.23	2.41	2.46	2.54	22.25	23.09	24.15	25.25	1.10	4.55	2.16	9.36
<b>United States</b>	0.35	0.34	0.41	0.41	2.33	2.31	2.34	2.34	0.82	0.77	0.95	0.95	0.00	0.00	0.18	22.77
<b>Total Foreign</b>	9.64	9.25	9.42	9.54	2.22	2.41	2.46	2.55	21.43	22.32	23.21	24.31	1.10	4.74	1.99	8.90
<b>European Union</b>	2.72	2.57	2.63	2.74	2.86	3.15	3.10	3.38	7.79	8.08	8.15	9.25	1.10	13.50	1.17	14.45
<b>Former Soviet Union - 12</b>																
Russia	2.73	2.43	2.25	2.25	1.73	1.82	1.78	1.78	4.72	4.42	4.00	4.00	0.00	0.00	-0.42	-9.50
Ukraine	0.20	0.18	0.20	0.20	2.14	2.32	2.31	2.31	0.42	0.43	0.45	0.45	0.00	0.00	0.02	5.39
Belarus	0.15	0.15	0.15	0.15	2.26	3.00	2.47	2.47	0.34	0.45	0.37	0.37	0.00	0.00	-0.08	-17.78
Kazakhstan	0.24	0.24	0.23	0.23	1.43	1.10	1.33	1.33	0.34	0.27	0.30	0.30	0.00	0.00	0.03	12.36
<b>Canada</b>	1.01	1.17	1.25	1.25	3.42	3.62	3.60	3.60	3.44	4.23	4.50	4.50	0.00	0.00	0.27	6.46
<b>South America</b>																
Argentina	0.24	0.32	0.29	0.29	2.40	1.86	2.25	2.25	0.57	0.60	0.64	0.64	0.00	0.00	0.04	6.67
Brazil	0.38	0.40	0.40	0.40	2.11	2.21	2.28	2.28	0.80	0.88	0.91	0.91	0.00	0.00	0.03	3.53
Chile	0.08	0.10	0.11	0.11	5.13	4.92	5.60	5.60	0.39	0.48	0.64	0.64	0.00	0.00	0.16	33.75
Uruguay	0.03	0.01	0.02	0.02	2.04	1.86	2.00	2.00	0.05	0.03	0.04	0.04	0.00	0.00	0.01	53.85
<b>Oceania</b>																
Australia	0.94	0.70	0.95	0.95	1.21	1.23	1.68	1.68	1.14	0.86	1.60	1.60	0.00	0.00	0.74	86.05
New Zealand	0.01	0.01	0.01	0.01	5.00	5.50	5.50	5.50	0.03	0.03	0.03	0.03	0.00	0.00	0.00	0.00
<b>China</b>	0.50	0.53	0.53	0.53	1.15	1.19	1.19	1.19	0.58	0.63	0.63	0.63	0.00	0.00	0.00	0.00
<b>Africa</b>																
Algeria	0.09	0.09	0.09	0.09	1.29	1.29	1.29	1.29	0.11	0.11	0.11	0.11	0.00	0.00	0.00	0.00
Morocco	0.05	0.05	0.04	0.04	1.40	0.89	0.88	0.88	0.06	0.04	0.04	0.04	0.00	0.00	-0.01	-12.50
South Africa	0.02	0.02	0.02	0.02	1.65	0.76	1.50	1.50	0.03	0.02	0.03	0.03	0.00	0.00	0.01	87.50
<b>Other Europe</b>																
Norway	0.07	0.07	0.07	0.07	2.09	4.29	4.29	4.29	0.14	0.30	0.30	0.30	0.00	0.00	0.00	0.00
Serbia	0.03	0.03	0.03	0.03	2.17	2.17	2.17	2.17	0.07	0.07	0.07	0.07	0.00	0.00	0.00	0.00
Albania	0.02	0.02	0.01	0.01	2.06	2.06	2.14	2.14	0.04	0.03	0.03	0.03	0.00	0.00	0.00	-9.09
Bosnia and Herzegovina	0.01	0.01	0.01	0.01	2.79	1.93	2.56	2.56	0.04	0.03	0.02	0.02	0.00	0.00	0.00	-14.81
<b>Turkey</b>	0.10	0.10	0.10	0.10	2.30	2.30	2.40	2.40	0.23	0.23	0.24	0.24	0.00	0.00	0.01	4.35
<b>Mexico</b>	0.05	0.05	0.05	0.05	2.06	1.98	2.00	2.00	0.10	0.10	0.09	0.09	0.00	0.00	-0.01	-9.09
<b>Others</b>	0.02	0.01	0.01	0.01	2.00	1.86	1.86	1.86	0.03	0.03	0.03	0.03	0.00	0.00	0.00	0.00

World and Selected Countries and Regions

**Table 07 Rye Area, Yield, and Production**

Country / Region	Area (Million hectares)				Yield (Metric tons per hectare)				Production (Million metric tons)				Change in Production			
	Prel.		2020/21 Proj.		Prel.		2020/21 Proj.		Prel.		2020/21 Proj.		From last month		From last year	
	2018/19	2019/20	Oct	Nov	2018/19	2019/20	Oct	Nov	2018/19	2019/20	Oct	Nov	MMT	Percent	MMT	Percent
<b>World</b>	3.74	3.91	4.17	4.20	2.68	3.10	3.15	3.25	10.00	12.11	13.13	13.64	0.52	3.94	1.54	12.71
<b>United States</b>	0.11	0.13	0.13	0.13	1.95	2.16	2.19	2.19	0.21	0.27	0.29	0.29	0.00	0.00	0.02	8.52
<b>Total Foreign</b>	3.63	3.79	4.04	4.07	2.70	3.13	3.18	3.28	9.79	11.84	12.83	13.35	0.52	4.03	1.52	12.80
<b>European Union</b>	1.92	2.21	2.20	2.25	3.23	3.80	3.93	4.10	6.21	8.39	8.65	9.20	0.55	6.32	0.81	9.69
<b>Former Soviet Union - 12</b>																
Russia	0.96	0.82	0.95	0.95	2.00	1.73	1.89	1.89	1.91	1.42	1.80	1.80	0.00	0.00	0.38	26.40
Belarus	0.25	0.20	0.30	0.30	2.00	3.25	3.00	3.00	0.50	0.65	0.90	0.90	0.00	0.00	0.25	38.46
Ukraine	0.15	0.12	0.14	0.14	2.66	2.90	2.96	2.96	0.40	0.34	0.40	0.40	0.00	0.00	0.06	17.99
Kazakhstan	0.02	0.02	0.02	0.02	1.05	1.00	1.00	1.00	0.02	0.02	0.02	0.02	0.00	0.00	0.00	-13.04
<b>Turkey</b>	0.11	0.11	0.11	0.11	2.91	2.91	2.91	2.91	0.32	0.32	0.32	0.32	0.00	0.00	0.00	0.00
<b>Canada</b>	0.08	0.10	0.15	0.15	2.99	3.23	2.97	2.97	0.24	0.33	0.43	0.43	0.00	0.00	0.10	29.13
<b>South America</b>																
Chile	0.00	0.00	0.00	0.00	5.00	5.00	5.00	5.00	0.01	0.01	0.01	0.01	0.00	0.00	0.00	0.00
Argentina	0.05	0.11	0.09	0.07	1.78	2.04	2.00	2.00	0.09	0.22	0.17	0.14	-0.03	-17.65	-0.08	-36.36
<b>Other Europe</b>																
Bosnia and Herzegovina	0.00	0.00	0.00	0.00	2.75	2.50	3.33	3.33	0.01	0.01	0.01	0.01	0.00	0.00	0.00	0.00
Switzerland	0.00	0.00	0.00	0.00	5.50	5.50	5.50	5.50	0.01	0.01	0.01	0.01	0.00	0.00	0.00	0.00
Serbia	0.00	0.00	0.00	0.00	2.50	2.50	2.50	2.50	0.01	0.01	0.01	0.01	0.00	0.00	0.00	0.00
<b>Australia</b>	0.04	0.04	0.04	0.04	0.68	0.68	0.68	0.68	0.03	0.03	0.03	0.03	0.00	0.00	0.00	0.00
<b>Others</b>	0.03	0.04	0.04	0.04	0.97	1.92	1.90	1.90	0.03	0.07	0.07	0.07	0.00	0.00	0.00	1.37

World and Selected Countries and Regions

**Table 08 Sorghum Area, Yield, and Production**

Country / Region	Area (Million hectares)				Yield (Metric tons per hectare)				Production (Million metric tons)				Change in Production			
	Prel.		2020/21 Proj.		Prel.		2020/21 Proj.		Prel.		2020/21 Proj.		From last month		From last year	
	2018/19	2019/20	Oct	Nov	2018/19	2019/20	Oct	Nov	2018/19	2019/20	Oct	Nov	MMT	Percent	MMT	Percent
<b>World</b>	40.74	39.78	41.36	41.44	1.45	1.46	1.48	1.49	59.24	57.97	61.35	61.75	0.40	0.65	3.78	6.52
<b>United States</b>	2.05	1.89	2.02	2.02	4.53	4.58	4.65	4.66	9.27	8.67	9.41	9.42	0.01	0.05	0.75	8.59
<b>Total Foreign</b>	38.70	37.89	39.33	39.42	1.29	1.30	1.32	1.33	49.97	49.30	51.94	52.33	0.39	0.76	3.04	6.16
<b>Africa</b>																
Nigeria	5.80	5.90	5.90	5.90	1.16	1.13	1.17	1.17	6.72	6.67	6.90	6.90	0.00	0.00	0.24	3.53
Ethiopia	1.83	1.85	1.85	1.85	2.70	2.81	2.81	2.81	4.93	5.20	5.20	5.20	0.00	0.00	0.00	0.00
Sudan	7.11	6.33	7.00	7.00	0.70	0.63	0.71	0.71	4.95	4.00	5.00	5.00	0.00	0.00	1.00	25.00
Burkina	1.91	1.80	1.80	1.80	1.01	1.04	1.06	1.06	1.93	1.87	1.90	1.90	0.00	0.00	0.03	1.60
Mali	1.35	1.50	1.50	1.50	1.09	1.00	1.00	1.00	1.47	1.50	1.50	1.50	0.00	0.00	0.00	0.00
Niger	3.90	3.70	3.70	3.70	0.54	0.53	0.51	0.51	2.10	1.97	1.90	1.90	0.00	0.00	-0.07	-3.55
Cameroon	0.87	0.85	0.85	0.85	1.63	1.41	1.65	1.65	1.42	1.20	1.40	1.40	0.00	0.00	0.20	16.67
Tanzania	0.79	0.80	0.80	0.80	1.02	0.91	0.94	0.94	0.81	0.73	0.75	0.75	0.00	0.00	0.02	2.74
Egypt	0.14	0.14	0.14	0.14	5.36	5.36	5.36	5.36	0.75	0.75	0.75	0.75	0.00	0.00	0.00	0.00
Uganda	0.45	0.41	0.41	0.41	0.67	0.98	0.98	0.98	0.30	0.40	0.40	0.40	0.00	0.00	0.00	0.00
Ghana	0.28	0.25	0.25	0.25	1.12	1.38	1.12	1.12	0.32	0.35	0.28	0.28	0.00	0.00	-0.07	-18.84
Mozambique	0.25	0.30	0.30	0.30	1.18	1.08	0.97	0.97	0.30	0.33	0.29	0.29	0.00	0.00	-0.04	-10.77
South Africa	0.05	0.05	0.05	0.05	2.70	2.96	2.50	2.50	0.14	0.13	0.13	0.13	0.00	0.00	-0.01	-6.02
<b>Mexico</b>	1.35	1.32	1.35	1.35	3.48	3.26	3.33	3.33	4.70	4.30	4.50	4.50	0.00	0.00	0.20	4.65
<b>South America</b>																
Argentina	0.63	0.58	0.55	0.63	3.97	4.35	4.36	4.44	2.50	2.50	2.40	2.80	0.40	16.67	0.30	12.00
Brazil	0.73	0.75	0.75	0.75	2.97	3.03	2.80	2.80	2.18	2.25	2.10	2.10	0.00	0.00	-0.15	-6.83
<b>South Asia</b>																
India	4.09	4.71	4.80	4.80	0.85	1.00	0.92	0.92	3.48	4.73	4.40	4.40	0.00	0.00	-0.33	-7.04
Pakistan	0.24	0.24	0.25	0.25	0.59	0.58	0.58	0.58	0.14	0.14	0.15	0.15	0.00	0.00	0.01	3.57
<b>China</b>	0.62	0.75	0.73	0.73	4.70	4.80	4.86	4.86	2.91	3.60	3.55	3.55	0.00	0.00	-0.05	-1.39
<b>Australia</b>	0.55	0.15	0.60	0.60	2.11	2.00	2.83	2.83	1.16	0.30	1.70	1.70	0.00	0.00	1.40	466.67
<b>European Union</b>	0.13	0.16	0.20	0.20	5.70	5.34	5.33	5.25	0.75	0.88	1.06	1.05	-0.01	-0.57	0.18	20.00
<b>Others</b>	5.64	5.37	5.56	5.56	1.07	1.03	1.02	1.02	6.03	5.51	5.69	5.69	0.00	0.00	0.19	3.40

World and Selected Countries and Regions

**Table 09 Rice Area, Yield, and Production**  
**World and Selected Countries and Regions**

Country / Region	Area (Million hectares)				Yield (Metric tons per hectare)				Production (Million metric tons)				Change in Production			
	Prel.		2020/21 Proj.		Prel.		2020/21 Proj.		Prel.		2020/21 Proj.		From last month		From last year	
	2018/19	2019/20	Oct	Nov	2018/19	2019/20	Oct	Nov	2018/19	2019/20	Oct	Nov	MMT	Percent	MMT	Percent
<b>World</b>	162.48	160.35	162.34	162.39	4.56	4.62	4.61	4.60	497.04	496.07	501.47	501.11	-0.36	-0.07	5.04	1.02
<b>United States</b>	1.18	1.00	1.21	1.21	8.62	8.38	8.48	8.48	7.11	5.86	7.19	7.18	-0.01	-0.08	1.32	22.44
<b>Total Foreign</b>	161.30	159.35	161.13	161.18	4.54	4.59	4.58	4.58	489.93	490.21	494.29	493.93	-0.36	-0.07	3.72	0.76
<b>East Asia</b>																
China	30.19	29.69	29.80	29.80	7.03	7.06	7.05	7.05	148.49	146.73	147.00	147.00	0.00	0.00	0.27	0.18
Japan	1.55	1.54	1.54	1.54	6.79	6.78	6.82	6.82	7.66	7.61	7.62	7.62	0.00	0.00	0.01	0.12
Korea, South	0.74	0.73	0.73	0.73	6.99	6.84	7.06	7.07	3.87	3.74	3.86	3.85	-0.01	-0.18	0.11	2.83
Korea, North	0.50	0.50	0.50	0.50	4.18	4.18	4.18	4.18	1.36	1.36	1.36	1.36	0.00	0.00	0.00	0.00
<b>South Asia</b>																
India	44.16	43.78	44.50	44.50	3.96	4.06	4.05	4.05	116.48	118.43	120.00	120.00	0.00	0.00	1.57	1.33
Bangladesh	11.77	11.83	11.80	11.70	4.45	4.55	4.58	4.53	34.91	35.85	36.00	35.30	-0.70	-1.94	-0.55	-1.53
Pakistan	2.88	3.00	3.00	3.00	3.80	3.60	3.80	3.80	7.30	7.20	7.60	7.60	0.00	0.00	0.40	5.56
Nepal	1.49	1.46	1.49	1.49	3.76	3.80	3.70	3.70	3.74	3.70	3.68	3.68	0.00	0.00	-0.02	-0.60
Sri Lanka	0.98	0.95	0.98	0.98	4.72	4.85	4.52	4.52	3.13	3.13	3.04	3.04	0.00	0.00	-0.09	-2.94
<b>Southeast Asia</b>																
Indonesia	11.50	11.20	11.50	11.60	4.68	4.78	4.78	4.74	34.20	34.00	34.90	34.90	0.00	0.00	0.90	2.65
Vietnam	7.54	7.47	7.40	7.40	5.80	5.82	5.84	5.84	27.34	27.15	27.00	27.00	0.00	0.00	-0.15	-0.55
Thailand	10.83	9.89	10.30	10.30	2.85	2.70	2.74	2.74	20.34	17.66	18.60	18.60	0.00	0.00	0.95	5.35
Burma	7.08	6.90	7.00	7.00	2.91	2.88	2.88	2.88	13.20	12.70	12.90	12.90	0.00	0.00	0.20	1.57
Philippines	4.74	4.64	4.55	4.55	3.93	4.08	4.08	4.08	11.73	11.93	11.70	11.70	0.00	0.00	-0.23	-1.90
Cambodia	3.24	3.26	3.28	3.24	2.91	2.89	2.89	2.89	5.74	5.74	5.78	5.71	-0.07	-1.21	-0.03	-0.52
Laos	0.86	0.97	0.98	0.98	3.12	3.19	3.24	3.24	1.68	1.95	2.00	2.00	0.00	0.00	0.05	2.56
Malaysia	0.70	0.70	0.70	0.70	4.01	4.01	4.01	4.01	1.83	1.83	1.83	1.83	0.00	0.00	0.00	0.00
<b>South America</b>																
Brazil	1.70	1.67	1.72	1.72	6.18	6.71	6.40	6.40	7.14	7.60	7.48	7.48	0.00	0.00	-0.12	-1.60
Peru	0.44	0.41	0.42	0.42	8.12	7.71	7.62	7.62	2.46	2.20	2.22	2.22	0.00	0.00	0.01	0.64
<b>Africa</b>																
Egypt	0.46	0.76	0.70	0.70	8.78	8.20	8.28	8.28	2.80	4.30	4.00	4.00	0.00	0.00	-0.30	-6.98
Madagascar	1.50	1.50	1.50	1.50	2.69	2.80	2.67	2.67	2.58	2.69	2.56	2.56	0.00	0.00	-0.13	-4.76
Nigeria	3.35	3.50	3.50	3.50	2.15	2.29	2.29	2.29	4.54	5.04	5.04	5.04	0.00	0.00	0.00	0.00
<b>European Union</b>	0.42	0.42	0.42	0.42	6.80	6.84	6.78	6.76	1.96	1.98	1.99	1.98	-0.01	-0.50	-0.01	-0.45
<b>Iran</b>	0.58	0.58	0.58	0.58	5.25	5.25	5.27	5.27	1.99	1.99	2.00	2.00	0.00	0.00	0.01	0.35
<b>Others</b>	12.12	12.01	12.25	12.35	2.94	3.00	2.99	3.02	23.47	23.70	24.16	24.58	0.43	1.76	0.88	3.71

Yield is on a rough basis, before the milling process. Production is on a milled basis, after the milling process.

**Table 10 Total Oilseed Area, Yield, and Production**  
**World and Selected Countries and Regions**

Country / Region	Area (Million hectares)				Yield (Metric tons per hectare)				Production (Million metric tons)				Change in Production			
	Prel.		2020/21 Proj.		Prel.		2020/21 Proj.		Prel.		2020/21 Proj.		From last month		From last year	
	2018/19	2019/20	Oct	Nov	2018/19	2019/20	Oct	Nov	2018/19	2019/20	Oct	Nov	MMT	Percent	MMT	Percent
<b>World Total</b>	--	--	--	--	--	--	--	--	600.01	576.37	605.50	597.28	-8.22	-1.36	20.91	3.63
<b>Total Foreign</b>	--	--	--	--	--	--	--	--	469.30	469.39	478.85	473.30	-5.56	-1.16	3.91	0.83
<b>Oilseed, Copra</b>	--	--	--	--	--	--	--	--	5.98	5.86	5.77	5.77	0.00	0.00	-0.09	-1.59
<b>Oilseed, Palm Kernel</b>	--	--	--	--	--	--	--	--	19.48	19.32	20.48	19.91	-0.58	-2.81	0.59	3.04
<b>Major Oilseeds</b>	247.74	244.62	248.93	248.14	2.32	2.25	2.33	2.30	574.55	551.19	579.25	571.60	-7.65	-1.32	20.42	3.70
<b>United States</b>	41.33	36.87	39.00	39.00	3.16	2.90	3.25	3.18	130.72	106.98	126.65	123.98	-2.67	-2.10	17.00	15.89
<b>Foreign Oilseeds</b>	206.42	207.74	209.93	209.15	2.15	2.14	2.16	2.14	443.84	444.21	452.60	447.62	-4.98	-1.10	3.41	0.77
<b>South America</b>	63.20	64.05	66.18	65.78	3.17	3.13	3.20	3.18	200.36	200.43	211.64	209.20	-2.44	-1.15	8.76	4.37
Brazil	37.75	38.77	40.36	40.36	3.30	3.38	3.41	3.41	124.49	131.20	137.54	137.60	0.06	0.04	6.40	4.88
Argentina	19.16	19.04	19.47	19.07	3.18	2.83	2.99	2.92	60.83	53.85	58.13	55.63	-2.50	-4.30	1.78	3.31
Paraguay	3.62	3.61	3.73	3.73	2.38	2.77	2.78	2.78	8.60	10.01	10.38	10.38	0.00	0.00	0.37	3.68
Bolivia	1.51	1.51	1.54	1.54	2.07	1.93	1.97	1.97	3.13	2.92	3.03	3.03	0.00	0.00	0.11	3.73
Uruguay	1.02	0.98	0.95	0.95	2.86	2.14	2.33	2.33	2.92	2.09	2.20	2.20	0.00	0.00	0.11	5.26
<b>China</b>	24.01	25.20	25.05	25.05	2.50	2.50	2.48	2.49	59.95	63.03	62.18	62.28	0.10	0.16	-0.76	-1.20
<b>South Asia</b>	39.09	41.28	42.11	42.11	1.00	0.96	1.00	0.98	39.00	39.70	42.15	41.10	-1.05	-2.48	1.40	3.52
India	35.93	37.82	38.85	38.85	0.97	0.95	0.99	0.97	34.74	35.92	38.47	37.77	-0.70	-1.82	1.85	5.16
Pakistan	2.80	3.09	2.90	2.90	1.36	1.08	1.11	0.99	3.81	3.33	3.22	2.88	-0.35	-10.73	-0.46	-13.68
<b>European Union</b>	12.24	11.13	11.05	11.04	2.68	2.67	2.69	2.68	32.78	29.78	29.76	29.54	-0.23	-0.76	-0.24	-0.80
<b>Former Soviet Union - 12</b>	25.62	26.10	25.30	25.30	1.80	1.96	1.80	1.74	46.11	51.13	45.43	43.94	-1.49	-3.28	-7.18	-14.05
Russia	12.18	12.56	12.30	12.30	1.54	1.73	1.63	1.61	18.73	21.70	20.10	19.80	-0.30	-1.49	-1.90	-8.77
Ukraine	9.38	9.70	9.40	9.40	2.42	2.52	2.21	2.09	22.68	24.46	20.80	19.60	-1.20	-5.77	-4.86	-19.88
Uzbekistan	1.10	1.01	0.98	0.98	1.17	1.36	1.33	1.39	1.28	1.37	1.29	1.35	0.06	4.56	-0.02	-1.60
<b>Canada</b>	11.69	10.76	10.34	10.34	2.41	2.40	2.47	2.48	28.20	25.82	25.50	25.60	0.10	0.39	-0.22	-0.85
<b>Africa</b>	21.64	21.14	21.10	20.68	1.04	0.97	0.99	1.00	22.56	20.60	20.86	20.76	-0.10	-0.46	0.16	0.79
Nigeria	3.77	3.66	3.79	3.79	1.38	1.17	1.25	1.25	5.19	4.29	4.75	4.75	0.00	0.00	0.46	10.83
South Africa	1.31	1.27	1.31	1.34	1.51	1.71	1.59	1.64	1.97	2.17	2.09	2.19	0.11	5.03	0.02	1.01
Tanzania	1.42	1.60	1.45	1.45	0.89	0.85	0.87	0.87	1.26	1.36	1.26	1.26	0.00	0.00	-0.10	-7.06
<b>Southeast Asia</b>	3.32	3.13	3.21	3.21	1.39	1.38	1.39	1.39	4.60	4.31	4.47	4.47	0.00	0.00	0.16	3.71
Indonesia	0.99	0.95	0.94	0.94	1.56	1.55	1.54	1.54	1.55	1.47	1.45	1.45	0.00	0.00	-0.03	-1.70
Burma	2.01	1.87	1.97	1.97	1.20	1.18	1.21	1.21	2.41	2.21	2.38	2.38	0.00	0.00	0.17	7.79
<b>Australia</b>	2.56	1.91	2.76	2.78	1.22	1.36	1.46	1.52	3.11	2.60	4.02	4.24	0.22	5.50	1.64	63.28
<b>Turkey</b>	1.33	1.39	1.15	1.17	2.53	2.31	2.56	2.43	3.36	3.22	2.93	2.83	-0.10	-3.41	-0.39	-11.96
<b>Others</b>	1.72	1.66	1.67	1.67	2.21	2.17	2.20	2.20	3.81	3.59	3.66	3.66	0.00	-0.03	0.07	1.89

World Total and Total Foreign: (Major Oilseeds plus copra and palm kernel) Major Oilseeds: (soybeans, sunflowerseeds, peanuts(inshell), cottonseed and rapeseed)

**Table 11 Soybean Area, Yield, and Production**

Country / Region	Area (Million hectares)				Yield (Metric tons per hectare)				Production (Million metric tons)				Change in Production			
	2018/19	Prel.	2020/21 Proj.		2018/19	Prel.	2020/21 Proj.		2018/19	Prel.	2020/21 Proj.		From last month		From last year	
		2019/20	Oct	Nov		2019/20	Oct	Nov		2019/20	Oct	Nov	MMT	Percent	MMT	Percent
<b>World</b>	124.97	122.45	127.28	126.95	2.89	2.75	2.89	2.86	361.06	336.69	368.47	362.64	-5.83	-1.58	25.95	7.71
<b>United States</b>	35.45	30.33	33.30	33.30	3.40	3.19	3.49	3.41	120.52	96.67	116.15	113.50	-2.66	-2.29	16.83	17.41
<b>Total Foreign</b>	89.52	92.12	93.98	93.64	2.69	2.61	2.68	2.66	240.55	240.02	252.32	249.14	-3.18	-1.26	9.12	3.80
<b>South America</b>																
Brazil	35.90	36.90	38.60	38.60	3.33	3.41	3.45	3.45	119.70	126.00	133.00	133.00	0.00	0.00	7.00	5.56
Argentina	16.60	16.70	17.30	16.90	3.33	2.93	3.09	3.02	55.30	49.00	53.50	51.00	-2.50	-4.67	2.00	4.08
Paraguay	3.54	3.54	3.65	3.65	2.40	2.80	2.81	2.81	8.51	9.90	10.25	10.25	0.00	0.00	0.35	3.54
Bolivia	1.40	1.40	1.43	1.43	2.14	2.00	2.03	2.03	2.99	2.80	2.90	2.90	0.00	0.00	0.10	3.57
Uruguay	0.97	0.92	0.88	0.88	2.93	2.17	2.38	2.38	2.83	1.99	2.09	2.09	0.00	0.00	0.10	5.03
<b>East Asia</b>																
China	8.41	9.30	9.30	9.30	1.90	1.95	1.88	1.88	15.97	18.10	17.50	17.50	0.00	0.00	-0.60	-3.31
Korea, South	0.05	0.06	0.06	0.06	1.75	1.81	1.80	1.80	0.09	0.11	0.11	0.11	0.00	0.00	0.00	2.86
Korea, North	0.15	0.15	0.15	0.15	1.50	1.50	1.50	1.50	0.23	0.23	0.23	0.23	0.00	0.00	0.00	0.00
Japan	0.15	0.14	0.14	0.14	1.45	1.47	1.65	1.65	0.21	0.21	0.24	0.24	0.00	0.00	0.02	10.85
<b>India</b>	11.13	12.00	12.20	12.20	0.98	0.78	0.92	0.86	10.93	9.30	11.20	10.50	-0.70	-6.25	1.20	12.90
<b>Canada</b>	2.54	2.27	2.00	2.00	2.92	2.71	3.00	3.05	7.42	6.15	6.00	6.10	0.10	1.67	-0.05	-0.73
<b>Former Soviet Union - 12</b>																
Russia	2.74	2.78	2.70	2.70	1.47	1.57	1.59	1.59	4.03	4.36	4.30	4.30	0.00	0.00	-0.06	-1.35
Ukraine	1.88	1.96	1.50	1.50	2.58	2.29	2.20	2.07	4.83	4.50	3.30	3.10	-0.20	-6.06	-1.40	-31.10
<b>European Union</b>	0.92	0.92	0.93	0.93	2.91	2.85	2.97	2.97	2.67	2.62	2.75	2.75	0.00	0.00	0.14	5.16
<b>Southeast Asia</b>																
Indonesia	0.42	0.40	0.39	0.39	1.24	1.20	1.22	1.22	0.52	0.48	0.48	0.48	0.00	0.00	-0.01	-1.04
Vietnam	0.05	0.05	0.05	0.05	1.62	1.53	1.53	1.53	0.08	0.07	0.07	0.07	0.00	0.00	0.00	0.00
Thailand	0.04	0.03	0.03	0.03	1.57	1.53	1.63	1.63	0.06	0.05	0.05	0.05	0.00	0.00	0.00	0.00
Burma	0.14	0.14	0.14	0.14	1.04	1.04	1.04	1.04	0.15	0.15	0.14	0.14	0.00	0.00	-0.01	-3.45
<b>Serbia</b>	0.22	0.22	0.22	0.22	2.84	2.73	2.89	2.89	0.63	0.60	0.64	0.64	0.00	0.00	0.04	5.83
<b>Mexico</b>	0.19	0.15	0.20	0.20	1.75	1.57	1.74	1.74	0.34	0.24	0.35	0.35	0.00	0.00	0.11	48.09
<b>Africa</b>																
South Africa	0.73	0.71	0.72	0.79	1.60	1.79	1.81	1.82	1.17	1.26	1.30	1.43	0.13	9.62	0.17	13.10
Nigeria	0.70	0.71	0.72	0.72	0.96	0.99	0.97	0.97	0.67	0.70	0.70	0.70	0.00	0.00	0.00	0.00
Zambia	0.19	0.20	0.19	0.19	1.58	1.43	1.50	1.50	0.30	0.28	0.29	0.29	0.00	0.00	0.00	1.42
Uganda	0.05	0.05	0.05	0.05	0.60	0.60	0.60	0.60	0.03	0.03	0.03	0.03	0.00	0.00	0.00	0.00
<b>Middle East</b>																
Iran	0.07	0.07	0.07	0.07	2.29	2.43	2.41	2.41	0.16	0.17	0.17	0.17	0.00	0.00	0.00	-0.59
Turkey	0.03	0.03	0.03	0.03	3.80	3.89	3.79	3.79	0.10	0.11	0.11	0.11	0.00	0.00	0.01	4.76
<b>Others</b>	0.33	0.34	0.34	0.34	2.01	1.89	1.89	1.89	0.66	0.64	0.64	0.64	0.00	0.00	0.00	0.00

World and Selected Countries and Regions

**Table 12 Cottonseed Area, Yield, and Production**

Country / Region	Area (Million hectares)				Yield (Metric tons per hectare)				Production (Million metric tons)				Change in Production			
	Prel.		2020/21 Proj.		Prel.		2020/21 Proj.		Prel.		2020/21 Proj.		From last month		From last year	
	2018/19	2019/20	Oct	Nov	2018/19	2019/20	Oct	Nov	2018/19	2019/20	Oct	Nov	MMT	Percent	MMT	Percent
<b>World</b>	32.68	34.16	31.96	31.96	1.32	1.30	1.33	1.33	43.11	44.43	42.64	42.57	-0.07	-0.16	-1.85	-4.17
<b>United States</b>	4.04	4.70	3.64	3.64	1.26	1.15	1.30	1.30	5.11	5.39	4.73	4.75	0.02	0.34	-0.65	-12.02
<b>Total Foreign</b>	28.64	29.46	28.31	28.31	1.33	1.32	1.34	1.34	38.01	39.03	37.91	37.83	-0.09	-0.23	-1.20	-3.08
<b>South Asia</b>																
India	12.60	13.30	13.40	13.40	0.87	0.94	0.95	0.95	10.95	12.52	12.74	12.74	0.00	0.00	0.21	1.70
Pakistan	2.30	2.45	2.20	2.20	1.43	1.10	1.14	0.98	3.29	2.69	2.51	2.17	-0.35	-13.77	-0.52	-19.36
<b>China</b>	3.50	3.45	3.25	3.25	3.11	3.10	3.29	3.32	10.88	10.68	10.68	10.78	0.10	0.92	0.10	0.92
<b>Former Soviet Union - 12</b>																
Uzbekistan	1.10	1.01	0.98	0.98	1.17	1.36	1.33	1.39	1.28	1.37	1.29	1.35	0.06	4.56	-0.02	-1.60
Turkmenistan	0.55	0.55	0.60	0.60	0.65	0.66	0.66	0.59	0.36	0.36	0.40	0.35	-0.04	-10.89	-0.01	-2.22
Tajikistan	0.18	0.18	0.16	0.16	0.90	1.27	1.22	1.22	0.16	0.23	0.20	0.20	0.00	0.00	-0.03	-14.85
Kazakhstan	0.13	0.13	0.11	0.11	1.05	1.13	1.12	1.06	0.14	0.14	0.12	0.12	-0.01	-4.88	-0.02	-17.02
<b>South America</b>																
Brazil	1.64	1.67	1.55	1.55	2.59	2.75	2.53	2.57	4.25	4.58	3.93	3.98	0.06	1.45	-0.59	-12.92
Argentina	0.34	0.42	0.43	0.43	0.73	0.68	0.67	0.67	0.25	0.29	0.29	0.29	0.00	0.00	0.00	-0.35
<b>Middle East</b>																
Turkey	0.52	0.57	0.35	0.35	2.35	1.98	2.61	2.61	1.22	1.13	0.91	0.91	0.00	0.00	-0.21	-18.83
Syria	0.03	0.03	0.03	0.03	2.36	2.36	2.36	2.36	0.06	0.06	0.06	0.06	0.00	0.00	0.00	0.00
Iran	0.08	0.08	0.08	0.08	1.16	1.16	1.16	1.16	0.09	0.09	0.09	0.09	0.00	0.00	0.00	0.00
<b>Australia</b>	0.38	0.06	0.30	0.33	1.74	3.12	2.10	2.31	0.66	0.19	0.63	0.75	0.12	19.21	0.56	301.60
<b>European Union</b>	0.31	0.35	0.33	0.32	1.74	1.82	1.57	1.51	0.55	0.64	0.51	0.49	-0.03	-4.87	-0.15	-23.63
<b>Africa</b>																
Burkina	0.63	0.58	0.58	0.55	0.37	0.42	0.43	0.45	0.24	0.24	0.25	0.25	0.00	-0.40	0.01	2.06
Mali	0.73	0.74	0.23	0.23	0.50	0.52	0.56	0.56	0.36	0.38	0.13	0.13	0.00	0.00	-0.26	-66.75
Cameroon	0.25	0.25	0.25	0.25	1.20	1.29	1.28	1.28	0.30	0.32	0.32	0.32	0.00	0.00	0.00	-0.62
Cote d'Ivoire	0.39	0.41	0.44	0.44	0.64	0.66	0.63	0.63	0.25	0.27	0.27	0.27	0.00	0.00	0.01	2.24
Benin	0.65	0.67	0.60	0.60	0.71	0.71	0.74	0.74	0.46	0.47	0.45	0.45	0.00	0.00	-0.02	-5.11
Tanzania	0.42	0.60	0.45	0.45	0.39	0.43	0.36	0.36	0.16	0.26	0.16	0.16	0.00	0.00	-0.10	-37.07
Egypt	0.14	0.10	0.07	0.07	1.06	0.92	1.00	1.00	0.15	0.09	0.07	0.07	0.00	0.00	-0.03	-29.35
Nigeria	0.25	0.15	0.27	0.27	0.40	0.57	0.56	0.56	0.10	0.09	0.15	0.15	0.00	0.00	0.06	74.42
Uganda	0.08	0.09	0.10	0.10	1.74	1.67	1.40	1.40	0.14	0.15	0.14	0.14	0.00	0.00	-0.01	-6.04
Zimbabwe	0.20	0.20	0.21	0.21	0.38	0.36	0.36	0.36	0.08	0.07	0.08	0.08	0.00	0.00	0.00	5.56
Sudan	0.18	0.20	0.20	0.20	1.42	1.53	1.41	1.41	0.26	0.31	0.28	0.28	0.00	0.00	-0.02	-7.84
<b>Mexico</b>	0.24	0.23	0.16	0.16	2.44	2.37	2.24	2.24	0.59	0.53	0.36	0.36	0.00	0.00	-0.18	-32.83
<b>Burma</b>	0.24	0.25	0.24	0.24	1.21	1.22	1.25	1.25	0.29	0.30	0.30	0.30	0.00	0.00	0.00	0.67
<b>Others</b>	0.59	0.78	0.78	0.78	0.84	0.76	0.78	0.78	0.49	0.59	0.61	0.61	0.00	0.00	0.02	2.53

World and Selected Countries and Regions



**Table 13 Peanut Area, Yield, and Production**

Country / Region	Area (Million hectares)				Yield (Metric tons per hectare)				Production (Million metric tons)				Change in Production			
	2018/19	Prel.	2020/21 Proj.		2018/19	Prel.	2020/21 Proj.		2018/19	Prel.	2020/21 Proj.		From last month		From last year	
		2019/20	Oct	Nov		2019/20	Oct	Nov		2019/20	Oct	Nov	MMT	Percent	MMT	Percent
<b>World</b>	27.49	26.75	28.39	27.97	1.70	1.71	1.68	1.70	46.81	45.87	47.78	47.56	-0.22	-0.47	1.69	3.68
<b>United States</b>	0.56	0.56	0.66	0.66	4.48	4.41	4.62	4.59	2.49	2.48	3.04	3.01	-0.02	-0.79	0.53	21.49
<b>Total Foreign</b>	26.93	26.19	27.73	27.31	1.65	1.66	1.61	1.63	44.31	43.39	44.75	44.55	-0.20	-0.45	1.16	2.67
<b>China</b>	4.62	4.60	4.60	4.60	3.75	3.81	3.80	3.80	17.33	17.52	17.50	17.50	0.00	0.00	-0.02	-0.11
<b>Africa</b>																
Nigeria	2.82	2.80	2.80	2.80	1.57	1.25	1.39	1.39	4.42	3.50	3.90	3.90	0.00	0.00	0.40	11.43
Sudan	3.07	2.30	2.30	2.30	0.94	0.78	0.78	0.78	2.88	1.80	1.80	1.80	0.00	0.00	0.00	0.00
Senegal	1.13	1.11	1.20	1.20	1.32	1.28	1.17	1.17	1.50	1.42	1.40	1.40	0.00	0.00	-0.02	-1.41
Cameroon	0.43	0.43	0.43	0.43	1.40	1.40	1.40	1.40	0.60	0.60	0.60	0.60	0.00	0.00	0.00	0.00
Ghana	0.32	0.33	0.75	0.33	1.63	1.36	0.87	1.36	0.52	0.45	0.65	0.45	-0.20	-30.77	0.00	0.00
Chad	0.79	0.77	0.77	0.77	1.14	1.10	1.10	1.10	0.89	0.85	0.85	0.85	0.00	0.00	0.00	0.00
Malawi	0.41	0.40	0.40	0.40	0.85	0.88	0.88	0.88	0.35	0.35	0.35	0.35	0.00	0.00	0.00	0.00
Congo (Kinshasa)	0.50	0.50	0.50	0.50	0.85	0.85	0.85	0.85	0.42	0.42	0.42	0.42	0.00	0.00	0.00	0.00
Niger	0.93	0.90	0.92	0.92	0.64	0.56	0.65	0.65	0.59	0.50	0.59	0.59	0.00	0.00	0.09	18.80
Mali	0.38	0.43	0.43	0.43	1.31	1.00	1.00	1.00	0.49	0.43	0.43	0.43	0.00	0.00	0.00	0.00
Uganda	0.43	0.43	0.43	0.43	0.71	0.71	0.71	0.71	0.30	0.30	0.30	0.30	0.00	0.00	0.00	0.00
Burkina	0.39	0.56	0.56	0.56	0.84	0.80	0.80	0.80	0.33	0.45	0.45	0.45	0.00	0.00	0.00	0.00
Guinea	0.79	0.75	0.75	0.75	0.98	1.00	1.00	1.00	0.77	0.75	0.75	0.75	0.00	0.00	0.00	0.00
Egypt	0.06	0.06	0.06	0.06	3.20	3.20	3.20	3.20	0.21	0.21	0.21	0.21	0.00	0.00	0.00	0.00
Central African Republic	0.10	0.10	0.10	0.10	1.50	1.50	1.50	1.50	0.15	0.15	0.15	0.15	0.00	0.00	0.00	0.00
South Africa	0.02	0.04	0.04	0.04	1.30	1.84	1.50	1.50	0.03	0.07	0.06	0.06	0.00	0.00	-0.01	-14.29
Mozambique	0.38	0.38	0.38	0.38	0.34	0.34	0.34	0.34	0.13	0.13	0.13	0.13	0.00	0.00	0.00	0.00
Cote d'Ivoire	0.15	0.15	0.15	0.15	1.45	1.45	1.45	1.45	0.21	0.21	0.21	0.21	0.00	0.00	0.00	0.00
Benin	0.23	0.19	0.19	0.19	1.00	0.92	0.92	0.92	0.23	0.18	0.18	0.18	0.00	0.00	0.00	0.00
<b>South Asia</b>																
India	4.73	4.88	5.80	5.80	0.99	1.28	1.16	1.16	4.69	6.26	6.70	6.70	0.00	0.00	0.45	7.11
Pakistan	0.12	0.09	0.10	0.10	0.89	0.98	0.92	0.92	0.10	0.09	0.09	0.09	0.00	0.00	0.00	-1.10
<b>Southeast Asia</b>																
Indonesia	0.57	0.55	0.55	0.55	1.80	1.80	1.78	1.78	1.03	0.99	0.97	0.97	0.00	0.00	-0.02	-2.02
Burma	1.03	0.89	0.99	0.99	1.53	1.55	1.57	1.57	1.58	1.38	1.55	1.55	0.00	0.00	0.18	12.73
Vietnam	0.18	0.18	0.18	0.18	2.48	2.48	2.48	2.48	0.44	0.43	0.45	0.45	0.00	0.00	0.01	3.00
Thailand	0.02	0.02	0.02	0.02	1.67	1.67	1.67	1.67	0.04	0.04	0.04	0.04	0.00	0.00	0.00	0.00
<b>South America</b>																
Argentina	0.33	0.37	0.33	0.33	4.35	3.53	4.00	4.00	1.42	1.30	1.32	1.32	0.00	0.00	0.02	1.54
Brazil	0.15	0.16	0.16	0.16	2.96	3.47	3.38	3.38	0.44	0.55	0.54	0.54	0.00	0.00	-0.01	-0.92
<b>Mexico</b>	0.05	0.05	0.06	0.06	1.75	1.74	1.73	1.73	0.09	0.08	0.10	0.10	0.00	0.00	0.02	24.39
<b>Others</b>	1.84	1.80	1.80	1.80	1.16	1.11	1.15	1.15	2.14	2.00	2.07	2.07	0.00	0.00	0.07	3.30

**Table 14 Sunflowerseed Area, Yield, and Production**

Country / Region	Area (Million hectares)				Yield (Metric tons per hectare)				Production (Million metric tons)				Change in Production						
	2018/19	Prel.		2020/21 Proj.		2018/19	Prel.		2020/21 Proj.		2018/19	Prel.		2020/21 Proj.		From last month		From last year	
		2019/20	Oct	Nov	2019/20		Oct	Nov	2019/20	Oct		Nov	MMT	Percent	MMT	Percent			
<b>World</b>	25.80	26.36	26.61	26.58	1.96	2.09	1.93	1.87	50.58	54.98	51.49	49.66	-1.82	-3.54	-5.32	-9.68			
<b>United States</b>	0.49	0.51	0.66	0.66	1.94	1.75	1.94	1.94	0.96	0.89	1.27	1.27	0.00	0.00	0.39	43.52			
<b>Total Foreign</b>	25.31	25.85	25.95	25.92	1.96	2.09	1.93	1.87	49.63	54.10	50.21	48.39	-1.82	-3.63	-5.71	-10.55			
<b>Former Soviet Union - 12</b>																			
Russia	7.94	8.36	8.20	8.20	1.60	1.83	1.65	1.59	12.71	15.31	13.50	13.00	-0.50	-3.70	-2.31	-15.06			
Ukraine	6.50	6.40	6.80	6.80	2.31	2.58	2.21	2.06	15.00	16.50	15.00	14.00	-1.00	-6.67	-2.50	-15.15			
Kazakhstan	0.85	0.82	0.70	0.70	1.00	1.13	1.07	1.07	0.85	0.92	0.75	0.75	0.00	0.00	-0.17	-18.30			
<b>European Union</b>	4.02	4.31	4.35	4.34	2.37	2.24	2.18	2.14	9.51	9.64	9.50	9.30	-0.20	-2.11	-0.34	-3.56			
<b>South America</b>																			
Argentina	1.88	1.53	1.40	1.40	2.04	2.11	2.14	2.14	3.83	3.24	3.00	3.00	0.00	0.00	-0.24	-7.26			
Uruguay	0.06	0.06	0.07	0.07	1.61	1.67	1.69	1.69	0.09	0.10	0.11	0.11	0.00	0.00	0.01	10.00			
Bolivia	0.11	0.11	0.11	0.11	1.25	1.10	1.20	1.20	0.14	0.12	0.13	0.13	0.00	0.00	0.01	7.38			
Brazil	0.06	0.05	0.05	0.05	1.67	1.60	1.50	1.50	0.11	0.08	0.08	0.08	0.00	0.00	-0.01	-6.25			
Paraguay	0.03	0.03	0.03	0.03	1.58	1.70	1.70	1.70	0.05	0.05	0.05	0.05	0.00	0.00	0.00	0.00			
<b>China</b>	0.92	1.25	1.25	1.25	2.71	2.60	2.64	2.64	2.49	3.25	3.30	3.30	0.00	0.00	0.05	1.54			
<b>South Asia</b>																			
India	0.26	0.24	0.25	0.25	0.65	0.58	0.76	0.76	0.17	0.14	0.19	0.19	0.00	0.00	0.05	32.14			
Pakistan	0.12	0.14	0.15	0.15	1.20	1.04	1.07	1.07	0.14	0.15	0.16	0.16	0.00	0.00	0.02	10.34			
<b>Middle East</b>																			
Turkey	0.72	0.73	0.70	0.72	2.52	2.40	2.37	2.17	1.80	1.75	1.66	1.56	-0.10	-6.02	-0.19	-10.86			
Iran	0.04	0.04	0.04	0.04	1.08	1.08	1.08	1.08	0.04	0.04	0.04	0.04	0.00	0.00	0.00	0.00			
Israel	0.01	0.01	0.01	0.01	1.60	1.60	1.60	1.60	0.02	0.02	0.02	0.02	0.00	0.00	0.00	0.00			
<b>Africa</b>																			
Egypt	0.01	0.01	0.01	0.01	2.38	2.38	2.38	2.38	0.02	0.02	0.02	0.02	0.00	0.00	0.00	0.00			
Morocco	0.02	0.02	0.02	0.02	1.29	1.25	1.25	1.25	0.03	0.03	0.03	0.03	0.00	0.00	0.00	0.00			
South Africa	0.52	0.50	0.52	0.48	1.32	1.57	1.27	1.33	0.68	0.79	0.66	0.64	-0.02	-3.03	-0.15	-18.47			
<b>Burma</b>	0.60	0.60	0.60	0.60	0.65	0.65	0.65	0.65	0.39	0.39	0.39	0.39	0.00	0.00	0.00	0.00			
<b>Canada</b>	0.03	0.03	0.04	0.04	2.11	2.17	2.38	2.38	0.06	0.06	0.10	0.10	0.00	0.00	0.03	50.79			
<b>Australia</b>	0.02	0.02	0.02	0.02	1.21	1.25	1.26	1.26	0.02	0.03	0.03	0.03	0.00	0.00	0.00	16.00			
<b>Others</b>	0.60	0.59	0.64	0.64	2.49	2.52	2.35	2.36	1.50	1.49	1.51	1.51	0.00	-0.07	0.02	1.34			

World and Selected Countries and Regions

**Table 15 Rapeseed Area, Yield, and Production**

Country / Region	Area (Million hectares)				Yield (Metric tons per hectare)				Production (Million metric tons)				Change in Production						
	2018/19	Prel.		2020/21 Proj.		2018/19	Prel.		2020/21 Proj.		2018/19	Prel.		2020/21 Proj.		From last month		From last year	
		2019/20	Oct	Nov	2019/20		Oct	Nov	2019/20	Oct		Nov	MMT	Percent	MMT	Percent			
<b>World</b>	36.81	34.90	34.70	34.70	1.98	1.98	1.98	1.99	72.99	69.22	68.87	69.17	0.30	0.44	-0.05	-0.07			
<b>United States</b>	0.79	0.78	0.74	0.74	2.09	2.00	1.97	1.97	1.64	1.55	1.46	1.46	0.00	0.00	-0.10	-6.31			
<b>Total Foreign</b>	36.02	34.12	33.96	33.96	1.98	1.98	1.99	1.99	71.34	67.67	67.42	67.72	0.30	0.44	0.05	0.07			
<b>European Union</b>	7.00	5.56	5.45	5.45	2.87	3.04	3.12	3.12	20.06	16.88	17.00	17.00	0.00	0.00	0.12	0.71			
<b>Canada</b>	9.12	8.46	8.30	8.30	2.27	2.32	2.34	2.34	20.72	19.61	19.40	19.40	0.00	0.00	-0.21	-1.06			
<b>China</b>	6.55	6.60	6.65	6.65	2.03	2.04	1.98	1.98	13.28	13.49	13.20	13.20	0.00	0.00	-0.29	-2.11			
<b>South Asia</b>																			
India	7.20	7.40	7.20	7.20	1.11	1.04	1.06	1.06	8.00	7.70	7.65	7.65	0.00	0.00	-0.05	-0.65			
Pakistan	0.26	0.40	0.45	0.45	1.04	1.03	1.02	1.02	0.27	0.41	0.46	0.46	0.00	0.00	0.05	12.20			
Bangladesh	0.25	0.25	0.25	0.25	0.92	0.92	0.92	0.92	0.23	0.23	0.23	0.23	0.00	0.00	0.00	0.00			
<b>Former Soviet Union - 12</b>																			
Russia	1.50	1.42	1.40	1.40	1.33	1.44	1.64	1.79	1.99	2.04	2.30	2.50	0.20	8.70	0.46	22.55			
Ukraine	1.00	1.34	1.10	1.10	2.85	2.59	2.27	2.27	2.85	3.47	2.50	2.50	0.00	0.00	-0.97	-27.85			
Belarus	0.35	0.34	0.35	0.35	1.31	1.68	1.57	1.57	0.46	0.58	0.55	0.55	0.00	0.00	-0.03	-4.84			
Kazakhstan	0.37	0.27	0.12	0.12	1.08	0.90	1.04	1.04	0.39	0.24	0.13	0.13	0.00	0.00	-0.12	-48.13			
<b>Australia</b>	2.12	1.80	2.40	2.40	1.12	1.29	1.38	1.42	2.37	2.33	3.30	3.40	0.10	3.03	1.07	45.92			
<b>South America</b>																			
Chile	0.05	0.04	0.03	0.03	3.85	4.05	4.00	4.00	0.19	0.15	0.14	0.14	0.00	0.00	-0.02	-11.69			
Paraguay	0.03	0.03	0.04	0.04	1.20	1.87	1.88	1.88	0.04	0.06	0.08	0.08	0.00	0.00	0.02	33.93			
<b>Switzerland</b>	0.02	0.02	0.02	0.02	3.14	3.14	3.14	3.14	0.07	0.07	0.07	0.07	0.00	0.00	0.00	0.00			
<b>Ethiopia</b>	0.04	0.04	0.04	0.04	1.57	1.86	1.86	1.86	0.06	0.07	0.07	0.07	0.00	0.00	0.00	0.00			
<b>Others</b>	0.18	0.17	0.16	0.16	2.14	2.14	2.24	2.24	0.38	0.36	0.36	0.36	0.00	0.00	0.00	-0.84			

World and Selected Countries and Regions

**Table 16 Copra, Palm Kernel, and Palm Oil Production**

Country / Region	Production (Million metric tons)				Change in Production			
	2018/19	Prel.	2020/21 Proj.		From last month		From last year	
		2019/20	Oct	Nov	MMT	Percent	MMT	Percent
<b>Oilseed, Copra</b>								
Philippines	2.63	2.50	2.40	2.40	0.00	0.00	-0.10	-4.00
Indonesia	1.64	1.66	1.66	1.66	0.00	0.00	0.00	0.00
India	0.75	0.75	0.75	0.75	0.00	0.00	0.00	0.00
Vietnam	0.29	0.29	0.30	0.30	0.00	0.00	0.01	3.45
Mexico	0.22	0.22	0.22	0.22	0.00	0.00	0.00	0.00
Papua New Guinea	0.10	0.08	0.08	0.08	0.00	0.00	0.00	0.00
Thailand	0.07	0.07	0.07	0.07	0.00	0.00	0.00	0.00
Sri Lanka	0.07	0.07	0.07	0.07	0.00	0.00	0.00	0.00
Solomon Islands	0.03	0.03	0.03	0.03	0.00	0.00	0.00	0.00
Cote d'Ivoire	0.03	0.03	0.03	0.03	0.00	0.00	0.00	0.00
World	5.98	5.86	5.77	5.77	0.00	0.00	-0.09	-1.54
<b>Oilseed, Palm Kernel</b>								
Indonesia	10.90	11.25	11.46	11.46	0.00	0.00	0.21	1.87
Malaysia	5.15	4.75	5.00	5.00	0.00	0.00	0.25	5.26
Thailand	0.87	0.89	0.90	0.90	0.00	0.00	0.01	1.12
Nigeria	0.73	0.73	0.73	0.73	0.00	0.00	0.00	0.00
Colombia	0.33	0.26	0.35	0.35	0.00	0.00	0.09	34.62
Guatemala	0.20	0.17	0.17	0.17	0.00	0.00	0.00	0.00
Papua New Guinea	0.18	0.16	0.16	0.16	0.00	0.00	0.00	0.00
Brazil	0.14	0.14	0.14	0.14	0.00	0.00	0.00	0.00
Honduras	0.14	0.14	0.14	0.14	0.00	0.00	0.00	0.00
Ecuador	0.13	0.13	0.15	0.15	0.00	0.00	0.02	15.38
World	19.48	19.32	20.48	19.91	-0.57	-2.78	0.59	3.05
<b>Oil, Palm</b>								
Indonesia	41.50	42.50	43.50	43.50	0.00	0.00	1.00	2.35
Malaysia	20.80	19.26	19.90	19.90	0.00	0.00	0.64	3.32
Thailand	3.00	2.80	3.10	3.10	0.00	0.00	0.30	10.71
Colombia	1.63	1.28	1.67	1.67	0.00	0.00	0.39	30.47
Nigeria	1.02	1.02	1.02	1.02	0.00	0.00	0.00	0.00
Guatemala	0.85	0.85	0.85	0.85	0.00	0.00	0.00	0.00
Honduras	0.58	0.58	0.58	0.58	0.00	0.00	0.00	0.00
Papua New Guinea	0.71	0.56	0.56	0.56	0.00	0.00	0.00	0.00
Ecuador	0.56	0.55	0.62	0.62	0.00	0.00	0.07	12.73
Brazil	0.53	0.54	0.54	0.54	0.00	0.00	0.00	0.00
World	74.03	72.77	75.20	75.19	-0.01	-0.01	2.42	3.33

World and Selected Countries and Regions

**Table 17 Cotton Area, Yield, and Production**

Country / Region	Area (Million hectares)				Yield (Kilograms per hectare)				Production (Million 480 lb. bales)				Change in Production			
	Prel.		2020/21 Proj.		Prel.		2020/21 Proj.		Prel.		2020/21 Proj.		From last month		From last year	
	2018/19	2019/20	Oct	Nov	2018/19	2019/20	Oct	Nov	2018/19	2019/20	Oct	Nov	MBales	Percent	MBales	Percent
<b>World</b>	33.35	34.83	32.63	32.63	774	764	776	775	118.58	122.16	116.27	116.11	-0.16	-0.14	-6.05	-4.95
<b>United States</b>	4.04	4.70	3.64	3.64	989	922	1,018	1,021	18.37	19.91	17.05	17.09	0.05	0.28	-2.82	-14.17
<b>Total Foreign</b>	29.31	30.13	28.98	28.98	744	739	745	744	100.21	102.24	99.23	99.02	-0.21	-0.21	-3.22	-3.15
<b>South Asia</b>																
India	12.60	13.30	13.40	13.40	446	483	487	487	25.80	29.50	30.00	30.00	0.00	0.00	0.50	1.69
Pakistan	2.30	2.45	2.20	2.20	719	551	574	495	7.60	6.20	5.80	5.00	-0.80	-13.79	-1.20	-19.35
<b>China</b>	3.50	3.45	3.25	3.25	1,726	1,720	1,826	1,842	27.75	27.25	27.25	27.50	0.25	0.92	0.25	0.92
<b>South America</b>																
Brazil	1.64	1.67	1.55	1.55	1,726	1,802	1,686	1,686	13.00	13.78	12.00	12.00	0.00	0.00	-1.78	-12.92
Argentina	0.34	0.42	0.43	0.43	728	684	666	666	1.12	1.32	1.30	1.30	0.00	0.00	-0.02	-1.52
Paraguay	0.01	0.01	0.01	0.01	416	416	416	416	0.02	0.02	0.02	0.02	0.00	0.00	0.00	0.00
<b>Africa</b>																
Burkina	0.63	0.58	0.58	0.55	294	330	341	356	0.85	0.88	0.90	0.90	0.00	0.00	0.02	2.27
Mali	0.73	0.74	0.23	0.23	381	400	435	435	1.27	1.35	0.45	0.45	0.00	0.00	-0.90	-66.67
Cote d'Ivoire	0.39	0.41	0.44	0.44	520	528	513	513	0.94	0.99	1.03	1.03	0.00	0.00	0.04	3.54
Benin	0.65	0.67	0.60	0.60	469	467	490	490	1.40	1.43	1.35	1.35	0.00	0.00	-0.08	-5.26
Egypt	0.14	0.10	0.07	0.07	757	664	720	720	0.49	0.31	0.22	0.22	0.00	0.00	-0.09	-29.51
Cameroon	0.25	0.25	0.25	0.25	523	562	557	557	0.60	0.65	0.64	0.64	0.00	0.00	-0.01	-0.78
Tanzania	0.42	0.60	0.45	0.45	194	216	181	181	0.38	0.60	0.38	0.38	0.00	0.00	-0.22	-36.97
Nigeria	0.25	0.15	0.27	0.27	205	290	282	282	0.24	0.20	0.35	0.35	0.00	0.00	0.15	75.00
Zimbabwe	0.20	0.20	0.21	0.21	218	207	207	207	0.20	0.19	0.20	0.20	0.00	0.00	0.01	5.26
Ethiopia	0.08	0.08	0.08	0.08	687	680	637	637	0.24	0.25	0.24	0.24	0.00	0.00	-0.01	-4.00
<b>Former Soviet Union - 12</b>																
Uzbekistan	1.10	1.01	0.98	0.98	648	754	737	770	3.28	3.50	3.30	3.45	0.15	4.55	-0.05	-1.43
Turkmenistan	0.55	0.55	0.60	0.60	364	368	367	327	0.91	0.92	1.01	0.90	-0.11	-10.89	-0.02	-2.17
Tajikistan	0.18	0.18	0.16	0.16	502	708	680	680	0.42	0.59	0.50	0.50	0.00	0.00	-0.09	-14.53
Kazakhstan	0.13	0.13	0.11	0.11	587	627	623	594	0.35	0.36	0.32	0.30	-0.02	-4.76	-0.06	-16.67
<b>Middle East</b>																
Turkey	0.52	0.57	0.35	0.35	1,570	1,318	1,742	1,742	3.75	3.45	2.80	2.80	0.00	0.00	-0.65	-18.84
Syria	0.03	0.03	0.03	0.03	1,219	1,219	1,219	1,219	0.14	0.14	0.14	0.14	0.00	0.00	0.00	0.00
Iran	0.08	0.08	0.08	0.08	748	748	748	748	0.28	0.28	0.28	0.28	0.00	0.00	0.00	0.00
<b>Australia</b>	0.38	0.06	0.30	0.33	1,261	2,268	1,524	1,675	2.20	0.63	2.10	2.50	0.40	19.05	1.88	300.00
<b>Mexico</b>	0.24	0.23	0.16	0.16	1,555	1,519	1,429	1,429	1.74	1.57	1.05	1.05	0.00	0.00	-0.52	-33.12
<b>Burma</b>	0.24	0.25	0.24	0.24	637	641	662	662	0.70	0.72	0.73	0.73	0.00	0.00	0.01	0.83
<b>Others</b>	1.75	2.00	1.99	1.98	570	564	536	528	4.58	5.19	4.89	4.81	-0.08	-1.64	-0.39	-7.41

World and Selected Countries and Regions

**TABLE 18**

The table below presents a record of the November projection and the final Estimate. Using world wheat production as an example, the "root mean square error" means that chances are 2 out of 3 that the current forecast will not be above or below the final estimate by more than 1.2 percent. Chances are 9 out of 10 (90% confidence level) that the difference will not exceed 2 percent. The average difference between the November projection and the final estimate is 5.4 million tons, ranging from 0.1 million to 18.1 million tons. The November projection has been below the estimate 28 times and above 11 times.

**RELIABILITY OF PRODUCTION PROJECTIONS 1/**

COMMODITY AND REGION	Root mean square error	90 percent confidence interval	Difference between forecast and final estimate				
			Average	Smallest	Largest	Years	
						Below final	Above final
	Percent		---Million metric tons---				
<b>WHEAT</b>							
World	1.2	2.0	5.4	0.1	18.1	28	11
U.S.	0.4	0.7	0.2	0.0	1.2	19	13
Foreign	1.3	2.3	5.3	0.0	18.2	28	11
<b>COARSE GRAINS 2/</b>							
World	1.6	2.7	13.3	0.2	47.3	30	9
U.S.	1.3	2.2	2.4	0.0	7.5	19	20
Foreign	2.2	3.8	13.4	0.2	48.8	30	9
<b>RICE (Milled)</b>							
World	2.1	3.5	5.8	0.1	16.8	32	7
U.S.	2.9	4.9	0.1	0.0	0.5	19	17
Foreign	2.1	3.6	5.8	0.2	16.9	32	7
<b>SOYBEANS</b>							
World	3.9	6.7	5.9	0.0	25.1	23	16
U.S.	2.2	3.7	1.2	0.1	4.7	16	23
Foreign	6.5	11.0	5.7	0.0	26.4	20	19
<b>COTTON</b>			---Million 480-lb. bales---				
World	3.5	6.0	2.5	0.1	9.3	24	15
U.S.	3.0	5.1	0.4	0.0	1.0	19	19
Foreign	4.1	7.0	2.4	0.1	8.9	25	14
<b>UNITED STATES</b>			-----Million bushels-----				
<i>CORN</i>	1.3	2.2	88	0	250	19	19
<i>SORGHUM</i>	4.1	7.0	15	1	53	20	19
<i>BARLEY</i>	1.5	2.5	4	0	24	17	10
<i>OATS</i>	1.1	1.8	2	0	18	7	9

1/ Marketing years 1981/82 through 2019/20 for grains, soybeans (U.S. only), and cotton. Final for grains, soybeans, and cotton is defined as the first November estimate following the marketing year for 1981/82 through 2018/19, and for 2019/20 the last month's estimate.

2/ Includes corn, sorghum, barley, oats, rye, millet, and mixed grain

November 2020

Global Market Analysis, FAS, USDA