



United States
Department of
Agriculture

Foreign
Agricultural
Service

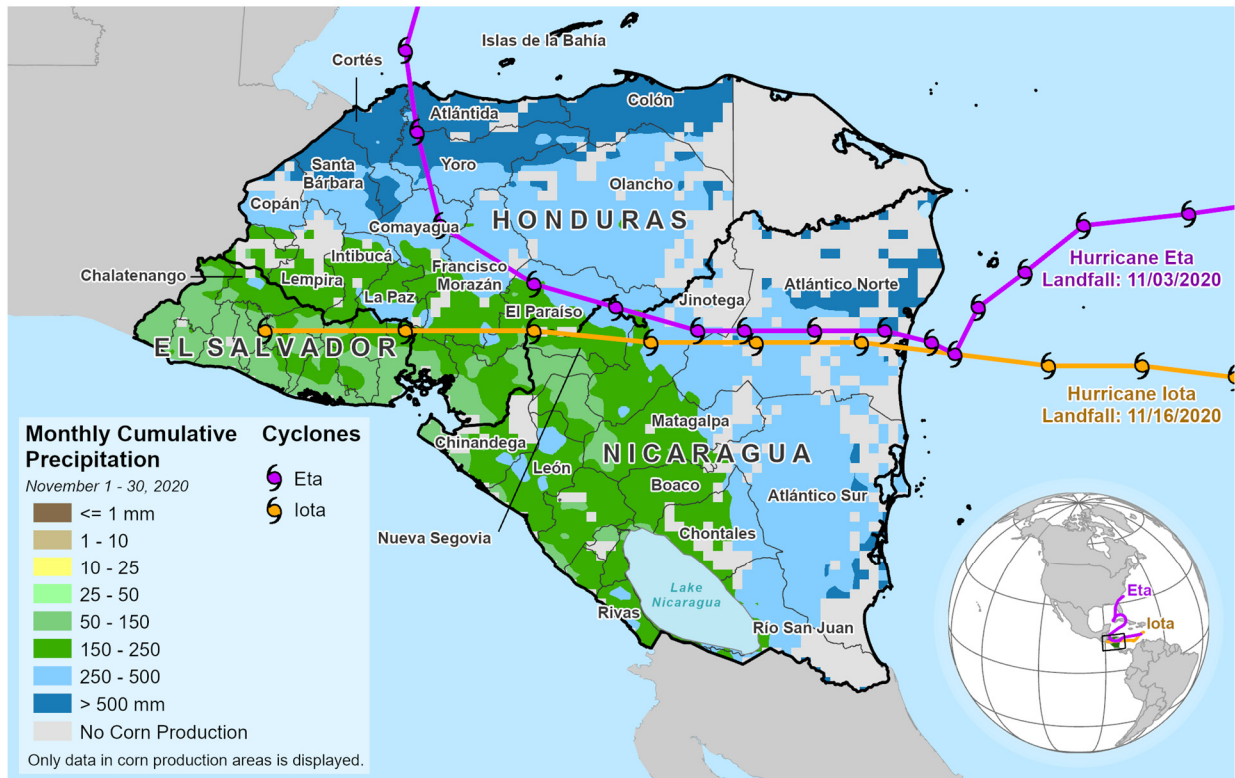
World Agricultural Production

Circular Series
WAP 12-20
December 2020

Central America Corn: Hurricanes Eta and Iota Damage Crops

At the start and middle of November 2020, both Hurricane Eta and Hurricane Iota landed in Nicaragua as Category 4 hurricanes, causing damage to crops, infrastructure, and human lives throughout Central America from flooding, strong winds, and landslides. The hurricane season in Central America ended at the end of November. Corn is planted in three seasons in Central America: the *primera* (main season), the *postrera* (second season), and in some countries the *apante* (third season). Generally, the *postrera* harvest was almost completed in November and the current wet conditions could postpone the planting of the *apante* crops in December. Preliminary assessments of crop damage from the hurricanes have started throughout the region.

Central America: Precipitation in Corn Production Areas



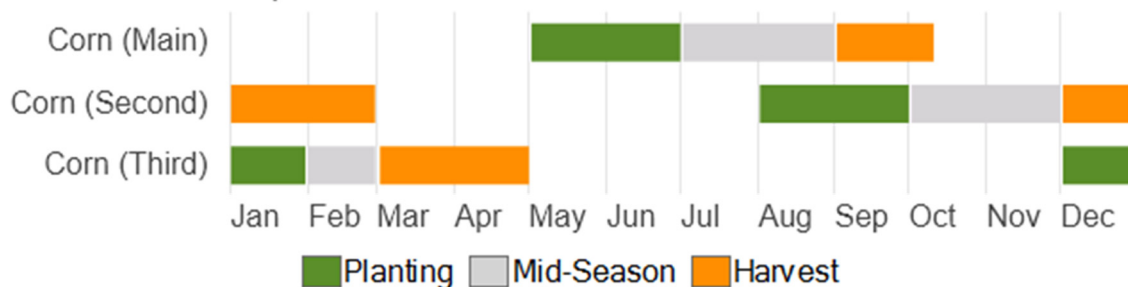
USDA Foreign Agricultural Service
U.S. DEPARTMENT OF AGRICULTURE

Sources: IFPRI, SPAM 2010; CHIRPS, Monthly Cumulative Precipitation; NOAA, NHC Tropical Cyclone Best Track

Approved by the World Agricultural Outlook Board

Honduras corn production for 2020/21 is estimated at 500,000 metric tons (mt), down about 4 percent (20,000 mt) from last month and from last year. Area is estimated at 340,000 hectares (ha), down about 3 percent (10,000 ha) from last month and last year. Yield is estimated at 1.47 metric tons per hectare (t/ha), down 1 percent from last month and last year. The second corn crop was nearing harvest in November. Government assessments reported damaged and lost corn crop in many departments, including Olancho, Yoro, Valle, El Paraíso, and Atlántida.

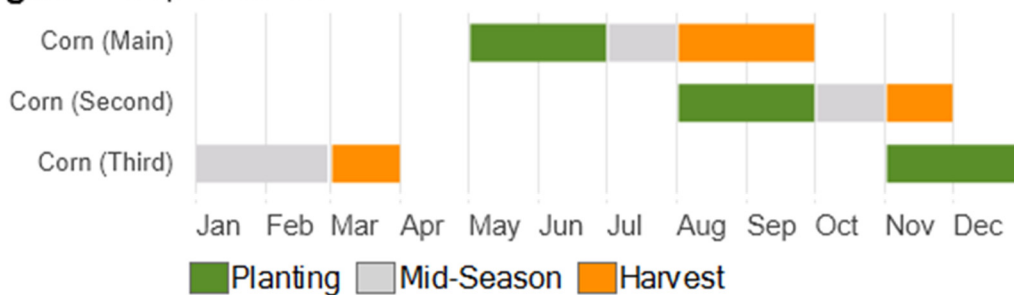
Honduras – Crop Calendar



Source: FAO/GIEWS

Nicaragua corn production for 2020/21 is estimated at 400,000 mt, down 5,000 mt (about 1 percent) from last month, and up 1 percent from last year. Area is estimated at 285,000 ha, down 1 percent (4,000 ha) from last month, but up 1 percent from last year. Yield is estimated at 1.40 t/ha, unchanged from last month. In November, harvest was ongoing for the second corn crop and planting was ongoing for the third corn crop. Major corn crop damage was reported in various areas such as Rivas, Carazo, Jinotega, and Matagalpa.

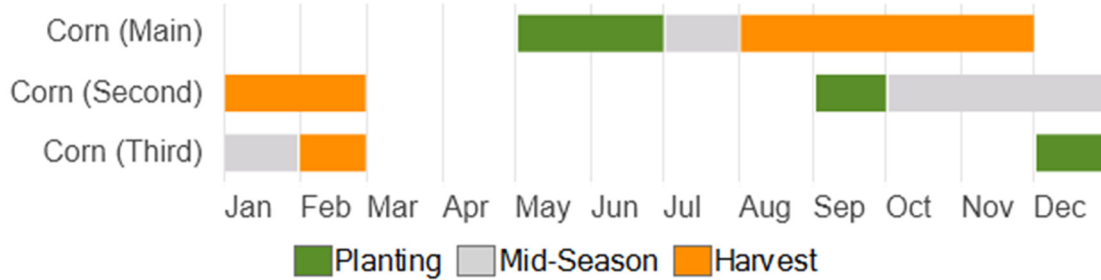
Nicaragua – Crop Calendar



Source: FAO/GIEWS

El Salvador corn production for 2020/21 is estimated at 820,000 mt, down 10,000 mt (about 1 percent) from last month, and down 1 percent from last year. Area is estimated at 295,000 ha, down 2 percent (5,000 ha) from last month and last year. Yield is estimated at 2.78 metric t/ha.

El Salvador – Crop Calendar

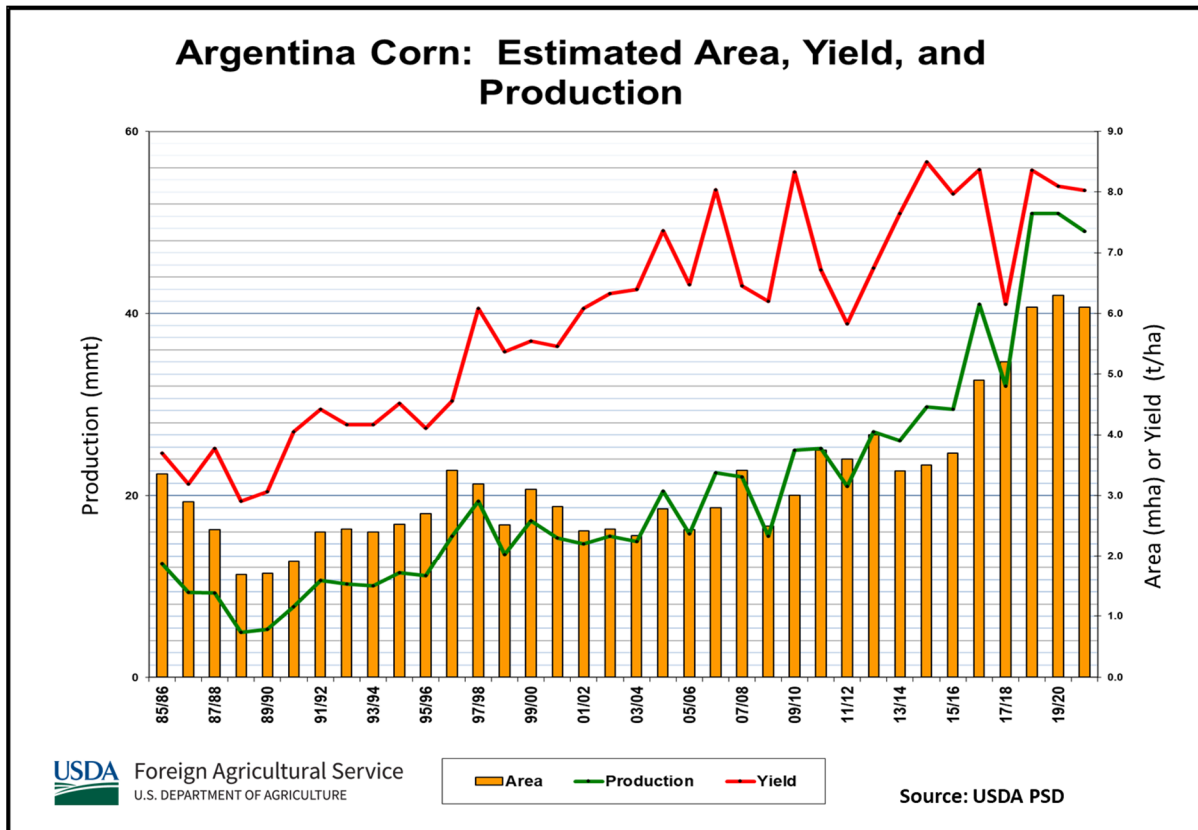


Source: FAO/GIEWS

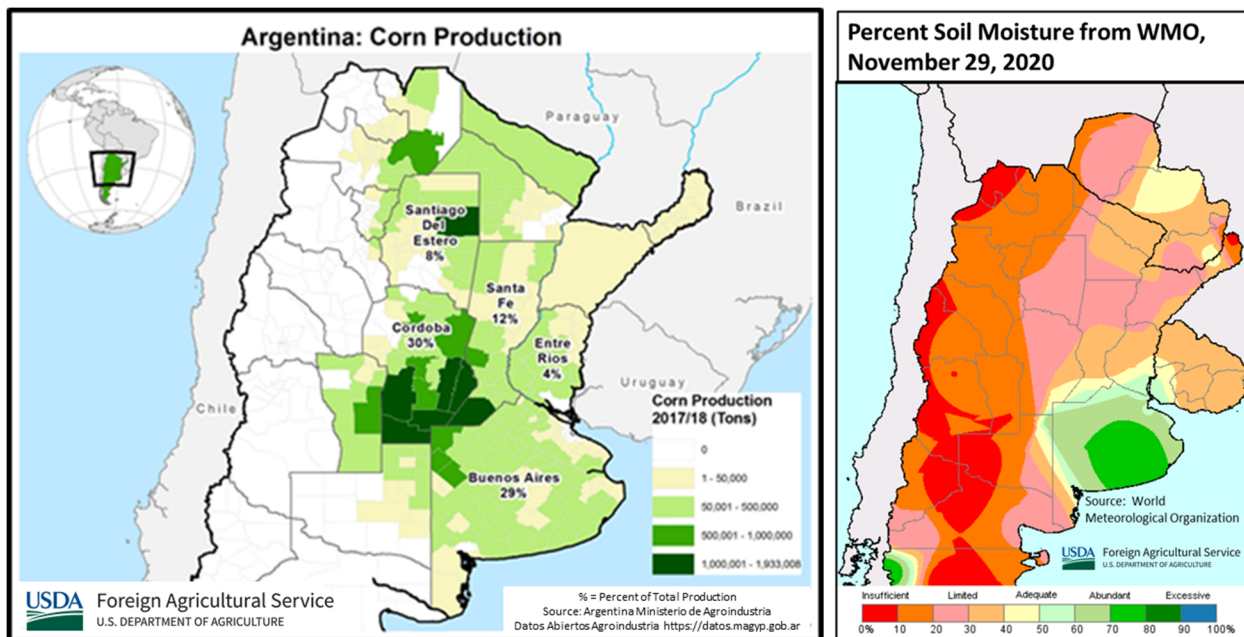
In November, harvest was ongoing for the main corn crop, while the second corn crop was near harvesting stage. Major corn damage was reported in departments such as La Libertad, Ahuachapán, and areas in the southeastern part of the country as well. *(For more information, please contact Ifeoma.Collins@usda.gov.)*

Argentina Corn: Crop Planting Drops with Dryness

The 2020/21 Argentina corn crop area is forecast lower at 6.1 million hectares, down 2 percent from last month and down 3 percent from last year, based on dry conditions caused by the ongoing La Niña. Corn production is forecast at 49.0 million metric tons, down 2 percent from last month, and down 4 percent from last year. Yield is forecast at 8.03 tons per hectare, down 1 percent from last month and down 1 percent from last year.



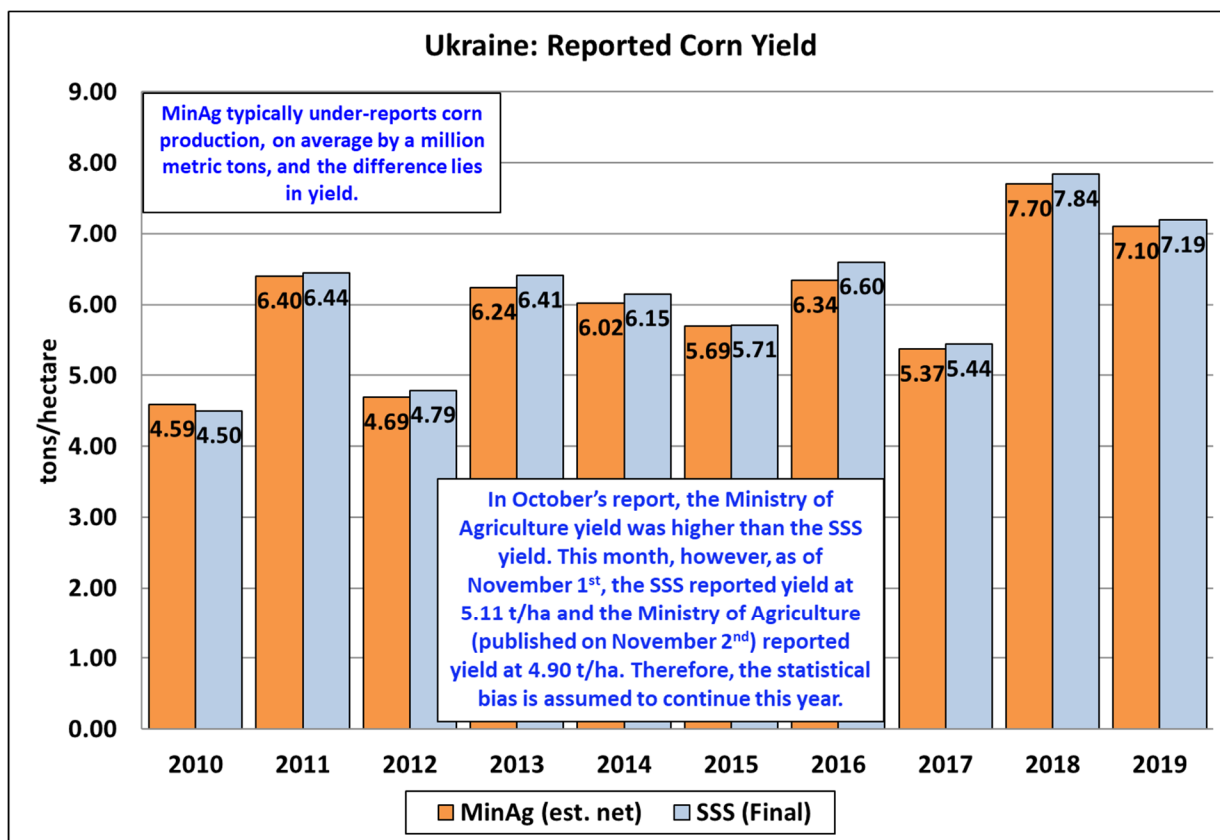
Farmers have planted the bulk of the corn crop late this year due to low soil moisture reserves, which can increase risk of losses in the remainder of this season. With poor conditions, some farmers have switched to soybeans or even the less cost-intensive sorghum, when fertilizers and pesticides for corn were not already applied to fields.



Adopting lower investment costs for soybeans or sorghum may be economically wise under the stressful soil moisture conditions. Selection of shorter crop maturities of the alternative crops can also be better tailored for a less risky production within the remaining season. *(For more information, please contact Denise.McWilliams@usda.gov.)*

Ukraine Corn: Harvest Results Increase Yields Slightly

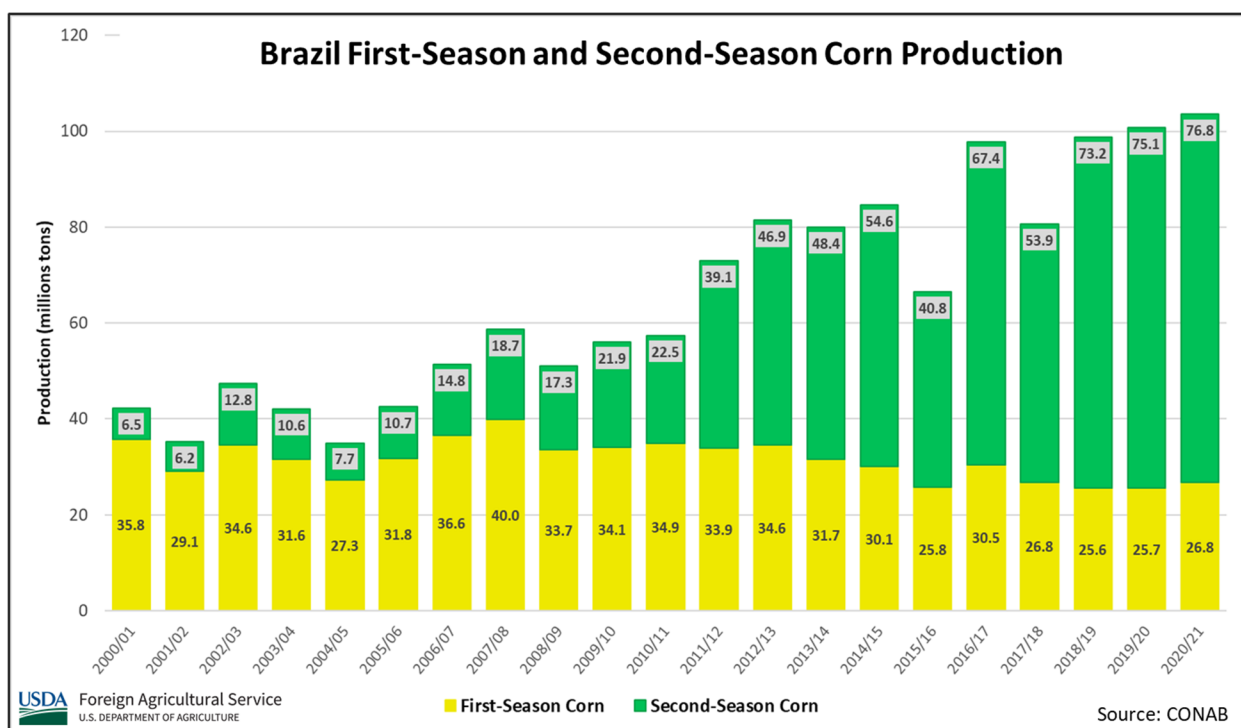
Ukraine corn production for 2020/21 is estimated at 29.5 million metric tons, up 4 percent from last month, but down 18 percent from last year. Yield is estimated at 5.46 tons per hectare (t/ha), up 4 percent from last month but down 24 percent from last year. Harvested area is estimated at 5.4 million hectares, unchanged from last month but up 8 percent from last year.



The month-to-month increase in yield is based on updated harvest results from the Ukrainian Ministry of Agriculture and the State Statistical Service of Ukraine (SSS). Harvest is about 94 percent complete as of the end of November. The areas still to harvest are the higher-yielding northern regions. In October's report, the Ministry of Agriculture yield was higher than the SSS yield. This month, however, as of November 1st, the SSS reported yield at 5.11 t/ha and the Ministry of Agriculture (published on November 2nd) reported yield at 4.90 t/ha. Therefore, the statistical bias is assumed to continue this year and total yield is revised up. USDA crop production estimates for Ukraine include estimated output from Crimea. *(For more information, please contact Katie.McGaughey@usda.gov.)*

Brazil Corn: Crop Stress in the South but Total Corn Production Unchanged

USDA estimates total corn production in Brazil at a record 110.0 million metric tons (mmt), unchanged from last month but up 8.0 mmt (8 percent) from last year's record. Total harvested area, for both the first-season and second-season corn crops, is estimated at a record 19.5 million hectares (mha), up 1.0 mha (5 percent) from last year's record area of 18.5 mha. Yield is forecast at 5.64 tons per hectare (t/ha), 2 percent higher than last year's crop, but 2 percent lower than the previous record of 5.77 t/ha in 2018/19 and up 8 percent from the 5-year average of 5.20 t/ha.

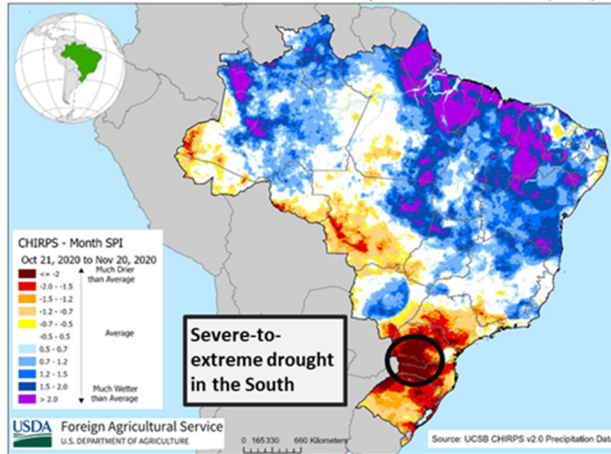


Brazil's first-season corn production comprises about one-fourth of total production, while second-season (*safrinha*) corn production has increased to now cover approximately three-fourths of Brazil's total corn production. The largest state producers of first-season corn are Rio Grande do Sul (~6.0 mmt), Minas Gerais (~4.8 mmt), Paraná (~3.2 mmt) and Santa Catarina (~2.9 mmt). Whereas the largest producers of *safrinha* corn are the states of Mato Grosso (~34 mmt), Paraná (~12 mmt), Mato Grosso do Sul (~9 mmt) and Goiás (~10 mmt).

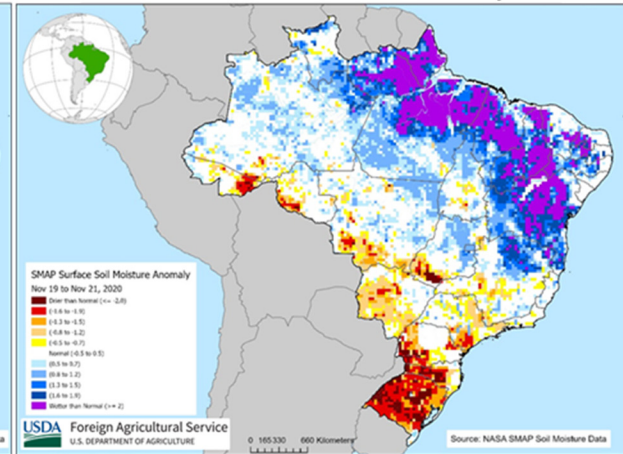
The first crop was planted from September through November with area forecast by CONAB (*Companhia Nacional de Abastecimento* or the National Food Supply Company), an agency within the Ministry of Agriculture in Brazil, at 4.15 mha (-2 percent from last year) and area for second-season corn at 13.8 mha (no change from last year). Production is forecast higher by CONAB for both seasons (3 percent for first-season and 2 percent for *safrinha* corn). With favorable corn prices, analysts expect the second-season corn area to be larger than last season. Planting of the second-season crop generally starts in January immediately following the soybean harvest. There is a strong potential for delays this *safrinha* season due to the delays in soybean planting through early November because of late rains.

Most Center-South summer corn growing regions experienced varying levels of drought from October to November displayed by the Standardized Precipitation Index and the low surface soil moisture.

1-month Standardized Precipitation Index (SPI)

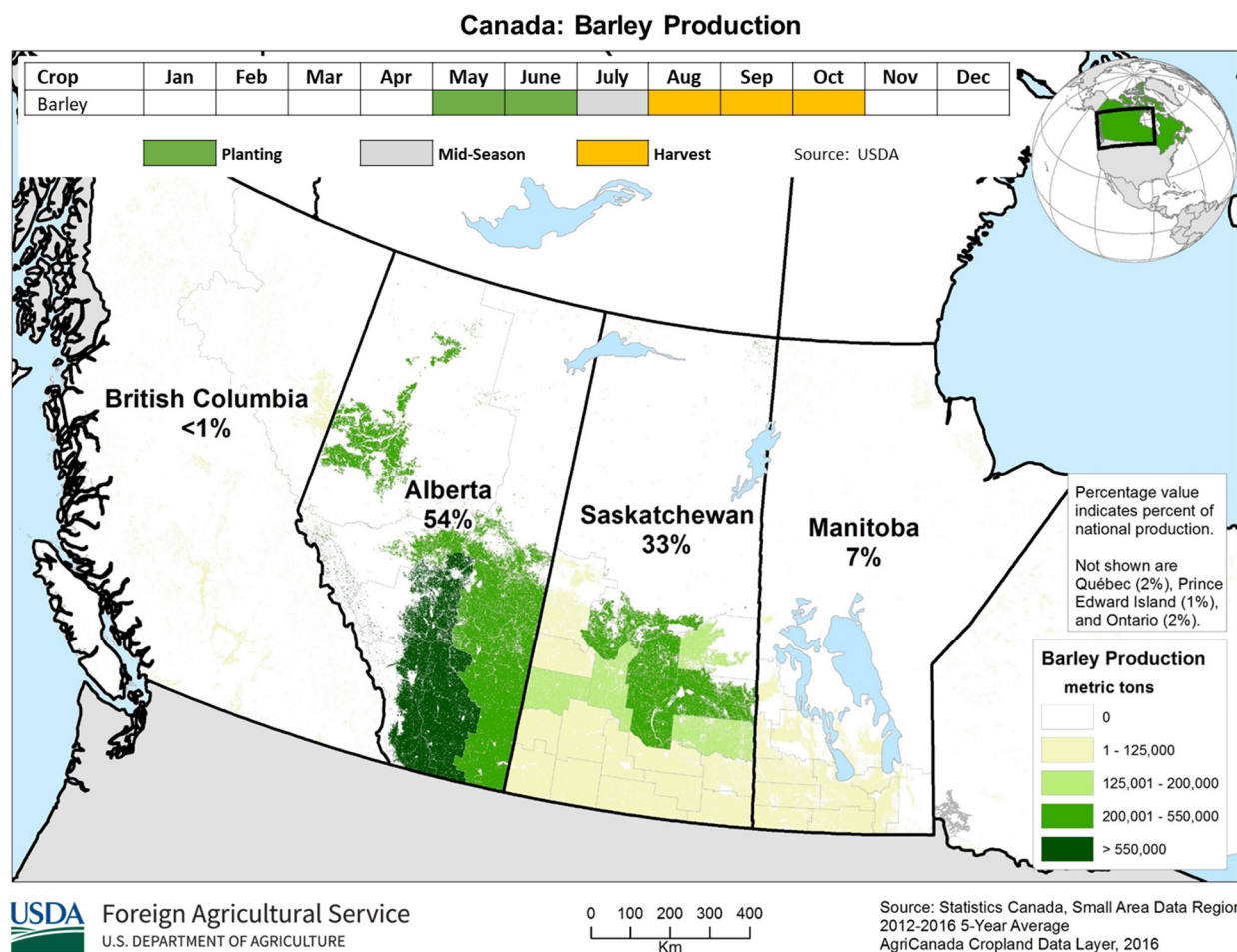


Surface Soil Moisture Anomaly



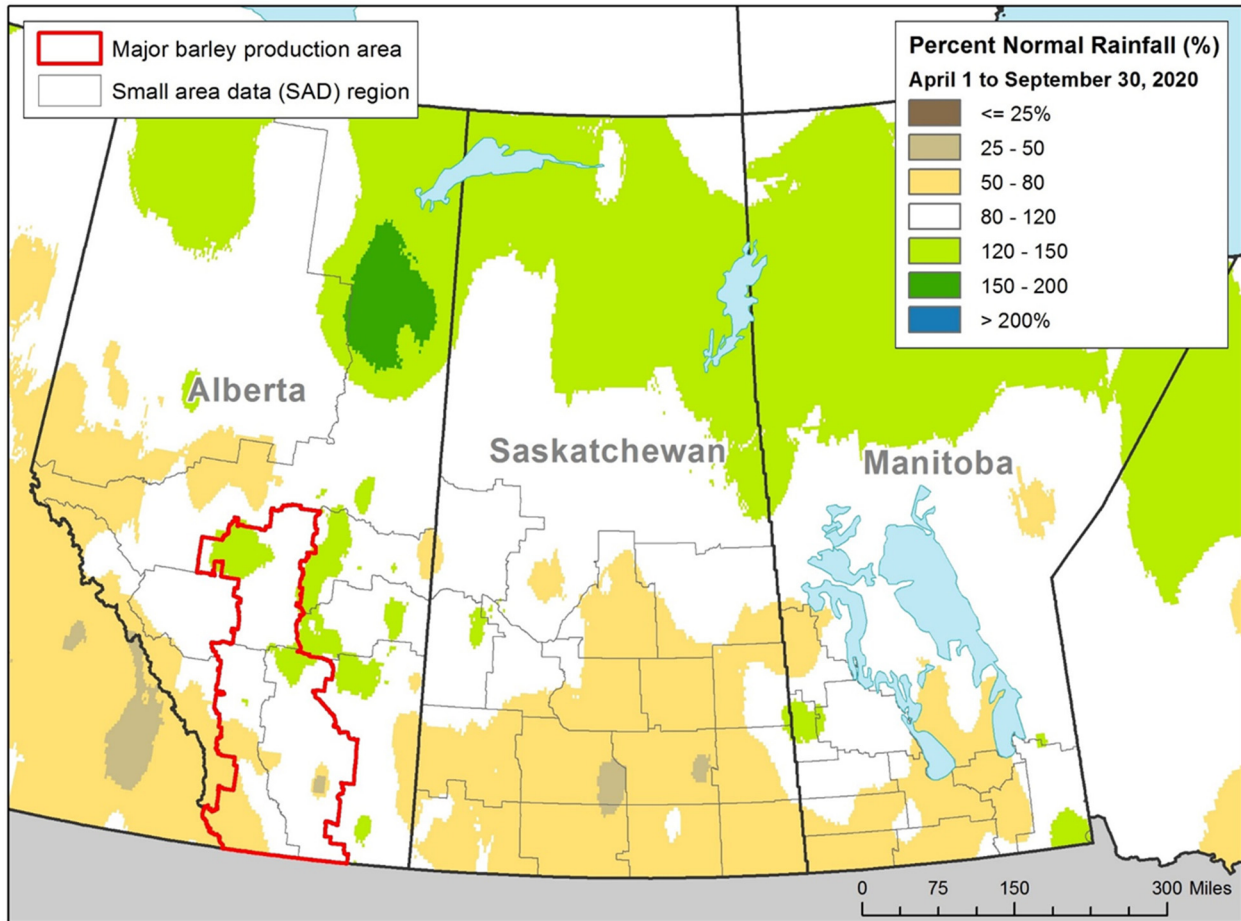
November was particularly dry in Rio Grande do Sul with the majority of rains arriving only in the last week of the month when approximately half of the crop was in sensitive flowering and early grain-filling stages. Similarly, precipitation was substantially reduced in western Paraná and Santa Catarina (over 80 percent in western regions). However, any reductions in first-season corn output from unfavorable weather is expected to be offset by an increase in the second-season crop. (For more information, please contact Sunita.Yadav-Pauletti@usda.gov.)

Canada Barley: Optimal Conditions Lead to Near-Record Yield



USDA estimates Canada barley production for 2020/21 at 10.7 million metric tons, up 0.3 mmt or 3 percent over last month and last year, and 23 percent above the 5-year average. Harvested area is estimated at 2.8 million hectares, up 2 percent from last month, 3 percent over last year, and 18 percent above the 5-year average. Yield is forecast at a near record 3.82 metric tons per hectare (t/ha), up 1 percent from last month, unchanged from last year, and 4 percent above the 5-year average. The record yield for Canada barley is 3.90 t/ha in 2016/17.

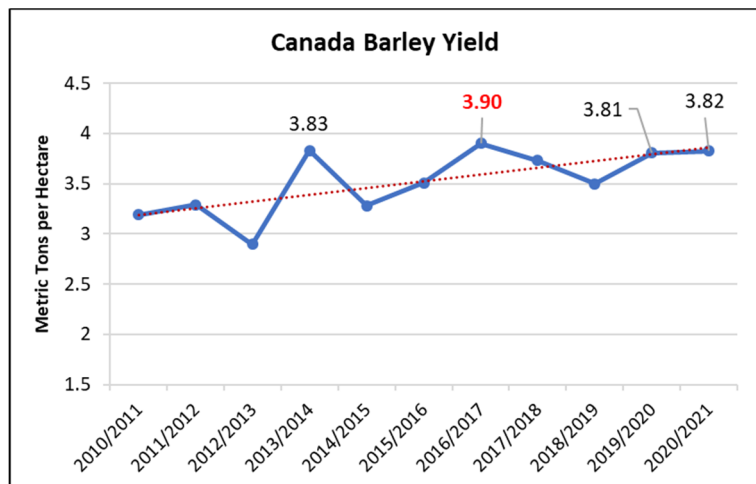
2020 Growing Season: Percent Normal Rainfall



USDA Foreign Agricultural Service
U.S. DEPARTMENT OF AGRICULTURE

Sources: WMO; Statistics Canada

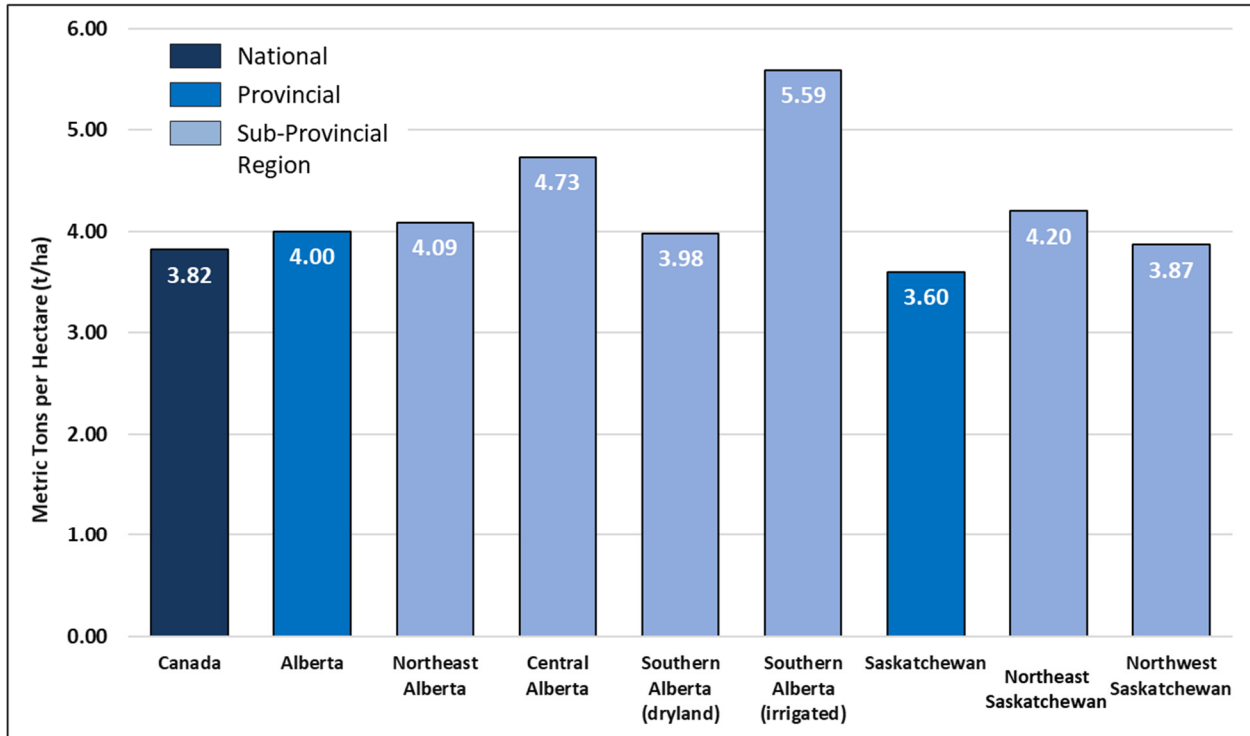
The 2020/21 growing season saw ideal conditions in much of the primary growing areas, including the most productive areas of southern and central Alberta, which saw adequate moisture throughout the growing season. Additionally, higher temperatures during the latter portion of the summer accelerated crop maturation and boosted yields in many areas. According to provincial reports, the Northeast and Central Regions of Alberta saw yields of 4.09 t/ha and 4.73 t/ha, respectively, while farmers of irrigated barley in Southern Alberta reported yields of 5.59 t/ha. Abnormal dryness led to more limited yields in southern Saskatchewan, however, yields in the northern regions of the province were lifted by adequate seasonal precipitation.



USDA Foreign Agricultural Service
U.S. DEPARTMENT OF AGRICULTURE

Source: USDA PSD

Regional Barley Yield



USDA Foreign Agricultural Service
U.S. DEPARTMENT OF AGRICULTURE

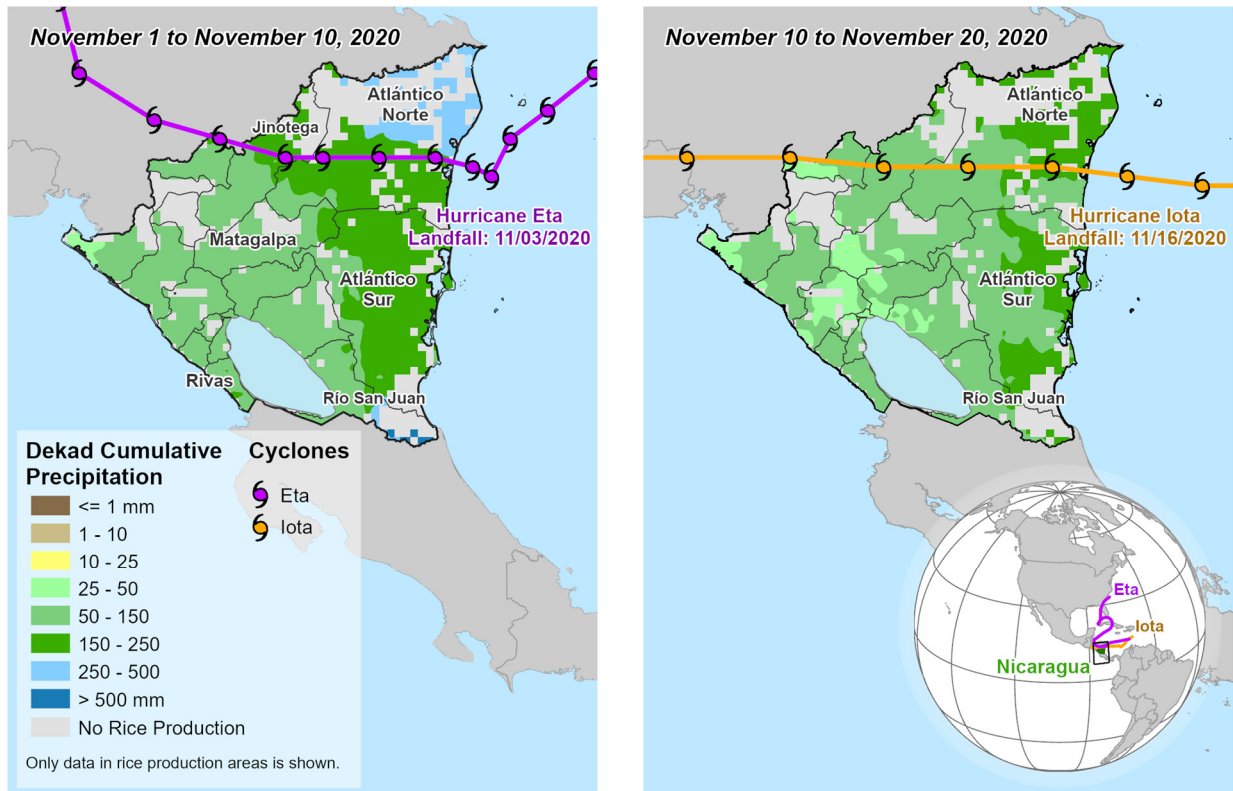
Sources: Statistics Canada; Governments of Alberta and Saskatchewan

Drier conditions, which had previously aided farmers during planting, again prevailed during harvest, with the majority of the crop combined by early October. Ultimately, despite the considerable challenges due to the ongoing COVID-19 pandemic, Canadian farmers were able to produce their third-highest yield for barley on record. *(For more information, please contact Aaron.Mulhollen@usda.gov.)*

Nicaragua Rice: Back-to-Back Hurricanes Damage Area

Nicaragua's rough rice production for 2020/21 is estimated at 412,000 metric tons (mt), down about 3 percent (12,000 mt) from last month, but up 9 percent from last year. Milled production is estimated at 272,000 mt. Area is estimated at 97,000 hectares, down 3 percent (3,000 mt) from last month and last year. Yield is estimated at 4.25 tons per hectare, unchanged from last month but up 13 percent from last year.

Nicaragua: Precipitation in Rice Production Areas

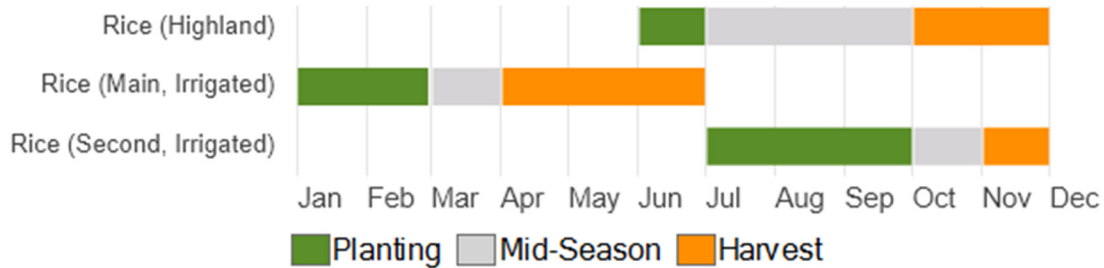


USDA Foreign Agricultural Service
U.S. DEPARTMENT OF AGRICULTURE

Sources: IFPRI, SPAM 2010; CHIRPS, Dekad Cumulative Precipitation; NOAA, NHC Tropical Cyclone Best Track

Hurricane Eta landed in Nicaragua on November 3 and Hurricane Iota landed in Nicaragua on November 16 as Category 4 storms. Both damaged rice crops through extensive flooding and strong winds.

Nicaragua – Crop Calendar



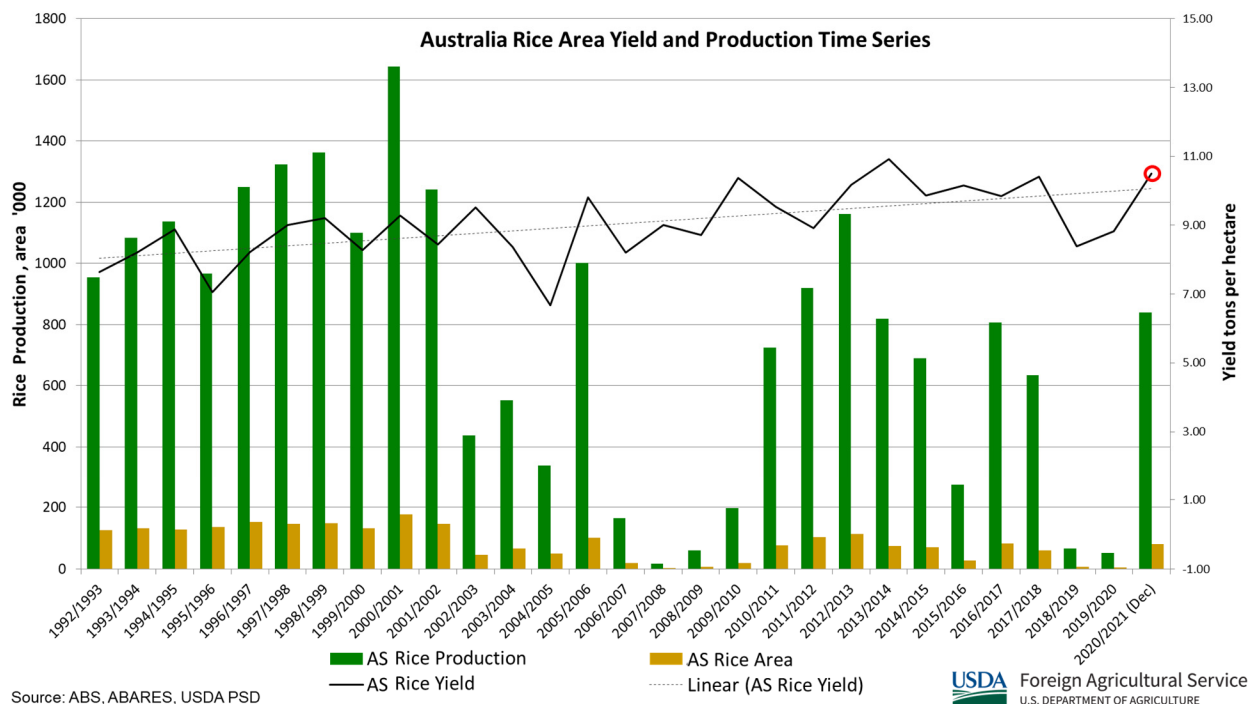
Source: FAO/GIEWS

Nicaragua is the largest rice producer in Central America and has three different rice-growing cycles. The rice in Nicaragua is about 80 percent irrigated. About half of the irrigated main rice crop was planted in January and February and harvested from April through June and was not impacted by Hurricanes Eta and Iota. However, the hurricanes damaged some of the irrigated

second rice crop and rainfed highland rice crop during the harvest in November. Crop damage assessments are ongoing. (For more information, please contact Ifeoma.Collins@usda.gov.)

Australia Rice: Substantial Increase from Last Year

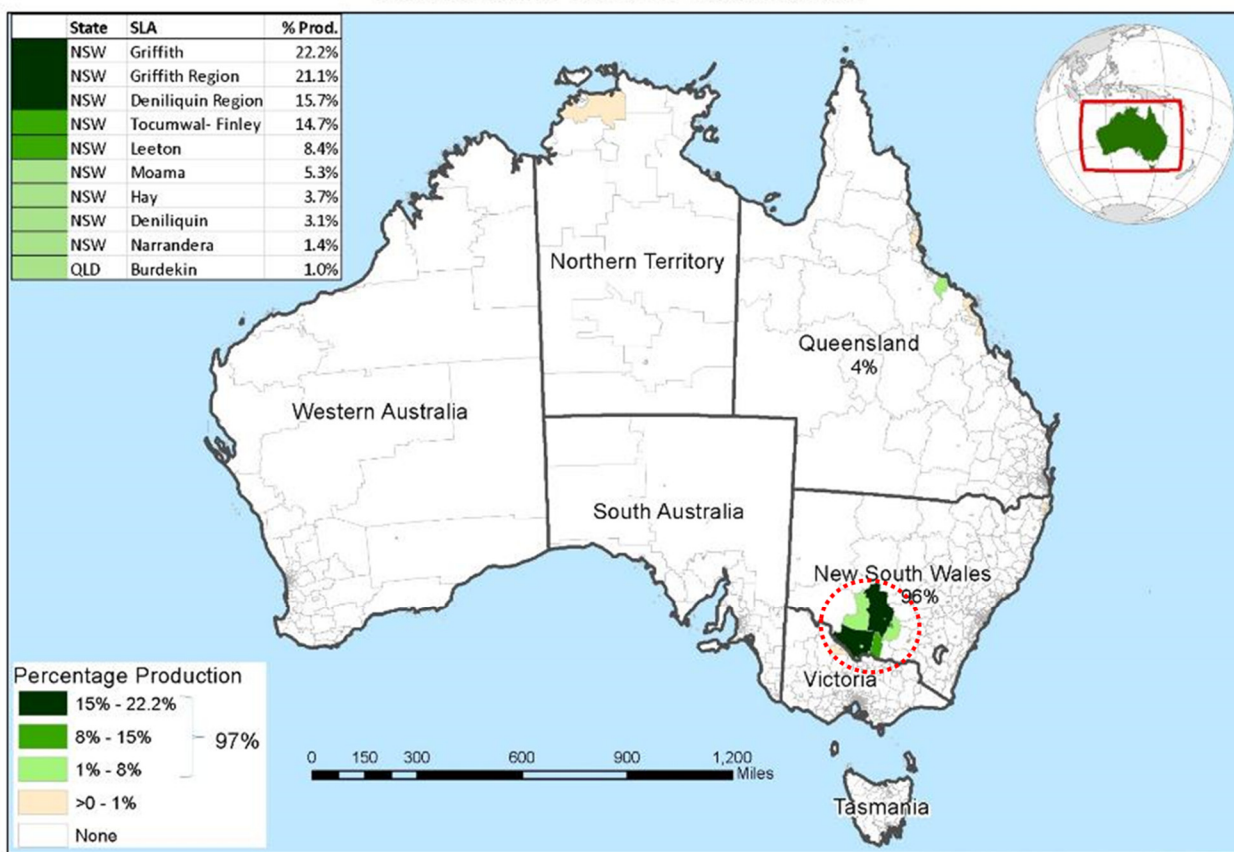
Australia rice production for 2020/21 is estimated at 840,000 metric tons (mt) on a paddy basis, up 423,000 mt from last month and up 787,000 mt or 1,485 percent from last season. Area is estimated at 80,000 hectares (ha), up 40,000 ha from last month and up 74,000 ha from last season. Yield is estimated at 10.50 metric tons per hectare, up 19 percent from last year, and 10 percent above the 5-year average.



Source: ABS, ABARES, USDA PSD

USDA Foreign Agricultural Service
U.S. DEPARTMENT OF AGRICULTURE

Australia: Rice Production



Source: ABS Ag Census with 2016 Boundaries (SA2)
Average percent production of 20005/2006, 2010/11, and 2015/16
Map last updated 3/2/2018

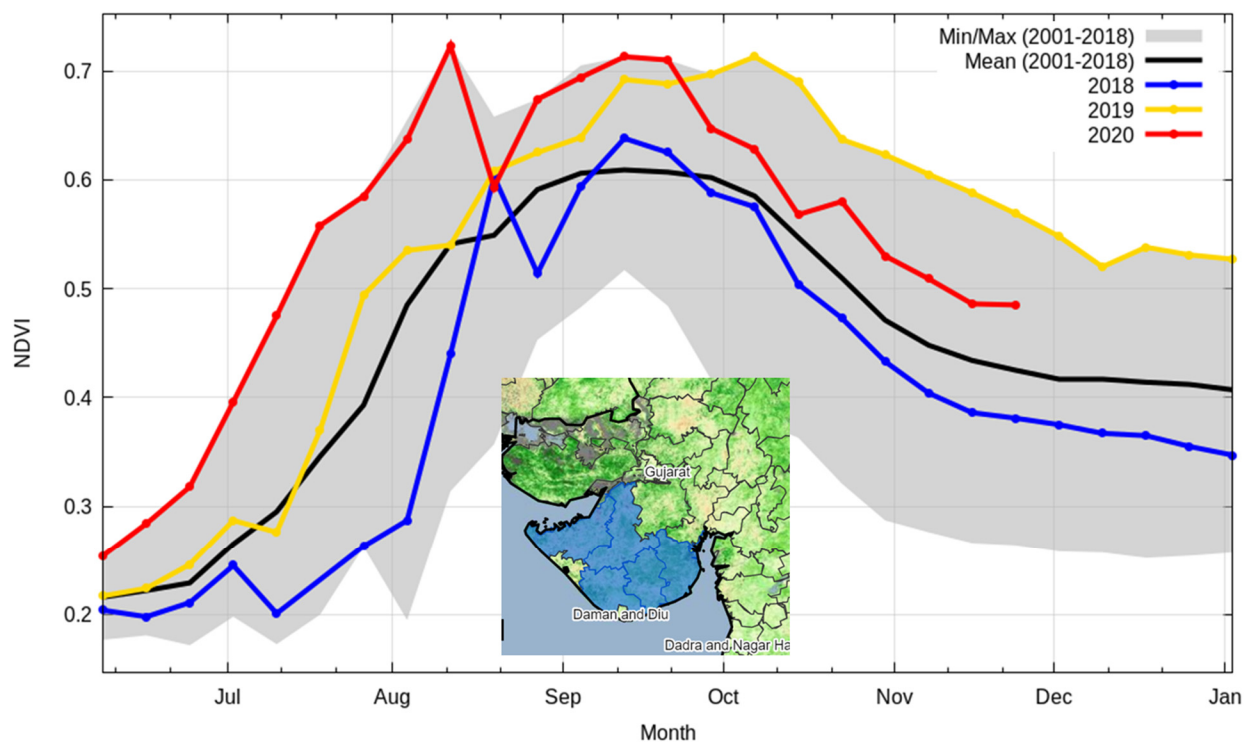
USDA Foreign Agricultural Service
U.S. DEPARTMENT OF AGRICULTURE

Rice is sown from October to December and harvested from March to May. Precipitation was average to above average during the past 12 months in the main rice-producing area of southern New South Wales resulting in reservoir recharge. Area planted to rice will expand because of increased water allocations, increased availability of irrigation water, and higher returns relative to cotton. *(For more information, please contact James.Crutchfield@usda.gov.)*

India Cotton: Heavy Rains Lower Yields

USDA estimates cotton harvested area to reach record levels at 13.4 million hectares, unchanged from the previous forecast but up almost 1 percent from 2019. Yields are estimated to reach 479 kilograms per hectare, down nearly 1 percent from 2019 because of crop damage from heavy rains and pests. Production is estimated at 29.5 million 480-pound bales, down nearly 2 percent from last month and unchanged from 2019/20.

Main Cotton Producing Area of Gujarat Depicts Lower Yields



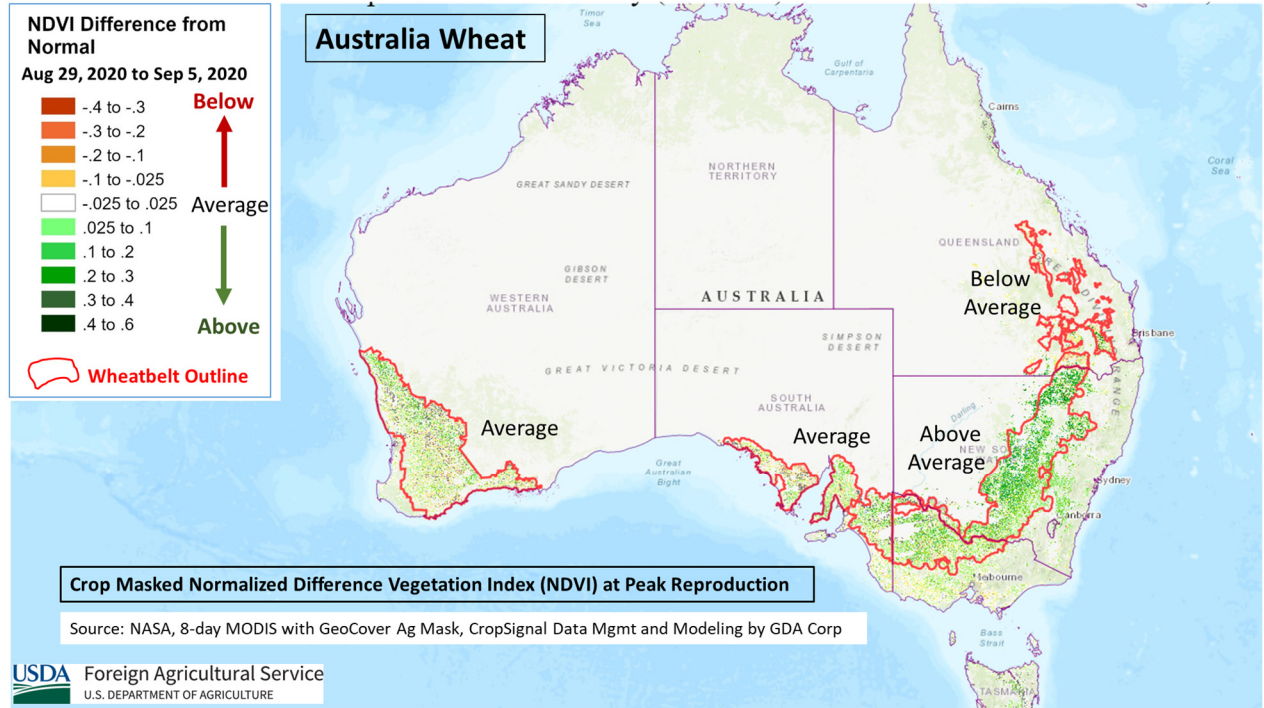
USDA Foreign Agricultural Service
U.S. DEPARTMENT OF AGRICULTURE

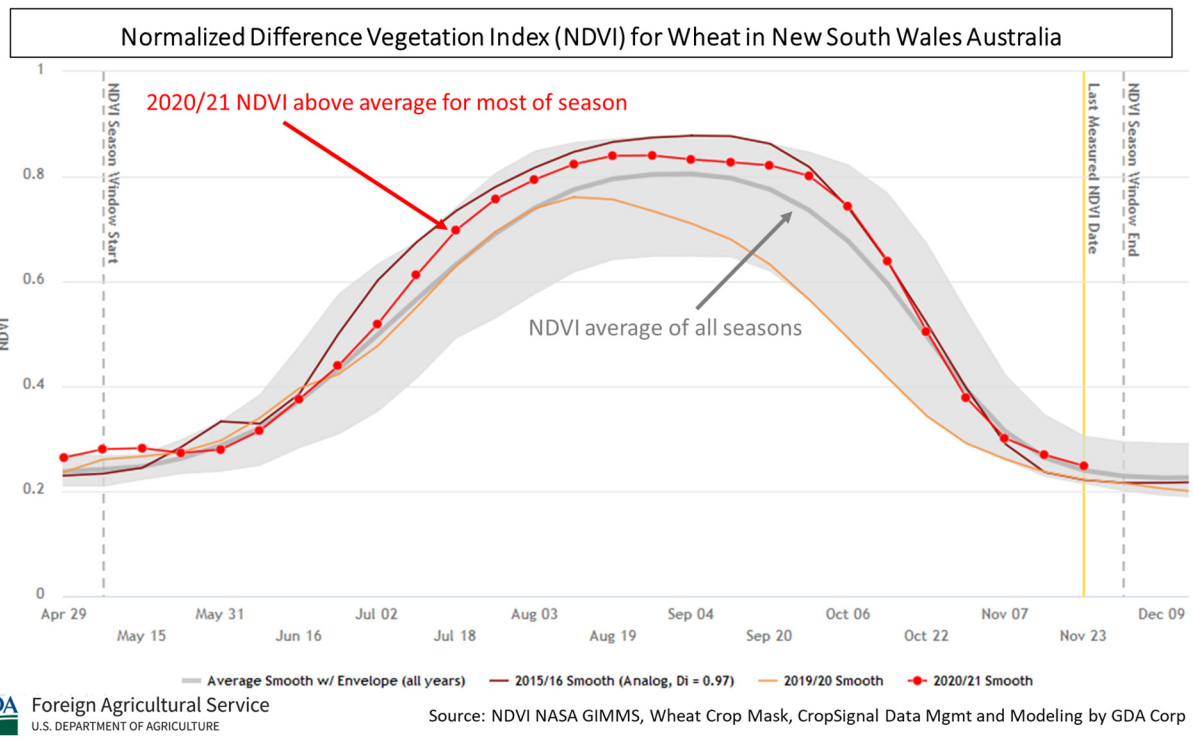
Source: USDA/NASA Global Agricultural Monitoring (GLAM) System with MODIS-UMD 2013 Crop Mask

In some areas, cotton crops were inundated for extended periods and did not recover completely. Maharashtra, Punjab, and Rajasthan reported extensive damage from flooding. Hot and humid conditions later in the season increased incidence of diseases such as bacterial blight and pests such as whitefly and pink bollworm. In most of these areas, satellite-derived Normalized Difference Vegetation Index (NDVI) depicts crop vigor below 2019 but above the long-term average. The first picking commenced in October. Cotton is grown only in the *kharif* season from May to October. Harvest can continue into February. *(For more information, please contact Arnella.Trent@usda.gov.)*

Australia Wheat: Second Largest Crop on Record; Production Nearly Double Last Year

USDA estimates Australia's 2020/21 wheat crop at 30.0 million metric tons (mmt), up 1.5 mmt or 5 percent from last month, and up 15.2 mmt or 97 percent from last year. At 30.0 mmt, this is the second largest crop on record after the 31.8 mmt crop harvested in 2016/17. Harvested area is estimated at 13.0 million hectares (mha), unchanged from last month, and up 2.8 mha or 27 percent from last year. Wheat yield is estimated at 2.31 tons per hectare, up 5 percent from last month and up 55 percent from 2019/20.

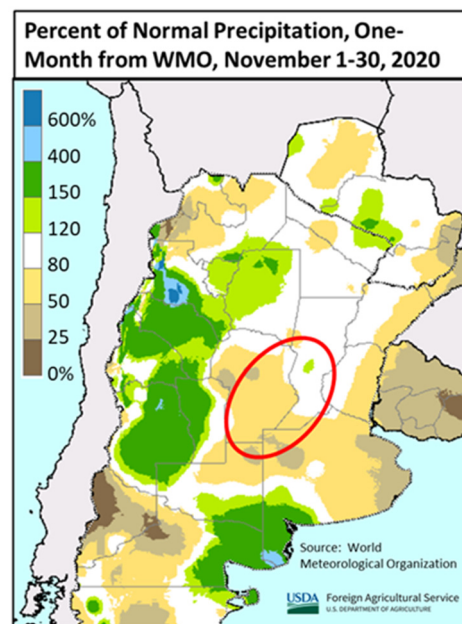




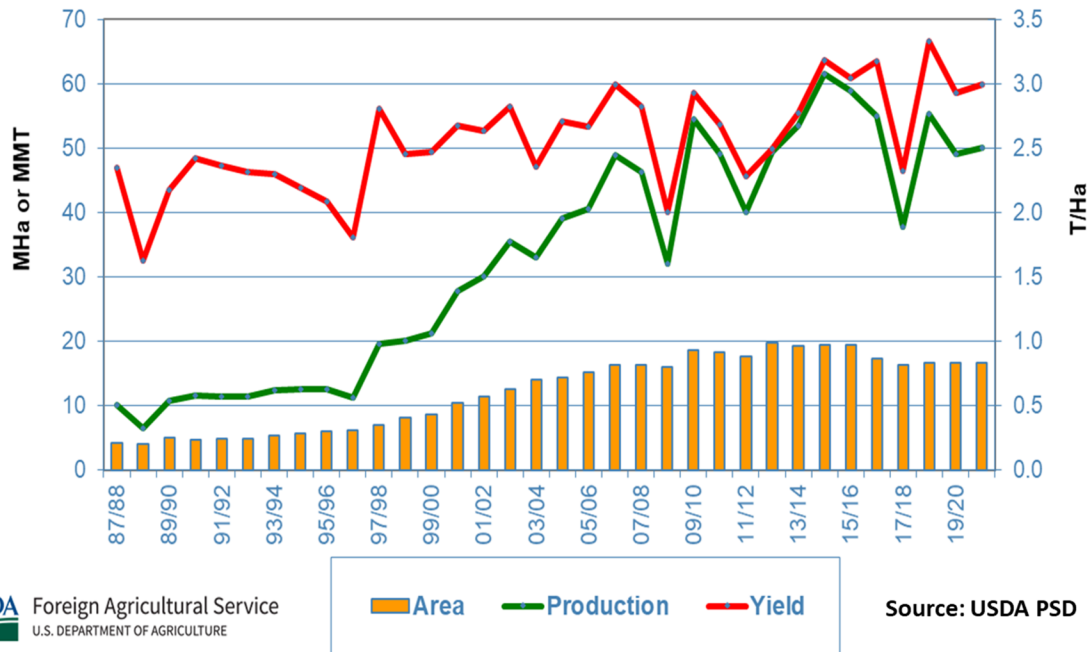
Precipitation was average to above average during the reproductive stage from August through October. Soil moisture in virtually all wheat areas was markedly improved from the dry conditions which prevailed during much of the previous season. Growing conditions were ideal in much of New South Wales and Victoria. This is corroborated by the satellite-derived Normalized Difference Vegetation Index (NDVI) with values significantly above normal during the flowering stage. (For more information, please contact James.Crutchfield@usda.gov.)

Argentina Soybeans: Economic Uncertainty and Dry Conditions Lower Soybean Area

The 2020/21 Argentina soybean harvested area is forecast at 16.7 million hectares, down 1 percent from last month, and unchanged from last year. The production is forecast at 50.0 million metric tons, down 2 percent from last month and 2 percent below last season's crop. Yield is forecast as 2.99 tons per hectare, less than 1 percent below last month but 2 percent above last year's yield. With inflation running more than 40 percent in recent years, Argentine farmers fear the rate will further increase once post-pandemic growth returns. The peso's value has fallen relative to the dollar during the pandemic, and farmers are concerned that if capital controls are lifted, further devaluation will occur. Despite higher global prices for soybeans, the 33 percent export tax on soybeans and their products, which allows exporters and processors to pay Argentine producers a low farmgate price.



Argentina Soybeans: Estimated Area, Yield, and Production



Besides economic uncertainty, dry conditions due to the La Niña weather pattern have delayed soybean planting and may affect soybeans at a critical time in the plant development. *(For more information, please contact Denise.McWilliams@usda.gov.)*



**World Agricultural Production
U.S. Department of Agriculture**

Foreign Agricultural Service / Global Market Analysis
International Production Assessment Division (IPAD)
Ag Box 1051, Room 4630, South Building
Washington, DC 20250-1051

<https://ipad.fas.usda.gov/>

Telephone: (202) 720-1662 Fax: (202) 720-1158

This report uses information from the Foreign Agricultural Service's (FAS) global network of agricultural attachés and counselors, official statistics of foreign governments and other foreign source materials, and the analysis of economic data and satellite imagery. Estimates of foreign area, yield, and production are from the International Production Assessment Division, FAS, and are reviewed by USDA's Inter-Agency Commodity Estimates Committee. Estimates of U.S. area, yield, and production are from USDA's National Agricultural Statistics Service. Numbers within the report may not add to totals because of rounding. This report reflects official USDA estimates released in the World Agricultural Supply and Demand Estimates (WASDE-584), December 10, 2020.

Printed copies are available from the National Technical Information Service. Download an order form at http://www.ntis.gov/products/specialty/usda/fas_a-g.asp, or call NTIS at 1-800-363-2068.

The FAS International Production Assessment Division prepared this report. The next issue of World Agricultural Production will be released after 12:00 p.m. Eastern Time, January 12, 2021.

Conversion Table

Metric tons to bushels

Wheat, soybeans	=	MT * 36.7437
Corn, sorghum, rye	=	MT * 39.36825
Barley	=	MT * 45.929625
Oats	=	MT * 68.894438

Metric tons to 480-lb bales

Cotton	=	MT * 4.592917
--------	---	---------------

Metric tons to hundredweight

Rice	=	MT * 22.04622
------	---	---------------

Area & weight

1 hectare	=	2.471044 acres
1 kilogram	=	2.204622 pounds

Approved by the World Agricultural Outlook Board



For further information, contact:
U.S. Department of Agriculture
Foreign Agricultural Service
Global Market Analysis

International Production Assessment Division
 Ag Box 1051, Room 4630, South Building
 Washington, DC 20250-1051

Telephone: (202) 720-1662

Fax: (202) 720-1158

GENERAL INFORMATION

Senior Director	Ronald Frantz	202-720-4056	ronald.frantz@usda.gov
Director	Robert Tetrault	202-720-1071	robert.tetrault@usda.gov
Administrative Assistant	Vacant	202-720-1662	
USDA Remote Sensing Advisor	Vacant		
Sr. Analyst/Technical Lead	Curt Reynolds, Ph.D.	202-690-0134	curt.reynolds@usda.gov
Sr. Analyst/ Satellite Imagery Archives Manager/Technical Lead	Dath Mita, Ph.D.	202-720-7339	dath.mita@usda.gov
Sr. Analyst/Technical Lead	Jim Crutchfield	202-690-0135	james.crutchfield@usda.gov
GIS Mapping/Imagery Analyst	Lisa Colson	202-720-6652	lisa.colson@usda.gov
WAP Coordinators	Ifeoma Collins	202-720-0240	ifeoma.collins@usda.gov
	Aaron Mulhollen	202-690-0131	aaron.mulhollen@usda.gov

COUNTRY- AND REGION-SPECIFIC INFORMATION

South America, Argentina, Venezuela, and Colombia	Denise McWilliams, Ph.D.	202-720-0107	denise.mcwilliams@usda.gov
Western and Central Europe, and North Africa	Bryan Purcell	202-690-0138	bryan.purcell@usda.gov
Russia, Ukraine, Kazakhstan, Moldova, and Belarus	Katie McGaughey	202-720-9210	katie.mcgaughey@usda.gov
South Asia, Sri Lanka Bangladesh, India, and Nepal	Arnella Trent	202-720-0881	arnella.trent@usda.gov
East Asia, China, and Japan	Dath Mita, Ph.D.	202-720-7339	dath.mita@usda.gov
Sub-Saharan Africa, Nigeria and South Africa	Curt Reynolds, Ph.D.	202-690-0134	curt.reynolds@usda.gov
S.E. Asia, Indonesia, Thailand, Malaysia, Cambodia and Vietnam	Justin Jenkins	202-720-0419	justin.jenkins@usda.gov
Central America, Mexico, and Western United States	Ifeoma Collins	202-720-0240	ifeoma.collins@usda.gov
Australia, New Zealand, Pakistan Papua New Guinea and South Pacific Islands	Jim Crutchfield	202-690-0135	james.crutchfield@usda.gov
Middle East, Central Asia, Afghanistan Iraq, Iran, and Syria	Iliana Mladenova, Ph.D.		iliana.mladenova@usda.gov
Canada, Caribbean, Eastern United States	Aaron Mulhollen	202-690-0131	aaron.mulhollen@usda.gov
Brazil	Sunita Yadav-Pauletti, Ph.D.		sunita.yadav-pauletti@usda.gov



The Foreign Agricultural Service (FAS) updates its production, supply and distribution (PSD) database for cotton, oilseeds, and grains at 12:00 p.m. on the day the *World Agricultural Supply and Demand Estimates* (WASDE) report is released. This circular is released by 12:15 p.m.

FAS Reports and Databases:

World Agricultural Production

Current: <https://www.fas.usda.gov/data/world-agricultural-production>

Archive: <https://usda.library.cornell.edu/concern/publications/5q47rn72z?locale=en>

USDA's Foreign Agricultural Service (FAS) publishes a monthly report on crop acreage, yield and production in major countries worldwide. Sources include reporting from FAS's worldwide offices, official statistics of foreign governments, and analysis of economic data and satellite imagery. The reports reflect official USDA estimates released in the monthly *World Agricultural Supply and Demand Estimates* (WASDE).

World Markets and Trade

Current: <https://www.fas.usda.gov/data>

Archive:

https://usda.library.cornell.edu/catalog?f%5Bmember_of_collections_ssim%5D%5B%5D=Foreign+Agricultural+Service&locale=en

USDA's Foreign Agricultural Service (FAS) publishes monthly and quarterly reports which include data on U.S. and global trade, production, consumption and stocks, as well as analysis of developments affecting world trade in oilseeds, grains, cotton, livestock and poultry. The reports reflect official USDA estimates released in the monthly *World Agricultural Supply and Demand Estimates* (WASDE).

Global Agricultural Information Network (GAIN)

<https://www.fas.usda.gov/databases/global-agricultural-information-network-gain>

USDA's Foreign Agricultural Service (FAS) provides timely reports on foreign markets through the Global Agriculture Information Network (GAIN) database. An average of 2,000 reports are added each year, with reports going back to 1995. GAIN reports are compiled by FAS' global market intelligence network, which includes FAS foreign service officers and locally engaged staff in over 90 overseas offices world-wide. They provide on-the-ground intelligence, insight, and analysis on nearly 200 countries, delivering information on foreign agricultural markets, crop conditions, and agro-political dynamics of interest to U.S. agriculture. GAIN reports contain assessments of commodity and trade issues made by USDA staff and are not necessarily statements of official U.S. government policy.

Production, Supply and Distribution (PS&D) Online

<https://apps.fas.usda.gov/psdonline/app/index.html#/app/home>

PSD Online is the public repository for USDA's Official Production, Supply and Distribution forecast data and reports for key agricultural commodities. PSD Online data are reviewed and updated monthly by an interagency committee chaired by USDA's World Agricultural Outlook Board (WAOB). The committee consist of representatives from Foreign Agricultural Service (FAS), the Economic Research Service (ERS), the Farm Service Agency (FSA), and the Agricultural Marketing Service (AMS).

EU Countries and Russia Wheat: Area and Production Estimates

<https://apps.fas.usda.gov/psdonline/app/index.html#/app/downloads> (click on PSD Datasets)

USDA's Foreign Agricultural Service (FAS) provides country-level area and production estimates for the nations of the European Union. For Russia, country-level area and production estimates are provided for Winter and Spring wheat. These datasets are reviewed and updated monthly by an interagency committee chaired by USDA's World Agricultural Outlook Board (WAOB) and can be downloaded through PSD datasets on PSD Online.



FAS Reports and Databases:

International Production Assessment (IPAD)

<https://ipad.fas.usda.gov/>

USDA's Foreign Agricultural Service (FAS) maintains a dynamic global crop production portal with key information including *World Agricultural Production* (WAP) briefs, Commodity Intelligence Reports (CIR), geospatial applications, crop production maps at a subnational level and crop calendars for the top-20 producing countries. Additionally, Crop Explorer (<https://ipad.fas.usda.gov/cropexplorer/>) displays rainfall, temperature, evapotranspiration, soil moisture, snow cover, and vegetation conditions in charts and maps.

USDA and NASA Global Agricultural Monitoring (GLAM)

<https://glam1.gsfc.nasa.gov/>

The USDA and NASA Global Agricultural Monitoring (GLAM) system provides near real-time and science quality Moderate Resolution Imaging Spectroradiometer (MODIS) Normalized Difference Vegetation Index (NDVI) from the satellites Terra and Aqua. The public can view and retrieve MODIS 8-day composited, global NDVI satellite imagery and time series data. GLAM was developed by NASA's Global Inventory Modeling and Mapping Studies (GIMMS) group for USDA's Foreign Agricultural Service.

Global Agricultural and Disaster Assessment System (GADAS)

<https://geo.fas.usda.gov/GADAS/index.html>

USDA's Foreign Agricultural Service (FAS) provides the Global Agricultural and Disaster Assessment System (GADAS), a web-based Geographic Information System (GIS) tool which integrates a vast array of highly detailed earth observation data streams, particularly targeted towards agricultural and disaster assessment analysis. GADAS is an interactive website which provides analysts with a wide variety of routine geospatial products (maps, charts, tables) they require for comprehensive situational investigations and recurring assessments.

Export Sales Reporting

<https://apps.fas.usda.gov/esrquery/>

USDA's Export Sales Reporting Program monitors U.S. agricultural export sales on a daily and weekly basis. Export sales reporting provides a constant stream of up-to-date market information for 40 U.S. agricultural commodities sold abroad. The weekly U.S. Export Sales report is the most currently available source of U.S. exports sales data. The data is used to analyze overall levels of export demand, determine where markets exit, and assess the relative position of U.S. commodities in foreign markets.

Global Agricultural Trade System (GATS)

<https://apps.fas.usda.gov/gats/default.aspx>

The Global Agricultural Trade System (GATS) is a searchable database containing monthly U.S. Census Bureau trade data organized by agricultural commodity and agricultural related product groups. Trade data is searchable by partner countries and partner groups. Historical U.S. agricultural trade data is available back to 1967. In addition, U.N. trade statistics (UN Comtrade) may be queried through GATS. UN trade data is available for nearly 200 countries or areas, dating from the inception of the Harmonized System (HS) of trade codes in 1989 to present. The database is continuously updated. U.S. trade data is updated monthly according to the U.S. Census Bureau's reporting system. UN Comtrade data are updated in GATS after nationally submitted data to the UN are standardized by the UN Statistical Division and added to the UN Comtrade database.

Other USDA Reports:

World Agricultural Supply and Demand Estimates (WASDE):

<http://www.usda.gov/oce/commodity/wasde/>

Economic Research Service:

<http://www.ers.usda.gov/topics/crops>

National Agricultural Statistics Service:

<http://www.nass.usda.gov/Publications/>

Table 01 World Crop Production Summary

Million Metric Tons

Commodity	World	Total Foreign	North America			Former Soviet		European	Asia (WAP)					South America		Selected Other			All Others
			United States	Canada	Mexico	Russia	Ukraine		China	India	Indonesia	Pakistan	Thailand	Argentina	Brazil	Australia	South Africa	Turkey	
---Million metric tons---																			
Wheat																			
2018/19	730.9	679.6	51.3	32.4	3.0	71.7	25.1	nr	131.4	99.9	0.0	25.1	0.0	19.5	5.4	17.6	1.9	19.0	227.7
2019/20 prel.	764.5	711.9	52.6	32.7	3.3	73.6	29.2	nr	133.6	103.6	0.0	24.3	0.0	19.8	5.2	15.2	1.5	17.5	252.5
2020/21 proj.																			
Nov	772.4	722.7	49.7	35.0	3.1	83.5	25.5	nr	136.0	107.6	0.0	25.7	0.0	18.0	6.6	28.5	2.1	18.3	232.9
Dec	773.7	724.0	49.7	35.2	3.1	84.0	25.5	nr	136.0	107.6	0.0	25.7	0.0	18.0	6.3	30.0	2.2	18.3	232.2
Coarse Grains																			
2018/19	1,397.6	1,019.7	377.9	26.2	33.4	35.0	44.5	nr	264.0	43.2	12.0	6.6	5.7	59.2	104.3	11.5	12.4	13.3	348.4
2019/20 prel.	1,411.5	1,052.0	359.4	28.6	31.9	40.5	46.5	nr	268.2	47.4	12.0	7.4	4.6	58.1	105.6	10.4	16.5	14.5	359.8
2020/21 proj.																			
Nov	1,447.7	1,065.0	382.8	29.6	33.6	40.9	37.7	nr	267.4	45.6	12.0	7.5	5.6	57.0	113.4	14.3	16.7	15.7	368.1
Dec	1,447.8	1,065.1	382.8	29.5	33.6	40.9	38.7	nr	267.4	45.3	12.0	7.5	5.6	56.4	113.4	14.8	16.7	15.7	367.6
Rice, Milled																			
2018/19	497.0	489.9	7.1	0.0	0.2	0.7	0.0	nr	148.5	116.5	34.2	7.3	20.3	0.8	7.1	0.0	0.0	0.6	153.6
2019/20 prel.	496.1	490.2	5.9	0.0	0.2	0.7	0.0	nr	146.7	118.4	34.0	7.2	17.7	0.8	7.6	0.0	0.0	0.6	156.3
2020/21 proj.																			
Nov	501.1	493.9	7.2	0.0	0.2	0.7	0.0	nr	147.0	120.0	34.9	7.6	18.6	0.8	7.5	0.3	0.0	0.6	155.7
Dec	501.2	494.0	7.2	0.0	0.2	0.7	0.0	nr	147.0	120.0	34.9	7.6	18.6	0.8	7.5	0.6	0.0	0.6	155.5
Total Grains																			
2018/19	2,625.5	2,189.2	436.3	58.6	36.6	107.4	69.6	nr	543.9	259.6	46.2	39.0	26.0	79.5	116.9	29.2	14.3	32.9	729.8
2019/20 prel.	2,672.1	2,254.2	417.9	61.3	35.4	114.8	75.8	nr	548.5	269.4	46.0	38.9	22.2	78.7	118.4	25.7	18.0	32.6	768.6
2020/21 proj.																			
Nov	2,721.2	2,281.6	439.6	64.6	36.8	125.1	63.2	nr	550.4	273.2	46.9	40.8	24.2	75.9	127.5	43.1	18.8	34.5	756.7
Dec	2,722.7	2,283.1	439.6	64.7	36.8	125.6	64.2	nr	550.4	272.9	46.9	40.8	24.2	75.3	127.2	45.4	18.9	34.5	755.3
Oilseeds																			
2018/19	600.0	469.3	130.7	28.2	1.3	18.7	22.7	nr	60.0	35.5	14.1	3.8	1.0	60.8	124.6	3.1	2.0	3.4	90.2
2019/20 prel.	576.4	469.5	107.0	25.8	1.1	21.7	24.5	nr	63.0	36.7	14.4	3.3	1.1	53.7	131.3	2.6	2.2	3.2	85.0
2020/21 proj.																			
Nov	597.3	473.3	124.0	25.6	1.0	19.8	19.6	nr	62.3	38.5	14.6	2.9	1.1	55.6	137.7	4.2	2.2	2.8	85.3
Dec	595.7	472.0	123.7	25.5	0.9	19.8	19.6	nr	62.3	38.3	14.6	2.7	1.1	54.6	137.7	4.4	2.2	2.8	85.5
Cotton																			
2018/19	118.6	100.2	18.4	0.0	1.7	0.0	0.0	1.7	27.8	25.8	0.0	7.6	0.0	1.1	13.0	2.2	0.2	3.8	15.3
2019/20 prel.	122.1	102.2	19.9	0.0	1.6	0.0	0.0	2.0	27.3	29.5	0.0	6.2	0.0	1.3	13.8	0.6	0.1	3.5	16.4
2020/21 proj.																			
Nov	116.1	99.0	17.1	0.0	1.1	0.0	0.0	1.5	27.5	30.0	0.0	5.0	0.0	1.3	12.0	2.5	0.2	2.8	15.2
Dec	113.9	98.0	15.9	0.0	1.1	0.0	0.0	1.5	27.5	29.5	0.0	4.5	0.0	1.4	12.0	2.4	0.2	2.8	15.1

1/ Includes wheat, coarse grains, and rice (milled) shown above.

Table 02 Wheat Area, Yield, and Production

Country / Region	Area (Million hectares)				Yield (Metric tons per hectare)				Production (Million metric tons)				Change in Production			
	2018/19	Prel.	2020/21 Proj.		2018/19	Prel.	2020/21 Proj.		2018/19	Prel.	2020/21 Proj.		From last month		From last year	
		2019/20	Nov	Dec		2019/20	Nov	Dec		2019/20	Nov	Dec	MMT	Percent	MMT	Percent
World	215.45	217.02	222.63	222.72	3.39	3.52	3.47	3.47	730.90	764.50	772.38	773.66	1.29	0.17	9.17	1.20
United States	16.03	15.13	14.87	14.87	3.20	3.47	3.34	3.34	51.31	52.58	49.69	49.69	0.00	0.00	-2.89	-5.50
Total Foreign	199.42	201.88	207.76	207.85	3.41	3.53	3.48	3.48	679.59	711.91	722.68	723.97	1.29	0.18	12.06	1.69
European Union - 28	25.52	26.12	24.66	24.61	5.35	5.91	5.54	5.52	136.58	154.51	136.55	135.80	-0.75	-0.55	-18.71	-12.11
China	24.27	23.73	24.00	24.00	5.42	5.63	5.67	5.67	131.43	133.59	136.00	136.00	0.00	0.00	2.41	1.80
South Asia																
India	29.65	29.32	31.45	31.45	3.37	3.53	3.42	3.42	99.87	103.60	107.59	107.59	0.00	0.00	3.99	3.85
Pakistan	8.80	8.80	9.13	9.13	2.85	2.76	2.81	2.81	25.10	24.30	25.70	25.70	0.00	0.00	1.40	5.76
Afghanistan	2.00	2.30	2.33	2.33	1.80	2.17	2.15	2.15	3.60	5.00	5.01	5.01	0.00	0.00	0.01	0.20
Nepal	0.70	0.75	0.75	0.75	2.85	2.95	2.95	2.95	2.01	2.20	2.21	2.21	0.00	0.00	0.01	0.45
Former Soviet Union - 12																
Russia	26.34	27.31	28.60	28.60	2.72	2.70	2.92	2.94	71.69	73.61	83.50	84.00	0.50	0.60	10.39	14.11
Russia Winter	14.91	15.41	16.35	16.35	3.52	3.41	3.58	3.59	52.47	52.54	58.50	58.75	0.25	0.43	6.21	11.82
Russia Spring	11.44	11.91	12.25	12.25	1.68	1.77	2.04	2.06	19.22	21.07	25.00	25.25	0.25	1.00	4.18	19.83
Ukraine	6.72	7.02	6.80	6.80	3.73	4.16	3.75	3.75	25.06	29.17	25.50	25.50	0.00	0.00	-3.67	-12.58
Kazakhstan	11.35	11.34	11.80	11.80	1.23	1.01	1.06	1.06	13.95	11.45	12.50	12.50	0.00	0.00	1.05	9.15
Uzbekistan	1.40	1.40	1.40	1.40	4.29	4.86	4.65	4.65	6.00	6.80	6.51	6.51	0.00	0.00	-0.29	-4.26
Belarus	0.66	0.75	0.70	0.70	2.75	3.83	3.29	3.29	1.82	2.88	2.30	2.30	0.00	0.00	-0.58	-20.00
Canada	9.88	9.66	9.90	10.02	3.27	3.38	3.54	3.51	32.35	32.67	35.00	35.18	0.18	0.52	2.51	7.69
South America																
Argentina	6.05	6.73	6.40	6.40	3.22	2.94	2.81	2.81	19.50	19.76	18.00	18.00	0.00	0.00	-1.76	-8.91
Brazil	2.04	2.04	2.32	2.32	2.66	2.55	2.84	2.72	5.43	5.20	6.60	6.30	-0.30	-4.55	1.10	21.15
Uruguay	0.20	0.24	0.21	0.21	3.68	3.26	3.50	3.50	0.73	0.78	0.75	0.75	0.00	0.00	-0.03	-3.99
Australia	10.40	10.20	13.00	13.00	1.69	1.49	2.19	2.31	17.60	15.20	28.50	30.00	1.50	5.26	14.80	97.37
Africa																
Egypt	1.32	1.37	1.39	1.39	6.40	6.40	6.40	6.40	8.45	8.77	8.90	8.90	0.00	0.00	0.13	1.48
Morocco	2.85	2.75	2.76	2.76	2.58	1.46	0.93	0.93	7.34	4.03	2.56	2.56	0.00	0.00	-1.47	-36.40
Ethiopia	1.75	1.80	1.85	1.85	2.42	2.74	2.86	2.86	4.24	4.93	5.30	5.30	0.00	0.00	0.38	7.61
Algeria	2.07	2.07	2.08	2.08	1.90	1.90	1.88	1.88	3.94	3.95	3.90	3.90	0.00	0.00	-0.05	-1.27
Middle East																
Turkey	7.62	7.00	7.10	7.10	2.50	2.50	2.57	2.57	19.00	17.50	18.25	18.25	0.00	0.00	0.75	4.29
Iran	6.70	6.70	6.70	6.70	2.16	2.51	2.50	2.50	14.50	16.80	16.75	16.75	0.00	0.00	-0.05	-0.30
Iraq	1.70	2.40	2.40	2.40	1.76	2.00	1.93	1.93	3.00	4.80	4.64	4.64	0.00	0.00	-0.17	-3.44
Syria	1.10	1.60	1.60	1.60	1.82	3.00	2.81	2.81	2.00	4.80	4.50	4.50	0.00	0.00	-0.30	-6.25
Mexico	0.54	0.59	0.55	0.55	5.56	5.54	5.55	5.55	3.00	3.27	3.05	3.05	0.00	0.00	-0.22	-6.73
Serbia	0.65	0.57	0.57	0.57	4.92	4.39	4.74	4.74	3.20	2.50	2.70	2.70	0.00	0.00	0.20	8.00
Others	7.13	7.33	7.31	7.33	2.56	2.71	2.72	2.74	18.23	19.86	19.92	20.08	0.16	0.78	0.22	1.09

Table 03 Total Coarse Grain Area, Yield, and Production

Country / Region	Area (Million hectares)				Yield (Metric tons per hectare)				Production (Million metric tons)				Change in Production			
	2018/19	Prel.	2020/21 Proj.		2018/19	Prel.	2020/21 Proj.		2018/19	Prel.	2020/21 Proj.		From last month		From last year	
		2019/20	Nov	Dec		2019/20	Nov	Dec		2019/20	Nov	Dec	MMT	Percent	MMT	Percent
World	331.10	333.78	338.66	338.55	4.22	4.23	4.27	4.28	1,397.60	1,411.46	1,447.75	1,447.82	0.07	0.00	36.36	2.58
United States	36.20	36.17	36.82	36.82	10.44	9.94	10.39	10.39	377.91	359.43	382.75	382.75	0.00	0.00	23.32	6.49
Total Foreign	294.90	297.61	301.83	301.73	3.46	3.53	3.53	3.53	1,019.69	1,052.02	1,065.00	1,065.07	0.07	0.01	13.04	1.24
China	44.29	43.72	44.42	44.42	5.96	6.14	6.02	6.02	263.96	268.20	267.38	267.38	0.00	0.00	-0.83	-0.31
European Union	29.24	30.17	30.79	30.97	5.07	5.37	5.28	5.24	148.26	161.98	162.60	162.19	-0.42	-0.26	0.21	0.13
South America																
Brazil	18.72	19.77	20.78	20.78	5.57	5.34	5.46	5.46	104.33	105.57	113.41	113.41	0.00	0.00	7.83	7.42
Argentina	8.22	8.43	8.04	8.04	7.20	6.90	7.10	7.02	59.22	58.13	57.03	56.43	-0.60	-1.05	-1.69	-2.91
Former Soviet Union - 12																
Russia	14.03	14.51	14.35	14.35	2.50	2.79	2.85	2.85	35.00	40.50	40.93	40.93	0.00	0.00	0.43	1.06
Ukraine	7.58	8.22	8.52	8.52	5.87	5.67	4.43	4.54	44.50	46.55	37.71	38.71	1.00	2.65	-7.84	-16.83
Kazakhstan	2.97	3.45	3.16	3.16	1.76	1.47	1.61	1.61	5.23	5.06	5.10	5.10	0.00	0.00	0.04	0.71
Belarus	1.01	0.90	1.03	1.03	2.91	3.78	3.42	3.42	2.93	3.40	3.52	3.52	0.00	0.00	0.12	3.53
Africa																
Nigeria	14.30	14.40	14.40	14.40	1.39	1.37	1.42	1.42	19.84	19.67	20.40	20.40	0.00	0.00	0.74	3.74
South Africa	2.81	3.13	3.23	3.23	4.43	5.27	5.16	5.16	12.42	16.50	16.66	16.66	0.00	0.00	0.16	0.98
Tanzania	5.22	5.35	5.35	5.35	1.36	1.29	1.38	1.38	7.12	6.90	7.40	7.40	0.00	0.00	0.50	7.25
Burkina	4.32	3.90	3.90	3.90	1.12	1.19	1.26	1.26	4.82	4.66	4.90	4.90	0.00	0.00	0.25	5.26
Ethiopia	5.64	5.60	5.60	5.60	2.92	3.05	3.08	3.08	16.47	17.10	17.25	17.25	0.00	0.00	0.15	0.88
Egypt	1.07	1.02	1.02	1.02	7.14	7.09	7.09	7.09	7.66	7.26	7.26	7.26	0.00	0.00	0.00	0.00
Mali	4.63	4.70	4.70	4.70	1.50	1.48	1.45	1.45	6.94	6.94	6.80	6.80	0.00	0.00	-0.14	-1.95
India	22.23	23.99	23.20	22.90	1.94	1.98	1.96	1.98	43.21	47.42	45.59	45.34	-0.25	-0.55	-2.09	-4.40
Southeast Asia																
Indonesia	3.70	3.80	3.70	3.70	3.24	3.16	3.24	3.24	12.00	12.00	12.00	12.00	0.00	0.00	0.00	0.00
Philippines	2.48	2.51	2.60	2.60	3.07	3.20	3.15	3.15	7.61	8.03	8.20	8.20	0.00	0.00	0.17	2.12
Vietnam	1.03	0.99	0.97	0.97	4.72	4.80	4.68	4.68	4.87	4.76	4.54	4.54	0.00	0.00	-0.22	-4.56
Thailand	1.32	1.24	1.28	1.28	4.27	3.66	4.35	4.35	5.65	4.55	5.55	5.55	0.00	0.00	1.00	21.98
Mexico	8.95	8.35	9.05	9.05	3.73	3.82	3.71	3.71	33.40	31.91	33.59	33.59	0.00	0.00	1.68	5.27
Canada	5.00	5.54	5.64	5.72	5.24	5.16	5.25	5.16	26.20	28.61	29.60	29.51	-0.08	-0.27	0.90	3.16
Australia	6.06	5.01	6.09	6.07	1.90	2.08	2.34	2.43	11.51	10.44	14.26	14.76	0.50	3.51	4.32	41.40
Middle East																
Turkey	4.34	4.53	4.63	4.63	3.05	3.19	3.38	3.38	13.25	14.45	15.66	15.66	0.00	0.00	1.21	8.37
Iran	1.73	1.91	1.91	1.91	2.32	2.63	2.71	2.71	4.02	5.02	5.17	5.17	0.00	0.00	0.15	2.99
Others	74.00	72.48	73.49	73.45	1.61	1.61	1.67	1.67	119.28	116.45	122.52	122.44	-0.09	-0.07	5.98	5.14

World and Selected Countries and Regions; Coarse Grain includes: Barley, Corn, Millet, Mixed Grains, Oats, Rye and Sorghum

Table 04 Corn Area, Yield, and Production

Country / Region	Area (Million hectares)				Yield (Metric tons per hectare)				Production (Million metric tons)				Change in Production			
	2018/19	Prel.	2020/21 Proj.		2018/19	Prel.	2020/21 Proj.		2018/19	Prel.	2020/21 Proj.		From last month		From last year	
		2019/20	Nov	Dec		2019/20	Nov	Dec		2019/20	Nov	Dec	MMT	Percent	MMT	Percent
World	192.08	193.25	197.00	196.98	5.85	5.78	5.81	5.81	1,123.37	1,116.21	1,144.63	1,143.56	-1.08	-0.09	27.35	2.45
United States	32.89	32.92	33.40	33.40	11.07	10.51	11.03	11.03	364.26	345.96	368.49	368.49	0.00	0.00	22.53	6.51
Total Foreign	159.19	160.33	163.61	163.58	4.77	4.80	4.74	4.74	759.11	770.25	776.14	775.07	-1.08	-0.14	4.82	0.63
China	42.13	41.28	42.00	42.00	6.10	6.32	6.19	6.19	257.17	260.78	260.00	260.00	0.00	0.00	-0.78	-0.30
South America																
Brazil	17.50	18.50	19.50	19.50	5.77	5.51	5.64	5.64	101.00	102.00	110.00	110.00	0.00	0.00	8.00	7.84
Argentina	6.10	6.30	6.20	6.10	8.36	8.10	8.06	8.03	51.00	51.00	50.00	49.00	-1.00	-2.00	-2.00	-3.92
Bolivia	0.47	0.48	0.50	0.50	2.11	2.39	2.40	2.40	0.99	1.15	1.20	1.20	0.00	0.00	0.06	4.80
European Union	8.28	8.89	8.88	9.00	7.77	7.51	7.23	7.08	64.38	66.72	64.20	63.70	-0.50	-0.78	-3.02	-4.52
Africa																
South Africa	2.60	2.91	3.00	3.00	4.55	5.50	5.33	5.33	11.82	16.00	16.00	16.00	0.00	0.00	0.00	0.00
Nigeria	6.50	6.50	6.50	6.50	1.69	1.69	1.77	1.77	11.00	11.00	11.50	11.50	0.00	0.00	0.50	4.55
Ethiopia	2.30	2.30	2.30	2.30	3.63	3.70	3.74	3.74	8.35	8.50	8.60	8.60	0.00	0.00	0.10	1.18
Egypt	0.85	0.80	0.80	0.80	8.00	8.00	8.00	8.00	6.80	6.40	6.40	6.40	0.00	0.00	0.00	0.00
Tanzania	4.10	4.20	4.20	4.20	1.46	1.39	1.50	1.50	5.99	5.82	6.30	6.30	0.00	0.00	0.48	8.25
Malawi	1.69	1.70	1.70	1.70	1.60	1.78	2.22	2.22	2.70	3.03	3.78	3.78	0.00	0.00	0.75	24.75
Zambia	1.09	0.84	1.29	1.29	2.21	2.38	2.62	2.62	2.40	2.00	3.39	3.39	0.00	0.00	1.38	69.01
Kenya	2.14	2.00	2.00	2.00	1.87	1.90	2.00	2.00	4.01	3.80	4.00	4.00	0.00	0.00	0.20	5.26
Uganda	1.13	1.15	1.15	1.15	2.30	2.24	2.43	2.43	2.60	2.58	2.80	2.80	0.00	0.00	0.23	8.74
Zimbabwe	1.72	1.62	1.58	1.58	0.99	0.48	0.57	0.57	1.70	0.78	0.91	0.91	0.00	0.00	0.13	16.86
Former Soviet Union - 12																
Ukraine	4.57	4.99	5.40	5.40	7.84	7.19	5.28	5.46	35.81	35.89	28.50	29.50	1.00	3.51	-6.39	-17.80
Russia	2.37	2.50	2.75	2.75	4.81	5.70	5.09	5.09	11.42	14.28	14.00	14.00	0.00	0.00	-0.28	-1.93
South Asia																
India	9.03	9.72	9.20	9.20	3.07	2.95	3.04	3.04	27.72	28.64	28.00	28.00	0.00	0.00	-0.64	-2.22
Pakistan	1.32	1.33	1.39	1.39	4.62	5.19	5.05	5.05	6.10	6.90	7.00	7.00	0.00	0.00	0.10	1.45
Nepal	0.96	0.96	0.97	0.97	2.84	2.76	2.82	2.82	2.71	2.65	2.72	2.72	0.00	0.00	0.07	2.64
Southeast Asia																
Indonesia	3.70	3.80	3.70	3.70	3.24	3.16	3.24	3.24	12.00	12.00	12.00	12.00	0.00	0.00	0.00	0.00
Philippines	2.48	2.51	2.60	2.60	3.07	3.20	3.15	3.15	7.61	8.03	8.20	8.20	0.00	0.00	0.17	2.12
Vietnam	1.03	0.99	0.97	0.97	4.72	4.80	4.68	4.68	4.87	4.76	4.54	4.54	0.00	0.00	-0.22	-4.56
Thailand	1.30	1.22	1.25	1.25	4.32	3.70	4.40	4.40	5.60	4.50	5.50	5.50	0.00	0.00	1.00	22.22
Mexico	7.20	6.62	7.30	7.30	3.83	4.00	3.84	3.84	27.60	26.50	28.00	28.00	0.00	0.00	1.50	5.66
Canada	1.43	1.45	1.40	1.41	9.70	9.24	10.00	9.63	13.89	13.40	14.00	13.56	-0.44	-3.12	0.16	1.19
Turkey	0.53	0.52	0.62	0.62	10.75	11.54	11.29	11.29	5.70	6.00	7.00	7.00	0.00	0.00	1.00	16.67
Others	24.68	24.25	24.47	24.41	2.68	2.69	2.76	2.76	66.18	65.16	67.61	67.47	-0.14	-0.21	2.31	3.54

World and Selected Countries and Regions

Table 05 Barley Area, Yield, and Production

Country / Region	Area (Million hectares)				Yield (Metric tons per hectare)				Production (Million metric tons)				Change in Production						
	2018/19	Prel.		2020/21 Proj.		2018/19	Prel.		2020/21 Proj.		2018/19	Prel.		2020/21 Proj.		From last month		From last year	
		2019/20	Nov	Dec	2019/20		Nov	Dec	2019/20	Nov		Dec	MMT	Percent	MMT	Percent			
World	48.84	51.84	51.39	51.48	2.85	3.03	3.04	3.05	139.42	156.87	156.38	157.18	0.80	0.51	0.31	0.20			
United States	0.80	0.90	0.86	0.86	4.17	4.18	4.17	4.17	3.34	3.76	3.60	3.60	0.00	0.00	-0.16	-4.15			
Total Foreign	48.04	50.94	50.53	50.61	2.83	3.01	3.02	3.03	136.08	153.11	152.78	153.58	0.80	0.52	0.47	0.31			
European Union	12.32	12.37	12.77	12.78	4.55	5.11	4.97	4.96	55.98	63.22	63.50	63.40	-0.10	-0.16	0.18	0.29			
Former Soviet Union - 12																			
Russia	7.78	8.40	8.00	8.00	2.15	2.37	2.58	2.58	16.74	19.94	20.60	20.60	0.00	0.00	0.66	3.32			
Ukraine	2.57	2.78	2.60	2.60	2.96	3.42	3.08	3.08	7.60	9.53	8.00	8.00	0.00	0.00	-1.53	-16.04			
Kazakhstan	2.52	2.98	2.70	2.70	1.58	1.29	1.41	1.41	3.97	3.83	3.80	3.80	0.00	0.00	-0.03	-0.78			
Belarus	0.43	0.40	0.38	0.38	2.20	3.50	2.76	2.76	0.94	1.40	1.05	1.05	0.00	0.00	-0.35	-25.00			
Azerbaijan	0.34	0.34	0.35	0.35	2.80	2.97	2.81	2.81	0.94	1.02	0.97	0.97	0.00	0.00	-0.05	-4.53			
Canada	2.40	2.73	2.75	2.81	3.50	3.81	3.78	3.82	8.38	10.38	10.40	10.74	0.34	3.28	0.36	3.45			
Australia	4.44	4.05	4.40	4.40	1.99	2.22	2.39	2.50	8.82	9.00	10.50	11.00	0.50	4.76	2.00	22.22			
Middle East																			
Turkey	3.60	3.80	3.80	3.80	1.94	2.08	2.13	2.13	7.00	7.90	8.10	8.10	0.00	0.00	0.20	2.53			
Iran	1.55	1.70	1.70	1.70	1.81	2.12	2.21	2.21	2.80	3.60	3.75	3.75	0.00	0.00	0.15	4.17			
Iraq	0.60	1.20	1.20	1.20	1.30	1.33	1.29	1.29	0.78	1.60	1.55	1.55	0.00	0.00	-0.05	-3.13			
Syria	0.80	1.50	1.50	1.50	0.50	1.33	1.27	1.27	0.40	2.00	1.90	1.90	0.00	0.00	-0.10	-5.00			
Africa																			
Ethiopia	1.00	1.00	1.00	1.00	2.20	2.30	2.35	2.35	2.20	2.30	2.35	2.35	0.00	0.00	0.05	2.17			
Morocco	1.60	1.45	1.47	1.47	1.82	0.80	0.44	0.44	2.91	1.16	0.64	0.64	0.00	0.00	-0.52	-44.88			
Algeria	1.03	1.03	1.03	1.03	1.90	1.95	1.80	1.80	1.95	2.00	1.85	1.85	0.00	0.00	-0.16	-7.75			
Tunisia	0.31	0.47	0.42	0.42	0.99	1.94	1.60	1.60	0.31	0.91	0.66	0.66	0.00	0.00	-0.25	-27.19			
South Africa	0.12	0.13	0.14	0.14	3.55	2.61	3.57	3.57	0.42	0.35	0.50	0.50	0.00	0.00	0.16	44.93			
South America																			
Argentina	1.20	1.12	0.85	0.85	4.22	3.39	4.06	4.06	5.06	3.80	3.45	3.45	0.00	0.00	-0.35	-9.21			
Uruguay	0.17	0.17	0.17	0.18	3.82	3.68	3.70	3.72	0.64	0.61	0.61	0.67	0.06	9.84	0.06	10.38			
Brazil	0.11	0.12	0.12	0.12	3.16	3.61	3.21	3.21	0.35	0.43	0.39	0.39	0.00	0.00	-0.04	-10.26			
India	0.66	0.58	0.60	0.60	2.69	2.84	2.80	2.80	1.78	1.63	1.69	1.69	0.00	0.00	0.05	3.31			
China	0.26	0.26	0.26	0.26	3.64	3.46	3.46	3.46	0.96	0.90	0.90	0.90	0.00	0.00	0.00	0.00			
Mexico	0.35	0.36	0.36	0.36	2.82	2.81	2.80	2.80	1.00	1.01	1.00	1.00	0.00	0.00	-0.01	-0.99			
Afghanistan	0.08	0.18	0.17	0.17	0.68	1.39	1.41	1.41	0.06	0.25	0.24	0.24	0.00	0.00	-0.01	-4.00			
Others	1.81	1.83	1.81	1.81	2.26	2.38	2.42	2.42	4.09	4.35	4.39	4.39	0.00	0.00	0.04	0.85			

World and Selected Countries and Regions

Table 06 Oats Area, Yield, and Production

Country / Region	Area (Million hectares)				Yield (Metric tons per hectare)				Production (Million metric tons)				Change in Production						
	2018/19	Prel.		2020/21 Proj.		2018/19	Prel.		2020/21 Proj.		2018/19	Prel.		2020/21 Proj.		From last month		From last year	
		2019/20	Nov	Dec	2019/20		Nov	Dec	2019/20	Nov		Dec	MMT	Percent	MMT	Percent			
World	9.99	9.57	9.94	9.94	2.23	2.41	2.54	2.55	22.25	23.09	25.25	25.33	0.07	0.29	2.24	9.69			
United States	0.35	0.34	0.41	0.41	2.33	2.31	2.34	2.34	0.82	0.77	0.95	0.95	0.00	0.00	0.18	22.77			
Total Foreign	9.64	9.23	9.54	9.53	2.22	2.42	2.55	2.56	21.43	22.32	24.31	24.38	0.07	0.30	2.06	9.24			
European Union	2.73	2.55	2.74	2.76	2.86	3.16	3.38	3.38	7.79	8.08	9.25	9.32	0.07	0.76	1.24	15.36			
Former Soviet Union - 12																			
Russia	2.73	2.43	2.25	2.25	1.73	1.82	1.78	1.78	4.72	4.42	4.00	4.00	0.00	0.00	-0.42	-9.50			
Ukraine	0.20	0.18	0.20	0.20	2.14	2.32	2.31	2.31	0.42	0.43	0.45	0.45	0.00	0.00	0.02	5.39			
Belarus	0.15	0.15	0.15	0.15	2.26	3.00	2.47	2.47	0.34	0.45	0.37	0.37	0.00	0.00	-0.08	-17.78			
Kazakhstan	0.24	0.24	0.23	0.23	1.43	1.10	1.33	1.33	0.34	0.27	0.30	0.30	0.00	0.00	0.03	12.36			
Canada	1.01	1.17	1.25	1.25	3.42	3.62	3.60	3.62	3.44	4.23	4.50	4.50	0.00	0.07	0.28	6.53			
South America																			
Argentina	0.24	0.32	0.29	0.29	2.40	1.86	2.25	2.25	0.57	0.60	0.64	0.64	0.00	0.00	0.04	6.67			
Brazil	0.38	0.40	0.40	0.40	2.11	2.21	2.28	2.28	0.80	0.88	0.91	0.91	0.00	0.00	0.03	3.53			
Chile	0.08	0.10	0.11	0.11	5.13	4.92	5.60	5.60	0.39	0.48	0.64	0.64	0.00	0.00	0.16	33.75			
Uruguay	0.03	0.01	0.02	0.02	2.04	1.86	2.00	2.00	0.05	0.03	0.04	0.04	0.00	0.00	0.01	53.85			
Oceania																			
Australia	0.94	0.70	0.95	0.93	1.21	1.23	1.68	1.72	1.14	0.86	1.60	1.60	0.00	0.00	0.74	86.05			
New Zealand	0.01	0.01	0.01	0.01	5.00	5.50	5.50	5.50	0.03	0.03	0.03	0.03	0.00	0.00	0.00	0.00			
China	0.50	0.53	0.53	0.53	1.15	1.19	1.19	1.19	0.58	0.63	0.63	0.63	0.00	0.00	0.00	0.00			
Africa																			
Algeria	0.09	0.09	0.09	0.09	1.29	1.29	1.29	1.29	0.11	0.11	0.11	0.11	0.00	0.00	0.00	0.00			
Morocco	0.05	0.05	0.04	0.04	1.40	0.89	0.88	0.88	0.06	0.04	0.04	0.04	0.00	0.00	-0.01	-12.50			
South Africa	0.02	0.02	0.02	0.02	1.65	0.76	1.50	1.50	0.03	0.02	0.03	0.03	0.00	0.00	0.01	87.50			
Other Europe																			
Norway	0.07	0.07	0.07	0.07	2.09	4.29	4.29	4.29	0.14	0.30	0.30	0.30	0.00	0.00	0.00	0.00			
Serbia	0.03	0.03	0.03	0.03	2.17	2.17	2.17	2.17	0.07	0.07	0.07	0.07	0.00	0.00	0.00	0.00			
Albania	0.02	0.02	0.01	0.01	2.06	2.06	2.14	2.14	0.04	0.03	0.03	0.03	0.00	0.00	0.00	-9.09			
Bosnia and Herzegovina	0.01	0.01	0.01	0.01	2.79	1.93	2.56	2.56	0.04	0.03	0.02	0.02	0.00	0.00	0.00	-14.81			
Turkey	0.10	0.10	0.10	0.10	2.30	2.30	2.40	2.40	0.23	0.23	0.24	0.24	0.00	0.00	0.01	4.35			
Mexico	0.05	0.05	0.05	0.05	2.06	1.98	2.00	2.00	0.10	0.10	0.09	0.09	0.00	0.00	-0.01	-9.09			
Others	0.02	0.01	0.01	0.01	2.00	1.86	1.86	1.86	0.03	0.03	0.03	0.03	0.00	0.00	0.00	0.00			

World and Selected Countries and Regions

Table 07 Rye Area, Yield, and Production

Country / Region	Area (Million hectares)				Yield (Metric tons per hectare)				Production (Million metric tons)				Change in Production			
	Prel.		2020/21 Proj.		Prel.		2020/21 Proj.		Prel.		2020/21 Proj.		From last month		From last year	
	2018/19	2019/20	Nov	Dec	2018/19	2019/20	Nov	Dec	2018/19	2019/20	Nov	Dec	MMT	Percent	MMT	Percent
World	3.74	3.91	4.20	4.20	2.67	3.09	3.25	3.24	10.00	12.11	13.64	13.62	-0.02	-0.18	1.51	12.46
United States	0.11	0.13	0.13	0.13	1.95	2.16	2.19	2.19	0.21	0.27	0.29	0.29	0.00	0.00	0.02	8.52
Total Foreign	3.63	3.79	4.07	4.07	2.70	3.12	3.28	3.28	9.79	11.84	13.35	13.33	-0.02	-0.18	1.49	12.55
European Union	1.92	2.21	2.25	2.25	3.23	3.79	4.10	4.09	6.21	8.39	9.20	9.18	-0.03	-0.27	0.78	9.33
Former Soviet Union - 12																
Russia	0.96	0.82	0.95	0.95	2.00	1.73	1.89	1.89	1.91	1.42	1.80	1.80	0.00	0.00	0.38	26.40
Belarus	0.25	0.20	0.30	0.30	2.00	3.25	3.00	3.00	0.50	0.65	0.90	0.90	0.00	0.00	0.25	38.46
Ukraine	0.15	0.12	0.14	0.14	2.66	2.90	2.96	2.96	0.40	0.34	0.40	0.40	0.00	0.00	0.06	17.99
Kazakhstan	0.02	0.02	0.02	0.02	1.05	1.00	1.00	1.00	0.02	0.02	0.02	0.02	0.00	0.00	0.00	-13.04
Turkey	0.11	0.11	0.11	0.11	2.91	2.91	2.91	2.91	0.32	0.32	0.32	0.32	0.00	0.00	0.00	0.00
Canada	0.08	0.10	0.15	0.15	2.99	3.23	2.97	2.95	0.24	0.33	0.43	0.43	0.00	0.23	0.10	29.43
South America																
Chile	0.00	0.00	0.00	0.00	5.00	5.00	5.00	5.00	0.01	0.01	0.01	0.01	0.00	0.00	0.00	0.00
Argentina	0.05	0.11	0.07	0.07	1.78	2.04	2.00	2.00	0.09	0.22	0.14	0.14	0.00	0.00	-0.08	-36.36
Other Europe																
Bosnia and Herzegovina	0.00	0.00	0.00	0.00	2.75	2.50	3.33	3.33	0.01	0.01	0.01	0.01	0.00	0.00	0.00	0.00
Switzerland	0.00	0.00	0.00	0.00	5.50	5.50	5.50	5.50	0.01	0.01	0.01	0.01	0.00	0.00	0.00	0.00
Serbia	0.00	0.00	0.00	0.00	2.50	2.50	2.50	2.50	0.01	0.01	0.01	0.01	0.00	0.00	0.00	0.00
Australia	0.04	0.04	0.04	0.04	0.68	0.68	0.68	0.68	0.03	0.03	0.03	0.03	0.00	0.00	0.00	0.00
Others	0.03	0.04	0.04	0.04	0.97	1.92	1.90	1.90	0.03	0.07	0.07	0.07	0.00	0.00	0.00	1.37

World and Selected Countries and Regions

Table 08 Sorghum Area, Yield, and Production

Country / Region	Area (Million hectares)				Yield (Metric tons per hectare)				Production (Million metric tons)				Change in Production			
	Prel.		2020/21 Proj.		Prel.		2020/21 Proj.		Prel.		2020/21 Proj.		From last month		From last year	
	2018/19	2019/20	Nov	Dec	2018/19	2019/20	Nov	Dec	2018/19	2019/20	Nov	Dec	MMT	Percent	MMT	Percent
World	40.74	39.78	41.44	41.24	1.45	1.46	1.49	1.50	59.24	57.96	61.75	61.87	0.12	0.19	3.90	6.73
United States	2.05	1.89	2.02	2.02	4.53	4.58	4.66	4.66	9.27	8.67	9.42	9.42	0.00	0.00	0.75	8.59
Total Foreign	38.70	37.89	39.42	39.21	1.29	1.30	1.33	1.34	49.97	49.29	52.33	52.45	0.12	0.22	3.16	6.41
Africa																
Nigeria	5.80	5.90	5.90	5.90	1.16	1.13	1.17	1.17	6.72	6.67	6.90	6.90	0.00	0.00	0.24	3.53
Ethiopia	1.83	1.85	1.85	1.85	2.70	2.81	2.81	2.81	4.93	5.20	5.20	5.20	0.00	0.00	0.00	0.00
Sudan	7.11	6.33	7.00	7.00	0.70	0.63	0.71	0.71	4.95	4.00	5.00	5.00	0.00	0.00	1.00	25.00
Burkina	1.91	1.80	1.80	1.80	1.01	1.04	1.06	1.06	1.93	1.87	1.90	1.90	0.00	0.00	0.03	1.60
Mali	1.35	1.50	1.50	1.50	1.09	1.00	1.00	1.00	1.47	1.50	1.50	1.50	0.00	0.00	0.00	0.00
Niger	3.90	3.70	3.70	3.70	0.54	0.53	0.51	0.51	2.10	1.97	1.90	1.90	0.00	0.00	-0.07	-3.55
Cameroon	0.87	0.85	0.85	0.85	1.63	1.41	1.65	1.65	1.42	1.20	1.40	1.40	0.00	0.00	0.20	16.67
Tanzania	0.79	0.80	0.80	0.80	1.02	0.91	0.94	0.94	0.81	0.73	0.75	0.75	0.00	0.00	0.02	2.74
Egypt	0.14	0.14	0.14	0.14	5.36	5.36	5.36	5.36	0.75	0.75	0.75	0.75	0.00	0.00	0.00	0.00
Uganda	0.45	0.41	0.41	0.41	0.67	0.98	0.98	0.98	0.30	0.40	0.40	0.40	0.00	0.00	0.00	0.00
Ghana	0.28	0.25	0.25	0.25	1.12	1.38	1.12	1.12	0.32	0.35	0.28	0.28	0.00	0.00	-0.07	-18.84
Mozambique	0.25	0.30	0.30	0.30	1.18	1.08	0.97	0.97	0.30	0.33	0.29	0.29	0.00	0.00	-0.04	-10.77
South Africa	0.05	0.05	0.05	0.05	2.70	2.96	2.50	2.50	0.14	0.13	0.13	0.13	0.00	0.00	-0.01	-6.02
Mexico	1.35	1.32	1.35	1.35	3.48	3.26	3.33	3.33	4.70	4.30	4.50	4.50	0.00	0.00	0.20	4.65
South America																
Argentina	0.63	0.58	0.63	0.73	3.97	4.35	4.44	4.38	2.50	2.50	2.80	3.20	0.40	14.29	0.70	28.00
Brazil	0.73	0.75	0.75	0.75	2.97	3.03	2.80	2.80	2.18	2.25	2.10	2.10	0.00	0.00	-0.15	-6.83
South Asia																
India	4.09	4.71	4.80	4.50	0.85	1.00	0.92	0.92	3.48	4.73	4.40	4.15	-0.25	-5.68	-0.58	-12.32
Pakistan	0.24	0.24	0.25	0.25	0.59	0.58	0.58	0.58	0.14	0.14	0.15	0.15	0.00	0.00	0.01	3.57
China	0.62	0.75	0.73	0.73	4.70	4.80	4.86	4.86	2.91	3.60	3.55	3.55	0.00	0.00	-0.05	-1.39
Australia	0.55	0.15	0.60	0.60	2.11	2.00	2.83	2.83	1.16	0.30	1.70	1.70	0.00	0.00	1.40	466.67
European Union	0.13	0.16	0.20	0.20	5.70	5.33	5.25	5.10	0.75	0.87	1.05	1.02	-0.03	-2.86	0.15	17.38
Others	5.64	5.37	5.56	5.55	1.07	1.03	1.02	1.02	6.03	5.51	5.69	5.69	-0.01	-0.09	0.18	3.30

World and Selected Countries and Regions

Table 09 Rice Area, Yield, and Production
World and Selected Countries and Regions

Country / Region	Area (Million hectares)				Yield (Metric tons per hectare)				Production (Million metric tons)				Change in Production			
	Prel.		2020/21 Proj.		Prel.		2020/21 Proj.		Prel.		2020/21 Proj.		From last month		From last year	
	2018/19	2019/20	Nov	Dec	2018/19	2019/20	Nov	Dec	2018/19	2019/20	Nov	Dec	MMT	Percent	MMT	Percent
World	162.48	160.42	162.39	162.43	4.57	4.62	4.60	4.61	497.04	496.11	501.11	501.20	0.09	0.02	5.10	1.03
United States	1.18	1.00	1.21	1.21	8.62	8.38	8.48	8.48	7.11	5.86	7.18	7.18	0.00	0.00	1.32	22.44
Total Foreign	161.30	159.42	161.18	161.22	4.54	4.59	4.58	4.58	489.93	490.24	493.93	494.02	0.09	0.02	3.78	0.77
East Asia																
China	30.19	29.69	29.80	29.80	7.03	7.06	7.05	7.05	148.49	146.73	147.00	147.00	0.00	0.00	0.27	0.18
Japan	1.55	1.54	1.54	1.54	6.79	6.78	6.82	6.82	7.66	7.61	7.62	7.62	0.00	0.00	0.01	0.12
Korea, South	0.74	0.73	0.73	0.73	7.04	6.87	7.07	6.49	3.87	3.74	3.85	3.51	-0.34	-8.91	-0.24	-6.33
Korea, North	0.50	0.50	0.50	0.50	4.18	4.18	4.18	4.18	1.36	1.36	1.36	1.36	0.00	0.00	0.00	0.00
South Asia																
India	44.16	43.78	44.50	44.50	3.96	4.06	4.05	4.05	116.48	118.43	120.00	120.00	0.00	0.00	1.57	1.33
Bangladesh	11.77	11.83	11.70	11.70	4.45	4.55	4.53	4.53	34.91	35.85	35.30	35.30	0.00	0.00	-0.55	-1.53
Pakistan	2.88	3.00	3.00	3.00	3.80	3.60	3.80	3.80	7.30	7.20	7.60	7.60	0.00	0.00	0.40	5.56
Nepal	1.49	1.46	1.49	1.47	3.76	3.80	3.70	3.78	3.74	3.70	3.68	3.70	0.02	0.57	0.00	0.00
Sri Lanka	0.98	0.95	0.98	0.98	4.72	4.85	4.52	4.52	3.13	3.13	3.04	3.04	0.00	0.00	-0.09	-2.94
Southeast Asia																
Indonesia	11.50	11.20	11.60	11.60	4.68	4.78	4.74	4.74	34.20	34.00	34.90	34.90	0.00	0.00	0.90	2.65
Vietnam	7.54	7.47	7.40	7.40	5.80	5.82	5.84	5.84	27.34	27.15	27.00	27.00	0.00	0.00	-0.15	-0.55
Thailand	10.83	9.89	10.30	10.30	2.85	2.70	2.74	2.74	20.34	17.66	18.60	18.60	0.00	0.00	0.95	5.35
Burma	7.08	6.90	7.00	7.00	2.91	2.88	2.88	2.88	13.20	12.70	12.90	12.90	0.00	0.00	0.20	1.57
Philippines	4.74	4.64	4.55	4.55	3.93	4.08	4.08	4.08	11.73	11.93	11.70	11.70	0.00	0.00	-0.23	-1.90
Cambodia	3.24	3.26	3.24	3.24	2.91	2.89	2.89	2.89	5.74	5.74	5.71	5.71	0.00	0.00	-0.03	-0.52
Laos	0.86	0.97	0.98	0.98	3.12	3.19	3.24	3.24	1.68	1.95	2.00	2.00	0.00	0.00	0.05	2.56
Malaysia	0.70	0.70	0.70	0.70	4.01	4.01	4.01	4.01	1.83	1.83	1.83	1.83	0.00	0.00	0.00	0.00
South America																
Brazil	1.70	1.67	1.72	1.72	6.18	6.71	6.40	6.40	7.14	7.60	7.48	7.48	0.00	0.00	-0.12	-1.60
Peru	0.44	0.41	0.42	0.42	8.12	7.71	7.62	8.08	2.46	2.20	2.22	2.35	0.13	5.91	0.15	6.59
Africa																
Egypt	0.46	0.76	0.70	0.70	8.78	8.20	8.28	8.28	2.80	4.30	4.00	4.00	0.00	0.00	-0.30	-6.98
Madagascar	1.50	1.50	1.50	1.50	2.69	2.80	2.67	2.67	2.58	2.69	2.56	2.56	0.00	0.00	-0.13	-4.76
Nigeria	3.35	3.50	3.50	3.50	2.15	2.29	2.29	2.29	4.54	5.04	5.04	5.04	0.00	0.00	0.00	0.00
European Union	0.42	0.42	0.42	0.42	6.80	6.84	6.76	6.76	1.96	1.98	1.98	1.98	0.00	0.00	-0.01	-0.45
Iran	0.58	0.58	0.58	0.58	5.25	5.25	5.27	5.27	1.99	1.99	2.00	2.00	0.00	0.00	0.01	0.35
Others	12.12	12.09	12.35	12.40	2.94	2.98	3.02	3.04	23.47	23.74	24.58	24.86	0.28	1.15	1.13	4.74

Yield is on a rough basis, before the milling process. Production is on a milled basis, after the milling process.

Table 10 Total Oilseed Area, Yield, and Production

World and Selected Countries and Regions

Country / Region	Area (Million hectares)				Yield (Metric tons per hectare)				Production (Million metric tons)				Change in Production			
	Prel.		2020/21 Proj.		Prel.		2020/21 Proj.		Prel.		2020/21 Proj.		From last month		From last year	
	2018/19	2019/20	Nov	Dec	2018/19	2019/20	Nov	Dec	2018/19	2019/20	Nov	Dec	MMT	Percent	MMT	Percent
World Total	--	--	--	--	--	--	--	--	600.01	576.44	597.28	595.68	-1.60	-0.27	19.24	3.34
Total Foreign	--	--	--	--	--	--	--	--	469.30	469.46	473.30	472.01	-1.29	-0.27	2.55	0.54
Oilseed, Copra	--	--	--	--	--	--	--	--	5.98	5.86	5.77	5.75	-0.02	-0.31	-0.11	-1.89
Oilseed, Palm Kernel	--	--	--	--	--	--	--	--	19.53	19.42	19.91	19.96	0.06	0.28	0.54	2.77
Major Oilseeds	247.71	244.75	248.14	248.12	2.32	2.25	2.30	2.30	574.50	551.15	571.60	569.97	-1.64	-0.29	18.81	3.41
United States	41.33	36.87	39.00	39.00	3.16	2.90	3.18	3.17	130.72	106.98	123.98	123.67	-0.31	-0.25	16.69	15.60
Foreign Oilseeds	206.39	207.87	209.15	209.13	2.15	2.14	2.14	2.13	443.78	444.17	447.62	446.30	-1.33	-0.30	2.12	0.48
South America	63.20	64.04	65.78	65.75	3.17	3.13	3.18	3.17	200.36	200.23	209.20	208.50	-0.69	-0.33	8.27	4.13
Brazil	37.75	38.77	40.36	40.36	3.30	3.38	3.41	3.41	124.49	131.20	137.60	137.60	0.00	0.00	6.40	4.88
Argentina	19.16	19.03	19.07	18.89	3.18	2.82	2.92	2.89	60.83	53.65	55.63	54.63	-1.00	-1.80	0.98	1.83
Paraguay	3.62	3.61	3.73	3.73	2.38	2.77	2.78	2.78	8.60	10.01	10.38	10.38	0.00	0.00	0.37	3.68
Bolivia	1.51	1.51	1.54	1.54	2.07	1.93	1.97	1.97	3.13	2.92	3.03	3.03	0.00	0.00	0.11	3.73
Uruguay	1.02	0.98	0.95	1.09	2.86	2.14	2.33	2.31	2.92	2.09	2.20	2.51	0.31	14.09	0.42	20.10
China	24.01	25.20	25.05	25.05	2.50	2.50	2.49	2.49	59.95	63.03	62.28	62.28	0.00	0.00	-0.76	-1.20
South Asia	39.09	41.28	42.11	42.11	1.00	0.96	0.98	0.97	39.00	39.70	41.10	40.67	-0.43	-1.05	0.97	2.44
India	35.93	37.82	38.85	38.85	0.97	0.95	0.97	0.97	34.74	35.92	37.77	37.56	-0.21	-0.56	1.64	4.57
Pakistan	2.80	3.09	2.90	2.90	1.36	1.08	0.99	0.92	3.81	3.33	2.88	2.66	-0.22	-7.54	-0.67	-20.19
European Union	12.24	11.13	11.04	11.04	2.68	2.67	2.68	2.65	32.78	29.78	29.54	29.29	-0.25	-0.85	-0.49	-1.64
Former Soviet Union - 12	25.62	26.10	25.30	25.30	1.80	1.96	1.74	1.74	46.11	51.13	43.94	43.97	0.03	0.07	-7.15	-13.99
Russia	12.18	12.56	12.30	12.30	1.54	1.73	1.61	1.61	18.73	21.70	19.80	19.80	0.00	0.00	-1.90	-8.77
Ukraine	9.38	9.70	9.40	9.40	2.42	2.52	2.09	2.09	22.68	24.46	19.60	19.60	0.00	0.00	-4.86	-19.88
Uzbekistan	1.10	1.01	0.98	0.98	1.17	1.36	1.39	1.41	1.28	1.37	1.35	1.37	0.02	1.41	0.00	-0.22
Canada	11.69	10.76	10.34	10.41	2.41	2.40	2.48	2.45	28.20	25.82	25.60	25.45	-0.14	-0.56	-0.36	-1.41
Africa	21.64	21.30	20.68	20.74	1.04	0.98	1.00	1.01	22.56	20.81	20.76	20.87	0.10	0.50	0.06	0.28
Nigeria	3.77	3.66	3.79	3.79	1.38	1.17	1.25	1.25	5.19	4.29	4.75	4.75	0.00	0.00	0.46	10.83
South Africa	1.31	1.27	1.34	1.34	1.51	1.71	1.64	1.64	1.97	2.17	2.19	2.19	0.00	0.00	0.02	1.01
Tanzania	1.42	1.60	1.45	1.45	0.89	0.85	0.87	0.87	1.26	1.36	1.26	1.26	0.00	0.00	-0.10	-7.06
Southeast Asia	3.32	3.13	3.21	3.21	1.39	1.38	1.39	1.39	4.60	4.31	4.47	4.47	0.00	-0.04	0.16	3.71
Indonesia	0.99	0.95	0.94	0.94	1.56	1.55	1.54	1.54	1.55	1.47	1.45	1.45	0.00	-0.14	-0.03	-1.70
Burma	2.01	1.87	1.97	1.97	1.20	1.18	1.21	1.21	2.41	2.21	2.38	2.38	0.00	0.00	0.17	7.79
Australia	2.54	1.90	2.78	2.73	1.21	1.35	1.52	1.61	3.07	2.57	4.24	4.40	0.16	3.75	1.83	71.18
Turkey	1.33	1.39	1.17	1.17	2.53	2.31	2.43	2.43	3.36	3.22	2.83	2.83	0.00	0.00	-0.39	-11.96
Others	1.72	1.65	1.67	1.62	2.22	2.18	2.20	2.20	3.80	3.58	3.66	3.56	-0.10	-2.73	-0.02	-0.59

World Total and Total Foreign: (Major Oilseeds plus copra and palm kernel) Major Oilseeds: (soybeans, sunflowerseeds, peanuts(inshell), cottonseed and rapeseed)

Table 11 Soybean Area, Yield, and Production

Country / Region	Area (Million hectares)				Yield (Metric tons per hectare)				Production (Million metric tons)				Change in Production			
	2018/19	Prel.	2020/21 Proj.		2018/19	Prel.	2020/21 Proj.		2018/19	Prel.	2020/21 Proj.		From last month		From last year	
		2019/20	Nov	Dec		2019/20	Nov	Dec		2019/20	Nov	Dec	MMT	Percent	MMT	Percent
World	124.96	122.44	126.95	126.88	2.89	2.75	2.86	2.85	361.04	336.47	362.64	362.05	-0.59	-0.16	25.58	7.60
United States	35.45	30.33	33.30	33.30	3.40	3.19	3.41	3.41	120.52	96.67	113.50	113.50	0.00	0.00	16.83	17.41
Total Foreign	89.51	92.12	93.64	93.58	2.69	2.60	2.66	2.66	240.52	239.81	249.14	248.56	-0.59	-0.24	8.75	3.65
South America																
Brazil	35.90	36.90	38.60	38.60	3.33	3.41	3.45	3.45	119.70	126.00	133.00	133.00	0.00	0.00	7.00	5.56
Argentina	16.60	16.70	16.90	16.70	3.33	2.92	3.02	2.99	55.30	48.80	51.00	50.00	-1.00	-1.96	1.20	2.46
Paraguay	3.54	3.54	3.65	3.65	2.40	2.80	2.81	2.81	8.51	9.90	10.25	10.25	0.00	0.00	0.35	3.54
Bolivia	1.40	1.40	1.43	1.43	2.14	2.00	2.03	2.03	2.99	2.80	2.90	2.90	0.00	0.00	0.10	3.57
Uruguay	0.97	0.92	0.88	1.02	2.93	2.17	2.38	2.35	2.83	1.99	2.09	2.40	0.31	14.83	0.41	20.60
East Asia																
China	8.41	9.30	9.30	9.30	1.90	1.95	1.88	1.88	15.97	18.10	17.50	17.50	0.00	0.00	-0.60	-3.31
Korea, South	0.05	0.06	0.06	0.06	1.75	1.81	1.80	1.80	0.09	0.11	0.11	0.11	0.00	0.00	0.00	2.86
Korea, North	0.15	0.15	0.15	0.15	1.50	1.50	1.50	1.50	0.23	0.23	0.23	0.23	0.00	0.00	0.00	0.00
Japan	0.15	0.14	0.14	0.14	1.45	1.47	1.65	1.65	0.21	0.21	0.24	0.24	0.00	0.00	0.02	10.85
India	11.13	12.00	12.20	12.20	0.98	0.78	0.86	0.86	10.93	9.30	10.50	10.50	0.00	0.00	1.20	12.90
Canada	2.54	2.27	2.00	2.04	2.92	2.71	3.05	3.11	7.42	6.15	6.10	6.35	0.25	4.10	0.21	3.34
Former Soviet Union - 12																
Russia	2.74	2.78	2.70	2.70	1.47	1.57	1.59	1.59	4.03	4.36	4.30	4.30	0.00	0.00	-0.06	-1.35
Ukraine	1.88	1.96	1.50	1.50	2.58	2.29	2.07	2.07	4.83	4.50	3.10	3.10	0.00	0.00	-1.40	-31.10
European Union	0.92	0.92	0.93	0.93	2.91	2.85	2.97	2.92	2.67	2.62	2.75	2.70	-0.05	-1.82	0.09	3.25
Southeast Asia																
Indonesia	0.42	0.40	0.39	0.39	1.24	1.20	1.22	1.22	0.52	0.48	0.48	0.48	0.00	0.00	-0.01	-1.04
Vietnam	0.05	0.05	0.05	0.05	1.62	1.53	1.53	1.53	0.08	0.07	0.07	0.07	0.00	0.00	0.00	0.00
Thailand	0.04	0.03	0.03	0.03	1.57	1.53	1.63	1.63	0.06	0.05	0.05	0.05	0.00	0.00	0.00	0.00
Burma	0.14	0.14	0.14	0.14	1.04	1.04	1.04	1.04	0.15	0.15	0.14	0.14	0.00	0.00	-0.01	-3.45
Serbia	0.22	0.22	0.22	0.22	2.84	2.73	2.89	2.89	0.63	0.60	0.64	0.64	0.00	0.00	0.04	5.83
Mexico	0.19	0.15	0.20	0.16	1.75	1.57	1.74	1.59	0.34	0.24	0.35	0.26	-0.09	-26.72	0.02	8.51
Africa																
South Africa	0.73	0.71	0.79	0.79	1.60	1.79	1.82	1.82	1.17	1.26	1.43	1.43	0.00	0.00	0.17	13.10
Nigeria	0.70	0.71	0.72	0.72	0.96	0.99	0.97	0.97	0.67	0.70	0.70	0.70	0.00	0.00	0.00	0.00
Zambia	0.19	0.20	0.19	0.19	1.58	1.43	1.50	1.50	0.30	0.28	0.29	0.29	0.00	0.00	0.00	1.42
Uganda	0.05	0.05	0.05	0.05	0.60	0.60	0.60	0.60	0.03	0.03	0.03	0.03	0.00	0.00	0.00	0.00
Middle East																
Iran	0.07	0.07	0.07	0.07	2.29	2.43	2.41	2.41	0.16	0.17	0.17	0.17	0.00	0.00	0.00	-0.59
Turkey	0.03	0.03	0.03	0.03	3.80	3.89	3.79	3.79	0.10	0.11	0.11	0.11	0.00	0.00	0.01	4.76
Others	0.32	0.33	0.34	0.34	2.01	1.89	1.89	1.89	0.64	0.63	0.64	0.64	0.00	-0.47	0.01	2.24

World and Selected Countries and Regions

Table 12 Cottonseed Area, Yield, and Production

Country / Region	Area (Million hectares)				Yield (Metric tons per hectare)				Production (Million metric tons)				Change in Production			
	Prel.		2020/21 Proj.		Prel.		2020/21 Proj.		Prel.		2020/21 Proj.		From last month		From last year	
	2018/19	2019/20	Nov	Dec	2018/19	2019/20	Nov	Dec	2018/19	2019/20	Nov	Dec	MMT	Percent	MMT	Percent
World	32.68	34.15	31.96	31.84	1.32	1.30	1.33	1.31	43.11	44.42	42.57	41.80	-0.77	-1.82	-2.62	-5.90
United States	4.04	4.70	3.64	3.64	1.26	1.15	1.30	1.22	5.11	5.39	4.75	4.43	-0.31	-6.58	-0.96	-17.80
Total Foreign	28.64	29.45	28.31	28.20	1.33	1.32	1.34	1.33	38.00	39.03	37.83	37.37	-0.46	-1.22	-1.66	-4.25
South Asia																
India	12.60	13.30	13.40	13.40	0.87	0.94	0.95	0.93	10.95	12.52	12.74	12.52	-0.21	-1.67	0.00	0.00
Pakistan	2.30	2.45	2.20	2.20	1.43	1.10	0.98	0.89	3.29	2.69	2.17	1.95	-0.22	-10.02	-0.74	-27.44
China	3.50	3.45	3.25	3.25	3.11	3.10	3.32	3.32	10.88	10.68	10.78	10.78	0.00	0.00	0.10	0.92
Former Soviet Union - 12																
Uzbekistan	1.10	1.01	0.98	0.98	1.17	1.36	1.39	1.41	1.28	1.37	1.35	1.37	0.02	1.41	0.00	-0.22
Turkmenistan	0.55	0.55	0.60	0.60	0.65	0.66	0.59	0.65	0.36	0.36	0.35	0.39	0.04	11.08	0.03	8.61
Tajikistan	0.18	0.18	0.16	0.16	0.90	1.27	1.22	1.22	0.16	0.23	0.20	0.20	0.00	0.00	-0.03	-14.85
Kazakhstan	0.13	0.13	0.11	0.11	1.05	1.13	1.06	0.95	0.14	0.14	0.12	0.11	-0.01	-10.26	-0.04	-25.53
South America																
Brazil	1.64	1.67	1.55	1.55	2.59	2.75	2.57	2.57	4.25	4.58	3.98	3.98	0.00	0.00	-0.59	-12.92
Argentina	0.34	0.42	0.43	0.45	0.73	0.68	0.67	0.67	0.25	0.28	0.29	0.30	0.02	5.96	0.02	7.09
Middle East																
Turkey	0.52	0.57	0.35	0.35	2.35	1.98	2.61	2.61	1.22	1.13	0.91	0.91	0.00	0.00	-0.21	-18.83
Syria	0.03	0.03	0.03	0.03	2.36	2.36	2.36	2.36	0.06	0.06	0.06	0.06	0.00	0.00	0.00	0.00
Iran	0.08	0.08	0.08	0.08	1.16	1.16	1.16	1.16	0.09	0.09	0.09	0.09	0.00	0.00	0.00	0.00
Australia	0.38	0.06	0.33	0.28	1.74	3.12	2.31	2.62	0.66	0.19	0.75	0.72	-0.03	-3.99	0.53	285.56
European Union	0.31	0.35	0.32	0.32	1.74	1.82	1.51	1.51	0.55	0.64	0.49	0.49	0.00	0.00	-0.15	-23.63
Africa																
Burkina	0.63	0.58	0.55	0.55	0.37	0.42	0.45	0.45	0.24	0.24	0.25	0.25	0.00	0.00	0.01	2.06
Mali	0.73	0.74	0.23	0.20	0.50	0.52	0.56	0.57	0.36	0.38	0.13	0.11	-0.01	-11.02	-0.27	-70.42
Cameroon	0.25	0.25	0.25	0.25	1.20	1.29	1.28	1.28	0.30	0.32	0.32	0.32	0.00	0.00	0.00	-0.62
Cote d'Ivoire	0.39	0.41	0.44	0.44	0.64	0.66	0.63	0.63	0.25	0.27	0.27	0.27	0.00	0.00	0.01	2.24
Benin	0.65	0.67	0.60	0.60	0.71	0.71	0.74	0.74	0.46	0.47	0.45	0.45	0.00	0.00	-0.02	-5.11
Tanzania	0.42	0.60	0.45	0.45	0.39	0.43	0.36	0.36	0.16	0.26	0.16	0.16	0.00	0.00	-0.10	-37.07
Egypt	0.14	0.10	0.07	0.07	1.06	0.92	1.00	1.00	0.15	0.09	0.07	0.07	0.00	0.00	-0.03	-29.35
Nigeria	0.25	0.15	0.27	0.27	0.40	0.57	0.56	0.56	0.10	0.09	0.15	0.15	0.00	0.00	0.06	74.42
Uganda	0.08	0.09	0.10	0.10	1.74	1.67	1.40	1.40	0.14	0.15	0.14	0.14	0.00	0.00	-0.01	-6.04
Zimbabwe	0.20	0.20	0.21	0.21	0.38	0.36	0.36	0.36	0.08	0.07	0.08	0.08	0.00	0.00	0.00	5.56
Sudan	0.18	0.20	0.20	0.20	1.42	1.53	1.41	1.41	0.26	0.31	0.28	0.28	0.00	0.00	-0.02	-7.84
Mexico	0.24	0.23	0.16	0.16	2.44	2.37	2.24	2.24	0.59	0.53	0.36	0.36	0.00	0.00	-0.18	-32.83
Burma	0.24	0.25	0.24	0.24	1.21	1.22	1.25	1.25	0.29	0.30	0.30	0.30	0.00	0.00	0.00	0.67
Others	0.59	0.78	0.78	0.72	0.84	0.76	0.78	0.78	0.49	0.59	0.61	0.56	-0.05	-8.22	-0.03	-5.58

World and Selected Countries and Regions

Table 13 Peanut Area, Yield, and Production

Country / Region	Area (Million hectares)				Yield (Metric tons per hectare)				Production (Million metric tons)				Change in Production			
	2018/19	Prel.	2020/21 Proj.		2018/19	Prel.	2020/21 Proj.		2018/19	Prel.	2020/21 Proj.		From last month		From last year	
		2019/20	Nov	Dec		2019/20	Nov	Dec		2019/20	Nov	Dec	MMT	Percent	MMT	Percent
World	27.49	26.91	27.97	28.14	1.70	1.71	1.70	1.70	46.81	46.08	47.56	47.79	0.23	0.48	1.71	3.72
United States	0.56	0.56	0.66	0.66	4.48	4.41	4.59	4.59	2.49	2.48	3.01	3.01	0.00	0.00	0.53	21.49
Total Foreign	26.93	26.35	27.31	27.48	1.65	1.65	1.63	1.63	44.31	43.60	44.55	44.78	0.23	0.52	1.18	2.70
China	4.62	4.60	4.60	4.60	3.75	3.81	3.80	3.80	17.33	17.52	17.50	17.50	0.00	0.00	-0.02	-0.11
Africa																
Nigeria	2.82	2.80	2.80	2.80	1.57	1.25	1.39	1.39	4.42	3.50	3.90	3.90	0.00	0.00	0.40	11.43
Sudan	3.07	2.30	2.30	2.30	0.94	0.78	0.78	0.78	2.88	1.80	1.80	1.80	0.00	0.00	0.00	0.00
Senegal	1.13	1.11	1.20	1.20	1.32	1.28	1.17	1.17	1.50	1.42	1.40	1.40	0.00	0.00	-0.02	-1.41
Cameroon	0.43	0.43	0.43	0.43	1.40	1.40	1.40	1.40	0.60	0.60	0.60	0.60	0.00	0.00	0.00	0.00
Ghana	0.32	0.33	0.33	0.33	1.63	1.36	1.36	1.36	0.52	0.45	0.45	0.45	0.00	0.00	0.00	0.00
Chad	0.79	0.77	0.77	0.77	1.14	1.10	1.10	1.10	0.89	0.85	0.85	0.85	0.00	0.00	0.00	0.00
Malawi	0.41	0.40	0.40	0.40	0.85	0.88	0.88	0.88	0.35	0.35	0.35	0.35	0.00	0.00	0.00	0.00
Congo (Kinshasa)	0.50	0.50	0.50	0.50	0.85	0.85	0.85	0.85	0.42	0.42	0.42	0.42	0.00	0.00	0.00	0.00
Niger	0.93	0.90	0.92	0.92	0.64	0.56	0.65	0.65	0.59	0.50	0.59	0.59	0.00	0.00	0.09	18.80
Mali	0.38	0.43	0.43	0.43	1.31	1.00	1.00	1.00	0.49	0.43	0.43	0.43	0.00	0.00	0.00	0.00
Uganda	0.43	0.43	0.43	0.43	0.71	0.71	0.71	0.71	0.30	0.30	0.30	0.30	0.00	0.00	0.00	0.00
Burkina	0.39	0.56	0.56	0.56	0.84	0.80	0.80	0.80	0.33	0.45	0.45	0.45	0.00	0.00	0.00	0.00
Guinea	0.79	0.91	0.75	0.90	0.98	1.05	1.00	1.00	0.77	0.96	0.75	0.90	0.15	20.00	-0.06	-6.05
Egypt	0.06	0.06	0.06	0.06	3.20	3.20	3.20	3.20	0.21	0.21	0.21	0.21	0.00	0.00	0.00	0.00
Central African Republic	0.10	0.10	0.10	0.10	1.50	1.50	1.50	1.50	0.15	0.15	0.15	0.15	0.00	0.00	0.00	0.00
South Africa	0.02	0.04	0.04	0.04	1.30	1.84	1.50	1.50	0.03	0.07	0.06	0.06	0.00	0.00	-0.01	-14.29
Mozambique	0.38	0.38	0.38	0.38	0.34	0.34	0.34	0.34	0.13	0.13	0.13	0.13	0.00	0.00	0.00	0.00
Cote d'Ivoire	0.15	0.15	0.15	0.15	1.45	1.45	1.45	1.45	0.21	0.21	0.21	0.21	0.00	0.00	0.00	0.00
Benin	0.23	0.19	0.19	0.19	1.00	0.92	0.92	0.92	0.23	0.18	0.18	0.18	0.00	0.00	0.00	0.00
South Asia																
India	4.73	4.88	5.80	5.80	0.99	1.28	1.16	1.16	4.69	6.26	6.70	6.70	0.00	0.00	0.45	7.11
Pakistan	0.12	0.09	0.10	0.10	0.89	0.98	0.92	0.92	0.10	0.09	0.09	0.09	0.00	0.00	0.00	-1.10
Southeast Asia																
Indonesia	0.57	0.55	0.55	0.55	1.80	1.80	1.78	1.78	1.03	0.99	0.97	0.97	0.00	0.00	-0.02	-2.02
Burma	1.03	0.89	0.99	0.99	1.53	1.55	1.57	1.57	1.58	1.38	1.55	1.55	0.00	0.00	0.18	12.73
Vietnam	0.18	0.18	0.18	0.18	2.48	2.48	2.48	2.48	0.44	0.43	0.45	0.45	0.00	0.00	0.01	3.00
Thailand	0.02	0.02	0.02	0.02	1.67	1.67	1.67	1.67	0.04	0.04	0.04	0.04	0.00	0.00	0.00	0.00
South America																
Argentina	0.33	0.37	0.33	0.35	4.35	3.53	4.00	4.00	1.42	1.30	1.32	1.40	0.08	6.06	0.10	7.69
Brazil	0.15	0.16	0.16	0.16	2.96	3.47	3.38	3.38	0.44	0.55	0.54	0.54	0.00	0.00	-0.01	-0.92
Mexico	0.05	0.05	0.06	0.06	1.75	1.74	1.73	1.73	0.09	0.08	0.10	0.10	0.00	0.00	0.02	24.39
Others	1.84	1.80	1.80	1.80	1.16	1.11	1.15	1.15	2.14	2.00	2.07	2.07	0.00	0.00	0.07	3.30

Table 14 Sunflowerseed Area, Yield, and Production

Country / Region	Area (Million hectares)				Yield (Metric tons per hectare)				Production (Million metric tons)				Change in Production						
	2018/19	Prel.		2020/21 Proj.		2018/19	Prel.		2020/21 Proj.		2018/19	Prel.		2020/21 Proj.		From last month		From last year	
		2019/20	Nov	Dec	2019/20		Nov	Dec	2019/20	Nov		Dec	MMT	Percent	MMT	Percent			
World	25.78	26.34	26.58	26.55	1.96	2.09	1.87	1.86	50.56	54.96	49.66	49.46	-0.21	-0.42	-5.51	-10.02			
United States	0.49	0.51	0.66	0.66	1.94	1.75	1.94	1.94	0.96	0.89	1.27	1.27	0.00	0.00	0.39	43.52			
Total Foreign	25.29	25.83	25.92	25.89	1.96	2.09	1.87	1.86	49.60	54.08	48.39	48.18	-0.21	-0.43	-5.89	-10.90			
Former Soviet Union - 12																			
Russia	7.94	8.36	8.20	8.20	1.60	1.83	1.59	1.59	12.71	15.31	13.00	13.00	0.00	0.00	-2.31	-15.06			
Ukraine	6.50	6.40	6.80	6.80	2.31	2.58	2.06	2.06	15.00	16.50	14.00	14.00	0.00	0.00	-2.50	-15.15			
Kazakhstan	0.85	0.82	0.70	0.70	1.00	1.13	1.07	1.07	0.85	0.92	0.75	0.75	0.00	0.00	-0.17	-18.30			
European Union	4.02	4.31	4.34	4.34	2.37	2.24	2.14	2.12	9.51	9.64	9.30	9.20	-0.10	-1.08	-0.44	-4.59			
South America																			
Argentina	1.88	1.53	1.40	1.38	2.04	2.11	2.14	2.10	3.83	3.24	3.00	2.90	-0.10	-3.33	-0.34	-10.36			
Uruguay	0.06	0.06	0.07	0.07	1.61	1.67	1.69	1.69	0.09	0.10	0.11	0.11	0.00	0.00	0.01	10.00			
Bolivia	0.11	0.11	0.11	0.11	1.25	1.10	1.20	1.20	0.14	0.12	0.13	0.13	0.00	0.00	0.01	7.38			
Brazil	0.06	0.05	0.05	0.05	1.67	1.60	1.50	1.50	0.11	0.08	0.08	0.08	0.00	0.00	-0.01	-6.25			
Paraguay	0.03	0.03	0.03	0.03	1.58	1.70	1.70	1.70	0.05	0.05	0.05	0.05	0.00	0.00	0.00	0.00			
China	0.92	1.25	1.25	1.25	2.71	2.60	2.64	2.64	2.49	3.25	3.30	3.30	0.00	0.00	0.05	1.54			
South Asia																			
India	0.26	0.24	0.25	0.25	0.65	0.58	0.76	0.76	0.17	0.14	0.19	0.19	0.00	0.00	0.05	32.14			
Pakistan	0.12	0.14	0.15	0.15	1.20	1.04	1.07	1.07	0.14	0.15	0.16	0.16	0.00	0.00	0.02	10.34			
Middle East																			
Turkey	0.72	0.73	0.72	0.72	2.52	2.40	2.17	2.17	1.80	1.75	1.56	1.56	0.00	0.00	-0.19	-10.86			
Iran	0.04	0.04	0.04	0.04	1.08	1.08	1.08	1.08	0.04	0.04	0.04	0.04	0.00	0.00	0.00	0.00			
Israel	0.00	0.00	0.01	0.00	4.00	5.00	1.60	9.00	0.00	0.01	0.02	0.01	-0.01	-43.75	0.00	80.00			
Africa																			
Egypt	0.01	0.01	0.01	0.01	2.38	2.38	2.38	2.38	0.02	0.02	0.02	0.02	0.00	0.00	0.00	0.00			
Morocco	0.02	0.02	0.02	0.02	1.29	1.25	1.25	1.25	0.03	0.03	0.03	0.03	0.00	0.00	0.00	0.00			
South Africa	0.52	0.50	0.48	0.48	1.32	1.57	1.33	1.33	0.68	0.79	0.64	0.64	0.00	0.00	-0.15	-18.47			
Burma	0.60	0.60	0.60	0.60	0.65	0.65	0.65	0.65	0.39	0.39	0.39	0.39	0.00	0.00	0.00	0.00			
Canada	0.03	0.03	0.04	0.05	2.11	2.17	2.38	2.24	0.06	0.06	0.10	0.10	0.01	6.32	0.04	60.32			
Australia	0.01	0.01	0.02	0.02	0.82	1.25	1.26	1.31	0.01	0.02	0.03	0.02	-0.01	-27.59	0.01	40.00			
Others	0.60	0.59	0.64	0.64	2.49	2.52	2.36	2.36	1.50	1.49	1.51	1.51	0.00	0.00	0.02	1.34			

World and Selected Countries and Regions

Table 15 Rapeseed Area, Yield, and Production

Country / Region	Area (Million hectares)				Yield (Metric tons per hectare)				Production (Million metric tons)				Change in Production			
	Prel.		2020/21 Proj.		Prel.		2020/21 Proj.		Prel.		2020/21 Proj.		From last month		From last year	
	2018/19	2019/20	Nov	Dec	2018/19	2019/20	Nov	Dec	2018/19	2019/20	Nov	Dec	MMT	Percent	MMT	Percent
World	36.81	34.90	34.70	34.72	1.98	1.98	1.99	1.98	72.99	69.22	69.17	68.87	-0.30	-0.43	-0.35	-0.51
United States	0.79	0.78	0.74	0.74	2.09	2.00	1.97	1.97	1.64	1.55	1.46	1.46	0.00	0.00	-0.10	-6.31
Total Foreign	36.02	34.12	33.96	33.98	1.98	1.98	1.99	1.98	71.34	67.67	67.72	67.42	-0.30	-0.44	-0.25	-0.37
European Union	7.00	5.55	5.45	5.45	2.87	3.04	3.12	3.10	20.06	16.88	17.00	16.90	-0.10	-0.59	0.02	0.12
Canada	9.12	8.46	8.30	8.32	2.27	2.32	2.34	2.28	20.72	19.61	19.40	19.00	-0.40	-2.06	-0.61	-3.10
China	6.55	6.60	6.65	6.65	2.03	2.04	1.98	1.98	13.28	13.49	13.20	13.20	0.00	0.00	-0.29	-2.11
South Asia																
India	7.20	7.40	7.20	7.20	1.11	1.04	1.06	1.06	8.00	7.70	7.65	7.65	0.00	0.00	-0.05	-0.65
Pakistan	0.26	0.40	0.45	0.45	1.04	1.03	1.02	1.02	0.27	0.41	0.46	0.46	0.00	0.00	0.05	12.20
Bangladesh	0.25	0.25	0.25	0.25	0.92	0.92	0.92	0.92	0.23	0.23	0.23	0.23	0.00	0.00	0.00	0.00
Former Soviet Union - 12																
Russia	1.50	1.42	1.40	1.40	1.33	1.44	1.79	1.79	1.99	2.04	2.50	2.50	0.00	0.00	0.46	22.55
Ukraine	1.00	1.34	1.10	1.10	2.85	2.59	2.27	2.27	2.85	3.47	2.50	2.50	0.00	0.00	-0.97	-27.85
Belarus	0.35	0.34	0.35	0.35	1.31	1.68	1.57	1.57	0.46	0.58	0.55	0.55	0.00	0.00	-0.03	-4.84
Kazakhstan	0.37	0.27	0.12	0.12	1.08	0.90	1.04	1.04	0.39	0.24	0.13	0.13	0.00	0.00	-0.12	-48.13
Australia	2.12	1.80	2.40	2.40	1.12	1.29	1.42	1.50	2.37	2.33	3.40	3.60	0.20	5.88	1.27	54.51
South America																
Chile	0.05	0.04	0.03	0.03	3.85	4.05	4.00	4.00	0.19	0.15	0.14	0.14	0.00	0.00	-0.02	-11.69
Paraguay	0.03	0.03	0.04	0.04	1.20	1.87	1.88	1.88	0.04	0.06	0.08	0.08	0.00	0.00	0.02	33.93
Switzerland	0.02	0.02	0.02	0.02	3.14	3.14	3.14	3.14	0.07	0.07	0.07	0.07	0.00	0.00	0.00	0.00
Ethiopia	0.04	0.04	0.04	0.04	1.57	1.86	1.86	1.86	0.06	0.07	0.07	0.07	0.00	0.00	0.00	0.00
Others	0.18	0.17	0.16	0.16	2.14	2.14	2.24	2.24	0.38	0.36	0.36	0.36	0.00	0.00	0.00	-0.84

World and Selected Countries and Regions

Table 16 Copra, Palm Kernel, and Palm Oil Production

Country / Region	Production (Million metric tons)				Change in Production			
	2018/19	Prel.	2020/21 Proj.		From last month		From last year	
		2019/20	Nov	Dec	MMT	Percent	MMT	Percent
Oilseed, Copra								
Philippines	2.63	2.50	2.40	2.40	0.00	0.00	-0.10	-4.00
Indonesia	1.64	1.66	1.66	1.66	0.00	0.00	0.00	0.00
India	0.75	0.75	0.75	0.75	0.00	0.00	0.00	0.00
Vietnam	0.29	0.29	0.30	0.30	0.00	0.00	0.01	3.45
Mexico	0.22	0.22	0.22	0.20	-0.02	-9.09	-0.02	-9.09
Papua New Guinea	0.10	0.08	0.08	0.08	0.00	0.00	0.00	0.00
Thailand	0.07	0.07	0.07	0.07	0.00	0.00	0.00	0.00
Sri Lanka	0.07	0.07	0.07	0.07	0.00	0.00	0.00	0.00
Solomon Islands	0.03	0.03	0.03	0.03	0.00	0.00	0.00	0.00
Cote d'Ivoire	0.03	0.03	0.03	0.03	0.00	0.00	0.00	0.00
World	5.98	5.86	5.77	5.75	-0.02	-0.35	-0.11	-1.88
Oilseed, Palm Kernel								
Indonesia	10.90	11.25	11.46	11.46	0.00	0.00	0.21	1.87
Malaysia	5.15	4.75	5.00	5.00	0.00	0.00	0.25	5.26
Thailand	0.87	0.89	0.90	0.90	0.00	0.00	0.01	1.12
Nigeria	0.73	0.73	0.73	0.73	0.00	0.00	0.00	0.00
Colombia	0.33	0.31	0.35	0.35	0.00	0.00	0.04	12.90
Guatemala	0.20	0.17	0.17	0.17	0.00	0.00	0.00	0.00
Papua New Guinea	0.18	0.16	0.16	0.16	0.00	0.00	0.00	0.00
Cameroon	0.15	0.15	0.09	0.15	0.05	55.56	0.00	0.00
Brazil	0.14	0.14	0.14	0.14	0.00	0.00	0.00	0.00
Honduras	0.14	0.14	0.14	0.14	0.00	0.00	0.00	0.00
World	19.53	19.42	19.91	19.96	0.05	0.25	0.54	2.78
Oil, Palm								
Indonesia	41.50	42.50	43.50	43.50	0.00	0.00	1.00	2.35
Malaysia	20.80	19.26	19.90	19.90	0.00	0.00	0.64	3.32
Thailand	3.00	2.80	3.10	3.10	0.00	0.00	0.30	10.71
Colombia	1.63	1.53	1.67	1.67	0.00	0.00	0.14	9.15
Nigeria	1.13	1.22	1.02	1.28	0.27	26.73	0.06	4.92
Guatemala	0.85	0.85	0.85	0.85	0.00	0.00	0.00	0.00
Honduras	0.58	0.58	0.58	0.58	0.00	0.00	0.00	0.00
Papua New Guinea	0.71	0.56	0.56	0.56	0.00	0.00	0.00	0.00
Ecuador	0.56	0.55	0.62	0.62	0.00	0.00	0.07	12.73
Brazil	0.53	0.54	0.54	0.54	0.00	0.00	0.00	0.00
World	74.06	73.18	75.19	75.45	0.26	0.35	2.27	3.10

World and Selected Countries and Regions

Table 17 Cotton Area, Yield, and Production

Country / Region	Area (Million hectares)				Yield (Kilograms per hectare)				Production (Million 480 lb. bales)				Change in Production			
	2018/19	Prel. 2019/20	2020/21 Proj.		2018/19	Prel. 2019/20	2020/21 Proj.		2018/19	Prel. 2019/20	2020/21 Proj.		From last month		From last year	
			Nov	Dec			Nov	Dec			Nov	Dec	MBales	Percent	MBales	Percent
World	33.35	34.83	32.63	32.51	774	764	775	763	118.58	122.14	116.11	113.90	-2.21	-1.90	-8.23	-6.74
United States	4.04	4.70	3.64	3.64	989	922	1,021	953	18.37	19.91	17.09	15.95	-1.14	-6.69	-3.96	-19.91
Total Foreign	29.31	30.13	28.98	28.87	744	739	744	739	100.21	102.22	99.02	97.95	-1.07	-1.08	-4.27	-4.18
South Asia																
India	12.60	13.30	13.40	13.40	446	483	487	479	25.80	29.50	30.00	29.50	-0.50	-1.67	0.00	0.00
Pakistan	2.30	2.45	2.20	2.20	719	551	495	445	7.60	6.20	5.00	4.50	-0.50	-10.00	-1.70	-27.42
China	3.50	3.45	3.25	3.25	1,726	1,720	1,842	1,842	27.75	27.25	27.50	27.50	0.00	0.00	0.25	0.92
South America																
Brazil	1.64	1.67	1.55	1.55	1,726	1,802	1,686	1,686	13.00	13.78	12.00	12.00	0.00	0.00	-1.78	-12.92
Argentina	0.34	0.42	0.43	0.45	728	682	666	665	1.12	1.30	1.30	1.38	0.08	5.77	0.08	5.77
Paraguay	0.01	0.01	0.01	0.01	416	416	416	416	0.02	0.02	0.02	0.02	0.00	0.00	0.00	0.00
Africa																
Burkina	0.63	0.58	0.55	0.55	294	330	356	356	0.85	0.88	0.90	0.90	0.00	0.00	0.02	2.27
Mali	0.73	0.74	0.23	0.20	381	400	435	435	1.27	1.35	0.45	0.40	-0.05	-11.11	-0.95	-70.37
Cote d'Ivoire	0.39	0.41	0.44	0.44	520	528	513	513	0.94	0.99	1.03	1.03	0.00	0.00	0.04	3.54
Benin	0.65	0.67	0.60	0.60	469	467	490	490	1.40	1.43	1.35	1.35	0.00	0.00	-0.08	-5.26
Egypt	0.14	0.10	0.07	0.07	757	664	720	720	0.49	0.31	0.22	0.22	0.00	0.00	-0.09	-29.51
Cameroon	0.25	0.25	0.25	0.25	523	562	557	557	0.60	0.65	0.64	0.64	0.00	0.00	-0.01	-0.78
Tanzania	0.42	0.60	0.45	0.45	194	216	181	181	0.38	0.60	0.38	0.38	0.00	0.00	-0.22	-36.97
Nigeria	0.25	0.15	0.27	0.27	205	290	282	282	0.24	0.20	0.35	0.35	0.00	0.00	0.15	75.00
Zimbabwe	0.20	0.20	0.21	0.21	218	207	207	207	0.20	0.19	0.20	0.20	0.00	0.00	0.01	5.26
Ethiopia	0.08	0.08	0.08	0.08	687	680	637	637	0.24	0.25	0.24	0.24	0.00	0.00	-0.01	-4.00
Former Soviet Union - 12																
Uzbekistan	1.10	1.01	0.98	0.98	648	754	770	782	3.28	3.50	3.45	3.50	0.05	1.45	0.00	0.00
Turkmenistan	0.55	0.55	0.60	0.60	364	368	327	363	0.91	0.92	0.90	1.00	0.10	11.11	0.08	8.70
Tajikistan	0.18	0.18	0.16	0.16	502	708	680	680	0.42	0.59	0.50	0.50	0.00	0.00	-0.09	-14.53
Kazakhstan	0.13	0.13	0.11	0.11	587	627	594	534	0.35	0.36	0.30	0.27	-0.03	-10.00	-0.09	-25.00
Middle East																
Turkey	0.52	0.57	0.35	0.35	1,570	1,318	1,742	1,742	3.75	3.45	2.80	2.80	0.00	0.00	-0.65	-18.84
Syria	0.03	0.03	0.03	0.03	1,219	1,219	1,219	1,219	0.14	0.14	0.14	0.14	0.00	0.00	0.00	0.00
Iran	0.08	0.08	0.08	0.08	748	748	748	748	0.28	0.28	0.28	0.28	0.00	0.00	0.00	0.00
Australia	0.38	0.06	0.33	0.28	1,261	2,268	1,675	1,900	2.20	0.63	2.50	2.40	-0.10	-4.00	1.78	284.00
Mexico	0.24	0.23	0.16	0.16	1,555	1,519	1,429	1,429	1.74	1.57	1.05	1.05	0.00	0.00	-0.52	-33.12
Burma	0.24	0.25	0.24	0.24	637	641	662	662	0.70	0.72	0.73	0.73	0.00	0.00	0.01	0.83
Others	1.75	2.00	1.98	1.92	570	565	528	534	4.58	5.19	4.81	4.70	-0.11	-2.31	-0.50	-9.55

World and Selected Countries and Regions

TABLE 18

The table below presents a record of the December projection and the final Estimate. Using world wheat production as an example, the "root mean square error" means that chances are 2 out of 3 that the current forecast will not be above or below the final estimate by more than 0.8 percent. Chances are 9 out of 10 (90% confidence level) that the difference will not exceed 1.4 percent. The average difference between the December projection and the final estimate is 3.8 million tons, ranging from 0.4 million to 10.2 million tons. The December projection has been below the estimate 28 times and above 11 times.

RELIABILITY OF PRODUCTION PROJECTIONS 1/

COMMODITY AND REGION	Root mean square error	90 percent confidence interval	Difference between forecast and final estimate				
			Average	Smallest	Largest	Years	
						Below final	Above final
	Percent		---Million metric tons---				
WHEAT							
World	0.8	1.4	3.8	0.4	10.2	28	11
U.S.	0.4	0.7	0.2	0.0	1.2	19	13
Foreign	0.9	1.5	3.8	0.3	10.3	28	11
COARSE GRAINS 2/							
World	1.4	2.5	12.4	0.0	36.0	29	10
U.S.	1.3	2.2	2.4	0.0	7.5	19	20
Foreign	2.1	3.5	12.7	0.3	37.5	28	11
RICE (Milled)							
World	1.9	3.3	5.6	0.0	16.2	31	8
U.S.	2.9	4.9	0.1	0.0	0.5	19	15
Foreign	2.0	3.3	5.7	0.1	16.2	32	7
SOYBEANS							
World	3.7	6.4	5.5	0.1	23.8	21	18
U.S.	2.0	3.4	1.1	0.1	4.7	16	23
Foreign	6.2	10.5	5.5	0.1	25.1	18	21
COTTON			---Million 480-lb. bales---				
World	3.1	5.3	2.3	0.0	7.2	23	15
U.S.	2.0	3.4	0.3	0.0	0.8	18	20
Foreign	3.7	6.3	2.3	0.0	7.1	22	16
UNITED STATES			-----Million bushels-----				
<i>CORN</i>	1.3	2.2	88	0	250	19	19
<i>SORGHUM</i>	4.2	7.1	15	1	53	20	19
<i>BARLEY</i>	1.5	2.5	4	0	24	17	10
<i>OATS</i>	1.1	1.8	2	0	18	7	9

1/ Marketing years 1981/82 through 2019/20 for grains, soybeans (U.S. only), and cotton. Final for grains, soybeans, and cotton is defined as the first December estimate following the marketing year for 1981/82 through 2018/19, and for 2019/20 the last month's estimate.

2/ Includes corn, sorghum, barley, oats, rye, millet, and mixed grain

December 2020

Global Market Analysis, FAS, USDA