



United States  
Department of  
Agriculture

Foreign  
Agricultural  
Service

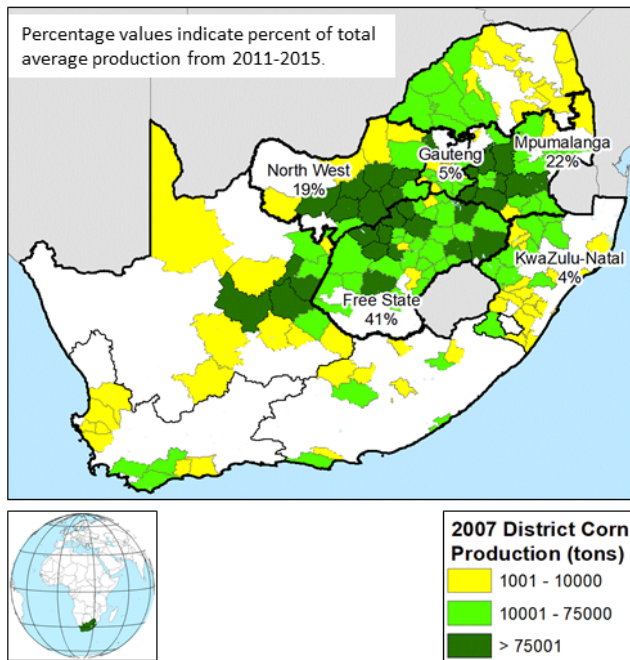
Circular Series  
WAP 3-21  
March 2021

# World Agricultural Production

## South Africa Corn: Production Prospects Improve from Abundant Rains

South Africa's 2020/21 corn production is forecast at 17.0 million metric tons (mmt), up 0.5 mmt (3 percent) from last month and 1.2 mmt (7 percent) from last year. The USDA forecast includes output from both the developing and commercial sectors, with the commercial sector accounting for approximately 97 percent of the total crop. Area is estimated at 3.1 million hectares (mha), unchanged from last month but up 0.2 mha (7 percent) from last year. Corn area planted was the largest since the 2014/15 growing season. Yield is forecast at 5.48 metric tons per hectare, up 1 percent from last year and up 12 percent from the 5-year average.

**South Africa Corn Production**

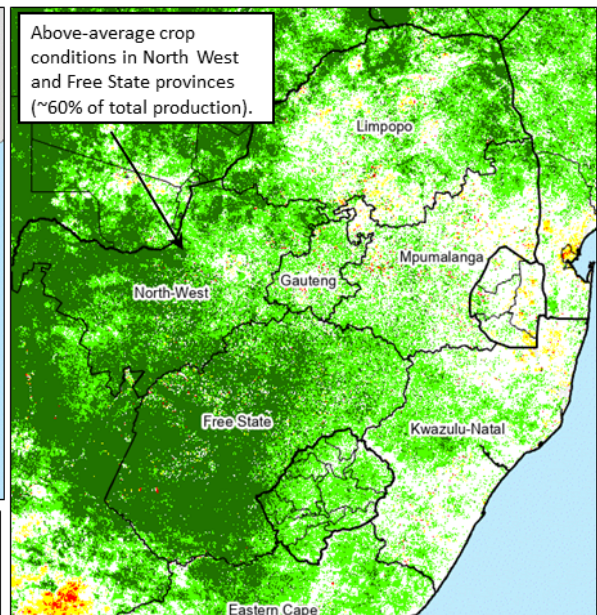


Source: Province production (2011-15) from South Africa's Crop Estimates Committee, Department of Agriculture, Forestry & Fisheries & district production from 2007 Census of Commercial Agriculture, Statistics South Africa

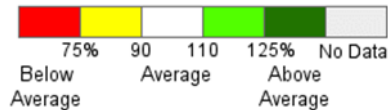
USDA Foreign Agricultural Service  
U.S. DEPARTMENT OF AGRICULTURE

**Percent of Average Seasonal Greenness (PASG)**

Dec 2, 2020 – Feb 25, 2021



**Percent of Average Seasonal Greenness (%)**



Source: MODIS-Terra satellite imagery

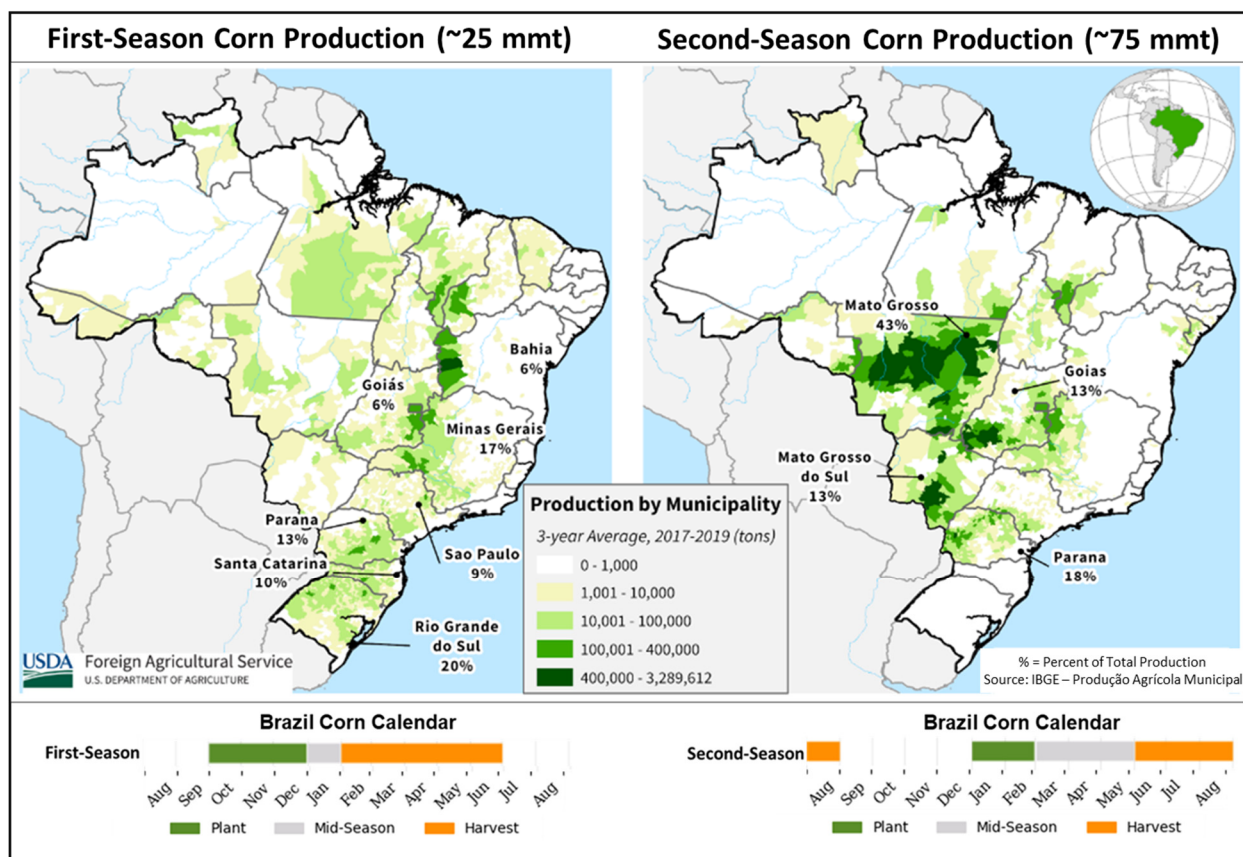
Beneficial La Niña rains from November 2020 through January 2021 allowed farmers to plant earlier than normal and to plant more corn area than in recent years. The satellite-derived Normalized Difference Vegetation Index (NDVI) and the Percent of Average Seasonal Greenness

**Approved by the World Agricultural Outlook Board**

(PASG) confirm early crop establishment and excellent crop conditions in late February. Crop conditions are well above average in the North West and Free State provinces where 60 percent of the total crop is grown. Record yields are expected in the west if rains continue to be favorable during March. Weather forecasts for March are favorable and farmers will begin harvest in late April. The bulk of the harvest (87 percent) is typically delivered to the silos from May through August. (For more information, please contact [Curt.Reynolds@usda.gov](mailto:Curt.Reynolds@usda.gov).)

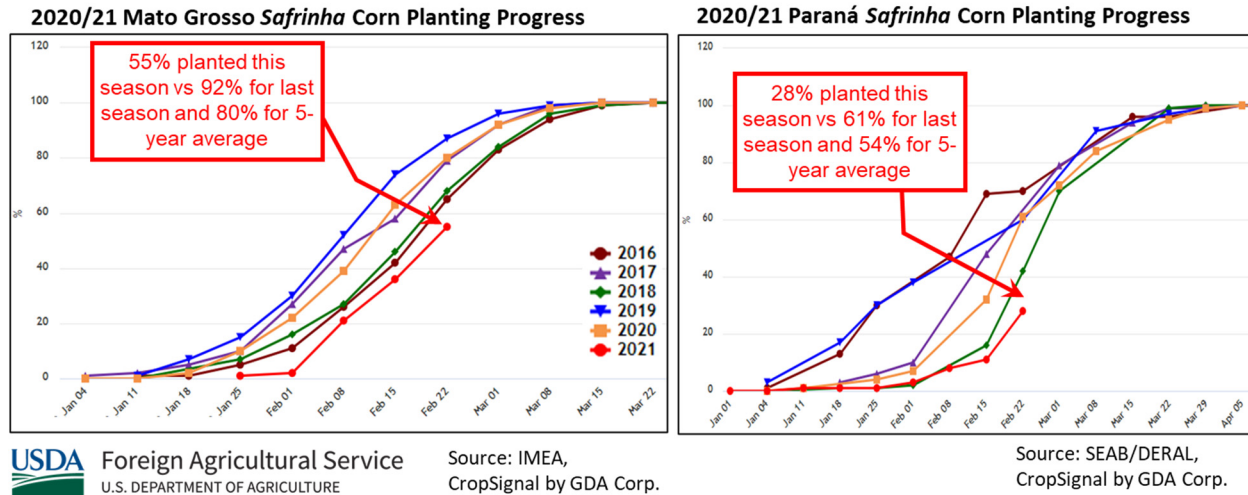
### Brazil Corn: Production Unchanged but Increasing Risks to *Safrinha* Corn

USDA estimates total corn production in Brazil at a record 109.0 million metric tons (mmt), unchanged from last month, but up 7.0 mmt (7 percent) from last year's record. Total harvested area, for all three corn crops, is forecast at a record 19.7 million hectares (mha), up 1.2 mha (6 percent) from last year's record area of 18.5 mha. Yield is forecast at 5.53 tons per hectare (t/ha), less than 1 percent higher than last year's crop, but 4 percent lower than the previous record of 5.77 t/ha in 2018/19, and up 6 percent from the 5-year average of 5.20 t/ha.



Brazil's first-season corn production comprises about one-fourth of total production, while second-season (*safrinha*) corn production now covers approximately three-fourths of Brazil's total corn production. The majority of the first crop was planted from September through November with area forecast by CONAB (*Companhia Nacional de Abastecimento* or the National Food Supply Company), an agency within the Ministry of Agriculture in Brazil, at 4.2 mha (about 1 percent lower than last year) and area for second-season corn at a record 14.4 mha (about 4 percent greater than last year).

## Brazil Corn: Second-Season Corn Planting Progress

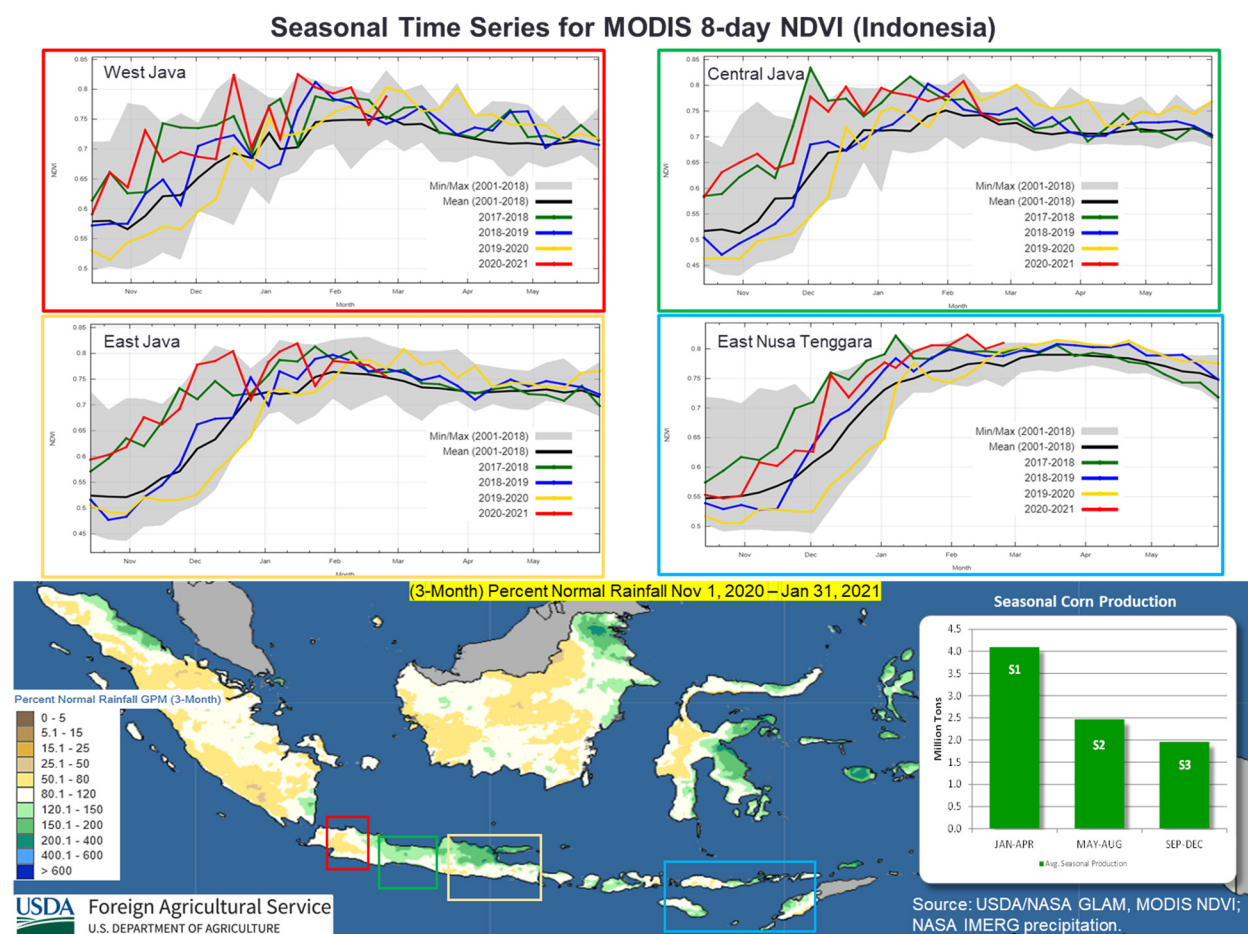


Harvesting for the first-season crop began in late January with roughly a quarter of the crop currently harvested. The harvest pace is more advanced in the central states and slower in Rio Grande do Sul and Paraná in comparison to the prior season.

Planting started for the *safrinha* crop with significant delays due to delays in the soybean harvest. The delay in soybean harvest was caused by late planting and excessive rainfall during harvest. In Mato Grosso, and other key second-season corn areas, corn is planted after the soybean harvest. As of March 5, the *Instituto Mato-Grossense de Economia Agropecuária* (IMEA) reports about 73 percent of the second crop planted in the state of Mato Grosso for 2020/21 versus 97 percent the prior season and 92 percent for the 5-year average. Similarly, only 28 percent of the second crop has been planted in Paraná versus 61 percent for the last season (*Departamento de Economia Rural*, SEAB/DERAL). This large proportion of the second-season crop planted outside of the ideal planting window in the Center-West increases risks later in the season if rainfall tapers off per the normal pattern by mid-June before the crop has fully developed. The strong prices, however, are expected to support planting despite the risks. (For more information, please contact [Sunita.Yadav-Pauletti@usda.gov](mailto:Sunita.Yadav-Pauletti@usda.gov).)

## Indonesia Corn: Abundant Seasonal Rains Lead to Record Production and Yield

USDA estimates Indonesia 2020/21 corn production at a record 12.1 million metric tons, up 1 percent from both last month and last year. Harvested area is estimated at 3.7 million hectares, unchanged from last month, but down 3 percent from last year. Yield is estimated at a record 3.27 tons per hectare, up 1 percent from last month and 4 percent from last year.



Corn in Indonesia is typically planted in three different seasons. The first “main” season is from October to February and accounts for 49 percent of Indonesia’s total corn output. First season corn, predominantly rain-fed, experienced above normal rainfall which supported growth and development in the main corn growing regions. The satellite-derived Normalized Difference Vegetation Index (NDVI) graphs depict record crop conditions in Indonesia’s largest corn producing region of East Java as well as in West Java. Additionally, near-record conditions were also observed in other high corn-producing provinces such as Central Java and Nusa Tenggara. Planting operations for the second season has begun and harvest will conclude in June. The second season accounts for about 37 percent of Indonesia’s corn production. A third-cycle corn is planted based on water availability from July to September and represents 14 percent of Indonesia’s total corn output. *(For additional information, please contact [Justin.Jenkins@usda.gov](mailto:Justin.Jenkins@usda.gov).)*

## Mexico Sorghum: Freezing Weather Lowers Winter Planted Area in Tamaulipas

Mexico's sorghum production for 2020/21 is estimated at 4.3 million metric tons (mmt), down 0.2 mmt (about 4 percent) from last month, and down about 1 percent from last year. Area is estimated at 1.3 million hectares, down 4 percent from last month and down 6 percent from last year. Yield is estimated at 3.31 metric tons per hectare, relatively unchanged from last month, but up 5 percent from last year.

### Mexico Winter Sorghum Production

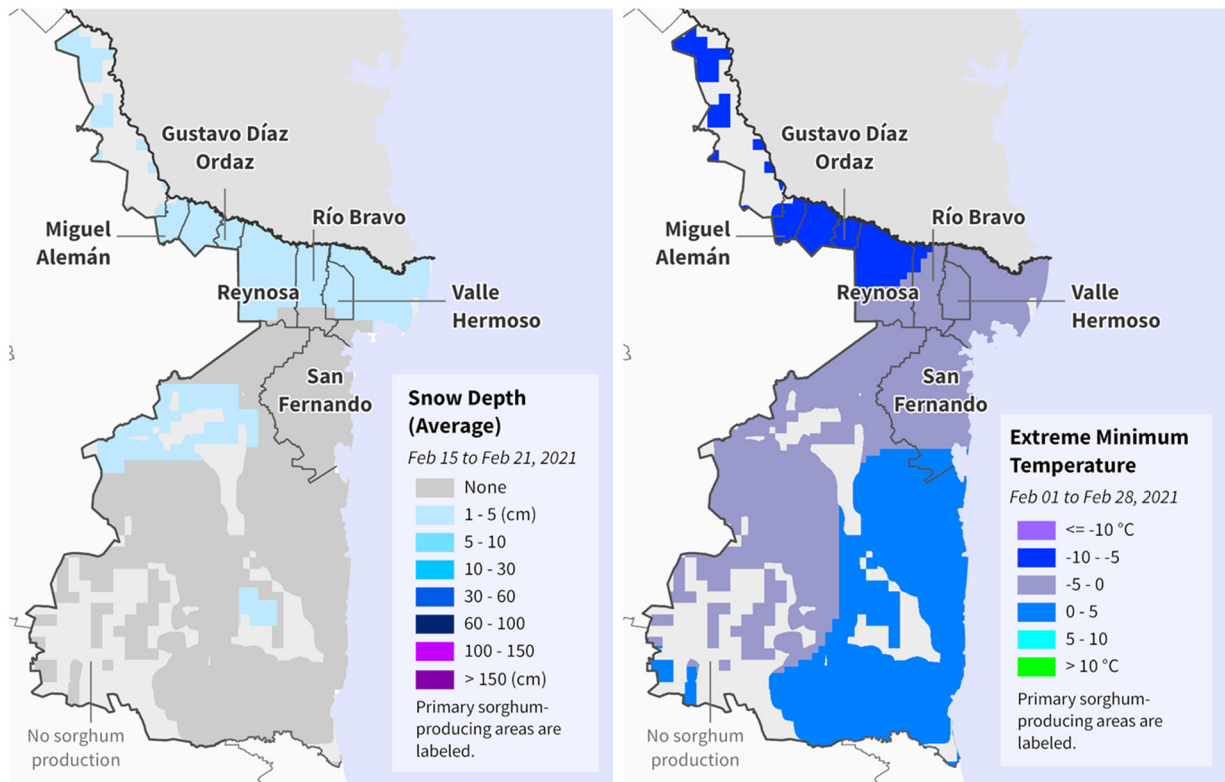


**USDA** Foreign Agricultural Service  
U.S. DEPARTMENT OF AGRICULTURE

Source: Servicio de Información Agroalimentaria y Pesquera (SIAP), Mexico

Mexico has two sorghum crops: summer (about 45 percent of production) and winter (about 55 percent of production). Planting was finished for the summer sorghum crop in September and harvest was completed in January. The winter sorghum crop is typically planted from January to April and harvested from May to July, with about 78 percent of the winter production found in Tamaulipas. According to data from *Servicio de Información Agroalimentaria y Pesquera (SIAP)*, Tamaulipas winter sorghum production's most recent 5-year average is about 2.0 mmt.

## Tamaulipas, Mexico: Freezing Conditions in Sorghum Production Areas

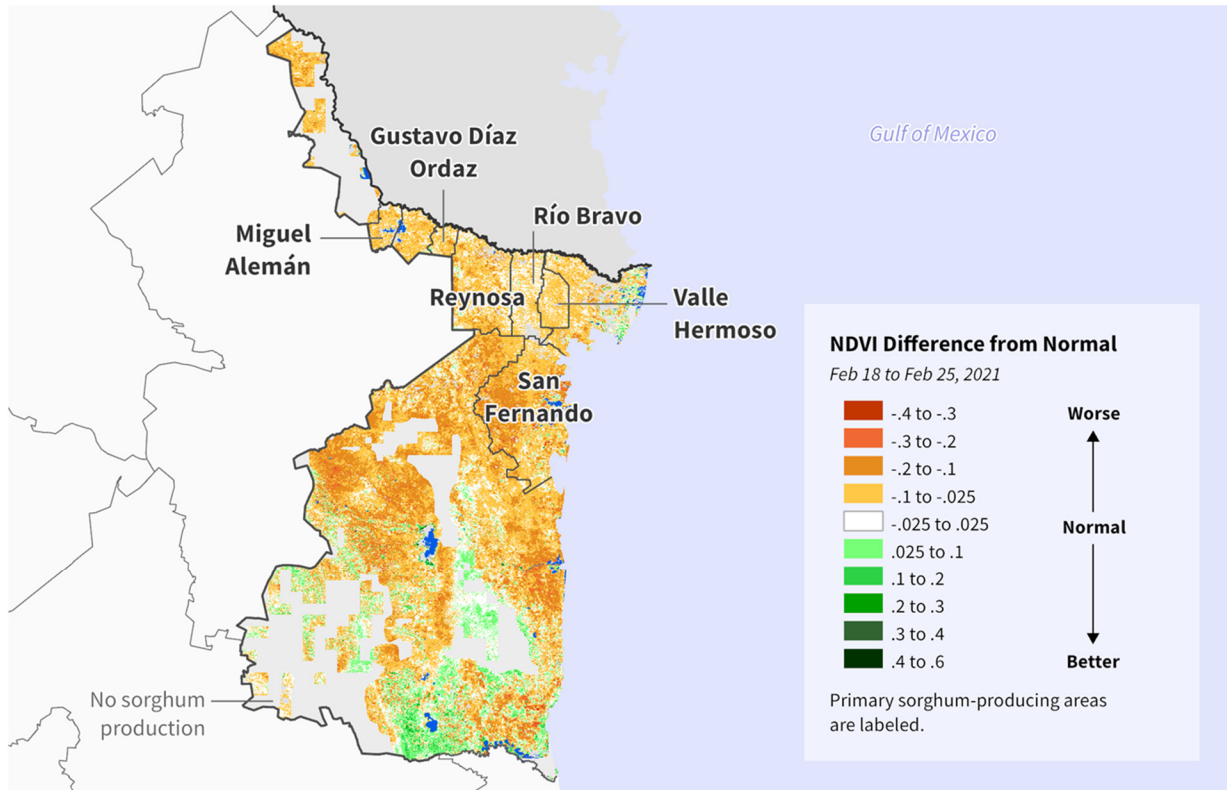


**USDA** Foreign Agricultural Service  
U.S. DEPARTMENT OF AGRICULTURE

Sources: USAF, Weekly Snow Depth Average; WMO, Monthly Extreme Minimum Temperature

During February 2021, freezing weather conditions damaged planted winter sorghum in northern Tamaulipas, significantly impacting the crops in the municipalities of San Fernando, Río Bravo, Valle Hermoso, Reynosa, Gustavo Díaz Ordaz, and Miguel Alemán. In these areas, snow depth averaged 1 to 5 cm during the week of February 15 to February 21 with the extreme minimum temperatures throughout the month ranging from -10 °C to 0 °C. The satellite-derived Normalized Difference Vegetation Index (NDVI) image depicted below average vegetation conditions in the major sorghum growing areas as of February 25, 2021, confirming freeze damage to the vegetative crop.

## Tamaulipas, Mexico: Low NDVI in Sorghum Production Areas

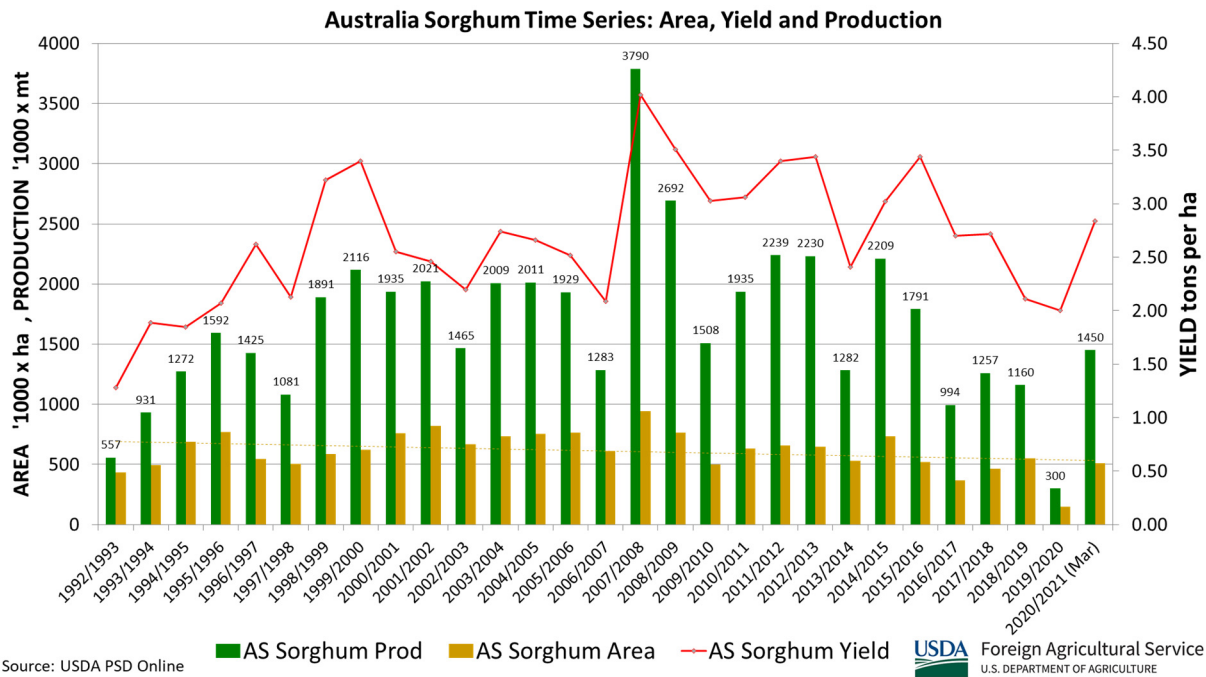


**USDA** Foreign Agricultural Service  
U.S. DEPARTMENT OF AGRICULTURE

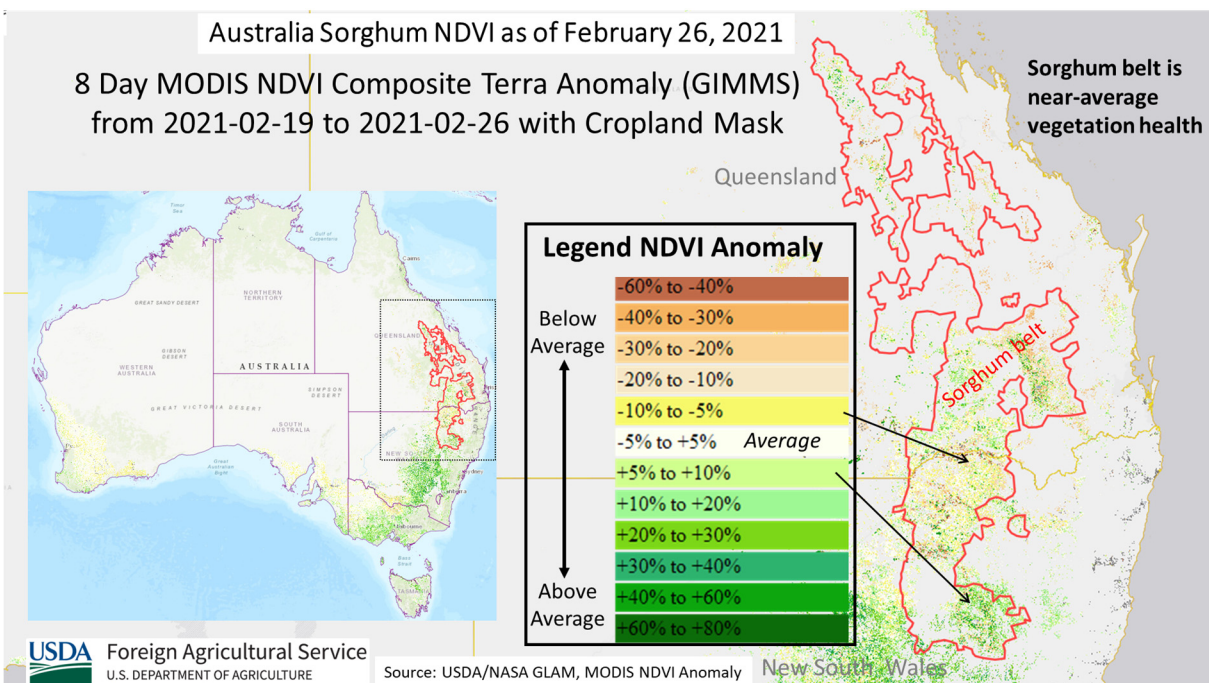
Sources: IFPRI, SPAM 2010; USDA/NASA, MODIS 8-Day NDVI Difference from Normal

The final winter sorghum crop damage assessment will be completed when planting is finished. Private sources currently estimate that approximately 20 to 40 percent of the winter sorghum crop will have to be replanted. The amount of sorghum replanting that occurs will depend on the government providing farmers funding for seeds and other financial support. *(For more information, please contact [lfeoma.Collins@usda.gov](mailto:lfeoma.Collins@usda.gov).)*

## Australia Sorghum: Production Revised Lower but Significantly Above Last Year



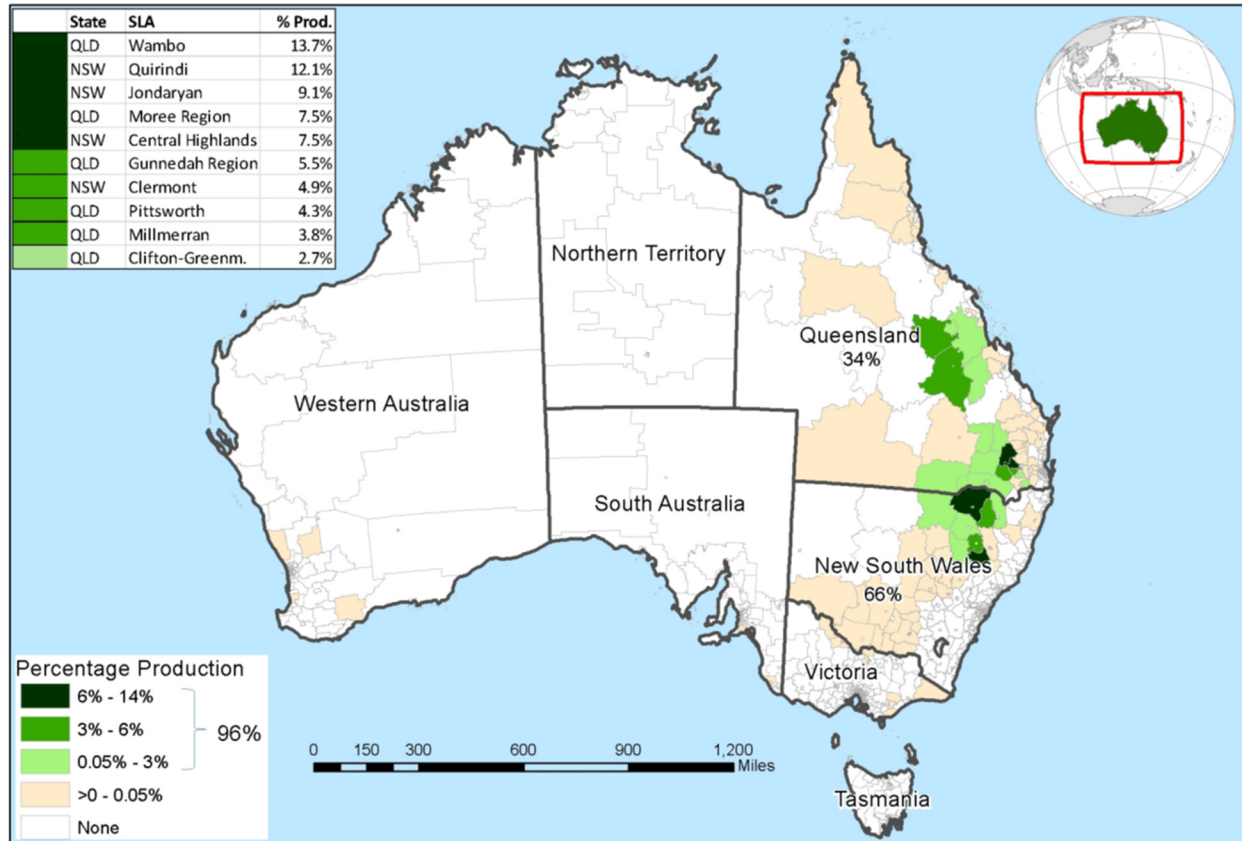
USDA estimates Australia 2020/21 sorghum production at 1.45 million metric tons (mmt), down 0.25 mmt or 15 percent from last month, but up 1.15 mmt or 383 percent from last year. Area is estimated at 0.51 million hectares (mha), down 0.09 mha from last month, but up 0.36 mha or 240 percent from last year. Yield is estimated at 2.84 tons per hectare (t/ha), up 42 percent from last year's drought-ravaged crop.





The downward revision is due to dry conditions in portions of the sorghum belt. The area planted to sorghum had been expected to increase more significantly this year as prices favored sorghum relative to other summer crops. However, many sorghum producers did not fully realize their planting intentions because of unfavorable seasonal conditions in the planting window, particularly for the late planted crop.

## Australia Sorghum Production Distribution Map



Data Source: ABS Ag Census with 2016 SLA boundaries (SA2)  
 Average percent production of 2005/06, 2010/11 and 2015/16  
 Map last updated 3/5/2018

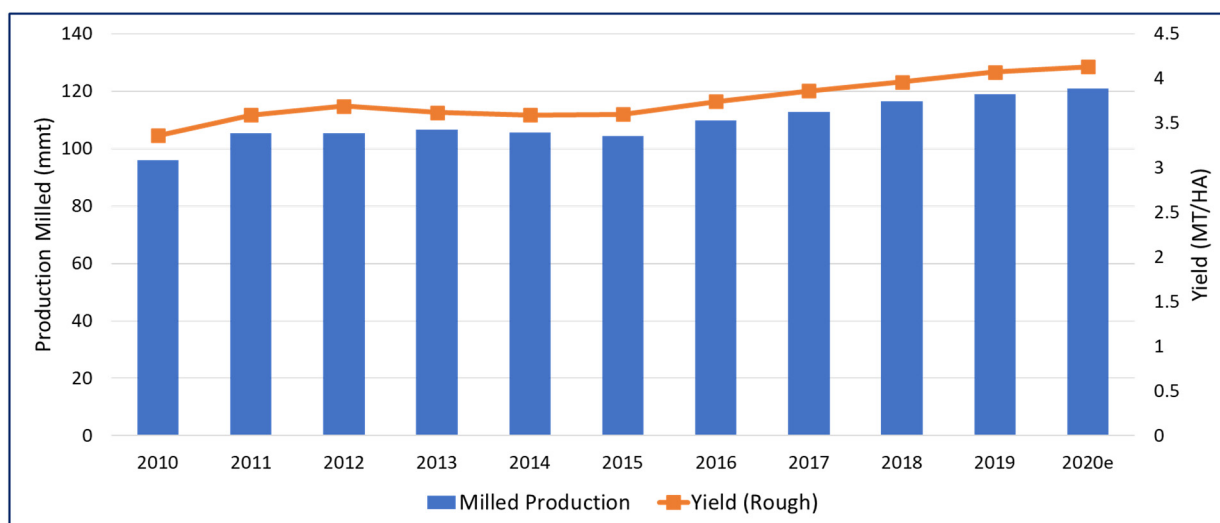
**USDA** Foreign Agricultural Service  
 U.S. DEPARTMENT OF AGRICULTURE

Sorghum production is concentrated in two eastern states. Queensland produces the bulk of Australia's sorghum with 66 percent (5-year average) and New South Wales accounts for the remaining 34 percent. *(For more information, please contact [James.Crutchfield@usda.gov](mailto:James.Crutchfield@usda.gov).)*

## India Rice: Ideal Weather Boosts Production to Record Level

USDA estimates India rice production for 2020/21 at a record 121.0 million metric tons (milled basis), up 1 percent from last month, 2 percent from last year, and 8 percent above the 5-year average. Harvested area is estimated at 44.0 million hectares, down 1 percent from last month, but up 1 percent from last year. Yield is estimated at a record 4.13 tons per hectare, up 2 percent from last month, 1 percent from last year, and 7 percent above the 5-year average.

### Ideal Weather Boosts India Rice Production to Record



USDA Foreign Agricultural Service  
U.S. DEPARTMENT OF AGRICULTURE

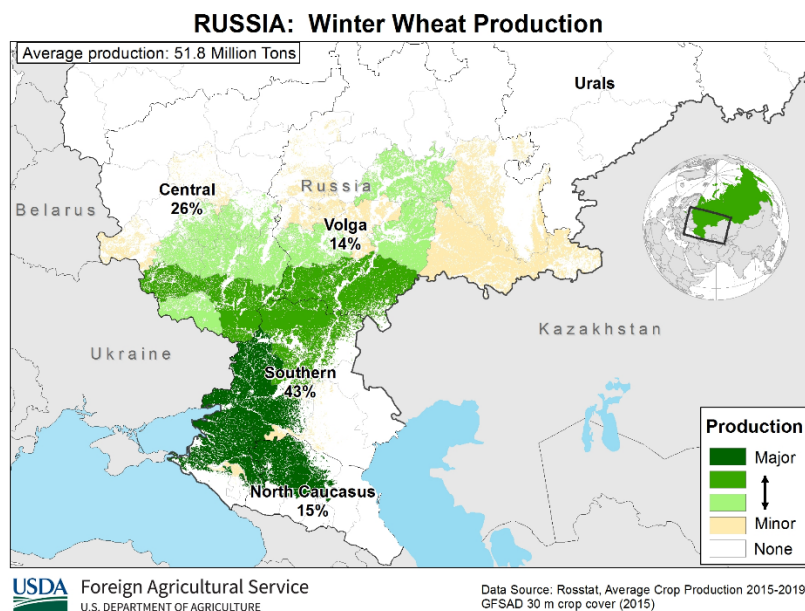
Source: USDA PSD Online

Plentiful rainfall from the 2020 southwest monsoon boosted yields in the southern and eastern producing states during the *kharif* season. The late withdrawal of the 2020 southwest monsoon benefited *rabi* planting because farmers planted in good residual soil moisture. Additionally, reservoir levels were at capacity, supporting irrigated rice. The satellite-derived Normalized Difference Vegetation Index (NDVI) analysis indicated strong crop vigor across the significant rice-producing areas in the *rabi* growing season.

*Kharif* rice, which is approximately 90 percent of total rice production, ended planting in mid-September. For the other 10 percent of the total rice crop, *rabi* planting ended in late January and early planted rice will be harvested in mid-March. (For more information, please contact [Arnella.Trent@usda.gov](mailto:Arnella.Trent@usda.gov).)

## Russia Wheat: Record Production Driven by Record or Near-Record Yields in Several Key Districts

USDA estimates Russia wheat production for 2020/21 at 85.4 million metric tons (mmt), essentially unchanged from last month, and up 16 percent from last year. The estimate includes 62.7 mmt of winter wheat and 22.7 mmt of spring wheat. USDA crop production estimates for



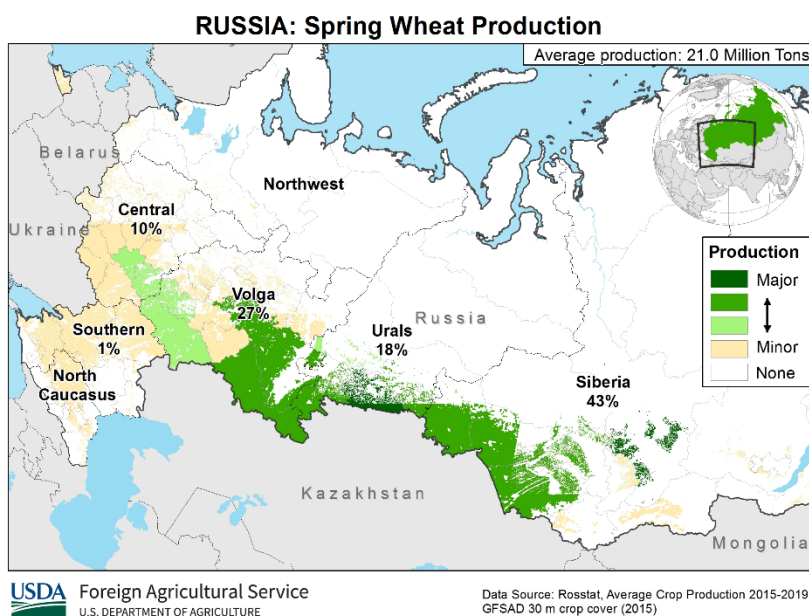
Russia exclude estimated output from Crimea. Total wheat yield is estimated at 2.98 tons per hectare, essentially unchanged from last month, and up 10 percent from last year. Total harvested area is estimated at 28.7 million hectares, essentially unchanged from last month and up 5 percent from last year.

Final data from the Russian statistical agency, Rosstat, cites record winter wheat yields in the Central and Volga Districts. Both the Southern and North Caucasus Districts' winter wheat yields were down year-to-

year due to difficult conditions throughout the growing season. The lower winter wheat yield in the Southern District was offset by record winter wheat area, resulting in the third highest winter wheat production for the Southern District.

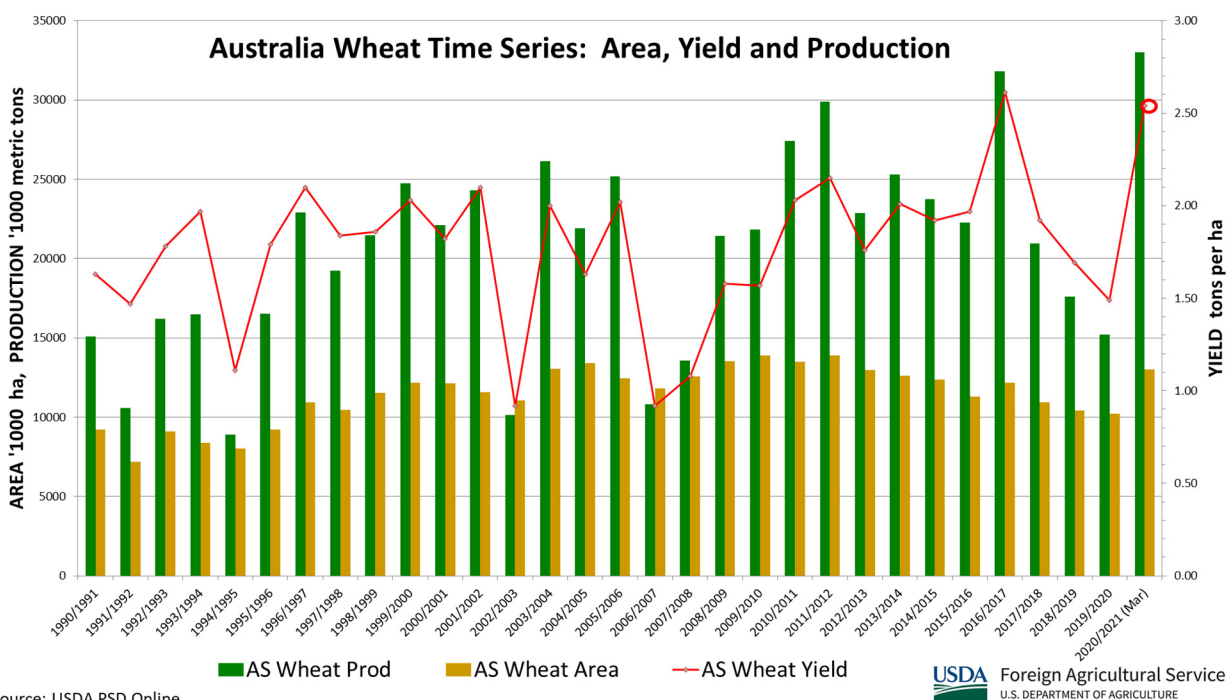
Year-to-year spring wheat yields were also up in several key growing districts. Yields in the Siberia District, which is the top producing district, were the third highest on record. Yields in the Volga District, which is the second top producing district, were the second highest on record. According to Russian analysts, spring wheat yield increases were largely due to improvements in technology (seed treatments, pesticides, fungicides and newer farm equipment).

Area, yield, and production estimates for Russia winter wheat and spring wheat are available on PSD Online. Select



“Downloadable Data Sets” and open the zipped file for “Russia Wheat; Winter/Spring Area & Production.” (For more information, please contact [Katie.McGaughey@usda.gov](mailto:Katie.McGaughey@usda.gov).)

### Australia Wheat: Production Reaches a New Record

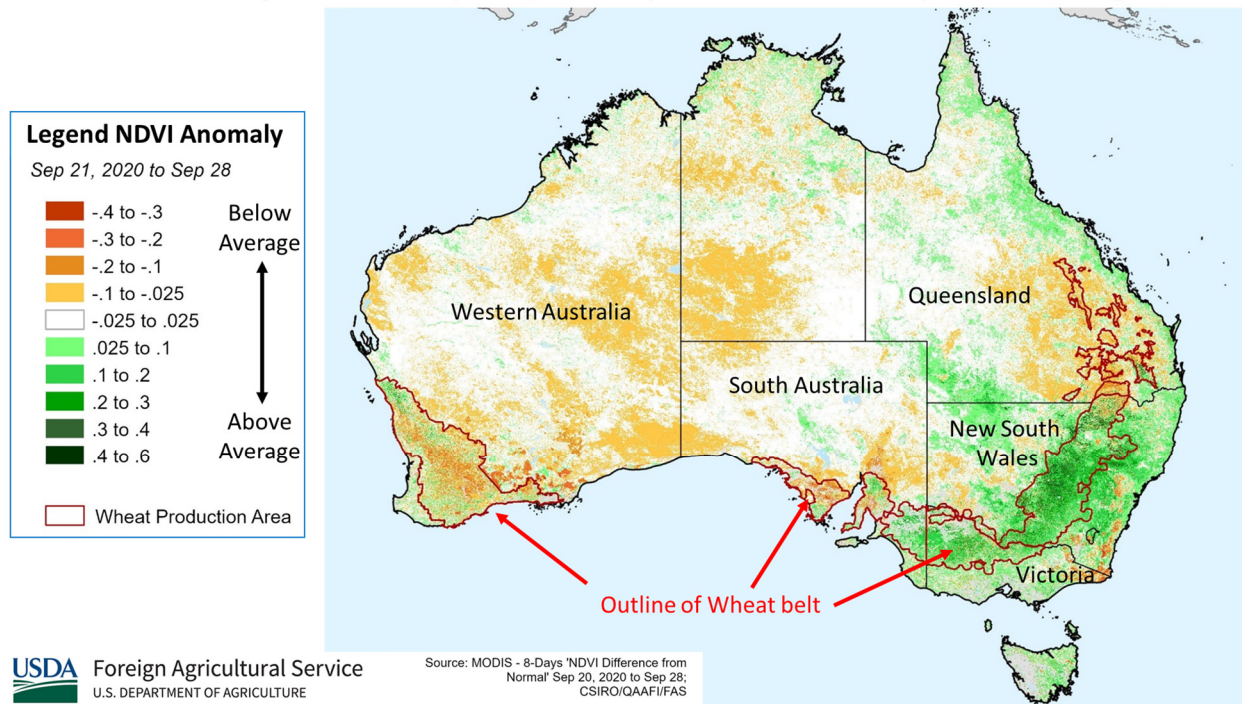


Source: USDA PSD Online

USDA Foreign Agricultural Service  
U.S. DEPARTMENT OF AGRICULTURE

USDA estimates Australia 2020/21 wheat production at a record 33.0 million metric tons (mmt), up 3.0 mmt or 10 percent from last month and up 17.8 mmt or 117 percent from last year. Area is estimated at 13.0 million hectares (mha), unchanged from last month but up 2.8 mha or 27 percent from last year. Yield is estimated at 2.54 tons per hectare (t/ha), second only to the 2016/17 season record of 2.61 t/ha. Yield is up 10 percent from last month, and up 70 percent from last year.

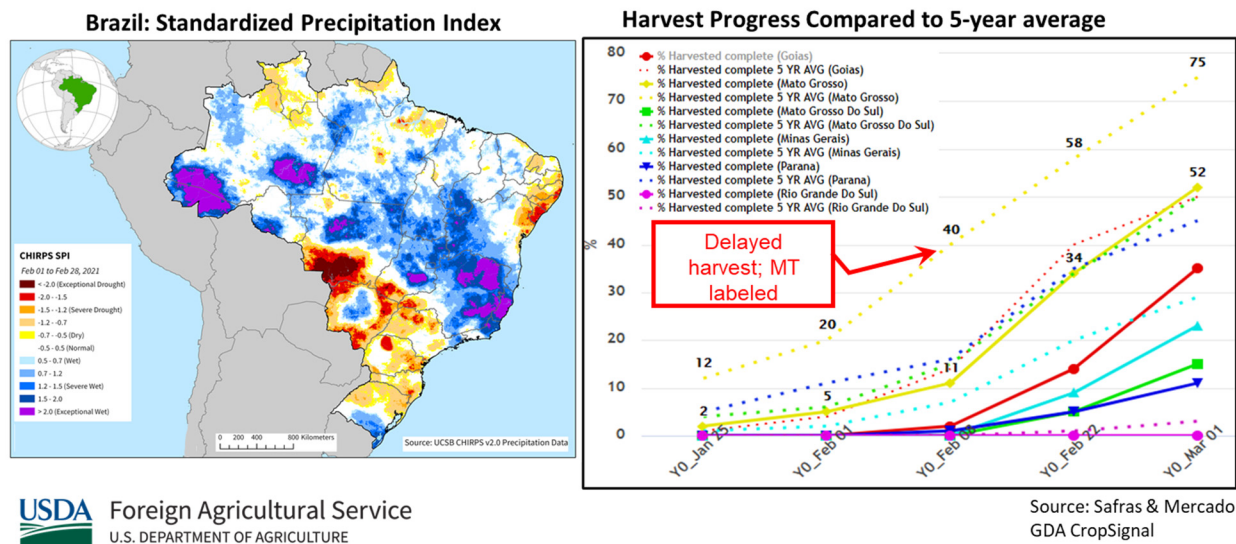
## Australia Vegetation Index (NDVI) Anomaly at Winter Grains Reproduction Stage



The revision is largely based on the latest information from the Australian Bureau of Agricultural and Resource Economics and Sciences (ABARES). Yields exceeded previous estimates as harvest progressed, particularly in the two largest producing states of Western Australia (39 percent) and New South Wales (24 percent). Crop conditions earlier in the season benefited from abundant precipitation prior to sowing and again in October during grain fill. Overall, beneficial growing conditions favored wheat producing states except for Queensland due to below average rainfall during a large portion of growing season. The satellite-derived Normalized Difference Vegetation Index (NDVI) showed strong crop vigor, especially in the wheat belt of southeastern Australia. Harvest was completed in early January. *(For more information, please contact [James.Crutchfield@usda.gov](mailto:James.Crutchfield@usda.gov).)*

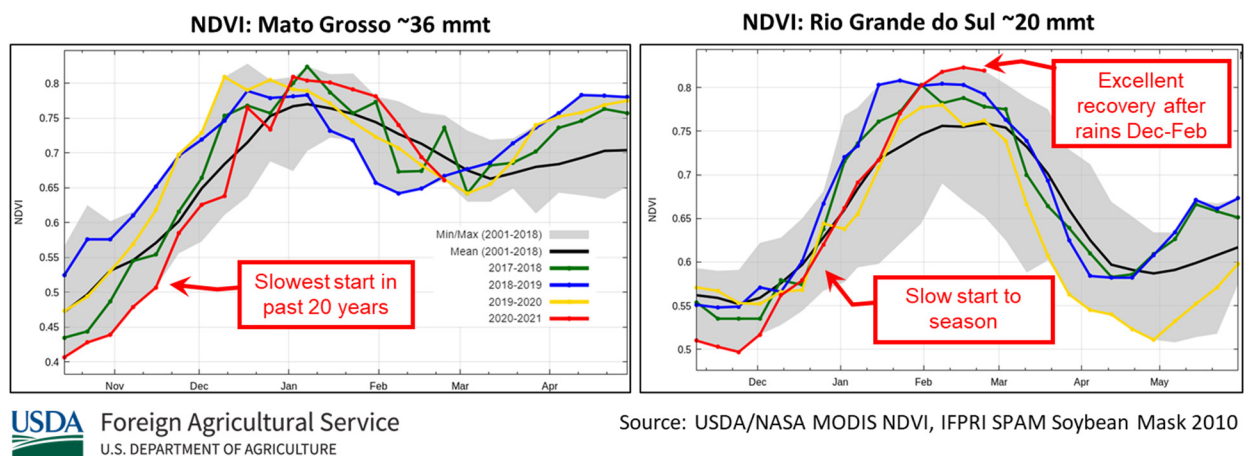
## Brazil Soybeans: Record Production Despite Further Harvest Delays

### Brazil Soybeans 2020/21: Harvest Delayed by Rains



Brazil soybean production for 2020/21 is forecast at a record 134.0 million metric tons (mmt), up 1.0 mmt (1 percent) from last month and 5.5 mmt (4 percent) from last season's revised record crop of 128.5 mmt. The harvested area is forecast at a record 38.6 million hectares (mha), up 1.7 mha (5 percent) from last season's record. Yield is forecast below the 10-year trend at 3.47 tons per hectare (t/ha) and slightly below last season. Soybean area expansion continues for the fourteenth straight year.

### Brazil Soybeans: Crop Conditions



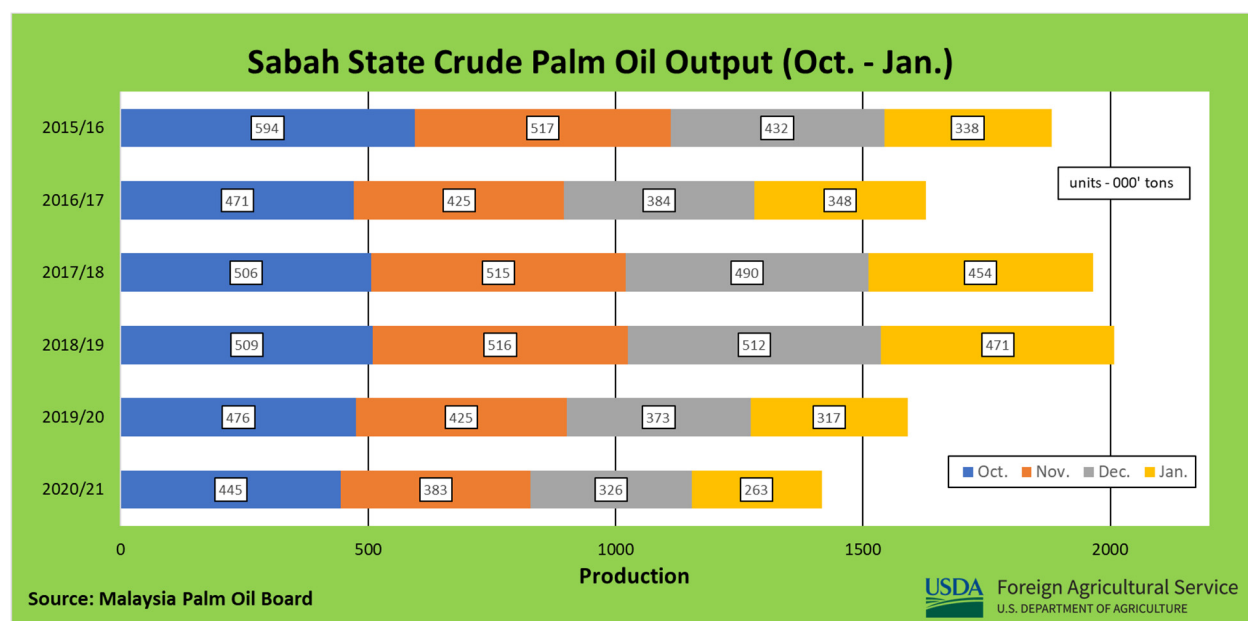
Wet weather in much of the center-west states is compounding the soybean harvest delay that was already pushed back because of a late planting. Current harvest as of early March 2021 is about 25 percent complete versus 40 percent in 2019/20. The high rainfall prevents equipment from entering

fields and high humidity affects yield. Due to these factors, state agencies in two of the states with the largest soybean production, Mato Grosso and Paraná, reduced their yield forecasts recently. The *Instituto Mato-Grossense de Economia Agropecuária* (IMEA) reports about 54 percent of soybeans harvested compared to 84 percent last season and 70 percent for the 5-year average. In contrast, Rio Grande do Sul staggered planting, with a significant delay, which benefited the crop when the rains arrived in December. The satellite-derived Normalized Difference Vegetation Index (NDVI) reflects excellent crop development in Rio Grande do Sul, with a peak NDVI above the 5-year average. This is despite the staggered start of the season due to periodic dryness and is good news for farmers in the state following the poor crop for the last season. The gains in Rio Grande do Sul offset the current reductions in the center-west states. (For more information, please contact [Sunita.Yadav-Pauletti@usda.gov](mailto:Sunita.Yadav-Pauletti@usda.gov).)

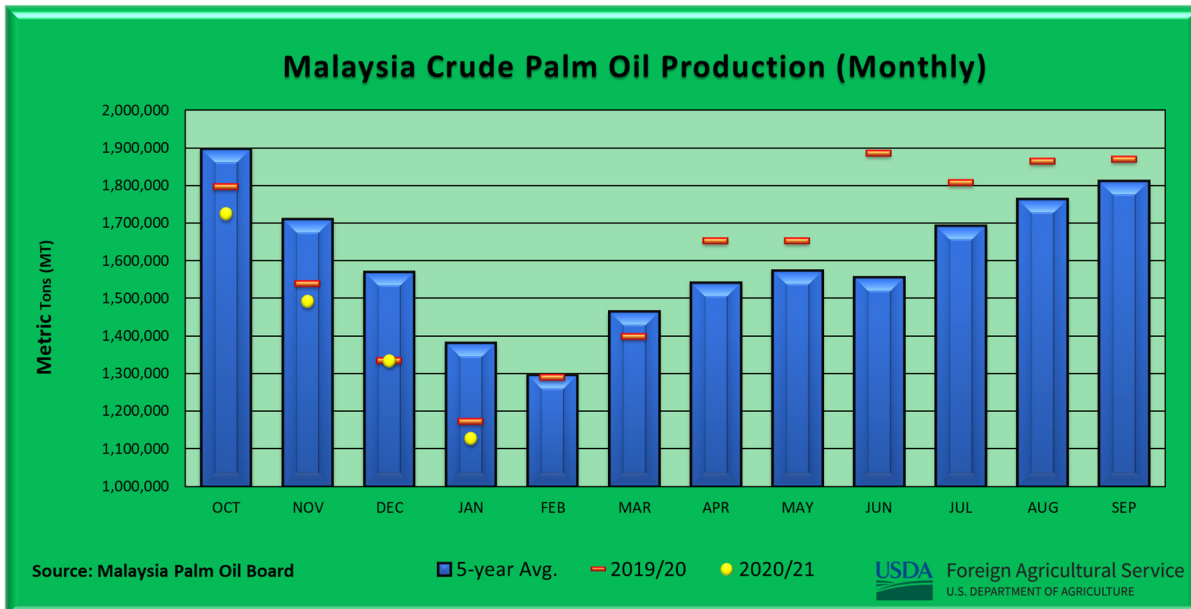
### Malaysia Palm Oil: Production Reduced Due to Negative La Niña Affect

USDA estimates Malaysia 2020/21 palm oil production at 19.6 million metric tons, down 2 percent from last month, but up 2 percent from last year. Harvested area is estimated at 5.4 million hectares, down 1 percent from last month, but up 1 percent from last year. Yield is estimated at 3.63 tons per hectare, down 1 percent from last month, but up 1 percent from last year.

Continued rains stemming from La Niña is negatively impacting the Crude Palm Oil (CPO) monthly output as workers ability to harvest oil palm has been limited, most notably in the Sabah state.



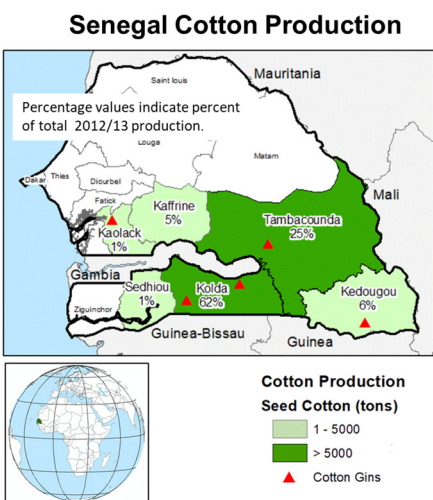
Sabah is the main producing oil palm state, accounting for 30 percent of total production. It has experienced significant year-to-year monthly output lows. According to the Malaysia Palm Oil Board, Sabah CPO output for the month of January was estimated 17 percent below last year. Since the start of the market year in October 2020, output from Sabah is down 11 percent year to year and 22 percent down from the (October to January) 5-year average.



Overall, Malaysia's (October to January) CPO output is 3 percent down from last year and down 13 percent from the 5-year average. USDA's market year for Malaysia palm oil is October through September. (For more information, please contact [Justin.Jenkins@usda.gov](mailto:Justin.Jenkins@usda.gov).)

### Senegal Cotton: Favorable Rains Boost Yield

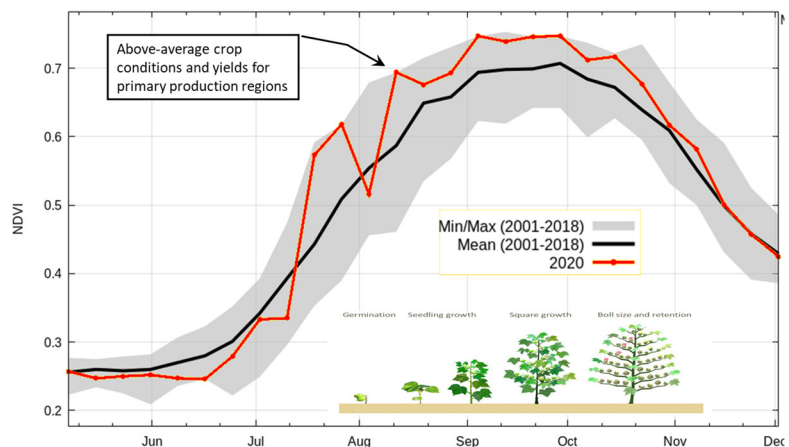
Senegal's cotton production for 2020/21 is estimated at 36,000 480-lb bales, up 1,000 bales (3 percent) from last month and up 7,000 bales (24 percent) from last year. Harvested area is estimated at 17,000 hectares (ha), down 3,000 ha (15 percent) from last month, but up 1,000 ha (6 percent) from last year. Yield is estimated at 461 kilograms per hectare, up 21 percent from last month, 17 percent from last year, and 41 percent from the 5-year average. Favorable seasonal rains and low pest pressure helped to boost yield well above average.



Source: Production data from Direction de l'Analyse, de la Prevision et des Statistiques Agricoles (DAPSA). Percentage values indicate percent regional production of total production in 2012/13.

USDA Foreign Agricultural Service  
U.S. DEPARTMENT OF AGRICULTURE

### Cropland NDVI for Kolda and Tambaounda Regions (Approximately 87% of total cotton production)



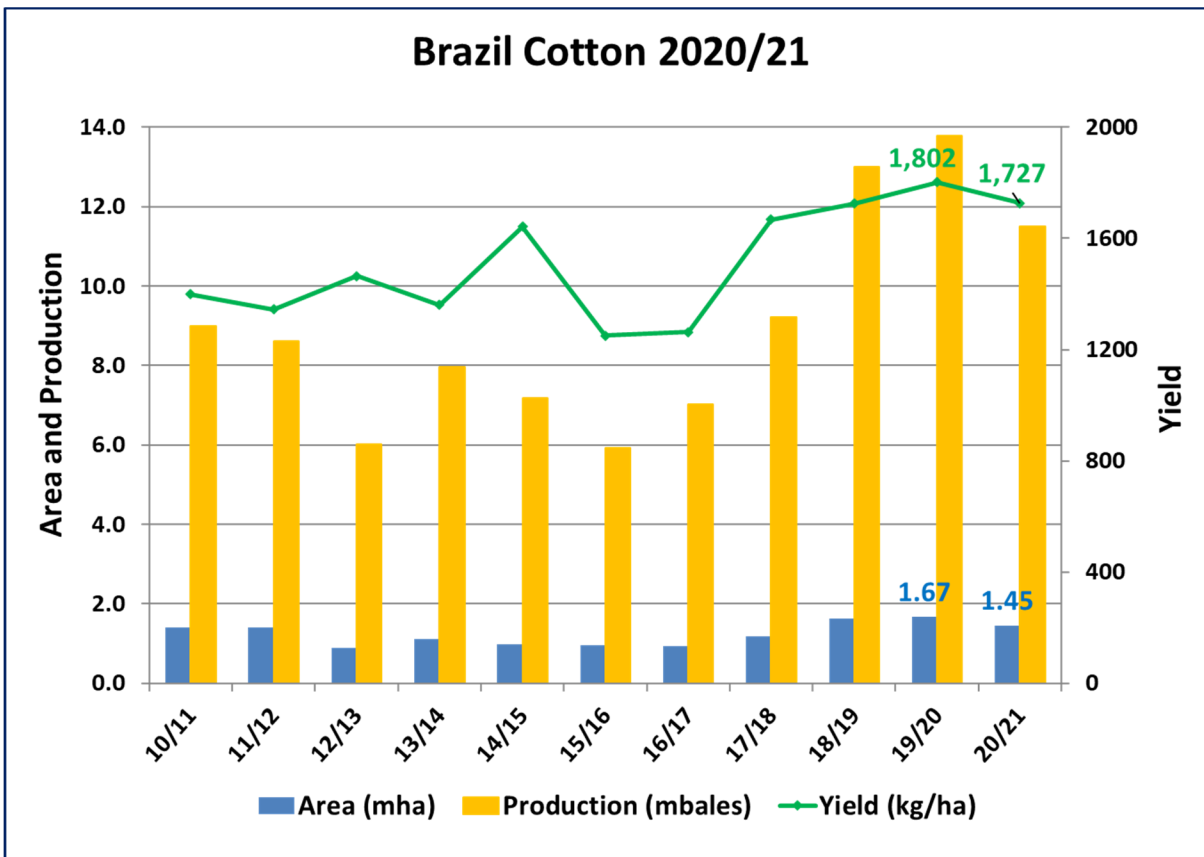
Source: USDA/NASA Global Agricultural Monitoring (GLAM) system



Senegal’s planting season is from June through July and harvest is from November through January. Drought early in the season delayed planting, but seasonal rains were well above average from mid-July through October. Favorable seasonal rains allowed crops to reach full maturity and provided a high yielding crop. Harvested area was low this year because many farmers switched to other crops, early-season drought reduced planting intentions, and some area was abandoned during the season from excessive rains causing unmanageable weed growth. *(For more information, please contact [Curt.Reynolds@usda.gov](mailto:Curt.Reynolds@usda.gov).)*

### Brazil Cotton: Lower Production Forecast

Brazil’s 2020/21 cotton production is forecast at 11.5 million 480-pound bales, lower by 0.5 million bales (4 percent) from last month, and down 2.3 million bales (17 percent) from last year’s record production. Harvested cotton area is forecast at 1.45 million hectares (mha), lower by 0.1 mha (6 percent) from last month, and 13 percent below last year. The two largest cotton producing states, Mato Grosso and Bahia, are reporting roughly 10 percent and 15 percent declines in sown area, respectively, for the 2020/21 season. Cotton yield is forecast at 1,727 kilograms per hectare (kg/ha), 5 percent above the 5-year average of 1,642 kg/ha. The COVID-19 pandemic dampened prices for much of 2020, and delayed plantings added further risk to cotton compared with alternative crops.



The two states of Mato Grosso and Bahia produce approximately 90 percent of Brazil's cotton, primarily in the *cerrado* ecoregion. Mato Grosso produces approximately 69 percent of the total output on 1.0 mha and Bahia produces about 20 percent on 0.3 mha. Mato Grosso has two seasons for cotton, with the larger proportion of the crop planted as a second-season crop following the soybean harvest. Cotton planting this year has been delayed in Mato Grosso because of the combined delays in soybean planting and harvest. The *Instituto Mato-Grossense de Economia Agropecuária* (IMEA) reports the slowest planting pace of the last five years. Bahia has one cotton growing season, with planting from December to January and harvest from April through September. (For more information, please contact [Sunita.Yadav-Pauletti@usda.gov](mailto:Sunita.Yadav-Pauletti@usda.gov).)



**World Agricultural Production**  
**U.S. Department of Agriculture**

Foreign Agricultural Service / Global Market Analysis  
International Production Assessment Division (IPAD)  
Ag Box 1051, Room 4630, South Building  
Washington, DC 20250-1051

<https://ipad.fas.usda.gov/>

Telephone: (202) 720-1662 Fax: (202) 720-1158

This report uses information from the Foreign Agricultural Service's (FAS) global network of agricultural attachés and counselors, official statistics of foreign governments and other foreign source materials, and the analysis of economic data and satellite imagery. Estimates of foreign area, yield, and production are from the International Production Assessment Division, FAS, and are reviewed by USDA's Inter-Agency Commodity Estimates Committee. Estimates of U.S. area, yield, and production are from USDA's National Agricultural Statistics Service. Numbers within the report may not add to totals because of rounding. This report reflects official USDA estimates released in the World Agricultural Supply and Demand Estimates (WASDE-584), March 9, 2021.

**Printed copies are available from the National Technical Information Service. Download an order form at [http://www.ntis.gov/products/specialty/usda/fas\\_a-g.asp](http://www.ntis.gov/products/specialty/usda/fas_a-g.asp), or call NTIS at 1-800-363-2068.**

The FAS International Production Assessment Division prepared this report. The next issue of World Agricultural Production will be released after 12:00 p.m. Eastern Time, April 9, 2021.

**Conversion Table**

Metric tons to bushels

Wheat, soybeans	=	MT * 36.7437
Corn, sorghum, rye	=	MT * 39.36825
Barley	=	MT * 45.929625
Oats	=	MT * 68.894438

Metric tons to 480-lb bales

Cotton	=	MT * 4.592917
--------	---	---------------

Metric tons to hundredweight

Rice	=	MT * 22.04622
------	---	---------------

Area & weight

1 hectare	=	2.471044 acres
1 kilogram	=	2.204622 pounds



For further information, contact:  
**U.S. Department of Agriculture**  
**Foreign Agricultural Service**  
**Global Market Analysis**

International Production Assessment Division  
 Ag Box 1051, Room 4630, South Building  
 Washington, DC 20250-1051

Telephone: (202) 720-1662

Fax: (202) 720-1158

**GENERAL INFORMATION**

Senior Director	Ronald Frantz	202-720-4056	ronald.frantz@usda.gov
Director	Robert Tetrault	202-720-1071	robert.tetrault@usda.gov
Administrative Assistant	Vacant		
USDA Remote Sensing Advisor	Vacant		
Sr. Analyst/Technical Lead	Curt Reynolds, Ph.D.	202-690-0134	curt.reynolds@usda.gov
Sr. Analyst/ Satellite Imagery Archives Manager/Technical Lead	Dath Mita, Ph.D.	202-720-7339	dath.mita@usda.gov
Sr. Analyst/Technical Lead	Jim Crutchfield	202-690-0135	james.crutchfield@usda.gov
GIS Mapping/Imagery Analyst	Lisa Colson	202-720-6652	lisa.colson@usda.gov
WAP Coordinators	Ifeoma Collins	202-720-0240	ifeoma.collins@usda.gov
	Aaron Mulhollen	202-690-0131	aaron.mulhollen@usda.gov

**COUNTRY- AND REGION-SPECIFIC INFORMATION**

South America, Argentina, Venezuela, and Colombia	Denise McWilliams, Ph.D.	202-720-0107	denise.mcwilliams@usda.gov
Western and Central Europe, and North Africa	Bryan Purcell	202-690-0138	bryan.purcell@usda.gov
Russia, Ukraine, Kazakhstan, Moldova, and Belarus	Katie McGaughey	202-720-9210	katie.mcgaughey@usda.gov
South Asia, Sri Lanka Bangladesh, India, and Nepal	Arnella Trent	202-720-0881	arnella.trent@usda.gov
East Asia, China, and Japan	Dath Mita, Ph.D.	202-720-7339	dath.mita@usda.gov
Sub-Saharan Africa, Nigeria and South Africa	Curt Reynolds, Ph.D.	202-690-0134	curt.reynolds@usda.gov
S.E. Asia, Indonesia, Thailand, Malaysia, Cambodia and Vietnam	Justin Jenkins	202-720-0419	justin.jenkins@usda.gov
Central America, Mexico, and Western United States	Ifeoma Collins	202-720-0240	ifeoma.collins@usda.gov
Australia, New Zealand, Pakistan Papua New Guinea and South Pacific Islands	Jim Crutchfield	202-690-0135	james.crutchfield@usda.gov
Middle East, Central Asia, Afghanistan Iraq, Iran, and Syria	Iliana Mladenova, Ph.D.		iliana.mladenova@usda.gov
Canada, Caribbean, Eastern United States	Aaron Mulhollen	202-690-0131	aaron.mulhollen@usda.gov
Brazil	Sunita Yadav-Pauletti, Ph.D.		sunita.yadav-pauletti@usda.gov



The Foreign Agricultural Service (FAS) updates its production, supply and distribution (PSD) database for cotton, oilseeds, and grains at 12:00 p.m. on the day the *World Agricultural Supply and Demand Estimates* (WASDE) report is released. This circular is released by 12:15 p.m.

## FAS Reports and Databases:

### World Agricultural Production

Current: <https://www.fas.usda.gov/data/world-agricultural-production>

Archive: <https://usda.library.cornell.edu/concern/publications/5q47rn72z?locale=en>

USDA's Foreign Agricultural Service (FAS) publishes a monthly report on crop acreage, yield and production in major countries worldwide. Sources include reporting from FAS's worldwide offices, official statistics of foreign governments, and analysis of economic data and satellite imagery. The reports reflect official USDA estimates released in the monthly *World Agricultural Supply and Demand Estimates* (WASDE).

### World Markets and Trade

Current: <https://www.fas.usda.gov/data>

Archive:

[https://usda.library.cornell.edu/catalog?f%5Bmember\\_of\\_collections\\_ssim%5D%5B%5D=Foreign+Agricultural+Service&locale=en](https://usda.library.cornell.edu/catalog?f%5Bmember_of_collections_ssim%5D%5B%5D=Foreign+Agricultural+Service&locale=en)

USDA's Foreign Agricultural Service (FAS) publishes monthly and quarterly reports which include data on U.S. and global trade, production, consumption and stocks, as well as analysis of developments affecting world trade in oilseeds, grains, cotton, livestock and poultry. The reports reflect official USDA estimates released in the monthly *World Agricultural Supply and Demand Estimates* (WASDE).

### Global Agricultural Information Network (GAIN)

<https://www.fas.usda.gov/databases/global-agricultural-information-network-gain>

USDA's Foreign Agricultural Service (FAS) provides timely reports on foreign markets through the Global Agriculture Information Network (GAIN) database. An average of 2,000 reports are added each year, with reports going back to 1995. GAIN reports are compiled by FAS' global market intelligence network, which includes FAS foreign service officers and locally engaged staff in over 90 overseas offices world-wide. They provide on-the-ground intelligence, insight, and analysis on nearly 200 countries, delivering information on foreign agricultural markets, crop conditions, and agro-political dynamics of interest to U.S. agriculture. GAIN reports contain assessments of commodity and trade issues made by USDA staff and are not necessarily statements of official U.S. government policy.

### Production, Supply and Distribution (PS&D) Online

<https://apps.fas.usda.gov/psdonline/app/index.html#/app/home>

PSD Online is the public repository for USDA's Official Production, Supply and Distribution forecast data and reports for key agricultural commodities. PSD Online data are reviewed and updated monthly by an interagency committee chaired by USDA's World Agricultural Outlook Board (WAOB). The committee consist of representatives from Foreign Agricultural Service (FAS), the Economic Research Service (ERS), the Farm Service Agency (FSA), and the Agricultural Marketing Service (AMS).

### EU Countries and Russia Wheat: Area and Production Estimates

<https://apps.fas.usda.gov/psdonline/app/index.html#/app/downloads> (click on PSD Datasets)

USDA's Foreign Agricultural Service (FAS) provides country-level area and production estimates for the nations of the European Union. For Russia, country-level area and production estimates are provided for Winter and Spring wheat. These datasets are reviewed and updated monthly by an interagency committee chaired by USDA's World Agricultural Outlook Board (WAOB) and can be downloaded through PSD datasets on PSD Online.



## FAS Reports and Databases:

### **International Production Assessment (IPAD)**

<https://ipad.fas.usda.gov/>

USDA's Foreign Agricultural Service (FAS) maintains a dynamic global crop production portal with key information including *World Agricultural Production* (WAP) briefs, Commodity Intelligence Reports (CIR), geospatial applications, crop production maps at a subnational level and crop calendars for the top-20 producing countries. Additionally, Crop Explorer (<https://ipad.fas.usda.gov/cropexplorer/>) displays rainfall, temperature, evapotranspiration, soil moisture, snow cover, and vegetation conditions in charts and maps.

### **USDA and NASA Global Agricultural Monitoring (GLAM)**

<https://glam1.gsfc.nasa.gov/>

The USDA and NASA Global Agricultural Monitoring (GLAM) system provides near real-time and science quality Moderate Resolution Imaging Spectroradiometer (MODIS) Normalized Difference Vegetation Index (NDVI) from the satellites Terra and Aqua. The public can view and retrieve MODIS 8-day composited, global NDVI satellite imagery and time series data. GLAM was developed by NASA's Global Inventory Modeling and Mapping Studies (GIMMS) group for USDA's Foreign Agricultural Service.

### **Global Agricultural and Disaster Assessment System (GADAS)**

<https://geo.fas.usda.gov/GADAS/index.html>

USDA's Foreign Agricultural Service (FAS) provides the Global Agricultural and Disaster Assessment System (GADAS), a web-based Geographic Information System (GIS) tool which integrates a vast array of highly detailed earth observation data streams, particularly targeted towards agricultural and disaster assessment analysis. GADAS is an interactive website which provides analysts with a wide variety of routine geospatial products (maps, charts, tables) they require for comprehensive situational investigations and recurring assessments.

### **Export Sales Reporting**

<https://apps.fas.usda.gov/esrquery/>

USDA's Export Sales Reporting Program monitors U.S. agricultural export sales on a daily and weekly basis. Export sales reporting provides a constant stream of up-to-date market information for 40 U.S. agricultural commodities sold abroad. The weekly U.S. Export Sales report is the most currently available source of U.S. exports sales data. The data is used to analyze overall levels of export demand, determine where markets exit, and assess the relative position of U.S. commodities in foreign markets.

### **Global Agricultural Trade System (GATS)**

<https://apps.fas.usda.gov/gats/default.aspx>

The Global Agricultural Trade System (GATS) is a searchable database containing monthly U.S. Census Bureau trade data organized by agricultural commodity and agricultural related product groups. Trade data is searchable by partner countries and partner groups. Historical U.S. agricultural trade data is available back to 1967. In addition, U.N. trade statistics (UN Comtrade) may be queried through GATS. UN trade data is available for nearly 200 countries or areas, dating from the inception of the Harmonized System (HS) of trade codes in 1989 to present. The database is continuously updated. U.S. trade data is updated monthly according to the U.S. Census Bureau's reporting system. UN Comtrade data are updated in GATS after nationally submitted data to the UN are standardized by the UN Statistical Division and added to the UN Comtrade database.

## **Other USDA Reports:**

World Agricultural Supply and Demand Estimates (WASDE):

<http://www.usda.gov/oce/commodity/wasde/>

Economic Research Service:

<http://www.ers.usda.gov/topics/crops>

National Agricultural Statistics Service:

<http://www.nass.usda.gov/Publications/>

**Table 01 World Crop Production Summary**

Million Metric Tons

Commodity	World	Total Foreign	North America			Former Soviet		European	Asia (WAP)					South America		Selected Other			All Others
			United States	Canada	Mexico	Russia	Ukraine		China	India	Indonesia	Pakistan	Thailand	Argentina	Brazil	Australia	South Africa	Turkey	
			-	-	-	-	-		-	-	-	-	-	-	-	-	-	-	
---Million metric tons---																			
<b>Wheat</b>																			
2018/19	731.0	679.7	51.3	32.4	3.0	71.7	25.1	nr	131.4	99.9	0.0	25.1	0.0	19.5	5.4	17.6	1.9	19.0	227.8
2019/20 prel.	763.9	711.3	52.6	32.7	3.3	73.6	29.2	nr	133.6	103.6	0.0	24.3	0.0	19.8	5.2	15.2	1.5	17.5	251.9
2020/21 proj.																			
Feb	773.4	723.7	49.7	35.2	3.1	85.3	25.5	nr	134.3	107.6	0.0	25.2	0.0	17.2	6.3	30.0	2.1	18.3	233.9
Mar	776.8	727.1	49.7	35.2	3.1	85.4	25.5	nr	134.3	107.9	0.0	25.2	0.0	17.2	6.3	33.0	2.1	18.3	233.9
<b>Coarse Grains</b>																			
2018/19	1,399.2	1,021.3	377.9	26.2	33.5	35.0	44.5	nr	264.0	43.2	12.0	6.6	5.7	59.2	104.3	11.5	12.4	13.3	350.0
2019/20 prel.	1,411.7	1,052.3	359.4	28.6	32.1	40.5	46.5	nr	268.2	47.7	12.0	7.4	4.6	58.1	105.6	10.4	16.4	14.5	359.7
2020/21 proj.																			
Feb	1,438.9	1,064.3	374.6	29.6	33.6	41.5	38.7	nr	268.0	45.5	12.0	7.5	5.6	55.6	112.4	14.8	17.2	15.8	366.6
Mar	1,444.8	1,070.3	374.6	29.6	33.2	41.4	38.7	nr	268.0	49.2	12.1	7.5	5.6	55.6	112.4	16.6	17.8	15.8	366.8
<b>Rice, Milled</b>																			
2018/19	497.3	490.2	7.1	0.0	0.2	0.7	0.0	nr	148.5	116.5	34.2	7.3	20.3	0.8	7.1	0.0	0.0	0.6	153.9
2019/20 prel.	497.7	491.8	5.9	0.0	0.2	0.7	0.0	nr	146.7	118.9	34.7	7.2	17.7	0.8	7.6	0.0	0.0	0.6	156.7
2020/21 proj.																			
Feb	504.0	496.8	7.2	0.0	0.2	0.7	0.0	nr	148.3	120.0	35.5	7.6	18.6	0.8	7.5	0.6	0.0	0.6	156.4
Mar	504.4	497.2	7.2	0.0	0.2	0.7	0.0	nr	148.3	121.0	35.5	7.6	18.6	0.8	7.5	0.4	0.0	0.6	156.0
<b>Total Grains</b>																			
2018/19	2,627.6	2,191.2	436.3	58.6	36.7	107.4	69.6	nr	543.9	259.6	46.2	39.0	26.0	79.5	116.9	29.2	14.3	32.9	731.7
2019/20 prel.	2,673.3	2,255.4	417.9	61.3	35.5	114.8	75.8	nr	548.5	270.1	46.7	38.9	22.2	78.7	118.4	25.7	17.9	32.6	768.4
2020/21 proj.																			
Feb	2,716.4	2,284.9	431.5	64.8	36.8	127.5	64.2	nr	550.6	273.1	47.5	40.3	24.2	73.6	126.1	45.4	19.3	34.6	756.8
Mar	2,726.0	2,294.5	431.5	64.8	36.4	127.5	64.2	nr	550.6	278.0	47.6	40.3	24.2	73.6	126.1	49.9	19.9	34.6	756.7
<b>Oilseeds</b>																			
2018/19	599.9	469.2	130.7	28.2	1.3	18.7	22.7	nr	60.0	35.5	14.1	3.8	1.0	60.8	124.6	3.1	2.0	3.4	90.1
2019/20 prel.	578.7	471.7	107.0	25.8	1.1	21.7	24.5	nr	63.0	36.7	14.4	3.3	1.1	53.6	133.8	2.6	2.2	3.2	84.7
2020/21 proj.																			
Feb	595.1	472.7	122.4	25.5	0.9	20.3	19.6	nr	65.0	37.9	14.6	2.7	1.1	52.6	137.7	4.5	2.3	2.9	85.3
Mar	595.8	473.4	122.4	25.5	0.9	20.1	19.8	nr	65.0	37.9	14.6	2.7	1.1	52.1	138.6	4.9	2.5	2.9	85.2
<b>Cotton</b>																			
2018/19	118.6	100.2	18.4	0.0	1.7	0.0	0.0	1.7	27.8	25.8	0.0	7.6	0.0	1.1	13.0	2.2	0.2	3.8	15.3
2019/20 prel.	122.1	102.2	19.9	0.0	1.6	0.0	0.0	2.0	27.3	29.5	0.0	6.2	0.0	1.3	13.8	0.6	0.1	3.5	16.4
2020/21 proj.																			
Feb	114.1	99.2	15.0	0.0	1.1	0.0	0.0	1.7	29.0	29.0	0.0	4.5	0.0	1.4	12.0	2.6	0.2	2.9	15.0
Mar	113.3	98.6	14.7	0.0	1.0	0.0	0.0	1.7	29.0	29.0	0.0	4.5	0.0	1.4	11.5	2.6	0.1	2.9	15.0

1/ Includes wheat, coarse grains, and rice (milled) shown above.

**Table 02 Wheat Area, Yield, and Production**

Country / Region	Area (Million hectares)				Yield (Metric tons per hectare)				Production (Million metric tons)				Change in Production			
	2018/19	Prel.	2020/21 Proj.		2018/19	Prel.	2020/21 Proj.		2018/19	Prel.	2020/21 Proj.		From last month		From last year	
		2019/20	Feb	Mar		2019/20	Feb	Mar		2019/20	Feb	Mar	MMT	Percent	MMT	Percent
<b>World</b>	215.45	216.94	221.99	221.96	3.39	3.52	3.48	3.50	731.00	763.92	773.44	776.78	3.34	0.43	12.86	1.68
<b>United States</b>	16.03	15.13	14.87	14.87	3.20	3.47	3.34	3.34	51.31	52.58	49.69	49.69	0.00	0.00	-2.89	-5.50
<b>Total Foreign</b>	199.42	201.81	207.12	207.09	3.41	3.52	3.49	3.51	679.69	711.34	723.74	727.09	3.34	0.46	15.75	2.21
<b>European Union - 28</b>	25.52	26.12	24.61	24.61	5.35	5.91	5.52	5.52	136.58	154.51	135.80	135.80	0.00	0.00	-18.71	-12.11
<b>China</b>	24.27	23.73	23.38	23.38	5.42	5.63	5.74	5.74	131.43	133.59	134.25	134.25	0.00	0.00	0.66	0.49
<b>South Asia</b>																
India	29.65	29.32	31.45	31.36	3.37	3.53	3.42	3.44	99.87	103.60	107.59	107.86	0.27	0.25	4.26	4.11
Pakistan	8.80	8.80	8.81	8.81	2.85	2.76	2.86	2.86	25.10	24.30	25.20	25.20	0.00	0.00	0.90	3.70
Afghanistan	2.00	2.30	2.33	2.33	1.80	2.17	2.15	2.15	3.60	5.00	5.01	5.01	0.00	0.00	0.01	0.20
Nepal	0.70	0.75	0.75	0.75	2.85	2.95	2.95	2.95	2.01	2.20	2.21	2.21	0.00	0.00	0.01	0.45
<b>Former Soviet Union - 12</b>																
Russia	26.34	27.31	28.60	28.68	2.72	2.70	2.98	2.98	71.69	73.61	85.30	85.35	0.05	0.06	11.74	15.95
Russia Winter	14.91	15.41	16.35	16.63	3.52	3.41	3.66	3.77	52.47	52.54	59.80	62.69	2.89	4.83	10.15	19.32
Russia Spring	11.44	11.91	12.25	12.06	1.68	1.77	2.08	1.88	19.22	21.07	25.50	22.67	-2.84	-11.12	1.59	7.56
Ukraine	6.72	7.02	6.80	6.80	3.73	4.16	3.75	3.75	25.06	29.17	25.50	25.50	0.00	0.00	-3.67	-12.58
Kazakhstan	11.35	11.34	12.08	12.08	1.23	1.01	1.18	1.18	13.95	11.45	14.26	14.26	0.00	0.00	2.80	24.48
Uzbekistan	1.40	1.40	1.40	1.40	4.29	4.86	4.65	4.65	6.00	6.80	6.51	6.51	0.00	0.00	-0.29	-4.26
Belarus	0.66	0.69	0.70	0.70	2.75	3.33	3.29	3.29	1.82	2.31	2.30	2.30	0.00	0.00	-0.01	-0.39
<b>Canada</b>	9.88	9.66	10.02	10.02	3.27	3.38	3.51	3.51	32.35	32.67	35.18	35.18	0.00	0.00	2.51	7.69
<b>South America</b>																
Argentina	6.05	6.73	6.30	6.30	3.22	2.94	2.73	2.73	19.50	19.78	17.20	17.20	0.00	0.00	-2.58	-13.04
Brazil	2.04	2.04	2.34	2.34	2.66	2.55	2.67	2.67	5.43	5.20	6.25	6.25	0.00	0.00	1.05	20.19
Uruguay	0.20	0.24	0.21	0.21	3.68	3.26	3.50	3.50	0.73	0.78	0.75	0.75	0.00	0.00	-0.03	-3.99
<b>Australia</b>	10.40	10.20	13.00	13.00	1.69	1.49	2.31	2.54	17.60	15.20	30.00	33.00	3.00	10.00	17.80	117.11
<b>Africa</b>																
Egypt	1.32	1.37	1.39	1.39	6.40	6.40	6.40	6.40	8.45	8.77	8.90	8.90	0.00	0.00	0.13	1.48
Morocco	2.85	2.75	2.76	2.76	2.58	1.46	0.93	0.93	7.34	4.03	2.56	2.56	0.00	0.00	-1.47	-36.40
Ethiopia	1.75	1.80	1.85	1.85	2.42	2.74	2.86	2.86	4.24	4.93	5.30	5.30	0.00	0.00	0.38	7.61
Algeria	2.07	2.07	2.08	2.08	1.90	1.90	1.88	1.88	3.94	3.95	3.90	3.90	0.00	0.00	-0.05	-1.27
<b>Middle East</b>																
Turkey	7.62	7.00	7.10	7.10	2.50	2.50	2.57	2.57	19.00	17.50	18.25	18.25	0.00	0.00	0.75	4.29
Iran	6.70	6.70	6.70	6.70	2.16	2.51	2.50	2.50	14.50	16.80	16.75	16.75	0.00	0.00	-0.05	-0.30
Iraq	1.70	2.40	2.40	2.40	1.76	2.00	1.93	1.93	3.00	4.80	4.64	4.64	0.00	0.00	-0.17	-3.44
Syria	1.10	1.60	1.60	1.60	1.82	3.00	2.81	2.81	2.00	4.80	4.50	4.50	0.00	0.00	-0.30	-6.25
<b>Mexico</b>	0.54	0.59	0.55	0.55	5.56	5.54	5.55	5.55	3.00	3.27	3.05	3.05	0.00	0.00	-0.22	-6.73
<b>Serbia</b>	0.65	0.57	0.57	0.57	4.92	4.39	4.56	4.56	3.20	2.50	2.60	2.60	0.00	0.00	0.10	4.00
<b>Others</b>	7.13	7.31	7.34	7.33	2.57	2.71	2.72	2.73	18.33	19.83	19.99	20.01	0.02	0.11	0.18	0.93



**Table 03 Total Coarse Grain Area, Yield, and Production**

Country / Region	Area (Million hectares)				Yield (Metric tons per hectare)				Production (Million metric tons)				Change in Production			
	2018/19	Prel.	2020/21 Proj.		2018/19	Prel.	2020/21 Proj.		2018/19	Prel.	2020/21 Proj.		From last month		From last year	
		2019/20	Feb	Mar		2019/20	Feb	Mar		2019/20	Feb	Mar	MMT	Percent	MMT	Percent
<b>World</b>	331.26	334.02	338.40	338.81	4.22	4.23	4.25	4.26	1,399.23	1,411.69	1,438.90	1,444.83	5.94	0.41	33.14	2.35
<b>United States</b>	36.20	36.17	36.84	36.84	10.44	9.94	10.17	10.17	377.91	359.43	374.57	374.57	0.00	0.00	15.13	4.21
<b>Total Foreign</b>	295.05	297.85	301.56	301.97	3.46	3.53	3.53	3.54	1,021.32	1,052.26	1,064.33	1,070.27	5.94	0.56	18.01	1.71
<b>China</b>	44.29	43.72	43.68	43.68	5.96	6.14	6.14	6.14	263.96	268.20	268.05	268.05	0.00	0.00	-0.16	-0.06
<b>European Union</b>	29.24	30.17	30.95	30.97	5.07	5.37	5.23	5.23	148.26	161.98	161.76	161.86	0.10	0.06	-0.12	-0.07
<b>South America</b>																
Brazil	18.72	19.77	20.98	20.98	5.57	5.34	5.36	5.36	104.33	105.57	112.41	112.41	0.00	0.00	6.83	6.47
Argentina	8.22	8.43	8.29	8.29	7.21	6.90	6.70	6.70	59.22	58.13	55.59	55.59	0.00	0.00	-2.53	-4.36
<b>Former Soviet Union - 12</b>																
Russia	14.03	14.51	14.38	14.55	2.50	2.79	2.89	2.84	35.00	40.50	41.48	41.40	-0.08	-0.19	0.90	2.22
Ukraine	7.58	8.22	8.52	8.52	5.87	5.67	4.54	4.54	44.50	46.55	38.71	38.71	0.00	0.00	-7.84	-16.83
Kazakhstan	2.97	3.45	3.20	3.20	1.76	1.47	1.54	1.54	5.23	5.06	4.93	4.93	0.00	0.00	-0.13	-2.61
Belarus	1.01	1.08	1.03	1.03	2.91	3.08	3.42	3.42	2.93	3.32	3.52	3.52	0.00	0.00	0.21	6.18
<b>Africa</b>																
Nigeria	14.30	14.40	14.40	14.40	1.39	1.37	1.42	1.42	19.84	19.67	20.40	20.40	0.00	0.00	0.74	3.74
South Africa	2.81	3.13	3.33	3.33	4.43	5.24	5.15	5.35	12.42	16.37	17.16	17.79	0.64	3.70	1.43	8.72
Tanzania	5.22	5.35	5.35	5.35	1.36	1.29	1.38	1.38	7.12	6.90	7.40	7.40	0.00	0.00	0.50	7.25
Burkina	4.32	3.90	3.90	3.90	1.12	1.19	1.26	1.26	4.82	4.66	4.90	4.90	0.00	0.00	0.25	5.26
Ethiopia	5.64	5.60	5.60	5.60	2.92	3.05	3.08	3.08	16.47	17.10	17.25	17.25	0.00	0.00	0.15	0.88
Egypt	1.07	1.02	1.02	1.02	7.14	7.09	7.09	7.09	7.66	7.26	7.26	7.26	0.00	0.00	0.00	0.00
Mali	4.63	4.70	4.70	4.70	1.50	1.48	1.45	1.45	6.94	6.94	6.80	6.80	0.00	0.00	-0.14	-1.95
<b>India</b>	22.23	23.98	22.80	23.19	1.94	1.99	2.00	2.12	43.21	47.66	45.54	49.16	3.63	7.96	1.50	3.15
<b>Southeast Asia</b>																
Indonesia	3.70	3.80	3.70	3.70	3.24	3.16	3.24	3.27	12.00	12.00	12.00	12.10	0.10	0.83	0.10	0.83
Philippines	2.48	2.51	2.60	2.60	3.07	3.20	3.15	3.15	7.61	8.03	8.20	8.20	0.00	0.00	0.17	2.12
Vietnam	1.03	0.99	0.97	0.97	4.72	4.80	4.68	4.68	4.87	4.76	4.54	4.54	0.00	0.00	-0.22	-4.56
Thailand	1.32	1.24	1.28	1.28	4.27	3.66	4.35	4.35	5.65	4.55	5.55	5.55	0.00	0.00	1.00	21.98
<b>Mexico</b>	8.95	8.41	9.05	8.95	3.74	3.82	3.71	3.71	33.47	32.10	33.59	33.19	-0.40	-1.19	1.10	3.41
<b>Canada</b>	5.00	5.54	5.80	5.80	5.24	5.16	5.11	5.11	26.20	28.61	29.64	29.64	0.00	0.00	1.03	3.61
<b>Australia</b>	6.06	5.01	6.07	5.99	1.90	2.08	2.43	2.76	11.51	10.44	14.76	16.56	1.81	12.23	6.13	58.69
<b>Middle East</b>																
Turkey	4.34	4.53	4.63	4.63	3.05	3.19	3.40	3.40	13.25	14.45	15.76	15.76	0.00	0.00	1.31	9.07
Iran	1.73	1.91	1.91	1.91	2.32	2.63	2.71	2.71	4.02	5.02	5.17	5.17	0.00	0.00	0.15	2.99
<b>Others</b>	74.15	72.51	73.44	73.44	1.63	1.61	1.66	1.66	120.83	116.48	121.99	122.14	0.15	0.12	5.66	4.86

World and Selected Countries and Regions; Coarse Grain includes: Barley, Corn, Millet, Mixed Grains, Oats, Rye and Sorghum

**Table 04 Corn Area, Yield, and Production**

Country / Region	Area (Million hectares)				Yield (Metric tons per hectare)				Production (Million metric tons)				Change in Production						
	2018/19	Prel.		2020/21 Proj.		2018/19	Prel.		2020/21 Proj.		2018/19	Prel.		2020/21 Proj.		From last month		From last year	
		2019/20	2019/20	Feb	Mar		2019/20	2019/20	Feb	Mar		2019/20	2019/20	Feb	Mar	MMT	Percent	MMT	Percent
<b>World</b>	192.23	193.19	196.69	196.96	5.85	5.78	5.77	5.77	1,124.99	1,116.53	1,134.05	1,136.31	2.26	0.20	19.78	1.77			
<b>United States</b>	32.89	32.92	33.37	33.37	11.07	10.51	10.79	10.79	364.26	345.96	360.25	360.25	0.00	0.00	14.29	4.13			
<b>Total Foreign</b>	159.34	160.27	163.32	163.59	4.77	4.81	4.74	4.74	760.73	770.57	773.80	776.06	2.26	0.29	5.49	0.71			
<b>China</b>	42.13	41.28	41.26	41.26	6.10	6.32	6.32	6.32	257.17	260.78	260.67	260.67	0.00	0.00	-0.11	-0.04			
<b>South America</b>																			
Brazil	17.50	18.50	19.70	19.70	5.77	5.51	5.53	5.53	101.00	102.00	109.00	109.00	0.00	0.00	7.00	6.86			
Argentina	6.10	6.30	6.10	6.10	8.36	8.10	7.79	7.79	51.00	51.00	47.50	47.50	0.00	0.00	-3.50	-6.86			
Bolivia	0.47	0.48	0.50	0.50	2.11	2.39	2.40	2.40	0.99	1.15	1.20	1.20	0.00	0.00	0.06	4.80			
<b>European Union</b>	8.28	8.89	8.98	9.00	7.77	7.51	7.08	7.08	64.38	66.72	63.60	63.70	0.10	0.16	-3.02	-4.52			
<b>Africa</b>																			
South Africa	2.60	2.91	3.10	3.10	4.55	5.45	5.32	5.48	11.82	15.84	16.50	17.00	0.50	3.03	1.16	7.30			
Nigeria	6.50	6.50	6.50	6.50	1.69	1.69	1.77	1.77	11.00	11.00	11.50	11.50	0.00	0.00	0.50	4.55			
Ethiopia	2.30	2.30	2.30	2.30	3.63	3.70	3.74	3.74	8.35	8.50	8.60	8.60	0.00	0.00	0.10	1.18			
Egypt	0.85	0.80	0.80	0.80	8.00	8.00	8.00	8.00	6.80	6.40	6.40	6.40	0.00	0.00	0.00	0.00			
Tanzania	4.10	4.20	4.20	4.20	1.46	1.39	1.50	1.50	5.99	5.82	6.30	6.30	0.00	0.00	0.48	8.25			
Malawi	1.69	1.70	1.70	1.70	1.60	1.78	2.22	2.22	2.70	3.03	3.78	3.78	0.00	0.00	0.75	24.75			
Zambia	1.09	0.84	1.29	1.29	2.21	2.38	2.62	2.62	2.40	2.00	3.39	3.39	0.00	0.00	1.38	69.01			
Kenya	2.14	2.00	2.00	2.00	1.87	1.90	2.00	2.00	4.01	3.80	4.00	4.00	0.00	0.00	0.20	5.26			
Uganda	1.13	1.15	1.15	1.15	2.30	2.24	2.43	2.43	2.60	2.58	2.80	2.80	0.00	0.00	0.23	8.74			
Zimbabwe	1.72	1.62	1.58	1.58	0.99	0.48	0.57	0.57	1.70	0.78	0.91	0.91	0.00	0.00	0.13	16.86			
<b>Former Soviet Union - 12</b>																			
Ukraine	4.57	4.99	5.40	5.40	7.84	7.19	5.46	5.46	35.81	35.89	29.50	29.50	0.00	0.00	-6.39	-17.80			
Russia	2.37	2.50	2.75	2.73	4.81	5.70	5.09	5.08	11.42	14.28	14.00	13.87	-0.13	-0.91	-0.40	-2.82			
<b>South Asia</b>																			
India	9.03	9.57	9.40	9.70	3.07	3.01	3.03	3.11	27.72	28.77	28.50	30.20	1.70	5.96	1.43	4.99			
Pakistan	1.32	1.33	1.39	1.39	4.62	5.19	5.05	5.05	6.10	6.90	7.00	7.00	0.00	0.00	0.10	1.45			
Nepal	0.96	0.96	0.97	0.97	2.84	2.76	2.82	2.82	2.71	2.65	2.72	2.72	0.00	0.00	0.07	2.64			
<b>Southeast Asia</b>																			
Indonesia	3.70	3.80	3.70	3.70	3.24	3.16	3.24	3.27	12.00	12.00	12.00	12.10	0.10	0.83	0.10	0.83			
Philippines	2.48	2.51	2.60	2.60	3.07	3.20	3.15	3.15	7.61	8.03	8.20	8.20	0.00	0.00	0.17	2.12			
Vietnam	1.03	0.99	0.97	0.97	4.72	4.80	4.68	4.68	4.87	4.76	4.54	4.54	0.00	0.00	-0.22	-4.56			
Thailand	1.30	1.22	1.25	1.25	4.32	3.70	4.40	4.40	5.60	4.50	5.50	5.50	0.00	0.00	1.00	22.22			
<b>Mexico</b>	7.20	6.62	7.30	7.25	3.84	4.03	3.84	3.83	27.67	26.66	28.00	27.80	-0.20	-0.71	1.14	4.28			
<b>Canada</b>	1.43	1.45	1.41	1.41	9.70	9.24	9.63	9.63	13.89	13.40	13.56	13.56	0.00	0.00	0.16	1.19			
<b>Turkey</b>	0.53	0.52	0.62	0.62	10.75	11.54	11.45	11.45	5.70	6.00	7.10	7.10	0.00	0.00	1.10	18.33			
<b>Others</b>	24.84	24.34	24.41	24.42	2.73	2.68	2.75	2.75	67.73	65.35	67.03	67.22	0.19	0.29	1.87	2.87			

World and Selected Countries and Regions

**Table 05 Barley Area, Yield, and Production**

Country / Region	Area (Million hectares)				Yield (Metric tons per hectare)				Production (Million metric tons)				Change in Production			
	2018/19	Prel.	2020/21 Proj.		2018/19	Prel.	2020/21 Proj.		2018/19	Prel.	2020/21 Proj.		From last month		From last year	
		2019/20	Feb	Mar		2019/20	Feb	Mar		2019/20	Feb	Mar	MMT	Percent	MMT	Percent
<b>World</b>	48.85	51.81	51.75	51.89	2.85	3.02	3.04	3.07	139.43	156.59	157.36	159.47	2.11	1.34	2.87	1.83
<b>United States</b>	0.80	0.90	0.86	0.86	4.17	4.18	4.17	4.17	3.34	3.76	3.60	3.60	0.00	0.00	-0.16	-4.15
<b>Total Foreign</b>	48.04	50.92	50.89	51.03	2.83	3.00	3.02	3.05	136.09	152.84	153.76	155.87	2.11	1.37	3.03	1.98
<b>European Union</b>	12.32	12.37	12.78	12.78	4.55	5.11	4.94	4.94	55.98	63.22	63.05	63.05	0.00	0.00	-0.17	-0.27
<b>Former Soviet Union - 12</b>																
Russia	7.78	8.40	8.00	8.16	2.15	2.37	2.58	2.53	16.74	19.94	20.60	20.63	0.03	0.14	0.69	3.46
Ukraine	2.57	2.78	2.60	2.60	2.96	3.42	3.08	3.08	7.60	9.53	8.00	8.00	0.00	0.00	-1.53	-16.04
Kazakhstan	2.52	2.98	2.73	2.73	1.58	1.29	1.34	1.34	3.97	3.83	3.66	3.66	0.00	0.00	-0.17	-4.46
Belarus	0.43	0.41	0.38	0.38	2.20	2.69	2.76	2.76	0.94	1.10	1.05	1.05	0.00	0.00	-0.05	-4.37
Azerbaijan	0.34	0.34	0.35	0.35	2.80	2.97	2.81	2.81	0.94	1.02	0.97	0.97	0.00	0.00	-0.05	-4.53
<b>Canada</b>	2.40	2.73	2.81	2.81	3.50	3.81	3.82	3.82	8.38	10.38	10.74	10.74	0.00	0.00	0.36	3.45
<b>Australia</b>	4.44	4.05	4.40	4.40	1.99	2.22	2.50	2.95	8.82	9.00	11.00	13.00	2.00	18.18	4.00	44.44
<b>Middle East</b>																
Turkey	3.60	3.80	3.80	3.80	1.94	2.08	2.13	2.13	7.00	7.90	8.10	8.10	0.00	0.00	0.20	2.53
Iran	1.55	1.70	1.70	1.70	1.81	2.12	2.21	2.21	2.80	3.60	3.75	3.75	0.00	0.00	0.15	4.17
Iraq	0.60	1.20	1.20	1.20	1.30	1.33	1.29	1.29	0.78	1.60	1.55	1.55	0.00	0.00	-0.05	-3.13
Syria	0.80	1.50	1.50	1.50	0.50	1.33	1.27	1.27	0.40	2.00	1.90	1.90	0.00	0.00	-0.10	-5.00
<b>Africa</b>																
Ethiopia	1.00	1.00	1.00	1.00	2.20	2.30	2.35	2.35	2.20	2.30	2.35	2.35	0.00	0.00	0.05	2.17
Morocco	1.60	1.45	1.47	1.47	1.82	0.80	0.44	0.44	2.91	1.16	0.64	0.64	0.00	0.00	-0.52	-44.88
Algeria	1.03	1.03	1.03	1.03	1.90	1.95	1.80	1.80	1.95	2.00	1.85	1.85	0.00	0.00	-0.16	-7.75
Tunisia	0.31	0.47	0.42	0.42	0.99	1.94	1.60	1.60	0.31	0.91	0.66	0.66	0.00	0.00	-0.25	-27.19
South Africa	0.12	0.13	0.14	0.14	3.55	2.61	3.57	4.15	0.42	0.35	0.50	0.59	0.09	18.00	0.25	71.01
<b>South America</b>																
Argentina	1.20	1.12	1.10	1.10	4.22	3.39	3.73	3.73	5.06	3.80	4.10	4.10	0.00	0.00	0.30	7.89
Uruguay	0.17	0.17	0.18	0.18	3.82	3.68	3.72	3.72	0.64	0.61	0.67	0.67	0.00	0.00	0.06	10.38
Brazil	0.11	0.12	0.12	0.12	3.16	3.61	3.21	3.21	0.35	0.43	0.39	0.39	0.00	0.00	-0.04	-10.26
<b>India</b>	0.66	0.58	0.60	0.59	2.69	2.84	2.80	2.92	1.78	1.63	1.69	1.72	0.04	2.07	0.09	5.45
<b>China</b>	0.26	0.26	0.26	0.26	3.64	3.46	3.46	3.46	0.96	0.90	0.90	0.90	0.00	0.00	0.00	0.00
<b>Mexico</b>	0.35	0.36	0.36	0.36	2.82	2.81	2.80	2.80	1.00	1.01	1.00	1.00	0.00	0.00	-0.01	-0.99
<b>Afghanistan</b>	0.08	0.18	0.17	0.17	0.68	1.39	1.41	1.41	0.06	0.25	0.24	0.24	0.00	0.00	-0.01	-4.00
<b>Others</b>	1.82	1.79	1.81	1.80	2.26	2.44	2.43	2.42	4.10	4.38	4.41	4.36	-0.05	-1.11	-0.02	-0.37

World and Selected Countries and Regions

**Table 06 Oats Area, Yield, and Production**

Country / Region	Area (Million hectares)				Yield (Metric tons per hectare)				Production (Million metric tons)				Change in Production						
	2018/19	Prel.		2020/21 Proj.		2018/19	Prel.		2020/21 Proj.		2018/19	Prel.		2020/21 Proj.		From last month		From last year	
		2019/20	Feb	Mar	2019/20		Feb	Mar	2019/20	Feb		Mar	MMT	Percent	MMT	Percent			
<b>World</b>	9.99	9.58	10.07	10.12	2.23	2.40	2.53	2.53	22.25	23.01	25.47	25.56	0.09	0.35	2.55	11.08			
<b>United States</b>	0.35	0.34	0.41	0.41	2.33	2.31	2.34	2.34	0.82	0.77	0.95	0.95	0.00	0.00	0.18	22.77			
<b>Total Foreign</b>	9.64	9.25	9.67	9.71	2.22	2.41	2.54	2.53	21.43	22.24	24.52	24.61	0.09	0.37	2.37	10.68			
<b>European Union</b>	2.73	2.55	2.77	2.77	2.86	3.16	3.38	3.38	7.79	8.08	9.34	9.34	0.00	0.00	1.26	15.61			
<b>Former Soviet Union - 12</b>																			
Russia	2.73	2.43	2.30	2.33	1.73	1.82	1.78	1.77	4.72	4.42	4.10	4.13	0.03	0.66	-0.29	-6.63			
Ukraine	0.20	0.18	0.20	0.20	2.14	2.32	2.31	2.31	0.42	0.43	0.45	0.45	0.00	0.00	0.02	5.39			
Belarus	0.15	0.16	0.15	0.15	2.26	2.30	2.47	2.47	0.34	0.37	0.37	0.37	0.00	0.00	0.00	0.54			
Kazakhstan	0.24	0.24	0.23	0.23	1.43	1.10	1.05	1.05	0.34	0.27	0.24	0.24	0.00	0.00	-0.03	-10.11			
<b>Canada</b>	1.01	1.17	1.31	1.31	3.42	3.62	3.48	3.48	3.44	4.23	4.58	4.58	0.00	0.00	0.35	8.26			
<b>South America</b>																			
Argentina	0.24	0.32	0.29	0.29	2.40	1.86	2.24	2.24	0.57	0.60	0.65	0.65	0.00	0.00	0.05	8.33			
Brazil	0.38	0.40	0.40	0.40	2.11	2.21	2.28	2.28	0.80	0.88	0.91	0.91	0.00	0.00	0.03	3.53			
Chile	0.08	0.10	0.11	0.11	5.13	4.92	5.60	5.60	0.39	0.48	0.64	0.64	0.00	0.00	0.16	33.75			
Uruguay	0.03	0.02	0.02	0.02	2.04	2.19	2.00	1.95	0.05	0.04	0.04	0.04	0.00	-7.50	0.00	5.71			
<b>Oceania</b>																			
Australia	0.94	0.70	0.93	0.95	1.21	1.23	1.72	1.76	1.14	0.86	1.60	1.68	0.08	4.69	0.82	94.77			
New Zealand	0.00	0.01	0.01	0.00	6.00	5.40	5.50	6.00	0.02	0.03	0.03	0.02	-0.01	-27.27	0.00	-11.11			
<b>China</b>	0.50	0.53	0.53	0.53	1.15	1.19	1.19	1.19	0.58	0.63	0.63	0.63	0.00	0.00	0.00	0.00			
<b>Africa</b>																			
Algeria	0.09	0.09	0.09	0.09	1.29	1.29	1.29	1.29	0.11	0.11	0.11	0.11	0.00	0.00	0.00	0.00			
Morocco	0.05	0.05	0.04	0.04	1.40	0.89	0.88	0.88	0.06	0.04	0.04	0.04	0.00	0.00	-0.01	-12.50			
South Africa	0.02	0.02	0.02	0.02	1.65	0.76	1.50	1.50	0.03	0.02	0.03	0.03	0.00	0.00	0.01	87.50			
<b>Other Europe</b>																			
Norway	0.07	0.07	0.07	0.07	2.09	4.29	4.29	4.29	0.14	0.30	0.30	0.30	0.00	0.00	0.00	0.00			
Serbia	0.03	0.03	0.03	0.03	2.17	2.17	2.17	2.17	0.07	0.07	0.07	0.07	0.00	0.00	0.00	0.00			
Albania	0.02	0.02	0.01	0.01	2.06	2.06	2.14	2.14	0.04	0.03	0.03	0.03	0.00	0.00	0.00	-9.09			
Bosnia and Herzegovina	0.01	0.01	0.01	0.01	2.79	1.93	2.56	2.56	0.04	0.03	0.02	0.02	0.00	0.00	0.00	-14.81			
<b>Turkey</b>	0.10	0.10	0.10	0.10	2.30	2.30	2.40	2.40	0.23	0.23	0.24	0.24	0.00	0.00	0.01	4.35			
<b>Mexico</b>	0.05	0.05	0.05	0.05	2.06	1.98	2.00	2.00	0.10	0.10	0.09	0.09	0.00	0.00	-0.01	-9.09			
<b>Others</b>	0.02	0.01	0.01	0.01	2.00	1.86	1.86	1.86	0.03	0.03	0.03	0.03	0.00	0.00	0.00	0.00			

World and Selected Countries and Regions

**Table 07 Rye Area, Yield, and Production**

Country / Region	Area (Million hectares)				Yield (Metric tons per hectare)				Production (Million metric tons)				Change in Production			
	Prel.		2020/21 Proj.		Prel.		2020/21 Proj.		Prel.		2020/21 Proj.		From last month		From last year	
	2018/19	2019/20	Feb	Mar	2018/19	2019/20	Feb	Mar	2018/19	2019/20	Feb	Mar	MMT	Percent	MMT	Percent
<b>World</b>	3.74	4.03	4.24	4.24	2.67	3.03	3.36	3.37	10.00	12.22	14.26	14.26	0.00	0.01	2.05	16.75
<b>United States</b>	0.11	0.13	0.13	0.13	1.95	2.16	2.19	2.19	0.21	0.27	0.29	0.29	0.00	0.00	0.02	8.52
<b>Total Foreign</b>	3.63	3.91	4.11	4.10	2.70	3.06	3.40	3.40	9.79	11.95	13.97	13.97	0.00	0.01	2.02	16.93
<b>European Union</b>	1.92	2.21	2.25	2.25	3.23	3.79	4.09	4.09	6.21	8.39	9.18	9.18	0.00	0.00	0.78	9.33
<b>Former Soviet Union - 12</b>																
Russia	0.96	0.82	0.98	0.97	2.00	1.73	2.44	2.44	1.91	1.42	2.38	2.38	0.00	0.04	0.95	66.85
Belarus	0.25	0.32	0.30	0.30	2.00	2.37	3.00	3.00	0.50	0.76	0.90	0.90	0.00	0.00	0.14	19.05
Ukraine	0.15	0.12	0.14	0.14	2.66	2.90	2.96	2.96	0.40	0.34	0.40	0.40	0.00	0.00	0.06	17.99
Kazakhstan	0.02	0.02	0.02	0.02	1.05	1.00	1.25	1.25	0.02	0.02	0.03	0.03	0.00	0.00	0.01	30.43
<b>Turkey</b>	0.11	0.11	0.11	0.11	2.91	2.91	2.91	2.91	0.32	0.32	0.32	0.32	0.00	0.00	0.00	0.00
<b>Canada</b>	0.08	0.10	0.15	0.15	2.99	3.23	3.19	3.19	0.24	0.33	0.49	0.49	0.00	0.00	0.16	46.55
<b>South America</b>																
Chile	0.00	0.00	0.00	0.00	5.00	5.00	5.00	5.00	0.01	0.01	0.01	0.01	0.00	0.00	0.00	0.00
Argentina	0.05	0.11	0.07	0.07	1.78	2.04	2.00	2.00	0.09	0.22	0.14	0.14	0.00	0.00	-0.08	-36.36
<b>Other Europe</b>																
Bosnia and Herzegovina	0.00	0.00	0.00	0.00	2.75	2.50	3.33	3.33	0.01	0.01	0.01	0.01	0.00	0.00	0.00	0.00
Switzerland	0.00	0.00	0.00	0.00	5.50	5.50	5.50	5.50	0.01	0.01	0.01	0.01	0.00	0.00	0.00	0.00
Serbia	0.00	0.00	0.00	0.00	2.50	2.50	2.50	2.50	0.01	0.01	0.01	0.01	0.00	0.00	0.00	0.00
<b>Australia</b>	0.04	0.04	0.04	0.04	0.68	0.68	0.68	0.68	0.03	0.03	0.03	0.03	0.00	0.00	0.00	0.00
<b>Others</b>	0.03	0.04	0.04	0.04	0.97	1.92	1.90	1.90	0.03	0.07	0.07	0.07	0.00	0.00	0.00	1.37

World and Selected Countries and Regions

**Table 08 Sorghum Area, Yield, and Production**

Country / Region	Area (Million hectares)				Yield (Metric tons per hectare)				Production (Million metric tons)				Change in Production			
	Prel.		2020/21 Proj.		Prel.		2020/21 Proj.		Prel.		2020/21 Proj.		From last month		From last year	
	2018/19	2019/20	Feb	Mar	2018/19	2019/20	Feb	Mar	2018/19	2019/20	Feb	Mar	MMT	Percent	MMT	Percent
<b>World</b>	40.74	39.95	40.98	40.73	1.45	1.45	1.50	1.52	59.25	58.06	61.62	62.11	0.49	0.79	4.05	6.98
<b>United States</b>	2.05	1.89	2.06	2.06	4.53	4.58	4.59	4.59	9.27	8.67	9.47	9.47	0.00	0.00	0.80	9.24
<b>Total Foreign</b>	38.70	38.06	38.91	38.67	1.29	1.30	1.34	1.36	49.98	49.38	52.15	52.63	0.49	0.93	3.25	6.58
<b>Africa</b>																
Nigeria	5.80	5.90	5.90	5.90	1.16	1.13	1.17	1.17	6.72	6.67	6.90	6.90	0.00	0.00	0.24	3.53
Ethiopia	1.83	1.85	1.85	1.85	2.70	2.81	2.81	2.81	4.93	5.20	5.20	5.20	0.00	0.00	0.00	0.00
Sudan	7.11	6.33	7.00	7.00	0.70	0.63	0.71	0.71	4.95	4.00	5.00	5.00	0.00	0.00	1.00	25.00
Burkina	1.91	1.80	1.80	1.80	1.01	1.04	1.06	1.06	1.93	1.87	1.90	1.90	0.00	0.00	0.03	1.60
Mali	1.35	1.50	1.50	1.50	1.09	1.00	1.00	1.00	1.47	1.50	1.50	1.50	0.00	0.00	0.00	0.00
Niger	3.90	3.70	3.70	3.70	0.54	0.53	0.51	0.51	2.10	1.97	1.90	1.90	0.00	0.00	-0.07	-3.55
Cameroon	0.87	0.85	0.85	0.85	1.63	1.41	1.65	1.65	1.42	1.20	1.40	1.40	0.00	0.00	0.20	16.67
Tanzania	0.79	0.80	0.80	0.80	1.02	0.91	0.94	0.94	0.81	0.73	0.75	0.75	0.00	0.00	0.02	2.74
Egypt	0.14	0.14	0.14	0.14	5.36	5.36	5.36	5.36	0.75	0.75	0.75	0.75	0.00	0.00	0.00	0.00
Uganda	0.45	0.41	0.41	0.41	0.67	0.98	0.98	0.98	0.30	0.40	0.40	0.40	0.00	0.00	0.00	0.00
Ghana	0.28	0.25	0.25	0.25	1.12	1.38	1.12	1.12	0.32	0.35	0.28	0.28	0.00	0.00	-0.07	-18.84
Mozambique	0.25	0.30	0.30	0.30	1.18	1.08	0.97	0.97	0.30	0.33	0.29	0.29	0.00	0.00	-0.04	-10.77
South Africa	0.05	0.04	0.05	0.05	2.70	3.67	2.50	3.78	0.14	0.16	0.13	0.17	0.05	36.00	0.01	7.59
<b>Mexico</b>	1.35	1.38	1.35	1.30	3.48	3.14	3.33	3.31	4.70	4.33	4.50	4.30	-0.20	-4.44	-0.03	-0.65
<b>South America</b>																
Argentina	0.63	0.58	0.73	0.73	3.97	4.35	4.38	4.38	2.50	2.50	3.20	3.20	0.00	0.00	0.70	28.00
Brazil	0.73	0.75	0.75	0.75	2.97	3.03	2.80	2.80	2.18	2.25	2.10	2.10	0.00	0.00	-0.15	-6.83
<b>South Asia</b>																
India	4.09	4.82	4.20	4.10	0.85	0.99	0.92	1.16	3.48	4.77	3.85	4.74	0.89	23.12	-0.03	-0.67
Pakistan	0.24	0.24	0.25	0.25	0.59	0.58	0.58	0.58	0.14	0.14	0.15	0.15	0.00	0.00	0.01	3.57
<b>China</b>	0.62	0.75	0.73	0.73	4.70	4.80	4.86	4.86	2.91	3.60	3.55	3.55	0.00	0.00	-0.05	-1.39
<b>Australia</b>	0.55	0.15	0.60	0.51	2.11	2.00	2.83	2.84	1.16	0.30	1.70	1.45	-0.25	-14.71	1.15	383.33
<b>European Union</b>	0.13	0.16	0.20	0.20	5.70	5.33	5.10	5.10	0.75	0.87	1.02	1.02	0.00	0.00	0.15	17.38
<b>Others</b>	5.64	5.37	5.55	5.55	1.07	1.03	1.02	1.02	6.03	5.51	5.69	5.69	0.00	0.00	0.18	3.30

World and Selected Countries and Regions

**Table 09 Rice Area, Yield, and Production**  
**World and Selected Countries and Regions**

Country / Region	Area (Million hectares)				Yield (Metric tons per hectare)				Production (Million metric tons)				Change in Production			
	Prel.		2020/21 Proj.		Prel.		2020/21 Proj.		Prel.		2020/21 Proj.		From last month		From last year	
	2018/19	2019/20	Feb	Mar	2018/19	2019/20	Feb	Mar	2018/19	2019/20	Feb	Mar	MMT	Percent	MMT	Percent
<b>World</b>	162.48	160.70	162.97	162.40	4.57	4.62	4.62	4.64	497.34	497.71	504.02	504.41	0.39	0.08	6.70	1.35
<b>United States</b>	1.18	1.00	1.21	1.21	8.62	8.38	8.54	8.54	7.11	5.88	7.23	7.23	0.00	0.00	1.35	22.95
<b>Total Foreign</b>	161.30	159.70	161.76	161.19	4.54	4.60	4.59	4.61	490.24	491.83	496.79	497.19	0.39	0.08	5.35	1.09
<b>East Asia</b>																
China	30.19	29.69	30.08	30.08	7.03	7.06	7.04	7.04	148.49	146.73	148.30	148.30	0.00	0.00	1.57	1.07
Japan	1.55	1.54	1.54	1.54	6.79	6.78	6.82	6.82	7.66	7.61	7.62	7.62	0.00	0.00	0.01	0.12
Korea, South	0.74	0.73	0.73	0.73	7.04	6.87	6.49	6.49	3.87	3.74	3.51	3.51	0.00	0.00	-0.24	-6.33
Korea, North	0.50	0.50	0.50	0.50	4.18	4.18	4.18	4.18	1.36	1.36	1.36	1.36	0.00	0.00	0.00	0.00
<b>South Asia</b>																
India	44.16	43.66	44.50	44.00	3.96	4.08	4.05	4.13	116.48	118.87	120.00	121.00	1.00	0.83	2.13	1.79
Bangladesh	11.77	11.83	11.70	11.60	4.45	4.55	4.53	4.50	34.91	35.85	35.30	34.80	-0.50	-1.42	-1.05	-2.93
Pakistan	2.88	3.00	3.00	3.00	3.80	3.60	3.80	3.80	7.30	7.20	7.60	7.60	0.00	0.00	0.40	5.56
Nepal	1.49	1.46	1.47	1.47	3.76	3.80	3.78	3.78	3.74	3.70	3.70	3.70	0.00	0.00	0.00	0.00
Sri Lanka	0.97	0.97	1.09	1.09	4.73	4.85	4.59	4.59	3.13	3.21	3.45	3.45	0.00	0.00	0.24	7.58
<b>Southeast Asia</b>																
Indonesia	11.50	11.60	11.80	11.80	4.68	4.71	4.74	4.74	34.20	34.70	35.50	35.50	0.00	0.00	0.80	2.31
Vietnam	7.54	7.38	7.39	7.39	5.80	5.88	5.87	5.87	27.34	27.10	27.10	27.10	0.00	0.00	0.00	0.00
Thailand	10.83	9.89	10.30	10.30	2.85	2.70	2.74	2.74	20.34	17.66	18.60	18.60	0.00	0.00	0.95	5.35
Burma	7.08	6.90	7.00	7.05	2.91	2.88	2.88	2.88	13.20	12.70	12.90	13.00	0.10	0.78	0.30	2.36
Philippines	4.74	4.64	4.70	4.70	3.93	4.08	4.12	4.12	11.73	11.93	12.20	12.20	0.00	0.00	0.27	2.29
Cambodia	3.24	3.26	3.30	3.30	2.91	2.89	2.90	2.90	5.74	5.74	5.84	5.84	0.00	0.00	0.10	1.74
Laos	0.86	0.97	0.98	0.98	3.12	3.19	3.24	3.24	1.68	1.95	2.00	2.00	0.00	0.00	0.05	2.56
Malaysia	0.70	0.70	0.70	0.70	4.01	4.01	4.01	4.01	1.83	1.83	1.83	1.83	0.00	0.00	0.00	0.00
<b>South America</b>																
Brazil	1.70	1.67	1.72	1.72	6.18	6.71	6.40	6.40	7.14	7.60	7.48	7.48	0.00	0.00	-0.12	-1.60
Peru	0.44	0.41	0.41	0.41	8.12	7.71	7.74	7.74	2.46	2.20	2.20	2.20	0.00	0.00	0.00	-0.09
<b>Africa</b>																
Egypt	0.46	0.76	0.70	0.70	8.78	8.20	8.28	8.28	2.80	4.30	4.00	4.00	0.00	0.00	-0.30	-6.98
Madagascar	1.50	1.50	1.50	1.50	2.69	2.80	2.67	2.67	2.58	2.69	2.56	2.56	0.00	0.00	-0.13	-4.76
Nigeria	3.35	3.50	3.25	3.25	2.15	2.29	2.31	2.31	4.54	5.04	4.73	4.73	0.00	0.00	-0.32	-6.25
<b>European Union</b>	0.41	0.42	0.42	0.42	6.85	6.81	6.76	6.76	1.97	1.97	1.98	1.98	0.00	0.00	0.00	0.15
<b>Iran</b>	0.58	0.58	0.58	0.58	5.25	5.25	5.27	5.27	1.99	1.99	2.00	2.00	0.00	0.00	0.01	0.35
<b>Others</b>	12.13	12.14	12.41	12.40	2.97	3.02	3.06	3.04	23.77	24.17	25.06	24.85	-0.21	-0.83	0.68	2.80

Yield is on a rough basis, before the milling process. Production is on a milled basis, after the milling process.

**Table 10 Total Oilseed Area, Yield, and Production**  
**World and Selected Countries and Regions**

Country / Region	Area (Million hectares)				Yield (Metric tons per hectare)				Production (Million metric tons)				Change in Production			
	Prel.		2020/21 Proj.		Prel.		2020/21 Proj.		Prel.		2020/21 Proj.		From last month		From last year	
	2018/19	2019/20	Feb	Mar	2018/19	2019/20	Feb	Mar	2018/19	2019/20	Feb	Mar	MMT	Percent	MMT	Percent
<b>World Total</b>	--	--	--	--	--	--	--	--	599.92	578.68	595.09	595.84	0.75	0.13	17.16	2.96
<b>Total Foreign</b>	--	--	--	--	--	--	--	--	469.21	471.70	472.67	473.42	0.75	0.16	1.72	0.36
<b>Oilseed, Copra</b>	--	--	--	--	--	--	--	--	5.97	5.85	5.75	5.74	-0.01	-0.23	-0.11	-1.90
<b>Oilseed, Palm Kernel</b>	--	--	--	--	--	--	--	--	19.38	19.25	19.86	19.58	-0.28	-1.39	0.33	1.72
<b>Major Oilseeds</b>	247.75	245.11	248.55	249.18	2.32	2.26	2.29	2.29	574.57	553.58	569.48	570.52	1.04	0.18	16.94	3.06
<b>United States</b>	41.33	36.87	38.89	38.89	3.16	2.90	3.15	3.15	130.72	106.98	122.42	122.42	0.00	0.00	15.44	14.43
<b>Foreign Oilseeds</b>	206.43	208.23	209.66	210.29	2.15	2.14	2.13	2.13	443.86	446.60	447.06	448.10	1.04	0.23	1.50	0.33
<b>South America</b>	63.21	64.06	65.73	65.61	3.17	3.16	3.14	3.15	200.37	202.74	206.26	206.49	0.23	0.11	3.74	1.85
Brazil	37.75	38.77	40.36	40.26	3.30	3.45	3.41	3.44	124.49	133.70	137.60	138.43	0.83	0.61	4.73	3.54
Argentina	19.16	19.03	18.90	18.89	3.18	2.82	2.78	2.76	60.83	53.64	52.59	52.08	-0.51	-0.96	-1.55	-2.89
Paraguay	3.64	3.62	3.73	3.74	2.37	2.76	2.78	2.76	8.61	10.01	10.38	10.32	-0.07	-0.63	0.31	3.12
Bolivia	1.50	1.51	1.54	1.52	2.09	1.93	1.97	1.96	3.13	2.92	3.03	2.98	-0.05	-1.65	0.06	2.02
Uruguay	1.02	0.98	1.07	1.07	2.86	2.14	2.17	2.17	2.92	2.09	2.31	2.31	0.00	0.00	0.22	10.53
<b>China</b>	24.01	25.22	25.62	25.62	2.50	2.50	2.54	2.54	59.95	63.03	64.97	64.97	0.00	0.00	1.93	3.06
<b>South Asia</b>	39.09	41.60	41.81	42.56	1.00	0.95	0.96	0.94	39.00	39.70	40.26	40.21	-0.05	-0.12	0.51	1.27
India	35.93	38.15	38.55	39.30	0.97	0.94	0.96	0.94	34.74	35.92	37.15	37.10	-0.05	-0.13	1.18	3.28
Pakistan	2.80	3.09	2.90	2.90	1.36	1.08	0.92	0.92	3.81	3.33	2.66	2.66	0.00	0.00	-0.67	-20.19
<b>European Union</b>	12.24	11.13	11.05	11.06	2.68	2.67	2.65	2.67	32.78	29.78	29.24	29.54	0.30	1.03	-0.24	-0.81
<b>Former Soviet Union - 12</b>	25.66	26.10	25.59	25.57	1.80	1.96	1.74	1.74	46.18	51.05	44.60	44.59	-0.01	-0.02	-6.46	-12.66
Russia	12.18	12.56	12.60	12.50	1.54	1.73	1.61	1.61	18.73	21.70	20.30	20.14	-0.16	-0.77	-1.56	-7.19
Ukraine	9.38	9.70	9.40	9.47	2.42	2.52	2.09	2.09	22.68	24.46	19.60	19.75	0.15	0.77	-4.71	-19.27
Uzbekistan	1.10	1.01	0.98	0.98	1.17	1.36	1.41	1.41	1.28	1.37	1.37	1.37	0.00	0.00	0.00	-0.22
<b>Canada</b>	11.69	10.76	10.41	10.41	2.41	2.40	2.45	2.45	28.20	25.82	25.45	25.45	0.00	0.00	-0.36	-1.41
<b>Africa</b>	21.63	21.30	20.74	20.76	1.04	0.98	1.01	1.02	22.55	20.79	20.93	21.11	0.18	0.85	0.31	1.51
Nigeria	3.77	3.66	3.79	3.79	1.38	1.17	1.25	1.25	5.19	4.29	4.75	4.75	0.00	0.00	0.46	10.83
South Africa	1.31	1.27	1.35	1.37	1.50	1.70	1.69	1.80	1.96	2.16	2.29	2.46	0.18	7.79	0.31	14.29
Tanzania	1.42	1.60	1.45	1.45	0.89	0.85	0.87	0.87	1.26	1.36	1.26	1.26	0.00	0.00	-0.10	-7.06
<b>Southeast Asia</b>	3.32	3.13	3.21	3.21	1.39	1.38	1.39	1.39	4.60	4.31	4.47	4.47	0.00	0.00	0.16	3.71
Indonesia	0.99	0.95	0.94	0.94	1.56	1.55	1.54	1.54	1.55	1.47	1.45	1.45	0.00	0.00	-0.03	-1.70
Burma	2.01	1.87	1.97	1.97	1.20	1.18	1.21	1.21	2.41	2.21	2.38	2.38	0.00	0.00	0.17	7.79
<b>Australia</b>	2.54	1.90	2.73	2.73	1.21	1.35	1.64	1.78	3.07	2.57	4.46	4.86	0.40	8.97	2.29	89.07
<b>Turkey</b>	1.33	1.39	1.17	1.17	2.53	2.31	2.45	2.45	3.36	3.22	2.87	2.87	0.00	0.00	-0.35	-10.94
<b>Others</b>	1.72	1.65	1.61	1.61	2.22	2.18	2.22	2.21	3.80	3.58	3.56	3.55	-0.01	-0.22	-0.03	-0.81

World Total and Total Foreign: (Major Oilseeds plus copra and palm kernel) Major Oilseeds: (soybeans, sunflowerseeds, peanuts(inshell), cottonseed and rapeseed)



**Table 11 Soybean Area, Yield, and Production**

Country / Region	Area (Million hectares)				Yield (Metric tons per hectare)				Production (Million metric tons)				Change in Production			
	2018/19	Prel.	2020/21 Proj.		2018/19	Prel.	2020/21 Proj.		2018/19	Prel.	2020/21 Proj.		From last month		From last year	
		2019/20	Feb	Mar		2019/20	Feb	Mar		2019/20	Feb	Mar	MMT	Percent	MMT	Percent
<b>World</b>	124.97	122.65	127.46	127.98	2.89	2.76	2.83	2.83	361.04	339.00	361.08	361.82	0.75	0.21	22.83	6.73
<b>United States</b>	35.45	30.33	33.31	33.31	3.40	3.19	3.38	3.38	120.52	96.67	112.55	112.55	0.00	0.00	15.88	16.43
<b>Total Foreign</b>	89.52	92.32	94.15	94.67	2.69	2.62	2.64	2.63	240.53	242.33	248.53	249.28	0.75	0.30	6.95	2.87
<b>South America</b>																
Brazil	35.90	36.90	38.60	38.60	3.33	3.48	3.45	3.47	119.70	128.50	133.00	134.00	1.00	0.75	5.50	4.28
Argentina	16.60	16.70	16.70	16.70	3.33	2.92	2.87	2.84	55.30	48.80	48.00	47.50	-0.50	-1.04	-1.30	-2.66
Paraguay	3.57	3.54	3.65	3.65	2.39	2.80	2.81	2.79	8.52	9.90	10.25	10.20	-0.05	-0.49	0.30	3.03
Bolivia	1.39	1.40	1.43	1.41	2.15	2.00	2.03	2.02	2.99	2.80	2.90	2.85	-0.05	-1.72	0.05	1.79
Uruguay	0.97	0.92	1.00	1.00	2.93	2.17	2.20	2.20	2.83	1.99	2.20	2.20	0.00	0.00	0.21	10.55
<b>East Asia</b>																
China	8.41	9.30	9.87	9.87	1.90	1.95	1.99	1.99	15.97	18.10	19.60	19.60	0.00	0.00	1.50	8.29
Korea, South	0.05	0.06	0.06	0.06	1.75	1.81	1.80	1.80	0.09	0.11	0.11	0.11	0.00	0.00	0.00	2.86
Korea, North	0.15	0.15	0.15	0.15	1.50	1.50	1.50	1.50	0.23	0.23	0.23	0.23	0.00	0.00	0.00	0.00
Japan	0.15	0.14	0.14	0.14	1.45	1.47	1.65	1.65	0.21	0.21	0.24	0.24	0.00	0.00	0.02	10.85
<b>India</b>	11.13	12.19	12.20	12.70	0.98	0.76	0.86	0.84	10.93	9.30	10.50	10.70	0.20	1.90	1.40	15.05
<b>Canada</b>	2.54	2.27	2.04	2.04	2.92	2.71	3.11	3.11	7.42	6.15	6.35	6.35	0.00	0.00	0.21	3.34
<b>Former Soviet Union - 12</b>																
Russia	2.74	2.78	2.70	2.71	1.47	1.57	1.59	1.59	4.03	4.36	4.30	4.31	0.01	0.16	-0.05	-1.19
Ukraine	1.88	1.96	1.50	1.50	2.58	2.29	2.07	2.07	4.83	4.50	3.10	3.10	0.00	0.00	-1.40	-31.10
<b>European Union</b>	0.92	0.92	0.93	0.93	2.91	2.85	2.92	2.92	2.67	2.62	2.70	2.70	0.00	0.00	0.09	3.25
<b>Southeast Asia</b>																
Indonesia	0.42	0.40	0.39	0.39	1.24	1.20	1.22	1.22	0.52	0.48	0.48	0.48	0.00	0.00	-0.01	-1.04
Vietnam	0.05	0.05	0.05	0.05	1.62	1.53	1.53	1.53	0.08	0.07	0.07	0.07	0.00	0.00	0.00	0.00
Thailand	0.04	0.03	0.03	0.03	1.57	1.53	1.63	1.63	0.06	0.05	0.05	0.05	0.00	0.00	0.00	0.00
Burma	0.14	0.14	0.14	0.14	1.04	1.04	1.04	1.04	0.15	0.15	0.14	0.14	0.00	0.00	-0.01	-3.45
<b>Serbia</b>	0.22	0.22	0.22	0.22	2.84	2.73	2.89	2.89	0.63	0.60	0.64	0.64	0.00	0.00	0.04	5.83
<b>Mexico</b>	0.19	0.15	0.16	0.16	1.75	1.57	1.59	1.59	0.34	0.24	0.26	0.26	0.00	0.00	0.02	8.51
<b>Africa</b>																
South Africa	0.73	0.71	0.81	0.83	1.60	1.77	1.86	1.96	1.17	1.25	1.50	1.63	0.13	8.33	0.38	30.42
Nigeria	0.70	0.71	0.72	0.72	0.96	0.99	0.97	0.97	0.67	0.70	0.70	0.70	0.00	0.00	0.00	0.00
Zambia	0.19	0.20	0.19	0.19	1.58	1.43	1.50	1.50	0.30	0.28	0.29	0.29	0.00	0.00	0.00	1.42
Uganda	0.05	0.05	0.05	0.05	0.60	0.60	0.60	0.60	0.03	0.03	0.03	0.03	0.00	0.00	0.00	0.00
<b>Middle East</b>																
Iran	0.07	0.07	0.07	0.07	2.29	2.43	2.41	2.41	0.16	0.17	0.17	0.17	0.00	0.00	0.00	-0.59
Turkey	0.03	0.03	0.03	0.03	3.80	3.89	3.79	3.79	0.10	0.11	0.11	0.11	0.00	0.00	0.01	4.76
<b>Others</b>	0.32	0.34	0.34	0.34	2.01	1.93	1.89	1.91	0.64	0.66	0.64	0.65	0.01	2.03	-0.01	-1.51

World and Selected Countries and Regions

**Table 12 Cottonseed Area, Yield, and Production**

Country / Region	Area (Million hectares)				Yield (Metric tons per hectare)				Production (Million metric tons)				Change in Production			
	Prel.		2020/21 Proj.		Prel.		2020/21 Proj.		Prel.		2020/21 Proj.		From last month		From last year	
	2018/19	2019/20	Feb	Mar	2018/19	2019/20	Feb	Mar	2018/19	2019/20	Feb	Mar	MMT	Percent	MMT	Percent
<b>World</b>	32.67	34.35	31.60	31.53	1.32	1.29	1.33	1.33	43.10	44.42	42.01	41.81	-0.20	-0.48	-2.61	-5.88
<b>United States</b>	4.04	4.70	3.52	3.52	1.26	1.15	1.18	1.18	5.11	5.39	4.16	4.16	0.00	0.00	-1.23	-22.84
<b>Total Foreign</b>	28.63	29.66	28.08	28.01	1.33	1.32	1.35	1.34	38.00	39.03	37.85	37.65	-0.20	-0.54	-1.38	-3.54
<b>South Asia</b>																
India	12.60	13.50	13.30	13.35	0.87	0.93	0.93	0.92	10.95	12.52	12.31	12.31	0.00	0.00	-0.21	-1.69
Pakistan	2.30	2.45	2.20	2.20	1.43	1.10	0.89	0.89	3.29	2.69	1.95	1.95	0.00	0.00	-0.74	-27.44
<b>China</b>	3.50	3.45	3.25	3.25	3.11	3.10	3.50	3.50	10.88	10.68	11.37	11.37	0.00	0.00	0.69	6.42
<b>Former Soviet Union - 12</b>																
Uzbekistan	1.10	1.01	0.98	0.98	1.17	1.36	1.41	1.41	1.28	1.37	1.37	1.37	0.00	0.00	0.00	-0.22
Turkmenistan	0.55	0.55	0.60	0.60	0.65	0.66	0.65	0.65	0.36	0.36	0.39	0.39	0.00	0.00	0.03	8.61
Tajikistan	0.18	0.18	0.16	0.16	0.90	1.27	1.22	1.22	0.16	0.23	0.20	0.20	0.00	0.00	-0.03	-14.85
Kazakhstan	0.13	0.13	0.11	0.11	1.05	1.13	0.95	0.95	0.14	0.14	0.11	0.11	0.00	0.00	-0.04	-25.53
<b>South America</b>																
Brazil	1.64	1.67	1.55	1.45	2.59	2.75	2.57	2.63	4.25	4.58	3.98	3.82	-0.17	-4.17	-0.76	-16.55
Argentina	0.34	0.42	0.45	0.44	0.73	0.68	0.66	0.66	0.25	0.28	0.30	0.29	-0.01	-2.36	0.01	2.84
<b>Middle East</b>																
Turkey	0.52	0.57	0.35	0.35	2.35	1.98	2.71	2.71	1.22	1.13	0.95	0.95	0.00	0.00	-0.18	-15.90
Syria	0.03	0.03	0.03	0.03	2.36	2.36	2.36	2.36	0.06	0.06	0.06	0.06	0.00	0.00	0.00	0.00
Iran	0.08	0.08	0.08	0.08	1.16	1.16	1.16	1.16	0.09	0.09	0.09	0.09	0.00	0.00	0.00	0.00
<b>Australia</b>	0.38	0.06	0.28	0.28	1.74	3.12	2.84	2.84	0.66	0.19	0.78	0.78	0.00	0.00	0.59	317.65
<b>European Union</b>	0.31	0.35	0.33	0.33	1.75	1.81	1.61	1.61	0.55	0.64	0.54	0.54	0.00	0.00	-0.10	-16.09
<b>Africa</b>																
Burkina	0.63	0.58	0.55	0.55	0.37	0.42	0.45	0.45	0.24	0.24	0.25	0.25	0.00	0.00	0.01	2.06
Mali	0.73	0.74	0.17	0.17	0.50	0.52	0.49	0.49	0.36	0.38	0.08	0.08	0.00	0.00	-0.30	-78.80
Cameroon	0.25	0.25	0.25	0.25	1.20	1.29	1.28	1.28	0.30	0.32	0.32	0.32	0.00	0.00	0.00	-0.62
Cote d'Ivoire	0.39	0.41	0.44	0.44	0.64	0.66	0.63	0.63	0.25	0.27	0.27	0.27	0.00	0.00	0.01	2.24
Benin	0.65	0.67	0.62	0.62	0.71	0.71	0.73	0.73	0.46	0.47	0.45	0.45	0.00	0.00	-0.02	-5.11
Tanzania	0.42	0.60	0.45	0.45	0.39	0.43	0.36	0.36	0.16	0.26	0.16	0.16	0.00	0.00	-0.10	-37.07
Egypt	0.14	0.10	0.07	0.07	1.06	0.92	1.00	1.00	0.15	0.09	0.07	0.07	0.00	0.00	-0.03	-29.35
Nigeria	0.25	0.15	0.27	0.27	0.40	0.57	0.56	0.56	0.10	0.09	0.15	0.15	0.00	0.00	0.06	74.42
Uganda	0.08	0.09	0.10	0.10	1.74	1.67	1.40	1.40	0.14	0.15	0.14	0.14	0.00	0.00	-0.01	-6.04
Zimbabwe	0.20	0.20	0.21	0.21	0.38	0.36	0.36	0.36	0.08	0.07	0.08	0.08	0.00	0.00	0.00	5.56
Sudan	0.18	0.20	0.20	0.20	1.42	1.53	1.41	1.41	0.26	0.31	0.28	0.28	0.00	0.00	-0.02	-7.84
<b>Mexico</b>	0.24	0.23	0.15	0.15	2.44	2.37	2.39	2.33	0.59	0.53	0.36	0.35	-0.01	-2.23	-0.18	-34.33
<b>Burma</b>	0.24	0.25	0.24	0.24	1.21	1.22	1.25	1.25	0.29	0.30	0.30	0.30	0.00	0.00	0.00	0.67
<b>Others</b>	0.59	0.78	0.72	0.71	0.83	0.76	0.78	0.76	0.48	0.59	0.56	0.54	-0.02	-3.94	-0.06	-9.31

World and Selected Countries and Regions

**Table 13 Peanut Area, Yield, and Production**

Country / Region	Area (Million hectares)				Yield (Metric tons per hectare)				Production (Million metric tons)				Change in Production			
	Prel.		2020/21 Proj.		Prel.		2020/21 Proj.		Prel.		2020/21 Proj.		From last month		From last year	
	2018/19	2019/20	Feb	Mar	2018/19	2019/20	Feb	Mar	2018/19	2019/20	Feb	Mar	MMT	Percent	MMT	Percent
<b>World</b>	27.49	26.89	27.93	27.93	1.70	1.71	1.69	1.69	46.81	46.06	47.32	47.33	0.01	0.02	1.27	2.76
<b>United States</b>	0.56	0.56	0.65	0.65	4.48	4.41	4.25	4.25	2.49	2.48	2.78	2.78	0.00	0.00	0.30	12.18
<b>Total Foreign</b>	26.93	26.33	27.28	27.28	1.65	1.66	1.63	1.63	44.31	43.58	44.54	44.55	0.01	0.02	0.97	2.22
<b>China</b>	4.62	4.63	4.60	4.60	3.75	3.78	3.80	3.80	17.33	17.52	17.50	17.50	0.00	0.00	-0.02	-0.11
<b>Africa</b>																
Nigeria	2.82	2.80	2.80	2.80	1.57	1.25	1.39	1.39	4.42	3.50	3.90	3.90	0.00	0.00	0.40	11.43
Sudan	3.07	2.30	2.30	2.30	0.94	0.78	0.78	0.78	2.88	1.80	1.80	1.80	0.00	0.00	0.00	0.00
Senegal	1.13	1.11	1.20	1.20	1.32	1.28	1.17	1.17	1.50	1.42	1.40	1.40	0.00	0.00	-0.02	-1.41
Cameroon	0.43	0.43	0.43	0.43	1.40	1.40	1.40	1.40	0.60	0.60	0.60	0.60	0.00	0.00	0.00	0.00
Ghana	0.32	0.33	0.33	0.33	1.63	1.36	1.36	1.36	0.52	0.45	0.45	0.45	0.00	0.00	0.00	0.00
Chad	0.79	0.77	0.77	0.77	1.14	1.10	1.10	1.10	0.89	0.85	0.85	0.85	0.00	0.00	0.00	0.00
Malawi	0.41	0.40	0.40	0.40	0.85	0.88	0.88	0.88	0.35	0.35	0.35	0.35	0.00	0.00	0.00	0.00
Congo (Kinshasa)	0.50	0.50	0.50	0.50	0.85	0.85	0.85	0.85	0.42	0.42	0.42	0.42	0.00	0.00	0.00	0.00
Niger	0.93	0.90	0.92	0.92	0.64	0.56	0.65	0.65	0.59	0.50	0.59	0.59	0.00	0.00	0.09	18.80
Mali	0.38	0.43	0.43	0.43	1.31	1.00	1.00	1.00	0.49	0.43	0.43	0.43	0.00	0.00	0.00	0.00
Uganda	0.43	0.43	0.43	0.43	0.71	0.71	0.71	0.71	0.30	0.30	0.30	0.30	0.00	0.00	0.00	0.00
Burkina	0.39	0.56	0.56	0.56	0.84	0.80	0.80	0.80	0.33	0.45	0.45	0.45	0.00	0.00	0.00	0.00
Guinea	0.79	0.91	0.90	0.90	0.98	1.05	1.00	1.00	0.77	0.96	0.90	0.90	0.00	0.00	-0.06	-6.05
Egypt	0.06	0.06	0.06	0.06	3.20	3.20	3.20	3.20	0.21	0.21	0.21	0.21	0.00	0.00	0.00	0.00
Central African Republic	0.10	0.10	0.10	0.10	1.50	1.50	1.50	1.50	0.15	0.15	0.15	0.15	0.00	0.00	0.00	0.00
South Africa	0.02	0.04	0.04	0.04	1.30	1.76	1.75	2.00	0.03	0.07	0.07	0.08	0.01	14.29	0.01	19.40
Mozambique	0.38	0.38	0.38	0.38	0.34	0.34	0.34	0.34	0.13	0.13	0.13	0.13	0.00	0.00	0.00	0.00
Cote d'Ivoire	0.15	0.15	0.15	0.15	1.45	1.45	1.45	1.45	0.21	0.21	0.21	0.21	0.00	0.00	0.00	0.00
Benin	0.23	0.19	0.19	0.19	1.00	0.92	0.92	0.92	0.23	0.18	0.18	0.18	0.00	0.00	0.00	0.00
<b>South Asia</b>																
India	4.73	4.83	5.60	5.60	0.99	1.30	1.16	1.16	4.69	6.26	6.50	6.50	0.00	0.00	0.25	3.92
Pakistan	0.12	0.09	0.10	0.10	0.89	0.98	0.92	0.92	0.10	0.09	0.09	0.09	0.00	0.00	0.00	-1.10
<b>Southeast Asia</b>																
Indonesia	0.57	0.55	0.55	0.55	1.80	1.80	1.78	1.78	1.03	0.99	0.97	0.97	0.00	0.00	-0.02	-2.02
Burma	1.03	0.89	0.99	0.99	1.53	1.55	1.57	1.57	1.58	1.38	1.55	1.55	0.00	0.00	0.18	12.73
Vietnam	0.18	0.18	0.18	0.18	2.48	2.48	2.48	2.48	0.44	0.43	0.45	0.45	0.00	0.00	0.01	3.00
Thailand	0.02	0.02	0.02	0.02	1.67	1.67	1.67	1.67	0.04	0.04	0.04	0.04	0.00	0.00	0.00	0.00
<b>South America</b>																
Argentina	0.33	0.37	0.35	0.35	4.35	3.50	3.86	3.86	1.42	1.29	1.35	1.35	0.00	0.00	0.07	5.06
Brazil	0.15	0.16	0.16	0.16	2.96	3.47	3.38	3.38	0.44	0.55	0.54	0.54	0.00	0.00	-0.01	-0.92
<b>Mexico</b>	0.05	0.05	0.06	0.06	1.75	1.74	1.73	1.73	0.09	0.08	0.10	0.10	0.00	0.00	0.02	24.39
<b>Others</b>	1.84	1.80	1.80	1.80	1.16	1.11	1.15	1.15	2.14	2.00	2.07	2.07	0.00	0.00	0.07	3.30

**Table 14 Sunflowerseed Area, Yield, and Production**

Country / Region	Area (Million hectares)				Yield (Metric tons per hectare)				Production (Million metric tons)				Change in Production						
	2018/19	Prel.		2020/21 Proj.		2018/19	Prel.		2020/21 Proj.		2018/19	Prel.		2020/21 Proj.		From last month		From last year	
		2019/20	Feb	Mar	2019/20		Feb	Mar	2019/20	Feb		Mar	MMT	Percent	MMT	Percent			
<b>World</b>	25.82	26.33	26.84	26.69	1.96	2.08	1.87	1.87	50.63	54.88	50.14	49.97	-0.17	-0.34	-4.91	-8.95			
<b>United States</b>	0.49	0.51	0.67	0.67	1.94	1.75	2.01	2.01	0.96	0.89	1.35	1.35	0.00	0.00	0.47	52.54			
<b>Total Foreign</b>	25.32	25.82	26.17	26.01	1.96	2.09	1.86	1.87	49.68	53.99	48.79	48.62	-0.17	-0.35	-5.38	-9.96			
<b>Former Soviet Union - 12</b>																			
Russia	7.94	8.36	8.50	8.35	1.60	1.83	1.59	1.59	12.71	15.31	13.50	13.27	-0.23	-1.71	-2.04	-13.30			
Ukraine	6.50	6.40	6.80	6.80	2.31	2.58	2.06	2.06	15.00	16.50	14.00	14.00	0.00	0.00	-2.50	-15.15			
Kazakhstan	0.85	0.82	0.69	0.69	1.00	1.03	1.23	1.23	0.85	0.84	0.84	0.84	0.00	0.00	0.01	0.60			
<b>European Union</b>	4.02	4.31	4.34	4.34	2.37	2.24	2.12	2.12	9.51	9.64	9.20	9.20	0.00	0.00	-0.44	-4.59			
<b>South America</b>																			
Argentina	1.88	1.53	1.38	1.38	2.04	2.11	2.11	2.11	3.83	3.24	2.90	2.90	0.00	0.00	-0.34	-10.36			
Uruguay	0.06	0.06	0.07	0.07	1.61	1.67	1.69	1.69	0.09	0.10	0.11	0.11	0.00	0.00	0.01	10.00			
Bolivia	0.11	0.11	0.11	0.11	1.25	1.10	1.20	1.20	0.14	0.12	0.13	0.13	0.00	0.00	0.01	7.38			
Brazil	0.06	0.05	0.05	0.05	1.67	1.60	1.50	1.50	0.11	0.08	0.08	0.08	0.00	0.00	-0.01	-6.25			
Paraguay	0.03	0.03	0.03	0.03	1.58	1.39	1.70	1.53	0.05	0.04	0.05	0.05	-0.01	-9.80	0.01	17.95			
<b>China</b>	0.92	1.25	1.25	1.25	2.71	2.60	2.64	2.64	2.49	3.25	3.30	3.30	0.00	0.00	0.05	1.54			
<b>South Asia</b>																			
India	0.26	0.23	0.25	0.25	0.65	0.61	0.76	0.76	0.17	0.14	0.19	0.19	0.00	0.00	0.05	32.14			
Pakistan	0.12	0.14	0.15	0.15	1.20	1.04	1.07	1.07	0.14	0.15	0.16	0.16	0.00	0.00	0.02	10.34			
<b>Middle East</b>																			
Turkey	0.72	0.73	0.72	0.72	2.52	2.40	2.17	2.17	1.80	1.75	1.56	1.56	0.00	0.00	-0.19	-10.86			
Iran	0.04	0.04	0.04	0.04	1.08	1.08	1.08	1.08	0.04	0.04	0.04	0.04	0.00	0.00	0.00	0.00			
Israel	0.00	0.00	0.00	0.00	4.00	5.00	9.00	9.00	0.00	0.01	0.01	0.01	0.00	0.00	0.00	80.00			
<b>Africa</b>																			
Egypt	0.01	0.01	0.01	0.01	2.38	2.38	2.38	2.38	0.02	0.02	0.02	0.02	0.00	0.00	0.00	0.00			
Morocco	0.02	0.02	0.02	0.02	1.29	1.25	1.25	1.25	0.03	0.03	0.03	0.03	0.00	0.00	0.00	0.00			
South Africa	0.52	0.50	0.48	0.48	1.32	1.58	1.37	1.51	0.68	0.79	0.65	0.72	0.07	10.00	-0.07	-9.38			
<b>Burma</b>	0.60	0.60	0.60	0.60	0.65	0.65	0.65	0.65	0.39	0.39	0.39	0.39	0.00	0.00	0.00	0.00			
<b>Canada</b>	0.03	0.03	0.05	0.05	2.11	2.17	2.24	2.24	0.06	0.06	0.10	0.10	0.00	0.00	0.04	60.32			
<b>Australia</b>	0.01	0.01	0.02	0.02	0.82	1.25	1.31	1.31	0.01	0.02	0.02	0.02	0.00	0.00	0.01	40.00			
<b>Others</b>	0.63	0.59	0.64	0.64	2.48	2.52	2.36	2.36	1.57	1.50	1.51	1.51	0.00	0.00	0.02	1.00			

World and Selected Countries and Regions

**Table 15 Rapeseed Area, Yield, and Production**

Country / Region	Area (Million hectares)				Yield (Metric tons per hectare)				Production (Million metric tons)				Change in Production			
	Prel.		2020/21 Proj.		Prel.		2020/21 Proj.		Prel.		2020/21 Proj.		From last month		From last year	
	2018/19	2019/20	Feb	Mar	2018/19	2019/20	Feb	Mar	2018/19	2019/20	Feb	Mar	MMT	Percent	MMT	Percent
<b>World</b>	36.81	34.89	34.72	35.06	1.98	1.98	1.99	1.99	72.99	69.23	68.93	69.59	0.66	0.95	0.37	0.53
<b>United States</b>	0.79	0.78	0.73	0.73	2.09	2.00	2.16	2.16	1.64	1.55	1.58	1.58	0.00	0.00	0.02	1.48
<b>Total Foreign</b>	36.02	34.11	33.99	34.33	1.98	1.98	1.98	1.98	71.34	67.67	67.36	68.02	0.66	0.98	0.34	0.51
<b>European Union</b>	7.00	5.55	5.45	5.46	2.87	3.04	3.08	3.13	20.06	16.88	16.80	17.10	0.30	1.79	0.22	1.30
<b>Canada</b>	9.12	8.46	8.32	8.32	2.27	2.32	2.28	2.28	20.72	19.61	19.00	19.00	0.00	0.00	-0.61	-3.10
<b>China</b>	6.55	6.58	6.65	6.65	2.03	2.05	1.98	1.98	13.28	13.49	13.20	13.20	0.00	0.00	-0.29	-2.11
<b>South Asia</b>																
India	7.20	7.40	7.20	7.40	1.11	1.04	1.06	1.00	8.00	7.70	7.65	7.40	-0.25	-3.27	-0.30	-3.90
Pakistan	0.26	0.40	0.45	0.45	1.04	1.03	1.02	1.02	0.27	0.41	0.46	0.46	0.00	0.00	0.05	12.20
Bangladesh	0.25	0.25	0.25	0.25	0.92	0.92	0.92	0.92	0.23	0.23	0.23	0.23	0.00	0.00	0.00	0.00
<b>Former Soviet Union - 12</b>																
Russia	1.50	1.42	1.40	1.45	1.33	1.44	1.79	1.77	1.99	2.04	2.50	2.57	0.07	2.68	0.53	25.83
Ukraine	1.00	1.34	1.10	1.17	2.85	2.59	2.27	2.26	2.85	3.47	2.50	2.65	0.15	6.00	-0.82	-23.52
Belarus	0.35	0.34	0.35	0.35	1.31	1.68	1.57	1.57	0.46	0.58	0.55	0.55	0.00	0.00	-0.03	-4.84
Kazakhstan	0.37	0.27	0.12	0.12	1.08	0.90	1.23	1.23	0.39	0.24	0.15	0.15	0.00	0.00	-0.09	-36.51
<b>Australia</b>	2.12	1.80	2.40	2.40	1.12	1.29	1.50	1.67	2.37	2.33	3.60	4.00	0.40	11.11	1.67	71.67
<b>South America</b>																
Chile	0.05	0.04	0.03	0.03	3.85	4.05	4.00	4.00	0.19	0.15	0.14	0.14	0.00	0.00	-0.02	-11.69
Paraguay	0.03	0.04	0.04	0.05	1.20	1.50	1.88	1.41	0.04	0.06	0.08	0.07	-0.01	-13.33	0.01	8.33
<b>Switzerland</b>	0.02	0.02	0.02	0.02	3.14	3.14	3.14	3.14	0.07	0.07	0.07	0.07	0.00	0.00	0.00	0.00
<b>Ethiopia</b>	0.04	0.04	0.04	0.04	1.57	1.86	1.86	1.86	0.06	0.07	0.07	0.07	0.00	0.00	0.00	0.00
<b>Others</b>	0.18	0.17	0.17	0.17	2.14	2.14	2.23	2.23	0.38	0.36	0.37	0.37	0.00	0.00	0.01	3.06

World and Selected Countries and Regions

**Table 16 Copra, Palm Kernel, and Palm Oil Production**

Country / Region	Production (Million metric tons)				Change in Production			
	2018/19	Prel.	2020/21 Proj.		From last month		From last year	
		2019/20	Feb	Mar	MMT	Percent	MMT	Percent
<b>Oilseed, Copra</b>								
Philippines	2.63	2.50	2.40	2.40	0.00	0.00	-0.10	-4.00
Indonesia	1.64	1.66	1.66	1.66	0.00	0.00	0.00	0.00
India	0.75	0.75	0.75	0.75	0.00	0.00	0.00	0.00
Vietnam	0.29	0.29	0.30	0.30	0.00	0.00	0.01	3.45
Mexico	0.22	0.22	0.20	0.20	0.00	0.00	-0.02	-9.09
Papua New Guinea	0.10	0.08	0.08	0.08	0.00	0.00	0.00	0.00
Thailand	0.07	0.07	0.07	0.07	0.00	0.00	0.00	0.00
Sri Lanka	0.07	0.07	0.07	0.07	0.00	0.00	0.00	0.00
Solomon Islands	0.03	0.03	0.03	0.03	0.00	0.00	0.00	0.00
Cote d'Ivoire	0.03	0.03	0.03	0.03	0.00	0.00	0.00	0.00
World	5.97	5.85	5.75	5.74	-0.01	-0.17	-0.11	-1.88
<b>Oilseed, Palm Kernel</b>								
Indonesia	10.90	11.25	11.46	11.46	0.00	0.00	0.21	1.87
Malaysia	5.15	4.75	5.00	4.85	-0.15	-3.00	0.10	2.11
Thailand	0.87	0.89	0.90	0.90	0.00	0.00	0.01	1.12
Nigeria	0.73	0.73	0.73	0.73	0.00	0.00	0.00	0.00
Colombia	0.33	0.31	0.29	0.29	0.00	0.00	-0.02	-6.45
Guatemala	0.20	0.17	0.17	0.17	0.00	0.00	0.00	0.00
Papua New Guinea	0.18	0.16	0.16	0.16	0.00	0.00	0.00	0.00
Cameroon	0.15	0.15	0.15	0.15	0.00	0.00	0.00	0.00
Brazil	0.14	0.14	0.14	0.14	0.00	0.00	0.00	0.00
Honduras	0.14	0.14	0.14	0.14	0.00	0.00	0.00	0.00
World	19.38	19.25	19.86	19.58	-0.28	-1.41	0.33	1.71
<b>Oil, Palm</b>								
Indonesia	41.50	42.50	43.50	43.50	0.00	0.00	1.00	2.35
Malaysia	20.80	19.26	19.90	19.60	-0.30	-1.51	0.34	1.77
Thailand	3.00	2.80	3.10	3.10	0.00	0.00	0.30	10.71
Colombia	1.63	1.53	1.56	1.56	0.00	0.00	0.03	1.96
Nigeria	1.13	1.22	1.28	1.28	0.00	0.00	0.06	4.92
Guatemala	0.86	0.86	0.87	0.87	0.00	0.00	0.00	0.00
Honduras	0.58	0.58	0.58	0.58	0.00	0.00	0.00	0.00
Papua New Guinea	0.71	0.56	0.56	0.56	0.00	0.00	0.00	0.00
Brazil	0.53	0.54	0.54	0.54	0.00	0.00	0.00	0.00
Cote d'Ivoire	0.51	0.52	0.52	0.52	0.00	0.00	0.00	0.00
World	74.14	73.20	75.46	75.09	-0.37	-0.49	1.89	2.58

World and Selected Countries and Regions

**Table 17 Cotton Area, Yield, and Production**

Country / Region	Area (Million hectares)				Yield (Kilograms per hectare)				Production (Million 480 lb. bales)				Change in Production			
	2018/19	Prel. 2019/20	2020/21 Proj.		2018/19	Prel. 2019/20	2020/21 Proj.		2018/19	Prel. 2019/20	2020/21 Proj.		From last month		From last year	
			Feb	Mar			Feb	Mar			Feb	Mar	MBales	Percent	MBales	Percent
<b>World</b>	33.35	35.03	32.27	32.20	774	759	770	766	118.56	122.12	114.14	113.32	-0.83	-0.72	-8.80	-7.21
<b>United States</b>	4.04	4.70	3.52	3.52	989	922	925	909	18.37	19.91	14.95	14.70	-0.25	-1.69	-5.21	-26.18
<b>Total Foreign</b>	29.30	30.33	28.75	28.68	744	734	751	749	100.20	102.21	99.19	98.62	-0.57	-0.58	-3.59	-3.51
<b>South Asia</b>																
India	12.60	13.50	13.30	13.35	446	476	475	473	25.80	29.50	29.00	29.00	0.00	0.00	-0.50	-1.69
Pakistan	2.30	2.45	2.20	2.20	719	551	445	445	7.60	6.20	4.50	4.50	0.00	0.00	-1.70	-27.42
<b>China</b>	3.50	3.45	3.25	3.25	1,726	1,720	1,943	1,943	27.75	27.25	29.00	29.00	0.00	0.00	1.75	6.42
<b>South America</b>																
Brazil	1.64	1.67	1.55	1.45	1,726	1,802	1,686	1,727	13.00	13.78	12.00	11.50	-0.50	-4.17	-2.28	-16.55
Argentina	0.34	0.42	0.45	0.44	728	682	653	668	1.12	1.30	1.35	1.35	0.00	0.00	0.05	3.85
Paraguay	0.01	0.01	0.01	0.01	416	416	416	416	0.02	0.02	0.02	0.02	0.00	0.00	0.00	0.00
<b>Africa</b>																
Burkina	0.63	0.58	0.55	0.55	294	330	356	356	0.85	0.88	0.90	0.90	0.00	0.00	0.02	2.27
Mali	0.73	0.74	0.17	0.17	381	400	376	376	1.27	1.35	0.29	0.29	0.00	0.00	-1.07	-78.89
Cote d'Ivoire	0.39	0.41	0.44	0.44	520	528	513	513	0.94	0.99	1.03	1.03	0.00	0.00	0.04	3.54
Benin	0.65	0.67	0.62	0.62	469	467	478	478	1.40	1.43	1.35	1.35	0.00	0.00	-0.08	-5.26
Egypt	0.14	0.10	0.07	0.07	757	664	720	720	0.49	0.31	0.22	0.22	0.00	0.00	-0.09	-29.51
Cameroon	0.25	0.25	0.25	0.25	523	562	557	557	0.60	0.65	0.64	0.64	0.00	0.00	-0.01	-0.78
Tanzania	0.42	0.60	0.45	0.45	194	216	181	181	0.38	0.60	0.38	0.38	0.00	0.00	-0.22	-36.97
Nigeria	0.25	0.15	0.27	0.27	205	290	282	282	0.24	0.20	0.35	0.35	0.00	0.00	0.15	75.00
Zimbabwe	0.20	0.20	0.21	0.21	218	207	207	207	0.20	0.19	0.20	0.20	0.00	0.00	0.01	5.26
Ethiopia	0.08	0.08	0.08	0.08	687	680	637	637	0.24	0.25	0.24	0.24	0.00	0.00	-0.01	-4.00
<b>Former Soviet Union - 12</b>																
Uzbekistan	1.10	1.01	0.98	0.98	648	754	782	782	3.28	3.50	3.50	3.50	0.00	0.00	0.00	0.00
Turkmenistan	0.55	0.55	0.60	0.60	364	368	363	363	0.91	0.92	1.00	1.00	0.00	0.00	0.08	8.70
Tajikistan	0.18	0.18	0.16	0.16	502	708	680	680	0.42	0.59	0.50	0.50	0.00	0.00	-0.09	-14.53
Kazakhstan	0.13	0.13	0.11	0.11	587	627	534	534	0.35	0.36	0.27	0.27	0.00	0.00	-0.09	-25.00
<b>Middle East</b>																
Turkey	0.52	0.57	0.35	0.35	1,570	1,318	1,804	1,804	3.75	3.45	2.90	2.90	0.00	0.00	-0.55	-15.94
Syria	0.03	0.03	0.03	0.03	1,219	1,219	1,219	1,219	0.14	0.14	0.14	0.14	0.00	0.00	0.00	0.00
Iran	0.08	0.08	0.08	0.08	748	748	748	748	0.28	0.28	0.28	0.28	0.00	0.00	0.00	0.00
<b>Australia</b>	0.38	0.06	0.28	0.28	1,261	2,268	2,059	2,059	2.20	0.63	2.60	2.60	0.00	0.00	1.98	316.00
<b>Mexico</b>	0.24	0.23	0.15	0.15	1,555	1,519	1,524	1,488	1.74	1.57	1.05	1.03	-0.03	-2.38	-0.55	-34.71
<b>Burma</b>	0.24	0.25	0.24	0.24	637	641	662	662	0.70	0.72	0.73	0.73	0.00	0.00	0.01	0.83
<b>Others</b>	1.74	2.00	1.93	1.92	570	562	539	537	4.56	5.18	4.77	4.72	-0.05	-1.03	-0.45	-8.71

World and Selected Countries and Regions

**TABLE 18**

The table below presents a record of the March projection and the final Estimate. Using world wheat production as an example, the "root mean square error" means that chances are 2 out of 3 that the current forecast will not be above or below the final estimate by more than 0.6 percent. Chances are 9 out of 10 (90% confidence level) that the difference will not exceed 0.9 percent. The average difference between the March projection and the final estimate is 2.4 million tons, ranging from 0.0 million to 8.0 million tons. The March projection has been below the estimate 29 times and above 10 times.

**RELIABILITY OF PRODUCTION PROJECTIONS 1/**

COMMODITY AND REGION	Root mean square error	90 percent confidence interval	Difference between forecast and final estimate				
			Average	Smallest	Largest	Years	
						Below final	Above final
	Percent		---Million metric tons---				
<b>WHEAT</b>							
World	0.6	0.9	2.4	0.0	8.0	29	10
U.S.	0.2	0.3	0.1	0.0	0.3	17	11
Foreign	0.6	1.1	2.4	0.1	8.0	29	10
<b>COARSE GRAINS 2/</b>							
World	1.2	2.0	10.7	0.5	35.1	33	6
U.S.	0.2	0.3	0.1	0.0	1.8	17	8
Foreign	1.7	2.9	10.7	0.5	35.1	33	6
<b>RICE (Milled)</b>							
World	1.3	2.2	3.5	0.2	13.8	28	11
U.S.	1.3	2.1	0.0	0.0	0.2	11	6
Foreign	1.3	2.3	3.5	0.1	13.8	28	11
<b>SOYBEANS</b>							
World	2.2	3.8	3.4	0.1	12.4	20	19
U.S.	1.4	2.3	0.6	0.0	3.2	16	16
Foreign	3.7	6.3	3.4	0.1	12.6	21	18
<b>COTTON</b>			---Million 480-lb. bales---				
World	1.8	3.0	1.3	0.0	5.2	24	13
U.S.	1.0	1.6	0.1	0.0	0.3	14	24
Foreign	2.1	3.6	1.3	0.0	5.3	24	14
<b>UNITED STATES</b>			-----Million bushels-----				
<i>CORN</i>	0.2	0.3	4	0	72	1	3
<i>SORGHUM</i>	0.1	0.2	0	0	4	0	2
<i>BARLEY</i>	0.8	1.3	1	0	11	18	4
<i>OATS</i>	0.3	0.6	0	0	2	4	4

1/ Marketing years 1981/82 through 2019/20 for grains, soybeans (U.S. only), and cotton. Final for grains, soybeans, and cotton is defined as the first *November* estimate following the marketing year for 1981/82 through 2018/19, and for 2019/20 the last month's estimate.

2/ Includes corn, sorghum, barley, oats, rye, millet, and mixed grain

March 2021

Global Market Analysis, FAS, USDA