



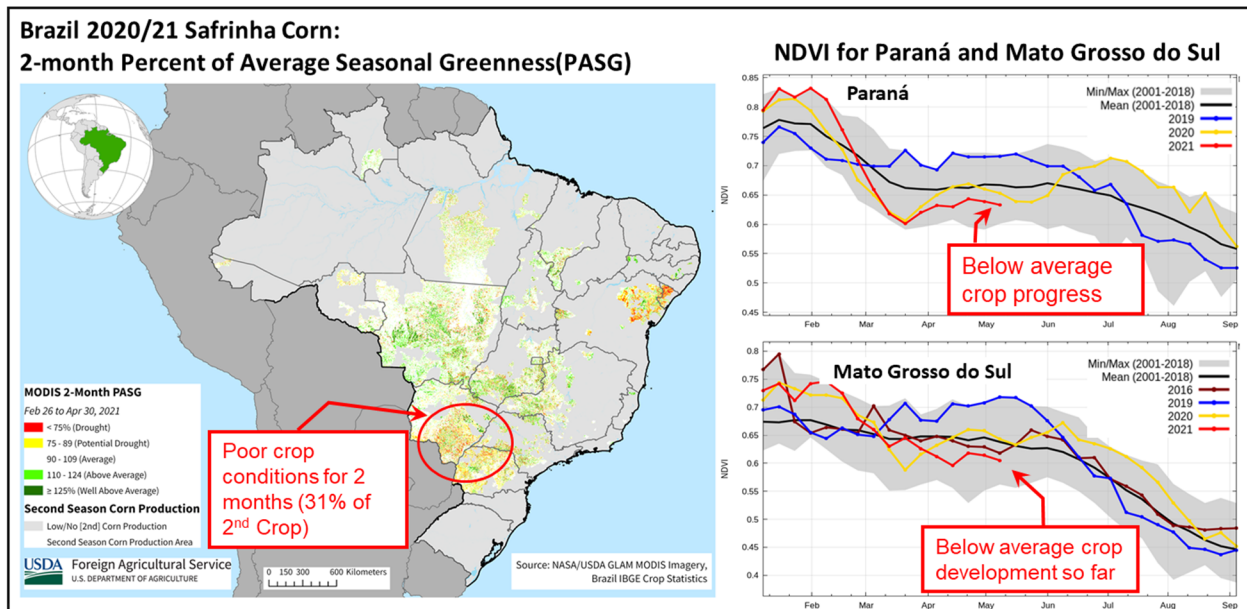
United States
Department of
Agriculture

Foreign
Agricultural
Service

Circular Series
WAP 5-21
May 2021

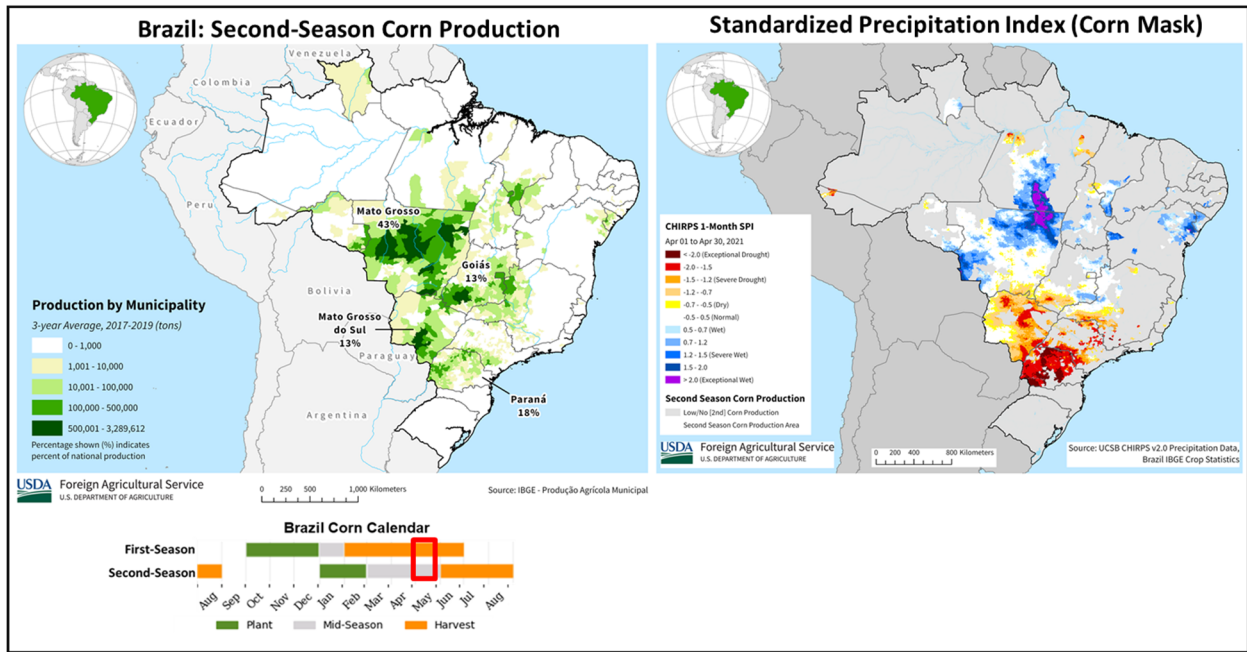
World Agricultural Production

Brazil Corn: Drought in South-Central Regions Lowers MY 2020/21 Production by 6 Percent

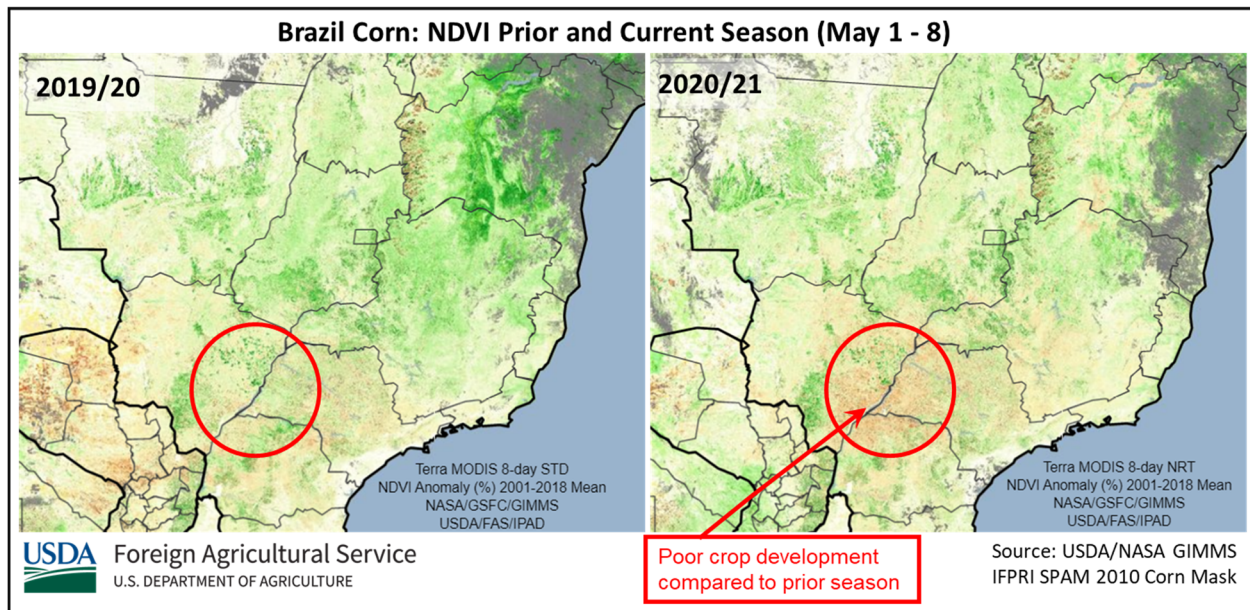


USDA estimates total corn production for marketing year (MY) 2020/21 in Brazil at a record 102.0 million metric tons (mmt), lower by 6 percent from last month, and equal to last year's record crop. Total harvested area, for all three corn crops, is estimated at a record 19.7 million hectares (mha), up 1.2 mha (6 percent) from last year's record area of 18.5 mha. Yield is estimated at 5.18 tons per hectare (t/ha), about 6 percent lower than last month's and last year's crop, 10 percent lower than the previous record of 5.77 t/ha in 2018/19, and similar to the 5-year average of 5.20 t/ha.

Weather conditions were dry during the early months for the first-season crop but improved in December with sufficient rainfall. Regions that planted early will likely display lower yields, such as northern sections of Rio Grande do Sul and Santa Catarina. First-season corn production is estimated at 24.5 mmt on 4.3 mha by *Companhia Nacional de Abastecimento* (CONAB, an agency in the Brazilian Ministry of Agriculture), down 1.2 mmt from last year's first-season output, with yield down 7 percent at 5.64 t/ha. Harvesting for the first-season crop began in late January with over two thirds of the crop currently harvested.



The *safrinha* season crop was planted with significant delay from January through mid-March because of the late soybean harvest. Timely planting is critical because the earlier planted second-corn has more time to benefit from seasonal rains during reproductive stages.

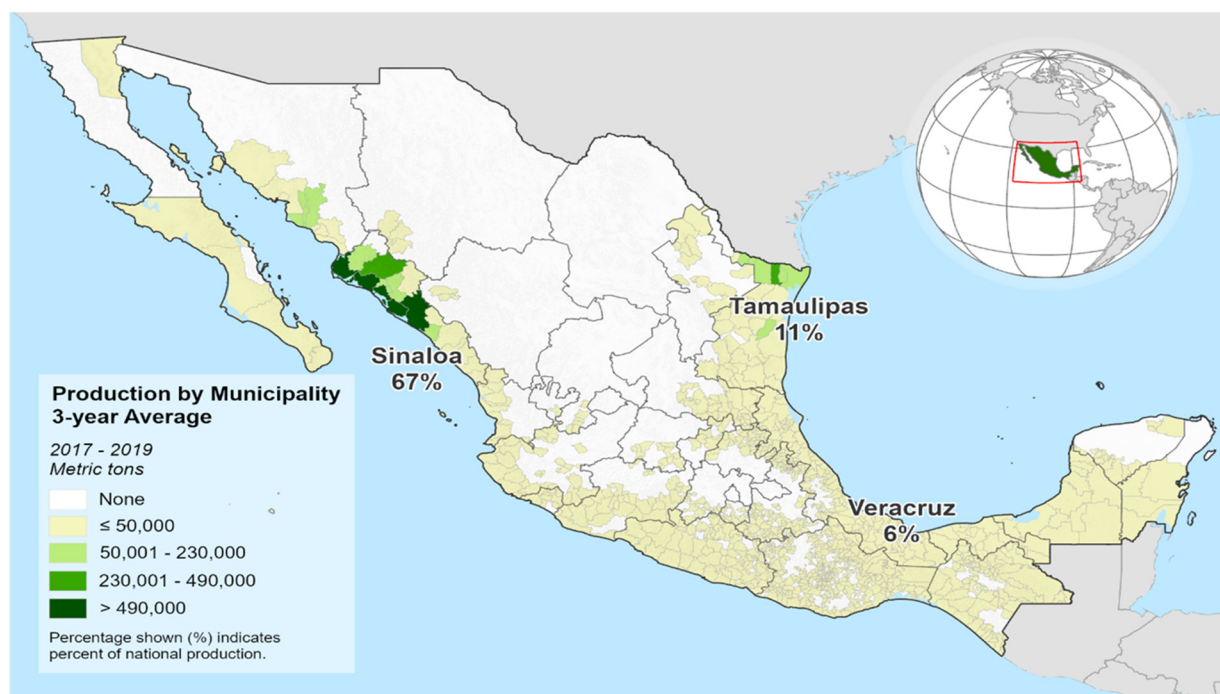


While northern and western parts of Mato Grosso received sufficient rainfall, southern Mato Grosso and the south-central states (particularly Mato Grosso do Sul and Paraná) are experiencing drought conditions with below average rains since late March. Both the Percent of Average Seasonal Greenness (PASG) and the Normalized Difference Vegetation Index (NDVI) metrics reflect poor crop development in these areas that comprise a large percentage of *safrinha* corn. With about half the crop in sensitive reproductive stages, the forecast yield for this crop was lowered this month. (For more information, please contact Sunita.Yadav-Pauletti@usda.gov.)

Mexico Corn: Weather Conditions Decrease Winter MY 2020/21 Crop Production

Mexico's corn production for marketing year (MY) 2020/21 is estimated at 27.0 million metric tons (mmt), down 0.8 mmt from last month, but up 342,000 mt (about 1 percent) from MY 2019/20. Area is estimated at 7,140,000 hectares (ha), down 110,000 ha from last month, but up 519,000 ha (about 8 percent) from MY 2019/20. Yield is estimated at 3.78 metric tons per hectare, down 1 percent from last month and down 6 percent from MY 2019/20.

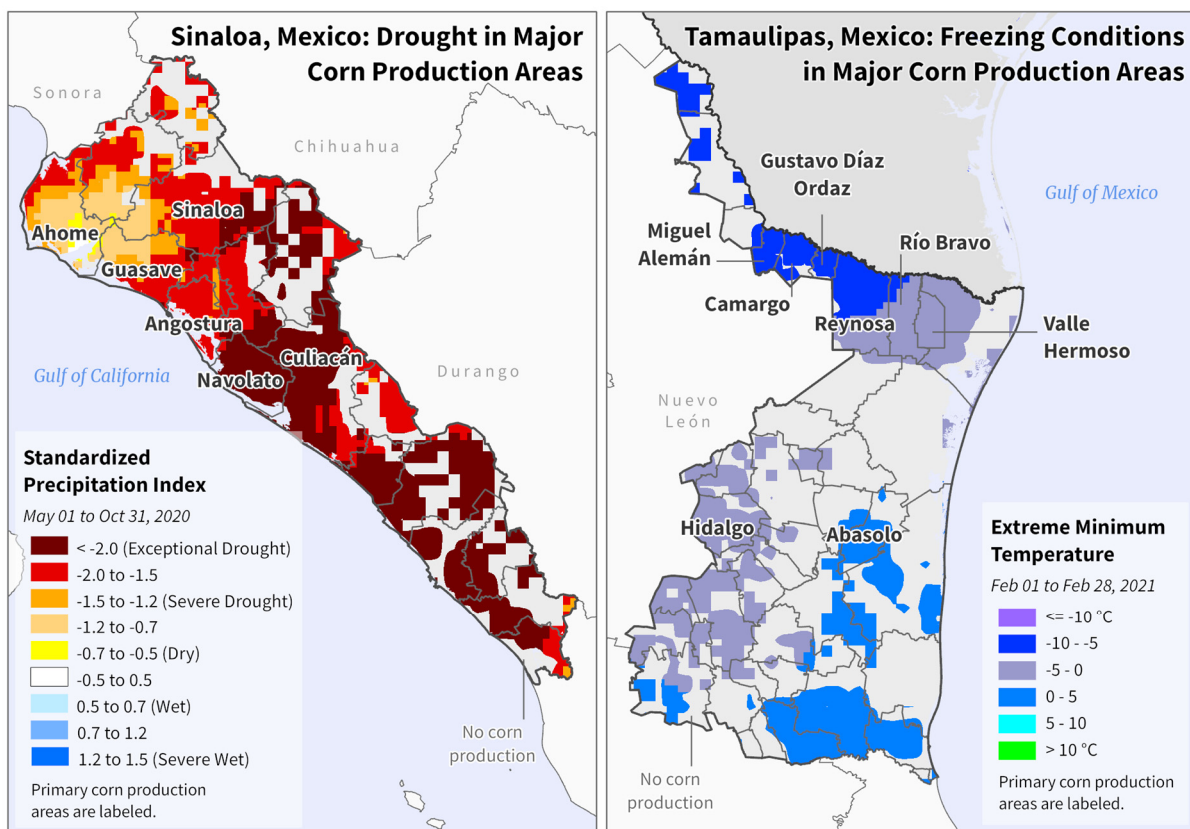
Mexico: Winter Corn



USDA Foreign Agricultural Service
U.S. DEPARTMENT OF AGRICULTURE

Source: Servicio de Información Agroalimentaria y Pesquera (SIAP), Mexico

The major summer corn crop was planted between April and August and harvest was completed between October and February. Representing about 30 percent of total production, the mostly irrigated minor winter corn crop was planted from October through February and started harvesting in May. Sinaloa and Tamaulipas produce about 80 percent of the winter corn crop.



USDA Foreign Agricultural Service
U.S. DEPARTMENT OF AGRICULTURE

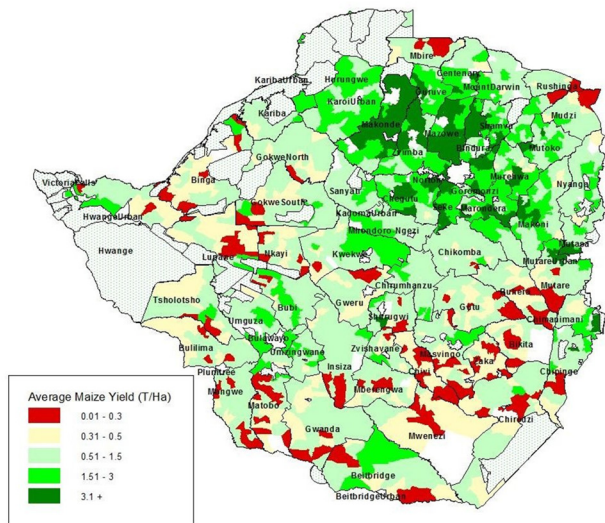
Sources: CHIRPS, 6-Month SPI; WMO, Monthly Extreme Minimum Temperature; IFPRI, SPAM 2010

At the beginning of May, all 11 dams in Sinaloa were below 30 percent capacity according to data from *Comisión Nacional del Agua* (CONAGUA), reflecting the ongoing drought conditions occurring throughout Mexico. Reservoir recharge occurs during the rainy season, but it was an exceptionally dry summer. Typically, there are no significant winter rains. Thus, water availability for the irrigation of the winter corn was limited in Sinaloa. According to data from *Servicio de Información Agroalimentaria y Pesquera* (SIAP), Sinaloa planted 458,899 ha during the winter season as of March 31, 2021, which was 39,606 ha less planted during the same time in MY 2019/20. In addition, snow and cold temperatures during February 2021 damaged winter corn planted in northern Tamaulipas. As of March 31, 2021, SIAP reported 21,277 ha of damaged area for the winter corn in Tamaulipas. (For more information, please contact Ifeoma.Collins@usda.gov.)

Zimbabwe Corn: Bumper MY 2021/22 Harvest from Above Average La Niña Rains

Zimbabwe's marketing year (MY) 2021/22 corn production is estimated at 2.7 million metric tons (mmt), up 1.8 mmt (199 percent) from last year. Area is estimated at a record 1.95 million hectares (mha), up 0.37 mha (23 percent) from last year. Yield is estimated at 1.39 metric tons per hectare, up 143 percent from last year and up 81 percent from the 5-year average. Yields were the highest since MY 2000/01 due to above average and well-distributed rains during the 2020/21 growing season. Zimbabwe Ministry of Agriculture refers to the current year as the 2020/21 crop season, whereas the USDA refers to that same year as the MY 2021/22.

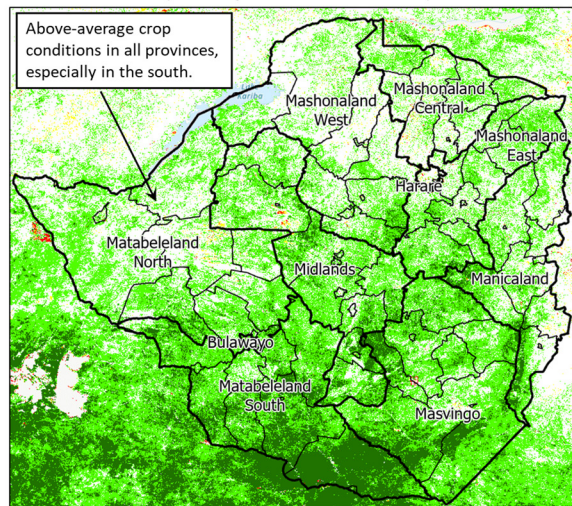
Zimbabwe 2020/21 Corn Yields by District Wards



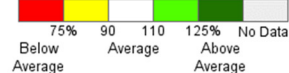
Source: Zimbabwe Ministry of Lands, Agriculture, Fisheries, Water and Rural Resettlement, Second Round Crop and Livestock Assessment Report, 2020/21 Crop Season, April 21, 2021

USDA Foreign Agricultural Service
U.S. DEPARTMENT OF AGRICULTURE

Percent of Average Seasonal Greenness (PASG) (January 1 - March 30, 2021)



Percent of Average Seasonal Greenness (%)



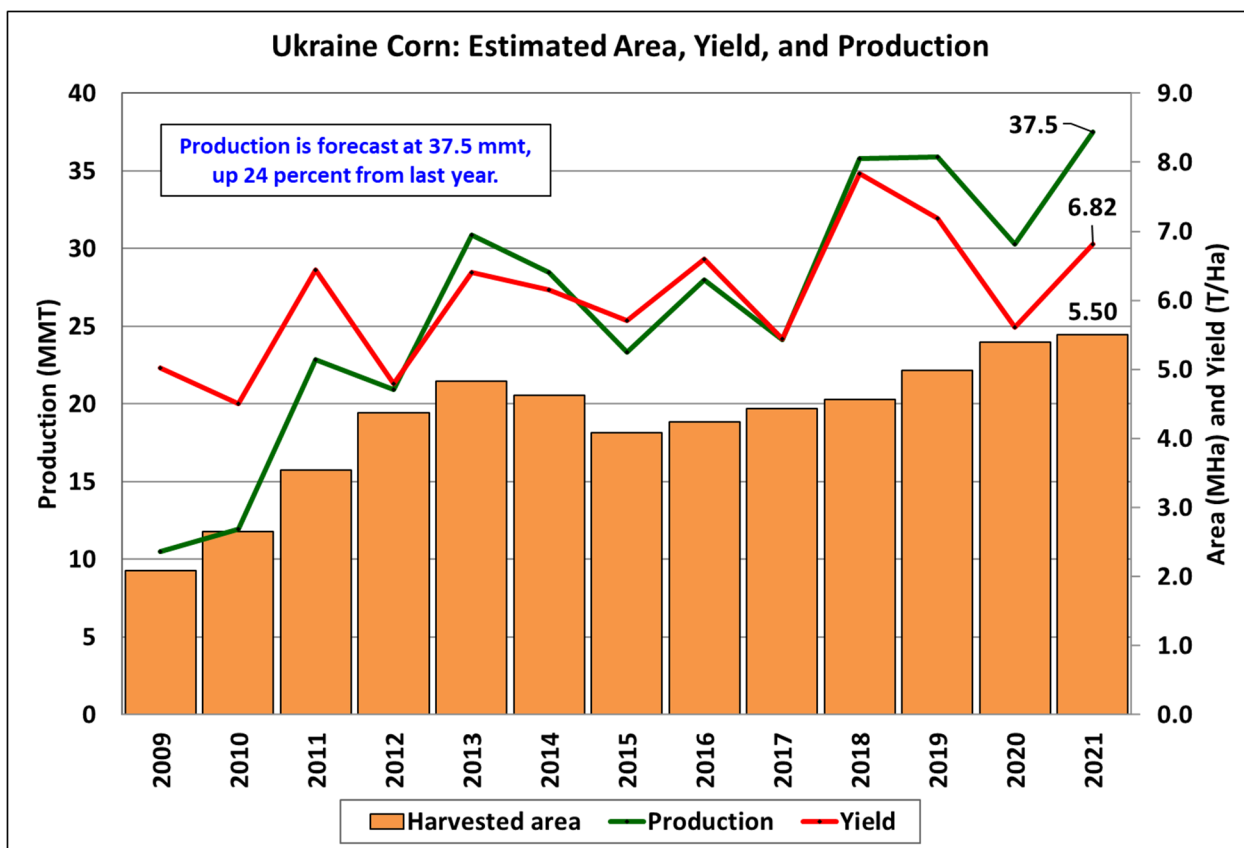
Source: NASA MODIS-Terra (250m) imagery

Planting started in early November 2020 after beneficial La Niña rains arrived from early November and continued through late February 2021. The rainy season ended prematurely in early March, but most of the crop had reached full maturity by March from farmers planting on time in early November. Waterlogging and nitrogen fertilizer leaching caused by heavy rains during December and January led to yield reductions in a few district wards within the southern and central provinces. Satellite-derived Normalized Difference Vegetation Index (NDVI) and the Percent of Average Seasonal Greenness (PASG) indices confirmed early crop establishment in November and excellent crop conditions throughout the country by late February.

The Zimbabwe Ministry of Agriculture released their annual Second Round Crop Assessment report in late April, and near-record production of 2.7 mmt on record area of 1.95 mha was reported. Zimbabwe's record corn output is 2.95 mmt produced during the 1984/85 season. *(For more information, please contact Curt.Reynolds@usda.gov.)*

Ukraine Corn: MY 2021/22 Record Area and Production

Ukraine corn production for marketing year (MY) 2021/22 is forecast at 37.5 million metric tons (mmt), up 24 percent from last year and 22 percent from the 5-year average. Yield is forecast at 6.82 tons per hectare, up 21 percent from last year. Harvested area is forecast at 5.5 million hectares, up 2 percent from last year. Both area and production are expected to be the highest on record.



USDA Foreign Agricultural Service
U.S. DEPARTMENT OF AGRICULTURE

Source: USDA PSD Online

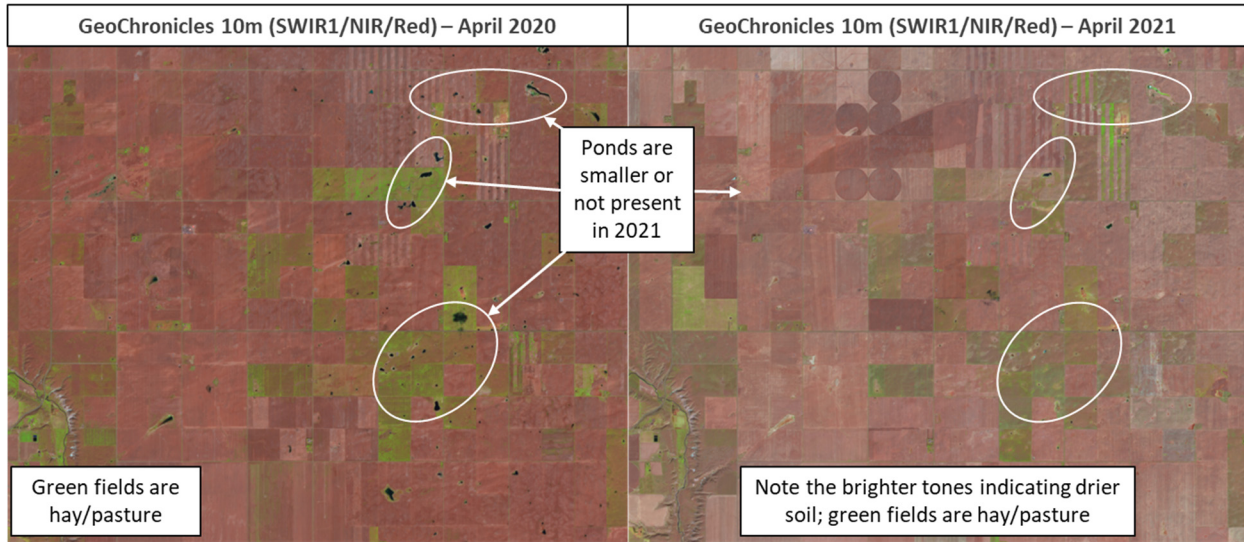
Corn planting began in mid-April, slightly later than last year and was 20 percent complete as of April 29. Soil moisture conditions are mixed across Ukraine but favorable for planting. Harvest typically occurs between mid-September and mid-November.

USDA crop production estimates for Ukraine include estimated output from Crimea. (For more information, please contact Iliana.Mladenova@usda.gov.)

Canada Barley: Area and Production Expected to Increase in MY 2021/22

USDA forecasts Canada barley production for marketing year (MY) 2021/22 at 12.5 million metric tons (mmt), up 1.8 mmt or 16 percent from last year, and 35 percent above the 5-year average. Harvested area is forecast at 3.4 million hectares (mha), 19 percent above last year, and 36 percent above the 5-year average. Yield is forecast at 3.73 metric tons per hectare (t/ha), nearly equivalent to the 5-year average.

Drier Spring Conditions in 2021: Barley Fields Northeast of Lethbridge, Alberta

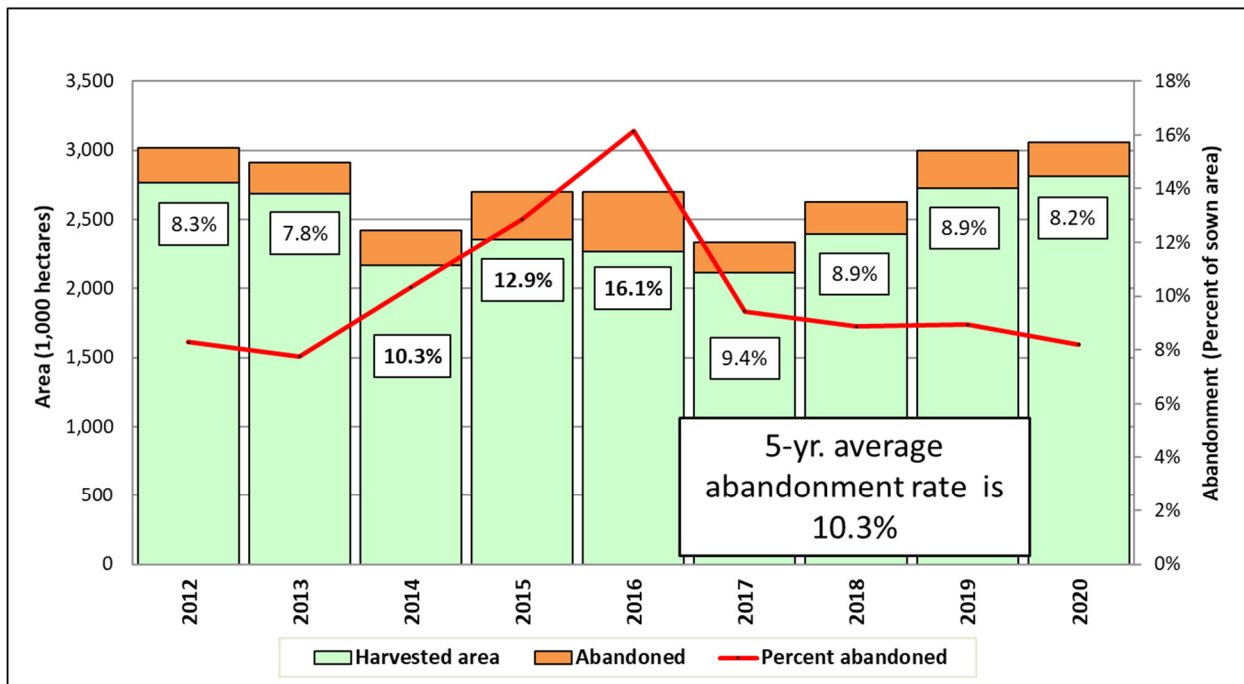


USDA Foreign Agricultural Service
U.S. DEPARTMENT OF AGRICULTURE

Source: GDA Corp, GeoChronicles (Landsat-Sentinel 2 30-day composite) imagery with 10-meter resolution

Barley is primarily grown in Alberta and Saskatchewan, which have received below-average precipitation since the late Summer of 2020. Provincial reports from Alberta noted below average snowpack that retreated early, exposing soils to the dry conditions in early Spring. Precipitation typically increases with temperatures, in Alberta, in the latter-half of May. Reporting across the region suggests that despite the abnormal dryness, conditions are generally favorable for planting, which takes place in the months of May and June.

Annual Barley Crop Abandonment



USDA Foreign Agricultural Service
U.S. DEPARTMENT OF AGRICULTURE

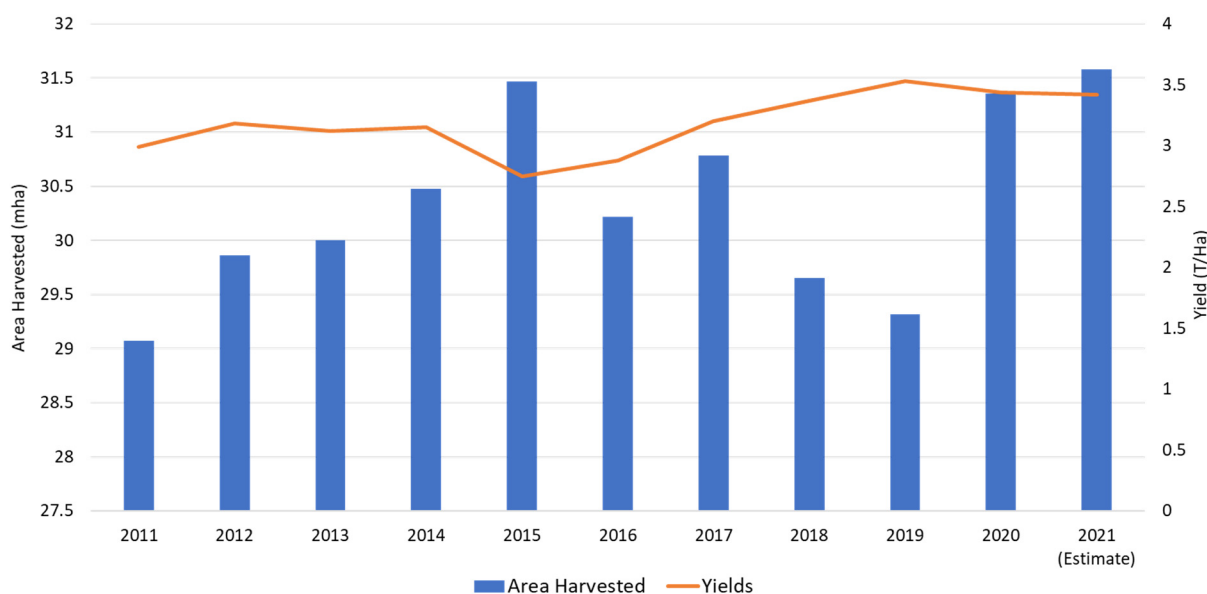
Source: Statistics Canada

Statistics Canada (StatCan) published the results of the March Planting Intentions Survey on April 27. StatCan forecasts planted area at 3.5 mha, a nearly 14 percent increase over last year, as farmers are expected to capitalize on advantageous market conditions. Increased domestic feed use and exports in MY 2020/21 resulted in record-low carry-in stocks for MY 2021/22. Demand for Canadian barley remains strong, particularly from China, which doubled its barley imports from Canada in 2020. On average, roughly 10 percent of planted area for barley is left unharvested, annually, which is accounted for in the USDA harvested area forecast. *(For more information, please contact Aaron.Mulhollen@usda.gov.)*

India Wheat: Record Area Harvested Led to Record Production in MY 2021/22

USDA estimates wheat production for marketing year (MY) 2021/22 at 108.0 million metric tons, up slightly from last year. The record production was driven by farmers expanding wheat acreage. Area harvested is estimated at a record 31.6 million hectares, up nearly 1 percent from MY 2020/21. The slight area expansion was attributed to a late withdrawal of the 2020 southwest monsoon which provided good soil moisture and favorable prices at planting. However, yields are estimated to drop to 3.42 tons per hectare, down almost 1 percent because of warmer than normal temperatures across central and eastern India.

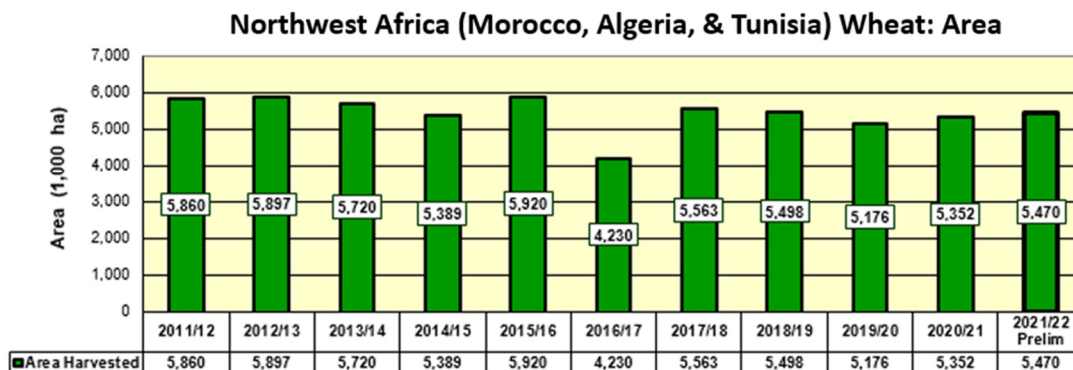
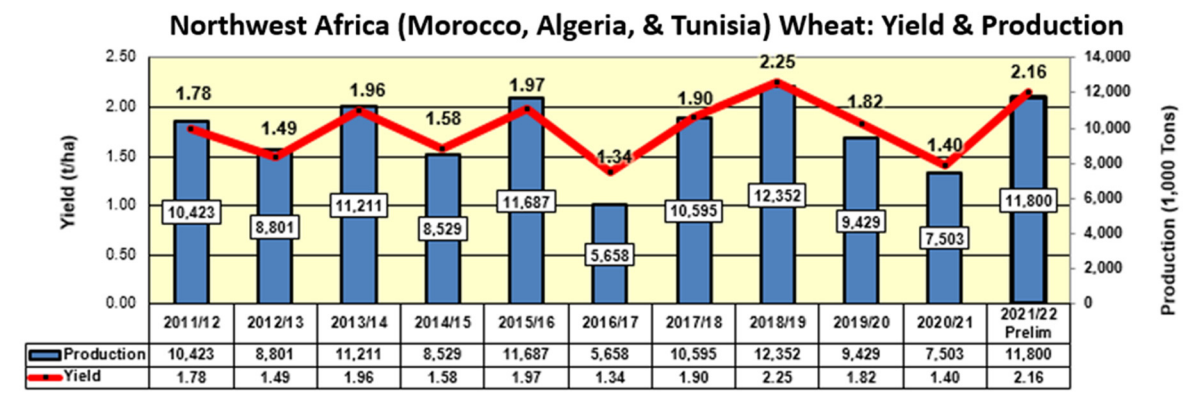
India Wheat: 2021 Record Area Harvest Leads to Record Production Despite Slight Decrease in Yields



In northern India, which comprised 70 percent of total production, yields are estimated to be the same as last year. The fully irrigated crops in northern India benefited from the cooling effects of the adjoining Himalayan range which kept night temperatures within a normal range. However, the partially irrigated areas in central and eastern Uttar Pradesh and Bihar matured under warmer than normal temperatures. Consequently, yields decreased by 10 to 15 percent in those regions.

Wheat is grown only in the *rabi* season (winter). It is planted in late November through the end of January and harvested as late as early May. The MY 2021/22 wheat crop was harvested in early May 2021. (For more information, please contact Arnella.Trent@usda.gov.)

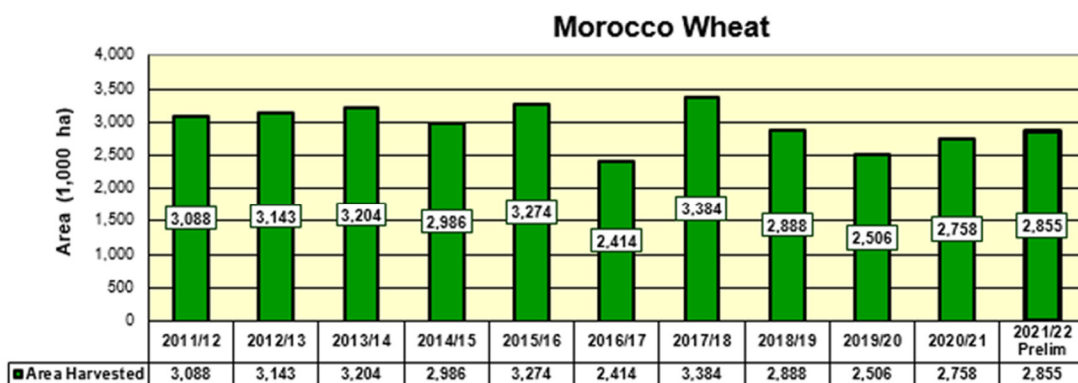
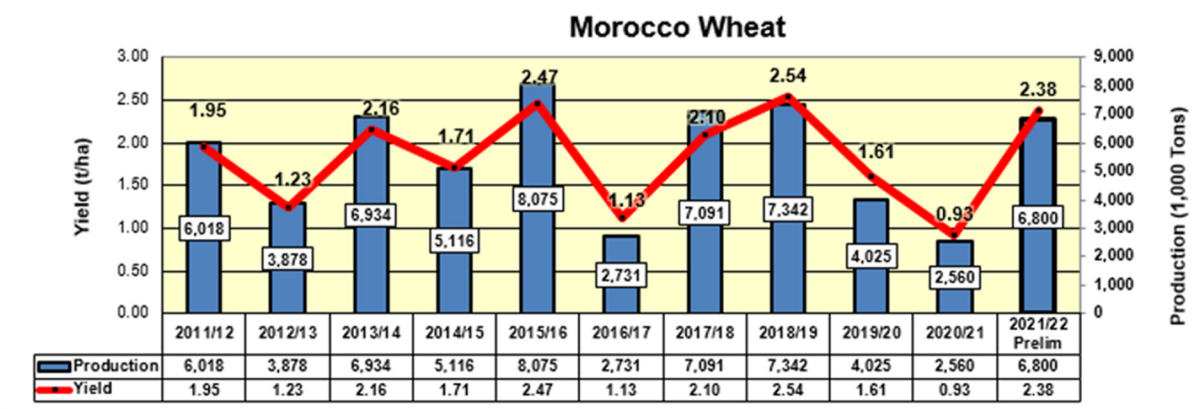
Northwest Africa Wheat: Large Crop Forecast for MY 2021/22 as Morocco Rebounds, Algeria Falls, and Tunisia is Steady



Source: USDA PSD Online



Northwest Africa's (Morocco, Algeria, and Tunisia) wheat crop for marketing year (MY) 2021/22 is forecast at 11.8 million metric tons (mmt), 4.3 million or 57 percent higher than last year's production of 7.5 mmt. Yield is forecast at 2.16 tons per hectare (t/ha), 54 percent above last year's 1.4 t/ha. Area is estimated at 5.5 million hectares (mha), above last year's 5.4 mha and the 5-year average of 5.2 mha.

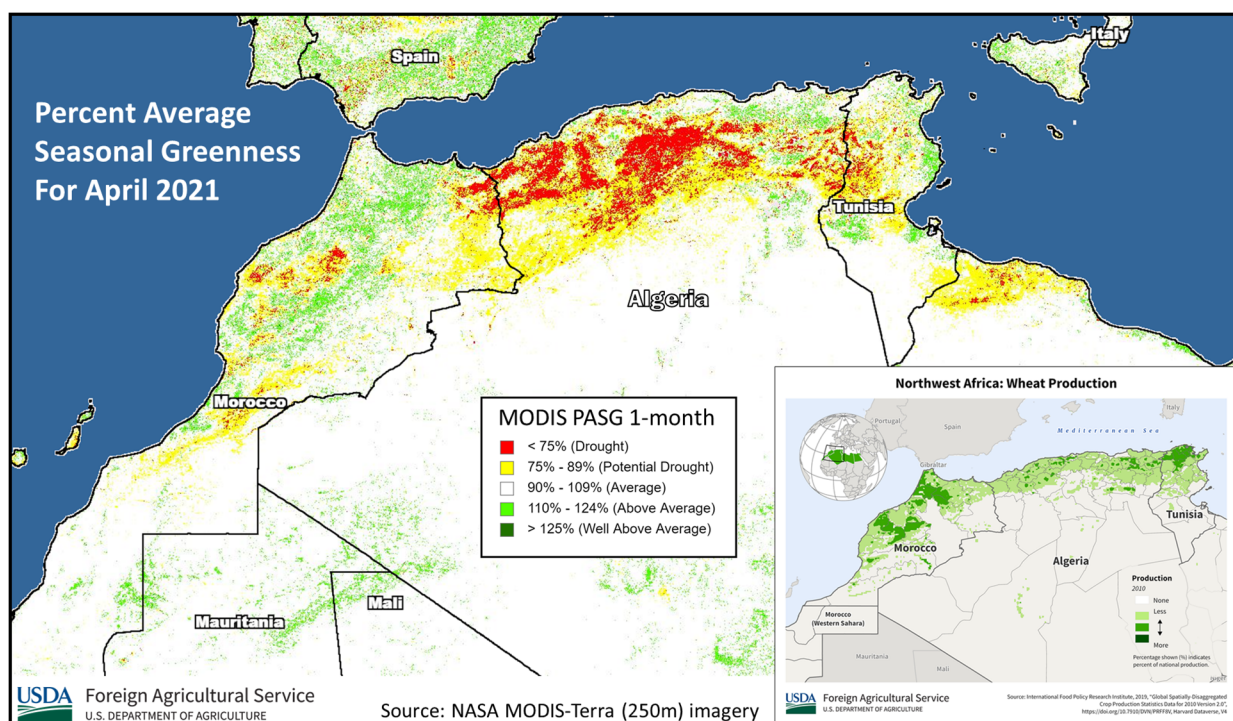


Source: USDA PSD Online



Morocco is recovering from its worst harvest in over a decade; the MY 2020/21 harvest was the lowest since MY 2007/08. The MY 2021/22 crop is expected to rebound due to favorable weather since the start of 2021. Although a late start to the rainy season caused autumn sowing to be slightly delayed, planting increased when rains arrived. Precipitation during the winter and spring has been timely and frequent, with favorable conditions occurring during flowering and grainfill. Morocco’s wheat is now mature, and harvest is set to begin later in May. USDA forecasts production of 6.8 mmt, 4.2 mmt above, or 166 percent higher than last year, and 43 percent higher than the 5-year average. Area is estimated at 2.9 mha and yield is forecast at 2.38 t/ha. There have been no excessively high temperatures in any of the coastal growing regions of the Maghreb. Morocco produces on average, over half of the three-country wheat crop. Highly influenced by seasonal rainfall, production for individual countries tends to be volatile with sharp highs and lows.

Algeria has experienced poor rainfall during the current growing season, particularly in the west and central areas. The highest concentration of wheat is in the east where rainfall was normal and crop conditions are average. Wheat is typically harvested in June, so rainfall during May can still improve crops that are currently in grainfill. Rainfall has recently increased in Algeria. Algeria is forecast to produce 3.7 mmt from 2.1 mha, and with a 1.78 t/ha yield.

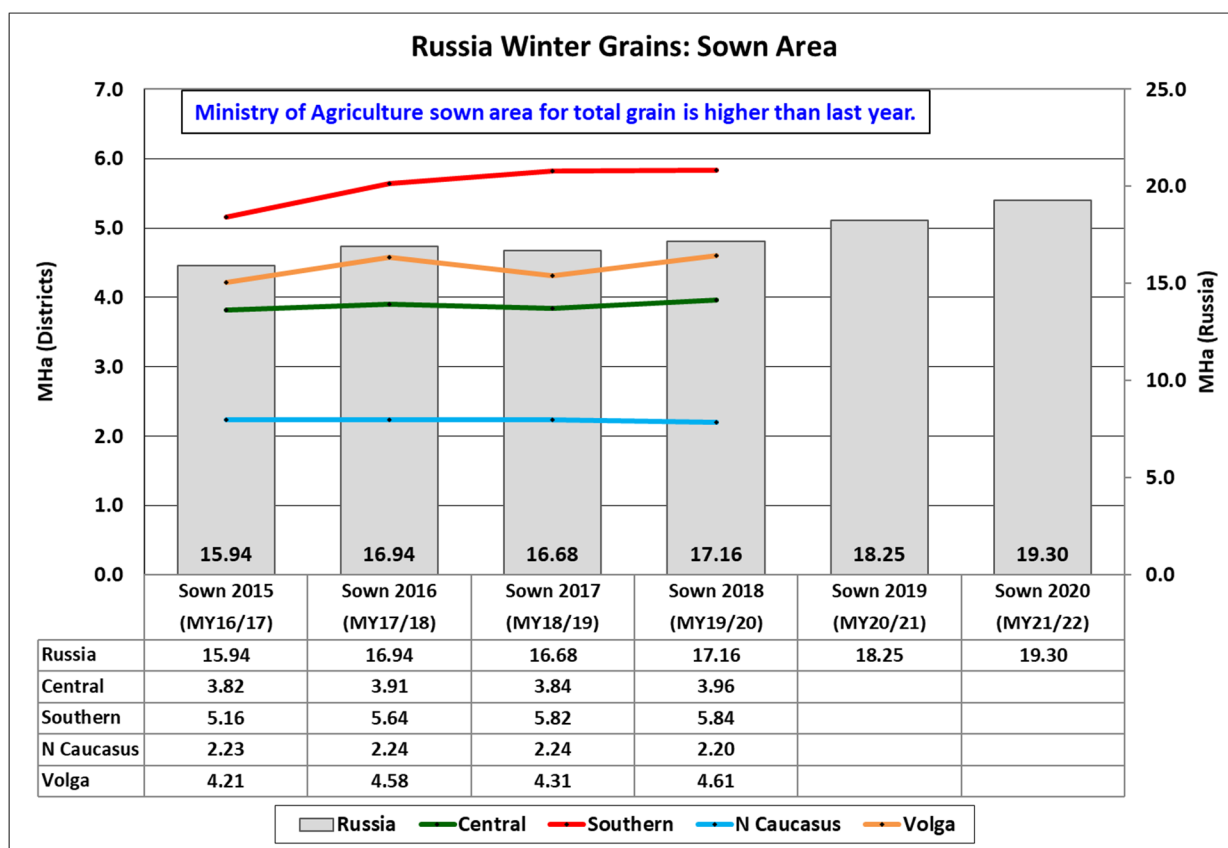


Tunisia has experienced favorable growing conditions with average and timely rainfall. The crop is forecast at 1.3 mmt, 0.3 mmt (25 percent) higher than last year, and with a near-record yield of 2.41 t/ha. Area is estimated at 0.5 mha, similar to last year. *(For more information, please contact Bryan.Purcell@USDA.gov.)*

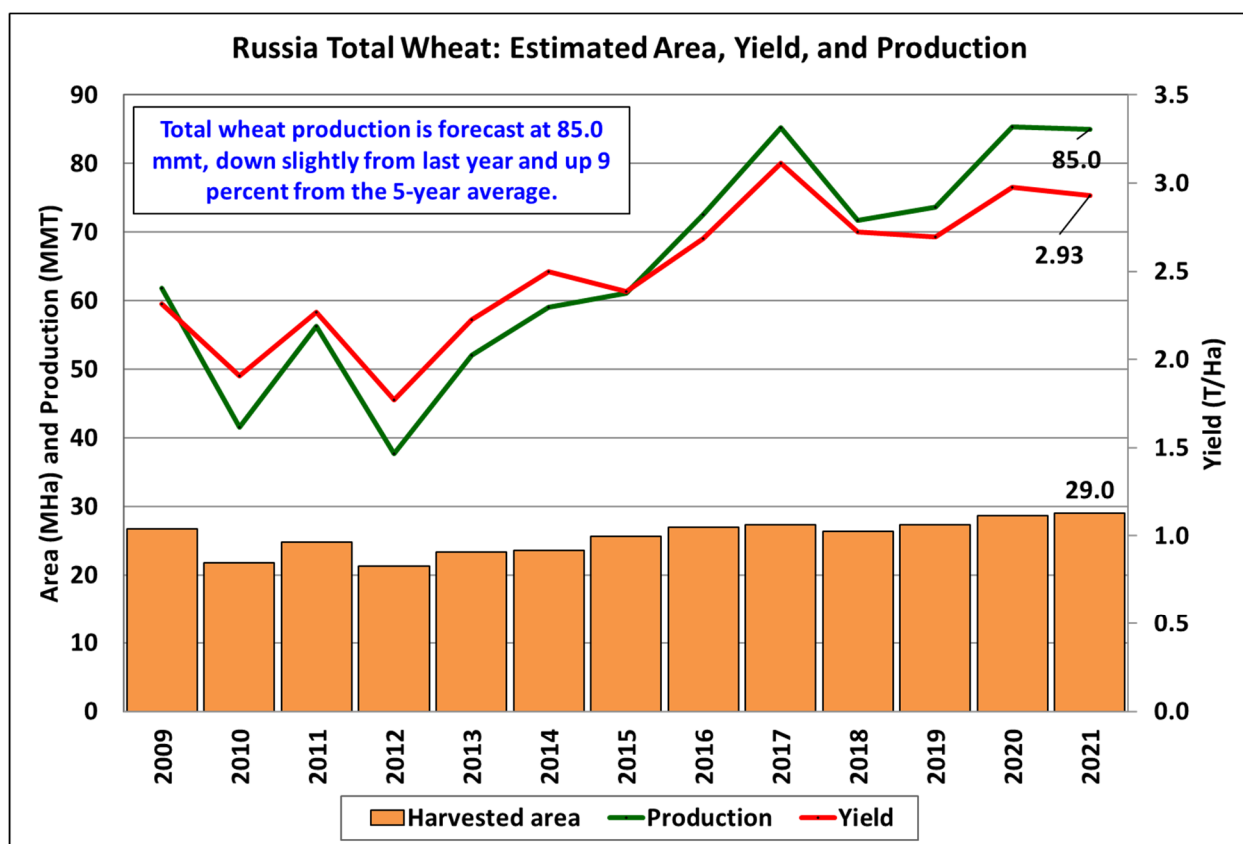
Russia Wheat: MY 2021/22 Production Third Highest on Record

Russia wheat production for marketing year (MY) 2020/21 is forecast at 85.0 million metric tons (mmt), down slightly from last year and up 9 percent from the 5-year average. The forecast includes 64.0 mmt of winter wheat and 21.0 mmt of spring wheat. USDA crop production forecasts for Russia exclude forecast output from Crimea. Total wheat yield is forecast at 2.93 tons per hectare, down 1.5 percent from last year. Total area is expected to increase slightly from last year to 29.0 million hectares (mha).

Winter wheat typically accounts for about 70 percent of production. According to data from the Russian Ministry of Agriculture published in late November 2020, the area planted to winter grains in MY 2021/22 is a record at 19.3 mha and is up by 6 percent from last year. Winter wheat accounts for about 85 percent on average of the total winter grains crop in Russia and the remainder is divided between barley, rye and triticale.



Early spring growing conditions for winter wheat are mixed. Planting in the autumn was done on time, however, it occurred during drier-than-average weather resulting in poor establishment. Timely spring rainfall has provided necessary soil moisture for crop emergence throughout the Southern and North Caucasus Districts, which together account for almost 58 percent of production. Winter wheat yield can be highly susceptible to the weather during May and June.



USDA Foreign Agricultural Service
U.S. DEPARTMENT OF AGRICULTURE

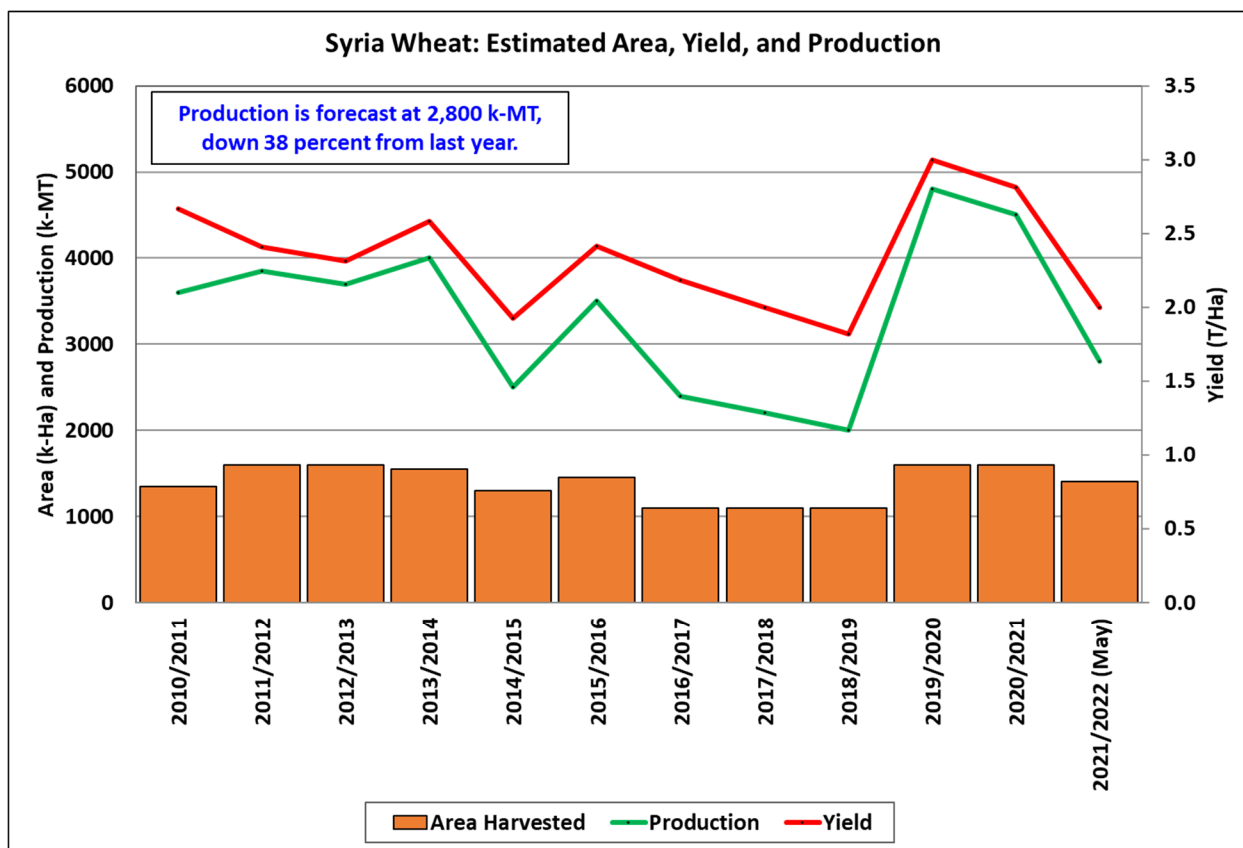
Source: USDA PSD Online

Sowing of spring wheat began in April and was 6.5 percent complete as of April 29. Planting progress is slightly behind compared to last year when sowing was at 11 percent during the same time. Above-average rainfall in western areas and early-season dryness in the eastern spring grain belt are possible reasons for the delay in planting. Spring wheat is mainly planted in the regions bordering Kazakhstan, in the Volga, Urals and Siberian districts of Russia. Planting will accelerate in all districts in May.

Area, yield, and production estimates for Russia winter wheat and spring wheat are available on PSD Online. Select “Downloadable Data Sets” and open the zipped file for “Russia Wheat; Winter/Spring Area & Production.” *(For more information, please contact Iliana.Mladenova@usda.gov.)*

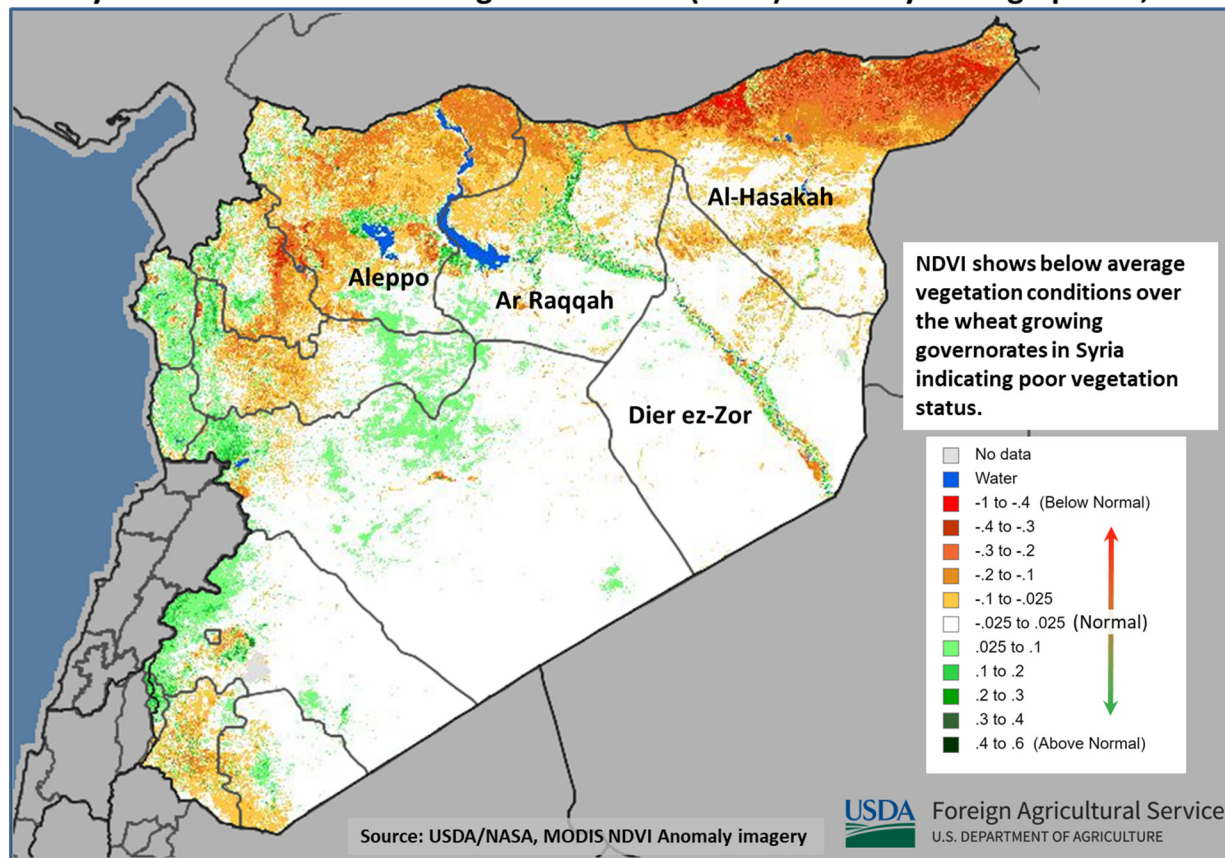
Syria Wheat: MY 2021/22 Production Decline Due to Short-Term Dryness

Syria wheat production for marketing year (MY) 2021/22 is forecast at 2.8 million metric tons, down 38 percent from last year and 12 percent from the 5-year average. Yield is forecast at 2.00 tons per hectare, down 29 percent from last year. Harvested area is forecast at 1.4 million hectares, down 13 percent from last year. Wheat production is forecast lower than last year due to ongoing short-term dryness and reduced area.



Winter wheat is currently in reproductive to filling stages when insufficient soil moisture and heat can negatively affect yield formation and result in production loss. The poor vegetation status and the impact of below-average seasonal precipitation are clearly visible in the Normalized Difference Vegetation Index anomaly image.

8-Day Normalized Difference Vegetation Index (NDVI) Anomaly ending April 30, 2021

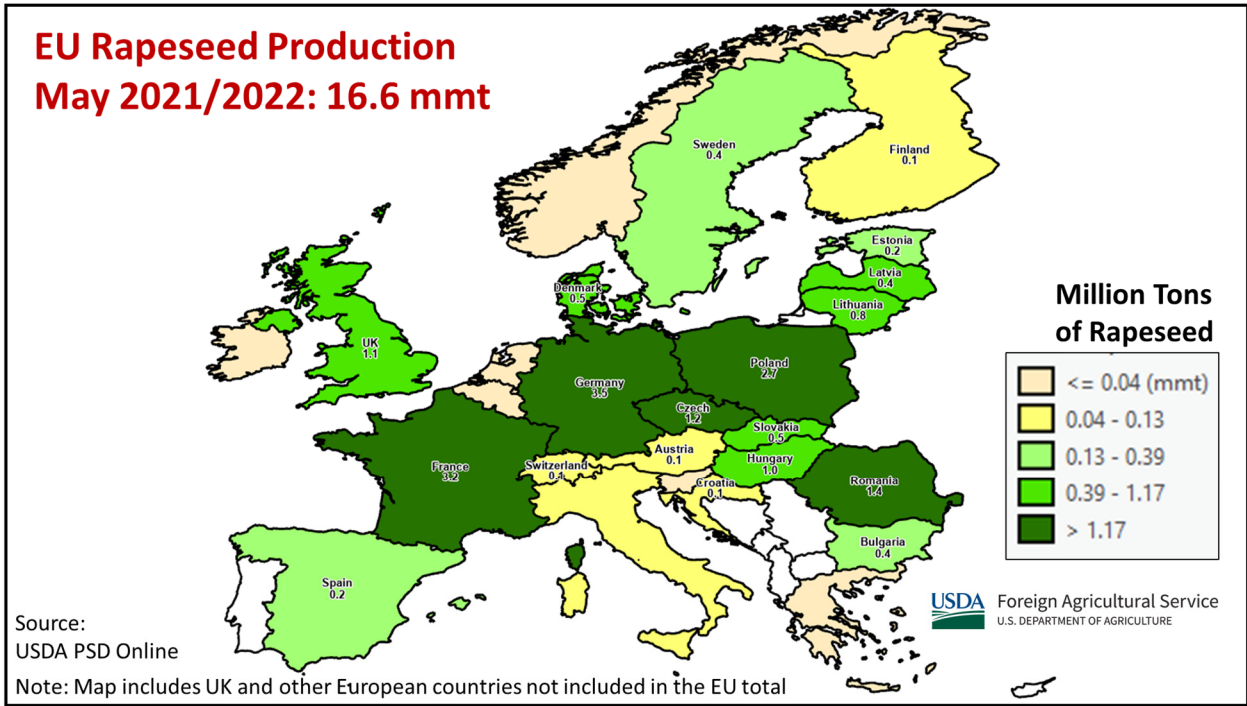


About 90 percent of the wheat produced in Syria is grown in the four governorates of Aleppo, Al-Hasakah, Ar Raqqah, and Dier ez-Zor, all located in the northern half of the country. Wheat in Syria is planted between October and December and harvested between June and mid-July. (For more information, please contact Iliana.Mladenova@usda.gov.)

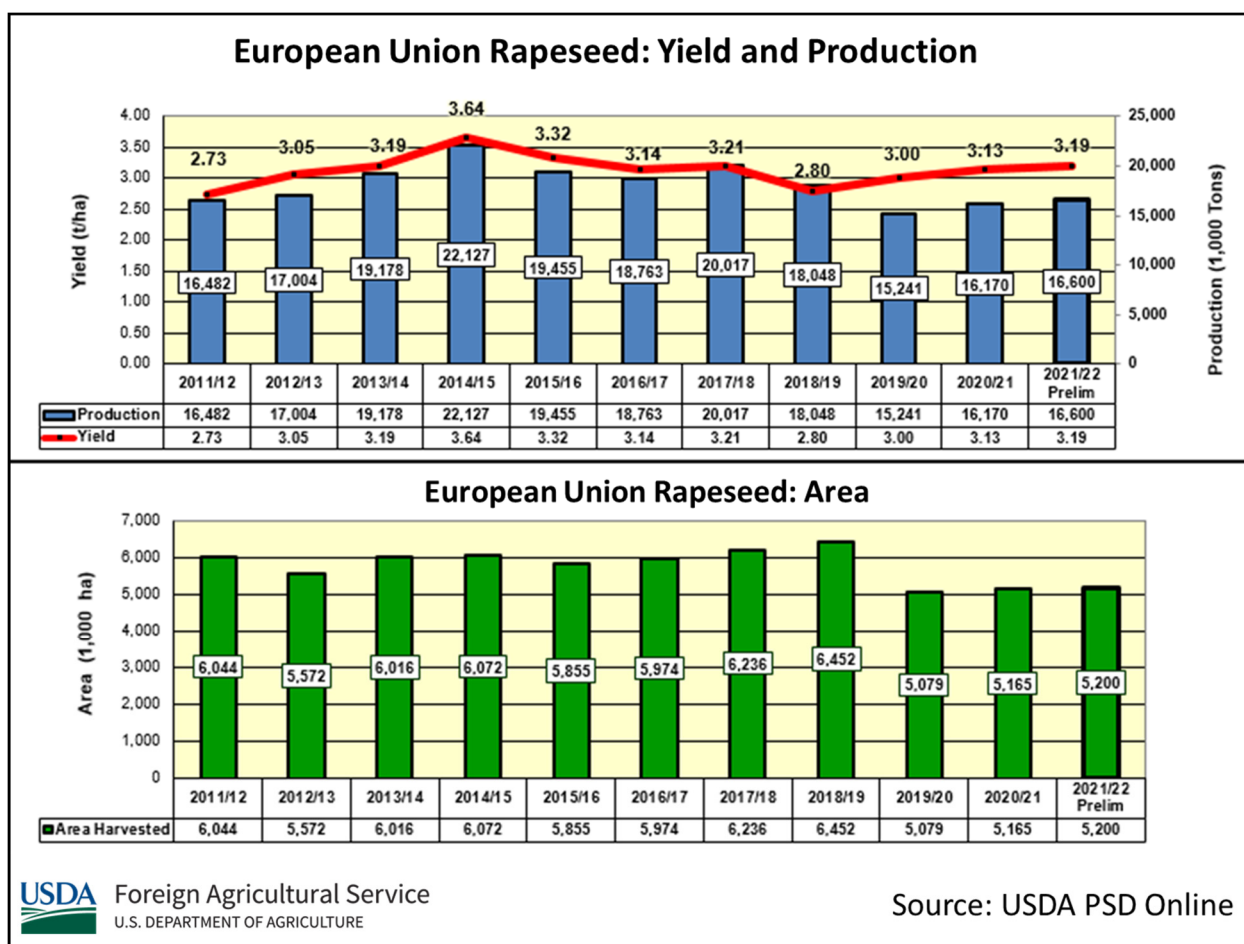
European Union Rapeseed: MY 2021/22 Production Forecast at 16.6 MMT, above Last Year's 16.2 MMT

Rapeseed production for the now 27 members of the European Union (EU) for 2021/22 is forecast at 16.6 million metric tons (mmt), 0.4 mmt above last year's crop, but 6 percent below the 5-year average. (All comparisons reference the 27 members of the European Union.) Harvested area is estimated at 5.2 million hectares (mha), 1 percent or 35,000 ha above last year's area, but 10 percent below the 5-year average. Yield is forecast at 3.19 tons per hectare, up 2 percent from last year and up 4 percent from the 5-year average.

The EU's two biggest rapeseed producers continue to be Germany and France with production forecast at 3.5 mmt and 3.2 mmt, respectively. Poland, the third largest, is forecast to produce 2.7 mmt, followed by an increase in Romania to 1.4 mmt. The Czech Republic is forecast at 1.2 mmt. Romania is expecting an increase in area sown to rapeseed because of its higher returns relative to other crops.



Improved rainfall has increased prospects for a crop mostly in flowering during May. Areas in France and Germany that had been dry have recently received beneficial rains. For much of spring, favorable soil moisture has existed in Poland and Romania, as well as in other central European countries. Cool weather during April has slowed progress of rapeseed in much of Europe, with the crop being about 7 to 10 days behind normal development. A particularly intense cold snap developed in northwest Europe in early April. The most severe weather centered on France, with sub-freezing temperatures, but it is not expected to have caused significant rapeseed damage.



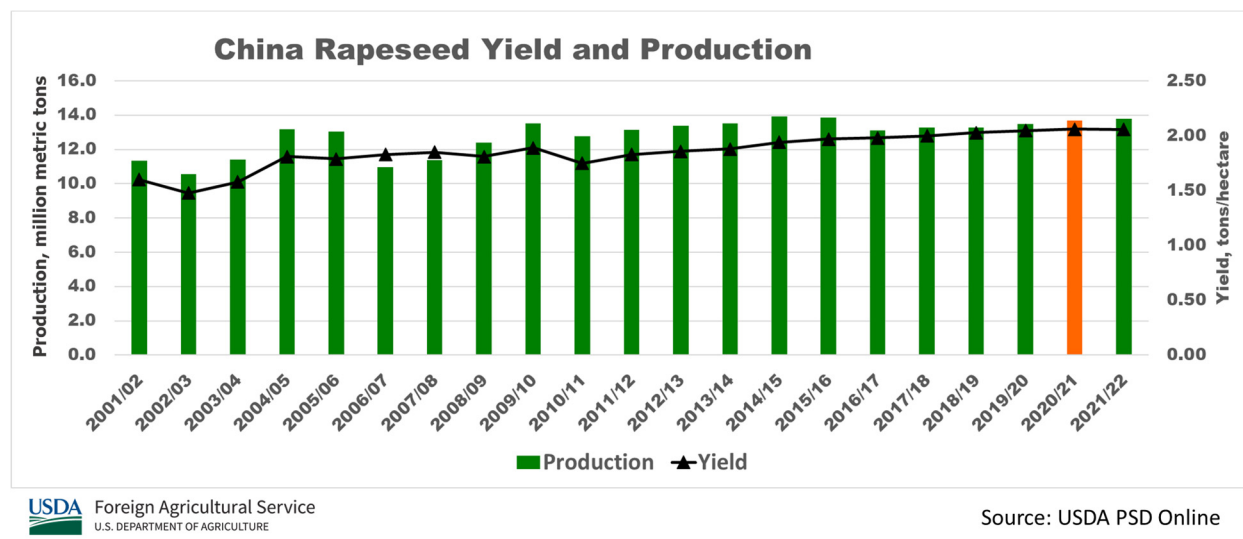
EU rapeseed production has recently dropped from a plateau just a few years ago, largely due to stagnant yields and lower planted area. While poor weather has played a role in lowering yields during some years, yields have flat-lined largely due to a continued ban on neonicotinoid usage. Inadequate plant protection, beginning with seeds that lack a neonicotinoid coating, has led to more insect damage and increased usage of other, less-effective pesticides. These restrictions have led to significantly higher production costs, lower profitability, decreased competitiveness, and a drop in enthusiasm for cultivating rapeseed.

Production data for the EU beginning in 2016/17 represents the 27 EU member states (without the UK). The UK production data can be accessed via the query function for grains and oilseeds beginning with 2016/17. To access historical production data for the UK and other current EU member states, please visit <https://apps.fas.usda.gov/psdonline/app/index.html#/app/downloads> and select the “PSD Data Sets” tab and click on the EU Countries Area & Production file for the CSV data file. UK data exists in this downloadable data file through 2015/16. (For more information, please contact Bryan.Purcell@usda.gov.)

China Rapeseed: Production Increase in MY 2020/21 Due to Higher Yield

USDA estimates China’s marketing year (MY) 2020/21 rapeseed production at 13.7 million metric tons (mmt), up half a million tons or 4 percent from last month, up 2 percent from MY 2019/20, and 2 percent from the 5-year average of 13.37 mmt. Area is estimated at 6.7 million hectares (mha), no change from last month and up one percent from the previous year. Yield is estimated

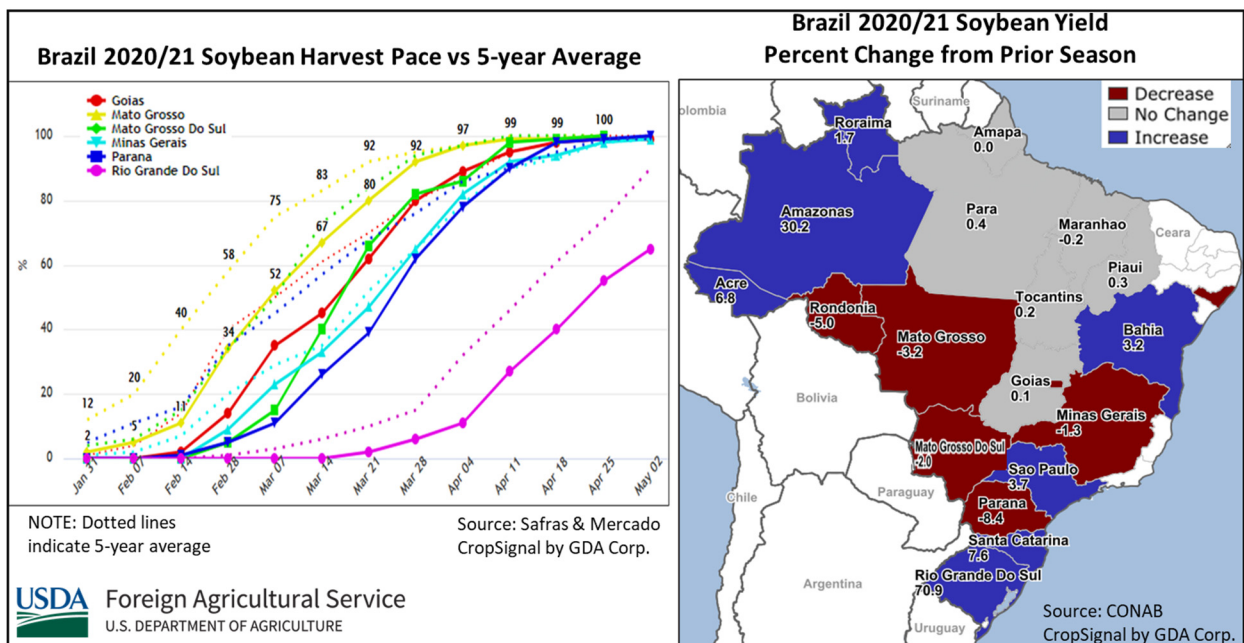
at a record 2.06 tons per hectare (t/ha), up 4 percent from last month, up approximately half a percent from MY 2019/20 and up 2 percent from the 5-year average of 2.02 t/ha.



China winter rapeseed which accounts for 85 percent of production, is planted starting in November and December. Harvest began in April 2021 and continues through May. The 2020/21 season was characterized by favorable conditions, to include good soil moisture availability throughout the major part of the season. These conditions facilitated rapid planting and early crop establishment across the major rapeseed growing regions in the Yangtze River basin including Jiangsu, Anhui, Hunan, Jiangxi, Zhejiang, Sichuan, and Hubei. According to USDA’s FAS office in Beijing, the favorable conditions resulted in above-average yields across the region with Sichuan reporting record production, 3.17 mmt on a 7 percent expansion of area and favorable yield. In addition to the favorable planting conditions, rapeseed planting has been bolstered by rising prices and profits due to consumer preferences for rapeseed oil. According to the China National Grains and Oil Information Center (CNGOIC), the government increased crop rotation subsidies to encourage rapeseed production. *(For more information, please contact Dath.Mita@usda.gov.)*

Brazil Soybeans: Unchanged Record MY 2020/21 Production

Brazil soybean production for marketing year (MY) 2020/21 is forecast at a record 136.0 million metric tons (mmt), up 7.5 mmt (6 percent) from the MY 2019/20 revised record crop of 128.5 mmt. The harvested area is forecast at a record 38.6 million hectares (mha), up 1.7 mha (5 percent) from the MY 2019/20 record. Yield is forecast at a record of 3.52 tons per hectare (t/ha), 1 percent above MY 2019/20 and close to the 10-year trend.



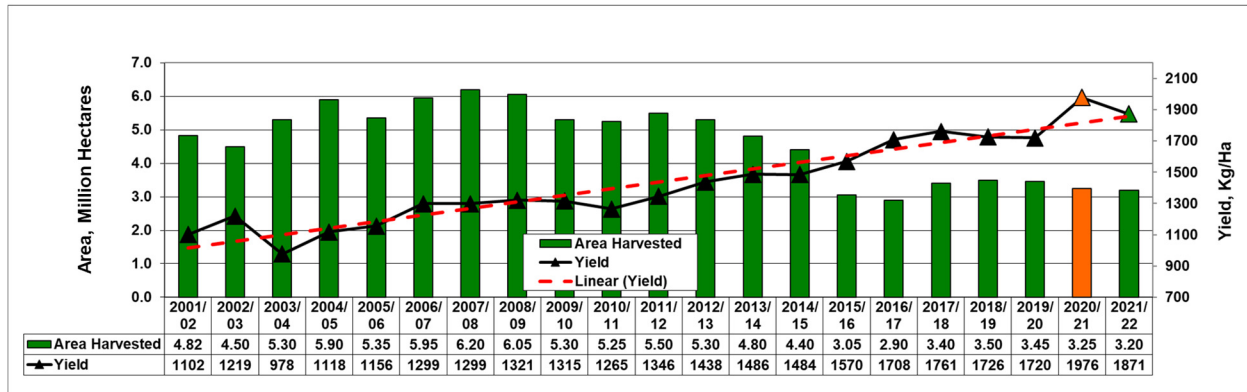
Nationally, over 95 percent of the soybean crop has been harvested with the remaining harvest in northeastern Brazil and Rio Grande do Sul. The largest proportion yet to be harvested is in Rio Grande do Sul where 81 percent was harvested by late April, compared to 93 percent the prior season (according to the Technical Assistance and Rural Extension agency, EMATER-RS). The harvest was delayed due to the combination of late planting and wet weather conditions during harvest.

Reported yields are lower than the prior season for Mato Grosso and Paraná (3.47 and 3.59 t/ha), while higher for Rio Grande do Sul (3.71 t/ha), Goiás (3.71 t/ha), Mato Grosso do Sul (3.69 t/ha), and Bahia (3.9 t/ha) based on data from *Companhia Nacional de Abastecimento* (CONAB, an agency in the Brazilian Ministry of Agriculture). Such yields will propel the state of Rio Grande do Sul to the second-largest soybean producer within Brazil this season, ahead of Paraná. Much of the northeastern soybean area has also been harvested with average to slightly above average yields. (For more information, please contact Sunita.Yadav-Pauletti@usda.gov.)

China Cotton: Production Increased in MY 2020/21 Due to Record Yield Returns

USDA estimates China's marketing year (MY) 2020/21 cotton production at 29.5 million 480-pound bales (6.42 million metric tons), up half a million bales or 2 percent from the previous estimate, up 8 percent from MY 2019/20, and approximately 9 percent from the 5-year average of 26.95 million bales. Area is estimated at 3.3 million hectares, no change from the previous estimate and down 6 percent from MY 2019/20. The year-to-year area decline is primarily due to larger area reductions in the Yangtze and Yellow River basins. Yield is estimated at a record 1,976 kilograms per hectare (kg/ha), up 2 percent from the previous estimate, up 15 percent from the previous year and up 11 percent from the 5-year average of 1,778 kg/ha.

China Cotton Area and Yield



USDA Foreign Agricultural Service
U.S. DEPARTMENT OF AGRICULTURE

Source: USDA PSD Online

The MY 2020/21 crop was harvested in October. The growing season was characterized by favorable temperatures with good irrigation water availability and rainfall throughout the major part of the season. Yield is significantly above the long-term trend due to favorable conditions in Xinjiang province where most of China’s cotton is produced. According to USDA’s FAS office in Beijing, end-of-season harvest returns indicate more favorable yields than previously estimated. Recent cotton inspection data from the China Fiber Inspection Bureau (CFIB) and ginning information from the China National Cotton Exchange (CNCE) indicates that production in Xinjiang increased significantly compared to the same time last year.

Approximately 85 percent of total China cotton is now produced in Xinjiang province and the rest in the Yellow River and Yangtze River basins. In Xinjiang approximately 94 percent of total cotton production operations, including sowing and combining, are mechanized. Marketing year 2020/21 marks the third year China’s cotton production continues to be characterized by relatively stable plantings in Xinjiang province and the continued area declines in the provinces of Shandong, Hebei, Anhui and Jiangsu. (For more information, please contact Dath.Mita@usda.gov.)



**World Agricultural Production
U.S. Department of Agriculture**

Foreign Agricultural Service / Global Market Analysis
International Production Assessment Division (IPAD)
Ag Box 1051, Room 4630, South Building
Washington, DC 20250-1051

<https://ipad.fas.usda.gov/>

Telephone: (202) 720-1662 Fax: (202) 720-1158

This report uses information from the Foreign Agricultural Service's (FAS) global network of agricultural attachés and counselors, official statistics of foreign governments and other foreign source materials, and the analysis of economic data and satellite imagery. Estimates of foreign area, yield, and production are from the International Production Assessment Division, FAS, and are reviewed by USDA's Inter-Agency Commodity Estimates Committee. Estimates of U.S. area, yield, and production are from USDA's National Agricultural Statistics Service. Numbers within the report may not add to totals because of rounding. This report reflects official USDA estimates released in the World Agricultural Supply and Demand Estimates (WASDE-584), May 12, 2021.

Printed copies are available from the National Technical Information Service. Download an order form at http://www.ntis.gov/products/specialty/usda/fas_a-g.asp, or call NTIS at 1-800-363-2068.

The FAS International Production Assessment Division prepared this report. The next issue of World Agricultural Production will be released after 12:00 p.m. Eastern Time, June 10, 2021.

Conversion Table

Metric tons to bushels

Wheat, soybeans	=	MT * 36.7437
Corn, sorghum, rye	=	MT * 39.36825
Barley	=	MT * 45.929625
Oats	=	MT * 68.894438

Metric tons to 480-lb bales

Cotton	=	MT * 4.592917
--------	---	---------------

Metric tons to hundredweight

Rice	=	MT * 22.04622
------	---	---------------

Area & weight

1 hectare	=	2.471044 acres
1 kilogram	=	2.204622 pounds



For further information, contact:
U.S. Department of Agriculture
Foreign Agricultural Service
Global Market Analysis

International Production Assessment Division
 Ag Box 1051, Room 4630, South Building
 Washington, DC 20250-1051

Telephone: (202) 720-1662

Fax: (202) 720-1158

GENERAL INFORMATION

Senior Director	Ronald Frantz	202-720-4056	ronald.frantz@usda.gov
Director	Robert Tetrault	202-720-1071	robert.tetrault@usda.gov
Administrative Assistant	Vacant		
USDA Remote Sensing Advisor	Vacant		
Sr. Analyst/Technical Lead	Curt Reynolds, Ph.D.	202-690-0134	curt.reynolds@usda.gov
Sr. Analyst/ Satellite Imagery Archives Manager/Technical Lead	Dath Mita, Ph.D.	202-720-7339	dath.mita@usda.gov
Sr. Analyst/Technical Lead	Jim Crutchfield	202-690-0135	james.crutchfield@usda.gov
GIS Mapping/Imagery Analyst	Lisa Colson	202-720-6652	lisa.colson@usda.gov
WAP Coordinators	Ifeoma Collins	202-720-0240	ifeoma.collins@usda.gov
	Aaron Mulhollen	202-690-0131	aaron.mulhollen@usda.gov

COUNTRY- AND REGION-SPECIFIC INFORMATION

South America, Argentina, Venezuela, and Colombia	Denise McWilliams, Ph.D.	202-720-0107	denise.mcwilliams@usda.gov
Western and Central Europe, and North Africa	Bryan Purcell	202-690-0138	bryan.purcell@usda.gov
Russia, Ukraine, Kazakhstan, Moldova, and Belarus	Katie McGaughey	202-720-9210	katie.mcgaughey@usda.gov
South Asia, Sri Lanka Bangladesh, India, and Nepal	Arnella Trent	202-720-0881	arnella.trent@usda.gov
East Asia, China, and Japan	Dath Mita, Ph.D.	202-720-7339	dath.mita@usda.gov
Sub-Saharan Africa, Nigeria and South Africa	Curt Reynolds, Ph.D.	202-690-0134	curt.reynolds@usda.gov
S.E. Asia, Indonesia, Thailand, Malaysia, Cambodia and Vietnam	Justin Jenkins	202-720-0419	justin.jenkins@usda.gov
Central America, Mexico, and Western United States	Ifeoma Collins	202-720-0240	ifeoma.collins@usda.gov
Australia, New Zealand, Pakistan Papua New Guinea and South Pacific Islands	Jim Crutchfield	202-690-0135	james.crutchfield@usda.gov
Middle East, Central Asia, Afghanistan Iraq, Iran, and Syria	Iliana Mladenova, Ph.D.		iliana.mladenova@usda.gov
Canada, Caribbean, Eastern United States	Aaron Mulhollen	202-690-0131	aaron.mulhollen@usda.gov
Brazil	Sunita Yadav-Pauletti, Ph.D.		sunita.yadav-pauletti@usda.gov



The Foreign Agricultural Service (FAS) updates its production, supply and distribution (PSD) database for cotton, oilseeds, and grains at 12:00 p.m. on the day the *World Agricultural Supply and Demand Estimates* (WASDE) report is released. This circular is released by 12:15 p.m.

FAS Reports and Databases:

World Agricultural Production

Current: <https://www.fas.usda.gov/data/world-agricultural-production>

Archive: <https://usda.library.cornell.edu/concern/publications/5q47rn72z?locale=en>

USDA's Foreign Agricultural Service (FAS) publishes a monthly report on crop acreage, yield and production in major countries worldwide. Sources include reporting from FAS's worldwide offices, official statistics of foreign governments, and analysis of economic data and satellite imagery. The reports reflect official USDA estimates released in the monthly *World Agricultural Supply and Demand Estimates* (WASDE).

World Markets and Trade

Current: <https://www.fas.usda.gov/data>

Archive:

https://usda.library.cornell.edu/catalog?f%5Bmember_of_collections_ssim%5D%5B%5D=Foreign+Agricultural+Service&locale=en

USDA's Foreign Agricultural Service (FAS) publishes monthly and quarterly reports which include data on U.S. and global trade, production, consumption and stocks, as well as analysis of developments affecting world trade in oilseeds, grains, cotton, livestock and poultry. The reports reflect official USDA estimates released in the monthly *World Agricultural Supply and Demand Estimates* (WASDE).

Global Agricultural Information Network (GAIN)

<https://www.fas.usda.gov/databases/global-agricultural-information-network-gain>

USDA's Foreign Agricultural Service (FAS) provides timely reports on foreign markets through the Global Agriculture Information Network (GAIN) database. An average of 2,000 reports are added each year, with reports going back to 1995. GAIN reports are compiled by FAS' global market intelligence network, which includes FAS foreign service officers and locally engaged staff in over 90 overseas offices world-wide. They provide on-the-ground intelligence, insight, and analysis on nearly 200 countries, delivering information on foreign agricultural markets, crop conditions, and agro-political dynamics of interest to U.S. agriculture. GAIN reports contain assessments of commodity and trade issues made by USDA staff and are not necessarily statements of official U.S. government policy.

Production, Supply and Distribution (PS&D) Online

<https://apps.fas.usda.gov/psdonline/app/index.html#/app/home>

PSD Online is the public repository for USDA's Official Production, Supply and Distribution forecast data and reports for key agricultural commodities. PSD Online data are reviewed and updated monthly by an interagency committee chaired by USDA's World Agricultural Outlook Board (WAOB). The committee consist of representatives from Foreign Agricultural Service (FAS), the Economic Research Service (ERS), the Farm Service Agency (FSA), and the Agricultural Marketing Service (AMS).

EU Countries and Russia Wheat: Area and Production Estimates

<https://apps.fas.usda.gov/psdonline/app/index.html#/app/downloads> (click on PSD Datasets)

USDA's Foreign Agricultural Service (FAS) provides country-level area and production estimates for the nations of the European Union. For Russia, country-level area and production estimates are provided for Winter and Spring wheat. These datasets are reviewed and updated monthly by an interagency committee chaired by USDA's World Agricultural Outlook Board (WAOB) and can be downloaded through PSD datasets on PSD Online.



FAS Reports and Databases:

International Production Assessment (IPAD)

<https://ipad.fas.usda.gov/>

USDA's Foreign Agricultural Service (FAS) maintains a dynamic global crop production portal with key information including *World Agricultural Production* (WAP) briefs, Commodity Intelligence Reports (CIR), geospatial applications, crop production maps at a subnational level and crop calendars for the top-20 producing countries. Additionally, Crop Explorer (<https://ipad.fas.usda.gov/cropexplorer/>) displays rainfall, temperature, evapotranspiration, soil moisture, snow cover, and vegetation conditions in charts and maps.

USDA and NASA Global Agricultural Monitoring (GLAM)

<https://glam1.gsfc.nasa.gov/>

The USDA and NASA Global Agricultural Monitoring (GLAM) system provides near real-time and science quality Moderate Resolution Imaging Spectroradiometer (MODIS) Normalized Difference Vegetation Index (NDVI) from the satellites Terra and Aqua. The public can view and retrieve MODIS 8-day composited, global NDVI satellite imagery and time series data. GLAM was developed by NASA's Global Inventory Modeling and Mapping Studies (GIMMS) group for USDA's Foreign Agricultural Service.

Global Agricultural and Disaster Assessment System (GADAS)

<https://geo.fas.usda.gov/GADAS/index.html>

USDA's Foreign Agricultural Service (FAS) provides the Global Agricultural and Disaster Assessment System (GADAS), a web-based Geographic Information System (GIS) tool which integrates a vast array of highly detailed earth observation data streams, particularly targeted towards agricultural and disaster assessment analysis. GADAS is an interactive website which provides analysts with a wide variety of routine geospatial products (maps, charts, tables) they require for comprehensive situational investigations and recurring assessments.

Export Sales Reporting

<https://apps.fas.usda.gov/esrquery/>

USDA's Export Sales Reporting Program monitors U.S. agricultural export sales on a daily and weekly basis. Export sales reporting provides a constant stream of up-to-date market information for 40 U.S. agricultural commodities sold abroad. The weekly U.S. Export Sales report is the most currently available source of U.S. exports sales data. The data is used to analyze overall levels of export demand, determine where markets exit, and assess the relative position of U.S. commodities in foreign markets.

Global Agricultural Trade System (GATS)

<https://apps.fas.usda.gov/gats/default.aspx>

The Global Agricultural Trade System (GATS) is a searchable database containing monthly U.S. Census Bureau trade data organized by agricultural commodity and agricultural related product groups. Trade data is searchable by partner countries and partner groups. Historical U.S. agricultural trade data is available back to 1967. In addition, U.N. trade statistics (UN Comtrade) may be queried through GATS. UN trade data is available for nearly 200 countries or areas, dating from the inception of the Harmonized System (HS) of trade codes in 1989 to present. The database is continuously updated. U.S. trade data is updated monthly according to the U.S. Census Bureau's reporting system. UN Comtrade data are updated in GATS after nationally submitted data to the UN are standardized by the UN Statistical Division and added to the UN Comtrade database.

Other USDA Reports:

World Agricultural Supply and Demand Estimates (WASDE):

<http://www.usda.gov/oce/commodity/wasde/>

Economic Research Service:

<http://www.ers.usda.gov/topics/crops>

National Agricultural Statistics Service:

<http://www.nass.usda.gov/Publications/>

Table 01 World Crop Production Summary

Million Metric Tons

Commodity	World -	Total Foreign	North America			Former Soviet		European	Asia (WAP)					South America		Selected Other			All Others
			United States	Canada -	Mexico -	Russia -	Ukraine -		China -	India -	Indonesia	Pakistan	Thailand	Argentina	Brazil -	Australia	South Africa	Turkey -	
---Million metric tons---																			
Wheat																			
2019/20	764.2	711.6	52.6	32.7	3.3	73.6	29.2	nr	133.6	103.6	0.0	24.3	0.0	19.8	5.2	15.2	1.5	17.5	252.1
2020/21 prel.	776.1	726.4	49.7	35.2	3.0	85.4	25.4	nr	134.3	107.9	0.0	25.2	0.0	17.6	6.3	33.0	2.1	18.3	232.9
2021/22 proj.																			
May	789.0	738.0	50.9	32.0	3.1	85.0	29.0	nr	136.0	108.0	0.0	26.0	0.0	20.5	6.8	27.0	1.8	17.3	245.6
Coarse Grains																			
2019/20	1,412.4	1,053.0	359.4	28.6	32.1	40.5	46.5	nr	268.2	47.7	12.0	7.4	4.6	58.1	105.8	10.4	16.4	14.5	360.2
2020/21 prel.	1,437.4	1,062.9	374.6	29.6	32.2	41.4	39.6	nr	268.0	49.2	11.8	8.3	5.7	55.5	106.0	16.5	17.8	15.8	365.6
2021/22 proj.																			
May	1,495.9	1,099.8	396.2	30.9	33.8	41.6	47.9	nr	275.4	48.1	12.0	8.1	5.5	60.8	122.0	13.5	17.7	13.8	368.9
Rice, Milled																			
2019/20	497.6	491.7	5.9	0.0	0.2	0.7	0.0	nr	146.7	118.9	34.7	7.2	17.7	0.8	7.6	0.0	0.0	0.6	156.6
2020/21 prel.	503.5	496.3	7.2	0.0	0.2	0.7	0.0	nr	148.3	121.0	35.2	8.1	18.8	0.8	7.5	0.4	0.0	0.6	154.6
2021/22 proj.																			
May	505.4	499.0	6.5	0.0	0.2	0.7	0.0	nr	149.0	120.0	35.3	8.2	19.5	0.8	7.7	0.5	0.0	0.6	156.4
Total Grains																			
2019/20	2,674.1	2,256.2	417.9	61.3	35.5	114.8	75.8	nr	548.5	270.1	46.7	38.9	22.2	78.7	118.6	25.7	17.9	32.6	768.9
2020/21 prel.	2,717.1	2,285.6	431.5	64.8	35.3	127.5	65.0	nr	550.6	278.0	47.0	41.6	24.5	73.9	119.8	49.8	20.0	34.6	753.1
2021/22 proj.																			
May	2,790.4	2,336.8	453.6	62.9	37.0	127.3	76.9	nr	560.4	276.1	47.3	42.3	25.0	82.1	136.5	41.0	19.5	31.6	771.0
Oilseeds																			
2019/20	580.6	473.6	107.0	25.8	1.1	21.7	24.5	nr	63.0	36.4	14.4	3.3	0.9	53.6	133.9	2.6	2.2	3.3	87.0
2020/21 prel.	599.6	477.2	122.4	25.5	0.9	20.1	19.9	nr	65.5	38.9	14.6	2.7	1.0	51.6	140.6	4.8	2.6	2.9	85.7
2021/22 proj.																			
May	632.2	501.9	130.3	27.0	1.0	21.5	23.2	nr	64.7	39.0	14.8	3.0	1.0	57.1	149.3	4.8	2.7	3.3	89.8
Cotton																			
2019/20	121.4	101.5	19.9	0.0	1.6	0.0	0.0	2.0	27.3	28.8	0.0	6.2	0.0	1.3	13.8	0.6	0.1	3.5	16.4
2020/21 prel.	113.1	98.5	14.6	0.0	1.0	0.0	0.0	1.7	29.5	28.5	0.0	4.5	0.0	1.3	11.5	2.5	0.1	2.9	15.0
2021/22 proj.																			
May	119.4	102.4	17.0	0.0	1.1	0.0	0.0	1.8	27.5	29.0	0.0	5.3	0.0	1.4	13.3	3.9	0.1	3.4	15.8

1/ Includes wheat, coarse grains, and rice (milled) shown above.

Table 02 Wheat Area, Yield, and Production

Country / Region	Area (Million hectares)			Yield (Metric tons per hectare)			Production (Million metric tons)			Change in Production			
	2019/20	Prel.	2021/22 Proj.	2019/20	Prel.	2021/22 Proj.	2019/20	Prel.	2021/22 Proj.	From last month		From last year	
		2020/21	May		2020/21	May		2020/21	May	MMT	Percent	MMT	Percent
World	216.65	221.85	223.79	3.53	3.50	3.53	764.16	776.10	788.98			12.88	1.66
United States	15.13	14.87	15.15	3.47	3.34	3.36	52.58	49.69	50.95			1.26	2.53
Total Foreign	201.52	206.98	208.64	3.53	3.51	3.54	711.58	726.41	738.03			11.62	1.60
European Union	24.36	23.08	23.85	5.69	5.46	5.62	138.74	125.94	134.00			8.06	6.40
United Kingdom	1.80	1.39	1.78	8.69	6.96	7.94	15.60	9.66	14.10			4.44	45.99
Serbia	0.57	0.57	0.60	4.56	4.74	4.75	2.60	2.70	2.85			0.15	5.56
China	23.73	23.38	23.00	5.63	5.74	5.91	133.59	134.25	136.00			1.75	1.30
South Asia													
India	29.32	31.36	31.58	3.53	3.44	3.42	103.60	107.86	108.00			0.14	0.13
Pakistan	8.80	8.81	9.20	2.76	2.86	2.83	24.30	25.20	26.00			0.80	3.17
Afghanistan	2.30	2.33	2.20	2.17	2.15	2.00	5.00	5.01	4.40			-0.61	-12.18
Nepal	0.75	0.75	0.75	2.95	2.95	2.80	2.20	2.21	2.10			-0.11	-4.98
Former Soviet Union - 12													
Russia	27.31	28.68	29.00	2.70	2.98	2.93	73.61	85.35	85.00			-0.35	-0.41
Russia Winter	15.41	16.63	17.00	3.41	3.77	3.76	52.54	62.69	64.00			1.31	2.09
Russia Spring	11.91	12.06	12.00	1.77	1.88	1.75	21.07	22.67	21.00			-1.67	-7.35
Ukraine	7.02	6.85	7.17	4.16	3.71	4.04	29.17	25.42	29.00			3.58	14.08
Kazakhstan	11.34	12.08	12.00	1.01	1.18	1.17	11.45	14.26	14.00			-0.26	-1.80
Uzbekistan	1.40	1.40	1.40	4.86	4.65	4.29	6.80	6.51	6.00			-0.51	-7.83
Belarus	0.69	0.70	0.70	3.33	3.29	3.21	2.31	2.30	2.25			-0.05	-2.17
Canada	9.66	10.02	9.20	3.38	3.51	3.48	32.67	35.18	32.00			-3.18	-9.05
South America													
Argentina	6.73	6.39	6.50	2.94	2.76	3.15	19.78	17.63	20.50			2.87	16.28
Brazil	2.04	2.34	2.50	2.55	2.67	2.72	5.20	6.25	6.80			0.55	8.80
Australia	10.20	13.00	13.20	1.49	2.54	2.05	15.20	33.00	27.00			-6.00	-18.18
Africa													
Egypt	1.37	1.39	1.40	6.40	6.40	6.43	8.77	8.90	9.00			0.10	1.12
Morocco	2.51	2.76	2.86	1.61	0.93	2.38	4.03	2.56	6.80			4.24	165.63
Algeria	2.07	2.08	2.08	1.90	1.88	1.78	3.95	3.90	3.70			-0.20	-5.13
Ethiopia	1.79	1.85	1.90	2.97	2.76	2.73	5.32	5.10	5.18			0.08	1.57
Middle East													
Turkey	7.00	7.10	7.00	2.50	2.57	2.46	17.50	18.25	17.25			-1.00	-5.48
Iran	6.70	6.70	6.70	2.51	2.50	2.24	16.80	16.75	15.00			-1.75	-10.45
Iraq	2.40	2.40	2.50	2.00	1.93	1.80	4.80	4.64	4.50			-0.14	-2.91
Syria	1.60	1.60	1.40	3.00	2.81	2.00	4.80	4.50	2.80			-1.70	-37.78
Mexico	0.59	0.56	0.57	5.54	5.33	5.40	3.27	2.97	3.05			0.09	2.87
Others	7.48	7.42	7.62	2.74	2.71	2.72	20.52	20.11	20.75			0.64	3.17

Table 03 Total Coarse Grain Area, Yield, and Production

Country / Region	Area (Million hectares)			Yield (Metric tons per hectare)			Production (Million metric tons)			Change in Production			
	2019/20	Prel.	2021/22 Proj.	2019/20	Prel.	2021/22 Proj.	2019/20	Prel.	2021/22 Proj.	From last month		From last year	
		2020/21	May		2020/21	May		2020/21	May	MMT	Percent	MMT	Percent
World	334.56	338.78	341.29	4.22	4.24	4.38	1,412.39	1,437.45	1,495.94			58.49	4.07
United States	36.17	36.84	37.61	9.94	10.17	10.53	359.43	374.57	396.17			21.60	5.77
Total Foreign	298.39	301.94	303.68	3.53	3.52	3.62	1,052.96	1,062.88	1,099.77			36.89	3.47
China	43.72	43.68	44.41	6.14	6.14	6.20	268.20	268.05	275.43			7.38	2.75
European Union	28.74	29.33	28.89	5.31	5.22	5.33	152.73	153.13	153.90			0.77	0.50
United Kingdom	1.41	1.66	1.42	6.64	5.65	5.97	9.35	9.36	8.50			-0.86	-9.16
South America													
Brazil	19.86	21.11	22.23	5.33	5.02	5.49	105.82	105.96	122.02			16.06	15.16
Argentina	8.43	8.28	8.82	6.90	6.70	6.89	58.13	55.49	60.78			5.29	9.53
Former Soviet Union - 12													
Russia	14.51	14.55	14.20	2.79	2.84	2.93	40.50	41.40	41.55			0.15	0.37
Ukraine	8.22	8.53	8.56	5.67	4.64	5.59	46.55	39.59	47.86			8.28	20.90
Kazakhstan	3.45	3.20	3.40	1.47	1.54	1.58	5.06	4.93	5.36			0.43	8.69
Belarus	1.08	1.03	0.92	3.08	3.42	3.18	3.32	3.52	2.93			-0.60	-16.90
Africa													
Nigeria	14.40	13.10	13.70	1.37	1.42	1.45	19.67	18.57	19.80			1.23	6.62
South Africa	3.13	3.31	3.33	5.24	5.39	5.32	16.37	17.84	17.70			-0.13	-0.75
Tanzania	4.35	5.20	5.10	1.56	1.42	1.49	6.77	7.38	7.58			0.20	2.71
Burkina Faso	4.08	4.00	4.00	1.12	0.99	1.10	4.55	3.95	4.40			0.46	11.53
Ethiopia	5.58	5.60	5.62	3.08	3.08	3.07	17.17	17.25	17.25			0.00	0.00
Egypt	1.02	1.02	1.02	7.09	7.09	7.09	7.26	7.26	7.26			0.00	0.00
Mali	4.92	5.17	4.70	1.46	1.38	1.45	7.21	7.14	6.80			-0.34	-4.70
India	23.98	23.19	23.89	1.99	2.12	2.01	47.66	49.16	48.05			-1.11	-2.26
Southeast Asia													
Indonesia	3.80	3.60	3.60	3.16	3.28	3.33	12.00	11.80	12.00			0.20	1.69
Philippines	2.51	2.60	2.50	3.20	3.19	3.20	8.03	8.30	8.00			-0.30	-3.61
Vietnam	0.99	0.95	0.90	4.80	4.83	4.89	4.76	4.59	4.40			-0.19	-4.14
Thailand	1.24	1.28	1.23	3.66	4.41	4.44	4.55	5.65	5.45			-0.20	-3.54
Mexico	8.41	8.76	9.11	3.82	3.67	3.71	32.10	32.16	33.75			1.59	4.94
Canada	5.54	5.80	6.16	5.16	5.11	5.02	28.61	29.64	30.87			1.23	4.14
Australia	5.01	5.99	5.53	2.08	2.75	2.43	10.44	16.46	13.45			-3.01	-18.28
Middle East													
Turkey	4.53	4.63	4.56	3.19	3.40	3.02	14.45	15.76	13.78			-1.98	-12.56
Iran	1.91	1.91	1.91	2.63	2.71	2.31	5.02	5.17	4.42			-0.75	-14.51
Others	73.59	74.47	73.98	1.59	1.66	1.71	116.73	123.40	126.49			3.09	2.50

World and Selected Countries and Regions; Coarse Grain includes: Barley, Corn, Millet, Mixed Grains, Oats, Rye and Sorghum

Table 04 Corn Area, Yield, and Production

Country / Region	Area (Million hectares)			Yield (Metric tons per hectare)			Production (Million metric tons)			Change in Production			
	2019/20	Prel. 2020/21	2021/22 Proj. May	2019/20	Prel. 2020/21	2021/22 Proj. May	2019/20	Prel. 2020/21	2021/22 Proj. May	From last month MMT Percent		From last year MMT Percent	
World	193.96	197.02	199.14	5.76	5.73	5.97	1,117.16	1,128.46	1,189.85			61.39	5.44
United States	32.92	33.37	33.79	10.51	10.79	11.27	345.96	360.25	380.76			20.51	5.69
Total Foreign	161.05	163.64	165.35	4.79	4.69	4.89	771.20	768.21	809.09			40.88	5.32
China	41.28	41.26	42.00	6.32	6.32	6.38	260.78	260.67	268.00			7.33	2.81
South America													
Brazil	18.50	19.70	20.80	5.51	5.18	5.67	102.00	102.00	118.00			16.00	15.69
Argentina	6.30	6.10	6.25	8.10	7.70	8.16	51.00	47.00	51.00			4.00	8.51
Bolivia	0.42	0.47	0.48	2.26	2.30	2.32	0.96	1.08	1.10			0.02	1.85
European Union	8.91	8.98	8.90	7.49	7.12	7.49	66.74	63.98	66.70			2.73	4.26
Africa													
South Africa	2.91	3.08	3.10	5.45	5.53	5.48	15.84	17.00	17.00			0.00	0.00
Nigeria	6.50	5.50	6.00	1.69	1.82	1.83	11.00	10.00	11.00			1.00	10.00
Ethiopia	2.30	2.30	2.30	3.70	3.74	3.74	8.50	8.60	8.60			0.00	0.00
Egypt	0.80	0.80	0.80	8.00	8.00	8.00	6.40	6.40	6.40			0.00	0.00
Tanzania	3.43	4.20	4.10	1.65	1.50	1.59	5.65	6.30	6.50			0.20	3.17
Malawi	1.70	1.70	1.70	1.78	2.22	2.47	3.03	3.78	4.20			0.42	11.11
Zambia	0.84	1.29	1.30	2.38	2.62	2.78	2.00	3.39	3.62			0.23	6.88
Kenya	2.20	2.20	2.20	1.77	1.82	1.82	3.90	4.00	4.00			0.00	0.00
Uganda	0.95	1.10	1.10	2.71	2.50	2.55	2.58	2.75	2.80			0.05	1.82
Zimbabwe	1.62	1.58	1.95	0.48	0.57	1.39	0.78	0.91	2.72			1.81	199.23
Former Soviet Union - 12													
Ukraine	4.99	5.40	5.50	7.19	5.62	6.82	35.89	30.30	37.50			7.20	23.77
Russia	2.50	2.73	2.70	5.70	5.08	5.52	14.28	13.87	14.90			1.03	7.41
South Asia													
India	9.57	9.70	9.50	3.01	3.11	3.11	28.77	30.20	29.50			-0.70	-2.32
Pakistan	1.33	1.39	1.40	5.19	5.63	5.43	6.90	7.80	7.60			-0.20	-2.56
Nepal	0.96	0.97	0.97	2.76	2.82	2.82	2.65	2.72	2.72			0.00	0.00
Southeast Asia													
Indonesia	3.80	3.60	3.60	3.16	3.28	3.33	12.00	11.80	12.00			0.20	1.69
Philippines	2.51	2.60	2.50	3.20	3.19	3.20	8.03	8.30	8.00			-0.30	-3.61
Vietnam	0.99	0.95	0.90	4.80	4.83	4.89	4.76	4.59	4.40			-0.19	-4.14
Thailand	1.22	1.26	1.20	3.70	4.46	4.50	4.50	5.60	5.40			-0.20	-3.57
Mexico	6.62	7.14	7.30	4.03	3.78	3.84	26.66	27.00	28.00			1.00	3.70
Canada	1.45	1.41	1.35	9.24	9.63	9.85	13.40	13.56	13.30			-0.26	-1.94
Turkey	0.52	0.62	0.54	11.54	11.45	11.48	6.00	7.10	6.20			-0.90	-12.68
Others	25.92	25.63	24.92	2.55	2.63	2.73	66.23	67.52	67.93			0.41	0.61

World and Selected Countries and Regions

Table 05 Barley Area, Yield, and Production

Country / Region	Area (Million hectares)			Yield (Metric tons per hectare)			Production (Million metric tons)			Change in Production			
	2019/20	Prel. 2020/21	2021/22 Proj. May	2019/20	Prel. 2020/21	2021/22 Proj. May	2019/20	Prel. 2020/21	2021/22 Proj. May	From last month		From last year	
										MMT	Percent	MMT	Percent
World	51.38	51.73	51.24	3.05	3.09	3.07	156.70	159.74	157.31			-2.43	-1.52
United States	0.90	0.86	0.85	4.18	4.17	4.12	3.76	3.60	3.51			-0.10	-2.64
Total Foreign	50.48	50.87	50.39	3.03	3.07	3.05	152.94	156.14	153.80			-2.34	-1.50
European Union	11.17	11.39	11.10	4.95	4.85	4.98	55.27	55.28	55.30			0.02	0.03
United Kingdom	1.16	1.39	1.15	6.93	5.85	6.18	8.05	8.12	7.08			-1.04	-12.84
Former Soviet Union - 12													
Russia	8.40	8.16	7.90	2.37	2.53	2.51	19.94	20.63	19.80			-0.83	-4.02
Ukraine	2.78	2.58	2.55	3.42	3.08	3.53	9.53	7.95	9.00			1.05	13.25
Kazakhstan	2.98	2.73	2.90	1.29	1.34	1.38	3.83	3.66	4.00			0.34	9.32
Belarus	0.41	0.38	0.35	2.69	2.76	2.57	1.10	1.05	0.90			-0.15	-14.29
Azerbaijan	0.34	0.35	0.37	2.97	2.81	2.74	1.02	0.97	1.00			0.03	3.09
Canada	2.73	2.81	3.35	3.81	3.82	3.73	10.38	10.74	12.50			1.76	16.38
Australia	4.05	4.40	4.00	2.22	2.95	2.50	9.00	13.00	10.00			-3.00	-23.08
Middle East													
Turkey	3.80	3.80	3.80	2.08	2.13	1.84	7.90	8.10	7.00			-1.10	-13.58
Iran	1.70	1.70	1.70	2.12	2.21	1.76	3.60	3.75	3.00			-0.75	-20.00
Iraq	1.20	1.20	1.10	1.33	1.29	1.18	1.60	1.55	1.30			-0.25	-16.13
Syria	1.50	1.50	1.30	1.33	1.27	0.85	2.00	1.90	1.10			-0.80	-42.11
Africa													
Ethiopia	1.00	1.00	1.00	2.30	2.35	2.35	2.30	2.35	2.35			0.00	0.00
Morocco	1.05	1.47	1.49	1.11	0.44	1.61	1.16	0.64	2.40			1.76	275.00
Algeria	1.03	1.03	1.03	1.95	1.80	1.56	2.00	1.85	1.60			-0.25	-13.28
Tunisia	0.47	0.36	0.37	1.94	1.28	1.91	0.91	0.47	0.70			0.24	50.54
South Africa	0.13	0.14	0.15	2.61	4.14	3.45	0.35	0.59	0.50			-0.09	-14.97
South America													
Argentina	1.12	1.09	1.25	3.39	4.13	3.84	3.80	4.50	4.80			0.30	6.67
Uruguay	0.17	0.18	0.19	3.68	3.72	3.73	0.61	0.67	0.69			0.02	2.99
Brazil	0.12	0.10	0.10	3.61	3.63	3.74	0.43	0.37	0.39			0.01	2.94
India	0.58	0.59	0.69	2.84	2.92	2.83	1.63	1.72	1.95			0.23	13.37
China	0.26	0.26	0.25	3.46	3.46	3.60	0.90	0.90	0.90			0.00	0.00
Mexico	0.36	0.29	0.34	2.81	2.76	2.82	1.01	0.80	0.96			0.16	20.00
Afghanistan	0.18	0.17	0.16	1.39	1.41	1.25	0.25	0.24	0.20			-0.04	-16.67
Others	1.80	1.80	1.82	2.44	2.41	2.41	4.38	4.35	4.39			0.04	0.94

World and Selected Countries and Regions

Table 06 Oats Area, Yield, and Production

Country / Region	Area (Million hectares)			Yield (Metric tons per hectare)			Production (Million metric tons)			Change in Production			
	2019/20	Prel. 2020/21	2021/22 Proj. May	2019/20	Prel. 2020/21	2021/22 Proj. May	2019/20	Prel. 2020/21	2021/22 Proj. May	From last month MMT	Percent	From last year MMT	Percent
World	9.55	10.18	9.92	2.40	2.51	2.47	22.95	25.53	24.55			-0.98	-3.83
United States	0.34	0.41	0.32	2.31	2.34	2.37	0.77	0.95	0.77			-0.18	-18.97
Total Foreign	9.22	9.78	9.60	2.41	2.51	2.48	22.18	24.58	23.78			-0.80	-3.25
European Union	2.37	2.58	2.50	2.94	3.20	2.98	6.95	8.25	7.45			-0.80	-9.69
Former Soviet Union - 12													
Russia	2.43	2.33	2.40	1.82	1.77	1.88	4.42	4.13	4.50			0.37	9.04
Ukraine	0.18	0.20	0.19	2.32	2.54	2.50	0.43	0.52	0.48			-0.04	-7.77
Belarus	0.16	0.15	0.16	2.30	2.47	2.34	0.37	0.37	0.38			0.01	1.35
Kazakhstan	0.24	0.23	0.25	1.10	1.05	1.10	0.27	0.24	0.28			0.04	14.58
Canada	1.17	1.31	1.20	3.62	3.48	3.58	4.23	4.58	4.30			-0.28	-6.03
South America													
Argentina	0.32	0.29	0.30	1.86	2.24	2.30	0.60	0.65	0.69			0.04	6.15
Brazil	0.40	0.43	0.43	2.21	1.99	2.18	0.88	0.85	0.93			0.08	9.57
Chile	0.10	0.11	0.11	4.92	5.60	5.45	0.48	0.64	0.60			-0.04	-5.96
Uruguay	0.02	0.02	0.02	2.19	1.95	2.00	0.04	0.04	0.04			0.00	8.11
Oceania													
Australia	0.70	0.95	0.85	1.23	1.76	1.53	0.86	1.68	1.30			-0.38	-22.39
New Zealand	0.01	0.00	0.00	5.40	6.00	6.00	0.03	0.02	0.02			0.00	0.00
China	0.53	0.53	0.53	1.19	1.19	1.19	0.63	0.63	0.63			0.00	0.00
Africa													
Algeria	0.09	0.09	0.09	1.29	1.29	1.29	0.11	0.11	0.11			0.00	0.00
Morocco	0.01	0.04	0.04	0.62	0.88	1.13	0.01	0.04	0.05			0.01	28.57
South Africa	0.02	0.03	0.02	0.81	2.15	1.50	0.02	0.06	0.03			-0.03	-46.43
Other Europe													
United Kingdom	0.18	0.21	0.22	5.91	4.91	5.58	1.08	1.03	1.20			0.17	16.39
Norway	0.07	0.07	0.07	4.29	4.29	4.29	0.30	0.30	0.30			0.00	0.00
Serbia	0.03	0.03	0.03	2.17	2.17	2.17	0.07	0.07	0.07			0.00	0.00
Albania	0.02	0.01	0.01	2.06	2.14	2.14	0.03	0.03	0.03			0.00	0.00
Bosnia and Herzegovina	0.01	0.01	0.01	2.70	3.09	2.82	0.03	0.03	0.03			0.00	-8.82
Turkey	0.10	0.10	0.11	2.30	2.40	2.38	0.23	0.24	0.25			0.01	4.17
Mexico	0.05	0.03	0.05	1.98	2.00	2.00	0.10	0.06	0.09			0.03	50.00
Others	0.03	0.03	0.03	1.67	1.66	1.76	0.05	0.05	0.05			0.00	6.25

World and Selected Countries and Regions

Table 07 Rye Area, Yield, and Production

Country / Region	Area (Million hectares)			Yield (Metric tons per hectare)			Production (Million metric tons)			Change in Production			
	2019/20	Prel.	2021/22 Proj.	2019/20	Prel.	2021/22 Proj.	2019/20	Prel.	2021/22 Proj.	From last month		From last year	
		2020/21	May		2020/21	May		2020/21	May	MMT	Percent	MMT	Percent
World	4.03	4.23	4.17	3.04	3.38	3.13	12.26	14.30	13.05			-1.25	-8.71
United States	0.13	0.13	0.14	2.16	2.19	2.08	0.27	0.29	0.29			-0.01	-2.05
Total Foreign	3.91	4.09	4.03	3.07	3.42	3.17	11.99	14.00	12.77			-1.24	-8.85
European Union	2.21	2.23	2.20	3.80	4.10	3.77	8.40	9.12	8.30			-0.82	-8.94
Former Soviet Union - 12													
Russia	0.82	0.97	0.95	1.73	2.44	2.16	1.42	2.38	2.05			-0.33	-13.72
Belarus	0.32	0.30	0.25	2.37	3.00	2.80	0.76	0.90	0.70			-0.20	-22.22
Ukraine	0.12	0.14	0.17	2.90	3.28	3.21	0.34	0.46	0.53			0.07	15.47
Kazakhstan	0.02	0.02	0.03	1.00	1.25	1.20	0.02	0.03	0.03			0.00	0.00
Turkey	0.11	0.11	0.12	2.91	2.91	2.87	0.32	0.32	0.33			0.01	3.13
Canada	0.10	0.15	0.16	3.23	3.19	3.19	0.33	0.49	0.51			0.02	4.51
South America													
Chile	0.00	0.00	0.00	5.00	5.00	5.00	0.01	0.01	0.01			0.00	0.00
Argentina	0.11	0.07	0.07	2.04	2.00	2.00	0.22	0.14	0.14			0.00	0.00
Other Europe													
Bosnia and Herzegovina	0.00	0.00	0.00	2.50	3.67	3.00	0.01	0.01	0.01			0.00	-18.18
Switzerland	0.00	0.00	0.00	5.50	5.50	5.50	0.01	0.01	0.01			0.00	0.00
Serbia	0.00	0.00	0.00	2.50	2.50	2.50	0.01	0.01	0.01			0.00	0.00
Australia	0.04	0.04	0.04	0.68	0.68	0.68	0.03	0.03	0.03			0.00	0.00
Others	0.04	0.04	0.04	2.51	2.48	2.50	0.11	0.11	0.11			0.00	0.92

World and Selected Countries and Regions

Table 08 Sorghum Area, Yield, and Production

Country / Region	Area (Million hectares)			Yield (Metric tons per hectare)			Production (Million metric tons)			Change in Production			
	2019/20	Prel. 2020/21	2021/22 Proj. May	2019/20	Prel. 2020/21	2021/22 Proj. May	2019/20	Prel. 2020/21	2021/22 Proj. May	From last month MMT Percent		From last year MMT Percent	
World	40.48	40.71	41.97	1.44	1.53	1.55	58.29	62.29	65.21			2.92	4.69
United States	1.89	2.06	2.51	4.58	4.59	4.32	8.67	9.47	10.85			1.37	14.48
Total Foreign	38.59	38.65	39.46	1.29	1.37	1.38	49.61	52.82	54.37			1.55	2.94
Africa													
Nigeria	5.90	5.60	5.70	1.13	1.17	1.19	6.67	6.57	6.80			0.23	3.50
Ethiopia	1.83	1.85	1.87	2.88	2.81	2.78	5.27	5.20	5.20			0.00	0.00
Sudan	6.83	7.00	7.00	0.54	0.71	0.71	3.71	5.00	5.00			0.00	0.00
Burkina Faso	1.89	1.80	1.80	0.99	0.87	0.94	1.87	1.56	1.70			0.14	8.97
Mali	1.50	1.83	1.50	1.01	0.98	1.00	1.51	1.80	1.50			-0.30	-16.71
Niger	3.75	3.70	3.70	0.51	0.52	0.51	1.90	1.92	1.90			-0.02	-1.14
Cameroon	0.73	0.74	0.74	1.67	1.62	1.62	1.22	1.20	1.20			0.00	0.00
Tanzania	0.65	0.70	0.70	1.13	1.07	1.07	0.73	0.75	0.75			0.00	0.00
Egypt	0.14	0.14	0.14	5.36	5.36	5.36	0.75	0.75	0.75			0.00	0.00
Uganda	0.42	0.43	0.43	0.95	0.94	0.94	0.40	0.40	0.40			0.00	0.00
Ghana	0.30	0.25	0.25	1.15	1.42	1.12	0.35	0.36	0.28			-0.08	-21.35
Mozambique	0.30	0.30	0.25	1.08	0.97	0.70	0.33	0.29	0.18			-0.12	-39.66
South Africa	0.04	0.05	0.05	3.67	3.88	3.78	0.16	0.19	0.17			-0.02	-10.53
Mexico	1.38	1.30	1.42	3.14	3.31	3.31	4.33	4.30	4.70			0.40	9.30
South America													
Argentina	0.58	0.73	0.95	4.35	4.38	4.37	2.50	3.20	4.15			0.95	29.69
Brazil	0.84	0.88	0.90	2.99	3.12	3.00	2.50	2.73	2.70			-0.03	-1.17
South Asia													
India	4.82	4.10	4.80	0.99	1.16	0.96	4.77	4.74	4.60			-0.14	-2.95
Pakistan	0.24	0.25	0.26	0.58	0.58	0.59	0.14	0.15	0.15			0.01	3.45
China	0.75	0.73	0.73	4.80	4.86	4.93	3.60	3.55	3.60			0.05	1.41
Australia	0.15	0.51	0.53	2.00	2.65	3.02	0.30	1.35	1.60			0.25	18.52
European Union	0.16	0.20	0.19	5.30	5.05	5.53	0.85	1.01	1.05			0.04	3.96
Others	5.40	5.57	5.57	1.07	1.04	1.08	5.78	5.80	5.99			0.19	3.31

World and Selected Countries and Regions

Table 09 Rice Area, Yield, and Production
World and Selected Countries and Regions

Country / Region	Area (Million hectares)			Yield (Metric tons per hectare)			Production (Million metric tons)			Change in Production			
	2019/20	Prel. 2020/21	2021/22 Proj. May	2019/20	Prel. 2020/21	2021/22 Proj. May	2019/20	Prel. 2020/21	2021/22 Proj. May	From last month		From last year	
										MMT	Percent	MMT	Percent
World	160.37	162.01	162.66	4.63	4.64	4.64	497.57	503.53	505.45			1.91	0.38
United States	1.00	1.21	1.08	8.38	8.54	8.57	5.88	7.23	6.46			-0.76	-10.55
Total Foreign	159.37	160.80	161.59	4.61	4.61	4.61	491.69	496.31	498.98			2.67	0.54
East Asia													
China	29.69	30.08	30.00	7.06	7.04	7.10	146.73	148.30	149.00			0.70	0.47
Japan	1.54	1.53	1.53	6.78	6.78	6.83	7.61	7.57	7.58			0.01	0.17
Korea, South	0.73	0.73	0.72	6.87	6.49	7.01	3.74	3.51	3.77			0.26	7.50
Korea, North	0.50	0.50	0.50	4.18	4.18	4.18	1.36	1.36	1.36			0.00	0.00
South Asia													
India	43.66	44.00	44.00	4.08	4.13	4.09	118.87	121.00	120.00			-1.00	-0.83
Bangladesh	11.83	11.50	11.65	4.55	4.51	4.55	35.85	34.60	35.33			0.73	2.11
Pakistan	3.00	3.20	3.30	3.60	3.80	3.73	7.20	8.10	8.20			0.10	1.23
Nepal	1.46	1.47	1.48	3.80	3.78	3.77	3.70	3.70	3.70			0.00	0.11
Sri Lanka	0.97	1.09	1.00	4.85	4.59	4.72	3.21	3.45	3.21			-0.24	-6.96
Southeast Asia													
Indonesia	11.60	11.80	11.80	4.71	4.70	4.71	34.70	35.20	35.30			0.10	0.28
Vietnam	7.38	7.35	7.30	5.88	5.90	5.90	27.10	27.10	26.90			-0.20	-0.74
Thailand	9.89	10.40	10.50	2.70	2.74	2.81	17.66	18.83	19.50			0.67	3.56
Burma	6.90	6.90	7.00	2.86	2.85	2.86	12.65	12.60	12.80			0.20	1.59
Philippines	4.64	4.80	4.75	4.08	4.10	4.11	11.93	12.40	12.30			-0.10	-0.81
Cambodia	3.26	3.27	3.30	2.89	2.90	2.93	5.74	5.78	5.90			0.12	2.02
Laos	0.84	0.96	0.97	3.01	3.14	3.19	1.60	1.90	1.95			0.05	2.63
Malaysia	0.70	0.68	0.68	4.01	4.07	4.07	1.83	1.80	1.80			0.00	0.00
South America													
Brazil	1.67	1.71	1.74	6.71	6.49	6.47	7.60	7.55	7.65			0.10	1.35
Peru	0.42	0.42	0.43	7.68	7.76	7.92	2.20	2.25	2.35			0.10	4.44
Africa													
Egypt	0.76	0.70	0.70	8.20	8.28	8.28	4.30	4.00	4.00			0.00	0.00
Madagascar	1.40	1.40	1.40	3.02	2.86	2.57	2.71	2.56	2.30			-0.26	-10.00
Nigeria	3.50	3.60	3.65	2.29	2.16	2.17	5.04	4.89	5.00			0.11	2.25
European Union	0.42	0.42	0.42	6.88	6.73	6.78	1.99	1.96	1.99			0.03	1.43
Iran	0.58	0.58	0.58	5.25	5.27	5.27	1.99	2.00	2.00			0.00	0.00
Others	12.05	11.73	12.20	3.08	3.09	3.12	24.40	23.91	25.09			1.18	4.95

Yield is on a rough basis, before the milling process. Production is on a milled basis, after the milling process.

Table 10 Total Oilseed Area, Yield, and Production
World and Selected Countries and Regions

Country / Region	Area (Million hectares)			Yield (Metric tons per hectare)			Production (Million metric tons)			Change in Production			
	2019/20	Prel. 2020/21	2021/22 Proj. May	2019/20	Prel. 2020/21	2021/22 Proj. May	2019/20	Prel. 2020/21	2021/22 Proj. May	From last month		From last year	
										MMT	Percent	MMT	Percent
World Total	--	--	--	--	--	--	580.60	599.60	632.23			32.63	5.44
Total Foreign	--	--	--	--	--	--	473.62	477.25	501.94			24.69	5.17
Oilseed, Copra	--	--	--	--	--	--	5.84	5.72	5.98			0.26	4.49
Oilseed, Palm Kernel	--	--	--	--	--	--	19.15	19.12	19.76			0.64	3.33
Major Oilseeds	246.01	250.96	257.59	2.26	2.29	2.35	555.62	574.75	606.49			31.74	5.52
United States	36.83	38.72	40.92	2.91	3.16	3.18	106.98	122.35	130.29			7.94	6.49
Foreign Oilseeds	209.18	212.24	216.67	2.14	2.13	2.20	448.64	452.40	476.20			23.80	5.26
South America	63.80	65.22	68.33	3.18	3.19	3.27	203.09	207.86	223.15			15.30	7.36
Brazil	38.77	40.25	42.21	3.45	3.49	3.53	133.78	140.51	149.15			8.64	6.15
Argentina	19.03	18.92	19.59	2.82	2.73	2.92	53.64	51.58	57.14			5.55	10.76
Paraguay	3.38	3.24	3.54	3.02	3.09	3.00	10.21	10.02	10.62			0.60	6.00
Bolivia	1.49	1.51	1.53	2.00	2.09	2.07	2.99	3.15	3.16			0.01	0.44
Uruguay	0.98	1.17	1.32	2.14	1.92	2.06	2.09	2.24	2.72			0.48	21.48
China	25.22	25.62	25.35	2.50	2.56	2.55	63.03	65.47	64.68			-0.79	-1.20
South Asia	41.30	43.21	42.52	0.95	0.95	0.98	39.34	41.26	41.66			0.41	0.98
India	37.85	39.95	39.35	0.94	0.95	0.97	35.62	38.15	38.20			0.05	0.14
Pakistan	3.09	2.90	2.80	1.06	0.92	1.08	3.27	2.66	3.02			0.36	13.42
European Union	10.65	10.80	10.90	2.62	2.61	2.75	27.94	28.13	29.98			1.85	6.56
United Kingdom	0.50	0.38	0.32	3.38	2.77	3.41	1.68	1.05	1.08			0.03	2.38
Former Soviet Union - 12	26.10	25.69	25.97	1.96	1.74	1.91	51.05	44.66	49.51			4.85	10.86
Russia	12.56	12.50	12.80	1.73	1.61	1.68	21.70	20.14	21.45			1.31	6.49
Ukraine	9.70	9.65	9.48	2.52	2.06	2.44	24.46	19.85	23.15			3.30	16.62
Uzbekistan	1.01	0.98	0.98	1.36	1.41	1.36	1.37	1.37	1.33			-0.04	-2.84
Canada	10.76	10.41	11.09	2.40	2.45	2.43	25.82	25.45	26.98			1.52	5.99
Africa	22.78	22.17	22.90	1.01	1.03	1.01	22.92	22.88	23.22			0.33	1.46
Nigeria	4.35	4.47	4.47	1.23	1.21	1.21	5.36	5.43	5.43			0.00	0.00
South Africa	1.27	1.37	1.45	1.70	1.91	1.87	2.16	2.61	2.71			0.10	3.83
Tanzania	1.60	1.45	1.45	0.85	0.87	0.87	1.36	1.26	1.26			0.00	0.00
Southeast Asia	3.12	3.25	3.20	1.38	1.36	1.37	4.30	4.41	4.38			-0.04	-0.79
Burma	1.87	2.03	2.04	1.18	1.17	1.19	2.21	2.37	2.42			0.04	1.81
Indonesia	0.95	0.94	0.89	1.55	1.54	1.55	1.47	1.45	1.39			-0.06	-4.15
Australia	1.90	2.73	3.16	1.35	1.77	1.50	2.57	4.83	4.75			-0.08	-1.66
Turkey	1.42	1.18	1.31	2.33	2.46	2.49	3.31	2.89	3.27			0.38	13.06
Others	1.65	1.59	1.64	2.17	2.20	2.17	3.58	3.51	3.56			0.05	1.40

World Total and Total Foreign: (Major Oilseeds plus copra and palm kernel) Major Oilseeds: (soybeans, sunflowerseeds, peanuts(inshell), cottonseed and rapeseed)

Table 11 Soybean Area, Yield, and Production

Country / Region	Area (Million hectares)			Yield (Metric tons per hectare)			Production (Million metric tons)			Change in Production			
	2019/20	Prel. 2020/21	2021/22 Proj. May	2019/20	Prel. 2020/21	2021/22 Proj. May	2019/20	Prel. 2020/21	2021/22 Proj. May	From last month		From last year	
										MMT	Percent	MMT	Percent
World	122.65	127.84	132.51	2.77	2.84	2.91	339.42	362.95	385.53			22.58	6.22
United States	30.33	33.31	35.09	3.19	3.38	3.42	96.67	112.55	119.88			7.34	6.52
Total Foreign	92.32	94.53	97.42	2.63	2.65	2.73	242.75	250.40	265.64			15.24	6.09
South America													
Brazil	36.90	38.60	40.40	3.48	3.52	3.56	128.50	136.00	144.00			8.00	5.88
Argentina	16.70	16.74	17.20	2.92	2.81	3.02	48.80	47.00	52.00			5.00	10.64
Paraguay	3.30	3.15	3.45	3.06	3.14	3.04	10.10	9.90	10.50			0.60	6.06
Bolivia	1.36	1.39	1.40	2.08	2.17	2.14	2.83	3.00	3.00			0.00	0.00
Uruguay	0.92	1.10	1.25	2.17	1.93	2.08	1.99	2.13	2.60			0.48	22.35
East Asia													
China	9.30	9.87	9.60	1.95	1.99	1.98	18.10	19.60	19.00			-0.60	-3.06
Korea, South	0.06	0.06	0.06	1.81	1.47	1.71	0.11	0.08	0.09			0.01	16.05
Korea, North	0.15	0.15	0.15	1.50	1.50	1.50	0.23	0.23	0.23			0.00	0.00
Japan	0.14	0.14	0.15	1.47	1.65	1.66	0.21	0.24	0.24			0.01	2.55
India	12.19	12.70	12.70	0.76	0.82	0.88	9.30	10.45	11.20			0.75	7.18
Canada	2.27	2.04	2.20	2.71	3.11	2.91	6.15	6.35	6.40			0.05	0.79
Former Soviet Union - 12													
Russia	2.78	2.71	2.90	1.57	1.59	1.59	4.36	4.31	4.60			0.29	6.80
Ukraine	1.96	1.46	1.50	2.29	2.05	2.33	4.50	3.00	3.50			0.50	16.67
European Union	0.90	0.94	0.98	2.90	2.74	2.87	2.62	2.58	2.80			0.23	8.74
Southeast Asia													
Indonesia	0.40	0.39	0.35	1.20	1.22	1.21	0.48	0.48	0.43			-0.05	-10.53
Vietnam	0.04	0.04	0.03	1.57	1.57	1.67	0.07	0.06	0.05			-0.01	-9.09
Thailand	0.03	0.03	0.03	1.53	1.63	1.63	0.05	0.05	0.05			0.00	0.00
Burma	0.14	0.14	0.13	1.04	1.04	1.04	0.14	0.14	0.14			-0.01	-3.57
Serbia	0.22	0.22	0.22	2.73	2.89	2.84	0.60	0.64	0.63			-0.01	-1.57
Mexico	0.15	0.16	0.19	1.57	1.55	1.58	0.24	0.24	0.30			0.06	25.00
Africa													
South Africa	0.71	0.83	0.85	1.77	2.17	2.06	1.25	1.80	1.75			-0.05	-2.78
Nigeria	1.00	1.00	1.00	0.88	0.88	0.88	0.88	0.88	0.88			0.00	0.00
Zambia	0.20	0.19	0.19	1.43	1.50	1.50	0.28	0.29	0.29			0.00	0.00
Uganda	0.05	0.05	0.05	0.60	0.60	0.60	0.03	0.03	0.03			0.00	0.00
Middle East													
Iran	0.07	0.07	0.07	2.43	2.41	2.29	0.17	0.17	0.16			-0.01	-5.33
Turkey	0.03	0.03	0.03	3.89	3.79	3.67	0.11	0.11	0.11			0.00	0.00
Others	0.36	0.36	0.36	1.92	1.92	1.92	0.69	0.68	0.68			0.00	0.00

World and Selected Countries and Regions

Table 12 Cottonseed Area, Yield, and Production

Country / Region	Area (Million hectares)			Yield (Metric tons per hectare)			Production (Million metric tons)			Change in Production			
	2019/20	Prel. 2020/21	2021/22 Proj. May	2019/20	Prel. 2020/21	2021/22 Proj. May	2019/20	Prel. 2020/21	2021/22 Proj. May	From last month		From last year	
										MMT	Percent	MMT	Percent
World	34.28	30.99	32.42	1.30	1.35	1.35	44.42	41.70	43.67			1.97	4.72
United States	4.65	3.35	3.90	1.16	1.22	1.25	5.39	4.09	4.87			0.78	19.09
Total Foreign	29.63	27.64	28.52	1.32	1.36	1.36	39.02	37.61	38.79			1.19	3.16
South Asia													
India	13.50	13.00	13.00	0.93	0.95	0.95	12.52	12.31	12.31			0.00	0.00
Pakistan	2.45	2.20	2.10	1.10	0.89	1.09	2.69	1.95	2.30			0.35	17.80
China	3.45	3.25	3.20	3.10	3.50	3.37	10.68	11.37	10.78			-0.59	-5.17
Former Soviet Union - 12													
Uzbekistan	1.01	0.98	0.98	1.36	1.41	1.36	1.37	1.37	1.33			-0.04	-2.84
Turkmenistan	0.55	0.55	0.55	0.66	0.66	0.64	0.36	0.36	0.35			-0.01	-2.22
Tajikistan	0.18	0.16	0.17	1.27	1.22	1.15	0.23	0.20	0.20			0.00	0.00
Kazakhstan	0.13	0.11	0.12	1.13	0.95	0.93	0.14	0.11	0.11			0.00	1.90
South America													
Brazil	1.67	1.45	1.60	2.75	2.63	2.75	4.58	3.82	4.40			0.58	15.22
Argentina	0.42	0.44	0.42	0.68	0.67	0.70	0.28	0.29	0.29			0.00	1.03
Middle East													
Turkey	0.57	0.35	0.45	1.98	2.71	2.47	1.13	0.95	1.11			0.16	17.21
Syria	0.03	0.03	0.03	2.36	2.36	2.20	0.06	0.06	0.06			0.00	-6.78
Iran	0.08	0.08	0.08	1.16	1.16	1.10	0.09	0.09	0.09			-0.01	-5.38
Australia	0.06	0.28	0.41	3.12	2.73	2.86	0.19	0.75	1.17			0.42	55.93
European Union	0.35	0.34	0.32	1.81	1.58	1.78	0.64	0.54	0.58			0.04	7.45
Africa													
Burkina Faso	0.58	0.56	0.59	0.42	0.46	0.44	0.24	0.25	0.26			0.01	3.56
Mali	0.74	0.17	0.70	0.52	0.49	0.52	0.38	0.08	0.37			0.28	350.62
Cameroon	0.25	0.25	0.25	1.29	1.28	1.20	0.32	0.32	0.30			-0.02	-6.25
Cote d'Ivoire	0.41	0.45	0.45	0.66	0.61	0.59	0.27	0.27	0.27			0.00	-1.11
Benin	0.67	0.62	0.65	0.71	0.73	0.71	0.47	0.45	0.46			0.02	3.81
Tanzania	0.60	0.45	0.45	0.43	0.36	0.36	0.26	0.16	0.16			0.00	0.00
Egypt	0.10	0.07	0.07	0.92	1.00	1.06	0.09	0.07	0.07			0.01	13.85
Nigeria	0.15	0.27	0.27	0.57	0.56	0.56	0.09	0.15	0.15			0.00	0.00
Uganda	0.09	0.10	0.10	1.67	1.40	1.40	0.15	0.14	0.14			0.00	0.00
Zimbabwe	0.18	0.24	0.21	0.40	0.55	0.36	0.07	0.13	0.08			-0.06	-42.86
Sudan	0.20	0.20	0.20	1.53	1.41	1.41	0.31	0.28	0.28			0.00	0.00
Mexico	0.23	0.15	0.15	2.37	2.40	2.33	0.53	0.35	0.35			0.00	0.57
Burma	0.25	0.24	0.25	1.22	1.17	1.18	0.30	0.28	0.29			0.01	3.57
Others	0.78	0.70	0.76	0.76	0.74	0.72	0.59	0.52	0.55			0.02	4.59

World and Selected Countries and Regions

Table 13 Peanut Area, Yield, and Production

Country / Region	Area (Million hectares)			Yield (Metric tons per hectare)			Production (Million metric tons)			Change in Production			
	2019/20	Prel. 2020/21	2021/22 Proj. May	2019/20	Prel. 2020/21	2021/22 Proj. May	2019/20	Prel. 2020/21	2021/22 Proj. May	From last month MMT	Percent	From last year MMT	Percent
World	28.09	29.27	28.80	1.71	1.67	1.71	48.09	48.99	49.17			0.18	0.37
United States	0.56	0.65	0.63	4.41	4.25	4.54	2.48	2.78	2.87			0.09	3.06
Total Foreign	27.53	28.62	28.17	1.66	1.61	1.64	45.61	46.21	46.30			0.10	0.21
China	4.63	4.60	4.75	3.78	3.80	3.83	17.52	17.50	18.20			0.70	4.00
Africa													
Nigeria	3.20	3.20	3.20	1.38	1.38	1.38	4.40	4.40	4.40			0.00	0.00
Sudan	3.13	3.00	3.00	0.90	0.83	0.83	2.83	2.50	2.50			0.00	0.00
Senegal	1.11	1.22	1.20	1.28	1.31	1.29	1.42	1.60	1.55			-0.05	-3.13
Cameroon	0.43	0.43	0.43	1.40	1.40	1.40	0.60	0.60	0.60			0.00	0.00
Ghana	0.33	0.33	0.33	1.36	1.36	1.36	0.45	0.45	0.45			0.00	0.00
Chad	0.79	0.80	0.80	1.14	1.13	1.13	0.90	0.90	0.90			0.00	0.00
Malawi	0.40	0.40	0.40	0.88	0.88	0.88	0.35	0.35	0.35			0.00	0.00
Congo (Kinshasa)	0.50	0.50	0.50	0.92	0.90	0.90	0.46	0.45	0.45			0.00	0.00
Niger	0.90	0.92	0.92	0.60	0.60	0.60	0.54	0.55	0.55			0.00	0.00
Mali	0.45	0.43	0.43	0.82	1.00	1.00	0.37	0.43	0.43			0.00	0.00
Uganda	0.43	0.43	0.43	0.71	0.71	0.71	0.30	0.30	0.30			0.00	0.00
Burkina Faso	0.49	0.49	0.50	0.81	0.82	0.80	0.40	0.40	0.40			0.00	0.00
Guinea	0.91	0.90	0.90	1.05	1.00	1.00	0.96	0.90	0.90			0.00	0.00
Egypt	0.06	0.06	0.06	3.20	3.20	3.20	0.21	0.21	0.21			0.00	0.00
Central African Republic	0.10	0.10	0.10	1.50	1.50	1.50	0.15	0.15	0.15			0.00	0.00
South Africa	0.04	0.04	0.04	1.76	2.00	2.00	0.07	0.08	0.08			0.00	0.00
Mozambique	0.38	0.38	0.38	0.34	0.34	0.34	0.13	0.13	0.13			0.00	0.00
Cote d'Ivoire	0.15	0.15	0.15	1.45	1.45	1.45	0.21	0.21	0.21			0.00	0.00
Benin	0.19	0.19	0.19	0.92	0.92	0.92	0.18	0.18	0.18			0.00	0.00
South Asia													
India	4.83	5.80	5.20	1.30	1.16	1.15	6.26	6.70	6.00			-0.70	-10.45
Pakistan	0.09	0.10	0.10	0.98	0.92	0.92	0.09	0.09	0.09			0.00	0.00
Southeast Asia													
Indonesia	0.55	0.55	0.54	1.80	1.78	1.78	0.99	0.97	0.96			-0.01	-1.03
Burma	0.89	1.06	1.06	1.55	1.48	1.51	1.38	1.56	1.60			0.04	2.43
Vietnam	0.17	0.17	0.16	2.50	2.50	2.50	0.43	0.41	0.40			-0.01	-3.15
Thailand	0.02	0.02	0.02	1.67	1.67	1.67	0.04	0.04	0.04			0.00	0.00
South America													
Argentina	0.37	0.35	0.35	3.50	3.86	4.00	1.29	1.35	1.40			0.05	3.70
Brazil	0.16	0.17	0.18	3.93	3.88	3.89	0.63	0.64	0.70			0.06	9.38
Mexico	0.05	0.06	0.05	1.74	1.73	1.74	0.08	0.10	0.09			-0.01	-9.80
Others	1.80	1.80	1.81	1.12	1.15	1.16	2.00	2.07	2.10			0.03	1.45

Table 14 Sunflowerseed Area, Yield, and Production

Country / Region	Area (Million hectares)			Yield (Metric tons per hectare)			Production (Million metric tons)			Change in Production			
	2019/20	Prel. 2020/21	2021/22 Proj. May	2019/20	Prel. 2020/21	2021/22 Proj. May	2019/20	Prel. 2020/21	2021/22 Proj. May	From last month		From last year	
										MMT	Percent	MMT	Percent
World	26.35	26.90	27.02	2.08	1.85	2.03	54.72	49.70	54.92			5.22	10.50
United States	0.51	0.67	0.47	1.75	2.01	1.91	0.89	1.35	0.90			-0.46	-33.70
Total Foreign	25.85	26.22	26.55	2.08	1.84	2.03	53.83	48.34	54.02			5.67	11.74
Former Soviet Union - 12													
Russia	8.36	8.35	8.50	1.83	1.59	1.71	15.31	13.27	14.50			1.23	9.28
Ukraine	6.40	7.00	6.90	2.58	2.01	2.42	16.50	14.10	16.70			2.60	18.44
Kazakhstan	0.82	0.69	0.70	1.03	1.23	1.29	0.84	0.84	0.90			0.06	6.64
European Union	4.32	4.35	4.40	2.19	2.03	2.27	9.44	8.85	10.00			1.15	12.99
South America													
Argentina	1.53	1.38	1.60	2.11	2.11	2.13	3.24	2.90	3.40			0.50	17.24
Uruguay	0.06	0.07	0.07	1.67	1.69	1.69	0.10	0.11	0.12			0.01	4.55
Bolivia	0.14	0.13	0.13	1.19	1.20	1.30	0.16	0.15	0.16			0.01	9.33
Brazil	0.05	0.03	0.03	1.60	1.61	1.63	0.08	0.05	0.05			0.00	-2.00
Paraguay	0.03	0.03	0.03	1.39	1.53	1.55	0.04	0.05	0.05			0.00	4.35
China	1.25	1.25	1.10	2.60	2.64	2.64	3.25	3.30	2.90			-0.40	-12.12
South Asia													
India	0.23	0.25	0.25	0.61	0.76	0.75	0.14	0.19	0.19			0.00	1.62
Pakistan	0.14	0.15	0.15	1.04	1.07	1.10	0.15	0.16	0.17			0.01	3.13
Middle East													
Turkey	0.73	0.72	0.76	2.40	2.17	2.38	1.75	1.56	1.80			0.24	15.38
Iran	0.04	0.04	0.04	1.08	1.08	1.00	0.04	0.04	0.04			0.00	2.33
Israel	0.00	0.00	0.00	5.00	9.00	7.00	0.01	0.01	0.01			0.00	-22.22
Africa													
Egypt	0.01	0.01	0.01	2.38	2.38	2.38	0.02	0.02	0.02			0.00	0.00
Morocco	0.02	0.02	0.02	1.32	1.25	1.25	0.03	0.03	0.03			0.00	0.00
South Africa	0.50	0.48	0.55	1.58	1.46	1.56	0.79	0.70	0.85			0.15	21.43
Burma	0.60	0.60	0.60	0.65	0.65	0.65	0.39	0.39	0.39			0.00	0.00
Canada	0.03	0.05	0.04	2.17	2.24	2.14	0.06	0.10	0.08			-0.03	-25.74
Australia	0.01	0.02	0.02	1.25	1.31	1.31	0.02	0.02	0.02			0.00	0.00
Others	0.59	0.64	0.67	2.52	2.36	2.48	1.50	1.51	1.66			0.15	9.66

World and Selected Countries and Regions

Table 15 Rapeseed Area, Yield, and Production

Country / Region	Area (Million hectares)			Yield (Metric tons per hectare)			Production (Million metric tons)			Change in Production			
	2019/20	Prel.	2021/22 Proj.	2019/20	Prel.	2021/22 Proj.	2019/20	Prel.	2021/22 Proj.	From last month		From last year	
		2020/21	May		2020/21	May		2020/21	May	MMT	Percent	MMT	Percent
World	34.63	35.96	36.84	1.99	1.99	1.99	68.98	71.42	73.21			1.79	2.51
United States	0.78	0.73	0.83	2.00	2.16	2.13	1.55	1.58	1.77			0.19	12.25
Total Foreign	33.85	35.23	36.01	1.99	1.98	1.98	67.42	69.84	71.44			1.60	2.29
European Union	5.08	5.17	5.20	3.00	3.13	3.19	15.24	16.17	16.60			0.43	2.66
United Kingdom	0.50	0.38	0.32	3.38	2.77	3.41	1.68	1.05	1.08			0.03	2.38
Switzerland	0.02	0.02	0.02	3.14	3.14	3.14	0.07	0.07	0.07			0.00	0.00
Canada	8.46	8.32	8.85	2.32	2.28	2.32	19.61	19.00	20.50			1.50	7.89
China	6.58	6.65	6.70	2.05	2.06	2.06	13.49	13.70	13.80			0.10	0.73
South Asia													
India	7.10	8.20	8.20	1.04	1.04	1.04	7.40	8.50	8.50			0.00	0.00
Pakistan	0.40	0.45	0.45	0.88	1.02	1.03	0.35	0.46	0.47			0.01	1.09
Bangladesh	0.25	0.25	0.25	0.92	0.92	0.92	0.23	0.23	0.23			0.00	0.00
Former Soviet Union - 12													
Russia	1.42	1.45	1.40	1.44	1.77	1.68	2.04	2.57	2.35			-0.22	-8.45
Ukraine	1.34	1.19	1.08	2.59	2.31	2.74	3.47	2.75	2.95			0.20	7.27
Belarus	0.34	0.35	0.32	1.68	1.57	1.59	0.58	0.55	0.50			-0.05	-9.09
Kazakhstan	0.27	0.12	0.25	0.90	1.23	1.10	0.24	0.15	0.28			0.12	79.74
Australia	1.80	2.40	2.70	1.29	1.67	1.30	2.33	4.00	3.50			-0.50	-12.50
South America													
Chile	0.04	0.03	0.04	4.05	4.00	4.00	0.15	0.14	0.14			0.00	2.94
Paraguay	0.04	0.05	0.04	1.50	1.41	1.45	0.06	0.07	0.06			0.00	-1.54
Ethiopia	0.02	0.03	0.03	1.83	1.80	1.80	0.04	0.05	0.05			0.00	0.00
Others	0.20	0.17	0.18	2.30	2.28	2.11	0.45	0.40	0.38			-0.02	-4.28

World and Selected Countries and Regions

Table 16 Copra, Palm Kernel, and Palm Oil Production

Country / Region	Production (Million metric tons)			Change in Production			
	2019/20	Prel.	2021/22 Proj.	From last month		From last year	
		2020/21	May	MMT	Percent	MMT	Percent
Oilseed, Copra							
Philippines	2.50	2.40	2.60			0.20	8.33
Indonesia	1.66	1.67	1.68			0.01	0.60
India	0.75	0.75	0.79			0.04	5.33
Vietnam	0.28	0.28	0.29			0.01	3.57
Mexico	0.22	0.20	0.20			0.00	0.00
Papua New Guinea	0.08	0.08	0.08			0.00	0.00
Thailand	0.07	0.07	0.07			0.00	0.00
Sri Lanka	0.07	0.07	0.07			0.00	0.00
Solomon Islands	0.03	0.03	0.03			0.00	0.00
Cote d'Ivoire	0.03	0.03	0.03			0.00	0.00
World	5.84	5.72	5.98			0.26	4.55
Oilseed, Palm Kernel							
Indonesia	11.25	11.46	11.70			0.24	2.09
Malaysia	4.75	4.50	4.80			0.30	6.67
Thailand	0.75	0.80	0.85			0.05	6.25
Nigeria	0.73	0.73	0.73			0.00	0.00
Colombia	0.31	0.29	0.30			0.01	3.45
Guatemala	0.17	0.17	0.18			0.01	5.88
Papua New Guinea	0.16	0.16	0.16			0.00	0.00
Cameroon	0.15	0.15	0.15			0.00	0.00
Brazil	0.14	0.14	0.15			0.00	0.00
Ecuador	0.11	0.13	0.12			-0.01	-7.69
World	19.15	19.12	19.76			0.64	3.35
Oil, Palm							
Indonesia	42.50	43.50	44.50			1.00	2.30
Malaysia	19.26	19.00	19.70			0.70	3.68
Thailand	2.30	2.40	3.10			0.70	29.17
Colombia	1.53	1.56	1.65			0.09	5.77
Nigeria	1.22	1.28	1.28			0.00	0.00
Guatemala	0.86	0.87	0.88			0.02	2.33
Papua New Guinea	0.56	0.56	0.57			0.00	0.00
Brazil	0.54	0.55	0.55			0.00	0.00
Ecuador	0.46	0.54	0.55			0.01	1.85
Cote d'Ivoire	0.52	0.52	0.52			0.00	0.00
World	72.70	73.67	76.38			2.71	3.68

World and Selected Countries and Regions

Table 17 Cotton Area, Yield, and Production

Country / Region	Area (Million hectares)			Yield (Kilograms per hectare)			Production (Million 480 lb. bales)			Change in Production			
	2019/20	Prel. 2020/21	2021/22 Proj. May	2019/20	Prel. 2020/21	2021/22 Proj. May	2019/20	Prel. 2020/21	2021/22 Proj. May	From last month MBales	Percent	From last year MBales	Percent
World	34.96	31.66	33.08	756	778	786	121.42	113.11	119.44			6.34	5.60
United States	4.65	3.35	3.90	932	950	950	19.91	14.61	17.00			2.39	16.37
Total Foreign	30.31	28.31	29.18	729	758	764	101.50	98.50	102.44			3.94	4.00
South Asia													
India	13.50	13.00	13.00	464	477	486	28.80	28.50	29.00			0.50	1.75
Pakistan	2.45	2.20	2.10	551	445	550	6.20	4.50	5.30			0.80	17.78
China	3.45	3.25	3.20	1,720	1,976	1,871	27.25	29.50	27.50			-2.00	-6.78
South America													
Brazil	1.67	1.45	1.60	1,802	1,727	1,803	13.78	11.50	13.25			1.75	15.22
Argentina	0.42	0.44	0.42	682	671	700	1.30	1.34	1.35			0.01	0.75
Paraguay	0.01	0.01	0.01	416	416	416	0.02	0.02	0.02			0.00	0.00
Africa													
Burkina Faso	0.58	0.56	0.59	330	358	351	0.88	0.92	0.95			0.04	3.83
Mali	0.74	0.17	0.70	400	376	401	1.35	0.29	1.29			1.01	352.63
Cote d'Ivoire	0.41	0.45	0.45	528	494	484	0.99	1.01	1.00			-0.01	-0.99
Benin	0.67	0.62	0.65	467	478	469	1.43	1.35	1.40			0.05	3.70
Egypt	0.10	0.07	0.07	664	720	762	0.31	0.22	0.25			0.03	13.95
Cameroon	0.25	0.25	0.25	562	557	523	0.65	0.64	0.60			-0.04	-6.25
Tanzania	0.60	0.45	0.45	216	181	181	0.60	0.38	0.38			0.00	0.00
Nigeria	0.15	0.27	0.27	290	282	282	0.20	0.35	0.35			0.00	0.00
Zimbabwe	0.18	0.24	0.21	230	318	207	0.19	0.35	0.20			-0.15	-42.86
Ethiopia	0.08	0.08	0.08	680	637	637	0.25	0.24	0.24			0.00	0.00
Former Soviet Union - 12													
Uzbekistan	1.01	0.98	0.98	754	782	755	3.50	3.50	3.40			-0.10	-2.86
Turkmenistan	0.55	0.55	0.55	368	368	356	0.92	0.92	0.90			-0.02	-2.17
Tajikistan	0.18	0.16	0.17	708	680	640	0.59	0.50	0.50			0.00	0.00
Kazakhstan	0.13	0.11	0.12	627	534	521	0.36	0.27	0.28			0.01	1.85
Middle East													
Turkey	0.57	0.35	0.45	1,318	1,804	1,645	3.45	2.90	3.40			0.50	17.24
Syria	0.03	0.03	0.03	1,219	1,219	1,132	0.14	0.14	0.13			-0.01	-7.14
Iran	0.08	0.08	0.08	748	748	708	0.28	0.28	0.26			-0.02	-5.45
Australia	0.06	0.28	0.41	2,268	1,979	2,071	0.63	2.50	3.90			1.40	56.00
Mexico	0.23	0.15	0.15	1,519	1,532	1,524	1.57	1.02	1.05			0.03	2.94
Burma	0.25	0.24	0.25	641	635	644	0.72	0.70	0.73			0.03	3.57
Others	2.01	1.92	1.95	562	531	538	5.18	4.68	4.83			0.15	3.18

World and Selected Countries and Regions

TABLE 18

The table below presents a record of the May projection and the final Estimate. Using world wheat production as an example, the "root mean square error" means that chances are 2 out of 3 that the current forecast will not be above or below the final estimate by more than 3.1 percent. Chances are 9 out of 10 (90% confidence level) that the difference will not exceed 5.2 percent. The average difference between the May projection and the final estimate is 16.3 million tons, ranging from 1.7 million to 35 million tons. The May projection has been below the estimate 24 times and above 16 times.

RELIABILITY OF PRODUCTION PROJECTIONS 1/

COMMODITY AND REGION	Root mean square error	90 percent confidence interval	Difference between forecast and final estimate				
			Average	Smallest	Largest	Years	
						Below final	Above final
	Percent		---Million metric tons---				
WHEAT							
World	3.1	5.2	16.3	1.7	35.0	24	16
U.S.	6.6	11.1	2.8	0.0	9.8	21	19
Foreign	3.2	5.5	15.1	1.6	32.9	23	17
COARSE GRAINS 2/							
World	3.7	6.2	26.8	1.1	103.6	19	21
U.S.	13.9	23.6	21.5	0.9	103.8	21	19
Foreign	2.7	4.6	14.6	0.2	42.8	19	21
RICE (Milled)							
World	2.4	4.0	6.8	0.0	21.8	24	16
U.S.	7.9	13.5	0.4	0.0	1.1	22	18
Foreign	2.4	4.1	6.8	0.4	22.0	24	16
SOYBEANS							
World	NA	NA	10.6	0.4	23.1	7	5
U.S.	9.0	15.3	4.8	0.0	16.1	21	19
Foreign	NA	NA	6.2	0.2	16.9	8	4
COTTON			---Million 480-lb. bales---				
World	6.2	10.5	4.4	0.1	16.7	23	17
U.S.	12.2	20.6	1.7	0.1	5.5	19	21
Foreign	6.2	10.5	3.4	0.1	12.2	21	19
UNITED STATES			-----Million bushels-----				
<i>CORN</i>	14.8	25.1	772	8	4,010	17	23
<i>SORGHUM</i>	19.8	33.7	84	0	228	20	19
<i>BARLEY</i>	14.0	23.8	26	1	206	16	24
<i>OATS</i>	25.2	42.7	30	1	231	9	31

1/ Marketing years 1981/82 through 2020/21 for grains, soybeans (U.S. only), and cotton. Final for grains, soybeans, and cotton is defined as the first *November* estimate following the marketing year for 1981/82 through 2019/20, and for 2020/21 the last month's estimate.

2/ Includes corn, sorghum, barley, oats, rye, millet, and mixed grain

May 2021

Global Market Analysis, FAS, USDA