



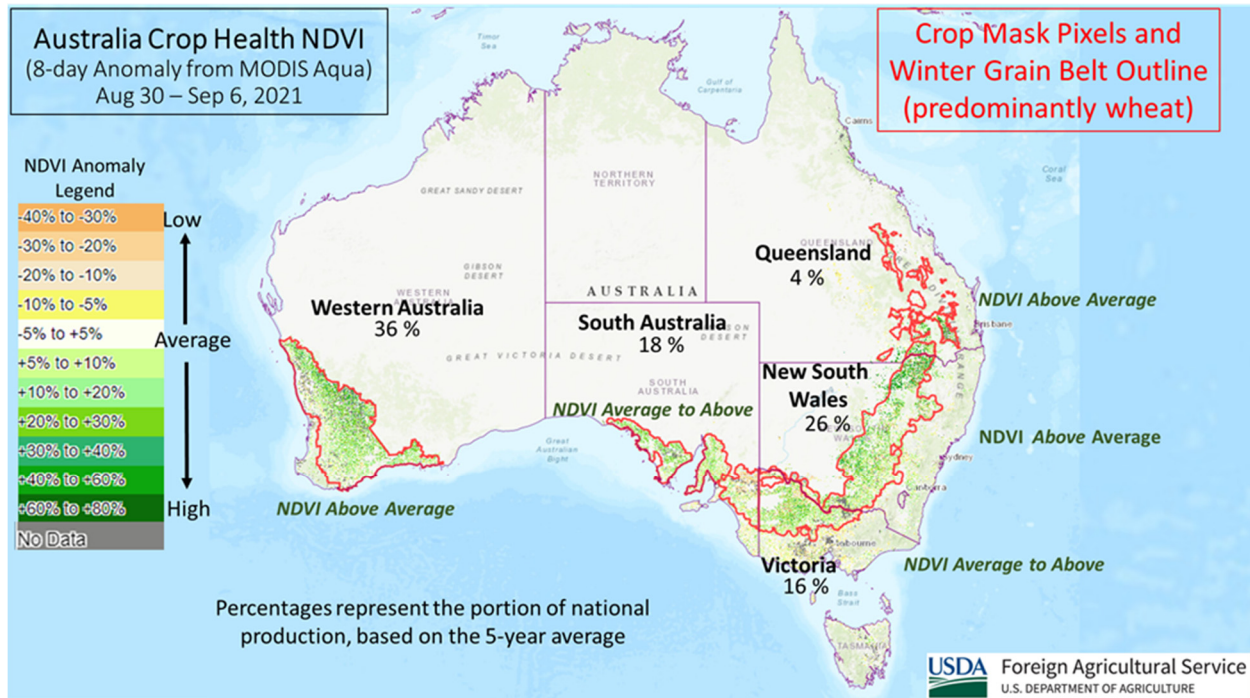
United States
Department of
Agriculture

Foreign
Agricultural
Service

World Agricultural Production

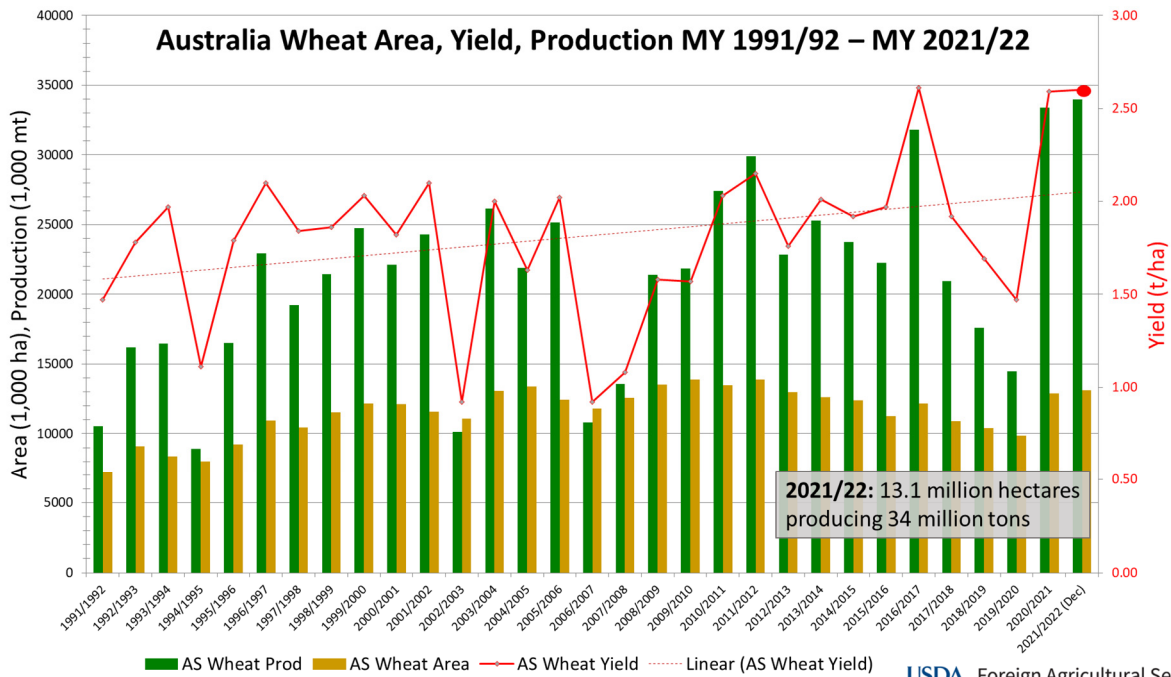
Circular Series
WAP 12-21
December 2021

Australia Wheat: Record Production



USDA estimates Australia marketing year (MY) 2021/22 wheat production at a record 34.0 million metric tons (mmt), up 2.5 mmt or 8 percent from last month, and up 0.7 mmt or 2 percent from last year. Harvested area is estimated at 13.1 million hectares (mha), unchanged from last month, but up 0.2 mha or 2 percent from last year. Wheat yield is estimated at 2.60 tons per hectare, up 8 percent from last month, and almost matching the record yield in MY 2016/17 (2.61 t/ha).

Approved by the World Agricultural Outlook Board

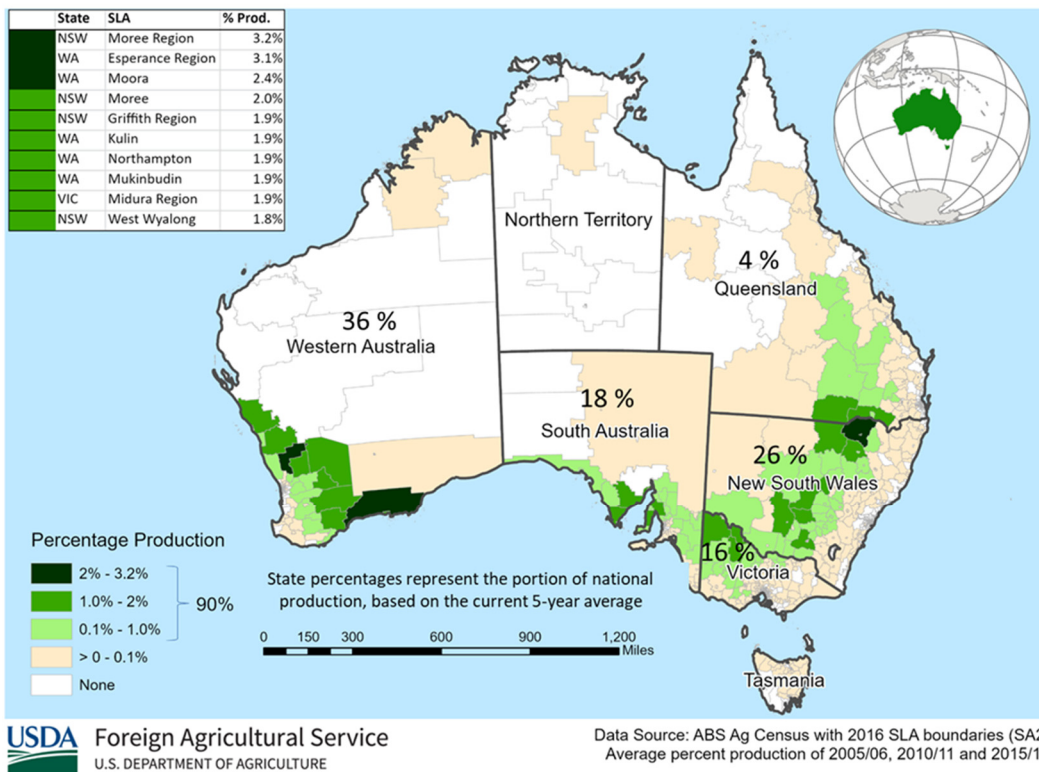


Source: USDA PSD Online

Foreign Agricultural Service
 U.S. DEPARTMENT OF AGRICULTURE

The higher MY 2021/22 wheat area estimate is supported by high world wheat prices and favorable seasonal conditions to date across much of the grain growing regions of Australia. Yield potential remains above average, particularly in the two largest producing states of Western Australia (36 percent) and New South Wales (26 percent).

Australia: Wheat Production



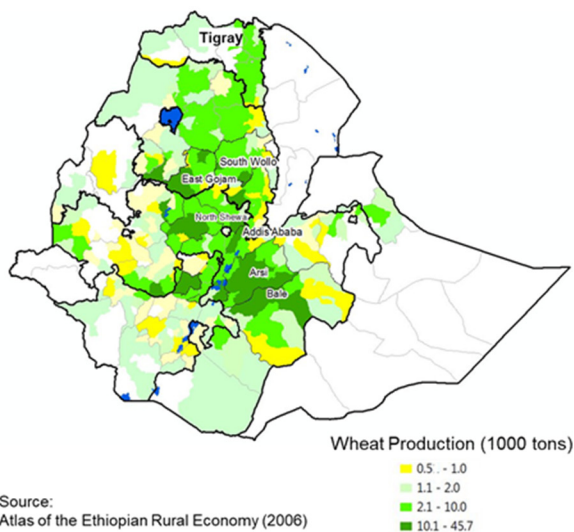
Abundant precipitation since sowing benefited crop establishment and sustained yield potential through the growing season. The satellite-derived Normalized Difference Vegetation Index (NDVI) during flowering depicts generally above-average crop vigor, especially in the wheat belt of New South Wales and Western Australia. Excessive rains in eastern Australia during harvest have raised concerns about grain quality. Harvest began in November for the main wheat growing areas and will continue into January. *(For more information, please contact James.Crutchfield@usda.gov.)*

Ethiopia Wheat: Conflict Reduces Harvest Prospects

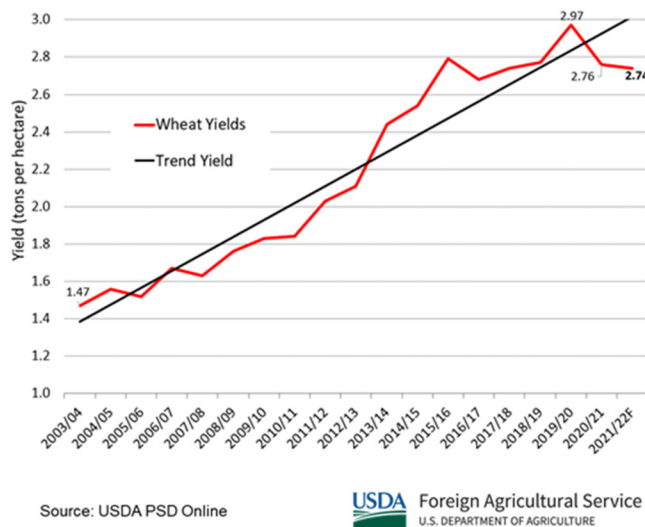
Ethiopia wheat production for marketing year 2021/22 is estimated at 4.8 million metric tons, down 380,000 tons (7 percent) from last month, and down 300,000 tons (6 percent) from last year. Harvested area is estimated at 1.75 million hectares, down 150,000 hectares (8 percent) from last month and down 100,000 hectares (5 percent) from last year. Yield is estimated at 2.74 metric tons per hectare, down 1 percent from last year and down 1 percent from the 5-year average. Even though seasonal rains were favorable this year, a below-average harvest is expected due to declines in cropping activities caused by civil unrest in northern Ethiopia.

The northern Tigray region has been facing a food security crisis since November 2020, after a conflict between federal and regional forces displaced thousands of people. The Tigray region produces approximately five percent of the country’s wheat output and most of the region is chronically food insecure. The conflict in the north during the past year prevented many farmers from planting this year due to insecurity and lack of access to seeds and agricultural inputs. The main production zones in the central highland wheat growing areas received favorable rains this year, but national yields are expected to be below average due to lack of access to limited agricultural inputs.

Ethiopia Wheat Production by Woreda (District)



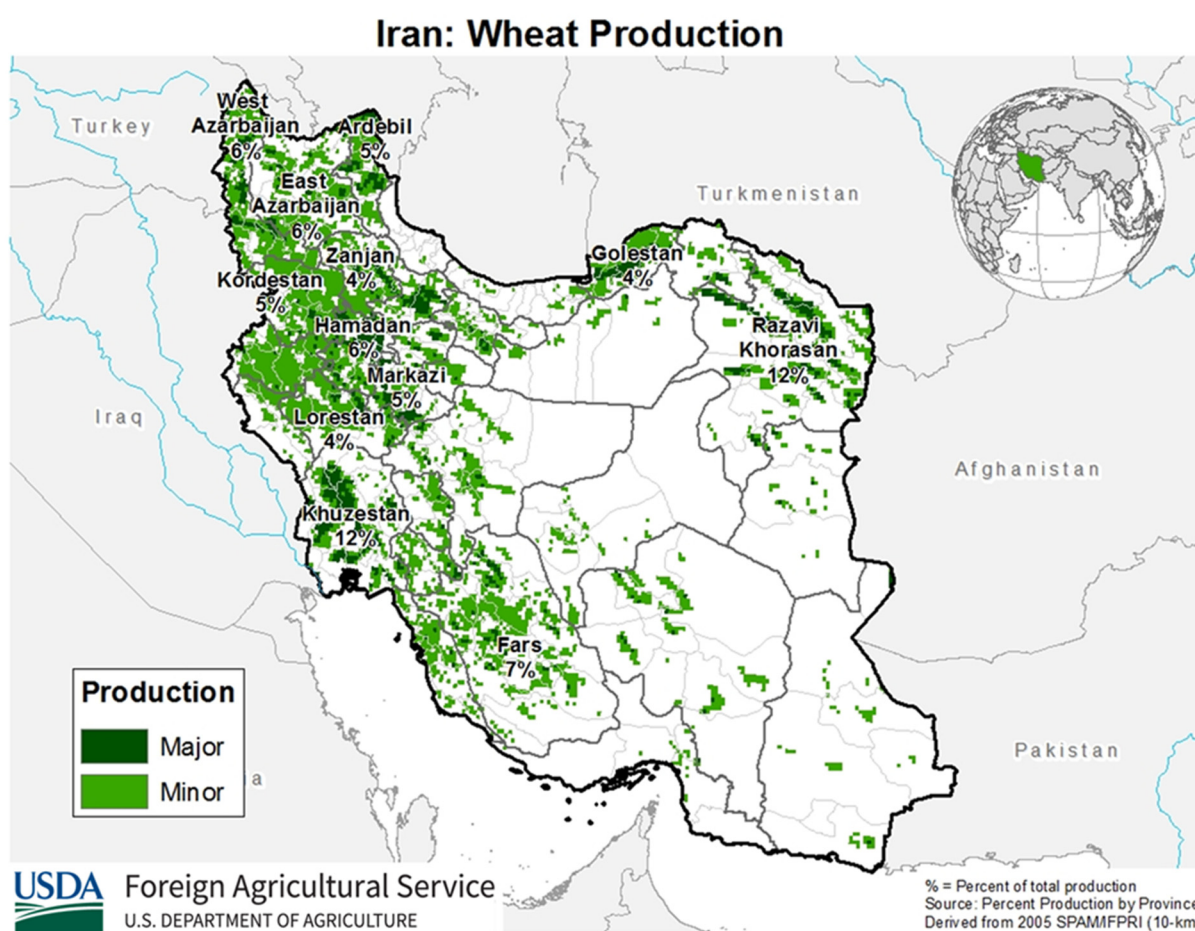
Ethiopia Wheat Yields



Wheat yields almost doubled during the past two decades due to favorable government initiatives that adopted improved seed varieties, increased fertilizer distribution, and expanded agriculture extension in rural areas. But the northern conflict and recent State of Emergency continues to reduce national harvest prospects as some farmers are unable to hire labor to harvest and roads are closed due to insecurity.

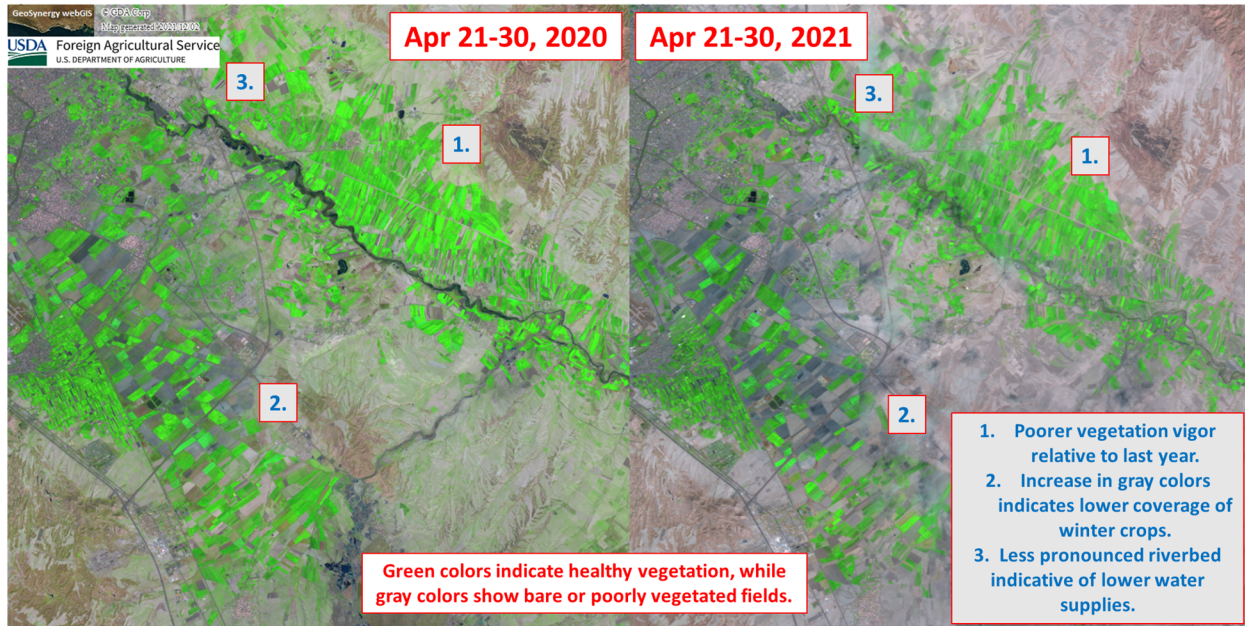
Ethiopia is the largest wheat producer in Sub-Saharan Africa, where wheat is mostly grown under rainfed conditions on small farms in the southern and central highlands. Wheat is an important food staple crop in Ethiopia, and it comprises about 18 percent of the country’s total cereal production. Wheat in Ethiopia is planted during the main *meher* rainy season from June to August and harvested from October through January. *(For more information, please contact Curt.Reynolds@usda.gov)*

Iran Wheat: Production Lower than Initially Expected Due to Dryness



USDA estimates wheat production for marketing year (MY) 2021/22 at 12.0 million metric tons (mmt), down 20 percent from last year and 11 percent from last month. The area is estimated at 6.0 million hectares, unchanged from last year, but down 6 percent from last month. Yield is estimated at 2.00 metric tons per hectare, down 20 percent from last year. Iran is the second largest wheat producer in the Middle East with an average production of 14.5 mmt, based on the 2016 to 2020 5-year average.

Agricultural areas near Mashhad in the Razavi Khorasan Province, northeast Iran



Source: GDA Corp, GeoChronicles (Sentinel-2/Landsat-8 10-day composite) 10-meter resolution imagery

Most of Iran's wheat is rainfed, and this season's below-average precipitation had adverse effects on wheat growth. The unfavorable weather resulted in sub-optimal growing conditions, which in turn lowered yield. For example, satellite imagery in Razavi Khorasan Province reveals worse vegetation status and shows lower winter crop coverage in some regions relative to last year. This season's wheat crop was planted in October 2020 and harvested in June and July 2021. (For more information, please contact Iliana.Mladenova@usda.gov.)

Ukraine Corn: Final-Season Harvest Results Boost Yield

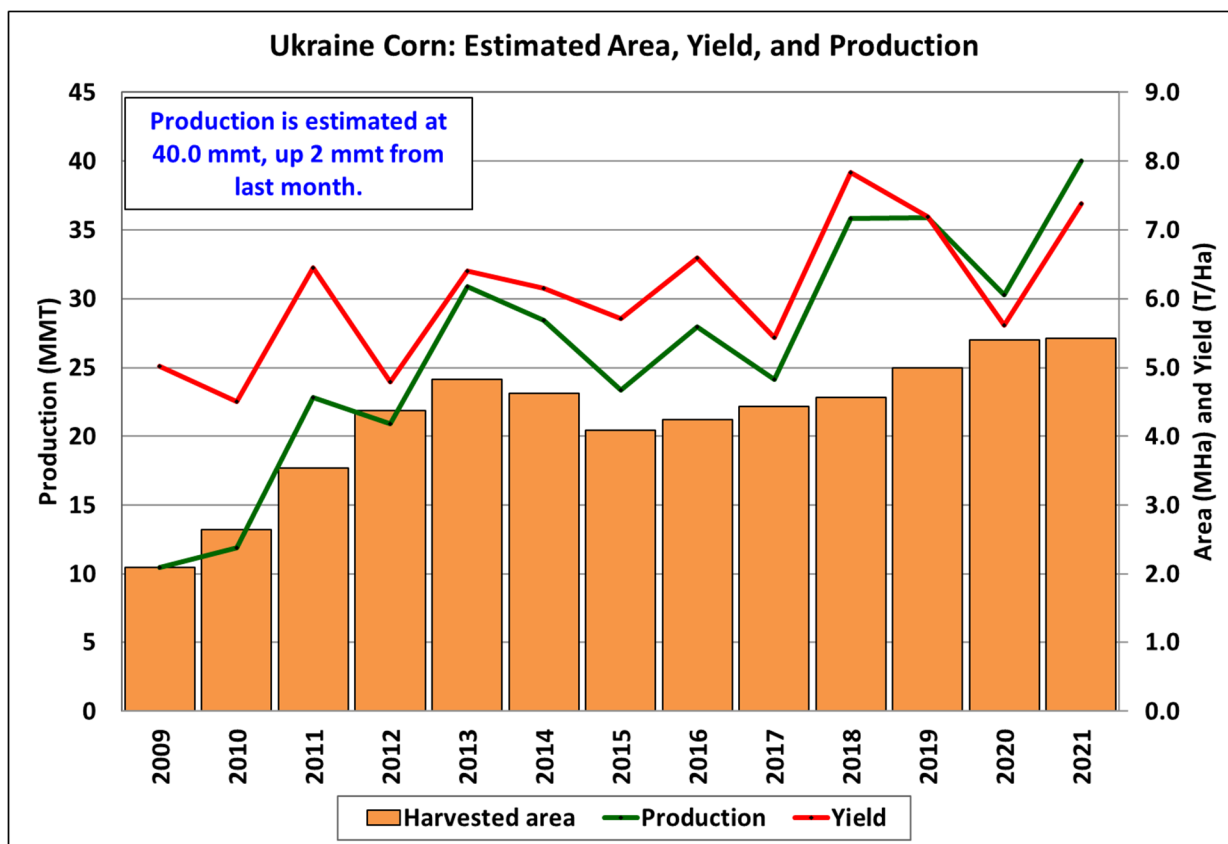
Ukraine: Corn Production



USDA Foreign Agricultural Service
U.S. DEPARTMENT OF AGRICULTURE

Source: State Statistics Service of Ukraine (Rosstat for Crimea Oblast)
Average Corn Production 2016-2020

Ukraine corn production for marketing year 2021/22 is estimated at 40.0 million metric tons (mmt), up 5 percent from last month and 32 percent from last year. Yield is estimated at 7.38 tons per hectare (t/ha), up 5 percent from last month and 31 percent from last year. Harvested area is estimated at 5.4 million hectares, unchanged from last month, but up less than 1 percent from last year.



USDA Foreign Agricultural Service
U.S. DEPARTMENT OF AGRICULTURE

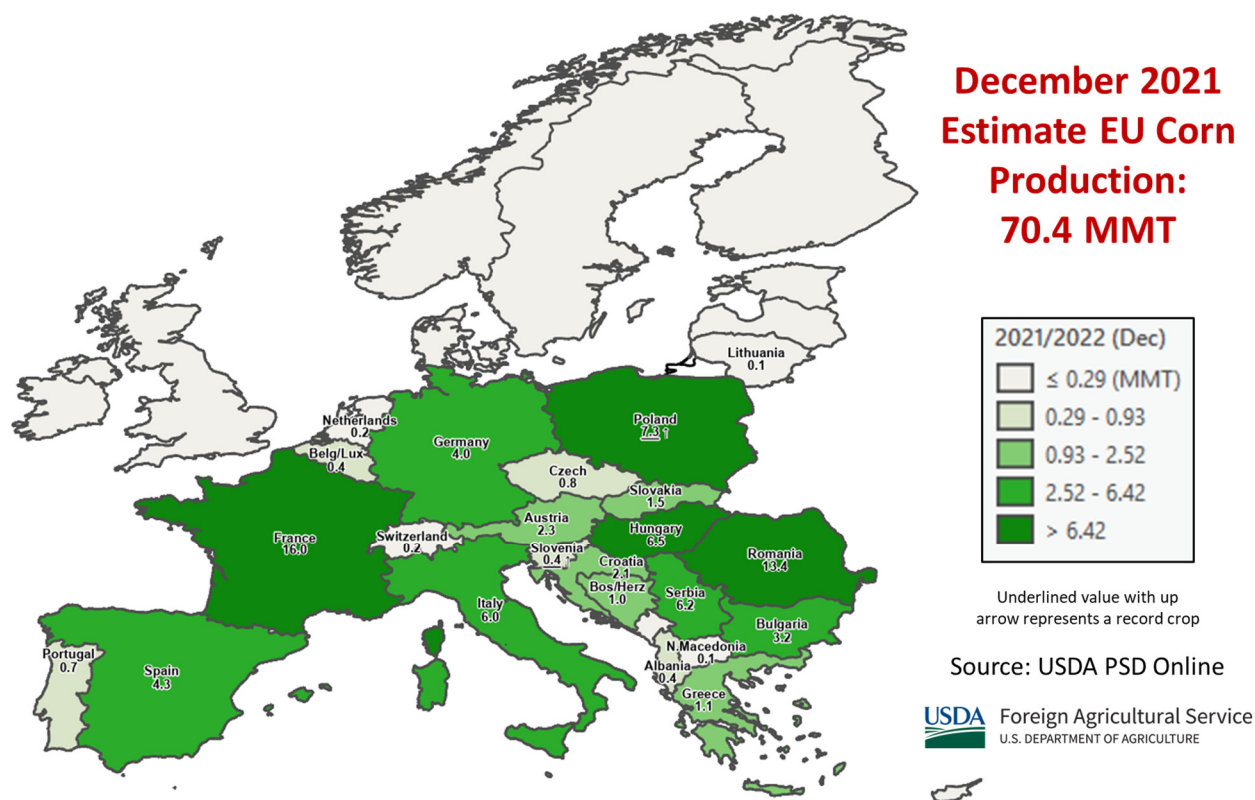
Source: USDA PSD Online

Yield is up month-to-month based on final-season harvest progress data from the Ukraine Ministry of Agriculture. As of November 25, harvest is 87 percent complete, and yield is currently reported at 7.33 t/ha. Harvest was delayed this year due to wetter-than-normal weather throughout September, although harvest has generally caught up and is now only slightly behind the 5-year average of 91 percent complete as of the end of November. Yields typically increase throughout harvest because the harvest begins in the lower-yielding southern regions and moves to the northern higher-yielding regions. The Ministry of Agriculture data, however, often under-reports corn production, on average, by about 1 mmt with the difference falling mostly in yield. Unlike other crop data published in Ukraine, there is no net-to-bunker conversion for corn. USDA crop production estimates for Ukraine include estimated output from Crimea. *(For more information, please contact Katie.McGaughey@usda.gov.)*

EU Corn: Second Largest Corn Crop Chiefly Due to Area Increases

European Union (EU) corn production for marketing year (MY) 2021/22 is estimated at a bumper 70.4 million metric tons (mmt), up 2.5 mmt or 4 percent from last month, 5 percent from last year, and 9 percent from the 5-year average. The record production for corn was 75.7 mmt in MY 2014/15. Harvested area is estimated at 9.4 million hectares (mha), 3 percent above last month, and up less than 1 percent from last year. Yield is estimated at 7.52 tons per hectare (t/ha), up slightly from last month and 4 percent above last year.

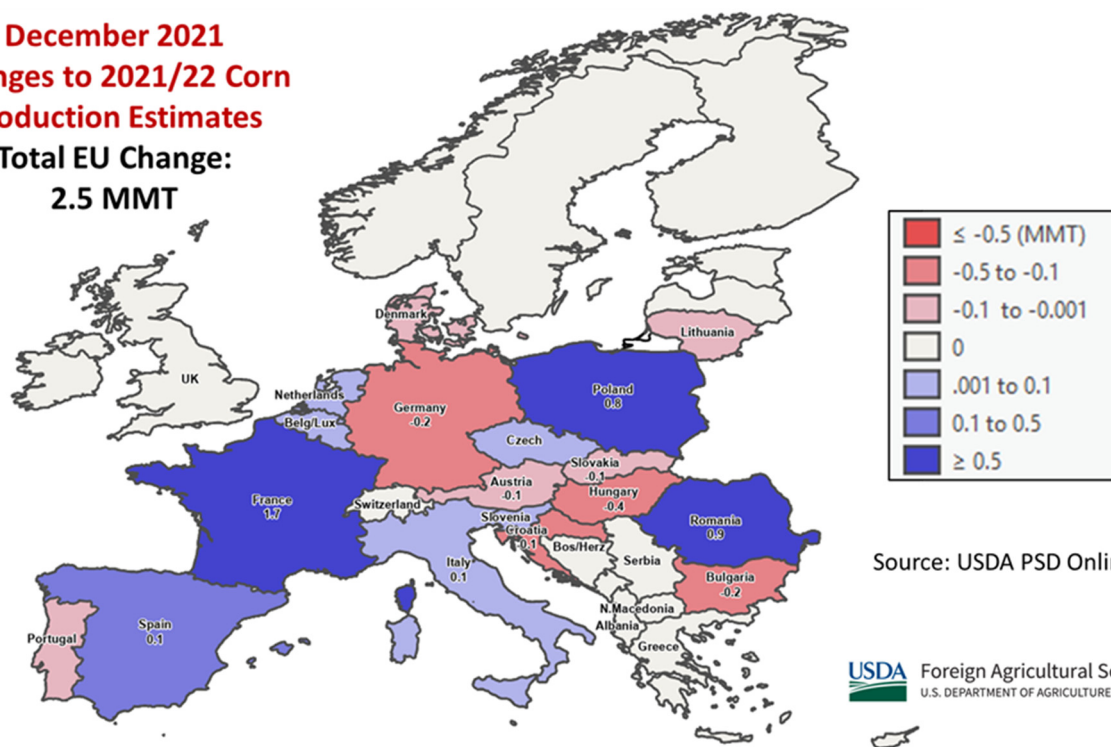
**December 2021
Estimate EU Corn
Production:
70.4 MMT**



December changes to the MY 2021/22 EU corn crop include an 87,000 hectare increase to revise Poland’s area. Poland’s MY 2021/22 area of 1.0 mha is a record. The increased area helped generate a 0.8 mmt production increase over last month’s estimate. Additionally, an increased yield of 3 percent from last month resulted in 7.23 t/ha and a record 7.3 mmt crop. Moreover, significant revisions were also made to the MY 2020/21 crop, based on government data and insight from USDA staff in Warsaw, to reflect market information.

The Romanian crop is estimated up 0.9 mmt from last month to 13.4 mmt. This crop is 2.6 mmt above last year and 9 percent above the 5-year average of 12.2 mmt. Weather during 2021 was highly variable in Romania, with the worst conditions – drought and heat – concentrated in the west, while the best conditions – with ample rain – occurred in the intensely cultivated southeast. The increases in the south and east far outweighed the reductions in the west.

December 2021
Changes to 2021/22 Corn
Production Estimates
Total EU Change:
2.5 MMT



Source: USDA PSD Online

USDA Foreign Agricultural Service
 U.S. DEPARTMENT OF AGRICULTURE

Harvest of the wet, delayed crop in France was finally completed in late November. MY 2021/22 production was increased in the EU’s largest corn producer, France, by 1.7 million tons to 16.0 mmt. The change also includes an area increase of over 0.1 mha to 1.6 mha. Based on industry sources, a significant amount of silage corn was harvested as grain corn due to the wet conditions which bolstered hay production and reduced silage demand.

For country-specific area, yield, and production estimates within the European Union (EU), please go to PSD Online at <https://apps.fas.usda.gov/PSDOnline/app/index.html#/app/home>, and select “Downloadable Data Sets.” Select the zipped file for “EU Countries Area & Production.” (For more information, please contact Bryan.Purcell@usda.gov.)

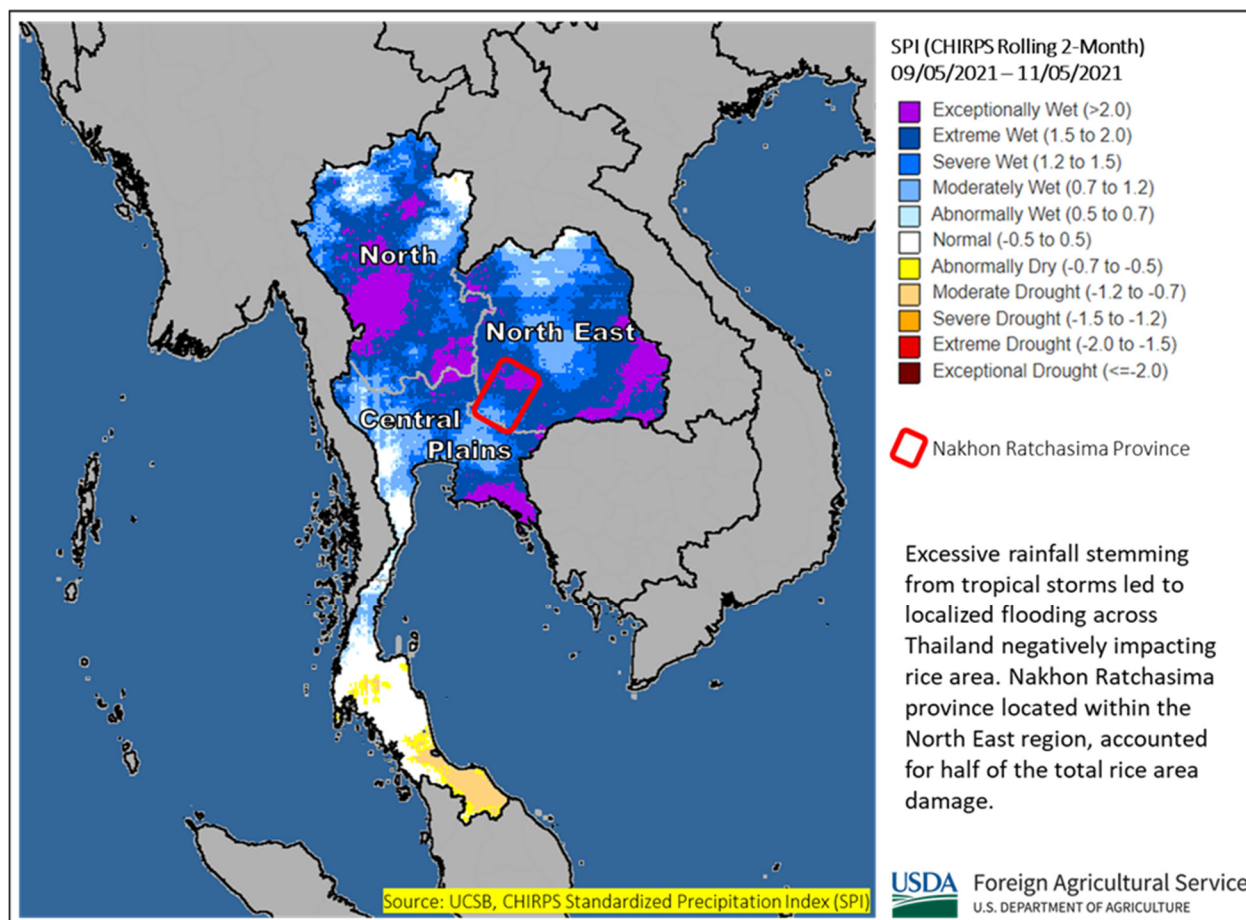
Thailand Rice: Adverse Weather Leads to a Decline in Estimated Production

USDA estimates Thailand rice production for marketing year 2021/22 at 19.3 million metric tons (milled basis), down 1 percent from last month, but up 2 percent from last year. Harvested area is estimated at 10.4 million hectares, down 1 percent from last month and last year. Yield is estimated at 2.81 tons per hectare, down less than 1 percent from last month, but up 3 percent from last year.

Thailand’s main season rice has progressed under mostly ideal conditions throughout the growing cycle. In late September through early November, however, an onslaught of rainfall stemming from tropical storms led to significant flooding throughout Thailand’s rice growing areas, particularly in the Central Plains region, the lower North region, and the North East region. Localized floods lasted more than 15 days during the most susceptible flowering and ripening growth stages. The Thailand-based Geo-informatics and Space Technology Development Agency reported about half of the rice area damaged was in the Nakhon Ratchasima province of the North East region. The rice area damage in the wake of the flooding events was higher than initially

expected. Harvest of the main season rice cycle is ongoing and is set to conclude by the end of December.

Observing Wet Conditions using SPI CHIRPS (09/05/2021 – 11/05/2021)

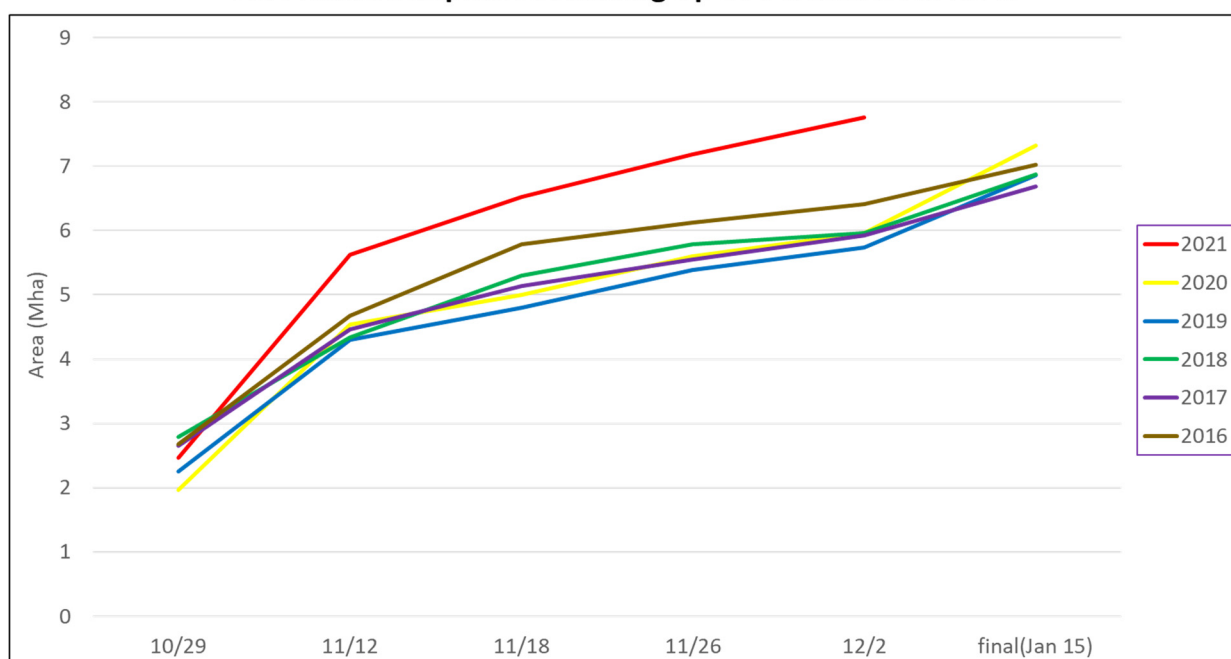


Rice cultivation for the late wet season and dry season cycles began in November and December, respectively. These two growing seasons depend on irrigation as their main source of water supply. Though tropical storms led to localized flooding, water holding facilities were able to benefit from these excessive rains which should support ongoing rice cultivating operations. (For more information, please contact Justin.Jenkins@usda.gov.)

India Rapeseed: Production up 4 Percent from Last Year

USDA forecasts rapeseed production for marketing year (MY) 2021/22 at 8.9 million tons, up 4 percent from last month and last year. Area is estimated at 8.5 million hectares, up 4 percent from last month and last year due to favorable planting conditions and a 9 percent higher minimum support price from 2020. Yield is forecast to reach 1.04 metric tons per hectare, up slightly from last year.

2021 India's Rapeseed Planting Up 30 Percent from 2020



USDA Foreign Agricultural Service
U.S. DEPARTMENT OF AGRICULTURE

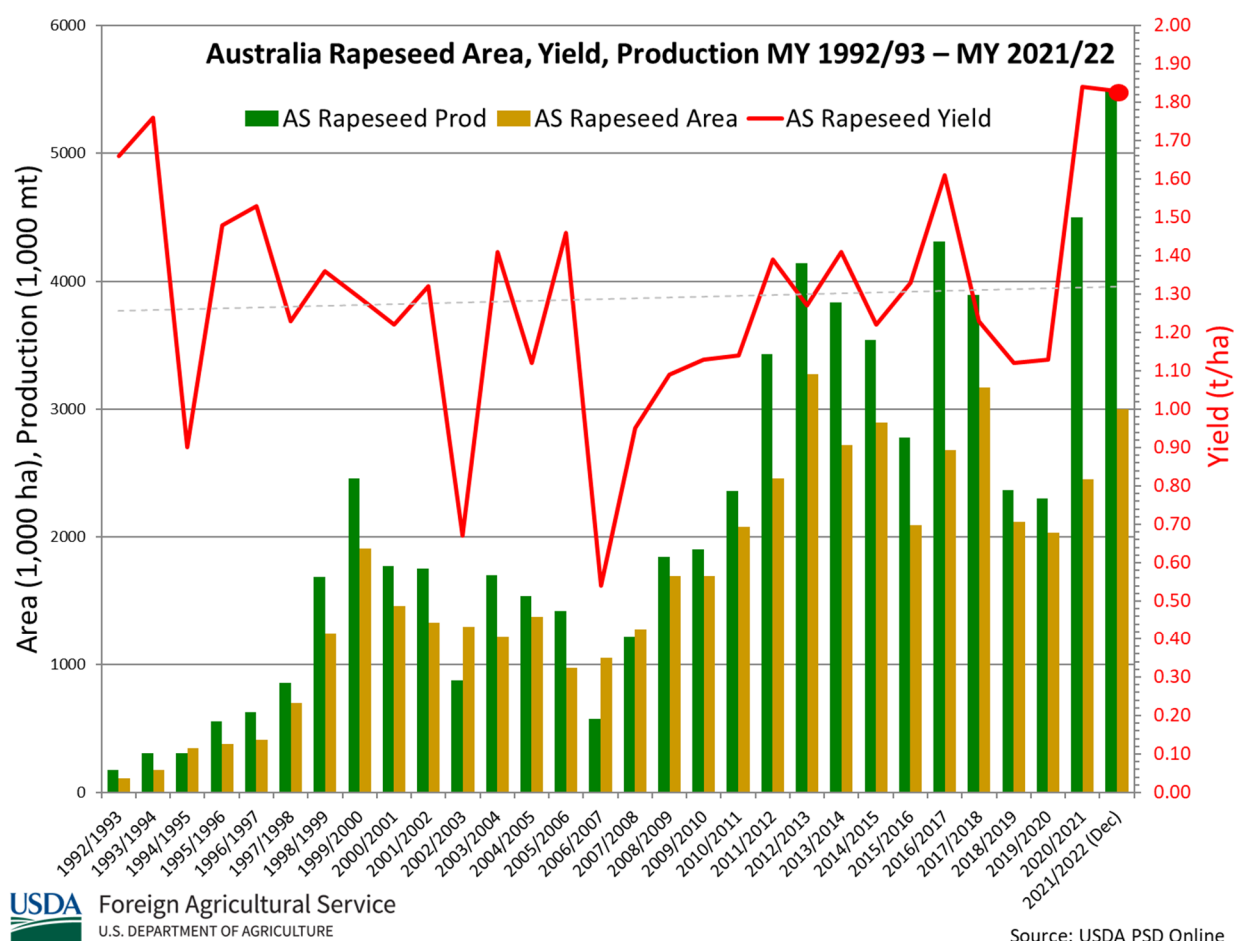
Source: Ministry of Agriculture and Farmers Welfare

The *rabi* season was delayed a few weeks because of the late *kharif* harvest. *Rabi* planting usually occurs after the southwest monsoon ends around September 30. However, the late withdrawal of the 2021 southwest monsoon in mid-October replenished water reservoirs and provided beneficial soil moisture. According to the India Ministry of Agriculture “All India Crop Situation” published December 3, 2021, farmers have planted 7.7 million hectares of rapeseed/mustard, up 30 percent from the same period last year. In Rajasthan, the largest producer, planting is up nearly 42 percent from the same period last year.

Rapeseed is grown only in the *rabi* season. Rapeseed is planted in late October until January and harvested in late March. (For more information, please contact Arnella.Trent@usda.gov.)

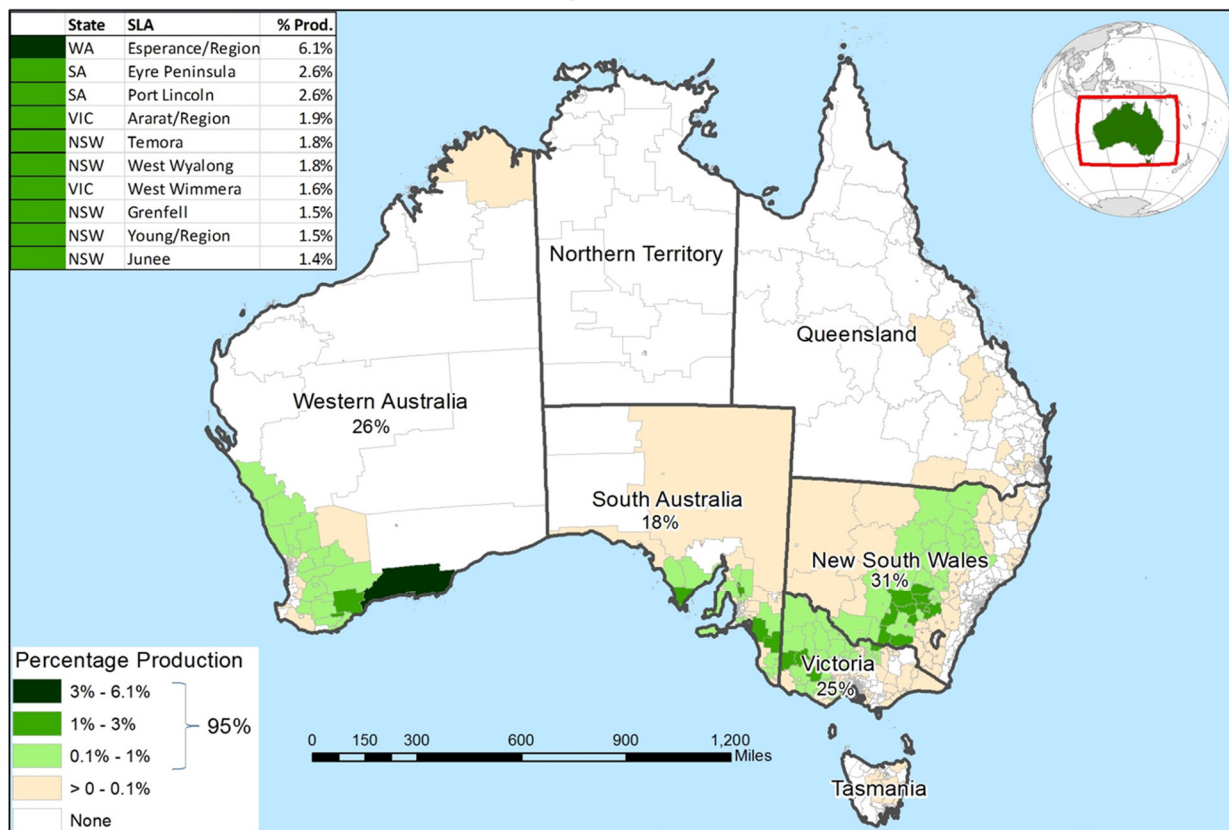
Australia Rapeseed: Record Production

USDA forecasts Australia rapeseed production for marketing year (MY) 2021/22 at a record 5.5 million metric tons (mmt), up 0.7 mmt or 15 percent from last month, and up 1.0 mmt or 22 percent from last year. Yield is forecast at 1.83 tons per hectare, up 15 percent from last month, but down slightly from last year.



Strong prices bolstered harvested area by 22 percent over last season. Above-average rainfall prior to sowing in the two largest producing states of Western Australia and New South Wales provided beneficial soil moisture for planting and throughout germination. Favorable seasonal conditions followed across much of the grain growing regions of Australia. Rapeseed sowing commences in April and continues into June. Rapeseed harvesting is currently underway and will conclude later in December.

Australia: Rapeseed Production

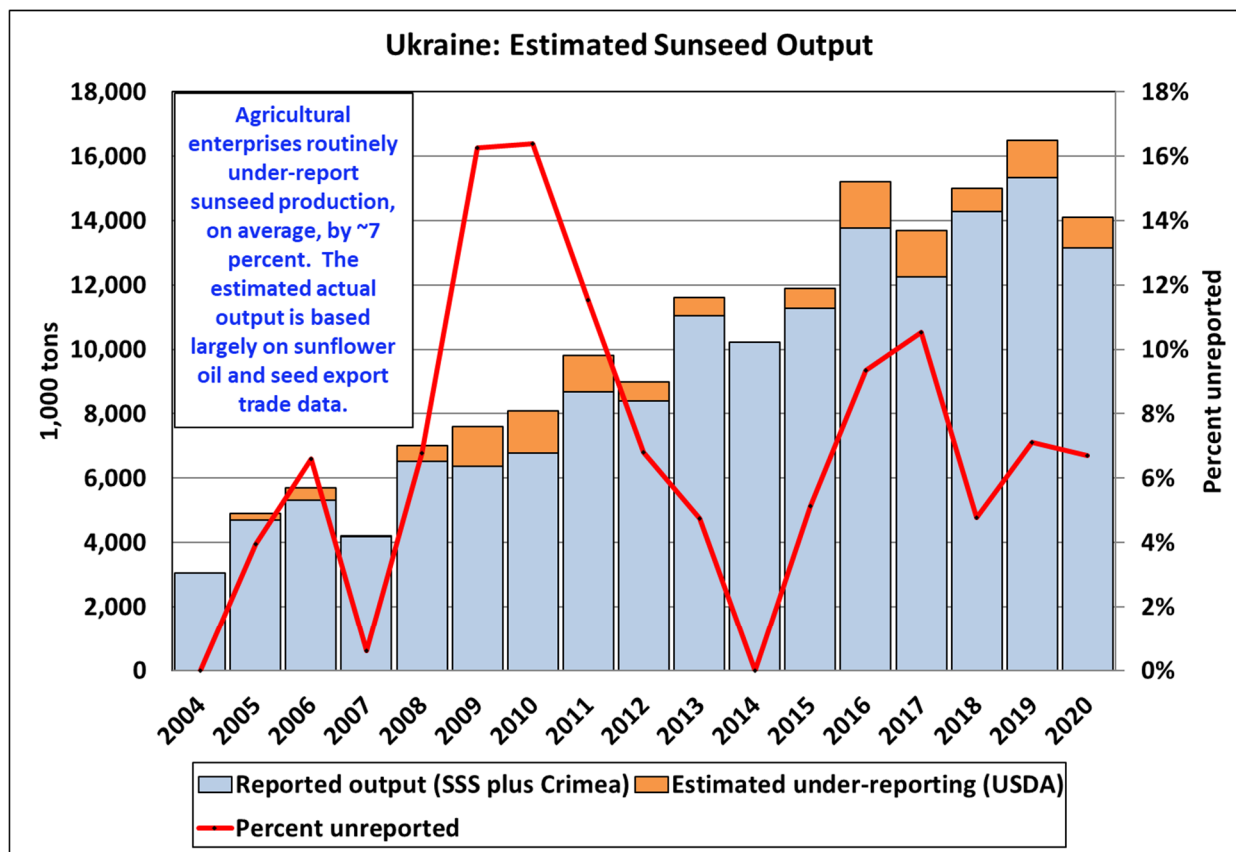


Data Sources: ABS Ag Census with 2016 SLA boundaries (SA2), Average percent production of MY 2005/06, MY 2010/11, and MY 2015/16; Australian Bureau of Agricultural and Resource Economics and Sciences (ABARES)

USDA Foreign Agricultural Service
U.S. DEPARTMENT OF AGRICULTURE

Rapeseed production is distributed across the four main agricultural producing states. New South Wales produces the largest portion of Australia's rapeseed with 31 percent (5-year average) and the remaining production is split among Western Australia (26 percent), Victoria (25 percent) and South Australia (18 percent). *(For more information, please contact James.Crutchfield@usda.gov.)*

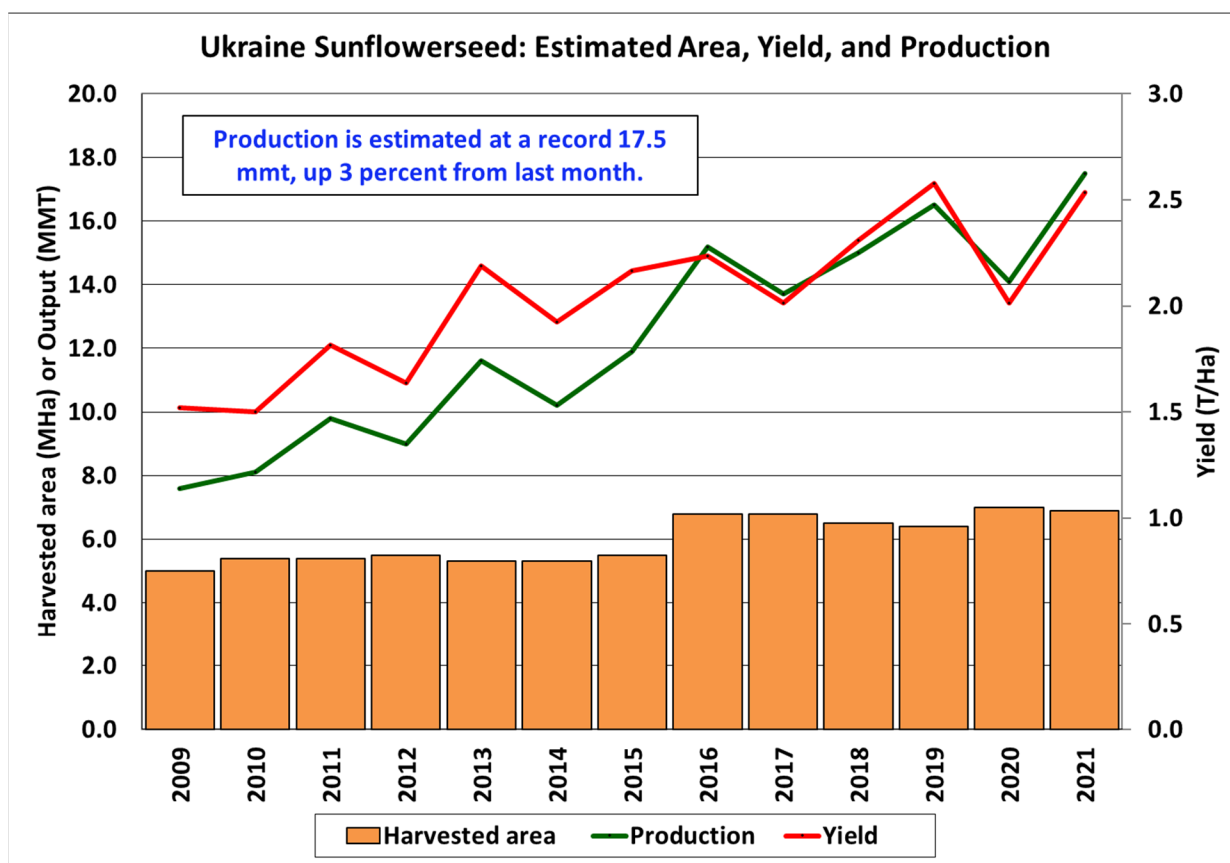
Ukraine Sunflowerseed: Final Harvest Data Boosts Yields Higher



Foreign Agricultural Service
 U.S. DEPARTMENT OF AGRICULTURE

Sources: State Statistics Service and USDA (Under-reported)

Ukraine sunflowerseed production for marketing year 2021/22 is estimated at a record 17.5 million metric tons (mmt), up 3 percent from last month and 24 percent from last year. Yield is estimated at 2.54 tons per hectare (t/ha), up 4 percent from last month and 26 percent from last year. Harvested area is estimated at 6.9 million hectares (mha), down 1 percent from last month and last year.



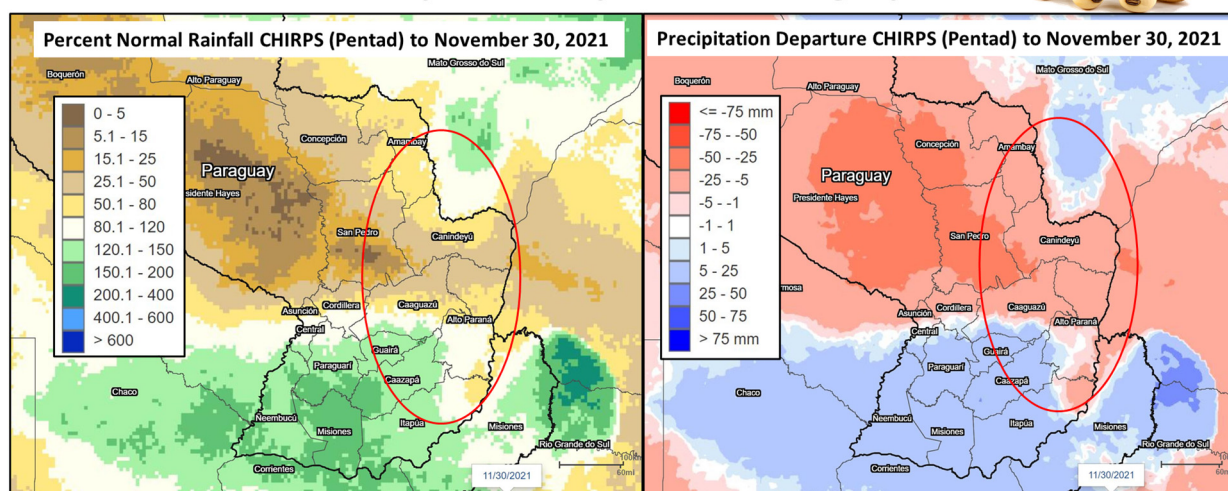
USDA Foreign Agricultural Service
U.S. DEPARTMENT OF AGRICULTURE

Source: USDA PSD Online

Area is down month-to-month based on final-season harvest progress data from the Ukraine Ministry of Agriculture while yield is up month-to-month. As of November 25, harvest is nearly complete on an estimated 6.5 mha, yield is reported at 2.50 t/ha, and production is reported at 16.17 mmt. Over the last few years, the Ministry of Agriculture has under-reported yields as compared to the State Statistics Service (SSS) and this bias is expected to continue for the current year. Sunflowerseed production is also routinely under-reported by SSS, on average by about 7 percent. USDA adjusts final sunflowerseed estimates by using sunflower oil and seed export trade data. Therefore, these multiple factors account for the difference in the Ministry of Agriculture's data and USDA's estimates. For the last few years, there has been no net-to-bunker conversion for sunflowers. USDA crop production estimates for Ukraine include estimated output from Crimea. (For more information, please contact Katie.McGaughey@usda.gov.)

Paraguay Soybeans: Early Dry Conditions Limit Expected Production

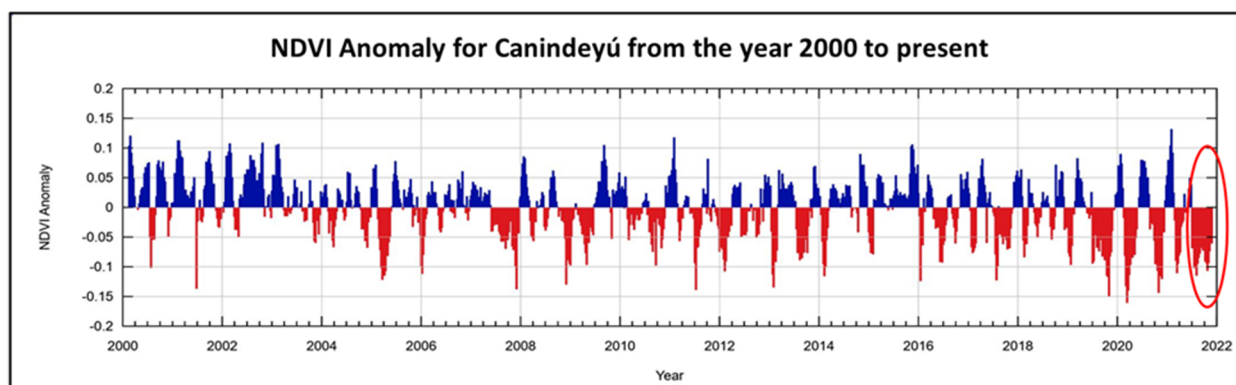
Percent Normal Rainfall and Precipitation Departure in Paraguay



USDA Foreign Agricultural Service
U.S. DEPARTMENT OF AGRICULTURE

Source: USCB CHIRPS

USDA forecasts Paraguay soybean production for marketing year 2021/22 at 10.0 million metric tons, down 5 percent from last month, but up 1 percent from last year. Area is estimated at 3.4 million hectares, down 1 percent from last month, but up 8 percent from last year. First crop soybean planting is now complete. Yield is forecast at 2.94 tons per hectare, down 3 percent from last month and 6 percent from last year.



USDA Foreign Agricultural Service
U.S. DEPARTMENT OF AGRICULTURE

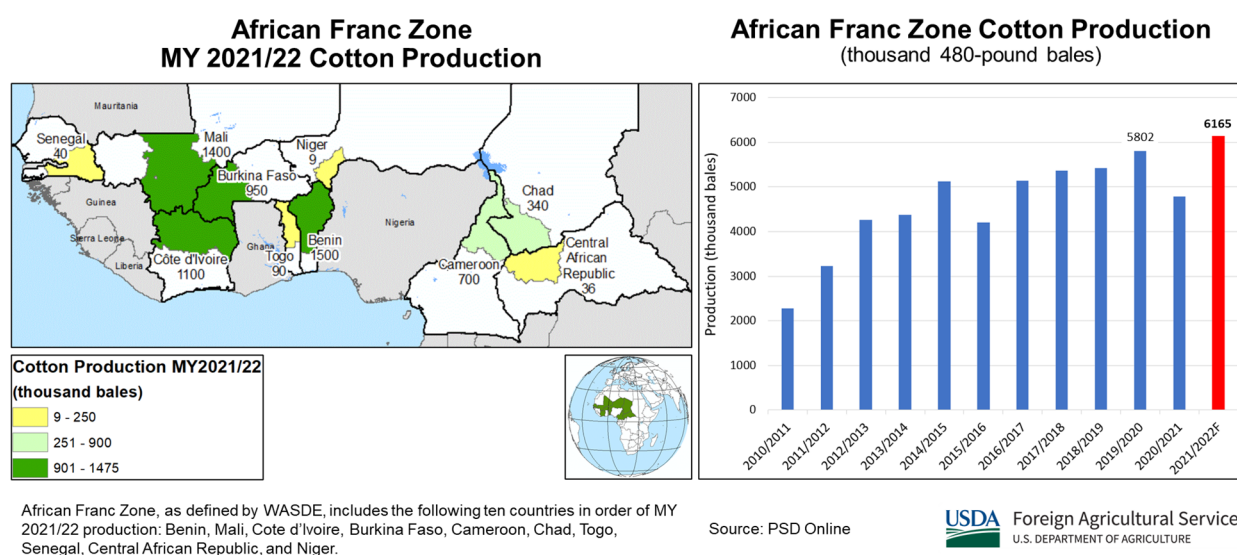
Source: USDA/NASA GLAM, MODIS 8-day NDVI

Soybean production expectations have decreased after farmers have contended with very dry field conditions. For example, in the Department of Canindeyú, satellite-derived Normalized Difference Vegetation Index shows one of the more prolonged periods of poor vegetation conditions since 2000. It has been dry since September 30 and through most of November in Canindeyú, and 10 to 15 days since other regions have received sufficient rainfall. Reports of drought were noted in soybean areas of the departments of Amambay, sections of San Pedro, and in parts of Caaguazú.

Despite some locations receiving rainfall in late November, most areas have limited soil moisture reserves for crop growth. December is a critical period for many soybean cultivars as plants go into initial bud and branch development. *(For more information, please contact Denise.McWilliams@usda.gov.)*

African Franc Zone Cotton: Record Production Expected

USDA estimates African Franc Zone cotton production for marketing year (MY) 2021/22 at a record 6.2 million 480-pound bales, up 0.3 million bales (4 percent) from last month and 1.4 million bales (29 percent) from last year. Harvested area is estimated at 3.1 million hectares, down 85,000 hectares (3 percent) from last month, but up 691,000 hectares (29 percent) from last year. The estimated yield of 435 kilograms per hectare is up 7 percent from the 5-year average. Favorable weather and adequate inputs helped to boost yields above average for all countries except for Togo, which experienced an extreme drought early in the season.



The top three producing countries (Benin, Mali, and Côte d'Ivoire) expect record output after planting near record area, according to the October report from the Programme Régional de Production Intégrée du Coton en Afrique (PR-PICA). African Franc Zone, as defined by USDA's World Agricultural Supply and Demand Estimates (WASDE), includes the following ten countries in order of estimated MY 2021/22 production (thousand 480-pound bales): Benin (1,500), Mali (1,400), Côte d'Ivoire (1,100), Burkina Faso (950), Cameroon (700), Chad (340), Togo (90), Senegal (40), Central African Republic (36), and Niger (9).

Cotton is sown from May to July and harvested from October through December. Seasonal rainfall from June through September was average to above average for most countries. Early crop harvest reports indicate average to above average output for all countries except where planted area was reduced in Burkina Faso due to a deteriorating security situation and increased violence, and in Togo due to early season drought. *(For more information, please contact Curt.Reynolds@usda.gov.)*



**World Agricultural Production
U.S. Department of Agriculture**

Foreign Agricultural Service / Global Market Analysis
International Production Assessment Division (IPAD)
Ag Box 1051, Room 4630, South Building
Washington, DC 20250-1051

<https://ipad.fas.usda.gov/>

Telephone: (202) 720-1662 Fax: (202) 720-1158

This report uses information from the Foreign Agricultural Service's (FAS) global network of agricultural attachés and counselors, official statistics of foreign governments and other foreign source materials, and the analysis of economic data and satellite imagery. Estimates of foreign area, yield, and production are from the International Production Assessment Division, FAS, and are reviewed by USDA's Inter-Agency Commodity Estimates Committee. Estimates of U.S. area, yield, and production are from USDA's National Agricultural Statistics Service. Numbers within the report may not add to totals because of rounding. This report reflects official USDA estimates released in the World Agricultural Supply and Demand Estimates (WASDE-584), December 9, 2021.

Printed copies are available from the National Technical Information Service. Download an order form at http://www.ntis.gov/products/specialty/usda/fas_a-g.asp, or call NTIS at 1-800-363-2068.

The FAS International Production Assessment Division prepared this report. The next issue of World Agricultural Production will be released after 12:00 p.m. Eastern Time, January 12, 2022.

Conversion Table

Metric tons to bushels

Wheat, soybeans	=	MT * 36.7437
Corn, sorghum, rye	=	MT * 39.36825
Barley	=	MT * 45.929625
Oats	=	MT * 68.894438

Metric tons to 480-lb bales

Cotton	=	MT * 4.592917
--------	---	---------------

Metric tons to hundredweight

Rice	=	MT * 22.04622
------	---	---------------

Area & weight

1 hectare	=	2.471044 acres
1 kilogram	=	2.204622 pounds

For further information, contact:



**U.S. Department of Agriculture
Foreign Agricultural Service
Global Market Analysis**
International Production Assessment Division
Ag Box 1051, Room 4630, South Building
Washington, DC 20250-1051

Telephone: (202) 720-1662

Fax: (202) 720-1158

GENERAL INFORMATION

Senior Director	Ronald Frantz	202-720-4056	ronald.frantz@usda.gov
Director	Robert Tetrault	202-720-1071	robert.tetrault@usda.gov
Administrative Assistant	Vacant		
USDA Remote Sensing Advisor	Vacant		
Sr. Analyst/Technical Lead	Curt Reynolds, Ph.D.	202-690-0134	curt.reynolds@usda.gov
Sr. Analyst/ Satellite Imagery	Dath Mita, Ph.D.	202-720-7339	dath.mita@usda.gov
Archives Manager/Technical Lead			
Sr. Analyst/Technical Lead	Jim Crutchfield	202-690-0135	james.crutchfield@usda.gov
GIS Mapping/Imagery Analyst	Lisa Colson	202-720-6652	lisa.colson@usda.gov
WAP Coordinators	Ifeoma Collins	202-720-0240	ifeoma.collins@usda.gov
	Aaron Mulhollen	202-690-0131	aaron.mulhollen@usda.gov

COUNTRY- AND REGION-SPECIFIC INFORMATION

South America, Argentina, Venezuela, and Colombia	Denise McWilliams, Ph.D.	202-720-0107	denise.mcwilliams@usda.gov
Western and Central Europe, and North Africa	Bryan Purcell	202-690-0138	bryan.purcell@usda.gov
Russia, Ukraine, Kazakhstan, Moldova, and Belarus	Katie McGaughey	202-720-9210	katie.mcgaughey@usda.gov
South Asia, Sri Lanka Bangladesh, India, and Nepal	Arnella Trent	202-720-0881	arnella.trent@usda.gov
East Asia, China, and Japan	Dath Mita, Ph.D.	202-720-7339	dath.mita@usda.gov
Sub-Saharan Africa, Nigeria and South Africa	Curt Reynolds, Ph.D.	202-690-0134	curt.reynolds@usda.gov
S.E. Asia, Indonesia, Thailand, Malaysia, Cambodia and Vietnam	Justin Jenkins	202-720-0419	justin.jenkins@usda.gov
Central America, Mexico, and Western United States	Ifeoma Collins	202-720-0240	ifeoma.collins@usda.gov
Australia, New Zealand, Pakistan Papua New Guinea and South Pacific Islands	Jim Crutchfield	202-690-0135	james.crutchfield@usda.gov
Middle East, Central Asia, Afghanistan Iraq, Iran, and Syria	Iliana Mladenova, Ph.D.	202-235-7562	iliana.mladenova@usda.gov
Canada, Caribbean, Eastern United States	Aaron Mulhollen	202-690-0131	aaron.mulhollen@usda.gov
Brazil	Sunita Yadav-Pauletti, Ph.D.		sunita.yadav-pauletti@usda.gov



The Foreign Agricultural Service (FAS) updates its production, supply and distribution (PSD) database for cotton, oilseeds, and grains at 12:00 p.m. on the day the *World Agricultural Supply and Demand Estimates* (WASDE) report is released. This circular is released by 12:15 p.m.

FAS Reports and Databases:

World Agricultural Production

Current: <https://www.fas.usda.gov/data/world-agricultural-production>

Archive: <https://usda.library.cornell.edu/concern/publications/5q47rn72z?locale=en>

USDA's Foreign Agricultural Service (FAS) publishes a monthly report on crop acreage, yield and production in major countries worldwide. Sources include reporting from FAS's worldwide offices, official statistics of foreign governments, and analysis of economic data and satellite imagery. The reports reflect official USDA estimates released in the monthly *World Agricultural Supply and Demand Estimates* (WASDE).

World Markets and Trade

Current: <https://www.fas.usda.gov/data>

Archive:

https://usda.library.cornell.edu/catalog?f%5Bmember_of_collections_ssim%5D%5B%5D=Foreign+Agricultural+Service&locale=en

USDA's Foreign Agricultural Service (FAS) publishes monthly and quarterly reports which include data on U.S. and global trade, production, consumption and stocks, as well as analysis of developments affecting world trade in oilseeds, grains, cotton, livestock and poultry. The reports reflect official USDA estimates released in the monthly *World Agricultural Supply and Demand Estimates* (WASDE).

Global Agricultural Information Network (GAIN)

<https://www.fas.usda.gov/databases/global-agricultural-information-network-gain>

USDA's Foreign Agricultural Service (FAS) provides timely reports on foreign markets through the Global Agriculture Information Network (GAIN) database. An average of 2,000 reports are added each year, with reports going back to 1995. GAIN reports are compiled by FAS' global market intelligence network, which includes FAS foreign service officers and locally engaged staff in over 90 overseas offices world-wide. They provide on-the-ground intelligence, insight, and analysis on nearly 200 countries, delivering information on foreign agricultural markets, crop conditions, and agro-political dynamics of interest to U.S. agriculture. GAIN reports contain assessments of commodity and trade issues made by USDA staff and are not necessarily statements of official U.S. government policy.

Production, Supply and Distribution (PS&D) Online

<https://apps.fas.usda.gov/psdonline/app/index.html#/app/home>

PSD Online is the public repository for USDA's Official Production, Supply and Distribution forecast data and reports for key agricultural commodities. PSD Online data are reviewed and updated monthly by an interagency committee chaired by USDA's World Agricultural Outlook Board (WAOB). The committee consist of representatives from Foreign Agricultural Service (FAS), the Economic Research Service (ERS), the Farm Service Agency (FSA), and the Agricultural Marketing Service (AMS).

EU Countries and Russia Wheat: Area and Production Estimates

<https://apps.fas.usda.gov/psdonline/app/index.html#/app/downloads> (click on PSD Datasets)

USDA's Foreign Agricultural Service (FAS) provides country-level area and production estimates for the nations of the European Union. For Russia, country-level area and production estimates are provided for Winter and Spring wheat. These datasets are reviewed and updated monthly by an interagency committee chaired by USDA's World Agricultural Outlook Board (WAOB) and can be downloaded through PSD datasets on PSD Online.



FAS Reports and Databases:

International Production Assessment (IPAD)

<https://ipad.fas.usda.gov/>

USDA's Foreign Agricultural Service (FAS) maintains a dynamic global crop production portal with key information including *World Agricultural Production* (WAP) briefs, Commodity Intelligence Reports (CIR), geospatial applications, crop production maps at a subnational level and crop calendars for the top-20 producing countries. Additionally, Crop Explorer (<https://ipad.fas.usda.gov/cropexplorer/>) displays rainfall, temperature, evapotranspiration, soil moisture, snow cover, and vegetation conditions in charts and maps.

USDA and NASA Global Agricultural Monitoring (GLAM)

<https://glam1.gsfc.nasa.gov/>

The USDA and NASA Global Agricultural Monitoring (GLAM) system provides near real-time and science quality Moderate Resolution Imaging Spectroradiometer (MODIS) Normalized Difference Vegetation Index (NDVI) from the satellites Terra and Aqua. The public can view and retrieve MODIS 8-day composited, global NDVI satellite imagery and time series data. GLAM was developed by NASA's Global Inventory Modeling and Mapping Studies (GIMMS) group for USDA's Foreign Agricultural Service.

Global Agricultural and Disaster Assessment System (GADAS)

<https://geo.fas.usda.gov/GADAS/index.html>

USDA's Foreign Agricultural Service (FAS) provides the Global Agricultural and Disaster Assessment System (GADAS), a web-based Geographic Information System (GIS) tool which integrates a vast array of highly detailed earth observation data streams, particularly targeted towards agricultural and disaster assessment analysis. GADAS is an interactive website which provides analysts with a wide variety of routine geospatial products (maps, charts, tables) they require for comprehensive situational investigations and recurring assessments.

Export Sales Reporting

<https://apps.fas.usda.gov/esrquery/>

USDA's Export Sales Reporting Program monitors U.S. agricultural export sales on a daily and weekly basis. Export sales reporting provides a constant stream of up-to-date market information for 40 U.S. agricultural commodities sold abroad. The weekly U.S. Export Sales report is the most currently available source of U.S. exports sales data. The data is used to analyze overall levels of export demand, determine where markets exit, and assess the relative position of U.S. commodities in foreign markets.

Global Agricultural Trade System (GATS)

<https://apps.fas.usda.gov/gats/default.aspx>

The Global Agricultural Trade System (GATS) is a searchable database containing monthly U.S. Census Bureau trade data organized by agricultural commodity and agricultural related product groups. Trade data is searchable by partner countries and partner groups. Historical U.S. agricultural trade data is available back to 1967. In addition, U.N. trade statistics (UN Comtrade) may be queried through GATS. UN trade data is available for nearly 200 countries or areas, dating from the inception of the Harmonized System (HS) of trade codes in 1989 to present. The database is continuously updated. U.S. trade data is updated monthly according to the U.S. Census Bureau's reporting system. UN Comtrade data are updated in GATS after nationally submitted data to the UN are standardized by the UN Statistical Division and added to the UN Comtrade database.

Other USDA Reports:

World Agricultural Supply and Demand Estimates (WASDE):

<http://www.usda.gov/oce/commodity/wasde/>

Economic Research Service:

<http://www.ers.usda.gov/topics/crops>

National Agricultural Statistics Service:

<http://www.nass.usda.gov/Publications/>

Table 01 World Crop Production Summary

Million Metric Tons

Commodity	World -	Total Foreign	North America			Former Soviet		European	Asia (WAP)					South America		Selected Other			All Others
			United States	Canada	Mexico	Russia	Ukraine		China	India	Indonesia	Pakistan	Thailand	Argentina	Brazil	Australia	South Africa	Turkey	
			-	-	-	-	-		-	-	-	-	-	-	-	-	-	-	
---Million metric tons---																			
Wheat																			
2019/20	762.2	709.6	52.6	32.7	3.3	73.6	29.2	nr	133.6	103.6	0.0	24.3	0.0	19.8	5.2	14.5	1.5	17.5	250.9
2020/21 prel.	775.9	726.2	49.8	35.2	3.0	85.4	25.4	nr	134.3	107.9	0.0	24.9	0.0	17.6	6.3	33.3	2.1	18.3	232.6
2021/22 proj.																			
Nov	775.3	730.5	44.8	21.0	3.2	74.5	33.0	nr	136.9	109.5	0.0	27.0	0.0	20.0	7.9	31.5	2.1	16.3	247.6
Dec	777.9	733.1	44.8	21.7	3.2	75.5	33.0	nr	136.9	109.5	0.0	27.0	0.0	20.0	7.9	34.0	2.2	16.3	245.9
Coarse Grains																			
2019/20	1,416.3	1,056.9	359.4	28.6	32.1	40.5	46.5	nr	268.2	47.7	12.0	7.7	4.6	58.1	105.8	12.0	16.4	14.5	362.3
2020/21 prel.	1,432.8	1,059.9	372.9	29.6	32.7	41.4	39.6	nr	268.0	51.2	11.8	8.3	5.7	59.0	91.0	16.7	17.8	15.8	371.5
2021/22 proj.																			
Nov	1,499.0	1,101.1	397.9	24.0	33.8	38.4	49.6	nr	280.4	47.6	12.0	8.1	5.4	63.9	122.0	15.7	17.6	11.6	371.1
Dec	1,501.7	1,103.7	397.9	24.2	33.8	38.4	51.6	nr	280.0	47.6	12.0	8.1	5.4	63.9	122.0	16.9	17.6	11.6	370.7
Rice, Milled																			
2019/20	498.8	493.0	5.9	0.0	0.2	0.7	0.0	nr	146.7	118.9	34.7	7.4	17.7	0.8	7.6	0.0	0.0	0.6	157.6
2020/21 prel.	507.2	500.0	7.2	0.0	0.2	0.7	0.0	nr	148.3	122.3	35.3	8.2	18.9	0.8	8.0	0.3	0.0	0.6	156.3
2021/22 proj.																			
Nov	511.7	505.6	6.2	0.0	0.2	0.7	0.0	nr	149.0	125.0	35.4	8.2	19.5	0.8	8.0	0.6	0.0	0.5	157.6
Dec	510.8	504.6	6.2	0.0	0.2	0.7	0.0	nr	149.0	125.0	35.4	8.2	19.3	0.8	8.0	0.7	0.0	0.5	156.7
Total Grains																			
2019/20	2,677.4	2,259.5	417.9	61.3	35.5	114.8	75.8	nr	548.5	270.1	46.7	39.5	22.2	78.7	118.6	26.5	17.9	32.6	770.8
2020/21 prel.	2,715.9	2,286.0	429.9	64.8	35.8	127.5	65.0	nr	550.6	281.3	47.1	41.5	24.5	77.5	105.2	50.3	19.9	34.6	760.4
2021/22 proj.																			
Nov	2,786.0	2,337.1	448.9	45.0	37.2	113.6	82.6	nr	566.3	282.1	47.4	43.3	24.9	84.7	137.9	47.8	19.7	28.4	776.3
Dec	2,790.3	2,341.4	448.9	45.9	37.2	114.6	84.6	nr	565.9	282.1	47.4	43.3	24.7	84.7	137.9	51.6	19.8	28.4	773.4
Oilseeds																			
2019/20	580.8	473.8	107.0	26.1	0.9	21.7	24.5	nr	62.2	36.0	14.4	3.5	0.9	53.6	133.9	2.5	2.2	3.3	88.1
2020/21 prel.	603.6	479.0	124.6	25.9	0.8	20.1	19.9	nr	65.3	38.3	14.6	2.7	1.0	51.2	142.4	5.4	2.7	2.9	85.8
2021/22 proj.																			
Nov	628.0	497.8	130.2	19.0	0.8	22.4	23.5	nr	64.6	40.1	14.8	3.6	1.0	54.6	149.3	6.5	2.8	3.3	91.7
Dec	627.6	497.3	130.3	19.0	0.8	23.1	24.3	nr	62.0	40.5	14.8	3.2	1.0	54.7	149.3	7.2	2.8	3.4	91.5
Cotton																			
2019/20	121.0	101.1	19.9	0.0	1.6	0.0	0.0	2.0	27.3	28.5	0.0	6.2	0.0	1.3	13.8	0.6	0.1	3.5	16.3
2020/21 prel.	111.7	97.1	14.6	0.0	1.0	0.0	0.0	1.7	29.5	27.6	0.0	4.5	0.0	1.4	10.8	2.8	0.1	2.9	14.8
2021/22 proj.																			
Nov	121.8	103.6	18.2	0.0	1.1	0.0	0.0	1.4	26.8	28.0	0.0	6.7	0.0	1.5	13.2	5.3	0.1	3.6	16.0
Dec	121.6	103.3	18.3	0.0	1.1	0.0	0.0	1.5	26.8	28.0	0.0	5.7	0.0	1.5	13.2	5.3	0.1	3.8	16.5

1/ Includes wheat, coarse grains, and rice (milled) shown above.

Table 02 Wheat Area, Yield, and Production

Country / Region	Area (Million hectares)				Yield (Metric tons per hectare)				Production (Million metric tons)				Change in Production			
	2019/20	Prel.	2021/22 Proj.		2019/20	Prel.	2021/22 Proj.		2019/20	Prel.	2021/22 Proj.		From last month		From last year	
		2020/21	Nov	Dec		2020/21	Nov	Dec		2020/21	Nov	Dec	MMT	Percent	MMT	Percent
World	215.53	220.89	223.33	223.36	3.54	3.51	3.47	3.48	762.20	775.90	775.28	777.89	2.61	0.34	1.99	0.26
United States	15.13	14.89	15.04	15.04	3.47	3.34	2.98	2.98	52.58	49.75	44.79	44.79	0.00	0.00	-4.96	-9.97
Total Foreign	200.39	206.01	208.29	208.32	3.54	3.52	3.51	3.52	709.62	726.15	730.49	733.10	2.61	0.36	6.95	0.96
European Union	24.36	22.97	24.05	24.10	5.70	5.53	5.75	5.76	138.80	126.93	138.40	138.70	0.30	0.22	11.77	9.27
United Kingdom	1.80	1.39	1.75	1.79	8.69	6.96	8.17	7.99	15.60	9.66	14.30	14.30	0.00	0.00	4.64	48.06
Serbia	0.57	0.59	0.60	0.60	4.56	4.58	5.50	5.50	2.60	2.70	3.30	3.30	0.00	0.00	0.60	22.22
China	23.73	23.38	23.80	23.57	5.63	5.74	5.75	5.81	133.60	134.25	136.90	136.95	0.05	0.03	2.70	2.01
South Asia																
India	29.32	31.36	31.62	31.62	3.53	3.44	3.46	3.46	103.60	107.86	109.52	109.52	0.00	0.00	1.66	1.54
Pakistan	8.68	8.83	9.20	9.20	2.81	2.83	2.93	2.93	24.35	24.95	27.00	27.00	0.00	0.00	2.05	8.23
Afghanistan	2.30	2.33	2.20	2.20	2.17	2.15	2.00	2.00	5.00	5.01	4.40	4.40	0.00	0.00	-0.61	-12.18
Nepal	0.71	0.75	0.75	0.75	3.09	2.95	2.80	2.80	2.19	2.21	2.10	2.10	0.00	0.00	-0.11	-4.98
Former Soviet Union - 12																
Russia	27.31	28.68	27.60	27.60	2.70	2.98	2.70	2.74	73.61	85.35	74.50	75.50	1.00	1.34	-9.85	-11.54
Russia Winter	15.41	16.63	15.00	15.00	3.41	3.77	3.43	3.50	52.54	62.69	51.50	52.50	1.00	1.94	-10.19	-16.25
Russia Spring	11.91	12.06	12.60	12.60	1.77	1.88	1.83	1.83	21.07	22.67	23.00	23.00	0.00	0.00	0.34	1.48
Ukraine	7.02	6.85	7.40	7.40	4.16	3.71	4.46	4.46	29.17	25.42	33.00	33.00	0.00	0.00	7.58	29.82
Kazakhstan	11.30	12.06	12.70	12.70	1.01	1.18	0.94	0.94	11.45	14.26	12.00	12.00	0.00	0.00	-2.26	-15.82
Uzbekistan	1.40	1.40	1.40	1.40	4.86	4.43	3.93	3.93	6.80	6.20	5.50	5.50	0.00	0.00	-0.70	-11.29
Belarus	0.69	0.72	0.65	0.65	3.33	3.94	3.54	3.54	2.31	2.85	2.30	2.30	0.00	0.00	-0.55	-19.24
Canada	9.66	10.02	8.50	9.25	3.38	3.51	2.47	2.34	32.67	35.18	21.00	21.65	0.65	3.10	-13.53	-38.46
South America																
Argentina	6.73	6.40	6.50	6.50	2.94	2.76	3.08	3.08	19.78	17.65	20.00	20.00	0.00	0.00	2.36	13.35
Brazil	2.04	2.34	2.70	2.70	2.55	2.67	2.93	2.93	5.20	6.25	7.90	7.90	0.00	0.00	1.65	26.40
Australia	9.86	12.90	13.10	13.10	1.47	2.58	2.40	2.60	14.48	33.30	31.50	34.00	2.50	7.94	0.70	2.10
Africa																
Egypt	1.37	1.39	1.40	1.40	6.40	6.40	6.43	6.43	8.77	8.90	9.00	9.00	0.00	0.00	0.10	1.12
Morocco	2.51	2.76	2.86	2.86	1.61	0.93	2.64	2.64	4.03	2.56	7.54	7.54	0.00	0.00	4.98	194.53
Algeria	2.07	2.08	2.08	2.08	1.90	1.88	1.73	1.73	3.95	3.90	3.60	3.60	0.00	0.00	-0.30	-7.69
Ethiopia	1.79	1.85	1.90	1.75	2.97	2.76	2.73	2.74	5.32	5.10	5.18	4.80	-0.38	-7.34	-0.30	-5.88
Middle East																
Turkey	7.00	7.10	7.05	7.05	2.50	2.57	2.30	2.30	17.50	18.25	16.25	16.25	0.00	0.00	-2.00	-10.96
Iran	6.20	6.00	6.40	6.00	2.51	2.50	2.11	2.00	15.55	15.00	13.50	12.00	-1.50	-11.11	-3.00	-20.00
Iraq	2.40	2.40	2.50	2.50	2.00	1.93	1.80	1.80	4.80	4.64	4.50	4.50	0.00	0.00	-0.14	-2.91
Syria	1.60	1.60	1.40	1.40	3.00	2.81	2.00	2.00	4.80	4.50	2.80	2.80	0.00	0.00	-1.70	-37.78
Mexico	0.59	0.56	0.56	0.56	5.54	5.33	5.77	5.77	3.27	2.97	3.20	3.20	0.00	0.00	0.24	7.93
Others	7.39	7.33	7.64	7.62	2.76	2.77	2.79	2.79	20.44	20.32	21.30	21.29	-0.01	-0.02	0.97	4.78

Table 03 Total Coarse Grain Area, Yield, and Production

Country / Region	Area (Million hectares)				Yield (Metric tons per hectare)				Production (Million metric tons)				Change in Production			
	2019/20	Prel.	2021/22 Proj.		2019/20	Prel.	2021/22 Proj.		2019/20	Prel.	2021/22 Proj.		From last month		From last year	
		2020/21	Nov	Dec		2020/21	Nov	Dec		2020/21	Nov	Dec	MMT	Percent	MMT	Percent
World	334.49	343.98	339.99	340.79	4.23	4.17	4.41	4.41	1,416.33	1,432.80	1,499.01	1,501.67	2.66	0.18	68.86	4.81
United States	36.17	36.81	38.24	38.24	9.94	10.13	10.41	10.41	359.43	372.89	397.95	397.95	0.00	0.00	25.06	6.72
Total Foreign	298.32	307.17	301.75	302.55	3.54	3.45	3.65	3.65	1,056.90	1,059.92	1,101.06	1,103.72	2.66	0.24	43.80	4.13
China	43.60	43.56	44.29	45.61	6.15	6.15	6.33	6.14	268.18	268.02	280.40	279.95	-0.45	-0.16	11.93	4.45
European Union	28.73	28.80	28.70	28.06	5.31	5.38	5.41	5.53	152.66	155.07	155.30	155.20	-0.10	-0.06	0.13	0.09
United Kingdom	1.41	1.66	1.42	1.41	6.64	5.65	6.01	6.03	9.35	9.36	8.53	8.53	0.00	0.00	-0.83	-8.89
South America																
Brazil	19.86	21.31	22.23	22.23	5.33	4.27	5.49	5.49	105.82	90.96	122.02	122.02	0.00	0.00	31.06	34.15
Argentina	8.43	8.57	9.27	9.27	6.89	6.88	6.89	6.89	58.13	58.97	63.88	63.88	0.00	0.00	4.91	8.32
Former Soviet Union - 12																
Russia	14.51	14.55	14.03	14.03	2.79	2.84	2.74	2.74	40.50	41.40	38.40	38.40	0.00	0.00	-3.00	-7.24
Ukraine	8.22	8.53	8.56	8.56	5.67	4.64	5.79	6.03	46.55	39.59	49.59	51.59	2.00	4.03	12.00	30.31
Kazakhstan	3.45	3.20	2.67	2.67	1.47	1.54	1.45	1.45	5.06	4.93	3.88	3.88	0.00	0.00	-1.05	-21.25
Belarus	1.08	1.14	0.99	0.99	3.08	3.47	3.05	3.05	3.32	3.95	3.00	3.00	0.00	0.00	-0.95	-23.99
Africa																
Nigeria	13.90	13.10	13.70	13.70	1.42	1.42	1.49	1.49	19.67	18.57	20.40	20.40	0.00	0.00	1.83	9.85
South Africa	3.12	3.36	3.30	3.30	5.24	5.29	5.34	5.34	16.37	17.76	17.60	17.60	0.00	0.00	-0.16	-0.87
Tanzania	4.35	5.20	5.10	5.10	1.56	1.46	1.49	1.49	6.77	7.58	7.58	7.58	0.00	0.00	0.00	0.00
Burkina Faso	4.08	4.00	4.00	4.00	1.12	1.18	1.31	1.31	4.55	4.72	5.23	5.23	0.00	0.00	0.51	10.70
Ethiopia	5.51	5.61	5.72	5.72	3.34	3.32	3.09	3.09	18.41	18.62	17.65	17.65	0.00	0.00	-0.97	-5.19
Egypt	1.02	1.02	1.02	1.02	7.09	7.09	7.09	7.09	7.26	7.26	7.26	7.26	0.00	0.00	0.00	0.00
Mali	4.92	5.17	4.70	4.70	1.46	1.38	1.45	1.45	7.21	7.14	6.80	6.80	0.00	0.00	-0.34	-4.70
India	23.98	23.83	22.40	22.40	1.99	2.15	2.12	2.12	47.66	51.21	47.57	47.57	0.00	0.00	-3.64	-7.11
Southeast Asia																
Indonesia	3.80	3.60	3.60	3.60	3.16	3.28	3.33	3.33	12.00	11.80	12.00	12.00	0.00	0.00	0.20	1.69
Philippines	2.51	2.57	2.50	2.50	3.20	3.25	3.12	3.12	8.03	8.35	7.80	7.80	0.00	0.00	-0.55	-6.61
Vietnam	0.99	0.95	0.90	0.90	4.80	4.83	4.89	4.89	4.76	4.59	4.40	4.40	0.00	0.00	-0.19	-4.14
Thailand	1.24	1.28	1.23	1.23	3.66	4.41	4.36	4.36	4.55	5.65	5.35	5.35	0.00	0.00	-0.30	-5.31
Mexico	8.41	8.76	9.11	9.11	3.82	3.73	3.71	3.71	32.10	32.66	33.75	33.75	0.00	0.00	1.09	3.33
Canada	5.54	5.80	5.57	5.74	5.16	5.11	4.30	4.22	28.61	29.64	23.95	24.21	0.26	1.10	-5.43	-18.32
Australia	6.18	5.99	5.88	5.92	1.94	2.79	2.67	2.86	12.00	16.70	15.70	16.95	1.25	7.93	0.25	1.50
Middle East																
Turkey	4.53	4.63	4.46	4.46	3.19	3.40	2.60	2.60	14.45	15.76	11.58	11.58	0.00	0.00	-4.18	-26.52
Iran	1.91	1.81	2.01	1.91	2.63	2.77	2.25	2.16	5.02	5.02	4.52	4.12	-0.40	-8.85	-0.90	-17.93
Others	73.06	79.18	74.42	74.43	1.61	1.57	1.71	1.71	117.96	124.67	126.94	127.04	0.10	0.08	2.37	1.90

World and Selected Countries and Regions; Coarse Grain includes: Barley, Corn, Millet, Mixed Grains, Oats, Rye and Sorghum

Table 04 Corn Area, Yield, and Production

Country / Region	Area (Million hectares)				Yield (Metric tons per hectare)				Production (Million metric tons)				Change in Production			
	2019/20	Prel.	2021/22 Proj.		2019/20	Prel.	2021/22 Proj.		2019/20	Prel.	2021/22 Proj.		From last month		From last year	
		2020/21	Nov	Dec		2020/21	Nov	Dec		2020/21	Nov	Dec	MMT	Percent	MMT	Percent
World	193.60	198.81	201.33	202.98	5.78	5.65	5.98	5.96	1,119.71	1,122.80	1,204.62	1,208.73	4.11	0.34	85.93	7.65
United States	32.92	33.31	34.43	34.43	10.51	10.76	11.11	11.11	345.96	358.45	382.59	382.59	0.00	0.00	24.15	6.74
Total Foreign	160.68	165.50	166.89	168.54	4.82	4.62	4.93	4.90	773.74	764.36	822.03	826.14	4.11	0.50	61.79	8.08
China	41.28	41.26	42.00	43.32	6.32	6.32	6.50	6.29	260.78	260.67	273.00	272.55	-0.45	-0.16	11.88	4.56
South America																
Brazil	18.50	19.90	20.80	20.80	5.51	4.37	5.67	5.67	102.00	87.00	118.00	118.00	0.00	0.00	31.00	35.63
Argentina	6.30	6.40	6.80	6.80	8.10	7.89	8.01	8.01	51.00	50.50	54.50	54.50	0.00	0.00	4.00	7.92
Bolivia	0.42	0.47	0.48	0.48	2.26	2.30	2.32	2.32	0.96	1.08	1.10	1.10	0.00	0.00	0.02	1.85
European Union	8.90	9.30	9.08	9.36	7.50	7.22	7.48	7.52	66.74	67.09	67.85	70.35	2.50	3.68	3.26	4.86
Africa																
South Africa	2.91	3.12	3.10	3.10	5.45	5.42	5.48	5.48	15.84	16.90	17.00	17.00	0.00	0.00	0.10	0.59
Nigeria	6.50	5.50	6.00	6.00	1.69	1.82	1.93	1.93	11.00	10.00	11.60	11.60	0.00	0.00	1.60	16.00
Ethiopia	2.27	2.53	2.40	2.40	4.24	4.18	3.75	3.75	9.64	10.56	9.00	9.00	0.00	0.00	-1.56	-14.75
Egypt	0.80	0.80	0.80	0.80	8.00	8.00	8.00	8.00	6.40	6.40	6.40	6.40	0.00	0.00	0.00	0.00
Tanzania	3.43	4.20	4.10	4.10	1.65	1.55	1.59	1.59	5.65	6.50	6.50	6.50	0.00	0.00	0.00	0.00
Malawi	1.70	1.70	1.70	1.70	1.78	2.22	2.47	2.47	3.03	3.78	4.20	4.20	0.00	0.00	0.42	11.11
Zambia	0.84	1.29	1.30	1.30	2.38	2.62	2.78	2.78	2.00	3.39	3.62	3.62	0.00	0.00	0.23	6.88
Kenya	2.20	2.20	2.20	2.20	1.77	1.82	1.82	1.82	3.90	4.00	4.00	4.00	0.00	0.00	0.00	0.00
Uganda	0.95	1.10	1.10	1.10	2.71	2.50	2.55	2.55	2.58	2.75	2.80	2.80	0.00	0.00	0.05	1.82
Zimbabwe	1.62	1.58	1.95	1.95	0.48	0.57	1.39	1.39	0.78	0.91	2.72	2.72	0.00	0.00	1.81	199.23
Former Soviet Union - 12																
Ukraine	4.99	5.40	5.42	5.42	7.19	5.62	7.01	7.38	35.89	30.30	38.00	40.00	2.00	5.26	9.70	32.03
Russia	2.50	2.73	2.80	2.80	5.70	5.08	5.36	5.36	14.28	13.87	15.00	15.00	0.00	0.00	1.13	8.13
South Asia																
India	9.57	9.87	9.70	9.70	3.01	3.19	3.09	3.09	28.77	31.51	30.00	30.00	0.00	0.00	-1.51	-4.79
Pakistan	1.41	1.39	1.40	1.40	5.12	5.63	5.43	5.43	7.24	7.80	7.60	7.60	0.00	0.00	-0.20	-2.56
Nepal	0.96	0.97	0.97	0.97	2.76	2.82	2.82	2.82	2.65	2.72	2.72	2.72	0.00	0.00	0.00	0.00
Southeast Asia																
Indonesia	3.80	3.60	3.60	3.60	3.16	3.28	3.33	3.33	12.00	11.80	12.00	12.00	0.00	0.00	0.20	1.69
Philippines	2.51	2.57	2.50	2.50	3.20	3.25	3.12	3.12	8.03	8.35	7.80	7.80	0.00	0.00	-0.55	-6.61
Vietnam	0.99	0.95	0.90	0.90	4.80	4.83	4.89	4.89	4.76	4.59	4.40	4.40	0.00	0.00	-0.19	-4.14
Thailand	1.22	1.26	1.20	1.20	3.70	4.46	4.42	4.42	4.50	5.60	5.30	5.30	0.00	0.00	-0.30	-5.36
Mexico	6.62	7.14	7.30	7.30	4.03	3.83	3.84	3.84	26.66	27.35	28.00	28.00	0.00	0.00	0.65	2.39
Canada	1.45	1.41	1.35	1.39	9.24	9.63	10.37	10.05	13.40	13.56	14.00	13.98	-0.02	-0.11	0.42	3.10
Turkey	0.52	0.62	0.54	0.54	11.54	11.45	12.04	12.04	6.00	7.10	6.50	6.50	0.00	0.00	-0.60	-8.45
Others	25.51	26.26	25.42	25.42	2.64	2.60	2.69	2.70	67.29	68.28	68.42	68.50	0.08	0.11	0.22	0.32

World and Selected Countries and Regions

Table 05 Barley Area, Yield, and Production

Country / Region	Area (Million hectares)				Yield (Metric tons per hectare)				Production (Million metric tons)				Change in Production			
	Prel.		2021/22 Proj.		Prel.		2021/22 Proj.		Prel.		2021/22 Proj.		From last month		From last year	
	2019/20	2020/21	Nov	Dec	2019/20	2020/21	Nov	Dec	2019/20	2020/21	Nov	Dec	MMT	Percent	MMT	Percent
World	52.34	51.31	49.85	49.43	3.02	3.11	2.93	2.94	157.84	159.39	146.24	145.51	-0.73	-0.50	-13.87	-8.70
United States	0.90	0.90	0.79	0.79	4.18	4.15	3.25	3.25	3.76	3.72	2.56	2.56	0.00	0.00	-1.16	-31.11
Total Foreign	51.44	50.41	49.06	48.64	3.00	3.09	2.93	2.94	154.08	155.67	143.68	142.95	-0.73	-0.51	-12.72	-8.17
European Union	11.16	11.04	10.73	10.40	4.94	4.91	5.02	5.07	55.18	54.23	53.90	52.75	-1.15	-2.13	-1.48	-2.74
United Kingdom	1.16	1.39	1.14	1.15	6.93	5.85	6.32	6.26	8.05	8.12	7.20	7.20	0.00	0.00	-0.92	-11.30
Former Soviet Union - 12																
Russia	8.40	8.16	7.75	7.75	2.37	2.53	2.19	2.19	19.94	20.63	17.00	17.00	0.00	0.00	-3.63	-17.59
Ukraine	2.78	2.58	2.67	2.67	3.42	3.08	3.82	3.82	9.53	7.95	10.20	10.20	0.00	0.00	2.25	28.35
Kazakhstan	2.98	2.73	2.20	2.20	1.29	1.34	1.14	1.14	3.83	3.66	2.50	2.50	0.00	0.00	-1.16	-31.68
Belarus	0.41	0.41	0.35	0.35	2.69	3.35	2.86	2.86	1.10	1.38	1.00	1.00	0.00	0.00	-0.38	-27.27
Azerbaijan	0.34	0.35	0.37	0.37	2.97	2.81	2.74	2.74	1.02	0.97	1.00	1.00	0.00	0.00	0.03	3.09
Canada	2.73	2.81	3.00	3.00	3.81	3.82	2.37	2.31	10.38	10.74	7.10	6.95	-0.15	-2.14	-3.79	-35.31
Australia	5.04	4.40	4.30	4.30	2.01	2.98	2.79	3.02	10.13	13.10	12.00	13.00	1.00	8.33	-0.10	-0.76
Middle East																
Turkey	3.80	3.80	3.70	3.70	2.08	2.13	1.22	1.22	7.90	8.10	4.50	4.50	0.00	0.00	-3.60	-44.44
Iran	1.70	1.60	1.80	1.70	2.12	2.25	1.72	1.59	3.60	3.60	3.10	2.70	-0.40	-12.90	-0.90	-25.00
Iraq	1.20	1.20	1.10	1.10	1.33	1.29	1.18	1.18	1.60	1.55	1.30	1.30	0.00	0.00	-0.25	-16.13
Syria	1.50	1.50	1.30	1.30	1.33	1.27	0.85	0.85	2.00	1.90	1.10	1.10	0.00	0.00	-0.80	-42.11
Africa																
Ethiopia	0.95	0.93	1.00	1.00	2.50	2.53	2.35	2.35	2.38	2.34	2.35	2.35	0.00	0.00	0.01	0.47
Morocco	1.05	1.47	1.49	1.49	1.11	0.44	1.87	1.87	1.16	0.64	2.78	2.78	0.00	0.00	2.14	334.38
Algeria	1.03	1.03	1.03	1.03	1.95	1.80	1.56	1.56	2.00	1.85	1.60	1.60	0.00	0.00	-0.25	-13.28
Tunisia	0.47	0.36	0.37	0.37	1.94	1.28	1.77	1.77	0.91	0.47	0.65	0.65	0.00	0.00	0.19	39.78
South Africa	0.13	0.14	0.10	0.10	2.61	4.14	3.68	3.68	0.35	0.59	0.35	0.35	0.00	0.00	-0.24	-40.48
South America																
Argentina	1.12	1.09	1.25	1.25	3.39	4.13	3.84	3.84	3.80	4.50	4.80	4.80	0.00	0.00	0.30	6.67
Uruguay	0.17	0.19	0.20	0.20	3.68	4.78	4.30	4.30	0.61	0.89	0.86	0.86	0.00	0.00	-0.03	-3.26
Brazil	0.12	0.10	0.10	0.10	3.61	3.63	3.74	3.74	0.43	0.37	0.39	0.39	0.00	0.00	0.01	2.94
India	0.58	0.59	0.60	0.60	2.84	2.92	2.78	2.78	1.63	1.72	1.67	1.67	0.00	0.00	-0.05	-2.91
China	0.26	0.26	0.25	0.25	3.46	3.46	3.60	3.60	0.90	0.90	0.90	0.90	0.00	0.00	0.00	0.00
Mexico	0.36	0.30	0.34	0.34	2.81	3.07	2.82	2.82	1.01	0.91	0.96	0.96	0.00	0.00	0.06	6.08
Afghanistan	0.18	0.17	0.16	0.16	1.39	1.41	1.25	1.25	0.25	0.24	0.20	0.20	0.00	0.00	-0.04	-16.67
Others	1.83	1.83	1.78	1.78	2.41	2.37	2.41	2.39	4.41	4.34	4.28	4.25	-0.03	-0.70	-0.09	-2.14

World and Selected Countries and Regions

Table 06 Oats Area, Yield, and Production

Country / Region	Area (Million hectares)				Yield (Metric tons per hectare)				Production (Million metric tons)				Change in Production			
	2019/20	Prel.	2021/22 Proj.		2019/20	Prel.	2021/22 Proj.		2019/20	Prel.	2021/22 Proj.		From last month		From last year	
		2020/21	Nov	Dec		2020/21	Nov	Dec		2020/21	Nov	Dec	MMT	Percent	MMT	Percent
World	9.56	9.99	9.43	9.53	2.43	2.55	2.41	2.42	23.22	25.51	22.77	23.03	0.26	1.12	-2.48	-9.72
United States	0.34	0.41	0.26	0.26	2.31	2.34	2.20	2.20	0.77	0.95	0.58	0.58	0.00	0.00	-0.38	-39.41
Total Foreign	9.22	9.59	9.17	9.27	2.43	2.56	2.42	2.42	22.45	24.55	22.19	22.45	0.26	1.15	-2.10	-8.56
European Union	2.38	2.55	2.60	2.60	2.93	3.30	3.15	3.13	6.97	8.42	8.20	8.15	-0.05	-0.61	-0.27	-3.23
Former Soviet Union - 12																
Russia	2.43	2.33	2.20	2.20	1.82	1.77	1.86	1.86	4.42	4.13	4.10	4.10	0.00	0.00	-0.03	-0.65
Ukraine	0.18	0.20	0.18	0.18	2.32	2.54	2.58	2.58	0.43	0.52	0.47	0.47	0.00	0.00	-0.05	-9.71
Belarus	0.16	0.16	0.15	0.15	2.30	2.87	2.33	2.33	0.37	0.45	0.35	0.35	0.00	0.00	-0.10	-21.35
Kazakhstan	0.24	0.23	0.20	0.20	1.10	1.05	1.00	1.00	0.27	0.24	0.20	0.20	0.00	0.00	-0.04	-16.67
Canada	1.17	1.31	1.00	1.11	3.62	3.48	2.30	2.34	4.23	4.58	2.30	2.61	0.31	13.30	-1.97	-43.05
South America																
Argentina	0.32	0.24	0.30	0.30	1.86	2.13	2.30	2.30	0.60	0.51	0.69	0.69	0.00	0.00	0.18	35.29
Brazil	0.40	0.43	0.43	0.43	2.21	1.99	2.18	2.18	0.88	0.85	0.93	0.93	0.00	0.00	0.08	9.57
Chile	0.10	0.11	0.11	0.11	4.92	4.65	5.45	5.45	0.48	0.53	0.60	0.60	0.00	0.00	0.08	14.29
Uruguay	0.02	0.02	0.02	0.02	2.19	2.20	2.33	2.33	0.04	0.03	0.04	0.04	0.00	0.00	0.00	6.06
Oceania																
Australia	0.82	0.95	0.90	0.90	1.40	1.76	1.72	1.72	1.14	1.68	1.55	1.55	0.00	0.00	-0.13	-7.46
New Zealand	0.01	0.00	0.00	0.00	5.40	6.00	6.00	6.00	0.03	0.02	0.02	0.02	0.00	0.00	0.00	0.00
China	0.41	0.41	0.41	0.41	1.48	1.48	1.48	1.48	0.60	0.60	0.60	0.60	0.00	0.00	0.00	0.00
Africa																
Algeria	0.09	0.09	0.09	0.09	1.29	1.29	1.29	1.29	0.11	0.11	0.11	0.11	0.00	0.00	0.00	0.00
Morocco	0.01	0.04	0.04	0.04	0.62	0.88	1.13	1.13	0.01	0.04	0.05	0.05	0.00	0.00	0.01	28.57
South Africa	0.02	0.03	0.04	0.04	0.81	2.19	2.29	2.29	0.02	0.06	0.08	0.08	0.00	0.00	0.02	40.35
Other Europe																
United Kingdom	0.18	0.21	0.22	0.20	5.91	4.91	5.12	5.50	1.08	1.03	1.10	1.10	0.00	0.00	0.07	6.69
Norway	0.07	0.07	0.07	0.07	4.29	4.29	4.29	4.29	0.30	0.30	0.30	0.30	0.00	0.00	0.00	0.00
Serbia	0.03	0.03	0.03	0.03	2.17	2.17	2.17	2.17	0.07	0.07	0.07	0.07	0.00	0.00	0.00	0.00
Albania	0.02	0.01	0.01	0.01	2.06	2.14	2.14	2.14	0.03	0.03	0.03	0.03	0.00	0.00	0.00	0.00
Bosnia and Herzegovina	0.01	0.01	0.01	0.01	2.70	3.09	2.82	2.82	0.03	0.03	0.03	0.03	0.00	0.00	0.00	-8.82
Turkey	0.10	0.10	0.11	0.11	2.30	2.40	2.38	2.38	0.23	0.24	0.25	0.25	0.00	0.00	0.01	4.17
Mexico	0.05	0.03	0.05	0.05	1.98	2.03	2.00	2.00	0.10	0.06	0.09	0.09	0.00	0.00	0.03	42.86
Others	0.03	0.03	0.03	0.03	1.70	1.66	1.76	1.76	0.05	0.05	0.05	0.05	0.00	0.00	0.00	6.25

World and Selected Countries and Regions

Table 07 Rye Area, Yield, and Production

Country / Region	Area (Million hectares)				Yield (Metric tons per hectare)				Production (Million metric tons)				Change in Production						
	2019/20	Prel.		2021/22 Proj.		2019/20	Prel.		2021/22 Proj.		2019/20	Prel.		2021/22 Proj.		From last month		From last year	
		2020/21	Nov	Dec	2020/21		Nov	Dec	2020/21	Nov		Dec	MMT	Percent	MMT	Percent			
World	4.04	4.16	4.29	4.06	3.04	3.43	3.19	3.17	12.25	14.29	13.69	12.85	-0.84	-6.15	-1.44	-10.08			
United States	0.13	0.13	0.12	0.12	2.16	2.19	2.09	2.09	0.27	0.29	0.25	0.25	0.00	0.00	-0.04	-15.02			
Total Foreign	3.91	4.03	4.18	3.94	3.06	3.48	3.22	3.20	11.98	14.00	13.44	12.60	-0.84	-6.26	-1.40	-9.98			
European Union	2.21	2.08	2.18	1.95	3.80	4.31	4.11	4.13	8.40	8.96	8.95	8.05	-0.90	-10.06	-0.91	-10.20			
Former Soviet Union - 12																			
Russia	0.82	0.97	1.03	1.03	1.73	2.44	1.95	1.95	1.42	2.38	2.00	2.00	0.00	0.00	-0.38	-15.82			
Belarus	0.32	0.36	0.33	0.33	2.37	2.92	2.46	2.46	0.76	1.05	0.80	0.80	0.00	0.00	-0.25	-23.88			
Ukraine	0.12	0.14	0.17	0.17	2.90	3.28	3.53	3.53	0.34	0.46	0.60	0.60	0.00	0.00	0.14	30.72			
Kazakhstan	0.02	0.02	0.04	0.04	1.10	1.25	1.00	1.00	0.02	0.03	0.04	0.04	0.00	0.00	0.01	33.33			
Turkey	0.11	0.11	0.12	0.12	2.91	2.91	2.87	2.87	0.32	0.32	0.33	0.33	0.00	0.00	0.01	3.13			
Canada	0.10	0.15	0.16	0.15	3.23	3.19	2.59	3.22	0.33	0.49	0.42	0.47	0.06	13.98	-0.02	-3.07			
South America																			
Chile	0.00	0.00	0.00	0.00	5.00	5.00	5.00	5.00	0.01	0.01	0.01	0.01	0.00	0.00	0.00	0.00			
Argentina	0.11	0.09	0.07	0.07	2.00	1.50	2.00	2.00	0.22	0.14	0.13	0.13	0.00	0.00	0.00	-0.74			
Other Europe																			
Bosnia and Herzegovina	0.00	0.00	0.00	0.00	2.50	3.67	3.00	3.00	0.01	0.01	0.01	0.01	0.00	0.00	0.00	-18.18			
Switzerland	0.00	0.00	0.00	0.00	5.50	5.50	5.50	5.50	0.01	0.01	0.01	0.01	0.00	0.00	0.00	0.00			
Serbia	0.00	0.00	0.00	0.00	2.50	2.50	2.50	2.50	0.01	0.01	0.01	0.01	0.00	0.00	0.00	0.00			
Australia	0.04	0.04	0.04	0.04	0.68	0.68	0.68	0.68	0.03	0.03	0.03	0.03	0.00	0.00	0.00	0.00			
Others	0.04	0.04	0.04	0.04	2.51	2.48	2.50	2.50	0.11	0.11	0.11	0.11	0.00	0.00	0.00	0.92			

World and Selected Countries and Regions

Table 08 Sorghum Area, Yield, and Production

Country / Region	Area (Million hectares)				Yield (Metric tons per hectare)				Production (Million metric tons)				Change in Production			
	Prel.		2021/22 Proj.		Prel.		2021/22 Proj.		Prel.		2021/22 Proj.		From last month		From last year	
	2019/20	2020/21	Nov	Dec	2019/20	2020/21	Nov	Dec	2019/20	2020/21	Nov	Dec	MMT	Percent	MMT	Percent
World	39.86	42.75	41.79	41.82	1.46	1.46	1.58	1.59	58.23	62.37	66.05	66.30	0.25	0.38	3.93	6.30
United States	1.89	2.06	2.64	2.64	4.58	4.59	4.53	4.53	8.67	9.47	11.97	11.97	0.00	0.00	2.49	26.31
Total Foreign	37.97	40.68	39.15	39.18	1.31	1.30	1.38	1.39	49.56	52.90	54.08	54.33	0.25	0.46	1.44	2.71
Africa																
Nigeria	5.40	5.60	5.70	5.70	1.23	1.17	1.19	1.19	6.67	6.57	6.80	6.80	0.00	0.00	0.23	3.50
Ethiopia	1.83	1.68	1.87	1.87	2.88	2.69	2.78	2.78	5.27	4.52	5.20	5.20	0.00	0.00	0.68	15.12
Sudan	6.83	9.03	7.00	7.00	0.54	0.57	0.71	0.71	3.71	5.15	5.00	5.00	0.00	0.00	-0.15	-2.91
Burkina Faso	1.89	1.80	1.80	1.80	0.99	1.02	1.19	1.19	1.87	1.84	2.15	2.15	0.00	0.00	0.31	16.85
Mali	1.50	1.83	1.50	1.50	1.01	0.98	1.00	1.00	1.51	1.80	1.50	1.50	0.00	0.00	-0.30	-16.71
Niger	3.75	3.70	3.70	3.70	0.51	0.52	0.51	0.51	1.90	1.92	1.90	1.90	0.00	0.00	-0.02	-1.14
Cameroon	0.73	0.74	0.74	0.74	1.67	1.62	1.62	1.62	1.22	1.20	1.20	1.20	0.00	0.00	0.00	0.00
Tanzania	0.65	0.70	0.70	0.70	1.13	1.07	1.07	1.07	0.73	0.75	0.75	0.75	0.00	0.00	0.00	0.00
Egypt	0.14	0.14	0.14	0.14	5.36	5.36	5.36	5.36	0.75	0.75	0.75	0.75	0.00	0.00	0.00	0.00
Uganda	0.42	0.43	0.43	0.43	0.95	0.94	0.94	0.94	0.40	0.40	0.40	0.40	0.00	0.00	0.00	0.00
Ghana	0.30	0.25	0.25	0.25	1.15	1.42	1.12	1.12	0.35	0.36	0.28	0.28	0.00	0.00	-0.08	-21.35
Mozambique	0.23	0.26	0.25	0.25	0.69	0.54	0.70	0.70	0.16	0.14	0.18	0.18	0.00	0.00	0.03	23.24
South Africa	0.04	0.05	0.05	0.05	3.67	4.29	3.78	3.78	0.16	0.21	0.17	0.17	0.00	0.00	-0.04	-19.05
Mexico	1.38	1.29	1.42	1.42	3.14	3.37	3.31	3.31	4.33	4.35	4.70	4.70	0.00	0.00	0.35	8.10
South America																
Argentina	0.58	0.75	0.85	0.85	4.35	4.43	4.41	4.41	2.50	3.32	3.75	3.75	0.00	0.00	0.43	12.95
Brazil	0.84	0.88	0.90	0.90	2.99	3.12	3.00	3.00	2.50	2.73	2.70	2.70	0.00	0.00	-0.03	-1.17
South Asia																
India	4.82	4.24	4.60	4.60	0.99	1.13	0.96	0.96	4.77	4.78	4.40	4.40	0.00	0.00	-0.38	-7.95
Pakistan	0.24	0.25	0.26	0.26	0.58	0.58	0.59	0.59	0.14	0.15	0.15	0.15	0.00	0.00	0.01	3.45
China	0.75	0.73	0.73	0.73	4.80	4.86	4.93	4.93	3.60	3.55	3.60	3.60	0.00	0.00	0.05	1.41
Australia	0.20	0.51	0.53	0.58	1.95	2.94	3.02	3.28	0.40	1.50	1.60	1.90	0.30	18.75	0.40	26.67
European Union	0.16	0.19	0.17	0.15	5.32	5.15	5.59	6.00	0.85	0.96	0.95	0.90	-0.05	-5.26	-0.06	-6.05
Others	5.30	5.65	5.57	5.57	1.09	1.06	1.07	1.07	5.79	5.96	5.96	5.96	0.00	0.00	0.00	0.03

World and Selected Countries and Regions

Table 09 Rice Area, Yield, and Production
World and Selected Countries and Regions

Country / Region	Area (Million hectares)				Yield (Metric tons per hectare)				Production (Million metric tons)				Change in Production			
	2019/20	Prel.	2021/22 Proj.		2019/20	Prel.	2021/22 Proj.		2019/20	Prel.	2021/22 Proj.		From last month		From last year	
		2020/21	Nov	Dec		2020/21	Nov	Dec		2020/21	Nov	Dec	MMT	Percent	MMT	Percent
World	161.69	164.86	165.27	164.81	4.61	4.59	4.62	4.63	498.84	507.20	511.72	510.78	-0.94	-0.18	3.57	0.70
United States	1.00	1.21	1.01	1.01	8.38	8.54	8.70	8.70	5.88	7.23	6.15	6.15	0.00	0.00	-1.07	-14.84
Total Foreign	160.69	163.66	164.26	163.79	4.58	4.56	4.60	4.60	492.96	499.98	505.57	504.62	-0.94	-0.19	4.64	0.93
East Asia																
China	29.69	30.08	30.00	29.92	7.06	7.04	7.10	7.11	146.73	148.30	149.00	148.99	-0.01	-0.01	0.69	0.47
Japan	1.54	1.53	1.53	1.53	6.78	6.79	6.81	6.81	7.61	7.57	7.56	7.56	0.00	0.00	-0.01	-0.17
Korea, South	0.73	0.73	0.73	0.73	6.87	6.49	7.01	7.12	3.74	3.51	3.82	3.88	0.07	1.73	0.38	10.69
Korea, North	0.48	0.49	0.50	0.50	5.89	4.44	4.18	4.18	1.82	1.40	1.36	1.36	0.00	0.00	-0.04	-2.72
South Asia																
India	43.66	45.00	45.50	45.50	4.08	4.08	4.12	4.12	118.87	122.27	125.00	125.00	0.00	0.00	2.73	2.23
Bangladesh	11.83	11.50	11.68	11.42	4.55	4.51	4.66	4.66	35.85	34.60	36.25	35.50	-0.75	-2.07	0.90	2.60
Pakistan	3.03	3.38	3.30	3.30	3.67	3.63	3.73	3.73	7.41	8.18	8.20	8.20	0.00	0.00	0.02	0.20
Nepal	1.46	1.47	1.48	1.48	3.80	3.78	3.77	3.77	3.70	3.70	3.70	3.70	0.00	0.00	0.00	0.11
Sri Lanka	0.97	1.09	1.10	1.10	4.85	4.57	4.64	4.64	3.21	3.39	3.47	3.47	0.00	0.00	0.08	2.30
Southeast Asia																
Indonesia	11.60	11.80	11.80	11.80	4.71	4.71	4.72	4.72	34.70	35.30	35.35	35.35	0.00	0.00	0.05	0.14
Vietnam	7.38	7.33	7.35	7.35	5.88	5.97	5.90	5.90	27.10	27.34	27.10	27.10	0.00	0.00	-0.24	-0.89
Thailand	9.89	10.51	10.50	10.40	2.70	2.72	2.81	2.81	17.66	18.86	19.50	19.30	-0.20	-1.03	0.44	2.32
Burma	6.90	6.90	6.90	6.90	2.86	2.85	2.85	2.85	12.65	12.60	12.60	12.60	0.00	0.00	0.00	0.00
Philippines	4.64	4.76	4.75	4.75	4.08	4.14	4.11	4.11	11.93	12.42	12.30	12.30	0.00	0.00	-0.12	-0.93
Cambodia	3.26	3.27	3.30	3.30	2.89	2.90	2.93	2.93	5.74	5.78	5.90	5.90	0.00	0.00	0.12	2.02
Laos	0.84	0.96	0.97	0.97	3.01	3.14	3.19	3.19	1.60	1.90	1.95	1.95	0.00	0.00	0.05	2.63
Malaysia	0.70	0.68	0.68	0.68	4.01	4.07	4.07	4.07	1.83	1.80	1.80	1.80	0.00	0.00	0.00	0.00
South America																
Brazil	1.67	1.68	1.70	1.70	6.71	7.00	6.94	6.94	7.60	8.00	8.02	8.02	0.00	0.00	0.02	0.29
Peru	0.41	0.42	0.43	0.41	7.46	7.76	7.92	7.90	2.13	2.25	2.35	2.24	-0.12	-4.89	-0.02	-0.67
Africa																
Egypt	0.76	0.70	0.50	0.50	8.20	8.28	8.41	8.41	4.30	4.00	2.90	2.90	0.00	0.00	-1.10	-27.50
Madagascar	1.40	1.40	1.40	1.40	3.02	3.02	2.86	2.86	2.71	2.71	2.56	2.56	0.00	0.00	-0.15	-5.43
Nigeria	3.50	3.60	3.65	3.65	2.29	2.16	2.17	2.17	5.04	4.89	5.00	5.00	0.00	0.00	0.11	2.25
European Union	0.42	0.42	0.41	0.41	6.96	6.78	6.79	6.68	1.99	1.95	1.89	1.85	-0.04	-2.11	-0.10	-4.97
Iran	0.58	0.58	0.56	0.56	5.25	5.27	5.14	5.14	1.99	2.00	1.90	1.90	0.00	0.00	-0.10	-5.00
Others	13.35	13.39	13.55	13.55	2.85	2.86	2.92	2.93	25.07	25.26	26.08	26.19	0.11	0.40	0.93	3.70

Yield is on a rough basis, before the milling process. Production is on a milled basis, after the milling process.

Table 10 Total Oilseed Area, Yield, and Production

World and Selected Countries and Regions

Country / Region	Area (Million hectares)				Yield (Metric tons per hectare)				Production (Million metric tons)				Change in Production			
	2019/20	Prel.	2021/22 Proj.		2019/20	Prel.	2021/22 Proj.		2019/20	Prel.	2021/22 Proj.		From last month		From last year	
		2020/21	Nov	Dec		2020/21	Nov	Dec		2020/21	Nov	Dec	MMT	Percent	MMT	Percent
World Total	--	--	--	--	--	--	--	--	580.75	603.57	628.03	627.58	-0.45	-0.07	24.01	3.98
Total Foreign	--	--	--	--	--	--	--	--	473.77	479.01	497.80	497.32	-0.48	-0.10	18.31	3.82
Oilseed, Copra	--	--	--	--	--	--	--	--	5.66	5.56	5.82	5.82	0.00	0.00	0.26	4.62
Oilseed, Palm Kernel	--	--	--	--	--	--	--	--	19.30	19.03	19.94	19.94	0.00	0.00	0.91	4.80
Major Oilseeds	246.18	252.13	259.09	258.69	2.26	2.30	2.32	2.33	555.79	578.98	602.27	601.82	-0.45	-0.07	22.84	3.95
United States	36.83	38.83	40.97	40.97	2.91	3.21	3.18	3.18	106.98	124.56	130.24	130.26	0.03	0.02	5.70	4.58
Foreign Oilseeds	209.35	213.29	218.13	217.72	2.14	2.13	2.16	2.17	448.81	454.42	472.04	471.56	-0.48	-0.10	17.14	3.77
South America	64.00	65.34	67.57	67.53	3.18	3.20	3.26	3.26	203.24	208.86	220.60	220.15	-0.45	-0.20	11.29	5.40
Brazil	38.77	40.47	42.21	42.21	3.45	3.52	3.53	3.53	133.78	142.28	149.13	149.13	0.00	0.00	6.85	4.81
Argentina	19.03	19.01	18.84	18.85	2.82	2.70	2.90	2.90	53.64	51.24	54.61	54.66	0.05	0.09	3.41	6.66
Paraguay	3.57	3.24	3.54	3.49	2.90	3.09	3.00	2.90	10.36	10.02	10.62	10.12	-0.50	-4.71	0.10	1.01
Bolivia	1.49	1.51	1.53	1.53	2.00	2.09	2.07	2.07	2.99	3.15	3.16	3.16	0.00	0.00	0.01	0.44
Uruguay	0.98	0.97	1.32	1.32	2.14	1.87	2.06	2.06	2.09	1.82	2.72	2.72	0.00	0.00	0.90	49.42
China	24.91	25.58	25.35	24.15	2.50	2.55	2.55	2.57	62.20	65.34	64.60	62.00	-2.60	-4.02	-3.34	-5.10
South Asia	41.20	43.45	42.27	42.57	0.95	0.94	1.03	1.02	39.13	40.70	43.38	43.30	-0.08	-0.19	2.60	6.39
India	37.75	40.15	39.20	39.50	0.93	0.94	1.00	1.00	35.20	37.55	39.31	39.66	0.35	0.89	2.11	5.62
Pakistan	3.08	2.94	2.70	2.70	1.13	0.92	1.34	1.18	3.49	2.69	3.62	3.19	-0.43	-11.95	0.50	18.46
European Union	10.65	10.79	10.89	10.95	2.62	2.62	2.80	2.80	27.95	28.25	30.46	30.63	0.16	0.54	2.37	8.40
United Kingdom	0.50	0.38	0.32	0.32	3.38	2.77	3.41	3.41	1.68	1.05	1.08	1.08	0.00	0.00	0.03	2.38
Former Soviet Union - 12	26.07	25.79	27.01	27.31	1.96	1.73	1.88	1.92	51.10	44.70	50.78	52.41	1.63	3.21	7.71	17.25
Russia	12.56	12.50	13.80	14.20	1.73	1.61	1.62	1.63	21.70	20.14	22.35	23.10	0.75	3.36	2.96	14.68
Ukraine	9.70	9.65	9.45	9.35	2.52	2.06	2.48	2.59	24.46	19.85	23.45	24.25	0.80	3.41	4.40	22.17
Uzbekistan	1.02	0.99	1.00	1.00	1.39	1.43	1.31	1.39	1.43	1.42	1.30	1.38	0.08	5.99	-0.04	-2.68
Canada	10.77	10.41	10.93	11.18	2.43	2.49	1.73	1.70	26.12	25.95	18.95	18.95	0.00	0.02	-6.99	-26.95
Africa	22.87	22.66	23.91	23.83	1.03	1.02	1.02	1.03	23.49	23.17	24.50	24.59	0.09	0.38	1.42	6.11
Nigeria	4.32	4.62	4.97	4.97	1.38	1.22	1.25	1.25	5.96	5.65	6.20	6.20	0.00	0.00	0.55	9.73
South Africa	1.27	1.37	1.54	1.54	1.70	1.96	1.82	1.82	2.16	2.68	2.81	2.81	0.00	0.00	0.13	4.89
Tanzania	1.60	1.45	1.60	1.60	0.85	0.82	0.85	0.85	1.36	1.19	1.36	1.36	0.00	0.00	0.17	14.27
Southeast Asia	3.12	3.25	3.20	3.20	1.38	1.36	1.37	1.37	4.30	4.41	4.38	4.38	0.00	0.00	-0.04	-0.79
Burma	1.87	2.03	2.04	2.04	1.18	1.17	1.19	1.19	2.21	2.37	2.42	2.42	0.00	0.00	0.04	1.81
Indonesia	0.95	0.94	0.89	0.89	1.55	1.54	1.55	1.55	1.47	1.45	1.39	1.39	0.00	0.00	-0.06	-4.15
Australia	2.12	2.78	3.65	3.65	1.19	1.95	1.77	1.96	2.53	5.43	6.47	7.18	0.70	10.88	1.75	32.15
Turkey	1.42	1.18	1.32	1.32	2.33	2.46	2.50	2.55	3.31	2.89	3.29	3.35	0.07	2.01	0.46	15.86
Others	1.72	1.68	1.72	1.72	2.19	2.19	2.07	2.07	3.76	3.67	3.56	3.56	0.00	0.00	-0.12	-3.19

World Total and Total Foreign: (Major Oilseeds plus copra and palm kernel) Major Oilseeds: (soybeans, sunflowerseeds, peanuts(inshell), cottonseed and rapeseed)

Table 11 Soybean Area, Yield, and Production

Country / Region	Area (Million hectares)				Yield (Metric tons per hectare)				Production (Million metric tons)				Change in Production			
	2019/20	Prel.	2021/22 Proj.		2019/20	Prel.	2021/22 Proj.		2019/20	Prel.	2021/22 Proj.		From last month		From last year	
		2020/21	Nov	Dec		2020/21	Nov	Dec		2020/21	Nov	Dec	MMT	Percent	MMT	Percent
World	122.93	127.88	131.56	130.45	2.76	2.86	2.92	2.93	339.88	366.23	384.01	381.78	-2.23	-0.58	15.55	4.25
United States	30.33	33.43	34.98	34.98	3.19	3.43	3.44	3.44	96.67	114.75	120.43	120.43	0.00	0.00	5.68	4.95
Total Foreign	92.60	94.46	96.58	95.47	2.63	2.66	2.73	2.74	243.21	251.48	263.58	261.36	-2.23	-0.85	9.87	3.93
South America																
Brazil	36.90	38.90	40.40	40.40	3.48	3.55	3.56	3.56	128.50	138.00	144.00	144.00	0.00	0.00	6.00	4.35
Argentina	16.70	16.47	16.40	16.40	2.92	2.81	3.02	3.02	48.80	46.20	49.50	49.50	0.00	0.00	3.30	7.14
Paraguay	3.50	3.15	3.45	3.40	2.93	3.14	3.04	2.94	10.25	9.90	10.50	10.00	-0.50	-4.76	0.10	1.01
Bolivia	1.36	1.39	1.40	1.40	2.08	2.17	2.14	2.14	2.83	3.00	3.00	3.00	0.00	0.00	0.00	0.00
Uruguay	0.92	0.91	1.25	1.25	2.17	1.88	2.08	2.08	1.99	1.71	2.60	2.60	0.00	0.00	0.89	52.31
East Asia																
China	9.33	9.88	9.60	8.40	1.94	1.98	1.98	1.95	18.09	19.60	19.00	16.40	-2.60	-13.68	-3.20	-16.34
Korea, South	0.06	0.06	0.06	0.06	1.81	1.47	1.71	1.71	0.11	0.08	0.09	0.09	0.00	0.00	0.01	16.05
Korea, North	0.16	0.16	0.17	0.17	1.70	1.40	1.44	1.44	0.26	0.23	0.24	0.24	0.00	0.00	0.01	3.48
Japan	0.14	0.14	0.15	0.15	1.47	1.65	1.66	1.66	0.21	0.24	0.24	0.24	0.00	0.00	0.01	2.55
India	12.19	12.70	12.50	12.50	0.76	0.82	0.95	0.95	9.30	10.45	11.90	11.90	0.00	0.00	1.45	13.88
Canada	2.27	2.04	2.10	2.13	2.71	3.12	2.81	2.94	6.15	6.36	5.90	6.27	0.37	6.31	-0.09	-1.37
Former Soviet Union - 12																
Russia	2.78	2.71	2.90	3.00	1.57	1.59	1.59	1.60	4.36	4.31	4.60	4.80	0.20	4.35	0.49	11.45
Ukraine	1.96	1.46	1.40	1.40	2.29	2.05	2.43	2.64	4.50	3.00	3.40	3.70	0.30	8.82	0.70	23.33
European Union	0.90	0.94	0.94	0.94	2.89	2.74	2.93	2.93	2.62	2.58	2.75	2.75	0.00	0.00	0.18	6.80
Southeast Asia																
Indonesia	0.40	0.39	0.35	0.35	1.20	1.22	1.21	1.21	0.48	0.48	0.43	0.43	0.00	0.00	-0.05	-10.53
Vietnam	0.04	0.04	0.03	0.03	1.57	1.57	1.67	1.67	0.07	0.06	0.05	0.05	0.00	0.00	-0.01	-9.09
Thailand	0.03	0.03	0.03	0.03	1.53	1.63	1.63	1.63	0.05	0.05	0.05	0.05	0.00	0.00	0.00	0.00
Burma	0.14	0.14	0.13	0.13	1.04	1.04	1.04	1.04	0.14	0.14	0.14	0.14	0.00	0.00	-0.01	-3.57
Serbia	0.22	0.22	0.22	0.22	2.73	2.89	2.45	2.45	0.60	0.64	0.54	0.54	0.00	0.00	-0.10	-14.96
Mexico	0.15	0.16	0.19	0.19	1.57	1.58	1.58	1.58	0.24	0.25	0.30	0.30	0.00	0.00	0.05	21.95
Africa																
South Africa	0.71	0.83	0.93	0.93	1.77	2.28	2.00	2.00	1.25	1.89	1.85	1.85	0.00	0.00	-0.04	-2.17
Nigeria	1.04	1.10	1.20	1.20	1.11	0.95	1.04	1.04	1.15	1.05	1.25	1.25	0.00	0.00	0.20	19.05
Zambia	0.20	0.16	0.30	0.30	1.43	1.81	0.84	0.84	0.28	0.30	0.25	0.25	0.00	0.00	-0.05	-15.82
Uganda	0.05	0.05	0.05	0.05	0.60	0.60	0.60	0.60	0.03	0.03	0.03	0.03	0.00	0.00	0.00	0.00
Middle East																
Iran	0.07	0.07	0.07	0.07	2.43	2.41	2.29	2.29	0.17	0.17	0.16	0.16	0.00	0.00	-0.01	-5.33
Turkey	0.03	0.03	0.03	0.03	3.89	3.79	3.67	3.67	0.11	0.11	0.11	0.11	0.00	0.00	0.00	0.00
Others	0.35	0.34	0.35	0.35	1.95	2.03	2.02	2.02	0.69	0.69	0.71	0.71	0.00	0.00	0.02	3.35

World and Selected Countries and Regions

Table 12 Cottonseed Area, Yield, and Production

Country / Region	Area (Million hectares)				Yield (Metric tons per hectare)				Production (Million metric tons)				Change in Production						
	2019/20	Prel.		2021/22 Proj.		2019/20	Prel.		2021/22 Proj.		2019/20	Prel.		2021/22 Proj.		From last month		From last year	
		2020/21	Nov	Dec	2020/21		Nov	Dec	2020/21	Nov		Dec	MMT	Percent	MMT	Percent			
World	34.12	30.82	32.13	32.05	1.29	1.33	1.37	1.37	43.95	40.93	44.17	44.02	-0.16	-0.36	3.09	7.54			
United States	4.65	3.35	4.02	4.02	1.16	1.22	1.25	1.26	5.39	4.09	5.03	5.06	0.03	0.50	0.97	23.69			
Total Foreign	29.47	27.47	28.11	28.04	1.31	1.34	1.39	1.39	38.56	36.84	39.14	38.96	-0.18	-0.47	2.12	5.75			
South Asia																			
India	13.40	13.00	12.40	12.40	0.90	0.90	0.96	0.96	12.10	11.72	11.89	11.89	0.00	0.00	0.17	1.44			
Pakistan	2.45	2.20	2.00	2.00	1.10	0.89	1.45	1.23	2.69	1.95	2.90	2.47	-0.43	-14.92	0.52	26.68			
China	3.45	3.25	3.10	3.10	3.10	3.50	3.39	3.39	10.68	11.37	10.50	10.50	0.00	0.00	-0.87	-7.61			
Former Soviet Union - 12																			
Uzbekistan	1.01	0.98	0.98	0.98	1.36	1.41	1.28	1.36	1.37	1.37	1.25	1.33	0.08	6.22	-0.04	-2.84			
Turkmenistan	0.55	0.55	0.55	0.55	0.66	0.66	0.64	0.64	0.36	0.36	0.35	0.35	0.00	0.00	-0.01	-2.22			
Tajikistan	0.18	0.16	0.17	0.17	1.27	1.11	1.15	1.15	0.23	0.18	0.20	0.20	0.00	0.00	0.02	9.55			
Kazakhstan	0.13	0.11	0.12	0.12	1.13	0.95	0.90	0.90	0.14	0.11	0.10	0.10	0.00	0.00	0.00	-1.90			
South America																			
Brazil	1.67	1.37	1.60	1.60	2.75	2.62	2.74	2.74	4.58	3.59	4.38	4.38	0.00	0.00	0.79	21.99			
Argentina	0.42	0.45	0.45	0.45	0.68	0.67	0.70	0.70	0.28	0.30	0.32	0.32	0.00	0.00	0.02	5.33			
Middle East																			
Turkey	0.57	0.35	0.45	0.45	1.98	2.71	2.61	2.76	1.13	0.95	1.18	1.24	0.07	5.62	0.29	31.05			
Syria	0.03	0.03	0.03	0.03	2.36	2.36	2.20	2.20	0.06	0.06	0.06	0.06	0.00	0.00	0.00	-6.78			
Iran	0.08	0.08	0.08	0.08	1.16	1.16	1.10	1.10	0.09	0.09	0.09	0.09	0.00	0.00	-0.01	-5.38			
Australia	0.06	0.28	0.60	0.60	3.12	3.06	2.65	2.65	0.19	0.84	1.59	1.59	0.00	0.00	0.75	89.30			
European Union	0.35	0.34	0.31	0.32	1.81	1.58	1.50	1.48	0.64	0.54	0.46	0.48	0.01	2.81	-0.06	-11.36			
Africa																			
Burkina Faso	0.58	0.56	0.61	0.60	0.42	0.46	0.43	0.44	0.24	0.25	0.26	0.26	0.00	0.00	0.01	3.56			
Mali	0.74	0.17	0.80	0.72	0.52	0.49	0.52	0.55	0.38	0.08	0.42	0.40	-0.02	-5.04	0.32	388.89			
Cameroon	0.25	0.23	0.23	0.23	1.29	1.51	1.30	1.52	0.32	0.34	0.30	0.35	0.05	16.67	0.01	2.94			
Cote d'Ivoire	0.41	0.45	0.46	0.48	0.66	0.61	0.61	0.62	0.27	0.27	0.28	0.29	0.01	4.63	0.02	8.89			
Benin	0.67	0.62	0.62	0.64	0.71	0.78	0.69	0.78	0.47	0.48	0.43	0.50	0.07	15.35	0.02	3.55			
Tanzania	0.60	0.45	0.60	0.60	0.43	0.20	0.44	0.44	0.26	0.09	0.26	0.26	0.00	0.00	0.17	186.81			
Egypt	0.10	0.07	0.10	0.10	0.92	1.00	1.00	1.00	0.09	0.07	0.10	0.10	0.00	0.00	0.04	53.85			
Nigeria	0.15	0.27	0.27	0.27	0.57	0.56	0.56	0.56	0.09	0.15	0.15	0.15	0.00	0.00	0.00	0.00			
Uganda	0.09	0.10	0.10	0.10	1.67	1.40	1.40	1.40	0.15	0.14	0.14	0.14	0.00	0.00	0.00	0.00			
Zimbabwe	0.18	0.24	0.21	0.21	0.40	0.55	0.36	0.36	0.07	0.13	0.08	0.08	0.00	0.00	-0.06	-42.86			
Sudan	0.20	0.20	0.20	0.20	1.53	1.41	1.41	1.41	0.31	0.28	0.28	0.28	0.00	0.00	0.00	0.00			
Mexico	0.23	0.15	0.15	0.15	2.37	2.40	2.33	2.33	0.53	0.35	0.35	0.35	0.00	0.00	0.00	0.57			
Burma	0.25	0.24	0.25	0.25	1.22	1.17	1.18	1.18	0.30	0.28	0.29	0.29	0.00	0.00	0.01	3.57			
Others	0.72	0.63	0.69	0.66	0.76	0.81	0.77	0.79	0.55	0.51	0.54	0.52	-0.02	-2.98	0.01	1.96			

World and Selected Countries and Regions

Table 13 Peanut Area, Yield, and Production

Country / Region	Area (Million hectares)				Yield (Metric tons per hectare)				Production (Million metric tons)				Change in Production						
	2019/20	Prel.		2021/22 Proj.		2019/20	Prel.		2021/22 Proj.		2019/20	Prel.		2021/22 Proj.		From last month		From last year	
		2020/21	Nov	Dec	2020/21		Nov	Dec	2020/21	Nov		Dec	MMT	Percent	MMT	Percent			
World	28.18	30.21	29.80	29.82	1.72	1.64	1.70	1.70	48.43	49.55	50.58	50.63	0.05	0.10	1.08	2.18			
United States	0.56	0.65	0.62	0.62	4.41	4.27	4.57	4.57	2.48	2.79	2.83	2.83	0.00	0.00	0.04	1.40			
Total Foreign	27.62	29.56	29.18	29.20	1.66	1.58	1.64	1.64	45.95	46.76	47.75	47.80	0.05	0.10	1.04	2.22			
China	4.63	4.75	4.75	4.75	3.78	3.79	3.83	3.83	17.52	17.99	18.20	18.20	0.00	0.00	0.21	1.15			
Africa																			
Nigeria	3.13	3.25	3.50	3.50	1.51	1.37	1.37	1.37	4.72	4.45	4.80	4.80	0.00	0.00	0.35	7.87			
Sudan	3.13	3.48	3.00	3.00	0.90	0.69	0.83	0.83	2.83	2.40	2.50	2.50	0.00	0.00	0.10	4.17			
Senegal	1.11	1.23	1.20	1.20	1.28	1.47	1.42	1.42	1.42	1.80	1.70	1.70	0.00	0.00	-0.10	-5.40			
Cameroon	0.43	0.43	0.43	0.43	1.40	1.40	1.40	1.40	0.60	0.60	0.60	0.60	0.00	0.00	0.00	0.00			
Ghana	0.33	0.33	0.33	0.33	1.36	1.36	1.36	1.36	0.45	0.45	0.45	0.45	0.00	0.00	0.00	0.00			
Chad	0.79	0.80	0.80	0.80	1.14	1.13	1.13	1.13	0.90	0.90	0.90	0.90	0.00	0.00	0.00	0.00			
Malawi	0.40	0.40	0.40	0.40	0.88	0.88	0.88	0.88	0.35	0.35	0.35	0.35	0.00	0.00	0.00	0.00			
Congo (Kinshasa)	0.50	0.50	0.50	0.50	0.92	0.90	0.90	0.90	0.46	0.45	0.45	0.45	0.00	0.00	0.00	0.00			
Niger	0.90	0.92	0.92	0.92	0.60	0.60	0.60	0.60	0.54	0.55	0.55	0.55	0.00	0.00	0.00	0.00			
Mali	0.45	0.43	0.43	0.43	0.82	1.00	1.00	1.00	0.37	0.43	0.43	0.43	0.00	0.00	0.00	0.00			
Uganda	0.43	0.43	0.43	0.43	0.71	0.71	0.71	0.71	0.30	0.30	0.30	0.30	0.00	0.00	0.00	0.00			
Burkina Faso	0.49	0.49	0.50	0.50	0.81	0.82	0.80	0.80	0.40	0.40	0.40	0.40	0.00	0.00	0.00	0.00			
Guinea	0.91	0.90	0.90	0.90	1.05	1.00	1.00	1.00	0.96	0.90	0.90	0.90	0.00	0.00	0.00	0.00			
Egypt	0.06	0.06	0.06	0.06	3.20	3.20	3.20	3.20	0.21	0.21	0.21	0.21	0.00	0.00	0.00	0.00			
Central African Republic	0.10	0.10	0.10	0.10	1.50	1.50	1.50	1.50	0.15	0.15	0.15	0.15	0.00	0.00	0.00	0.00			
South Africa	0.04	0.04	0.04	0.04	1.76	2.00	2.00	2.00	0.07	0.08	0.08	0.08	0.00	0.00	0.00	0.00			
Mozambique	0.53	0.35	0.38	0.38	0.28	0.30	0.34	0.34	0.15	0.10	0.13	0.13	0.00	0.00	0.03	26.21			
Cote d'Ivoire	0.15	0.15	0.15	0.15	1.45	1.45	1.45	1.45	0.21	0.21	0.21	0.21	0.00	0.00	0.00	0.00			
Benin	0.19	0.19	0.19	0.19	0.92	0.92	0.92	0.92	0.18	0.18	0.18	0.18	0.00	0.00	0.00	0.00			
South Asia																			
India	4.83	6.00	5.80	5.80	1.30	1.12	1.17	1.17	6.26	6.70	6.80	6.80	0.00	0.00	0.10	1.49			
Pakistan	0.10	0.14	0.10	0.10	0.92	0.89	0.92	0.92	0.10	0.12	0.09	0.09	0.00	0.00	-0.03	-26.83			
Southeast Asia																			
Indonesia	0.55	0.55	0.54	0.54	1.80	1.78	1.78	1.78	0.99	0.97	0.96	0.96	0.00	0.00	-0.01	-1.03			
Burma	0.89	1.06	1.06	1.06	1.55	1.48	1.51	1.51	1.38	1.56	1.60	1.60	0.00	0.00	0.04	2.43			
Vietnam	0.17	0.17	0.16	0.16	2.50	2.50	2.50	2.50	0.43	0.41	0.40	0.40	0.00	0.00	-0.01	-3.15			
Thailand	0.02	0.02	0.02	0.02	1.67	1.67	1.67	1.67	0.04	0.04	0.04	0.04	0.00	0.00	0.00	0.00			
South America																			
Argentina	0.37	0.40	0.37	0.38	3.50	3.16	3.70	3.68	1.29	1.27	1.35	1.40	0.05	3.70	0.13	10.24			
Brazil	0.16	0.17	0.18	0.18	3.93	3.88	3.89	3.89	0.63	0.64	0.70	0.70	0.00	0.00	0.06	9.38			
Mexico	0.05	0.06	0.05	0.05	1.74	1.73	1.74	1.74	0.08	0.10	0.09	0.09	0.00	0.00	-0.01	-9.80			
Others	1.79	1.79	1.90	1.90	1.12	1.15	1.18	1.18	2.00	2.05	2.24	2.24	0.00	0.00	0.19	9.26			

Table 14 Sunflowerseed Area, Yield, and Production

Country / Region	Area (Million hectares)				Yield (Metric tons per hectare)				Production (Million metric tons)				Change in Production						
	2019/20	Prel.		2021/22 Proj.		2019/20	Prel.		2021/22 Proj.		2019/20	Prel.		2021/22 Proj.		From last month		From last year	
		2020/21	Nov	Dec	2020/21		Nov	Dec	2020/21	Nov		Dec	MMT	Percent	MMT	Percent			
World	26.03	26.97	28.23	28.44	2.07	1.82	1.98	2.01	53.94	49.11	56.01	57.04	1.04	1.85	7.93	16.16			
United States	0.51	0.67	0.50	0.50	1.75	2.01	1.74	1.74	0.89	1.35	0.86	0.86	0.00	0.00	-0.49	-36.29			
Total Foreign	25.52	26.29	27.74	27.95	2.08	1.82	1.99	2.01	53.05	47.75	55.14	56.18	1.04	1.88	8.43	17.64			
Former Soviet Union - 12																			
Russia	8.36	8.35	9.30	9.60	1.83	1.59	1.61	1.61	15.31	13.27	15.00	15.50	0.50	3.33	2.23	16.81			
Ukraine	6.40	7.00	7.00	6.90	2.58	2.01	2.43	2.54	16.50	14.10	17.00	17.50	0.50	2.94	3.40	24.11			
Kazakhstan	0.82	0.75	0.92	0.92	1.03	1.13	1.20	1.20	0.84	0.84	1.10	1.10	0.00	0.00	0.26	30.33			
European Union	4.32	4.35	4.39	4.39	2.19	2.04	2.31	2.31	9.46	8.85	10.15	10.15	0.00	0.00	1.30	14.68			
South America																			
Argentina	1.53	1.67	1.60	1.60	2.11	2.05	2.13	2.13	3.24	3.43	3.40	3.40	0.00	0.00	-0.03	-0.87			
Uruguay	0.06	0.07	0.07	0.07	1.67	1.69	1.69	1.69	0.10	0.11	0.12	0.12	0.00	0.00	0.01	4.55			
Bolivia	0.14	0.13	0.13	0.13	1.19	1.20	1.30	1.30	0.16	0.15	0.16	0.16	0.00	0.00	0.01	9.33			
Brazil	0.05	0.03	0.03	0.03	1.60	1.61	1.63	1.63	0.08	0.05	0.05	0.05	0.00	0.00	0.00	-2.00			
Paraguay	0.03	0.03	0.03	0.03	1.39	1.53	1.55	1.55	0.04	0.05	0.05	0.05	0.00	0.00	0.00	4.35			
China	0.92	0.90	1.10	1.10	2.64	2.64	2.64	2.64	2.42	2.38	2.90	2.90	0.00	0.00	0.53	22.11			
South Asia																			
India	0.23	0.25	0.30	0.30	0.61	0.76	0.75	0.75	0.14	0.19	0.23	0.23	0.00	0.00	0.04	21.62			
Pakistan	0.14	0.15	0.15	0.15	1.04	1.07	1.10	1.10	0.15	0.16	0.17	0.17	0.00	0.00	0.01	3.13			
Middle East																			
Turkey	0.73	0.72	0.76	0.76	2.40	2.17	2.30	2.30	1.75	1.56	1.75	1.75	0.00	0.00	0.19	12.18			
Iran	0.04	0.04	0.04	0.04	1.08	1.08	1.00	1.00	0.04	0.04	0.04	0.04	0.00	0.00	0.00	2.33			
Israel	0.00	0.00	0.00	0.00	5.00	9.00	7.00	7.00	0.01	0.01	0.01	0.01	0.00	0.00	0.00	-22.22			
Africa																			
Egypt	0.01	0.01	0.01	0.01	2.38	2.38	2.38	2.38	0.02	0.02	0.02	0.02	0.00	0.00	0.00	0.00			
Morocco	0.02	0.02	0.02	0.02	1.32	1.25	1.25	1.25	0.03	0.03	0.03	0.03	0.00	0.00	0.00	0.00			
South Africa	0.50	0.48	0.56	0.56	1.58	1.41	1.52	1.52	0.79	0.68	0.85	0.85	0.00	0.00	0.17	25.55			
Burma	0.60	0.60	0.60	0.60	0.65	0.65	0.65	0.65	0.39	0.39	0.39	0.39	0.00	0.00	0.00	0.00			
Canada	0.03	0.05	0.03	0.04	2.17	2.24	1.67	2.05	0.06	0.10	0.05	0.08	0.03	64.00	-0.02	-18.81			
Australia	0.01	0.02	0.02	0.02	1.22	1.50	1.31	1.39	0.01	0.03	0.02	0.03	0.00	19.05	0.00	-7.41			
Others	0.60	0.70	0.68	0.68	2.55	1.90	2.45	2.45	1.54	1.33	1.67	1.67	0.00	0.00	0.34	25.36			

World and Selected Countries and Regions

Table 15 Rapeseed Area, Yield, and Production

Country / Region	Area (Million hectares)				Yield (Metric tons per hectare)				Production (Million metric tons)				Change in Production						
	2019/20	Prel.		2021/22 Proj.		2019/20	Prel.		2021/22 Proj.		2019/20	Prel.		2021/22 Proj.		From last month		From last year	
		2020/21	Nov	Dec	2020/21		Nov	Dec	2020/21	Nov		Dec	MMT	Percent	MMT	Percent			
World	34.92	36.24	37.37	37.93	1.99	2.02	1.81	1.80	69.60	73.16	67.50	68.35	0.85	1.26	-4.81	-6.57			
United States	0.78	0.73	0.86	0.86	2.00	2.16	1.26	1.26	1.55	1.58	1.08	1.08	0.00	0.00	-0.49	-31.37			
Total Foreign	34.15	35.51	36.52	37.07	1.99	2.02	1.82	1.81	68.05	71.59	66.42	67.27	0.85	1.28	-4.31	-6.03			
European Union	5.08	5.17	5.25	5.30	3.00	3.15	3.26	3.25	15.24	16.29	17.10	17.25	0.15	0.88	0.96	5.90			
United Kingdom	0.50	0.38	0.32	0.32	3.38	2.77	3.41	3.41	1.68	1.05	1.08	1.08	0.00	0.00	0.03	2.38			
Switzerland	0.02	0.02	0.02	0.02	3.14	3.14	3.14	3.14	0.07	0.07	0.07	0.07	0.00	0.00	0.00	0.00			
Canada	8.47	8.33	8.80	9.01	2.35	2.34	1.48	1.40	19.91	19.49	13.00	12.60	-0.40	-3.08	-6.89	-35.33			
China	6.58	6.80	6.80	6.80	2.05	2.06	2.06	2.06	13.49	14.00	14.00	14.00	0.00	0.00	0.00	0.00			
South Asia																			
India	7.10	8.20	8.20	8.50	1.04	1.04	1.04	1.04	7.40	8.50	8.50	8.85	0.35	4.12	0.35	4.12			
Pakistan	0.39	0.45	0.45	0.45	1.45	1.02	1.03	1.03	0.56	0.46	0.47	0.47	0.00	0.00	0.01	1.09			
Bangladesh	0.25	0.25	0.25	0.25	0.92	0.92	0.92	0.92	0.23	0.23	0.23	0.23	0.00	0.00	0.00	0.00			
Former Soviet Union - 12																			
Russia	1.42	1.45	1.60	1.60	1.44	1.77	1.72	1.75	2.04	2.57	2.75	2.80	0.05	1.82	0.23	9.08			
Ukraine	1.34	1.19	1.05	1.05	2.59	2.31	2.90	2.90	3.47	2.75	3.05	3.05	0.00	0.00	0.30	10.91			
Belarus	0.34	0.36	0.32	0.32	1.68	2.06	1.59	1.59	0.58	0.73	0.50	0.50	0.00	0.00	-0.23	-31.60			
Kazakhstan	0.27	0.12	0.11	0.11	0.90	1.23	1.00	1.00	0.24	0.15	0.11	0.11	0.00	0.00	-0.04	-28.10			
Australia	2.03	2.45	3.00	3.00	1.13	1.84	1.60	1.83	2.30	4.50	4.80	5.50	0.70	14.58	1.00	22.22			
South America																			
Chile	0.04	0.04	0.04	0.04	4.05	3.81	4.00	4.00	0.15	0.14	0.14	0.14	0.00	0.00	0.00	-0.71			
Paraguay	0.04	0.05	0.04	0.04	1.71	1.41	1.45	1.45	0.06	0.07	0.06	0.06	0.00	0.00	0.00	-1.54			
Ethiopia	0.02	0.03	0.03	0.03	1.83	1.80	1.80	1.80	0.04	0.05	0.05	0.05	0.00	0.00	0.00	0.00			
Others	0.26	0.24	0.25	0.25	2.26	2.25	2.09	2.09	0.59	0.55	0.52	0.52	0.00	0.00	-0.03	-4.91			

World and Selected Countries and Regions

Table 16 Copra, Palm Kernel, and Palm Oil Production

Country / Region	Production (Million metric tons)				Change in Production			
	2019/20	Prel.	2021/22 Proj.		From last month		From last year	
		2020/21	Nov	Dec	MMT	Percent	MMT	Percent
Oilseed, Copra								
Philippines	2.50	2.40	2.60	2.60	0.00	0.00	0.20	8.33
Indonesia	1.66	1.67	1.68	1.68	0.00	0.00	0.01	0.60
India	0.75	0.75	0.79	0.79	0.00	0.00	0.04	5.33
Vietnam	0.28	0.28	0.29	0.29	0.00	0.00	0.01	3.57
Papua New Guinea	0.08	0.08	0.08	0.08	0.00	0.00	0.00	0.00
Thailand	0.07	0.07	0.07	0.07	0.00	0.00	0.00	0.00
Sri Lanka	0.07	0.07	0.07	0.07	0.00	0.00	0.00	0.00
Mexico	0.04	0.04	0.04	0.04	0.00	0.00	0.00	0.00
Solomon Islands	0.03	0.03	0.03	0.03	0.00	0.00	0.00	0.00
Cote d'Ivoire	0.03	0.03	0.03	0.03	0.00	0.00	0.00	0.00
World	5.66	5.56	5.82	5.82	0.00	0.00	0.26	4.68
Oilseed, Palm Kernel								
Indonesia	11.25	11.46	11.70	11.70	0.00	0.00	0.24	2.09
Malaysia	4.75	4.34	4.80	4.80	0.00	0.00	0.46	10.60
Nigeria	0.88	0.82	0.90	0.90	0.00	0.00	0.08	9.76
Thailand	0.75	0.79	0.85	0.85	0.00	0.00	0.06	7.59
Colombia	0.31	0.29	0.30	0.30	0.00	0.00	0.01	3.45
Guatemala	0.17	0.17	0.18	0.18	0.00	0.00	0.01	5.88
Papua New Guinea	0.16	0.16	0.16	0.16	0.00	0.00	0.00	0.00
Cameroon	0.15	0.15	0.15	0.15	0.00	0.00	0.00	0.00
Brazil	0.14	0.14	0.15	0.15	0.00	0.00	0.00	0.00
Honduras	0.18	0.13	0.16	0.16	0.00	0.00	0.03	23.08
World	19.30	19.03	19.94	19.94	0.00	0.00	0.91	4.78
Oil, Palm								
Indonesia	42.50	43.50	44.50	44.50	0.00	0.00	1.00	2.30
Malaysia	19.26	17.85	19.70	19.70	0.00	0.00	1.85	10.36
Thailand	2.65	2.80	3.12	3.12	0.00	0.00	0.32	11.43
Colombia	1.53	1.56	1.65	1.65	0.00	0.00	0.09	5.77
Nigeria	1.14	1.28	1.40	1.40	0.00	0.00	0.13	10.24
Guatemala	0.86	0.87	0.88	0.88	0.00	0.00	0.02	2.33
Papua New Guinea	0.56	0.56	0.57	0.57	0.00	0.00	0.00	0.00
Brazil	0.54	0.55	0.55	0.55	0.00	0.00	0.00	0.00
Cote d'Ivoire	0.52	0.52	0.52	0.52	0.00	0.00	0.00	0.00
Ecuador	0.46	0.49	0.56	0.56	0.00	0.00	0.07	14.29
World	72.97	72.87	76.54	76.54	0.00	0.00	3.67	5.04

World and Selected Countries and Regions

Table 17 Cotton Area, Yield, and Production

Country / Region	Area (Million hectares)				Yield (Kilograms per hectare)				Production (Million 480 lb. bales)				Change in Production			
	2019/20	Prel.	2021/22 Proj.		2019/20	Prel.	2021/22 Proj.		2019/20	Prel.	2021/22 Proj.		From last month		From last year	
		2020/21	Nov	Dec		2020/21	Nov	Dec		2019/20	2020/21	Nov	Dec	MBales	Percent	MBales
World	34.73	31.40	32.73	32.65	758	775	810	811	120.99	111.70	121.79	121.57	-0.22	-0.18	9.86	8.83
United States	4.65	3.35	4.02	4.02	932	950	987	992	19.91	14.61	18.20	18.28	0.09	0.47	3.68	25.16
Total Foreign	30.08	28.05	28.71	28.64	732	754	786	785	101.07	97.10	103.59	103.28	-0.31	-0.30	6.19	6.37
South Asia																
India	13.40	13.00	12.40	12.40	463	462	492	492	28.50	27.60	28.00	28.00	0.00	0.00	0.40	1.45
Pakistan	2.45	2.20	2.00	2.00	551	445	729	621	6.20	4.50	6.70	5.70	-1.00	-14.93	1.20	26.67
China	3.45	3.25	3.10	3.10	1,720	1,976	1,879	1,879	27.25	29.50	26.75	26.75	0.00	0.00	-2.75	-9.32
South America																
Brazil	1.67	1.37	1.60	1.60	1,802	1,720	1,796	1,796	13.78	10.82	13.20	13.20	0.00	0.00	2.38	22.00
Argentina	0.42	0.45	0.45	0.45	682	668	702	702	1.30	1.38	1.45	1.45	0.00	0.00	0.07	5.07
Paraguay	0.01	0.01	0.01	0.01	416	416	416	416	0.02	0.02	0.02	0.02	0.00	0.00	0.00	0.00
Africa																
Burkina Faso	0.58	0.56	0.61	0.60	330	358	339	348	0.88	0.92	0.95	0.95	0.00	0.00	0.04	3.83
Mali	0.74	0.17	0.80	0.72	400	376	404	423	1.35	0.29	1.48	1.40	-0.08	-5.08	1.12	391.23
Cote d'Ivoire	0.41	0.45	0.46	0.48	528	494	497	504	0.99	1.01	1.05	1.10	0.05	4.76	0.09	8.91
Benin	0.67	0.62	0.62	0.64	467	513	457	510	1.43	1.45	1.30	1.50	0.20	15.38	0.05	3.45
Egypt	0.10	0.07	0.10	0.10	664	720	718	718	0.31	0.22	0.33	0.33	0.00	0.00	0.12	53.49
Cameroon	0.25	0.23	0.23	0.23	562	658	568	663	0.65	0.68	0.60	0.70	0.10	16.67	0.02	2.94
Tanzania	0.60	0.45	0.60	0.60	216	102	218	218	0.60	0.21	0.60	0.60	0.00	0.00	0.39	185.71
Nigeria	0.15	0.27	0.27	0.27	290	282	282	282	0.20	0.35	0.35	0.35	0.00	0.00	0.00	0.00
Zimbabwe	0.18	0.24	0.21	0.21	230	318	207	207	0.19	0.35	0.20	0.20	0.00	0.00	-0.15	-42.86
Ethiopia	0.08	0.08	0.08	0.08	680	637	637	637	0.25	0.24	0.24	0.24	0.00	0.00	0.00	0.00
Former Soviet Union - 12																
Uzbekistan	1.01	0.98	0.98	0.98	754	782	711	755	3.50	3.50	3.20	3.40	0.20	6.25	-0.10	-2.86
Turkmenistan	0.55	0.55	0.55	0.55	368	368	356	356	0.92	0.92	0.90	0.90	0.00	0.00	-0.02	-2.17
Tajikistan	0.18	0.16	0.17	0.17	708	619	640	640	0.59	0.46	0.50	0.50	0.00	0.00	0.05	9.89
Kazakhstan	0.13	0.11	0.12	0.12	627	534	502	502	0.36	0.27	0.27	0.27	0.00	0.00	-0.01	-1.85
Middle East																
Turkey	0.57	0.35	0.45	0.45	1,318	1,804	1,742	1,839	3.45	2.90	3.60	3.80	0.20	5.56	0.90	31.03
Syria	0.03	0.03	0.03	0.03	1,219	1,219	1,132	1,132	0.14	0.14	0.13	0.13	0.00	0.00	-0.01	-7.14
Iran	0.08	0.08	0.08	0.08	748	748	708	708	0.28	0.28	0.26	0.26	0.00	0.00	-0.02	-5.45
Australia	0.06	0.28	0.60	0.60	2,268	2,217	1,923	1,923	0.63	2.80	5.30	5.30	0.00	0.00	2.50	89.29
Mexico	0.23	0.15	0.15	0.15	1,519	1,532	1,524	1,524	1.57	1.02	1.05	1.05	0.00	0.00	0.03	2.94
Burma	0.25	0.24	0.25	0.25	641	635	644	644	0.72	0.70	0.73	0.73	0.00	0.00	0.03	3.57
Others	1.88	1.75	1.81	1.79	586	572	535	542	5.05	4.59	4.45	4.46	0.02	0.34	-0.13	-2.83

World and Selected Countries and Regions

TABLE 18

The table below presents a record of the December projection and the final Estimate. Using world wheat production as an example, the "root mean square error" means that chances are 2 out of 3 that the current forecast will not be above or below the final estimate by more than 0.8 percent. Chances are 9 out of 10 (90% confidence level) that the difference will not exceed 1.3 percent. The average difference between the December projection and the final estimate is 3.7 million tons, ranging from 0.4 million to 10.2 million tons. The December projection has been below the estimate 29 times and above 11 times.

RELIABILITY OF PRODUCTION PROJECTIONS 1/

COMMODITY AND REGION	Root mean square error	90 percent confidence interval	Difference between forecast and final estimate				
			Average	Smallest	Largest	Years	
						Below final	Above final
	Percent		---Million metric tons---				
WHEAT							
World	0.8	1.3	3.7	0.4	10.2	29	11
U.S.	0.4	0.7	0.2	0.0	1.2	20	14
Foreign	0.9	1.5	3.7	0.3	10.3	29	11
COARSE GRAINS 2/							
World	1.4	2.4	12.6	0.0	36.0	29	11
U.S.	1.3	2.3	2.6	0.0	9.9	19	21
Foreign	2.0	3.5	12.6	0.3	37.5	28	12
RICE (Milled)							
World	1.9	3.3	5.7	0.0	16.2	32	8
U.S.	2.8	4.8	0.1	0.0	0.5	20	15
Foreign	2.0	3.3	5.7	0.1	16.2	33	7
SOYBEANS							
World	3.7	6.3	5.5	0.1	23.8	22	18
U.S.	2.0	3.4	1.1	0.1	4.7	17	23
Foreign	6.1	10.3	5.4	0.1	25.1	19	21
COTTON			---Million 480-lb. bales---				
World	3.1	5.3	2.3	0.0	7.2	23	16
U.S.	2.5	4.2	0.3	0.0	1.3	18	21
Foreign	3.7	6.2	2.2	0.0	7.1	22	17
UNITED STATES			-----Million bushels-----				
<i>CORN</i>	1.4	2.3	96	0	396	19	20
<i>SORGHUM</i>	4.1	7.0	14	1	53	21	19
<i>BARLEY</i>	1.6	2.7	4	0	24	18	10
<i>OATS</i>	1.1	1.9	2	0	18	8	9

1/ Marketing years 1981/82 through 2020/21 for grains, soybeans, and cotton. Final for grains, soybeans, and cotton is defined as the first November estimate following the marketing year for 1981/82 through 2020/21.

2/ Includes corn, sorghum, barley, oats, rye, millet, and mixed grain

December 2021

Global Market Analysis, FAS, USDA