



United States
Department of
Agriculture

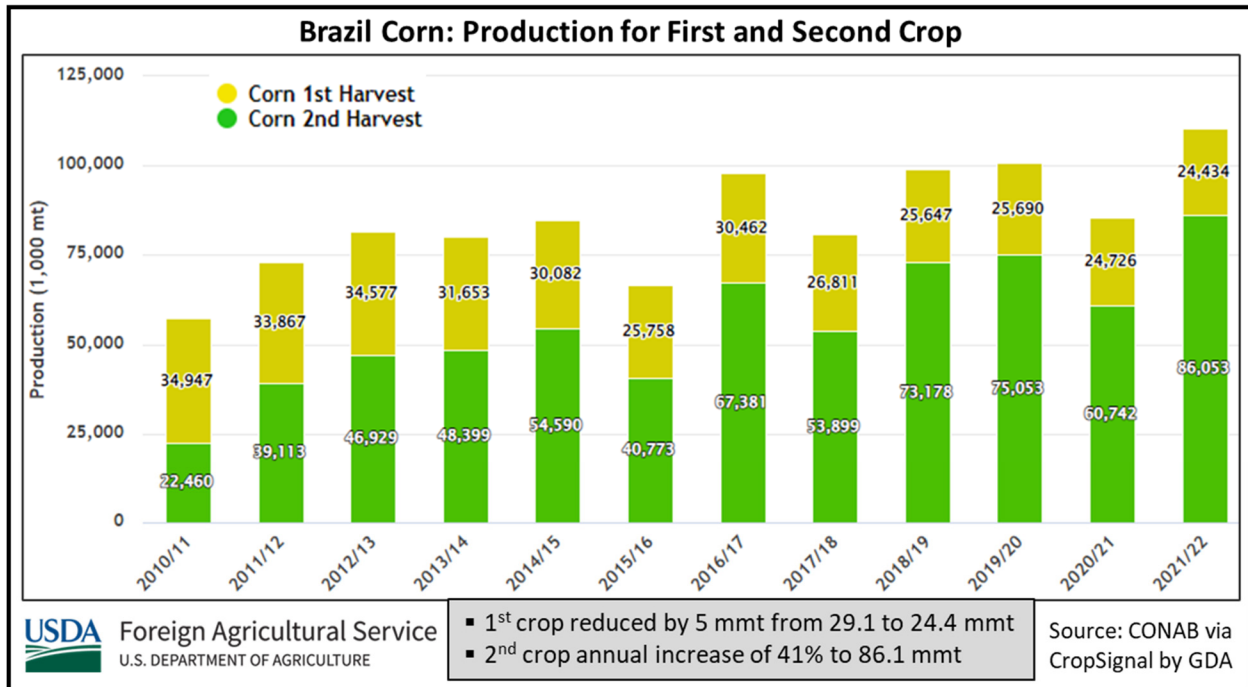
Foreign
Agricultural
Service

Circular Series
WAP 3-22
March 2022

World Agricultural Production

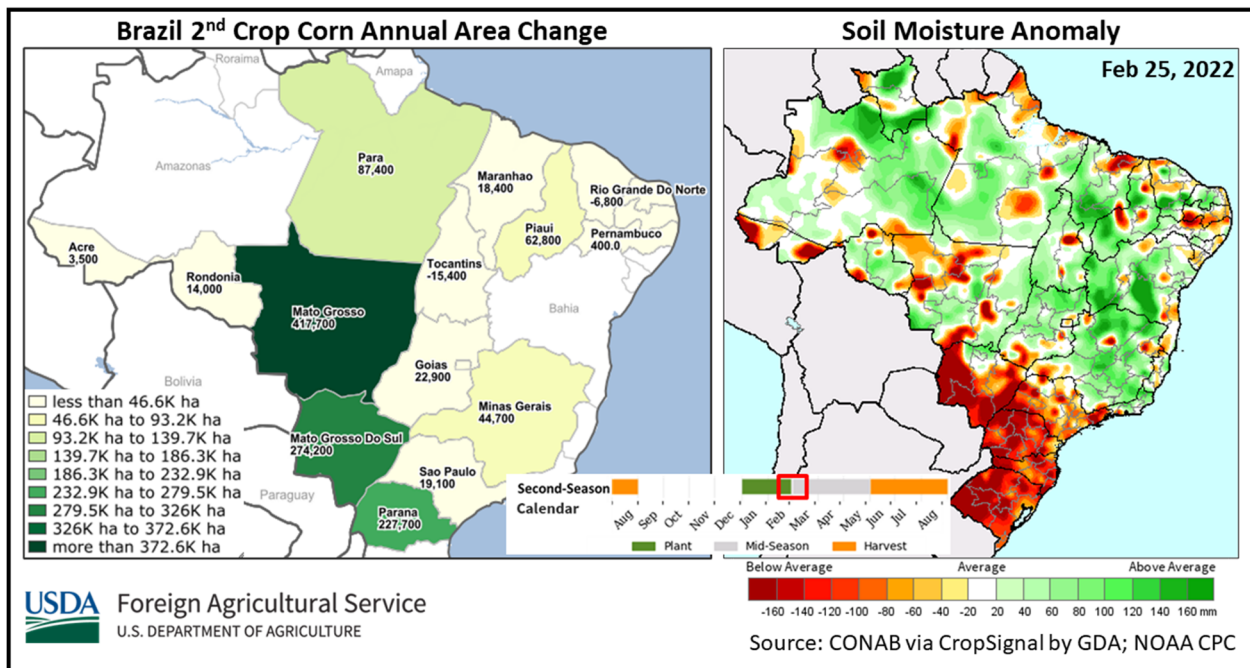
Brazil Corn: Sowing Advances for Second Crop and Production Unchanged

Total Brazil corn production for marketing year (MY) 2021/22 is estimated at a record 114.0 million metric tons (mmt), unchanged from last month, and larger than last year's crop by 27.0 mmt (31 percent). Total harvested area, for all three corn crops, is estimated at a record 20.8 million hectares (mha), up 0.9 mha (5 percent) from last year. Yield is estimated at 5.48 tons per hectare, 25 percent above last year's disappointing crop, and 5 percent above the 5-year average.



Harvest began for the first season crop (roughly 21 percent of total production) and is at 23 percent complete as of late February. Area for the first crop is reported at 4.5 mha (almost 4 percent larger than last year) and production at 24.4 mmt (less than 1 percent above last year). Output was reduced by roughly 16 percent or 4.6 mmt from the initial estimate per the National Food Supply Company (*Companhia Nacional de Abastecimento* or CONAB). These reductions are largely driven by low rainfall amounts and high temperatures resulting in poor vegetation conditions from November through February in the southern states.

Approved by the World Agricultural Outlook Board

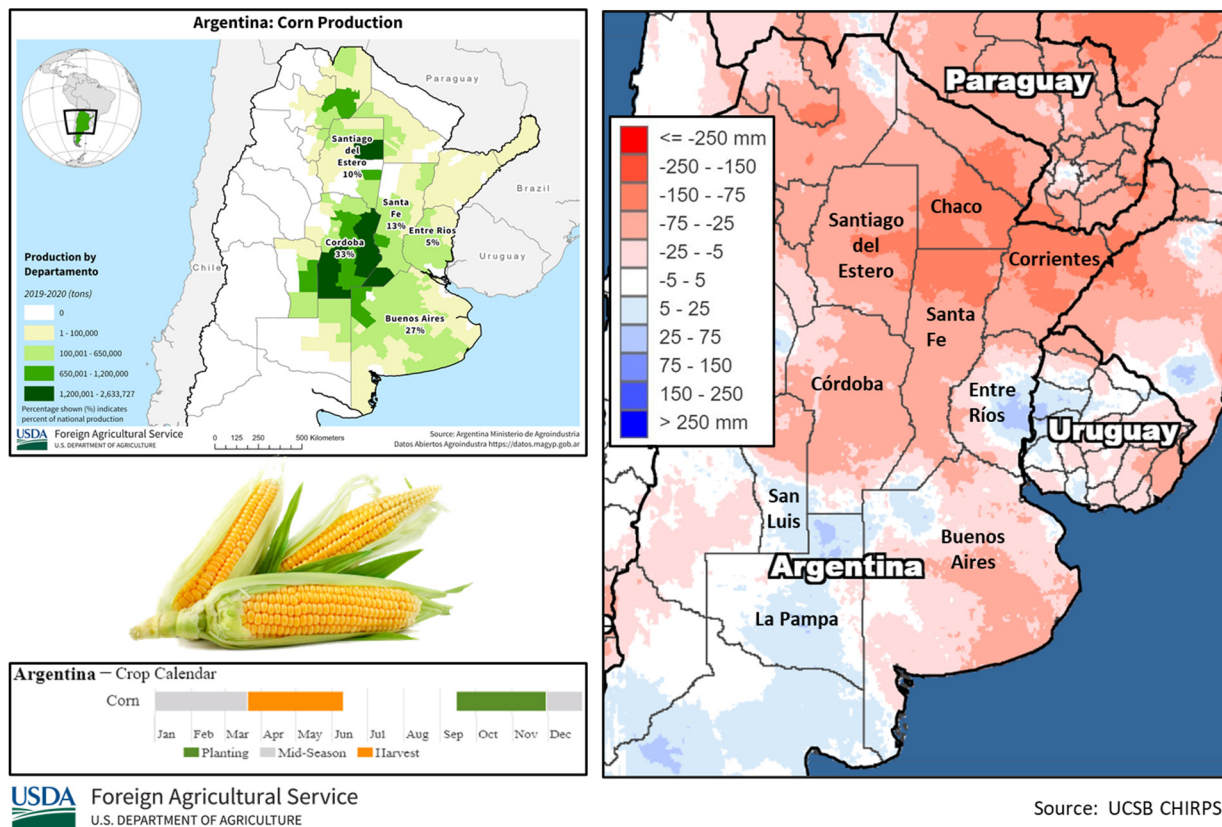


Area for the second-season crop is at a record 15.8 mha (about 6 percent greater than last year) with production of 86.1 mmt according to CONAB. The largest area increase is in the state of Mato Grosso (about 45 percent of second crop production) of over 400,000 hectares. Planting for the second crop begins in January and continues through March. Sowing is ahead of the 5-year pace in the center-west states and stands at 60 percent nationally. The *Instituto Mato-Grossense de Economia Agropecuária* (IMEA) reports about 83 percent sown in the state of Mato Grosso for MY 2021/22, 5 percent ahead of the 5-year average of 78 percent. An optimistic outlook for *safrinha* corn is anticipated owing to abundant rainfall and the bulk of planting within the ideal sowing window. Nevertheless, concerns remain with sub-optimal soil moisture in the states of Mato Grosso do Sul, Paraná, and São Paulo. (For more information, please contact Sunita.Yadav-Pauletti@usda.gov.)

Argentina Corn: Rain Relief comes too Late for the Corn Crop

The marketing year (MY) 2021/22 Argentina corn crop area has expanded with late plantings. Corn area is now estimated at 7.0 million hectares, 3 percent higher than last month and 8 percent higher than last year. Corn production is expected to be 53.0 million metric tons, down 2 percent from last month, but up 3 percent from last year. Yield is estimated at 7.57 tons per hectare, down 5 percent from last month and 4 percent from last year.

Monthly Precipitation Departure (February 2022)

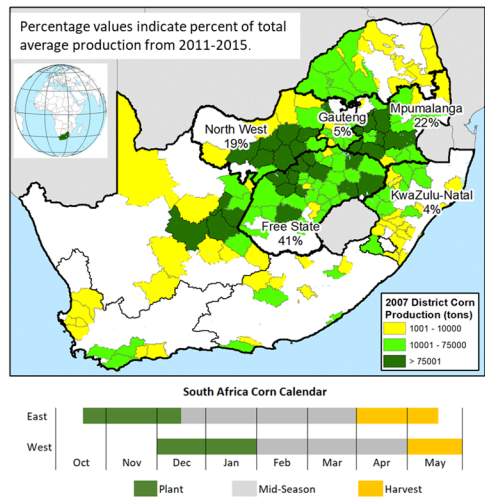


Recent March moisture has helped, but rains have not replenished soil reserves to improve yield potential. Even with late-planted corn, the rainfall was insufficient to offset decreases in yield potential from the prior dry and hot weather. Soil moisture conditions will need to remain adequate over the next four weeks to ensure optimal crop development. (For more information, please contact Denise.McWilliams@usda.gov.)

South Africa Corn: Favorable Production Prospects from Beneficial La Niña Rains

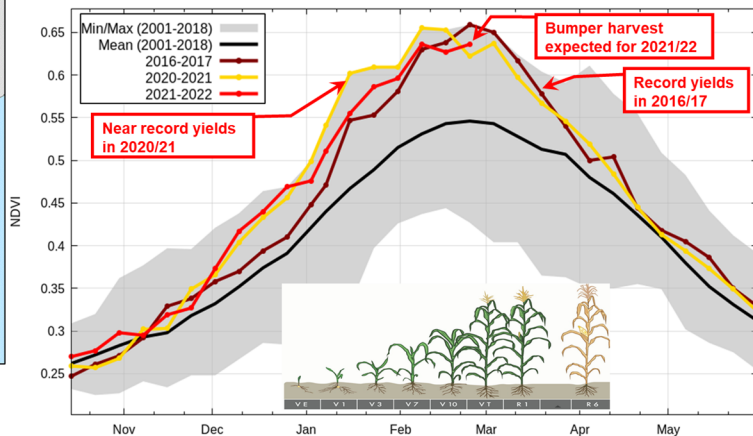
South Africa marketing year 2021/22 corn production is forecast at 16.3 million metric tons (mmt), down 0.7 mmt (4 percent) from last month and last year. The USDA production forecast includes output from both developing and commercial sectors, with the commercial sector accounting for approximately 97 percent of the total crop. Harvested area is estimated at 3.0 million hectares (mha), unchanged from last month, but down 0.1 mha (4 percent) from last year. Yield is forecast at 5.43 metric tons per hectare, down 4 percent from last month, nearly the same as last year, and up 3 percent from the 5-year average.

South Africa Corn Production



Source: Province production (2011-15) from South Africa's Crop Estimates Committee, and district production from 2007 Census of Commercial Agriculture, Statistics South Africa

Cropland NDVI for Major Corn Producing Provinces (Approximately 91% of total corn production)



Source: MODIS-Terra satellite imagery from USDA/NASA Global Agricultural Monitoring (GLAM) System

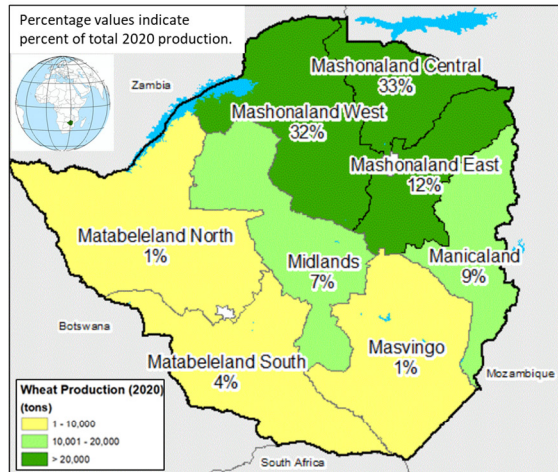
USDA Foreign Agricultural Service
U.S. DEPARTMENT OF AGRICULTURE

Beneficial La Niña rains from November 2021 through January 2022 allowed farmers to plant earlier than normal and crop conditions range from good to excellent. Satellite-derived Normalized Difference Vegetation Index (NDVI) and the Percent of Average Seasonal Greenness (PASG) indices confirm early crop establishment and excellent crop conditions in late February. Crop conditions are well above average in the North West and Free State provinces where 60 percent of the total crop is grown. Record yields are expected in the west if rains continue to be favorable during March. Weather forecasts for March are favorable and farmers will begin harvest in late April. The bulk of the harvest (87 percent) is typically delivered to the grain silos from May through August. *(For more information, please contact Curt.Reynolds@usda.gov.)*

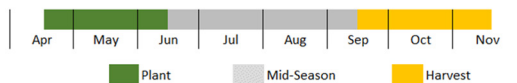
Zimbabwe Wheat: Irrigated Area Increase from Last Year Provides Bumper Harvest

Zimbabwe wheat production for marketing year (MY) 2021/22 is estimated at 210,000 metric tons (mt), down 55,000 mt (21 percent) from last month and 3,000 mt (1 percent) from last year. Harvested area is estimated at 50,000 hectares (ha), down 5,000 ha (9 percent) from last month, but up 6,000 ha (14 percent) from last year. Yield is estimated at 4.20 metric tons per hectare, down 13 percent from last month and last year, and 3 percent below the 5-year average. Zimbabwe wheat is nearly 100 percent irrigated and grown by commercial farmers who deliver their harvest to Zimbabwe's Grain Marketing Board (GMB).

Zimbabwe Wheat Production

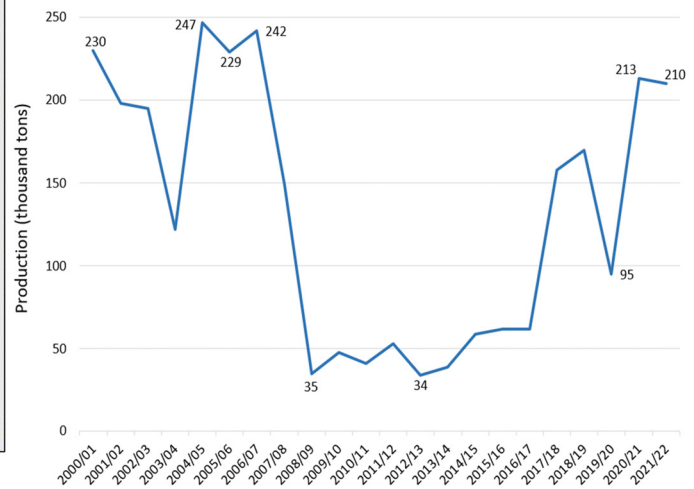


Zimbabwe Wheat Calendar



Source: Province production data (2020) from Zimbabwe's Ministry of Lands, Agriculture & Rural Resettlement.

Long Term Wheat Production



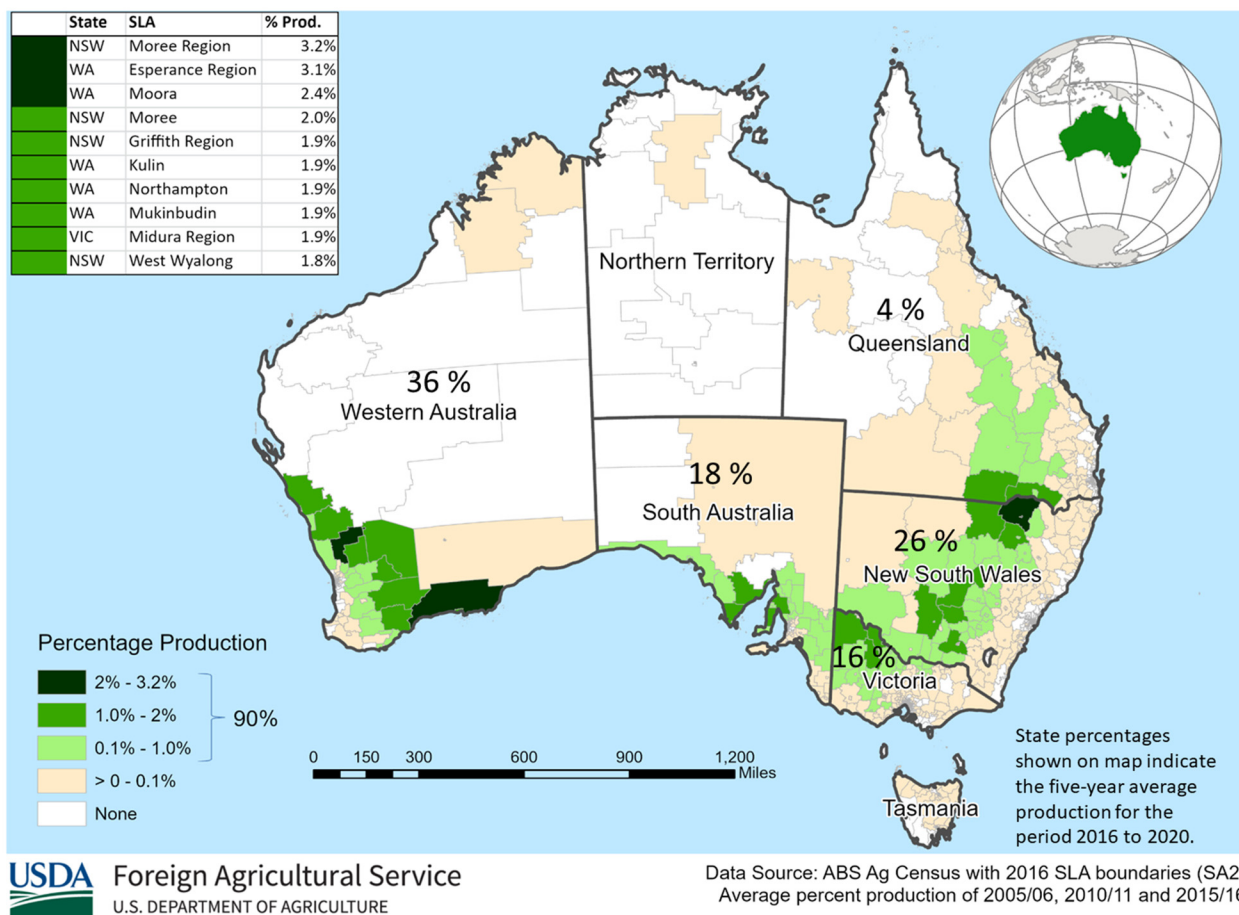
Source: USDA PSD Online

USDA Foreign Agricultural Service
U.S. DEPARTMENT OF AGRICULTURE

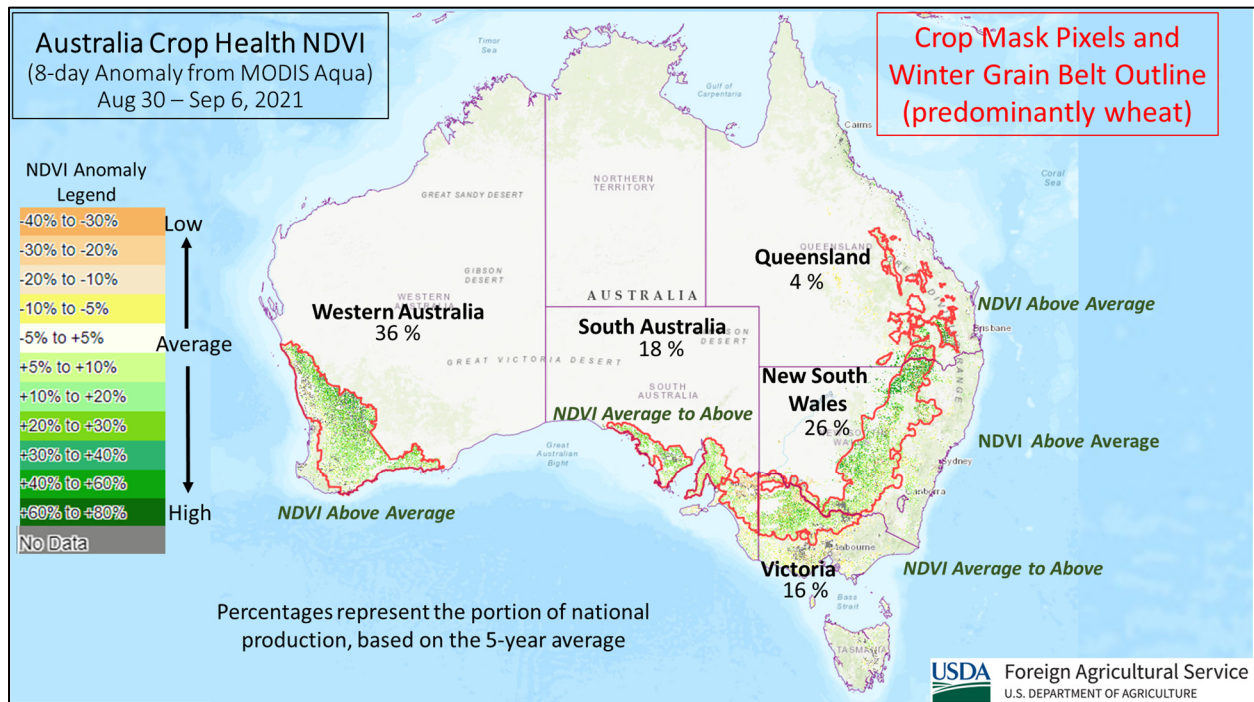
The Zimbabwe government and private industry have been trying to revive the wheat sector for the past decade, after production dropped to 35,000 mt in MY 2008/09. Major production constraints have included high cost of production, unreliable power supplies for irrigation, lack of investment in rehabilitating irrigation infrastructure, late payments by GMB, and lack of input support programs. GMB reportedly received 208,000 mt of wheat by January 2022. Optimal planting for irrigated wheat is from late April through late May and the peak harvest period ranges from mid-September through mid-November. *(For more information, please contact Curt.Reynolds@usda.gov.)*

Australia Wheat: Production Achieves New Record

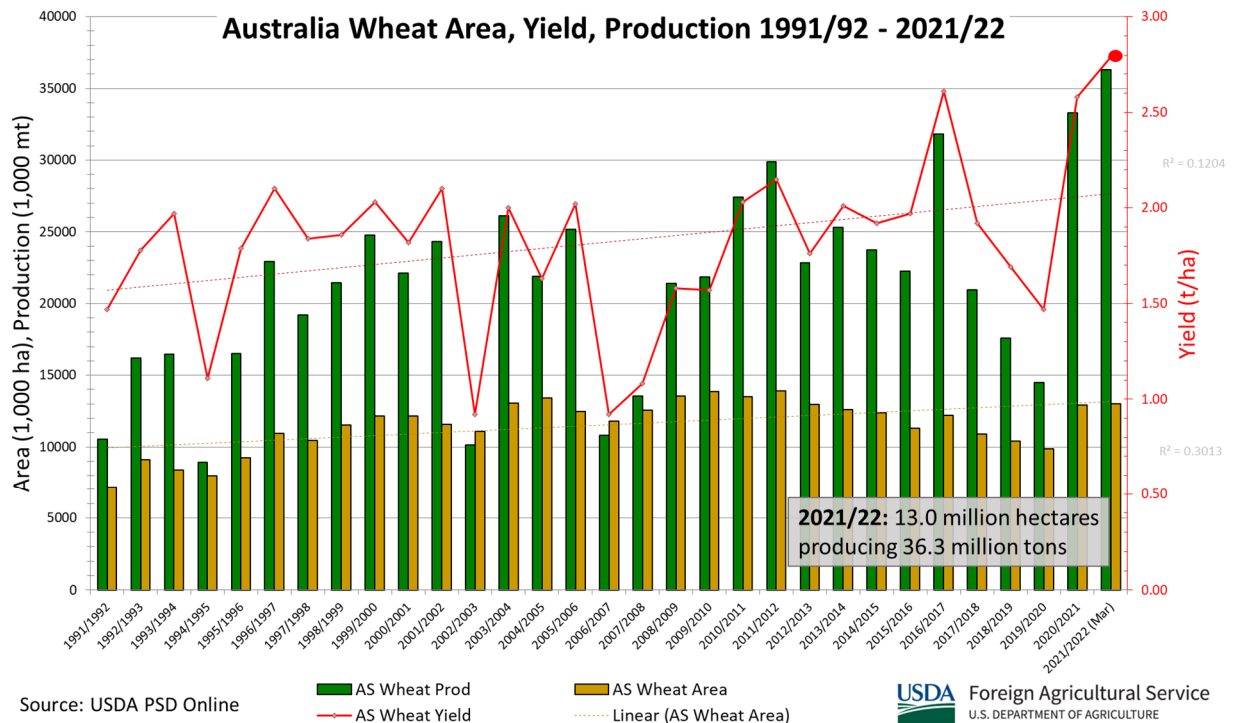
Australia: Wheat Production



USDA estimates Australia marketing year (MY) 2021/22 wheat production at a record 36.3 million metric tons (mmt), up 2.3 mmt or 7 percent from last month, and up 3.0 mmt or 9 percent from last year. Harvested area is estimated at 13.0 million hectares (mha), down 0.1 mmt or 1 percent from last month, but up 0.1 mmt or 1 percent from last year. Wheat yield is estimated at a record 2.79 tons per hectare, up 8 percent from last month and 7 percent above the previous record of 2.61 t/ha in MY 2016/17. The revisions were made based on the recently released official government estimates from the Australian Bureau of Agricultural and Resource Economics and Sciences (ABARES).



The MY 2021/22 wheat area estimate was a result of high world wheat prices and beneficial soil moisture at sowing. Favorable growing conditions throughout much of the season resulted in record yields across much of the grain growing regions of Australia.

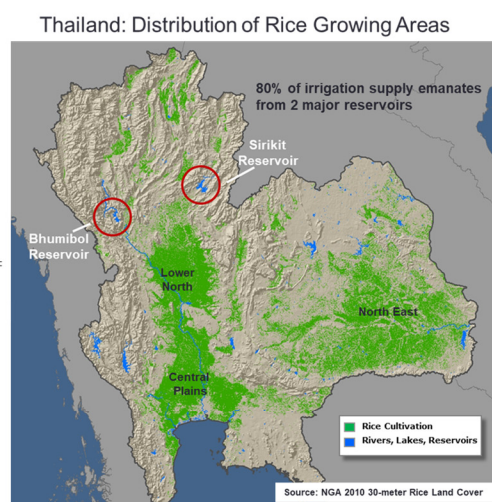
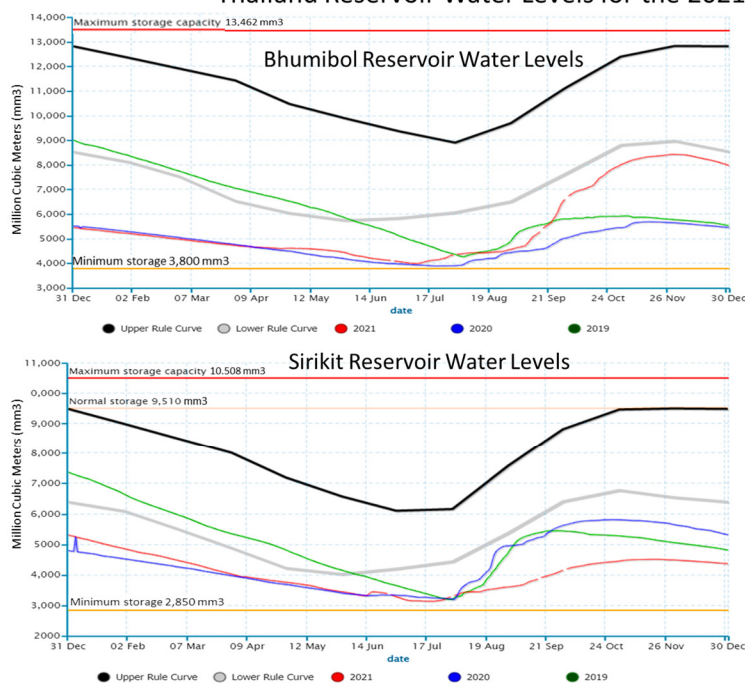


Abundant precipitation since sowing benefited crop establishment and sustained yield potential through the growing season. The satellite-derived Normalized Difference Vegetation Index (NDVI) during flowering depicts above-average crop vigor, especially in the wheat belt of New South Wales and Western Australia. Excessive rains in eastern Australia during harvest have raised concerns about grain quality as larger amounts of feed quality wheat are expected. The harvest began in November for the main wheat growing areas and completed in January. *(For more information, please contact James.Crutchfield@usda.gov.)*

Thailand Rice: Second Season Crop Benefits from Favorable Weather

USDA estimates Thailand rice production for marketing year (MY) 2021/22 at 19.7 million metric tons (milled basis), up 2 percent from last month and 4 percent from last year. Harvested area is estimated at 10.6 million hectares, up 2 percent from last month and 1 percent from last year. Yield is estimated at 2.82 tons per hectare, up slightly from last month and 4 percent above last year.

Thailand Reservoir Water Levels for the 2021/22 Second Season Crop



Source: Water Allocation Operations Center Bureau of Hydrology and Water Management, Royal Irrigation Department

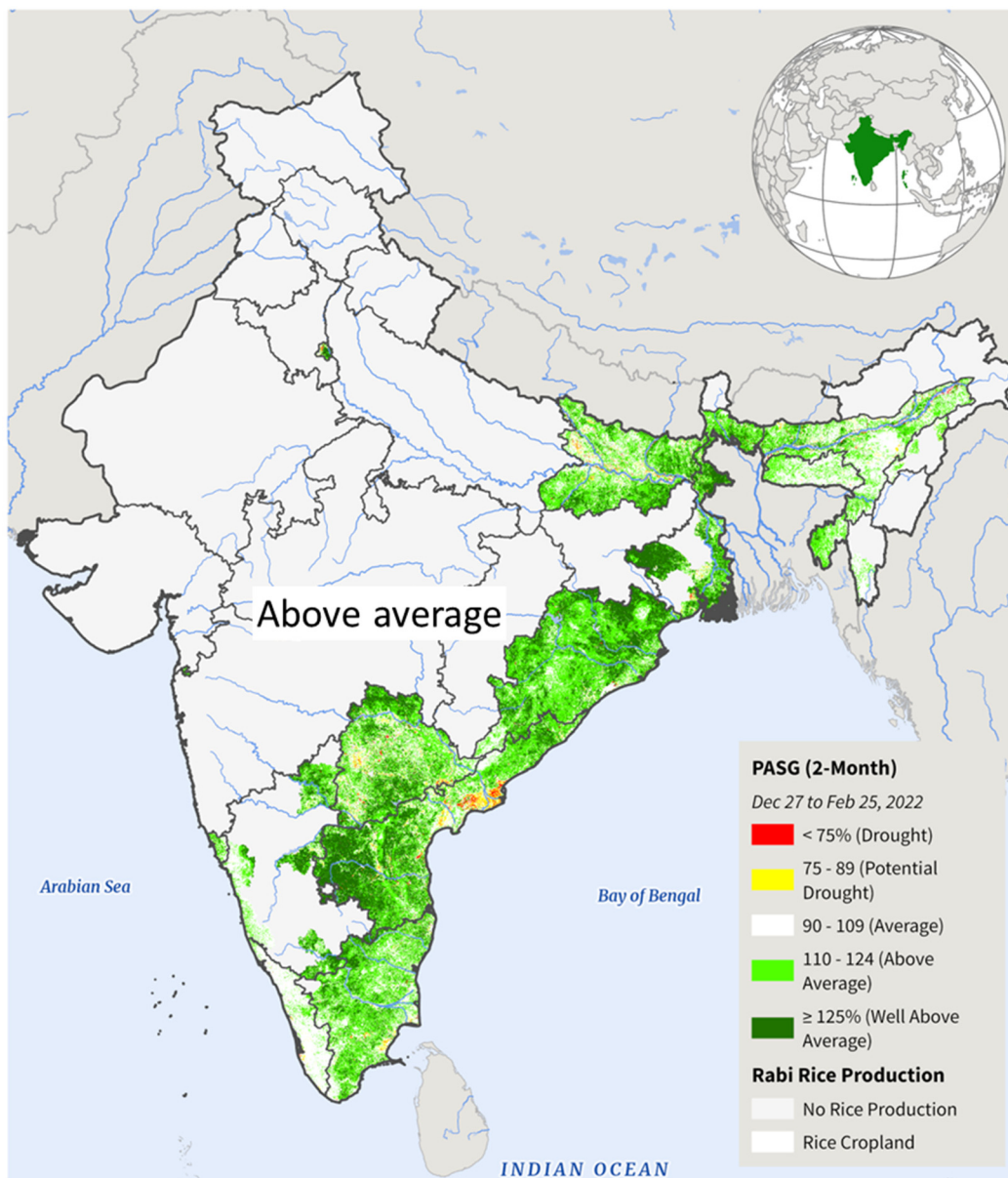
USDA Foreign Agricultural Service
U.S. DEPARTMENT OF AGRICULTURE

Thailand rice is cultivated in two seasons. Planting of the first or main season rice crop begins in May and is harvested in November. The second season begins in December and is harvested in March. Main season rice development is contingent on seasonal rainfall and progressed under mostly ideal conditions throughout the MY 2021/22 growing cycle. Second season rice is predominantly irrigated and benefited from above-average rainfall in September through November of 2021. This rainfall partially replenished water supply levels for the two main reservoirs, Sirikit and Bhumibol, located in Thailand's North region. Observed reservoir water levels from Thailand's Royal Irrigation Department indicate that the Bhumibol reservoir, the larger of the two, has fared better this year compared to the past two years, further supporting second season rice cultivation. Sirikit and Bhumibol reservoirs provide roughly 80 percent of the second-season rice crop water supply. *(For more information, please contact Justin.Jenkins@usda.gov.)*

India Rice: Ideal Weather Conditions Lead to Record Yields

USDA estimates India rice production for marketing year (MY) 2021/22 at a record 129.0 million metric tons (milled basis), up 3 percent from last month and up nearly 4 percent from MY 2020/21. This 4 percent increase in production from last year is because of higher planted area and record yields. Harvested area is estimated at a record 47.0 million hectares, up 3 percent from last month and last year despite a 2 percent decrease in *rabi* planting. This increase in area is due to favorable minimum support prices. Yield is estimated at a record 4.12 tons per hectare, unchanged from last month, but 4 percent above the 5-year average.

India Rice (Rabi): Percent of Average Seasonal Greenness



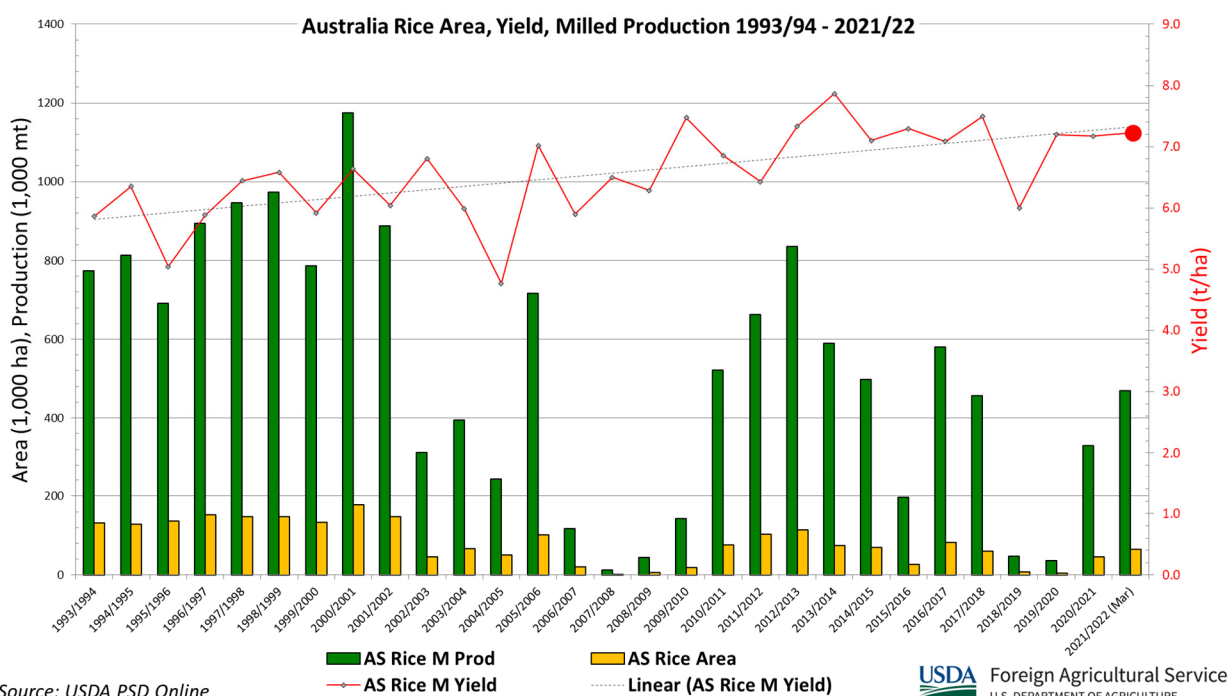
USDA Foreign Agricultural Service
U.S. DEPARTMENT OF AGRICULTURE

Sources: USDA/NASA GLAM, MODIS; India Ministry of Agriculture, Dir. of Economics and Statistics (Rabi Rice)

The late withdrawal of the 2021 southwest monsoon in late October replenished water reservoirs and provided beneficial soil moisture for *rabi* planting. The satellite-derived Percent Average Seasonal Greenness (PASG) analysis indicated strong crop vigor across the significant rice-producing areas during the *rabi* season. These record yields can also be attributed to new and improved varieties combined with better agronomic practices.

Kharif rice, which is approximately 90 percent of total rice production, was harvested in early November. The other 10 percent of total production, *rabi*, was planted from November to January and will be harvested in late April. (For more information, please contact Arnella.Trent@usda.gov.)

Australia Rice: Production Revised Down on Lower Area

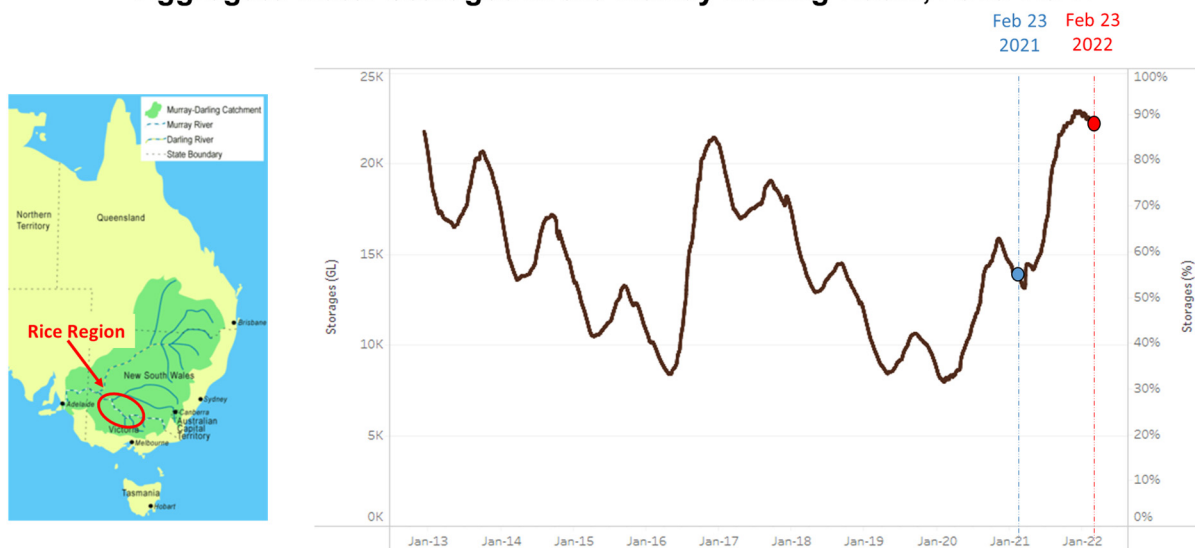


Source: USDA PSD Online

USDA Foreign Agricultural Service
U.S. DEPARTMENT OF AGRICULTURE

USDA estimates Australia rice production for marketing year (MY) 2021/22 at 470,000 metric tons (milled basis), down 28 percent from last month, but up 62 percent above the 5-year average. Harvested area is estimated at 65,000 hectares, down 28 percent from last month, but up 61 percent above the 5-year average. Yield is estimated at 10.05 tons per hectare (t/ha), (7.23 t/ha on a milled basis), roughly equivalent to last month and 1 percent above the 5-year average. USDA has revised its harvested area and production estimates for Australia rice, based on recently released official government estimates from the Australian Bureau of Agricultural and Resource Economics and Sciences (ABARES).

Aggregate Water Storages in the Murray-Darling Basin, 2013–2022



Water storage in the Murray–Darling Basin (MDB) decreased by 85 gigalitres (GL) between 16 February 2022 and 23 February 2022. The current volume of water held in storage is 22,137 GL, which represents 88% of total capacity. This is 66% or 9,036 GL more than at the same time last year.

Source: https://www.agriculture.gov.au/abares/publications/weekly_update

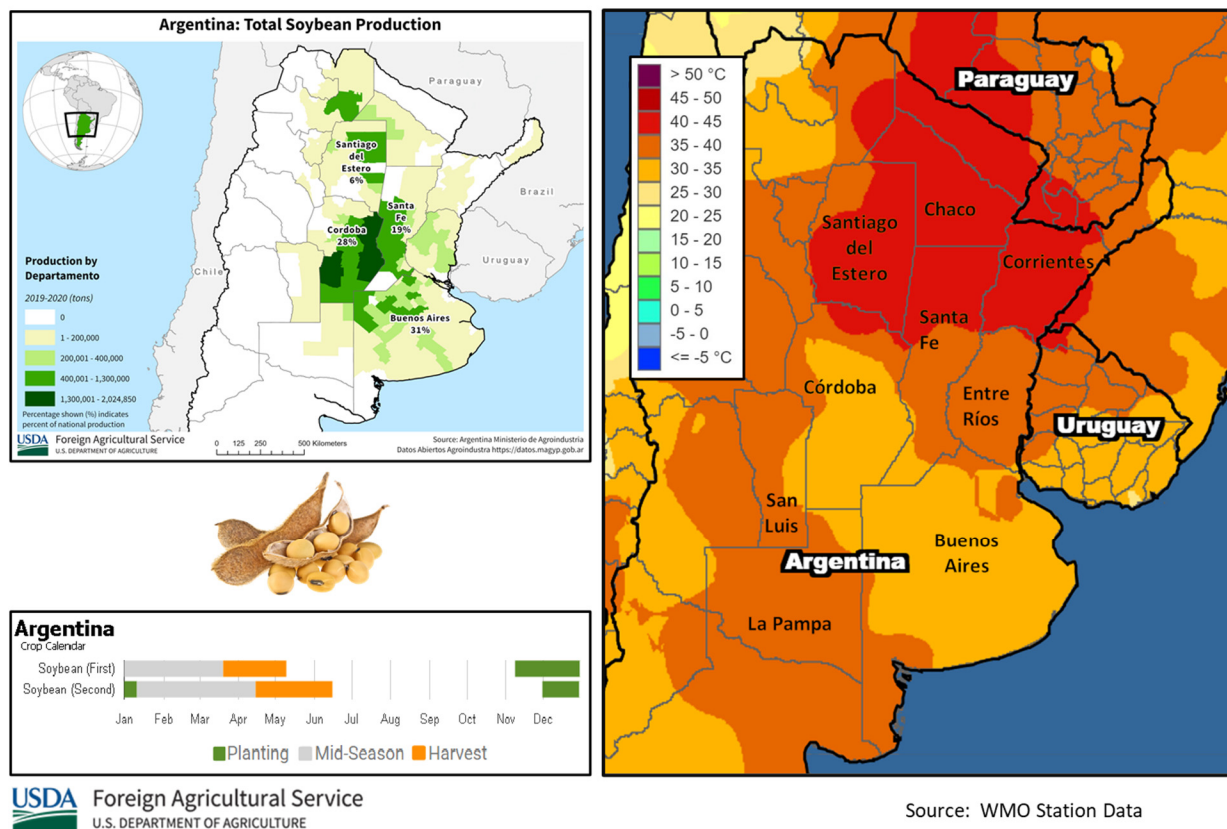
USDA Foreign Agricultural Service
U.S. DEPARTMENT OF AGRICULTURE

According to reporting from the FAS office in Canberra, the above-average rains over 2020 and 2021 resulted in strong inflows of water into the major water storage dams from which irrigation water is delivered to rice producing regions. At the end of September 2021, water storages overall were near capacity which would typically encourage a strong rice planting program which mainly occurs in October. However, available water allocations announced by the Murrumbidgee and New South Wales Murray (NSW Murray) irrigation schemes at the start and middle of each month during the irrigation season have a large bearing on rice planting programs. At the start of October 2021, the water allocation for the Murrumbidgee irrigators was 52 percent and for NSW Murray it was 55 percent, which did not provide rice growers with water resource certainty to expand their planting area. Overall, the announcements were too late to support any significant increase in area. (For more information, please contact James.Crutchfield@usda.gov.)

Argentina Soybeans: High Temperatures Limit Crop Yields Despite Recent Rains

Argentina soybean production for marketing year (MY) 2021/22 is forecast at 43.5 million metric tons, down 3 percent from last month and 6 percent from last year. Harvested area is estimated at 16.0 million hectares, down 1 percent from last month and 3 percent from last year. Yield is forecast at 2.72 tons per hectare, down 2 percent from last month and 3 percent from last year.

Monthly Extreme Maximum Temperature (February 2022)

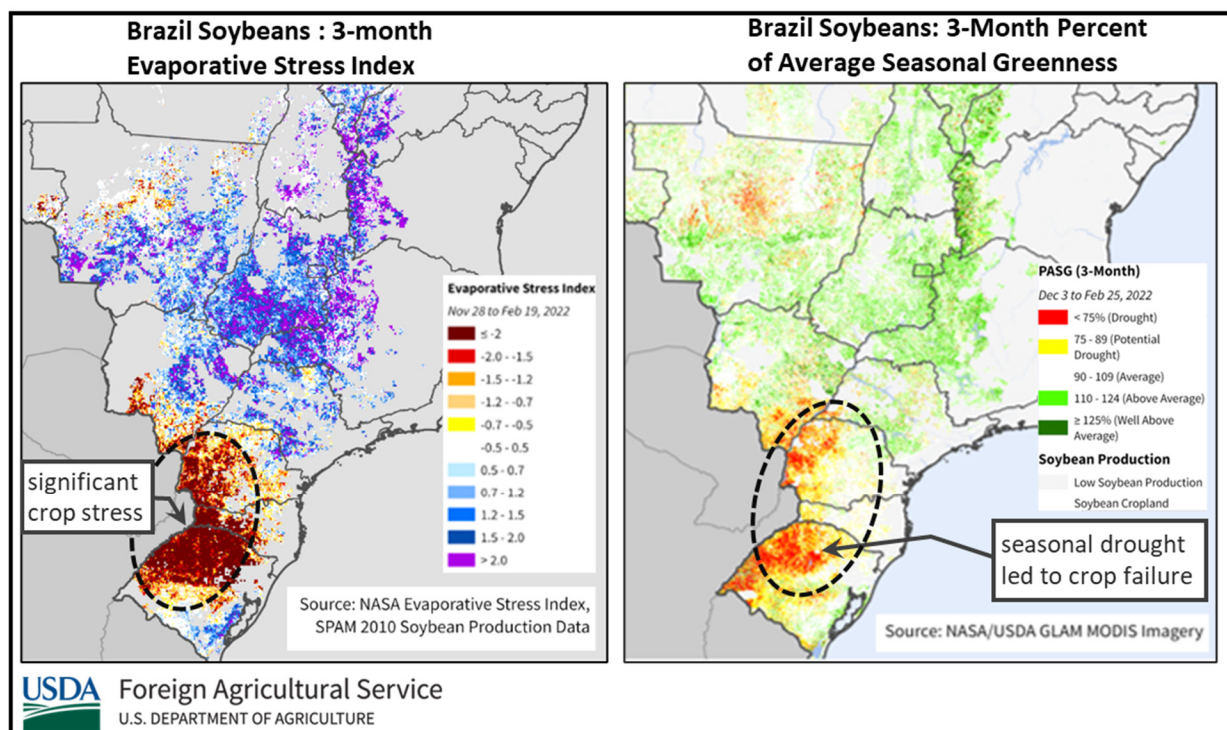


Soybean yield expectations have continued to decrease due to last month's hot and dry conditions. The eastern and far northern planting regions were the most affected. Recent March rains, although beneficial, will fail to recover yields from early declines. Rain came too late to improve crop conditions.

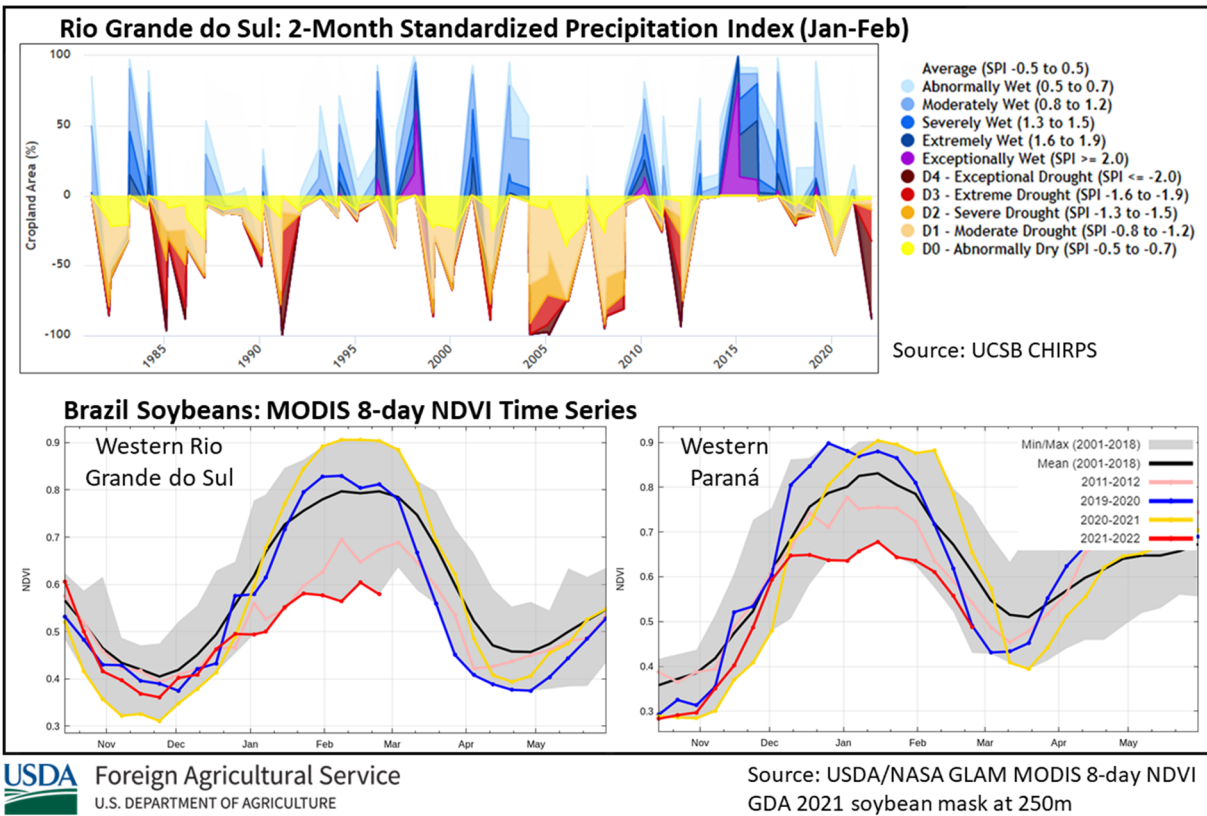
Most early planted soybeans are now in seed fill with later-planted fields showing signs of yield suppression as extreme high temperatures affected plants during flowering and pollination. Recovery of water reserves is not yet optimal, and many fields still need more rain to have enough available soil moisture to satisfy the crop requirements for the rest of the season. *(For more information, please contact Denise.McWilliams@usda.gov.)*

Brazil Soybeans: Persistent Drought Further Reduces Production

Brazil soybean production for marketing year 2021/22 is estimated at 127.0 million metric tons (mmt), down 7.0 mmt (5 percent) from last month, and lower by 11.0 mmt (8 percent) from last season's record crop. Harvested area is estimated at a record 40.6 million hectares (mha), up 0.2 mha (<1 percent) from last month and up 1.7 mha (4 percent) from last season. Yield is estimated at 3.13 tons per hectare (t/ha), 6 percent below last month and 12 percent lower than last season. The production decrease reflects continuing below-average conditions and extreme drought in the southern areas during sensitive crop stages.



Major soybean producing regions in western Paraná, southeastern Mato Grosso do Sul, and northwestern Rio Grande do Sul experienced extreme drought this season overlapping key crop reproductive stages. These regions have the largest cropland area under severe drought in the last 40 years as evidenced by the CHIRPS Standardized Precipitation Index (SPI). Low moisture combined with high temperatures resulted in high evaporative crop stress. Vegetation indices such as the satellite-derived Normalized Difference Vegetation Index (NDVI) and Percent of Average Seasonal Greenness (PASG) reflect a similar scenario. NDVI is at or below the minimum range of the 20-year record for the MODIS sensor and PASG matches crop stress data. The later planted crop benefitted from rains after mid-January in Paraná; however, amounts were sparse and insufficient in Rio Grande do Sul where the crop is planted later. January and February rainfall is critical to optimal yields in Rio Grande do Sul when roughly 60 to 80 percent of the crop is in reproductive stages. The Technical Assistance and Rural Extension of Rio Grande do Sul (EMATER-RS) reports yield losses between 45 and 65 percent in major soybean areas.

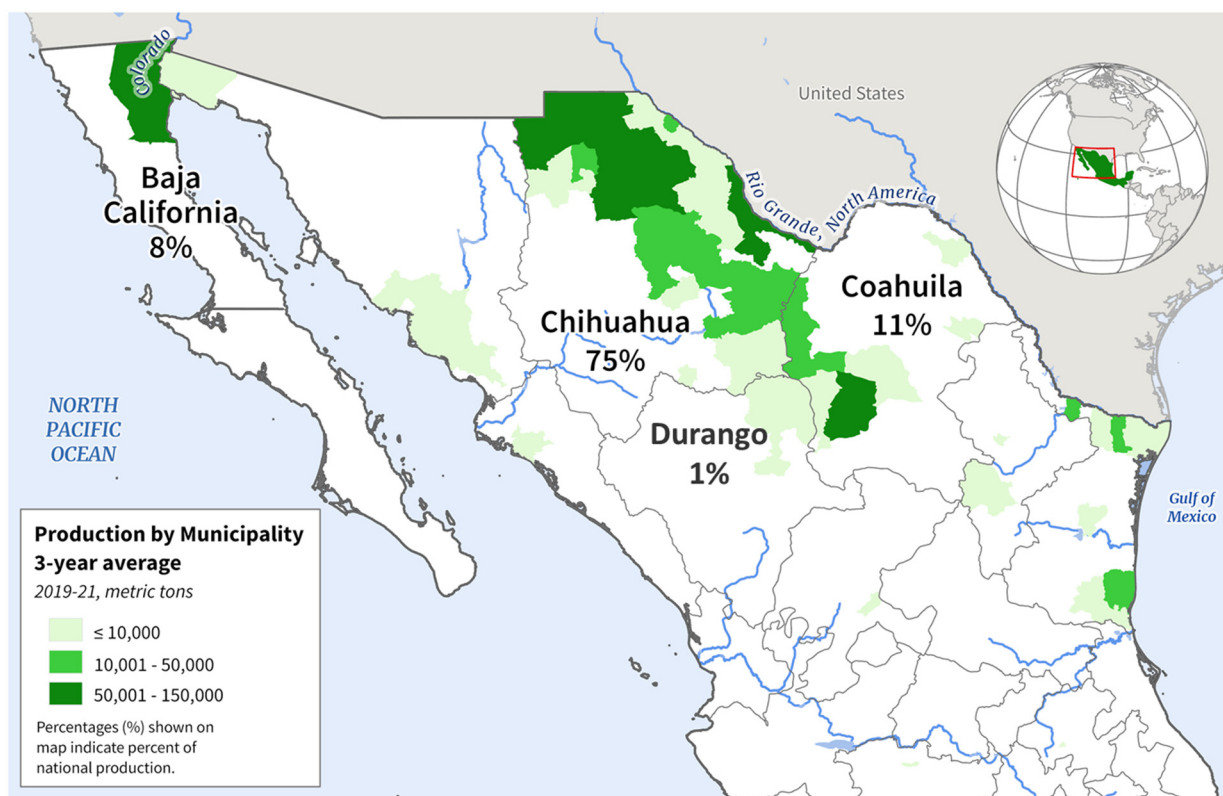


In contrast, northern and center-west states continue to receive above-average rainfall with optimistic yield expectations. However, excessive rainfall is slowing down harvest operations locally. Currently, about 42 percent of harvest is complete with the largest amount in the state of Mato Grosso at 81 percent, 6 percent ahead of the 5-year average as reported by *Companhia Nacional de Abastecimento* (CONAB, an agency in the Brazilian Ministry of Agriculture). Mato Grosso is the largest producing state, accounting for 27 percent of total production. (For more information, please contact Sunita.Yadav-Pauletti@usda.gov.)

Mexico Cotton: Record Yield Reported

Mexico cotton production for marketing year (MY) 2021/22 is estimated at 1.2 million 480-pound bales, up 18 percent from last year's production and up 14 percent from last month. Harvested area is estimated at 155,000 hectares (ha), 7 percent more than last year and 3 percent more than last month. The yield is estimated at a record 1,686 kilograms per hectare, 10 percent higher than last year.

Mexico: Cotton Production

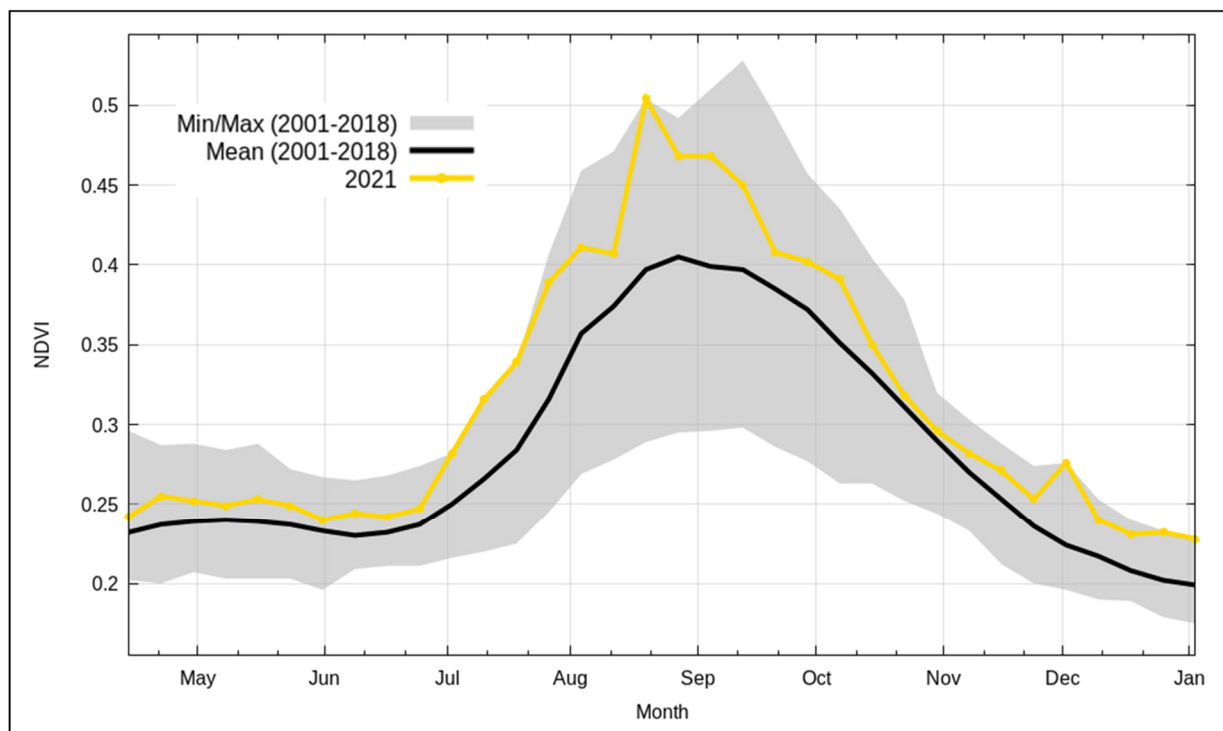


USDA Foreign Agricultural Service
U.S. DEPARTMENT OF AGRICULTURE

Sources: Mexico Agrifood and Fisheries Information Service (SIAP), 2019-2021 Agricultural Production Statistics

Chihuahua is the largest cotton producing state in Mexico, representing about 77 percent of production for MY 2021/22. The other cotton growing states in Mexico are Coahuila, Baja California, Tamaulipas, Sonora, and Durango. The majority of Mexico cotton is typically planted in the spring from March to June and harvested from August to February. The minor winter cotton crop is usually planted in northern Tamaulipas from February to March and harvested from July to September. Cotton is mostly irrigated in Mexico; however, most of the southern Tamaulipas spring cotton crop is rainfed.

NDVI Conditions in Northeast Chihuahua, Mexico



USDA Foreign Agricultural Service
U.S. DEPARTMENT OF AGRICULTURE

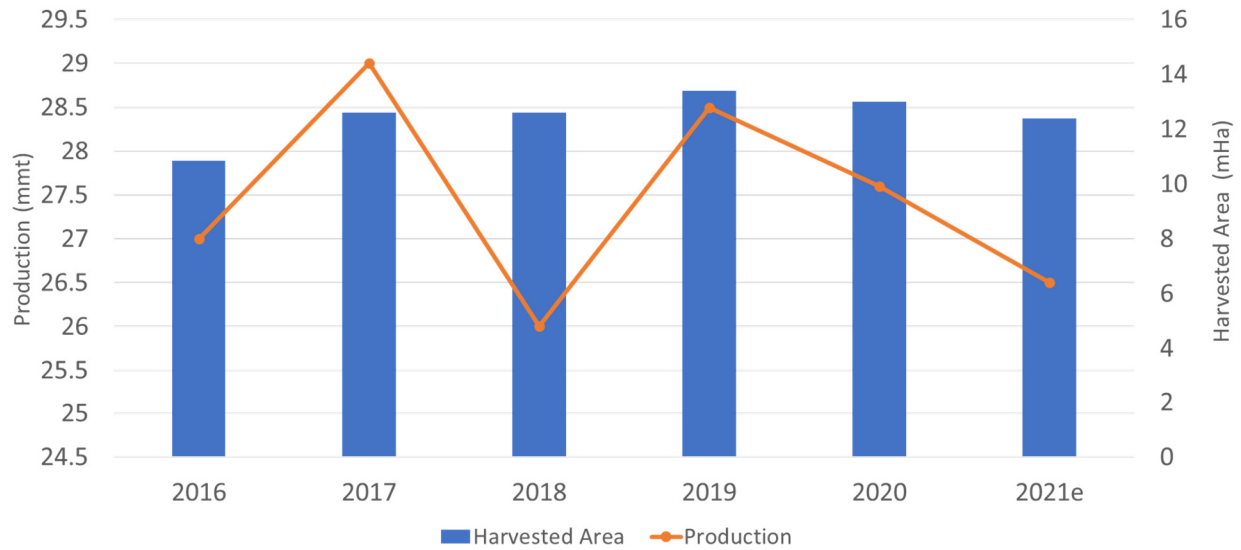
Source: USDA/NASA GLAM, MODIS 8-day NDVI; ICPRI SPAM 2010 V1 Cotton

According to data from *Servicio de Información Agroalimentaria y Pesquera* (SIAP), the highest cotton yields were found in Chihuahua, Coahuila, and Durango. Favorable weather conditions, adequate water irrigation levels, and sufficient pest management techniques supported these high yields. The satellite-derived Normalized Difference Vegetation Index (NDVI) chart showed above-average vegetation conditions throughout the growing season in the cotton growing areas of Chihuahua. (For more information, please contact Ifeoma.Collins@usda.gov.)

India Cotton: Production Down due to Crop Damage

USDA estimates India cotton production for marketing year (MY) 2021/22 at 26.5 million 480-pound bales, down 2 percent from last month and 4 percent from last year. Harvested area is estimated at 12.4 million hectares, unchanged from last month, but down 5 percent from last year. Production has been revised due to crop damage from excessive September rainfall (Tropical Cyclone Gulab) and the late withdrawal of monsoon rains in October, which increased incidences of pink bollworm in Gujarat, Madhya Pradesh, Karnataka, and northern India. Additionally, the Cotton Corporation of India reported for the first 3 months of 2022 that cotton arrivals at government marketing yards were down 25 percent from last year. This 25-percent decrease in arrivals could imply even lower MY 2021/22 production, however, not all cotton is marketed through this channel in any given year. Yield is estimated to reach 465 kilograms per hectare, up marginally from last year.

MY 2021/22 India Cotton Production Down



 Foreign Agricultural Service
U.S. DEPARTMENT OF AGRICULTURE

Source: USDA PSD Online

India's cotton harvest is mainly from October to February, with earlier pickings in the North starting in September and some activity in the South extending to July. Cotton is grown only in the *kharif* season from May to October. (For more information, please contact Arnella.Trent@usda.gov.)



World Agricultural Production
U.S. Department of Agriculture

Foreign Agricultural Service / Global Market Analysis
International Production Assessment Division (IPAD)

Ag Box 1051, Room 4630, South Building
Washington, DC 20250-1051

<https://ipad.fas.usda.gov/>

Telephone: (202) 720-1662 Fax: (202) 720-1158

This report uses information from the Foreign Agricultural Service's (FAS) global network of agricultural attachés and counselors, official statistics of foreign governments and other foreign source materials, and the analysis of economic data and satellite imagery. Estimates of foreign area, yield, and production are from the International Production Assessment Division, FAS, and are reviewed by USDA's Inter-Agency Commodity Estimates Committee. Estimates of U.S. area, yield, and production are from USDA's National Agricultural Statistics Service. Numbers within the report may not add to totals because of rounding. This report reflects official USDA estimates released in the World Agricultural Supply and Demand Estimates (WASDE-584), March 9, 2022.

Printed copies are available from the National Technical Information Service. Download an order form at http://www.ntis.gov/products/specialty/usda/fas_a-g.asp, or call NTIS at 1-800-363-2068.

The FAS International Production Assessment Division prepared this report. The next issue of World Agricultural Production will be released after 12:00 p.m. Eastern Time, April 8, 2022.

Conversion Table

Metric tons to bushels

Wheat, soybeans	=	MT * 36.7437
Corn, sorghum, rye	=	MT * 39.36825
Barley	=	MT * 45.929625
Oats	=	MT * 68.894438

Metric tons to 480-lb bales

Cotton	=	MT * 4.592917
--------	---	---------------

Metric tons to hundredweight

Rice	=	MT * 22.04622
------	---	---------------

Area & weight

1 hectare	=	2.471044 acres
1 kilogram	=	2.204622 pounds



For further information, contact:
U.S. Department of Agriculture
Foreign Agricultural Service
Global Market Analysis

International Production Assessment Division
 Ag Box 1051, Room 4630, South Building
 Washington, DC 20250-1051

Telephone: (202) 720-1662

Fax: (202) 720-1158

GENERAL INFORMATION

Senior Director	Ronald Frantz	202-720-4056	ronald.frantz@usda.gov
Director	Robert Tetrault	202-720-1071	robert.tetrault@usda.gov
Administrative Assistant	Vacant		
USDA Remote Sensing Advisor	Vacant		
Sr. Analyst/Technical Lead	Curt Reynolds, Ph.D.	202-690-0134	curt.reynolds@usda.gov
Sr. Analyst/ Satellite Imagery Archives Manager/Technical Lead	Dath Mita, Ph.D.	202-720-7339	dath.mita@usda.gov
Sr. Analyst/Technical Lead	Jim Crutchfield	202-690-0135	james.crutchfield@usda.gov
GIS Mapping/Imagery Analyst	Lisa Colson	202-720-6652	lisa.colson@usda.gov
WAP Coordinators	Ifeoma Collins	202-720-0240	ifeoma.collins@usda.gov
	Aaron Mulhollen	202-690-0131	aaron.mulhollen@usda.gov

COUNTRY- AND REGION-SPECIFIC INFORMATION

South America, Argentina, Venezuela, and Colombia	Denise McWilliams, Ph.D.	202-720-0107	denise.mcwilliams@usda.gov
Western and Central Europe, and North Africa	Bryan Purcell	202-690-0138	bryan.purcell@usda.gov
Russia, Ukraine, Kazakhstan, Moldova, and Belarus	Katie McGaughey	202-720-9210	katie.mcgaughey@usda.gov
South Asia, Sri Lanka Bangladesh, India, and Nepal	Arnella Trent	202-720-0881	arnella.trent@usda.gov
East Asia, China, and Japan	Dath Mita, Ph.D.	202-720-7339	dath.mita@usda.gov
Sub-Saharan Africa, Nigeria and South Africa	Curt Reynolds, Ph.D.	202-690-0134	curt.reynolds@usda.gov
S.E. Asia, Indonesia, Thailand, Malaysia, Cambodia and Vietnam	Justin Jenkins	202-720-0419	justin.jenkins@usda.gov
Central America, Mexico, and Western United States	Ifeoma Collins	202-720-0240	ifeoma.collins@usda.gov
Australia, New Zealand, Pakistan Papua New Guinea and South Pacific Islands	Jim Crutchfield	202-690-0135	james.crutchfield@usda.gov
Middle East, Central Asia, Afghanistan Iraq, Iran, and Syria	Iliana Mladenova, Ph.D.	202-235-7562	iliana.mladenova@usda.gov
Canada, Caribbean, Eastern United States	Aaron Mulhollen	202-690-0131	aaron.mulhollen@usda.gov
Brazil	Sunita Yadav-Pauletti, Ph.D.		sunita.yadav-pauletti@usda.gov



The Foreign Agricultural Service (FAS) updates its production, supply and distribution (PSD) database for cotton, oilseeds, and grains at 12:00 p.m. on the day the *World Agricultural Supply and Demand Estimates* (WASDE) report is released. This circular is released by 12:15 p.m.

FAS Reports and Databases:

World Agricultural Production

Current: <https://www.fas.usda.gov/data/world-agricultural-production>

Archive: <https://usda.library.cornell.edu/concern/publications/5q47rn72z?locale=en>

USDA's Foreign Agricultural Service (FAS) publishes a monthly report on crop acreage, yield and production in major countries worldwide. Sources include reporting from FAS's worldwide offices, official statistics of foreign governments, and analysis of economic data and satellite imagery. The reports reflect official USDA estimates released in the monthly *World Agricultural Supply and Demand Estimates* (WASDE).

World Markets and Trade

Current: <https://www.fas.usda.gov/data>

Archive:

https://usda.library.cornell.edu/catalog?f%5Bmember_of_collections_ssim%5D%5B%5D=Foreign+Agricultural+Service&locale=en

USDA's Foreign Agricultural Service (FAS) publishes monthly and quarterly reports which include data on U.S. and global trade, production, consumption and stocks, as well as analysis of developments affecting world trade in oilseeds, grains, cotton, livestock and poultry. The reports reflect official USDA estimates released in the monthly *World Agricultural Supply and Demand Estimates* (WASDE).

Global Agricultural Information Network (GAIN)

<https://www.fas.usda.gov/databases/global-agricultural-information-network-gain>

USDA's Foreign Agricultural Service (FAS) provides timely reports on foreign markets through the Global Agriculture Information Network (GAIN) database. An average of 2,000 reports are added each year, with reports going back to 1995. GAIN reports are compiled by FAS' global market intelligence network, which includes FAS foreign service officers and locally engaged staff in over 90 overseas offices world-wide. They provide on-the-ground intelligence, insight, and analysis on nearly 200 countries, delivering information on foreign agricultural markets, crop conditions, and agro-political dynamics of interest to U.S. agriculture. GAIN reports contain assessments of commodity and trade issues made by USDA staff and are not necessarily statements of official U.S. government policy.

Production, Supply and Distribution (PS&D) Online

<https://apps.fas.usda.gov/psdonline/app/index.html#/app/home>

PSD Online is the public repository for USDA's Official Production, Supply and Distribution forecast data and reports for key agricultural commodities. PSD Online data are reviewed and updated monthly by an interagency committee chaired by USDA's World Agricultural Outlook Board (WAOB). The committee consist of representatives from Foreign Agricultural Service (FAS), the Economic Research Service (ERS), the Farm Service Agency (FSA), and the Agricultural Marketing Service (AMS).

EU Countries and Russia Wheat: Area and Production Estimates

<https://apps.fas.usda.gov/psdonline/app/index.html#/app/downloads> (click on PSD Datasets)

USDA's Foreign Agricultural Service (FAS) provides country-level area and production estimates for the nations of the European Union. For Russia, country-level area and production estimates are provided for Winter and Spring wheat. These datasets are reviewed and updated monthly by an interagency committee chaired by USDA's World Agricultural Outlook Board (WAOB) and can be downloaded through PSD datasets on PSD Online.



FAS Reports and Databases:

International Production Assessment (IPAD)

<https://ipad.fas.usda.gov/>

USDA's Foreign Agricultural Service (FAS) maintains a dynamic global crop production portal with key information including *World Agricultural Production* (WAP) briefs, Commodity Intelligence Reports (CIR), geospatial applications, crop production maps at a subnational level and crop calendars for the top-20 producing countries. Additionally, Crop Explorer (<https://ipad.fas.usda.gov/cropexplorer/>) displays rainfall, temperature, evapotranspiration, soil moisture, snow cover, and vegetation conditions in charts and maps.

USDA and NASA Global Agricultural Monitoring (GLAM)

<https://glam1.gsfc.nasa.gov/>

The USDA and NASA Global Agricultural Monitoring (GLAM) system provides near real-time and science quality Moderate Resolution Imaging Spectroradiometer (MODIS) Normalized Difference Vegetation Index (NDVI) from the satellites Terra and Aqua. The public can view and retrieve MODIS 8-day composited, global NDVI satellite imagery and time series data. GLAM was developed by NASA's Global Inventory Modeling and Mapping Studies (GIMMS) group for USDA's Foreign Agricultural Service.

Global Agricultural and Disaster Assessment System (GADAS)

<https://geo.fas.usda.gov/GADAS/index.html>

USDA's Foreign Agricultural Service (FAS) provides the Global Agricultural and Disaster Assessment System (GADAS), a web-based Geographic Information System (GIS) tool which integrates a vast array of highly detailed earth observation data streams, particularly targeted towards agricultural and disaster assessment analysis. GADAS is an interactive website which provides analysts with a wide variety of routine geospatial products (maps, charts, tables) they require for comprehensive situational investigations and recurring assessments.

Export Sales Reporting

<https://apps.fas.usda.gov/esrquery/>

USDA's Export Sales Reporting Program monitors U.S. agricultural export sales on a daily and weekly basis. Export sales reporting provides a constant stream of up-to-date market information for 40 U.S. agricultural commodities sold abroad. The weekly U.S. Export Sales report is the most currently available source of U.S. exports sales data. The data is used to analyze overall levels of export demand, determine where markets exit, and assess the relative position of U.S. commodities in foreign markets.

Global Agricultural Trade System (GATS)

<https://apps.fas.usda.gov/gats/default.aspx>

The Global Agricultural Trade System (GATS) is a searchable database containing monthly U.S. Census Bureau trade data organized by agricultural commodity and agricultural related product groups. Trade data is searchable by partner countries and partner groups. Historical U.S. agricultural trade data is available back to 1967. In addition, U.N. trade statistics (UN Comtrade) may be queried through GATS. UN trade data is available for nearly 200 countries or areas, dating from the inception of the Harmonized System (HS) of trade codes in 1989 to present. The database is continuously updated. U.S. trade data is updated monthly according to the U.S. Census Bureau's reporting system. UN Comtrade data are updated in GATS after nationally submitted data to the UN are standardized by the UN Statistical Division and added to the UN Comtrade database.

Other USDA Reports:

World Agricultural Supply and Demand Estimates (WASDE):

<http://www.usda.gov/oce/commodity/wasde/>

Economic Research Service:

<http://www.ers.usda.gov/topics/crops>

National Agricultural Statistics Service:

<http://www.nass.usda.gov/Publications/>

Table 01 World Crop Production Summary

Million Metric Tons

Commodity	World -	Total Foreign	North America			Former Soviet		European	Asia (WAP)					South America		Selected Other			All Others
			United States	Canada -	Mexico -	Russia -	Ukraine -		China -	India -	Indonesia	Pakistan	Thailand	Argentina	Brazil -	Australia	South Africa	Turkey -	
---Million metric tons---																			
Wheat																			
2019/20	762.4	709.8	52.6	32.7	3.3	73.6	29.2	nr	133.6	103.6	0.0	24.3	0.0	19.8	5.2	14.5	1.5	17.5	251.1
2020/21 prel.	776.0	726.3	49.8	35.2	3.0	85.4	25.4	nr	134.3	107.9	0.0	24.9	0.0	17.6	6.3	33.3	2.1	18.3	232.7
2021/22 proj.																			
Feb	776.4	731.6	44.8	21.7	3.3	75.5	33.0	nr	136.9	109.5	0.0	27.0	0.0	20.5	7.7	34.0	2.2	16.3	244.1
Mar	778.5	733.7	44.8	21.7	3.3	75.2	33.0	nr	136.9	109.6	0.0	27.0	0.0	20.5	7.7	36.3	2.3	16.3	244.1
Coarse Grains																			
2019/20	1,417.1	1,057.7	359.4	28.6	32.1	40.5	46.5	nr	269.1	47.7	12.0	7.7	4.6	57.9	105.8	12.0	16.4	14.5	362.3
2020/21 prel.	1,434.0	1,061.1	372.9	29.6	32.7	41.4	39.6	nr	269.1	51.4	11.8	8.3	5.7	59.5	91.0	16.7	17.8	15.8	370.9
2021/22 proj.																			
Feb	1,497.4	1,098.6	398.7	24.2	33.4	38.3	53.6	nr	280.9	47.6	12.0	8.1	5.4	63.4	118.0	17.0	17.6	11.6	367.7
Mar	1,498.9	1,100.2	398.7	24.2	33.4	38.5	53.3	nr	280.9	50.1	12.0	8.1	5.4	62.4	118.0	18.1	16.9	11.6	367.5
Rice, Milled																			
2019/20	498.8	492.9	5.9	0.0	0.2	0.7	0.0	nr	146.7	118.9	34.7	7.4	17.7	0.8	7.6	0.0	0.0	0.6	157.6
2020/21 prel.	509.7	502.5	7.2	0.0	0.2	0.7	0.0	nr	148.3	124.4	35.3	8.4	18.9	0.8	8.0	0.3	0.0	0.6	156.5
2021/22 proj.																			
Feb	510.3	504.2	6.1	0.0	0.2	0.7	0.0	nr	149.0	125.0	35.4	8.7	19.3	0.8	7.7	0.7	0.0	0.5	156.2
Mar	514.1	508.0	6.1	0.0	0.2	0.7	0.0	nr	149.0	129.0	35.4	8.7	19.7	0.8	7.3	0.5	0.0	0.5	156.1
Total Grains																			
2019/20	2,678.3	2,260.4	417.9	61.3	35.5	114.8	75.8	nr	549.4	270.1	46.7	39.5	22.2	78.5	118.6	26.5	17.9	32.6	771.0
2020/21 prel.	2,719.7	2,289.8	429.9	64.8	35.8	127.5	65.0	nr	551.6	283.6	47.1	41.7	24.5	78.0	105.2	50.3	19.9	34.6	760.0
2021/22 proj.																			
Feb	2,784.1	2,334.5	449.6	45.9	36.8	114.5	86.6	nr	566.8	282.1	47.4	43.8	24.7	84.7	133.4	51.7	19.8	28.4	767.9
Mar	2,791.5	2,341.9	449.6	45.9	36.8	114.4	86.3	nr	566.8	288.7	47.4	43.8	25.1	83.7	133.0	54.9	19.1	28.4	767.7
Oilseeds																			
2019/20	581.0	474.0	107.0	26.1	0.9	21.7	24.5	nr	62.4	36.0	14.4	3.5	0.9	53.6	133.9	2.5	2.2	3.3	88.1
2020/21 prel.	603.6	479.1	124.5	25.9	0.8	20.1	19.9	nr	65.6	38.3	14.6	2.7	1.0	51.2	142.4	5.4	2.7	2.9	85.7
2021/22 proj.																			
Feb	611.5	480.9	130.6	19.0	0.8	23.1	24.3	nr	62.1	42.0	14.8	3.2	1.0	50.2	139.3	7.2	2.8	3.4	87.8
Mar	601.6	471.0	130.6	19.0	0.9	23.1	24.3	nr	62.1	41.8	14.8	3.2	1.0	48.5	132.3	8.1	2.9	3.4	85.8
Cotton																			
2019/20	121.0	101.1	19.9	0.0	1.6	0.0	0.0	2.0	27.3	28.5	0.0	6.2	0.0	1.3	13.8	0.6	0.1	3.5	16.3
2020/21 prel.	111.8	97.2	14.6	0.0	1.0	0.0	0.0	1.7	29.5	27.6	0.0	4.5	0.0	1.4	10.8	2.8	0.1	2.9	14.9
2021/22 proj.																			
Feb	120.2	102.5	17.6	0.0	1.1	0.0	0.0	1.5	27.0	27.0	0.0	5.8	0.0	1.5	13.2	5.5	0.1	3.8	16.2
Mar	119.9	102.2	17.6	0.0	1.2	0.0	0.0	1.5	27.0	26.5	0.0	5.8	0.0	1.5	13.2	5.5	0.1	3.8	16.2

1/ Includes wheat, coarse grains, and rice (milled) shown above.

Table 02 Wheat Area, Yield, and Production

Country / Region	Area (Million hectares)				Yield (Metric tons per hectare)				Production (Million metric tons)				Change in Production						
	2019/20	Prel.		2021/22 Proj.		2019/20	Prel.		2021/22 Proj.		2019/20	Prel.		2021/22 Proj.		From last month		From last year	
		2020/21	Feb	Mar	2020/21		Feb	Mar	2020/21	Feb		Mar	MMT	Percent	MMT	Percent			
World	215.58	220.93	222.62	222.05	3.54	3.51	3.49	3.51	762.37	776.00	776.42	778.52	2.10	0.27	2.52	0.32			
United States	15.13	14.89	15.04	15.04	3.47	3.34	2.98	2.98	52.58	49.75	44.79	44.79	0.00	0.00	-4.96	-9.97			
Total Foreign	200.45	206.04	207.58	207.01	3.54	3.52	3.52	3.54	709.79	726.25	731.63	733.73	2.10	0.29	7.48	1.03			
European Union	24.36	22.97	24.14	24.14	5.70	5.53	5.76	5.76	138.80	126.93	138.90	139.00	0.10	0.07	12.07	9.51			
United Kingdom	1.80	1.39	1.79	1.79	8.69	6.96	7.82	7.82	15.60	9.66	14.00	14.00	0.00	0.00	4.34	44.96			
Serbia	0.57	0.59	0.60	0.60	4.56	4.58	5.50	5.50	2.60	2.70	3.30	3.30	0.00	0.00	0.60	22.22			
China	23.73	23.38	23.57	23.57	5.63	5.74	5.81	5.81	133.60	134.25	136.95	136.95	0.00	0.00	2.70	2.01			
South Asia																			
India	29.32	31.36	31.62	31.13	3.53	3.44	3.46	3.52	103.60	107.86	109.52	109.59	0.07	0.06	1.73	1.60			
Pakistan	8.68	8.83	9.20	9.20	2.81	2.83	2.93	2.93	24.35	24.95	27.00	27.00	0.00	0.00	2.05	8.23			
Afghanistan	2.30	2.33	2.20	2.20	2.17	2.15	2.00	2.00	5.00	5.01	4.40	4.40	0.00	0.00	-0.61	-12.18			
Nepal	0.71	0.75	0.75	0.75	3.09	2.95	2.80	2.80	2.19	2.21	2.10	2.10	0.00	0.00	-0.11	-4.98			
Former Soviet Union - 12																			
Russia	27.31	28.68	27.60	27.63	2.70	2.98	2.74	2.72	73.61	85.35	75.50	75.16	-0.34	-0.45	-10.19	-11.94			
Russia Winter	15.41	16.63	15.00	15.22	3.41	3.77	3.50	3.43	52.54	62.69	52.50	52.19	-0.31	-0.58	-10.50	-16.74			
Russia Spring	11.91	12.06	12.60	12.41	1.77	1.88	1.83	1.85	21.07	22.66	23.00	22.96	-0.04	-0.16	0.30	1.33			
Ukraine	7.02	6.85	7.40	7.40	4.16	3.71	4.46	4.46	29.17	25.42	33.00	33.00	0.00	0.00	7.58	29.82			
Kazakhstan	11.30	12.06	12.72	12.72	1.01	1.18	0.93	0.93	11.45	14.26	11.81	11.81	0.00	0.00	-2.44	-17.13			
Uzbekistan	1.40	1.40	1.40	1.40	4.86	4.43	3.93	3.93	6.80	6.20	5.50	5.50	0.00	0.00	-0.70	-11.29			
Belarus	0.69	0.72	0.65	0.65	3.33	3.94	3.54	3.54	2.31	2.85	2.30	2.30	0.00	0.00	-0.55	-19.24			
Canada	9.66	10.02	9.25	9.25	3.38	3.51	2.34	2.34	32.67	35.18	21.65	21.65	0.00	0.00	-13.53	-38.46			
South America																			
Argentina	6.73	6.40	6.50	6.50	2.93	2.76	3.15	3.15	19.75	17.64	20.50	20.50	0.00	0.00	2.86	16.21			
Brazil	2.04	2.34	2.74	2.74	2.55	2.67	2.81	2.81	5.20	6.25	7.70	7.70	0.00	0.00	1.45	23.20			
Australia	9.86	12.90	13.10	13.00	1.47	2.58	2.60	2.79	14.48	33.30	34.00	36.30	2.30	6.76	3.00	9.01			
Africa																			
Egypt	1.37	1.39	1.40	1.40	6.40	6.40	6.43	6.43	8.77	8.90	9.00	9.00	0.00	0.00	0.10	1.12			
Morocco	2.51	2.76	2.86	2.86	1.61	0.93	2.64	2.64	4.03	2.56	7.54	7.54	0.00	0.00	4.98	194.53			
Algeria	2.07	2.08	2.08	2.08	1.90	1.88	1.73	1.73	3.95	3.90	3.60	3.60	0.00	0.00	-0.30	-7.69			
Ethiopia	1.79	1.85	1.75	1.75	2.97	2.76	2.74	2.74	5.32	5.10	4.80	4.80	0.00	0.00	-0.30	-5.88			
Middle East																			
Turkey	7.00	7.10	7.05	7.05	2.50	2.57	2.30	2.30	17.50	18.25	16.25	16.25	0.00	0.00	-2.00	-10.96			
Iran	6.20	6.00	6.00	6.00	2.51	2.50	2.00	2.00	15.55	15.00	12.00	12.00	0.00	0.00	-3.00	-20.00			
Iraq	2.40	2.40	2.00	2.00	2.00	1.93	1.75	1.75	4.80	4.64	3.50	3.50	0.00	0.00	-1.14	-24.49			
Syria	1.60	1.60	1.10	1.10	3.00	2.81	1.82	1.82	4.80	4.50	2.00	2.00	0.00	0.00	-2.50	-55.56			
Mexico	0.59	0.56	0.55	0.55	5.54	5.33	5.95	6.00	3.27	2.97	3.28	3.28	0.01	0.15	0.32	10.62			
Others	7.45	7.36	7.59	7.58	2.77	2.77	2.84	2.84	20.64	20.43	21.53	21.50	-0.03	-0.13	1.07	5.25			

Table 03 Total Coarse Grain Area, Yield, and Production

Country / Region	Area (Million hectares)				Yield (Metric tons per hectare)				Production (Million metric tons)				Change in Production						
	2019/20	Prel.		2021/22 Proj.		2019/20	Prel.		2021/22 Proj.		2019/20	Prel.		2021/22 Proj.		From last month		From last year	
		2020/21	Feb	Mar	2020/21		Feb	Mar	2020/21	Feb		Mar	MMT	Percent	MMT	Percent			
World	334.52	344.01	339.53	341.75	4.24	4.17	4.41	4.39	1,417.09	1,433.99	1,497.36	1,498.89	1.54	0.10	64.91	4.53			
United States	36.17	36.81	38.35	38.35	9.94	10.13	10.40	10.40	359.43	372.89	398.71	398.71	0.00	0.00	25.82	6.92			
Total Foreign	298.35	307.19	301.18	303.40	3.54	3.45	3.65	3.63	1,057.65	1,061.10	1,098.65	1,100.19	1.54	0.14	39.09	3.68			
China	43.67	43.72	45.77	45.77	6.16	6.15	6.14	6.14	269.07	269.08	280.85	280.85	0.00	0.00	11.77	4.37			
European Union	28.76	28.83	28.03	28.00	5.31	5.38	5.53	5.53	152.82	155.21	154.95	154.82	-0.13	-0.08	-0.40	-0.26			
United Kingdom	1.41	1.66	1.41	1.41	6.64	5.65	5.89	5.89	9.35	9.36	8.33	8.33	0.00	0.00	-1.03	-11.03			
South America																			
Brazil	19.86	21.31	22.23	22.23	5.33	4.27	5.31	5.31	105.82	90.96	118.02	118.02	0.00	0.00	27.06	29.75			
Argentina	8.39	8.59	9.27	9.47	6.91	6.93	6.83	6.58	57.94	59.50	63.39	62.39	-1.00	-1.58	2.88	4.85			
Former Soviet Union - 12																			
Russia	14.51	14.55	13.85	14.01	2.79	2.84	2.77	2.75	40.50	41.40	38.31	38.54	0.23	0.60	-2.86	-6.90			
Ukraine	8.22	8.53	8.44	8.63	5.67	4.64	6.35	6.18	46.55	39.59	53.59	53.27	-0.32	-0.60	13.68	34.56			
Kazakhstan	3.45	3.20	2.63	2.63	1.47	1.54	1.43	1.43	5.06	4.93	3.76	3.76	0.00	0.00	-1.17	-23.79			
Belarus	1.08	1.14	0.99	0.99	3.08	3.47	3.05	3.05	3.32	3.95	3.00	3.00	0.00	0.00	-0.95	-23.99			
Africa																			
Nigeria	13.90	13.10	13.70	13.70	1.42	1.42	1.49	1.49	19.67	18.57	20.40	20.40	0.00	0.00	1.83	9.85			
South Africa	3.12	3.36	3.20	3.19	5.24	5.31	5.51	5.29	16.37	17.81	17.60	16.85	-0.75	-4.25	-0.96	-5.39			
Tanzania	4.35	5.20	5.10	5.10	1.56	1.46	1.49	1.49	6.77	7.58	7.58	7.58	0.00	0.00	0.00	0.00			
Burkina Faso	4.08	4.00	4.00	4.00	1.12	1.18	1.31	1.31	4.55	4.72	5.23	5.23	0.00	0.00	0.51	10.70			
Ethiopia	5.51	5.61	5.72	5.72	3.34	3.32	3.09	3.09	18.41	18.62	17.65	17.65	0.00	0.00	-0.97	-5.19			
Egypt	1.02	1.02	1.02	1.02	7.09	7.09	7.09	7.09	7.26	7.26	7.26	7.26	0.00	0.00	0.00	0.00			
Mali	4.92	5.17	4.70	4.70	1.46	1.38	1.45	1.45	7.21	7.14	6.80	6.80	0.00	0.00	-0.34	-4.70			
India	23.98	23.94	22.40	24.09	1.99	2.15	2.12	2.08	47.66	51.37	47.57	50.07	2.50	5.25	-1.30	-2.54			
Southeast Asia																			
Indonesia	3.80	3.60	3.60	3.60	3.16	3.28	3.33	3.33	12.00	11.80	12.00	12.00	0.00	0.00	0.20	1.69			
Philippines	2.51	2.57	2.60	2.60	3.20	3.25	3.12	3.12	8.03	8.35	8.10	8.10	0.00	0.00	-0.25	-3.02			
Vietnam	0.99	0.95	0.90	0.90	4.80	4.83	4.89	4.89	4.76	4.59	4.40	4.40	0.00	0.00	-0.19	-4.14			
Thailand	1.24	1.28	1.23	1.23	3.66	4.41	4.36	4.36	4.55	5.65	5.35	5.35	0.00	0.00	-0.30	-5.31			
Mexico	8.41	8.76	9.01	9.01	3.82	3.73	3.70	3.70	32.10	32.66	33.35	33.35	0.00	0.00	0.69	2.11			
Canada	5.54	5.80	5.74	5.74	5.16	5.11	4.22	4.22	28.61	29.64	24.21	24.21	0.00	0.00	-5.43	-18.32			
Australia	6.18	5.99	5.94	5.96	1.94	2.79	2.87	3.04	12.00	16.69	17.05	18.10	1.05	6.16	1.41	8.45			
Middle East																			
Turkey	4.53	4.63	4.46	4.46	3.19	3.40	2.60	2.60	14.45	15.76	11.58	11.58	0.00	0.00	-4.18	-26.52			
Iran	1.91	1.81	1.91	1.91	2.63	2.77	2.16	2.16	5.02	5.02	4.12	4.12	0.00	0.00	-0.90	-17.93			
Others	73.03	78.88	73.34	73.34	1.61	1.57	1.69	1.69	117.85	123.91	124.23	124.19	-0.04	-0.03	0.28	0.23			

World and Selected Countries and Regions; Coarse Grain includes: Barley, Corn, Millet, Mixed Grains, Oats, Rye and Sorghum

Table 04 Corn Area, Yield, and Production

Country / Region	Area (Million hectares)				Yield (Metric tons per hectare)				Production (Million metric tons)				Change in Production						
	2019/20	Prel.		2021/22 Proj.		2019/20	Prel.		2021/22 Proj.		2019/20	Prel.		2021/22 Proj.		From last month		From last year	
		2020/21	Feb	Mar	2020/21		Feb	Mar	2020/21	Feb		Mar	MMT	Percent	MMT	Percent			
World	193.56	198.74	202.72	203.32	5.78	5.65	5.95	5.93	1,119.60	1,123.28	1,205.35	1,206.14	0.80	0.07	82.87	7.38			
United States	32.92	33.31	34.56	34.56	10.51	10.76	11.11	11.11	345.96	358.45	383.94	383.94	0.00	0.00	25.50	7.11			
Total Foreign	160.65	165.43	168.16	168.76	4.82	4.62	4.88	4.87	773.63	764.83	821.40	822.20	0.80	0.10	57.37	7.50			
China	41.28	41.26	43.32	43.32	6.32	6.32	6.29	6.29	260.78	260.67	272.55	272.55	0.00	0.00	11.88	4.56			
South America																			
Brazil	18.50	19.90	20.80	20.80	5.51	4.37	5.48	5.48	102.00	87.00	114.00	114.00	0.00	0.00	27.00	31.03			
Argentina	6.30	6.50	6.80	7.00	8.10	7.92	7.94	7.57	51.00	51.50	54.00	53.00	-1.00	-1.85	1.50	2.91			
Bolivia	0.42	0.47	0.48	0.48	2.26	2.30	2.32	2.32	0.96	1.08	1.10	1.10	0.00	0.00	0.02	1.85			
European Union	8.90	9.30	9.31	9.23	7.50	7.22	7.52	7.56	66.74	67.09	69.96	69.80	-0.16	-0.23	2.71	4.04			
Africa																			
South Africa	2.91	3.12	3.00	3.00	5.45	5.44	5.67	5.43	15.84	16.95	17.00	16.30	-0.70	-4.12	-0.65	-3.84			
Nigeria	6.50	5.50	6.00	6.00	1.69	1.82	1.93	1.93	11.00	10.00	11.60	11.60	0.00	0.00	1.60	16.00			
Ethiopia	2.27	2.53	2.40	2.40	4.24	4.18	3.75	3.75	9.64	10.56	9.00	9.00	0.00	0.00	-1.56	-14.75			
Egypt	0.80	0.80	0.80	0.80	8.00	8.00	8.00	8.00	6.40	6.40	6.40	6.40	0.00	0.00	0.00	0.00			
Tanzania	3.43	4.20	4.10	4.10	1.65	1.55	1.59	1.59	5.65	6.50	6.50	6.50	0.00	0.00	0.00	0.00			
Malawi	1.70	1.70	1.70	1.70	1.78	2.22	2.47	2.47	3.03	3.78	4.20	4.20	0.00	0.00	0.42	11.11			
Zambia	0.84	1.29	1.30	1.30	2.38	2.62	2.78	2.78	2.00	3.39	3.62	3.62	0.00	0.00	0.23	6.88			
Kenya	2.20	2.20	2.20	2.20	1.77	1.82	1.59	1.59	3.90	4.00	3.50	3.50	0.00	0.00	-0.50	-12.50			
Uganda	0.95	1.10	1.10	1.10	2.71	2.50	2.55	2.55	2.58	2.75	2.80	2.80	0.00	0.00	0.05	1.82			
Zimbabwe	1.62	1.58	1.95	1.95	0.48	0.57	1.39	1.39	0.78	0.91	2.72	2.72	0.00	0.00	1.81	199.23			
Former Soviet Union - 12																			
Ukraine	4.99	5.40	5.30	5.47	7.19	5.62	7.92	7.67	35.89	30.30	42.00	41.90	-0.10	-0.24	11.60	38.30			
Russia	2.50	2.73	2.80	2.90	5.70	5.08	5.36	5.25	14.28	13.87	15.00	15.23	0.23	1.50	1.35	9.75			
South Asia																			
India	9.57	9.95	9.70	9.90	3.01	3.18	3.09	3.28	28.77	31.65	30.00	32.50	2.50	8.33	0.85	2.69			
Pakistan	1.41	1.39	1.40	1.40	5.12	5.63	5.43	5.43	7.24	7.80	7.60	7.60	0.00	0.00	-0.20	-2.56			
Nepal	0.96	0.97	0.97	0.97	2.76	2.82	2.82	2.82	2.65	2.72	2.72	2.72	0.00	0.00	0.00	0.00			
Southeast Asia																			
Indonesia	3.80	3.60	3.60	3.60	3.16	3.28	3.33	3.33	12.00	11.80	12.00	12.00	0.00	0.00	0.20	1.69			
Philippines	2.51	2.57	2.60	2.60	3.20	3.25	3.12	3.12	8.03	8.35	8.10	8.10	0.00	0.00	-0.25	-3.02			
Vietnam	0.99	0.95	0.90	0.90	4.80	4.83	4.89	4.89	4.76	4.59	4.40	4.40	0.00	0.00	-0.19	-4.14			
Thailand	1.22	1.26	1.20	1.20	3.70	4.46	4.42	4.42	4.50	5.60	5.30	5.30	0.00	0.00	-0.30	-5.36			
Mexico	6.62	7.14	7.20	7.20	4.03	3.83	3.83	3.83	26.66	27.35	27.60	27.60	0.00	0.00	0.25	0.93			
Canada	1.45	1.41	1.39	1.39	9.24	9.63	10.05	10.05	13.40	13.56	13.98	13.98	0.00	0.00	0.42	3.10			
Turkey	0.52	0.62	0.54	0.54	11.54	11.45	12.04	12.04	6.00	7.10	6.50	6.50	0.00	0.00	-0.60	-8.45			
Others	25.47	26.00	25.31	25.32	2.64	2.60	2.66	2.66	67.18	67.57	67.25	67.28	0.03	0.05	-0.28	-0.42			

World and Selected Countries and Regions

Table 05 Barley Area, Yield, and Production

Country / Region	Area (Million hectares)				Yield (Metric tons per hectare)				Production (Million metric tons)				Change in Production			
	Prel.		2021/22 Proj.		Prel.		2021/22 Proj.		Prel.		2021/22 Proj.		From last month		From last year	
	2019/20	2020/21	Feb	Mar	2019/20	2020/21	Feb	Mar	2019/20	2020/21	Feb	Mar	MMT	Percent	MMT	Percent
World	52.55	51.46	48.57	48.65	3.02	3.11	3.00	3.00	158.76	160.03	145.79	146.14	0.36	0.24	-13.89	-8.68
United States	0.90	0.90	0.79	0.79	4.18	4.15	3.25	3.25	3.76	3.72	2.56	2.56	0.00	0.00	-1.16	-31.11
Total Foreign	51.65	50.57	47.78	47.86	3.00	3.09	3.00	3.00	155.00	156.32	143.23	143.58	0.36	0.25	-12.73	-8.15
European Union	11.16	11.04	10.40	10.41	4.94	4.91	5.07	5.07	55.18	54.23	52.75	52.80	0.05	0.09	-1.43	-2.64
United Kingdom	1.16	1.39	1.15	1.15	6.93	5.85	6.09	6.09	8.05	8.12	7.00	7.00	0.00	0.00	-1.12	-13.76
Former Soviet Union - 12																
Russia	8.40	8.16	7.65	7.69	2.37	2.53	2.29	2.28	19.94	20.63	17.50	17.51	0.01	0.03	-3.12	-15.14
Ukraine	2.78	2.58	2.67	2.67	3.42	3.08	3.82	3.71	9.53	7.95	10.20	9.90	-0.30	-2.94	1.95	24.58
Kazakhstan	2.98	2.73	2.16	2.16	1.29	1.34	1.10	1.10	3.83	3.66	2.37	2.37	0.00	0.00	-1.29	-35.31
Belarus	0.41	0.41	0.35	0.35	2.69	3.35	2.86	2.86	1.10	1.38	1.00	1.00	0.00	0.00	-0.38	-27.27
Azerbaijan	0.34	0.35	0.37	0.37	2.97	2.81	2.74	2.74	1.02	0.97	1.00	1.00	0.00	0.00	0.03	3.09
Canada	2.73	2.81	3.00	3.00	3.81	3.82	2.31	2.31	10.38	10.74	6.95	6.95	0.00	0.00	-3.79	-35.31
Australia	5.04	4.40	4.30	4.35	2.01	2.98	3.02	3.15	10.13	13.10	13.00	13.70	0.70	5.38	0.60	4.58
Middle East																
Turkey	3.80	3.80	3.70	3.70	2.08	2.13	1.22	1.22	7.90	8.10	4.50	4.50	0.00	0.00	-3.60	-44.44
Iran	1.70	1.60	1.70	1.70	2.12	2.25	1.59	1.59	3.60	3.60	2.70	2.70	0.00	0.00	-0.90	-25.00
Iraq	1.20	1.20	0.60	0.60	1.33	1.29	1.17	1.17	1.60	1.55	0.70	0.70	0.00	0.00	-0.85	-54.84
Syria	1.50	1.50	0.80	0.80	1.33	1.27	0.81	0.81	2.00	1.90	0.65	0.65	0.00	0.00	-1.25	-65.79
Africa																
Ethiopia	0.95	0.93	1.00	1.00	2.50	2.53	2.35	2.35	2.38	2.34	2.35	2.35	0.00	0.00	0.01	0.47
Morocco	1.05	1.47	1.49	1.49	1.11	0.44	1.87	1.87	1.16	0.64	2.78	2.78	0.00	0.00	2.14	334.38
Algeria	1.03	1.03	1.03	1.03	1.95	1.80	1.56	1.56	2.00	1.85	1.60	1.60	0.00	0.00	-0.25	-13.28
Tunisia	0.47	0.36	0.37	0.37	1.94	1.28	1.77	1.77	0.91	0.47	0.65	0.65	0.00	0.00	0.19	39.78
South Africa	0.13	0.14	0.10	0.10	2.61	4.14	3.68	3.48	0.35	0.59	0.35	0.33	-0.02	-5.43	-0.26	-43.71
South America																
Argentina	1.08	1.01	1.25	1.25	3.35	4.00	3.84	3.84	3.62	4.04	4.80	4.80	0.00	0.00	0.77	18.96
Uruguay	0.17	0.19	0.22	0.22	3.68	4.78	4.11	4.11	0.61	0.89	0.92	0.92	0.00	0.00	0.03	3.49
Brazil	0.12	0.10	0.10	0.10	3.61	3.63	3.74	3.74	0.43	0.37	0.39	0.39	0.00	0.00	0.01	2.94
India	0.58	0.59	0.60	0.59	2.84	2.92	2.78	2.81	1.63	1.72	1.67	1.67	0.00	-0.24	-0.05	-3.14
China	0.51	0.51	0.51	0.51	3.94	4.00	3.92	3.92	2.01	2.04	2.00	2.00	0.00	0.00	-0.04	-1.77
Mexico	0.36	0.30	0.34	0.34	2.81	3.07	2.82	2.82	1.01	0.91	0.96	0.96	0.00	0.00	0.06	6.08
Afghanistan	0.18	0.17	0.16	0.16	1.39	1.41	1.25	1.25	0.25	0.24	0.20	0.20	0.00	0.00	-0.04	-16.67
Others	1.82	1.82	1.78	1.77	2.41	2.38	2.39	2.36	4.40	4.32	4.25	4.17	-0.08	-1.81	-0.15	-3.43

World and Selected Countries and Regions

Table 06 Oats Area, Yield, and Production

Country / Region	Area (Million hectares)				Yield (Metric tons per hectare)				Production (Million metric tons)				Change in Production			
	2019/20	Prel.	2021/22 Proj.		2019/20	Prel.	2021/22 Proj.		2019/20	Prel.	2021/22 Proj.		From last month		From last year	
		2020/21	Feb	Mar		2020/21	Feb	Mar		2020/21	Feb	Mar	MMT	Percent	MMT	Percent
World	9.56	9.97	9.48	9.46	2.43	2.56	2.39	2.40	23.22	25.47	22.66	22.70	0.04	0.19	-2.77	-10.89
United States	0.34	0.41	0.26	0.26	2.31	2.34	2.20	2.20	0.77	0.95	0.58	0.58	0.00	0.00	-0.38	-39.41
Total Foreign	9.23	9.56	9.22	9.19	2.43	2.56	2.40	2.41	22.45	24.52	22.08	22.12	0.04	0.19	-2.40	-9.78
European Union	2.38	2.55	2.60	2.60	2.93	3.30	3.13	3.13	6.97	8.42	8.15	8.15	0.00	0.00	-0.27	-3.23
Former Soviet Union - 12																
Russia	2.43	2.33	2.15	2.17	1.82	1.77	1.74	1.72	4.42	4.13	3.75	3.73	-0.02	-0.45	-0.39	-9.55
Ukraine	0.18	0.20	0.18	0.19	2.32	2.54	2.58	2.59	0.43	0.52	0.47	0.48	0.02	3.23	-0.04	-6.80
Belarus	0.16	0.16	0.15	0.15	2.30	2.87	2.33	2.33	0.37	0.45	0.35	0.35	0.00	0.00	-0.10	-21.35
Kazakhstan	0.24	0.23	0.20	0.20	1.10	1.05	0.90	0.90	0.27	0.24	0.18	0.18	0.00	0.00	-0.06	-24.17
Canada	1.17	1.31	1.11	1.11	3.62	3.48	2.34	2.34	4.23	4.58	2.61	2.61	0.00	0.00	-1.97	-43.05
South America																
Argentina	0.32	0.24	0.30	0.30	1.86	2.13	2.30	2.30	0.60	0.51	0.69	0.69	0.00	0.00	0.18	35.29
Brazil	0.40	0.43	0.43	0.43	2.21	1.99	2.18	2.18	0.88	0.85	0.93	0.93	0.00	0.00	0.08	9.57
Chile	0.10	0.11	0.11	0.11	4.92	4.65	5.45	5.45	0.48	0.53	0.60	0.60	0.00	0.00	0.08	14.29
Uruguay	0.02	0.02	0.01	0.01	2.19	2.20	2.21	2.21	0.04	0.03	0.03	0.03	0.00	0.00	0.00	-6.06
Oceania																
Australia	0.82	0.95	0.90	0.85	1.40	1.76	1.72	1.88	1.14	1.67	1.55	1.60	0.05	3.23	-0.07	-3.90
New Zealand	0.01	0.00	0.00	0.01	5.40	5.75	6.00	5.80	0.03	0.02	0.02	0.03	0.01	20.83	0.01	26.09
China	0.41	0.41	0.41	0.41	1.48	1.48	1.48	1.48	0.60	0.60	0.60	0.60	0.00	0.00	0.00	0.00
Africa																
Algeria	0.09	0.09	0.09	0.09	1.29	1.29	1.29	1.29	0.11	0.11	0.11	0.11	0.00	0.00	0.00	0.00
Morocco	0.01	0.02	0.04	0.04	0.62	0.40	1.13	1.13	0.01	0.01	0.05	0.05	0.00	0.00	0.04	650.00
South Africa	0.02	0.03	0.04	0.04	0.81	2.19	2.29	1.94	0.02	0.06	0.08	0.07	-0.01	-12.50	0.01	22.81
Other Europe																
United Kingdom	0.18	0.21	0.20	0.20	5.91	4.91	5.50	5.50	1.08	1.03	1.10	1.10	0.00	0.00	0.07	6.69
Norway	0.07	0.07	0.07	0.07	4.29	4.29	4.29	4.29	0.30	0.30	0.30	0.30	0.00	0.00	0.00	0.00
Serbia	0.03	0.03	0.03	0.03	2.17	2.17	2.17	2.17	0.07	0.07	0.07	0.07	0.00	0.00	0.00	0.00
Albania	0.02	0.02	0.01	0.01	2.06	2.25	2.14	2.14	0.03	0.04	0.03	0.03	0.00	0.00	-0.01	-16.67
Bosnia and Herzegovina	0.01	0.01	0.01	0.01	2.70	3.09	2.82	2.82	0.03	0.03	0.03	0.03	0.00	0.00	0.00	-8.82
Turkey	0.10	0.10	0.11	0.11	2.30	2.40	2.38	2.38	0.23	0.24	0.25	0.25	0.00	0.00	0.01	4.17
Mexico	0.05	0.03	0.05	0.05	1.98	2.03	2.00	2.00	0.10	0.06	0.09	0.09	0.00	0.00	0.03	42.86
Others	0.03	0.03	0.03	0.03	1.66	1.63	1.76	1.76	0.05	0.05	0.05	0.05	0.00	0.00	0.00	4.08

World and Selected Countries and Regions

Table 07 Rye Area, Yield, and Production

Country / Region	Area (Million hectares)				Yield (Metric tons per hectare)				Production (Million metric tons)				Change in Production			
	Prel.		2021/22 Proj.		Prel.		2021/22 Proj.		Prel.		2021/22 Proj.		From last month		From last year	
	2019/20	2020/21	Feb	Mar	2019/20	2020/21	Feb	Mar	2019/20	2020/21	Feb	Mar	MMT	Percent	MMT	Percent
World	4.04	4.16	4.02	4.04	3.04	3.43	3.12	3.12	12.25	14.29	12.56	12.58	0.02	0.13	-1.72	-12.00
United States	0.13	0.13	0.12	0.12	2.16	2.19	2.09	2.09	0.27	0.29	0.25	0.25	0.00	0.00	-0.04	-15.02
Total Foreign	3.91	4.03	3.90	3.92	3.06	3.48	3.16	3.15	11.98	14.00	12.31	12.33	0.02	0.13	-1.67	-11.94
European Union	2.21	2.08	1.95	1.95	3.80	4.31	4.13	4.13	8.40	8.96	8.05	8.05	0.00	0.00	-0.91	-10.20
Former Soviet Union - 12																
Russia	0.82	0.97	0.98	0.99	1.73	2.44	1.73	1.73	1.42	2.38	1.70	1.72	0.02	0.94	-0.66	-27.78
Belarus	0.32	0.36	0.33	0.33	2.37	2.92	2.46	2.46	0.76	1.05	0.80	0.80	0.00	0.00	-0.25	-23.88
Ukraine	0.12	0.14	0.17	0.18	2.90	3.28	3.53	3.43	0.34	0.46	0.60	0.60	0.00	0.00	0.14	30.72
Kazakhstan	0.02	0.02	0.04	0.04	1.10	1.25	0.91	0.91	0.02	0.03	0.04	0.04	0.00	0.00	0.01	33.33
Turkey	0.11	0.11	0.12	0.12	2.91	2.91	2.87	2.87	0.32	0.32	0.33	0.33	0.00	0.00	0.01	3.13
Canada	0.10	0.15	0.15	0.15	3.23	3.19	3.22	3.22	0.33	0.49	0.47	0.47	0.00	0.00	-0.02	-3.07
South America																
Chile	0.00	0.00	0.00	0.00	5.00	5.00	5.00	5.00	0.01	0.01	0.01	0.01	0.00	0.00	0.00	0.00
Argentina	0.11	0.09	0.07	0.07	2.00	1.50	2.00	2.00	0.22	0.14	0.14	0.14	0.00	0.00	0.01	6.67
Other Europe																
Bosnia and Herzegovina	0.00	0.00	0.00	0.00	2.50	3.67	3.00	3.00	0.01	0.01	0.01	0.01	0.00	0.00	0.00	-18.18
Switzerland	0.00	0.00	0.00	0.00	5.50	5.50	5.50	5.50	0.01	0.01	0.01	0.01	0.00	0.00	0.00	0.00
Serbia	0.00	0.00	0.00	0.00	2.50	2.50	2.50	2.50	0.01	0.01	0.01	0.01	0.00	0.00	0.00	0.00
Australia	0.04	0.04	0.04	0.04	0.68	0.68	0.68	0.68	0.03	0.03	0.03	0.03	0.00	0.00	0.00	0.00
Others	0.04	0.04	0.04	0.04	2.51	2.48	2.50	2.50	0.11	0.11	0.11	0.11	0.00	0.00	0.00	0.92

World and Selected Countries and Regions

Table 08 Sorghum Area, Yield, and Production

Country / Region	Area (Million hectares)				Yield (Metric tons per hectare)				Production (Million metric tons)				Change in Production			
	Prel.		2021/22 Proj.		Prel.		2021/22 Proj.		Prel.		2021/22 Proj.		From last month		From last year	
	2019/20	2020/21	Feb	Mar	2019/20	2020/21	Feb	Mar	2019/20	2020/21	Feb	Mar	MMT	Percent	MMT	Percent
World	39.78	42.71	41.74	41.76	1.46	1.45	1.56	1.57	57.94	61.96	65.31	65.60	0.29	0.44	3.64	5.87
United States	1.89	2.06	2.63	2.63	4.58	4.59	4.33	4.33	8.67	9.47	11.38	11.38	0.00	0.00	1.90	20.07
Total Foreign	37.89	40.65	39.12	39.13	1.30	1.29	1.38	1.39	49.26	52.49	53.93	54.22	0.29	0.54	1.74	3.31
Africa																
Nigeria	5.40	5.60	5.70	5.70	1.23	1.17	1.19	1.19	6.67	6.57	6.80	6.80	0.00	0.00	0.23	3.50
Ethiopia	1.83	1.68	1.87	1.87	2.88	2.69	2.78	2.78	5.27	4.52	5.20	5.20	0.00	0.00	0.68	15.12
Sudan	6.83	9.03	7.00	7.00	0.54	0.57	0.71	0.71	3.71	5.15	5.00	5.00	0.00	0.00	-0.15	-2.91
Burkina Faso	1.89	1.80	1.80	1.80	0.99	1.02	1.19	1.19	1.87	1.84	2.15	2.15	0.00	0.00	0.31	16.85
Mali	1.50	1.83	1.50	1.50	1.01	0.98	1.00	1.00	1.51	1.80	1.50	1.50	0.00	0.00	-0.30	-16.71
Niger	3.75	3.70	3.70	3.70	0.51	0.52	0.51	0.51	1.90	1.92	1.90	1.90	0.00	0.00	-0.02	-1.14
Cameroon	0.73	0.74	0.74	0.74	1.67	1.62	1.62	1.62	1.22	1.20	1.20	1.20	0.00	0.00	0.00	0.00
Tanzania	0.65	0.70	0.70	0.70	1.13	1.07	1.07	1.07	0.73	0.75	0.75	0.75	0.00	0.00	0.00	0.00
Egypt	0.14	0.14	0.14	0.14	5.36	5.36	5.36	5.36	0.75	0.75	0.75	0.75	0.00	0.00	0.00	0.00
Uganda	0.42	0.43	0.43	0.43	0.95	0.94	0.94	0.94	0.40	0.40	0.40	0.40	0.00	0.00	0.00	0.00
Ghana	0.30	0.25	0.25	0.25	1.15	1.42	1.12	1.12	0.35	0.36	0.28	0.28	0.00	0.00	-0.08	-21.35
Mozambique	0.23	0.26	0.25	0.25	0.69	0.54	0.70	0.70	0.16	0.14	0.18	0.18	0.00	0.00	0.03	23.24
South Africa	0.04	0.05	0.05	0.04	3.67	4.39	3.78	3.95	0.16	0.22	0.17	0.15	-0.02	-11.76	-0.07	-30.23
Mexico	1.38	1.29	1.42	1.42	3.14	3.37	3.31	3.31	4.33	4.35	4.70	4.70	0.00	0.00	0.35	8.10
South America																
Argentina	0.58	0.75	0.85	0.85	4.35	4.43	4.41	4.41	2.50	3.32	3.75	3.75	0.00	0.00	0.43	12.95
Brazil	0.84	0.88	0.90	0.90	2.99	3.12	3.00	3.00	2.50	2.73	2.70	2.70	0.00	0.00	-0.03	-1.17
South Asia																
India	4.82	4.27	4.60	4.60	0.99	1.12	0.96	0.96	4.77	4.80	4.40	4.40	0.00	0.00	-0.40	-8.33
Pakistan	0.24	0.25	0.26	0.26	0.58	0.58	0.59	0.59	0.14	0.15	0.15	0.15	0.00	0.00	0.01	3.45
China	0.64	0.64	0.63	0.63	4.90	4.68	4.76	4.76	3.14	2.97	3.00	3.00	0.00	0.00	0.03	1.01
Australia	0.20	0.51	0.60	0.62	1.95	2.94	3.33	3.71	0.40	1.50	2.00	2.30	0.30	15.00	0.80	53.33
European Union	0.19	0.21	0.18	0.18	5.38	5.15	5.81	5.70	1.01	1.10	1.04	1.02	-0.02	-1.93	-0.09	-7.89
Others	5.30	5.65	5.56	5.56	1.09	1.06	1.06	1.07	5.79	5.96	5.92	5.95	0.03	0.51	0.00	-0.05

World and Selected Countries and Regions

Table 09 Rice Area, Yield, and Production
World and Selected Countries and Regions

Country / Region	Area (Million hectares)				Yield (Metric tons per hectare)				Production (Million metric tons)				Change in Production						
	2019/20	Prel.		2021/22 Proj.		2019/20	Prel.		2021/22 Proj.		2019/20	Prel.		2021/22 Proj.		From last month		From last year	
		2020/21	Feb	Mar	2020/21		Feb	Mar	2020/21	Feb		Mar	MMT	Percent	MMT	Percent			
World	161.70	165.22	164.96	166.61	4.61	4.61	4.62	4.61	498.82	509.68	510.31	514.07	3.76	0.74	4.39	0.86			
United States	1.00	1.21	1.01	1.01	8.38	8.54	8.64	8.64	5.88	7.22	6.09	6.09	0.00	0.00	-1.13	-15.70			
Total Foreign	160.70	164.02	163.96	165.60	4.58	4.58	4.59	4.58	492.95	502.45	504.22	507.98	3.76	0.75	5.52	1.10			
East Asia																			
China	29.69	30.08	29.92	29.92	7.06	7.04	7.11	7.11	146.73	148.30	148.99	148.99	0.00	0.00	0.69	0.47			
Japan	1.54	1.53	1.53	1.53	6.78	6.79	6.81	6.81	7.61	7.57	7.56	7.56	0.00	0.00	-0.01	-0.17			
Korea, South	0.73	0.73	0.73	0.73	6.87	6.49	7.12	7.12	3.74	3.51	3.88	3.88	0.00	0.00	0.38	10.69			
Korea, North	0.48	0.49	0.50	0.50	5.89	4.44	4.18	4.18	1.82	1.40	1.36	1.36	0.00	0.00	-0.04	-2.72			
South Asia																			
India	43.66	45.40	45.50	47.00	4.08	4.11	4.12	4.12	118.87	124.37	125.00	129.00	4.00	3.20	4.63	3.72			
Bangladesh	11.83	11.50	11.62	11.62	4.55	4.51	4.63	4.63	35.85	34.60	35.85	35.85	0.00	0.00	1.25	3.61			
Pakistan	3.03	3.38	3.40	3.40	3.67	3.74	3.84	3.84	7.41	8.42	8.70	8.70	0.00	0.00	0.28	3.34			
Nepal	1.46	1.47	1.48	1.48	3.80	3.78	3.77	3.77	3.70	3.70	3.70	3.70	0.00	0.00	0.00	0.11			
Sri Lanka	0.97	1.09	0.98	0.98	4.85	4.57	4.41	4.41	3.21	3.39	2.92	2.92	0.00	0.00	-0.47	-13.75			
Southeast Asia																			
Indonesia	11.60	11.80	11.83	11.83	4.71	4.71	4.71	4.71	34.70	35.30	35.40	35.40	0.00	0.00	0.10	0.28			
Vietnam	7.38	7.31	7.30	7.30	5.88	6.00	5.96	5.96	27.10	27.38	27.19	27.19	0.00	0.00	-0.19	-0.68			
Thailand	9.89	10.51	10.40	10.60	2.70	2.72	2.81	2.82	17.66	18.86	19.30	19.70	0.40	2.07	0.84	4.44			
Burma	6.90	6.90	6.90	6.90	2.86	2.85	2.85	2.85	12.65	12.60	12.60	12.60	0.00	0.00	0.00	0.00			
Philippines	4.64	4.76	4.80	4.80	4.08	4.14	4.10	4.10	11.93	12.42	12.40	12.40	0.00	0.00	-0.02	-0.13			
Cambodia	3.26	3.27	3.30	3.30	2.89	2.90	2.93	2.93	5.74	5.78	5.90	5.90	0.00	0.00	0.12	2.02			
Laos	0.84	0.96	0.97	0.97	3.01	3.14	3.19	3.19	1.60	1.90	1.95	1.95	0.00	0.00	0.05	2.63			
Malaysia	0.70	0.68	0.68	0.68	4.01	4.07	4.07	4.07	1.83	1.80	1.80	1.80	0.00	0.00	0.00	0.00			
South America																			
Brazil	1.67	1.68	1.70	1.67	6.71	7.00	6.65	6.41	7.60	8.00	7.68	7.28	-0.41	-5.31	-0.73	-9.06			
Peru	0.41	0.42	0.41	0.41	7.71	8.22	7.90	7.90	2.20	2.37	2.24	2.24	0.00	0.00	-0.14	-5.78			
Africa																			
Egypt	0.76	0.70	0.50	0.50	8.20	8.28	8.41	8.41	4.30	4.00	2.90	2.90	0.00	0.00	-1.10	-27.50			
Madagascar	1.40	1.40	1.40	1.40	3.02	3.02	2.86	2.86	2.71	2.71	2.56	2.56	0.00	0.00	-0.15	-5.43			
Nigeria	3.50	3.60	3.65	3.65	2.29	2.16	2.17	2.17	5.04	4.89	5.00	5.00	0.00	0.00	0.11	2.25			
European Union	0.42	0.42	0.41	0.41	6.96	6.78	6.68	6.68	1.99	1.95	1.85	1.85	0.00	0.00	-0.10	-4.97			
Iran	0.58	0.58	0.56	0.56	5.25	5.27	5.14	5.14	1.99	2.00	1.90	1.90	0.00	0.00	-0.10	-5.00			
Others	13.37	13.38	13.50	13.47	2.84	2.86	2.87	2.85	24.97	25.24	25.57	25.34	-0.23	-0.90	0.11	0.42			

Yield is on a rough basis, before the milling process. Production is on a milled basis, after the milling process.

Table 10 Total Oilseed Area, Yield, and Production

World and Selected Countries and Regions

Country / Region	Area (Million hectares)				Yield (Metric tons per hectare)				Production (Million metric tons)				Change in Production						
	2019/20	Prel.		2021/22 Proj.		2019/20	Prel.		2021/22 Proj.		2019/20	Prel.		2021/22 Proj.		From last month		From last year	
		2020/21	Feb	Mar	2020/21		Feb	Mar	2020/21	Feb		Mar	MMT	Percent	MMT	Percent			
World Total	--	--	--	--	--	--	--	--	581.01	603.63	611.48	601.62	-9.86	-1.61	-2.01	-0.33			
Total Foreign	--	--	--	--	--	--	--	--	474.03	479.14	480.89	471.03	-9.86	-2.05	-8.11	-1.69			
Oilseed, Copra	--	--	--	--	--	--	--	--	5.66	5.56	5.83	5.83	0.00	0.00	0.27	4.76			
Oilseed, Palm Kernel	--	--	--	--	--	--	--	--	19.29	19.02	19.73	19.73	0.00	0.00	0.71	3.74			
Major Oilseeds	245.69	250.16	257.59	257.32	2.26	2.31	2.27	2.24	556.05	579.05	585.92	576.06	-9.86	-1.68	-2.99	-0.52			
United States	36.83	38.83	40.95	40.95	2.91	3.21	3.19	3.19	106.98	124.49	130.59	130.59	0.00	0.00	6.10	4.90			
Foreign Oilseeds	208.86	211.33	216.64	216.37	2.15	2.15	2.10	2.06	449.07	454.56	455.33	445.47	-9.86	-2.17	-9.09	-2.00			
South America	64.00	65.31	66.74	66.51	3.18	3.20	3.03	2.88	203.24	208.84	201.96	191.74	-10.23	-5.06	-17.10	-8.19			
Brazil	38.77	40.47	42.21	42.41	3.45	3.52	3.30	3.12	133.78	142.28	139.13	132.13	-7.00	-5.03	-10.15	-7.13			
Argentina	19.03	18.99	18.66	18.51	2.82	2.70	2.69	2.62	53.64	51.22	50.17	48.53	-1.64	-3.27	-2.69	-5.26			
Paraguay	3.57	3.24	2.89	2.89	2.90	3.09	2.22	1.88	10.36	10.02	6.42	5.42	-1.00	-15.58	-4.60	-45.91			
Bolivia	1.49	1.51	1.53	1.53	2.00	2.09	2.07	2.07	2.99	3.15	3.16	3.16	0.00	0.00	0.01	0.44			
Uruguay	0.98	0.97	1.32	1.04	2.14	1.87	2.06	2.04	2.09	1.82	2.72	2.13	-0.59	-21.55	0.31	17.23			
China	24.91	25.50	24.15	24.15	2.51	2.57	2.57	2.57	62.44	65.58	62.08	62.08	0.00	0.00	-3.50	-5.33			
South Asia	40.95	41.95	42.52	42.12	0.96	0.97	1.05	1.06	39.13	40.70	44.83	44.62	-0.21	-0.47	3.92	9.64			
India	37.50	38.65	39.45	39.05	0.94	0.97	1.04	1.05	35.20	37.55	41.15	40.94	-0.21	-0.52	3.39	9.02			
Pakistan	3.08	2.94	2.70	2.70	1.13	0.92	1.20	1.20	3.49	2.69	3.23	3.23	0.00	0.00	0.54	20.05			
European Union	10.65	10.79	11.04	11.02	2.62	2.62	2.81	2.78	27.95	28.25	30.98	30.66	-0.32	-1.02	2.41	8.53			
United Kingdom	0.50	0.38	0.32	0.31	3.38	2.77	3.41	3.21	1.68	1.05	1.08	0.98	-0.10	-8.84	-0.07	-6.67			
Former Soviet Union - 12	26.07	25.70	27.32	27.57	1.96	1.73	1.92	1.90	51.10	44.58	52.41	52.48	0.07	0.14	7.90	17.73			
Russia	12.56	12.50	14.20	14.23	1.73	1.61	1.63	1.62	21.70	20.14	23.10	23.11	0.01	0.03	2.96	14.71			
Ukraine	9.70	9.65	9.35	9.58	2.52	2.06	2.59	2.54	24.46	19.85	24.25	24.32	0.07	0.27	4.47	22.49			
Uzbekistan	1.02	0.99	1.00	1.00	1.39	1.43	1.39	1.39	1.43	1.42	1.38	1.38	0.00	0.00	-0.04	-2.68			
Canada	10.77	10.41	11.18	11.18	2.43	2.49	1.70	1.70	26.12	25.95	18.95	18.95	0.00	0.00	-6.99	-26.95			
Africa	22.62	22.37	23.48	23.56	1.04	1.04	1.04	1.04	23.49	23.17	24.47	24.48	0.01	0.04	1.31	5.65			
Nigeria	4.32	4.62	4.97	4.97	1.38	1.22	1.25	1.25	5.96	5.65	6.20	6.20	0.00	0.00	0.55	9.73			
South Africa	1.27	1.36	1.56	1.63	1.70	1.97	1.83	1.75	2.16	2.68	2.85	2.86	0.01	0.35	0.18	6.61			
Tanzania	1.35	1.17	1.24	1.24	1.01	1.02	0.98	0.98	1.36	1.19	1.21	1.21	0.00	0.00	0.02	1.51			
Southeast Asia	3.12	3.25	3.20	3.20	1.38	1.36	1.37	1.37	4.30	4.41	4.38	4.38	0.00	0.00	-0.04	-0.79			
Burma	1.87	2.03	2.04	2.04	1.18	1.17	1.19	1.19	2.21	2.37	2.42	2.42	0.00	0.00	0.04	1.81			
Indonesia	0.95	0.94	0.89	0.89	1.55	1.54	1.55	1.55	1.47	1.45	1.39	1.39	0.00	0.00	-0.06	-4.15			
Australia	2.12	2.78	3.65	3.70	1.19	1.95	1.98	2.19	2.53	5.43	7.24	8.10	0.86	11.90	2.67	49.12			
Turkey	1.42	1.18	1.32	1.32	2.33	2.46	2.55	2.55	3.31	2.89	3.35	3.35	0.00	0.00	0.46	15.86			
Others	1.73	1.70	1.74	1.74	2.19	2.19	2.08	2.10	3.78	3.71	3.61	3.65	0.04	1.16	-0.06	-1.64			

World Total and Total Foreign: (Major Oilseeds plus copra and palm kernel) Major Oilseeds: (soybeans, sunflowerseeds, peanuts(inshell), cottonseed and rapeseed)

Table 11 Soybean Area, Yield, and Production

Country / Region	Area (Million hectares)				Yield (Metric tons per hectare)				Production (Million metric tons)				Change in Production			
	Prel.		2021/22 Proj.		Prel.		2021/22 Proj.		Prel.		2021/22 Proj.		From last month		From last year	
	2019/20	2020/21	Feb	Mar	2019/20	2020/21	Feb	Mar	2019/20	2020/21	Feb	Mar	MMT	Percent	MMT	Percent
World	122.93	127.88	129.60	129.35	2.76	2.86	2.81	2.74	339.88	366.23	363.86	353.80	-10.07	-2.77	-12.43	-3.40
United States	30.33	33.43	34.94	34.94	3.19	3.43	3.45	3.45	96.67	114.75	120.71	120.71	0.00	0.00	5.96	5.19
Total Foreign	92.60	94.45	94.66	94.41	2.63	2.66	2.57	2.47	243.21	251.48	243.16	233.09	-10.07	-4.14	-18.39	-7.31
South America																
Brazil	36.90	38.90	40.40	40.60	3.48	3.55	3.32	3.13	128.50	138.00	134.00	127.00	-7.00	-5.22	-11.00	-7.97
Argentina	16.70	16.47	16.20	16.00	2.92	2.81	2.78	2.72	48.80	46.20	45.00	43.50	-1.50	-3.33	-2.70	-5.84
Paraguay	3.50	3.15	2.80	2.80	2.93	3.14	2.25	1.89	10.25	9.90	6.30	5.30	-1.00	-15.87	-4.60	-46.46
Bolivia	1.36	1.39	1.40	1.40	2.08	2.17	2.14	2.14	2.83	3.00	3.00	3.00	0.00	0.00	0.00	0.00
Uruguay	0.92	0.91	1.25	0.98	2.17	1.88	2.08	2.07	1.99	1.71	2.60	2.02	-0.58	-22.31	0.31	18.34
East Asia																
China	9.33	9.88	8.40	8.40	1.94	1.98	1.95	1.95	18.09	19.60	16.40	16.40	0.00	0.00	-3.20	-16.34
Korea, South	0.06	0.06	0.06	0.06	1.81	1.47	1.71	1.71	0.11	0.08	0.09	0.09	0.00	0.00	0.01	16.05
Korea, North	0.16	0.16	0.17	0.17	1.70	1.40	1.44	1.44	0.26	0.23	0.24	0.24	0.00	0.00	0.01	3.48
Japan	0.14	0.14	0.15	0.15	1.47	1.65	1.66	1.66	0.21	0.24	0.24	0.24	0.00	0.00	0.01	2.55
India	12.19	12.70	12.50	12.50	0.76	0.82	0.95	0.95	9.30	10.45	11.90	11.90	0.00	0.00	1.45	13.88
Canada	2.27	2.04	2.13	2.13	2.71	3.12	2.94	2.94	6.15	6.36	6.27	6.27	0.00	0.00	-0.09	-1.37
Former Soviet Union - 12																
Russia	2.78	2.71	3.00	2.99	1.57	1.59	1.60	1.59	4.36	4.31	4.80	4.76	-0.04	-0.83	0.45	10.52
Ukraine	1.96	1.46	1.40	1.44	2.29	2.05	2.64	2.64	4.50	3.00	3.70	3.80	0.10	2.70	0.80	26.67
European Union	0.90	0.94	0.94	0.94	2.89	2.74	2.93	2.91	2.62	2.58	2.75	2.74	-0.02	-0.55	0.16	6.21
Southeast Asia																
Indonesia	0.40	0.39	0.35	0.35	1.20	1.22	1.21	1.21	0.48	0.48	0.43	0.43	0.00	0.00	-0.05	-10.53
Vietnam	0.04	0.04	0.03	0.03	1.57	1.57	1.67	1.67	0.07	0.06	0.05	0.05	0.00	0.00	-0.01	-9.09
Thailand	0.03	0.03	0.03	0.03	1.53	1.63	1.63	1.63	0.05	0.05	0.05	0.05	0.00	0.00	0.00	0.00
Burma	0.14	0.14	0.13	0.13	1.04	1.04	1.04	1.04	0.14	0.14	0.14	0.14	0.00	0.00	-0.01	-3.57
Serbia	0.22	0.22	0.22	0.22	2.73	2.89	2.45	2.45	0.60	0.64	0.54	0.54	0.00	0.00	-0.10	-14.96
Mexico	0.15	0.16	0.19	0.19	1.57	1.58	1.62	1.57	0.24	0.25	0.30	0.29	-0.01	-3.33	0.04	17.89
Africa																
South Africa	0.71	0.83	0.93	0.92	1.77	2.29	2.00	1.99	1.25	1.89	1.85	1.82	-0.03	-1.62	-0.07	-3.75
Nigeria	1.04	1.10	1.20	1.20	1.11	0.95	1.04	1.04	1.15	1.05	1.25	1.25	0.00	0.00	0.20	19.05
Zambia	0.20	0.16	0.30	0.30	1.43	1.81	0.84	0.84	0.28	0.30	0.25	0.25	0.00	0.00	-0.05	-15.82
Uganda	0.05	0.05	0.05	0.05	0.60	0.60	0.60	0.60	0.03	0.03	0.03	0.03	0.00	0.00	0.00	0.00
Middle East																
Iran	0.07	0.07	0.07	0.07	2.43	2.41	2.29	2.29	0.17	0.17	0.16	0.16	0.00	0.00	-0.01	-5.33
Turkey	0.03	0.03	0.03	0.03	3.89	3.79	3.67	3.67	0.11	0.11	0.11	0.11	0.00	0.00	0.00	0.00
Others	0.35	0.34	0.35	0.35	1.95	2.03	2.02	2.04	0.69	0.69	0.71	0.72	0.01	1.27	0.03	4.66

World and Selected Countries and Regions

Table 12 Cottonseed Area, Yield, and Production

Country / Region	Area (Million hectares)				Yield (Metric tons per hectare)				Production (Million metric tons)				Change in Production			
	Prel.		2021/22 Proj.		Prel.		2021/22 Proj.		Prel.		2021/22 Proj.		From last month		From last year	
	2019/20	2020/21	Feb	Mar	2019/20	2020/21	Feb	Mar	2019/20	2020/21	Feb	Mar	MMT	Percent	MMT	Percent
World	33.88	30.53	31.73	31.77	1.30	1.34	1.37	1.36	43.97	40.90	43.50	43.35	-0.15	-0.34	2.44	5.97
United States	4.65	3.35	4.03	4.03	1.16	1.20	1.21	1.21	5.39	4.02	4.88	4.88	0.00	0.00	0.86	21.25
Total Foreign	29.22	27.18	27.70	27.73	1.32	1.36	1.39	1.39	38.57	36.88	38.62	38.47	-0.15	-0.39	1.59	4.30
South Asia																
India	13.40	13.00	12.40	12.40	0.90	0.90	0.92	0.91	12.10	11.72	11.46	11.25	-0.21	-1.85	-0.47	-3.99
Pakistan	2.45	2.20	2.00	2.00	1.10	0.89	1.26	1.26	2.69	1.95	2.51	2.51	0.00	0.00	0.56	28.89
China	3.45	3.25	3.10	3.10	3.10	3.50	3.41	3.41	10.68	11.37	10.58	10.58	0.00	0.00	-0.78	-6.90
Former Soviet Union - 12																
Uzbekistan	1.01	0.98	0.98	0.98	1.36	1.41	1.36	1.36	1.37	1.37	1.33	1.33	0.00	0.00	-0.04	-2.84
Turkmenistan	0.55	0.55	0.55	0.55	0.66	0.66	0.64	0.64	0.36	0.36	0.35	0.35	0.00	0.00	-0.01	-2.22
Tajikistan	0.18	0.16	0.17	0.17	1.27	1.11	1.15	1.15	0.23	0.18	0.20	0.20	0.00	0.00	0.02	9.55
Kazakhstan	0.13	0.11	0.12	0.12	1.13	0.95	0.90	0.90	0.14	0.11	0.10	0.10	0.00	0.00	0.00	-1.90
South America																
Brazil	1.67	1.37	1.60	1.60	2.75	2.62	2.74	2.74	4.58	3.59	4.38	4.38	0.00	0.00	0.79	21.99
Argentina	0.42	0.43	0.45	0.48	0.68	0.71	0.70	0.68	0.28	0.30	0.32	0.33	0.01	3.16	0.03	8.67
Middle East																
Turkey	0.57	0.35	0.45	0.45	1.98	2.71	2.76	2.76	1.13	0.95	1.24	1.24	0.00	0.00	0.29	31.05
Syria	0.03	0.03	0.03	0.03	2.36	2.36	2.20	2.20	0.06	0.06	0.06	0.06	0.00	0.00	0.00	-6.78
Iran	0.09	0.10	0.10	0.10	1.22	1.35	1.35	1.35	0.11	0.13	0.14	0.14	0.00	0.00	0.00	0.75
Australia	0.06	0.28	0.60	0.60	3.12	3.06	2.75	2.75	0.19	0.84	1.65	1.65	0.00	0.00	0.81	96.43
European Union	0.35	0.34	0.32	0.32	1.81	1.58	1.48	1.48	0.64	0.54	0.48	0.48	0.00	0.00	-0.06	-11.36
Africa																
Burkina Faso	0.58	0.56	0.60	0.60	0.42	0.46	0.45	0.45	0.24	0.25	0.27	0.27	0.00	0.00	0.02	6.32
Mali	0.74	0.17	0.72	0.72	0.52	0.49	0.54	0.54	0.38	0.08	0.39	0.39	0.00	0.00	0.31	380.25
Cameroon	0.25	0.23	0.23	0.23	1.29	1.51	1.52	1.52	0.32	0.34	0.35	0.35	0.00	0.00	0.01	2.94
Cote d'Ivoire	0.41	0.45	0.48	0.48	0.66	0.61	0.62	0.62	0.27	0.27	0.29	0.29	0.00	0.00	0.02	8.89
Benin	0.67	0.62	0.64	0.64	0.71	0.78	0.78	0.78	0.47	0.48	0.50	0.50	0.00	0.00	0.02	3.55
Tanzania	0.35	0.17	0.24	0.24	0.75	0.56	0.46	0.46	0.26	0.09	0.11	0.11	0.00	0.00	0.02	19.35
Egypt	0.10	0.07	0.10	0.10	0.92	1.00	1.00	1.00	0.09	0.07	0.10	0.10	0.00	0.00	0.04	53.85
Nigeria	0.15	0.27	0.27	0.27	0.57	0.56	0.56	0.56	0.09	0.15	0.15	0.15	0.00	0.00	0.00	0.00
Uganda	0.09	0.10	0.10	0.10	1.67	1.40	1.40	1.40	0.15	0.14	0.14	0.14	0.00	0.00	0.00	0.00
Zimbabwe	0.18	0.24	0.21	0.21	0.40	0.55	0.36	0.36	0.07	0.13	0.08	0.08	0.00	0.00	-0.06	-42.86
Sudan	0.20	0.20	0.20	0.20	1.53	1.41	1.41	1.41	0.31	0.28	0.28	0.28	0.00	0.00	0.00	0.00
Mexico	0.23	0.15	0.15	0.16	2.37	2.40	2.39	2.65	0.53	0.35	0.36	0.41	0.05	14.53	0.06	17.82
Burma	0.25	0.24	0.25	0.25	1.22	1.17	1.18	1.18	0.30	0.28	0.29	0.29	0.00	0.00	0.01	3.57
Others	0.72	0.63	0.66	0.66	0.76	0.81	0.78	0.78	0.55	0.51	0.52	0.52	0.00	0.00	0.01	1.37

World and Selected Countries and Regions

Table 13 Peanut Area, Yield, and Production

Country / Region	Area (Million hectares)				Yield (Metric tons per hectare)				Production (Million metric tons)				Change in Production						
	2019/20	Prel.		2021/22 Proj.		2019/20	Prel.		2021/22 Proj.		2019/20	Prel.		2021/22 Proj.		From last month		From last year	
		2020/21	Feb	Mar	2020/21		Feb	Mar	2020/21	Feb		Mar	MMT	Percent	MMT	Percent			
World	28.18	30.19	29.82	29.65	1.72	1.64	1.70	1.71	48.43	49.55	50.68	50.61	-0.08	-0.15	1.06	2.13			
United States	0.56	0.65	0.63	0.63	4.41	4.27	4.64	4.64	2.48	2.79	2.90	2.90	0.00	0.00	0.11	3.76			
Total Foreign	27.62	29.54	29.19	29.02	1.66	1.58	1.64	1.64	45.95	46.76	47.78	47.71	-0.08	-0.16	0.95	2.03			
China	4.63	4.73	4.75	4.75	3.78	3.80	3.83	3.83	17.52	17.99	18.20	18.20	0.00	0.00	0.21	1.15			
Africa																			
Nigeria	3.13	3.25	3.50	3.50	1.51	1.37	1.37	1.37	4.72	4.45	4.80	4.80	0.00	0.00	0.35	7.87			
Sudan	3.13	3.48	3.00	3.00	0.90	0.69	0.83	0.83	2.83	2.40	2.50	2.50	0.00	0.00	0.10	4.17			
Senegal	1.11	1.23	1.20	1.20	1.28	1.47	1.42	1.42	1.42	1.80	1.70	1.70	0.00	0.00	-0.10	-5.40			
Cameroon	0.43	0.43	0.43	0.43	1.40	1.40	1.40	1.40	0.60	0.60	0.60	0.60	0.00	0.00	0.00	0.00			
Ghana	0.33	0.33	0.33	0.33	1.36	1.36	1.36	1.36	0.45	0.45	0.45	0.45	0.00	0.00	0.00	0.00			
Chad	0.79	0.80	0.80	0.80	1.14	1.13	1.13	1.13	0.90	0.90	0.90	0.90	0.00	0.00	0.00	0.00			
Malawi	0.40	0.40	0.40	0.40	0.88	0.88	0.88	0.88	0.35	0.35	0.35	0.35	0.00	0.00	0.00	0.00			
Congo (Kinshasa)	0.50	0.50	0.50	0.50	0.92	0.90	0.90	0.90	0.46	0.45	0.45	0.45	0.00	0.00	0.00	0.00			
Niger	0.90	0.92	0.92	0.92	0.60	0.60	0.60	0.60	0.54	0.55	0.55	0.55	0.00	0.00	0.00	0.00			
Mali	0.45	0.43	0.43	0.43	0.82	1.00	1.00	1.00	0.37	0.43	0.43	0.43	0.00	0.00	0.00	0.00			
Uganda	0.43	0.43	0.43	0.43	0.71	0.71	0.71	0.71	0.30	0.30	0.30	0.30	0.00	0.00	0.00	0.00			
Burkina Faso	0.49	0.49	0.50	0.50	0.81	0.82	0.80	0.80	0.40	0.40	0.40	0.40	0.00	0.00	0.00	0.00			
Guinea	0.91	0.90	0.90	0.90	1.05	1.00	1.00	1.00	0.96	0.90	0.90	0.90	0.00	0.00	0.00	0.00			
Egypt	0.06	0.06	0.06	0.06	3.20	3.20	3.20	3.20	0.21	0.21	0.21	0.21	0.00	0.00	0.00	0.00			
Central African Republic	0.10	0.10	0.10	0.10	1.50	1.50	1.50	1.50	0.15	0.15	0.15	0.15	0.00	0.00	0.00	0.00			
South Africa	0.04	0.04	0.04	0.05	1.76	2.05	1.86	2.00	0.07	0.08	0.07	0.09	0.03	38.46	0.01	12.50			
Mozambique	0.53	0.35	0.38	0.38	0.28	0.30	0.34	0.34	0.15	0.10	0.13	0.13	0.00	0.00	0.03	26.21			
Cote d'Ivoire	0.15	0.15	0.15	0.15	1.45	1.45	1.45	1.45	0.21	0.21	0.21	0.21	0.00	0.00	0.00	0.00			
Benin	0.19	0.19	0.19	0.19	0.92	0.92	0.92	0.92	0.18	0.18	0.18	0.18	0.00	0.00	0.00	0.00			
South Asia																			
India	4.83	6.00	5.80	5.60	1.30	1.12	1.17	1.21	6.26	6.70	6.80	6.80	0.00	0.00	0.10	1.49			
Pakistan	0.10	0.14	0.10	0.10	0.92	0.89	0.92	0.92	0.10	0.12	0.09	0.09	0.00	0.00	-0.03	-26.83			
Southeast Asia																			
Indonesia	0.55	0.55	0.54	0.54	1.80	1.78	1.78	1.78	0.99	0.97	0.96	0.96	0.00	0.00	-0.01	-1.03			
Burma	0.89	1.06	1.06	1.06	1.55	1.48	1.51	1.51	1.38	1.56	1.60	1.60	0.00	0.00	0.04	2.43			
Vietnam	0.17	0.17	0.16	0.16	2.50	2.50	2.50	2.50	0.43	0.41	0.40	0.40	0.00	0.00	-0.01	-3.15			
Thailand	0.02	0.02	0.02	0.02	1.67	1.67	1.67	1.67	0.04	0.04	0.04	0.04	0.00	0.00	0.00	0.00			
South America																			
Argentina	0.37	0.40	0.38	0.40	3.50	3.16	3.68	3.25	1.29	1.27	1.40	1.30	-0.10	-7.14	0.03	2.36			
Brazil	0.16	0.17	0.18	0.18	3.93	3.88	3.89	3.89	0.63	0.64	0.70	0.70	0.00	0.00	0.06	9.38			
Mexico	0.05	0.06	0.05	0.05	1.74	1.73	1.74	1.74	0.08	0.10	0.09	0.09	0.00	0.00	-0.01	-9.80			
Others	1.79	1.79	1.90	1.90	1.12	1.15	1.18	1.18	2.00	2.05	2.24	2.24	0.00	0.00	0.19	9.32			

Table 14 Sunflowerseed Area, Yield, and Production

Country / Region	Area (Million hectares)				Yield (Metric tons per hectare)				Production (Million metric tons)				Change in Production			
	Prel.		2021/22 Proj.		Prel.		2021/22 Proj.		Prel.		2021/22 Proj.		From last month		From last year	
	2019/20	2020/21	Feb	Mar	2019/20	2020/21	Feb	Mar	2019/20	2020/21	Feb	Mar	MMT	Percent	MMT	Percent
World	26.03	26.86	28.45	28.75	2.08	1.83	2.01	1.99	54.18	49.20	57.26	57.19	-0.07	-0.12	7.99	16.24
United States	0.51	0.67	0.50	0.50	1.75	2.01	1.72	1.72	0.89	1.35	0.86	0.86	0.00	0.00	-0.49	-36.22
Total Foreign	25.52	26.19	27.94	28.25	2.09	1.83	2.02	1.99	53.29	47.85	56.40	56.33	-0.07	-0.12	8.48	17.72
Former Soviet Union - 12																
Russia	8.36	8.35	9.60	9.61	1.83	1.59	1.61	1.62	15.31	13.27	15.50	15.57	0.07	0.46	2.30	17.36
Ukraine	6.40	7.00	6.90	7.10	2.58	2.01	2.54	2.46	16.50	14.10	17.50	17.50	0.00	0.00	3.40	24.11
Kazakhstan	0.82	0.75	0.94	0.94	1.03	1.13	1.10	1.10	0.84	0.84	1.03	1.03	0.00	0.00	0.19	22.27
European Union	4.32	4.35	4.41	4.43	2.19	2.04	2.36	2.33	9.46	8.85	10.40	10.30	-0.10	-0.96	1.45	16.37
South America																
Argentina	1.53	1.67	1.60	1.60	2.11	2.05	2.13	2.09	3.24	3.43	3.40	3.35	-0.05	-1.47	-0.08	-2.33
Uruguay	0.06	0.07	0.07	0.07	1.67	1.69	1.69	1.62	0.10	0.11	0.12	0.11	-0.01	-4.35	0.00	0.00
Bolivia	0.14	0.13	0.13	0.13	1.19	1.20	1.30	1.30	0.16	0.15	0.16	0.16	0.00	0.00	0.01	9.33
Brazil	0.05	0.03	0.03	0.03	1.60	1.61	1.63	1.63	0.08	0.05	0.05	0.05	0.00	0.00	0.00	-2.00
Paraguay	0.03	0.03	0.03	0.03	1.39	1.53	1.55	1.55	0.04	0.05	0.05	0.05	0.00	0.00	0.00	4.35
China	0.92	0.87	1.10	1.10	2.91	2.94	2.64	2.64	2.66	2.57	2.90	2.90	0.00	0.00	0.33	12.84
South Asia																
India	0.23	0.25	0.25	0.25	0.61	0.76	0.76	0.76	0.14	0.19	0.19	0.19	0.00	0.00	0.01	2.70
Pakistan	0.14	0.15	0.15	0.15	1.04	1.07	1.10	1.10	0.15	0.16	0.17	0.17	0.00	0.00	0.01	3.13
Middle East																
Turkey	0.73	0.72	0.76	0.76	2.40	2.17	2.30	2.30	1.75	1.56	1.75	1.75	0.00	0.00	0.19	12.18
Iran	0.04	0.04	0.04	0.04	1.08	1.08	1.00	1.00	0.04	0.04	0.04	0.04	0.00	0.00	0.00	2.33
Israel	0.00	0.00	0.00	0.00	5.00	9.00	7.00	7.00	0.01	0.01	0.01	0.01	0.00	0.00	0.00	-22.22
Africa																
Egypt	0.01	0.01	0.01	0.01	2.38	2.38	2.38	2.38	0.02	0.02	0.02	0.02	0.00	0.00	0.00	0.00
Morocco	0.02	0.02	0.02	0.02	1.32	1.16	1.25	1.25	0.03	0.02	0.03	0.03	0.00	0.00	0.00	13.64
South Africa	0.50	0.48	0.58	0.66	1.58	1.42	1.55	1.40	0.79	0.68	0.90	0.92	0.02	1.67	0.24	35.16
Burma	0.60	0.60	0.60	0.60	0.65	0.65	0.65	0.65	0.39	0.39	0.39	0.39	0.00	0.00	0.00	0.00
Canada	0.03	0.05	0.04	0.04	2.17	2.24	2.05	2.05	0.06	0.10	0.08	0.08	0.00	0.00	-0.02	-18.81
Australia	0.01	0.02	0.02	0.02	1.22	1.50	1.39	1.50	0.01	0.03	0.03	0.03	0.00	8.00	0.00	0.00
Others	0.60	0.63	0.67	0.67	2.55	1.98	2.54	2.54	1.54	1.24	1.69	1.69	0.00	0.00	0.46	36.81

World and Selected Countries and Regions

Table 15 Rapeseed Area, Yield, and Production

Country / Region	Area (Million hectares)				Yield (Metric tons per hectare)				Production (Million metric tons)				Change in Production			
	Prel.		2021/22 Proj.		Prel.		2021/22 Proj.		Prel.		2021/22 Proj.		From last month		From last year	
	2019/20	2020/21	Feb	Mar	2019/20	2020/21	Feb	Mar	2019/20	2020/21	Feb	Mar	MMT	Percent	MMT	Percent
World	34.68	34.70	38.00	37.81	2.01	2.11	1.86	1.88	69.60	73.16	70.62	71.12	0.50	0.70	-2.04	-2.79
United States	0.78	0.73	0.85	0.85	2.00	2.16	1.46	1.46	1.55	1.58	1.24	1.24	0.00	0.00	-0.33	-21.02
Total Foreign	33.90	33.97	37.15	36.96	2.01	2.11	1.87	1.89	68.05	71.59	69.38	69.87	0.50	0.71	-1.71	-2.39
European Union	5.08	5.17	5.37	5.33	3.00	3.15	3.23	3.22	15.24	16.29	17.35	17.15	-0.20	-1.15	0.86	5.29
United Kingdom	0.50	0.38	0.32	0.31	3.38	2.77	3.41	3.21	1.68	1.05	1.08	0.98	-0.10	-8.84	-0.07	-6.67
Switzerland	0.02	0.02	0.02	0.02	3.14	3.14	3.14	3.14	0.07	0.07	0.07	0.07	0.00	0.00	0.00	0.00
Canada	8.47	8.33	9.01	9.01	2.35	2.34	1.40	1.40	19.91	19.49	12.60	12.60	0.00	0.00	-6.89	-35.33
China	6.58	6.77	6.80	6.80	2.05	2.08	2.06	2.06	13.49	14.05	14.00	14.00	0.00	0.00	-0.05	-0.35
South Asia																
India	6.86	6.70	8.50	8.30	1.08	1.27	1.27	1.30	7.40	8.50	10.80	10.80	0.00	0.00	2.30	27.06
Pakistan	0.39	0.45	0.45	0.45	1.45	1.02	1.03	1.03	0.56	0.46	0.47	0.47	0.00	0.00	0.01	1.09
Bangladesh	0.25	0.25	0.25	0.25	0.92	0.92	0.92	0.92	0.23	0.23	0.23	0.23	0.00	0.00	0.00	0.00
Former Soviet Union - 12																
Russia	1.42	1.45	1.60	1.62	1.44	1.77	1.75	1.71	2.04	2.57	2.80	2.78	-0.03	-0.89	0.21	8.10
Ukraine	1.34	1.19	1.05	1.04	2.59	2.31	2.90	2.91	3.47	2.75	3.05	3.02	-0.04	-1.15	0.27	9.64
Belarus	0.34	0.36	0.32	0.32	1.68	2.06	1.59	1.59	0.58	0.73	0.50	0.50	0.00	0.00	-0.23	-31.60
Kazakhstan	0.27	0.12	0.12	0.12	0.90	1.23	1.24	1.24	0.24	0.15	0.15	0.15	0.00	0.00	-0.01	-4.58
Australia	2.03	2.45	3.00	3.05	1.13	1.84	1.83	2.08	2.30	4.50	5.50	6.35	0.85	15.45	1.85	41.11
South America																
Chile	0.04	0.04	0.04	0.04	4.05	3.81	4.00	4.00	0.15	0.14	0.14	0.14	0.00	0.00	0.00	-0.71
Paraguay	0.04	0.05	0.04	0.04	1.71	1.41	1.45	1.45	0.06	0.07	0.06	0.06	0.00	0.00	0.00	-1.54
Ethiopia	0.02	0.03	0.03	0.03	1.83	1.80	1.80	1.80	0.04	0.05	0.05	0.05	0.00	0.00	0.00	0.00
Others	0.26	0.24	0.25	0.25	2.26	2.14	2.15	2.15	0.59	0.50	0.55	0.55	0.00	0.00	0.04	8.57

World and Selected Countries and Regions

Table 16 Copra, Palm Kernel, and Palm Oil Production

Country / Region	Production (Million metric tons)				Change in Production			
	2019/20	Prel.	2021/22 Proj.		From last month		From last year	
		2020/21	Feb	Mar	MMT	Percent	MMT	Percent
Oilseed, Copra								
Philippines	2.50	2.40	2.60	2.60	0.00	0.00	0.20	8.33
Indonesia	1.66	1.67	1.68	1.68	0.00	0.00	0.01	0.60
India	0.75	0.75	0.79	0.79	0.00	0.00	0.04	5.33
Vietnam	0.28	0.28	0.29	0.29	0.00	0.00	0.01	3.57
Papua New Guinea	0.08	0.08	0.08	0.08	0.00	0.00	0.00	0.00
Thailand	0.07	0.07	0.07	0.07	0.00	0.00	0.00	0.00
Sri Lanka	0.07	0.07	0.07	0.07	0.00	0.00	0.00	0.00
Mexico	0.04	0.04	0.05	0.05	0.00	0.00	0.01	25.00
Solomon Islands	0.03	0.03	0.03	0.03	0.00	0.00	0.00	0.00
Cote d'Ivoire	0.03	0.03	0.03	0.03	0.00	0.00	0.00	0.00
World	5.66	5.56	5.83	5.83	0.00	0.00	0.27	4.86
Oilseed, Palm Kernel								
Indonesia	11.25	11.46	11.70	11.70	0.00	0.00	0.24	2.09
Malaysia	4.75	4.34	4.60	4.60	0.00	0.00	0.26	5.99
Nigeria	0.88	0.82	0.90	0.90	0.00	0.00	0.08	9.76
Thailand	0.75	0.79	0.85	0.85	0.00	0.00	0.06	7.59
Colombia	0.30	0.28	0.29	0.29	0.00	0.00	0.01	3.57
Guatemala	0.17	0.17	0.18	0.18	0.00	0.00	0.01	5.88
Papua New Guinea	0.16	0.16	0.16	0.16	0.00	0.00	0.00	0.00
Cameroon	0.15	0.15	0.15	0.15	0.00	0.00	0.00	0.00
Brazil	0.14	0.14	0.15	0.15	0.00	0.00	0.00	0.00
Honduras	0.18	0.13	0.16	0.16	0.00	0.00	0.03	23.08
World	19.29	19.02	19.73	19.73	0.00	0.00	0.71	3.73
Oil, Palm								
Indonesia	42.50	43.50	44.50	44.50	0.00	0.00	1.00	2.30
Malaysia	19.26	17.85	18.70	18.70	0.00	0.00	0.85	4.76
Thailand	2.65	2.97	3.12	3.12	0.00	0.00	0.15	5.05
Colombia	1.50	1.52	1.62	1.62	0.00	0.00	0.10	6.58
Nigeria	1.14	1.28	1.40	1.40	0.00	0.00	0.13	10.24
Guatemala	0.86	0.87	0.88	0.88	0.00	0.00	0.02	2.33
Papua New Guinea	0.56	0.56	0.57	0.57	0.00	0.00	0.00	0.00
Brazil	0.54	0.55	0.55	0.55	0.00	0.00	0.00	0.00
Cote d'Ivoire	0.52	0.52	0.52	0.52	0.00	0.00	0.00	0.00
Ecuador	0.46	0.49	0.56	0.56	0.00	0.00	0.07	14.29
World	73.00	73.07	75.50	75.59	0.09	0.12	2.52	3.45

World and Selected Countries and Regions

Table 17 Cotton Area, Yield, and Production

Country / Region	Area (Million hectares)				Yield (Kilograms per hectare)				Production (Million 480 lb. bales)				Change in Production			
	Prel.		2021/22 Proj.		Prel.		2021/22 Proj.		Prel.		2021/22 Proj.		From last month		From last year	
	2019/20	2020/21	Feb	Mar	2019/20	2020/21	Feb	Mar	2019/20	2020/21	Feb	Mar	MBales	Percent	MBales	Percent
World	34.48	31.09	32.28	32.32	764	783	810	808	121.01	111.79	120.15	119.85	-0.30	-0.25	8.07	7.22
United States	4.65	3.35	4.03	4.03	932	950	951	951	19.91	14.61	17.62	17.62	0.00	0.00	3.02	20.65
Total Foreign	29.82	27.74	28.25	28.28	738	763	790	787	101.10	97.18	102.53	102.23	-0.30	-0.29	5.05	5.20
South Asia																
India	13.40	13.00	12.40	12.40	463	462	474	465	28.50	27.60	27.00	26.50	-0.50	-1.85	-1.10	-3.99
Pakistan	2.45	2.20	2.00	2.00	551	445	631	631	6.20	4.50	5.80	5.80	0.00	0.00	1.30	28.89
China	3.45	3.25	3.10	3.10	1,720	1,976	1,896	1,896	27.25	29.50	27.00	27.00	0.00	0.00	-2.50	-8.47
South America																
Brazil	1.67	1.37	1.60	1.60	1,802	1,720	1,796	1,796	13.78	10.82	13.20	13.20	0.00	0.00	2.38	22.00
Argentina	0.42	0.43	0.45	0.48	682	707	702	680	1.30	1.38	1.45	1.50	0.05	3.45	0.12	8.70
Paraguay	0.01	0.01	0.01	0.01	416	416	416	416	0.02	0.02	0.02	0.02	0.00	0.00	0.00	0.00
Africa																
Burkina Faso	0.58	0.56	0.60	0.60	330	358	357	357	0.88	0.92	0.98	0.98	0.00	0.00	0.06	6.56
Mali	0.74	0.17	0.72	0.72	400	376	416	416	1.35	0.29	1.38	1.38	0.00	0.00	1.09	382.46
Cote d'Ivoire	0.41	0.45	0.48	0.48	528	494	504	504	0.99	1.01	1.10	1.10	0.00	0.00	0.09	8.91
Benin	0.67	0.62	0.64	0.64	467	513	510	510	1.43	1.45	1.50	1.50	0.00	0.00	0.05	3.45
Egypt	0.10	0.07	0.10	0.10	664	720	718	718	0.31	0.22	0.33	0.33	0.00	0.00	0.12	53.49
Cameroon	0.25	0.23	0.23	0.23	562	658	663	663	0.65	0.68	0.70	0.70	0.00	0.00	0.02	2.94
Tanzania	0.35	0.17	0.24	0.24	375	284	231	231	0.60	0.22	0.26	0.26	0.00	0.00	0.04	18.60
Nigeria	0.15	0.27	0.27	0.27	290	282	282	282	0.20	0.35	0.35	0.35	0.00	0.00	0.00	0.00
Zimbabwe	0.18	0.24	0.21	0.21	230	318	207	207	0.19	0.35	0.20	0.20	0.00	0.00	-0.15	-42.86
Ethiopia	0.08	0.08	0.08	0.08	680	637	637	637	0.25	0.24	0.24	0.24	0.00	0.00	0.00	0.00
Former Soviet Union - 12																
Uzbekistan	1.01	0.98	0.98	0.98	754	782	755	755	3.50	3.50	3.40	3.40	0.00	0.00	-0.10	-2.86
Turkmenistan	0.55	0.55	0.55	0.55	368	368	356	356	0.92	0.92	0.90	0.90	0.00	0.00	-0.02	-2.17
Tajikistan	0.18	0.16	0.17	0.17	708	619	640	640	0.59	0.46	0.50	0.50	0.00	0.00	0.05	9.89
Kazakhstan	0.13	0.11	0.12	0.12	627	534	502	502	0.36	0.27	0.27	0.27	0.00	0.00	-0.01	-1.85
Middle East																
Turkey	0.57	0.35	0.45	0.45	1,318	1,804	1,839	1,839	3.45	2.90	3.80	3.80	0.00	0.00	0.90	31.03
Syria	0.03	0.03	0.03	0.03	1,219	1,219	1,132	1,132	0.14	0.14	0.13	0.13	0.00	0.00	-0.01	-7.14
Iran	0.09	0.10	0.10	0.10	789	871	871	871	0.33	0.40	0.40	0.40	0.00	0.00	0.00	1.01
Australia	0.06	0.28	0.60	0.60	2,268	2,217	1,996	1,996	0.63	2.80	5.50	5.50	0.00	0.00	2.70	96.43
Mexico	0.23	0.15	0.15	0.16	1,519	1,532	1,524	1,686	1.57	1.02	1.05	1.20	0.15	14.29	0.18	17.65
Burma	0.25	0.24	0.25	0.25	641	635	644	644	0.72	0.70	0.73	0.73	0.00	0.00	0.03	3.57
Others	1.87	1.73	1.74	1.74	585	572	547	547	5.03	4.55	4.36	4.36	0.00	0.00	-0.18	-4.05

World and Selected Countries and Regions

TABLE 18

The table below presents a record of the March projection and the final Estimate. Using world wheat production as an example, the "root mean square error" means that chances are 2 out of 3 that the current forecast will not be above or below the final estimate by more than 0.5 percent. Chances are 9 out of 10 (90% confidence level) that the difference will not exceed 0.9 percent. The average difference between the March projection and the final estimate is 2.4 million tons, ranging from 0.0 million to 8.0 million tons. The March projection has been below the estimate 29 times and above 11 times.

RELIABILITY OF PRODUCTION PROJECTIONS 1/

COMMODITY AND REGION	Root mean square error	90 percent confidence interval	Difference between forecast and final estimate				
			Average	Smallest	Largest	Years	
						Below final	Above final
	Percent		---Million metric tons---				
WHEAT							
World	0.5	0.9	2.4	0.0	8.0	29	11
U.S.	0.2	0.3	0.1	0.0	0.3	18	11
Foreign	0.6	1.1	2.4	0.1	8.0	29	11
COARSE GRAINS 2/							
World	1.2	2.0	10.8	0.5	35.1	33	7
U.S.	0.2	0.3	0.2	0.0	1.8	17	9
Foreign	1.7	2.9	10.8	0.5	35.1	33	7
RICE (Milled)							
World	1.3	2.2	3.5	0.2	13.8	29	11
U.S.	1.2	2.1	0.0	0.0	0.2	11	6
Foreign	1.3	2.3	3.5	0.1	13.8	29	11
SOYBEANS							
World	2.2	3.7	3.4	0.1	12.4	21	19
U.S.	1.4	2.3	0.7	0.0	3.2	17	16
Foreign	3.6	6.2	3.3	0.1	12.6	22	18
COTTON			---Million 480-lb. bales---				
World	1.8	3.0	1.3	0.0	5.2	24	14
U.S.	0.9	1.6	0.1	0.0	0.3	14	25
Foreign	2.1	3.6	1.3	0.0	5.3	24	15
UNITED STATES			-----Million bushels-----				
<i>CORN</i>	0.2	0.3	5	0	72	1	4
<i>SORGHUM</i>	0.1	0.2	0	0	4	0	2
<i>BARLEY</i>	0.9	1.6	1	0	11	19	4
<i>OATS</i>	0.4	0.7	0	0	2	5	4

1/ Marketing years 1981/82 through 2020/21 for grains, soybeans, and cotton. Final for grains, soybeans, and cotton is defined as the first November estimate following the marketing year for 1981/82 through 2019/20, and for 2020/21 the last month's estimate.

2/ Includes corn, sorghum, barley, oats, rye, millet, and mixed grain

March 2022

Global Market Analysis, FAS, USDA