



United States
Department of
Agriculture

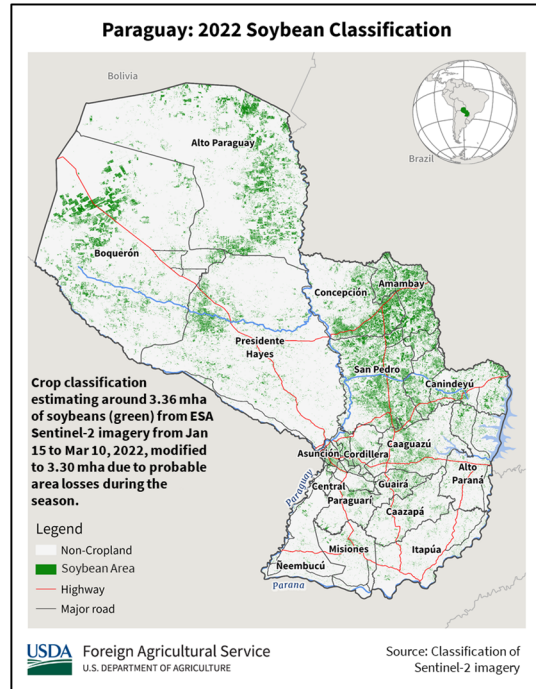
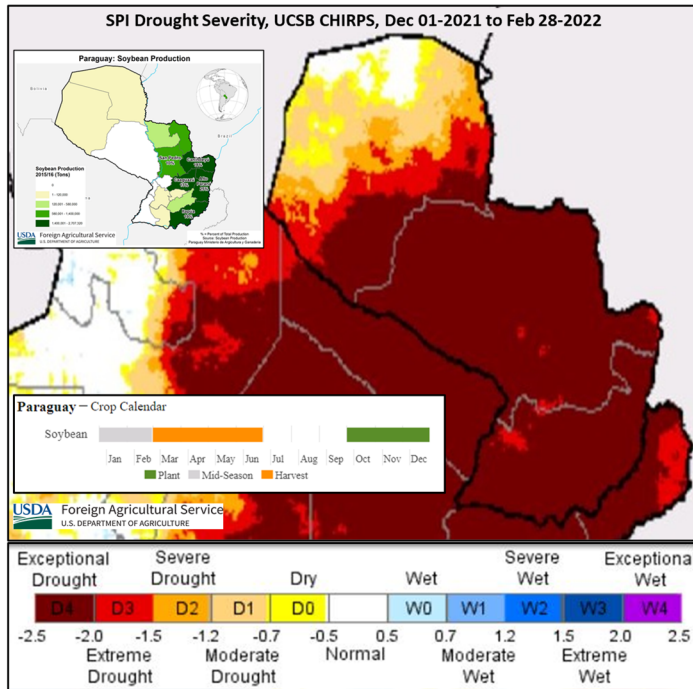
Foreign
Agricultural
Service

World Agricultural Production

Circular Series
WAP 4-22
April 2022

Paraguay Soybeans: High Temperatures and Drought Damage First-Crop Yield

Paraguay soybean production for marketing year (MY) 2021/22 is estimated at 4.2 million metric tons, down 21 percent from last month and 58 percent from last year. Harvested area is estimated at 3.3 million hectares, up 18 percent from last month and 5 percent from last year. Yield is estimated at 1.27 tons per hectare, down 33 percent from last month and 60 percent from last year. Area changes are supported by recent satellite imagery analysis.

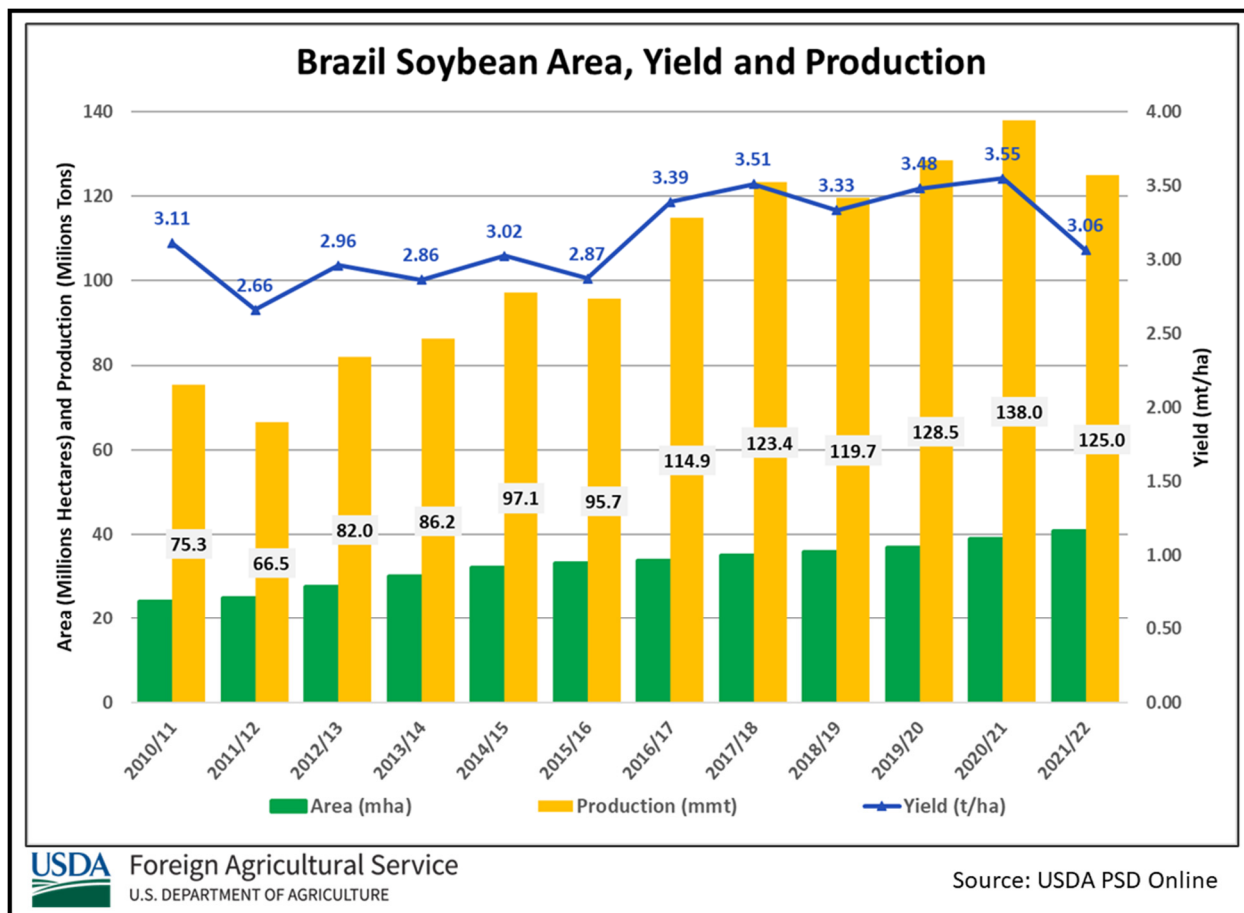


Soybean yield expectations have continued to decrease due to three months (December through February) of hot and dry conditions. The southern and central planting regions of the country were the most affected, as shown by the Standardized Precipitation Index (SPI) Drought Severity map. Recent March rains, although beneficial, will fail to recover yields from early yield declines of first-crop soybeans. However, the second-crop soybeans, perhaps 20 to 30 percent of the total crop this season, may have average yields due to recent rains in March and late plantings of these soybeans.

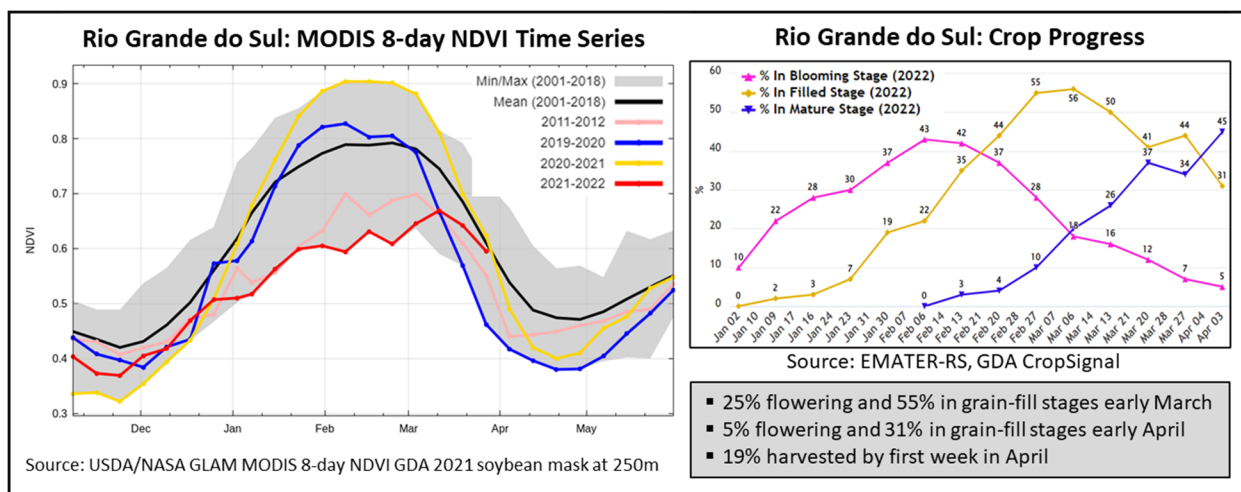
Approved by the World Agricultural Outlook Board

Most of the early planted soybeans are now being harvested. Farmers are harvesting fields which had population levels of plants with enough production for some gross return to the farmer. (For more information, please contact Denise.McWilliams@usda.gov.)

Brazil Soybeans: Production Lowered Further



Brazil soybean production for marketing year (MY) 2021/22 is estimated at 125.0 million metric tons (mmt), down 2.0 mmt (2 percent) from last month, and lower by 14.5 mmt (10 percent) from last season's record crop. Harvested area is estimated at a record 40.8 million hectares (mha), up 0.2 mha (<1 percent) from last month and up 1.6 mha (4 percent) from last season. Yield is estimated at 3.06 tons per hectare (t/ha), 2 percent below last month and 14 percent lower than last season.

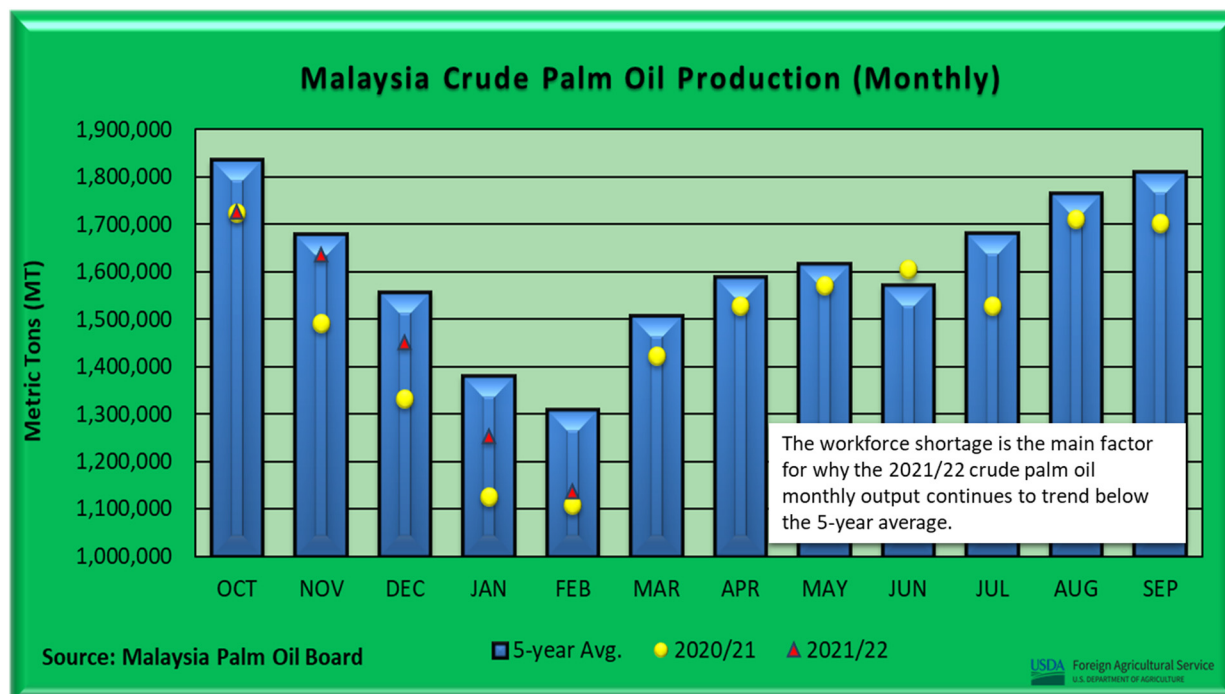


USDA Foreign Agricultural Service
U.S. DEPARTMENT OF AGRICULTURE

Harvest started in January for soybeans planted in mid-September and approximately 81 percent of the national crop was harvested by the first week of April per *Companhia Nacional de Abastecimento* (CONAB, an agency in the Brazilian Ministry of Agriculture). Several center-west states completed harvest with record yields reported for Mato Grosso (~39 mmt) and Goiás (~16 mmt) by state and national agencies. In contrast, states in the south report depressed yields with almost 50 percent loss of production for Paraná per SEAB-DERAL (*Secretaria de Estado da Agricultura e do Abastecimento Departamento de Economia Rural*). In Rio Grande do Sul, the satellite-derived Normalized Difference Vegetation Index (NDVI) displays an uptick in March, however, only about a quarter of the crop remained in flowering by early March. Recent rains will benefit the later planted and longer-cycle crop. Harvest stands at 19 percent in Rio Grande do Sul and yields for the remaining crop are expected to improve. In the northeast, harvest is over 75 percent complete with above average yields expected. (For more information, please contact Sunita.Yadav-Pauletti@usda.gov.)

Malaysia Palm Oil: Production Estimate Increases on Anticipated Return of Workers to Pre-Pandemic Levels

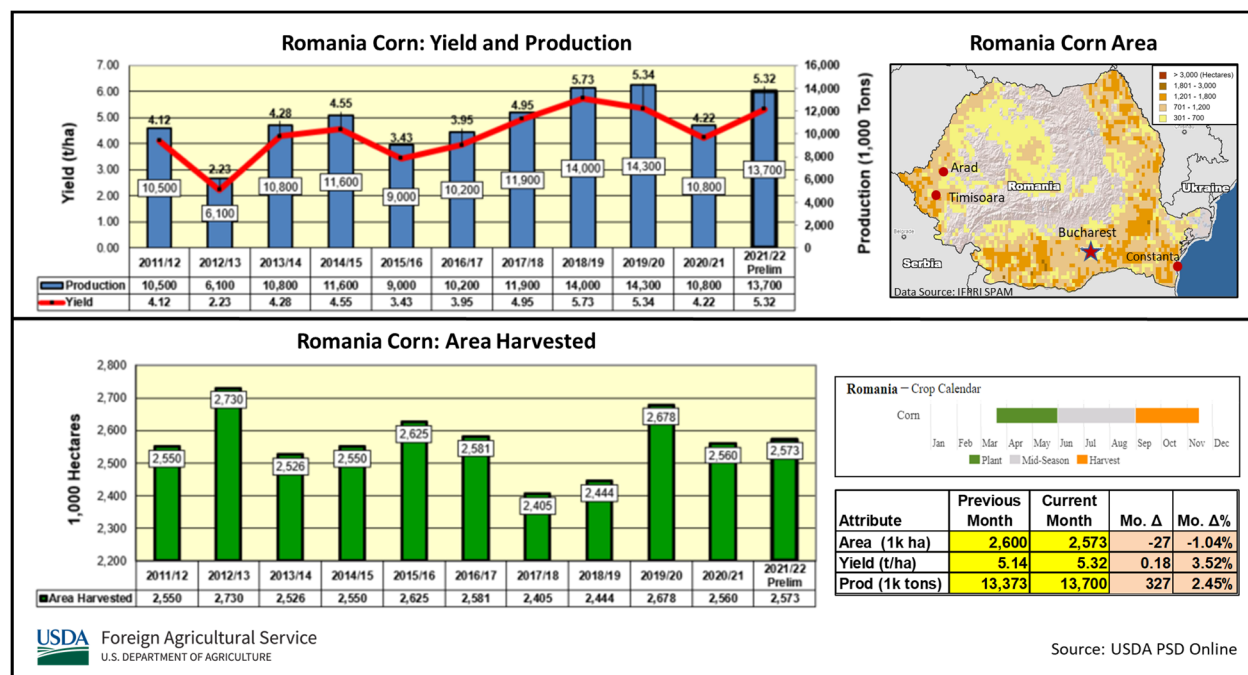
USDA estimates Malaysia palm oil production for marketing year (MY) 2021/22 at 19.0 million metric tons, up 2 percent from last month and 6 percent from last year. Harvested area remains unchanged from last month at 5.45 million hectares but is up 1 percent from last year. Yield is estimated at 3.49 tons per hectare, up 2 percent from last month and 5 percent from last year.



Since MY 2020/21, Malaysia palm oil output has been negatively impacted by COVID-19 and its strain on the palm oil sector workforce. As a measure to curb the spread of COVID-19, the government of Malaysia closed its borders, which essentially eliminated the main source of skilled workers that harvest Malaysian palm oil. Migrant workers, mainly from Indonesia, comprise 80 percent of Malaysia's workforce. Even with ideal weather conditions, palm oil harvest operations have failed to keep up with demand due to the workforce shortage. According to the Malaysian Palm Oil Board, monthly crude palm oil output has continued to trend below the 5-year average and latest reports indicate output for the month of February is down 13 percent from the 5-year average. With the drastic decline of COVID-19 cases, as compared to last year, the Malaysian government is slated to reopen its borders and anticipates the return of migrant workers to pre-pandemic levels. The return of the migrant workforce will benefit palm oil harvest operations. *(For more information, please contact Justin.Jenkins@usda.gov.)*

Romania Corn: Bumper Crop Harvested

Corn production in Romania for marketing year (MY) 2021/22 is estimated at 13.7 million tons (mmt), up 0.3 mmt or 2 percent from last month, and 27 percent above MY 2020/21's poor crop of 10.8 mmt. Production is 12 percent above the 5-year average of 12.2 mmt. Area is estimated similar to last month and last year at 2.6 million hectares. Yield is estimated at 5.32 tons per hectare, up 4 percent from last month, 26 percent above last year, and 10 percent above the 5-year average.

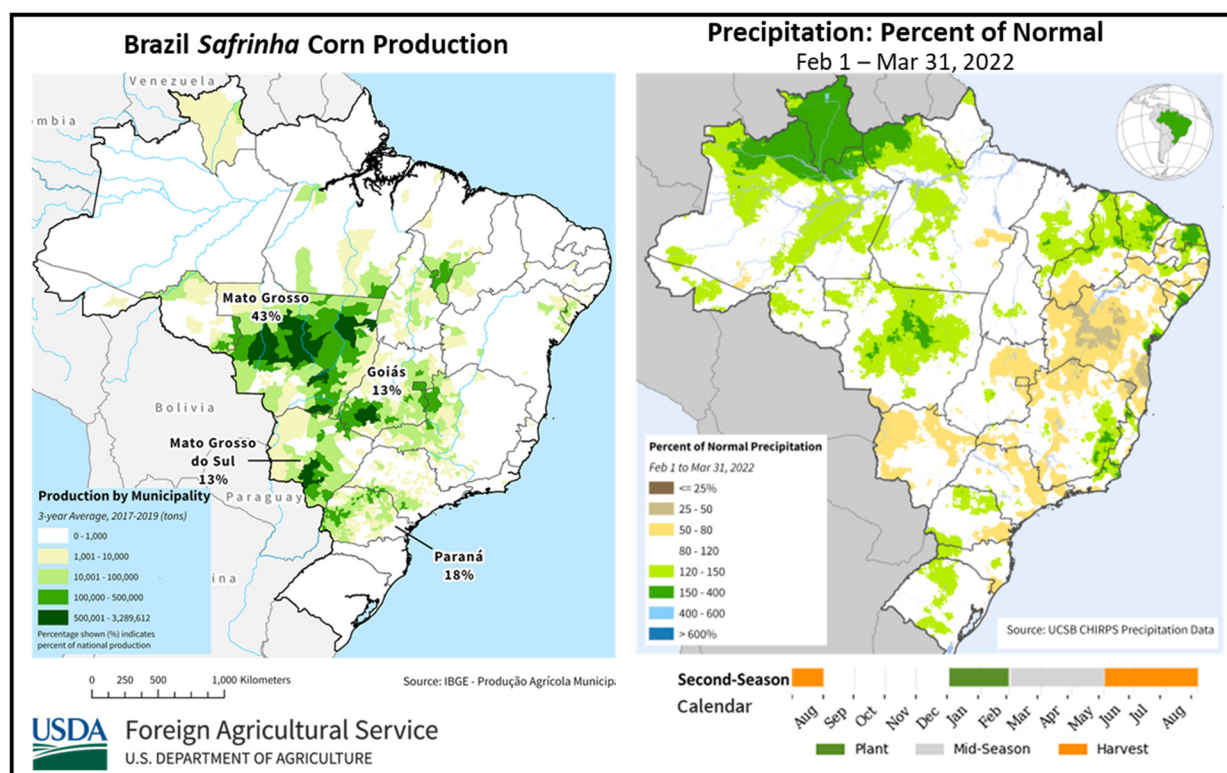


Corn in Romania benefitted from favorable rainfall in the primary growing areas of the south and southeast. These fertile areas in the Danube River Valley follow the river along the border of Bulgaria in the southwest to the Port of Constanza on the Black Sea. Meanwhile, in the western regions around Timisoara and Arad, yields were moderately curtailed due to heat and dryness, hence keeping national yields from rising further.

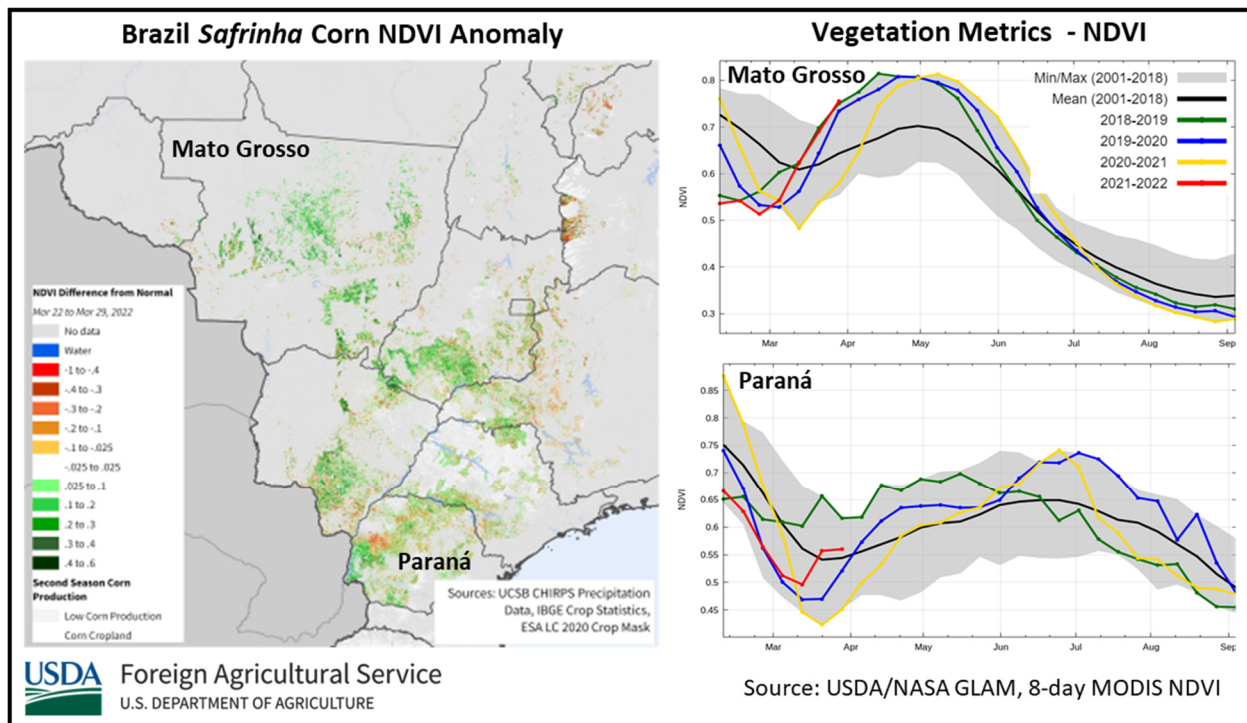
Romania is consistently one of the two largest corn producers in the European Union (EU). Romania is the second largest corn producer in the EU for MY 2021/22, while France is first. With limited irrigation, and a frequently hot and dry summer, Romania's corn harvest fluctuates significantly. Recently, national production reached a record high of 14.3 mmt in MY 2019/20 under nearly ideal weather but this was followed by a 5-year low of 10.8 mmt in MY 2020/21. Due to the cool, wet spring which delayed summer crop progress, the harvest began later than usual in MY 2021/22. Corn is typically harvested from September to November. (For more information, please contact Bryan.Purcell@usda.gov.)

Brazil Corn: Record *Safrinha* Area and Production Anticipated

USDA estimates Brazil total corn production for marketing year (MY) 2021/22 at a record 116.0 million metric tons (mmt), larger by 2.0 mmt (2 percent) from last month, and larger than last year's crop by 29.0 mmt (33 percent). Total harvested area, for all three corn crops, is estimated at a record 21.1 million hectares (mha), up 0.3 mha (1 percent) from last month, and up 1.2 mha (6 percent) from last year. Yield is estimated at 5.50 tons per hectare, 26 percent above last year's mediocre crop, and 5 percent above the 5-year average. Yield expectations are essentially unchanged month-to-month.



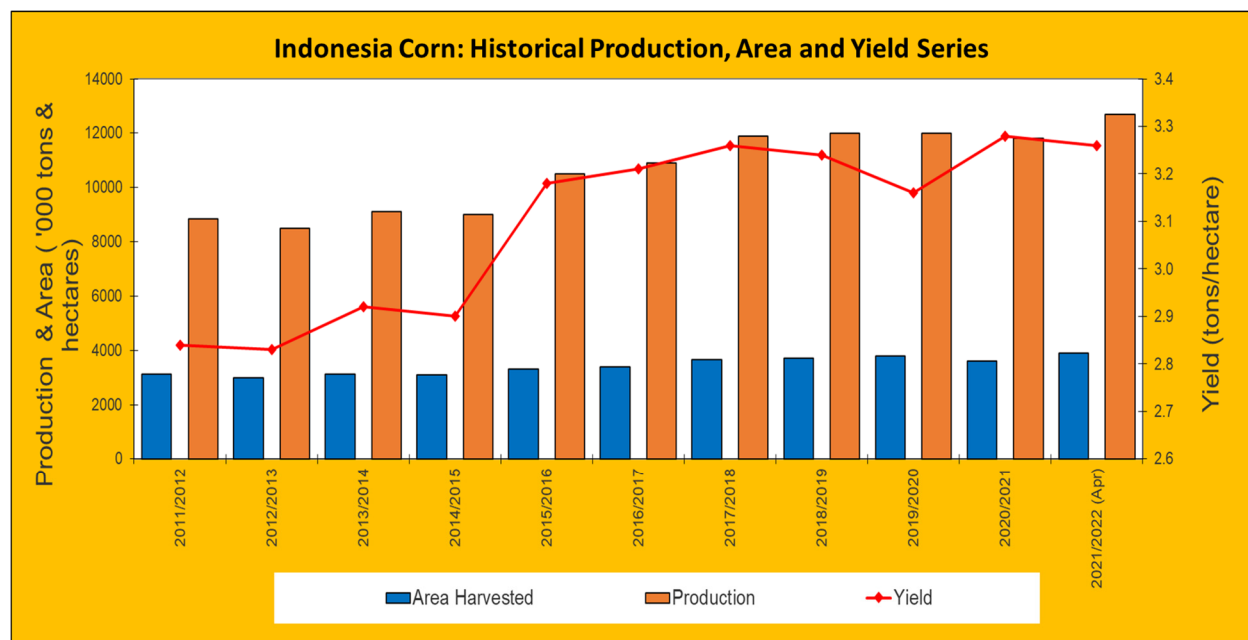
Slightly over half of the first-season crop has been harvested as of the first week in April. First-season corn output is estimated at 24.3 mmt by *Companhia Nacional de Abastecimento* (CONAB, an agency in the Brazilian Ministry of Agriculture). This is almost 4.0 mmt lower than initial projections due to the drought conditions caused by La Niña in southern Brazil during sensitive pollination and grain-filling crop stages. Weather was favorable for the center-west and eastern states. Harvested first-season corn area is estimated by CONAB at 4.6 mha, larger than last year's corn area by 4 percent.



Planting for the second-season or *safrinha* crop is mostly complete and was ahead of the 5-year average in Mato Grosso, Goiás, and Paraná. Weather since planting has been favorable with intermittent rainfall and replenishing sub-surface soil moisture in southern regions. Typically, the rainy season for Mato Grosso and Goiás ends in mid-to-late April. On-time planting is reflected in earlier crop development in Mato Grosso displayed by the satellite-derived Normalized Difference Vegetation Index (NDVI). The season-to-date NDVI is analogous to the record setting MY 2018/19 season. NDVI is above average in most states except for Minas Gerais and northern parts of Goiás where dry spells occurred over the last month. State agencies in Mato Grosso and Paraná report record *safrinha* planted area. (For more information, please contact Sunita.Yadav-Pauletti@usda.gov.)

Indonesia Corn: Favorable Weather and Prices Lead to Record Production

USDA estimates Indonesia corn for marketing year (MY) 2021/22 at a record 12.7 million metric tons, up 6 percent from last month and 1 percent from last year. Harvested area is estimated at 3.9 million hectares, up 8 percent from last month and 1 percent from last year.



USDA Foreign Agricultural Service
U.S. DEPARTMENT OF AGRICULTURE

Source: USDA PSD Online

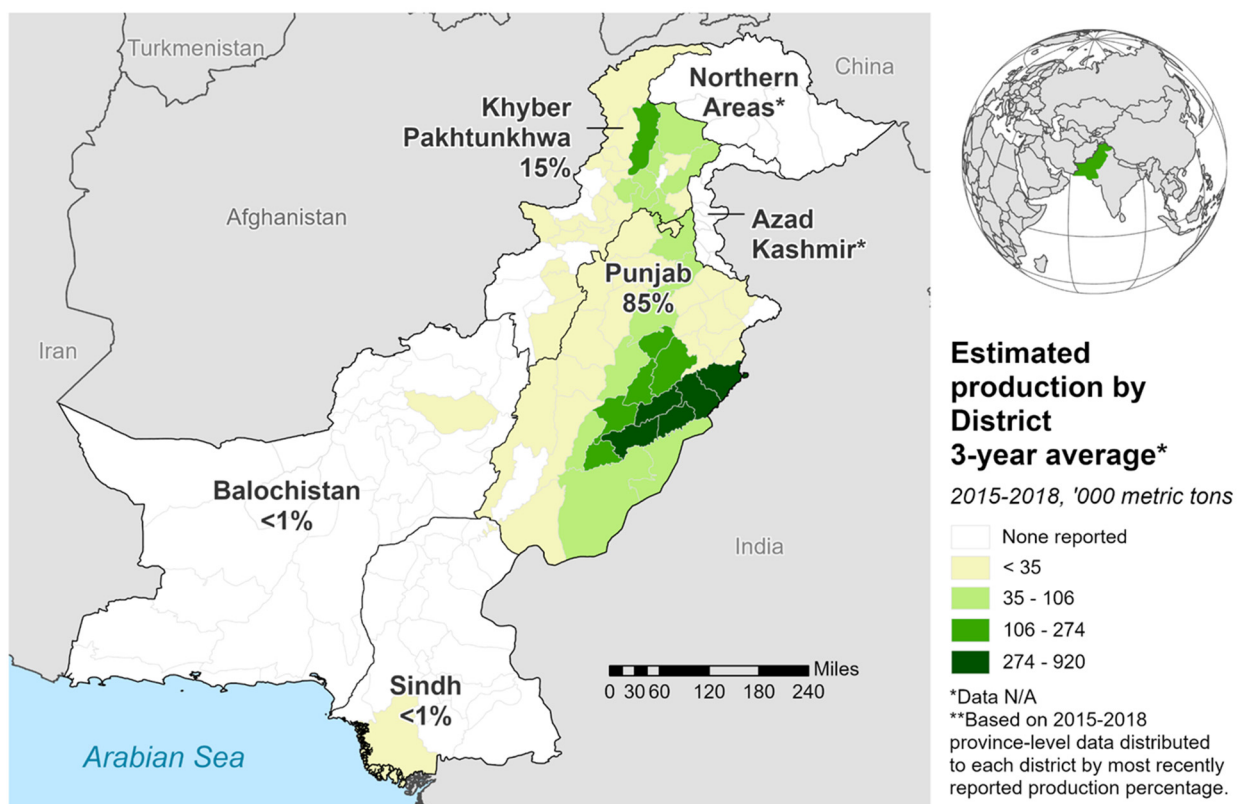
Typically, extended seasonal rainfall during the wet season leads to Indonesian farmers planting more rice than other crops, as adequate water supplies fuel cultivated rice area for all three cropping cycles. For the second consecutive year, however, Indonesia has experienced a prolonged wet season, and sustained high corn prices as seen in MY 2020/21, have continued to incentivize farmers to plant more corn. The latest Indonesian Statistical Agency's Paddy Harvest Area Pattern report highlights that the lower rice harvested area for the first crop cycle is attributed to higher corn area.

As a result of continued rainfall, yield potential was reduced due to extended periods of cloudiness throughout the season, limiting sunshine exposure during the most sensitive periods of corn development. Additionally, the Indonesian government reduced the budget for fertilizer subsidies in 2022 leading to decreased application use which have also contributed to yield declines. Yield is estimated at 3.26 tons per hectare, down 2 percent from last month and down less than 1 percent from last year. (For more information, please contact Justin.Jenkins@usda.gov.)

Pakistan Corn: Production Revised Up

USDA estimates Pakistan's corn production for marketing year (MY) 2021/22 at 8.3 million metric tons (mmt), up 0.7 mmt (9 percent) from last month, but down 0.6 mmt (7 percent) from last season's record crop. Harvested area is estimated at 1.4 million hectares (mha), unchanged from last month but down slightly from last season's area. Yield is estimated at 5.93 tons per hectare, 13 percent above the 5-year average.

Pakistan: Corn Production

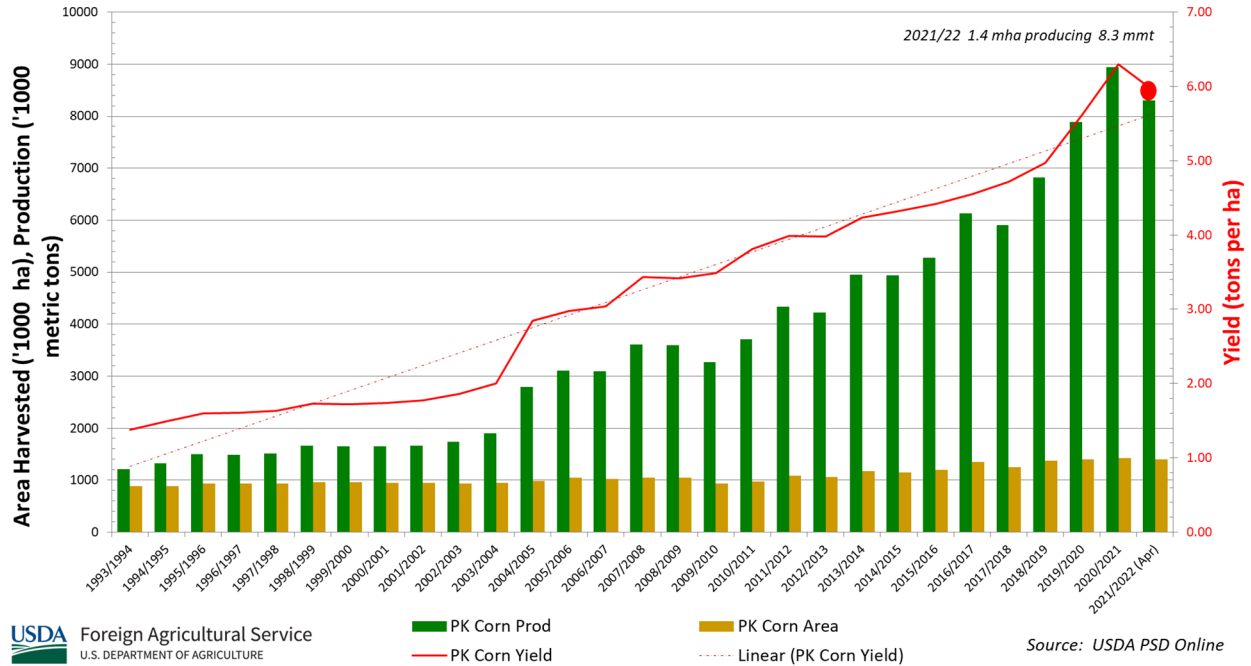


USDA Foreign Agricultural Service
U.S. DEPARTMENT OF AGRICULTURE

Source: Agricultural Marketing Information Service; Pakistan Bureau of Statistics; Crop Reporting Service

The production estimate is revised upward to 8.3 mmt in accordance with official data. The positive yield trend in recent years is largely a result of the increased use of higher yielding seed varieties imported from the United States. Corn area is growing due to corn's profitability compared to competing crops, particularly cotton. Expanding poultry and livestock sectors are driving demand for corn resulting in area expansion.

Pakistan Corn: Area, Yield, and Production, MY 1991/92 – 2021/22

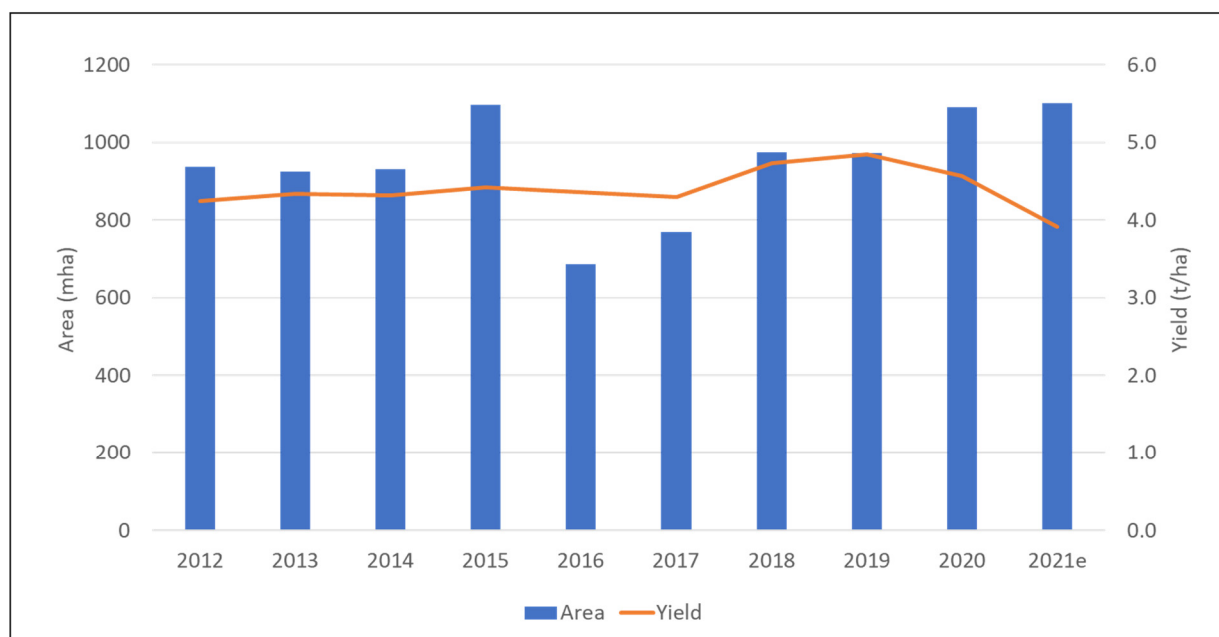


The provinces of Punjab and Khyber Pakhtunkhwa account for about 99 percent of production. Yields are lower in Punjab due to the higher temperatures, but conditions in Khyber Pakhtunkhwa are optimal in the fall. Approximately 65 percent of the corn in Pakistan has access to irrigation; the remainder is farmed under rain-fed conditions. (For more information, please contact James.Crutchfield@usda.gov.)

Sri Lanka Rice: Production Down due to a Decline in Yield

USDA estimates marketing year (MY) 2021/22 Sri Lanka rice production at 2.9 million metric tons (milled-basis), unchanged from last month and down nearly 14 percent from MY 2020/21. Harvested area is estimated at 1.1 million hectares, up nearly 13 percent from last month and 1 percent from MY 2020/21. The 13 percent area increase from last month is based on February's Ministry of Agriculture crop report. Yield is estimated at 3.91 metric tons per hectare, down 11 percent from last month and down 15 percent from MY 2020/21. A lack of agricultural inputs such as fertilizers for the *maha* crop contributed to the decline in yields. The government of Sri Lanka restricted imports of inorganic fertilizers in May 2021; the ban was rescinded in November.

Sri Lanka Rice Yield Declines from 2020

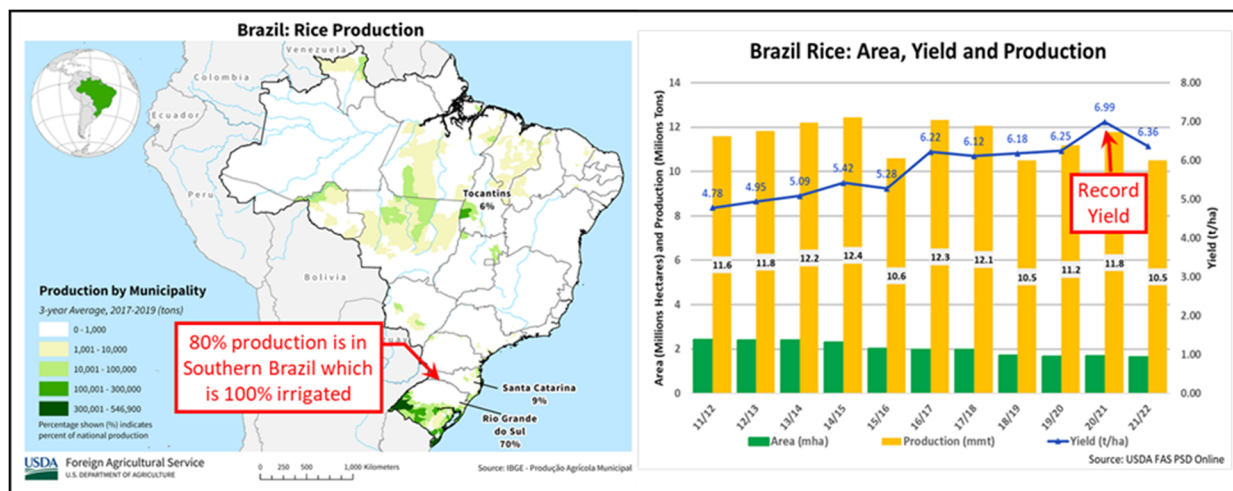


USDA Foreign Agricultural Service
U.S. DEPARTMENT OF AGRICULTURE

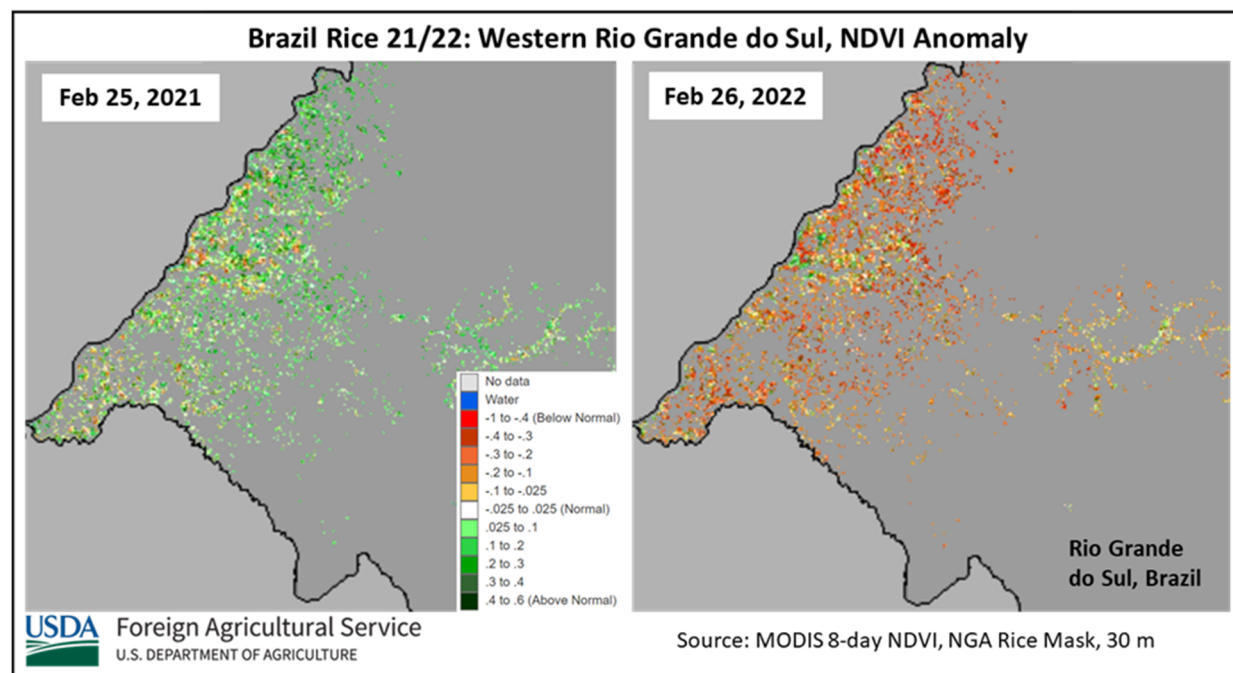
Source: USDA PSD Online

USDA combines the 2021 *yala* crop, which accounts for 40 percent of the total production, and the MY 2021/22 *maha* crop for the total estimate. The MY 2021/22 *maha* crop was harvested in March 2022. (For more information, please contact Arnella.Trent@usda.gov.)

Brazil Rice: Production Reduced due to Drought in Rio Grande do Sul



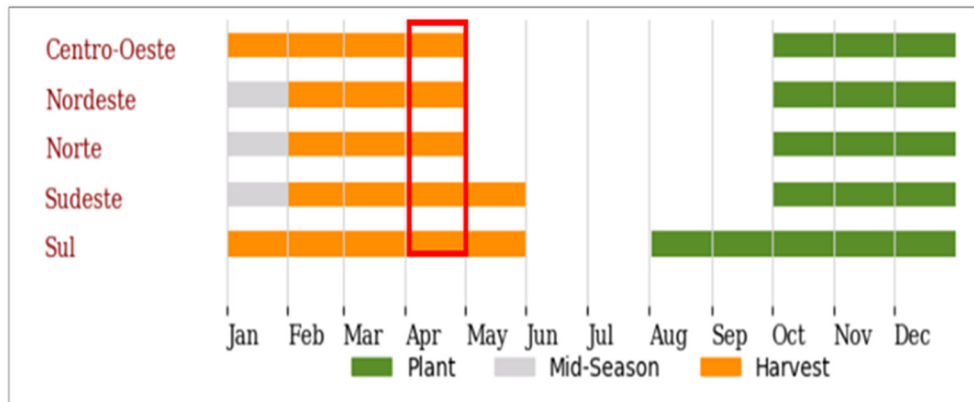
USDA estimates Brazil rice production for marketing year (MY) 2021/22 at 7.1 million metric tons (mmt) (milled-basis), down 2 percent from last month, and 11 percent from last year. Harvested area is estimated at 1.65 million hectares (mha), down 1 percent from last month, and 2 percent from last season. Yield is estimated at 6.36 tons per hectare (t/ha), less than 1 percent from last month and 9 percent below last year's record yield.



Roughly 80 percent of the rice crop in Brazil is produced in the southern states of Rio Grande do Sul and Santa Catarina. The rice crop is planted from August through December with earlier planting occurring in the south. All of the rice in the southern states is irrigated and yields are usually stable. A historic drought caused by the occurrence of a La Niña severely limited water availability in western Rio Grande do Sul. Water rationing and intermittent irrigation coupled with high temperatures damaged the crop just as it was entering sensitive flowering stages. Vegetation

metrics such as the satellite-derived Normalized Difference Vegetation Index (NDVI) show poor crop vigor relative to the long-term average and a sharp departure from last season's crop. The Technical Assistance and Rural Extension of Rio Grande do Sul (EMATER-RS) reports yield losses of about 5 percent relative to the initial projection and 13 percent lower than last year.

Rice Crop Calendar



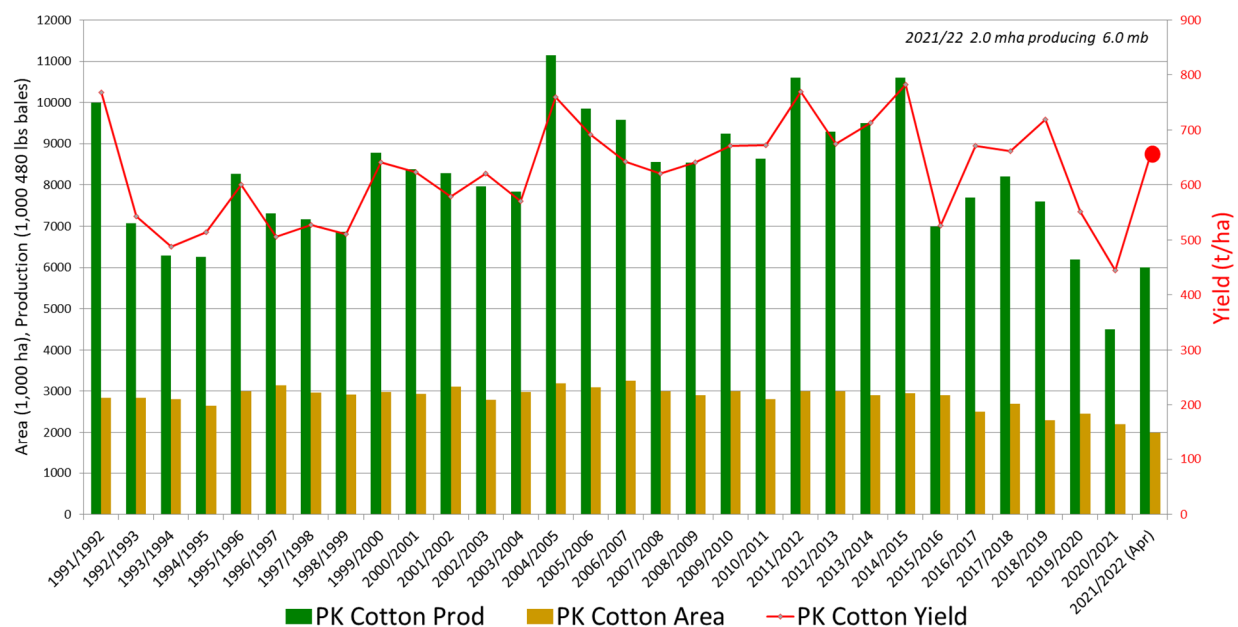
Source: CONAB

National harvest is about half complete with 95 percent harvested in Santa Catarina and 53 percent in Rio Grande do Sul. Harvest concludes in May in the south but will continue through August in northern minor rice producing areas of Brazil. (For more information, please contact Sunita.Yadav-Pauletti@usda.gov.)

Pakistan Cotton: Production Revised Up

USDA estimates Pakistan's cotton production for marketing year (MY) 2021/22 at 6.0 million 480-pound bales, up 0.2 million bales from last month and 1.5 million bales from last year. Harvested area is estimated at 2.0 million hectares, unchanged from last month, but down 0.2 million hectares from last year. Yield is estimated at 653 kilograms per hectare, up 3 percent from last month and 47 percent from last year's 30-year low.

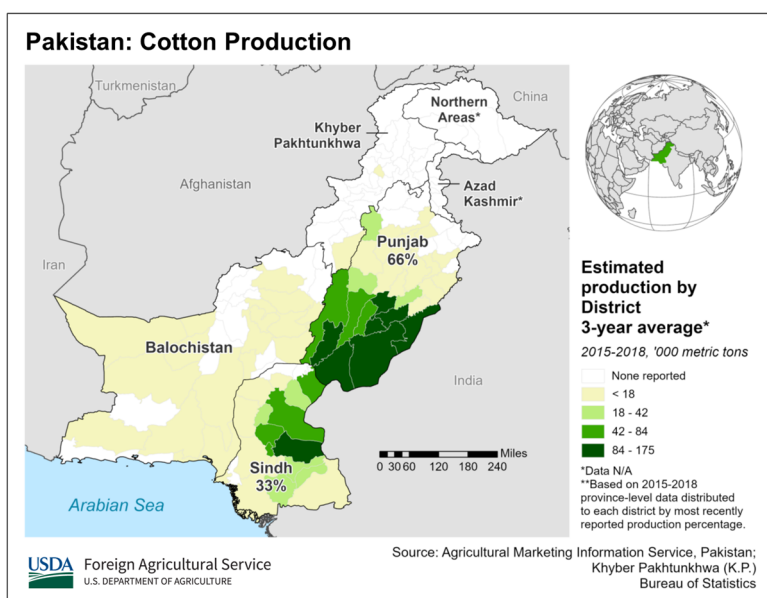
Pakistan Cotton: Area, Yield, and Production, MY 1991/92 – 2021/22



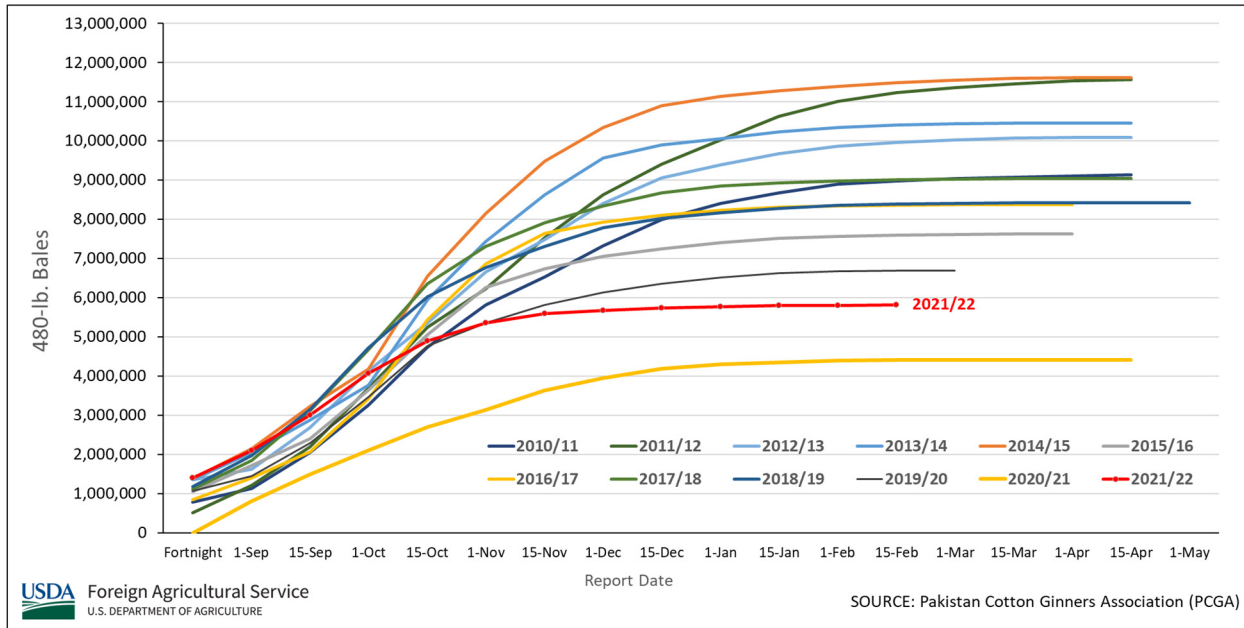
USDA Foreign Agricultural Service
U.S. DEPARTMENT OF AGRICULTURE

Source: USDA PSD Online

Production is revised up due to an upward revision to the estimated amount of cotton marketed outside of the channels captured by Pakistan's gin arrivals data. At the beginning of March, cumulative seed cotton arrivals at gins are 32 percent higher than the same time last year, according to the Pakistan Cotton Ginner's Association. At the provincial level the arrivals are up 64 percent in Punjab and up 12 percent in Sindh. In MY 2020/21, about 500,000 bales was estimated to have been marketed outside of traditional channels, and with the larger crop for 2021/22, the estimate was raised to 700,000 bales. Cotton planting began in April. Harvest began in August and was completed in November 2021.



Pakistan Cumulative Bi-Weekly Seed Cotton Arrivals (480-lb. Bales)



Peak harvest typically occurs in October. Arrivals continued until early March 2022. The two major cotton producing provinces are Punjab (66 percent) and Sindh (33 percent) based on the current 5-year average. (For more information, please contact James.Crutchfield@usda.gov.)



World Agricultural Production
U.S. Department of Agriculture

Foreign Agricultural Service / Global Market Analysis
International Production Assessment Division (IPAD)
Ag Box 1051, Room 4630, South Building
Washington, DC 20250-1051

<https://ipad.fas.usda.gov/>

Telephone: (202) 720-1662 Fax: (202) 720-1158

This report uses information from the Foreign Agricultural Service's (FAS) global network of agricultural attachés and counselors, official statistics of foreign governments and other foreign source materials, and the analysis of economic data and satellite imagery. Estimates of foreign area, yield, and production are from the International Production Assessment Division, FAS, and are reviewed by USDA's Inter-Agency Commodity Estimates Committee. Estimates of U.S. area, yield, and production are from USDA's National Agricultural Statistics Service. Numbers within the report may not add to totals because of rounding. This report reflects official USDA estimates released in the World Agricultural Supply and Demand Estimates (WASDE-584), April 8, 2022.

Printed copies are available from the National Technical Information Service. Download an order form at http://www.ntis.gov/products/specialty/usda/fas_a-g.asp, or call NTIS at 1-800-363-2068.

The FAS International Production Assessment Division prepared this report. The next issue of World Agricultural Production will be released after 12:00 p.m. Eastern Time, May 12, 2022.

Conversion Table

Metric tons to bushels

Wheat, soybeans	=	MT * 36.7437
Corn, sorghum, rye	=	MT * 39.36825
Barley	=	MT * 45.929625
Oats	=	MT * 68.894438

Metric tons to 480-lb bales

Cotton	=	MT * 4.592917
--------	---	---------------

Metric tons to hundredweight

Rice	=	MT * 22.04622
------	---	---------------

Area & weight

1 hectare	=	2.471044 acres
1 kilogram	=	2.204622 pounds

For further information, contact:



**U.S. Department of Agriculture
Foreign Agricultural Service
Global Market Analysis**
International Production Assessment Division
Ag Box 1051, Room 4630, South Building
Washington, DC 20250-1051

Telephone: (202) 720-1662

Fax: (202) 720-1158

GENERAL INFORMATION

Senior Director	Ronald Frantz	202-720-4056	ronald.frantz@usda.gov
Director	Robert Tetrault	202-720-1071	robert.tetrault@usda.gov
Administrative Assistant	Vacant		
USDA Remote Sensing Advisor	Vacant		
Sr. Analyst/Technical Lead	Curt Reynolds, Ph.D.	202-690-0134	curt.reynolds@usda.gov
Sr. Analyst/ Satellite Imagery	Dath Mita, Ph.D.	202-720-7339	dath.mita@usda.gov
Archives Manager/Technical Lead			
Sr. Analyst/Technical Lead	Jim Crutchfield	202-690-0135	james.crutchfield@usda.gov
GIS Mapping/Imagery Analyst	Lisa Colson	202-720-6652	lisa.colson@usda.gov
WAP Coordinators	Ifeoma Collins	202-720-0240	ifeoma.collins@usda.gov
	Aaron Mulhollen	202-690-0131	aaron.mulhollen@usda.gov

COUNTRY- AND REGION-SPECIFIC INFORMATION

South America, Argentina, Venezuela, and Colombia	Denise McWilliams, Ph.D.	202-720-0107	denise.mcwilliams@usda.gov
Western and Central Europe, and North Africa	Bryan Purcell	202-690-0138	bryan.purcell@usda.gov
Russia, Ukraine, Kazakhstan, Moldova, and Belarus	Katie McGaughey	202-720-9210	katie.mcgaughey@usda.gov
South Asia, Sri Lanka Bangladesh, India, and Nepal	Arnella Trent	202-720-0881	arnella.trent@usda.gov
East Asia, China, and Japan	Dath Mita, Ph.D.	202-720-7339	dath.mita@usda.gov
Sub-Saharan Africa, Nigeria and South Africa	Curt Reynolds, Ph.D.	202-690-0134	curt.reynolds@usda.gov
S.E. Asia, Indonesia, Thailand, Malaysia, Cambodia and Vietnam	Justin Jenkins	202-720-0419	justin.jenkins@usda.gov
Central America, Mexico, and Western United States	Ifeoma Collins	202-720-0240	ifeoma.collins@usda.gov
Australia, New Zealand, Pakistan Papua New Guinea and South Pacific Islands	Jim Crutchfield	202-690-0135	james.crutchfield@usda.gov
Middle East, Central Asia, Afghanistan Iraq, Iran, and Syria	Iliana Mladenova, Ph.D.	202-235-7562	iliana.mladenova@usda.gov
Canada, Caribbean, Eastern United States	Aaron Mulhollen	202-690-0131	aaron.mulhollen@usda.gov
Brazil	Sunita Yadav-Pauletti, Ph.D.		sunita.yadav-pauletti@usda.gov



The Foreign Agricultural Service (FAS) updates its production, supply and distribution (PSD) database for cotton, oilseeds, and grains at 12:00 p.m. on the day the *World Agricultural Supply and Demand Estimates* (WASDE) report is released. This circular is released by 12:15 p.m.

FAS Reports and Databases:

World Agricultural Production

Current: <https://www.fas.usda.gov/data/world-agricultural-production>

Archive: <https://usda.library.cornell.edu/concern/publications/5q47rn72z?locale=en>

USDA's Foreign Agricultural Service (FAS) publishes a monthly report on crop acreage, yield and production in major countries worldwide. Sources include reporting from FAS's worldwide offices, official statistics of foreign governments, and analysis of economic data and satellite imagery. The reports reflect official USDA estimates released in the monthly *World Agricultural Supply and Demand Estimates* (WASDE).

World Markets and Trade

Current: <https://www.fas.usda.gov/data>

Archive:

https://usda.library.cornell.edu/catalog?f%5Bmember_of_collections_ssim%5D%5B%5D=Foreign+Agricultural+Service&locale=en

USDA's Foreign Agricultural Service (FAS) publishes monthly and quarterly reports which include data on U.S. and global trade, production, consumption and stocks, as well as analysis of developments affecting world trade in oilseeds, grains, cotton, livestock and poultry. The reports reflect official USDA estimates released in the monthly *World Agricultural Supply and Demand Estimates* (WASDE).

Global Agricultural Information Network (GAIN)

<https://www.fas.usda.gov/databases/global-agricultural-information-network-gain>

USDA's Foreign Agricultural Service (FAS) provides timely reports on foreign markets through the Global Agriculture Information Network (GAIN) database. An average of 2,000 reports are added each year, with reports going back to 1995. GAIN reports are compiled by FAS' global market intelligence network, which includes FAS foreign service officers and locally engaged staff in over 90 overseas offices world-wide. They provide on-the-ground intelligence, insight, and analysis on nearly 200 countries, delivering information on foreign agricultural markets, crop conditions, and agro-political dynamics of interest to U.S. agriculture. GAIN reports contain assessments of commodity and trade issues made by USDA staff and are not necessarily statements of official U.S. government policy.

Production, Supply and Distribution (PS&D) Online

<https://apps.fas.usda.gov/psdonline/app/index.html#/app/home>

PSD Online is the public repository for USDA's Official Production, Supply and Distribution forecast data and reports for key agricultural commodities. PSD Online data are reviewed and updated monthly by an interagency committee chaired by USDA's World Agricultural Outlook Board (WAOB). The committee consist of representatives from Foreign Agricultural Service (FAS), the Economic Research Service (ERS), the Farm Service Agency (FSA), and the Agricultural Marketing Service (AMS).

EU Countries and Russia Wheat: Area and Production Estimates

<https://apps.fas.usda.gov/psdonline/app/index.html#/app/downloads> (click on PSD Datasets)

USDA's Foreign Agricultural Service (FAS) provides country-level area and production estimates for the nations of the European Union. For Russia, country-level area and production estimates are provided for Winter and Spring wheat. These datasets are reviewed and updated monthly by an interagency committee chaired by USDA's World Agricultural Outlook Board (WAOB) and can be downloaded through PSD datasets on PSD Online.



FAS Reports and Databases:

International Production Assessment (IPAD)

<https://ipad.fas.usda.gov/>

USDA's Foreign Agricultural Service (FAS) maintains a dynamic global crop production portal with key information including *World Agricultural Production* (WAP) briefs, Commodity Intelligence Reports (CIR), geospatial applications, crop production maps at a subnational level and crop calendars for the top-20 producing countries. Additionally, Crop Explorer (<https://ipad.fas.usda.gov/cropexplorer/>) displays rainfall, temperature, evapotranspiration, soil moisture, snow cover, and vegetation conditions in charts and maps.

USDA and NASA Global Agricultural Monitoring (GLAM)

<https://glam1.gsfc.nasa.gov/>

The USDA and NASA Global Agricultural Monitoring (GLAM) system provides near real-time and science quality Moderate Resolution Imaging Spectroradiometer (MODIS) Normalized Difference Vegetation Index (NDVI) from the satellites Terra and Aqua. The public can view and retrieve MODIS 8-day composited, global NDVI satellite imagery and time series data. GLAM was developed by NASA's Global Inventory Modeling and Mapping Studies (GIMMS) group for USDA's Foreign Agricultural Service.

Global Agricultural and Disaster Assessment System (GADAS)

<https://geo.fas.usda.gov/GADAS/index.html>

USDA's Foreign Agricultural Service (FAS) provides the Global Agricultural and Disaster Assessment System (GADAS), a web-based Geographic Information System (GIS) tool which integrates a vast array of highly detailed earth observation data streams, particularly targeted towards agricultural and disaster assessment analysis. GADAS is an interactive website which provides analysts with a wide variety of routine geospatial products (maps, charts, tables) they require for comprehensive situational investigations and recurring assessments.

Export Sales Reporting

<https://apps.fas.usda.gov/esrquery/>

USDA's Export Sales Reporting Program monitors U.S. agricultural export sales on a daily and weekly basis. Export sales reporting provides a constant stream of up-to-date market information for 40 U.S. agricultural commodities sold abroad. The weekly U.S. Export Sales report is the most currently available source of U.S. exports sales data. The data is used to analyze overall levels of export demand, determine where markets exit, and assess the relative position of U.S. commodities in foreign markets.

Global Agricultural Trade System (GATS)

<https://apps.fas.usda.gov/gats/default.aspx>

The Global Agricultural Trade System (GATS) is a searchable database containing monthly U.S. Census Bureau trade data organized by agricultural commodity and agricultural related product groups. Trade data is searchable by partner countries and partner groups. Historical U.S. agricultural trade data is available back to 1967. In addition, U.N. trade statistics (UN Comtrade) may be queried through GATS. UN trade data is available for nearly 200 countries or areas, dating from the inception of the Harmonized System (HS) of trade codes in 1989 to present. The database is continuously updated. U.S. trade data is updated monthly according to the U.S. Census Bureau's reporting system. UN Comtrade data are updated in GATS after nationally submitted data to the UN are standardized by the UN Statistical Division and added to the UN Comtrade database.

Other USDA Reports:

World Agricultural Supply and Demand Estimates (WASDE):

<http://www.usda.gov/oce/commodity/wasde/>

Economic Research Service:

<http://www.ers.usda.gov/topics/crops>

National Agricultural Statistics Service:

<http://www.nass.usda.gov/Publications/>

Table 01 World Crop Production Summary

Million Metric Tons

Commodity	World	Total Foreign	North America			Former Soviet		European	Asia (WAP)					South America		Selected Other			All Others
			United States	Canada	Mexico	Russia	Ukraine		China	India	Indonesia	Pakistan	Thailand	Argentina	Brazil	Australia	South Africa	Turkey	
			-	-	-	-	-		-	-	-	-	-	-	-	-	-	-	
---Million metric tons---																			
Wheat																			
2019/20	762.4	709.8	52.6	32.7	3.3	73.6	29.2	nr	133.6	103.6	0.0	24.3	0.0	19.8	5.2	14.5	1.5	17.5	251.1
2020/21 prel.	776.3	726.5	49.8	35.2	3.0	85.4	25.4	nr	134.3	107.9	0.0	25.2	0.0	17.6	6.3	33.3	2.1	18.3	232.7
2021/22 proj.																			
Mar	778.5	733.7	44.8	21.7	3.3	75.2	33.0	nr	136.9	109.6	0.0	27.0	0.0	20.5	7.7	36.3	2.3	16.3	244.1
Apr	778.8	734.0	44.8	21.7	3.3	75.2	33.0	nr	136.9	109.6	0.0	27.5	0.0	21.0	7.7	36.3	2.3	16.3	243.4
Coarse Grains																			
2019/20	1,417.7	1,058.3	359.4	28.6	32.1	40.5	46.5	nr	269.1	47.7	12.0	8.4	4.6	57.9	105.8	12.0	16.4	14.5	362.2
2020/21 prel.	1,436.6	1,063.7	372.9	29.6	32.7	41.4	39.6	nr	269.1	51.4	12.6	9.3	5.7	60.0	91.0	16.7	17.8	15.8	371.1
2021/22 proj.																			
Mar	1,498.9	1,100.2	398.7	24.2	33.4	38.5	53.3	nr	280.9	50.1	12.0	8.1	5.4	62.4	118.0	18.1	16.9	11.6	367.5
Apr	1,501.6	1,102.8	398.7	24.2	33.4	38.5	53.3	nr	280.9	50.1	12.7	8.8	5.4	62.4	120.0	18.1	16.9	11.6	366.8
Rice, Milled																			
2019/20	498.8	492.9	5.9	0.0	0.2	0.7	0.0	nr	146.7	118.9	34.7	7.4	17.7	0.8	7.6	0.0	0.0	0.6	157.6
2020/21 prel.	508.8	501.6	7.2	0.0	0.2	0.7	0.0	nr	148.3	124.4	34.5	8.4	18.9	0.8	8.0	0.3	0.0	0.6	156.4
2021/22 proj.																			
Mar	514.1	508.0	6.1	0.0	0.2	0.7	0.0	nr	149.0	129.0	35.4	8.7	19.7	0.8	7.3	0.5	0.0	0.5	156.1
Apr	513.0	506.9	6.1	0.0	0.2	0.7	0.0	nr	149.0	129.0	34.4	8.7	19.7	0.8	7.1	0.5	0.0	0.5	156.2
Total Grains																			
2019/20	2,678.9	2,261.0	417.9	61.3	35.5	114.8	75.8	nr	549.4	270.1	46.7	40.2	22.2	78.5	118.6	26.5	17.9	32.6	770.9
2020/21 prel.	2,721.7	2,291.8	429.9	64.8	35.8	127.5	65.0	nr	551.6	283.6	47.1	43.0	24.5	78.5	105.2	50.3	19.9	34.6	760.2
2021/22 proj.																			
Mar	2,791.5	2,341.9	449.6	45.9	36.8	114.4	86.3	nr	566.8	288.7	47.4	43.8	25.1	83.7	133.0	54.9	19.1	28.4	767.7
Apr	2,793.4	2,343.8	449.6	45.9	36.8	114.4	86.3	nr	566.8	288.6	47.1	45.0	25.1	84.2	134.9	54.9	19.1	28.4	766.4
Oilseeds																			
2019/20	581.1	474.1	107.0	26.1	0.9	21.7	24.5	nr	62.4	36.0	14.4	3.5	0.9	53.6	133.9	2.5	2.2	3.3	88.2
2020/21 prel.	605.7	481.2	124.5	25.9	0.8	20.1	19.9	nr	65.6	38.3	14.6	2.7	1.0	51.2	143.9	5.4	2.7	2.9	86.2
2021/22 proj.																			
Mar	601.6	471.0	130.6	19.0	0.9	23.1	24.3	nr	62.1	41.8	14.8	3.2	1.0	48.5	132.3	8.1	2.9	3.4	85.8
Apr	599.2	468.6	130.6	19.0	0.9	23.1	24.3	nr	62.1	41.8	15.1	3.3	1.0	48.5	130.3	8.1	2.9	3.4	85.1
Cotton																			
2019/20	121.0	101.1	19.9	0.0	1.6	0.0	0.0	2.0	27.3	28.5	0.0	6.2	0.0	1.3	13.8	0.6	0.1	3.5	16.3
2020/21 prel.	111.8	97.2	14.6	0.0	1.0	0.0	0.0	1.7	29.5	27.6	0.0	4.5	0.0	1.4	10.8	2.8	0.1	2.9	14.9
2021/22 proj.																			
Mar	119.9	102.2	17.6	0.0	1.2	0.0	0.0	1.5	27.0	26.5	0.0	5.8	0.0	1.5	13.2	5.5	0.1	3.8	16.2
Apr	120.2	102.6	17.6	0.0	1.2	0.0	0.0	1.6	27.0	26.5	0.0	6.0	0.0	1.5	13.2	5.5	0.1	3.8	16.2

1/ Includes wheat, coarse grains, and rice (milled) shown above.

Table 02 Wheat Area, Yield, and Production

Country / Region	Area (Million hectares)				Yield (Metric tons per hectare)				Production (Million metric tons)				Change in Production						
	2019/20	Prel.		2021/22 Proj.		2019/20	Prel.		2021/22 Proj.		2019/20	Prel.		2021/22 Proj.		From last month		From last year	
		2020/21	Mar	Apr	2020/21		Mar	Apr	2020/21	Mar		Apr	MMT	Percent	MMT	Percent			
World	215.58	220.95	222.05	222.11	3.54	3.51	3.51	3.51	762.37	776.26	778.52	778.83	0.31	0.04	2.56	0.33			
United States	15.13	14.89	15.04	15.04	3.47	3.34	2.98	2.98	52.58	49.75	44.79	44.79	0.00	0.00	-4.96	-9.97			
Total Foreign	200.45	206.06	207.01	207.07	3.54	3.53	3.54	3.54	709.79	726.51	733.73	734.04	0.31	0.04	7.53	1.04			
European Union	24.36	22.98	24.14	24.23	5.70	5.51	5.76	5.71	138.80	126.69	139.00	138.42	-0.58	-0.42	11.72	9.25			
United Kingdom	1.80	1.39	1.79	1.79	8.69	6.96	7.82	7.82	15.60	9.66	14.00	14.00	0.00	0.00	4.34	44.96			
Serbia	0.57	0.59	0.60	0.60	4.56	4.58	5.50	5.50	2.60	2.70	3.30	3.30	0.00	0.00	0.60	22.22			
China	23.73	23.38	23.57	23.57	5.63	5.74	5.81	5.81	133.60	134.25	136.95	136.95	0.00	0.00	2.70	2.01			
South Asia																			
India	29.32	31.36	31.13	31.13	3.53	3.44	3.52	3.52	103.60	107.86	109.59	109.59	0.00	0.00	1.73	1.60			
Pakistan	8.68	8.81	9.20	9.17	2.81	2.87	2.93	3.00	24.35	25.25	27.00	27.46	0.46	1.72	2.22	8.78			
Afghanistan	2.30	2.33	2.20	2.20	2.17	2.15	2.00	2.00	5.00	5.01	4.40	4.40	0.00	0.00	-0.61	-12.18			
Nepal	0.71	0.75	0.75	0.75	3.09	2.95	2.80	2.80	2.19	2.21	2.10	2.10	0.00	0.00	-0.11	-4.98			
Former Soviet Union - 12																			
Russia	27.31	28.68	27.63	27.63	2.70	2.98	2.72	2.72	73.61	85.35	75.16	75.16	0.00	0.00	-10.19	-11.94			
Russia Winter	15.41	16.63	15.22	15.22	3.41	3.77	3.43	3.43	52.54	62.69	52.19	52.19	0.00	0.00	-10.50	-16.74			
Russia Spring	11.91	12.06	12.41	12.41	1.77	1.88	1.85	1.85	21.07	22.66	22.96	22.96	0.00	0.00	0.30	1.33			
Ukraine	7.02	6.85	7.40	7.40	4.16	3.71	4.46	4.46	29.17	25.42	33.00	33.00	0.00	0.00	7.58	29.82			
Kazakhstan	11.30	12.06	12.72	12.72	1.01	1.18	0.93	0.93	11.45	14.26	11.81	11.81	0.00	0.00	-2.44	-17.13			
Uzbekistan	1.40	1.40	1.40	1.40	4.86	4.43	3.93	3.93	6.80	6.20	5.50	5.50	0.00	0.00	-0.70	-11.29			
Belarus	0.69	0.72	0.65	0.65	3.33	3.94	3.54	3.54	2.31	2.85	2.30	2.30	0.00	0.00	-0.55	-19.24			
Canada	9.66	10.02	9.25	9.25	3.38	3.51	2.34	2.34	32.67	35.18	21.65	21.65	0.00	0.00	-13.53	-38.46			
South America																			
Argentina	6.73	6.40	6.50	6.50	2.93	2.76	3.15	3.23	19.75	17.64	20.50	21.00	0.50	2.44	3.36	19.05			
Brazil	2.04	2.34	2.74	2.74	2.55	2.67	2.81	2.81	5.20	6.25	7.70	7.70	0.00	0.00	1.45	23.20			
Australia	9.86	12.90	13.00	13.00	1.47	2.58	2.79	2.79	14.48	33.30	36.30	36.30	0.00	0.00	3.00	9.01			
Africa																			
Egypt	1.37	1.39	1.40	1.40	6.40	6.40	6.43	6.43	8.77	8.90	9.00	9.00	0.00	0.00	0.10	1.12			
Morocco	2.51	2.76	2.86	2.86	1.61	0.93	2.64	2.64	4.03	2.56	7.54	7.54	0.00	0.00	4.98	194.53			
Algeria	2.07	2.08	2.08	2.08	1.90	1.88	1.73	1.73	3.95	3.90	3.60	3.60	0.00	0.00	-0.30	-7.69			
Ethiopia	1.79	1.85	1.75	1.75	2.97	2.76	2.74	2.74	5.32	5.10	4.80	4.80	0.00	0.00	-0.30	-5.88			
Middle East																			
Turkey	7.00	7.10	7.05	7.05	2.50	2.57	2.30	2.30	17.50	18.25	16.25	16.25	0.00	0.00	-2.00	-10.96			
Iran	6.20	6.00	6.00	6.00	2.51	2.50	2.00	2.00	15.55	15.00	12.00	12.00	0.00	0.00	-3.00	-20.00			
Iraq	2.40	2.40	2.00	2.00	2.00	1.93	1.75	1.75	4.80	4.64	3.50	3.50	0.00	0.00	-1.14	-24.49			
Syria	1.60	1.60	1.10	1.10	3.00	2.81	1.82	1.82	4.80	4.50	2.00	2.00	0.00	0.00	-2.50	-55.56			
Mexico	0.59	0.56	0.55	0.55	5.54	5.33	6.00	6.00	3.27	2.97	3.28	3.28	0.00	0.03	0.32	10.66			
Others	7.45	7.40	7.58	7.57	2.77	2.79	2.84	2.83	20.64	20.62	21.50	21.43	-0.07	-0.34	0.81	3.90			

Table 03 Total Coarse Grain Area, Yield, and Production

Country / Region	Area (Million hectares)				Yield (Metric tons per hectare)				Production (Million metric tons)				Change in Production						
	2019/20	Prel.		2021/22 Proj.		2019/20	Prel.		2021/22 Proj.		2019/20	Prel.		2021/22 Proj.		From last month		From last year	
		2020/21	Mar	Apr	2020/21		Mar	Apr	2020/21	Mar		Apr	MMT	Percent	MMT	Percent			
World	334.50	344.16	341.75	342.04	4.24	4.17	4.39	4.39	1,417.68	1,436.59	1,498.89	1,501.55	2.66	0.18	64.96	4.52			
United States	36.17	36.81	38.35	38.35	9.94	10.13	10.40	10.40	359.43	372.89	398.71	398.71	0.00	0.00	25.82	6.92			
Total Foreign	298.33	307.35	303.40	303.69	3.55	3.46	3.63	3.63	1,058.25	1,063.70	1,100.19	1,102.85	2.66	0.24	39.14	3.68			
China	43.67	43.72	45.77	45.77	6.16	6.15	6.14	6.14	269.07	269.08	280.85	280.85	0.00	0.00	11.77	4.37			
European Union	28.76	28.76	28.00	27.80	5.31	5.40	5.53	5.54	152.82	155.35	154.82	154.08	-0.74	-0.48	-1.28	-0.82			
United Kingdom	1.41	1.66	1.41	1.41	6.64	5.65	5.89	5.89	9.35	9.36	8.33	8.33	0.00	0.00	-1.03	-11.03			
South America																			
Brazil	19.86	21.31	22.23	22.53	5.33	4.27	5.31	5.33	105.82	90.96	118.02	120.02	2.00	1.69	29.06	31.95			
Argentina	8.39	8.64	9.47	9.47	6.91	6.94	6.58	6.58	57.94	60.00	62.39	62.39	0.00	0.00	2.38	3.97			
Former Soviet Union - 12																			
Russia	14.51	14.55	14.01	14.01	2.79	2.84	2.75	2.75	40.50	41.40	38.54	38.54	0.00	0.00	-2.86	-6.90			
Ukraine	8.22	8.53	8.63	8.63	5.67	4.64	6.18	6.18	46.55	39.59	53.27	53.27	0.00	0.00	13.68	34.56			
Kazakhstan	3.45	3.20	2.63	2.63	1.47	1.54	1.43	1.43	5.06	4.93	3.76	3.76	0.00	0.00	-1.17	-23.79			
Belarus	1.08	1.14	0.99	0.99	3.08	3.47	3.05	3.05	3.32	3.95	3.00	3.00	0.00	0.00	-0.95	-23.99			
Africa																			
Nigeria	13.90	13.10	13.70	13.70	1.42	1.42	1.49	1.49	19.67	18.57	20.40	20.40	0.00	0.00	1.83	9.85			
South Africa	3.12	3.36	3.19	3.19	5.24	5.31	5.29	5.29	16.37	17.81	16.85	16.85	0.00	0.00	-0.96	-5.39			
Tanzania	4.35	5.20	5.10	5.10	1.56	1.46	1.49	1.49	6.77	7.58	7.58	7.58	0.00	0.00	0.00	0.00			
Burkina Faso	4.08	4.00	4.00	4.00	1.12	1.18	1.31	1.31	4.55	4.72	5.23	5.23	0.00	0.00	0.51	10.70			
Ethiopia	5.51	5.61	5.72	5.72	3.34	3.32	3.09	3.09	18.41	18.62	17.65	17.65	0.00	0.00	-0.97	-5.19			
Egypt	1.02	1.02	1.02	1.02	7.09	7.09	7.09	7.09	7.26	7.26	7.26	7.26	0.00	0.00	0.00	0.00			
Mali	4.92	5.17	4.70	4.70	1.46	1.38	1.45	1.45	7.21	7.14	6.80	6.80	0.00	0.00	-0.34	-4.70			
India	23.98	24.12	24.09	24.09	1.99	2.13	2.08	2.08	47.66	51.39	50.07	50.06	-0.01	-0.02	-1.33	-2.59			
Southeast Asia																			
Indonesia	3.80	3.85	3.60	3.90	3.16	3.27	3.33	3.26	12.00	12.60	12.00	12.70	0.70	5.83	0.10	0.79			
Philippines	2.51	2.57	2.60	2.60	3.20	3.25	3.12	3.12	8.03	8.35	8.10	8.10	0.00	0.00	-0.25	-3.02			
Vietnam	0.99	0.95	0.90	0.90	4.80	4.83	4.89	4.89	4.76	4.59	4.40	4.40	0.00	0.00	-0.19	-4.14			
Thailand	1.24	1.28	1.23	1.23	3.66	4.41	4.36	4.36	4.55	5.65	5.35	5.35	0.00	0.00	-0.30	-5.31			
Mexico	8.41	8.76	9.01	9.01	3.82	3.73	3.70	3.70	32.10	32.66	33.35	33.35	0.00	0.00	0.69	2.11			
Canada	5.54	5.80	5.74	5.74	5.16	5.11	4.22	4.22	28.61	29.64	24.21	24.21	0.00	0.00	-5.43	-18.32			
Australia	6.18	5.99	5.96	5.96	1.94	2.79	3.04	3.04	12.00	16.69	18.10	18.10	0.00	0.00	1.41	8.45			
Middle East																			
Turkey	4.53	4.63	4.46	4.46	3.19	3.40	2.60	2.60	14.45	15.76	11.58	11.58	0.00	0.00	-4.18	-26.52			
Iran	1.91	1.81	1.91	1.91	2.63	2.77	2.16	2.16	5.02	5.02	4.12	4.12	0.00	0.00	-0.90	-17.93			
Others	73.01	78.63	73.34	73.23	1.62	1.59	1.69	1.71	118.44	125.05	124.19	124.90	0.71	0.57	-0.15	-0.12			

World and Selected Countries and Regions; Coarse Grain includes: Barley, Corn, Millet, Mixed Grains, Oats, Rye and Sorghum

Table 04 Corn Area, Yield, and Production

Country / Region	Area (Million hectares)				Yield (Metric tons per hectare)				Production (Million metric tons)				Change in Production			
	2019/20	Prel.		2021/22 Proj.		2019/20	Prel.		2021/22 Proj.		2019/20	Prel.		2021/22 Proj.		
		2020/21	Mar	Apr	2020/21		Mar	Apr	2020/21	Mar		Apr	MMT	Percent	MMT	Percent
World	193.54	198.93	203.32	203.89	5.79	5.66	5.93	5.94	1,120.13	1,125.88	1,206.14	1,210.45	4.31	0.36	84.57	7.51
United States	32.92	33.31	34.56	34.56	10.51	10.76	11.11	11.11	345.96	358.45	383.94	383.94	0.00	0.00	25.50	7.11
Total Foreign	160.62	165.62	168.76	169.34	4.82	4.63	4.87	4.88	774.17	767.43	822.20	826.51	4.31	0.52	59.08	7.70
China	41.28	41.26	43.32	43.32	6.32	6.32	6.29	6.29	260.78	260.67	272.55	272.55	0.00	0.00	11.88	4.56
South America																
Brazil	18.50	19.90	20.80	21.10	5.51	4.37	5.48	5.50	102.00	87.00	114.00	116.00	2.00	1.75	29.00	33.33
Argentina	6.30	6.55	7.00	7.00	8.10	7.94	7.57	7.57	51.00	52.00	53.00	53.00	0.00	0.00	1.00	1.92
Bolivia	0.42	0.47	0.48	0.48	2.26	2.30	2.32	2.32	0.96	1.08	1.10	1.10	0.00	0.00	0.02	1.85
European Union	8.90	9.21	9.23	9.21	7.50	7.29	7.56	7.65	66.74	67.14	69.80	70.50	0.70	1.00	3.36	5.00
Africa																
South Africa	2.91	3.12	3.00	3.00	5.45	5.44	5.43	5.43	15.84	16.95	16.30	16.30	0.00	0.00	-0.65	-3.84
Nigeria	6.50	5.50	6.00	6.00	1.69	1.82	1.93	1.93	11.00	10.00	11.60	11.60	0.00	0.00	1.60	16.00
Ethiopia	2.27	2.53	2.40	2.40	4.24	4.18	3.75	3.75	9.64	10.56	9.00	9.00	0.00	0.00	-1.56	-14.75
Egypt	0.80	0.80	0.80	0.80	8.00	8.00	8.00	8.00	6.40	6.40	6.40	6.40	0.00	0.00	0.00	0.00
Tanzania	3.43	4.20	4.10	4.10	1.65	1.55	1.59	1.59	5.65	6.50	6.50	6.50	0.00	0.00	0.00	0.00
Malawi	1.70	1.70	1.70	1.70	1.78	2.22	2.47	2.47	3.03	3.78	4.20	4.20	0.00	0.00	0.42	11.11
Zambia	0.84	1.29	1.30	1.30	2.38	2.62	2.78	2.78	2.00	3.39	3.62	3.62	0.00	0.00	0.23	6.88
Kenya	2.20	2.20	2.20	2.20	1.77	1.82	1.59	1.59	3.90	4.00	3.50	3.50	0.00	0.00	-0.50	-12.50
Uganda	0.95	1.10	1.10	1.10	2.71	2.50	2.55	2.55	2.58	2.75	2.80	2.80	0.00	0.00	0.05	1.82
Zimbabwe	1.62	1.58	1.95	1.95	0.48	0.57	1.39	1.39	0.78	0.91	2.72	2.72	0.00	0.00	1.81	199.23
Former Soviet Union - 12																
Ukraine	4.99	5.40	5.47	5.47	7.19	5.62	7.67	7.67	35.89	30.30	41.90	41.90	0.00	0.00	11.60	38.30
Russia	2.50	2.73	2.90	2.90	5.70	5.08	5.25	5.25	14.28	13.87	15.23	15.23	0.00	0.00	1.35	9.75
South Asia																
India	9.57	9.89	9.90	9.90	3.01	3.20	3.28	3.28	28.77	31.65	32.50	32.50	0.00	0.00	0.85	2.70
Pakistan	1.40	1.42	1.40	1.40	5.61	6.30	5.43	5.93	7.88	8.94	7.60	8.30	0.70	9.21	-0.64	-7.16
Nepal	0.96	0.97	0.97	0.97	2.76	2.82	2.82	2.82	2.65	2.72	2.72	2.72	0.00	0.00	0.00	0.00
Southeast Asia																
Indonesia	3.80	3.85	3.60	3.90	3.16	3.27	3.33	3.26	12.00	12.60	12.00	12.70	0.70	5.83	0.10	0.79
Philippines	2.51	2.57	2.60	2.60	3.20	3.25	3.12	3.12	8.03	8.35	8.10	8.10	0.00	0.00	-0.25	-3.02
Vietnam	0.99	0.95	0.90	0.90	4.80	4.83	4.89	4.89	4.76	4.59	4.40	4.40	0.00	0.00	-0.19	-4.14
Thailand	1.22	1.26	1.20	1.20	3.70	4.46	4.42	4.42	4.50	5.60	5.30	5.30	0.00	0.00	-0.30	-5.36
Mexico	6.62	7.14	7.20	7.20	4.03	3.83	3.83	3.83	26.66	27.35	27.60	27.60	0.00	0.00	0.25	0.93
Canada	1.45	1.41	1.39	1.39	9.24	9.63	10.05	10.05	13.40	13.56	13.98	13.98	0.00	0.00	0.42	3.10
Turkey	0.52	0.62	0.54	0.54	11.54	11.45	12.04	12.04	6.00	7.10	6.50	6.50	0.00	0.00	-0.60	-8.45
Others	25.46	26.00	25.32	25.31	2.63	2.60	2.66	2.67	67.07	67.68	67.28	67.49	0.21	0.31	-0.19	-0.28

World and Selected Countries and Regions

Table 05 Barley Area, Yield, and Production

Country / Region	Area (Million hectares)				Yield (Metric tons per hectare)				Production (Million metric tons)				Change in Production			
	Prel.		2021/22 Proj.		Prel.		2021/22 Proj.		Prel.		2021/22 Proj.		From last month		From last year	
	2019/20	2020/21	Mar	Apr	2019/20	2020/21	Mar	Apr	2019/20	2020/21	Mar	Apr	MMT	Percent	MMT	Percent
World	52.54	51.43	48.65	48.48	3.02	3.11	3.00	2.99	158.76	160.11	146.14	145.10	-1.04	-0.71	-15.00	-9.37
United States	0.90	0.90	0.79	0.79	4.18	4.15	3.25	3.25	3.76	3.72	2.56	2.56	0.00	0.00	-1.16	-31.11
Total Foreign	51.64	50.54	47.86	47.69	3.00	3.09	3.00	2.99	155.00	156.39	143.58	142.54	-1.04	-0.72	-13.85	-8.85
European Union	11.16	11.04	10.41	10.34	4.94	4.92	5.07	5.02	55.18	54.32	52.80	51.97	-0.83	-1.57	-2.35	-4.33
United Kingdom	1.16	1.39	1.15	1.15	6.93	5.85	6.09	6.09	8.05	8.12	7.00	7.00	0.00	0.00	-1.12	-13.76
Former Soviet Union - 12																
Russia	8.40	8.16	7.69	7.69	2.37	2.53	2.28	2.28	19.94	20.63	17.51	17.51	0.00	0.00	-3.12	-15.14
Ukraine	2.78	2.58	2.67	2.67	3.42	3.08	3.71	3.71	9.53	7.95	9.90	9.90	0.00	0.00	1.95	24.58
Kazakhstan	2.98	2.73	2.16	2.16	1.29	1.34	1.10	1.10	3.83	3.66	2.37	2.37	0.00	0.00	-1.29	-35.31
Belarus	0.41	0.41	0.35	0.35	2.69	3.35	2.86	2.86	1.10	1.38	1.00	1.00	0.00	0.00	-0.38	-27.27
Azerbaijan	0.34	0.35	0.37	0.37	2.97	2.81	2.74	2.74	1.02	0.97	1.00	1.00	0.00	0.00	0.03	3.09
Canada	2.73	2.81	3.00	3.00	3.81	3.82	2.31	2.31	10.38	10.74	6.95	6.95	0.00	0.00	-3.79	-35.31
Australia	5.04	4.40	4.35	4.35	2.01	2.98	3.15	3.15	10.13	13.10	13.70	13.70	0.00	0.00	0.60	4.58
Middle East																
Turkey	3.80	3.80	3.70	3.70	2.08	2.13	1.22	1.22	7.90	8.10	4.50	4.50	0.00	0.00	-3.60	-44.44
Iran	1.70	1.60	1.70	1.70	2.12	2.25	1.59	1.59	3.60	3.60	2.70	2.70	0.00	0.00	-0.90	-25.00
Iraq	1.20	1.20	0.60	0.60	1.33	1.29	1.17	1.17	1.60	1.55	0.70	0.70	0.00	0.00	-0.85	-54.84
Syria	1.50	1.50	0.80	0.80	1.33	1.27	0.81	0.81	2.00	1.90	0.65	0.65	0.00	0.00	-1.25	-65.79
Africa																
Ethiopia	0.95	0.93	1.00	1.00	2.50	2.53	2.35	2.35	2.38	2.34	2.35	2.35	0.00	0.00	0.01	0.47
Morocco	1.05	1.47	1.49	1.49	1.11	0.44	1.87	1.87	1.16	0.64	2.78	2.78	0.00	0.00	2.14	334.38
Algeria	1.03	1.03	1.03	1.03	1.95	1.80	1.56	1.56	2.00	1.85	1.60	1.60	0.00	0.00	-0.25	-13.28
Tunisia	0.47	0.36	0.37	0.28	1.94	1.28	1.77	1.54	0.91	0.47	0.65	0.43	-0.22	-33.85	-0.04	-7.53
South Africa	0.13	0.14	0.10	0.10	2.61	4.14	3.48	3.48	0.35	0.59	0.33	0.33	0.00	0.00	-0.26	-43.71
South America																
Argentina	1.08	1.01	1.25	1.25	3.35	4.00	3.84	3.84	3.62	4.04	4.80	4.80	0.00	0.00	0.77	18.96
Uruguay	0.17	0.19	0.22	0.22	3.68	4.78	4.11	4.11	0.61	0.89	0.92	0.92	0.00	0.00	0.03	3.49
Brazil	0.12	0.10	0.10	0.10	3.61	3.63	3.74	3.74	0.43	0.37	0.39	0.39	0.00	0.00	0.01	2.94
India	0.58	0.59	0.59	0.59	2.84	2.92	2.81	2.80	1.63	1.72	1.67	1.66	-0.01	-0.60	-0.06	-3.72
China	0.51	0.51	0.51	0.51	3.94	4.00	3.92	3.92	2.01	2.04	2.00	2.00	0.00	0.00	-0.04	-1.77
Mexico	0.36	0.30	0.34	0.34	2.81	3.07	2.82	2.82	1.01	0.91	0.96	0.96	0.00	0.00	0.06	6.08
Afghanistan	0.18	0.17	0.16	0.16	1.39	1.41	1.25	1.25	0.25	0.24	0.20	0.20	0.00	0.00	-0.04	-16.67
Others	1.81	1.78	1.77	1.75	2.43	2.41	2.36	2.40	4.40	4.30	4.17	4.19	0.02	0.46	-0.11	-2.60

World and Selected Countries and Regions

Table 06 Oats Area, Yield, and Production

Country / Region	Area (Million hectares)				Yield (Metric tons per hectare)				Production (Million metric tons)				Change in Production			
	2019/20	Prel.	2021/22 Proj.		2019/20	Prel.	2021/22 Proj.		2019/20	Prel.	2021/22 Proj.		From last month		From last year	
		2020/21	Mar	Apr		2020/21	Mar	Apr		2020/21	Mar	Apr	MMT	Percent	MMT	Percent
World	9.56	9.98	9.46	9.41	2.43	2.56	2.40	2.36	23.22	25.52	22.70	22.19	-0.51	-2.23	-3.33	-13.05
United States	0.34	0.41	0.26	0.26	2.31	2.34	2.20	2.20	0.77	0.95	0.58	0.58	0.00	0.00	-0.38	-39.41
Total Foreign	9.23	9.57	9.19	9.15	2.43	2.57	2.41	2.36	22.45	24.57	22.12	21.61	-0.51	-2.29	-2.95	-12.02
European Union	2.38	2.56	2.60	2.55	2.93	3.31	3.13	2.99	6.97	8.47	8.15	7.64	-0.51	-6.22	-0.83	-9.77
Former Soviet Union - 12																
Russia	2.43	2.33	2.17	2.17	1.82	1.77	1.72	1.72	4.42	4.13	3.73	3.73	0.00	0.00	-0.39	-9.55
Ukraine	0.18	0.20	0.19	0.19	2.32	2.54	2.59	2.59	0.43	0.52	0.48	0.48	0.00	0.00	-0.04	-6.80
Belarus	0.16	0.16	0.15	0.15	2.30	2.87	2.33	2.33	0.37	0.45	0.35	0.35	0.00	0.00	-0.10	-21.35
Kazakhstan	0.24	0.23	0.20	0.20	1.10	1.05	0.90	0.90	0.27	0.24	0.18	0.18	0.00	0.00	-0.06	-24.17
Canada	1.17	1.31	1.11	1.11	3.62	3.48	2.34	2.34	4.23	4.58	2.61	2.61	0.00	0.00	-1.97	-43.05
South America																
Argentina	0.32	0.24	0.30	0.30	1.86	2.13	2.30	2.30	0.60	0.51	0.69	0.69	0.00	0.00	0.18	35.29
Brazil	0.40	0.43	0.43	0.43	2.21	1.99	2.18	2.18	0.88	0.85	0.93	0.93	0.00	0.00	0.08	9.57
Chile	0.10	0.11	0.11	0.11	4.92	4.65	5.45	5.45	0.48	0.53	0.60	0.60	0.00	0.00	0.08	14.29
Uruguay	0.02	0.02	0.01	0.01	2.19	2.20	2.21	2.21	0.04	0.03	0.03	0.03	0.00	0.00	0.00	-6.06
Oceania																
Australia	0.82	0.95	0.85	0.85	1.40	1.76	1.88	1.88	1.14	1.67	1.60	1.60	0.00	0.00	-0.07	-3.90
New Zealand	0.01	0.00	0.01	0.01	5.40	5.75	5.80	5.80	0.03	0.02	0.03	0.03	0.00	0.00	0.01	26.09
China	0.41	0.41	0.41	0.41	1.48	1.48	1.48	1.48	0.60	0.60	0.60	0.60	0.00	0.00	0.00	0.00
Africa																
Algeria	0.09	0.09	0.09	0.09	1.29	1.29	1.29	1.29	0.11	0.11	0.11	0.11	0.00	0.00	0.00	0.00
Morocco	0.01	0.02	0.04	0.04	0.62	0.40	1.13	1.13	0.01	0.01	0.05	0.05	0.00	0.00	0.04	650.00
South Africa	0.02	0.03	0.04	0.04	0.81	2.19	1.94	1.94	0.02	0.06	0.07	0.07	0.00	0.00	0.01	22.81
Other Europe																
United Kingdom	0.18	0.21	0.20	0.20	5.91	4.91	5.50	5.50	1.08	1.03	1.10	1.10	0.00	0.00	0.07	6.69
Norway	0.07	0.07	0.07	0.07	4.29	4.29	4.29	4.29	0.30	0.30	0.30	0.30	0.00	0.00	0.00	0.00
Serbia	0.03	0.03	0.03	0.03	2.17	2.17	2.17	2.17	0.07	0.07	0.07	0.07	0.00	0.00	0.00	0.00
Albania	0.02	0.02	0.01	0.01	2.06	2.25	2.14	2.14	0.03	0.04	0.03	0.03	0.00	0.00	-0.01	-16.67
Bosnia and Herzegovina	0.01	0.01	0.01	0.01	2.70	3.09	2.82	2.82	0.03	0.03	0.03	0.03	0.00	0.00	0.00	-8.82
Turkey	0.10	0.10	0.11	0.11	2.30	2.40	2.38	2.38	0.23	0.24	0.25	0.25	0.00	0.00	0.01	4.17
Mexico	0.05	0.03	0.05	0.05	1.98	2.03	2.00	2.00	0.10	0.06	0.09	0.09	0.00	0.00	0.03	42.86
Others	0.03	0.03	0.03	0.03	1.66	1.63	1.76	1.76	0.05	0.05	0.05	0.05	0.00	0.00	0.00	4.08

World and Selected Countries and Regions

Table 07 Rye Area, Yield, and Production

Country / Region	Area (Million hectares)				Yield (Metric tons per hectare)				Production (Million metric tons)				Change in Production			
	2019/20	Prel.	2021/22 Proj.		2019/20	Prel.	2021/22 Proj.		2019/20	Prel.	2021/22 Proj.		From last month		From last year	
		2020/21	Mar	Apr		2020/21	Mar	Apr		2020/21	Mar	Apr	MMT	Percent	MMT	Percent
World	4.04	4.16	4.04	4.02	3.04	3.43	3.12	3.11	12.25	14.29	12.58	12.49	-0.09	-0.73	-1.81	-12.64
United States	0.13	0.13	0.12	0.12	2.16	2.19	2.09	2.09	0.27	0.29	0.25	0.25	0.00	0.00	-0.04	-15.02
Total Foreign	3.91	4.03	3.92	3.90	3.06	3.47	3.15	3.14	11.98	14.00	12.33	12.24	-0.09	-0.75	-1.76	-12.59
European Union	2.21	2.08	1.95	1.93	3.80	4.31	4.13	4.12	8.40	8.96	8.05	7.96	-0.09	-1.14	-1.01	-11.22
Former Soviet Union - 12																
Russia	0.82	0.97	0.99	0.99	1.73	2.44	1.73	1.73	1.42	2.38	1.72	1.72	0.00	0.00	-0.66	-27.78
Belarus	0.32	0.36	0.33	0.33	2.37	2.92	2.46	2.46	0.76	1.05	0.80	0.80	0.00	0.00	-0.25	-23.88
Ukraine	0.12	0.14	0.18	0.18	2.90	3.28	3.43	3.43	0.34	0.46	0.60	0.60	0.00	0.00	0.14	30.72
Kazakhstan	0.02	0.02	0.04	0.04	1.10	1.25	0.91	0.91	0.02	0.03	0.04	0.04	0.00	0.00	0.01	33.33
Turkey	0.11	0.11	0.12	0.12	2.91	2.91	2.87	2.87	0.32	0.32	0.33	0.33	0.00	0.00	0.01	3.13
Canada	0.10	0.15	0.15	0.15	3.23	3.19	3.22	3.22	0.33	0.49	0.47	0.47	0.00	0.00	-0.02	-3.07
South America																
Chile	0.00	0.00	0.00	0.00	5.00	5.00	5.00	5.00	0.01	0.01	0.01	0.01	0.00	0.00	0.00	0.00
Argentina	0.11	0.09	0.07	0.07	2.00	1.50	2.00	2.00	0.22	0.14	0.14	0.14	0.00	0.00	0.01	6.67
Other Europe																
Bosnia and Herzegovina	0.00	0.00	0.00	0.00	2.50	3.67	3.00	3.00	0.01	0.01	0.01	0.01	0.00	0.00	0.00	-18.18
Switzerland	0.00	0.00	0.00	0.00	5.50	5.50	5.50	5.50	0.01	0.01	0.01	0.01	0.00	0.00	0.00	0.00
Serbia	0.00	0.00	0.00	0.00	2.50	2.50	2.50	2.50	0.01	0.01	0.01	0.01	0.00	0.00	0.00	0.00
Australia	0.04	0.04	0.04	0.04	0.68	0.68	0.68	0.68	0.03	0.03	0.03	0.03	0.00	0.00	0.00	0.00
Others	0.04	0.04	0.04	0.04	2.51	2.48	2.50	2.50	0.11	0.11	0.11	0.11	0.00	0.00	0.00	0.92

World and Selected Countries and Regions

Table 08 Sorghum Area, Yield, and Production

Country / Region	Area (Million hectares)				Yield (Metric tons per hectare)				Production (Million metric tons)				Change in Production			
	Prel.		2021/22 Proj.		Prel.		2021/22 Proj.		Prel.		2021/22 Proj.		From last month		From last year	
	2019/20	2020/21	Mar	Apr	2019/20	2020/21	Mar	Apr	2019/20	2020/21	Mar	Apr	MMT	Percent	MMT	Percent
World	39.74	42.69	41.76	41.75	1.46	1.45	1.57	1.57	57.92	61.92	65.60	65.59	-0.01	-0.01	3.67	5.93
United States	1.89	2.06	2.63	2.63	4.58	4.59	4.33	4.33	8.67	9.47	11.38	11.38	0.00	0.00	1.90	20.07
Total Foreign	37.85	40.63	39.13	39.13	1.30	1.29	1.39	1.39	49.24	52.44	54.22	54.21	-0.01	-0.02	1.77	3.38
Africa																
Nigeria	5.40	5.60	5.70	5.70	1.23	1.17	1.19	1.19	6.67	6.57	6.80	6.80	0.00	0.00	0.23	3.50
Ethiopia	1.83	1.68	1.87	1.87	2.88	2.69	2.78	2.78	5.27	4.52	5.20	5.20	0.00	0.00	0.68	15.12
Sudan	6.83	9.03	7.00	7.00	0.54	0.57	0.71	0.71	3.71	5.15	5.00	5.00	0.00	0.00	-0.15	-2.91
Burkina Faso	1.89	1.80	1.80	1.80	0.99	1.02	1.19	1.19	1.87	1.84	2.15	2.15	0.00	0.00	0.31	16.85
Mali	1.50	1.83	1.50	1.50	1.01	0.98	1.00	1.00	1.51	1.80	1.50	1.50	0.00	0.00	-0.30	-16.71
Niger	3.75	3.70	3.70	3.70	0.51	0.52	0.51	0.51	1.90	1.92	1.90	1.90	0.00	0.00	-0.02	-1.14
Cameroon	0.73	0.74	0.74	0.74	1.67	1.62	1.62	1.62	1.22	1.20	1.20	1.20	0.00	0.00	0.00	0.00
Tanzania	0.65	0.70	0.70	0.70	1.13	1.07	1.07	1.07	0.73	0.75	0.75	0.75	0.00	0.00	0.00	0.00
Egypt	0.14	0.14	0.14	0.14	5.36	5.36	5.36	5.36	0.75	0.75	0.75	0.75	0.00	0.00	0.00	0.00
Uganda	0.42	0.43	0.43	0.43	0.95	0.94	0.94	0.94	0.40	0.40	0.40	0.40	0.00	0.00	0.00	0.00
Ghana	0.30	0.25	0.25	0.25	1.15	1.42	1.12	1.12	0.35	0.36	0.28	0.28	0.00	0.00	-0.08	-21.35
Mozambique	0.23	0.26	0.25	0.25	0.69	0.54	0.70	0.70	0.16	0.14	0.18	0.18	0.00	0.00	0.03	23.24
South Africa	0.04	0.05	0.04	0.04	3.67	4.39	3.95	3.95	0.16	0.22	0.15	0.15	0.00	0.00	-0.07	-30.23
Mexico	1.38	1.29	1.42	1.42	3.14	3.37	3.31	3.31	4.33	4.35	4.70	4.70	0.00	0.00	0.35	8.10
South America																
Argentina	0.58	0.75	0.85	0.85	4.35	4.43	4.41	4.41	2.50	3.32	3.75	3.75	0.00	0.00	0.43	12.95
Brazil	0.84	0.88	0.90	0.90	2.99	3.12	3.00	3.00	2.50	2.73	2.70	2.70	0.00	0.00	-0.03	-1.17
South Asia																
India	4.82	4.38	4.60	4.60	0.99	1.10	0.96	0.96	4.77	4.81	4.40	4.40	0.00	0.00	-0.41	-8.56
Pakistan	0.20	0.13	0.26	0.26	0.60	0.76	0.59	0.59	0.12	0.10	0.15	0.15	0.00	0.00	0.05	56.25
China	0.64	0.64	0.63	0.63	4.90	4.68	4.76	4.76	3.14	2.97	3.00	3.00	0.00	0.00	0.03	1.01
Australia	0.20	0.51	0.62	0.62	1.95	2.94	3.71	3.71	0.40	1.50	2.30	2.30	0.00	0.00	0.80	53.33
European Union	0.19	0.21	0.18	0.18	5.38	5.15	5.70	5.72	1.01	1.10	1.02	1.01	-0.01	-0.89	-0.09	-8.30
Others	5.30	5.65	5.56	5.56	1.09	1.06	1.07	1.07	5.79	5.96	5.95	5.95	0.00	0.00	0.00	-0.05

World and Selected Countries and Regions

Table 09 Rice Area, Yield, and Production
World and Selected Countries and Regions

Country / Region	Area (Million hectares)				Yield (Metric tons per hectare)				Production (Million metric tons)				Change in Production			
	2019/20	Prel.		2021/22 Proj.		2019/20	Prel.		2021/22 Proj.		2019/20	Prel.		2021/22 Proj.		
		2020/21	Mar	Apr	2020/21		Mar	Apr	2020/21	Mar		Apr	From last month MMT	Percent	From last year MMT	Percent
World	161.70	165.15	166.61	166.47	4.61	4.60	4.61	4.60	498.82	508.84	514.07	513.03	-1.04	-0.20	4.18	0.82
United States	1.00	1.21	1.01	1.01	8.38	8.54	8.64	8.64	5.88	7.22	6.09	6.09	0.00	0.00	-1.13	-15.70
Total Foreign	160.70	163.94	165.60	165.46	4.58	4.57	4.58	4.58	492.95	501.62	507.98	506.94	-1.04	-0.21	5.32	1.06
East Asia																
China	29.69	30.08	29.92	29.92	7.06	7.04	7.11	7.11	146.73	148.30	148.99	148.99	0.00	0.00	0.69	0.47
Japan	1.54	1.53	1.53	1.53	6.78	6.79	6.81	6.81	7.61	7.57	7.56	7.56	0.00	0.00	-0.01	-0.17
Korea, South	0.73	0.73	0.73	0.73	6.87	6.49	7.12	7.12	3.74	3.51	3.88	3.88	0.00	0.00	0.38	10.69
Korea, North	0.48	0.49	0.50	0.50	5.89	4.44	4.18	4.18	1.82	1.40	1.36	1.36	0.00	0.00	-0.04	-2.72
South Asia																
India	43.66	45.77	47.00	47.00	4.08	4.08	4.12	4.12	118.87	124.37	129.00	129.00	0.00	0.00	4.63	3.72
Bangladesh	11.83	11.50	11.62	11.62	4.55	4.51	4.63	4.63	35.85	34.60	35.85	35.85	0.00	0.00	1.25	3.61
Pakistan	3.03	3.34	3.40	3.40	3.67	3.79	3.84	3.84	7.41	8.42	8.70	8.70	0.00	0.00	0.28	3.33
Nepal	1.46	1.47	1.48	1.48	3.80	3.78	3.77	3.77	3.70	3.70	3.70	3.70	0.00	0.00	0.00	0.11
Sri Lanka	0.97	1.09	0.98	1.10	4.85	4.57	4.41	3.91	3.21	3.39	2.92	2.92	0.00	0.00	-0.47	-13.75
Southeast Asia																
Indonesia	11.60	11.40	11.83	11.60	4.71	4.77	4.71	4.67	34.70	34.50	35.40	34.40	-1.00	-2.82	-0.10	-0.29
Vietnam	7.38	7.31	7.30	7.30	5.88	6.00	5.96	5.96	27.10	27.38	27.19	27.19	0.00	0.00	-0.19	-0.68
Thailand	9.89	10.51	10.60	10.60	2.70	2.72	2.82	2.82	17.66	18.86	19.70	19.70	0.00	0.00	0.84	4.44
Burma	6.90	6.90	6.90	6.90	2.86	2.85	2.85	2.85	12.65	12.60	12.60	12.60	0.00	0.00	0.00	0.00
Philippines	4.64	4.76	4.80	4.80	4.08	4.14	4.10	4.10	11.93	12.42	12.40	12.40	0.00	0.00	-0.02	-0.13
Cambodia	3.26	3.27	3.30	3.30	2.89	2.90	2.93	2.93	5.74	5.78	5.90	5.90	0.00	0.00	0.12	2.02
Laos	0.84	0.96	0.97	0.97	3.01	3.14	3.19	3.19	1.60	1.90	1.95	1.95	0.00	0.00	0.05	2.63
Malaysia	0.70	0.68	0.68	0.68	4.01	4.07	4.07	4.07	1.83	1.80	1.80	1.80	0.00	0.00	0.00	0.00
South America																
Brazil	1.67	1.68	1.67	1.65	6.71	7.00	6.41	6.36	7.60	8.00	7.28	7.14	-0.14	-1.87	-0.86	-10.76
Peru	0.41	0.42	0.41	0.42	7.71	8.21	7.90	8.35	2.20	2.36	2.24	2.40	0.16	7.20	0.03	1.40
Africa																
Egypt	0.76	0.70	0.50	0.50	8.20	8.28	8.41	8.41	4.30	4.00	2.90	2.90	0.00	0.00	-1.10	-27.50
Madagascar	1.40	1.40	1.40	1.40	3.02	3.02	2.86	2.86	2.71	2.71	2.56	2.56	0.00	0.00	-0.15	-5.43
Nigeria	3.50	3.60	3.65	3.65	2.29	2.16	2.17	2.17	5.04	4.89	5.00	5.00	0.00	0.00	0.11	2.25
European Union	0.42	0.42	0.41	0.40	6.96	6.70	6.68	6.66	1.99	1.93	1.85	1.84	-0.01	-0.76	-0.09	-4.47
Iran	0.58	0.58	0.56	0.56	5.25	5.27	5.14	5.14	1.99	2.00	1.90	1.90	0.00	0.00	-0.10	-5.00
Others	13.37	13.38	13.47	13.46	2.84	2.86	2.85	2.85	24.97	25.24	25.34	25.29	-0.05	-0.21	0.05	0.21

Yield is on a rough basis, before the milling process. Production is on a milled basis, after the milling process.

Table 10 Total Oilseed Area, Yield, and Production

World and Selected Countries and Regions

Country / Region	Area (Million hectares)				Yield (Metric tons per hectare)				Production (Million metric tons)				Change in Production			
	2019/20	Prel.	2021/22 Proj.		2019/20	Prel.	2021/22 Proj.		2019/20	Prel.	2021/22 Proj.		From last month		From last year	
		2020/21	Mar	Apr		2020/21	Mar	Apr		2020/21	Mar	Apr	MMT	Percent	MMT	Percent
World Total	--	--	--	--	--	--	--	--	581.13	605.68	601.62	599.21	-2.41	-0.40	-6.47	-1.07
Total Foreign	--	--	--	--	--	--	--	--	474.15	481.18	471.03	468.62	-2.41	-0.51	-12.56	-2.61
Oilseed, Copra	--	--	--	--	--	--	--	--	5.66	5.56	5.83	5.83	0.00	0.00	0.27	4.76
Oilseed, Palm Kernel	--	--	--	--	--	--	--	--	19.30	19.03	19.73	20.11	0.37	1.90	1.08	5.66
Major Oilseeds	245.73	251.28	257.32	257.81	2.26	2.31	2.24	2.22	556.17	581.09	576.06	573.28	-2.78	-0.48	-7.81	-1.34
United States	36.83	38.83	40.95	40.95	2.91	3.21	3.19	3.19	106.98	124.49	130.59	130.59	0.00	0.00	6.10	4.90
Foreign Oilseeds	208.90	212.44	216.37	216.86	2.15	2.15	2.06	2.04	449.19	456.59	445.47	442.69	-2.78	-0.62	-13.90	-3.05
South America	64.00	65.61	66.51	67.21	3.18	3.21	2.88	2.81	203.24	210.34	191.74	188.64	-3.10	-1.62	-21.70	-10.32
Brazil	38.77	40.77	42.41	42.61	3.45	3.53	3.12	3.05	133.78	143.78	132.13	130.13	-2.00	-1.51	-13.65	-9.49
Argentina	19.03	18.99	18.51	18.51	2.82	2.70	2.62	2.62	53.64	51.22	48.53	48.53	0.00	0.00	-2.69	-5.26
Paraguay	3.57	3.24	2.89	3.39	2.90	3.09	1.88	1.28	10.36	10.02	5.42	4.32	-1.10	-20.30	-5.70	-56.89
Bolivia	1.49	1.51	1.53	1.53	2.00	2.09	2.07	2.07	2.99	3.15	3.16	3.16	0.00	0.00	0.01	0.44
Uruguay	0.98	0.97	1.04	1.04	2.14	1.87	2.04	2.04	2.09	1.82	2.13	2.13	0.00	0.00	0.31	17.23
China	24.91	25.50	24.15	24.15	2.51	2.57	2.57	2.57	62.44	65.58	62.08	62.08	0.00	0.00	-3.50	-5.33
South Asia	40.95	42.45	42.12	41.72	0.96	0.96	1.06	1.07	39.13	40.70	44.62	44.64	0.02	0.04	3.94	9.68
India	37.50	39.15	39.05	38.80	0.94	0.96	1.05	1.06	35.20	37.55	40.94	40.94	0.00	0.00	3.39	9.02
Pakistan	3.08	2.94	2.70	2.55	1.13	0.92	1.20	1.27	3.49	2.69	3.23	3.25	0.02	0.53	0.56	20.68
European Union	10.69	11.11	11.02	11.21	2.62	2.59	2.78	2.76	28.07	28.79	30.66	30.95	0.29	0.94	2.16	7.50
United Kingdom	0.50	0.38	0.31	0.31	3.38	2.77	3.21	3.21	1.68	1.05	0.98	0.98	0.00	0.00	-0.07	-6.67
Former Soviet Union - 12	26.07	25.70	27.57	27.57	1.96	1.73	1.90	1.90	51.10	44.58	52.48	52.48	0.00	0.00	7.90	17.73
Russia	12.56	12.50	14.23	14.23	1.73	1.61	1.62	1.62	21.70	20.14	23.11	23.11	0.00	0.00	2.96	14.71
Ukraine	9.70	9.65	9.58	9.58	2.52	2.06	2.54	2.54	24.46	19.85	24.32	24.32	0.00	0.00	4.47	22.49
Uzbekistan	1.02	0.99	1.00	1.00	1.39	1.43	1.39	1.39	1.43	1.42	1.38	1.38	0.00	0.00	-0.04	-2.68
Canada	10.77	10.41	11.18	11.18	2.43	2.49	1.70	1.70	26.12	25.95	18.95	18.95	0.00	0.00	-6.99	-26.95
Africa	22.62	22.37	23.56	23.56	1.04	1.04	1.04	1.04	23.49	23.17	24.48	24.48	0.00	-0.01	1.31	5.65
Nigeria	4.32	4.62	4.97	4.97	1.38	1.22	1.25	1.25	5.96	5.65	6.20	6.20	0.00	0.00	0.55	9.73
South Africa	1.27	1.36	1.63	1.63	1.70	1.97	1.75	1.75	2.16	2.68	2.86	2.85	0.00	-0.07	0.18	6.53
Tanzania	1.35	1.17	1.24	1.24	1.01	1.02	0.98	0.98	1.36	1.19	1.21	1.21	0.00	0.00	0.02	1.51
Southeast Asia	3.12	3.25	3.20	3.20	1.38	1.36	1.37	1.37	4.30	4.41	4.38	4.38	0.00	0.00	-0.04	-0.79
Burma	1.87	2.03	2.04	2.04	1.18	1.17	1.19	1.19	2.21	2.37	2.42	2.42	0.00	0.00	0.04	1.81
Indonesia	0.95	0.94	0.89	0.89	1.55	1.54	1.55	1.55	1.47	1.45	1.39	1.39	0.00	0.00	-0.06	-4.15
Australia	2.12	2.78	3.70	3.70	1.19	1.95	2.19	2.19	2.53	5.43	8.10	8.10	0.00	0.00	2.67	49.12
Turkey	1.42	1.18	1.32	1.32	2.33	2.46	2.55	2.55	3.31	2.89	3.35	3.37	0.02	0.45	0.47	16.38
Others	1.73	1.70	1.74	1.74	2.19	2.19	2.10	2.10	3.78	3.71	3.65	3.65	0.00	0.05	-0.06	-1.59

World Total and Total Foreign: (Major Oilseeds plus copra and palm kernel) Major Oilseeds: (soybeans, sunflowerseeds, peanuts(inshell), cottonseed and rapeseed)

Table 11 Soybean Area, Yield, and Production

Country / Region	Area (Million hectares)				Yield (Metric tons per hectare)				Production (Million metric tons)				Change in Production			
	2019/20	Prel.		2021/22 Proj.		2019/20	Prel.		2021/22 Proj.		2019/20	Prel.		2021/22 Proj.		
		2020/21	Mar	Apr	2020/21		Mar	Apr	2020/21	Mar		Apr	MMT	Percent	MMT	Percent
World	122.96	128.46	129.35	130.10	2.76	2.86	2.74	2.70	339.97	367.76	353.80	350.72	-3.08	-0.87	-17.04	-4.63
United States	30.33	33.43	34.94	34.94	3.19	3.43	3.45	3.45	96.67	114.75	120.71	120.71	0.00	0.00	5.96	5.19
Total Foreign	92.63	95.03	94.41	95.16	2.63	2.66	2.47	2.42	243.30	253.01	233.09	230.01	-3.08	-1.32	-23.00	-9.09
South America																
Brazil	36.90	39.20	40.60	40.80	3.48	3.56	3.13	3.06	128.50	139.50	127.00	125.00	-2.00	-1.57	-14.50	-10.39
Argentina	16.70	16.47	16.00	16.00	2.92	2.81	2.72	2.72	48.80	46.20	43.50	43.50	0.00	0.00	-2.70	-5.84
Paraguay	3.50	3.15	2.80	3.30	2.93	3.14	1.89	1.27	10.25	9.90	5.30	4.20	-1.10	-20.75	-5.70	-57.58
Bolivia	1.36	1.39	1.40	1.40	2.08	2.17	2.14	2.14	2.83	3.00	3.00	3.00	0.00	0.00	0.00	0.00
Uruguay	0.92	0.91	0.98	0.98	2.17	1.88	2.07	2.07	1.99	1.71	2.02	2.02	0.00	0.00	0.31	18.34
East Asia																
China	9.33	9.88	8.40	8.40	1.94	1.98	1.95	1.95	18.09	19.60	16.40	16.40	0.00	0.00	-3.20	-16.34
Korea, South	0.06	0.06	0.06	0.06	1.81	1.47	1.71	1.71	0.11	0.08	0.09	0.09	0.00	0.00	0.01	16.05
Korea, North	0.16	0.16	0.17	0.17	1.70	1.40	1.44	1.44	0.26	0.23	0.24	0.24	0.00	0.00	0.01	3.48
Japan	0.14	0.14	0.15	0.15	1.47	1.65	1.66	1.66	0.21	0.24	0.24	0.24	0.00	0.00	0.01	2.55
India	12.19	12.92	12.50	12.50	0.76	0.81	0.95	0.95	9.30	10.45	11.90	11.90	0.00	0.00	1.45	13.88
Canada	2.27	2.04	2.13	2.13	2.71	3.12	2.94	2.94	6.15	6.36	6.27	6.27	0.00	0.00	-0.09	-1.37
Former Soviet Union - 12																
Russia	2.78	2.71	2.99	2.99	1.57	1.59	1.59	1.59	4.36	4.31	4.76	4.76	0.00	0.00	0.45	10.52
Ukraine	1.96	1.46	1.44	1.44	2.29	2.05	2.64	2.64	4.50	3.00	3.80	3.80	0.00	0.00	0.80	26.67
European Union	0.94	1.00	0.94	0.99	2.89	2.61	2.91	2.77	2.71	2.60	2.74	2.74	0.00	0.15	0.14	5.35
Southeast Asia																
Indonesia	0.40	0.39	0.35	0.35	1.20	1.22	1.21	1.21	0.48	0.48	0.43	0.43	0.00	0.00	-0.05	-10.53
Vietnam	0.04	0.04	0.03	0.03	1.57	1.57	1.67	1.67	0.07	0.06	0.05	0.05	0.00	0.00	-0.01	-9.09
Thailand	0.03	0.03	0.03	0.03	1.53	1.63	1.63	1.63	0.05	0.05	0.05	0.05	0.00	0.00	0.00	0.00
Burma	0.14	0.14	0.13	0.13	1.04	1.04	1.04	1.04	0.14	0.14	0.14	0.14	0.00	0.00	-0.01	-3.57
Serbia	0.22	0.22	0.22	0.22	2.73	2.89	2.45	2.45	0.60	0.64	0.54	0.54	0.00	0.00	-0.10	-14.96
Mexico	0.15	0.16	0.19	0.19	1.57	1.58	1.57	1.57	0.24	0.25	0.29	0.29	0.00	0.00	0.04	17.89
Africa																
South Africa	0.71	0.83	0.92	0.92	1.77	2.29	1.99	1.99	1.25	1.89	1.82	1.82	0.00	0.00	-0.07	-3.75
Nigeria	1.04	1.10	1.20	1.20	1.11	0.95	1.04	1.04	1.15	1.05	1.25	1.25	0.00	0.00	0.20	19.05
Zambia	0.20	0.16	0.30	0.30	1.43	1.81	0.84	0.84	0.28	0.30	0.25	0.25	0.00	0.00	-0.05	-15.82
Uganda	0.05	0.05	0.05	0.05	0.60	0.60	0.60	0.60	0.03	0.03	0.03	0.03	0.00	0.00	0.00	0.00
Middle East																
Iran	0.07	0.07	0.07	0.07	2.43	2.41	2.29	2.29	0.17	0.17	0.16	0.16	0.00	0.00	-0.01	-5.33
Turkey	0.03	0.03	0.03	0.03	3.89	3.79	3.67	3.91	0.11	0.11	0.11	0.13	0.02	13.64	0.02	13.64
Others	0.35	0.34	0.35	0.35	1.95	2.03	2.04	2.03	0.69	0.69	0.72	0.72	0.00	0.00	0.03	4.66

World and Selected Countries and Regions

Table 12 Cottonseed Area, Yield, and Production

Country / Region	Area (Million hectares)				Yield (Metric tons per hectare)				Production (Million metric tons)				Change in Production						
	2019/20	Prel.		2021/22 Proj.		2019/20	Prel.		2021/22 Proj.		2019/20	Prel.		2021/22 Proj.		From last month		From last year	
		2020/21	Mar	Apr	2020/21		Mar	Apr	2020/21	Mar		Apr	MMT	Percent	MMT	Percent			
World	33.88	30.82	31.77	31.52	1.30	1.33	1.36	1.38	43.97	40.91	43.35	43.47	0.13	0.30	2.57	6.27			
United States	4.65	3.35	4.03	4.03	1.16	1.20	1.21	1.21	5.39	4.02	4.88	4.88	0.00	0.00	0.86	21.25			
Total Foreign	29.22	27.47	27.73	27.48	1.32	1.34	1.39	1.40	38.57	36.88	38.47	38.60	0.13	0.33	1.71	4.64			
South Asia																			
India	13.40	13.29	12.40	12.15	0.90	0.88	0.91	0.93	12.10	11.72	11.25	11.25	0.00	0.00	-0.47	-3.99			
Pakistan	2.45	2.20	2.00	2.00	1.10	0.89	1.26	1.30	2.69	1.95	2.51	2.60	0.09	3.46	0.65	33.35			
China	3.45	3.25	3.10	3.10	3.10	3.50	3.41	3.41	10.68	11.37	10.58	10.58	0.00	0.00	-0.78	-6.90			
Former Soviet Union - 12																			
Uzbekistan	1.01	0.98	0.98	0.98	1.36	1.41	1.36	1.36	1.37	1.37	1.33	1.33	0.00	0.00	-0.04	-2.84			
Turkmenistan	0.55	0.55	0.55	0.55	0.66	0.66	0.64	0.64	0.36	0.36	0.35	0.35	0.00	0.00	-0.01	-2.22			
Tajikistan	0.18	0.16	0.17	0.17	1.27	1.11	1.15	1.15	0.23	0.18	0.20	0.20	0.00	0.00	0.02	9.55			
Kazakhstan	0.13	0.11	0.12	0.12	1.13	0.95	0.90	0.90	0.14	0.11	0.10	0.10	0.00	0.00	0.00	-1.90			
South America																			
Brazil	1.67	1.37	1.60	1.60	2.75	2.62	2.74	2.74	4.58	3.59	4.38	4.38	0.00	0.00	0.79	21.99			
Argentina	0.42	0.43	0.48	0.48	0.68	0.71	0.68	0.68	0.28	0.30	0.33	0.33	0.00	0.00	0.03	8.67			
Middle East																			
Turkey	0.57	0.35	0.45	0.45	1.98	2.71	2.76	2.76	1.13	0.95	1.24	1.24	0.00	0.00	0.29	31.05			
Syria	0.03	0.03	0.03	0.03	2.36	2.36	2.20	2.20	0.06	0.06	0.06	0.06	0.00	0.00	0.00	-6.78			
Iran	0.09	0.10	0.10	0.10	1.22	1.35	1.35	1.35	0.11	0.13	0.14	0.14	0.00	0.00	0.00	0.75			
Australia	0.06	0.28	0.60	0.60	3.12	3.06	2.75	2.75	0.19	0.84	1.65	1.65	0.00	0.00	0.81	96.43			
European Union	0.35	0.34	0.32	0.32	1.81	1.59	1.48	1.59	0.64	0.54	0.48	0.51	0.04	7.56	-0.03	-5.36			
Africa																			
Burkina Faso	0.58	0.56	0.60	0.60	0.42	0.46	0.45	0.45	0.24	0.25	0.27	0.27	0.00	0.00	0.02	6.32			
Mali	0.74	0.17	0.72	0.72	0.52	0.49	0.54	0.54	0.38	0.08	0.39	0.39	0.00	0.00	0.31	380.25			
Cameroon	0.25	0.23	0.23	0.23	1.29	1.51	1.52	1.52	0.32	0.34	0.35	0.35	0.00	0.00	0.01	2.94			
Cote d'Ivoire	0.41	0.45	0.48	0.48	0.66	0.61	0.62	0.62	0.27	0.27	0.29	0.29	0.00	0.00	0.02	8.89			
Benin	0.67	0.62	0.64	0.64	0.71	0.78	0.78	0.78	0.47	0.48	0.50	0.50	0.00	0.00	0.02	3.55			
Tanzania	0.35	0.17	0.24	0.24	0.75	0.56	0.46	0.46	0.26	0.09	0.11	0.11	0.00	0.00	0.02	19.35			
Egypt	0.10	0.07	0.10	0.10	0.92	1.00	1.00	1.00	0.09	0.07	0.10	0.10	0.00	0.00	0.04	53.85			
Nigeria	0.15	0.27	0.27	0.27	0.57	0.56	0.56	0.56	0.09	0.15	0.15	0.15	0.00	0.00	0.00	0.00			
Uganda	0.09	0.10	0.10	0.10	1.67	1.40	1.40	1.40	0.15	0.14	0.14	0.14	0.00	0.00	0.00	0.00			
Zimbabwe	0.18	0.24	0.21	0.21	0.40	0.55	0.36	0.36	0.07	0.13	0.08	0.08	0.00	0.00	-0.06	-42.86			
Sudan	0.20	0.20	0.20	0.20	1.53	1.41	1.41	1.41	0.31	0.28	0.28	0.28	0.00	0.00	0.00	0.00			
Mexico	0.23	0.15	0.16	0.15	2.37	2.40	2.65	2.71	0.53	0.35	0.41	0.42	0.01	1.71	0.07	19.83			
Burma	0.25	0.24	0.25	0.25	1.22	1.17	1.18	1.18	0.30	0.28	0.29	0.29	0.00	0.00	0.01	3.57			
Others	0.72	0.63	0.66	0.66	0.76	0.81	0.78	0.78	0.55	0.51	0.52	0.52	0.00	-0.39	0.01	0.98			

World and Selected Countries and Regions

Table 13 Peanut Area, Yield, and Production

Country / Region	Area (Million hectares)				Yield (Metric tons per hectare)				Production (Million metric tons)				Change in Production						
	2019/20	Prel.		2021/22 Proj.		2019/20	Prel.		2021/22 Proj.		2019/20	Prel.		2021/22 Proj.		From last month		From last year	
		2020/21	Mar	Apr	2020/21		Mar	Apr	2020/21	Mar		Apr	MMT	Percent	MMT	Percent			
World	28.18	30.21	29.65	29.65	1.72	1.64	1.71	1.71	48.43	49.55	50.61	50.60	-0.01	-0.01	1.05	2.12			
United States	0.56	0.65	0.63	0.63	4.41	4.27	4.64	4.64	2.48	2.79	2.90	2.90	0.00	0.00	0.11	3.76			
Total Foreign	27.62	29.55	29.02	29.02	1.66	1.58	1.64	1.64	45.95	46.76	47.71	47.70	-0.01	-0.01	0.95	2.02			
China	4.63	4.73	4.75	4.75	3.78	3.80	3.83	3.83	17.52	17.99	18.20	18.20	0.00	0.00	0.21	1.15			
Africa																			
Nigeria	3.13	3.25	3.50	3.50	1.51	1.37	1.37	1.37	4.72	4.45	4.80	4.80	0.00	0.00	0.35	7.87			
Sudan	3.13	3.48	3.00	3.00	0.90	0.69	0.83	0.83	2.83	2.40	2.50	2.50	0.00	0.00	0.10	4.17			
Senegal	1.11	1.23	1.20	1.20	1.28	1.47	1.42	1.42	1.42	1.80	1.70	1.70	0.00	0.00	-0.10	-5.40			
Cameroon	0.43	0.43	0.43	0.43	1.40	1.40	1.40	1.40	0.60	0.60	0.60	0.60	0.00	0.00	0.00	0.00			
Ghana	0.33	0.33	0.33	0.33	1.36	1.36	1.36	1.36	0.45	0.45	0.45	0.45	0.00	0.00	0.00	0.00			
Chad	0.79	0.80	0.80	0.80	1.14	1.13	1.13	1.13	0.90	0.90	0.90	0.90	0.00	0.00	0.00	0.00			
Malawi	0.40	0.40	0.40	0.40	0.88	0.88	0.88	0.88	0.35	0.35	0.35	0.35	0.00	0.00	0.00	0.00			
Congo (Kinshasa)	0.50	0.50	0.50	0.50	0.92	0.90	0.90	0.90	0.46	0.45	0.45	0.45	0.00	0.00	0.00	0.00			
Niger	0.90	0.92	0.92	0.92	0.60	0.60	0.60	0.60	0.54	0.55	0.55	0.55	0.00	0.00	0.00	0.00			
Mali	0.45	0.43	0.43	0.43	0.82	1.00	1.00	1.00	0.37	0.43	0.43	0.43	0.00	0.00	0.00	0.00			
Uganda	0.43	0.43	0.43	0.43	0.71	0.71	0.71	0.71	0.30	0.30	0.30	0.30	0.00	0.00	0.00	0.00			
Burkina Faso	0.49	0.49	0.50	0.50	0.81	0.82	0.80	0.80	0.40	0.40	0.40	0.40	0.00	0.00	0.00	0.00			
Guinea	0.91	0.90	0.90	0.90	1.05	1.00	1.00	1.00	0.96	0.90	0.90	0.90	0.00	0.00	0.00	0.00			
Egypt	0.06	0.06	0.06	0.06	3.20	3.20	3.20	3.20	0.21	0.21	0.21	0.21	0.00	0.00	0.00	0.00			
Central African Republic	0.10	0.10	0.10	0.10	1.50	1.50	1.50	1.50	0.15	0.15	0.15	0.15	0.00	0.00	0.00	0.00			
South Africa	0.04	0.04	0.05	0.05	1.76	2.05	2.00	2.00	0.07	0.08	0.09	0.09	0.00	0.00	0.01	12.50			
Mozambique	0.53	0.35	0.38	0.38	0.28	0.30	0.34	0.34	0.15	0.10	0.13	0.13	0.00	0.00	0.03	26.21			
Cote d'Ivoire	0.15	0.15	0.15	0.15	1.45	1.45	1.45	1.45	0.21	0.21	0.21	0.21	0.00	0.00	0.00	0.00			
Benin	0.19	0.19	0.19	0.19	0.92	0.92	0.92	0.92	0.18	0.18	0.18	0.18	0.00	0.00	0.00	0.00			
South Asia																			
India	4.83	6.02	5.60	5.60	1.30	1.11	1.21	1.21	6.26	6.70	6.80	6.80	0.00	0.00	0.10	1.49			
Pakistan	0.10	0.14	0.10	0.10	0.92	0.89	0.92	0.92	0.10	0.12	0.09	0.09	0.00	0.00	-0.03	-26.83			
Southeast Asia																			
Indonesia	0.55	0.55	0.54	0.54	1.80	1.78	1.78	1.78	0.99	0.97	0.96	0.96	0.00	0.00	-0.01	-1.03			
Burma	0.89	1.06	1.06	1.06	1.55	1.48	1.51	1.51	1.38	1.56	1.60	1.60	0.00	0.00	0.04	2.43			
Vietnam	0.17	0.17	0.16	0.16	2.50	2.50	2.50	2.50	0.43	0.41	0.40	0.40	0.00	0.00	-0.01	-3.15			
Thailand	0.02	0.02	0.02	0.02	1.67	1.67	1.67	1.67	0.04	0.04	0.04	0.04	0.00	0.00	0.00	0.00			
South America																			
Argentina	0.37	0.40	0.40	0.40	3.50	3.16	3.25	3.25	1.29	1.27	1.30	1.30	0.00	0.00	0.03	2.36			
Brazil	0.16	0.17	0.18	0.18	3.93	3.88	3.89	3.89	0.63	0.64	0.70	0.70	0.00	0.00	0.06	9.38			
Mexico	0.05	0.06	0.05	0.05	1.74	1.73	1.74	1.74	0.08	0.10	0.09	0.09	0.00	0.00	-0.01	-9.80			
Others	1.79	1.79	1.90	1.90	1.12	1.15	1.18	1.18	2.00	2.05	2.24	2.24	-0.01	-0.22	0.19	9.07			

Table 14 Sunflowerseed Area, Yield, and Production

Country / Region	Area (Million hectares)				Yield (Metric tons per hectare)				Production (Million metric tons)				Change in Production						
	2019/20	Prel.		2021/22 Proj.		2019/20	Prel.		2021/22 Proj.		2019/20	Prel.		2021/22 Proj.		From last month		From last year	
		2020/21	Mar	Apr	2020/21		Mar	Apr	2020/21	Mar		Apr	MMT	Percent	MMT	Percent			
World	26.03	26.94	28.75	28.82	2.08	1.83	1.99	1.99	54.20	49.27	57.19	57.31	0.12	0.20	8.04	16.33			
United States	0.51	0.67	0.50	0.50	1.75	2.01	1.72	1.72	0.89	1.35	0.86	0.86	0.00	0.00	-0.49	-36.22			
Total Foreign	25.53	26.27	28.25	28.32	2.09	1.82	1.99	1.99	53.31	47.91	56.33	56.45	0.12	0.21	8.53	17.81			
Former Soviet Union - 12																			
Russia	8.36	8.35	9.61	9.61	1.83	1.59	1.62	1.62	15.31	13.27	15.57	15.57	0.00	0.00	2.30	17.36			
Ukraine	6.40	7.00	7.10	7.10	2.58	2.01	2.46	2.46	16.50	14.10	17.50	17.50	0.00	0.00	3.40	24.11			
Kazakhstan	0.82	0.75	0.94	0.94	1.03	1.13	1.10	1.10	0.84	0.84	1.03	1.03	0.00	0.00	0.19	22.27			
European Union	4.32	4.45	4.43	4.50	2.19	2.00	2.33	2.32	9.47	8.92	10.30	10.43	0.13	1.28	1.52	17.02			
South America																			
Argentina	1.53	1.67	1.60	1.60	2.11	2.05	2.09	2.09	3.24	3.43	3.35	3.35	0.00	0.00	-0.08	-2.33			
Uruguay	0.06	0.07	0.07	0.07	1.67	1.69	1.62	1.62	0.10	0.11	0.11	0.11	0.00	0.00	0.00	0.00			
Bolivia	0.14	0.13	0.13	0.13	1.19	1.20	1.30	1.30	0.16	0.15	0.16	0.16	0.00	0.00	0.01	9.33			
Brazil	0.05	0.03	0.03	0.03	1.60	1.61	1.63	1.63	0.08	0.05	0.05	0.05	0.00	0.00	0.00	-2.00			
Paraguay	0.03	0.03	0.03	0.03	1.39	1.53	1.55	1.55	0.04	0.05	0.05	0.05	0.00	0.00	0.00	4.35			
China	0.92	0.87	1.10	1.10	2.91	2.94	2.64	2.64	2.66	2.57	2.90	2.90	0.00	0.00	0.33	12.84			
South Asia																			
India	0.23	0.23	0.25	0.25	0.61	0.82	0.76	0.76	0.14	0.19	0.19	0.19	0.00	0.00	0.01	2.70			
Pakistan	0.14	0.15	0.15	0.15	1.04	1.07	1.10	1.00	0.15	0.16	0.17	0.15	-0.02	-9.09	-0.01	-6.25			
Middle East																			
Turkey	0.73	0.72	0.76	0.76	2.40	2.17	2.30	2.30	1.75	1.56	1.75	1.75	0.00	0.00	0.19	12.18			
Iran	0.04	0.04	0.04	0.04	1.08	1.08	1.00	1.00	0.04	0.04	0.04	0.04	0.00	0.00	0.00	2.33			
Israel	0.00	0.00	0.00	0.00	5.00	9.00	7.00	7.00	0.01	0.01	0.01	0.01	0.00	0.00	0.00	-22.22			
Africa																			
Egypt	0.01	0.01	0.01	0.01	2.38	2.38	2.38	2.38	0.02	0.02	0.02	0.02	0.00	0.00	0.00	0.00			
Morocco	0.02	0.02	0.02	0.02	1.32	1.16	1.25	1.25	0.03	0.02	0.03	0.03	0.00	0.00	0.00	13.64			
South Africa	0.50	0.48	0.66	0.66	1.58	1.42	1.40	1.40	0.79	0.68	0.92	0.92	0.00	0.00	0.24	35.16			
Burma	0.60	0.60	0.60	0.60	0.65	0.65	0.65	0.65	0.39	0.39	0.39	0.39	0.00	0.00	0.00	0.00			
Canada	0.03	0.05	0.04	0.04	2.17	2.24	2.05	2.05	0.06	0.10	0.08	0.08	0.00	0.00	-0.02	-18.81			
Australia	0.01	0.02	0.02	0.02	1.22	1.50	1.50	1.50	0.01	0.03	0.03	0.03	0.00	0.00	0.00	0.00			
Others	0.60	0.63	0.67	0.67	2.55	1.98	2.54	2.54	1.54	1.24	1.69	1.69	0.00	0.00	0.46	36.81			

World and Selected Countries and Regions

Table 15 Rapeseed Area, Yield, and Production

Country / Region	Area (Million hectares)				Yield (Metric tons per hectare)				Production (Million metric tons)				Change in Production						
	2019/20	Prel.		2021/22 Proj.		2019/20	Prel.		2021/22 Proj.		2019/20	Prel.		2021/22 Proj.		From last month		From last year	
		2020/21	Mar	Apr	2020/21		Mar	Apr	2020/21	Mar		Apr	MMT	Percent	MMT	Percent			
World	34.68	34.86	37.81	37.73	2.01	2.11	1.88	1.89	69.60	73.61	71.12	71.18	0.06	0.08	-2.43	-3.30			
United States	0.78	0.73	0.85	0.85	2.00	2.16	1.46	1.46	1.55	1.58	1.24	1.24	0.00	0.00	-0.33	-21.02			
Total Foreign	33.90	34.13	36.96	36.88	2.01	2.11	1.89	1.90	68.05	72.03	69.87	69.93	0.06	0.09	-2.10	-2.91			
European Union	5.08	5.32	5.33	5.40	3.00	3.14	3.22	3.20	15.24	16.73	17.15	17.27	0.12	0.67	0.53	3.18			
United Kingdom	0.50	0.38	0.31	0.31	3.38	2.77	3.21	3.21	1.68	1.05	0.98	0.98	0.00	0.00	-0.07	-6.67			
Switzerland	0.02	0.02	0.02	0.02	3.14	3.14	3.14	3.14	0.07	0.07	0.07	0.07	0.00	0.00	0.00	0.00			
Canada	8.47	8.33	9.01	9.01	2.35	2.34	1.40	1.40	19.91	19.49	12.60	12.60	0.00	0.00	-6.89	-35.33			
China	6.58	6.77	6.80	6.80	2.05	2.08	2.06	2.06	13.49	14.05	14.00	14.00	0.00	0.00	-0.05	-0.35			
South Asia																			
India	6.86	6.70	8.30	8.30	1.08	1.27	1.30	1.30	7.40	8.50	10.80	10.80	0.00	0.00	2.30	27.06			
Pakistan	0.39	0.45	0.45	0.30	1.45	1.02	1.03	1.37	0.56	0.46	0.47	0.41	-0.06	-11.83	-0.05	-10.87			
Bangladesh	0.25	0.25	0.25	0.25	0.92	0.92	0.92	0.92	0.23	0.23	0.23	0.23	0.00	0.00	0.00	0.00			
Former Soviet Union - 12																			
Russia	1.42	1.45	1.62	1.62	1.44	1.77	1.71	1.71	2.04	2.57	2.78	2.78	0.00	0.00	0.21	8.10			
Ukraine	1.34	1.19	1.04	1.04	2.59	2.31	2.91	2.91	3.47	2.75	3.02	3.02	0.00	0.00	0.27	9.64			
Belarus	0.34	0.36	0.32	0.32	1.68	2.06	1.59	1.59	0.58	0.73	0.50	0.50	0.00	0.00	-0.23	-31.60			
Kazakhstan	0.27	0.12	0.12	0.12	0.90	1.23	1.24	1.24	0.24	0.15	0.15	0.15	0.00	0.00	-0.01	-4.58			
Australia	2.03	2.45	3.05	3.05	1.13	1.84	2.08	2.08	2.30	4.50	6.35	6.35	0.00	0.00	1.85	41.11			
South America																			
Chile	0.04	0.04	0.04	0.04	4.05	3.81	4.00	4.00	0.15	0.14	0.14	0.14	0.00	0.00	0.00	-0.71			
Paraguay	0.04	0.05	0.04	0.04	1.71	1.41	1.45	1.45	0.06	0.07	0.06	0.06	0.00	0.00	0.00	-1.54			
Ethiopia	0.02	0.03	0.03	0.03	1.83	1.80	1.80	1.80	0.04	0.05	0.05	0.05	0.00	0.00	0.00	0.00			
Others	0.26	0.24	0.25	0.25	2.26	2.14	2.15	2.15	0.59	0.50	0.55	0.55	0.00	0.00	0.04	8.57			

World and Selected Countries and Regions

Table 16 Copra, Palm Kernel, and Palm Oil Production

Country / Region	Production (Million metric tons)				Change in Production			
	2019/20	Prel.	2021/22 Proj.		From last month		From last year	
		2020/21	Mar	Apr	MMT	Percent	MMT	Percent
Oilseed, Copra								
Philippines	2.50	2.40	2.60	2.60	0.00	0.00	0.20	8.33
Indonesia	1.66	1.67	1.68	1.68	0.00	0.00	0.01	0.60
India	0.75	0.75	0.79	0.79	0.00	0.00	0.04	5.33
Vietnam	0.28	0.28	0.29	0.29	0.00	0.00	0.01	3.57
Papua New Guinea	0.08	0.08	0.08	0.08	0.00	0.00	0.00	0.00
Thailand	0.07	0.07	0.07	0.07	0.00	0.00	0.00	0.00
Sri Lanka	0.07	0.07	0.07	0.07	0.00	0.00	0.00	0.00
Mexico	0.04	0.04	0.05	0.05	0.00	0.00	0.01	25.00
Solomon Islands	0.03	0.03	0.03	0.03	0.00	0.00	0.00	0.00
Cote d'Ivoire	0.03	0.03	0.03	0.03	0.00	0.00	0.00	0.00
World	5.66	5.56	5.83	5.83	0.00	0.00	0.27	4.86
Oilseed, Palm Kernel								
Indonesia	11.25	11.46	11.70	12.00	0.30	2.56	0.54	4.71
Malaysia	4.75	4.34	4.60	4.65	0.05	1.09	0.31	7.14
Nigeria	0.88	0.82	0.90	0.90	0.00	0.00	0.08	9.76
Thailand	0.75	0.79	0.85	0.85	0.00	0.00	0.06	7.59
Colombia	0.31	0.29	0.29	0.31	0.02	6.90	0.02	6.90
Guatemala	0.17	0.17	0.18	0.18	0.00	0.00	0.01	5.88
Papua New Guinea	0.16	0.16	0.16	0.16	0.00	0.00	0.00	0.00
Cameroon	0.15	0.15	0.15	0.15	0.00	0.00	0.00	0.00
Brazil	0.14	0.14	0.15	0.15	0.00	0.00	0.00	0.00
Honduras	0.18	0.13	0.16	0.16	0.00	0.00	0.03	23.08
World	19.30	19.03	19.73	20.11	0.38	1.93	1.08	5.68
Oil, Palm								
Indonesia	42.50	43.50	44.50	45.50	1.00	2.25	2.00	4.60
Malaysia	19.26	17.85	18.70	19.00	0.30	1.60	1.15	6.44
Thailand	2.65	2.97	3.12	3.12	0.00	0.00	0.15	5.05
Colombia	1.53	1.56	1.62	1.75	0.13	8.02	0.19	12.18
Nigeria	1.14	1.28	1.40	1.40	0.00	0.00	0.13	10.24
Guatemala	0.86	0.87	0.88	0.88	0.00	0.00	0.02	2.33
Papua New Guinea	0.56	0.56	0.57	0.57	0.00	0.00	0.00	0.00
Brazil	0.54	0.55	0.55	0.55	0.00	0.00	0.00	0.00
Cote d'Ivoire	0.52	0.52	0.52	0.52	0.00	0.00	0.00	0.00
Ecuador	0.46	0.49	0.56	0.56	0.00	0.00	0.07	14.29
World	73.03	73.11	75.59	77.05	1.46	1.93	3.95	5.40

World and Selected Countries and Regions

Table 17 Cotton Area, Yield, and Production

Country / Region	Area (Million hectares)				Yield (Kilograms per hectare)				Production (Million 480 lb. bales)				Change in Production			
	2019/20	Prel. 2020/21	2021/22 Proj. Mar Apr		2019/20	Prel. 2020/21	2021/22 Proj. Mar Apr		2019/20	Prel. 2020/21	2021/22 Proj. Mar Apr		From last month MBales Percent		From last year MBales Percent	
World	34.48	31.38	32.32	32.07	764	776	808	816	121.02	111.81	119.85	120.20	0.34	0.29	8.39	7.50
United States	4.65	3.35	4.03	4.03	932	950	951	951	19.91	14.61	17.62	17.62	0.00	0.00	3.02	20.65
Total Foreign	29.82	28.03	28.28	28.03	738	755	787	797	101.11	97.20	102.23	102.57	0.34	0.33	5.37	5.53
South Asia																
India	13.40	13.29	12.40	12.15	463	452	465	475	28.50	27.60	26.50	26.50	0.00	0.00	-1.10	-3.99
Pakistan	2.45	2.20	2.00	2.00	551	445	631	653	6.20	4.50	5.80	6.00	0.20	3.45	1.50	33.33
China	3.45	3.25	3.10	3.10	1,720	1,976	1,896	1,896	27.25	29.50	27.00	27.00	0.00	0.00	-2.50	-8.47
South America																
Brazil	1.67	1.37	1.60	1.60	1,802	1,720	1,796	1,796	13.78	10.82	13.20	13.20	0.00	0.00	2.38	22.00
Argentina	0.42	0.43	0.48	0.48	682	707	680	680	1.30	1.38	1.50	1.50	0.00	0.00	0.12	8.70
Paraguay	0.01	0.01	0.01	0.01	416	416	416	416	0.02	0.02	0.02	0.02	0.00	0.00	0.00	0.00
Africa																
Burkina Faso	0.58	0.56	0.60	0.60	330	358	357	357	0.88	0.92	0.98	0.98	0.00	0.00	0.06	6.56
Mali	0.74	0.17	0.72	0.72	400	376	416	416	1.35	0.29	1.38	1.38	0.00	0.00	1.09	382.46
Cote d'Ivoire	0.41	0.45	0.48	0.48	528	494	504	504	0.99	1.01	1.10	1.10	0.00	0.00	0.09	8.91
Benin	0.67	0.62	0.64	0.64	467	513	510	510	1.43	1.45	1.50	1.50	0.00	0.00	0.05	3.45
Egypt	0.10	0.07	0.10	0.10	664	720	718	718	0.31	0.22	0.33	0.33	0.00	0.00	0.12	53.49
Cameroon	0.25	0.23	0.23	0.23	562	658	663	663	0.65	0.68	0.70	0.70	0.00	0.00	0.02	2.94
Tanzania	0.35	0.17	0.24	0.24	375	284	231	231	0.60	0.22	0.26	0.26	0.00	0.00	0.04	18.60
Nigeria	0.15	0.27	0.27	0.27	290	282	282	282	0.20	0.35	0.35	0.35	0.00	0.00	0.00	0.00
Zimbabwe	0.18	0.24	0.21	0.21	230	318	207	207	0.19	0.35	0.20	0.20	0.00	0.00	-0.15	-42.86
Ethiopia	0.08	0.08	0.08	0.08	680	637	637	637	0.25	0.24	0.24	0.24	0.00	0.00	0.00	0.00
Former Soviet Union - 12																
Uzbekistan	1.01	0.98	0.98	0.98	754	782	755	755	3.50	3.50	3.40	3.40	0.00	0.00	-0.10	-2.86
Turkmenistan	0.55	0.55	0.55	0.55	368	368	356	356	0.92	0.92	0.90	0.90	0.00	0.00	-0.02	-2.17
Tajikistan	0.18	0.16	0.17	0.17	708	619	640	640	0.59	0.46	0.50	0.50	0.00	0.00	0.05	9.89
Kazakhstan	0.13	0.11	0.12	0.12	627	534	502	502	0.36	0.27	0.27	0.27	0.00	0.00	-0.01	-1.85
Middle East																
Turkey	0.57	0.35	0.45	0.45	1,318	1,804	1,839	1,839	3.45	2.90	3.80	3.80	0.00	0.00	0.90	31.03
Syria	0.03	0.03	0.03	0.03	1,219	1,219	1,132	1,132	0.14	0.14	0.13	0.13	0.00	0.00	-0.01	-7.14
Iran	0.09	0.10	0.10	0.10	789	871	871	871	0.33	0.40	0.40	0.40	0.00	0.00	0.00	1.01
Australia	0.06	0.28	0.60	0.60	2,268	2,217	1,996	1,996	0.63	2.80	5.50	5.50	0.00	0.00	2.70	96.43
Mexico	0.23	0.15	0.16	0.15	1,519	1,532	1,686	1,725	1.57	1.02	1.20	1.22	0.02	1.67	0.20	19.61
Burma	0.25	0.24	0.25	0.25	641	635	644	644	0.72	0.70	0.73	0.73	0.00	0.00	0.03	3.57
Others	1.87	1.73	1.74	1.74	586	574	547	561	5.03	4.57	4.36	4.49	0.12	2.80	-0.08	-1.80

World and Selected Countries and Regions

TABLE 18

The table below presents a record of the April projection and the final Estimate. Using world wheat production as an example, the "root mean square error" means that chances are 2 out of 3 that the current forecast will not be above or below the final estimate by more than 0.5 percent. Chances are 9 out of 10 (90% confidence level) that the difference will not exceed 0.8 percent. The average difference between the April projection and the final estimate is 2.0 million tons, ranging from 0.1 million to 6.8 million tons. The April projection has been below the estimate 26 times and above 14 times.

RELIABILITY OF PRODUCTION PROJECTIONS 1/

COMMODITY AND REGION	Root mean square error	90 percent confidence interval	Difference between forecast and final estimate				
			Average	Smallest	Largest	Years	
						Below final	Above final
	Percent		---Million metric tons---				
WHEAT							
World	0.5	0.8	2.0	0.1	6.8	26	14
U.S.	0.2	0.3	0.1	0.0	0.3	18	11
Foreign	0.5	0.9	2.0	0.2	6.8	26	14
COARSE GRAINS 2/							
World	1.1	1.8	9.3	0.3	42.1	32	8
U.S.	0.2	0.3	0.2	0.0	1.8	17	9
Foreign	1.5	2.5	9.3	0.3	42.1	32	8
RICE (Milled)							
World	1.3	2.1	3.3	0.0	13.3	32	8
U.S.	1.3	2.2	0.0	0.0	0.2	11	5
Foreign	1.3	2.2	3.3	0.0	13.3	32	8
SOYBEANS							
World	1.6	2.8	2.5	0.2	7.9	23	17
U.S.	1.4	2.3	0.7	0.0	3.2	17	16
Foreign	2.7	4.6	2.3	0.0	8.1	25	15
COTTON			---Million 480-lb. bales---				
World	1.6	2.6	1.1	0.0	5.2	29	10
U.S.	0.3	0.5	0.0	0.0	0.2	17	15
Foreign	1.9	3.2	1.1	0.0	5.1	28	11
UNITED STATES			-----Million bushels-----				
<i>CORN</i>	0.2	0.3	5	0	72	1	4
<i>SORGHUM</i>	0.1	0.2	0	0	4	0	2
<i>BARLEY</i>	0.9	1.6	1	0	3	7	6
<i>OATS</i>	0.4	0.7	0	0	2	5	4

1/ Marketing years 1981/82 through 2020/21 for grains, soybeans, and cotton. Final for grains, soybeans, and cotton is defined as the first November estimate following the marketing year for 1981/82 through 2019/20, and for 2020/21 the last month's estimate.

2/ Includes corn, sorghum, barley, oats, rye, millet, and mixed grain

April 2022

Global Market Analysis, FAS, USDA