



United States  
Department of  
Agriculture

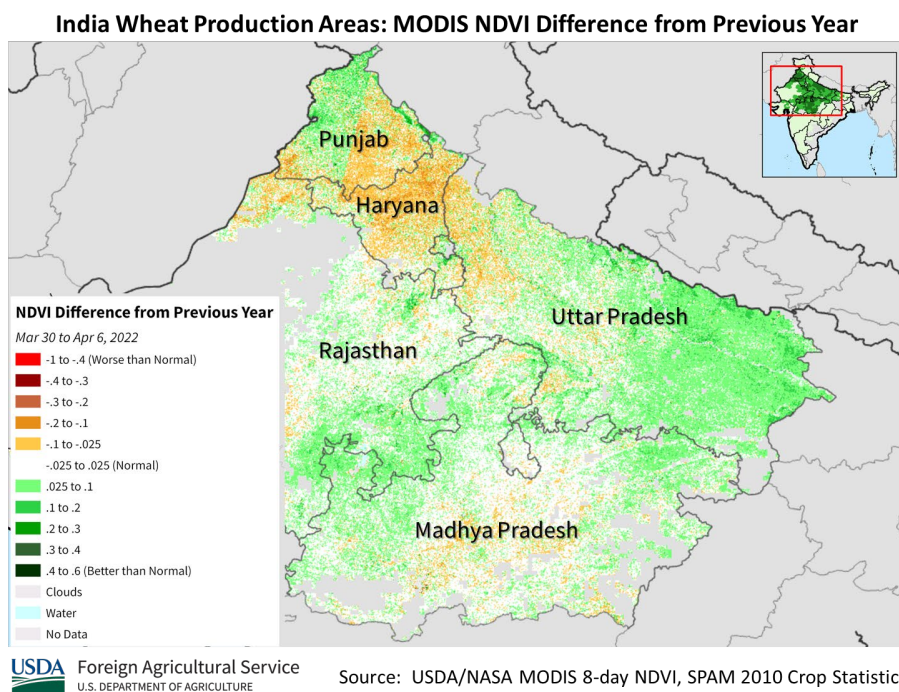
Foreign  
Agricultural  
Service

Circular Series  
WAP 6-22  
June 2022

# World Agricultural Production

## India Wheat: Production Impacted by Extreme Heat

USDA estimates marketing year (MY) 2022/23 wheat production at 106.0 million metric tons, down 2 percent from last month and 3 percent from last year's record. Harvested area is estimated at 31.0 million hectares, unchanged from last month and down less than 1 percent from last year as farmers shifted some area to oilseeds. Yields are estimated to reach 3.42 metric tons per hectare, down 2 percent from last month and 3 percent from last year.

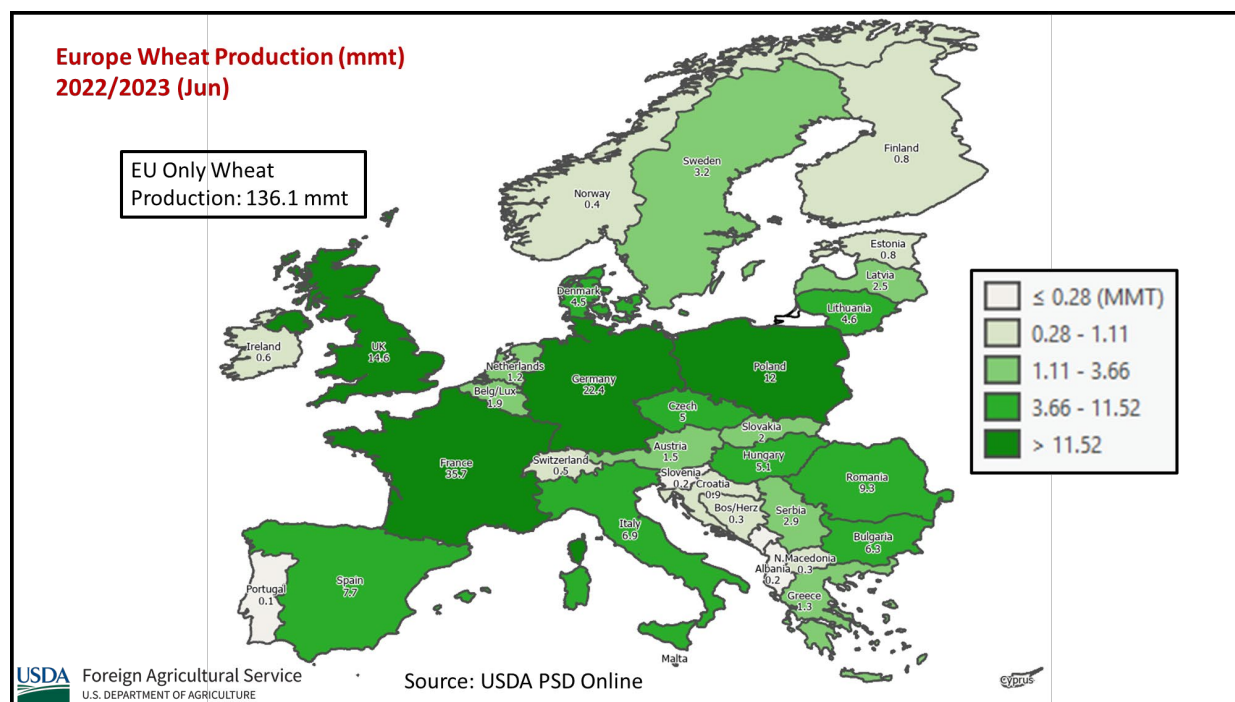


Excessive heat arrived weeks earlier than normal. Across the wheat belt there were yield losses due to these extreme temperatures, which began the second week of March during the critical grain-fill stage. Punjab and Haryana, which account for 25 percent of total wheat, recorded extremely high temperatures at the start of grain fill. Temperatures reached 7 to 9 degrees Celsius above normal in Punjab and Haryana. Uttar Pradesh, the largest producer, recorded 5 of 28 filling days where temperatures exceeded 38 degrees Celsius. Wheat was harvested in Rajasthan and Madhya Pradesh before the extreme temperatures arrived. The satellite-derived MODIS Normalized Difference Vegetation Index (NDVI) shows strong crop vigor in Uttar Pradesh and lower crop vigor in Punjab and Haryana after grain filled as compared to the same period last year.

Approved by the World Agricultural Outlook Board

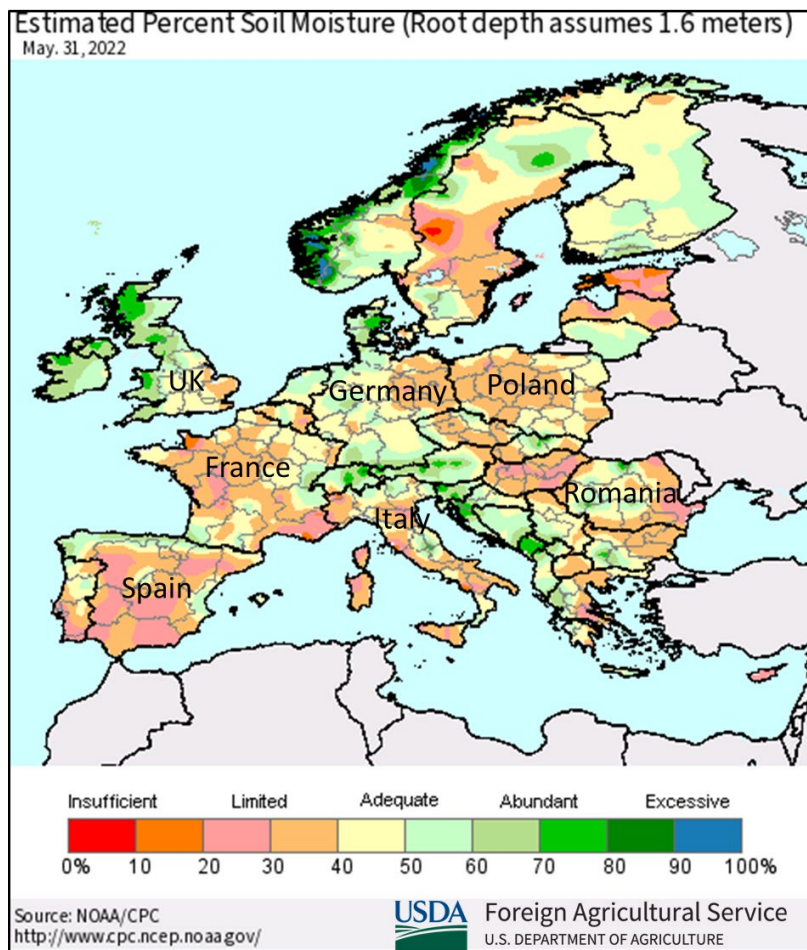
Wheat is grown only in the *rabi* season. It is planted in early November until January and harvested from late February until April. (For more information, please contact [Arnella.Trent@usda.gov](mailto:Arnella.Trent@usda.gov).)

## EU Wheat: Dryness in France and Spain Pushes Down Yield



Wheat production for marketing year (MY) 2022/23 in the European Union (EU) is estimated at 136.1 million metric tons (mmt), down 0.4 mmt from last month, 2.3 mmt (2 percent) from last year, but 3 percent above the 5-year average of 132.7 mmt. Harvested area is estimated at 24.1 million hectares (mha), unchanged from last month, down 0.1 mha from last year, but up 0.2 mha from the 5-year average. Yield is estimated at 5.65 tons per hectare (t/ha), 1 percent below last year, but up 2 percent from the 5-year average.

Prolonged dryness in France, Spain, Romania, and Hungary caused decreases in expected production which are partially offset by an increase in production in Germany due to favorable rainfall. With warm conditions dominating, wheat is developing about one week ahead of normal in most regions of Europe. However, soil moisture is limited in much of Europe.

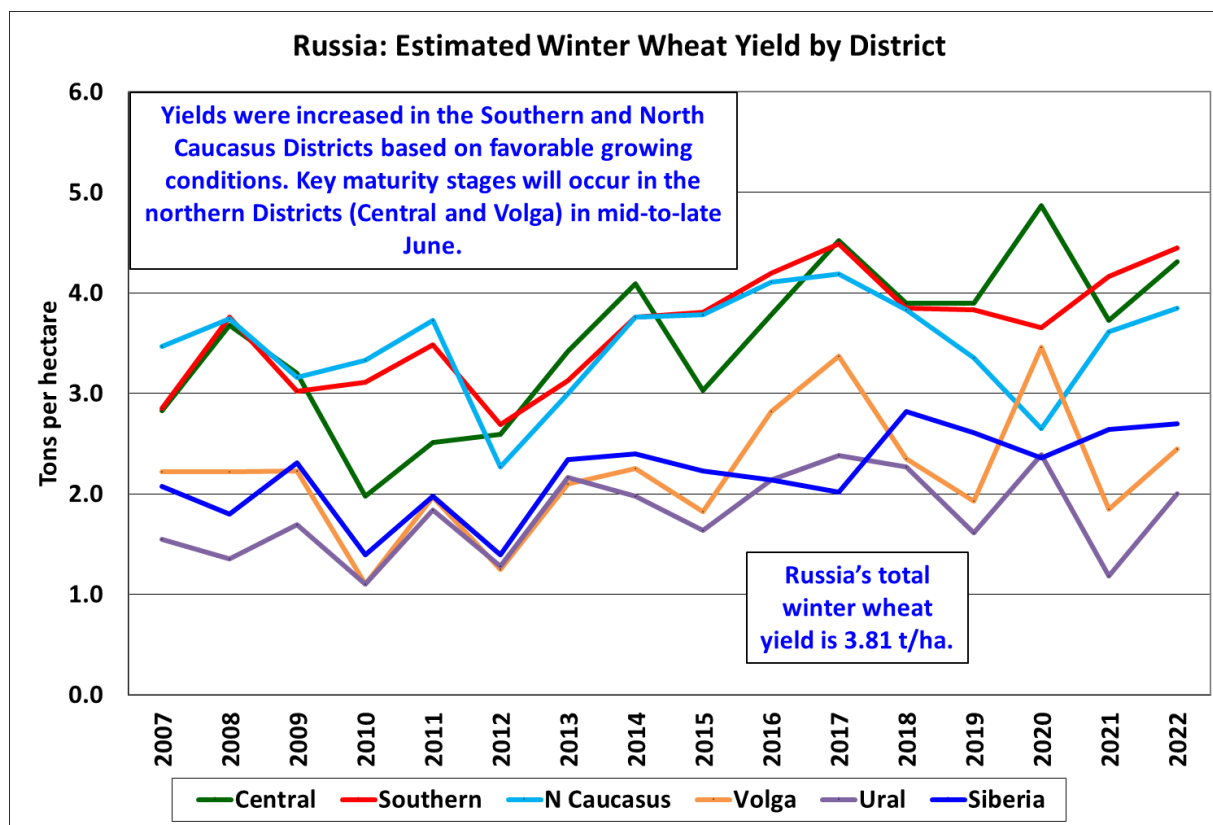


Spain is typically the first country to begin the wheat harvest; it is likely now underway in Andalucía, in its south. Harvest commences in earnest across the continent in late June and runs through July.

For country-specific area, yield, and production estimates within the European Union (EU), please go to PSD Online at <https://apps.fas.usda.gov/PSDOnline/app/index.html#/app/home>, and select “Downloadable Data Sets.” Select the zipped file for “EU Countries Area & Production.” (For more information, please contact [Bryan.Purcell@usda.gov](mailto:Bryan.Purcell@usda.gov).)

## Russia Wheat: Favorable Weather in the Southern and North Caucasus Districts Boosts Yields

Russia wheat production for marketing year 2022/23 is forecast at 81.0 million metric tons (mmt), up 1 percent from last month and up 8 percent from last year. The forecast includes 59.5 mmt of winter wheat and 21.5 mmt of spring wheat. USDA crop production forecasts for Russia exclude estimated output from Crimea. Total wheat yield is forecast at 2.95 tons per hectare, up 1 percent from last month and up 8 percent from last year. Total harvested area is forecast at 27.5 million hectares, unchanged from last year and essentially matching the 5-year average.



Favorable moisture throughout May has led to good prospects, especially in the Southern and North Caucasus Districts of European Russia, which account for about 56 percent of total winter wheat production. Recent heat that occurred in this region was offset by the heavy rainfall during April and May, which enabled the crops to better withstand the high temperatures. Further north, the winter wheat crop in the Central and Volga Districts, which together account for about 44 percent of total winter wheat production, will reach key maturity stages in mid-to-late-June. Harvest of winter wheat will begin in July. Typically, winter wheat yields are higher than spring wheat yields.



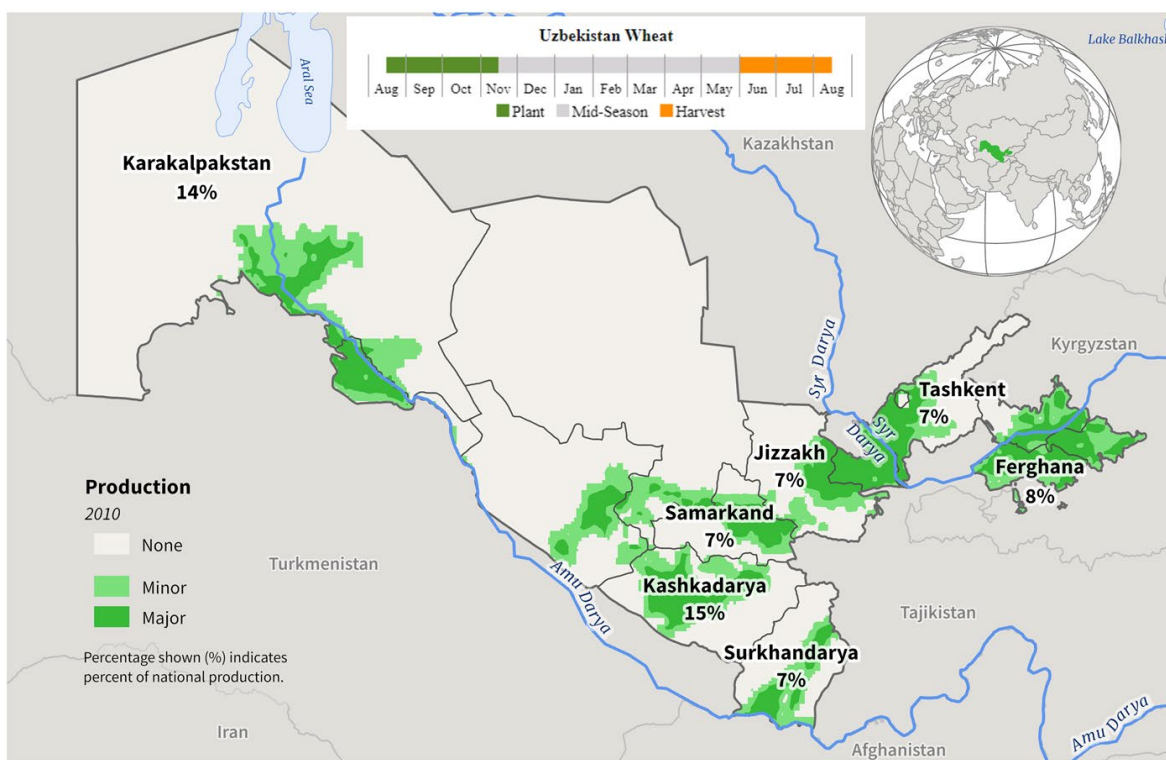
Spring wheat planting began in late April and is almost complete. Spring wheat is mainly planted in the regions bordering Kazakhstan: the Volga, Urals and Siberian Districts of Russia. Harvest of spring wheat will begin in late August.

Area, yield, and production estimates for Russia winter wheat and spring wheat are available on PSD Online. Select “Downloadable Data Sets” and open the zipped file for “Russia Wheat; Winter/Spring Area & Production.” (For more information, please contact [Katie.McGaughey@usda.gov](mailto:Katie.McGaughey@usda.gov).)

### Uzbekistan Wheat: Favorable Weather Boosts Yield Prospects

USDA estimates Uzbekistan wheat production for marketing year (MY) 2022/23 at 6.6 million metric tons, up 6 percent from last month and 10 percent from last year. Harvested area is estimated at 1.4 million hectares, unchanged from last month and up 3 percent from last year. Yield is estimated at 4.71 metric tons per hectare, up 6 percent from last month, last year and the 5-year average.

### Uzbekistan: Wheat Production



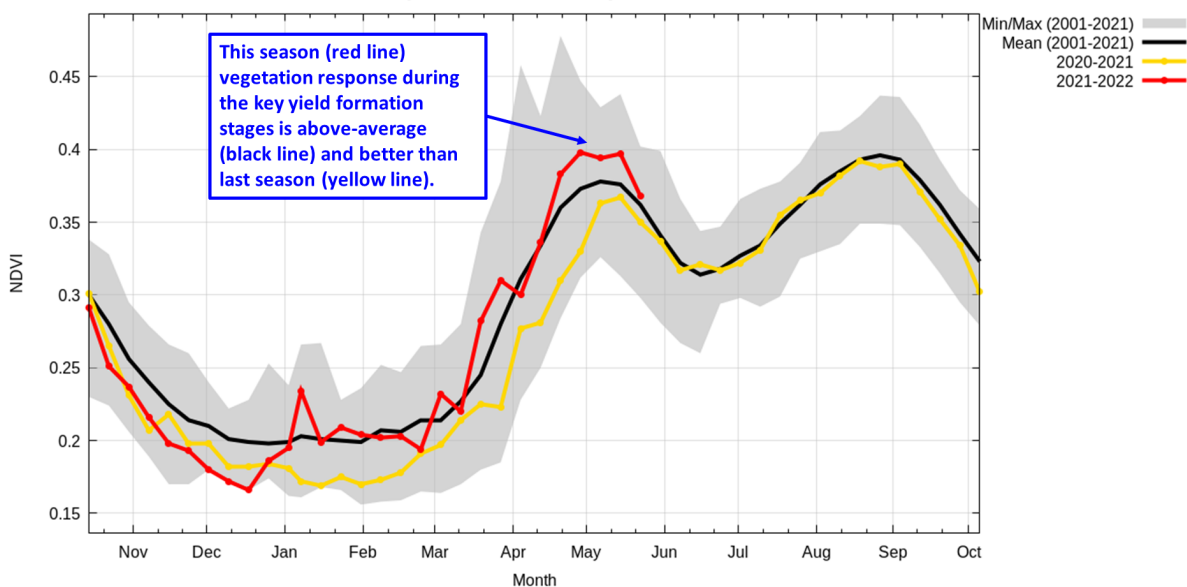
**USDA** Foreign Agricultural Service  
U.S. DEPARTMENT OF AGRICULTURE

Source: International Food Policy Research Institute (IFPRI), Spatial Production Allocation Model (SPAM), 2010

The key grains producing area for Uzbekistan is southern Uzbekistan. This includes the regions of Kashkadarya, Samarkand, Jizzakh, Ferghana, Tashkent and Surkhandarya. Wheat is typically

planted in the fall between August and early November; harvest starts in June and lasts until early August.

### Uzbekistan cropland: 8-day NDVI Time series

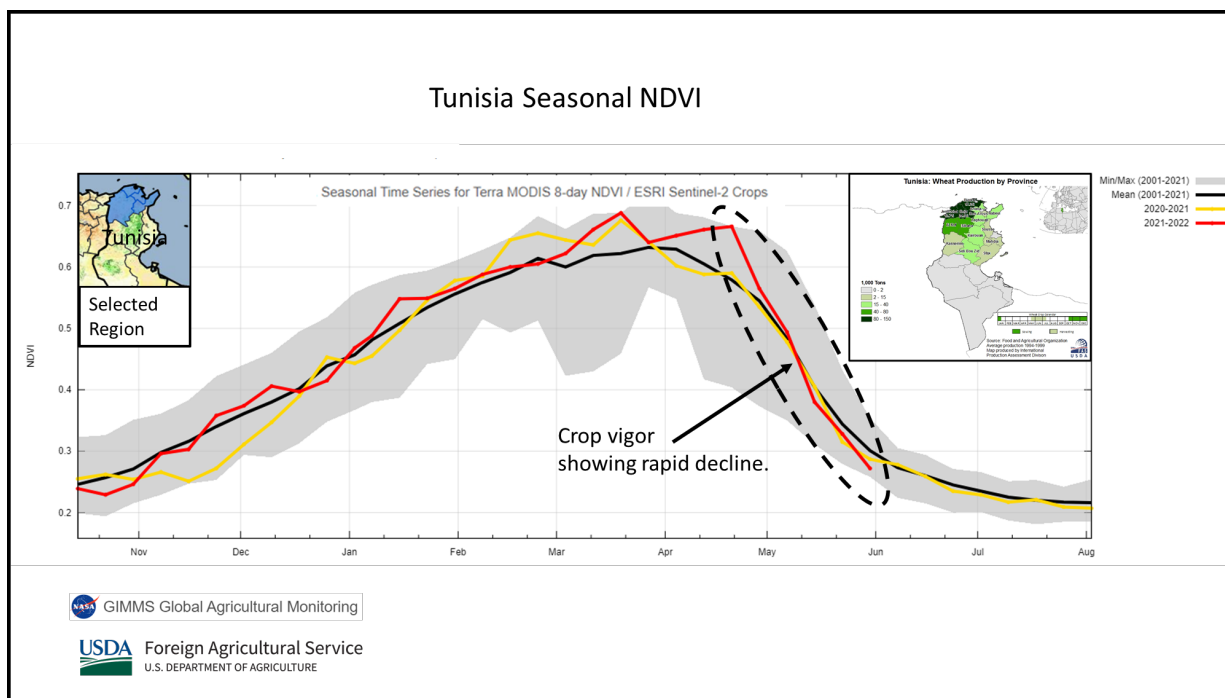


**USDA** Foreign Agricultural Service  
U.S. DEPARTMENT OF AGRICULTURE

Source: GLAM 8-day MODIS NDVI;  
mask GFSAD30-CE\_2015\_crops.

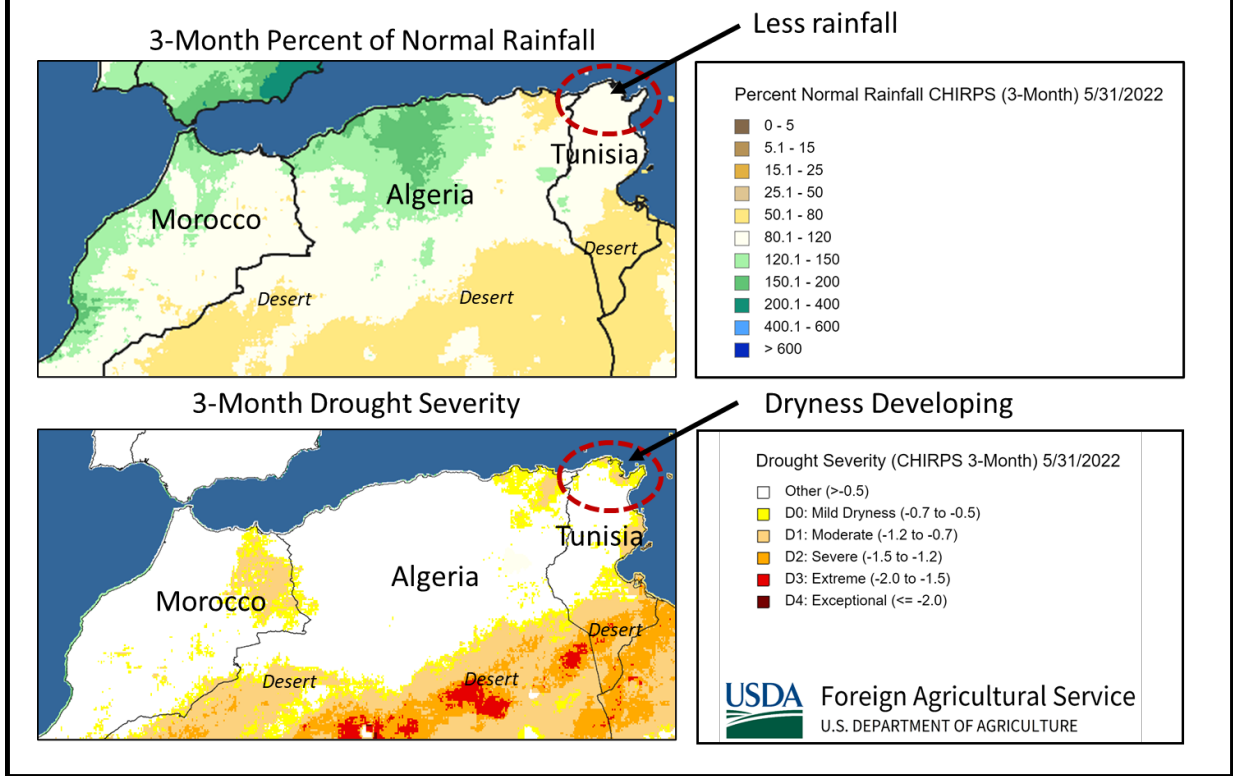
Timely precipitation has provided ample water availability for the MY 2022/23 crop. The favorable weather and adequate soil moisture supplies have boosted yield prospects above the 5-year average. This is revealed by the satellite-derived Normalized Difference Index, which indicates excellent and above-average vegetation response during the key yield formation stages this season. The Uzbekistan Ministry of Agriculture announced that harvesting of the 2022 crops is expected to be done on time. Harvest has begun on May 25 in the southern region of Surkhandarya. In the more northern areas of the Republic of Karakalpakstan and Khorezm, harvest is anticipated to occur around mid-June. *(For more information, please contact [Iliana.Mladenova@usda.gov](mailto:Iliana.Mladenova@usda.gov).)*

## Tunisia Wheat: Rainfall Diminishes at the End of the Season



Wheat production in Tunisia for marketing year (MY) 2022/23 is estimated at 1.2 million metric tons (mmt), compared to 1.3 mmt last month, 1.2 mmt last year and the 1.2 mmt 5-year average. Harvested area is estimated at 0.5 million hectares, same as last month and last year, but down 5 percent from the 5-year average. Yield is estimated at 2.29 tons per hectare, 8 percent below last month, but similar to last year. Yield is 7 percent above the 5-year average.

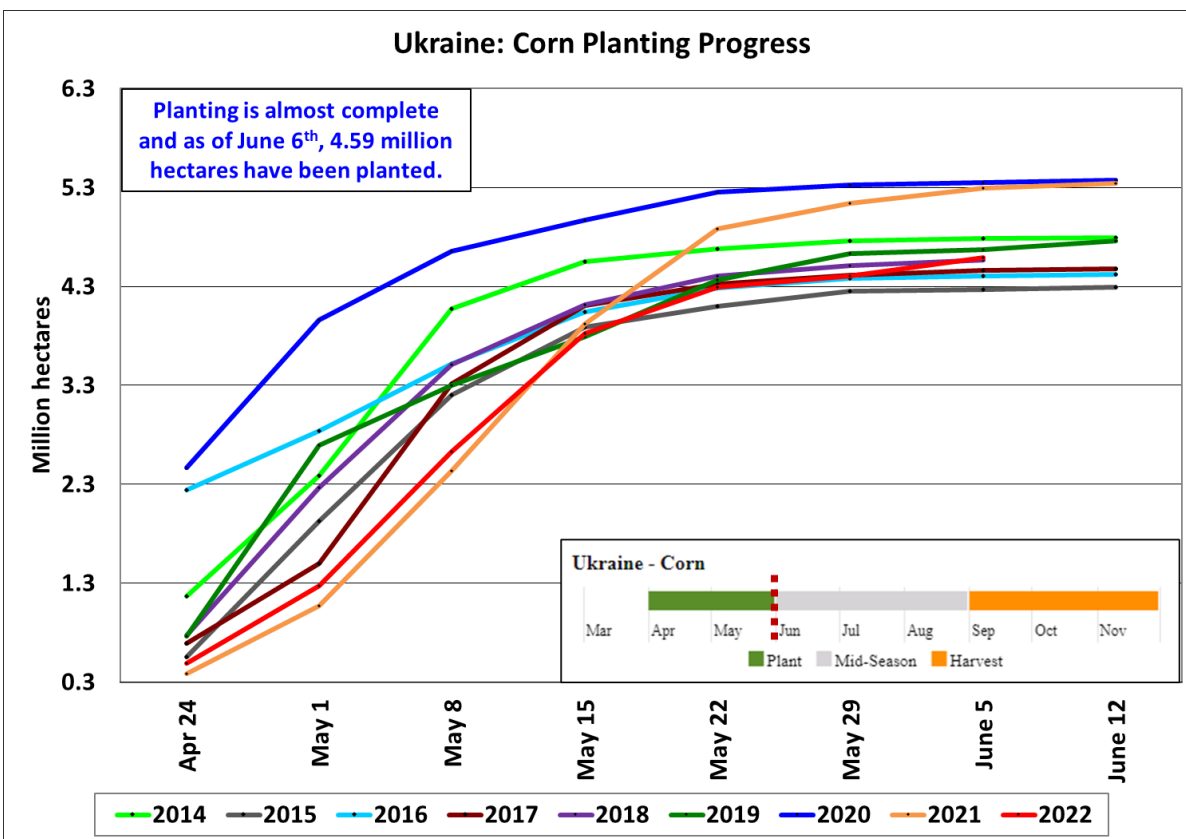
## Northern Africa Rainfall and Drought: March, April, May 2022



Wheat is concentrated in Tunisia’s north, along the Mediterranean Coast, where rainfall is most common. Precipitation in northern Tunisia had been favorable for planting, establishment, and early growth. During winter, however, less rain fell. Wheat in Northwest Africa does not go fully dormant, so winter moisture is critical for further spring growth. The satellite-derived MODIS Normalized Difference Vegetation Index (NDVI) shows a precipitous drop in vegetation vigor during late April through May, a result of diminished rainfall’s effect on maturing cereals. Soil moisture reserves have prevented further reductions. *(For more information, please contact [Bryan.Purcell@usda.gov](mailto:Bryan.Purcell@usda.gov).)*



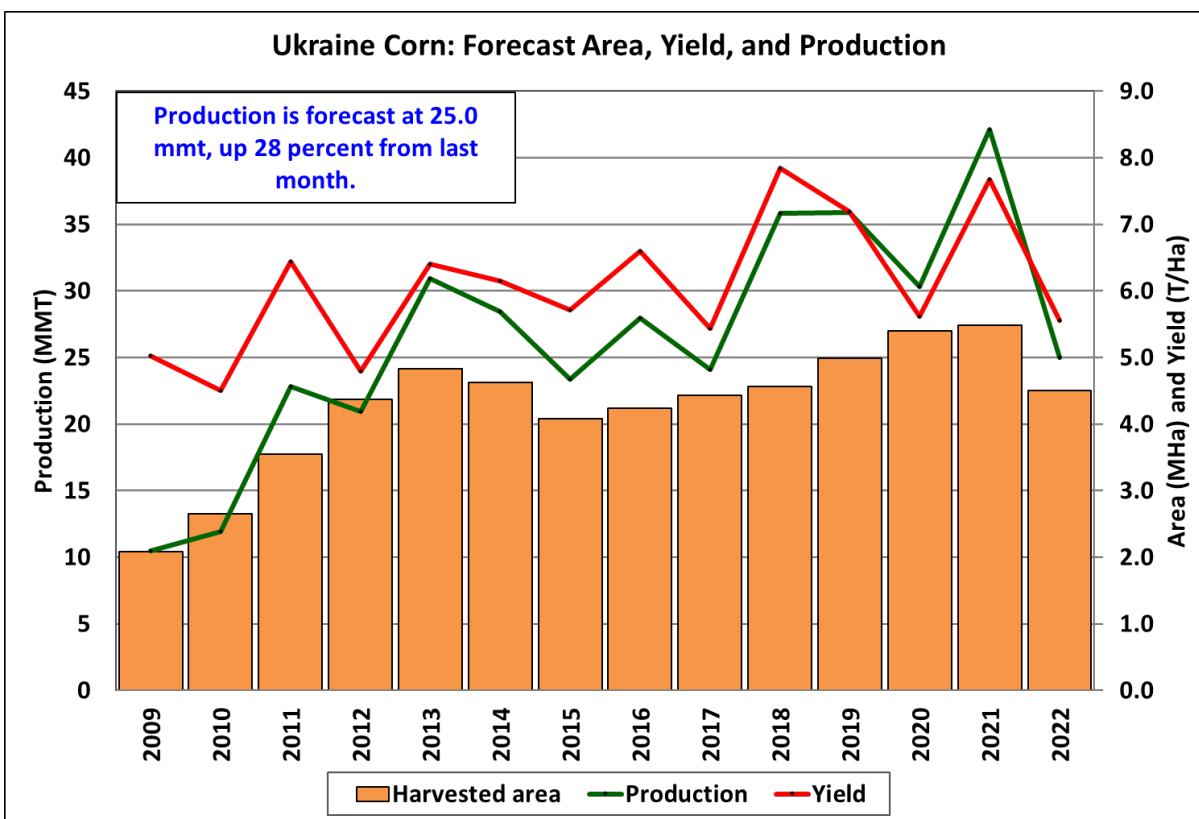
## Ukraine Corn: Farmers Plant More Corn Despite Ongoing Conflict



Foreign Agricultural Service  
 U.S. DEPARTMENT OF AGRICULTURE

Source: Ukraine Ministry of Agriculture

Ukraine corn production for marketing year 2022/23 is forecast at 25.0 million metric tons, up 28 percent from last month, but down 41 percent from last year. Yield is forecast at 5.56 tons per hectare, essentially unchanged from last month, and down 28 percent from last year. Harvested area is forecast at 4.5 million hectares (mha), up 29 percent from last month, but down 18 percent from last year.

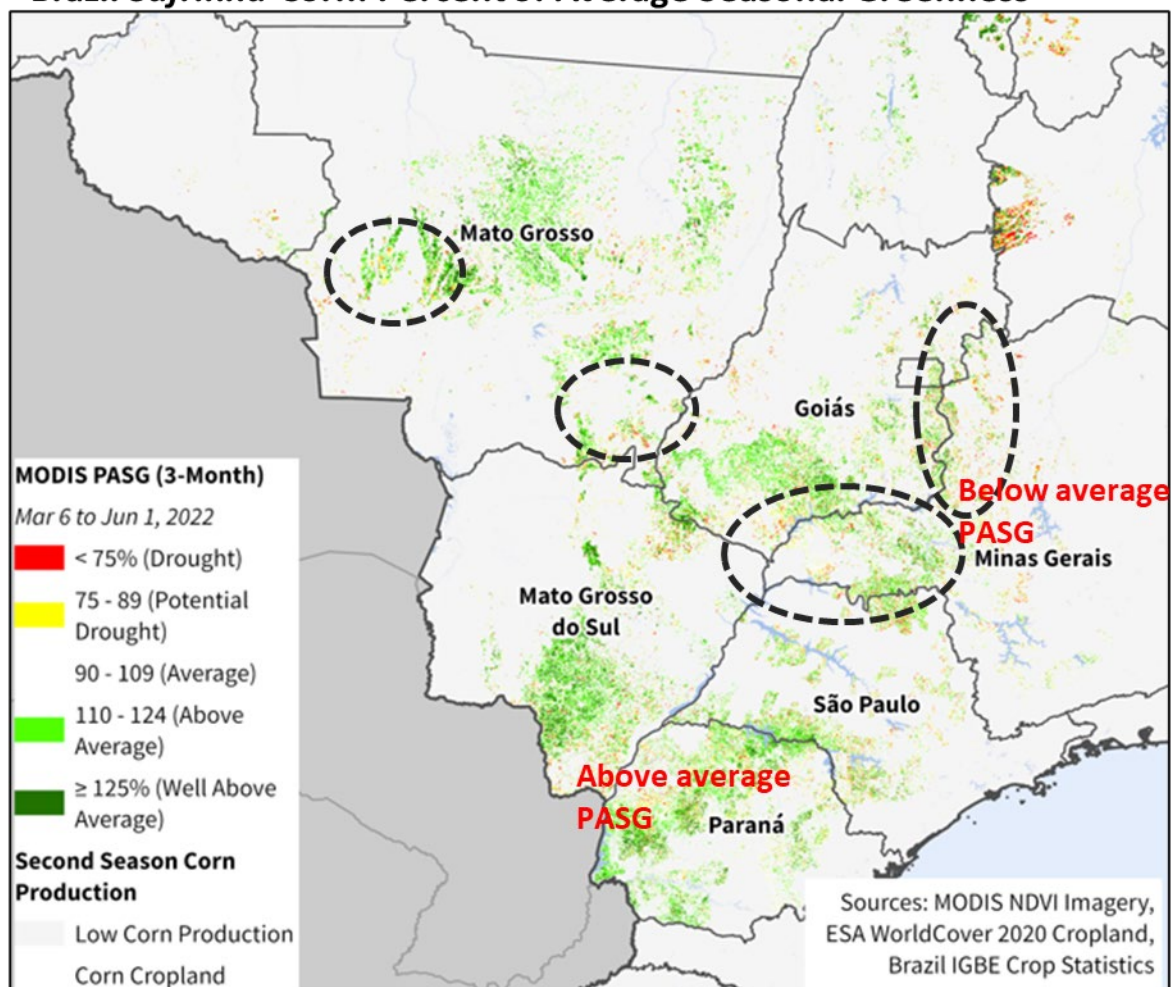


According to the Ministry of Agriculture’s planting progress data, planting is almost complete and 4.59 mha have been planted as of June 6<sup>th</sup>. The USDA assumption is that areas that have been planted are likely to be harvested, therefore, normal abandonment is expected. Abandonment for corn is typically low; it is around 1 percent, based on a 10-year average. Yield is essentially unchanged month-to-month. The critical time for yield development occurs during July and early August, coincident with late reproduction to grain fill. Harvest begins in early September. USDA crop production estimates for Ukraine include estimated output from Crimea. *(For more information, please contact [Katie.McGaughey@usda.gov](mailto:Katie.McGaughey@usda.gov).)*

### Brazil Corn: MY 2021/22 Safrinha Production Unchanged

USDA estimates Brazil total corn production for marketing year (MY) 2021/22 at 116.0 million metric tons (mmt), unchanged from last month, and larger than the previous year’s crop (MY 2020/21) by 29.0 mmt (33 percent). Total harvested area is estimated at 21.8 million hectares (mha), unchanged from last month, and up 1.9 mha (10 percent) from the previous year. Yield remains at 5.32 tons per hectare, which is 22 percent above the previous year’s crop, and 3 percent above the 5-year average.

## Brazil *Safrinha* Corn: Percent of Average Seasonal Greenness



USDA Foreign Agricultural Service  
U.S. DEPARTMENT OF AGRICULTURE

Source: USDA/NASA GLAM  
NDVI PASG 88-day, Mar 6 – Jun 1

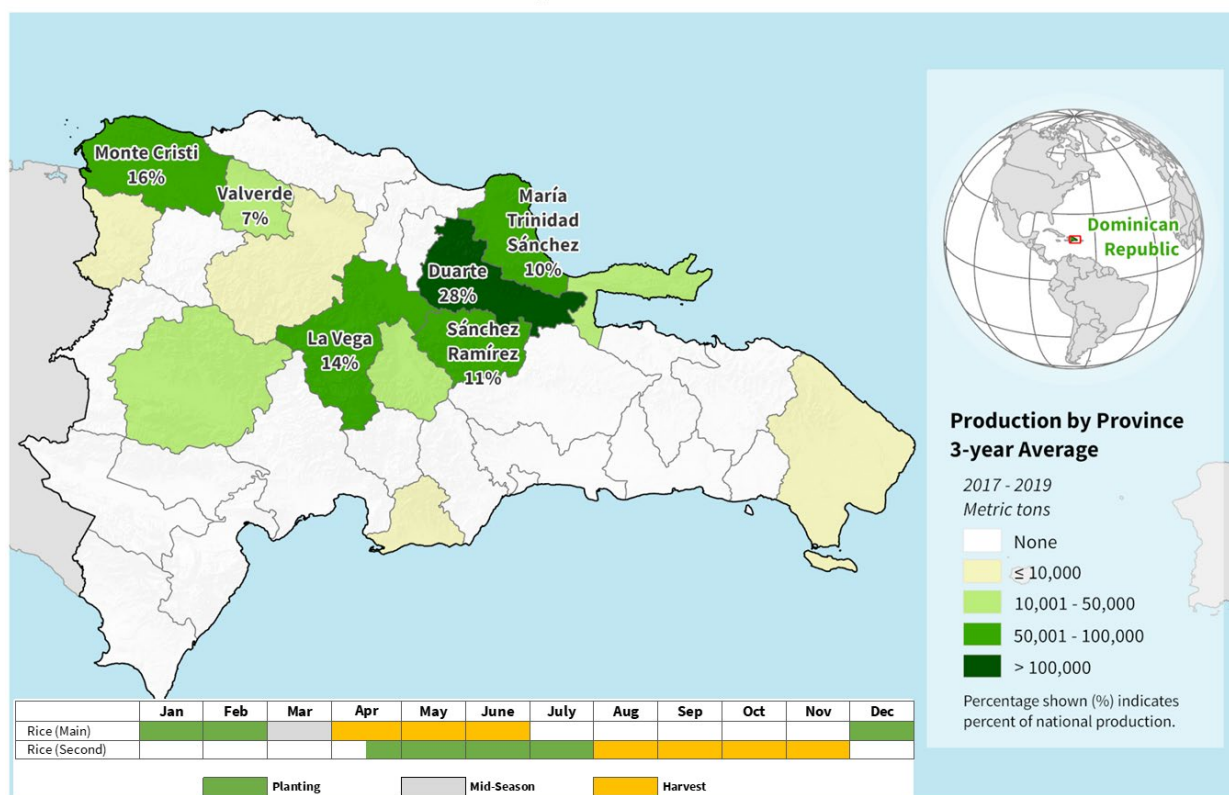
Harvest for the smaller first-season crop (about 20 percent of total production) is currently at 87 percent with production reported at 24.8 mmt by *Companhia Nacional de Abastecimento* (CONAB, an agency in the Brazilian Ministry of Agriculture), about 4 mmt lower than initial forecasts.

The larger *safrinha* crop has been affected by diminished rainfall. Late March through May precipitation in Brazil has been one of the lowest in the 40-year record with extended gaps between rain events. Yield declines, however, in drought-affected states are offset by gains in other states. The states showing the greatest yield declines are Goiás (11 percent of *safrinha* area) and Minas Gerais (4 percent of *safrinha* area). A similar situation is present in areas of western Mato Grosso, the largest *safrinha* producer (40 percent of *safrinha* area), where precipitation reduced markedly since April 10<sup>th</sup>. This led to significant declines in soil moisture during sensitive reproductive stages with high water demands. Nevertheless, with most of the crop planted within the ideal window, a modest fraction of the crop was affected by low rainfall. The satellite-derived Percent of Average Seasonal Greenness (PASG) displays the relevant areas with lower crop vigor relative

to long-term averages. Farther south, conditions remained favorable in Paraná and Mato Grosso do Sul with sufficient precipitation and anticipation of a record crop in Paraná. The exception are the northern region of Mato Grosso do Sul bordering southeastern Mato Grosso and Goiás, with similar crop conditions. Conditions in the northern states also remain favorable with ample rainfall for the still developing crop. Overall *safrinha* harvest is reported at 3 percent, according to early June report from CONAB. Harvest will continue through September. (For more information, please contact [Sunita.Yadav-Pauletti@usda.gov](mailto:Sunita.Yadav-Pauletti@usda.gov).)

## Dominican Republic Rice: MY 2021/22 Record Production Expected

### Dominican Republic: Rice Production

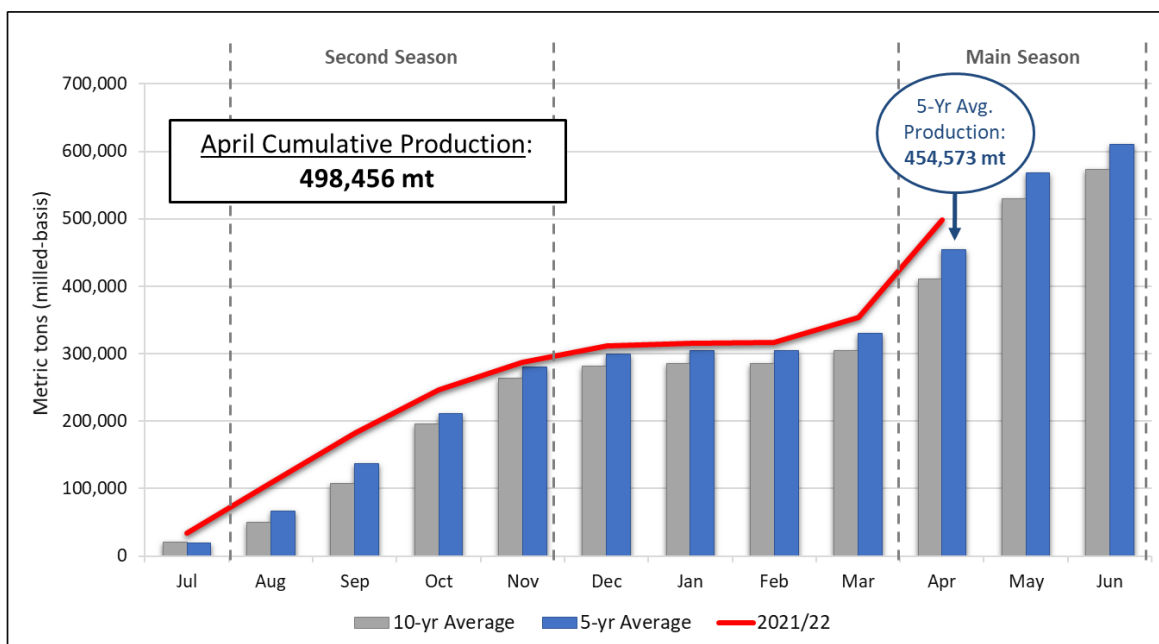


**USDA** Foreign Agricultural Service  
U.S. DEPARTMENT OF AGRICULTURE

Source: Ministerio de Agricultura, Serie Histórica Nacional por Regional de La Siembra, Cosecha y Producción del Cultivo Arroz, Periodo 2010-2019

USDA estimates Dominican Republic rice production for marketing year (MY) 2021/22 at a record 650,000 metric tons (mt) (milled basis), up 3 percent from last month, 1 percent from last year, and 4 percent above the 5-year average. Harvested area is estimated at 191,000 hectares, up less than 1 percent from last month and last year, and 2 percent above the 5-year average. Yield is estimated at 5.08 metric tons per hectare, up 3 percent from last month, 1 percent from last year, and 2 percent above the 5-year average. This would represent the fourth-highest yield on record.

## Dominican Republic MY 2021/22 Monthly Cumulative Rice Production



**USDA** Foreign Agricultural Service  
U.S. DEPARTMENT OF AGRICULTURE

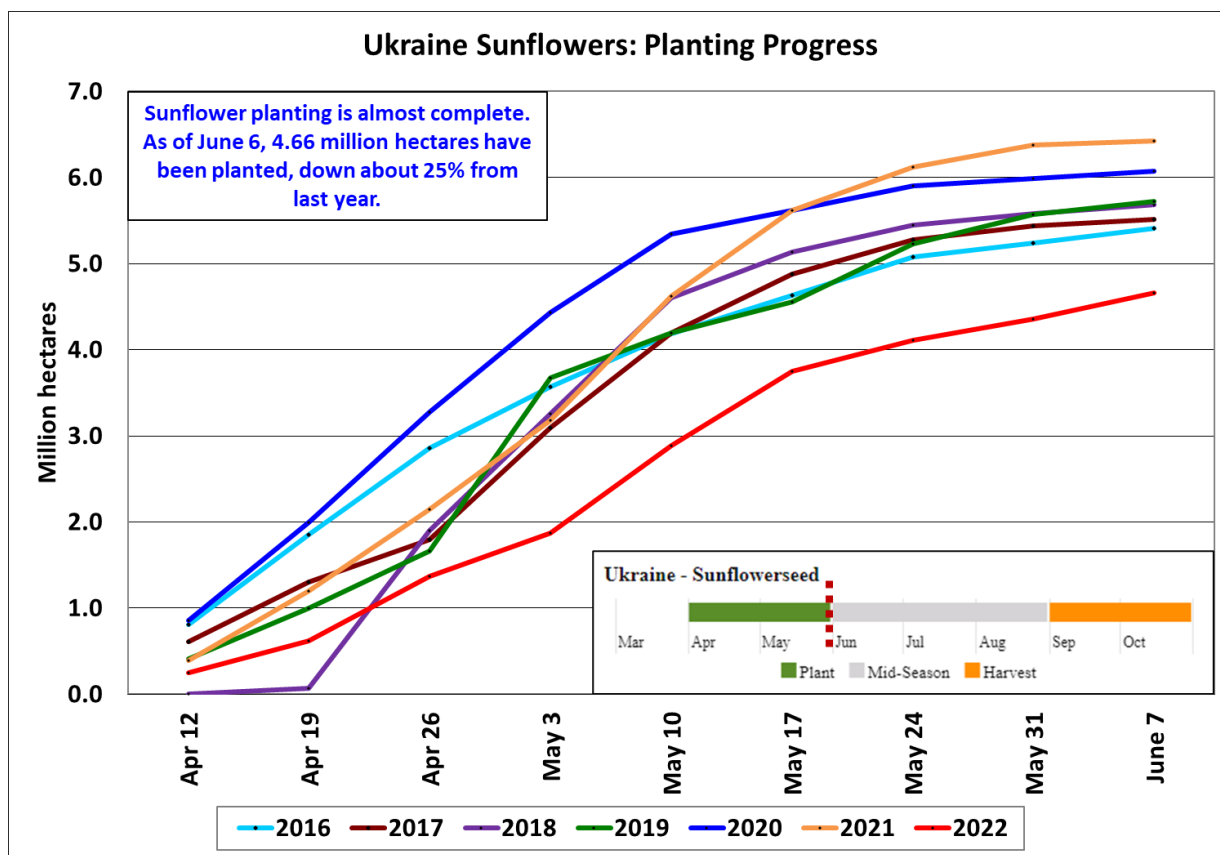
Source: Ministerio de Agricultura

The main rice season harvest began in April with farmers harvesting nearly 145,000 mt from almost 36,000 ha, representing the largest monthly area and production totals since May 2015. This follows the previous nine months of the marketing year which saw cumulative production remaining above-average throughout. The record production is the result of rising yields, which have reportedly been boosted through increased government financial support for inputs and the wide adoption of new, higher-yielding and herbicide-resistant varieties. This record crop has led to government announcements of self-sufficiency in rice production, with no need for rice imports for the first time in 20 years. (For more information, please contact [Aaron.Mulhollen@usda.gov](mailto:Aaron.Mulhollen@usda.gov).)

### Ukraine Sunflowerseed: Farmers Plant Less Crop Due to Ongoing Conflict

Ukraine sunflowerseed production for marketing year 2022/23 is forecast at 9.5 million metric tons, down 14 percent from last month and 46 percent from last year. Yield is forecast at 2.07 tons per hectare, down slightly from last month and 16 percent from last year. Harvested area is forecast at 4.6 million hectares (mha), down 13 percent from last month and 35 percent from last year.



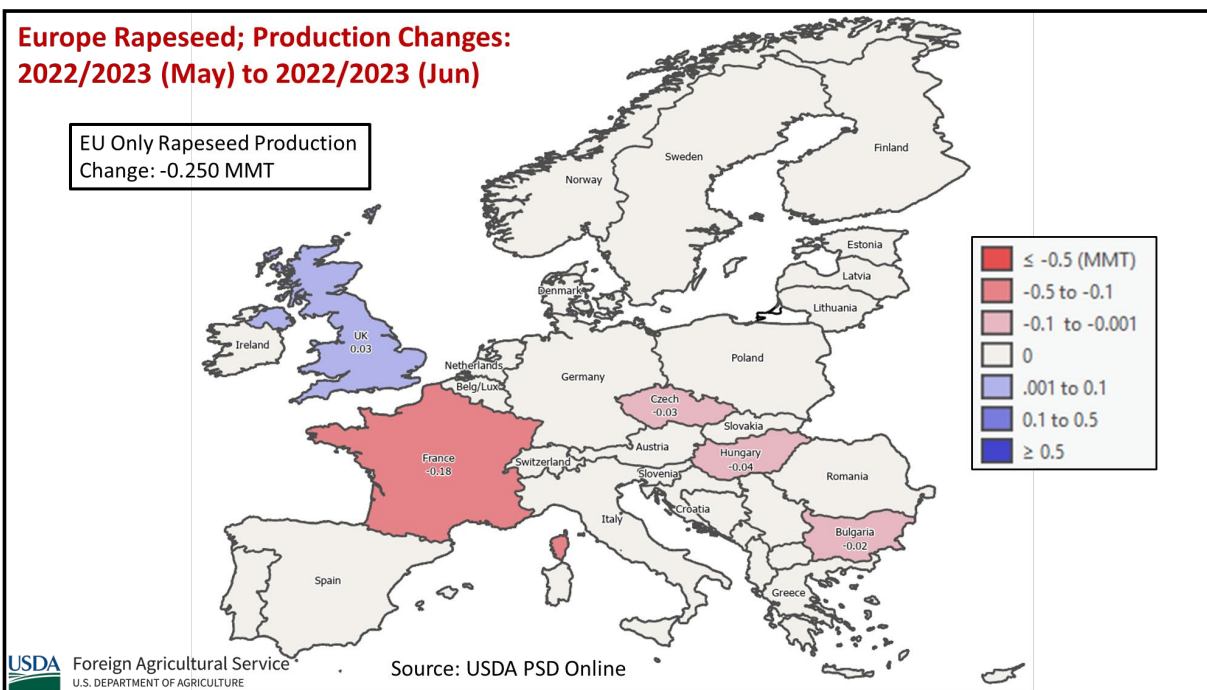


**USDA** Foreign Agricultural Service  
U.S. DEPARTMENT OF AGRICULTURE

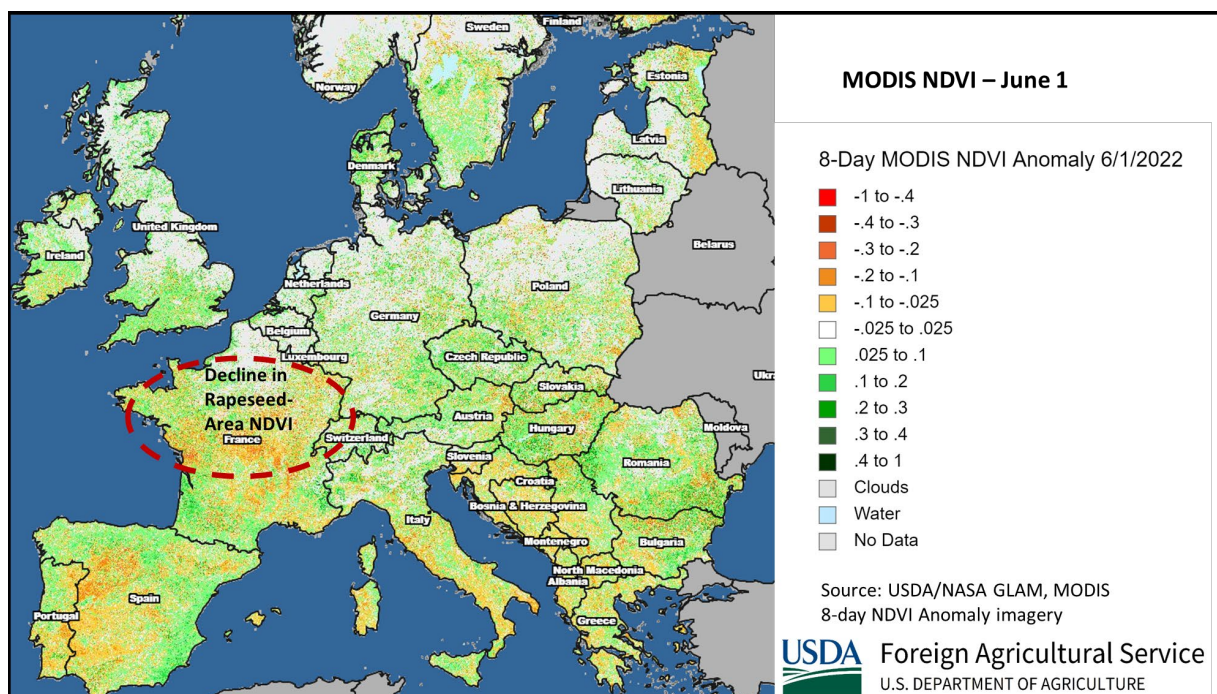
Source: Ukraine Ministry of Agriculture

According to planting data published by the Ministry of Agriculture, 4.66 mha have been planted as of June 6<sup>th</sup>. The USDA assumption is that areas that have been planted are likely to be harvested, therefore, normal abandonment is expected. Abandonment for sunflower is typically low, around 1 percent on average. Ukraine farmers typically import the hybrid seeds between December and April each year. Since the conflict began at the end of February, there will be less hybrid seeds for planting since March and April are key months for importing seeds (accounting for over half the seed imports on average). This decrease in expected hybrid seed imports is one reason for the lower planted area, as published by the Ministry of Agriculture. Yield for sunflowers is essentially unchanged month-to-month and key yield development occurs in mid-summer. USDA crop production estimates for Ukraine include estimated output from Crimea. (For more information, please contact [Katie.McGaughey@usda.gov](mailto:Katie.McGaughey@usda.gov).)

## EU Rapeseed: Dryness in France Suppresses Yield



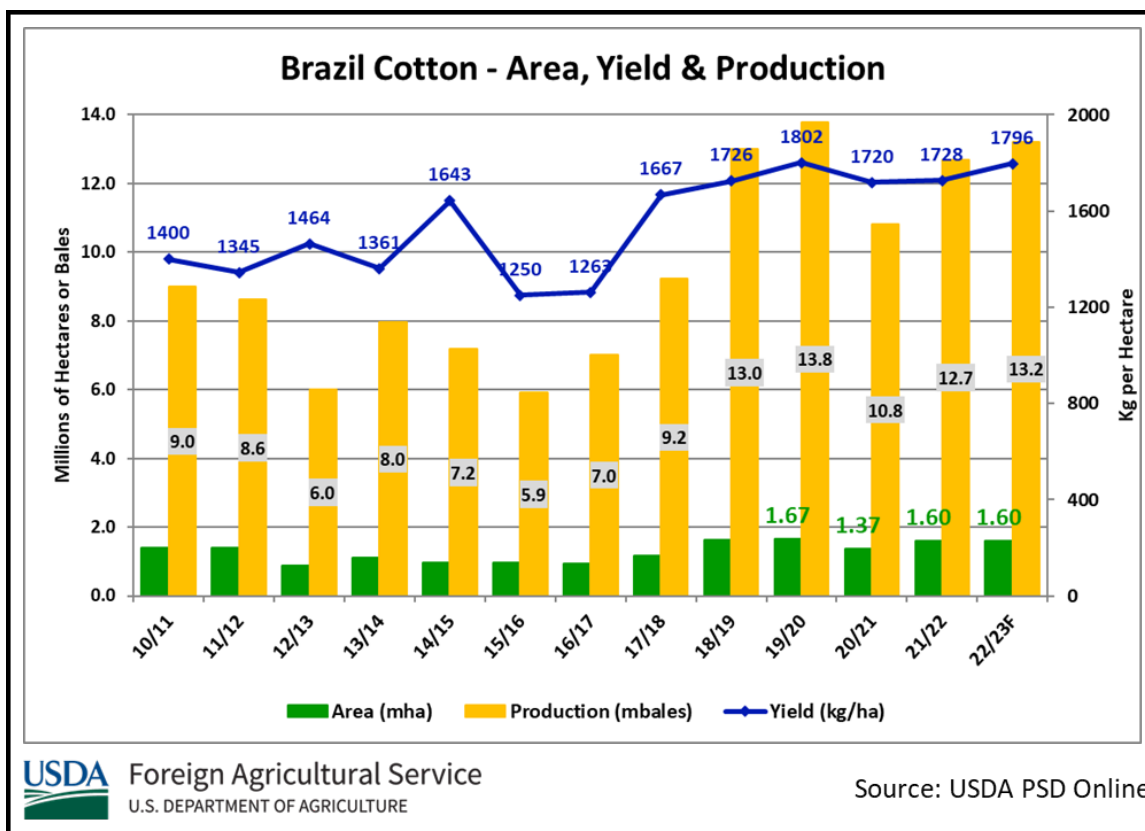
European Union (EU) rapeseed production for marketing year (MY) 2022/23 is forecast at 18.3 million metric tons (mmt), down 0.3 mmt or 1 percent from last month, but up 6 percent from last year and 5 percent above the 5-year average of 17.5 mmt. Harvested area is estimated at 5.8 million hectares (mha), unchanged from last month, 7 percent above last year, and 2 percent above the 5-year average. Yield is estimated at 3.15 tons per hectare (t/ha), down slightly from last month's 3.19 t/ha and last year's 3.20 t/ha, but 2 percent above the 5-year average of 3.07 t/ha.



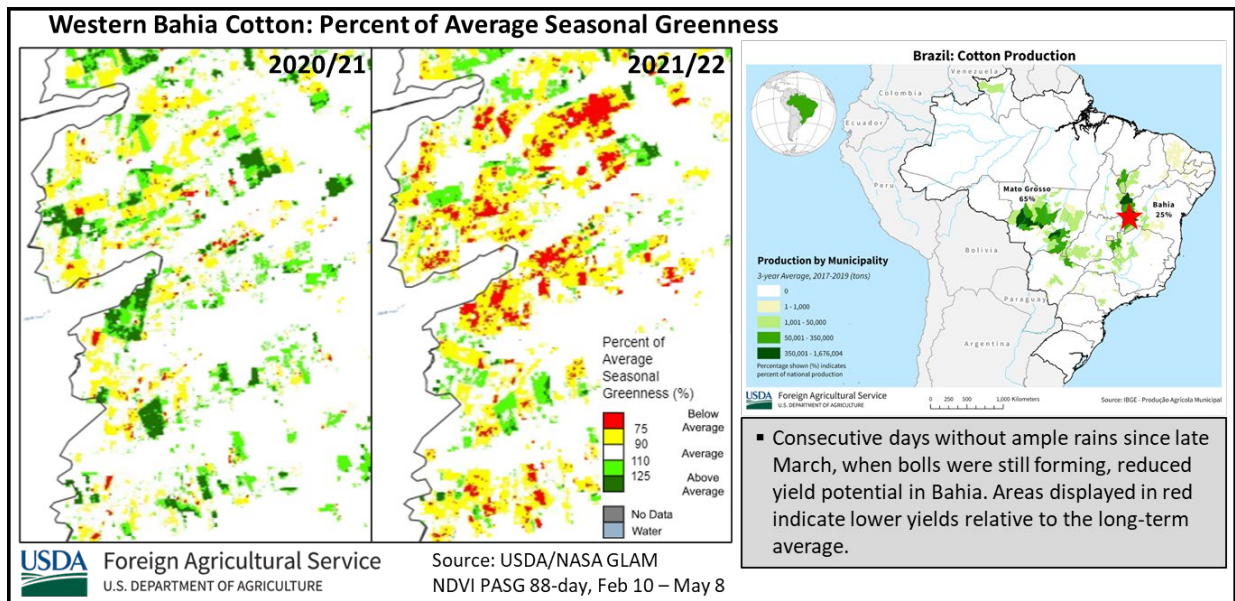
Rapeseed production in the EU has been lowered month-to-month due to dryness, primarily in France. Below-normal precipitation fell during the spring in France. The France rapeseed production forecast has been reduced by 0.2 mmt for June to 3.7 mmt. This drops its production rank to second highest in the EU, after Germany, which is forecast at 3.9 mmt. Additionally, much smaller reductions were made to Hungary, Czech Republic, and Bulgaria to make the aggregate EU rapeseed reduction 0.3 mmt. With the largest EU area in 5 years, the crop is expected to be the largest since MY 2018/19 despite the yield reductions. Overall, the crop in the EU is about a week ahead of average with harvest usually beginning in late June and finishing in July.

For country-specific area, yield, and production estimates within the European Union (EU), please go to PSD Online at <https://apps.fas.usda.gov/PSDOnline/app/index.html#/app/home>, and select “Downloadable Data Sets.” Select the zipped file for “EU Countries Area & Production.” (For more information, please contact [Bryan.Purcell@usda.gov](mailto:Bryan.Purcell@usda.gov).)

### Brazil Cotton: Drought Reduces MY 2021/22 Production

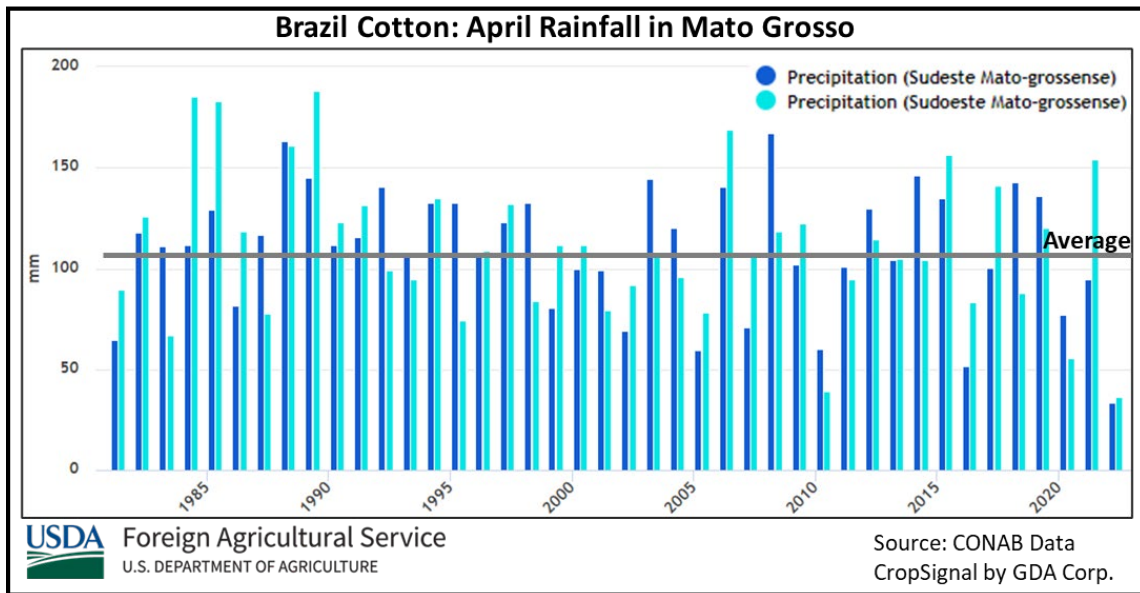


Brazil’s marketing year (MY) 2021/22 cotton production is estimated at 12.7 million 480-pound bales, lower by 0.5 million bales (4 percent) from last month, and up by 1.9 million bales (17 percent) from MY 2020/21. Harvested area is estimated at 1.6 million hectares (mha), unchanged from last month, and 17 percent greater than last season. Yield is estimated at 1,728 kilograms per hectare (kg/ha), 4 percent lower than last month, and slightly below the 5-year average.



The two largest cotton producing states, Mato Grosso and Bahia (70 and 20 percent of national production, respectively), increased area from the previous year 19 and 15 percent, respectively. Planting in both major cotton producing states occurred punctually with an optimistic start to the season. However, the rainy season tapered off before mid-April in Mato Grosso. The April rainfall amount of only 35 mm is the lowest in 40 years for the southeast and western regions of the state, when the long-term average is over 100 mm in the month. The low rainfall volumes and extended dry periods occurred when a significant proportion of the crop was in mid-flower through early boll formation stages, which will depress yield prospects. Finally for Mato Grosso, a brief period of low temperatures may have resulted in localized light frost, during the weekend of May 20<sup>th</sup>, likely minimally impacting the crop. The satellite-derived Percent of Average Seasonal Greenness (PASG) displays a sharp decline since mid-April indicating reduced crop vigor. The *Instituto Mato-Grossense de Economia Agropecuária* (IMEA) reports a larger area than their prior estimate and a productivity loss of 4 percent in their most recent report.



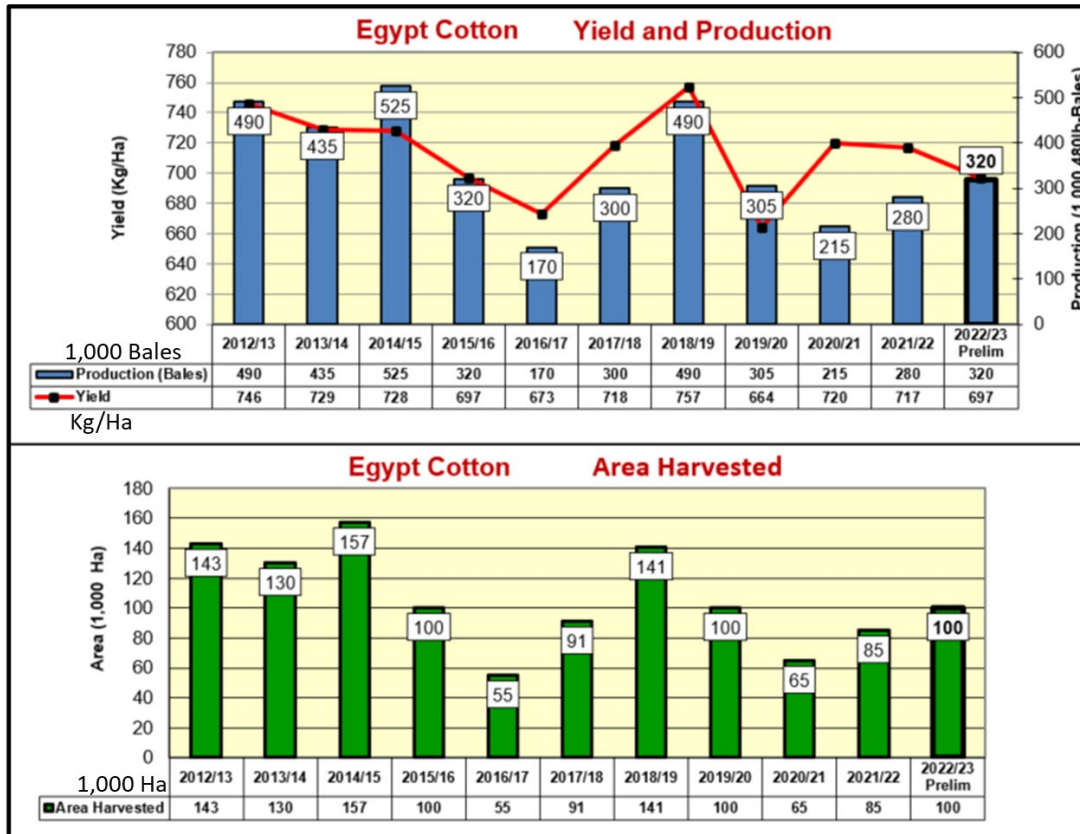


Meanwhile in Bahia where a longer season cotton is produced, heavy early rains were followed by an extended drought since late March when crops were still developing bolls. ABAPA (Bahian Association of Cotton Producers) is forecasting a productivity loss of 10 percent in the state. Harvest started in Bahia in May and will run through September, whereas harvest begins in June for Mato Grosso and also runs through September. *(For more information, please contact [Sunita.Yadav-Pauletti@usda.gov](mailto:Sunita.Yadav-Pauletti@usda.gov).)*

### Egypt Cotton: Increased Area Raises Production Expectations

Egypt cotton production for marketing year (MY) 2022/23 is forecast at 420,000 480-pound bales, up 100,000 bales or 31 percent from last month and 50 percent from last year. Harvested area is estimated at 130,000 hectares (ha), up 30 percent from last month and 53 percent from last year. Area is also 35 percent above the 5-year average. Yield is forecast at 703 kilograms per hectare (kg/ha), up slightly (1 percent) from last month, but down 2 percent from last year and the 5-year average.





**USDA** Foreign Agricultural Service  
U.S. DEPARTMENT OF AGRICULTURE

Source: USDA PSD Online

Cotton plantings for MY 2022/23 have increased due to their profitability compared to other crops, a result of high demand. This increase, reported by the Cotton Arbitration and Testing General Organization, would be the second consecutive year of increasing area after a near-record low of 65,000 hectares was reached in MY 2020/21. In recent years, the Egyptian government has taken control of cottonseed supplies in order to enhance the Egyptian cotton brand, after quality had declined due to farmers' re-use of seeds. The combination of this effort, and the increase in cotton prices, has led to a small resurgence in cotton area during the last two years. *(For more information, please contact [Bryan.Purcell@usda.gov](mailto:Bryan.Purcell@usda.gov).)*



**World Agricultural Production  
U.S. Department of Agriculture**

Foreign Agricultural Service / Global Market Analysis  
International Production Assessment Division (IPAD)  
Ag Box 1051, Room 4630, South Building  
Washington, DC 20250-1051

<https://ipad.fas.usda.gov/>

Telephone: (202) 720-1662 Fax: (202) 720-1158

This report uses information from the Foreign Agricultural Service’s (FAS) global network of agricultural attachés and counselors, official statistics of foreign governments and other foreign source materials, and the analysis of economic data and satellite imagery. Estimates of foreign area, yield, and production are from the International Production Assessment Division, FAS, and are reviewed by USDA’s Inter-Agency Commodity Estimates Committee. Estimates of U.S. area, yield, and production are from USDA’s National Agricultural Statistics Service. Numbers within the report may not add to totals because of rounding. This report reflects official USDA estimates released in the World Agricultural Supply and Demand Estimates (WASDE-584), June 10, 2022.

**Printed copies are available from the National Technical Information Service. Download an order form at [http://www.ntis.gov/products/specialty/usda/fas\\_a-g.asp](http://www.ntis.gov/products/specialty/usda/fas_a-g.asp), or call NTIS at 1-800-363-2068.**

The FAS International Production Assessment Division prepared this report. The next issue of World Agricultural Production will be released after 12:00 p.m. Eastern Time, July 12, 2022.

**Conversion Table**

Metric tons to bushels

Wheat, soybeans	=	MT * 36.7437
Corn, sorghum, rye	=	MT * 39.36825
Barley	=	MT * 45.929625
Oats	=	MT * 68.894438

Metric tons to 480-lb bales

Cotton	=	MT * 4.592917
--------	---	---------------

Metric tons to hundredweight

Rice	=	MT * 22.04622
------	---	---------------

Area & weight

1 hectare	=	2.471044 acres
1 kilogram	=	2.204622 pounds



For further information, contact:  
**U.S. Department of Agriculture**  
**Foreign Agricultural Service**  
**Global Market Analysis**

International Production Assessment Division  
Ag Box 1051, Room 4630, South Building  
Washington, DC 20250-1051

Telephone: (202) 720-1662

Fax: (202) 720-1158

---

### **GENERAL INFORMATION**

Senior Director	Ronald Frantz	202-720-4056	ronald.frantz@usda.gov
Director	Robert Tetrault	202-720-1071	robert.tetrault@usda.gov
Administrative Assistant	Vacant		
USDA Remote Sensing Advisor	Vacant		
Sr. Analyst/Technical Lead	Curt Reynolds, Ph.D.	202-690-0134	curt.reynolds@usda.gov
Sr. Analyst/ Satellite Imagery	Dath Mita, Ph.D.	202-720-7339	dath.mita@usda.gov
Archives Manager/Technical Lead			
Sr. Analyst/Technical Lead	Jim Crutchfield	202-690-0135	james.crutchfield@usda.gov
GIS Mapping/Imagery Analyst	Lisa Colson	202-720-6652	lisa.colson@usda.gov
WAP Coordinators	Ifeoma Collins	202-720-0240	ifeoma.collins@usda.gov
	Aaron Mulhollen	202-690-0131	aaron.mulhollen@usda.gov

### **COUNTRY- AND REGION-SPECIFIC INFORMATION**

South America, Argentina, Venezuela, and Colombia	Denise McWilliams, Ph.D.	202-720-0107	denise.mcwilliams@usda.gov
Western and Central Europe, and North Africa	Bryan Purcell	202-690-0138	bryan.purcell@usda.gov
Russia, Ukraine, Kazakhstan, Moldova, and Belarus	Katie McGaughey	202-720-9210	katie.mcgaughey@usda.gov
South Asia, Sri Lanka Bangladesh, India, and Nepal	Arnella Trent	202-720-0881	arnella.trent@usda.gov
East Asia, China, and Japan	Dath Mita, Ph.D.	202-720-7339	dath.mita@usda.gov
Sub-Saharan Africa, Nigeria and South Africa	Curt Reynolds, Ph.D.	202-690-0134	curt.reynolds@usda.gov
S.E. Asia, Indonesia, Thailand, Malaysia, Cambodia and Vietnam	Justin Jenkins	202-720-0419	justin.jenkins@usda.gov
Central America, Mexico, and Western United States	Ifeoma Collins	202-720-0240	ifeoma.collins@usda.gov
Australia, New Zealand, Pakistan Papua New Guinea and South Pacific Islands	Jim Crutchfield	202-690-0135	james.crutchfield@usda.gov
Middle East, Central Asia, Afghanistan Iraq, Iran, and Syria	Iliana Mladenova, Ph.D.	202-235-7562	iliana.mladenova@usda.gov
Canada, Caribbean, Eastern United States	Aaron Mulhollen	202-690-0131	aaron.mulhollen@usda.gov
Brazil	Sunita Yadav-Pauletti, Ph.D.		sunita.yadav-pauletti@usda.gov



The Foreign Agricultural Service (FAS) updates its production, supply and distribution (PSD) database for cotton, oilseeds, and grains at 12:00 p.m. on the day the *World Agricultural Supply and Demand Estimates* (WASDE) report is released. This circular is released by 12:15 p.m.

## FAS Reports and Databases:

### World Agricultural Production

Current: <https://www.fas.usda.gov/data/world-agricultural-production>

Archive: <https://usda.library.cornell.edu/concern/publications/5q47rn72z?locale=en>

USDA's Foreign Agricultural Service (FAS) publishes a monthly report on crop acreage, yield and production in major countries worldwide. Sources include reporting from FAS's worldwide offices, official statistics of foreign governments, and analysis of economic data and satellite imagery. The reports reflect official USDA estimates released in the monthly *World Agricultural Supply and Demand Estimates* (WASDE).

### World Markets and Trade

Current: <https://www.fas.usda.gov/data>

Archive:

[https://usda.library.cornell.edu/catalog?f%5Bmember\\_of\\_collections\\_ssim%5D%5B%5D=Foreign+Agricultural+Service&locale=en](https://usda.library.cornell.edu/catalog?f%5Bmember_of_collections_ssim%5D%5B%5D=Foreign+Agricultural+Service&locale=en)

USDA's Foreign Agricultural Service (FAS) publishes monthly and quarterly reports which include data on U.S. and global trade, production, consumption and stocks, as well as analysis of developments affecting world trade in oilseeds, grains, cotton, livestock and poultry. The reports reflect official USDA estimates released in the monthly *World Agricultural Supply and Demand Estimates* (WASDE).

### Global Agricultural Information Network (GAIN)

<https://www.fas.usda.gov/databases/global-agricultural-information-network-gain>

USDA's Foreign Agricultural Service (FAS) provides timely reports on foreign markets through the Global Agriculture Information Network (GAIN) database. An average of 2,000 reports are added each year, with reports going back to 1995. GAIN reports are compiled by FAS' global market intelligence network, which includes FAS foreign service officers and locally engaged staff in over 90 overseas offices world-wide. They provide on-the-ground intelligence, insight, and analysis on nearly 200 countries, delivering information on foreign agricultural markets, crop conditions, and agro-political dynamics of interest to U.S. agriculture. GAIN reports contain assessments of commodity and trade issues made by USDA staff and are not necessarily statements of official U.S. government policy.

### Production, Supply and Distribution (PS&D) Online

<https://apps.fas.usda.gov/psdonline/app/index.html#/app/home>

PSD Online is the public repository for USDA's Official Production, Supply and Distribution forecast data and reports for key agricultural commodities. PSD Online data are reviewed and updated monthly by an interagency committee chaired by USDA's World Agricultural Outlook Board (WAOB). The committee consist of representatives from Foreign Agricultural Service (FAS), the Economic Research Service (ERS), the Farm Service Agency (FSA), and the Agricultural Marketing Service (AMS).

### EU Countries and Russia Wheat: Area and Production Estimates

<https://apps.fas.usda.gov/psdonline/app/index.html#/app/downloads> (click on PSD Datasets)

USDA's Foreign Agricultural Service (FAS) provides country-level area and production estimates for the nations of the European Union. For Russia, country-level area and production estimates are provided for Winter and Spring wheat. These datasets are reviewed and updated monthly by an interagency committee chaired by USDA's World Agricultural Outlook Board (WAOB) and can be downloaded through PSD datasets on PSD Online.



## FAS Reports and Databases:

### **International Production Assessment (IPAD)**

<https://ipad.fas.usda.gov/>

USDA's Foreign Agricultural Service (FAS) maintains a dynamic global crop production portal with key information including *World Agricultural Production* (WAP) briefs, Commodity Intelligence Reports (CIR), geospatial applications, crop production maps at a subnational level and crop calendars for the top-20 producing countries. Additionally, Crop Explorer (<https://ipad.fas.usda.gov/cropeplorer/>) displays rainfall, temperature, evapotranspiration, soil moisture, snow cover, and vegetation conditions in charts and maps.

### **USDA and NASA Global Agricultural Monitoring (GLAM)**

<https://glam1.gsfc.nasa.gov/>

The USDA and NASA Global Agricultural Monitoring (GLAM) system provides near real-time and science quality Moderate Resolution Imaging Spectroradiometer (MODIS) Normalized Difference Vegetation Index (NDVI) from the satellites Terra and Aqua. The public can view and retrieve MODIS 8-day composited, global NDVI satellite imagery and time series data. GLAM was developed by NASA's Global Inventory Modeling and Mapping Studies (GIMMS) group for USDA's Foreign Agricultural Service.

### **Global Agricultural and Disaster Assessment System (GADAS)**

<https://geo.fas.usda.gov/GADAS/index.html>

USDA's Foreign Agricultural Service (FAS) provides the Global Agricultural and Disaster Assessment System (GADAS), a web-based Geographic Information System (GIS) tool which integrates a vast array of highly detailed earth observation data streams, particularly targeted towards agricultural and disaster assessment analysis. GADAS is an interactive website which provides analysts with a wide variety of routine geospatial products (maps, charts, tables) they require for comprehensive situational investigations and recurring assessments.

### **Export Sales Reporting**

<https://apps.fas.usda.gov/esrquery/>

USDA's Export Sales Reporting Program monitors U.S. agricultural export sales on a daily and weekly basis. Export sales reporting provides a constant stream of up-to-date market information for 40 U.S. agricultural commodities sold abroad. The weekly U.S. Export Sales report is the most currently available source of U.S. exports sales data. The data is used to analyze overall levels of export demand, determine where markets exit, and assess the relative position of U.S. commodities in foreign markets.

### **Global Agricultural Trade System (GATS)**

<https://apps.fas.usda.gov/gats/default.aspx>

The Global Agricultural Trade System (GATS) is a searchable database containing monthly U.S. Census Bureau trade data organized by agricultural commodity and agricultural related product groups. Trade data is searchable by partner countries and partner groups. Historical U.S. agricultural trade data is available back to 1967. In addition, U.N. trade statistics (UN Comtrade) may be queried through GATS. UN trade data is available for nearly 200 countries or areas, dating from the inception of the Harmonized System (HS) of trade codes in 1989 to present. The database is continuously updated. U.S. trade data is updated monthly according to the U.S. Census Bureau's reporting system. UN Comtrade data are updated in GATS after nationally submitted data to the UN are standardized by the UN Statistical Division and added to the UN Comtrade database.

### **Other USDA Reports:**

World Agricultural Supply and Demand Estimates (WASDE):

<http://www.usda.gov/oce/commodity/wasde/>

Economic Research Service:

<http://www.ers.usda.gov/topics/crops>

National Agricultural Statistics Service:

<http://www.nass.usda.gov/Publications/>



**Table 01 World Crop Production Summary**

Million Metric Tons

Commodity	World	Total Foreign	North America			Former Soviet		European	Asia (WAP)					South America		Selected Other			All Others
			United States	Canada	Mexico	Russia	Ukraine		China	India	Indonesia	Pakistan	Thailand	Argentina	Brazil	Australia	South Africa	Turkey	
			-	-	-	-	-		-	-	-	-	-	-	-	-	-	-	
---Million metric tons---																			
<b>Wheat</b>																			
2020/21	775.7	726.0	49.8	35.2	3.0	85.4	25.4	nr	134.3	107.9	0.0	25.2	0.0	17.6	6.3	33.3	2.1	18.3	232.1
2021/22 prel.	779.0	734.2	44.8	21.7	3.3	75.2	33.0	nr	136.9	109.6	0.0	27.5	0.0	22.2	7.7	36.3	2.3	16.0	242.7
2022/23 proj.																			
May	774.8	727.8	47.1	33.0	3.3	80.0	21.5	nr	135.0	108.5	0.0	26.4	0.0	20.0	8.5	30.0	2.3	17.5	241.8
Jun	773.4	726.2	47.3	33.0	3.3	81.0	21.5	nr	135.0	106.0	0.0	26.4	0.0	20.0	8.5	30.0	2.3	17.5	241.7
<b>Coarse Grains</b>																			
2020/21	1,439.1	1,066.2	372.9	29.6	32.7	41.4	39.6	nr	269.1	51.4	12.6	9.4	5.7	60.0	90.3	17.1	17.8	15.8	373.9
2021/22 prel.	1,501.8	1,103.1	398.7	24.2	33.2	38.5	53.5	nr	280.9	50.6	12.7	10.0	5.4	62.9	120.6	18.4	16.9	11.6	363.8
2022/23 proj.																			
May	1,475.9	1,093.8	382.1	29.8	33.5	41.9	26.6	nr	279.3	50.1	12.9	9.4	5.5	64.9	130.5	15.0	17.9	13.6	362.8
Jun	1,479.2	1,097.1	382.1	29.8	33.5	41.9	31.8	nr	279.3	50.0	12.9	9.4	5.5	64.9	130.5	14.5	17.9	13.6	361.6
<b>Rice, Milled</b>																			
2020/21	509.3	502.1	7.2	0.0	0.2	0.7	0.0	nr	148.3	124.4	34.5	8.4	18.9	0.8	8.0	0.3	0.0	0.6	156.9
2021/22 prel.	513.7	507.6	6.1	0.0	0.2	0.7	0.0	nr	149.0	129.7	34.4	8.7	19.7	0.8	7.3	0.5	0.0	0.5	156.2
2022/23 proj.																			
May	514.6	508.8	5.8	0.0	0.2	0.6	0.0	nr	149.0	130.0	34.6	8.9	19.8	0.8	7.1	0.6	0.0	0.6	156.7
Jun	515.3	509.5	5.8	0.0	0.2	0.6	0.0	nr	149.0	130.5	34.6	8.9	19.8	0.8	7.1	0.6	0.0	0.6	156.9
<b>Total Grains</b>																			
2020/21	2,724.1	2,294.2	429.9	64.8	35.8	127.5	65.0	nr	551.6	283.6	47.1	43.0	24.5	78.5	104.6	50.7	19.9	34.6	762.9
2021/22 prel.	2,794.5	2,344.9	449.6	45.9	36.7	114.4	86.6	nr	566.8	289.8	47.1	46.2	25.0	85.8	135.6	55.2	19.1	28.1	762.7
2022/23 proj.																			
May	2,765.3	2,330.4	435.0	62.8	37.0	122.5	48.1	nr	563.3	288.6	47.5	44.7	25.3	85.8	146.1	45.6	20.2	31.7	761.3
Jun	2,768.0	2,332.8	435.2	62.8	37.0	123.5	53.3	nr	563.3	286.5	47.5	44.7	25.3	85.7	146.1	45.1	20.2	31.7	760.2
<b>Oilseeds</b>																			
2020/21	606.6	482.0	124.5	25.9	0.7	20.1	19.9	nr	65.6	38.3	14.6	2.7	1.0	51.2	143.9	5.4	2.7	2.9	87.1
2021/22 prel.	599.0	468.5	130.5	19.0	0.9	23.1	24.3	nr	62.1	41.1	15.1	3.3	1.0	48.4	131.1	8.1	3.0	3.4	84.7
2022/23 proj.																			
May	647.1	510.5	136.6	26.4	0.9	22.6	16.5	nr	64.1	42.2	15.2	3.4	1.0	56.8	154.3	6.4	3.2	3.7	93.8
Jun	646.8	510.2	136.6	26.4	0.9	22.6	15.5	nr	64.1	42.2	15.2	3.4	1.0	56.8	154.3	7.1	3.2	3.7	93.8
<b>Cotton</b>																			
2020/21	111.5	96.9	14.6	0.0	1.0	0.0	0.0	1.7	29.5	27.6	0.0	4.5	0.0	1.4	10.8	2.8	0.1	2.9	14.6
2021/22 prel.	116.9	99.4	17.5	0.0	1.2	0.0	0.0	1.6	27.0	24.5	0.0	6.0	0.0	1.5	12.7	5.5	0.1	3.8	15.5
2022/23 proj.																			
May	121.1	104.6	16.5	0.0	1.3	0.0	0.0	1.6	27.5	27.5	0.0	6.2	0.0	1.4	13.2	5.5	0.1	4.3	16.0
Jun	121.3	104.8	16.5	0.0	1.3	0.0	0.0	1.6	27.5	27.5	0.0	6.2	0.0	1.4	13.2	5.5	0.1	4.3	16.2

1/ Includes wheat, coarse grains, and rice (milled) shown above.

**Table 02 Wheat Area, Yield, and Production**

Country / Region	Area (Million hectares)				Yield (Metric tons per hectare)				Production (Million metric tons)				Change in Production						
	2020/21	Prel.		2022/23 Proj.		2020/21	Prel.		2022/23 Proj.		2020/21	Prel.		2022/23 Proj.		From last month		From last year	
		2021/22	May	Jun	2021/22		May	Jun	2021/22	May		Jun	MMT	Percent	MMT	Percent			
<b>World</b>	220.83	222.21	220.85	221.11	3.51	3.51	3.51	3.50	775.71	779.03	774.83	773.43	-1.40	-0.18	-5.60	-0.72			
<b>United States</b>	14.89	15.04	15.00	15.00	3.34	2.98	3.14	3.15	49.75	44.79	47.05	47.26	0.21	0.45	2.47	5.52			
<b>Total Foreign</b>	205.95	207.17	205.85	206.11	3.53	3.54	3.54	3.52	725.96	734.24	727.78	726.17	-1.61	-0.22	-8.07	-1.10			
<b>European Union</b>	22.98	24.23	24.10	24.10	5.51	5.71	5.66	5.65	126.69	138.42	136.50	136.10	-0.40	-0.29	-2.32	-1.67			
<b>United Kingdom</b>	1.39	1.79	1.80	1.80	6.96	7.81	8.00	8.11	9.66	13.99	14.40	14.60	0.20	1.39	0.61	4.38			
<b>Serbia</b>	0.59	0.60	0.63	0.63	4.58	5.00	4.60	4.60	2.70	3.00	2.90	2.90	0.00	0.00	-0.10	-3.33			
<b>China</b>	23.38	23.57	23.40	23.40	5.74	5.81	5.77	5.77	134.25	136.95	135.00	135.00	0.00	0.00	-1.95	-1.42			
<b>South Asia</b>																			
India	31.36	31.13	31.00	31.00	3.44	3.52	3.50	3.42	107.86	109.59	108.50	106.00	-2.50	-2.30	-3.59	-3.27			
Pakistan	8.81	9.17	9.00	9.00	2.87	3.00	2.93	2.93	25.25	27.46	26.40	26.40	0.00	0.00	-1.06	-3.87			
Afghanistan	2.33	2.20	2.20	2.20	2.15	2.00	2.05	2.05	5.01	4.40	4.50	4.50	0.00	0.00	0.10	2.27			
Nepal	0.75	0.75	0.75	0.75	2.95	2.80	2.80	2.80	2.21	2.10	2.10	2.10	0.00	0.00	0.00	0.00			
<b>Former Soviet Union - 12</b>																			
Russia	28.68	27.63	27.50	27.50	2.98	2.72	2.91	2.95	85.35	75.16	80.00	81.00	1.00	1.25	5.84	7.77			
Russia Winter	16.63	15.22	15.60	15.60	3.77	3.43	3.75	3.81	62.69	52.19	58.50	59.50	1.00	1.71	7.31	14.00			
Russia Spring	12.06	12.41	11.90	11.90	1.88	1.85	1.81	1.81	22.66	22.96	21.50	21.50	0.00	0.00	-1.46	-6.38			
Ukraine	6.85	7.41	5.85	5.85	3.71	4.45	3.68	3.68	25.42	33.01	21.50	21.50	0.00	0.00	-11.51	-34.86			
Kazakhstan	12.06	12.72	12.50	12.50	1.18	0.93	1.04	1.04	14.26	11.81	13.00	13.00	0.00	0.00	1.19	10.04			
Uzbekistan	1.36	1.36	1.40	1.40	4.53	4.43	4.43	4.71	6.16	6.03	6.20	6.60	0.40	6.45	0.57	9.51			
Belarus	0.72	0.65	0.68	0.68	3.94	3.54	3.48	3.48	2.85	2.30	2.35	2.35	0.00	0.00	0.05	2.17			
<b>Canada</b>	10.02	9.25	9.70	9.70	3.51	2.34	3.40	3.40	35.18	21.65	33.00	33.00	0.00	0.00	11.35	52.41			
<b>South America</b>																			
Argentina	6.40	6.55	6.30	6.30	2.76	3.38	3.17	3.17	17.64	22.15	20.00	20.00	0.00	0.00	-2.15	-9.71			
Brazil	2.34	2.74	3.20	3.20	2.67	2.81	2.66	2.66	6.25	7.70	8.50	8.50	0.00	0.00	0.80	10.39			
<b>Australia</b>	12.90	13.00	12.90	13.20	2.58	2.79	2.33	2.27	33.30	36.30	30.00	30.00	0.00	0.00	-6.30	-17.36			
<b>Africa</b>																			
Egypt	1.39	1.40	1.53	1.53	6.40	6.43	6.41	6.41	8.90	9.00	9.80	9.80	0.00	0.00	0.80	8.89			
Morocco	2.76	2.86	2.50	2.50	0.93	2.64	0.90	0.90	2.56	7.54	2.25	2.25	0.00	0.00	-5.29	-70.16			
Algeria	2.08	2.08	2.08	2.08	1.50	1.20	1.78	1.78	3.11	2.50	3.70	3.70	0.00	0.00	1.20	48.00			
Ethiopia	1.83	1.95	2.00	2.00	3.00	2.83	2.85	2.85	5.48	5.52	5.70	5.70	0.00	0.00	0.18	3.26			
<b>Middle East</b>																			
Turkey	7.10	7.05	7.00	7.00	2.57	2.27	2.50	2.50	18.25	16.00	17.50	17.50	0.00	0.00	1.50	9.38			
Iran	6.00	6.00	6.20	6.20	2.50	2.00	2.13	2.13	15.00	12.00	13.20	13.20	0.00	0.00	1.20	10.00			
Iraq	2.40	2.00	2.00	2.00	1.93	1.75	1.50	1.50	4.64	3.50	3.00	3.00	0.00	0.00	-0.50	-14.29			
Syria	1.60	1.10	1.30	1.30	2.81	1.82	1.92	1.92	4.50	2.00	2.50	2.50	0.00	0.00	0.50	25.00			
<b>Mexico</b>	0.56	0.55	0.59	0.59	5.33	6.00	5.59	5.59	2.97	3.28	3.27	3.27	0.00	0.00	-0.01	-0.34			
<b>Others</b>	7.34	7.46	7.76	7.72	2.80	2.80	2.84	2.81	20.52	20.89	22.01	21.70	-0.31	-1.40	0.81	3.87			

**Table 03 Total Coarse Grain Area, Yield, and Production**

Country / Region	Area (Million hectares)				Yield (Metric tons per hectare)				Production (Million metric tons)				Change in Production						
	2020/21	Prel.		2022/23 Proj.		2020/21	Prel.		2022/23 Proj.		2020/21	Prel.		2022/23 Proj.		From last month		From last year	
		2021/22	May	Jun	2021/22		May	Jun	2021/22	May		Jun	MMT	Percent	MMT	Percent			
<b>World</b>	343.67	345.22	340.66	341.13	4.19	4.35	4.33	4.34	1,439.10	1,501.77	1,475.87	1,479.19	3.32	0.23	-22.58	-1.50			
<b>United States</b>	36.81	38.35	36.78	36.78	10.13	10.40	10.39	10.39	372.89	398.71	382.10	382.10	0.00	0.00	-16.60	-4.16			
<b>Total Foreign</b>	306.86	306.86	303.88	304.35	3.47	3.59	3.60	3.60	1,066.21	1,103.06	1,093.77	1,097.09	3.32	0.30	-5.98	-0.54			
<b>China</b>	43.72	45.77	45.45	45.45	6.15	6.14	6.15	6.15	269.08	280.85	279.30	279.30	0.00	0.00	-1.55	-0.55			
<b>European Union</b>	28.76	27.80	27.71	27.71	5.40	5.54	5.47	5.44	155.35	154.08	151.62	150.82	-0.80	-0.53	-3.26	-2.12			
<b>United Kingdom</b>	1.66	1.43	1.37	1.37	5.64	5.88	5.95	6.10	9.36	8.41	8.15	8.35	0.20	2.46	-0.06	-0.73			
<b>South America</b>																			
Brazil	21.30	23.37	24.31	24.31	4.24	5.16	5.37	5.37	90.32	120.62	130.54	130.54	0.00	0.00	9.92	8.22			
Argentina	8.64	9.91	9.61	9.62	6.94	6.35	6.76	6.74	60.00	62.91	64.92	64.88	-0.05	-0.07	1.97	3.12			
<b>Former Soviet Union - 12</b>																			
Russia	14.55	14.01	14.38	14.38	2.84	2.75	2.92	2.92	41.40	38.54	41.93	41.93	0.00	0.00	3.39	8.79			
Ukraine	8.53	8.66	5.97	6.87	4.64	6.18	4.45	4.63	39.59	53.51	26.56	31.76	5.20	19.58	-21.75	-40.65			
Kazakhstan	3.20	2.63	2.70	2.70	1.54	1.43	1.58	1.58	4.93	3.76	4.25	4.25	0.00	0.00	0.49	13.05			
Belarus	1.14	0.99	1.03	1.03	3.47	3.05	3.11	3.11	3.95	3.00	3.20	3.20	0.00	0.00	0.20	6.67			
<b>Africa</b>																			
Nigeria	13.10	13.70	13.95	13.95	1.60	1.56	1.54	1.54	20.90	21.39	21.50	21.50	0.00	0.00	0.11	0.50			
South Africa	3.36	3.19	3.30	3.30	5.31	5.29	5.43	5.43	17.81	16.85	17.90	17.90	0.00	0.00	1.05	6.22			
Tanzania	5.17	5.40	5.00	5.00	1.51	1.49	1.40	1.40	7.79	8.05	6.98	6.98	0.00	0.00	-1.08	-13.35			
Burkina Faso	4.18	4.24	4.24	4.24	1.13	0.99	1.16	1.16	4.72	4.20	4.90	4.90	0.00	0.00	0.70	16.58			
Ethiopia	5.53	5.59	5.63	5.63	3.45	3.08	3.23	3.23	19.10	17.20	18.20	18.20	0.00	0.00	1.00	5.81			
Egypt	1.03	1.16	1.16	1.16	7.01	7.13	7.13	7.13	7.24	8.30	8.30	8.30	0.00	0.00	0.00	0.00			
Mali	5.17	4.70	4.70	4.70	1.41	1.34	1.38	1.38	7.26	6.31	6.50	6.50	0.00	0.00	0.19	2.95			
<b>India</b>	24.12	24.09	23.91	23.91	2.13	2.10	2.10	2.09	51.39	50.56	50.10	50.00	-0.10	-0.20	-0.56	-1.10			
<b>Southeast Asia</b>																			
Indonesia	3.85	3.90	3.95	3.95	3.27	3.26	3.27	3.27	12.60	12.70	12.90	12.90	0.00	0.00	0.20	1.57			
Philippines	2.57	2.50	2.65	2.65	3.25	3.28	3.13	3.13	8.35	8.20	8.30	8.30	0.00	0.00	0.10	1.22			
Vietnam	0.99	0.99	0.97	0.97	4.80	4.86	4.85	4.85	4.74	4.80	4.70	4.70	0.00	0.00	-0.10	-2.04			
Thailand	1.28	1.23	1.25	1.25	4.41	4.36	4.37	4.37	5.65	5.35	5.45	5.45	0.00	0.00	0.10	1.87			
<b>Mexico</b>	8.76	8.89	9.01	9.01	3.73	3.73	3.72	3.72	32.66	33.20	33.50	33.50	0.00	0.00	0.30	0.89			
<b>Canada</b>	5.80	5.74	5.74	5.74	5.11	4.22	5.20	5.20	29.64	24.21	29.81	29.81	0.00	0.00	5.59	23.09			
<b>Australia</b>	6.12	5.96	5.89	5.69	2.79	3.09	2.55	2.55	17.09	18.40	15.02	14.52	-0.50	-3.33	-3.88	-21.09			
<b>Middle East</b>																			
Turkey	4.63	4.46	4.54	4.54	3.40	2.60	2.99	2.99	15.76	11.58	13.57	13.57	0.00	0.00	1.99	17.18			
Iran	1.81	1.91	1.86	1.86	2.77	2.16	2.38	2.38	5.02	4.12	4.42	4.42	0.00	0.00	0.30	7.31			
<b>Others</b>	77.90	74.66	73.65	73.41	1.60	1.63	1.65	1.64	124.53	121.96	121.28	120.65	-0.63	-0.52	-1.31	-1.08			

World and Selected Countries and Regions; Coarse Grain includes: Barley, Corn, Millet, Mixed Grains, Oats, Rye and Sorghum

**Table 04 Corn Area, Yield, and Production**

Country / Region	Area (Million hectares)				Yield (Metric tons per hectare)				Production (Million metric tons)				Change in Production			
	2020/21	Prel.	2022/23 Proj.		2020/21	Prel.	2022/23 Proj.		2020/21	Prel.	2022/23 Proj.		From last month		From last year	
		2021/22	May	Jun		2021/22	May	Jun		2021/22	May	Jun	MMT	Percent	MMT	Percent
<b>World</b>	199.11	206.47	202.67	203.46	5.67	5.89	5.83	5.83	1,129.00	1,216.07	1,180.72	1,185.81	5.09	0.43	-30.26	-2.49
<b>United States</b>	33.31	34.56	33.06	33.06	10.76	11.11	11.11	11.11	358.45	383.94	367.30	367.30	0.00	0.00	-16.64	-4.33
<b>Total Foreign</b>	165.80	171.91	169.61	170.39	4.65	4.84	4.80	4.80	770.55	832.12	813.41	818.51	5.09	0.63	-13.62	-1.64
<b>China</b>	41.26	43.32	43.00	43.00	6.32	6.29	6.30	6.30	260.67	272.55	271.00	271.00	0.00	0.00	-1.55	-0.57
<b>South America</b>																
Brazil	19.90	21.80	22.70	22.70	4.37	5.32	5.55	5.55	87.00	116.00	126.00	126.00	0.00	0.00	10.00	8.62
Argentina	6.55	7.20	7.00	7.00	7.94	7.36	7.86	7.86	52.00	53.00	55.00	55.00	0.00	0.00	2.00	3.77
Bolivia	0.47	0.48	0.48	0.48	2.30	2.32	2.32	2.32	1.08	1.10	1.10	1.10	0.00	0.00	0.00	0.00
<b>European Union</b>	9.21	9.21	9.07	9.07	7.29	7.65	7.53	7.53	67.14	70.50	68.25	68.25	0.00	0.00	-2.25	-3.19
<b>Africa</b>																
South Africa	3.12	3.00	3.10	3.10	5.44	5.43	5.58	5.58	16.95	16.30	17.30	17.30	0.00	0.00	1.00	6.13
Nigeria	5.50	6.00	6.25	6.25	2.25	2.12	2.00	2.00	12.40	12.75	12.50	12.50	0.00	0.00	-0.25	-1.92
Ethiopia	2.36	2.53	2.55	2.55	4.47	3.72	4.00	4.00	10.56	9.40	10.20	10.20	0.00	0.00	0.80	8.51
Egypt	0.80	0.93	0.93	0.93	8.00	8.00	8.00	8.00	6.40	7.44	7.44	7.44	0.00	0.00	0.00	0.00
Tanzania	4.20	4.40	4.00	4.00	1.60	1.59	1.48	1.48	6.71	7.00	5.90	5.90	0.00	0.00	-1.10	-15.71
Malawi	1.76	1.70	1.70	1.70	2.10	2.47	1.76	1.76	3.69	4.20	3.00	3.00	0.00	0.00	-1.20	-28.57
Zambia	1.33	1.41	1.30	1.12	2.54	2.57	2.31	2.43	3.39	3.62	3.00	2.71	-0.29	-9.80	-0.91	-25.25
Kenya	2.19	1.95	1.90	1.90	1.73	1.59	1.68	1.68	3.79	3.10	3.20	3.20	0.00	0.00	0.10	3.23
Uganda	0.99	1.10	1.10	1.10	2.78	2.55	2.55	2.55	2.75	2.80	2.80	2.80	0.00	0.00	0.00	0.00
Zimbabwe	1.58	1.95	1.60	1.60	0.57	1.39	1.00	1.00	0.91	2.72	1.60	1.60	0.00	0.00	-1.12	-41.11
<b>Former Soviet Union - 12</b>																
Ukraine	5.40	5.49	3.50	4.50	5.62	7.68	5.57	5.56	30.30	42.13	19.50	25.00	5.50	28.21	-17.13	-40.65
Russia	2.73	2.90	2.90	2.90	5.08	5.25	5.34	5.34	13.87	15.23	15.50	15.50	0.00	0.00	0.28	1.81
<b>South Asia</b>																
India	9.89	9.90	9.80	9.80	3.20	3.33	3.21	3.21	31.65	33.00	31.50	31.50	0.00	0.00	-1.50	-4.55
Pakistan	1.42	1.50	1.50	1.50	6.30	6.33	5.93	5.93	8.94	9.50	8.90	8.90	0.00	0.00	-0.60	-6.32
Nepal	0.97	0.97	0.97	0.97	2.82	2.82	2.82	2.82	2.72	2.72	2.72	2.72	0.00	0.00	0.00	0.00
<b>Southeast Asia</b>																
Indonesia	3.85	3.90	3.95	3.95	3.27	3.26	3.27	3.27	12.60	12.70	12.90	12.90	0.00	0.00	0.20	1.57
Philippines	2.57	2.50	2.65	2.65	3.25	3.28	3.13	3.13	8.35	8.20	8.30	8.30	0.00	0.00	0.10	1.22
Vietnam	0.99	0.99	0.97	0.97	4.80	4.86	4.85	4.85	4.74	4.80	4.70	4.70	0.00	0.00	-0.10	-2.04
Thailand	1.26	1.20	1.22	1.22	4.46	4.42	4.43	4.43	5.60	5.30	5.40	5.40	0.00	0.00	0.10	1.89
<b>Mexico</b>	7.14	7.10	7.20	7.20	3.83	3.88	3.83	3.83	27.35	27.55	27.60	27.60	0.00	0.00	0.05	0.18
<b>Canada</b>	1.41	1.39	1.40	1.40	9.63	10.05	10.00	10.00	13.56	13.98	14.00	14.00	0.00	0.00	0.02	0.11
<b>Turkey</b>	0.62	0.54	0.52	0.52	11.45	12.04	11.54	11.54	7.10	6.50	6.00	6.00	0.00	0.00	-0.50	-7.69
<b>Others</b>	26.32	26.56	26.37	26.33	2.60	2.56	2.58	2.58	68.34	68.05	68.10	67.99	-0.12	-0.17	-0.06	-0.09

World and Selected Countries and Regions

**Table 05 Barley Area, Yield, and Production**

Country / Region	Area (Million hectares)				Yield (Metric tons per hectare)				Production (Million metric tons)				Change in Production			
	Prel.		2022/23 Proj.		Prel.		2022/23 Proj.		Prel.		2022/23 Proj.		From last month		From last year	
	2020/21	2021/22	May	Jun	2020/21	2021/22	May	Jun	2020/21	2021/22	May	Jun	MMT	Percent	MMT	Percent
<b>World</b>	51.37	48.58	48.37	48.07	3.10	2.98	3.08	3.06	159.41	145.01	148.97	147.26	-1.71	-1.15	2.25	1.55
<b>United States</b>	0.90	0.79	0.97	0.97	4.15	3.25	4.06	4.06	3.72	2.56	3.94	3.94	0.00	0.00	1.38	53.83
<b>Total Foreign</b>	50.48	47.80	47.40	47.09	3.08	2.98	3.06	3.04	155.69	142.45	145.03	143.32	-1.71	-1.18	0.87	0.61
<b>European Union</b>	11.04	10.34	10.55	10.55	4.92	5.02	4.98	4.90	54.32	51.97	52.50	51.70	-0.80	-1.52	-0.27	-0.52
<b>United Kingdom</b>	1.39	1.15	1.12	1.12	5.85	6.05	6.14	6.32	8.12	6.96	6.85	7.05	0.20	2.92	0.09	1.28
<b>Former Soviet Union - 12</b>																
Russia	8.16	7.69	7.80	7.80	2.53	2.28	2.50	2.50	20.63	17.51	19.50	19.50	0.00	0.00	2.00	11.40
Ukraine	2.58	2.68	2.00	1.90	3.08	3.70	3.00	3.00	7.95	9.92	6.00	5.70	-0.30	-5.00	-4.22	-42.56
Kazakhstan	2.73	2.16	2.20	2.20	1.34	1.10	1.27	1.27	3.66	2.37	2.80	2.80	0.00	0.00	0.43	18.29
Belarus	0.41	0.35	0.40	0.40	3.35	2.86	2.75	2.75	1.38	1.00	1.10	1.10	0.00	0.00	0.10	10.00
Azerbaijan	0.35	0.37	0.34	0.34	2.81	2.74	2.79	2.79	0.97	1.00	0.95	0.95	0.00	0.00	-0.05	-5.00
<b>Canada</b>	2.81	3.00	2.80	2.80	3.82	2.31	3.75	3.75	10.74	6.95	10.50	10.50	0.00	0.00	3.55	51.12
<b>Australia</b>	4.40	4.35	4.30	4.10	2.98	3.15	2.67	2.68	13.10	13.70	11.50	11.00	-0.50	-4.35	-2.70	-19.71
<b>Middle East</b>																
Turkey	3.80	3.70	3.80	3.80	2.13	1.22	1.84	1.84	8.10	4.50	7.00	7.00	0.00	0.00	2.50	55.56
Iran	1.60	1.70	1.65	1.65	2.25	1.59	1.82	1.82	3.60	2.70	3.00	3.00	0.00	0.00	0.30	11.11
Iraq	1.20	0.60	0.60	0.60	1.29	1.17	1.13	1.13	1.55	0.70	0.68	0.68	0.00	0.00	-0.02	-2.86
Syria	1.50	0.80	1.00	1.00	1.27	0.81	0.90	0.90	1.90	0.65	0.90	0.90	0.00	0.00	0.25	38.46
<b>Africa</b>																
Ethiopia	0.90	0.96	0.97	0.97	2.52	2.45	2.47	2.47	2.26	2.35	2.40	2.40	0.00	0.00	0.05	2.13
Morocco	1.47	1.49	1.30	1.30	0.44	1.87	0.60	0.60	0.64	2.78	0.78	0.78	0.00	0.00	-2.00	-71.94
Algeria	0.98	1.03	1.03	1.03	1.24	0.93	1.76	1.56	1.21	0.95	1.80	1.60	-0.20	-11.11	0.65	68.42
Tunisia	0.36	0.28	0.30	0.30	1.28	1.54	1.40	1.40	0.47	0.43	0.42	0.42	0.00	0.00	-0.01	-2.33
South Africa	0.14	0.10	0.11	0.11	4.14	3.48	3.64	3.64	0.59	0.33	0.40	0.40	0.00	0.00	0.07	20.85
<b>South America</b>																
Argentina	1.01	1.34	1.35	1.35	4.00	3.96	3.93	3.93	4.04	5.30	5.30	5.30	0.00	0.00	0.00	0.00
Uruguay	0.19	0.22	0.23	0.23	4.78	4.11	4.16	4.16	0.89	0.92	0.94	0.94	0.00	0.00	0.02	1.63
Brazil	0.10	0.11	0.11	0.11	3.63	3.79	3.91	3.91	0.37	0.43	0.43	0.43	0.00	0.00	0.01	1.18
<b>India</b>	0.59	0.59	0.61	0.61	2.92	2.80	2.79	2.62	1.72	1.66	1.70	1.60	-0.10	-5.88	-0.06	-3.38
<b>China</b>	0.51	0.51	0.51	0.51	4.00	3.92	3.92	3.92	2.04	2.00	2.00	2.00	0.00	0.00	0.00	0.00
<b>Mexico</b>	0.30	0.34	0.34	0.34	3.07	2.82	2.82	2.82	0.91	0.96	0.96	0.96	0.00	0.00	0.00	0.00
<b>Afghanistan</b>	0.17	0.16	0.17	0.17	1.41	1.25	1.35	1.35	0.24	0.20	0.23	0.23	0.00	0.00	0.03	15.00
<b>Others</b>	1.80	1.78	1.82	1.82	2.40	2.37	2.41	2.41	4.31	4.22	4.39	4.38	-0.01	-0.18	0.17	3.91

World and Selected Countries and Regions



**Table 06 Oats Area, Yield, and Production**

Country / Region	Area (Million hectares)				Yield (Metric tons per hectare)				Production (Million metric tons)				Change in Production			
	2020/21	Prel.	2022/23 Proj.		2020/21	Prel.	2022/23 Proj.		2020/21	Prel.	2022/23 Proj.		From last month		From last year	
		2021/22	May	Jun		2021/22	May	Jun		2021/22	May	Jun	MMT	Percent	MMT	Percent
<b>World</b>	9.96	9.54	9.92	9.94	2.56	2.36	2.52	2.51	25.49	22.51	25.00	24.95	-0.05	-0.20	2.44	10.82
<b>United States</b>	0.41	0.26	0.36	0.36	2.34	2.20	2.35	2.35	0.95	0.58	0.86	0.86	0.00	0.00	0.28	48.10
<b>Total Foreign</b>	9.55	9.27	9.56	9.57	2.57	2.37	2.53	2.52	24.53	21.94	24.14	24.09	-0.05	-0.21	2.16	9.83
<b>European Union</b>	2.56	2.55	2.45	2.45	3.31	2.99	3.08	3.08	8.47	7.64	7.55	7.55	0.00	0.00	-0.09	-1.22
<b>Former Soviet Union - 12</b>																
Russia	2.33	2.17	2.40	2.40	1.77	1.72	1.88	1.88	4.13	3.73	4.50	4.50	0.00	0.00	0.77	20.55
Ukraine	0.20	0.18	0.18	0.18	2.54	2.61	2.29	2.29	0.52	0.48	0.40	0.40	0.00	0.00	-0.08	-16.32
Belarus	0.16	0.15	0.16	0.16	2.87	2.33	2.42	2.42	0.45	0.35	0.38	0.38	0.00	0.00	0.03	7.14
Kazakhstan	0.23	0.20	0.24	0.24	1.05	0.90	1.15	1.15	0.24	0.18	0.28	0.28	0.00	0.00	0.09	51.10
<b>Canada</b>	1.31	1.11	1.30	1.30	3.48	2.34	3.54	3.54	4.58	2.61	4.60	4.60	0.00	0.00	1.99	76.52
<b>South America</b>																
Argentina	0.24	0.35	0.29	0.30	2.13	2.08	2.26	2.00	0.51	0.72	0.65	0.60	-0.05	-6.98	-0.12	-16.20
Brazil	0.43	0.50	0.51	0.51	2.00	2.27	2.26	2.26	0.85	1.14	1.16	1.16	0.00	0.00	0.01	1.05
Chile	0.11	0.12	0.10	0.10	4.65	5.40	5.10	5.10	0.53	0.66	0.50	0.50	0.00	0.00	-0.17	-25.45
Uruguay	0.02	0.01	0.02	0.02	2.20	2.21	2.40	2.40	0.03	0.03	0.04	0.04	0.00	0.00	0.01	16.13
<b>Oceania</b>																
Australia	0.95	0.85	0.90	0.90	1.76	1.88	1.61	1.61	1.67	1.60	1.45	1.45	0.00	0.00	-0.15	-9.38
New Zealand	0.00	0.01	0.01	0.01	5.75	5.80	5.80	5.80	0.02	0.03	0.03	0.03	0.00	0.00	0.00	0.00
<b>China</b>	0.41	0.41	0.41	0.41	1.48	1.48	1.48	1.48	0.60	0.60	0.60	0.60	0.00	0.00	0.00	0.00
<b>Africa</b>																
Algeria	0.06	0.08	0.08	0.08	1.11	1.31	1.38	1.31	0.07	0.11	0.11	0.11	-0.01	-4.55	0.00	0.00
Morocco	0.02	0.04	0.02	0.02	0.40	1.13	0.40	0.40	0.01	0.05	0.01	0.01	0.00	0.00	-0.04	-86.67
South Africa	0.03	0.04	0.03	0.03	2.19	1.94	1.67	1.67	0.06	0.07	0.05	0.05	0.00	0.00	-0.02	-28.57
<b>Other Europe</b>																
United Kingdom	0.21	0.20	0.19	0.19	4.91	5.62	5.53	5.53	1.03	1.12	1.05	1.05	0.00	0.00	-0.07	-6.50
Norway	0.07	0.07	0.07	0.07	4.29	4.29	4.29	4.29	0.30	0.30	0.30	0.30	0.00	0.00	0.00	0.00
Serbia	0.03	0.03	0.03	0.03	2.17	2.17	2.17	2.17	0.07	0.07	0.07	0.07	0.00	0.00	0.00	0.00
Albania	0.02	0.01	0.02	0.02	2.25	2.14	2.20	2.20	0.04	0.03	0.03	0.03	0.00	0.00	0.00	10.00
Bosnia and Herzegovina	0.01	0.01	0.01	0.01	3.09	2.82	2.82	2.82	0.03	0.03	0.03	0.03	0.00	0.00	0.00	0.00
<b>Turkey</b>	0.10	0.11	0.11	0.11	2.40	2.38	2.38	2.38	0.24	0.25	0.25	0.25	0.00	0.00	0.00	0.00
<b>Mexico</b>	0.03	0.05	0.05	0.05	2.03	2.00	1.89	1.89	0.06	0.09	0.09	0.09	0.00	0.00	-0.01	-5.56
<b>Others</b>	0.03	0.03	0.03	0.03	1.61	1.76	1.68	1.68	0.05	0.05	0.05	0.05	0.00	0.00	0.00	1.96

World and Selected Countries and Regions

**Table 07 Rye Area, Yield, and Production**

Country / Region	Area (Million hectares)				Yield (Metric tons per hectare)				Production (Million metric tons)				Change in Production						
	2020/21	Prel.		2022/23 Proj.		2020/21	Prel.		2022/23 Proj.		2020/21	Prel.		2022/23 Proj.		From last month		From last year	
		2021/22	May	Jun	2021/22		May	Jun	2021/22	May		Jun	MMT	Percent	MMT	Percent			
<b>World</b>	4.16	4.02	3.88	3.88	3.43	3.10	3.16	3.16	14.30	12.47	12.28	12.28	0.00	0.00	-0.20	-1.57			
<b>United States</b>	0.13	0.12	0.15	0.15	2.19	2.09	2.13	2.13	0.29	0.25	0.33	0.33	0.00	0.00	0.08	31.73			
<b>Total Foreign</b>	4.03	3.90	3.73	3.73	3.47	3.14	3.20	3.20	14.00	12.22	11.95	11.95	0.00	0.00	-0.28	-2.25			
<b>European Union</b>	2.08	1.93	1.90	1.90	4.31	4.12	4.08	4.08	8.96	7.96	7.75	7.75	0.00	0.00	-0.21	-2.61			
<b>Former Soviet Union - 12</b>																			
Russia	0.97	0.99	0.95	0.95	2.44	1.73	2.11	2.11	2.38	1.72	2.00	2.00	0.00	0.00	0.28	16.55			
Belarus	0.36	0.33	0.30	0.30	2.92	2.46	2.50	2.50	1.05	0.80	0.75	0.75	0.00	0.00	-0.05	-6.25			
Ukraine	0.14	0.18	0.10	0.10	3.28	3.43	2.85	2.85	0.46	0.60	0.29	0.29	0.00	0.00	-0.32	-52.50			
Kazakhstan	0.02	0.04	0.03	0.03	1.25	0.91	1.20	1.20	0.03	0.04	0.03	0.03	0.00	0.00	-0.01	-25.00			
<b>Turkey</b>	0.11	0.12	0.11	0.11	2.91	2.87	2.91	2.91	0.32	0.33	0.32	0.32	0.00	0.00	-0.01	-3.03			
<b>Canada</b>	0.15	0.15	0.15	0.15	3.19	3.22	3.17	3.17	0.49	0.47	0.48	0.48	0.00	0.00	0.00	0.42			
<b>South America</b>																			
Chile	0.00	0.00	0.00	0.00	5.00	5.00	5.00	5.00	0.01	0.01	0.01	0.01	0.00	0.00	0.00	0.00			
Argentina	0.09	0.07	0.10	0.10	1.50	2.00	1.84	1.84	0.14	0.14	0.18	0.18	0.00	0.00	0.03	21.53			
<b>Other Europe</b>																			
Bosnia and Herzegovina	0.00	0.00	0.00	0.00	3.67	3.00	2.75	2.75	0.01	0.01	0.01	0.01	0.00	0.00	0.00	22.22			
Switzerland	0.00	0.00	0.00	0.00	5.50	5.50	5.50	5.50	0.01	0.01	0.01	0.01	0.00	0.00	0.00	0.00			
Serbia	0.00	0.00	0.00	0.00	2.50	2.50	2.50	2.50	0.01	0.01	0.01	0.01	0.00	0.00	0.00	0.00			
<b>Australia</b>	0.05	0.05	0.05	0.05	0.71	0.71	0.71	0.71	0.03	0.03	0.03	0.03	0.00	0.00	0.00	0.00			
<b>Others</b>	0.04	0.04	0.04	0.04	2.50	2.18	2.16	2.16	0.11	0.10	0.10	0.10	0.00	0.00	0.00	-1.04			

World and Selected Countries and Regions

**Table 08 Sorghum Area, Yield, and Production**

Country / Region	Area (Million hectares)				Yield (Metric tons per hectare)				Production (Million metric tons)				Change in Production			
	Prel.		2022/23 Proj.		Prel.		2022/23 Proj.		Prel.		2022/23 Proj.		From last month		From last year	
	2020/21	2021/22	May	Jun	2020/21	2021/22	May	Jun	2020/21	2021/22	May	Jun	MMT	Percent	MMT	Percent
<b>World</b>	43.05	41.67	41.10	41.10	1.45	1.50	1.52	1.52	62.42	62.33	62.67	62.66	-0.01	-0.01	0.33	0.53
<b>United States</b>	2.06	2.63	2.23	2.23	4.59	4.33	4.35	4.35	9.47	11.38	9.68	9.68	0.00	0.00	-1.70	-14.92
<b>Total Foreign</b>	40.99	39.05	38.88	38.87	1.29	1.30	1.36	1.36	52.94	50.95	52.99	52.98	-0.01	-0.01	2.03	3.98
<b>Africa</b>																
Nigeria	5.60	5.70	5.70	5.70	1.18	1.18	1.23	1.23	6.59	6.73	7.00	7.00	0.00	0.00	0.28	4.09
Ethiopia	1.79	1.65	1.66	1.66	2.83	2.70	2.71	2.71	5.06	4.45	4.50	4.50	0.00	0.00	0.05	1.12
Sudan	9.03	6.92	7.00	7.00	0.57	0.51	0.71	0.71	5.15	3.53	5.00	5.00	0.00	0.00	1.47	41.64
Burkina Faso	1.86	1.90	1.90	1.90	0.99	0.87	1.00	1.00	1.84	1.64	1.90	1.90	0.00	0.00	0.26	15.57
Mali	1.83	1.50	1.50	1.50	1.00	0.83	1.00	1.00	1.82	1.24	1.50	1.50	0.00	0.00	0.26	21.07
Niger	3.67	3.70	3.70	3.70	0.58	0.33	0.51	0.51	2.13	1.21	1.90	1.90	0.00	0.00	0.69	57.42
Cameroon	0.74	0.74	0.74	0.74	1.62	1.62	1.62	1.62	1.20	1.20	1.20	1.20	0.00	0.00	0.00	0.00
Tanzania	0.70	0.70	0.70	0.70	1.07	1.02	1.07	1.07	0.75	0.72	0.75	0.75	0.00	0.00	0.04	4.90
Egypt	0.15	0.15	0.15	0.15	4.91	5.00	5.00	5.00	0.73	0.75	0.75	0.75	0.00	0.00	0.00	0.00
Uganda	0.31	0.25	0.25	0.25	0.82	0.80	0.90	0.90	0.25	0.20	0.23	0.23	0.00	0.00	0.03	12.50
Ghana	0.30	0.31	0.31	0.31	1.13	1.11	1.13	1.13	0.35	0.35	0.35	0.35	0.00	0.00	0.01	1.45
Mozambique	0.26	0.25	0.25	0.25	0.54	0.64	0.64	0.64	0.14	0.16	0.16	0.16	0.00	0.00	0.00	0.00
South Africa	0.05	0.04	0.04	0.04	4.39	3.95	3.75	3.75	0.22	0.15	0.15	0.15	0.00	0.00	0.00	0.00
<b>Mexico</b>	1.29	1.41	1.42	1.42	3.37	3.27	3.42	3.42	4.35	4.60	4.85	4.85	0.00	0.00	0.25	5.43
<b>South America</b>																
Argentina	0.75	0.95	0.88	0.88	4.43	3.95	4.34	4.34	3.32	3.75	3.80	3.80	0.00	0.00	0.05	1.33
Brazil	0.87	0.95	0.98	0.98	2.41	3.20	3.00	3.00	2.08	3.04	2.94	2.94	0.00	0.00	-0.10	-3.35
<b>South Asia</b>																
India	4.38	4.60	4.50	4.50	1.10	0.98	0.98	0.98	4.81	4.50	4.40	4.40	0.00	0.00	-0.10	-2.22
Pakistan	0.13	0.26	0.22	0.22	0.76	0.59	0.63	0.63	0.10	0.15	0.14	0.14	0.00	0.00	-0.02	-10.00
<b>China</b>	0.64	0.63	0.63	0.63	4.68	4.76	4.76	4.76	2.97	3.00	3.00	3.00	0.00	0.00	0.00	0.00
<b>Australia</b>	0.64	0.62	0.55	0.55	2.97	4.19	2.91	2.91	1.90	2.60	1.60	1.60	0.00	0.00	-1.00	-38.46
<b>European Union</b>	0.21	0.18	0.19	0.19	5.15	5.72	5.34	5.34	1.10	1.01	1.02	1.02	0.00	0.00	0.01	0.89
<b>Others</b>	5.80	5.65	5.62	5.61	1.05	1.06	1.04	1.04	6.09	5.99	5.86	5.86	-0.01	-0.10	-0.13	-2.20

World and Selected Countries and Regions

**Table 09 Rice Area, Yield, and Production**  
**World and Selected Countries and Regions**

Country / Region	Area (Million hectares)				Yield (Metric tons per hectare)				Production (Million metric tons)				Change in Production			
	Prel.		2022/23 Proj.		Prel.		2022/23 Proj.		Prel.		2022/23 Proj.		From last month		From last year	
	2020/21	2021/22	May	Jun	2020/21	2021/22	May	Jun	2020/21	2021/22	May	Jun	MMT	Percent	MMT	Percent
<b>World</b>	165.22	166.57	166.91	166.91	4.60	4.60	4.60	4.61	509.29	513.67	514.63	515.35	0.72	0.14	1.68	0.33
<b>United States</b>	1.21	1.01	0.97	0.97	8.54	8.64	8.52	8.52	7.22	6.09	5.80	5.80	0.00	0.00	-0.29	-4.75
<b>Total Foreign</b>	164.01	165.56	165.94	165.94	4.57	4.58	4.58	4.59	502.06	507.58	508.83	509.55	0.72	0.14	1.97	0.39
<b>East Asia</b>																
China	30.08	29.92	30.00	30.00	7.04	7.11	7.10	7.10	148.30	148.99	149.00	149.00	0.00	0.00	0.01	0.01
Japan	1.53	1.52	1.51	1.51	6.79	6.90	6.87	6.87	7.57	7.64	7.55	7.55	0.00	0.00	-0.09	-1.18
Korea, South	0.73	0.73	0.73	0.73	6.49	7.12	6.90	6.90	3.51	3.88	3.77	3.77	0.00	0.00	-0.11	-2.83
Korea, North	0.49	0.50	0.50	0.50	4.44	4.18	4.18	4.18	1.40	1.36	1.36	1.36	0.00	0.00	0.00	0.00
<b>South Asia</b>																
India	45.77	47.00	47.00	47.00	4.08	4.14	4.15	4.17	124.37	129.66	130.00	130.50	0.50	0.38	0.84	0.65
Bangladesh	11.50	11.62	11.75	11.75	4.51	4.63	4.60	4.60	34.60	35.85	36.00	36.00	0.00	0.00	0.15	0.42
Pakistan	3.34	3.40	3.40	3.40	3.79	3.84	3.93	3.93	8.42	8.70	8.90	8.90	0.00	0.00	0.20	2.30
Nepal	1.48	1.47	1.48	1.48	3.81	3.48	3.73	3.73	3.74	3.42	3.67	3.67	0.00	0.00	0.25	7.26
Sri Lanka	1.09	1.10	1.10	1.10	4.57	3.91	4.00	4.00	3.39	2.92	3.00	3.00	0.00	0.00	0.07	2.43
<b>Southeast Asia</b>																
Indonesia	11.40	11.60	11.65	11.65	4.77	4.67	4.68	4.68	34.50	34.40	34.60	34.60	0.00	0.00	0.20	0.58
Vietnam	7.31	7.30	7.29	7.29	6.00	5.99	6.01	6.01	27.38	27.33	27.40	27.40	0.00	0.00	0.07	0.25
Thailand	10.51	10.59	10.70	10.70	2.72	2.81	2.80	2.80	18.86	19.65	19.80	19.80	0.00	0.00	0.15	0.76
Burma	6.90	6.90	6.90	6.90	2.85	2.80	2.83	2.83	12.60	12.35	12.50	12.50	0.00	0.00	0.15	1.20
Philippines	4.76	4.80	4.80	4.80	4.14	4.13	4.10	4.10	12.42	12.47	12.41	12.41	0.00	0.00	-0.06	-0.51
Cambodia	3.27	3.34	3.35	3.35	2.90	2.88	2.91	2.91	5.78	5.86	5.94	5.94	0.00	0.00	0.08	1.33
Laos	0.93	0.94	0.95	0.95	3.24	3.28	3.26	3.26	1.90	1.95	1.95	1.95	0.00	0.00	0.00	0.00
Malaysia	0.68	0.67	0.68	0.68	4.07	4.09	4.07	4.07	1.80	1.78	1.80	1.80	0.00	0.00	0.02	1.12
<b>South America</b>																
Brazil	1.68	1.63	1.60	1.60	7.00	6.56	6.53	6.53	8.00	7.28	7.10	7.10	0.00	0.00	-0.18	-2.42
Peru	0.41	0.42	0.42	0.42	8.21	8.34	7.86	8.55	2.34	2.40	2.28	2.48	0.21	9.09	0.09	3.72
<b>Africa</b>																
Egypt	0.70	0.50	0.50	0.50	8.28	8.41	8.41	8.41	4.00	2.90	2.90	2.90	0.00	0.00	0.00	0.00
Madagascar	1.68	1.65	1.60	1.60	2.53	2.42	2.38	2.38	2.71	2.56	2.43	2.43	0.00	0.00	-0.13	-5.00
Nigeria	3.60	3.65	3.70	3.70	2.27	2.29	2.30	2.30	5.15	5.26	5.36	5.36	0.00	0.00	0.10	1.90
<b>European Union</b>	0.42	0.40	0.40	0.40	6.73	6.54	6.76	6.76	1.83	1.72	1.74	1.74	0.00	0.00	0.02	1.34
<b>Iran</b>	0.58	0.56	0.57	0.57	5.27	5.14	5.32	5.32	2.00	1.90	2.00	2.00	0.00	0.00	0.10	5.26
<b>Others</b>	13.21	13.36	13.36	13.36	2.93	2.88	2.88	2.88	25.50	25.36	25.38	25.39	0.01	0.04	0.04	0.15

Yield is on a rough basis, before the milling process. Production is on a milled basis, after the milling process.

**Table 10 Total Oilseed Area, Yield, and Production**

**World and Selected Countries and Regions**

Country / Region	Area (Million hectares)				Yield (Metric tons per hectare)				Production (Million metric tons)				Change in Production			
	2020/21	Prel.	2022/23 Proj.		2020/21	Prel.	2022/23 Proj.		2020/21	Prel.	2022/23 Proj.		From last month		From last year	
		2021/22	May	Jun		2021/22	May	Jun		2021/22	May	Jun	MMT	Percent	MMT	Percent
<b>World Total</b>	--	--	--	--	--	--	--	--	606.57	599.04	647.15	646.82	-0.33	-0.05	47.78	7.98
<b>Total Foreign</b>	--	--	--	--	--	--	--	--	482.05	468.50	510.54	510.22	-0.33	-0.06	41.72	8.90
<b>Oilseed, Copra</b>	--	--	--	--	--	--	--	--	5.59	5.86	5.86	5.86	0.00	0.00	0.00	0.00
<b>Oilseed, Palm Kernel</b>	--	--	--	--	--	--	--	--	19.03	20.05	20.56	20.56	0.00	0.00	0.51	2.55
<b>Major Oilseeds</b>	251.19	259.45	262.57	263.17	2.32	2.21	2.36	2.36	581.95	573.13	620.72	620.40	-0.33	-0.05	47.27	8.25
<b>United States</b>	38.81	41.07	42.17	42.17	3.21	3.18	3.24	3.24	124.52	130.54	136.60	136.60	0.00	0.00	6.06	4.64
<b>Foreign Oilseeds</b>	212.38	218.37	220.40	221.01	2.15	2.03	2.20	2.19	457.43	442.59	484.12	483.80	-0.33	-0.07	41.21	9.31
<b>South America</b>	65.60	67.44	70.07	70.07	3.21	2.81	3.24	3.24	210.32	189.40	227.30	227.30	0.00	0.00	37.89	20.01
Brazil	40.77	42.83	43.85	43.85	3.53	3.06	3.52	3.52	143.77	130.99	154.20	154.20	0.00	0.00	23.20	17.71
Argentina	18.97	18.51	19.84	19.84	2.70	2.62	2.86	2.86	51.21	48.43	56.81	56.81	0.00	0.00	8.38	17.31
Paraguay	3.24	3.39	3.54	3.54	3.09	1.28	2.86	2.86	10.02	4.32	10.13	10.13	0.00	0.00	5.81	134.43
Bolivia	1.51	1.53	1.52	1.52	2.09	2.07	2.07	2.07	3.15	3.16	3.15	3.15	0.00	0.00	-0.02	-0.51
Uruguay	0.97	1.04	1.18	1.18	1.87	2.04	2.24	2.24	1.82	2.13	2.63	2.63	0.00	0.00	0.50	23.38
<b>China</b>	25.50	24.15	24.95	24.95	2.57	2.57	2.57	2.57	65.58	62.08	64.08	64.08	0.00	0.00	2.00	3.22
<b>South Asia</b>	42.45	41.62	43.22	43.72	0.96	1.06	1.05	1.03	40.68	43.98	45.21	45.21	0.00	0.00	1.23	2.80
India	39.15	38.70	40.05	40.55	0.96	1.04	1.03	1.02	37.55	40.29	41.37	41.37	0.00	0.00	1.08	2.68
Pakistan	2.94	2.55	2.80	2.80	0.92	1.27	1.21	1.21	2.69	3.25	3.40	3.40	0.00	0.00	0.15	4.55
<b>European Union</b>	11.11	11.21	11.73	11.73	2.59	2.76	2.77	2.75	28.79	30.94	32.51	32.26	-0.25	-0.77	1.32	4.26
<b>United Kingdom</b>	0.38	0.31	0.36	0.36	2.73	3.20	3.33	3.40	1.04	0.98	1.20	1.23	0.03	2.08	0.24	24.87
<b>Former Soviet Union - 12</b>	25.91	27.77	25.19	24.69	1.72	1.89	1.75	1.74	44.70	52.46	43.97	42.97	-1.00	-2.27	-9.49	-18.10
Russia	12.50	14.23	13.60	13.60	1.61	1.62	1.66	1.66	20.14	23.11	22.60	22.60	0.00	0.00	-0.51	-2.19
Ukraine	9.65	9.58	7.60	7.10	2.06	2.54	2.17	2.18	19.85	24.32	16.50	15.50	-1.00	-6.06	-8.82	-36.25
Uzbekistan	1.08	1.08	1.09	1.09	1.19	1.05	1.13	1.13	1.28	1.13	1.23	1.23	0.00	0.00	0.10	8.89
<b>Canada</b>	10.41	11.18	10.85	10.85	2.49	1.70	2.43	2.43	25.95	18.95	26.41	26.41	0.00	0.00	7.46	39.34
<b>Africa</b>	22.12	24.73	24.00	24.21	1.08	0.98	1.04	1.04	23.94	24.30	25.00	25.20	0.20	0.79	0.90	3.70
Nigeria	4.62	4.97	4.87	4.87	1.19	1.11	1.21	1.21	5.49	5.50	5.90	5.90	0.00	0.00	0.41	7.37
South Africa	1.36	1.66	1.75	1.75	1.98	1.84	1.81	1.81	2.69	3.05	3.16	3.16	0.00	0.00	0.11	3.74
Tanzania	1.17	1.24	1.35	1.35	1.02	0.98	0.93	0.93	1.19	1.21	1.25	1.25	0.00	0.00	0.04	3.39
<b>Southeast Asia</b>	3.25	3.21	3.18	3.18	1.36	1.36	1.38	1.38	4.42	4.38	4.37	4.37	0.00	0.00	-0.01	-0.16
Burma	2.03	2.04	2.04	2.04	1.17	1.19	1.21	1.21	2.37	2.42	2.46	2.46	0.00	0.00	0.05	1.86
Indonesia	0.94	0.90	0.87	0.87	1.54	1.55	1.55	1.55	1.45	1.39	1.35	1.35	0.00	0.00	-0.04	-2.53
<b>Australia</b>	2.78	3.70	3.60	4.00	1.95	2.19	1.78	1.78	5.43	8.10	6.43	7.13	0.70	10.88	-0.97	-11.94
<b>Turkey</b>	1.18	1.32	1.45	1.45	2.46	2.55	2.58	2.58	2.89	3.37	3.73	3.73	0.00	0.00	0.36	10.72
<b>Others</b>	1.70	1.74	1.81	1.81	2.18	2.10	2.17	2.17	3.70	3.65	3.92	3.93	0.00	0.05	0.27	7.47

World Total and Total Foreign: (Major Oilseeds plus copra and palm kernel) Major Oilseeds: (soybeans, sunflowerseeds, peanuts(inshell), cottonseed and rapeseed)



**Table 11 Soybean Area, Yield, and Production**

Country / Region	Area (Million hectares)				Yield (Metric tons per hectare)				Production (Million metric tons)				Change in Production			
	Prel.		2022/23 Proj.		Prel.		2022/23 Proj.		Prel.		2022/23 Proj.		From last month		From last year	
	2020/21	2021/22	May	Jun	2020/21	2021/22	May	Jun	2020/21	2021/22	May	Jun	MMT	Percent	MMT	Percent
<b>World</b>	128.61	130.43	134.93	135.29	2.86	2.70	2.93	2.92	368.13	351.99	394.69	395.37	0.68	0.17	43.38	12.32
<b>United States</b>	33.43	34.94	36.46	36.46	3.43	3.45	3.46	3.46	114.75	120.71	126.28	126.28	0.00	0.00	5.57	4.62
<b>Total Foreign</b>	95.18	95.50	98.46	98.83	2.66	2.42	2.73	2.72	253.38	231.29	268.41	269.09	0.68	0.25	37.80	16.34
<b>South America</b>																
Brazil	39.20	41.00	42.00	42.00	3.56	3.07	3.55	3.55	139.50	126.00	149.00	149.00	0.00	0.00	23.00	18.25
Argentina	16.47	16.00	17.00	17.00	2.81	2.71	3.00	3.00	46.20	43.40	51.00	51.00	0.00	0.00	7.60	17.51
Paraguay	3.15	3.30	3.45	3.45	3.14	1.27	2.90	2.90	9.90	4.20	10.00	10.00	0.00	0.00	5.80	138.10
Bolivia	1.39	1.40	1.40	1.40	2.17	2.14	2.14	2.14	3.00	3.00	3.00	3.00	0.00	0.00	0.00	0.00
Uruguay	0.91	0.98	1.10	1.10	1.88	2.07	2.27	2.27	1.71	2.02	2.50	2.50	0.00	0.00	0.48	23.76
<b>East Asia</b>																
China	9.88	8.40	8.90	8.90	1.98	1.95	1.97	1.97	19.60	16.40	17.50	17.50	0.00	0.00	1.10	6.71
Korea, South	0.06	0.06	0.06	0.06	1.47	1.71	1.73	1.73	0.08	0.09	0.10	0.10	0.00	0.00	0.00	1.06
Korea, North	0.16	0.17	0.17	0.17	1.40	1.44	1.44	1.44	0.23	0.24	0.24	0.24	0.00	0.00	0.00	0.00
Japan	0.14	0.15	0.15	0.15	1.54	1.63	1.55	1.55	0.22	0.24	0.23	0.23	0.00	0.00	-0.01	-2.52
<b>India</b>	12.92	12.50	12.70	12.70	0.81	0.95	0.91	0.91	10.45	11.90	11.50	11.50	0.00	0.00	-0.40	-3.36
<b>Canada</b>	2.04	2.13	2.20	2.20	3.12	2.94	2.86	2.86	6.36	6.27	6.30	6.30	0.00	0.00	0.03	0.45
<b>Former Soviet Union - 12</b>																
Russia	2.71	2.99	3.30	3.30	1.59	1.59	1.61	1.61	4.31	4.76	5.30	5.30	0.00	0.00	0.54	11.34
Ukraine	1.46	1.44	1.00	1.20	2.05	2.64	2.30	2.33	3.00	3.80	2.30	2.80	0.50	21.74	-1.00	-26.32
<b>European Union</b>	1.00	0.99	1.05	1.05	2.61	2.76	2.86	2.86	2.60	2.73	3.00	3.00	0.00	0.00	0.27	9.89
<b>Southeast Asia</b>																
Indonesia	0.39	0.35	0.33	0.33	1.22	1.21	1.21	1.21	0.48	0.43	0.40	0.40	0.00	0.00	-0.03	-5.88
Vietnam	0.04	0.03	0.03	0.03	1.61	1.61	1.60	1.60	0.06	0.05	0.05	0.05	0.00	0.00	-0.01	-9.43
Thailand	0.03	0.03	0.03	0.03	1.63	1.63	1.63	1.63	0.05	0.05	0.05	0.05	0.00	0.00	0.00	0.00
Burma	0.14	0.13	0.13	0.13	1.04	1.04	1.04	1.04	0.14	0.14	0.13	0.13	0.00	0.00	-0.01	-3.70
<b>Serbia</b>	0.22	0.22	0.22	0.22	2.89	2.45	2.77	2.77	0.64	0.54	0.61	0.61	0.00	0.00	0.07	12.96
<b>Mexico</b>	0.16	0.19	0.19	0.19	1.58	1.57	1.58	1.58	0.25	0.29	0.30	0.30	0.00	0.00	0.01	3.45
<b>Africa</b>																
South Africa	0.83	0.93	1.00	1.00	2.29	2.11	2.00	2.00	1.90	1.95	2.00	2.00	0.00	0.00	0.05	2.56
Nigeria	1.10	1.20	1.20	1.20	1.01	0.93	1.04	1.04	1.11	1.12	1.25	1.25	0.00	0.00	0.13	11.91
Zambia	0.16	0.30	0.21	0.38	1.81	1.35	1.43	1.27	0.30	0.41	0.30	0.48	0.18	58.33	0.06	15.57
Uganda	0.05	0.05	0.05	0.05	0.60	0.60	0.60	0.60	0.03	0.03	0.03	0.03	0.00	0.00	0.00	0.00
<b>Middle East</b>																
Iran	0.07	0.07	0.08	0.08	2.41	2.29	2.27	2.27	0.17	0.16	0.17	0.17	0.00	0.00	0.01	6.25
Turkey	0.03	0.03	0.04	0.04	3.79	3.91	4.00	4.00	0.11	0.13	0.14	0.14	0.00	0.00	0.02	12.00
<b>Others</b>	0.49	0.47	0.50	0.50	2.06	2.03	2.05	2.05	1.01	0.95	1.02	1.02	0.00	0.20	0.07	7.71

World and Selected Countries and Regions

**Table 12 Cottonseed Area, Yield, and Production**

Country / Region	Area (Million hectares)				Yield (Metric tons per hectare)				Production (Million metric tons)				Change in Production			
	Prel.		2022/23 Proj.		Prel.		2022/23 Proj.		Prel.		2022/23 Proj.		From last month		From last year	
	2020/21	2021/22	May	Jun	2020/21	2021/22	May	Jun	2020/21	2021/22	May	Jun	MMT	Percent	MMT	Percent
<b>World</b>	30.86	31.72	32.38	32.98	1.32	1.33	1.36	1.34	40.81	42.15	44.07	44.14	0.07	0.15	1.99	4.72
<b>United States</b>	3.33	4.16	3.70	3.70	1.22	1.16	1.26	1.26	4.05	4.83	4.64	4.64	0.00	0.00	-0.19	-3.91
<b>Total Foreign</b>	27.54	27.57	28.69	29.29	1.33	1.35	1.37	1.35	36.75	37.33	39.43	39.50	0.07	0.17	2.18	5.83
<b>South Asia</b>																
India	13.29	12.15	12.70	13.20	0.88	0.86	0.92	0.88	11.72	10.40	11.68	11.68	0.00	0.00	1.27	12.25
Pakistan	2.20	2.00	2.20	2.20	0.89	1.30	1.22	1.22	1.95	2.60	2.69	2.69	0.00	0.00	0.09	3.35
<b>China</b>	3.25	3.10	3.15	3.15	3.50	3.41	3.42	3.42	11.37	10.58	10.78	10.78	0.00	0.00	0.20	1.85
<b>Former Soviet Union - 12</b>																
Uzbekistan	1.06	1.06	1.07	1.07	1.16	1.02	1.10	1.10	1.23	1.08	1.18	1.18	0.00	0.00	0.10	9.10
Turkmenistan	0.55	0.55	0.55	0.55	0.66	0.64	0.64	0.64	0.36	0.35	0.35	0.35	0.00	0.00	0.00	0.00
Tajikistan	0.16	0.17	0.17	0.17	1.11	1.15	1.15	1.15	0.18	0.20	0.20	0.20	0.00	0.00	0.00	0.00
Kazakhstan	0.11	0.12	0.12	0.12	0.95	0.90	0.93	0.93	0.11	0.10	0.11	0.11	0.00	0.00	0.00	3.88
<b>South America</b>																
Brazil	1.37	1.60	1.60	1.60	2.62	2.64	2.74	2.74	3.59	4.22	4.38	4.38	0.00	0.00	0.17	3.94
Argentina	0.41	0.48	0.43	0.43	0.72	0.68	0.71	0.71	0.29	0.33	0.30	0.30	0.00	0.00	-0.03	-7.98
<b>Middle East</b>																
Turkey	0.35	0.45	0.53	0.53	2.71	2.76	2.67	2.67	0.95	1.24	1.40	1.40	0.00	0.00	0.16	13.13
Syria	0.03	0.03	0.03	0.03	2.36	2.20	2.20	2.20	0.06	0.06	0.06	0.06	0.00	0.00	0.00	0.00
Iran	0.10	0.10	0.10	0.10	1.35	1.35	1.35	1.35	0.13	0.14	0.14	0.14	0.00	0.00	0.00	0.00
<b>Australia</b>	0.28	0.60	0.55	0.55	3.06	2.75	3.00	3.00	0.84	1.65	1.65	1.65	0.00	0.00	0.00	0.00
<b>European Union</b>	0.34	0.32	0.33	0.33	1.59	1.58	1.54	1.54	0.54	0.51	0.51	0.51	0.00	0.00	0.00	-0.79
<b>Africa</b>																
Burkina Faso	0.56	0.60	0.65	0.65	0.47	0.46	0.45	0.45	0.26	0.27	0.29	0.29	0.00	0.00	0.02	6.23
Mali	0.17	0.72	0.74	0.74	0.51	0.56	0.55	0.55	0.08	0.40	0.41	0.41	0.00	0.00	0.01	1.49
Cameroon	0.23	0.23	0.24	0.24	1.51	1.59	1.35	1.35	0.34	0.37	0.33	0.33	0.00	0.00	-0.04	-10.96
Cote d'Ivoire	0.45	0.47	0.46	0.46	0.61	0.60	0.58	0.58	0.27	0.28	0.27	0.27	0.00	0.00	-0.01	-4.98
Benin	0.62	0.64	0.65	0.68	0.78	0.78	0.76	0.77	0.48	0.50	0.50	0.52	0.03	5.04	0.03	5.04
Tanzania	0.17	0.24	0.35	0.35	0.56	0.46	0.43	0.43	0.09	0.11	0.15	0.15	0.00	0.00	0.04	36.94
Egypt	0.07	0.09	0.10	0.13	1.00	1.00	0.97	0.98	0.07	0.09	0.10	0.13	0.03	31.96	0.04	50.59
Nigeria	0.27	0.27	0.27	0.27	0.56	0.56	0.56	0.56	0.15	0.15	0.15	0.15	0.00	0.00	0.00	0.00
Uganda	0.10	0.10	0.10	0.10	1.40	1.40	1.49	1.49	0.14	0.14	0.15	0.15	0.00	0.00	0.01	6.43
Zimbabwe	0.24	0.21	0.21	0.21	0.55	0.36	0.43	0.43	0.13	0.08	0.09	0.09	0.00	0.00	0.02	19.74
Sudan	0.20	0.20	0.20	0.20	1.41	1.41	1.53	1.53	0.28	0.28	0.31	0.31	0.00	0.00	0.02	8.51
<b>Mexico</b>	0.15	0.15	0.19	0.19	2.40	2.71	2.38	2.38	0.35	0.42	0.45	0.45	0.00	0.00	0.04	8.39
<b>Burma</b>	0.24	0.25	0.25	0.25	1.17	1.18	1.18	1.18	0.28	0.29	0.29	0.29	0.00	0.00	0.00	0.00
<b>Others</b>	0.63	0.69	0.77	0.81	0.81	0.75	0.72	0.70	0.51	0.51	0.56	0.57	0.01	2.15	0.06	11.31

World and Selected Countries and Regions

**Table 13 Peanut Area, Yield, and Production**

Country / Region	Area (Million hectares)				Yield (Metric tons per hectare)				Production (Million metric tons)				Change in Production			
	2020/21	Prel.	2022/23 Proj.		2020/21	Prel.	2022/23 Proj.		2020/21	Prel.	2022/23 Proj.		From last month		From last year	
		2021/22	May	Jun		2021/22	May	Jun		2021/22	May	Jun	MMT	Percent	MMT	Percent
<b>World</b>	29.92	30.81	30.01	29.95	1.68	1.63	1.70	1.70	50.17	50.22	50.91	50.87	-0.05	-0.09	0.65	1.29
<b>United States</b>	0.65	0.63	0.61	0.61	4.27	4.64	4.66	4.66	2.79	2.90	2.84	2.84	0.00	0.00	-0.06	-2.00
<b>Total Foreign</b>	29.27	30.18	29.40	29.34	1.62	1.57	1.64	1.64	47.38	47.32	48.07	48.03	-0.05	-0.09	0.71	1.49
<b>China</b>	4.73	4.75	4.80	4.80	3.80	3.83	3.81	3.81	17.99	18.20	18.30	18.30	0.00	0.00	0.10	0.55
<b>Africa</b>																
Nigeria	3.25	3.50	3.40	3.40	1.30	1.21	1.32	1.32	4.23	4.23	4.50	4.50	0.00	0.00	0.27	6.43
Sudan	3.20	3.94	3.00	3.00	0.87	0.60	0.83	0.83	2.77	2.36	2.50	2.50	0.00	0.00	0.15	6.16
Senegal	1.23	1.20	1.20	1.20	1.47	1.40	1.42	1.42	1.80	1.68	1.70	1.70	0.00	0.00	0.02	1.31
Cameroon	0.43	0.43	0.43	0.43	1.40	1.40	1.40	1.40	0.60	0.60	0.60	0.60	0.00	0.00	0.00	0.00
Ghana	0.33	0.33	0.33	0.33	1.45	1.28	1.42	1.42	0.48	0.42	0.47	0.47	0.00	0.00	0.05	11.37
Chad	0.76	0.80	0.80	0.80	1.11	1.13	1.13	1.13	0.84	0.90	0.90	0.90	0.00	0.00	0.00	0.00
Malawi	0.40	0.40	0.40	0.40	0.88	0.88	0.88	0.88	0.35	0.35	0.35	0.35	0.00	0.00	0.00	0.00
Congo (Kinshasa)	0.50	0.50	0.50	0.50	0.90	0.90	0.90	0.90	0.45	0.45	0.45	0.45	0.00	0.00	0.00	0.00
Niger	0.90	0.92	0.92	0.92	0.66	0.56	0.60	0.60	0.59	0.52	0.55	0.55	0.00	0.00	0.03	5.97
Mali	0.43	0.43	0.43	0.43	1.16	0.87	1.00	1.00	0.49	0.37	0.43	0.43	0.00	0.00	0.06	15.49
Uganda	0.34	0.40	0.40	0.40	0.99	0.75	0.75	0.75	0.34	0.30	0.30	0.30	0.00	0.00	0.00	0.00
Burkina Faso	0.65	0.60	0.60	0.60	0.97	0.80	0.83	0.83	0.63	0.48	0.50	0.50	0.00	0.00	0.02	4.82
Guinea	0.98	1.10	1.10	1.10	1.10	1.21	1.09	1.09	1.07	1.34	1.20	1.20	0.00	0.00	-0.14	-10.11
Egypt	0.06	0.06	0.06	0.06	3.20	3.20	3.20	3.20	0.21	0.21	0.21	0.21	0.00	0.00	0.00	0.00
Central African Republic	0.10	0.10	0.10	0.10	1.50	1.50	1.50	1.50	0.15	0.15	0.15	0.15	0.00	0.00	0.00	0.00
South Africa	0.04	0.05	0.05	0.05	2.21	2.22	2.22	2.22	0.09	0.10	0.10	0.10	0.00	0.00	0.00	0.00
Mozambique	0.35	0.38	0.38	0.38	0.30	0.34	0.34	0.34	0.10	0.13	0.13	0.13	0.00	0.00	0.00	0.00
Cote d'Ivoire	0.16	0.15	0.15	0.15	1.40	1.45	1.45	1.45	0.23	0.21	0.21	0.21	0.00	0.00	0.00	0.00
Benin	0.17	0.19	0.19	0.19	1.01	0.92	0.92	0.92	0.18	0.18	0.18	0.18	0.00	0.00	0.00	0.00
<b>South Asia</b>																
India	6.02	5.60	5.80	5.80	1.11	1.21	1.21	1.21	6.70	6.80	7.00	7.00	0.00	0.00	0.20	2.94
Pakistan	0.14	0.10	0.10	0.10	0.89	0.92	0.91	0.91	0.12	0.09	0.09	0.09	0.00	0.00	0.00	1.11
<b>Southeast Asia</b>																
Indonesia	0.55	0.55	0.54	0.54	1.78	1.76	1.76	1.76	0.97	0.96	0.95	0.95	0.00	0.00	-0.01	-1.04
Burma	1.06	1.06	1.07	1.07	1.48	1.51	1.55	1.55	1.56	1.60	1.65	1.65	0.00	0.00	0.05	3.13
Vietnam	0.17	0.16	0.16	0.16	2.50	2.50	2.50	2.50	0.41	0.40	0.39	0.39	0.00	0.00	-0.01	-3.00
Thailand	0.02	0.02	0.02	0.02	1.67	1.67	1.67	1.67	0.04	0.04	0.04	0.04	0.00	0.00	0.00	0.00
<b>South America</b>																
Argentina	0.40	0.41	0.38	0.38	3.16	3.21	3.29	3.29	1.27	1.30	1.25	1.25	0.00	0.00	-0.05	-3.85
Brazil	0.17	0.20	0.21	0.21	3.86	3.68	3.66	3.66	0.64	0.72	0.75	0.75	0.00	0.00	0.03	4.46
<b>Mexico</b>	0.06	0.05	0.05	0.05	1.73	1.74	1.74	1.74	0.10	0.09	0.09	0.09	0.00	0.00	0.00	0.00
<b>Others</b>	1.70	1.83	1.85	1.79	1.16	1.19	1.16	1.18	1.98	2.17	2.15	2.10	-0.05	-2.09	-0.07	-3.18

**Table 14 Sunflowerseed Area, Yield, and Production**

Country / Region	Area (Million hectares)				Yield (Metric tons per hectare)				Production (Million metric tons)				Change in Production						
	2020/21	Prel.		2022/23 Proj.		2020/21	Prel.		2022/23 Proj.		2020/21	Prel.		2022/23 Proj.		From last month		From last year	
		2021/22	May	Jun	2021/22		May	Jun	2021/22	May		Jun	MMT	Percent	MMT	Percent			
<b>World</b>	26.94	28.85	26.52	25.82	1.83	1.99	1.91	1.91	49.25	57.38	50.72	49.22	-1.50	-2.96	-8.16	-14.22			
<b>United States</b>	0.67	0.50	0.55	0.55	2.01	1.72	1.93	1.93	1.35	0.86	1.06	1.06	0.00	0.00	0.20	22.83			
<b>Total Foreign</b>	26.27	28.34	25.97	25.27	1.82	1.99	1.91	1.91	47.90	56.52	49.66	48.16	-1.50	-3.02	-8.35	-14.78			
<b>Former Soviet Union - 12</b>																			
Russia	8.35	9.61	8.70	8.70	1.59	1.62	1.67	1.67	13.27	15.57	14.50	14.50	0.00	0.00	-1.07	-6.88			
Ukraine	7.00	7.10	5.30	4.60	2.01	2.46	2.08	2.07	14.10	17.50	11.00	9.50	-1.50	-13.64	-8.00	-45.71			
Kazakhstan	0.75	0.94	0.90	0.90	1.13	1.10	1.11	1.11	0.84	1.03	1.00	1.00	0.00	0.00	-0.03	-3.10			
<b>European Union</b>	4.45	4.50	4.55	4.55	2.00	2.32	2.31	2.31	8.92	10.43	10.50	10.50	0.00	0.00	0.07	0.65			
<b>South America</b>																			
Argentina	1.67	1.60	2.00	2.00	2.05	2.09	2.10	2.10	3.43	3.35	4.20	4.20	0.00	0.00	0.85	25.37			
Uruguay	0.07	0.07	0.08	0.08	1.69	1.62	1.71	1.71	0.11	0.11	0.13	0.13	0.00	0.00	0.02	16.36			
Bolivia	0.13	0.13	0.12	0.12	1.20	1.30	1.23	1.23	0.15	0.16	0.15	0.15	0.00	0.00	-0.02	-9.76			
Brazil	0.03	0.04	0.04	0.04	1.13	1.62	1.60	1.60	0.04	0.06	0.06	0.06	0.00	0.00	0.00	6.67			
Paraguay	0.03	0.03	0.03	0.03	1.53	1.55	1.56	1.56	0.05	0.05	0.05	0.05	0.00	0.00	0.00	4.17			
<b>China</b>	0.87	1.10	1.00	1.00	2.94	2.64	2.80	2.80	2.57	2.90	2.80	2.80	0.00	0.00	-0.10	-3.45			
<b>South Asia</b>																			
India	0.23	0.25	0.25	0.25	0.82	0.76	0.78	0.78	0.19	0.19	0.20	0.20	0.00	0.00	0.01	2.63			
Pakistan	0.15	0.15	0.15	0.15	1.07	1.00	1.03	1.03	0.16	0.15	0.16	0.16	0.00	0.00	0.01	3.33			
<b>Middle East</b>																			
Turkey	0.72	0.76	0.79	0.79	2.17	2.30	2.34	2.34	1.56	1.75	1.85	1.85	0.00	0.00	0.10	5.71			
Iran	0.04	0.04	0.04	0.04	1.08	1.00	1.02	1.02	0.04	0.04	0.04	0.04	0.00	0.00	0.00	0.00			
Israel	0.00	0.00	0.00	0.00	9.00	7.00	6.00	6.00	0.01	0.01	0.01	0.01	0.00	0.00	0.01	71.43			
<b>Africa</b>																			
Egypt	0.01	0.01	0.01	0.01	2.38	2.38	2.50	2.50	0.02	0.02	0.03	0.03	0.00	0.00	0.01	31.58			
Morocco	0.02	0.02	0.02	0.02	1.16	1.25	1.11	1.11	0.02	0.03	0.02	0.02	0.00	0.00	-0.01	-20.00			
South Africa	0.48	0.68	0.69	0.69	1.42	1.44	1.50	1.50	0.68	0.97	1.03	1.03	0.00	0.00	0.06	6.19			
<b>Burma</b>	0.60	0.60	0.60	0.60	0.65	0.65	0.65	0.65	0.39	0.39	0.39	0.39	0.00	0.00	0.00	0.00			
<b>Canada</b>	0.05	0.04	0.05	0.05	2.24	2.05	2.20	2.20	0.10	0.08	0.11	0.11	0.00	0.00	0.03	34.15			
<b>Australia</b>	0.02	0.02	0.02	0.02	1.50	1.67	1.22	1.22	0.03	0.03	0.02	0.02	0.00	0.00	-0.01	-26.67			
<b>Others</b>	0.62	0.67	0.64	0.64	1.98	2.54	2.23	2.23	1.23	1.69	1.42	1.42	0.00	0.00	-0.27	-16.09			

World and Selected Countries and Regions

**Table 15 Rapeseed Area, Yield, and Production**

Country / Region	Area (Million hectares)				Yield (Metric tons per hectare)				Production (Million metric tons)				Change in Production						
	2020/21	Prel.		2022/23 Proj.		2020/21	Prel.		2022/23 Proj.		2020/21	Prel.		2022/23 Proj.		From last month		From last year	
		2021/22	May	Jun	2021/22		May	Jun	2021/22	May		Jun	MMT	Percent	MMT	Percent			
<b>World</b>	34.86	37.63	38.73	39.13	2.11	1.90	2.07	2.06	73.59	71.38	80.32	80.80	0.48	0.59	9.41	13.19			
<b>United States</b>	0.73	0.85	0.85	0.85	2.16	1.46	2.10	2.10	1.58	1.24	1.78	1.78	0.00	0.00	0.54	43.25			
<b>Total Foreign</b>	34.13	36.78	37.89	38.29	2.11	1.91	2.07	2.06	72.02	70.14	78.54	79.01	0.48	0.60	8.88	12.65			
<b>European Union</b>	5.32	5.40	5.80	5.80	3.14	3.20	3.19	3.15	16.73	17.27	18.50	18.25	-0.25	-1.35	0.99	5.71			
<b>United Kingdom</b>	0.38	0.31	0.36	0.36	2.73	3.20	3.33	3.40	1.04	0.98	1.20	1.23	0.03	2.08	0.24	24.87			
<b>Switzerland</b>	0.02	0.02	0.02	0.02	3.14	3.14	3.14	3.14	0.07	0.07	0.07	0.07	0.00	0.00	0.00	0.00			
<b>Canada</b>	8.33	9.01	8.60	8.60	2.34	1.40	2.33	2.33	19.49	12.60	20.00	20.00	0.00	0.00	7.40	58.73			
<b>China</b>	6.77	6.80	7.10	7.10	2.08	2.06	2.07	2.07	14.05	14.00	14.70	14.70	0.00	0.00	0.70	5.00			
<b>South Asia</b>																			
India	6.70	8.20	8.60	8.60	1.27	1.34	1.28	1.28	8.50	11.00	11.00	11.00	0.00	0.00	0.00	0.00			
Pakistan	0.45	0.30	0.35	0.35	1.02	1.37	1.33	1.33	0.46	0.41	0.47	0.47	0.00	0.00	0.06	13.41			
Bangladesh	0.25	0.25	0.25	0.25	0.92	0.92	0.92	0.92	0.23	0.23	0.23	0.23	0.00	0.00	0.00	0.00			
<b>Former Soviet Union - 12</b>																			
Russia	1.45	1.62	1.60	1.60	1.77	1.71	1.75	1.75	2.57	2.78	2.80	2.80	0.00	0.00	0.03	0.90			
Ukraine	1.19	1.04	1.30	1.30	2.31	2.91	2.46	2.46	2.75	3.02	3.20	3.20	0.00	0.00	0.19	6.14			
Belarus	0.36	0.32	0.33	0.33	2.06	1.59	1.69	1.69	0.73	0.50	0.55	0.55	0.00	0.00	0.05	10.00			
Kazakhstan	0.12	0.12	0.19	0.19	1.23	1.24	1.22	1.22	0.15	0.15	0.23	0.23	0.00	0.00	0.08	54.11			
<b>Australia</b>	2.45	3.05	3.00	3.40	1.84	2.08	1.57	1.59	4.50	6.35	4.70	5.40	0.70	14.89	-0.95	-14.96			
<b>South America</b>																			
Chile	0.04	0.04	0.04	0.04	3.81	4.00	4.00	4.00	0.14	0.14	0.16	0.16	0.00	0.00	0.02	14.29			
Paraguay	0.05	0.04	0.05	0.05	1.41	1.45	1.51	1.51	0.07	0.06	0.07	0.07	0.00	0.00	0.00	6.25			
<b>Ethiopia</b>	0.03	0.03	0.03	0.03	1.80	1.80	1.80	1.80	0.05	0.05	0.05	0.05	0.00	0.00	0.00	0.00			
<b>Others</b>	0.24	0.26	0.28	0.28	2.14	2.15	2.21	2.21	0.50	0.55	0.63	0.63	0.00	0.00	0.08	14.23			

World and Selected Countries and Regions



**Table 16 Copra, Palm Kernel, and Palm Oil Production**

Country / Region	Production (Million metric tons)				Change in Production			
	2020/21	Prel.	2022/23 Proj.		From last month		From last year	
		2021/22	May	Jun	MMT	Percent	MMT	Percent
<b>Oilseed, Copra</b>								
Philippines	2.40	2.60	2.60	2.60	0.00	0.00	0.00	0.00
Indonesia	1.67	1.68	1.68	1.68	0.00	0.00	0.00	0.00
India	0.75	0.79	0.80	0.80	0.00	0.00	0.01	1.27
Vietnam	0.28	0.29	0.29	0.29	0.00	0.00	0.00	0.00
Papua New Guinea	0.11	0.11	0.11	0.11	0.00	0.00	0.00	0.00
Thailand	0.07	0.07	0.07	0.07	0.00	0.00	0.00	0.00
Sri Lanka	0.07	0.07	0.07	0.07	0.00	0.00	0.00	0.00
Mexico	0.04	0.05	0.04	0.04	0.00	0.00	-0.01	-20.00
Solomon Islands	0.03	0.03	0.03	0.03	0.00	0.00	0.00	0.00
Cote d'Ivoire	0.03	0.03	0.03	0.03	0.00	0.00	0.00	0.00
World	5.59	5.86	5.86	5.86	0.00	0.00	0.00	0.00
<b>Oilseed, Palm Kernel</b>								
Indonesia	11.46	12.00	12.12	12.12	0.00	0.00	0.12	1.00
Malaysia	4.34	4.65	4.95	4.95	0.00	0.00	0.30	6.45
Nigeria	0.82	0.90	0.90	0.90	0.00	0.00	0.00	0.00
Thailand	0.79	0.83	0.86	0.86	0.00	0.00	0.03	3.61
Colombia	0.29	0.31	0.34	0.34	0.00	0.00	0.03	9.68
Guatemala	0.17	0.18	0.18	0.18	0.00	0.00	0.00	0.00
Papua New Guinea	0.16	0.17	0.17	0.17	0.00	0.00	0.01	6.25
Honduras	0.13	0.16	0.16	0.16	0.00	0.00	0.00	0.00
Brazil	0.14	0.15	0.15	0.15	0.00	0.00	0.01	7.14
Cameroon	0.15	0.15	0.15	0.15	0.00	0.00	0.00	0.00
World	19.03	20.05	20.56	20.56	0.00	0.00	0.51	2.54
<b>Oil, Palm</b>								
Indonesia	43.50	45.50	46.50	46.50	0.00	0.00	1.00	2.20
Malaysia	17.85	19.00	19.80	19.80	0.00	0.00	0.80	4.21
Thailand	2.96	3.15	3.26	3.26	0.00	0.00	0.11	3.49
Colombia	1.56	1.75	1.84	1.84	0.00	0.00	0.09	5.14
Nigeria	1.28	1.40	1.40	1.40	0.00	0.00	0.00	0.00
Guatemala	0.87	0.88	0.91	0.91	0.00	0.00	0.03	3.41
Papua New Guinea	0.60	0.63	0.65	0.65	0.00	0.00	0.03	4.84
Honduras	0.45	0.60	0.60	0.60	0.00	0.00	0.00	0.00
Brazil	0.55	0.55	0.57	0.57	0.00	0.00	0.02	3.64
Cote d'Ivoire	0.52	0.52	0.52	0.52	0.00	0.00	0.00	0.00
World	73.14	76.96	79.13	79.14	0.01	0.01	2.18	2.83

World and Selected Countries and Regions

**Table 17 Cotton Area, Yield, and Production**

Country / Region	Area (Million hectares)				Yield (Kilograms per hectare)				Production (Million 480 lb. bales)				Change in Production			
	Prel.		2022/23 Proj.		Prel.		2022/23 Proj.		Prel.		2022/23 Proj.		From last month		From last year	
	2020/21	2021/22	May	Jun	2020/21	2021/22	May	Jun	2020/21	2021/22	May	Jun	MBales	Percent	MBales	Percent
<b>World</b>	31.42	32.27	32.93	33.53	773	789	800	787	111.48	116.94	121.06	121.27	0.21	0.17	4.32	3.70
<b>United States</b>	3.33	4.16	3.70	3.70	957	918	972	972	14.61	17.52	16.50	16.50	0.00	0.00	-1.02	-5.84
<b>Total Foreign</b>	28.10	28.12	29.23	29.83	751	770	779	765	96.87	99.42	104.56	104.77	0.21	0.20	5.35	5.38
<b>South Asia</b>																
India	13.29	12.15	12.70	13.20	452	439	471	454	27.60	24.50	27.50	27.50	0.00	0.00	3.00	12.24
Pakistan	2.20	2.00	2.20	2.20	445	653	614	614	4.50	6.00	6.20	6.20	0.00	0.00	0.20	3.33
<b>China</b>	3.25	3.10	3.15	3.15	1,976	1,896	1,901	1,901	29.50	27.00	27.50	27.50	0.00	0.00	0.50	1.85
<b>South America</b>																
Brazil	1.37	1.60	1.60	1.60	1,720	1,728	1,796	1,796	10.82	12.70	13.20	13.20	0.00	0.00	0.50	3.94
Argentina	0.41	0.48	0.43	0.43	717	680	692	692	1.35	1.50	1.35	1.35	0.00	0.00	-0.15	-10.00
Paraguay	0.01	0.01	0.01	0.01	416	416	416	416	0.02	0.02	0.02	0.02	0.00	0.00	0.00	0.00
<b>Africa</b>																
Burkina Faso	0.56	0.60	0.65	0.65	372	362	352	352	0.95	0.99	1.05	1.05	0.00	0.00	0.06	6.06
Mali	0.17	0.72	0.74	0.74	396	432	427	427	0.30	1.43	1.45	1.45	0.00	0.00	0.02	1.40
Cote d'Ivoire	0.45	0.47	0.46	0.46	494	486	473	473	1.01	1.05	1.00	1.00	0.00	0.00	-0.05	-4.76
Benin	0.62	0.64	0.65	0.68	513	510	502	504	1.45	1.50	1.50	1.58	0.08	5.00	0.08	5.00
Egypt	0.07	0.09	0.10	0.13	720	717	697	703	0.22	0.28	0.32	0.42	0.10	31.25	0.14	50.00
Cameroon	0.23	0.23	0.24	0.24	658	691	590	590	0.68	0.73	0.65	0.65	0.00	0.00	-0.08	-10.96
Tanzania	0.17	0.24	0.35	0.35	284	231	218	218	0.22	0.26	0.35	0.35	0.00	0.00	0.10	37.25
Nigeria	0.27	0.27	0.27	0.27	282	282	282	282	0.35	0.35	0.35	0.35	0.00	0.00	0.00	0.00
Zimbabwe	0.24	0.21	0.21	0.21	318	207	249	249	0.35	0.20	0.24	0.24	0.00	0.00	0.04	20.00
Ethiopia	0.08	0.08	0.08	0.08	637	637	637	637	0.24	0.24	0.24	0.24	0.00	0.00	0.00	0.00
<b>Former Soviet Union - 12</b>																
Uzbekistan	1.06	1.06	1.07	1.07	647	565	610	610	3.15	2.75	3.00	3.00	0.00	0.00	0.25	9.09
Turkmenistan	0.55	0.55	0.55	0.55	368	356	356	356	0.92	0.90	0.90	0.90	0.00	0.00	0.00	0.00
Tajikistan	0.16	0.17	0.17	0.17	619	640	640	640	0.46	0.50	0.50	0.50	0.00	0.00	0.00	0.00
Kazakhstan	0.11	0.12	0.12	0.12	534	502	521	521	0.27	0.27	0.28	0.28	0.00	0.00	0.01	3.77
<b>Middle East</b>																
Turkey	0.35	0.45	0.53	0.53	1,804	1,839	1,783	1,783	2.90	3.80	4.30	4.30	0.00	0.00	0.50	13.16
Syria	0.03	0.03	0.03	0.03	1,219	1,132	1,132	1,132	0.14	0.13	0.13	0.13	0.00	0.00	0.00	0.00
Iran	0.10	0.10	0.10	0.10	871	871	871	871	0.40	0.40	0.40	0.40	0.00	0.00	0.00	0.00
<b>Australia</b>	0.28	0.60	0.55	0.55	2,217	1,996	2,177	2,177	2.80	5.50	5.50	5.50	0.00	0.00	0.00	0.00
<b>Mexico</b>	0.15	0.15	0.19	0.19	1,532	1,725	1,518	1,518	1.02	1.22	1.33	1.33	0.00	0.00	0.11	8.61
<b>Burma</b>	0.24	0.25	0.25	0.25	635	644	644	644	0.70	0.73	0.73	0.73	0.00	0.00	0.00	0.00
<b>Others</b>	1.73	1.77	1.86	1.90	575	553	538	530	4.57	4.48	4.58	4.61	0.03	0.65	0.13	2.92

World and Selected Countries and Regions

**TABLE 18**

The table below presents a record of the June projection and the final Estimate. Using world wheat production as an example, the "root mean square error" means that chances are 2 out of 3 that the current forecast will not be above or below the final estimate by more than 3.0 percent. Chances are 9 out of 10 (90% confidence level) that the difference will not exceed 5.1 percent. The average difference between the June projection and the final estimate is 16.0 million tons, ranging from 0.4 million to 32.2 million tons. The June projection has been below the estimate 25 times and above 16 times.

**RELIABILITY OF PRODUCTION PROJECTIONS 1/**

COMMODITY AND REGION	Root mean square error	90 percent confidence interval	Difference between forecast and final estimate				
			Average	Smallest	Largest	Years	
						Below final	Above final
	Percent		---Million metric tons---				
<b>WHEAT</b>							
World	3.0	5.1	16.0	0.4	32.2	25	16
U.S.	6.1	10.3	2.7	0.0	8.4	23	18
Foreign	3.2	5.3	14.9	1.1	31.9	24	16
<b>COARSE GRAINS 2/</b>							
World	3.6	6.1	26.8	0.6	103.3	23	18
U.S.	13.4	22.6	19.9	0.5	103.8	22	19
Foreign	2.7	4.6	14.6	0.4	45.6	21	19
<b>RICE (Milled)</b>							
World	2.4	4.0	7.0	0.3	21.8	27	14
U.S.	7.2	12.2	0.3	0.0	1.1	22	19
Foreign	2.4	4.1	6.9	0.4	21.9	26	14
<b>SOYBEANS</b>							
World	NA	NA	12.5	0.1	36.2	7	11
U.S.	9.0	15.1	4.7	0.0	16.2	22	19
Foreign	NA	NA	9.7	0.2	37.0	6	11
<b>COTTON</b>			---Million 480-lb. bales---				
World	5.9	10.0	4.1	0.0	16.4	22	18
U.S.	11.4	19.2	1.6	0.1	5.7	20	21
Foreign	6.0	10.1	3.2	0.2	12.4	22	18
<b>UNITED STATES</b>			-----Million bushels-----				
<i>CORN</i>	15.8	26.7	780	8	4,010	21	20
<i>SORGHUM</i>	19.5	32.9	82	0	228	21	19
<i>BARLEY</i>	15.0	25.3	27	1	206	16	25
<i>OATS</i>	24.1	40.5	29	1	231	8	33

1/ Marketing years 1981/82 through 2021/22 for grains, soybeans, and cotton. Final for grains, soybeans, and cotton is defined as the first November estimate following the marketing year for 1981/82 through 2021/22.

2/ Includes corn, sorghum, barley, oats, rye, millet, and mixed grain

June 2022

Global Market Analysis, FAS, USDA