



United States
Department of
Agriculture

Foreign
Agricultural
Service

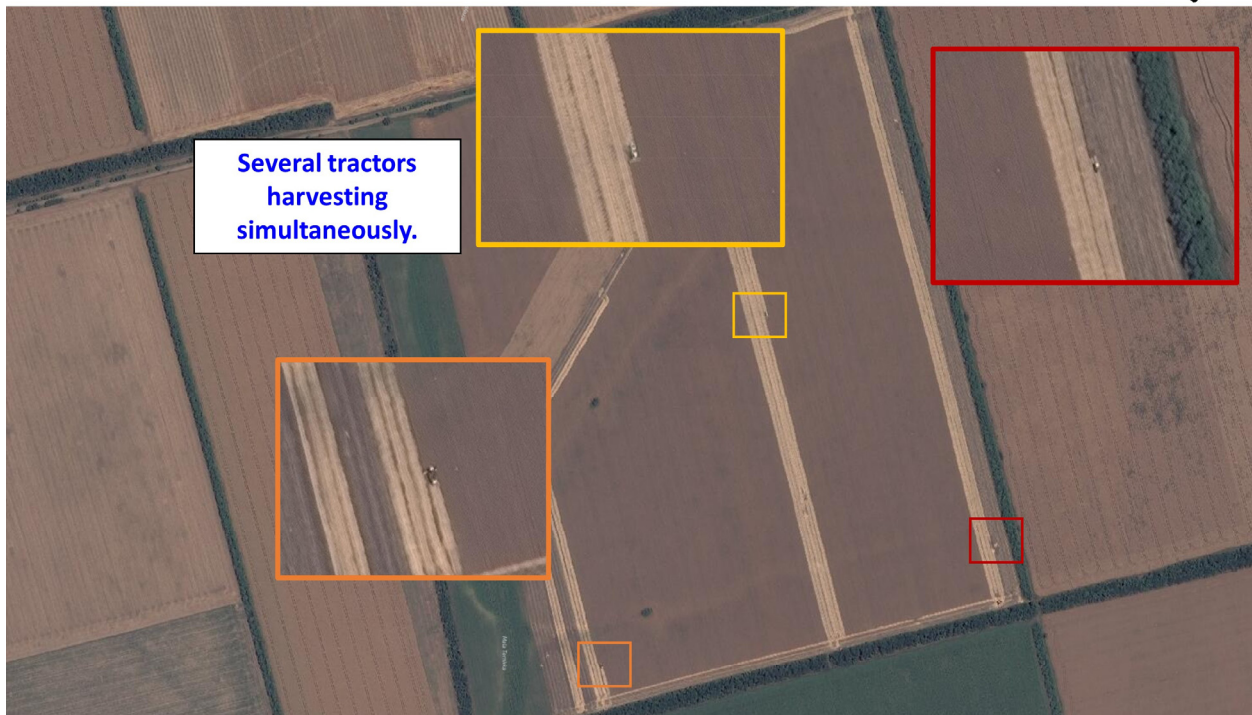
Circular Series
WAP 7-22
July 2022

World Agricultural Production

Ukraine Wheat: Conflict Causes Lower Harvested Area

Ukraine wheat production for marketing year (MY) 2022/23 is estimated at 19.5 million metric tons, down 9 percent from last month, and down 41 percent from last year. USDA crop production estimates for Ukraine include estimated output from Crimea. Yield is estimated at 3.71 tons per hectare, down 1 percent from last month and 17 percent from last year. Harvested area is estimated at 5.3 million hectares (mha), down 10 percent from last month and 29 percent from last year.

Harvesting in the Mykolaiv Oblast, North of Mykolaiv City, July 3, 2022



USDA Foreign Agricultural Service
U.S. DEPARTMENT OF AGRICULTURE

Source: Maxar Technologies, 07/03/2022;
Global Enhanced GEOINT Delivery

Winter wheat is typically planted from about early September to mid-November and accounts for about 97 percent of total Ukraine wheat production. Each winter, the State Statistics Service of Ukraine (SSSU) publishes planted area information for the winter crops. SSSU estimates do not

Approved by the World Agricultural Outlook Board

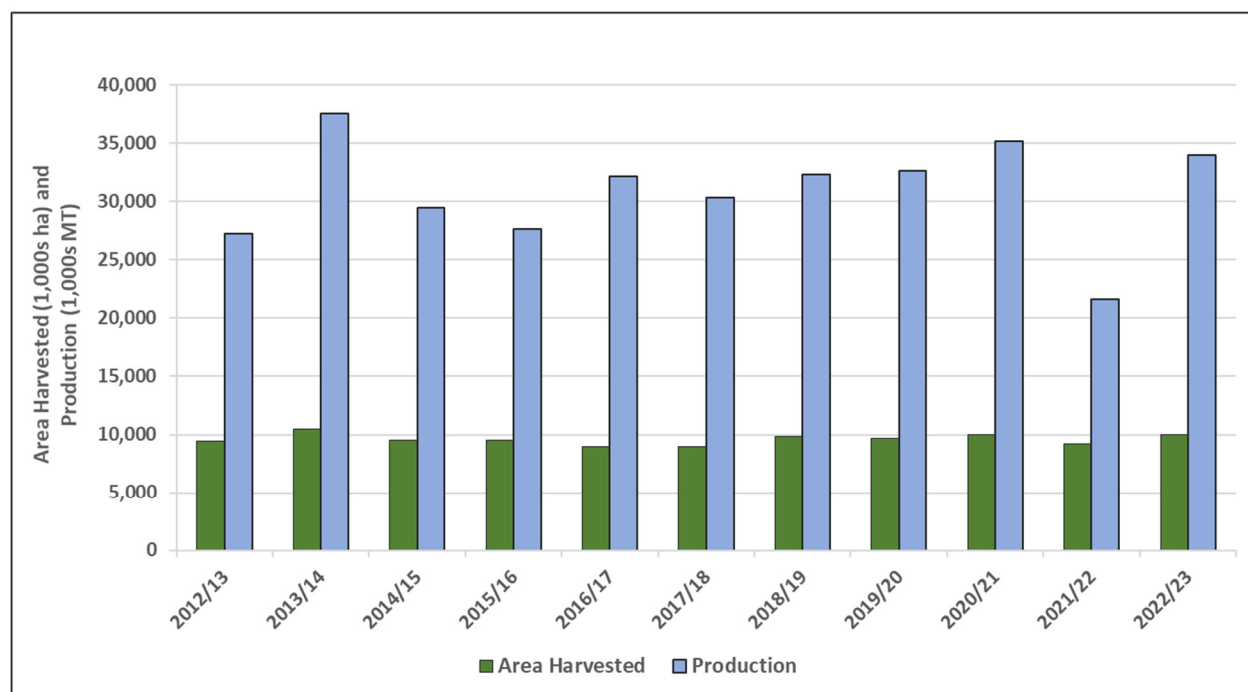
include Crimea or conflict zones in Donetsk and Luhansk oblasts, but these data were published pre-invasion, so do include other areas currently under conflict. Winter wheat was planted on 6.54 mha, as compared to 6.71 mha in MY 2021/22. Wheat area in Crimea is, on average, about 0.3 mha.

Harvest has just begun at the end of June and will continue until mid-August. Based on operational harvest information from the Ministry of Agriculture in Ukraine, the estimate for harvested area is 4.96 mha, which is about 1.5 mha lower than the SSSU number published pre-conflict. This area estimate does not include Crimea, which USDA includes. Therefore, total USDA harvested area including Crimea is 5.25 mha. *(For more information, please contact Katie.McGaughey@usda.gov.)*

Canada Wheat: Production Up on Increased Area

USDA forecasts Canada wheat production for marketing year 2022/23 at 34.0 million metric tons (mmt), up 1.0 mmt or 3 percent from last month, 57 percent over last year and 12 percent above the 5-year average. Harvested area is estimated at 10.0 million hectares, up 3 percent from last month, 8 percent from last year, and 5 percent above the 5-year average. Yield is forecast at 3.40 metric tons per hectare, unchanged from last month and up 45 percent over last year.

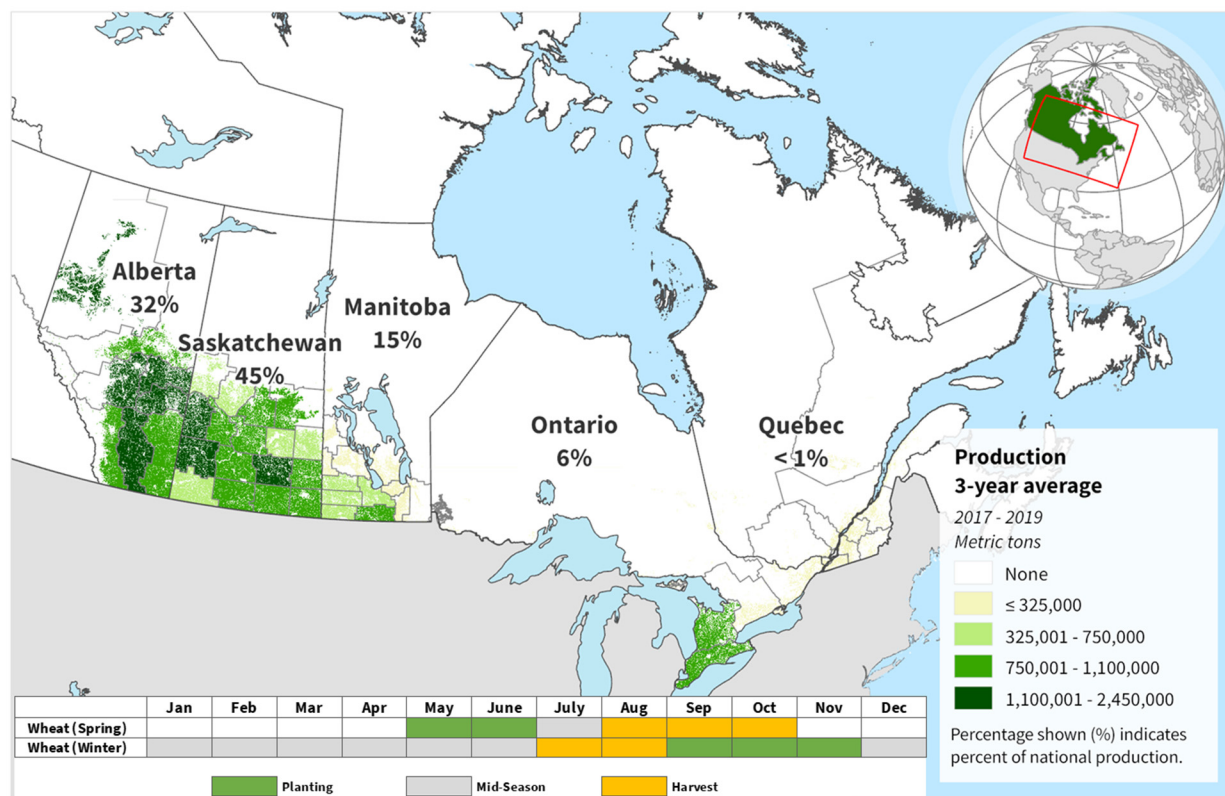
Canada Wheat Area and Production by Year



Statistics Canada (StatCan) conducted its 2022 Field Crop Survey in June, where Canadian farmers reported nearly 9 percent more area planted to wheat than last year. Spring wheat planting is up more than 10 percent while durum wheat area rose by nearly 9 percent, year-to-year. This increased

acreage for spring varieties more than offset a 13 percent decline in winter wheat planting in eastern Canada.

Canada: Total Wheat Production



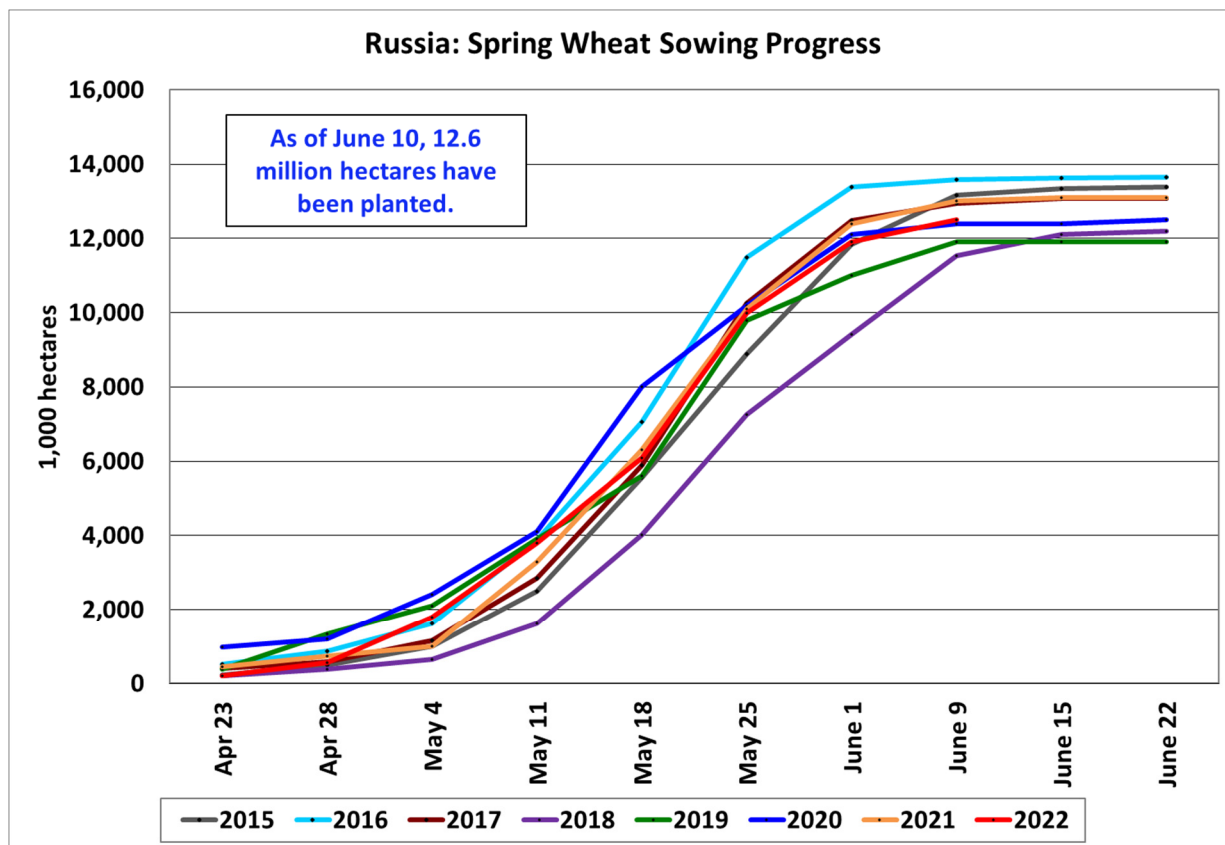
USDA Foreign Agricultural Service
U.S. DEPARTMENT OF AGRICULTURE

Sources: Statistics Canada, Estimated production by Small Area Data (SAD) Region; Agriculture and Agri-Food Canada (AAFC), Annual Crop Inventory 2018

Government and industry reports indicate variable crop conditions in Saskatchewan, Canada’s leading wheat-producing province, where dryness continues to plague crops in many areas of the western portion of the province. The opposite is true in the eastern half of Saskatchewan, and Manitoba, where excessive moisture has been the limiting factor for crop progress. More broadly, however, reporting from both provinces indicates slowly improving conditions and crop advancement as the season progresses. Conditions in Alberta have improved dramatically since the spring, and crops are progressing normally as rainfall throughout the month of June replenished soil moisture. Overall, expectations for average wheat yields remain for the season. *(For more information, please contact Aaron.Mulhollen@usda.gov.)*

Russia Wheat: Higher Spring Wheat Area

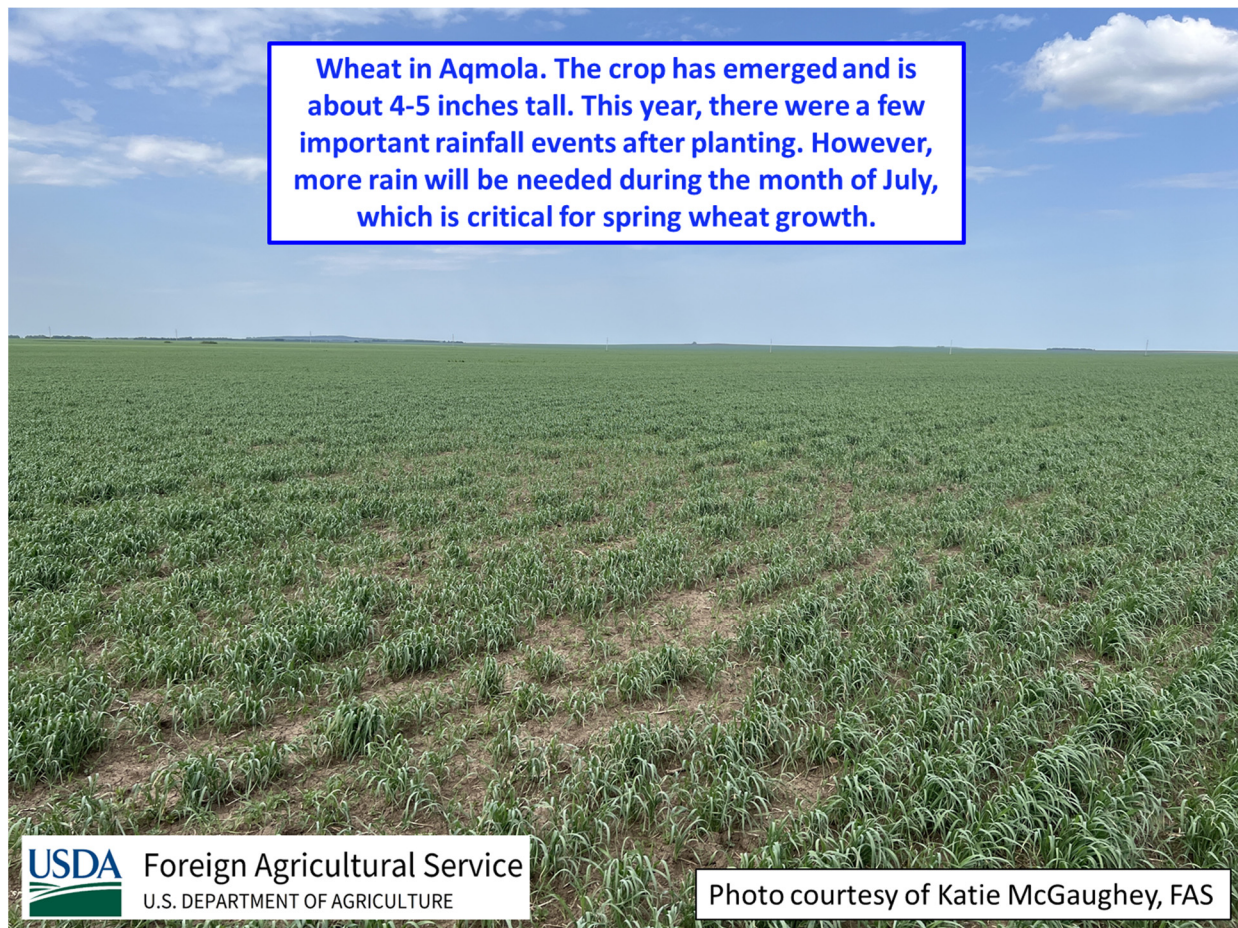
Russia wheat production for marketing year 2022/23 is estimated at 81.5 million metric tons (mmt), up 1 percent from last month and up 8 percent from last year. The estimate includes 59.5 mmt of winter wheat and 22.0 mmt of spring wheat. USDA crop production estimates for Russia exclude estimated output from Crimea. Total wheat yield is estimated at 2.93 tons per hectare, essentially unchanged from last month, and up 8 percent from last year. Total harvested area is estimated at 27.8 million hectares (mha), up 1 percent from last month and last year.



The Russian Ministry of Agriculture reported that spring wheat planting is complete on 12.6 mha. Since USDA publishes in harvested area, abandonment (the difference between planted and harvested area) needs to be taken into consideration. Abandonment for spring wheat is about 3 percent on average. Spring wheat is mainly planted in the regions bordering Kazakhstan: the Volga, Urals, and Siberian Districts of Russia. Critical crop yield development occurs throughout July. Harvest of spring wheat will begin in late August.

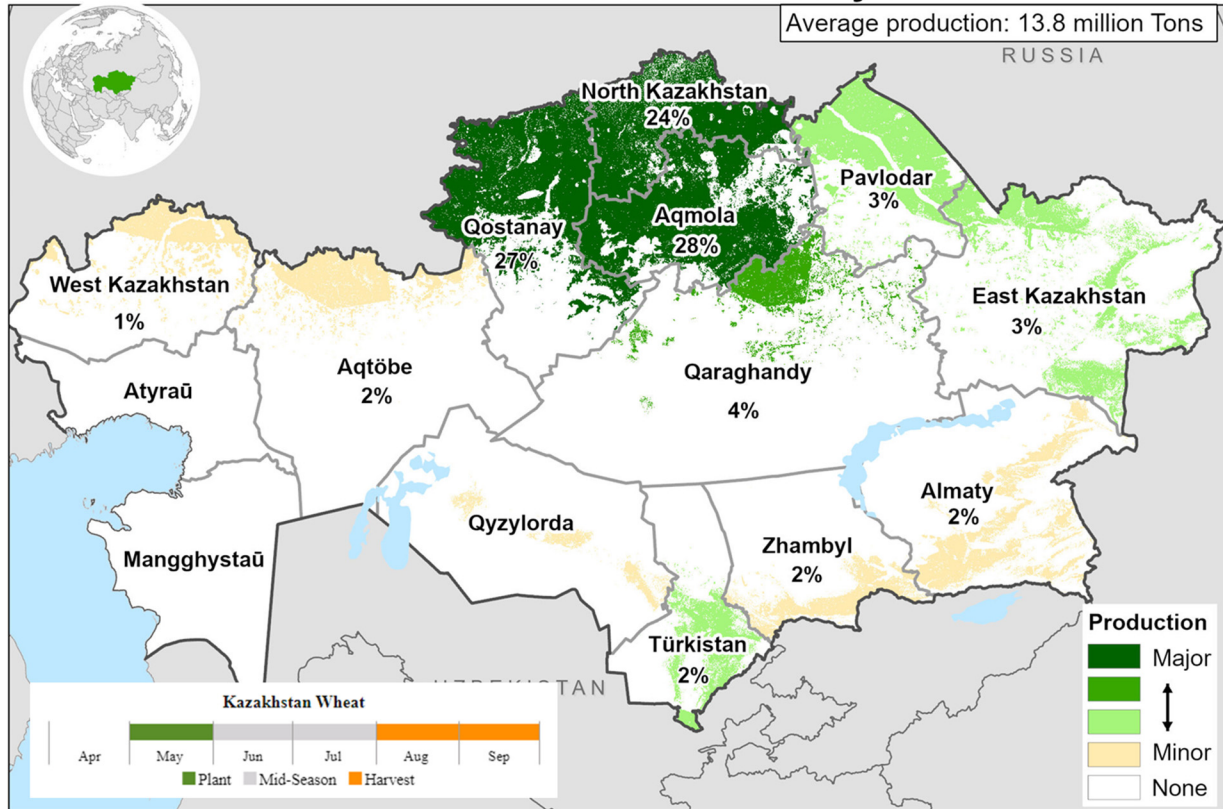
Area, yield, and production estimates for Russia winter wheat and spring wheat are available on PSD Online. Select “Downloadable Data Sets” and open the zipped file for “Russia Wheat; Winter/Spring Area & Production” (For more information, please contact Katie.McGaughey@usda.gov.)

Kazakhstan Wheat: Favorable Early Spring Crop Prospects



USDA forecasts Kazakhstan wheat production at 13.0 million metric tons for marketing year (MY) 2022/23. This is a 10 percent increase relative to the drought-stricken MY 2021/22 crop. Harvested area is estimated at 12.5 million hectares, 2 percent lower than last year. Yield is forecast at 1.04 tons per hectare, 12 percent higher than last year. About 80 percent of Kazakhstan wheat is produced in the north-central oblasts of Qostanay, Aqmola, and North Kazakhstan. USDA specialists recently traveled through this region and met with local producers, agronomists, and industry representatives to assess the wheat-production prospects for the current year.

KAZAKHSTAN: Wheat Production by Oblast



USDA Foreign Agricultural Service
U.S. DEPARTMENT OF AGRICULTURE

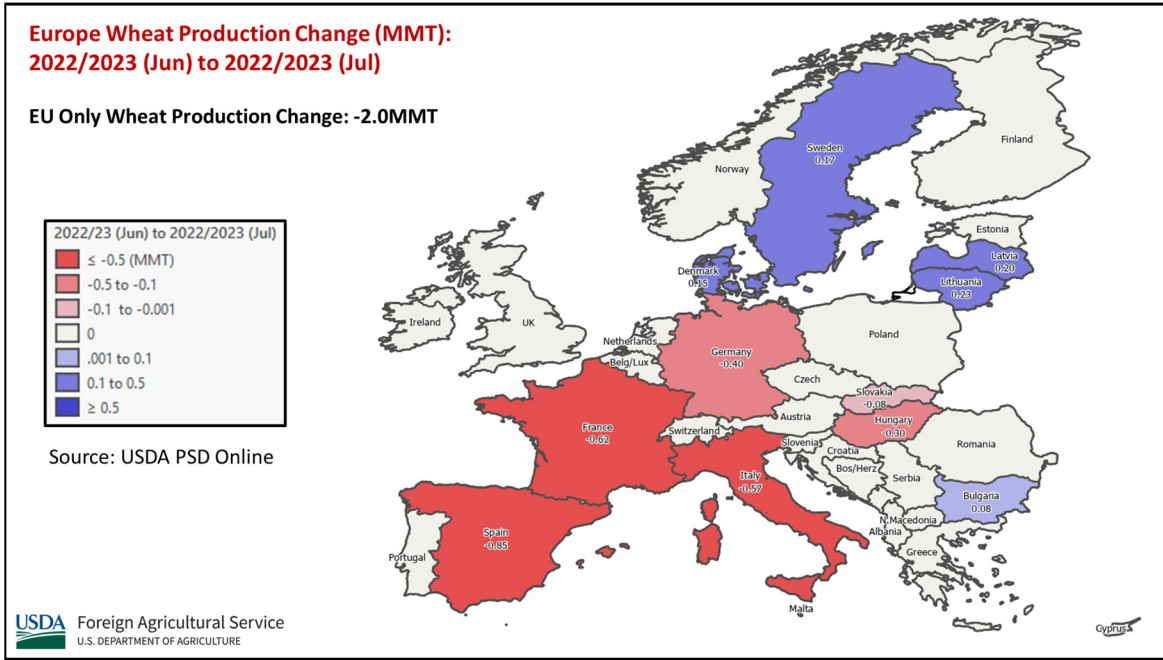
Data Source: State Statistical Agency of Kazakhstan
Average production 2015-19
GFSAD 30 m crop cover (2015)

During field visits in late June, the team observed a well-established crop that was about 4 to 5 inches tall. The rainfall that occurred after planting in May provided important deep-layer soil moisture ensuring good vegetation vigor as of late June. More rain, however, is needed during the month of July, which is the critical period for spring wheat growth. Additional discussions with industry contacts were conducted to learn more about Kazakhstan's agricultural practices such as preferred crop rotation and fertilizers schemes, seed varieties used, availability of government support, market opportunities, etc. (For more information, please contact Iliana.Mladenova@usda.gov or Katie.McGaughey@usda.gov.)

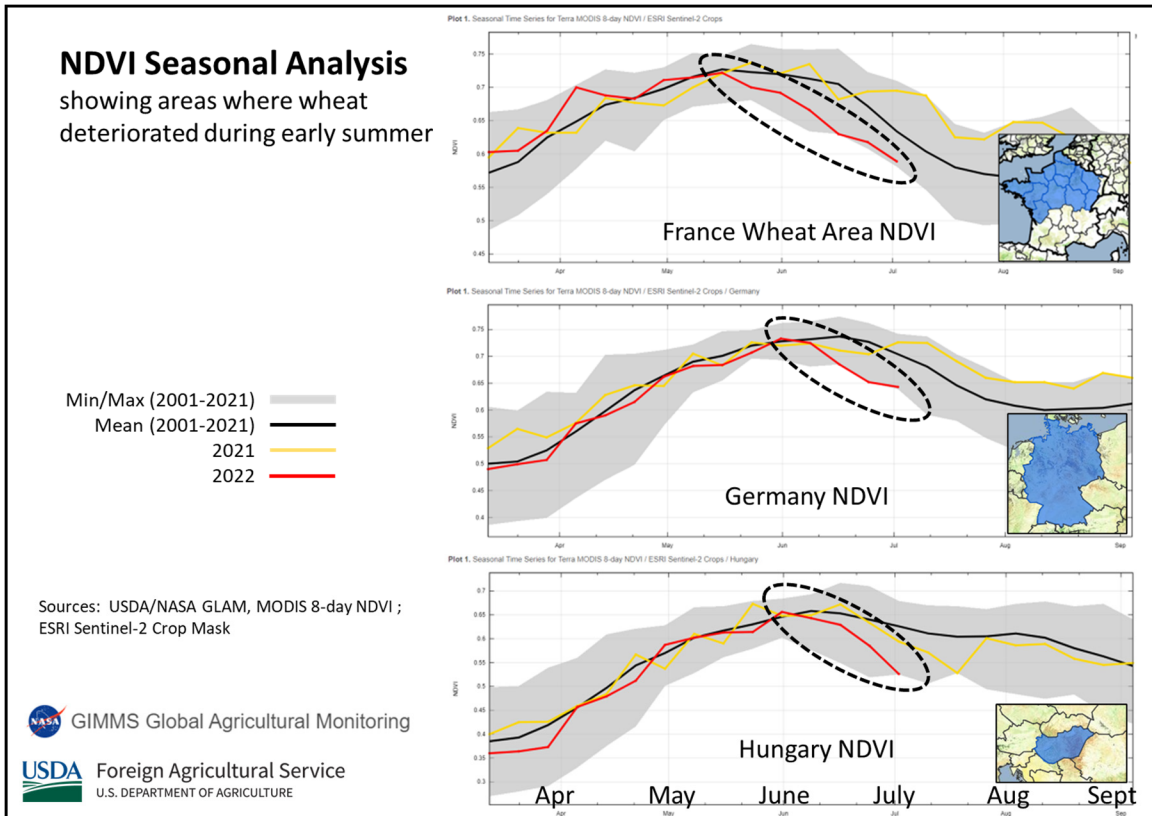
European Union (EU) Wheat: Drought Continues to Reduce Crop



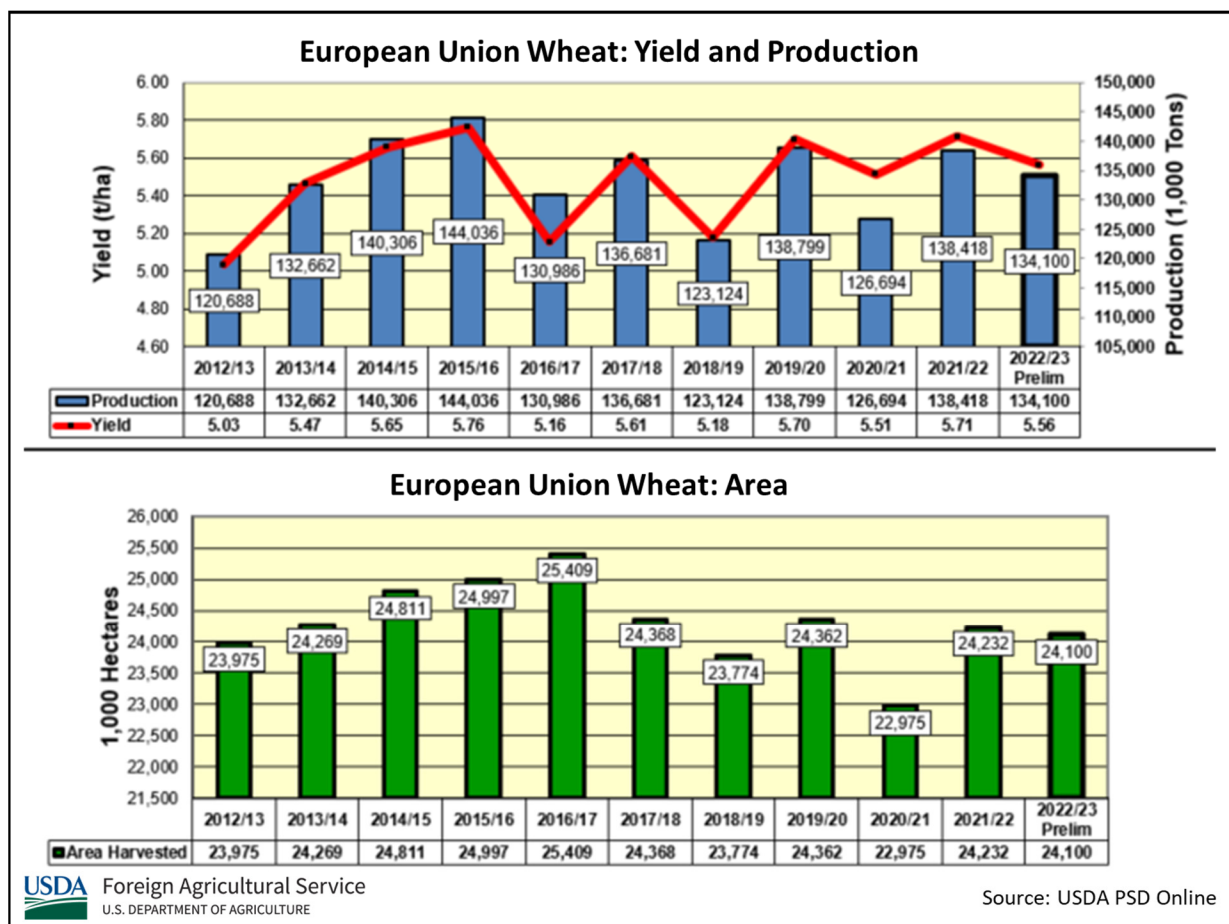
Wheat production for marketing year (MY) 2022/23 in the European Union is estimated at 134.1 million metric tons (mmt), down 2.0 mmt (1 percent) from last month, 4.3 mmt (3 percent) from last year, but 1 percent above the 5-year average of 132.7 mmt. Harvested area is estimated at 24.1 million hectares (mha), unchanged from last month, down 0.1 mha from last year, but up 0.2 mha above the 5-year average. Yield is estimated at 5.56 tons per hectare (t/ha), 3 percent below last year and up slightly from the 5-year average of 5.54 t/ha.



Harvest has commenced in much of Europe, with it underway in most countries. Prolonged dryness, however, has reduced wheat production in Spain (-0.9 mmt), France (-0.6 mmt), Italy (-0.6 mmt), Germany (-0.4 mmt), and Hungary (-0.3 mmt). In northern Europe, favorable rainfall stimulated increased production in the Baltic and Nordic countries of Latvia, Lithuania, Sweden, and Denmark, each up 0.2 mmt from last month.



Rainfall increased during June in France, alleviating long-term national drought levels, however, it arrived too late to improve yields. An early heatwave with temperatures upward of 40 degrees C in France and Spain stressed grains and compounded the long-term dry conditions in both countries. Drought deepened in Germany during June, where the crop was less mature, depressing yields. Drought has also plagued Italy this season, particularly along the agriculturally-important Po River in the north, where less than half normal rainfall has been received year to date. Conditions also deteriorated in Hungary, most notably in the east, which includes the Great Hungarian Plain, where there was little to no rainfall, exacerbated by high temperatures.

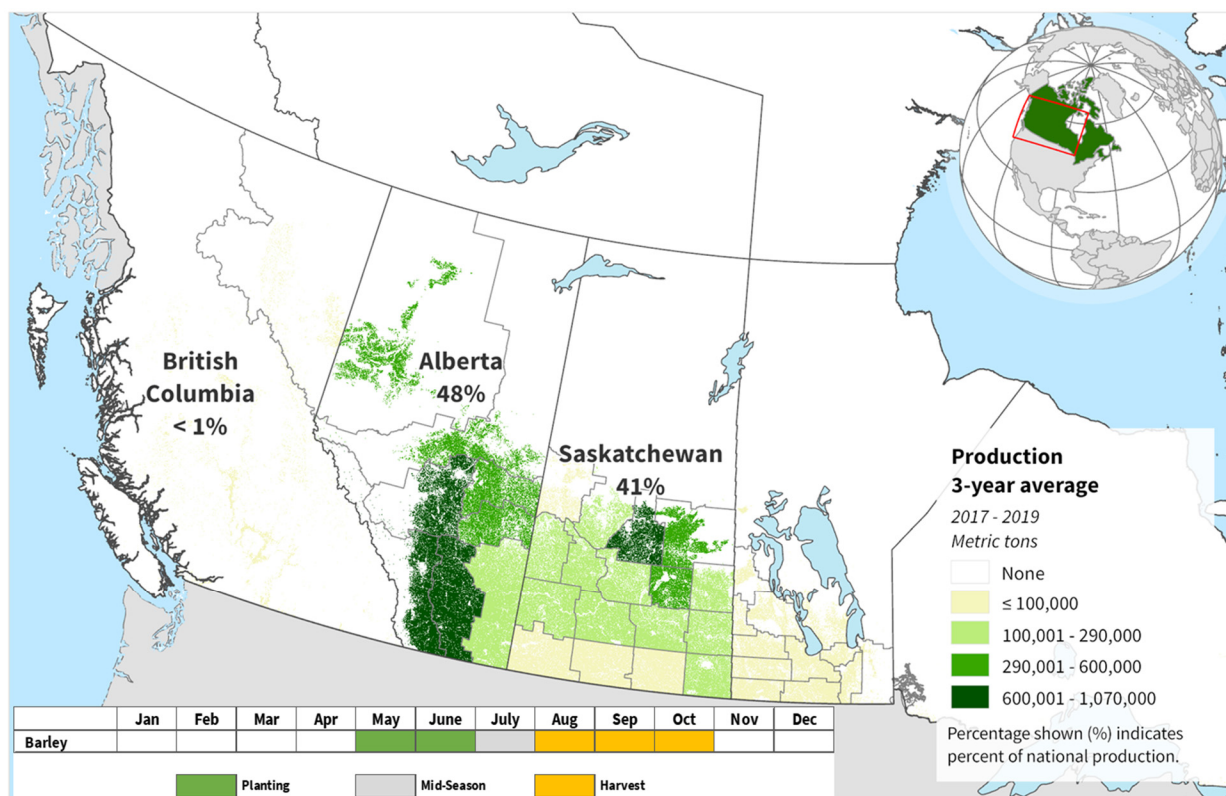


For country-specific area, yield, and production estimates within the European Union (EU), please go to PSD Online at <https://apps.fas.usda.gov/PSDOnline/app/index.html#/app/home>, and select “Downloadable Data Sets.” Select the zipped file for “EU Countries Area & Production.” (For more information, please contact Bryan.Purcell@usda.gov.)

Canada Barley: Harvested Area Down while Production Recovers from Last Year

USDA forecasts Canada barley production for marketing year 2022/23 at 9.7 million metric tons (mmt), down 8 percent from last month, but up 40 percent from last year and 9 percent above the 5-year average. Harvested area is estimated at 2.6 million hectares (mha), down 7 percent from last month, 13 percent from last year, but roughly equivalent to the 5-year average. Yield is forecast at 3.73 metric tons per hectare (t/ha), up 61 percent from last year's drought-stricken crop.

Canada: Barley Production

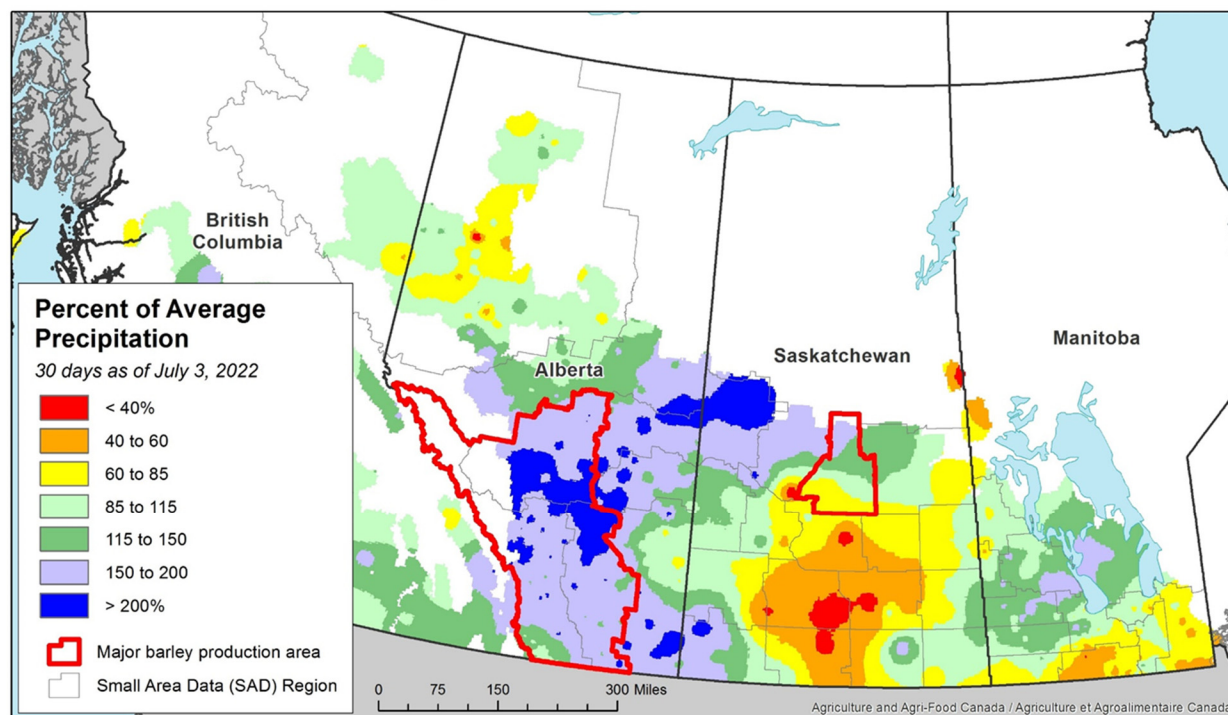


USDA Foreign Agricultural Service
U.S. DEPARTMENT OF AGRICULTURE

Sources: Statistics Canada, Estimated production by Small Area Data (SAD) Region; Agriculture and Agri-Food Canada (AAFC), Annual Crop Inventory 2018

Statistics Canada (StatCan) recently updated its principal field crop area estimates based on its 2022 June Field Crop Survey. The survey indicated an 8 percent decrease in barley area in Alberta and a 25 percent decrease in Saskatchewan, the two largest barley-producing provinces. StatCan estimates nationwide planted area for barley at nearly 2.9 mha, a 15 percent decrease from last year, as farmers instead boosted area for spring wheat, durum wheat, and oats. On average, roughly 9 percent of planted area for barley is left unharvested, annually, which is accounted for in the USDA harvested area estimate.

June Precipitation in the Canadian Prairies



USDA Foreign Agricultural Service
U.S. DEPARTMENT OF AGRICULTURE

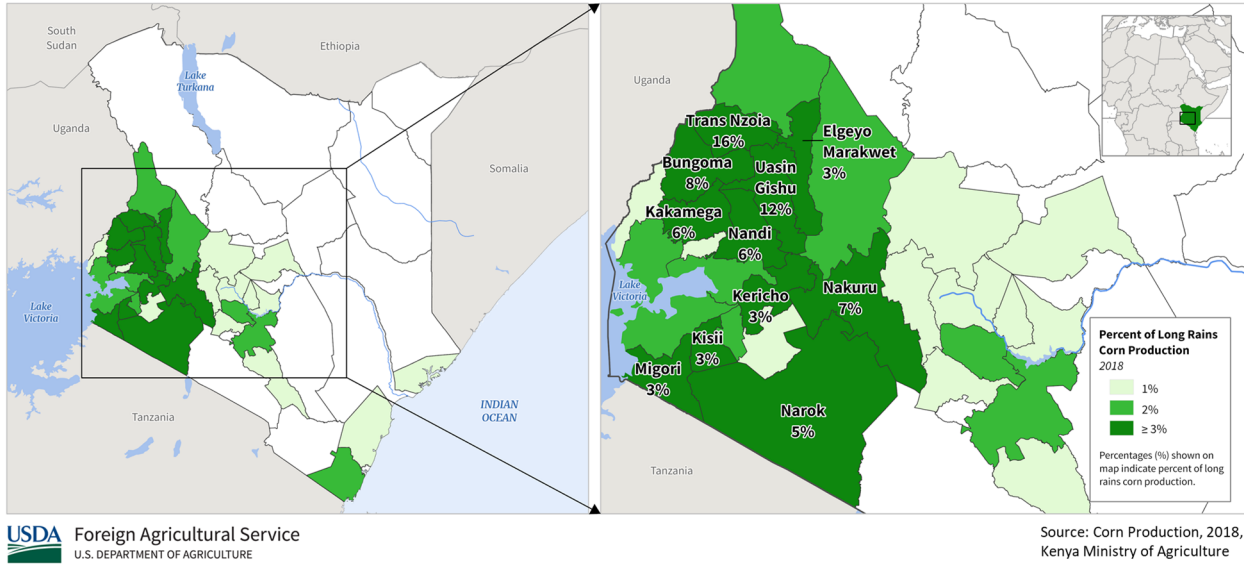
Sources: Agriculture and Agri-Food Canada; Statistics Canada

Despite this downturn in area, the barley yield outlook in Alberta has rapidly improved since the dry spring, with above-average rainfall in early June replenishing soil moisture reserves across most of the province. In response, provincial reporting indicates rapid crop progress, and average crop conditions at this point in the season. Saskatchewan farmers were hampered by either excessive moisture in the eastern portion, or excessive dryness in the western portion of the province, which limited early-season crop progress. However, recent reporting has been more positive, particularly in the northeastern and northwestern crop districts, where most of the barley is grown in the province. *(For more information, please contact Aaron.Mulhollen@usda.gov.)*

Kenya Corn: Production Prospects Down from Early Season Drought

Kenya corn production for marketing year 2022/23 is forecast at 3.0 million metric tons (mmt), down 200,000 tons (6 percent) from last month, down 100,000 tons (3 percent) from last year, and 15 percent below the 5-year average. Area is forecast at 1.9 million hectares (mha), unchanged from last month, down 50,000 hectares (3 percent) from last year, and 12 percent below the 5-year average. Yield is forecast at 1.58 metric tons per hectare, down 6 percent from last month, 1 percent from last year, and 3 percent from the 5-year average. Corn production prospects are reduced due to below-average rainfall from March through June and low fertilizer applications caused by high fertilizer prices.

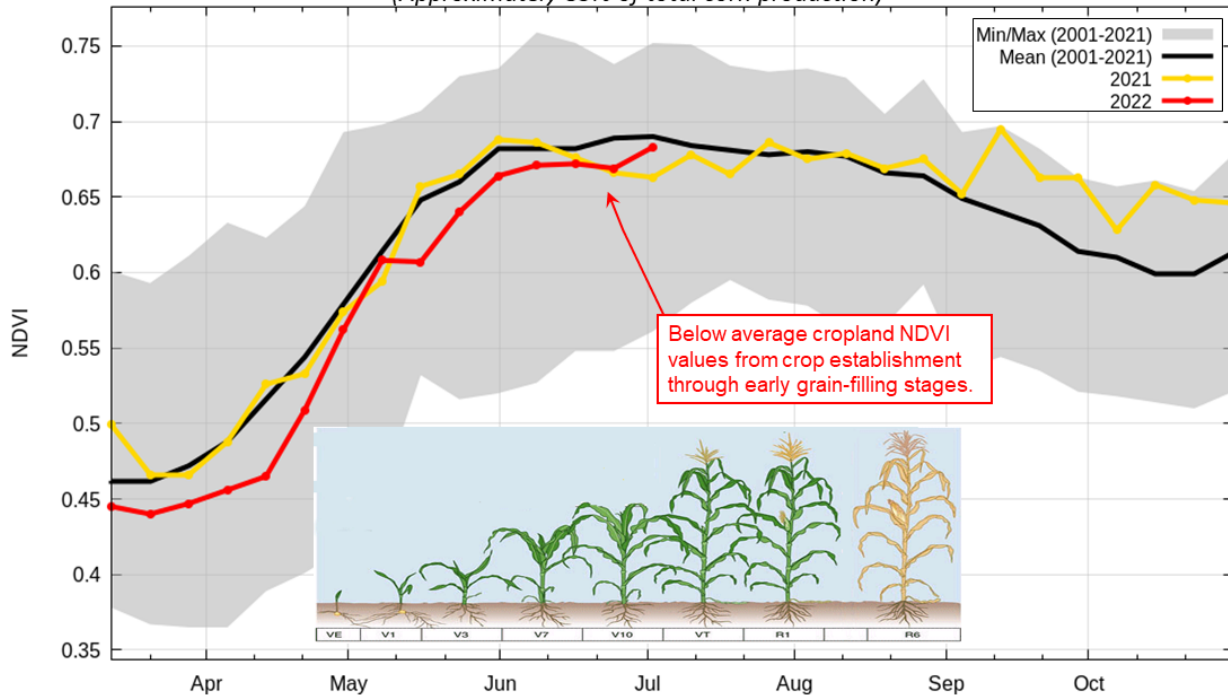
Kenya: Long Rains Corn Production



Below-average rains from March through June also reduced corn area and potential yields below the 5-year average. The late arrival of March rains caused many farmers to plant late or reduce corn area planting intentions. Satellite-derived Normalized Difference Vegetation Index (NDVI) confirm late crop establishment in April and May and poor crop conditions by early July. Relative NDVI crop conditions indicate potential yields could be below last year's drought-reduced yield and below the 5-year average.

Cropland NDVI for Major Corn Producing Provinces in Kenya

(Approximately 85% of total corn production)

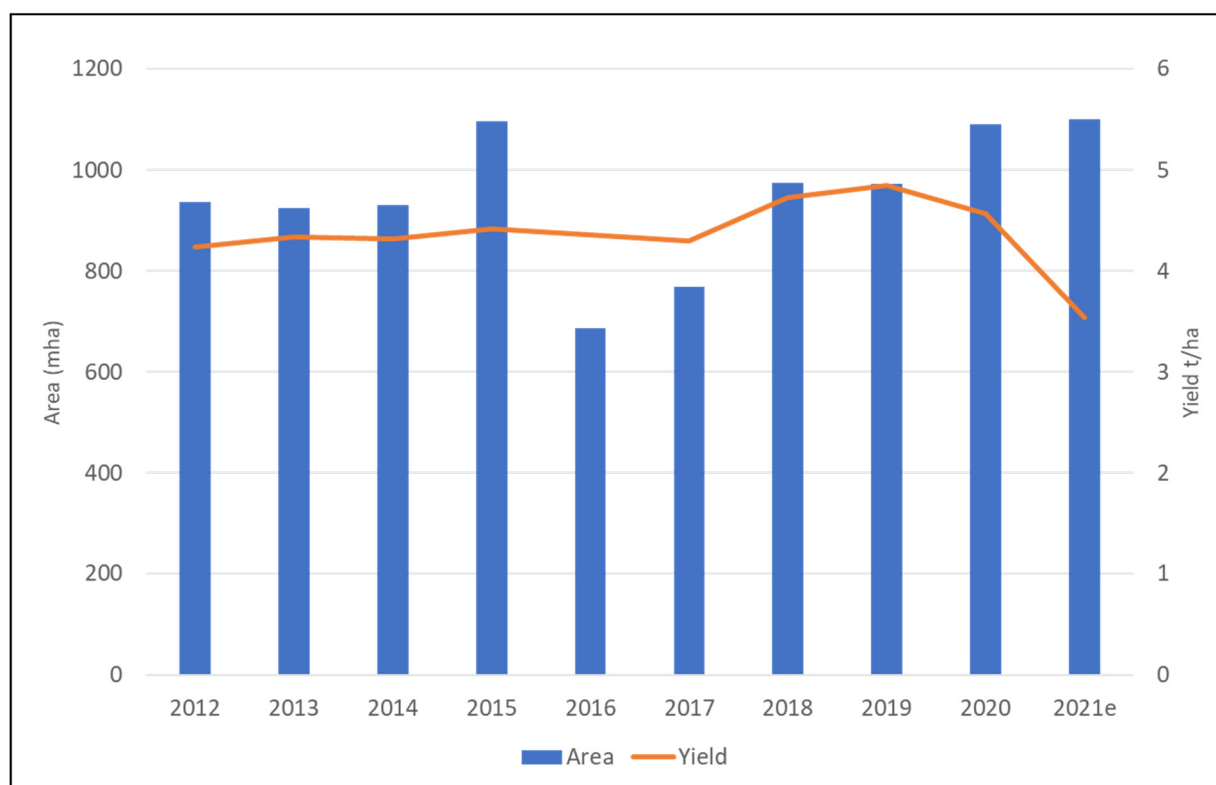


The long-rains season in Kenya’s high production region begins in March and ends in September, with planting from March through May and harvest ranging from October through December. The long-rains harvest contributes to over 85 percent of the national corn output. Major long-rains corn producing counties include Trans Nzoia (16%), Uasin Gishu (12%), Bungoma (8%), Nakuru (7%), Kakemega (6%) and Nandi (6%). The short-rains season begins in October and ends in January, with harvest ranging from late January through February. *(For more information, please contact Curt.Reynolds@usda.gov.)*

Sri Lanka Rice: MY 2021/22 Production Down due to a Decline in Yields

USDA estimates marketing year (MY) 2021/22 Sri Lanka rice production at 2.6 million metric tons milled, down about 22 percent from MY 2020/21. This decrease is based on an update from the Sri Lanka Census and Statistics Department. Harvested area is estimated at 1.1 million hectares, up 1 percent from the previous year. Yield is estimated to reach 3.54 metric tons per hectare, down nearly 23 percent from MY 2020/21. This decline in yield is due to a lack of agricultural inputs, such as fertilizers for the *maha* crop.

Sri Lanka Rice Area and Yield by Year

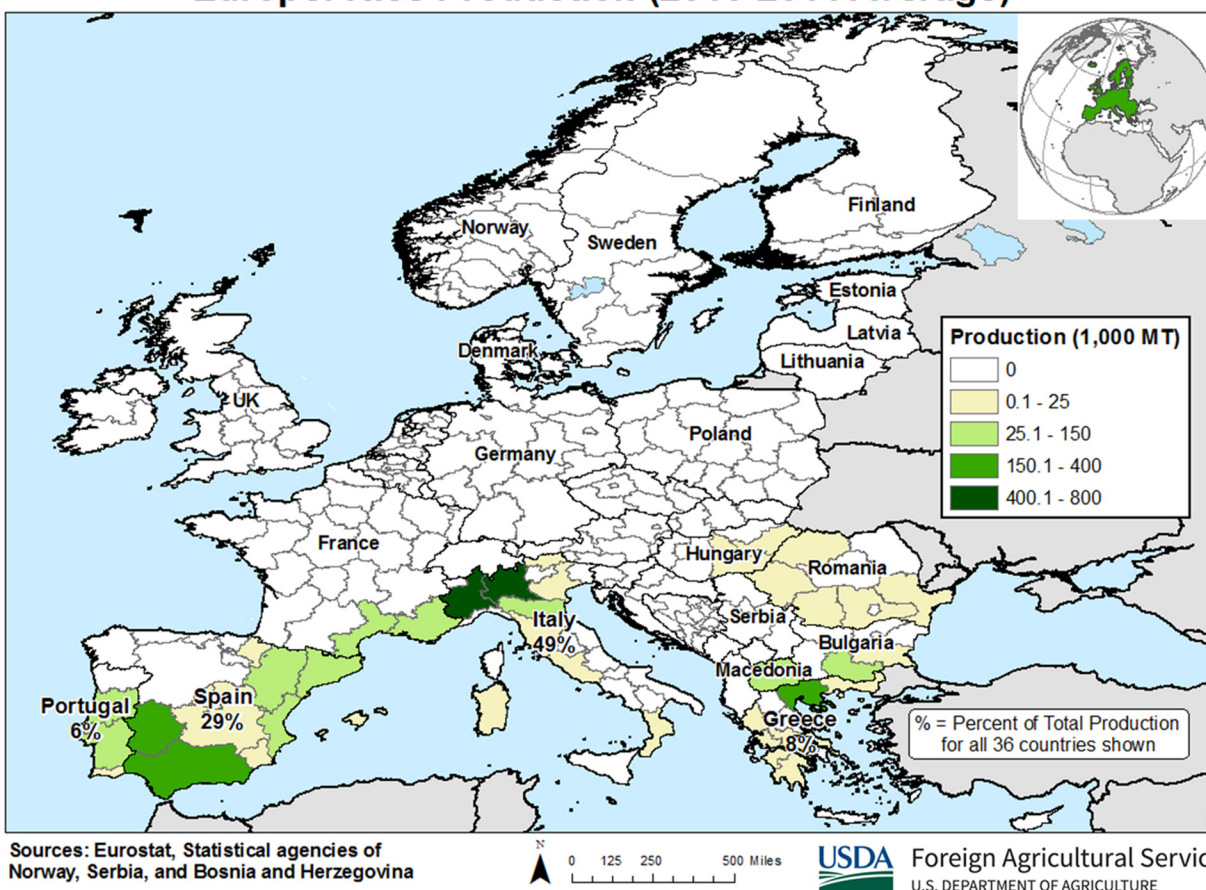


USDA combines the 2021 *yala* crop, which accounts for 40 percent of the total production, and the MY 2021/22 *maha* crop for the total estimate. The MY 2021/22 *maha* crop was harvested in March. *(For more information, please contact Arnella.Trent@usda.gov.)*

European Union (EU) Rice: Low Water Levels Reduce Rice Crop in Spain and Italy

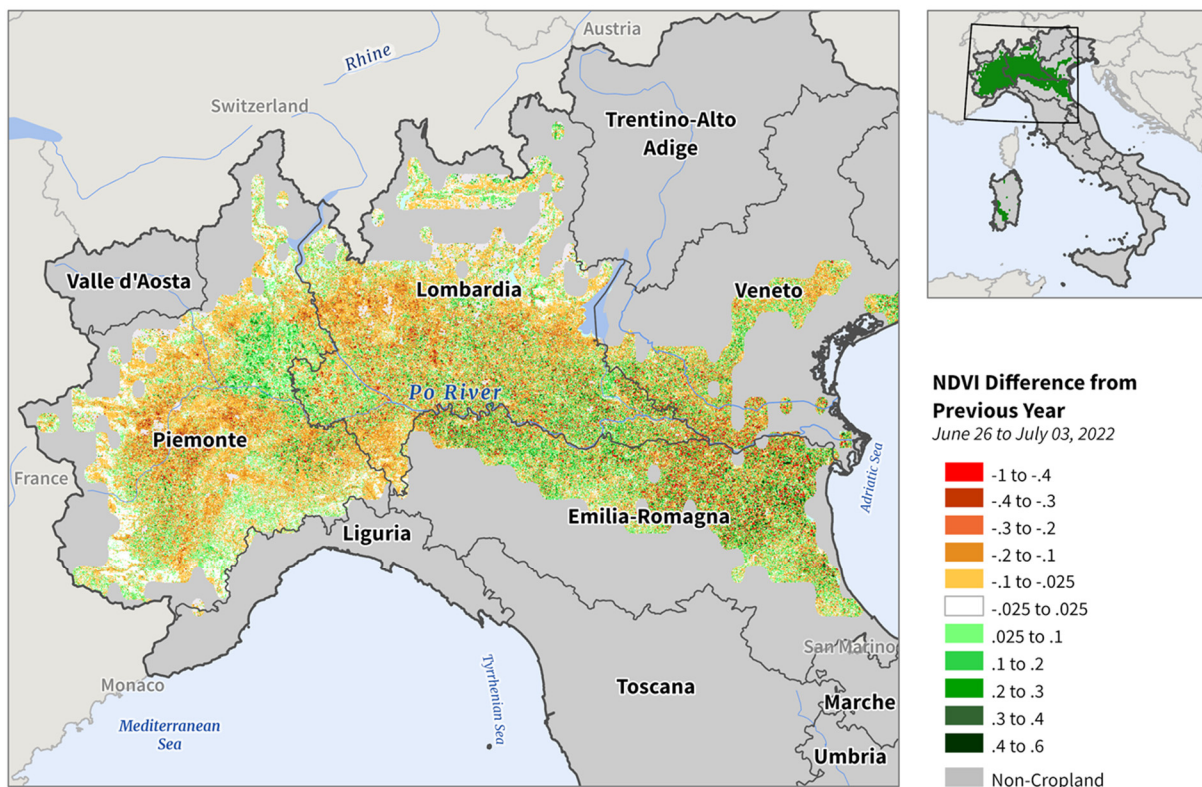
Rice production for marketing year (MY) 2022/23 in the EU is forecast at 1.5 million tons (mmt) (milled basis), or 2.3 mmt rough. Milled production is forecast down 16 percent from last month, 15 percent from last year and 21 percent from the 5-year average. Area is estimated at 0.4 million hectares, down 11 percent from last month and last year, and 14 percent below the 5-year average. Yield is forecast at 6.36 tons per hectare, down 6 percent from last month, 3 percent from last year and 6 percent below the 5-year average.

Europe: Rice Production (2010-2014 Average)



Rice is cultivated in several of Europe's southern countries. The largest producers are Italy, Spain, Greece, and Portugal along with some smaller producers. The crop is grown from April to October with harvest peaking in September. Drought has impacted the two largest producers, Italy, and Spain. Italy produces about half of the rice grown in the EU while Spain typically produces 25-30 percent and Greece about 10 percent. Extreme drought in the rice area of northern Italy, northwest of Milan, has caused reduction in both area and production. The crop is primarily irrigated by the Po River and its tributaries. A lack of winter snowfall upstream in the Alps, coupled with little rainfall in the Po watershed and higher-than-normal temperatures during spring has caused the Po's volume to diminish to low levels not seen in years.

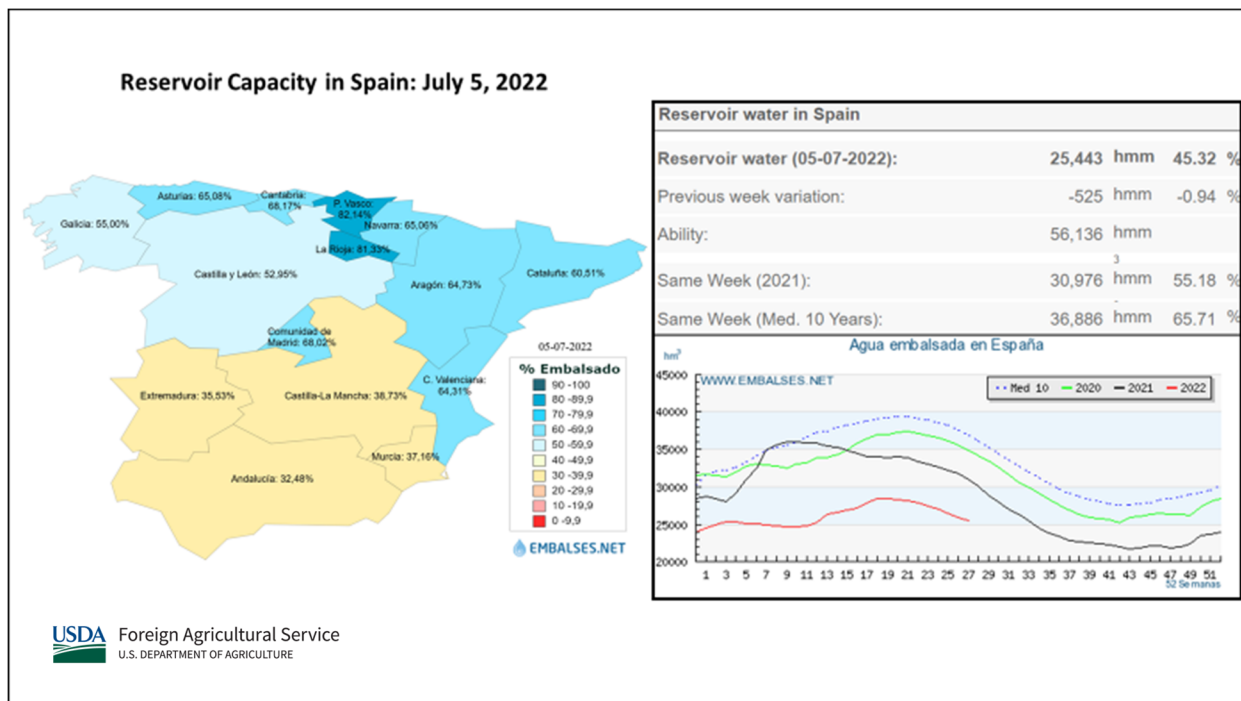
Italy Rice Producing Areas: NDVI Difference from Previous Year



USDA Foreign Agricultural Service
U.S. DEPARTMENT OF AGRICULTURE

Source: MODIS - 8-Days 'NDVI Difference from Previous Year'
June 26 to July 03, 2022; IFPRI SPAM 2010 Rice Cropland Mask

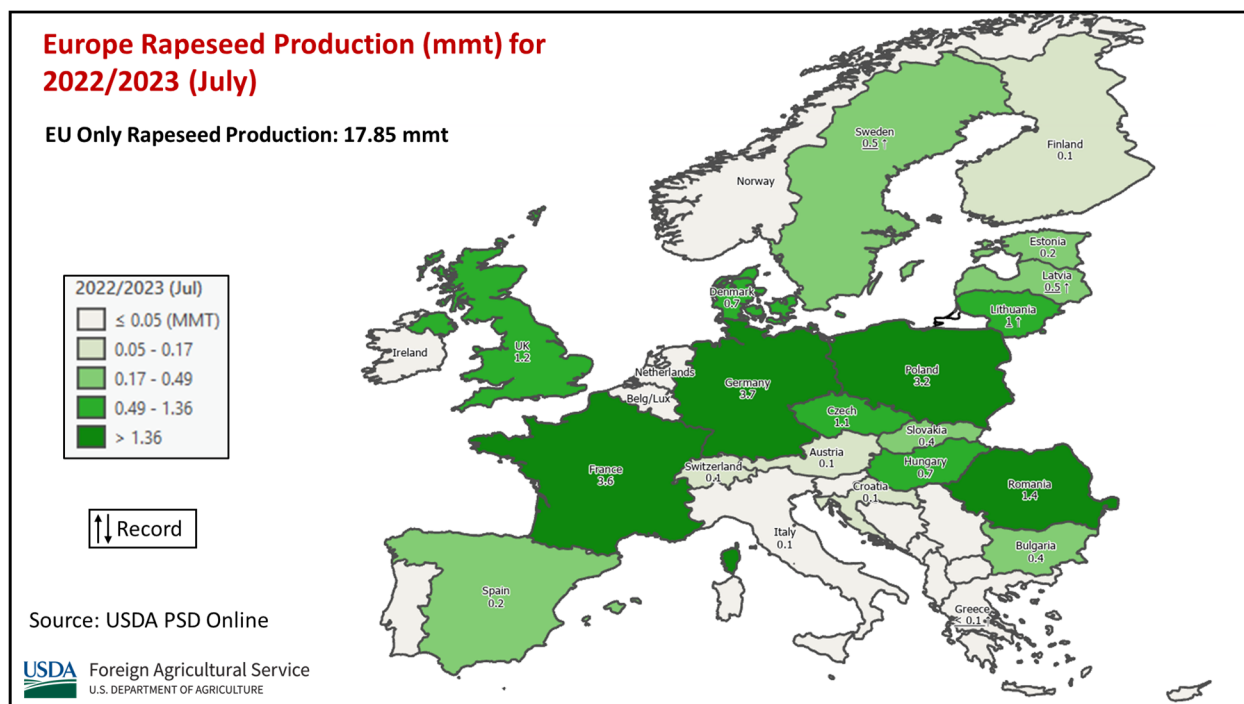
Spain, accounting for a quarter of the EU's rice production, has suffered through several drought years, with the cumulative effect of greatly reduced water levels in reservoirs needed for irrigating rice and other crops. Restrictions were enacted to conserve water, significantly impacting planted rice area. Farmers were forced to adapt to reduced water allocations by lowering sown area.



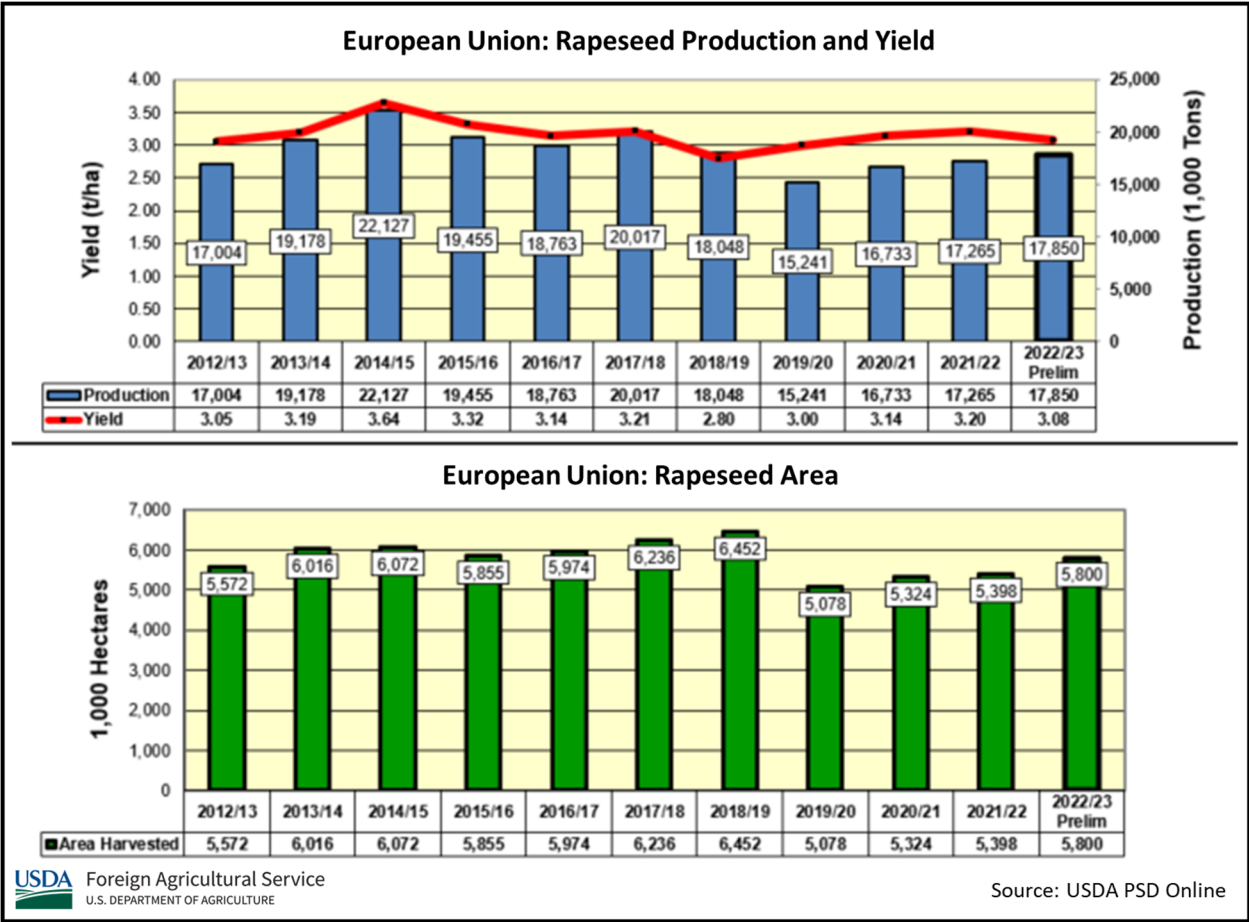
For country-specific area, yield, and production estimates within the European Union (EU), please go to PSD Online at <https://apps.fas.usda.gov/PSDOnline/app/index.html#/app/home>, and select “Downloadable Data Sets.” Select the zipped file for “EU Countries Area & Production.” (For more information, please contact Bryan.Purcell@usda.gov.)

European Union (EU) Rapeseed: Dryness Continues, Lowering Crop Further

European Union rapeseed production for marketing year (MY) 2022/23 is estimated at 17.9 million metric tons (mmt), down 0.4 mmt or 2 percent from last month, but up 3 percent from last year and 2 percent above the 5-year average of 17.5 mmt. Harvested area is estimated at 5.8 million hectares (mha), unchanged from last month, and 7 percent above last year and 2 percent above the 5-year average. Yield is estimated at 3.08 tons per hectare (t/ha), down 2 percent from last month's 3.15 t/ha and 4 percent from last year's 3.20 t/ha, but similar to the 5-year average of 3.07 t/ha.



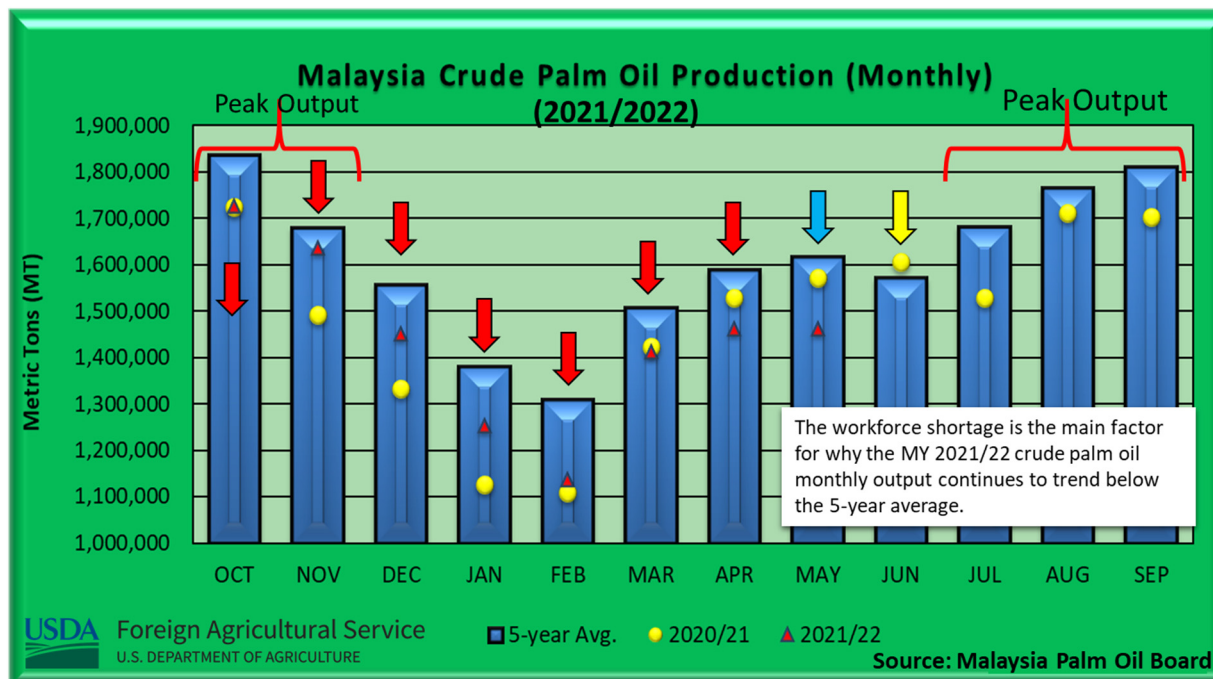
Rapeseed production in the EU has been lowered due to dryness, primarily in France and Germany, the EU's largest producers. Germany's rapeseed production is estimated at 3.7 mmt, the highest in the EU, but is down 0.2 mmt from last month. France's rapeseed production is estimated to be down 0.1 mmt from last month to 3.6 mmt. Smaller, dryness-related reductions were also made to Hungary, the Czech Republic, and Poland, while small increases were made to Lithuania, Latvia, and Sweden, due to favorable weather in the north. Despite the overall EU yield reduction, with the largest EU area since MY 2018/19, the MY 2022/23 crop is expected to be the largest crop since MY 2018/19. Harvest has begun in most countries and should finish during July.



For country-specific area, yield, and production estimates within the European Union (EU), please go to PSD Online at <https://apps.fas.usda.gov/PSDOnline/app/index.html#/app/home>, and select “Downloadable Data Sets.” Select the zipped file for “EU Countries Area & Production.” (For more information, please contact Bryan.Purcell@usda.gov.)

Malaysia Palm Oil: MY 2021/22 Production Estimate Decreases with Slower-than-Expected Return of Migrant Workers

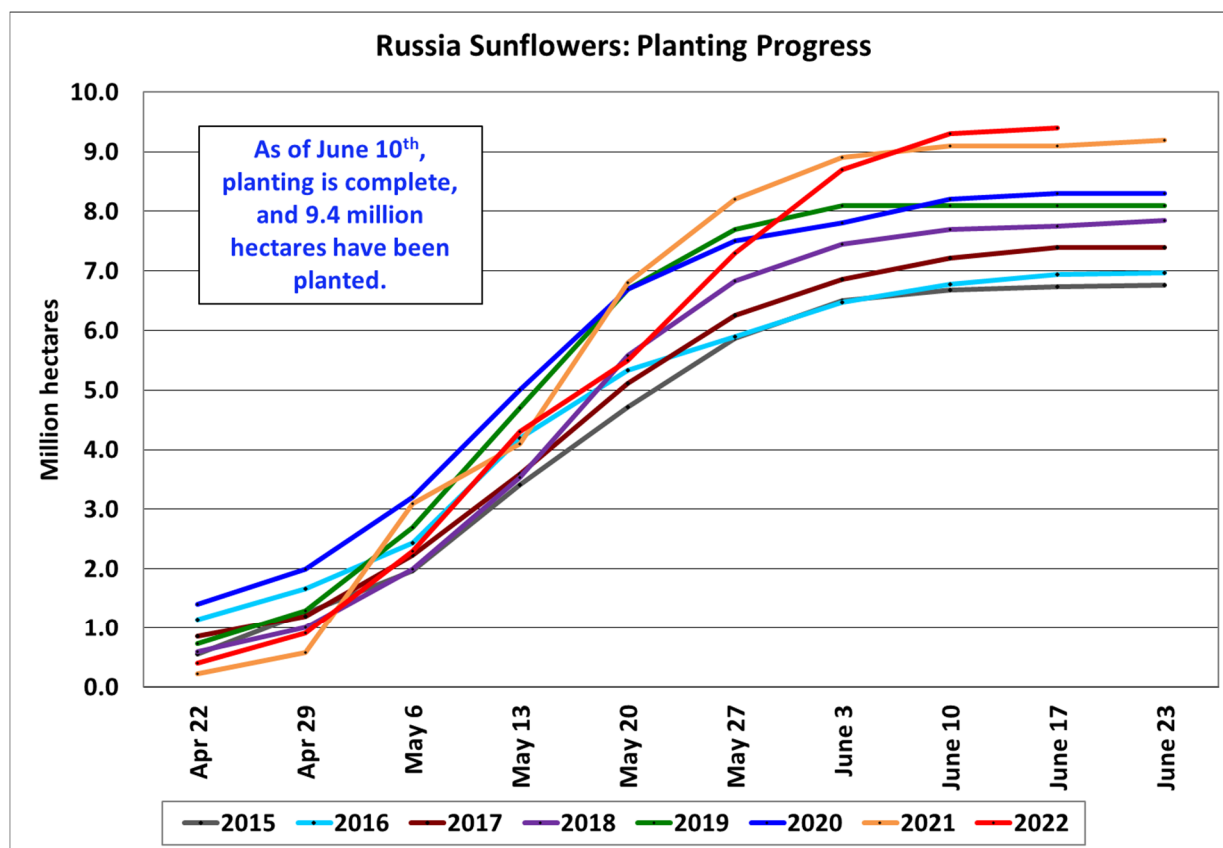
USDA estimates Malaysia palm oil production for market year (MY) 2021/22 at 18.3 million metric tons, down 4 percent from last month, but up 2 percent from last year. The area harvested monthly estimate remains unchanged at 5.45 million hectares but is up 1 percent from last year. Yield is estimated at 3.36 tons per hectare, down 4 percent from last month, but up 2 percent from last year.



- Months of continued workforce shortage
- Original Expected workforce to return 'normal'
- Limited workforce permitted

Since MY 2020/21, Malaysia palm oil output has been negatively impacted by COVID-19 and its strain on the palm oil sector workforce. As a measure to curb the spread of COVID-19, the government of Malaysia closed its borders, which essentially eliminated the main source of skilled workers that harvest Malaysian palm oil. Migrant workers, mainly from Indonesia, comprise 80 percent of Malaysia's workforce. Even with ideal weather conditions, palm oil harvest operations have failed to keep up with demand due to the workforce shortage. In mid-June, the Malaysian government opened its borders to allow migrant workers to obtain work visas, however, the process has been slower than expected, with limited amounts of migrant work visas being approved. As a result, a continued low crude palm oil output is being reported. According to the Malaysian Palm Oil Board, monthly crude palm oil output has continued to trend below the 5-year average. Latest reports indicate crude palm oil output for the month of May is down 10 percent from the 5-year average. (For more information, please contact Justin.Jenkins@usda.gov.)

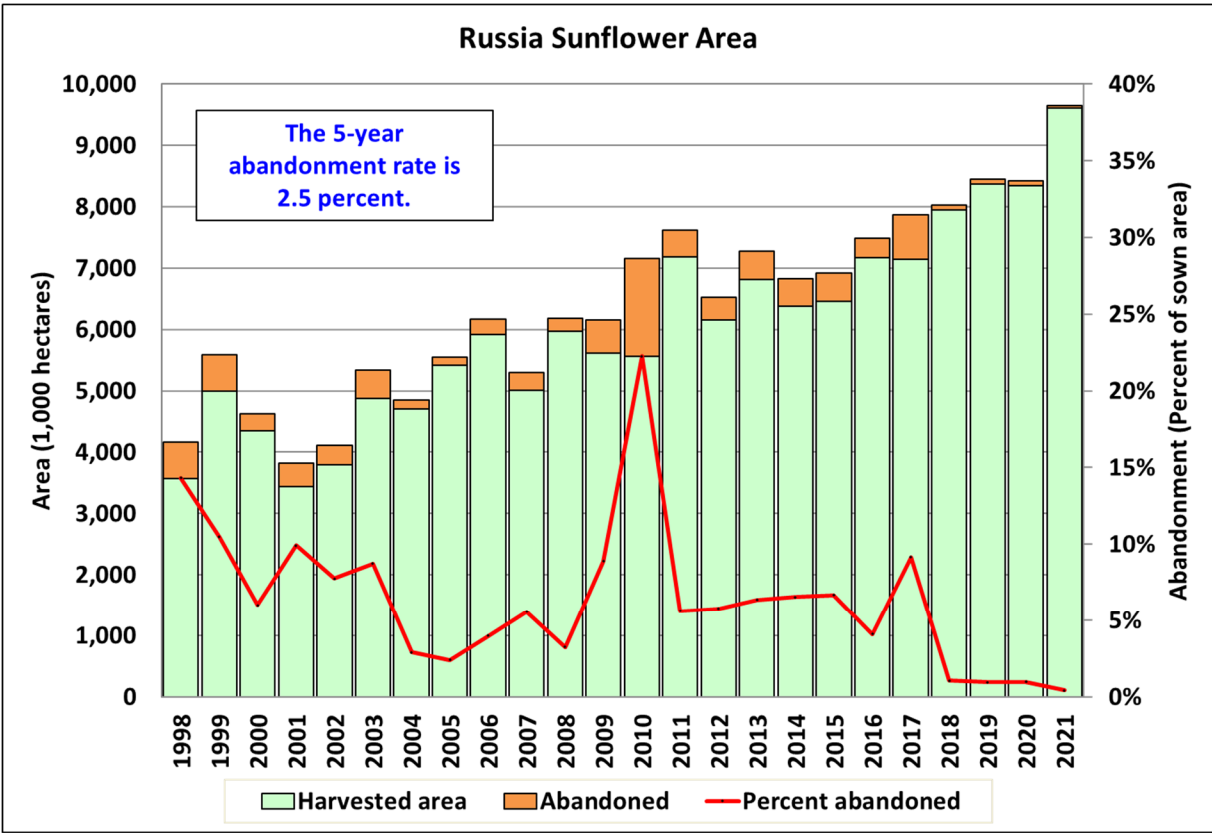
Russia Sunflowerseed: Production Up Based on Higher Planted Area



USDA Foreign Agricultural Service
U.S. DEPARTMENT OF AGRICULTURE

Source: Russia Ministry of Agriculture

Russia sunflowerseed production for marketing year 2022/23 is forecast at 15.5 million metric tons, up 7 percent from last month, but down less than 1 percent from last year. Yield is forecast at 1.68 tons per hectare, up 1 percent from last month and 4 percent from last year. Harvested area is forecast at 9.2 million hectares (mha), up 6 percent from last month, but down 4 percent from last year.



The Russian Ministry of Agriculture operational reports published planted area at 9.4 mha. Since USDA publishes in harvested area, abandonment (the difference between planted and harvested area) needs to be taken into consideration. Abandonment for sunflowerseed is about 3 percent on average. Therefore, USDA harvested area is forecast at 9.2 mha. Yield is essentially unchanged month-to-month, but July into early August will be a key time for summer crop yield development. USDA crop production estimates for Russia exclude estimated output from Crimea. *(For more information, please contact Katie.McGaughey@usda.gov.)*



**World Agricultural Production
U.S. Department of Agriculture**

Foreign Agricultural Service / Global Market Analysis
International Production Assessment Division (IPAD)
Ag Box 1051, Room 4630, South Building
Washington, DC 20250-1051

<https://ipad.fas.usda.gov/>

Telephone: (202) 720-1662 Fax: (202) 720-1158

This report uses information from the Foreign Agricultural Service’s (FAS) global network of agricultural attachés and counselors, official statistics of foreign governments and other foreign source materials, and the analysis of economic data and satellite imagery. Estimates of foreign area, yield, and production are from the International Production Assessment Division, FAS, and are reviewed by USDA’s Inter-Agency Commodity Estimates Committee. Estimates of U.S. area, yield, and production are from USDA’s National Agricultural Statistics Service. Numbers within the report may not add to totals because of rounding. This report reflects official USDA estimates released in the World Agricultural Supply and Demand Estimates (WASDE-584), July 12, 2022.

Printed copies are available from the National Technical Information Service. Download an order form at http://www.ntis.gov/products/specialty/usda/fas_a-g.asp, or call NTIS at 1-800-363-2068.

The FAS International Production Assessment Division prepared this report. The next issue of World Agricultural Production will be released after 12:00 p.m. Eastern Time, August 12, 2022.

Conversion Table

Metric tons to bushels

Wheat, soybeans	=	MT * 36.7437
Corn, sorghum, rye	=	MT * 39.36825
Barley	=	MT * 45.929625
Oats	=	MT * 68.894438

Metric tons to 480-lb bales

Cotton	=	MT * 4.592917
--------	---	---------------

Metric tons to hundredweight

Rice	=	MT * 22.04622
------	---	---------------

Area & weight

1 hectare	=	2.471044 acres
1 kilogram	=	2.204622 pounds



For further information, contact:
U.S. Department of Agriculture
Foreign Agricultural Service
Global Market Analysis

International Production Assessment Division
Ag Box 1051, Room 4630, South Building
Washington, DC 20250-1051

Telephone: (202) 720-1662

Fax: (202) 720-1158

GENERAL INFORMATION

Senior Director	Ronald Frantz	202-720-4056	ronald.frantz@usda.gov
Director	Robert Tetrault	202-720-1071	robert.tetrault@usda.gov
Administrative Assistant	Vacant		
USDA Remote Sensing Advisor	Vacant		
Sr. Analyst/Technical Lead	Curt Reynolds, Ph.D.	202-690-0134	curt.reynolds@usda.gov
Sr. Analyst/ Satellite Imagery Archives Manager/Technical Lead	Dath Mita, Ph.D.	202-720-7339	dath.mita@usda.gov
Sr. Analyst/Technical Lead	Jim Crutchfield	202-690-0135	james.crutchfield@usda.gov
GIS Mapping/Imagery Analyst	Lisa Colson	202-720-6652	lisa.colson@usda.gov
WAP Coordinators	Ifeoma Collins	202-720-0240	ifeoma.collins@usda.gov
	Aaron Mulhollen	202-690-0131	aaron.mulhollen@usda.gov

COUNTRY- AND REGION-SPECIFIC INFORMATION

South America, Argentina, Venezuela, and Colombia	Denise McWilliams, Ph.D.	202-720-0107	denise.mcwilliams@usda.gov
Western and Central Europe, and North Africa	Bryan Purcell	202-690-0138	bryan.purcell@usda.gov
Russia, Ukraine, Kazakhstan, Moldova, and Belarus	Katie McGaughey	202-720-9210	katie.mcgaughey@usda.gov
South Asia, Sri Lanka Bangladesh, India, and Nepal	Arnella Trent	202-720-0881	arnella.trent@usda.gov
East Asia, China, and Japan	Dath Mita, Ph.D.	202-720-7339	dath.mita@usda.gov
Sub-Saharan Africa, Nigeria and South Africa	Curt Reynolds, Ph.D.	202-690-0134	curt.reynolds@usda.gov
S.E. Asia, Indonesia, Thailand, Malaysia, Cambodia and Vietnam	Justin Jenkins	202-720-0419	justin.jenkins@usda.gov
Central America, Mexico, and Western United States	Ifeoma Collins	202-720-0240	ifeoma.collins@usda.gov
Australia, New Zealand, Pakistan Papua New Guinea and South Pacific Islands	Jim Crutchfield	202-690-0135	james.crutchfield@usda.gov
Middle East, Central Asia, Afghanistan Iraq, Iran, and Syria	Iliana Mladenova, Ph.D.	202-690-2315	iliana.mladenova@usda.gov
Canada, Caribbean, Eastern United States	Aaron Mulhollen	202-690-0131	aaron.mulhollen@usda.gov
Brazil	Sunita Yadav-Pauletti, Ph.D.		sunita.yadav-pauletti@usda.gov



The Foreign Agricultural Service (FAS) updates its production, supply and distribution (PSD) database for cotton, oilseeds, and grains at 12:00 p.m. on the day the *World Agricultural Supply and Demand Estimates* (WASDE) report is released. This circular is released by 12:15 p.m.

FAS Reports and Databases:

World Agricultural Production

Current: <https://www.fas.usda.gov/data/world-agricultural-production>

Archive: <https://usda.library.cornell.edu/concern/publications/5q47rn72z?locale=en>

USDA's Foreign Agricultural Service (FAS) publishes a monthly report on crop acreage, yield and production in major countries worldwide. Sources include reporting from FAS's worldwide offices, official statistics of foreign governments, and analysis of economic data and satellite imagery. The reports reflect official USDA estimates released in the monthly *World Agricultural Supply and Demand Estimates* (WASDE).

World Markets and Trade

Current: <https://www.fas.usda.gov/data>

Archive:

https://usda.library.cornell.edu/catalog?f%5Bmember_of_collections_ssim%5D%5B%5D=Foreign+Agricultural+Service&locale=en

USDA's Foreign Agricultural Service (FAS) publishes monthly and quarterly reports which include data on U.S. and global trade, production, consumption and stocks, as well as analysis of developments affecting world trade in oilseeds, grains, cotton, livestock and poultry. The reports reflect official USDA estimates released in the monthly *World Agricultural Supply and Demand Estimates* (WASDE).

Global Agricultural Information Network (GAIN)

<https://www.fas.usda.gov/databases/global-agricultural-information-network-gain>

USDA's Foreign Agricultural Service (FAS) provides timely reports on foreign markets through the Global Agriculture Information Network (GAIN) database. An average of 2,000 reports are added each year, with reports going back to 1995. GAIN reports are compiled by FAS' global market intelligence network, which includes FAS foreign service officers and locally engaged staff in over 90 overseas offices world-wide. They provide on-the-ground intelligence, insight, and analysis on nearly 200 countries, delivering information on foreign agricultural markets, crop conditions, and agro-political dynamics of interest to U.S. agriculture. GAIN reports contain assessments of commodity and trade issues made by USDA staff and are not necessarily statements of official U.S. government policy.

Production, Supply and Distribution (PS&D) Online

<https://apps.fas.usda.gov/psdonline/app/index.html#/app/home>

PSD Online is the public repository for USDA's Official Production, Supply and Distribution forecast data and reports for key agricultural commodities. PSD Online data are reviewed and updated monthly by an interagency committee chaired by USDA's World Agricultural Outlook Board (WAOB). The committee consist of representatives from Foreign Agricultural Service (FAS), the Economic Research Service (ERS), the Farm Service Agency (FSA), and the Agricultural Marketing Service (AMS).

EU Countries and Russia Wheat: Area and Production Estimates

<https://apps.fas.usda.gov/psdonline/app/index.html#/app/downloads> (click on PSD Datasets)

USDA's Foreign Agricultural Service (FAS) provides country-level area and production estimates for the nations of the European Union. For Russia, country-level area and production estimates are provided for Winter and Spring wheat. These datasets are reviewed and updated monthly by an interagency committee chaired by USDA's World Agricultural Outlook Board (WAOB) and can be downloaded through PSD datasets on PSD Online.



FAS Reports and Databases:

International Production Assessment (IPAD)

<https://ipad.fas.usda.gov/>

USDA's Foreign Agricultural Service (FAS) maintains a dynamic global crop production portal with key information including *World Agricultural Production* (WAP) briefs, Commodity Intelligence Reports (CIR), geospatial applications, crop production maps at a subnational level and crop calendars for the top-20 producing countries. Additionally, Crop Explorer (<https://ipad.fas.usda.gov/cropexplorer/>) displays rainfall, temperature, evapotranspiration, soil moisture, snow cover, and vegetation conditions in charts and maps.

USDA and NASA Global Agricultural Monitoring (GLAM)

<https://glam1.gsfc.nasa.gov/>

The USDA and NASA Global Agricultural Monitoring (GLAM) system provides near real-time and science quality Moderate Resolution Imaging Spectroradiometer (MODIS) Normalized Difference Vegetation Index (NDVI) from the satellites Terra and Aqua. The public can view and retrieve MODIS 8-day composited, global NDVI satellite imagery and time series data. GLAM was developed by NASA's Global Inventory Modeling and Mapping Studies (GIMMS) group for USDA's Foreign Agricultural Service.

Global Agricultural and Disaster Assessment System (GADAS)

<https://geo.fas.usda.gov/GADAS/index.html>

USDA's Foreign Agricultural Service (FAS) provides the Global Agricultural and Disaster Assessment System (GADAS), a web-based Geographic Information System (GIS) tool which integrates a vast array of highly detailed earth observation data streams, particularly targeted towards agricultural and disaster assessment analysis. GADAS is an interactive website which provides analysts with a wide variety of routine geospatial products (maps, charts, tables) they require for comprehensive situational investigations and recurring assessments.

Export Sales Reporting

<https://apps.fas.usda.gov/esrquery/>

USDA's Export Sales Reporting Program monitors U.S. agricultural export sales on a daily and weekly basis. Export sales reporting provides a constant stream of up-to-date market information for 40 U.S. agricultural commodities sold abroad. The weekly U.S. Export Sales report is the most currently available source of U.S. exports sales data. The data is used to analyze overall levels of export demand, determine where markets exit, and assess the relative position of U.S. commodities in foreign markets.

Global Agricultural Trade System (GATS)

<https://apps.fas.usda.gov/gats/default.aspx>

The Global Agricultural Trade System (GATS) is a searchable database containing monthly U.S. Census Bureau trade data organized by agricultural commodity and agricultural related product groups. Trade data is searchable by partner countries and partner groups. Historical U.S. agricultural trade data is available back to 1967. In addition, U.N. trade statistics (UN Comtrade) may be queried through GATS. UN trade data is available for nearly 200 countries or areas, dating from the inception of the Harmonized System (HS) of trade codes in 1989 to present. The database is continuously updated. U.S. trade data is updated monthly according to the U.S. Census Bureau's reporting system. UN Comtrade data are updated in GATS after nationally submitted data to the UN are standardized by the UN Statistical Division and added to the UN Comtrade database.

Other USDA Reports:

World Agricultural Supply and Demand Estimates (WASDE):

<http://www.usda.gov/oce/commodity/wasde/>

Economic Research Service:

<http://www.ers.usda.gov/topics/crops>

National Agricultural Statistics Service:

<http://www.nass.usda.gov/Publications/>

Table 01 World Crop Production Summary

Million Metric Tons

Commodity	World	Total Foreign	North America			Former Soviet		European	Asia (WAP)					South America		Selected Other			All Others
			United States	Canada	Mexico	Russia	Ukraine		China	India	Indonesia	Pakistan	Thailand	Argentina	Brazil	Australia	South Africa	Turkey	
			-	-	-	-	-		-	-	-	-	-	-	-	-	-	-	
---Million metric tons---																			
Wheat																			
2020/21	775.7	726.0	49.8	35.2	3.0	85.4	25.4	nr	134.3	107.9	0.0	25.2	0.0	17.6	6.3	33.3	2.1	18.3	232.1
2021/22 prel.	779.0	734.2	44.8	21.7	3.3	75.2	33.0	nr	136.9	109.6	0.0	27.5	0.0	22.2	7.7	36.3	2.3	16.0	242.7
2022/23 proj.																			
Jun	773.4	726.2	47.3	33.0	3.3	81.0	21.5	nr	135.0	106.0	0.0	26.4	0.0	20.0	8.5	30.0	2.3	17.5	241.7
Jul	771.6	723.2	48.5	34.0	3.3	81.5	19.5	nr	135.0	106.0	0.0	26.4	0.0	19.5	8.5	30.0	2.3	17.5	239.7
Coarse Grains																			
2020/21	1,439.1	1,066.2	372.9	29.6	32.7	41.4	39.6	nr	269.1	51.4	12.6	9.4	5.7	60.0	90.3	17.1	17.8	15.8	373.9
2021/22 prel.	1,503.6	1,104.9	398.7	24.2	33.3	38.5	53.5	nr	280.9	50.6	12.7	10.0	5.4	62.9	120.6	18.4	16.9	11.6	365.6
2022/23 proj.																			
Jun	1,479.2	1,097.1	382.1	29.8	33.5	41.9	31.8	nr	279.3	50.0	12.9	9.4	5.5	64.9	130.5	14.5	17.9	13.6	361.6
Jul	1,477.2	1,094.4	382.8	29.0	33.5	40.9	31.8	nr	279.3	50.0	12.9	9.4	5.5	64.9	130.5	14.5	17.9	13.6	360.8
Rice, Milled																			
2020/21	509.3	502.1	7.2	0.0	0.2	0.7	0.0	nr	148.3	124.4	34.5	8.4	18.9	0.8	8.0	0.3	0.0	0.6	156.9
2021/22 prel.	513.6	507.5	6.1	0.0	0.2	0.7	0.0	nr	149.0	129.7	34.4	8.7	19.7	0.8	7.3	0.5	0.0	0.5	156.1
2022/23 proj.																			
Jun	515.3	509.5	5.8	0.0	0.2	0.6	0.0	nr	149.0	130.5	34.6	8.9	19.8	0.8	7.1	0.6	0.0	0.6	156.9
Jul	514.8	509.2	5.5	0.0	0.2	0.6	0.0	nr	149.0	130.5	34.6	8.9	19.8	0.8	7.1	0.6	0.0	0.6	156.6
Total Grains																			
2020/21	2,724.1	2,294.2	429.9	64.8	35.8	127.5	65.0	nr	551.6	283.6	47.1	43.0	24.5	78.5	104.6	50.7	19.9	34.6	762.9
2021/22 prel.	2,796.2	2,346.6	449.6	45.9	36.7	114.4	86.6	nr	566.8	289.8	47.1	46.2	25.0	85.8	135.6	55.2	19.1	28.1	764.4
2022/23 proj.																			
Jun	2,768.0	2,332.8	435.2	62.8	37.0	123.5	53.3	nr	563.3	286.5	47.5	44.7	25.3	85.7	146.1	45.1	20.2	31.7	760.2
Jul	2,763.6	2,326.8	436.8	63.0	37.0	123.0	51.3	nr	563.3	286.5	47.5	44.7	25.3	85.2	146.1	45.1	20.2	31.7	757.0
Oilseeds																			
2020/21	606.4	481.9	124.5	25.9	0.7	20.1	19.9	nr	65.6	38.3	14.6	2.6	1.0	51.2	143.9	5.4	2.7	2.9	87.1
2021/22 prel.	600.3	469.8	130.5	19.0	0.9	23.1	24.3	nr	62.9	41.1	15.1	3.3	1.0	49.0	131.0	8.1	3.2	3.4	84.6
2022/23 proj.																			
Jun	646.8	510.2	136.6	26.4	0.9	22.6	15.5	nr	64.1	42.2	15.2	3.4	1.0	56.8	154.3	7.1	3.2	3.7	93.8
Jul	643.1	510.4	132.7	26.1	0.9	23.6	15.5	nr	64.1	42.2	15.2	3.4	1.0	56.8	154.3	7.1	3.2	3.7	93.4
Cotton																			
2020/21	111.5	96.9	14.6	0.0	1.0	0.0	0.0	1.7	29.5	27.6	0.0	4.5	0.0	1.4	10.8	2.8	0.1	2.9	14.6
2021/22 prel.	116.2	98.7	17.5	0.0	1.2	0.0	0.0	1.6	27.0	24.5	0.0	6.0	0.0	1.5	12.3	5.5	0.1	3.8	15.2
2022/23 proj.																			
Jun	121.3	104.8	16.5	0.0	1.3	0.0	0.0	1.6	27.5	27.5	0.0	6.2	0.0	1.4	13.2	5.5	0.1	4.3	16.2
Jul	120.1	104.6	15.5	0.0	1.3	0.0	0.0	1.6	27.5	27.5	0.0	6.2	0.0	1.4	13.0	5.5	0.1	4.3	16.2

1/ Includes wheat, coarse grains, and rice (milled) shown above.

Table 02 Wheat Area, Yield, and Production

Country / Region	Area (Million hectares)				Yield (Metric tons per hectare)				Production (Million metric tons)				Change in Production			
	Prel.		2022/23 Proj.		Prel.		2022/23 Proj.		Prel.		2022/23 Proj.		From last month		From last year	
	2020/21	2021/22	Jun	Jul	2020/21	2021/22	Jun	Jul	2020/21	2021/22	Jun	Jul	MMT	Percent	MMT	Percent
World	220.83	222.21	221.11	221.24	3.51	3.51	3.50	3.49	775.71	779.03	773.43	771.64	-1.80	-0.23	-7.40	-0.95
United States	14.89	15.04	15.00	15.23	3.34	2.98	3.15	3.18	49.75	44.79	47.26	48.47	1.20	2.55	3.68	8.21
Total Foreign	205.95	207.17	206.11	206.01	3.53	3.54	3.52	3.51	725.96	734.24	726.17	723.17	-3.00	-0.41	-11.07	-1.51
European Union	22.98	24.23	24.10	24.10	5.51	5.71	5.65	5.56	126.69	138.42	136.10	134.10	-2.00	-1.47	-4.32	-3.12
United Kingdom	1.39	1.79	1.80	1.80	6.96	7.81	8.11	8.11	9.66	13.99	14.60	14.60	0.00	0.00	0.61	4.38
Serbia	0.59	0.60	0.63	0.63	4.58	5.00	4.60	4.60	2.70	3.00	2.90	2.90	0.00	0.00	-0.10	-3.33
China	23.38	23.57	23.40	23.40	5.74	5.81	5.77	5.77	134.25	136.95	135.00	135.00	0.00	0.00	-1.95	-1.42
South Asia																
India	31.36	31.13	31.00	31.00	3.44	3.52	3.42	3.42	107.86	109.59	106.00	106.00	0.00	0.00	-3.59	-3.27
Pakistan	8.81	9.17	9.00	9.00	2.87	3.00	2.93	2.93	25.25	27.46	26.40	26.40	0.00	0.00	-1.06	-3.87
Afghanistan	2.33	2.20	2.20	2.20	2.15	2.00	2.05	2.05	5.01	4.40	4.50	4.50	0.00	0.00	0.10	2.27
Nepal	0.75	0.75	0.75	0.75	2.95	2.80	2.80	2.80	2.21	2.10	2.10	2.10	0.00	0.00	0.00	0.00
Former Soviet Union - 12																
Russia	28.68	27.63	27.50	27.80	2.98	2.72	2.95	2.93	85.35	75.16	81.00	81.50	0.50	0.62	6.34	8.44
Russia Winter	16.63	15.22	15.60	15.60	3.77	3.43	3.81	3.81	62.69	52.19	59.50	59.50	0.00	0.00	7.31	14.00
Russia Spring	12.06	12.41	11.90	12.20	1.88	1.85	1.81	1.80	22.66	22.96	21.50	22.00	0.50	2.33	-0.96	-4.20
Ukraine	6.85	7.41	5.85	5.25	3.71	4.45	3.68	3.71	25.42	33.01	21.50	19.50	-2.00	-9.30	-13.51	-40.92
Kazakhstan	12.06	12.72	12.50	12.50	1.18	0.93	1.04	1.04	14.26	11.81	13.00	13.00	0.00	0.00	1.19	10.04
Uzbekistan	1.36	1.36	1.40	1.40	4.53	4.43	4.71	4.71	6.16	6.03	6.60	6.60	0.00	0.00	0.57	9.51
Belarus	0.72	0.65	0.68	0.68	3.94	3.54	3.48	3.48	2.85	2.30	2.35	2.35	0.00	0.00	0.05	2.17
Canada	10.02	9.25	9.70	10.00	3.51	2.34	3.40	3.40	35.18	21.65	33.00	34.00	1.00	3.03	12.35	57.03
South America																
Argentina	6.40	6.55	6.30	6.20	2.76	3.38	3.17	3.15	17.64	22.15	20.00	19.50	-0.50	-2.50	-2.65	-11.96
Brazil	2.34	2.74	3.20	3.20	2.67	2.81	2.66	2.66	6.25	7.70	8.50	8.50	0.00	0.00	0.80	10.39
Australia	12.90	13.00	13.20	13.20	2.58	2.79	2.27	2.27	33.30	36.30	30.00	30.00	0.00	0.00	-6.30	-17.36
Africa																
Egypt	1.39	1.40	1.53	1.53	6.40	6.43	6.41	6.41	8.90	9.00	9.80	9.80	0.00	0.00	0.80	8.89
Morocco	2.76	2.86	2.50	2.50	0.93	2.64	0.90	0.90	2.56	7.54	2.25	2.25	0.00	0.00	-5.29	-70.16
Algeria	2.08	2.08	2.08	2.08	1.50	1.20	1.78	1.78	3.11	2.50	3.70	3.70	0.00	0.00	1.20	48.00
Ethiopia	1.83	1.95	2.00	2.00	3.00	2.83	2.85	2.85	5.48	5.52	5.70	5.70	0.00	0.00	0.18	3.26
Middle East																
Turkey	7.10	7.05	7.00	7.00	2.57	2.27	2.50	2.50	18.25	16.00	17.50	17.50	0.00	0.00	1.50	9.38
Iran	6.00	6.00	6.20	6.20	2.50	2.00	2.13	2.13	15.00	12.00	13.20	13.20	0.00	0.00	1.20	10.00
Iraq	2.40	2.00	2.00	2.00	1.93	1.75	1.50	1.50	4.64	3.50	3.00	3.00	0.00	0.00	-0.50	-14.29
Syria	1.60	1.10	1.30	1.30	2.81	1.82	1.92	1.92	4.50	2.00	2.50	2.50	0.00	0.00	0.50	25.00
Mexico	0.56	0.55	0.59	0.59	5.33	6.00	5.59	5.59	2.97	3.28	3.27	3.27	0.00	0.00	-0.01	-0.34
Others	7.34	7.46	7.72	7.72	2.80	2.80	2.81	2.81	20.52	20.89	21.70	21.70	0.00	0.00	0.81	3.87

Table 03 Total Coarse Grain Area, Yield, and Production

Country / Region	Area (Million hectares)				Yield (Metric tons per hectare)				Production (Million metric tons)				Change in Production			
	Prel.		2022/23 Proj.		Prel.		2022/23 Proj.		Prel.		2022/23 Proj.		From last month		From last year	
	2020/21	2021/22	Jun	Jul	2020/21	2021/22	Jun	Jul	2020/21	2021/22	Jun	Jul	MMT	Percent	MMT	Percent
World	343.67	345.48	341.13	340.79	4.19	4.35	4.34	4.33	1,439.10	1,503.64	1,479.19	1,477.20	-1.99	-0.13	-26.43	-1.76
United States	36.81	38.35	36.78	36.77	10.13	10.40	10.39	10.41	372.89	398.71	382.10	382.76	0.66	0.17	-15.95	-4.00
Total Foreign	306.86	307.13	304.35	304.02	3.47	3.60	3.60	3.60	1,066.21	1,104.93	1,097.09	1,094.44	-2.65	-0.24	-10.49	-0.95
China	43.72	45.77	45.45	45.45	6.15	6.14	6.15	6.15	269.08	280.85	279.30	279.30	0.00	0.00	-1.55	-0.55
European Union	28.76	27.80	27.71	27.71	5.40	5.54	5.44	5.41	155.35	154.08	150.82	149.77	-1.05	-0.70	-4.31	-2.80
United Kingdom	1.66	1.43	1.37	1.37	5.64	5.88	6.10	6.10	9.36	8.41	8.35	8.35	0.00	0.00	-0.06	-0.73
South America																
Brazil	21.30	23.37	24.31	24.31	4.24	5.16	5.37	5.37	90.32	120.62	130.54	130.54	0.00	0.00	9.92	8.22
Argentina	8.64	9.91	9.62	9.62	6.94	6.35	6.74	6.75	60.00	62.91	64.88	64.87	-0.01	-0.02	1.96	3.11
Former Soviet Union - 12																
Russia	14.55	14.01	14.38	14.18	2.84	2.75	2.92	2.89	41.40	38.54	41.93	40.93	-1.00	-2.39	2.39	6.19
Ukraine	8.53	8.66	6.87	6.87	4.64	6.18	4.63	4.63	39.59	53.51	31.76	31.76	0.00	0.00	-21.75	-40.65
Kazakhstan	3.20	2.63	2.70	2.70	1.54	1.43	1.58	1.58	4.93	3.76	4.25	4.25	0.00	0.00	0.49	13.05
Belarus	1.14	0.99	1.03	1.03	3.47	3.05	3.11	3.11	3.95	3.00	3.20	3.20	0.00	0.00	0.20	6.67
Africa																
Nigeria	13.10	13.70	13.95	13.95	1.60	1.56	1.54	1.54	20.90	21.39	21.50	21.50	0.00	0.00	0.11	0.50
South Africa	3.36	3.19	3.30	3.30	5.31	5.29	5.43	5.43	17.81	16.85	17.90	17.90	0.00	0.00	1.05	6.22
Tanzania	5.17	5.40	5.00	5.00	1.51	1.49	1.40	1.40	7.79	8.05	6.98	6.98	0.00	0.00	-1.08	-13.35
Burkina Faso	4.18	4.24	4.24	4.24	1.13	0.99	1.16	1.16	4.72	4.20	4.90	4.90	0.00	0.00	0.70	16.58
Ethiopia	5.53	5.59	5.63	5.63	3.45	3.08	3.23	3.23	19.10	17.20	18.20	18.20	0.00	0.00	1.00	5.81
Egypt	1.03	1.16	1.16	1.16	7.01	7.13	7.13	7.13	7.24	8.30	8.30	8.30	0.00	0.00	0.00	0.00
Mali	5.17	4.70	4.70	4.70	1.41	1.34	1.38	1.38	7.26	6.31	6.50	6.50	0.00	0.00	0.19	2.95
India	24.12	24.09	23.91	23.91	2.13	2.10	2.09	2.09	51.39	50.56	50.00	50.00	0.00	0.00	-0.56	-1.10
Southeast Asia																
Indonesia	3.85	3.90	3.95	3.95	3.27	3.26	3.27	3.27	12.60	12.70	12.90	12.90	0.00	0.00	0.20	1.57
Philippines	2.57	2.60	2.65	2.65	3.25	3.19	3.13	3.13	8.35	8.30	8.30	8.30	0.00	0.00	0.00	0.00
Vietnam	0.99	0.99	0.97	0.97	4.80	4.86	4.85	4.85	4.74	4.80	4.70	4.70	0.00	0.00	-0.10	-2.04
Thailand	1.28	1.23	1.25	1.25	4.41	4.36	4.37	4.37	5.65	5.35	5.45	5.45	0.00	0.00	0.10	1.87
Mexico	8.76	8.89	9.01	9.01	3.73	3.74	3.72	3.72	32.66	33.27	33.50	33.50	0.00	0.00	0.23	0.68
Canada	5.80	5.74	5.74	5.54	5.11	4.22	5.20	5.24	29.64	24.21	29.81	29.02	-0.79	-2.63	4.81	19.85
Australia	6.12	5.96	5.69	5.69	2.79	3.09	2.55	2.55	17.09	18.40	14.52	14.52	0.00	0.00	-3.88	-21.09
Middle East																
Turkey	4.63	4.46	4.54	4.54	3.40	2.60	2.99	2.99	15.76	11.58	13.57	13.57	0.00	0.00	1.99	17.18
Iran	1.81	1.91	1.86	1.86	2.77	2.16	2.38	2.38	5.02	4.12	4.42	4.42	0.00	0.00	0.30	7.31
Others	77.90	74.83	73.41	73.48	1.60	1.65	1.64	1.64	124.53	123.66	120.65	120.85	0.20	0.17	-2.81	-2.27

World and Selected Countries and Regions; Coarse Grain includes: Barley, Corn, Millet, Mixed Grains, Oats, Rye and Sorghum

Table 04 Corn Area, Yield, and Production

Country / Region	Area (Million hectares)				Yield (Metric tons per hectare)				Production (Million metric tons)				Change in Production			
	2020/21	Prel. 2021/22	2022/23 Proj. Jun Jul		2020/21	Prel. 2021/22	2022/23 Proj. Jun Jul		2020/21	Prel. 2021/22	2022/23 Proj. Jun Jul		From last month MMT	Percent	From last year MMT	Percent
World	199.11	206.74	203.46	203.43	5.67	5.89	5.83	5.83	1,129.00	1,217.87	1,185.81	1,185.90	0.09	0.01	-31.97	-2.62
United States	33.31	34.56	33.06	33.16	10.76	11.11	11.11	11.11	358.45	383.94	367.30	368.44	1.14	0.31	-15.50	-4.04
Total Foreign	165.80	172.18	170.39	170.27	4.65	4.84	4.80	4.80	770.55	833.92	818.51	817.46	-1.05	-0.13	-16.47	-1.97
China	41.26	43.32	43.00	43.00	6.32	6.29	6.30	6.30	260.67	272.55	271.00	271.00	0.00	0.00	-1.55	-0.57
South America																
Brazil	19.90	21.80	22.70	22.70	4.37	5.32	5.55	5.55	87.00	116.00	126.00	126.00	0.00	0.00	10.00	8.62
Argentina	6.55	7.20	7.00	7.00	7.94	7.36	7.86	7.86	52.00	53.00	55.00	55.00	0.00	0.00	2.00	3.77
Bolivia	0.47	0.48	0.48	0.48	2.30	2.32	2.32	2.32	1.08	1.10	1.10	1.10	0.00	0.00	0.00	0.00
European Union	9.21	9.21	9.07	9.07	7.29	7.65	7.53	7.50	67.14	70.50	68.25	68.00	-0.25	-0.37	-2.50	-3.54
Africa																
South Africa	3.12	3.00	3.10	3.10	5.44	5.43	5.58	5.58	16.95	16.30	17.30	17.30	0.00	0.00	1.00	6.13
Nigeria	5.50	6.00	6.25	6.25	2.25	2.12	2.00	2.00	12.40	12.75	12.50	12.50	0.00	0.00	-0.25	-1.92
Ethiopia	2.36	2.53	2.55	2.55	4.47	3.72	4.00	4.00	10.56	9.40	10.20	10.20	0.00	0.00	0.80	8.51
Egypt	0.80	0.93	0.93	0.93	8.00	8.00	8.00	8.00	6.40	7.44	7.44	7.44	0.00	0.00	0.00	0.00
Tanzania	4.20	4.40	4.00	4.00	1.60	1.59	1.48	1.48	6.71	7.00	5.90	5.90	0.00	0.00	-1.10	-15.71
Malawi	1.76	1.70	1.70	1.70	2.10	2.47	1.76	1.76	3.69	4.20	3.00	3.00	0.00	0.00	-1.20	-28.57
Zambia	1.33	1.41	1.12	1.12	2.54	2.57	2.43	2.43	3.39	3.62	2.71	2.71	0.00	0.00	-0.91	-25.25
Kenya	2.19	1.95	1.90	1.90	1.73	1.59	1.68	1.58	3.79	3.10	3.20	3.00	-0.20	-6.25	-0.10	-3.23
Uganda	0.99	1.10	1.10	1.10	2.78	2.55	2.55	2.55	2.75	2.80	2.80	2.80	0.00	0.00	0.00	0.00
Zimbabwe	1.58	1.95	1.60	1.60	0.57	1.39	1.00	1.00	0.91	2.72	1.60	1.60	0.00	0.00	-1.12	-41.11
Former Soviet Union - 12																
Ukraine	5.40	5.49	4.50	4.50	5.62	7.68	5.56	5.56	30.30	42.13	25.00	25.00	0.00	0.00	-17.13	-40.65
Russia	2.73	2.90	2.90	2.70	5.08	5.25	5.34	5.37	13.87	15.23	15.50	14.50	-1.00	-6.45	-0.73	-4.76
South Asia																
India	9.89	9.90	9.80	9.80	3.20	3.33	3.21	3.21	31.65	33.00	31.50	31.50	0.00	0.00	-1.50	-4.55
Pakistan	1.42	1.50	1.50	1.50	6.30	6.33	5.93	5.93	8.94	9.50	8.90	8.90	0.00	0.00	-0.60	-6.32
Nepal	0.97	0.97	0.97	0.97	2.82	2.82	2.82	2.82	2.72	2.72	2.72	2.72	0.00	0.00	0.00	0.00
Southeast Asia																
Indonesia	3.85	3.90	3.95	3.95	3.27	3.26	3.27	3.27	12.60	12.70	12.90	12.90	0.00	0.00	0.20	1.57
Philippines	2.57	2.60	2.65	2.65	3.25	3.19	3.13	3.13	8.35	8.30	8.30	8.30	0.00	0.00	0.00	0.00
Vietnam	0.99	0.99	0.97	0.97	4.80	4.86	4.85	4.85	4.74	4.80	4.70	4.70	0.00	0.00	-0.10	-2.04
Thailand	1.26	1.20	1.22	1.22	4.46	4.42	4.43	4.43	5.60	5.30	5.40	5.40	0.00	0.00	0.10	1.89
Mexico	7.14	7.10	7.20	7.20	3.83	3.88	3.83	3.83	27.35	27.55	27.60	27.60	0.00	0.00	0.05	0.18
Canada	1.41	1.39	1.40	1.40	9.63	10.05	10.00	10.00	13.56	13.98	14.00	14.00	0.00	0.00	0.02	0.11
Turkey	0.62	0.54	0.52	0.52	11.45	12.04	11.54	11.54	7.10	6.50	6.00	6.00	0.00	0.00	-0.50	-7.69
Others	26.32	26.73	26.33	26.41	2.60	2.61	2.58	2.59	68.34	69.75	67.99	68.39	0.40	0.59	-1.36	-1.95

World and Selected Countries and Regions

Table 05 Barley Area, Yield, and Production

Country / Region	Area (Million hectares)				Yield (Metric tons per hectare)				Production (Million metric tons)				Change in Production			
	Prel.		2022/23 Proj.		Prel.		2022/23 Proj.		Prel.		2022/23 Proj.		From last month		From last year	
	2020/21	2021/22	Jun	Jul	2020/21	2021/22	Jun	Jul	2020/21	2021/22	Jun	Jul	MMT	Percent	MMT	Percent
World	51.37	48.59	48.07	47.86	3.10	2.99	3.06	3.04	159.41	145.08	147.26	145.53	-1.73	-1.18	0.45	0.31
United States	0.90	0.79	0.97	0.97	4.15	3.25	4.06	3.93	3.72	2.56	3.94	3.81	-0.13	-3.40	1.25	48.59
Total Foreign	50.48	47.80	47.09	46.89	3.08	2.98	3.04	3.02	155.69	142.52	143.32	141.72	-1.60	-1.12	-0.80	-0.56
European Union	11.04	10.34	10.55	10.55	4.92	5.02	4.90	4.82	54.32	51.97	51.70	50.90	-0.80	-1.55	-1.07	-2.06
United Kingdom	1.39	1.15	1.12	1.12	5.85	6.05	6.32	6.32	8.12	6.96	7.05	7.05	0.00	0.00	0.09	1.28
Former Soviet Union - 12																
Russia	8.16	7.69	7.80	7.80	2.53	2.28	2.50	2.50	20.63	17.51	19.50	19.50	0.00	0.00	2.00	11.40
Ukraine	2.58	2.68	1.90	1.90	3.08	3.70	3.00	3.00	7.95	9.92	5.70	5.70	0.00	0.00	-4.22	-42.56
Kazakhstan	2.73	2.16	2.20	2.20	1.34	1.10	1.27	1.27	3.66	2.37	2.80	2.80	0.00	0.00	0.43	18.29
Belarus	0.41	0.35	0.40	0.40	3.35	2.86	2.75	2.75	1.38	1.00	1.10	1.10	0.00	0.00	0.10	10.00
Azerbaijan	0.35	0.37	0.34	0.34	2.81	2.74	2.79	2.79	0.97	1.00	0.95	0.95	0.00	0.00	-0.05	-5.00
Canada	2.81	3.00	2.80	2.60	3.82	2.31	3.75	3.73	10.74	6.95	10.50	9.70	-0.80	-7.62	2.75	39.61
Australia	4.40	4.35	4.10	4.10	2.98	3.15	2.68	2.68	13.10	13.70	11.00	11.00	0.00	0.00	-2.70	-19.71
Middle East																
Turkey	3.80	3.70	3.80	3.80	2.13	1.22	1.84	1.84	8.10	4.50	7.00	7.00	0.00	0.00	2.50	55.56
Iran	1.60	1.70	1.65	1.65	2.25	1.59	1.82	1.82	3.60	2.70	3.00	3.00	0.00	0.00	0.30	11.11
Iraq	1.20	0.60	0.60	0.60	1.29	1.17	1.13	1.13	1.55	0.70	0.68	0.68	0.00	0.00	-0.02	-2.86
Syria	1.50	0.80	1.00	1.00	1.27	0.81	0.90	0.90	1.90	0.65	0.90	0.90	0.00	0.00	0.25	38.46
Africa																
Ethiopia	0.90	0.96	0.97	0.97	2.52	2.45	2.47	2.47	2.26	2.35	2.40	2.40	0.00	0.00	0.05	2.13
Morocco	1.47	1.49	1.30	1.30	0.44	1.87	0.60	0.60	0.64	2.78	0.78	0.78	0.00	0.00	-2.00	-71.94
Algeria	0.98	1.03	1.03	1.03	1.24	0.93	1.56	1.56	1.21	0.95	1.60	1.60	0.00	0.00	0.65	68.42
Tunisia	0.36	0.28	0.30	0.30	1.28	1.54	1.40	1.40	0.47	0.43	0.42	0.42	0.00	0.00	-0.01	-2.33
South Africa	0.14	0.10	0.11	0.11	4.14	3.48	3.64	3.64	0.59	0.33	0.40	0.40	0.00	0.00	0.07	20.85
South America																
Argentina	1.01	1.34	1.35	1.35	4.00	3.96	3.93	3.93	4.04	5.30	5.30	5.30	0.00	0.00	0.00	0.00
Uruguay	0.19	0.22	0.23	0.23	4.78	4.11	4.16	4.16	0.89	0.92	0.94	0.94	0.00	0.00	0.02	1.63
Brazil	0.10	0.11	0.11	0.11	3.63	3.79	3.91	3.91	0.37	0.43	0.43	0.43	0.00	0.00	0.01	1.18
India	0.59	0.59	0.61	0.61	2.92	2.80	2.62	2.62	1.72	1.66	1.60	1.60	0.00	0.00	-0.06	-3.38
China	0.51	0.51	0.51	0.51	4.00	3.92	3.92	3.92	2.04	2.00	2.00	2.00	0.00	0.00	0.00	0.00
Mexico	0.30	0.35	0.34	0.34	3.07	2.99	2.82	2.82	0.91	1.03	0.96	0.96	0.00	0.00	-0.07	-6.80
Afghanistan	0.17	0.16	0.17	0.17	1.41	1.25	1.35	1.35	0.24	0.20	0.23	0.23	0.00	0.00	0.03	15.00
Others	1.80	1.78	1.82	1.82	2.40	2.37	2.41	2.41	4.31	4.22	4.38	4.38	0.00	0.00	0.17	3.91

World and Selected Countries and Regions

Table 06 Oats Area, Yield, and Production

Country / Region	Area (Million hectares)				Yield (Metric tons per hectare)				Production (Million metric tons)				Change in Production			
	2020/21	Prel.	2022/23 Proj.		2020/21	Prel.	2022/23 Proj.		2020/21	Prel.	2022/23 Proj.		From last month		From last year	
		2021/22	Jun	Jul		2021/22	Jun	Jul		2021/22	Jun	Jul	MMT	Percent	MMT	Percent
World	9.96	9.54	9.94	9.90	2.56	2.36	2.51	2.51	25.49	22.51	24.95	24.86	-0.09	-0.37	2.34	10.41
United States	0.41	0.26	0.36	0.32	2.34	2.20	2.35	2.37	0.95	0.58	0.86	0.76	-0.09	-10.75	0.19	32.18
Total Foreign	9.55	9.27	9.57	9.57	2.57	2.37	2.52	2.52	24.53	21.94	24.09	24.09	0.00	0.00	2.16	9.83
European Union	2.56	2.55	2.45	2.45	3.31	2.99	3.08	3.08	8.47	7.64	7.55	7.55	0.00	0.00	-0.09	-1.22
Former Soviet Union - 12																
Russia	2.33	2.17	2.40	2.40	1.77	1.72	1.88	1.88	4.13	3.73	4.50	4.50	0.00	0.00	0.77	20.55
Ukraine	0.20	0.18	0.18	0.18	2.54	2.61	2.29	2.29	0.52	0.48	0.40	0.40	0.00	0.00	-0.08	-16.32
Belarus	0.16	0.15	0.16	0.16	2.87	2.33	2.42	2.42	0.45	0.35	0.38	0.38	0.00	0.00	0.03	7.14
Kazakhstan	0.23	0.20	0.24	0.24	1.05	0.90	1.15	1.15	0.24	0.18	0.28	0.28	0.00	0.00	0.09	51.10
Canada	1.31	1.11	1.30	1.30	3.48	2.34	3.54	3.54	4.58	2.61	4.60	4.60	0.00	0.00	1.99	76.52
South America																
Argentina	0.24	0.35	0.30	0.30	2.13	2.08	2.00	2.00	0.51	0.72	0.60	0.60	0.00	0.00	-0.12	-16.20
Brazil	0.43	0.50	0.51	0.51	2.00	2.27	2.26	2.26	0.85	1.14	1.16	1.16	0.00	0.00	0.01	1.05
Chile	0.11	0.12	0.10	0.10	4.65	5.40	5.10	5.10	0.53	0.66	0.50	0.50	0.00	0.00	-0.17	-25.45
Uruguay	0.02	0.01	0.02	0.02	2.20	2.21	2.40	2.40	0.03	0.03	0.04	0.04	0.00	0.00	0.01	16.13
Oceania																
Australia	0.95	0.85	0.90	0.90	1.76	1.88	1.61	1.61	1.67	1.60	1.45	1.45	0.00	0.00	-0.15	-9.38
New Zealand	0.00	0.01	0.01	0.01	5.75	5.80	5.80	5.80	0.02	0.03	0.03	0.03	0.00	0.00	0.00	0.00
China	0.41	0.41	0.41	0.41	1.48	1.48	1.48	1.48	0.60	0.60	0.60	0.60	0.00	0.00	0.00	0.00
Africa																
Algeria	0.06	0.08	0.08	0.08	1.11	1.31	1.31	1.31	0.07	0.11	0.11	0.11	0.00	0.00	0.00	0.00
Morocco	0.02	0.04	0.02	0.02	0.40	1.13	0.40	0.40	0.01	0.05	0.01	0.01	0.00	0.00	-0.04	-86.67
South Africa	0.03	0.04	0.03	0.03	2.19	1.94	1.67	1.67	0.06	0.07	0.05	0.05	0.00	0.00	-0.02	-28.57
Other Europe																
United Kingdom	0.21	0.20	0.19	0.19	4.91	5.62	5.53	5.53	1.03	1.12	1.05	1.05	0.00	0.00	-0.07	-6.50
Norway	0.07	0.07	0.07	0.07	4.29	4.29	4.29	4.29	0.30	0.30	0.30	0.30	0.00	0.00	0.00	0.00
Serbia	0.03	0.03	0.03	0.03	2.17	2.17	2.17	2.17	0.07	0.07	0.07	0.07	0.00	0.00	0.00	0.00
Albania	0.02	0.01	0.02	0.02	2.25	2.14	2.20	2.20	0.04	0.03	0.03	0.03	0.00	0.00	0.00	10.00
Bosnia and Herzegovina	0.01	0.01	0.01	0.01	3.09	2.82	2.82	2.82	0.03	0.03	0.03	0.03	0.00	0.00	0.00	0.00
Turkey	0.10	0.11	0.11	0.11	2.40	2.38	2.38	2.38	0.24	0.25	0.25	0.25	0.00	0.00	0.00	0.00
Mexico	0.03	0.05	0.05	0.05	2.03	2.00	1.89	1.89	0.06	0.09	0.09	0.09	0.00	0.00	-0.01	-5.56
Others	0.03	0.03	0.03	0.03	1.61	1.76	1.68	1.68	0.05	0.05	0.05	0.05	0.00	0.00	0.00	1.96

World and Selected Countries and Regions

Table 07 Rye Area, Yield, and Production

Country / Region	Area (Million hectares)				Yield (Metric tons per hectare)				Production (Million metric tons)				Change in Production			
	Prel.		2022/23 Proj.		Prel.		2022/23 Proj.		Prel.		2022/23 Proj.		From last month		From last year	
	2020/21	2021/22	Jun	Jul	2020/21	2021/22	Jun	Jul	2020/21	2021/22	Jun	Jul	MMT	Percent	MMT	Percent
World	4.16	4.02	3.88	3.86	3.43	3.10	3.16	3.17	14.30	12.47	12.28	12.24	-0.04	-0.33	-0.24	-1.89
United States	0.13	0.12	0.15	0.14	2.19	2.09	2.13	2.13	0.29	0.25	0.33	0.30	-0.03	-9.15	0.05	19.68
Total Foreign	4.03	3.90	3.73	3.72	3.47	3.14	3.20	3.21	14.00	12.22	11.95	11.94	-0.01	-0.08	-0.29	-2.33
European Union	2.08	1.93	1.90	1.90	4.31	4.12	4.08	4.08	8.96	7.96	7.75	7.75	0.00	0.00	-0.21	-2.61
Former Soviet Union - 12																
Russia	0.97	0.99	0.95	0.95	2.44	1.73	2.11	2.11	2.38	1.72	2.00	2.00	0.00	0.00	0.28	16.55
Belarus	0.36	0.33	0.30	0.30	2.92	2.46	2.50	2.50	1.05	0.80	0.75	0.75	0.00	0.00	-0.05	-6.25
Ukraine	0.14	0.18	0.10	0.10	3.28	3.43	2.85	2.85	0.46	0.60	0.29	0.29	0.00	0.00	-0.32	-52.50
Kazakhstan	0.02	0.04	0.03	0.03	1.25	0.91	1.20	1.20	0.03	0.04	0.03	0.03	0.00	0.00	-0.01	-25.00
Turkey	0.11	0.12	0.11	0.11	2.91	2.87	2.91	2.91	0.32	0.33	0.32	0.32	0.00	0.00	-0.01	-3.03
Canada	0.15	0.15	0.15	0.15	3.19	3.22	3.17	3.17	0.49	0.47	0.48	0.48	0.00	0.00	0.00	0.42
South America																
Chile	0.00	0.00	0.00	0.00	5.00	5.00	5.00	5.00	0.01	0.01	0.01	0.01	0.00	0.00	0.00	0.00
Argentina	0.09	0.07	0.10	0.09	1.50	2.00	1.84	1.85	0.14	0.14	0.18	0.17	-0.01	-5.71	0.02	14.58
Other Europe																
Bosnia and Herzegovina	0.00	0.00	0.00	0.00	3.67	3.00	2.75	2.75	0.01	0.01	0.01	0.01	0.00	0.00	0.00	22.22
Switzerland	0.00	0.00	0.00	0.00	5.50	5.50	5.50	5.50	0.01	0.01	0.01	0.01	0.00	0.00	0.00	0.00
Serbia	0.00	0.00	0.00	0.00	2.50	2.50	2.50	2.50	0.01	0.01	0.01	0.01	0.00	0.00	0.00	0.00
Australia	0.05	0.05	0.05	0.05	0.71	0.71	0.71	0.71	0.03	0.03	0.03	0.03	0.00	0.00	0.00	0.00
Others	0.04	0.04	0.04	0.04	2.50	2.18	2.16	2.16	0.11	0.10	0.10	0.10	0.00	0.00	0.00	-1.04

World and Selected Countries and Regions

Table 08 Sorghum Area, Yield, and Production

Country / Region	Area (Million hectares)				Yield (Metric tons per hectare)				Production (Million metric tons)				Change in Production			
	Prel.		2022/23 Proj.		Prel.		2022/23 Proj.		Prel.		2022/23 Proj.		From last month		From last year	
	2020/21	2021/22	Jun	Jul	2020/21	2021/22	Jun	Jul	2020/21	2021/22	Jun	Jul	MMT	Percent	MMT	Percent
World	43.05	41.69	41.10	41.04	1.45	1.49	1.52	1.52	62.42	62.33	62.66	62.43	-0.23	-0.37	0.11	0.17
United States	2.06	2.63	2.23	2.18	4.59	4.33	4.35	4.34	9.47	11.38	9.68	9.45	-0.23	-2.37	-1.93	-16.93
Total Foreign	40.99	39.07	38.87	38.87	1.29	1.30	1.36	1.36	52.94	50.95	52.98	52.98	0.00	0.00	2.03	3.99
Africa																
Nigeria	5.60	5.70	5.70	5.70	1.18	1.18	1.23	1.23	6.59	6.73	7.00	7.00	0.00	0.00	0.28	4.09
Ethiopia	1.79	1.65	1.66	1.66	2.83	2.70	2.71	2.71	5.06	4.45	4.50	4.50	0.00	0.00	0.05	1.12
Sudan	9.03	6.92	7.00	7.00	0.57	0.51	0.71	0.71	5.15	3.53	5.00	5.00	0.00	0.00	1.47	41.64
Burkina Faso	1.86	1.90	1.90	1.90	0.99	0.87	1.00	1.00	1.84	1.64	1.90	1.90	0.00	0.00	0.26	15.57
Mali	1.83	1.50	1.50	1.50	1.00	0.83	1.00	1.00	1.82	1.24	1.50	1.50	0.00	0.00	0.26	21.07
Niger	3.67	3.70	3.70	3.70	0.58	0.33	0.51	0.51	2.13	1.21	1.90	1.90	0.00	0.00	0.69	57.42
Cameroon	0.74	0.74	0.74	0.74	1.62	1.62	1.62	1.62	1.20	1.20	1.20	1.20	0.00	0.00	0.00	0.00
Tanzania	0.70	0.70	0.70	0.70	1.07	1.02	1.07	1.07	0.75	0.72	0.75	0.75	0.00	0.00	0.04	4.90
Egypt	0.15	0.15	0.15	0.15	4.91	5.00	5.00	5.00	0.73	0.75	0.75	0.75	0.00	0.00	0.00	0.00
Uganda	0.31	0.25	0.25	0.25	0.82	0.80	0.90	0.90	0.25	0.20	0.23	0.23	0.00	0.00	0.03	12.50
Ghana	0.30	0.31	0.31	0.31	1.13	1.11	1.13	1.13	0.35	0.35	0.35	0.35	0.00	0.00	0.01	1.45
Mozambique	0.26	0.25	0.25	0.25	0.54	0.64	0.64	0.64	0.14	0.16	0.16	0.16	0.00	0.00	0.00	0.00
South Africa	0.05	0.04	0.04	0.04	4.39	3.95	3.75	3.75	0.22	0.15	0.15	0.15	0.00	0.00	0.00	0.00
Mexico	1.29	1.40	1.42	1.42	3.37	3.29	3.42	3.42	4.35	4.60	4.85	4.85	0.00	0.00	0.25	5.43
South America																
Argentina	0.75	0.95	0.88	0.88	4.43	3.95	4.34	4.34	3.32	3.75	3.80	3.80	0.00	0.00	0.05	1.33
Brazil	0.87	0.95	0.98	0.98	2.41	3.20	3.00	3.00	2.08	3.04	2.94	2.94	0.00	0.00	-0.10	-3.35
South Asia																
India	4.38	4.60	4.50	4.50	1.10	0.98	0.98	0.98	4.81	4.50	4.40	4.40	0.00	0.00	-0.10	-2.22
Pakistan	0.13	0.26	0.22	0.22	0.76	0.59	0.63	0.63	0.10	0.15	0.14	0.14	0.00	0.00	-0.02	-10.00
China	0.64	0.63	0.63	0.63	4.68	4.76	4.76	4.76	2.97	3.00	3.00	3.00	0.00	0.00	0.00	0.00
Australia	0.64	0.62	0.55	0.55	2.97	4.19	2.91	2.91	1.90	2.60	1.60	1.60	0.00	0.00	-1.00	-38.46
European Union	0.21	0.18	0.19	0.19	5.15	5.72	5.34	5.34	1.10	1.01	1.02	1.02	0.00	0.00	0.01	0.89
Others	5.80	5.68	5.61	5.61	1.05	1.05	1.04	1.04	6.09	5.99	5.86	5.86	0.00	0.00	-0.13	-2.19

World and Selected Countries and Regions

Table 09 Rice Area, Yield, and Production

World and Selected Countries and Regions

Country / Region	Area (Million hectares)				Yield (Metric tons per hectare)				Production (Million metric tons)				Change in Production			
	Prel.		2022/23 Proj.		Prel.		2022/23 Proj.		Prel.		2022/23 Proj.		From last month		From last year	
	2020/21	2021/22	Jun	Jul	2020/21	2021/22	Jun	Jul	2020/21	2021/22	Jun	Jul	MMT	Percent	MMT	Percent
World	165.22	166.54	166.91	166.82	4.60	4.60	4.61	4.61	509.29	513.56	515.35	514.76	-0.59	-0.11	1.20	0.23
United States	1.21	1.01	0.97	0.93	8.54	8.64	8.52	8.48	7.22	6.09	5.80	5.54	-0.26	-4.48	-0.55	-9.01
Total Foreign	164.01	165.53	165.94	165.89	4.57	4.58	4.59	4.59	502.06	507.47	509.55	509.22	-0.33	-0.06	1.75	0.35
East Asia																
China	30.08	29.92	30.00	30.00	7.04	7.11	7.10	7.10	148.30	148.99	149.00	149.00	0.00	0.00	0.01	0.01
Japan	1.53	1.52	1.51	1.51	6.79	6.90	6.87	6.87	7.57	7.64	7.55	7.55	0.00	0.00	-0.09	-1.18
Korea, South	0.73	0.73	0.73	0.72	6.49	7.12	6.90	6.91	3.51	3.88	3.77	3.72	-0.05	-1.33	-0.16	-4.12
Korea, North	0.49	0.50	0.50	0.50	4.44	4.18	4.18	4.18	1.40	1.36	1.36	1.36	0.00	0.00	0.00	0.00
South Asia																
India	45.77	47.00	47.00	47.00	4.08	4.14	4.17	4.17	124.37	129.66	130.50	130.50	0.00	0.00	0.84	0.65
Bangladesh	11.50	11.62	11.75	11.75	4.51	4.63	4.60	4.60	34.60	35.85	36.00	36.00	0.00	0.00	0.15	0.42
Pakistan	3.34	3.40	3.40	3.40	3.79	3.84	3.93	3.93	8.42	8.70	8.90	8.90	0.00	0.00	0.20	2.30
Nepal	1.48	1.47	1.48	1.48	3.81	3.48	3.73	3.73	3.74	3.42	3.67	3.67	0.00	0.00	0.25	7.26
Sri Lanka	1.09	1.10	1.10	1.10	4.57	3.54	4.00	4.00	3.39	2.65	3.00	3.00	0.00	0.00	0.35	13.23
Southeast Asia																
Indonesia	11.40	11.60	11.65	11.65	4.77	4.67	4.68	4.68	34.50	34.40	34.60	34.60	0.00	0.00	0.20	0.58
Vietnam	7.31	7.30	7.29	7.29	6.00	5.99	6.01	6.01	27.38	27.33	27.40	27.40	0.00	0.00	0.07	0.25
Thailand	10.51	10.59	10.70	10.70	2.72	2.81	2.80	2.80	18.86	19.65	19.80	19.80	0.00	0.00	0.15	0.76
Burma	6.90	6.90	6.90	6.90	2.85	2.80	2.83	2.83	12.60	12.35	12.50	12.50	0.00	0.00	0.15	1.20
Philippines	4.76	4.80	4.80	4.80	4.14	4.17	4.10	4.10	12.42	12.60	12.41	12.41	0.00	0.00	-0.19	-1.50
Cambodia	3.27	3.34	3.35	3.35	2.90	2.88	2.91	2.91	5.78	5.86	5.94	5.94	0.00	0.00	0.08	1.33
Laos	0.93	0.94	0.95	0.95	3.24	3.28	3.26	3.26	1.90	1.95	1.95	1.95	0.00	0.00	0.00	0.00
Malaysia	0.68	0.67	0.68	0.68	4.07	4.09	4.07	4.07	1.80	1.78	1.80	1.80	0.00	0.00	0.02	1.12
South America																
Brazil	1.68	1.63	1.60	1.60	7.00	6.56	6.53	6.53	8.00	7.28	7.10	7.10	0.00	0.00	-0.18	-2.42
Peru	0.41	0.42	0.42	0.42	8.21	8.34	8.55	8.55	2.34	2.40	2.48	2.48	0.00	0.00	0.09	3.72
Africa																
Egypt	0.70	0.50	0.50	0.50	8.28	8.41	8.41	8.41	4.00	2.90	2.90	2.90	0.00	0.00	0.00	0.00
Madagascar	1.68	1.65	1.60	1.60	2.53	2.42	2.38	2.38	2.71	2.56	2.43	2.43	0.00	0.00	-0.13	-5.00
Nigeria	3.60	3.65	3.70	3.70	2.27	2.29	2.30	2.30	5.15	5.26	5.36	5.36	0.00	0.00	0.10	1.90
European Union	0.42	0.40	0.40	0.36	6.73	6.54	6.76	6.36	1.83	1.72	1.74	1.46	-0.28	-16.03	-0.26	-14.91
Iran	0.58	0.56	0.57	0.57	5.27	5.14	5.32	5.32	2.00	1.90	2.00	2.00	0.00	0.00	0.10	5.26
Others	13.21	13.33	13.36	13.36	2.93	2.89	2.88	2.88	25.50	25.39	25.39	25.39	0.00	0.00	0.00	0.00

Yield is on a rough basis, before the milling process. Production is on a milled basis, after the milling process.

Table 10 Total Oilseed Area, Yield, and Production

World and Selected Countries and Regions

Country / Region	Area (Million hectares)				Yield (Metric tons per hectare)				Production (Million metric tons)				Change in Production			
	Prel.		2022/23 Proj.		Prel.		2022/23 Proj.		Prel.		2022/23 Proj.		From last month		From last year	
	2020/21	2021/22	Jun	Jul	2020/21	2021/22	Jun	Jul	2020/21	2021/22	Jun	Jul	MMT	Percent	MMT	Percent
World Total	--	--	--	--	--	--	--	--	606.44	600.33	646.82	643.07	-3.75	-0.58	42.74	7.12
Total Foreign	--	--	--	--	--	--	--	--	481.92	469.79	510.22	510.40	0.19	0.04	40.61	8.64
Oilseed, Copra	--	--	--	--	--	--	--	--	5.59	5.86	5.86	5.86	0.00	0.00	0.00	0.00
Oilseed, Palm Kernel	--	--	--	--	--	--	--	--	19.03	20.05	20.56	20.56	0.00	0.00	0.51	2.55
Major Oilseeds	250.98	259.46	263.17	262.29	2.32	2.21	2.36	2.35	581.82	574.42	620.40	616.65	-3.75	-0.60	42.23	7.35
United States	38.81	41.07	42.17	40.91	3.21	3.18	3.24	3.24	124.52	130.54	136.60	132.67	-3.94	-2.88	2.13	1.63
Foreign Oilseeds	212.17	218.39	221.01	221.38	2.16	2.03	2.19	2.19	457.30	443.88	483.80	483.98	0.19	0.04	40.10	9.03
South America	65.60	67.44	70.07	70.06	3.21	2.82	3.24	3.24	210.32	189.87	227.30	227.21	-0.08	-0.04	37.34	19.67
Brazil	40.77	42.83	43.85	43.85	3.53	3.06	3.52	3.52	143.77	130.86	154.20	154.13	-0.07	-0.04	23.27	17.78
Argentina	18.97	18.51	19.84	19.83	2.70	2.65	2.86	2.86	51.21	49.03	56.81	56.79	-0.02	-0.03	7.76	15.84
Paraguay	3.24	3.39	3.54	3.54	3.09	1.28	2.86	2.86	10.02	4.32	10.13	10.13	0.00	0.00	5.81	134.43
Bolivia	1.51	1.53	1.52	1.52	2.09	2.07	2.07	2.07	3.15	3.16	3.15	3.15	0.00	0.00	-0.02	-0.51
Uruguay	0.97	1.04	1.18	1.18	1.87	2.04	2.24	2.24	1.82	2.13	2.63	2.63	0.00	0.00	0.50	23.38
China	25.50	24.15	24.95	24.95	2.57	2.60	2.57	2.57	65.58	62.90	64.08	64.08	0.00	0.00	1.17	1.87
South Asia	42.23	41.62	43.72	43.72	0.96	1.06	1.03	1.03	40.55	43.98	45.21	45.21	0.00	0.00	1.23	2.80
India	39.15	38.70	40.55	40.55	0.96	1.04	1.02	1.02	37.55	40.29	41.37	41.37	0.00	0.00	1.08	2.68
Pakistan	2.72	2.55	2.80	2.80	0.94	1.27	1.21	1.21	2.57	3.25	3.40	3.40	0.00	0.00	0.15	4.55
European Union	11.11	11.21	11.73	11.73	2.59	2.76	2.75	2.72	28.79	30.94	32.26	31.86	-0.40	-1.24	0.92	2.97
United Kingdom	0.38	0.31	0.36	0.36	2.73	3.20	3.40	3.40	1.04	0.98	1.23	1.23	0.00	0.00	0.24	24.87
Former Soviet Union - 12	25.91	27.77	24.69	25.19	1.72	1.89	1.74	1.75	44.70	52.42	42.97	43.97	1.00	2.33	-8.46	-16.13
Russia	12.50	14.23	13.60	14.10	1.61	1.62	1.66	1.67	20.14	23.11	22.60	23.60	1.00	4.42	0.49	2.13
Ukraine	9.65	9.58	7.10	7.10	2.06	2.54	2.18	2.18	19.85	24.32	15.50	15.50	0.00	0.00	-8.82	-36.25
Uzbekistan	1.08	1.08	1.09	1.09	1.19	1.01	1.13	1.13	1.28	1.09	1.23	1.23	0.00	0.00	0.14	12.80
Canada	10.41	11.18	10.85	10.74	2.49	1.70	2.43	2.43	25.95	18.95	26.41	26.08	-0.33	-1.26	7.12	37.59
Africa	22.12	24.75	24.21	24.21	1.08	0.98	1.04	1.04	23.94	24.34	25.20	25.20	0.00	0.00	0.86	3.53
Nigeria	4.62	4.97	4.87	4.87	1.19	1.11	1.21	1.21	5.49	5.50	5.90	5.90	0.00	0.00	0.41	7.37
South Africa	1.36	1.66	1.75	1.75	1.98	1.92	1.81	1.81	2.69	3.18	3.16	3.16	0.00	0.00	-0.02	-0.50
Tanzania	1.17	1.24	1.35	1.35	1.02	0.98	0.93	0.93	1.19	1.21	1.25	1.25	0.00	0.00	0.04	3.39
Southeast Asia	3.25	3.21	3.18	3.18	1.36	1.36	1.38	1.38	4.42	4.38	4.37	4.37	0.00	0.00	-0.01	-0.16
Burma	2.03	2.04	2.04	2.04	1.17	1.19	1.21	1.21	2.37	2.42	2.46	2.46	0.00	0.00	0.05	1.86
Indonesia	0.94	0.90	0.87	0.87	1.54	1.55	1.55	1.55	1.45	1.39	1.35	1.35	0.00	0.00	-0.04	-2.53
Australia	2.78	3.70	4.00	4.00	1.95	2.19	1.78	1.78	5.43	8.10	7.13	7.13	0.00	0.00	-0.97	-11.94
Turkey	1.18	1.32	1.45	1.45	2.46	2.55	2.58	2.58	2.89	3.37	3.73	3.73	0.00	0.00	0.36	10.72
Others	1.70	1.74	1.81	1.81	2.18	2.10	2.17	2.17	3.70	3.65	3.93	3.93	0.00	0.00	0.27	7.47

World Total and Total Foreign: (Major Oilseeds plus copra and palm kernel) Major Oilseeds: (soybeans, sunflowerseeds, peanuts(inshell), cottonseed and rapeseed)

Table 11 Soybean Area, Yield, and Production

Country / Region	Area (Million hectares)				Yield (Metric tons per hectare)				Production (Million metric tons)				Change in Production			
	Prel.		2022/23 Proj.		Prel.		2022/23 Proj.		Prel.		2022/23 Proj.		From last month		From last year	
	2020/21	2021/22	Jun	Jul	2020/21	2021/22	Jun	Jul	2020/21	2021/22	Jun	Jul	MMT	Percent	MMT	Percent
World	128.61	130.43	135.29	134.14	2.86	2.70	2.92	2.92	368.13	352.74	395.37	391.40	-3.97	-1.01	38.65	10.96
United States	33.43	34.94	36.46	35.41	3.43	3.45	3.46	3.46	114.75	120.71	126.28	122.61	-3.67	-2.91	1.90	1.57
Total Foreign	95.18	95.50	98.83	98.73	2.66	2.43	2.72	2.72	253.38	232.04	269.09	268.79	-0.30	-0.11	36.75	15.84
South America																
Brazil	39.20	41.00	42.00	42.00	3.56	3.07	3.55	3.55	139.50	126.00	149.00	149.00	0.00	0.00	23.00	18.25
Argentina	16.47	16.00	17.00	17.00	2.81	2.75	3.00	3.00	46.20	44.00	51.00	51.00	0.00	0.00	7.00	15.91
Paraguay	3.15	3.30	3.45	3.45	3.14	1.27	2.90	2.90	9.90	4.20	10.00	10.00	0.00	0.00	5.80	138.10
Bolivia	1.39	1.40	1.40	1.40	2.17	2.14	2.14	2.14	3.00	3.00	3.00	3.00	0.00	0.00	0.00	0.00
Uruguay	0.91	0.98	1.10	1.10	1.88	2.07	2.27	2.27	1.71	2.02	2.50	2.50	0.00	0.00	0.48	23.76
East Asia																
China	9.88	8.40	8.90	8.90	1.98	1.95	1.97	1.97	19.60	16.40	17.50	17.50	0.00	0.00	1.10	6.71
Korea, South	0.06	0.06	0.06	0.06	1.47	1.71	1.73	1.73	0.08	0.09	0.10	0.10	0.00	0.00	0.00	1.06
Korea, North	0.16	0.17	0.17	0.17	1.40	1.44	1.44	1.44	0.23	0.24	0.24	0.24	0.00	0.00	0.00	0.00
Japan	0.14	0.15	0.15	0.15	1.54	1.63	1.55	1.55	0.22	0.24	0.23	0.23	0.00	0.00	-0.01	-2.52
India	12.92	12.50	12.70	12.70	0.81	0.95	0.91	0.91	10.45	11.90	11.50	11.50	0.00	0.00	-0.40	-3.36
Canada	2.04	2.13	2.20	2.10	3.12	2.94	2.86	2.86	6.36	6.27	6.30	6.00	-0.30	-4.76	-0.27	-4.34
Former Soviet Union - 12																
Russia	2.71	2.99	3.30	3.30	1.59	1.59	1.61	1.61	4.31	4.76	5.30	5.30	0.00	0.00	0.54	11.34
Ukraine	1.46	1.44	1.20	1.20	2.05	2.64	2.33	2.33	3.00	3.80	2.80	2.80	0.00	0.00	-1.00	-26.32
European Union	1.00	0.99	1.05	1.05	2.61	2.76	2.86	2.86	2.60	2.73	3.00	3.00	0.00	0.00	0.27	9.89
Southeast Asia																
Indonesia	0.39	0.35	0.33	0.33	1.22	1.21	1.21	1.21	0.48	0.43	0.40	0.40	0.00	0.00	-0.03	-5.88
Vietnam	0.04	0.03	0.03	0.03	1.61	1.61	1.60	1.60	0.06	0.05	0.05	0.05	0.00	0.00	-0.01	-9.43
Thailand	0.03	0.03	0.03	0.03	1.63	1.63	1.63	1.63	0.05	0.05	0.05	0.05	0.00	0.00	0.00	0.00
Burma	0.14	0.13	0.13	0.13	1.04	1.04	1.04	1.04	0.14	0.14	0.13	0.13	0.00	0.00	-0.01	-3.70
Serbia	0.22	0.22	0.22	0.22	2.89	2.45	2.77	2.77	0.64	0.54	0.61	0.61	0.00	0.00	0.07	12.96
Mexico	0.16	0.19	0.19	0.19	1.58	1.57	1.58	1.58	0.25	0.29	0.30	0.30	0.00	0.00	0.01	3.45
Africa																
South Africa	0.83	0.93	1.00	1.00	2.29	2.27	2.00	2.00	1.90	2.10	2.00	2.00	0.00	0.00	-0.10	-4.76
Nigeria	1.10	1.20	1.20	1.20	1.01	0.93	1.04	1.04	1.11	1.12	1.25	1.25	0.00	0.00	0.13	11.91
Zambia	0.16	0.30	0.38	0.38	1.81	1.35	1.27	1.27	0.30	0.41	0.48	0.48	0.00	0.00	0.06	15.57
Uganda	0.05	0.05	0.05	0.05	0.60	0.60	0.60	0.60	0.03	0.03	0.03	0.03	0.00	0.00	0.00	0.00
Middle East																
Iran	0.07	0.07	0.08	0.08	2.41	2.29	2.27	2.27	0.17	0.16	0.17	0.17	0.00	0.00	0.01	6.25
Turkey	0.03	0.03	0.04	0.04	3.79	3.91	4.00	4.00	0.11	0.13	0.14	0.14	0.00	0.00	0.02	12.00
Others	0.49	0.47	0.50	0.50	2.06	2.03	2.05	2.05	1.01	0.95	1.02	1.02	0.00	0.00	0.07	7.71

World and Selected Countries and Regions

Table 12 Cottonseed Area, Yield, and Production

Country / Region	Area (Million hectares)				Yield (Metric tons per hectare)				Production (Million metric tons)				Change in Production			
	Prel.		2022/23 Proj.		Prel.		2022/23 Proj.		Prel.		2022/23 Proj.		From last month		From last year	
	2020/21	2021/22	Jun	Jul	2020/21	2021/22	Jun	Jul	2020/21	2021/22	Jun	Jul	MMT	Percent	MMT	Percent
World	30.86	31.72	32.98	32.75	1.32	1.32	1.34	1.34	40.81	41.89	44.14	43.78	-0.36	-0.82	1.89	4.51
United States	3.33	4.16	3.70	3.46	1.22	1.16	1.26	1.26	4.05	4.83	4.64	4.35	-0.30	-6.36	-0.48	-10.02
Total Foreign	27.54	27.57	29.29	29.29	1.33	1.34	1.35	1.35	36.75	37.06	39.50	39.44	-0.07	-0.17	2.37	6.40
South Asia																
India	13.29	12.15	13.20	13.20	0.88	0.86	0.88	0.88	11.72	10.40	11.68	11.68	0.00	0.00	1.27	12.25
Pakistan	2.20	2.00	2.20	2.20	0.89	1.30	1.22	1.22	1.95	2.60	2.69	2.69	0.00	0.00	0.09	3.35
China	3.25	3.10	3.15	3.15	3.50	3.41	3.42	3.42	11.37	10.58	10.78	10.78	0.00	0.00	0.20	1.85
Former Soviet Union - 12																
Uzbekistan	1.06	1.06	1.07	1.07	1.16	0.98	1.10	1.10	1.23	1.04	1.18	1.18	0.00	0.00	0.14	13.20
Turkmenistan	0.55	0.55	0.55	0.55	0.66	0.64	0.64	0.64	0.36	0.35	0.35	0.35	0.00	0.00	0.00	0.00
Tajikistan	0.16	0.17	0.17	0.17	1.11	1.15	1.15	1.15	0.18	0.20	0.20	0.20	0.00	0.00	0.00	0.00
Kazakhstan	0.11	0.12	0.12	0.12	0.95	0.90	0.93	0.93	0.11	0.10	0.11	0.11	0.00	0.00	0.00	3.88
South America																
Brazil	1.37	1.60	1.60	1.60	2.62	2.55	2.74	2.70	3.59	4.08	4.38	4.32	-0.07	-1.51	0.23	5.68
Argentina	0.41	0.48	0.43	0.43	0.72	0.68	0.71	0.71	0.29	0.33	0.30	0.30	0.00	0.00	-0.03	-7.98
Middle East																
Turkey	0.35	0.45	0.53	0.53	2.71	2.76	2.67	2.67	0.95	1.24	1.40	1.40	0.00	0.00	0.16	13.13
Syria	0.03	0.03	0.03	0.03	2.36	2.20	2.20	2.20	0.06	0.06	0.06	0.06	0.00	0.00	0.00	0.00
Iran	0.10	0.10	0.10	0.10	1.35	1.35	1.35	1.35	0.13	0.14	0.14	0.14	0.00	0.00	0.00	0.00
Australia	0.28	0.60	0.55	0.55	3.06	2.75	3.00	3.00	0.84	1.65	1.65	1.65	0.00	0.00	0.00	0.00
European Union	0.34	0.32	0.33	0.33	1.59	1.58	1.54	1.54	0.54	0.51	0.51	0.51	0.00	0.00	0.00	-0.79
Africa																
Burkina Faso	0.56	0.60	0.65	0.65	0.47	0.45	0.45	0.45	0.26	0.27	0.29	0.29	0.00	0.00	0.03	9.43
Mali	0.17	0.72	0.74	0.74	0.51	0.56	0.55	0.55	0.08	0.40	0.41	0.41	0.00	0.00	0.01	1.49
Cameroon	0.23	0.23	0.24	0.24	1.51	1.39	1.35	1.35	0.34	0.32	0.33	0.33	0.00	0.00	0.01	1.56
Cote d'Ivoire	0.45	0.47	0.46	0.46	0.61	0.60	0.58	0.58	0.27	0.28	0.27	0.27	0.00	0.00	-0.01	-4.98
Benin	0.62	0.64	0.68	0.68	0.78	0.73	0.77	0.77	0.48	0.47	0.52	0.52	0.00	0.00	0.05	11.09
Tanzania	0.17	0.24	0.35	0.35	0.56	0.46	0.43	0.43	0.09	0.11	0.15	0.15	0.00	0.00	0.04	36.94
Egypt	0.07	0.09	0.13	0.13	1.00	1.00	0.98	0.98	0.07	0.09	0.13	0.13	0.00	0.00	0.04	50.59
Nigeria	0.27	0.27	0.27	0.27	0.56	0.56	0.56	0.56	0.15	0.15	0.15	0.15	0.00	0.00	0.00	0.00
Uganda	0.10	0.10	0.10	0.10	1.40	1.40	1.49	1.49	0.14	0.14	0.15	0.15	0.00	0.00	0.01	6.43
Zimbabwe	0.24	0.21	0.21	0.21	0.55	0.36	0.43	0.43	0.13	0.08	0.09	0.09	0.00	0.00	0.02	19.74
Sudan	0.20	0.20	0.20	0.20	1.41	1.41	1.53	1.53	0.28	0.28	0.31	0.31	0.00	0.00	0.02	8.51
Mexico	0.15	0.15	0.19	0.19	2.40	2.71	2.38	2.38	0.35	0.42	0.45	0.45	0.00	0.00	0.04	8.39
Burma	0.24	0.25	0.25	0.25	1.17	1.18	1.18	1.18	0.28	0.29	0.29	0.29	0.00	0.00	0.00	0.00
Others	0.63	0.69	0.81	0.81	0.81	0.73	0.70	0.70	0.51	0.50	0.57	0.57	0.00	0.00	0.07	13.52

World and Selected Countries and Regions

Table 13 Peanut Area, Yield, and Production

Country / Region	Area (Million hectares)				Yield (Metric tons per hectare)				Production (Million metric tons)				Change in Production						
	2020/21	Prel.		2022/23 Proj.		2020/21	Prel.		2022/23 Proj.		2020/21	Prel.		2022/23 Proj.		From last month		From last year	
		2021/22	Jun	Jul	2021/22		Jun	Jul	2021/22	Jun		Jul	MMT	Percent	MMT	Percent			
World	29.92	30.82	29.95	29.95	1.68	1.63	1.70	1.70	50.17	50.31	50.87	50.86	-0.01	-0.02	0.55	1.09			
United States	0.65	0.63	0.61	0.61	4.27	4.64	4.66	4.65	2.79	2.90	2.84	2.83	-0.01	-0.42	-0.07	-2.42			
Total Foreign	29.27	30.20	29.34	29.34	1.62	1.57	1.64	1.64	47.38	47.41	48.03	48.03	0.00	0.00	0.62	1.30			
China	4.73	4.75	4.80	4.80	3.80	3.85	3.81	3.81	17.99	18.31	18.30	18.30	0.00	0.00	-0.01	-0.04			
Africa																			
Nigeria	3.25	3.50	3.40	3.40	1.30	1.21	1.32	1.32	4.23	4.23	4.50	4.50	0.00	0.00	0.27	6.43			
Sudan	3.20	3.94	3.00	3.00	0.87	0.60	0.83	0.83	2.77	2.36	2.50	2.50	0.00	0.00	0.15	6.16			
Senegal	1.23	1.21	1.20	1.20	1.47	1.38	1.42	1.42	1.80	1.68	1.70	1.70	0.00	0.00	0.02	1.31			
Cameroon	0.43	0.43	0.43	0.43	1.40	1.40	1.40	1.40	0.60	0.60	0.60	0.60	0.00	0.00	0.00	0.00			
Ghana	0.33	0.33	0.33	0.33	1.45	1.28	1.42	1.42	0.48	0.42	0.47	0.47	0.00	0.00	0.05	11.37			
Chad	0.76	0.80	0.80	0.80	1.11	1.13	1.13	1.13	0.84	0.90	0.90	0.90	0.00	0.00	0.00	0.00			
Malawi	0.40	0.40	0.40	0.40	0.88	0.88	0.88	0.88	0.35	0.35	0.35	0.35	0.00	0.00	0.00	0.00			
Congo (Kinshasa)	0.50	0.50	0.50	0.50	0.90	0.90	0.90	0.90	0.45	0.45	0.45	0.45	0.00	0.00	0.00	0.00			
Niger	0.90	0.92	0.92	0.92	0.66	0.56	0.60	0.60	0.59	0.52	0.55	0.55	0.00	0.00	0.03	5.97			
Mali	0.43	0.43	0.43	0.43	1.16	0.87	1.00	1.00	0.49	0.37	0.43	0.43	0.00	0.00	0.06	15.49			
Uganda	0.34	0.40	0.40	0.40	0.99	0.75	0.75	0.75	0.34	0.30	0.30	0.30	0.00	0.00	0.00	0.00			
Burkina Faso	0.65	0.60	0.60	0.60	0.97	0.80	0.83	0.83	0.63	0.48	0.50	0.50	0.00	0.00	0.02	4.82			
Guinea	0.98	1.10	1.10	1.10	1.10	1.21	1.09	1.09	1.07	1.34	1.20	1.20	0.00	0.00	-0.14	-10.11			
Egypt	0.06	0.06	0.06	0.06	3.20	3.20	3.20	3.20	0.21	0.21	0.21	0.21	0.00	0.00	0.00	0.00			
Central African Republic	0.10	0.10	0.10	0.10	1.50	1.50	1.50	1.50	0.15	0.15	0.15	0.15	0.00	0.00	0.00	0.00			
South Africa	0.04	0.05	0.05	0.05	2.21	1.78	2.22	2.22	0.09	0.08	0.10	0.10	0.00	0.00	0.02	25.00			
Mozambique	0.35	0.38	0.38	0.38	0.30	0.34	0.34	0.34	0.10	0.13	0.13	0.13	0.00	0.00	0.00	0.00			
Cote d'Ivoire	0.16	0.15	0.15	0.15	1.40	1.45	1.45	1.45	0.23	0.21	0.21	0.21	0.00	0.00	0.00	0.00			
Benin	0.17	0.19	0.19	0.19	1.01	0.92	0.92	0.92	0.18	0.18	0.18	0.18	0.00	0.00	0.00	0.00			
South Asia																			
India	6.02	5.60	5.80	5.80	1.11	1.21	1.21	1.21	6.70	6.80	7.00	7.00	0.00	0.00	0.20	2.94			
Pakistan	0.14	0.10	0.10	0.10	0.89	0.92	0.91	0.91	0.12	0.09	0.09	0.09	0.00	0.00	0.00	1.11			
Southeast Asia																			
Indonesia	0.55	0.55	0.54	0.54	1.78	1.76	1.76	1.76	0.97	0.96	0.95	0.95	0.00	0.00	-0.01	-1.04			
Burma	1.06	1.06	1.07	1.07	1.48	1.51	1.55	1.55	1.56	1.60	1.65	1.65	0.00	0.00	0.05	3.13			
Vietnam	0.17	0.16	0.16	0.16	2.50	2.50	2.50	2.50	0.41	0.40	0.39	0.39	0.00	0.00	-0.01	-3.00			
Thailand	0.02	0.02	0.02	0.02	1.67	1.67	1.67	1.67	0.04	0.04	0.04	0.04	0.00	0.00	0.00	0.00			
South America																			
Argentina	0.40	0.41	0.38	0.38	3.16	3.21	3.29	3.29	1.27	1.30	1.25	1.25	0.00	0.00	-0.05	-3.85			
Brazil	0.17	0.20	0.21	0.21	3.86	3.68	3.66	3.66	0.64	0.72	0.75	0.75	0.00	0.00	0.03	4.46			
Mexico	0.06	0.05	0.05	0.05	1.73	1.74	1.74	1.74	0.10	0.09	0.09	0.09	0.00	0.00	0.00	0.00			
Others	1.70	1.83	1.79	1.79	1.16	1.19	1.18	1.18	1.98	2.17	2.10	2.10	0.00	0.00	-0.07	-3.18			

Table 14 Sunflowerseed Area, Yield, and Production

Country / Region	Area (Million hectares)				Yield (Metric tons per hectare)				Production (Million metric tons)				Change in Production			
	Prel.		2022/23 Proj.		Prel.		2022/23 Proj.		Prel.		2022/23 Proj.		From last month		From last year	
	2020/21	2021/22	Jun	Jul	2020/21	2021/22	Jun	Jul	2020/21	2021/22	Jun	Jul	MMT	Percent	MMT	Percent
World	26.94	28.85	25.82	26.40	1.83	1.99	1.91	1.91	49.25	57.38	49.22	50.38	1.16	2.36	-7.00	-12.19
United States	0.67	0.50	0.55	0.65	2.01	1.72	1.93	1.94	1.35	0.86	1.06	1.25	0.19	18.30	0.39	45.31
Total Foreign	26.27	28.34	25.27	25.76	1.82	1.99	1.91	1.91	47.90	56.52	48.16	49.13	0.97	2.01	-7.39	-13.07
Former Soviet Union - 12																
Russia	8.35	9.61	8.70	9.20	1.59	1.62	1.67	1.68	13.27	15.57	14.50	15.50	1.00	6.90	-0.07	-0.46
Ukraine	7.00	7.10	4.60	4.60	2.01	2.46	2.07	2.07	14.10	17.50	9.50	9.50	0.00	0.00	-8.00	-45.71
Kazakhstan	0.75	0.94	0.90	0.90	1.13	1.10	1.11	1.11	0.84	1.03	1.00	1.00	0.00	0.00	-0.03	-3.10
European Union	4.45	4.50	4.55	4.55	2.00	2.32	2.31	2.31	8.92	10.43	10.50	10.50	0.00	0.00	0.07	0.65
South America																
Argentina	1.67	1.60	2.00	2.00	2.05	2.09	2.10	2.10	3.43	3.35	4.20	4.20	0.00	0.00	0.85	25.37
Uruguay	0.07	0.07	0.08	0.08	1.69	1.62	1.71	1.71	0.11	0.11	0.13	0.13	0.00	0.00	0.02	16.36
Bolivia	0.13	0.13	0.12	0.12	1.20	1.30	1.23	1.23	0.15	0.16	0.15	0.15	0.00	0.00	-0.02	-9.76
Brazil	0.03	0.04	0.04	0.04	1.13	1.62	1.60	1.60	0.04	0.06	0.06	0.06	0.00	0.00	0.00	6.67
Paraguay	0.03	0.03	0.03	0.03	1.53	1.55	1.56	1.56	0.05	0.05	0.05	0.05	0.00	0.00	0.00	4.17
China	0.87	1.10	1.00	1.00	2.94	2.64	2.80	2.80	2.57	2.90	2.80	2.80	0.00	0.00	-0.10	-3.45
South Asia																
India	0.23	0.25	0.25	0.25	0.82	0.76	0.78	0.78	0.19	0.19	0.20	0.20	0.00	0.00	0.01	2.63
Pakistan	0.15	0.15	0.15	0.15	1.07	1.00	1.03	1.03	0.16	0.15	0.16	0.16	0.00	0.00	0.01	3.33
Middle East																
Turkey	0.72	0.76	0.79	0.79	2.17	2.30	2.34	2.34	1.56	1.75	1.85	1.85	0.00	0.00	0.10	5.71
Iran	0.04	0.04	0.04	0.04	1.08	1.00	1.02	1.02	0.04	0.04	0.04	0.04	0.00	0.00	0.00	0.00
Israel	0.00	0.00	0.00	0.00	9.00	7.00	6.00	6.00	0.01	0.01	0.01	0.01	0.00	0.00	0.01	71.43
Africa																
Egypt	0.01	0.01	0.01	0.01	2.38	2.38	2.50	2.50	0.02	0.02	0.03	0.03	0.00	0.00	0.01	31.58
Morocco	0.02	0.02	0.02	0.02	1.16	1.25	1.11	1.11	0.02	0.03	0.02	0.02	0.00	0.00	-0.01	-20.00
South Africa	0.48	0.68	0.69	0.69	1.42	1.44	1.50	1.50	0.68	0.97	1.03	1.03	0.00	0.00	0.06	6.19
Burma	0.60	0.60	0.60	0.60	0.65	0.65	0.65	0.65	0.39	0.39	0.39	0.39	0.00	0.00	0.00	0.00
Canada	0.05	0.04	0.05	0.04	2.24	2.05	2.20	2.17	0.10	0.08	0.11	0.08	-0.03	-29.09	0.00	-4.88
Australia	0.02	0.02	0.02	0.02	1.50	1.67	1.22	1.22	0.03	0.03	0.02	0.02	0.00	0.00	-0.01	-26.67
Others	0.62	0.67	0.64	0.64	1.98	2.54	2.23	2.23	1.23	1.69	1.42	1.42	0.00	0.00	-0.27	-16.09

World and Selected Countries and Regions

Table 15 Rapeseed Area, Yield, and Production

Country / Region	Area (Million hectares)				Yield (Metric tons per hectare)				Production (Million metric tons)				Change in Production			
	Prel.		2022/23 Proj.		Prel.		2022/23 Proj.		Prel.		2022/23 Proj.		From last month		From last year	
	2020/21	2021/22	Jun	Jul	2020/21	2021/22	Jun	Jul	2020/21	2021/22	Jun	Jul	MMT	Percent	MMT	Percent
World	34.64	37.63	39.13	39.05	2.12	1.92	2.06	2.05	73.47	72.10	80.80	80.23	-0.57	-0.70	8.13	11.28
United States	0.73	0.85	0.85	0.78	2.16	1.46	2.10	2.10	1.58	1.24	1.78	1.63	-0.15	-8.31	0.39	31.35
Total Foreign	33.91	36.78	38.29	38.28	2.12	1.93	2.06	2.05	71.89	70.85	79.01	78.60	-0.42	-0.53	7.74	10.93
European Union	5.32	5.40	5.80	5.80	3.14	3.20	3.15	3.08	16.73	17.27	18.25	17.85	-0.40	-2.19	0.59	3.39
United Kingdom	0.38	0.31	0.36	0.36	2.73	3.20	3.40	3.40	1.04	0.98	1.23	1.23	0.00	0.00	0.24	24.87
Switzerland	0.02	0.02	0.02	0.02	3.14	3.14	3.14	3.14	0.07	0.07	0.07	0.07	0.00	0.00	0.00	0.00
Canada	8.33	9.01	8.60	8.60	2.34	1.40	2.33	2.33	19.49	12.60	20.00	20.00	0.00	0.00	7.40	58.73
China	6.77	6.80	7.10	7.10	2.08	2.16	2.07	2.07	14.05	14.71	14.70	14.70	0.00	0.00	-0.01	-0.10
South Asia																
India	6.70	8.20	8.60	8.60	1.27	1.34	1.28	1.28	8.50	11.00	11.00	11.00	0.00	0.00	0.00	0.00
Pakistan	0.23	0.30	0.35	0.35	1.43	1.37	1.33	1.33	0.33	0.41	0.47	0.47	0.00	0.00	0.06	13.41
Bangladesh	0.25	0.25	0.25	0.25	0.92	0.92	0.92	0.92	0.23	0.23	0.23	0.23	0.00	0.00	0.00	0.00
Former Soviet Union - 12																
Russia	1.45	1.62	1.60	1.60	1.77	1.71	1.75	1.75	2.57	2.78	2.80	2.80	0.00	0.00	0.03	0.90
Ukraine	1.19	1.04	1.30	1.30	2.31	2.91	2.46	2.46	2.75	3.02	3.20	3.20	0.00	0.00	0.19	6.14
Belarus	0.36	0.32	0.33	0.33	2.06	1.59	1.69	1.69	0.73	0.50	0.55	0.55	0.00	0.00	0.05	10.00
Kazakhstan	0.12	0.12	0.19	0.19	1.23	1.24	1.22	1.22	0.15	0.15	0.23	0.23	0.00	0.00	0.08	54.11
Australia	2.45	3.05	3.40	3.40	1.84	2.08	1.59	1.59	4.50	6.35	5.40	5.40	0.00	0.00	-0.95	-14.96
South America																
Chile	0.04	0.04	0.04	0.04	3.81	4.00	4.00	4.00	0.14	0.14	0.16	0.16	0.00	0.00	0.02	14.29
Paraguay	0.05	0.04	0.05	0.05	1.41	1.45	1.51	1.51	0.07	0.06	0.07	0.07	0.00	0.00	0.00	6.25
Ethiopia	0.03	0.03	0.03	0.03	1.80	1.80	1.80	1.80	0.05	0.05	0.05	0.05	0.00	0.00	0.00	0.00
Others	0.24	0.26	0.28	0.27	2.14	2.15	2.21	2.23	0.50	0.55	0.63	0.61	-0.02	-2.72	0.06	11.13

World and Selected Countries and Regions

Table 16 Copra, Palm Kernel, and Palm Oil Production

Country / Region	Production (Million metric tons)				Change in Production			
	2020/21	Prel.	2022/23 Proj.		From last month		From last year	
		2021/22	Jun	Jul	MMT	Percent	MMT	Percent
Oilseed, Copra								
Philippines	2.40	2.60	2.60	2.60	0.00	0.00	0.00	0.00
Indonesia	1.67	1.68	1.68	1.68	0.00	0.00	0.00	0.00
India	0.75	0.79	0.80	0.80	0.00	0.00	0.01	1.27
Vietnam	0.28	0.29	0.29	0.29	0.00	0.00	0.00	0.00
Papua New Guinea	0.11	0.11	0.11	0.11	0.00	0.00	0.00	0.00
Thailand	0.07	0.07	0.07	0.07	0.00	0.00	0.00	0.00
Sri Lanka	0.07	0.07	0.07	0.07	0.00	0.00	0.00	0.00
Mexico	0.04	0.05	0.04	0.04	0.00	0.00	-0.01	-20.00
Solomon Islands	0.03	0.03	0.03	0.03	0.00	0.00	0.00	0.00
Cote d'Ivoire	0.03	0.03	0.03	0.03	0.00	0.00	0.00	0.00
World	5.59	5.86	5.86	5.86	0.00	0.00	0.00	0.00
Oilseed, Palm Kernel								
Indonesia	11.46	12.00	12.12	12.12	0.00	0.00	0.12	1.00
Malaysia	4.34	4.65	4.95	4.95	0.00	0.00	0.30	6.45
Nigeria	0.82	0.90	0.90	0.90	0.00	0.00	0.00	0.00
Thailand	0.79	0.83	0.86	0.86	0.00	0.00	0.03	3.61
Colombia	0.29	0.31	0.34	0.34	0.00	0.00	0.03	9.68
Guatemala	0.17	0.18	0.18	0.18	0.00	0.00	0.00	0.00
Papua New Guinea	0.16	0.17	0.17	0.17	0.00	0.00	0.01	6.25
Honduras	0.13	0.16	0.16	0.16	0.00	0.00	0.00	0.00
Brazil	0.14	0.15	0.15	0.15	0.00	0.00	0.01	7.14
Cameroon	0.15	0.15	0.15	0.15	0.00	0.00	0.00	0.00
World	19.03	20.05	20.56	20.56	0.00	0.00	0.51	2.54
Oil, Palm								
Indonesia	43.50	45.50	46.50	46.50	0.00	0.00	1.00	2.20
Malaysia	17.85	18.30	19.80	19.80	0.00	0.00	1.50	8.20
Thailand	2.96	3.15	3.26	3.26	0.00	0.00	0.11	3.49
Colombia	1.56	1.75	1.84	1.84	0.00	0.00	0.09	5.14
Nigeria	1.28	1.40	1.40	1.40	0.00	0.00	0.00	0.00
Guatemala	0.87	0.88	0.91	0.91	0.00	0.00	0.03	3.41
Papua New Guinea	0.60	0.63	0.65	0.65	0.00	0.00	0.03	4.84
Honduras	0.45	0.60	0.60	0.60	0.00	0.00	0.00	0.00
Brazil	0.55	0.55	0.57	0.57	0.00	0.00	0.02	3.64
Cote d'Ivoire	0.52	0.52	0.52	0.52	0.00	0.00	0.00	0.00
World	73.14	76.26	79.14	79.14	0.00	0.00	2.88	3.78

World and Selected Countries and Regions

Table 17 Cotton Area, Yield, and Production

Country / Region	Area (Million hectares)				Yield (Kilograms per hectare)				Production (Million 480 lb. bales)				Change in Production			
	Prel.		2022/23 Proj.		Prel.		2022/23 Proj.		Prel.		2022/23 Proj.		From last month		From last year	
	2020/21	2021/22	Jun	Jul	2020/21	2021/22	Jun	Jul	2020/21	2021/22	Jun	Jul	MBales	Percent	MBales	Percent
World	31.42	32.27	33.53	33.30	773	784	787	785	111.48	116.22	121.27	120.07	-1.20	-0.99	3.85	3.31
United States	3.33	4.16	3.70	3.46	957	918	972	975	14.61	17.52	16.50	15.50	-1.00	-6.06	-2.02	-11.54
Total Foreign	28.10	28.12	29.83	29.83	751	764	765	763	96.87	98.69	104.77	104.57	-0.20	-0.19	5.87	5.95
South Asia																
India	13.29	12.15	13.20	13.20	452	439	454	454	27.60	24.50	27.50	27.50	0.00	0.00	3.00	12.24
Pakistan	2.20	2.00	2.20	2.20	445	653	614	614	4.50	6.00	6.20	6.20	0.00	0.00	0.20	3.33
China	3.25	3.10	3.15	3.15	1,976	1,896	1,901	1,901	29.50	27.00	27.50	27.50	0.00	0.00	0.50	1.85
South America																
Brazil	1.37	1.60	1.60	1.60	1,720	1,674	1,796	1,769	10.82	12.30	13.20	13.00	-0.20	-1.52	0.70	5.69
Argentina	0.41	0.48	0.43	0.43	717	680	692	692	1.35	1.50	1.35	1.35	0.00	0.00	-0.15	-10.00
Paraguay	0.01	0.01	0.01	0.01	416	416	416	416	0.02	0.02	0.02	0.02	0.00	0.00	0.00	0.00
Africa																
Burkina Faso	0.56	0.60	0.65	0.65	372	351	352	352	0.95	0.96	1.05	1.05	0.00	0.00	0.09	9.38
Mali	0.17	0.72	0.74	0.74	396	432	427	427	0.30	1.43	1.45	1.45	0.00	0.00	0.02	1.40
Cote d'Ivoire	0.45	0.47	0.46	0.46	494	486	473	473	1.01	1.05	1.00	1.00	0.00	0.00	-0.05	-4.76
Benin	0.62	0.64	0.68	0.68	513	483	504	504	1.45	1.42	1.58	1.58	0.00	0.00	0.16	10.92
Egypt	0.07	0.09	0.13	0.13	720	717	703	703	0.22	0.28	0.42	0.42	0.00	0.00	0.14	50.00
Cameroon	0.23	0.23	0.24	0.24	658	606	590	590	0.68	0.64	0.65	0.65	0.00	0.00	0.01	1.56
Tanzania	0.17	0.24	0.35	0.35	284	231	218	218	0.22	0.26	0.35	0.35	0.00	0.00	0.10	37.25
Nigeria	0.27	0.27	0.27	0.27	282	282	282	282	0.35	0.35	0.35	0.35	0.00	0.00	0.00	0.00
Zimbabwe	0.24	0.21	0.21	0.21	318	207	249	249	0.35	0.20	0.24	0.24	0.00	0.00	0.04	20.00
Ethiopia	0.08	0.08	0.08	0.08	637	637	637	637	0.24	0.24	0.24	0.24	0.00	0.00	0.00	0.00
Former Soviet Union - 12																
Uzbekistan	1.06	1.06	1.07	1.07	647	544	610	610	3.15	2.65	3.00	3.00	0.00	0.00	0.35	13.21
Turkmenistan	0.55	0.55	0.55	0.55	368	356	356	356	0.92	0.90	0.90	0.90	0.00	0.00	0.00	0.00
Tajikistan	0.16	0.17	0.17	0.17	619	640	640	640	0.46	0.50	0.50	0.50	0.00	0.00	0.00	0.00
Kazakhstan	0.11	0.12	0.12	0.12	534	502	521	521	0.27	0.27	0.28	0.28	0.00	0.00	0.01	3.77
Middle East																
Turkey	0.35	0.45	0.53	0.53	1,804	1,839	1,783	1,783	2.90	3.80	4.30	4.30	0.00	0.00	0.50	13.16
Syria	0.03	0.03	0.03	0.03	1,219	1,132	1,132	1,132	0.14	0.13	0.13	0.13	0.00	0.00	0.00	0.00
Iran	0.10	0.10	0.10	0.10	871	871	871	871	0.40	0.40	0.40	0.40	0.00	0.00	0.00	0.00
Australia	0.28	0.60	0.55	0.55	2,217	1,996	2,177	2,177	2.80	5.50	5.50	5.50	0.00	0.00	0.00	0.00
Mexico	0.15	0.15	0.19	0.19	1,532	1,725	1,518	1,518	1.02	1.22	1.33	1.33	0.00	0.00	0.11	8.61
Burma	0.24	0.25	0.25	0.25	635	644	644	644	0.70	0.73	0.73	0.73	0.00	0.00	0.00	0.00
Others	1.73	1.77	1.90	1.90	575	550	530	530	4.57	4.46	4.61	4.61	0.00	0.00	0.16	3.50

World and Selected Countries and Regions

TABLE 18

The table below presents a record of the July projection and the final Estimate. Using world wheat production as an example, the "root mean square error" means that chances are 2 out of 3 that the current forecast will not be above or below the final estimate by more than 2.7 percent. Chances are 9 out of 10 (90% confidence level) that the difference will not exceed 4.6 percent. The average difference between the July projection and the final estimate is 13.9 million tons, ranging from 1 million to 34.6 million tons. The July projection has been below the estimate 24 times and above 17 times.

RELIABILITY OF PRODUCTION PROJECTIONS 1/

COMMODITY AND REGION	Root mean square error	90 percent confidence interval	Difference between forecast and final estimate				
			Average	Smallest	Largest	Years	
						Below final	Above final
	Percent		---Million metric tons---				
WHEAT							
World	2.7	4.6	13.9	1.0	34.6	24	17
U.S.	3.5	5.9	1.5	0.0	6.2	19	22
Foreign	3.0	5.0	13.6	0.3	34.7	25	16
COARSE GRAINS 2/							
World	2.8	4.8	22.5	1.3	68.4	22	19
U.S.	9.8	16.5	15.2	0.0	57.9	19	22
Foreign	2.5	4.3	14.4	1.1	53.0	22	19
RICE (Milled)							
World	2.3	3.9	6.9	0.4	24.0	26	15
U.S.	5.4	9.0	0.3	0.0	0.8	20	19
Foreign	2.4	4.0	6.8	0.5	24.3	26	15
SOYBEANS							
World	5.2	8.7	8.0	0.5	33.2	19	22
U.S.	6.9	11.6	3.6	0.0	11.7	22	19
Foreign	7.6	12.8	7.2	1.0	34.1	21	20
COTTON			---Million 480-lb. bales---				
World	5.6	9.4	3.8	0.0	14.9	23	18
U.S.	10.1	16.9	1.4	0.1	5.3	21	20
Foreign	5.7	9.6	3.0	0.0	12.1	21	19
UNITED STATES			-----Million bushels-----				
<i>CORN</i>	10.7	18.0	553	12	2,190	22	19
<i>SORGHUM</i>	17.7	29.7	66	3	213	24	17
<i>BARLEY</i>	7.6	12.7	19	0	87	14	26
<i>OATS</i>	12.5	21.0	19	0	144	6	33

1/ Marketing years 1981/82 through 2021/22 for grains, soybeans, and cotton. Final for grains, soybeans, and cotton is defined as the first November estimate following the marketing year for 1981/82 through 2021/22.

2/ Includes corn, sorghum, barley, oats, rye, millet, and mixed grain

July 2022

Global Market Analysis, FAS, USDA