



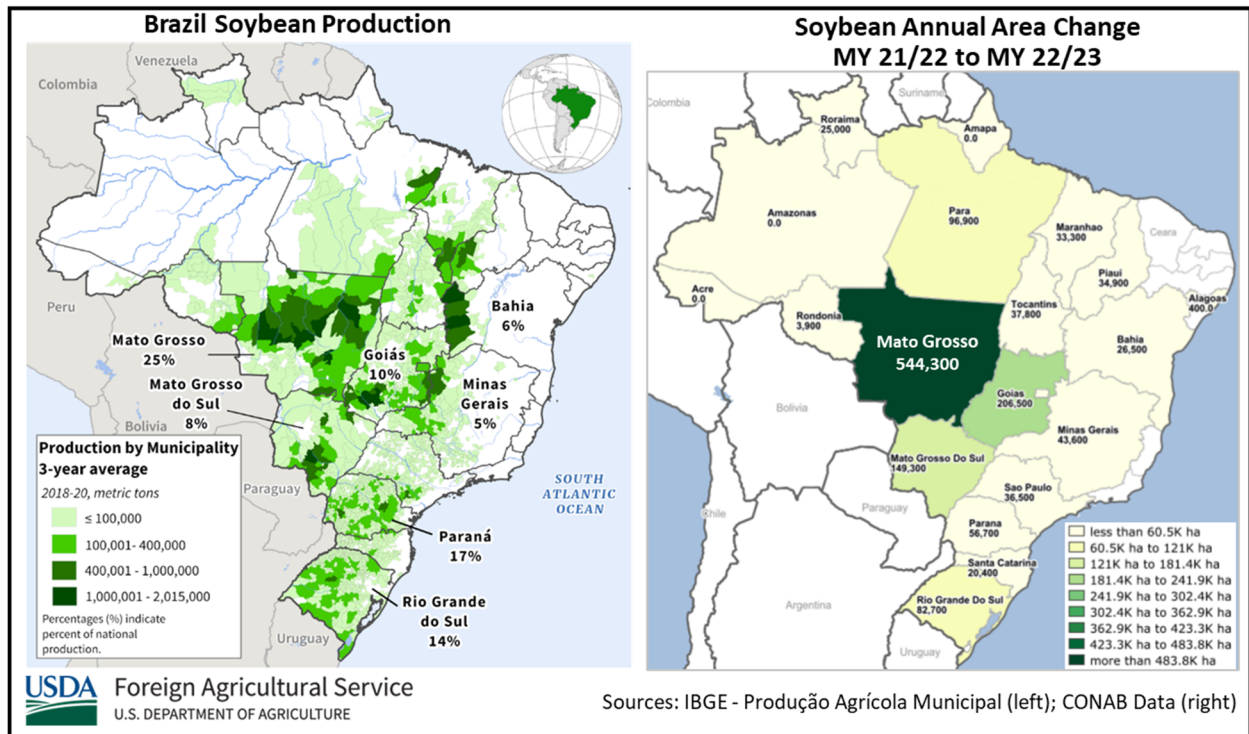
United States  
Department of  
Agriculture

Foreign  
Agricultural  
Service

Circular Series  
WAP 10-22  
October 2022

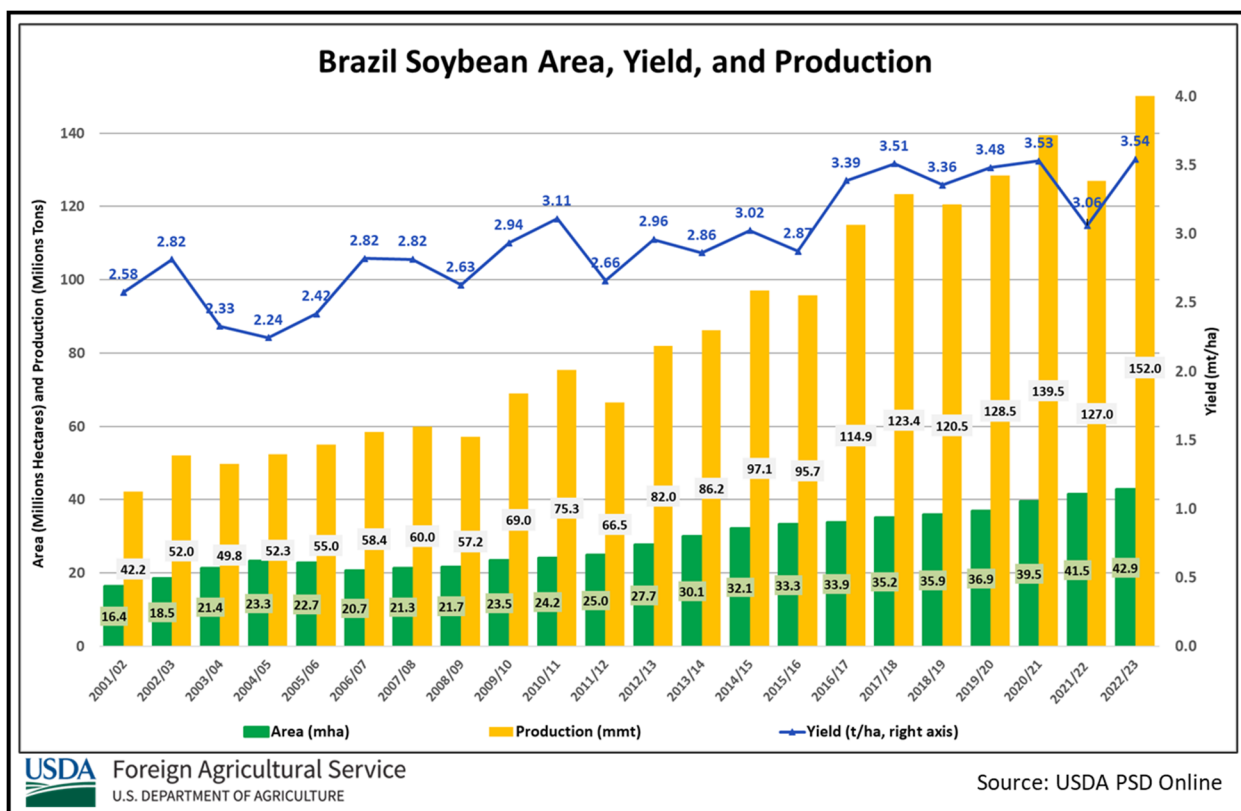
# World Agricultural Production

## Brazil Soybeans: Record Production, 20 Percent Larger than Last Year



Brazil soybean production for marketing year (MY) 2022/23 is forecast at a record 152.0 million metric tons (mmt), raised higher by 3.0 mmt (2 percent) from last month, and higher by 25.0 mmt (20 percent) from last year. Harvested area is estimated at a record 42.9 million hectares (mha), up 0.9 mha (2 percent) from last month and up 1.4 mha (3 percent) from last season. Yield is forecast at close to the 10-year trend yield at 3.54 tons per hectare (t/ha), slightly below last month and 16 percent greater than last season. This would be the highest yield on record, with the prior record at 3.53 t/ha reached in MY 2020/21.

Approved by the World Agricultural Outlook Board

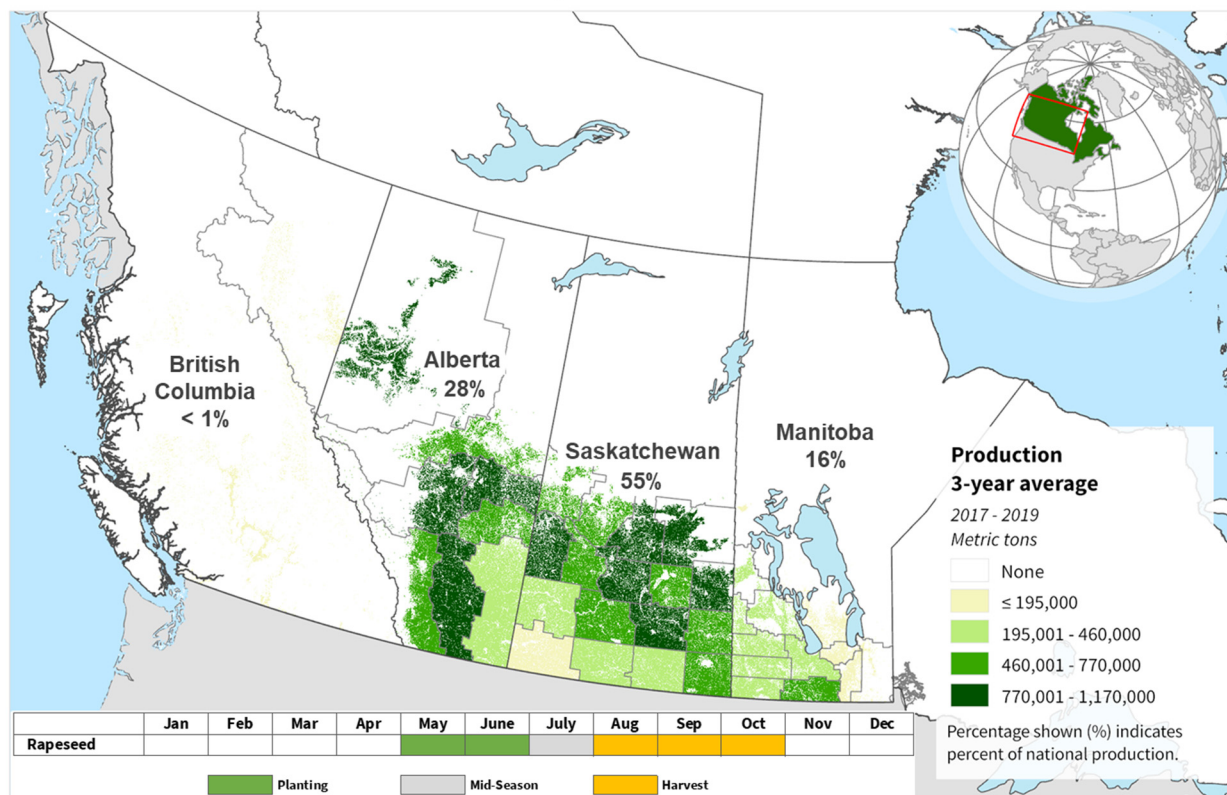


The new soybean season began with the end of the soybean moratoriums beginning in mid-September. Overall planting is currently at 4.6 percent according to *Companhia Nacional de Abastecimento* (CONAB, an agency in the Brazilian Ministry of Agriculture). The pace is slightly ahead of the 5-year pace of roughly 3.5 percent. Soil moisture conditions improved after mid-September in the center-west region, although rainfall has been excessive in southern Brazil. The large amount of rainfall in Paraná impeded planting progress over the last few weeks. Meanwhile, planting in Mato Grosso is proceeding ahead of the 5-year pace. The largest annual acreage increases are reported in the center-west states of Mato Grosso (over 0.5 mha) and Goiás (over 0.2 mha) by CONAB. In Paraná, planted soybean area shows gains at the expense of first season corn acreage. Planting of the MY 2022/23 crop will intensify during the month of October and continue through December. Harvest begins in late December for the early planted crop. (For more information, please contact [Sunita.Yadav-Pauletti@usda.gov](mailto:Sunita.Yadav-Pauletti@usda.gov).)

### Canada Rapeseed: Production Revised Down on Below-Average Yield in Saskatchewan

USDA estimates Canada rapeseed production for marketing year (MY) 2022/23 at 19.5 million metric tons (mmt), down 3 percent from last month, but up 42 percent from last year and 2 percent above the 5-year average. Harvested area is estimated at 8.6 million hectares, unchanged from last month, but down 4 percent from last year, and 3 percent below the 5-year average. Yield is estimated at 2.27 metric tons per hectare (t/ha), down 3 percent from last month, but up 47 percent from last year's crop which struggled under historic drought.

## Canada: Rapeseed Production

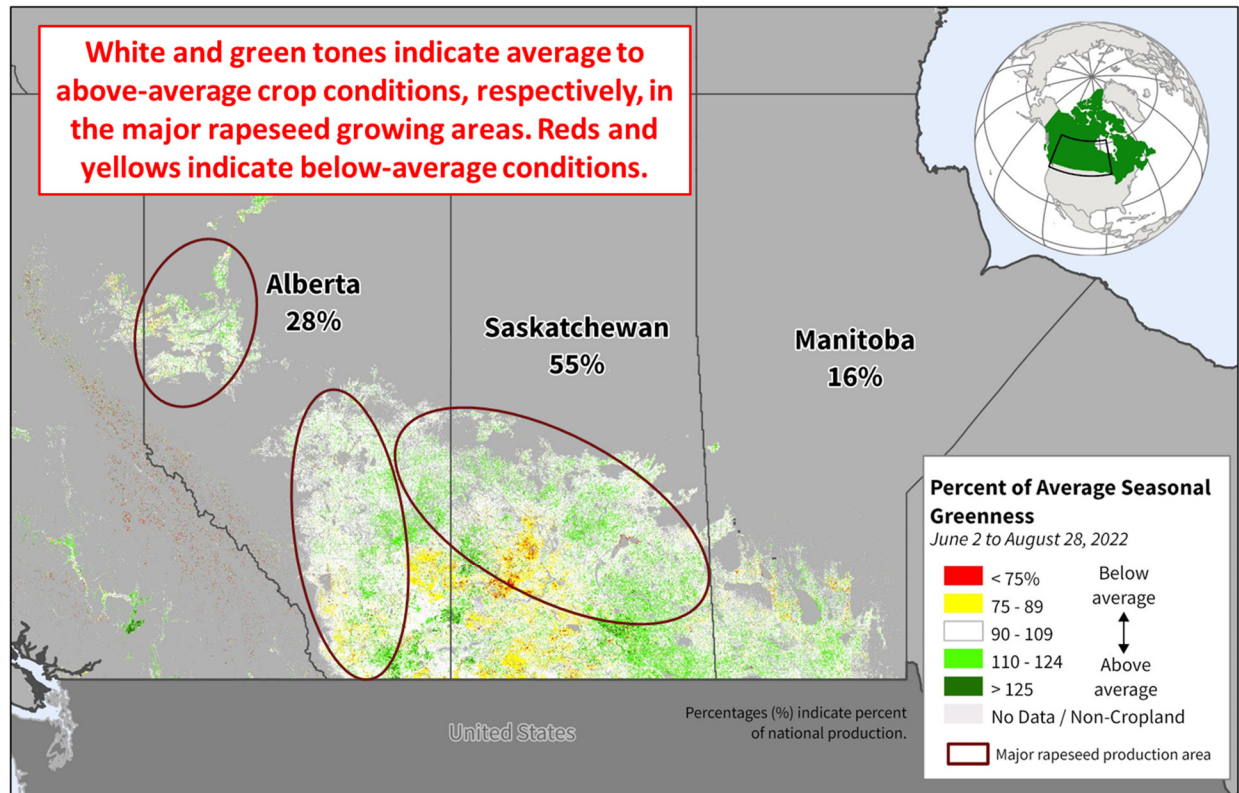


**USDA** Foreign Agricultural Service  
U.S. DEPARTMENT OF AGRICULTURE

Sources: Statistics Canada, Estimated production by Small Area Data (SAD) Region; Agriculture and Agri-Food Canada (AAFC), Annual Crop Inventory 2018

The rapeseed crop rebounded substantially from last year. Following a slow start to the season due to excessive dryness in the western Prairie region and excessive moisture in eastern Saskatchewan and Manitoba, conditions improved over the summer throughout most of the rapeseed-growing region. However, in its model-based production estimates, released on September 14, Statistics Canada tempered expectations, indicating overall rapeseed yield would be more than 4 percent below the 2016-2020 5-year average (omitting the 2021 drought-ravaged season as an outlier). This lower yield expectation stems primarily from Saskatchewan, which typically accounts for 55 percent of the total Canadian rapeseed production. Statistics Canada expects rapeseed yield in Saskatchewan to be 9 percent below its 2016-2020 5-year average.

## Canadian Prairies: Percent of Average Seasonal Greenness (PASG)



**USDA** Foreign Agricultural Service  
U.S. DEPARTMENT OF AGRICULTURE

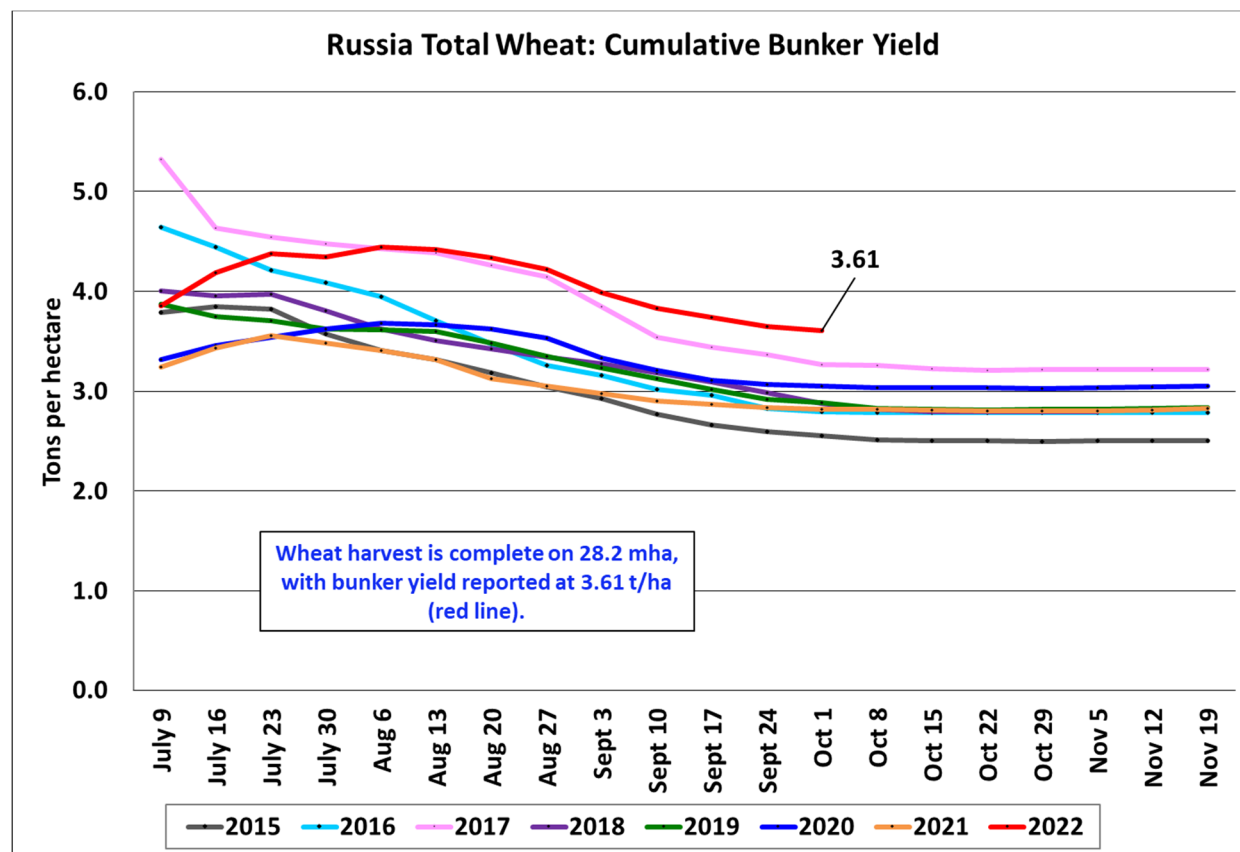
Sources: USDA/NASA, Percent of Average Seasonal Greenness (PASG) derived from MODIS NDVI; Statistics Canada, Estimated Production by Small Area Data (SAD) Region; Agriculture and Agri-Food Canada (AAFC), Annual Crop Inventory 2021 Crop Mask

The satellite-derived Percent Average Seasonal Greenness (PASG) illustrates vegetation response to weather conditions. The 3-month PASG for June through August indicates average to above-average crop conditions during the summer growing season, over most of the Prairies. However, it also indicates below-average conditions in many areas of western Saskatchewan. These areas saw limited rainfall during the summer, which exacerbated pre-existing dryness from the previous year. Overall, this paints a mixed picture for rapeseed in the province, likely tempering overall yield expectations, given its prominence in Canadian rapeseed production. *(For more information, please contact [Aaron.Mulhollen@usda.gov](mailto:Aaron.Mulhollen@usda.gov).)*



## Russia Wheat: Discrepancies in Official Data; Production Unchanged

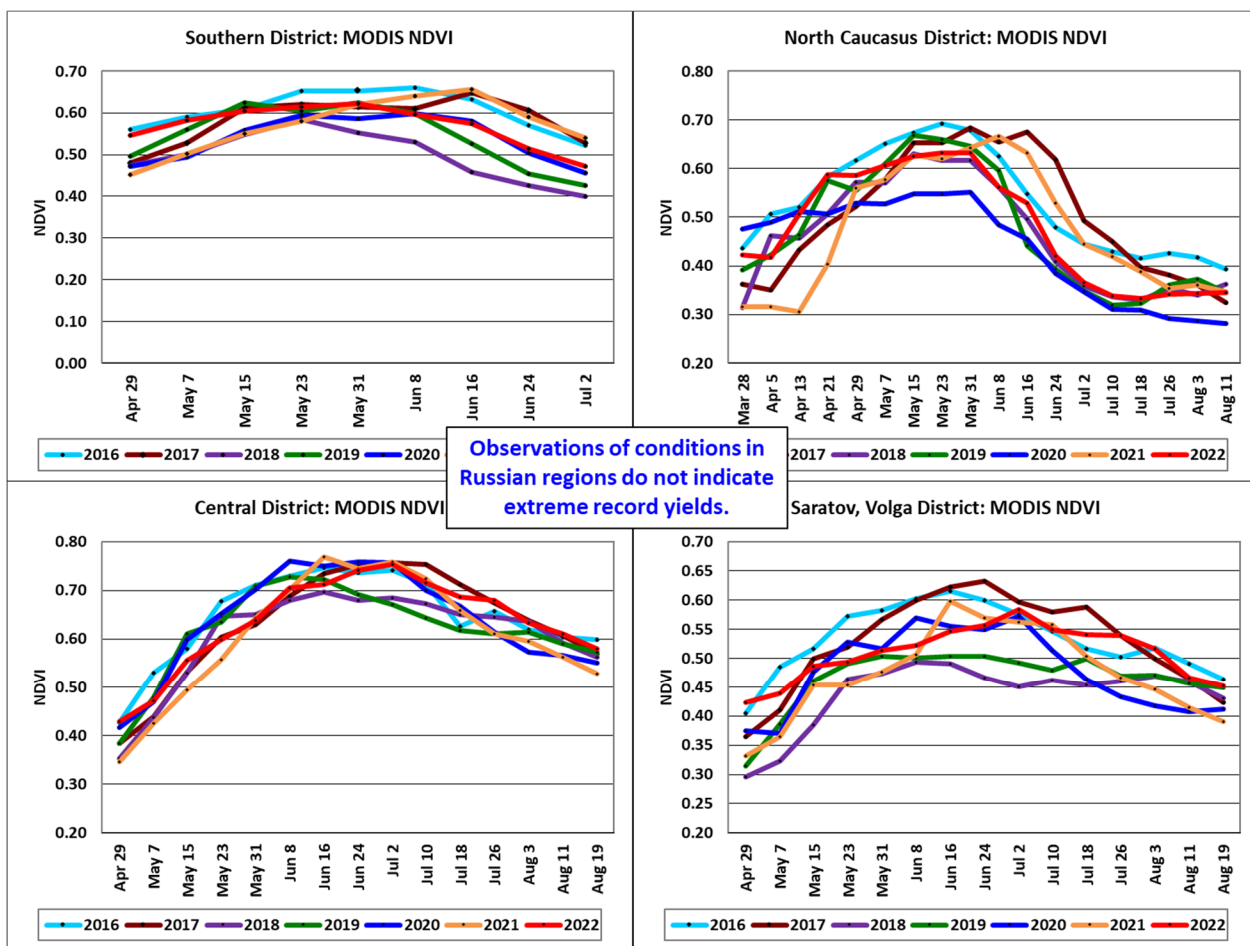
Russia wheat production for marketing year 2022/23 is estimated at 91.0 million metric tons (mmt), unchanged from last month, but up 21 percent from last year. The estimate includes 68.0 mmt of winter wheat and 23.0 mmt of spring wheat. Total wheat yield is estimated at a record 3.17 tons per hectare, unchanged from last month, and up 17 percent from last year. Total harvested area is estimated at 28.7 million hectares, unchanged from last month, but up 4 percent from last year.



USDA Foreign Agricultural Service  
U.S. DEPARTMENT OF AGRICULTURE

Source: Russia Ministry of Agriculture

Official data from the Russian Ministry of Agriculture (MinAg) reports bunker production at 101.8 mmt. The reported yields from MinAg would be about 10 percent higher than the previous record in 2017. However, remote sensing indicators throughout the growing season, including the Normalized Difference Vegetation Index (NDVI) and the Vegetation Health Index (VHI), highlight above average conditions but not record yields. USDA crop production estimates for Russia exclude estimated output from Crimea, all Ukraine oblasts currently under conflict, and any stolen grain from the conflict zones.



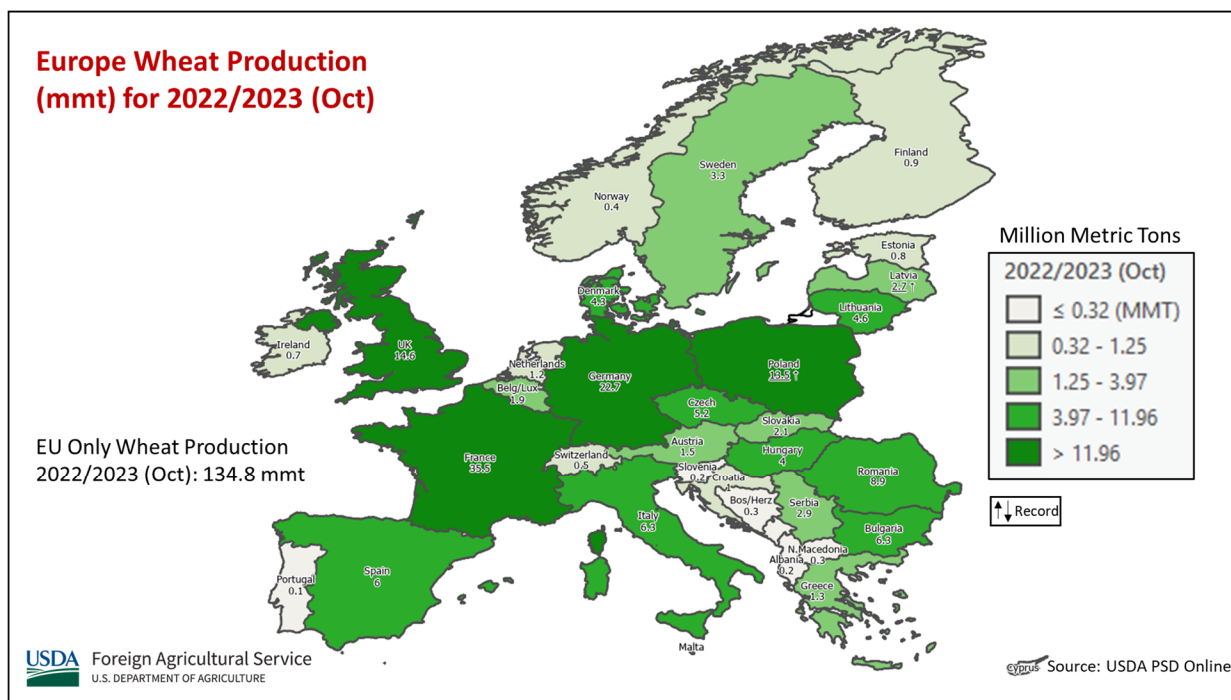
USDA Foreign Agricultural Service  
U.S. DEPARTMENT OF AGRICULTURE

Source: USDA/NASA MODIS Terra 8-day NDVI

Area, yield, and production estimates for Russia winter wheat and spring wheat are available on PSD Online. Select “Downloadable Data Sets” and open the zipped file for “Russia Wheat; Winter/Spring Area & Production.” *(For more information, please contact [Katie.McGaughey@usda.gov](mailto:Katie.McGaughey@usda.gov).)*

### European Union Wheat: Area Revisions Contribute to Production Increase

Wheat production for marketing year (MY) 2022/23 in the European Union (EU) is estimated at 134.8 million metric tons (mmt), up 2.7 mmt from last month, but down 3.5 mmt (3 percent) from last year, but 2 percent above the 132.7 mmt, 5-year average. Harvested area is estimated at 24.3 million hectares (mha), up 0.3 mha from last month, nearly unchanged from last year, and 1 percent above the 5-year average. Yield is estimated at 5.56 tons per hectare (t/ha), similar to the 5.54 t/ha 5-year average, but 1 percent above last month and 3 percent below last year.

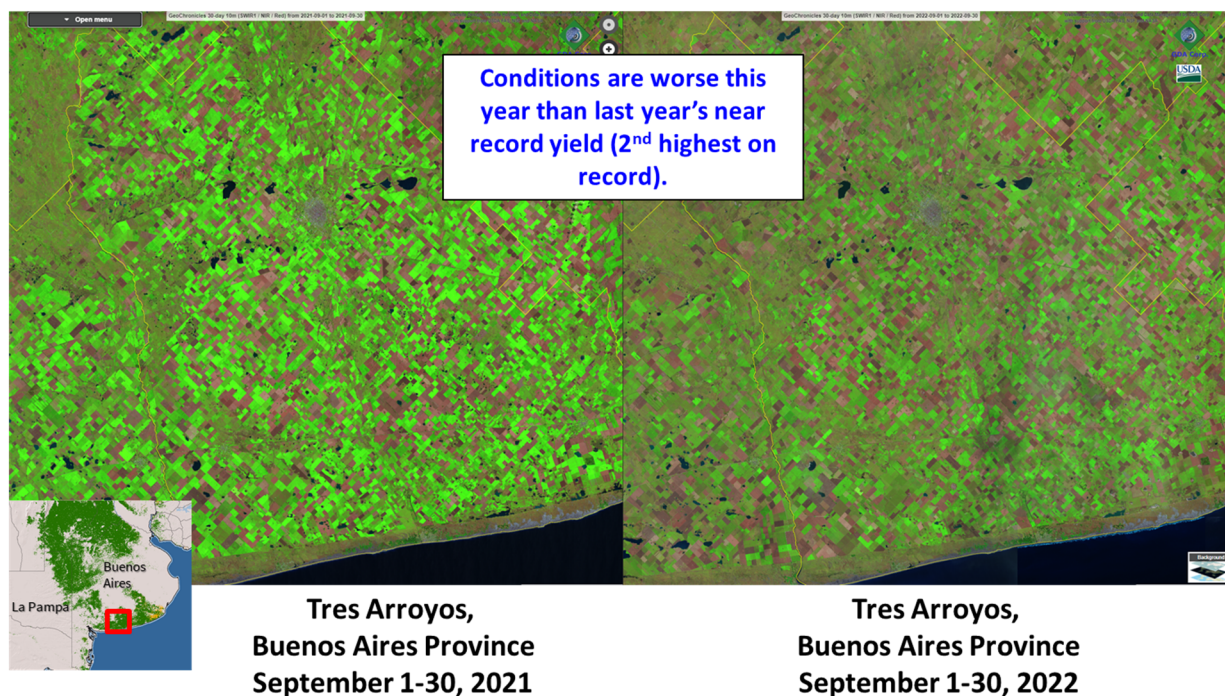


The wheat harvest is finished in the EU. Harvest reports in several countries show higher areas in Poland, Germany, Czech Republic, Slovakia, and Spain, totaling a 0.3 mha EU increase. Total EU yield also increased about 1 percent, with the biggest gain in Poland. In Poland, the changes include a 0.1 mha area increase to 2.5 mha, an 8 percent increase in yield, and a 13 percent (1.5 mmt) increase in production to 13.5 mmt. These estimates reflect data released by Poland’s Statistics Office in late September. Post-harvest reports were used to tally totals for countries such as Spain, Germany, and Slovakia.

For country-specific area, yield, and production estimates within the European Union (EU), please go to PSD Online at <https://apps.fas.usda.gov/PSDOnline/app/index.html#/app/home>, and select “Downloadable Data Sets.” Select the zipped file for “EU Countries Area & Production.”  
(For more information, please contact [Bryan.Purcell@usda.gov](mailto:Bryan.Purcell@usda.gov).)

## Argentina Wheat: Production Down

# Southern Buenos Aires, Argentina



 Foreign Agricultural Service  
U.S. DEPARTMENT OF AGRICULTURE

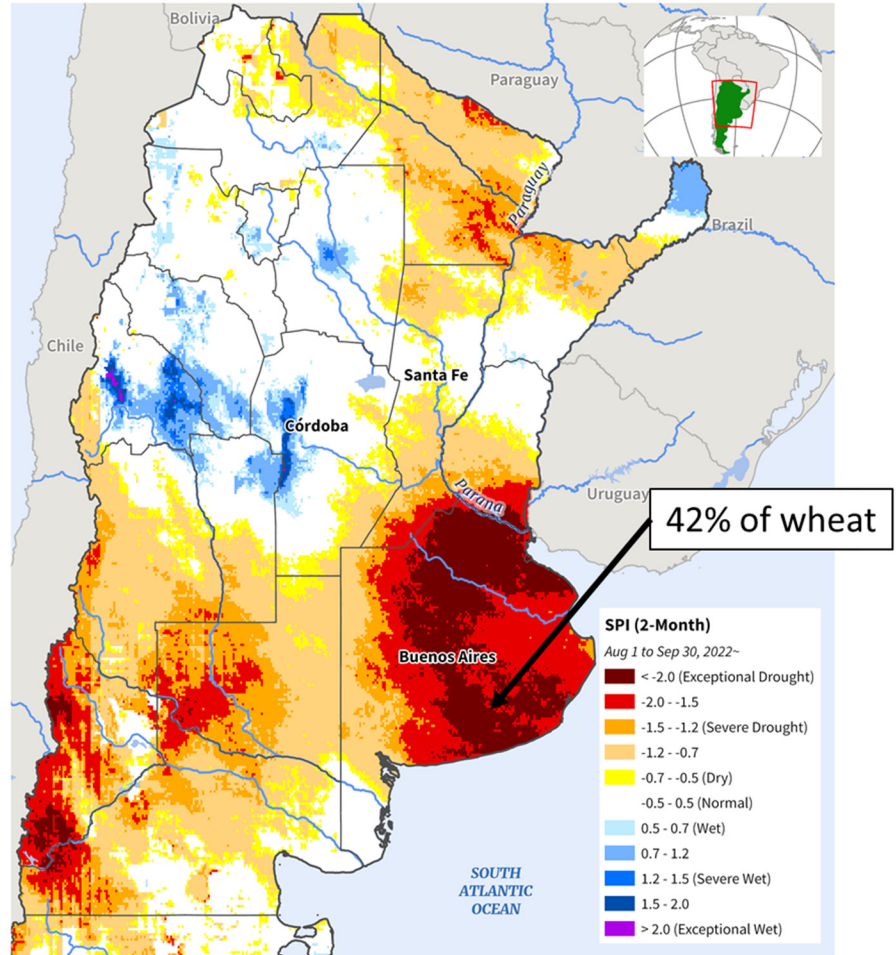
Source: GDA Corp, Sentinel-2/Landsat-8  
(10m) 10-day composite imagery

Argentina wheat production for marketing year 2022/23 is estimated at 17.5 million metric tons, down 8 percent from last month and 22 percent from last year. Wheat yield is estimated at 3.02 tons per hectare, down 3 percent from last month, and 12 percent from last year. Harvested area is estimated at 5.8 million hectares (mha), down 5 percent from last month, and 12 percent from last year.



## Argentina: Standardized Precipitation Index

Conditions have been dry throughout September, though recently there were some showers that may improve conditions. October is still an important month for yield development.



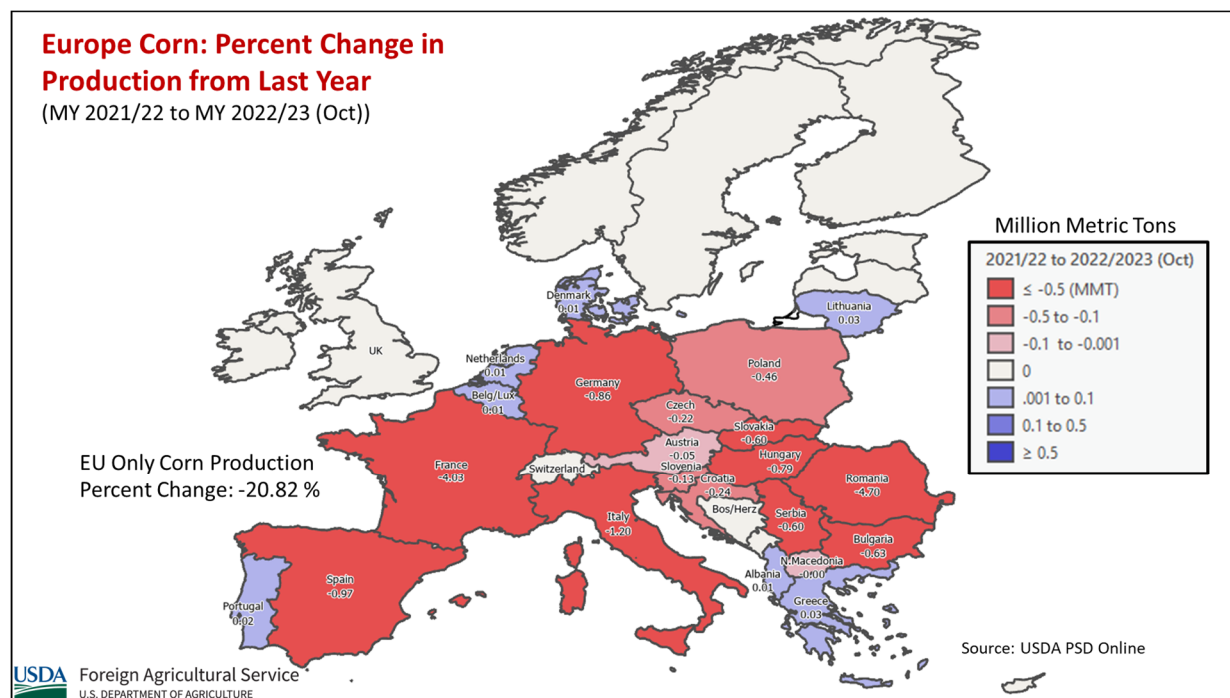
USDA Foreign Agricultural Service  
U.S. DEPARTMENT OF AGRICULTURE

Source: UCSB CHIRPS v2.0 Precipitation Data

Planting for the wheat crop was finished in August of 2022 and the Argentina Ministry of Agriculture (MoA) estimates about 6.1 mha of planted area. USDA assumes average area abandonment of 5 percent. Based on information from MoA, wheat flowering began at the end of September. Flowering is a critical stage of yield development for wheat. In general, the entire season in Buenos Aires province has been drier than normal and conditions throughout September have also been drier than average. Flowering will continue throughout October, which therefore is also a crucial month for yield development. *(For more information, please contact [Katie.McGaughey@usda.gov](mailto:Katie.McGaughey@usda.gov).)*

## European Union Corn: Smallest Crop in 15 Years

European Union (EU) marketing year (MY) 2022/23 corn production is estimated at 56.2 million metric tons (mmt), down 2.6 mmt (4 percent) from last month, 14.8 mmt (21 percent) below last year's crop, and 15 percent below the 5-year average. Area is estimated at 8.9 million hectares (mha), down 0.1 million mha from last month, and 0.3 mha or 4 percent from last year. Yield is estimated at 6.31 tons per hectare (t/ha), down 3 percent from last month, 18 percent from last year, and 16 percent from the 5-year average.

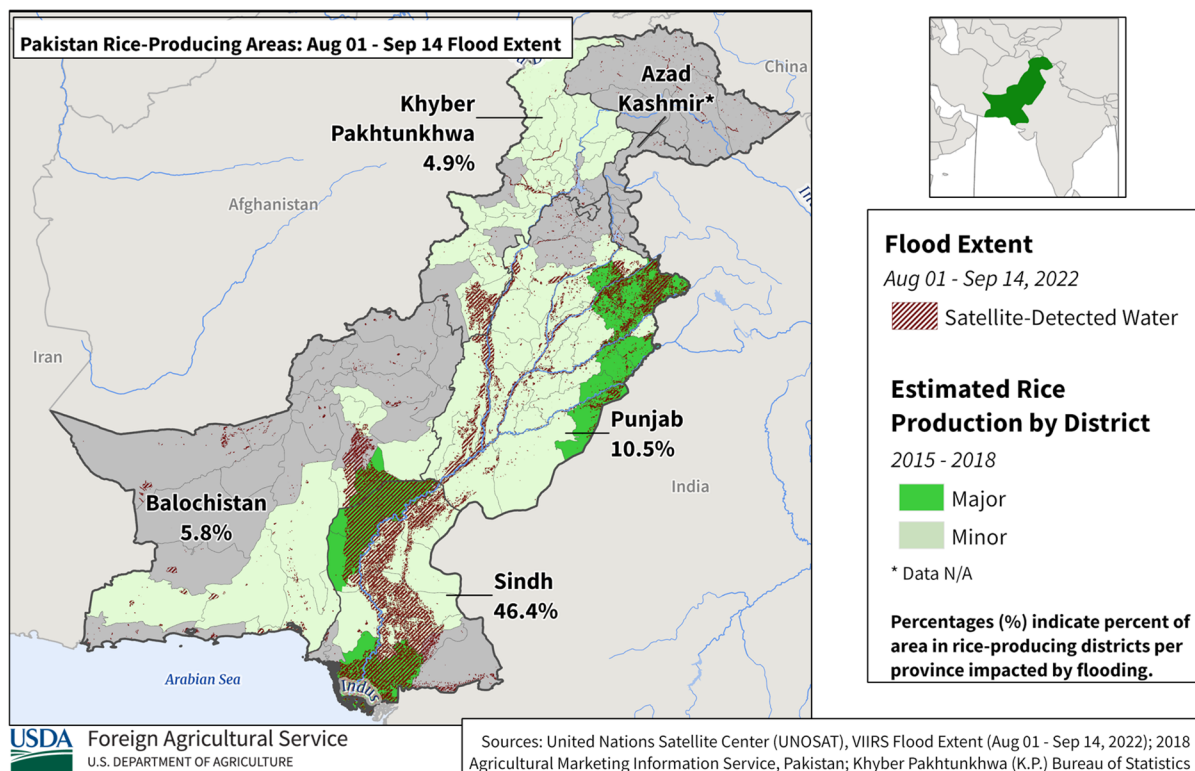


The corn harvest is continuing throughout Europe and national agencies report lower yields across the region. Extreme heat and severe drought in many of the major corn regions created a very challenging growing season. During spring and summer, rainfall was minimal, and the heat was intense. Both contributed to the smallest EU corn crop since MY 2007/08, and the lowest yield since MY 2012/13.

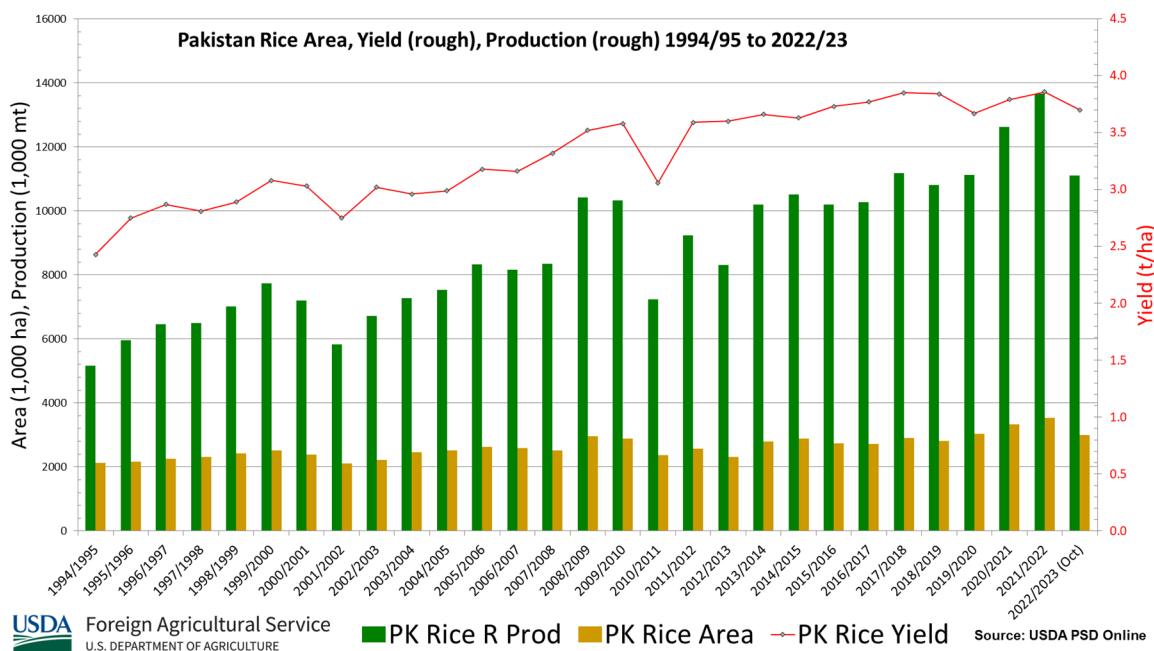
Lower area resulted from farmers converting corn area to silage. Additionally, low yields have resulted in a disappointing harvest. France, the EU's largest producer, is estimated to harvest 11.3 mmt, their smallest crop in over 10 years. Overall, the largest month-to-month reductions in Europe were made to Romania (0.7 mmt), Bulgaria (0.6 mmt) and Hungary (0.6 mmt).

For country-specific area, yield, and production estimates within the European Union (EU), please go to PSD Online at <https://apps.fas.usda.gov/PSDOnline/app/index.html#/app/home>, and select "Downloadable Data Sets." Select the zipped file for "EU Countries Area & Production." (For more information, please contact [Bryan.Purcell@usda.gov](mailto:Bryan.Purcell@usda.gov).)

## Pakistan Rice: Production Reduced by Flooding

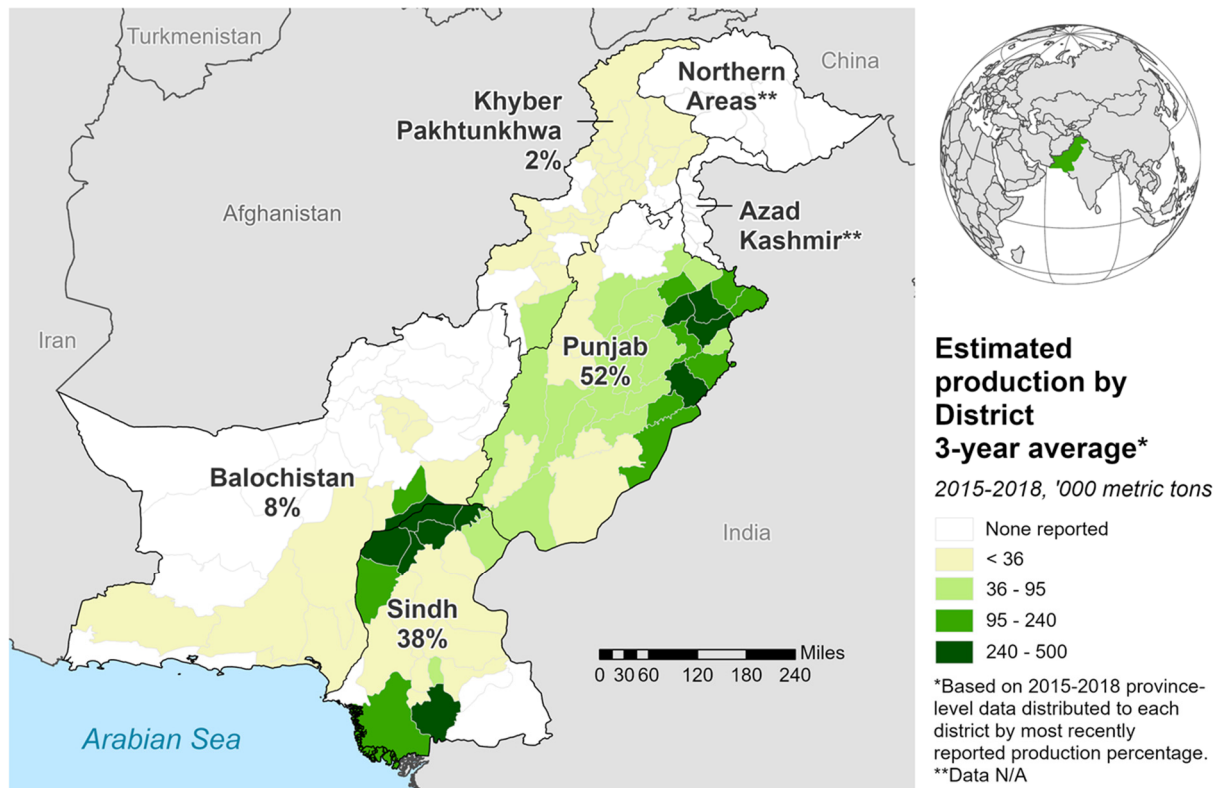


Pakistan rice production for marketing year 2022/23 is estimated at 7.4 million metric tons (mmt) (milled basis), down 1.0 mmt (12 percent) from last month, and down 1.7 mmt (19 percent) from last season's record crop. Harvested area is estimated at 3.0 million hectares (mha), down 0.2 mha (6 percent) from last month. Yield (rough) is estimated at 3.70 tons per hectare (t/ha), down 6 percent from last month.



Production is revised down based on estimated lower area and reduced yield. The area estimate is reduced due to flooding in production areas of northwest Sindh and scattered areas of Punjab. If the flood waters recede quickly, some production in these areas may recover.

## Pakistan: Rice Production



**USDA** Foreign Agricultural Service  
U.S. DEPARTMENT OF AGRICULTURE

Source: Agricultural Marketing Information Service;  
Pakistan Bureau of Statistics;  
Crop Reporting Service

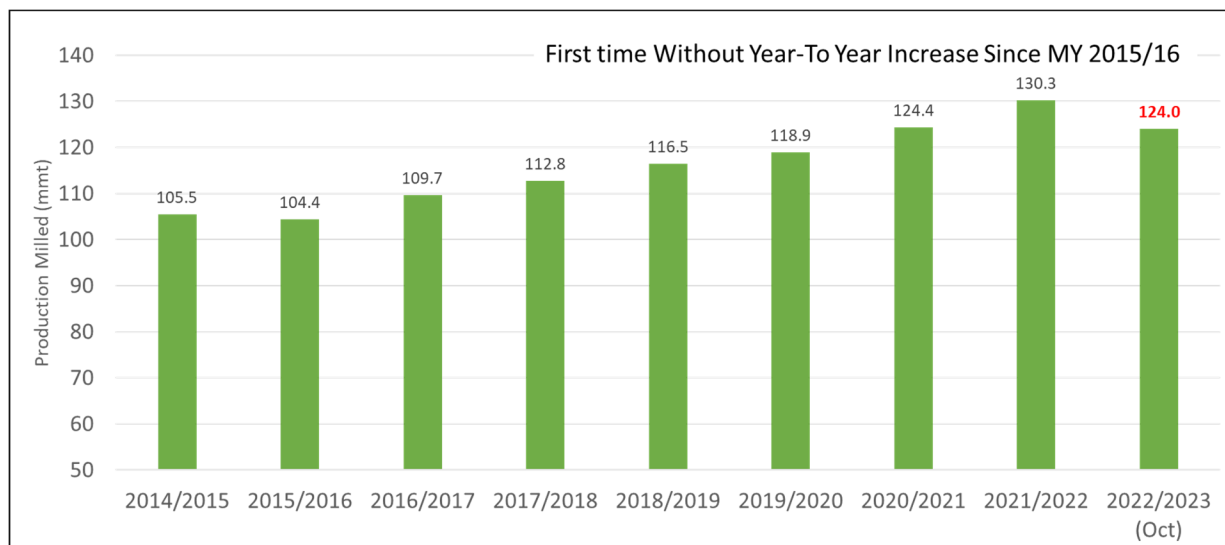
Rice is grown under irrigated conditions with the Tarbela Reservoir providing most of the irrigation water. Pakistan is a leading producer and exporter of Basmati and IRRI rice (white long grain rice). Rice ranks second among the staple food grain crops in Pakistan and exports are a major source of foreign exchange earnings. Pakistan has two major rice-producing provinces, namely Punjab and Sindh. Both provinces account for nearly 90 percent of total rice production. Punjab, due to its agroclimatic and soil conditions, produces 100 percent of the Basmati rice in the country. (For more information, please contact [James.Crutchfield@usda.gov](mailto:James.Crutchfield@usda.gov).)



## India Rice: Production Down Due to Dry Conditions

USDA estimates India rice production for marketing year 2022/23 at 124.0 million metric tons (mmt) (milled basis), down 2.5 mmt (2 percent) from last month and nearly 5 percent from last year. Harvested area is estimated at 45.5 million hectares (mha), unchanged from last month, but down 2 percent from last year. Dry conditions in Northern and Eastern India resulted in a decline in planted area for India's rice crop this year. The 2022 Southwest monsoonal rains have been above average, except for the Northern and Eastern regions. Yield (rough) is forecast at 4.09 metric tons per hectare, down 3 percent from last year.

### India Rice Production Down Nearly 5 Percent from MY 2021/22



USDA Foreign Agricultural Service  
U.S. DEPARTMENT OF AGRICULTURE

Source: USDA PSD Online

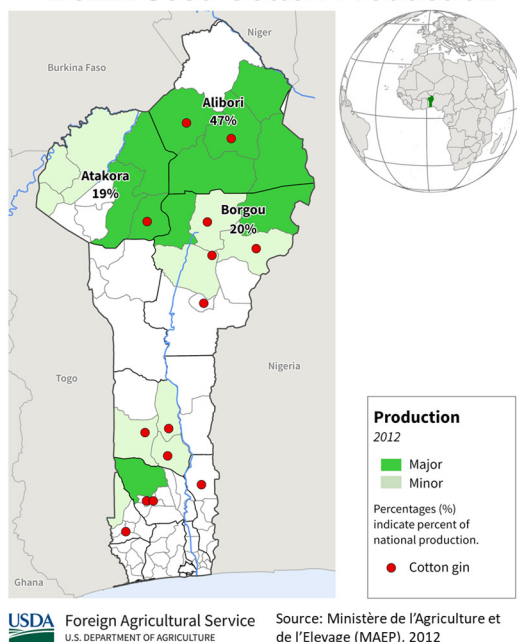
India rice yield is estimated to be down from last year. Most *Kharif* rice is rainfed, whereas crops in Punjab, Haryana, and western Uttar Pradesh have access to irrigation. Satellite-derived, Normalized Difference Vegetation Index (NDVI) analysis in Punjab and western Uttar Pradesh indicates crop vigor is slightly above average. Crop vigor for rainfed rice, however, is below average in the Northern and Eastern rice belts. In the Southern region, Andhra Pradesh and Telangana, combined, account for 20 percent of the *Kharif* crop, and vegetation analysis shows above-average crop vigor because of ideal weather conditions throughout the growing season.

India produces rice in both the *Kharif* and *Rabi* seasons. *Kharif* rice, which is approximately 70 percent of total rice production, will be harvested in early November. *Rabi* rice, which accounts for roughly 30 percent of total rice production, will be planted from November to January and will be harvested in late April. (For more information, please contact [Arnella.Trent@usda.gov](mailto:Arnella.Trent@usda.gov).)

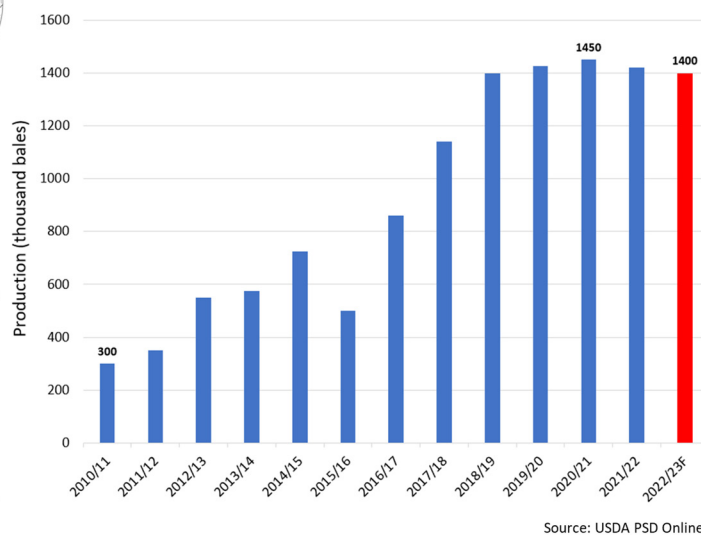
## Benin Cotton: Drought Reduced Planting Intentions and Lowered Production Prospects

USDA forecasts Benin cotton production for marketing year (MY) 2022/23 at 1.4 million 480-pound bales, down 0.18 million bales (11 percent) from last month and down 0.02 million bales (1 percent) from last year. Harvested area is estimated at 620,000 hectares, down 60,000 hectares (9 percent) from last month and down 20,000 hectares (3 percent) from last year. The forecast yield of 492 kilograms per hectare is up 3 percent from the 5-year average. An early season drought during the planting season reduced planting intentions and lowered production prospects.

### Benin Seed Cotton Production



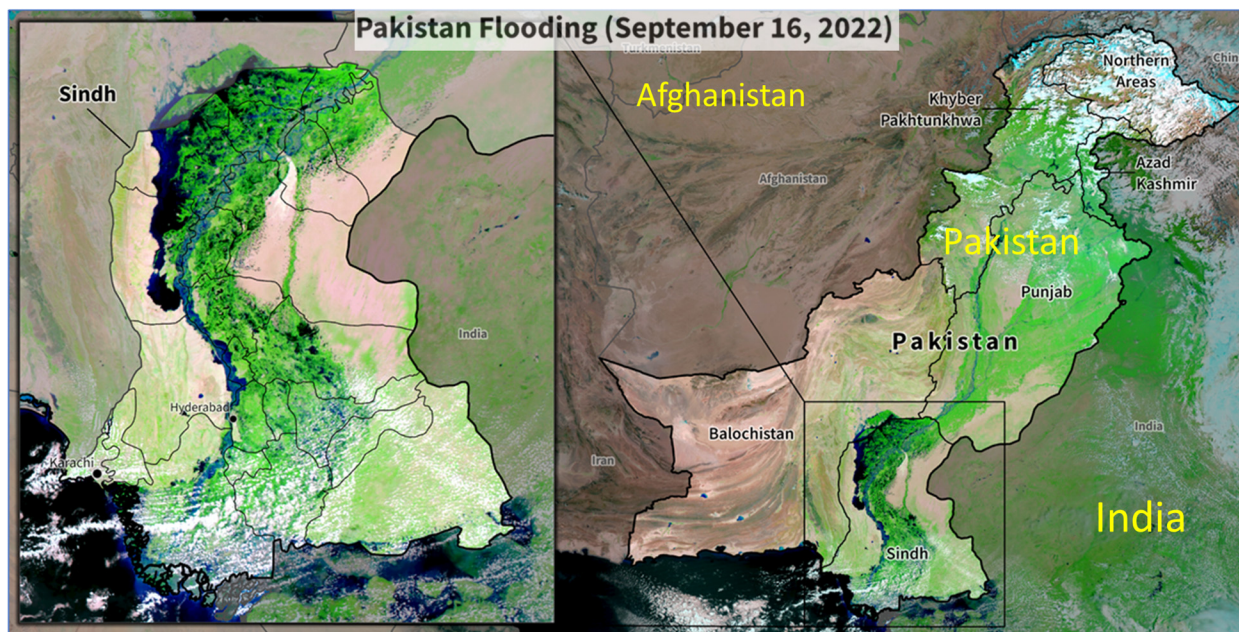
### Benin Lint Cotton Production (thousand 480-pound bales)



Cotton in Benin is sown from late May through mid-July and harvested from October through December. A severe drought in mid-July ended sowing early and caused poor plant establishment which lowered planted area below expectations. Seasonal rainfall after planting was average to above average from August through September. Insect infestations were reported to be average in Benin, while other African Franc Zone countries reported high insect infestations from abundant rainfall in some regions.

African Franc Zone, as defined by World Agricultural Supply and Demand Estimates (WASDE), includes the following ten countries in order of estimated MY 2022/23 production (thousand 480-pound bales): Mali (1,450), Benin (1,400), Burkina Faso (1150), Côte d'Ivoire (1,000), Cameroon (650), Chad (330), Togo (105), Senegal (40), Central African Republic (36), and Niger (9). The top three producing countries (Mali, Benin, and Burkina Faso) each planted over 600,000 hectares of cotton for MY 2022/23. (For more information, please contact [Curt.Reynolds@usda.gov](mailto:Curt.Reynolds@usda.gov).)

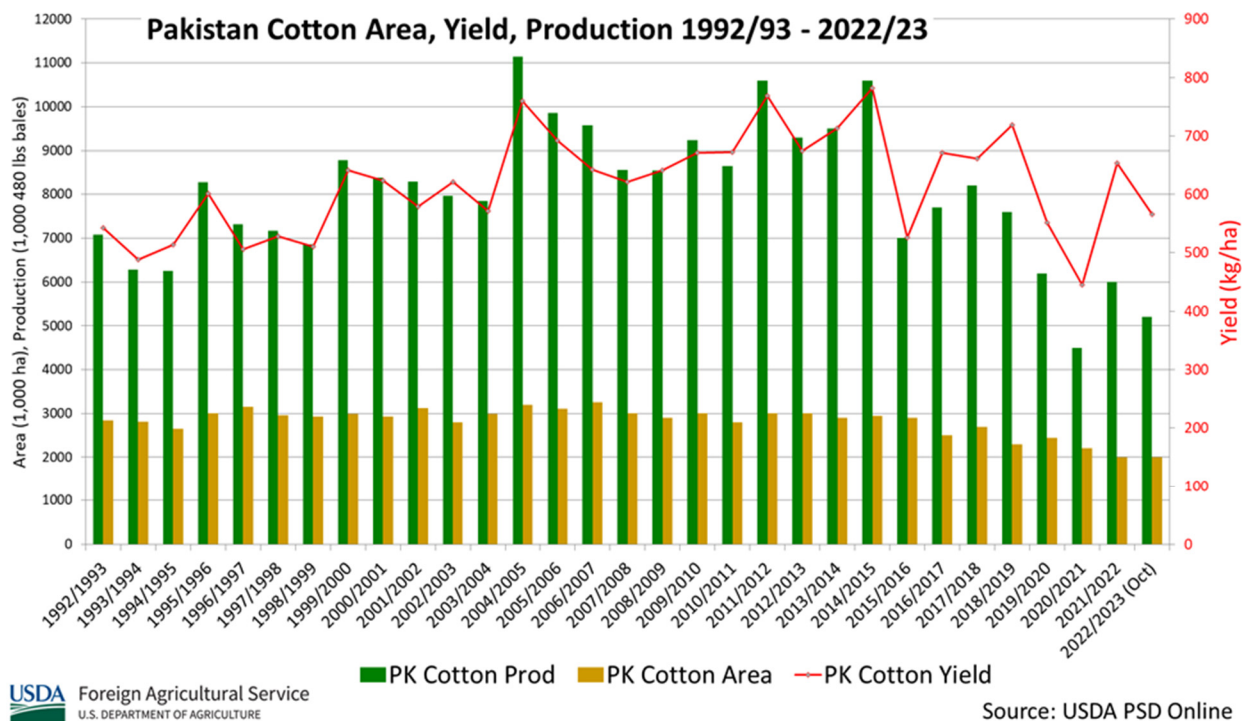
## Pakistan Cotton: Flooding Lowers Production



USDA Foreign Agricultural Service  
U.S. DEPARTMENT OF AGRICULTURE

Sources: False Color Imagery from NOAA VIIRS, Suomi NPP (Sep 16, 2022); Esri Administrative Datasets, World Cities

USDA estimates marketing year (MY) 2022/23 Pakistan cotton production at 5.2 million 480-pound bales, down 0.3 million bales (5 percent) from last month, and down 0.8 million bales (13 percent) from last year. Area is estimated at 2.0 million hectares, and unchanged from last year. The yield is estimated at 566 kilograms per hectare (kg/ha). This is 7 percent below the five-year average of 606 kg/ha.



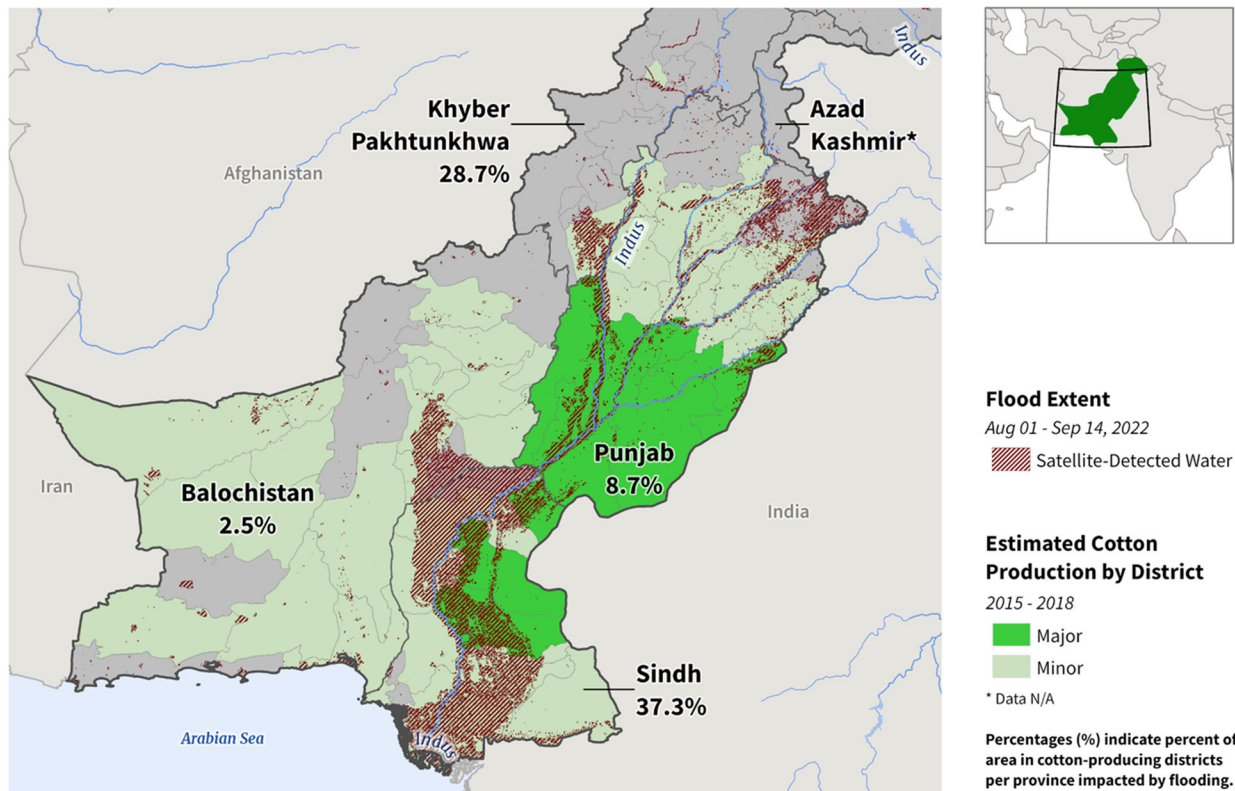
USDA Foreign Agricultural Service  
U.S. DEPARTMENT OF AGRICULTURE

Source: USDA PSD Online



Production is revised down based on projected lower yield due to severe flooding in important production areas of Sindh and scattered areas along the Indus River in Punjab. Due to the flooding, MY 2022/23 yield is reduced 6 percent to 566 kg/ha.

### Pakistan Cotton-Producing Areas: Aug 01 - Sep 14 Flood Extent



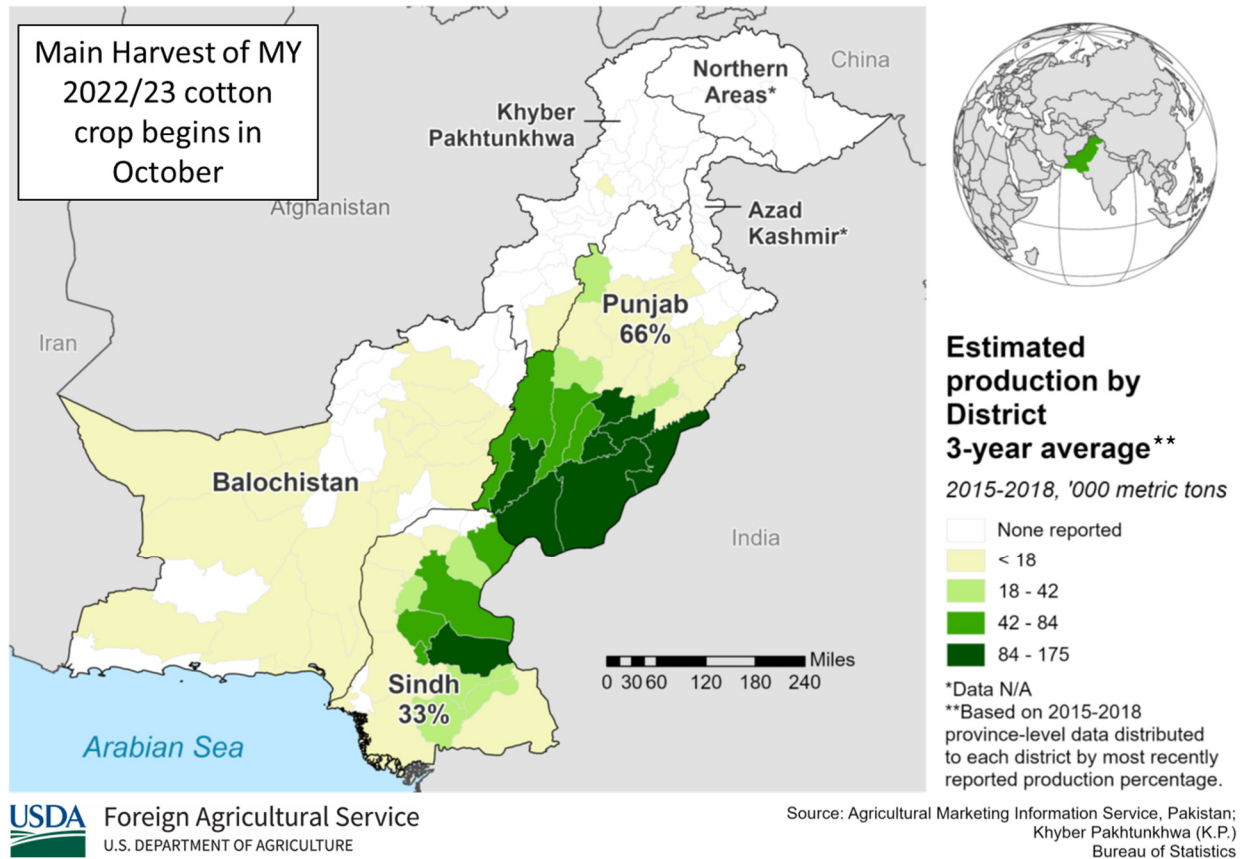
USDA Foreign Agricultural Service  
U.S. DEPARTMENT OF AGRICULTURE

Sources: United Nations Satellite Center (UNOSAT), VIIRS Flood Extent (Aug 01 - Sep 14, 2022); 2018 Agricultural Marketing Information Service, Pakistan; Khyber Pakhtunkhwa (K.P.) Bureau of Statistics

According to FAS/Islamabad, the most affected cotton producing districts in the province of Sindh – Sukkur, Khairpur, Naushahro Feroze, and Ghotki – have large crop areas inundated with flood waters. If the flood waters recede quickly, some production in these areas may recover, but substantial loss has already occurred.



# Pakistan: Cotton Production



Cotton is grown under irrigated conditions with the Tarbela Reservoir providing most of the irrigation water. Approximately 66 percent of Pakistan’s total cotton crop is produced in Punjab province and the remaining 33 percent is in Sindh province. *(For more information, please contact [James.Crutchfield@usda.gov](mailto:James.Crutchfield@usda.gov).)*



**World Agricultural Production  
U.S. Department of Agriculture**

Foreign Agricultural Service / Global Market Analysis  
International Production Assessment Division (IPAD)  
Ag Box 1051, Room 4630, South Building  
Washington, DC 20250-1051

<https://ipad.fas.usda.gov/>

Telephone: (202) 720-1662 Fax: (202) 720-1158

This report uses information from the Foreign Agricultural Service's (FAS) global network of agricultural attachés and counselors, official statistics of foreign governments and other foreign source materials, and the analysis of economic data and satellite imagery. Estimates of foreign area, yield, and production are from the International Production Assessment Division, FAS, and are reviewed by USDA's Inter-Agency Commodity Estimates Committee. Estimates of U.S. area, yield, and production are from USDA's National Agricultural Statistics Service. Numbers within the report may not add to totals because of rounding. This report reflects official USDA estimates released in the World Agricultural Supply and Demand Estimates (WASDE-584), October 12, 2022.

**Printed copies are available from the National Technical Information Service. Download an order form at [http://www.ntis.gov/products/specialty/usda/fas\\_a-g.asp](http://www.ntis.gov/products/specialty/usda/fas_a-g.asp), or call NTIS at 1-800-363-2068.**

The FAS International Production Assessment Division prepared this report. The next issue of World Agricultural Production will be released after 12:00 p.m. Eastern Time, November 9, 2022.

**Conversion Table**

Metric tons to bushels

Wheat, soybeans	=	MT * 36.7437
Corn, sorghum, rye	=	MT * 39.36825
Barley	=	MT * 45.929625
Oats	=	MT * 68.894438

Metric tons to 480-lb bales

Cotton	=	MT * 4.592917
--------	---	---------------

Metric tons to hundredweight

Rice	=	MT * 22.04622
------	---	---------------

Area & weight

1 hectare	=	2.471044 acres
1 kilogram	=	2.204622 pounds



For further information, contact:  
**U.S. Department of Agriculture**  
**Foreign Agricultural Service**  
**Global Market Analysis**  
International Production Assessment Division  
Ag Box 1051, Room 4630, South Building  
Washington, DC 20250-1051

Telephone: (202) 720-1662

Fax: (202) 720-1158

## **GENERAL INFORMATION**

Senior Director	Ronald Frantz	202-720-4056	ronald.frantz@usda.gov
Director	Robert Tetrault	202-720-1071	robert.tetrault@usda.gov
Administrative Assistant	Vacant		
USDA Remote Sensing Advisor	Vacant		
Sr. Analyst/Technical Lead	Curt Reynolds, Ph.D.	202-690-0134	curt.reynolds@usda.gov
Sr. Analyst/ Satellite Imagery	Dath Mita, Ph.D.	202-720-7339	dath.mita@usda.gov
Archives Manager/Technical Lead			
Sr. Analyst/Technical Lead	Jim Crutchfield	202-690-0135	james.crutchfield@usda.gov
GIS Mapping/Imagery Analyst	Lisa Colson	202-720-6652	lisa.colson@usda.gov
WAP Coordinators	Ifeoma Collins	202-720-0240	ifeoma.collins@usda.gov
	Aaron Mulhollen	202-690-0131	aaron.mulhollen@usda.gov

## **COUNTRY- AND REGION-SPECIFIC INFORMATION**

South America, Argentina, Venezuela, and Colombia	Katie McGaughey	202-720-9210	katie.mcgaughey@usda.gov
Western and Central Europe, and North Africa	Bryan Purcell	202-690-0138	bryan.purcell@usda.gov
Russia, Ukraine, Kazakhstan, Moldova, and Belarus	Katie McGaughey	202-720-9210	katie.mcgaughey@usda.gov
South Asia, Sri Lanka Bangladesh, India, and Nepal	Arnella Trent	202-720-0881	arnella.trent@usda.gov
East Asia, China, and Japan	Dath Mita, Ph.D.	202-720-7339	dath.mita@usda.gov
Sub-Saharan Africa, Nigeria and South Africa	Curt Reynolds, Ph.D.	202-690-0134	curt.reynolds@usda.gov
S.E. Asia, Indonesia, Thailand, Malaysia, Cambodia and Vietnam	Justin Jenkins	202-720-0419	justin.jenkins@usda.gov
Central America, Mexico, and Western United States	Ifeoma Collins	202-720-0240	ifeoma.collins@usda.gov
Australia, New Zealand, Pakistan Papua New Guinea and South Pacific Islands	Jim Crutchfield	202-690-0135	james.crutchfield@usda.gov
Middle East, Central Asia, Afghanistan Iraq, Iran, and Syria	Iliana Mladenova, Ph.D.	202-690-2315	iliana.mladenova@usda.gov
Canada, Caribbean, Eastern United States	Aaron Mulhollen	202-690-0131	aaron.mulhollen@usda.gov
Brazil	Sunita Yadav-Pauletti, Ph.D.		sunita.yadav-pauletti@usda.gov



The Foreign Agricultural Service (FAS) updates its production, supply and distribution (PSD) database for cotton, oilseeds, and grains at 12:00 p.m. on the day the *World Agricultural Supply and Demand Estimates* (WASDE) report is released. This circular is released by 12:15 p.m.

## **FAS Reports and Databases:**

### **World Agricultural Production**

Current: <https://www.fas.usda.gov/data/world-agricultural-production>

Archive: <https://usda.library.cornell.edu/concern/publications/5q47rn72z?locale=en>

USDA's Foreign Agricultural Service (FAS) publishes a monthly report on crop acreage, yield and production in major countries worldwide. Sources include reporting from FAS's worldwide offices, official statistics of foreign governments, and analysis of economic data and satellite imagery. The reports reflect official USDA estimates released in the monthly *World Agricultural Supply and Demand Estimates* (WASDE).

### **World Markets and Trade**

Current: <https://www.fas.usda.gov/data>

Archive:

[https://usda.library.cornell.edu/catalog?f%5Bmember\\_of\\_collections\\_ssim%5D%5B%5D=Foreign+Agricultural+Service&locale=en](https://usda.library.cornell.edu/catalog?f%5Bmember_of_collections_ssim%5D%5B%5D=Foreign+Agricultural+Service&locale=en)

USDA's Foreign Agricultural Service (FAS) publishes monthly and quarterly reports which include data on U.S. and global trade, production, consumption and stocks, as well as analysis of developments affecting world trade in oilseeds, grains, cotton, livestock and poultry. The reports reflect official USDA estimates released in the monthly *World Agricultural Supply and Demand Estimates* (WASDE).

### **Global Agricultural Information Network (GAIN)**

<https://www.fas.usda.gov/databases/global-agricultural-information-network-gain>

USDA's Foreign Agricultural Service (FAS) provides timely reports on foreign markets through the Global Agriculture Information Network (GAIN) database. An average of 2,000 reports are added each year, with reports going back to 1995. GAIN reports are compiled by FAS' global market intelligence network, which includes FAS foreign service officers and locally engaged staff in over 90 overseas offices world-wide. They provide on-the-ground intelligence, insight, and analysis on nearly 200 countries, delivering information on foreign agricultural markets, crop conditions, and agro-political dynamics of interest to U.S. agriculture. GAIN reports contain assessments of commodity and trade issues made by USDA staff and are not necessarily statements of official U.S. government policy.

### **Production, Supply and Distribution (PS&D) Online**

<https://apps.fas.usda.gov/psdonline/app/index.html#/app/home>

PSD Online is the public repository for USDA's Official Production, Supply and Distribution forecast data and reports for key agricultural commodities. PSD Online data are reviewed and updated monthly by an interagency committee chaired by USDA's World Agricultural Outlook Board (WAOB). The committee consist of representatives from Foreign Agricultural Service (FAS), the Economic Research Service (ERS), the Farm Service Agency (FSA), and the Agricultural Marketing Service (AMS).

### **EU Countries and Russia Wheat: Area and Production Estimates**

<https://apps.fas.usda.gov/psdonline/app/index.html#/app/downloads> (click on PSD Datasets)

USDA's Foreign Agricultural Service (FAS) provides country-level area and production estimates for the nations of the European Union. For Russia, country-level area and production estimates are provided for Winter and Spring wheat. These datasets are reviewed and updated monthly by an interagency committee chaired by USDA's World Agricultural Outlook Board (WAOB) and can be downloaded through PSD datasets on PSD Online.





## FAS Reports and Databases:

### **International Production Assessment (IPAD)**

<https://ipad.fas.usda.gov/>

USDA's Foreign Agricultural Service (FAS) maintains a dynamic global crop production portal with key information including *World Agricultural Production* (WAP) briefs, Commodity Intelligence Reports (CIR), geospatial applications, crop production maps at a subnational level and crop calendars for the top-20 producing countries. Additionally, Crop Explorer (<https://ipad.fas.usda.gov/cropexplorer/>) displays rainfall, temperature, evapotranspiration, soil moisture, snow cover, and vegetation conditions in charts and maps.

### **USDA and NASA Global Agricultural Monitoring (GLAM)**

<https://glam1.gsfc.nasa.gov/>

The USDA and NASA Global Agricultural Monitoring (GLAM) system provides near real-time and science quality Moderate Resolution Imaging Spectroradiometer (MODIS) Normalized Difference Vegetation Index (NDVI) from the satellites Terra and Aqua. The public can view and retrieve MODIS 8-day composited, global NDVI satellite imagery and time series data. GLAM was developed by NASA's Global Inventory Modeling and Mapping Studies (GIMMS) group for USDA's Foreign Agricultural Service.

### **Global Agricultural and Disaster Assessment System (GADAS)**

<https://geo.fas.usda.gov/GADAS/index.html>

USDA's Foreign Agricultural Service (FAS) provides the Global Agricultural and Disaster Assessment System (GADAS), a web-based Geographic Information System (GIS) tool which integrates a vast array of highly detailed earth observation data streams, particularly targeted towards agricultural and disaster assessment analysis. GADAS is an interactive website which provides analysts with a wide variety of routine geospatial products (maps, charts, tables) they require for comprehensive situational investigations and recurring assessments.

### **Export Sales Reporting**

<https://apps.fas.usda.gov/esrquery/>

USDA's Export Sales Reporting Program monitors U.S. agricultural export sales on a daily and weekly basis. Export sales reporting provides a constant stream of up-to-date market information for 40 U.S. agricultural commodities sold abroad. The weekly U.S. Export Sales report is the most currently available source of U.S. exports sales data. The data is used to analyze overall levels of export demand, determine where markets exit, and assess the relative position of U.S. commodities in foreign markets.

### **Global Agricultural Trade System (GATS)**

<https://apps.fas.usda.gov/gats/default.aspx>

The Global Agricultural Trade System (GATS) is a searchable database containing monthly U.S. Census Bureau trade data organized by agricultural commodity and agricultural related product groups. Trade data is searchable by partner countries and partner groups. Historical U.S. agricultural trade data is available back to 1967. In addition, U.N. trade statistics (UN Comtrade) may be queried through GATS. UN trade data is available for nearly 200 countries or areas, dating from the inception of the Harmonized System (HS) of trade codes in 1989 to present. The database is continuously updated. U.S. trade data is updated monthly according to the U.S. Census Bureau's reporting system. UN Comtrade data are updated in GATS after nationally submitted data to the UN are standardized by the UN Statistical Division and added to the UN Comtrade database.

### **Other USDA Reports:**

World Agricultural Supply and Demand Estimates (WASDE):

<http://www.usda.gov/oce/commodity/wasde/>

Economic Research Service:

<http://www.ers.usda.gov/topics/crops>

National Agricultural Statistics Service:

<http://www.nass.usda.gov/Publications/>

**Table 01 World Crop Production Summary**

Million Metric Tons

Commodity	World -	Total Foreign	North America			Former Soviet		European	Asia (WAP)					South America		Selected Other			All Others
			United States	Canada -	Mexico -	Russia -	Ukraine -		China -	India -	Indonesia	Pakistan	Thailand	Argentina	Brazil -	Australia	South Africa	Turkey -	
---Million metric tons---																			
<b>Wheat</b>																			
2020/21	774.5	724.8	49.8	35.4	3.0	85.4	25.4	nr	134.3	107.9	0.0	25.2	0.0	17.6	6.3	31.9	2.1	18.3	232.1
2021/22 prel.	779.8	735.0	44.8	22.3	3.3	75.2	33.0	nr	136.9	109.6	0.0	27.5	0.0	22.5	7.7	36.3	2.3	16.0	242.4
2022/23 proj.																			
Sep	783.9	735.4	48.5	35.0	3.6	91.0	20.5	nr	138.0	103.0	0.0	26.4	0.0	19.0	8.7	33.0	2.3	17.3	237.7
Oct	781.7	736.8	44.9	35.0	3.6	91.0	20.5	nr	138.0	103.0	0.0	26.4	0.0	17.5	9.2	33.0	2.3	17.3	240.1
<b>Coarse Grains</b>																			
2020/21	1,441.2	1,068.3	372.9	29.6	32.7	41.4	39.6	nr	269.1	51.4	12.6	9.3	5.6	60.0	90.3	18.6	17.8	15.8	374.6
2021/22 prel.	1,503.7	1,106.0	397.7	24.4	32.8	38.5	53.5	nr	280.9	51.2	12.7	11.0	5.4	61.2	120.6	18.8	16.9	11.6	366.7
2022/23 proj.																			
Sep	1,463.6	1,098.5	365.1	29.7	33.5	42.0	39.0	nr	282.3	50.5	12.9	9.4	5.4	64.9	130.5	16.7	17.9	14.2	349.7
Oct	1,459.8	1,095.7	364.1	29.7	33.5	42.0	39.0	nr	282.3	49.8	12.9	9.4	5.3	64.7	130.5	16.7	17.9	14.2	347.9
<b>Rice, Milled</b>																			
2020/21	509.3	502.0	7.2	0.0	0.2	0.7	0.0	nr	148.3	124.4	34.5	8.4	18.9	0.8	8.0	0.3	0.0	0.6	156.9
2021/22 prel.	515.3	509.2	6.1	0.0	0.2	0.7	0.0	nr	149.0	130.3	34.4	9.1	19.9	0.8	7.3	0.5	0.0	0.5	156.5
2022/23 proj.																			
Sep	508.0	502.7	5.2	0.0	0.2	0.7	0.0	nr	147.0	126.5	34.6	8.4	19.8	0.8	7.1	0.5	0.0	0.6	156.5
Oct	505.0	499.8	5.3	0.0	0.2	0.7	0.0	nr	147.0	124.0	34.6	7.4	20.1	0.8	7.3	0.5	0.0	0.6	156.6
<b>Total Grains</b>																			
2020/21	2,725.0	2,295.1	429.9	65.1	35.8	127.5	65.0	nr	551.6	283.6	47.1	43.0	24.4	78.5	104.6	50.8	19.9	34.6	763.5
2021/22 prel.	2,798.8	2,350.2	448.6	46.7	36.2	114.4	86.6	nr	566.8	291.1	47.1	47.5	25.2	84.4	135.7	55.6	19.1	28.1	765.6
2022/23 proj.																			
Sep	2,755.5	2,336.7	418.9	64.7	37.3	133.7	59.5	nr	567.3	280.0	47.5	44.2	25.2	84.7	146.3	50.2	20.1	32.0	744.0
Oct	2,746.5	2,332.3	414.3	64.7	37.3	133.7	59.5	nr	567.3	276.8	47.5	43.2	25.4	83.0	147.0	50.2	20.1	32.0	744.6
<b>Oilseeds</b>																			
2020/21	607.5	482.9	124.5	25.9	0.7	20.1	19.9	nr	65.8	38.3	14.6	2.5	1.0	51.2	143.9	5.7	2.7	2.9	87.7
2021/22 prel.	604.5	473.2	131.4	20.1	0.9	23.1	24.3	nr	62.8	41.1	15.1	3.2	1.0	49.0	131.7	8.6	3.1	3.4	85.7
2022/23 proj.																			
Sep	644.8	516.3	128.5	26.5	0.9	26.4	17.2	nr	65.2	41.9	15.2	3.1	1.0	56.8	154.3	8.6	2.9	3.8	92.7
Oct	646.6	519.7	126.9	26.1	0.9	26.4	17.2	nr	65.2	41.9	15.2	3.0	1.0	56.8	157.3	8.6	2.9	3.8	93.5
<b>Cotton</b>																			
2020/21	111.5	96.9	14.6	0.0	1.0	0.0	0.0	1.7	29.6	27.6	0.0	4.5	0.0	1.4	10.8	2.8	0.1	2.9	14.5
2021/22 prel.	115.5	98.0	17.5	0.0	1.2	0.0	0.0	1.6	26.8	24.5	0.0	6.0	0.0	1.5	11.5	5.8	0.1	3.8	15.3
2022/23 proj.																			
Sep	118.4	104.6	13.8	0.0	1.4	0.0	0.0	1.6	28.0	27.5	0.0	5.5	0.0	1.4	13.0	6.0	0.1	4.4	15.8
Oct	118.1	104.2	13.8	0.0	1.4	0.0	0.0	1.6	28.0	27.5	0.0	5.2	0.0	1.4	13.0	6.0	0.1	4.4	15.7

1/ Includes wheat, coarse grains, and rice (milled) shown above.

**Table 02 Wheat Area, Yield, and Production**

Country / Region	Area (Million hectares)				Yield (Metric tons per hectare)				Production (Million metric tons)				Change in Production			
	2020/21	Prel.	2022/23 Proj.		2020/21	Prel.	2022/23 Proj.		2020/21	Prel.	2022/23 Proj.		From last month		From last year	
		2021/22	Sep	Oct		2021/22	Sep	Oct		2021/22	Sep	Oct	MMT	Percent	MMT	Percent
<b>World</b>	220.51	222.11	221.44	220.41	3.51	3.51	3.54	3.55	774.53	779.76	783.92	781.70	-2.22	-0.28	1.94	0.25
<b>United States</b>	14.89	15.03	15.19	14.36	3.34	2.98	3.20	3.13	49.75	44.80	48.52	44.90	-3.62	-7.46	0.10	0.22
<b>Total Foreign</b>	205.62	207.08	206.25	206.05	3.52	3.55	3.57	3.58	724.78	734.96	735.40	736.80	1.40	0.19	1.84	0.25
<b>European Union</b>	22.97	24.25	24.00	24.25	5.52	5.70	5.50	5.56	126.69	138.29	132.10	134.75	2.65	2.01	-3.54	-2.56
<b>United Kingdom</b>	1.39	1.79	1.80	1.80	6.96	7.81	8.11	8.11	9.66	13.99	14.60	14.60	0.00	0.00	0.61	4.38
<b>Serbia</b>	0.59	0.60	0.63	0.63	4.58	5.00	4.60	4.60	2.70	3.00	2.90	2.90	0.00	0.00	-0.10	-3.33
<b>China</b>	23.38	23.57	23.60	23.60	5.74	5.81	5.85	5.85	134.25	136.95	138.00	138.00	0.00	0.00	1.05	0.77
<b>South Asia</b>																
India	31.36	31.13	30.54	30.54	3.44	3.52	3.37	3.37	107.86	109.59	103.00	103.00	0.00	0.00	-6.59	-6.01
Pakistan	8.81	9.17	9.00	9.00	2.87	3.00	2.93	2.93	25.25	27.46	26.40	26.40	0.00	0.00	-1.06	-3.87
Afghanistan	2.33	2.20	2.20	2.20	2.15	2.00	2.05	2.05	5.01	4.40	4.50	4.50	0.00	0.00	0.10	2.27
Nepal	0.71	0.72	0.72	0.72	2.99	2.90	2.92	2.92	2.13	2.08	2.10	2.10	0.00	0.00	0.03	1.20
<b>Former Soviet Union - 12</b>																
Russia	28.68	27.63	28.70	28.70	2.98	2.72	3.17	3.17	85.35	75.16	91.00	91.00	0.00	0.00	15.84	21.08
Russia Winter	16.63	15.22	16.30	16.30	3.77	3.43	4.17	4.17	62.69	52.19	68.00	68.00	0.00	0.00	15.81	30.28
Russia Spring	12.06	12.41	12.40	12.40	1.88	1.85	1.85	1.85	22.66	22.96	23.00	23.00	0.00	0.00	0.04	0.16
Ukraine	6.85	7.41	5.25	5.25	3.71	4.45	3.90	3.90	25.42	33.01	20.50	20.50	0.00	0.00	-12.51	-37.89
Kazakhstan	12.06	12.72	12.75	12.75	1.18	0.93	1.02	1.02	14.26	11.81	13.00	13.00	0.00	0.00	1.19	10.04
Uzbekistan	1.36	1.36	1.40	1.40	4.53	4.40	4.71	4.71	6.16	5.99	6.60	6.60	0.00	0.00	0.62	10.28
Belarus	0.72	0.65	0.68	0.68	3.94	3.54	3.48	3.48	2.85	2.30	2.35	2.35	0.00	0.00	0.05	2.17
<b>Canada</b>	10.02	9.19	10.00	10.00	3.54	2.43	3.50	3.50	35.44	22.30	35.00	35.00	0.00	0.00	12.70	56.98
<b>South America</b>																
Argentina	6.40	6.55	6.10	5.80	2.76	3.44	3.11	3.02	17.64	22.50	19.00	17.50	-1.50	-7.89	-5.00	-22.22
Brazil	2.34	2.74	3.20	3.10	2.67	2.81	2.72	2.97	6.25	7.70	8.70	9.20	0.50	5.75	1.50	19.48
<b>Australia</b>	12.64	13.04	13.10	13.10	2.52	2.79	2.52	2.52	31.92	36.35	33.00	33.00	0.00	0.00	-3.35	-9.21
<b>Africa</b>																
Egypt	1.39	1.40	1.53	1.53	6.40	6.43	6.41	6.41	8.90	9.00	9.80	9.80	0.00	0.00	0.80	8.89
Morocco	2.76	2.86	2.50	2.50	0.93	2.64	1.08	1.08	2.56	7.54	2.70	2.70	0.00	0.00	-4.84	-64.19
Algeria	2.08	2.08	2.08	2.08	1.50	1.20	1.78	1.78	3.11	2.50	3.70	3.70	0.00	0.00	1.20	48.00
Ethiopia	1.83	1.95	2.00	2.00	3.00	2.83	2.85	2.85	5.48	5.52	5.70	5.70	0.00	0.00	0.18	3.26
<b>Middle East</b>																
Turkey	7.10	7.05	6.80	6.80	2.57	2.27	2.54	2.54	18.25	16.00	17.25	17.25	0.00	0.00	1.25	7.81
Iran	6.00	6.00	6.20	6.20	2.50	2.00	2.13	2.13	15.00	12.00	13.20	13.20	0.00	0.00	1.20	10.00
Iraq	2.40	2.00	2.00	2.00	1.93	1.75	1.50	1.50	4.64	3.50	3.00	3.00	0.00	0.00	-0.50	-14.29
Syria	1.60	1.10	1.20	1.20	2.81	1.82	1.75	1.75	4.50	2.00	2.10	2.10	0.00	0.00	0.10	5.00
<b>Mexico</b>	0.56	0.55	0.59	0.59	5.33	6.00	6.05	6.05	2.97	3.28	3.57	3.57	0.00	0.00	0.29	8.81
<b>Others</b>	7.32	7.40	7.69	7.64	2.81	2.81	2.81	2.80	20.56	20.76	21.63	21.38	-0.25	-1.16	0.62	2.96

**Table 03 Total Coarse Grain Area, Yield, and Production**

Country / Region	Area (Million hectares)				Yield (Metric tons per hectare)				Production (Million metric tons)				Change in Production						
	2020/21	Prel.		2022/23 Proj.		2020/21	Prel.		2022/23 Proj.		2020/21	Prel.		2022/23 Proj.		From last month		From last year	
		2021/22	Sep	Oct	2021/22		Sep	Oct	2021/22	Sep		Oct	MMT	Percent	MMT	Percent			
<b>World</b>	344.76	345.68	339.95	340.06	4.18	4.35	4.31	4.29	1,441.19	1,503.73	1,463.62	1,459.80	-3.82	-0.26	-43.94	-2.92			
<b>United States</b>	36.81	38.34	36.36	36.42	10.13	10.37	10.04	10.00	372.89	397.71	365.09	364.11	-0.98	-0.27	-33.60	-8.45			
<b>Total Foreign</b>	307.94	307.34	303.59	303.64	3.47	3.60	3.62	3.61	1,068.30	1,106.02	1,098.53	1,095.68	-2.84	-0.26	-10.34	-0.93			
<b>China</b>	43.72	45.77	45.45	45.45	6.15	6.14	6.21	6.21	269.08	280.85	282.30	282.30	0.00	0.00	1.45	0.52			
<b>European Union</b>	28.77	27.77	27.67	27.53	5.40	5.56	5.04	5.01	155.46	154.41	139.41	137.81	-1.60	-1.15	-16.60	-10.75			
<b>United Kingdom</b>	1.66	1.43	1.37	1.37	5.64	5.88	6.10	6.10	9.36	8.41	8.35	8.35	0.00	0.00	-0.06	-0.73			
<b>South America</b>																			
Brazil	21.30	23.37	24.31	24.31	4.24	5.16	5.37	5.37	90.32	120.62	130.54	130.54	0.00	0.00	9.92	8.22			
Argentina	8.65	10.14	9.60	9.60	6.94	6.03	6.76	6.74	60.01	61.16	64.91	64.71	-0.20	-0.31	3.56	5.81			
<b>Former Soviet Union - 12</b>																			
Russia	14.55	14.01	13.40	13.40	2.84	2.75	3.13	3.13	41.40	38.54	42.00	42.00	0.00	0.00	3.46	8.98			
Ukraine	8.53	8.66	6.87	6.87	4.64	6.18	5.68	5.68	39.59	53.51	38.96	38.96	0.00	0.00	-14.55	-27.20			
Kazakhstan	3.20	2.63	2.61	2.61	1.54	1.43	1.57	1.57	4.93	3.76	4.10	4.10	0.00	0.00	0.34	9.05			
Belarus	1.14	0.99	1.03	1.03	3.47	3.05	3.11	3.11	3.95	3.00	3.20	3.20	0.00	0.00	0.20	6.67			
<b>Africa</b>																			
Nigeria	13.10	13.70	13.95	13.95	1.60	1.56	1.54	1.54	20.90	21.39	21.50	21.50	0.00	0.00	0.11	0.50			
South Africa	3.36	3.19	3.29	3.29	5.31	5.29	5.43	5.43	17.81	16.86	17.87	17.87	0.00	0.00	1.02	6.03			
Tanzania	5.17	5.40	5.00	5.00	1.51	1.49	1.40	1.40	7.79	8.05	6.98	6.98	0.00	0.00	-1.08	-13.35			
Burkina Faso	4.18	4.24	4.24	4.24	1.13	0.99	1.16	1.16	4.72	4.20	4.90	4.90	0.00	0.00	0.70	16.58			
Ethiopia	5.53	5.59	5.63	5.63	3.45	3.08	3.23	3.23	19.10	17.20	18.20	18.20	0.00	0.00	1.00	5.81			
Egypt	1.03	1.16	1.16	1.16	7.01	7.13	7.13	7.13	7.24	8.30	8.30	8.30	0.00	0.00	0.00	0.00			
Mali	5.17	4.70	4.70	4.70	1.41	1.34	1.38	1.38	7.26	6.31	6.50	6.50	0.00	0.00	0.19	2.95			
<b>India</b>	24.12	24.29	24.34	24.54	2.13	2.11	2.07	2.03	51.39	51.21	50.50	49.80	-0.70	-1.39	-1.41	-2.75			
<b>Southeast Asia</b>																			
Indonesia	3.85	3.90	3.95	3.95	3.27	3.26	3.27	3.27	12.60	12.70	12.90	12.90	0.00	0.00	0.20	1.57			
Philippines	2.57	2.56	2.65	2.65	3.25	3.26	3.13	3.13	8.35	8.34	8.30	8.30	0.00	0.00	-0.04	-0.53			
Vietnam	0.99	0.99	0.97	0.97	4.80	4.86	4.85	4.85	4.74	4.80	4.70	4.70	0.00	0.00	-0.10	-2.04			
Thailand	1.28	1.23	1.23	1.21	4.33	4.36	4.36	4.35	5.55	5.35	5.35	5.25	-0.10	-1.87	-0.10	-1.87			
<b>Mexico</b>	8.76	8.89	9.01	9.01	3.73	3.69	3.72	3.72	32.66	32.77	33.50	33.50	0.00	0.00	0.72	2.20			
<b>Canada</b>	5.80	5.81	5.58	5.58	5.11	4.21	5.32	5.33	29.64	24.43	29.70	29.72	0.02	0.07	5.29	21.65			
<b>Australia</b>	7.26	6.03	5.88	5.88	2.56	3.11	2.84	2.84	18.56	18.76	16.67	16.67	0.00	0.00	-2.09	-11.13			
<b>Middle East</b>																			
Turkey	4.63	4.46	4.54	4.54	3.40	2.60	3.12	3.12	15.76	11.58	14.17	14.17	0.00	0.00	2.59	22.36			
Iran	1.81	1.91	1.86	1.86	2.77	2.16	2.38	2.38	5.02	4.12	4.42	4.42	0.00	0.00	0.30	7.31			
<b>Others</b>	77.83	74.54	73.33	73.35	1.61	1.68	1.64	1.64	125.14	125.41	120.33	120.07	-0.26	-0.22	-5.34	-4.26			

World and Selected Countries and Regions; Coarse Grain includes: Barley, Corn, Millet, Mixed Grains, Oats, Rye and Sorghum



**Table 04 Corn Area, Yield, and Production**

Country / Region	Area (Million hectares)				Yield (Metric tons per hectare)				Production (Million metric tons)				Change in Production			
	2020/21	Prel. 2021/22	2022/23 Proj. Sep Oct		2020/21	Prel. 2021/22	2022/23 Proj. Sep Oct		2020/21	Prel. 2021/22	2022/23 Proj. Sep Oct		From last month MMT Percent		From last year MMT Percent	
<b>World</b>	199.08	207.25	203.16	203.24	5.67	5.87	5.77	5.75	1,129.33	1,217.30	1,172.58	1,168.74	-3.84	-0.33	-48.56	-3.99
<b>United States</b>	33.31	34.53	32.72	32.72	10.76	11.09	10.83	10.79	358.45	382.89	354.19	352.95	-1.24	-0.35	-29.94	-7.82
<b>Total Foreign</b>	165.77	172.73	170.44	170.52	4.65	4.83	4.80	4.78	770.88	834.41	818.39	815.79	-2.60	-0.32	-18.62	-2.23
<b>China</b>	41.26	43.32	43.00	43.00	6.32	6.29	6.37	6.37	260.67	272.55	274.00	274.00	0.00	0.00	1.45	0.53
<b>South America</b>																
Brazil	19.90	21.80	22.70	22.70	4.37	5.32	5.55	5.55	87.00	116.00	126.00	126.00	0.00	0.00	10.00	8.62
Argentina	6.55	7.40	7.00	7.00	7.94	6.96	7.86	7.86	52.00	51.50	55.00	55.00	0.00	0.00	3.50	6.80
Bolivia	0.41	0.44	0.44	0.44	3.00	2.60	2.64	2.64	1.23	1.13	1.15	1.15	0.00	0.00	0.02	1.77
<b>European Union</b>	9.24	9.24	9.00	8.90	7.30	7.69	6.53	6.31	67.44	70.98	58.80	56.20	-2.60	-4.42	-14.78	-20.82
<b>Africa</b>																
South Africa	3.12	3.00	3.10	3.10	5.44	5.43	5.58	5.58	16.95	16.30	17.30	17.30	0.00	0.00	1.00	6.13
Nigeria	5.50	6.00	6.25	6.25	2.25	2.12	2.00	2.00	12.40	12.75	12.50	12.50	0.00	0.00	-0.25	-1.92
Ethiopia	2.36	2.53	2.55	2.55	4.47	3.72	4.00	4.00	10.56	9.40	10.20	10.20	0.00	0.00	0.80	8.51
Egypt	0.80	0.93	0.93	0.93	8.00	8.00	8.00	8.00	6.40	7.44	7.44	7.44	0.00	0.00	0.00	0.00
Tanzania	4.20	4.40	4.00	4.00	1.60	1.59	1.48	1.48	6.71	7.00	5.90	5.90	0.00	0.00	-1.10	-15.71
Malawi	1.76	1.75	1.75	1.75	2.10	2.62	2.12	2.12	3.69	4.58	3.72	3.72	0.00	0.00	-0.86	-18.86
Zambia	1.33	1.41	1.12	1.12	2.54	2.57	2.43	2.43	3.39	3.62	2.71	2.71	0.00	0.00	-0.91	-25.25
Kenya	2.19	1.95	1.90	1.90	1.73	1.59	1.58	1.58	3.79	3.10	3.00	3.00	0.00	0.00	-0.10	-3.23
Uganda	0.99	1.10	1.10	1.10	2.78	2.55	2.55	2.55	2.75	2.80	2.80	2.80	0.00	0.00	0.00	0.00
Zimbabwe	1.58	1.95	1.90	1.90	0.57	1.39	0.82	0.82	0.91	2.72	1.56	1.56	0.00	0.00	-1.16	-42.66
<b>Former Soviet Union - 12</b>																
Ukraine	5.40	5.49	4.50	4.50	5.62	7.68	7.00	7.00	30.30	42.13	31.50	31.50	0.00	0.00	-10.63	-25.22
Russia	2.73	2.90	2.70	2.70	5.08	5.25	5.56	5.56	13.87	15.23	15.00	15.00	0.00	0.00	-0.23	-1.48
<b>South Asia</b>																
India	9.89	10.10	9.80	10.00	3.20	3.33	3.21	3.20	31.65	33.60	31.50	32.00	0.50	1.59	-1.60	-4.76
Pakistan	1.42	1.65	1.50	1.50	6.30	6.43	5.93	5.93	8.94	10.64	8.90	8.90	0.00	0.00	-1.74	-16.31
Nepal	0.97	0.97	0.97	0.97	2.82	2.82	2.82	2.82	2.72	2.72	2.72	2.72	0.00	0.00	0.00	0.00
<b>Southeast Asia</b>																
Indonesia	3.85	3.90	3.95	3.95	3.27	3.26	3.27	3.27	12.60	12.70	12.90	12.90	0.00	0.00	0.20	1.57
Philippines	2.57	2.56	2.65	2.65	3.25	3.26	3.13	3.13	8.35	8.34	8.30	8.30	0.00	0.00	-0.04	-0.53
Vietnam	0.99	0.99	0.97	0.97	4.80	4.86	4.85	4.85	4.74	4.80	4.70	4.70	0.00	0.00	-0.10	-2.04
Thailand	1.26	1.20	1.20	1.18	4.38	4.42	4.42	4.41	5.50	5.30	5.30	5.20	-0.10	-1.89	-0.10	-1.89
<b>Mexico</b>	7.14	7.10	7.20	7.20	3.83	3.77	3.83	3.83	27.35	26.75	27.60	27.60	0.00	0.00	0.85	3.18
<b>Canada</b>	1.41	1.39	1.45	1.45	9.63	10.05	10.00	10.00	13.56	13.98	14.50	14.50	0.00	0.00	0.52	3.69
<b>Turkey</b>	0.62	0.54	0.53	0.53	11.45	12.04	11.81	11.81	7.10	6.50	6.20	6.20	0.00	0.00	-0.30	-4.62
<b>Others</b>	26.33	26.73	26.30	26.30	2.60	2.61	2.56	2.54	68.33	69.86	67.20	66.80	-0.40	-0.60	-3.07	-4.39

World and Selected Countries and Regions

**Table 05 Barley Area, Yield, and Production**

Country / Region	Area (Million hectares)				Yield (Metric tons per hectare)				Production (Million metric tons)				Change in Production			
	Prel.		2022/23 Proj.		Prel.		2022/23 Proj.		Prel.		2022/23 Proj.		From last month		From last year	
	2020/21	2021/22	Sep	Oct	2020/21	2021/22	Sep	Oct	2020/21	2021/22	Sep	Oct	MMT	Percent	MMT	Percent
<b>World</b>	52.46	48.63	47.30	47.30	3.07	2.99	3.12	3.15	160.91	145.56	147.72	149.02	1.30	0.88	3.47	2.38
<b>United States</b>	0.90	0.81	0.96	0.99	4.15	3.25	3.57	3.85	3.72	2.62	3.44	3.80	0.36	10.45	1.18	45.16
<b>Total Foreign</b>	51.56	47.83	46.33	46.31	3.05	2.99	3.11	3.14	157.19	142.94	144.29	145.23	0.94	0.65	2.28	1.60
<b>European Union</b>	11.05	10.31	10.53	10.49	4.91	5.05	4.76	4.87	54.23	52.05	50.10	51.10	1.00	2.00	-0.95	-1.82
<b>United Kingdom</b>	1.39	1.15	1.12	1.12	5.85	6.05	6.32	6.32	8.12	6.96	7.05	7.05	0.00	0.00	0.09	1.28
<b>Former Soviet Union - 12</b>																
Russia	8.16	7.69	7.60	7.60	2.53	2.28	2.76	2.76	20.63	17.51	21.00	21.00	0.00	0.00	3.50	19.97
Ukraine	2.58	2.68	1.90	1.90	3.08	3.70	3.37	3.37	7.95	9.92	6.40	6.40	0.00	0.00	-3.52	-35.50
Kazakhstan	2.73	2.16	2.15	2.15	1.34	1.10	1.26	1.26	3.66	2.37	2.70	2.70	0.00	0.00	0.33	14.07
Belarus	0.41	0.35	0.40	0.40	3.35	2.86	2.75	2.75	1.38	1.00	1.10	1.10	0.00	0.00	0.10	10.00
Azerbaijan	0.35	0.37	0.34	0.38	2.96	3.07	2.79	2.93	1.02	1.15	0.95	1.10	0.15	15.79	-0.05	-4.10
<b>Canada</b>	2.81	3.01	2.60	2.60	3.82	2.31	3.81	3.81	10.74	6.96	9.90	9.90	0.00	0.00	2.94	42.26
<b>Australia</b>	5.49	4.42	4.20	4.20	2.67	3.15	2.90	2.90	14.65	13.91	12.20	12.20	0.00	0.00	-1.71	-12.27
<b>Middle East</b>																
Turkey	3.80	3.70	3.80	3.80	2.13	1.22	1.95	1.95	8.10	4.50	7.40	7.40	0.00	0.00	2.90	64.44
Iran	1.60	1.70	1.65	1.65	2.25	1.59	1.82	1.82	3.60	2.70	3.00	3.00	0.00	0.00	0.30	11.11
Iraq	1.20	0.60	0.60	0.60	1.29	1.17	1.13	1.13	1.55	0.70	0.68	0.68	0.00	0.00	-0.02	-2.86
Syria	1.50	0.80	0.90	0.90	1.27	0.81	0.78	0.78	1.90	0.65	0.70	0.70	0.00	0.00	0.05	7.69
<b>Africa</b>																
Ethiopia	0.90	0.96	0.97	0.97	2.52	2.45	2.47	2.47	2.26	2.35	2.40	2.40	0.00	0.00	0.05	2.13
Morocco	1.47	1.49	1.10	1.10	0.44	1.87	0.64	0.64	0.64	2.78	0.70	0.70	0.00	0.00	-2.08	-74.82
Algeria	0.98	1.03	1.03	1.03	1.24	0.93	1.56	1.56	1.21	0.95	1.60	1.60	0.00	0.00	0.65	68.42
Tunisia	0.36	0.28	0.30	0.30	1.28	1.54	1.40	1.40	0.47	0.43	0.42	0.42	0.00	0.00	-0.01	-2.33
South Africa	0.14	0.10	0.10	0.10	4.14	3.52	3.70	3.70	0.59	0.33	0.37	0.37	0.00	0.00	0.04	10.78
<b>South America</b>																
Argentina	1.01	1.34	1.35	1.35	4.00	3.96	3.93	3.78	4.04	5.30	5.30	5.10	-0.20	-3.77	-0.20	-3.77
Uruguay	0.19	0.22	0.23	0.23	4.78	4.11	4.16	4.16	0.89	0.92	0.94	0.94	0.00	0.00	0.02	1.63
Brazil	0.10	0.11	0.11	0.11	3.63	3.79	3.91	3.91	0.37	0.43	0.43	0.43	0.00	0.00	0.01	1.18
<b>India</b>	0.59	0.59	0.54	0.54	2.92	2.80	2.59	2.59	1.72	1.66	1.40	1.40	0.00	0.00	-0.26	-15.46
<b>China</b>	0.51	0.51	0.51	0.51	4.00	3.92	3.92	3.92	2.04	2.00	2.00	2.00	0.00	0.00	0.00	0.00
<b>Mexico</b>	0.30	0.35	0.34	0.34	3.07	3.11	2.82	2.82	0.91	1.09	0.96	0.96	0.00	0.00	-0.13	-11.93
<b>Afghanistan</b>	0.17	0.16	0.17	0.17	1.41	1.25	1.35	1.35	0.24	0.20	0.23	0.23	0.00	0.00	0.03	15.00
<b>Others</b>	1.78	1.76	1.81	1.79	2.41	2.36	2.41	2.43	4.31	4.14	4.36	4.35	-0.01	-0.23	0.21	5.02

World and Selected Countries and Regions

**Table 06 Oats Area, Yield, and Production**

Country / Region	Area (Million hectares)				Yield (Metric tons per hectare)				Production (Million metric tons)				Change in Production			
	2020/21	Prel.	2022/23 Proj.		2020/21	Prel.	2022/23 Proj.		2020/21	Prel.	2022/23 Proj.		From last month		From last year	
		2021/22	Sep	Oct		2021/22	Sep	Oct		2021/22	Sep	Oct	MMT	Percent	MMT	Percent
<b>World</b>	10.08	9.61	9.42	9.45	2.55	2.35	2.57	2.57	25.72	22.55	24.21	24.28	0.07	0.31	1.73	7.69
<b>United States</b>	0.41	0.26	0.32	0.36	2.34	2.20	2.37	2.33	0.95	0.58	0.76	0.84	0.07	9.70	0.26	44.81
<b>Total Foreign</b>	9.67	9.35	9.09	9.09	2.56	2.35	2.58	2.58	24.77	21.97	23.44	23.44	0.00	0.00	1.48	6.71
<b>European Union</b>	2.56	2.56	2.50	2.50	3.31	2.95	3.04	3.04	8.47	7.53	7.60	7.60	0.00	0.00	0.07	0.96
<b>Former Soviet Union - 12</b>																
Russia	2.33	2.17	2.00	2.00	1.77	1.72	1.90	1.90	4.13	3.73	3.80	3.80	0.00	0.00	0.07	1.79
Ukraine	0.20	0.18	0.18	0.18	2.54	2.61	2.29	2.29	0.52	0.48	0.40	0.40	0.00	0.00	-0.08	-16.32
Belarus	0.16	0.15	0.16	0.16	2.87	2.33	2.42	2.42	0.45	0.35	0.38	0.38	0.00	0.00	0.03	7.14
Kazakhstan	0.23	0.20	0.20	0.20	1.05	0.90	1.13	1.13	0.24	0.18	0.23	0.23	0.00	0.00	0.04	23.63
<b>Canada</b>	1.31	1.18	1.30	1.30	3.48	2.39	3.54	3.54	4.58	2.81	4.60	4.60	0.00	0.00	1.79	63.82
<b>South America</b>																
Argentina	0.24	0.35	0.28	0.28	2.13	2.07	2.30	2.30	0.51	0.73	0.65	0.65	0.00	0.00	-0.08	-11.03
Brazil	0.43	0.50	0.51	0.51	2.00	2.27	2.26	2.26	0.85	1.14	1.16	1.16	0.00	0.00	0.01	1.05
Chile	0.11	0.12	0.13	0.13	4.65	4.70	4.37	4.37	0.53	0.58	0.55	0.55	0.00	0.00	-0.03	-4.84
Uruguay	0.02	0.01	0.02	0.02	2.20	2.21	2.40	2.40	0.03	0.03	0.04	0.04	0.00	0.00	0.01	16.13
<b>Oceania</b>																
Australia	1.07	0.85	0.80	0.80	1.77	1.90	1.75	1.75	1.90	1.62	1.40	1.40	0.00	0.00	-0.22	-13.53
New Zealand	0.00	0.01	0.01	0.01	5.75	5.80	5.80	5.80	0.02	0.03	0.03	0.03	0.00	0.00	0.00	0.00
<b>China</b>	0.41	0.41	0.41	0.41	1.48	1.48	1.48	1.48	0.60	0.60	0.60	0.60	0.00	0.00	0.00	0.00
<b>Africa</b>																
Algeria	0.06	0.08	0.08	0.08	1.11	1.31	1.31	1.31	0.07	0.11	0.11	0.11	0.00	0.00	0.00	0.00
Morocco	0.02	0.04	0.02	0.02	0.40	1.13	0.40	0.40	0.01	0.05	0.01	0.01	0.00	0.00	-0.04	-86.67
South Africa	0.03	0.04	0.03	0.03	2.19	1.94	1.67	1.67	0.06	0.07	0.05	0.05	0.00	0.00	-0.02	-28.57
<b>Other Europe</b>																
United Kingdom	0.21	0.20	0.19	0.19	4.91	5.62	5.53	5.53	1.03	1.12	1.05	1.05	0.00	0.00	-0.07	-6.50
Norway	0.07	0.07	0.07	0.07	4.29	4.29	4.29	4.29	0.30	0.30	0.30	0.30	0.00	0.00	0.00	0.00
Serbia	0.03	0.03	0.03	0.03	2.17	2.17	2.17	2.17	0.07	0.07	0.07	0.07	0.00	0.00	0.00	0.00
Albania	0.02	0.01	0.02	0.02	2.25	2.14	2.20	2.20	0.04	0.03	0.03	0.03	0.00	0.00	0.00	10.00
Bosnia and Herzegovina	0.01	0.01	0.01	0.01	3.09	2.82	2.82	2.82	0.03	0.03	0.03	0.03	0.00	0.00	0.00	0.00
<b>Turkey</b>	0.10	0.11	0.11	0.11	2.40	2.38	2.38	2.38	0.24	0.25	0.25	0.25	0.00	0.00	0.00	0.00
<b>Mexico</b>	0.03	0.05	0.05	0.05	2.03	2.02	1.89	1.89	0.06	0.09	0.09	0.09	0.00	0.00	-0.01	-8.60
<b>Others</b>	0.03	0.03	0.03	0.03	1.61	1.76	1.68	1.68	0.05	0.05	0.05	0.05	0.00	0.00	0.00	1.96

World and Selected Countries and Regions

**Table 07 Rye Area, Yield, and Production**

Country / Region	Area (Million hectares)				Yield (Metric tons per hectare)				Production (Million metric tons)				Change in Production			
	Prel.		2022/23 Proj.		Prel.		2022/23 Proj.		Prel.		2022/23 Proj.		From last month		From last year	
	2020/21	2021/22	Sep	Oct	2020/21	2021/22	Sep	Oct	2020/21	2021/22	Sep	Oct	MMT	Percent	MMT	Percent
<b>World</b>	4.17	4.06	3.78	3.78	3.43	3.09	3.19	3.20	14.30	12.54	12.04	12.07	0.03	0.28	-0.47	-3.77
<b>United States</b>	0.13	0.12	0.14	0.14	2.19	2.09	2.13	2.26	0.29	0.25	0.30	0.31	0.01	4.70	0.06	25.30
<b>Total Foreign</b>	4.03	3.94	3.64	3.64	3.47	3.12	3.23	3.23	14.01	12.30	11.74	11.76	0.02	0.17	-0.54	-4.36
<b>European Union</b>	2.08	1.93	1.90	1.90	4.31	4.12	4.04	4.04	8.97	7.95	7.68	7.68	0.00	0.00	-0.27	-3.37
<b>Former Soviet Union - 12</b>																
Russia	0.97	0.99	0.88	0.88	2.44	1.73	2.17	2.17	2.38	1.72	1.90	1.90	0.00	0.00	0.18	10.72
Belarus	0.36	0.33	0.30	0.30	2.92	2.46	2.50	2.50	1.05	0.80	0.75	0.75	0.00	0.00	-0.05	-6.25
Ukraine	0.14	0.18	0.10	0.10	3.28	3.43	2.85	2.85	0.46	0.60	0.29	0.29	0.00	0.00	-0.32	-52.50
Kazakhstan	0.02	0.04	0.03	0.03	1.25	0.91	1.20	1.20	0.03	0.04	0.03	0.03	0.00	0.00	-0.01	-25.00
<b>Turkey</b>	0.11	0.12	0.11	0.11	2.91	2.87	2.91	2.91	0.32	0.33	0.32	0.32	0.00	0.00	-0.01	-3.03
<b>Canada</b>	0.15	0.15	0.14	0.14	3.19	3.22	3.21	3.36	0.49	0.47	0.45	0.47	0.02	4.44	0.00	-0.63
<b>South America</b>																
Chile	0.00	0.00	0.00	0.00	5.00	5.00	5.00	5.00	0.01	0.01	0.01	0.01	0.00	0.00	0.00	0.00
Argentina	0.09	0.12	0.09	0.09	1.50	1.88	1.84	1.84	0.14	0.23	0.16	0.16	0.00	0.00	-0.07	-28.89
<b>Other Europe</b>																
Bosnia and Herzegovina	0.00	0.00	0.00	0.00	3.67	3.00	2.75	2.75	0.01	0.01	0.01	0.01	0.00	0.00	0.00	22.22
Switzerland	0.00	0.00	0.00	0.00	5.50	5.50	5.50	5.50	0.01	0.01	0.01	0.01	0.00	0.00	0.00	0.00
Serbia	0.00	0.00	0.00	0.00	2.50	2.50	2.50	2.50	0.01	0.01	0.01	0.01	0.00	0.00	0.00	0.00
<b>Australia</b>	0.05	0.05	0.05	0.05	0.71	0.71	0.71	0.71	0.03	0.03	0.03	0.03	0.00	0.00	0.00	0.00
<b>Others</b>	0.04	0.04	0.04	0.04	2.50	2.18	2.16	2.16	0.11	0.10	0.10	0.10	0.00	0.00	0.00	-1.04

World and Selected Countries and Regions



**Table 08 Sorghum Area, Yield, and Production**

Country / Region	Area (Million hectares)				Yield (Metric tons per hectare)				Production (Million metric tons)				Change in Production			
	Prel.		2022/23 Proj.		Prel.		2022/23 Proj.		Prel.		2022/23 Proj.		From last month		From last year	
	2020/21	2021/22	Sep	Oct	2020/21	2021/22	Sep	Oct	2020/21	2021/22	Sep	Oct	MMT	Percent	MMT	Percent
<b>World</b>	42.96	41.46	41.22	41.22	1.45	1.50	1.46	1.46	62.44	62.10	60.32	60.13	-0.19	-0.32	-1.98	-3.18
<b>United States</b>	2.06	2.63	2.22	2.22	4.59	4.33	2.89	2.80	9.47	11.38	6.40	6.21	-0.19	-3.00	-5.16	-45.39
<b>Total Foreign</b>	40.90	38.84	39.00	39.00	1.30	1.31	1.38	1.38	52.97	50.73	53.92	53.92	0.00	0.00	3.19	6.28
<b>Africa</b>																
Nigeria	5.60	5.70	5.70	5.70	1.18	1.18	1.23	1.23	6.59	6.73	7.00	7.00	0.00	0.00	0.28	4.09
Ethiopia	1.79	1.65	1.66	1.66	2.83	2.70	2.71	2.71	5.06	4.45	4.50	4.50	0.00	0.00	0.05	1.12
Sudan	9.03	6.92	7.00	7.00	0.57	0.51	0.71	0.71	5.15	3.53	5.00	5.00	0.00	0.00	1.47	41.64
Burkina Faso	1.86	1.90	1.90	1.90	0.99	0.87	1.00	1.00	1.84	1.64	1.90	1.90	0.00	0.00	0.26	15.57
Mali	1.83	1.50	1.50	1.50	1.00	0.83	1.00	1.00	1.82	1.24	1.50	1.50	0.00	0.00	0.26	21.07
Niger	3.67	3.70	3.70	3.70	0.58	0.33	0.51	0.51	2.13	1.21	1.90	1.90	0.00	0.00	0.69	57.42
Cameroon	0.74	0.74	0.74	0.74	1.62	1.62	1.62	1.62	1.20	1.20	1.20	1.20	0.00	0.00	0.00	0.00
Tanzania	0.70	0.70	0.70	0.70	1.07	1.02	1.07	1.07	0.75	0.72	0.75	0.75	0.00	0.00	0.04	4.90
Egypt	0.15	0.15	0.15	0.15	4.91	5.00	5.00	5.00	0.73	0.75	0.75	0.75	0.00	0.00	0.00	0.00
Uganda	0.31	0.25	0.25	0.25	0.82	0.80	0.90	0.90	0.25	0.20	0.23	0.23	0.00	0.00	0.03	12.50
Ghana	0.30	0.31	0.31	0.31	1.13	1.11	1.13	1.13	0.35	0.35	0.35	0.35	0.00	0.00	0.01	1.45
Mozambique	0.26	0.25	0.25	0.25	0.54	0.64	0.64	0.64	0.14	0.16	0.16	0.16	0.00	0.00	0.00	0.00
South Africa	0.05	0.04	0.04	0.04	4.39	3.95	3.75	3.75	0.22	0.15	0.15	0.15	0.00	0.00	0.00	0.00
<b>Mexico</b>	1.29	1.40	1.42	1.42	3.37	3.47	3.42	3.42	4.35	4.84	4.85	4.85	0.00	0.00	0.01	0.21
<b>South America</b>																
Argentina	0.75	0.93	0.88	0.88	4.43	3.68	4.34	4.34	3.32	3.40	3.80	3.80	0.00	0.00	0.40	11.76
Brazil	0.87	0.95	0.98	0.98	2.41	3.20	3.00	3.00	2.08	3.04	2.94	2.94	0.00	0.00	-0.10	-3.35
<b>South Asia</b>																
India	4.38	4.60	4.50	4.50	1.10	0.92	0.98	0.98	4.81	4.25	4.40	4.40	0.00	0.00	0.15	3.53
Pakistan	0.13	0.08	0.22	0.22	0.76	0.83	0.63	0.63	0.10	0.06	0.14	0.14	0.00	0.00	0.07	110.94
<b>China</b>	0.64	0.63	0.63	0.63	4.68	4.76	4.76	4.76	2.97	3.00	3.00	3.00	0.00	0.00	0.00	0.00
<b>Australia</b>	0.57	0.62	0.74	0.74	2.86	4.38	3.51	3.51	1.64	2.73	2.60	2.60	0.00	0.00	-0.13	-4.87
<b>European Union</b>	0.19	0.15	0.14	0.14	5.21	5.49	5.18	5.18	1.00	0.82	0.73	0.73	0.00	0.00	-0.10	-11.91
<b>Others</b>	5.80	5.68	5.60	5.60	1.12	1.10	1.09	1.09	6.47	6.26	6.08	6.08	0.00	0.00	-0.18	-2.89

World and Selected Countries and Regions

**Table 09 Rice Area, Yield, and Production**  
**World and Selected Countries and Regions**

Country / Region	Area (Million hectares)				Yield (Metric tons per hectare)				Production (Million metric tons)				Change in Production			
	Prel.		2022/23 Proj.		Prel.		2022/23 Proj.		Prel.		2022/23 Proj.		From last month		From last year	
	2020/21	2021/22	Sep	Oct	2020/21	2021/22	Sep	Oct	2020/21	2021/22	Sep	Oct	MMT	Percent	MMT	Percent
<b>World</b>	165.21	166.18	164.75	164.69	4.60	4.63	4.61	4.58	509.26	515.31	507.99	505.04	-2.95	-0.58	-10.27	-1.99
<b>United States</b>	1.21	1.01	0.88	0.88	8.54	8.64	8.50	8.52	7.22	6.09	5.24	5.25	0.01	0.17	-0.84	-13.74
<b>Total Foreign</b>	164.00	165.17	163.87	163.81	4.57	4.61	4.58	4.56	502.03	509.22	502.75	499.79	-2.96	-0.59	-9.43	-1.85
<b>East Asia</b>																
China	30.08	29.92	30.00	30.00	7.04	7.11	7.00	7.00	148.30	148.99	147.00	147.00	0.00	0.00	-1.99	-1.34
Japan	1.53	1.52	1.51	1.50	6.78	6.93	6.87	6.82	7.57	7.67	7.55	7.45	-0.10	-1.32	-0.22	-2.80
Korea, South	0.73	0.73	0.73	0.73	6.49	7.12	6.91	6.91	3.51	3.88	3.75	3.75	0.00	0.00	-0.13	-3.40
Korea, North	0.49	0.50	0.50	0.50	4.44	4.18	4.18	4.18	1.40	1.36	1.36	1.36	0.00	0.00	0.00	0.00
<b>South Asia</b>																
India	45.77	46.38	45.50	45.50	4.08	4.21	4.17	4.09	124.37	130.29	126.50	124.00	-2.50	-1.98	-6.29	-4.83
Bangladesh	11.50	11.62	11.50	11.50	4.51	4.63	4.65	4.65	34.60	35.85	35.65	35.65	0.00	0.00	-0.20	-0.56
Pakistan	3.34	3.54	3.20	3.00	3.79	3.86	3.94	3.70	8.42	9.10	8.40	7.40	-1.00	-11.90	-1.70	-18.68
Nepal	1.48	1.47	1.48	1.42	3.81	3.80	3.83	3.83	3.74	3.73	3.76	3.62	-0.14	-3.80	-0.11	-2.95
Sri Lanka	1.09	1.13	1.00	1.00	4.59	3.56	3.90	3.90	3.39	2.73	2.65	2.65	0.00	0.00	-0.08	-3.04
<b>Southeast Asia</b>																
Indonesia	11.40	11.60	11.65	11.65	4.77	4.67	4.68	4.68	34.50	34.40	34.60	34.60	0.00	0.00	0.20	0.58
Vietnam	7.31	7.29	7.29	7.29	6.00	5.95	6.01	6.01	27.38	27.07	27.40	27.40	0.00	0.00	0.33	1.22
Thailand	10.51	10.70	10.70	10.85	2.72	2.81	2.80	2.81	18.86	19.88	19.80	20.10	0.30	1.52	0.22	1.12
Burma	6.90	6.90	6.90	6.90	2.85	2.80	2.83	2.83	12.60	12.35	12.50	12.50	0.00	0.00	0.15	1.20
Philippines	4.76	4.80	4.80	4.80	4.14	4.15	4.10	4.10	12.42	12.54	12.41	12.41	0.00	0.00	-0.13	-1.03
Cambodia	3.27	3.34	3.35	3.35	2.90	2.88	2.91	2.91	5.78	5.86	5.94	5.94	0.00	0.00	0.08	1.33
Laos	0.93	0.94	0.95	0.95	3.24	3.28	3.26	3.26	1.90	1.95	1.95	1.95	0.00	0.00	0.00	0.00
Malaysia	0.68	0.67	0.68	0.68	4.07	4.09	4.07	4.07	1.80	1.78	1.80	1.80	0.00	0.00	0.02	1.12
<b>South America</b>																
Brazil	1.68	1.62	1.60	1.60	7.00	6.67	6.53	6.71	8.00	7.34	7.10	7.30	0.20	2.82	-0.04	-0.50
Peru	0.41	0.42	0.42	0.42	8.21	8.34	8.55	8.55	2.34	2.40	2.48	2.48	0.00	0.00	0.09	3.72
<b>Africa</b>																
Egypt	0.70	0.50	0.55	0.60	8.28	8.41	8.83	8.70	4.00	2.90	3.35	3.60	0.25	7.46	0.70	24.14
Madagascar	1.68	1.65	1.60	1.60	2.53	2.65	2.69	2.69	2.71	2.80	2.75	2.75	0.00	0.00	-0.05	-1.82
Nigeria	3.60	3.65	3.70	3.70	2.27	2.29	2.30	2.30	5.15	5.26	5.36	5.36	0.00	0.00	0.10	1.90
<b>European Union</b>	0.42	0.40	0.36	0.36	6.74	6.53	5.90	5.90	1.83	1.71	1.35	1.35	0.00	0.00	-0.37	-21.35
<b>Iran</b>	0.58	0.56	0.57	0.57	5.27	5.14	5.32	5.32	2.00	1.90	2.00	2.00	0.00	0.00	0.10	5.26
<b>Others</b>	13.20	13.33	13.34	13.35	2.93	2.90	2.88	2.88	25.48	25.49	25.34	25.37	0.03	0.13	-0.12	-0.46

Yield is on a rough basis, before the milling process. Production is on a milled basis, after the milling process.

**Table 10 Total Oilseed Area, Yield, and Production**

**World and Selected Countries and Regions**

Country / Region	Area (Million hectares)				Yield (Metric tons per hectare)				Production (Million metric tons)				Change in Production			
	2020/21	Prel.	2022/23 Proj.		2020/21	Prel.	2022/23 Proj.		2020/21	Prel.	2022/23 Proj.		From last month		From last year	
		2021/22	Sep	Oct		2021/22	Sep	Oct		2021/22	Sep	Oct	MMT	Percent	MMT	Percent
<b>World Total</b>	--	--	--	--	--	--	--	--	607.47	604.51	644.83	646.59	1.76	0.27	42.08	6.96
<b>Total Foreign</b>	--	--	--	--	--	--	--	--	482.95	473.16	516.32	519.67	3.35	0.65	46.51	9.83
<b>Oilseed, Copra</b>	--	--	--	--	--	--	--	--	5.59	5.86	5.86	5.86	0.00	0.00	0.00	0.00
<b>Oilseed, Palm Kernel</b>	--	--	--	--	--	--	--	--	19.05	20.03	20.59	20.59	0.00	0.00	0.57	2.84
<b>Major Oilseeds</b>	251.54	260.17	263.73	264.57	2.32	2.22	2.34	2.34	582.83	578.62	618.38	620.13	1.76	0.28	41.51	7.17
<b>United States</b>	38.81	41.06	40.24	40.36	3.21	3.20	3.19	3.15	124.52	131.35	128.51	126.92	-1.59	-1.24	-4.43	-3.37
<b>Foreign Oilseeds</b>	212.73	219.10	223.49	224.21	2.15	2.04	2.19	2.20	458.31	447.27	489.87	493.21	3.35	0.68	45.94	10.27
<b>South America</b>	66.05	68.24	70.30	71.20	3.19	2.81	3.24	3.24	210.85	191.96	227.64	230.64	3.00	1.32	38.68	20.15
Brazil	41.07	43.33	43.85	44.75	3.50	3.04	3.52	3.51	143.77	131.60	154.13	157.13	3.00	1.95	25.53	19.40
Argentina	18.97	18.52	19.83	19.83	2.70	2.65	2.86	2.86	51.21	49.03	56.80	56.80	0.00	0.00	7.77	15.84
Paraguay	3.24	3.39	3.54	3.54	3.09	1.28	2.86	2.86	10.02	4.32	10.13	10.13	0.00	0.00	5.81	134.43
Bolivia	1.57	1.54	1.57	1.57	2.24	2.07	2.10	2.10	3.51	3.20	3.30	3.30	0.00	0.00	0.10	3.22
Uruguay	1.07	1.32	1.38	1.38	1.85	2.62	2.14	2.14	1.98	3.46	2.94	2.94	0.00	0.00	-0.52	-14.94
<b>China</b>	25.45	24.15	25.40	25.25	2.59	2.60	2.57	2.58	65.81	62.83	65.17	65.17	0.00	0.00	2.35	3.74
<b>South Asia</b>	42.22	41.59	43.04	43.04	0.96	1.06	1.04	1.03	40.51	43.94	44.58	44.45	-0.13	-0.29	0.50	1.15
India	39.15	38.70	40.08	40.08	0.96	1.04	1.02	1.02	37.55	40.29	41.04	41.04	0.00	0.00	0.75	1.86
Pakistan	2.71	2.53	2.60	2.60	0.93	1.27	1.19	1.14	2.53	3.22	3.10	2.97	-0.13	-4.20	-0.25	-7.78
<b>European Union</b>	11.10	10.99	12.10	12.13	2.59	2.79	2.56	2.63	28.77	30.67	30.96	31.86	0.90	2.91	1.19	3.87
<b>United Kingdom</b>	0.38	0.31	0.36	0.36	2.73	3.20	3.40	3.40	1.04	0.98	1.23	1.23	0.00	0.00	0.24	24.87
<b>Former Soviet Union - 12</b>	25.91	27.77	26.54	26.54	1.72	1.89	1.82	1.82	44.70	52.44	48.38	48.38	0.00	0.00	-4.06	-7.73
Russia	12.50	14.23	15.20	15.20	1.61	1.62	1.74	1.74	20.14	23.11	26.40	26.40	0.00	0.00	3.29	14.25
Ukraine	9.65	9.58	7.25	7.25	2.06	2.54	2.37	2.37	19.85	24.32	17.20	17.20	0.00	0.00	-7.12	-29.26
Uzbekistan	1.08	1.08	1.09	1.09	1.19	1.03	1.02	1.02	1.28	1.11	1.11	1.11	0.00	0.00	0.00	0.18
<b>Canada</b>	10.41	11.12	10.73	10.73	2.49	1.81	2.47	2.43	25.95	20.11	26.46	26.07	-0.39	-1.49	5.96	29.62
<b>Africa</b>	22.12	24.80	24.24	24.18	1.08	0.98	1.03	1.03	23.99	24.37	24.89	24.86	-0.03	-0.12	0.50	2.03
Nigeria	4.62	4.97	4.87	4.87	1.19	1.11	1.21	1.21	5.49	5.50	5.90	5.90	0.00	0.00	0.41	7.37
South Africa	1.36	1.66	1.82	1.82	1.98	1.89	1.60	1.60	2.69	3.14	2.91	2.91	0.00	0.00	-0.24	-7.57
Tanzania	1.17	1.24	1.35	1.35	1.02	0.98	0.93	0.93	1.19	1.21	1.25	1.25	0.00	0.00	0.04	3.39
<b>Southeast Asia</b>	3.25	3.21	3.18	3.18	1.36	1.36	1.38	1.38	4.42	4.38	4.37	4.37	0.00	0.00	-0.01	-0.16
Burma	2.03	2.04	2.04	2.04	1.17	1.19	1.21	1.21	2.37	2.42	2.46	2.46	0.00	0.00	0.05	1.86
Indonesia	0.94	0.90	0.87	0.87	1.54	1.55	1.55	1.55	1.45	1.39	1.35	1.35	0.00	0.00	-0.04	-2.53
<b>Australia</b>	2.94	3.87	4.31	4.31	1.93	2.22	1.99	1.99	5.69	8.59	8.60	8.60	0.00	0.00	0.01	0.13
<b>Turkey</b>	1.18	1.32	1.48	1.48	2.46	2.55	2.58	2.58	2.89	3.37	3.81	3.81	0.00	0.00	0.44	13.15
<b>Others</b>	1.70	1.74	1.82	1.82	2.18	2.10	2.08	2.08	3.70	3.65	3.78	3.78	0.00	0.00	0.13	3.59

World Total and Total Foreign: (Major Oilseeds plus copra and palm kernel) Major Oilseeds: (soybeans, sunflowerseeds, peanuts(inshell), cottonseed and rapeseed)

**Table 11 Soybean Area, Yield, and Production**

Country / Region	Area (Million hectares)				Yield (Metric tons per hectare)				Production (Million metric tons)				Change in Production			
	Prel.		2022/23 Proj.		Prel.		2022/23 Proj.		Prel.		2022/23 Proj.		From last month		From last year	
	2020/21	2021/22	Sep	Oct	2020/21	2021/22	Sep	Oct	2020/21	2021/22	Sep	Oct	MMT	Percent	MMT	Percent
<b>World</b>	128.96	131.04	134.56	135.46	2.86	2.71	2.90	2.89	368.44	355.69	389.77	390.99	1.22	0.31	35.30	9.92
<b>United States</b>	33.43	34.93	35.06	35.06	3.43	3.48	3.40	3.35	114.75	121.53	119.16	117.38	-1.78	-1.49	-4.15	-3.41
<b>Total Foreign</b>	95.53	96.11	99.50	100.40	2.66	2.44	2.72	2.73	253.70	234.16	270.61	273.61	3.00	1.11	39.45	16.85
<b>South America</b>																
Brazil	39.50	41.50	42.00	42.90	3.53	3.06	3.55	3.54	139.50	127.00	149.00	152.00	3.00	2.01	25.00	19.69
Argentina	16.47	16.00	17.00	17.00	2.81	2.75	3.00	3.00	46.20	44.00	51.00	51.00	0.00	0.00	7.00	15.91
Paraguay	3.15	3.30	3.45	3.45	3.14	1.27	2.90	2.90	9.90	4.20	10.00	10.00	0.00	0.00	5.80	138.10
Bolivia	1.43	1.40	1.43	1.43	2.32	2.14	2.17	2.17	3.32	3.00	3.10	3.10	0.00	0.00	0.10	3.33
Uruguay	0.91	1.10	1.10	1.10	1.88	2.80	2.27	2.27	1.71	3.07	2.50	2.50	0.00	0.00	-0.57	-18.57
<b>East Asia</b>																
China	9.88	8.40	9.35	9.35	1.98	1.95	1.97	1.97	19.60	16.40	18.40	18.40	0.00	0.00	2.00	12.20
Korea, South	0.06	0.06	0.06	0.06	1.47	1.71	1.73	1.73	0.08	0.09	0.10	0.10	0.00	0.00	0.00	1.06
Korea, North	0.16	0.17	0.17	0.17	1.40	1.44	1.44	1.44	0.23	0.24	0.24	0.24	0.00	0.00	0.00	0.00
Japan	0.14	0.15	0.15	0.15	1.54	1.63	1.55	1.55	0.22	0.24	0.23	0.23	0.00	0.00	-0.01	-2.52
<b>India</b>	12.92	12.50	12.70	12.70	0.81	0.95	0.91	0.91	10.45	11.90	11.50	11.50	0.00	0.00	-0.40	-3.36
<b>Canada</b>	2.04	2.13	2.10	2.10	3.12	2.94	3.05	3.10	6.36	6.27	6.40	6.50	0.10	1.56	0.23	3.64
<b>Former Soviet Union - 12</b>																
Russia	2.71	2.99	3.30	3.30	1.59	1.59	1.67	1.67	4.31	4.76	5.50	5.50	0.00	0.00	0.74	15.55
Ukraine	1.46	1.44	1.50	1.50	2.05	2.64	2.33	2.33	3.00	3.80	3.50	3.50	0.00	0.00	-0.30	-7.89
<b>European Union</b>	1.00	0.98	1.06	1.06	2.61	2.76	2.46	2.37	2.60	2.71	2.60	2.50	-0.10	-3.85	-0.21	-7.58
<b>Southeast Asia</b>																
Indonesia	0.39	0.35	0.33	0.33	1.22	1.21	1.21	1.21	0.48	0.43	0.40	0.40	0.00	0.00	-0.03	-5.88
Vietnam	0.04	0.03	0.03	0.03	1.61	1.61	1.60	1.60	0.06	0.05	0.05	0.05	0.00	0.00	-0.01	-9.43
Thailand	0.03	0.03	0.03	0.03	1.63	1.63	1.63	1.63	0.05	0.05	0.05	0.05	0.00	0.00	0.00	0.00
Burma	0.14	0.13	0.13	0.13	1.04	1.04	1.04	1.04	0.14	0.14	0.13	0.13	0.00	0.00	-0.01	-3.70
<b>Serbia</b>	0.22	0.22	0.22	0.22	2.89	2.45	2.50	2.50	0.64	0.54	0.55	0.55	0.00	0.00	0.01	1.85
<b>Mexico</b>	0.16	0.18	0.19	0.19	1.58	1.57	1.57	1.57	0.25	0.29	0.29	0.29	0.00	0.00	0.00	0.69
<b>Africa</b>																
South Africa	0.83	0.93	1.00	1.00	2.29	2.38	2.00	2.00	1.90	2.20	2.00	2.00	0.00	0.00	-0.20	-9.09
Nigeria	1.10	1.20	1.20	1.20	1.01	0.93	1.04	1.04	1.11	1.12	1.25	1.25	0.00	0.00	0.13	11.91
Zambia	0.16	0.30	0.38	0.38	1.81	1.35	1.27	1.27	0.30	0.41	0.48	0.48	0.00	0.00	0.06	15.57
Uganda	0.05	0.05	0.05	0.05	0.60	0.60	0.60	0.60	0.03	0.03	0.03	0.03	0.00	0.00	0.00	0.00
<b>Middle East</b>																
Iran	0.07	0.07	0.08	0.08	2.41	2.29	2.27	2.27	0.17	0.16	0.17	0.17	0.00	0.00	0.01	6.25
Turkey	0.03	0.03	0.04	0.04	3.79	3.91	4.00	4.00	0.11	0.13	0.14	0.14	0.00	0.00	0.02	12.00
<b>Others</b>	0.49	0.47	0.49	0.49	2.06	2.03	2.05	2.05	1.01	0.95	1.01	1.01	0.00	0.00	0.06	6.65

World and Selected Countries and Regions



**Table 12 Cottonseed Area, Yield, and Production**

Country / Region	Area (Million hectares)				Yield (Metric tons per hectare)				Production (Million metric tons)				Change in Production			
	Prel.		2022/23 Proj.		Prel.		2022/23 Proj.		Prel.		2022/23 Proj.		From last month		From last year	
	2020/21	2021/22	Sep	Oct	2020/21	2021/22	Sep	Oct	2020/21	2021/22	Sep	Oct	MMT	Percent	MMT	Percent
<b>World</b>	30.81	31.76	32.17	31.96	1.33	1.31	1.34	1.35	41.00	41.65	43.18	43.01	-0.17	-0.39	1.36	3.26
<b>United States</b>	3.33	4.16	3.19	3.19	1.22	1.16	1.20	1.19	4.05	4.83	3.81	3.81	-0.01	-0.21	-1.02	-21.18
<b>Total Foreign</b>	27.49	27.61	28.99	28.78	1.34	1.33	1.36	1.36	36.95	36.83	39.37	39.21	-0.16	-0.41	2.38	6.46
<b>South Asia</b>																
India	13.29	12.15	13.00	13.00	0.88	0.86	0.90	0.90	11.72	10.40	11.68	11.68	0.00	0.00	1.27	12.25
Pakistan	2.20	2.00	2.00	2.00	0.89	1.30	1.19	1.13	1.95	2.60	2.38	2.25	-0.13	-5.46	-0.35	-13.31
<b>China</b>	3.20	3.10	3.15	3.00	3.63	3.39	3.48	3.66	11.60	10.50	10.97	10.97	0.00	0.00	0.47	4.47
<b>Former Soviet Union - 12</b>																
Uzbekistan	1.06	1.06	1.07	1.07	1.16	1.00	0.99	0.99	1.23	1.06	1.06	1.06	0.00	0.00	0.00	0.00
Turkmenistan	0.55	0.55	0.55	0.55	0.66	0.64	0.64	0.64	0.36	0.35	0.35	0.35	0.00	0.00	0.00	0.00
Tajikistan	0.16	0.17	0.17	0.17	1.11	1.09	1.11	1.11	0.18	0.19	0.19	0.19	0.00	0.00	0.00	1.08
Kazakhstan	0.11	0.12	0.13	0.13	0.95	0.90	0.94	0.94	0.11	0.10	0.12	0.12	0.00	0.00	0.01	13.59
<b>South America</b>																
Brazil	1.37	1.60	1.60	1.60	2.62	2.39	2.70	2.70	3.59	3.82	4.32	4.32	0.00	0.00	0.50	13.04
Argentina	0.41	0.48	0.43	0.43	0.72	0.68	0.71	0.71	0.29	0.33	0.30	0.30	0.00	0.00	-0.03	-7.98
<b>Middle East</b>																
Turkey	0.35	0.45	0.56	0.56	2.71	2.76	2.59	2.59	0.95	1.24	1.44	1.44	0.00	0.00	0.20	15.71
Syria	0.03	0.03	0.03	0.03	2.36	2.20	2.20	2.20	0.06	0.06	0.06	0.06	0.00	0.00	0.00	0.00
Iran	0.10	0.10	0.10	0.10	1.35	1.35	1.35	1.35	0.13	0.14	0.14	0.14	0.00	0.00	0.00	0.00
<b>Australia</b>	0.28	0.60	0.65	0.65	3.06	2.88	2.77	2.77	0.84	1.73	1.80	1.80	0.00	0.00	0.08	4.34
<b>European Union</b>	0.34	0.32	0.33	0.33	1.59	1.61	1.54	1.54	0.54	0.52	0.51	0.51	0.00	0.00	-0.02	-2.88
<b>Africa</b>																
Burkina Faso	0.56	0.60	0.65	0.65	0.47	0.45	0.45	0.49	0.26	0.27	0.29	0.32	0.03	9.31	0.05	19.62
Mali	0.17	0.72	0.74	0.74	0.51	0.56	0.55	0.55	0.08	0.40	0.41	0.41	0.00	0.00	0.01	1.49
Cameroon	0.23	0.23	0.24	0.24	1.51	1.39	1.35	1.35	0.34	0.32	0.33	0.33	0.00	0.00	0.01	1.56
Cote d'Ivoire	0.45	0.47	0.46	0.46	0.61	0.60	0.58	0.58	0.27	0.28	0.27	0.27	0.00	0.00	-0.01	-4.98
Benin	0.62	0.64	0.68	0.62	0.78	0.73	0.77	0.75	0.48	0.47	0.52	0.46	-0.06	-11.13	-0.01	-1.28
Tanzania	0.17	0.24	0.35	0.35	0.56	0.46	0.43	0.43	0.09	0.11	0.15	0.15	0.00	0.00	0.04	36.94
Egypt	0.07	0.09	0.13	0.13	1.00	1.00	0.98	0.98	0.07	0.09	0.13	0.13	0.00	0.00	0.04	50.59
Nigeria	0.27	0.27	0.27	0.27	0.56	0.56	0.56	0.56	0.15	0.15	0.15	0.15	0.00	0.00	0.00	0.00
Uganda	0.10	0.10	0.10	0.10	1.40	1.40	1.49	1.49	0.14	0.14	0.15	0.15	0.00	0.00	0.01	6.43
Zimbabwe	0.24	0.25	0.24	0.24	0.39	0.33	0.34	0.34	0.09	0.08	0.08	0.08	0.00	0.00	0.00	0.00
Sudan	0.20	0.20	0.20	0.20	1.41	1.41	1.53	1.53	0.28	0.28	0.31	0.31	0.00	0.00	0.02	8.51
<b>Mexico</b>	0.15	0.15	0.20	0.20	2.40	2.71	2.39	2.39	0.35	0.42	0.48	0.48	0.00	0.00	0.06	14.63
<b>Burma</b>	0.24	0.25	0.25	0.25	1.17	1.18	1.18	1.18	0.28	0.29	0.29	0.29	0.00	0.00	0.00	0.00
<b>Others</b>	0.63	0.69	0.73	0.73	0.81	0.73	0.71	0.71	0.51	0.51	0.52	0.52	0.00	0.00	0.02	3.56

World and Selected Countries and Regions

**Table 13 Peanut Area, Yield, and Production**

Country / Region	Area (Million hectares)				Yield (Metric tons per hectare)				Production (Million metric tons)				Change in Production			
	Prel.		2022/23 Proj.		Prel.		2022/23 Proj.		Prel.		2022/23 Proj.		From last month		From last year	
	2020/21	2021/22	Sep	Oct	2020/21	2021/22	Sep	Oct	2020/21	2021/22	Sep	Oct	MMT	Percent	MMT	Percent
<b>World</b>	29.93	30.84	29.62	29.62	1.68	1.63	1.70	1.70	50.26	50.34	50.34	50.31	-0.04	-0.07	-0.03	-0.07
<b>United States</b>	0.65	0.62	0.57	0.57	4.27	4.63	4.65	4.58	2.79	2.89	2.65	2.62	-0.04	-1.32	-0.27	-9.25
<b>Total Foreign</b>	29.28	30.21	29.05	29.05	1.62	1.57	1.64	1.64	47.47	47.46	47.69	47.69	0.00	0.00	0.23	0.49
<b>China</b>	4.73	4.75	4.80	4.80	3.80	3.85	3.81	3.81	17.99	18.31	18.30	18.30	0.00	0.00	-0.01	-0.04
<b>Africa</b>																
Nigeria	3.25	3.50	3.40	3.40	1.30	1.21	1.32	1.32	4.23	4.23	4.50	4.50	0.00	0.00	0.27	6.43
Sudan	3.20	3.94	3.00	3.00	0.87	0.60	0.83	0.83	2.77	2.36	2.50	2.50	0.00	0.00	0.15	6.16
Senegal	1.23	1.21	1.20	1.20	1.47	1.38	1.42	1.42	1.80	1.68	1.70	1.70	0.00	0.00	0.02	1.31
Cameroon	0.43	0.43	0.43	0.43	1.40	1.40	1.40	1.40	0.60	0.60	0.60	0.60	0.00	0.00	0.00	0.00
Ghana	0.34	0.34	0.34	0.34	1.68	1.41	1.41	1.41	0.57	0.48	0.48	0.48	0.00	0.00	0.00	0.00
Chad	0.76	0.80	0.80	0.80	1.11	1.13	1.13	1.13	0.84	0.90	0.90	0.90	0.00	0.00	0.00	0.00
Malawi	0.40	0.40	0.40	0.40	0.88	0.88	0.88	0.88	0.35	0.35	0.35	0.35	0.00	0.00	0.00	0.00
Congo (Kinshasa)	0.50	0.50	0.50	0.50	0.90	0.90	0.90	0.90	0.45	0.45	0.45	0.45	0.00	0.00	0.00	0.00
Niger	0.90	0.92	0.92	0.92	0.66	0.56	0.60	0.60	0.59	0.52	0.55	0.55	0.00	0.00	0.03	5.97
Mali	0.43	0.43	0.43	0.43	1.16	0.87	1.00	1.00	0.49	0.37	0.43	0.43	0.00	0.00	0.06	15.49
Uganda	0.34	0.40	0.40	0.40	0.99	0.75	0.75	0.75	0.34	0.30	0.30	0.30	0.00	0.00	0.00	0.00
Burkina Faso	0.65	0.60	0.60	0.60	0.97	0.80	0.83	0.83	0.63	0.48	0.50	0.50	0.00	0.00	0.02	4.82
Guinea	0.98	1.10	1.10	1.10	1.10	1.21	1.09	1.09	1.07	1.34	1.20	1.20	0.00	0.00	-0.14	-10.11
Egypt	0.06	0.06	0.06	0.06	3.20	3.20	3.20	3.20	0.21	0.21	0.21	0.21	0.00	0.00	0.00	0.00
Central African Republic	0.10	0.10	0.10	0.10	1.50	1.50	1.50	1.50	0.15	0.15	0.15	0.15	0.00	0.00	0.00	0.00
South Africa	0.04	0.05	0.05	0.05	2.21	1.44	2.22	2.22	0.09	0.07	0.10	0.10	0.00	0.00	0.04	53.85
Mozambique	0.35	0.38	0.38	0.38	0.30	0.34	0.34	0.34	0.10	0.13	0.13	0.13	0.00	0.00	0.00	0.00
Cote d'Ivoire	0.16	0.15	0.15	0.15	1.40	1.45	1.45	1.45	0.23	0.21	0.21	0.21	0.00	0.00	0.00	0.00
Benin	0.17	0.19	0.19	0.19	1.01	0.92	0.92	0.92	0.18	0.18	0.18	0.18	0.00	0.00	0.00	0.00
<b>South Asia</b>																
India	6.02	5.60	5.50	5.50	1.11	1.21	1.21	1.21	6.70	6.80	6.65	6.65	0.00	0.00	-0.15	-2.21
Pakistan	0.14	0.10	0.10	0.10	0.89	0.92	0.91	0.91	0.12	0.09	0.09	0.09	0.00	0.00	0.00	1.11
<b>Southeast Asia</b>																
Indonesia	0.55	0.55	0.54	0.54	1.78	1.76	1.76	1.76	0.97	0.96	0.95	0.95	0.00	0.00	-0.01	-1.04
Burma	1.06	1.06	1.07	1.07	1.48	1.51	1.55	1.55	1.56	1.60	1.65	1.65	0.00	0.00	0.05	3.13
Vietnam	0.17	0.16	0.16	0.16	2.50	2.50	2.50	2.50	0.41	0.40	0.39	0.39	0.00	0.00	-0.01	-3.00
Thailand	0.02	0.02	0.02	0.02	1.67	1.67	1.67	1.67	0.04	0.04	0.04	0.04	0.00	0.00	0.00	0.00
<b>South America</b>																
Argentina	0.40	0.41	0.38	0.38	3.16	3.17	3.29	3.29	1.27	1.30	1.25	1.25	0.00	0.00	-0.05	-3.85
Brazil	0.17	0.20	0.21	0.21	3.86	3.68	3.66	3.66	0.64	0.72	0.75	0.75	0.00	0.00	0.03	4.46
<b>Mexico</b>	0.06	0.05	0.05	0.05	1.73	1.74	1.74	1.74	0.10	0.09	0.09	0.09	0.00	0.00	0.00	0.00
<b>Others</b>	1.70	1.83	1.79	1.79	1.16	1.19	1.18	1.18	1.98	2.17	2.10	2.10	0.00	0.00	-0.07	-3.18

**Table 14 Sunflowerseed Area, Yield, and Production**

Country / Region	Area (Million hectares)				Yield (Metric tons per hectare)				Production (Million metric tons)				Change in Production			
	Prel.		2022/23 Proj.		Prel.		2022/23 Proj.		Prel.		2022/23 Proj.		From last month		From last year	
	2020/21	2021/22	Sep	Oct	2020/21	2021/22	Sep	Oct	2020/21	2021/22	Sep	Oct	MMT	Percent	MMT	Percent
<b>World</b>	26.95	28.72	27.48	27.49	1.83	1.99	1.89	1.89	49.27	57.11	51.95	52.02	0.07	0.14	-5.09	-8.91
<b>United States</b>	0.67	0.50	0.65	0.66	2.01	1.71	1.94	2.00	1.35	0.86	1.25	1.32	0.07	5.26	0.46	52.78
<b>Total Foreign</b>	26.27	28.22	26.83	26.83	1.82	1.99	1.89	1.89	47.92	56.24	50.69	50.70	0.01	0.01	-5.54	-9.85
<b>Former Soviet Union - 12</b>																
Russia	8.35	9.61	9.70	9.70	1.59	1.62	1.75	1.75	13.27	15.57	17.00	17.00	0.00	0.00	1.43	9.17
Ukraine	7.00	7.10	4.60	4.60	2.01	2.46	2.28	2.28	14.10	17.50	10.50	10.50	0.00	0.00	-7.00	-40.00
Kazakhstan	0.75	0.94	1.05	1.05	1.13	1.10	1.05	1.05	0.84	1.03	1.10	1.10	0.00	0.00	0.07	6.59
<b>European Union</b>	4.44	4.36	4.86	4.86	2.00	2.35	2.00	2.00	8.90	10.25	9.70	9.70	0.00	0.00	-0.55	-5.34
<b>South America</b>																
Argentina	1.67	1.60	2.00	2.00	2.05	2.09	2.10	2.10	3.43	3.35	4.20	4.20	0.00	0.00	0.85	25.37
Uruguay	0.07	0.07	0.08	0.08	1.69	1.62	1.71	1.71	0.11	0.11	0.13	0.13	0.00	0.00	0.02	16.36
Bolivia	0.14	0.14	0.14	0.14	1.39	1.39	1.40	1.40	0.19	0.20	0.20	0.20	0.00	0.00	0.00	1.54
Brazil	0.03	0.04	0.04	0.04	1.13	1.62	1.60	1.60	0.04	0.06	0.06	0.06	0.00	0.00	0.00	6.67
Paraguay	0.03	0.03	0.03	0.03	1.53	1.55	1.56	1.56	0.05	0.05	0.05	0.05	0.00	0.00	0.00	4.17
<b>China</b>	0.87	1.10	1.00	1.00	2.94	2.64	2.80	2.80	2.57	2.90	2.80	2.80	0.00	0.00	-0.10	-3.45
<b>South Asia</b>																
India	0.23	0.25	0.28	0.28	0.82	0.76	0.78	0.78	0.19	0.19	0.22	0.22	0.00	0.00	0.03	13.16
Pakistan	0.15	0.15	0.15	0.15	1.07	1.00	1.03	1.03	0.16	0.15	0.16	0.16	0.00	0.00	0.01	3.33
<b>Middle East</b>																
Turkey	0.72	0.76	0.79	0.79	2.17	2.30	2.41	2.41	1.56	1.75	1.90	1.90	0.00	0.00	0.15	8.57
Iran	0.04	0.04	0.04	0.04	1.08	1.00	1.02	1.02	0.04	0.04	0.04	0.04	0.00	0.00	0.00	0.00
Israel	0.00	0.00	0.00	0.00	9.00	7.00	6.00	6.00	0.01	0.01	0.01	0.01	0.00	0.00	0.01	71.43
<b>Africa</b>																
Egypt	0.01	0.01	0.01	0.01	2.38	2.38	2.50	2.50	0.02	0.02	0.03	0.03	0.00	0.00	0.01	31.58
Morocco	0.02	0.02	0.02	0.02	1.16	1.25	1.11	1.11	0.02	0.03	0.02	0.02	0.00	0.00	-0.01	-20.00
South Africa	0.48	0.68	0.76	0.76	1.42	1.26	1.03	1.03	0.68	0.85	0.78	0.78	0.00	0.00	-0.08	-8.82
<b>Burma</b>	0.60	0.60	0.60	0.60	0.65	0.65	0.65	0.65	0.39	0.39	0.39	0.39	0.00	0.00	0.00	0.00
<b>Canada</b>	0.05	0.04	0.03	0.03	2.24	2.05	1.88	2.06	0.10	0.08	0.06	0.07	0.01	9.68	-0.01	-17.07
<b>Australia</b>	0.02	0.02	0.03	0.03	1.44	1.58	1.48	1.48	0.03	0.03	0.04	0.04	0.00	0.00	0.01	23.33
<b>Others</b>	0.62	0.67	0.64	0.64	1.98	2.54	2.07	2.07	1.23	1.69	1.32	1.32	0.00	0.00	-0.37	-22.00

World and Selected Countries and Regions

**Table 15 Rapeseed Area, Yield, and Production**

Country / Region	Area (Million hectares)				Yield (Metric tons per hectare)				Production (Million metric tons)				Change in Production			
	Prel.		2022/23 Proj.		Prel.		2022/23 Proj.		Prel.		2022/23 Proj.		From last month		From last year	
	2020/21	2021/22	Sep	Oct	2020/21	2021/22	Sep	Oct	2020/21	2021/22	Sep	Oct	MMT	Percent	MMT	Percent
<b>World</b>	34.89	37.81	39.90	40.03	2.12	1.95	2.08	2.09	73.85	73.84	83.14	83.81	0.66	0.80	9.97	13.50
<b>United States</b>	0.73	0.85	0.78	0.88	2.16	1.46	2.10	2.05	1.58	1.24	1.63	1.80	0.16	9.98	0.55	44.45
<b>Total Foreign</b>	34.16	36.96	39.12	39.15	2.12	1.96	2.08	2.09	72.28	72.59	81.51	82.01	0.50	0.61	9.42	12.97
<b>European Union</b>	5.32	5.33	5.86	5.89	3.14	3.22	3.10	3.25	16.73	17.20	18.15	19.15	1.00	5.51	1.96	11.37
<b>United Kingdom</b>	0.38	0.31	0.36	0.36	2.73	3.20	3.40	3.40	1.04	0.98	1.23	1.23	0.00	0.00	0.24	24.87
<b>Switzerland</b>	0.02	0.02	0.02	0.02	3.14	3.14	3.14	3.14	0.07	0.07	0.07	0.07	0.00	0.00	0.00	0.00
<b>Canada</b>	8.33	8.95	8.60	8.60	2.34	1.54	2.33	2.27	19.49	13.76	20.00	19.50	-0.50	-2.50	5.74	41.75
<b>China</b>	6.77	6.80	7.10	7.10	2.08	2.16	2.07	2.07	14.05	14.71	14.70	14.70	0.00	0.00	-0.01	-0.10
<b>South Asia</b>																
India	6.70	8.20	8.60	8.60	1.27	1.34	1.28	1.28	8.50	11.00	11.00	11.00	0.00	0.00	0.00	0.00
Pakistan	0.22	0.28	0.35	0.35	1.32	1.35	1.33	1.33	0.30	0.38	0.47	0.47	0.00	0.00	0.09	24.00
Bangladesh	0.25	0.25	0.25	0.25	0.92	0.92	0.92	0.92	0.23	0.23	0.23	0.23	0.00	0.00	0.00	0.00
<b>Former Soviet Union - 12</b>																
Russia	1.45	1.62	2.20	2.20	1.77	1.71	1.77	1.77	2.57	2.78	3.90	3.90	0.00	0.00	1.13	40.54
Ukraine	1.19	1.04	1.15	1.15	2.31	2.91	2.78	2.78	2.75	3.02	3.20	3.20	0.00	0.00	0.19	6.14
Belarus	0.36	0.32	0.33	0.33	2.06	1.59	1.69	1.69	0.73	0.50	0.55	0.55	0.00	0.00	0.05	10.00
Kazakhstan	0.12	0.12	0.13	0.13	1.23	1.24	1.23	1.23	0.15	0.15	0.16	0.16	0.00	0.00	0.01	9.59
<b>Australia</b>	2.61	3.22	3.60	3.60	1.82	2.10	1.86	1.86	4.76	6.76	6.70	6.70	0.00	0.00	-0.06	-0.92
<b>South America</b>																
Chile	0.04	0.04	0.03	0.03	3.81	3.86	3.87	3.87	0.14	0.14	0.12	0.12	0.00	0.00	-0.02	-11.11
Paraguay	0.05	0.04	0.05	0.05	1.41	1.45	1.51	1.51	0.07	0.06	0.07	0.07	0.00	0.00	0.00	6.25
<b>Ethiopia</b>	0.03	0.03	0.03	0.03	1.80	1.80	1.80	1.80	0.05	0.05	0.05	0.05	0.00	0.00	0.00	0.00
<b>Others</b>	0.33	0.41	0.48	0.48	2.02	2.03	1.95	1.95	0.67	0.83	0.93	0.93	0.00	0.00	0.10	11.94

World and Selected Countries and Regions



**Table 16 Copra, Palm Kernel, and Palm Oil Production**

Country / Region	Production (Million metric tons)				Change in Production			
	2020/21	Prel.	2022/23 Proj.		From last month		From last year	
		2021/22	Sep	Oct	MMT	Percent	MMT	Percent
<b>Oilseed, Copra</b>								
Philippines	2.40	2.60	2.60	2.60	0.00	0.00	0.00	0.00
Indonesia	1.67	1.68	1.68	1.68	0.00	0.00	0.00	0.00
India	0.75	0.79	0.80	0.80	0.00	0.00	0.01	1.27
Vietnam	0.28	0.29	0.29	0.29	0.00	0.00	0.00	0.00
Papua New Guinea	0.11	0.11	0.11	0.11	0.00	0.00	0.00	0.00
Thailand	0.07	0.07	0.07	0.07	0.00	0.00	0.00	0.00
Sri Lanka	0.07	0.07	0.07	0.07	0.00	0.00	0.00	0.00
Mexico	0.04	0.05	0.04	0.04	0.00	0.00	-0.01	-20.00
Solomon Islands	0.03	0.03	0.03	0.03	0.00	0.00	0.00	0.00
Cote d'Ivoire	0.03	0.03	0.03	0.03	0.00	0.00	0.00	0.00
World	5.59	5.86	5.86	5.86	0.00	0.00	0.00	0.00
<b>Oilseed, Palm Kernel</b>								
Indonesia	11.46	12.00	12.12	12.12	0.00	0.00	0.12	1.00
Malaysia	4.34	4.60	4.95	4.95	0.00	0.00	0.35	7.61
Nigeria	0.82	0.90	0.90	0.90	0.00	0.00	0.00	0.00
Thailand	0.79	0.83	0.86	0.86	0.00	0.00	0.03	3.61
Colombia	0.29	0.31	0.34	0.34	0.00	0.00	0.03	9.68
Guatemala	0.17	0.18	0.18	0.18	0.00	0.00	0.00	0.00
Papua New Guinea	0.16	0.17	0.17	0.17	0.00	0.00	0.01	6.25
Honduras	0.13	0.16	0.16	0.16	0.00	0.00	0.00	0.00
Brazil	0.14	0.15	0.15	0.15	0.00	0.00	0.01	7.14
Cameroon	0.15	0.15	0.15	0.15	0.00	0.00	0.00	0.00
World	19.05	20.03	20.59	20.59	0.00	0.00	0.57	2.85
<b>Oil, Palm</b>								
Indonesia	43.50	45.30	46.50	46.50	0.00	0.00	1.20	2.65
Malaysia	17.85	18.20	19.80	19.80	0.00	0.00	1.60	8.79
Thailand	2.96	3.15	3.26	3.26	0.00	0.00	0.11	3.49
Colombia	1.56	1.75	1.84	1.84	0.00	0.00	0.09	5.14
Nigeria	1.28	1.40	1.40	1.40	0.00	0.00	0.00	0.00
Guatemala	0.87	0.88	0.91	0.91	0.00	0.00	0.03	3.41
Papua New Guinea	0.60	0.63	0.65	0.65	0.00	0.00	0.03	4.84
Honduras	0.45	0.60	0.60	0.60	0.00	0.00	0.00	0.00
Cote d'Ivoire	0.55	0.58	0.60	0.60	0.00	0.00	0.03	5.26
Brazil	0.55	0.55	0.57	0.57	0.00	0.00	0.02	3.64
World	73.08	75.95	79.16	79.16	0.00	0.00	3.21	4.23

World and Selected Countries and Regions

**Table 17 Cotton Area, Yield, and Production**

Country / Region	Area (Million hectares)				Yield (Kilograms per hectare)				Production (Million 480 lb. bales)				Change in Production			
	2020/21	Prel. 2021/22	2022/23 Proj.		2020/21	Prel. 2021/22	2022/23 Proj.		2020/21	Prel. 2021/22	2022/23 Proj.		From last month		From last year	
			Sep	Oct			Sep	Oct			Sep	Oct	MBales	Percent	MBales	Percent
<b>World</b>	31.37	32.31	32.72	32.51	774	778	788	791	111.47	115.54	118.45	118.05	-0.40	-0.33	2.51	2.17
<b>United States</b>	3.33	4.16	3.19	3.19	957	918	945	944	14.61	17.52	13.83	13.81	-0.02	-0.14	-3.71	-21.18
<b>Total Foreign</b>	28.04	28.16	29.53	29.32	752	758	771	774	96.86	98.02	104.61	104.24	-0.38	-0.36	6.22	6.35
<b>South Asia</b>																
India	13.29	12.15	13.00	13.00	452	439	461	461	27.60	24.50	27.50	27.50	0.00	0.00	3.00	12.24
Pakistan	2.20	2.00	2.00	2.00	445	653	599	566	4.50	6.00	5.50	5.20	-0.30	-5.45	-0.80	-13.33
<b>China</b>	3.20	3.10	3.15	3.00	2,014	1,882	1,935	2,032	29.60	26.80	28.00	28.00	0.00	0.00	1.20	4.48
<b>South America</b>																
Brazil	1.37	1.60	1.60	1.60	1,720	1,565	1,769	1,769	10.82	11.50	13.00	13.00	0.00	0.00	1.50	13.04
Argentina	0.41	0.48	0.43	0.43	717	680	692	692	1.35	1.50	1.35	1.35	0.00	0.00	-0.15	-10.00
Paraguay	0.01	0.01	0.01	0.01	416	416	416	416	0.02	0.02	0.02	0.02	0.00	0.00	0.00	0.00
<b>Africa</b>																
Burkina Faso	0.56	0.60	0.65	0.65	372	351	352	385	0.95	0.96	1.05	1.15	0.10	9.52	0.19	19.79
Mali	0.17	0.72	0.74	0.74	396	432	427	427	0.30	1.43	1.45	1.45	0.00	0.00	0.02	1.40
Cote d'Ivoire	0.45	0.47	0.46	0.46	494	486	473	473	1.01	1.05	1.00	1.00	0.00	0.00	-0.05	-4.76
Benin	0.62	0.64	0.68	0.62	513	483	504	492	1.45	1.42	1.58	1.40	-0.18	-11.11	-0.02	-1.41
Egypt	0.07	0.09	0.13	0.13	720	717	703	703	0.22	0.28	0.42	0.42	0.00	0.00	0.14	50.00
Cameroon	0.23	0.23	0.24	0.24	658	606	590	590	0.68	0.64	0.65	0.65	0.00	0.00	0.01	1.56
Tanzania	0.17	0.24	0.35	0.35	284	231	218	218	0.22	0.26	0.35	0.35	0.00	0.00	0.10	37.25
Nigeria	0.27	0.27	0.27	0.27	282	282	282	282	0.35	0.35	0.35	0.35	0.00	0.00	0.00	0.00
Zimbabwe	0.24	0.25	0.24	0.24	222	191	195	195	0.25	0.22	0.22	0.22	0.00	0.00	0.00	0.00
Ethiopia	0.08	0.08	0.08	0.08	637	637	637	637	0.24	0.24	0.24	0.24	0.00	0.00	0.00	0.00
<b>Former Soviet Union - 12</b>																
Uzbekistan	1.06	1.06	1.07	1.07	647	555	549	549	3.15	2.70	2.70	2.70	0.00	0.00	0.00	0.00
Turkmenistan	0.55	0.55	0.55	0.55	368	356	356	356	0.92	0.90	0.90	0.90	0.00	0.00	0.00	0.00
Tajikistan	0.16	0.17	0.17	0.17	619	608	615	615	0.46	0.48	0.48	0.48	0.00	0.00	0.01	1.05
Kazakhstan	0.11	0.12	0.13	0.13	534	502	523	523	0.27	0.27	0.30	0.30	0.00	0.00	0.04	13.21
<b>Middle East</b>																
Turkey	0.35	0.45	0.56	0.56	1,804	1,839	1,726	1,726	2.90	3.80	4.40	4.40	0.00	0.00	0.60	15.79
Syria	0.03	0.03	0.03	0.03	1,219	1,132	1,132	1,132	0.14	0.13	0.13	0.13	0.00	0.00	0.00	0.00
Iran	0.10	0.10	0.10	0.10	871	871	871	871	0.40	0.40	0.40	0.40	0.00	0.00	0.00	0.00
<b>Australia</b>	0.28	0.60	0.65	0.65	2,217	2,087	2,010	2,010	2.80	5.75	6.00	6.00	0.00	0.00	0.25	4.35
<b>Mexico</b>	0.15	0.15	0.20	0.20	1,532	1,725	1,524	1,524	1.02	1.22	1.40	1.40	0.00	0.00	0.18	14.75
<b>Burma</b>	0.24	0.25	0.25	0.25	635	644	644	644	0.70	0.73	0.73	0.73	0.00	0.00	0.00	0.00
<b>Others</b>	1.73	1.77	1.82	1.82	575	552	541	541	4.57	4.49	4.51	4.51	0.00	0.00	0.02	0.36

World and Selected Countries and Regions

**TABLE 18**

The table below presents a record of the October projection and the final Estimate. Using world wheat production as an example, the "root mean square error" means that chances are 2 out of 3 that the current forecast will not be above or below the final estimate by more than 1.6 percent. Chances are 9 out of 10 (90% confidence level) that the difference will not exceed 2.7 percent. The average difference between the October projection and the final estimate is 7 million tons, ranging from 0.1 million to 26.7 million tons. The October projection has been below the estimate 29 times and above 11 times.

**RELIABILITY OF PRODUCTION PROJECTIONS 1/**

COMMODITY AND REGION	Root mean square error	90 percent confidence interval	Difference between forecast and final estimate				
			Average	Smallest	Largest	Years	
						Below final	Above final
	Percent		---Million metric tons---				
<b>WHEAT</b>							
World	1.6	2.7	7.0	0.1	26.7	29	11
U.S.	0.6	0.9	0.2	0.0	1.2	12	17
Foreign	1.8	3.1	6.9	0.1	26.8	29	11
<b>COARSE GRAINS 2/</b>							
World	1.9	3.2	15.9	0.8	51.9	31	9
U.S.	2.7	4.5	4.8	0.1	17.9	23	17
Foreign	2.5	4.2	15.1	0.6	61.4	32	8
<b>RICE (Milled)</b>							
World	2.2	3.8	6.2	0.0	20.9	31	8
U.S.	3.2	5.4	0.1	0.0	0.5	23	17
Foreign	2.2	3.8	6.2	0.1	21.0	31	9
<b>SOYBEANS</b>							
World	4.5	7.6	7.1	0.1	31.9	19	21
U.S.	2.8	4.7	1.5	0.0	4.0	17	23
Foreign	7.2	12.2	6.9	0.0	31.5	18	22
<b>COTTON</b>			---Million 480-lb. bales---				
World	4.4	7.5	3.0	0.0	10.9	20	19
U.S.	5.4	9.1	0.7	0.0	2.4	22	18
Foreign	5.0	8.5	2.6	0.0	10.5	19	20
<b>UNITED STATES</b>			-----Million bushels-----				
<i>CORN</i>	2.8	4.7	187	5	618	22	18
<i>SORGHUM</i>	4.7	8.1	18	0	71	22	17
<i>BARLEY</i>	1.4	2.4	3	0	24	9	16
<i>OATS</i>	2.4	4.1	2	0	18	6	12

1/ Marketing years 1981/82 through 2021/22 for grains, soybeans, and cotton. There was no WASDE published in October 2013, due to a partial government shutdown, so no 2013/14 forecasts in that month were published for grains, soybeans, and cotton, and no 2013 forecast was published in that month for animal products. Final for grains, soybeans, and cotton is defined as the first November estimate following the marketing year for 1981/82 through 2020/21, and for 2021/22 the last month's estimate.

2/ Includes corn, sorghum, barley, oats, rye, millet, and mixed grain