



United States
Department of
Agriculture

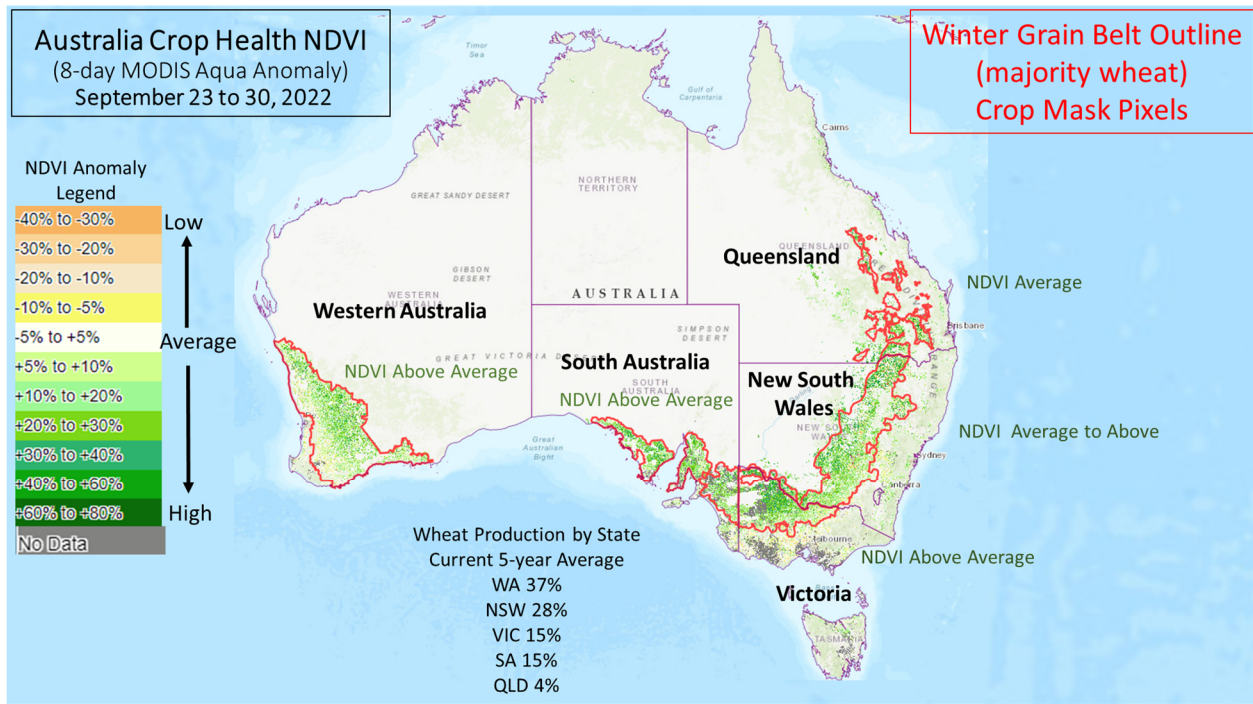
Foreign
Agricultural
Service

World Agricultural Production

Circular Series
WAP 11-22
November 2022

Australia Wheat: Production Revised Higher

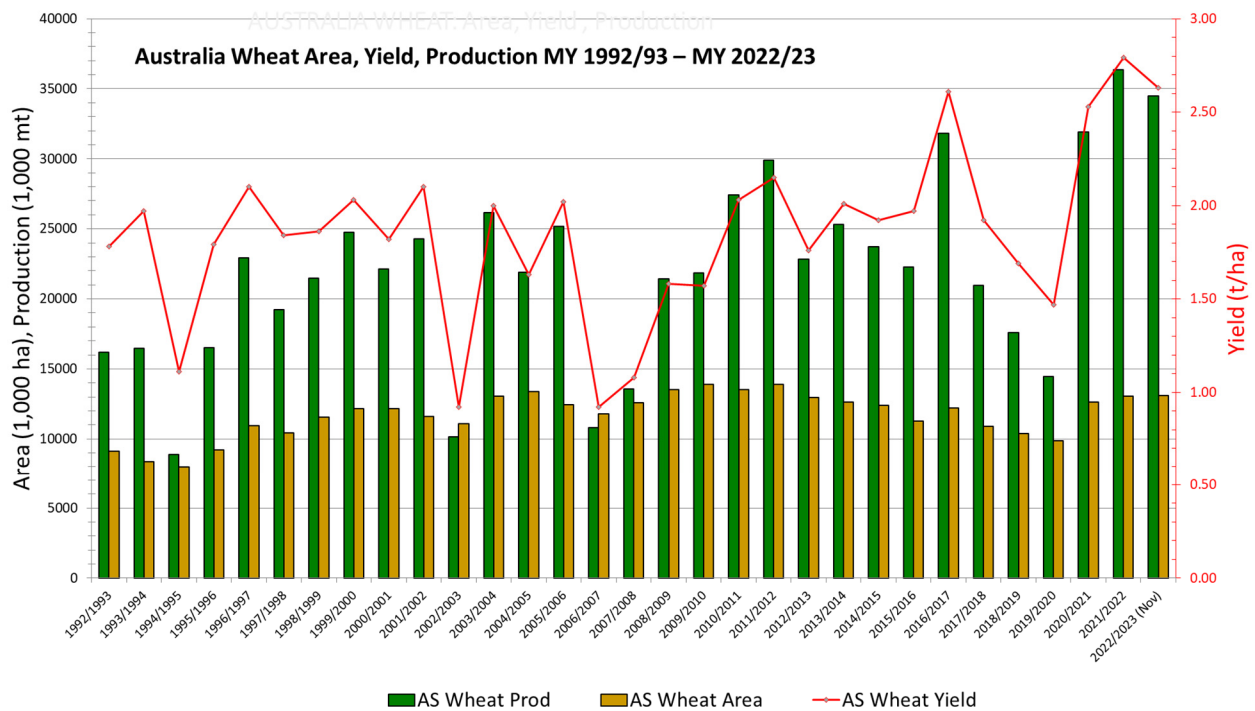
USDA forecasts Australia marketing year (MY) 2022/23 wheat production at 34.5 million metric tons (mmt), up 1.5 mmt or 5 percent from last month, but down 5 percent from last year's record. Harvested area is estimated at 13.1 million hectares (mha), unchanged from last month and up 0.1 mha, or less than 1 percent from last year. Yield is forecast at 2.63 tons per hectare (t/ha), up 5 percent from last month, but down 6 percent from last year's record.



Sources: MODIS 8-day NDVI Anomaly Composite (NASA); GeoCover LandCover 2010 Agricultural Mask

Overall, wheat passed through the flowering crop stage and into early grain fill with ample moisture availability in September and October. Peak flowering is typically early to mid-September. At present, root zone soil moisture is average to above-average for the major growing regions, further supporting yield potential.

Approved by the World Agricultural Outlook Board

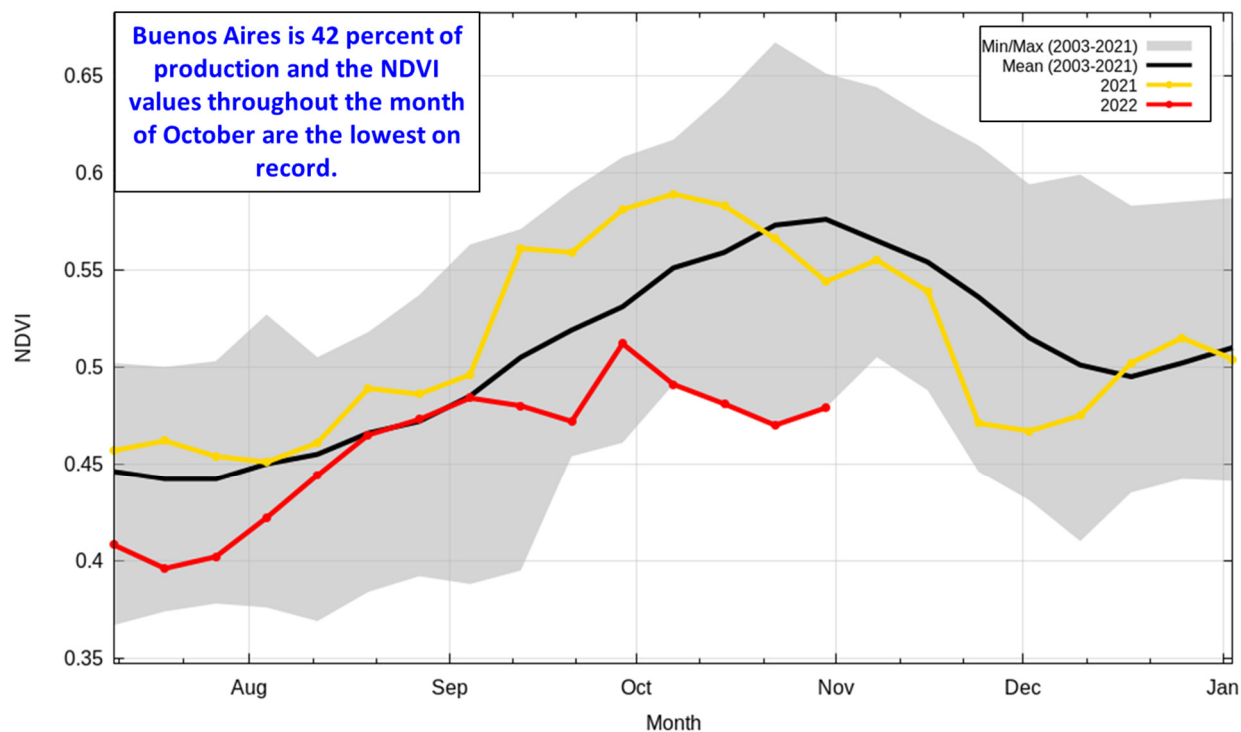


Source: USDA PSD Online

The recent satellite-derived Normalized Difference Vegetation Index (NDVI) depicts above-average crop vigor, especially in the wheat belt of Western Australia, Victoria, and New South Wales. (For more information, please contact James.Crutchfield@usda.gov.)

Argentina Wheat: Drought Cuts Production

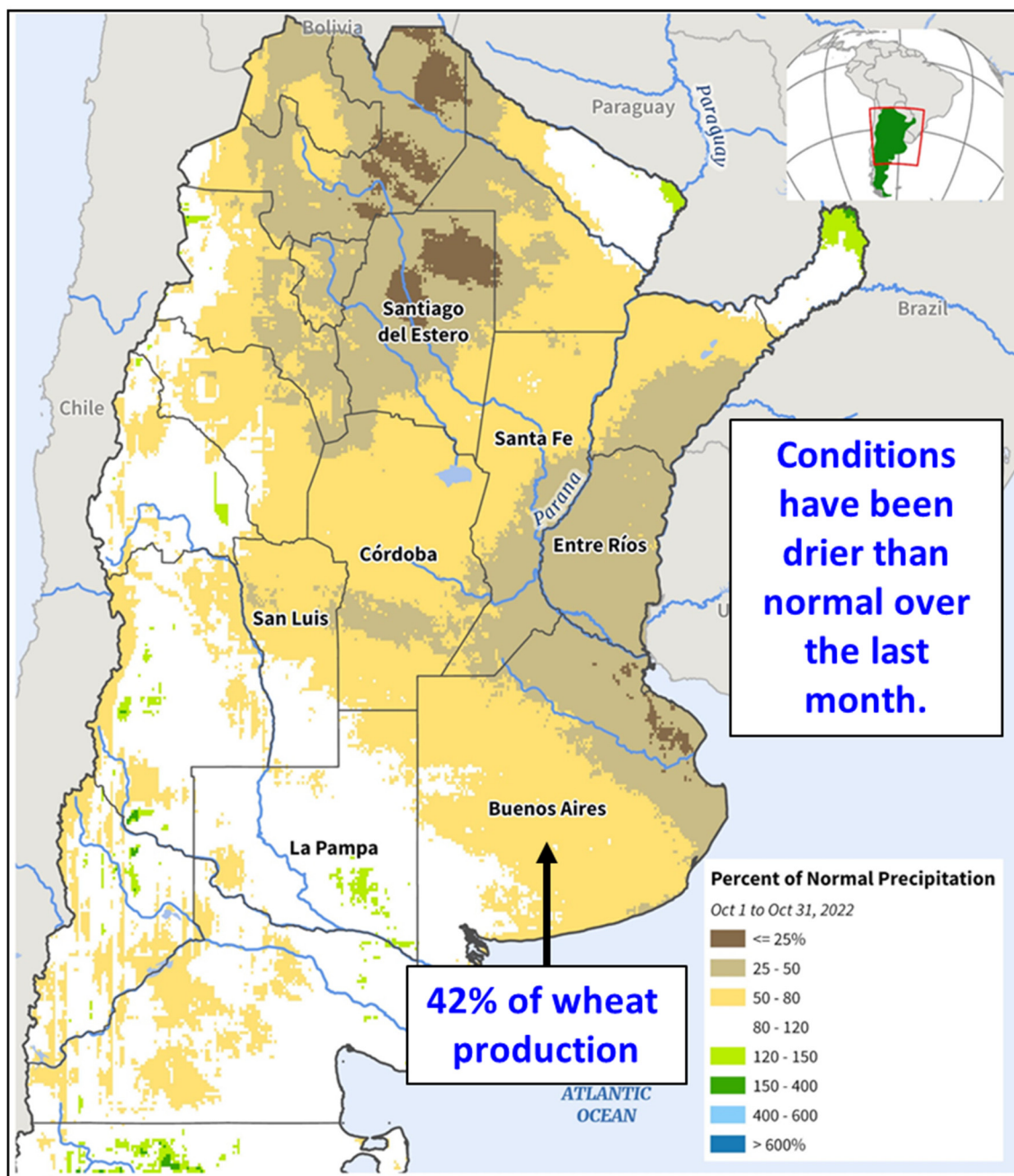
Buenos Aires, Argentina: NDVI



Source: USDA/NASA GLAM, MODIS Aqua 8-day NDVI

Argentina wheat production for marketing year 2022/23 is estimated at 15.5 million metric tons, down 11 percent from last month and 30 percent from last year. Wheat yield is estimated at 2.67 tons per hectare, down 11 percent from last month, and 21 percent from last year. Harvested area is estimated at 5.8 million hectares, unchanged from last month, but down 11 percent from last year.

Argentina: Percent of Normal Precipitation (Oct 1-Oct 31)

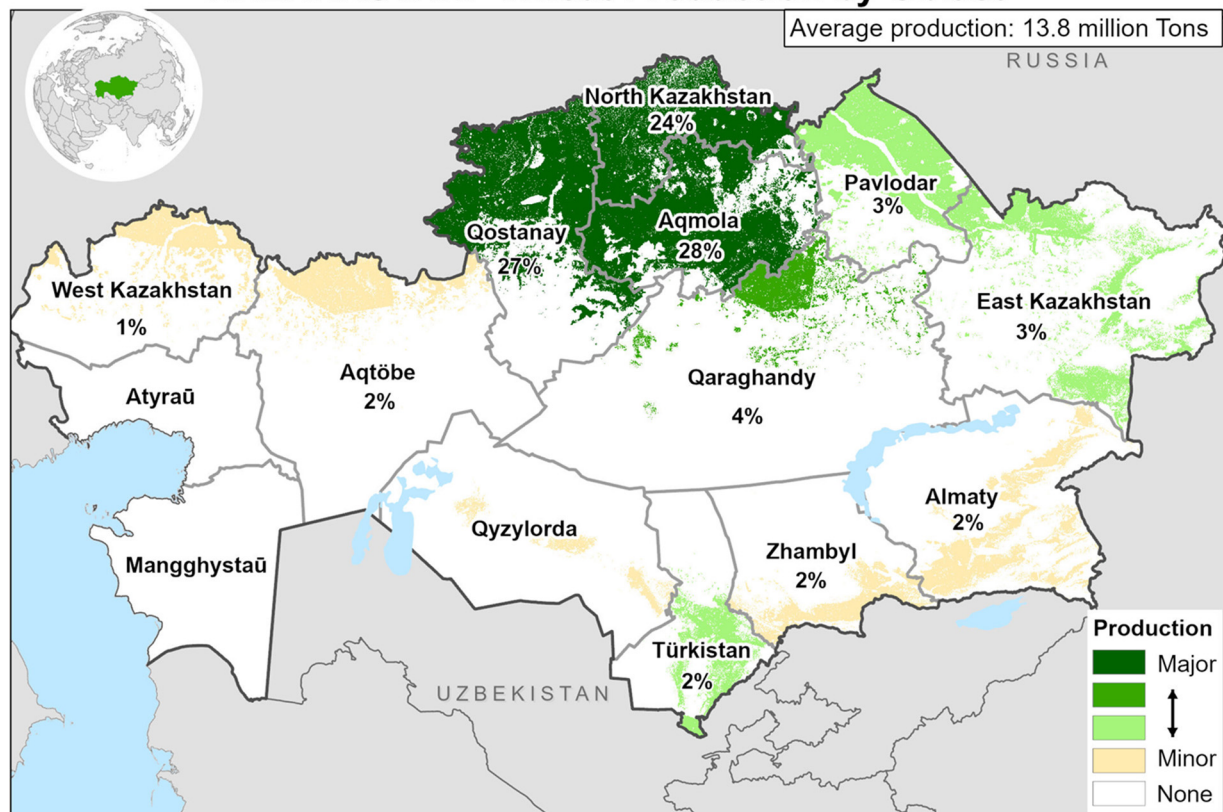


Source: USCB/CHIRPS 2.0 Precipitation Data

Yield is down month-to-month because of continued dry conditions throughout crop areas in Buenos Aires, Córdoba, and Santa Fe, which together account for about 80 percent of total wheat production. Crop conditions, as shown by the satellite-derived MODIS Normalized Difference Vegetation Index (NDVI), were below-average throughout the wheat growing regions. In Buenos Aires, the NDVI values throughout the month of October, when the crop was flowering, were the lowest values in the history of the 20-year data series. Rainfall occurred at the end of October, but it was not enough to boost yield. Harvest will begin in mid-to-late November. *(For more information, please contact Katie.McGaughey@usda.gov.)*

Kazakhstan Wheat: Increased Production Driven by Favorable Weather

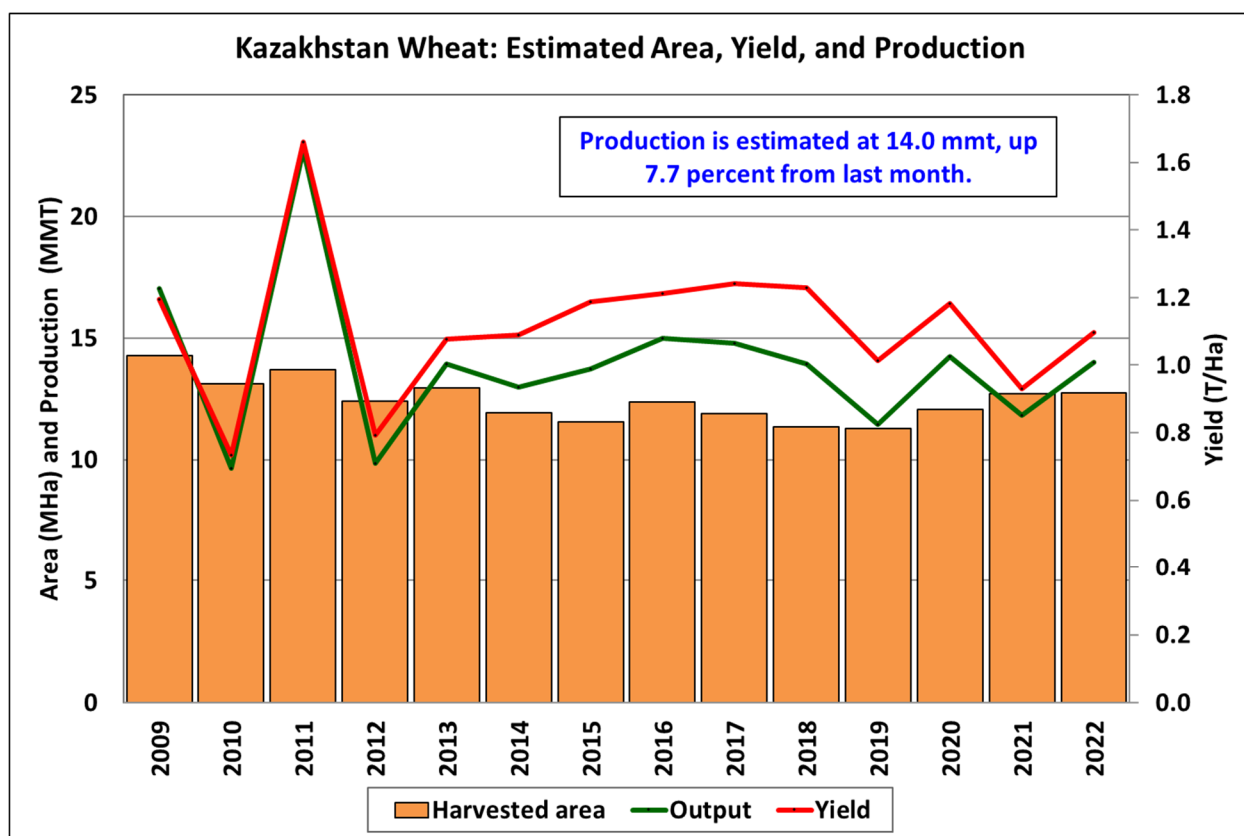
KAZAKHSTAN: Wheat Production by Oblast



USDA Foreign Agricultural Service
U.S. DEPARTMENT OF AGRICULTURE

Data Source: State Statistical Agency of Kazakhstan
Average production 2015-19
GFSAD 30 m crop cover (2015)

USDA estimates Kazakhstan wheat production for marketing year 2022/23 at 14.0 million metric tons, up 8 percent from last month and 19 percent from last year. Yield is estimated at 1.10 tons per hectare, up 8 percent from last month and 18 percent from last year. Harvested area is estimated at 12.8 million hectares, unchanged last month and slightly up from last year.

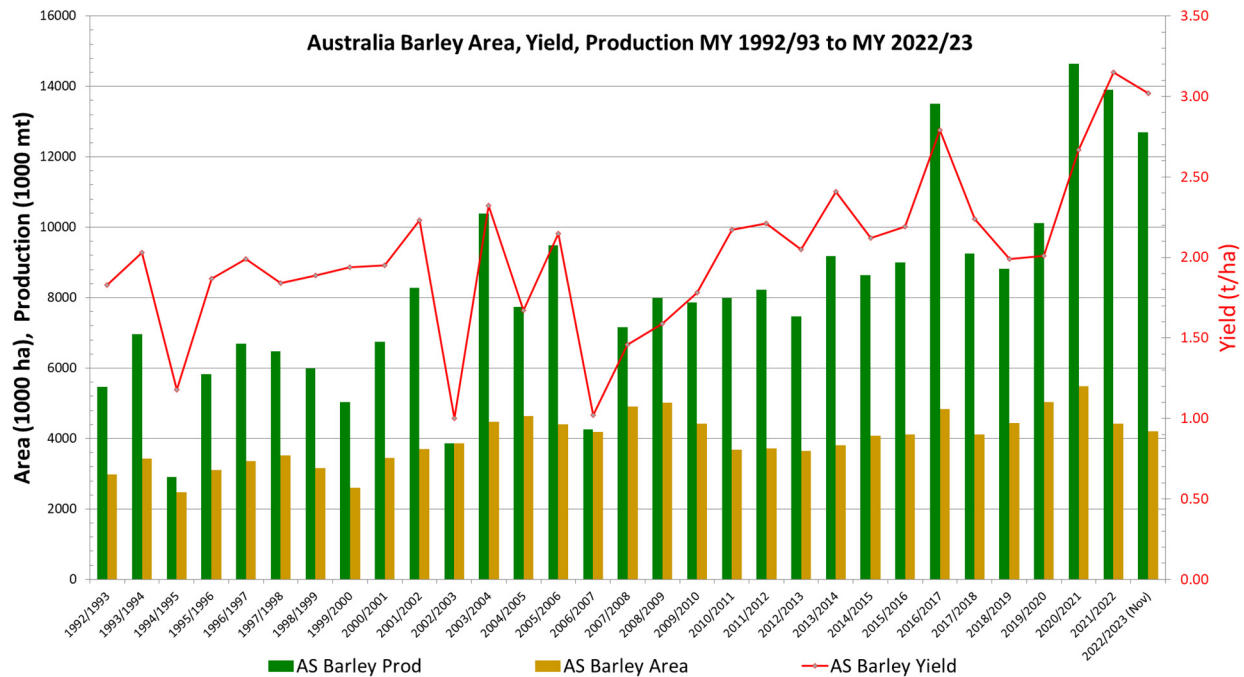


Sources: USDA PSD Online (2009-2021); FAS estimates (2022)

Production is revised up month-to-month based on information provided by USDA’s Agricultural Affairs Office in Astana, Kazakhstan. The increase is driven by favorable weather conditions this season and appropriate use of fertilizers and pesticides by producers. About 80 percent of Kazakhstan wheat is produced in the north-central oblasts of Qostanay, Aqmola, and North Kazakhstan. The Kazakhstan Ministry of Agriculture indicates that harvest is complete across all major grain producing areas as of October 10, 2022. *(For more information, please contact Iliana.Mladenova@usda.gov.)*

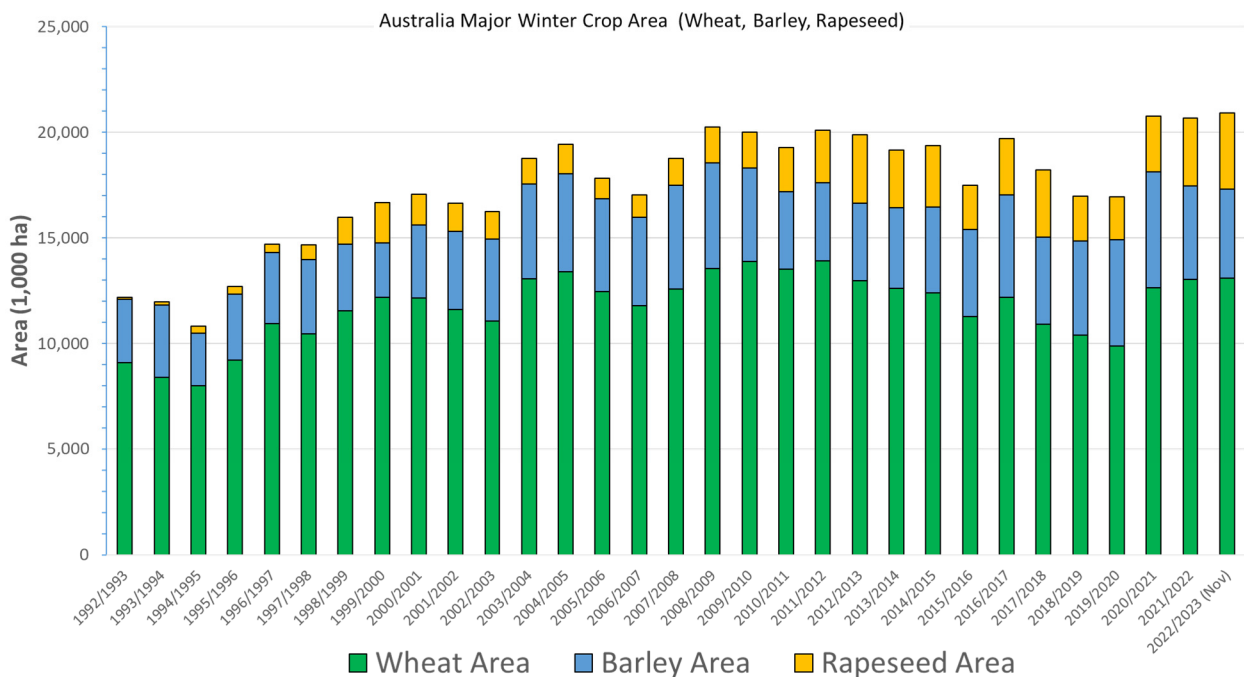
Australia Barley: Production Revised Higher

USDA forecasts Australia marketing year (MY) 2022/23 barley production at 12.7 million metric tons (mmt), up 0.5 mmt or 4 percent from last month, but down 1.2 mmt or 9 percent from last year. Harvested area is estimated at 4.2 million hectares (mha), unchanged from last month, but down 0.2 mha or 5 percent from last year. Yield is forecast at 3.02 tons per hectare (t/ha), up 4 percent from last month, but down 4 percent from last year’s record.



Source: USDA PSD Online

Overall, barley passed through the flowering crop stage and into early grain fill with abundant moisture availability in September and October. Peak flowering is typically early to mid-September. At present, root zone soil moisture is average to above-average for the major growing regions, further supporting yield potential. Barley is the most reliable and lower risk crop of the three major winter crops grown in Australia that include wheat, rapeseed, and barley.



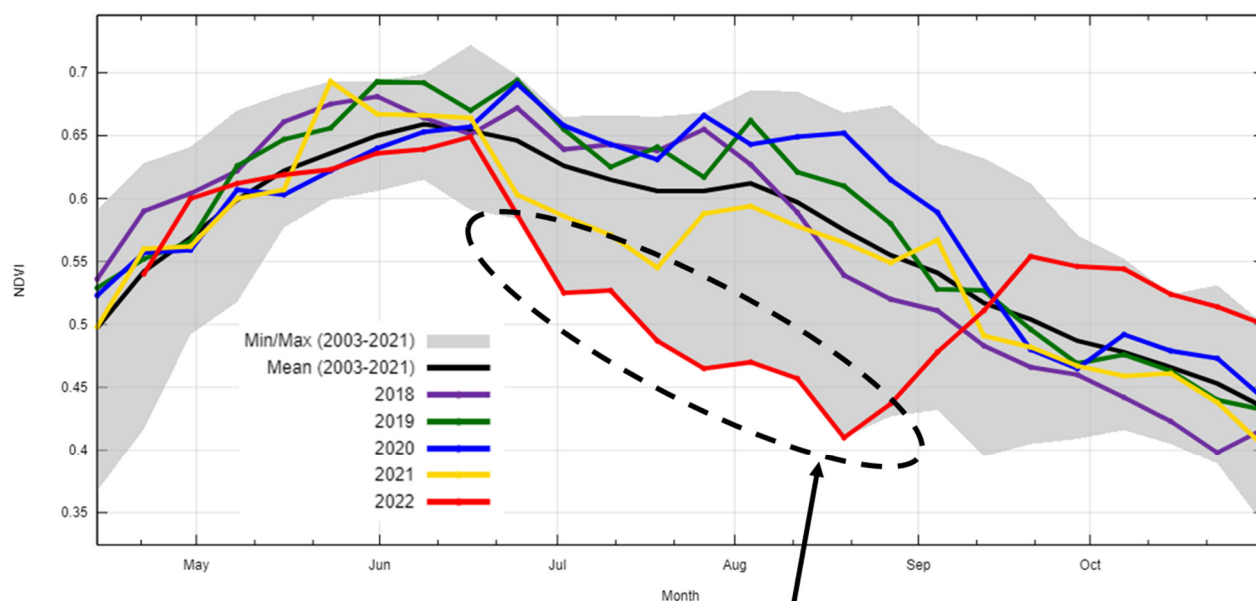
Source: USDA PSD Online

The recent satellite-derived Normalized Difference Vegetation Index (NDVI) depicts above-average crop vigor, especially in the barley belt of Western Australia, Victoria, and New South Wales. (For more information, please contact James.Crutchfield@usda.gov.)

Hungary Corn: Extreme Weather Reduces Production to Lowest Level in 54 Years

Corn production in Hungary for marketing year (MY) 2022/23 is estimated at 4.0 million tons (mmt), down 1.6 mmt from last month, 2.3 mmt (37 percent) from last year, and 47 percent below the 5-year average of 7.5 mmt. Production is the lowest since MY 1968/69. Area is estimated at 0.9 million hectares (mha), 0.1 mha (10 percent) below last month, 14 percent below last year, and 10 percent below the 5-year average. Yield is estimated at 4.41 tons per hectare, 20 percent below last month, 27 percent below last year and 42 percent below the 5-year average.

Hungary: Normalized Difference Vegetation Index (NDVI)



During the summer 2022 corn season, NDVI levels in Hungary were the lowest since the beginning of the dataset in 2003.

Sources: USDA/NASA GLAM, MODIS Aqua 8-day NDVI; ESRI Sentinel-2 Crop Mask

Central Europe experienced extreme heat and severe drought during the summer and Hungary was situated at the center of these poor conditions. Satellite data confirmed the deteriorated situation in Hungary. Corn was damaged during its most vulnerable periods of tasseling, pollination, and grain fill. The combination of record heat and prolonged dryness was relentless, with yield potential falling throughout the season as relief never materialized. Harvested area has also been reduced due to conversion of grain corn to silage, as well as to abandonment. Harvest is ongoing and continues through November. While official Hungarian estimates have not been released yet by the government, some private sources report even lower production estimates.

Corn is a vital part of Hungary’s economy and agricultural system. The country is typically one of the European Union (EU)’s largest corn producers, supplying a significant amount of corn for export, but this year it may become a net corn importer for the first time in decades. In addition to

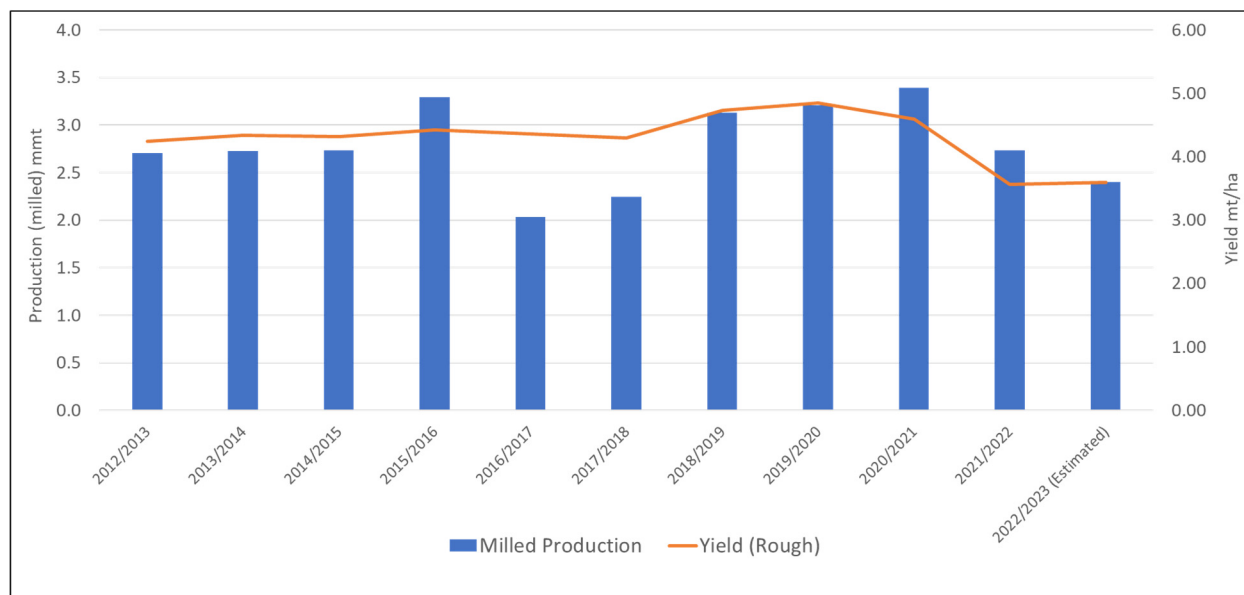
its livestock sector, Hungary has three of the EU’s largest corn processing facilities with significant processing capacity. Total MY 2022/23 EU corn production, of which Hungary is a contributor, is estimated at 54.8 mmt, down 23 percent from last year and 17 percent from the 5-year average.

For country-specific area, yield, and production estimates within the European Union (EU), please go to PSD Online at <https://apps.fas.usda.gov/PSDOnline/app/index.html#/app/home>, and select “Downloadable Data Sets.” Select the zipped file for “EU Countries Area & Production.” (For more information, please contact Bryan.Purcell@usda.gov.)

Sri Lanka Rice: Rice Production Estimated to Drop Further

USDA estimates marketing year (MY) 2022/23 Sri Lanka rice production at 2.4 million metric tons (milled basis), down 9 percent from last month and 12 percent from MY 2021/22. Harvested area is estimated at 0.98 million hectares, down 2 percent from last month and 13 percent from last year. Yields (rough) are estimated to reach 3.60 metric tons per hectare, down 18 percent from the 5-year average, but up 1 percent from last year.

Lowest Rice Production Since the MY 2017/18 Drought Year



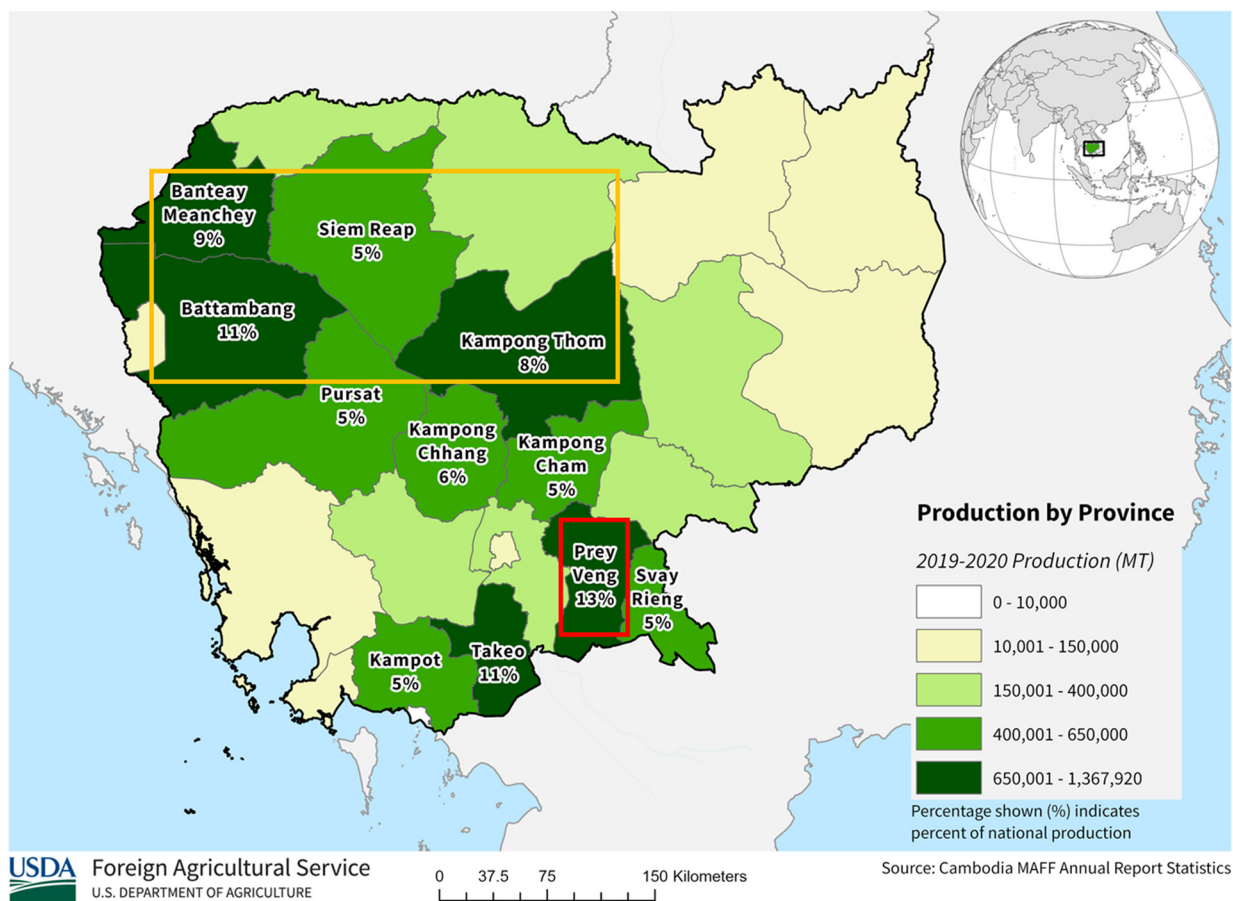
Source: USDA PSD Online

Rice production dropped to the lowest level since the drought of 2017. The low yields were due to reduced application of agrochemicals, including chemical fertilizers and pesticides, resulting from an import ban in 2021. The import ban was lifted in November 2021. However, the country was on the verge of economic collapse, and farmers could not easily acquire agrochemicals. FAO conducted an in-country team assessment during the 2022 *yala* growing period and produced the report – *FAO/WFP Special Report: Crop and Food Security Assessment Mission (CFSAM) To the Democratic Socialist Republic of Sri Lanka, September 2022*. The mission team commented on stunted crops, panicles without grain, and yellowed paddy fields due to nitrogen deficiency.

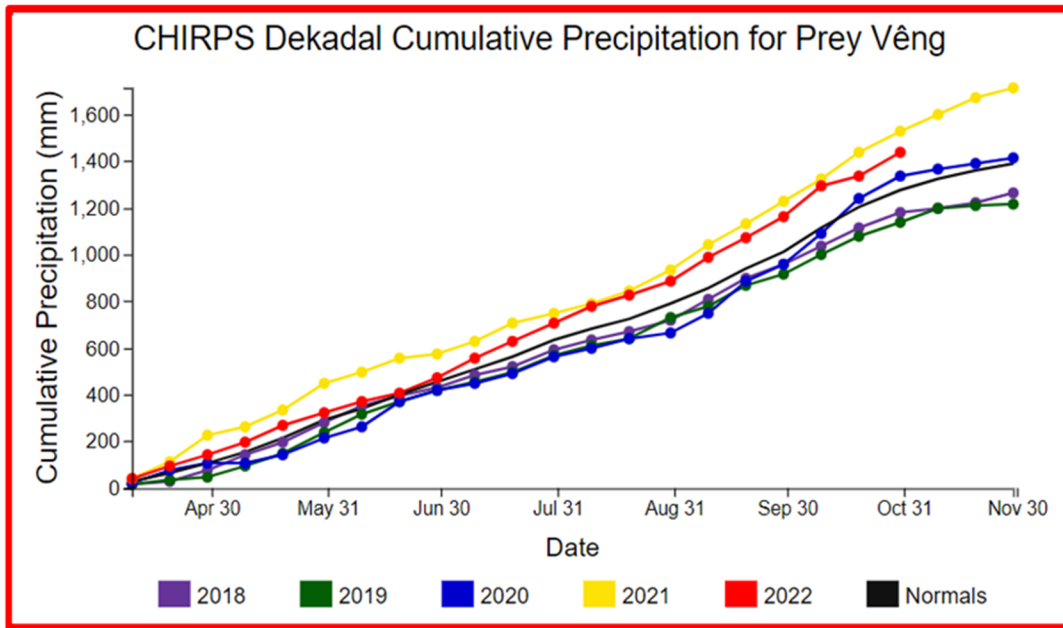
USDA combines the 2022 *yala*, which accounts for 40 percent of the total production, and the 2022/23 *maha* crop for the total estimate. (For more information, please contact Arnella.Trent@usda.gov.)

Cambodia Rice: Estimated Production Remains High Year-to-Year Despite Prolonged Flooding

Cambodia: Rice Production

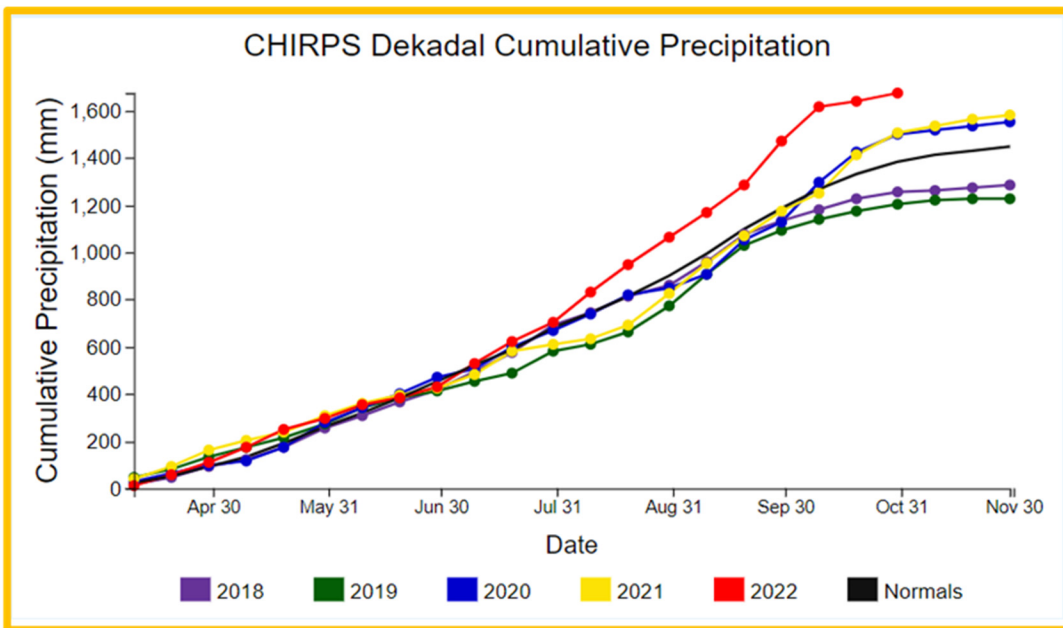


USDA estimates marketing year (MY) 2022/23 rice production at 5.9 million metric tons (milled basis), down slightly from last month, but up 3 percent from last year. Harvested area is estimated at 3.3 million hectares, down 1 percent from last month, but up 1 percent from last year. Yield (rough) is estimated at a record 2.94 tons per hectare, up 1 percent from last month and 2 percent from last year.



Source: USCB CHIRPS

Rice in Cambodia is cultivated year-round due to the different rice varieties: short, medium, and long. Cultivation occurs in two distinct seasons, a wet season (the main season) followed by a dry season. During Cambodia’s wet season, rice sowing operations for all the varieties start in May through June. Harvest for the short and medium varieties begins in August through September, however, for the long varieties, harvest begins in October and extends through January. Dry season sowing begins in November through December and is harvested in February through April.

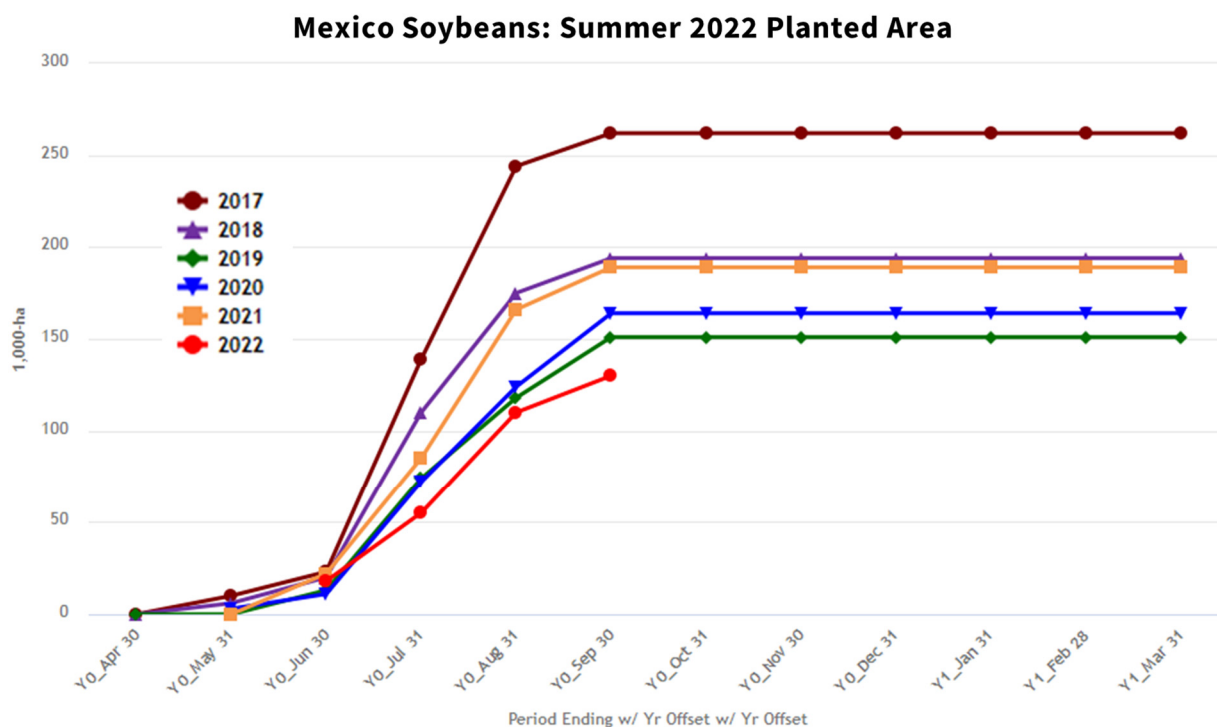


Source: USCB CHIRPS

For the past decade, Cambodia rice area has expanded by 12 percent due to the adoption of new technologies and access to better inputs. In MY 2022/23 the rate of rice expansion was slowed due

to above-average rainfall during the wet season (as referenced in the yellow-framed graphic above), most notably in the key rice provinces of Banteay Meanchey, Battambang, Kampong Thom, and Siem Reap. Though the rains replenished soil moisture profiles and aided rice development, prolonged periods of rainfall led to localized flooding and limited rice area expansion. Reports of localized flooding led to rice area damage; however, the damages were offset by new planting policies enacted that provided seeds to affected farmers. (For more information, please contact Justin.Jenkins@usda.gov.)

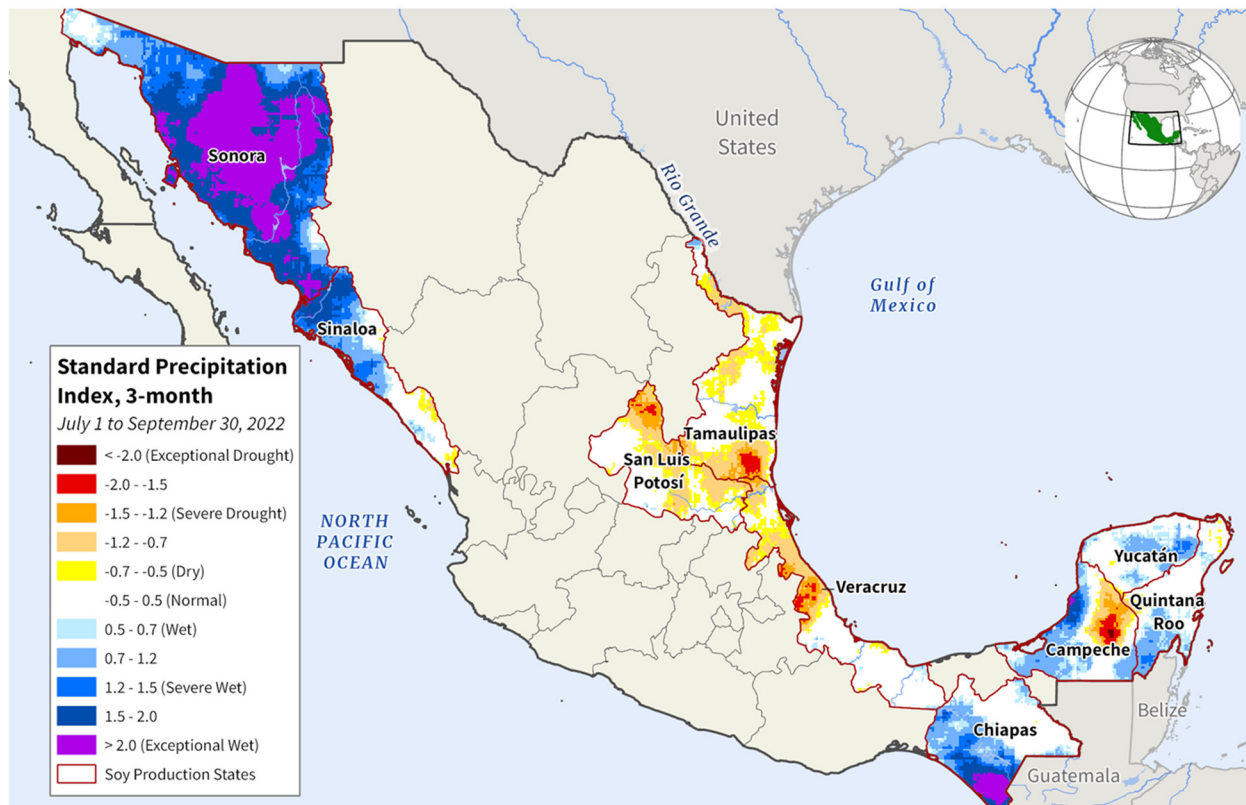
Mexico Soybeans: Production Decreased by Lower Planted Area and Drought Conditions



Sources: GDA Corp., CropSignal; SIAP

USDA estimates Mexico’s marketing year 2022/23 soybean production at 225,000 metric tons, down 22 percent from last month and last year’s production. The area is estimated at 150,000 hectares (ha), 19 percent less than last month and 18 percent lower than last year. The yield is estimated at 1.50 tons per hectare, down 4 percent from last month and last year.

Drought Conditions in Major Soybean Areas During Summer 2022



Source: CHIRPS 3-Month Standard Precipitation Index (SPI)

As of September 2022, *Servicio de Información Agroalimentaria y Pesquera* (SIAP) reported summer soybean planted area at 130,221 ha, which is below the summer planted area of the most recent five years. Planted area has decreased due to the high production costs of agricultural inputs. In addition, SIAP has reported 13,016 ha of damaged soybeans in Campeche, Tamaulipas, and San Luis Potosí, mostly due to drought since June 2022, preventing crops from fully developing.

Mexico: Soybean Production



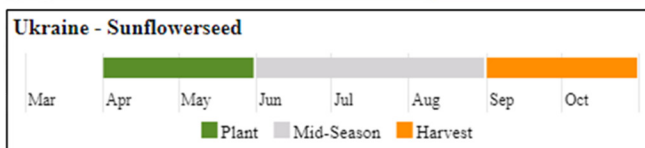
USDA Foreign Agricultural Service
 U.S. DEPARTMENT OF AGRICULTURE

Sources: INEGI, Servicio de Información Agroalimentaria y Pesquera (SIAP), Mexico

Representing about 98 percent of total production, the mostly rainfed summer soybean crop is planted from April to July and harvested from September to December. The main soybean states in Mexico include Campeche, Tamaulipas, Sinaloa, Yucatan, Chiapas, Veracruz, and San Luis Potosí. The mostly irrigated fall soybean crop is planted from around December to February and harvested from April to July. *(For more information, please contact Ifeoma.Collins@usda.gov.)*

Ukraine Sunflowerseed: Lower Yield Based on Harvest Data

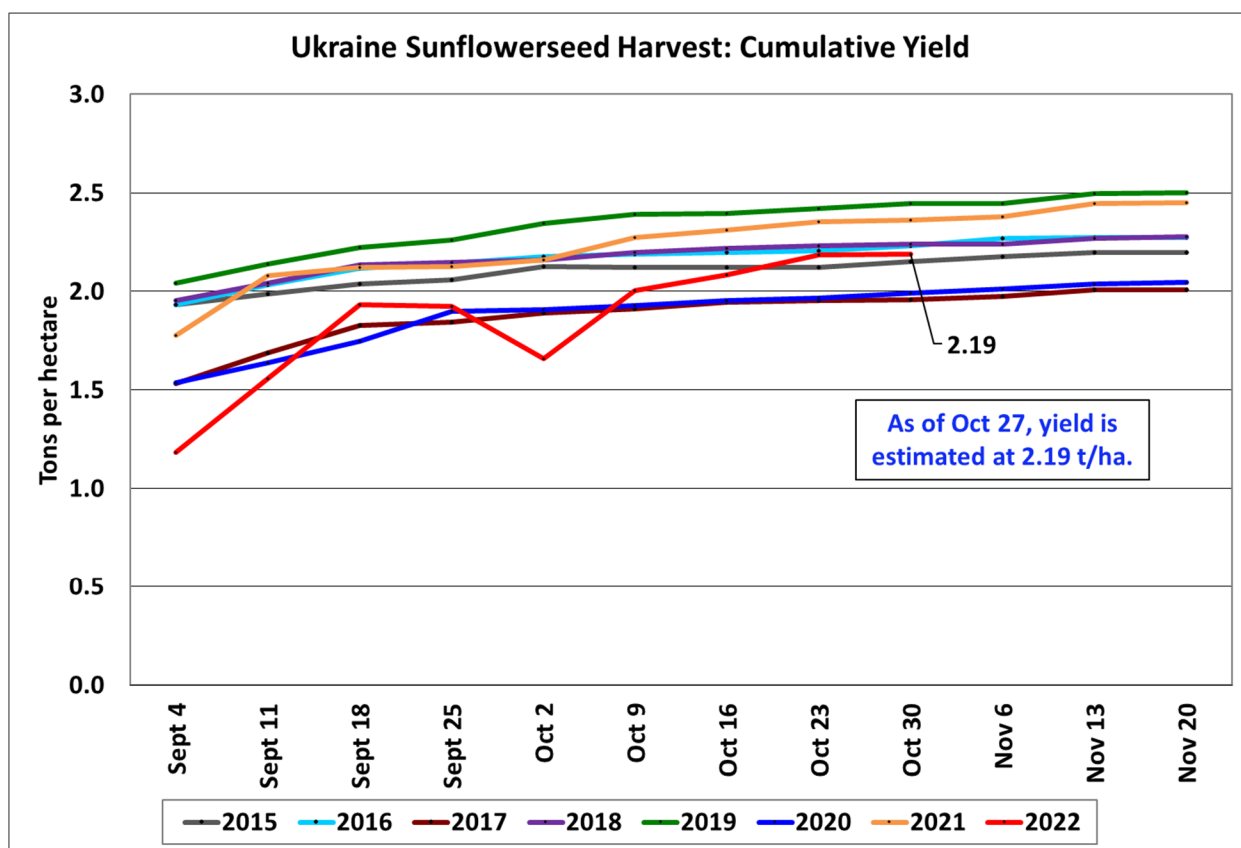
Ukraine: Sunflower Seed Production



Source: State Statistics Service of Ukraine (Rosstat for Crimea Oblast)
Average Sunflower Seed Production 2016-2020

USDA Foreign Agricultural Service
U.S. DEPARTMENT OF AGRICULTURE

Ukraine sunflowerseed production for marketing year (MY) 2022/23 is estimated at 10.1 million metric tons, down 4 percent from last month and 42 percent from last year. Yield is estimated at 2.20 tons per hectare (t/ha), down 4 percent from last month and 11 percent from last year. Harvested area is estimated at 4.6 million hectares, unchanged from last month, but down 35 percent from last year.

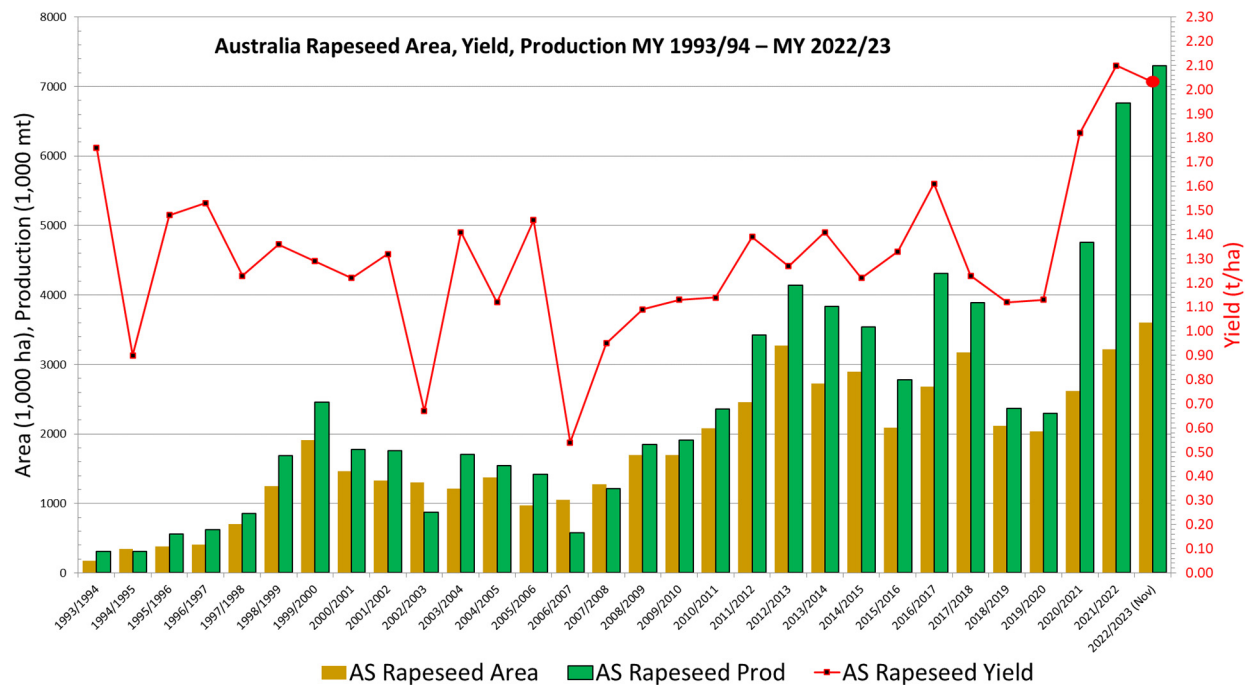


Source: Ukraine Ministry of Agriculture

Yield is lowered month-to-month based on harvest progress data from the Ukraine Ministry of Agriculture. As of October 27th, 80 percent of harvest is complete, and yield is currently at 2.19 t/ha. Overall, less area was planted this year because of the ongoing conflict. Even with the lower planted area, harvest is still behind normal, which is largely due to the abnormally wet conditions during the month of September. Yield typically increases throughout the harvest, however, this year, harvest data indicates below normal yields across all sunflowerseed producing regions in Ukraine. USDA crop production estimates for Ukraine include estimated output from Crimea. *(For more information, please contact Iliana.Mladenova@usda.gov.)*

Australia Rapeseed: New Production Record

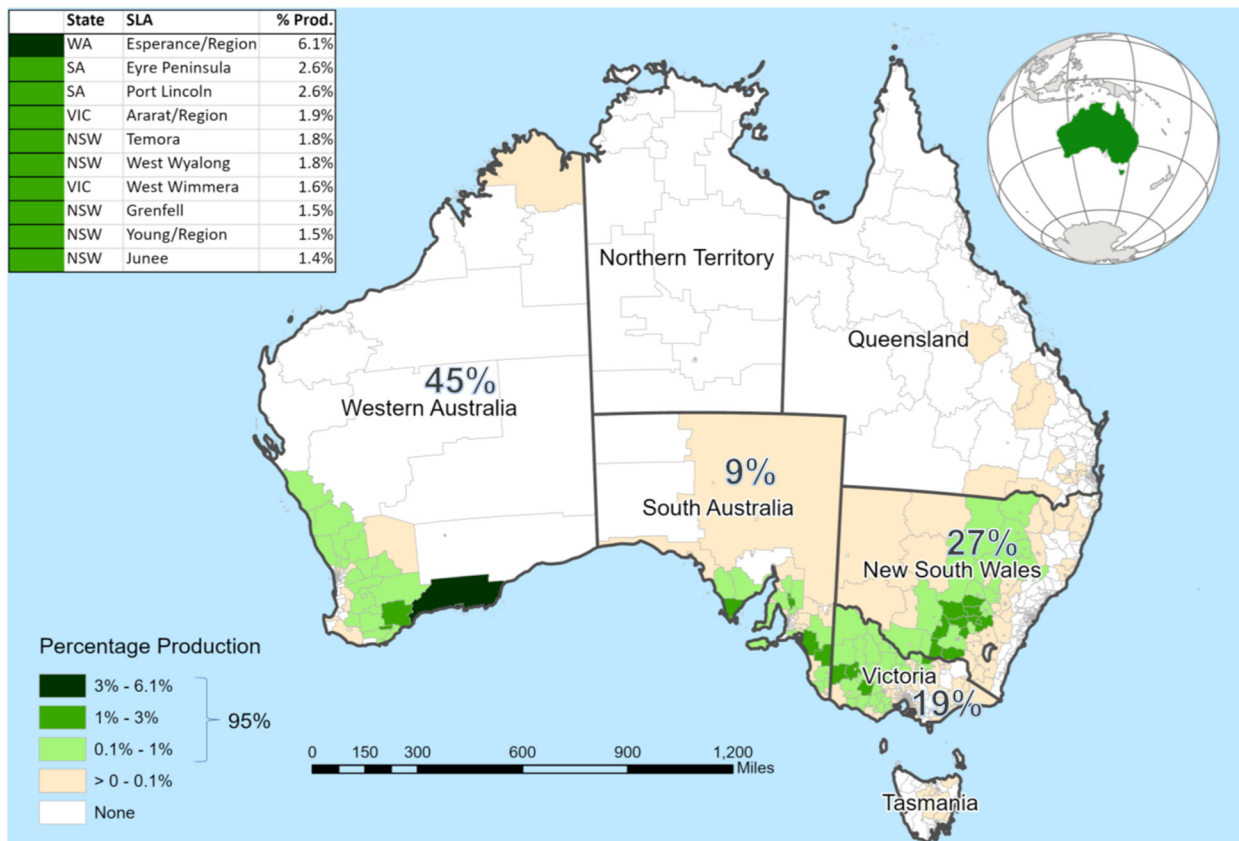
USDA forecasts Australia rapeseed production for marketing year (MY) 2022/23 at a record 7.3 million metric tons (mmt), up 0.6 mmt or 9 percent from last month, and up 0.5 mmt or 8 percent from the previous record of last year. Yield is forecast at 2.03 tons per hectare, up 9 percent from last month, but down 4 percent from last year's record.



Source: USDA PSD Online

Strong prices supported a record harvested area of 3.6 million hectares and is estimated 12 percent over last season. Above-average rainfall prior to sowing in the two largest producing states of Western Australia and New South Wales provided beneficial soil moisture for planting and throughout germination. Favorable seasonal conditions followed across much of the grain growing regions of Australia. Rapeseed sowing commenced in April and continued into June. In September, the rapeseed crop entered the critical flowering crop stage with ample soil moisture. October soil moisture levels were supportive for grain fill. Harvesting will commence in late November and will conclude in December.

Australia: Rapeseed (Canola) Production



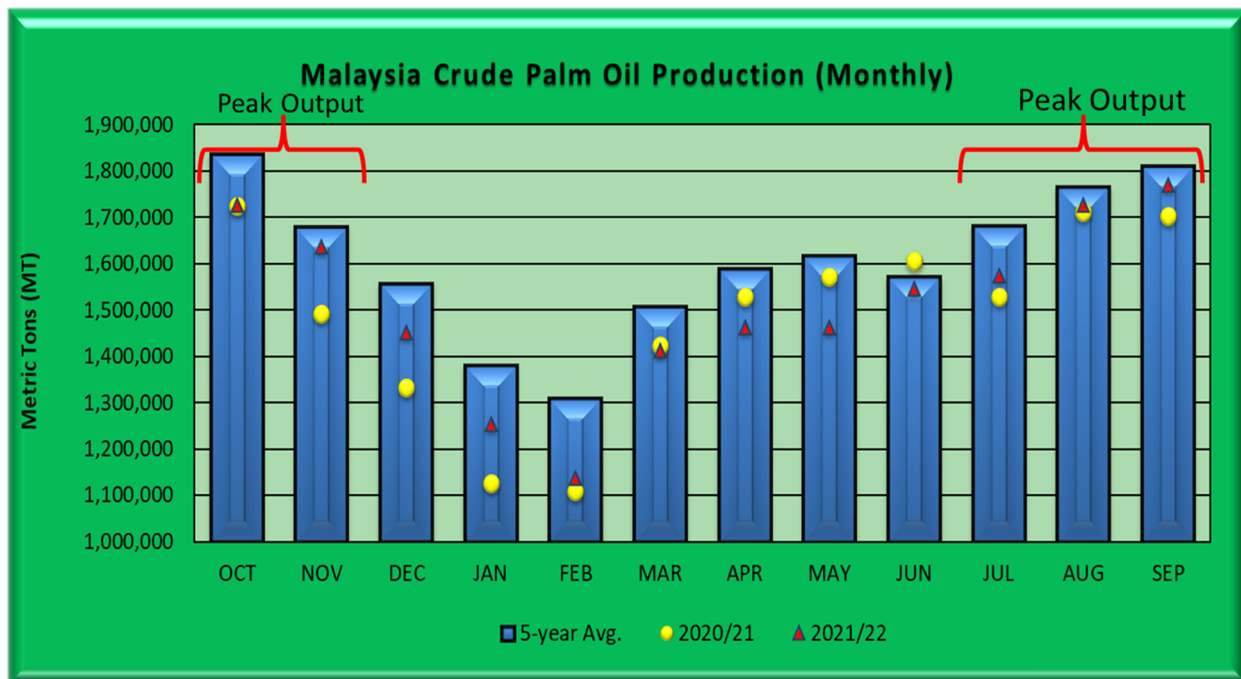
USDA Foreign Agricultural Service
U.S. DEPARTMENT OF AGRICULTURE

Data Source: ABS Ag Census with 2016 SLA boundaries (SA2)
Average percent production of 2005/06, 2010/11 and 2015/16

Rapeseed production is distributed across the four main agricultural producing states. Western Australia produces the largest portion of Australia's rapeseed with 45 percent (5-year average) and the remaining production is split among New South Wales (27 percent), Victoria (19 percent) and South Australia (9 percent). (For more information, please contact James.Crutchfield@usda.gov.)

Malaysia Palm Oil: MY 2021/22 Production Estimate Up 2 Percent from MY 2020/21

USDA estimates Malaysia palm oil production for marketing year (MY) 2021/22 at 18.2 million metric tons, down slightly from last month, but up 2 percent from MY 2020/21. Harvested area remains unchanged at 5.5 million hectares, but is up 1 percent from the previous year. Yield is estimated at 3.33 tons per hectare, slightly down from last month, but up 1 percent from the previous year.



Source: Malaysia Palm Oil Board

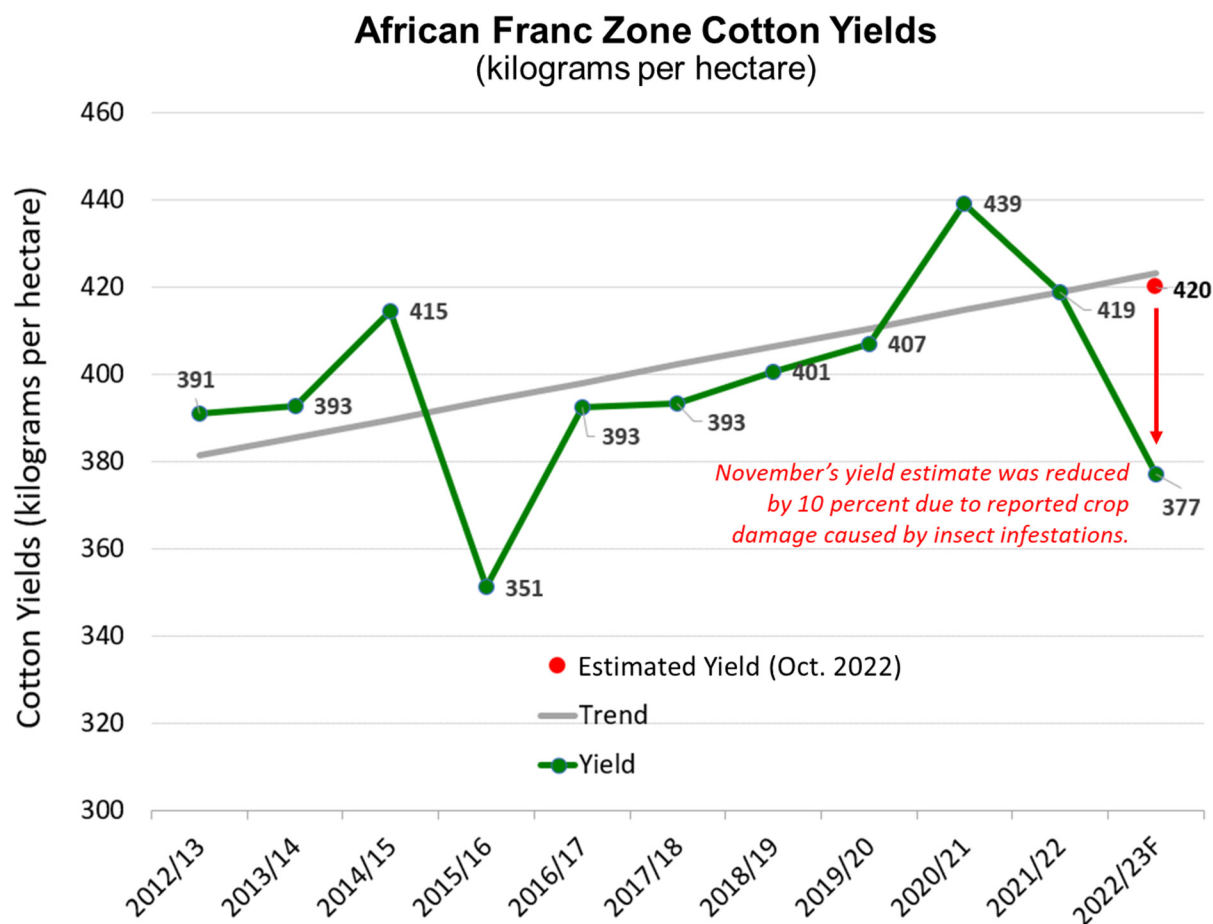
The palm oil sector in Malaysia faced major challenges during the 2021/22 marketing year. One of the key factors that impacted the palm oil sector value chain was the continued labor shortage. Malaysia's palm oil workforce is predominantly supported by migrant workers of which about 80 percent come from Indonesia. Other countries that support the palm oil workforce sector include Philippines, Bangladesh, Nepal, and Burma. In early 2021, Malaysia's government enacted laws that restricted migrant work visas as a preventative measure to reduce the COVID-19 outbreak. As border restrictions began to be lifted in June 2022, new migrant work visa policies, such as health screenings, slowed entry access into Malaysia. Reports indicated that in May there was a shortage of roughly 54,000 workers in the palm oil sector of which 29,000 would be dedicated for fresh fruit bunch (FFB) harvest and collection. Malaysia Palm Oil Board cites that one skilled laborer can achieve an average harvest of 2.0 tons of fresh fruit bunches per day. With the shortage of about 29,000 harvesters and collectors, an estimated 58,000 tons of FFB would have been left unharvested each day. Even with ideal weather conditions, palm oil harvest operations have failed to keep up with demand due to the workforce shortage and have led to monthly palm oil output to be below average.

USDA's marketing year for Malaysia palm oil is October through September. According to the Malaysian Palm Oil Board, monthly crude palm oil output from October 2021 to September 2022 is 6 percent below the 5-year average. *(For more information, please contact Justin.Jenkins@usda.gov.)*

African Franc Zone Cotton: Heavy Insect Infestations Reduce Production Prospects

USDA estimates African Franc Zone cotton production for marketing year (MY) 2022/23 at 5.5 million 480-pound bales, down 0.6 million bales (10 percent) from last month and down 0.4 million bales (7 percent) from last year's record production. Harvested area is estimated at 3.2 million hectares, unchanged from last month but up 90,000 hectares (3 percent) from last year.

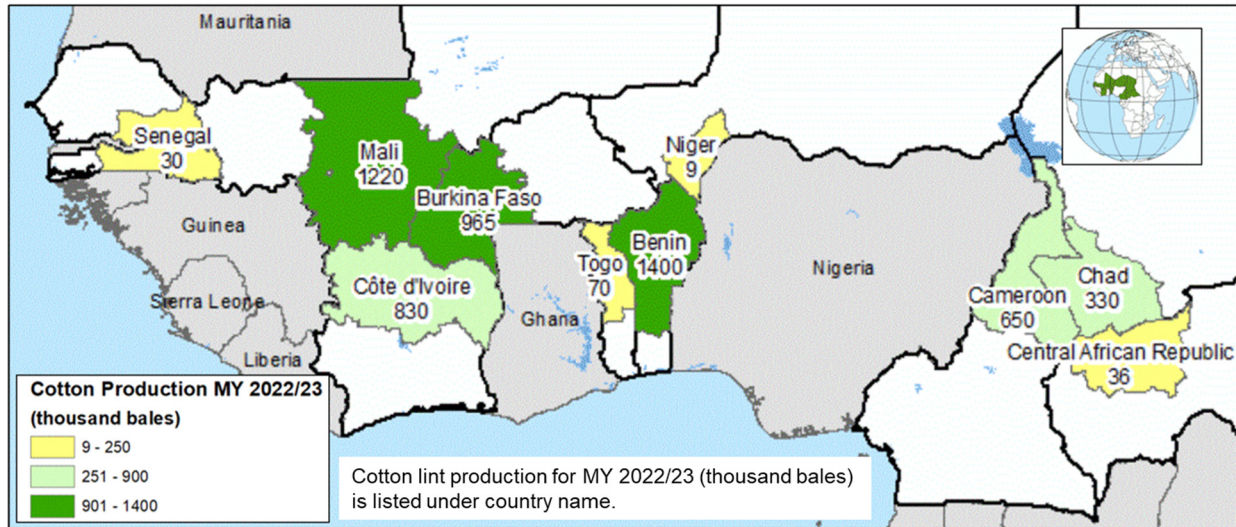
The estimated yield of 377 kilograms per hectare is down 10 percent from the previous month and down 8 percent from the 5-year average. Yields are down from reported crop damage caused by heavy insect infestations in all countries except for Benin and Cameroon.



Source: USDA PSD Online

Cotton is sown from late May through mid-July and harvested from October to December. Seasonal rainfall from June through September was average to above average for most countries, but temporal distribution was uneven with many regions experiencing both floods and short periods of drought. Insect infestations began in July and damaged crops that were not sprayed immediately upon insect detection. Abundant rains also caused leaching of insecticides and reduced the efficiency of insect control programs. Heavy infestations of cotton leafhopper or jassids were reported in most countries by September. Cote d'Ivoire's national cotton and cashew council reported yield drops caused by jassid damage ranged from 30 to 40 percent, while other countries could report similar yield drops as the crop is harvested and ginned in the next few months.

African Franc Zone MY 2022/23 Cotton Production



African Franc Zone, as defined by WASDE, includes the following ten countries in order of MY 2022/23 production: Benin, Mali, Burkina Faso, Cote d'Ivoire, Cameroon, Chad, Togo, Central African Republic, Senegal, and Niger.

African Franc Zone, as defined by WASDE, includes the following ten countries in order of estimated MY 2022/23 production (thousand 480-pound bales): Benin (1,400), Mali (1,220), Burkina Faso (965), Côte d'Ivoire (830), Cameroon (650), Chad (330), Togo (70), Central African Republic (36), Senegal (30), and Niger (9). *(For more information, please contact Curt.Reynolds@usda.gov.)*



**World Agricultural Production
U.S. Department of Agriculture**

Foreign Agricultural Service / Global Market Analysis
International Production Assessment Division (IPAD)
Ag Box 1051, Room 4630, South Building
Washington, DC 20250-1051

<https://ipad.fas.usda.gov/>

Telephone: (202) 720-1662 Fax: (202) 720-1158

This report uses information from the Foreign Agricultural Service's (FAS) global network of agricultural attachés and counselors, official statistics of foreign governments and other foreign source materials, and the analysis of economic data and satellite imagery. Estimates of foreign area, yield, and production are from the International Production Assessment Division, FAS, and are reviewed by USDA's Inter-Agency Commodity Estimates Committee. Estimates of U.S. area, yield, and production are from USDA's National Agricultural Statistics Service. Numbers within the report may not add to totals because of rounding. This report reflects official USDA estimates released in the World Agricultural Supply and Demand Estimates (WASDE-584), November 9, 2022.

Printed copies are available from the National Technical Information Service. Download an order form at http://www.ntis.gov/products/specialty/usda/fas_a-g.asp, or call NTIS at 1-800-363-2068.

The FAS International Production Assessment Division prepared this report. The next issue of World Agricultural Production will be released after 12:00 p.m. Eastern Time, December 9, 2022.

Conversion Table

Metric tons to bushels

Wheat, soybeans	=	MT * 36.7437
Corn, sorghum, rye	=	MT * 39.36825
Barley	=	MT * 45.929625
Oats	=	MT * 68.894438

Metric tons to 480-lb bales

Cotton	=	MT * 4.592917
--------	---	---------------

Metric tons to hundredweight

Rice	=	MT * 22.04622
------	---	---------------

Area & weight

1 hectare	=	2.471044 acres
1 kilogram	=	2.204622 pounds



For further information, contact:
U.S. Department of Agriculture
Foreign Agricultural Service
Global Market Analysis
International Production Assessment Division
Ag Box 1051, Room 4630, South Building
Washington, DC 20250-1051

Telephone: (202) 720-1662

Fax: (202) 720-1158

GENERAL INFORMATION

Senior Director	Ronald Frantz	202-720-4056	ronald.frantz@usda.gov
Director	Robert Tetrault	202-720-1071	robert.tetrault@usda.gov
Administrative Assistant	Vacant		
USDA Remote Sensing Advisor	Vacant		
Sr. Analyst/Technical Lead	Curt Reynolds, Ph.D.	202-690-0134	curt.reynolds@usda.gov
Sr. Analyst/ Satellite Imagery	Dath Mita, Ph.D.	202-720-7339	dath.mita@usda.gov
Archives Manager/Technical Lead			
Sr. Analyst/Technical Lead	Jim Crutchfield	202-690-0135	james.crutchfield@usda.gov
GIS Mapping/Imagery Analyst	Lisa Colson	202-720-6652	lisa.colson@usda.gov
WAP Coordinators	Ifeoma Collins	202-720-0240	ifeoma.collins@usda.gov
	Aaron Mulhollen	202-690-0131	aaron.mulhollen@usda.gov

COUNTRY- AND REGION-SPECIFIC INFORMATION

South America, Argentina, Venezuela, and Colombia	Katie McGaughey	202-720-9210	katie.mcgaughey@usda.gov
Western and Central Europe, and North Africa	Bryan Purcell	202-690-0138	bryan.purcell@usda.gov
Russia, Ukraine, Kazakhstan, Moldova, and Belarus	Iliana Mladenova, Ph.D.	202-690-2315	iliana.mladenova@usda.gov
South Asia, Sri Lanka Bangladesh, India, and Nepal	Arnella Trent	202-720-0881	arnella.trent@usda.gov
East Asia, China, and Japan	Dath Mita, Ph.D.	202-720-7339	dath.mita@usda.gov
Sub-Saharan Africa, Nigeria and South Africa	Curt Reynolds, Ph.D.	202-690-0134	curt.reynolds@usda.gov
S.E. Asia, Indonesia, Thailand, Malaysia, Cambodia and Vietnam	Justin Jenkins	202-720-0419	justin.jenkins@usda.gov
Central America, Mexico, and Western United States	Ifeoma Collins	202-720-0240	ifeoma.collins@usda.gov
Australia, New Zealand, Pakistan Papua New Guinea and South Pacific Islands	Jim Crutchfield	202-690-0135	james.crutchfield@usda.gov
Middle East, Central Asia, Afghanistan Iraq, Iran, and Syria	Iliana Mladenova, Ph.D.	202-690-2315	iliana.mladenova@usda.gov
Canada, Caribbean, Eastern United States	Aaron Mulhollen	202-690-0131	aaron.mulhollen@usda.gov
Brazil	Sunita Yadav-Pauletti, Ph.D.		sunita.yadav-pauletti@usda.gov



The Foreign Agricultural Service (FAS) updates its production, supply and distribution (PSD) database for cotton, oilseeds, and grains at 12:00 p.m. on the day the *World Agricultural Supply and Demand Estimates* (WASDE) report is released. This circular is released by 12:15 p.m.

FAS Reports and Databases:

World Agricultural Production

Current: <https://www.fas.usda.gov/data/world-agricultural-production>

Archive: <https://usda.library.cornell.edu/concern/publications/5q47rn72z?locale=en>

USDA's Foreign Agricultural Service (FAS) publishes a monthly report on crop acreage, yield and production in major countries worldwide. Sources include reporting from FAS's worldwide offices, official statistics of foreign governments, and analysis of economic data and satellite imagery. The reports reflect official USDA estimates released in the monthly *World Agricultural Supply and Demand Estimates* (WASDE).

World Markets and Trade

Current: <https://www.fas.usda.gov/data>

Archive:

https://usda.library.cornell.edu/catalog?f%5Bmember_of_collections_ssim%5D%5B%5D=Foreign+Agricultural+Service&locale=en

USDA's Foreign Agricultural Service (FAS) publishes monthly and quarterly reports which include data on U.S. and global trade, production, consumption and stocks, as well as analysis of developments affecting world trade in oilseeds, grains, cotton, livestock and poultry. The reports reflect official USDA estimates released in the monthly *World Agricultural Supply and Demand Estimates* (WASDE).

Global Agricultural Information Network (GAIN)

<https://www.fas.usda.gov/databases/global-agricultural-information-network-gain>

USDA's Foreign Agricultural Service (FAS) provides timely reports on foreign markets through the Global Agriculture Information Network (GAIN) database. An average of 2,000 reports are added each year, with reports going back to 1995. GAIN reports are compiled by FAS' global market intelligence network, which includes FAS foreign service officers and locally engaged staff in over 90 overseas offices world-wide. They provide on-the-ground intelligence, insight, and analysis on nearly 200 countries, delivering information on foreign agricultural markets, crop conditions, and agro-political dynamics of interest to U.S. agriculture. GAIN reports contain assessments of commodity and trade issues made by USDA staff and are not necessarily statements of official U.S. government policy.

Production, Supply and Distribution (PS&D) Online

<https://apps.fas.usda.gov/psdonline/app/index.html#/app/home>

PSD Online is the public repository for USDA's Official Production, Supply and Distribution forecast data and reports for key agricultural commodities. PSD Online data are reviewed and updated monthly by an interagency committee chaired by USDA's World Agricultural Outlook Board (WAOB). The committee consist of representatives from Foreign Agricultural Service (FAS), the Economic Research Service (ERS), the Farm Service Agency (FSA), and the Agricultural Marketing Service (AMS).

EU Countries and Russia Wheat: Area and Production Estimates

<https://apps.fas.usda.gov/psdonline/app/index.html#/app/downloads> (click on PSD Datasets)

USDA's Foreign Agricultural Service (FAS) provides country-level area and production estimates for the nations of the European Union. For Russia, country-level area and production estimates are provided for Winter and Spring wheat. These datasets are reviewed and updated monthly by an interagency committee chaired by USDA's World Agricultural Outlook Board (WAOB) and can be downloaded through PSD datasets on PSD Online.



FAS Reports and Databases:

International Production Assessment (IPAD)

<https://ipad.fas.usda.gov/>

USDA's Foreign Agricultural Service (FAS) maintains a dynamic global crop production portal with key information including *World Agricultural Production* (WAP) briefs, Commodity Intelligence Reports (CIR), geospatial applications, crop production maps at a subnational level and crop calendars for the top-20 producing countries. Additionally, Crop Explorer (<https://ipad.fas.usda.gov/cropexplorer/>) displays rainfall, temperature, evapotranspiration, soil moisture, snow cover, and vegetation conditions in charts and maps.

USDA and NASA Global Agricultural Monitoring (GLAM)

<https://glam1.gsfc.nasa.gov/>

The USDA and NASA Global Agricultural Monitoring (GLAM) system provides near real-time and science quality Moderate Resolution Imaging Spectroradiometer (MODIS) Normalized Difference Vegetation Index (NDVI) from the satellites Terra and Aqua. The public can view and retrieve MODIS 8-day composited, global NDVI satellite imagery and time series data. GLAM was developed by NASA's Global Inventory Modeling and Mapping Studies (GIMMS) group for USDA's Foreign Agricultural Service.

Global Agricultural and Disaster Assessment System (GADAS)

<https://geo.fas.usda.gov/GADAS/index.html>

USDA's Foreign Agricultural Service (FAS) provides the Global Agricultural and Disaster Assessment System (GADAS), a web-based Geographic Information System (GIS) tool which integrates a vast array of highly detailed earth observation data streams, particularly targeted towards agricultural and disaster assessment analysis. GADAS is an interactive website which provides analysts with a wide variety of routine geospatial products (maps, charts, tables) they require for comprehensive situational investigations and recurring assessments.

Export Sales Reporting

<https://apps.fas.usda.gov/esrquery/>

USDA's Export Sales Reporting Program monitors U.S. agricultural export sales on a daily and weekly basis. Export sales reporting provides a constant stream of up-to-date market information for 40 U.S. agricultural commodities sold abroad. The weekly U.S. Export Sales report is the most currently available source of U.S. exports sales data. The data is used to analyze overall levels of export demand, determine where markets exit, and assess the relative position of U.S. commodities in foreign markets.

Global Agricultural Trade System (GATS)

<https://apps.fas.usda.gov/gats/default.aspx>

The Global Agricultural Trade System (GATS) is a searchable database containing monthly U.S. Census Bureau trade data organized by agricultural commodity and agricultural related product groups. Trade data is searchable by partner countries and partner groups. Historical U.S. agricultural trade data is available back to 1967. In addition, U.N. trade statistics (UN Comtrade) may be queried through GATS. UN trade data is available for nearly 200 countries or areas, dating from the inception of the Harmonized System (HS) of trade codes in 1989 to present. The database is continuously updated. U.S. trade data is updated monthly according to the U.S. Census Bureau's reporting system. UN Comtrade data are updated in GATS after nationally submitted data to the UN are standardized by the UN Statistical Division and added to the UN Comtrade database.

Other USDA Reports:

World Agricultural Supply and Demand Estimates (WASDE):

<http://www.usda.gov/oce/commodity/wasde/>

Economic Research Service:

<http://www.ers.usda.gov/topics/crops>

National Agricultural Statistics Service:

<http://www.nass.usda.gov/Publications/>

Table 01 World Crop Production Summary

Million Metric Tons

Commodity	World	Total Foreign	North America			Former Soviet		European	Asia (WAP)					South America		Selected Other			All Others
			United States	Canada	Mexico	Russia	Ukraine		China	India	Indonesia	Pakistan	Thailand	Argentina	Brazil	Australia	South Africa	Turkey	
			-	-	-	-	-		-	-	-	-	-	-	-	-	-	-	
---Million metric tons---																			
Wheat																			
2020/21	774.5	724.8	49.8	35.4	3.0	85.4	25.4	nr	134.3	107.9	0.0	25.2	0.0	17.6	6.3	31.9	2.1	18.3	232.1
2021/22 prel.	779.4	734.6	44.8	22.3	3.3	75.2	33.0	nr	136.9	109.6	0.0	27.5	0.0	22.2	7.7	36.3	2.3	16.0	242.4
2022/23 proj.																			
Oct	781.7	736.8	44.9	35.0	3.6	91.0	20.5	nr	138.0	103.0	0.0	26.4	0.0	17.5	9.2	33.0	2.3	17.3	240.1
Nov	782.7	737.8	44.9	35.0	3.6	91.0	20.5	nr	138.0	103.0	0.0	26.4	0.0	15.5	9.4	34.5	2.3	17.3	241.4
Coarse Grains																			
2020/21	1,441.3	1,068.4	372.9	29.6	32.7	41.4	39.6	nr	269.1	51.4	12.6	9.3	5.6	60.0	90.3	18.6	17.8	15.8	374.7
2021/22 prel.	1,503.4	1,105.7	397.7	24.4	32.8	38.5	53.5	nr	280.9	51.2	12.7	11.0	5.4	61.2	120.6	18.8	16.8	11.6	366.4
2022/23 proj.																			
Oct	1,459.8	1,095.7	364.1	29.7	33.5	42.0	39.0	nr	282.3	49.8	12.9	9.4	5.3	64.7	130.5	16.7	17.9	14.2	347.9
Nov	1,459.5	1,094.8	364.8	29.7	33.5	42.0	39.0	nr	282.3	49.8	12.9	9.7	5.3	64.1	130.5	17.5	17.3	14.5	346.8
Rice, Milled																			
2020/21	509.3	502.1	7.2	0.0	0.2	0.7	0.0	nr	148.3	124.4	34.5	8.4	18.9	0.9	8.0	0.3	0.0	0.6	156.8
2021/22 prel.	515.1	509.0	6.1	0.0	0.2	0.7	0.0	nr	149.0	130.3	34.4	9.1	19.9	0.8	7.3	0.5	0.0	0.5	156.3
2022/23 proj.																			
Oct	505.0	499.8	5.3	0.0	0.2	0.7	0.0	nr	147.0	124.0	34.6	7.4	20.1	0.8	7.3	0.5	0.0	0.6	156.6
Nov	503.7	498.5	5.2	0.0	0.2	0.7	0.0	nr	147.0	124.0	34.6	6.6	20.1	0.8	7.3	0.5	0.0	0.6	156.1
Total Grains																			
2020/21	2,725.1	2,295.3	429.9	65.1	35.8	127.5	65.0	nr	551.6	283.6	47.1	43.0	24.4	78.6	104.6	50.8	19.9	34.6	763.6
2021/22 prel.	2,797.9	2,349.3	448.6	46.7	36.2	114.4	86.6	nr	566.8	291.1	47.1	47.5	25.2	84.1	135.7	55.6	19.1	28.1	765.1
2022/23 proj.																			
Oct	2,746.5	2,332.3	414.3	64.7	37.3	133.7	59.5	nr	567.3	276.8	47.5	43.2	25.4	83.0	147.0	50.2	20.1	32.0	744.6
Nov	2,745.9	2,331.0	414.9	64.7	37.3	133.7	59.5	nr	567.3	276.8	47.5	42.7	25.4	80.4	147.2	52.5	19.5	32.3	744.2
Oilseeds																			
2020/21	607.5	483.0	124.5	25.9	0.7	20.1	19.9	nr	65.8	38.3	14.6	2.5	1.0	51.2	143.9	5.7	2.7	2.9	87.8
2021/22 prel.	604.6	473.3	131.4	20.1	0.9	23.1	24.3	nr	62.3	41.1	15.1	3.2	1.0	49.7	131.8	8.6	3.1	3.4	85.6
2022/23 proj.																			
Oct	646.6	519.7	126.9	26.1	0.9	26.4	17.2	nr	65.2	41.9	15.2	3.0	1.0	56.8	157.3	8.6	2.9	3.8	93.5
Nov	645.6	517.7	127.9	26.1	0.8	26.4	16.8	nr	65.0	41.9	15.2	2.6	1.0	55.3	157.3	9.0	3.2	3.8	93.3
Cotton																			
2020/21	111.5	96.9	14.6	0.0	1.0	0.0	0.0	1.7	29.6	27.6	0.0	4.5	0.0	1.4	10.8	2.8	0.1	2.9	14.5
2021/22 prel.	115.8	98.2	17.5	0.0	1.2	0.0	0.0	1.6	26.8	24.5	0.0	6.0	0.0	1.5	11.7	5.8	0.1	3.8	15.3
2022/23 proj.																			
Oct	118.1	104.2	13.8	0.0	1.4	0.0	0.0	1.6	28.0	27.5	0.0	5.2	0.0	1.4	13.0	6.0	0.1	4.4	15.7
Nov	116.4	102.4	14.0	0.0	1.4	0.0	0.0	1.6	28.0	27.5	0.0	4.5	0.0	1.4	13.0	5.5	0.1	4.4	15.1

1/ Includes wheat, coarse grains, and rice (milled) shown above.

Table 02 Wheat Area, Yield, and Production

Country / Region	Area (Million hectares)				Yield (Metric tons per hectare)				Production (Million metric tons)				Change in Production			
	2020/21	Prel.	2022/23 Proj.		2020/21	Prel.	2022/23 Proj.		2020/21	Prel.	2022/23 Proj.		From last month		From last year	
		2021/22	Oct	Nov		2021/22	Oct	Nov		2021/22	Oct	Nov	MMT	Percent	MMT	Percent
World	220.51	222.12	220.41	220.41	3.51	3.51	3.55	3.55	774.53	779.44	781.70	782.68	0.98	0.13	3.23	0.41
United States	14.89	15.03	14.36	14.36	3.34	2.98	3.13	3.13	49.75	44.80	44.90	44.90	0.00	0.00	0.10	0.22
Total Foreign	205.62	207.08	206.05	206.05	3.52	3.55	3.58	3.58	724.78	734.64	736.80	737.77	0.98	0.13	3.14	0.43
European Union	22.97	24.25	24.25	24.25	5.52	5.70	5.56	5.54	126.69	138.29	134.75	134.30	-0.45	-0.33	-3.99	-2.88
United Kingdom	1.39	1.79	1.80	1.80	6.96	7.81	8.11	8.56	9.66	13.99	14.60	15.40	0.80	5.48	1.41	10.09
Serbia	0.59	0.60	0.63	0.63	4.58	5.00	4.60	4.60	2.70	3.00	2.90	2.90	0.00	0.00	-0.10	-3.33
China	23.38	23.57	23.60	23.60	5.74	5.81	5.85	5.85	134.25	136.95	138.00	138.00	0.00	0.00	1.05	0.77
South Asia																
India	31.36	31.13	30.54	30.54	3.44	3.52	3.37	3.37	107.86	109.59	103.00	103.00	0.00	0.00	-6.59	-6.01
Pakistan	8.81	9.17	9.00	9.00	2.87	3.00	2.93	2.93	25.25	27.46	26.40	26.40	0.00	0.00	-1.06	-3.87
Afghanistan	2.33	2.20	2.20	2.20	2.15	2.00	2.05	2.05	5.01	4.40	4.50	4.50	0.00	0.00	0.10	2.27
Nepal	0.71	0.72	0.72	0.72	2.99	2.90	2.92	2.92	2.13	2.08	2.10	2.10	0.00	0.00	0.03	1.20
Former Soviet Union - 12																
Russia	28.68	27.63	28.70	28.70	2.98	2.72	3.17	3.17	85.35	75.16	91.00	91.00	0.00	0.00	15.84	21.08
Russia Winter	16.63	15.22	16.30	16.30	3.77	3.43	4.17	4.17	62.69	52.19	68.00	68.00	0.00	0.00	15.81	30.28
Russia Spring	12.06	12.41	12.40	12.40	1.88	1.85	1.85	1.85	22.66	22.96	23.00	23.00	0.00	0.00	0.04	0.16
Ukraine	6.85	7.41	5.25	5.25	3.71	4.45	3.90	3.90	25.42	33.01	20.50	20.50	0.00	0.00	-12.51	-37.89
Kazakhstan	12.06	12.72	12.75	12.75	1.18	0.93	1.02	1.10	14.26	11.81	13.00	14.00	1.00	7.69	2.19	18.50
Uzbekistan	1.36	1.36	1.40	1.40	4.53	4.40	4.71	4.71	6.16	5.99	6.60	6.60	0.00	0.00	0.62	10.28
Belarus	0.72	0.65	0.68	0.68	3.94	3.54	3.48	3.48	2.85	2.30	2.35	2.35	0.00	0.00	0.05	2.17
Canada	10.02	9.19	10.00	10.00	3.54	2.43	3.50	3.50	35.44	22.30	35.00	35.00	0.00	0.00	12.70	56.98
South America																
Argentina	6.40	6.55	5.80	5.80	2.76	3.38	3.02	2.67	17.64	22.15	17.50	15.50	-2.00	-11.43	-6.65	-30.02
Brazil	2.34	2.74	3.10	3.10	2.67	2.81	2.97	3.03	6.25	7.70	9.20	9.40	0.20	2.17	1.70	22.08
Australia	12.64	13.04	13.10	13.10	2.52	2.79	2.52	2.63	31.92	36.35	33.00	34.50	1.50	4.55	-1.85	-5.08
Africa																
Egypt	1.39	1.40	1.53	1.53	6.40	6.43	6.41	6.41	8.90	9.00	9.80	9.80	0.00	0.00	0.80	8.89
Morocco	2.76	2.86	2.50	2.50	0.93	2.64	1.08	1.08	2.56	7.54	2.70	2.70	0.00	0.00	-4.84	-64.19
Algeria	2.08	2.08	2.08	2.08	1.50	1.20	1.78	1.78	3.11	2.50	3.70	3.70	0.00	0.00	1.20	48.00
Ethiopia	1.83	1.95	2.00	2.00	3.00	2.83	2.85	2.85	5.48	5.52	5.70	5.70	0.00	0.00	0.18	3.26
Middle East																
Turkey	7.10	7.05	6.80	6.80	2.57	2.27	2.54	2.54	18.25	16.00	17.25	17.25	0.00	0.00	1.25	7.81
Iran	6.00	6.00	6.20	6.20	2.50	2.00	2.13	2.13	15.00	12.00	13.20	13.20	0.00	0.00	1.20	10.00
Iraq	2.40	2.00	2.00	2.00	1.93	1.75	1.50	1.50	4.64	3.50	3.00	3.00	0.00	0.00	-0.50	-14.29
Syria	1.60	1.10	1.20	1.20	2.81	1.82	1.75	1.75	4.50	2.00	2.10	2.10	0.00	0.00	0.10	5.00
Mexico	0.56	0.55	0.59	0.59	5.33	6.00	6.05	6.05	2.97	3.28	3.57	3.57	0.00	0.00	0.29	8.81
Others	7.32	7.41	7.64	7.64	2.81	2.81	2.80	2.79	20.56	20.79	21.38	21.30	-0.07	-0.34	0.51	2.46

Table 03 Total Coarse Grain Area, Yield, and Production

Country / Region	Area (Million hectares)				Yield (Metric tons per hectare)				Production (Million metric tons)				Change in Production			
	2020/21	Prel.	2022/23 Proj.		2020/21	Prel.	2022/23 Proj.		2020/21	Prel.	2022/23 Proj.		From last month		From last year	
		2021/22	Oct	Nov		2021/22	Oct	Nov		2021/22	Oct	Nov	MMT	Percent	MMT	Percent
World	344.47	345.69	340.06	339.39	4.18	4.35	4.29	4.30	1,441.28	1,503.36	1,459.80	1,459.54	-0.26	-0.02	-43.82	-2.92
United States	36.81	38.34	36.42	36.42	10.13	10.37	10.00	10.02	372.89	397.71	364.11	364.77	0.66	0.18	-32.94	-8.28
Total Foreign	307.66	307.35	303.64	302.97	3.47	3.60	3.61	3.61	1,068.39	1,105.65	1,095.68	1,094.77	-0.92	-0.08	-10.88	-0.98
China	43.72	45.77	45.45	45.45	6.15	6.14	6.21	6.21	269.08	280.85	282.30	282.30	0.00	0.00	1.45	0.52
European Union	28.77	27.77	27.53	27.42	5.40	5.56	5.01	4.99	155.46	154.41	137.81	136.67	-1.14	-0.83	-17.74	-11.49
United Kingdom	1.66	1.43	1.37	1.37	5.64	5.88	6.10	6.14	9.36	8.41	8.35	8.40	0.05	0.60	-0.01	-0.13
South America																
Brazil	21.30	23.37	24.31	24.31	4.24	5.16	5.37	5.37	90.32	120.62	130.54	130.54	0.00	0.00	9.92	8.22
Argentina	8.65	10.14	9.60	9.60	6.94	6.03	6.74	6.68	60.01	61.16	64.71	64.11	-0.60	-0.93	2.95	4.83
Former Soviet Union - 12																
Russia	14.55	14.01	13.40	13.40	2.84	2.75	3.13	3.13	41.40	38.54	42.00	42.00	0.00	0.00	3.46	8.98
Ukraine	8.53	8.66	6.87	6.87	4.64	6.18	5.68	5.68	39.59	53.51	38.96	38.96	0.00	0.00	-14.55	-27.20
Kazakhstan	3.20	2.63	2.61	2.61	1.54	1.43	1.57	1.57	4.93	3.76	4.10	4.10	0.00	0.00	0.34	9.05
Belarus	1.14	0.99	1.03	1.03	3.47	3.05	3.11	3.11	3.95	3.00	3.20	3.20	0.00	0.00	0.20	6.67
Africa																
Nigeria	13.10	13.70	13.95	13.50	1.60	1.56	1.54	1.57	20.90	21.39	21.50	21.18	-0.32	-1.49	-0.21	-0.99
South Africa	3.36	3.19	3.29	3.19	5.31	5.28	5.43	5.42	17.81	16.82	17.87	17.25	-0.62	-3.47	0.44	2.59
Tanzania	5.17	5.40	5.00	5.00	1.51	1.40	1.40	1.40	7.79	7.55	6.98	6.98	0.00	0.00	-0.58	-7.62
Burkina Faso	3.89	4.24	4.24	4.24	1.21	0.99	1.16	1.16	4.72	4.20	4.90	4.90	0.00	0.00	0.70	16.58
Ethiopia	5.53	5.59	5.63	5.63	3.45	3.08	3.23	3.23	19.10	17.20	18.20	18.20	0.00	0.00	1.00	5.81
Egypt	1.03	1.16	1.16	1.16	7.01	7.13	7.13	7.13	7.24	8.30	8.30	8.30	0.00	0.00	0.00	0.00
Mali	5.17	4.70	4.70	4.70	1.41	1.34	1.38	1.45	7.26	6.31	6.50	6.80	0.30	4.62	0.49	7.70
India	24.12	24.29	24.54	24.54	2.13	2.11	2.03	2.03	51.39	51.21	49.80	49.80	0.00	0.00	-1.41	-2.75
Southeast Asia																
Indonesia	3.85	3.90	3.95	3.95	3.27	3.26	3.27	3.27	12.60	12.70	12.90	12.90	0.00	0.00	0.20	1.57
Philippines	2.57	2.56	2.65	2.50	3.25	3.26	3.13	3.16	8.35	8.34	8.30	7.90	-0.40	-4.82	-0.44	-5.32
Vietnam	0.99	0.99	0.97	0.97	4.80	4.86	4.85	4.85	4.74	4.80	4.70	4.70	0.00	0.00	-0.10	-2.04
Thailand	1.28	1.23	1.21	1.21	4.33	4.36	4.35	4.35	5.55	5.35	5.25	5.25	0.00	0.00	-0.10	-1.87
Mexico	8.76	8.88	9.01	9.01	3.73	3.69	3.72	3.72	32.66	32.79	33.50	33.50	0.00	0.00	0.71	2.17
Canada	5.80	5.81	5.58	5.58	5.11	4.21	5.33	5.33	29.64	24.43	29.72	29.72	0.00	0.00	5.29	21.65
Australia	7.26	6.03	5.88	5.98	2.56	3.11	2.84	2.92	18.56	18.76	16.67	17.47	0.80	4.80	-1.29	-6.87
Middle East																
Turkey	4.63	4.46	4.54	4.54	3.40	2.60	3.12	3.19	15.76	11.58	14.17	14.47	0.30	2.12	2.89	24.95
Iran	1.81	1.91	1.86	1.86	2.77	2.16	2.38	2.38	5.02	4.12	4.42	4.42	0.00	0.00	0.30	7.31
Others	77.83	74.55	73.35	73.39	1.61	1.68	1.64	1.65	125.23	125.56	120.07	120.78	0.71	0.59	-4.78	-3.81

World and Selected Countries and Regions; Coarse Grain includes: Barley, Corn, Millet, Mixed Grains, Oats, Rye and Sorghum

Table 04 Corn Area, Yield, and Production

Country / Region	Area (Million hectares)				Yield (Metric tons per hectare)				Production (Million metric tons)				Change in Production			
	2020/21	Prel.	2022/23 Proj.		2020/21	Prel.	2022/23 Proj.		2020/21	Prel.	2022/23 Proj.		From last month		From last year	
		2021/22	Oct	Nov		2021/22	Oct	Nov		2021/22	Oct	Nov	MMT	Percent	MMT	Percent
World	199.04	207.26	203.24	202.57	5.67	5.87	5.75	5.77	1,129.29	1,217.46	1,168.74	1,168.39	-0.36	-0.03	-49.08	-4.03
United States	33.31	34.53	32.72	32.72	10.76	11.09	10.79	10.82	358.45	382.89	352.95	353.84	0.88	0.25	-29.06	-7.59
Total Foreign	165.72	172.73	170.52	169.85	4.65	4.83	4.78	4.80	770.84	834.57	815.79	814.55	-1.24	-0.15	-20.02	-2.40
China	41.26	43.32	43.00	43.00	6.32	6.29	6.37	6.37	260.67	272.55	274.00	274.00	0.00	0.00	1.45	0.53
South America																
Brazil	19.90	21.80	22.70	22.70	4.37	5.32	5.55	5.55	87.00	116.00	126.00	126.00	0.00	0.00	10.00	8.62
Argentina	6.55	7.40	7.00	7.00	7.94	6.96	7.86	7.86	52.00	51.50	55.00	55.00	0.00	0.00	3.50	6.80
Bolivia	0.41	0.44	0.44	0.44	3.00	2.60	2.64	2.64	1.23	1.13	1.15	1.15	0.00	0.00	0.02	1.77
European Union	9.24	9.24	8.90	8.84	7.30	7.69	6.31	6.20	67.44	70.98	56.20	54.80	-1.40	-2.49	-16.18	-22.79
Africa																
South Africa	3.12	3.00	3.10	3.00	5.44	5.43	5.58	5.57	16.95	16.30	17.30	16.70	-0.60	-3.47	0.40	2.45
Nigeria	5.50	6.00	6.25	5.80	2.25	2.12	2.00	2.10	12.40	12.75	12.50	12.18	-0.32	-2.56	-0.57	-4.43
Ethiopia	2.36	2.53	2.55	2.55	4.47	3.72	4.00	4.00	10.56	9.40	10.20	10.20	0.00	0.00	0.80	8.51
Egypt	0.80	0.93	0.93	0.93	8.00	8.00	8.00	8.00	6.40	7.44	7.44	7.44	0.00	0.00	0.00	0.00
Tanzania	4.20	4.40	4.00	4.00	1.60	1.48	1.48	1.48	6.71	6.50	5.90	5.90	0.00	0.00	-0.60	-9.23
Malawi	1.76	1.75	1.75	1.75	2.10	2.62	2.12	2.12	3.69	4.58	3.72	3.72	0.00	0.00	-0.86	-18.86
Zambia	1.33	1.41	1.12	1.12	2.54	2.57	2.43	2.43	3.39	3.62	2.71	2.71	0.00	0.00	-0.91	-25.25
Kenya	2.19	1.95	1.90	1.90	1.73	1.59	1.58	1.58	3.79	3.10	3.00	3.00	0.00	0.00	-0.10	-3.23
Uganda	0.99	1.10	1.10	1.10	2.78	2.55	2.55	2.55	2.75	2.80	2.80	2.80	0.00	0.00	0.00	0.00
Zimbabwe	1.58	1.95	1.90	1.90	0.57	1.39	0.82	0.82	0.91	2.72	1.56	1.56	0.00	0.00	-1.16	-42.66
Former Soviet Union - 12																
Ukraine	5.40	5.49	4.50	4.50	5.62	7.68	7.00	7.00	30.30	42.13	31.50	31.50	0.00	0.00	-10.63	-25.22
Russia	2.73	2.90	2.70	2.70	5.08	5.25	5.56	5.56	13.87	15.23	15.00	15.00	0.00	0.00	-0.23	-1.48
South Asia																
India	9.89	10.10	10.00	10.00	3.20	3.33	3.20	3.20	31.65	33.60	32.00	32.00	0.00	0.00	-1.60	-4.76
Pakistan	1.42	1.65	1.50	1.60	6.30	6.43	5.93	5.75	8.94	10.64	8.90	9.20	0.30	3.37	-1.44	-13.49
Nepal	0.97	0.97	0.97	0.97	2.82	2.82	2.82	2.82	2.72	2.72	2.72	2.72	0.00	0.00	0.00	0.00
Southeast Asia																
Indonesia	3.85	3.90	3.95	3.95	3.27	3.26	3.27	3.27	12.60	12.70	12.90	12.90	0.00	0.00	0.20	1.57
Philippines	2.57	2.56	2.65	2.50	3.25	3.26	3.13	3.16	8.35	8.34	8.30	7.90	-0.40	-4.82	-0.44	-5.32
Vietnam	0.99	0.99	0.97	0.97	4.80	4.86	4.85	4.85	4.74	4.80	4.70	4.70	0.00	0.00	-0.10	-2.04
Thailand	1.26	1.20	1.18	1.18	4.38	4.42	4.41	4.41	5.50	5.30	5.20	5.20	0.00	0.00	-0.10	-1.89
Mexico	7.14	7.09	7.20	7.20	3.83	3.77	3.83	3.83	27.35	26.76	27.60	27.60	0.00	0.00	0.84	3.13
Canada	1.41	1.39	1.45	1.45	9.63	10.05	10.00	10.00	13.56	13.98	14.50	14.50	0.00	0.00	0.52	3.69
Turkey	0.62	0.54	0.53	0.53	11.45	12.04	11.81	12.38	7.10	6.50	6.20	6.50	0.30	4.84	0.00	0.00
Others	26.28	26.74	26.30	26.30	2.60	2.64	2.54	2.57	68.29	70.51	66.80	67.68	0.88	1.32	-2.83	-4.02

World and Selected Countries and Regions

Table 05 Barley Area, Yield, and Production

Country / Region	Area (Million hectares)				Yield (Metric tons per hectare)				Production (Million metric tons)				Change in Production			
	Prel.		2022/23 Proj.		Prel.		2022/23 Proj.		Prel.		2022/23 Proj.		From last month		From last year	
	2020/21	2021/22	Oct	Nov	2020/21	2021/22	Oct	Nov	2020/21	2021/22	Oct	Nov	MMT	Percent	MMT	Percent
World	52.46	48.63	47.30	47.25	3.07	2.99	3.15	3.15	160.91	145.52	149.02	149.00	-0.02	-0.01	3.48	2.39
United States	0.90	0.81	0.99	0.99	4.15	3.25	3.85	3.85	3.72	2.62	3.80	3.80	0.00	0.00	1.18	45.16
Total Foreign	51.56	47.83	46.31	46.27	3.05	2.99	3.14	3.14	157.19	142.90	145.23	145.21	-0.02	-0.01	2.30	1.61
European Union	11.05	10.31	10.49	10.50	4.91	5.05	4.87	4.89	54.23	52.05	51.10	51.30	0.20	0.39	-0.75	-1.43
United Kingdom	1.39	1.15	1.12	1.12	5.85	6.05	6.32	6.37	8.12	6.96	7.05	7.10	0.05	0.71	0.14	2.00
Former Soviet Union - 12																
Russia	8.16	7.69	7.60	7.60	2.53	2.28	2.76	2.76	20.63	17.51	21.00	21.00	0.00	0.00	3.50	19.97
Ukraine	2.58	2.68	1.90	1.90	3.08	3.70	3.37	3.37	7.95	9.92	6.40	6.40	0.00	0.00	-3.52	-35.50
Kazakhstan	2.73	2.16	2.15	2.15	1.34	1.10	1.26	1.26	3.66	2.37	2.70	2.70	0.00	0.00	0.33	14.07
Belarus	0.41	0.35	0.40	0.40	3.35	2.86	2.75	2.75	1.38	1.00	1.10	1.10	0.00	0.00	0.10	10.00
Azerbaijan	0.35	0.37	0.38	0.38	2.96	3.07	2.93	2.93	1.02	1.15	1.10	1.10	0.00	0.00	-0.05	-4.10
Canada	2.81	3.01	2.60	2.60	3.82	2.31	3.81	3.81	10.74	6.96	9.90	9.90	0.00	0.00	2.94	42.26
Australia	5.49	4.42	4.20	4.20	2.67	3.15	2.90	3.02	14.65	13.91	12.20	12.70	0.50	4.10	-1.21	-8.67
Middle East																
Turkey	3.80	3.70	3.80	3.80	2.13	1.22	1.95	1.95	8.10	4.50	7.40	7.40	0.00	0.00	2.90	64.44
Iran	1.60	1.70	1.65	1.65	2.25	1.59	1.82	1.82	3.60	2.70	3.00	3.00	0.00	0.00	0.30	11.11
Iraq	1.20	0.60	0.60	0.60	1.29	1.17	1.13	1.13	1.55	0.70	0.68	0.68	0.00	0.00	-0.02	-2.86
Syria	1.50	0.80	0.90	0.90	1.27	0.81	0.78	0.78	1.90	0.65	0.70	0.70	0.00	0.00	0.05	7.69
Africa																
Ethiopia	0.90	0.96	0.97	0.97	2.52	2.45	2.47	2.47	2.26	2.35	2.40	2.40	0.00	0.00	0.05	2.13
Morocco	1.47	1.49	1.10	1.10	0.44	1.87	0.64	0.64	0.64	2.78	0.70	0.70	0.00	0.00	-2.08	-74.82
Algeria	0.98	1.03	1.03	1.03	1.24	0.93	1.56	1.56	1.21	0.95	1.60	1.60	0.00	0.00	0.65	68.42
Tunisia	0.36	0.28	0.30	0.30	1.28	1.54	1.40	1.40	0.47	0.43	0.42	0.42	0.00	0.00	-0.01	-2.33
South Africa	0.14	0.10	0.10	0.10	4.14	3.52	3.70	3.70	0.59	0.33	0.37	0.37	0.00	0.00	0.04	10.78
South America																
Argentina	1.01	1.34	1.35	1.35	4.00	3.96	3.78	3.33	4.04	5.30	5.10	4.50	-0.60	-11.76	-0.80	-15.09
Uruguay	0.19	0.22	0.23	0.19	4.78	4.11	4.16	4.19	0.89	0.92	0.94	0.78	-0.16	-17.11	-0.15	-15.76
Brazil	0.10	0.11	0.11	0.11	3.63	3.79	3.91	3.91	0.37	0.43	0.43	0.43	0.00	0.00	0.01	1.18
India	0.59	0.59	0.54	0.54	2.92	2.80	2.59	2.59	1.72	1.66	1.40	1.40	0.00	0.00	-0.26	-15.46
China	0.51	0.51	0.51	0.51	4.00	3.92	3.92	3.92	2.04	2.00	2.00	2.00	0.00	0.00	0.00	0.00
Mexico	0.30	0.35	0.34	0.34	3.07	3.11	2.82	2.82	0.91	1.09	0.96	0.96	0.00	0.00	-0.13	-11.93
Afghanistan	0.17	0.16	0.17	0.17	1.41	1.25	1.35	1.35	0.24	0.20	0.23	0.23	0.00	0.00	0.03	15.00
Others	1.78	1.76	1.79	1.78	2.41	2.34	2.43	2.44	4.31	4.10	4.35	4.34	-0.01	-0.23	0.24	5.77

World and Selected Countries and Regions

Table 06 Oats Area, Yield, and Production

Country / Region	Area (Million hectares)				Yield (Metric tons per hectare)				Production (Million metric tons)				Change in Production			
	2020/21	Prel.	2022/23 Proj.		2020/21	Prel.	2022/23 Proj.		2020/21	Prel.	2022/23 Proj.		From last month		From last year	
		2021/22	Oct	Nov		2021/22	Oct	Nov		2021/22	Oct	Nov	MMT	Percent	MMT	Percent
World	10.08	9.61	9.45	9.42	2.55	2.35	2.57	2.60	25.72	22.55	24.28	24.45	0.18	0.72	1.91	8.47
United States	0.41	0.26	0.36	0.36	2.34	2.20	2.33	2.33	0.95	0.58	0.84	0.84	0.00	0.00	0.26	44.81
Total Foreign	9.67	9.35	9.09	9.06	2.56	2.35	2.58	2.61	24.77	21.97	23.44	23.62	0.18	0.75	1.65	7.51
European Union	2.56	2.56	2.50	2.47	3.31	2.95	3.04	3.15	8.47	7.53	7.60	7.78	0.18	2.30	0.25	3.28
Former Soviet Union - 12																
Russia	2.33	2.17	2.00	2.00	1.77	1.72	1.90	1.90	4.13	3.73	3.80	3.80	0.00	0.00	0.07	1.79
Ukraine	0.20	0.18	0.18	0.18	2.54	2.61	2.29	2.29	0.52	0.48	0.40	0.40	0.00	0.00	-0.08	-16.32
Belarus	0.16	0.15	0.16	0.16	2.87	2.33	2.42	2.42	0.45	0.35	0.38	0.38	0.00	0.00	0.03	7.14
Kazakhstan	0.23	0.20	0.20	0.20	1.05	0.90	1.13	1.13	0.24	0.18	0.23	0.23	0.00	0.00	0.04	23.63
Canada	1.31	1.18	1.30	1.30	3.48	2.39	3.54	3.54	4.58	2.81	4.60	4.60	0.00	0.00	1.79	63.82
South America																
Argentina	0.24	0.35	0.28	0.28	2.13	2.07	2.30	2.30	0.51	0.73	0.65	0.65	0.00	0.00	-0.08	-11.03
Brazil	0.43	0.50	0.51	0.51	2.00	2.27	2.26	2.26	0.85	1.14	1.16	1.16	0.00	0.00	0.01	1.05
Chile	0.11	0.12	0.13	0.13	4.65	4.70	4.37	4.37	0.53	0.58	0.55	0.55	0.00	0.00	-0.03	-4.84
Uruguay	0.02	0.01	0.02	0.02	2.20	2.21	2.40	2.40	0.03	0.03	0.04	0.04	0.00	0.00	0.01	16.13
Oceania																
Australia	1.07	0.85	0.80	0.80	1.77	1.90	1.75	1.75	1.90	1.62	1.40	1.40	0.00	0.00	-0.22	-13.53
New Zealand	0.00	0.01	0.01	0.01	5.75	5.80	5.80	5.80	0.02	0.03	0.03	0.03	0.00	0.00	0.00	0.00
China	0.41	0.41	0.41	0.41	1.48	1.48	1.48	1.48	0.60	0.60	0.60	0.60	0.00	0.00	0.00	0.00
Africa																
Algeria	0.06	0.08	0.08	0.08	1.11	1.31	1.31	1.31	0.07	0.11	0.11	0.11	0.00	0.00	0.00	0.00
Morocco	0.02	0.04	0.02	0.02	0.40	1.13	0.40	0.40	0.01	0.05	0.01	0.01	0.00	0.00	-0.04	-86.67
South Africa	0.03	0.04	0.03	0.03	2.19	1.94	1.67	1.67	0.06	0.07	0.05	0.05	0.00	0.00	-0.02	-28.57
Other Europe																
United Kingdom	0.21	0.20	0.19	0.19	4.91	5.62	5.53	5.53	1.03	1.12	1.05	1.05	0.00	0.00	-0.07	-6.50
Norway	0.07	0.07	0.07	0.07	4.29	4.29	4.29	4.29	0.30	0.30	0.30	0.30	0.00	0.00	0.00	0.00
Serbia	0.03	0.03	0.03	0.03	2.17	2.17	2.17	2.17	0.07	0.07	0.07	0.07	0.00	0.00	0.00	0.00
Albania	0.02	0.01	0.02	0.02	2.25	2.14	2.20	2.20	0.04	0.03	0.03	0.03	0.00	0.00	0.00	10.00
Bosnia and Herzegovina	0.01	0.01	0.01	0.01	3.09	2.82	2.82	2.82	0.03	0.03	0.03	0.03	0.00	0.00	0.00	0.00
Turkey	0.10	0.11	0.11	0.11	2.40	2.38	2.38	2.38	0.24	0.25	0.25	0.25	0.00	0.00	0.00	0.00
Mexico	0.03	0.05	0.05	0.05	2.03	2.02	1.89	1.89	0.06	0.09	0.09	0.09	0.00	0.00	-0.01	-8.60
Others	0.03	0.03	0.03	0.03	1.61	1.76	1.68	1.68	0.05	0.05	0.05	0.05	0.00	0.00	0.00	1.96

World and Selected Countries and Regions

Table 07 Rye Area, Yield, and Production

Country / Region	Area (Million hectares)				Yield (Metric tons per hectare)				Production (Million metric tons)				Change in Production			
	Prel.		2022/23 Proj.		Prel.		2022/23 Proj.		Prel.		2022/23 Proj.		From last month		From last year	
	2020/21	2021/22	Oct	Nov	2020/21	2021/22	Oct	Nov	2020/21	2021/22	Oct	Nov	MMT	Percent	MMT	Percent
World	4.17	4.06	3.78	3.75	3.43	3.09	3.20	3.21	14.30	12.54	12.07	12.01	-0.07	-0.54	-0.54	-4.29
United States	0.13	0.12	0.14	0.14	2.19	2.09	2.26	2.26	0.29	0.25	0.31	0.31	0.00	0.00	0.06	25.30
Total Foreign	4.03	3.94	3.64	3.61	3.47	3.12	3.23	3.24	14.01	12.30	11.76	11.69	-0.07	-0.55	-0.60	-4.89
European Union	2.08	1.93	1.90	1.87	4.31	4.12	4.04	4.07	8.97	7.95	7.68	7.62	-0.07	-0.85	-0.33	-4.19
Former Soviet Union - 12																
Russia	0.97	0.99	0.88	0.88	2.44	1.73	2.17	2.17	2.38	1.72	1.90	1.90	0.00	0.00	0.18	10.72
Belarus	0.36	0.33	0.30	0.30	2.92	2.46	2.50	2.50	1.05	0.80	0.75	0.75	0.00	0.00	-0.05	-6.25
Ukraine	0.14	0.18	0.10	0.10	3.28	3.43	2.85	2.85	0.46	0.60	0.29	0.29	0.00	0.00	-0.32	-52.50
Kazakhstan	0.02	0.04	0.03	0.03	1.25	0.91	1.20	1.20	0.03	0.04	0.03	0.03	0.00	0.00	-0.01	-25.00
Turkey	0.11	0.12	0.11	0.11	2.91	2.87	2.91	2.91	0.32	0.33	0.32	0.32	0.00	0.00	-0.01	-3.03
Canada	0.15	0.15	0.14	0.14	3.19	3.22	3.36	3.36	0.49	0.47	0.47	0.47	0.00	0.00	0.00	-0.63
South America																
Chile	0.00	0.00	0.00	0.00	5.00	5.00	5.00	5.00	0.01	0.01	0.01	0.01	0.00	0.00	0.00	0.00
Argentina	0.09	0.12	0.09	0.09	1.50	1.88	1.84	1.84	0.14	0.23	0.16	0.16	0.00	0.00	-0.07	-28.89
Other Europe																
Bosnia and Herzegovina	0.00	0.00	0.00	0.00	3.67	3.00	2.75	2.75	0.01	0.01	0.01	0.01	0.00	0.00	0.00	22.22
Switzerland	0.00	0.00	0.00	0.00	5.50	5.50	5.50	5.50	0.01	0.01	0.01	0.01	0.00	0.00	0.00	0.00
Serbia	0.00	0.00	0.00	0.00	2.50	2.50	2.50	2.50	0.01	0.01	0.01	0.01	0.00	0.00	0.00	0.00
Australia	0.05	0.05	0.05	0.05	0.71	0.71	0.71	0.71	0.03	0.03	0.03	0.03	0.00	0.00	0.00	0.00
Others	0.04	0.04	0.04	0.04	2.50	2.18	2.16	2.16	0.11	0.10	0.10	0.10	0.00	0.00	0.00	-1.04

World and Selected Countries and Regions

Table 08 Sorghum Area, Yield, and Production

Country / Region	Area (Million hectares)				Yield (Metric tons per hectare)				Production (Million metric tons)				Change in Production			
	Prel.		2022/23 Proj.		Prel.		2022/23 Proj.		Prel.		2022/23 Proj.		From last month		From last year	
	2020/21	2021/22	Oct	Nov	2020/21	2021/22	Oct	Nov	2020/21	2021/22	Oct	Nov	MMT	Percent	MMT	Percent
World	42.84	41.46	41.22	41.31	1.46	1.50	1.46	1.46	62.57	62.20	60.13	60.15	0.02	0.03	-2.06	-3.31
United States	2.06	2.63	2.22	2.22	4.59	4.33	2.80	2.70	9.47	11.38	6.21	5.99	-0.22	-3.59	-5.39	-47.35
Total Foreign	40.77	38.83	39.00	39.10	1.30	1.31	1.38	1.39	53.10	50.83	53.92	54.16	0.24	0.45	3.33	6.55
Africa																
Nigeria	5.60	5.70	5.70	5.70	1.18	1.18	1.23	1.23	6.59	6.73	7.00	7.00	0.00	0.00	0.28	4.09
Ethiopia	1.79	1.65	1.66	1.66	2.83	2.70	2.71	2.71	5.06	4.45	4.50	4.50	0.00	0.00	0.05	1.12
Sudan	9.03	6.92	7.00	7.00	0.57	0.51	0.71	0.71	5.15	3.53	5.00	5.00	0.00	0.00	1.47	41.64
Burkina Faso	1.74	1.90	1.90	1.90	1.06	0.87	1.00	1.00	1.84	1.64	1.90	1.90	0.00	0.00	0.26	15.57
Mali	1.83	1.50	1.50	1.50	1.00	0.83	1.00	1.00	1.82	1.24	1.50	1.50	0.00	0.00	0.26	21.07
Niger	3.67	3.70	3.70	3.70	0.58	0.33	0.51	0.51	2.13	1.21	1.90	1.90	0.00	0.00	0.69	57.42
Cameroon	0.74	0.74	0.74	0.74	1.62	1.62	1.62	1.62	1.20	1.20	1.20	1.20	0.00	0.00	0.00	0.00
Tanzania	0.70	0.70	0.70	0.70	1.07	1.02	1.07	1.07	0.75	0.72	0.75	0.75	0.00	0.00	0.04	4.90
Egypt	0.15	0.15	0.15	0.15	4.91	5.00	5.00	5.00	0.73	0.75	0.75	0.75	0.00	0.00	0.00	0.00
Uganda	0.31	0.25	0.25	0.25	1.23	1.32	0.90	0.90	0.38	0.33	0.23	0.23	0.00	0.00	-0.11	-31.82
Ghana	0.30	0.31	0.31	0.31	1.13	1.11	1.13	1.13	0.35	0.35	0.35	0.35	0.00	0.00	0.01	1.45
Mozambique	0.26	0.25	0.25	0.25	0.54	0.64	0.64	0.64	0.14	0.16	0.16	0.16	0.00	0.00	0.00	0.00
South Africa	0.05	0.04	0.04	0.04	4.39	2.97	3.75	3.71	0.22	0.11	0.15	0.13	-0.02	-13.33	0.02	18.18
Mexico	1.29	1.40	1.42	1.42	3.37	3.47	3.42	3.42	4.35	4.84	4.85	4.85	0.00	0.00	0.01	0.21
South America																
Argentina	0.75	0.93	0.88	0.88	4.43	3.68	4.34	4.34	3.32	3.40	3.80	3.80	0.00	0.00	0.40	11.76
Brazil	0.87	0.95	0.98	0.98	2.41	3.20	3.00	3.00	2.08	3.04	2.94	2.94	0.00	0.00	-0.10	-3.35
South Asia																
India	4.38	4.60	4.50	4.50	1.10	0.92	0.98	0.98	4.81	4.25	4.40	4.40	0.00	0.00	0.15	3.53
Pakistan	0.13	0.08	0.22	0.22	0.76	0.83	0.63	0.63	0.10	0.06	0.14	0.14	0.00	0.00	0.07	110.94
China	0.64	0.63	0.63	0.63	4.68	4.76	4.76	4.76	2.97	3.00	3.00	3.00	0.00	0.00	0.00	0.00
Australia	0.57	0.62	0.74	0.84	2.86	4.38	3.51	3.45	1.64	2.73	2.60	2.90	0.30	11.54	0.17	6.11
European Union	0.19	0.15	0.14	0.14	5.21	5.49	5.18	4.82	1.00	0.82	0.73	0.68	-0.05	-6.90	-0.15	-17.98
Others	5.80	5.68	5.60	5.60	1.12	1.11	1.09	1.09	6.48	6.27	6.08	6.09	0.01	0.16	-0.18	-2.89

World and Selected Countries and Regions

Table 09 Rice Area, Yield, and Production
World and Selected Countries and Regions

Country / Region	Area (Million hectares)				Yield (Metric tons per hectare)				Production (Million metric tons)				Change in Production			
	Prel.		2022/23 Proj.		Prel.		2022/23 Proj.		Prel.		2022/23 Proj.		From last month		From last year	
	2020/21	2021/22	Oct	Nov	2020/21	2021/22	Oct	Nov	2020/21	2021/22	Oct	Nov	MMT	Percent	MMT	Percent
World	165.21	166.11	164.69	164.44	4.60	4.63	4.58	4.57	509.32	515.09	505.04	503.69	-1.35	-0.27	-11.40	-2.21
United States	1.21	1.01	0.88	0.88	8.54	8.64	8.52	8.46	7.22	6.09	5.25	5.22	-0.04	-0.67	-0.87	-14.32
Total Foreign	164.00	165.11	163.81	163.56	4.57	4.61	4.56	4.55	502.10	509.00	499.79	498.47	-1.32	-0.26	-10.53	-2.07
East Asia																
China	30.08	29.92	30.00	30.00	7.04	7.11	7.00	7.00	148.30	148.99	147.00	147.00	0.00	0.00	-1.99	-1.34
Japan	1.53	1.52	1.50	1.50	6.78	6.93	6.82	6.82	7.57	7.67	7.45	7.45	0.00	0.00	-0.22	-2.80
Korea, South	0.73	0.73	0.73	0.73	6.49	7.12	6.91	7.00	3.51	3.88	3.75	3.80	0.05	1.33	-0.08	-2.11
Korea, North	0.49	0.50	0.50	0.50	4.44	4.18	4.18	4.18	1.40	1.36	1.36	1.36	0.00	0.00	0.00	0.00
South Asia																
India	45.77	46.38	45.50	45.50	4.08	4.21	4.09	4.09	124.37	130.29	124.00	124.00	0.00	0.00	-6.29	-4.83
Bangladesh	11.50	11.62	11.50	11.50	4.51	4.63	4.65	4.65	34.60	35.85	35.65	35.65	0.00	0.00	-0.20	-0.56
Pakistan	3.34	3.54	3.00	3.00	3.79	3.86	3.70	3.30	8.42	9.10	7.40	6.60	-0.80	-10.81	-2.50	-27.47
Nepal	1.48	1.47	1.42	1.42	3.81	3.80	3.83	3.83	3.74	3.73	3.62	3.62	0.00	0.00	-0.11	-2.95
Sri Lanka	1.09	1.13	1.00	0.98	4.59	3.56	3.90	3.60	3.39	2.73	2.65	2.40	-0.25	-9.43	-0.33	-12.18
Southeast Asia																
Indonesia	11.40	11.60	11.65	11.65	4.77	4.67	4.68	4.68	34.50	34.40	34.60	34.60	0.00	0.00	0.20	0.58
Vietnam	7.31	7.27	7.29	7.28	6.00	5.93	6.01	5.99	27.38	26.94	27.40	27.23	-0.18	-0.64	0.28	1.04
Thailand	10.51	10.70	10.85	10.85	2.72	2.81	2.81	2.81	18.86	19.88	20.10	20.10	0.00	0.00	0.22	1.12
Burma	6.90	6.90	6.90	6.90	2.85	2.80	2.83	2.83	12.60	12.35	12.50	12.50	0.00	0.00	0.15	1.20
Philippines	4.76	4.80	4.80	4.80	4.14	4.15	4.10	4.10	12.42	12.54	12.41	12.41	0.00	0.00	-0.13	-1.03
Cambodia	3.26	3.27	3.35	3.31	2.89	2.89	2.91	2.94	5.74	5.77	5.94	5.93	-0.01	-0.12	0.16	2.81
Laos	0.93	0.94	0.95	0.95	3.24	3.28	3.26	3.26	1.90	1.95	1.95	1.95	0.00	0.00	0.00	0.00
Malaysia	0.68	0.67	0.68	0.68	4.07	4.09	4.07	4.07	1.80	1.78	1.80	1.80	0.00	0.00	0.02	1.12
South America																
Brazil	1.68	1.62	1.60	1.60	7.00	6.67	6.71	6.71	8.00	7.34	7.30	7.30	0.00	0.00	-0.04	-0.50
Peru	0.41	0.42	0.42	0.42	8.22	8.37	8.55	8.55	2.34	2.43	2.48	2.48	0.00	0.00	0.05	2.22
Africa																
Egypt	0.70	0.50	0.60	0.60	8.28	8.41	8.70	8.70	4.00	2.90	3.60	3.60	0.00	0.00	0.70	24.14
Madagascar	1.68	1.65	1.60	1.60	2.53	2.65	2.69	2.69	2.71	2.80	2.75	2.75	0.00	0.00	-0.05	-1.82
Nigeria	3.60	3.65	3.70	3.50	2.27	2.29	2.30	2.29	5.15	5.26	5.36	5.04	-0.32	-5.88	-0.22	-4.09
European Union	0.42	0.40	0.36	0.36	6.74	6.53	5.90	5.90	1.83	1.71	1.35	1.35	0.00	0.00	-0.37	-21.35
Iran	0.58	0.56	0.57	0.57	5.27	5.14	5.32	5.32	2.00	1.90	2.00	2.00	0.00	0.00	0.10	5.26
Others	13.21	13.34	13.35	13.37	2.94	2.89	2.88	2.90	25.58	25.45	25.37	25.55	0.18	0.71	0.10	0.40

Yield is on a rough basis, before the milling process. Production is on a milled basis, after the milling process.

Table 10 Total Oilseed Area, Yield, and Production

World and Selected Countries and Regions

Country / Region	Area (Million hectares)				Yield (Metric tons per hectare)				Production (Million metric tons)				Change in Production			
	Prel.		2022/23 Proj.		Prel.		2022/23 Proj.		Prel.		2022/23 Proj.		From last month		From last year	
	2020/21	2021/22	Oct	Nov	2020/21	2021/22	Oct	Nov	2020/21	2021/22	Oct	Nov	MMT	Percent	MMT	Percent
World Total	--	--	--	--	--	--	--	--	607.47	604.61	646.59	645.61	-0.98	-0.15	41.00	6.78
Total Foreign	--	--	--	--	--	--	--	--	482.95	473.26	519.67	517.74	-1.93	-0.37	44.48	9.40
Oilseed, Copra	--	--	--	--	--	--	--	--	5.59	5.86	5.86	5.86	0.00	0.00	0.00	0.00
Oilseed, Palm Kernel	--	--	--	--	--	--	--	--	19.05	19.87	20.59	20.39	-0.20	-0.97	0.52	2.62
Major Oilseeds	251.49	260.16	264.57	263.75	2.32	2.23	2.34	2.35	582.83	578.88	620.13	619.35	-0.78	-0.13	40.48	6.99
United States	38.81	41.06	40.36	40.36	3.21	3.20	3.15	3.17	124.52	131.35	126.92	127.87	0.95	0.75	-3.48	-2.65
Foreign Oilseeds	212.68	219.10	224.21	223.40	2.15	2.04	2.20	2.20	458.31	447.53	493.21	491.48	-1.73	-0.35	43.96	9.82
South America	66.09	68.49	71.20	70.75	3.19	2.81	3.24	3.24	210.92	192.67	230.64	229.20	-1.44	-0.62	36.53	18.96
Brazil	41.07	43.33	44.75	44.75	3.50	3.04	3.51	3.51	143.77	131.67	157.13	157.13	0.00	0.00	25.46	19.34
Argentina	18.97	18.77	19.83	19.33	2.70	2.65	2.86	2.86	51.21	49.67	56.80	55.30	-1.50	-2.64	5.63	11.33
Paraguay	3.24	3.39	3.54	3.54	3.09	1.28	2.86	2.86	10.02	4.32	10.13	10.13	0.00	0.00	5.81	134.43
Bolivia	1.57	1.54	1.57	1.57	2.24	2.07	2.10	2.10	3.51	3.20	3.30	3.30	0.00	0.00	0.10	3.22
Uruguay	1.11	1.32	1.38	1.43	1.85	2.62	2.14	2.11	2.06	3.46	2.94	3.00	0.06	2.00	-0.46	-13.23
China	25.45	23.94	25.25	25.20	2.59	2.60	2.58	2.58	65.81	62.35	65.17	65.02	-0.15	-0.23	2.67	4.29
South Asia	42.13	41.55	43.04	42.99	0.96	1.06	1.03	1.03	40.44	43.93	44.45	44.12	-0.32	-0.73	0.19	0.43
India	39.15	38.70	40.08	40.08	0.96	1.04	1.02	1.02	37.55	40.29	41.04	41.04	0.00	0.00	0.75	1.86
Pakistan	2.62	2.48	2.60	2.55	0.94	1.29	1.14	1.03	2.46	3.21	2.97	2.64	-0.32	-10.93	-0.57	-17.62
European Union	11.10	10.99	12.13	12.06	2.59	2.79	2.63	2.65	28.77	30.69	31.86	31.94	0.09	0.27	1.25	4.08
United Kingdom	0.38	0.31	0.36	0.36	2.73	3.20	3.40	3.40	1.04	0.98	1.23	1.23	0.00	0.00	0.24	24.87
Former Soviet Union - 12	25.91	27.77	26.54	26.54	1.72	1.89	1.82	1.81	44.70	52.44	48.38	47.98	-0.40	-0.83	-4.46	-8.50
Russia	12.50	14.23	15.20	15.20	1.61	1.62	1.74	1.74	20.14	23.11	26.40	26.40	0.00	0.00	3.29	14.25
Ukraine	9.65	9.58	7.25	7.25	2.06	2.54	2.37	2.32	19.85	24.32	17.20	16.80	-0.40	-2.33	-7.52	-30.91
Uzbekistan	1.08	1.08	1.09	1.09	1.19	1.03	1.02	1.02	1.28	1.11	1.11	1.11	0.00	0.00	0.00	0.18
Canada	10.41	11.12	10.73	10.73	2.49	1.81	2.43	2.43	25.95	20.11	26.07	26.07	0.00	0.00	5.96	29.62
Africa	22.12	24.80	24.18	24.12	1.08	0.98	1.03	1.04	23.99	24.37	24.86	24.98	0.11	0.45	0.61	2.50
Nigeria	4.62	4.97	4.87	4.87	1.19	1.11	1.21	1.21	5.49	5.50	5.90	5.90	0.00	0.00	0.41	7.37
South Africa	1.36	1.66	1.82	1.76	1.98	1.89	1.60	1.82	2.69	3.14	2.91	3.20	0.29	9.98	0.05	1.65
Tanzania	1.17	1.24	1.35	1.35	1.02	0.98	0.93	0.93	1.19	1.21	1.25	1.25	0.00	0.00	0.04	3.39
Southeast Asia	3.25	3.21	3.18	3.18	1.36	1.36	1.38	1.38	4.42	4.38	4.37	4.37	0.00	0.00	-0.01	-0.16
Burma	2.03	2.04	2.04	2.04	1.17	1.19	1.21	1.21	2.37	2.42	2.46	2.46	0.00	0.00	0.05	1.86
Indonesia	0.94	0.90	0.87	0.87	1.54	1.55	1.55	1.55	1.45	1.39	1.35	1.35	0.00	0.00	-0.04	-2.53
Australia	2.94	3.87	4.31	4.21	1.93	2.22	1.99	2.15	5.69	8.59	8.60	9.05	0.45	5.23	0.46	5.37
Turkey	1.18	1.32	1.48	1.48	2.46	2.55	2.58	2.58	2.89	3.37	3.81	3.81	0.00	0.00	0.44	13.15
Others	1.70	1.74	1.82	1.78	2.18	2.10	2.08	2.09	3.70	3.65	3.78	3.72	-0.07	-1.72	0.07	1.81

World Total and Total Foreign: (Major Oilseeds plus copra and palm kernel) Major Oilseeds: (soybeans, sunflowerseeds, peanuts(inshell), cottonseed and rapeseed)

Table 11 Soybean Area, Yield, and Production

Country / Region	Area (Million hectares)				Yield (Metric tons per hectare)				Production (Million metric tons)				Change in Production			
	Prel.		2022/23 Proj.		Prel.		2022/23 Proj.		Prel.		2022/23 Proj.		From last month		From last year	
	2020/21	2021/22	Oct	Nov	2020/21	2021/22	Oct	Nov	2020/21	2021/22	Oct	Nov	MMT	Percent	MMT	Percent
World	129.00	130.94	135.46	135.03	2.86	2.72	2.89	2.89	368.52	355.59	390.99	390.53	-0.46	-0.12	34.94	9.83
United States	33.43	34.93	35.06	35.06	3.43	3.48	3.35	3.37	114.75	121.53	117.38	118.27	0.89	0.76	-3.26	-2.68
Total Foreign	95.57	96.01	100.40	99.97	2.66	2.44	2.73	2.72	253.77	234.06	273.61	272.26	-1.35	-0.49	38.20	16.32
South America																
Brazil	39.50	41.50	42.90	42.90	3.53	3.06	3.54	3.54	139.50	127.00	152.00	152.00	0.00	0.00	25.00	19.69
Argentina	16.47	15.90	17.00	16.50	2.81	2.76	3.00	3.00	46.20	43.90	51.00	49.50	-1.50	-2.94	5.60	12.76
Paraguay	3.15	3.30	3.45	3.45	3.14	1.27	2.90	2.90	9.90	4.20	10.00	10.00	0.00	0.00	5.80	138.10
Bolivia	1.43	1.40	1.43	1.43	2.32	2.14	2.17	2.17	3.32	3.00	3.10	3.10	0.00	0.00	0.10	3.33
Uruguay	0.95	1.10	1.10	1.10	1.88	2.80	2.27	2.27	1.79	3.07	2.50	2.50	0.00	0.00	-0.57	-18.57
East Asia																
China	9.88	8.40	9.35	9.35	1.98	1.95	1.97	1.97	19.60	16.40	18.40	18.40	0.00	0.00	2.00	12.20
Korea, South	0.06	0.06	0.06	0.06	1.47	1.71	1.73	1.73	0.08	0.09	0.10	0.10	0.00	0.00	0.00	1.06
Korea, North	0.16	0.17	0.17	0.17	1.40	1.44	1.44	1.44	0.23	0.24	0.24	0.24	0.00	0.00	0.00	0.00
Japan	0.14	0.15	0.15	0.15	1.54	1.63	1.55	1.55	0.22	0.24	0.23	0.23	0.00	0.00	-0.01	-2.52
India	12.92	12.50	12.70	12.70	0.81	0.95	0.91	0.91	10.45	11.90	11.50	11.50	0.00	0.00	-0.40	-3.36
Canada	2.04	2.13	2.10	2.10	3.12	2.94	3.10	3.10	6.36	6.27	6.50	6.50	0.00	0.00	0.23	3.64
Former Soviet Union - 12																
Russia	2.71	2.99	3.30	3.30	1.59	1.59	1.67	1.67	4.31	4.76	5.50	5.50	0.00	0.00	0.74	15.55
Ukraine	1.46	1.44	1.50	1.50	2.05	2.64	2.33	2.33	3.00	3.80	3.50	3.50	0.00	0.00	-0.30	-7.89
European Union	1.00	0.98	1.06	1.06	2.61	2.76	2.37	2.34	2.60	2.71	2.50	2.47	-0.04	-1.40	-0.24	-8.87
Southeast Asia																
Indonesia	0.39	0.35	0.33	0.33	1.22	1.21	1.21	1.21	0.48	0.43	0.40	0.40	0.00	0.00	-0.03	-5.88
Vietnam	0.04	0.03	0.03	0.03	1.61	1.61	1.60	1.60	0.06	0.05	0.05	0.05	0.00	0.00	-0.01	-9.43
Thailand	0.03	0.03	0.03	0.03	1.63	1.63	1.63	1.63	0.05	0.05	0.05	0.05	0.00	0.00	0.00	0.00
Burma	0.14	0.13	0.13	0.13	1.04	1.04	1.04	1.04	0.14	0.14	0.13	0.13	0.00	0.00	-0.01	-3.70
Serbia	0.22	0.22	0.22	0.22	2.89	2.45	2.50	2.50	0.64	0.54	0.55	0.55	0.00	0.00	0.01	1.85
Mexico	0.16	0.18	0.19	0.15	1.58	1.57	1.57	1.50	0.25	0.29	0.29	0.23	-0.07	-22.41	-0.06	-21.88
Africa																
South Africa	0.83	0.93	1.00	1.10	2.29	2.38	2.00	2.05	1.90	2.20	2.00	2.25	0.25	12.50	0.05	2.27
Nigeria	1.10	1.20	1.20	1.20	1.01	0.93	1.04	1.04	1.11	1.12	1.25	1.25	0.00	0.00	0.13	11.91
Zambia	0.16	0.30	0.38	0.38	1.81	1.35	1.27	1.27	0.30	0.41	0.48	0.48	0.00	0.00	0.06	15.57
Uganda	0.05	0.05	0.05	0.05	0.60	0.60	0.60	0.60	0.03	0.03	0.03	0.03	0.00	0.00	0.00	0.00
Middle East																
Iran	0.07	0.07	0.08	0.08	2.41	2.29	2.27	2.27	0.17	0.16	0.17	0.17	0.00	0.00	0.01	6.25
Turkey	0.03	0.03	0.04	0.04	3.79	3.91	4.00	4.00	0.11	0.13	0.14	0.14	0.00	0.00	0.02	12.00
Others	0.49	0.47	0.49	0.49	2.06	2.03	2.05	2.05	1.01	0.95	1.01	1.01	0.00	0.00	0.06	6.65

World and Selected Countries and Regions

Table 12 Cottonseed Area, Yield, and Production

Country / Region	Area (Million hectares)				Yield (Metric tons per hectare)				Production (Million metric tons)				Change in Production			
	Prel.		2022/23 Proj.		Prel.		2022/23 Proj.		Prel.		2022/23 Proj.		From last month		From last year	
	2020/21	2021/22	Oct	Nov	2020/21	2021/22	Oct	Nov	2020/21	2021/22	Oct	Nov	MMT	Percent	MMT	Percent
World	30.81	31.76	31.96	31.86	1.33	1.31	1.35	1.33	41.00	41.73	43.01	42.44	-0.58	-1.34	0.71	1.70
United States	3.33	4.16	3.19	3.19	1.22	1.16	1.19	1.21	4.05	4.83	3.81	3.87	0.06	1.55	-0.96	-19.96
Total Foreign	27.49	27.61	28.78	28.67	1.34	1.34	1.36	1.35	36.95	36.90	39.21	38.57	-0.63	-1.62	1.67	4.53
South Asia																
India	13.29	12.15	13.00	13.00	0.88	0.86	0.90	0.90	11.72	10.40	11.68	11.68	0.00	0.00	1.27	12.25
Pakistan	2.20	2.00	2.00	2.00	0.89	1.30	1.13	0.97	1.95	2.60	2.25	1.95	-0.30	-13.49	-0.65	-25.01
China	3.20	3.10	3.00	3.00	3.63	3.39	3.66	3.66	11.60	10.50	10.97	10.97	0.00	0.00	0.47	4.47
Former Soviet Union - 12																
Uzbekistan	1.06	1.06	1.07	1.07	1.16	1.00	0.99	0.99	1.23	1.06	1.06	1.06	0.00	0.00	0.00	0.00
Turkmenistan	0.55	0.55	0.55	0.55	0.66	0.64	0.64	0.64	0.36	0.35	0.35	0.35	0.00	0.00	0.00	0.00
Tajikistan	0.16	0.17	0.17	0.17	1.11	1.09	1.11	1.11	0.18	0.19	0.19	0.19	0.00	0.00	0.00	1.08
Kazakhstan	0.11	0.12	0.13	0.13	0.95	0.90	0.94	0.94	0.11	0.10	0.12	0.12	0.00	0.00	0.01	13.59
South America																
Brazil	1.37	1.60	1.60	1.60	2.62	2.43	2.70	2.70	3.59	3.89	4.32	4.32	0.00	0.00	0.43	10.92
Argentina	0.41	0.48	0.43	0.43	0.72	0.68	0.71	0.71	0.29	0.33	0.30	0.30	0.00	0.00	-0.03	-7.98
Middle East																
Turkey	0.35	0.45	0.56	0.56	2.71	2.76	2.59	2.59	0.95	1.24	1.44	1.44	0.00	0.00	0.20	15.71
Syria	0.03	0.03	0.03	0.03	2.36	2.20	2.20	2.20	0.06	0.06	0.06	0.06	0.00	0.00	0.00	0.00
Iran	0.10	0.10	0.10	0.10	1.35	1.35	1.35	1.35	0.13	0.14	0.14	0.14	0.00	0.00	0.00	0.00
Australia	0.28	0.60	0.65	0.55	3.06	2.88	2.77	3.00	0.84	1.73	1.80	1.65	-0.15	-8.32	-0.08	-4.34
European Union	0.34	0.32	0.33	0.32	1.59	1.61	1.54	1.55	0.54	0.52	0.51	0.50	0.00	-0.59	-0.02	-3.46
Africa																
Burkina Faso	0.56	0.60	0.65	0.65	0.47	0.45	0.49	0.41	0.26	0.27	0.32	0.27	-0.05	-16.09	0.00	0.38
Mali	0.17	0.72	0.74	0.74	0.51	0.56	0.55	0.47	0.08	0.40	0.41	0.35	-0.07	-15.85	-0.06	-14.60
Cameroon	0.23	0.23	0.24	0.24	1.51	1.39	1.35	1.35	0.34	0.32	0.33	0.33	0.00	0.00	0.01	1.56
Cote d'Ivoire	0.45	0.47	0.46	0.46	0.61	0.60	0.58	0.48	0.27	0.28	0.27	0.22	-0.05	-16.85	-0.06	-21.00
Benin	0.62	0.64	0.62	0.62	0.78	0.73	0.75	0.75	0.48	0.47	0.46	0.46	0.00	0.00	-0.01	-1.28
Tanzania	0.17	0.24	0.35	0.35	0.56	0.46	0.43	0.43	0.09	0.11	0.15	0.15	0.00	0.00	0.04	36.94
Egypt	0.07	0.09	0.13	0.13	1.00	1.00	0.98	0.98	0.07	0.09	0.13	0.13	0.00	0.00	0.04	50.59
Nigeria	0.27	0.27	0.27	0.27	0.56	0.56	0.56	0.56	0.15	0.15	0.15	0.15	0.00	0.00	0.00	0.00
Uganda	0.10	0.10	0.10	0.10	1.40	1.40	1.49	1.49	0.14	0.14	0.15	0.15	0.00	0.00	0.01	6.43
Zimbabwe	0.24	0.25	0.24	0.24	0.39	0.33	0.34	0.34	0.09	0.08	0.08	0.08	0.00	0.00	0.00	0.00
Sudan	0.20	0.20	0.20	0.20	1.41	1.41	1.53	1.53	0.28	0.28	0.31	0.31	0.00	0.00	0.02	8.51
Mexico	0.15	0.15	0.20	0.20	2.40	2.71	2.39	2.39	0.35	0.42	0.48	0.48	0.00	0.00	0.06	14.63
Burma	0.24	0.25	0.25	0.25	1.17	1.18	1.18	1.18	0.28	0.29	0.29	0.29	0.00	0.00	0.00	0.00
Others	0.63	0.69	0.73	0.73	0.81	0.73	0.71	0.69	0.51	0.51	0.52	0.51	-0.02	-3.06	0.00	0.40

World and Selected Countries and Regions

Table 13 Peanut Area, Yield, and Production

Country / Region	Area (Million hectares)				Yield (Metric tons per hectare)				Production (Million metric tons)				Change in Production			
	2020/21	Prel. 2021/22	2022/23 Proj. Oct Nov		2020/21	Prel. 2021/22	2022/23 Proj. Oct Nov		2020/21	Prel. 2021/22	2022/23 Proj. Oct Nov		From last month MMT Percent		From last year MMT Percent	
World	29.93	30.83	29.62	29.62	1.68	1.63	1.70	1.70	50.26	50.38	50.31	50.27	-0.04	-0.07	-0.11	-0.21
United States	0.65	0.62	0.57	0.57	4.27	4.63	4.58	4.58	2.79	2.89	2.62	2.62	0.00	0.00	-0.27	-9.25
Total Foreign	29.28	30.21	29.05	29.05	1.62	1.57	1.64	1.64	47.47	47.50	47.69	47.65	-0.04	-0.07	0.16	0.33
China	4.73	4.75	4.80	4.80	3.80	3.85	3.81	3.81	17.99	18.31	18.30	18.30	0.00	0.00	-0.01	-0.04
Africa																
Nigeria	3.25	3.50	3.40	3.40	1.30	1.21	1.32	1.32	4.23	4.23	4.50	4.50	0.00	0.00	0.27	6.43
Sudan	3.20	3.94	3.00	3.00	0.87	0.60	0.83	0.83	2.77	2.36	2.50	2.50	0.00	0.00	0.15	6.16
Senegal	1.23	1.21	1.20	1.20	1.47	1.38	1.42	1.42	1.80	1.68	1.70	1.70	0.00	0.00	0.02	1.31
Cameroon	0.43	0.43	0.43	0.43	1.40	1.40	1.40	1.40	0.60	0.60	0.60	0.60	0.00	0.00	0.00	0.00
Ghana	0.34	0.34	0.34	0.34	1.68	1.41	1.41	1.41	0.57	0.48	0.48	0.48	0.00	0.00	0.00	0.00
Chad	0.76	0.80	0.80	0.80	1.11	1.13	1.13	1.13	0.84	0.90	0.90	0.90	0.00	0.00	0.00	0.00
Malawi	0.40	0.40	0.40	0.40	0.88	0.88	0.88	0.88	0.35	0.35	0.35	0.35	0.00	0.00	0.00	0.00
Congo (Kinshasa)	0.50	0.50	0.50	0.50	0.90	0.90	0.90	0.90	0.45	0.45	0.45	0.45	0.00	0.00	0.00	0.00
Niger	0.90	0.92	0.92	0.92	0.66	0.56	0.60	0.60	0.59	0.52	0.55	0.55	0.00	0.00	0.03	5.97
Mali	0.43	0.43	0.43	0.43	1.16	0.87	1.00	1.00	0.49	0.37	0.43	0.43	0.00	0.00	0.06	15.49
Uganda	0.34	0.40	0.40	0.40	0.99	0.75	0.75	0.75	0.34	0.30	0.30	0.30	0.00	0.00	0.00	0.00
Burkina Faso	0.65	0.60	0.60	0.60	0.97	0.80	0.83	0.83	0.63	0.48	0.50	0.50	0.00	0.00	0.02	4.82
Guinea	0.98	1.10	1.10	1.10	1.10	1.21	1.09	1.09	1.07	1.34	1.20	1.20	0.00	0.00	-0.14	-10.11
Egypt	0.06	0.06	0.06	0.06	3.20	3.20	3.20	3.20	0.21	0.21	0.21	0.21	0.00	0.00	0.00	0.00
Central African Republic	0.10	0.10	0.10	0.10	1.50	1.50	1.50	1.50	0.15	0.15	0.15	0.15	0.00	0.00	0.00	0.00
South Africa	0.04	0.05	0.05	0.04	2.21	1.44	2.22	1.63	0.09	0.07	0.10	0.07	-0.04	-35.00	0.00	0.00
Mozambique	0.35	0.38	0.38	0.38	0.30	0.34	0.34	0.34	0.10	0.13	0.13	0.13	0.00	0.00	0.00	0.00
Cote d'Ivoire	0.16	0.15	0.15	0.15	1.40	1.45	1.45	1.45	0.23	0.21	0.21	0.21	0.00	0.00	0.00	0.00
Benin	0.17	0.19	0.19	0.19	1.01	0.92	0.92	0.92	0.18	0.18	0.18	0.18	0.00	0.00	0.00	0.00
South Asia																
India	6.02	5.60	5.50	5.50	1.11	1.21	1.21	1.21	6.70	6.80	6.65	6.65	0.00	0.00	-0.15	-2.21
Pakistan	0.14	0.10	0.10	0.10	0.89	0.92	0.91	0.91	0.12	0.09	0.09	0.09	0.00	0.00	0.00	1.11
Southeast Asia																
Indonesia	0.55	0.55	0.54	0.54	1.78	1.76	1.76	1.76	0.97	0.96	0.95	0.95	0.00	0.00	-0.01	-1.04
Burma	1.06	1.06	1.07	1.07	1.48	1.51	1.55	1.55	1.56	1.60	1.65	1.65	0.00	0.00	0.05	3.13
Vietnam	0.17	0.16	0.16	0.16	2.50	2.50	2.50	2.50	0.41	0.40	0.39	0.39	0.00	0.00	-0.01	-3.00
Thailand	0.02	0.02	0.02	0.02	1.67	1.67	1.67	1.67	0.04	0.04	0.04	0.04	0.00	0.00	0.00	0.00
South America																
Argentina	0.40	0.41	0.38	0.38	3.16	3.29	3.29	3.29	1.27	1.34	1.25	1.25	0.00	0.00	-0.09	-6.72
Brazil	0.17	0.20	0.21	0.21	3.86	3.68	3.66	3.66	0.64	0.72	0.75	0.75	0.00	0.00	0.03	4.46
Mexico	0.06	0.05	0.05	0.05	1.73	1.74	1.74	1.74	0.10	0.09	0.09	0.09	0.00	0.00	0.00	0.00
Others	1.70	1.83	1.79	1.79	1.16	1.19	1.18	1.18	1.98	2.17	2.10	2.10	0.00	0.00	-0.07	-3.18

Table 14 Sunflowerseed Area, Yield, and Production

Country / Region	Area (Million hectares)				Yield (Metric tons per hectare)				Production (Million metric tons)				Change in Production			
	Prel.		2022/23 Proj.		Prel.		2022/23 Proj.		Prel.		2022/23 Proj.		From last month		From last year	
	2020/21	2021/22	Oct	Nov	2020/21	2021/22	Oct	Nov	2020/21	2021/22	Oct	Nov	MMT	Percent	MMT	Percent
World	26.86	28.82	27.49	27.15	1.83	1.99	1.89	1.89	49.20	57.32	52.02	51.30	-0.72	-1.38	-6.02	-10.51
United States	0.67	0.50	0.66	0.66	2.01	1.71	2.00	2.00	1.35	0.86	1.32	1.32	0.00	0.00	0.46	52.78
Total Foreign	26.18	28.32	26.83	26.49	1.83	1.99	1.89	1.89	47.85	56.46	50.70	49.98	-0.72	-1.42	-6.48	-11.48
Former Soviet Union - 12																
Russia	8.35	9.61	9.70	9.70	1.59	1.62	1.75	1.75	13.27	15.57	17.00	17.00	0.00	0.00	1.43	9.17
Ukraine	7.00	7.10	4.60	4.60	2.01	2.46	2.28	2.20	14.10	17.50	10.50	10.10	-0.40	-3.81	-7.40	-42.29
Kazakhstan	0.75	0.94	1.05	1.05	1.13	1.10	1.05	1.05	0.84	1.03	1.10	1.10	0.00	0.00	0.07	6.59
European Union	4.44	4.36	4.86	4.77	2.00	2.35	2.00	1.99	8.90	10.25	9.70	9.48	-0.23	-2.32	-0.77	-7.55
South America																
Argentina	1.67	1.96	2.00	2.00	2.05	2.07	2.10	2.10	3.43	4.05	4.20	4.20	0.00	0.00	0.15	3.70
Uruguay	0.07	0.07	0.08	0.08	1.69	1.62	1.71	1.71	0.11	0.11	0.13	0.13	0.00	0.00	0.02	16.36
Bolivia	0.14	0.14	0.14	0.14	1.39	1.39	1.40	1.40	0.19	0.20	0.20	0.20	0.00	0.00	0.00	1.54
Brazil	0.03	0.04	0.04	0.04	1.13	1.62	1.60	1.60	0.04	0.06	0.06	0.06	0.00	0.00	0.00	6.67
Paraguay	0.03	0.03	0.03	0.03	1.53	1.55	1.56	1.56	0.05	0.05	0.05	0.05	0.00	0.00	0.00	4.17
China	0.87	0.89	1.00	0.95	2.94	2.73	2.80	2.79	2.57	2.42	2.80	2.65	-0.15	-5.36	0.23	9.32
South Asia																
India	0.23	0.25	0.28	0.28	0.82	0.76	0.78	0.78	0.19	0.19	0.22	0.22	0.00	0.00	0.03	13.16
Pakistan	0.06	0.10	0.15	0.10	1.43	1.38	1.03	1.35	0.09	0.14	0.16	0.14	-0.02	-12.90	-0.01	-4.26
Middle East																
Turkey	0.72	0.76	0.79	0.79	2.17	2.30	2.41	2.41	1.56	1.75	1.90	1.90	0.00	0.00	0.15	8.57
Iran	0.04	0.04	0.04	0.04	1.08	1.00	1.02	1.02	0.04	0.04	0.04	0.04	0.00	0.00	0.00	0.00
Israel	0.00	0.00	0.00	0.00	9.00	7.00	6.00	6.00	0.01	0.01	0.01	0.01	0.00	0.00	0.01	71.43
Africa																
Egypt	0.01	0.01	0.01	0.01	2.38	2.38	2.50	2.50	0.02	0.02	0.03	0.03	0.00	0.00	0.01	31.58
Morocco	0.02	0.02	0.02	0.02	1.16	1.25	1.11	1.11	0.02	0.03	0.02	0.02	0.00	0.00	-0.01	-20.00
South Africa	0.48	0.68	0.76	0.60	1.42	1.26	1.03	1.42	0.68	0.85	0.78	0.85	0.08	9.68	0.00	0.00
Burma	0.60	0.60	0.60	0.60	0.65	0.65	0.65	0.65	0.39	0.39	0.39	0.39	0.00	0.00	0.00	0.00
Canada	0.05	0.04	0.03	0.03	2.24	2.05	2.06	2.06	0.10	0.08	0.07	0.07	0.00	0.00	-0.01	-17.07
Australia	0.02	0.02	0.03	0.03	1.44	1.58	1.48	1.48	0.03	0.03	0.04	0.04	0.00	0.00	0.01	23.33
Others	0.62	0.67	0.64	0.64	1.98	2.54	2.07	2.07	1.23	1.69	1.32	1.32	0.00	0.00	-0.37	-22.00

World and Selected Countries and Regions

Table 15 Rapeseed Area, Yield, and Production

Country / Region	Area (Million hectares)				Yield (Metric tons per hectare)				Production (Million metric tons)				Change in Production			
	Prel.		2022/23 Proj.		Prel.		2022/23 Proj.		Prel.		2022/23 Proj.		From last month		From last year	
	2020/21	2021/22	Oct	Nov	2020/21	2021/22	Oct	Nov	2020/21	2021/22	Oct	Nov	MMT	Percent	MMT	Percent
World	34.89	37.81	40.03	40.11	2.12	1.95	2.09	2.11	73.85	73.86	83.81	84.82	1.01	1.20	10.96	14.84
United States	0.73	0.85	0.88	0.88	2.16	1.46	2.05	2.05	1.58	1.24	1.80	1.80	0.00	0.00	0.55	44.45
Total Foreign	34.16	36.96	39.15	39.23	2.12	1.96	2.09	2.12	72.28	72.61	82.01	83.02	1.01	1.23	10.41	14.33
European Union	5.32	5.33	5.89	5.92	3.14	3.23	3.25	3.30	16.73	17.22	19.15	19.50	0.35	1.83	2.28	13.27
United Kingdom	0.38	0.31	0.36	0.36	2.73	3.20	3.40	3.40	1.04	0.98	1.23	1.23	0.00	0.00	0.24	24.87
Switzerland	0.02	0.02	0.02	0.02	3.14	3.14	3.14	3.14	0.07	0.07	0.07	0.07	0.00	0.00	0.00	0.00
Canada	8.33	8.95	8.60	8.60	2.34	1.54	2.27	2.27	19.49	13.76	19.50	19.50	0.00	0.00	5.74	41.75
China	6.77	6.80	7.10	7.10	2.08	2.16	2.07	2.07	14.05	14.71	14.70	14.70	0.00	0.00	-0.01	-0.10
South Asia																
India	6.70	8.20	8.60	8.60	1.27	1.34	1.28	1.28	8.50	11.00	11.00	11.00	0.00	0.00	0.00	0.00
Pakistan	0.22	0.28	0.35	0.35	1.32	1.35	1.33	1.33	0.30	0.38	0.47	0.47	0.00	0.00	0.09	24.00
Bangladesh	0.25	0.25	0.25	0.25	0.92	0.92	0.92	0.92	0.23	0.23	0.23	0.23	0.00	0.00	0.00	0.00
Former Soviet Union - 12																
Russia	1.45	1.62	2.20	2.20	1.77	1.71	1.77	1.77	2.57	2.78	3.90	3.90	0.00	0.00	1.13	40.54
Ukraine	1.19	1.04	1.15	1.15	2.31	2.91	2.78	2.78	2.75	3.02	3.20	3.20	0.00	0.00	0.19	6.14
Belarus	0.36	0.32	0.33	0.33	2.06	1.59	1.69	1.69	0.73	0.50	0.55	0.55	0.00	0.00	0.05	10.00
Kazakhstan	0.12	0.12	0.13	0.13	1.23	1.24	1.23	1.23	0.15	0.15	0.16	0.16	0.00	0.00	0.01	9.59
Australia	2.61	3.22	3.60	3.60	1.82	2.10	1.86	2.03	4.76	6.76	6.70	7.30	0.60	8.96	0.54	7.96
South America																
Chile	0.04	0.04	0.03	0.03	3.81	3.86	3.87	3.87	0.14	0.14	0.12	0.12	0.00	0.00	-0.02	-11.11
Paraguay	0.05	0.04	0.05	0.05	1.41	1.45	1.51	1.51	0.07	0.06	0.07	0.07	0.00	0.00	0.00	6.25
Ethiopia	0.03	0.03	0.03	0.03	1.80	1.80	1.80	1.80	0.05	0.05	0.05	0.05	0.00	0.00	0.00	0.00
Others	0.33	0.41	0.48	0.52	2.02	2.03	1.95	1.88	0.67	0.83	0.93	0.99	0.06	6.36	0.16	19.06

World and Selected Countries and Regions

Table 16 Copra, Palm Kernel, and Palm Oil Production

Country / Region	Production (Million metric tons)				Change in Production			
	2020/21	Prel.	2022/23 Proj.		From last month		From last year	
		2021/22	Oct	Nov	MMT	Percent	MMT	Percent
Oilseed, Copra								
Philippines	2.40	2.60	2.60	2.60	0.00	0.00	0.00	0.00
Indonesia	1.67	1.68	1.68	1.68	0.00	0.00	0.00	0.00
India	0.75	0.79	0.80	0.80	0.00	0.00	0.01	1.27
Vietnam	0.28	0.29	0.29	0.29	0.00	0.00	0.00	0.00
Papua New Guinea	0.11	0.11	0.11	0.11	0.00	0.00	0.00	0.00
Thailand	0.07	0.07	0.07	0.07	0.00	0.00	0.00	0.00
Sri Lanka	0.07	0.07	0.07	0.07	0.00	0.00	0.00	0.00
Mexico	0.04	0.05	0.04	0.04	0.00	0.00	-0.01	-20.00
Solomon Islands	0.03	0.03	0.03	0.03	0.00	0.00	0.00	0.00
Cote d'Ivoire	0.03	0.03	0.03	0.03	0.00	0.00	0.00	0.00
World	5.59	5.86	5.86	5.86	0.00	0.00	0.00	0.00
Oilseed, Palm Kernel								
Indonesia	11.46	12.00	12.12	12.12	0.00	0.00	0.12	1.00
Malaysia	4.34	4.45	4.95	4.75	-0.20	-4.04	0.30	6.74
Nigeria	0.82	0.90	0.90	0.90	0.00	0.00	0.00	0.00
Thailand	0.79	0.83	0.86	0.86	0.00	0.00	0.03	3.61
Colombia	0.29	0.31	0.34	0.34	0.00	0.00	0.03	9.68
Guatemala	0.17	0.18	0.18	0.18	0.00	0.00	0.00	0.00
Papua New Guinea	0.16	0.17	0.17	0.17	0.00	0.00	0.01	6.25
Honduras	0.13	0.16	0.16	0.16	0.00	0.00	0.00	0.00
Brazil	0.14	0.15	0.15	0.15	0.00	0.00	0.01	7.14
Cameroon	0.15	0.15	0.15	0.15	0.00	0.00	0.00	0.00
World	19.05	19.87	20.59	20.39	-0.20	-0.97	0.52	2.62
Oil, Palm								
Indonesia	43.50	45.30	46.50	46.50	0.00	0.00	1.20	2.65
Malaysia	17.85	18.15	19.80	18.80	-1.00	-5.05	0.65	3.58
Thailand	2.96	3.15	3.26	3.26	0.00	0.00	0.11	3.49
Colombia	1.56	1.75	1.84	1.84	0.00	0.00	0.09	5.14
Nigeria	1.28	1.40	1.40	1.40	0.00	0.00	0.00	0.00
Guatemala	0.87	0.88	0.91	0.91	0.00	0.00	0.03	3.41
Papua New Guinea	0.60	0.63	0.65	0.65	0.00	0.00	0.03	4.84
Honduras	0.45	0.60	0.60	0.60	0.00	0.00	0.00	0.00
Cote d'Ivoire	0.55	0.58	0.60	0.60	0.00	0.00	0.03	5.26
Brazil	0.55	0.55	0.57	0.57	0.00	0.00	0.02	3.64
World	73.08	75.93	79.16	78.22	-0.94	-1.19	2.29	3.02

World and Selected Countries and Regions

Table 17 Cotton Area, Yield, and Production

Country / Region	Area (Million hectares)				Yield (Kilograms per hectare)				Production (Million 480 lb. bales)				Change in Production			
	2020/21	Prel. 2021/22	2022/23 Proj. Oct Nov		2020/21	Prel. 2021/22	2022/23 Proj. Oct Nov		2020/21	Prel. 2021/22	2022/23 Proj. Oct Nov		From last month MBales Percent		From last year MBales Percent	
World	31.37	32.31	32.51	32.41	774	780	791	782	111.47	115.76	118.05	116.43	-1.62	-1.37	0.67	0.58
United States	3.33	4.16	3.19	3.19	957	918	944	959	14.61	17.52	13.81	14.03	0.22	1.59	-3.49	-19.93
Total Foreign	28.04	28.16	29.32	29.22	752	760	774	763	96.86	98.24	104.24	102.40	-1.84	-1.77	4.16	4.24
South Asia																
India	13.29	12.15	13.00	13.00	452	439	461	461	27.60	24.50	27.50	27.50	0.00	0.00	3.00	12.24
Pakistan	2.20	2.00	2.00	2.00	445	653	566	490	4.50	6.00	5.20	4.50	-0.70	-13.46	-1.50	-25.00
China	3.20	3.10	3.00	3.00	2,014	1,882	2,032	2,032	29.60	26.80	28.00	28.00	0.00	0.00	1.20	4.48
South America																
Brazil	1.37	1.60	1.60	1.60	1,720	1,595	1,769	1,769	10.82	11.72	13.00	13.00	0.00	0.00	1.28	10.92
Argentina	0.41	0.48	0.43	0.43	717	680	692	692	1.35	1.50	1.35	1.35	0.00	0.00	-0.15	-10.00
Paraguay	0.01	0.01	0.01	0.01	416	416	416	416	0.02	0.02	0.02	0.02	0.00	0.00	0.00	0.00
Africa																
Burkina Faso	0.56	0.60	0.65	0.65	372	351	385	323	0.95	0.96	1.15	0.97	-0.19	-16.09	0.01	0.52
Mali	0.17	0.72	0.74	0.74	396	432	427	359	0.30	1.43	1.45	1.22	-0.23	-15.86	-0.21	-14.69
Cote d'Ivoire	0.45	0.47	0.46	0.46	494	486	473	393	1.01	1.05	1.00	0.83	-0.17	-17.00	-0.22	-20.95
Benin	0.62	0.64	0.62	0.62	513	483	492	492	1.45	1.42	1.40	1.40	0.00	0.00	-0.02	-1.41
Egypt	0.07	0.09	0.13	0.13	720	717	703	703	0.22	0.28	0.42	0.42	0.00	0.00	0.14	50.00
Cameroon	0.23	0.23	0.24	0.24	658	606	590	590	0.68	0.64	0.65	0.65	0.00	0.00	0.01	1.56
Tanzania	0.17	0.24	0.35	0.35	284	231	218	218	0.22	0.26	0.35	0.35	0.00	0.00	0.10	37.25
Nigeria	0.27	0.27	0.27	0.27	282	282	282	282	0.35	0.35	0.35	0.35	0.00	0.00	0.00	0.00
Zimbabwe	0.24	0.25	0.24	0.24	222	191	195	195	0.25	0.22	0.22	0.22	0.00	0.00	0.00	0.00
Ethiopia	0.08	0.08	0.08	0.08	637	637	637	637	0.24	0.24	0.24	0.24	0.00	0.00	0.00	0.00
Former Soviet Union - 12																
Uzbekistan	1.06	1.06	1.07	1.07	647	555	549	549	3.15	2.70	2.70	2.70	0.00	0.00	0.00	0.00
Turkmenistan	0.55	0.55	0.55	0.55	368	356	356	356	0.92	0.90	0.90	0.90	0.00	0.00	0.00	0.00
Tajikistan	0.16	0.17	0.17	0.17	619	608	615	615	0.46	0.48	0.48	0.48	0.00	0.00	0.01	1.05
Kazakhstan	0.11	0.12	0.13	0.13	534	502	523	523	0.27	0.27	0.30	0.30	0.00	0.00	0.04	13.21
Middle East																
Turkey	0.35	0.45	0.56	0.56	1,804	1,839	1,726	1,726	2.90	3.80	4.40	4.40	0.00	0.00	0.60	15.79
Syria	0.03	0.03	0.03	0.03	1,219	1,132	1,132	1,132	0.14	0.13	0.13	0.13	0.00	0.00	0.00	0.00
Iran	0.10	0.10	0.10	0.10	871	871	871	871	0.40	0.40	0.40	0.40	0.00	0.00	0.00	0.00
Australia	0.28	0.60	0.65	0.55	2,217	2,087	2,010	2,177	2.80	5.75	6.00	5.50	-0.50	-8.33	-0.25	-4.35
Mexico	0.15	0.15	0.20	0.20	1,532	1,725	1,524	1,524	1.02	1.22	1.40	1.40	0.00	0.00	0.18	14.75
Burma	0.24	0.25	0.25	0.25	635	644	644	644	0.70	0.73	0.73	0.73	0.00	0.00	0.00	0.00
Others	1.73	1.77	1.82	1.81	575	552	541	535	4.57	4.49	4.51	4.45	-0.06	-1.22	-0.04	-0.87

World and Selected Countries and Regions

TABLE 18

The table below presents a record of the November projection and the final Estimate. Using world wheat production as an example, the "root mean square error" means that chances are 2 out of 3 that the current forecast will not be above or below the final estimate by more than 1.2 percent. Chances are 9 out of 10 (90% confidence level) that the difference will not exceed 2.0 percent. The average difference between the November projection and the final estimate is 5.3 million tons, ranging from 0.1 million to 18.1 million tons. The November projection has been below the estimate 30 times and above 11 times.

RELIABILITY OF PRODUCTION PROJECTIONS 1/

COMMODITY AND REGION	Root mean square error	90 percent confidence interval	Difference between forecast and final estimate				
			Average	Smallest	Largest	Years	
						Below final	Above final
	Percent		---Million metric tons---				
WHEAT							
World	1.2	2.0	5.3	0.1	18.1	30	11
U.S.	0.4	0.7	0.2	0.0	1.2	21	13
Foreign	1.3	2.2	5.2	0.0	18.2	30	11
COARSE GRAINS 2/							
World	1.6	2.6	13.3	0.2	47.3	31	10
U.S.	1.3	2.2	2.5	0.0	9.9	19	22
Foreign	2.2	3.7	13.2	0.2	48.8	31	10
RICE (Milled)							
World	2.0	3.4	5.7	0.1	16.8	34	7
U.S.	2.8	4.7	0.1	0.0	0.5	20	18
Foreign	2.1	3.5	5.7	0.2	16.9	34	7
SOYBEANS							
World	4.0	6.8	6.4	0.0	28.3	24	17
U.S.	2.1	3.6	1.2	0.1	4.7	18	23
Foreign	6.6	11.2	6.2	0.0	29.4	21	20
COTTON			---Million 480-lb. bales---				
World	3.6	6.0	2.6	0.1	9.3	24	17
U.S.	4.0	6.7	0.5	0.0	2.5	19	21
Foreign	4.1	6.9	2.5	0.1	8.9	25	16
UNITED STATES			-----Million bushels-----				
<i>CORN</i>	1.3	2.3	94	0	396	20	20
<i>SORGHUM</i>	4.1	6.9	15	1	53	21	20
<i>BARLEY</i>	1.6	2.6	4	0	24	19	10
<i>OATS</i>	1.1	1.8	2	0	18	8	9

1/ Marketing years 1981/82 through 2020/21 for grains, soybeans, and cotton. Final for grains, soybeans, and cotton is defined as the first November estimate following the marketing year for 1981/82 through 2020/21, and for 2021/22 the last month's estimate.

2/ Includes corn, sorghum, barley, oats, rye, millet, and mixed grain

November 2022

Global Market Analysis, FAS, USDA