



United States
Department of
Agriculture

Foreign
Agricultural
Service

Circular Series
WAP 2-23
February 2023

World Agricultural Production

Argentina Corn: Drought Reduces Production for Early-Planted Corn

Argentina corn production for marketing year 2022/23 is estimated at 47.0 million metric tons, down 10 percent from last month and 5 percent from last year. Corn yield is estimated at 7.01 tons per hectare, down 7 percent from last month, but up 1 percent from last year. Harvested area is estimated at 6.7 million hectares, down 3 percent from last month and 6 percent from last year.

Santa Fe, Argentina:
January 18, 2023

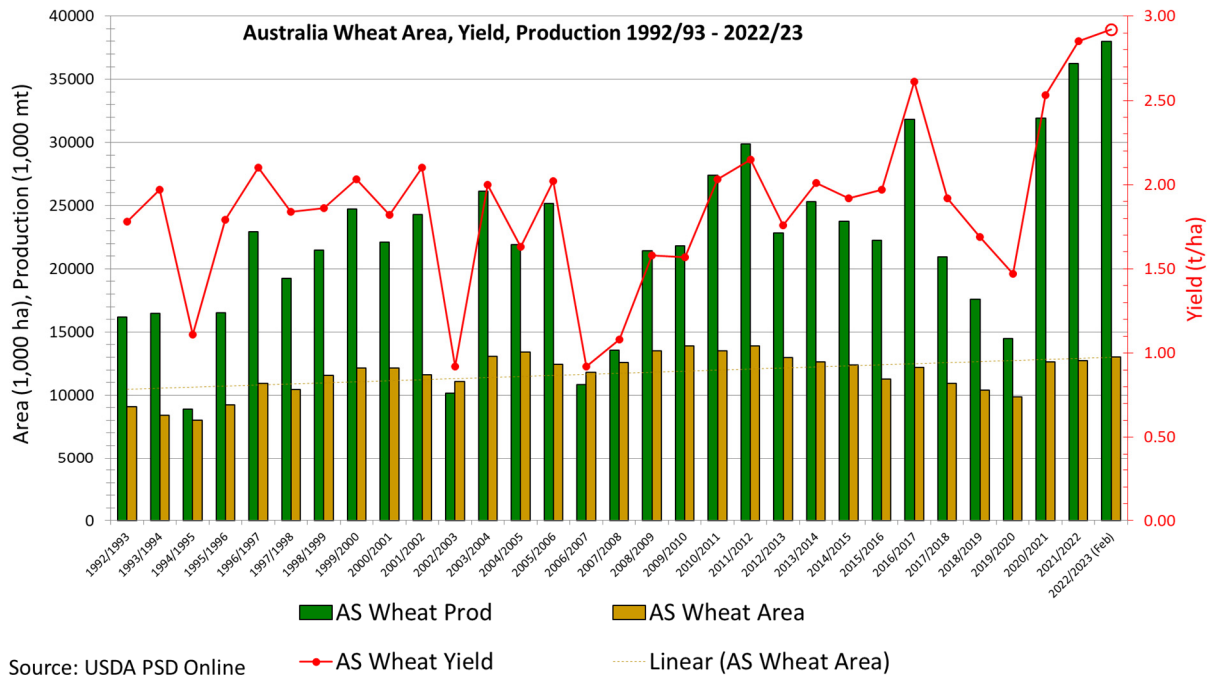


Harvested area is down month-to-month because many farmers have cut part of their early-planted corn crop for silage. USDA estimates harvested area for grain. Crop conditions for the early corn crop, which account for roughly one-third of area, have been below average due to hot and dry conditions during tasseling. As seen during farm visits by FAS Washington and FAS Buenos Aires

Approved by the World Agricultural Outlook Board

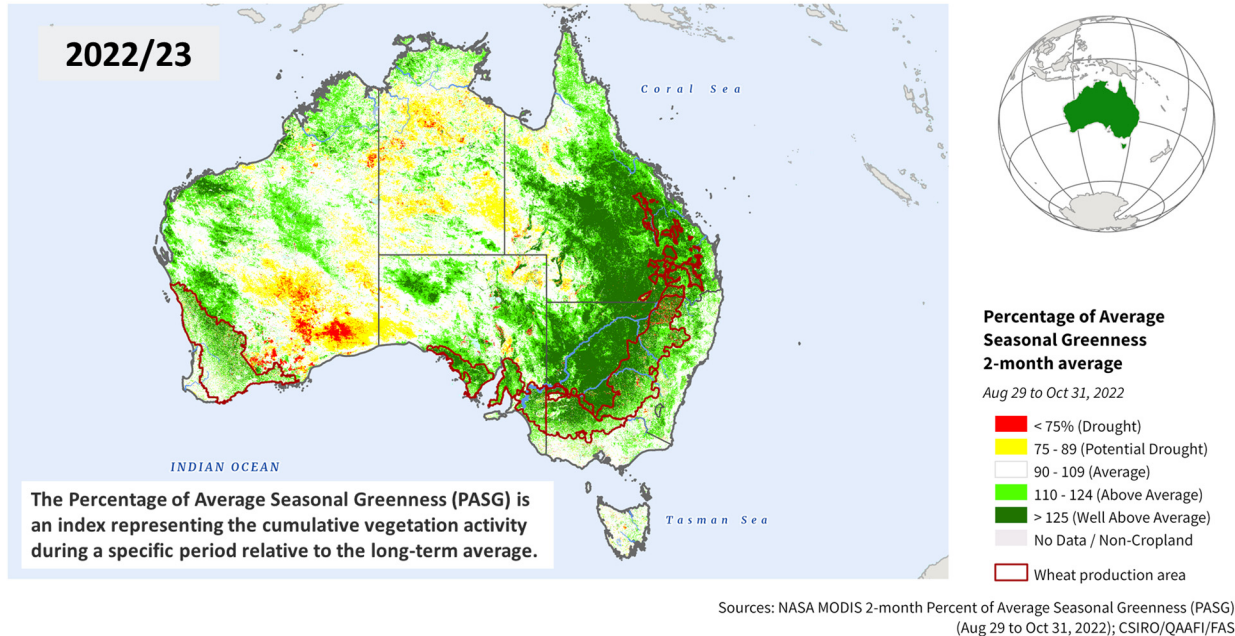
in mid-to-late January, the plant biomass is below average in size, which means the crop can support fewer cobs. Additionally, the corn cobs that have developed are below average in size. The late-planted corn will tassel during February and March. Harvest will begin in March. (For more information, please contact Katie.McGaughey@usda.gov.)

Australia Wheat: Record Production



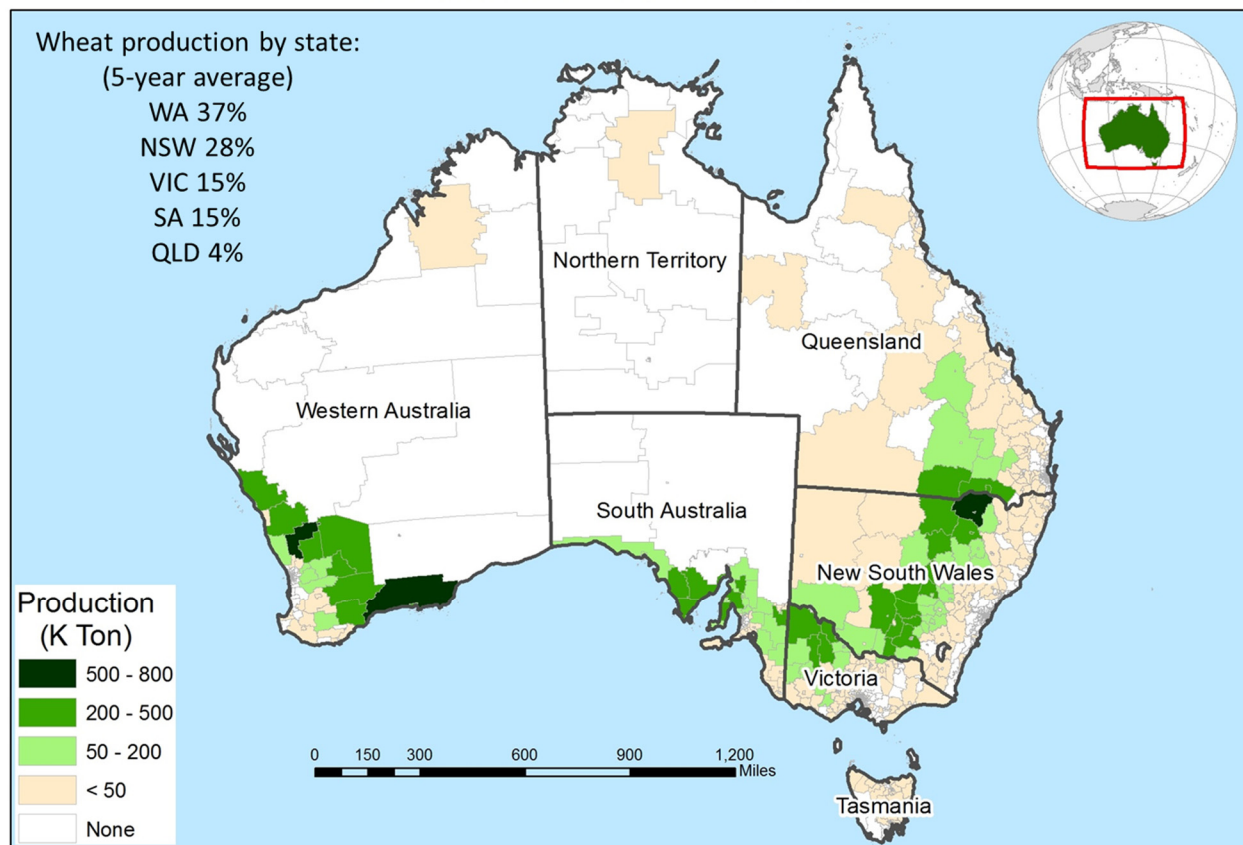
USDA estimates Australia marketing year (MY) 2022/23 wheat production at a record 38.0 million metric tons (mmt), up 1.4 mmt or 4 percent from last month, and up 1.8 mmt or 5 percent from last season’s record crop of 36.2 mmt. Harvested area is estimated at 13.0 million hectares (mha), unchanged from last month, and up almost 0.3 mha or 2 percent from last year.

Australia: Percent of Average Seasonal Greenness



In review of Australia’s wheat season, the crop stage of reproduction (flowering) occurs September to early-October. Satellite-derived Percentage of Average Seasonal Greenness (PASG) for this critical time period reveals above average crop health in the wheat areas of all producing states. Favorable weather from April to October across the major Australian winter grain belt provided optimal conditions for early sowing, plant establishment, reproduction, and grain fill. The record wheat yield of 2.92 tons per hectare (t/ha) is up 4 percent from last month and 3 percent above the previous record of 2.85 t/ha in MY 2021/22, and 40 percent above the five-year average.

Australia: Wheat Production



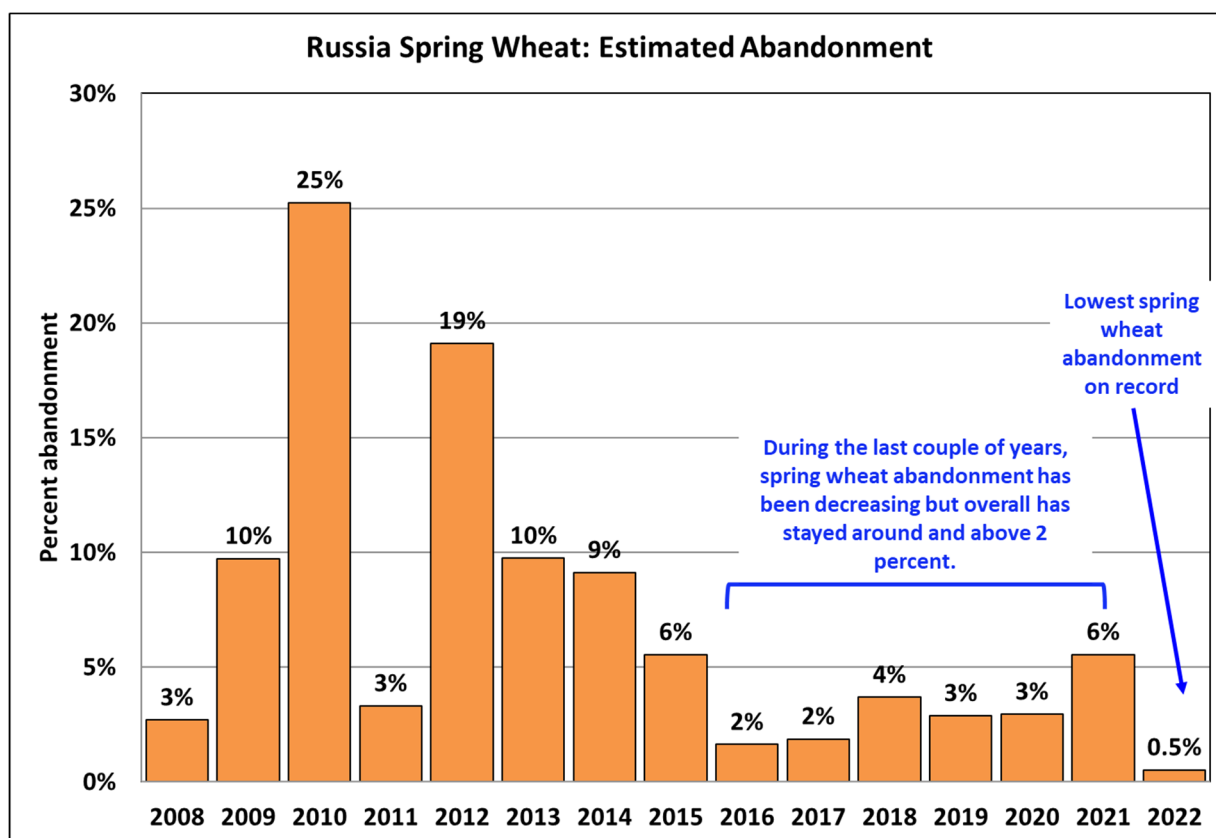
Data Source: ABS Ag Census with 2016 SLA boundaries (SA2)
Average production of 2005/06, 2010/11 and 2015/16

USDA Foreign Agricultural Service
U.S. DEPARTMENT OF AGRICULTURE

Harvest was complete by the end of January 2023 after being delayed approximately two weeks due to heavy precipitation. Australia's three major grain handlers report exceptionally large grain receipts as a result of a third year in a row of national record production. *(For more information, please contact James.Crutchfield@usda.gov.)*

Russia Wheat: Area Revised up Based on Lower Abandonment

Russia wheat production for marketing year 2022/23 is estimated at 92.0 million metric tons (mmt), up 1 percent from last month and 22 percent from last year. The estimate includes 68.0 mmt of winter wheat and 24.0 mmt of spring wheat. Total wheat yield is estimated at a record 3.16 tons per hectare (t/ha), down slightly from last month, but up 16 percent from last year. Total harvested area is estimated at 29.1 million hectares (mha), up 1 percent from last month and 5 percent from last year.



Source: Rosstat (2022 Prelim)

USDA’s production change this month is due to a spring wheat area increase. In mid-January 2023, Russia’s statistical agency, Rosstat, published a second version of its preliminary final numbers for 2022. Unlike the first release from December 2022, which had only national-level estimates, the updated report provides district- and oblast-level data. It does not reflect the Ukrainian oblasts occupied by Russia. Analyses of the Rosstat’s updated sub-regional level estimates indicate below-average and minimal spring wheat abandonment this season. Furthermore, the reported district-level area changes for both crops are within the variability captured by past years.

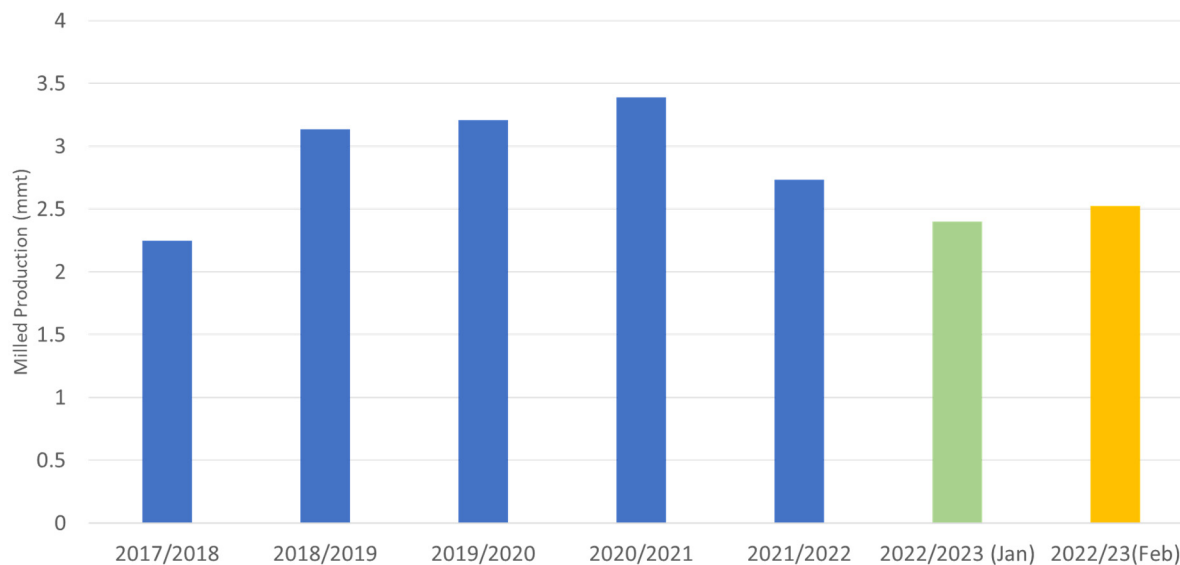
Rosstat’s total wheat yield is estimated at 3.55 t/ha (calculated on per harvested basis and excluding production from Crimea), up 14 percent relative to the 2017 record and 24 percent relative to the 5-year average. Remote sensing vegetation indicators and statistical-based yield modeling support record, but not the relatively higher wheat yields reported by Rosstat for the winter and the spring crop this season. Analyses show good vegetation status across all major wheat producing regions in Russia this season. However, excessively high yields are not supported.

USDA crop production estimates for Russia exclude estimated output from Crimea, all Ukraine oblasts currently under conflict, and any misappropriated grain from the conflict zones. Area, yield, and production estimates for Russia winter wheat and spring wheat are available on PSD Online. Select “Downloadable Data Sets” and open the zipped file for “Russia Wheat; Winter/Spring Area & Production.” (For more information, please contact Iliana.Mladenova@usda.gov.)

Sri Lanka Rice: Production Revised Up

USDA estimates marketing year (MY) 2022/23 Sri Lanka rice production at 2.5 million metric tons (milled basis), up 5 percent from last month but down nearly 8 percent from MY 2021/22. Harvested area is estimated at 1.09 million hectares, up 11 percent from January but down nearly 4 percent from last year. The Sri Lanka Ministry of Agriculture revised their estimate of planted area in January. Yields are estimated at 3.41 metric tons per hectare, down 4 percent from MY 2021/22.

Sri Lanka Rice Production Revised Up Due to Increased Area



Source: USDA PSD Online

The Ministry of Agriculture reported in their January Crop Forecast that they have achieved 89 percent of their target for harvested area of the *maha crop*. Additionally, the *maha* yields are forecast higher than last year. The Sri Lanka Ministry of Agriculture reported that floods, pests, and disease continue to be a concern. USDA combines the 2022 *yala*, which accounts for 40 percent of the total production, and the MY 2022/23 *maha* crop for the total estimate. The MY 2022/23 *maha* harvest will be completed in March. (For more information, please contact Arnella.Trent@usda.gov.)

Mexico Soybeans: Lower Area Expected

USDA estimates Mexico's marketing year 2022/23 soybeans production at 185,000 metric tons, down 18 percent from last month and 36 percent from last year. The harvested area is estimated at 120,000 hectares (ha), down 20 percent from last month, 35 percent from last year, and 36 percent from the 5-year average. The yield is estimated at 1.54 tons per hectare, down 2 percent from last year.

Mexico: Soy Production

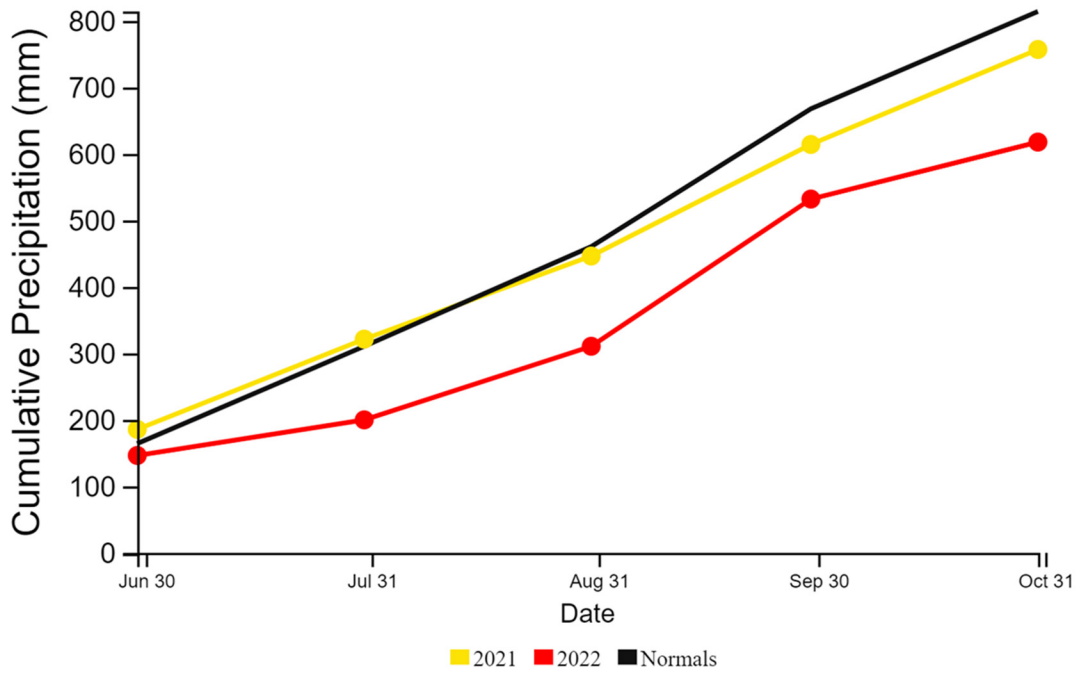


USDA Foreign Agricultural Service
U.S. DEPARTMENT OF AGRICULTURE

Sources: INEGI, Servicio de Información Agroalimentaria y Pesquera (SIAP), Mexico

The main soybean states in Mexico include Campeche, Tamaulipas, Sinaloa, Yucatan, Chiapas, Veracruz, and San Luis Potosí. Representing about 98 percent of total production, the mostly rainfed summer soybean crop is planted from April to July and harvested from September to December. As of December 2022, *Servicio de Información Agroalimentaria y Pesquera* (SIAP) reported summer soybean planted area at 130,221 ha, which is lower than the 5-year summer soybean planted area average. High agricultural input production costs have led to decreased planted area. Harvested area for the summer soybean crop has been reported at 104,645 ha so far. SIAP has reported area damaged for the summer soybean crop at 16,726 ha in the states of Campeche, Veracruz, Tamaulipas, and San Luis Potosí. Overall, cumulative precipitation during the 2022 rainy season in the major soybean growing areas in these states was below 2021 and below average.

Cumulative Precipitation in Southern Tamaulipas, Southeastern San Luis Potosí, Northern Veracruz, and Eastern Campeche



Source: UC Santa Barbara, CHIRPS

The mostly irrigated fall soybean crop is planted from around December to February and harvested from April to July. According to *Comisión Nacional del Agua* (CONAGUA) data as of mid-January 2023, irrigation levels in Tamaulipas, a major fall soybean state, were averaging 44 percent capacity. (For more information, please contact Ifeoma.Collins@usda.gov.)

Argentina Soybeans: Production Down due to Heat and Dryness Impacting the First Crop

Cordoba, Argentina:
January 19, 2023



Argentina soybeans production for marketing year 2022/23 is estimated at 41.0 million metric tons, down 10 percent from last month and 7 percent from last year. Soybean yield is estimated at 2.58 tons per hectare, down 8 percent from last month and 7 percent from last year. Harvested area is estimated at 15.9 million hectares, down 2 percent from last month and matching last year's area.

Buenos Aires, Argentina:
January 19, 2023

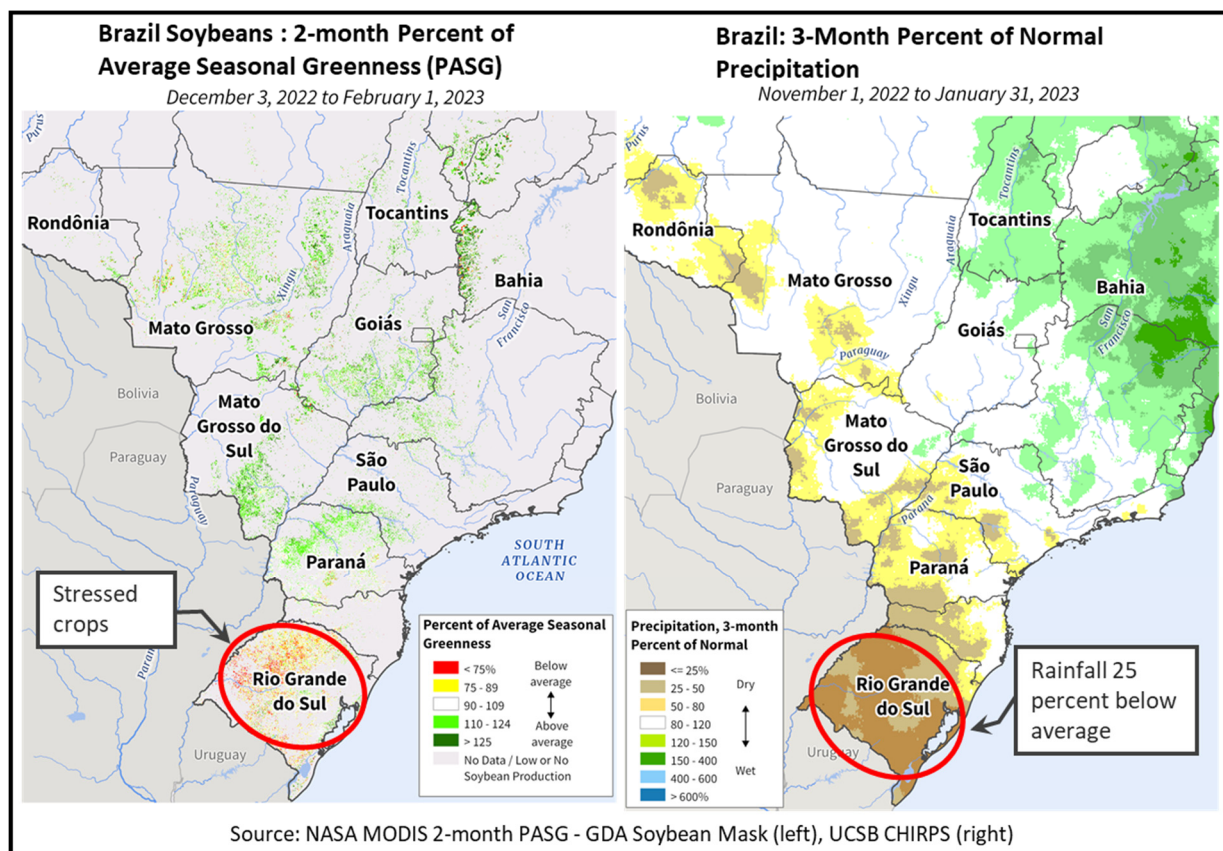


According to the Argentina Ministry of Agriculture (MinAg), planting for soybeans is almost complete and less soybeans have been planted than initially forecast by the MinAg. Many farmers were waiting on additional precipitation to plant the second crop, which did not materialize before the planting window closed. Yield is down month-to-month because of dry and hot conditions throughout January that impacted the first soybean crop during flowering. The first soybean crop is planted from November through December and flowers during January and February.

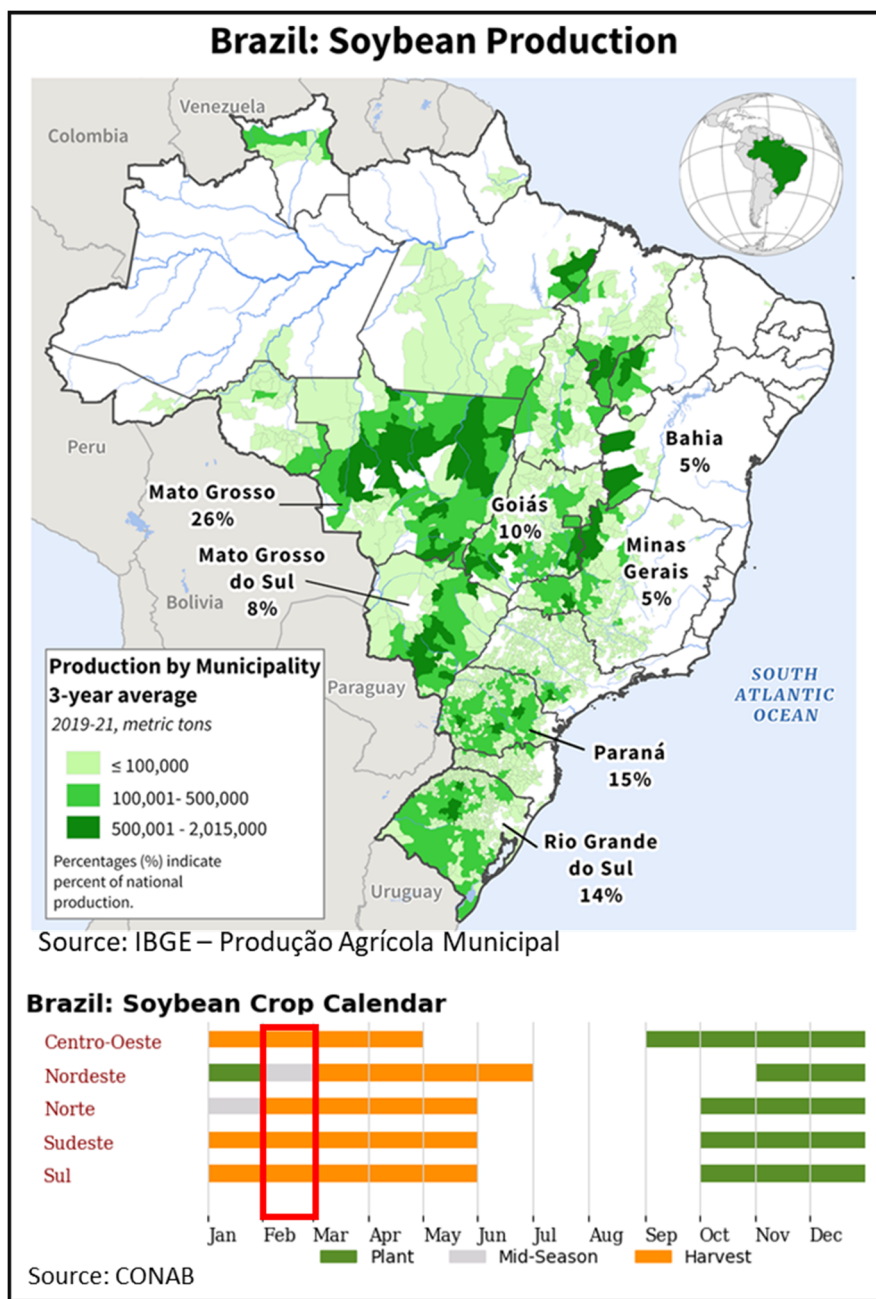
USDA/FAS Washington and USDA/FAS Buenos Aires visited key soybean growing regions during the last two weeks of January and corroborated the dry and hot conditions. The first soybean crop was flowering during this time and showed high levels of stress. Roughly two-thirds of area are planted to early soybeans and one-third is planted to late soybeans. *(For more information, please contact Katie.McGaughey@usda.gov.)*

Brazil Soybeans: Production Unchanged at a Record 153 Million Tons

Brazil soybean production for marketing year 2022/23 is estimated at a record 153.0 million metric tons (mmt), unchanged from last month, and higher by 24 mmt (18 percent) from last season's drought-affected crop. Harvested area is estimated at a record 43.4 million hectares (mha), up 1.9 mha (5 percent) from last season's record area. Yield is estimated at 3.53 tons per hectare (t/ha), 13 percent higher than last season.



As the harvest season begins, crop conditions remain mostly favorable in the center-west states that received ample rainfall. Excessive rainfall in southeastern Mato Grosso (28 percent of production) has delayed harvest and some concerns remain if the heavy rains continue. In the southern states, the state of Paraná displays crop vigor above last year, whereas crops in the state of Rio Grande do Sul (15 percent of production) are once again subject to drought and temperature induced evaporative stress as observed by the satellite-derived Percent of Average Seasonal Greenness (PASG) index. The Technical Assistance and Rural Extension of Rio Grande do Sul (EMATER-RS) reports short stature and flower abortion in limited areas of the state. With 60 percent of crops still in vegetative crop stages, yield prospects remain favorable if rainfall becomes more regular.

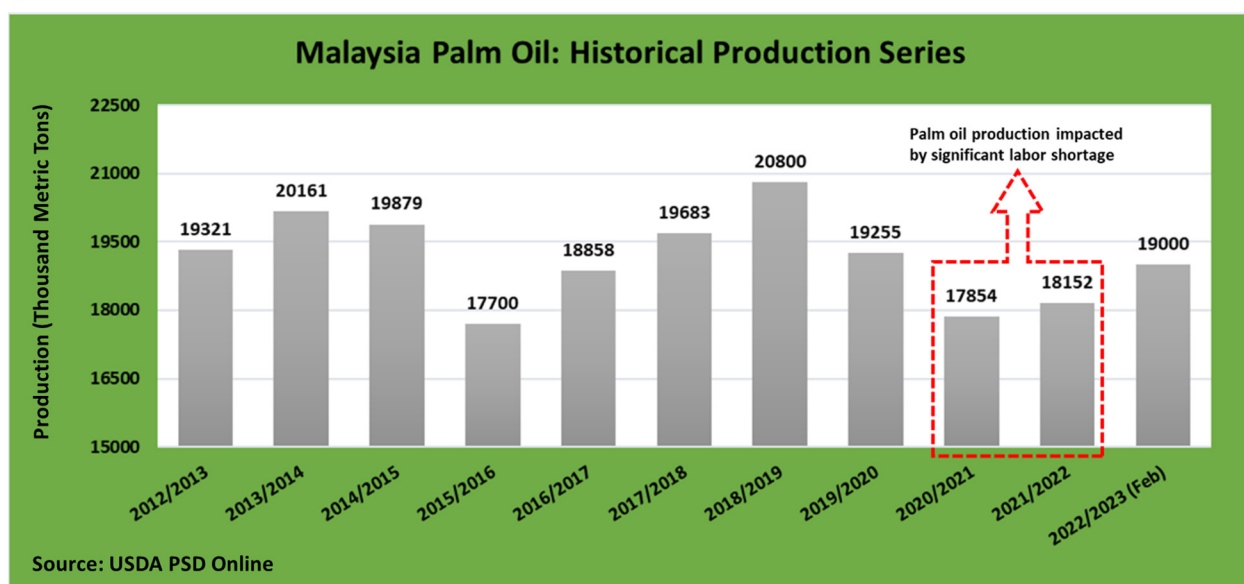


Approximately 5 percent of the crop has been harvested nationally, below the 12 percent pace last year. In the largest producing state of Mato Grosso (over 42 mmt), harvest is at 14 percent, also behind last year’s pace of 32 percent. (For more information, please contact Sunita.Yadav-Pauletti@usda.gov.)

Malaysia Palm Oil: Estimated Production Rebounds from Last Year

USDA estimates Malaysia palm oil production for marketing year (MY) 2022/23 at 19.0 million metric tons, up 1 percent from last month and 5 percent from last year. Harvested area estimate remains unchanged at 5.5 million hectares but is up 1 percent from last year. Yield is estimated at 3.45 tons per hectare, up 1 percent from last month, and 4 percent from last year.

After two consecutive challenging years, Malaysia palm oil output is estimated to rebound back to near-average levels. The driving factor enabling palm oil to achieve higher output is due to the decrease in foreign labor shortage. Foreign labor for the Malaysian palm oil sector represents about 80 percent of the total workforce. In MY 2021/22, the foreign labor shortage was reported at levels upwards of 200,000 workers needed for the Malaysian palm oil workforce sector. Although labor shortages are being resolved, albeit at a slowed pace, they remain an ongoing issue.

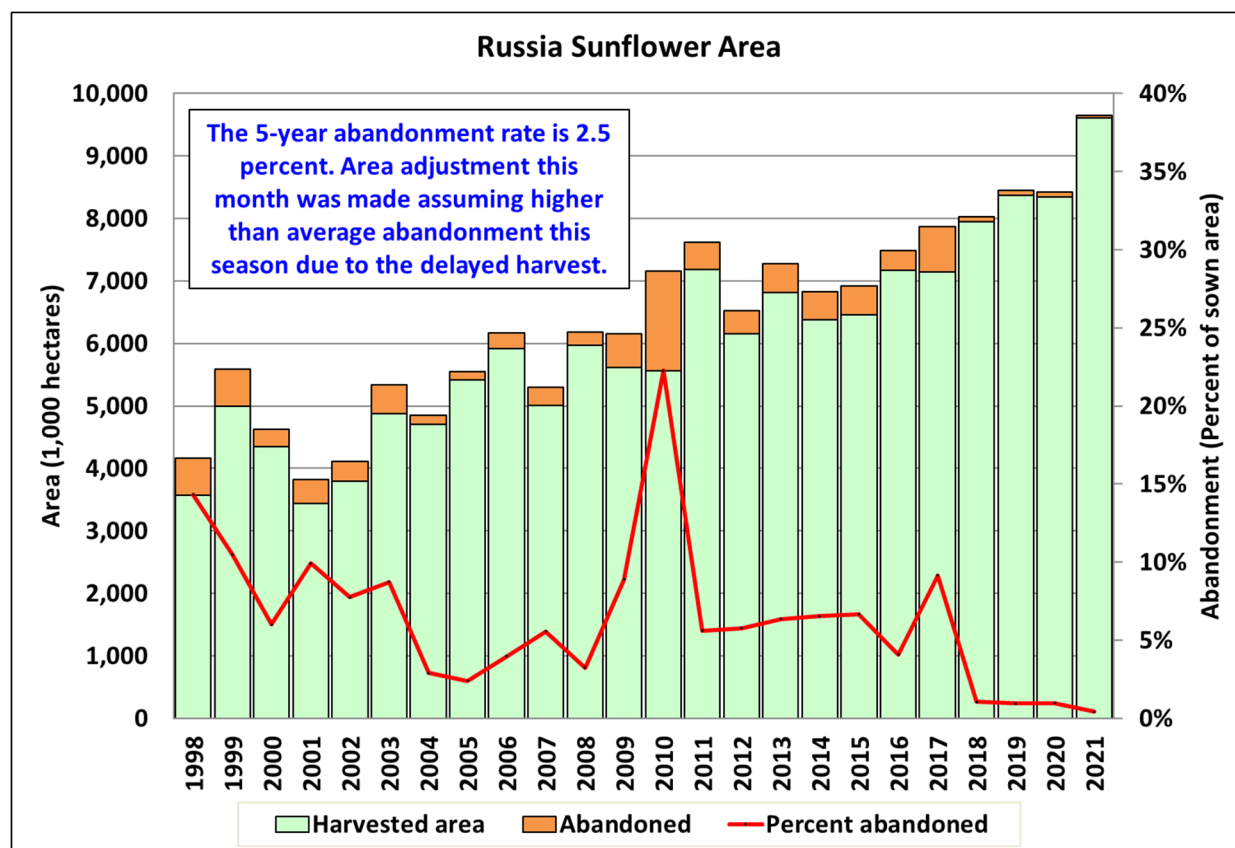


According to the Malaysia Palm Oil Board, the latest Malaysia Crude Palm Oil (CPO) data released for the month of December 2022 was estimated 12 percent down from the December 2021 estimate and 3 percent above the 5-year December average.

USDA's marketing year for Malaysia palm oil is October through September. According to the Malaysian Palm Oil Board, aggregated monthly crude palm oil output from October 2022 to December 2022 is 1 percent below the 5-year average. *(For more information, please contact Justin.Jenkins@usda.gov.)*

Russia Sunflower: Further Reduction in Area

Russia sunflower production for marketing year (MY) 2022/23 is estimated at a record 16.0 million metric tons, down 3 percent from last month but up 3 percent from last year. Yield is estimated at 1.78 tons per hectare, up 1 percent from last month and 10 percent from last year. Harvested area is estimated at 9.0 million hectares (mha), down 4 percent from last month and 6 percent from last year.



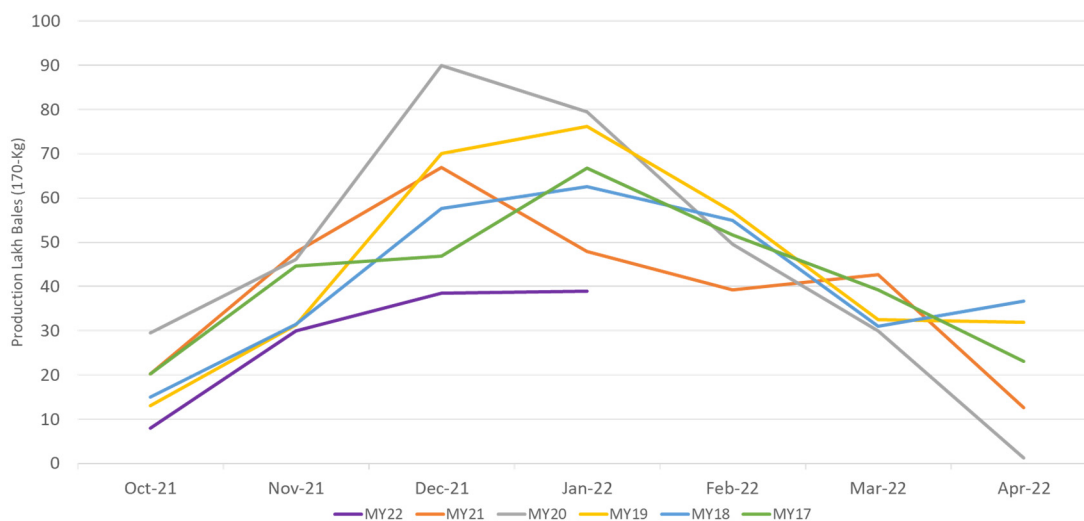
Source: Rosstat

Based on the operational harvest reports published by the Russian Ministry of Agriculture, sunflower harvest has been tracking behind normal. Abnormally wet October and November months contributed to the significant harvest delay; as a result, a portion of the planted area may remain unharvested. The 5-year average sunflower area abandonment is around 2.5 percent. This season, however, the unfavorable weather during harvest may cause higher-than-average area abandonment. Despite this month's decrease in harvested area, production is estimated to be a record. USDA crop production estimates for Russia exclude estimated output from Crimea. (For more information, please contact Iliana.Mladenova@usda.gov.)

India Cotton: Production Revised down Due to Slow Market Arrivals

USDA estimates marketing year (MY) 2022/23 cotton production for India at 25.5 million 480-pound bales, down 4 percent from last month, but up 5 percent from MY 2021/22. The harvested area is estimated at 12.7 million hectares, down 2 percent from last month, but up 5 percent from last year. Yields are expected to reach 437 kilograms per hectare, down nearly 2 percent from last month and unchanged from last year.

India Cotton: MY 2022/23 Monthly Market Arrivals Lowest in Five Years



Source: Cotton Corporation of India

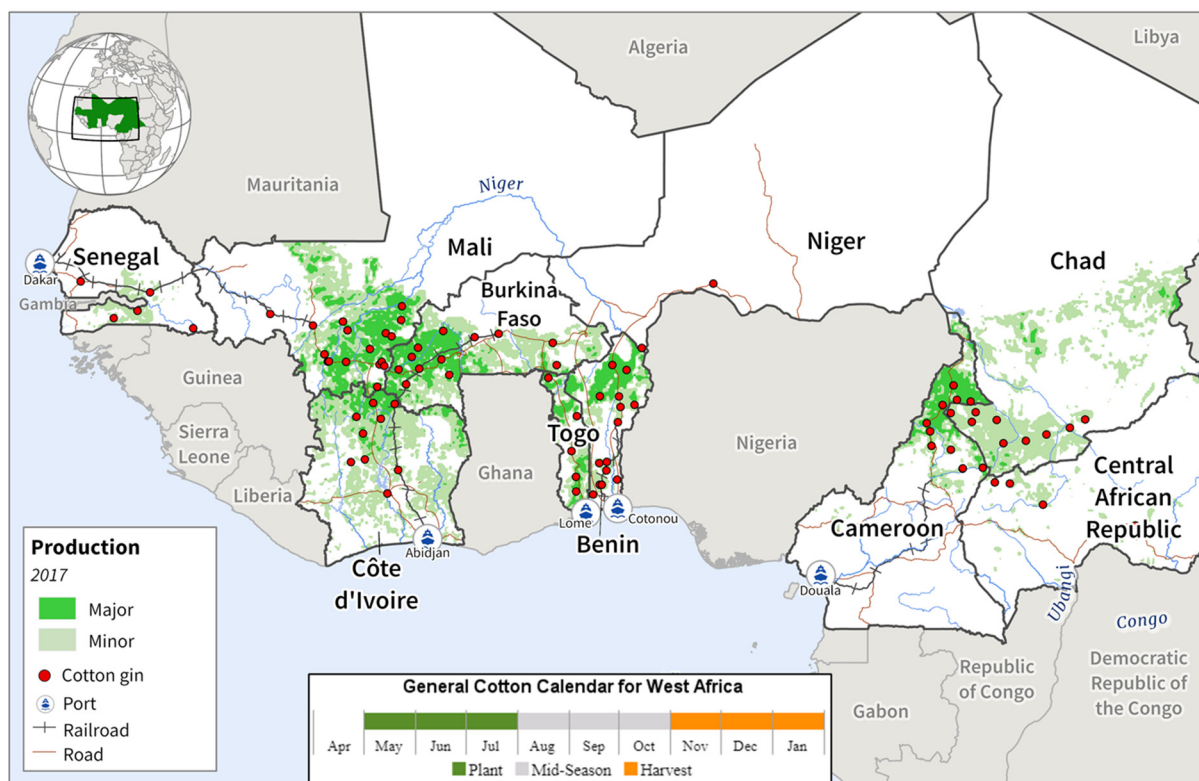
Market arrivals have been slow since the market opened on October 1. Cotton arrivals as of the end of November were down 33 percent from the same period a year ago. As customary, there was an uptick in arrivals following the Diwali holiday in late October. However, cotton arrivals are now the slowest in the last five years. Because of these slow arrivals, some in the cotton trade are beginning to speculate on the amount of cotton in the market. Others are speculating that farmers could be withholding cotton from the market in anticipation of higher prices in March.

Cotton is grown largely in the *kharif* season from May to October and harvesting can continue into February. (For more information, please contact Arnella.Trent@usda.gov.)

African Franc Zone Cotton: Production Declines by 20 Percent from Last Year Due to Widespread Insect Infestations

USDA estimates African Franc Zone cotton production for marketing year (MY) 2022/23 at 4.8 million 480-pound bales, down 0.6 million bales (11 percent) from last month, and down 1.2 million bales (20 percent) from last year's record production. Harvested area is estimated at 2.9 million hectares, down 7 percent from last year and nearly equal to the 5-year average. Yield is estimated at 360 kilograms per hectare, down 5 percent from the previous month, down 14 percent from the previous year, and down 12 percent from the 5-year average. Large yield reductions below the 5-year average were reported in several countries due to widespread crop damage caused by cotton leafhoppers, or jassids.

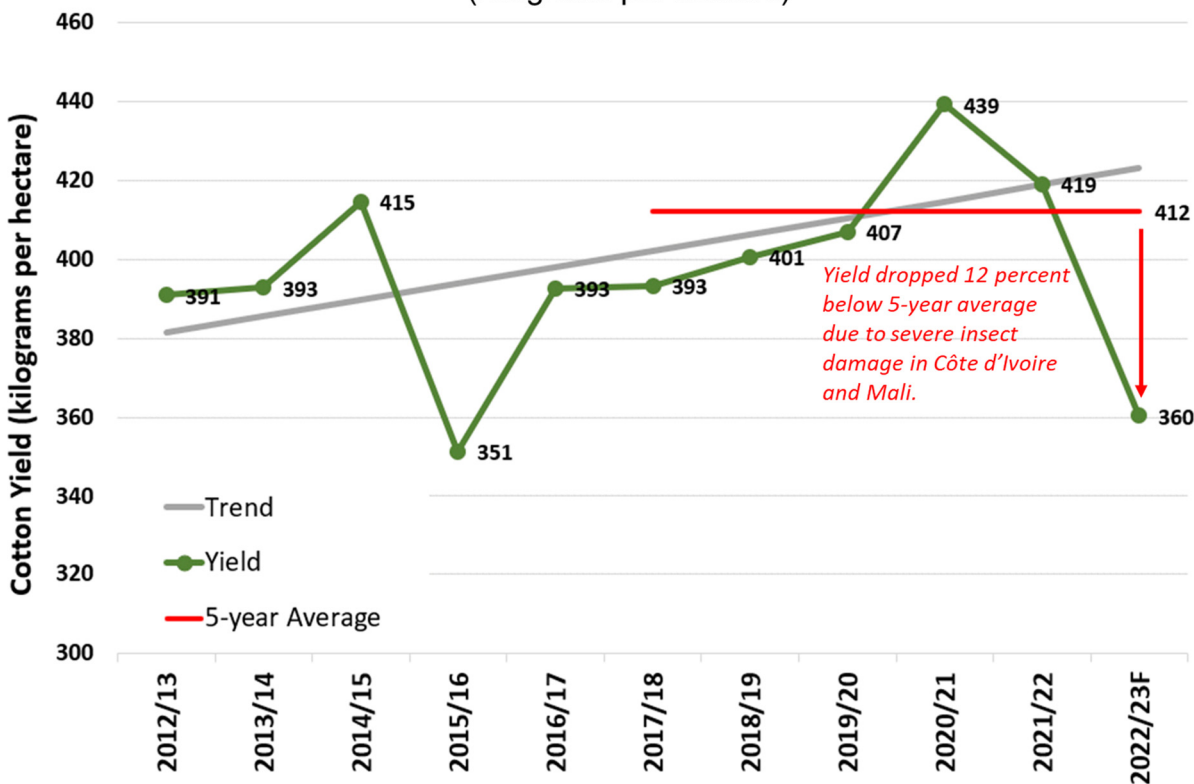
African Franc Zone Cotton Production



Source: International Food Policy Research Institute, Spatial Production Allocation Model 2017.

Early gin reports indicate yields for Cote d'Ivoire and Mali dropped 43 and 23 percent below the 5-year average, respectively, due to unprecedented levels of jassid infestations. Abundant rains from June through September brought numerous jassids by the end of July in Burkina Faso, Côte d'Ivoire, Mali, Senegal, and Togo, while Benin, Cameroon and Chad were relatively spared. By September, Côte d'Ivoire and Mali reported widespread crop damage from jassid infestations, causing significant yield and economic losses for farmers.

African Franc Zone Cotton Yields (kilograms per hectare)



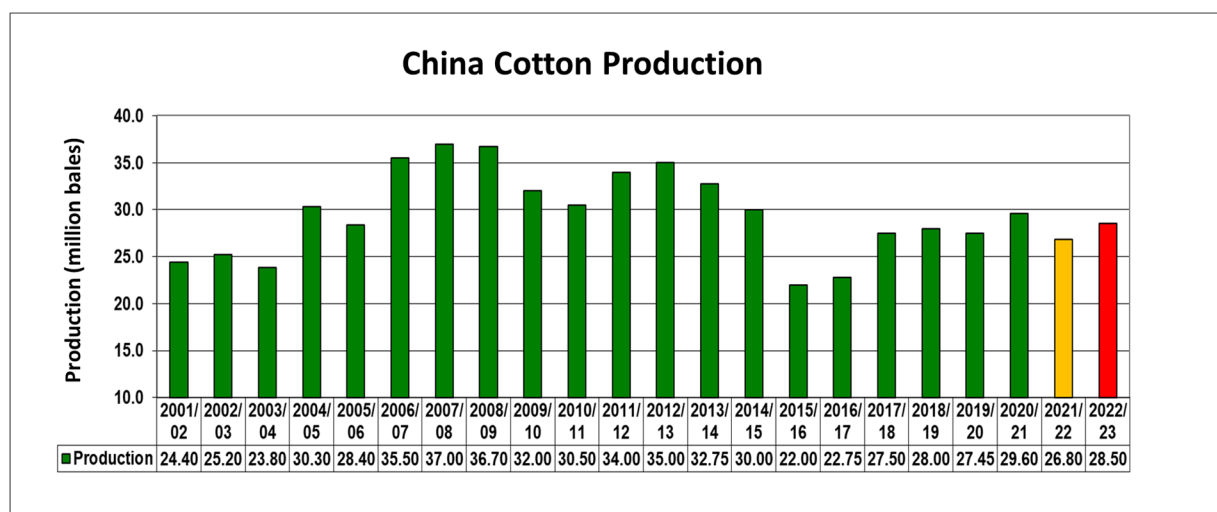
Source: USDA PSD Online

Côte d'Ivoire's national cotton and cashew council reported in November that yield drops were more than 20 percent below the 5-year average, after most insecticides and insect control programs were ineffective in combating jassid infestations. FAS-Dakar office reported in December that Mali's expected yield would drop 22 percent below the 5-years average due to widespread jassid infestations in the southern part of Mali, especially in the high producing cotton zones of Sikasso and Bougouni. The abundant rains in Mali also caused fertilizer leaching and abandoned crop area from flood damage.

Cotton is sown from late May through mid-July and ginning season is from October through April. African Franc Zone, as defined by WASDE, includes the following ten countries in order of estimated MY 2022/23 production (thousand 480-pound bales): Benin (1,300), Mali (1,000), Burkina Faso (900), Cameroon (650), Côte d'Ivoire (550), Chad (245), Togo (90), Central African Republic (36), Senegal (28), and Niger (9). *(For more information, please contact Curt.Reynolds@usda.gov.)*

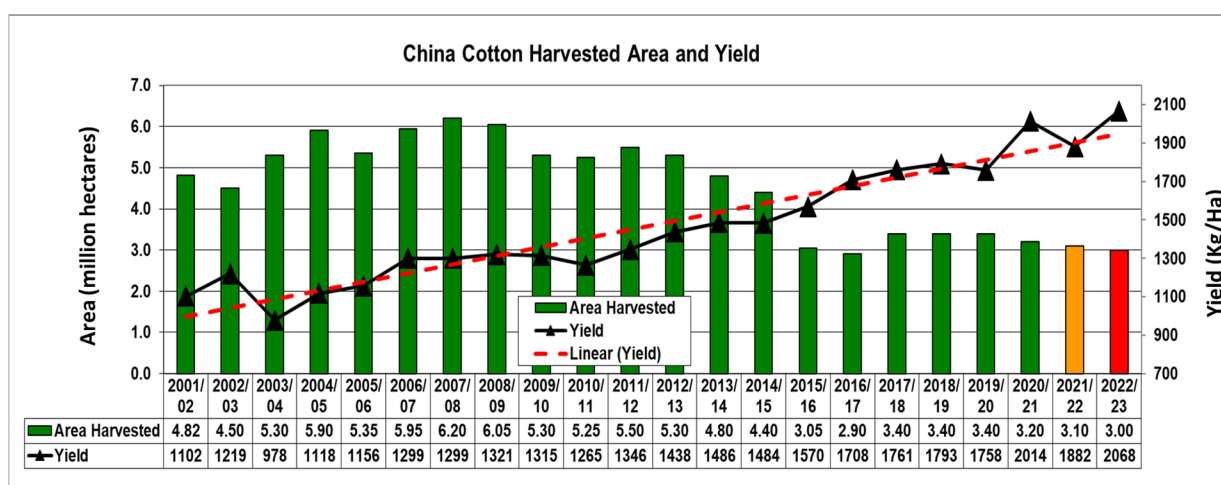
China Cotton: Production Increased Due to Record Yields

USDA estimates China's marketing year (MY) 2022/23 cotton production at 28.5 million 480-pound bales (6.2 million metric tons), up 0.5 million bales or 2 percent from last month, up 6 percent from last year, and 2 percent from the 5-year average of 27.9 million bales. Area is estimated at 3.0 million hectares (mha), no change from last month and down 3 percent from last year. Yield is estimated at a record 2068 kilograms per hectare (kg/ha), up 2 percent from last month, 10 percent from last year, and 12 percent above the 5-year average of 1842 kg/ha. Yield is significantly above the long-term trend due to the increasing quantity of cotton produced in Xinjiang province, where yield has nearly doubled compared to elsewhere in the country. Approximately 85 percent of total China cotton is now produced in Xinjiang province.



Source: USDA PSD Online

Most of the major cotton estimates from industry sources are indicating higher-than-expected yields resulting in significant adjustment of production numbers.



Source: USDA PSD Online

Harvest was completed in October; the typical cotton growing season is April to October. In Xinjiang, planting starts in April while in the North China plains, the Yellow River and Yangtze River basins, planting begins in late April and extends through May. The MY 2022/23 season was characterized by favorable conditions, good irrigation water availability, and rainfall throughout a major part of the season. These conditions facilitated rapid planting and early crop establishment in Xinjiang resulting in above-average yields. In addition to the favorable planting conditions, farmers were also encouraged by the government's continuation of the target price-based cotton subsidy. On March 26, 2020, China's National Development and Reform Commission (NDRC) published a notice stating that the target price-based subsidy will continue through 2023.

The year-to-year cotton national area decline was due to decreases in the Yangtze and Yellow River basins, which offset an increase in Xinjiang. However, the significant year-to-year yield increase more than offset the planted area reduction, resulting in increased production. *(For more information, please contact Dath.Mita@usda.gov.)*



World Agricultural Production
U.S. Department of Agriculture

Foreign Agricultural Service / Global Market Analysis
International Production Assessment Division (IPAD)

Ag Box 1051, Room 4630, South Building
Washington, DC 20250-1051

<https://ipad.fas.usda.gov/>

Telephone: (202) 720-1662 Fax: (202) 720-1158

This report uses information from the Foreign Agricultural Service's (FAS) global network of agricultural attachés and counselors, official statistics of foreign governments and other foreign source materials, and the analysis of economic data and satellite imagery. Estimates of foreign area, yield, and production are from the International Production Assessment Division, FAS, and are reviewed by USDA's Inter-Agency Commodity Estimates Committee. Estimates of U.S. area, yield, and production are from USDA's National Agricultural Statistics Service. Numbers within the report may not add to totals because of rounding. This report reflects official USDA estimates released in the World Agricultural Supply and Demand Estimates (WASDE-584), February 8, 2023.

Printed copies are available from the National Technical Information Service. Download an order form at http://www.ntis.gov/products/specialty/usda/fas_a-g.asp, or call NTIS at 1-800-363-2068.

The FAS International Production Assessment Division prepared this report. The next issue of World Agricultural Production will be released after 12:00 p.m. Eastern Time, March 8, 2023.

Conversion Table

Metric tons to bushels

Wheat, soybeans	=	MT * 36.7437
Corn, sorghum, rye	=	MT * 39.36825
Barley	=	MT * 45.929625
Oats	=	MT * 68.894438

Metric tons to 480-lb bales

Cotton	=	MT * 4.592917
--------	---	---------------

Metric tons to hundredweight

Rice	=	MT * 22.04622
------	---	---------------

Area & weight

1 hectare	=	2.471044 acres
1 kilogram	=	2.204622 pounds



For further information, contact:
U.S. Department of Agriculture
Foreign Agricultural Service
Global Market Analysis

International Production Assessment Division
Ag Box 1051, Room 4630, South Building
Washington, DC 20250-1051

Telephone: (202) 720-1662

Fax: (202) 720-1158

GENERAL INFORMATION

Senior Director	Ronald Frantz	202-720-4056	ronald.frantz@usda.gov
Director	Robert Tetrault	202-720-1071	robert.tetrault@usda.gov
Administrative Assistant	Vacant		
USDA Remote Sensing Advisor	Vacant		
Sr. Analyst/Technical Lead	Curt Reynolds, Ph.D.	202-690-0134	curt.reynolds@usda.gov
Sr. Analyst/ Satellite Imagery	Dath Mita, Ph.D.	202-720-7339	dath.mita@usda.gov
Archives Manager/Technical Lead			
Sr. Analyst/Technical Lead	Jim Crutchfield	202-690-0135	james.crutchfield@usda.gov
GIS Mapping/Imagery Analyst	Lisa Colson	202-720-6652	lisa.colson@usda.gov
WAP Coordinators	Ifeoma Collins	202-720-0240	ifeoma.collins@usda.gov
	Aaron Mulhollen	202-690-0131	aaron.mulhollen@usda.gov

COUNTRY- AND REGION-SPECIFIC INFORMATION

South America, Argentina, Venezuela, and Colombia	Katie McGaughey	202-720-9210	katie.mcgaughey@usda.gov
Western and Central Europe, and North Africa	Bryan Purcell	202-690-0138	bryan.purcell@usda.gov
Russia, Ukraine, Kazakhstan, Moldova, and Belarus	Iliana Mladenova, Ph.D.	202-690-2315	iliana.mladenova@usda.gov
South Asia, Sri Lanka Bangladesh, India, and Nepal	Arnella Trent	202-720-0881	arnella.trent@usda.gov
East Asia, China, and Japan	Dath Mita, Ph.D.	202-720-7339	dath.mita@usda.gov
Sub-Saharan Africa, Nigeria and South Africa	Curt Reynolds, Ph.D.	202-690-0134	curt.reynolds@usda.gov
S.E. Asia, Indonesia, Thailand, Malaysia, Cambodia and Vietnam	Justin Jenkins	202-720-0419	justin.jenkins@usda.gov
Central America, Mexico, and Western United States	Ifeoma Collins	202-720-0240	ifeoma.collins@usda.gov
Australia, New Zealand, Pakistan Papua New Guinea and South Pacific Islands	Jim Crutchfield	202-690-0135	james.crutchfield@usda.gov
Middle East, Central Asia, Afghanistan Iraq, Iran, and Syria	Aaron Mulhollen	202-690-0131	aaron.mulhollen@usda.gov
Canada, Caribbean, Eastern United States	Aaron Mulhollen	202-690-0131	aaron.mulhollen@usda.gov
Brazil	Sunita Yadav-Pauletti, Ph.D.		sunita.yadav-pauletti@usda.gov



The Foreign Agricultural Service (FAS) updates its production, supply and distribution (PSD) database for cotton, oilseeds, and grains at 12:00 p.m. on the day the *World Agricultural Supply and Demand Estimates* (WASDE) report is released. This circular is released by 12:15 p.m.

FAS Reports and Databases:

World Agricultural Production

Current: <https://www.fas.usda.gov/data/world-agricultural-production>

Archive: <https://usda.library.cornell.edu/concern/publications/5q47rn72z?locale=en>

USDA's Foreign Agricultural Service (FAS) publishes a monthly report on crop acreage, yield and production in major countries worldwide. Sources include reporting from FAS's worldwide offices, official statistics of foreign governments, and analysis of economic data and satellite imagery. The reports reflect official USDA estimates released in the monthly *World Agricultural Supply and Demand Estimates* (WASDE).

World Markets and Trade

Current: <https://www.fas.usda.gov/data>

Archive:

https://usda.library.cornell.edu/catalog?f%5Bmember_of_collections_ssim%5D%5B%5D=Foreign+Agricultural+Service&locale=en

USDA's Foreign Agricultural Service (FAS) publishes monthly and quarterly reports which include data on U.S. and global trade, production, consumption and stocks, as well as analysis of developments affecting world trade in oilseeds, grains, cotton, livestock and poultry. The reports reflect official USDA estimates released in the monthly *World Agricultural Supply and Demand Estimates* (WASDE).

Global Agricultural Information Network (GAIN)

<https://www.fas.usda.gov/databases/global-agricultural-information-network-gain>

USDA's Foreign Agricultural Service (FAS) provides timely reports on foreign markets through the Global Agriculture Information Network (GAIN) database. An average of 2,000 reports are added each year, with reports going back to 1995. GAIN reports are compiled by FAS' global market intelligence network, which includes FAS foreign service officers and locally engaged staff in over 90 overseas offices world-wide. They provide on-the-ground intelligence, insight, and analysis on nearly 200 countries, delivering information on foreign agricultural markets, crop conditions, and agro-political dynamics of interest to U.S. agriculture. GAIN reports contain assessments of commodity and trade issues made by USDA staff and are not necessarily statements of official U.S. government policy.

Production, Supply and Distribution (PS&D) Online

<https://apps.fas.usda.gov/psdonline/app/index.html#/app/home>

PSD Online is the public repository for USDA's Official Production, Supply and Distribution forecast data and reports for key agricultural commodities. PSD Online data are reviewed and updated monthly by an interagency committee chaired by USDA's World Agricultural Outlook Board (WAOB). The committee consist of representatives from Foreign Agricultural Service (FAS), the Economic Research Service (ERS), the Farm Service Agency (FSA), and the Agricultural Marketing Service (AMS).

EU Countries and Russia Wheat: Area and Production Estimates

<https://apps.fas.usda.gov/psdonline/app/index.html#/app/downloads> (click on PSD Datasets)

USDA's Foreign Agricultural Service (FAS) provides country-level area and production estimates for the nations of the European Union. For Russia, country-level area and production estimates are provided for Winter and Spring wheat. These datasets are reviewed and updated monthly by an interagency committee chaired by USDA's World Agricultural Outlook Board (WAOB) and can be downloaded through PSD datasets on PSD Online.

Approved by the World Agricultural Outlook Board



FAS Reports and Databases:

International Production Assessment (IPAD)

<https://ipad.fas.usda.gov/>

USDA's Foreign Agricultural Service (FAS) maintains a dynamic global crop production portal with key information including *World Agricultural Production* (WAP) briefs, Commodity Intelligence Reports (CIR), geospatial applications, crop production maps at a subnational level and crop calendars for the top-20 producing countries. Additionally, Crop Explorer (<https://ipad.fas.usda.gov/cropexplorer/>) displays rainfall, temperature, evapotranspiration, soil moisture, snow cover, and vegetation conditions in charts and maps.

USDA and NASA Global Agricultural Monitoring (GLAM)

<https://glam1.gsfc.nasa.gov/>

The USDA and NASA Global Agricultural Monitoring (GLAM) system provides near real-time and science quality Moderate Resolution Imaging Spectroradiometer (MODIS) Normalized Difference Vegetation Index (NDVI) from the satellites Terra and Aqua. The public can view and retrieve MODIS 8-day composited, global NDVI satellite imagery and time series data. GLAM was developed by NASA's Global Inventory Modeling and Mapping Studies (GIMMS) group for USDA's Foreign Agricultural Service.

Global Agricultural and Disaster Assessment System (GADAS)

<https://geo.fas.usda.gov/GADAS/index.html>

USDA's Foreign Agricultural Service (FAS) provides the Global Agricultural and Disaster Assessment System (GADAS), a web-based Geographic Information System (GIS) tool which integrates a vast array of highly detailed earth observation data streams, particularly targeted towards agricultural and disaster assessment analysis. GADAS is an interactive website which provides analysts with a wide variety of routine geospatial products (maps, charts, tables) they require for comprehensive situational investigations and recurring assessments.

Export Sales Reporting

<https://apps.fas.usda.gov/esrquery/>

USDA's Export Sales Reporting Program monitors U.S. agricultural export sales on a daily and weekly basis. Export sales reporting provides a constant stream of up-to-date market information for 40 U.S. agricultural commodities sold abroad. The weekly U.S. Export Sales report is the most currently available source of U.S. exports sales data. The data is used to analyze overall levels of export demand, determine where markets exit, and assess the relative position of U.S. commodities in foreign markets.

Global Agricultural Trade System (GATS)

<https://apps.fas.usda.gov/gats/default.aspx>

The Global Agricultural Trade System (GATS) is a searchable database containing monthly U.S. Census Bureau trade data organized by agricultural commodity and agricultural related product groups. Trade data is searchable by partner countries and partner groups. Historical U.S. agricultural trade data is available back to 1967. In addition, U.N. trade statistics (UN Comtrade) may be queried through GATS. UN trade data is available for nearly 200 countries or areas, dating from the inception of the Harmonized System (HS) of trade codes in 1989 to present. The database is continuously updated. U.S. trade data is updated monthly according to the U.S. Census Bureau's reporting system. UN Comtrade data are updated in GATS after nationally submitted data to the UN are standardized by the UN Statistical Division and added to the UN Comtrade database.

Other USDA Reports:

World Agricultural Supply and Demand Estimates (WASDE):

<http://www.usda.gov/oce/commodity/wasde/>

Economic Research Service:

<http://www.ers.usda.gov/topics/crops>

National Agricultural Statistics Service:

<http://www.nass.usda.gov/Publications/>

Table 01 World Crop Production Summary

Million Metric Tons

Commodity	World -	Total Foreign	North America			Former Soviet		European	Asia (WAP)					South America		Selected Other			All Others
			United States	Canada -	Mexico -	Russia -	Ukraine -		China -	India -	Indonesia	Pakistan	Thailand	Argentina	Brazil -	Australia	South Africa	Turkey -	
---Million metric tons---																			
Wheat																			
2020/21	774.5	724.8	49.8	35.4	3.0	85.4	25.4	nr	134.3	107.9	0.0	25.2	0.0	17.6	6.3	31.9	2.1	18.3	232.1
2021/22 prel.	779.3	734.5	44.8	22.4	3.3	75.2	33.0	nr	136.9	109.6	0.0	27.5	0.0	22.2	7.7	36.2	2.3	16.0	242.3
2022/23 proj.																			
Jan	781.3	736.4	44.9	33.8	3.6	91.0	21.0	nr	137.7	103.0	0.0	26.4	0.0	12.5	9.5	36.6	2.3	17.3	241.8
Feb	783.8	738.9	44.9	33.8	3.6	92.0	21.0	nr	137.7	103.0	0.0	26.4	0.0	12.5	9.9	38.0	2.2	17.3	241.5
Coarse Grains																			
2020/21	1,441.5	1,068.6	372.9	29.6	32.7	41.4	39.6	nr	269.1	51.4	12.6	9.3	5.6	60.0	90.3	18.6	17.8	15.8	374.9
2021/22 prel.	1,502.4	1,104.6	397.7	25.1	32.8	38.5	53.5	nr	280.9	51.2	12.7	11.0	5.4	59.2	120.6	19.2	16.6	11.6	366.4
2022/23 proj.																			
Jan	1,446.4	1,087.9	358.5	30.5	33.5	41.0	34.2	nr	285.5	49.8	12.9	9.7	5.3	60.8	129.5	18.2	17.2	14.5	345.3
Feb	1,442.8	1,084.3	358.5	30.5	33.5	41.8	34.2	nr	285.5	49.8	12.9	9.7	5.3	55.5	129.5	18.5	17.2	14.5	345.9
Rice, Milled																			
2020/21	509.3	502.1	7.2	0.0	0.2	0.7	0.0	nr	148.3	124.4	34.5	8.4	18.9	0.9	8.0	0.3	0.0	0.6	156.8
2021/22 prel.	514.8	508.7	6.1	0.0	0.2	0.7	0.0	nr	149.0	130.3	34.4	9.3	19.9	0.8	7.3	0.5	0.0	0.5	155.8
2022/23 proj.																			
Jan	503.0	497.9	5.1	0.0	0.2	0.5	0.0	nr	145.9	125.0	34.6	6.6	20.1	0.8	7.2	0.3	0.0	0.6	156.0
Feb	503.0	497.9	5.1	0.0	0.2	0.5	0.0	nr	145.9	125.0	34.6	6.6	20.2	0.8	7.1	0.3	0.0	0.6	156.1
Total Grains																			
2020/21	2,725.4	2,295.5	429.9	65.1	35.8	127.5	65.0	nr	551.6	283.6	47.1	43.0	24.4	78.6	104.6	50.8	19.9	34.6	763.8
2021/22 prel.	2,796.5	2,347.9	448.6	47.5	36.2	114.4	86.6	nr	566.8	291.1	47.1	47.8	25.2	82.1	135.7	56.0	18.9	28.1	764.5
2022/23 proj.																			
Jan	2,730.6	2,322.2	408.5	64.4	37.2	132.5	55.2	nr	569.2	277.8	47.5	42.7	25.4	74.1	146.3	55.1	19.5	32.3	743.1
Feb	2,729.5	2,321.1	408.5	64.4	37.2	134.3	55.2	nr	569.2	277.8	47.5	42.7	25.5	68.8	146.5	56.8	19.4	32.3	743.6
Oilseeds																			
2020/21	607.8	483.2	124.5	25.9	0.7	20.1	19.9	nr	65.8	38.6	14.6	2.5	1.0	51.2	143.9	5.7	2.7	2.9	87.8
2021/22 prel.	606.8	475.4	131.4	20.1	0.9	23.1	24.3	nr	62.3	41.3	14.5	3.4	1.0	49.7	134.3	8.6	3.1	3.4	85.5
2022/23 proj.																			
Jan	641.9	516.0	126.0	25.6	0.8	25.9	16.8	nr	67.0	42.4	14.6	2.4	1.0	51.9	158.4	8.9	3.2	4.0	93.1
Feb	636.7	510.8	126.0	25.6	0.8	25.4	16.9	nr	67.2	42.2	14.6	2.5	1.0	47.0	158.4	8.9	3.2	4.0	93.1
Cotton																			
2020/21	111.5	96.9	14.6	0.0	1.0	0.0	0.0	1.7	29.6	27.6	0.0	4.5	0.0	1.4	10.8	2.8	0.1	2.9	14.5
2021/22 prel.	115.7	98.2	17.5	0.0	1.2	0.0	0.0	1.7	26.8	24.4	0.0	6.0	0.0	1.5	11.7	5.8	0.1	3.8	15.3
2022/23 proj.																			
Jan	115.4	100.7	14.7	0.0	1.4	0.0	0.0	1.6	28.0	26.5	0.0	3.7	0.0	1.3	13.3	5.0	0.1	4.9	15.0
Feb	114.4	99.7	14.7	0.0	1.4	0.0	0.0	1.6	28.5	25.5	0.0	3.9	0.0	1.2	13.3	5.0	0.1	4.9	14.4

1/ Includes wheat, coarse grains, and rice (milled) shown above.

Table 02 Wheat Area, Yield, and Production

Country / Region	Area (Million hectares)				Yield (Metric tons per hectare)				Production (Million metric tons)				Change in Production			
	2020/21	Prel.	2022/23 Proj.		2020/21	Prel.	2022/23 Proj.		2020/21	Prel.	2022/23 Proj.		From last month		From last year	
		2021/22	Jan	Feb		2021/22	Jan	Feb		2021/22	Jan	Feb	MMT	Percent	MMT	Percent
World	220.52	221.84	220.01	220.39	3.51	3.51	3.55	3.56	774.55	779.33	781.31	783.80	2.49	0.32	4.47	0.57
United States	14.89	15.03	14.36	14.36	3.34	2.98	3.13	3.13	49.75	44.80	44.90	44.90	0.00	0.00	0.10	0.22
Total Foreign	205.63	206.81	205.66	206.03	3.52	3.55	3.58	3.59	724.80	734.53	736.41	738.90	2.49	0.34	4.37	0.59
European Union	22.97	24.26	24.30	24.30	5.51	5.70	5.54	5.54	126.68	138.22	134.70	134.70	0.00	0.00	-3.52	-2.54
United Kingdom	1.39	1.79	1.80	1.80	6.96	7.81	8.61	8.61	9.66	13.99	15.50	15.50	0.00	0.00	1.51	10.81
Serbia	0.59	0.60	0.63	0.63	4.58	5.00	4.60	4.60	2.70	3.00	2.90	2.90	0.00	0.00	-0.10	-3.33
China	23.38	23.57	23.52	23.52	5.74	5.81	5.86	5.86	134.25	136.95	137.72	137.72	0.00	0.00	0.78	0.57
South Asia																
India	31.36	31.13	30.54	30.54	3.44	3.52	3.37	3.37	107.86	109.59	103.00	103.00	0.00	0.00	-6.59	-6.01
Pakistan	8.81	9.17	9.00	9.00	2.87	3.00	2.93	2.93	25.25	27.46	26.40	26.40	0.00	0.00	-1.06	-3.87
Afghanistan	2.33	2.20	2.20	2.20	2.15	2.00	2.05	2.05	5.01	4.40	4.50	4.50	0.00	0.00	0.10	2.27
Nepal	0.71	0.72	0.72	0.72	2.99	2.90	2.92	2.92	2.13	2.08	2.10	2.10	0.00	0.00	0.03	1.20
Former Soviet Union - 12																
Russia	28.68	27.63	28.70	29.10	2.98	2.72	3.17	3.16	85.35	75.16	91.00	92.00	1.00	1.10	16.84	22.41
Russia Winter	16.63	15.22	16.30	16.30	3.77	3.43	4.17	4.17	62.69	52.19	68.00	68.00	0.00	0.00	15.81	30.28
Russia Spring	12.06	12.41	12.40	12.80	1.88	1.85	1.85	1.88	22.66	22.96	23.00	24.00	1.00	4.35	1.04	4.51
Ukraine	6.85	7.41	5.35	5.35	3.71	4.45	3.93	3.93	25.42	33.01	21.00	21.00	0.00	0.00	-12.01	-36.38
Kazakhstan	12.06	12.72	12.75	12.75	1.18	0.93	1.10	1.10	14.26	11.81	14.00	14.00	0.00	0.00	2.19	18.50
Uzbekistan	1.36	1.36	1.40	1.40	4.53	4.40	4.71	4.42	6.16	5.99	6.60	6.19	-0.41	-6.20	0.21	3.44
Belarus	0.72	0.65	0.68	0.68	3.94	3.54	3.48	3.48	2.85	2.30	2.35	2.35	0.00	0.00	0.05	2.17
Canada	10.02	9.20	10.08	10.08	3.54	2.44	3.35	3.35	35.44	22.42	33.82	33.82	0.00	0.00	11.40	50.85
South America																
Argentina	6.40	6.55	5.35	5.35	2.76	3.38	2.34	2.34	17.64	22.15	12.50	12.50	0.00	0.00	-9.65	-43.57
Brazil	2.34	2.74	3.10	3.09	2.67	2.81	3.06	3.20	6.25	7.70	9.50	9.90	0.40	4.21	2.20	28.57
Australia	12.64	12.73	13.00	13.00	2.52	2.85	2.82	2.92	31.92	36.24	36.60	38.00	1.40	3.83	1.76	4.87
Africa																
Egypt	1.39	1.40	1.53	1.53	6.40	6.43	6.41	6.41	8.90	9.00	9.80	9.80	0.00	0.00	0.80	8.89
Morocco	2.76	2.86	2.50	2.50	0.93	2.64	1.08	1.08	2.56	7.54	2.70	2.70	0.00	0.00	-4.84	-64.19
Algeria	2.08	2.08	2.08	2.08	1.50	1.20	1.78	1.78	3.11	2.50	3.70	3.70	0.00	0.00	1.20	48.00
Ethiopia	1.83	1.95	2.00	2.00	3.00	2.83	2.85	2.85	5.48	5.52	5.70	5.70	0.00	0.00	0.18	3.26
Middle East																
Turkey	7.10	7.05	6.80	6.80	2.57	2.27	2.54	2.54	18.25	16.00	17.25	17.25	0.00	0.00	1.25	7.81
Iran	6.00	6.00	6.20	6.20	2.50	2.00	2.13	2.13	15.00	12.00	13.20	13.20	0.00	0.00	1.20	10.00
Iraq	2.40	2.00	2.00	2.00	1.93	1.75	1.50	1.50	4.64	3.50	3.00	3.00	0.00	0.00	-0.50	-14.29
Syria	1.60	1.10	1.20	1.20	2.81	1.82	1.75	1.75	4.50	2.00	2.10	2.10	0.00	0.00	0.10	5.00
Mexico	0.56	0.55	0.59	0.59	5.33	6.00	6.05	6.05	2.97	3.28	3.57	3.57	0.00	0.00	0.29	8.81
Others	7.33	7.42	7.64	7.63	2.81	2.79	2.77	2.79	20.58	20.74	21.19	21.29	0.10	0.45	0.55	2.66

Table 03 Total Coarse Grain Area, Yield, and Production

Country / Region	Area (Million hectares)				Yield (Metric tons per hectare)				Production (Million metric tons)				Change in Production						
	2020/21	Prel.		2022/23 Proj.		2020/21	Prel.		2022/23 Proj.		2020/21	Prel.		2022/23 Proj.		From last month		From last year	
		2021/22	Jan	Feb	2021/22		Jan	Feb	2021/22	Jan		Feb	MMT	Percent	MMT	Percent			
World	344.58	346.16	337.42	337.57	4.18	4.34	4.29	4.27	1,441.49	1,502.36	1,446.36	1,442.77	-3.59	-0.25	-59.59	-3.97			
United States	36.81	38.34	35.39	35.39	10.13	10.37	10.13	10.13	372.89	397.71	358.47	358.47	0.00	0.00	-39.24	-9.87			
Total Foreign	307.77	307.82	302.03	302.18	3.47	3.59	3.60	3.59	1,068.60	1,104.65	1,087.89	1,084.30	-3.59	-0.33	-20.34	-1.84			
China	43.72	45.77	45.52	45.52	6.15	6.14	6.27	6.27	269.08	280.85	285.50	285.50	0.00	0.00	4.65	1.65			
European Union	28.77	27.77	27.23	27.23	5.40	5.56	4.98	4.98	155.46	154.41	135.61	135.61	0.00	0.00	-18.80	-12.17			
United Kingdom	1.66	1.43	1.37	1.37	5.64	5.88	6.32	6.32	9.36	8.41	8.65	8.65	0.00	0.00	0.24	2.84			
South America																			
Brazil	21.30	23.37	24.31	24.31	4.24	5.16	5.33	5.33	90.32	120.62	129.54	129.54	0.00	0.00	8.92	7.39			
Argentina	8.65	9.84	9.43	9.23	6.94	6.01	6.45	6.02	60.01	59.16	60.81	55.51	-5.30	-8.72	-3.65	-6.17			
Former Soviet Union - 12																			
Russia	14.55	14.01	13.20	13.50	2.84	2.75	3.11	3.09	41.40	38.54	41.00	41.77	0.77	1.88	3.23	8.39			
Ukraine	8.53	8.66	6.37	6.37	4.64	6.18	5.37	5.37	39.59	53.51	34.16	34.16	0.00	0.00	-19.35	-36.17			
Kazakhstan	3.20	2.63	2.61	2.61	1.54	1.43	1.57	1.57	4.93	3.76	4.10	4.10	0.00	0.00	0.34	9.05			
Belarus	1.14	0.99	1.03	1.03	3.47	3.05	3.11	3.11	3.95	3.00	3.20	3.20	0.00	0.00	0.20	6.67			
Africa																			
Nigeria	13.10	13.70	13.50	13.50	1.60	1.56	1.57	1.57	20.90	21.39	21.18	21.18	0.00	0.00	-0.21	-0.99			
South Africa	3.36	3.19	3.19	3.19	5.31	5.21	5.41	5.41	17.81	16.60	17.24	17.24	0.00	0.00	0.64	3.88			
Tanzania	5.17	5.40	5.00	5.00	1.51	1.40	1.40	1.40	7.79	7.55	6.98	6.98	0.00	0.00	-0.58	-7.62			
Burkina Faso	3.89	4.24	4.24	4.24	1.21	0.99	1.16	1.16	4.72	4.20	4.90	4.90	0.00	0.00	0.70	16.58			
Ethiopia	5.53	5.59	5.63	5.63	3.45	3.08	3.23	3.23	19.10	17.20	18.20	18.20	0.00	0.00	1.00	5.81			
Egypt	1.03	1.16	1.16	1.16	7.01	7.13	7.13	7.13	7.24	8.30	8.30	8.30	0.00	0.00	0.00	0.00			
Mali	5.17	4.70	4.70	4.70	1.41	1.34	1.45	1.45	7.26	6.31	6.80	6.80	0.00	0.00	0.49	7.70			
India	24.12	24.29	24.54	24.54	2.13	2.11	2.03	2.03	51.39	51.21	49.80	49.80	0.00	0.00	-1.41	-2.75			
Southeast Asia																			
Indonesia	3.85	3.90	3.95	3.95	3.27	3.26	3.27	3.27	12.60	12.70	12.90	12.90	0.00	0.00	0.20	1.57			
Philippines	2.57	2.56	2.50	2.50	3.25	3.26	3.16	3.24	8.35	8.34	7.90	8.10	0.20	2.53	-0.24	-2.92			
Vietnam	0.94	0.90	0.85	0.88	4.83	4.92	4.94	5.00	4.56	4.45	4.20	4.40	0.20	4.76	-0.05	-1.03			
Thailand	1.28	1.23	1.23	1.23	4.33	4.36	4.28	4.28	5.55	5.35	5.25	5.25	0.00	0.00	-0.10	-1.87			
Mexico	8.76	8.88	9.01	8.99	3.73	3.69	3.72	3.73	32.66	32.79	33.50	33.49	-0.01	-0.03	0.70	2.14			
Canada	5.80	5.91	5.74	5.74	5.11	4.25	5.32	5.32	29.64	25.12	30.54	30.54	0.00	0.00	5.41	21.54			
Australia	7.26	6.69	5.98	5.98	2.56	2.87	3.04	3.09	18.56	19.22	18.17	18.47	0.30	1.65	-0.75	-3.90			
Middle East																			
Turkey	4.63	4.46	4.54	4.54	3.40	2.60	3.19	3.19	15.76	11.58	14.47	14.47	0.00	0.00	2.89	24.95			
Iran	1.81	1.91	1.86	1.86	2.77	2.16	2.38	2.38	5.02	4.12	4.42	4.42	0.00	0.00	0.30	7.31			
Others	77.99	74.63	73.38	73.42	1.61	1.69	1.64	1.65	125.61	125.97	120.60	120.85	0.25	0.21	-5.12	-4.06			

World and Selected Countries and Regions; Coarse Grain includes: Barley, Corn, Millet, Mixed Grains, Oats, Rye and Sorghum

Table 04 Corn Area, Yield, and Production

Country / Region	Area (Million hectares)				Yield (Metric tons per hectare)				Production (Million metric tons)				Change in Production			
	Prel.		2022/23 Proj.		Prel.		2022/23 Proj.		Prel.		2022/23 Proj.		From last month		From last year	
	2020/21	2021/22	Jan	Feb	2020/21	2021/22	Jan	Feb	2020/21	2021/22	Jan	Feb	MMT	Percent	MMT	Percent
World	199.15	207.04	201.28	201.12	5.67	5.87	5.74	5.72	1,129.50	1,216.00	1,155.93	1,151.36	-4.57	-0.40	-64.64	-5.32
United States	33.31	34.53	32.05	32.05	10.76	11.09	10.88	10.88	358.45	382.89	348.75	348.75	0.00	0.00	-34.14	-8.92
Total Foreign	165.84	172.52	169.22	169.06	4.65	4.83	4.77	4.75	771.06	833.11	807.18	802.61	-4.57	-0.57	-30.50	-3.66
China	41.26	43.32	43.07	43.07	6.32	6.29	6.44	6.44	260.67	272.55	277.20	277.20	0.00	0.00	4.65	1.71
South America																
Brazil	19.90	21.80	22.70	22.70	4.37	5.32	5.51	5.51	87.00	116.00	125.00	125.00	0.00	0.00	9.00	7.76
Argentina	6.55	7.10	6.90	6.70	7.94	6.97	7.54	7.01	52.00	49.50	52.00	47.00	-5.00	-9.62	-2.50	-5.05
Bolivia	0.41	0.44	0.44	0.44	3.00	2.60	2.64	2.64	1.23	1.13	1.15	1.15	0.00	0.00	0.02	1.77
European Union	9.24	9.24	9.03	9.03	7.30	7.69	6.01	6.01	67.44	70.98	54.20	54.20	0.00	0.00	-16.78	-23.64
Africa																
South Africa	3.12	3.00	3.00	3.00	5.44	5.37	5.57	5.57	16.95	16.10	16.70	16.70	0.00	0.00	0.60	3.73
Nigeria	5.50	6.00	5.80	5.80	2.25	2.12	2.10	2.10	12.40	12.75	12.18	12.18	0.00	0.00	-0.57	-4.43
Ethiopia	2.36	2.53	2.55	2.55	4.47	3.72	4.00	4.00	10.56	9.40	10.20	10.20	0.00	0.00	0.80	8.51
Egypt	0.80	0.93	0.93	0.93	8.00	8.00	8.00	8.00	6.40	7.44	7.44	7.44	0.00	0.00	0.00	0.00
Tanzania	4.20	4.40	4.00	4.00	1.60	1.48	1.48	1.48	6.71	6.50	5.90	5.90	0.00	0.00	-0.60	-9.23
Malawi	1.76	1.75	1.75	1.75	2.10	2.62	2.12	2.12	3.69	4.58	3.72	3.72	0.00	0.00	-0.86	-18.86
Zambia	1.33	1.41	1.12	1.12	2.54	2.57	2.43	2.43	3.39	3.62	2.71	2.71	0.00	0.00	-0.91	-25.25
Kenya	2.19	1.95	1.90	1.90	1.73	1.59	1.58	1.58	3.79	3.10	3.00	3.00	0.00	0.00	-0.10	-3.23
Uganda	0.99	1.10	1.10	1.10	2.78	2.55	2.55	2.55	2.75	2.80	2.80	2.80	0.00	0.00	0.00	0.00
Zimbabwe	1.58	1.95	1.90	1.90	0.57	1.39	0.82	0.82	0.91	2.72	1.56	1.56	0.00	0.00	-1.16	-42.66
Former Soviet Union - 12																
Ukraine	5.40	5.49	4.00	4.00	5.62	7.68	6.75	6.75	30.30	42.13	27.00	27.00	0.00	0.00	-15.13	-35.91
Russia	2.73	2.90	2.50	2.50	5.08	5.25	5.60	5.60	13.87	15.23	14.00	14.00	0.00	0.00	-1.23	-8.05
South Asia																
India	9.89	10.10	10.00	10.00	3.20	3.33	3.20	3.20	31.65	33.60	32.00	32.00	0.00	0.00	-1.60	-4.76
Pakistan	1.42	1.65	1.60	1.60	6.30	6.43	5.75	5.75	8.94	10.64	9.20	9.20	0.00	0.00	-1.44	-13.49
Nepal	0.97	0.97	0.97	0.97	2.82	2.82	2.82	2.82	2.72	2.72	2.72	2.72	0.00	0.00	0.00	0.00
Southeast Asia																
Indonesia	3.85	3.90	3.95	3.95	3.27	3.26	3.27	3.27	12.60	12.70	12.90	12.90	0.00	0.00	0.20	1.57
Philippines	2.57	2.56	2.50	2.50	3.25	3.26	3.16	3.24	8.35	8.34	7.90	8.10	0.20	2.53	-0.24	-2.92
Vietnam	0.94	0.90	0.85	0.88	4.83	4.92	4.94	5.00	4.56	4.45	4.20	4.40	0.20	4.76	-0.05	-1.03
Thailand	1.26	1.20	1.20	1.20	4.38	4.42	4.33	4.33	5.50	5.30	5.20	5.20	0.00	0.00	-0.10	-1.89
Mexico	7.14	7.09	7.20	7.20	3.83	3.77	3.83	3.83	27.35	26.76	27.60	27.60	0.00	0.00	0.84	3.13
Canada	1.41	1.46	1.44	1.44	9.63	9.99	10.07	10.07	13.56	14.61	14.54	14.54	0.00	0.00	-0.07	-0.49
Turkey	0.62	0.54	0.53	0.53	11.45	12.04	12.38	12.38	7.10	6.50	6.50	6.50	0.00	0.00	0.00	0.00
Others	26.44	26.84	26.31	26.32	2.60	2.64	2.57	2.57	68.68	70.98	67.67	67.70	0.03	0.04	-3.27	-4.61

World and Selected Countries and Regions

Table 05 Barley Area, Yield, and Production

Country / Region	Area (Million hectares)				Yield (Metric tons per hectare)				Production (Million metric tons)				Change in Production			
	Prel.		2022/23 Proj.		Prel.		2022/23 Proj.		Prel.		2022/23 Proj.		From last month		From last year	
	2020/21	2021/22	Jan	Feb	2020/21	2021/22	Jan	Feb	2020/21	2021/22	Jan	Feb	MMT	Percent	MMT	Percent
World	52.45	49.30	47.13	47.33	3.07	2.96	3.17	3.18	160.91	145.93	149.47	150.48	1.01	0.68	4.55	3.12
United States	0.90	0.81	0.99	0.99	4.15	3.25	3.85	3.85	3.72	2.62	3.80	3.80	0.00	0.00	1.18	45.16
Total Foreign	51.56	48.50	46.14	46.35	3.05	2.96	3.16	3.16	157.19	143.31	145.67	146.68	1.01	0.69	3.37	2.35
European Union	11.05	10.31	10.43	10.43	4.91	5.05	4.93	4.93	54.23	52.05	51.45	51.45	0.00	0.00	-0.60	-1.15
United Kingdom	1.39	1.15	1.12	1.12	5.85	6.05	6.64	6.64	8.12	6.96	7.40	7.40	0.00	0.00	0.44	6.31
Former Soviet Union - 12																
Russia	8.16	7.69	7.60	7.80	2.53	2.28	2.76	2.76	20.63	17.51	21.00	21.50	0.50	2.38	4.00	22.82
Ukraine	2.58	2.68	1.90	1.90	3.08	3.70	3.21	3.21	7.95	9.92	6.10	6.10	0.00	0.00	-3.82	-38.53
Kazakhstan	2.73	2.16	2.15	2.15	1.34	1.10	1.26	1.26	3.66	2.37	2.70	2.70	0.00	0.00	0.33	14.07
Belarus	0.41	0.35	0.40	0.40	3.35	2.86	2.75	2.75	1.38	1.00	1.10	1.10	0.00	0.00	0.10	10.00
Azerbaijan	0.35	0.37	0.38	0.38	2.96	3.07	2.93	2.93	1.02	1.15	1.10	1.10	0.00	0.00	-0.05	-4.10
Canada	2.81	3.01	2.64	2.64	3.82	2.32	3.79	3.79	10.74	6.98	9.99	9.99	0.00	0.00	3.00	43.00
Australia	5.49	5.10	4.20	4.20	2.67	2.81	3.19	3.26	14.65	14.34	13.40	13.70	0.30	2.24	-0.64	-4.44
Middle East																
Turkey	3.80	3.70	3.80	3.80	2.13	1.22	1.95	1.95	8.10	4.50	7.40	7.40	0.00	0.00	2.90	64.44
Iran	1.60	1.70	1.65	1.65	2.25	1.59	1.82	1.82	3.60	2.70	3.00	3.00	0.00	0.00	0.30	11.11
Iraq	1.20	0.60	0.60	0.60	1.29	1.17	1.13	1.13	1.55	0.70	0.68	0.68	0.00	0.00	-0.02	-2.86
Syria	1.50	0.80	0.90	0.90	1.27	0.81	0.78	0.78	1.90	0.65	0.70	0.70	0.00	0.00	0.05	7.69
Africa																
Ethiopia	0.90	0.96	0.97	0.97	2.52	2.45	2.47	2.47	2.26	2.35	2.40	2.40	0.00	0.00	0.05	2.13
Morocco	1.47	1.49	1.10	1.10	0.44	1.87	0.64	0.64	0.64	2.78	0.70	0.70	0.00	0.00	-2.08	-74.82
Algeria	0.98	1.03	1.03	1.03	1.24	0.93	1.56	1.56	1.21	0.95	1.60	1.60	0.00	0.00	0.65	68.42
Tunisia	0.36	0.28	0.30	0.30	1.28	1.54	1.40	1.40	0.47	0.43	0.42	0.42	0.00	0.00	-0.01	-2.33
South Africa	0.14	0.10	0.10	0.10	4.14	3.52	3.70	3.70	0.59	0.33	0.37	0.37	0.00	0.00	0.04	10.78
South America																
Argentina	1.01	1.34	1.28	1.28	4.00	3.96	3.28	3.28	4.04	5.30	4.20	4.20	0.00	0.00	-1.10	-20.75
Uruguay	0.19	0.22	0.19	0.21	4.78	4.11	3.65	4.25	0.89	0.92	0.68	0.90	0.22	32.89	-0.02	-2.50
Brazil	0.10	0.11	0.11	0.11	3.63	3.79	3.91	3.91	0.37	0.43	0.43	0.43	0.00	0.00	0.01	1.18
India	0.59	0.59	0.54	0.54	2.92	2.80	2.59	2.59	1.72	1.66	1.40	1.40	0.00	0.00	-0.26	-15.46
China	0.51	0.51	0.51	0.51	4.00	3.92	3.92	3.92	2.04	2.00	2.00	2.00	0.00	0.00	0.00	0.00
Mexico	0.30	0.35	0.34	0.32	3.07	3.11	2.82	2.97	0.91	1.09	0.96	0.95	-0.01	-1.04	-0.14	-12.84
Afghanistan	0.17	0.16	0.17	0.17	1.41	1.25	1.35	1.35	0.24	0.20	0.23	0.23	0.00	0.00	0.03	15.00
Others	1.78	1.74	1.76	1.76	2.42	2.33	2.43	2.43	4.30	4.06	4.27	4.27	0.00	0.00	0.21	5.23

World and Selected Countries and Regions

Table 06 Oats Area, Yield, and Production

Country / Region	Area (Million hectares)				Yield (Metric tons per hectare)				Production (Million metric tons)				Change in Production			
	2020/21	Prel.	2022/23 Proj.		2020/21	Prel.	2022/23 Proj.		2020/21	Prel.	2022/23 Proj.		From last month		From last year	
		2021/22	Jan	Feb		2021/22	Jan	Feb		2021/22	Jan	Feb	MMT	Percent	MMT	Percent
World	10.08	9.64	9.45	9.55	2.55	2.36	2.63	2.62	25.72	22.74	24.85	25.05	0.20	0.80	2.32	10.20
United States	0.41	0.26	0.36	0.36	2.34	2.20	2.33	2.33	0.95	0.58	0.84	0.84	0.00	0.00	0.26	44.81
Total Foreign	9.67	9.38	9.09	9.19	2.56	2.36	2.64	2.63	24.77	22.16	24.02	24.22	0.20	0.83	2.06	9.29
European Union	2.56	2.56	2.40	2.40	3.31	2.95	3.18	3.18	8.47	7.53	7.61	7.61	0.00	0.00	0.08	1.06
Former Soviet Union - 12																
Russia	2.33	2.17	2.00	2.10	1.77	1.72	1.90	1.90	4.13	3.73	3.80	4.00	0.20	5.26	0.27	7.15
Ukraine	0.20	0.18	0.18	0.18	2.54	2.61	2.29	2.29	0.52	0.48	0.40	0.40	0.00	0.00	-0.08	-16.32
Belarus	0.16	0.15	0.16	0.16	2.87	2.33	2.42	2.42	0.45	0.35	0.38	0.38	0.00	0.00	0.03	7.14
Kazakhstan	0.23	0.20	0.20	0.20	1.05	0.90	1.13	1.13	0.24	0.18	0.23	0.23	0.00	0.00	0.04	23.63
Canada	1.31	1.21	1.40	1.40	3.48	2.39	3.73	3.73	4.58	2.90	5.23	5.23	0.00	0.00	2.33	80.27
South America																
Argentina	0.24	0.35	0.28	0.28	2.13	2.07	2.30	2.30	0.51	0.73	0.65	0.65	0.00	0.00	-0.08	-11.03
Brazil	0.43	0.50	0.51	0.51	2.00	2.27	2.26	2.26	0.85	1.14	1.16	1.16	0.00	0.00	0.01	1.05
Chile	0.11	0.12	0.13	0.13	4.65	4.70	4.37	4.37	0.53	0.58	0.55	0.55	0.00	0.00	-0.03	-4.84
Uruguay	0.02	0.01	0.02	0.02	2.20	2.21	2.40	2.40	0.03	0.03	0.04	0.04	0.00	0.00	0.01	16.13
Oceania																
Australia	1.07	0.84	0.80	0.80	1.77	2.06	1.75	1.75	1.90	1.74	1.40	1.40	0.00	0.00	-0.34	-19.31
New Zealand	0.00	0.01	0.01	0.01	5.75	5.00	5.80	5.80	0.02	0.03	0.03	0.03	0.00	0.00	0.00	16.00
China	0.41	0.41	0.41	0.41	1.48	1.48	1.48	1.48	0.60	0.60	0.60	0.60	0.00	0.00	0.00	0.00
Africa																
Algeria	0.06	0.08	0.08	0.08	1.11	1.31	1.31	1.31	0.07	0.11	0.11	0.11	0.00	0.00	0.00	0.00
Morocco	0.02	0.04	0.02	0.02	0.40	1.13	0.40	0.40	0.01	0.05	0.01	0.01	0.00	0.00	-0.04	-86.67
South Africa	0.03	0.04	0.03	0.03	2.19	1.64	1.33	1.33	0.06	0.06	0.04	0.04	0.00	0.00	-0.02	-32.20
Other Europe																
United Kingdom	0.21	0.20	0.19	0.19	4.91	5.62	5.26	5.26	1.03	1.12	1.00	1.00	0.00	0.00	-0.12	-10.95
Norway	0.07	0.07	0.07	0.07	4.29	4.29	4.29	4.29	0.30	0.30	0.30	0.30	0.00	0.00	0.00	0.00
Serbia	0.03	0.03	0.03	0.03	2.17	2.17	2.17	2.17	0.07	0.07	0.07	0.07	0.00	0.00	0.00	0.00
Albania	0.02	0.01	0.02	0.02	2.25	2.14	2.20	2.20	0.04	0.03	0.03	0.03	0.00	0.00	0.00	10.00
Bosnia and Herzegovina	0.01	0.01	0.01	0.01	3.09	2.82	2.82	2.82	0.03	0.03	0.03	0.03	0.00	0.00	0.00	0.00
Turkey	0.10	0.11	0.11	0.11	2.40	2.38	2.38	2.38	0.24	0.25	0.25	0.25	0.00	0.00	0.00	0.00
Mexico	0.03	0.05	0.05	0.05	2.03	2.02	1.89	1.89	0.06	0.09	0.09	0.09	0.00	0.00	-0.01	-8.60
Others	0.03	0.03	0.03	0.03	1.61	1.69	1.68	1.68	0.05	0.05	0.05	0.05	0.00	0.00	0.00	6.12

World and Selected Countries and Regions

Table 07 Rye Area, Yield, and Production

Country / Region	Area (Million hectares)				Yield (Metric tons per hectare)				Production (Million metric tons)				Change in Production			
	Prel.		2022/23 Proj.		Prel.		2022/23 Proj.		Prel.		2022/23 Proj.		From last month		From last year	
	2020/21	2021/22	Jan	Feb	2020/21	2021/22	Jan	Feb	2020/21	2021/22	Jan	Feb	MMT	Percent	MMT	Percent
World	4.17	4.03	3.76	3.78	3.43	3.09	3.21	3.21	14.30	12.44	12.06	12.16	0.10	0.83	-0.29	-2.31
United States	0.13	0.12	0.14	0.14	2.19	2.09	2.26	2.26	0.29	0.25	0.31	0.31	0.00	0.00	0.06	25.30
Total Foreign	4.03	3.91	3.62	3.64	3.47	3.12	3.25	3.25	14.01	12.19	11.74	11.84	0.10	0.85	-0.35	-2.87
European Union	2.08	1.93	1.87	1.87	4.31	4.12	4.07	4.07	8.97	7.95	7.62	7.62	0.00	0.00	-0.33	-4.19
Former Soviet Union - 12																
Russia	0.97	0.99	0.88	0.90	2.44	1.73	2.17	2.22	2.38	1.72	1.90	2.00	0.10	5.26	0.28	16.55
Belarus	0.36	0.33	0.30	0.30	2.92	2.46	2.50	2.50	1.05	0.80	0.75	0.75	0.00	0.00	-0.05	-6.25
Ukraine	0.14	0.18	0.10	0.10	3.28	3.43	2.85	2.85	0.46	0.60	0.29	0.29	0.00	0.00	-0.32	-52.50
Kazakhstan	0.02	0.04	0.03	0.03	1.25	0.91	1.20	1.20	0.03	0.04	0.03	0.03	0.00	0.00	-0.01	-25.00
Turkey	0.11	0.12	0.11	0.11	2.91	2.87	2.91	2.91	0.32	0.33	0.32	0.32	0.00	0.00	-0.01	-3.03
Canada	0.15	0.12	0.15	0.15	3.19	3.21	3.42	3.42	0.49	0.37	0.52	0.52	0.00	0.00	0.15	39.78
South America																
Chile	0.00	0.00	0.00	0.00	5.00	5.00	5.00	5.00	0.01	0.01	0.01	0.01	0.00	0.00	0.00	0.00
Argentina	0.09	0.12	0.09	0.09	1.50	1.88	1.84	1.84	0.14	0.23	0.16	0.16	0.00	0.00	-0.07	-28.89
Other Europe																
Bosnia and Herzegovina	0.00	0.00	0.00	0.00	3.67	3.00	2.75	2.75	0.01	0.01	0.01	0.01	0.00	0.00	0.00	22.22
Switzerland	0.00	0.00	0.00	0.00	5.50	5.50	5.50	5.50	0.01	0.01	0.01	0.01	0.00	0.00	0.00	0.00
Serbia	0.00	0.00	0.00	0.00	2.50	2.50	2.50	2.50	0.01	0.01	0.01	0.01	0.00	0.00	0.00	0.00
Australia	0.05	0.05	0.05	0.05	0.71	0.71	0.71	0.71	0.03	0.03	0.03	0.03	0.00	0.00	0.00	0.00
Others	0.04	0.04	0.04	0.04	2.50	2.18	2.16	2.16	0.11	0.10	0.10	0.10	0.00	0.00	0.00	-1.04

World and Selected Countries and Regions

Table 08 Sorghum Area, Yield, and Production

Country / Region	Area (Million hectares)				Yield (Metric tons per hectare)				Production (Million metric tons)				Change in Production			
	Prel.		2022/23 Proj.		Prel.		2022/23 Proj.		Prel.		2022/23 Proj.		From last month		From last year	
	2020/21	2021/22	Jan	Feb	2020/21	2021/22	Jan	Feb	2020/21	2021/22	Jan	Feb	MMT	Percent	MMT	Percent
World	42.84	41.46	40.94	40.94	1.46	1.50	1.44	1.43	62.57	62.11	58.84	58.54	-0.30	-0.51	-3.57	-5.75
United States	2.06	2.63	1.85	1.85	4.59	4.33	2.58	2.58	9.47	11.38	4.77	4.77	0.00	0.00	-6.61	-58.07
Total Foreign	40.77	38.83	39.09	39.09	1.30	1.31	1.38	1.38	53.10	50.74	54.07	53.77	-0.30	-0.55	3.04	5.98
Africa																
Nigeria	5.60	5.70	5.70	5.70	1.18	1.18	1.23	1.23	6.59	6.73	7.00	7.00	0.00	0.00	0.28	4.09
Ethiopia	1.79	1.65	1.66	1.66	2.83	2.70	2.71	2.71	5.06	4.45	4.50	4.50	0.00	0.00	0.05	1.12
Sudan	9.03	6.92	7.00	7.00	0.57	0.51	0.71	0.71	5.15	3.53	5.00	5.00	0.00	0.00	1.47	41.64
Burkina Faso	1.74	1.90	1.90	1.90	1.06	0.87	1.00	1.00	1.84	1.64	1.90	1.90	0.00	0.00	0.26	15.57
Mali	1.83	1.50	1.50	1.50	1.00	0.83	1.00	1.00	1.82	1.24	1.50	1.50	0.00	0.00	0.26	21.07
Niger	3.67	3.70	3.70	3.70	0.58	0.33	0.51	0.51	2.13	1.21	1.90	1.90	0.00	0.00	0.69	57.42
Cameroon	0.74	0.74	0.74	0.74	1.62	1.62	1.62	1.62	1.20	1.20	1.20	1.20	0.00	0.00	0.00	0.00
Tanzania	0.70	0.70	0.70	0.70	1.07	1.02	1.07	1.07	0.75	0.72	0.75	0.75	0.00	0.00	0.04	4.90
Egypt	0.15	0.15	0.15	0.15	4.91	5.00	5.00	5.00	0.73	0.75	0.75	0.75	0.00	0.00	0.00	0.00
Uganda	0.31	0.25	0.25	0.25	1.23	1.32	0.90	0.90	0.38	0.33	0.23	0.23	0.00	0.00	-0.11	-31.82
Ghana	0.30	0.31	0.31	0.31	1.13	1.11	1.13	1.13	0.35	0.35	0.35	0.35	0.00	0.00	0.01	1.45
Mozambique	0.26	0.25	0.25	0.25	0.54	0.64	0.64	0.64	0.14	0.16	0.16	0.16	0.00	0.00	0.00	0.00
South Africa	0.05	0.04	0.04	0.04	4.39	2.78	3.71	3.71	0.22	0.10	0.13	0.13	0.00	0.00	0.03	26.21
Mexico	1.29	1.40	1.42	1.42	3.37	3.47	3.42	3.42	4.35	4.84	4.85	4.85	0.00	0.00	0.01	0.21
South America																
Argentina	0.75	0.93	0.88	0.88	4.43	3.68	4.34	4.00	3.32	3.40	3.80	3.50	-0.30	-7.89	0.10	2.94
Brazil	0.87	0.95	0.98	0.98	2.41	3.20	3.00	3.00	2.08	3.04	2.94	2.94	0.00	0.00	-0.10	-3.35
South Asia																
India	4.38	4.60	4.50	4.50	1.10	0.92	0.98	0.98	4.81	4.25	4.40	4.40	0.00	0.00	0.15	3.53
Pakistan	0.13	0.08	0.22	0.22	0.76	0.83	0.63	0.63	0.10	0.06	0.14	0.14	0.00	0.00	0.07	110.94
China	0.64	0.63	0.63	0.63	4.68	4.76	4.76	4.76	2.97	3.00	3.00	3.00	0.00	0.00	0.00	0.00
Australia	0.57	0.62	0.84	0.84	2.86	4.26	3.45	3.45	1.64	2.65	2.90	2.90	0.00	0.00	0.25	9.52
European Union	0.19	0.15	0.13	0.13	5.21	5.49	4.41	4.41	1.00	0.82	0.59	0.59	0.00	0.00	-0.23	-28.19
Others	5.80	5.68	5.60	5.60	1.12	1.11	1.09	1.09	6.48	6.27	6.09	6.09	0.00	0.00	-0.18	-2.89

World and Selected Countries and Regions

Table 09 Rice Area, Yield, and Production
World and Selected Countries and Regions

Country / Region	Area (Million hectares)				Yield (Metric tons per hectare)				Production (Million metric tons)				Change in Production			
	Prel.		2022/23 Proj.		Prel.		2022/23 Proj.		Prel.		2022/23 Proj.		From last month		From last year	
	2020/21	2021/22	Jan	Feb	2020/21	2021/22	Jan	Feb	2020/21	2021/22	Jan	Feb	MMT	Percent	MMT	Percent
World	165.20	166.02	163.74	163.69	4.60	4.63	4.59	4.59	509.33	514.80	502.97	502.98	0.01	0.00	-11.82	-2.30
United States	1.21	1.01	0.88	0.88	8.54	8.64	8.28	8.28	7.22	6.08	5.09	5.09	0.00	0.00	-0.99	-16.29
Total Foreign	163.99	165.02	162.86	162.81	4.57	4.61	4.57	4.57	502.10	508.71	497.88	497.88	0.01	0.00	-10.83	-2.13
East Asia																
China	30.08	29.92	29.45	29.45	7.04	7.11	7.08	7.08	148.30	148.99	145.95	145.95	0.00	0.00	-3.04	-2.04
Japan	1.53	1.52	1.50	1.50	6.78	6.93	6.82	6.82	7.57	7.67	7.45	7.45	0.00	0.00	-0.22	-2.80
Korea, South	0.73	0.73	0.73	0.73	6.49	7.12	6.94	6.88	3.51	3.88	3.76	3.76	0.00	0.03	-0.12	-3.04
Korea, North	0.49	0.50	0.50	0.50	4.44	4.18	4.18	4.18	1.40	1.36	1.36	1.36	0.00	0.00	0.00	0.00
South Asia																
India	45.77	46.38	45.50	45.50	4.08	4.21	4.12	4.12	124.37	130.29	125.00	125.00	0.00	0.00	-5.29	-4.06
Bangladesh	11.50	11.62	11.50	11.50	4.51	4.63	4.65	4.68	34.60	35.85	35.65	35.85	0.20	0.56	0.00	0.00
Pakistan	3.34	3.54	3.00	3.00	3.79	3.95	3.30	3.30	8.42	9.32	6.60	6.60	0.00	0.00	-2.72	-29.21
Nepal	1.47	1.48	1.45	1.45	3.82	3.47	3.79	3.79	3.74	3.42	3.65	3.65	0.00	0.00	0.24	6.94
Sri Lanka	1.09	1.13	0.98	1.09	4.59	3.56	3.60	3.41	3.39	2.73	2.40	2.53	0.13	5.21	-0.21	-7.61
Southeast Asia																
Indonesia	11.40	11.60	11.65	11.65	4.77	4.67	4.68	4.68	34.50	34.40	34.60	34.60	0.00	0.00	0.20	0.58
Vietnam	7.31	7.19	7.28	7.17	6.00	5.96	5.99	6.03	27.38	26.77	27.23	27.00	-0.23	-0.83	0.23	0.86
Thailand	10.51	10.70	10.85	10.85	2.72	2.81	2.81	2.82	18.86	19.88	20.10	20.20	0.10	0.50	0.32	1.62
Burma	6.90	6.90	6.90	6.90	2.85	2.80	2.83	2.83	12.60	12.35	12.50	12.50	0.00	0.00	0.15	1.20
Philippines	4.76	4.80	4.80	4.80	4.14	4.15	4.10	4.10	12.42	12.54	12.41	12.41	0.00	0.00	-0.13	-1.03
Cambodia	3.26	3.27	3.31	3.31	2.89	2.89	2.94	2.94	5.74	5.77	5.93	5.93	0.00	0.00	0.16	2.81
Laos	0.93	0.94	0.95	0.95	3.24	3.28	3.26	3.26	1.90	1.95	1.95	1.95	0.00	0.00	0.00	0.00
Malaysia	0.68	0.67	0.68	0.68	4.07	4.09	4.07	4.07	1.80	1.78	1.80	1.80	0.00	0.00	0.02	1.12
South America																
Brazil	1.68	1.62	1.52	1.47	7.00	6.67	7.00	7.07	8.00	7.34	7.24	7.07	-0.16	-2.25	-0.27	-3.61
Peru	0.41	0.42	0.42	0.42	8.22	8.37	8.55	8.55	2.34	2.43	2.48	2.48	0.00	0.00	0.05	2.22
Africa																
Egypt	0.70	0.50	0.60	0.60	8.28	8.41	8.70	8.70	4.00	2.90	3.60	3.60	0.00	0.00	0.70	24.14
Madagascar	1.68	1.65	1.60	1.60	2.53	2.65	2.69	2.69	2.71	2.80	2.75	2.75	0.00	0.00	-0.05	-1.82
Nigeria	3.60	3.65	3.50	3.50	2.27	2.29	2.29	2.29	5.15	5.26	5.04	5.04	0.00	0.00	-0.22	-4.09
European Union	0.42	0.40	0.33	0.33	6.74	6.57	6.06	6.00	1.83	1.72	1.29	1.27	-0.01	-1.01	-0.45	-26.00
Iran	0.58	0.56	0.57	0.57	5.27	5.14	5.32	5.32	2.00	1.90	2.00	2.00	0.00	0.00	0.10	5.26
Others	13.21	13.32	13.29	13.29	2.94	2.89	2.87	2.87	25.58	25.42	25.14	25.12	-0.02	-0.07	-0.30	-1.17

Yield is on a rough basis, before the milling process. Production is on a milled basis, after the milling process.

Table 10 Total Oilseed Area, Yield, and Production

World and Selected Countries and Regions

Country / Region	Area (Million hectares)				Yield (Metric tons per hectare)				Production (Million metric tons)				Change in Production			
	2020/21	Prel.	2022/23 Proj.		2020/21	Prel.	2022/23 Proj.		2020/21	Prel.	2022/23 Proj.		From last month		From last year	
		2021/22	Jan	Feb		2021/22	Jan	Feb		2021/22	Jan	Feb	MMT	Percent	MMT	Percent
World Total	--	--	--	--	--	--	--	--	607.75	606.79	641.94	636.72	-5.22	-0.81	29.94	4.93
Total Foreign	--	--	--	--	--	--	--	--	483.23	475.44	515.97	510.76	-5.22	-1.01	35.32	7.43
Oilseed, Copra	--	--	--	--	--	--	--	--	5.77	6.01	5.86	6.01	0.15	2.49	0.00	-0.07
Oilseed, Palm Kernel	--	--	--	--	--	--	--	--	19.10	19.33	19.87	19.99	0.12	0.58	0.66	3.39
Major Oilseeds	251.51	260.49	264.77	263.59	2.32	2.23	2.33	2.32	582.88	581.44	616.20	610.73	-5.48	-0.89	29.29	5.04
United States	38.81	41.06	40.04	40.04	3.21	3.20	3.15	3.15	124.52	131.35	125.96	125.96	0.00	0.00	-5.39	-4.10
Foreign Oilseeds	212.70	219.42	224.73	223.54	2.15	2.05	2.18	2.17	458.36	450.09	490.24	484.76	-5.48	-1.12	34.67	7.70
South America	66.09	68.49	71.28	70.94	3.19	2.85	3.18	3.13	210.92	195.16	226.68	222.03	-4.65	-2.05	26.87	13.77
Brazil	41.07	43.33	45.28	45.28	3.50	3.10	3.49	3.49	143.77	134.17	158.23	158.23	0.00	0.00	24.06	17.93
Argentina	18.97	18.77	19.33	18.91	2.70	2.65	2.68	2.49	51.21	49.67	51.88	47.04	-4.84	-9.32	-2.63	-5.29
Paraguay	3.24	3.39	3.54	3.54	3.09	1.28	2.86	2.86	10.02	4.32	10.13	10.13	0.00	0.00	5.81	134.43
Bolivia	1.57	1.54	1.57	1.57	2.24	2.07	2.10	2.10	3.51	3.20	3.30	3.30	0.00	0.00	0.10	3.22
Uruguay	1.11	1.32	1.43	1.51	1.85	2.62	1.97	1.98	2.06	3.46	2.80	2.99	0.19	6.78	-0.47	-13.52
China	25.45	24.20	26.12	26.12	2.59	2.58	2.56	2.57	65.81	62.34	66.95	67.18	0.23	0.34	4.83	7.75
South Asia	42.16	41.64	43.24	42.94	0.96	1.06	1.03	1.03	40.48	44.04	44.43	44.09	-0.34	-0.76	0.05	0.11
India	39.15	38.70	40.48	40.18	0.96	1.04	1.03	1.03	37.55	40.25	41.62	41.19	-0.43	-1.02	0.94	2.34
Pakistan	2.65	2.58	2.40	2.40	0.94	1.30	0.99	1.02	2.50	3.36	2.37	2.46	0.09	3.67	-0.90	-26.82
European Union	11.10	10.99	12.09	12.09	2.59	2.79	2.64	2.64	28.77	30.70	31.95	31.94	0.00	-0.01	1.24	4.03
United Kingdom	0.38	0.31	0.36	0.36	2.73	3.20	3.40	3.40	1.04	0.98	1.23	1.23	0.00	0.00	0.24	24.87
Former Soviet Union - 12	25.91	27.77	26.24	25.99	1.73	1.89	1.81	1.81	44.71	52.44	47.48	47.08	-0.40	-0.84	-5.36	-10.21
Russia	12.50	14.23	14.90	14.50	1.61	1.62	1.74	1.75	20.14	23.11	25.90	25.40	-0.50	-1.93	2.29	9.92
Ukraine	9.65	9.58	7.25	7.40	2.06	2.54	2.32	2.28	19.85	24.32	16.80	16.90	0.10	0.60	-7.42	-30.50
Uzbekistan	1.08	1.08	1.09	1.09	1.20	1.03	1.02	1.02	1.29	1.11	1.11	1.11	0.00	0.00	0.00	0.18
Canada	10.41	11.06	10.76	10.76	2.49	1.81	2.38	2.38	25.95	20.05	25.63	25.63	0.00	0.00	5.58	27.81
Africa	22.12	24.79	24.04	23.79	1.08	0.98	1.04	1.04	23.99	24.36	24.94	24.75	-0.19	-0.78	0.38	1.58
Nigeria	4.62	4.97	4.87	4.87	1.19	1.11	1.21	1.21	5.49	5.50	5.90	5.90	0.00	0.00	0.41	7.37
South Africa	1.36	1.66	1.76	1.72	1.98	1.89	1.82	1.85	2.69	3.14	3.20	3.18	-0.02	-0.47	0.04	1.31
Tanzania	1.17	1.24	1.35	1.35	1.02	0.98	0.93	0.93	1.19	1.21	1.25	1.25	0.00	0.00	0.04	3.39
Southeast Asia	3.25	3.21	3.18	3.18	1.36	1.36	1.38	1.38	4.42	4.38	4.37	4.37	0.00	0.00	-0.01	-0.16
Burma	2.03	2.04	2.04	2.04	1.17	1.19	1.21	1.21	2.37	2.42	2.46	2.46	0.00	0.00	0.05	1.86
Indonesia	0.94	0.90	0.87	0.87	1.54	1.55	1.55	1.55	1.45	1.39	1.35	1.35	0.00	0.00	-0.04	-2.53
Australia	2.94	3.91	4.16	4.16	1.93	2.21	2.14	2.14	5.69	8.65	8.90	8.90	0.00	0.00	0.25	2.93
Turkey	1.18	1.32	1.48	1.48	2.46	2.55	2.69	2.69	2.89	3.37	3.98	3.98	0.00	0.00	0.61	18.02
Others	1.70	1.74	1.78	1.74	2.18	2.08	2.09	2.06	3.69	3.61	3.72	3.60	-0.12	-3.28	-0.02	-0.53

World Total and Total Foreign: (Major Oilseeds plus copra and palm kernel) Major Oilseeds: (soybeans, sunflowerseeds, peanuts(inshell), cottonseed and rapeseed)

Table 11 Soybean Area, Yield, and Production

Country / Region	Area (Million hectares)				Yield (Metric tons per hectare)				Production (Million metric tons)				Change in Production			
	Prel.		2022/23 Proj.		Prel.		2022/23 Proj.		Prel.		2022/23 Proj.		From last month		From last year	
	2020/21	2021/22	Jan	Feb	2020/21	2021/22	Jan	Feb	2020/21	2021/22	Jan	Feb	MMT	Percent	MMT	Percent
World	129.00	130.89	136.14	135.55	2.86	2.74	2.85	2.83	368.52	358.00	388.01	383.01	-5.00	-1.29	25.02	6.99
United States	33.43	34.93	34.94	34.94	3.43	3.48	3.33	3.33	114.75	121.53	116.38	116.38	0.00	0.00	-5.15	-4.24
Total Foreign	95.57	95.96	101.20	100.62	2.66	2.46	2.68	2.65	253.77	236.47	271.63	266.63	-5.00	-1.84	30.17	12.76
South America																
Brazil	39.50	41.50	43.40	43.40	3.53	3.12	3.53	3.53	139.50	129.50	153.00	153.00	0.00	0.00	23.50	18.15
Argentina	16.47	15.90	16.30	15.90	2.81	2.76	2.79	2.58	46.20	43.90	45.50	41.00	-4.50	-9.89	-2.90	-6.61
Paraguay	3.15	3.30	3.45	3.45	3.14	1.27	2.90	2.90	9.90	4.20	10.00	10.00	0.00	0.00	5.80	138.10
Bolivia	1.43	1.40	1.43	1.43	2.32	2.14	2.17	2.17	3.32	3.00	3.10	3.10	0.00	0.00	0.10	3.33
Uruguay	0.95	1.10	1.10	1.10	1.88	2.80	2.09	2.09	1.79	3.07	2.30	2.30	0.00	0.00	-0.77	-25.08
East Asia																
China	9.88	8.42	10.27	10.27	1.98	1.95	1.98	1.98	19.60	16.40	20.33	20.33	0.00	0.00	3.93	23.99
Korea, South	0.06	0.05	0.06	0.06	1.47	2.06	1.73	1.73	0.08	0.11	0.10	0.10	0.00	0.00	-0.02	-14.41
Korea, North	0.16	0.17	0.17	0.16	1.40	1.15	1.44	1.15	0.23	0.19	0.24	0.18	-0.06	-24.37	-0.01	-5.26
Japan	0.14	0.15	0.15	0.15	1.54	1.63	1.55	1.55	0.22	0.24	0.23	0.23	0.00	0.00	-0.01	-2.52
India	12.92	12.50	12.70	12.70	0.81	0.95	0.94	0.94	10.45	11.90	12.00	12.00	0.00	0.00	0.10	0.84
Canada	2.04	2.08	2.12	2.12	3.12	2.99	3.09	3.09	6.36	6.22	6.54	6.54	0.00	0.00	0.32	5.13
Former Soviet Union - 12																
Russia	2.71	2.99	3.30	3.30	1.59	1.59	1.67	1.67	4.31	4.76	5.50	5.50	0.00	0.00	0.74	15.55
Ukraine	1.46	1.44	1.50	1.35	2.05	2.64	2.40	2.37	3.00	3.80	3.60	3.20	-0.40	-11.11	-0.60	-15.79
European Union	1.00	0.98	1.06	1.06	2.61	2.76	2.34	2.34	2.60	2.71	2.47	2.47	0.00	0.00	-0.24	-8.87
Southeast Asia																
Indonesia	0.39	0.35	0.33	0.33	1.22	1.21	1.21	1.21	0.48	0.43	0.40	0.40	0.00	0.00	-0.03	-5.88
Vietnam	0.04	0.03	0.03	0.03	1.61	1.61	1.60	1.60	0.06	0.05	0.05	0.05	0.00	0.00	-0.01	-9.43
Thailand	0.03	0.03	0.03	0.03	1.63	1.63	1.63	1.63	0.05	0.05	0.05	0.05	0.00	0.00	0.00	0.00
Burma	0.14	0.13	0.13	0.13	1.04	1.04	1.04	1.04	0.14	0.14	0.13	0.13	0.00	0.00	-0.01	-3.70
Serbia	0.22	0.22	0.22	0.22	2.89	2.45	2.50	2.50	0.64	0.54	0.55	0.55	0.00	0.00	0.01	1.85
Mexico	0.16	0.18	0.15	0.12	1.58	1.57	1.50	1.54	0.25	0.29	0.23	0.19	-0.04	-17.78	-0.10	-35.76
Africa																
South Africa	0.83	0.93	1.10	1.10	2.29	2.38	2.05	2.05	1.90	2.20	2.25	2.25	0.00	0.00	0.05	2.27
Nigeria	1.10	1.20	1.20	1.20	1.01	0.93	1.04	1.04	1.11	1.12	1.25	1.25	0.00	0.00	0.13	11.91
Zambia	0.16	0.30	0.38	0.38	1.81	1.35	1.27	1.27	0.30	0.41	0.48	0.48	0.00	0.00	0.06	15.57
Uganda	0.05	0.05	0.05	0.05	0.60	0.60	0.60	0.60	0.03	0.03	0.03	0.03	0.00	0.00	0.00	0.00
Middle East																
Iran	0.07	0.07	0.08	0.08	2.41	2.29	2.27	2.27	0.17	0.16	0.17	0.17	0.00	0.00	0.01	6.25
Turkey	0.03	0.03	0.04	0.04	3.79	3.91	4.00	4.00	0.11	0.13	0.14	0.14	0.00	0.00	0.02	12.00
Others	0.49	0.46	0.49	0.49	2.06	2.03	2.05	2.05	1.01	0.94	1.01	1.01	0.00	0.10	0.07	7.78

World and Selected Countries and Regions

Table 12 Cottonseed Area, Yield, and Production

Country / Region	Area (Million hectares)				Yield (Metric tons per hectare)				Production (Million metric tons)				Change in Production			
	Prel.		2022/23 Proj.		Prel.		2022/23 Proj.		Prel.		2022/23 Proj.		From last month		From last year	
	2020/21	2021/22	Jan	Feb	2020/21	2021/22	Jan	Feb	2020/21	2021/22	Jan	Feb	MMT	Percent	MMT	Percent
World	30.81	31.76	31.37	30.83	1.33	1.31	1.34	1.35	41.01	41.70	42.11	41.76	-0.35	-0.83	0.06	0.14
United States	3.33	4.16	3.01	3.01	1.22	1.16	1.34	1.34	4.05	4.83	4.04	4.04	0.00	0.00	-0.79	-16.30
Total Foreign	27.49	27.61	28.36	27.82	1.34	1.34	1.34	1.36	36.96	36.87	38.07	37.72	-0.35	-0.91	0.85	2.30
South Asia																
India	13.29	12.15	13.00	12.70	0.88	0.85	0.87	0.85	11.72	10.36	11.25	10.83	-0.43	-3.78	0.47	4.51
Pakistan	2.20	2.00	1.80	1.80	0.89	1.30	0.89	0.94	1.95	2.60	1.60	1.69	0.09	5.36	-0.91	-35.01
China	3.20	3.10	3.00	3.00	3.63	3.39	3.66	3.73	11.60	10.50	10.97	11.20	0.23	2.07	0.70	6.64
Former Soviet Union - 12																
Uzbekistan	1.06	1.06	1.07	1.07	1.18	1.00	0.99	0.99	1.25	1.06	1.06	1.06	0.00	0.00	0.00	0.00
Turkmenistan	0.55	0.55	0.55	0.55	0.66	0.64	0.64	0.64	0.36	0.35	0.35	0.35	0.00	0.00	0.00	0.00
Tajikistan	0.16	0.17	0.17	0.17	1.11	1.09	1.11	1.11	0.18	0.19	0.19	0.19	0.00	0.00	0.00	1.08
Kazakhstan	0.11	0.12	0.13	0.13	0.95	0.90	0.94	0.94	0.11	0.10	0.12	0.12	0.00	0.00	0.01	13.59
South America																
Brazil	1.37	1.60	1.63	1.63	2.62	2.43	2.71	2.71	3.59	3.89	4.42	4.42	0.00	0.00	0.53	13.49
Argentina	0.41	0.48	0.43	0.40	0.72	0.68	1.13	1.11	0.29	0.33	0.48	0.44	-0.04	-7.69	0.12	36.20
Middle East																
Turkey	0.35	0.45	0.56	0.56	2.71	2.76	2.88	2.88	0.95	1.24	1.60	1.60	0.00	0.00	0.36	28.93
Syria	0.03	0.03	0.03	0.03	2.36	2.20	2.20	2.20	0.06	0.06	0.06	0.06	0.00	0.00	0.00	0.00
Iran	0.10	0.10	0.10	0.10	1.35	1.35	1.35	1.35	0.13	0.14	0.14	0.14	0.00	0.00	0.00	0.00
Australia	0.28	0.60	0.50	0.50	3.06	2.88	3.00	3.00	0.84	1.73	1.50	1.50	0.00	0.00	-0.23	-13.03
European Union	0.34	0.32	0.31	0.31	1.59	1.66	1.63	1.62	0.54	0.53	0.51	0.50	0.00	-0.59	-0.03	-5.99
Africa																
Burkina Faso	0.56	0.60	0.63	0.62	0.47	0.45	0.43	0.40	0.26	0.27	0.27	0.25	-0.02	-6.77	-0.02	-6.42
Mali	0.17	0.72	0.69	0.69	0.51	0.56	0.45	0.41	0.08	0.40	0.31	0.28	-0.03	-9.00	-0.12	-29.95
Cameroon	0.23	0.23	0.24	0.23	1.51	1.39	1.35	1.41	0.34	0.32	0.33	0.33	0.00	0.00	0.01	1.56
Cote d'Ivoire	0.45	0.47	0.46	0.41	0.61	0.60	0.48	0.36	0.27	0.28	0.22	0.15	-0.08	-33.78	-0.13	-47.69
Benin	0.62	0.64	0.62	0.58	0.78	0.73	0.75	0.75	0.48	0.47	0.46	0.43	-0.03	-7.13	-0.04	-8.32
Tanzania	0.17	0.24	0.35	0.35	0.56	0.46	0.43	0.43	0.09	0.11	0.15	0.15	0.00	0.00	0.04	36.94
Egypt	0.07	0.09	0.13	0.13	1.00	1.00	0.98	0.98	0.07	0.09	0.13	0.13	0.00	0.00	0.04	50.59
Nigeria	0.27	0.27	0.27	0.27	0.56	0.56	0.56	0.56	0.15	0.15	0.15	0.15	0.00	0.00	0.00	0.00
Uganda	0.10	0.10	0.10	0.10	1.40	1.40	1.49	1.49	0.14	0.14	0.15	0.15	0.00	0.00	0.01	6.43
Zimbabwe	0.24	0.25	0.24	0.24	0.39	0.33	0.34	0.34	0.09	0.08	0.08	0.08	0.00	0.00	0.00	0.00
Sudan	0.20	0.20	0.20	0.20	1.41	1.41	1.53	1.53	0.28	0.28	0.31	0.31	0.00	0.00	0.02	8.51
Mexico	0.15	0.15	0.20	0.20	2.40	2.71	2.39	2.31	0.35	0.42	0.48	0.46	-0.02	-3.56	0.04	10.55
Burma	0.24	0.25	0.25	0.25	1.17	1.18	1.18	1.18	0.28	0.29	0.29	0.29	0.00	0.00	0.00	0.00
Others	0.63	0.69	0.73	0.63	0.81	0.73	0.69	0.77	0.51	0.51	0.51	0.48	-0.03	-4.93	-0.02	-4.55

World and Selected Countries and Regions

Table 13 Peanut Area, Yield, and Production

Country / Region	Area (Million hectares)				Yield (Metric tons per hectare)				Production (Million metric tons)				Change in Production			
	Prel.		2022/23 Proj.		Prel.		2022/23 Proj.		Prel.		2022/23 Proj.		From last month		From last year	
	2020/21	2021/22	Jan	Feb	2020/21	2021/22	Jan	Feb	2020/21	2021/22	Jan	Feb	MMT	Percent	MMT	Percent
World	29.93	30.94	29.66	29.65	1.68	1.63	1.69	1.69	50.26	50.43	50.23	50.11	-0.12	-0.23	-0.32	-0.63
United States	0.65	0.62	0.56	0.56	4.27	4.63	4.50	4.50	2.79	2.89	2.53	2.53	0.00	0.00	-0.36	-12.44
Total Foreign	29.27	30.32	29.10	29.09	1.62	1.57	1.64	1.64	47.46	47.55	47.70	47.59	-0.12	-0.24	0.04	0.08
China	4.73	4.81	4.80	4.80	3.80	3.81	3.81	3.81	17.99	18.31	18.30	18.30	0.00	0.00	-0.01	-0.04
Africa																
Nigeria	3.25	3.50	3.40	3.40	1.30	1.21	1.32	1.32	4.23	4.23	4.50	4.50	0.00	0.00	0.27	6.43
Sudan	3.20	3.94	3.00	3.00	0.87	0.60	0.83	0.83	2.77	2.36	2.50	2.50	0.00	0.00	0.15	6.16
Senegal	1.23	1.21	1.20	1.20	1.47	1.38	1.42	1.42	1.80	1.68	1.70	1.70	0.00	0.00	0.02	1.31
Cameroon	0.43	0.43	0.43	0.43	1.40	1.40	1.40	1.40	0.60	0.60	0.60	0.60	0.00	0.00	0.00	0.00
Ghana	0.34	0.34	0.34	0.34	1.68	1.41	1.41	1.41	0.57	0.48	0.48	0.48	0.00	0.00	0.00	0.00
Chad	0.76	0.80	0.80	0.80	1.11	1.13	1.13	1.13	0.84	0.90	0.90	0.90	0.00	0.00	0.00	0.00
Malawi	0.40	0.40	0.40	0.40	0.88	0.88	0.88	0.88	0.35	0.35	0.35	0.35	0.00	0.00	0.00	0.00
Congo (Kinshasa)	0.50	0.50	0.50	0.50	0.90	0.90	0.90	0.90	0.45	0.45	0.45	0.45	0.00	0.00	0.00	0.00
Niger	0.90	0.92	0.92	0.92	0.66	0.56	0.60	0.60	0.59	0.52	0.55	0.55	0.00	0.00	0.03	5.97
Mali	0.43	0.43	0.43	0.43	1.16	0.87	1.00	1.00	0.49	0.37	0.43	0.43	0.00	0.00	0.06	15.49
Uganda	0.34	0.40	0.40	0.40	0.99	0.75	0.75	0.75	0.34	0.30	0.30	0.30	0.00	0.00	0.00	0.00
Burkina Faso	0.65	0.60	0.60	0.60	0.97	0.80	0.83	0.83	0.63	0.48	0.50	0.50	0.00	0.00	0.02	4.82
Guinea	0.98	1.10	1.10	1.10	1.10	1.21	1.09	1.09	1.07	1.34	1.20	1.20	0.00	0.00	-0.14	-10.11
Egypt	0.06	0.06	0.06	0.06	3.20	3.20	3.20	3.20	0.21	0.21	0.21	0.21	0.00	0.00	0.00	0.00
Central African Republic	0.10	0.10	0.10	0.10	1.50	1.50	1.50	1.50	0.15	0.15	0.15	0.15	0.00	0.00	0.00	0.00
South Africa	0.04	0.04	0.04	0.03	2.21	1.48	1.63	1.67	0.09	0.07	0.07	0.05	-0.02	-23.08	-0.02	-23.08
Mozambique	0.35	0.38	0.38	0.38	0.30	0.34	0.34	0.34	0.10	0.13	0.13	0.13	0.00	0.00	0.00	0.00
Cote d'Ivoire	0.16	0.15	0.15	0.15	1.40	1.45	1.45	1.45	0.23	0.21	0.21	0.21	0.00	0.00	0.00	0.00
Benin	0.17	0.19	0.19	0.19	1.01	0.92	0.92	0.92	0.18	0.18	0.18	0.18	0.00	0.00	0.00	0.00
South Asia																
India	6.02	5.60	5.50	5.50	1.11	1.21	1.21	1.21	6.70	6.80	6.65	6.65	0.00	0.00	-0.15	-2.21
Pakistan	0.14	0.15	0.15	0.15	0.90	0.94	0.93	0.93	0.12	0.15	0.14	0.14	0.00	0.00	-0.01	-3.45
Southeast Asia																
Indonesia	0.55	0.55	0.54	0.54	1.78	1.76	1.76	1.76	0.97	0.96	0.95	0.95	0.00	0.00	-0.01	-1.04
Burma	1.06	1.06	1.07	1.07	1.48	1.51	1.55	1.55	1.56	1.60	1.65	1.65	0.00	0.00	0.05	3.13
Vietnam	0.17	0.16	0.16	0.16	2.50	2.50	2.50	2.50	0.41	0.40	0.39	0.39	0.00	0.00	-0.01	-3.00
Thailand	0.02	0.02	0.02	0.02	1.67	1.67	1.67	1.67	0.04	0.04	0.04	0.04	0.00	0.00	0.00	0.00
South America																
Argentina	0.40	0.41	0.38	0.38	3.16	3.29	3.29	3.03	1.27	1.34	1.25	1.15	-0.10	-8.00	-0.19	-14.18
Brazil	0.17	0.20	0.21	0.21	3.86	3.68	3.66	3.66	0.64	0.72	0.75	0.75	0.00	0.00	0.03	4.46
Mexico	0.06	0.05	0.05	0.05	1.73	1.74	1.74	1.74	0.10	0.09	0.09	0.09	0.00	0.00	0.00	0.00
Others	1.70	1.83	1.79	1.79	1.16	1.19	1.18	1.18	1.97	2.17	2.10	2.10	0.00	0.00	-0.07	-3.13

Table 14 Sunflowerseed Area, Yield, and Production

Country / Region	Area (Million hectares)				Yield (Metric tons per hectare)				Production (Million metric tons)				Change in Production			
	Prel.		2022/23 Proj.		Prel.		2022/23 Proj.		Prel.		2022/23 Proj.		From last month		From last year	
	2020/21	2021/22	Jan	Feb	2020/21	2021/22	Jan	Feb	2020/21	2021/22	Jan	Feb	MMT	Percent	MMT	Percent
World	26.86	28.82	27.09	26.96	1.83	1.99	1.89	1.88	49.20	57.31	51.07	50.77	-0.31	-0.60	-6.54	-11.42
United States	0.67	0.50	0.65	0.65	2.01	1.71	1.96	1.96	1.35	0.86	1.28	1.28	0.00	0.00	0.41	47.69
Total Foreign	26.18	28.31	26.44	26.31	1.83	1.99	1.88	1.88	47.84	56.44	49.80	49.49	-0.31	-0.62	-6.95	-12.32
Former Soviet Union - 12																
Russia	8.35	9.61	9.40	9.00	1.59	1.62	1.76	1.78	13.27	15.57	16.50	16.00	-0.50	-3.03	0.43	2.75
Ukraine	7.00	7.10	4.60	4.90	2.01	2.46	2.17	2.12	14.10	17.50	10.00	10.40	0.40	4.00	-7.10	-40.57
Kazakhstan	0.75	0.94	1.05	1.05	1.13	1.10	1.05	1.05	0.84	1.03	1.10	1.10	0.00	0.00	0.07	6.59
European Union	4.44	4.36	4.82	4.82	2.00	2.35	1.97	1.97	8.90	10.25	9.48	9.48	0.00	0.00	-0.77	-7.55
South America																
Argentina	1.67	1.96	2.20	2.20	2.05	2.07	2.09	2.00	3.43	4.05	4.60	4.40	-0.20	-4.35	0.35	8.64
Uruguay	0.07	0.07	0.08	0.08	1.69	1.62	1.71	1.71	0.11	0.11	0.13	0.13	0.00	0.00	0.02	16.36
Bolivia	0.14	0.14	0.14	0.14	1.39	1.39	1.40	1.40	0.19	0.20	0.20	0.20	0.00	0.00	0.00	1.54
Brazil	0.03	0.04	0.04	0.04	1.13	1.62	1.60	1.60	0.04	0.06	0.06	0.06	0.00	0.00	0.00	6.67
Paraguay	0.03	0.03	0.03	0.03	1.53	1.55	1.56	1.56	0.05	0.05	0.05	0.05	0.00	0.00	0.00	4.17
China	0.87	0.89	0.95	0.95	2.94	2.73	2.79	2.79	2.57	2.42	2.65	2.65	0.00	0.00	0.23	9.32
South Asia																
India	0.23	0.25	0.28	0.28	0.82	0.76	0.78	0.78	0.19	0.19	0.22	0.22	0.00	0.00	0.03	13.16
Pakistan	0.06	0.10	0.10	0.10	1.43	1.38	1.35	1.35	0.09	0.14	0.14	0.14	0.00	0.00	-0.01	-4.26
Middle East																
Turkey	0.72	0.76	0.79	0.79	2.17	2.30	2.41	2.41	1.56	1.75	1.90	1.90	0.00	0.00	0.15	8.57
Iran	0.04	0.04	0.04	0.04	1.08	1.00	1.02	1.02	0.04	0.04	0.04	0.04	0.00	0.00	0.00	0.00
Israel	0.00	0.00	0.00	0.00	5.00	2.00	6.00	5.00	0.01	0.00	0.01	0.01	-0.01	-58.33	0.00	150.00
Africa																
Egypt	0.01	0.01	0.01	0.01	2.38	2.38	2.50	2.50	0.02	0.02	0.03	0.03	0.00	0.00	0.01	31.58
Morocco	0.02	0.02	0.02	0.02	1.16	1.25	1.11	1.11	0.02	0.03	0.02	0.02	0.00	0.00	-0.01	-20.00
South Africa	0.48	0.67	0.60	0.57	1.42	1.26	1.42	1.49	0.68	0.85	0.85	0.85	0.00	0.00	0.00	0.47
Burma	0.60	0.60	0.60	0.60	0.65	0.65	0.65	0.65	0.39	0.39	0.39	0.39	0.00	0.00	0.00	0.00
Canada	0.05	0.04	0.04	0.04	2.24	2.03	2.21	2.21	0.10	0.08	0.08	0.08	0.00	0.00	0.01	12.00
Australia	0.02	0.02	0.03	0.03	1.44	1.58	1.48	1.48	0.03	0.03	0.04	0.04	0.00	0.00	0.01	23.33
Others	0.62	0.67	0.64	0.64	1.98	2.54	2.07	2.07	1.23	1.69	1.32	1.32	0.00	0.00	-0.37	-22.00

World and Selected Countries and Regions

Table 15 Rapeseed Area, Yield, and Production

Country / Region	Area (Million hectares)				Yield (Metric tons per hectare)				Production (Million metric tons)				Change in Production			
	Prel.		2022/23 Proj.		Prel.		2022/23 Proj.		Prel.		2022/23 Proj.		From last month		From last year	
	2020/21	2021/22	Jan	Feb	2020/21	2021/22	Jan	Feb	2020/21	2021/22	Jan	Feb	MMT	Percent	MMT	Percent
World	34.92	38.07	40.51	40.59	2.12	1.94	2.09	2.10	73.89	74.01	84.79	85.08	0.29	0.34	11.07	14.96
United States	0.73	0.85	0.88	0.88	2.16	1.46	1.98	1.98	1.58	1.24	1.74	1.74	0.00	0.00	0.50	40.03
Total Foreign	34.19	37.22	39.63	39.71	2.12	1.95	2.10	2.10	72.32	72.76	83.04	83.33	0.29	0.35	10.57	14.53
European Union	5.32	5.33	5.92	5.92	3.14	3.23	3.30	3.30	16.73	17.22	19.50	19.50	0.00	0.00	2.28	13.27
United Kingdom	0.38	0.31	0.36	0.36	2.73	3.20	3.40	3.40	1.04	0.98	1.23	1.23	0.00	0.00	0.24	24.87
Switzerland	0.02	0.02	0.02	0.02	3.14	3.14	3.14	3.14	0.07	0.07	0.07	0.07	0.00	0.00	0.00	0.00
Canada	8.33	8.95	8.60	8.60	2.34	1.54	2.21	2.21	19.49	13.75	19.00	19.00	0.00	0.00	5.25	38.16
China	6.77	6.99	7.10	7.10	2.08	2.10	2.07	2.07	14.05	14.71	14.70	14.70	0.00	0.00	-0.01	-0.10
South Asia																
India	6.70	8.20	9.00	9.00	1.27	1.34	1.28	1.28	8.50	11.00	11.50	11.50	0.00	0.00	0.50	4.55
Pakistan	0.25	0.32	0.35	0.35	1.35	1.47	1.40	1.40	0.34	0.47	0.49	0.49	0.00	0.00	0.02	4.26
Bangladesh	0.25	0.25	0.25	0.25	0.92	0.92	0.92	0.92	0.23	0.23	0.23	0.23	0.00	0.00	0.00	0.00
Former Soviet Union - 12																
Russia	1.45	1.62	2.20	2.20	1.77	1.71	1.77	1.77	2.57	2.78	3.90	3.90	0.00	0.00	1.13	40.54
Ukraine	1.19	1.04	1.15	1.15	2.31	2.91	2.78	2.87	2.75	3.02	3.20	3.30	0.10	3.13	0.29	9.45
Belarus	0.36	0.32	0.33	0.33	2.06	1.59	1.69	1.69	0.73	0.50	0.55	0.55	0.00	0.00	0.05	10.00
Kazakhstan	0.12	0.12	0.13	0.13	1.23	1.24	1.23	1.23	0.15	0.15	0.16	0.16	0.00	0.00	0.01	9.59
Australia	2.61	3.25	3.60	3.60	1.82	2.10	2.03	2.03	4.76	6.82	7.30	7.30	0.00	0.00	0.48	7.04
South America																
Chile	0.04	0.04	0.03	0.03	3.81	3.86	3.87	3.87	0.14	0.14	0.12	0.12	0.00	0.00	-0.02	-11.11
Paraguay	0.05	0.04	0.05	0.05	1.41	1.45	1.51	1.51	0.07	0.06	0.07	0.07	0.00	0.00	0.00	6.25
Ethiopia	0.03	0.03	0.03	0.03	1.80	1.80	1.80	1.80	0.05	0.05	0.05	0.05	0.00	0.00	0.00	0.00
Others	0.33	0.41	0.52	0.61	2.02	2.03	1.88	1.93	0.67	0.83	0.99	1.18	0.19	19.25	0.35	41.98

World and Selected Countries and Regions

Table 16 Copra, Palm Kernel, and Palm Oil Production

Country / Region	Production (Million metric tons)				Change in Production			
	2020/21	Prel.	2022/23 Proj.		From last month		From last year	
		2021/22	Jan	Feb	MMT	Percent	MMT	Percent
Oilseed, Copra								
Philippines	2.40	2.60	2.60	2.60	0.00	0.00	0.00	0.00
Indonesia	1.67	1.68	1.68	1.68	0.00	0.00	0.00	0.00
India	0.93	0.94	0.80	0.94	0.14	17.50	0.00	0.00
Vietnam	0.28	0.29	0.29	0.29	0.00	0.00	0.00	0.00
Papua New Guinea	0.11	0.11	0.11	0.11	0.00	0.00	0.00	0.00
Thailand	0.07	0.07	0.07	0.07	0.00	0.00	0.00	0.00
Sri Lanka	0.07	0.07	0.07	0.07	0.00	0.00	0.00	0.00
Mexico	0.04	0.05	0.04	0.05	0.01	25.00	0.00	0.00
Solomon Islands	0.03	0.03	0.03	0.03	0.00	0.00	0.00	0.00
Cote d'Ivoire	0.03	0.03	0.03	0.03	0.00	0.00	0.00	0.00
World	5.77	6.01	5.86	6.01	0.15	2.56	0.00	0.00
Oilseed, Palm Kernel								
Indonesia	11.46	11.40	11.60	11.60	0.00	0.00	0.20	1.75
Malaysia	4.34	4.45	4.75	4.80	0.05	1.05	0.35	7.87
Nigeria	0.82	0.90	0.90	0.90	0.00	0.00	0.00	0.00
Thailand	0.79	0.83	0.86	0.86	0.00	0.00	0.03	3.61
Colombia	0.29	0.31	0.34	0.34	0.00	0.00	0.03	9.68
Guatemala	0.17	0.18	0.18	0.18	0.00	0.00	0.00	0.00
Papua New Guinea	0.16	0.17	0.17	0.17	0.00	0.00	0.01	6.25
Honduras	0.13	0.16	0.16	0.16	0.00	0.00	0.00	0.00
Brazil	0.14	0.15	0.15	0.15	0.00	0.00	0.01	7.14
Cameroon	0.15	0.15	0.15	0.15	0.00	0.00	0.00	0.00
World	19.10	19.33	19.87	19.99	0.12	0.60	0.66	3.41
Oil, Palm								
Indonesia	43.50	43.20	45.50	45.50	0.00	0.00	2.30	5.32
Malaysia	17.85	18.15	18.80	19.00	0.20	1.06	0.85	4.68
Thailand	2.96	3.15	3.26	3.26	0.00	0.00	0.11	3.49
Colombia	1.56	1.75	1.84	1.84	0.00	0.00	0.09	5.14
Nigeria	1.28	1.40	1.40	1.40	0.00	0.00	0.00	0.00
Guatemala	0.87	0.88	0.91	0.91	0.00	0.00	0.03	3.41
Papua New Guinea	0.60	0.63	0.65	0.65	0.00	0.00	0.03	4.84
Honduras	0.45	0.60	0.60	0.60	0.00	0.00	0.00	0.00
Cote d'Ivoire	0.55	0.58	0.60	0.60	0.00	0.00	0.03	5.26
Brazil	0.55	0.55	0.57	0.57	0.00	0.00	0.02	3.64
World	73.08	73.83	77.22	77.43	0.21	0.27	3.60	4.88

World and Selected Countries and Regions

Table 17 Cotton Area, Yield, and Production

Country / Region	Area (Million hectares)				Yield (Kilograms per hectare)				Production (Million 480 lb. bales)				Change in Production			
	2020/21	Prel. 2021/22	2022/23 Proj.		2020/21	Prel. 2021/22	2022/23 Proj.		2020/21	Prel. 2021/22	2022/23 Proj.		From last month		From last year	
			Jan	Feb			Jan	Feb			Jan	Feb	MBales	Percent	MBales	Percent
World	31.37	32.31	31.92	31.38	774	780	787	794	111.49	115.71	115.40	114.37	-1.03	-0.89	-1.34	-1.16
United States	3.33	4.16	3.01	3.01	957	918	1,062	1,062	14.61	17.52	14.68	14.68	0.00	0.00	-2.84	-16.22
Total Foreign	28.04	28.16	28.91	28.37	752	759	759	765	96.89	98.19	100.72	99.69	-1.03	-1.02	1.50	1.53
South Asia																
India	13.29	12.15	13.00	12.70	452	437	444	437	27.60	24.40	26.50	25.50	-1.00	-3.77	1.10	4.51
Pakistan	2.20	2.00	1.80	1.80	445	653	448	472	4.50	6.00	3.70	3.90	0.20	5.41	-2.10	-35.00
China	3.20	3.10	3.00	3.00	2,014	1,882	2,032	2,068	29.60	26.80	28.00	28.50	0.50	1.79	1.70	6.34
South America																
Brazil	1.37	1.60	1.63	1.63	1,720	1,595	1,777	1,777	10.82	11.72	13.30	13.30	0.00	0.00	1.58	13.48
Argentina	0.41	0.48	0.43	0.40	717	680	666	653	1.35	1.50	1.30	1.20	-0.10	-7.69	-0.30	-20.00
Paraguay	0.01	0.01	0.01	0.01	416	416	416	416	0.02	0.02	0.02	0.02	0.00	0.00	0.00	0.00
Africa																
Burkina Faso	0.56	0.60	0.63	0.62	372	351	336	316	0.95	0.96	0.97	0.90	-0.07	-6.74	-0.06	-6.25
Mali	0.17	0.72	0.69	0.69	396	432	347	316	0.30	1.43	1.10	1.00	-0.10	-9.09	-0.43	-30.07
Cote d'Ivoire	0.45	0.47	0.46	0.41	494	486	393	292	1.01	1.05	0.83	0.55	-0.28	-33.73	-0.50	-47.62
Benin	0.62	0.64	0.62	0.58	513	483	492	492	1.45	1.42	1.40	1.30	-0.10	-7.14	-0.12	-8.45
Egypt	0.07	0.09	0.13	0.13	720	717	703	703	0.22	0.28	0.42	0.42	0.00	0.00	0.14	50.00
Cameroon	0.23	0.23	0.24	0.23	658	606	590	615	0.68	0.64	0.65	0.65	0.00	0.00	0.01	1.56
Tanzania	0.17	0.24	0.35	0.35	284	231	218	218	0.22	0.26	0.35	0.35	0.00	0.00	0.10	37.25
Nigeria	0.27	0.27	0.27	0.27	282	282	282	282	0.35	0.35	0.35	0.35	0.00	0.00	0.00	0.00
Zimbabwe	0.24	0.25	0.24	0.24	222	191	195	195	0.25	0.22	0.22	0.22	0.00	0.00	0.00	0.00
Ethiopia	0.08	0.08	0.08	0.08	637	637	637	637	0.24	0.24	0.24	0.24	0.00	0.00	0.00	0.00
Former Soviet Union - 12																
Uzbekistan	1.06	1.06	1.07	1.07	653	555	549	549	3.18	2.70	2.70	2.70	0.00	0.00	0.00	0.00
Turkmenistan	0.55	0.55	0.55	0.55	368	356	356	356	0.92	0.90	0.90	0.90	0.00	0.00	0.00	0.00
Tajikistan	0.16	0.17	0.17	0.17	619	608	615	615	0.46	0.48	0.48	0.48	0.00	0.00	0.01	1.05
Kazakhstan	0.11	0.12	0.13	0.13	534	502	523	523	0.27	0.27	0.30	0.30	0.00	0.00	0.04	13.21
Middle East																
Turkey	0.35	0.45	0.56	0.56	1,804	1,839	1,922	1,922	2.90	3.80	4.90	4.90	0.00	0.00	1.10	28.95
Syria	0.03	0.03	0.03	0.03	1,219	1,132	1,132	1,132	0.14	0.13	0.13	0.13	0.00	0.00	0.00	0.00
Iran	0.10	0.10	0.10	0.10	871	871	871	871	0.40	0.40	0.40	0.40	0.00	0.00	0.00	0.00
Australia	0.28	0.60	0.50	0.50	2,217	2,087	2,177	2,177	2.80	5.75	5.00	5.00	0.00	0.00	-0.75	-13.04
Mexico	0.15	0.15	0.20	0.20	1,532	1,725	1,524	1,470	1.02	1.22	1.40	1.35	-0.05	-3.57	0.13	10.66
Burma	0.24	0.25	0.25	0.25	635	644	644	644	0.70	0.73	0.73	0.73	0.00	0.00	0.00	0.00
Others	1.73	1.77	1.79	1.69	575	559	539	567	4.56	4.54	4.44	4.41	-0.03	-0.68	-0.13	-2.88

World and Selected Countries and Regions

TABLE 18

The table below presents a record of the February projection and the final Estimate. Using world wheat production as an example, the "root mean square error" means that chances are 2 out of 3 that the current forecast will not be above or below the final estimate by more than 0.6 percent. Chances are 9 out of 10 (90% confidence level) that the difference will not exceed 0.9 percent. The average difference between the February projection and the final estimate is 2.5 million tons, ranging from 0.0 million to 7.3 million tons. The February projection has been below the estimate 31 times and above 10 times.

RELIABILITY OF PRODUCTION PROJECTIONS 1/

COMMODITY AND REGION	Root mean square error	90 percent confidence interval	Difference between forecast and final estimate				
			Average	Smallest	Largest	Years	
						Below final	Above final
	Percent		---Million metric tons---				
WHEAT							
World	0.6	0.9	2.5	0.0	7.3	31	10
U.S.	0.2	0.3	0.1	0.0	0.3	19	11
Foreign	0.6	1.1	2.5	0.0	7.3	31	10
COARSE GRAINS 2/							
World	1.3	2.2	11.2	0.0	36.3	33	8
U.S.	0.2	0.3	0.2	0.0	1.8	18	10
Foreign	1.8	3.1	11.3	0.0	36.3	31	9
RICE (Milled)							
World	1.5	2.6	4.3	0.1	14.0	32	9
U.S.	1.4	2.4	0.0	0.0	0.3	12	6
Foreign	1.5	2.6	4.3	0.1	14.0	32	9
SOYBEANS							
World	2.7	4.5	4.4	0.4	15.3	23	18
U.S.	1.4	2.3	0.7	0.0	3.2	18	17
Foreign	4.5	7.6	4.4	0.3	14.9	25	16
COTTON			---Million 480-lb. bales---				
World	2.4	4.0	1.8	0.0	5.4	29	12
U.S.	1.1	1.8	0.1	0.0	0.3	14	26
Foreign	2.8	4.8	1.8	0.1	5.7	29	12
UNITED STATES			-----Million bushels-----				
<i>CORN</i>	0.2	0.3	7	0	72	2	5
<i>SORGHUM</i>	0.1	0.2	0	0	4	0	2
<i>BARLEY</i>	1.0	1.6	1	0	11	20	4
<i>OATS</i>	0.4	0.7	0	0	2	5	4

1/ Marketing years 1981/82 through 2021/22 for grains, soybeans, and cotton. Final for grains, soybeans, and cotton is defined as the first November estimate following the marketing year for 1981/82 through 2020/21, and for 2021/22 the last month's estimate.

2/ Includes corn, sorghum, barley, oats, rye, millet, and mixed grain

February 2023

Global Market Analysis, FAS, USDA