



United States
Department of
Agriculture

Foreign
Agricultural
Service

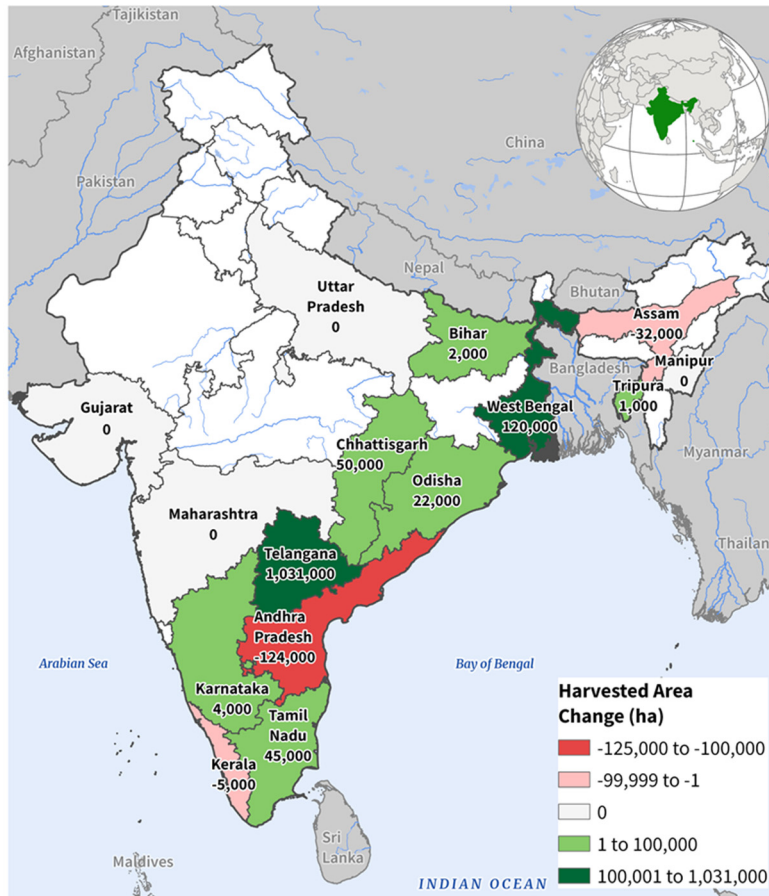
Circular Series
WAP 3-23
March 2023

World Agricultural Production

India Rice: Production Revised to Record Levels Due to Larger *Rabi* Crop

USDA estimates India rice production for marketing year 2022/23 at a record 132.0 million metric tons (mmt) (milled basis), up 6 percent from last month and 2 percent from 2021.

India: *Rabi* Rice Harvested Area Change 2021-22 vs 2022-23

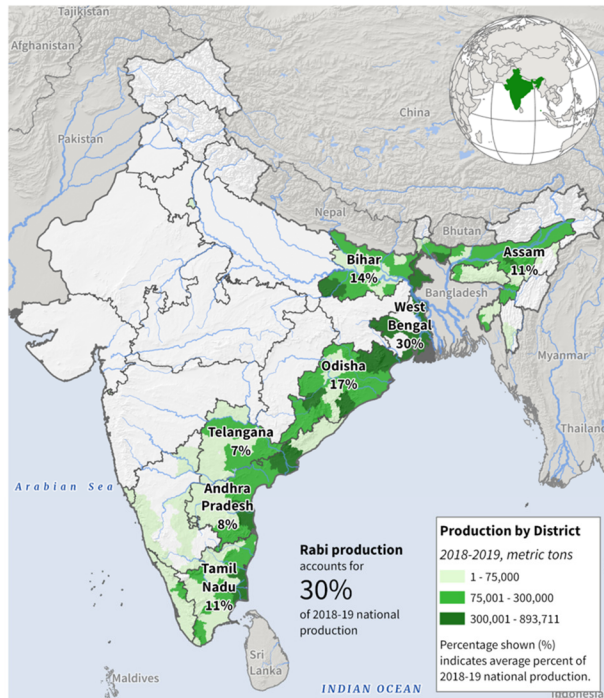


Source: India National Government, Directorate of Rice Development

Harvested area is estimated at a record 47.0 million hectares (mha), up 3 percent from last month, and up 2 percent from last year. Yield is expected to reach 4.21 tons per hectare (t/ha), up 2 percent from last month and up slightly from 2021.

Approved by the World Agricultural Outlook Board

India: Rabi Rice Production

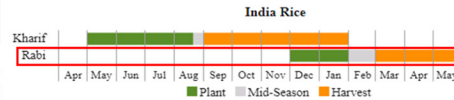
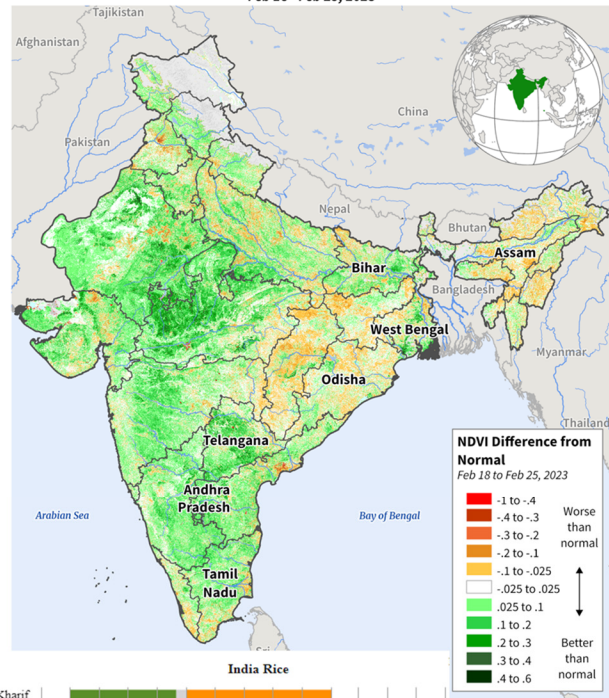


USDA Foreign Agricultural Service
U.S. DEPARTMENT OF AGRICULTURE

Source: India Ministry of Agriculture, Directorate of Economics and Statistics, Market Year 2018/19 data by districts

India: NDVI Difference From Normal

Feb 18 - Feb 25, 2023



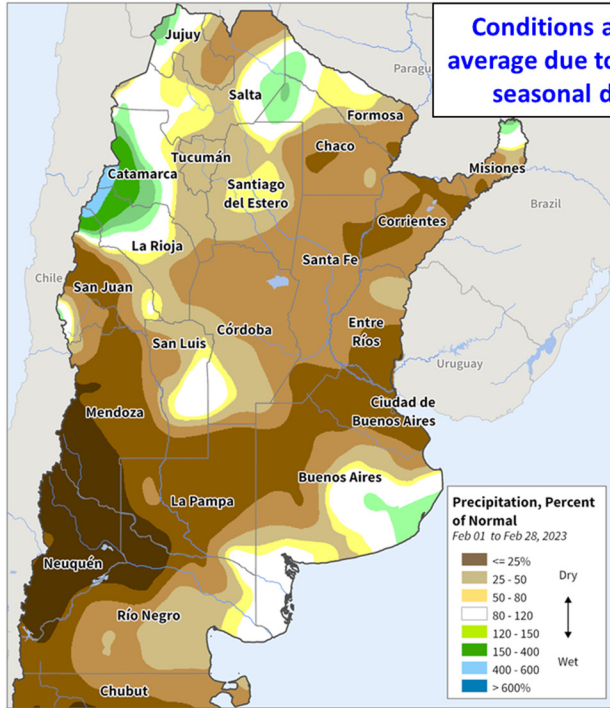
Source: NASA GLAM MODIS NDVI Data

Rabi planting, which accounts for 30 percent of total production, increased 25 percent, offsetting losses that occurred during the *kharif* growing season. Dry conditions in Northern and Eastern India resulted in planted area decreasing by 1 percent in the *kharif* season. In contrast, the *rabi* crop benefited from ideal growing conditions and increased area. Most of the *rabi* area increase was in Telangana (up 125 percent), and West Bengal (up 32 percent). Farmers planted on time in October with good soil moisture and had adequate fertilizer. Most of this crop is irrigated. Reservoirs as of the end of February were at least 80 percent of capacity. Rice should currently be entering grain development. Satellite-derived, Normalized Difference Vegetation Index (NDVI) indicates crop vigor is above average. Harvest of the *rabi* crop will start in March and end in late April. (For more information, please contact Arnella.Trent@usda.gov).

Argentina Corn: Heat and Dryness Reduces Production for Late-Planted Corn

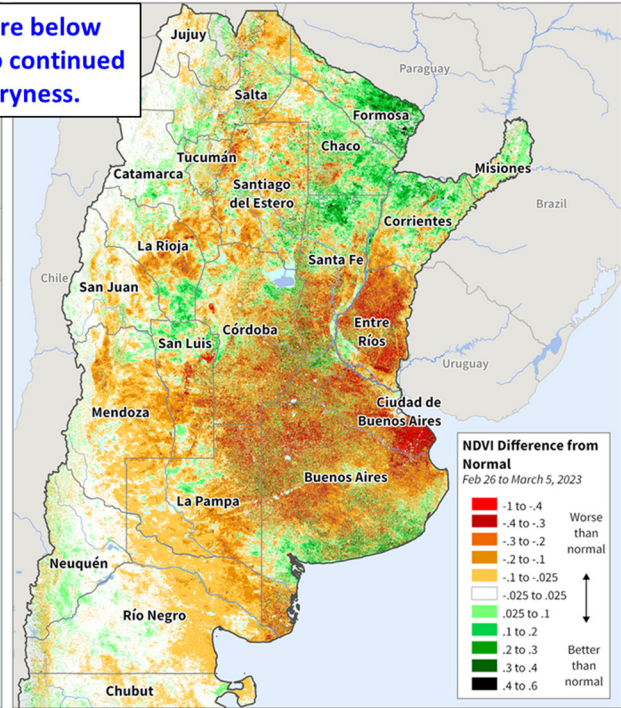
Argentina corn production for marketing year 2022/23 is forecast at 40.0 million metric tons, down 15 percent from last month, and down 19 percent from last year. Corn yield is forecast at 5.97 tons per hectare, down 15 percent from last month, and down 14 percent from last year. Harvested area is estimated at 6.7 million hectares, unchanged from last month, and down 6 percent from last year.

Argentina Percent of Normal Precipitation, 1-Month (CPC)
February 1-28, 2023



Source: NOAA/CPC
<http://www.cpc.ncep.noaa.gov/>

Argentina NDVI Difference From Normal
February 26 to March 5, 2023



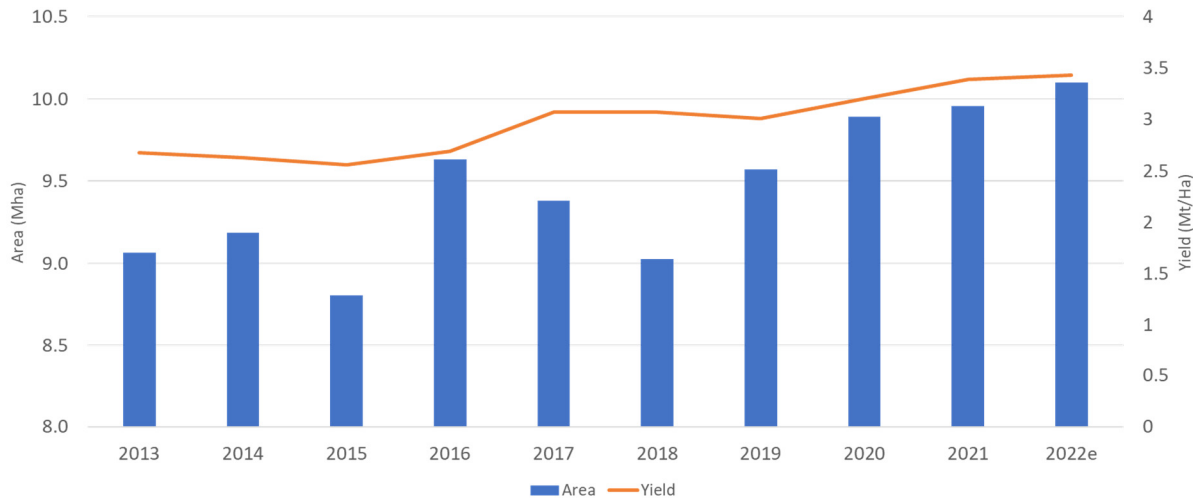
Source: NDVI MODIS Terra at 250-m
<https://modis.land.gsfc.nasa.gov/>

Yield is down month-to-month due to heat and dryness that impacted the late-planted corn, which accounts for roughly two-thirds of area. Dryness throughout February and temperatures above 35 degrees Celsius damaged the tasseling corn. Additionally, the decrease year-to-year in vegetation biomass has been observed in the MODIS satellite imagery. This year, Córdoba province (33 percent of production) is doing better than Santa Fe province (13 percent of production) but both have been impacted by the hot and dry conditions. Late-planted corn is sown from December through February and enters the critical yield period from January through March. Harvest for corn will begin in late March. (For more information, please contact Katie.McGaughey@usda.gov.)

India Corn: Record Production

USDA estimates 2022/23 India corn production at a record of 34.6 million metric tons, up 8 percent from last month and 3 percent from 2021. Harvested area is estimated at a record 10.1 million hectares, up 1 percent from last month and last year due to higher prices. Yield is estimated at a record 3.43 metric tons per hectare, up 7 percent from last month and 1 percent from last year.

MY 2022/23 India Corn Area at Record

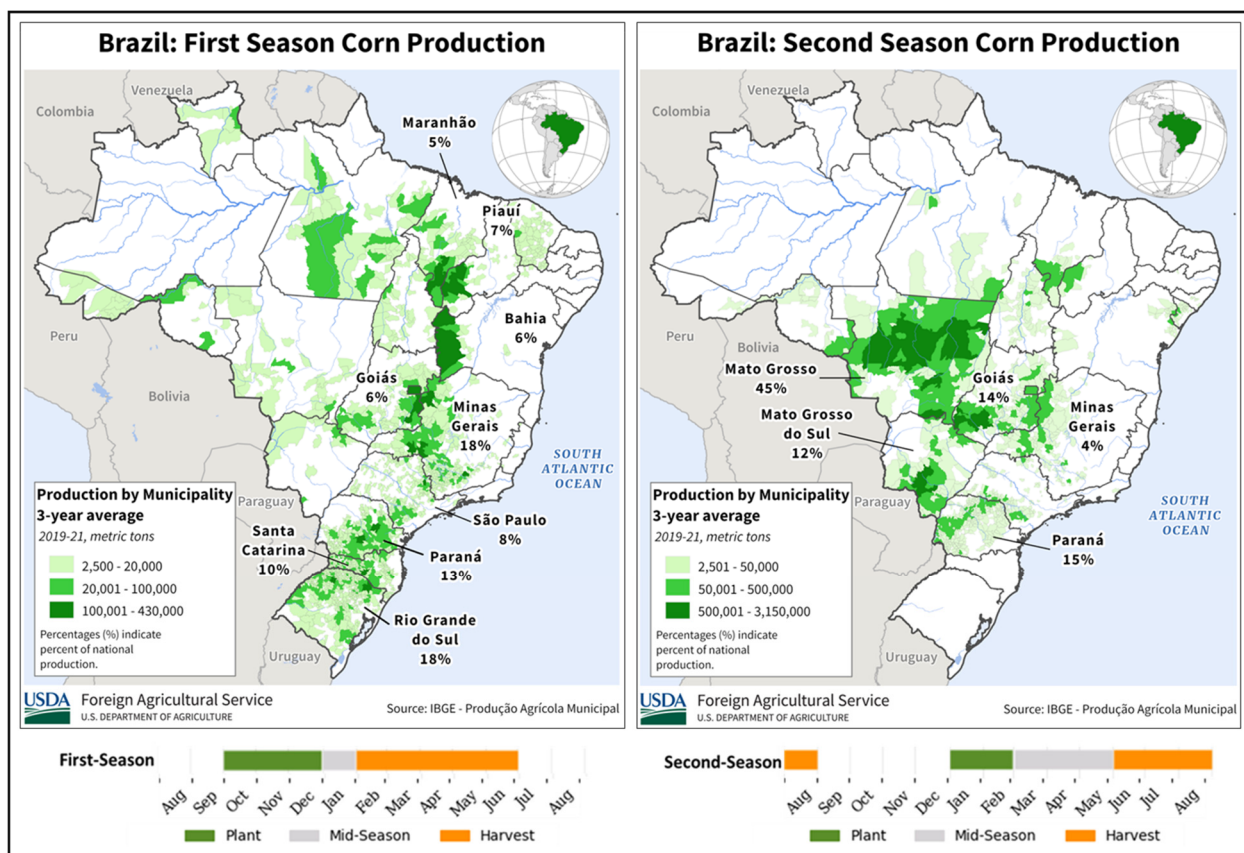


Source: USDA PSD Online

Corn is grown both in the *kharif*, which accounts for 70 percent of the total production, and the *rabi* seasons. Planting for the *kharif* crop starts with the onset of the southwest monsoon in June, and planting for the *rabi* crop starts in November. *Rabi* corn is predominantly grown on irrigated fields. Reservoirs were at least 80 percent of capacity at planting. The final planting progress from the Ministry of Agriculture Planting Progress (February 2, 2023) reported *rabi* planting up 16 percent from the same period last year and 18 percent above the 5-year average. The crop progressed under ideal growing conditions. The satellite-derived Normalized Difference Vegetation Index (NDVI) show crop vigor above average. The corn crop is currently at the tasseling stage. Harvest should begin in late March for the *rabi* crop. (For more information, please contact Arnella.Trent@usda.gov).

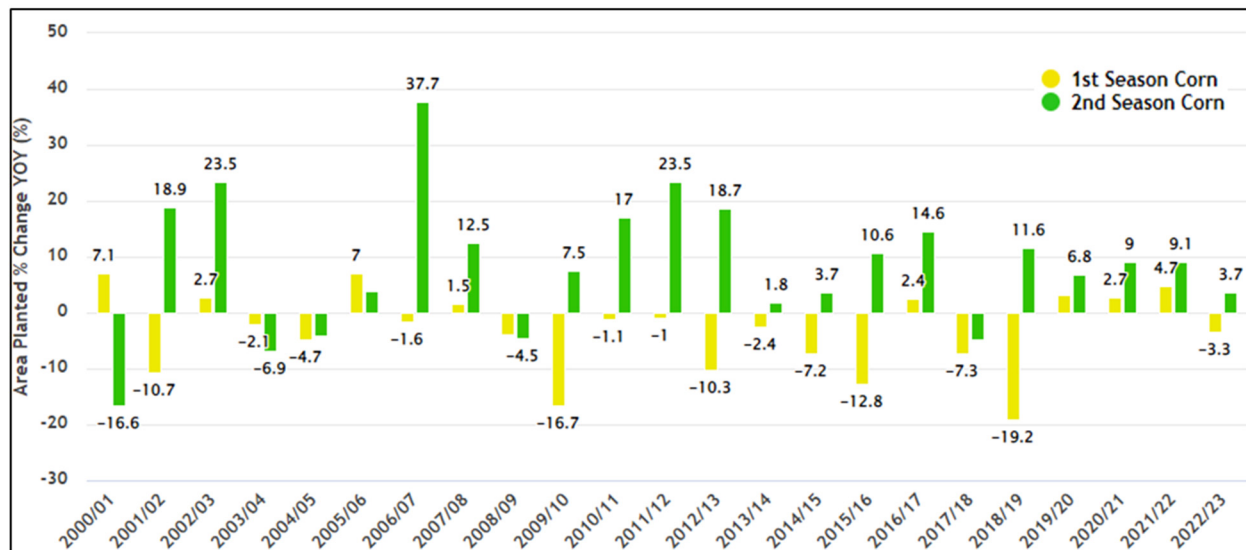
Brazil Corn: Planting Delayed in Several *Safrinha* Producing States; Production Unchanged

Brazil total corn production for marketing year (MY) 2022/23 is estimated at a record 125.0 million metric tons (mmt), unchanged from last month, and larger than last year's crop by 9.0 mmt (8 percent). Total harvested area, for all three corn crops, is estimated at a record 22.7 million hectares (mha), up 1 mha (4 percent) from last year. Yield is estimated at 5.51 tons per hectare, 3 percent above last year's crop, and 6 percent above the 5-year average.



Harvest started for the first-season crop (20 percent of total production) and is currently at 17 percent complete versus last year's 23 percent complete at this stage, as reported by the *Companhia Nacional de Abastecimento* (CONAB). First-season corn area is estimated by CONAB at 4.4 mha, about 152,000 hectares below last year's area. Production for this crop is estimated at 26.5 mmt by CONAB. Sufficient rainfall benefitted crop progression in most areas with the exception of the state of Rio Grande do Sul. Prolonged dry periods occurred during critical pollination and grain-filling stages, thus reducing potential yields. Recent rainfall will provide relief to the later-maturing crop.

Brazil Corn Area: Annual Percentage Change for First and Second Crop



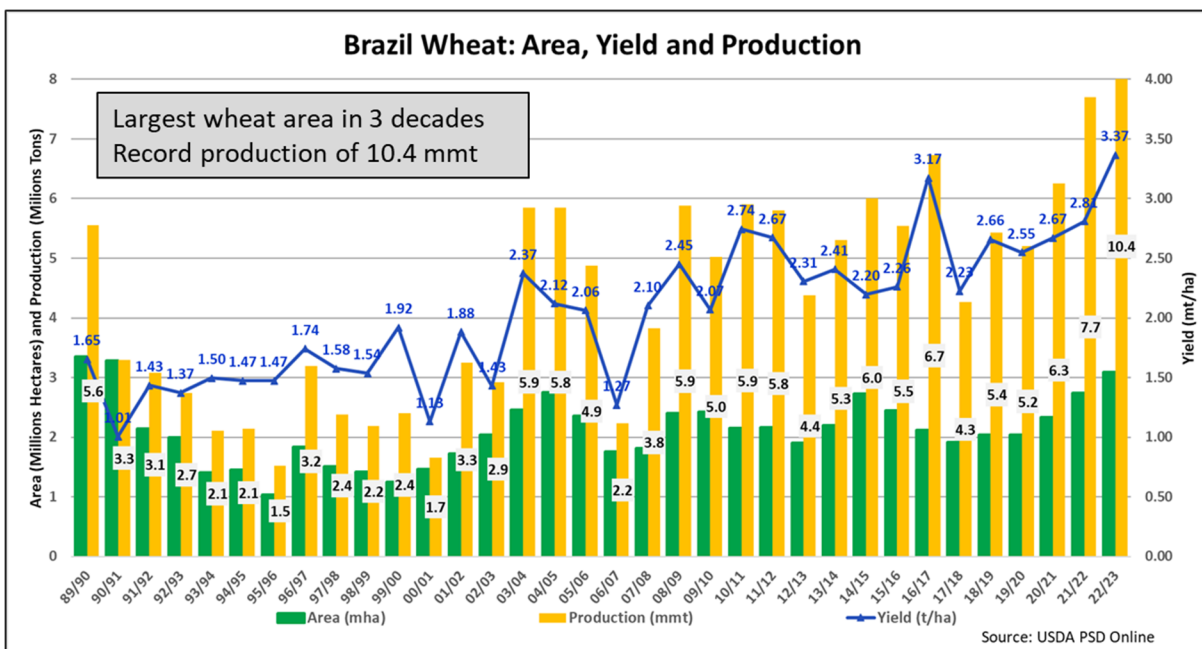
- 1st crop area reduced by -152,000 hectares in MY 22/23 from last year
- 2nd crop area increased by 602,000 hectares in MY 22/23 from last year

Source: CONAB

Second-crop planting has been progressing at a slower pace than average in several center-west states because of excessively wet conditions due to well-above-average rainfall. This situation limits fieldwork and is delaying the soybean harvest in Mato Grosso and Paraná. Based on reporting from CONAB and the *Instituto Mato-Grossense de Economia Agropecuária* (IMEA), about 70 to 75 percent of the *safrinha* crop will be planted within the “ideal” window, with the late planted crop potentially at greater risk if rainfall is insufficient towards the end of the season. In southern states such as Mato Grosso do Sul and Paraná, frosts before harvest can also pose a risk to a late planted crop.

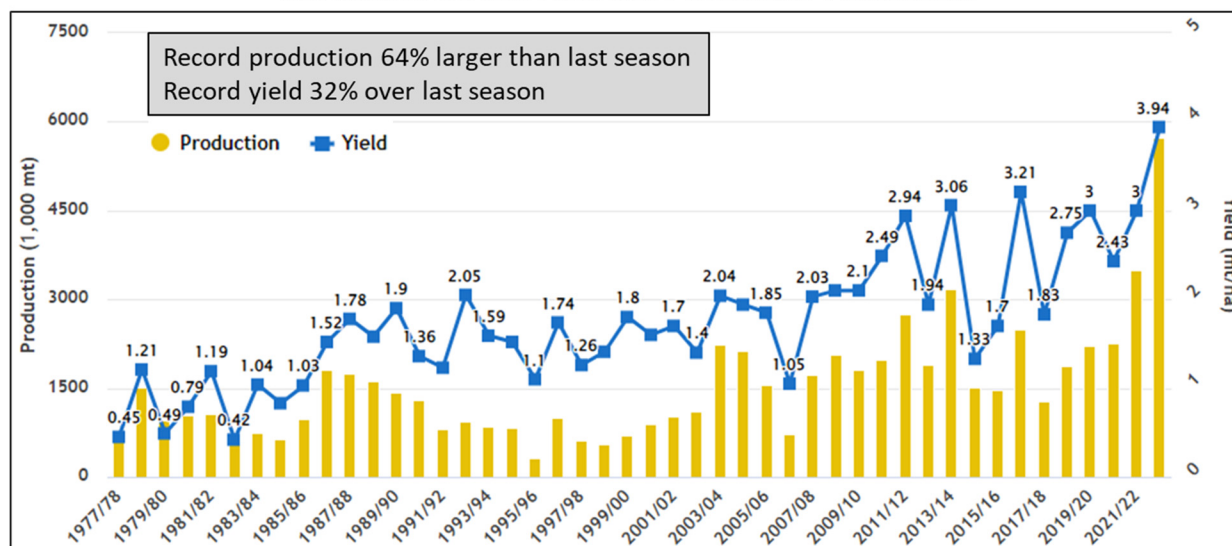
Area for the second-season crop is at a record 16.9 mha (about 4 percent greater than last year) with production of 95.0 mmt per CONAB. The largest area increase is in the state of Mato Grosso (about 46 percent of second crop production) of over 400,000 hectares with a projected output of 44.1 mmt (77 percent of total production). The second crop corn is harvested from June to September. (For more information, please contact Sunita.Yadav-Pauletti@usda.gov.)

Brazil Wheat: Record Production Surpasses 10 Million Tons in MY 2022/23



Brazil wheat production for marketing year 2022/23 is estimated at a record 10.4 million metric tons (mmt), 5 percent higher than last month, and higher by 2.7 mmt (35 percent) from last season's record crop. Harvested area is estimated at 3.1 million hectares (mha), up 0.4 mha (13 percent) from last season's area and the largest wheat area in 3 decades. Yield is estimated at a record 3.37 tons per hectare (t/ha), 20 percent higher than last season. Brazil's wheat has been harvested. The month-to-month yield change is based on harvest data from official sources.

Rio Grande do Sul: Yield and Production Time Series



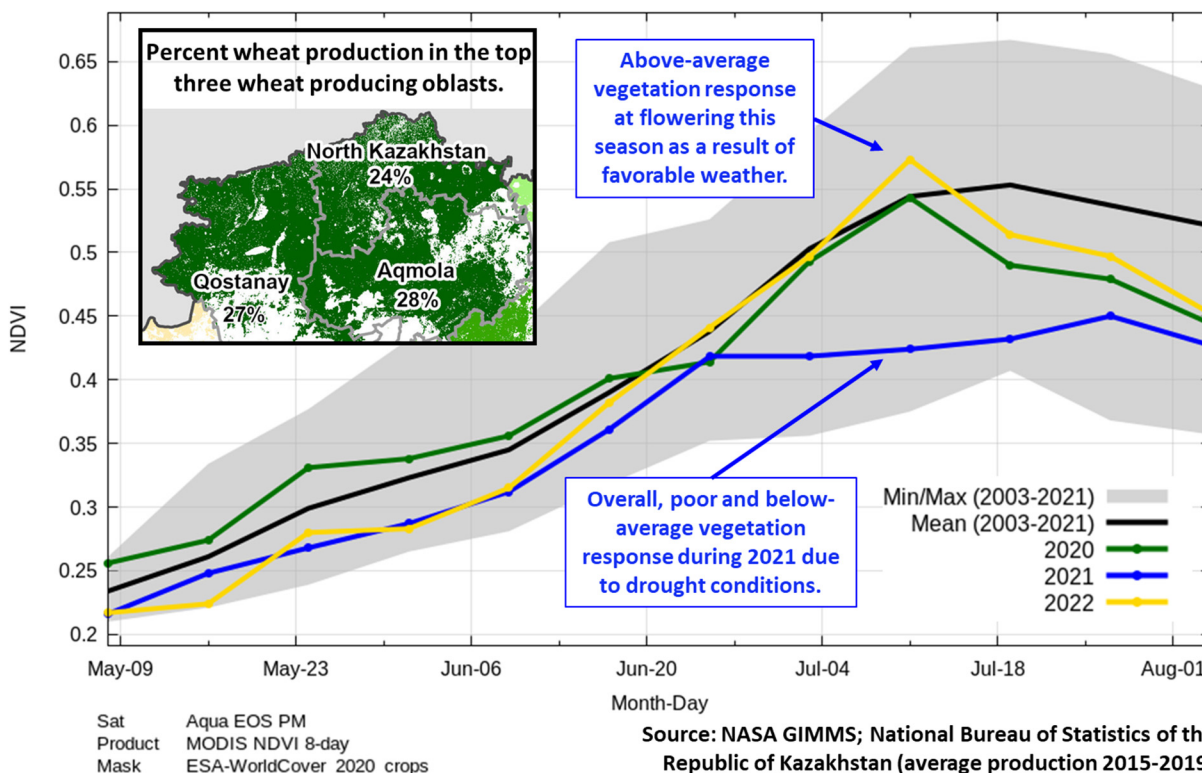
For a second consecutive season, Brazil harvested a record wheat crop. This was possible due to the large area increases in southern Brazil and weather remaining mostly favorable. The largest

wheat producing state, Paraná (roughly 44 percent of the national total production), had some losses in yield due to frost in late August. However, the second largest wheat producer, Rio Grande do Sul (roughly 40 percent of national production), planted the largest area in 42 years and escaped the trifecta of threats that normally beset wheat in Brazil – drought during flowering or grain-fill, an ill-timed frost, or rains during harvest. Rio Grande do Sul was fortunate to have favorable weather during the entire season resulting in a record production over 5 million tons as reported by the Technical Assistance and Rural Extension of Rio Grande do Sul (EMATER-RS). Additionally, the state of São Paulo, the fourth largest producer nationally, also reported a record wheat crop over 400,000 tons. (For more information, please contact Sunita.Yadav-Pauletti@usda.gov.)

Kazakhstan Wheat: Yield-Driven Production Increase Due to Favorable Weather

Kazakhstan wheat production for marketing year 2022/23 is estimated at 16.4 million metric tons (mmt), up 17 percent from last month and 39 percent from last year. Wheat yield is estimated at 1.28 tons per hectare (t/ha), up 16 percent from last month and 38 percent from last year. Harvested area is estimated at 12.8 million hectares (mha), up less than 1 percent from last month and from last year.

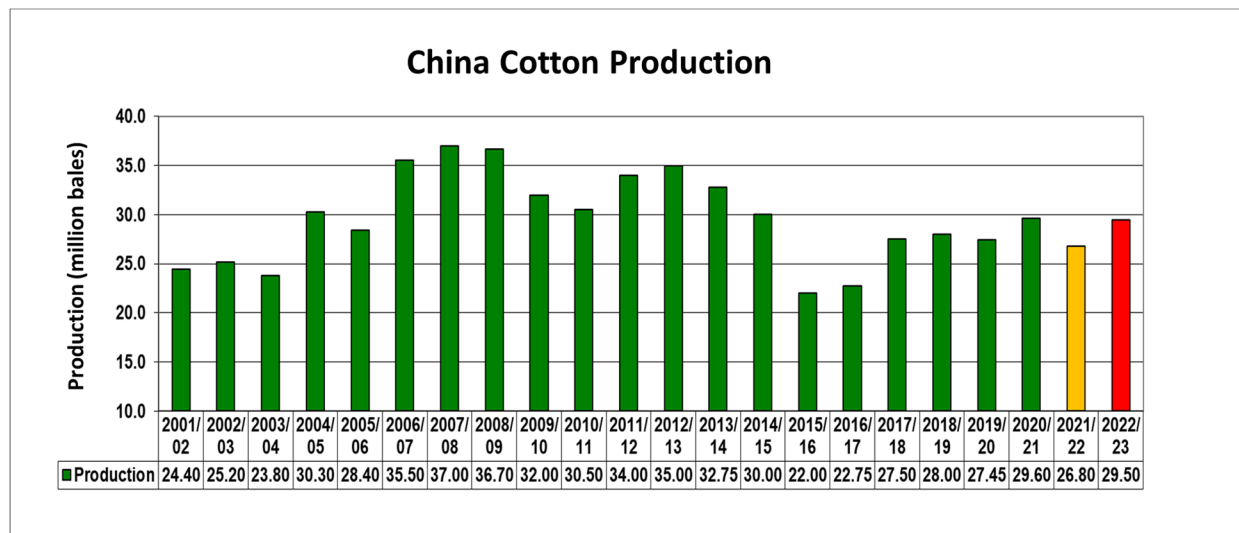
MODIS, 8-day Normalized Difference Vegetation Index (NDVI) time series over the major wheat producing area in Kazakhstan



The production increase this month is based on officially published data from the National Bureau of Statistics of the Republic of Kazakhstan. The agency released its final 2022 numbers for all major crops on January 31, 2023. This year’s wheat production is the second largest after the 2011

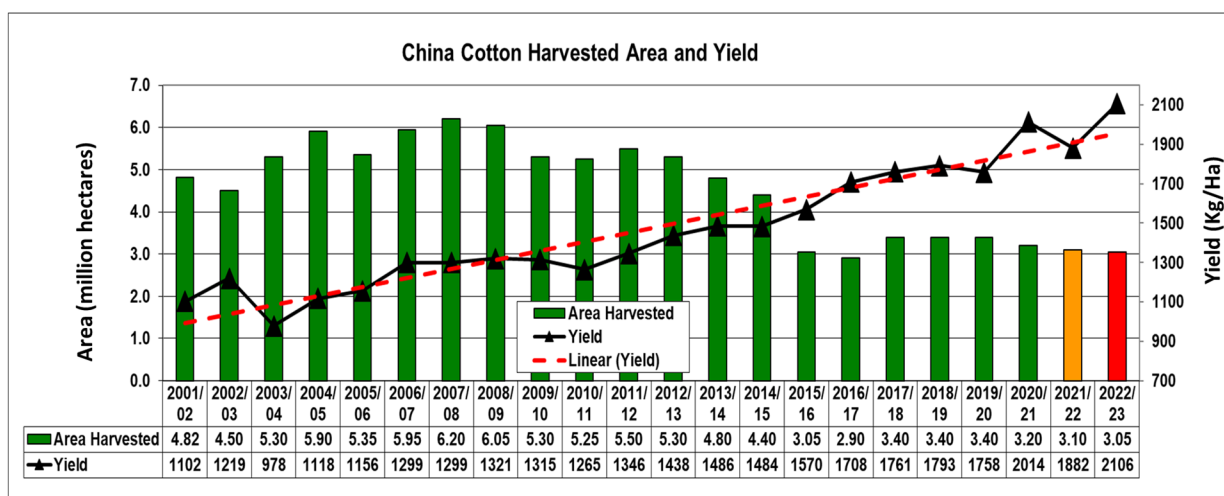
record of 22.7 mmt. The reported year-to-year increase is driven by yield improvements owing to favorable weather and sufficient precipitation during the growing season across the major northern grain producing oblasts of North Kazakhstan, Qostanay, and Aqmola. Timely July precipitation aided crop development during key yield formation stages. As a result, this season's vegetation response tracked along the average and slightly above average indicating improved yield relative to the drought-stricken 2021 crop. Major wheat producers in Kazakhstan reported higher harvests and better yields this season, according to FAS-Astana. *(For more information, please contact Iliana.Mladenova@usda.gov.)*

China Cotton: Production Increased Due to Record Yields



Source: USDA PSD Online

USDA estimates China's marketing year (MY) 2022/23 cotton production at 29.5 million 480-pound bales (6.4 million metric tons), up 1.0 million bales or 4 percent from last month, up 10 percent from last year, and 6 percent from the 5-year average of 27.9 million bales. Harvested area is estimated at 3.05 million hectares (mha), up 2 percent from last month but down 2 percent from last year and 8 percent from the 5-year average of 3.3 mha. Yield is estimated at a record 2,106 kilograms per hectare (kg/ha), up 2 percent from last month, 12 percent from last year, and 14 percent above the 5-year average of 1,842 kg/ha. Yield is significantly above the long-term trend due to the increasing quantity of cotton produced in Xinjiang province, where yield has nearly doubled compared to elsewhere in the country. Approximately 85 percent of total China cotton is now produced in Xinjiang province. Most of the major cotton estimates from industry sources are indicating higher-than-expected yields resulting in significant adjustment of production numbers.

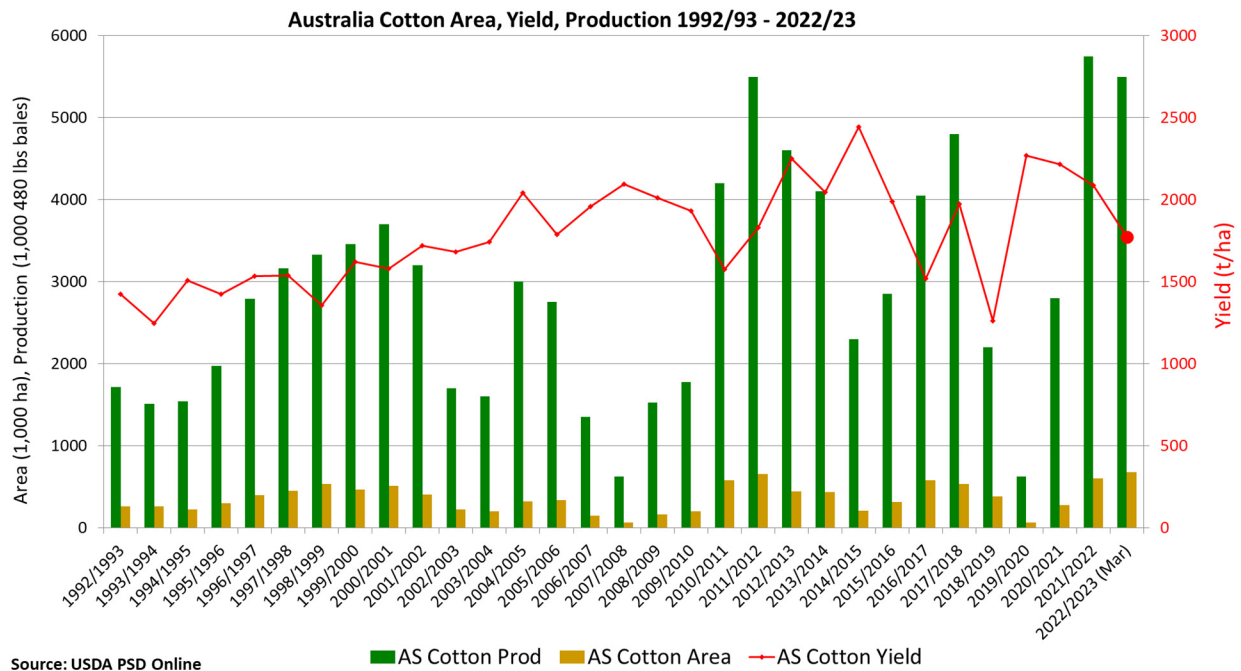


Source: USDA PSD Online

Harvest was completed in October; the typical cotton growing season is April to October. In Xinjiang, planting starts in April while on the North China Plain, the Yellow River and Yangtze River basins, planting begins in late April and extends through May. The MY 2022/23 season was characterized by favorable growing conditions and good irrigation water availability throughout a major part of the season. These conditions facilitated rapid planting and early crop establishment in Xinjiang resulting in above-average yields. In addition to the favorable planting conditions, farmers were also encouraged by the government's continuation of the target price-based cotton subsidy. On March 26, 2020, China's National Development and Reform Commission (NDRC) published a notice stating that the target price-based subsidy will continue through 2023. The year-to-year cotton national area decline was due to decreases in the Yangtze and Yellow River basins, which offset an increase in Xinjiang. However, the significant year-to-year yield increase more than offset the planted area reduction, resulting in increased production. *(For more information, please contact Dath.Mita@usda.gov.)*

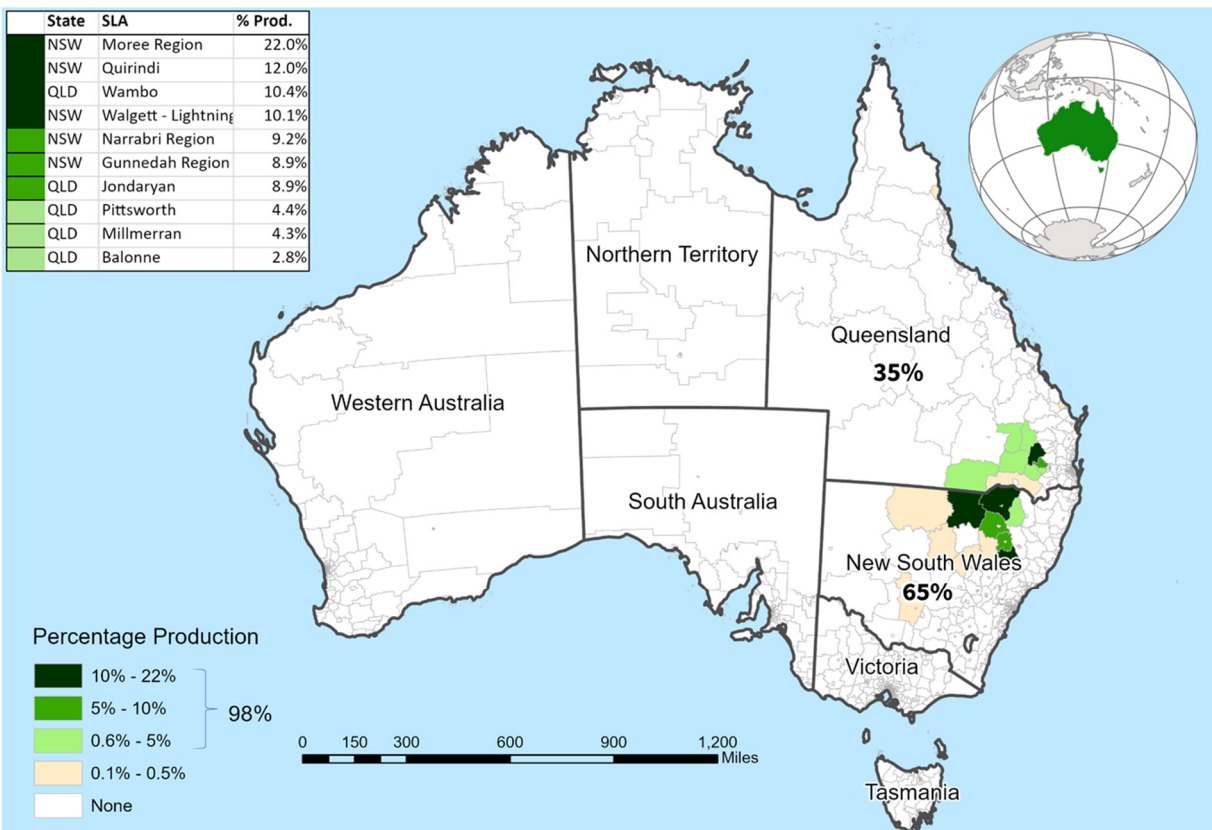
Australia Cotton: Production Revised Up Due to Record Area

Australia's marketing year (MY) 2022/23 cotton production is forecast at 5.5 million 480-pound bales, up 0.5 million bales from last month, but down 0.25 million bales or 4 percent from last year. The production forecast is second only to the record set last season in MY 2021/22 and similar to that of MY 2011/12. Harvested area is estimated at a record 675,000 hectares (ha), up 175,000 ha or 35 percent from last month, and up 75,000 ha or 13 percent from last year. Yield is forecast at 1,774 kilograms per hectare, down 19 percent from last month and 15 percent from last year. Yield is expected to decrease year-to-year because of an estimated increase in the share of the total area sown to dryland cotton this season as compared to last. Dryland cotton yields are substantially lower than irrigated yields. Irrigated cotton area comprises about 90 percent of Australia's total cotton production.



Dryland cotton planting tends to vary with the seasonal weather forecast and prices at sowing, and dryland area rose above the previous year's already elevated to reach a new record. Above-average rainfall this season prior to sowing increased water storages for irrigated cotton and provided adequate soil moisture in dryland cotton areas. Irrigated cotton area is estimated higher, reflecting increased water storage levels in reservoirs supplying cotton growing regions. Also, higher world cotton prices at sowing motivated producers to expand total plantings.

Australia: Cotton Production



USDA Foreign Agricultural Service
U.S. DEPARTMENT OF AGRICULTURE

Data Source: ABS Ag Census with 2016 SLA boundaries (SA2)
Average percent production of 2005/06, 2010/11 and 2015/16

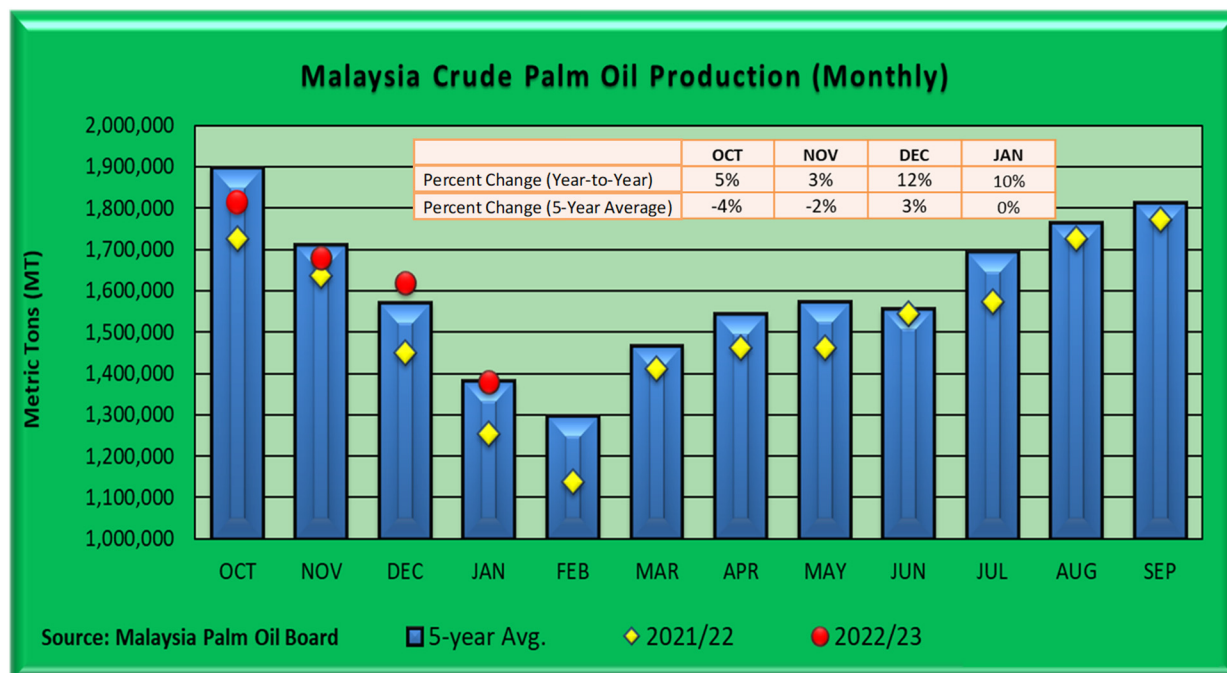
Sorghum and cotton are the two dominant summer crop options in eastern Australia. Cotton planting began in September with October being the primary planting month. Typically, harvest begins in March and peaks in April. The two major cotton producing states are New South Wales (65 percent) and Queensland (35 percent) based on the current 5-year average. *(For more information, please contact James.Crutchfield@usda.gov.)*

Malaysia Palm Oil: Estimated Production Revised Up

USDA estimates Malaysia palm oil production for marketing year (MY) 2022/23 at 19.2 million metric tons, up 1 percent from last month and 6 percent from last year. Harvested area estimate remains unchanged at a record 5.5 million hectares, up 1 percent from last year. Yield is estimated at 3.49 tons per hectare, up 1 percent from last month and 5 percent from last year.

Malaysia palm oil harvest operations are continuing to benefit from a reduction in the migrant labor shortage, returning back to pre-COVID levels. During peak COVID, harvest operations in both MY 2020/21 and MY 2021/22 were impeded by a shortage of migrant laborers due to border closures, and as a result, palm oil production dropped to its lowest output since MY 2015/16.

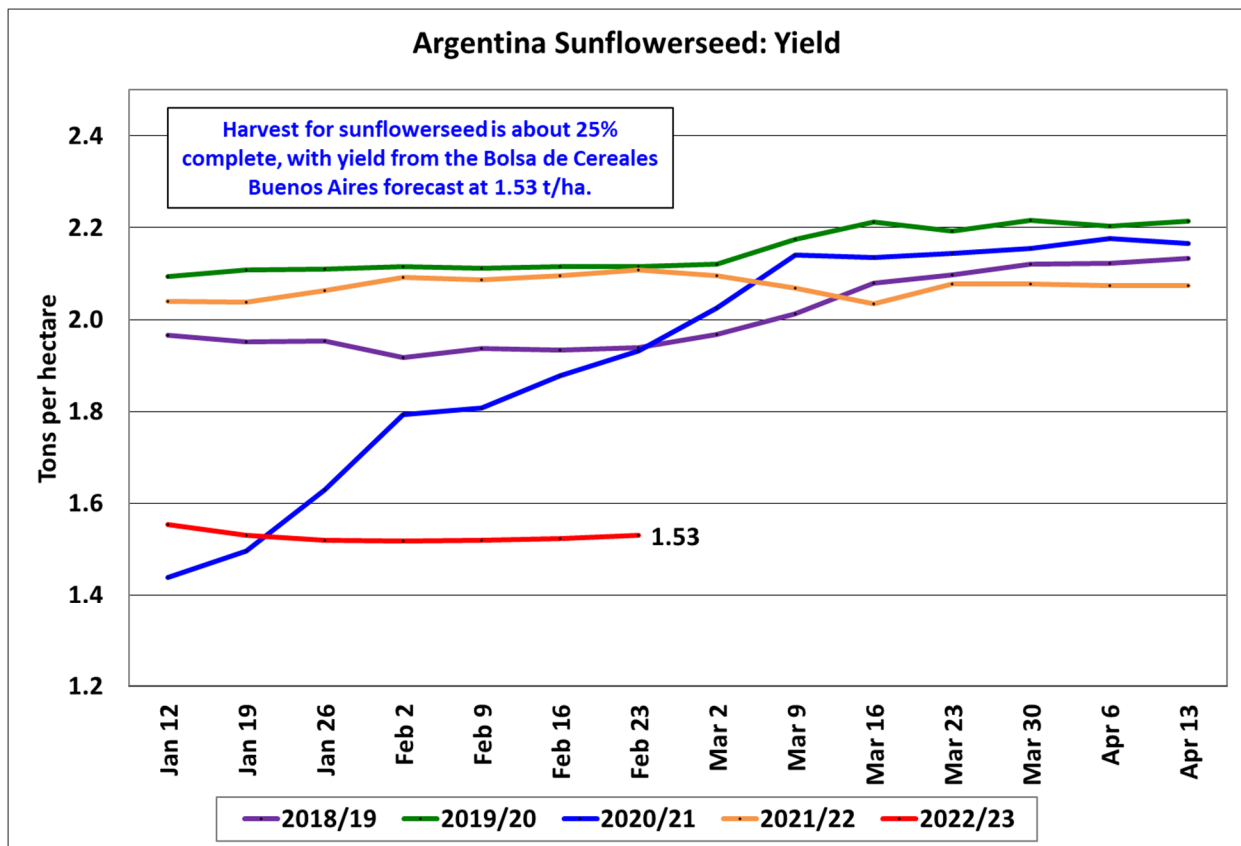
According to the Malaysia Palm Oil Board, the latest Malaysia Crude Palm Oil data released for the month of January was estimated 10 percent up from last year’s January estimate, but on par with the January 5-year average.



USDA’s marketing year for Malaysia palm oil is October through September. According to the Malaysian Palm Oil Board, aggregated monthly crude palm oil output from October 2022 to January 2023 is 6 percent below the 5-year average. *(For more information, please contact Justin.Jenkins@usda.gov.)*

Argentina Sunflowerseed: Heat and Dryness Reduces Production

Argentina sunflowerseed production for marketing year 2022/23 is estimated at 3.8 million metric tons, down 14 percent from last month, and down 6 percent from last year. Sunflowerseed yield is estimated at 1.73 tons per hectare, down 14 percent from last month, and down 16 percent from last year. Harvested area is estimated at 2.2 million hectares, unchanged from last month, but up 12 percent from last year.



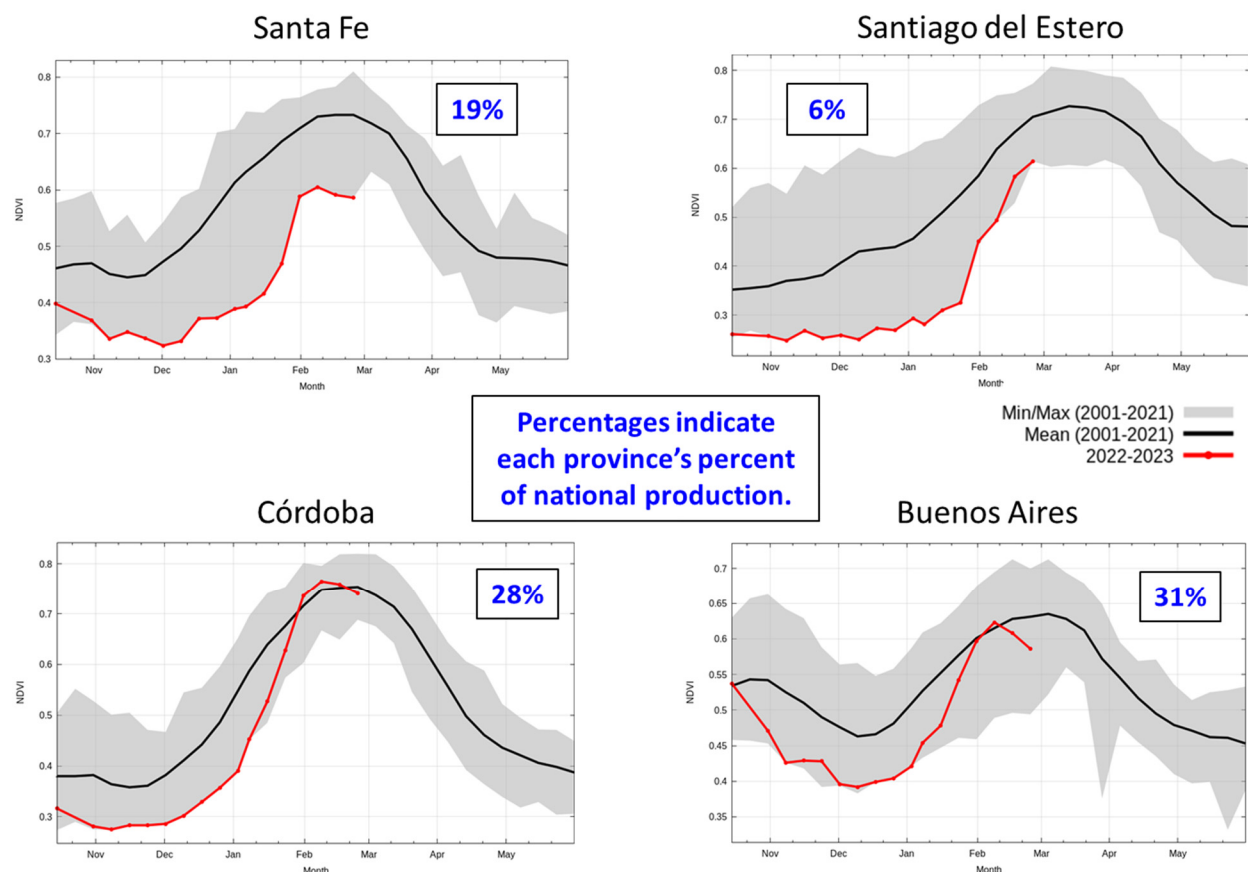
Source: Argentina Bolsa de Cereales Buenos Aires

Sunflowers in Argentina are concentrated in three provinces: Buenos Aires (53 percent of production), Chaco (17 percent) and Santa Fe (13 percent). Yield is down month-to-month due to heat and dryness that impacted the crop throughout the growing season. Sunflowers are generally a more drought tolerant crop, but estimated soil moisture is at an all-time low after three continuous years of La Niña. Harvest has begun and is about a quarter complete. Early harvest results from the Argentina Bolsa de Cereales in Buenos Aires indicate below-average yield. Harvesting begins in northern Argentina and proceeds southward with the higher-yielding province of Buenos Aires harvested last. Generally, the Bolsa de Cereales Buenos Aires yield is within 5 percent to the Ministry of Agriculture’s final yield. Harvest will continue until April. *(For more information, please contact Katie.McGaughey@usda.gov.)*

Argentina Soybeans: Production Down due to Heat and Dryness

Argentina soybeans production for marketing year 2022/23 is estimated at 33.0 million metric tons, down 20 percent from last month, and down 25 percent from last year. Soybean yield is estimated at 2.13 tons per hectare, down 17 percent from last month, and down 23 percent from last year. Harvested area is estimated at 15.5 million hectares, down 3 percent from last month, and down 3 percent from last year.

MODIS, 8-day Normalized Difference Vegetation Index (NDVI) Time Series over Major Soybean Area in Argentina



Source: NASA GIMMS MODIS NDVI, with ESA WorldCover 2020 crop mask

Planting for both first and second soybean is complete. Yield is down month-to-month because of dry and hot conditions throughout February that impacted the second soybean crop during flowering. The satellite-derived Normalized Difference Vegetation Index (NDVI) displays significantly below average conditions for several of the main soybean producing provinces. In Santa Fe (19 percent of production) and Santiago del Estero (6 percent of production), crop conditions are the lowest in the last twenty years of data. The second soybean crop is planted during December through early January and flowers during February and March. Roughly two-thirds of area are planted to early soybeans and one-third is planted to late soybeans. *(For more information, please contact Katie.McGaughey@usda.gov.)*



**World Agricultural Production
U.S. Department of Agriculture**

Foreign Agricultural Service / Global Market Analysis
International Production Assessment Division (IPAD)

Ag Box 1051, Room 4630, South Building
Washington, DC 20250-1051

<https://ipad.fas.usda.gov/>

Telephone: (202) 720-1662 Fax: (202) 720-1158

This report uses information from the Foreign Agricultural Service's (FAS) global network of agricultural attachés and counselors, official statistics of foreign governments and other foreign source materials, and the analysis of economic data and satellite imagery. Estimates of foreign area, yield, and production are from the International Production Assessment Division, FAS, and are reviewed by USDA's Inter-Agency Commodity Estimates Committee. Estimates of U.S. area, yield, and production are from USDA's National Agricultural Statistics Service. Numbers within the report may not add to totals because of rounding. This report reflects official USDA estimates released in the World Agricultural Supply and Demand Estimates (WASDE-584), March 8, 2023.

The FAS International Production Assessment Division prepared this report. The next issue of World Agricultural Production will be released after 12:00 p.m. Eastern Time, April 11, 2023.

Conversion Table

Metric tons to bushels

Wheat, soybeans	=	MT * 36.7437
Corn, sorghum, rye	=	MT * 39.36825
Barley	=	MT * 45.929625
Oats	=	MT * 68.894438

Metric tons to 480-lb bales

Cotton	=	MT * 4.592917
--------	---	---------------

Metric tons to hundredweight

Rice	=	MT * 22.04622
------	---	---------------

Area & weight

1 hectare	=	2.471044 acres
1 kilogram	=	2.204622 pounds



For further information, contact:
U.S. Department of Agriculture
Foreign Agricultural Service
Global Market Analysis

International Production Assessment Division
Ag Box 1051, Room 4630, South Building
Washington, DC 20250-1051

Telephone: (202) 720-1662

Fax: (202) 720-1158

GENERAL INFORMATION

Senior Director	Ronald Frantz	202-720-4056	ronald.frantz@usda.gov
Director	Robert Tetrault	202-720-1071	robert.tetrault@usda.gov
Administrative Assistant	Vacant		
USDA Remote Sensing Advisor	Vacant		
Sr. Analyst/Technical Lead	Curt Reynolds, Ph.D.	202-690-0134	curt.reynolds@usda.gov
Sr. Analyst/ Satellite Imagery Archives Manager/Technical Lead	Dath Mita, Ph.D.	202-720-7339	dath.mita@usda.gov
Sr. Analyst/Technical Lead	Jim Crutchfield	202-690-0135	james.crutchfield@usda.gov
GIS Mapping/Imagery Analyst	Lisa Colson	202-720-6652	lisa.colson@usda.gov
WAP Coordinators	Ifeoma Collins	202-720-0240	ifeoma.collins@usda.gov
	Aaron Mulhollen	202-690-0131	aaron.mulhollen@usda.gov

COUNTRY- AND REGION-SPECIFIC INFORMATION

South America, Argentina, Venezuela, and Colombia	Katie McGaughey	202-720-9210	katie.mcgaughey@usda.gov
Western and Central Europe, and North Africa	Bryan Purcell	202-690-0138	bryan.purcell@usda.gov
Russia, Ukraine, Kazakhstan, Moldova, and Belarus	Iliana Mladenova, Ph.D.	202-690-2315	iliana.mladenova@usda.gov
South Asia, Sri Lanka Bangladesh, India, and Nepal	Arnella Trent	202-720-0881	arnella.trent@usda.gov
East Asia, China, and Japan	Dath Mita, Ph.D.	202-720-7339	dath.mita@usda.gov
Sub-Saharan Africa, Nigeria and South Africa	Curt Reynolds, Ph.D.	202-690-0134	curt.reynolds@usda.gov
S.E. Asia, Indonesia, Thailand, Malaysia, Cambodia and Vietnam	Justin Jenkins	202-720-0419	justin.jenkins@usda.gov
Central America, Mexico, and Western United States	Ifeoma Collins	202-720-0240	ifeoma.collins@usda.gov
Australia, New Zealand, Pakistan Papua New Guinea and South Pacific Islands	Jim Crutchfield	202-690-0135	james.crutchfield@usda.gov
Middle East, Central Asia, Afghanistan Iraq, Iran, and Syria	Aaron Mulhollen	202-690-0131	aaron.mulhollen@usda.gov
Canada, Caribbean, Eastern United States	Aaron Mulhollen	202-690-0131	aaron.mulhollen@usda.gov
Brazil	Sunita Yadav-Pauletti, Ph.D.		sunita.yadav-pauletti@usda.gov



The Foreign Agricultural Service (FAS) updates its production, supply and distribution (PSD) database for cotton, oilseeds, and grains at 12:00 p.m. on the day the *World Agricultural Supply and Demand Estimates* (WASDE) report is released. This circular is released by 12:15 p.m.

FAS Reports and Databases:

World Agricultural Production

Current: <https://www.fas.usda.gov/data/world-agricultural-production>

Archive: <https://usda.library.cornell.edu/concern/publications/5q47rn72z?locale=en>

USDA's Foreign Agricultural Service (FAS) publishes a monthly report on crop acreage, yield and production in major countries worldwide. Sources include reporting from FAS's worldwide offices, official statistics of foreign governments, and analysis of economic data and satellite imagery. The reports reflect official USDA estimates released in the monthly *World Agricultural Supply and Demand Estimates* (WASDE).

World Markets and Trade

Current: <https://www.fas.usda.gov/data>

Archive:

https://usda.library.cornell.edu/catalog?f%5Bmember_of_collections_ssim%5D%5B%5D=Foreign+Agricultural+Service&locale=en

USDA's Foreign Agricultural Service (FAS) publishes monthly and quarterly reports which include data on U.S. and global trade, production, consumption and stocks, as well as analysis of developments affecting world trade in oilseeds, grains, cotton, livestock and poultry. The reports reflect official USDA estimates released in the monthly *World Agricultural Supply and Demand Estimates* (WASDE).

Global Agricultural Information Network (GAIN)

<https://gain.fas.usda.gov/>

USDA's Foreign Agricultural Service (FAS) provides timely reports on foreign markets through the Global Agriculture Information Network (GAIN) database. An average of 2,000 reports are added each year, with reports going back to 1995. GAIN reports are compiled by FAS' global market intelligence network, which includes FAS foreign service officers and locally engaged staff in over 90 overseas offices world-wide. They provide on-the-ground intelligence, insight, and analysis on nearly 200 countries, delivering information on foreign agricultural markets, crop conditions, and agro-political dynamics of interest to U.S. agriculture. GAIN reports contain assessments of commodity and trade issues made by USDA staff and are not necessarily statements of official U.S. government policy.

Production, Supply and Distribution (PS&D) Online

<https://apps.fas.usda.gov/psdonline/app/index.html#/app/home>

PSD Online is the public repository for USDA's Official Production, Supply and Distribution forecast data and reports for key agricultural commodities. PSD Online data are reviewed and updated monthly by an interagency committee chaired by USDA's World Agricultural Outlook Board (WAOB). The committee consist of representatives from Foreign Agricultural Service (FAS), the Economic Research Service (ERS), the Farm Service Agency (FSA), and the Agricultural Marketing Service (AMS).

EU Countries and Russia Wheat: Area and Production Estimates

<https://apps.fas.usda.gov/psdonline/app/index.html#/app/downloads> (click on PSD Datasets)

USDA's Foreign Agricultural Service (FAS) provides country-level area and production estimates for the nations of the European Union. For Russia, country-level area and production estimates are provided for Winter and Spring wheat. These datasets are reviewed and updated monthly by an interagency committee chaired by USDA's World Agricultural Outlook Board (WAOB) and can be downloaded through PSD datasets on PSD Online.



FAS Reports and Databases:

International Production Assessment (IPAD)

<https://ipad.fas.usda.gov/>

USDA's Foreign Agricultural Service (FAS) maintains a dynamic global crop production portal with key information including *World Agricultural Production* (WAP) briefs, Commodity Intelligence Reports (CIR), geospatial applications, crop production maps at a subnational level and crop calendars for the top-20 producing countries. Additionally, Crop Explorer (<https://ipad.fas.usda.gov/cropexplorer/>) displays rainfall, temperature, evapotranspiration, soil moisture, snow cover, and vegetation conditions in charts and maps.

USDA and NASA Global Agricultural Monitoring (GLAM)

<https://glam1.gsfc.nasa.gov/>

The USDA and NASA Global Agricultural Monitoring (GLAM) system provides near real-time and science quality Moderate Resolution Imaging Spectroradiometer (MODIS) Normalized Difference Vegetation Index (NDVI) from the satellites Terra and Aqua. The public can view and retrieve MODIS 8-day composited, global NDVI satellite imagery and time series data. GLAM was developed by NASA's Global Inventory Modeling and Mapping Studies (GIMMS) group for USDA's Foreign Agricultural Service.

Global Agricultural and Disaster Assessment System (GADAS)

<https://geo.fas.usda.gov/GADAS/index.html>

USDA's Foreign Agricultural Service (FAS) provides the Global Agricultural and Disaster Assessment System (GADAS), a web-based Geographic Information System (GIS) tool which integrates a vast array of highly detailed earth observation data streams, particularly targeted towards agricultural and disaster assessment analysis. GADAS is an interactive website which provides analysts with a wide variety of routine geospatial products (maps, charts, tables) they require for comprehensive situational investigations and recurring assessments.

Export Sales Reporting

<https://apps.fas.usda.gov/esrquery/>

USDA's Export Sales Reporting Program monitors U.S. agricultural export sales on a daily and weekly basis. Export sales reporting provides a constant stream of up-to-date market information for 40 U.S. agricultural commodities sold abroad. The weekly U.S. Export Sales report is the most currently available source of U.S. exports sales data. The data is used to analyze overall levels of export demand, determine where markets exit, and assess the relative position of U.S. commodities in foreign markets.

Global Agricultural Trade System (GATS)

<https://apps.fas.usda.gov/gats/default.aspx>

The Global Agricultural Trade System (GATS) is a searchable database containing monthly U.S. Census Bureau trade data organized by agricultural commodity and agricultural related product groups. Trade data is searchable by partner countries and partner groups. Historical U.S. agricultural trade data is available back to 1967. In addition, U.N. trade statistics (UN Comtrade) may be queried through GATS. UN trade data is available for nearly 200 countries or areas, dating from the inception of the Harmonized System (HS) of trade codes in 1989 to present. The database is continuously updated. U.S. trade data is updated monthly according to the U.S. Census Bureau's reporting system. UN Comtrade data are updated in GATS after nationally submitted data to the UN are standardized by the UN Statistical Division and added to the UN Comtrade database.

Other USDA Reports:

World Agricultural Supply and Demand Estimates (WASDE):

<http://www.usda.gov/oce/commodity/wasde/>

Economic Research Service:

<http://www.ers.usda.gov/topics/crops>

National Agricultural Statistics Service:

<http://www.nass.usda.gov/Publications/>

Table 01 World Crop Production Summary

Million Metric Tons

Commodity	World	Total Foreign	North America			Former Soviet		European	Asia (WAP)					South America		Selected Other			All Others
			United States	Canada	Mexico	Russia	Ukraine		China	India	Indonesia	Pakistan	Thailand	Argentina	Brazil	Australia	South Africa	Turkey	
			-	-	-	-	-		-	-	-	-	-	-	-	-	-	-	
---Million metric tons---																			
Wheat																			
2020/21	774.4	724.7	49.8	35.4	3.0	85.4	25.4	nr	134.3	107.9	0.0	25.2	0.0	17.6	6.3	31.9	2.1	18.3	232.0
2021/22 prel.	779.2	734.4	44.8	22.4	3.3	75.2	33.0	nr	136.9	109.6	0.0	27.5	0.0	22.2	7.7	36.2	2.3	16.0	242.2
2022/23 proj.																			
Feb	783.8	738.9	44.9	33.8	3.6	92.0	21.0	nr	137.7	103.0	0.0	26.4	0.0	12.5	9.9	38.0	2.2	17.3	241.5
Mar	788.9	744.0	44.9	33.8	3.6	92.0	21.0	nr	137.7	104.0	0.0	26.4	0.0	12.9	10.4	39.0	2.1	17.3	243.9
Coarse Grains																			
2020/21	1,441.3	1,068.5	372.9	29.6	32.7	41.4	39.6	nr	269.1	51.4	12.6	9.3	5.6	60.0	90.3	18.6	17.8	15.8	374.7
2021/22 prel.	1,502.4	1,104.7	397.7	25.1	32.8	38.5	53.5	nr	280.9	51.4	12.7	11.0	5.4	59.2	120.6	19.2	16.6	11.6	366.3
2022/23 proj.																			
Feb	1,442.8	1,084.3	358.5	30.5	33.5	41.8	34.2	nr	285.5	49.8	12.9	9.7	5.3	55.5	129.5	18.5	17.2	14.5	345.9
Mar	1,439.6	1,081.2	358.5	30.5	33.5	41.8	34.2	nr	285.5	52.2	12.9	9.7	5.3	48.7	129.5	18.7	17.2	14.8	346.8
Rice, Milled																			
2020/21	509.3	502.1	7.2	0.0	0.2	0.7	0.0	nr	148.3	124.4	34.5	8.4	18.9	0.9	8.0	0.3	0.0	0.6	156.8
2021/22 prel.	514.0	507.9	6.1	0.0	0.2	0.7	0.0	nr	149.0	129.5	34.4	9.3	19.9	0.8	7.3	0.5	0.0	0.5	155.7
2022/23 proj.																			
Feb	503.0	497.9	5.1	0.0	0.2	0.5	0.0	nr	145.9	125.0	34.6	6.6	20.2	0.8	7.1	0.3	0.0	0.6	156.1
Mar	509.8	504.7	5.1	0.0	0.2	0.5	0.0	nr	145.9	132.0	34.6	6.6	20.2	0.8	6.9	0.4	0.0	0.6	156.0
Total Grains																			
2020/21	2,725.1	2,295.2	429.9	65.1	35.8	127.5	65.0	nr	551.6	283.6	47.1	43.0	24.4	78.6	104.6	50.8	19.9	34.6	763.5
2021/22 prel.	2,795.6	2,347.0	448.6	47.5	36.2	114.4	86.6	nr	566.8	290.4	47.1	47.8	25.2	82.1	135.7	56.0	18.9	28.1	764.2
2022/23 proj.																			
Feb	2,729.5	2,321.1	408.5	64.4	37.2	134.3	55.2	nr	569.2	277.8	47.5	42.7	25.5	68.8	146.5	56.8	19.4	32.3	743.6
Mar	2,738.4	2,329.9	408.5	64.4	37.2	134.3	55.2	nr	569.2	288.2	47.5	42.7	25.5	62.4	146.9	58.0	19.2	32.6	746.6
Oilseeds																			
2020/21	607.7	483.2	124.5	25.9	0.7	20.1	19.9	nr	65.8	38.6	14.6	2.5	1.0	51.2	143.9	5.7	2.7	2.9	87.7
2021/22 prel.	607.1	475.7	131.4	20.1	0.9	23.1	24.3	nr	62.3	41.3	14.5	3.4	1.0	49.7	134.3	8.6	3.1	3.4	85.8
2022/23 proj.																			
Feb	636.7	510.8	126.0	25.6	0.8	25.4	16.9	nr	67.2	42.2	14.6	2.5	1.0	47.0	158.4	8.9	3.2	4.0	93.1
Mar	629.9	503.9	126.0	25.6	0.8	25.4	17.1	nr	67.5	41.8	14.6	2.4	1.0	38.4	158.4	10.0	3.5	4.0	93.2
Cotton																			
2020/21	111.5	96.9	14.6	0.0	1.0	0.0	0.0	1.7	29.6	27.6	0.0	4.5	0.0	1.4	10.8	2.8	0.1	2.9	14.5
2021/22 prel.	115.9	98.4	17.5	0.0	1.2	0.0	0.0	1.7	26.8	24.4	0.0	6.0	0.0	1.5	11.7	5.8	0.1	3.8	15.4
2022/23 proj.																			
Feb	114.4	99.7	14.7	0.0	1.4	0.0	0.0	1.6	28.5	25.5	0.0	3.9	0.0	1.2	13.3	5.0	0.1	4.9	14.4
Mar	115.1	100.4	14.7	0.0	1.4	0.0	0.0	1.6	29.5	24.5	0.0	3.9	0.0	1.2	13.3	5.5	0.1	4.9	14.6

1/ Includes wheat, coarse grains, and rice (milled) shown above.

Table 02 Wheat Area, Yield, and Production

Country / Region	Area (Million hectares)				Yield (Metric tons per hectare)				Production (Million metric tons)				Change in Production			
	2020/21	Prel.	2022/23 Proj.		2020/21	Prel.	2022/23 Proj.		2020/21	Prel.	2022/23 Proj.		From last month		From last year	
		2021/22	Feb	Mar		2021/22	Feb	Mar		2021/22	Feb	Mar	MMT	Percent	MMT	Percent
World	220.47	221.74	220.39	220.51	3.51	3.51	3.56	3.58	774.42	779.21	783.80	788.94	5.14	0.66	9.73	1.25
United States	14.89	15.03	14.36	14.36	3.34	2.98	3.13	3.13	49.75	44.80	44.90	44.90	0.00	0.00	0.10	0.22
Total Foreign	205.58	206.71	206.03	206.15	3.52	3.55	3.59	3.61	724.67	734.41	738.90	744.04	5.14	0.70	9.63	1.31
European Union	22.97	24.26	24.30	24.30	5.51	5.70	5.54	5.54	126.68	138.22	134.70	134.70	0.00	0.00	-3.52	-2.54
United Kingdom	1.39	1.79	1.80	1.80	6.96	7.81	8.61	8.61	9.66	13.99	15.50	15.50	0.00	0.00	1.51	10.81
Serbia	0.59	0.60	0.63	0.63	4.58	5.00	4.60	4.60	2.70	3.00	2.90	2.90	0.00	0.00	-0.10	-3.33
China	23.38	23.57	23.52	23.52	5.74	5.81	5.86	5.86	134.25	136.95	137.72	137.72	0.00	0.00	0.78	0.57
South Asia																
India	31.36	31.13	30.54	30.46	3.44	3.52	3.37	3.41	107.86	109.59	103.00	104.00	1.00	0.97	-5.59	-5.10
Pakistan	8.81	9.17	9.00	9.00	2.87	3.00	2.93	2.93	25.25	27.46	26.40	26.40	0.00	0.00	-1.06	-3.87
Afghanistan	2.33	2.20	2.20	2.20	2.15	2.00	2.05	2.05	5.01	4.40	4.50	4.50	0.00	0.00	0.10	2.27
Nepal	0.71	0.72	0.72	0.72	2.99	2.90	2.92	2.92	2.13	2.08	2.10	2.10	0.00	0.00	0.03	1.20
Former Soviet Union - 12																
Russia	28.68	27.63	29.10	29.10	2.98	2.72	3.16	3.16	85.35	75.16	92.00	92.00	0.00	0.00	16.84	22.41
Russia Winter	16.63	15.22	16.30	16.30	3.77	3.43	4.17	4.17	62.69	52.19	68.00	68.00	0.00	0.00	15.81	30.28
Russia Spring	12.06	12.41	12.80	12.80	1.88	1.85	1.88	1.88	22.66	22.96	24.00	24.00	0.00	0.00	1.04	4.51
Ukraine	6.85	7.41	5.35	5.35	3.71	4.45	3.93	3.93	25.42	33.01	21.00	21.00	0.00	0.00	-12.01	-36.38
Kazakhstan	12.06	12.72	12.75	12.81	1.18	0.93	1.10	1.28	14.26	11.81	14.00	16.40	2.40	17.17	4.59	38.85
Uzbekistan	1.36	1.36	1.40	1.40	4.53	4.40	4.42	4.42	6.16	5.99	6.19	6.19	0.00	0.00	0.21	3.44
Belarus	0.72	0.65	0.68	0.68	3.94	3.54	3.48	3.48	2.85	2.30	2.35	2.35	0.00	0.00	0.05	2.17
Canada	10.02	9.20	10.08	10.08	3.54	2.44	3.35	3.35	35.44	22.42	33.82	33.82	0.00	0.00	11.40	50.85
South America																
Argentina	6.40	6.55	5.35	5.50	2.76	3.38	2.34	2.35	17.64	22.15	12.50	12.90	0.40	3.20	-9.25	-41.76
Brazil	2.34	2.74	3.09	3.09	2.67	2.81	3.20	3.37	6.25	7.70	9.90	10.40	0.50	5.05	2.70	35.06
Australia	12.64	12.73	13.00	13.00	2.52	2.85	2.92	3.00	31.92	36.24	38.00	39.00	1.00	2.63	2.76	7.62
Africa																
Egypt	1.39	1.40	1.53	1.53	6.40	6.43	6.41	6.41	8.90	9.00	9.80	9.80	0.00	0.00	0.80	8.89
Morocco	2.76	2.86	2.50	2.50	0.93	2.64	1.08	1.08	2.56	7.54	2.70	2.70	0.00	0.00	-4.84	-64.19
Algeria	2.08	2.08	2.08	2.08	1.50	1.20	1.78	1.78	3.11	2.50	3.70	3.70	0.00	0.00	1.20	48.00
Ethiopia	1.83	1.95	2.00	2.00	3.00	2.83	2.85	2.85	5.48	5.52	5.70	5.70	0.00	0.00	0.18	3.26
Middle East																
Turkey	7.10	7.05	6.80	6.80	2.57	2.27	2.54	2.54	18.25	16.00	17.25	17.25	0.00	0.00	1.25	7.81
Iran	6.00	6.00	6.20	6.20	2.50	2.00	2.13	2.13	15.00	12.00	13.20	13.20	0.00	0.00	1.20	10.00
Iraq	2.40	2.00	2.00	2.00	1.93	1.75	1.50	1.50	4.64	3.50	3.00	3.00	0.00	0.00	-0.50	-14.29
Syria	1.60	1.10	1.20	1.20	2.81	1.82	1.75	1.75	4.50	2.00	2.10	2.10	0.00	0.00	0.10	5.00
Mexico	0.56	0.55	0.59	0.59	5.33	6.00	6.05	6.05	2.97	3.28	3.57	3.57	0.00	0.00	0.29	8.81
Others	7.28	7.32	7.63	7.62	2.81	2.82	2.79	2.77	20.45	20.62	21.29	21.13	-0.16	-0.76	0.51	2.47

Table 03 Total Coarse Grain Area, Yield, and Production

Country / Region	Area (Million hectares)				Yield (Metric tons per hectare)				Production (Million metric tons)				Change in Production			
	2020/21	Prel.	2022/23 Proj.		2020/21	Prel.	2022/23 Proj.		2020/21	Prel.	2022/23 Proj.		From last month		From last year	
		2021/22	Feb	Mar		2021/22	Feb	Mar		2021/22	Feb	Mar	MMT	Percent	MMT	Percent
World	344.54	345.98	337.57	337.50	4.18	4.34	4.27	4.27	1,441.35	1,502.39	1,442.77	1,439.62	-3.15	-0.22	-62.78	-4.18
United States	36.81	38.34	35.39	35.39	10.13	10.37	10.13	10.13	372.89	397.71	358.47	358.47	0.00	0.00	-39.24	-9.87
Total Foreign	307.73	307.64	302.18	302.11	3.47	3.59	3.59	3.58	1,068.46	1,104.68	1,084.30	1,081.15	-3.15	-0.29	-23.53	-2.13
China	43.72	45.77	45.52	45.52	6.15	6.14	6.27	6.27	269.08	280.85	285.50	285.50	0.00	0.00	4.65	1.65
European Union	28.77	27.77	27.23	27.23	5.40	5.56	4.98	4.98	155.46	154.41	135.61	135.61	0.00	0.00	-18.80	-12.17
United Kingdom	1.66	1.43	1.37	1.37	5.64	5.88	6.32	6.32	9.36	8.41	8.65	8.65	0.00	0.00	0.24	2.84
South America																
Brazil	21.30	23.37	24.31	24.31	4.24	5.16	5.33	5.33	90.32	120.62	129.54	129.54	0.00	0.00	8.92	7.39
Argentina	8.65	9.84	9.23	9.30	6.94	6.01	6.02	5.24	60.01	59.16	55.51	48.71	-6.80	-12.25	-10.45	-17.66
Former Soviet Union - 12																
Russia	14.55	14.01	13.50	13.50	2.84	2.75	3.09	3.09	41.40	38.54	41.77	41.77	0.00	0.00	3.23	8.39
Ukraine	8.53	8.66	6.37	6.37	4.64	6.18	5.37	5.37	39.59	53.51	34.16	34.16	0.00	0.00	-19.35	-36.17
Kazakhstan	3.20	2.63	2.61	2.63	1.54	1.43	1.57	1.79	4.93	3.76	4.10	4.71	0.62	15.04	0.96	25.46
Belarus	1.14	0.99	1.03	1.03	3.47	3.05	3.11	3.11	3.95	3.00	3.20	3.20	0.00	0.00	0.20	6.67
Africa																
Nigeria	13.10	13.70	13.50	13.50	1.60	1.56	1.57	1.57	20.90	21.39	21.18	21.18	0.00	0.00	-0.21	-0.99
South Africa	3.36	3.19	3.19	3.18	5.31	5.22	5.41	5.39	17.81	16.64	17.24	17.16	-0.09	-0.50	0.52	3.13
Tanzania	5.17	5.40	5.00	5.00	1.51	1.40	1.40	1.40	7.79	7.55	6.98	6.98	0.00	0.00	-0.58	-7.62
Burkina Faso	3.89	4.24	4.24	4.24	1.21	0.99	1.16	1.16	4.72	4.20	4.90	4.90	0.00	0.00	0.70	16.58
Ethiopia	5.53	5.59	5.63	5.63	3.45	3.08	3.23	3.23	19.10	17.20	18.20	18.20	0.00	0.00	1.00	5.81
Egypt	1.03	1.16	1.16	1.16	7.01	7.13	7.13	7.13	7.24	8.30	8.30	8.30	0.00	0.00	0.00	0.00
Mali	5.17	4.70	4.70	4.70	1.41	1.34	1.45	1.45	7.26	6.31	6.80	6.80	0.00	0.00	0.49	7.70
India	24.12	24.15	24.54	24.55	2.13	2.13	2.03	2.13	51.39	51.39	49.80	52.21	2.41	4.84	0.82	1.60
Southeast Asia																
Indonesia	3.85	3.90	3.95	3.95	3.27	3.26	3.27	3.27	12.60	12.70	12.90	12.90	0.00	0.00	0.20	1.57
Philippines	2.57	2.56	2.50	2.50	3.25	3.26	3.24	3.24	8.35	8.34	8.10	8.10	0.00	0.00	-0.24	-2.92
Vietnam	0.94	0.90	0.88	0.89	4.83	4.92	5.00	4.94	4.56	4.45	4.40	4.40	0.00	0.00	-0.05	-1.03
Thailand	1.28	1.23	1.23	1.23	4.33	4.36	4.28	4.28	5.55	5.35	5.25	5.25	0.00	0.00	-0.10	-1.87
Mexico	8.76	8.88	8.99	8.99	3.73	3.69	3.73	3.73	32.66	32.79	33.49	33.49	0.00	0.00	0.70	2.14
Canada	5.80	5.91	5.74	5.74	5.11	4.25	5.32	5.32	29.64	25.12	30.54	30.54	0.00	0.00	5.41	21.54
Australia	7.26	6.69	5.98	5.74	2.56	2.87	3.09	3.25	18.56	19.22	18.47	18.67	0.20	1.08	-0.55	-2.86
Middle East																
Turkey	4.63	4.46	4.54	4.55	3.40	2.60	3.19	3.25	15.76	11.58	14.47	14.77	0.30	2.07	3.19	27.55
Iran	1.81	1.91	1.86	1.86	2.77	2.16	2.38	2.38	5.02	4.12	4.42	4.42	0.00	0.00	0.30	7.31
Others	77.95	74.58	73.42	73.47	1.61	1.69	1.65	1.65	125.47	125.78	120.85	121.06	0.21	0.17	-4.73	-3.76

World and Selected Countries and Regions; Coarse Grain includes: Barley, Corn, Millet, Mixed Grains, Oats, Rye and Sorghum

Table 04 Corn Area, Yield, and Production

Country / Region	Area (Million hectares)				Yield (Metric tons per hectare)				Production (Million metric tons)				Change in Production			
	2020/21	Prel. 2021/22	2022/23 Proj. Feb Mar		2020/21	Prel. 2021/22	2022/23 Proj. Feb Mar		2020/21	Prel. 2021/22	2022/23 Proj. Feb Mar		From last month MMT Percent		From last year MMT Percent	
World	199.12	206.87	201.12	201.29	5.67	5.88	5.72	5.70	1,129.39	1,216.03	1,151.36	1,147.52	-3.84	-0.33	-68.50	-5.63
United States	33.31	34.53	32.05	32.05	10.76	11.09	10.88	10.88	358.45	382.89	348.75	348.75	0.00	0.00	-34.14	-8.92
Total Foreign	165.81	172.35	169.06	169.23	4.65	4.83	4.75	4.72	770.94	833.13	802.61	798.77	-3.84	-0.48	-34.36	-4.12
China	41.26	43.32	43.07	43.07	6.32	6.29	6.44	6.44	260.67	272.55	277.20	277.20	0.00	0.00	4.65	1.71
South America																
Brazil	19.90	21.80	22.70	22.70	4.37	5.32	5.51	5.51	87.00	116.00	125.00	125.00	0.00	0.00	9.00	7.76
Argentina	6.55	7.10	6.70	6.70	7.94	6.97	7.01	5.97	52.00	49.50	47.00	40.00	-7.00	-14.89	-9.50	-19.19
Bolivia	0.41	0.44	0.44	0.44	3.00	2.60	2.64	2.64	1.23	1.13	1.15	1.15	0.00	0.00	0.02	1.77
European Union	9.24	9.24	9.03	9.03	7.30	7.69	6.01	6.01	67.44	70.98	54.20	54.20	0.00	0.00	-16.78	-23.64
Africa																
South Africa	3.12	3.00	3.00	3.00	5.44	5.38	5.57	5.57	16.95	16.14	16.70	16.70	0.00	0.00	0.56	3.49
Nigeria	5.50	6.00	5.80	5.80	2.25	2.12	2.10	2.10	12.40	12.75	12.18	12.18	0.00	0.00	-0.57	-4.43
Ethiopia	2.36	2.53	2.55	2.55	4.47	3.72	4.00	4.00	10.56	9.40	10.20	10.20	0.00	0.00	0.80	8.51
Egypt	0.80	0.93	0.93	0.93	8.00	8.00	8.00	8.00	6.40	7.44	7.44	7.44	0.00	0.00	0.00	0.00
Tanzania	4.20	4.40	4.00	4.00	1.60	1.48	1.48	1.48	6.71	6.50	5.90	5.90	0.00	0.00	-0.60	-9.23
Malawi	1.76	1.75	1.75	1.75	2.10	2.62	2.12	2.12	3.69	4.58	3.72	3.72	0.00	0.00	-0.86	-18.86
Zambia	1.33	1.41	1.12	1.12	2.54	2.57	2.43	2.43	3.39	3.62	2.71	2.71	0.00	0.00	-0.91	-25.25
Kenya	2.19	1.95	1.90	1.90	1.73	1.59	1.58	1.58	3.79	3.10	3.00	3.00	0.00	0.00	-0.10	-3.23
Uganda	0.99	1.10	1.10	1.10	2.78	2.55	2.55	2.55	2.75	2.80	2.80	2.80	0.00	0.00	0.00	0.00
Zimbabwe	1.58	1.95	1.90	1.90	0.57	1.39	0.82	0.82	0.91	2.72	1.56	1.56	0.00	0.00	-1.16	-42.66
Former Soviet Union - 12																
Ukraine	5.40	5.49	4.00	4.00	5.62	7.68	6.75	6.75	30.30	42.13	27.00	27.00	0.00	0.00	-15.13	-35.91
Russia	2.73	2.90	2.50	2.50	5.08	5.25	5.60	5.60	13.87	15.23	14.00	14.00	0.00	0.00	-1.23	-8.05
South Asia																
India	9.89	9.96	10.00	10.10	3.20	3.39	3.20	3.43	31.65	33.73	32.00	34.61	2.61	8.16	0.88	2.61
Pakistan	1.42	1.65	1.60	1.60	6.30	6.43	5.75	5.75	8.94	10.64	9.20	9.20	0.00	0.00	-1.44	-13.49
Nepal	0.97	0.97	0.97	0.97	2.82	2.82	2.82	2.82	2.72	2.72	2.72	2.72	0.00	0.00	0.00	0.00
Southeast Asia																
Indonesia	3.85	3.90	3.95	3.95	3.27	3.26	3.27	3.27	12.60	12.70	12.90	12.90	0.00	0.00	0.20	1.57
Philippines	2.57	2.56	2.50	2.50	3.25	3.26	3.24	3.24	8.35	8.34	8.10	8.10	0.00	0.00	-0.24	-2.92
Vietnam	0.94	0.90	0.88	0.89	4.83	4.92	5.00	4.94	4.56	4.45	4.40	4.40	0.00	0.00	-0.05	-1.03
Thailand	1.26	1.20	1.20	1.20	4.38	4.42	4.33	4.33	5.50	5.30	5.20	5.20	0.00	0.00	-0.10	-1.89
Mexico	7.14	7.09	7.20	7.20	3.83	3.77	3.83	3.83	27.35	26.76	27.60	27.60	0.00	0.00	0.84	3.13
Canada	1.41	1.46	1.44	1.44	9.63	9.99	10.07	10.07	13.56	14.61	14.54	14.54	0.00	0.00	-0.07	-0.49
Turkey	0.62	0.54	0.53	0.53	11.45	12.04	12.38	12.83	7.10	6.50	6.50	6.80	0.30	4.62	0.30	4.62
Others	26.41	26.81	26.32	26.38	2.60	2.64	2.57	2.58	68.57	70.83	67.70	67.95	0.25	0.37	-2.88	-4.07

World and Selected Countries and Regions

Table 05 Barley Area, Yield, and Production

Country / Region	Area (Million hectares)				Yield (Metric tons per hectare)				Production (Million metric tons)				Change in Production			
	Prel.		2022/23 Proj.		Prel.		2022/23 Proj.		Prel.		2022/23 Proj.		From last month		From last year	
	2020/21	2021/22	Feb	Mar	2020/21	2021/22	Feb	Mar	2020/21	2021/22	Feb	Mar	MMT	Percent	MMT	Percent
World	52.45	49.30	47.33	47.26	3.07	2.96	3.18	3.21	160.91	145.93	150.48	151.62	1.15	0.76	5.70	3.91
United States	0.90	0.81	0.99	0.99	4.15	3.25	3.85	3.85	3.72	2.62	3.80	3.80	0.00	0.00	1.18	45.16
Total Foreign	51.56	48.50	46.35	46.28	3.05	2.96	3.16	3.19	157.19	143.31	146.68	147.83	1.15	0.78	4.52	3.15
European Union	11.05	10.31	10.43	10.43	4.91	5.05	4.93	4.93	54.23	52.05	51.45	51.45	0.00	0.00	-0.60	-1.15
United Kingdom	1.39	1.15	1.12	1.12	5.85	6.05	6.64	6.64	8.12	6.96	7.40	7.40	0.00	0.00	0.44	6.31
Former Soviet Union - 12																
Russia	8.16	7.69	7.80	7.80	2.53	2.28	2.76	2.76	20.63	17.51	21.50	21.50	0.00	0.00	4.00	22.82
Ukraine	2.58	2.68	1.90	1.90	3.08	3.70	3.21	3.21	7.95	9.92	6.10	6.10	0.00	0.00	-3.82	-38.53
Kazakhstan	2.73	2.16	2.15	2.18	1.34	1.10	1.26	1.51	3.66	2.37	2.70	3.29	0.59	21.74	0.92	38.87
Belarus	0.41	0.35	0.40	0.40	3.35	2.86	2.75	2.75	1.38	1.00	1.10	1.10	0.00	0.00	0.10	10.00
Azerbaijan	0.35	0.37	0.38	0.38	2.96	3.07	2.93	2.93	1.02	1.15	1.10	1.10	0.00	0.00	-0.05	-4.10
Canada	2.81	3.01	2.64	2.64	3.82	2.32	3.79	3.79	10.74	6.98	9.99	9.99	0.00	0.00	3.00	43.00
Australia	5.49	5.10	4.20	4.10	2.67	2.81	3.26	3.44	14.65	14.34	13.70	14.10	0.40	2.92	-0.24	-1.65
Middle East																
Turkey	3.80	3.70	3.80	3.80	2.13	1.22	1.95	1.95	8.10	4.50	7.40	7.40	0.00	0.00	2.90	64.44
Iran	1.60	1.70	1.65	1.65	2.25	1.59	1.82	1.82	3.60	2.70	3.00	3.00	0.00	0.00	0.30	11.11
Iraq	1.20	0.60	0.60	0.60	1.29	1.17	1.13	1.13	1.55	0.70	0.68	0.68	0.00	0.00	-0.02	-2.86
Syria	1.50	0.80	0.90	0.90	1.27	0.81	0.78	0.78	1.90	0.65	0.70	0.70	0.00	0.00	0.05	7.69
Africa																
Ethiopia	0.90	0.96	0.97	0.97	2.52	2.45	2.47	2.47	2.26	2.35	2.40	2.40	0.00	0.00	0.05	2.13
Morocco	1.47	1.49	1.10	1.10	0.44	1.87	0.64	0.64	0.64	2.78	0.70	0.70	0.00	0.00	-2.08	-74.82
Algeria	0.98	1.03	1.03	1.03	1.24	0.93	1.56	1.56	1.21	0.95	1.60	1.60	0.00	0.00	0.65	68.42
Tunisia	0.36	0.28	0.30	0.30	1.28	1.54	1.40	1.40	0.47	0.43	0.42	0.42	0.00	0.00	-0.01	-2.33
South Africa	0.14	0.10	0.10	0.10	4.14	3.52	3.70	3.06	0.59	0.33	0.37	0.31	-0.06	-16.49	-0.03	-7.49
South America																
Argentina	1.01	1.34	1.28	1.38	4.00	3.96	3.28	3.27	4.04	5.30	4.20	4.50	0.30	7.14	-0.80	-15.09
Uruguay	0.19	0.22	0.21	0.21	4.78	4.11	4.25	4.25	0.89	0.92	0.90	0.90	0.00	0.00	-0.02	-2.50
Brazil	0.10	0.11	0.11	0.11	3.63	3.79	3.91	3.91	0.37	0.43	0.43	0.43	0.00	0.00	0.01	1.18
India	0.59	0.59	0.54	0.45	2.92	2.80	2.59	3.02	1.72	1.66	1.40	1.37	-0.03	-2.14	-0.29	-17.27
China	0.51	0.51	0.51	0.51	4.00	3.92	3.92	3.92	2.04	2.00	2.00	2.00	0.00	0.00	0.00	0.00
Mexico	0.30	0.35	0.32	0.32	3.07	3.11	2.97	2.97	0.91	1.09	0.95	0.95	0.00	0.00	-0.14	-12.84
Afghanistan	0.17	0.16	0.17	0.17	1.41	1.25	1.35	1.35	0.24	0.20	0.23	0.23	0.00	0.00	0.03	15.00
Others	1.78	1.74	1.76	1.75	2.42	2.33	2.43	2.41	4.30	4.06	4.27	4.22	-0.05	-1.15	0.16	4.02

World and Selected Countries and Regions

Table 06 Oats Area, Yield, and Production

Country / Region	Area (Million hectares)				Yield (Metric tons per hectare)				Production (Million metric tons)				Change in Production			
	2020/21	Prel.	2022/23 Proj.		2020/21	Prel.	2022/23 Proj.		2020/21	Prel.	2022/23 Proj.		From last month		From last year	
		2021/22	Feb	Mar		2021/22	Feb	Mar		2021/22	Feb	Mar	MMT	Percent	MMT	Percent
World	10.08	9.64	9.55	9.55	2.55	2.36	2.62	2.65	25.72	22.74	25.05	25.25	0.20	0.79	2.52	11.07
United States	0.41	0.26	0.36	0.36	2.34	2.20	2.33	2.33	0.95	0.58	0.84	0.84	0.00	0.00	0.26	44.81
Total Foreign	9.67	9.38	9.19	9.19	2.56	2.36	2.63	2.66	24.77	22.16	24.22	24.42	0.20	0.82	2.26	10.19
European Union	2.56	2.56	2.40	2.40	3.31	2.95	3.18	3.18	8.47	7.53	7.61	7.61	0.00	0.00	0.08	1.06
Former Soviet Union - 12																
Russia	2.33	2.17	2.10	2.10	1.77	1.72	1.90	1.90	4.13	3.73	4.00	4.00	0.00	0.00	0.27	7.15
Ukraine	0.20	0.18	0.18	0.18	2.54	2.61	2.29	2.29	0.52	0.48	0.40	0.40	0.00	0.00	-0.08	-16.32
Belarus	0.16	0.15	0.16	0.16	2.87	2.33	2.42	2.42	0.45	0.35	0.38	0.38	0.00	0.00	0.03	7.14
Kazakhstan	0.23	0.20	0.20	0.20	1.05	0.90	1.13	1.16	0.24	0.18	0.23	0.23	0.00	1.78	0.05	25.82
Canada	1.31	1.21	1.40	1.40	3.48	2.39	3.73	3.73	4.58	2.90	5.23	5.23	0.00	0.00	2.33	80.27
South America																
Argentina	0.24	0.35	0.28	0.28	2.13	2.07	2.30	2.30	0.51	0.73	0.65	0.65	0.00	0.00	-0.08	-11.03
Brazil	0.43	0.50	0.51	0.51	2.00	2.27	2.26	2.26	0.85	1.14	1.16	1.16	0.00	0.00	0.01	1.05
Chile	0.11	0.12	0.13	0.13	4.65	4.70	4.37	4.37	0.53	0.58	0.55	0.55	0.00	0.00	-0.03	-4.84
Uruguay	0.02	0.01	0.02	0.02	2.20	2.21	2.40	2.40	0.03	0.03	0.04	0.04	0.00	0.00	0.01	16.13
Oceania																
Australia	1.07	0.84	0.80	0.80	1.77	2.06	1.75	2.00	1.90	1.74	1.40	1.60	0.20	14.29	-0.14	-7.78
New Zealand	0.00	0.00	0.01	0.01	5.75	6.25	5.80	5.67	0.02	0.03	0.03	0.03	0.01	17.24	0.01	36.00
China	0.41	0.41	0.41	0.41	1.48	1.48	1.48	1.48	0.60	0.60	0.60	0.60	0.00	0.00	0.00	0.00
Africa																
Algeria	0.06	0.08	0.08	0.08	1.11	1.31	1.31	1.31	0.07	0.11	0.11	0.11	0.00	0.00	0.00	0.00
Morocco	0.02	0.04	0.02	0.02	0.40	1.13	0.40	0.40	0.01	0.05	0.01	0.01	0.00	0.00	-0.04	-86.67
South Africa	0.03	0.04	0.03	0.03	2.19	1.64	1.33	1.11	0.06	0.06	0.04	0.03	-0.01	-25.00	-0.03	-49.15
Other Europe																
United Kingdom	0.21	0.20	0.19	0.19	4.91	5.62	5.26	5.26	1.03	1.12	1.00	1.00	0.00	0.00	-0.12	-10.95
Norway	0.07	0.07	0.07	0.07	4.29	4.29	4.29	4.29	0.30	0.30	0.30	0.30	0.00	0.00	0.00	0.00
Serbia	0.03	0.03	0.03	0.03	2.17	2.17	2.17	2.17	0.07	0.07	0.07	0.07	0.00	0.00	0.00	0.00
Albania	0.02	0.01	0.02	0.02	2.25	2.14	2.20	2.20	0.04	0.03	0.03	0.03	0.00	0.00	0.00	10.00
Bosnia and Herzegovina	0.01	0.01	0.01	0.01	3.09	2.82	2.82	2.82	0.03	0.03	0.03	0.03	0.00	0.00	0.00	0.00
Turkey	0.10	0.11	0.11	0.11	2.40	2.38	2.38	2.38	0.24	0.25	0.25	0.25	0.00	0.00	0.00	0.00
Mexico	0.03	0.05	0.05	0.05	2.03	2.02	1.89	1.89	0.06	0.09	0.09	0.09	0.00	0.00	-0.01	-8.60
Others	0.03	0.03	0.03	0.03	1.61	1.69	1.68	1.68	0.05	0.05	0.05	0.05	0.00	0.00	0.00	6.12

World and Selected Countries and Regions

Table 07 Rye Area, Yield, and Production

Country / Region	Area (Million hectares)				Yield (Metric tons per hectare)				Production (Million metric tons)				Change in Production			
	Prel.		2022/23 Proj.		Prel.		2022/23 Proj.		Prel.		2022/23 Proj.		From last month		From last year	
	2020/21	2021/22	Feb	Mar	2020/21	2021/22	Feb	Mar	2020/21	2021/22	Feb	Mar	MMT	Percent	MMT	Percent
World	4.17	4.03	3.78	3.79	3.43	3.09	3.21	3.21	14.30	12.44	12.16	12.19	0.03	0.25	-0.26	-2.07
United States	0.13	0.12	0.14	0.14	2.19	2.09	2.26	2.26	0.29	0.25	0.31	0.31	0.00	0.00	0.06	25.30
Total Foreign	4.03	3.91	3.64	3.65	3.47	3.12	3.25	3.25	14.01	12.19	11.84	11.87	0.03	0.25	-0.32	-2.62
European Union	2.08	1.93	1.87	1.87	4.31	4.12	4.07	4.07	8.97	7.95	7.62	7.62	0.00	0.00	-0.33	-4.19
Former Soviet Union - 12																
Russia	0.97	0.99	0.90	0.90	2.44	1.73	2.22	2.22	2.38	1.72	2.00	2.00	0.00	0.00	0.28	16.55
Belarus	0.36	0.33	0.30	0.30	2.92	2.46	2.50	2.50	1.05	0.80	0.75	0.75	0.00	0.00	-0.05	-6.25
Ukraine	0.14	0.18	0.10	0.10	3.28	3.43	2.85	2.85	0.46	0.60	0.29	0.29	0.00	0.00	-0.32	-52.50
Kazakhstan	0.02	0.04	0.03	0.03	1.25	0.91	1.20	1.76	0.03	0.04	0.03	0.06	0.03	100.00	0.02	50.00
Turkey	0.11	0.12	0.11	0.11	2.91	2.87	2.91	2.91	0.32	0.33	0.32	0.32	0.00	0.00	-0.01	-3.03
Canada	0.15	0.12	0.15	0.15	3.19	3.21	3.42	3.42	0.49	0.37	0.52	0.52	0.00	0.00	0.15	39.78
South America																
Chile	0.00	0.00	0.00	0.00	5.00	5.00	5.00	5.00	0.01	0.01	0.01	0.01	0.00	0.00	0.00	0.00
Argentina	0.09	0.12	0.09	0.09	1.50	1.88	1.84	1.84	0.14	0.23	0.16	0.16	0.00	0.00	-0.07	-28.89
Other Europe																
Bosnia and Herzegovina	0.00	0.00	0.00	0.00	3.67	3.00	2.75	2.75	0.01	0.01	0.01	0.01	0.00	0.00	0.00	22.22
Switzerland	0.00	0.00	0.00	0.00	5.50	5.50	5.50	5.50	0.01	0.01	0.01	0.01	0.00	0.00	0.00	0.00
Serbia	0.00	0.00	0.00	0.00	2.50	2.50	2.50	2.50	0.01	0.01	0.01	0.01	0.00	0.00	0.00	0.00
Australia	0.05	0.05	0.05	0.05	0.71	0.71	0.71	0.71	0.03	0.03	0.03	0.03	0.00	0.00	0.00	0.00
Others	0.04	0.04	0.04	0.04	2.50	2.18	2.16	2.16	0.11	0.10	0.10	0.10	0.00	0.00	0.00	-1.04

World and Selected Countries and Regions

Table 08 Sorghum Area, Yield, and Production

Country / Region	Area (Million hectares)				Yield (Metric tons per hectare)				Production (Million metric tons)				Change in Production			
	Prel.		2022/23 Proj.		Prel.		2022/23 Proj.		Prel.		2022/23 Proj.		From last month		From last year	
	2020/21	2021/22	Feb	Mar	2020/21	2021/22	Feb	Mar	2020/21	2021/22	Feb	Mar	MMT	Percent	MMT	Percent
World	42.83	41.44	40.94	40.77	1.46	1.50	1.43	1.42	62.54	61.97	58.54	58.03	-0.52	-0.88	-3.95	-6.37
United States	2.06	2.63	1.85	1.85	4.59	4.33	2.58	2.58	9.47	11.38	4.77	4.77	0.00	0.00	-6.61	-58.07
Total Foreign	40.77	38.82	39.09	38.92	1.30	1.30	1.38	1.37	53.07	50.60	53.77	53.26	-0.52	-0.96	2.66	5.26
Africa																
Nigeria	5.60	5.70	5.70	5.70	1.18	1.18	1.23	1.23	6.59	6.73	7.00	7.00	0.00	0.00	0.28	4.09
Ethiopia	1.79	1.65	1.66	1.66	2.83	2.70	2.71	2.71	5.06	4.45	4.50	4.50	0.00	0.00	0.05	1.12
Sudan	9.03	6.92	7.00	7.00	0.57	0.51	0.71	0.71	5.15	3.53	5.00	5.00	0.00	0.00	1.47	41.64
Burkina Faso	1.74	1.90	1.90	1.90	1.06	0.87	1.00	1.00	1.84	1.64	1.90	1.90	0.00	0.00	0.26	15.57
Mali	1.83	1.50	1.50	1.50	1.00	0.83	1.00	1.00	1.82	1.24	1.50	1.50	0.00	0.00	0.26	21.07
Niger	3.67	3.70	3.70	3.70	0.58	0.33	0.51	0.51	2.13	1.21	1.90	1.90	0.00	0.00	0.69	57.42
Cameroon	0.74	0.74	0.74	0.74	1.62	1.62	1.62	1.62	1.20	1.20	1.20	1.20	0.00	0.00	0.00	0.00
Tanzania	0.70	0.70	0.70	0.70	1.07	1.02	1.07	1.07	0.75	0.72	0.75	0.75	0.00	0.00	0.04	4.90
Egypt	0.15	0.15	0.15	0.15	4.91	5.00	5.00	5.00	0.73	0.75	0.75	0.75	0.00	0.00	0.00	0.00
Uganda	0.31	0.25	0.25	0.25	1.23	1.32	0.90	0.90	0.38	0.33	0.23	0.23	0.00	0.00	-0.11	-31.82
Ghana	0.30	0.31	0.31	0.31	1.13	1.11	1.13	1.13	0.35	0.35	0.35	0.35	0.00	0.00	0.01	1.45
Mozambique	0.26	0.25	0.25	0.25	0.54	0.64	0.64	0.64	0.14	0.16	0.16	0.16	0.00	0.00	0.00	0.00
South Africa	0.05	0.04	0.04	0.04	4.39	2.78	3.71	3.29	0.22	0.10	0.13	0.12	-0.02	-11.54	0.01	11.65
Mexico	1.29	1.40	1.42	1.42	3.37	3.47	3.42	3.42	4.35	4.84	4.85	4.85	0.00	0.00	0.01	0.21
South America																
Argentina	0.75	0.93	0.88	0.85	4.43	3.68	4.00	4.00	3.32	3.40	3.50	3.40	-0.10	-2.86	0.00	0.00
Brazil	0.87	0.95	0.98	0.98	2.41	3.20	3.00	3.00	2.08	3.04	2.94	2.94	0.00	0.00	-0.10	-3.35
South Asia																
India	4.38	4.60	4.50	4.50	1.10	0.90	0.98	0.98	4.81	4.15	4.40	4.40	0.00	0.00	0.25	6.02
Pakistan	0.13	0.08	0.22	0.22	0.76	0.83	0.63	0.63	0.10	0.06	0.14	0.14	0.00	0.00	0.07	110.94
China	0.64	0.63	0.63	0.63	4.68	4.76	4.76	4.76	2.97	3.00	3.00	3.00	0.00	0.00	0.00	0.00
Australia	0.57	0.62	0.84	0.70	2.86	4.26	3.45	3.57	1.64	2.65	2.90	2.50	-0.40	-13.79	-0.15	-5.59
European Union	0.19	0.15	0.13	0.13	5.21	5.49	4.41	4.41	1.00	0.82	0.59	0.59	0.00	0.00	-0.23	-28.19
Others	5.79	5.66	5.60	5.60	1.11	1.10	1.09	1.09	6.45	6.23	6.09	6.09	0.00	0.00	-0.14	-2.26

World and Selected Countries and Regions

Table 09 Rice Area, Yield, and Production

World and Selected Countries and Regions

Country / Region	Area (Million hectares)				Yield (Metric tons per hectare)				Production (Million metric tons)				Change in Production			
	Prel.		2022/23 Proj.		Prel.		2022/23 Proj.		Prel.		2022/23 Proj.		From last month		From last year	
	2020/21	2021/22	Feb	Mar	2020/21	2021/22	Feb	Mar	2020/21	2021/22	Feb	Mar	MMT	Percent	MMT	Percent
World	165.20	165.92	163.69	165.20	4.60	4.63	4.59	4.61	509.32	513.97	502.98	509.83	6.85	1.36	-4.14	-0.81
United States	1.21	1.01	0.88	0.88	8.54	8.64	8.28	8.28	7.22	6.08	5.09	5.09	0.00	0.00	-0.99	-16.29
Total Foreign	164.00	164.92	162.81	164.32	4.57	4.60	4.57	4.59	502.10	507.89	497.88	504.74	6.85	1.38	-3.15	-0.62
East Asia																
China	30.08	29.92	29.45	29.45	7.04	7.11	7.08	7.08	148.30	148.99	145.95	145.95	0.00	0.00	-3.04	-2.04
Japan	1.53	1.52	1.50	1.50	6.78	6.93	6.82	6.82	7.57	7.67	7.45	7.45	0.00	0.00	-0.22	-2.80
Korea, South	0.73	0.73	0.73	0.73	6.49	7.12	6.88	6.88	3.51	3.88	3.76	3.76	0.00	0.00	-0.12	-3.04
Korea, North	0.49	0.50	0.50	0.50	4.44	4.18	4.18	4.18	1.40	1.36	1.36	1.36	0.00	0.00	0.00	0.00
South Asia																
India	45.77	46.28	45.50	47.00	4.08	4.20	4.12	4.21	124.37	129.47	125.00	132.00	7.00	5.60	2.53	1.95
Bangladesh	11.50	11.62	11.50	11.50	4.51	4.63	4.68	4.68	34.60	35.85	35.85	35.85	0.00	0.00	0.00	0.00
Pakistan	3.34	3.54	3.00	3.00	3.79	3.95	3.30	3.30	8.42	9.32	6.60	6.60	0.00	0.00	-2.72	-29.21
Nepal	1.47	1.48	1.45	1.45	3.82	3.47	3.79	3.79	3.74	3.42	3.65	3.65	0.00	0.00	0.24	6.94
Sri Lanka	1.09	1.13	1.09	1.09	4.59	3.56	3.41	3.41	3.39	2.73	2.53	2.53	0.00	0.00	-0.21	-7.61
Southeast Asia																
Indonesia	11.40	11.60	11.65	11.65	4.77	4.67	4.68	4.68	34.50	34.40	34.60	34.60	0.00	0.00	0.20	0.58
Vietnam	7.31	7.19	7.17	7.17	6.00	5.96	6.03	6.03	27.38	26.77	27.00	27.00	0.00	0.00	0.23	0.86
Thailand	10.51	10.70	10.85	10.85	2.72	2.81	2.82	2.82	18.86	19.88	20.20	20.20	0.00	0.00	0.32	1.62
Burma	6.90	6.90	6.90	6.90	2.85	2.80	2.83	2.83	12.60	12.35	12.50	12.50	0.00	0.00	0.15	1.20
Philippines	4.76	4.80	4.80	4.80	4.14	4.15	4.10	4.10	12.42	12.54	12.41	12.41	0.00	0.00	-0.13	-1.03
Cambodia	3.26	3.27	3.31	3.31	2.89	2.89	2.94	2.94	5.74	5.77	5.93	5.93	0.00	0.00	0.16	2.81
Laos	0.93	0.94	0.95	0.95	3.24	3.28	3.26	3.26	1.90	1.95	1.95	1.95	0.00	0.00	0.00	0.00
Malaysia	0.68	0.67	0.68	0.68	4.07	4.09	4.07	4.07	1.80	1.78	1.80	1.80	0.00	0.00	0.02	1.12
South America																
Brazil	1.68	1.62	1.47	1.47	7.00	6.67	7.07	6.94	8.00	7.34	7.07	6.94	-0.14	-1.92	-0.40	-5.47
Peru	0.41	0.42	0.42	0.42	8.22	8.37	8.55	8.55	2.34	2.43	2.48	2.48	0.00	0.00	0.05	2.22
Africa																
Egypt	0.70	0.50	0.60	0.60	8.28	8.41	8.70	8.70	4.00	2.90	3.60	3.60	0.00	0.00	0.70	24.14
Madagascar	1.68	1.65	1.60	1.60	2.53	2.65	2.69	2.69	2.71	2.80	2.75	2.75	0.00	0.00	-0.05	-1.82
Nigeria	3.60	3.65	3.50	3.50	2.27	2.29	2.29	2.29	5.15	5.26	5.04	5.04	0.00	0.00	-0.22	-4.09
European Union	0.42	0.40	0.33	0.33	6.74	6.57	6.00	6.00	1.83	1.72	1.27	1.27	0.00	0.00	-0.45	-26.00
Iran	0.58	0.56	0.57	0.57	5.27	5.14	5.32	5.32	2.00	1.90	2.00	2.00	0.00	0.00	0.10	5.26
Others	13.21	13.33	13.29	13.31	2.94	2.89	2.87	2.86	25.58	25.41	25.12	25.11	-0.01	-0.04	-0.30	-1.19

Yield is on a rough basis, before the milling process. Production is on a milled basis, after the milling process.

Table 10 Total Oilseed Area, Yield, and Production

World and Selected Countries and Regions

Country / Region	Area (Million hectares)				Yield (Metric tons per hectare)				Production (Million metric tons)				Change in Production			
	2020/21	Prel.	2022/23 Proj.		2020/21	Prel.	2022/23 Proj.		2020/21	Prel.	2022/23 Proj.		From last month		From last year	
		2021/22	Feb	Mar		2021/22	Feb	Mar		2021/22	Feb	Mar	MMT	Percent	MMT	Percent
World Total	--	--	--	--	--	--	--	--	607.70	607.09	636.72	629.89	-6.83	-1.07	22.80	3.76
Total Foreign	--	--	--	--	--	--	--	--	483.18	475.74	510.76	503.93	-6.83	-1.34	28.19	5.93
Oilseed, Copra	--	--	--	--	--	--	--	--	5.78	6.07	6.01	6.03	0.02	0.37	-0.04	-0.61
Oilseed, Palm Kernel	--	--	--	--	--	--	--	--	19.09	19.33	19.99	20.08	0.09	0.43	0.74	3.84
Major Oilseeds	251.77	260.89	263.59	263.85	2.31	2.23	2.32	2.29	582.84	581.69	610.73	603.79	-6.94	-1.14	22.10	3.80
United States	38.81	41.06	40.04	40.04	3.21	3.20	3.15	3.15	124.52	131.35	125.96	125.96	0.00	0.00	-5.39	-4.10
Foreign Oilseeds	212.96	219.83	223.54	223.81	2.15	2.05	2.17	2.13	458.32	450.34	484.76	477.82	-6.94	-1.43	27.49	6.10
South America	66.35	68.66	70.94	70.59	3.18	2.84	3.13	3.02	210.88	195.31	222.03	213.23	-8.80	-3.96	17.92	9.18
Brazil	41.07	43.33	45.28	45.28	3.50	3.10	3.49	3.49	143.77	134.17	158.23	158.23	0.00	0.00	24.06	17.93
Argentina	18.97	18.77	18.91	18.51	2.70	2.65	2.49	2.08	51.21	49.67	47.04	38.44	-8.60	-18.28	-11.23	-22.61
Paraguay	3.38	3.50	3.54	3.54	2.89	1.23	2.86	2.86	9.76	4.30	10.13	10.13	0.00	0.00	5.82	135.36
Bolivia	1.57	1.54	1.57	1.57	2.24	2.07	2.10	2.10	3.51	3.20	3.30	3.30	0.00	0.00	0.10	3.22
Uruguay	1.22	1.38	1.51	1.56	1.86	2.63	1.98	1.79	2.27	3.62	2.99	2.79	-0.20	-6.68	-0.83	-22.93
China	25.45	24.20	26.12	26.14	2.59	2.58	2.57	2.58	65.81	62.34	67.18	67.49	0.31	0.47	5.15	8.26
South Asia	42.16	41.87	42.94	42.92	0.96	1.05	1.03	1.02	40.48	44.06	44.09	43.64	-0.45	-1.02	-0.42	-0.96
India	39.15	38.92	40.18	40.18	0.96	1.03	1.03	1.01	37.55	40.25	41.19	40.77	-0.43	-1.03	0.52	1.28
Pakistan	2.65	2.59	2.40	2.38	0.94	1.31	1.02	1.02	2.50	3.38	2.46	2.43	-0.03	-1.02	-0.95	-28.01
European Union	11.10	10.99	12.09	12.09	2.59	2.79	2.64	2.64	28.77	30.70	31.94	31.94	0.00	0.00	1.24	4.03
United Kingdom	0.38	0.31	0.36	0.36	2.73	3.20	3.40	3.40	1.04	0.98	1.23	1.23	0.00	0.00	0.24	24.87
Former Soviet Union - 12	25.91	27.77	25.99	26.09	1.73	1.89	1.81	1.82	44.71	52.51	47.08	47.58	0.50	1.05	-4.94	-9.40
Russia	12.50	14.23	14.50	14.50	1.61	1.62	1.75	1.75	20.14	23.11	25.40	25.40	0.00	0.00	2.29	9.92
Ukraine	9.65	9.58	7.40	7.45	2.06	2.54	2.28	2.30	19.85	24.32	16.90	17.10	0.20	1.18	-7.22	-29.67
Uzbekistan	1.08	1.08	1.09	1.09	1.20	1.10	1.02	1.09	1.29	1.19	1.11	1.19	0.08	7.04	0.00	0.08
Canada	10.41	11.06	10.76	10.76	2.49	1.81	2.38	2.38	25.95	20.05	25.63	25.63	0.00	0.00	5.58	27.81
Africa	22.12	24.79	23.79	23.83	1.08	0.98	1.04	1.05	23.99	24.36	24.75	25.08	0.33	1.35	0.72	2.95
Nigeria	4.62	4.97	4.87	4.87	1.19	1.11	1.21	1.21	5.49	5.50	5.90	5.90	0.00	0.00	0.41	7.37
South Africa	1.36	1.66	1.72	1.76	1.98	1.89	1.85	2.00	2.69	3.14	3.18	3.52	0.34	10.69	0.38	12.13
Tanzania	1.17	1.24	1.35	1.35	1.02	0.98	0.93	0.93	1.19	1.21	1.25	1.25	0.00	0.00	0.04	3.39
Southeast Asia	3.25	3.21	3.18	3.18	1.36	1.36	1.38	1.38	4.42	4.38	4.37	4.37	0.00	0.00	-0.01	-0.16
Burma	2.03	2.04	2.04	2.04	1.17	1.19	1.21	1.21	2.37	2.42	2.46	2.46	0.00	0.00	0.05	1.86
Indonesia	0.94	0.90	0.87	0.87	1.54	1.55	1.55	1.55	1.45	1.39	1.35	1.35	0.00	0.00	-0.04	-2.53
Australia	2.94	3.91	4.16	4.64	1.93	2.21	2.14	2.17	5.69	8.65	8.90	10.05	1.15	12.92	1.40	16.23
Turkey	1.18	1.32	1.48	1.48	2.46	2.55	2.69	2.69	2.89	3.37	3.98	3.98	0.00	0.00	0.61	18.02
Others	1.70	1.74	1.74	1.74	2.18	2.08	2.06	2.07	3.69	3.61	3.60	3.61	0.02	0.47	0.00	-0.06

World Total and Total Foreign: (Major Oilseeds plus copra and palm kernel) Major Oilseeds: (soybeans, sunflowerseeds, peanuts(inshell), cottonseed and rapeseed)

Table 11 Soybean Area, Yield, and Production

Country / Region	Area (Million hectares)				Yield (Metric tons per hectare)				Production (Million metric tons)				Change in Production			
	Prel.		2022/23 Proj.		Prel.		2022/23 Proj.		Prel.		2022/23 Proj.		From last month		From last year	
	2020/21	2021/22	Feb	Mar	2020/21	2021/22	Feb	Mar	2020/21	2021/22	Feb	Mar	MMT	Percent	MMT	Percent
World	129.25	131.07	135.55	135.24	2.85	2.73	2.83	2.77	368.48	358.14	383.01	375.15	-7.86	-2.05	17.01	4.75
United States	33.43	34.93	34.94	34.94	3.43	3.48	3.33	3.33	114.75	121.53	116.38	116.38	0.00	0.00	-5.15	-4.24
Total Foreign	95.83	96.14	100.62	100.30	2.65	2.46	2.65	2.58	253.73	236.61	266.63	258.77	-7.86	-2.95	22.16	9.36
South America																
Brazil	39.50	41.50	43.40	43.40	3.53	3.12	3.53	3.53	139.50	129.50	153.00	153.00	0.00	0.00	23.50	18.15
Argentina	16.47	15.90	15.90	15.50	2.81	2.76	2.58	2.13	46.20	43.90	41.00	33.00	-8.00	-19.51	-10.90	-24.83
Paraguay	3.29	3.42	3.45	3.45	2.93	1.22	2.90	2.90	9.64	4.18	10.00	10.00	0.00	0.00	5.82	139.06
Bolivia	1.43	1.40	1.43	1.43	2.32	2.14	2.17	2.17	3.32	3.00	3.10	3.10	0.00	0.00	0.10	3.33
Uruguay	1.06	1.16	1.10	1.15	1.88	2.80	2.09	1.83	2.00	3.23	2.30	2.10	-0.20	-8.70	-1.13	-35.04
East Asia																
China	9.88	8.42	10.27	10.24	1.98	1.95	1.98	1.98	19.60	16.40	20.33	20.28	-0.05	-0.24	3.89	23.70
Korea, South	0.06	0.05	0.06	0.06	1.47	2.06	1.73	1.73	0.08	0.11	0.10	0.10	0.00	0.00	-0.02	-14.41
Korea, North	0.16	0.17	0.16	0.16	1.40	1.15	1.15	1.15	0.23	0.19	0.18	0.18	0.00	0.00	-0.01	-5.26
Japan	0.14	0.15	0.15	0.15	1.54	1.63	1.55	1.55	0.22	0.24	0.23	0.23	0.00	0.00	-0.01	-2.52
India	12.92	12.50	12.70	12.70	0.81	0.95	0.94	0.94	10.45	11.90	12.00	12.00	0.00	0.00	0.10	0.84
Canada	2.04	2.08	2.12	2.12	3.12	2.99	3.09	3.09	6.36	6.22	6.54	6.54	0.00	0.00	0.32	5.13
Former Soviet Union - 12																
Russia	2.71	2.99	3.30	3.30	1.59	1.59	1.67	1.67	4.31	4.76	5.50	5.50	0.00	0.00	0.74	15.55
Ukraine	1.46	1.44	1.35	1.35	2.05	2.64	2.37	2.37	3.00	3.80	3.20	3.20	0.00	0.00	-0.60	-15.79
European Union	1.00	0.98	1.06	1.06	2.61	2.76	2.34	2.34	2.60	2.71	2.47	2.47	0.00	0.00	-0.24	-8.87
Southeast Asia																
Indonesia	0.39	0.35	0.33	0.33	1.22	1.21	1.21	1.21	0.48	0.43	0.40	0.40	0.00	0.00	-0.03	-5.88
Vietnam	0.04	0.03	0.03	0.03	1.61	1.61	1.60	1.60	0.06	0.05	0.05	0.05	0.00	0.00	-0.01	-9.43
Thailand	0.03	0.03	0.03	0.03	1.63	1.63	1.63	1.63	0.05	0.05	0.05	0.05	0.00	0.00	0.00	0.00
Burma	0.14	0.13	0.13	0.13	1.04	1.04	1.04	1.04	0.14	0.14	0.13	0.13	0.00	0.00	-0.01	-3.70
Serbia	0.22	0.22	0.22	0.22	2.89	2.45	2.50	2.50	0.64	0.54	0.55	0.55	0.00	0.00	0.01	1.85
Mexico	0.16	0.18	0.12	0.12	1.58	1.57	1.54	1.54	0.25	0.29	0.19	0.19	0.00	0.00	-0.10	-35.76
Africa																
South Africa	0.83	0.93	1.10	1.15	2.29	2.38	2.05	2.30	1.90	2.20	2.25	2.65	0.40	17.78	0.45	20.45
Nigeria	1.10	1.20	1.20	1.20	1.01	0.93	1.04	1.04	1.11	1.12	1.25	1.25	0.00	0.00	0.13	11.91
Zambia	0.16	0.30	0.38	0.38	1.81	1.35	1.27	1.27	0.30	0.41	0.48	0.48	0.00	0.00	0.06	15.57
Uganda	0.05	0.05	0.05	0.05	0.60	0.60	0.60	0.60	0.03	0.03	0.03	0.03	0.00	0.00	0.00	0.00
Middle East																
Iran	0.07	0.07	0.08	0.08	2.41	2.29	2.27	2.27	0.17	0.16	0.17	0.17	0.00	0.00	0.01	6.25
Turkey	0.03	0.03	0.04	0.04	3.79	3.91	4.00	4.00	0.11	0.13	0.14	0.14	0.00	0.00	0.02	12.00
Others	0.49	0.46	0.49	0.50	2.06	2.03	2.05	1.99	1.01	0.94	1.01	1.00	-0.02	-1.48	0.06	6.07

World and Selected Countries and Regions

Table 12 Cottonseed Area, Yield, and Production

Country / Region	Area (Million hectares)				Yield (Metric tons per hectare)				Production (Million metric tons)				Change in Production			
	Prel.		2022/23 Proj.		Prel.		2022/23 Proj.		Prel.		2022/23 Proj.		From last month		From last year	
	2020/21	2021/22	Feb	Mar	2020/21	2021/22	Feb	Mar	2020/21	2021/22	Feb	Mar	MMT	Percent	MMT	Percent
World	30.81	31.98	30.83	31.06	1.33	1.31	1.35	1.35	41.01	41.78	41.76	41.93	0.17	0.41	0.15	0.36
United States	3.33	4.16	3.01	3.01	1.22	1.16	1.34	1.34	4.05	4.83	4.04	4.04	0.00	0.00	-0.79	-16.30
Total Foreign	27.49	27.83	27.82	28.05	1.34	1.33	1.36	1.35	36.96	36.95	37.72	37.89	0.17	0.45	0.94	2.54
South Asia																
India	13.29	12.37	12.70	12.70	0.88	0.84	0.85	0.82	11.72	10.36	10.83	10.40	-0.43	-3.93	0.04	0.41
Pakistan	2.20	2.00	1.80	1.80	0.89	1.30	0.94	0.94	1.95	2.60	1.69	1.69	0.00	0.00	-0.91	-35.01
China	3.20	3.10	3.00	3.05	3.63	3.39	3.73	3.79	11.60	10.50	11.20	11.56	0.36	3.22	1.06	10.07
Former Soviet Union - 12																
Uzbekistan	1.06	1.06	1.07	1.07	1.18	1.07	0.99	1.06	1.25	1.14	1.06	1.14	0.08	7.37	0.00	0.00
Turkmenistan	0.55	0.55	0.55	0.55	0.66	0.64	0.64	0.64	0.36	0.35	0.35	0.35	0.00	0.00	0.00	0.00
Tajikistan	0.16	0.17	0.17	0.17	1.11	1.09	1.11	1.11	0.18	0.19	0.19	0.19	0.00	0.00	0.00	1.08
Kazakhstan	0.11	0.12	0.13	0.13	0.95	0.90	0.94	0.94	0.11	0.10	0.12	0.12	0.00	0.00	0.01	13.59
South America																
Brazil	1.37	1.60	1.63	1.63	2.62	2.43	2.71	2.71	3.59	3.89	4.42	4.42	0.00	0.00	0.53	13.49
Argentina	0.41	0.48	0.40	0.40	0.72	0.68	1.11	1.11	0.29	0.33	0.44	0.44	0.00	0.00	0.12	36.20
Middle East																
Turkey	0.35	0.45	0.56	0.56	2.71	2.76	2.88	2.88	0.95	1.24	1.60	1.60	0.00	0.00	0.36	28.93
Syria	0.03	0.03	0.03	0.03	2.36	2.20	2.20	2.20	0.06	0.06	0.06	0.06	0.00	0.00	0.00	0.00
Iran	0.10	0.10	0.10	0.10	1.35	1.35	1.35	1.35	0.13	0.14	0.14	0.14	0.00	0.00	0.00	0.00
Australia	0.28	0.60	0.50	0.68	3.06	2.88	3.00	2.45	0.84	1.73	1.50	1.65	0.15	9.99	-0.08	-4.34
European Union	0.34	0.32	0.31	0.31	1.59	1.66	1.62	1.62	0.54	0.53	0.50	0.50	0.00	0.00	-0.03	-5.99
Africa																
Burkina Faso	0.56	0.60	0.62	0.62	0.47	0.45	0.40	0.40	0.26	0.27	0.25	0.25	0.00	0.00	-0.02	-6.42
Mali	0.17	0.72	0.69	0.69	0.51	0.56	0.41	0.41	0.08	0.40	0.28	0.28	0.00	0.00	-0.12	-29.95
Cameroon	0.23	0.23	0.23	0.23	1.51	1.39	1.41	1.41	0.34	0.32	0.33	0.33	0.00	0.00	0.01	1.56
Cote d'Ivoire	0.45	0.47	0.41	0.41	0.61	0.60	0.36	0.34	0.27	0.28	0.15	0.14	-0.01	-4.08	-0.14	-49.82
Benin	0.62	0.64	0.58	0.58	0.78	0.73	0.75	0.75	0.48	0.47	0.43	0.43	0.00	0.00	-0.04	-8.32
Tanzania	0.17	0.24	0.35	0.35	0.56	0.46	0.43	0.43	0.09	0.11	0.15	0.15	0.00	0.00	0.04	36.94
Egypt	0.07	0.09	0.13	0.13	1.00	1.00	0.98	0.98	0.07	0.09	0.13	0.13	0.00	0.00	0.04	50.59
Nigeria	0.27	0.27	0.27	0.27	0.56	0.56	0.56	0.56	0.15	0.15	0.15	0.15	0.00	0.00	0.00	0.00
Uganda	0.10	0.10	0.10	0.10	1.40	1.40	1.49	1.49	0.14	0.14	0.15	0.15	0.00	0.00	0.01	6.43
Zimbabwe	0.24	0.25	0.24	0.24	0.39	0.33	0.34	0.34	0.09	0.08	0.08	0.08	0.00	0.00	0.00	0.00
Sudan	0.20	0.20	0.20	0.20	1.41	1.41	1.53	1.53	0.28	0.28	0.31	0.31	0.00	0.00	0.02	8.51
Mexico	0.15	0.15	0.20	0.20	2.40	2.71	2.31	2.39	0.35	0.42	0.46	0.48	0.02	3.69	0.06	14.63
Burma	0.24	0.25	0.25	0.25	1.17	1.18	1.18	1.18	0.28	0.29	0.29	0.29	0.00	0.00	0.00	0.00
Others	0.63	0.69	0.63	0.63	0.81	0.73	0.77	0.76	0.51	0.51	0.48	0.48	-0.01	-1.04	-0.03	-5.54

World and Selected Countries and Regions

Table 13 Peanut Area, Yield, and Production

Country / Region	Area (Million hectares)				Yield (Metric tons per hectare)				Production (Million metric tons)				Change in Production			
	Prel.		2022/23 Proj.		Prel.		2022/23 Proj.		Prel.		2022/23 Proj.		From last month		From last year	
	2020/21	2021/22	Feb	Mar	2020/21	2021/22	Feb	Mar	2020/21	2021/22	Feb	Mar	MMT	Percent	MMT	Percent
World	29.93	30.94	29.65	29.63	1.68	1.63	1.69	1.69	50.26	50.43	50.11	50.11	-0.01	-0.01	-0.33	-0.64
United States	0.65	0.62	0.56	0.56	4.27	4.63	4.50	4.50	2.79	2.89	2.53	2.53	0.00	0.00	-0.36	-12.44
Total Foreign	29.27	30.32	29.09	29.07	1.62	1.57	1.64	1.64	47.46	47.55	47.59	47.58	-0.01	-0.01	0.03	0.07
China	4.73	4.81	4.80	4.80	3.80	3.81	3.81	3.81	17.99	18.31	18.30	18.30	0.00	0.00	-0.01	-0.04
Africa																
Nigeria	3.25	3.50	3.40	3.40	1.30	1.21	1.32	1.32	4.23	4.23	4.50	4.50	0.00	0.00	0.27	6.43
Sudan	3.20	3.94	3.00	3.00	0.87	0.60	0.83	0.83	2.77	2.36	2.50	2.50	0.00	0.00	0.15	6.16
Senegal	1.23	1.21	1.20	1.20	1.47	1.38	1.42	1.42	1.80	1.68	1.70	1.70	0.00	0.00	0.02	1.31
Cameroon	0.43	0.43	0.43	0.43	1.40	1.40	1.40	1.40	0.60	0.60	0.60	0.60	0.00	0.00	0.00	0.00
Ghana	0.34	0.34	0.34	0.34	1.68	1.41	1.41	1.41	0.57	0.48	0.48	0.48	0.00	0.00	0.00	0.00
Chad	0.76	0.80	0.80	0.80	1.11	1.13	1.13	1.13	0.84	0.90	0.90	0.90	0.00	0.00	0.00	0.00
Malawi	0.40	0.40	0.40	0.40	0.88	0.88	0.88	0.88	0.35	0.35	0.35	0.35	0.00	0.00	0.00	0.00
Congo (Kinshasa)	0.50	0.50	0.50	0.50	0.90	0.90	0.90	0.90	0.45	0.45	0.45	0.45	0.00	0.00	0.00	0.00
Niger	0.90	0.92	0.92	0.92	0.66	0.56	0.60	0.60	0.59	0.52	0.55	0.55	0.00	0.00	0.03	5.97
Mali	0.43	0.43	0.43	0.43	1.16	0.87	1.00	1.00	0.49	0.37	0.43	0.43	0.00	0.00	0.06	15.49
Uganda	0.34	0.40	0.40	0.40	0.99	0.75	0.75	0.75	0.34	0.30	0.30	0.30	0.00	0.00	0.00	0.00
Burkina Faso	0.65	0.60	0.60	0.60	0.97	0.80	0.83	0.83	0.63	0.48	0.50	0.50	0.00	0.00	0.02	4.82
Guinea	0.98	1.10	1.10	1.10	1.10	1.21	1.09	1.09	1.07	1.34	1.20	1.20	0.00	0.00	-0.14	-10.11
Egypt	0.06	0.06	0.06	0.06	3.20	3.20	3.20	3.20	0.21	0.21	0.21	0.21	0.00	0.00	0.00	0.00
Central African Republic	0.10	0.10	0.10	0.10	1.50	1.50	1.50	1.50	0.15	0.15	0.15	0.15	0.00	0.00	0.00	0.00
South Africa	0.04	0.04	0.03	0.03	2.21	1.48	1.67	2.33	0.09	0.07	0.05	0.07	0.02	40.00	0.01	7.69
Mozambique	0.35	0.38	0.38	0.38	0.30	0.34	0.34	0.34	0.10	0.13	0.13	0.13	0.00	0.00	0.00	0.00
Cote d'Ivoire	0.16	0.15	0.15	0.15	1.40	1.45	1.45	1.45	0.23	0.21	0.21	0.21	0.00	0.00	0.00	0.00
Benin	0.17	0.19	0.19	0.19	1.01	0.92	0.92	0.92	0.18	0.18	0.18	0.18	0.00	0.00	0.00	0.00
South Asia																
India	6.02	5.60	5.50	5.50	1.11	1.21	1.21	1.21	6.70	6.80	6.65	6.65	0.00	0.00	-0.15	-2.21
Pakistan	0.14	0.15	0.15	0.13	0.90	0.94	0.93	0.88	0.12	0.15	0.14	0.12	-0.03	-17.86	-0.03	-20.69
Southeast Asia																
Indonesia	0.55	0.55	0.54	0.54	1.78	1.76	1.76	1.76	0.97	0.96	0.95	0.95	0.00	0.00	-0.01	-1.04
Burma	1.06	1.06	1.07	1.07	1.48	1.51	1.55	1.55	1.56	1.60	1.65	1.65	0.00	0.00	0.05	3.13
Vietnam	0.17	0.16	0.16	0.16	2.50	2.50	2.50	2.50	0.41	0.40	0.39	0.39	0.00	0.00	-0.01	-3.00
Thailand	0.02	0.02	0.02	0.02	1.67	1.67	1.67	1.67	0.04	0.04	0.04	0.04	0.00	0.00	0.00	0.00
South America																
Argentina	0.40	0.41	0.38	0.38	3.16	3.29	3.03	3.03	1.27	1.34	1.15	1.15	0.00	0.00	-0.19	-14.18
Brazil	0.17	0.20	0.21	0.21	3.86	3.68	3.66	3.66	0.64	0.72	0.75	0.75	0.00	0.00	0.03	4.46
Mexico	0.06	0.05	0.05	0.05	1.73	1.74	1.74	1.74	0.10	0.09	0.09	0.09	0.00	0.00	0.00	0.00
Others	1.70	1.83	1.79	1.79	1.16	1.19	1.18	1.18	1.97	2.17	2.10	2.10	0.00	0.00	-0.07	-3.13

Table 14 Sunflowerseed Area, Yield, and Production

Country / Region	Area (Million hectares)				Yield (Metric tons per hectare)				Production (Million metric tons)				Change in Production			
	Prel.		2022/23 Proj.		Prel.		2022/23 Proj.		Prel.		2022/23 Proj.		From last month		From last year	
	2020/21	2021/22	Feb	Mar	2020/21	2021/22	Feb	Mar	2020/21	2021/22	Feb	Mar	MMT	Percent	MMT	Percent
World	26.86	28.82	26.96	26.99	1.83	1.99	1.88	1.86	49.20	57.31	50.77	50.29	-0.47	-0.93	-7.01	-12.24
United States	0.67	0.50	0.65	0.65	2.01	1.71	1.96	1.96	1.35	0.86	1.28	1.28	0.00	0.00	0.41	47.69
Total Foreign	26.18	28.31	26.31	26.34	1.83	1.99	1.88	1.86	47.85	56.44	49.49	49.02	-0.47	-0.95	-7.43	-13.16
Former Soviet Union - 12																
Russia	8.35	9.61	9.00	9.00	1.59	1.62	1.78	1.78	13.27	15.57	16.00	16.00	0.00	0.00	0.43	2.75
Ukraine	7.00	7.10	4.90	4.90	2.01	2.46	2.12	2.12	14.10	17.50	10.40	10.40	0.00	0.00	-7.10	-40.57
Kazakhstan	0.75	0.94	1.05	1.09	1.13	1.10	1.05	1.20	0.84	1.03	1.10	1.30	0.20	18.55	0.27	26.36
European Union	4.44	4.36	4.82	4.82	2.00	2.35	1.97	1.97	8.90	10.25	9.48	9.48	0.00	0.00	-0.77	-7.55
South America																
Argentina	1.67	1.96	2.20	2.20	2.05	2.07	2.00	1.73	3.43	4.05	4.40	3.80	-0.60	-13.64	-0.25	-6.17
Uruguay	0.07	0.07	0.08	0.08	1.69	1.62	1.71	1.71	0.11	0.11	0.13	0.13	0.00	0.00	0.02	16.36
Bolivia	0.14	0.14	0.14	0.14	1.39	1.39	1.40	1.40	0.19	0.20	0.20	0.20	0.00	0.00	0.00	1.54
Brazil	0.03	0.04	0.04	0.04	1.13	1.62	1.60	1.60	0.04	0.06	0.06	0.06	0.00	0.00	0.00	6.67
Paraguay	0.03	0.03	0.03	0.03	1.53	1.55	1.56	1.56	0.05	0.05	0.05	0.05	0.00	0.00	0.00	4.17
China	0.87	0.89	0.95	0.95	2.94	2.73	2.79	2.79	2.57	2.42	2.65	2.65	0.00	0.00	0.23	9.32
South Asia																
India	0.23	0.25	0.28	0.28	0.82	0.76	0.78	0.78	0.19	0.19	0.22	0.22	0.00	0.00	0.03	13.16
Pakistan	0.06	0.10	0.10	0.10	1.47	1.38	1.35	1.35	0.09	0.14	0.14	0.14	0.00	0.00	-0.01	-4.26
Middle East																
Turkey	0.72	0.76	0.79	0.79	2.17	2.30	2.41	2.41	1.56	1.75	1.90	1.90	0.00	0.00	0.15	8.57
Iran	0.04	0.04	0.04	0.04	1.08	1.00	1.02	1.02	0.04	0.04	0.04	0.04	0.00	0.00	0.00	0.00
Israel	0.00	0.00	0.00	0.00	5.00	2.00	5.00	5.00	0.01	0.00	0.01	0.01	0.00	0.00	0.00	150.00
Africa																
Egypt	0.01	0.01	0.01	0.01	2.38	2.38	2.50	2.50	0.02	0.02	0.03	0.03	0.00	0.00	0.01	31.58
Morocco	0.02	0.02	0.02	0.02	1.16	1.25	1.11	1.11	0.02	0.03	0.02	0.02	0.00	0.00	-0.01	-20.00
South Africa	0.48	0.67	0.57	0.56	1.42	1.26	1.49	1.38	0.68	0.85	0.85	0.78	-0.08	-8.82	-0.07	-8.39
Burma	0.60	0.60	0.60	0.60	0.65	0.65	0.65	0.65	0.39	0.39	0.39	0.39	0.00	0.00	0.00	0.00
Canada	0.05	0.04	0.04	0.04	2.24	2.03	2.21	2.21	0.10	0.08	0.08	0.08	0.00	0.00	0.01	12.00
Australia	0.02	0.02	0.03	0.03	1.44	1.58	1.48	1.48	0.03	0.03	0.04	0.04	0.00	0.00	0.01	23.33
Others	0.62	0.67	0.64	0.64	1.98	2.54	2.07	2.07	1.23	1.69	1.32	1.32	0.00	0.00	-0.37	-22.04

World and Selected Countries and Regions

Table 15 Rapeseed Area, Yield, and Production

Country / Region	Area (Million hectares)				Yield (Metric tons per hectare)				Production (Million metric tons)				Change in Production			
	Prel.		2022/23 Proj.		Prel.		2022/23 Proj.		Prel.		2022/23 Proj.		From last month		From last year	
	2020/21	2021/22	Feb	Mar	2020/21	2021/22	Feb	Mar	2020/21	2021/22	Feb	Mar	MMT	Percent	MMT	Percent
World	34.92	38.08	40.59	40.94	2.12	1.94	2.10	2.11	73.89	74.03	85.08	86.31	1.23	1.44	12.28	16.59
United States	0.73	0.85	0.88	0.88	2.16	1.46	1.98	1.98	1.58	1.24	1.74	1.74	0.00	0.00	0.50	40.03
Total Foreign	34.19	37.23	39.71	40.06	2.12	1.95	2.10	2.11	72.32	72.78	83.33	84.56	1.23	1.47	11.78	16.19
European Union	5.32	5.33	5.92	5.92	3.14	3.23	3.30	3.30	16.73	17.22	19.50	19.50	0.00	0.00	2.28	13.27
United Kingdom	0.38	0.31	0.36	0.36	2.73	3.20	3.40	3.40	1.04	0.98	1.23	1.23	0.00	0.00	0.24	24.87
Switzerland	0.02	0.02	0.02	0.02	3.14	3.14	3.14	3.14	0.07	0.07	0.07	0.07	0.00	0.00	0.00	0.00
Canada	8.33	8.95	8.60	8.60	2.34	1.54	2.21	2.21	19.49	13.75	19.00	19.00	0.00	0.00	5.25	38.16
China	6.77	6.99	7.10	7.10	2.08	2.10	2.07	2.07	14.05	14.71	14.70	14.70	0.00	0.00	-0.01	-0.10
South Asia																
India	6.70	8.20	9.00	9.00	1.27	1.34	1.28	1.28	8.50	11.00	11.50	11.50	0.00	0.00	0.50	4.55
Pakistan	0.25	0.33	0.35	0.35	1.35	1.49	1.40	1.40	0.34	0.49	0.49	0.49	0.00	0.00	0.00	0.00
Bangladesh	0.25	0.25	0.25	0.25	0.92	0.92	0.92	0.92	0.23	0.23	0.23	0.23	0.00	0.00	0.00	0.00
Former Soviet Union - 12																
Russia	1.45	1.62	2.20	2.20	1.77	1.71	1.77	1.77	2.57	2.78	3.90	3.90	0.00	0.00	1.13	40.54
Ukraine	1.19	1.04	1.15	1.20	2.31	2.91	2.87	2.92	2.75	3.02	3.30	3.50	0.20	6.06	0.49	16.09
Belarus	0.36	0.32	0.33	0.33	2.06	1.59	1.69	1.69	0.73	0.50	0.55	0.55	0.00	0.00	0.05	10.00
Kazakhstan	0.12	0.12	0.13	0.13	1.23	1.24	1.23	1.48	0.15	0.15	0.16	0.19	0.03	18.13	0.04	29.45
Australia	2.61	3.25	3.60	3.90	1.82	2.10	2.03	2.13	4.76	6.82	7.30	8.30	1.00	13.70	1.48	21.70
South America																
Chile	0.04	0.04	0.03	0.03	3.81	3.86	3.87	3.87	0.14	0.14	0.12	0.12	0.00	0.00	-0.02	-11.11
Paraguay	0.05	0.04	0.05	0.05	1.41	1.45	1.51	1.51	0.07	0.06	0.07	0.07	0.00	0.00	0.00	6.25
Ethiopia	0.03	0.03	0.03	0.03	1.80	1.80	1.80	1.80	0.05	0.05	0.05	0.05	0.00	0.00	0.00	0.00
Others	0.33	0.41	0.61	0.61	2.02	2.03	1.93	1.93	0.67	0.83	1.18	1.18	0.00	0.00	0.35	41.98

World and Selected Countries and Regions

Table 16 Copra, Palm Kernel, and Palm Oil Production

Country / Region	Production (Million metric tons)				Change in Production			
	2020/21	Prel.	2022/23 Proj.		From last month		From last year	
		2021/22	Feb	Mar	MMT	Percent	MMT	Percent
Oilseed, Copra								
Philippines	2.40	2.60	2.60	2.60	0.00	0.00	0.00	0.00
Indonesia	1.67	1.68	1.68	1.68	0.00	0.00	0.00	0.00
India	0.93	0.94	0.94	0.94	0.00	0.00	0.00	0.00
Vietnam	0.28	0.29	0.29	0.29	0.00	0.00	0.00	0.00
Papua New Guinea	0.11	0.11	0.11	0.11	0.00	0.00	0.00	0.00
Sri Lanka	0.07	0.11	0.07	0.07	0.00	0.00	-0.03	-30.00
Thailand	0.07	0.09	0.07	0.09	0.02	28.57	0.00	0.00
Mexico	0.04	0.05	0.05	0.05	0.00	0.00	0.00	0.00
Solomon Islands	0.03	0.03	0.03	0.03	0.00	0.00	0.00	0.00
Cote d'Ivoire	0.03	0.03	0.03	0.03	0.00	0.00	0.00	0.00
World	5.78	6.07	6.01	6.03	0.02	0.33	-0.04	-0.66
Oilseed, Palm Kernel								
Indonesia	11.46	11.40	11.60	11.60	0.00	0.00	0.20	1.75
Malaysia	4.34	4.45	4.80	4.90	0.10	2.08	0.45	10.11
Nigeria	0.82	0.90	0.90	0.90	0.00	0.00	0.00	0.00
Thailand	0.79	0.83	0.86	0.86	0.00	0.00	0.03	3.61
Colombia	0.29	0.31	0.34	0.32	-0.02	-5.88	0.01	3.23
Guatemala	0.17	0.18	0.18	0.18	0.00	0.00	0.00	0.00
Papua New Guinea	0.16	0.17	0.17	0.17	0.00	0.00	0.01	6.25
Honduras	0.13	0.16	0.16	0.16	0.00	0.00	0.00	0.00
Brazil	0.14	0.15	0.15	0.15	0.00	0.00	0.01	7.14
Cameroon	0.15	0.15	0.15	0.15	0.00	0.00	0.00	0.00
World	19.09	19.33	19.99	20.08	0.09	0.45	0.75	3.88
Oil, Palm								
Indonesia	43.50	43.20	45.50	45.50	0.00	0.00	2.30	5.32
Malaysia	17.85	18.15	19.00	19.20	0.20	1.05	1.05	5.79
Thailand	2.96	3.15	3.26	3.26	0.00	0.00	0.11	3.49
Colombia	1.56	1.75	1.84	1.77	-0.07	-3.80	0.02	1.14
Nigeria	1.28	1.40	1.40	1.40	0.00	0.00	0.00	0.00
Guatemala	0.87	0.88	0.91	0.91	0.00	0.00	0.03	3.41
Papua New Guinea	0.60	0.63	0.65	0.65	0.00	0.00	0.03	4.84
Honduras	0.45	0.60	0.60	0.60	0.00	0.00	0.00	0.00
Cote d'Ivoire	0.55	0.58	0.60	0.60	0.00	0.00	0.03	5.26
Brazil	0.55	0.55	0.57	0.57	0.00	0.00	0.02	3.64
World	73.08	73.83	77.43	77.56	0.13	0.17	3.73	5.05

World and Selected Countries and Regions

Table 17 Cotton Area, Yield, and Production

Country / Region	Area (Million hectares)				Yield (Kilograms per hectare)				Production (Million 480 lb. bales)				Change in Production			
	Prel.		2022/23 Proj.		Prel.		2022/23 Proj.		Prel.		2022/23 Proj.		From last month		From last year	
	2020/21	2021/22	Feb	Mar	2020/21	2021/22	Feb	Mar	2020/21	2021/22	Feb	Mar	MBales	Percent	MBales	Percent
World	31.37	32.53	31.38	31.61	774	776	794	793	111.49	115.90	114.37	115.09	0.72	0.63	-0.81	-0.70
United States	3.33	4.16	3.01	3.01	957	918	1,062	1,062	14.61	17.52	14.68	14.68	0.00	0.00	-2.84	-16.22
Total Foreign	28.04	28.38	28.37	28.60	752	755	765	764	96.89	98.38	99.69	100.41	0.72	0.72	2.03	2.07
South Asia																
India	13.29	12.37	12.70	12.70	452	429	437	420	27.60	24.40	25.50	24.50	-1.00	-3.92	0.10	0.41
Pakistan	2.20	2.00	1.80	1.80	445	653	472	472	4.50	6.00	3.90	3.90	0.00	0.00	-2.10	-35.00
China	3.20	3.10	3.00	3.05	2,014	1,882	2,068	2,106	29.60	26.80	28.50	29.50	1.00	3.51	2.70	10.07
South America																
Brazil	1.37	1.60	1.63	1.63	1,720	1,595	1,777	1,777	10.82	11.72	13.30	13.30	0.00	0.00	1.58	13.48
Argentina	0.41	0.48	0.40	0.40	717	680	653	653	1.35	1.50	1.20	1.20	0.00	0.00	-0.30	-20.00
Paraguay	0.01	0.01	0.01	0.01	416	416	416	416	0.02	0.02	0.02	0.02	0.00	0.00	0.00	0.00
Africa																
Burkina Faso	0.56	0.60	0.62	0.62	372	351	316	316	0.95	0.96	0.90	0.90	0.00	0.00	-0.06	-6.25
Mali	0.17	0.72	0.69	0.69	396	432	316	316	0.30	1.43	1.00	1.00	0.00	0.00	-0.43	-30.07
Cote d'Ivoire	0.45	0.47	0.41	0.41	494	486	292	281	1.01	1.05	0.55	0.53	-0.02	-3.64	-0.52	-49.52
Benin	0.62	0.64	0.58	0.58	513	483	492	492	1.45	1.42	1.30	1.30	0.00	0.00	-0.12	-8.45
Egypt	0.07	0.09	0.13	0.13	720	717	703	703	0.22	0.28	0.42	0.42	0.00	0.00	0.14	50.00
Cameroon	0.23	0.23	0.23	0.23	658	606	615	615	0.68	0.64	0.65	0.65	0.00	0.00	0.01	1.56
Tanzania	0.17	0.24	0.35	0.35	284	231	218	218	0.22	0.26	0.35	0.35	0.00	0.00	0.10	37.25
Nigeria	0.27	0.27	0.27	0.27	282	282	282	282	0.35	0.35	0.35	0.35	0.00	0.00	0.00	0.00
Zimbabwe	0.24	0.25	0.24	0.24	222	191	195	195	0.25	0.22	0.22	0.22	0.00	0.00	0.00	0.00
Ethiopia	0.08	0.08	0.08	0.08	637	637	637	637	0.24	0.24	0.24	0.24	0.00	0.00	0.00	0.00
Former Soviet Union - 12																
Uzbekistan	1.06	1.06	1.07	1.07	653	596	549	590	3.18	2.90	2.70	2.90	0.20	7.41	0.00	0.00
Turkmenistan	0.55	0.55	0.55	0.55	368	356	356	356	0.92	0.90	0.90	0.90	0.00	0.00	0.00	0.00
Tajikistan	0.16	0.17	0.17	0.17	619	608	615	615	0.46	0.48	0.48	0.48	0.00	0.00	0.01	1.05
Kazakhstan	0.11	0.12	0.13	0.13	534	502	523	523	0.27	0.27	0.30	0.30	0.00	0.00	0.04	13.21
Middle East																
Turkey	0.35	0.45	0.56	0.56	1,804	1,839	1,922	1,922	2.90	3.80	4.90	4.90	0.00	0.00	1.10	28.95
Syria	0.03	0.03	0.03	0.03	1,219	1,132	1,132	1,132	0.14	0.13	0.13	0.13	0.00	0.00	0.00	0.00
Iran	0.10	0.10	0.10	0.10	871	871	871	871	0.40	0.40	0.40	0.40	0.00	0.00	0.00	0.00
Australia	0.28	0.60	0.50	0.68	2,217	2,087	2,177	1,774	2.80	5.75	5.00	5.50	0.50	10.00	-0.25	-4.35
Mexico	0.15	0.15	0.20	0.20	1,532	1,725	1,470	1,524	1.02	1.22	1.35	1.40	0.05	3.70	0.18	14.75
Burma	0.24	0.25	0.25	0.25	635	644	644	644	0.70	0.73	0.73	0.73	0.00	0.00	0.00	0.00
Others	1.73	1.77	1.69	1.70	575	558	567	564	4.56	4.53	4.41	4.40	-0.01	-0.25	-0.13	-2.93

World and Selected Countries and Regions

TABLE 18

The table below presents a record of the March projection and the final Estimate. Using world wheat production as an example, the "root mean square error" means that chances are 2 out of 3 that the current forecast will not be above or below the final estimate by more than 0.5 percent. Chances are 9 out of 10 (90% confidence level) that the difference will not exceed 0.9 percent. The average difference between the March projection and the final estimate is 2.4 million tons, ranging from 0.0 million to 8.0 million tons. The March projection has been below the estimate 30 times and above 11 times.

RELIABILITY OF PRODUCTION PROJECTIONS 1/

COMMODITY AND REGION	Root mean square error	90 percent confidence interval	Difference between forecast and final estimate				
			Average	Smallest	Largest	Years	
						Below final	Above final
	Percent		---Million metric tons---				
WHEAT							
World	0.5	0.9	2.4	0.0	8.0	30	11
U.S.	0.2	0.3	0.1	0.0	0.3	19	11
Foreign	0.6	1.0	2.3	0.1	8.0	30	11
COARSE GRAINS 2/							
World	1.2	2.0	10.6	0.5	35.1	34	7
U.S.	0.2	0.3	0.2	0.0	1.8	17	10
Foreign	1.7	2.8	10.7	0.5	35.1	34	7
RICE (Milled)							
World	1.3	2.2	3.5	0.2	13.8	30	11
U.S.	1.2	2.1	0.0	0.0	0.2	11	6
Foreign	1.3	2.2	3.5	0.1	13.8	30	11
SOYBEANS							
World	2.2	3.7	3.4	0.1	12.4	22	19
U.S.	1.4	2.3	0.7	0.0	3.2	18	16
Foreign	3.6	6.1	3.3	0.1	12.6	23	18
COTTON			---Million 480-lb. bales---				
World	1.8	3.1	1.4	0.0	5.2	24	15
U.S.	0.9	1.6	0.1	0.0	0.3	14	26
Foreign	2.2	3.7	1.4	0.0	5.3	24	16
UNITED STATES			-----Million bushels-----				
<i>CORN</i>	0.2	0.3	6	0	72	1	5
<i>SORGHUM</i>	0.1	0.2	0	0	4	0	2
<i>BARLEY</i>	1.0	1.6	1	0	11	20	4
<i>OATS</i>	0.4	0.7	0	0	2	5	4

1/ Marketing years 1981/82 through 2021/22 for grains, soybeans, and cotton. Final for grains, soybeans, and cotton is defined as the first November estimate following the marketing year for 1981/82 through 2020/21, and for 2021/22 the last month's estimate.

2/ Includes corn, sorghum, barley, oats, rye, millet, and mixed grain

March 2023

Global Market Analysis, FAS, USDA