



United States
Department of
Agriculture

Foreign
Agricultural
Service

Circular Series
WAP 4-23
April 2023

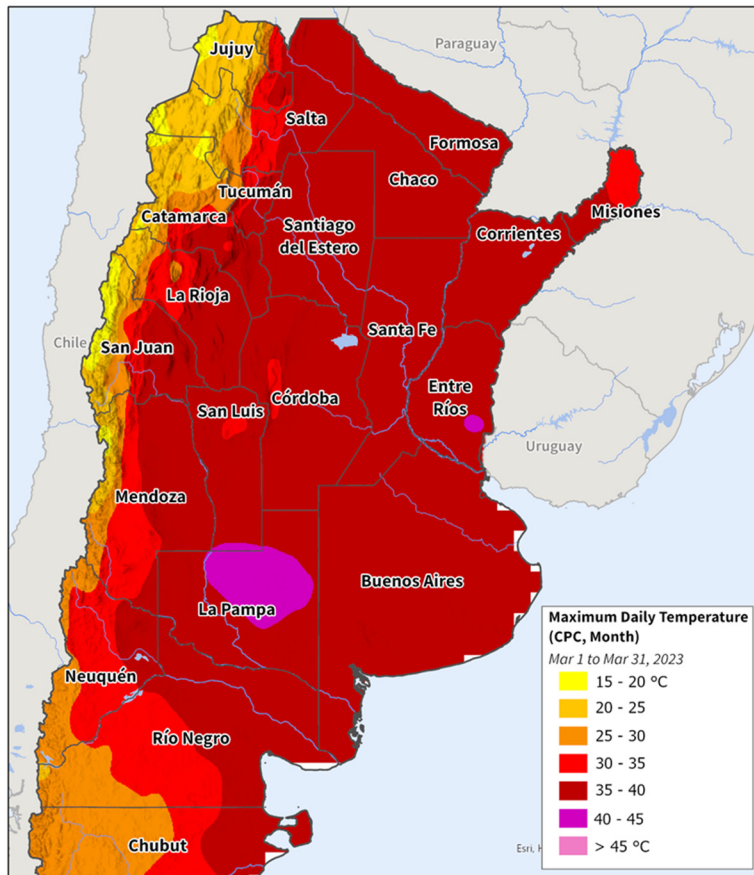
World Agricultural Production

Argentina Corn: Production Down 25 Percent from Last Year

Argentina corn production for marketing year 2022/23 is estimated at 37.0 million metric tons, down 8 percent from last month, and down 25 percent from last year. Corn yield is estimated at 5.52 tons per hectare, down 7 percent from last month, and down 21 percent from last year. Harvested area is estimated at 6.7 million hectares, unchanged from last month, and down 6 percent from last year.

Argentina Maximum Daily Temperature (CPC)

Highest Value from March 1 to March 31, 2023



Source: NOAA/CPC
<http://www.cpc.ncep.noaa.gov/>

Approved by the World Agricultural Outlook Board

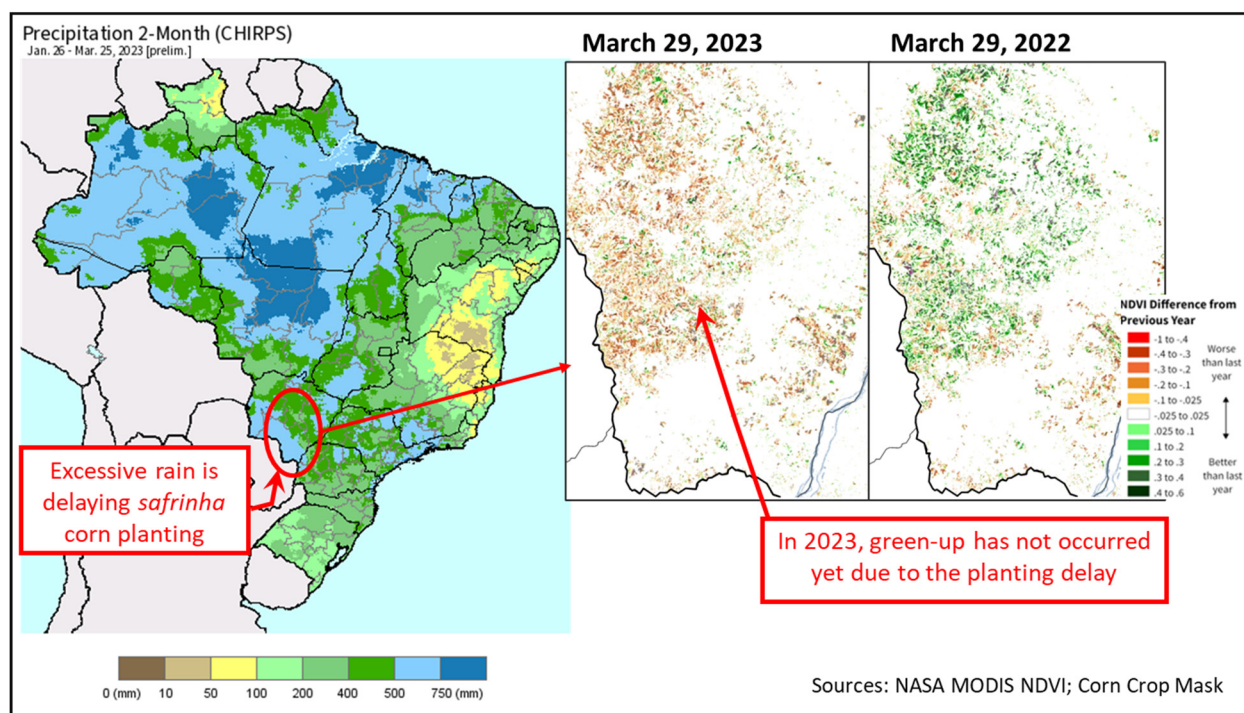
Yield is down month-to-month due to heat and dryness that impacted the late-planted corn, which accounts for roughly two-thirds of area. Temperatures during March were well above normal, with many days above 35 degrees Celsius. Dryness continued until about late March when rainfall occurred. According to FAS Buenos Aires, who conducted crop assessment during March, the late-March rainfall was too late to benefit the early-planted corn and may only marginally help the late-planted corn. Harvest for corn has begun and according to the Bolsa Cereales in Buenos Aires, about 10 percent of the crop has been harvested as of early April. Yields are well-below average. Harvest will continue until early August. *(For more information, please contact Katie.McGaughey@usda.gov.)*

Brazil Corn: No Change to Production for MY22/23 as Planting Concludes

Brazil corn production for marketing year (MY) 2022/23 is estimated at a record 125.0 million metric tons (mmt), unchanged from last month, and larger than last year's crop by 9.0 mmt (8 percent). Total harvested area, for all three corn crops, is estimated at a record 22.7 million hectares (mha), up 0.9 mha (4 percent) from last year. Yield is estimated at 5.51 tons per hectare, 3 percent above last year's crop, and 6 percent above the 5-year average yield.

The first-season crop is in the middle of harvest at 48 percent completed as of April 3 per the *Companhia Nacional de Abastecimento* (CONAB). Harvested area for this crop is estimated at 4.4 mha, with production at 26.8 mmt according to CONAB – roughly 2.0 mmt lower than initial forecasts. Yield expectations are mixed with several states in the Northeast and the state of Rio Grande do Sul experiencing dry conditions at critical pollination and grain-filling stages. These areas will display lower yields, whereas other states (for example, Paraná and Santa Catarina) are expecting exceptional yields.

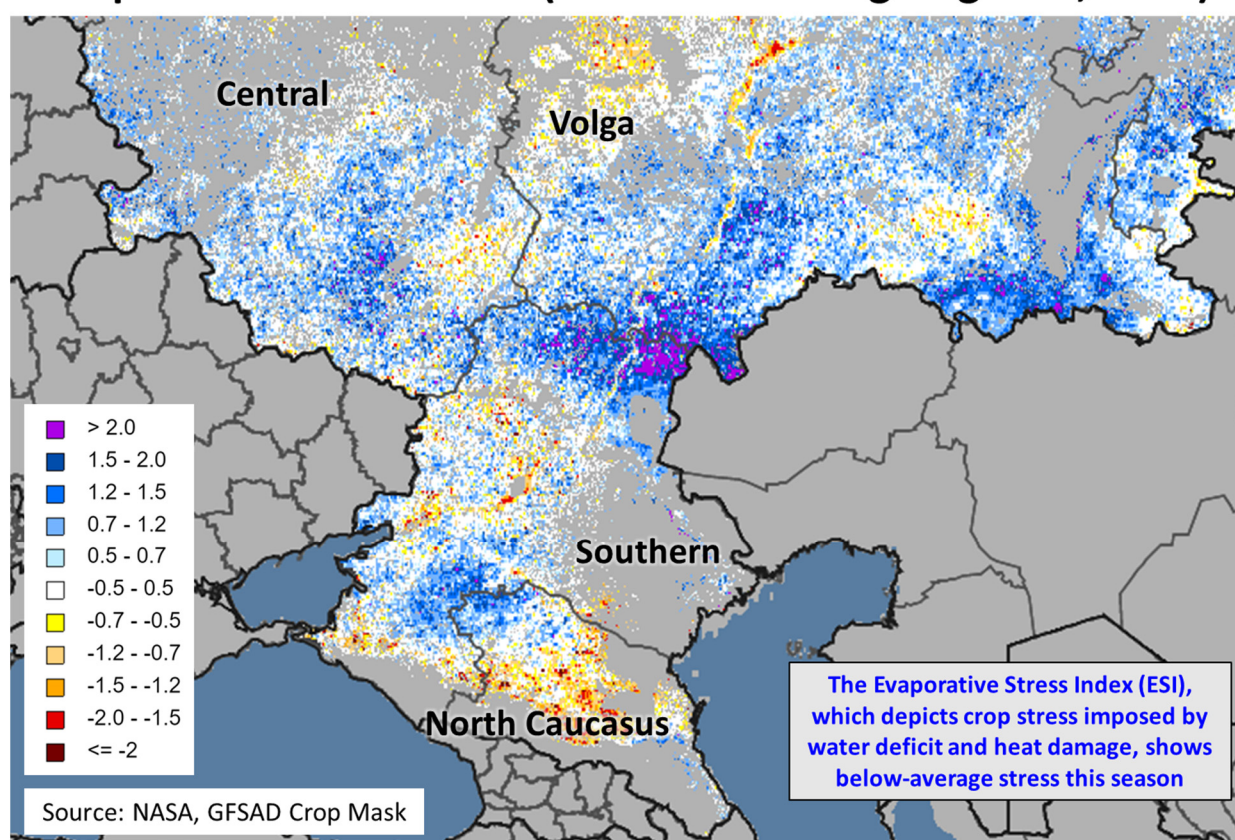
Brazil Corn: 2-Month Percent of Normal Precipitation and NDVI



Planting for the second-season crop is mostly complete except in the state of Mato Grosso do Sul (12 percent of *safrinha* production) where excessive soil moisture has delayed planting by 24 percent relative to the 5-year average. In the largest *safrinha* state of Mato Grosso (47 percent of *safrinha* production), farmers planted about 80 percent of the crop within the ideal sowing window on a record area, according to the *Instituto Mato-Grossense de Economia Agropecuária* (IMEA). Some producers who did not sow within the ideal window are opting for other crops, such as wheat in Paraná, as a late *safrinha* planting raises the risk of lower yields. The second-season corn area is estimated by CONAB at a record 17.0 mha, up 0.6 mha from last year. Sufficient rainfall and intermittent sunshine have been beneficial for crop development so far this season. The second corn crop is harvested from June to September. (For more information, please contact Sunita.Yadav-Pauletti@usda.gov.)

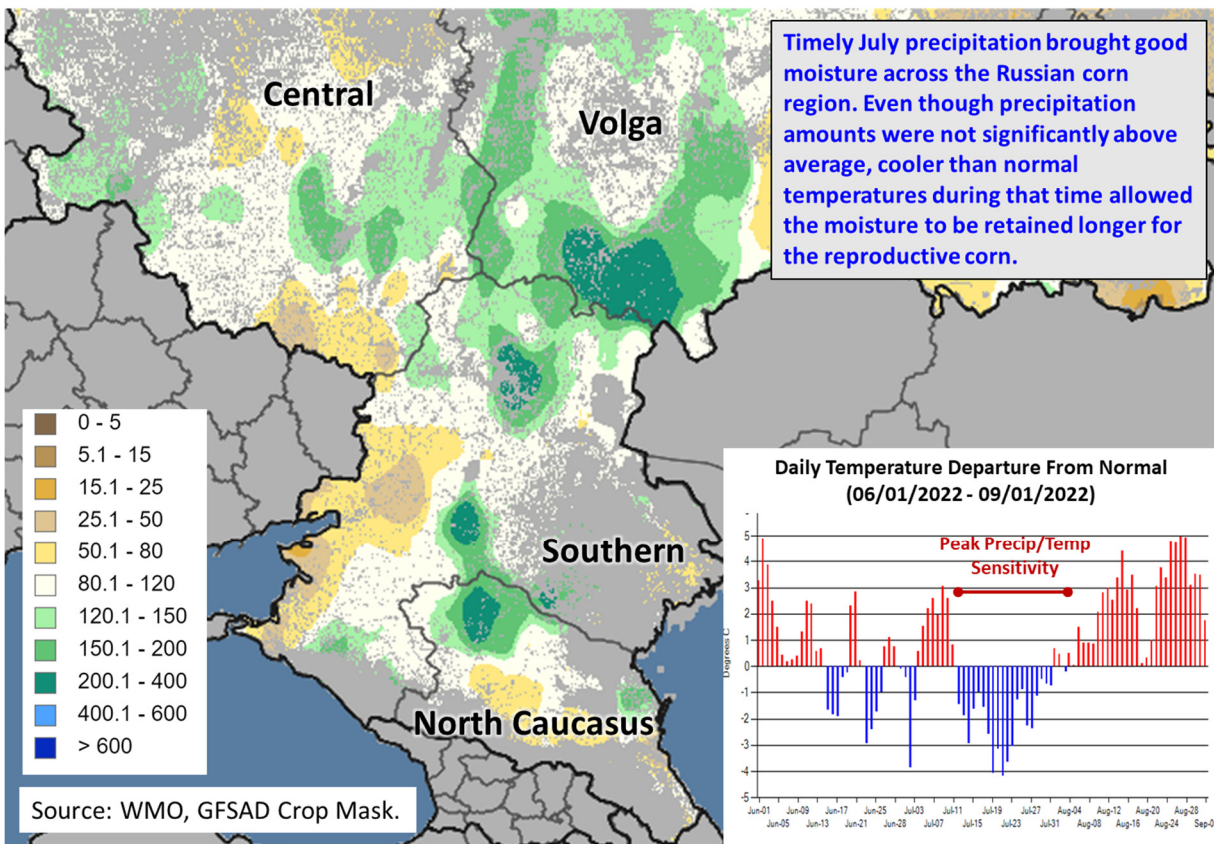
Russia Corn: High Production Despite Delayed Harvest

Evaporative Stress Index (12-weeks ending August 6, 2022)



Russia corn production for marketing year 2022/23 is estimated at 15.8 million metric tons (mmt), up 13 percent from last month and 4 percent from last year. Total corn yield is estimated at a record 6.00 tons per hectare (t/ha), up 7 percent from last month and 14 percent from last year. Total harvested area is estimated at 2.6 million hectares (mha), up 6 percent from last month, but down 9 percent from last year.

Percent Normal Rainfall for the Month of July 2022

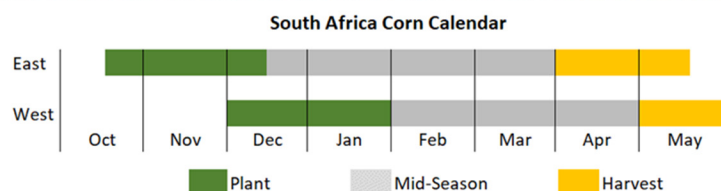
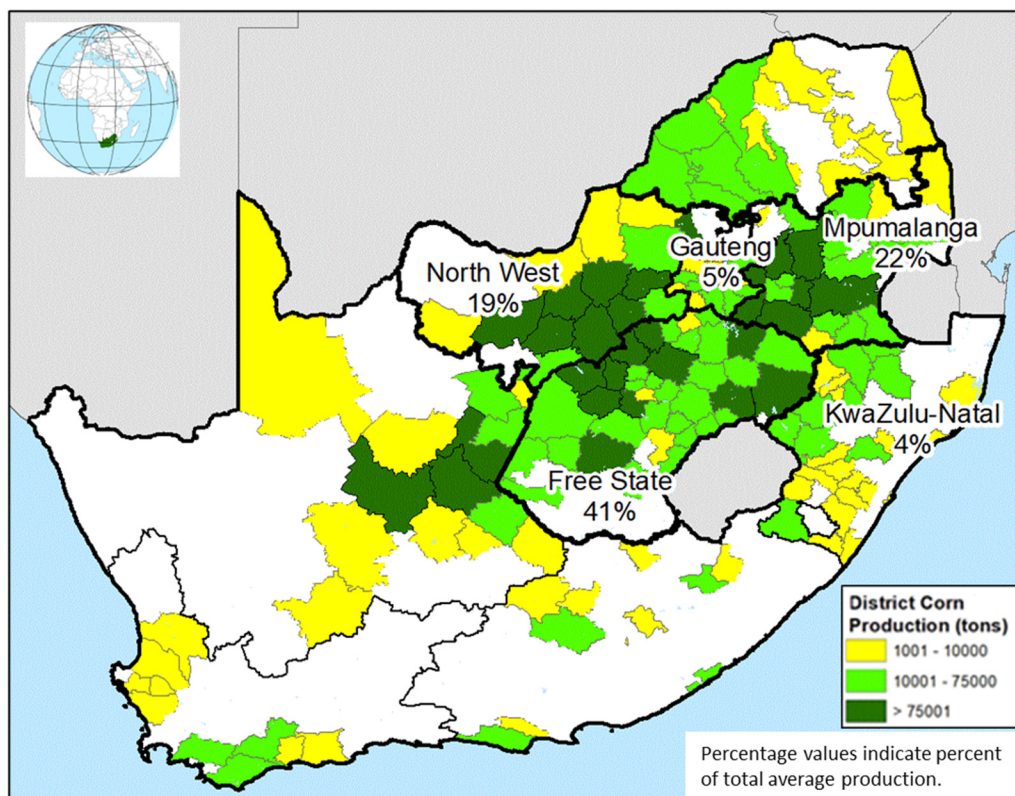


Russia's Statistical Agency, Rosstat, released its final 2022 numbers for all major crops in mid-March of 2023. Rosstat suggests a record yield for the MY 2022/23 corn crop. This season, corn harvest was substantially delayed due to abnormally wet October and November. Despite this late-season setback, yields marked year-to-year improvements across all major corn producing districts. Timely July precipitation brought good moisture across the Russian corn region. Even though precipitation amounts were not significantly above average, cooler than normal temperatures during that time allowed the moisture to be retained longer for the reproductive corn. As a result, this season's vegetation response tracked above the average during key yield formation stages. *(For more information, please contact Iliana.Mladenova@usda.gov.)*

South Africa Corn: Bumper Crop from Beneficial La Niña Rains

South Africa's marketing year 2022/23 corn production is forecast at 16.7 million metric tons (mmt), unchanged from last month but up 0.6 mmt (3 percent) from last year. The USDA production forecast includes output from both developing and commercial sectors, with the commercial sector accounting for approximately 97 percent of the total crop. Area is estimated at 3.0 million hectares (mha), unchanged from last month and nearly the same area as last year. Yield is forecast at 5.57 metric tons per hectare, unchanged from last month but up 4 percent from last year and up 8 percent from the 5-year average. Yields are expected to be higher than last year due to less waterlogging in regions with a high-water table.

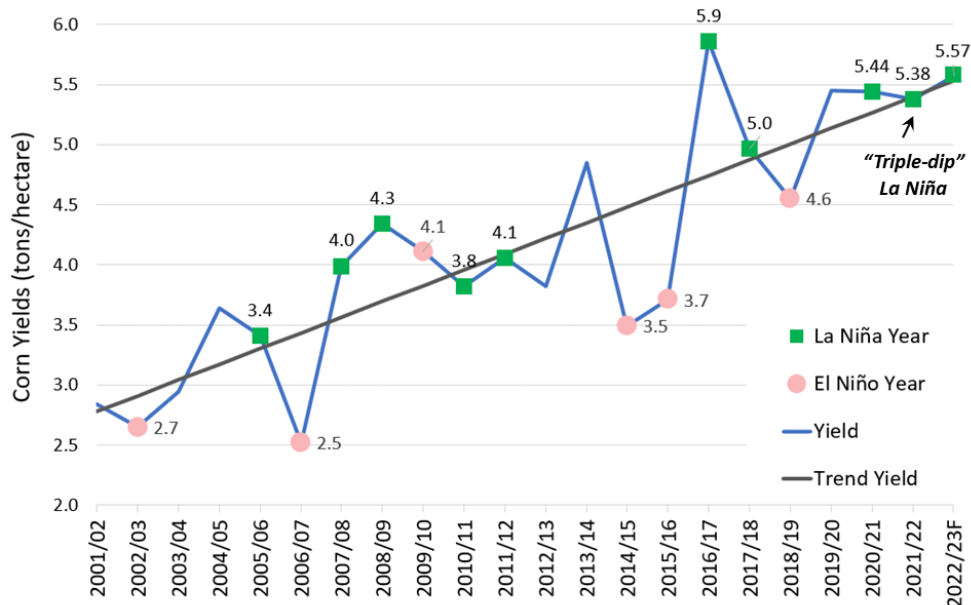
South Africa Corn Production



Source: Average production percentages are from South Africa's Crop Estimates Committee (2011-15), and district production data is from the Census of Commercial Agriculture, Statistics South Africa (2007)

FAS personnel traveled in South Africa's primary producing provinces in mid-March and interviewed representatives from the major grain cooperatives. Crop analysts from the cooperatives reported that beneficial La Niña rains from November 2022 through March 2023 allowed farmers to plant earlier than normal, and seasonal weather was most favorable in the Free State province where 41 percent of total crop is produced. Record or near record yields are expected in the Free State province and trend yields are expected for Mpumalanga (22 percent of total) and North West (19 percent) provinces. Satellite-derived Normalized Difference Vegetation Index (NDVI) and the Percent of Average Seasonal Greenness (PASG) indices confirmed early crop establishment, and good to excellent crop conditions by late March for all primary producing provinces.

South Africa Corn Yields



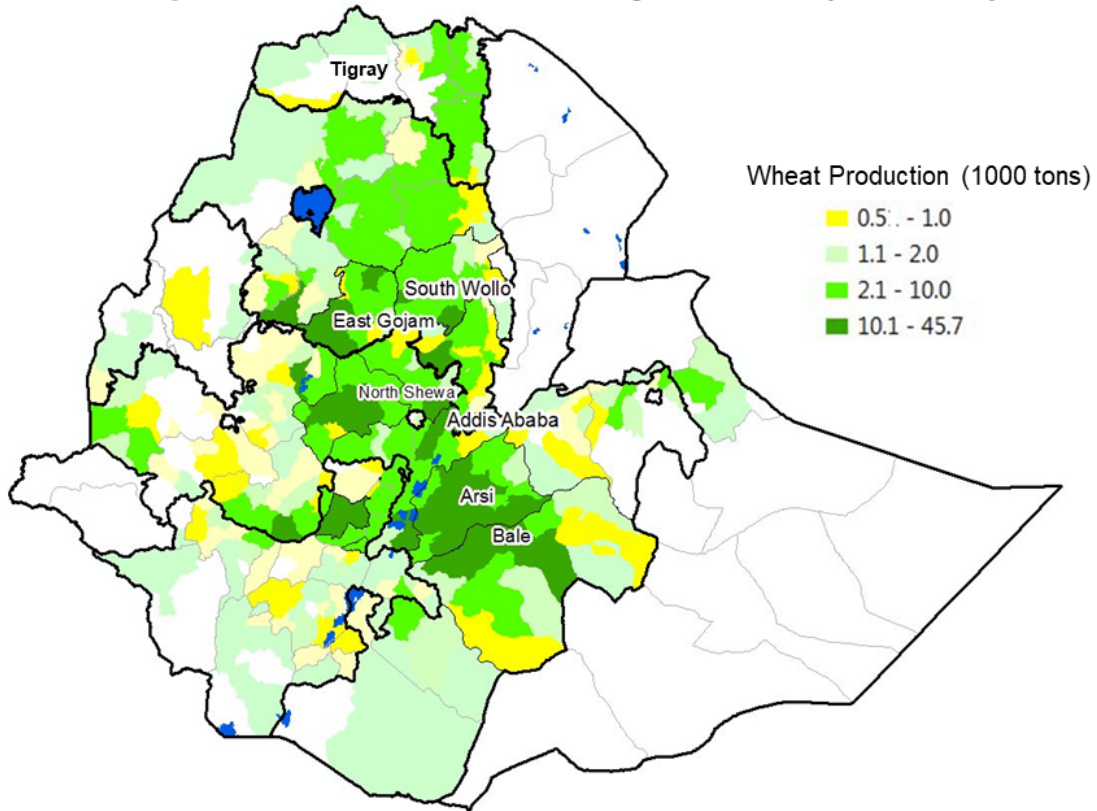
Source: USDA PSD Online

Corn reaches maturity during April and air-dried in the fields until the moisture content is low enough for harvest. The bulk of the harvest (87 percent) is typically delivered to the grain silos from May through August. *(For more information, please contact Curt.Reynolds@usda.gov.)*

Ethiopia Wheat: Record Production from Favorable Rains and Increase in Irrigated Wheat Area

Ethiopia wheat production for marketing year 2022/23 is estimated at a record 7.0 million metric tons (mmt), up 1.3 mmt (23 percent) from last month and up 1.5 mmt (27 percent) from last year. Harvested area is estimated at a record 2.3 million hectares (mha), up 0.3 mha (15 percent) from last month and up 0.4 mha (18 percent) from last year. Yield is estimated at a record 3.0 metric tons per hectare, up 8 percent from last year and up 6 percent from the 5-year average. Wheat yields were above average due to well-distributed rainfall received in the main highland production zones and increased wheat area under irrigation.

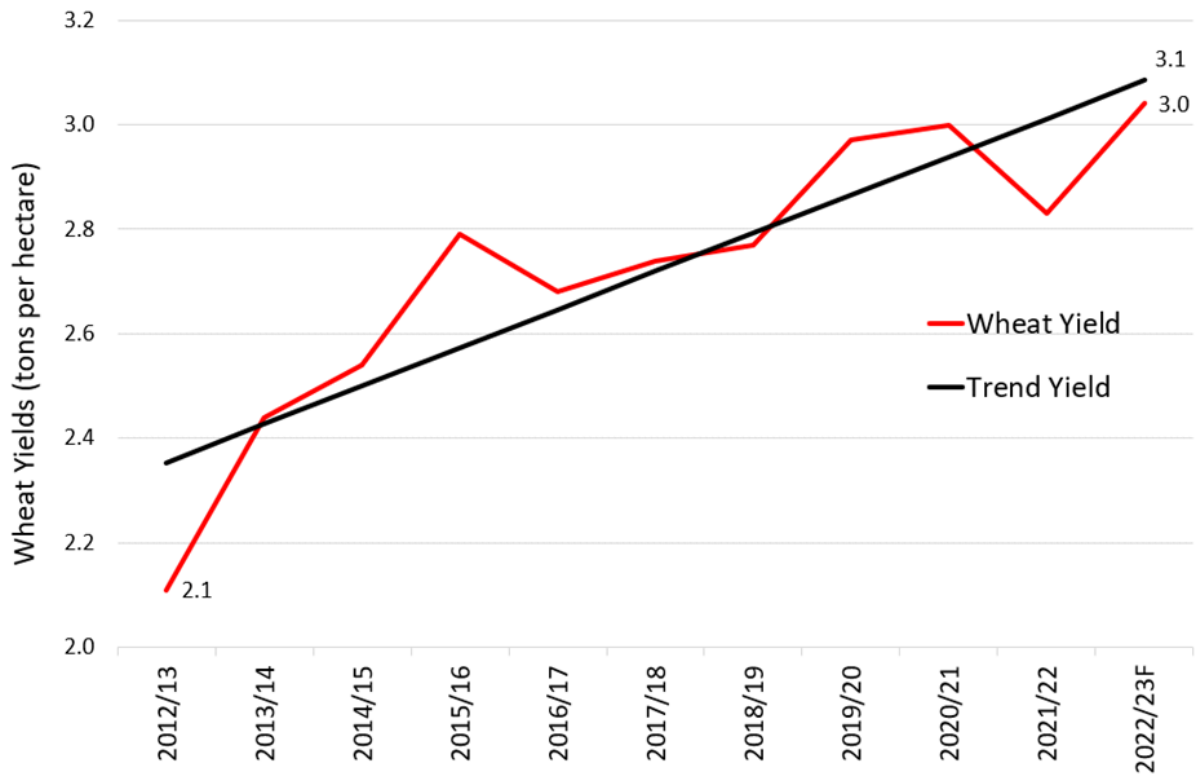
Ethiopia Wheat Production by District (Woreda)



Source:
Atlas of the Ethiopian Rural Economy (2006)

Wheat is an important food staple crop in Ethiopia, and it comprises about 18 percent of the country's total cereal production. Wheat yields almost tripled during the past two decades due to favorable government initiatives that adopted improved seed varieties, increased fertilizer distribution, and expanded agriculture extension in rural areas. The Government of Ethiopia also implemented an ambitious wheat self-sufficiency plan by expanding wheat area with irrigation farming. Increases in irrigated wheat area were achieved by rotating wheat with irrigated cotton and replanting old sugarcane farms in the northern and southern lowlands with irrigated wheat.

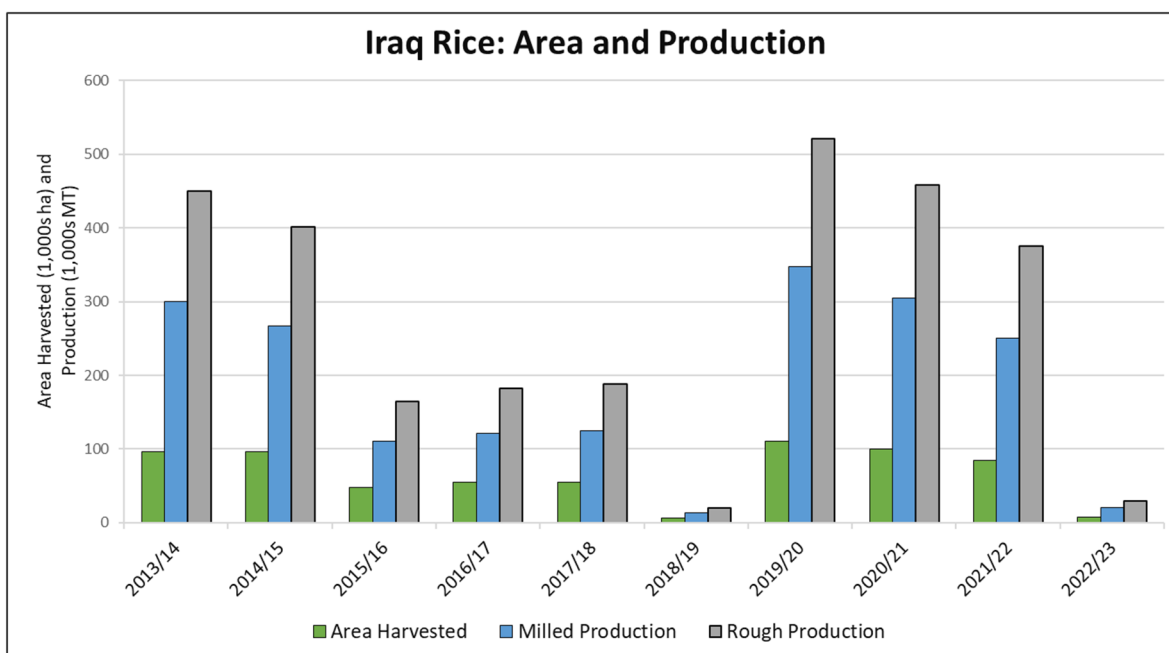
Ethiopia Wheat Yields



Source: USDA PSD Online

Ethiopia is the largest wheat producer in Sub-Saharan Africa, where wheat is mostly grown under rainfed conditions on small farms in the southern and central highlands. Wheat in Ethiopia is planted during the main *meher* rainy season from June to August and harvested from October through January. The northern Tigray region is currently facing a food security crisis after a conflict between federal and regional forces in early November displaced thousands of people. The Tigray region is chronically food insecure, and it produces approximately five percent of the country's wheat output. (For more information, please contact Curt.Reynolds@usda.gov.)

Iraq Rice: Production Down as Water Shortages Result in Lower Area and Yield



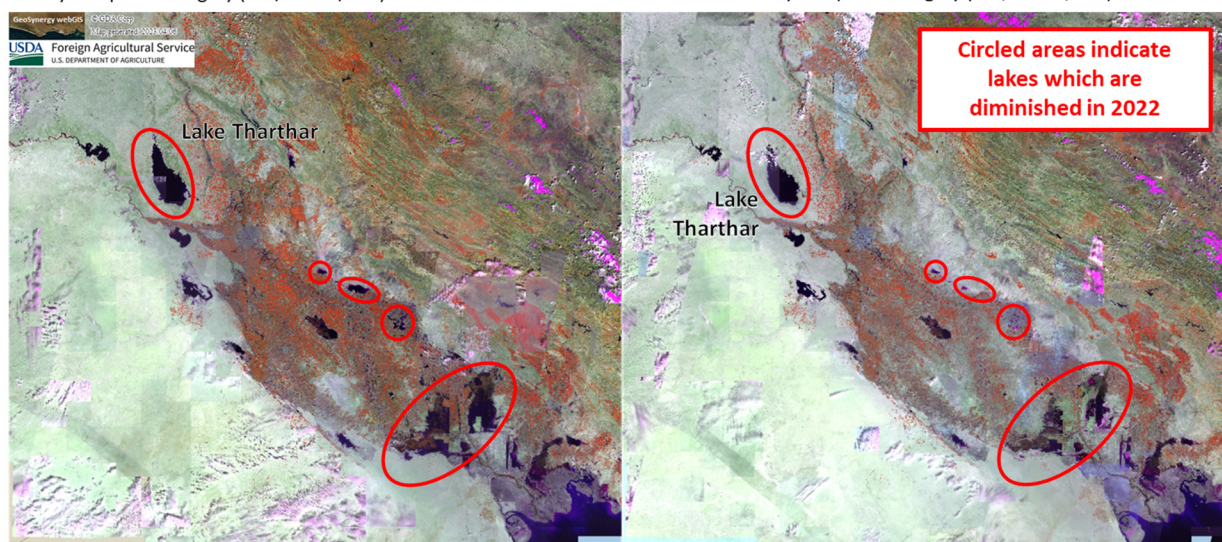
Source: USDA PSD Online

USDA estimates Iraq rice production for marketing year (MY) 2022/23 at 20,000 metric tons (milled basis), down 92 percent from last month and last year, and 90 percent below the 5-year average. Harvested area is estimated at 8,000 hectares, down 90 percent from last month, 91 percent from last year, and 89 percent below the 5-year average. Yield (rough basis) is estimated at 3.75 tons per hectare, down 18 percent from last month, 15 percent from last year, and 8 percent below the 5-year average.

Iraq Water Availability Decreased in 2022

30-day Composite Imagery (NIR/SWIR1/Red) – March 2021

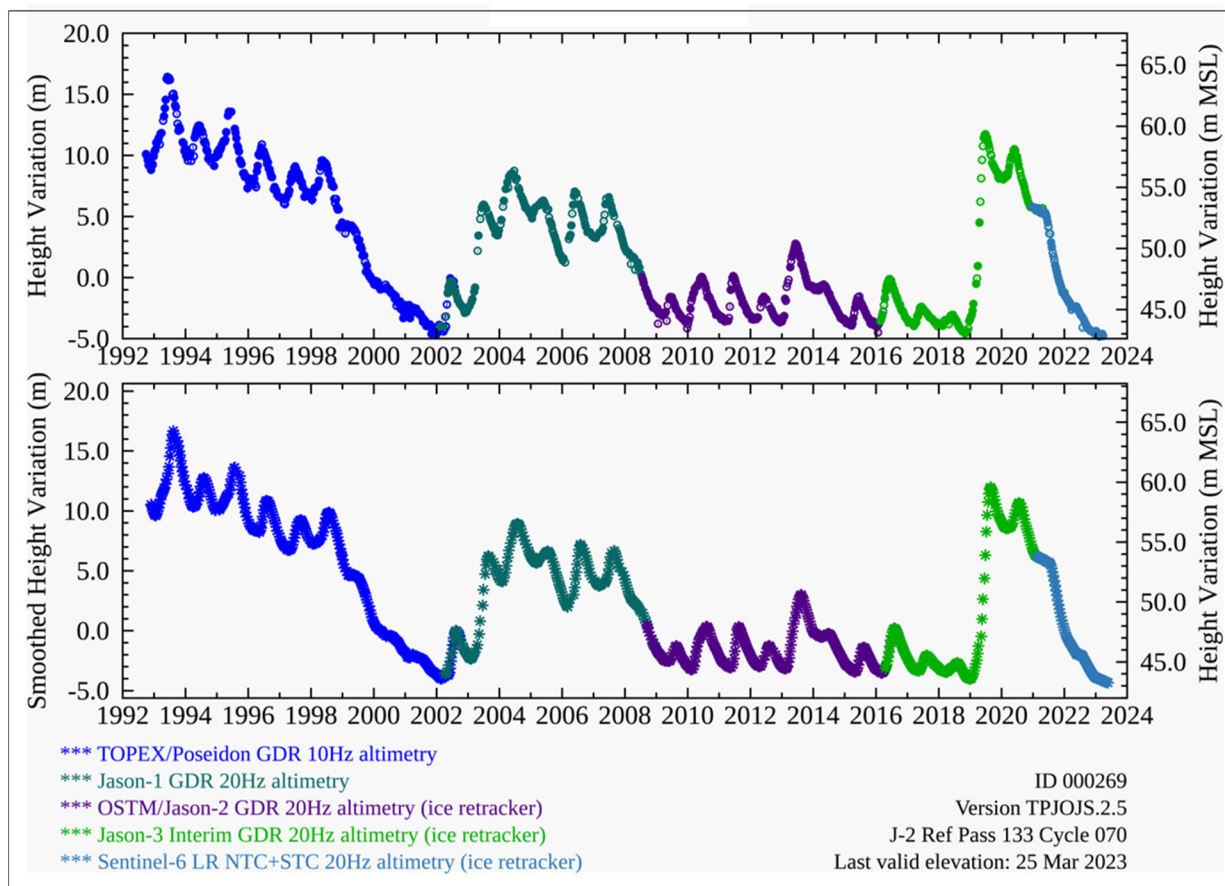
30-day Composite Imagery (NIR/SWIR1/Red) – March 2022



Source: GDA Corp, Sentinel-2/Landsat-8 (10m) 30-day composite imagery

Precipitation in Iraq was below normal in 2021 and 2022 resulting in critical shortages of water storage used for irrigation, leading into the MY 2022/23 planting season, which began with planting in April and May. Satellite imagery from March of 2022 indicated diminished lakes and reservoirs throughout the primary rice-growing areas of southeastern Iraq. Of particular interest is Lake Tharthar, an artificial reservoir built in 1956 to hold floodwaters from the Tigris River to later discharge into both the Tigris and Euphrates during dry seasons. Imagery indicates smaller lake area in March 2022 than during the same period in 2021.

Lake Tharthar Water Level Variations from Altimetry

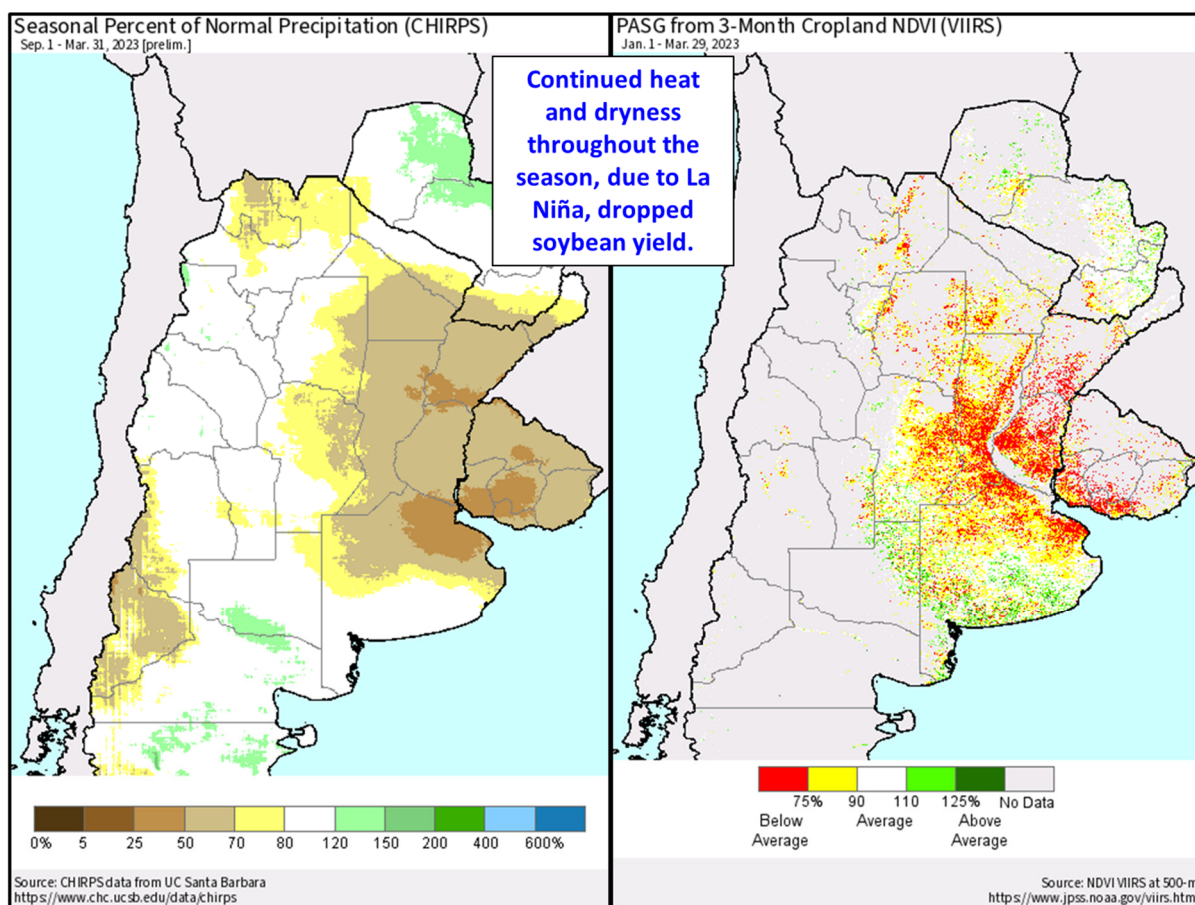


Source: USDA/NASA Global Reservoirs and Lakes Monitor (G-REALM)

In response to the water shortages, the Iraqi government reduced area allocated for rice cultivation by as much as 97 percent, according to government and industry reporting. Altimetry data indicates water levels in Lake Tharthar are well-below normal, and similar to 2018, the last time the government placed severe restrictions on rice cultivation. USDA also expects lower yields given the drought conditions that persisted throughout the growing season of 2022. (For more information, please contact Aaron.Mulhollen@usda.gov.)

Argentina Soybeans: Production Down 39 Percent from Last Year

Argentina soybean production for marketing year 2022/23 is estimated at 27.0 million metric tons, down 18 percent from last month, and down 38 percent from last year. Soybean yield is estimated at 1.80 tons per hectare, down 15 percent from last month, and down 35 percent from last year. Harvested area is estimated at 15.0 million hectares, down 3 percent from last month, and down 6 percent from last year.

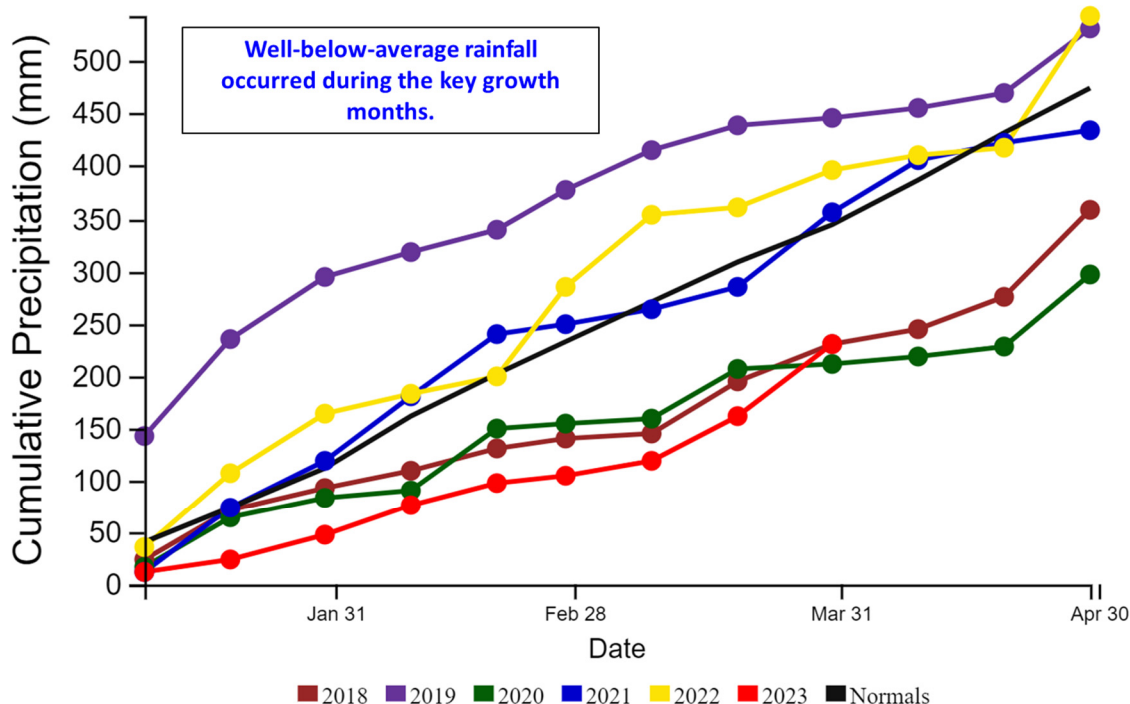


Yield is down month-to-month because of dry and hot conditions throughout March. Rains that occurred during the latter half of March were too late to provide benefit to the soybean crop. Harvest has just begun, and early yields are below average. FAS Buenos Aires, who conducted crop travel through major soybean areas during March, noted the lower-than-average yields during harvest. Harvest will continue until early June. *(For more information, please contact Katie.McGaughey@usda.gov.)*

Uruguay Soybeans: Production Down 63 Percent from Last Year

Uruguay soybean production for marketing year 2022/23 is estimated at 1.2 million metric tons, down 43 percent from last month, and down 63 percent from last year. Soybean yield is estimated at 1.33 tons per hectare, down 27 percent from last month, and down 52 percent from last year. Harvested area is estimated at 0.9 million hectares, down 22 percent from last month and from last year.

Uruguay: CHIRPS 10-day Cumulative Precipitation



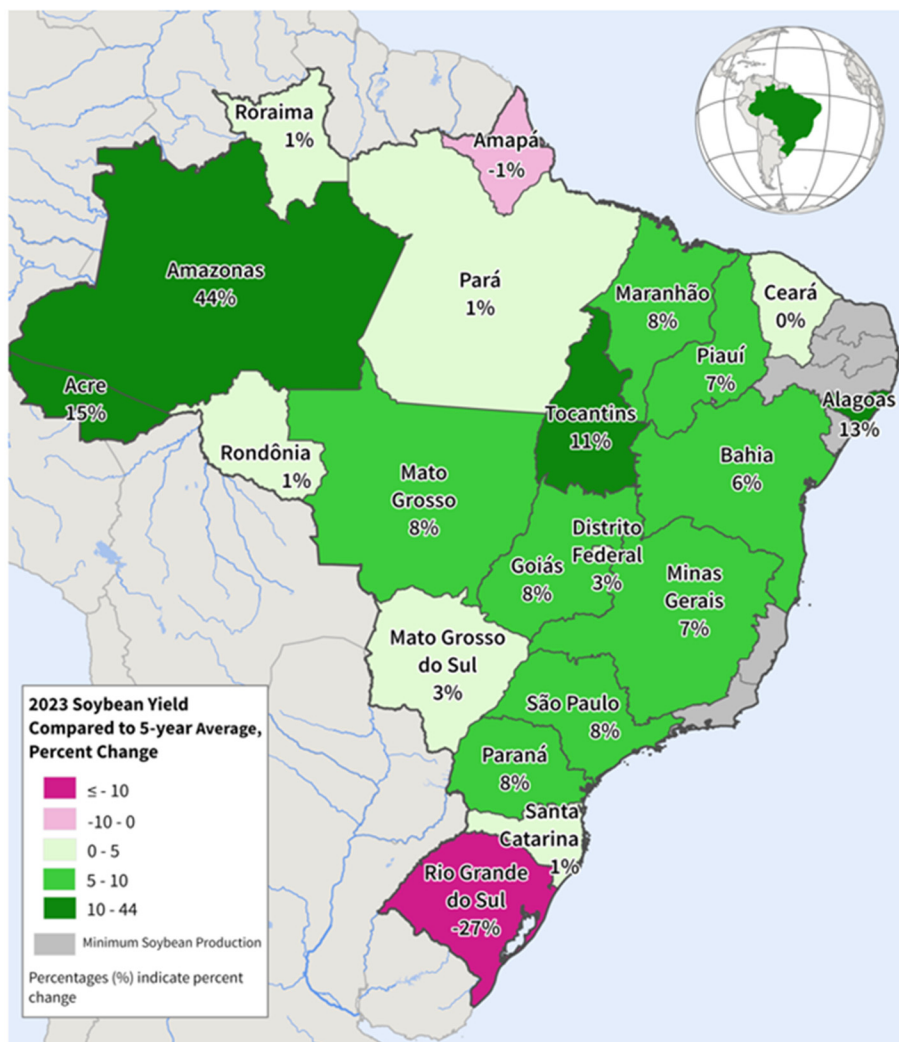
Source: UCSB CHIRPS

<https://www.chc.ucsb.edu/data/chirps>

Yield and area are both down month-to-month because of dry and hot conditions throughout the growing season. Rains that occurred during late March were too late to provide benefit to the soybean crop since harvest had already begun. FAS Buenos Aires, who conducted crop travel through major soybean areas during March, noted the lower-than-average yields and higher-than-normal abandonment information during harvest. Harvest will continue until mid-May. (For more information, please contact Katie.McGaughey@usda.gov.)

Brazil Soybeans: Area and Production Rise to New Records

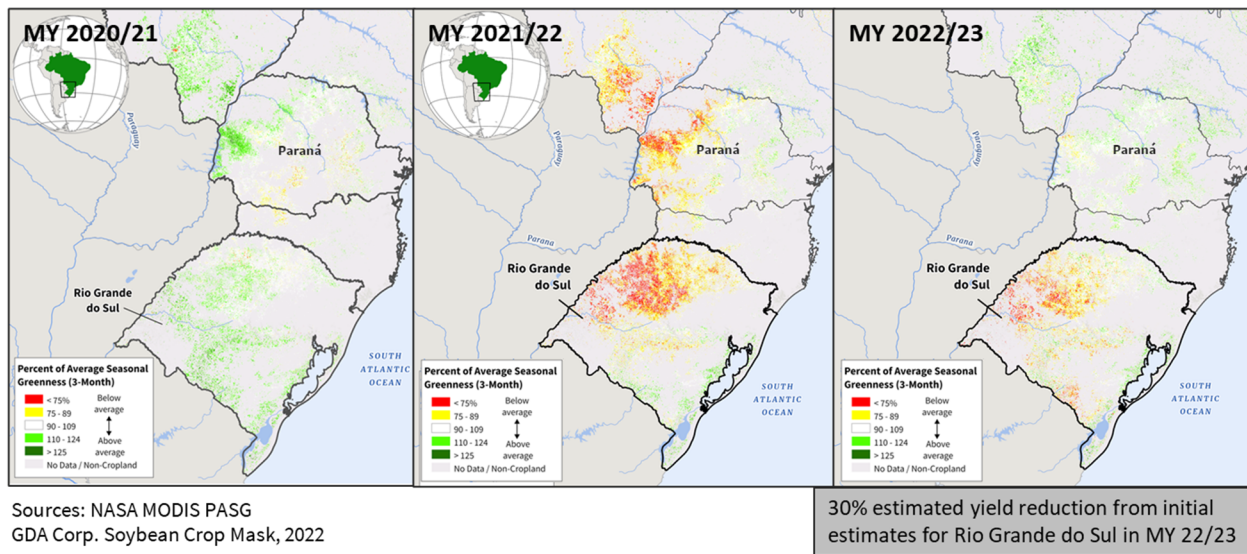
MY 2022/23 Soybean Yields Compared to the 5 Year Average



Sources: Average soybean yields for 2018-2022 from Série histórica das Safras by CONAB. April 2023 state yields substituted from Mato Grosso (IMEA), Paraná (DERAL), and Rio Grande do Sul (EMATER-RS) reports.

Brazil soybean production for marketing year (MY) 2022/23 is estimated at a record 154.0 million metric tons (mmt), higher by 1.0 mmt (1 percent) from last month, and higher by 24.0 mmt (18 percent) from last year. Harvested area is estimated at a record 43.7 million hectares (mha), up 0.3 mha (1 percent) from last month and up 2.1 mha (5 percent) from last season. Yield is estimated at 3.52 tons per hectare (t/ha), slightly below last month and up 12 percent from last year. A revision was made to MY 2021/22 with area raised to 41.6 mha, production to 130.5 mmt with a yield of 3.14 t/ha. For MY 2022/23, soybean production in the large center-west states have compensated for problems in Rio Grande do Sul.

Percent of Average Seasonal Greenness (PASG) from January to March Displays Vegetation during 3 Consecutive Years of La Niña

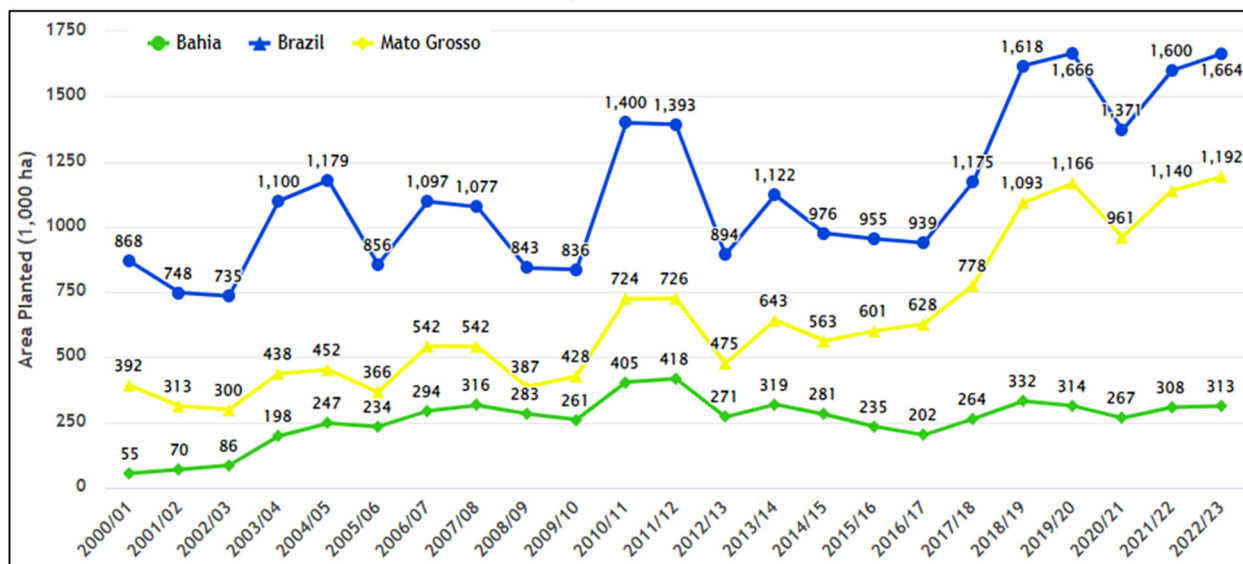


Harvest was delayed in several key center-west states due to heavy rains. Nationally, about 75 percent of the soybean crop has been harvested versus 81 percent last year in early April. The largest producer, Mato Grosso, completed harvest and reports a record crop of 44.3 mmt on a record area of 12.0 mha per *Instituto Mato-Grossense de Economia Agropecuária* (IMEA). Second ranked Paraná is also reporting a record output (~22 mmt) according to the Paraná Department of Agriculture (SEAB/DERAL). The spot for the number three producer this year is taken up by Goiás (~17.3 mmt). Meanwhile, the usual number three producer, Rio Grande do Sul, experienced another season riddled by drought which reduced yields by 30 percent resulting in a production loss of roughly 6 mmt (as reported by The Technical Assistance and Rural Extension of Rio Grande do Sul, EMATER-RS). In the Northeast, harvest stands at 69 percent with yields reported to be well above average. (For more information, please contact Sunita.Yadav-Pauletti@usda.gov.)

Brazil Cotton: Estimated Output for MY 2022/23 Reduced

Brazil's marketing year (MY) 2022/23 cotton production is forecast at 13.0 million 480-pound bales, lower by 0.3 million bales (2 percent) from last month, and up by 1.3 million bales (11 percent) from last year. Harvested cotton area is estimated at 1.6 million hectares (mha), unchanged from last month, and up 2 percent from last year. Cotton yield is forecast at 1,736 kilograms per hectare (kg/ha), roughly 2 percent lower than last month, but 9 percent above the previous year.

Cotton Area: Brazil and Key States of Mato Grosso and Bahia

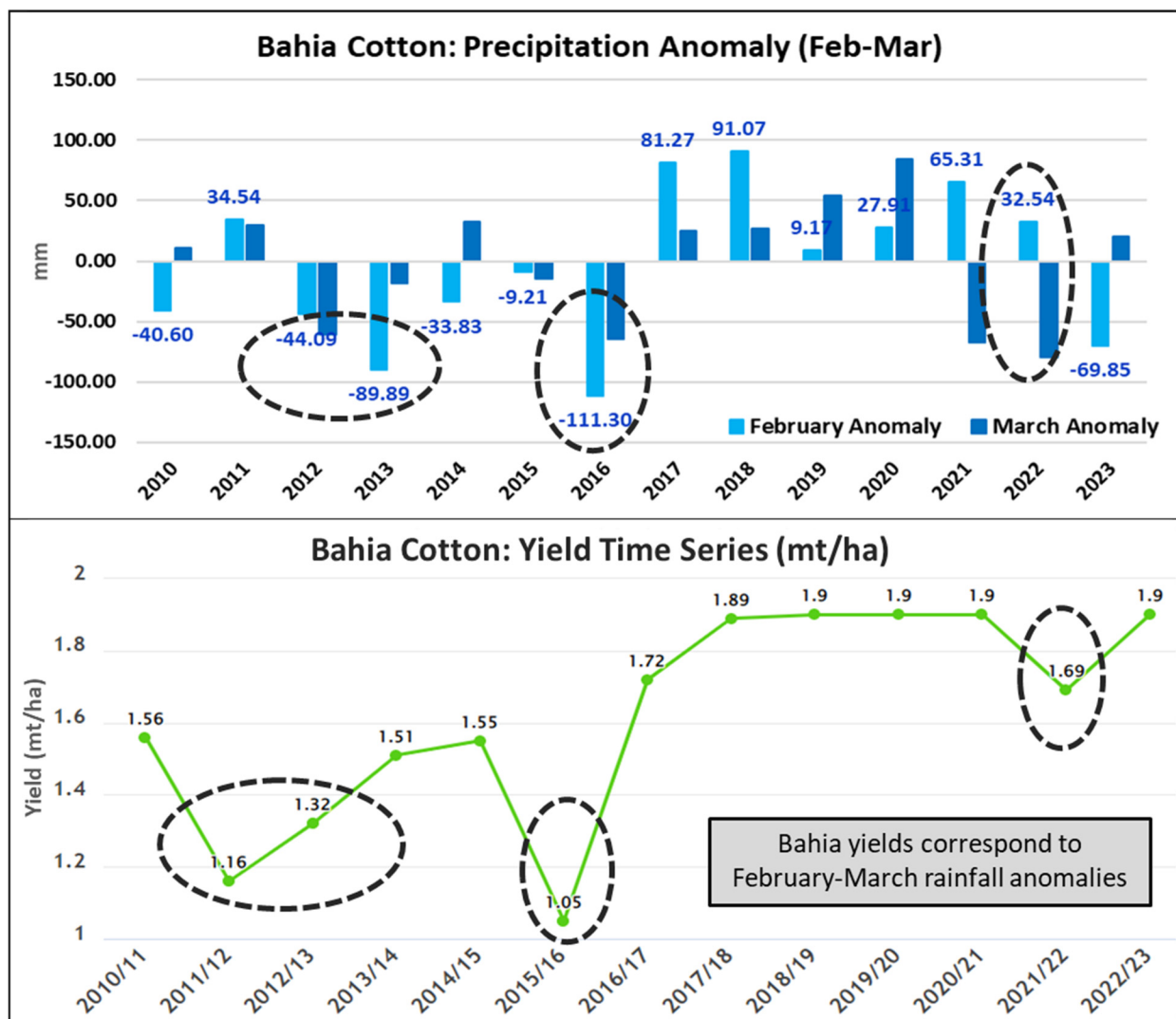


Source: CONAB

Overall year-over-year Brazil area increased 4% or 64 thousand hectares

The full-season cotton crop was planted from late November to early February in Bahia (20 percent of national production). The second-season cotton crop in Mato Grosso (70 percent of national production) was planted with a delay this season due to excessive rainfall delaying the soybean harvest. However, this delay was not as significant as the one 2 years ago in MY 2020/21. The *Instituto Mato-Grossense de Economia Agropecuária* (IMEA) reports an area reduction this season of 0.03 mmt.

Bahia Cotton Precipitation Anomaly and Yield Association

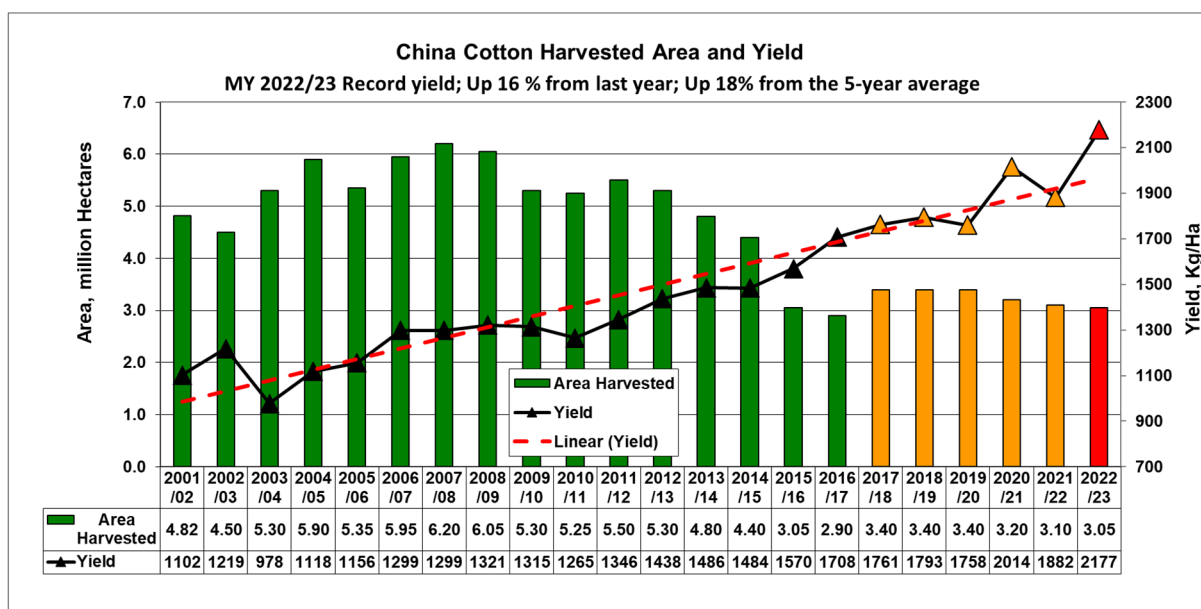


Sources: UCSB CHIRPS, CONAB

Similar to last year, rainfall in western Bahia, where most cotton is cultivated, once again was below normal in February when the crop was in critical development stages. The difference from last year is that the rainfall volume recovered this March bringing some relief to crops, whereas it reduced further last March. Nevertheless, the yield expectations are reduced as the rains may not reverse some of the crop damage. Weather in Mato Grosso has been favorable for the crop thus far. The majority of the cotton will be harvested from June to August. *(For more information, please contact Sunita.Yadav-Pauletti@usda.gov.)*

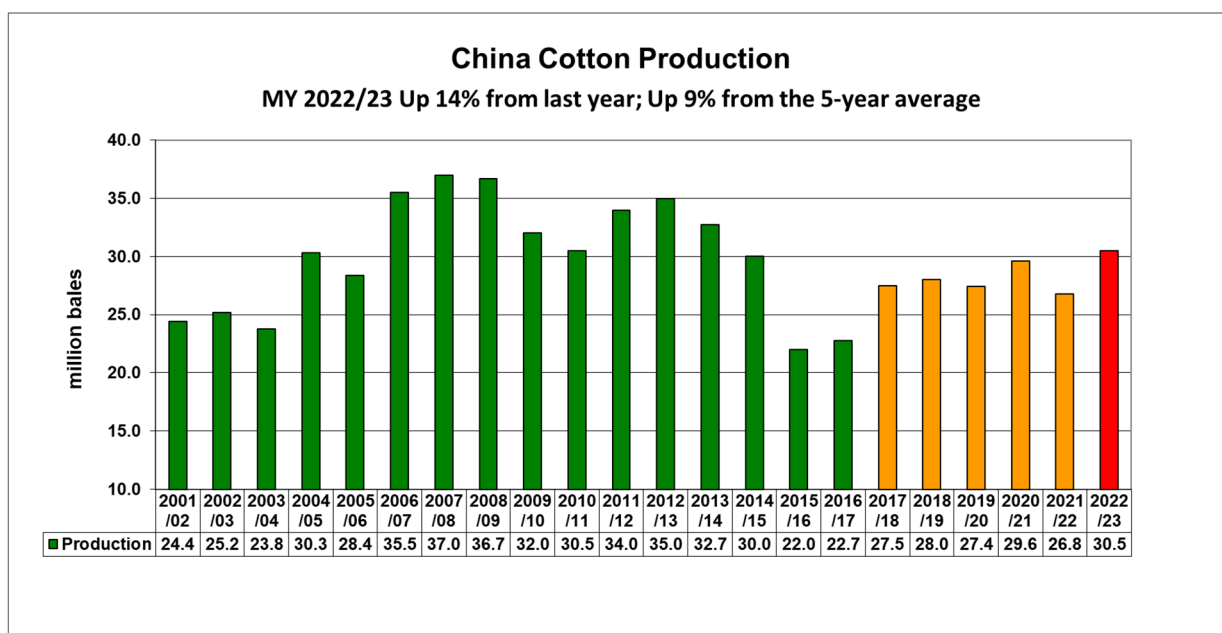
China Cotton: Production Increased Due to Record Yields

USDA estimates China's marketing year (MY) 2022/23 cotton production at 30.5 million 480-pound bales (6.6 million metric tons), up 1.0 million bales or 3 percent from last month, up 3.7 million bales or 14 percent from last year, and 9 percent from the 5-year average of 27.9 million bales. Harvested area is estimated at 3.05 million hectares (mha), same as last month but down 2 percent from last year, down 8 percent from the 5-year average of 3.3 mha. Yield is estimated at a record 2,177 kilograms per hectare (kg/ha), up 3 percent from last month, 16 percent from last year, and 18 percent above the 5-year average of 1,842 kg/ha.



Source: USDA PSD Online

Yield is significantly above the long-term trend due to the increasing quantity of cotton produced in Xinjiang province, where yield is nearly that elsewhere in the country, especially the North China Plain. Approximately 90 percent of total China cotton is now produced in Xinjiang province. Xinjiang's daily cotton processing data of inspection, ginning, and classing are higher compared to the same period last year, September through early April. The processing data published by China Fiber Quality Monitoring Center and China National Cotton Exchange continues to provide evidence indicating higher-than-expected production compared to the previous years. Most of the cotton estimates from major industry sources are also indicating higher-than-expected yields resulting in significant adjustment of production numbers.



Source: USDA PSD Online

Harvest was completed in October; the typical cotton growing season is April to October. In Xinjiang, planting starts in April while on the North China Plain, the Yellow River and Yangtze River basins, planting begins in late April and extends through May. The MY 2022/23 season was characterized by favorable conditions, good irrigation water availability, and near-optimal temperatures throughout a major part of the season. These conditions facilitated rapid planting and early crop establishment in Xinjiang resulting in above-average yields. In addition to the favorable planting conditions, farmers were also encouraged by the government's continuation of the target price-based cotton subsidy. On March 26, 2020, China's National Development and Reform Commission (NDRC) published a notice stating that the target price-based subsidy will continue through 2023. The year-to-year cotton national area decline was due to decreases in the Yangtze and Yellow River basins, which offset an increase in Xinjiang. However, the significant year-to-year yield increase more than offset the planted area reduction, resulting in increased production. (For more information, please contact Dath.Mita@usda.gov.)



**World Agricultural Production
U.S. Department of Agriculture**

Foreign Agricultural Service / Global Market Analysis
International Production Assessment Division (IPAD)

Ag Box 1051, Room 4630, South Building
Washington, DC 20250-1051

<https://ipad.fas.usda.gov/>

Telephone: (202) 720-1662 Fax: (202) 720-1158

This report uses information from the Foreign Agricultural Service’s (FAS) global network of agricultural attachés and counselors, official statistics of foreign governments and other foreign source materials, and the analysis of economic data and satellite imagery. Estimates of foreign area, yield, and production are from the International Production Assessment Division, FAS, and are reviewed by USDA’s Inter-Agency Commodity Estimates Committee. Estimates of U.S. area, yield, and production are from USDA’s National Agricultural Statistics Service. Numbers within the report may not add to totals because of rounding. This report reflects official USDA estimates released in the World Agricultural Supply and Demand Estimates (WASDE-584), April 11, 2023.

The FAS International Production Assessment Division prepared this report. The next issue of World Agricultural Production will be released after 12:00 p.m. Eastern Time, May 12, 2023.

Conversion Table

Metric tons to bushels

Wheat, soybeans	=	MT * 36.7437
Corn, sorghum, rye	=	MT * 39.36825
Barley	=	MT * 45.929625
Oats	=	MT * 68.894438

Metric tons to 480-lb bales

Cotton	=	MT * 4.592917
--------	---	---------------

Metric tons to hundredweight

Rice	=	MT * 22.04622
------	---	---------------

Area & weight

1 hectare	=	2.471044 acres
1 kilogram	=	2.204622 pounds



For further information, contact:
U.S. Department of Agriculture
Foreign Agricultural Service
Global Market Analysis

International Production Assessment Division
 Ag Box 1051, Room 4630, South Building
 Washington, DC 20250-1051

Telephone: (202) 720-1662

Fax: (202) 720-1158

GENERAL INFORMATION

Senior Director	Ronald Frantz	202-720-4056	ronald.frantz@usda.gov
Director	Robert Tetrault	202-720-1071	robert.tetrault@usda.gov
Administrative Assistant	Vacant		
USDA Remote Sensing Advisor	Vacant		
Sr. Analyst/Technical Lead	Curt Reynolds, Ph.D.	202-690-0134	curt.reynolds@usda.gov
Sr. Analyst/ Satellite Imagery	Dath Mita, Ph.D.	202-720-7339	dath.mita@usda.gov
Archives Manager/Technical Lead			
Sr. Analyst/Technical Lead	Jim Crutchfield	202-690-0135	james.crutchfield@usda.gov
GIS Mapping/Imagery Analyst	Lisa Colson	202-720-6652	lisa.colson@usda.gov
WAP Coordinators	Ifeoma Collins	202-720-0240	ifeoma.collins@usda.gov
	Aaron Mulhollen	202-690-0131	aaron.mulhollen@usda.gov

COUNTRY- AND REGION-SPECIFIC INFORMATION

South America, Argentina, Venezuela, and Colombia	Katie McGaughey	202-720-9210	katie.mcgaughey@usda.gov
Western and Central Europe, and North Africa	Bryan Purcell	202-690-0138	bryan.purcell@usda.gov
Russia, Ukraine, Kazakhstan, Moldova, and Belarus	Iliana Mladenova, Ph.D.	202-690-2315	iliana.mladenova@usda.gov
South Asia, Sri Lanka Bangladesh, India, and Nepal	Arnella Trent	202-720-0881	arnella.trent@usda.gov
East Asia, China, and Japan	Dath Mita, Ph.D.	202-720-7339	dath.mita@usda.gov
Sub-Saharan Africa, Nigeria and South Africa	Curt Reynolds, Ph.D.	202-690-0134	curt.reynolds@usda.gov
S.E. Asia, Indonesia, Thailand, Malaysia, Cambodia and Vietnam	Justin Jenkins	202-720-0419	justin.jenkins@usda.gov
Central America, Mexico, and Western United States	Ifeoma Collins	202-720-0240	ifeoma.collins@usda.gov
Australia, New Zealand, Pakistan Papua New Guinea and South Pacific Islands	Jim Crutchfield	202-690-0135	james.crutchfield@usda.gov
Middle East, Central Asia, Afghanistan Iraq, Iran, and Syria	Aaron Mulhollen	202-690-0131	aaron.mulhollen@usda.gov
Canada, Caribbean, Eastern United States	Aaron Mulhollen	202-690-0131	aaron.mulhollen@usda.gov
Brazil	Sunita Yadav-Pauletti, Ph.D.		sunita.yadav-pauletti@usda.gov



The Foreign Agricultural Service (FAS) updates its production, supply and distribution (PSD) database for cotton, oilseeds, and grains at 12:00 p.m. on the day the *World Agricultural Supply and Demand Estimates* (WASDE) report is released. This circular is released by 12:15 p.m.

FAS Reports and Databases:

World Agricultural Production

Current: <https://www.fas.usda.gov/data/world-agricultural-production>

Archive: <https://usda.library.cornell.edu/concern/publications/5q47rn72z?locale=en>

USDA's Foreign Agricultural Service (FAS) publishes a monthly report on crop acreage, yield and production in major countries worldwide. Sources include reporting from FAS's worldwide offices, official statistics of foreign governments, and analysis of economic data and satellite imagery. The reports reflect official USDA estimates released in the monthly *World Agricultural Supply and Demand Estimates* (WASDE).

World Markets and Trade

Current: <https://www.fas.usda.gov/data>

Archive:

https://usda.library.cornell.edu/catalog?f%5Bmember_of_collections_ssim%5D%5B%5D=Foreign+Agricultural+Service&locale=en

USDA's Foreign Agricultural Service (FAS) publishes monthly and quarterly reports which include data on U.S. and global trade, production, consumption and stocks, as well as analysis of developments affecting world trade in oilseeds, grains, cotton, livestock and poultry. The reports reflect official USDA estimates released in the monthly *World Agricultural Supply and Demand Estimates* (WASDE).

Global Agricultural Information Network (GAIN)

<https://gain.fas.usda.gov/>

USDA's Foreign Agricultural Service (FAS) provides timely reports on foreign markets through the Global Agriculture Information Network (GAIN) database. An average of 2,000 reports are added each year, with reports going back to 1995. GAIN reports are compiled by FAS' global market intelligence network, which includes FAS foreign service officers and locally engaged staff in over 90 overseas offices world-wide. They provide on-the-ground intelligence, insight, and analysis on nearly 200 countries, delivering information on foreign agricultural markets, crop conditions, and agro-political dynamics of interest to U.S. agriculture. GAIN reports contain assessments of commodity and trade issues made by USDA staff and are not necessarily statements of official U.S. government policy.

Production, Supply and Distribution (PS&D) Online

<https://apps.fas.usda.gov/psdonline/app/index.html#/app/home>

PSD Online is the public repository for USDA's Official Production, Supply and Distribution forecast data and reports for key agricultural commodities. PSD Online data are reviewed and updated monthly by an interagency committee chaired by USDA's World Agricultural Outlook Board (WAOB). The committee consist of representatives from Foreign Agricultural Service (FAS), the Economic Research Service (ERS), the Farm Service Agency (FSA), and the Agricultural Marketing Service (AMS).

EU Countries and Russia Wheat: Area and Production Estimates

<https://apps.fas.usda.gov/psdonline/app/index.html#/app/downloads> (click on PSD Datasets)

USDA's Foreign Agricultural Service (FAS) provides country-level area and production estimates for the nations of the European Union. For Russia, country-level area and production estimates are provided for Winter and Spring wheat. These datasets are reviewed and updated monthly by an interagency committee chaired by USDA's World Agricultural Outlook Board (WAOB) and can be downloaded through PSD datasets on PSD Online.



FAS Reports and Databases:

International Production Assessment (IPAD)

<https://ipad.fas.usda.gov/>

USDA's Foreign Agricultural Service (FAS) maintains a dynamic global crop production portal with key information including *World Agricultural Production* (WAP) briefs, Commodity Intelligence Reports (CIR), geospatial applications, crop production maps at a subnational level and crop calendars for the top-20 producing countries. Additionally, Crop Explorer (<https://ipad.fas.usda.gov/cropexplorer/>) displays rainfall, temperature, evapotranspiration, soil moisture, snow cover, and vegetation conditions in charts and maps.

USDA and NASA Global Agricultural Monitoring (GLAM)

<https://glam1.gsfc.nasa.gov/>

The USDA and NASA Global Agricultural Monitoring (GLAM) system provides near real-time and science quality Moderate Resolution Imaging Spectroradiometer (MODIS) Normalized Difference Vegetation Index (NDVI) from the satellites Terra and Aqua. The public can view and retrieve MODIS 8-day composited, global NDVI satellite imagery and time series data. GLAM was developed by NASA's Global Inventory Modeling and Mapping Studies (GIMMS) group for USDA's Foreign Agricultural Service.

Global Agricultural and Disaster Assessment System (GADAS)

<https://geo.fas.usda.gov/GADAS/index.html>

USDA's Foreign Agricultural Service (FAS) provides the Global Agricultural and Disaster Assessment System (GADAS), a web-based Geographic Information System (GIS) tool which integrates a vast array of highly detailed earth observation data streams, particularly targeted towards agricultural and disaster assessment analysis. GADAS is an interactive website which provides analysts with a wide variety of routine geospatial products (maps, charts, tables) they require for comprehensive situational investigations and recurring assessments.

Export Sales Reporting

<https://apps.fas.usda.gov/esrquery/>

USDA's Export Sales Reporting Program monitors U.S. agricultural export sales on a daily and weekly basis. Export sales reporting provides a constant stream of up-to-date market information for 40 U.S. agricultural commodities sold abroad. The weekly U.S. Export Sales report is the most currently available source of U.S. exports sales data. The data is used to analyze overall levels of export demand, determine where markets exit, and assess the relative position of U.S. commodities in foreign markets.

Global Agricultural Trade System (GATS)

<https://apps.fas.usda.gov/gats/default.aspx>

The Global Agricultural Trade System (GATS) is a searchable database containing monthly U.S. Census Bureau trade data organized by agricultural commodity and agricultural related product groups. Trade data is searchable by partner countries and partner groups. Historical U.S. agricultural trade data is available back to 1967. In addition, U.N. trade statistics (UN Comtrade) may be queried through GATS. UN trade data is available for nearly 200 countries or areas, dating from the inception of the Harmonized System (HS) of trade codes in 1989 to present. The database is continuously updated. U.S. trade data is updated monthly according to the U.S. Census Bureau's reporting system. UN Comtrade data are updated in GATS after nationally submitted data to the UN are standardized by the UN Statistical Division and added to the UN Comtrade database.

Other USDA Reports:

World Agricultural Supply and Demand Estimates (WASDE):

<http://www.usda.gov/oce/commodity/wasde/>

Economic Research Service:

<http://www.ers.usda.gov/topics/crops>

National Agricultural Statistics Service:

<http://www.nass.usda.gov/Publications/>

Table 01 World Crop Production Summary

Million Metric Tons

Commodity	World	Total Foreign	North America			Former Soviet		European	Asia (WAP)					South America		Selected Other			All Others
			United States	Canada	Mexico	Russia	Ukraine		China	India	Indonesia	Pakistan	Thailand	Argentina	Brazil	Australia	South Africa	Turkey	
---Million metric tons---																			
Wheat																			
2020/21	774.4	724.7	49.8	35.4	3.0	85.4	25.4	nr	134.3	107.9	0.0	25.2	0.0	17.6	6.3	31.9	2.1	18.3	231.9
2021/22 prel.	779.1	734.3	44.8	22.4	3.3	75.2	33.0	nr	136.9	109.6	0.0	27.5	0.0	22.2	7.7	36.2	2.3	16.0	242.1
2022/23 proj.																			
Mar	788.9	744.0	44.9	33.8	3.6	92.0	21.0	nr	137.7	104.0	0.0	26.4	0.0	12.9	10.4	39.0	2.1	17.3	243.9
Apr	789.0	744.1	44.9	33.8	3.6	92.0	21.0	nr	137.7	104.0	0.0	26.4	0.0	12.6	10.4	39.0	2.1	17.3	244.3
Coarse Grains																			
2020/21	1,441.7	1,068.8	372.9	29.6	32.7	41.4	39.6	nr	269.1	51.4	12.6	9.3	5.6	60.0	90.3	18.6	17.8	15.8	375.1
2021/22 prel.	1,503.4	1,105.7	397.7	25.1	32.8	38.5	53.5	nr	280.9	51.4	12.7	11.0	5.4	59.2	120.6	19.2	16.6	11.6	367.3
2022/23 proj.																			
Mar	1,439.6	1,081.2	358.5	30.5	33.5	41.8	34.2	nr	285.5	52.2	12.9	9.7	5.3	48.7	129.5	18.7	17.2	14.8	346.8
Apr	1,436.3	1,077.8	358.5	30.5	33.4	44.1	34.2	nr	285.5	51.9	12.9	9.7	5.3	45.7	129.5	18.7	17.2	14.8	344.4
Rice, Milled																			
2020/21	509.3	502.1	7.2	0.0	0.2	0.7	0.0	nr	148.3	124.4	34.5	8.4	18.9	0.9	8.0	0.3	0.0	0.6	156.8
2021/22 prel.	513.9	507.8	6.1	0.0	0.2	0.7	0.0	nr	149.0	129.5	34.4	9.3	19.9	0.8	7.3	0.5	0.0	0.5	155.6
2022/23 proj.																			
Mar	509.8	504.7	5.1	0.0	0.2	0.5	0.0	nr	145.9	132.0	34.6	6.6	20.2	0.8	6.9	0.4	0.0	0.6	156.0
Apr	509.4	504.3	5.1	0.0	0.2	0.6	0.0	nr	145.9	132.0	34.0	6.6	20.2	0.8	6.8	0.4	0.0	0.6	156.3
Total Grains																			
2020/21	2,725.4	2,295.5	429.9	65.1	35.8	127.5	65.0	nr	551.6	283.6	47.1	43.0	24.4	78.6	104.6	50.8	19.9	34.6	763.8
2021/22 prel.	2,796.4	2,347.8	448.6	47.5	36.2	114.4	86.6	nr	566.8	290.4	47.1	47.8	25.2	82.1	135.7	56.0	18.9	28.1	765.0
2022/23 proj.																			
Mar	2,738.4	2,329.9	408.5	64.4	37.2	134.3	55.2	nr	569.2	288.2	47.5	42.7	25.5	62.4	146.9	58.0	19.2	32.6	746.6
Apr	2,734.7	2,326.3	408.5	64.4	37.2	136.7	55.2	nr	569.2	287.9	46.9	42.7	25.5	59.0	146.7	58.0	19.2	32.6	745.0
Oilseeds																			
2020/21	608.4	483.8	124.5	25.9	0.7	20.1	19.9	nr	65.8	38.6	14.6	2.5	1.0	51.2	143.9	5.7	2.7	2.9	88.3
2021/22 prel.	609.2	477.9	131.4	20.1	0.9	23.1	24.3	nr	62.3	41.0	14.5	3.4	1.0	49.7	135.3	8.7	3.1	3.4	87.2
2022/23 proj.																			
Mar	629.9	503.9	126.0	25.6	0.8	25.4	17.1	nr	67.5	41.8	14.6	2.4	1.0	38.4	158.4	10.0	3.5	4.0	93.2
Apr	625.4	499.4	126.0	25.6	0.8	26.3	17.1	nr	67.9	41.4	14.6	2.3	1.0	32.4	159.3	10.0	3.6	4.0	93.0
Cotton																			
2020/21	111.5	96.9	14.6	0.0	1.0	0.0	0.0	1.7	29.6	27.6	0.0	4.5	0.0	1.4	10.8	2.8	0.1	2.9	14.5
2021/22 prel.	116.0	98.5	17.5	0.0	1.2	0.0	0.0	1.7	26.8	24.4	0.0	6.0	0.0	1.5	11.7	5.9	0.1	3.8	15.5
2022/23 proj.																			
Mar	115.1	100.4	14.7	0.0	1.4	0.0	0.0	1.6	29.5	24.5	0.0	3.9	0.0	1.2	13.3	5.5	0.1	4.9	14.6
Apr	115.9	101.2	14.7	0.0	1.4	0.0	0.0	1.6	30.5	24.5	0.0	3.9	0.0	1.2	13.0	5.5	0.1	4.9	14.7

1/ Includes wheat, coarse grains, and rice (milled) shown above.

Table 02 Wheat Area, Yield, and Production

Country / Region	Area (Million hectares)				Yield (Metric tons per hectare)				Production (Million metric tons)				Change in Production			
	2020/21	Prel.	2022/23 Proj.		2020/21	Prel.	2022/23 Proj.		2020/21	Prel.	2022/23 Proj.		From last month		From last year	
		2021/22	Mar	Apr		2021/22	Mar	Apr		2021/22	Mar	Apr	MMT	Percent	MMT	Percent
World	220.43	221.72	220.51	220.62	3.51	3.51	3.58	3.58	774.41	779.13	788.94	789.02	0.08	0.01	9.89	1.27
United States	14.89	15.03	14.36	14.36	3.34	2.98	3.13	3.13	49.75	44.80	44.90	44.90	0.00	0.00	0.10	0.22
Total Foreign	205.55	206.69	206.15	206.26	3.53	3.55	3.61	3.61	724.66	734.32	744.04	744.11	0.08	0.01	9.79	1.33
European Union	22.97	24.28	24.30	24.35	5.51	5.69	5.54	5.52	126.68	138.24	134.70	134.34	-0.36	-0.27	-3.90	-2.82
United Kingdom	1.39	1.79	1.80	1.80	6.96	7.81	8.61	8.61	9.66	13.99	15.50	15.50	0.00	0.00	1.51	10.81
Serbia	0.59	0.60	0.63	0.63	4.58	5.00	4.60	4.60	2.70	3.00	2.90	2.90	0.00	0.00	-0.10	-3.33
China	23.38	23.57	23.52	23.52	5.74	5.81	5.86	5.86	134.25	136.95	137.72	137.72	0.00	0.00	0.78	0.57
South Asia																
India	31.36	31.13	30.46	30.46	3.44	3.52	3.41	3.41	107.86	109.59	104.00	104.00	0.00	0.00	-5.59	-5.10
Pakistan	8.81	9.17	9.00	9.00	2.87	3.00	2.93	2.93	25.25	27.46	26.40	26.40	0.00	0.00	-1.06	-3.87
Afghanistan	2.33	2.20	2.20	2.20	2.15	2.00	2.05	2.05	5.01	4.40	4.50	4.50	0.00	0.00	0.10	2.27
Nepal	0.71	0.72	0.72	0.72	2.99	2.90	2.92	2.92	2.13	2.08	2.10	2.10	0.00	0.00	0.03	1.20
Former Soviet Union - 12																
Russia	28.68	27.63	29.10	29.00	2.98	2.72	3.16	3.17	85.35	75.16	92.00	92.00	0.00	0.00	16.84	22.41
Russia Winter	16.63	15.22	16.30	16.30	3.77	3.43	4.17	4.17	62.69	52.19	68.00	68.00	0.00	0.00	15.81	30.28
Russia Spring	12.06	12.41	12.80	12.70	1.88	1.85	1.88	1.89	22.66	22.96	24.00	24.00	0.00	0.00	1.04	4.51
Ukraine	6.85	7.41	5.35	5.35	3.71	4.45	3.93	3.93	25.42	33.01	21.00	21.00	0.00	0.00	-12.01	-36.38
Kazakhstan	12.06	12.72	12.81	12.81	1.18	0.93	1.28	1.28	14.26	11.81	16.40	16.40	0.00	0.00	4.59	38.85
Uzbekistan	1.36	1.36	1.40	1.40	4.53	4.40	4.42	4.42	6.16	5.99	6.19	6.19	0.00	0.00	0.21	3.44
Belarus	0.72	0.65	0.68	0.68	3.94	3.54	3.48	3.48	2.85	2.30	2.35	2.35	0.00	0.00	0.05	2.17
Canada	10.02	9.20	10.08	10.08	3.54	2.44	3.35	3.35	35.44	22.42	33.82	33.82	0.00	0.00	11.40	50.85
South America																
Argentina	6.40	6.55	5.50	5.50	2.76	3.38	2.35	2.28	17.64	22.15	12.90	12.55	-0.35	-2.71	-9.60	-43.34
Brazil	2.34	2.74	3.09	3.09	2.67	2.81	3.37	3.37	6.25	7.70	10.40	10.40	0.00	0.00	2.70	35.06
Australia	12.64	12.73	13.00	13.00	2.52	2.85	3.00	3.00	31.92	36.24	39.00	39.00	0.00	0.00	2.76	7.62
Africa																
Egypt	1.39	1.40	1.53	1.53	6.40	6.43	6.41	6.41	8.90	9.00	9.80	9.80	0.00	0.00	0.80	8.89
Morocco	2.76	2.86	2.50	2.50	0.93	2.64	1.08	1.08	2.56	7.54	2.70	2.70	0.00	0.00	-4.84	-64.19
Algeria	2.08	2.08	2.08	2.08	1.50	1.20	1.78	1.78	3.11	2.50	3.70	3.70	0.00	0.00	1.20	48.00
Ethiopia	1.83	1.95	2.00	2.30	3.00	2.83	2.85	3.04	5.48	5.52	5.70	7.00	1.30	22.81	1.48	26.81
Middle East																
Turkey	7.10	7.05	6.80	6.80	2.57	2.27	2.54	2.54	18.25	16.00	17.25	17.25	0.00	0.00	1.25	7.81
Iran	6.00	6.00	6.20	6.20	2.50	2.00	2.13	2.13	15.00	12.00	13.20	13.20	0.00	0.00	1.20	10.00
Iraq	2.40	2.00	2.00	2.00	1.93	1.75	1.50	1.50	4.64	3.50	3.00	3.00	0.00	0.00	-0.50	-14.29
Syria	1.60	1.10	1.20	1.20	2.81	1.82	1.75	1.75	4.50	2.00	2.10	2.10	0.00	0.00	0.10	5.00
Mexico	0.56	0.55	0.59	0.59	5.33	6.00	6.05	6.07	2.97	3.28	3.57	3.57	0.00	0.06	0.29	8.87
Others	7.24	7.28	7.62	7.48	2.82	2.82	2.77	2.75	20.44	20.51	21.13	20.61	-0.52	-2.45	0.10	0.50

Table 03 Total Coarse Grain Area, Yield, and Production

Country / Region	Area (Million hectares)				Yield (Metric tons per hectare)				Production (Million metric tons)				Change in Production			
	2020/21	Prel.	2022/23 Proj.		2020/21	Prel.	2022/23 Proj.		2020/21	Prel.	2022/23 Proj.		From last month		From last year	
		2021/22	Mar	Apr		2021/22	Mar	Apr		2021/22	Mar	Apr	MMT	Percent	MMT	Percent
World	344.41	345.07	337.50	336.33	4.19	4.36	4.27	4.27	1,441.67	1,503.40	1,439.62	1,436.29	-3.33	-0.23	-67.11	-4.46
United States	36.81	38.34	35.39	35.39	10.13	10.37	10.13	10.13	372.89	397.71	358.47	358.47	0.00	0.00	-39.24	-9.87
Total Foreign	307.60	306.73	302.11	300.95	3.47	3.60	3.58	3.58	1,068.78	1,105.69	1,081.15	1,077.82	-3.33	-0.31	-27.86	-2.52
China	43.72	45.77	45.52	45.52	6.15	6.14	6.27	6.27	269.08	280.85	285.50	285.50	0.00	0.00	4.65	1.65
European Union	28.77	27.74	27.23	26.76	5.40	5.58	4.98	5.00	155.46	154.77	135.61	133.85	-1.76	-1.30	-20.92	-13.52
United Kingdom	1.66	1.43	1.37	1.37	5.64	5.88	6.32	6.32	9.36	8.41	8.65	8.65	0.00	0.00	0.24	2.84
South America																
Brazil	21.30	23.37	24.31	24.31	4.24	5.16	5.33	5.33	90.32	120.62	129.54	129.54	0.00	0.00	8.92	7.39
Argentina	8.65	9.84	9.30	9.49	6.94	6.01	5.24	4.82	60.01	59.16	48.71	45.71	-3.00	-6.16	-13.45	-22.73
Former Soviet Union - 12																
Russia	14.55	14.01	13.50	13.60	2.84	2.75	3.09	3.25	41.40	38.54	41.77	44.13	2.36	5.65	5.59	14.52
Ukraine	8.53	8.66	6.37	6.37	4.64	6.18	5.37	5.37	39.59	53.51	34.16	34.16	0.00	0.00	-19.35	-36.17
Kazakhstan	3.20	2.63	2.63	2.63	1.54	1.43	1.79	1.79	4.93	3.76	4.71	4.71	0.00	0.00	0.96	25.46
Belarus	1.14	0.99	1.03	1.03	3.47	3.05	3.11	3.11	3.95	3.00	3.20	3.20	0.00	0.00	0.20	6.67
Africa																
Nigeria	13.10	13.70	13.50	13.50	1.60	1.56	1.57	1.57	20.90	21.39	21.18	21.18	0.00	0.00	-0.21	-0.99
South Africa	3.36	3.19	3.18	3.18	5.31	5.22	5.39	5.39	17.81	16.64	17.16	17.16	0.00	0.00	0.52	3.13
Tanzania	5.17	5.40	5.00	5.00	1.51	1.40	1.40	1.40	7.79	7.55	6.98	6.98	0.00	0.00	-0.58	-7.62
Burkina Faso	3.89	4.24	4.24	4.24	1.21	0.99	1.16	1.16	4.72	4.20	4.90	4.90	0.00	0.00	0.70	16.58
Ethiopia	5.53	5.59	5.63	5.63	3.45	3.08	3.23	3.23	19.10	17.20	18.20	18.20	0.00	0.00	1.00	5.81
Egypt	1.03	1.16	1.16	1.16	7.01	7.13	7.13	7.13	7.24	8.30	8.30	8.30	0.00	0.00	0.00	0.00
Mali	5.17	4.70	4.70	4.70	1.41	1.34	1.45	1.45	7.26	6.31	6.80	6.80	0.00	0.00	0.49	7.70
India	24.12	23.35	24.55	23.80	2.13	2.20	2.13	2.18	51.39	51.39	52.21	51.91	-0.30	-0.57	0.52	1.02
Southeast Asia																
Indonesia	3.85	3.90	3.95	3.95	3.27	3.26	3.27	3.27	12.60	12.70	12.90	12.90	0.00	0.00	0.20	1.57
Philippines	2.57	2.56	2.50	2.50	3.25	3.26	3.24	3.24	8.35	8.34	8.10	8.10	0.00	0.00	-0.24	-2.92
Vietnam	0.94	0.90	0.89	0.87	4.83	4.92	4.94	4.97	4.56	4.45	4.40	4.30	-0.10	-2.27	-0.15	-3.28
Thailand	1.28	1.23	1.23	1.21	4.33	4.36	4.28	4.35	5.55	5.35	5.25	5.25	0.00	0.00	-0.10	-1.87
Mexico	8.76	8.88	8.99	8.97	3.73	3.69	3.73	3.73	32.66	32.79	33.49	33.44	-0.05	-0.15	0.65	1.98
Canada	5.80	5.91	5.74	5.74	5.11	4.25	5.32	5.32	29.64	25.12	30.54	30.54	0.00	0.00	5.41	21.54
Australia	7.26	6.69	5.74	5.74	2.56	2.87	3.25	3.25	18.56	19.22	18.67	18.67	0.00	0.00	-0.55	-2.86
Middle East																
Turkey	4.63	4.46	4.55	4.55	3.40	2.60	3.25	3.25	15.76	11.58	14.77	14.77	0.00	0.00	3.19	27.55
Iran	1.81	1.91	1.86	1.86	2.77	2.16	2.38	2.38	5.02	4.12	4.42	4.42	0.00	0.00	0.30	7.31
Others	77.82	74.51	73.47	73.30	1.62	1.70	1.65	1.65	125.79	126.43	121.06	120.58	-0.48	-0.40	-5.85	-4.63

World and Selected Countries and Regions; Coarse Grain includes: Barley, Corn, Millet, Mixed Grains, Oats, Rye and Sorghum

Table 04 Corn Area, Yield, and Production

Country / Region	Area (Million hectares)				Yield (Metric tons per hectare)				Production (Million metric tons)				Change in Production						
	2020/21	Prel.		2022/23 Proj.		2020/21	Prel.		2022/23 Proj.		2020/21	Prel.		2022/23 Proj.		From last month		From last year	
		2021/22	Mar	Apr	2021/22		Mar	Apr	2021/22	Mar		Apr	MMT	Percent	MMT	Percent			
World	199.09	206.89	201.29	201.16	5.67	5.88	5.70	5.69	1,129.42	1,217.00	1,147.52	1,144.50	-3.02	-0.26	-72.50	-5.96			
United States	33.31	34.53	32.05	32.05	10.76	11.09	10.88	10.88	358.45	382.89	348.75	348.75	0.00	0.00	-34.14	-8.92			
Total Foreign	165.78	172.37	169.23	169.11	4.65	4.84	4.72	4.71	770.98	834.11	798.77	795.75	-3.02	-0.38	-38.36	-4.60			
China	41.26	43.32	43.07	43.07	6.32	6.29	6.44	6.44	260.67	272.55	277.20	277.20	0.00	0.00	4.65	1.71			
South America																			
Brazil	19.90	21.80	22.70	22.70	4.37	5.32	5.51	5.51	87.00	116.00	125.00	125.00	0.00	0.00	9.00	7.76			
Argentina	6.55	7.10	6.70	6.70	7.94	6.97	5.97	5.52	52.00	49.50	40.00	37.00	-3.00	-7.50	-12.50	-25.25			
Bolivia	0.41	0.44	0.44	0.44	3.00	2.60	2.64	2.64	1.23	1.13	1.15	1.15	0.00	0.00	0.02	1.77			
European Union	9.24	9.23	9.03	8.87	7.30	7.73	6.01	5.97	67.44	71.37	54.20	52.97	-1.23	-2.27	-18.40	-25.78			
Africa																			
South Africa	3.12	3.00	3.00	3.00	5.44	5.38	5.57	5.57	16.95	16.14	16.70	16.70	0.00	0.00	0.56	3.49			
Nigeria	5.50	6.00	5.80	5.80	2.25	2.12	2.10	2.10	12.40	12.75	12.18	12.18	0.00	0.00	-0.57	-4.43			
Ethiopia	2.36	2.53	2.55	2.55	4.47	3.72	4.00	4.00	10.56	9.40	10.20	10.20	0.00	0.00	0.80	8.51			
Egypt	0.80	0.93	0.93	0.93	8.00	8.00	8.00	8.00	6.40	7.44	7.44	7.44	0.00	0.00	0.00	0.00			
Tanzania	4.20	4.40	4.00	4.00	1.60	1.48	1.48	1.48	6.71	6.50	5.90	5.90	0.00	0.00	-0.60	-9.23			
Malawi	1.76	1.75	1.75	1.75	2.10	2.62	2.12	2.12	3.69	4.58	3.72	3.72	0.00	0.00	-0.86	-18.86			
Zambia	1.33	1.41	1.12	1.12	2.54	2.57	2.43	2.43	3.39	3.62	2.71	2.71	0.00	0.00	-0.91	-25.25			
Kenya	2.19	1.95	1.90	1.90	1.73	1.59	1.58	1.58	3.79	3.10	3.00	3.00	0.00	0.00	-0.10	-3.23			
Uganda	0.99	1.10	1.10	1.10	2.78	2.55	2.55	2.55	2.75	2.80	2.80	2.80	0.00	0.00	0.00	0.00			
Zimbabwe	1.58	1.95	1.90	1.90	0.57	1.39	0.82	0.82	0.91	2.72	1.56	1.56	0.00	0.00	-1.16	-42.66			
Former Soviet Union - 12																			
Ukraine	5.40	5.49	4.00	4.00	5.62	7.68	6.75	6.75	30.30	42.13	27.00	27.00	0.00	0.00	-15.13	-35.91			
Russia	2.73	2.90	2.50	2.64	5.08	5.25	5.60	6.00	13.87	15.23	14.00	15.83	1.83	13.09	0.61	3.99			
South Asia																			
India	9.89	9.96	10.10	10.10	3.20	3.39	3.43	3.43	31.65	33.73	34.61	34.61	0.00	0.00	0.88	2.61			
Pakistan	1.42	1.65	1.60	1.60	6.30	6.43	5.75	5.75	8.94	10.64	9.20	9.20	0.00	0.00	-1.44	-13.49			
Nepal	0.97	0.97	0.97	0.97	2.82	2.82	2.82	2.82	2.72	2.72	2.72	2.72	0.00	0.00	0.00	0.00			
Southeast Asia																			
Indonesia	3.85	3.90	3.95	3.95	3.27	3.26	3.27	3.27	12.60	12.70	12.90	12.90	0.00	0.00	0.20	1.57			
Philippines	2.57	2.56	2.50	2.50	3.25	3.26	3.24	3.24	8.35	8.34	8.10	8.10	0.00	0.00	-0.24	-2.92			
Vietnam	0.94	0.90	0.89	0.87	4.83	4.92	4.94	4.97	4.56	4.45	4.40	4.30	-0.10	-2.27	-0.15	-3.28			
Thailand	1.26	1.20	1.20	1.18	4.38	4.42	4.33	4.41	5.50	5.30	5.20	5.20	0.00	0.00	-0.10	-1.89			
Mexico	7.14	7.09	7.20	7.20	3.83	3.77	3.83	3.83	27.35	26.76	27.60	27.60	0.00	0.00	0.84	3.13			
Canada	1.41	1.46	1.44	1.44	9.63	9.99	10.07	10.07	13.56	14.61	14.54	14.54	0.00	0.00	-0.07	-0.49			
Turkey	0.62	0.54	0.53	0.53	11.45	12.04	12.83	12.83	7.10	6.50	6.80	6.80	0.00	0.00	0.30	4.62			
Others	26.38	26.83	26.38	26.31	2.60	2.66	2.58	2.56	68.60	71.42	67.95	67.43	-0.52	-0.77	-3.99	-5.59			

World and Selected Countries and Regions

Table 05 Barley Area, Yield, and Production

Country / Region	Area (Million hectares)				Yield (Metric tons per hectare)				Production (Million metric tons)				Change in Production			
	Prel.		2022/23 Proj.		Prel.		2022/23 Proj.		Prel.		2022/23 Proj.		From last month		From last year	
	2020/21	2021/22	Mar	Apr	2020/21	2021/22	Mar	Apr	2020/21	2021/22	Mar	Apr	MMT	Percent	MMT	Percent
World	52.45	49.30	47.26	47.37	3.07	2.96	3.21	3.21	160.92	145.96	151.62	151.96	0.33	0.22	6.00	4.11
United States	0.90	0.81	0.99	0.99	4.15	3.25	3.85	3.85	3.72	2.62	3.80	3.80	0.00	0.00	1.18	45.16
Total Foreign	51.55	48.49	46.28	46.38	3.05	2.96	3.19	3.19	157.20	143.35	147.83	148.16	0.33	0.23	4.81	3.36
European Union	11.05	10.30	10.43	10.42	4.91	5.05	4.93	4.97	54.23	52.05	51.45	51.80	0.35	0.68	-0.25	-0.48
United Kingdom	1.39	1.15	1.12	1.12	5.85	6.05	6.64	6.64	8.12	6.96	7.40	7.40	0.00	0.00	0.44	6.31
Former Soviet Union - 12																
Russia	8.16	7.69	7.80	7.75	2.53	2.28	2.76	2.77	20.63	17.51	21.50	21.50	0.00	0.00	4.00	22.82
Ukraine	2.58	2.68	1.90	1.90	3.08	3.70	3.21	3.21	7.95	9.92	6.10	6.10	0.00	0.00	-3.82	-38.53
Kazakhstan	2.73	2.16	2.18	2.18	1.34	1.10	1.51	1.51	3.66	2.37	3.29	3.29	0.00	0.00	0.92	38.87
Belarus	0.41	0.35	0.40	0.40	3.35	2.86	2.75	2.75	1.38	1.00	1.10	1.10	0.00	0.00	0.10	10.00
Azerbaijan	0.35	0.37	0.38	0.38	2.96	3.07	2.93	2.93	1.02	1.15	1.10	1.10	0.00	0.00	-0.05	-4.10
Canada	2.81	3.01	2.64	2.64	3.82	2.32	3.79	3.79	10.74	6.98	9.99	9.99	0.00	0.00	3.00	43.00
Australia	5.49	5.10	4.10	4.10	2.67	2.81	3.44	3.44	14.65	14.34	14.10	14.10	0.00	0.00	-0.24	-1.65
Middle East																
Turkey	3.80	3.70	3.80	3.80	2.13	1.22	1.95	1.95	8.10	4.50	7.40	7.40	0.00	0.00	2.90	64.44
Iran	1.60	1.70	1.65	1.65	2.25	1.59	1.82	1.82	3.60	2.70	3.00	3.00	0.00	0.00	0.30	11.11
Iraq	1.20	0.60	0.60	0.60	1.29	1.17	1.13	1.13	1.55	0.70	0.68	0.68	0.00	0.00	-0.02	-2.86
Syria	1.50	0.80	0.90	0.90	1.27	0.81	0.78	0.78	1.90	0.65	0.70	0.70	0.00	0.00	0.05	7.69
Africa																
Ethiopia	0.90	0.96	0.97	0.97	2.52	2.45	2.47	2.47	2.26	2.35	2.40	2.40	0.00	0.00	0.05	2.13
Morocco	1.47	1.49	1.10	1.10	0.44	1.87	0.64	0.64	0.64	2.78	0.70	0.70	0.00	0.00	-2.08	-74.82
Algeria	0.98	1.03	1.03	1.03	1.24	0.93	1.56	1.56	1.21	0.95	1.60	1.60	0.00	0.00	0.65	68.42
Tunisia	0.36	0.28	0.30	0.30	1.28	1.54	1.40	1.53	0.47	0.43	0.42	0.46	0.04	9.52	0.03	6.98
South Africa	0.14	0.10	0.10	0.10	4.14	3.52	3.06	3.06	0.59	0.33	0.31	0.31	0.00	0.00	-0.03	-7.49
South America																
Argentina	1.01	1.34	1.38	1.57	4.00	3.96	3.27	2.88	4.04	5.30	4.50	4.50	0.00	0.00	-0.80	-15.09
Uruguay	0.19	0.22	0.21	0.21	4.78	4.11	4.25	4.25	0.89	0.92	0.90	0.90	0.00	0.00	-0.02	-2.50
Brazil	0.10	0.11	0.11	0.11	3.63	3.79	3.91	3.91	0.37	0.43	0.43	0.43	0.00	0.00	0.01	1.18
India	0.59	0.59	0.45	0.45	2.92	2.80	3.02	3.02	1.72	1.66	1.37	1.37	0.00	0.00	-0.29	-17.27
China	0.51	0.51	0.51	0.51	4.00	3.92	3.92	3.92	2.04	2.00	2.00	2.00	0.00	0.00	0.00	0.00
Mexico	0.30	0.35	0.32	0.31	3.07	3.11	2.97	2.95	0.91	1.09	0.95	0.90	-0.05	-5.26	-0.19	-17.43
Afghanistan	0.17	0.16	0.17	0.17	1.41	1.25	1.35	1.35	0.24	0.20	0.23	0.23	0.00	0.00	0.03	15.00
Others	1.77	1.75	1.75	1.74	2.43	2.34	2.41	2.42	4.31	4.09	4.22	4.21	-0.01	-0.12	0.12	3.03

World and Selected Countries and Regions

Table 06 Oats Area, Yield, and Production

Country / Region	Area (Million hectares)				Yield (Metric tons per hectare)				Production (Million metric tons)				Change in Production			
	2020/21	Prel.	2022/23 Proj.		2020/21	Prel.	2022/23 Proj.		2020/21	Prel.	2022/23 Proj.		From last month		From last year	
		2021/22	Mar	Apr		2021/22	Mar	Apr		2021/22	Mar	Apr	MMT	Percent	MMT	Percent
World	10.08	9.63	9.55	9.55	2.55	2.36	2.65	2.70	25.72	22.72	25.25	25.77	0.52	2.07	3.05	13.42
United States	0.41	0.26	0.36	0.36	2.34	2.20	2.33	2.33	0.95	0.58	0.84	0.84	0.00	0.00	0.26	44.81
Total Foreign	9.67	9.37	9.19	9.19	2.56	2.36	2.66	2.71	24.77	22.15	24.42	24.94	0.52	2.14	2.79	12.60
European Union	2.56	2.54	2.40	2.37	3.31	2.95	3.18	3.22	8.47	7.52	7.61	7.63	0.02	0.30	0.12	1.53
Former Soviet Union - 12																
Russia	2.33	2.17	2.10	2.13	1.77	1.72	1.90	2.11	4.13	3.73	4.00	4.50	0.50	12.50	0.77	20.55
Ukraine	0.20	0.18	0.18	0.18	2.54	2.61	2.29	2.29	0.52	0.48	0.40	0.40	0.00	0.00	-0.08	-16.32
Belarus	0.16	0.15	0.16	0.16	2.87	2.33	2.42	2.42	0.45	0.35	0.38	0.38	0.00	0.00	0.03	7.14
Kazakhstan	0.23	0.20	0.20	0.20	1.05	0.90	1.16	1.16	0.24	0.18	0.23	0.23	0.00	0.00	0.05	25.82
Canada	1.31	1.21	1.40	1.40	3.48	2.39	3.73	3.73	4.58	2.90	5.23	5.23	0.00	0.00	2.33	80.27
South America																
Argentina	0.24	0.35	0.28	0.28	2.13	2.07	2.30	2.30	0.51	0.73	0.65	0.65	0.00	0.00	-0.08	-11.03
Brazil	0.43	0.50	0.51	0.51	2.00	2.27	2.26	2.26	0.85	1.14	1.16	1.16	0.00	0.00	0.01	1.05
Chile	0.11	0.12	0.13	0.13	4.65	4.70	4.37	4.37	0.53	0.58	0.55	0.55	0.00	0.00	-0.03	-4.84
Uruguay	0.02	0.01	0.02	0.02	2.20	2.21	2.40	2.40	0.03	0.03	0.04	0.04	0.00	0.00	0.01	16.13
Oceania																
Australia	1.07	0.84	0.80	0.80	1.77	2.06	2.00	2.00	1.90	1.74	1.60	1.60	0.00	0.00	-0.14	-7.78
New Zealand	0.00	0.00	0.01	0.01	5.75	6.25	5.67	5.67	0.02	0.03	0.03	0.03	0.00	0.00	0.01	36.00
China	0.41	0.41	0.41	0.41	1.48	1.48	1.48	1.48	0.60	0.60	0.60	0.60	0.00	0.00	0.00	0.00
Africa																
Algeria	0.06	0.08	0.08	0.08	1.11	1.31	1.31	1.31	0.07	0.11	0.11	0.11	0.00	0.00	0.00	0.00
Morocco	0.02	0.04	0.02	0.02	0.40	1.13	0.40	0.40	0.01	0.05	0.01	0.01	0.00	0.00	-0.04	-86.67
South Africa	0.03	0.04	0.03	0.03	2.19	1.64	1.11	1.11	0.06	0.06	0.03	0.03	0.00	0.00	-0.03	-49.15
Other Europe																
United Kingdom	0.21	0.20	0.19	0.19	4.91	5.62	5.26	5.26	1.03	1.12	1.00	1.00	0.00	0.00	-0.12	-10.95
Norway	0.07	0.07	0.07	0.07	4.29	4.29	4.29	4.29	0.30	0.30	0.30	0.30	0.00	0.00	0.00	0.00
Serbia	0.03	0.03	0.03	0.03	2.17	2.17	2.17	2.17	0.07	0.07	0.07	0.07	0.00	0.00	0.00	0.00
Albania	0.02	0.02	0.02	0.02	2.25	2.20	2.20	2.20	0.04	0.03	0.03	0.03	0.00	0.00	0.00	0.00
Bosnia and Herzegovina	0.01	0.01	0.01	0.01	3.09	2.82	2.82	2.82	0.03	0.03	0.03	0.03	0.00	0.00	0.00	0.00
Turkey	0.10	0.11	0.11	0.11	2.40	2.38	2.38	2.38	0.24	0.25	0.25	0.25	0.00	0.00	0.00	0.00
Mexico	0.03	0.05	0.05	0.05	2.03	2.02	1.89	1.89	0.06	0.09	0.09	0.09	0.00	0.00	-0.01	-8.60
Others	0.03	0.03	0.03	0.03	1.58	1.62	1.68	1.65	0.05	0.05	0.05	0.05	0.00	-1.92	0.00	8.51

World and Selected Countries and Regions

Table 07 Rye Area, Yield, and Production

Country / Region	Area (Million hectares)				Yield (Metric tons per hectare)				Production (Million metric tons)				Change in Production			
	Prel.		2022/23 Proj.		Prel.		2022/23 Proj.		Prel.		2022/23 Proj.		From last month		From last year	
	2020/21	2021/22	Mar	Apr	2020/21	2021/22	Mar	Apr	2020/21	2021/22	Mar	Apr	MMT	Percent	MMT	Percent
World	4.17	4.03	3.79	3.66	3.43	3.10	3.21	3.31	14.30	12.50	12.19	12.11	-0.08	-0.65	-0.40	-3.17
United States	0.13	0.12	0.14	0.14	2.19	2.09	2.26	2.26	0.29	0.25	0.31	0.31	0.00	0.00	0.06	25.30
Total Foreign	4.03	3.91	3.65	3.52	3.47	3.13	3.25	3.35	14.01	12.25	11.87	11.80	-0.08	-0.67	-0.46	-3.75
European Union	2.08	1.93	1.87	1.76	4.31	4.15	4.07	4.28	8.97	8.01	7.62	7.54	-0.08	-1.04	-0.47	-5.89
Former Soviet Union - 12																
Russia	0.97	0.99	0.90	0.88	2.44	1.73	2.22	2.27	2.38	1.72	2.00	2.00	0.00	0.00	0.28	16.55
Belarus	0.36	0.33	0.30	0.30	2.92	2.46	2.50	2.50	1.05	0.80	0.75	0.75	0.00	0.00	-0.05	-6.25
Ukraine	0.14	0.18	0.10	0.10	3.28	3.43	2.85	2.85	0.46	0.60	0.29	0.29	0.00	0.00	-0.32	-52.50
Kazakhstan	0.02	0.04	0.03	0.03	1.25	0.91	1.76	1.76	0.03	0.04	0.06	0.06	0.00	0.00	0.02	50.00
Turkey	0.11	0.12	0.11	0.11	2.91	2.87	2.91	2.91	0.32	0.33	0.32	0.32	0.00	0.00	-0.01	-3.03
Canada	0.15	0.12	0.15	0.15	3.19	3.21	3.42	3.42	0.49	0.37	0.52	0.52	0.00	0.00	0.15	39.78
South America																
Chile	0.00	0.00	0.00	0.00	5.00	5.00	5.00	5.00	0.01	0.01	0.01	0.01	0.00	0.00	0.00	0.00
Argentina	0.09	0.12	0.09	0.09	1.50	1.88	1.84	1.84	0.14	0.23	0.16	0.16	0.00	0.00	-0.07	-28.89
Other Europe																
Bosnia and Herzegovina	0.00	0.00	0.00	0.00	3.67	3.00	2.75	2.75	0.01	0.01	0.01	0.01	0.00	0.00	0.00	22.22
Switzerland	0.00	0.00	0.00	0.00	5.50	5.50	5.50	5.50	0.01	0.01	0.01	0.01	0.00	0.00	0.00	0.00
Serbia	0.00	0.00	0.00	0.00	2.50	2.50	2.50	2.50	0.01	0.01	0.01	0.01	0.00	0.00	0.00	0.00
Australia	0.05	0.05	0.05	0.05	0.71	0.71	0.71	0.71	0.03	0.03	0.03	0.03	0.00	0.00	0.00	0.00
Others	0.04	0.04	0.04	0.04	2.50	2.18	2.16	2.16	0.11	0.10	0.10	0.10	0.00	0.00	0.00	-1.04

World and Selected Countries and Regions

Table 08 Sorghum Area, Yield, and Production

Country / Region	Area (Million hectares)				Yield (Metric tons per hectare)				Production (Million metric tons)				Change in Production						
	2020/21	Prel.		2022/23 Proj.		2020/21	Prel.		2022/23 Proj.		2020/21	Prel.		2022/23 Proj.		From last month		From last year	
		2021/22	Mar	Apr	2021/22		Mar	Apr	2021/22	Mar		Apr	MMT	Percent	MMT	Percent			
World	42.73	40.53	40.77	39.91	1.47	1.53	1.42	1.45	62.79	61.95	58.03	57.69	-0.34	-0.59	-4.27	-6.88			
United States	2.06	2.63	1.85	1.85	4.59	4.33	2.58	2.58	9.47	11.38	4.77	4.77	0.00	0.00	-6.61	-58.07			
Total Foreign	40.67	37.90	38.92	38.06	1.31	1.33	1.37	1.39	53.32	50.58	53.26	52.92	-0.34	-0.64	2.34	4.63			
Africa																			
Nigeria	5.60	5.70	5.70	5.70	1.18	1.18	1.23	1.23	6.59	6.73	7.00	7.00	0.00	0.00	0.28	4.09			
Ethiopia	1.79	1.65	1.66	1.66	2.83	2.70	2.71	2.71	5.06	4.45	4.50	4.50	0.00	0.00	0.05	1.12			
Sudan	9.03	6.92	7.00	7.00	0.57	0.51	0.71	0.71	5.15	3.53	5.00	5.00	0.00	0.00	1.47	41.64			
Burkina Faso	1.74	1.90	1.90	1.90	1.06	0.87	1.00	1.00	1.84	1.64	1.90	1.90	0.00	0.00	0.26	15.57			
Mali	1.83	1.50	1.50	1.50	1.00	0.83	1.00	1.00	1.82	1.24	1.50	1.50	0.00	0.00	0.26	21.07			
Niger	3.67	3.70	3.70	3.70	0.58	0.33	0.51	0.51	2.13	1.21	1.90	1.90	0.00	0.00	0.69	57.42			
Cameroon	0.74	0.74	0.74	0.74	1.62	1.62	1.62	1.62	1.20	1.20	1.20	1.20	0.00	0.00	0.00	0.00			
Tanzania	0.70	0.70	0.70	0.70	1.07	1.02	1.07	1.07	0.75	0.72	0.75	0.75	0.00	0.00	0.04	4.90			
Egypt	0.15	0.15	0.15	0.15	4.91	5.00	5.00	5.00	0.73	0.75	0.75	0.75	0.00	0.00	0.00	0.00			
Uganda	0.31	0.25	0.25	0.25	1.23	1.32	0.90	0.90	0.38	0.33	0.23	0.23	0.00	0.00	-0.11	-31.82			
Ghana	0.30	0.31	0.31	0.31	1.13	1.11	1.13	1.13	0.35	0.35	0.35	0.35	0.00	0.00	0.01	1.45			
Mozambique	0.26	0.25	0.25	0.25	0.54	0.64	0.64	0.64	0.14	0.16	0.16	0.16	0.00	0.00	0.00	0.00			
South Africa	0.05	0.04	0.04	0.04	4.39	2.78	3.29	3.29	0.22	0.10	0.12	0.12	0.00	0.00	0.01	11.65			
Mexico	1.29	1.40	1.42	1.42	3.37	3.47	3.42	3.42	4.35	4.84	4.85	4.85	0.00	0.00	0.01	0.21			
South America																			
Argentina	0.75	0.93	0.85	0.85	4.43	3.68	4.00	4.00	3.32	3.40	3.40	3.40	0.00	0.00	0.00	0.00			
Brazil	0.87	0.95	0.98	0.98	2.41	3.20	3.00	3.00	2.08	3.04	2.94	2.94	0.00	0.00	-0.10	-3.35			
South Asia																			
India	4.38	3.80	4.50	3.75	1.10	1.09	0.98	1.09	4.81	4.15	4.40	4.10	-0.30	-6.82	-0.05	-1.20			
Pakistan	0.13	0.08	0.22	0.22	0.76	0.83	0.63	0.63	0.10	0.06	0.14	0.14	0.00	0.00	0.07	110.94			
China	0.64	0.63	0.63	0.63	4.68	4.76	4.76	4.76	2.97	3.00	3.00	3.00	0.00	0.00	0.00	0.00			
Australia	0.57	0.62	0.70	0.70	2.86	4.26	3.57	3.57	1.64	2.65	2.50	2.50	0.00	0.00	-0.15	-5.59			
European Union	0.19	0.15	0.13	0.13	5.21	5.41	4.41	4.27	1.00	0.80	0.59	0.55	-0.04	-6.77	-0.25	-31.21			
Others	5.69	5.55	5.60	5.49	1.18	1.12	1.09	1.11	6.70	6.23	6.09	6.09	0.00	0.00	-0.14	-2.29			

World and Selected Countries and Regions

Table 09 Rice Area, Yield, and Production
World and Selected Countries and Regions

Country / Region	Area (Million hectares)				Yield (Metric tons per hectare)				Production (Million metric tons)				Change in Production			
	Prel.		2022/23 Proj.		Prel.		2022/23 Proj.		Prel.		2022/23 Proj.		From last month		From last year	
	2020/21	2021/22	Mar	Apr	2020/21	2021/22	Mar	Apr	2020/21	2021/22	Mar	Apr	MMT	Percent	MMT	Percent
World	165.20	165.90	165.20	165.12	4.60	4.62	4.61	4.61	509.32	513.85	509.83	509.42	-0.41	-0.08	-4.43	-0.86
United States	1.21	1.01	0.88	0.88	8.54	8.64	8.28	8.28	7.22	6.08	5.09	5.09	0.00	0.00	-0.99	-16.29
Total Foreign	164.00	164.90	164.32	164.24	4.57	4.60	4.59	4.59	502.10	507.77	504.74	504.33	-0.41	-0.08	-3.44	-0.68
East Asia																
China	30.08	29.92	29.45	29.45	7.04	7.11	7.08	7.08	148.30	148.99	145.95	145.95	0.00	0.00	-3.04	-2.04
Japan	1.53	1.52	1.50	1.50	6.78	6.90	6.82	6.86	7.57	7.64	7.45	7.48	0.03	0.40	-0.16	-2.04
Korea, South	0.73	0.73	0.73	0.73	6.49	7.12	6.88	6.88	3.51	3.88	3.76	3.76	0.00	0.00	-0.12	-3.04
Korea, North	0.49	0.50	0.50	0.50	4.44	4.18	4.18	4.18	1.40	1.36	1.36	1.36	0.00	0.00	0.00	0.00
South Asia																
India	45.77	46.28	47.00	47.00	4.08	4.20	4.21	4.21	124.37	129.47	132.00	132.00	0.00	0.00	2.53	1.95
Bangladesh	11.50	11.62	11.50	11.60	4.51	4.63	4.68	4.70	34.60	35.85	35.85	36.35	0.50	1.39	0.50	1.39
Pakistan	3.34	3.54	3.00	3.00	3.79	3.95	3.30	3.30	8.42	9.32	6.60	6.60	0.00	0.00	-2.72	-29.21
Nepal	1.47	1.48	1.45	1.45	3.82	3.47	3.79	3.79	3.74	3.42	3.65	3.65	0.00	0.00	0.24	6.94
Sri Lanka	1.09	1.13	1.09	1.09	4.59	3.56	3.41	3.41	3.39	2.73	2.53	2.53	0.00	0.00	-0.21	-7.61
Southeast Asia																
Indonesia	11.40	11.60	11.65	11.55	4.77	4.67	4.68	4.64	34.50	34.40	34.60	34.00	-0.60	-1.73	-0.40	-1.16
Vietnam	7.31	7.19	7.17	7.17	6.00	5.96	6.03	6.03	27.38	26.77	27.00	27.00	0.00	0.00	0.23	0.86
Thailand	10.51	10.70	10.85	10.85	2.72	2.81	2.82	2.82	18.86	19.88	20.20	20.20	0.00	0.00	0.32	1.62
Burma	6.90	6.90	6.90	6.90	2.85	2.80	2.83	2.83	12.60	12.35	12.50	12.50	0.00	0.00	0.15	1.20
Philippines	4.76	4.80	4.80	4.80	4.14	4.15	4.10	4.10	12.42	12.54	12.41	12.41	0.00	0.00	-0.13	-1.03
Cambodia	3.26	3.27	3.31	3.31	2.89	2.89	2.94	2.94	5.74	5.77	5.93	5.93	0.00	0.00	0.16	2.81
Laos	0.93	0.94	0.95	0.95	3.24	3.28	3.26	3.26	1.90	1.95	1.95	1.95	0.00	0.00	0.00	0.00
Malaysia	0.68	0.65	0.68	0.66	4.07	3.97	4.07	3.99	1.80	1.68	1.80	1.70	-0.10	-5.56	0.02	1.37
South America																
Brazil	1.68	1.62	1.47	1.47	7.00	6.67	6.94	6.80	8.00	7.34	6.94	6.80	-0.14	-1.96	-0.54	-7.32
Peru	0.41	0.42	0.42	0.42	8.22	8.37	8.55	8.55	2.34	2.43	2.48	2.48	0.00	0.00	0.05	2.22
Africa																
Egypt	0.70	0.50	0.60	0.60	8.28	8.41	8.70	8.70	4.00	2.90	3.60	3.60	0.00	0.00	0.70	24.14
Madagascar	1.68	1.65	1.60	1.60	2.53	2.65	2.69	2.69	2.71	2.80	2.75	2.75	0.00	0.00	-0.05	-1.82
Nigeria	3.60	3.65	3.50	3.50	2.27	2.29	2.29	2.29	5.15	5.26	5.04	5.04	0.00	0.00	-0.22	-4.09
European Union	0.42	0.40	0.33	0.33	6.74	6.64	6.00	6.32	1.83	1.73	1.27	1.34	0.06	5.03	-0.40	-22.86
Iran	0.58	0.56	0.57	0.57	5.27	5.14	5.32	5.32	2.00	1.90	2.00	2.00	0.00	0.00	0.10	5.26
Others	13.21	13.33	13.31	13.26	2.94	2.89	2.86	2.86	25.58	25.41	25.11	24.94	-0.17	-0.67	-0.47	-1.85

Yield is on a rough basis, before the milling process. Production is on a milled basis, after the milling process.

Table 10 Total Oilseed Area, Yield, and Production

World and Selected Countries and Regions

Country / Region	Area (Million hectares)				Yield (Metric tons per hectare)				Production (Million metric tons)				Change in Production			
	2020/21	Prel.	2022/23 Proj.		2020/21	Prel.	2022/23 Proj.		2020/21	Prel.	2022/23 Proj.		From last month		From last year	
		2021/22	Mar	Apr		2021/22	Mar	Apr		2021/22	Mar	Apr	MMT	Percent	MMT	Percent
World Total	--	--	--	--	--	--	--	--	608.35	609.21	629.89	625.38	-4.51	-0.72	16.17	2.65
Total Foreign	--	--	--	--	--	--	--	--	483.83	477.86	503.93	499.41	-4.51	-0.90	21.55	4.51
Oilseed, Copra	--	--	--	--	--	--	--	--	5.78	6.07	6.03	6.03	0.00	0.00	-0.04	-0.61
Oilseed, Palm Kernel	--	--	--	--	--	--	--	--	19.09	19.33	20.08	20.08	0.00	0.00	0.74	3.84
Major Oilseeds	252.13	261.07	263.85	263.73	2.31	2.24	2.29	2.27	583.49	583.81	603.79	599.27	-4.51	-0.75	15.46	2.65
United States	38.81	41.06	40.04	40.04	3.21	3.20	3.15	3.15	124.52	131.35	125.96	125.96	0.00	0.00	-5.39	-4.10
Foreign Oilseeds	213.32	220.00	223.81	223.69	2.15	2.06	2.13	2.12	458.97	452.46	477.82	473.31	-4.51	-0.94	20.85	4.61
South America	66.35	68.92	70.59	70.16	3.18	2.86	3.02	2.95	210.89	196.92	213.23	207.24	-5.99	-2.81	10.33	5.24
Brazil	41.07	43.43	45.28	45.58	3.50	3.11	3.49	3.49	143.77	135.17	158.23	159.13	0.90	0.57	23.96	17.73
Argentina	18.97	18.77	18.51	18.01	2.70	2.65	2.08	1.80	51.21	49.67	38.44	32.42	-6.02	-15.66	-17.25	-34.73
Paraguay	3.38	3.51	3.54	3.56	2.89	1.23	2.86	2.85	9.77	4.31	10.13	10.17	0.04	0.41	5.86	135.84
Bolivia	1.57	1.69	1.57	1.57	2.24	2.25	2.10	2.10	3.51	3.80	3.30	3.30	0.00	0.00	-0.50	-13.10
Uruguay	1.22	1.38	1.56	1.31	1.86	2.63	1.79	1.44	2.27	3.62	2.79	1.88	-0.91	-32.69	-1.74	-48.12
China	25.45	24.10	26.14	26.14	2.59	2.59	2.58	2.60	65.81	62.32	67.49	67.88	0.39	0.58	5.56	8.93
South Asia	42.50	41.80	42.92	42.53	0.97	1.06	1.02	1.03	41.05	44.34	43.64	44.02	0.38	0.88	-0.32	-0.73
India	39.15	38.48	40.18	39.18	0.96	1.04	1.01	1.03	37.56	39.94	40.77	40.42	-0.35	-0.86	0.48	1.20
Pakistan	2.65	2.59	2.38	2.43	0.94	1.31	1.02	0.96	2.50	3.38	2.43	2.34	-0.09	-3.58	-1.03	-30.59
European Union	11.10	11.06	12.09	12.51	2.59	2.80	2.64	2.54	28.77	30.98	31.94	31.79	-0.16	-0.49	0.81	2.61
United Kingdom	0.38	0.31	0.36	0.36	2.73	3.20	3.40	3.40	1.04	0.98	1.23	1.23	0.00	0.00	0.24	24.87
Former Soviet Union - 12	25.91	27.74	26.09	26.32	1.73	1.89	1.82	1.84	44.71	52.45	47.58	48.43	0.85	1.79	-4.03	-7.68
Russia	12.50	14.23	14.50	14.74	1.61	1.62	1.75	1.78	20.14	23.11	25.40	26.25	0.85	3.35	3.14	13.60
Ukraine	9.65	9.58	7.45	7.45	2.06	2.54	2.30	2.30	19.85	24.32	17.10	17.10	0.00	0.00	-7.22	-29.67
Uzbekistan	1.08	1.08	1.09	1.09	1.20	1.10	1.09	1.09	1.29	1.19	1.19	1.19	0.00	0.00	0.00	0.08
Canada	10.41	11.06	10.76	10.76	2.49	1.81	2.38	2.38	25.95	20.05	25.63	25.63	0.00	0.00	5.58	27.81
Africa	22.12	24.79	23.83	23.85	1.08	0.98	1.05	1.06	23.99	24.36	25.08	25.20	0.12	0.48	0.84	3.44
Nigeria	4.62	4.97	4.87	4.87	1.19	1.11	1.21	1.21	5.49	5.50	5.90	5.90	0.00	0.00	0.41	7.37
South Africa	1.36	1.66	1.76	1.76	1.98	1.89	2.00	2.05	2.69	3.14	3.52	3.61	0.09	2.41	0.47	14.84
Tanzania	1.17	1.24	1.35	1.35	1.02	0.98	0.93	0.93	1.19	1.21	1.25	1.25	0.00	0.00	0.04	3.39
Southeast Asia	3.25	3.21	3.18	3.18	1.36	1.36	1.38	1.38	4.42	4.38	4.37	4.37	0.00	0.00	-0.01	-0.16
Burma	2.03	2.04	2.04	2.04	1.17	1.19	1.21	1.21	2.37	2.42	2.46	2.46	0.00	0.00	0.05	1.86
Indonesia	0.94	0.90	0.87	0.87	1.54	1.55	1.55	1.55	1.45	1.39	1.35	1.35	0.00	0.00	-0.04	-2.53
Australia	2.94	3.94	4.64	4.64	1.93	2.20	2.17	2.17	5.69	8.68	10.05	10.05	0.00	0.00	1.37	15.83
Turkey	1.18	1.32	1.48	1.48	2.46	2.55	2.69	2.69	2.89	3.37	3.98	3.98	0.00	0.00	0.61	18.02
Others	1.71	1.76	1.74	1.77	2.20	2.06	2.07	1.97	3.77	3.63	3.61	3.50	-0.12	-3.18	-0.13	-3.61

World Total and Total Foreign: (Major Oilseeds plus copra and palm kernel) Major Oilseeds: (soybeans, sunflowerseeds, peanuts(inshell), cottonseed and rapeseed)

Table 11 Soybean Area, Yield, and Production

Country / Region	Area (Million hectares)				Yield (Metric tons per hectare)				Production (Million metric tons)				Change in Production			
	2020/21	Prel. 2021/22	2022/23 Proj.		2020/21	Prel. 2021/22	2022/23 Proj.		2020/21	Prel. 2021/22	2022/23 Proj.		From last month		From last year	
			Mar	Apr			Mar	Apr			Mar	Apr	MMT	Percent	MMT	Percent
World	129.27	130.98	135.24	134.18	2.85	2.75	2.77	2.75	368.60	359.80	375.15	369.64	-5.51	-1.47	9.84	2.74
United States	33.43	34.93	34.94	34.94	3.43	3.48	3.33	3.33	114.75	121.53	116.38	116.38	0.00	0.00	-5.15	-4.24
Total Foreign	95.84	96.05	100.30	99.25	2.65	2.48	2.58	2.55	253.85	238.27	258.77	253.26	-5.51	-2.13	14.99	6.29
South America																
Brazil	39.50	41.60	43.40	43.70	3.53	3.14	3.53	3.52	139.50	130.50	153.00	154.00	1.00	0.65	23.50	18.01
Argentina	16.47	15.90	15.50	15.00	2.81	2.76	2.13	1.80	46.20	43.90	33.00	27.00	-6.00	-18.18	-16.90	-38.50
Paraguay	3.29	3.42	3.45	3.45	2.93	1.22	2.90	2.90	9.64	4.18	10.00	10.00	0.00	0.00	5.82	139.06
Bolivia	1.43	1.55	1.43	1.43	2.32	2.32	2.17	2.17	3.32	3.60	3.10	3.10	0.00	0.00	-0.50	-13.89
Uruguay	1.06	1.16	1.15	0.90	1.88	2.80	1.83	1.33	2.00	3.23	2.10	1.20	-0.90	-42.86	-2.03	-62.88
East Asia																
China	9.88	8.42	10.24	10.24	1.98	1.95	1.98	1.98	19.60	16.40	20.28	20.28	0.00	0.00	3.89	23.70
Korea, South	0.06	0.05	0.06	0.06	1.47	2.06	1.73	1.73	0.08	0.11	0.10	0.10	0.00	0.00	-0.02	-14.41
Korea, North	0.16	0.17	0.16	0.16	1.40	1.15	1.15	1.15	0.23	0.19	0.18	0.18	0.00	0.00	-0.01	-5.26
Japan	0.14	0.15	0.15	0.15	1.54	1.63	1.55	1.55	0.22	0.24	0.23	0.23	0.00	0.00	-0.01	-2.52
India	12.92	12.15	12.70	12.00	0.81	0.98	0.94	1.00	10.46	11.89	12.00	12.00	0.00	0.00	0.11	0.93
Canada	2.04	2.08	2.12	2.12	3.12	2.99	3.09	3.09	6.36	6.22	6.54	6.54	0.00	0.00	0.32	5.13
Former Soviet Union - 12																
Russia	2.71	2.99	3.30	3.36	1.59	1.59	1.67	1.79	4.31	4.76	5.50	6.00	0.50	9.02	1.24	25.97
Ukraine	1.46	1.44	1.35	1.35	2.05	2.64	2.37	2.37	3.00	3.80	3.20	3.20	0.00	0.00	-0.60	-15.79
European Union	1.00	0.98	1.06	1.08	2.61	2.83	2.34	2.26	2.60	2.77	2.47	2.44	-0.03	-1.05	-0.33	-11.98
Southeast Asia																
Indonesia	0.39	0.35	0.33	0.33	1.22	1.21	1.21	1.21	0.48	0.43	0.40	0.40	0.00	0.00	-0.03	-5.88
Vietnam	0.04	0.03	0.03	0.03	1.61	1.61	1.60	1.60	0.06	0.05	0.05	0.05	0.00	0.00	-0.01	-9.43
Thailand	0.03	0.03	0.03	0.03	1.63	1.63	1.63	1.63	0.05	0.05	0.05	0.05	0.00	0.00	0.00	0.00
Burma	0.14	0.13	0.13	0.13	1.04	1.04	1.04	1.04	0.14	0.14	0.13	0.13	0.00	0.00	-0.01	-3.70
Serbia	0.24	0.24	0.22	0.24	3.17	2.28	2.50	1.70	0.75	0.54	0.55	0.40	-0.15	-27.45	-0.14	-26.11
Mexico	0.16	0.18	0.12	0.12	1.58	1.57	1.54	1.52	0.25	0.29	0.19	0.18	-0.01	-5.41	-0.11	-39.24
Africa																
South Africa	0.83	0.93	1.15	1.15	2.29	2.38	2.30	2.36	1.90	2.20	2.65	2.71	0.06	2.26	0.51	23.18
Nigeria	1.10	1.20	1.20	1.20	1.01	0.93	1.04	1.04	1.11	1.12	1.25	1.25	0.00	0.00	0.13	11.91
Zambia	0.16	0.30	0.38	0.38	1.81	1.35	1.27	1.27	0.30	0.41	0.48	0.48	0.00	0.00	0.06	15.57
Uganda	0.05	0.05	0.05	0.05	0.60	0.60	0.60	0.60	0.03	0.03	0.03	0.03	0.00	0.00	0.00	0.00
Middle East																
Iran	0.07	0.07	0.08	0.08	2.41	2.29	2.27	2.27	0.17	0.16	0.17	0.17	0.00	0.00	0.01	6.25
Turkey	0.03	0.03	0.04	0.04	3.79	3.91	4.00	4.00	0.11	0.13	0.14	0.14	0.00	0.00	0.02	12.00
Others	0.49	0.46	0.50	0.51	2.06	2.03	1.99	2.00	1.01	0.94	1.00	1.02	0.02	2.21	0.08	8.41

World and Selected Countries and Regions

Table 12 Cottonseed Area, Yield, and Production

Country / Region	Area (Million hectares)				Yield (Metric tons per hectare)				Production (Million metric tons)				Change in Production			
	Prel.		2022/23 Proj.		Prel.		2022/23 Proj.		Prel.		2022/23 Proj.		From last month		From last year	
	2020/21	2021/22	Mar	Apr	2020/21	2021/22	Mar	Apr	2020/21	2021/22	Mar	Apr	MMT	Percent	MMT	Percent
World	30.81	32.03	31.06	31.10	1.33	1.31	1.35	1.36	41.02	41.82	41.93	42.27	0.34	0.81	0.45	1.08
United States	3.33	4.16	3.01	3.01	1.22	1.16	1.34	1.34	4.05	4.83	4.04	4.04	0.00	0.00	-0.79	-16.30
Total Foreign	27.49	27.87	28.05	28.08	1.34	1.33	1.35	1.36	36.97	36.99	37.89	38.23	0.34	0.89	1.24	3.35
South Asia																
India	13.29	12.37	12.70	12.70	0.88	0.84	0.82	0.82	11.72	10.36	10.40	10.40	0.00	0.00	0.04	0.41
Pakistan	2.20	2.00	1.80	1.80	0.89	1.30	0.94	0.94	1.95	2.60	1.69	1.69	0.00	0.00	-0.91	-35.01
China	3.20	3.10	3.05	3.05	3.63	3.39	3.79	3.92	11.60	10.50	11.56	11.95	0.39	3.39	1.45	13.81
Former Soviet Union - 12																
Uzbekistan	1.06	1.06	1.07	1.07	1.18	1.07	1.06	1.06	1.25	1.14	1.14	1.14	0.00	0.00	0.00	0.00
Turkmenistan	0.55	0.55	0.55	0.55	0.66	0.64	0.64	0.64	0.36	0.35	0.35	0.35	0.00	0.00	0.00	0.00
Tajikistan	0.16	0.17	0.17	0.17	1.11	1.09	1.11	1.11	0.18	0.19	0.19	0.19	0.00	0.00	0.00	1.08
Kazakhstan	0.11	0.12	0.13	0.13	0.95	0.90	0.94	0.94	0.11	0.10	0.12	0.12	0.00	0.00	0.01	13.59
South America																
Brazil	1.37	1.60	1.63	1.63	2.62	2.43	2.71	2.65	3.59	3.89	4.42	4.32	-0.10	-2.26	0.43	10.92
Argentina	0.41	0.48	0.40	0.40	0.72	0.68	1.11	1.06	0.29	0.33	0.44	0.43	-0.02	-4.28	0.10	30.37
Middle East																
Turkey	0.35	0.45	0.56	0.56	2.71	2.76	2.88	2.88	0.95	1.24	1.60	1.60	0.00	0.00	0.36	28.93
Syria	0.03	0.03	0.03	0.03	2.36	2.20	2.20	2.20	0.06	0.06	0.06	0.06	0.00	0.00	0.00	0.00
Iran	0.10	0.10	0.10	0.10	1.35	1.35	1.35	1.35	0.13	0.14	0.14	0.14	0.00	0.00	0.00	0.00
Australia	0.28	0.64	0.68	0.68	3.06	2.77	2.45	2.45	0.84	1.76	1.65	1.65	0.00	0.00	-0.11	-5.98
European Union	0.34	0.32	0.31	0.31	1.59	1.66	1.62	1.70	0.54	0.53	0.50	0.53	0.02	4.58	-0.01	-1.69
Africa																
Burkina Faso	0.56	0.60	0.62	0.62	0.47	0.45	0.40	0.40	0.26	0.27	0.25	0.25	0.00	0.00	-0.02	-6.42
Mali	0.17	0.72	0.69	0.69	0.51	0.56	0.41	0.41	0.08	0.40	0.28	0.28	0.00	0.00	-0.12	-29.95
Cameroon	0.23	0.23	0.23	0.23	1.51	1.39	1.41	1.41	0.34	0.32	0.33	0.33	0.00	0.00	0.01	1.56
Cote d'Ivoire	0.45	0.47	0.41	0.41	0.61	0.60	0.34	0.34	0.27	0.28	0.14	0.14	0.00	0.00	-0.14	-49.82
Benin	0.62	0.64	0.58	0.58	0.78	0.73	0.75	0.75	0.48	0.47	0.43	0.43	0.00	0.00	-0.04	-8.32
Tanzania	0.17	0.24	0.35	0.35	0.56	0.46	0.43	0.43	0.09	0.11	0.15	0.15	0.00	0.00	0.04	36.94
Egypt	0.07	0.09	0.13	0.14	1.00	1.00	0.98	0.92	0.07	0.09	0.13	0.13	0.00	0.78	0.04	51.76
Nigeria	0.27	0.27	0.27	0.27	0.56	0.56	0.56	0.56	0.15	0.15	0.15	0.15	0.00	0.00	0.00	0.00
Uganda	0.10	0.10	0.10	0.10	1.40	1.40	1.49	1.49	0.14	0.14	0.15	0.15	0.00	0.00	0.01	6.43
Zimbabwe	0.24	0.25	0.24	0.24	0.39	0.33	0.34	0.34	0.09	0.08	0.08	0.08	0.00	0.00	0.00	0.00
Sudan	0.20	0.20	0.20	0.20	1.41	1.41	1.53	1.53	0.28	0.28	0.31	0.31	0.00	0.00	0.02	8.51
Mexico	0.15	0.15	0.20	0.20	2.40	2.71	2.39	2.39	0.35	0.42	0.48	0.48	0.00	0.00	0.06	14.63
Burma	0.24	0.25	0.25	0.25	1.17	1.18	1.18	1.18	0.28	0.29	0.29	0.29	0.00	0.00	0.00	0.00
Others	0.63	0.70	0.63	0.66	0.83	0.74	0.76	0.79	0.52	0.51	0.48	0.52	0.04	8.81	0.01	0.97

World and Selected Countries and Regions

Table 13 Peanut Area, Yield, and Production

Country / Region	Area (Million hectares)				Yield (Metric tons per hectare)				Production (Million metric tons)				Change in Production			
	Prel.		2022/23 Proj.		Prel.		2022/23 Proj.		Prel.		2022/23 Proj.		From last month		From last year	
	2020/21	2021/22	Mar	Apr	2020/21	2021/22	Mar	Apr	2020/21	2021/22	Mar	Apr	MMT	Percent	MMT	Percent
World	29.93	31.05	29.63	29.33	1.68	1.62	1.69	1.70	50.26	50.44	50.11	49.76	-0.35	-0.69	-0.68	-1.35
United States	0.65	0.62	0.56	0.56	4.27	4.63	4.50	4.50	2.79	2.89	2.53	2.53	0.00	0.00	-0.36	-12.44
Total Foreign	29.27	30.43	29.07	28.77	1.62	1.56	1.64	1.64	47.46	47.56	47.58	47.24	-0.35	-0.73	-0.32	-0.67
China	4.73	4.81	4.80	4.80	3.80	3.81	3.81	3.81	17.99	18.31	18.30	18.30	0.00	0.00	-0.01	-0.04
Africa																
Nigeria	3.25	3.50	3.40	3.40	1.30	1.21	1.32	1.32	4.23	4.23	4.50	4.50	0.00	0.00	0.27	6.43
Sudan	3.20	3.94	3.00	3.00	0.87	0.60	0.83	0.83	2.77	2.36	2.50	2.50	0.00	0.00	0.15	6.16
Senegal	1.23	1.21	1.20	1.20	1.47	1.38	1.42	1.42	1.80	1.68	1.70	1.70	0.00	0.00	0.02	1.31
Cameroon	0.43	0.43	0.43	0.43	1.40	1.40	1.40	1.40	0.60	0.60	0.60	0.60	0.00	0.00	0.00	0.00
Ghana	0.34	0.34	0.34	0.34	1.68	1.41	1.41	1.41	0.57	0.48	0.48	0.48	0.00	0.00	0.00	0.00
Chad	0.76	0.80	0.80	0.80	1.11	1.13	1.13	1.13	0.84	0.90	0.90	0.90	0.00	0.00	0.00	0.00
Malawi	0.40	0.40	0.40	0.40	0.88	0.88	0.88	0.88	0.35	0.35	0.35	0.35	0.00	0.00	0.00	0.00
Congo (Kinshasa)	0.50	0.50	0.50	0.50	0.90	0.90	0.90	0.90	0.45	0.45	0.45	0.45	0.00	0.00	0.00	0.00
Niger	0.90	0.92	0.92	0.92	0.66	0.56	0.60	0.60	0.59	0.52	0.55	0.55	0.00	0.00	0.03	5.97
Mali	0.43	0.43	0.43	0.43	1.16	0.87	1.00	1.00	0.49	0.37	0.43	0.43	0.00	0.00	0.06	15.49
Uganda	0.34	0.40	0.40	0.40	0.99	0.75	0.75	0.75	0.34	0.30	0.30	0.30	0.00	0.00	0.00	0.00
Burkina Faso	0.65	0.60	0.60	0.60	0.97	0.80	0.83	0.83	0.63	0.48	0.50	0.50	0.00	0.00	0.02	4.82
Guinea	0.98	1.10	1.10	1.10	1.10	1.21	1.09	1.09	1.07	1.34	1.20	1.20	0.00	0.00	-0.14	-10.11
Egypt	0.06	0.06	0.06	0.06	3.20	3.20	3.20	3.20	0.21	0.21	0.21	0.21	0.00	0.00	0.00	0.00
Central African Republic	0.10	0.10	0.10	0.10	1.50	1.50	1.50	1.50	0.15	0.15	0.15	0.15	0.00	0.00	0.00	0.00
South Africa	0.04	0.04	0.03	0.03	2.21	1.48	2.33	2.33	0.09	0.07	0.07	0.07	0.00	0.00	0.01	7.69
Mozambique	0.35	0.38	0.38	0.38	0.30	0.34	0.34	0.34	0.10	0.13	0.13	0.13	0.00	0.00	0.00	0.00
Cote d'Ivoire	0.16	0.15	0.15	0.15	1.40	1.45	1.45	1.45	0.23	0.21	0.21	0.21	0.00	0.00	0.00	0.00
Benin	0.17	0.19	0.19	0.19	1.01	0.92	0.92	0.92	0.18	0.18	0.18	0.18	0.00	0.00	0.00	0.00
South Asia																
India	6.02	5.71	5.50	5.20	1.11	1.19	1.21	1.21	6.70	6.80	6.65	6.30	-0.35	-5.26	-0.50	-7.35
Pakistan	0.14	0.15	0.13	0.13	0.90	0.94	0.88	0.88	0.12	0.15	0.12	0.12	0.00	0.00	-0.03	-20.69
Southeast Asia																
Indonesia	0.55	0.55	0.54	0.54	1.78	1.76	1.76	1.76	0.97	0.96	0.95	0.95	0.00	0.00	-0.01	-1.04
Burma	1.06	1.06	1.07	1.07	1.48	1.51	1.55	1.55	1.56	1.60	1.65	1.65	0.00	0.00	0.05	3.13
Vietnam	0.17	0.16	0.16	0.16	2.50	2.50	2.50	2.50	0.41	0.40	0.39	0.39	0.00	0.00	-0.01	-3.00
Thailand	0.02	0.02	0.02	0.02	1.67	1.67	1.67	1.67	0.04	0.04	0.04	0.04	0.00	0.00	0.00	0.00
South America																
Argentina	0.40	0.41	0.38	0.38	3.16	3.29	3.03	3.03	1.27	1.34	1.15	1.15	0.00	0.00	-0.19	-14.18
Brazil	0.17	0.20	0.21	0.21	3.86	3.68	3.66	3.66	0.64	0.72	0.75	0.75	0.00	0.00	0.03	4.46
Mexico	0.06	0.06	0.05	0.05	1.73	1.63	1.74	1.87	0.10	0.10	0.09	0.10	0.01	9.78	0.00	3.06
Others	1.70	1.83	1.79	1.79	1.16	1.19	1.18	1.17	1.97	2.17	2.10	2.10	-0.01	-0.33	-0.08	-3.45

Table 14 Sunflowerseed Area, Yield, and Production

Country / Region	Area (Million hectares)				Yield (Metric tons per hectare)				Production (Million metric tons)				Change in Production			
	Prel.		2022/23 Proj.		Prel.		2022/23 Proj.		Prel.		2022/23 Proj.		From last month		From last year	
	2020/21	2021/22	Mar	Apr	2020/21	2021/22	Mar	Apr	2020/21	2021/22	Mar	Apr	MMT	Percent	MMT	Percent
World	26.86	28.72	26.99	27.49	1.83	1.99	1.86	1.83	49.16	57.27	50.29	50.44	0.15	0.29	-6.83	-11.92
United States	0.67	0.50	0.65	0.65	2.01	1.71	1.96	1.96	1.35	0.86	1.28	1.28	0.00	0.00	0.41	47.69
Total Foreign	26.19	28.21	26.34	26.84	1.83	2.00	1.86	1.83	47.81	56.40	49.02	49.17	0.15	0.30	-7.24	-12.83
Former Soviet Union - 12																
Russia	8.35	9.61	9.00	9.11	1.59	1.62	1.78	1.78	13.27	15.57	16.00	16.25	0.25	1.59	0.68	4.38
Ukraine	7.00	7.10	4.90	4.90	2.01	2.46	2.12	2.12	14.10	17.50	10.40	10.40	0.00	0.00	-7.10	-40.57
Kazakhstan	0.75	0.94	1.09	1.09	1.13	1.10	1.20	1.20	0.84	1.03	1.30	1.30	0.00	0.00	0.27	26.36
European Union	4.44	4.37	4.82	5.18	2.00	2.35	1.97	1.79	8.90	10.29	9.48	9.29	-0.19	-1.98	-1.00	-9.70
South America																
Argentina	1.67	1.96	2.20	2.20	2.05	2.07	1.73	1.73	3.43	4.05	3.80	3.80	0.00	0.00	-0.25	-6.17
Uruguay	0.07	0.07	0.08	0.07	1.69	1.62	1.71	1.64	0.11	0.11	0.13	0.12	-0.01	-10.16	0.01	4.55
Bolivia	0.14	0.14	0.14	0.14	1.39	1.39	1.40	1.40	0.19	0.20	0.20	0.20	0.00	0.00	0.00	1.54
Brazil	0.03	0.04	0.04	0.04	1.13	1.62	1.60	1.60	0.04	0.06	0.06	0.06	0.00	0.00	0.00	6.67
Paraguay	0.03	0.03	0.03	0.03	1.53	1.55	1.56	1.56	0.05	0.05	0.05	0.05	0.00	0.00	0.00	4.17
China	0.87	0.79	0.95	0.95	2.94	3.06	2.79	2.79	2.57	2.40	2.65	2.65	0.00	0.00	0.25	10.42
South Asia																
India	0.23	0.27	0.28	0.28	0.82	0.70	0.78	0.78	0.19	0.19	0.22	0.22	0.00	0.00	0.03	13.16
Pakistan	0.06	0.10	0.10	0.11	1.47	1.38	1.35	1.35	0.09	0.14	0.14	0.15	0.01	9.63	0.01	4.96
Middle East																
Turkey	0.72	0.76	0.79	0.79	2.17	2.30	2.41	2.41	1.56	1.75	1.90	1.90	0.00	0.00	0.15	8.57
Iran	0.04	0.04	0.04	0.04	1.08	1.00	1.02	1.02	0.04	0.04	0.04	0.04	0.00	0.00	0.00	0.00
Israel	0.00	0.00	0.00	0.00	5.00	2.00	5.00	5.00	0.01	0.00	0.01	0.01	0.00	0.00	0.00	150.00
Africa																
Egypt	0.01	0.01	0.01	0.02	2.38	2.38	2.50	2.53	0.02	0.02	0.03	0.04	0.01	52.00	0.02	100.00
Morocco	0.02	0.02	0.02	0.02	1.16	1.25	1.11	1.11	0.02	0.03	0.02	0.02	0.00	0.00	-0.01	-20.00
South Africa	0.48	0.67	0.56	0.56	1.42	1.26	1.38	1.43	0.68	0.85	0.78	0.80	0.03	3.23	-0.05	-5.44
Burma	0.60	0.60	0.60	0.60	0.65	0.65	0.65	0.65	0.39	0.39	0.39	0.39	0.00	0.00	0.00	0.00
Canada	0.05	0.04	0.04	0.04	2.24	2.03	2.21	2.21	0.10	0.08	0.08	0.08	0.00	0.00	0.01	12.00
Australia	0.02	0.02	0.03	0.03	1.44	1.58	1.48	1.48	0.03	0.03	0.04	0.04	0.00	0.00	0.01	23.33
Others	0.62	0.63	0.64	0.66	1.91	2.59	2.07	2.07	1.19	1.64	1.32	1.36	0.04	3.34	-0.28	-16.89

World and Selected Countries and Regions

Table 15 Rapeseed Area, Yield, and Production

Country / Region	Area (Million hectares)				Yield (Metric tons per hectare)				Production (Million metric tons)				Change in Production			
	Prel.		2022/23 Proj.		Prel.		2022/23 Proj.		Prel.		2022/23 Proj.		From last month		From last year	
	2020/21	2021/22	Mar	Apr	2020/21	2021/22	Mar	Apr	2020/21	2021/22	Mar	Apr	MMT	Percent	MMT	Percent
World	35.26	38.29	40.94	41.64	2.11	1.95	2.11	2.09	74.45	74.49	86.31	87.16	0.86	0.99	12.67	17.01
United States	0.73	0.85	0.88	0.88	2.16	1.46	1.98	1.98	1.58	1.24	1.74	1.74	0.00	0.00	0.50	40.03
Total Foreign	34.53	37.44	40.06	40.75	2.11	1.96	2.11	2.10	72.87	73.25	84.56	85.42	0.86	1.01	12.17	16.62
European Union	5.32	5.39	5.92	5.94	3.14	3.23	3.30	3.29	16.73	17.39	19.50	19.54	0.04	0.18	2.15	12.35
United Kingdom	0.38	0.31	0.36	0.36	2.73	3.20	3.40	3.40	1.04	0.98	1.23	1.23	0.00	0.00	0.24	24.87
Switzerland	0.02	0.02	0.02	0.02	3.14	3.14	3.14	3.14	0.07	0.07	0.07	0.07	0.00	0.00	0.00	0.00
Canada	8.33	8.95	8.60	8.60	2.34	1.54	2.21	2.21	19.49	13.75	19.00	19.00	0.00	0.00	5.25	38.16
China	6.77	6.99	7.10	7.10	2.08	2.10	2.07	2.07	14.05	14.71	14.70	14.70	0.00	0.00	-0.01	-0.10
South Asia																
India	6.70	7.99	9.00	9.00	1.27	1.34	1.28	1.28	8.50	10.70	11.50	11.50	0.00	0.00	0.80	7.48
Pakistan	0.25	0.33	0.35	0.39	1.35	1.49	1.40	1.00	0.34	0.49	0.49	0.39	-0.10	-20.41	-0.10	-20.41
Bangladesh	0.59	0.61	0.25	0.81	1.33	1.35	0.92	1.30	0.79	0.82	0.23	1.05	0.82	356.52	0.23	27.74
Former Soviet Union - 12																
Russia	1.45	1.62	2.20	2.27	1.77	1.71	1.77	1.76	2.57	2.78	3.90	4.00	0.10	2.56	1.23	44.14
Ukraine	1.19	1.04	1.20	1.20	2.31	2.91	2.92	2.92	2.75	3.02	3.50	3.50	0.00	0.00	0.49	16.09
Belarus	0.36	0.32	0.33	0.33	2.06	1.59	1.69	1.69	0.73	0.50	0.55	0.55	0.00	0.00	0.05	10.00
Kazakhstan	0.12	0.12	0.13	0.13	1.23	1.24	1.48	1.48	0.15	0.15	0.19	0.19	0.00	0.00	0.04	29.45
Australia	2.61	3.25	3.90	3.90	1.82	2.10	2.13	2.13	4.76	6.82	8.30	8.30	0.00	0.00	1.48	21.70
South America																
Chile	0.04	0.04	0.03	0.03	3.81	3.86	3.87	3.87	0.14	0.14	0.12	0.12	0.00	0.00	-0.02	-11.11
Paraguay	0.05	0.04	0.05	0.05	1.41	1.45	1.51	1.51	0.07	0.06	0.07	0.07	0.00	0.00	0.00	6.25
Ethiopia	0.03	0.03	0.03	0.03	1.80	1.80	1.80	1.80	0.05	0.05	0.05	0.05	0.00	0.00	0.00	0.00
Others	0.33	0.41	0.61	0.61	2.02	2.03	1.93	1.94	0.67	0.83	1.18	1.18	0.00	0.00	0.35	41.98

World and Selected Countries and Regions

Table 16 Copra, Palm Kernel, and Palm Oil Production

Country / Region	Production (Million metric tons)				Change in Production			
	2020/21	Prel.	2022/23 Proj.		From last month		From last year	
		2021/22	Mar	Apr	MMT	Percent	MMT	Percent
Oilseed, Copra								
Philippines	2.40	2.60	2.60	2.60	0.00	0.00	0.00	0.00
Indonesia	1.67	1.68	1.68	1.68	0.00	0.00	0.00	0.00
India	0.93	0.94	0.94	0.94	0.00	0.00	0.00	0.00
Vietnam	0.28	0.29	0.29	0.29	0.00	0.00	0.00	0.00
Papua New Guinea	0.11	0.11	0.11	0.11	0.00	0.00	0.00	0.00
Sri Lanka	0.07	0.11	0.07	0.07	0.00	0.00	-0.03	-30.00
Thailand	0.07	0.09	0.09	0.09	0.00	0.00	0.00	0.00
Mexico	0.04	0.05	0.05	0.05	0.00	0.00	0.00	0.00
Solomon Islands	0.03	0.03	0.03	0.03	0.00	0.00	0.00	0.00
Cote d'Ivoire	0.03	0.03	0.03	0.03	0.00	0.00	0.00	0.00
World	5.78	6.07	6.03	6.03	0.00	0.00	-0.04	-0.66
Oilseed, Palm Kernel								
Indonesia	11.46	11.40	11.60	11.60	0.00	0.00	0.20	1.75
Malaysia	4.34	4.45	4.90	4.90	0.00	0.00	0.45	10.11
Nigeria	0.82	0.90	0.90	0.90	0.00	0.00	0.00	0.00
Thailand	0.79	0.83	0.86	0.86	0.00	0.00	0.03	3.61
Colombia	0.29	0.31	0.32	0.32	0.00	0.00	0.01	3.23
Guatemala	0.17	0.18	0.18	0.18	0.00	0.00	0.00	0.00
Papua New Guinea	0.16	0.17	0.17	0.17	0.00	0.00	0.01	6.25
Honduras	0.13	0.16	0.16	0.16	0.00	0.00	0.00	0.00
Brazil	0.14	0.15	0.15	0.15	0.00	0.00	0.01	7.14
Cameroon	0.15	0.15	0.15	0.15	0.00	0.00	0.00	0.00
World	19.09	19.33	20.08	20.08	0.00	0.00	0.75	3.88
Oil, Palm								
Indonesia	43.50	43.20	45.50	45.50	0.00	0.00	2.30	5.32
Malaysia	17.85	18.15	19.20	19.20	0.00	0.00	1.05	5.79
Thailand	2.96	3.38	3.26	3.26	0.00	0.00	-0.12	-3.55
Colombia	1.56	1.75	1.77	1.77	0.00	0.00	0.02	1.14
Nigeria	1.28	1.40	1.40	1.40	0.00	0.00	0.00	0.00
Guatemala	0.87	0.88	0.91	0.91	0.00	0.00	0.03	3.41
Papua New Guinea	0.60	0.63	0.65	0.65	0.00	0.00	0.03	4.84
Honduras	0.45	0.60	0.60	0.60	0.00	0.00	0.00	0.00
Cote d'Ivoire	0.55	0.58	0.60	0.60	0.00	0.00	0.03	5.26
Brazil	0.55	0.55	0.57	0.57	0.00	0.00	0.02	3.64
World	73.09	74.05	77.56	77.56	0.00	0.00	3.51	4.74

World and Selected Countries and Regions

Table 17 Cotton Area, Yield, and Production

Country / Region	Area (Million hectares)				Yield (Kilograms per hectare)				Production (Million 480 lb. bales)				Change in Production			
	Prel.		2022/23 Proj.		Prel.		2022/23 Proj.		Prel.		2022/23 Proj.		From last month		From last year	
	2020/21	2021/22	Mar	Apr	2020/21	2021/22	Mar	Apr	2020/21	2021/22	Mar	Apr	MBales	Percent	MBales	Percent
World	31.35	32.57	31.61	31.64	774	776	793	798	111.50	116.01	115.09	115.92	0.83	0.72	-0.10	-0.08
United States	3.33	4.16	3.01	3.01	957	918	1,062	1,062	14.61	17.52	14.68	14.68	0.00	0.00	-2.84	-16.22
Total Foreign	28.03	28.41	28.60	28.63	753	755	764	770	96.89	98.49	100.41	101.24	0.83	0.83	2.75	2.79
South Asia																
India	13.29	12.37	12.70	12.70	452	429	420	420	27.60	24.40	24.50	24.50	0.00	0.00	0.10	0.41
Pakistan	2.20	2.00	1.80	1.80	445	653	472	472	4.50	6.00	3.90	3.90	0.00	0.00	-2.10	-35.00
China	3.20	3.10	3.05	3.05	2,014	1,882	2,106	2,177	29.60	26.80	29.50	30.50	1.00	3.39	3.70	13.81
South America																
Brazil	1.37	1.60	1.63	1.63	1,720	1,595	1,777	1,736	10.82	11.72	13.30	13.00	-0.30	-2.26	1.28	10.92
Argentina	0.41	0.48	0.40	0.40	717	680	653	626	1.35	1.50	1.20	1.15	-0.05	-4.17	-0.35	-23.33
Paraguay	0.01	0.02	0.01	0.04	853	527	416	877	0.05	0.05	0.02	0.14	0.12	571.43	0.10	206.52
Africa																
Burkina Faso	0.56	0.60	0.62	0.62	372	351	316	316	0.95	0.96	0.90	0.90	0.00	0.00	-0.06	-6.25
Mali	0.17	0.72	0.69	0.69	396	432	316	316	0.30	1.43	1.00	1.00	0.00	0.00	-0.43	-30.07
Cote d'Ivoire	0.45	0.47	0.41	0.41	494	486	281	281	1.01	1.05	0.53	0.53	0.00	0.00	-0.52	-49.52
Benin	0.62	0.64	0.58	0.58	513	483	492	492	1.45	1.42	1.30	1.30	0.00	0.00	-0.12	-8.45
Egypt	0.07	0.09	0.13	0.14	720	717	703	661	0.22	0.28	0.42	0.43	0.01	1.19	0.15	51.79
Cameroon	0.23	0.23	0.23	0.23	658	606	615	615	0.68	0.64	0.65	0.65	0.00	0.00	0.01	1.56
Tanzania	0.17	0.24	0.35	0.35	284	231	218	218	0.22	0.26	0.35	0.35	0.00	0.00	0.10	37.25
Nigeria	0.27	0.27	0.27	0.27	282	282	282	282	0.35	0.35	0.35	0.35	0.00	0.00	0.00	0.00
Zimbabwe	0.24	0.25	0.24	0.24	222	191	195	195	0.25	0.22	0.22	0.22	0.00	0.00	0.00	0.00
Ethiopia	0.08	0.08	0.08	0.08	637	637	637	637	0.24	0.24	0.24	0.24	0.00	0.00	0.00	0.00
Former Soviet Union - 12																
Uzbekistan	1.06	1.06	1.07	1.07	653	596	590	590	3.18	2.90	2.90	2.90	0.00	0.00	0.00	0.00
Turkmenistan	0.55	0.55	0.55	0.55	368	356	356	356	0.92	0.90	0.90	0.90	0.00	0.00	0.00	0.00
Tajikistan	0.16	0.17	0.17	0.17	619	608	615	615	0.46	0.48	0.48	0.48	0.00	0.00	0.01	1.05
Kazakhstan	0.11	0.12	0.13	0.13	534	502	523	523	0.27	0.27	0.30	0.30	0.00	0.00	0.04	13.21
Middle East																
Turkey	0.35	0.45	0.56	0.56	1,804	1,839	1,922	1,922	2.90	3.80	4.90	4.90	0.00	0.00	1.10	28.95
Syria	0.03	0.03	0.03	0.03	1,219	1,132	1,132	1,132	0.14	0.13	0.13	0.13	0.00	0.00	0.00	0.00
Iran	0.10	0.10	0.10	0.10	871	871	871	871	0.40	0.40	0.40	0.40	0.00	0.00	0.00	0.00
Australia	0.28	0.64	0.68	0.68	2,217	2,006	1,774	1,774	2.80	5.85	5.50	5.50	0.00	0.00	-0.35	-5.98
Mexico	0.15	0.15	0.20	0.20	1,532	1,725	1,524	1,524	1.02	1.22	1.40	1.40	0.00	0.00	0.18	14.75
Burma	0.24	0.25	0.25	0.25	635	644	644	644	0.70	0.73	0.73	0.73	0.00	0.00	0.00	0.00
Others	1.71	1.76	1.70	1.69	577	559	564	574	4.54	4.52	4.40	4.45	0.05	1.23	-0.07	-1.48

World and Selected Countries and Regions

TABLE 18

The table below presents a record of the April projection and the final Estimate. Using world wheat production as an example, the "root mean square error" means that chances are 2 out of 3 that the current forecast will not be above or below the final estimate by more than 0.5 percent. Chances are 9 out of 10 (90% confidence level) that the difference will not exceed 0.8 percent. The average difference between the April projection and the final estimate is 2.0 million tons, ranging from 0.1 million to 6.8 million tons. The April projection has been below the estimate 27 times and above 14 times.

RELIABILITY OF PRODUCTION PROJECTIONS 1/

COMMODITY AND REGION	Root mean square error	90 percent confidence interval	Difference between forecast and final estimate				
			Average	Smallest	Largest	Years	
						Below final	Above final
	Percent		---Million metric tons---				
WHEAT							
World	0.5	0.8	2.0	0.1	6.8	27	14
U.S.	0.2	0.3	0.1	0.0	0.3	19	11
Foreign	0.5	0.9	2.0	0.2	6.8	27	14
COARSE GRAINS 2/							
World	1.1	1.8	9.1	0.3	42.1	33	8
U.S.	0.2	0.3	0.2	0.0	1.8	17	10
Foreign	1.5	2.5	9.2	0.3	42.1	33	8
RICE (Milled)							
World	1.3	2.1	3.3	0.0	13.3	33	8
U.S.	1.3	2.2	0.0	0.0	0.2	11	5
Foreign	1.3	2.1	3.3	0.0	13.3	33	8
SOYBEANS							
World	1.6	2.7	2.6	0.2	7.9	24	17
U.S.	1.4	2.3	0.7	0.0	3.2	18	16
Foreign	2.7	4.5	2.3	0.0	8.1	26	15
COTTON			---Million 480-lb. bales---				
World	1.7	2.8	1.2	0.0	5.2	29	11
U.S.	0.3	0.5	0.0	0.0	0.2	17	16
Foreign	2.0	3.3	1.2	0.0	5.1	28	12
UNITED STATES			-----Million bushels-----				
<i>CORN</i>	0.2	0.3	6	0	72	1	5
<i>SORGHUM</i>	0.1	0.2	0	0	4	0	2
<i>BARLEY</i>	1.0	1.6	1	0	11	20	4
<i>OATS</i>	0.4	0.7	0	0	2	5	4

1/ Marketing years 1981/82 through 2021/22 for grains, soybeans, and cotton. Final for grains, soybeans, and cotton is defined as the first November estimate following the marketing year for 1981/82 through 2020/21, and for 2021/22 the last month's estimate.

2/ Includes corn, sorghum, barley, oats, rye, millet, and mixed grain

April 2023

Global Market Analysis, FAS, USDA