



United States  
Department of  
Agriculture

Foreign  
Agricultural  
Service

Circular Series  
WAP 6-23  
June 2023

# World Agricultural Production

## Ukraine Wheat: Favorable Conditions across the Steppe Zone Prompt a Yield Increase

Ukraine wheat production for marketing year (MY) 2023/24 is forecast at 17.5 million metric tons, up 6 percent from last month, but down 16 percent from last year and 34 percent from the 5-year average. Yield is forecast at 4.07 tons per hectare, up 6 percent from last month, 3 percent from last year, and 2 percent above the 5-year average. Harvested area is forecast at 4.3 million hectares (mha), unchanged from last month, and down 19 percent from last year and 35 percent from the 5-year average.

## Ukraine Kherson Oblast, Kakhovka Dam Damage

Functioning dam / prior to damage

After the dam collapse

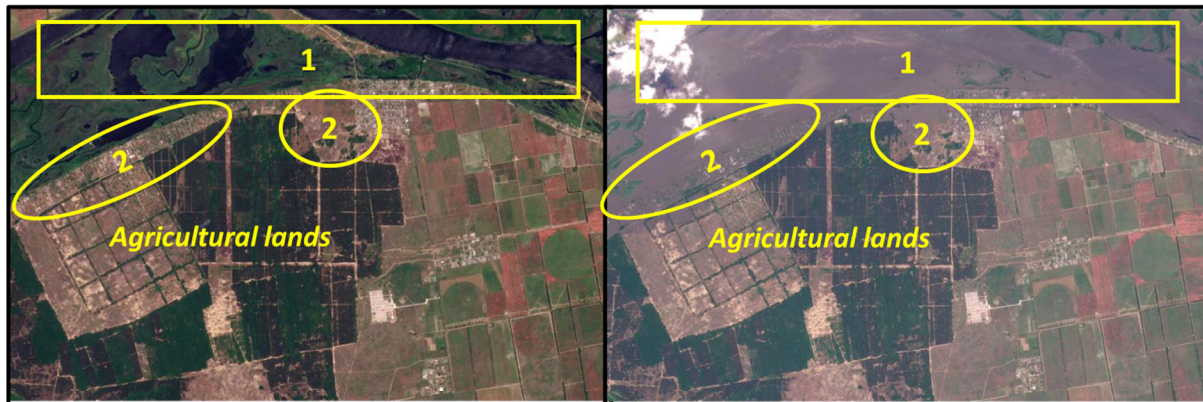


IMAGE DATE: 06/05/23

IMAGE CENTER: (46.73432, 33.12747)

IMAGE DATE: 06/06/23

IMAGE CENTER: (46.73432, 33.12747)

1. Increased water flow downstream due to the dam collapse.
2. Flood impact on agricultural lands.

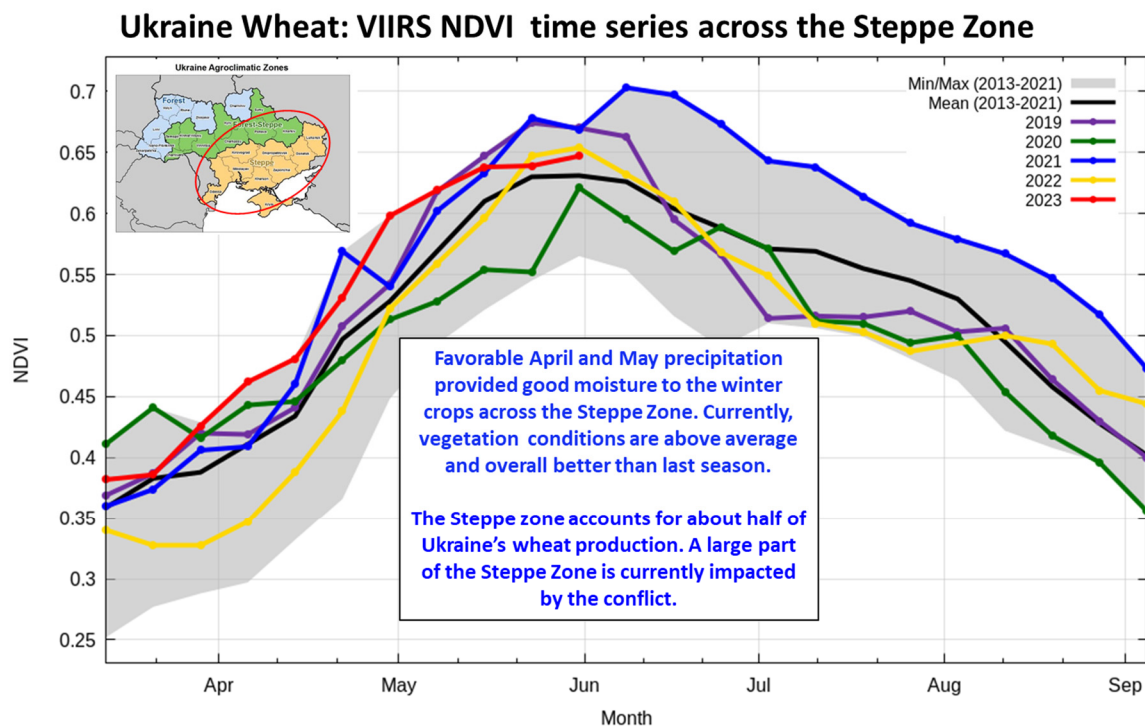
Source: Planet Labs PBC (06/05 & 06/06/2023), Global Enhanced GEOINT Delivery

From an agricultural perspective Ukraine can be divided into 3 zones: Steppe, Forest Steppe, and Forest Zone (see small insert in the image). Ukraine wheat production is revised up amid favorable weather across the Steppe Zone, which accounts for about half of Ukraine's wheat production. Yield is higher than the 5-year average despite the numerous challenges the Ukraine's producers face as a result of the ongoing conflict. As shown by the satellite-derived VIIRS Normalized

Approved by the World Agricultural Outlook Board

Difference Vegetation Index (NDVI), current vegetation conditions are mostly above average across most of the winter grains producing areas in the Steppe Zone.

Winter wheat, which accounts for about 97 percent of the total wheat production in Ukraine, is typically planted between early September and mid-November. Harvest generally occurs from the end of June until mid-August.



Source: USDA/NASA GLAM, VIIRS 8-day NDVI; GFSAD30-CE 2015 Crop Mask

In the early morning of June 6, 2023, an explosion caused the collapse of the Kakhovka Dam located on the Dnipro River in the Kherson oblast in the Steppe zone. Some of the major crops grown in the region such as wheat and barley are rain-fed. The reservoir, however, feeds a net of irrigation systems that are used for the irrigation of vegetables, oilseeds, and rice. Initial examination of satellite imagery shows a relatively minimal impact of the dam collapse on agricultural lands in the region. USDA is still evaluating the implications of the event on agriculture in the region. As discussed in the next paragraph, however, the occupied territories are currently not reflected in any official statistics used to inform USDA's forecasts. It is, therefore, expected that the impact of the dam collapse on USDA's production numbers for Ukraine will be negligible.

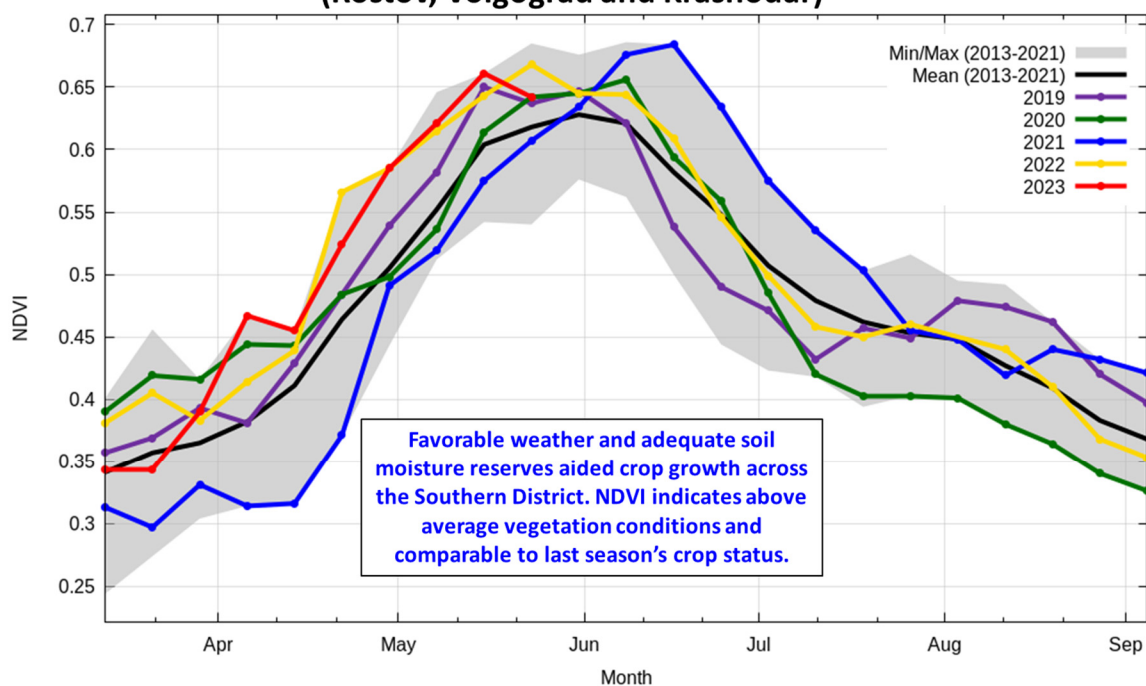
At present, Ukraine can be divided into areas in conflict and areas not in conflict. As elaborated by USDA's POST in Ukraine, due to the ongoing war there is neither official nor reliable information about the status of Ukraine's agriculture in the conflict zone. As a result, the area and production data currently provided by POST, Ukraine's Ministry of Agriculture (MinAg) and the State Statistical Service of Ukraine, which inform USDA's forecasts, do not reflect the whole country. For the MY 2023/24 season the MinAg planted area information for both the MY 2023/24 winter and spring crops excludes the temporarily occupied territory of the Donetsk, Zaporizhzhia,

Luhansk, and Kherson regions. This is based on an official note included in the daily MinAg planting reports. MinAg also does not include Crimea. USDA crop production estimates for Ukraine include estimated output from Crimea. Crimean area and production numbers are extracted from the agricultural crop reports provided by the Russian Statistical Agency, Rosstat. (For more information, please contact [Iliana.Mladenova@usda.gov](mailto:Iliana.Mladenova@usda.gov).)

### Russia Wheat: Production Increase Due to Favorable Weather in the South

Russia wheat production for marketing year 2023/24 is forecast at 85.0 million metric tons (mmt), up 4 percent from last month, but down 8 percent from last year, and up 7 percent from the 5-year average. The forecast includes 61.5 mmt of winter wheat and 23.5 mmt of spring wheat. USDA crop production forecasts for Russia exclude estimated output from Crimea. Total wheat yield is forecast at 3.09 tons per hectare, up 4 percent from last month, but down 3 percent from last year, and up 8 percent from the 5-year average. Total harvested area is forecast at 27.5 million hectares (mha), unchanged from last month and down 5 percent from last year.

**Russia Winter Wheat: VIIRS NDVI time series across the Southern District (Rostov, Volgograd and Krasnodar)**



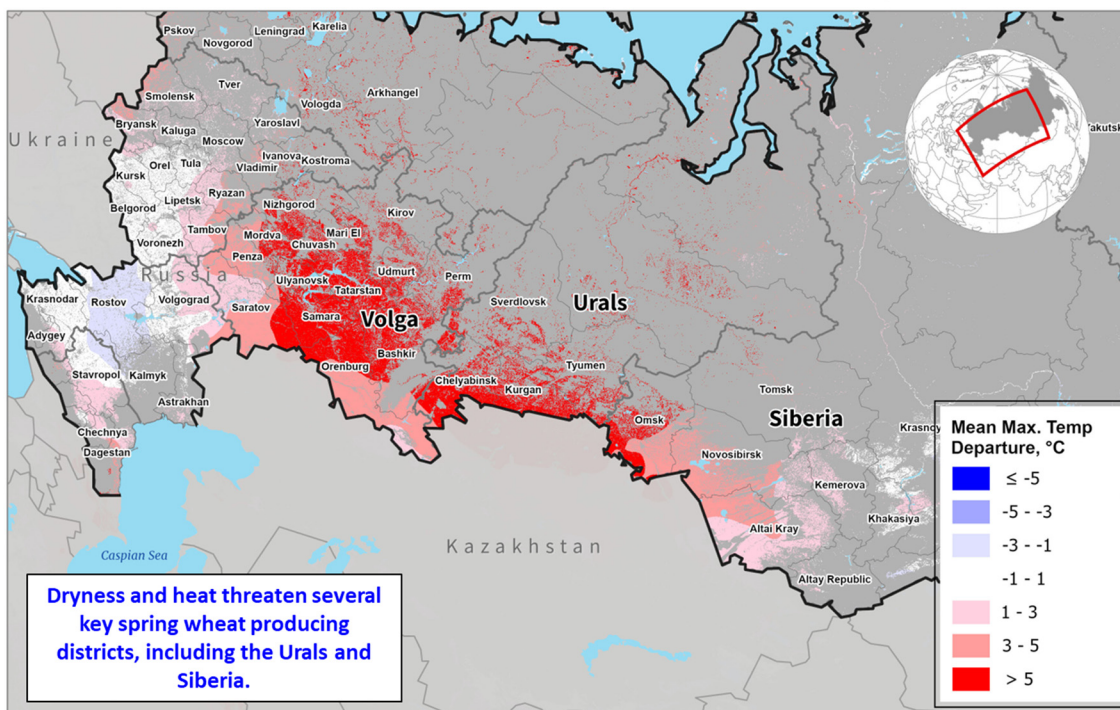
Source: USDA/NASA GLAM, VIIRS 8-day NDVI; GFSAD30-CE 2015 Crop Mask

Winter wheat typically accounts for about 70 percent of total production, and it is grown primarily in the European part of Russia. This month, winter wheat production is revised up due to improved conditions in the Southern District, which accounts for about 43 percent of total wheat production. Winter wheat across Russia varies in terms of crop development. The crop is at filling, a key yield formation stage in the more southern districts. Meanwhile, in the Central and the Volga regions, it is a bit behind at heading or between heading and flowering. European Russia has been getting mostly above-average precipitation during the months of April and May. This boosted the soil

moisture reserves and provided favorable growing conditions for the winter crops planted in the region.

Spring wheat, which accounts for about 30 percent of total production, is mainly planted in the regions bordering Kazakhstan: the Volga, Urals, and Siberia Districts of Russia. Spring wheat planting typically starts in late April. According to MinAg, as of June 1<sup>st</sup>, spring wheat has been planted on an area of 13.2 mha, which is ahead of last year’s pace, when planted area was 11.7 mha during the same time. This season’s planting began under favorable conditions. Dryness and heat, however, currently threaten the spring crops across the Urals and Siberia. Harvest of spring wheat will begin in late August.

### Russia Mean Max. Temperature Departure from Normal (May 18 - 25, 2023)



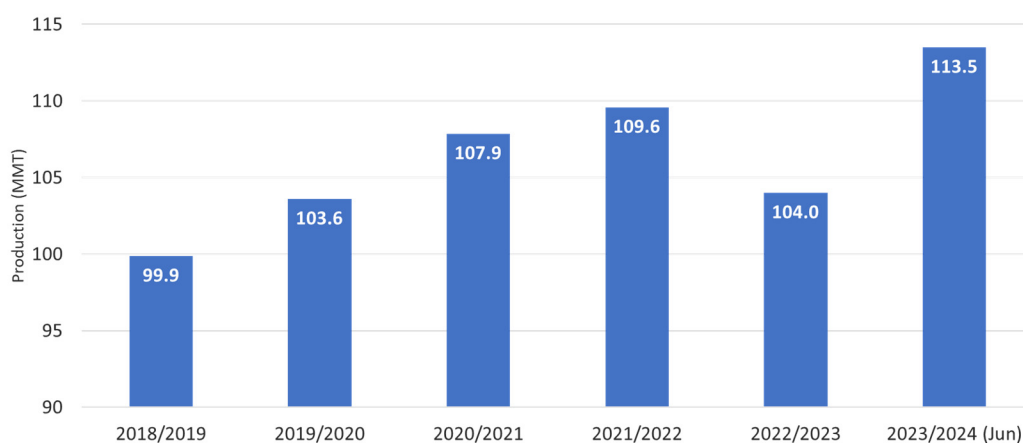
Source: CPC  
GFSAD 30 m crop cover (2015)

Area, yield, and production estimates for Russia winter wheat and spring wheat are available on PSD Online. Select “Downloadable Data Sets” and open the zipped file for “Russia Wheat; Winter/Spring Area & Production.” (For more information, please contact [Iliana.Mladenova@usda.gov](mailto:Iliana.Mladenova@usda.gov).)

## India Wheat: Wheat Estimated at Record Levels

USDA estimates marketing year (MY) 2023/24 India wheat production at a record 113.5 million metric tons (mmt), up 9 percent from last year. The harvested area is estimated at a record 32.0 million hectares, up 5 percent from last year. Yields are estimated to reach a record of 3.55 metric tons per hectare despite minor weather events such as heat and hail during the reproductive stage in February and March. Yield is 3 percent above the 5-year average.

### India MY 2023/24 Wheat Production at Record Levels



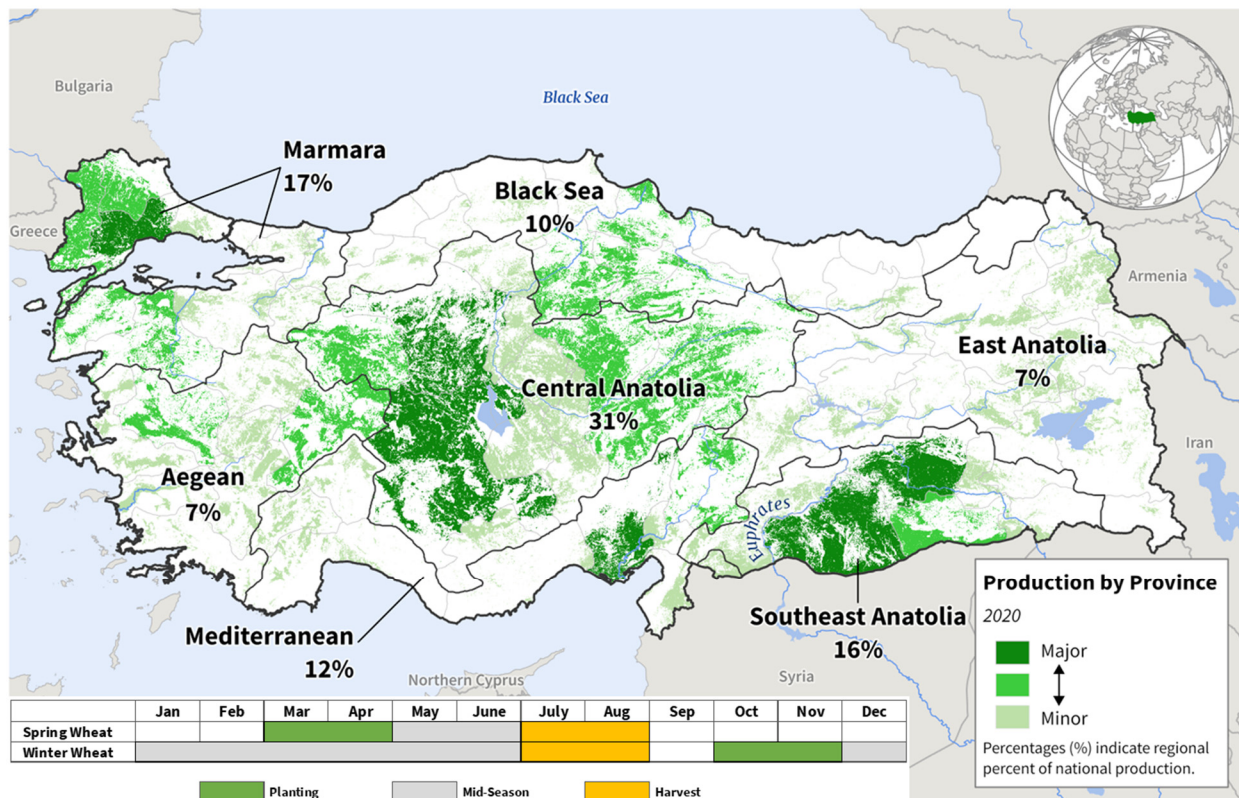
Source: USDA PSD Online

Favorable weather conditions, sufficient soil moisture at planting, and higher minimum support prices than last year resulted in record planting. The crop progressed from planting to vegetative/reproductive stages because of ideal weather conditions and adequate reservoir levels. The heat returned in the northern wheat belt as the crop entered the reproductive stage in late February. However, temperatures were not as high as last year, and minimal damage occurred. The India Government's procurement of wheat is 18 percent higher than MY 2022/23. Farmers are reporting higher than anticipated yields.

Wheat is grown only in the *rabi* season. It is planted from early November until January and harvested from late February until April. (For more information, please contact [Arnella.Trent@usda.gov](mailto:Arnella.Trent@usda.gov).)

## Turkey Wheat: Spring Rains Boost Crop Conditions

### Turkey: Wheat Production

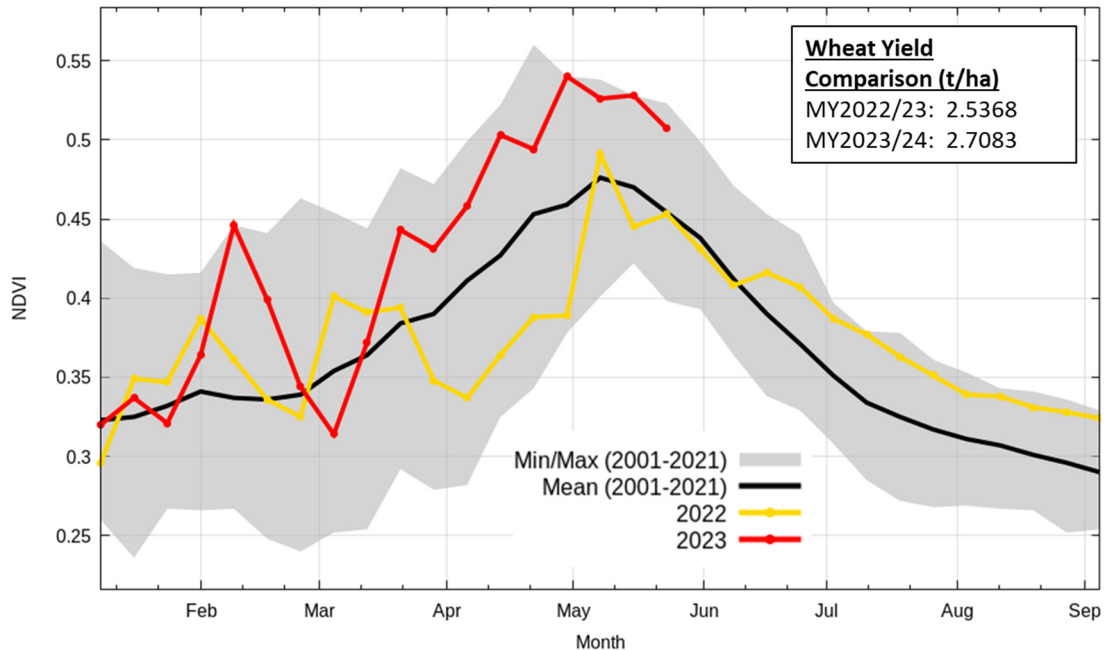


USDA Foreign Agricultural Service  
U.S. DEPARTMENT OF AGRICULTURE

Source: Turkish Statistical Institute (TurkStat);  
ESA WorldCover 10m 2020 Crop Mask

USDA forecasts Turkey wheat production for marketing year (MY) 2023/24 at 19.5 million metric tons, up 3 percent from last month, 13 percent from last year, and 11 percent above the 5-year average. Harvested area is estimated at 7.2 million hectares, unchanged from last month, but up 6 percent from last year and 1 percent above the 5-year average. Yield is forecast at a record 2.71 metric tons per hectare, up 3 percent from last month, 7 percent from last year, and 9 percent above the 5-year average.

## Turkey Croplands: Terra MODIS 8-Day NDVI Time Series



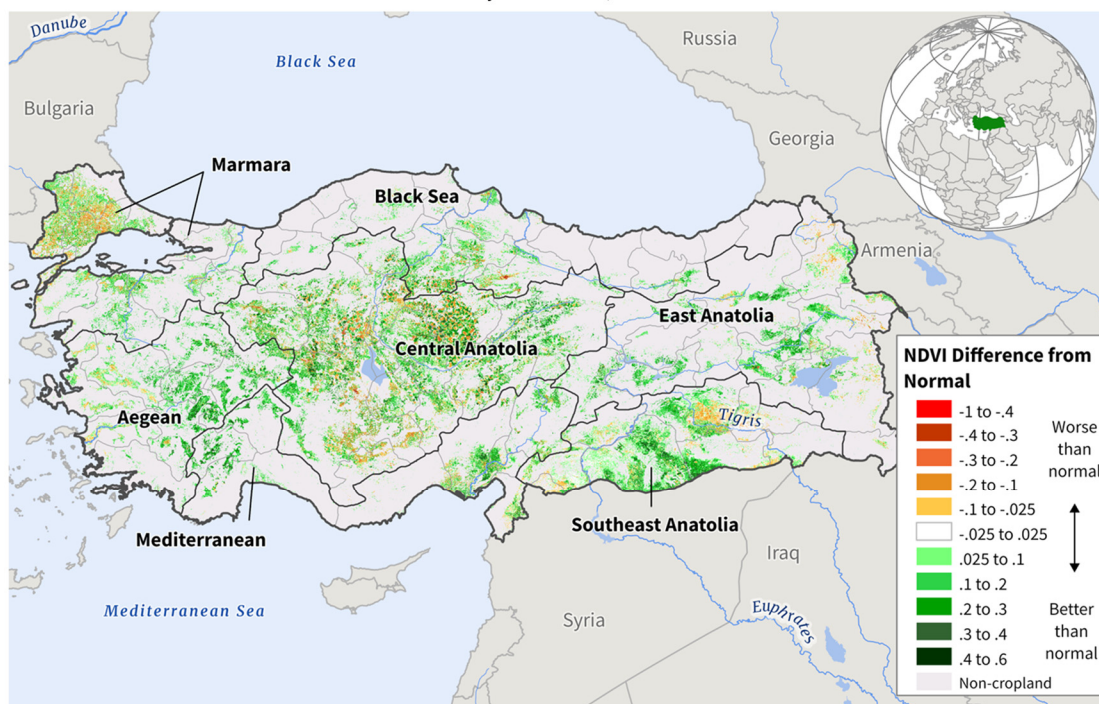
Sources: USDA/NASA GLAM, MODIS 8-day NDVI; ESRI Sentinel-2 Crop Mask

Turkey's winter grains experienced historic widespread drought after planting in the Fall 2022, receiving the lowest cumulative precipitation in 60 years between October 2022 and February 2023. However, spring rains arrived in the second half of March as winter wheat broke dormancy and have continued to be abundant throughout the spring growing season. Additionally, the arrival of spring rains followed on the heels of February fertilizer application to wheat, greatly benefiting plant development.

The satellite-derived Normalized Difference Vegetation Index (NDVI) time series chart highlights the overall cropland vegetation response to the improved rainfall, indicating well-above-average conditions. The NDVI anomaly map also indicates above-average vegetation health in Turkey croplands, particularly in the major wheat growing regions of Central Anatolia, Marmara, and Southeast Anatolia, where most of the country's wheat is grown. With these crop conditions, industry and government sources expect a substantial production increase over last year.

## Turkey Croplands NDVI Anomaly

May 25 – June 1, 2023



Sources: NASA MODIS 8-Day NDVI Difference from Normal; European Space Agency (ESA) 2021 10m Landcover Classification Crop Mask

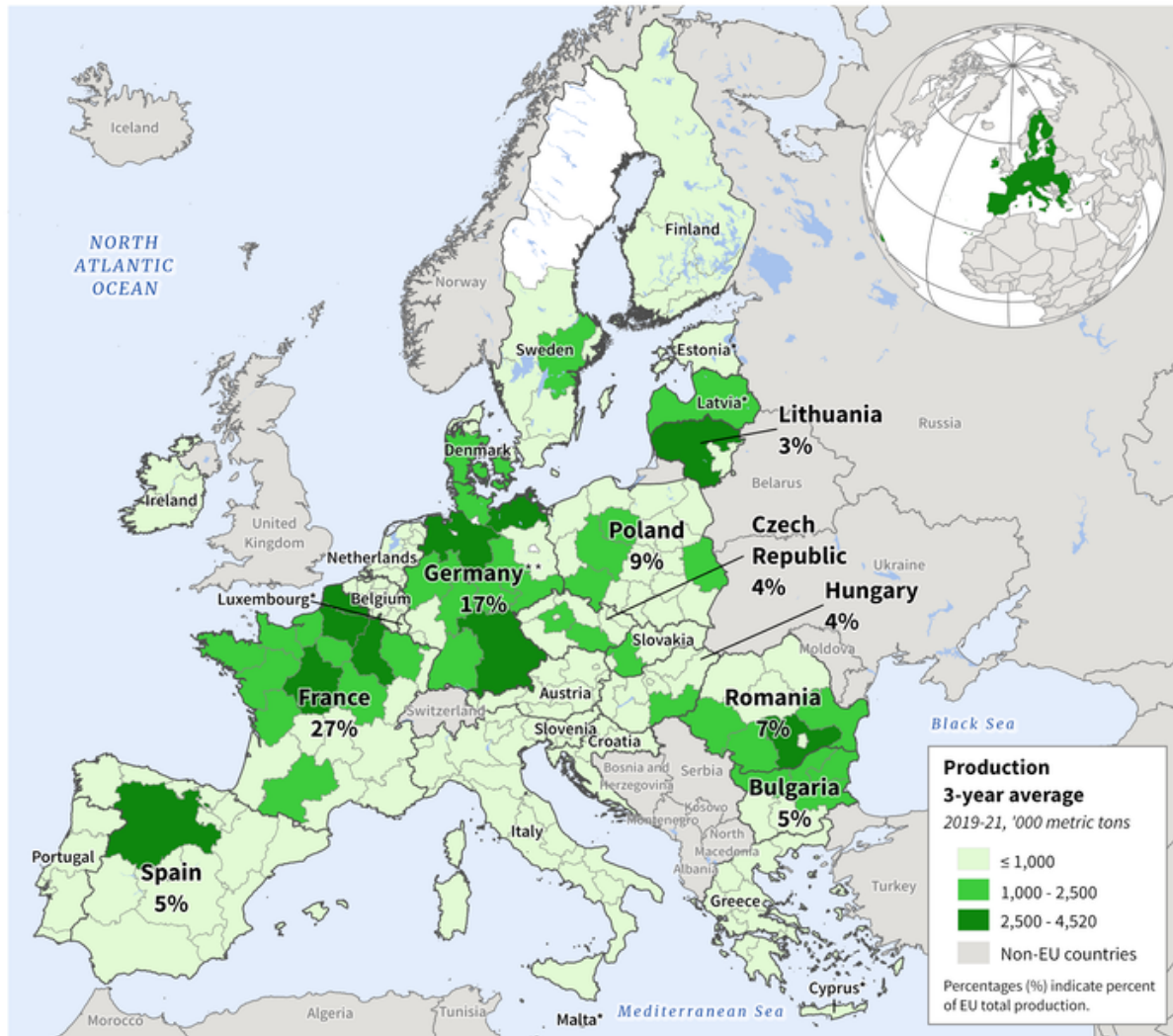
The contributions of staff at the USDA-FAS office in Ankara are gratefully acknowledged. (For more information, please contact [Aaron.Mulhollen@usda.gov](mailto:Aaron.Mulhollen@usda.gov).)

### European Union Wheat: Favorable Weather Bolsters Bumper Crop Prospects

Wheat production in the European Union (EU) for marketing year (MY) 2023/2024 is estimated at 140.5 million metric tons (mmt), up 1.5 mmt (1 percent) from last month, up 6.2 mmt (5 percent) from last year, and 6 percent above the 5-year average. Harvested area is estimated at 24.4 million hectares (mha), unchanged from May, up 0.1 mha from last year, and 2 percent above the 5-year average. Yield is estimated at 5.75 tons per hectare, 1 percent above last month, and 4 percent above both last year and the 5-year average.



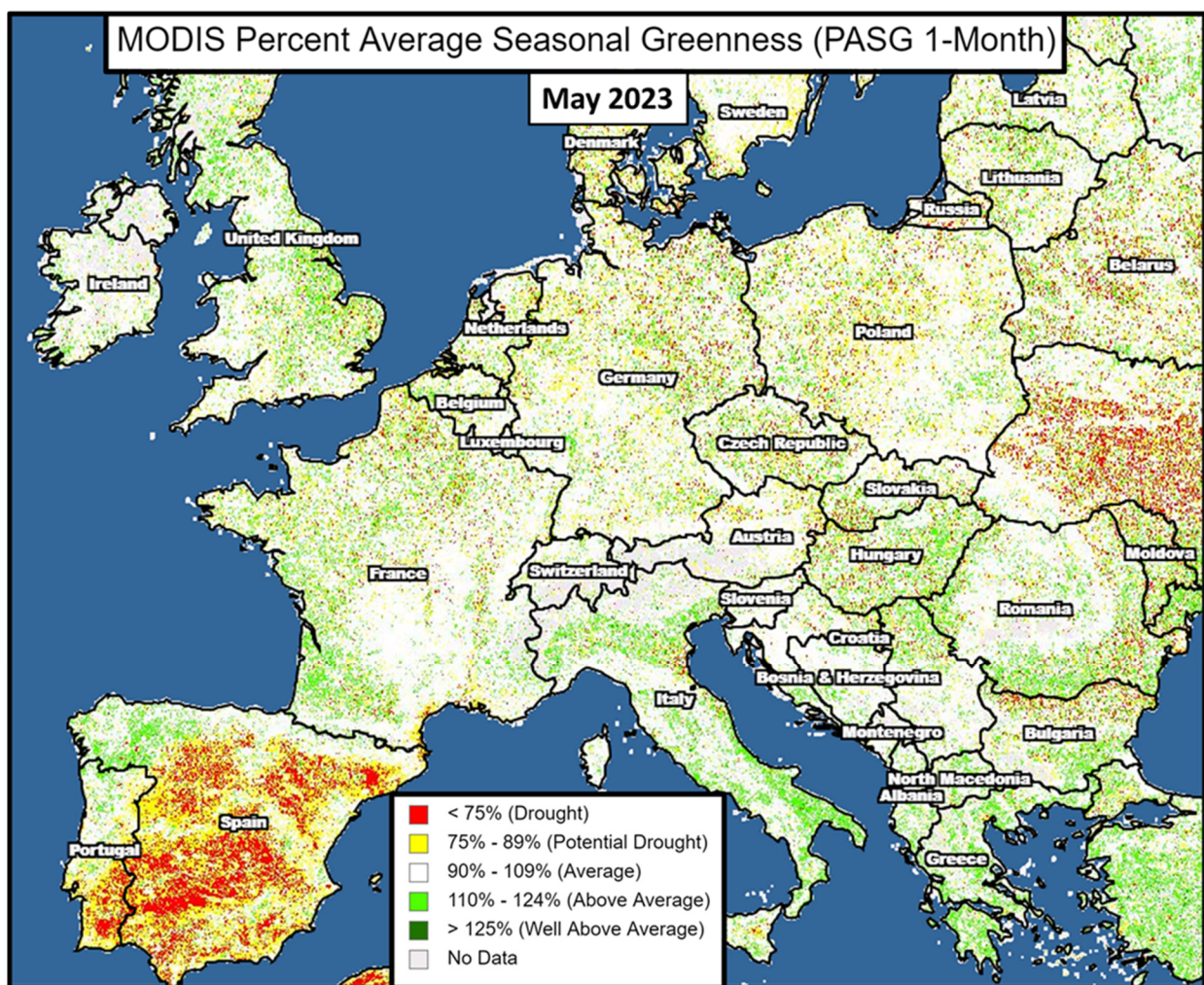
## European Union (EU): Wheat Production



USDA Foreign Agricultural Service  
U.S. DEPARTMENT OF AGRICULTURE

Source: Eurostat by Nomenclature of Territorial Units for Statistics (NUTS) 2 region, with exceptions indicated by \* (NUTS 0/country-level data), or \*\* (NUTS 1 region)

Upward production revisions were made to a number of countries this month. The largest revisions include an increase in France by 0.6 mmt to 37.2 mmt, a 0.3 mmt increase to Italy, as well as 0.2 mmt increases to Hungary, Spain, and Germany.



Conditions during May continued to be favorable across most of Europe for flowering and grainfill of winter crops. The exception was in Spain and Portugal. Although May rainfall provided limited relief to long term drought in the Iberian Peninsula, overall conditions remained poor. Satellite-derived Percent Average Seasonal Greenness (PASG) imagery for the month of May depicts the positive situation across most of the EU. During May, a blocking high pressure system directed needed rainfall over southern Europe (but with reports of localized flooding), while northern Europe dried out, following a wet period in early spring. Extended dryness in northern Europe, however, could become a concern if the weather pattern does not change. Temperatures were favorable, with near-average levels almost everywhere in the EU during May, providing normal growth rates and no early heat damage to crops.

For country-specific area, yield, and production estimates within the European Union (EU), please go to PSD Online at <https://apps.fas.usda.gov/PSDOnline/app/index.html#/app/home>, and select “Downloadable Data Sets.” Select the zipped file for “EU Countries Area & Production.”  
*(For more information, please contact [Bryan.Purcell@usda.gov](mailto:Bryan.Purcell@usda.gov).)*

## Mexico Corn: Lowest Summer Planted Area in 5 Years for MY 2022/2023

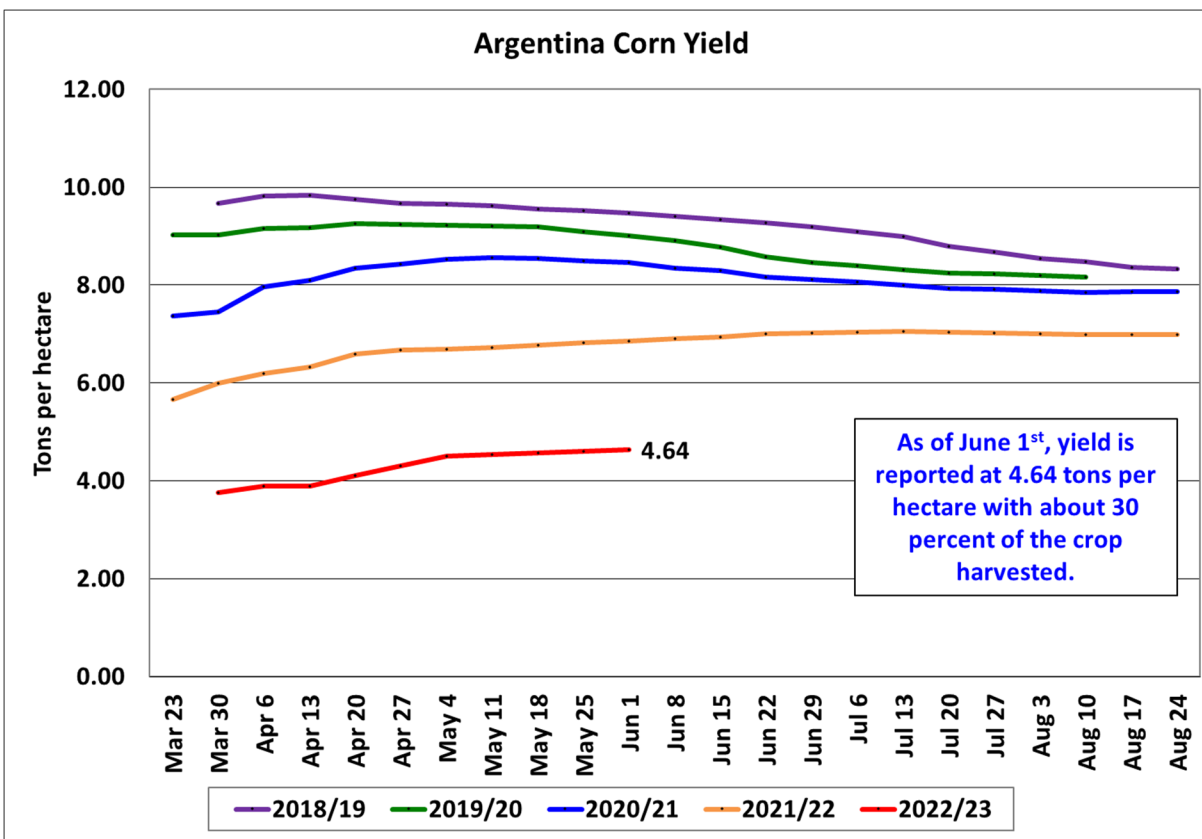
Mexico's corn production for marketing year (MY) 2022/23 is estimated at 26.5 million metric tons (mmt), down 1.1 mmt from last month (4 percent) and 262,000 mt (1 percent) from MY 2021/22. Harvested area is estimated at 6.9 million hectares (mha), down 300,000 ha from last month and 193,000 ha (3 percent) from MY 2021/22. Yield is estimated at 3.84 metric tons per hectare.

Representing about 70 percent of production, the summer corn crop is mostly rainfed. The summer corn crop was planted from April through August and has completed harvest. The mostly irrigated minor winter crop was planted from November through February and is now being harvested.



As of April 2023, the Mexico government's *Servicio de Información Agroalimentaria y Pesquera* (SIAP) has reported that 6,989,860 ha of corn was planted for MY 2022/23, with 5,938,302 ha harvested so far (representing about 84 percent harvested) and 96,248 ha listed as damaged. Though the winter corn planted area was reported as slightly higher than MY 2021/22, the summer corn planted area was lower than the previous 5 years due to high input costs. Compared to 2021, San Luis Potosí and Sonora planted at least 40 percent less summer corn than in 2022. (For more information, please contact [lfeoma.Collins@usda.gov](mailto:lfeoma.Collins@usda.gov).)

## Argentina Corn: Production for MY 2022/23 is Down 29 Percent from the Previous Year



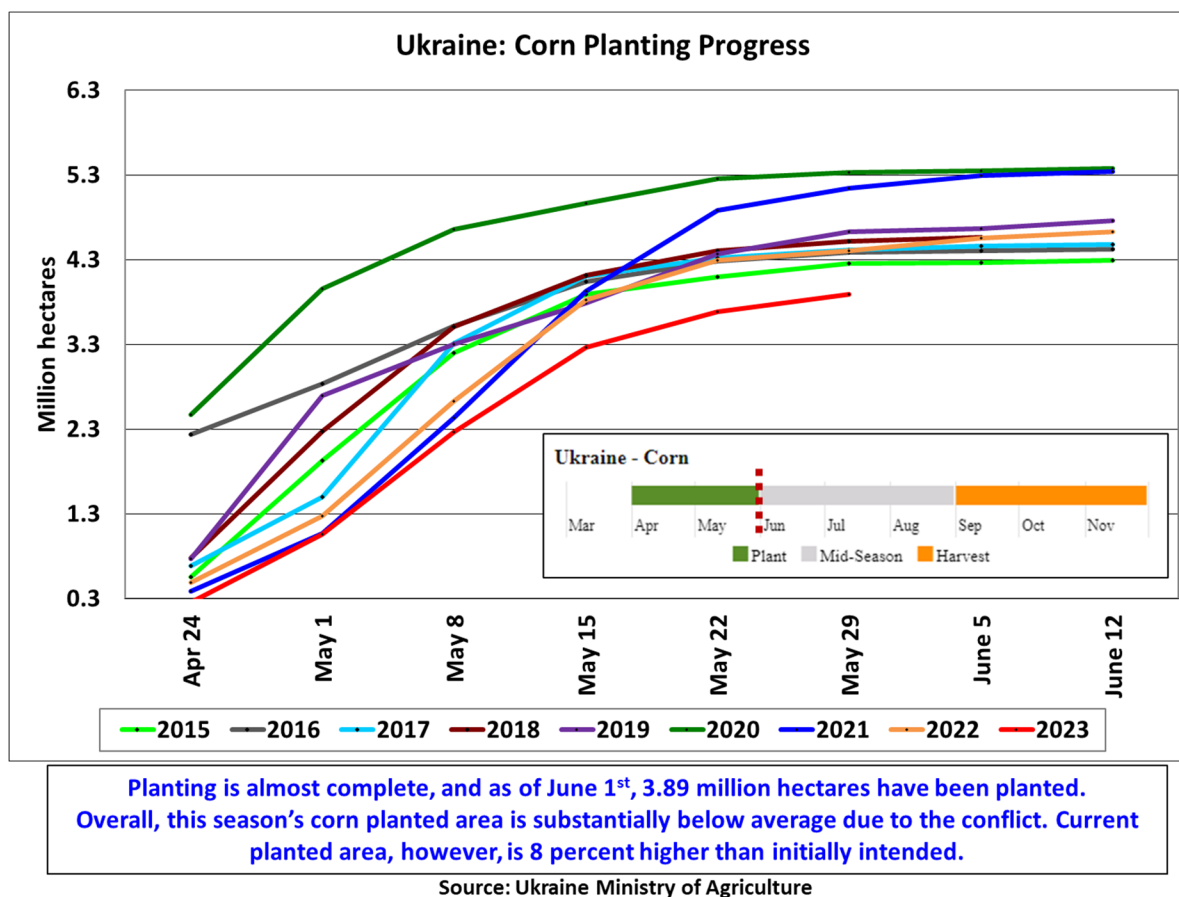
Source: Argentina Bolsa de Cereales Buenos Aires

Argentina corn production for marketing year (MY) 2022/23 is estimated at 35.0 million metric tons, down 5 percent from last month, and down 29 percent from MY 2021/22. Corn yield is estimated at 5.22 tons per hectare (t/ha), down 5 percent from last month, and down 25 percent from last year. Harvested area is estimated at 6.7 million hectares, unchanged from last month, and down 6 percent from last year.

Yield is down month-to-month due to continued heat and dryness during the growing season, caused by a third consecutive year of La Niña. Harvest for corn is ongoing and, according to the Bolsa Cereales in Buenos Aires, about 30 percent of the crop has been harvested. As of June 1<sup>st</sup>, yield is reported at 4.64 t/ha. Based on previous Bolsa Cereales reports, yield typically drops as harvest continues since the early planted corn is usually higher yielding than the late-planted corn. Harvest will continue until early August. (For more information, please contact [Katie.McGaughey@usda.gov](mailto:Katie.McGaughey@usda.gov).)

## Ukraine Corn: Farmers Plant More Despite the Ongoing Conflict

Ukraine corn production for marketing year (MY) 2023/24 is forecast at 24.5 million metric tons, up 11 percent from last month but down 9 percent from last year. Yield is forecast at 6.45 tons per hectare, essentially unchanged from last month, and down 3 percent from last year. Harvested area is forecast at 3.8 million hectares (mha), up 12 percent from last month, but down 6 percent from last year.



According to the Ministry of Agriculture's operational planting progress data, planting is almost complete. As of June 1<sup>st</sup>, 3.9 mha have been planted. Despite the numerous challenges the conflict imposed on farmers, the current corn planted area is higher by 8 percent relative to the initially intended acreage of 3.6 mha. Abandonment for corn is overall low (typically less than 2 percent). USDA's assumption is that areas that have been planted are likely to be harvested, so normal abandonment is expected. Yield is essentially unchanged month-to-month. The critical time for yield development occurs during July and early August, when crop reaches the key silking and grain-fill stages. Harvest begins in early September.

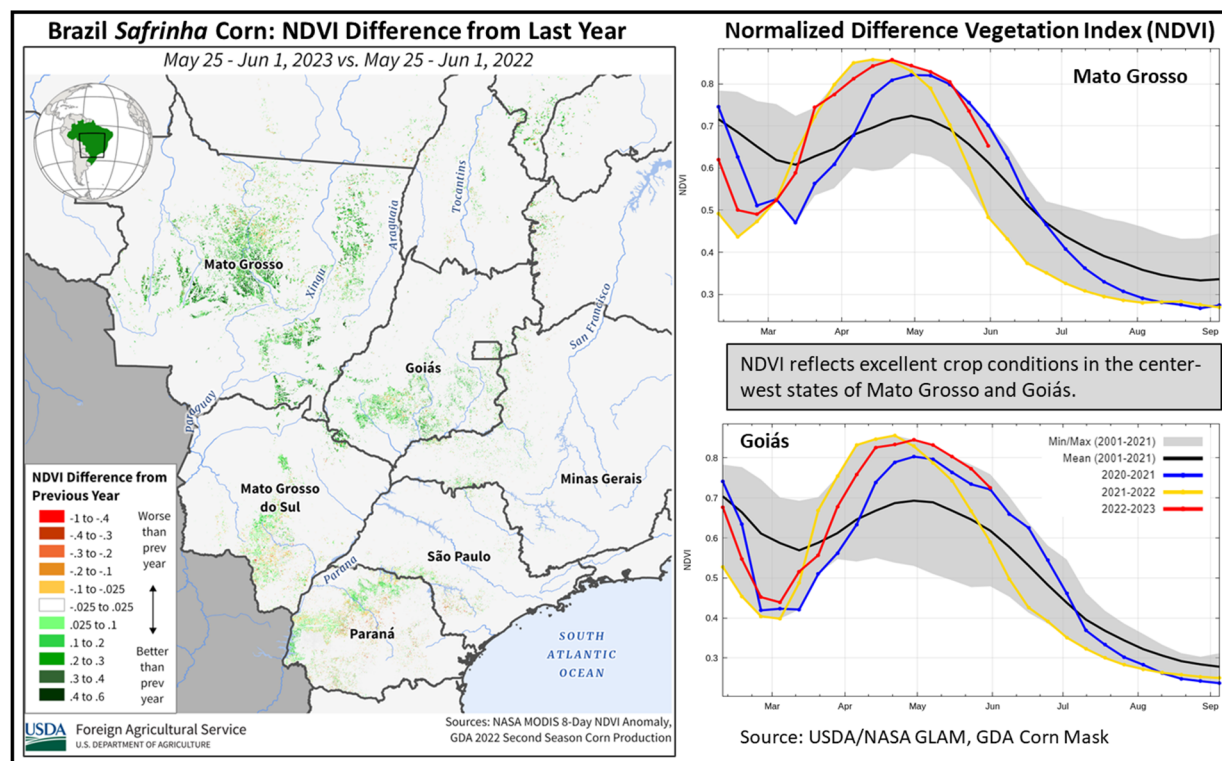
In the early morning of June 6, 2023, an explosion caused the collapse of the Kakhovka dam located on the Dnipro River in the Kherson Oblast in the Steppe Zone. USDA is still evaluating the implications of the dam collapse on agriculture in the region. As discussed in the next paragraph, the occupied territories are currently not reflected in any official statistics used to inform USDA's forecasts. Furthermore, corn production in Kherson is minimal and amounts for

only 1 percent of the total Ukraine corn production. It is, therefore, expected that the impact of the dam collapse on USDA’s corn production numbers for Ukraine will be negligible.

At present, Ukraine can be divided into areas in conflict and areas not in conflict. As elaborated by USDA’s POST in Ukraine, due to the ongoing war there is no official and reliable information about the status of Ukraine’s agriculture in the conflict zone. As a result, area and production data currently provided by POST, Ukraine’s Ministry of Agriculture (MinAg) and the State Statistical Service of Ukraine, which inform USDA’s forecasts, do not reflect the whole country. For the MY 2023/24 season the MinAg planted area information for both the MY 2023/24 winter and spring crops excludes the temporarily occupied territory of the Donetsk, Zaporizhzhia, Luhansk and Kherson regions. This is based on an official note included in the daily MinAg planting reports. MinAg also does not include Crimea. USDA crop production estimates for Ukraine include estimated output from Crimea. Crimean area and production numbers are extracted from the agricultural crop reports provided by the Russian Statistical Agency, Rosstat. *(For more information, please contact [Iliana.Mladenova@usda.gov](mailto:Iliana.Mladenova@usda.gov).)*

### Brazil Corn: Bumper Crop Revised Upward for MY 2022/23

Brazil total corn production for marketing year (MY) 2022/23 is estimated at a record 132.0 million metric tons (mmt), up 2.0 mmt (2 percent) from last month, and larger than the MY 2021/22 crop by 16.0 mmt (14 percent). Total harvested area, for all three corn crops, is unchanged from last month at 22.7 million hectares (mha), up 0.9 mha (4 percent) from the previous year. Yield is estimated at a record of 5.81 tons per hectare, 2 percent higher than last month and 9 percent above the previous year’s crop.

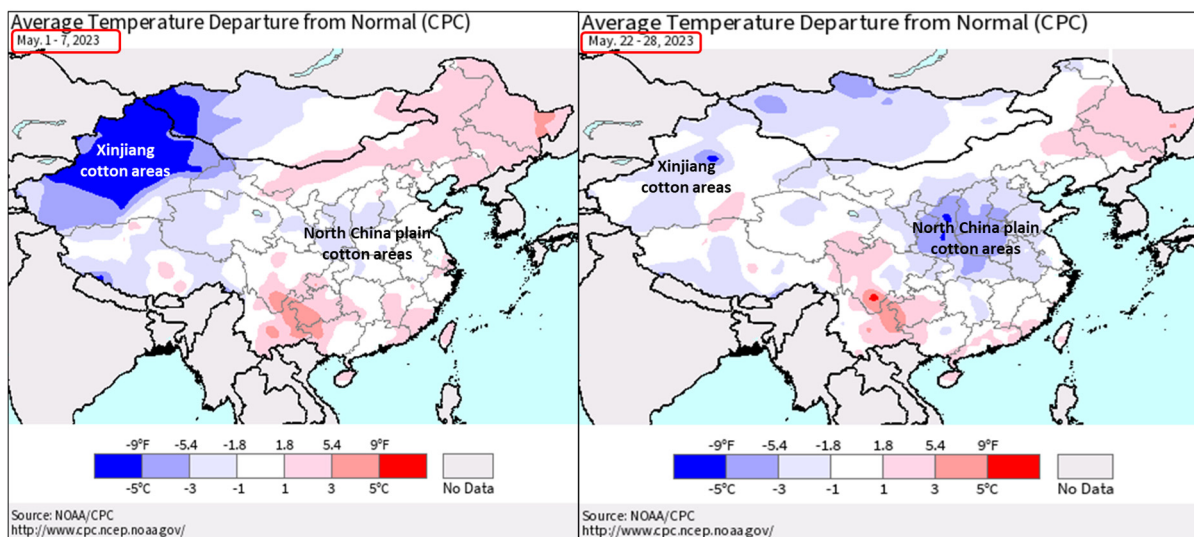


The first-season crop (22 percent of total production) continues to be harvested with 83 percent of the corn collected, slightly under the last two years at this point in time. Reported production is estimated at 27.0 mmt on an area of 4.4 mha according to the Brazilian government’s *Companhia Nacional de Abastecimento* (CONAB).

The second-season crop (77 percent of total production) is now beginning harvest for the earlier planted crop. About 34 percent of the crop is in mature stages and 48 percent in grain-filling stages. Rainfall has petered out in the center-west and the drier weather helps the maturing corn, although some rain is still necessary for the later planted crop. Rainfall in late May for the southeastern states (Paraná, São Paulo, and Mato Grosso do Sul) broke the dry spell during the month of May and was critical as the crop was mostly in sensitive reproductive stages. The satellite-derived Normalized Difference Vegetation Index (NDVI) displays better crop conditions compared to last year in the center-west states. The *Instituto Mato-Grossense de Economia Agropecuária* (IMEA) reports a bumper crop in the state of Mato Grosso of almost 49 mmt (roughly half of *safrinha* production). The second corn crop will be harvested from June to September. (For more information, please contact [Sunita.Yadav-Pauletti@usda.gov](mailto:Sunita.Yadav-Pauletti@usda.gov).)

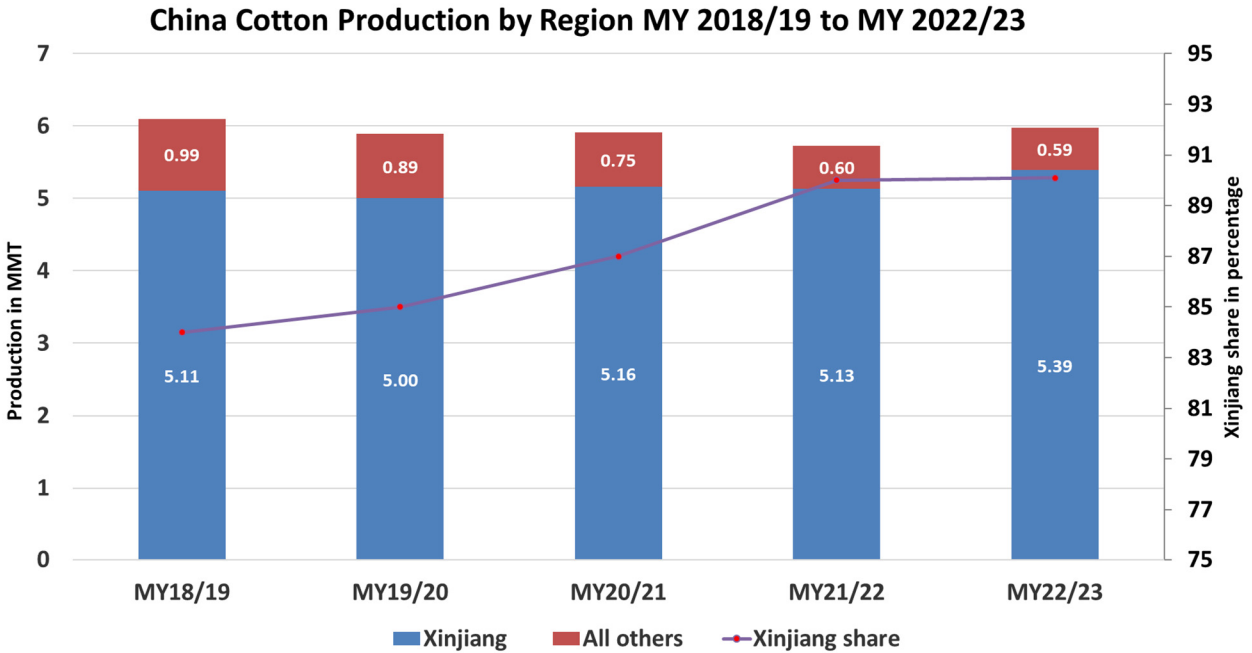
### China Cotton: Production Forecast Down on Lower-Than-Normal Temperatures

#### Cool Weather Across China’s Major Cotton Production Regions



Source: NOAA/CPC

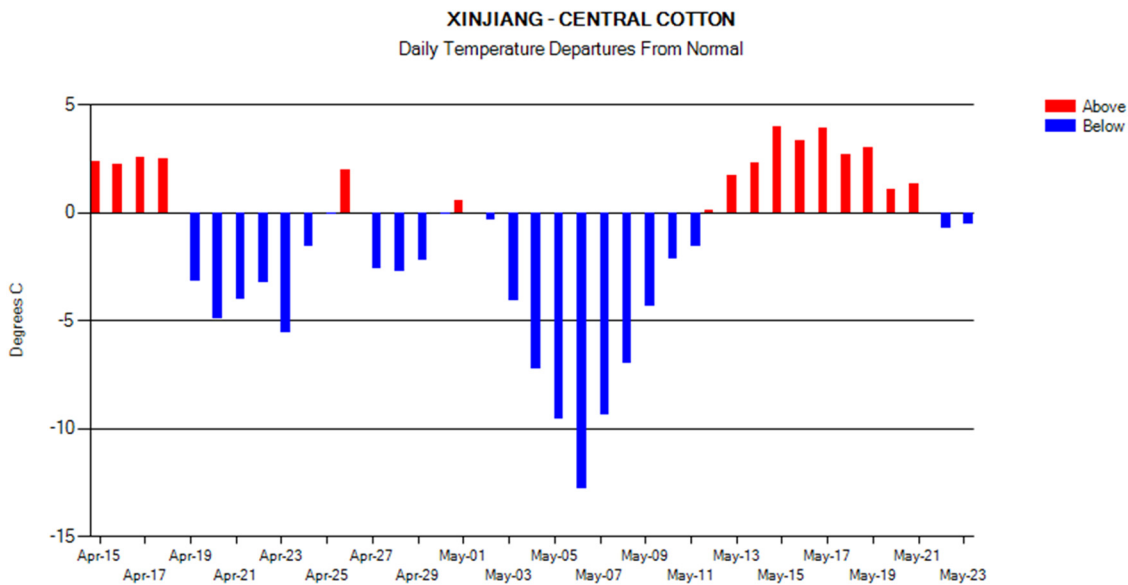
USDA forecasts China’s marketing year (MY) 2023/24 cotton production at 27.0 million 480-pound bales (5.88 million metric tons), down 2 percent or half a million bales from last month, down 3.7 million bales or 12 percent from last year and down 5 percent from the 5-year average of 28.5 million bales. Harvested area is forecast at 2.9 million hectares (mha), down 2 percent from last month, down 6 percent from last year, and down 10 percent from the 5-year average of 3.24 mha. Planted area is forecast lower than expected due to lower expected area in Xinjiang. Yield is forecast close to the long-term trend value at 2,027 kilograms per hectare (kg/ha), slightly down from last month, down 6 percent from last year’s record yield of 2,156 kg/ha, but 6 percent above the 5-year average of 1,921 kg/ha.



Yields are projected down based on the unfavorable cold and cloudy May weather in Xinjiang, which likely reduced the benefit of early planting and crop establishment. However, potential yields at the national level are expected near the long-term trend due to the increasing quantity of cotton produced in Xinjiang province, where yield is nearly twice that realized elsewhere in the country. Approximately 90 percent of total China cotton is now produced in Xinjiang province.

The typical China cotton growing season is April to October. In Xinjiang, where most of the cotton is produced, planting starts in April and ends in mid-May. While in the Yellow River and Yangtze River basins, planting begins in late April and extends through May. Thus far, the start of MY 2023/24 season is characterized by favorable soil moisture conditions and good irrigation water availability. However, the major concern is lower-than-expected cool temperatures that prevailed in April and May in Xinjiang. The cold weather conditions likely resulted in delayed planting and slow crop establishment, and in some regions, may have resulted in significant replanting as well. Cotton is sensitive to cool temperatures, which affect yield potential.





Source: OCE-WAOB-JAWF

Xinjiang cotton farmers continue to be encouraged by the government’s maintenance of a target price-based cotton subsidy. On March 26, 2020, China’s National Development and Reform Commission (NDRC) published that the target price-based subsidy will continue through 2023. The projected year-to-year cotton national area decline is due to anticipated decreases in both Xinjiang and in Eastern China (the Yangtze and Yellow River basins). Xinjiang’s yields were extraordinarily high in MY 2022/23, and much of China’s projected decline in production is driven by the expected decline in Xinjiang’s potential yields and the modest reduction in planted area. (For more information, please contact [Dath.Mita@usda.gov](mailto:Dath.Mita@usda.gov).)

### India Cotton: Production Revised Up due to Higher Arrivals in MY 2022/23

USDA estimates marketing year (MY) 2022/23 cotton production for India at 25.0 million 480-pound bales, up 2 percent from MY 2021/22. The harvested area is estimated at 13.0 million hectares, unchanged from last month and up 5 percent from the previous year. Yields are expected to reach 419 kilograms per hectare, down 2 percent from MY 2021/22.

## Early June Cotton Market Arrivals Five Times Higher than Average



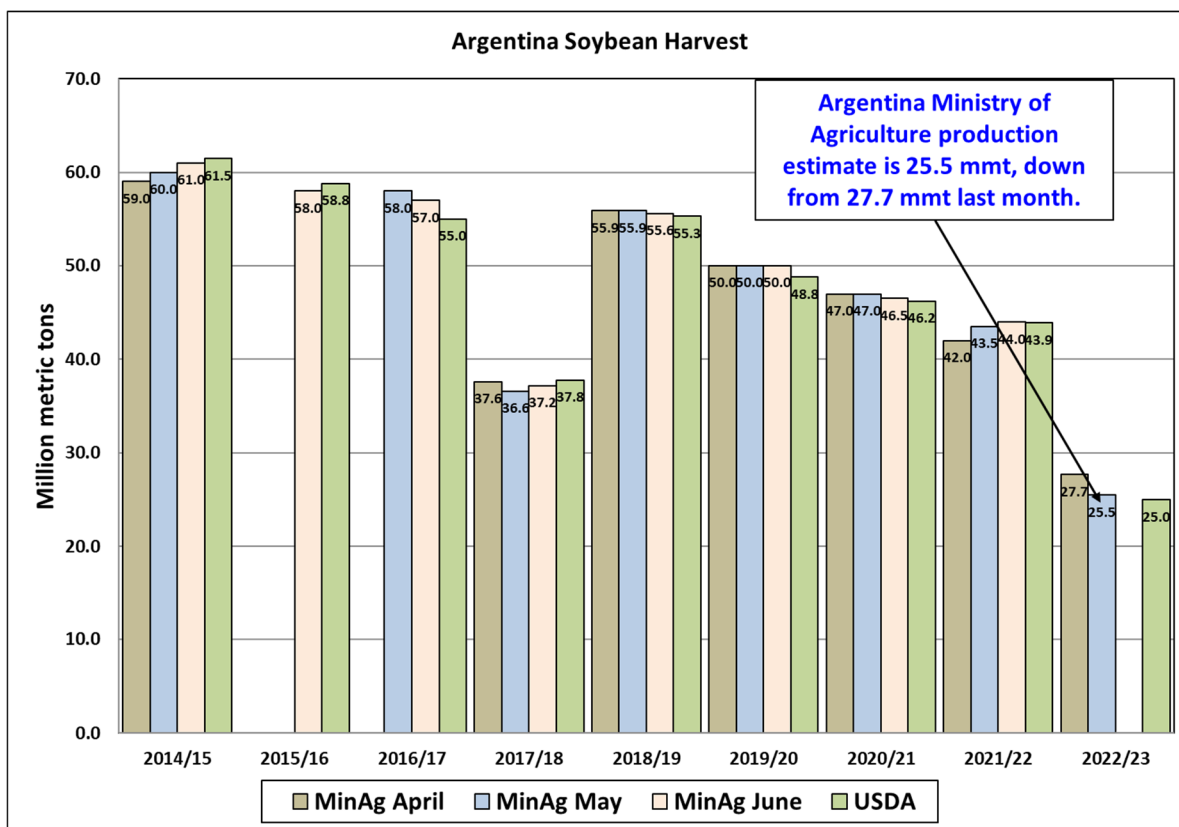
Source: FAS/Mumbai, Gujarat India Agricultural Produce Market, June 5, 2023

Market arrivals have been slow since the market opened on October 1. Because of these slow arrivals, there has been significant uncertainty regarding the level of India's production this year. Trade sources estimated that farmers held back 30 percent to 40 percent of their crop in anticipation of higher prices. Recently, cotton seed arrivals in late May were five times the normal for May, indicating that farmers' hopes for higher prices may have faded. Recent photos of warehouses indicate large arrivals of cotton. This is likely due to the southwest monsoon approaching. Farmers plant the new crop after the monsoon has started.

Cotton is grown mostly in the *kharif* season from May to October and harvesting can continue into February. (For more information, please contact [Arnella.Trent@usda.gov](mailto:Arnella.Trent@usda.gov).)

### Argentina Soybeans: MY 2022/23 Production Down 43 Percent from the Previous Year

Argentina soybean production for marketing year (MY) 2022/23 is estimated at 25.0 million metric tons (mmt), down 7 percent from last month, and down 43 percent from MY 2021/22. Soybean yield is estimated at 1.67 tons per hectare (t/ha), down 7 percent from last month, and down 40 percent from MY 2021/22. Harvested area is estimated at 15.0 million hectares, unchanged from last month, and down 6 percent from MY 2021/22.

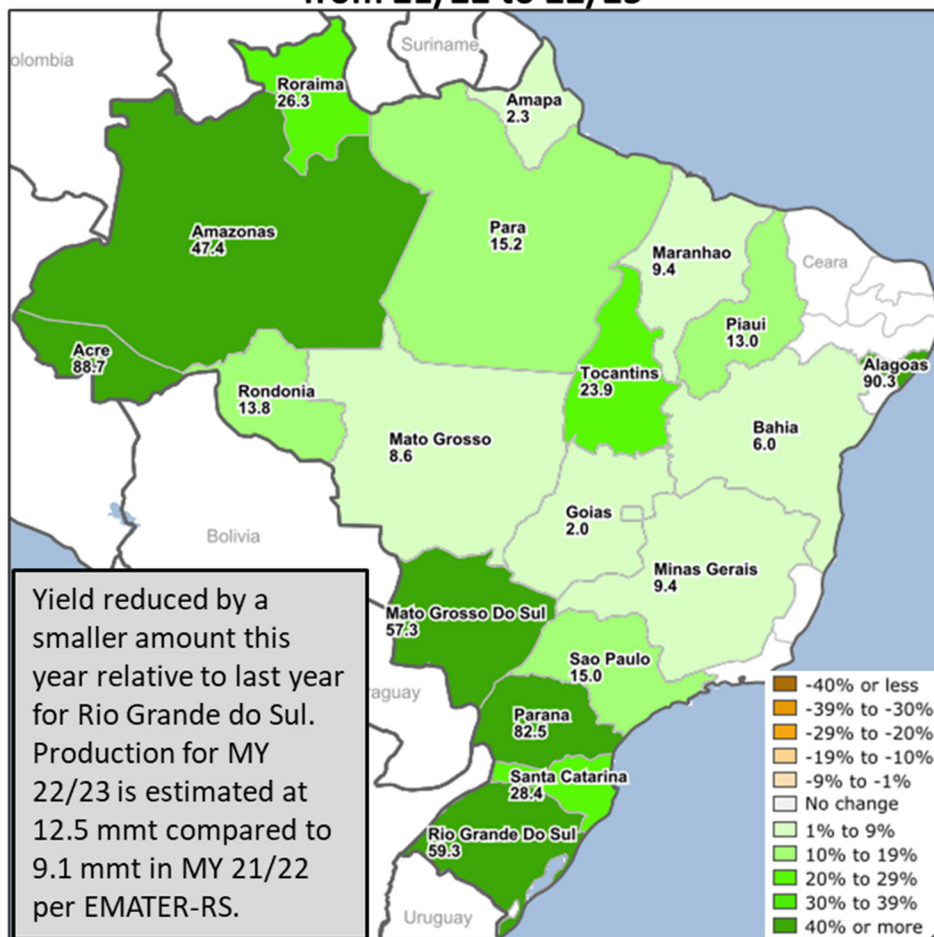


**Source: Argentina Ministry of Agriculture**

Yield is down month-to-month because of dry and hot conditions throughout the growing season caused by the third consecutive year of La Niña. Harvest is ongoing and yield is below average. As of June 1<sup>st</sup>, the Bolsa Cereales in Buenos Aires reported that harvest was 87 percent complete, and country-level yield was at 1.50 t/ha. Additionally, reports published by the Argentina Ministry of Agriculture dropped soybean production month-to month. Harvest will continue until early June. *(For more information, please contact [Katie.McGaughey@usda.gov](mailto:Katie.McGaughey@usda.gov).)*

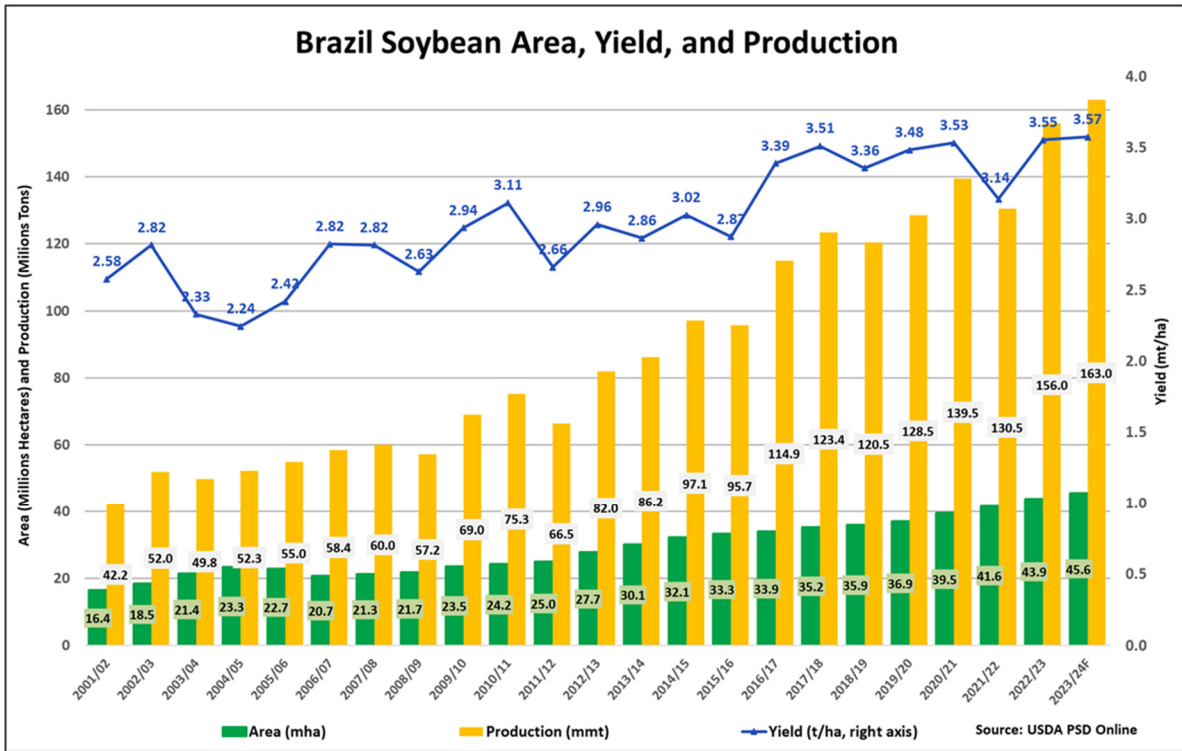
## Brazil Soybeans: Larger Area Boosts Production for MY 2022/23

### Brazil Soybeans: Annual Production Percent Change from 21/22 to 22/23

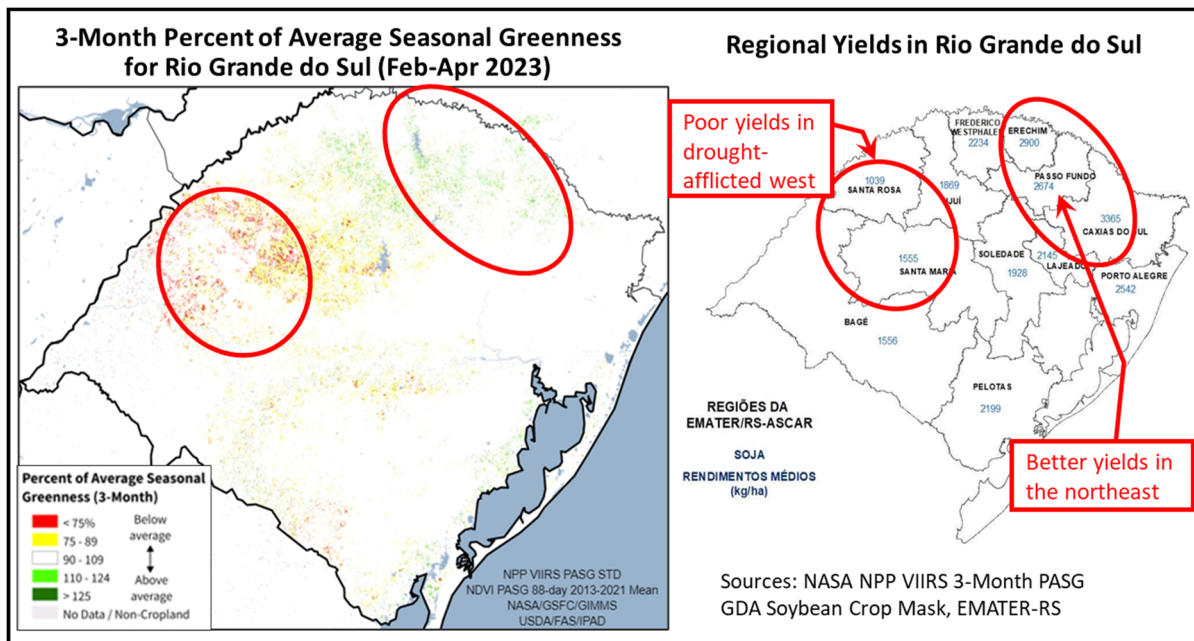


Source: CONAB

Brazil soybean production for marketing year (MY) 2022/23 is estimated at a 156.0 million metric tons (mmt), higher by 1.0 mmt (1 percent) from last month, and higher by 25.5 mmt (20 percent) from MY 2021/22. Harvested area is estimated at a 43.9 million hectares (mha), 0.2 mha (less than 1 percent) higher from last month and up 2.3 mha (6 percent) from the previous season. The yield remains unchanged from last month at 3.55 tons per hectare (t/ha), up 13 percent from the previous year.

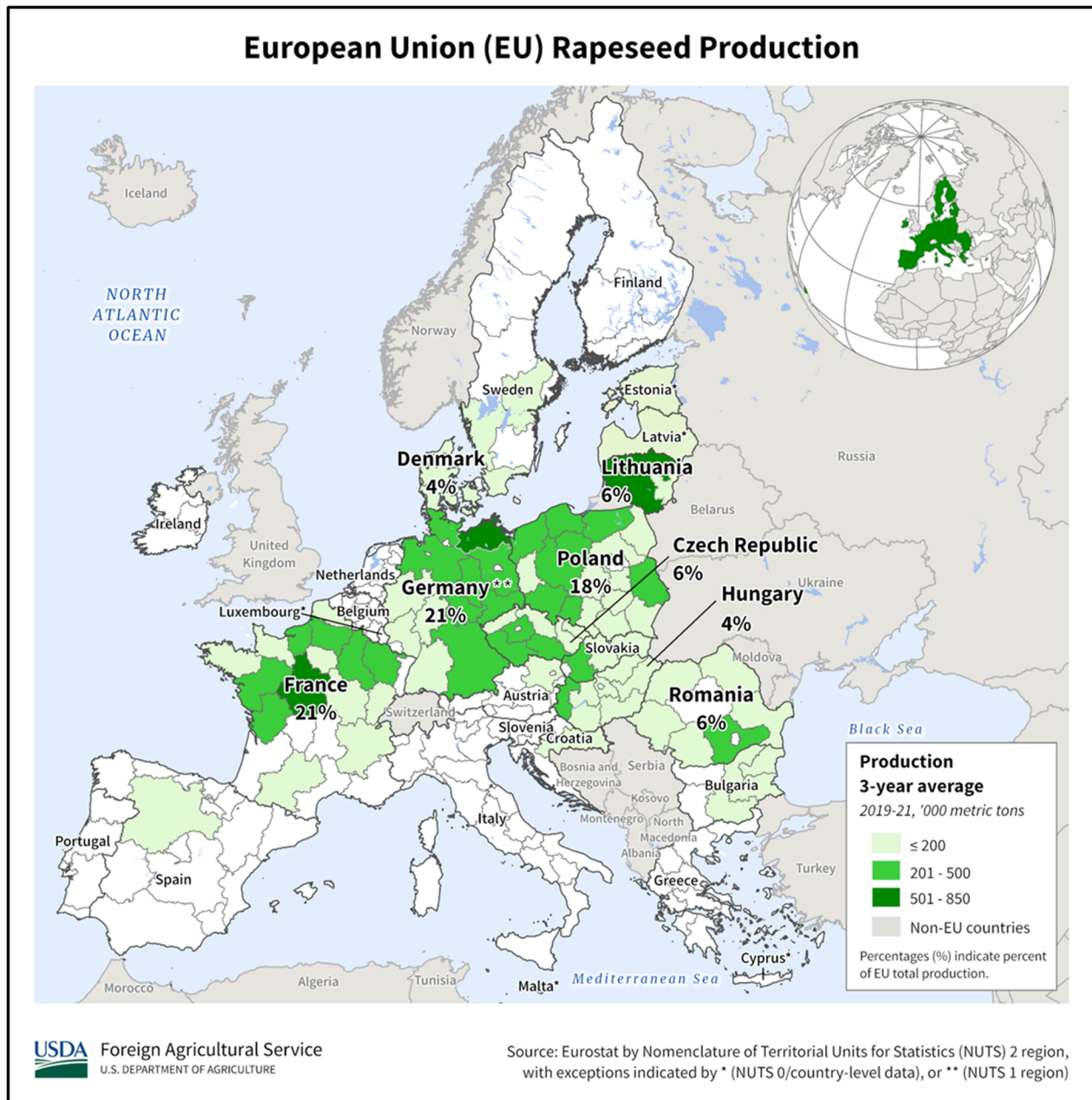


The soybean harvest approaches completion nationally with over 99 percent harvested at the end of May. Harvest reports indicate month-to-month yield increases for the center-west states, the largest gains being in Mato Grosso and Mato Grosso do Sul. State reporting from the *Federação da Agricultura e Pecuária do Mato Grosso do Sul* (FAMASUL) reports a 1.6 mmt rise in production from their initial estimate.



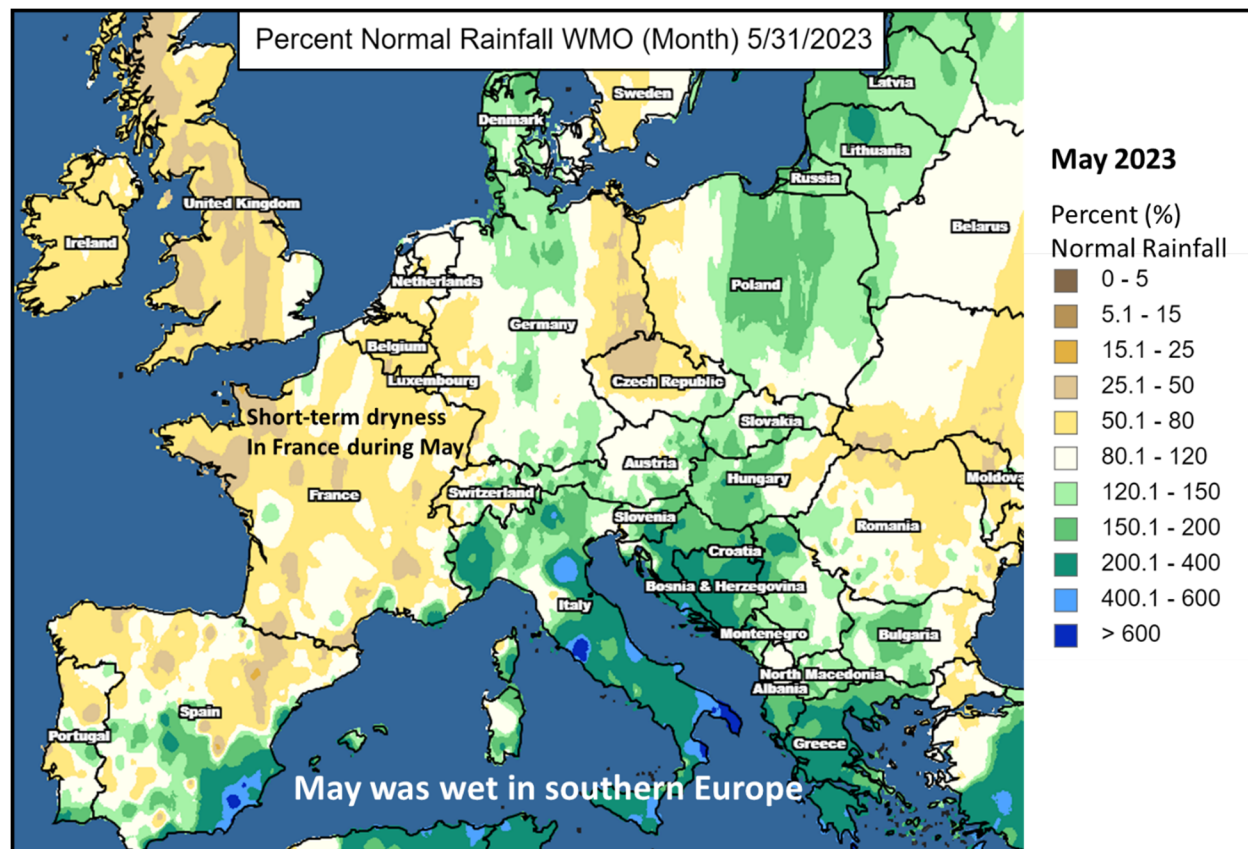
The bumper crop this season was achieved through a combination of several factors: improved seed varieties, crop management practices, and exceptionally favorable weather almost everywhere. Records yields were achieved in several states. The one exception was the state of Rio Grande do Sul where yield was reduced by almost 40 percent from initial expectations due to dry conditions in western regions of the state. Nevertheless, the overall yield for the state was roughly 60 percent above the previous year because northeastern regions in Rio Grande do Sul achieved higher yields. (For more information, please contact [Sunita.Yadav-Pauletti@usda.gov](mailto:Sunita.Yadav-Pauletti@usda.gov).)

### European Union Rapeseed: Favorable Weather Raises Crop Expectations



European Union (EU) rapeseed production for marketing year (MY) 2023/2024 is forecast at 21.0 million metric tons (mmt), up 0.5 mmt or 2 percent above last month, and 1.5 mmt or 7 percent

above last year. Total EU rapeseed production is forecast up 21 percent from the 5-year average. Harvested area is estimated at 6.1 million hectares (mha), unchanged from last month, up 2 percent from last year, and 8 percent above the 5-year average. Yield is estimated at 3.46 tons per hectare (t/ha), up 2 percent from last month, 5 percent above last year, and 12 percent above the 5-year average.



Long-term favorable weather, with both rain and sun across the rapeseed belt of northern Europe and also in central and southeast Europe, has pushed yield potential higher. After a wet early spring, dryness in May facilitated reproduction and early podfill. A bumper crop is currently expected; however, there are concerns that the short-term dryness trend in France and other areas of northern Europe could continue and become more entrenched. If this occurs, smaller pods and seeds would lower yield.

Production was revised up in both France and Romania, each by 0.25 mmt to account for the beneficial spring weather. France is forecast to be the EU's largest rapeseed producer in MY 2023/24, with 4.8 mmt. Germany is the second-largest producer, with production unchanged this month, with harvest forecast at 4.5 mmt. Romania, not a traditional rapeseed producer prior to 10 years ago, is forecast to harvest a record crop of 2.2 mmt in MY 2023/24. Romania's production is fourth highest in the EU, behind Poland's forecast crop of 3.4 mmt. Harvest of rapeseed occurs in late June and July.

For country-specific area, yield, and production estimates within the European Union (EU), please go to PSD Online at <https://apps.fas.usda.gov/PSDOnline/app/index.html#/app/home>, and select “Downloadable Data Sets.” Select the zipped file for “EU Countries Area & Production.”  
(For more information, please contact [Bryan.Purcell@usda.gov](mailto:Bryan.Purcell@usda.gov).)

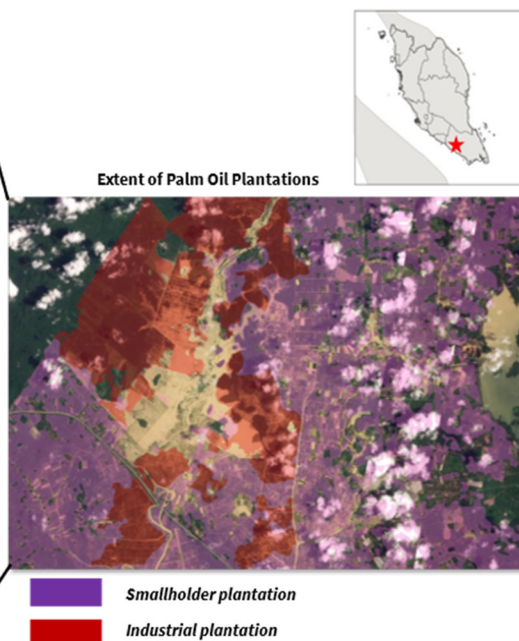
## Malaysia Palm Oil: Production Reduced Due to Extended Wetness in MY 2022/23

USDA estimates marketing year (MY) 2022/23 Malaysia palm oil production at 18.6 million metric tons, down 2 percent from last month, but up 2 percent from MY 2021/22. Harvested area is estimated at 5.50 million hectares, unchanged from last month, but up 1 percent from the previous year. Yield is estimated at 3.38 tons per hectare, down 2 percent from last month, but up 2 percent from previous year.

Malaysia palm oil monthly production was off to a good start, benefiting from favorable weather and an improved migrant laborer situation. USDA begins its MY 2022/2023 for Malaysia palm oil in October 2022. By February 2023, the aggregated monthly crude palm oil (CPO) production was up 8 percent from last year, according to Malaysia Palm Oil Board (MPOB) estimates. In March and April, however, the MPOB reported that CPO was down from last year’s monthly output totals by 9 and 18 percent, respectively. Although observed rainfall since December has been higher-than-average, the significant monthly CPO declines in March and April were attributed to extended heavy rains that impeded harvest operations and logistics, most notably in Peninsular Malaysia’s main producing palm oil states of Johor, Pahang, and Perak. Collectively these three states produce over 40 percent of Malaysia total palm oil.

### Flooded Fields in Johor Malaysia

IMAGE DATE: 03/06/2023 | IMAGE CENTER: (103.0136766 °E 2.1056718 °N)



Right image highlights location of palm oil plantations with applied palm oil mask from CREAM dataset. The image on the left shows palm oil plantations inundated by water (without mask applied). The floods impeded harvest operations and logistics.

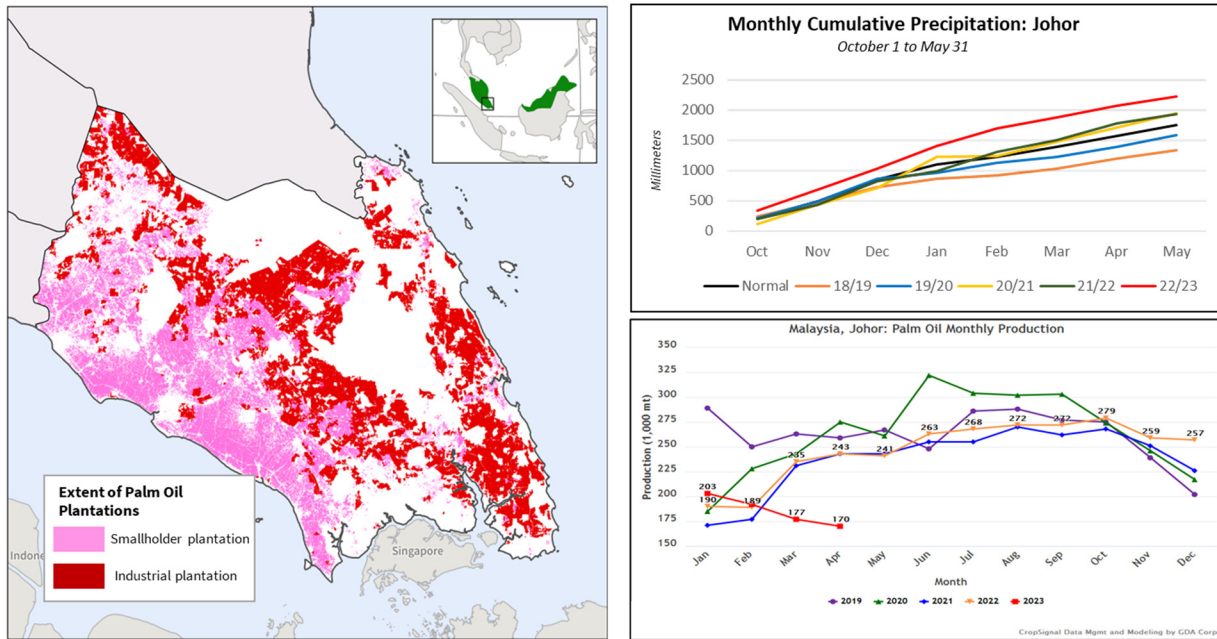
Sources: Image © 2023 Planet Labs PBC, CREAM 2019 10m Global Palm Oil Map

Johor experienced the highest recorded 4-day rainfall from February 28 to March 3, 2023, since record keeping began in 1991. This rain event led to all districts in Johor to become flooded as



dams had to release water to keep from overflowing, according to local reports. March CPO monthly output in Johor, Pahang and Perak was down 25 percent, 19 percent, and 16 percent, respectively from last year. Continued heavy rains into April compounded the issue, where April's monthly CPO for Johor, Pahang and Perak was down 30 percent, 27 percent, and 26 percent, respectively from last year.

### Johor, Malaysia



Sources: CHIRPS Precipitation Data, CREAM 2019 Global Palm Oil Mills Layer (10m), Malaysia Palm Oil Board

According to the MPOB, aggregated monthly crude palm oil output from October 2022 to April 2023 is 22 percent below the 5-year average. (For more information, please contact [Justin.Jenkins@usda.gov](mailto:Justin.Jenkins@usda.gov).)



**World Agricultural Production  
U.S. Department of Agriculture**

Foreign Agricultural Service / Global Market Analysis  
International Production Assessment Division (IPAD)

Ag Box 1051, Room 4630, South Building  
Washington, DC 20250-1051

<https://ipad.fas.usda.gov/>

Telephone: (202) 720-1662 Fax: (202) 720-1158

This report uses information from the Foreign Agricultural Service’s (FAS) global network of agricultural attachés and counselors, official statistics of foreign governments and other foreign source materials, and the analysis of economic data and satellite imagery. Estimates of foreign area, yield, and production are from the International Production Assessment Division, FAS, and are reviewed by USDA’s Inter-Agency Commodity Estimates Committee. Estimates of U.S. area, yield, and production are from USDA’s National Agricultural Statistics Service. Numbers within the report may not add to totals because of rounding. This report reflects official USDA estimates released in the World Agricultural Supply and Demand Estimates (WASDE-584), June 9, 2023.

The FAS International Production Assessment Division prepared this report. The next issue of World Agricultural Production will be released after 12:00 p.m. Eastern Time, July 12, 2023.

**Conversion Table**

Metric tons to bushels

Wheat, soybeans	=	MT * 36.7437
Corn, sorghum, rye	=	MT * 39.36825
Barley	=	MT * 45.929625
Oats	=	MT * 68.894438

Metric tons to 480-lb bales

Cotton	=	MT * 4.592917
--------	---	---------------

Metric tons to hundredweight

Rice	=	MT * 22.04622
------	---	---------------

Area & weight

1 hectare	=	2.471044 acres
1 kilogram	=	2.204622 pounds



For further information, contact:  
**U.S. Department of Agriculture**  
**Foreign Agricultural Service**  
**Global Market Analysis**

International Production Assessment Division  
Ag Box 1051, Room 4630, South Building  
Washington, DC 20250-1051

Telephone: (202) 720-1662

Fax: (202) 720-1158

---

### **GENERAL INFORMATION**

Senior Director	Ronald Frantz	202-720-4056	ronald.frantz@usda.gov
Director	Robert Tetrault	202-720-1071	robert.tetrault@usda.gov
Administrative Assistant	Vacant		
USDA Remote Sensing Advisor	Vacant		
Sr. Analyst/Technical Lead	Curt Reynolds, Ph.D.	202-690-0134	curt.reynolds@usda.gov
Sr. Analyst/ Satellite Imagery	Dath Mita, Ph.D.	202-720-7339	dath.mita@usda.gov
Archives Manager/Technical Lead			
Sr. Analyst/Technical Lead	Jim Crutchfield	202-690-0135	james.crutchfield@usda.gov
GIS Mapping/Imagery Analyst	Lisa Colson	202-720-6652	lisa.colson@usda.gov
WAP Coordinators	Ifeoma Collins	202-720-0240	ifeoma.collins@usda.gov
	Aaron Mulhollen	202-690-0131	aaron.mulhollen@usda.gov

### **COUNTRY- AND REGION-SPECIFIC INFORMATION**

South America, Argentina, Venezuela, and Colombia	Katie McGaughey	202-720-9210	katie.mcgaughey@usda.gov
Western and Central Europe, and North Africa	Bryan Purcell	202-690-0138	bryan.purcell@usda.gov
Russia, Ukraine, Kazakhstan, Moldova, and Belarus	Iliana Mladenova, Ph.D.	202-690-2315	iliana.mladenova@usda.gov
South Asia, Sri Lanka Bangladesh, India, and Nepal	Arnella Trent	202-720-0881	arnella.trent@usda.gov
East Asia, China, and Japan	Dath Mita, Ph.D.	202-720-7339	dath.mita@usda.gov
Sub-Saharan Africa, Nigeria and South Africa	Curt Reynolds, Ph.D.	202-690-0134	curt.reynolds@usda.gov
S.E. Asia, Indonesia, Thailand, Malaysia, Cambodia and Vietnam	Justin Jenkins	202-720-0419	justin.jenkins@usda.gov
Central America, Mexico, and Western United States	Ifeoma Collins	202-720-0240	ifeoma.collins@usda.gov
Australia, New Zealand, Pakistan Papua New Guinea and South Pacific Islands	Jim Crutchfield	202-690-0135	james.crutchfield@usda.gov
Middle East, Central Asia, Afghanistan Iraq, Iran, and Syria	Aaron Mulhollen	202-690-0131	aaron.mulhollen@usda.gov
Canada, Caribbean, Eastern United States	Aaron Mulhollen	202-690-0131	aaron.mulhollen@usda.gov
Brazil	Sunita Yadav-Pauletti, Ph.D.		sunita.yadav-pauletti@usda.gov



The Foreign Agricultural Service (FAS) updates its production, supply and distribution (PSD) database for cotton, oilseeds, and grains at 12:00 p.m. on the day the *World Agricultural Supply and Demand Estimates* (WASDE) report is released. This circular is released by 12:15 p.m.

## FAS Reports and Databases:

### World Agricultural Production

Current: <https://www.fas.usda.gov/data/world-agricultural-production>

Archive: <https://usda.library.cornell.edu/concern/publications/5q47rn72z?locale=en>

USDA's Foreign Agricultural Service (FAS) publishes a monthly report on crop acreage, yield and production in major countries worldwide. Sources include reporting from FAS's worldwide offices, official statistics of foreign governments, and analysis of economic data and satellite imagery. The reports reflect official USDA estimates released in the monthly *World Agricultural Supply and Demand Estimates* (WASDE).

### World Markets and Trade

Current: <https://www.fas.usda.gov/data>

Archive:

[https://usda.library.cornell.edu/catalog?f%5Bmember\\_of\\_collections\\_ssim%5D%5B%5D=Foreign+Agricultural+Service&locale=en](https://usda.library.cornell.edu/catalog?f%5Bmember_of_collections_ssim%5D%5B%5D=Foreign+Agricultural+Service&locale=en)

USDA's Foreign Agricultural Service (FAS) publishes monthly and quarterly reports which include data on U.S. and global trade, production, consumption and stocks, as well as analysis of developments affecting world trade in oilseeds, grains, cotton, livestock and poultry. The reports reflect official USDA estimates released in the monthly *World Agricultural Supply and Demand Estimates* (WASDE).

### Global Agricultural Information Network (GAIN)

<https://gain.fas.usda.gov/>

USDA's Foreign Agricultural Service (FAS) provides timely reports on foreign markets through the Global Agriculture Information Network (GAIN) database. An average of 2,000 reports are added each year, with reports going back to 1995. GAIN reports are compiled by FAS' global market intelligence network, which includes FAS foreign service officers and locally engaged staff in over 90 overseas offices world-wide. They provide on-the-ground intelligence, insight, and analysis on nearly 200 countries, delivering information on foreign agricultural markets, crop conditions, and agro-political dynamics of interest to U.S. agriculture. GAIN reports contain assessments of commodity and trade issues made by USDA staff and are not necessarily statements of official U.S. government policy.

### Production, Supply and Distribution (PS&D) Online

<https://apps.fas.usda.gov/psdonline/app/index.html#/app/home>

PSD Online is the public repository for USDA's Official Production, Supply and Distribution forecast data and reports for key agricultural commodities. PSD Online data are reviewed and updated monthly by an interagency committee chaired by USDA's World Agricultural Outlook Board (WAOB). The committee consist of representatives from Foreign Agricultural Service (FAS), the Economic Research Service (ERS), the Farm Service Agency (FSA), and the Agricultural Marketing Service (AMS).

### EU Countries and Russia Wheat: Area and Production Estimates

<https://apps.fas.usda.gov/psdonline/app/index.html#/app/downloads> (click on PSD Datasets)

USDA's Foreign Agricultural Service (FAS) provides country-level area and production estimates for the nations of the European Union. For Russia, country-level area and production estimates are provided for Winter and Spring wheat. These datasets are reviewed and updated monthly by an interagency committee chaired by USDA's World Agricultural Outlook Board (WAOB) and can be downloaded through PSD datasets on PSD Online.



## FAS Reports and Databases:

### **International Production Assessment (IPAD)**

<https://ipad.fas.usda.gov/>

USDA's Foreign Agricultural Service (FAS) maintains a dynamic global crop production portal with key information including *World Agricultural Production* (WAP) briefs, Commodity Intelligence Reports (CIR), geospatial applications, crop production maps at a subnational level and crop calendars for the top-20 producing countries. Additionally, Crop Explorer (<https://ipad.fas.usda.gov/cropexplorer/>) displays rainfall, temperature, evapotranspiration, soil moisture, snow cover, and vegetation conditions in charts and maps.

### **USDA and NASA Global Agricultural Monitoring (GLAM)**

<https://glam1.gsfc.nasa.gov/>

The USDA and NASA Global Agricultural Monitoring (GLAM) system provides near real-time and science quality Moderate Resolution Imaging Spectroradiometer (MODIS) Normalized Difference Vegetation Index (NDVI) from the satellites Terra and Aqua. The public can view and retrieve MODIS 8-day composited, global NDVI satellite imagery and time series data. GLAM was developed by NASA's Global Inventory Modeling and Mapping Studies (GIMMS) group for USDA's Foreign Agricultural Service.

### **Global Agricultural and Disaster Assessment System (GADAS)**

<https://geo.fas.usda.gov/GADAS/index.html>

USDA's Foreign Agricultural Service (FAS) provides the Global Agricultural and Disaster Assessment System (GADAS), a web-based Geographic Information System (GIS) tool which integrates a vast array of highly detailed earth observation data streams, particularly targeted towards agricultural and disaster assessment analysis. GADAS is an interactive website which provides analysts with a wide variety of routine geospatial products (maps, charts, tables) they require for comprehensive situational investigations and recurring assessments.

### **Export Sales Reporting**

<https://apps.fas.usda.gov/esrquery/>

USDA's Export Sales Reporting Program monitors U.S. agricultural export sales on a daily and weekly basis. Export sales reporting provides a constant stream of up-to-date market information for 40 U.S. agricultural commodities sold abroad. The weekly U.S. Export Sales report is the most currently available source of U.S. exports sales data. The data is used to analyze overall levels of export demand, determine where markets exit, and assess the relative position of U.S. commodities in foreign markets.

### **Global Agricultural Trade System (GATS)**

<https://apps.fas.usda.gov/gats/default.aspx>

The Global Agricultural Trade System (GATS) is a searchable database containing monthly U.S. Census Bureau trade data organized by agricultural commodity and agricultural related product groups. Trade data is searchable by partner countries and partner groups. Historical U.S. agricultural trade data is available back to 1967. In addition, U.N. trade statistics (UN Comtrade) may be queried through GATS. UN trade data is available for nearly 200 countries or areas, dating from the inception of the Harmonized System (HS) of trade codes in 1989 to present. The database is continuously updated. U.S. trade data is updated monthly according to the U.S. Census Bureau's reporting system. UN Comtrade data are updated in GATS after nationally submitted data to the UN are standardized by the UN Statistical Division and added to the UN Comtrade database.

## **Other USDA Reports:**

World Agricultural Supply and Demand Estimates (WASDE):

<http://www.usda.gov/oce/commodity/wasde/>

Economic Research Service:

<http://www.ers.usda.gov/topics/crops>

National Agricultural Statistics Service:

<http://www.nass.usda.gov/Publications/>

**Table 01 World Crop Production Summary**

Million Metric Tons

Commodity	World	Total Foreign	North America			Former Soviet		European	Asia (WAP)					South America		Selected Other			All Others
			United States	Canada	Mexico	Russia	Ukraine		China	India	Indonesia	Pakistan	Thailand	Argentina	Brazil	Australia	South Africa	Turkey	
			-	-	-	-	-		-	-	-	-	-	-	-	-	-	-	
---Million metric tons---																			
<b>Wheat</b>																			
2021/22	780.2	735.4	44.8	22.4	3.3	75.2	33.0	nr	136.9	109.6	0.0	27.5	0.0	22.2	7.7	36.2	2.3	16.0	243.2
2022/23 prel.	788.5	743.6	44.9	33.8	3.6	92.0	20.9	nr	137.7	104.0	0.0	26.4	0.0	12.6	10.6	39.0	2.1	17.3	243.7
2023/24 proj.																			
May	789.8	744.6	45.2	37.0	3.3	81.5	16.5	nr	140.0	110.0	0.0	26.8	0.0	19.5	10.0	29.0	2.0	19.0	250.0
Jun	800.2	754.9	45.3	37.0	3.3	85.0	17.5	nr	140.0	113.5	0.0	26.8	0.0	19.5	10.0	29.0	2.0	19.5	251.8
<b>Coarse Grains</b>																			
2021/22	1,505.0	1,107.3	397.7	25.1	32.8	38.5	53.5	nr	280.9	51.4	12.7	11.0	5.4	59.2	120.6	19.2	16.6	11.6	368.8
2022/23 prel.	1,443.1	1,084.6	358.5	30.5	32.4	44.1	34.1	nr	285.5	54.5	12.9	9.9	5.3	43.7	136.6	18.7	17.4	14.8	344.3
2023/24 proj.																			
May	1,509.5	1,107.5	402.0	28.3	33.2	42.2	28.7	nr	288.3	53.3	13.1	11.0	5.5	62.6	134.3	13.7	17.4	16.8	359.1
Jun	1,513.3	1,111.3	402.0	28.3	33.2	42.3	31.7	nr	288.3	52.9	13.1	11.0	5.6	62.6	134.3	13.7	17.4	17.0	359.9
<b>Rice, Milled</b>																			
2021/22	514.0	507.9	6.1	0.0	0.2	0.7	0.0	nr	149.0	129.5	34.4	9.3	19.9	0.8	7.3	0.5	0.0	0.5	155.7
2022/23 prel.	512.5	507.4	5.1	0.0	0.1	0.6	0.0	nr	145.9	136.0	34.0	5.5	20.2	0.8	6.8	0.4	0.0	0.6	156.5
2023/24 proj.																			
May	520.5	514.4	6.1	0.0	0.2	0.7	0.0	nr	149.0	133.0	34.5	9.0	20.5	0.8	6.8	0.5	0.0	0.6	158.9
Jun	520.5	514.4	6.1	0.0	0.2	0.7	0.0	nr	149.0	134.0	34.5	9.0	19.7	0.8	6.8	0.5	0.0	0.6	158.7
<b>Total Grains</b>																			
2021/22	2,799.2	2,350.6	448.6	47.5	36.2	114.4	86.6	nr	566.8	290.4	47.1	47.8	25.2	82.1	135.7	56.0	18.9	28.1	767.8
2022/23 prel.	2,744.1	2,335.6	408.5	64.4	36.1	136.7	55.0	nr	569.2	294.5	46.9	41.8	25.5	57.0	154.0	58.0	19.5	32.6	744.5
2023/24 proj.																			
May	2,819.8	2,366.5	453.3	65.3	36.7	124.3	45.2	nr	577.3	296.3	47.6	46.9	26.0	82.9	151.1	43.2	19.4	36.4	768.0
Jun	2,834.0	2,380.5	453.5	65.3	36.7	127.9	49.2	nr	577.3	300.4	47.6	46.9	25.3	82.9	151.1	43.2	19.4	37.1	770.3
<b>Oilseeds</b>																			
2021/22	610.5	479.1	131.4	20.1	0.9	23.1	24.3	nr	62.1	43.2	14.3	3.4	1.0	49.7	135.5	8.7	3.2	3.4	86.5
2022/23 prel.	627.4	501.5	125.9	25.6	0.9	26.3	18.8	nr	68.5	41.7	14.8	2.3	1.0	31.1	161.5	10.0	3.7	4.0	91.2
2023/24 proj.																			
May	671.2	538.4	132.8	26.9	0.8	26.1	19.6	nr	67.7	42.4	14.9	3.1	1.0	53.7	168.5	7.1	3.8	3.3	99.4
Jun	671.4	538.2	133.2	26.9	0.8	26.1	19.6	nr	67.2	42.4	14.9	3.3	1.0	53.7	168.5	6.7	3.8	3.3	99.8
<b>Cotton</b>																			
2021/22	115.8	98.3	17.5	0.0	1.2	0.0	0.0	1.7	26.8	24.4	0.0	6.0	0.0	1.5	11.7	5.9	0.1	3.8	15.2
2022/23 prel.	116.3	101.8	14.5	0.0	1.6	0.0	0.0	1.6	30.7	25.0	0.0	3.9	0.0	1.2	13.2	5.5	0.1	4.9	14.2
2023/24 proj.																			
May	115.7	100.2	15.5	0.0	1.3	0.0	0.0	1.5	27.5	25.5	0.0	5.3	0.0	1.3	13.3	5.8	0.1	3.5	15.2
Jun	116.7	100.2	16.5	0.0	1.3	0.0	0.0	1.5	27.0	25.5	0.0	5.9	0.0	1.3	13.3	5.8	0.1	3.5	15.1

1/ Includes wheat, coarse grains, and rice (milled) shown above.

**Table 02 Wheat Area, Yield, and Production**

Country / Region	Area (Million hectares)				Yield (Metric tons per hectare)				Production (Million metric tons)				Change in Production			
	2021/22	Prel.	2023/24 Proj.		2021/22	Prel.	2023/24 Proj.		2021/22	Prel.	2023/24 Proj.		From last month		From last year	
		2022/23	May	Jun		2022/23	May	Jun		2022/23	May	Jun	MMT	Percent	MMT	Percent
<b>World</b>	221.88	220.60	221.38	221.88	3.52	3.57	3.57	3.61	780.25	788.50	789.76	800.19	10.42	1.32	11.69	1.48
<b>United States</b>	15.03	14.36	15.01	15.01	2.98	3.13	3.01	3.02	44.80	44.90	45.16	45.32	0.16	0.36	0.42	0.93
<b>Total Foreign</b>	206.85	206.24	206.37	206.87	3.56	3.61	3.61	3.65	735.44	743.60	744.61	754.87	10.26	1.38	11.27	1.52
<b>European Union</b>	24.28	24.35	24.43	24.43	5.69	5.52	5.69	5.75	138.24	134.34	139.00	140.50	1.50	1.08	6.16	4.58
<b>United Kingdom</b>	1.79	1.81	1.83	1.83	7.81	8.59	8.47	8.58	13.99	15.54	15.50	15.70	0.20	1.29	0.16	1.03
<b>Serbia</b>	0.60	0.63	0.63	0.63	5.75	4.93	5.30	5.71	3.44	3.11	3.34	3.60	0.26	7.78	0.49	15.76
<b>China</b>	23.57	23.52	23.60	23.60	5.81	5.86	5.93	5.93	136.95	137.72	140.00	140.00	0.00	0.00	2.28	1.65
<b>South Asia</b>																
India	31.13	30.46	31.50	32.00	3.52	3.41	3.49	3.55	109.59	104.00	110.00	113.50	3.50	3.18	9.50	9.13
Pakistan	9.17	9.00	9.00	9.00	3.00	2.93	2.98	2.98	27.46	26.40	26.81	26.81	0.00	0.00	0.41	1.55
Afghanistan	2.05	2.20	2.20	2.20	2.45	2.05	2.18	2.18	5.02	4.50	4.80	4.80	0.00	0.00	0.30	6.67
Nepal	0.72	0.72	0.72	0.72	2.90	2.92	2.92	2.92	2.08	2.10	2.10	2.10	0.00	0.00	0.00	0.00
<b>Former Soviet Union - 12</b>																
Russia	27.63	29.00	27.50	27.50	2.72	3.17	2.96	3.09	75.16	92.00	81.50	85.00	3.50	4.29	-7.00	-7.61
Russia Winter	15.22	16.30	15.00	15.00	3.43	4.17	3.87	4.10	52.19	68.00	58.00	61.50	3.50	6.03	-6.50	-9.56
Russia Spring	12.41	12.70	12.50	12.50	1.85	1.89	1.88	1.88	22.96	24.00	23.50	23.50	0.00	0.00	-0.50	-2.08
Ukraine	7.41	5.30	4.30	4.30	4.45	3.94	3.84	4.07	33.01	20.90	16.50	17.50	1.00	6.06	-3.40	-16.27
Kazakhstan	12.72	12.81	12.50	12.50	0.93	1.28	1.12	1.12	11.81	16.40	14.00	14.00	0.00	0.00	-2.40	-14.65
Uzbekistan	1.24	1.40	1.40	1.40	4.83	4.42	4.64	4.64	5.99	6.19	6.50	6.50	0.00	0.00	0.31	4.99
Belarus	0.65	0.68	0.68	0.68	3.54	3.48	3.38	3.38	2.30	2.35	2.30	2.30	0.00	0.00	-0.05	-2.13
<b>Canada</b>	9.20	10.08	10.60	10.60	2.44	3.35	3.49	3.49	22.42	33.82	37.00	37.00	0.00	0.00	3.18	9.39
<b>South America</b>																
Argentina	6.55	5.50	6.50	6.50	3.38	2.28	3.00	3.00	22.15	12.55	19.50	19.50	0.00	0.00	6.95	55.38
Brazil	2.74	3.09	3.30	3.30	2.81	3.43	3.03	3.03	7.70	10.60	10.00	10.00	0.00	0.00	-0.60	-5.66
<b>Australia</b>	12.73	13.00	12.50	12.50	2.85	3.00	2.32	2.32	36.24	39.00	29.00	29.00	0.00	0.00	-10.00	-25.64
<b>Africa</b>																
Egypt	1.40	1.45	1.35	1.35	6.43	6.41	6.42	6.42	9.00	9.30	8.67	8.67	0.00	0.00	-0.63	-6.77
Morocco	2.86	2.50	2.55	2.55	2.64	1.08	1.49	1.49	7.54	2.70	3.80	3.80	0.00	0.00	1.10	40.74
Algeria	2.08	2.08	2.08	2.08	1.20	1.78	1.30	1.30	2.50	3.70	2.70	2.70	0.00	0.00	-1.00	-27.03
Ethiopia	1.95	2.30	2.50	2.50	2.83	3.04	3.00	3.00	5.52	7.00	7.50	7.50	0.00	0.00	0.50	7.14
<b>Middle East</b>																
Turkey	7.05	6.80	7.20	7.20	2.27	2.54	2.64	2.71	16.00	17.25	19.00	19.50	0.50	2.63	2.25	13.04
Iran	6.00	6.20	6.20	6.20	2.00	2.13	2.34	2.34	12.00	13.20	14.50	14.50	0.00	0.00	1.30	9.85
Iraq	2.00	2.00	2.20	2.20	1.75	1.50	1.91	1.91	3.50	3.00	4.20	4.20	0.00	0.00	1.20	40.00
Syria	1.57	1.50	1.20	1.20	1.25	1.40	2.33	2.00	1.95	2.10	2.80	2.40	-0.40	-14.29	0.30	14.29
<b>Mexico</b>	0.55	0.59	0.55	0.55	6.00	6.07	6.00	6.00	3.28	3.57	3.30	3.30	0.00	0.00	-0.27	-7.61
<b>Others</b>	7.24	7.29	7.35	7.35	2.85	2.78	2.76	2.79	20.61	20.24	20.29	20.49	0.20	0.99	0.25	1.22

**Table 03 Total Coarse Grain Area, Yield, and Production**

Country / Region	Area (Million hectares)				Yield (Metric tons per hectare)				Production (Million metric tons)				Change in Production			
	2021/22	Prel.	2023/24 Proj.		2021/22	Prel.	2023/24 Proj.		2021/22	Prel.	2023/24 Proj.		From last month		From last year	
		2022/23	May	Jun		2022/23	May	Jun		2022/23	May	Jun	MMT	Percent	MMT	Percent
<b>World</b>	345.20	336.33	337.94	338.65	4.36	4.29	4.47	4.47	1,504.97	1,443.08	1,509.53	1,513.29	3.77	0.25	70.21	4.87
<b>United States</b>	38.34	35.39	37.59	37.59	10.37	10.13	10.69	10.69	397.71	358.47	402.01	402.01	0.00	0.00	43.55	12.15
<b>Total Foreign</b>	306.86	300.94	300.34	301.06	3.61	3.60	3.69	3.69	1,107.26	1,084.62	1,107.51	1,111.28	3.77	0.34	26.66	2.46
<b>China</b>	45.77	45.52	45.44	45.44	6.14	6.27	6.35	6.35	280.85	285.50	288.30	288.30	0.00	0.00	2.80	0.98
<b>European Union</b>	27.74	26.76	26.73	26.73	5.58	5.00	5.48	5.49	154.77	133.84	146.40	146.65	0.25	0.17	12.81	9.57
<b>United Kingdom</b>	1.43	1.34	1.32	1.32	5.88	6.44	6.29	6.29	8.41	8.64	8.33	8.33	0.00	0.00	-0.31	-3.61
<b>South America</b>																
Brazil	23.37	24.40	24.77	24.77	5.16	5.60	5.42	5.42	120.62	136.60	134.33	134.33	0.00	0.00	-2.28	-1.67
Argentina	9.84	9.48	9.38	9.38	6.01	4.61	6.67	6.67	59.16	43.71	62.58	62.58	0.00	0.00	18.87	43.18
<b>Former Soviet Union - 12</b>																
Russia	14.01	13.60	13.55	13.55	2.75	3.25	3.11	3.12	38.54	44.13	42.15	42.25	0.10	0.24	-1.88	-4.26
Ukraine	8.66	6.23	5.52	5.92	6.18	5.47	5.20	5.35	53.51	34.06	28.67	31.67	3.00	10.46	-2.39	-7.00
Kazakhstan	2.63	2.63	2.55	2.55	1.43	1.79	1.72	1.72	3.76	4.71	4.39	4.39	0.00	0.00	-0.32	-6.81
Belarus	0.99	1.03	1.05	1.05	3.05	3.11	3.09	3.09	3.00	3.20	3.23	3.23	0.00	0.00	0.03	0.94
<b>Africa</b>																
Nigeria	13.70	13.50	13.40	13.40	1.56	1.59	1.54	1.54	21.40	21.51	20.70	20.70	0.00	0.00	-0.81	-3.75
South Africa	3.19	3.18	3.20	3.20	5.22	5.48	5.43	5.43	16.64	17.44	17.37	17.37	0.00	0.00	-0.07	-0.37
Tanzania	5.74	5.30	5.30	5.30	1.47	1.36	1.36	1.36	8.45	7.23	7.23	7.23	0.00	0.00	0.00	0.00
Burkina Faso	4.20	4.24	4.20	4.20	1.00	1.16	1.13	1.13	4.20	4.92	4.75	4.75	0.00	0.00	-0.17	-3.49
Ethiopia	5.60	5.64	5.65	5.65	3.10	3.19	3.24	3.24	17.37	17.95	18.30	18.30	0.00	0.00	0.35	1.95
Egypt	1.16	1.16	1.18	1.18	7.13	7.13	7.15	7.15	8.30	8.30	8.46	8.46	0.00	0.00	0.16	1.93
Mali	5.16	4.80	4.80	4.80	1.23	1.49	1.42	1.42	6.34	7.15	6.80	6.80	0.00	0.00	-0.35	-4.87
<b>India</b>	23.35	23.80	23.84	23.84	2.20	2.29	2.24	2.22	51.39	54.53	53.30	52.89	-0.41	-0.77	-1.64	-3.01
<b>Southeast Asia</b>																
Indonesia	3.90	3.95	4.00	4.00	3.26	3.27	3.28	3.28	12.70	12.90	13.10	13.10	0.00	0.00	0.20	1.55
Philippines	2.56	2.50	2.57	2.57	3.26	3.32	3.27	3.27	8.34	8.30	8.40	8.40	0.00	0.00	0.10	1.20
Vietnam	0.90	0.87	0.83	0.83	4.92	4.97	5.06	5.06	4.45	4.30	4.20	4.20	0.00	0.00	-0.10	-2.33
Thailand	1.23	1.21	1.23	1.28	4.36	4.35	4.44	4.35	5.35	5.25	5.45	5.55	0.10	1.83	0.30	5.71
<b>Mexico</b>	8.88	8.66	9.04	9.04	3.69	3.74	3.68	3.68	32.79	32.35	33.24	33.24	0.00	0.00	0.89	2.75
<b>Canada</b>	5.91	5.74	5.22	5.22	4.25	5.32	5.43	5.43	25.12	30.54	28.35	28.35	0.00	0.00	-2.19	-7.17
<b>Australia</b>	6.69	5.74	5.58	5.58	2.87	3.25	2.46	2.46	19.22	18.67	13.74	13.74	0.00	0.00	-4.93	-26.38
<b>Middle East</b>																
Turkey	4.46	4.55	4.56	4.56	2.60	3.25	3.68	3.73	11.58	14.77	16.77	16.97	0.20	1.19	2.20	14.89
Iran	1.91	1.86	1.86	1.86	2.16	2.38	2.48	2.38	4.12	4.42	4.62	4.42	-0.20	-4.33	0.00	-0.02
<b>Others</b>	73.87	73.28	73.61	73.88	1.72	1.63	1.69	1.69	126.90	119.72	124.37	125.09	0.73	0.58	5.38	4.49

World and Selected Countries and Regions; Coarse Grain includes: Barley, Corn, Millet, Mixed Grains, Oats, Rye and Sorghum



**Table 04 Corn Area, Yield, and Production**

Country / Region	Area (Million hectares)				Yield (Metric tons per hectare)				Production (Million metric tons)				Change in Production			
	2021/22	Prel.	2023/24 Proj.		2021/22	Prel.	2023/24 Proj.		2021/22	Prel.	2023/24 Proj.		From last month		From last year	
		2022/23	May	Jun		2022/23	May	Jun		2022/23	May	Jun	MMT	Percent	MMT	Percent
<b>World</b>	207.29	201.19	203.03	203.74	5.88	5.72	6.01	6.00	1,218.70	1,150.73	1,219.63	1,222.77	3.14	0.26	72.04	6.26
<b>United States</b>	34.53	32.05	34.03	34.03	11.09	10.88	11.39	11.39	382.89	348.75	387.75	387.75	0.00	0.00	39.00	11.18
<b>Total Foreign</b>	172.76	169.14	168.99	169.71	4.84	4.74	4.92	4.92	835.81	801.98	831.88	835.02	3.14	0.38	33.04	4.12
<b>China</b>	43.32	43.07	43.00	43.00	6.29	6.44	6.51	6.51	272.55	277.20	280.00	280.00	0.00	0.00	2.80	1.01
<b>South America</b>																
Brazil	21.80	22.70	22.90	22.90	5.32	5.81	5.63	5.63	116.00	132.00	129.00	129.00	0.00	0.00	-3.00	-2.27
Argentina	7.10	6.70	7.00	7.00	6.97	5.22	7.71	7.71	49.50	35.00	54.00	54.00	0.00	0.00	19.00	54.29
Bolivia	0.44	0.44	0.44	0.44	2.60	2.64	2.70	2.70	1.13	1.15	1.18	1.18	0.00	0.00	0.03	2.17
<b>European Union</b>	9.23	8.87	8.65	8.65	7.73	5.97	7.43	7.43	71.37	52.97	64.30	64.30	0.00	0.00	11.33	21.38
<b>Africa</b>																
South Africa	3.00	3.00	3.00	3.00	5.38	5.67	5.60	5.60	16.14	17.00	16.80	16.80	0.00	0.00	-0.20	-1.18
Nigeria	6.00	5.80	5.70	5.70	2.12	2.20	2.11	2.11	12.75	12.74	12.00	12.00	0.00	0.00	-0.74	-5.77
Ethiopia	2.53	2.55	2.56	2.56	3.72	4.00	4.06	4.06	9.40	10.20	10.40	10.40	0.00	0.00	0.20	1.96
Egypt	0.93	0.93	0.95	0.95	8.00	8.00	8.00	8.00	7.44	7.44	7.60	7.60	0.00	0.00	0.16	2.15
Tanzania	4.40	4.00	4.00	4.00	1.60	1.48	1.48	1.48	7.04	5.90	5.90	5.90	0.00	0.00	0.00	0.00
Malawi	1.75	1.75	1.70	1.70	2.62	2.12	2.00	2.00	4.58	3.72	3.40	3.40	0.00	0.00	-0.32	-8.53
Zambia	1.41	1.37	1.15	1.42	2.57	1.94	2.35	2.30	3.62	2.65	2.70	3.26	0.56	20.85	0.61	22.95
Kenya	2.17	1.90	2.00	2.00	1.52	1.53	1.60	1.60	3.30	2.90	3.20	3.20	0.00	0.00	0.30	10.34
Uganda	1.10	1.10	1.10	1.10	2.55	2.55	2.55	2.55	2.80	2.80	2.80	2.80	0.00	0.00	0.00	0.00
Zimbabwe	1.95	1.90	1.80	1.80	1.39	0.76	0.83	0.83	2.72	1.45	1.50	1.50	0.00	0.00	0.05	3.23
<b>Former Soviet Union - 12</b>																
Ukraine	5.49	4.05	3.40	3.80	7.68	6.67	6.47	6.45	42.13	27.00	22.00	24.50	2.50	11.36	-2.50	-9.26
Russia	2.90	2.64	2.80	2.80	5.25	6.00	5.82	5.82	15.23	15.83	16.30	16.30	0.00	0.00	0.47	2.96
<b>South Asia</b>																
India	9.96	10.10	10.00	10.00	3.39	3.56	3.43	3.43	33.73	36.00	34.30	34.30	0.00	0.00	-1.70	-4.72
Pakistan	1.65	1.60	1.65	1.65	6.43	5.83	6.36	6.36	10.64	9.33	10.50	10.50	0.00	0.00	1.17	12.53
Nepal	0.97	0.97	0.97	0.97	2.82	2.82	2.82	2.82	2.72	2.72	2.72	2.72	0.00	0.00	0.00	0.00
<b>Southeast Asia</b>																
Indonesia	3.90	3.95	4.00	4.00	3.26	3.27	3.28	3.28	12.70	12.90	13.10	13.10	0.00	0.00	0.20	1.55
Philippines	2.56	2.50	2.57	2.57	3.26	3.32	3.27	3.27	8.34	8.30	8.40	8.40	0.00	0.00	0.10	1.20
Vietnam	0.90	0.87	0.83	0.83	4.92	4.97	5.06	5.06	4.45	4.30	4.20	4.20	0.00	0.00	-0.10	-2.33
Thailand	1.20	1.18	1.20	1.25	4.42	4.41	4.50	4.40	5.30	5.20	5.40	5.50	0.10	1.85	0.30	5.77
<b>Mexico</b>	7.09	6.90	7.25	7.25	3.77	3.84	3.78	3.78	26.76	26.50	27.40	27.40	0.00	0.00	0.90	3.40
<b>Canada</b>	1.46	1.44	1.40	1.40	9.99	10.07	10.21	10.21	14.61	14.54	14.30	14.30	0.00	0.00	-0.24	-1.64
<b>Turkey</b>	0.54	0.53	0.64	0.64	12.04	12.83	12.81	12.81	6.50	6.80	8.20	8.20	0.00	0.00	1.40	20.59
<b>Others</b>	27.01	26.34	26.34	26.34	2.68	2.56	2.67	2.67	72.38	67.44	70.28	70.26	-0.02	-0.03	2.83	4.19

World and Selected Countries and Regions

**Table 05 Barley Area, Yield, and Production**

Country / Region	Area (Million hectares)				Yield (Metric tons per hectare)				Production (Million metric tons)				Change in Production			
	Prel.		2023/24 Proj.		Prel.		2023/24 Proj.		Prel.		2023/24 Proj.		From last month		From last year	
	2021/22	2022/23	May	Jun	2021/22	2022/23	May	Jun	2021/22	2022/23	May	Jun	MMT	Percent	MMT	Percent
<b>World</b>	49.82	47.22	46.47	46.47	2.92	3.22	3.17	3.18	145.40	151.99	147.37	147.98	0.61	0.41	-4.01	-2.64
<b>United States</b>	0.81	0.99	0.97	0.97	3.25	3.85	4.10	4.10	2.62	3.80	3.98	3.98	0.00	0.00	0.19	4.95
<b>Total Foreign</b>	49.01	46.24	45.50	45.50	2.91	3.21	3.15	3.16	142.78	148.20	143.39	144.00	0.61	0.43	-4.20	-2.83
<b>European Union</b>	10.30	10.42	10.40	10.40	5.05	4.97	5.06	5.08	52.05	51.79	52.60	52.85	0.25	0.48	1.06	2.05
<b>United Kingdom</b>	1.15	1.10	1.09	1.09	6.05	6.69	6.59	6.59	6.96	7.39	7.15	7.15	0.00	0.00	-0.24	-3.18
<b>Former Soviet Union - 12</b>																
Russia	7.69	7.75	7.50	7.50	2.28	2.77	2.60	2.61	17.51	21.50	19.50	19.60	0.10	0.51	-1.90	-8.84
Ukraine	2.68	1.85	1.80	1.80	3.70	3.34	3.28	3.56	9.92	6.18	5.90	6.40	0.50	8.47	0.22	3.56
Kazakhstan	2.16	2.18	2.10	2.10	1.10	1.51	1.43	1.43	2.37	3.29	3.00	3.00	0.00	0.00	-0.29	-8.73
Belarus	0.35	0.40	0.40	0.40	2.86	2.75	2.75	2.75	1.00	1.10	1.10	1.10	0.00	0.00	0.00	0.00
Azerbaijan	0.37	0.38	0.38	0.38	3.07	2.93	2.93	2.93	1.15	1.10	1.10	1.10	0.00	0.00	0.00	0.00
<b>Canada</b>	3.01	2.64	2.60	2.60	2.32	3.79	3.77	3.77	6.98	9.99	9.80	9.80	0.00	0.00	-0.19	-1.87
<b>Australia</b>	5.10	4.10	4.00	4.00	2.81	3.44	2.50	2.50	14.34	14.10	10.00	10.00	0.00	0.00	-4.10	-29.08
<b>Middle East</b>																
Turkey	3.70	3.80	3.70	3.70	1.22	1.95	2.16	2.22	4.50	7.40	8.00	8.20	0.20	2.50	0.80	10.81
Iran	1.70	1.65	1.65	1.65	1.59	1.82	1.94	1.82	2.70	3.00	3.20	3.00	-0.20	-6.25	0.00	0.00
Iraq	0.60	0.60	0.60	0.60	1.17	1.13	1.25	1.33	0.70	0.68	0.75	0.80	0.05	6.67	0.12	17.65
Syria	1.44	0.90	0.90	0.90	0.18	0.78	1.11	1.22	0.25	0.70	1.00	1.10	0.10	10.00	0.40	57.14
<b>Africa</b>																
Ethiopia	0.96	0.97	0.98	0.98	2.45	2.47	2.46	2.46	2.35	2.40	2.40	2.40	0.00	0.00	0.00	0.00
Morocco	1.49	1.10	1.20	1.20	1.87	0.64	0.92	0.92	2.78	0.70	1.10	1.10	0.00	0.00	0.40	57.14
Algeria	1.03	1.03	1.03	1.03	0.93	1.56	1.00	1.00	0.95	1.60	1.03	1.03	0.00	0.00	-0.58	-35.94
Tunisia	0.28	0.30	0.20	0.20	1.54	1.53	0.85	0.85	0.43	0.46	0.17	0.17	0.00	0.00	-0.29	-63.04
South Africa	0.10	0.10	0.11	0.11	3.52	2.99	3.41	3.41	0.33	0.30	0.38	0.38	0.00	0.00	0.07	24.17
<b>South America</b>																
Argentina	1.34	1.57	1.20	1.20	3.96	2.88	3.75	3.75	5.30	4.50	4.50	4.50	0.00	0.00	0.00	0.00
Uruguay	0.22	0.21	0.19	0.19	4.11	4.25	4.16	4.16	0.92	0.90	0.79	0.79	0.00	0.00	-0.11	-11.93
Brazil	0.11	0.12	0.13	0.13	3.79	3.92	3.96	3.96	0.43	0.48	0.50	0.50	0.00	0.00	0.01	2.70
<b>India</b>	0.59	0.45	0.74	0.74	2.80	3.02	2.86	2.30	1.66	1.37	2.10	1.69	-0.41	-19.52	0.32	23.36
<b>China</b>	0.51	0.51	0.50	0.50	3.92	3.92	4.00	4.00	2.00	2.00	2.00	2.00	0.00	0.00	0.00	0.00
<b>Mexico</b>	0.35	0.31	0.33	0.33	3.11	2.95	2.92	2.92	1.09	0.90	0.95	0.95	0.00	0.00	0.05	5.56
<b>Afghanistan</b>	0.04	0.08	0.08	0.08	1.63	1.38	1.38	1.38	0.07	0.11	0.11	0.11	0.00	0.00	0.00	0.00
<b>Others</b>	1.75	1.74	1.73	1.73	2.32	2.46	2.48	2.49	4.05	4.27	4.27	4.29	0.02	0.47	0.03	0.59

World and Selected Countries and Regions

**Table 06 Oats Area, Yield, and Production**

Country / Region	Area (Million hectares)				Yield (Metric tons per hectare)				Production (Million metric tons)				Change in Production			
	Prel.		2023/24 Proj.		Prel.		2023/24 Proj.		Prel.		2023/24 Proj.		From last month		From last year	
	2021/22	2022/23	May	Jun	2021/22	2022/23	May	Jun	2021/22	2022/23	May	Jun	MMT	Percent	MMT	Percent
<b>World</b>	9.63	9.47	9.16	9.16	2.36	2.71	2.54	2.54	22.73	25.62	23.30	23.30	0.00	0.00	-2.33	-9.07
<b>United States</b>	0.26	0.36	0.36	0.36	2.20	2.33	2.39	2.39	0.58	0.84	0.87	0.87	0.00	0.00	0.03	4.06
<b>Total Foreign</b>	9.36	9.11	8.79	8.79	2.37	2.72	2.55	2.55	22.15	24.79	22.43	22.43	0.00	0.00	-2.36	-9.52
<b>European Union</b>	2.54	2.37	2.40	2.40	2.95	3.22	3.08	3.08	7.52	7.63	7.40	7.40	0.00	0.00	-0.23	-3.03
<b>Former Soviet Union - 12</b>																
Russia	2.17	2.13	2.10	2.10	1.72	2.11	1.95	1.95	3.73	4.50	4.10	4.10	0.00	0.00	-0.40	-8.89
Ukraine	0.18	0.15	0.15	0.15	2.61	2.60	2.33	2.33	0.48	0.39	0.35	0.35	0.00	0.00	-0.04	-10.26
Belarus	0.15	0.16	0.16	0.16	2.33	2.42	2.26	2.26	0.35	0.38	0.35	0.35	0.00	0.00	-0.03	-6.67
Kazakhstan	0.20	0.20	0.19	0.19	0.90	1.16	1.16	1.16	0.18	0.23	0.22	0.22	0.00	0.00	-0.01	-3.93
<b>Canada</b>	1.21	1.40	1.03	1.03	2.39	3.73	3.56	3.56	2.90	5.23	3.65	3.65	0.00	0.00	-1.58	-30.16
<b>South America</b>																
Argentina	0.35	0.28	0.29	0.29	2.07	2.30	2.14	2.14	0.73	0.65	0.61	0.61	0.00	0.00	-0.04	-5.43
Brazil	0.50	0.50	0.51	0.51	2.27	2.38	2.39	2.39	1.14	1.19	1.22	1.22	0.00	0.00	0.03	2.52
Chile	0.12	0.07	0.10	0.10	4.70	4.38	4.74	4.74	0.58	0.32	0.45	0.45	0.00	0.00	0.14	42.86
Uruguay	0.01	0.02	0.02	0.02	2.21	2.40	2.24	2.24	0.03	0.04	0.04	0.04	0.00	0.00	0.00	5.56
<b>Oceania</b>																
Australia	0.84	0.80	0.85	0.85	2.06	2.00	1.76	1.76	1.74	1.60	1.50	1.50	0.00	0.00	-0.10	-6.25
New Zealand	0.00	0.01	0.01	0.01	6.25	5.67	5.67	5.67	0.03	0.03	0.03	0.03	0.00	0.00	0.00	0.00
<b>China</b>	0.41	0.41	0.41	0.41	1.48	1.48	1.48	1.48	0.60	0.60	0.60	0.60	0.00	0.00	0.00	0.00
<b>Africa</b>																
Algeria	0.08	0.08	0.08	0.08	1.31	1.31	1.31	1.31	0.11	0.11	0.11	0.11	0.00	0.00	0.00	0.00
Morocco	0.02	0.02	0.01	0.01	0.33	0.40	0.31	0.31	0.01	0.01	0.00	0.00	0.00	0.00	0.00	-33.33
South Africa	0.04	0.03	0.03	0.03	1.64	1.04	1.50	1.50	0.06	0.03	0.05	0.05	0.00	0.00	0.02	60.71
<b>Other Europe</b>																
United Kingdom	0.20	0.17	0.17	0.17	5.62	5.79	5.45	5.45	1.12	1.01	0.90	0.90	0.00	0.00	-0.11	-10.63
Norway	0.07	0.07	0.07	0.07	4.29	4.29	4.29	4.29	0.30	0.30	0.30	0.30	0.00	0.00	0.00	0.00
Serbia	0.02	0.02	0.02	0.02	3.11	2.80	3.00	3.00	0.06	0.04	0.06	0.06	0.00	0.00	0.02	42.86
Albania	0.02	0.02	0.02	0.02	2.20	2.20	2.27	2.27	0.03	0.03	0.03	0.03	0.00	0.00	0.00	3.03
Bosnia and Herzegovina	0.01	0.01	0.01	0.01	2.82	4.00	3.43	3.43	0.03	0.04	0.02	0.02	0.00	0.00	-0.02	-45.45
<b>Turkey</b>	0.11	0.11	0.11	0.11	2.38	2.38	2.38	2.38	0.25	0.25	0.25	0.25	0.00	0.00	0.00	0.00
<b>Mexico</b>	0.05	0.05	0.05	0.05	2.02	2.00	2.00	2.00	0.09	0.10	0.09	0.09	0.00	0.00	-0.01	-10.00
<b>Others</b>	0.06	0.06	0.06	0.06	1.66	1.66	1.68	1.68	0.10	0.10	0.09	0.09	0.00	0.00	-0.01	-6.93

World and Selected Countries and Regions

**Table 07 Rye Area, Yield, and Production**

Country / Region	Area (Million hectares)				Yield (Metric tons per hectare)				Production (Million metric tons)				Change in Production						
	2021/22	Prel.		2023/24 Proj.		2021/22	Prel.		2023/24 Proj.		2021/22	Prel.		2023/24 Proj.		From last month		From last year	
		2022/23	May	Jun	2022/23		May	Jun	2022/23	May		Jun	MMT	Percent	MMT	Percent			
<b>World</b>	4.03	3.66	3.66	3.66	3.10	3.31	3.28	3.28	12.51	12.11	12.00	12.00	0.00	0.00	-0.12	-0.98			
<b>United States</b>	0.12	0.14	0.12	0.12	2.09	2.26	2.20	2.20	0.25	0.31	0.27	0.27	0.00	0.00	-0.05	-14.74			
<b>Total Foreign</b>	3.92	3.53	3.54	3.54	3.13	3.35	3.31	3.31	12.26	11.80	11.73	11.73	0.00	0.00	-0.07	-0.62			
<b>European Union</b>	1.93	1.76	1.83	1.83	4.15	4.28	4.23	4.23	8.01	7.54	7.75	7.75	0.00	0.00	0.21	2.84			
<b>Former Soviet Union - 12</b>																			
Russia	0.99	0.88	0.88	0.88	1.73	2.27	2.17	2.17	1.72	2.00	1.90	1.90	0.00	0.00	-0.10	-5.00			
Belarus	0.33	0.30	0.31	0.31	2.46	2.50	2.52	2.52	0.80	0.75	0.78	0.78	0.00	0.00	0.03	4.00			
Ukraine	0.18	0.10	0.08	0.08	3.43	2.85	2.88	2.88	0.60	0.29	0.23	0.23	0.00	0.00	-0.06	-19.30			
Kazakhstan	0.04	0.03	0.03	0.03	0.91	1.76	1.33	1.33	0.04	0.06	0.04	0.04	0.00	0.00	-0.02	-33.33			
<b>Turkey</b>	0.12	0.11	0.11	0.11	2.87	2.91	2.91	2.91	0.33	0.32	0.32	0.32	0.00	0.00	0.00	0.00			
<b>Canada</b>	0.12	0.15	0.12	0.12	3.21	3.42	3.26	3.26	0.37	0.52	0.38	0.38	0.00	0.00	-0.15	-27.88			
<b>South America</b>																			
Chile	0.00	0.00	0.00	0.00	5.00	5.00	0.00	0.00	0.01	0.01	0.00	0.00	0.00	100.00	-0.01	-100.00			
Argentina	0.12	0.09	0.09	0.09	1.88	1.84	1.83	1.83	0.23	0.16	0.17	0.17	0.00	0.00	0.01	3.13			
<b>Other Europe</b>																			
Bosnia and Herzegovina	0.00	0.00	0.00	0.00	3.00	3.00	3.00	3.00	0.01	0.01	0.01	0.01	0.00	0.00	0.00	0.00			
Switzerland	0.00	0.00	0.00	0.00	5.50	5.50	5.50	5.50	0.01	0.01	0.01	0.01	0.00	0.00	0.00	0.00			
Serbia	0.01	0.01	0.01	0.01	3.80	3.00	3.33	3.33	0.02	0.02	0.02	0.02	0.00	0.00	0.00	11.11			
<b>Australia</b>	0.05	0.05	0.05	0.05	0.71	0.71	0.71	0.71	0.03	0.03	0.03	0.03	0.00	0.00	0.00	0.00			
<b>Others</b>	0.04	0.04	0.04	0.04	2.18	2.18	2.20	2.20	0.10	0.10	0.10	0.10	0.00	0.00	0.00	1.04			

World and Selected Countries and Regions

**Table 08 Sorghum Area, Yield, and Production**

Country / Region	Area (Million hectares)				Yield (Metric tons per hectare)				Production (Million metric tons)				Change in Production			
	Prel.		2023/24 Proj.		Prel.		2023/24 Proj.		Prel.		2023/24 Proj.		From last month		From last year	
	2021/22	2022/23	May	Jun	2021/22	2022/23	May	Jun	2021/22	2022/23	May	Jun	MMT	Percent	MMT	Percent
<b>World</b>	40.75	40.30	41.45	41.44	1.53	1.42	1.50	1.50	62.28	57.23	62.18	62.17	-0.01	-0.02	4.94	8.63
<b>United States</b>	2.63	1.85	2.10	2.10	4.33	2.58	4.35	4.35	11.38	4.77	9.14	9.14	0.00	0.00	4.37	91.70
<b>Total Foreign</b>	38.12	38.45	39.35	39.34	1.34	1.36	1.35	1.35	50.91	52.46	53.04	53.03	-0.01	-0.02	0.57	1.08
<b>Africa</b>																
Nigeria	5.70	5.70	5.70	5.70	1.18	1.18	1.18	1.18	6.73	6.74	6.70	6.70	0.00	0.00	-0.04	-0.62
Ethiopia	1.65	1.66	1.66	1.66	2.70	2.53	2.65	2.65	4.45	4.20	4.40	4.40	0.00	0.00	0.20	4.76
Sudan	6.92	7.00	7.50	7.50	0.51	0.75	0.67	0.67	3.53	5.25	5.00	5.00	0.00	0.00	-0.25	-4.73
Burkina Faso	1.90	1.90	1.90	1.90	0.87	1.06	1.00	1.00	1.64	2.01	1.90	1.90	0.00	0.00	-0.11	-5.66
Mali	1.55	1.50	1.50	1.50	0.81	1.05	1.00	1.00	1.25	1.58	1.50	1.50	0.00	0.00	-0.08	-5.18
Niger	3.52	3.70	3.70	3.70	0.34	0.32	0.51	0.51	1.21	1.20	1.90	1.90	0.00	0.00	0.70	58.33
Cameroon	0.74	0.74	0.74	0.74	1.62	1.62	1.62	1.62	1.20	1.20	1.20	1.20	0.00	0.00	0.00	0.00
Tanzania	1.04	1.00	1.00	1.00	1.04	1.00	1.00	1.00	1.08	1.00	1.00	1.00	0.00	0.00	0.00	0.00
Egypt	0.15	0.15	0.15	0.15	5.00	5.00	5.00	5.00	0.75	0.75	0.75	0.75	0.00	0.00	0.00	0.00
Uganda	0.25	0.25	0.25	0.25	1.32	0.90	0.90	0.90	0.33	0.23	0.23	0.23	0.00	0.00	0.00	0.00
Ghana	0.31	0.31	0.31	0.31	1.05	1.49	1.13	1.13	0.32	0.46	0.35	0.35	0.00	0.00	-0.11	-24.41
Mozambique	0.25	0.15	0.25	0.25	0.64	1.04	0.64	0.64	0.16	0.15	0.16	0.16	0.00	0.00	0.01	4.58
South Africa	0.04	0.04	0.04	0.04	2.78	3.00	3.75	3.75	0.10	0.11	0.15	0.15	0.00	0.00	0.05	42.86
<b>Mexico</b>	1.40	1.40	1.42	1.42	3.47	3.46	3.38	3.38	4.84	4.85	4.80	4.80	0.00	0.00	-0.05	-1.03
<b>South America</b>																
Argentina	0.93	0.85	0.80	0.80	3.68	4.00	4.13	4.13	3.40	3.40	3.30	3.30	0.00	0.00	-0.10	-2.94
Brazil	0.95	1.07	1.23	1.23	3.20	2.72	2.93	2.93	3.04	2.92	3.60	3.60	0.00	0.00	0.68	23.29
<b>South Asia</b>																
India	3.80	3.75	4.10	4.10	1.09	1.07	1.07	1.07	4.15	4.00	4.40	4.40	0.00	0.00	0.40	10.00
Pakistan	0.08	0.22	0.22	0.22	0.83	0.63	0.63	0.63	0.06	0.14	0.14	0.14	0.00	0.00	0.00	0.00
<b>China</b>	0.63	0.63	0.63	0.63	4.76	4.76	4.76	4.76	3.00	3.00	3.00	3.00	0.00	0.00	0.00	0.00
<b>Australia</b>	0.62	0.70	0.60	0.60	4.26	3.57	3.00	3.00	2.65	2.50	1.80	1.80	0.00	0.00	-0.70	-28.00
<b>European Union</b>	0.15	0.13	0.15	0.15	5.41	4.27	5.00	5.00	0.80	0.55	0.75	0.75	0.00	0.00	0.20	36.12
<b>Others</b>	5.57	5.61	5.51	5.49	1.12	1.11	1.09	1.09	6.22	6.22	6.02	6.01	-0.01	-0.17	-0.22	-3.49

World and Selected Countries and Regions

**Table 09 Rice Area, Yield, and Production**  
**World and Selected Countries and Regions**

Country / Region	Area (Million hectares)				Yield (Metric tons per hectare)				Production (Million metric tons)				Change in Production			
	Prel.		2023/24 Proj.		Prel.		2023/24 Proj.		Prel.		2023/24 Proj.		From last month		From last year	
	2021/22	2022/23	May	Jun	2021/22	2022/23	May	Jun	2021/22	2022/23	May	Jun	MMT	Percent	MMT	Percent
<b>World</b>	165.51	165.27	166.38	166.08	4.64	4.63	4.67	4.68	513.95	512.53	520.52	520.49	-0.03	-0.01	7.97	1.55
<b>United States</b>	1.01	0.88	1.03	1.03	8.64	8.28	8.50	8.50	6.08	5.09	6.12	6.12	0.00	0.00	1.03	20.17
<b>Total Foreign</b>	164.50	164.39	165.35	165.05	4.61	4.61	4.65	4.66	507.87	507.43	514.41	514.37	-0.03	-0.01	6.94	1.37
<b>East Asia</b>																
China	29.92	29.45	29.85	29.85	7.11	7.08	7.13	7.13	148.99	145.95	149.00	149.00	0.00	0.00	3.05	2.09
Japan	1.52	1.50	1.48	1.48	6.90	6.86	6.91	6.91	7.64	7.48	7.45	7.45	0.00	0.00	-0.03	-0.40
Korea, South	0.73	0.73	0.70	0.70	7.12	6.88	6.77	6.77	3.88	3.76	3.57	3.57	0.00	0.00	-0.19	-5.13
Korea, North	0.50	0.50	0.50	0.50	4.18	4.18	4.18	4.18	1.36	1.36	1.36	1.36	0.00	0.00	0.00	0.00
<b>South Asia</b>																
India	46.28	47.70	47.00	47.00	4.20	4.28	4.25	4.28	129.47	136.00	133.00	134.00	1.00	0.75	-2.00	-1.47
Bangladesh	11.62	11.60	11.85	11.85	4.63	4.70	4.68	4.68	35.85	36.35	37.00	37.00	0.00	0.00	0.65	1.79
Pakistan	3.54	3.00	3.50	3.50	3.95	2.75	3.86	3.86	9.32	5.50	9.00	9.00	0.00	0.00	3.50	63.64
Nepal	1.48	1.45	1.45	1.45	3.47	3.79	3.79	3.79	3.42	3.65	3.65	3.65	0.00	0.00	0.00	0.00
Sri Lanka	1.13	1.09	1.10	1.10	3.56	3.76	4.09	4.09	2.73	2.78	3.06	3.06	0.00	0.00	0.28	9.95
<b>Southeast Asia</b>																
Indonesia	11.60	11.55	11.60	11.60	4.67	4.64	4.68	4.68	34.40	34.00	34.45	34.45	0.00	0.00	0.45	1.32
Vietnam	7.19	7.17	7.16	7.16	5.96	6.03	6.03	6.03	26.77	27.00	27.00	27.00	0.00	0.00	0.00	0.00
Thailand	10.70	10.85	10.90	10.60	2.81	2.82	2.85	2.82	19.88	20.20	20.50	19.70	-0.80	-3.90	-0.50	-2.48
Burma	7.00	6.80	7.00	7.00	2.77	2.71	2.79	2.79	12.40	11.80	12.50	12.50	0.00	0.00	0.70	5.93
Philippines	4.80	4.85	4.80	4.80	4.15	4.12	4.17	4.17	12.54	12.60	12.60	12.60	0.00	0.00	0.00	0.00
Cambodia	3.27	3.31	3.37	3.37	2.89	2.94	3.03	2.92	5.77	5.93	6.22	6.00	-0.22	-3.57	0.07	1.13
Laos	0.94	0.95	0.96	0.96	3.28	3.26	3.26	3.26	1.95	1.95	1.96	1.96	0.00	0.00	0.01	0.51
Malaysia	0.65	0.66	0.66	0.66	3.97	3.99	4.08	4.08	1.68	1.70	1.75	1.75	0.00	0.00	0.05	2.94
<b>South America</b>																
Brazil	1.62	1.47	1.40	1.40	6.67	6.80	7.14	7.14	7.34	6.80	6.80	6.80	0.00	0.00	0.00	0.00
Peru	0.42	0.42	0.43	0.43	8.37	8.55	8.52	8.52	2.43	2.48	2.50	2.50	0.00	0.00	0.02	0.64
<b>Africa</b>																
Egypt	0.50	0.60	0.63	0.63	8.41	8.70	8.70	8.70	2.90	3.60	3.78	3.78	0.00	0.00	0.18	5.00
Madagascar	1.60	1.60	1.60	1.60	2.74	2.75	2.75	2.75	2.81	2.82	2.82	2.82	0.00	0.00	0.00	0.00
Nigeria	3.65	3.50	3.50	3.50	2.29	2.43	2.37	2.37	5.26	5.36	5.23	5.23	0.00	0.00	-0.13	-2.35
<b>European Union</b>	0.40	0.33	0.35	0.35	6.64	6.32	6.51	6.51	1.73	1.34	1.46	1.46	0.00	0.00	0.12	9.28
<b>Iran</b>	0.56	0.57	0.57	0.57	5.14	5.32	5.26	5.26	1.90	2.00	1.98	1.98	0.00	0.00	-0.02	-1.00
<b>Others</b>	12.88	12.75	13.00	13.01	3.00	2.98	3.01	3.00	25.46	25.02	25.76	25.75	-0.01	-0.04	0.73	2.92

Yield is on a rough basis, before the milling process. Production is on a milled basis, after the milling process.

**Table 10 Total Oilseed Area, Yield, and Production**

**World and Selected Countries and Regions**

Country / Region	Area (Million hectares)				Yield (Metric tons per hectare)				Production (Million metric tons)				Change in Production			
	2021/22	Prel.	2023/24 Proj.		2021/22	Prel.	2023/24 Proj.		2021/22	Prel.	2023/24 Proj.		From last month		From last year	
		2022/23	May	Jun		2022/23	May	Jun		2022/23	May	Jun	MMT	Percent	MMT	Percent
<b>World Total</b>	--	--	--	--	--	--	--	--	610.48	627.40	671.23	671.38	0.15	0.02	43.98	7.01
<b>Total Foreign</b>	--	--	--	--	--	--	--	--	479.13	501.47	538.38	538.17	-0.21	-0.04	36.70	7.32
<b>Oilseed, Copra</b>	--	--	--	--	--	--	--	--	6.07	6.03	6.05	6.05	0.00	0.00	0.02	0.36
<b>Oilseed, Palm Kernel</b>	--	--	--	--	--	--	--	--	19.13	20.02	20.50	20.30	-0.20	-0.98	0.27	1.36
<b>Major Oilseeds</b>	260.51	264.72	270.53	270.84	2.25	2.27	2.38	2.38	585.28	601.34	644.68	645.03	0.35	0.05	43.69	7.26
<b>United States</b>	41.06	39.99	40.63	40.91	3.20	3.15	3.27	3.26	131.35	125.93	132.85	133.20	0.35	0.27	7.28	5.78
<b>Foreign Oilseeds</b>	219.45	224.73	229.90	229.92	2.07	2.12	2.23	2.23	453.93	475.42	511.83	511.83	-0.01	0.00	36.41	7.66
<b>South America</b>	68.95	70.37	73.73	73.73	2.86	2.94	3.25	3.25	197.08	206.95	239.61	239.61	0.00	0.00	32.66	15.78
Brazil	43.46	45.79	47.51	47.51	3.11	3.52	3.54	3.54	135.33	161.34	168.35	168.35	0.00	0.00	7.02	4.35
Argentina	18.77	18.00	19.16	19.16	2.65	1.73	2.80	2.80	49.67	31.11	53.74	53.74	0.00	0.00	22.62	72.71
Paraguay	3.51	3.56	3.65	3.65	1.23	2.52	2.78	2.78	4.31	8.97	10.14	10.14	0.00	0.00	1.18	13.10
Bolivia	1.69	1.57	1.63	1.63	2.25	2.10	2.13	2.13	3.80	3.30	3.48	3.48	0.00	0.00	0.18	5.37
Uruguay	1.38	1.31	1.64	1.64	2.63	1.44	2.15	2.15	3.62	1.88	3.53	3.53	0.00	0.00	1.65	87.77
<b>China</b>	24.02	26.26	26.53	26.37	2.58	2.61	2.55	2.55	62.07	68.51	67.68	67.17	-0.51	-0.75	-1.34	-1.96
<b>South Asia</b>	41.80	42.83	43.21	43.41	1.11	1.03	1.06	1.06	46.59	44.27	45.66	45.92	0.26	0.57	1.65	3.73
India	38.48	39.48	39.87	39.87	1.10	1.03	1.04	1.04	42.19	40.67	41.34	41.34	0.00	0.00	0.67	1.65
Pakistan	2.59	2.43	2.42	2.62	1.31	0.96	1.28	1.28	3.38	2.34	3.09	3.35	0.26	8.42	1.00	42.79
<b>European Union</b>	11.09	12.55	12.66	12.71	2.80	2.54	2.81	2.85	31.04	31.90	35.58	36.19	0.62	1.73	4.29	13.45
<b>United Kingdom</b>	0.31	0.36	0.41	0.41	3.20	3.74	3.50	3.50	0.98	1.36	1.44	1.44	0.00	0.00	0.07	5.44
<b>Former Soviet Union - 12</b>	27.74	26.97	28.02	28.02	1.89	1.87	1.82	1.82	52.46	50.34	50.99	51.04	0.05	0.10	0.70	1.40
Russia	14.23	14.74	15.00	15.00	1.62	1.78	1.74	1.74	23.11	26.25	26.10	26.10	0.00	0.00	-0.15	-0.57
Ukraine	9.58	8.10	8.85	8.85	2.54	2.32	2.21	2.21	24.32	18.80	19.55	19.60	0.05	0.26	0.80	4.26
Uzbekistan	1.08	1.09	1.05	1.05	1.11	1.27	1.21	1.21	1.20	1.38	1.26	1.26	0.00	0.00	-0.12	-8.54
<b>Canada</b>	11.06	10.76	11.04	11.04	1.81	2.38	2.44	2.44	20.05	25.63	26.89	26.89	0.00	0.00	1.26	4.91
<b>Africa</b>	24.35	23.64	24.02	23.95	0.98	1.04	1.05	1.06	23.74	24.65	25.34	25.33	-0.01	-0.04	0.67	2.73
Nigeria	4.97	4.87	4.92	4.92	1.11	1.17	1.16	1.16	5.50	5.68	5.70	5.70	0.00	0.00	0.02	0.28
South Africa	1.66	1.76	1.85	1.85	1.91	2.08	2.04	2.04	3.17	3.65	3.78	3.78	0.00	0.00	0.12	3.34
Tanzania	1.24	1.35	1.35	1.35	0.98	0.93	0.93	0.93	1.21	1.25	1.25	1.25	0.00	0.00	0.00	0.00
<b>Southeast Asia</b>	3.12	3.08	3.05	3.05	1.36	1.36	1.39	1.39	4.23	4.18	4.23	4.23	0.00	0.00	0.05	1.12
Burma	1.95	1.94	1.95	1.95	1.16	1.18	1.24	1.24	2.25	2.28	2.41	2.41	0.00	0.00	0.13	5.47
Indonesia	0.90	0.87	0.84	0.84	1.55	1.52	1.49	1.49	1.39	1.32	1.26	1.26	0.00	0.00	-0.07	-4.92
<b>Australia</b>	3.94	4.65	4.21	4.21	2.20	2.16	1.69	1.60	8.68	10.05	7.13	6.73	-0.40	-5.61	-3.32	-33.03
<b>Turkey</b>	1.32	1.48	1.24	1.24	2.55	2.69	2.68	2.68	3.37	3.98	3.34	3.34	0.00	0.00	-0.64	-16.13
<b>Others</b>	1.76	1.78	1.79	1.79	2.06	2.02	2.22	2.21	3.63	3.60	3.97	3.95	-0.02	-0.43	0.35	9.80

World Total and Total Foreign: (Major Oilseeds plus copra and palm kernel) Major Oilseeds: (soybeans, sunflowerseeds, peanuts(inshell), cottonseed and rapeseed)

**Table 11 Soybean Area, Yield, and Production**

Country / Region	Area (Million hectares)				Yield (Metric tons per hectare)				Production (Million metric tons)				Change in Production			
	Prel.		2023/24 Proj.		Prel.		2023/24 Proj.		Prel.		2023/24 Proj.		From last month		From last year	
	2021/22	2022/23	May	Jun	2021/22	2022/23	May	Jun	2021/22	2022/23	May	Jun	MMT	Percent	MMT	Percent
<b>World</b>	131.01	134.79	139.78	139.82	2.75	2.74	2.94	2.94	359.91	369.57	410.59	410.70	0.12	0.03	41.13	11.13
<b>United States</b>	34.93	34.94	35.09	35.09	3.48	3.33	3.50	3.50	121.53	116.38	122.74	122.74	0.00	0.00	6.37	5.47
<b>Total Foreign</b>	96.08	99.85	104.69	104.74	2.48	2.54	2.75	2.75	238.38	253.20	287.84	287.96	0.12	0.04	34.76	13.73
<b>South America</b>																
Brazil	41.60	43.90	45.60	45.60	3.14	3.55	3.57	3.57	130.50	156.00	163.00	163.00	0.00	0.00	7.00	4.49
Argentina	15.90	15.00	16.40	16.40	2.76	1.67	2.93	2.93	43.90	25.00	48.00	48.00	0.00	0.00	23.00	92.00
Paraguay	3.42	3.45	3.55	3.55	1.22	2.55	2.82	2.82	4.18	8.80	10.00	10.00	0.00	0.00	1.20	13.64
Bolivia	1.55	1.43	1.50	1.50	2.32	2.17	2.20	2.20	3.60	3.10	3.30	3.30	0.00	0.00	0.20	6.45
Uruguay	1.16	0.90	1.28	1.28	2.80	1.33	2.27	2.27	3.23	1.20	2.90	2.90	0.00	0.00	1.70	141.67
<b>East Asia</b>																
China	8.42	10.24	10.45	10.45	1.95	1.98	1.96	1.96	16.40	20.28	20.50	20.50	0.00	0.00	0.22	1.08
Korea, South	0.05	0.06	0.07	0.07	2.06	2.03	1.93	1.93	0.11	0.13	0.13	0.13	0.00	0.00	0.00	0.77
Korea, North	0.17	0.16	0.16	0.16	1.15	1.15	1.15	1.15	0.19	0.18	0.18	0.18	0.00	0.00	0.00	0.00
Japan	0.15	0.15	0.16	0.16	1.63	1.58	1.63	1.63	0.24	0.24	0.25	0.25	0.00	0.00	0.02	6.30
<b>India</b>	12.15	12.00	12.50	12.50	0.98	1.00	0.96	0.96	11.89	12.04	12.00	12.00	0.00	0.00	-0.04	-0.32
<b>Canada</b>	2.08	2.12	2.20	2.20	2.99	3.09	2.95	2.95	6.22	6.54	6.50	6.50	0.00	0.00	-0.04	-0.66
<b>Former Soviet Union - 12</b>																
Russia	2.99	3.36	3.40	3.40	1.59	1.79	1.74	1.74	4.76	6.00	5.90	5.90	0.00	0.00	-0.10	-1.60
Ukraine	1.44	1.70	2.00	2.00	2.64	2.41	2.30	2.30	3.80	4.10	4.60	4.60	0.00	0.00	0.50	12.20
<b>European Union</b>	1.01	1.13	1.10	1.15	2.82	2.26	2.82	2.80	2.83	2.55	3.10	3.22	0.12	3.71	0.66	25.88
<b>Southeast Asia</b>																
Indonesia	0.35	0.33	0.32	0.32	1.21	1.18	1.17	1.17	0.43	0.39	0.38	0.38	0.00	0.00	-0.02	-3.85
Vietnam	0.03	0.03	0.03	0.03	1.61	1.60	1.61	1.61	0.05	0.05	0.05	0.05	0.00	0.00	0.00	-6.25
Thailand	0.03	0.03	0.03	0.03	1.63	1.63	1.63	1.63	0.05	0.05	0.05	0.05	0.00	0.00	0.00	0.00
Burma	0.13	0.13	0.12	0.12	1.04	1.04	1.04	1.04	0.14	0.13	0.13	0.13	0.00	0.00	-0.01	-3.85
<b>Serbia</b>	0.24	0.24	0.24	0.24	2.28	1.70	3.09	3.09	0.54	0.40	0.73	0.73	0.00	0.00	0.33	81.70
<b>Mexico</b>	0.18	0.12	0.15	0.15	1.57	1.52	1.57	1.57	0.29	0.18	0.24	0.24	0.00	0.00	0.06	34.29
<b>Africa</b>																
South Africa	0.93	1.15	1.20	1.20	2.41	2.40	2.33	2.33	2.23	2.76	2.80	2.80	0.00	0.00	0.05	1.63
Nigeria	1.20	1.20	1.20	1.20	0.93	1.04	1.04	1.04	1.12	1.25	1.25	1.25	0.00	0.00	0.00	0.00
Zambia	0.30	0.38	0.38	0.38	1.35	1.27	1.27	1.27	0.41	0.48	0.48	0.48	0.00	0.00	0.00	0.00
Uganda	0.05	0.05	0.05	0.05	0.60	0.60	0.60	0.60	0.03	0.03	0.03	0.03	0.00	0.00	0.00	0.00
<b>Middle East</b>																
Iran	0.07	0.08	0.07	0.07	2.29	2.27	2.36	2.36	0.16	0.17	0.17	0.17	0.00	0.00	-0.01	-2.94
Turkey	0.03	0.04	0.03	0.03	3.91	4.14	4.12	4.12	0.13	0.15	0.14	0.14	0.00	0.00	-0.01	-3.45
<b>Others</b>	0.47	0.51	0.52	0.52	2.04	2.01	2.04	2.04	0.96	1.02	1.06	1.06	0.00	0.00	0.05	4.42

World and Selected Countries and Regions



**Table 12 Cottonseed Area, Yield, and Production**

Country / Region	Area (Million hectares)				Yield (Metric tons per hectare)				Production (Million metric tons)				Change in Production			
	Prel.		2023/24 Proj.		Prel.		2023/24 Proj.		Prel.		2023/24 Proj.		From last month		From last year	
	2021/22	2022/23	May	Jun	2021/22	2022/23	May	Jun	2021/22	2022/23	May	Jun	MMT	Percent	MMT	Percent
<b>World</b>	31.93	31.17	30.99	31.35	1.31	1.36	1.36	1.36	41.68	42.45	42.28	42.67	0.39	0.93	0.22	0.53
<b>United States</b>	4.16	2.96	3.53	3.81	1.16	1.35	1.24	1.24	4.83	4.01	4.39	4.74	0.35	8.07	0.74	18.35
<b>Total Foreign</b>	27.78	28.22	27.46	27.54	1.33	1.36	1.38	1.38	36.85	38.44	37.89	37.93	0.04	0.10	-0.51	-1.33
<b>South Asia</b>																
India	12.37	13.00	12.40	12.40	0.84	0.82	0.87	0.87	10.36	10.61	10.83	10.83	0.00	0.00	0.21	2.00
Pakistan	2.00	1.80	1.80	2.00	1.30	0.94	1.28	1.28	2.60	1.69	2.30	2.56	0.26	11.32	0.87	51.33
<b>China</b>	3.10	3.10	2.95	2.90	3.39	3.88	3.65	3.65	10.50	12.03	10.78	10.58	-0.20	-1.82	-1.45	-12.05
<b>Former Soviet Union - 12</b>																
Uzbekistan	1.06	1.07	1.03	1.03	1.07	1.24	1.18	1.18	1.14	1.33	1.21	1.21	0.00	0.00	-0.12	-8.86
Turkmenistan	0.55	0.55	0.55	0.55	0.64	0.64	0.64	0.64	0.35	0.35	0.35	0.35	0.00	0.00	0.00	0.00
Tajikistan	0.17	0.17	0.17	0.17	1.09	1.11	1.15	1.15	0.19	0.19	0.20	0.20	0.00	0.00	0.01	3.72
Kazakhstan	0.11	0.13	0.12	0.12	0.84	1.05	0.94	0.94	0.09	0.13	0.11	0.11	0.00	0.00	-0.02	-13.74
<b>South America</b>																
Brazil	1.60	1.63	1.63	1.63	2.43	2.69	2.70	2.70	3.89	4.38	4.40	4.40	0.00	0.00	0.02	0.39
Argentina	0.48	0.40	0.41	0.41	0.68	1.06	1.17	1.17	0.33	0.43	0.48	0.48	0.00	0.00	0.06	13.18
<b>Middle East</b>																
Turkey	0.45	0.56	0.43	0.43	2.76	2.88	2.69	2.69	1.24	1.60	1.14	1.14	0.00	0.00	-0.46	-28.56
Syria	0.03	0.03	0.03	0.03	2.20	2.20	2.20	2.20	0.06	0.06	0.06	0.06	0.00	0.00	0.00	0.00
Iran	0.10	0.10	0.10	0.10	1.35	1.35	1.35	1.18	0.14	0.14	0.14	0.12	-0.02	-12.59	-0.02	-12.59
<b>Australia</b>	0.64	0.68	0.65	0.65	2.77	2.42	2.68	2.68	1.76	1.65	1.74	1.74	0.00	0.00	0.09	5.45
<b>European Union</b>	0.32	0.31	0.29	0.29	1.66	1.70	1.64	1.64	0.53	0.53	0.48	0.48	0.00	0.00	-0.05	-8.76
<b>Africa</b>																
Burkina Faso	0.60	0.62	0.61	0.61	0.45	0.35	0.42	0.42	0.27	0.21	0.26	0.26	0.00	0.00	0.04	19.16
Mali	0.72	0.60	0.70	0.70	0.56	0.35	0.51	0.50	0.40	0.21	0.35	0.35	0.00	-0.28	0.15	69.71
Cameroon	0.23	0.23	0.23	0.23	1.39	1.29	1.30	1.30	0.32	0.30	0.30	0.30	0.00	0.00	0.00	0.00
Cote d'Ivoire	0.47	0.41	0.39	0.39	0.60	0.29	0.52	0.52	0.28	0.12	0.20	0.20	0.00	0.00	0.08	70.59
Benin	0.64	0.57	0.64	0.64	0.73	0.64	0.72	0.72	0.47	0.36	0.46	0.46	0.00	0.00	0.10	27.20
Tanzania	0.24	0.35	0.35	0.35	0.46	0.43	0.43	0.43	0.11	0.15	0.15	0.15	0.00	0.00	0.00	0.00
Egypt	0.09	0.14	0.15	0.15	1.00	0.92	0.92	0.92	0.09	0.13	0.14	0.14	0.00	0.00	0.01	6.98
Nigeria	0.27	0.27	0.27	0.27	0.56	0.56	0.56	0.56	0.15	0.15	0.15	0.15	0.00	0.00	0.00	0.00
Uganda	0.10	0.10	0.10	0.10	1.49	1.49	1.49	1.49	0.15	0.15	0.15	0.15	0.00	0.00	0.00	0.00
Zimbabwe	0.25	0.24	0.24	0.24	0.33	0.34	0.34	0.34	0.08	0.08	0.08	0.08	0.00	0.00	0.00	0.00
Sudan	0.20	0.20	0.20	0.20	1.53	1.53	1.53	1.53	0.31	0.31	0.31	0.31	0.00	0.00	0.00	0.00
<b>Mexico</b>	0.15	0.20	0.17	0.17	2.71	2.70	2.56	2.56	0.42	0.54	0.44	0.44	0.00	0.00	-0.11	-19.44
<b>Burma</b>	0.16	0.15	0.16	0.16	0.81	0.76	1.25	1.25	0.13	0.11	0.19	0.19	0.00	0.00	0.08	70.18
<b>Others</b>	0.70	0.62	0.71	0.64	0.74	0.82	0.72	0.78	0.52	0.50	0.51	0.50	-0.01	-1.58	-0.01	-1.39

World and Selected Countries and Regions

**Table 13 Peanut Area, Yield, and Production**

Country / Region	Area (Million hectares)				Yield (Metric tons per hectare)				Production (Million metric tons)				Change in Production			
	2021/22	Prel.	2023/24 Proj.		2021/22	Prel.	2023/24 Proj.		2021/22	Prel.	2023/24 Proj.		From last month		From last year	
		2022/23	May	Jun		2022/23	May	Jun		2022/23	May	Jun	MMT	Percent	MMT	Percent
<b>World</b>	30.64	29.26	29.64	29.64	1.69	1.69	1.70	1.70	51.85	49.54	50.44	50.44	0.00	0.00	0.90	1.82
<b>United States</b>	0.62	0.56	0.60	0.60	4.63	4.50	4.74	4.74	2.89	2.53	2.85	2.85	0.00	0.00	0.32	12.79
<b>Total Foreign</b>	30.01	28.69	29.04	29.04	1.63	1.64	1.64	1.64	48.96	47.01	47.59	47.59	0.00	0.00	0.58	1.23
<b>China</b>	4.81	4.80	4.82	4.82	3.81	3.81	3.80	3.80	18.31	18.30	18.30	18.30	0.00	0.00	0.00	0.00
<b>Africa</b>																
Nigeria	3.50	3.40	3.45	3.45	1.21	1.26	1.25	1.25	4.23	4.28	4.30	4.30	0.00	0.00	0.02	0.37
Sudan	3.94	3.00	3.00	3.00	0.60	0.83	0.83	0.83	2.36	2.50	2.50	2.50	0.00	0.00	0.00	0.00
Senegal	1.21	1.23	1.23	1.23	1.38	1.23	1.40	1.40	1.68	1.50	1.72	1.72	0.00	0.00	0.21	14.18
Cameroon	0.43	0.43	0.43	0.43	1.40	1.40	1.40	1.40	0.60	0.60	0.60	0.60	0.00	0.00	0.00	0.00
Ghana	0.34	0.37	0.37	0.37	1.48	1.65	1.62	1.62	0.50	0.61	0.60	0.60	0.00	0.00	-0.01	-1.80
Chad	0.75	0.76	0.76	0.76	1.06	1.10	1.09	1.09	0.80	0.83	0.83	0.83	0.00	0.00	0.00	0.12
Malawi	0.40	0.40	0.40	0.40	0.88	0.88	0.88	0.88	0.35	0.35	0.35	0.35	0.00	0.00	0.00	0.00
Congo (Kinshasa)	0.52	0.53	0.53	0.53	0.92	0.91	0.91	0.91	0.48	0.48	0.48	0.48	0.00	0.00	0.00	0.00
Niger	0.92	0.97	0.92	0.92	0.56	0.69	0.65	0.65	0.52	0.67	0.60	0.60	0.00	0.00	-0.07	-10.58
Mali	0.44	0.43	0.43	0.43	0.78	1.04	1.00	1.00	0.35	0.44	0.43	0.43	0.00	0.00	-0.02	-4.06
Uganda	0.33	0.35	0.35	0.35	0.59	0.57	0.57	0.57	0.19	0.20	0.20	0.20	0.00	0.00	0.00	0.00
Burkina Faso	0.58	0.63	0.64	0.64	0.83	0.89	0.90	0.90	0.48	0.56	0.58	0.58	0.00	0.00	0.02	2.86
Guinea	0.79	0.90	0.90	0.90	1.15	1.14	1.11	1.11	0.91	1.03	1.00	1.00	0.00	0.00	-0.03	-2.44
Egypt	0.06	0.06	0.06	0.06	3.20	3.20	3.20	3.20	0.21	0.21	0.21	0.21	0.00	0.00	0.00	0.00
Central African Republic	0.13	0.13	0.13	0.13	1.15	1.15	1.15	1.15	0.15	0.15	0.15	0.15	0.00	0.00	0.00	0.00
South Africa	0.04	0.03	0.04	0.04	1.51	2.33	2.00	2.00	0.07	0.07	0.07	0.07	0.00	0.00	0.00	0.00
Mozambique	0.38	0.38	0.38	0.38	0.34	0.34	0.34	0.34	0.13	0.13	0.13	0.13	0.00	0.00	0.00	0.00
Cote d'Ivoire	0.17	0.17	0.17	0.17	1.42	1.47	1.45	1.45	0.23	0.24	0.24	0.24	0.00	0.00	0.00	-1.23
Benin	0.17	0.17	0.18	0.18	1.05	0.96	0.97	0.97	0.18	0.16	0.18	0.18	0.00	0.00	0.01	6.71
<b>South Asia</b>																
India	5.71	5.20	5.50	5.50	1.52	1.21	1.20	1.20	8.70	6.30	6.60	6.60	0.00	0.00	0.30	4.76
Pakistan	0.15	0.13	0.13	0.13	0.94	0.88	0.88	0.88	0.15	0.12	0.12	0.12	0.00	0.00	0.00	0.00
<b>Southeast Asia</b>																
Indonesia	0.55	0.54	0.52	0.52	1.76	1.72	1.69	1.69	0.96	0.93	0.88	0.88	0.00	0.00	-0.05	-5.38
Burma	1.06	1.07	1.07	1.07	1.51	1.55	1.59	1.59	1.60	1.65	1.70	1.70	0.00	0.00	0.05	3.03
Vietnam	0.16	0.16	0.15	0.15	2.58	2.58	2.60	2.60	0.41	0.40	0.39	0.39	0.00	0.00	-0.01	-2.50
Thailand	0.02	0.02	0.02	0.02	1.67	1.67	1.67	1.67	0.04	0.04	0.04	0.04	0.00	0.00	0.00	0.00
<b>South America</b>																
Argentina	0.41	0.38	0.38	0.38	3.29	3.03	3.47	3.47	1.34	1.15	1.32	1.32	0.00	0.00	0.17	14.78
Brazil	0.22	0.22	0.24	0.24	4.09	4.05	3.79	3.79	0.90	0.89	0.89	0.89	0.00	0.00	0.00	0.00
<b>Mexico</b>	0.06	0.05	0.05	0.05	1.63	1.87	1.74	1.74	0.10	0.10	0.09	0.09	0.00	0.00	-0.01	-8.91
<b>Others</b>	1.77	1.80	1.80	1.80	1.17	1.17	1.17	1.17	2.07	2.12	2.12	2.12	0.00	0.00	0.00	-0.09

**Table 14 Sunflowerseed Area, Yield, and Production**

Country / Region	Area (Million hectares)				Yield (Metric tons per hectare)				Production (Million metric tons)				Change in Production			
	2021/22	Prel.		2023/24 Proj.		2021/22	Prel.		2023/24 Proj.		2021/22	Prel.		2023/24 Proj.		
		2022/23	May	Jun	2022/23		May	Jun	2022/23	May		Jun	MMT	Percent	MMT	Percent
<b>World</b>	28.64	27.70	28.32	28.21	1.99	1.87	1.92	1.91	56.95	51.66	54.32	54.01	-0.31	-0.57	2.35	4.54
<b>United States</b>	0.50	0.65	0.53	0.53	1.71	1.96	1.98	1.98	0.86	1.28	1.04	1.04	0.00	0.00	-0.24	-18.57
<b>Total Foreign</b>	28.13	27.05	27.80	27.69	1.99	1.86	1.92	1.91	56.09	50.39	53.28	52.97	-0.31	-0.58	2.58	5.13
<b>Former Soviet Union - 12</b>																
Russia	9.61	9.11	9.50	9.50	1.62	1.78	1.74	1.74	15.57	16.25	16.50	16.50	0.00	0.00	0.25	1.51
Ukraine	7.10	5.20	5.70	5.70	2.46	2.15	2.07	2.07	17.50	11.20	11.80	11.80	0.00	0.00	0.60	5.36
Kazakhstan	0.94	1.09	1.15	1.15	1.10	1.20	1.22	1.22	1.03	1.30	1.40	1.40	0.00	0.00	0.10	7.36
<b>European Union</b>	4.37	5.18	5.20	5.20	2.35	1.79	2.21	2.21	10.29	9.29	11.50	11.50	0.00	0.00	2.21	23.83
<b>South America</b>																
Argentina	1.96	2.20	1.95	1.95	2.07	2.05	2.00	2.00	4.05	4.50	3.90	3.90	0.00	0.00	-0.60	-13.33
Uruguay	0.07	0.07	0.07	0.07	1.62	1.64	1.62	1.62	0.11	0.12	0.11	0.11	0.00	0.00	-0.01	-8.70
Bolivia	0.14	0.14	0.13	0.13	1.39	1.40	1.35	1.35	0.20	0.20	0.18	0.18	0.00	0.00	-0.02	-11.62
Brazil	0.04	0.04	0.04	0.04	1.03	1.56	1.55	1.55	0.04	0.06	0.07	0.07	0.00	0.00	0.00	1.56
Paraguay	0.03	0.03	0.03	0.03	1.55	1.56	1.50	1.50	0.05	0.05	0.05	0.05	0.00	0.00	-0.01	-10.00
<b>China</b>	0.70	0.85	0.96	0.85	3.06	2.79	2.81	2.81	2.15	2.37	2.70	2.39	-0.31	-11.48	0.02	0.80
<b>South Asia</b>																
India	0.27	0.28	0.27	0.27	0.52	0.78	0.78	0.78	0.14	0.22	0.21	0.21	0.00	0.00	-0.01	-2.33
Pakistan	0.10	0.11	0.10	0.10	1.38	1.35	1.35	1.35	0.14	0.15	0.14	0.14	0.00	0.00	-0.01	-8.78
<b>Middle East</b>																
Turkey	0.76	0.79	0.70	0.70	2.30	2.41	2.50	2.50	1.75	1.90	1.75	1.75	0.00	0.00	-0.15	-7.89
Iran	0.04	0.04	0.04	0.04	1.00	1.02	1.05	1.05	0.04	0.04	0.04	0.04	0.00	0.00	0.00	-2.27
Israel	0.00	0.00	0.00	0.00	2.00	5.00	4.00	4.00	0.00	0.01	0.00	0.00	0.00	0.00	0.00	-20.00
<b>Africa</b>																
Egypt	0.01	0.02	0.02	0.02	2.38	2.53	2.50	2.50	0.02	0.04	0.05	0.05	0.00	0.00	0.01	31.58
Morocco	0.02	0.02	0.02	0.02	1.25	1.11	1.27	1.27	0.03	0.02	0.03	0.03	0.00	0.00	0.01	40.00
South Africa	0.67	0.56	0.60	0.60	1.26	1.43	1.46	1.46	0.85	0.80	0.88	0.88	0.00	0.00	0.08	9.38
<b>Burma</b>	0.60	0.60	0.60	0.60	0.65	0.65	0.65	0.65	0.39	0.39	0.39	0.39	0.00	0.00	0.00	0.00
<b>Canada</b>	0.04	0.04	0.04	0.04	2.03	2.21	2.24	2.24	0.08	0.08	0.09	0.09	0.00	0.00	0.00	1.19
<b>Australia</b>	0.02	0.03	0.02	0.02	1.58	1.48	1.24	1.24	0.03	0.04	0.03	0.03	0.00	0.00	-0.01	-29.73
<b>Others</b>	0.63	0.66	0.66	0.66	2.59	2.07	2.28	2.28	1.64	1.36	1.50	1.50	0.00	0.00	0.13	9.68

World and Selected Countries and Regions

**Table 15 Rapeseed Area, Yield, and Production**

Country / Region	Area (Million hectares)				Yield (Metric tons per hectare)				Production (Million metric tons)				Change in Production			
	2021/22	Prel.	2023/24 Proj.		2021/22	Prel.	2023/24 Proj.		2021/22	Prel.	2023/24 Proj.		From last month		From last year	
		2022/23	May	Jun		2022/23	May	Jun		2022/23	May	Jun	MMT	Percent	MMT	Percent
<b>World</b>	38.29	41.81	41.81	41.81	1.96	2.11	2.08	2.09	74.89	88.13	87.06	87.21	0.15	0.17	-0.91	-1.04
<b>United States</b>	0.85	0.88	0.89	0.89	1.46	1.98	2.06	2.06	1.24	1.74	1.83	1.83	0.00	0.00	0.09	5.22
<b>Total Foreign</b>	37.44	40.92	40.92	40.92	1.97	2.11	2.08	2.09	73.65	86.38	85.23	85.38	0.15	0.18	-1.01	-1.16
<b>European Union</b>	5.39	5.94	6.07	6.07	3.23	3.29	3.38	3.46	17.39	19.54	20.50	21.00	0.50	2.44	1.46	7.49
<b>United Kingdom</b>	0.31	0.36	0.41	0.41	3.20	3.74	3.50	3.50	0.98	1.36	1.44	1.44	0.00	0.00	0.07	5.44
<b>Switzerland</b>	0.02	0.02	0.02	0.02	3.14	3.14	3.14	3.14	0.07	0.07	0.07	0.07	0.00	0.00	0.00	0.00
<b>Canada</b>	8.95	8.60	8.80	8.80	1.54	2.21	2.31	2.31	13.75	19.00	20.30	20.30	0.00	0.00	1.30	6.84
<b>China</b>	6.99	7.27	7.35	7.35	2.10	2.14	2.10	2.10	14.71	15.53	15.40	15.40	0.00	0.00	-0.13	-0.84
<b>South Asia</b>																
India	7.99	9.00	9.20	9.20	1.39	1.28	1.27	1.27	11.10	11.50	11.70	11.70	0.00	0.00	0.20	1.74
Pakistan	0.33	0.39	0.39	0.39	1.49	1.00	1.38	1.38	0.49	0.39	0.54	0.54	0.00	0.00	0.15	38.46
Bangladesh	0.61	0.81	0.80	0.80	1.35	1.30	1.29	1.29	0.82	1.05	1.03	1.03	0.00	0.00	-0.02	-1.90
<b>Former Soviet Union - 12</b>																
Russia	1.62	2.27	2.10	2.10	1.71	1.76	1.76	1.76	2.78	4.00	3.70	3.70	0.00	0.00	-0.30	-7.50
Ukraine	1.04	1.20	1.15	1.15	2.91	2.92	2.74	2.78	3.02	3.50	3.15	3.20	0.05	1.59	-0.30	-8.57
Belarus	0.32	0.33	0.34	0.34	1.59	1.69	1.67	1.67	0.50	0.55	0.56	0.56	0.00	0.00	0.01	1.82
Kazakhstan	0.12	0.13	0.13	0.13	1.24	1.48	1.38	1.38	0.15	0.19	0.18	0.18	0.00	0.00	-0.01	-4.76
<b>Australia</b>	3.25	3.90	3.50	3.50	2.10	2.13	1.51	1.40	6.82	8.30	5.30	4.90	-0.40	-7.55	-3.40	-40.96
<b>South America</b>																
Chile	0.04	0.03	0.04	0.04	3.86	3.79	3.82	3.82	0.14	0.13	0.15	0.15	0.00	0.00	0.02	16.00
Paraguay	0.04	0.05	0.04	0.04	1.45	1.51	1.50	1.50	0.06	0.07	0.06	0.06	0.00	0.00	-0.01	-7.35
<b>Ethiopia</b>	0.03	0.03	0.03	0.03	1.80	1.80	1.80	1.80	0.05	0.05	0.05	0.05	0.00	0.00	0.00	0.00
<b>Others</b>	0.41	0.61	0.56	0.56	2.03	1.93	1.98	1.98	0.83	1.17	1.11	1.11	0.00	0.00	-0.06	-5.04

World and Selected Countries and Regions

**Table 16 Copra, Palm Kernel, and Palm Oil Production**

Country / Region	Production (Million metric tons)				Change in Production			
	2021/22	Prel.	2023/24 Proj.		From last month		From last year	
		2022/23	May	Jun	MMT	Percent	MMT	Percent
<b>Oilseed, Copra</b>								
Philippines	2.60	2.60	2.70	2.70	0.00	0.00	0.10	3.85
Indonesia	1.68	1.68	1.69	1.69	0.00	0.00	0.01	0.60
India	0.94	0.94	0.94	0.94	0.00	0.00	0.00	0.00
Vietnam	0.29	0.29	0.29	0.29	0.00	0.00	0.00	0.00
Papua New Guinea	0.11	0.11	0.11	0.11	0.00	0.00	0.00	0.00
Thailand	0.09	0.09	0.09	0.09	0.00	0.00	0.00	0.00
Sri Lanka	0.11	0.07	0.07	0.07	0.00	0.00	0.00	0.00
Mexico	0.05	0.05	0.05	0.05	0.00	0.00	0.00	0.00
Solomon Islands	0.03	0.03			0.00	0.00	-0.03	0.00
Cote d'Ivoire	0.03	0.03	0.03	0.03	0.00	0.00	0.00	0.00
World	6.07	6.03	6.05	6.05	0.00	0.00	0.02	0.33
<b>Oilseed, Palm Kernel</b>								
Indonesia	11.20	11.80	12.00	12.00	0.00	0.00	0.20	1.69
Malaysia	4.45	4.65	4.90	4.70	-0.20	-4.08	0.05	1.08
Nigeria	0.90	0.90	0.90	0.90	0.00	0.00	0.00	0.00
Thailand	0.83	0.86	0.86	0.86	0.00	0.00	0.00	0.00
Colombia	0.31	0.32	0.34	0.34	0.00	0.00	0.02	6.25
Guatemala	0.18	0.18	0.18	0.18	0.00	0.00	0.00	0.00
Papua New Guinea	0.17	0.17	0.18	0.18	0.00	0.00	0.01	5.88
Honduras	0.16	0.16	0.16	0.16	0.00	0.00	0.00	0.00
Brazil	0.15	0.15	0.16	0.16	0.00	0.00	0.01	6.67
Cameroon	0.15	0.15	0.15	0.15	0.00	0.00	0.00	0.00
World	19.13	20.02	20.50	20.30	-0.20	-0.98	0.28	1.40
<b>Oil, Palm</b>								
Indonesia	42.00	46.00	47.00	47.00	0.00	0.00	1.00	2.17
Malaysia	18.15	18.60	19.30	19.00	-0.30	-1.55	0.40	2.15
Thailand	3.38	3.42	3.45	3.45	0.00	0.00	0.03	0.88
Colombia	1.75	1.77	1.80	1.80	0.00	0.00	0.03	1.69
Nigeria	1.40	1.40	1.40	1.40	0.00	0.00	0.00	0.00
Guatemala	0.88	0.91	0.92	0.92	0.00	0.00	0.01	1.10
Papua New Guinea	0.72	0.78	0.80	0.80	0.00	0.00	0.02	2.56
Cote d'Ivoire	0.58	0.60	0.60	0.60	0.00	0.00	0.00	0.00
Honduras	0.60	0.60	0.60	0.60	0.00	0.00	0.00	0.00
Brazil	0.55	0.57	0.59	0.59	0.00	0.00	0.01	1.75
World	72.95	77.74	79.56	79.26	-0.30	-0.38	1.52	1.96

World and Selected Countries and Regions

**Table 17 Cotton Area, Yield, and Production**

Country / Region	Area (Million hectares)				Yield (Kilograms per hectare)				Production (Million 480 lb. bales)				Change in Production			
	Prel.		2023/24 Proj.		Prel.		2023/24 Proj.		Prel.		2023/24 Proj.		From last month		From last year	
	2021/22	2022/23	May	Jun	2021/22	2022/23	May	Jun	2021/22	2022/23	May	Jun	MBales	Percent	MBales	Percent
<b>World</b>	32.49	31.72	31.54	31.91	776	798	799	797	115.78	116.32	115.69	116.72	1.03	0.89	0.41	0.35
<b>United States</b>	4.16	2.96	3.52	3.81	918	1,065	958	943	17.52	14.47	15.50	16.50	1.00	6.45	2.03	14.04
<b>Total Foreign</b>	28.33	28.77	28.02	28.10	755	771	779	777	98.26	101.85	100.19	100.22	0.03	0.03	-1.63	-1.60
<b>South Asia</b>																
India	12.37	13.00	12.40	12.40	429	419	448	448	24.40	25.00	25.50	25.50	0.00	0.00	0.50	2.00
Pakistan	2.00	1.80	1.80	2.00	653	472	641	642	6.00	3.90	5.30	5.90	0.60	11.32	2.00	51.28
<b>China</b>	3.10	3.10	2.95	2.90	1,882	2,156	2,030	2,027	26.80	30.70	27.50	27.00	-0.50	-1.82	-3.70	-12.05
<b>South America</b>																
Brazil	1.60	1.63	1.63	1.63	1,595	1,763	1,770	1,770	11.72	13.20	13.25	13.25	0.00	0.00	0.05	0.38
Argentina	0.48	0.40	0.41	0.41	680	626	690	690	1.50	1.15	1.30	1.30	0.00	0.00	0.15	13.04
Paraguay	0.02	0.04	0.03	0.03	527	877	806	806	0.05	0.14	0.10	0.10	0.00	0.00	-0.04	-29.08
<b>Africa</b>																
Burkina Faso	0.60	0.62	0.61	0.61	351	273	330	330	0.96	0.78	0.93	0.93	0.00	0.00	0.15	19.35
Mali	0.72	0.60	0.70	0.70	432	269	389	389	1.43	0.74	1.25	1.25	0.00	0.00	0.52	70.07
Cote d'Ivoire	0.47	0.41	0.39	0.39	486	236	424	424	1.05	0.45	0.76	0.76	0.00	0.00	0.32	70.79
Benin	0.64	0.57	0.64	0.64	483	418	476	476	1.42	1.10	1.40	1.40	0.00	0.00	0.30	27.27
Egypt	0.09	0.14	0.15	0.15	717	661	660	660	0.28	0.43	0.46	0.46	0.00	0.00	0.03	7.06
Cameroon	0.23	0.23	0.23	0.23	606	563	568	568	0.64	0.60	0.60	0.60	0.00	0.00	0.00	0.00
Tanzania	0.24	0.35	0.35	0.35	231	218	218	218	0.26	0.35	0.35	0.35	0.00	0.00	0.00	0.00
Nigeria	0.27	0.27	0.27	0.27	282	282	282	282	0.35	0.35	0.35	0.35	0.00	0.00	0.00	0.00
Zimbabwe	0.25	0.24	0.24	0.24	191	195	195	195	0.22	0.22	0.22	0.22	0.00	0.00	0.00	0.00
Ethiopia	0.08	0.08	0.08	0.08	637	637	637	637	0.24	0.24	0.24	0.24	0.00	0.00	0.00	0.00
<b>Former Soviet Union - 12</b>																
Uzbekistan	1.06	1.07	1.03	1.03	596	692	655	655	2.90	3.40	3.10	3.10	0.00	0.00	-0.30	-8.82
Turkmenistan	0.55	0.55	0.55	0.55	356	356	356	356	0.90	0.90	0.90	0.90	0.00	0.00	0.00	0.00
Tajikistan	0.17	0.17	0.17	0.17	608	615	640	640	0.48	0.48	0.50	0.50	0.00	0.00	0.02	4.17
Kazakhstan	0.11	0.13	0.12	0.12	467	584	526	526	0.24	0.34	0.29	0.29	0.00	0.00	-0.05	-13.43
<b>Middle East</b>																
Turkey	0.45	0.56	0.43	0.43	1,839	1,922	1,793	1,793	3.80	4.90	3.50	3.50	0.00	0.00	-1.40	-28.57
Syria	0.03	0.03	0.03	0.03	1,132	1,132	1,132	1,132	0.13	0.13	0.13	0.13	0.00	0.00	0.00	0.00
Iran	0.10	0.10	0.10	0.10	871	871	871	762	0.40	0.40	0.40	0.35	-0.05	-12.50	-0.05	-12.50
<b>Australia</b>	0.64	0.68	0.65	0.65	2,006	1,751	1,943	1,943	5.85	5.50	5.80	5.80	0.00	0.00	0.30	5.45
<b>Mexico</b>	0.15	0.20	0.17	0.17	1,725	1,720	1,633	1,633	1.22	1.58	1.28	1.28	0.00	0.00	-0.31	-19.30
<b>Burma</b>	0.16	0.15	0.16	0.16	660	653	660	660	0.48	0.45	0.47	0.47	0.00	0.00	0.02	4.44
<b>Others</b>	1.77	1.66	1.74	1.67	561	583	541	561	4.56	4.45	4.33	4.31	-0.02	-0.46	-0.14	-3.04

World and Selected Countries and Regions

**TABLE 18**

The table below presents a record of the June projection and the final Estimate. Using world wheat production as an example, the "root mean square error" means that chances are 2 out of 3 that the current forecast will not be above or below the final estimate by more than 3.0 percent. Chances are 9 out of 10 (90% confidence level) that the difference will not exceed 5.0 percent. The average difference between the June projection and the final estimate is 16.0 million tons, ranging from 0.4 million to 32.2 million tons. The June projection has been below the estimate 26 times and above 16 times.

**RELIABILITY OF PRODUCTION PROJECTIONS 1/**

COMMODITY AND REGION	Root mean square error	90 percent confidence interval	Difference between forecast and final estimate				
			Average	Smallest	Largest	Years	
						Below final	Above final
	Percent		---Million metric tons---				
<b>WHEAT</b>							
World	3.0	5.0	16.0	0.4	32.2	26	16
U.S.	6.1	10.3	2.7	0.0	8.4	23	19
Foreign	3.1	5.3	14.9	1.1	31.9	25	16
<b>COARSE GRAINS 2/</b>							
World	3.6	6.0	27.1	0.6	103.3	23	19
U.S.	13.3	22.4	20.0	0.5	103.8	22	20
Foreign	2.7	4.6	14.6	0.4	45.6	21	20
<b>RICE (Milled)</b>							
World	2.3	3.9	7.0	0.3	21.8	27	15
U.S.	7.5	12.6	0.4	0.0	1.1	22	20
Foreign	2.4	4.0	6.9	0.4	21.9	26	15
<b>SOYBEANS</b>							
World	NA	NA	13.2	0.1	36.2	7	12
U.S.	9.0	15.1	4.9	0.0	16.2	22	20
Foreign	NA	NA	10.0	0.2	37.0	6	12
<b>COTTON</b>			---Million 480-lb. bales---				
World	5.9	9.9	4.1	0.0	16.4	22	19
U.S.	11.5	19.3	1.6	0.1	5.7	20	22
Foreign	5.9	9.9	3.2	0.2	12.4	22	19
<b>UNITED STATES</b>			-----Million bushels-----				
<i>CORN</i>	15.7	26.4	779	8	4,010	21	21
<i>SORGHUM</i>	25.0	42.0	85	0	228	21	20
<i>BARLEY</i>	14.8	25.0	26	1	206	16	26
<i>OATS</i>	23.8	40.0	28	1	231	8	34

1/ Marketing years 1981/82 through 2022/23 for grains, soybeans, and cotton. Final for grains, soybeans, and cotton is defined as the first November estimate following the marketing year for 1981/82 through 2021/22, and for 2022/23 the last month's estimate.

2/ Includes corn, sorghum, barley, oats, rye, millet, and mixed grain

June 2023

Global Market Analysis, FAS, USDA