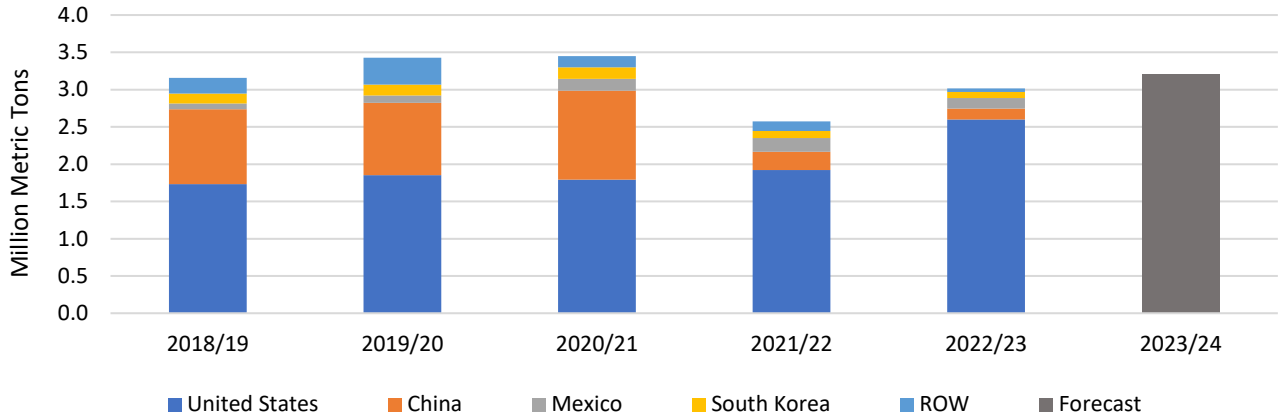


# Oilseeds: World Markets and Trade

## 2022/23 Canada Rapeseed Oil Exports Hit Record to United States

Canada exported 3.0 million metric tons of rapeseed oil in MY 2022/23 (Aug-Jul) with a record volume of 2.6 million to the United States. After the December 2022 decision by the U.S. Environmental Protection Agency to approve rapeseed oil for the Renewable Fuel Standard program, rapeseed oil used for industrial purposes more than doubled in 2022/23.

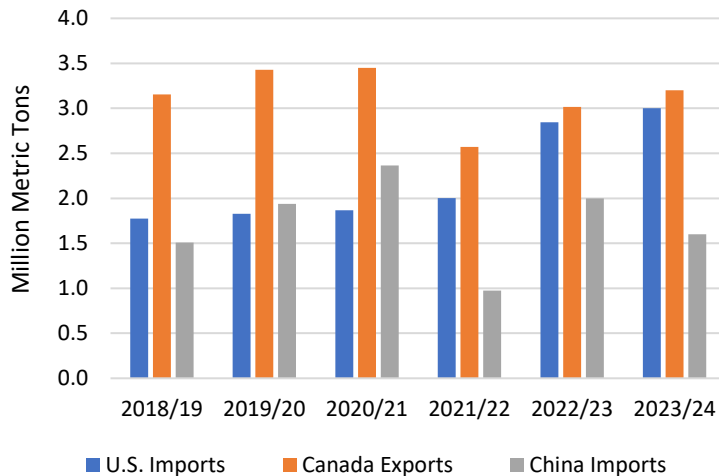
Canada Rapeseed Oil Exports by Destination



Source: Trade Data Monitor, LLC

Despite the record amount of rapeseed oil sent to the United States, overall Canada exports were lower than past years. The most notable drop for Canada rapeseed oil exports was to China, which fell from 35 percent market share in 2020/21 to just 5 percent in 2022/23 owing to strong U.S. demand for biodiesel feedstock. China has largely replaced Canada rapeseed oil with supplies sourced from Russia and Belarus since 2021/22.

Rapeseed Oil Trade



In 2023/24, the United States is expected to break records again with 3.0 million tons of rapeseed oil imports as industrial consumption, driven by renewable diesel demand, is expected to continue to grow. Canada is projected to increase exports of rapeseed oil to 3.2 million tons. With rising rapeseed oil exports, domestic consumption is forecast to decline slightly with soybean oil consumption offsetting. In 2023/24, Canada is projected to import a record 150,000 tons of soybean oil, primarily from Argentina.

## OVERVIEW FOR 2023/24

The global oilseed production forecast is raised 2 million tons this month to 661 million on larger Russia rapeseed and soybean, Ukraine soybean and sunflowerseed, and U.S. soybean crops. Ending stocks are down slightly, with significantly lower soybean stocks in China outweighing an increase to soybean stocks in Brazil and the United States and higher Ukraine sunflowerseed carryout. Oilseed crush is up more than 1 million tons on higher soybean processing in China and rapeseed crush in both Russia and Ukraine; as a result, the global protein meal trade and consumption forecasts are also raised. Vegetable oil trade is slightly lower as higher Black Sea rapeseed oil trade is more than offset by lower EU soybean and global palm oil exports. The projected U.S. season-average farm price for soybeans is unchanged at \$12.90 per bushel.

## EXPORT PRICES

Soybean export prices were up since the October WASDE. South America soybeans traded higher on strong China demand for Brazil soybeans at the beginning of the new marketing year as well as dry weather in central Brazil delaying planting progress. In the United States, soybean prices were supported by strong September exports and October inspections coupled with high domestic disappearance. Continued tight supplies held Argentine export prices above the United States and Brazil.

Following higher soybean prices, soybean meal prices increased approximately 10 percent on average from major meal exporters. Furthermore, weak Argentina crush stressed soybean meal supplies and boosted demand for U.S. and Brazil soybean meal exports.

Vegetable oil export prices increased since the October WASDE with the exception of U.S. soybean oil and Ukraine sunflowerseed oil. U.S. soybean oil prices are elevated compared to other exporters on strong domestic biofuel demand. However, higher soybean crush and record U.S. imports of vegetable oils and used cooking oil put pressure on domestic soybean oil prices over the past month.

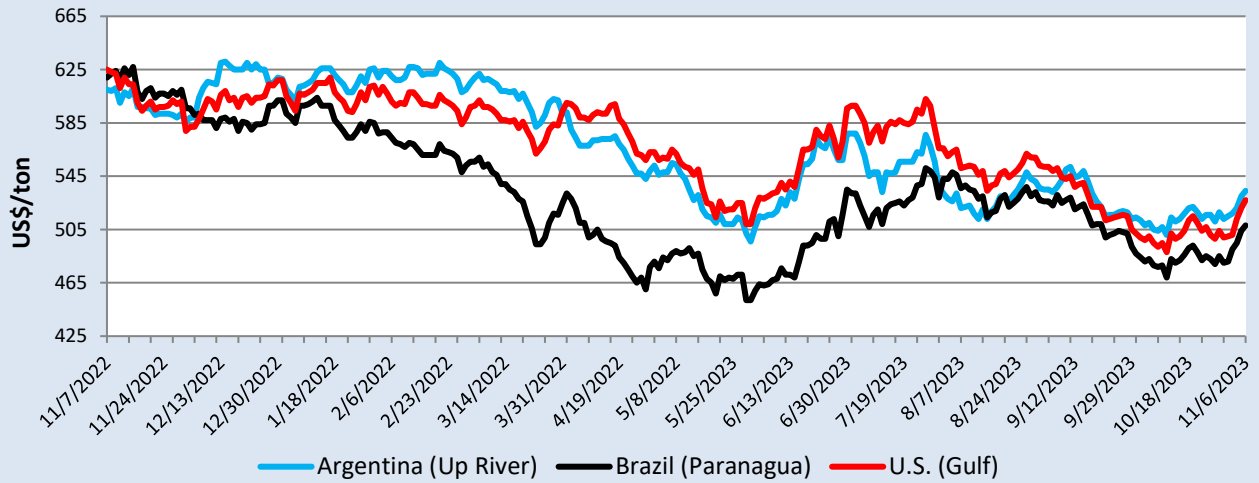
In addition, global vegetable oil prices faced upward pressure from palm oil as Indonesia continues to utilize more palm oil domestically, especially for biofuels. Palm oil prices were up, but, volatility increased during the month of October due to large stocks for the major importers and competition from Black Sea sunflowerseed oil, which is trading at an abnormal discount.

### Soybean Export Prices (U.S. dollars per metric ton)

|               | U.S.          | Argentina     | Brazil        |
|---------------|---------------|---------------|---------------|
| October 12    | \$502         | \$514         | \$483         |
| November 6    | \$527         | \$534         | \$508         |
| <b>Change</b> | <b>+ \$25</b> | <b>+ \$20</b> | <b>+ \$25</b> |

Source: International Grains Council. All prices are FOB: U.S. Gulf, Argentina Up River, and Brazil Paranagua.

### SOYBEAN EXPORT PRICES

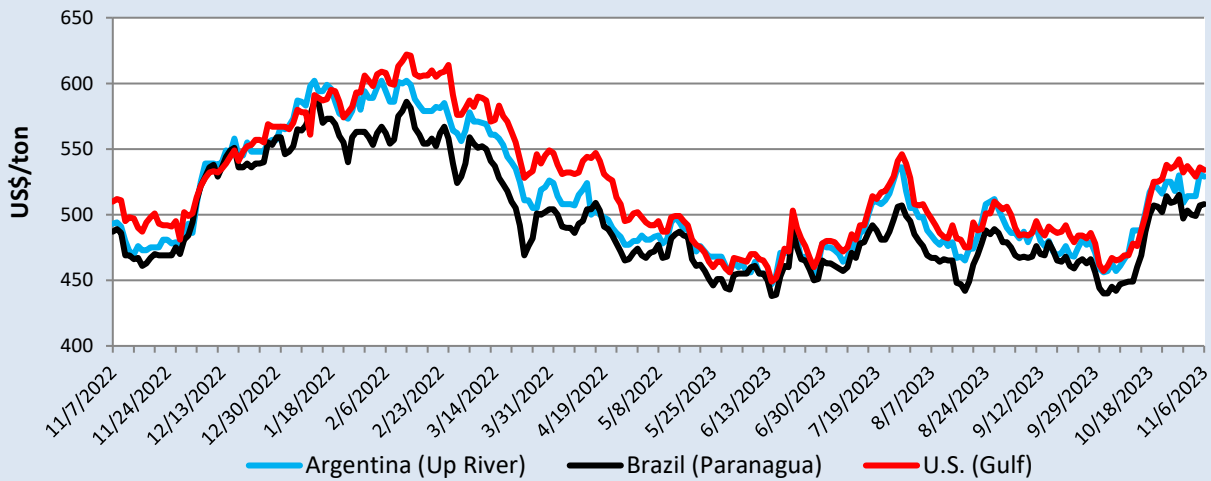


### Soybean Meal Export Prices (U.S. dollars per metric ton)

|               | U.S.         | Argentina    | Brazil       |
|---------------|--------------|--------------|--------------|
| October 12    | \$478        | \$488        | \$449        |
| November 6    | \$534        | \$529        | \$508        |
| <b>Change</b> | <b>+\$56</b> | <b>+\$41</b> | <b>+\$59</b> |

Source: International Grains Council. All prices are FOB: U.S. Gulf, Argentina Up River, and Brazil Paranagua.

### SOYBEAN MEAL EXPORT PRICES

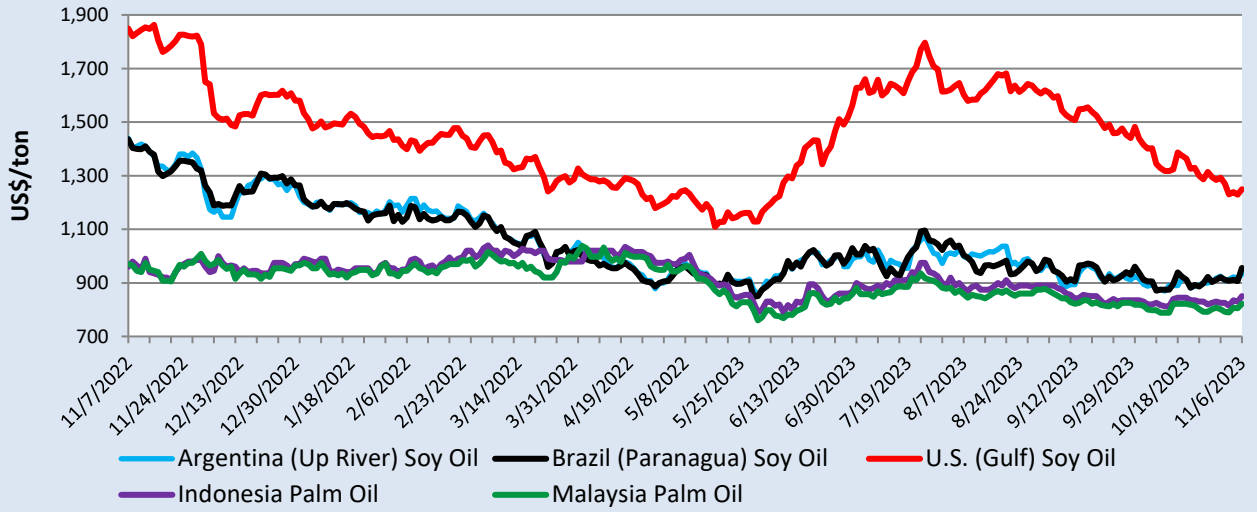


### Soybean and Palm Oil Export Prices (U.S. dollars per metric ton)

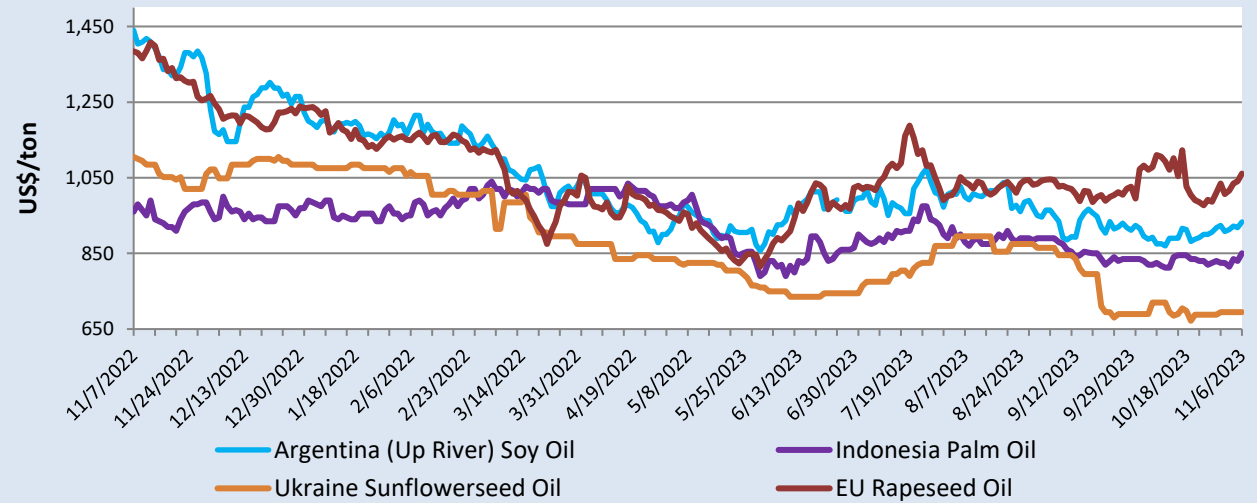
|               | U.S. Soybean Oil | Argentina Soybean Oil | Brazil Soybean Oil | Indonesia Palm Oil | Malaysia Palm Oil |
|---------------|------------------|-----------------------|--------------------|--------------------|-------------------|
| October 12    | \$1,317          | \$890                 | \$874              | \$812              | \$788             |
| November 6    | \$1,250          | \$933                 | \$956              | \$850              | \$822             |
| <b>Change</b> | <b>-\$67</b>     | <b>+\$43</b>          | <b>+\$82</b>       | <b>+\$38</b>       | <b>+\$34</b>      |

Source: International Grains Council; all prices are FOB: U.S. Gulf, Argentina Up River, Brazil Paranagua.

### SOYBEAN AND PALM OIL EXPORT PRICES



### VEGETABLE OIL EXPORT PRICES



**2023/24 OUTLOOK CHANGES** (All figures are in thousand metric tons)

| Country        | Commodity         | Attribute | Previous | Current | Change | Reason   |
|----------------|-------------------|-----------|----------|---------|--------|--|
| Burma          | Oil, Palm         | Imports   | 1,000    | 850     | -150   | Economic challenges and high prices curb demand                      |
| China          | Oil, Rapeseed     | Imports   | 1,400    | 1,600   | 200    | Strong demand and larger exportable supplies from Russia and Belarus |
| Egypt          | Oilseed, Soybean  | Imports   | 2,800    | 3,000   | 200    | Increased price-competitive supplies in Ukraine                      |
| European Union | Oil, Soybean      | Exports   | 1,100    | 900     | -200   | Higher industrial usage to support biofuel exports                   |
| New Zealand    | Meal, Palm Kernel | Imports   | 1,800    | 1,600   | -200   | Reduced dairy utilization  |
| Russia         | Meal, Rapeseed    | Exports   | 550      | 700     | 150    | Larger domestic production   |
|                | Oilseed, Soybean  | Imports   | 1,400    | 1,200   | -200   |  |
| Ukraine        | Oilseed, Rapeseed | Exports   | 3,800    | 3,650   | -150   | Increased demand for crush products                                  |
|                | Oilseed, Soybean  | Exports   | 2,700    | 2,900   | 200    | Larger production  |

**2022/23 OUTLOOK CHANGES** (All figures are in thousand metric tons and reflect trade pace to date)

| Country        | Commodity         | Attribute | Previous | Current | Change |
|----------------|-------------------|-----------|----------|---------|--------|
| Argentina      | Meal, Soybean     | Exports   | 20,950   | 20,751  | -199   |
| Burma          | Oil, Palm         | Imports   | 950      | 691     | -259   |
| China          | Meal, Soybean     | Exports   | 1,000    | 795     | -205   |
|                | Oilseed, Rapeseed | Imports   | 5,100    | 5,335   | 235    |
|                | Oilseed, Soybean  | Imports   | 102,000  | 100,846 | -1,154 |
| European Union | Oilseed, Soybean  | Imports   | 13,500   | 13,350  | -150   |
| Indonesia      | Oil, Palm         | Exports   | 28,400   | 28,077  | -323   |
| Japan          | Oilseed, Soybean  | Imports   | 3,500    | 3,332   | -168   |
| Korea, South   | Meal, Soybean     | Imports   | 1,700    | 1,492   | -208   |
| Malaysia       | Meal, Palm Kernel | Exports   | 2,300    | 1,998   | -302   |
| Mexico         | Meal, Soybean     | Imports   | 1,850    | 1,668   | -182   |
| Thailand       | Oilseed, Soybean  | Imports   | 3,450    | 3,238   | -212   |

# **ENDNOTES**

## **REGION DEFINITIONS**

North America: Canada, Mexico, the United States

Central America: Belize, Costa Rica, El Salvador, Guatemala, Honduras, Nicaragua, Panama

Caribbean: Cuba, Dominican Republic, Haiti, Jamaica, Trinidad and Tobago

South America: Argentina, Bolivia, Brazil, Chile, Colombia, Ecuador, Guyana, Paraguay, Peru, Suriname, Uruguay, Venezuela

EU: Austria, Belgium/Luxembourg, Bulgaria, Croatia, Cyprus, Czech Republic, Denmark, Estonia, Finland, France, Germany, Greece, Hungary, Ireland, Italy, Latvia, Lithuania, Malta, Netherlands, Poland, Portugal, Romania, Slovakia, Slovenia, Spain, and Sweden. Effective January 1, 2021, the separation of the United Kingdom (UK) from the European Union (EU) was complete, including trade between both entities. Starting in May 2021 with the release of 2021/22 data, grain PSDs reflect EU27 (shown in the PSD system as “European Union”) and UK separately. Beginning with the release of 2021/22 data, historical data for both EU27 and the UK are provided for 5 years (2016/17 through 2020/21).

Other Europe: Albania, Bosnia and Herzegovina, Former Yugoslavia, Gibraltar, Iceland, North Macedonia, Montenegro, Norway, Serbia, Switzerland, United Kingdom

Former Soviet Union: Armenia, Azerbaijan, Belarus, Georgia, Kazakhstan, Kyrgyzstan, Moldova, Russia, Tajikistan, Turkmenistan, Ukraine, Uzbekistan

Middle East: Afghanistan, Bahrain, Iran, Iraq, Israel, Jordan, Kuwait, Lebanon, Oman, Qatar, Saudi Arabia, Syria, Turkey, United Arab Emirates, and Yemen

North Africa: Algeria, Egypt, Libya, Morocco, Tunisia

Sub-Saharan Africa: all African countries except North Africa

East Asia: China, Hong Kong, Japan, South Korea, North Korea, Macau, Mongolia, Taiwan

South Asia: Bangladesh, Bhutan, India, Nepal, Pakistan, Sri Lanka

Southeast Asia: Brunei, Burma, Cambodia, Indonesia, Laos, Malaysia, Philippines, Singapore, Thailand, Vietnam

Oceania: Australia, Fiji, New Zealand, Papua New Guinea

## OTHER NOTES

**Marketing Years (MY):** MY refers to the 12-month period at the onset of the main harvest, when the crop is marketed (i.e., consumed, traded, or stored). The year first listed begins a country's MY for that commodity (2022/23 starts in 2022); except for oilseeds in certain Southern Hemisphere countries, where the second year begins the MY (2022/23 starts in 2023). For a complete list of local marketing years, please see the FAS website (<https://apps.fas.usda.gov/psdonline/>): go to Reports, Reference Data, and then Data Availability.

**Stocks:** Unless otherwise stated, stock data are based on an aggregate of differing local marketing years and should not be construed as representing world stock levels at a fixed point in time.

**Consumption:** World totals for consumption reflect total utilization, including food, seed, industrial, feed, and waste; as well as differences in local marketing year imports and local marketing year exports. Consumption statistics for regions and individual countries, however, reflect food, seed, industrial, feed, and waste only.

**Trade:** All PSD tables are balanced on the different local marketing years.

### Oilseeds HS Codes

|               | Seed   | Meal                   | Oil            |
|---------------|--|------------------------|----------------|
| Soybeans      | 1201   | 2304, 230250, 120810   | 1507           |
| Peanuts       | Unshelled: 120210, 120241<br>Shelled: 120220, 120242,<br>120230, 200811XX <sup>[1]</sup> | 2305                   | 1508           |
| Copra         | 1203   | 230650                 | 151311, 151319 |
| Rapeseed      | 1205   | 230640, 230641, 230649 | 1514           |
| Sunflowerseed | 1206   | 230630                 | 151211, 151219 |
| Palm Kernel   | 120710   | 230660                 | 151321, 151329 |
| Cottonseed    | 120720, 120721, 120729   | 230610                 | 151221, 151229 |
| Palm          |  |                        | 1511           |
| Olive         |  |                        | 1509, 1510     |
| Fish          |  | 230120                 |                |

<sup>[1]</sup> Peanut butter is found at the 8- or 10-digit level and varies by reporting country. Argentina and India do not report peanut butter trade.

The Global Commodity Analysis Division, Global Market Analysis, Foreign Agricultural Service, USDA, Washington, DC 20250 prepared this publication. Information is gathered from official statistics of foreign governments and other foreign source materials, reports of U.S. agricultural attachés and Foreign Service officers, office research, and related information. Further information may be obtained by writing the Division.

**Note:** For further details on world oilseeds production, please see [World Agricultural Production](#). This publication is available in its entirety on the Internet via the Foreign Agricultural Service Home Page. The address is: <http://www.fas.usda.gov>

**Questions may be directed to:**

Agata Kingsbury (202) 869-9047 [Agata.Kingsbury@usda.gov](mailto:Agata.Kingsbury@usda.gov)  
Tim O'Neil (202) 235-7577 [Timothy.ONeil@usda.gov](mailto:Timothy.ONeil@usda.gov)  
Gretchen Kuck (202) 572-5962 [Gretchen.Kuck@usda.gov](mailto:Gretchen.Kuck@usda.gov)  
Luke Cummings (202) 777-9015 [Luke.Cummings@usda.gov](mailto:Luke.Cummings@usda.gov)

**To download the tables in the publication**, go to the Production, Supply, and Distribution Database (PSD Online): (<http://apps.fas.usda.gov/psdonline/psdHome.aspx>), scroll down to Reports, and click the plus sign [+] next to Oilseeds.

The Foreign Agricultural Service (FAS) updates its production, supply, and distribution (PSD) database for cotton, oilseeds, and grains at 12:00 p.m. on the day the *World Agricultural Supply and Demand Estimates* (WASDE) report is released. This circular is released by 12:15 p.m.

**FAS Reports and Databases:**

Current *World Markets and Trade* and *World Agricultural Production* Reports:

<http://apps.fas.usda.gov/psdonline/psdDataPublications.aspx>

Archives *World Markets and Trade* and *World Agricultural Production* Reports:

<http://usda.mannlib.cornell.edu/MannUsda/viewTaxonomy.do?taxonomyID=7>

Production, Supply and Distribution Database (PSD Online):

<http://apps.fas.usda.gov/psdonline/psdHome.aspx>

Global Agricultural Trade System (U.S. Exports and Imports):

<http://apps.fas.usda.gov/gats/default.aspx>

Export Sales Report:

<http://apps.fas.usda.gov/esrquery/>

Global Agricultural Information Network (Agricultural Attaché Reports):

<http://gain.fas.usda.gov/Pages/Default.aspx>

**Other USDA Reports:**

World Agricultural Supply and Demand Estimates (WASDE):

<http://www.usda.gov/oce/commodity/wasde/>

Economic Research Service:

<http://www.ers.usda.gov/topics/crops>

National Agricultural Statistics Service:

<http://www.nass.usda.gov/Publications/>



## List of Tables

### **SUMMARY TABLES**

|          |  |
|----------|--|
| Table 01 | Major Oilseeds: World Supply and Distribution (Commodity View)       |
| Table 02 | Major Protein Meals: World Supply and Distribution (Commodity View)  |
| Table 03 | Major Vegetable Oils: World Supply and Distribution (Commodity View) |
| Table 04 | Major Oilseeds: World Supply and Distribution (Country View)         |
| Table 05 | Major Protein Meals: World Supply and Distribution (Country View)    |
| Table 06 | Major Vegetable Oils: World Supply and Distribution (Country View)   |

### **COMMODITY TABLES**

|          |   |
|----------|---|
| Table 07 | Soybeans: World Supply and Distribution                   |
| Table 08 | Soybean Meal: World Supply and Distribution               |
| Table 09 | Soybean Oil: World Supply and Distribution                |
| Table 10 | Soybeans and Products: World Trade                        |
| Table 11 | Palm Oil: World Supply and Distribution                   |
| Table 12 | Rapeseed and Products: World Supply and Distribution      |
| Table 13 | Sunflowerseed and Products: World Supply and Distribution |
| Table 14 | Minor Vegetable Oils: World Supply and Distribution       |

### **HISTORICAL TABLES**

|          |  |
|----------|--|
| Table 15 | World Oilseeds and Products Supply and Distribution                |
| Table 16 | World Soybeans and Products Supply and Distribution                |
| Table 17 | World Rapeseed and Products Supply and Distribution                |
| Table 18 | World Sunflowerseed and Products Supply and Distribution           |
| Table 19 | World Palm Oil, Coconut Oil, and Fish Meal Supply and Distribution |

### **COUNTRY TABLES**

|          |   |
|----------|---|
| Table 20 | United States Oilseeds and Products Supply and Distribution Local Marketing Years |
| Table 21 | United States Soybeans and Products Supply and Distribution Local Marketing Years |
| Table 22 | Brazil Soybeans and Products Supply and Distribution Local Marketing Years        |
| Table 23 | Argentina Soybeans and Products Supply and Distribution Local Marketing Years     |
| Table 24 | South East Asia Oilseeds and Products Supply and Distribution                     |
| Table 25 | Middle East Oilseeds and Products Supply and Distribution                         |
| Table 26 | European Union Oilseeds and Products Supply and Distribution                      |
| Table 27 | China Oilseeds and Products Supply and Distribution                               |
| Table 28 | India Oilseeds and Products Supply and Distribution                               |

**Table 01: Major Oilseeds: World Supply and Distribution (Commodity View)**

Million Metric Tons

|                        | 2019/20       | 2020/21       | 2021/22       | 2022/23       | Oct<br>2023/24 | Nov<br>2023/24 |
|------------------------|---------------|---------------|---------------|---------------|----------------|----------------|
| <b>Production</b>      |               |               |               |               |                |                |
| Oilseed, Copra         | 5.92          | 5.78          | 6.07          | 6.03          | 6.05           | 6.05           |
| Oilseed, Cottonseed    | 43.45         | 42.05         | 41.51         | 42.68         | 41.32          | 41.50          |
| Oilseed, Palm Kernel   | 19.36         | 19.09         | 19.14         | 19.87         | 20.51          | 20.51          |
| Oilseed, Peanut        | 47.73         | 50.42         | 51.89         | 49.33         | 50.52          | 50.41          |
| Oilseed, Rapeseed      | 70.32         | 74.72         | 75.79         | 88.81         | 85.04          | 85.58          |
| Oilseed, Soybean       | 341.45        | 369.22        | 360.43        | 372.24        | 399.50         | 400.42         |
| Oilseed, Sunflowerseed | 53.80         | 48.84         | 56.86         | 52.38         | 56.42          | 56.98          |
| <b>Total</b>           | <b>582.03</b> | <b>610.12</b> | <b>611.68</b> | <b>631.34</b> | <b>659.36</b>  | <b>661.46</b>  |
| <b>Imports</b>         |               |               |               |               |                |                |
| Oilseed, Copra         | 0.15          | 0.08          | 0.09          | 0.07          | 0.08           | 0.08           |
| Oilseed, Cottonseed    | 0.81          | 0.84          | 1.02          | 1.38          | 1.19           | 1.19           |
| Oilseed, Palm Kernel   | 0.14          | 0.14          | 0.14          | 0.16          | 0.15           | 0.15           |
| Oilseed, Peanut        | 4.37          | 4.33          | 4.05          | 4.14          | 4.42           | 4.42           |
| Oilseed, Rapeseed      | 15.82         | 16.66         | 13.84         | 19.97         | 15.86          | 15.76          |
| Oilseed, Soybean       | 165.29        | 165.50        | 155.58        | 165.11        | 165.75         | 165.75         |
| Oilseed, Sunflowerseed | 3.34          | 2.74          | 3.79          | 4.06          | 2.91           | 2.91           |
| <b>Total</b>           | <b>189.93</b> | <b>190.28</b> | <b>178.52</b> | <b>194.87</b> | <b>190.34</b>  | <b>190.25</b>  |
| <b>Exports</b>         |               |               |               |               |                |                |
| Oilseed, Copra         | 0.28          | 0.10          | 0.11          | 0.09          | 0.13           | 0.13           |
| Oilseed, Cottonseed    | 0.88          | 0.96          | 1.27          | 1.47          | 1.21           | 1.28           |
| Oilseed, Palm Kernel   | 0.08          | 0.06          | 0.12          | 0.05          | 0.05           | 0.05           |
| Oilseed, Peanut        | 5.01          | 5.06          | 4.43          | 4.67          | 4.88           | 4.84           |
| Oilseed, Rapeseed      | 16.01         | 18.14         | 15.32         | 20.21         | 17.01          | 16.89          |
| Oilseed, Soybean       | 165.82        | 165.18        | 154.25        | 170.95        | 168.24         | 168.29         |
| Oilseed, Sunflowerseed | 3.69          | 2.90          | 3.91          | 4.21          | 3.09           | 3.09           |
| <b>Total</b>           | <b>191.77</b> | <b>192.39</b> | <b>179.41</b> | <b>201.64</b> | <b>194.62</b>  | <b>194.57</b>  |
| <b>Crush</b>           |               |               |               |               |                |                |
| Oilseed, Copra         | 5.76          | 5.71          | 5.95          | 5.91          | 5.97           | 5.97           |
| Oilseed, Cottonseed    | 33.28         | 32.55         | 32.15         | 32.58         | 32.86          | 32.85          |
| Oilseed, Palm Kernel   | 19.40         | 19.08         | 18.92         | 19.88         | 20.44          | 20.44          |
| Oilseed, Peanut        | 19.10         | 19.68         | 19.83         | 19.32         | 19.53          | 19.50          |
| Oilseed, Rapeseed      | 69.03         | 71.91         | 72.20         | 80.95         | 81.08          | 81.58          |
| Oilseed, Soybean       | 312.66        | 316.04        | 314.50        | 313.43        | 328.49         | 329.47         |
| Oilseed, Sunflowerseed | 49.40         | 44.96         | 46.69         | 51.31         | 52.33          | 52.38          |
| <b>Total</b>           | <b>508.62</b> | <b>509.92</b> | <b>510.24</b> | <b>523.38</b> | <b>540.69</b>  | <b>542.18</b>  |
| <b>Ending Stocks</b>   |               |               |               |               |                |                |
| Oilseed, Copra         | 0.05          | 0.05          | 0.05          | 0.05          | 0.04           | 0.04           |
| Oilseed, Cottonseed    | 1.69          | 1.67          | 1.49          | 1.51          | 1.47           | 1.48           |
| Oilseed, Palm Kernel   | 0.18          | 0.18          | 0.29          | 0.26          | 0.29           | 0.29           |
| Oilseed, Peanut        | 4.71          | 5.05          | 5.09          | 4.48          | 4.39           | 4.37           |
| Oilseed, Rapeseed      | 7.64          | 6.36          | 4.49          | 7.83          | 6.23           | 6.54           |
| Oilseed, Soybean       | 95.15         | 100.26        | 98.06         | 100.31        | 115.62         | 114.51         |
| Oilseed, Sunflowerseed | 2.88          | 2.46          | 7.94          | 4.17          | 3.85           | 4.14           |
| <b>Total</b>           | <b>112.30</b> | <b>116.03</b> | <b>117.43</b> | <b>118.62</b> | <b>131.88</b>  | <b>131.38</b>  |

Totals may not add due to rounding

**Table 02: Major Protein Meals: World Supply and Distribution (Commodity View)**

Million Metric Tons

|                             | 2019/20       | 2020/21       | 2021/22       | 2022/23       | Oct<br>2023/24 | Nov<br>2023/24 |
|-----------------------------|---------------|---------------|---------------|---------------|----------------|----------------|
| <b>Production</b>           |               |               |               |               |                |                |
| Meal, Copra                 | 1.91          | 1.90          | 1.97          | 1.95          | 1.98           | 1.98           |
| Meal, Cottonseed            | 15.30         | 14.90         | 14.77         | 14.96         | 15.13          | 15.10          |
| Meal, Fish                  | 4.65          | 4.89          | 5.01          | 4.76          | 5.09           | 5.09           |
| Meal, Palm Kernel           | 10.14         | 9.98          | 9.86          | 10.34         | 10.65          | 10.65          |
| Meal, Peanut                | 7.62          | 7.84          | 7.89          | 7.70          | 7.78           | 7.77           |
| Meal, Rapeseed              | 39.81         | 41.52         | 42.13         | 47.25         | 47.26          | 47.55          |
| Meal, Soybean               | 245.60        | 248.35        | 246.75        | 246.46        | 257.88         | 258.63         |
| Meal, Sunflowerseed         | 21.77         | 20.20         | 21.20         | 23.00         | 23.42          | 23.44          |
| <b>Total</b>                | <b>346.80</b> | <b>349.58</b> | <b>349.58</b> | <b>356.41</b> | <b>369.17</b>  | <b>370.21</b>  |
| <b>Imports</b>              |               |               |               |               |                |                |
| Meal, Copra                 | 0.43          | 0.62          | 0.58          | 0.65          | 0.61           | 0.61           |
| Meal, Cottonseed            | 0.35          | 0.29          | 0.28          | 0.26          | 0.29           | 0.29           |
| Meal, Fish                  | 3.09          | 3.41          | 3.60          | 3.28          | 3.44           | 3.44           |
| Meal, Palm Kernel           | 7.21          | 7.10          | 7.26          | 7.75          | 7.63           | 7.50           |
| Meal, Peanut                | 0.13          | 0.10          | 0.13          | 0.12          | 0.11           | 0.11           |
| Meal, Rapeseed              | 8.01          | 8.37          | 7.69          | 9.28          | 8.57           | 8.83           |
| Meal, Soybean               | 63.32         | 65.36         | 67.32         | 62.75         | 66.76          | 66.78          |
| Meal, Sunflowerseed         | 8.56          | 7.60          | 7.30          | 8.59          | 9.09           | 9.07           |
| <b>Total</b>                | <b>91.10</b>  | <b>92.84</b>  | <b>94.16</b>  | <b>92.69</b>  | <b>96.51</b>   | <b>96.64</b>   |
| <b>Exports</b>              |               |               |               |               |                |                |
| Meal, Copra                 | 0.43          | 0.55          | 0.68          | 0.55          | 0.65           | 0.68           |
| Meal, Cottonseed            | 0.42          | 0.41          | 0.45          | 0.29          | 0.33           | 0.33           |
| Meal, Fish                  | 2.67          | 2.95          | 2.85          | 2.70          | 2.97           | 2.97           |
| Meal, Palm Kernel           | 7.83          | 7.58          | 7.87          | 7.78          | 8.11           | 8.01           |
| Meal, Peanut                | 0.18          | 0.13          | 0.18          | 0.18          | 0.16           | 0.16           |
| Meal, Rapeseed              | 7.72          | 8.23          | 7.68          | 9.67          | 8.84           | 9.08           |
| Meal, Soybean               | 67.94         | 69.43         | 68.84         | 66.43         | 69.73          | 69.79          |
| Meal, Sunflowerseed         | 8.84          | 8.14          | 7.77          | 8.83          | 9.44           | 9.45           |
| <b>Total</b>                | <b>96.04</b>  | <b>97.41</b>  | <b>96.31</b>  | <b>96.42</b>  | <b>100.22</b>  | <b>100.46</b>  |
| <b>Domestic Consumption</b> |               |               |               |               |                |                |
| Meal, Copra                 | 1.95          | 2.00          | 1.87          | 2.05          | 1.94           | 1.91           |
| Meal, Cottonseed            | 15.24         | 14.80         | 14.61         | 14.90         | 15.10          | 15.07          |
| Meal, Fish                  | 5.06          | 5.42          | 5.69          | 5.38          | 5.57           | 5.57           |
| Meal, Palm Kernel           | 9.44          | 9.36          | 9.39          | 10.40         | 10.03          | 10.05          |
| Meal, Peanut                | 7.58          | 7.82          | 7.84          | 7.65          | 7.73           | 7.73           |
| Meal, Rapeseed              | 39.93         | 41.83         | 41.87         | 47.05         | 46.70          | 46.95          |
| Meal, Soybean               | 240.58        | 244.78        | 244.99        | 245.88        | 252.94         | 253.62         |
| Meal, Sunflowerseed         | 21.41         | 20.60         | 20.92         | 22.04         | 23.07          | 23.06          |
| <b>Total</b>                | <b>341.19</b> | <b>346.59</b> | <b>347.17</b> | <b>355.36</b> | <b>363.08</b>  | <b>363.96</b>  |
| <b>Ending Stocks</b>        |               |               |               |               |                |                |
| Meal, Copra                 | 0.07          | 0.04          | 0.04          | 0.04          | 0.03           | 0.04           |
| Meal, Cottonseed            | 0.14          | 0.12          | 0.10          | 0.13          | 0.13           | 0.13           |
| Meal, Fish                  | 0.26          | 0.19          | 0.26          | 0.22          | 0.21           | 0.21           |
| Meal, Palm Kernel           | 0.70          | 0.83          | 0.69          | 0.60          | 0.72           | 0.68           |
| Meal, Peanut                | 0.04          | 0.03          | 0.04          | 0.03          | 0.03           | 0.03           |
| Meal, Rapeseed              | 1.41          | 1.25          | 1.53          | 1.34          | 1.59           | 1.70           |
| Meal, Soybean               | 17.04         | 16.54         | 16.78         | 13.69         | 15.38          | 15.69          |
| Meal, Sunflowerseed         | 2.07          | 1.12          | 0.93          | 1.65          | 1.58           | 1.65           |
| <b>Total</b>                | <b>21.70</b>  | <b>20.12</b>  | <b>20.38</b>  | <b>17.70</b>  | <b>19.67</b>   | <b>20.12</b>   |

Totals may not add due to rounding

**Table 03: Major Vegetable Oils: World Supply and Distribution (Commodity View)**

Million Metric Tons

|                             | 2019/20       | 2020/21       | 2021/22       | 2022/23       | Oct<br>2023/24 | Nov<br>2023/24 |
|-----------------------------|---------------|---------------|---------------|---------------|----------------|----------------|
| <b>Production</b>           |               |               |               |               |                |                |
| Oil, Coconut                | 3.61          | 3.58          | 3.73          | 3.71          | 3.76           | 3.76           |
| Oil, Cottonseed             | 5.02          | 4.88          | 4.85          | 4.90          | 4.96           | 4.96           |
| Oil, Olive                  | 3.15          | 2.93          | 3.31          | 2.49          | 2.94           | 2.89           |
| Oil, Palm                   | 73.11         | 73.28         | 72.96         | 77.56         | 79.46          | 79.46          |
| Oil, Palm Kernel            | 8.51          | 8.43          | 8.36          | 8.79          | 9.03           | 9.03           |
| Oil, Peanut                 | 6.18          | 6.37          | 6.44          | 6.29          | 6.35           | 6.34           |
| Oil, Rapeseed               | 28.33         | 29.37         | 29.24         | 32.80         | 32.91          | 33.06          |
| Oil, Soybean                | 58.55         | 59.31         | 59.27         | 59.03         | 61.75          | 61.93          |
| Oil, Sunflowerseed          | 21.15         | 18.97         | 19.66         | 21.61         | 22.03          | 22.05          |
| <b>Total</b>                | <b>207.61</b> | <b>207.11</b> | <b>207.83</b> | <b>217.19</b> | <b>223.19</b>  | <b>223.49</b>  |
| <b>Imports</b>              |               |               |               |               |                |                |
| Oil, Coconut                | 1.84          | 1.94          | 2.19          | 1.93          | 1.96           | 1.94           |
| Oil, Cottonseed             | 0.12          | 0.10          | 0.11          | 0.10          | 0.09           | 0.08           |
| Oil, Olive                  | 1.31          | 1.21          | 1.29          | 1.07          | 1.07           | 1.06           |
| Oil, Palm                   | 47.05         | 46.85         | 41.70         | 47.43         | 48.80          | 48.56          |
| Oil, Palm Kernel            | 3.03          | 2.94          | 2.62          | 2.92          | 3.03           | 3.03           |
| Oil, Peanut                 | 0.31          | 0.44          | 0.29          | 0.39          | 0.41           | 0.41           |
| Oil, Rapeseed               | 5.80          | 6.33          | 5.13          | 6.85          | 6.53           | 6.73           |
| Oil, Soybean                | 11.54         | 11.79         | 11.54         | 10.63         | 10.76          | 10.79          |
| Oil, Sunflowerseed          | 11.73         | 9.65          | 9.69          | 12.38         | 12.22          | 12.23          |
| <b>Total</b>                | <b>82.73</b>  | <b>81.25</b>  | <b>74.55</b>  | <b>83.70</b>  | <b>84.86</b>   | <b>84.83</b>   |
| <b>Exports</b>              |               |               |               |               |                |                |
| Oil, Coconut                | 1.88          | 1.71          | 2.28          | 2.07          | 1.99           | 1.99           |
| Oil, Cottonseed             | 0.12          | 0.10          | 0.13          | 0.11          | 0.11           | 0.11           |
| Oil, Olive                  | 1.47          | 1.36          | 1.41          | 1.16          | 1.17           | 1.14           |
| Oil, Palm                   | 48.36         | 48.54         | 43.97         | 49.42         | 50.94          | 50.71          |
| Oil, Palm Kernel            | 3.29          | 3.21          | 2.78          | 2.99          | 3.16           | 3.16           |
| Oil, Peanut                 | 0.32          | 0.48          | 0.35          | 0.41          | 0.45           | 0.45           |
| Oil, Rapeseed               | 5.87          | 6.42          | 5.32          | 6.46          | 6.80           | 6.97           |
| Oil, Soybean                | 12.38         | 12.61         | 12.25         | 11.39         | 11.70          | 11.50          |
| Oil, Sunflowerseed          | 13.47         | 11.33         | 11.08         | 14.00         | 13.82          | 13.82          |
| <b>Total</b>                | <b>87.15</b>  | <b>85.75</b>  | <b>79.57</b>  | <b>88.00</b>  | <b>90.13</b>   | <b>89.84</b>   |
| <b>Domestic Consumption</b> |               |               |               |               |                |                |
| Oil, Coconut                | 3.63          | 3.66          | 3.59          | 3.69          | 3.81           | 3.75           |
| Oil, Cottonseed             | 5.00          | 4.91          | 4.87          | 4.88          | 4.97           | 4.96           |
| Oil, Olive                  | 3.03          | 3.04          | 3.12          | 2.74          | 2.83           | 2.81           |
| Oil, Palm                   | 70.84         | 72.56         | 69.52         | 74.64         | 78.23          | 78.28          |
| Oil, Palm Kernel            | 8.16          | 8.29          | 8.25          | 8.78          | 8.91           | 8.86           |
| Oil, Peanut                 | 6.19          | 6.44          | 6.34          | 6.22          | 6.32           | 6.31           |
| Oil, Rapeseed               | 28.39         | 28.68         | 29.95         | 32.44         | 32.56          | 32.60          |
| Oil, Soybean                | 57.09         | 58.49         | 59.22         | 58.25         | 60.56          | 60.85          |
| Oil, Sunflowerseed          | 18.91         | 18.23         | 17.59         | 19.55         | 20.47          | 20.49          |
| <b>Total</b>                | <b>201.25</b> | <b>204.29</b> | <b>202.44</b> | <b>211.20</b> | <b>218.65</b>  | <b>218.92</b>  |
| <b>Ending Stocks</b>        |               |               |               |               |                |                |
| Oil, Coconut                | 0.64          | 0.80          | 0.85          | 0.74          | 0.65           | 0.69           |
| Oil, Cottonseed             | 0.22          | 0.20          | 0.16          | 0.17          | 0.15           | 0.15           |
| Oil, Olive                  | 0.85          | 0.59          | 0.66          | 0.33          | 0.34           | 0.32           |
| Oil, Palm                   | 15.91         | 14.94         | 16.12         | 17.05         | 16.03          | 16.07          |
| Oil, Palm Kernel            | 1.13          | 0.99          | 0.95          | 0.90          | 0.93           | 0.95           |
| Oil, Peanut                 | 0.40          | 0.30          | 0.34          | 0.39          | 0.37           | 0.37           |
| Oil, Rapeseed               | 2.85          | 3.44          | 2.54          | 3.29          | 3.47           | 3.53           |
| Oil, Soybean                | 5.51          | 5.52          | 4.85          | 4.87          | 5.21           | 5.24           |
| Oil, Sunflowerseed          | 2.88          | 1.94          | 2.62          | 3.05          | 2.90           | 3.02           |
| <b>Total</b>                | <b>30.39</b>  | <b>28.72</b>  | <b>29.09</b>  | <b>30.78</b>  | <b>30.05</b>   | <b>30.34</b>   |

Totals may not add due to rounding

**Table 04: Major Oilseeds: World Supply and Distribution (Country View)**

Million Metric Tons

|                      | 2019/20       | 2020/21       | 2021/22       | 2022/23       | Oct<br>2023/24 | Nov<br>2023/24 |
|----------------------|---------------|---------------|---------------|---------------|----------------|----------------|
| <b>Production</b>    |               |               |               |               |                |                |
| Brazil               | 133.66        | 144.89        | 135.18        | 163.00        | 168.94         | 168.94         |
| United States        | 106.98        | 124.52        | 131.35        | 125.75        | 120.90         | 121.54         |
| China                | 62.52         | 65.81         | 62.07         | 68.04         | 67.33          | 67.33          |
| Argentina            | 53.49         | 51.25         | 49.85         | 31.57         | 54.53          | 54.61          |
| India                | 36.19         | 39.18         | 43.17         | 42.41         | 40.89          | 40.89          |
| Other                | 189.19        | 184.46        | 190.06        | 200.57        | 206.78         | 208.14         |
| <b>Total</b>         | <b>582.03</b> | <b>610.12</b> | <b>611.68</b> | <b>631.34</b> | <b>659.36</b>  | <b>661.46</b>  |
| <b>Imports</b>       |               |               |               |               |                |                |
| China                | 102.71        | 104.12        | 93.40         | 108.06        | 105.35         | 105.35         |
| European Union       | 22.95         | 22.19         | 22.82         | 22.56         | 20.40          | 20.30          |
| Mexico               | 7.36          | 7.86          | 7.23          | 8.06          | 7.92           | 7.92           |
| Japan                | 5.78          | 5.70          | 5.78          | 5.50          | 5.76           | 5.76           |
| Argentina            | 4.88          | 4.82          | 3.84          | 9.06          | 5.70           | 5.70           |
| Turkey               | 4.38          | 3.73          | 3.68          | 4.15          | 4.17           | 4.17           |
| Thailand             | 3.95          | 4.26          | 3.33          | 3.34          | 3.92           | 3.92           |
| Egypt                | 5.03          | 3.76          | 4.68          | 2.05          | 2.84           | 3.04           |
| Indonesia            | 3.03          | 3.00          | 2.80          | 2.72          | 3.00           | 3.00           |
| Vietnam              | 2.15          | 2.17          | 2.06          | 2.33          | 2.88           | 2.88           |
| Other                | 27.70         | 28.69         | 28.91         | 27.05         | 28.41          | 28.21          |
| <b>Total</b>         | <b>189.93</b> | <b>190.28</b> | <b>178.52</b> | <b>194.87</b> | <b>190.34</b>  | <b>190.25</b>  |
| <b>Exports</b>       |               |               |               |               |                |                |
| Brazil               | 92.51         | 82.02         | 79.45         | 95.96         | 97.95          | 97.95          |
| United States        | 47.07         | 62.78         | 59.55         | 55.12         | 48.74          | 48.77          |
| Canada               | 13.99         | 15.20         | 9.58          | 12.23         | 12.10          | 12.10          |
| Ukraine              | 5.68          | 4.05          | 5.71          | 8.37          | 7.00           | 7.05           |
| Paraguay             | 6.63          | 6.35          | 2.28          | 5.81          | 6.01           | 6.01           |
| Argentina            | 11.24         | 6.36          | 3.98          | 5.06          | 5.80           | 5.80           |
| Australia            | 1.67          | 4.03          | 6.66          | 7.71          | 5.00           | 5.00           |
| Other                | 12.98         | 11.60         | 12.20         | 11.39         | 12.02          | 11.90          |
| <b>Total</b>         | <b>191.77</b> | <b>192.39</b> | <b>179.41</b> | <b>201.64</b> | <b>194.62</b>  | <b>194.57</b>  |
| <b>Crush</b>         |               |               |               |               |                |                |
| China                | 127.49        | 130.00        | 124.95        | 134.50        | 136.10         | 137.10         |
| United States        | 63.04         | 62.66         | 63.87         | 64.35         | 66.72          | 66.69          |
| Brazil               | 51.21         | 51.12         | 54.82         | 57.22         | 60.87          | 60.87          |
| European Union       | 45.72         | 46.66         | 47.91         | 48.20         | 49.21          | 49.19          |
| Argentina            | 41.88         | 43.67         | 42.79         | 34.60         | 38.89          | 38.89          |
| India                | 30.01         | 32.39         | 32.20         | 34.78         | 33.52          | 33.52          |
| Russia               | 20.05         | 18.75         | 21.20         | 24.25         | 25.15          | 25.65          |
| Ukraine              | 18.73         | 15.40         | 12.50         | 15.68         | 16.38          | 16.53          |
| Indonesia            | 12.67         | 13.02         | 12.79         | 13.36         | 13.57          | 13.57          |
| Canada               | 11.88         | 12.07         | 10.40         | 11.75         | 12.00          | 12.00          |
| Mexico               | 7.37          | 7.67          | 7.46          | 8.09          | 7.78           | 7.78           |
| Turkey               | 5.42          | 5.25          | 5.31          | 6.18          | 5.47           | 5.47           |
| Malaysia             | 5.47          | 4.99          | 4.83          | 5.18          | 5.33           | 5.33           |
| Japan                | 4.68          | 4.68          | 4.79          | 4.63          | 4.73           | 4.70           |
| Pakistan             | 6.23          | 5.48          | 5.60          | 3.88          | 4.40           | 4.40           |
| Other                | 56.79         | 56.15         | 58.85         | 56.75         | 60.58          | 60.49          |
| <b>Total</b>         | <b>508.62</b> | <b>509.92</b> | <b>510.24</b> | <b>523.38</b> | <b>540.69</b>  | <b>542.18</b>  |
| <b>Ending Stocks</b> |               |               |               |               |                |                |
| Brazil               | 20.63         | 29.81         | 27.72         | 33.65         | 37.90          | 39.89          |
| China                | 26.28         | 33.00         | 30.37         | 36.46         | 39.12          | 35.83          |
| Argentina            | 27.97         | 26.16         | 25.05         | 18.68         | 26.42          | 26.13          |
| United States        | 15.96         | 8.64          | 9.14          | 8.96          | 7.58           | 8.24           |
| European Union       | 3.64          | 2.79          | 3.31          | 3.63          | 3.21           | 3.22           |
| Other                | 17.84         | 15.62         | 21.84         | 17.24         | 17.66          | 18.06          |
| <b>Total</b>         | <b>112.30</b> | <b>116.03</b> | <b>117.43</b> | <b>118.62</b> | <b>131.88</b>  | <b>131.38</b>  |

Major Oilseeds includes Copra, Cottonseed, Palm Kernel, Peanut, Rapeseed, Soybeans and Sunflowerseeds.

**Table 05: Major Protein Meals: World Supply and Distribution (Country View)**

Million Metric Tons

|                             | 2019/20       | 2020/21       | 2021/22       | 2022/23       | Oct<br>2023/24 | Nov<br>2023/24 |
|-----------------------------|---------------|---------------|---------------|---------------|----------------|----------------|
| <b>Production</b>           |               |               |               |               |                |                |
| China                       | 90.64         | 92.35         | 88.43         | 95.45         | 96.92          | 97.71          |
| United States               | 48.77         | 48.26         | 49.27         | 50.05         | 51.53          | 51.49          |
| Brazil                      | 38.35         | 38.23         | 41.23         | 43.05         | 45.61          | 45.61          |
| European Union              | 29.59         | 30.19         | 30.75         | 30.72         | 31.44          | 31.43          |
| Argentina                   | 31.57         | 32.82         | 31.98         | 25.49         | 28.80          | 28.80          |
| Other                       | 107.87        | 107.75        | 107.92        | 111.65        | 114.87         | 115.17         |
| <b>Total</b>                | <b>346.80</b> | <b>349.58</b> | <b>349.58</b> | <b>356.41</b> | <b>369.17</b>  | <b>370.21</b>  |
| <b>Imports</b>              |               |               |               |               |                |                |
| European Union              | 21.52         | 21.23         | 21.62         | 21.30         | 20.66          | 20.75          |
| China                       | 6.36          | 7.12          | 7.18          | 8.37          | 8.62           | 8.67           |
| Vietnam                     | 6.24          | 6.15          | 6.44          | 6.07          | 6.13           | 6.23           |
| Indonesia                   | 5.17          | 5.50          | 5.73          | 5.66          | 5.93           | 5.93           |
| United States               | 4.12          | 4.39          | 3.57          | 4.30          | 4.23           | 4.23           |
| Thailand                    | 3.57          | 3.36          | 3.51          | 4.03          | 4.00           | 4.05           |
| Korea, South                | 3.45          | 3.45          | 3.42          | 3.44          | 3.50           | 3.40           |
| Other                       | 40.66         | 41.66         | 42.68         | 39.53         | 43.46          | 43.39          |
| <b>Total</b>                | <b>91.10</b>  | <b>92.84</b>  | <b>94.16</b>  | <b>92.69</b>  | <b>96.51</b>   | <b>96.64</b>   |
| <b>Exports</b>              |               |               |               |               |                |                |
| Argentina                   | 28.09         | 29.33         | 27.60         | 21.82         | 24.48          | 24.48          |
| Brazil                      | 17.50         | 16.58         | 20.21         | 21.36         | 22.00          | 22.00          |
| United States               | 12.83         | 12.62         | 12.46         | 13.52         | 14.11          | 14.11          |
| Indonesia                   | 5.20          | 5.33          | 5.85          | 5.87          | 5.88           | 5.91           |
| Ukraine                     | 6.10          | 5.02          | 3.92          | 4.60          | 5.80           | 5.88           |
| Canada                      | 5.24          | 5.63          | 4.81          | 5.69          | 5.65           | 5.65           |
| Russia                      | 2.94          | 2.74          | 3.10          | 3.80          | 3.95           | 4.18           |
| Other                       | 18.14         | 20.16         | 18.37         | 19.76         | 18.36          | 18.26          |
| <b>Total</b>                | <b>96.04</b>  | <b>97.41</b>  | <b>96.31</b>  | <b>96.42</b>  | <b>100.22</b>  | <b>100.46</b>  |
| <b>Domestic Consumption</b> |               |               |               |               |                |                |
| China                       | 95.60         | 98.59         | 95.55         | 102.46        | 104.59         | 105.44         |
| European Union              | 49.48         | 49.27         | 49.54         | 49.57         | 49.65          | 49.65          |
| United States               | 40.10         | 40.01         | 40.42         | 40.77         | 41.61          | 41.58          |
| Brazil                      | 20.32         | 21.18         | 21.62         | 22.27         | 23.11          | 23.11          |
| India                       | 15.94         | 16.53         | 17.23         | 17.69         | 18.32          | 18.32          |
| Russia                      | 8.00          | 8.20          | 8.49          | 8.94          | 9.33           | 9.40           |
| Mexico                      | 7.55          | 7.61          | 7.62          | 7.81          | 7.94           | 7.94           |
| Vietnam                     | 7.46          | 7.59          | 7.66          | 7.63          | 7.64           | 7.77           |
| Indonesia                   | 6.06          | 6.44          | 6.53          | 6.66          | 6.73           | 6.73           |
| Thailand                    | 6.09          | 6.04          | 5.97          | 6.28          | 6.50           | 6.48           |
| Other                       | 84.59         | 85.12         | 86.54         | 85.28         | 87.67          | 87.56          |
| <b>Total</b>                | <b>341.19</b> | <b>346.59</b> | <b>347.17</b> | <b>355.36</b> | <b>363.08</b>  | <b>363.96</b>  |
| <b>SME</b>                  |               |               |               |               |                |                |
| China                       | 89.94         | 92.80         | 89.70         | 95.46         | 97.71          | 98.53          |
| European Union              | 42.61         | 42.58         | 42.64         | 42.31         | 42.37          | 42.37          |
| United States               | 38.72         | 38.60         | 39.26         | 39.29         | 40.16          | 40.14          |
| Brazil                      | 19.90         | 20.75         | 21.26         | 21.90         | 22.65          | 22.65          |
| India                       | 13.61         | 14.00         | 14.60         | 15.00         | 15.46          | 15.46          |
| Mexico                      | 7.26          | 7.32          | 7.39          | 7.53          | 7.67           | 7.67           |
| Russia                      | 6.60          | 6.72          | 6.89          | 7.27          | 7.59           | 7.65           |
| Other                       | 93.86         | 95.12         | 96.77         | 95.09         | 98.00          | 97.98          |
| <b>Total</b>                | <b>312.50</b> | <b>317.89</b> | <b>318.53</b> | <b>323.85</b> | <b>331.63</b>  | <b>332.45</b>  |
| <b>Ending Stocks</b>        |               |               |               |               |                |                |
| Brazil                      | 3.99          | 4.48          | 3.89          | 3.31          | 3.70           | 3.83           |
| Argentina                   | 2.87          | 2.42          | 2.93          | 2.54          | 2.44           | 2.68           |
| European Union              | 1.45          | 0.99          | 1.13          | 0.95          | 1.06           | 1.19           |
| China                       | 0.98          | 0.78          | 0.34          | 0.88          | 0.81           | 0.79           |
| Vietnam                     | 1.04          | 0.72          | 0.79          | 0.56          | 0.78           | 0.77           |
| Other                       | 11.37         | 10.74         | 11.30         | 9.46          | 10.88          | 10.85          |
| <b>Total</b>                | <b>21.70</b>  | <b>20.12</b>  | <b>20.38</b>  | <b>17.70</b>  | <b>19.67</b>   | <b>20.12</b>   |

Major Protein Meals include Copra, Cottonseed, Fish, Palm Kernel, Peanut, Rapeseed, Soybean, and Sunflower Meal.

**Table 06: Major Vegetable Oils: World Supply and Distribution (Country View)**

Million Metric Tons

|                             | 2019/20       | 2020/21       | 2021/22       | 2022/23       | Oct<br>2023/24 | Nov<br>2023/24 |
|-----------------------------|---------------|---------------|---------------|---------------|----------------|----------------|
| <b>Production</b>           |               |               |               |               |                |                |
| Indonesia                   | 48.32         | 49.50         | 47.90         | 52.15         | 53.25          | 53.25          |
| China                       | 27.41         | 27.99         | 27.18         | 29.23         | 29.63          | 29.81          |
| Malaysia                    | 21.53         | 19.98         | 20.22         | 20.60         | 21.27          | 21.27          |
| European Union              | 17.46         | 17.94         | 18.80         | 18.31         | 18.99          | 18.99          |
| United States               | 12.64         | 12.70         | 13.06         | 13.27         | 13.62          | 13.61          |
| Brazil                      | 10.35         | 10.34         | 11.11         | 11.60         | 12.28          | 12.28          |
| Russia                      | 7.15          | 6.66          | 7.60          | 8.69          | 9.03           | 9.17           |
| Other                       | 62.75         | 62.01         | 61.96         | 63.34         | 65.12          | 65.10          |
| <b>Total</b>                | <b>207.61</b> | <b>207.11</b> | <b>207.83</b> | <b>217.19</b> | <b>223.19</b>  | <b>223.49</b>  |
| <b>Imports</b>              |               |               |               |               |                |                |
| India                       | 13.73         | 13.81         | 14.31         | 16.88         | 15.44          | 15.44          |
| China                       | 12.62         | 13.25         | 7.13          | 11.41         | 11.01          | 11.26          |
| European Union              | 12.04         | 9.95          | 9.79          | 9.74          | 9.45           | 9.45           |
| United States               | 4.90          | 4.95          | 5.26          | 6.27          | 6.60           | 6.58           |
| Pakistan                    | 3.54          | 3.59          | 3.08          | 3.89          | 4.08           | 4.08           |
| Bangladesh                  | 2.21          | 1.96          | 2.03          | 2.29          | 2.43           | 2.43           |
| Turkey                      | 1.83          | 1.71          | 2.42          | 2.75          | 2.24           | 2.24           |
| Malaysia                    | 1.44          | 1.96          | 1.93          | 1.56          | 1.97           | 1.97           |
| Egypt                       | 1.92          | 1.77          | 1.76          | 1.65          | 1.79           | 1.79           |
| Iran                        | 1.13          | 1.91          | 1.41          | 1.21          | 1.64           | 1.64           |
| Other                       | 27.38         | 26.41         | 25.43         | 26.05         | 28.21          | 27.96          |
| <b>Total</b>                | <b>82.73</b>  | <b>81.25</b>  | <b>74.55</b>  | <b>83.70</b>  | <b>84.86</b>   | <b>84.83</b>   |
| <b>Exports</b>              |               |               |               |               |                |                |
| Indonesia                   | 28.60         | 29.43         | 24.27         | 30.25         | 30.40          | 30.40          |
| Malaysia                    | 18.66         | 17.32         | 16.83         | 16.75         | 17.94          | 17.94          |
| Russia                      | 5.16          | 4.56          | 4.50          | 6.09          | 6.17           | 6.28           |
| Ukraine                     | 7.21          | 5.61          | 4.87          | 6.05          | 6.16           | 6.22           |
| Argentina                   | 6.06          | 7.05          | 5.85          | 5.22          | 5.51           | 5.51           |
| Canada                      | 3.58          | 3.58          | 2.74          | 3.17          | 3.36           | 3.36           |
| European Union              | 3.26          | 3.57          | 3.30          | 3.63          | 3.58           | 3.33           |
| Other                       | 14.62         | 14.63         | 17.22         | 16.85         | 17.01          | 16.82          |
| <b>Total</b>                | <b>87.15</b>  | <b>85.75</b>  | <b>79.57</b>  | <b>88.00</b>  | <b>90.13</b>   | <b>89.84</b>   |
| <b>Domestic Consumption</b> |               |               |               |               |                |                |
| China                       | 39.22         | 40.16         | 36.55         | 38.96         | 40.14          | 40.39          |
| European Union              | 25.60         | 25.58         | 24.52         | 24.75         | 24.86          | 25.10          |
| India                       | 22.17         | 22.53         | 22.82         | 23.81         | 24.68          | 24.65          |
| Indonesia                   | 18.12         | 19.51         | 21.59         | 23.27         | 24.39          | 24.56          |
| United States               | 15.99         | 16.52         | 17.30         | 19.36         | 19.90          | 19.88          |
| Brazil                      | 9.63          | 9.97          | 9.33          | 9.62          | 10.57          | 10.57          |
| Malaysia                    | 5.03          | 4.72          | 4.60          | 5.47          | 5.42           | 5.37           |
| Pakistan                    | 4.88          | 4.80          | 4.64          | 4.78          | 4.92           | 4.92           |
| Russia                      | 3.54          | 3.63          | 3.74          | 3.77          | 3.81           | 3.81           |
| Thailand                    | 3.16          | 3.13          | 2.97          | 3.19          | 3.37           | 3.35           |
| Mexico                      | 2.88          | 2.94          | 3.11          | 3.15          | 3.25           | 3.24           |
| Bangladesh                  | 3.23          | 3.13          | 3.10          | 3.09          | 3.09           | 3.09           |
| Argentina                   | 2.79          | 2.66          | 3.28          | 2.75          | 3.07           | 3.07           |
| Turkey                      | 2.43          | 2.42          | 2.51          | 2.71          | 2.79           | 2.79           |
| Nigeria                     | 2.38          | 2.46          | 2.56          | 2.65          | 2.75           | 2.75           |
| Other                       | 40.22         | 40.14         | 39.83         | 39.87         | 41.66          | 41.38          |
| <b>Total</b>                | <b>201.25</b> | <b>204.29</b> | <b>202.44</b> | <b>211.20</b> | <b>218.65</b>  | <b>218.92</b>  |
| <b>Ending Stocks</b>        |               |               |               |               |                |                |
| Indonesia                   | 5.08          | 5.76          | 7.93          | 6.61          | 5.04           | 4.96           |
| India                       | 2.56          | 1.90          | 2.02          | 4.19          | 3.88           | 3.88           |
| China                       | 3.01          | 4.01          | 1.62          | 3.13          | 3.56           | 3.57           |
| Malaysia                    | 2.19          | 2.09          | 2.80          | 2.75          | 2.63           | 2.68           |
| European Union              | 3.13          | 1.88          | 2.64          | 2.31          | 2.20           | 2.32           |
| Other                       | 14.42         | 13.09         | 12.08         | 11.78         | 12.74          | 12.93          |
| <b>Total</b>                | <b>30.39</b>  | <b>28.72</b>  | <b>29.09</b>  | <b>30.78</b>  | <b>30.05</b>   | <b>30.34</b>   |

Major Vegetable Oils includes Coconut, Cottonseed, Olive, Palm, Palm Kernel, Peanut, Rapeseed, Soybean, and Sunflowerseed oil.

**Table 07: Soybeans: World Supply and Distribution**

Thousand Metric Tons

|                      | 2019/20        | 2020/21        | 2021/22        | 2022/23        | Oct<br>2023/24 | Nov<br>2023/24 |
|----------------------|----------------|----------------|----------------|----------------|----------------|----------------|
| <b>Production</b>    |                |                |                |                |                |                |
| Brazil               | 128,500        | 139,500        | 130,500        | 158,000        | 163,000        | 163,000        |
| United States        | 96,667         | 114,749        | 121,528        | 116,216        | 111,703        | 112,385        |
| Argentina            | 48,800         | 46,200         | 43,900         | 25,000         | 48,000         | 48,000         |
| China                | 18,092         | 19,602         | 16,395         | 20,280         | 20,500         | 20,500         |
| India                | 9,300          | 10,456         | 11,889         | 12,411         | 11,000         | 11,000         |
| Paraguay             | 10,553         | 9,642          | 4,183          | 9,050          | 10,000         | 10,000         |
| Canada               | 6,145          | 6,359          | 6,224          | 6,543          | 6,700          | 6,700          |
| Other                | 23,396         | 22,714         | 25,815         | 24,738         | 28,598         | 28,838         |
| <b>Total</b>         | <b>341,453</b> | <b>369,222</b> | <b>360,434</b> | <b>372,238</b> | <b>399,501</b> | <b>400,423</b> |
| <b>Imports</b>       |                |                |                |                |                |                |
| China                | 98,532         | 99,740         | 90,501         | 100,846        | 100,000        | 100,000        |
| European Union       | 15,017         | 14,786         | 14,549         | 13,350         | 13,800         | 13,800         |
| Mexico               | 5,743          | 6,101          | 5,956          | 6,442          | 6,400          | 6,400          |
| Argentina            | 4,882          | 4,816          | 3,839          | 9,059          | 5,700          | 5,700          |
| Thailand             | 3,831          | 4,157          | 3,243          | 3,238          | 3,800          | 3,800          |
| Japan                | 3,325          | 3,085          | 3,455          | 3,332          | 3,500          | 3,500          |
| Turkey               | 3,148          | 2,745          | 2,949          | 2,888          | 3,100          | 3,100          |
| Egypt                | 4,956          | 3,687          | 4,630          | 2,000          | 2,800          | 3,000          |
| Iran                 | 1,460          | 1,894          | 2,674          | 2,650          | 2,800          | 2,800          |
| Taiwan               | 2,708          | 2,615          | 2,622          | 2,700          | 2,750          | 2,750          |
| Other                | 21,692         | 21,869         | 21,164         | 18,602         | 21,096         | 20,898         |
| <b>Total</b>         | <b>165,294</b> | <b>165,495</b> | <b>155,582</b> | <b>165,107</b> | <b>165,746</b> | <b>165,748</b> |
| <b>Exports</b>       |                |                |                |                |                |                |
| Brazil               | 92,135         | 81,650         | 79,063         | 95,511         | 97,500         | 97,500         |
| United States        | 45,800         | 61,664         | 58,571         | 54,208         | 47,763         | 47,763         |
| Paraguay             | 6,619          | 6,330          | 2,273          | 5,800          | 6,000          | 6,000          |
| Argentina            | 10,004         | 5,195          | 2,861          | 4,185          | 4,600          | 4,600          |
| Canada               | 3,909          | 4,554          | 4,284          | 4,240          | 4,550          | 4,550          |
| Other                | 7,354          | 5,789          | 7,196          | 7,005          | 7,828          | 7,878          |
| <b>Total</b>         | <b>165,821</b> | <b>165,182</b> | <b>154,248</b> | <b>170,949</b> | <b>168,241</b> | <b>168,291</b> |
| <b>Crush</b>         |                |                |                |                |                |                |
| China                | 91,500         | 93,000         | 87,900         | 95,000         | 97,000         | 98,000         |
| United States        | 58,910         | 58,257         | 59,980         | 60,199         | 62,596         | 62,596         |
| Brazil               | 46,742         | 46,500         | 50,712         | 53,000         | 55,750         | 55,750         |
| Argentina            | 38,770         | 40,162         | 38,825         | 30,318         | 34,500         | 34,500         |
| European Union       | 15,600         | 15,800         | 15,400         | 14,350         | 15,000         | 15,000         |
| India                | 8,600          | 10,000         | 8,500          | 10,300         | 9,500          | 9,500          |
| Mexico               | 6,000          | 6,200          | 6,350          | 6,650          | 6,500          | 6,500          |
| Russia               | 4,650          | 4,500          | 4,800          | 5,400          | 5,750          | 5,850          |
| Paraguay             | 3,500          | 3,325          | 2,200          | 3,050          | 3,500          | 3,500          |
| Iran                 | 2,500          | 2,000          | 2,550          | 3,000          | 2,900          | 2,900          |
| Egypt                | 4,700          | 3,900          | 4,500          | 2,225          | 2,800          | 2,800          |
| Bolivia              | 2,550          | 3,050          | 3,100          | 2,675          | 2,650          | 2,650          |
| Japan                | 2,385          | 2,300          | 2,640          | 2,600          | 2,650          | 2,625          |
| Thailand             | 2,610          | 2,800          | 2,500          | 2,100          | 2,550          | 2,450          |
| Taiwan               | 2,080          | 2,050          | 2,075          | 2,050          | 2,100          | 2,100          |
| Other                | 21,559         | 22,192         | 22,471         | 20,514         | 22,745         | 22,745         |
| <b>Total</b>         | <b>312,656</b> | <b>316,036</b> | <b>314,503</b> | <b>313,431</b> | <b>328,491</b> | <b>329,466</b> |
| <b>Ending Stocks</b> |                |                |                |                |                |                |
| Brazil               | 20,419         | 29,579         | 27,598         | 33,442         | 37,698         | 39,692         |
| China                | 24,484         | 30,856         | 29,250         | 33,786         | 37,200         | 33,686         |
| Argentina            | 26,650         | 25,060         | 23,903         | 17,209         | 24,853         | 24,559         |
| United States        | 14,276         | 6,994          | 7,468          | 7,299          | 5,975          | 6,681          |
| European Union       | 1,721          | 1,560          | 1,681          | 1,425          | 1,390          | 1,400          |
| Other                | 7,597          | 6,214          | 8,163          | 7,150          | 8,505          | 8,496          |
| <b>Total</b>         | <b>95,147</b>  | <b>100,263</b> | <b>98,063</b>  | <b>100,311</b> | <b>115,621</b> | <b>114,514</b> |

Most countries are on an October/September Marketing Year (MY). The United States, Mexico, and Thailand are on a September/August MY. Canada is on an August/July MY. Paraguay is on a Jan/Dec MY.



**Table 08: Soybean Meal: World Supply and Distribution**

Thousand Metric Tons

|                             | 2019/20        | 2020/21        | 2021/22        | 2022/23        | Oct<br>2023/24 | Nov<br>2023/24 |
|-----------------------------|----------------|----------------|----------------|----------------|----------------|----------------|
| <b>Production</b>           |                |                |                |                |                |                |
| China                       | 72,468         | 73,656         | 69,617         | 75,240         | 76,824         | 77,616         |
| United States               | 46,358         | 45,872         | 47,005         | 47,621         | 49,147         | 49,128         |
| Brazil                      | 36,225         | 36,047         | 39,307         | 41,070         | 43,206         | 43,206         |
| Argentina                   | 30,240         | 31,320         | 30,287         | 23,648         | 26,910         | 26,910         |
| European Union              | 12,324         | 12,482         | 12,166         | 11,337         | 11,850         | 11,850         |
| India                       | 6,890          | 8,000          | 6,800          | 8,240          | 7,600          | 7,600          |
| Mexico                      | 4,740          | 4,900          | 5,020          | 5,255          | 5,136          | 5,136          |
| Other                       | 36,359         | 36,074         | 36,550         | 34,048         | 37,204         | 37,186         |
| <b>Total</b>                | <b>245,604</b> | <b>248,351</b> | <b>246,752</b> | <b>246,459</b> | <b>257,877</b> | <b>258,632</b> |
| <b>Imports</b>              |                |                |                |                |                |                |
| European Union              | 16,329         | 16,504         | 16,704         | 15,950         | 15,800         | 15,800         |
| Indonesia                   | 5,043          | 5,356          | 5,535          | 5,434          | 5,700          | 5,700          |
| Vietnam                     | 5,336          | 5,200          | 5,531          | 5,000          | 5,175          | 5,200          |
| Thailand                    | 2,854          | 2,687          | 3,077          | 3,141          | 3,200          | 3,150          |
| Philippines                 | 2,906          | 2,839          | 2,895          | 2,600          | 2,925          | 2,925          |
| Mexico                      | 1,818          | 1,854          | 1,827          | 1,668          | 2,000          | 2,050          |
| United Kingdom              | 2,133          | 2,214          | 2,015          | 1,750          | 2,000          | 2,000          |
| Colombia                    | 1,509          | 1,607          | 1,831          | 1,700          | 1,850          | 1,850          |
| Ecuador                     | 1,187          | 1,597          | 1,775          | 1,600          | 1,850          | 1,850          |
| Korea, South                | 1,992          | 1,727          | 1,726          | 1,492          | 1,750          | 1,650          |
| Other                       | 22,216         | 23,775         | 24,406         | 22,419         | 24,514         | 24,604         |
| <b>Total</b>                | <b>63,323</b>  | <b>65,360</b>  | <b>67,322</b>  | <b>62,754</b>  | <b>66,764</b>  | <b>66,779</b>  |
| <b>Exports</b>              |                |                |                |                |                |                |
| Argentina                   | 27,461         | 28,325         | 26,589         | 20,751         | 23,400         | 23,400         |
| Brazil                      | 17,499         | 16,577         | 20,207         | 21,358         | 22,000         | 22,000         |
| United States               | 12,549         | 12,406         | 12,283         | 13,303         | 13,880         | 13,880         |
| Paraguay                    | 2,138          | 1,916          | 1,270          | 1,700          | 2,000          | 2,000          |
| Bolivia                     | 1,723          | 2,117          | 2,153          | 1,750          | 1,700          | 1,700          |
| Other                       | 6,572          | 8,093          | 6,336          | 7,568          | 6,745          | 6,806          |
| <b>Total</b>                | <b>67,942</b>  | <b>69,434</b>  | <b>68,838</b>  | <b>66,430</b>  | <b>69,725</b>  | <b>69,786</b>  |
| <b>Domestic Consumption</b> |                |                |                |                |                |                |
| China                       | 71,145         | 72,875         | 69,630         | 73,950         | 75,950         | 76,750         |
| United States               | 34,444         | 34,179         | 35,343         | 34,837         | 35,766         | 35,765         |
| European Union              | 28,267         | 28,392         | 28,042         | 26,792         | 26,892         | 26,892         |
| Brazil                      | 18,200         | 19,000         | 19,700         | 20,300         | 20,700         | 20,700         |
| Mexico                      | 6,650          | 6,725          | 6,875          | 6,950          | 7,125          | 7,125          |
| India                       | 5,780          | 5,850          | 6,273          | 6,700          | 7,050          | 7,050          |
| Vietnam                     | 6,130          | 6,330          | 6,385          | 6,185          | 6,340          | 6,390          |
| Indonesia                   | 4,900          | 5,200          | 5,550          | 5,580          | 5,600          | 5,625          |
| Thailand                    | 4,795          | 4,745          | 4,900          | 4,750          | 5,020          | 4,900          |
| Russia                      | 3,500          | 3,475          | 3,450          | 3,650          | 3,865          | 3,865          |
| Japan                       | 3,655          | 3,615          | 3,610          | 3,550          | 3,585          | 3,560          |
| Argentina                   | 3,200          | 3,275          | 3,325          | 3,400          | 3,450          | 3,450          |
| Iran                        | 3,400          | 3,430          | 3,500          | 2,950          | 3,100          | 3,100          |
| Egypt                       | 3,450          | 3,600          | 3,650          | 2,800          | 3,050          | 3,050          |
| Philippines                 | 2,900          | 2,875          | 2,950          | 2,775          | 2,900          | 2,900          |
| Other                       | 40,160         | 41,209         | 41,809         | 40,710         | 42,547         | 42,502         |
| <b>Total</b>                | <b>240,576</b> | <b>244,775</b> | <b>244,992</b> | <b>245,879</b> | <b>252,940</b> | <b>253,624</b> |
| <b>Ending Stocks</b>        |                |                |                |                |                |                |
| Brazil                      | 3,982          | 4,470          | 3,882          | 3,300          | 3,686          | 3,816          |
| Argentina                   | 2,568          | 2,289          | 2,797          | 2,361          | 2,187          | 2,431          |
| China                       | 981            | 784            | 343            | 878            | 805            | 794            |
| Vietnam                     | 952            | 616            | 697            | 486            | 664            | 659            |
| European Union              | 790            | 537            | 595            | 365            | 461            | 473            |
| Other                       | 7,765          | 7,844          | 8,470          | 6,298          | 7,581          | 7,516          |
| <b>Total</b>                | <b>17,038</b>  | <b>16,540</b>  | <b>16,784</b>  | <b>13,688</b>  | <b>15,384</b>  | <b>15,689</b>  |

Most countries are on an October/September Marketing Year (MY). The Mexico and Thailand are on a September/August MY. Canada is on an August/July MY. Paraguay, Vietnam and the Philippines are on a January/December MY and Bolivia is on a March/February MY.

**Table 09: Soybean Oil: World Supply and Distribution**

Thousand Metric Tons

|                             | 2019/20       | 2020/21       | 2021/22       | 2022/23       | Oct<br>2023/24 | Nov<br>2023/24 |
|-----------------------------|---------------|---------------|---------------|---------------|----------------|----------------|
| <b>Production</b>           |               |               |               |               |                |                |
| China                       | 16,397        | 16,666        | 15,752        | 17,024        | 17,382         | 17,562         |
| United States               | 11,299        | 11,350        | 11,864        | 11,897        | 12,258         | 12,258         |
| Brazil                      | 8,998         | 8,951         | 9,762         | 10,208        | 10,732         | 10,732         |
| Argentina                   | 7,700         | 7,930         | 7,664         | 5,991         | 6,814          | 6,814          |
| European Union              | 2,964         | 3,002         | 2,926         | 2,727         | 2,850          | 2,850          |
| India                       | 1,550         | 1,800         | 1,530         | 1,854         | 1,710          | 1,710          |
| Mexico                      | 1,110         | 1,145         | 1,171         | 1,227         | 1,200          | 1,200          |
| Other                       | 8,533         | 8,470         | 8,602         | 8,103         | 8,807          | 8,802          |
| <b>Total</b>                | <b>58,551</b> | <b>59,314</b> | <b>59,271</b> | <b>59,031</b> | <b>61,753</b>  | <b>61,928</b>  |
| <b>Imports</b>              |               |               |               |               |                |                |
| India                       | 3,626         | 3,251         | 4,231         | 3,900         | 3,300          | 3,300          |
| Bangladesh                  | 696           | 676           | 689           | 681           | 725            | 725            |
| Algeria                     | 693           | 632           | 604           | 500           | 580            | 580            |
| Peru                        | 521           | 594           | 471           | 525           | 575            | 575            |
| Morocco                     | 573           | 507           | 529           | 525           | 550            | 550            |
| China                       | 998           | 1,221         | 291           | 409           | 400            | 400            |
| European Union              | 483           | 493           | 459           | 625           | 400            | 400            |
| Colombia                    | 387           | 285           | 317           | 250           | 375            | 350            |
| Korea, South                | 402           | 407           | 392           | 353           | 400            | 350            |
| Iran                        | 79            | 570           | 372           | 75            | 275            | 275            |
| Other                       | 3,085         | 3,158         | 3,182         | 2,788         | 3,180          | 3,285          |
| <b>Total</b>                | <b>11,543</b> | <b>11,794</b> | <b>11,537</b> | <b>10,631</b> | <b>10,760</b>  | <b>10,790</b>  |
| <b>Exports</b>              |               |               |               |               |                |                |
| Argentina                   | 5,404         | 6,137         | 4,873         | 4,137         | 4,400          | 4,400          |
| Brazil                      | 1,156         | 1,262         | 2,409         | 2,690         | 2,250          | 2,250          |
| European Union              | 909           | 1,065         | 971           | 925           | 1,100          | 900            |
| Russia                      | 641           | 561           | 480           | 680           | 725            | 725            |
| Paraguay                    | 631           | 562           | 371           | 510           | 590            | 590            |
| Bolivia                     | 408           | 525           | 523           | 420           | 390            | 390            |
| Ukraine                     | 338           | 232           | 235           | 277           | 345            | 345            |
| Other                       | 2,897         | 2,267         | 2,392         | 1,751         | 1,897          | 1,903          |
| <b>Total</b>                | <b>12,384</b> | <b>12,611</b> | <b>12,254</b> | <b>11,390</b> | <b>11,697</b>  | <b>11,503</b>  |
| <b>Domestic Consumption</b> |               |               |               |               |                |                |
| China                       | 17,000        | 17,600        | 16,700        | 16,750        | 17,600         | 17,700         |
| United States               | 10,122        | 10,574        | 11,262        | 12,072        | 12,291         | 12,292         |
| Brazil                      | 7,750         | 7,950         | 7,450         | 7,675         | 8,450          | 8,450          |
| India                       | 5,125         | 4,950         | 5,825         | 5,400         | 5,100          | 5,100          |
| European Union              | 2,380         | 2,430         | 2,305         | 2,385         | 2,265          | 2,465          |
| Argentina                   | 2,175         | 2,042         | 2,660         | 2,050         | 2,350          | 2,350          |
| Mexico                      | 1,285         | 1,290         | 1,300         | 1,340         | 1,325          | 1,325          |
| Bangladesh                  | 1,264         | 1,205         | 1,100         | 960           | 990            | 990            |
| Algeria                     | 785           | 825           | 860           | 820           | 865            | 865            |
| Iran                        | 650           | 725           | 800           | 775           | 800            | 800            |
| Egypt                       | 915           | 1,075         | 980           | 680           | 760            | 760            |
| Peru                        | 535           | 535           | 555           | 540           | 545            | 545            |
| Korea, South                | 535           | 580           | 590           | 545           | 590            | 540            |
| Morocco                     | 520           | 510           | 525           | 525           | 525            | 525            |
| Japan                       | 482           | 458           | 533           | 525           | 520            | 515            |
| Other                       | 5,571         | 5,737         | 5,779         | 5,206         | 5,584          | 5,629          |
| <b>Total</b>                | <b>57,094</b> | <b>58,486</b> | <b>59,224</b> | <b>58,248</b> | <b>60,560</b>  | <b>60,851</b>  |
| <b>Ending Stocks</b>        |               |               |               |               |                |                |
| China                       | 877           | 1,122         | 353           | 920           | 964            | 982            |
| United States               | 840           | 967           | 903           | 727           | 788            | 715            |
| European Union              | 440           | 440           | 549           | 591           | 479            | 476            |
| India                       | 175           | 265           | 186           | 525           | 420            | 420            |
| Argentina                   | 548           | 299           | 523           | 327           | 414            | 391            |
| Other                       | 2,626         | 2,424         | 2,333         | 1,781         | 2,149          | 2,251          |
| <b>Total</b>                | <b>5,506</b>  | <b>5,517</b>  | <b>4,847</b>  | <b>4,871</b>  | <b>5,214</b>   | <b>5,235</b>   |

Most countries are on an October/September Marketing Year (MY). Mexico is on a September/August MY. Paraguay and Peru are on an January/December MY and Bolivia is on a March/February MY.

**Table 10: Soybeans and Products: World Trade**  
**Thousand Metric Tons**

| Marketing Year           | Meal, Soybean |               |               | Oil, Soybean  |               |               | Oilseed, Soybean |                |                |  |
|--------------------------|---------------|---------------|---------------|---------------|---------------|---------------|------------------|----------------|----------------|--|
|                          | 2021/22       | 2022/23       | 2023/24       | 2021/22       | 2022/23       | 2023/24       | 2021/22          | 2022/23        | 2023/24        |  |
| <b>Exports</b>           |               |               |               |               |               |               |                  |                |                |  |
| North America            | 12,706        | 13,683        | 14,231        | 981           | 346           | 339           | 62,855           | 58,449         | 52,313         |  |
| South America            | 50,228        | 45,568        | 49,107        | 8,244         | 7,823         | 7,697         | 87,837           | 106,624        | 110,605        |  |
| South Asia               | 1,074         | 1,853         | 604           | 30            | 15            | 30            | 61               | 25             | 50             |  |
| India (Oct-Sep)          | 940           | 1,825         | 600           | 15            | 15            | 15            | 61               | 25             | 50             |  |
| Other                    | 4,830         | 5,326         | 5,844         | 2,999         | 3,206         | 3,437         | 3,495            | 5,851          | 5,323          |  |
| <b>World Total</b>       | <b>68,838</b> | <b>66,430</b> | <b>69,786</b> | <b>12,254</b> | <b>11,390</b> | <b>11,503</b> | <b>154,248</b>   | <b>170,949</b> | <b>168,291</b> |  |
| <b>Imports</b>           |               |               |               |               |               |               |                  |                |                |  |
| European Union (Oct-Sep) | 16,704        | 15,950        | 15,800        | 459           | 625           | 400           | 14,549           | 13,350         | 13,800         |  |
| East Asia                | 3,565         | 3,137         | 3,375         | 767           | 844           | 850           | 97,853           | 108,222        | 107,655        |  |
| China (Oct-Sep)          | 56            | 40            | 50            | 291           | 409           | 400           | 90,501           | 100,846        | 100,000        |  |
| Japan (Oct-Sep)          | 1,699         | 1,540         | 1,600         | 10            | 7             | 10            | 3,455            | 3,332          | 3,500          |  |
| Korea, South (Oct-Sep)   | 1,726         | 1,492         | 1,650         | 392           | 353           | 350           | 1,268            | 1,337          | 1,400          |  |
| Taiwan (Oct-Sep)         | 79            | 60            | 70            | 0             | 0             | 0             | 2,622            | 2,700          | 2,750          |  |
| Southeast Asia           | 19,010        | 18,178        | 19,149        | 236           | 256           | 264           | 8,289            | 8,565          | 9,982          |  |
| Indonesia (Oct-Sep)      | 5,535         | 5,434         | 5,700         | 36            | 31            | 36            | 2,307            | 2,308          | 2,550          |  |
| Malaysia (Oct-Sep)       | 1,292         | 1,300         | 1,400         | 65            | 90            | 100           | 694              | 775            | 800            |  |
| Philippines (Jan-Dec)    | 2,895         | 2,600         | 2,925         | 60            | 60            | 60            | 178              | 160            | 190            |  |
| Thailand (Sep-Aug)       | 3,077         | 3,141         | 3,150         | 0             | 0             | 0             | 3,243            | 3,238          | 3,800          |  |
| Vietnam (Jan-Dec)        | 5,531         | 5,000         | 5,200         | 60            | 60            | 50            | 1,839            | 2,050          | 2,600          |  |
| North America            | 3,747         | 3,448         | 3,894         | 387           | 414           | 531           | 6,930            | 7,609          | 7,716          |  |
| Canada (Aug-Jul)         | 1,326         | 1,207         | 1,300         | 63            | 147           | 150           | 541              | 500            | 500            |  |
| United States (Oct-Sep)  | 594           | 573           | 544           | 137           | 170           | 181           | 433              | 667            | 816            |  |
| Canada (Aug-Jul)         | 1,326         | 1,207         | 1,300         | 63            | 147           | 150           | 541              | 500            | 500            |  |
| Mexico (Sep-Aug)         | 1,827         | 1,668         | 2,050         | 187           | 97            | 200           | 5,956            | 6,442          | 6,400          |  |
| South America            | 7,025         | 6,605         | 7,287         | 1,415         | 1,293         | 1,459         | 5,392            | 10,286         | 7,285          |  |
| Argentina (Oct-Sep)      | 135           | 67            | 10            | 93            | 0             | 0             | 3,839            | 9,059          | 5,700          |  |
| Brazil (Oct-Sep)         | 12            | 6             | 10            | 32            | 29            | 25            | 539              | 155            | 450            |  |
| Paraguay (Jan-Dec)       | 5             | 2             | 0             | 2             | 2             | 2             | 40               | 10             | 20             |  |
| Brazil (Oct-Sep)         | 12            | 6             | 10            | 32            | 29            | 25            | 539              | 155            | 450            |  |
| Colombia (Oct-Sep)       | 1,831         | 1,700         | 1,850         | 317           | 250           | 350           | 526              | 525            | 575            |  |
| Central America          | 1,675         | 1,576         | 1,785         | 224           | 197           | 243           | 313              | 327            | 352            |  |
| Caribbean                | 809           | 755           | 850           | 307           | 266           | 310           | 23               | 25             | 65             |  |
| Middle East              | 6,281         | 4,860         | 5,820         | 537           | 203           | 438           | 6,865            | 6,609          | 7,252          |  |
| Iran (Oct-Sep)           | 1,406         | 500           | 900           | 372           | 75            | 275           | 2,674            | 2,650          | 2,800          |  |
| Israel (Oct-Sep)         | 361           | 350           | 350           | 19            | 10            | 20            | 316              | 320            | 375            |  |
| Syria (Jan-Dec)          | 78            | 60            | 80            | 18            | 1             | 1             | 1                | 1              | 2              |  |
| Turkey (Oct-Sep)         | 1,468         | 1,350         | 1,350         | 4             | 2             | 2             | 2,949            | 2,888          | 3,100          |  |
| North Africa             | 1,262         | 2,415         | 2,055         | 1,424         | 1,290         | 1,440         | 6,753            | 4,250          | 5,500          |  |
| Egypt (Oct-Sep)          | 162           | 900           | 850           | 215           | 200           | 235           | 4,630            | 2,000          | 3,000          |  |
| Other Europe             | 2,546         | 2,185         | 2,500         | 212           | 176           | 189           | 1,276            | 1,519          | 1,504          |  |
| United Kingdom (Oct-Sep) | 2,015         | 1,750         | 2,000         | 198           | 165           | 175           | 871              | 950            | 925            |  |
| Other                    | 4,698         | 3,645         | 4,264         | 5,569         | 5,067         | 4,666         | 7,339            | 4,345          | 4,637          |  |
| <b>World Total</b>       | <b>67,322</b> | <b>62,754</b> | <b>66,779</b> | <b>11,537</b> | <b>10,631</b> | <b>10,790</b> | <b>155,582</b>   | <b>165,107</b> | <b>165,748</b> |  |

**Table 11: Palm Oil: World Supply and Distribution**

Thousand Metric Tons

|                             | 2019/20       | 2020/21       | 2021/22       | 2022/23       | Oct<br>2023/24 | Nov<br>2023/24 |
|-----------------------------|---------------|---------------|---------------|---------------|----------------|----------------|
| <b>Production</b>           |               |               |               |               |                |                |
| Indonesia                   | 42,500        | 43,500        | 42,000        | 46,000        | 47,000         | 47,000         |
| Malaysia                    | 19,255        | 17,854        | 18,152        | 18,387        | 19,000         | 19,000         |
| Thailand                    | 2,652         | 2,963         | 3,376         | 3,415         | 3,450          | 3,450          |
| Colombia                    | 1,598         | 1,628         | 1,762         | 1,800         | 1,900          | 1,900          |
| Nigeria                     | 1,140         | 1,275         | 1,400         | 1,400         | 1,500          | 1,500          |
| Other                       | 5,966         | 6,057         | 6,274         | 6,561         | 6,614          | 6,614          |
| <b>Total</b>                | <b>73,111</b> | <b>73,277</b> | <b>72,964</b> | <b>77,563</b> | <b>79,464</b>  | <b>79,464</b>  |
| <b>Imports</b>              |               |               |               |               |                |                |
| India                       | 7,398         | 8,411         | 8,004         | 9,950         | 9,300          | 9,300          |
| China                       | 6,719         | 6,818         | 4,387         | 6,190         | 6,400          | 6,400          |
| European Union              | 7,112         | 5,970         | 4,979         | 5,050         | 4,850          | 4,850          |
| Pakistan                    | 3,416         | 3,500         | 2,824         | 3,700         | 3,850          | 3,850          |
| United States               | 1,503         | 1,576         | 1,588         | 1,887         | 1,900          | 1,900          |
| Bangladesh                  | 1,510         | 1,285         | 1,339         | 1,610         | 1,700          | 1,700          |
| Malaysia                    | 790           | 1,300         | 1,237         | 935           | 1,400          | 1,400          |
| Philippines                 | 1,127         | 1,192         | 1,177         | 1,050         | 1,280          | 1,225          |
| Egypt                       | 1,173         | 1,127         | 1,196         | 1,150         | 1,200          | 1,200          |
| Kenya                       | 1,143         | 839           | 789           | 1,000         | 1,050          | 1,050          |
| Other                       | 15,158        | 14,832        | 14,182        | 14,905        | 15,867         | 15,686         |
| <b>Total</b>                | <b>47,049</b> | <b>46,850</b> | <b>41,702</b> | <b>47,427</b> | <b>48,797</b>  | <b>48,561</b>  |
| <b>Exports</b>              |               |               |               |               |                |                |
| Indonesia                   | 26,249        | 27,321        | 22,321        | 28,077        | 28,300         | 28,300         |
| Malaysia                    | 17,212        | 15,878        | 15,527        | 15,355        | 16,500         | 16,500         |
| Guatemala                   | 758           | 776           | 792           | 860           | 875            | 875            |
| Papua New Guinea            | 698           | 745           | 834           | 800           | 800            | 800            |
| Colombia                    | 611           | 454           | 449           | 500           | 750            | 675            |
| Other                       | 2,827         | 3,362         | 4,047         | 3,826         | 3,713          | 3,563          |
| <b>Total</b>                | <b>48,355</b> | <b>48,536</b> | <b>43,970</b> | <b>49,418</b> | <b>50,938</b>  | <b>50,713</b>  |
| <b>Domestic Consumption</b> |               |               |               |               |                |                |
| Indonesia                   | 14,595        | 15,700        | 17,430        | 19,090        | 20,150         | 20,350         |
| India                       | 8,450         | 9,225         | 8,150         | 8,900         | 9,750          | 9,750          |
| China                       | 6,200         | 6,550         | 5,100         | 5,600         | 6,300          | 6,300          |
| European Union              | 6,575         | 6,360         | 4,850         | 4,700         | 4,600          | 4,650          |
| Malaysia                    | 3,559         | 3,242         | 3,300         | 3,971         | 3,970          | 3,970          |
| Pakistan                    | 3,445         | 3,470         | 3,145         | 3,595         | 3,695          | 3,695          |
| Thailand                    | 2,475         | 2,485         | 2,335         | 2,685         | 2,775          | 2,775          |
| United States               | 1,483         | 1,598         | 1,561         | 1,875         | 1,888          | 1,890          |
| Nigeria                     | 1,590         | 1,650         | 1,715         | 1,790         | 1,865          | 1,865          |
| Bangladesh                  | 1,480         | 1,430         | 1,470         | 1,600         | 1,550          | 1,550          |
| Colombia                    | 1,050         | 1,220         | 1,380         | 1,465         | 1,470          | 1,545          |
| Philippines                 | 1,235         | 1,255         | 1,270         | 1,165         | 1,300          | 1,245          |
| Egypt                       | 1,200         | 1,215         | 1,200         | 1,145         | 1,165          | 1,165          |
| Vietnam                     | 942           | 950           | 927           | 937           | 947            | 947            |
| Brazil                      | 758           | 870           | 840           | 880           | 915            | 915            |
| Other                       | 15,805        | 15,337        | 14,850        | 15,246        | 15,887         | 15,671         |
| <b>Total</b>                | <b>70,842</b> | <b>72,557</b> | <b>69,523</b> | <b>74,644</b> | <b>78,227</b>  | <b>78,283</b>  |
| <b>Ending Stocks</b>        |               |               |               |               |                |                |
| Indonesia                   | 4,576         | 5,055         | 7,304         | 6,137         | 4,564          | 4,487          |
| Malaysia                    | 1,722         | 1,756         | 2,318         | 2,314         | 2,244          | 2,244          |
| India                       | 1,386         | 843           | 972           | 2,324         | 2,180          | 2,179          |
| China                       | 895           | 1,149         | 421           | 986           | 1,076          | 1,066          |
| European Union              | 1,137         | 588           | 540           | 740           | 790            | 790            |
| Other                       | 6,194         | 5,553         | 4,562         | 4,544         | 5,173          | 5,308          |
| <b>Total</b>                | <b>15,910</b> | <b>14,944</b> | <b>16,117</b> | <b>17,045</b> | <b>16,027</b>  | <b>16,074</b>  |

**Table 12: Rapeseed and Products: World Supply and Distribution**  
**Thousand Metric Tons**

| Marketing Year              | Meal, Rapeseed |         |         | Oil, Rapeseed |         |         | Oilseed, Rapeseed |         |         |        |
|-----------------------------|----------------|---------|---------|---------------|---------|---------|-------------------|---------|---------|--------|
|                             | 2021/22        | 2022/23 | 2023/24 | 2021/22       | 2022/23 | 2023/24 | 2021/22           | 2022/23 | 2023/24 |        |
| <b>Production</b>           |                |         |         |               |         |         |                   |         |         |        |
| China                       | (Oct-Sep)      | 9,737   | 11,035  | 11,035        | 6,435   | 7,293   | 7,293             | 14,714  | 15,530  | 15,400 |
| India                       | (Oct-Sep)      | 5,808   | 6,015   | 6,070         | 3,705   | 3,840   | 3,880             | 11,100  | 11,300  | 11,700 |
| Canada                      | (Aug-Jul)      | 5,092   | 5,908   | 6,000         | 3,573   | 4,151   | 4,210             | 14,248  | 18,695  | 17,800 |
| Japan                       | (Oct-Sep)      | 1,221   | 1,153   | 1,181         | 904     | 853     | 875               | 4       | 4       | 4      |
| European Union              | (Jul-Jun)      | 12,426  | 13,737  | 13,908        | 9,156   | 10,122  | 10,248            | 17,389  | 19,620  | 20,100 |
| Other                       |                | 7,849   | 9,404   | 9,357         | 5,469   | 6,545   | 6,558             | 18,331  | 23,665  | 20,575 |
| <b>World Total</b>          |                | 42,133  | 47,252  | 47,551        | 29,242  | 32,804  | 33,064            | 75,786  | 88,814  | 85,579 |
| <b>Imports</b>              |                |         |         |               |         |         |                   |         |         |        |
| China                       | (Oct-Sep)      | 2,225   | 2,030   | 1,800         | 973     | 1,998   | 1,600             | 1,657   | 5,335   | 3,400  |
| India                       | (Oct-Sep)      | 1       | 1       | 0             | 34      | 5       | 5                 | 0       | 0       | 0      |
| Canada                      | (Aug-Jul)      | 11      | 6       | 10            | 19      | 26      | 20                | 105     | 151     | 100    |
| Japan                       | (Oct-Sep)      | 7       | 20      | 5             | 33      | 15      | 20                | 2,116   | 1,976   | 2,050  |
| European Union              | (Jul-Jun)      | 576     | 843     | 750           | 593     | 402     | 375               | 5,573   | 6,834   | 5,100  |
| Other                       |                | 4,869   | 6,382   | 6,266         | 3,477   | 4,399   | 4,712             | 4,389   | 5,674   | 5,110  |
| <b>World Total</b>          |                | 7,689   | 9,282   | 8,831         | 5,129   | 6,845   | 6,732             | 13,840  | 19,970  | 15,760 |
| <b>Exports</b>              |                |         |         |               |         |         |                   |         |         |        |
| China                       | (Oct-Sep)      | 11      | 24      | 20            | 3       | 4       | 3                 | 0       | 0       | 0      |
| India                       | (Oct-Sep)      | 1,207   | 1,900   | 1,100         | 7       | 10      | 10                | 0       | 0       | 0      |
| Canada                      | (Aug-Jul)      | 4,395   | 5,311   | 5,300         | 2,573   | 3,017   | 3,200             | 5,253   | 7,954   | 7,500  |
| Japan                       | (Oct-Sep)      | 10      | 0       | 0             | 7       | 5       | 5                 | 0       | 0       | 0      |
| European Union              | (Jul-Jun)      | 703     | 794     | 725           | 337     | 671     | 750               | 452     | 549     | 450    |
| Other                       |                | 1,351   | 1,641   | 1,932         | 2,397   | 2,748   | 2,997             | 9,614   | 11,702  | 8,943  |
| <b>World Total</b>          |                | 7,677   | 9,670   | 9,077         | 5,324   | 6,455   | 6,965             | 15,319  | 20,205  | 16,893 |
| <b>Domestic Consumption</b> |                |         |         |               |         |         |                   |         |         |        |
| China                       | (Oct-Sep)      | 11,951  | 13,041  | 12,815        | 8,300   | 8,900   | 8,600             | 17,025  | 19,325  | 19,325 |
| India                       | (Oct-Sep)      | 4,375   | 4,330   | 4,750         | 3,780   | 3,680   | 3,880             | 10,950  | 11,400  | 11,545 |
| Canada                      | (Aug-Jul)      | 650     | 615     | 665           | 1,030   | 1,055   | 1,025             | 9,551   | 10,711  | 10,706 |
| Japan                       | (Oct-Sep)      | 1,220   | 1,175   | 1,185         | 916     | 890     | 880               | 2,124   | 2,005   | 2,055  |
| European Union              | (Jul-Jun)      | 12,300  | 13,775  | 13,800        | 9,225   | 9,820   | 9,920             | 22,400  | 24,900  | 25,200 |
| Other                       |                | 11,369  | 14,117  | 13,731        | 6,698   | 8,099   | 8,291             | 14,130  | 16,897  | 16,906 |
| <b>World Total</b>          |                | 41,865  | 47,053  | 46,946        | 29,949  | 32,444  | 32,596            | 76,180  | 85,238  | 85,737 |
| <b>Ending Stocks</b>        |                |         |         |               |         |         |                   |         |         |        |
| China                       | (Oct-Sep)      | 0       | 0       | 0             | 841     | 1,228   | 1,518             | 868     | 2,408   | 1,883  |
| India                       | (Oct-Sep)      | 450     | 236     | 456           | 247     | 402     | 397               | 519     | 419     | 574    |
| Canada                      | (Aug-Jul)      | 183     | 171     | 216           | 525     | 630     | 635               | 1,325   | 1,506   | 1,200  |
| Japan                       | (Oct-Sep)      | 18      | 16      | 17            | 46      | 19      | 29                | 207     | 182     | 181    |
| European Union              | (Jul-Jun)      | 312     | 323     | 456           | 398     | 431     | 384               | 828     | 1,833   | 1,383  |
| Other                       |                | 567     | 595     | 555           | 485     | 582     | 564               | 744     | 1,484   | 1,320  |
| <b>World Total</b>          |                | 1,530   | 1,341   | 1,700         | 2,542   | 3,292   | 3,527             | 4,491   | 7,832   | 6,541  |

**Table 13: Sunflowerseed and Products: World Supply and Distribution**  
**Thousand Metric Tons**

| Marketing Year              | Oilseed, Sunflowerseed |               |               | Meal, Sunflowerseed |               |               | Oil, Sunflowerseed |               |               |               |
|-----------------------------|------------------------|---------------|---------------|---------------------|---------------|---------------|--------------------|---------------|---------------|---------------|
|                             | 2021/22                | 2022/23       | 2023/24       | 2021/22             | 2022/23       | 2023/24       | 2021/22            | 2022/23       | 2023/24       |               |
| <b>Production</b>           |                        |               |               |                     |               |               |                    |               |               |               |
| Argentina                   | (Mar-Feb)              | 4,050         | 5,019         | 4,700               | 1,514         | 1,705         | 1,705              | 1,503         | 1,695         | 1,695         |
| Russia                      | (Sep-Aug)              | 15,572        | 16,254        | 17,500              | 5,795         | 6,309         | 6,741              | 5,823         | 6,340         | 6,774         |
| Turkey                      | (Sep-Aug)              | 1,750         | 1,900         | 1,550               | 1,156         | 1,410         | 1,215              | 923           | 1,125         | 967           |
| Ukraine                     | (Sep-Aug)              | 17,500        | 12,200        | 14,500              | 4,460         | 5,782         | 5,782              | 4,644         | 6,020         | 6,020         |
| European Union              | (Oct-Sep)              | 10,328        | 9,166         | 10,650              | 5,621         | 5,135         | 5,189              | 4,394         | 4,014         | 4,056         |
| Other                       |                        | 7,658         | 7,844         | 8,083               | 2,652         | 2,656         | 2,812              | 2,374         | 2,413         | 2,538         |
| <b>World Total</b>          |                        | <b>56,858</b> | <b>52,383</b> | <b>56,983</b>       | <b>21,198</b> | <b>22,997</b> | <b>23,444</b>      | <b>19,661</b> | <b>21,607</b> | <b>22,050</b> |
| <b>Imports</b>              |                        |               |               |                     |               |               |                    |               |               |               |
| Argentina                   | (Mar-Feb)              | 0             | 1             | 0                   | 0             | 0             | 0                  | 0             | 0             | 0             |
| Russia                      | (Sep-Aug)              | 75            | 75            | 50                  | 3             | 5             | 5                  | 1             | 1             | 1             |
| Turkey                      | (Sep-Aug)              | 669           | 1,075         | 900                 | 820           | 879           | 1,000              | 1,308         | 1,711         | 1,225         |
| Ukraine                     | (Sep-Aug)              | 21            | 31            | 30                  | 3             | 13            | 2                  | 1             | 1             | 0             |
| European Union              | (Oct-Sep)              | 1,794         | 1,500         | 500                 | 2,589         | 2,790         | 2,475              | 2,181         | 2,125         | 2,300         |
| Other                       |                        | 1,235         | 1,378         | 1,426               | 3,881         | 4,903         | 5,586              | 6,198         | 8,543         | 8,701         |
| <b>World Total</b>          |                        | <b>3,794</b>  | <b>4,060</b>  | <b>2,906</b>        | <b>7,296</b>  | <b>8,590</b>  | <b>9,068</b>       | <b>9,689</b>  | <b>12,381</b> | <b>12,227</b> |
| <b>Exports</b>              |                        |               |               |                     |               |               |                    |               |               |               |
| Argentina                   | (Mar-Feb)              | 156           | 96            | 200                 | 976           | 1,025         | 1,050              | 873           | 1,000         | 1,000         |
| Russia                      | (Sep-Aug)              | 235           | 450           | 550                 | 2,025         | 2,225         | 2,550              | 3,150         | 4,050         | 4,275         |
| Turkey                      | (Sep-Aug)              | 118           | 105           | 75                  | 36            | 78            | 15                 | 889           | 1,102         | 1,125         |
| Ukraine                     | (Sep-Aug)              | 1,622         | 1,856         | 500                 | 3,275         | 3,973         | 4,650              | 4,465         | 5,683         | 5,600         |
| European Union              | (Oct-Sep)              | 396           | 565           | 450                 | 990           | 900           | 650                | 852           | 1,200         | 875           |
| Other                       |                        | 1,384         | 1,142         | 1,319               | 468           | 626           | 539                | 849           | 966           | 949           |
| <b>World Total</b>          |                        | <b>3,911</b>  | <b>4,214</b>  | <b>3,094</b>        | <b>7,770</b>  | <b>8,827</b>  | <b>9,454</b>       | <b>11,078</b> | <b>14,001</b> | <b>13,824</b> |
| <b>Domestic Consumption</b> |                        |               |               |                     |               |               |                    |               |               |               |
| Argentina                   | (Mar-Feb)              | 3,850         | 4,550         | 4,400               | 540           | 635           | 580                | 582           | 662           | 682           |
| Russia                      | (Sep-Aug)              | 14,550        | 15,830        | 16,890              | 3,800         | 3,900         | 4,125              | 2,300         | 2,400         | 2,460         |
| Turkey                      | (Sep-Aug)              | 2,302         | 2,812         | 2,427               | 2,050         | 2,100         | 2,220              | 1,260         | 1,340         | 1,415         |
| Ukraine                     | (Sep-Aug)              | 11,350        | 14,250        | 14,250              | 1,300         | 1,500         | 1,300              | 415           | 340           | 365           |
| European Union              | (Oct-Sep)              | 11,435        | 10,525        | 10,625              | 7,160         | 6,975         | 7,000              | 5,313         | 5,213         | 5,398         |
| Other                       |                        | 7,769         | 8,033         | 8,234               | 6,065         | 6,929         | 7,839              | 7,718         | 9,598         | 10,168        |
| <b>World Total</b>          |                        | <b>51,256</b> | <b>56,000</b> | <b>56,826</b>       | <b>20,915</b> | <b>22,039</b> | <b>23,064</b>      | <b>17,588</b> | <b>19,553</b> | <b>20,488</b> |
| <b>Ending Stocks</b>        |                        |               |               |                     |               |               |                    |               |               |               |
| Argentina                   | (Mar-Feb)              | 715           | 1,089         | 1,189               | 126           | 171           | 246                | 282           | 315           | 328           |
| Russia                      | (Sep-Aug)              | 958           | 1,007         | 1,117               | 55            | 244           | 315                | 427           | 318           | 358           |
| Turkey                      | (Sep-Aug)              | 101           | 159           | 107                 | 113           | 224           | 204                | 222           | 616           | 268           |
| Ukraine                     | (Sep-Aug)              | 4,690         | 815           | 595                 | 125           | 447           | 281                | 44            | 42            | 97            |
| European Union              | (Oct-Sep)              | 692           | 268           | 343                 | 185           | 235           | 249                | 560           | 286           | 369           |
| Other                       |                        | 787           | 834           | 790                 | 329           | 333           | 353                | 1,085         | 1,477         | 1,599         |
| <b>World Total</b>          |                        | <b>7,943</b>  | <b>4,172</b>  | <b>4,141</b>        | <b>933</b>    | <b>1,654</b>  | <b>1,648</b>       | <b>2,620</b>  | <b>3,054</b>  | <b>3,019</b>  |

**Table 14: Minor Vegetable Oils: World Supply and Distribution**  
**Thousand Metric Tons**

| Marketing Year              | Oil, Peanut |              |              | Oil, Cottonseed |              |              | Oil, Olive   |              |              |              |
|-----------------------------|-------------|--------------|--------------|-----------------|--------------|--------------|--------------|--------------|--------------|--------------|
|                             | 2021/22     | 2022/23      | 2023/24      | 2021/22         | 2022/23      | 2023/24      | 2021/22      | 2022/23      | 2023/24      |              |
| <b>Production</b>           |             |              |              |                 |              |              |              |              |              |              |
| China                       | (Oct-Sep)   | 3,168        | 3,136        | 3,200           | 1,368        | 1,484        | 1,353        | 8            | 8            | 8            |
| India                       | (Oct-Sep)   | 1,273        | 1,221        | 1,156           | 1,297        | 1,365        | 1,326        | nr           | nr           | nr           |
| Turkey                      | (Nov-Oct)   | 7            | 7            | 7               | 228          | 290          | 210          | 225          | 375          | 310          |
| United States               | (Aug-Jul)   | 129          | 120          | 122             | 195          | 166          | 166          | 16           | 16           | 16           |
| European Union              | (Oct-Sep)   | 13           | 13           | 13              | 41           | 33           | 23           | 2,272        | 1,400        | 1,800        |
| Other                       |             | 1,851        | 1,789        | 1,841           | 1,719        | 1,565        | 1,883        | 785          | 695          | 755          |
| <b>World Total</b>          |             | <b>6,441</b> | <b>6,286</b> | <b>6,339</b>    | <b>4,848</b> | <b>4,903</b> | <b>4,961</b> | <b>3,306</b> | <b>2,494</b> | <b>2,889</b> |
| <b>Imports</b>              |             |              |              |                 |              |              |              |              |              |              |
| China                       | (Oct-Sep)   | 166          | 292          | 300             | 0            | 0            | 0            | 54           | 35           | 35           |
| India                       | (Oct-Sep)   | 0            | 0            | 0               | 4            | 1            | 3            | nr           | nr           | nr           |
| Turkey                      | (Nov-Oct)   | 0            | 0            | 0               | 1            | 0            | 2            | 22           | 60           | 30           |
| United States               | (Aug-Jul)   | 36           | 28           | 25              | 11           | 7            | 9            | 410          | 371          | 400          |
| European Union              | (Oct-Sep)   | 62           | 45           | 52              | 24           | 1            | 1            | 177          | 190          | 175          |
| Other                       |             | 29           | 26           | 29              | 68           | 87           | 68           | 625          | 416          | 423          |
| <b>World Total</b>          |             | <b>293</b>   | <b>391</b>   | <b>406</b>      | <b>108</b>   | <b>96</b>    | <b>83</b>    | <b>1,288</b> | <b>1,072</b> | <b>1,063</b> |
| <b>Exports</b>              |             |              |              |                 |              |              |              |              |              |              |
| China                       | (Oct-Sep)   | 11           | 10           | 10              | 5            | 7            | 5            | 0            | 0            | 0            |
| India                       | (Oct-Sep)   | 40           | 110          | 100             | 0            | 0            | 0            | nr           | nr           | nr           |
| Turkey                      | (Nov-Oct)   | 0            | 0            | 0               | 6            | 8            | 16           | 78           | 200          | 165          |
| United States               | (Aug-Jul)   | 9            | 6            | 7               | 58           | 32           | 32           | 4            | 6            | 10           |
| European Union              | (Oct-Sep)   | 6            | 6            | 6               | 1            | 1            | 0            | 919          | 615          | 610          |
| Other                       |             | 285          | 281          | 322             | 55           | 59           | 52           | 409          | 335          | 358          |
| <b>World Total</b>          |             | <b>351</b>   | <b>413</b>   | <b>445</b>      | <b>125</b>   | <b>107</b>   | <b>105</b>   | <b>1,410</b> | <b>1,156</b> | <b>1,143</b> |
| <b>Domestic Consumption</b> |             |              |              |                 |              |              |              |              |              |              |
| China                       | (Oct-Sep)   | 3,323        | 3,418        | 3,490           | 1,363        | 1,477        | 1,348        | 62           | 43           | 43           |
| India                       | (Oct-Sep)   | 1,195        | 1,060        | 1,060           | 1,295        | 1,361        | 1,346        | nr           | nr           | nr           |
| Turkey                      | (Nov-Oct)   | 7            | 7            | 7               | 215          | 260          | 225          | 190          | 190          | 195          |
| United States               | (Aug-Jul)   | 156          | 142          | 140             | 147          | 141          | 143          | 422          | 381          | 406          |
| European Union              | (Oct-Sep)   | 67           | 54           | 57              | 64           | 33           | 24           | 1,460        | 1,300        | 1,330        |
| Other                       |             | 1,595        | 1,541        | 1,559           | 1,785        | 1,606        | 1,875        | 982          | 826          | 838          |
| <b>World Total</b>          |             | <b>6,343</b> | <b>6,222</b> | <b>6,313</b>    | <b>4,869</b> | <b>4,878</b> | <b>4,961</b> | <b>3,116</b> | <b>2,740</b> | <b>2,812</b> |
| <b>Ending Stocks</b>        |             |              |              |                 |              |              |              |              |              |              |
| China                       | (Oct-Sep)   | 0            | 0            | 0               | 0            | 0            | 0            | 0            | 0            | 0            |
| India                       | (Oct-Sep)   | 228          | 279          | 275             | 28           | 33           | 16           | nr           | nr           | nr           |
| Turkey                      | (Nov-Oct)   | 0            | 0            | 0               | 14           | 36           | 7            | 19           | 64           | 44           |
| United States               | (Aug-Jul)   | 11           | 11           | 11              | 23           | 23           | 23           | 0            | 0            | 0            |
| European Union              | (Oct-Sep)   | 5            | 3            | 5               | 0            | 0            | 0            | 411          | 86           | 121          |
| Other                       |             | 100          | 93           | 82              | 93           | 80           | 104          | 225          | 175          | 157          |
| <b>World Total</b>          |             | <b>344</b>   | <b>386</b>   | <b>373</b>      | <b>158</b>   | <b>172</b>   | <b>150</b>   | <b>655</b>   | <b>325</b>   | <b>322</b>   |

**Table 15: World Oilseeds and Products Supply and Distribution**

Million Metric Tons

|                             | Area Harvested | Beginning Stocks | Production | Imports | Total Supply | Exports | Food Use Dom. | Domestic Consumpti | Ending Stocks |
|-----------------------------|----------------|------------------|------------|---------|--------------|---------|---------------|--------------------|---------------|
| <b>Major Oilseeds</b>       |                |                  |            |         |              |         |               |                    |               |
| 2010/11                     | 245.59         | 77.57            | 459.59     | 105.02  | 642.18       | 108.11  | 35.90         | 445.03             | 89.04         |
| 2011/12                     | 249.06         | 89.04            | 447.11     | 113.33  | 649.48       | 111.07  | 36.10         | 466.12             | 72.29         |
| 2012/13                     | 257.81         | 72.29            | 475.44     | 114.72  | 662.45       | 118.25  | 36.48         | 472.01             | 72.18         |
| 2013/14                     | 261.64         | 72.18            | 503.79     | 133.93  | 709.90       | 133.97  | 37.36         | 494.78             | 81.15         |
| 2014/15                     | 268.08         | 81.15            | 540.07     | 143.59  | 764.81       | 147.52  | 38.85         | 521.33             | 95.96         |
| 2015/16                     | 265.77         | 95.96            | 524.89     | 154.32  | 775.16       | 153.93  | 40.15         | 527.86             | 93.38         |
| 2016/17                     | 270.62         | 93.46            | 577.26     | 167.86  | 838.57       | 171.61  | 41.58         | 556.28             | 110.68        |
| 2017/18                     | 281.95         | 110.68           | 583.84     | 176.51  | 871.03       | 177.50  | 43.03         | 574.85             | 118.68        |
| 2018/19                     | 282.95         | 118.68           | 601.50     | 168.11  | 888.29       | 172.08  | 43.74         | 582.18             | 134.03        |
| 2019/20                     | 281.32         | 134.03           | 582.03     | 189.93  | 905.98       | 191.77  | 45.19         | 601.92             | 112.30        |
| 2020/21                     | 287.92         | 112.30           | 610.12     | 190.28  | 912.69       | 192.39  | 46.86         | 604.28             | 116.03        |
| 2021/22                     | 296.73         | 116.03           | 611.68     | 178.52  | 906.23       | 179.41  | 47.84         | 609.39             | 117.43        |
| 2022/23                     | 303.28         | 117.43           | 631.34     | 194.87  | 943.64       | 201.64  | 49.06         | 623.37             | 118.62        |
| 2023/24                     | 308.05         | 118.62           | 661.46     | 190.25  | 970.32       | 194.57  | 50.58         | 644.37             | 131.38        |
| <b>Major Protein Meals</b>  |                |                  |            |         |              |         |               |                    |               |
| 2010/11                     | nr             | 10.53            | 256.89     | 75.10   | 342.52       | 77.92   | 0.33          | 251.46             | 13.14         |
| 2011/12                     | nr             | 13.14            | 267.54     | 79.41   | 360.09       | 81.13   | 0.40          | 263.95             | 15.01         |
| 2012/13                     | nr             | 15.01            | 269.49     | 75.23   | 359.73       | 79.48   | 0.43          | 266.76             | 13.49         |
| 2013/14                     | nr             | 13.49            | 282.67     | 81.00   | 377.16       | 83.54   | 0.44          | 278.47             | 15.15         |
| 2014/15                     | nr             | 15.15            | 300.79     | 82.88   | 398.82       | 86.61   | 0.45          | 293.51             | 18.71         |
| 2015/16                     | nr             | 18.71            | 306.02     | 84.15   | 408.88       | 87.39   | 0.47          | 302.96             | 18.52         |
| 2016/17                     | nr             | 18.87            | 320.78     | 85.67   | 425.32       | 89.73   | 0.52          | 316.18             | 19.42         |
| 2017/18                     | nr             | 19.42            | 331.33     | 88.16   | 438.91       | 90.99   | 0.54          | 326.30             | 21.62         |
| 2018/19                     | nr             | 21.62            | 333.31     | 91.00   | 445.93       | 95.26   | 0.61          | 329.64             | 21.03         |
| 2019/20                     | nr             | 21.03            | 346.80     | 91.10   | 458.93       | 96.04   | 0.70          | 341.19             | 21.70         |
| 2020/21                     | nr             | 21.70            | 349.58     | 92.84   | 464.12       | 97.41   | 0.77          | 346.59             | 20.12         |
| 2021/22                     | nr             | 20.12            | 349.58     | 94.16   | 463.86       | 96.31   | 0.81          | 347.17             | 20.38         |
| 2022/23                     | nr             | 20.38            | 356.41     | 92.69   | 469.48       | 96.42   | 0.84          | 355.36             | 17.70         |
| 2023/24                     | nr             | 17.70            | 370.21     | 96.64   | 484.55       | 100.46  | 0.87          | 363.96             | 20.12         |
| <b>Major Vegetable Oils</b> |                |                  |            |         |              |         |               |                    |               |
| 2010/11                     | 17.51          | 16.98            | 149.15     | 56.68   | 222.81       | 60.62   | 109.78        | 142.16             | 20.03         |
| 2011/12                     | 18.52          | 20.03            | 157.87     | 61.32   | 239.22       | 64.73   | 115.38        | 151.10             | 23.39         |
| 2012/13                     | 19.23          | 23.39            | 161.25     | 64.75   | 249.39       | 68.27   | 120.26        | 157.68             | 23.44         |
| 2013/14                     | 20.12          | 23.44            | 171.59     | 66.65   | 261.67       | 70.12   | 125.17        | 165.93             | 25.62         |
| 2014/15                     | 20.96          | 25.62            | 177.50     | 70.14   | 273.26       | 76.55   | 130.28        | 169.77             | 26.94         |
| 2015/16                     | 22.06          | 26.94            | 176.38     | 70.43   | 273.75       | 73.84   | 134.70        | 176.98             | 22.92         |
| 2016/17                     | 23.18          | 22.91            | 189.16     | 76.22   | 288.30       | 82.01   | 138.43        | 182.42             | 23.87         |
| 2017/18                     | 24.14          | 23.87            | 198.76     | 76.03   | 298.66       | 80.99   | 142.34        | 190.96             | 26.72         |
| 2018/19                     | 24.60          | 26.72            | 204.01     | 82.18   | 312.91       | 86.86   | 145.40        | 197.60             | 28.45         |
| 2019/20                     | 25.04          | 28.45            | 207.61     | 82.73   | 318.79       | 87.15   | 148.50        | 201.25             | 30.39         |
| 2020/21                     | 25.36          | 30.39            | 207.11     | 81.25   | 318.76       | 85.75   | 151.05        | 204.29             | 28.72         |
| 2021/22                     | 25.96          | 28.72            | 207.83     | 74.55   | 311.10       | 79.57   | 149.25        | 202.44             | 29.09         |
| 2022/23                     | 27.09          | 29.09            | 217.19     | 83.70   | 329.97       | 88.00   | 152.82        | 211.20             | 30.78         |
| 2023/24                     | 27.69          | 30.78            | 223.49     | 84.83   | 339.10       | 89.84   | 157.36        | 218.92             | 30.34         |

Based on the aggregate of different marketing years



**Table 16: World Soybeans and Products Supply and Distribution**

Million Metric Tons

|                         | Area Harvested | Beginning Stocks | Production | Imports | Total Supply | Exports | Crush  | Domestic Consumpti | Ending Stocks |
|-------------------------|----------------|------------------|------------|---------|--------------|---------|--------|--------------------|---------------|
| <b>Oilseed, Soybean</b> |                |                  |            |         |              |         |        |                    |               |
| 2010/11                 | 103.82         | 62.81            | 265.07     | 89.74   | 417.62       | 91.35   | 222.40 | 252.76             | 73.51         |
| 2011/12                 | 103.04         | 73.51            | 241.19     | 94.66   | 409.36       | 91.83   | 229.39 | 259.47             | 58.06         |
| 2012/13                 | 110.39         | 58.06            | 268.97     | 97.13   | 424.16       | 100.41  | 232.12 | 265.43             | 58.33         |
| 2013/14                 | 113.22         | 58.33            | 283.38     | 113.32  | 455.03       | 112.80  | 243.32 | 278.37             | 63.86         |
| 2014/15                 | 119.20         | 63.86            | 321.51     | 124.28  | 509.66       | 126.44  | 265.28 | 303.91             | 79.31         |
| 2015/16                 | 120.91         | 79.31            | 316.14     | 133.90  | 529.35       | 132.84  | 275.83 | 316.96             | 79.55         |
| 2016/17                 | 120.59         | 79.57            | 350.88     | 145.22  | 575.67       | 147.74  | 288.46 | 332.23             | 95.70         |
| 2017/18                 | 125.27         | 95.70            | 343.82     | 154.15  | 593.68       | 153.40  | 295.66 | 340.28             | 100.00        |
| 2018/19                 | 126.08         | 100.00           | 363.51     | 145.97  | 609.47       | 149.22  | 299.19 | 346.07             | 114.19        |
| 2019/20                 | 123.57         | 114.19           | 341.45     | 165.29  | 620.93       | 165.82  | 312.66 | 359.96             | 95.15         |
| 2020/21                 | 129.73         | 95.15            | 369.22     | 165.50  | 629.86       | 165.18  | 316.04 | 364.42             | 100.26        |
| 2021/22                 | 131.45         | 100.26           | 360.43     | 155.58  | 616.28       | 154.25  | 314.50 | 363.97             | 98.06         |
| 2022/23                 | 136.23         | 98.06            | 372.24     | 165.11  | 635.41       | 170.95  | 313.43 | 364.15             | 100.31        |
| 2023/24                 | 139.05         | 100.31           | 400.42     | 165.75  | 666.48       | 168.29  | 329.47 | 383.68             | 114.51        |
| <b>Meal, Soybean</b>    |                |                  |            |         |              |         |        |                    |               |
| 2010/11                 | nr             | 7.32             | 175.10     | 56.85   | 239.27       | 58.92   | 222.40 | 170.84             | 9.51          |
| 2011/12                 | nr             | 9.51             | 181.01     | 57.21   | 247.73       | 58.73   | 229.39 | 177.90             | 11.10         |
| 2012/13                 | nr             | 11.10            | 182.38     | 54.54   | 248.03       | 58.50   | 232.22 | 178.96             | 10.57         |
| 2013/14                 | nr             | 10.57            | 190.70     | 58.52   | 259.78       | 60.86   | 243.42 | 187.24             | 11.68         |
| 2014/15                 | nr             | 11.68            | 208.69     | 61.34   | 281.71       | 64.64   | 265.29 | 202.07             | 15.00         |
| 2015/16                 | nr             | 15.00            | 216.41     | 63.35   | 294.76       | 65.85   | 275.84 | 213.96             | 14.95         |
| 2016/17                 | nr             | 15.11            | 226.36     | 61.83   | 303.31       | 65.41   | 288.47 | 222.47             | 15.43         |
| 2017/18                 | nr             | 15.43            | 232.83     | 63.69   | 311.95       | 65.80   | 295.67 | 229.18             | 16.98         |
| 2018/19                 | nr             | 16.98            | 234.33     | 64.24   | 315.54       | 68.05   | 299.20 | 230.86             | 16.63         |
| 2019/20                 | nr             | 16.63            | 245.60     | 63.32   | 325.56       | 67.94   | 312.66 | 240.58             | 17.04         |
| 2020/21                 | nr             | 17.04            | 248.35     | 65.36   | 330.75       | 69.43   | 316.04 | 244.78             | 16.54         |
| 2021/22                 | nr             | 16.54            | 246.75     | 67.32   | 330.61       | 68.84   | 314.51 | 244.99             | 16.78         |
| 2022/23                 | nr             | 16.78            | 246.46     | 62.75   | 326.00       | 66.43   | 313.43 | 245.88             | 13.69         |
| 2023/24                 | nr             | 13.69            | 258.63     | 66.78   | 339.10       | 69.79   | 329.47 | 253.62             | 15.69         |
| <b>Oil, Soybean</b>     |                |                  |            |         |              |         |        |                    |               |
| 2010/11                 | nr             | 3.72             | 41.51      | 9.42    | 54.65        | 9.68    | 222.40 | 40.49              | 4.48          |
| 2011/12                 | nr             | 4.48             | 42.87      | 8.02    | 55.36        | 8.55    | 229.39 | 42.43              | 4.38          |
| 2012/13                 | nr             | 4.38             | 43.41      | 8.51    | 56.30        | 9.36    | 232.21 | 42.59              | 4.35          |
| 2013/14                 | nr             | 4.35             | 45.33      | 9.35    | 59.03        | 9.43    | 243.42 | 45.47              | 4.14          |
| 2014/15                 | nr             | 4.14             | 49.36      | 10.15   | 63.65        | 11.19   | 265.28 | 47.79              | 4.67          |
| 2015/16                 | nr             | 4.67             | 51.65      | 11.74   | 68.06        | 11.83   | 275.83 | 52.11              | 4.12          |
| 2016/17                 | nr             | 4.14             | 53.95      | 11.25   | 69.34        | 11.45   | 288.46 | 53.54              | 4.35          |
| 2017/18                 | nr             | 4.35             | 55.29      | 9.97    | 69.61        | 10.78   | 295.66 | 54.41              | 4.42          |
| 2018/19                 | nr             | 4.42             | 56.15      | 11.09   | 71.65        | 11.47   | 299.19 | 55.29              | 4.89          |
| 2019/20                 | nr             | 4.89             | 58.55      | 11.54   | 74.98        | 12.38   | 312.66 | 57.09              | 5.51          |
| 2020/21                 | nr             | 5.51             | 59.31      | 11.79   | 76.61        | 12.61   | 316.04 | 58.49              | 5.52          |
| 2021/22                 | nr             | 5.52             | 59.27      | 11.54   | 76.33        | 12.25   | 314.50 | 59.22              | 4.85          |
| 2022/23                 | nr             | 4.85             | 59.03      | 10.63   | 74.51        | 11.39   | 313.43 | 58.25              | 4.87          |
| 2023/24                 | nr             | 4.87             | 61.93      | 10.79   | 77.59        | 11.50   | 329.47 | 60.85              | 5.24          |

Based on the aggregate of different marketing years, primarily October through September.

**Table 17: World Rapeseed and Products Supply and Distribution**

Million Metric Tons

|                          | Area Harvested | Beginning Stocks | Production | Imports | Total Supply | Exports | Food Use Dom. | Domestic Consumpti | Ending Stocks |
|--------------------------|----------------|------------------|------------|---------|--------------|---------|---------------|--------------------|---------------|
| <b>Oilseed, Rapeseed</b> |                |                  |            |         |              |         |               |                    |               |
| 2010/11                  | 33.84          | 8.70             | 60.85      | 10.18   | 79.73        | 10.93   | 0.46          | 60.09              | 8.71          |
| 2011/12                  | 33.55          | 8.71             | 61.55      | 13.24   | 83.51        | 12.99   | 0.46          | 63.73              | 6.79          |
| 2012/13                  | 36.07          | 6.79             | 63.67      | 12.83   | 83.29        | 12.57   | 0.48          | 65.20              | 5.52          |
| 2013/14                  | 36.07          | 5.52             | 71.11      | 15.55   | 92.18        | 15.10   | 0.50          | 69.28              | 7.80          |
| 2014/15                  | 35.43          | 7.80             | 70.99      | 14.32   | 93.11        | 15.11   | 0.56          | 70.63              | 7.37          |
| 2015/16                  | 33.75          | 7.37             | 69.40      | 14.13   | 90.90        | 14.40   | 0.66          | 70.14              | 6.37          |
| 2016/17                  | 33.80          | 6.42             | 70.17      | 15.80   | 92.38        | 16.15   | 0.66          | 70.93              | 5.31          |
| 2017/18                  | 36.17          | 5.31             | 75.80      | 15.73   | 96.83        | 16.60   | 0.66          | 72.10              | 8.14          |
| 2018/19                  | 36.23          | 8.14             | 73.48      | 14.64   | 96.26        | 14.68   | 0.17          | 71.84              | 9.74          |
| 2019/20                  | 35.15          | 9.74             | 70.32      | 15.82   | 95.89        | 16.01   | 0.27          | 72.23              | 7.64          |
| 2020/21                  | 35.33          | 7.64             | 74.72      | 16.66   | 99.02        | 18.14   | 0.67          | 74.52              | 6.36          |
| 2021/22                  | 38.46          | 6.36             | 75.79      | 13.84   | 95.99        | 15.32   | 0.67          | 76.18              | 4.49          |
| 2022/23                  | 41.91          | 4.49             | 88.81      | 19.97   | 113.28       | 20.21   | 0.72          | 85.24              | 7.83          |
| 2023/24                  | 42.39          | 7.83             | 85.58      | 15.76   | 109.17       | 16.89   | 0.75          | 85.74              | 6.54          |
| <b>Meal, Rapeseed</b>    |                |                  |            |         |              |         |               |                    |               |
| 2010/11                  | nr             | 1.23             | 33.52      | 5.32    | 40.07        | 5.28    | 0.00          | 33.74              | 1.05          |
| 2011/12                  | nr             | 1.05             | 35.11      | 5.57    | 41.73        | 5.56    | 0.00          | 35.05              | 1.11          |
| 2012/13                  | nr             | 1.11             | 36.10      | 5.63    | 42.84        | 5.70    | 0.00          | 36.24              | 0.90          |
| 2013/14                  | nr             | 0.90             | 38.54      | 6.51    | 45.95        | 6.36    | 0.00          | 38.69              | 0.90          |
| 2014/15                  | nr             | 0.90             | 38.99      | 6.01    | 45.90        | 6.07    | 0.00          | 38.86              | 0.97          |
| 2015/16                  | nr             | 0.97             | 38.88      | 5.71    | 45.56        | 5.70    | 0.00          | 38.71              | 1.15          |
| 2016/17                  | nr             | 1.33             | 39.10      | 6.19    | 46.62        | 6.26    | 0.00          | 38.96              | 1.40          |
| 2017/18                  | nr             | 1.40             | 39.68      | 6.51    | 47.59        | 6.68    | 0.00          | 39.44              | 1.48          |
| 2018/19                  | nr             | 1.48             | 39.56      | 7.17    | 48.21        | 7.22    | 0.00          | 39.75              | 1.25          |
| 2019/20                  | nr             | 1.25             | 39.81      | 8.01    | 49.07        | 7.72    | 0.00          | 39.93              | 1.41          |
| 2020/21                  | nr             | 1.41             | 41.52      | 8.37    | 51.30        | 8.23    | 0.00          | 41.83              | 1.25          |
| 2021/22                  | nr             | 1.25             | 42.13      | 7.69    | 51.07        | 7.68    | 0.00          | 41.87              | 1.53          |
| 2022/23                  | nr             | 1.53             | 47.25      | 9.28    | 58.06        | 9.67    | 0.00          | 47.05              | 1.34          |
| 2023/24                  | nr             | 1.34             | 47.55      | 8.83    | 57.72        | 9.08    | 0.00          | 46.95              | 1.70          |
| <b>Oil, Rapeseed</b>     |                |                  |            |         |              |         |               |                    |               |
| 2010/11                  | nr             | 2.13             | 23.52      | 3.39    | 29.04        | 3.43    | 15.78         | 23.32              | 2.28          |
| 2011/12                  | nr             | 2.28             | 24.87      | 4.08    | 31.23        | 3.98    | 16.55         | 23.92              | 3.34          |
| 2012/13                  | nr             | 3.34             | 25.50      | 3.94    | 32.78        | 3.95    | 16.61         | 23.87              | 4.95          |
| 2013/14                  | nr             | 4.95             | 27.20      | 3.82    | 35.97        | 3.83    | 17.95         | 25.86              | 6.28          |
| 2014/15                  | nr             | 6.28             | 27.62      | 3.95    | 37.85        | 4.07    | 18.94         | 27.11              | 6.68          |
| 2015/16                  | nr             | 6.68             | 27.57      | 4.13    | 38.38        | 4.17    | 20.13         | 28.50              | 5.71          |
| 2016/17                  | nr             | 5.66             | 27.81      | 4.56    | 38.03        | 4.64    | 20.57         | 29.14              | 4.25          |
| 2017/18                  | nr             | 4.25             | 28.33      | 4.84    | 37.42        | 4.83    | 20.59         | 29.19              | 3.40          |
| 2018/19                  | nr             | 3.40             | 28.02      | 5.18    | 36.60        | 5.26    | 20.26         | 28.34              | 2.99          |
| 2019/20                  | nr             | 2.99             | 28.33      | 5.80    | 37.12        | 5.87    | 20.29         | 28.39              | 2.85          |
| 2020/21                  | nr             | 2.85             | 29.37      | 6.33    | 38.55        | 6.42    | 20.55         | 28.68              | 3.44          |
| 2021/22                  | nr             | 3.44             | 29.24      | 5.13    | 37.82        | 5.32    | 21.81         | 29.95              | 2.54          |
| 2022/23                  | nr             | 2.54             | 32.80      | 6.85    | 42.19        | 6.46    | 23.28         | 32.44              | 3.29          |
| 2023/24                  | nr             | 3.29             | 33.06      | 6.73    | 43.09        | 6.97    | 23.08         | 32.60              | 3.53          |

Based on the aggregate of different marketing years.

**Table 18: World Sunflower and Products Supply and Distribution**

Million Metric Tons

|                               | Area Harvested | Beginning Stocks | Production | Imports | Exports | Food Use Dom. | Domestic Consumpti | Ending Stocks |
|-------------------------------|----------------|------------------|------------|---------|---------|---------------|--------------------|---------------|
| <b>Oilseed, Sunflowerseed</b> |                |                  |            |         |         |               |                    |               |
| 2010/11                       | 23.11          | 2.61             | 32.82      | 1.64    | 1.78    | 1.86          | 33.02              | 2.26          |
| 2011/12                       | 24.65          | 2.26             | 38.74      | 1.74    | 1.93    | 1.77          | 38.28              | 2.54          |
| 2012/13                       | 23.59          | 2.54             | 34.96      | 1.36    | 1.47    | 1.76          | 34.60              | 2.79          |
| 2013/14                       | 24.00          | 2.79             | 41.54      | 1.73    | 2.01    | 1.91          | 40.73              | 3.33          |
| 2014/15                       | 23.09          | 3.33             | 39.25      | 1.63    | 1.68    | 2.01          | 39.55              | 2.97          |
| 2015/16                       | 23.46          | 2.97             | 40.70      | 2.11    | 2.13    | 2.05          | 40.70              | 2.95          |
| 2016/17                       | 25.94          | 2.94             | 48.33      | 2.46    | 2.68    | 2.06          | 47.38              | 3.66          |
| 2017/18                       | 25.94          | 3.66             | 47.94      | 2.38    | 2.76    | 2.09          | 48.13              | 3.10          |
| 2018/19                       | 25.66          | 3.10             | 50.33      | 2.89    | 3.21    | 2.07          | 50.33              | 2.78          |
| 2019/20                       | 25.79          | 2.78             | 53.80      | 3.34    | 3.69    | 2.09          | 53.35              | 2.88          |
| 2020/21                       | 26.75          | 2.88             | 48.84      | 2.74    | 2.90    | 2.08          | 49.09              | 2.46          |
| 2021/22                       | 28.55          | 2.46             | 56.86      | 3.79    | 3.91    | 2.08          | 51.26              | 7.94          |
| 2022/23                       | 28.01          | 7.94             | 52.38      | 4.06    | 4.21    | 2.13          | 56.00              | 4.17          |
| 2023/24                       | 28.47          | 4.17             | 56.98      | 2.91    | 3.09    | 2.11          | 56.83              | 4.14          |
| <b>Meal, Sunflowerseed</b>    |                |                  |            |         |         |               |                    |               |
| 2010/11                       | nr             | 0.99             | 13.34      | 4.11    | 4.58    | 0.00          | 12.78              | 1.08          |
| 2011/12                       | nr             | 1.08             | 15.62      | 6.44    | 6.81    | 0.00          | 14.67              | 1.67          |
| 2012/13                       | nr             | 1.67             | 14.14      | 4.96    | 5.14    | 0.00          | 14.88              | 0.75          |
| 2013/14                       | nr             | 0.75             | 16.83      | 5.81    | 6.23    | 0.00          | 15.78              | 1.39          |
| 2014/15                       | nr             | 1.39             | 16.17      | 5.56    | 5.87    | 0.00          | 15.74              | 1.52          |
| 2015/16                       | nr             | 1.52             | 16.54      | 5.99    | 6.24    | 0.00          | 16.38              | 1.42          |
| 2016/17                       | nr             | 1.42             | 19.49      | 7.12    | 7.61    | 0.00          | 18.95              | 1.47          |
| 2017/18                       | nr             | 1.47             | 20.01      | 6.81    | 7.16    | 0.00          | 19.34              | 1.78          |
| 2018/19                       | nr             | 1.78             | 20.93      | 8.11    | 8.17    | 0.00          | 20.66              | 1.99          |
| 2019/20                       | nr             | 1.99             | 21.77      | 8.56    | 8.84    | 0.00          | 21.41              | 2.07          |
| 2020/21                       | nr             | 2.07             | 20.20      | 7.60    | 8.14    | 0.00          | 20.60              | 1.12          |
| 2021/22                       | nr             | 1.12             | 21.20      | 7.30    | 7.77    | 0.00          | 20.92              | 0.93          |
| 2022/23                       | nr             | 0.93             | 23.00      | 8.59    | 8.83    | 0.00          | 22.04              | 1.65          |
| 2023/24                       | nr             | 1.65             | 23.44      | 9.07    | 9.45    | 0.00          | 23.06              | 1.65          |
| <b>Oil, Sunflowerseed</b>     |                |                  |            |         |         |               |                    |               |
| 2010/11                       | nr             | 2.00             | 12.11      | 3.73    | 4.57    | 10.64         | 11.33              | 1.94          |
| 2011/12                       | nr             | 1.94             | 14.37      | 5.89    | 6.52    | 11.89         | 12.61              | 3.06          |
| 2012/13                       | nr             | 3.06             | 12.85      | 5.09    | 5.55    | 12.40         | 13.19              | 2.26          |
| 2013/14                       | nr             | 2.26             | 15.64      | 7.05    | 7.78    | 13.41         | 14.22              | 2.95          |
| 2014/15                       | nr             | 2.95             | 14.97      | 6.33    | 7.41    | 13.43         | 14.24              | 2.59          |
| 2015/16                       | nr             | 2.59             | 15.40      | 7.32    | 8.21    | 14.15         | 15.07              | 2.04          |
| 2016/17                       | nr             | 2.13             | 18.29      | 9.31    | 10.75   | 15.41         | 16.36              | 2.62          |
| 2017/18                       | nr             | 2.62             | 18.57      | 9.15    | 10.32   | 16.41         | 17.40              | 2.61          |
| 2018/19                       | nr             | 2.61             | 19.59      | 9.65    | 11.50   | 16.96         | 17.97              | 2.37          |
| 2019/20                       | nr             | 2.37             | 21.15      | 11.73   | 13.47   | 17.89         | 18.91              | 2.88          |
| 2020/21                       | nr             | 2.88             | 18.97      | 9.65    | 11.33   | 17.20         | 18.23              | 1.94          |
| 2021/22                       | nr             | 1.94             | 19.66      | 9.69    | 11.08   | 16.51         | 17.59              | 2.62          |
| 2022/23                       | nr             | 2.62             | 21.61      | 12.38   | 14.00   | 18.45         | 19.55              | 3.05          |
| 2023/24                       | nr             | 3.05             | 22.05      | 12.23   | 13.82   | 19.35         | 20.49              | 3.02          |

Based on the aggregate of different marketing years, primarily September through August.

**Table 19: World Palm Oil, Coconut Oil, and Fish Meal Supply and Distribution**

Million Metric Tons

|                     | Beginning Stocks | Production | Imports | Total Supply | Exports | Industrial Dom. | Food Use Dom. | Domestic Consumpti | Ending Stocks |
|---------------------|------------------|------------|---------|--------------|---------|-----------------|---------------|--------------------|---------------|
| <b>Oil, Palm</b>    |                  |            |         |              |         |                 |               |                    |               |
| 2010/11             | 6.51             | 49.38      | 34.91   | 90.80        | 37.12   | 10.64           | 33.99         | 45.19              | 8.49          |
| 2011/12             | 8.49             | 52.31      | 37.84   | 98.65        | 39.73   | 12.46           | 36.24         | 49.35              | 9.57          |
| 2012/13             | 9.57             | 56.34      | 41.39   | 107.30       | 43.00   | 14.67           | 39.51         | 54.82              | 9.48          |
| 2013/14             | 9.48             | 59.20      | 41.16   | 109.84       | 43.09   | 16.21           | 40.27         | 57.11              | 9.63          |
| 2014/15             | 9.63             | 62.09      | 43.86   | 115.58       | 47.33   | 14.35           | 42.42         | 57.40              | 10.85         |
| 2015/16             | 10.85            | 58.75      | 41.79   | 111.38       | 43.79   | 16.41           | 41.85         | 58.95              | 8.63          |
| 2016/17             | 8.58             | 65.57      | 45.63   | 119.79       | 48.94   | 16.72           | 43.06         | 60.44              | 10.41         |
| 2017/18             | 10.41            | 70.51      | 46.02   | 126.93       | 48.66   | 19.85           | 44.74         | 65.28              | 12.99         |
| 2018/19             | 12.99            | 74.17      | 49.89   | 137.05       | 51.49   | 22.72           | 47.20         | 70.61              | 14.95         |
| 2019/20             | 14.95            | 73.11      | 47.05   | 135.11       | 48.36   | 23.10           | 47.03         | 70.84              | 15.91         |
| 2020/21             | 15.91            | 73.28      | 46.85   | 136.04       | 48.54   | 23.51           | 48.35         | 72.56              | 14.94         |
| 2021/22             | 14.94            | 72.96      | 41.70   | 129.61       | 43.97   | 22.90           | 45.97         | 69.52              | 16.12         |
| 2022/23             | 16.12            | 77.56      | 47.43   | 141.11       | 49.42   | 25.84           | 48.09         | 74.64              | 17.05         |
| 2023/24             | 17.05            | 79.46      | 48.56   | 145.07       | 50.71   | 27.14           | 50.43         | 78.28              | 16.07         |
| <b>Oil, Coconut</b> |                  |            |         |              |         |                 |               |                    |               |
| 2010/11             | 0.75             | 3.52       | 1.78    | 6.06         | 1.80    | 1.60            | 1.87          | 3.50               | 0.75          |
| 2011/12             | 0.75             | 3.27       | 1.83    | 5.85         | 1.86    | 1.48            | 1.86          | 3.37               | 0.62          |
| 2012/13             | 0.62             | 3.48       | 1.89    | 5.99         | 1.93    | 1.62            | 1.90          | 3.56               | 0.50          |
| 2013/14             | 0.50             | 3.37       | 1.74    | 5.61         | 1.91    | 1.51            | 1.72          | 3.27               | 0.43          |
| 2014/15             | 0.43             | 3.31       | 1.82    | 5.56         | 1.94    | 1.44            | 1.70          | 3.18               | 0.44          |
| 2015/16             | 0.44             | 3.20       | 1.61    | 5.25         | 1.58    | 1.47            | 1.63          | 3.13               | 0.54          |
| 2016/17             | 0.54             | 3.38       | 1.54    | 5.46         | 1.79    | 1.55            | 1.63          | 3.21               | 0.47          |
| 2017/18             | 0.47             | 3.69       | 1.75    | 5.91         | 1.76    | 1.65            | 1.74          | 3.42               | 0.73          |
| 2018/19             | 0.73             | 3.79       | 1.86    | 6.37         | 2.14    | 1.70            | 1.80          | 3.54               | 0.70          |
| 2019/20             | 0.70             | 3.61       | 1.84    | 6.15         | 1.88    | 1.75            | 1.85          | 3.63               | 0.64          |
| 2020/21             | 0.64             | 3.58       | 1.94    | 6.17         | 1.71    | 1.70            | 1.93          | 3.66               | 0.80          |
| 2021/22             | 0.80             | 3.73       | 2.19    | 6.72         | 2.28    | 1.61            | 1.95          | 3.59               | 0.85          |
| 2022/23             | 0.85             | 3.71       | 1.93    | 6.49         | 2.07    | 1.74            | 1.92          | 3.69               | 0.74          |
| 2023/24             | 0.74             | 3.76       | 1.94    | 6.43         | 1.99    | 1.74            | 1.98          | 3.75               | 0.69          |
| <b>Meal, Fish</b>   |                  |            |         |              |         |                 |               |                    |               |
| 2010/11             | 0.28             | 5.55       | 2.77    | 8.60         | 2.69    | 0.05            | 0.00          | 5.22               | 0.69          |
| 2011/12             | 0.69             | 4.71       | 3.05    | 8.44         | 2.80    | 0.05            | 0.00          | 5.36               | 0.28          |
| 2012/13             | 0.28             | 4.84       | 2.47    | 7.59         | 2.32    | 0.05            | 0.00          | 4.81               | 0.46          |
| 2013/14             | 0.46             | 4.45       | 2.73    | 7.64         | 2.47    | 0.05            | 0.00          | 4.94               | 0.23          |
| 2014/15             | 0.23             | 4.69       | 2.51    | 7.42         | 2.28    | 0.05            | 0.00          | 4.87               | 0.27          |
| 2015/16             | 0.27             | 4.51       | 2.44    | 7.21         | 2.21    | 0.05            | 0.00          | 4.73               | 0.27          |
| 2016/17             | 0.27             | 4.88       | 3.06    | 8.21         | 2.59    | 0.05            | 0.00          | 5.37               | 0.25          |
| 2017/18             | 0.25             | 4.80       | 3.05    | 8.10         | 2.69    | 0.05            | 0.00          | 5.17               | 0.25          |
| 2018/19             | 0.25             | 4.77       | 3.08    | 8.09         | 2.65    | 0.05            | 0.00          | 5.20               | 0.24          |
| 2019/20             | 0.24             | 4.65       | 3.09    | 7.98         | 2.67    | 0.08            | 0.00          | 5.06               | 0.26          |
| 2020/21             | 0.26             | 4.89       | 3.41    | 8.56         | 2.95    | 0.06            | 0.00          | 5.42               | 0.19          |
| 2021/22             | 0.19             | 5.01       | 3.60    | 8.80         | 2.85    | 0.07            | 0.00          | 5.69               | 0.26          |
| 2022/23             | 0.26             | 4.76       | 3.28    | 8.30         | 2.70    | 0.07            | 0.00          | 5.38               | 0.22          |
| 2023/24             | 0.22             | 5.09       | 3.44    | 8.75         | 2.97    | 0.08            | 0.00          | 5.57               | 0.21          |

Based on the aggregate of different marketing years.

**Table 20: United States Oilseeds and Products Supply and Distribution Local Marketing Year**

Thousand Metric Tons

|                             | Area Harvested | Beginning Stocks | Production | Imports | Total Supply | Exports | Crush  | Domestic Consumpti | Ending Stocks |
|-----------------------------|----------------|------------------|------------|---------|--------------|---------|--------|--------------------|---------------|
| <b>Major Oilseeds</b>       |                |                  |            |         |              |         |        |                    |               |
| 2010/11                     | 37,179         | 5,545            | 100,432    | 945     | 106,922      | 41,938  | 49,323 | 57,665             | 7,319         |
| 2011/12                     | 35,131         | 7,319            | 92,442     | 1,285   | 101,046      | 37,813  | 50,316 | 57,621             | 5,612         |
| 2012/13                     | 36,676         | 5,612            | 93,323     | 1,605   | 100,540      | 37,156  | 50,250 | 57,621             | 5,763         |
| 2013/14                     | 35,428         | 5,763            | 98,986     | 3,067   | 107,816      | 45,569  | 51,455 | 58,294             | 3,953         |
| 2014/15                     | 38,991         | 3,953            | 116,050    | 1,851   | 121,854      | 51,109  | 55,108 | 63,989             | 6,756         |
| 2015/16                     | 38,403         | 6,756            | 115,891    | 1,130   | 123,777      | 53,968  | 55,055 | 62,940             | 6,869         |
| 2016/17                     | 39,247         | 6,869            | 126,942    | 1,502   | 135,313      | 60,084  | 56,257 | 65,628             | 9,601         |
| 2017/18                     | 42,801         | 9,601            | 131,483    | 1,419   | 142,503      | 59,315  | 60,168 | 69,361             | 13,827        |
| 2018/19                     | 41,328         | 13,827           | 130,716    | 1,116   | 145,659      | 48,861  | 61,033 | 70,258             | 26,540        |
| 2019/20                     | 36,826         | 26,540           | 106,980    | 1,216   | 134,736      | 47,067  | 63,037 | 71,711             | 15,958        |
| 2020/21                     | 38,809         | 15,958           | 124,523    | 1,205   | 141,686      | 62,781  | 62,655 | 70,266             | 8,639         |
| 2021/22                     | 41,063         | 8,639            | 131,350    | 1,182   | 141,171      | 59,553  | 63,868 | 72,476             | 9,142         |
| 2022/23                     | 39,920         | 9,142            | 125,752    | 1,523   | 136,417      | 55,117  | 64,349 | 72,344             | 8,956         |
| 2023/24                     | 38,845         | 8,956            | 121,540    | 1,522   | 132,018      | 48,766  | 66,694 | 75,010             | 8,242         |
| <b>Major Protein Meals</b>  |                |                  |            |         |              |         |        |                    |               |
| 2010/11                     | nr             | 341              | 38,032     | 2,241   | 40,614       | 8,488   | 49,323 | 31,748             | 378           |
| 2011/12                     | nr             | 378              | 39,450     | 3,032   | 42,860       | 9,170   | 50,316 | 33,354             | 336           |
| 2012/13                     | nr             | 336              | 38,593     | 3,393   | 42,322       | 10,460  | 50,250 | 31,548             | 314           |
| 2013/14                     | nr             | 314              | 39,291     | 3,798   | 43,403       | 10,803  | 51,455 | 32,308             | 292           |
| 2014/15                     | nr             | 292              | 43,210     | 3,873   | 47,375       | 12,144  | 55,108 | 34,941             | 290           |
| 2015/16                     | nr             | 290              | 42,773     | 4,070   | 47,133       | 11,178  | 55,055 | 35,680             | 275           |
| 2016/17                     | nr             | 275              | 43,117     | 3,920   | 47,312       | 10,826  | 56,257 | 36,078             | 408           |
| 2017/18                     | nr             | 408              | 47,063     | 3,736   | 51,207       | 13,005  | 60,168 | 37,639             | 563           |
| 2018/19                     | nr             | 563              | 46,530     | 3,935   | 51,028       | 12,447  | 61,033 | 38,160             | 421           |
| 2019/20                     | nr             | 421              | 48,773     | 4,121   | 53,315       | 12,826  | 63,037 | 40,103             | 386           |
| 2020/21                     | nr             | 386              | 48,257     | 4,385   | 53,028       | 12,623  | 62,655 | 40,014             | 391           |
| 2021/22                     | nr             | 391              | 49,269     | 3,570   | 53,230       | 12,459  | 63,868 | 40,418             | 353           |
| 2022/23                     | nr             | 353              | 50,054     | 4,297   | 54,704       | 13,520  | 64,349 | 40,770             | 414           |
| 2023/24                     | nr             | 414              | 51,488     | 4,228   | 56,130       | 14,109  | 66,694 | 41,577             | 444           |
| <b>Major Vegetable Oils</b> |                |                  |            |         |              |         |        |                    |               |
| 2010/11                     | 0              | 1,991            | 9,775      | 3,612   | 15,378       | 1,861   | 49,323 | 11,794             | 1,723         |
| 2011/12                     | 0              | 1,723            | 10,032     | 3,831   | 15,586       | 1,146   | 50,316 | 12,873             | 1,567         |
| 2012/13                     | 0              | 1,567            | 10,231     | 3,801   | 15,599       | 1,387   | 50,250 | 13,068             | 1,144         |
| 2013/14                     | 0              | 1,144            | 10,425     | 4,016   | 15,585       | 1,116   | 51,455 | 13,498             | 971           |
| 2014/15                     | 0              | 971              | 10,938     | 4,230   | 16,139       | 1,174   | 55,108 | 13,679             | 1,286         |
| 2015/16                     | 0              | 1,286            | 11,210     | 4,527   | 17,023       | 1,248   | 55,055 | 14,573             | 1,202         |
| 2016/17                     | 0              | 1,202            | 11,434     | 4,731   | 17,367       | 1,416   | 56,257 | 14,720             | 1,231         |
| 2017/18                     | 0              | 1,231            | 12,109     | 4,783   | 18,123       | 1,342   | 60,168 | 15,541             | 1,240         |
| 2018/19                     | 0              | 1,240            | 12,199     | 4,702   | 18,141       | 1,092   | 61,033 | 15,889             | 1,160         |
| 2019/20                     | 0              | 1,160            | 12,636     | 4,901   | 18,697       | 1,504   | 63,037 | 15,986             | 1,207         |
| 2020/21                     | 0              | 1,207            | 12,701     | 4,950   | 18,858       | 1,042   | 62,655 | 16,515             | 1,301         |
| 2021/22                     | 0              | 1,301            | 13,060     | 5,263   | 19,624       | 1,048   | 63,868 | 17,303             | 1,273         |
| 2022/23                     | 0              | 1,273            | 13,268     | 6,271   | 20,812       | 334     | 64,349 | 19,361             | 1,117         |
| 2023/24                     | 0              | 1,117            | 13,613     | 6,579   | 21,309       | 330     | 66,694 | 19,881             | 1,098         |

Based on the aggregate of different marketing years

**Table 21: United States Soybeans and Products Supply and Distribution (Sep-Aug)**

Thousand Metric Tons

|                         | Area Harvested | Beginning Stocks | Production | Imports | Total Supply | Exports | Crush  | Domestic Consumpti | Ending Stocks |
|-------------------------|----------------|------------------|------------|---------|--------------|---------|--------|--------------------|---------------|
| <b>Oilseed, Soybean</b> |                |                  |            |         |              |         |        |                    |               |
| 2010/11                 | 31,003         | 4,106            | 90,663     | 393     | 95,162       | 40,959  | 44,851 | 48,351             | 5,852         |
| 2011/12                 | 29,856         | 5,852            | 84,291     | 439     | 90,582       | 37,186  | 46,348 | 48,786             | 4,610         |
| 2012/13                 | 30,814         | 4,610            | 82,791     | 1,103   | 88,504       | 36,129  | 45,967 | 48,550             | 3,825         |
| 2013/14                 | 30,850         | 3,825            | 91,363     | 1,953   | 97,141       | 44,594  | 47,192 | 50,043             | 2,504         |
| 2014/15                 | 33,431         | 2,504            | 106,905    | 904     | 110,313      | 50,136  | 50,975 | 54,989             | 5,188         |
| 2015/16                 | 33,080         | 5,188            | 106,869    | 641     | 112,698      | 52,869  | 51,335 | 54,475             | 5,354         |
| 2016/17                 | 33,470         | 5,354            | 116,931    | 606     | 122,891      | 58,964  | 51,742 | 55,719             | 8,208         |
| 2017/18                 | 36,236         | 8,208            | 120,065    | 594     | 128,867      | 58,071  | 55,926 | 58,873             | 11,923        |
| 2018/19                 | 35,448         | 11,923           | 120,515    | 383     | 132,821      | 47,721  | 56,935 | 60,360             | 24,740        |
| 2019/20                 | 30,327         | 24,740           | 96,667     | 419     | 121,826      | 45,800  | 58,910 | 61,750             | 14,276        |
| 2020/21                 | 33,428         | 14,276           | 114,749    | 539     | 129,564      | 61,664  | 58,257 | 60,906             | 6,994         |
| 2021/22                 | 34,929         | 6,994            | 121,528    | 433     | 128,955      | 58,571  | 59,980 | 62,916             | 7,468         |
| 2022/23                 | 34,871         | 7,468            | 116,216    | 667     | 124,351      | 54,208  | 60,199 | 62,844             | 7,299         |
| 2023/24                 | 33,504         | 7,299            | 112,385    | 816     | 120,500      | 47,763  | 62,596 | 66,056             | 6,681         |
| <b>Meal, Soybean</b>    |                |                  |            |         |              |         |        |                    |               |
| 2010/11                 | nr             | 274              | 35,608     | 163     | 36,045       | 8,238   | 44,851 | 27,489             | 318           |
| 2011/12                 | nr             | 318              | 37,217     | 196     | 37,731       | 8,845   | 46,348 | 28,614             | 272           |
| 2012/13                 | nr             | 272              | 36,174     | 222     | 36,668       | 10,111  | 45,967 | 26,308             | 249           |
| 2013/14                 | nr             | 249              | 36,909     | 347     | 37,505       | 10,504  | 47,192 | 26,774             | 227           |
| 2014/15                 | nr             | 227              | 40,880     | 302     | 41,409       | 11,891  | 50,975 | 29,282             | 236           |
| 2015/16                 | nr             | 236              | 40,525     | 358     | 41,119       | 10,843  | 51,335 | 30,037             | 239           |
| 2016/17                 | nr             | 239              | 40,630     | 313     | 41,182       | 10,505  | 51,742 | 30,314             | 363           |
| 2017/18                 | nr             | 363              | 44,657     | 438     | 45,458       | 12,717  | 55,926 | 32,237             | 504           |
| 2018/19                 | nr             | 504              | 44,283     | 620     | 45,407       | 12,141  | 56,935 | 32,901             | 365           |
| 2019/20                 | nr             | 365              | 46,358     | 580     | 47,303       | 12,549  | 58,910 | 34,444             | 310           |
| 2020/21                 | nr             | 310              | 45,872     | 712     | 46,894       | 12,406  | 58,257 | 34,179             | 309           |
| 2021/22                 | nr             | 309              | 47,005     | 594     | 47,908       | 12,283  | 59,980 | 35,343             | 282           |
| 2022/23                 | nr             | 282              | 47,621     | 573     | 48,476       | 13,303  | 60,199 | 34,837             | 336           |
| 2023/24                 | nr             | 336              | 49,128     | 544     | 50,008       | 13,880  | 62,596 | 35,765             | 363           |
| <b>Oil, Soybean</b>     |                |                  |            |         |              |         |        |                    |               |
| 2010/11                 | nr             | 1,545            | 8,568      | 72      | 10,185       | 1,466   | 44,851 | 7,506              | 1,213         |
| 2011/12                 | nr             | 1,213            | 8,954      | 68      | 10,235       | 664     | 46,348 | 8,396              | 1,175         |
| 2012/13                 | nr             | 1,175            | 8,990      | 89      | 10,254       | 981     | 45,967 | 8,522              | 751           |
| 2013/14                 | nr             | 751              | 9,131      | 75      | 9,957        | 852     | 47,192 | 8,577              | 528           |
| 2014/15                 | nr             | 528              | 9,706      | 120     | 10,354       | 914     | 50,975 | 8,599              | 841           |
| 2015/16                 | nr             | 841              | 9,956      | 130     | 10,927       | 1,017   | 51,335 | 9,145              | 765           |
| 2016/17                 | nr             | 765              | 10,035     | 145     | 10,945       | 1,159   | 51,742 | 9,010              | 776           |
| 2017/18                 | nr             | 776              | 10,783     | 152     | 11,711       | 1,108   | 55,926 | 9,698              | 905           |
| 2018/19                 | nr             | 905              | 10,976     | 180     | 12,061       | 880     | 56,935 | 10,376             | 805           |
| 2019/20                 | nr             | 805              | 11,299     | 145     | 12,249       | 1,287   | 58,910 | 10,122             | 840           |
| 2020/21                 | nr             | 840              | 11,350     | 137     | 12,327       | 786     | 58,257 | 10,574             | 967           |
| 2021/22                 | nr             | 967              | 11,864     | 137     | 12,968       | 803     | 59,980 | 11,262             | 903           |
| 2022/23                 | nr             | 903              | 11,897     | 170     | 12,970       | 171     | 60,199 | 12,072             | 727           |
| 2023/24                 | nr             | 727              | 12,258     | 181     | 13,166       | 159     | 62,596 | 12,292             | 715           |

Data based on Local Marketing Year (MY). Soybeans are on a September/August MY, and Soybean Meal and Oil are on an October/September MY.

**Table 22: Brazil Soybeans and Products Supply and Distribution Local Marketing Years (Feb-Jan)**

Thousand Metric Tons

|                                 | Area Harvested | Beginning Stocks | Production | Imports | Total Supply | Exports | Crush  | Domestic Consumpti | Ending Stocks |
|---------------------------------|----------------|------------------|------------|---------|--------------|---------|--------|--------------------|---------------|
| <b>Oilseed, Soybean (Local)</b> |                |                  |            |         |              |         |        |                    |               |
| 2010/11                         | 24,200         | 7,739            | 75,300     | 40      | 83,079       | 33,789  | 37,264 | 39,664             | 9,626         |
| 2011/12                         | 25,000         | 9,626            | 66,500     | 298     | 76,424       | 31,905  | 36,230 | 38,630             | 5,889         |
| 2012/13                         | 27,700         | 5,889            | 82,000     | 240     | 88,129       | 42,826  | 36,432 | 38,807             | 6,496         |
| 2013/14                         | 30,100         | 6,496            | 86,200     | 579     | 93,275       | 45,747  | 38,195 | 40,745             | 6,783         |
| 2014/15                         | 32,100         | 6,783            | 97,100     | 329     | 104,212      | 54,635  | 40,339 | 42,989             | 6,588         |
| 2015/16                         | 33,300         | 6,588            | 95,700     | 362     | 102,650      | 52,099  | 39,967 | 42,642             | 7,909         |
| 2016/17                         | 33,900         | 7,909            | 114,900    | 267     | 123,076      | 68,806  | 42,161 | 44,936             | 9,334         |
| 2017/18                         | 35,150         | 9,334            | 123,400    | 190     | 132,924      | 83,728  | 43,389 | 46,224             | 2,972         |
| 2018/19                         | 35,900         | 2,972            | 120,500    | 145     | 123,617      | 73,436  | 43,495 | 46,410             | 3,771         |
| 2019/20                         | 36,900         | 3,771            | 128,500    | 884     | 133,155      | 81,626  | 46,461 | 49,556             | 1,973         |
| 2020/21                         | 39,500         | 1,973            | 139,500    | 791     | 142,264      | 88,512  | 48,121 | 51,326             | 2,426         |
| 2021/22                         | 41,500         | 2,426            | 130,500    | 416     | 133,342      | 77,118  | 51,196 | 54,441             | 1,783         |
| 2022/23                         | 44,100         | 1,783            | 158,000    | 200     | 159,983      | 100,000 | 53,700 | 57,500             | 2,483         |
| 2023/24                         | 45,600         | 2,483            | 163,000    | 450     | 165,933      | 101,000 | 55,500 | 59,450             | 5,483         |
| <b>Meal, Soybean (Local)</b>    |                |                  |            |         |              |         |        |                    |               |
| 2010/11                         | nr             | 1,528            | 28,880     | 51      | 30,459       | 14,452  | 37,264 | 13,400             | 2,607         |
| 2011/12                         | nr             | 2,607            | 28,080     | 15      | 30,702       | 13,854  | 36,230 | 14,000             | 2,848         |
| 2012/13                         | nr             | 2,848            | 28,230     | 30      | 31,108       | 13,619  | 36,432 | 14,800             | 2,689         |
| 2013/14                         | nr             | 2,689            | 29,560     | 27      | 32,276       | 13,721  | 38,195 | 15,300             | 3,255         |
| 2014/15                         | nr             | 3,255            | 31,220     | 16      | 34,491       | 15,106  | 40,339 | 15,900             | 3,485         |
| 2015/16                         | nr             | 3,485            | 30,930     | 27      | 34,442       | 14,651  | 39,967 | 16,700             | 3,091         |
| 2016/17                         | nr             | 3,091            | 32,680     | 38      | 35,809       | 13,915  | 42,161 | 17,100             | 4,794         |
| 2017/18                         | nr             | 4,794            | 33,620     | 12      | 38,426       | 16,782  | 43,389 | 17,500             | 4,144         |
| 2018/19                         | nr             | 4,144            | 33,640     | 22      | 37,806       | 16,462  | 43,495 | 17,864             | 3,480         |
| 2019/20                         | nr             | 3,480            | 36,007     | 12      | 39,499       | 16,947  | 46,461 | 18,700             | 3,852         |
| 2020/21                         | nr             | 3,852            | 37,294     | 19      | 41,165       | 17,579  | 48,121 | 19,400             | 4,186         |
| 2021/22                         | nr             | 4,186            | 39,682     | 5       | 43,873       | 20,297  | 51,196 | 19,800             | 3,776         |
| 2022/23                         | nr             | 3,776            | 41,618     | 17      | 45,411       | 21,800  | 53,700 | 20,200             | 3,411         |
| 2023/24                         | nr             | 3,411            | 43,013     | 10      | 46,434       | 21,500  | 55,500 | 20,900             | 4,034         |
| <b>Oil, Soybean (Local)</b>     |                |                  |            |         |              |         |        |                    |               |
| 2010/11                         | nr             | 504              | 7,150      | 0       | 7,654        | 1,758   | 37,264 | 5,305              | 591           |
| 2011/12                         | nr             | 591              | 6,950      | 2       | 7,543        | 1,688   | 36,230 | 5,395              | 460           |
| 2012/13                         | nr             | 460              | 6,990      | 4       | 7,454        | 1,410   | 36,432 | 5,528              | 516           |
| 2013/14                         | nr             | 516              | 7,330      | 0       | 7,846        | 1,326   | 38,195 | 5,955              | 565           |
| 2014/15                         | nr             | 565              | 7,740      | 32      | 8,337        | 1,650   | 40,339 | 6,220              | 467           |
| 2015/16                         | nr             | 467              | 7,670      | 74      | 8,211        | 1,250   | 39,967 | 6,490              | 471           |
| 2016/17                         | nr             | 471              | 8,090      | 51      | 8,612        | 1,323   | 42,161 | 6,887              | 402           |
| 2017/18                         | nr             | 402              | 8,325      | 41      | 8,768        | 1,409   | 43,389 | 6,990              | 369           |
| 2018/19                         | nr             | 369              | 8,355      | 35      | 8,759        | 1,014   | 43,495 | 7,351              | 394           |
| 2019/20                         | nr             | 394              | 8,944      | 241     | 9,579        | 1,097   | 46,461 | 7,880              | 602           |
| 2020/21                         | nr             | 602              | 9,268      | 67      | 9,937        | 1,794   | 48,121 | 7,675              | 468           |
| 2021/22                         | nr             | 468              | 9,855      | 33      | 10,356       | 2,645   | 51,196 | 7,350              | 361           |
| 2022/23                         | nr             | 361              | 10,327     | 35      | 10,723       | 2,650   | 53,700 | 7,775              | 298           |
| 2023/24                         | nr             | 298              | 10,684     | 25      | 11,007       | 2,100   | 55,500 | 8,550              | 357           |

Data based on Brazil's local February/January Marketing Year (MY). Where February 2012 - January 2013 is the 2011/12 MY.

**Table 23: Argentina Soybeans and Products Supply and Distribution Local Marketing Years (Apr-Mar)**

Thousand Metric Tons

|                                 | Area Harvested | Beginning Stocks | Production | Imports | Total Supply | Exports | Crush  | Domestic Consumpti | Ending Stocks |
|---------------------------------|----------------|------------------|------------|---------|--------------|---------|--------|--------------------|---------------|
| <b>Oilseed, Soybean (Local)</b> |                |                  |            |         |              |         |        |                    |               |
| 2010/11                         | 18,300         | 3,383            | 49,000     | 13      | 52,396       | 10,389  | 37,521 | 39,901             | 2,106         |
| 2011/12                         | 17,577         | 2,106            | 40,100     | 2       | 42,208       | 6,098   | 30,681 | 33,431             | 2,679         |
| 2012/13                         | 19,750         | 2,679            | 49,300     | 2       | 51,981       | 7,817   | 35,009 | 40,009             | 4,155         |
| 2013/14                         | 19,250         | 4,155            | 53,400     | 2       | 57,557       | 7,434   | 38,503 | 43,503             | 6,620         |
| 2014/15                         | 19,350         | 6,620            | 61,450     | 141     | 68,211       | 11,670  | 45,110 | 50,360             | 6,181         |
| 2015/16                         | 19,350         | 6,181            | 58,800     | 1,304   | 66,285       | 9,046   | 43,042 | 49,242             | 7,997         |
| 2016/17                         | 17,335         | 7,997            | 55,000     | 2,600   | 65,597       | 7,247   | 40,940 | 47,440             | 10,910        |
| 2017/18                         | 16,300         | 10,910           | 37,800     | 7,256   | 55,966       | 3,842   | 36,359 | 43,055             | 9,069         |
| 2018/19                         | 16,600         | 9,069            | 55,300     | 3,789   | 68,158       | 10,256  | 41,188 | 48,083             | 9,819         |
| 2019/20                         | 16,700         | 9,819            | 48,800     | 4,939   | 63,558       | 6,662   | 37,870 | 45,108             | 11,788        |
| 2020/21                         | 16,470         | 11,788           | 46,200     | 4,438   | 62,426       | 5,377   | 41,043 | 48,362             | 8,687         |
| 2021/22                         | 15,900         | 8,687            | 43,900     | 4,571   | 57,158       | 5,552   | 35,900 | 43,100             | 8,506         |
| 2022/23                         | 15,000         | 8,506            | 25,000     | 10,500  | 44,006       | 1,800   | 27,000 | 35,500             | 6,706         |
| 2023/24                         | 16,400         | 6,706            | 48,000     | 4,700   | 59,406       | 5,100   | 38,000 | 45,250             | 9,056         |
| <b>Meal, Soybean (Local)</b>    |                |                  |            |         |              |         |        |                    |               |
| 2010/11                         | nr             | 2,264            | 29,181     | 0       | 31,445       | 27,485  | 37,521 | 1,085              | 2,875         |
| 2011/12                         | nr             | 2,875            | 23,946     | 0       | 26,821       | 21,973  | 30,681 | 1,550              | 3,298         |
| 2012/13                         | nr             | 3,298            | 27,150     | 0       | 30,448       | 23,937  | 35,009 | 1,950              | 4,561         |
| 2013/14                         | nr             | 4,561            | 29,528     | 0       | 34,089       | 27,473  | 38,503 | 2,200              | 4,416         |
| 2014/15                         | nr             | 4,416            | 34,737     | 1       | 39,154       | 31,873  | 45,110 | 2,524              | 4,757         |
| 2015/16                         | nr             | 4,757            | 33,350     | 0       | 38,107       | 30,981  | 43,042 | 2,759              | 4,367         |
| 2016/17                         | nr             | 4,367            | 31,750     | 0       | 36,117       | 29,255  | 40,940 | 2,930              | 3,932         |
| 2017/18                         | nr             | 3,932            | 28,270     | 1       | 32,203       | 25,849  | 36,359 | 3,084              | 3,270         |
| 2018/19                         | nr             | 3,270            | 32,000     | 27      | 35,297       | 29,285  | 41,188 | 3,175              | 2,837         |
| 2019/20                         | nr             | 2,837            | 29,539     | 1       | 32,377       | 26,584  | 37,870 | 3,217              | 2,576         |
| 2020/21                         | nr             | 2,576            | 32,050     | 1       | 34,627       | 28,652  | 41,043 | 3,300              | 2,675         |
| 2021/22                         | nr             | 2,675            | 28,002     | 194     | 30,871       | 24,849  | 35,900 | 3,325              | 2,697         |
| 2022/23                         | nr             | 2,697            | 21,060     | 10      | 23,767       | 19,000  | 27,000 | 3,150              | 1,617         |
| 2023/24                         | nr             | 1,617            | 29,640     | 1       | 31,258       | 25,600  | 38,000 | 3,500              | 2,158         |
| <b>Oil, Soybean (Local)</b>     |                |                  |            |         |              |         |        |                    |               |
| 2010/11                         | nr             | 225              | 7,148      | 0       | 7,373        | 4,227   | 37,521 | 2,755              | 391           |
| 2011/12                         | nr             | 391              | 5,840      | 35      | 6,266        | 3,433   | 30,681 | 2,550              | 283           |
| 2012/13                         | nr             | 283              | 6,616      | 59      | 6,958        | 4,281   | 35,009 | 2,375              | 302           |
| 2013/14                         | nr             | 302              | 7,191      | 26      | 7,519        | 4,296   | 38,503 | 2,843              | 380           |
| 2014/15                         | nr             | 380              | 8,753      | 5       | 9,138        | 6,312   | 45,110 | 2,308              | 518           |
| 2015/16                         | nr             | 518              | 8,382      | 0       | 8,900        | 5,386   | 43,042 | 3,055              | 459           |
| 2016/17                         | nr             | 459              | 7,925      | 0       | 8,384        | 4,721   | 40,940 | 3,290              | 373           |
| 2017/18                         | nr             | 373              | 7,150      | 1       | 7,524        | 4,566   | 36,359 | 2,610              | 348           |
| 2018/19                         | nr             | 348              | 8,042      | 0       | 8,390        | 5,113   | 41,188 | 2,625              | 652           |
| 2019/20                         | nr             | 652              | 7,460      | 0       | 8,112        | 6,150   | 37,870 | 1,792              | 170           |
| 2020/21                         | nr             | 170              | 8,100      | 15      | 8,285        | 5,480   | 41,043 | 2,194              | 611           |
| 2021/22                         | nr             | 611              | 7,079      | 78      | 7,768        | 4,575   | 35,900 | 2,770              | 423           |
| 2022/23                         | nr             | 423              | 5,333      | 10      | 5,766        | 3,450   | 27,000 | 1,950              | 366           |
| 2023/24                         | nr             | 366              | 7,505      | 10      | 7,881        | 4,850   | 38,000 | 2,600              | 431           |

Data based on Argentina's Local April/March Marketing Year (MY). Where April 2012 - March 2013 is the 2011/12 MY.



**Table 24: South East Asia Oilseeds and Products Supply and Distribution**

Thousand Metric Tons

|                              | 2019/20       | 2020/21       | 2021/22       | 2022/23       | Oct<br>2023/24 | Nov<br>2023/24 |
|------------------------------|---------------|---------------|---------------|---------------|----------------|----------------|
| <b>Production</b>            |               |               |               |               |                |                |
| Oilseed, Copra               | 4,590         | 4,455         | 4,689         | 4,691         | 4,801          | 4,801          |
| Oilseed, Palm Kernel         | 16,776        | 16,624        | 16,508        | 17,178        | 17,590         | 17,590         |
| Oilseed, Soybean             | 743           | 726           | 666           | 621           | 598            | 598            |
| Other                        | 3,396         | 3,533         | 3,563         | 3,558         | 3,628          | 3,628          |
| <b>Total</b>                 | <b>25,505</b> | <b>25,338</b> | <b>25,426</b> | <b>26,048</b> | <b>26,617</b>  | <b>26,617</b>  |
| <b>Domestic Consumption</b>  |               |               |               |               |                |                |
| Meal, Fish                   | 897           | 843           | 863           | 869           | 919            | 919            |
| Meal, Palm Kernel            | 1,913         | 1,992         | 1,775         | 2,271         | 1,958          | 2,130          |
| Meal, Soybean                | 21,088        | 21,513        | 22,125        | 21,702        | 22,341         | 22,321         |
| Other                        | 2,318         | 2,174         | 2,023         | 2,551         | 2,340          | 2,478          |
| <b>Total</b>                 | <b>26,216</b> | <b>26,522</b> | <b>26,786</b> | <b>27,393</b> | <b>27,558</b>  | <b>27,848</b>  |
| <b>SME</b>                   |               |               |               |               |                |                |
| Meal, Fish                   | 1,296         | 1,218         | 1,247         | 1,256         | 1,328          | 1,328          |
| Meal, Palm Kernel            | 680           | 709           | 631           | 808           | 696            | 758            |
| Meal, Soybean                | 21,008        | 21,433        | 22,040        | 21,617        | 22,251         | 22,231         |
| Other                        | 1,495         | 1,427         | 1,338         | 1,682         | 1,551          | 1,658          |
| <b>Total</b>                 | <b>24,479</b> | <b>24,787</b> | <b>25,257</b> | <b>25,363</b> | <b>25,827</b>  | <b>25,975</b>  |
| <b>Imports</b>               |               |               |               |               |                |                |
| Meal, Fish                   | 410           | 329           | 347           | 355           | 380            | 380            |
| Meal, Palm Kernel            | 769           | 835           | 734           | 920           | 853            | 865            |
| Meal, Soybean                | 18,222        | 18,057        | 19,010        | 18,178        | 19,149         | 19,149         |
| Other                        | 666           | 681           | 538           | 1,002         | 824            | 991            |
| <b>Total</b>                 | <b>20,067</b> | <b>19,902</b> | <b>20,629</b> | <b>20,455</b> | <b>21,206</b>  | <b>21,385</b>  |
| <b>Industrial Dom. Cons.</b> |               |               |               |               |                |                |
| Oil, Palm                    | 12,670        | 13,212        | 14,281        | 16,405        | 17,280         | 17,465         |
| Oil, Rapeseed                | 0             | 0             | 0             | 0             | 0              | 0              |
| Oil, Soybean                 | 56            | 54            | 54            | 54            | 54             | 54             |
| Oil, Sunflowerseed           | 0             | 0             | 0             | 0             | 0              | 0              |
| Other                        | 4,853         | 4,969         | 5,068         | 5,459         | 5,459          | 5,417          |
| <b>Total</b>                 | <b>17,579</b> | <b>18,235</b> | <b>19,403</b> | <b>21,918</b> | <b>22,793</b>  | <b>22,936</b>  |
| <b>Food Use Dom. Cons.</b>   |               |               |               |               |                |                |
| Oil, Palm                    | 10,791        | 11,030        | 11,460        | 11,830        | 12,440         | 12,235         |
| Oil, Rapeseed                | 15            | 13            | 14            | 16            | 13             | 16             |
| Oil, Soybean                 | 749           | 795           | 731           | 566           | 698            | 683            |
| Oil, Sunflowerseed           | 171           | 158           | 141           | 138           | 141            | 141            |
| Other                        | 1,604         | 1,671         | 1,649         | 1,679         | 1,670          | 1,635          |
| <b>Total</b>                 | <b>13,330</b> | <b>13,667</b> | <b>13,995</b> | <b>14,229</b> | <b>14,962</b>  | <b>14,710</b>  |
| <b>Domestic Consumption</b>  |               |               |               |               |                |                |
| Oil, Palm                    | 23,851        | 24,627        | 26,130        | 28,688        | 30,162         | 30,142         |
| Oil, Rapeseed                | 15            | 13            | 14            | 16            | 13             | 16             |
| Oil, Soybean                 | 805           | 849           | 785           | 620           | 752            | 737            |
| Oil, Sunflowerseed           | 171           | 158           | 141           | 138           | 141            | 141            |
| Other                        | 6,467         | 6,650         | 6,717         | 7,148         | 7,139          | 7,062          |
| <b>Total</b>                 | <b>31,309</b> | <b>32,297</b> | <b>33,787</b> | <b>36,610</b> | <b>38,207</b>  | <b>38,098</b>  |
| <b>Imports</b>               |               |               |               |               |                |                |
| Oil, Palm                    | 4,065         | 4,441         | 4,221         | 3,863         | 4,932          | 4,727          |
| Oil, Rapeseed                | 15            | 12            | 13            | 16            | 12             | 14             |
| Oil, Soybean                 | 308           | 295           | 236           | 256           | 264            | 264            |
| Oil, Sunflowerseed           | 40            | 27            | 10            | 7             | 10             | 10             |
| Other                        | 701           | 708           | 788           | 627           | 596            | 596            |
| <b>Total</b>                 | <b>5,129</b>  | <b>5,483</b>  | <b>5,268</b>  | <b>4,769</b>  | <b>5,814</b>   | <b>5,611</b>   |

Southeast Asia includes Brunei, Burma, Cambodia, Indonesia, Laos, Malaysia, Philippines, Singapore, Thailand, and Vietnam. SME - 44 Percent Protein Soybean Meal Equivalent

**Table 25: Middle East Oilseeds and Products Supply and Distribution**

Thousand Metric Tons

|                              | 2019/20       | 2020/21       | 2021/22       | 2022/23       | Oct<br>2023/24 | Nov<br>2023/24 |
|------------------------------|---------------|---------------|---------------|---------------|----------------|----------------|
| <b>Production</b>            |               |               |               |               |                |                |
| Oilseed, Cottonseed          | 1,295         | 1,140         | 1,431         | 1,790         | 1,316          | 1,316          |
| Oilseed, Rapeseed            | 458           | 415           | 382           | 495           | 460            | 460            |
| Oilseed, Soybean             | 277           | 285           | 289           | 319           | 309            | 309            |
| Oilseed, Sunflowerseed       | 1,798         | 1,608         | 1,796         | 1,949         | 1,597          | 1,597          |
| Other                        | 150           | 155           | 160           | 160           | 165            | 165            |
| <b>Total</b>                 | <b>3,978</b>  | <b>3,603</b>  | <b>4,058</b>  | <b>4,713</b>  | <b>3,847</b>   | <b>3,847</b>   |
| <b>Domestic Consumption</b>  |               |               |               |               |                |                |
| Meal, Cottonseed             | 731           | 648           | 798           | 1,004         | 769            | 769            |
| Meal, Soybean                | 8,845         | 9,044         | 9,642         | 8,975         | 9,435          | 9,435          |
| Meal, Sunflowerseed          | 2,495         | 2,695         | 2,258         | 2,291         | 2,432          | 2,432          |
| Other                        | 1,423         | 1,203         | 1,059         | 1,359         | 1,456          | 1,456          |
| <b>Total</b>                 | <b>13,494</b> | <b>13,590</b> | <b>13,757</b> | <b>13,629</b> | <b>14,092</b>  | <b>14,092</b>  |
| <b>SME</b>                   |               |               |               |               |                |                |
| Meal, Cottonseed             | 592           | 525           | 647           | 814           | 623            | 623            |
| Meal, Soybean                | 8,843         | 9,042         | 9,640         | 8,973         | 9,435          | 9,435          |
| Meal, Sunflowerseed          | 1,664         | 1,798         | 1,506         | 1,528         | 1,622          | 1,622          |
| Other                        | 925           | 804           | 769           | 946           | 997            | 997            |
| <b>Total</b>                 | <b>12,024</b> | <b>12,168</b> | <b>12,561</b> | <b>12,260</b> | <b>12,677</b>  | <b>12,677</b>  |
| <b>Imports</b>               |               |               |               |               |                |                |
| Meal, Cottonseed             | 47            | 35            | 57            | 46            | 60             | 60             |
| Meal, Soybean                | 4,592         | 6,122         | 6,281         | 4,860         | 5,820          | 5,820          |
| Meal, Sunflowerseed          | 1,321         | 1,027         | 992           | 1,039         | 1,177          | 1,177          |
| Other                        | 994           | 873           | 828           | 921           | 1,006          | 1,006          |
| <b>Total</b>                 | <b>6,954</b>  | <b>8,057</b>  | <b>8,158</b>  | <b>6,866</b>  | <b>8,063</b>   | <b>8,063</b>   |
| <b>Imports</b>               |               |               |               |               |                |                |
| Oil, Palm                    | 2,647         | 2,912         | 3,332         | 3,150         | 3,305          | 3,305          |
| Oil, Rapeseed                | 70            | 84            | 81            | 117           | 105            | 105            |
| Oil, Soybean                 | 174           | 710           | 537           | 203           | 438            | 438            |
| Oil, Sunflowerseed           | 2,617         | 2,429         | 2,754         | 3,536         | 3,150          | 3,150          |
| Other                        | 251           | 226           | 223           | 258           | 247            | 247            |
| <b>Total</b>                 | <b>5,759</b>  | <b>6,361</b>  | <b>6,927</b>  | <b>7,264</b>  | <b>7,245</b>   | <b>7,245</b>   |
| <b>Industrial Dom. Cons.</b> |               |               |               |               |                |                |
| Oil, Palm                    | 160           | 180           | 225           | 245           | 240            | 240            |
| Oil, Rapeseed                | 10            | 10            | 10            | 25            | 25             | 25             |
| Oil, Soybean                 | 105           | 75            | 65            | 70            | 62             | 62             |
| Oil, Sunflowerseed           | 20            | 20            | 20            | 25            | 25             | 25             |
| Other                        | 64            | 56            | 50            | 61            | 63             | 63             |
| <b>Total</b>                 | <b>359</b>    | <b>341</b>    | <b>370</b>    | <b>426</b>    | <b>415</b>     | <b>415</b>     |
| <b>Food Use Dom. Cons.</b>   |               |               |               |               |                |                |
| Oil, Palm                    | 2,131         | 2,175         | 2,421         | 2,430         | 2,525          | 2,525          |
| Oil, Rapeseed                | 275           | 256           | 240           | 300           | 315            | 315            |
| Oil, Soybean                 | 870           | 943           | 1,065         | 1,000         | 1,057          | 1,057          |
| Oil, Sunflowerseed           | 2,748         | 2,829         | 2,832         | 3,057         | 3,212          | 3,212          |
| Other                        | 634           | 648           | 690           | 730           | 707            | 707            |
| <b>Total</b>                 | <b>6,658</b>  | <b>6,851</b>  | <b>7,248</b>  | <b>7,517</b>  | <b>7,816</b>   | <b>7,816</b>   |
| <b>Domestic Consumption</b>  |               |               |               |               |                |                |
| Oil, Palm                    | 2,291         | 2,355         | 2,646         | 2,675         | 2,765          | 2,765          |
| Oil, Rapeseed                | 285           | 266           | 250           | 325           | 340            | 340            |
| Oil, Soybean                 | 1,025         | 1,043         | 1,140         | 1,080         | 1,134          | 1,134          |
| Oil, Sunflowerseed           | 2,778         | 2,859         | 2,862         | 3,097         | 3,252          | 3,252          |
| Other                        | 710           | 713           | 752           | 801           | 780            | 780            |
| <b>Total</b>                 | <b>7,089</b>  | <b>7,236</b>  | <b>7,650</b>  | <b>7,978</b>  | <b>8,271</b>   | <b>8,271</b>   |

Middle East includes Bahrain, Iran, Iraq, Israel, Jordan, Kuwait, Lebanon, Oman, Qatar, Saudi Arabia, Syria, Turkey, United Arab Emirates, and Yemen. SME - 44 Percent Protein Soybean Meal Equivalent

**Table 26: European Union Oilseeds and Products Supply and Distribution**

Thousand Metric Tons

|                              | 2019/20       | 2020/21       | 2021/22       | 2022/23       | Oct<br>2023/24 | Nov<br>2023/24 |
|------------------------------|---------------|---------------|---------------|---------------|----------------|----------------|
| <b>Production</b>            |               |               |               |               |                |                |
| Oilseed, Rapeseed            | 15,252        | 16,732        | 17,389        | 19,620        | 20,000         | 20,100         |
| Oilseed, Soybean             | 2,711         | 2,600         | 2,833         | 2,549         | 3,050          | 3,065          |
| Oilseed, Sunflowerseed       | 9,474         | 8,898         | 10,328        | 9,166         | 10,650         | 10,650         |
| Other                        | 642           | 542           | 534           | 525           | 362            | 338            |
| <b>Total</b>                 | <b>28,079</b> | <b>28,772</b> | <b>31,084</b> | <b>31,860</b> | <b>34,062</b>  | <b>34,153</b>  |
| <b>Domestic Consumption</b>  |               |               |               |               |                |                |
| Meal, Rapeseed               | 12,000        | 12,550        | 12,300        | 13,775        | 13,790         | 13,800         |
| Meal, Soybean                | 28,267        | 28,392        | 28,042        | 26,792        | 26,892         | 26,892         |
| Meal, Sunflowerseed          | 7,160         | 6,410         | 7,160         | 6,975         | 7,000          | 7,000          |
| Other                        | 2,052         | 1,916         | 2,038         | 2,027         | 1,968          | 1,959          |
| <b>Total</b>                 | <b>49,479</b> | <b>49,268</b> | <b>49,540</b> | <b>49,569</b> | <b>49,650</b>  | <b>49,651</b>  |
| <b>SME</b>                   |               |               |               |               |                |                |
| Meal, Rapeseed               | 8,538         | 8,929         | 8,751         | 9,801         | 9,812          | 9,819          |
| Meal, Soybean                | 28,225        | 28,350        | 28,000        | 26,750        | 26,850         | 26,850         |
| Meal, Sunflowerseed          | 4,736         | 4,235         | 4,736         | 4,612         | 4,629          | 4,629          |
| Other                        | 1,113         | 1,062         | 1,154         | 1,142         | 1,080          | 1,072          |
| <b>Total</b>                 | <b>42,612</b> | <b>42,577</b> | <b>42,641</b> | <b>42,305</b> | <b>42,370</b>  | <b>42,370</b>  |
| <b>Imports</b>               |               |               |               |               |                |                |
| Meal, Rapeseed               | 469           | 467           | 576           | 843           | 660            | 750            |
| Meal, Soybean                | 16,329        | 16,504        | 16,704        | 15,950        | 15,800         | 15,800         |
| Meal, Sunflowerseed          | 2,890         | 2,586         | 2,589         | 2,790         | 2,475          | 2,475          |
| Other                        | 1,829         | 1,668         | 1,755         | 1,715         | 1,724          | 1,724          |
| <b>Total</b>                 | <b>21,517</b> | <b>21,225</b> | <b>21,624</b> | <b>21,298</b> | <b>20,659</b>  | <b>20,749</b>  |
| <b>Industrial Dom. Cons.</b> |               |               |               |               |                |                |
| Oil, Palm                    | 4,025         | 3,860         | 2,700         | 2,500         | 2,400          | 2,450          |
| Oil, Rapeseed                | 6,600         | 6,675         | 6,600         | 6,920         | 7,050          | 7,050          |
| Oil, Soybean                 | 1,150         | 1,100         | 1,100         | 1,100         | 1,050          | 1,250          |
| Oil, Sunflowerseed           | 510           | 500           | 500           | 500           | 515            | 515            |
| Other                        | 587           | 587           | 587           | 580           | 585            | 585            |
| <b>Total</b>                 | <b>12,872</b> | <b>12,722</b> | <b>11,487</b> | <b>11,600</b> | <b>11,600</b>  | <b>11,850</b>  |
| <b>Food Use Dom. Cons.</b>   |               |               |               |               |                |                |
| Oil, Palm                    | 2,350         | 2,300         | 1,950         | 2,000         | 2,000          | 2,000          |
| Oil, Rapeseed                | 2,250         | 2,400         | 2,575         | 2,850         | 2,820          | 2,820          |
| Oil, Soybean                 | 1,175         | 1,275         | 1,150         | 1,230         | 1,160          | 1,160          |
| Oil, Sunflowerseed           | 4,375         | 4,300         | 4,800         | 4,700         | 4,870          | 4,870          |
| Other                        | 2,246         | 2,247         | 2,229         | 2,047         | 2,089          | 2,081          |
| <b>Total</b>                 | <b>12,396</b> | <b>12,522</b> | <b>12,704</b> | <b>12,827</b> | <b>12,939</b>  | <b>12,931</b>  |
| <b>Domestic Consumption</b>  |               |               |               |               |                |                |
| Oil, Palm                    | 6,575         | 6,360         | 4,850         | 4,700         | 4,600          | 4,650          |
| Oil, Rapeseed                | 8,900         | 9,125         | 9,225         | 9,820         | 9,920          | 9,920          |
| Oil, Soybean                 | 2,380         | 2,430         | 2,305         | 2,385         | 2,265          | 2,465          |
| Oil, Sunflowerseed           | 4,898         | 4,813         | 5,313         | 5,213         | 5,398          | 5,398          |
| Other                        | 2,846         | 2,847         | 2,829         | 2,632         | 2,674          | 2,666          |
| <b>Total</b>                 | <b>25,599</b> | <b>25,575</b> | <b>24,522</b> | <b>24,750</b> | <b>24,857</b>  | <b>25,099</b>  |
| <b>Imports</b>               |               |               |               |               |                |                |
| Oil, Palm                    | 7,112         | 5,970         | 4,979         | 5,050         | 4,850          | 4,850          |
| Oil, Rapeseed                | 467           | 314           | 593           | 402           | 375            | 375            |
| Oil, Soybean                 | 483           | 493           | 459           | 625           | 400            | 400            |
| Oil, Sunflowerseed           | 2,369         | 1,599         | 2,181         | 2,125         | 2,300          | 2,300          |
| Other                        | 1,606         | 1,570         | 1,576         | 1,536         | 1,528          | 1,523          |
| <b>Total</b>                 | <b>12,037</b> | <b>9,946</b>  | <b>9,788</b>  | <b>9,738</b>  | <b>9,453</b>   | <b>9,448</b>   |

European Union includes Austria, Belgium, Bulgaria, Croatia, Cyprus, Czech Republic, Denmark, Estonia, Finland, France, Germany, Greece, Hungary, Ireland, Italy, Latvia, Lithuania, Luxembourg, Malta, Netherlands, Poland, Portugal, Romania, Slovakia, Slovenia, Spain, and Sweden.

**Table 27: China Oilseeds and Products Supply and Distribution**

Thousand Metric Tons

|                             | 2019/20        | 2020/21        | 2021/22       | 2022/23        | Oct<br>2023/24 | Nov<br>2023/24 |
|-----------------------------|----------------|----------------|---------------|----------------|----------------|----------------|
| <b>Production</b>           |                |                |               |                |                |                |
| Oilseed, Peanut             | 17,520         | 17,993         | 18,308        | 18,300         | 18,600         | 18,600         |
| Oilseed, Rapeseed           | 13,485         | 14,049         | 14,714        | 15,530         | 15,400         | 15,400         |
| Oilseed, Soybean            | 18,092         | 19,602         | 16,395        | 20,280         | 20,500         | 20,500         |
| Oilseed, Sunflowerseed      | 2,664          | 2,570          | 2,154         | 1,900          | 2,250          | 2,250          |
| Other                       | 10,758         | 11,600         | 10,503        | 12,031         | 10,581         | 10,581         |
| <b>Total</b>                | <b>62,519</b>  | <b>65,814</b>  | <b>62,074</b> | <b>68,041</b>  | <b>67,331</b>  | <b>67,331</b>  |
| <b>Imports</b>              |                |                |               |                |                |                |
| Oilseed, Peanut             | 1,353          | 1,373          | 785           | 938            | 1,150          | 1,150          |
| Oilseed, Rapeseed           | 2,558          | 2,795          | 1,657         | 5,335          | 3,400          | 3,400          |
| Oilseed, Soybean            | 98,532         | 99,740         | 90,501        | 100,846        | 100,000        | 100,000        |
| Oilseed, Sunflowerseed      | 266            | 137            | 157           | 277            | 300            | 300            |
| Other                       | 5              | 72             | 297           | 665            | 500            | 500            |
| <b>Total</b>                | <b>102,714</b> | <b>104,117</b> | <b>93,397</b> | <b>108,061</b> | <b>105,350</b> | <b>105,350</b> |
| <b>Domestic Consumption</b> |                |                |               |                |                |                |
| Meal, Peanut                | 4,083          | 4,090          | 4,077         | 4,005          | 4,100          | 4,100          |
| Meal, Rapeseed              | 11,034         | 11,404         | 11,951        | 13,041         | 12,815         | 12,815         |
| Meal, Soybean               | 71,145         | 72,875         | 69,630        | 73,950         | 75,950         | 76,750         |
| Other                       | 9,341          | 10,225         | 9,895         | 11,464         | 11,725         | 11,775         |
| <b>Total</b>                | <b>95,603</b>  | <b>98,594</b>  | <b>95,553</b> | <b>102,460</b> | <b>104,590</b> | <b>105,440</b> |
| <b>SME</b>                  |                |                |               |                |                |                |
| Meal, Peanut                | 4,589          | 4,597          | 4,583         | 4,502          | 4,608          | 4,608          |
| Meal, Rapeseed              | 7,514          | 7,776          | 8,165         | 8,941          | 8,780          | 8,780          |
| Meal, Soybean               | 70,030         | 71,750         | 68,530        | 72,800         | 74,800         | 75,600         |
| Other                       | 7,806          | 8,680          | 8,426         | 9,221          | 9,521          | 9,539          |
| <b>Total</b>                | <b>89,940</b>  | <b>92,803</b>  | <b>89,704</b> | <b>95,463</b>  | <b>97,709</b>  | <b>98,527</b>  |
| <b>Food Use Dom. Cons.</b>  |                |                |               |                |                |                |
| Oil, Palm                   | 3,800          | 4,200          | 3,300         | 3,200          | 3,800          | 3,800          |
| Oil, Peanut                 | 3,382          | 3,567          | 3,323         | 3,418          | 3,490          | 3,490          |
| Oil, Rapeseed               | 8,100          | 8,100          | 8,300         | 8,900          | 8,500          | 8,600          |
| Oil, Soybean                | 17,000         | 17,600         | 16,700        | 16,750         | 17,600         | 17,700         |
| Oil, Sunflowerseed          | 2,176          | 2,067          | 955           | 1,839          | 1,891          | 1,941          |
| Other                       | 1,576          | 1,640          | 1,646         | 1,705          | 1,611          | 1,611          |
| <b>Total</b>                | <b>36,034</b>  | <b>37,174</b>  | <b>34,224</b> | <b>35,812</b>  | <b>36,892</b>  | <b>37,142</b>  |
| <b>Domestic Consumption</b> |                |                |               |                |                |                |
| Oil, Palm                   | 6,200          | 6,550          | 5,100         | 5,600          | 6,300          | 6,300          |
| Oil, Peanut                 | 3,382          | 3,567          | 3,323         | 3,418          | 3,490          | 3,490          |
| Oil, Rapeseed               | 8,100          | 8,100          | 8,300         | 8,900          | 8,500          | 8,600          |
| Oil, Soybean                | 17,000         | 17,600         | 16,700        | 16,750         | 17,600         | 17,700         |
| Oil, Sunflowerseed          | 2,176          | 2,067          | 955           | 1,839          | 1,891          | 1,941          |
| Other                       | 2,359          | 2,278          | 2,169         | 2,452          | 2,361          | 2,361          |
| <b>Total</b>                | <b>39,217</b>  | <b>40,162</b>  | <b>36,547</b> | <b>38,959</b>  | <b>40,142</b>  | <b>40,392</b>  |
| <b>Imports</b>              |                |                |               |                |                |                |
| Oil, Palm                   | 6,719          | 6,818          | 4,387         | 6,190          | 6,400          | 6,400          |
| Oil, Peanut                 | 226            | 346            | 166           | 292            | 300            | 300            |
| Oil, Rapeseed               | 1,940          | 2,365          | 973           | 1,998          | 1,400          | 1,600          |
| Oil, Soybean                | 998            | 1,221          | 291           | 409            | 400            | 400            |
| Oil, Sunflowerseed          | 1,749          | 1,640          | 513           | 1,555          | 1,500          | 1,550          |
| Other                       | 986            | 862            | 798           | 967            | 1,005          | 1,005          |
| <b>Total</b>                | <b>12,618</b>  | <b>13,252</b>  | <b>7,128</b>  | <b>11,411</b>  | <b>11,005</b>  | <b>11,255</b>  |

SME - 44 Percent Protein Soybean Meal Equivalent

**Table 28: India Oilseeds and Products Supply and Distribution**

Thousand Metric Tons

|                             | 2019/20       | 2020/21       | 2021/22       | 2022/23       | Oct<br>2023/24 | Nov<br>2023/24 |
|-----------------------------|---------------|---------------|---------------|---------------|----------------|----------------|
| <b>Production</b>           |               |               |               |               |                |                |
| Oilseed, Cottonseed         | 12,100        | 11,675        | 10,316        | 11,166        | 10,614         | 10,614         |
| Oilseed, Peanut             | 6,255         | 7,300         | 8,700         | 6,300         | 6,400          | 6,400          |
| Oilseed, Rapeseed           | 7,400         | 8,600         | 11,100        | 11,300        | 11,700         | 11,700         |
| Oilseed, Soybean            | 9,300         | 10,456        | 11,889        | 12,411        | 11,000         | 11,000         |
| Oilseed, Sunflowerseed      | 140           | 150           | 140           | 215           | 150            | 150            |
| Other                       | 998           | 1,003         | 1,021         | 1,022         | 1,021          | 1,021          |
| <b>Total</b>                | <b>36,193</b> | <b>39,184</b> | <b>43,166</b> | <b>42,414</b> | <b>40,885</b>  | <b>40,885</b>  |
| <b>Domestic Consumption</b> |               |               |               |               |                |                |
| Meal, Cottonseed            | 4,523         | 4,584         | 4,238         | 4,453         | 4,311          | 4,311          |
| Meal, Rapeseed              | 3,100         | 3,650         | 4,375         | 4,330         | 4,750          | 4,750          |
| Meal, Soybean               | 5,780         | 5,850         | 6,273         | 6,700         | 7,050          | 7,050          |
| Other                       | 2,541         | 2,445         | 2,348         | 2,209         | 2,206          | 2,206          |
| <b>Total</b>                | <b>15,944</b> | <b>16,529</b> | <b>17,234</b> | <b>17,692</b> | <b>18,317</b>  | <b>18,317</b>  |
| <b>SME</b>                  |               |               |               |               |                |                |
| Meal, Cottonseed            | 3,665         | 3,714         | 3,434         | 3,608         | 3,493          | 3,493          |
| Meal, Rapeseed              | 2,206         | 2,597         | 3,113         | 3,081         | 3,380          | 3,380          |
| Meal, Soybean               | 5,500         | 5,500         | 5,873         | 6,275         | 6,600          | 6,600          |
| Other                       | 2,239         | 2,191         | 2,177         | 2,038         | 1,991          | 1,991          |
| <b>Total</b>                | <b>13,610</b> | <b>14,003</b> | <b>14,597</b> | <b>15,002</b> | <b>15,464</b>  | <b>15,464</b>  |
| <b>Food Use Dom. Cons.</b>  |               |               |               |               |                |                |
| Oil, Cottonseed             | 1,350         | 1,360         | 1,250         | 1,315         | 1,300          | 1,300          |
| Oil, Palm                   | 8,050         | 8,850         | 7,800         | 8,300         | 9,100          | 9,100          |
| Oil, Peanut                 | 1,150         | 1,160         | 1,185         | 1,050         | 1,050          | 1,050          |
| Oil, Rapeseed               | 2,700         | 2,700         | 3,700         | 3,600         | 3,800          | 3,800          |
| Oil, Soybean                | 5,125         | 4,950         | 5,825         | 5,400         | 5,100          | 5,100          |
| Oil, Sunflowerseed          | 2,560         | 2,250         | 1,900         | 2,700         | 2,800          | 2,775          |
| Other                       | 380           | 400           | 375           | 400           | 421            | 421            |
| <b>Total</b>                | <b>21,315</b> | <b>21,670</b> | <b>22,035</b> | <b>22,765</b> | <b>23,571</b>  | <b>23,546</b>  |
| <b>Domestic Consumption</b> |               |               |               |               |                |                |
| Oil, Cottonseed             | 1,395         | 1,408         | 1,295         | 1,361         | 1,346          | 1,346          |
| Oil, Palm                   | 8,450         | 9,225         | 8,150         | 8,900         | 9,750          | 9,750          |
| Oil, Peanut                 | 1,160         | 1,170         | 1,195         | 1,060         | 1,060          | 1,060          |
| Oil, Rapeseed               | 2,780         | 2,780         | 3,780         | 3,680         | 3,880          | 3,880          |
| Oil, Soybean                | 5,125         | 4,950         | 5,825         | 5,400         | 5,100          | 5,100          |
| Oil, Sunflowerseed          | 2,560         | 2,250         | 1,900         | 2,700         | 2,800          | 2,775          |
| Other                       | 704           | 747           | 674           | 710           | 741            | 741            |
| <b>Total</b>                | <b>22,174</b> | <b>22,530</b> | <b>22,819</b> | <b>23,811</b> | <b>24,677</b>  | <b>24,652</b>  |
| <b>Imports</b>              |               |               |               |               |                |                |
| Oil, Cottonseed             | 3             | 8             | 4             | 1             | 3              | 3              |
| Oil, Palm                   | 7,398         | 8,411         | 8,004         | 9,950         | 9,300          | 9,300          |
| Oil, Peanut                 | 0             | 0             | 0             | 0             | 0              | 0              |
| Oil, Rapeseed               | 78            | 25            | 34            | 5             | 5              | 5              |
| Oil, Soybean                | 3,626         | 3,251         | 4,231         | 3,900         | 3,300          | 3,300          |
| Oil, Sunflowerseed          | 2,514         | 1,958         | 1,956         | 2,900         | 2,700          | 2,700          |
| Other                       | 113           | 157           | 80            | 121           | 135            | 135            |
| <b>Total</b>                | <b>13,732</b> | <b>13,810</b> | <b>14,309</b> | <b>16,877</b> | <b>15,443</b>  | <b>15,443</b>  |

SME - 44 Percent Protein Soybean Meal Equivalent