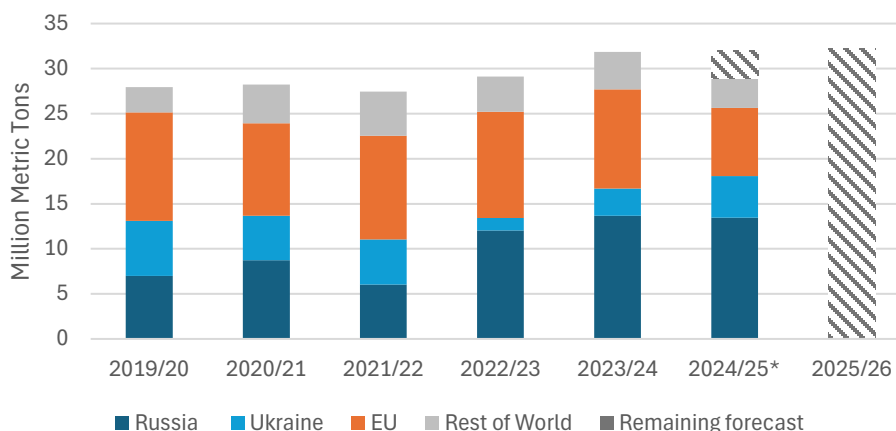


Grain: World Markets and Trade

North Africa Shifts Toward Black Sea Supplies for Wheat Imports

Wheat Exports to North Africa
(Egypt, Libya, Tunisia, Algeria, and Morocco)



Note: Morocco import data is reported through April. Exporter data used to derive imports for Egypt, Libya, Tunisia, and Algeria with availability through April (EU), May (Ukraine), June (Russia).

North Africa (Egypt, Libya, Tunisia, Algeria, and Morocco) accounts for approximately 15 percent of global wheat imports. In 2024/25 (July – June), global wheat trade contracted by more than 10 percent as China, Turkey, Pakistan, and other key importers purchased less from the global market. By contrast, North Africa saw imports rise by 1 percent as demand for this primary staple remained resilient. North Africa became a battleground for major exporters and increasingly sourced wheat from the Black Sea region. Russia has become the dominant supplier, supplanting market share primarily from the EU, while Ukraine has also seen expansion of market share.

In 2024/25, Russia's total wheat exports declined due to smaller supplies, however, shipments to nearby North African markets expanded. Russia seized the opportunity owing to smaller exportable supplies in the European Union. Notably, Russia garnered a near 50 percent market share in the region, with around 70 percent market share in Egypt, and was nearly the sole supplier to Libya. Russia exports to Tunisia are up 50 percent, while shipments to Morocco have more than doubled, offsetting reduced shipments from France (see the [Morocco June 2025 Grain Update](#) for further details).

Ukraine's wheat exports to the region continued to recover in 2024/25 from its sharp decline at the start of the Russia-Ukraine war. Ukraine strategically expanded to North African markets this year, capitalizing on geographic and logistical advantages. For example, Algeria became its third largest market, with exports nearly tripling over the past year. Meanwhile, Ukraine's shipments to Tunisia rose by more than 50 percent, as EU exports there plummeted.

As a result of reduced exportable supplies, EU market share to the region fell to just over 25 percent. Major exporter France, which experienced its smallest crop in decades, saw declines in exports to numerous markets, including Morocco and Algeria. The Algerian government has not included France in its wheat tenders over the past year, resulting in no shipments since July 2024.

While other European exporters near the Black Sea, such as Romania and Bulgaria, have increased shipments to Algeria, Russia and Ukraine have both gained market share (see the [Algeria June 2025 Grain Update](#) for further details).

Looking ahead to 2025/26, overall wheat exports for both the EU and Russia are forecast to rise, while Ukraine exports are forecast slightly lower. Notably, the European Union is forecast to have a much larger harvest, with major exporter France expected to see a recovery in production. In addition, the EU has implemented trade policies limiting the amount of wheat that Ukraine can ship to its market. This will prompt Ukraine to compete with the EU to increase exports to other markets. Larger wheat supplies among major exporters are likely to intensify competition for market share in North Africa in 2025/26, where imports are set to rise slightly.

TABLE OF CONTENTS

World Markets and Trade: Commodities and Data

WHEAT	4
RICE	7
COARSE GRAINS	10
ENDNOTES.....	14
DATA TABLES	17

The Foreign Agricultural Service (FAS) updates its production, supply and distribution (PSD) database for cotton, oilseeds, and grains at 12:00 p.m. on the day the *World Agricultural Supply and Demand Estimates* (WASDE) report is released. This circular is released by 12:15 p.m.

To download the tables in the publication, go to Production, Supply and Distribution Database ([PSD Online](#)): scroll down to Reports, and then click Grains.

FAS Reports and Databases:

[Current World Markets and Trade and World Agricultural Production Reports](#)

[Archived World Markets and Trade and World Agricultural Production Reports](#)

[Production, Supply and Distribution Database \(PSD Online\)](#)

[Global Agricultural Trade System \(U.S. Exports and Imports\)](#)

[Export Sales Report](#)

[Global Agricultural Information Network \(Agricultural Attaché Reports\)](#)

Other USDA Reports:

[World Agricultural Supply and Demand Estimates \(WASDE\)](#)

[Economic Research Service](#)

[National Agricultural Statistics Service](#)

WHEAT

OVERVIEW FOR 2025/26

Global production is forecast nearly unchanged this month, with downward revisions for Canada, Ukraine, and Iran mostly outweighing upward adjustments for Kazakhstan, the EU, Russia, Pakistan, and the United States. Global consumption is up, while stocks are forecast to decline. Global trade is revised lower, but still the third highest on record. Imports are forecast lower for the EU and Pakistan. Meanwhile, EU and Ukraine exports are revised lower this month, only partially offset by higher exports for Russia and the United States. The U.S. season-average farm price is forecast unchanged at \$5.40 per bushel.

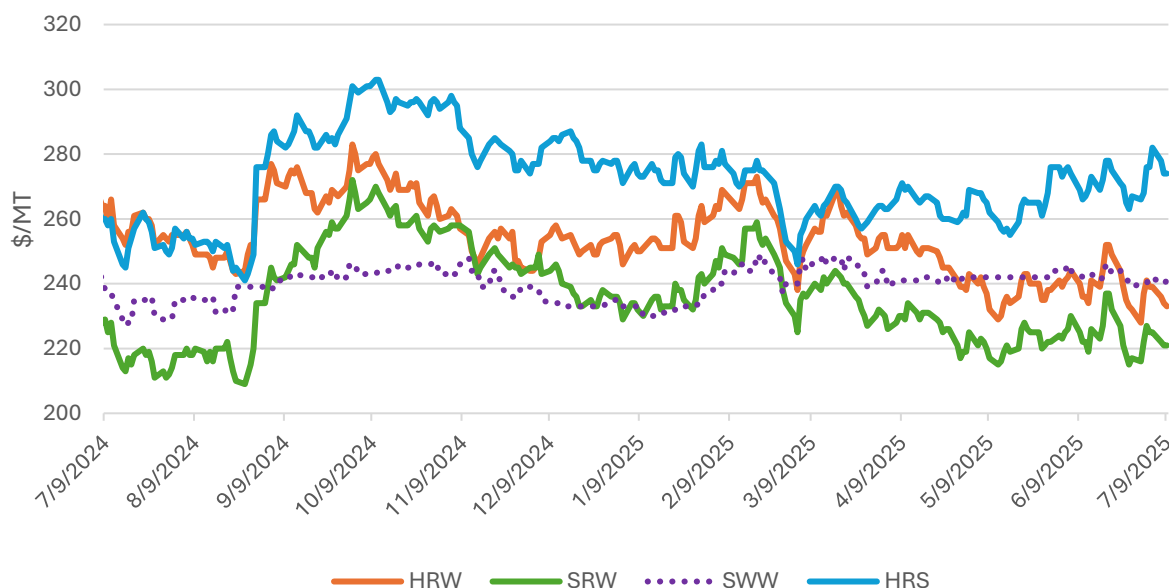
OVERVIEW FOR 2024/25

Global production is essentially unchanged this month, while global consumption is marginally raised. Global trade is revised up slightly but remains the lowest since 2020/21. Global stocks are lowered this month and are still at the lowest level since 2015/16. The final U.S. season-average farm price for the marketing year is \$5.52 per bushel, 2 cents higher than last month's estimate.

WHEAT PRICES

Domestic: U.S. wheat prices were down since the June WASDE for all classes except for Hard Red Spring. Hard Red Winter dropped \$6/ton to \$233, while both Soft Red Winter and Soft White Winter lost \$3/ton to \$221 and \$241 respectively, on continued Northern Hemisphere harvest pressure and slow demand. Hard Red Spring gained \$9/ton to \$274 on NASS crop condition ratings showing a decline from a year ago amid dry conditions in some growing areas.

U.S. Daily FOB Export Bids



Note: Data as of July 9, 2025

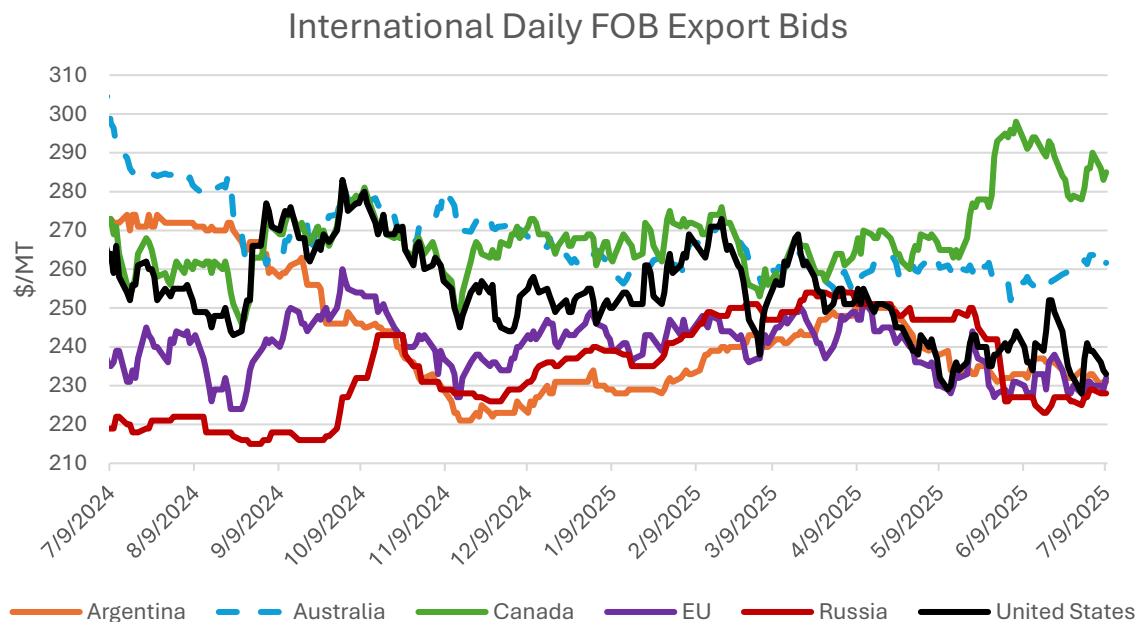
Source: International Grains Council

*Note on FOB prices: HRW (Hard Red Winter); SRW (Soft Red Winter); SWW (Soft White Wheat); HRS (Hard Red Spring)

Global: Major exporter quotes were mixed since the June *WASDE*. Quotes for Canada fluctuated though ultimately slid \$8/ton with tepid demand from importers as prices remain substantially above other exporters. Australian quotes continued to rise, up \$5/ton, as planting concluded on lower area compared to last year. U.S. prices edged down \$7/ton with over half of the winter wheat harvest completed. Argentina declined \$2/ton as sowing was completed on larger area. EU quotes rose \$2/ton, while Russian quotes gained \$1/ton.

Argentina	Australia	Canada	EU	Russia	United States
\$231	\$262	\$285	\$232	\$228	\$233

Note: Data as of July 9, 2025



Source: International Grains Council

*Note on FOB prices: Argentina- 12.0%, up river; Australia- average of APW; Kwinana, Newcastle, and Port Adelaide; Russia - Black Sea- milling; EU- France grade 1, Rouen; US- HRW 11.5% Gulf; Canada- CWRS (13.5%), Vancouver

TRADE CHANGES IN 2025/26 (1,000 MT)

Country	Attribute	Previous	Current	Change	Reason
Bangladesh	Imports	6,900	6,700	-200	Lower consumption
Brazil	Imports	6,700	6,900	200	Strong demand for imports
European Union	Imports	9,500	6,500	-3,000	Higher production and the expiration of the Autonomous Trade Measures with Ukraine reduces demand for imports
Iran	Imports	2,500	3,000	500	Smaller crop
Pakistan	Imports	2,000	1,500	-500	Upward revision for crop estimate
Thailand	Imports	4,000	4,400	400	More demand for feed use
United Kingdom	Imports	3,000	3,200	200	Reduced production
European Union	Exports	34,500	32,500	-2,000	Higher domestic demand due to lower imports from Ukraine
Russia	Exports	45,000	46,000	1,000	Larger crop and reduced competition from EU and Ukraine
Ukraine	Exports	16,500	15,500	-1,000	Smaller crop
United States	Exports	22,500	23,000	500	Increased production and strong early-season sales

TRADE CHANGES IN 2024/25 (1,000 MT) – based on trade data

Country	Attribute	Previous	Current	Change
Bangladesh	Imports	6,000	5,800	-200
Indonesia	Imports	11,000	10,500	-500
Kenya	Imports	2,600	2,400	-200
Thailand	Imports	4,100	4,400	300
Argentina	Exports	10,000	10,400	400
Brazil	Exports	2,100	1,897	-203
Canada	Exports	27,500	28,000	500
Russia	Exports	43,500	43,000	-500

RICE

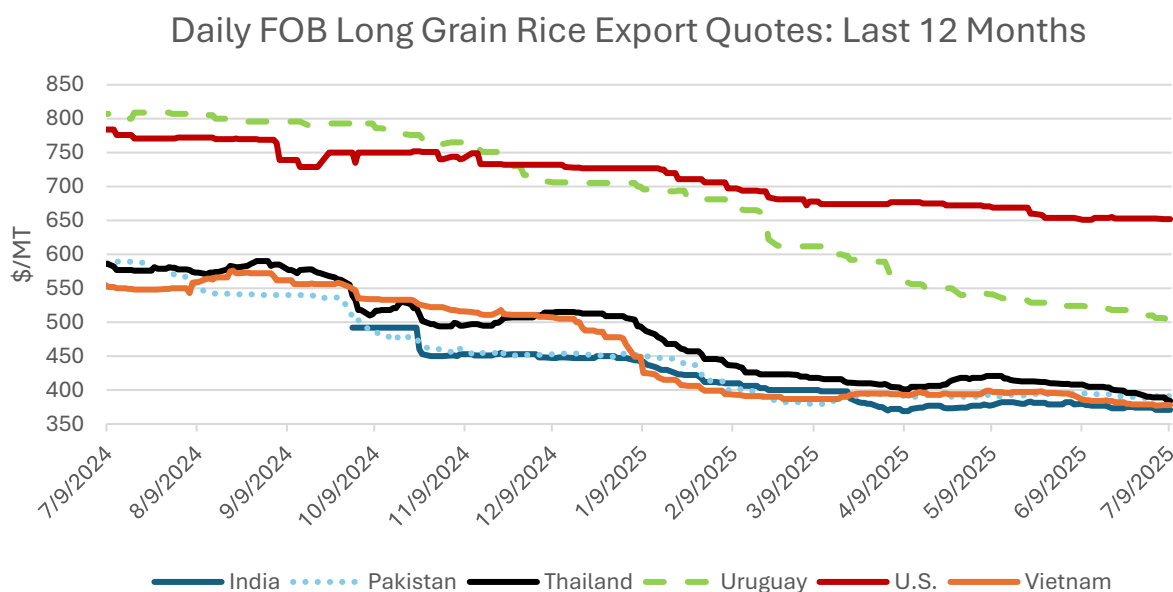
OVERVIEW FOR 2025/26

Global rice production is forecast down this month due to a reduction in the United States. At the same time, consumption is increased, primarily in China, and global stocks are forecast lower. Global trade is forecast slightly higher this month, reflecting strong demand from China and higher expected exports from Burma.

OVERVIEW FOR 2024/25

Global rice production is increased this month on a larger crop in the Philippines, with a slight increase for global consumption and stocks. Global trade is forecast higher with more imports by China, Russia, and Ghana and more exports from China and Burma.

RICE PRICES



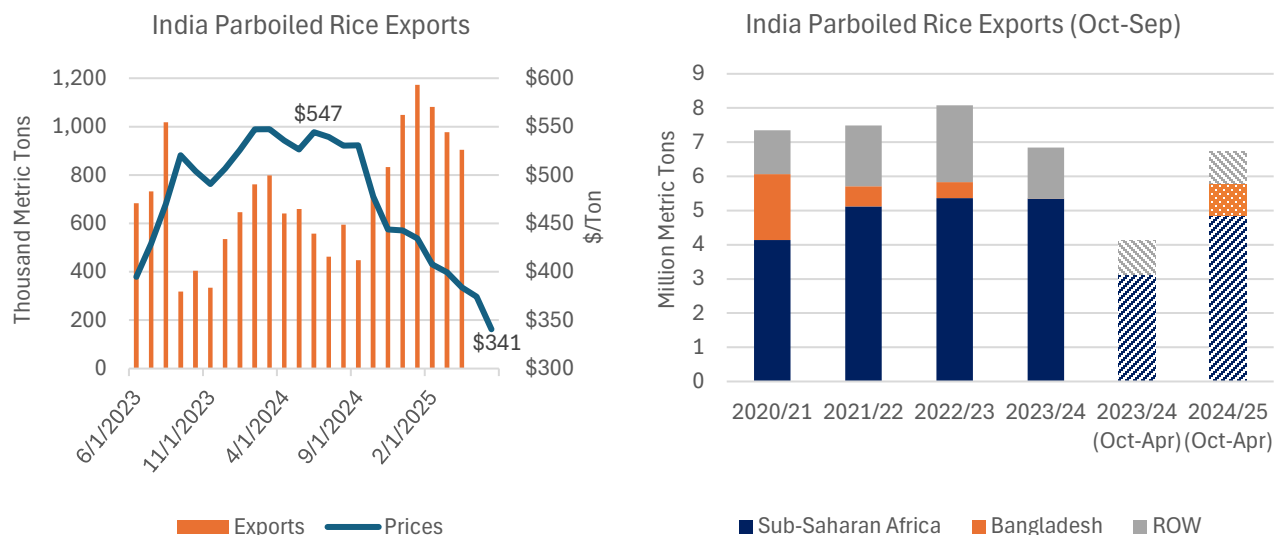
Source: International Grains Council

Note on FOB quotes: Thai 100B, U.S. 4%, all others 5% broken white rice

Since the June *WASDE*, major exporter quotes, other than the United States, continued to decline. U.S. quotes rose \$1/ton to \$652, as sales continue to key markets in Latin America. Uruguayan quotes dropped \$21/ton to \$503, reflecting sluggish sales to key markets. Indian quotes (\$371/ton) dropped \$9 and Vietnamese quotes (\$378/ton) fell \$8 as demand fell from major markets in Asia. Thai quotes dipped \$24/ton to \$384 to garner more demand from importers. Pakistani quotes dropped slightly (\$4/ton) to \$391 but remain the highest amongst major Asian exporters. All major Asian rice exporters now have quotes below \$400/ton for 5% broken white rice.

MARKET FEATURE

India Parboiled Rice Exports on Track for a Record High



India parboiled rice exports are on pace to reach a record high, with falling prices leading to increased sales to Sub-Saharan Africa and Bangladesh. In the first 7 months of marketing year 2024/25 (Oct-Sep), India's overall rice exports are up a remarkable 70 percent compared to the same period last year, of which half have been parboiled. India is the top exporter of parboiled rice globally. Demand for parboiled rice in price-sensitive markets is rising as export prices have declined following the end of India trade restrictions, including the parboiled rice export tax.

Sub-Saharan Africa was the destination for 70 percent of India parboiled rice exports in the first 7 months of this marketing year. Parboiled rice is popular in the region for its firmer, less sticky texture and common use in traditional dishes. Historically, prices for domestically produced parboiled rice in the region are higher than imported rice due to lower yields and high input cost. Declining prices for Indian parboiled rice have caused rebounding demand all over the region. India parboiled rice exports to Nigeria and neighboring countries have more than doubled between October 2024 and April 2025 compared to the same period a year before.

India parboiled rice exports to Bangladesh were 925,000 tons from October 2024 through April 2025, compared to none the year before. The Government of Bangladesh temporarily reduced import tariffs and duties following a significant crop loss and high domestic prices¹.

Despite a strong start to the year, exports of India parboiled rice are expected to slow in the remaining months of the marketing year. African markets are reporting lower import demand because of an oversupply of rice. At the same time, some markets are experiencing container shortages and increasing freight costs. While Bangladesh has been a strong buyer in the first half of India's marketing year 2024/25, Bangladesh imports declined in May with the harvest of its new Boro crop.

¹ See January 2025 [Grain: World Markets and Trade](#) page 7

TRADE CHANGES IN 2026 (1,000 MT)

Country	Attribute	Previous	Current	Change	Reason
China	Imports	2,450	2,600	150	Continued demand for imported rice as global prices are expected to stay low
Burma	Exports	1,500	1,600	100	Sales to China are expected to grow

TRADE CHANGES IN 2025 (1,000 MT)

Country	Attribute	Previous	Current	Change	Reason
China	Imports	2,400	2,600	200	Strong demand for low-cost foreign rice
Ghana	Imports	1,000	1,100	100	Pace of trade
Russia	Imports	150	250	100	Large purchases of rice from India
Brazil	Exports	1,100	1,000	-100	Reduced sales to Latin America
Burma	Exports	1,500	1,600	100	Large sales to China
China	Exports	850	1,050	200	Strong shipments of medium grain rice
Uruguay	Exports	1,000	900	-100	Lower-than-anticipated exports to Brazil

COARSE GRAINS

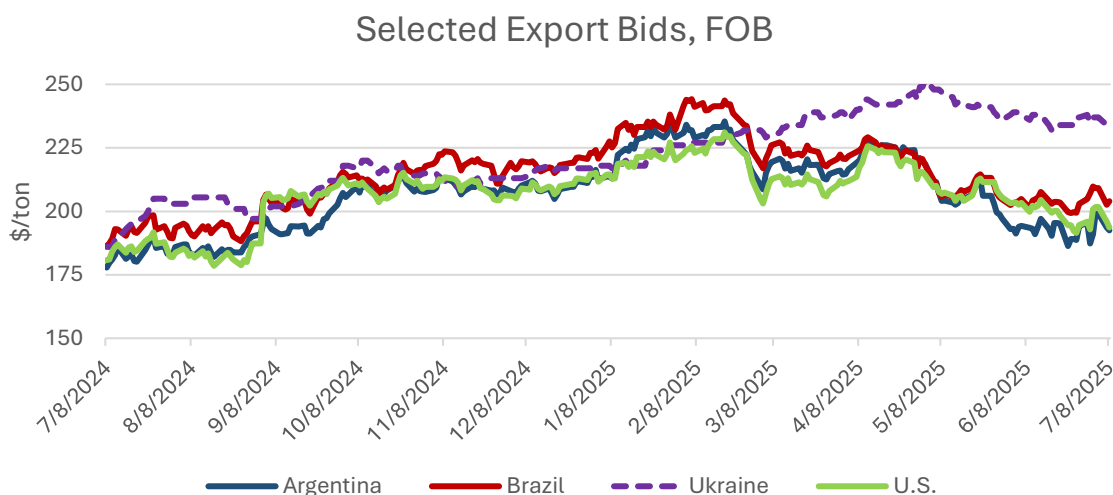
OVERVIEW FOR 2025/26

Global corn production in 2025/26 is forecast down this month as a smaller forecast crop in the United States more than offsets forecasts for larger crops in Canada and Mexico. Global trade is virtually unchanged, as are global imports. The U.S. season-average farm price is unchanged at \$4.20 per bushel.

OVERVIEW FOR 2024/25

Global corn production is forecast up this month as a larger crop in Brazil more than offsets a cut to Mexico. Global trade is forecast up as higher exports from the United States, Canada, and India more than offset lower exports from Turkey. Global imports are forecast down as cuts to China, Canada, and Iran more than offset raises for Turkey, Egypt, Peru, and Morocco. The U.S. season-average farm price is down 5 cents to \$4.30 per bushel.

CORN PRICES



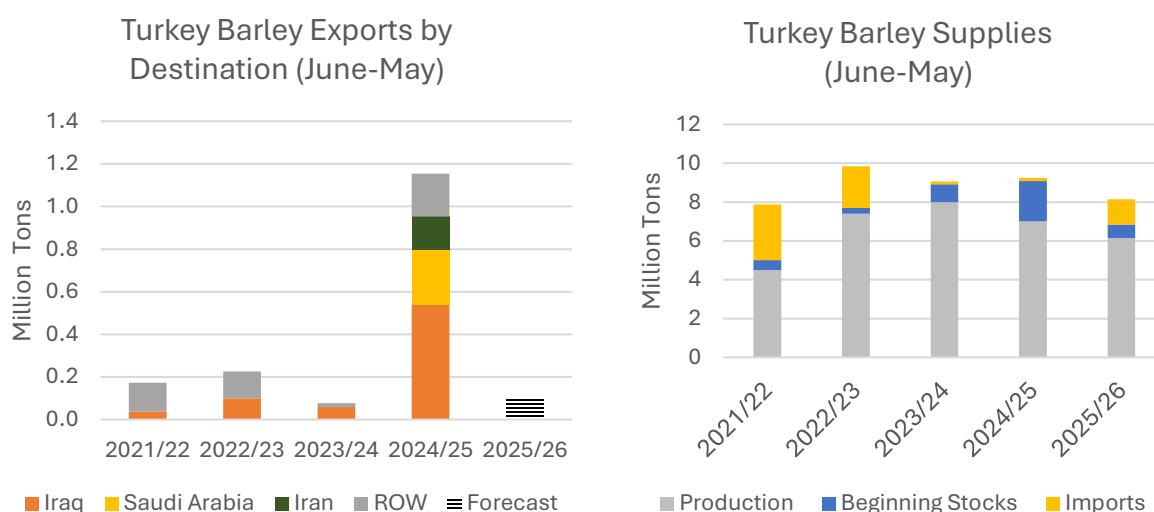
Source: International Grains Council

Export bids (fob, US\$ per ton)	8-Jul-25	6-Jun-25	8-Jul-24	% change, '24 - '25
Argentina, Up River	193	194	178	8%
Brazil, Paranaguá	204	205	186	10%
Ukraine	232	238	186	25%
U.S. #3 Yellow Corn, Gulf	194	203	181	7%

Global: Since the June WASDE, export bids for all major origins except Argentina have fallen, largely due to pressure from Brazil's ongoing *safrinha* (2nd) corn crop harvest and a benign weather outlook for U.S. crops. Argentina bids were down \$1 to \$193/ton, while Brazil bids were also down \$1 to \$204/ton. U.S. bids were down \$9 to \$194/ton as expectations of large new crop supplies continue to outweigh tight old crop ending stocks. Ukraine bids were down \$6 to \$232/ton, largely reflecting movements in other major exporters.

MARKET FEATURE

Turkey Barley Exports Reach 25-Year High in 2024/25



Source: Trade Data Monitor, LLC (left); USDA PSD Online (right)

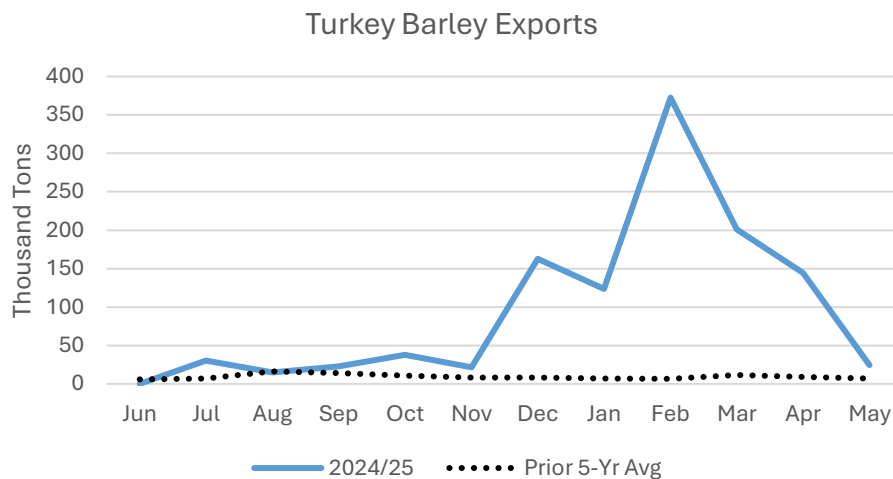
During the 2024/25 (June 2024-May 2025) local marketing year, Turkey exported over 1.1 million tons of barley, the largest volume in 25 years. Large inventories of barley at the start of the harvest, a shift in government trade policy, and shortfalls for other regional suppliers aligned to sharply increase exports.

Coming into 2024/25, Turkey's opening stocks of barley were estimated at just over 2 million tons – the highest level on record and more than 20 percent of annual use. These large stocks accumulated after reduced tariffs led to strong imports in 2022/23 and large crops in 2022/23 and 2023/24 were met with only modest growth in demand in recent years. Around 80 to 90 percent of barley in Turkey is used for animal feed with a smaller portion used for malting. The 2023 Turkey-Syria earthquakes damaged livestock inventories across central-south Turkey and suppressed barley feed demand in 2022/23 and the beginning of 2023/24. Rising imports and production of corn also resulted in some substitution for barley in feed rations, which dented barley feeding use in recent years.

To reduce barley stocks to more manageable levels, the government began allowing exports of barley to the world market beginning in December 2024. Volumes jumped notably, from a total of 77,000 tons in 2023/24 to over 500,000 tons in the 3 months after the policy was implemented. Shipments through May 2025 were mostly to Iraq (541,000 tons), Iran (254,000 tons), and Saudi Arabia (157,000 tons). Iraq benefitted the most due to proximity and established trade with Turkey.

Turkey's exports to non-traditional partners also benefitted from less competition. The Middle East and North Africa primarily source barley imports from Russia and Ukraine due to greater affordability. However, lower global barley prices and poor weather resulted in lower barley crops in both Russia and Ukraine in 2024/25.

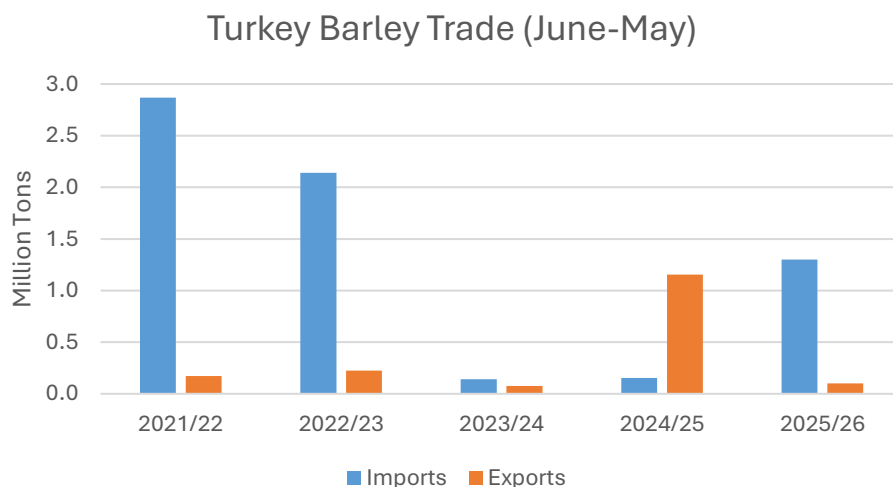
Russia's barley harvest is estimated at 16.3 million tons in 2024/25 (July-June) – a decade low – with export restrictions in place to preserve supplies for the domestic market. As a result, Russia exports to the Middle East and North Africa fell over the course of the marketing year.



Source: Trade Data Monitor, LLC

Likewise, Ukraine barley output and trade is down by nearly 10 percent, with 2024/25 (July 2024-June 2025) exports estimated at a 13-year low of 2.3 million tons. Depleted stocks from consecutive years of war as well as poor weather during last year's harvest resulted in fewer exportable supplies.

Looking ahead, Turkey is expected to return to being a net importer by a large margin in 2025/26. Low prices in 2024/25 prompted farmers to plant less barley for the crop which is currently being harvested. Additionally, low rainfall, higher winter temperatures, and a spring frost have all negatively affected yields, resulting in the crop being much smaller than last year, while stocks have returned to the average levels seen prior to 2022/23. At present, Turkey maintains a 130 percent tariff on barley imports; however, the government has historically shown significant flexibility in adjusting this rate if additional supplies are needed. For 2025/26, barley exports are forecast at 100,000 tons, while imports are forecast at 1.3 million tons.



TRADE CHANGES IN 2025/26 (1,000 MT)

Country	Commodity	Attribute	Previous	Current	Change	Reason
Australia	Barley	Exports	6,700	6,900	200	Expectations of stronger exports to East Asia and MENA
Canada	Corn	Imports	2,500	2,300	-200	Larger crop
China	Sorghum	Imports	8,500	7,900	-600	Lower U.S. supplies
Egypt	Corn	Imports	8,750	9,000	250	Carryover change
Kazakhstan	Barley	Exports	1,300	1,500	200	Larger crop
Mexico	Corn	Imports	25,000	24,800	-200	Larger crop
Russia	Barley	Exports	3,600	3,400	-200	Smaller crop
United States	Sorghum	Exports	6,000	5,400	-600	Reduced sorghum production on lower acreage

TRADE CHANGES IN 2024/25 (1,000 MT)

Country	Commodity	Attribute	Previous	Current	Change	Reason
Canada	Corn	Imports	2,100	1,700	-400	Trade to date
	Barley	Imports	9,000	9,500	500	Trade to date
China	Corn	Imports	7,000	5,000	-2,000	Weak arrivals to date
	Sorghum	Imports	4,200	4,500	300	Trade to date
Colombia	Corn	Imports	7,000	7,200	200	Strong sales and shipments of U.S. corn
Egypt	Corn	Imports	8,400	8,800	400	Strong Brazil shipments
Iran	Corn	Imports	8,100	7,900	-200	Weaker Russia flows
Morocco	Corn	Imports	2,900	3,100	200	Trade to date
Peru	Corn	Imports	4,200	4,400	200	Trade to date
Turkey	Corn	Imports	3,700	4,900	1,200	Expectations of larger imports from Ukraine
United States	Corn	Exports	67,000	69,000	2,000	Sales and shipments to date
	Sorghum	Exports	2,200	2,500	300	

ENDNOTES

REGIONAL TABLES

North America: Canada, Mexico, the United States

Central America: Belize, Costa Rica, El Salvador, Guatemala, Honduras, Nicaragua, Panama

Caribbean: Cuba, Dominican Republic, Haiti, Jamaica, Trinidad and Tobago

South America: Argentina, Bolivia, Brazil, Chile, Colombia, Ecuador, Guyana, Paraguay, Peru, Suriname, Uruguay, Venezuela

EU: Austria, Belgium/Luxembourg, Bulgaria, Croatia, Cyprus, Czech Republic, Denmark, Estonia, Finland, France, Germany, Greece, Hungary, Ireland, Italy, Latvia, Lithuania, Malta, Netherlands, Poland, Portugal, Romania, Slovakia, Slovenia, Spain, and Sweden. Effective January 1, 2021, the separation of the United Kingdom (UK) from the European Union (EU) was complete, including trade between both entities. Starting in May 2021 with the release of 2021/22 data, grain PSDs reflect EU27 (shown in the PSD system as “European Union”) and UK separately. Beginning with the release of 2021/22 data, historical data for both EU27 and the UK are provided for 5 years (2016/17 through 2020/21). See below for notes on prior years’ EU Consolidated data.

Other Europe: Albania, Bosnia and Herzegovina, Former Yugoslavia, Gibraltar, Iceland, North Macedonia, Montenegro, Norway, Serbia, Switzerland, United Kingdom

Former Soviet Union: Armenia, Azerbaijan, Belarus, Georgia, Kazakhstan, Kyrgyzstan, Moldova, Russia, Tajikistan, Turkmenistan, Ukraine, Uzbekistan

Middle East: Bahrain, Iran, Iraq, Israel, Jordan, Kuwait, Lebanon, Oman, Qatar, Saudi Arabia, Syria, Turkey, United Arab Emirates, Yemen

North Africa: Algeria, Egypt, Libya, Morocco, Tunisia

Sub-Saharan Africa: all African countries except North Africa

East Asia: China, Hong Kong, Japan, South Korea, North Korea, Macau, Mongolia, Taiwan

South Asia: Afghanistan, Bangladesh, Bhutan, India, Nepal, Pakistan, Sri Lanka

Southeast Asia: Brunei, Burma, Cambodia, Indonesia, Laos, Malaysia, Philippines, Singapore, Thailand, Vietnam

Oceania: Australia, Fiji, New Zealand, Papua New Guinea

OTHER NOTES

Marketing Years (MY): MY refers to the 12-month period at the onset of the main harvest, when the crop is marketed (i.e., consumed, traded, or stored). The year first listed begins a country's MY for that commodity (2024/25 starts in 2024); except for summer grains in certain Southern Hemisphere countries and for rice in selected countries, where the second year begins the MY (2024/25 starts in 2025). Key exporter MYs are:

Wheat	Corn	Barley	Sorghum
Argentina (Dec/Nov)	Argentina (Mar/Feb)	Australia (Nov/Oct)	Argentina (Mar/Feb)
Australia (Oct/Sep)	Brazil (Mar/Feb)	Canada (Aug/Jul)	Australia (Mar/Feb)
Canada (Aug/Jul)	Russia (Oct/Sep)	European Union (Jul/Jun)	United States (Sep/Aug)
China (Jul/Jun)	South Africa (May/Apr)	Kazakhstan (Jul/Jun)	
European Union (Jul/Jun)	Ukraine (Oct/Sep)	Russia (Jul/Jun)	
India (Apr/Mar)	United States (Sep/Aug)	Ukraine (Jul/Jun)	
Kazakhstan (Sep/Aug)		United States (Jun/May)	
Russia (Jul/Jun)			
Turkey (Jun/May)			
Ukraine (Jul/Jun)			
United States (Jun/May)			

For a complete list of local marketing years, please see the FAS website (<https://apps.fas.usda.gov/psdonline/>): go to Reports, Reference Data, and then Data Availability.

Prices: Many export bids and quotes in this publication are Free-On Board (FOB). FOB is a term of sale meaning that the shipper will pay all costs to deliver and load the cargo at a specified place, usually a ship, and then the receiver pays the costs from there on — normally the ocean freight, insurance, and all subsequent costs of unloading and delivery. All references to ton, unless otherwise specified, refer to metric tons – 2,204.62 U.S. pounds/1,000 kilograms.

Stocks: Unless otherwise stated, stock data are based on an aggregate of differing local marketing years and should not be construed as representing world stock levels at a fixed point in time.

Consumption: World totals for consumption reflect total utilization, including food, seed, industrial, feed, and waste; as well as differences in local marketing year imports and local marketing year exports. Consumption statistics for regions and individual countries, however, reflect food, seed, industrial, feed, and waste only.

Trade: All PSD tables are balanced on the different local marketing years. All trade tables contain Trade Year (TY) data which puts all countries on a uniform, 12-month period for analytical comparisons: wheat is July/June; coarse grains, corn, barley, sorghum, oats, and rye are Oct/Sept; and rice is calendar year (TY 2024/25 corresponds to Jan – Dec 2025).

European Union:

From 2016/17 onwards, the European Union PSD data includes 27 member countries, excluding intra-trade between the member states. The trade figures starting from 1999/00 through 2015/16 represent the European Union (EU-27 plus UK) and excludes all intra-trade. For the years 1960/61 through 1998/99, figures are the EU-15 and also exclude all intra-trade. EU-15 member states' data for grains are no longer maintained in the official USDA database. Data for the individual NMS-10, plus Bulgaria, Romania, and Croatia, exists only prior to 1999/00.

Statistics: (1) Wheat trade statistics include wheat (1001), flour (1101), bulgur (190430), and selected pasta products (190219, 190230, and 190240) on a grain-equivalent basis (all wheat flour and products are multiplied by 1.368). (2) Rice trade statistics include rough (100610), brown (100620), milled (100630), and broken (100640) on a milled-equivalent basis (rough rice is multiplied by 0.7 and brown rice is multiplied by 0.875). (3) Coarse grains statistics include corn, barley, sorghum, oats, rye, millet, and mixed grains but exclude trade in barley malt, millet, and mixed grains.

Unaccounted: This term includes grain in transit, reporting discrepancies in some countries, and trade to countries outside the USDA database.

The Global Commodity Analysis Division, Global Market Analysis, Foreign Agricultural Service, USDA, Washington, DC 20250, prepared this publication. Information is gathered from official statistics of foreign governments and other foreign source materials, reports of U.S. agricultural attachés and Foreign Service officers, office research, and related information.

Note: For further details on world grain production, please see [World Agricultural Production](#) July 2025. This publication is available in its entirety on the Internet via the Foreign Agricultural Service Home Page. The address is: <http://www.fas.usda.gov>

Hannah Austin	Hannah.Austin@usda.gov	Wheat
Rachel Trego	Rachel.Trego@usda.gov	Wheat/Rice
Adolfo Escoto	Adolfo.Escoto@usda.gov	Rice
Nabil Hoq	Nabil.Hoq@usda.gov	Rice
Eric Gero	Eric.Gero@usda.gov	Coarse Grains
Victorino Floro	Victorino.Floro@usda.gov	Coarse Grains
Kevin Min	Kevin.Min1@usda.gov	Coarse Grains

DATA TABLES

Page Intentionally Left Blank

All Grain Summary Comparison

Million Metric Tons

		Wheat			Rice, Milled			Corn		
	Marketing Year	2023/24	2024/25	2025/26	2023/24	2024/25	2025/26	2023/24	2024/25	2025/26
Production										
United States	(Jun-May)	49.1	53.7	52.5	6.9	7.1	6.5	389.7	377.6	398.9
Other		742.9	746.2	756.1	516.7	534.4	534.8	841.0	847.7	864.8
World Total		792.0	799.9	808.6	523.6	541.5	541.3	1,230.7	1,225.3	1,263.7
Domestic Consumption										
United States	(Jun-May)	30.2	31.0	31.5	4.9	5.4	5.2	322.9	319.2	323.5
Other		768.0	765.9	774.9	516.3	524.6	533.6	902.9	927.9	944.2
World Total		798.2	796.9	806.4	521.2	530.0	538.8	1,225.8	1,247.1	1,267.7
Ending Stocks										
United States	(Jun-May)	19.0	23.1	24.2	1.3	1.5	1.4	44.8	34.0	42.2
Other		250.2	240.5	237.3	178.5	186.1	185.9	270.9	250.2	229.9
World Total		269.2	263.6	261.5	179.8	187.6	187.3	315.7	284.2	272.1
TY Imports										
United States	(Jun-May)	3.8	4.0	3.3	1.5	1.6	1.6	0.7	0.7	0.7
Other		217.5	194.9	205.7	56.2	57.3	57.7	198.6	182.6	186.9
World Total		221.3	198.9	209.0	57.7	58.9	59.3	199.3	183.3	187.6
TY Exports										
United States	(Jun-May)	19.6	22.5	23.0	3.3	3.0	3.0	58.5	69.0	68.0
Other		205.6	180.1	190.9	56.6	58.2	58.7	138.9	121.3	127.1
World Total		225.2	202.6	213.9	59.9	61.2	61.7	197.4	190.3	195.1

Note: Consumption in this table has not been adjusted for differences in marketing year imports and exports and therefore differs from global totals shown elsewhere. Marketing years for U.S. grains are: Wheat (Jun-May), Rice (Aug-Jul), Corn (Sep-Aug). 'Marketing Year' column is germane for U.S. wheat only.

World Wheat, Flour, and Products Trade
July/June Year, Thousand Metric Tons

	2021/22	2022/23	2023/24	2024/25	2025/26 Jun	2025/26 Jul
TY Exports						
Russia	34,000	49,000	55,500	43,000	45,000	46,000
European Union	31,927	35,083	38,012	26,500	34,500	32,500
Canada	15,010	25,334	25,650	28,000	27,000	27,000
Australia	25,958	32,329	22,504	21,500	24,000	24,000
Ukraine	18,844	17,122	18,577	15,900	16,500	15,500
Argentina	17,651	4,681	7,282	10,400	13,000	13,000
Kazakhstan	8,459	9,862	8,409	10,100	8,000	8,000
Turkey	6,646	6,953	9,998	7,000	7,000	7,000
Brazil	3,105	2,689	2,812	1,897	2,700	2,700
Egypt	300	661	1,851	2,300	2,000	2,000
Others	22,861	13,894	15,014	13,477	13,123	13,173
Subtotal	184,761	197,608	205,609	180,074	192,823	190,873
United States	21,347	20,250	19,615	22,500	22,500	23,000
World Total	206,108	217,858	225,224	202,574	215,323	213,873
TY Imports						
Egypt	11,256	11,221	12,440	12,500	13,000	13,000
Indonesia	11,271	9,446	13,015	10,500	12,000	12,000
Algeria	8,500	8,700	9,500	9,000	9,000	9,000
Turkey	9,555	12,500	8,940	3,200	7,500	7,500
Philippines	6,886	5,750	6,915	6,800	7,200	7,200
Brazil	6,582	4,985	5,917	7,309	6,700	6,900
Bangladesh	6,340	5,120	6,650	5,800	6,900	6,700
Morocco	4,726	5,770	6,205	6,700	6,700	6,700
European Union	4,631	12,228	12,658	10,700	9,500	6,500
Mexico	5,326	5,232	5,290	5,500	6,500	6,500
Nigeria	6,187	4,732	5,105	6,250	6,400	6,400
China	9,568	13,282	13,635	4,000	6,000	6,000
Japan	5,605	5,452	5,346	5,450	5,450	5,450
Vietnam	4,517	4,317	5,441	5,300	5,400	5,400
Afghanistan	4,000	4,350	4,600	4,300	4,400	4,500
Korea, South	5,099	4,533	4,990	4,400	4,500	4,500
Thailand	2,351	3,163	3,316	4,400	4,000	4,400
Uzbekistan	3,318	3,869	3,616	4,100	4,100	4,100
Yemen	3,442	4,157	3,993	3,600	3,950	3,950
United Kingdom	2,634	2,030	3,135	3,900	3,000	3,200
Iran	8,000	3,600	2,000	1,000	2,500	3,000
Iraq	2,576	3,986	2,761	2,525	3,000	3,000
Saudi Arabia	3,052	5,260	3,890	3,500	3,000	3,000
Kenya	2,045	2,204	2,475	2,400	2,600	2,600
Sudan	2,381	2,276	2,282	2,500	2,550	2,550
Others	59,528	60,515	63,427	59,259	61,815	61,720
Subtotal	199,376	208,678	217,542	194,893	207,665	205,770
Unaccounted	4,001	5,911	3,913	3,681	4,408	4,853
United States	2,731	3,269	3,769	4,000	3,250	3,250
World Total	206,108	217,858	225,224	202,574	215,323	213,873

TY=Trade Year, see Endnotes.

World Wheat Production, Consumption, and Stocks

Local Marketing Years, Thousand Metric Tons

	2021/22	2022/23	2023/24	2024/25	2025/26 Jun	2025/26 Jul
Production						
China	136,946	137,723	136,590	140,099	142,000	142,000
European Union	138,479	134,492	135,375	122,123	136,550	137,250
India	109,586	104,000	110,554	113,292	117,510	117,510
Russia	75,158	92,000	91,500	81,600	83,000	83,500
Canada	22,422	34,807	32,946	34,958	36,000	35,000
Australia	36,237	40,545	25,960	34,110	31,000	31,000
Pakistan	27,464	26,209	28,161	31,438	28,500	29,000
Ukraine	33,007	21,500	23,000	23,400	23,000	22,000
Argentina	22,150	12,550	15,850	18,538	20,000	20,000
Turkey	16,000	17,250	21,000	19,000	19,000	19,000
Kazakhstan	11,814	16,404	12,111	18,577	14,500	15,500
Iran	12,000	13,200	14,000	16,000	14,000	13,500
United Kingdom	13,988	15,540	13,980	11,146	12,800	12,500
Egypt	9,842	9,500	8,870	9,200	9,300	9,300
Brazil	7,679	10,554	8,097	7,889	8,000	8,000
Others	63,171	59,231	64,864	64,895	61,149	60,999
Subtotal	735,943	745,505	742,858	746,265	756,309	756,059
United States	44,804	44,898	49,095	53,650	52,280	52,492
World Total	780,747	790,403	791,953	799,915	808,589	808,551
Total Consumption						
China	148,000	148,000	153,500	150,000	150,000	150,000
India	109,882	108,665	112,342	108,761	113,000	112,510
European Union	108,250	109,000	110,500	109,750	111,000	111,000
Russia	40,750	41,000	39,000	40,000	39,000	39,000
Pakistan	27,700	29,000	30,200	31,200	31,500	31,500
Egypt	20,500	20,550	20,500	20,000	20,000	20,000
Turkey	19,700	19,900	19,400	19,400	19,400	19,400
Iran	18,200	18,100	17,300	16,900	17,000	16,950
United Kingdom	15,324	15,200	15,594	15,025	15,500	15,500
Brazil	11,750	11,850	12,000	12,100	12,100	12,100
Algeria	11,370	11,570	11,750	11,950	12,050	12,050
Indonesia	10,500	9,800	11,400	11,000	11,500	11,300
Morocco	10,500	10,000	9,800	9,500	9,600	9,600
Afghanistan	8,250	8,500	9,200	9,500	9,300	9,400
Canada	9,621	8,288	9,121	9,000	9,250	8,750
Others	186,904	181,984	186,384	191,764	194,664	195,799
Subtotal	760,484	760,493	767,267	774,450	778,259	779,079
United States	30,411	30,361	30,180	31,034	31,543	31,543
World Total	790,895	790,854	797,447	805,484	809,802	810,622
Ending Stocks						
China	136,759	138,818	134,503	127,602	124,602	124,602
India	19,500	9,500	7,500	12,000	16,510	17,000
European Union	13,631	16,268	15,789	12,362	12,912	12,612
Russia	12,088	14,388	11,688	10,588	9,388	9,388
Algeria	4,351	5,081	5,531	5,576	5,721	5,721
Argentina	1,926	3,967	4,537	4,935	4,645	4,645
Australia	3,454	4,371	2,912	4,247	4,322	4,347
Others	65,036	66,755	67,741	63,129	60,219	58,971
Subtotal	256,745	259,148	250,201	240,439	238,319	237,286
United States	18,355	15,501	18,954	23,147	24,445	24,229
World Total	275,100	274,649	269,155	263,586	262,764	261,515

Regional Wheat Imports, Production, Consumption, and Stocks

Thousand Metric Tons

	2021/22	2022/23	2023/24	2024/25	Jun 2025/26	Jul 2025/26
TY Imports						
North America	8,614	9,046	9,616	10,100	10,300	10,350
Central America	2,157	2,085	2,228	2,460	2,200	2,200
South America	14,855	13,150	14,272	15,666	15,495	15,695
European Union	4,631	12,228	12,658	10,700	9,500	6,500
Other Europe	4,412	3,644	4,889	5,875	4,775	4,975
Former Soviet Union - 12	10,577	12,846	10,621	9,455	9,360	9,460
Middle East	35,089	38,301	30,210	22,475	29,325	30,000
North Africa	27,477	29,209	31,675	32,015	32,250	32,250
Sub-Saharan Africa	26,842	24,443	28,079	29,785	30,185	30,265
East Asia	22,166	25,079	25,997	15,847	17,950	17,950
South Asia	13,945	13,388	16,069	11,460	14,660	14,060
Southeast Asia	27,957	25,203	31,369	29,840	31,440	31,840
Others	3,385	3,325	3,628	3,215	3,475	3,475
Total	202,107	211,947	221,311	198,893	210,915	209,020
Production						
North America	70,510	83,316	85,517	91,256	89,980	89,092
South America	33,424	27,031	28,442	30,925	32,296	32,296
European Union	138,479	134,492	135,375	122,123	136,550	137,250
Other Europe	18,856	20,450	19,053	16,086	17,670	17,370
Former Soviet Union - 12	134,227	144,588	141,137	138,822	134,815	135,415
Middle East	34,457	36,234	44,798	45,560	40,575	39,925
North Africa	21,279	17,260	16,370	16,039	17,550	17,550
Sub-Saharan Africa	9,740	9,506	9,455	9,623	9,953	9,953
East Asia	138,736	139,288	138,299	141,706	143,675	143,675
South Asia	144,299	137,210	147,075	153,130	154,010	154,510
Oceania	36,660	40,948	26,352	34,575	31,445	31,445
Others	80	80	80	70	70	70
Total	780,747	790,403	791,953	799,915	808,589	808,551
Domestic Consumption						
North America	47,457	46,449	47,201	47,934	48,893	48,393
South America	29,597	29,700	30,085	30,430	31,080	31,080
European Union	108,250	109,000	110,500	109,750	111,000	111,000
Other Europe	20,534	20,360	21,024	20,385	20,830	20,830
Former Soviet Union - 12	76,800	76,250	73,300	75,515	73,555	74,290
Middle East	63,180	63,651	63,361	63,675	63,555	63,730
North Africa	46,920	46,720	46,580	46,225	46,550	46,550
Sub-Saharan Africa	35,586	34,242	35,733	37,987	39,399	39,349
East Asia	161,354	160,683	166,378	162,540	162,765	162,750
South Asia	157,627	156,055	162,180	159,933	164,925	164,335
Southeast Asia	26,595	25,430	28,600	29,000	30,040	30,240
Oceania	10,015	9,665	9,445	9,640	9,865	9,865
Others	3,697	3,563	3,784	3,870	3,950	3,990
Total	787,612	781,768	798,171	796,884	806,407	806,402
Ending Stocks						
North America	23,038	21,883	24,307	27,686	29,731	28,518
South America	4,980	7,747	8,006	8,483	7,611	7,861
European Union	13,631	16,268	15,789	12,362	12,912	12,612
Other Europe	2,917	3,783	4,643	4,216	3,714	3,606
Former Soviet Union - 12	22,604	24,978	18,069	18,881	16,896	17,196
Middle East	15,513	19,291	21,293	17,555	16,213	15,700
North Africa	12,721	12,173	11,442	10,736	11,777	11,861
Sub-Saharan Africa	4,320	3,324	4,218	4,519	4,328	4,308
East Asia	139,798	141,701	137,655	130,727	127,656	127,647
South Asia	26,145	14,658	14,674	18,547	21,822	22,247
Southeast Asia	4,777	3,241	4,672	4,122	4,477	4,327
Oceania	3,848	4,685	3,301	4,596	4,641	4,656
Others	808	917	1,086	1,156	986	976
Total	275,100	274,649	269,155	263,586	262,764	261,515

NOTES: Regional definitions appear on last page of this circular. Imports are reported on a trade year basis. All other data are reported using local marketing years.

World Rice Trade
January/December Year, Thousand Metric Tons

	2021/22	2022/23	2023/24	2024/25	2025/26 Jun	2025/26 Jul
TY Exports						
India	22,122	17,733	17,919	25,000	25,000	25,000
Vietnam	7,054	8,225	9,035	7,900	7,900	7,900
Thailand	7,682	8,736	9,886	7,000	7,200	7,200
Pakistan	4,562	4,523	6,492	5,200	5,300	5,300
Cambodia	2,800	3,450	3,700	4,000	4,100	4,100
Burma	2,335	1,577	2,797	1,600	1,500	1,600
Brazil	1,445	1,208	958	1,000	1,275	1,275
Uruguay	982	991	745	900	1,000	1,000
China	2,172	1,602	1,115	1,050	900	900
Paraguay	752	857	723	925	900	900
Guyana	338	399	470	525	500	500
European Union	402	366	362	400	425	425
Argentina	402	293	264	460	400	400
Australia	207	248	239	250	225	225
Turkey	227	258	293	250	225	225
Others	1,500	1,299	1,656	1,719	1,755	1,760
Subtotal	54,982	51,765	56,654	58,179	58,605	58,710
United States	2,190	2,398	3,271	2,975	3,050	3,000
World Total	57,172	54,163	59,925	61,154	61,655	61,710
TY Imports						
Philippines	3,800	3,900	5,450	5,400	5,500	5,500
Vietnam	2,750	3,500	3,700	4,000	4,100	4,100
Nigeria	2,400	2,000	2,700	2,800	3,000	3,000
China	6,155	2,597	1,625	2,600	2,450	2,600
Iraq	2,124	1,845	2,125	2,200	2,225	2,225
European Union	2,490	2,183	2,411	2,300	2,200	2,200
Saudi Arabia	1,324	1,487	1,775	1,850	1,850	1,850
Malaysia	1,240	1,410	1,695	1,600	1,650	1,650
Senegal	1,500	1,300	1,400	1,700	1,650	1,650
Cote d'Ivoire	1,560	1,313	1,616	2,000	1,600	1,600
Guinea	850	870	1,065	1,200	1,250	1,250
South Africa	1,034	1,221	1,075	1,150	1,200	1,200
Iran	1,250	751	750	1,000	1,050	1,050
Bangladesh	950	365	200	1,500	1,000	1,000
United Arab Emirates	1,025	900	875	950	975	975
Ghana	620	810	850	1,100	925	925
Brazil	826	982	1,023	950	900	900
Cameroon	575	360	960	800	900	900
Mexico	875	734	878	875	900	900
Mozambique	685	740	890	850	925	900
Burkina Faso	706	767	854	860	900	900
Yemen	570	550	725	750	825	825
Indonesia	740	3,500	4,650	600	800	800
United Kingdom	638	667	682	675	700	700
Japan	669	709	754	775	690	690
Others	17,501	15,525	15,508	16,877	17,244	17,349
Subtotal	54,857	50,986	56,236	57,362	57,409	57,639
Unaccounted	1,000	1,821	2,232	2,217	2,621	2,446
United States	1,315	1,356	1,457	1,575	1,625	1,625
World Total	57,172	54,163	59,925	61,154	61,655	61,710

TY=Trade Year, see Endnotes. Note about dates: 2016/17 is calendar year 2017, 2017/18 is calendar year 2018, and so on.

World Rice Production, Consumption, and Stocks

Local Marketing Years, Thousand Metric Tons

	2021/22	2022/23	2023/24	2024/25	2025/26 Jun	2025/26 Jul
Milled Production						
India	129,471	135,755	137,825	150,000	151,000	151,000
China	148,990	145,946	144,620	145,275	146,000	146,000
Bangladesh	35,850	36,350	37,000	36,600	37,500	37,500
Indonesia	34,400	33,900	33,020	34,600	33,600	33,600
Vietnam	26,670	27,140	27,200	26,950	26,300	26,300
Thailand	19,878	20,909	20,000	20,545	20,400	20,400
Philippines	12,540	12,625	12,325	12,350	12,300	12,300
Burma	12,400	11,800	12,300	11,900	12,000	12,000
Pakistan	9,323	7,322	9,869	9,750	9,800	9,800
Cambodia	6,561	7,000	7,400	8,470	8,100	8,100
Brazil	7,337	6,822	7,199	8,200	7,600	7,600
Japan	7,636	7,480	7,297	7,294	7,280	7,280
Nigeria	5,255	5,408	5,607	5,765	5,229	5,229
Egypt	2,900	3,600	3,780	3,900	3,900	3,900
Nepal	3,417	3,654	3,812	3,666	3,800	3,800
Others	45,539	46,135	47,472	49,190	49,958	49,955
Subtotal	508,167	511,846	516,726	534,455	534,767	534,764
United States	6,066	5,082	6,922	7,053	6,808	6,509
World Total	514,233	516,928	523,648	541,508	541,575	541,273
Consumption and Residual						
China	156,360	154,994	148,115	146,025	146,050	146,700
India	110,446	114,510	116,396	122,000	126,500	126,500
Bangladesh	36,500	37,300	37,600	38,000	38,500	38,500
Indonesia	35,300	35,600	36,200	35,900	35,500	35,500
Vietnam	22,050	22,400	22,500	22,650	22,750	22,750
Philippines	15,400	16,100	16,800	17,500	17,700	17,700
Thailand	12,300	12,300	12,300	12,500	12,650	12,650
Burma	10,300	10,200	10,000	10,100	10,200	10,200
Nigeria	7,350	7,500	7,650	7,900	8,100	8,100
Japan	8,200	8,150	8,150	8,175	8,000	8,000
Brazil	7,150	7,000	7,100	7,200	7,300	7,300
Nepal	4,412	4,249	4,022	4,416	4,450	4,450
Pakistan	3,900	3,925	4,000	4,100	4,200	4,200
Egypt	4,050	4,000	4,050	4,100	4,150	4,150
Madagascar	3,605	3,719	3,578	3,807	4,048	4,048
Others	74,300	76,065	77,874	80,233	82,765	82,860
Subtotal	513,968	515,926	519,738	528,332	535,705	536,382
United States	4,740	4,595	4,882	5,397	5,367	5,239
World Total	518,708	520,521	524,620	533,729	541,072	541,621
Ending Stocks						
China	113,000	106,600	103,000	103,500	105,000	104,500
India	34,000	35,000	42,000	45,000	44,500	44,500
Indonesia	2,900	4,700	6,170	5,470	4,370	4,370
Thailand	4,426	4,349	2,213	3,308	3,908	3,908
Philippines	3,103	3,378	3,403	3,803	3,653	3,803
Vietnam	3,605	3,620	2,985	3,385	3,135	3,135
Nigeria	2,045	2,228	2,070	2,835	3,064	2,964
Others	20,069	19,980	16,738	18,830	18,719	18,676
Subtotal	183,148	179,855	178,579	186,131	186,349	185,856
United States	1,261	961	1,265	1,492	1,479	1,419
World Total	184,409	180,816	179,844	187,623	187,828	187,275

Note: All data are reported on a milled basis.

Regional Rice Imports, Production, Consumption, and Stocks

Thousand Metric Tons

	2021/22	2022/23	2023/24	2024/25	Jun 2025/26	Jul 2025/26
TY Imports						
North America	2,714	2,563	2,790	2,925	3,035	3,035
Caribbean	1,021	1,165	1,240	1,075	1,085	1,085
South America	1,815	1,936	1,860	1,707	1,746	1,746
Other Europe	729	749	778	785	805	805
Former Soviet Union - 12	666	570	767	790	815	890
Middle East	7,947	7,424	7,951	8,585	8,885	8,885
North Africa	863	731	564	700	705	735
Sub-Saharan Africa	16,979	15,513	17,401	19,200	19,155	19,130
East Asia	7,738	4,100	3,202	4,258	4,048	4,198
South Asia	3,085	1,377	1,312	2,987	2,380	2,380
Southeast Asia	9,098	12,930	16,169	12,395	12,895	12,895
European Union	2,490	2,183	2,411	2,300	2,200	2,200
Total	56,172	52,342	57,693	58,937	59,034	59,264
Production						
North America	6,248	5,247	7,075	7,223	6,978	6,686
Caribbean	885	841	759	885	882	882
South America	16,529	16,031	16,586	18,378	17,655	17,655
European Union	1,732	1,292	1,371	1,595	1,770	1,770
Former Soviet Union - 12	1,339	1,177	1,308	1,441	1,383	1,383
Middle East	2,723	2,607	2,560	2,857	2,780	2,770
North Africa	2,945	3,642	3,825	3,936	3,948	3,948
Sub-Saharan Africa	20,548	22,194	23,363	23,713	23,815	23,815
East Asia	162,921	159,653	158,093	158,782	159,448	159,448
South Asia	181,065	186,167	191,862	203,436	205,670	205,670
Southeast Asia	116,077	117,025	115,756	118,291	116,266	116,266
Total	514,233	516,928	523,648	541,508	541,575	541,273
Domestic Consumption						
North America	6,153	5,983	6,331	6,827	6,872	6,744
Central America	1,396	1,408	1,435	1,493	1,523	1,523
Caribbean	1,860	1,949	1,810	1,913	1,955	1,955
South America	14,945	14,820	14,900	15,097	15,322	15,322
European Union	3,500	3,300	3,250	3,400	3,550	3,550
Former Soviet Union - 12	1,714	1,605	1,913	1,975	2,017	2,057
Middle East	9,637	9,862	10,364	10,805	11,355	11,355
North Africa	4,359	4,329	4,599	4,631	4,728	4,758
Sub-Saharan Africa	36,371	38,379	38,714	40,632	42,329	42,354
East Asia	171,445	169,913	163,298	161,008	160,838	161,488
South Asia	159,193	163,945	166,213	172,686	177,920	177,920
Southeast Asia	104,665	105,964	107,193	108,316	108,571	108,571
Total	516,363	522,607	521,217	530,003	538,230	538,847
Ending Stocks						
North America	1,414	1,081	1,381	1,633	1,663	1,607
Central America	175	255	232	211	196	207
Caribbean	340	357	346	428	430	430
South America	2,291	1,882	2,012	2,615	2,384	2,324
European Union	905	828	699	844	839	839
Middle East	1,733	2,121	1,973	2,260	2,270	2,260
North Africa	611	600	454	354	254	229
Sub-Saharan Africa	3,808	4,623	3,983	5,557	5,483	5,483
East Asia	116,721	110,309	106,174	106,466	107,784	107,284
South Asia	39,300	40,021	45,617	48,372	48,180	48,187
Southeast Asia	16,556	18,260	16,434	18,304	17,894	17,844
Oceania	240	196	252	211	172	172
Total	184,409	180,816	179,844	187,623	187,828	187,275

NOTES: Regional definitions appear on last page of this circular. Imports are reported on a trade year basis. All other data are reported using local marketing years.

World Coarse Grain Trade
October/September Year, Thousand Metric Tons

	2021/22	2022/23	2023/24	2024/25	2025/26 Jun	2025/26 Jul
TY Exports						
Brazil	31,938	53,307	46,513	41,185	42,085	42,085
Argentina	44,418	29,448	35,158	39,800	41,600	41,500
Ukraine	29,895	29,765	32,727	24,770	27,580	27,580
European Union	12,812	11,054	11,425	8,755	10,090	10,090
Australia	11,109	10,500	10,345	10,255	9,760	10,060
Russia	7,375	11,515	12,865	6,770	7,480	7,280
Canada	5,552	7,863	6,214	6,555	5,690	5,790
Paraguay	3,208	4,006	2,927	2,935	3,135	3,135
Burma	2,300	2,000	3,000	2,600	2,700	2,700
Serbia	1,622	636	2,442	1,623	2,202	2,202
Others	16,229	15,595	13,387	11,795	10,435	10,625
Subtotal	166,458	175,689	177,003	157,043	162,757	163,047
United States	70,394	45,830	64,673	71,694	74,135	73,535
World Total	236,852	221,519	241,676	228,737	236,892	236,582
TY Imports						
China	41,499	32,619	48,107	19,500	28,475	27,875
Mexico	18,498	20,230	24,931	25,925	26,075	25,875
European Union	21,353	25,639	21,738	21,310	21,730	21,730
Japan	16,506	16,451	16,670	16,640	16,960	17,010
Vietnam	9,653	10,122	11,597	12,800	13,300	13,300
Korea, South	11,617	11,227	11,667	11,618	11,608	11,608
Iran	10,302	8,000	9,900	10,200	10,500	10,600
Egypt	9,771	6,238	8,041	8,825	8,770	9,020
Saudi Arabia	8,778	6,394	7,596	8,005	8,405	8,405
Colombia	6,846	6,697	6,951	7,550	7,550	7,650
Algeria	3,965	4,249	5,859	5,605	5,555	5,555
Taiwan	4,644	4,269	4,666	4,470	4,630	4,630
Peru	3,646	3,495	4,455	4,550	4,450	4,450
Malaysia	3,697	3,476	3,886	3,830	3,828	3,828
Turkey	5,861	4,360	3,435	5,051	3,700	3,800
Morocco	2,724	2,979	4,201	3,956	3,606	3,606
Chile	2,564	2,430	2,619	2,635	2,795	2,795
United Kingdom	2,637	2,166	3,027	2,940	2,735	2,735
Brazil	4,064	2,353	2,264	2,426	2,420	2,420
Canada	6,341	2,278	2,897	1,846	2,590	2,390
Philippines	1,126	1,340	1,889	1,925	2,155	2,155
Thailand	1,568	1,965	2,079	2,000	2,050	2,050
Guatemala	1,574	1,618	1,894	1,850	1,900	1,900
Dominican Republic	1,354	1,386	1,665	1,600	1,650	1,650
Libya	1,395	1,800	1,450	1,850	1,600	1,600
Others	26,915	24,684	28,527	29,315	26,770	26,995
Subtotal	228,898	208,465	242,011	218,222	225,807	225,632
Unaccounted	5,302	9,700	-2,662	8,214	8,885	8,650
United States	2,652	3,354	2,327	2,301	2,200	2,300
World Total	236,852	221,519	241,676	228,737	236,892	236,582

TY=Trade Year, see Endnotes.

World Coarse Grains Production, Consumption, and Stocks

Local Marketing Years, Thousand Metric Tons

	2021/22	2022/23	2023/24	2024/25	2025/26 Jun	2025/26 Jul
Production						
China	281,729	285,894	297,382	303,467	303,950	303,950
European Union	155,030	133,099	137,039	137,176	141,325	141,125
Brazil	120,699	143,489	124,808	138,484	137,620	137,620
Argentina	61,142	43,914	59,373	59,098	61,621	61,621
India	51,385	56,776	57,155	61,550	61,060	61,060
Russia	38,538	44,132	42,540	34,775	37,725	37,425
Ukraine	53,514	33,925	39,780	33,470	37,035	36,835
Mexico	32,790	33,943	29,087	28,270	29,690	29,990
Canada	25,124	30,535	27,524	27,521	27,060	27,560
Nigeria	21,397	21,696	19,012	19,250	20,750	20,750
Ethiopia	18,215	17,466	17,560	17,910	17,985	17,985
South Africa	16,636	17,527	13,944	16,308	17,038	17,038
Australia	19,219	18,842	14,484	17,335	16,719	16,719
Turkey	11,477	14,839	17,045	14,760	15,200	14,650
Indonesia	12,700	12,400	12,700	12,800	13,300	13,300
Others	189,865	193,214	194,888	192,831	196,641	196,726
Subtotal	1,109,460	1,101,691	1,104,321	1,115,005	1,134,719	1,134,354
United States	396,297	356,449	402,882	390,857	415,978	412,722
World Total	1,505,757	1,458,140	1,507,203	1,505,862	1,550,697	1,547,076
Domestic Consumption						
China	320,911	321,768	338,700	340,250	348,625	348,025
European Union	158,273	149,602	148,705	151,241	153,091	152,891
Brazil	76,161	84,987	90,632	98,304	100,485	101,485
India	48,046	53,703	57,311	62,250	63,000	63,000
Mexico	51,065	52,395	53,170	54,355	55,755	55,755
Russia	31,109	33,150	29,990	28,100	29,725	29,725
Canada	25,792	24,728	24,435	23,588	24,010	24,210
Nigeria	21,177	21,591	20,159	19,400	20,900	20,900
Argentina	19,344	17,630	18,326	20,196	19,626	19,626
Ethiopia	18,392	17,632	17,860	18,180	18,225	18,225
Turkey	17,609	17,954	16,909	19,265	17,950	17,950
Japan	16,822	16,804	16,923	16,870	17,262	17,262
Egypt	17,891	14,556	16,199	16,688	16,690	16,990
Vietnam	15,300	14,472	14,650	16,050	16,750	16,750
Iran	14,720	13,520	14,220	14,870	15,270	15,370
Others	290,089	286,467	294,387	300,316	300,990	300,440
Subtotal	1,166,467	1,147,965	1,165,984	1,209,364	1,227,996	1,227,382
United States	324,909	314,970	331,424	331,069	334,208	333,243
World Total	1,491,376	1,462,935	1,497,408	1,540,433	1,562,204	1,560,625
Ending Stocks						
China	210,035	206,770	213,554	196,246	182,021	180,021
European Union	18,652	16,531	15,458	14,268	14,107	14,142
Mexico	3,907	5,608	6,447	6,266	6,320	6,355
Brazil	4,573	10,769	9,221	8,642	3,260	4,212
Argentina	5,582	3,135	3,615	3,822	4,022	4,022
Canada	3,706	3,717	3,681	2,855	2,980	2,805
India	3,387	3,589	3,906	3,471	2,461	2,271
Others	54,943	50,210	43,506	39,800	39,799	40,010
Subtotal	304,785	300,329	299,388	275,370	254,970	253,838
United States	37,475	37,136	47,872	37,319	47,418	45,302
World Total	342,260	337,465	347,260	312,689	302,388	299,140

Regional Coarse Grains Imports, Production, Consumption, and Stocks

Thousand Metric Tons

	2021/22	2022/23	2023/24	2024/25	Jun 2025/26	Jul 2025/26
TY Imports						
North America	27,491	25,862	30,155	30,072	30,865	30,565
Central America	5,333	5,464	5,627	5,800	5,925	5,925
Caribbean	2,151	2,009	2,234	2,097	2,201	2,176
South America	18,716	16,918	18,262	18,456	19,008	19,108
European Union	21,353	25,639	21,738	21,310	21,730	21,730
Former Soviet Union - 12	823	1,316	1,105	944	854	854
Middle East	33,453	26,378	29,657	31,896	31,051	31,351
North Africa	19,650	16,853	21,275	21,986	21,131	21,381
Sub-Saharan Africa	3,962	3,716	5,094	6,992	3,980	4,130
East Asia	74,316	64,613	81,155	52,273	61,718	61,168
Southeast Asia	17,339	17,977	21,402	21,916	22,544	22,544
Others	6,963	5,074	6,634	6,781	7,000	7,000
Total	231,550	211,819	244,338	220,523	228,007	227,932
Production						
North America	454,211	420,927	459,493	446,648	472,728	470,272
South America	199,184	203,178	199,782	215,787	217,227	217,227
European Union	155,030	133,099	137,039	137,176	141,325	141,125
Other Europe	18,070	16,675	18,395	17,217	18,310	18,135
Former Soviet Union - 12	106,378	91,684	95,834	83,084	89,479	89,309
Middle East	17,922	21,561	24,646	23,705	22,570	21,920
North Africa	12,704	11,160	10,812	10,299	11,222	11,252
Sub-Saharan Africa	127,796	135,385	128,945	127,219	132,170	132,170
East Asia	284,547	288,704	300,194	306,235	306,768	306,768
South Asia	70,084	76,977	76,771	80,610	81,165	81,165
Southeast Asia	35,481	34,914	35,925	35,469	35,980	35,980
Oceania	19,778	19,393	15,065	17,958	17,319	17,319
Others	4,572	4,483	4,302	4,455	4,434	4,434
Total	1,505,757	1,458,140	1,507,203	1,505,862	1,550,697	1,547,076
Domestic Consumption						
North America	401,766	392,093	409,029	409,012	413,973	413,208
South America	122,534	129,699	138,339	148,726	151,010	152,110
European Union	158,273	149,602	148,705	151,241	153,091	152,891
Other Europe	18,928	17,808	18,386	18,698	18,663	18,593
Former Soviet Union - 12	57,731	55,145	52,728	50,935	52,751	52,471
Middle East	52,667	48,659	50,086	55,725	53,741	53,841
North Africa	31,904	27,282	31,700	33,044	32,426	32,726
Sub-Saharan Africa	126,327	133,767	132,251	131,509	133,131	133,181
East Asia	356,652	356,947	374,430	375,875	384,792	384,192
South Asia	69,023	75,156	77,111	83,199	84,597	84,597
Southeast Asia	51,526	49,699	51,431	53,055	53,928	53,928
Oceania	8,394	8,207	7,694	7,672	7,919	7,619
Others	11,885	11,865	12,110	12,301	12,540	12,490
Total	1,467,610	1,455,929	1,504,000	1,530,992	1,552,562	1,551,847
Ending Stocks						
North America	45,088	46,461	58,000	46,440	56,718	54,462
South America	13,341	16,599	15,111	14,659	9,528	10,471
European Union	18,652	16,531	15,458	14,268	14,107	14,142
Other Europe	2,655	2,412	2,665	2,729	2,817	2,671
Former Soviet Union - 12	12,334	7,869	4,781	3,874	4,369	4,344
Middle East	5,209	5,743	6,837	6,067	5,387	5,587
North Africa	3,229	2,945	3,183	2,766	2,842	2,922
Sub-Saharan Africa	13,563	13,303	11,425	10,737	10,294	10,455
East Asia	214,318	210,677	217,594	200,202	185,921	183,921
South Asia	5,371	6,362	5,845	4,995	4,126	3,916
Southeast Asia	3,790	3,581	3,566	3,233	3,498	3,568
Oceania	3,721	4,043	1,798	1,688	1,721	1,621
Others	989	939	997	1,031	1,060	1,060
Total	342,260	337,465	347,260	312,689	302,388	299,140

NOTES: Regional definitions appear on last page of this circular. Imports are reported on a trade year basis. All other data are reported using local marketing years.

World Corn Trade
October/September Year, Thousand Metric Tons

	2021/22	2022/23	2023/24	2024/25	2025/26 Jun	2025/26 Jul
TY Exports						
Brazil	31,921	53,285	46,416	41,000	42,000	42,000
Argentina	38,853	25,740	31,214	35,500	37,000	37,000
Ukraine	26,980	27,122	29,488	22,000	24,000	24,000
Russia	4,000	5,900	6,600	3,300	3,600	3,600
Paraguay	3,187	3,968	2,864	2,900	3,100	3,100
European Union	6,027	4,198	4,389	2,400	3,000	3,000
Burma	2,300	2,000	3,000	2,600	2,700	2,700
Canada	2,200	2,851	2,157	2,750	2,100	2,100
Serbia	1,495	534	2,355	1,500	2,100	2,100
South Africa	3,830	3,619	2,464	2,000	2,000	2,000
Others	9,841	8,921	7,887	5,319	5,512	5,502
Subtotal	130,634	138,138	138,834	121,269	127,112	127,102
United States	62,903	42,774	58,520	69,000	68,000	68,000
World Total	193,537	180,912	197,354	190,269	195,112	195,102
TY Imports						
Mexico	17,584	19,325	24,222	25,000	25,000	24,800
European Union	19,521	23,188	19,832	20,000	20,500	20,500
Japan	15,003	14,927	15,290	15,200	15,500	15,500
Vietnam	9,100	9,500	11,300	12,500	13,000	13,000
Korea, South	11,510	11,099	11,550	11,500	11,500	11,500
China	21,884	18,711	23,407	5,000	10,000	10,000
Egypt	9,763	6,215	8,019	8,800	8,750	9,000
Iran	8,600	6,700	8,500	7,900	8,500	8,500
Colombia	6,512	6,343	6,622	7,200	7,200	7,300
Algeria	3,273	4,069	4,956	4,900	4,950	4,950
Taiwan	4,553	4,193	4,590	4,400	4,550	4,550
Saudi Arabia	4,071	3,289	4,989	4,500	4,500	4,500
Peru	3,514	3,324	4,288	4,400	4,300	4,300
Malaysia	3,678	3,448	3,870	3,800	3,800	3,800
Morocco	1,963	2,244	2,736	3,100	2,900	2,900
Turkey	3,782	2,388	3,307	4,900	2,800	2,800
Chile	2,497	2,344	2,586	2,600	2,700	2,700
United Kingdom	2,521	2,036	2,761	2,750	2,600	2,600
Canada	6,108	2,219	2,753	1,700	2,500	2,300
Philippines	669	1,024	1,784	1,750	2,000	2,000
Guatemala	1,574	1,618	1,894	1,850	1,900	1,900
Thailand	1,480	1,346	2,018	1,800	1,850	1,850
Dominican Republic	1,354	1,386	1,665	1,600	1,650	1,650
Bangladesh	2,544	1,145	885	1,300	1,500	1,500
Brazil	3,316	1,684	1,449	1,500	1,500	1,500
Others	19,766	18,474	23,317	22,667	20,968	21,093
Subtotal	186,140	172,239	198,590	182,617	186,918	186,993
Unaccounted	6,790	7,652	-1,942	7,002	7,544	7,459
United States	607	1,021	706	650	650	650
World Total	193,537	180,912	197,354	190,269	195,112	195,102

TY=Trade Year, see Endnotes.

World Corn Production, Consumption, and Stocks

Local Marketing Years, Thousand Metric Tons

	2021/22	2022/23	2023/24	2024/25	2025/26 Jun	2025/26 Jul
Production						
China	272,552	277,200	288,842	294,917	295,000	295,000
Brazil	116,000	137,000	119,000	132,000	131,000	131,000
European Union	71,672	52,379	61,947	59,312	60,000	60,000
Argentina	52,000	37,000	51,000	50,000	53,000	53,000
India	33,730	38,085	37,665	42,281	42,000	42,000
Ukraine	42,126	27,000	32,500	26,800	30,500	30,500
Mexico	26,762	28,077	23,710	23,100	24,500	24,800
South Africa	16,137	17,100	13,425	15,750	16,500	16,500
Canada	14,611	14,539	15,421	15,345	14,700	15,000
Russia	15,225	15,832	16,600	14,000	15,000	15,000
Indonesia	12,700	12,400	12,700	12,800	13,300	13,300
Nigeria	12,745	12,949	11,053	11,200	12,000	12,000
Ethiopia	10,751	10,200	10,000	10,200	10,300	10,300
Pakistan	9,525	10,985	9,847	9,000	9,800	9,800
Philippines	8,344	8,322	8,100	8,320	8,300	8,300
Others	124,701	119,834	129,256	122,637	128,235	128,235
Subtotal	839,581	818,902	841,066	847,662	864,135	864,735
United States	381,469	346,739	389,667	377,633	401,847	398,925
World Total	1,221,050	1,165,641	1,230,733	1,225,295	1,265,982	1,263,660
Total Consumption						
China	291,000	299,000	307,000	316,000	321,000	321,000
Brazil	71,000	78,000	84,000	91,000	93,000	94,000
European Union	81,700	74,700	78,100	77,900	77,800	77,800
Mexico	44,300	45,600	47,000	48,200	49,500	49,500
India	30,000	34,700	37,900	42,900	43,500	43,500
Vietnam	14,750	13,850	14,350	15,750	16,450	16,450
Egypt	17,000	13,700	15,300	15,800	15,800	16,100
Argentina	15,700	14,200	14,600	15,200	15,600	15,600
Japan	15,040	15,000	15,300	15,250	15,500	15,500
Canada	17,984	14,897	15,800	14,700	15,000	15,100
South Africa	12,655	13,239	13,840	13,900	14,200	14,200
Indonesia	13,800	13,400	14,100	14,400	13,900	13,900
Nigeria	12,600	12,900	12,200	11,400	12,200	12,200
Korea, South	11,560	11,350	11,500	11,550	11,600	11,600
Russia	11,100	10,000	10,200	10,600	11,200	11,200
Others	205,964	196,949	211,710	213,392	216,445	216,570
Subtotal	888,213	868,453	897,781	937,641	951,032	952,272
United States	315,665	305,931	322,873	319,166	324,754	323,483
World Total	1,203,878	1,174,384	1,220,654	1,256,807	1,275,786	1,275,755
Ending Stocks						
China	209,137	206,040	211,286	195,183	181,163	179,163
European Union	11,355	8,024	7,314	6,326	6,026	6,026
Mexico	3,125	4,877	5,786	5,666	5,713	5,746
Brazil	3,971	10,041	8,488	7,988	2,588	3,588
Argentina	4,748	2,324	2,478	2,783	3,188	3,188
Korea, South	2,056	1,898	2,042	2,086	2,081	2,081
Canada	2,746	1,628	1,996	1,591	1,741	1,691
Others	42,241	36,228	31,508	28,514	28,280	28,430
Subtotal	279,379	271,060	270,898	250,137	230,780	229,913
United States	34,975	34,551	44,792	34,041	44,456	42,170
World Total	314,354	305,611	315,690	284,178	275,236	272,083

Regional Corn Imports, Production, Consumption, and Stocks

Thousand Metric Tons

	2021/22	2022/23	2023/24	2024/25	Jun 2025/26	Jul 2025/26
TY Imports						
North America	24,299	22,565	27,681	27,350	28,150	27,750
Central America	5,333	5,464	5,627	5,800	5,925	5,925
South America	17,371	15,503	16,849	16,905	17,420	17,520
European Union	19,521	23,188	19,832	20,000	20,500	20,500
Former Soviet Union - 12	430	472	398	398	361	361
Middle East	21,814	17,136	23,209	22,910	21,375	21,375
North Africa	16,809	14,149	17,484	18,600	18,450	18,700
Sub-Saharan Africa	3,383	2,963	4,258	5,857	3,347	3,497
East Asia	53,000	48,977	54,882	36,145	41,595	41,595
Southeast Asia	16,222	16,392	20,923	21,211	21,861	21,861
Caribbean	2,147	2,008	2,232	2,095	2,200	2,175
Others	6,418	4,443	5,921	5,996	6,384	6,384
Total	186,747	173,260	199,296	183,267	187,568	187,643
Production						
North America	422,842	389,355	428,798	416,078	441,047	438,725
South America	182,556	186,970	182,536	196,720	198,630	198,630
European Union	71,672	52,379	61,947	59,312	60,000	60,000
Other Europe	7,591	5,875	8,224	6,778	7,538	7,538
Former Soviet Union - 12	64,607	47,907	55,178	46,624	52,140	52,140
Middle East	8,753	9,461	10,904	9,674	10,484	10,484
North Africa	7,507	7,487	7,262	7,072	7,317	7,317
Sub-Saharan Africa	88,756	89,623	87,815	85,044	89,519	89,519
East Asia	275,026	279,702	291,349	297,427	297,516	297,516
South Asia	51,615	57,454	56,429	60,545	61,306	61,306
Central America	3,659	3,665	3,551	3,639	3,607	3,607
Southeast Asia	35,191	34,624	35,635	35,179	35,690	35,690
Others	1,275	1,139	1,105	1,203	1,188	1,188
Total	1,221,050	1,165,641	1,230,733	1,225,295	1,265,982	1,263,660
Domestic Consumption						
North America	377,949	366,428	385,673	382,066	389,254	388,083
South America	110,565	116,008	124,714	132,680	135,855	136,955
European Union	81,700	74,700	78,100	77,900	77,800	77,800
Other Europe	9,049	8,469	8,671	8,882	8,475	8,500
Former Soviet Union - 12	25,428	19,985	21,155	21,695	23,760	23,760
Middle East	30,112	25,809	31,824	31,915	31,640	31,640
North Africa	23,910	20,995	24,720	25,800	25,650	25,950
Sub-Saharan Africa	86,070	87,645	90,227	88,592	89,764	89,814
East Asia	324,650	332,096	340,846	349,745	355,145	355,145
South Asia	50,133	55,293	56,832	63,031	64,280	64,280
Southeast Asia	50,059	47,863	50,606	52,161	52,956	52,956
Central America	8,785	9,015	9,195	9,365	9,540	9,515
Others	3,408	3,110	3,210	3,276	3,330	3,305
Total	1,181,818	1,167,416	1,225,773	1,247,108	1,267,449	1,267,703
Ending Stocks						
North America	40,846	41,056	52,574	41,298	51,910	49,607
South America	11,521	14,602	12,834	12,468	7,482	8,471
European Union	11,355	8,024	7,314	6,326	6,026	6,026
Other Europe	1,324	762	1,088	856	884	884
Former Soviet Union - 12	9,676	4,584	2,288	1,948	2,534	2,534
Middle East	3,043	3,039	2,979	3,153	2,787	2,887
North Africa	2,012	2,161	2,141	2,012	2,128	2,178
Sub-Saharan Africa	12,146	11,597	9,926	9,038	8,823	8,984
East Asia	213,206	209,780	215,163	198,970	184,916	182,916
South Asia	4,366	5,421	4,750	3,766	3,111	2,891
Southeast Asia	3,781	3,572	3,560	3,227	3,492	3,562
Central America	837	809	803	864	870	870
Others	241	204	270	252	273	273
Total	314,354	305,611	315,690	284,178	275,236	272,083

NOTES: Regional definitions appear on last page of this circular. Imports are reported on a trade year basis. All other data are reported using local marketing years.

World Barley Trade
October/September Year, Thousand Metric Tons

	2021/22	2022/23	2023/24	2024/25	2025/26 Jun	2025/26 Jul
TY Exports						
Australia	8,233	7,084	7,909	7,300	6,700	6,900
European Union	6,355	6,614	6,694	6,100	6,800	6,800
Ukraine	2,710	2,559	3,176	2,700	3,500	3,500
Russia	3,100	5,400	5,800	3,100	3,600	3,400
Argentina	3,765	2,908	2,843	3,000	3,100	3,100
Canada	1,973	2,899	2,470	2,200	2,100	2,100
Kazakhstan	563	1,253	1,399	1,900	1,300	1,500
United Kingdom	785	1,061	653	650	700	700
Uruguay	317	127	350	250	350	350
Moldova	139	98	147	110	125	125
Others	479	334	354	1,486	314	314
Subtotal	28,419	30,337	31,795	28,796	28,589	28,789
United States	68	57	152	155	100	100
World Total	28,487	30,394	31,947	28,951	28,689	28,889
TY Imports						
China	8,282	8,582	15,898	9,500	9,500	9,500
Saudi Arabia	4,700	3,100	2,600	3,500	3,900	3,900
Iran	1,700	1,300	1,400	2,300	2,000	2,100
Japan	1,184	1,228	1,203	1,250	1,200	1,250
European Union	1,237	2,157	1,625	1,100	1,000	1,000
Turkey	2,036	1,967	127	150	900	1,000
Brazil	734	652	759	875	900	900
Jordan	1,166	1,261	847	850	800	800
Libya	535	1,000	700	1,000	800	800
Morocco	760	734	1,462	850	700	700
Algeria	688	180	900	700	600	600
Tunisia	845	766	701	800	550	550
Iraq	141	59	150	650	400	500
Mexico	363	544	471	400	500	500
Qatar	292	394	287	450	450	450
Kuwait	551	410	300	250	400	400
Colombia	333	353	329	350	350	350
United Arab Emirates	337	260	320	300	300	300
Vietnam	553	622	297	300	300	300
India	101	253	99	240	200	200
Others	2,304	2,903	2,211	2,319	2,044	2,044
Subtotal	28,842	28,725	32,686	28,134	27,794	28,144
Unaccounted	-813	1,211	-953	617	695	545
United States	458	458	214	200	200	200
World Total	28,487	30,394	31,947	28,951	28,689	28,889

TY=Trade Year, see Endnotes.

World Barley Production, Consumption, and Stocks

Local Marketing Years, Thousand Metric Tons

	2021/22	2022/23	2023/24	2024/25	2025/26 Jun	2025/26 Jul
Production						
European Union	52,065	51,829	47,903	50,328	53,300	53,100
Russia	17,505	21,500	20,500	16,250	18,000	17,700
Australia	14,337	14,137	10,800	13,265	12,500	12,500
Canada	6,984	9,987	8,905	8,144	8,200	8,200
United Kingdom	6,961	7,385	6,963	7,091	7,300	7,125
Turkey	4,500	7,400	8,000	7,000	6,650	6,100
Ukraine	9,923	6,100	6,350	5,800	5,700	5,500
Argentina	5,300	4,695	5,100	4,851	4,900	4,900
Kazakhstan	2,367	3,287	2,614	3,840	3,000	3,300
Iran	2,700	3,000	3,000	3,100	3,000	3,000
Ethiopia	2,072	2,184	2,450	2,485	2,485	2,485
China	2,134	2,192	2,000	2,000	2,300	2,300
India	1,656	1,371	1,913	1,699	1,860	1,860
Algeria	950	1,400	1,025	1,200	1,350	1,350
Belarus	1,077	1,500	1,150	1,100	1,250	1,250
Others	11,853	9,685	10,788	12,051	10,977	10,937
Subtotal	142,384	147,652	139,461	140,204	142,772	141,607
United States	2,626	3,787	4,052	3,132	3,201	3,218
World Total	145,010	151,439	143,513	143,336	145,973	144,825
Total Consumption						
European Union	45,450	46,700	43,200	45,700	47,300	47,100
Russia	14,300	16,700	14,700	13,300	14,100	14,100
China	11,600	11,000	16,400	12,700	11,900	11,900
Turkey	7,400	8,700	6,900	7,400	7,300	7,300
United Kingdom	6,380	6,046	6,434	6,450	6,700	6,600
Canada	5,399	6,698	6,269	6,400	6,400	6,400
Australia	6,000	6,000	5,800	5,800	6,000	5,700
Iran	4,700	5,300	4,300	5,500	5,100	5,200
Saudi Arabia	4,225	4,325	2,025	4,225	3,825	3,825
Ethiopia	2,100	2,200	2,510	2,500	2,525	2,525
Ukraine	4,100	3,450	3,900	3,600	2,400	2,200
India	1,700	1,600	1,880	1,950	2,100	2,100
Algeria	1,950	1,400	1,850	1,800	1,980	1,980
Kazakhstan	2,300	2,450	1,900	1,900	2,000	1,900
Argentina	1,550	1,800	1,850	1,850	1,800	1,800
Others	22,800	21,201	20,543	22,967	21,640	21,660
Subtotal	144,336	145,503	138,544	143,324	143,415	142,195
United States	3,532	3,628	3,963	3,331	3,157	3,157
World Total	147,868	149,131	142,507	146,655	146,572	145,352
Ending Stocks						
European Union	5,287	5,726	5,632	5,560	5,760	5,760
United Kingdom	964	1,268	1,218	1,409	1,468	1,334
Australia	2,848	3,220	1,118	1,083	1,183	1,083
Saudi Arabia	991	980	967	954	941	941
Turkey	306	922	2,087	687	587	687
Iran	382	382	382	482	682	682
Canada	543	709	1,152	821	696	596
Others	6,413	6,211	7,598	6,029	5,370	5,267
Subtotal	17,734	19,418	20,154	17,025	16,687	16,350
United States	809	1,433	1,703	1,513	1,590	1,661
World Total	18,543	20,851	21,857	18,538	18,277	18,011

Regional Barley Imports, Production, Consumption, and Stocks

Thousand Metric Tons

	2021/22	2022/23	2023/24	2024/25	Jun 2025/26	Jul 2025/26
TY Imports						
North America	1,025	1,038	808	725	775	775
South America	1,261	1,209	1,244	1,417	1,425	1,425
European Union	1,237	2,157	1,625	1,100	1,000	1,000
Other Europe	198	171	406	308	191	191
Former Soviet Union - 12	381	819	668	489	474	474
Middle East	11,506	9,207	6,416	8,950	9,645	9,945
North Africa	2,835	2,702	3,783	3,375	2,670	2,670
Sub-Saharan Africa	61	109	170	180	135	135
East Asia	9,576	9,936	17,215	10,855	10,805	10,855
South Asia	109	280	117	255	214	214
Oceania	45	19	5	30	30	30
Total	29,300	29,183	32,900	28,334	27,994	28,344
Production						
North America	10,705	14,635	13,734	12,166	12,211	12,228
South America	7,042	6,528	6,866	6,934	7,012	7,012
European Union	52,065	51,829	47,903	50,328	53,300	53,100
Other Europe	8,531	8,961	8,498	8,674	8,937	8,762
Former Soviet Union - 12	32,888	34,600	32,775	29,361	30,210	30,040
Middle East	7,938	10,925	12,569	12,813	10,863	10,213
North Africa	4,348	2,809	2,655	2,322	3,010	3,040
Sub-Saharan Africa	2,559	2,646	2,987	3,017	2,995	2,995
East Asia	2,474	2,494	2,302	2,255	2,599	2,599
South Asia	1,798	1,545	2,066	1,845	2,006	2,006
Oceania	14,662	14,467	11,158	13,621	12,830	12,830
Total	145,010	151,439	143,513	143,336	145,973	144,825
Domestic Consumption						
North America	10,431	11,726	11,582	11,031	10,857	10,857
South America	4,195	4,590	4,664	5,044	4,941	4,941
European Union	45,450	46,700	43,200	45,700	47,300	47,100
Other Europe	7,930	7,580	7,997	8,037	8,292	8,192
Former Soviet Union - 12	23,860	26,422	24,060	22,431	22,176	21,896
Middle East	21,209	21,628	17,046	22,552	20,847	20,947
North Africa	7,146	5,412	6,079	6,338	5,870	5,870
Sub-Saharan Africa	2,638	2,793	3,069	3,115	3,130	3,130
East Asia	13,278	12,703	18,010	14,305	13,575	13,575
South Asia	1,868	1,797	2,045	2,110	2,259	2,259
Oceania	6,350	6,355	6,170	6,160	6,350	6,050
Total	145,486	149,198	144,424	147,373	146,227	145,447
Ending Stocks						
North America	1,815	2,589	3,230	2,699	2,664	2,632
South America	902	1,001	1,198	1,160	1,146	1,021
European Union	5,287	5,726	5,632	5,560	5,760	5,760
Other Europe	1,125	1,453	1,393	1,622	1,687	1,553
Former Soviet Union - 12	2,050	2,559	1,913	1,471	1,403	1,403
Middle East	2,133	2,682	3,851	2,912	2,598	2,698
North Africa	1,197	774	1,030	732	692	722
Sub-Saharan Africa	385	324	364	401	376	371
East Asia	614	341	1,848	653	532	532
South Asia	128	131	241	195	191	191
Oceania	2,898	3,262	1,151	1,127	1,222	1,122
Total	18,543	20,851	21,857	18,538	18,277	18,011

NOTES: Regional definitions appear on last page of this circular. Imports are reported on a trade year basis. All other data are reported using local marketing years.

World Sorghum Trade
October/September Year, Thousand Metric Tons

	2021/22	2022/23	2023/24	2024/25	2025/26 Jun	2025/26 Jul
TY Exports						
Australia	2,267	2,753	2,060	2,400	2,500	2,600
Argentina	1,800	800	1,100	1,300	1,500	1,400
Brazil	10	1	93	175	75	75
India	41	37	33	40	50	50
Nigeria	50	50	50	50	50	50
Ukraine	72	66	36	40	50	50
Paraguay	21	38	63	35	35	35
Others	170	85	86	107	102	102
Subtotal	4,431	3,830	3,521	4,147	4,362	4,362
United States	7,387	2,965	5,964	2,500	6,000	5,400
World Total	11,818	6,795	9,485	6,647	10,362	9,762
TY Imports						
China	10,991	4,863	8,341	4,500	8,500	7,900
Mexico	362	176	60	350	400	400
Japan	258	241	127	130	200	200
European Union	167	38	16	120	100	100
Kenya	79	152	24	100	75	75
Eritrea	95	63	162	70	60	60
Ethiopia	12	35	14	275	50	50
Somalia	50	50	50	50	50	50
Sudan	75	110	60	75	50	50
Taiwan	55	50	51	50	50	50
Others	386	310	475	498	303	303
Subtotal	12,530	6,088	9,380	6,218	9,838	9,238
Unaccounted	-712	707	104	428	524	524
United States	0	0	1	1	0	0
World Total	11,818	6,795	9,485	6,647	10,362	9,762

TY=Trade Year, see Endnotes.

World Sorghum Production, Consumption, and Stocks

Local Marketing Years, Thousand Metric Tons

	2021/22	2022/23	2023/24	2024/25	2025/26 Jun	2025/26 Jul
Production						
Nigeria	6,725	6,806	6,400	6,500	6,900	6,900
Brazil	3,120	4,789	4,426	5,000	4,900	4,900
India	4,150	3,814	4,737	6,000	4,600	4,600
Mexico	4,840	4,892	4,540	4,200	4,300	4,300
Ethiopia	4,450	4,140	4,010	4,100	4,100	4,100
Sudan	3,528	5,248	3,055	3,300	3,300	3,300
China	3,377	3,094	3,000	3,000	3,100	3,100
Argentina	2,883	1,610	2,487	3,500	3,000	3,000
Australia	2,648	2,638	2,215	2,325	2,500	2,500
Niger	1,207	2,100	1,700	1,900	1,907	1,907
Burkina Faso	1,644	2,014	1,772	1,900	1,900	1,900
Mali	1,248	1,603	1,528	1,640	1,500	1,500
Cameroon	1,200	1,200	1,200	1,200	1,200	1,200
Bolivia	595	886	985	1,000	1,000	1,000
European Union	801	522	794	1,089	975	975
Others	7,407	7,288	7,354	6,974	7,284	7,284
Subtotal	49,823	52,644	50,203	53,628	52,466	52,466
United States	11,375	4,770	8,071	8,734	9,957	9,322
World Total	61,198	57,414	58,274	62,362	62,423	61,788
Total Consumption						
China	14,300	7,900	11,300	7,500	11,700	11,100
Nigeria	6,650	6,750	6,400	6,450	6,850	6,850
Brazil	3,000	4,700	4,400	4,900	4,900	4,900
India	4,450	3,900	4,600	5,750	4,750	4,750
Mexico	5,000	5,100	4,600	4,600	4,700	4,700
Ethiopia	4,650	4,250	4,050	4,300	4,250	4,250
Sudan	3,700	5,200	3,250	3,350	3,350	3,350
Niger	1,400	2,000	1,800	1,850	1,950	1,950
Burkina Faso	1,650	1,950	1,800	1,900	1,900	1,900
Mali	1,400	1,550	1,500	1,600	1,600	1,600
Argentina	1,150	1,000	1,100	2,400	1,500	1,500
Cameroon	1,215	1,210	1,215	1,230	1,215	1,215
European Union	948	552	795	1,116	1,066	1,066
Bolivia	650	850	1,000	1,000	1,000	1,000
Chad	950	975	915	780	925	925
Others	7,394	7,131	7,215	6,963	6,958	6,958
Subtotal	57,719	55,101	56,316	56,000	59,488	58,753
United States	3,175	2,585	1,912	5,715	3,937	3,937
World Total	60,894	57,686	58,228	61,715	63,425	62,690
Ending Stocks						
Brazil	390	495	483	458	403	403
China	332	387	426	421	316	316
Argentina	221	181	269	269	169	269
India	258	135	239	449	239	249
Mexico	303	270	269	218	212	217
Sudan	148	301	161	181	176	176
Mali	144	197	225	265	165	165
Others	1,283	1,426	1,151	1,129	1,023	1,023
Subtotal	3,079	3,392	3,223	3,390	2,703	2,818
United States	1,201	616	831	1,311	981	981
World Total	4,280	4,008	4,054	4,701	3,684	3,799

Regional Sorghum Imports, Production, Consumption, and Stocks

Thousand Metric Tons

	2021/22	2022/23	2023/24	2024/25	Jun 2025/26	Jul 2025/26
TY Imports						
North America	362	176	61	351	400	400
South America	31	40	76	63	33	33
European Union	167	38	16	120	100	100
Other Europe	19	13	12	15	15	15
Middle East	85	30	31	30	26	26
North Africa	1	2	3	1	1	1
Sub-Saharan Africa	518	605	634	920	478	478
East Asia	11,307	5,157	8,522	4,684	8,754	8,154
Southeast Asia	32	21	20	25	25	25
Others	8	6	6	10	6	6
Total	12,530	6,088	9,381	6,219	9,838	9,238
Production						
North America	16,215	9,662	12,611	12,934	14,257	13,622
Central America	206	212	157	157	162	162
Caribbean	71	66	61	61	67	67
South America	6,817	7,451	8,092	9,775	9,141	9,141
European Union	801	522	794	1,089	975	975
Middle East	664	469	468	498	513	513
North Africa	803	755	784	794	784	784
Sub-Saharan Africa	25,135	28,571	25,194	25,576	26,145	26,145
East Asia	3,379	3,098	3,002	3,002	3,102	3,102
South Asia	4,214	3,863	4,776	6,041	4,641	4,641
Southeast Asia	50	50	50	50	50	50
Oceania	2,648	2,638	2,215	2,325	2,500	2,500
Others	195	57	70	60	86	86
Total	61,198	57,414	58,274	62,362	62,423	61,788
Domestic Consumption						
North America	8,175	7,685	6,512	10,315	8,637	8,637
Central America	208	212	157	157	162	162
Caribbean	74	68	63	63	68	68
South America	4,999	6,687	6,649	8,545	7,611	7,611
European Union	948	552	795	1,116	1,066	1,066
Middle East	742	501	497	528	539	539
North Africa	789	766	785	785	785	785
Sub-Saharan Africa	26,262	28,753	25,979	26,183	26,701	26,701
East Asia	14,620	8,198	11,496	7,686	11,956	11,356
South Asia	4,518	3,954	4,643	5,799	4,796	4,796
Southeast Asia	77	76	67	74	74	74
Oceania	160	110	160	110	110	110
Others	110	41	49	43	46	46
Total	61,682	57,603	57,852	61,404	62,551	61,951
Ending Stocks						
North America	1,504	886	1,100	1,529	1,193	1,198
Central America	5	5	5	5	5	5
South America	731	832	893	861	699	799
European Union	18	15	21	84	78	78
Middle East	0	0	0	0	0	0
North Africa	20	10	12	22	22	22
Sub-Saharan Africa	1,009	1,351	1,099	1,264	1,071	1,071
East Asia	356	411	437	432	327	327
South Asia	258	135	239	449	239	249
Oceania	331	351	237	52	42	42
Others	48	12	11	3	8	8
Total	4,280	4,008	4,054	4,701	3,684	3,799

NOTES: Regional definitions appear on last page of this circular. Imports are reported on a trade year basis. All other data are reported using local marketing years.

World Oats Trade
October/September Year, Thousand Metric Tons

	2021/22	2022/23	2023/24	2024/25	2025/26 Jun	2025/26 Jul
TY Exports						
Canada	1,222	1,891	1,430	1,450	1,350	1,450
Australia	512	574	300	475	500	500
Russia	150	150	275	300	250	250
European Union	202	90	118	115	125	125
United Kingdom	167	147	95	60	75	75
Ukraine	9	4	19	20	20	20
Kazakhstan	2	13	16	20	15	15
Others	67	41	19	20	18	18
Subtotal	2,331	2,910	2,272	2,460	2,353	2,453
United States	33	29	31	35	30	30
World Total	2,364	2,939	2,303	2,495	2,383	2,483
TY Imports						
China	342	463	461	500	475	475
Mexico	189	185	178	175	175	175
European Union	209	125	98	65	90	90
Chile	12	75	25	20	70	70
India	46	53	32	50	50	50
Japan	48	44	42	50	50	50
Switzerland	50	42	43	45	45	45
Peru	30	45	52	35	35	35
Malaysia	19	28	16	30	28	28
Korea, South	26	21	21	25	25	25
Norway	32	13	50	30	25	25
South Africa	0	39	32	35	20	20
Canada	28	21	17	20	15	15
United Kingdom	16	19	15	15	15	15
Uruguay	10	21	4	5	15	15
Others	26	47	40	35	33	33
Subtotal	1,083	1,241	1,126	1,135	1,166	1,166
Unaccounted	25	98	88	110	67	67
United States	1,256	1,600	1,089	1,250	1,150	1,250
World Total	2,364	2,939	2,303	2,495	2,383	2,483

TY=Trade Year, see Endnotes.

World Oats Production, Consumption, and Stocks

Local Marketing Years, Thousand Metric Tons

	2021/22	2022/23	2023/24	2024/25	2025/26 Jun	2025/26 Jul
Production						
European Union	7,502	7,485	5,941	7,754	7,450	7,450
Canada	2,899	5,226	2,643	3,358	3,340	3,540
Russia	3,733	4,500	3,300	3,000	3,300	3,300
Australia	1,735	1,587	1,021	1,315	1,300	1,300
Brazil	1,143	1,190	984	1,042	1,200	1,200
United Kingdom	1,123	1,007	830	986	1,000	1,000
China	780	790	840	850	850	850
Argentina	725	429	565	556	525	525
Chile	578	333	458	475	450	450
Ukraine	478	380	430	460	410	410
Belarus	327	375	350	320	350	350
Turkey	276	365	325	340	350	350
Norway	269	291	300	300	300	300
Kazakhstan	182	229	150	330	200	200
Algeria	40	105	105	105	105	105
Others	433	384	378	416	416	416
Subtotal	22,223	24,676	18,620	21,607	21,546	21,746
United States	578	837	828	984	697	903
World Total	22,801	25,513	19,448	22,591	22,243	22,649
Total Consumption						
European Union	7,475	7,400	6,275	7,375	7,325	7,325
Russia	3,650	4,300	3,050	2,750	3,000	3,000
Canada	1,920	2,565	1,989	1,975	2,000	2,100
China	1,125	1,250	1,300	1,350	1,325	1,325
Brazil	1,125	1,175	975	1,050	1,175	1,175
United Kingdom	1,007	870	745	885	950	950
Australia	1,200	1,100	750	750	800	800
Chile	570	420	455	520	570	570
Argentina	710	450	555	555	530	530
Ukraine	465	405	415	435	390	390
Belarus	325	375	350	325	350	350
Turkey	280	370	325	345	350	350
Norway	295	300	355	325	325	330
Mexico	265	295	220	255	255	255
Kazakhstan	205	205	160	290	200	200
Others	650	710	662	742	746	746
Subtotal	21,377	22,190	18,595	20,065	20,330	20,431
United States	2,015	2,219	2,049	2,270	1,883	2,118
World Total	23,392	24,409	20,644	22,335	22,213	22,549
Ending Stocks						
European Union	424	596	253	597	672	687
Australia	395	348	326	416	366	366
Canada	333	1,275	442	345	375	350
United Kingdom	157	140	125	191	190	181
Russia	122	173	149	99	174	149
China	140	143	144	144	144	144
Brazil	78	73	81	64	100	79
Others	343	317	328	339	305	307
Subtotal	1,992	3,065	1,848	2,195	2,326	2,263
United States	474	505	526	435	371	467
World Total	2,466	3,570	2,374	2,630	2,697	2,730

Regional Oats Imports, Production, Consumption, and Stocks

Thousand Metric Tons

	2021/22	2022/23	2023/24	2024/25	Jun 2025/26	Jul 2025/26
TY Imports						
North America	1,473	1,806	1,284	1,445	1,340	1,440
South America	53	166	93	71	130	130
European Union	209	125	98	65	90	90
Other Europe	104	80	118	95	92	92
Former Soviet Union - 12	7	11	12	8	6	6
Middle East	7	5	1	1	0	0
North Africa	5	0	5	10	10	10
Sub-Saharan Africa	0	39	32	35	20	20
East Asia	416	528	524	575	550	550
South Asia	46	53	32	50	50	50
Southeast Asia	19	28	16	30	28	28
Oceania	0	0	0	0	0	0
Total	2,339	2,841	2,215	2,385	2,316	2,416
Production						
North America	3,570	6,176	3,531	4,422	4,117	4,523
South America	2,504	2,017	2,060	2,163	2,238	2,238
European Union	7,502	7,485	5,941	7,754	7,450	7,450
Other Europe	1,525	1,432	1,264	1,421	1,438	1,438
Former Soviet Union - 12	4,778	5,490	4,283	4,148	4,313	4,313
Middle East	276	365	325	340	350	350
North Africa	46	109	111	111	111	111
Sub-Saharan Africa	59	28	41	43	45	45
East Asia	781	791	841	851	851	851
South Asia	0	0	0	0	0	0
Southeast Asia	0	0	0	0	0	0
Oceania	1,760	1,620	1,051	1,338	1,330	1,330
Total	22,801	25,513	19,448	22,591	22,243	22,649
Domestic Consumption						
North America	4,200	5,079	4,258	4,500	4,138	4,473
South America	2,510	2,202	2,084	2,262	2,397	2,397
European Union	7,475	7,400	6,275	7,375	7,325	7,325
Other Europe	1,491	1,356	1,279	1,397	1,466	1,471
Former Soviet Union - 12	4,707	5,294	4,032	3,844	3,997	3,997
Middle East	280	370	325	345	350	350
North Africa	59	109	116	121	121	121
Sub-Saharan Africa	70	69	68	75	70	70
East Asia	1,200	1,316	1,366	1,425	1,402	1,402
South Asia	46	53	31	50	50	50
Southeast Asia	19	28	16	30	28	28
Oceania	1,225	1,133	780	773	830	830
Total	23,282	24,409	20,630	22,197	22,174	22,514
Ending Stocks						
North America	823	1,794	985	797	763	834
South America	187	164	186	170	201	180
European Union	424	596	253	597	672	687
Other Europe	206	197	184	251	246	234
Former Soviet Union - 12	255	295	259	219	280	255
Middle East	9	8	7	2	2	2
North Africa	0	0	0	0	0	0
Sub-Saharan Africa	23	21	26	29	19	24
East Asia	141	144	145	146	145	145
South Asia	0	0	0	0	0	0
Southeast Asia	0	0	0	0	0	0
Oceania	398	351	329	419	369	369
Total	2,466	3,570	2,374	2,630	2,697	2,730

NOTES: Regional definitions appear on last page of this circular. Imports are reported on a trade year basis. All other data are reported using local marketing years.

World Rye Trade
October/September Year, Thousand Metric Tons

	2021/22	2022/23	2023/24	2024/25	2025/26 Jun	2025/26 Jul
TY Exports						
European Union	210	138	213	125	150	150
Canada	157	222	157	155	140	140
Russia	125	65	190	70	30	30
Ukraine	124	14	8	10	10	10
Belarus	5	5	5	5	5	5
Others	22	30	8	6	6	6
Subtotal	643	474	581	371	341	341
United States	3	5	6	4	5	5
World Total	646	479	587	375	346	346
TY Imports						
European Union	219	131	167	25	40	40
Japan	13	11	8	10	10	10
Kazakhstan	1	10	24	45	10	10
Norway	3	2	7	10	10	10
Israel	5	0	0	5	5	5
United Kingdom	11	4	7	10	5	5
Korea, South	4	4	4	4	4	4
Others	47	10	12	9	7	7
Subtotal	303	172	229	118	91	91
Unaccounted	12	32	41	57	55	55
United States	331	275	317	200	200	200
World Total	646	479	587	375	346	346

TY=Trade Year, see Endnotes.

World Rye Production, Consumption, and Stocks
Local Marketing Years, Thousand Metric Tons

	2021/22	2022/23	2023/24	2024/25	2025/26 Jun	2025/26 Jul
Production						
European Union	7,996	7,546	7,647	6,896	7,400	7,400
Russia	1,716	2,000	1,700	1,200	1,100	1,100
Belarus	845	750	780	800	760	760
Canada	372	520	358	421	600	600
Turkey	200	273	320	320	300	300
Ukraine	600	315	240	220	220	220
Argentina	225	179	218	185	190	190
Others	199	250	191	186	199	199
Subtotal	12,153	11,833	11,454	10,228	10,769	10,769
United States	249	316	264	374	276	354
World Total	12,402	12,149	11,718	10,602	11,045	11,123
Total Consumption						
European Union	7,950	7,200	7,485	7,200	7,450	7,450
Russia	1,700	1,850	1,600	1,125	1,100	1,100
Belarus	825	750	750	800	775	775
Canada	231	305	180	260	390	390
Turkey	228	283	334	320	300	300
Ukraine	365	262	282	292	252	252
Argentina	225	179	218	185	190	190
Norway	45	63	56	60	60	60
Kazakhstan	45	50	24	80	40	40
Australia	32	32	32	32	32	32
Others	121	92	113	105	114	114
Subtotal	11,769	11,088	11,128	10,470	10,750	10,750
United States	522	607	627	587	477	548
World Total	12,291	11,695	11,755	11,057	11,227	11,298
Ending Stocks						
European Union	888	1,202	1,313	929	749	769
Canada	84	105	91	98	168	168
Russia	93	179	89	94	64	64
Belarus	44	37	65	63	46	46
Ukraine	164	199	155	69	27	27
Kazakhstan	4	4	1	7	7	7
Japan	1	1	1	1	1	1
Others	24	14	0	0	0	0
Subtotal	1,302	1,741	1,715	1,261	1,062	1,082
United States	16	31	20	19	20	23
World Total	1,318	1,772	1,735	1,280	1,082	1,105

Regional Rye Imports, Production, Consumption, and Stocks

Thousand Metric Tons

	2021/22	2022/23	2023/24	2024/25	Jun 2025/26	Jul 2025/26
TY Imports						
North America	332	277	321	201	200	200
South America	0	0	0	0	0	0
European Union	219	131	167	25	40	40
Other Europe	20	10	19	24	19	19
Former Soviet Union - 12	5	14	27	49	13	13
Middle East	41	0	0	5	5	5
Sub-Saharan Africa	0	0	0	0	0	0
East Asia	17	15	12	14	14	14
Oceania	0	0	0	0	0	0
Total	634	447	546	318	291	291
Production						
North America	621	836	622	795	876	954
South America	241	196	225	189	200	200
European Union	7,996	7,546	7,647	6,896	7,400	7,400
Other Europe	108	138	131	116	124	124
Former Soviet Union - 12	3,201	3,125	2,738	2,251	2,110	2,110
Middle East	200	273	320	320	300	300
Sub-Saharan Africa	3	3	3	3	3	3
East Asia	0	0	0	0	0	0
Oceania	32	32	32	32	32	32
Total	12,402	12,149	11,718	10,602	11,045	11,123
Domestic Consumption						
North America	753	912	807	847	867	938
South America	241	196	225	189	200	200
European Union	7,950	7,200	7,485	7,200	7,450	7,450
Other Europe	125	120	147	139	142	142
Former Soviet Union - 12	2,935	2,912	2,656	2,297	2,167	2,167
Middle East	233	283	334	325	305	305
Sub-Saharan Africa	3	3	3	3	3	3
East Asia	17	15	12	14	14	14
Oceania	32	32	32	32	32	32
Total	12,289	11,673	11,701	11,046	11,180	11,251
Ending Stocks						
North America	100	136	111	117	188	191
South America	0	0	0	0	0	0
European Union	888	1,202	1,313	929	749	769
Other Europe	0	0	0	0	0	0
Former Soviet Union - 12	305	419	310	233	144	144
Middle East	24	14	0	0	0	0
Sub-Saharan Africa	0	0	0	0	0	0
East Asia	1	1	1	1	1	1
Oceania	0	0	0	0	0	0
Total	1,318	1,772	1,735	1,280	1,082	1,105

NOTES: Regional definitions appear on last page of this circular. Imports are reported on a trade year basis. All other data are reported using local marketing years.