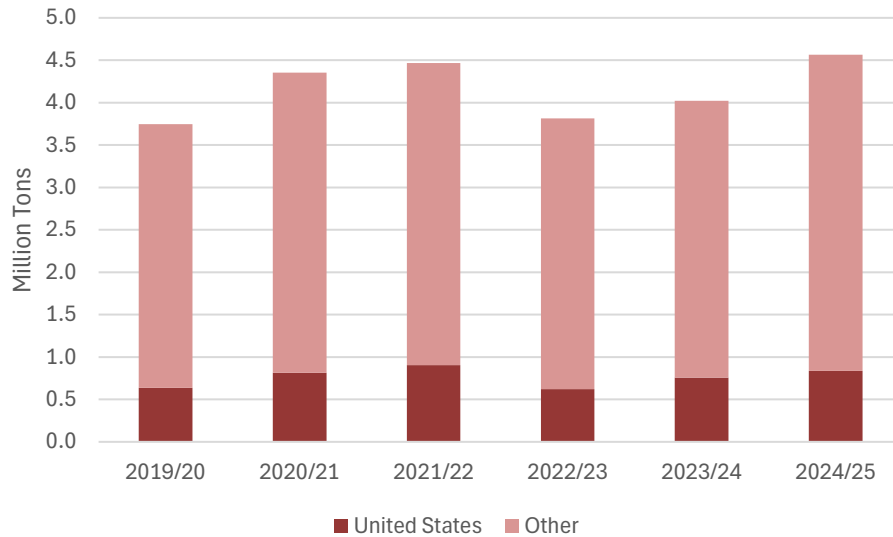


# Cotton: World Markets and Trade

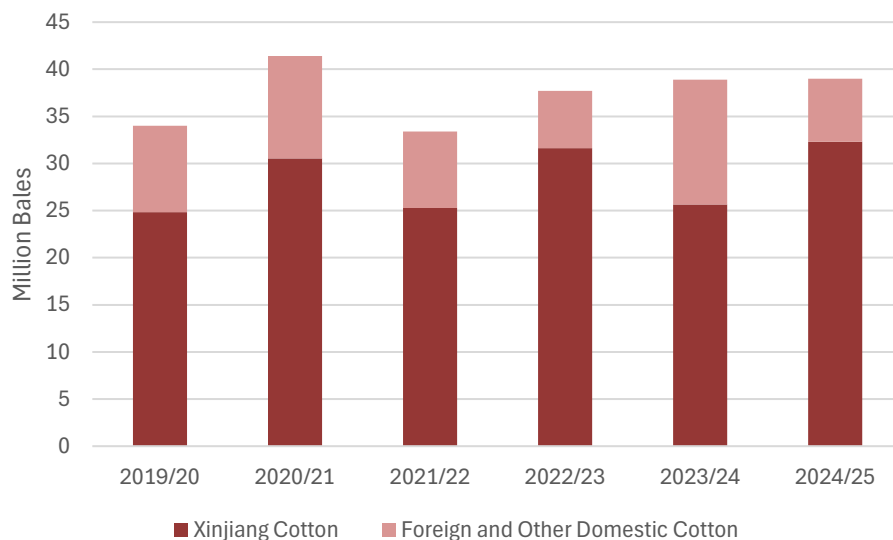
## China: Cotton Product Exports Grow Despite U.S. Tariffs



Source: USDA calculation using data from Trade Data Monitor, LLC

China cotton consumption is projected at 39.0 million bales in marketing year 2024/25 (August 2024 – July 2025), unchanged from the previous year and above previous USDA forecasts. Despite concerns from higher U.S. tariffs, Chinese product exports rose to a 7-year high. Domestic sales of apparel were a record and boosted by government stimulus. The country also witnessed record production and consumption of Xinjiang cotton fiber as imports fell to the lowest level in nearly a decade and the government did not auction from reserves.

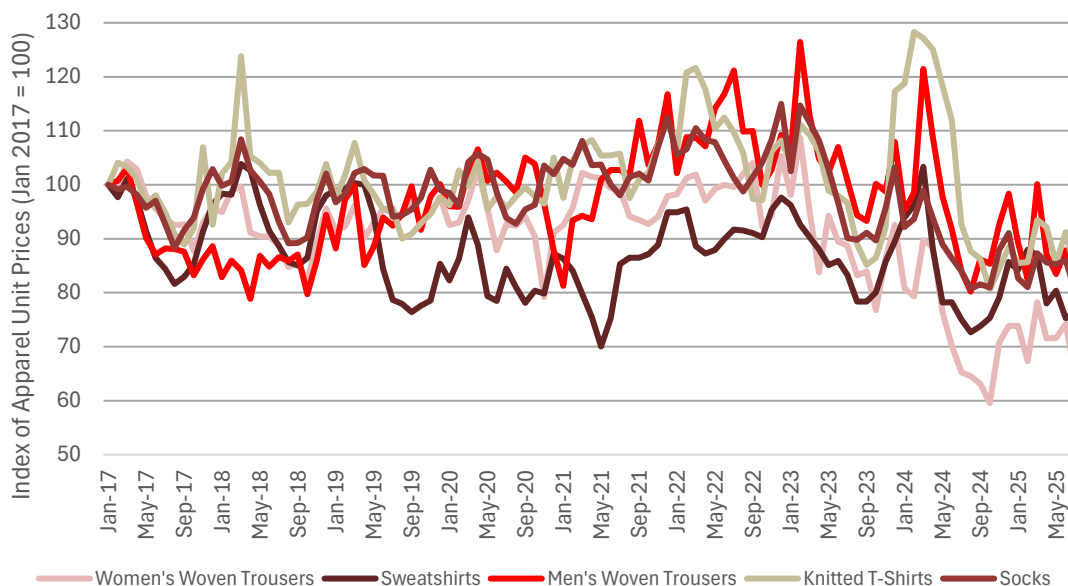
## China Cotton Consumption



Source: USDA internal calculation.

China's largest export market for cotton products is the United States and tariff concerns suppressed earlier USDA forecasts. However, competitive product prices and a frontloading of U.S. imports supported higher 2024/25 product exports to the United States and elsewhere. Major export categories witnessed significantly lower prices compared with recent history; for July, prices were 30 percent lower compared with 8 years ago for women's woven trousers, China's largest cotton product category for the month.

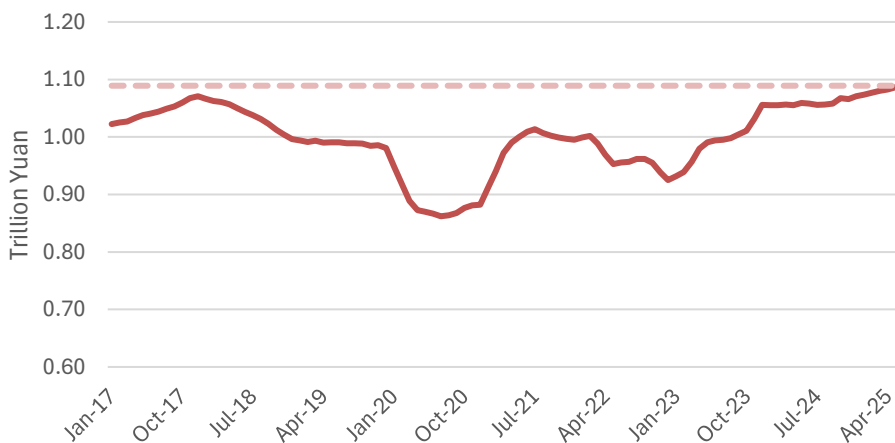
**Prices of Cotton Apparel Trending Lower**



Source: USDA calculation using data from Trade Data Monitor, LLC. Major product categories are considered at the 6-digit Harmonized System code.

Another factor boosting cotton consumption was a record 1.09 trillion yuan in annual domestic sales of apparel (year ending June), significantly above recent levels. In July, the International Monetary Fund revised the forecast for China's 2025 gross domestic product growth up to 4.8 percent, partly alluding to fiscal stimulus that has boosted domestic demand for goods.

**Domestic Sales of Clothing (Running Annual Sum)**



Source: USDA calculation using China's National Bureau of Statistics.

Despite higher U.S. tariffs and the ongoing effects from the 2021 Uyghur Forced Labor Prevention Act<sup>1</sup> (UFLPA), China’s 2024/25 cotton product exports to the United States were the second highest in 7 years. With China having successfully channeled Xinjiang cotton fiber away from the U.S. market and U.S. tariffs rising for other major product suppliers (especially India), 2025/26 China consumption is raised 1.0 million bales this month to 38.5 million. This represents a modest decline from 2024/25.

## 2025/26 Outlook

Global production is raised more than 1.0 million bales to 117.7 million as larger crops in China, India, and Australia more than offset smaller crops in Turkey, Mexico, and Mali. China production is forecast up 1.0 million bales to 32.5 million, if realized, the largest crop in 12 years.

Global trade is raised more than 100,000 bales to 43.7 million. Higher imports by Mexico, Turkey, and Vietnam more than offset lower India and China imports. Higher exports by India and Australia more than offset reductions from Cameroon, Cote d’Ivoire, and Mali.

Global consumption is forecast up more than 800,000 bales to 118.8 million as a 1.0-million-bale increase in China more than offsets reduced Turkey consumption. Global ending stocks are lowered nearly 800,000 bales to 73.1 million mainly due to higher consumption in China in 2024/25. The U.S. season-average farm price for 2025/26 is unchanged at 64 cents per pound.

<b>2025/26 Trade Outlook (1,000 480-lb Bales)</b>				
<b>Major Importers:</b>				
	Previous	Current	Change	Reason
<b>WORLD</b>	43,582	<b>43,707</b>	125	
<b>India</b>	2,900	<b>2,800</b>	-100	Higher production
<b>China</b>	5,300	<b>5,200</b>	-100	Higher production
<b>Mexico</b>	600	<b>700</b>	100	Lower production
<b>Turkey</b>	4,600	<b>4,700</b>	100	Lower production
<b>Vietnam</b>	8,000	<b>8,100</b>	100	Higher consumption
<b>Major Exporters:</b>				
	Previous	Current	Change	Reason
<b>WORLD</b>	43,587	<b>43,702</b>	115	
<b>India</b>	1,000	<b>1,300</b>	300	Higher production
<b>Australia</b>	5,000	<b>5,100</b>	100	Higher production
<b>Cameroon</b>	650	<b>550</b>	-100	Lower production
<b>Cote d'Ivoire</b>	700	<b>600</b>	-100	Lower production
<b>Mali</b>	1,200	<b>1,100</b>	-100	Lower production

<sup>1</sup> U.S. policy prohibiting the importation of goods into the United States manufactured wholly or in part with forced labor in the People's Republic of China, especially from the Xinjiang Uyghur Autonomous Region.

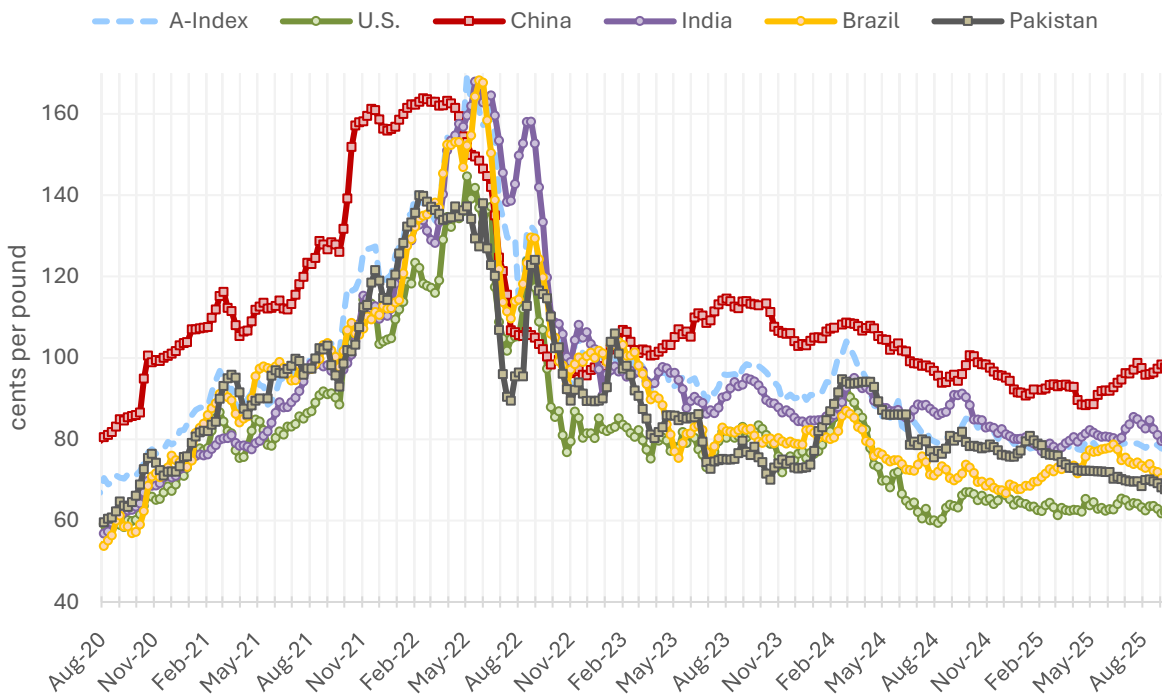
## Futures and Spot Prices

Since the last WASDE report, cotton futures on the Intercontinental Exchange (ICE) are unchanged at around 66 cents per pound.

Changes Since August WASDE (cents per pound)

	A-Index	U.S.	China	India	Brazil	Pakistan
8-Aug	77.8	62.6	95.8	82.5	73.2	69.8
10-Sep	77.9	62.7	97.4	79.9	68.6	68.1
<b>Change</b>	<b>0.1</b>	<b>0.1</b>	<b>1.6</b>	<b>-2.6</b>	<b>-4.6</b>	<b>-1.7</b>

Weekly Cotton Prices



[Notes on Price Series](#)

Questions may be directed to:

Graham Soley – Foreign Agricultural Service

[graham.soley@usda.gov](mailto:graham.soley@usda.gov)

Stephanie Galbraith – Foreign Agricultural Service

[stephanie.galbraith@usda.gov](mailto:stephanie.galbraith@usda.gov)

## Notes on Price Series

**A-Index** is published by Cotton Outlook and reflects the average of the five cheapest quotations (quality being middling 1<sup>1/8</sup> inch) of upland cottons traded internationally; the delivery price reflects Cost and Freight (CFR) to a Far Eastern Port.

**U.S.** is the simple average reported by the Agricultural Marketing Service, Free On Board (FOB) car/truck across seven U.S. spot markets of grade strict low middling.

**China** is the reported China Cotton Price Index (i.e., CCIndex 3128B) and reflects the national weighted average of middling grade cotton; the delivery price is at the textile mill in China.

**India** is the Shankar-6 (middling grade 29-3.8-76) spot price and is reported ex-gin (at the gin yard) in Gujarat.

**Brazil** is strict low middling and reflects the delivered price to a mill in São Paulo.

**Pakistan** is the ex-gin (at the gin yard) price in Karachi reflecting a 1<sup>1/16</sup> inch staple and grade 3.

### Production, Supply, and Distribution (PSD) Attributes for Cotton

(Note: Area Harvested is reported in thousand hectares and all other attributes in thousand 480-lb bale equivalents.)

**Marketing Year:** August – July, for example, the 2024/25 marketing year is August 1, 2024 – July 31, 2025.

**Area Harvested:** The area of land planted to cotton from which seed cotton is harvested.

**Beginning Stocks:** The quantity of cotton lint physically located within a country on August 1 (the first day of the marketing year, for example, August 1, 2023 of the 2023/24 marketing year) and includes cotton lint in transit. Beginning stocks equal the ending stocks of the previous year.

**Production:** The quantity of cotton lint ginned from harvested seed cotton during the marketing year and does not include cotton [linters](#) (short fibers attached to cottonseed).

**Imports/Exports:** The quantity of cotton lint physically imported into or exported from the country during the respective marketing year. This includes the Harmonized System (HS) code specific to the four-digit heading 5201 (Cotton, not carded or combed) and specific to unprocessed cotton lint. For some countries, imports include cotton bales in bonded warehouses that have *and* have not cleared customs.

**Domestic Use:** Also referred to as cotton consumption or mill use. All cotton lint that has been processed during the marketing year and excludes cotton linters. Domestic yarn production (100% cotton fiber or cotton blended with other fibers) usually accounts for more than 90 percent of domestic use. Yarn production occurs at a spinning mill and hence is also referred to as “spinning”. Use outside of yarn production typically includes nonwoven fabric production (see [nonwoven products](#)).

**Ending Stocks:** The quantity of cotton lint physically located within a country on July 31 (the last day of the marketing year, for example, July 31, 2024, of the 2023/24 marketing year) and includes cotton lint in transit. Ending Stocks will always equal the following year’s beginning stocks.

**Loss:** Cotton that has been destroyed or cannot be accounted for. Loss may also include “negative loss” when the estimates of Ending Stocks exceed the difference between **Total Supply** and total use (total use is equal to **Exports** plus **Domestic Use**).

### Other Terminology

**Cotton Textiles:** Refers to both the yarn and fabric industries. This mostly pertains to spinning mills (yarn manufacturers), weavers (woven fabric manufacturers), and knitters (knit fabric manufacturers).<sup>2</sup>

**Cotton Products:** Refers to end-use products including apparel and home goods (e.g., towels and bed sheets) as well as [nonwoven products](#) (e.g., medical and hygiene products). When referencing “cotton product” trade data, certain imports are not included that contain cotton fiber. Circular analyses include HS (Harmonized System) codes that specify cotton as the primary fiber and typically state “of cotton” in the product code description.

**Garment Manufacturers:** Typically reflects cut-and-sew and finishing operations to assemble and produce the final end-products such as apparel (i.e., cotton products).

#### Example of a Cotton Supply Chain

Cotton planted [**Farm**] → Cotton harvested [**Farm**] → Cotton ginned to separate lint from seed and compressed into bale (represented as Production in the PSD) [**Gin**] → Cotton bales spun into yarn or fibers processed into nonwoven products (represented as Domestic Use in the PSD) [**Spinning Mill**] → Yarn woven or knit into fabric [**Fabric Mill**] → Fabric is dyed and processed [**Fabric Mill**] → Finished fabric is cut-and-sewn into apparel or other finished product [**Garment Manufacturer**] → [**Retailer**]

The Foreign Agricultural Service (FAS) updates its production, supply, and distribution (PSD) database for cotton, oilseeds, and grains at 12:00 p.m. on the day the *World Agricultural Supply and Demand Estimates* (WASDE) report is released. This circular is released by 12:15 p.m.

#### FAS Reports and Databases:

Current *World Markets and Trade and World Agricultural Production Reports*:

<https://apps.fas.usda.gov/psdonline/app/index.html#/app/downloads>

Archives *World Markets and Trade and World Agricultural Production Reports*:

[https://www.fas.usda.gov/data/search?reports%5B0%5D=report\\_type%3A10259](https://www.fas.usda.gov/data/search?reports%5B0%5D=report_type%3A10259)

Production, Supply and Distribution Database (PSD Online):

<https://apps.fas.usda.gov/psdonline/app/index.html#/app/home>

Global Agricultural Trade System (U.S. Exports and Imports):

<http://apps.fas.usda.gov/gats/default.aspx>

Export Sales Report:

<http://apps.fas.usda.gov/esrquery/>

Global Agricultural Information Network (Agricultural Attaché Reports):

<http://gain.fas.usda.gov/Pages/Default.aspx>

#### Other USDA Reports:

World Agricultural Supply and Demand Estimates (WASDE):

<http://www.usda.gov/oce/commodity/wasde/>

Economic Research Service:

<http://www.ers.usda.gov/topics/crops>

National Agricultural Statistics Service:

<http://www.nass.usda.gov/Publications>

---

<sup>2</sup> Dyeing operations can occur anywhere between the manufacture of yarn, fabric, and end-product but typically at the fabric mill.

**Summary of Changes in estimates and Forecasts from Last Month**  
**(1,000 480 lb Bales and 1,000 Ha)**

Country Mktg Year	Area Harvested	Beginning Stocks	Production	Imports	Exports	Domestic Use	Loss	Ending Stocks
<b>Algeria</b>								
2024/25	0	0	0	25	0	20	0	5
2025/26	0	5	0	25	0	25	0	5
<b>Argentina</b>								
2024/25	0	0	0	0	-11	0	0	11
2025/26	0	11	0	0	0	0	0	11
<b>Australia</b>								
2023/24	0	0	0	0	23	0	0	-23
2024/25	0	-23	0	0	168	0	0	-191
2025/26	20	-191	400	0	100	0	-10	119
<b>Azerbaijan</b>								
2024/25	0	0	0	0	40	-20	0	-20
2025/26	0	-20	0	0	0	-20	0	0
<b>Bahrain</b>								
2024/25	0	0	0	3	0	3	0	0
<b>Benin</b>								
2025/26	-15	0	-50	0	-50	0	0	0
<b>Bolivia</b>								
2023/24	0	0	-1	0	0	0	0	-1
2024/25	0	-1	0	0	0	0	0	-1
2025/26	0	-1	0	0	0	0	0	-1
<b>Burkina Faso</b>								
2025/26	40	0	50	0	50	0	0	0
<b>Cameroon</b>								
2025/26	-30	0	-90	0	-100	0	0	10
<b>Chad</b>								
2025/26	-15	0	-10	0	0	0	0	-10
<b>China</b>								
2024/25	0	0	0	36	-14	1,000	0	-950
2025/26	50	-950	1,000	-100	0	1,000	0	-1,050
<b>Cote d'Ivoire</b>								
2025/26	-30	0	-75	0	-100	0	0	25
<b>El Salvador</b>								

**Summary of Changes in estimates and Forecasts from Last Month (Continued)**  
**(1,000 480 lb Bales and 1,000 Ha)**

Country Mktg Year	Area Harvested	Beginning Stocks	Production	Imports	Exports	Domestic Use	Loss	Ending Stocks
2024/25	0	0	0	-12	0	-15	0	3
2025/26	0	3	0	0	0	0	0	3
<b>Greece</b>								
2021/22	0	0	0	0	-2	0	0	2
2022/23	0	2	0	0	-1	0	0	3
2023/24	0	3	0	0	1	0	0	2
2024/25	0	2	0	0	0	0	0	2
2025/26	0	2	0	0	0	0	0	2
<b>Hungary</b>								
2024/25	0	0	0	1	1	0	0	0
<b>India</b>								
2024/25	0	0	0	100	-25	0	0	125
2025/26	0	125	500	-100	300	0	0	225
<b>Indonesia</b>								
2024/25	0	0	0	128	4	100	0	24
2025/26	0	24	0	0	0	0	0	24
<b>Iran</b>								
2024/25	0	0	0	-14	0	0	0	-14
2025/26	0	-14	0	0	0	0	0	-14
<b>Israel</b>								
2024/25	0	0	0	0	20	0	0	-20
2025/26	0	-20	0	0	0	0	0	-20
<b>Italy</b>								
2024/25	0	0	0	0	1	0	0	-1
2025/26	0	-1	0	0	0	0	0	-1
<b>Japan</b>								
2024/25	0	0	0	1	0	0	0	1
2025/26	0	1	0	0	0	0	0	1
<b>Kazakhstan</b>								
2024/25	0	0	0	0	10	-10	0	0
2025/26	10	0	25	0	0	-10	0	35
<b>Korea, South</b>								
2024/25	0	0	0	10	1	5	0	4
2025/26	0	4	0	0	0	0	0	4

**Summary of Changes in estimates and Forecasts from Last Month (Continued)**  
**(1,000 480 lb Bales and 1,000 Ha)**

Country Mktg Year	Area Harvested	Beginning Stocks	Production	Imports	Exports	Domestic Use	Loss	Ending Stocks
<b>Mali</b>								
2025/26	-44	0	-100	0	-100	0	0	0
<b>Mexico</b>								
2024/25	0	0	65	0	25	0	0	40
2025/26	-30	40	-220	100	0	-50	0	-30
<b>Philippines</b>								
2024/25	0	0	0	-1	0	-1	0	0
<b>Senegal</b>								
2025/26	8	0	15	0	15	0	0	0
<b>Sri Lanka</b>								
2024/25	0	0	0	-1	0	-1	0	0
<b>Taiwan</b>								
2024/25	0	0	0	-4	1	-5	0	0
<b>Thailand</b>								
2024/25	0	0	0	39	0	20	0	19
2025/26	0	19	0	0	0	0	0	19
<b>Togo</b>								
2024/25	0	0	0	0	-20	0	0	20
2025/26	0	20	0	0	0	0	0	20
<b>Turkey</b>								
2024/25	0	0	0	59	83	0	0	-24
2025/26	-30	-24	-400	100	0	-200	0	-124
<b>United States</b>								
2025/26	5	0	10	0	0	0	10	0
<b>Vietnam</b>								
2024/25	0	0	0	79	0	100	0	-21
2025/26	0	-21	0	100	0	100	0	-21
<b>World</b>								
<b>World</b>								
2021/22	0	0	0	0	-2	0	0	2
2022/23	0	2	0	0	-1	0	0	3
2023/24	0	3	-1	0	24	0	0	-22

**Summary of Changes in estimates and Forecasts from Last Month (Continued)**  
**(1,000 480 lb Bales and 1,000 Ha)**

<b>Country Mktg Year</b>	<b>Area Harvested</b>	<b>Beginning Stocks</b>	<b>Production</b>	<b>Imports</b>	<b>Exports</b>	<b>Domestic Use</b>	<b>Loss</b>	<b>Ending Stocks</b>
2024/25	0	-22	65	449	284	1,196	0	-988
2025/26	-61	-988	1,055	125	115	845	0	-768

**Table 01 Cotton World Supply, Use, and Trade (Season Beginning August 1)**  
(1000 MT)

	2021/22	2022/23	2023/24	2024/25	Aug 2025/26	Sep 2025/26
<b>Production</b>						
China	5,813	6,695	5,955	6,967	6,858	7,076
India	5,291	5,726	5,530	5,225	5,117	5,225
Brazil	2,356	2,552	3,172	3,701	3,974	3,974
United States	3,815	3,150	2,627	3,138	2,877	2,879
Pakistan	1,306	849	1,524	1,089	1,089	1,089
Australia	1,274	1,263	1,089	1,219	893	980
Turkey	827	1,067	695	860	784	697
Other	4,211	3,945	3,916	3,757	3,802	3,702
<b>Total</b>	<b>24,894</b>	<b>25,247</b>	<b>24,508</b>	<b>25,957</b>	<b>25,392</b>	<b>25,622</b>
<b>Domestic Use</b>						
China	7,272	8,208	8,470	8,491	8,165	8,382
India	5,443	5,334	5,552	5,443	5,443	5,443
Pakistan	2,330	1,894	2,112	2,351	2,373	2,373
Bangladesh	1,916	1,676	1,687	1,785	1,764	1,764
Vietnam	1,459	1,404	1,437	1,742	1,742	1,764
Turkey	1,872	1,633	1,437	1,546	1,546	1,502
Brazil	694	695	733	762	762	762
Other	4,201	3,681	3,599	3,821	3,894	3,882
<b>Total</b>	<b>25,187</b>	<b>24,527</b>	<b>25,028</b>	<b>25,942</b>	<b>25,688</b>	<b>25,872</b>
<b>Imports</b>						
Bangladesh	1,840	1,524	1,649	1,764	1,764	1,764
Vietnam	1,444	1,409	1,434	1,737	1,742	1,764
Pakistan	980	980	697	1,328	1,285	1,285
China	1,694	1,357	3,261	1,129	1,154	1,132
Turkey	1,203	912	776	971	1,002	1,023
India	218	376	193	664	631	610
Indonesia	561	362	402	431	435	435
Other	1,405	1,297	1,179	1,370	1,477	1,504
<b>Total</b>	<b>9,344</b>	<b>8,217</b>	<b>9,591</b>	<b>9,394</b>	<b>9,489</b>	<b>9,516</b>
<b>Exports</b>						
Brazil	1,682	1,449	2,680	2,835	3,113	3,113
United States	3,059	2,711	2,558	2,591	2,613	2,613
Australia	778	1,347	1,255	1,147	1,089	1,110
India	815	239	503	299	218	283
Benin	388	239	229	250	261	250
Mali	283	163	256	223	261	239
Turkey	123	187	302	312	218	218
Other	2,171	1,626	1,877	1,642	1,717	1,688
<b>Total</b>	<b>9,299</b>	<b>7,962</b>	<b>9,659</b>	<b>9,300</b>	<b>9,490</b>	<b>9,515</b>
<b>Ending Stocks</b>						
China	7,439	7,262	7,995	7,586	7,625	7,396
India	1,828	2,357	2,025	2,172	2,231	2,280
Australia	1,088	1,047	919	1,033	911	937
Brazil	446	855	615	721	820	820
United States	1,002	1,012	686	871	784	784
Argentina	339	400	475	514	572	574
Pakistan	419	332	403	457	446	446
Other	2,918	3,245	2,851	2,770	2,704	2,688
<b>Total</b>	<b>15,478</b>	<b>16,510</b>	<b>15,968</b>	<b>16,125</b>	<b>16,093</b>	<b>15,925</b>

**Table 02 Cotton World Supply, Use, and Trade (Season Beginning August 1)**  
(1000 Bales)

	2021/22	2022/23	2023/24	2024/25	Aug 2025/26	Sep 2025/26
<b>Production</b>						
China	26,700	30,750	27,350	32,000	31,500	32,500
India	24,300	26,300	25,400	24,000	23,500	24,000
Brazil	10,820	11,720	14,570	17,000	18,250	18,250
United States	17,523	14,468	12,066	14,413	13,214	13,224
Pakistan	6,000	3,900	7,000	5,000	5,000	5,000
Australia	5,850	5,800	5,000	5,600	4,100	4,500
Turkey	3,800	4,900	3,192	3,950	3,600	3,200
Other	19,342	18,121	17,985	17,254	17,460	17,005
<b>Total</b>	<b>114,335</b>	<b>115,959</b>	<b>112,563</b>	<b>119,217</b>	<b>116,624</b>	<b>117,679</b>
<b>Domestic Use</b>						
China	33,400	37,700	38,900	39,000	37,500	38,500
India	25,000	24,500	25,500	25,000	25,000	25,000
Pakistan	10,700	8,700	9,700	10,800	10,900	10,900
Bangladesh	8,800	7,700	7,750	8,200	8,100	8,100
Vietnam	6,700	6,450	6,600	8,000	8,000	8,100
Turkey	8,600	7,500	6,600	7,100	7,100	6,900
Brazil	3,186	3,194	3,368	3,500	3,500	3,500
Uzbekistan	3,250	2,625	2,950	3,100	3,000	3,000
Indonesia	2,600	1,750	1,800	1,950	2,000	2,000
United States	2,550	2,050	1,850	1,700	1,700	1,700
Other	10,897	10,482	9,932	10,800	11,185	11,130
<b>Total</b>	<b>115,683</b>	<b>112,651</b>	<b>114,950</b>	<b>119,150</b>	<b>117,985</b>	<b>118,830</b>
<b>Imports</b>						
Bangladesh	8,450	7,000	7,575	8,100	8,100	8,100
Vietnam	6,631	6,471	6,585	7,979	8,000	8,100
Pakistan	4,500	4,500	3,200	6,100	5,900	5,900
China	7,782	6,232	14,976	5,186	5,300	5,200
Turkey	5,524	4,189	3,566	4,459	4,600	4,700
India	1,000	1,727	885	3,050	2,900	2,800
Indonesia	2,577	1,664	1,848	1,978	2,000	2,000
Egypt	450	500	550	1,000	1,100	1,100
Malaysia	444	687	730	725	800	800
Mexico	959	689	695	600	600	700
Other	4,600	4,079	3,441	3,967	4,282	4,307
<b>Total</b>	<b>42,917</b>	<b>37,738</b>	<b>44,051</b>	<b>43,144</b>	<b>43,582</b>	<b>43,707</b>
<b>Exports</b>						
Brazil	7,727	6,656	12,310	13,020	14,300	14,300
United States	14,050	12,450	11,750	11,900	12,000	12,000
Australia	3,571	6,186	5,764	5,268	5,000	5,100
India	3,743	1,099	2,310	1,375	1,000	1,300
Benin	1,780	1,100	1,050	1,150	1,200	1,150
Mali	1,300	750	1,175	1,025	1,200	1,100
Turkey	567	860	1,385	1,433	1,000	1,000
Greece	1,426	1,330	973	1,100	950	950
Argentina	658	186	581	439	700	700
Burkina Faso	950	750	750	525	600	650
Other	6,936	5,204	6,316	5,479	5,637	5,452
<b>Total</b>	<b>42,708</b>	<b>36,571</b>	<b>44,364</b>	<b>42,714</b>	<b>43,587</b>	<b>43,702</b>
<b>Ending Stocks</b>						
China	34,167	33,355	36,719	34,844	35,019	33,969
India	8,396	10,824	9,299	9,974	10,249	10,474
Australia	4,996	4,810	4,221	4,743	4,184	4,303
Brazil	2,050	3,928	2,826	3,311	3,766	3,766
United States	4,600	4,650	3,150	4,000	3,600	3,600
Argentina	1,557	1,836	2,180	2,363	2,627	2,638
Pakistan	1,925	1,525	1,850	2,100	2,050	2,050
Other	13,400	14,903	13,093	12,724	12,417	12,344
<b>Total</b>	<b>71,091</b>	<b>75,831</b>	<b>73,338</b>	<b>74,059</b>	<b>73,912</b>	<b>73,144</b>

**Table 04 Cotton Area, Yield, and Production**

Country / Region	Area (Million hectares)				Yield (Kilograms per hectare)				Production (Million 480 lb. bales)				Change in Production			
	Prel.		2025/26 Proj.		Prel.		2025/26 Proj.		Prel.		2025/26 Proj.		From last month		From last year	
	2023/24	2024/25	Aug	Sep	2023/24	2024/25	Aug	Sep	2023/24	2024/25	Aug	Sep	MBales	Percent	MBales	Percent
<b>World</b>	31.05	30.16	29.61	29.55	789	861	858	867	112.56	119.22	116.62	117.68	1.06	0.90	-1.54	-1.29
<b>United States</b>	2.61	3.16	2.98	2.98	1,008	993	966	966	12.07	14.41	13.21	13.22	0.01	0.08	-1.19	-8.25
<b>Total Foreign</b>	28.45	27.00	26.63	26.56	769	845	845	856	100.50	104.80	103.41	104.46	1.05	1.01	-0.35	-0.33
<b>Western Hemisphere</b>																
Brazil	1.66	1.95	2.10	2.10	1,911	1,903	1,892	1,892	14.57	17.00	18.25	18.25	0.00	0.00	1.25	7.35
Mexico	0.13	0.12	0.11	0.08	1,435	1,694	1,659	1,684	0.87	0.97	0.80	0.58	-0.22	-27.50	-0.39	-39.90
Argentina	0.62	0.63	0.63	0.63	578	472	601	601	1.65	1.37	1.73	1.73	0.00	0.00	0.36	26.37
Paraguay	0.06	0.07	0.06	0.06	812	837	907	907	0.21	0.25	0.25	0.25	0.00	0.00	0.00	0.00
Peru	0.01	0.01	0.01	0.01	898	871	980	980	0.03	0.04	0.05	0.05	0.00	0.00	0.01	12.50
Colombia	0.01	0.01	0.01	0.01	904	1,005	990	990	0.05	0.06	0.05	0.05	0.00	0.00	-0.01	-16.67
<b>Africa</b>																
Burkina Faso	0.46	0.35	0.36	0.40	361	345	369	359	0.77	0.55	0.61	0.66	0.05	8.20	0.11	20.00
Mali	0.71	0.62	0.67	0.63	407	374	390	383	1.33	1.07	1.20	1.10	-0.10	-8.33	0.03	2.80
Cote d'Ivoire	0.40	0.36	0.35	0.32	358	360	435	425	0.65	0.59	0.70	0.63	-0.08	-10.71	0.04	5.93
Cameroon	0.24	0.23	0.23	0.20	671	513	615	610	0.74	0.54	0.65	0.56	-0.09	-13.85	0.02	3.70
Benin	0.51	0.54	0.54	0.52	482	487	488	482	1.13	1.20	1.20	1.15	-0.05	-4.17	-0.05	-4.17
Chad	0.20	0.14	0.17	0.15	234	176	198	203	0.21	0.11	0.15	0.14	-0.01	-6.67	0.03	27.27
Togo	0.08	0.08	0.08	0.08	354	327	290	290	0.13	0.11	0.10	0.10	0.00	0.00	-0.01	-12.28
Senegal	0.02	0.01	0.01	0.02	348	526	467	445	0.02	0.03	0.03	0.05	0.02	50.00	0.02	55.17
Egypt	0.10	0.13	0.08	0.08	686	712	680	680	0.32	0.43	0.25	0.25	0.00	0.00	-0.18	-41.18
Zimbabwe	0.24	0.24	0.24	0.24	195	195	204	204	0.22	0.22	0.23	0.23	0.00	0.00	0.01	4.65
Nigeria	0.27	0.27	0.27	0.27	282	282	282	282	0.35	0.35	0.35	0.35	0.00	0.00	0.00	0.00
<b>Asia Oceania</b>																
China	2.85	2.90	2.95	3.00	2,089	2,402	2,325	2,359	27.35	32.00	31.50	32.50	1.00	3.17	0.50	1.56
India	12.69	11.50	11.20	11.20	436	454	457	467	25.40	24.00	23.50	24.00	0.50	2.13	0.00	0.00
Pakistan	2.40	2.00	1.95	1.95	635	544	558	558	7.00	5.00	5.00	5.00	0.00	0.00	0.00	0.00
Kazakhstan	0.12	0.11	0.13	0.14	558	544	502	505	0.30	0.27	0.30	0.33	0.03	8.33	0.06	22.64
Tajikistan	0.17	0.18	0.18	0.18	647	605	641	641	0.49	0.50	0.53	0.53	0.00	0.00	0.03	6.00
Turkmenistan	0.50	0.50	0.52	0.52	348	348	356	356	0.80	0.80	0.85	0.85	0.00	0.00	0.05	6.25
Uzbekistan	1.03	1.00	0.93	0.93	613	653	597	597	2.90	3.00	2.55	2.55	0.00	0.00	-0.45	-15.00
Turkey	0.44	0.47	0.43	0.40	1,580	1,850	1,823	1,742	3.19	3.95	3.60	3.20	-0.40	-11.11	-0.75	-18.99
Australia	0.51	0.60	0.46	0.48	2,156	2,032	1,941	2,041	5.00	5.60	4.10	4.50	0.40	9.76	-1.10	-19.64
Syria	0.03	0.03	0.03	0.03	1,161	1,161	1,161	1,161	0.16	0.16	0.16	0.16	0.00	0.00	0.00	0.00
Burma	0.18	0.19	0.19	0.19	654	654	659	659	0.55	0.57	0.56	0.56	0.00	0.00	-0.01	-1.93
<b>Europe</b>																
Greece	0.20	0.22	0.21	0.21	1,034	1,050	1,058	1,058	0.95	1.08	1.02	1.02	0.00	0.00	-0.06	-5.56
<b>Others</b>	1.63	1.56	1.56	1.56	422	419	442	442	3.17	3.01	3.16	3.16	0.00	0.00	0.15	4.99

**Table 05 Cotton Supply and Distribution MY 2025/26**  
(1,000 HA and 1000 480-lb. Bales)

Country	Area Harvested	Production	Imports	Total Supply	Domestic Use	Loss	Exports	Ending Stocks
Afghanistan	180	375	0	437	15	0	350	72
Albania	1	1	0	2	1	0	0	1
Algeria	0	0	80	100	80	0	0	20
Angola	3	5	0	10	5	0	0	5
Argentina	625	1,725	0	4,088	750	0	700	2,638
Armenia	0	0	1	1	1	0	0	0
Australia	480	4,500	0	9,243	0	-160	5,100	4,303
Austria	0	0	1	2	1	0	0	1
Azerbaijan	100	475	0	557	40	0	425	92
Bahrain	0	0	30	35	30	0	0	5
Bangladesh	45	153	8,100	10,017	8,100	0	0	1,917
Belarus	0	0	10	13	10	0	0	3
Belgium-Luxembourg	0	0	10	13	9	0	1	3
Benin	520	1,150	0	1,303	25	0	1,150	128
Bolivia	4	11	1	16	12	0	0	4
Bosnia and Herzegovina	0	0	5	6	5	0	0	1
Brazil	2,100	18,250	5	21,566	3,500	0	14,300	3,766
Bulgaria	2	10	10	25	20	0	0	5
Burkina Faso	400	660	0	726	15	0	650	61
Burma	185	560	0	728	500	0	50	178
Cambodia	0	0	1	2	1	0	0	1
Cameroon	200	560	0	804	20	0	550	234
Canada	0	0	1	1	1	0	0	0
Central African Republic	34	36	0	53	0	0	36	17
Chad	150	140	0	250	10	0	150	90
Chile	0	0	1	2	1	0	0	1
China	3,000	32,500	5,200	72,544	38,500	0	75	33,969
Colombia	11	50	40	110	90	0	0	20
Congo (Kinshasa)	30	15	2	21	17	0	0	4
Costa Rica	0	0	75	89	75	0	0	14
Cote d'Ivoire	320	625	0	878	10	0	600	268
Croatia	0	0	1	1	1	0	0	0
Cuba	4	4	3	9	7	0	0	2
Cyprus	0	0	1	1	1	0	0	0
Czech Republic	0	0	5	6	5	0	0	1

**Table 05 Cotton Supply and Distribution MY 2025/26 (Continued)**  
**(1,000 HA and 1000 480-lb. Bales)**

Country	Area Harvested	Production	Imports	Total Supply	Domestic Use	Loss	Exports	Ending Stocks
Denmark	0	0	0	0	0	0	0	0
Dominican Republic	0	0	1	2	1	0	0	1
Ecuador	1	1	30	39	30	0	0	9
Egypt	80	250	1,100	1,732	1,200	0	200	332
El Salvador	0	0	225	268	225	0	0	43
Estonia	0	0	15	19	15	0	0	4
Ethiopia	55	180	0	263	175	0	5	83
France	0	0	40	46	37	0	2	7
Germany	0	0	60	70	55	0	3	12
Ghana	15	28	0	32	15	0	10	7
Greece	210	1,020	15	1,116	70	0	950	96
Guatemala	0	0	300	345	300	0	0	45
Guinea	13	18	0	21	0	0	18	3
Haiti	7	5	0	6	5	0	0	1
Honduras	0	0	375	422	365	0	0	57
Hong Kong	0	0	1	7	0	0	1	6
Hungary	0	0	1	1	0	0	1	0
India	11,200	24,000	2,800	36,774	25,000	0	1,300	10,474
Indonesia	1	2	2,000	2,410	2,000	0	15	395
Iran	100	400	500	1,113	900	0	0	213
Iraq	10	15	20	45	35	0	0	10
Ireland	0	0	1	1	1	0	0	0
Israel	8	65	1	136	1	0	50	85
Italy	0	0	100	112	90	0	5	17
Japan	0	0	130	148	130	0	0	18
Kazakhstan	140	325	0	537	20	0	300	217
Kenya	10	5	30	45	35	0	0	10
Korea, North	19	55	15	85	70	0	0	15
Korea, South	0	0	325	407	325	0	3	79
Kyrgyzstan	20	80	0	90	0	0	80	10
Latvia	0	0	5	6	5	0	0	1
Lebanon	0	0	1	2	1	0	0	1
Lesotho	0	0	70	85	70	0	0	15
Lithuania	0	0	1	1	1	0	0	0
North Macedonia	0	0	2	3	2	0	0	1

**Table 05 Cotton Supply and Distribution MY 2025/26 (Continued)**  
**(1,000 HA and 1000 480-lb. Bales)**

Country	Area Harvested	Production	Imports	Total Supply	Domestic Use	Loss	Exports	Ending Stocks
Madagascar	20	30	0	45	20	0	10	15
Malawi	30	37	0	61	15	0	25	21
Malaysia	0	0	800	1,428	750	0	15	663
Mali	626	1,100	0	1,509	25	0	1,100	384
Mauritius	0	0	75	89	75	0	0	14
Mexico	75	580	700	1,562	1,300	0	100	162
Moldova	0	0	20	25	20	0	0	5
Morocco	0	0	20	24	20	0	0	4
Mozambique	125	115	0	191	5	0	110	76
Netherlands	0	0	5	7	5	0	0	2
Nicaragua	0	0	150	172	140	0	0	32
Niger	5	9	0	14	0	0	9	5
Nigeria	270	350	0	459	250	0	100	109
Norway	0	0	0	0	0	0	0	0
Pakistan	1,950	5,000	5,900	13,000	10,900	0	50	2,050
Panama	0	0	1	1	1	0	0	0
Paraguay	60	250	0	419	75	0	175	169
Peru	10	45	275	361	300	0	3	58
Philippines	1	2	15	21	18	0	0	3
Poland	0	0	30	34	30	0	0	4
Portugal	0	0	150	176	140	0	5	31
Romania	0	0	1	2	1	0	0	1
Russia	0	0	90	106	85	0	5	16
Senegal	22	45	0	52	2	0	45	5
Serbia	0	0	5	6	5	0	0	1
Singapore	0	0	0	0	0	0	0	0
Slovakia	0	0	1	1	1	0	0	0
Slovenia	0	0	5	6	5	0	0	1
Somalia	12	7	3	11	10	0	0	1
South Africa	14	60	70	174	80	0	60	34
Spain	55	245	15	276	15	0	225	36
Sri Lanka	5	5	1	8	6	0	0	2
Sudan	70	150	0	264	10	0	150	104
Sweden	0	0	0	0	0	0	0	0
Switzerland	0	0	1	2	1	0	0	1

**Table 05 Cotton Supply and Distribution MY 2025/26 (Continued)**  
**(1,000 HA and 1000 480-lb. Bales)**

Country	Area Harvested	Production	Imports	Total Supply	Domestic Use	Loss	Exports	Ending Stocks
Syria	30	160	0	224	75	0	100	49
Taiwan	0	0	100	124	105	0	0	19
Tajikistan	180	530	0	724	140	0	400	184
Tanzania	440	400	0	561	100	0	300	161
Thailand	1	2	500	609	500	0	0	109
Togo	75	100	0	201	0	0	100	101
Tunisia	0	0	10	12	10	0	0	2
Turkey	400	3,200	4,700	9,178	6,900	0	1,000	1,278
Turkmenistan	520	850	0	1,264	750	0	200	314
Uganda	65	90	0	185	15	0	75	95
Ukraine	0	0	1	1	1	0	0	0
United Kingdom	0	0	1	2	1	0	0	1
United States	2,982	13,224	5	17,229	1,700	-71	12,000	3,600
Uruguay	0	0	0	0	0	0	0	0
Uzbekistan	930	2,550	200	4,690	3,000	0	10	1,680
Venezuela	4	8	10	21	18	0	0	3
Vietnam	1	3	8,100	9,119	8,100	0	0	1,019
Yemen	5	8	0	10	8	0	0	2
Zambia	40	45	0	155	5	0	50	100
Zimbabwe	240	225	0	582	55	0	200	327
<b>World</b>								
World	29,546	117,679	43,707	235,445	118,830	-231	43,702	73,144

**Table 05A Cotton Supply and Distribution MY 2025/26**  
(1000 MT and 1000 HA)

Country	Area Harvested	Production	Imports	Total Supply	Domestic Use	Loss	Exports	Ending Stocks
Afghanistan	180	82	0	95	3	0	76	16
Albania	1	0	0	0	0	0	0	0
Algeria	0	0	17	22	17	0	0	4
Angola	3	1	0	2	1	0	0	1
Argentina	625	376	0	890	163	0	152	574
Armenia	0	0	0	0	0	0	0	0
Australia	480	980	0	2,012	0	-35	1,110	937
Austria	0	0	0	0	0	0	0	0
Azerbaijan	100	103	0	121	9	0	93	20
Bahrain	0	0	7	8	7	0	0	1
Bangladesh	45	33	1,764	2,181	1,764	0	0	417
Belarus	0	0	2	3	2	0	0	1
Belgium-Luxembourg	0	0	2	3	2	0	0	1
Benin	520	250	0	284	5	0	250	28
Bolivia	4	2	0	3	3	0	0	1
Bosnia and Herzegovina	0	0	1	1	1	0	0	0
Brazil	2,100	3,974	1	4,695	762	0	3,113	820
Bulgaria	2	2	2	5	4	0	0	1
Burkina Faso	400	144	0	158	3	0	142	13
Burma	185	122	0	159	109	0	11	39
Cambodia	0	0	0	0	0	0	0	0
Cameroon	200	122	0	175	4	0	120	51
Canada	0	0	0	0	0	0	0	0
Central African Republic	34	8	0	12	0	0	8	4
Chad	150	30	0	54	2	0	33	20
Chile	0	0	0	0	0	0	0	0
China	3,000	7,076	1,132	15,795	8,382	0	16	7,396
Colombia	11	11	9	24	20	0	0	4
Congo (Kinshasa)	30	3	0	5	4	0	0	1
Costa Rica	0	0	16	19	16	0	0	3
Cote d'Ivoire	320	136	0	191	2	0	131	58
Croatia	0	0	0	0	0	0	0	0
Cuba	4	1	1	2	2	0	0	0
Cyprus	0	0	0	0	0	0	0	0
Czech Republic	0	0	1	1	1	0	0	0

**Table 05A Cotton Supply and Distribution MY 2025/26 (Continued)**  
(1000 MT and 1000 HA)

Country	Area Harvested	Production	Imports	Total Supply	Domestic Use	Loss	Exports	Ending Stocks
Denmark	0	0	0	0	0	0	0	0
Dominican Republic	0	0	0	0	0	0	0	0
Ecuador	1	0	7	8	7	0	0	2
Egypt	80	54	239	377	261	0	44	72
El Salvador	0	0	49	58	49	0	0	9
Estonia	0	0	3	4	3	0	0	1
Ethiopia	55	39	0	57	38	0	1	18
France	0	0	9	10	8	0	0	2
Germany	0	0	13	15	12	0	1	3
Ghana	15	6	0	7	3	0	2	2
Greece	210	222	3	243	15	0	207	21
Guatemala	0	0	65	75	65	0	0	10
Guinea	13	4	0	5	0	0	4	1
Haiti	7	1	0	1	1	0	0	0
Honduras	0	0	82	92	79	0	0	12
Hong Kong	0	0	0	2	0	0	0	1
Hungary	0	0	0	0	0	0	0	0
India	11,200	5,225	610	8,007	5,443	0	283	2,280
Indonesia	1	0	435	525	435	0	3	86
Iran	100	87	109	242	196	0	0	46
Iraq	10	3	4	10	8	0	0	2
Ireland	0	0	0	0	0	0	0	0
Israel	8	14	0	30	0	0	11	19
Italy	0	0	22	24	20	0	1	4
Japan	0	0	28	32	28	0	0	4
Kazakhstan	140	71	0	117	4	0	65	47
Kenya	10	1	7	10	8	0	0	2
Korea, North	19	12	3	19	15	0	0	3
Korea, South	0	0	71	89	71	0	1	17
Kyrgyzstan	20	17	0	20	0	0	17	2
Latvia	0	0	1	1	1	0	0	0
Lebanon	0	0	0	0	0	0	0	0
Lesotho	0	0	15	19	15	0	0	3
Lithuania	0	0	0	0	0	0	0	0
North Macedonia	0	0	0	1	0	0	0	0

**Table 05A Cotton Supply and Distribution MY 2025/26 (Continued)**  
(1000 MT and 1000 HA)

Country	Area Harvested	Production	Imports	Total Supply	Domestic Use	Loss	Exports	Ending Stocks
Madagascar	20	7	0	10	4	0	2	3
Malawi	30	8	0	13	3	0	5	5
Malaysia	0	0	174	311	163	0	3	144
Mali	626	239	0	329	5	0	239	84
Mauritius	0	0	16	19	16	0	0	3
Mexico	75	126	152	340	283	0	22	35
Moldova	0	0	4	5	4	0	0	1
Morocco	0	0	4	5	4	0	0	1
Mozambique	125	25	0	42	1	0	24	17
Netherlands	0	0	1	2	1	0	0	0
Nicaragua	0	0	33	37	30	0	0	7
Niger	5	2	0	3	0	0	2	1
Nigeria	270	76	0	100	54	0	22	24
Norway	0	0	0	0	0	0	0	0
Pakistan	1,950	1,089	1,285	2,830	2,373	0	11	446
Panama	0	0	0	0	0	0	0	0
Paraguay	60	54	0	91	16	0	38	37
Peru	10	10	60	79	65	0	1	13
Philippines	1	0	3	5	4	0	0	1
Poland	0	0	7	7	7	0	0	1
Portugal	0	0	33	38	30	0	1	7
Romania	0	0	0	0	0	0	0	0
Russia	0	0	20	23	19	0	1	3
Senegal	22	10	0	11	0	0	10	1
Serbia	0	0	1	1	1	0	0	0
Singapore	0	0	0	0	0	0	0	0
Slovakia	0	0	0	0	0	0	0	0
Slovenia	0	0	1	1	1	0	0	0
Somalia	12	2	1	2	2	0	0	0
South Africa	14	13	15	38	17	0	13	7
Spain	55	53	3	60	3	0	49	8
Sri Lanka	5	1	0	2	1	0	0	0
Sudan	70	33	0	57	2	0	33	23
Sweden	0	0	0	0	0	0	0	0
Switzerland	0	0	0	0	0	0	0	0

**Table 05A Cotton Supply and Distribution MY 2025/26 (Continued)**  
(1000 MT and 1000 HA)

Country	Area Harvested	Production	Imports	Total Supply	Domestic Use	Loss	Exports	Ending Stocks
Syria	30	35	0	49	16	0	22	11
Taiwan	0	0	22	27	23	0	0	4
Tajikistan	180	115	0	158	30	0	87	40
Tanzania	440	87	0	122	22	0	65	35
Thailand	1	0	109	133	109	0	0	24
Togo	75	22	0	44	0	0	22	22
Tunisia	0	0	2	3	2	0	0	0
Turkey	400	697	1,023	1,998	1,502	0	218	278
Turkmenistan	520	185	0	275	163	0	44	68
Uganda	65	20	0	40	3	0	16	21
Ukraine	0	0	0	0	0	0	0	0
United Kingdom	0	0	0	0	0	0	0	0
United States	2,982	2,879	1	3,751	370	-15	2,613	784
Uruguay	0	0	0	0	0	0	0	0
Uzbekistan	930	555	44	1,021	653	0	2	366
Venezuela	4	2	2	5	4	0	0	1
Vietnam	1	1	1,764	1,985	1,764	0	0	222
Yemen	5	2	0	2	2	0	0	0
Zambia	40	10	0	34	1	0	11	22
Zimbabwe	240	49	0	127	12	0	44	71
<b>World</b>								
World	29,546	25,622	9,516	51,263	25,872	-50	9,515	15,925

**Table 06: Cotton Supply and Distribution by Country 2024/25**  
(1,000 HA and 1000 480-lb. Bales)

Country	Area Harvested	Production	Imports	Total Supply	Domestic Use	Loss	Exports	Ending Stocks
Afghanistan	200	400	0	477	15	0	400	62
Albania	1	1	0	2	1	0	0	1
Algeria	0	0	80	95	75	0	0	20
Angola	3	5	0	10	5	0	0	5
Argentina	630	1,365	7	3,552	750	0	439	2,363
Armenia	0	0	1	1	1	0	0	0
Australia	600	5,600	0	9,821	0	-190	5,268	4,743
Austria	0	0	1	2	1	0	0	1
Azerbaijan	100	475	0	612	40	0	490	82
Bahrain	0	0	36	41	36	0	0	5
Bangladesh	45	153	8,100	9,964	8,200	0	0	1,764
Belarus	0	0	15	18	15	0	0	3
Belgium-Luxembourg	0	0	10	14	9	0	2	3
Benin	536	1,200	0	1,323	20	0	1,150	153
Bolivia	4	10	1	16	12	0	0	4
Bosnia and Herzegovina	0	0	5	6	5	0	0	1
Brazil	1,945	17,000	5	19,831	3,500	0	13,020	3,311
Bulgaria	2	10	10	25	20	0	0	5
Burkina Faso	347	550	0	606	15	0	525	66
Burma	190	571	0	743	525	0	50	168
Cambodia	0	0	1	2	1	0	0	1
Cameroon	229	540	0	814	20	0	550	244
Canada	0	0	1	1	1	0	0	0
Central African Republic	34	36	0	53	0	0	36	17
Chad	136	110	0	220	10	0	100	110
Chile	0	0	1	2	1	0	0	1
China	2,900	32,000	5,186	73,905	39,000	0	61	34,844
Colombia	13	60	30	109	86	0	3	20
Congo (Kinshasa)	30	15	2	21	17	0	0	4
Costa Rica	0	0	70	84	70	0	0	14
Cote d'Ivoire	357	590	0	809	10	0	546	253
Croatia	0	0	1	1	1	0	0	0
Cuba	4	4	3	9	7	0	0	2
Cyprus	0	0	1	1	1	0	0	0
Czech Republic	0	0	5	6	5	0	0	1

**Table 06: Cotton Supply and Distribution by Country 2024/25 (Continued)**  
**(1,000 HA and 1000 480-lb. Bales)**

Country	Area Harvested	Production	Imports	Total Supply	Domestic Use	Loss	Exports	Ending Stocks
Denmark	0	0	0	0	0	0	0	0
Dominican Republic	0	0	1	2	1	0	0	1
Ecuador	1	1	40	48	40	0	0	8
Egypt	130	425	1,000	1,657	1,100	0	175	382
El Salvador	0	0	188	228	185	0	0	43
Estonia	0	0	15	19	15	0	0	4
Ethiopia	55	180	0	263	175	0	5	83
France	0	0	35	41	33	0	2	6
Germany	0	0	55	66	53	0	3	10
Ghana	15	28	0	34	15	0	15	4
Greece	224	1,080	15	1,251	70	0	1,100	81
Guatemala	0	0	250	295	250	0	0	45
Guinea	13	18	0	21	0	0	18	3
Haiti	7	5	0	6	5	0	0	1
Honduras	0	0	315	347	300	0	0	47
Hong Kong	0	0	1	7	0	0	1	6
Hungary	0	0	2	2	0	0	2	0
India	11,500	24,000	3,050	36,349	25,000	0	1,375	9,974
Indonesia	1	2	1,978	2,377	1,950	0	19	408
Iran	100	400	466	1,113	900	0	0	213
Iraq	10	15	20	45	35	0	0	10
Ireland	0	0	1	1	1	0	0	0
Israel	5	40	1	131	1	0	60	70
Italy	0	0	90	103	85	0	6	12
Japan	0	0	126	143	125	0	0	18
Kazakhstan	106	265	0	592	20	0	360	212
Kenya	10	5	30	45	35	0	0	10
Korea, North	19	55	15	90	75	0	0	15
Korea, South	0	0	325	406	320	0	4	82
Kyrgyzstan	13	50	0	55	0	0	45	10
Latvia	0	0	6	7	6	0	0	1
Lebanon	0	0	1	2	1	0	0	1
Lesotho	0	0	65	85	70	0	0	15
Lithuania	0	0	1	1	1	0	0	0
North Macedonia	0	0	2	3	2	0	0	1

**Table 06: Cotton Supply and Distribution by Country 2024/25 (Continued)**  
**(1,000 HA and 1000 480-lb. Bales)**

Country	Area Harvested	Production	Imports	Total Supply	Domestic Use	Loss	Exports	Ending Stocks
Madagascar	20	30	0	45	20	0	10	15
Malawi	30	37	0	59	15	0	20	24
Malaysia	0	0	725	1,323	675	0	20	628
Mali	623	1,070	0	1,459	25	0	1,025	409
Mauritius	0	0	75	89	75	0	0	14
Mexico	124	965	600	1,807	1,350	0	175	282
Moldova	0	0	20	29	24	0	0	5
Morocco	0	0	20	24	20	0	0	4
Mozambique	125	115	0	191	5	0	110	76
Netherlands	0	0	5	7	5	0	0	2
Nicaragua	0	0	125	137	115	0	0	22
Niger	5	9	0	14	0	0	9	5
Nigeria	270	350	0	459	250	0	100	109
Norway	0	0	0	0	0	0	0	0
Pakistan	2,000	5,000	6,100	12,950	10,800	0	50	2,100
Panama	0	0	1	1	1	0	0	0
Paraguay	65	250	0	394	75	0	150	169
Peru	10	40	266	341	300	0	0	41
Philippines	1	2	14	22	18	0	0	4
Poland	0	0	30	34	30	0	0	4
Portugal	0	0	130	161	125	0	10	26
Romania	0	0	1	2	1	0	0	1
Russia	0	0	90	106	85	0	5	16
Senegal	12	29	0	37	0	0	30	7
Serbia	0	0	5	6	5	0	0	1
Singapore	0	0	0	0	0	0	0	0
Slovakia	0	0	1	1	1	0	0	0
Slovenia	0	0	6	7	6	0	0	1
Somalia	12	7	3	11	10	0	0	1
South Africa	14	62	70	184	80	0	60	44
Spain	51	154	15	191	15	0	160	16
Sri Lanka	5	5	1	8	6	0	0	2
Sudan	70	150	0	299	10	0	175	114
Sweden	0	0	0	0	0	0	0	0
Switzerland	0	0	1	2	1	0	0	1

**Table 06: Cotton Supply and Distribution by Country 2024/25 (Continued)**  
**(1,000 HA and 1000 480-lb. Bales)**

Country	Area Harvested	Production	Imports	Total Supply	Domestic Use	Loss	Exports	Ending Stocks
Syria	30	160	0	289	75	0	150	64
Taiwan	0	0	96	136	110	0	2	24
Tajikistan	180	500	0	744	120	0	430	194
Tanzania	440	350	0	511	100	0	250	161
Thailand	1	2	514	607	500	0	0	107
Togo	76	114	0	206	0	0	105	101
Tunisia	0	0	10	11	9	0	0	2
Turkey	465	3,950	4,459	9,811	7,100	0	1,433	1,278
Turkmenistan	500	800	0	1,314	750	0	150	414
Uganda	65	110	0	210	15	0	100	95
Ukraine	0	0	2	2	2	0	0	0
United Kingdom	0	0	1	2	1	0	0	1
United States	3,159	14,413	3	17,566	1,700	-34	11,900	4,000
Uruguay	0	0	0	0	0	0	0	0
Uzbekistan	1,000	3,000	100	5,050	3,100	0	10	1,940
Venezuela	4	8	10	21	18	0	0	3
Vietnam	1	3	7,979	9,016	8,000	0	0	1,016
Yemen	5	8	0	10	8	0	0	2
Zambia	40	45	0	160	5	0	45	110
Zimbabwe	240	215	0	602	45	0	200	357
<b>World</b>								
World	30,158	119,217	43,144	235,699	119,150	-224	42,714	74,059

**Table 06A: Cotton Supply and Distribution by Country 2024/25**  
(1,000 Metric Tons)

Country	Area Harvested	Production	Imports	Domestic Use	Loss	Exports	Ending Stocks
Afghanistan	200	87	0	3	0	87	13
Albania	1	0	0	0	0	0	0
Algeria	0	0	17	16	0	0	4
Angola	3	1	0	1	0	0	1
Argentina	630	297	2	163	0	96	514
Armenia	0	0	0	0	0	0	0
Australia	600	1,219	0	0	-41	1,147	1,033
Austria	0	0	0	0	0	0	0
Azerbaijan	100	103	0	9	0	107	18
Bahrain	0	0	8	8	0	0	1
Bangladesh	45	33	1,764	1,785	0	0	384
Belarus	0	0	3	3	0	0	1
Belgium-Luxembourg	0	0	2	2	0	0	1
Benin	536	261	0	4	0	250	33
Bolivia	4	2	0	3	0	0	1
Bosnia and Herzegovina	0	0	1	1	0	0	0
Brazil	1,945	3,701	1	762	0	2,835	721
Bulgaria	2	2	2	4	0	0	1
Burkina Faso	347	120	0	3	0	114	14
Burma	190	124	0	114	0	11	37
Cambodia	0	0	0	0	0	0	0
Cameroon	229	118	0	4	0	120	53
Canada	0	0	0	0	0	0	0
Central African Republic	34	8	0	0	0	8	4
Chad	136	24	0	2	0	22	24
Chile	0	0	0	0	0	0	0
China	2,900	6,967	1,129	8,491	0	13	7,586
Colombia	13	13	7	19	0	1	4
Congo (Kinshasa)	30	3	0	4	0	0	1
Costa Rica	0	0	15	15	0	0	3
Cote d'Ivoire	357	128	0	2	0	119	55
Croatia	0	0	0	0	0	0	0
Cuba	4	1	1	2	0	0	0
Cyprus	0	0	0	0	0	0	0
Czech Republic	0	0	1	1	0	0	0

**Table 06A: Cotton Supply and Distribution by Country 2024/25 (Continued)**  
(1,000 Metric Tons)

Country	Area Harvested	Production	Imports	Domestic Use	Loss	Exports	Ending Stocks
Denmark	0	0	0	0	0	0	0
Dominican Republic	0	0	0	0	0	0	0
Ecuador	1	0	9	9	0	0	2
Egypt	130	93	218	239	0	38	83
El Salvador	0	0	41	40	0	0	9
Estonia	0	0	3	3	0	0	1
Ethiopia	55	39	0	38	0	1	18
France	0	0	8	7	0	0	1
Germany	0	0	12	12	0	1	2
Ghana	15	6	0	3	0	3	1
Greece	224	235	3	15	0	239	18
Guatemala	0	0	54	54	0	0	10
Guinea	13	4	0	0	0	4	1
Haiti	7	1	0	1	0	0	0
Honduras	0	0	69	65	0	0	10
Hong Kong	0	0	0	0	0	0	1
Hungary	0	0	0	0	0	0	0
India	11,500	5,225	664	5,443	0	299	2,172
Indonesia	1	0	431	425	0	4	89
Iran	100	87	101	196	0	0	46
Iraq	10	3	4	8	0	0	2
Ireland	0	0	0	0	0	0	0
Israel	5	9	0	0	0	13	15
Italy	0	0	20	19	0	1	3
Japan	0	0	27	27	0	0	4
Kazakhstan	106	58	0	4	0	78	46
Kenya	10	1	7	8	0	0	2
Korea, North	19	12	3	16	0	0	3
Korea, South	0	0	71	70	0	1	18
Kyrgyzstan	13	11	0	0	0	10	2
Latvia	0	0	1	1	0	0	0
Lebanon	0	0	0	0	0	0	0
Lesotho	0	0	14	15	0	0	3
Lithuania	0	0	0	0	0	0	0
North Macedonia	0	0	0	0	0	0	0

**Table 06A: Cotton Supply and Distribution by Country 2024/25 (Continued)**  
(1,000 Metric Tons)

Country	Area Harvested	Production	Imports	Domestic Use	Loss	Exports	Ending Stocks
Madagascar	20	7	0	4	0	2	3
Malawi	30	8	0	3	0	4	5
Malaysia	0	0	158	147	0	4	137
Mali	623	233	0	5	0	223	89
Mauritius	0	0	16	16	0	0	3
Mexico	124	210	131	294	0	38	61
Moldova	0	0	4	5	0	0	1
Morocco	0	0	4	4	0	0	1
Mozambique	125	25	0	1	0	24	17
Netherlands	0	0	1	1	0	0	0
Nicaragua	0	0	27	25	0	0	5
Niger	5	2	0	0	0	2	1
Nigeria	270	76	0	54	0	22	24
Norway	0	0	0	0	0	0	0
Pakistan	2,000	1,089	1,328	2,351	0	11	457
Panama	0	0	0	0	0	0	0
Paraguay	65	54	0	16	0	33	37
Peru	10	9	58	65	0	0	9
Philippines	1	0	3	4	0	0	1
Poland	0	0	7	7	0	0	1
Portugal	0	0	28	27	0	2	6
Romania	0	0	0	0	0	0	0
Russia	0	0	20	19	0	1	3
Senegal	12	6	0	0	0	7	2
Serbia	0	0	1	1	0	0	0
Singapore	0	0	0	0	0	0	0
Slovakia	0	0	0	0	0	0	0
Slovenia	0	0	1	1	0	0	0
Somalia	12	2	1	2	0	0	0
South Africa	14	13	15	17	0	13	10
Spain	51	34	3	3	0	35	3
Sri Lanka	5	1	0	1	0	0	0
Sudan	70	33	0	2	0	38	25
Sweden	0	0	0	0	0	0	0
Switzerland	0	0	0	0	0	0	0

**Table 06A: Cotton Supply and Distribution by Country 2024/25 (Continued)**  
(1,000 Metric Tons)

Country	Area Harvested	Production	Imports	Domestic Use	Loss	Exports	Ending Stocks
Syria	30	35	0	16	0	33	14
Taiwan	0	0	21	24	0	0	5
Tajikistan	180	109	0	26	0	94	42
Tanzania	440	76	0	22	0	54	35
Thailand	1	0	112	109	0	0	23
Togo	76	25	0	0	0	23	22
Tunisia	0	0	2	2	0	0	0
Turkey	465	860	971	1,546	0	312	278
Turkmenistan	500	174	0	163	0	33	90
Uganda	65	24	0	3	0	22	21
Ukraine	0	0	0	0	0	0	0
United Kingdom	0	0	0	0	0	0	0
United States	3,159	3,138	1	370	-7	2,591	871
Uruguay	0	0	0	0	0	0	0
Uzbekistan	1,000	653	22	675	0	2	422
Venezuela	4	2	2	4	0	0	1
Vietnam	1	1	1,737	1,742	0	0	221
Yemen	5	2	0	2	0	0	0
Zambia	40	10	0	1	0	10	24
Zimbabwe	240	47	0	10	0	44	78
<b>World</b>							
World	30,158	25,957	9,394	25,942	-49	9,300	16,125

**Table 09: World Cotton Supply and Distribution**  
**(1,000 HA and 1000 480-lb. Bales)**

Country Mktg Year	Beginning Stocks	Area Harvested	Production	Imports	Total Supply	Exports	Domestic Use	Loss	Ending Stocks	Stock to Use %
<b>World</b>										
1994/95	27,872	32,180	85,934	30,340	144,146	28,018	84,462	-330	31,996	38
1995/96	31,996	35,913	93,656	26,994	152,646	27,296	85,853	-544	40,041	47
1996/97	40,041	33,763	89,814	28,564	158,419	26,602	87,851	-535	44,501	51
1997/98	44,501	33,772	92,074	25,909	162,484	26,777	87,070	-506	49,143	56
1998/99	49,143	32,871	85,820	24,460	159,423	23,507	84,358	-1,014	52,572	62
1999/00	52,572	32,341	87,743	27,968	168,283	27,126	90,534	-477	51,100	56
2000/01	51,100	31,945	88,449	26,182	165,731	26,156	91,713	-1,249	49,111	54
2001/02	49,111	33,783	99,275	29,266	177,652	29,081	94,269	-631	54,933	58
2002/03	54,933	30,727	90,630	30,151	175,714	30,400	98,293	-654	47,675	49
2003/04	47,675	31,895	94,388	34,119	176,182	33,072	98,034	-759	45,835	47
2004/05	45,835	35,581	121,521	33,939	201,295	34,949	109,007	-1,095	58,434	54
2005/06	58,434	35,026	117,388	44,649	220,471	44,922	116,448	-1,666	60,767	52
2006/07	60,767	34,324	120,400	38,285	219,452	37,416	123,925	-1,588	59,699	48
2007/08	59,699	32,883	119,665	39,451	218,815	38,868	123,890	-1,992	58,049	47
2008/09	58,049	30,834	109,865	30,534	198,448	30,207	110,628	-1,389	59,002	53
2009/10	59,002	30,188	103,171	36,931	199,104	35,805	119,584	20	43,695	37
2010/11	43,695	33,252	113,632	36,449	193,776	34,902	115,552	82	43,240	37
2011/12	43,240	36,000	127,634	45,432	216,306	45,978	103,914	-327	66,741	64
2012/13	66,741	34,757	126,301	47,479	240,521	46,298	107,745	-477	86,955	81
2013/14	86,955	32,558	118,608	41,436	246,999	41,228	109,240	-38	96,569	88
2014/15	96,569	33,942	120,031	36,528	253,128	36,235	112,825	208	103,860	92
2015/16	103,860	30,774	97,008	35,626	236,494	34,887	113,522	89	87,996	78
2016/17	87,996	29,780	105,100	37,760	230,856	38,112	116,582	-64	76,226	65
2017/18	76,226	33,171	121,598	41,336	239,160	41,579	122,982	-195	74,794	61
2018/19	74,794	32,414	113,732	42,374	230,900	41,389	118,955	-130	70,686	59
2019/20	70,686	34,090	118,206	40,725	229,617	40,880	105,173	-54	83,618	80
2020/21	83,618	31,304	113,261	48,578	245,457	48,501	124,468	-140	72,628	58
2021/22	72,628	32,001	114,335	42,917	229,880	42,708	115,683	398	71,091	61
2022/23	71,091	31,532	115,959	37,738	224,788	36,571	112,651	-265	75,831	67
2023/24	75,831	31,054	112,563	44,051	232,445	44,364	114,950	-207	73,338	64
2024/25	73,338	30,158	119,217	43,144	235,699	42,714	119,150	-224	74,059	62
2025/26	74,059	29,546	117,679	43,707	235,445	43,702	118,830	-231	73,144	62

**Table 10: United States Cotton Supply and Distribution**  
**(1,000 HA and 1000 480-lb. Bales)**

Country Mktg Year	Area Harvested	Yield	Beginning Stocks	Production	Imports	Total Supply	Exports	Domestic Use	Loss	Ending Stocks	Stock to Use %
<b>United States</b>											
1994/95	5,391	794	3,530	19,662	20	23,212	9,402	11,198	-38	2,650	13
1995/96	6,478	602	2,650	17,900	408	20,958	7,675	10,647	27	2,609	14
1996/97	5,216	791	2,609	18,942	403	21,954	6,865	11,126	-8	3,971	22
1997/98	5,425	754	3,971	18,793	13	22,777	7,500	11,349	41	3,887	21
1998/99	4,324	701	3,887	13,918	439	18,244	4,298	10,401	-394	3,939	27
1999/00	5,433	680	3,939	16,968	97	21,004	6,750	10,194	145	3,915	23
2000/01	5,282	708	3,915	17,188	16	21,119	6,740	8,862	-483	6,000	38
2001/02	5,596	790	6,000	20,303	21	26,324	11,000	7,696	180	7,448	40
2002/03	5,025	746	7,448	17,209	67	24,724	11,900	7,273	166	5,385	28
2003/04	4,858	818	5,385	18,255	45	23,685	13,758	6,266	211	3,450	17
2004/05	5,284	958	3,450	23,251	29	26,730	14,436	6,691	108	5,495	26
2005/06	5,586	931	5,495	23,890	28	29,413	17,673	5,871	-200	6,069	26
2006/07	5,152	912	6,069	21,588	19	27,676	12,959	4,935	303	9,479	53
2007/08	4,245	985	9,479	19,207	12	28,698	13,634	4,584	429	10,051	55
2008/09	3,063	912	10,051	12,825	0	22,876	13,261	3,541	-263	6,337	38
2009/10	3,049	870	6,337	12,183	0	18,520	12,037	3,550	-14	2,947	19
2010/11	4,330	910	2,947	18,102	9	21,058	14,376	3,900	182	2,600	14
2011/12	3,829	886	2,600	15,573	19	18,192	11,714	3,300	-172	3,350	22
2012/13	3,772	999	3,350	17,314	10	20,674	13,026	3,500	348	3,800	23
2013/14	3,051	921	3,800	12,909	13	16,722	10,530	3,550	292	2,350	17
2014/15	3,785	939	2,350	16,319	12	18,681	11,246	3,575	210	3,650	25
2015/16	3,268	859	3,650	12,888	33	16,571	9,153	3,450	168	3,800	30
2016/17	3,848	972	3,800	17,170	7	20,977	14,917	3,250	60	2,750	15
2017/18	4,492	1,014	2,750	20,923	3	23,676	16,281	3,225	-30	4,200	22
2018/19	4,038	990	4,200	18,367	3	22,570	14,700	2,975	-55	4,950	28
2019/20	4,650	932	4,950	19,913	3	24,866	15,300	2,150	-34	7,450	43
2020/21	3,323	957	7,450	14,608	2	22,060	16,050	2,400	-40	3,650	20
2021/22	4,153	919	3,650	17,523	5	21,178	14,050	2,550	-22	4,600	28
2022/23	2,950	1,068	4,600	14,468	2	19,070	12,450	2,050	-80	4,650	32
2023/24	2,606	1,008	4,650	12,066	2	16,718	11,750	1,850	-32	3,150	23
2024/25	3,159	993	3,150	14,413	3	17,566	11,900	1,700	-34	4,000	29
2025/26	2,982	966	4,000	13,224	5	17,229	12,000	1,700	-71	3,600	26

**Table 11: Foreign Cotton Supply and Distribution**  
**(1,000 HA and 1000 480-lb. Bales)**

Country Mktg Year	Area Harvested	Yield	Beginning Stocks	Production	Imports	Total Supply	Exports	Domestic Use	Loss	Ending Stocks
<b>Total Foreign</b>										
1993/94	25,545	523	29,941	61,416	27,911	119,268	19,758	75,017	151	24,342
1994/95	26,789	539	24,342	66,272	30,320	120,934	18,616	73,264	-292	29,346
1995/96	29,435	560	29,346	75,756	26,586	131,688	19,621	75,206	-571	37,432
1996/97	28,547	541	37,432	70,872	28,161	136,465	19,737	76,725	-527	40,530
1997/98	28,347	563	40,530	73,281	25,896	139,707	19,277	75,721	-547	45,256
1998/99	28,547	548	45,256	71,902	24,021	141,179	19,209	73,957	-620	48,633
1999/00	26,908	573	48,633	70,775	27,871	147,279	20,376	80,340	-622	47,185
2000/01	26,663	582	47,185	71,261	26,166	144,612	19,416	82,851	-766	43,111
2001/02	28,187	610	43,111	78,972	29,245	151,328	18,081	86,573	-811	47,485
2002/03	25,702	622	47,485	73,421	30,084	150,990	18,500	91,020	-820	42,290
2003/04	27,037	613	42,290	76,133	34,074	152,497	19,314	91,768	-970	42,385
2004/05	30,297	706	42,385	98,270	33,910	174,565	20,513	102,316	-1,203	52,939
2005/06	29,440	691	52,939	93,498	44,621	191,058	27,249	110,577	-1,466	54,698
2006/07	29,172	737	54,698	98,812	38,266	191,776	24,457	118,990	-1,891	50,220
2007/08	28,638	764	50,220	100,458	39,439	190,117	25,234	119,306	-2,421	47,998
2008/09	27,771	761	47,998	97,040	30,534	175,572	16,946	107,087	-1,126	52,665
2009/10	27,139	730	52,665	90,988	36,931	180,584	23,768	116,034	34	40,748
2010/11	28,922	719	40,748	95,530	36,440	172,718	20,526	111,652	-100	40,640
2011/12	32,171	758	40,640	112,061	45,413	198,114	34,264	100,614	-155	63,391
2012/13	30,985	766	63,391	108,987	47,469	219,847	33,272	104,245	-825	83,155
2013/14	29,507	780	83,155	105,699	41,423	230,277	30,698	105,690	-330	94,219
2014/15	30,157	749	94,219	103,712	36,516	234,447	24,989	109,250	-2	100,210
2015/16	27,506	666	100,210	84,120	35,593	219,923	25,734	110,072	-79	84,196
2016/17	25,932	738	84,196	87,930	37,753	209,879	23,195	113,332	-124	73,476
2017/18	28,679	764	73,476	100,675	41,333	215,484	25,298	119,757	-165	70,594
2018/19	28,376	732	70,594	95,365	42,371	208,330	26,689	115,980	-75	65,736
2019/20	29,440	727	65,736	98,293	40,722	204,751	25,580	103,023	-20	76,168
2020/21	27,981	768	76,168	98,653	48,576	223,397	32,451	122,068	-100	68,978
2021/22	27,848	757	68,978	96,812	42,912	208,702	28,658	113,133	420	66,491
2022/23	28,582	773	66,491	101,491	37,736	205,718	24,121	110,601	-185	71,181
2023/24	28,448	769	71,181	100,497	44,049	215,727	32,614	113,100	-175	70,188
2024/25	26,999	845	70,188	104,804	43,141	218,133	30,814	117,450	-190	70,059
2025/26	26,564	856	70,059	104,455	43,702	218,216	31,702	117,130	-160	69,544