



United States
Department of
Agriculture

Foreign
Agricultural
Service

World Agricultural Production

Circular Series
WAP 09-25
September 2025

Australia Wheat: Production and Yield Increase to Third Highest on Record

USDA forecasts Australia wheat production for marketing year (MY) 2025/26 at 34.5 million metric tons, up 11 percent from last month, 1 percent from last year and 2 percent above the 5-year average. Harvested area is forecast at 12.7 million hectares, up 2 percent from last month, but down 3 percent from last year and 1 percent below the 5-year average. Yield is forecast at 2.72 metric tons per hectare, up 10 percent from last month, 4 percent from last year and 3 percent above the 5-year average.

The 11 percent increase in production from last month is supported by a higher official forecast released by the Australian Bureau of Agricultural and Resource Economics and Sciences (ABARES) on September 2, 2025, as well as improved growing conditions due to opportune precipitation during the season. In addition, a recent crop travel assessment was conducted by FAS/Washington and FAS/Canberra in the Kwinana North zone of Western Australia where the wheat crop was observed to be in excellent condition.

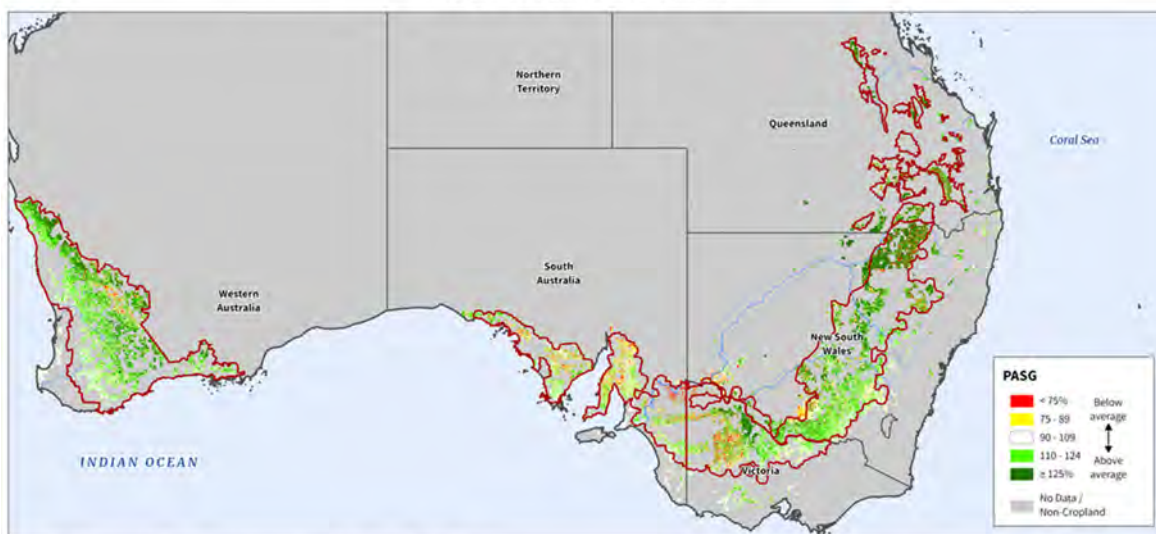


Approved by the World Agricultural Outlook Board

The beginning of the season started out very dry, especially in Western Australia where approximately 27 percent of the entire wheat crop is grown. Beneficial rain fell in early June which was enough to get the dry-sown crops to emerge. Additional timely precipitation came in July, August and early September to further boost the crop along. As the wheat crop enters the reproductive stage of growth, the satellite-derived 1-month Percent of Average Seasonal Greenness (PASG) depicts above-average conditions and crop vigor in the wheat producing areas across Australia. This provides additional evidence to support the increases in production and yield for MY 2025/26 to the third highest on record.

Australia: Wheat Belt Percent of Average Seasonal Greenness (PASG)

July 28 to August 28, 2025 (1-Month)



Sources: MODIS Percent of Average Seasonal Greenness (1-Month, Jul 28 to Aug 28, 2025); IFPRI SPAM 2020 Wheat Mask

Wheat is grown in the winter in Australia. Planting begins in April with harvest typically beginning in October and continuing into January. *(For more information, please contact Shannon.Moyo@usda.gov.)*

Russia Wheat: Spring Wheat Yield Offsets Area Decrease and Pushes Production Up

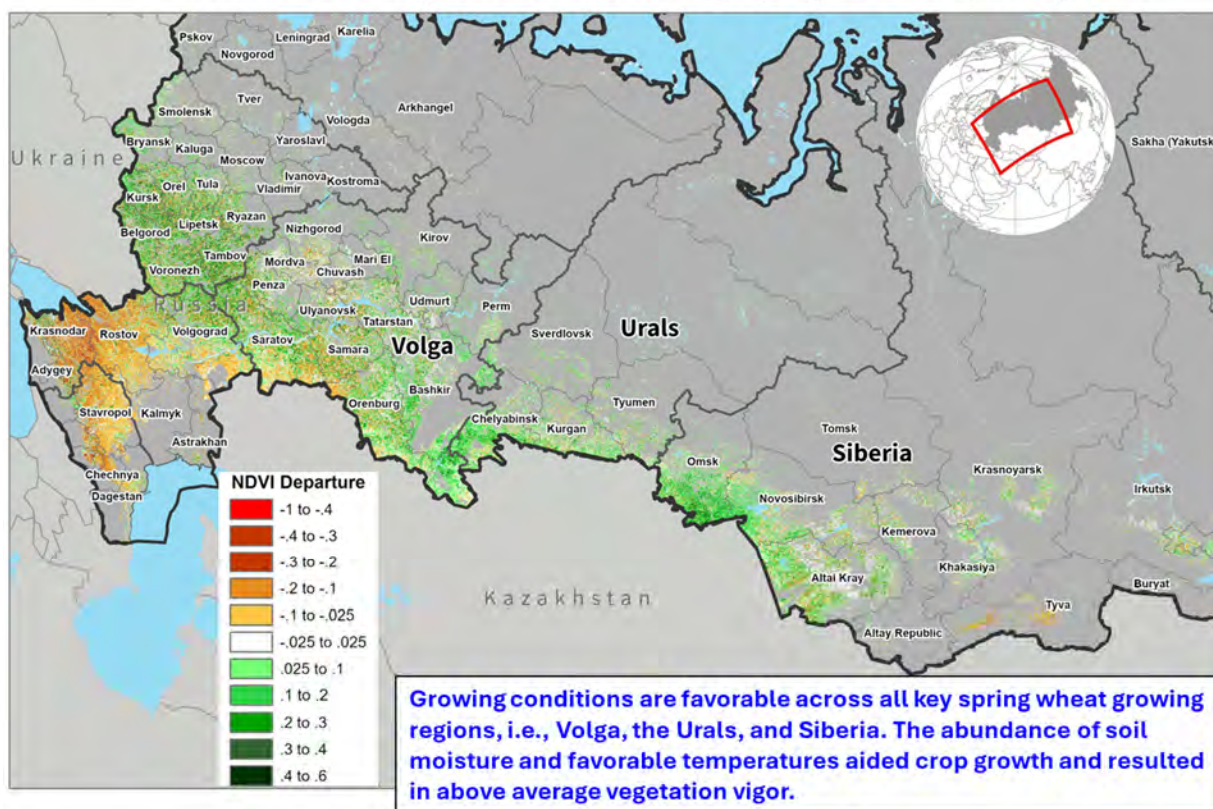
USDA estimates Russia wheat production for marketing year (MY) 2025/26 at 85.0 million metric tons (mmt), up 2 percent from last month and 4 percent from last year. The estimate includes 61.5 mmt of winter wheat and 23.5 mmt of spring wheat. USDA crop production estimates for Russia exclude estimated output from Crimea. The all wheat yield is estimated at a record 3.21 tons per hectare (t/ha), up 3 percent from last month and 9 percent from last year. Total harvested area is estimated at 26.5 million hectares (mha), down less than 1 percent from last month and 5 percent from last year.

Russia's statistical agency, Rosstat, released its final planted area statistics for all crops to be harvested in 2025. The winter wheat planted area went down from 16.1 mha to 15.8 mha, about a 2 percent year-over-year decrease, and the spring wheat planted area dropped from 12.4 mha to 11.1 mha, about a 10 percent year-over-year decrease. Rosstat's reported planted area for Crimea, which USDA removes from Russia's estimates, is near the 5-year average of 300,000 hectares.

Thus, USDA revised its estimated harvested area for both crops considering the Rosstat planted area numbers and accounting for expected abandonment based on the historical 5-year average.

The spring wheat yield is revised up based on widespread favorable weather. An abundance of soil moisture and favorable temperatures promoted crop vigor and boosted yield prospects. The satellite-derived Normalized Difference Vegetation Index (NDVI) reveals above-average crop vigor across all key spring wheat growing regions, i.e., Volga, the Urals, and Siberia.

Russia: NDVI Departure from Average (August 5 - 12, 2025)



Sources: NASA MODIS; USGS GFSAD 30m crop cover (2015)

Harvest of the MY 2025/26 crop is progressing. According to the Ministry of Agriculture (MinAg), as of August 29, farmers have harvested 66.4 mmt of wheat in bunker weight. Bunker yield is 3.82 t/ha, and at this stage of the campaign, it is higher compared to last season during the same time when the bunker yield was 3.47 t/ha. Reported MinAg output and yield include Crimea.

Area, yield, and production estimates for Russia winter wheat and spring wheat are available on PSD Online. Select “Downloadable Data Sets” and open the zipped file for “Russia Wheat; Winter/Spring Area & Production” (For more information, please contact Iliana.Mladenova@usda.gov.)

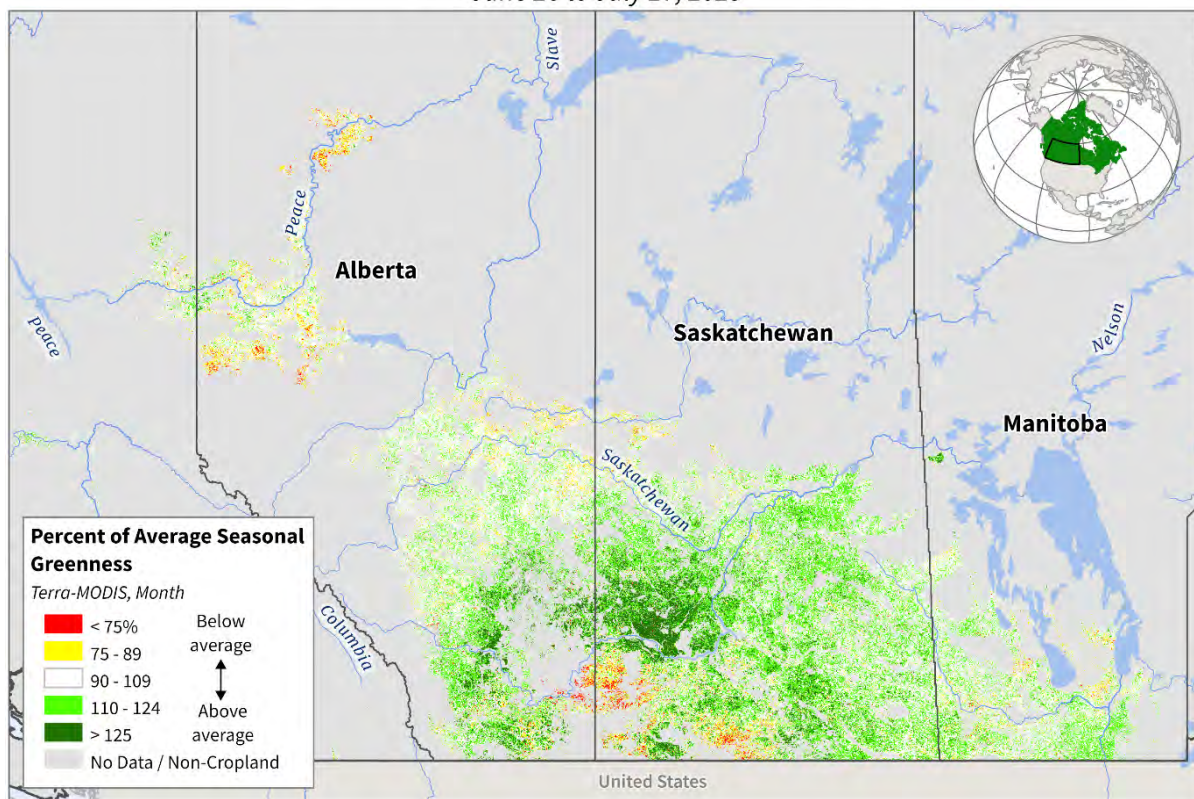
Canada Wheat: Production Forecast Similar to Last Year

USDA estimates Canada wheat production for marketing year (MY) 2025/26 at 36.0 million metric tons, up 3 percent from last month, nearly unchanged from last year, and 11 percent above the 5-year average. Harvested area is estimated at 10.7 million hectares, unchanged from last month, less than 1 percent above last year, and 6 percent above the 5-year average. Yield is estimated at 3.36 metric tons per hectare, up 3 percent from last month, but down less than 1 percent from last year. Yield is 6 percent above the 5-year average.

This summer's variable growing conditions brought yield-improving rains to parts of the Prairies, whereas continued hot and dry conditions limited crop development in other areas, including the Peace River Valley. Satellite-derived Percent of Average Seasonal Greenness (PASG) is an indicator of how much greenness has accumulated in the current season compared to the long-term average, illuminating relative vegetation conditions and growth compared to historical norms. The unevenness of the precipitation this season is evident in the above-average crop conditions compared to the below-average crop conditions in areas such as the Peace River Valley and southern Saskatchewan.

Canadian Prairies: Percent of Average Seasonal Greenness

June 26 to July 27, 2025



Source: NASA MODIS Percent of Average Seasonal Greenness (1-month);
AgCanada 2024 Cropland Mask

Provincial reports have noted above-average dryland yields for major crops in Alberta and dry conditions that facilitated steady harvest progress in the Prairies. Winter wheat harvest is complete, and spring harvest—which typically concludes by late September—is underway.

Spring wheat:

Central Saskatchewan, July 22, 2025



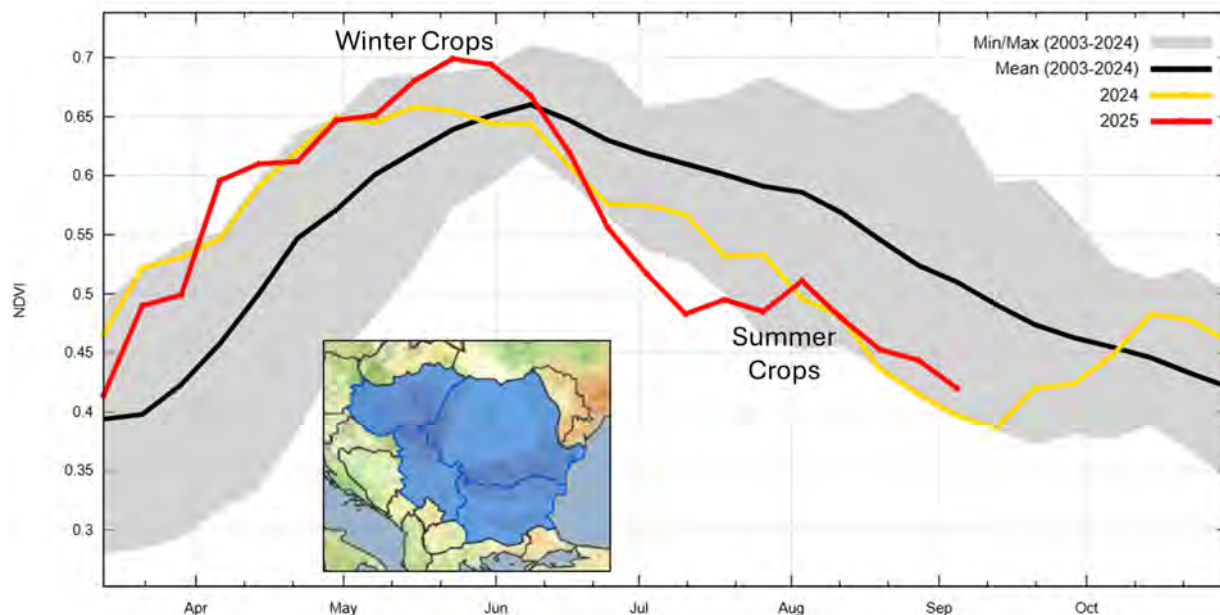
Photo courtesy of FAS/Washington

In addition, Statistics Canada (StatCan) published its early season model-based field crop yield estimates based on July agroclimatic and satellite data. StatCan projects slightly less (1 percent) total wheat production compared to last year, which was an above-average harvest. (*For more information, please contact Sarah.Parker@usda.gov.*)

European Union Corn: Further Damage Realized in Southeast Europe and France

USDA estimates European Union (EU) corn production for marketing year (MY) 2025/26 at 55.3 million metric tons (mmt), down 2.7 mmt (5 percent) from last month, 4.0 mmt (7 percent) from last year, and 12 percent below the 5-year average. Harvested area is estimated at 8.0 million hectares (mha), down 50,000 hectares from last month, 8 percent below last year, and 10 percent below the 5-year average. Yield is estimated at 6.91 tons per hectare (t/ha), down from 7.21 t/ha last month, but up from 6.81 t/ha last year and the 5-year average of 7.06 t/ha.

NDVI for the Balkan Region Hungary, Romania, Bulgaria, and non-EU member Serbia



Source: MODIS NDVI (Aqua 250m) from the operational USDA/NASA Global Agricultural Monitoring (GLAM) system and ESRI Sentinel-2 crop mask.

The Balkans in southeast Europe have had two consecutive years of extremely difficult summer conditions. After a record or near-record winter wheat crop, conditions dramatically worsened in June when many areas received no precipitation. July and August also recorded below-average rainfall and excessive, damaging temperatures. EU corn area has fallen in recent years as farmers have either switched to winter crops, which benefit from higher seasonal moisture levels and less heat, or to more drought-tolerant sunflowers. During recent crop assessment travel by FAS/Washington, FAS/Belgrade, and FAS/Bucharest, the trend of less corn area was repeatedly communicated by farmers, government, and industry. There is very little irrigation available and conventional plowing is standard procedure. Few farmers are using minimum or strip-till farming practices which conserve water. Improved hybrid seeds have mitigated further damage, while late-planted corn benefitted by missing some of the earlier heat at pollination and later received limited precipitation.

Romania Corn: August 2025

Corn Field

Northwest of Craiova, Romania
August 29, 2025



Damaged Corn

Southeast of Craiova, Romania
August 28, 2025



Photos courtesy of FAS/Washington

Among USDA's largest reductions in the EU for September was Romania, with production lowered 1.6 mmt to 6.1 mmt, including a downward revision of 68,000 hectares to area. Hungary is down 0.8 mmt to 3.6 mmt, and Bulgaria was lowered 0.6 mmt to 1.4 mmt. The reductions continued outside the EU's boundary to neighboring Serbia, where corn production is revised down 1.6 mmt and area is reduced by 50,000 hectares. During August, detrimental heat in France's corn region in the southwest topped 40 degrees Celsius (104 °F) multiple times, prompting a decrease in production of 0.5 mmt to 12.8 mmt.

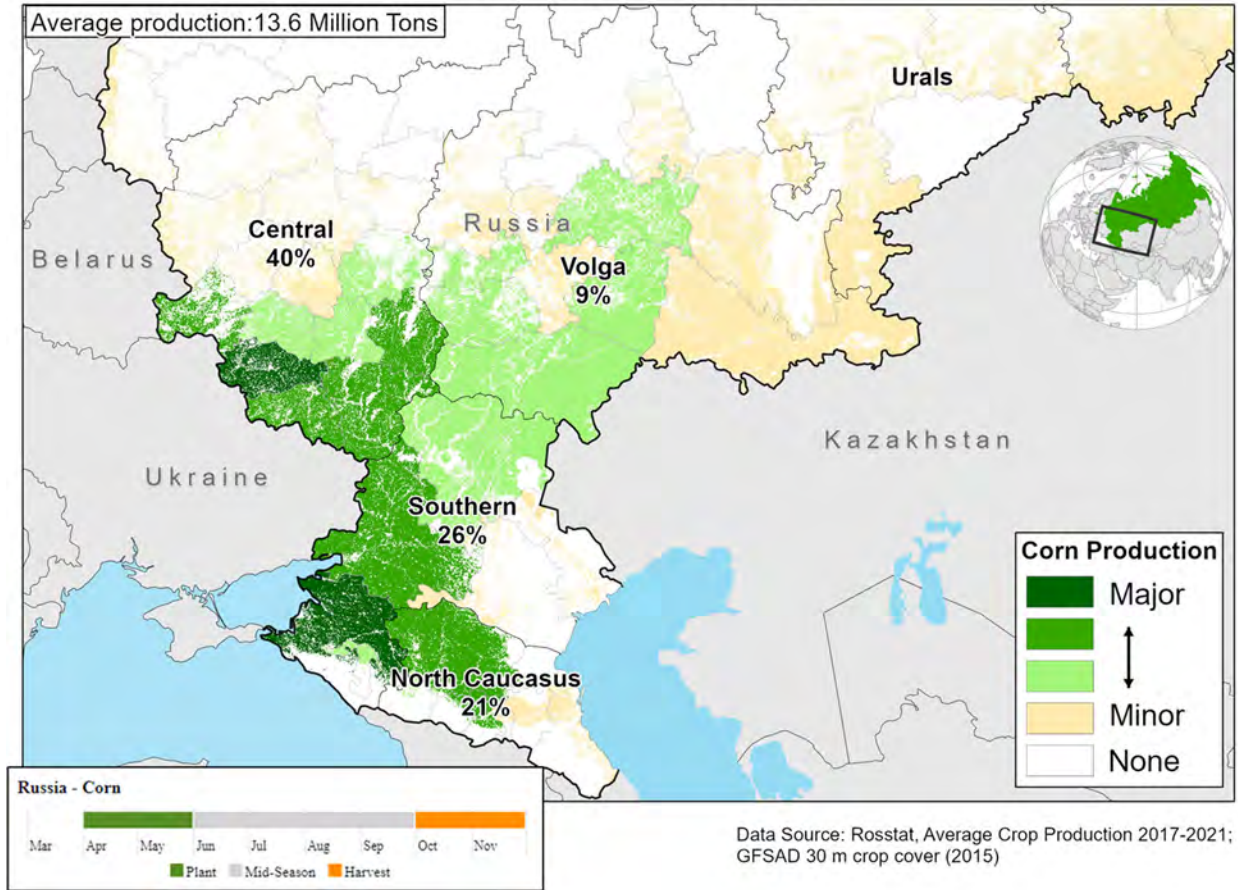
For country-specific area, yield, and production estimates within the European Union (EU), please go to PSD Online at <https://apps.fas.usda.gov/PSDOnline/app/index.html#/app/home>, and select "Downloadable Data Sets." Select the zipped file for "EU Countries Area & Production."

(For more information, please contact Bryan.Purcell@usda.gov.)

Russia Corn: Production Down on Lower Yield

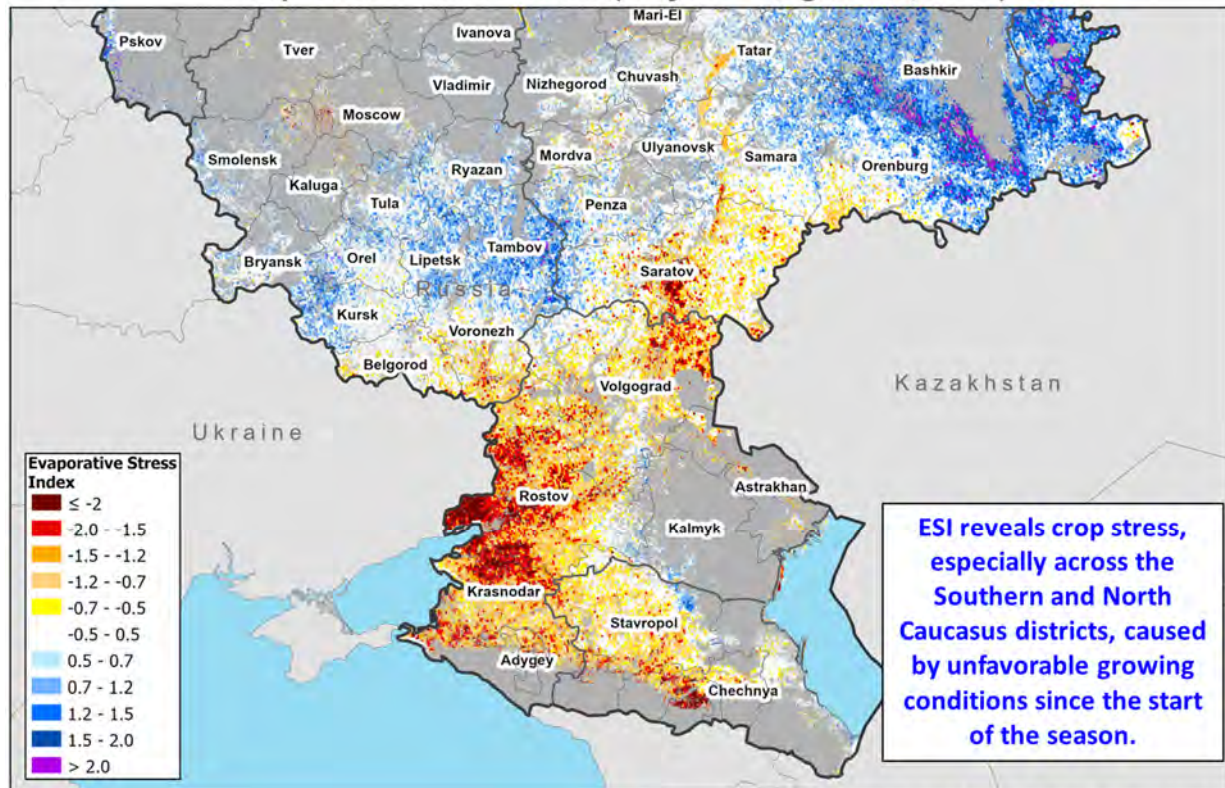
USDA estimates Russia corn production for marketing year (MY) 2025/26 at 14.1 million metric tons, down 6 percent from last month, but up 1 percent from last year. Yield is estimated at 5.64 tons per hectare (t/ha), down 6 percent from last month, but up 9 percent from last year. Harvested area is estimated at 2.5 million hectares, unchanged from last month and down 7 percent from last year and the 5-year average.

RUSSIA: Corn Production



Yield is revised down month-to-month due to unfavorable growing conditions since the start of the season. As evident in the Evaporative Stress Index (ESI) image, the corn crop is stressed due to prolonged dryness and lack of adequate soil moisture availability, especially across the Southern and North Caucasus Districts of Russia.

European Russia Evaporative Stress Index (July 24 - August 20, 2025)



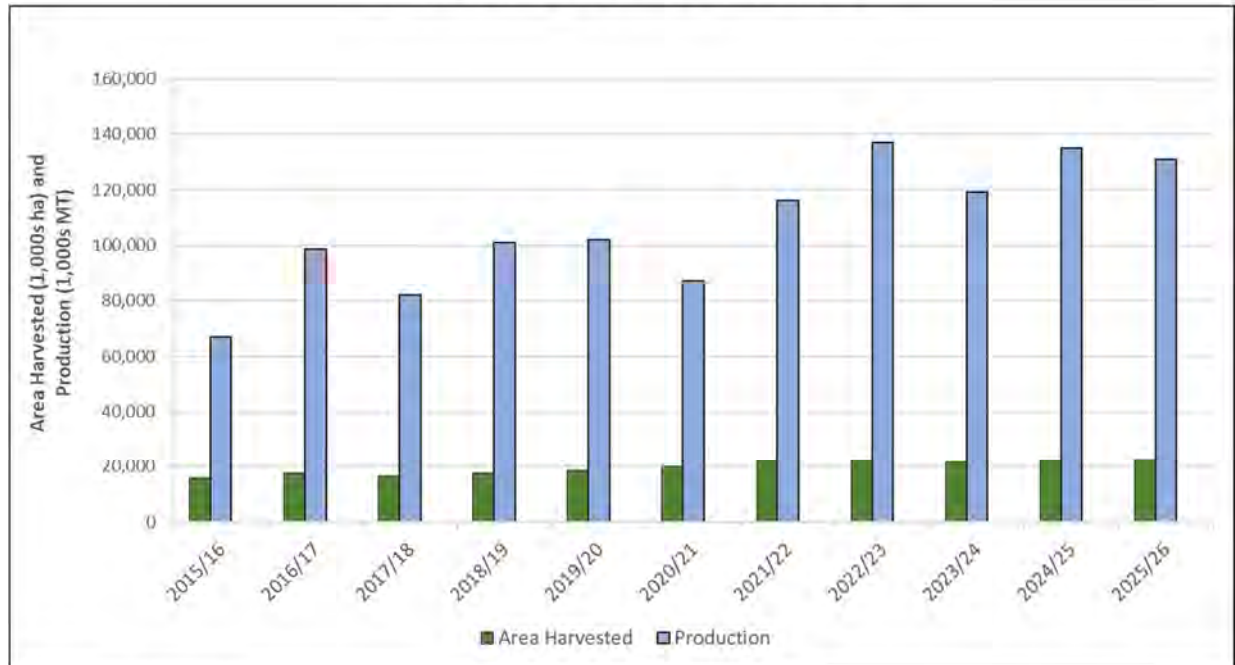
Source: NASA ESI; USGS GFSAD 30 m crop cover (2015)

In addition, Russia’s statistical agency, Rosstat, released its final planted area statistics for all crops to be harvested in 2025. USDA’s estimated harvested area is consistent with Rosstat’s corn number. Based on official data published by the Ministry of Agriculture, harvest of the MY 2025/26 crop has begun and is still in its early stages. As of August 29, farmers have collected about 93,000 tons of corn from about 25,000 hectares. This season’s starting yield of 3.7 t/ha is higher than last year’s 2.99 t/ha. *(For more information, please contact Iliana.Mladenova@usda.gov.)*

Brazil Corn: MY 2024/25 Production Approaches Record

USDA estimates Brazil corn production for marketing year (MY) 2024/25 at a near record 135.0 million metric tons (mmt), up 2 percent from last month, 13 percent from MY 2023/24, and 14 percent above the 5-year average. Harvested area is estimated at 22.3 million hectares, unchanged from last month, but 3 percent above MY 2023/24 and the 5-year average. Yield is estimated at 6.05 tons per hectare, up 2 percent from last month, 10 percent from MY 2023/24, and 11 percent above the 5-year average.

Brazil Corn Area and Production

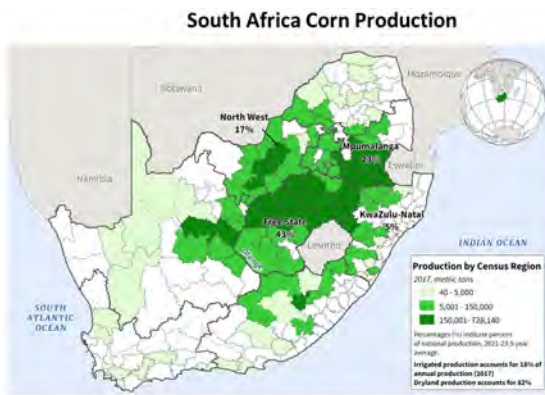


Source: USDA PSD Online

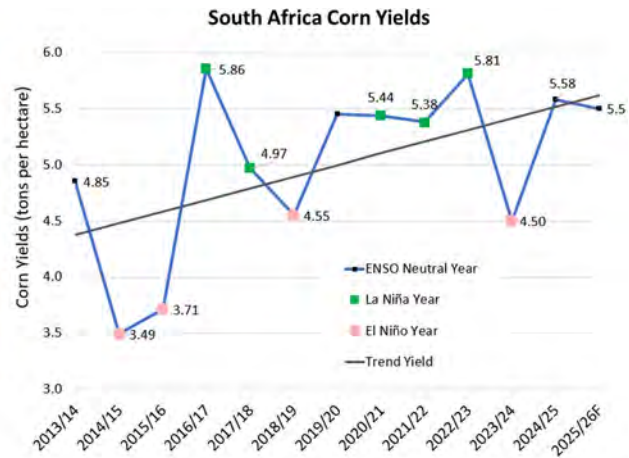
Favorable conditions and an extended rainy season for the *safrinha* (or second) corn crop have pushed total national production to a near record (record production was achieved in MY 2022/23, on slightly higher area). *Safrinha* harvest results, as reported by government and industry, indicate record yields in many states of the Central West region, where the majority of the second crop is grown. The *safrinha* crop accounts for roughly 75 percent of total annual production. (For more information, please contact Aaron.Mulhollen@usda.gov.)

South Africa Corn: Third Largest Harvest on Record from Beneficial Rains in MY 2024/25

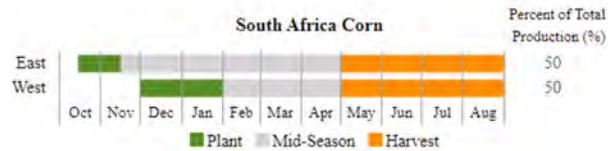
USDA estimates South Africa corn production for marketing year (MY) 2024/25 at 16.5 million metric tons (mmt), up 5 percent from last month, up 23 percent from the previous year's reduced production caused by an El Niño drought, and up 3 percent from the 5-year average. The MY 2024/25 corn production estimate includes output from both developing and commercial sectors, with the commercial sector accounting for approximately 96 percent of total corn production. Harvested area is estimated at 3.0 million hectares (mha), unchanged from last month, but down 28,000 hectares (1 percent) from the previous year, and down 2 percent from the 5-year average. Yield is estimated at 5.58 metric tons per hectare (t/ha), up 24 percent from the previous year's drought-reduced crop, and 5 percent above the 5-year average. MY 2024/25 is the third highest recorded yield, due to beneficial rains received during the critical pollination and grain-filling crop stages.



Source: South Africa Crop Estimates, Department of Agriculture, Land Reform, and Rural Development, 2023. South Africa 2017 Census of Commercial Agriculture.

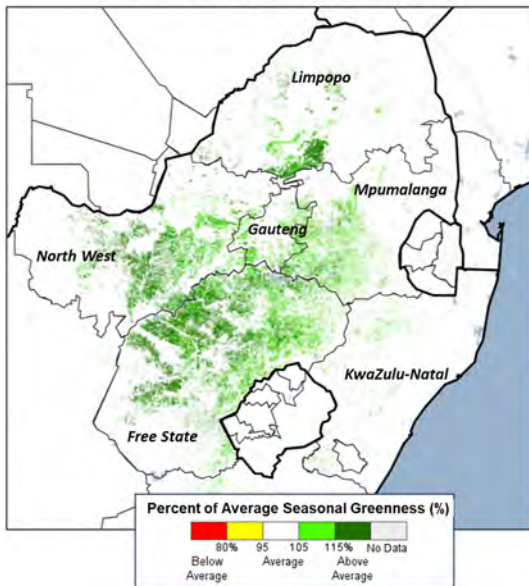


Source: USDA PSD Online

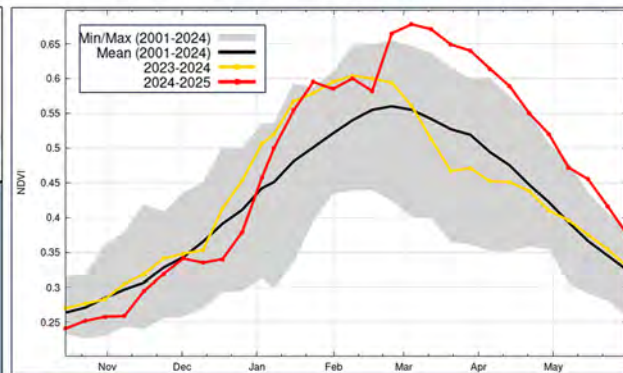


Corn planting in South Africa starts from early October and extends to mid-January, depending on the arrival of seasonal planting rains, with the optimal planting months in November and December. South Africa's planting season rains were below average from October through mid-December 2024, and crop conditions were poor for crop establishment in early January 2025. However, above-average rainfall from late January (pollination) through April (grain-filling) boosted yields and provided South Africa with the fourth largest production (16.5 mmt) on record.

Two-Month Percent of Average Seasonal Greenness (PASG) from February 26 – April 30, 2025



Cropland NDVI for Major Corn Producing Provinces (Approximately 92 percent of total corn production)



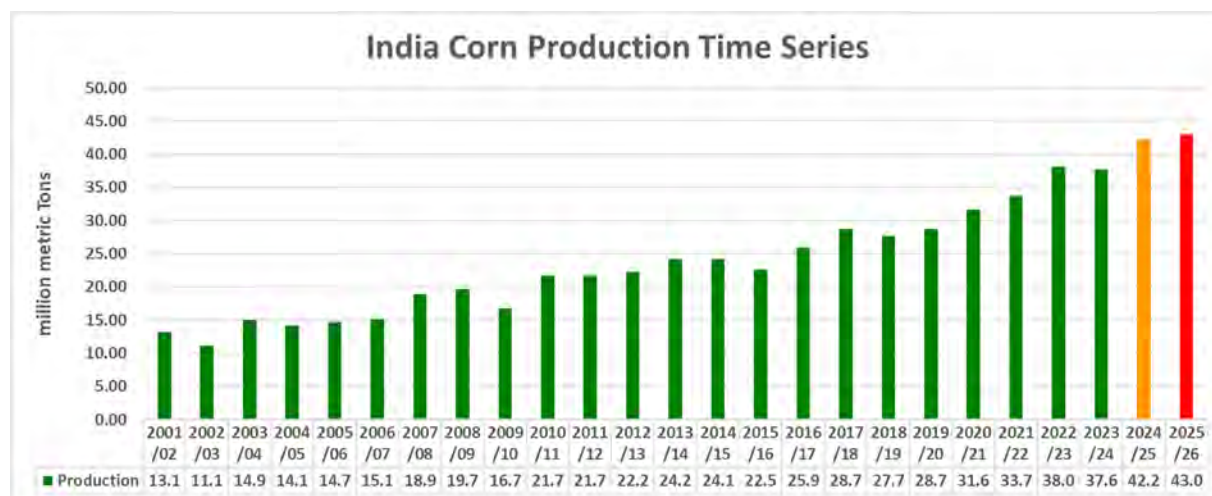
Cropland NDVI measurements were above average from pollination (late January) through grain-filling (April) growth stages and estimated MY 2024/25 yield (5.58 t/ha) is the third highest on record.

Source: Cropland NDVI-MODIS and PASG-MODIS (250-m) measurements are from the operational USDA/NASA Global Agricultural Monitoring (GLAM) system.

South African farmers started to harvest the bumper crop in April, and the bulk of the harvest (87 percent) was delivered to the silos from May through August. (For more information, please contact Curt.Reynolds@usda.gov.)

India Corn: Production Revised Up

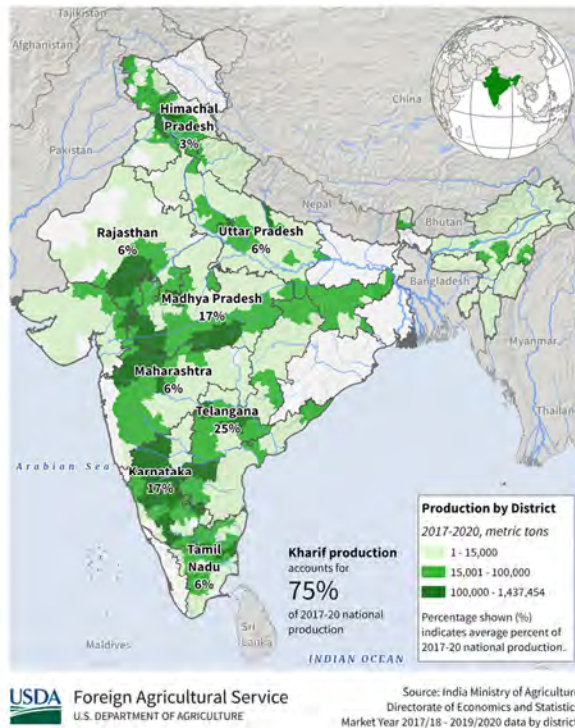
USDA estimates India corn production for marketing year (MY) 2025/26 at a record 43.0 million metric tons, up 2 percent from last month and 2 percent from last year. The harvested area is estimated at a record 11.5 million hectares, up 3 percent from last year. Yield is estimated at 3.74 metric tons per hectare, up 2 percent from last month, but down 1 percent from last year.



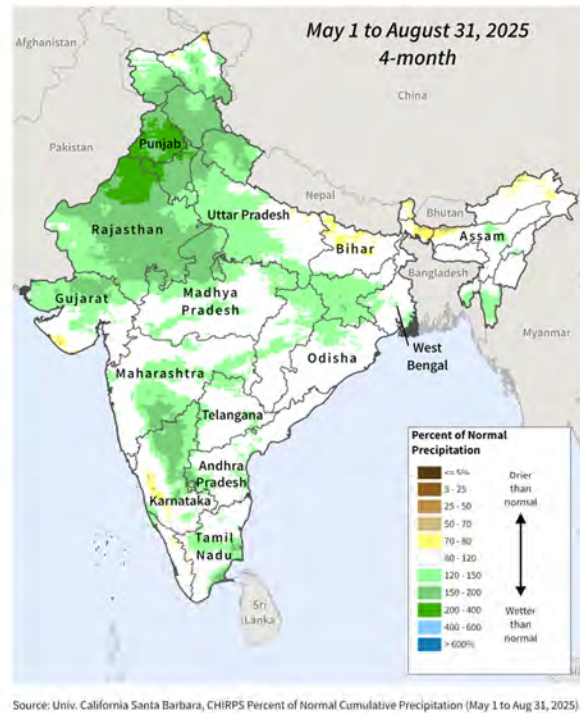
Source: USDA PSD Online

Corn is grown both in the *kharif* season, which accounts for 70 percent of the total production, and during *rabi* season. Planting for the *kharif* crop typically starts in June at the onset of the southwest monsoon rainfall while planting for the *rabi* crop starts in November. As of mid-August, India's Ministry of Agriculture and Farmers Welfare (MoAFW) reported *kharif* corn planting at 9.3 million hectares, an increase of nearly 12 percent over last year. FAS/New Delhi also reported that the *kharif* corn crop in major producing states was planted on time and was progressing well under adequate soil moisture conditions with no reports of any outbreak of pests or diseases. The major *kharif* corn production states are Telangana (25 percent of national total), Karnataka (17 percent), and Madhya Pradesh (17 percent). *Rabi* corn is predominantly grown in Bihar (24 percent), Andhra Pradesh (18 percent), Telangana (15 percent), Tamil Nadi (15 percent), and West Bengal (12 percent).

India: Kharif Corn Production



India: Percent of Normal Cumulative Precipitation



Monsoon Update: This year's southwest monsoon arrived in May, approximately eight days earlier than the usual onset date of June 1, marking the earliest start since 2009. The India Meteorological Department (IMD) anticipated a rapid advancement of the monsoon during August and September, ensuring adequate soil moisture for *kharif* crops. IMD's updated seasonal forecast for June to September indicates a 33 percent probability of rainfall reaching 106 percent of the long-period average (LPA). As of July 14, cumulative rainfall had already reached 10 percent above the LPA. According to India's Central Water Commission's July reservoir storage bulletin, live storage stood at 94.5 billion cubic meters (BCM), 52 percent of the total capacity as compared to 26 percent last year, and well above the 10-year average of 28 percent during the same period.

In general, the above-average rainfall conditions have provided adequate irrigation supplies and soil moisture for *kharif* sowing and favorable crop establishment and development. (For more information, please contact Dath.Mita@usda.gov).

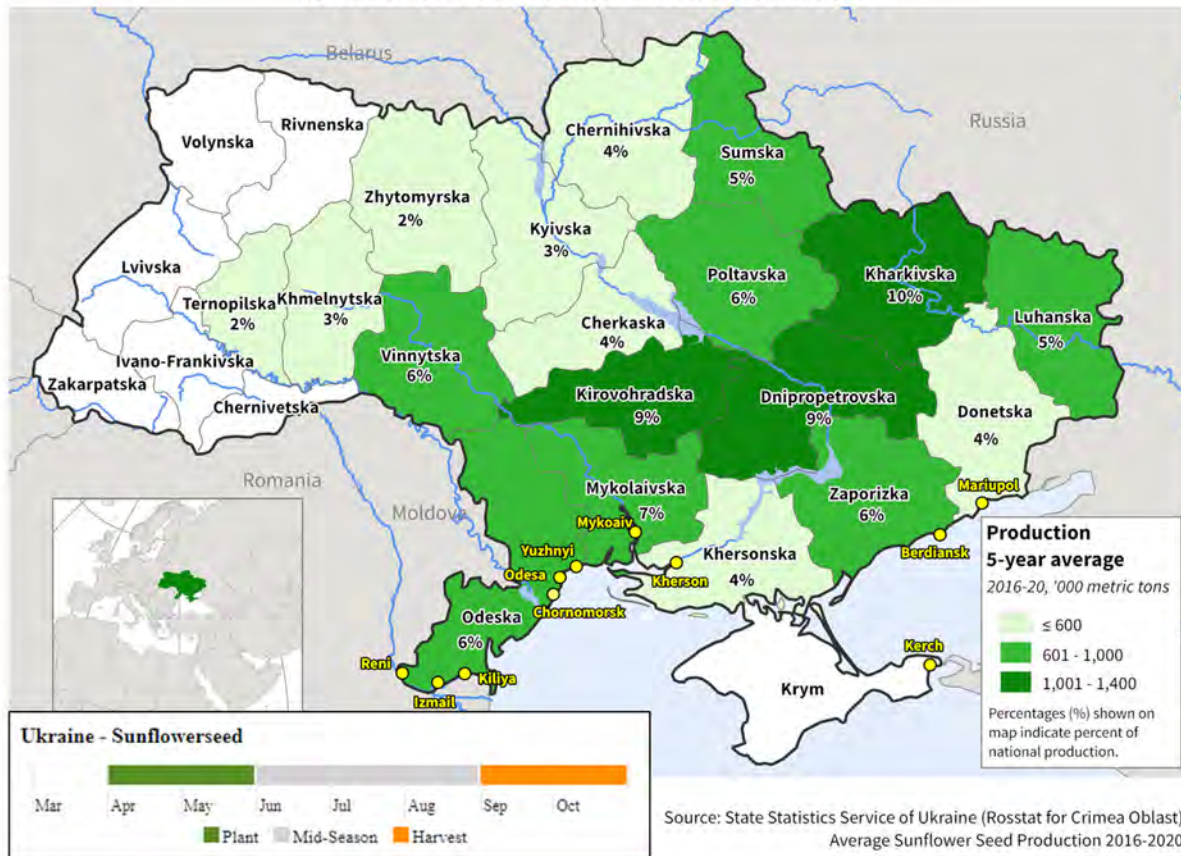
Ukraine Sunflowerseed: Lower Yield Potential Due to Seasonal Dryness and Heat

USDA estimates Ukraine sunflowerseed production for marketing year (MY) 2025/26 at 12.7 million metric tons, down 6 percent from last month and 2 percent from last year. Yield is estimated at 2.19 tons per hectare, down 6 percent from last month, but up 1 percent from last year. Harvested area is estimated at 5.8 million hectares, unchanged from last month and down 3 percent from last year.

At present, Ukraine can be divided into two zones, areas in conflict and areas not in conflict. As elaborated by FAS/Kyiv in Ukraine, due to the ongoing war there is no official and reliable information about the status of Ukraine's agriculture in the conflict zone. As a result, area and

production data currently provided by FAS/Kyiv, Ukraine's Ministry of Agriculture (MinAg), and the State Statistical Service of Ukraine, which inform USDA's forecasts, do not reflect the whole country. MinAg also does not include Crimea. USDA crop production estimates for Ukraine include estimated output from Crimea. Crimean area and production numbers are extracted from the agricultural crop reports provided by the Russian Statistical Agency, Rosstat.

Ukraine: Sunflower Seed Production



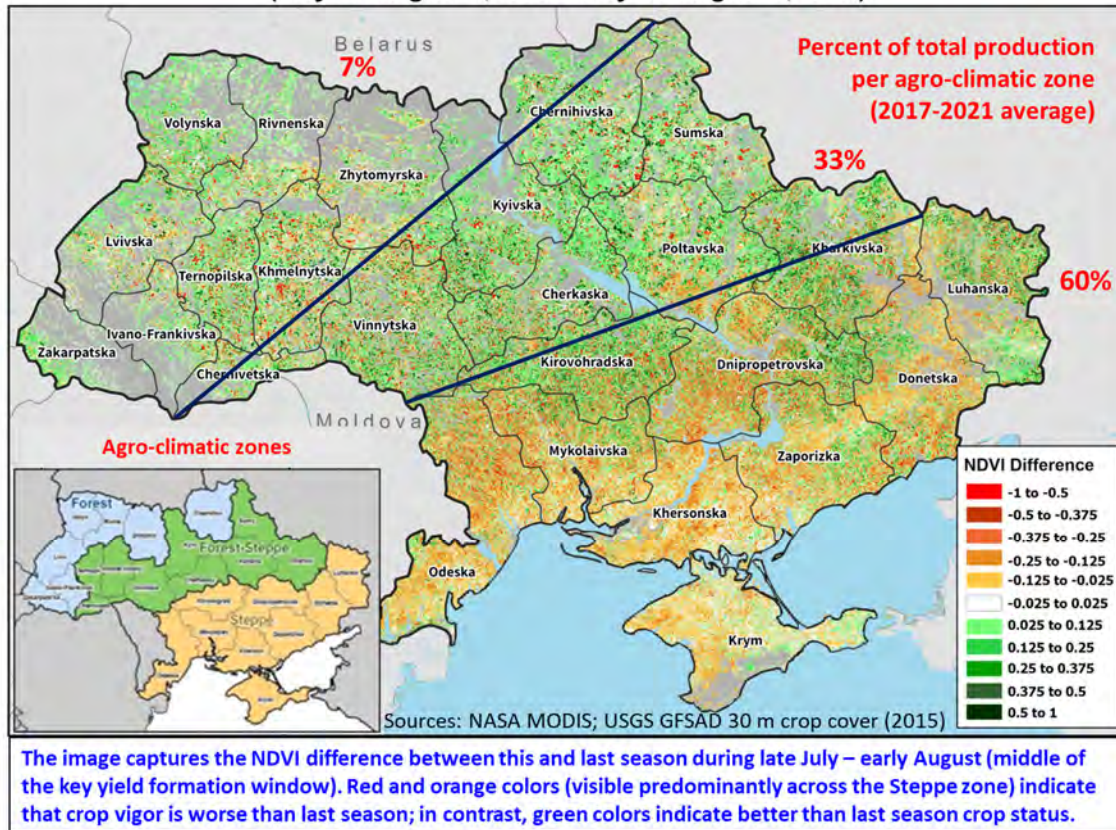
This month's downward yield revision is due to persistent unfavorable weather since the start of the season. Dryness and heat challenged the Ukraine sunflower crop for the second year in a row. Sub-optimal moisture availability and heat at flowering and grain filling, which typically occurs in mid-to-late July and early August, reduced the yield potential of this season's crop. Crop travel conducted by FAS/Kyiv in early September across Poltava revealed patchy conditions and mixed crop vigor, consistent with satellite-derived Normalized Difference Vegetation Index (NDVI) data.



Photo courtesy of FAS/Kyiv

The NDVI depicts crop vigor substantially below average and worse than last season, across the Steppe zone, which historically accounts for about 60 percent of Ukraine’s total sunflowerseed production. Growing conditions are better than last season across the central part of the country and the more northern growing areas. Harvest will begin in early September and continue until mid-November.

**Ukraine NDVI Difference from Last Year
(July 28-August 4, 2025 - July 27-August 3, 2024)**



USDA crop production estimates for Ukraine include estimated output from Crimea. (For more information, please contact Iliana.Mladenova@usda.gov.)

Australia Rapeseed: Production and Yield Increase Due to Excellent Seasonal Conditions

USDA forecasts Australia rapeseed production for marketing year (MY) 2025/26 at 6.4 million metric tons, up 4 percent from last month, 5 percent from last year, but 1 percent below the 5-year average. Harvested area is forecast at 3.4 million hectares, unchanged from last month, down 1 percent from last year but 2 percent above the 5-year average. Yield is forecast at 1.88 metric tons per hectare, up 4 percent from last month and 5 percent from last year.

FAS/Washington and FAS/Canberra conducted a crop travel assessment during the beginning of August in Western Australia. The rapeseed crop conditions were observed to be very good. Farmers were optimistic that the precipitation that fell during the season would give the rapeseed crop an additional boost in yield.

Rapeseed in excellent condition in Kalannie, Western Australia – August 7, 2025



The beginning of this season started out very dry, however, widespread timely precipitation in June, July and August saturated the soils and led to favorable conditions for crop development throughout the growing season. This has resulted in MY 2025/26 currently being at the third highest production on record for rapeseed in Australia.

Rapeseed is grown in the winter in Australia. Sowing commences in May and harvest begins in October. (For more information, please contact Shannon.Moyo@usda.gov.)

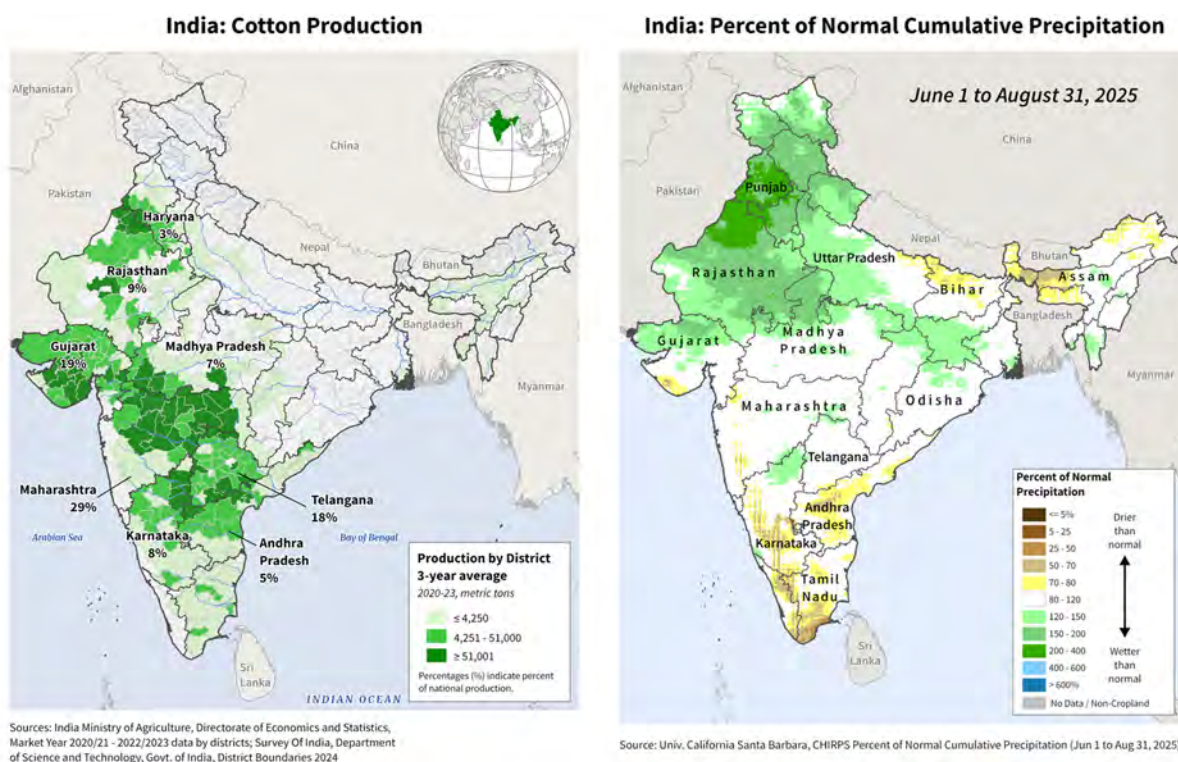
India Cotton: Production Revised Up

USDA estimates India cotton production for marketing year (MY) 2025/26 at 24.0 million 480-pound bales, up 2 percent from last month and unchanged from the MY 2024/25 crop. The harvested area is estimated at 11.2 million hectares, unchanged from last month, but down 3 percent from last year. Yield is estimated at 467 kilograms per hectare, up 2 percent from last month, 3 percent from last year, and 6 percent from the 5-year-average.



Source: USDA PSD Online

Cotton is grown only during the *kharif* season and is typically planted in May through July and harvested in September through February. The majority (66 percent) of India's cotton production is in the central states of Maharashtra, Gujarat, and Telangana.



Monsoon Update: This year's southwest monsoon arrived in May, approximately eight days earlier than the usual onset date of June 1, marking the earliest start since 2009. The India Meteorological Department (IMD) anticipated a rapid advancement of the monsoon during August and September, ensuring adequate soil moisture for *kharif* crops. IMD's updated seasonal forecast for June to September indicates a 33 percent probability of rainfall reaching 106 percent of the long-period average (LPA). By July 14, cumulative rainfall had already reached 10 percent above the LPA. According to India's Central Water Commission's July reservoir storage bulletin, live storage stood at 94.5 billion cubic meters, 52 percent of the total capacity as compared to 26 percent last year, and well above the ten-year average of 28 percent during the same period.

In general, the above average rainfall conditions have provided adequate irrigation supplies and soil moisture for cotton sowing and favorable establishment and development. In addition, according to FAS/New Delhi, farmers have been encouraged by the government's provision of an 8 percent increase in the minimum support price for medium- and long-staple cotton. (For more information, please contact Dath.Mita@usda.gov).



**World Agricultural Production
U.S. Department of Agriculture**

Foreign Agricultural Service / Global Market Analysis
International Production Assessment Division (IPAD)
GMA/IPAD Room 5071, South Building
1400 Independence Ave SW
Washington, DC 20250-1051
<https://ipad.fas.usda.gov/>

This report uses information from the Foreign Agricultural Service’s (FAS) global network of agricultural attachés and counselors, official statistics of foreign governments and other foreign source materials, and the analysis of economic data and satellite imagery. Estimates of foreign area, yield, and production are from the International Production Assessment Division (IPAD), FAS, and are reviewed by USDA’s Inter-Agency Commodity Estimates Committee. Estimates of U.S. area, yield, and production are from USDA’s National Agricultural Statistics Service. Numbers within the report may not add to totals because of rounding. This report reflects official USDA estimates released in the World Agricultural Supply and Demand Estimates (WASDE-584), September 12, 2025.

The FAS International Production Assessment Division prepared this report. The next issue of World Agricultural Production will be released after 12:00 p.m. Eastern Time, October 9, 2025.

Conversion Table

Metric tons to bushels

Wheat, soybeans	=	MT * 36.7437
Corn, sorghum, rye	=	MT * 39.36825
Barley	=	MT * 45.929625
Oats	=	MT * 68.894438

Metric tons to 480-lb bales

Cotton	=	MT * 4.592917
--------	---	---------------

Metric tons to hundredweight

Rice	=	MT * 22.04622
------	---	---------------

Area & weight

1 hectare	=	2.471044 acres
1 kilogram	=	2.204622 pounds



For further information, contact:
U.S. Department of Agriculture
Foreign Agricultural Service
Global Market Analysis

International Production Assessment Division
 GMA/IPAD Room 5071, South Building
 1400 Independence Ave SW
 Washington, DC 20250-1051

GENERAL INFORMATION

Senior Director	Ronald Frantz	ronald.frantz@usda.gov
Director	Vacant	
USDA Remote Sensing Advisor	Vacant	
Sr. Analyst/Technical Lead	Curt Reynolds, Ph.D.	curt.reynolds@usda.gov
Sr. Analyst/ Satellite Imagery	Dath Mita, Ph.D.	dath.mita@usda.gov
Archives Manager/Technical Lead		
Sr. Analyst/Technical Lead	Vacant	
GIS Mapping/Imagery Analyst	Lisa Colson	lisa.colson@usda.gov
WAP Coordinators	Shannon Moyo	shannon.moyo@usda.gov
	Vacant	

ANALYSIS REGIONS

ANALYST

CONTACT INFORMATION

Brazil, Pakistan, and South Asia	Aaron Mulhollen	aaron.mulhollen@usda.gov
South America (except Brazil), and Central Asia	Katie McGaughey	katie.mcgaughey@usda.gov
Europe, North Africa, and Middle East	Bryan Purcell	bryan.purcell@usda.gov
India, China and East Asia	Dath Mita, Ph.D.	dath.mita@usda.gov
South Africa and Sub-Saharan Africa	Curt Reynolds, Ph.D.	curt.reynolds@usda.gov
Southeast Asia	Justin Jenkins	justin.jenkins@usda.gov
Mexico and Central America	Lisa Colson	lisa.colson@usda.gov
Australia and Oceania	Shannon Moyo	shannon.moyo@usda.gov
Canada and Caribbean	Sarah Parker	sarah.parker@usda.gov
Russia, Ukraine, Kazakhstan, Moldova, and Belarus	Iliana Mladenova, Ph.D.	iliana.mladenova@usda.gov



The Foreign Agricultural Service (FAS) updates its production, supply and distribution (PSD) database for cotton, oilseeds, and grains at 12:00 p.m. on the day the *World Agricultural Supply and Demand Estimates* (WASDE) report is released. This circular is released by 12:15 p.m.

FAS Reports and Databases:

World Agricultural Production

Current: <https://www.fas.usda.gov/data/world-agricultural-production>

Archive: <https://usda.library.cornell.edu/concern/publications/5q47rn72z?locale=en>

USDA's Foreign Agricultural Service (FAS) publishes a monthly report on crop acreage, yield and production in major countries worldwide. Sources include reporting from FAS's worldwide offices, official statistics of foreign governments, and analysis of economic data and satellite imagery. The reports reflect official USDA estimates released in the monthly *World Agricultural Supply and Demand Estimates* (WASDE).

World Markets and Trade

Current: <https://www.fas.usda.gov/data>

Archive:

https://usda.library.cornell.edu/catalog?f%5Bmember_of_collections_ssim%5D%5B%5D=Foreign+Agricultural+Service&locale=en

USDA's Foreign Agricultural Service (FAS) publishes monthly and quarterly reports which include data on U.S. and global trade, production, consumption and stocks, as well as analysis of developments affecting world trade in oilseeds, grains, cotton, livestock and poultry. The reports reflect official USDA estimates released in the monthly *World Agricultural Supply and Demand Estimates* (WASDE).

Global Agricultural Information Network (GAIN)

<https://gain.fas.usda.gov/>

USDA's Foreign Agricultural Service (FAS) provides timely reports on foreign markets through the Global Agriculture Information Network (GAIN) database. An average of 2,000 reports are added each year, with reports going back to 1995. GAIN reports are compiled by FAS' global market intelligence network, which includes FAS foreign service officers and locally engaged staff in over 90 overseas offices world-wide. They provide on-the-ground intelligence, insight, and analysis on nearly 200 countries, delivering information on foreign agricultural markets, crop conditions, and agro-political dynamics of interest to U.S. agriculture. GAIN reports contain assessments of commodity and trade issues made by USDA staff and are not necessarily statements of official U.S. government policy.

Production, Supply and Distribution (PS&D) Online

<https://apps.fas.usda.gov/psdonline/app/index.html#/app/home>

PSD Online is the public repository for USDA's Official Production, Supply and Distribution forecast data and reports for key agricultural commodities. PSD Online data are reviewed and updated monthly by an interagency committee chaired by USDA's World Agricultural Outlook Board (WAOB). The committee consist of representatives from Foreign Agricultural Service (FAS), the Economic Research Service (ERS), the Farm Service Agency (FSA), and the Agricultural Marketing Service (AMS).

EU Countries and Russia Wheat: Area and Production Estimates

<https://apps.fas.usda.gov/psdonline/app/index.html#/app/downloads> (click on PSD Datasets)

USDA's Foreign Agricultural Service (FAS) provides country-level area and production estimates for the nations of the European Union. For Russia, country-level area and production estimates are provided for Winter and Spring wheat. These datasets are reviewed and updated monthly by an interagency committee chaired by USDA's World Agricultural Outlook Board (WAOB) and can be downloaded through PSD datasets on PSD Online.



FAS Reports and Databases:

International Production Assessment (IPAD)

<https://ipad.fas.usda.gov/>

USDA's Foreign Agricultural Service (FAS) maintains a dynamic global crop production portal with key information including *World Agricultural Production* (WAP) briefs, Commodity Intelligence Reports (CIR), geospatial applications, crop production maps at a subnational level and crop calendars for the top-20 producing countries. Additionally, Crop Explorer (<https://ipad.fas.usda.gov/cropexplorer/>) displays rainfall, temperature, evapotranspiration, soil moisture, snow cover, and vegetation conditions in charts and maps.

USDA and NASA Global Agricultural Monitoring (GLAM)

<https://glam1.gsfc.nasa.gov/>

The USDA and NASA Global Agricultural Monitoring (GLAM) system provides near real-time and science quality Moderate Resolution Imaging Spectroradiometer (MODIS) Normalized Difference Vegetation Index (NDVI) from the satellites Terra and Aqua. The public can view and retrieve MODIS 8-day composited, global NDVI satellite imagery and time series data. GLAM was developed by NASA's Global Inventory Modeling and Mapping Studies (GIMMS) group for USDA's Foreign Agricultural Service.

Global Agricultural and Disaster Assessment System (GADAS)

<https://geo.fas.usda.gov/GADAS/index.html>

USDA's Foreign Agricultural Service (FAS) provides the Global Agricultural and Disaster Assessment System (GADAS), a web-based Geographic Information System (GIS) tool which integrates a vast array of highly detailed earth observation data streams, particularly targeted towards agricultural and disaster assessment analysis. GADAS is an interactive website which provides analysts with a wide variety of routine geospatial products (maps, charts, tables) they require for comprehensive situational investigations and recurring assessments.

Export Sales Reporting

<https://apps.fas.usda.gov/esrquery/>

USDA's Export Sales Reporting Program monitors U.S. agricultural export sales on a daily and weekly basis. Export sales reporting provides a constant stream of up-to-date market information for 40 U.S. agricultural commodities sold abroad. The weekly U.S. Export Sales report is the most currently available source of U.S. exports sales data. The data is used to analyze overall levels of export demand, determine where markets exit, and assess the relative position of U.S. commodities in foreign markets.

Global Agricultural Trade System (GATS)

<https://apps.fas.usda.gov/gats/default.aspx>

The Global Agricultural Trade System (GATS) is a searchable database containing monthly U.S. Census Bureau trade data organized by agricultural commodity and agricultural related product groups. Trade data is searchable by partner countries and partner groups. Historical U.S. agricultural trade data is available back to 1967. In addition, U.N. trade statistics (UN Comtrade) may be queried through GATS. UN trade data is available for nearly 200 countries or areas, dating from the inception of the Harmonized System (HS) of trade codes in 1989 to present. The database is continuously updated. U.S. trade data is updated monthly according to the U.S. Census Bureau's reporting system. UN Comtrade data are updated in GATS after nationally submitted data to the UN are standardized by the UN Statistical Division and added to the UN Comtrade database.

Other USDA Reports:

World Agricultural Supply and Demand Estimates (WASDE):

<http://www.usda.gov/oce/commodity/wasde/>

Economic Research Service:

<http://www.ers.usda.gov/topics/crops>

National Agricultural Statistics Service:

<http://www.nass.usda.gov/Publications/>

Table 01 World Crop Production Summary

Million Metric Tons

Commodity	World	Total Foreign	North America			Former Soviet		European	Asia (WAP)					South America		Selected Other			All Others
			United States	Canada	Mexico	Russia	Ukraine		China	India	Indonesia	Pakistan	Thailand	Argentina	Brazil	Australia	South Africa	Turkey	
---Million metric tons---																			
Wheat																			
2023/24	792.3	743.2	49.1	33.4	3.5	91.5	23.0	nr	136.6	110.6	0.0	28.2	0.0	15.9	8.1	26.0	2.1	21.0	243.6
2024/25 prel.	800.9	747.2	53.7	35.9	2.6	81.6	23.4	nr	140.1	113.3	0.0	31.4	0.0	18.5	7.9	34.1	1.9	19.0	237.3
2025/26 proj.																			
Aug	806.9	754.5	52.4	35.0	1.8	83.5	22.0	nr	140.0	117.5	0.0	29.0	0.0	19.7	7.5	31.0	2.0	19.0	246.5
Sep	816.2	763.8	52.4	36.0	1.8	85.0	23.0	nr	140.0	117.5	0.0	29.0	0.0	19.5	7.5	34.5	2.0	19.0	249.0
Coarse Grains																			
2023/24	1,508.3	1,105.4	402.9	27.5	29.1	42.5	39.8	nr	297.4	57.2	12.7	10.2	5.4	59.4	124.8	14.5	13.9	17.0	354.0
2024/25 prel.	1,510.3	1,119.5	390.9	27.5	28.3	34.8	33.5	nr	303.5	61.6	13.1	8.6	5.4	59.1	142.5	17.3	17.1	14.8	352.7
2025/26 proj.																			
Aug	1,572.0	1,132.4	439.6	27.9	30.0	37.4	38.2	nr	304.0	61.1	13.3	10.1	5.5	61.6	137.6	16.7	17.0	14.7	357.4
Sep	1,572.9	1,131.2	441.7	28.1	30.0	36.0	38.4	nr	304.0	62.1	13.3	10.1	5.5	61.6	137.6	19.3	17.1	14.7	353.7
Rice, Milled																			
2023/24	523.7	516.8	6.9	0.0	0.2	0.7	0.0	nr	144.6	137.8	33.0	9.9	20.0	0.8	7.2	0.4	0.0	0.5	161.6
2024/25 prel.	540.9	533.9	7.1	0.0	0.2	0.8	0.0	nr	145.3	150.0	34.1	9.7	20.5	1.0	8.4	0.3	0.0	0.6	163.0
2025/26 proj.																			
Aug	541.5	534.8	6.6	0.0	0.2	0.8	0.0	nr	146.0	151.0	33.6	9.8	20.4	0.9	7.6	0.3	0.0	0.5	163.7
Sep	541.1	534.4	6.6	0.0	0.2	0.8	0.0	nr	146.0	151.0	33.6	9.8	20.4	0.9	7.6	0.3	0.0	0.5	163.4
Total Grains																			
2023/24	2,824.4	2,365.5	458.9	60.9	32.7	134.7	62.8	nr	578.6	305.5	45.7	48.3	25.4	76.0	140.1	40.9	16.0	38.6	759.2
2024/25 prel.	2,852.1	2,400.6	451.6	63.5	31.1	117.2	56.9	nr	588.8	324.8	47.2	49.7	25.9	78.6	158.8	51.8	19.0	34.3	752.9
2025/26 proj.																			
Aug	2,920.3	2,421.7	498.6	62.9	31.9	121.7	60.2	nr	590.0	329.6	46.9	48.9	25.9	82.2	152.7	48.1	19.0	34.2	767.6
Sep	2,930.2	2,429.4	500.8	64.1	31.9	121.7	61.4	nr	590.0	330.6	46.9	48.9	25.9	82.0	152.7	54.1	19.1	34.2	766.1
Oilseeds																			
2023/24	657.4	535.3	122.2	26.5	0.6	28.1	25.5	nr	66.9	41.4	13.9	3.8	1.0	54.2	160.3	7.4	2.8	3.1	99.7
2024/25 prel.	682.1	553.7	128.4	26.9	0.7	28.6	24.0	nr	67.8	42.5	14.7	2.9	1.0	58.4	176.1	7.6	3.9	3.1	95.5
2025/26 proj.																			
Aug	690.1	563.6	126.5	26.3	0.7	31.1	24.6	nr	68.4	43.0	15.1	2.9	1.0	54.8	182.5	7.3	3.6	3.3	98.9
Sep	691.5	564.8	126.8	27.1	0.6	32.8	23.6	nr	68.8	42.3	15.1	2.9	1.0	54.8	182.5	7.6	3.6	3.1	98.9
Cotton																			
2023/24	112.6	100.5	12.1	0.0	0.9	0.0	0.0	1.0	27.4	25.4	0.0	7.0	0.0	1.7	14.6	5.0	0.1	3.2	14.3
2024/25 prel.	119.2	104.8	14.4	0.0	1.0	0.0	0.0	1.2	32.0	24.0	0.0	5.0	0.0	1.4	17.0	5.6	0.1	4.0	13.6
2025/26 proj.																			
Aug	116.6	103.4	13.2	0.0	0.8	0.0	0.0	1.3	31.5	23.5	0.0	5.0	0.0	1.7	18.3	4.1	0.1	3.6	13.6
Sep	117.7	104.5	13.2	0.0	0.6	0.0	0.0	1.3	32.5	24.0	0.0	5.0	0.0	1.7	18.3	4.5	0.1	3.2	13.4

1/ Includes wheat, coarse grains, and rice (milled) shown above.

Table 02 Wheat Area, Yield, and Production

Country / Region	Area (Million hectares)				Yield (Metric tons per hectare)				Production (Million metric tons)				Change in Production			
	2023/24	Prel.	2025/26 Proj.		2023/24	Prel.	2025/26 Proj.		2023/24	Prel.	2025/26 Proj.		From last month		From last year	
		2024/25	Aug	Sep		2024/25	Aug	Sep		2024/25	Aug	Sep	MMT	Percent	MMT	Percent
World	222.75	222.52	220.88	220.12	3.56	3.60	3.65	3.71	792.34	800.86	806.90	816.20	9.30	1.15	15.34	1.92
United States	15.01	15.57	14.80	14.80	3.27	3.45	3.54	3.54	49.10	53.65	52.45	52.45	0.00	0.00	-1.21	-2.25
Total Foreign	207.74	206.95	206.08	205.32	3.58	3.61	3.66	3.72	743.25	747.21	754.45	763.75	9.30	1.23	16.55	2.21
European Union	24.32	22.70	23.85	23.85	5.57	5.38	5.80	5.87	135.38	122.12	138.25	140.10	1.85	1.34	17.98	14.72
United Kingdom	1.72	1.53	1.63	1.63	8.13	7.30	7.67	7.67	13.98	11.15	12.50	12.50	0.00	0.00	1.35	12.15
Serbia	0.73	0.63	0.60	0.60	4.69	5.28	5.50	5.50	3.40	3.30	3.30	3.30	0.00	0.00	0.00	0.00
China	23.63	23.59	23.60	23.60	5.78	5.94	5.93	5.93	136.59	140.10	140.00	140.00	0.00	0.00	-0.10	-0.07
South Asia																
India	31.40	31.83	32.76	32.76	3.52	3.56	3.59	3.59	110.55	113.29	117.51	117.51	0.00	0.00	4.22	3.72
Pakistan	9.03	9.73	9.10	9.10	3.12	3.23	3.18	3.18	28.16	31.44	28.98	28.98	0.00	0.00	-2.46	-7.82
Afghanistan	2.35	2.30	2.25	2.25	2.20	2.26	2.13	2.13	5.17	5.20	4.80	4.80	0.00	0.00	-0.40	-7.69
Nepal	0.68	0.72	0.71	0.71	2.99	2.92	3.10	3.10	2.04	2.10	2.20	2.20	0.00	0.00	0.10	4.76
Former Soviet Union - 12																
Russia	28.83	27.80	26.70	26.50	3.17	2.94	3.13	3.21	91.50	81.60	83.50	85.00	1.50	1.80	3.40	4.17
Russia Winter	15.27	15.70	15.20	15.50	4.19	3.55	3.98	3.97	64.00	55.80	60.50	61.50	1.00	1.65	5.70	10.22
Russia Spring	13.56	12.10	11.50	11.00	2.03	2.13	2.00	2.14	27.50	25.80	23.00	23.50	0.50	2.17	-2.30	-8.91
Ukraine	5.01	5.20	5.50	5.50	4.59	4.50	4.00	4.18	23.00	23.40	22.00	23.00	1.00	4.55	-0.40	-1.71
Kazakhstan	13.13	13.07	12.90	12.20	0.92	1.42	1.20	1.31	12.11	18.58	15.50	16.00	0.50	3.23	-2.58	-13.87
Uzbekistan	1.40	1.30	1.32	1.32	4.62	5.15	4.64	4.64	6.46	6.70	6.10	6.10	0.00	0.00	-0.60	-8.96
Belarus	0.66	0.72	0.73	0.73	3.61	3.82	3.70	3.70	2.40	2.75	2.70	2.70	0.00	0.00	-0.05	-1.82
Canada	10.71	10.65	10.70	10.70	3.12	3.37	3.27	3.36	33.41	35.94	35.00	36.00	1.00	2.86	0.06	0.17
South America																
Argentina	5.58	6.35	6.40	6.30	2.84	2.92	3.08	3.10	15.85	18.54	19.70	19.50	-0.20	-1.02	0.96	5.19
Brazil	3.47	3.06	2.60	2.60	2.33	2.58	2.88	2.88	8.10	7.89	7.50	7.50	0.00	0.00	-0.39	-4.93
Australia	12.37	13.06	12.50	12.70	2.10	2.61	2.48	2.72	25.96	34.11	31.00	34.50	3.50	11.29	0.39	1.14
Africa																
Egypt	1.35	1.40	1.43	1.43	6.57	6.57	6.50	6.50	8.87	9.20	9.30	9.30	0.00	0.00	0.10	1.09
Morocco	2.43	2.20	2.20	2.20	1.71	1.12	1.59	1.59	4.16	2.46	3.50	3.50	0.00	0.00	1.04	42.28
Algeria	1.80	1.80	1.80	1.80	1.50	1.67	1.78	1.78	2.70	3.00	3.20	3.20	0.00	0.00	0.20	6.67
Ethiopia	1.90	1.95	2.00	2.00	3.05	3.18	3.20	3.20	5.80	6.20	6.40	6.40	0.00	0.00	0.20	3.23
Middle East																
Turkey	7.20	7.25	7.30	7.30	2.92	2.62	2.60	2.60	21.00	19.00	19.00	19.00	0.00	0.00	0.00	0.00
Iran	6.20	6.20	6.20	6.20	2.26	2.58	2.18	2.18	14.00	16.00	13.50	13.50	0.00	0.00	-2.50	-15.63
Iraq	2.60	2.70	2.40	2.40	2.00	2.22	1.83	1.83	5.20	6.00	4.40	4.40	0.00	0.00	-1.60	-26.67
Syria	1.50	1.40	1.20	1.20	2.03	2.14	0.96	0.96	3.03	3.00	1.15	1.15	0.00	0.00	-1.85	-61.67
Mexico	0.56	0.47	0.32	0.32	6.21	5.66	5.47	5.47	3.48	2.65	1.75	1.75	0.00	0.00	-0.90	-33.91
Others	7.18	7.36	7.39	7.43	2.92	2.92	2.94	2.94	20.95	21.50	21.71	21.86	0.15	0.69	0.37	1.71

Table 03 Total Coarse Grain Area, Yield, and Production

Country / Region	Area (Million hectares)				Yield (Metric tons per hectare)				Production (Million metric tons)				Change in Production			
	2023/24	Prel.	2025/26 Proj.		2023/24	Prel.	2025/26 Proj.		2023/24	Prel.	2025/26 Proj.		From last month		From last year	
		2024/25	Aug	Sep		2024/25	Aug	Sep		2024/25	Aug	Sep	MMT	Percent	MMT	Percent
World	341.88	337.66	340.89	340.98	4.41	4.47	4.61	4.61	1,508.29	1,510.32	1,571.99	1,572.93	0.94	0.06	62.61	4.15
United States	38.99	37.10	39.42	39.98	10.33	10.54	11.15	11.05	402.88	390.86	439.56	441.68	2.12	0.48	50.83	13.00
Total Foreign	302.89	300.56	301.47	301.00	3.65	3.72	3.76	3.76	1,105.41	1,119.47	1,132.43	1,131.25	-1.18	-0.10	11.78	1.05
China	46.71	47.24	46.88	46.88	6.37	6.42	6.48	6.48	297.38	303.47	303.95	303.95	0.00	0.00	0.48	0.16
European Union	26.02	26.33	25.81	25.76	5.27	5.21	5.39	5.30	137.04	137.18	139.13	136.56	-2.57	-1.85	-0.62	-0.45
United Kingdom	1.38	1.47	1.47	1.47	5.87	5.64	5.70	5.70	8.08	8.30	8.40	8.40	0.00	0.00	0.10	1.18
South America																
Brazil	23.77	24.51	24.79	24.79	5.25	5.81	5.55	5.55	124.81	142.48	137.62	137.61	-0.01	0.00	-4.87	-3.42
Argentina	10.10	9.48	9.99	9.99	5.88	6.24	6.17	6.17	59.37	59.10	61.62	61.62	0.00	0.00	2.52	4.27
Former Soviet Union - 12																
Russia	12.88	11.74	11.75	11.28	3.30	2.96	3.19	3.19	42.54	34.78	37.43	35.98	-1.45	-3.87	1.20	3.45
Ukraine	6.24	6.05	6.26	6.26	6.38	5.53	6.10	6.13	39.78	33.47	38.18	38.38	0.20	0.52	4.91	14.68
Kazakhstan	2.87	2.72	2.71	2.70	1.40	1.94	1.67	1.85	4.01	5.27	4.51	5.00	0.49	10.94	-0.27	-5.18
Belarus	0.93	1.17	1.17	1.17	3.54	3.36	3.56	3.56	3.28	3.92	4.16	4.16	0.00	0.00	0.24	6.12
Africa																
Nigeria	13.40	13.50	13.80	13.80	1.42	1.43	1.50	1.50	19.01	19.25	20.75	20.75	0.00	0.00	1.50	7.79
South Africa	3.18	3.15	3.19	3.20	4.38	5.42	5.34	5.34	13.94	17.06	17.04	17.05	0.02	0.09	-0.01	-0.03
Tanzania	5.18	5.15	5.05	5.05	1.74	1.87	1.60	1.60	9.03	9.63	8.08	8.08	0.00	0.00	-1.55	-16.05
Burkina Faso	3.98	4.20	4.10	4.10	1.16	1.08	1.13	1.13	4.63	4.55	4.65	4.65	0.00	0.00	0.10	2.20
Ethiopia	5.41	5.64	5.69	5.69	3.25	3.18	3.16	3.16	17.56	17.91	17.99	17.99	0.00	0.00	0.08	0.42
Egypt	1.12	1.09	1.12	1.12	7.19	7.22	7.24	7.24	8.07	7.88	8.12	8.12	0.00	0.00	0.24	3.05
Mali	5.24	4.90	5.10	5.10	1.31	1.55	1.37	1.37	6.86	7.58	7.00	7.00	0.00	0.00	-0.58	-7.63
India	25.02	25.75	25.03	25.03	2.28	2.39	2.44	2.48	57.16	61.55	61.06	62.06	1.00	1.64	0.51	0.83
Southeast Asia																
Indonesia	3.70	3.50	3.60	3.60	3.43	3.74	3.69	3.69	12.70	13.10	13.30	13.30	0.00	0.00	0.20	1.53
Philippines	2.49	2.45	2.55	2.50	3.26	3.40	3.25	3.32	8.12	8.33	8.30	8.30	0.00	0.00	-0.03	-0.37
Vietnam	0.89	0.87	0.84	0.84	5.01	5.03	5.03	5.03	4.44	4.35	4.20	4.20	0.00	0.00	-0.15	-3.45
Thailand	1.25	1.24	1.25	1.25	4.29	4.32	4.37	4.37	5.35	5.35	5.45	5.45	0.00	0.00	0.10	1.87
Mexico	7.72	8.06	8.08	8.08	3.77	3.51	3.71	3.71	29.09	28.27	29.99	29.99	0.00	0.00	1.72	6.08
Canada	5.24	5.05	5.03	5.05	5.25	5.45	5.54	5.56	27.52	27.52	27.86	28.07	0.21	0.74	0.54	1.98
Australia	5.61	6.03	6.20	6.40	2.58	2.87	2.70	3.02	14.48	17.34	16.72	19.32	2.60	15.55	1.98	11.45
Middle East																
Turkey	4.59	4.55	4.35	4.35	3.72	3.24	3.37	3.37	17.05	14.76	14.65	14.65	0.00	0.00	-0.11	-0.75
Iran	1.86	1.81	1.86	1.86	2.38	2.50	2.38	2.38	4.42	4.52	4.42	4.42	0.00	0.00	-0.10	-2.21
Others	76.14	72.94	73.82	73.70	1.70	1.68	1.73	1.71	129.70	122.57	127.87	126.20	-1.67	-1.31	3.63	2.96

World and Selected Countries and Regions; Coarse Grain includes: Barley, Corn, Millet, Mixed Grains, Oats, Rye and Sorghum

Table 04 Corn Area, Yield, and Production

Country / Region	Area (Million hectares)				Yield (Metric tons per hectare)				Production (Million metric tons)				Change in Production			
	2023/24	Prel.	2025/26 Proj.		2023/24	Prel.	2025/26 Proj.		2023/24	Prel.	2025/26 Proj.		From last month		From last year	
		2024/25	Aug	Sep		2024/25	Aug	Sep		2024/25	Aug	Sep	MMT	Percent	MMT	Percent
World	208.81	204.09	209.23	209.61	5.90	6.02	6.16	6.14	1,231.06	1,228.91	1,288.58	1,286.58	-2.00	-0.16	57.67	4.69
United States	35.01	33.55	35.89	36.44	11.13	11.26	11.85	11.72	389.67	377.63	425.26	427.11	1.85	0.43	49.47	13.10
Total Foreign	173.80	170.54	173.34	173.17	4.84	4.99	4.98	4.96	841.39	851.27	863.32	859.47	-3.85	-0.45	8.20	0.96
China	44.22	44.74	44.30	44.30	6.53	6.59	6.66	6.66	288.84	294.92	295.00	295.00	0.00	0.00	0.08	0.03
South America																
Brazil	21.65	22.30	22.60	22.60	5.50	6.05	5.80	5.80	119.00	135.00	131.00	131.00	0.00	0.00	-4.00	-2.96
Argentina	7.78	6.90	7.50	7.50	6.56	7.25	7.07	7.07	51.00	50.00	53.00	53.00	0.00	0.00	3.00	6.00
Bolivia	0.44	0.43	0.44	0.44	2.53	2.56	2.61	2.61	1.12	1.10	1.15	1.15	0.00	0.00	0.05	4.55
European Union	8.28	8.70	8.05	8.00	7.48	6.81	7.20	6.91	61.95	59.31	58.00	55.30	-2.70	-4.66	-4.01	-6.76
Africa																
South Africa	2.98	2.96	3.00	3.00	4.50	5.58	5.50	5.50	13.43	16.50	16.50	16.50	0.00	0.00	0.00	0.00
Nigeria	5.70	5.50	5.80	5.80	1.94	2.04	2.07	2.07	11.05	11.20	12.00	12.00	0.00	0.00	0.80	7.14
Ethiopia	2.50	2.55	2.60	2.60	4.00	4.00	3.96	3.96	10.00	10.20	10.30	10.30	0.00	0.00	0.10	0.98
Egypt	0.95	0.92	0.95	0.95	7.58	7.61	7.63	7.63	7.20	7.00	7.25	7.25	0.00	0.00	0.25	3.57
Tanzania	4.20	4.10	4.00	4.00	1.91	2.07	1.75	1.75	8.01	8.50	7.00	7.00	0.00	0.00	-1.50	-17.65
Malawi	1.79	1.50	1.80	1.80	1.96	2.00	1.67	1.67	3.51	3.00	3.00	3.00	0.00	0.00	0.00	0.00
Zambia	1.42	0.69	1.40	1.40	2.30	2.20	2.43	2.61	3.26	1.51	3.40	3.66	0.26	7.50	2.15	142.05
Kenya	2.43	2.10	2.30	2.30	1.76	1.81	1.91	1.91	4.29	3.80	4.40	4.40	0.00	0.00	0.60	15.79
Uganda	2.27	2.30	2.30	2.30	2.18	2.17	2.17	2.17	4.95	5.00	5.00	5.00	0.00	0.00	0.00	0.00
Zimbabwe	1.00	0.90	1.00	1.00	1.50	0.71	1.30	1.30	1.50	0.64	1.30	1.30	0.00	0.00	0.67	104.72
Former Soviet Union - 12																
Ukraine	4.20	4.10	4.40	4.40	7.74	6.54	7.27	7.27	32.50	26.80	32.00	32.00	0.00	0.00	5.20	19.40
Russia	2.40	2.70	2.50	2.50	6.92	5.19	6.00	5.64	16.60	14.00	15.00	14.10	-0.90	-6.00	0.10	0.71
South Asia																
India	11.24	11.20	11.50	11.50	3.35	3.78	3.65	3.74	37.67	42.28	42.00	43.00	1.00	2.38	0.72	1.70
Pakistan	1.64	1.44	1.56	1.56	6.00	5.73	6.28	6.28	9.85	8.24	9.80	9.80	0.00	0.00	1.56	18.95
Nepal	0.92	0.97	0.97	0.97	3.49	3.11	3.21	3.21	3.19	3.00	3.10	3.10	0.00	0.00	0.10	3.33
Southeast Asia																
Indonesia	3.70	3.50	3.60	3.60	3.43	3.74	3.69	3.69	12.70	13.10	13.30	13.30	0.00	0.00	0.20	1.53
Philippines	2.49	2.45	2.55	2.50	3.26	3.40	3.25	3.32	8.12	8.33	8.30	8.30	0.00	0.00	-0.03	-0.37
Vietnam	0.89	0.87	0.84	0.84	5.01	5.03	5.03	5.03	4.44	4.35	4.20	4.20	0.00	0.00	-0.15	-3.45
Thailand	1.22	1.21	1.22	1.22	4.34	4.38	4.43	4.43	5.30	5.30	5.40	5.40	0.00	0.00	0.10	1.89
Mexico	6.11	6.50	6.50	6.50	3.88	3.55	3.82	3.82	23.71	23.10	24.80	24.80	0.00	0.00	1.70	7.36
Canada	1.52	1.45	1.48	1.50	10.15	10.59	10.34	10.37	15.42	15.35	15.30	15.55	0.25	1.63	0.21	1.34
Turkey	0.65	0.56	0.61	0.61	12.92	12.68	12.95	12.95	8.40	7.10	7.90	7.90	0.00	0.00	0.80	11.27
Others	29.23	27.02	27.58	27.49	2.55	2.69	2.68	2.63	74.40	72.65	73.92	72.17	-1.76	-2.37	-0.49	-0.67

World and Selected Countries and Regions

Table 05 Barley Area, Yield, and Production

Country / Region	Area (Million hectares)				Yield (Metric tons per hectare)				Production (Million metric tons)				Change in Production			
	Prel.		2025/26 Proj.		Prel.		2025/26 Proj.		Prel.		2025/26 Proj.		From last month		From last year	
	2023/24	2024/25	Aug	Sep	2023/24	2024/25	Aug	Sep	2023/24	2024/25	Aug	Sep	MMT	Percent	MMT	Percent
World	46.93	45.91	45.19	45.09	3.06	3.12	3.19	3.27	143.51	143.33	144.33	147.31	2.98	2.06	3.98	2.78
United States	1.04	0.76	0.73	0.73	3.89	4.13	4.19	4.19	4.05	3.13	3.07	3.07	0.00	0.00	-0.06	-1.85
Total Foreign	45.89	45.15	44.46	44.35	3.04	3.11	3.18	3.25	139.46	140.20	141.26	144.24	2.98	2.11	4.04	2.88
European Union	10.35	10.32	10.38	10.38	4.63	4.88	5.12	5.13	47.90	50.33	53.10	53.23	0.13	0.24	2.90	5.77
United Kingdom	1.14	1.20	1.20	1.20	6.12	5.91	5.94	5.94	6.96	7.09	7.13	7.13	0.00	0.00	0.03	0.48
Former Soviet Union - 12																
Russia	7.65	6.60	6.70	6.40	2.68	2.46	2.64	2.73	20.50	16.25	17.70	17.50	-0.20	-1.13	1.25	7.69
Ukraine	1.68	1.60	1.60	1.60	3.78	3.63	3.44	3.56	6.35	5.80	5.50	5.70	0.20	3.64	-0.10	-1.72
Kazakhstan	2.43	2.28	2.30	2.30	1.08	1.68	1.43	1.61	2.61	3.84	3.30	3.70	0.40	12.12	-0.14	-3.65
Belarus	0.28	0.37	0.35	0.35	4.09	2.97	3.57	3.57	1.15	1.10	1.25	1.25	0.00	0.00	0.15	13.64
Azerbaijan	0.36	0.36	0.37	0.37	2.99	3.06	2.97	2.97	1.07	1.10	1.10	1.10	0.00	0.00	0.00	0.00
Canada	2.70	2.39	2.27	2.27	3.29	3.40	3.61	3.61	8.91	8.14	8.20	8.20	0.00	0.00	0.06	0.69
Australia	4.21	4.62	4.60	4.80	2.57	2.87	2.72	3.13	10.80	13.27	12.50	15.00	2.50	20.00	1.74	13.08
Middle East																
Turkey	3.70	3.75	3.50	3.50	2.16	1.87	1.74	1.74	8.00	7.00	6.10	6.10	0.00	0.00	-0.90	-12.86
Iran	1.65	1.60	1.65	1.65	1.82	1.94	1.82	1.82	3.00	3.10	3.00	3.00	0.00	0.00	-0.10	-3.23
Iraq	0.16	1.00	0.60	0.60	1.29	1.40	1.08	1.08	0.20	1.40	0.65	0.65	0.00	0.00	-0.75	-53.57
Syria	1.43	1.10	1.00	1.00	0.88	1.09	0.35	0.35	1.26	1.20	0.35	0.35	0.00	0.00	-0.85	-70.83
Africa																
Ethiopia	0.98	0.98	0.98	0.98	2.50	2.54	2.54	2.54	2.45	2.49	2.49	2.49	0.00	0.00	0.00	0.00
Morocco	1.17	0.80	0.80	0.80	1.15	0.83	1.19	1.19	1.35	0.66	0.95	0.95	0.00	0.00	0.29	43.94
Algeria	1.03	1.03	1.03	1.03	1.00	1.17	1.32	1.32	1.03	1.20	1.35	1.35	0.00	0.00	0.15	12.50
Tunisia	0.11	0.23	0.29	0.29	0.83	1.21	1.90	1.90	0.09	0.27	0.55	0.55	0.00	0.00	0.28	102.21
South Africa	0.11	0.10	0.10	0.10	3.49	3.68	3.50	3.50	0.38	0.37	0.35	0.35	0.00	0.00	-0.02	-5.91
South America																
Argentina	1.30	1.32	1.30	1.30	3.92	3.68	3.77	3.77	5.10	4.85	4.90	4.90	0.00	0.00	0.05	1.01
Uruguay	0.19	0.27	0.17	0.17	4.87	4.32	4.85	4.85	0.92	1.17	0.80	0.80	0.00	0.00	-0.37	-31.86
Brazil	0.14	0.12	0.14	0.14	2.90	3.56	3.78	3.78	0.39	0.44	0.51	0.51	0.00	0.00	0.07	16.44
India	0.63	0.55	0.53	0.53	3.05	3.08	3.52	3.52	1.91	1.70	1.86	1.86	0.00	0.00	0.16	9.48
China	0.50	0.50	0.56	0.56	4.00	4.00	4.11	4.11	2.00	2.00	2.30	2.30	0.00	0.00	0.30	15.00
Mexico	0.29	0.32	0.30	0.30	2.72	2.83	2.70	2.70	0.78	0.89	0.81	0.81	0.00	0.00	-0.08	-8.99
Afghanistan	0.08	0.07	0.07	0.07	1.38	1.43	1.54	1.54	0.11	0.10	0.10	0.10	0.00	0.00	0.00	0.00
Others	1.66	1.67	1.69	1.69	2.57	2.65	2.61	2.59	4.26	4.44	4.42	4.37	-0.05	-1.13	-0.07	-1.62

World and Selected Countries and Regions

Table 06 Oats Area, Yield, and Production

Country / Region	Area (Million hectares)				Yield (Metric tons per hectare)				Production (Million metric tons)				Change in Production			
	2023/24	Prel.	2025/26 Proj.		2023/24	Prel.	2025/26 Proj.		2023/24	Prel.	2025/26 Proj.		From last month		From last year	
		2024/25	Aug	Sep		2024/25	Aug	Sep		2024/25	Aug	Sep	MMT	Percent	MMT	Percent
World	8.38	8.73	8.97	8.87	2.32	2.59	2.52	2.54	19.45	22.59	22.63	22.54	-0.09	-0.38	-0.05	-0.22
United States	0.34	0.36	0.34	0.34	2.46	2.74	2.74	2.74	0.83	0.98	0.93	0.93	0.00	0.00	-0.05	-5.18
Total Foreign	8.04	8.37	8.63	8.53	2.32	2.58	2.51	2.53	18.62	21.61	21.69	21.61	-0.09	-0.39	0.00	0.01
European Union	2.28	2.49	2.50	2.50	2.60	3.12	2.98	2.98	5.94	7.75	7.45	7.45	0.00	0.00	-0.30	-3.92
Former Soviet Union - 12																
Russia	1.77	1.60	1.80	1.70	1.86	1.88	1.83	1.82	3.30	3.00	3.30	3.10	-0.20	-6.06	0.10	3.33
Ukraine	0.17	0.17	0.14	0.14	2.53	2.71	2.57	2.57	0.43	0.46	0.36	0.36	0.00	0.00	-0.10	-21.74
Belarus	0.16	0.16	0.15	0.15	2.26	2.06	2.33	2.33	0.35	0.32	0.35	0.35	0.00	0.00	0.03	9.38
Kazakhstan	0.19	0.19	0.18	0.18	0.79	1.71	1.14	1.14	0.15	0.33	0.20	0.20	0.00	0.00	-0.13	-39.39
Canada	0.83	0.99	1.02	1.02	3.20	3.38	3.49	3.49	2.64	3.36	3.54	3.54	0.00	0.00	0.18	5.42
South America																
Argentina	0.28	0.30	0.30	0.30	2.03	1.87	1.75	1.75	0.57	0.56	0.53	0.53	0.00	0.00	-0.03	-5.58
Brazil	0.52	0.49	0.50	0.50	1.89	2.14	2.40	2.40	0.98	1.04	1.20	1.20	0.00	0.00	0.16	15.16
Chile	0.09	0.10	0.09	0.09	5.39	4.75	5.00	5.00	0.46	0.48	0.45	0.45	0.00	0.00	-0.03	-5.26
Uruguay	0.02	0.03	0.02	0.02	2.44	2.37	2.33	2.33	0.04	0.06	0.04	0.04	0.00	0.00	-0.03	-45.31
Oceania																
Australia	0.68	0.74	0.80	0.80	1.51	1.77	1.63	1.75	1.02	1.32	1.30	1.40	0.10	7.69	0.09	6.46
New Zealand	0.00	0.00	0.01	0.01	7.50	5.75	6.00	6.00	0.03	0.02	0.03	0.03	0.00	0.00	0.01	30.43
China	0.46	0.47	0.47	0.47	1.83	1.83	1.83	1.83	0.84	0.85	0.85	0.85	0.00	0.00	0.00	0.00
Africa																
Algeria	0.08	0.08	0.08	0.08	1.31	1.31	1.31	1.31	0.11	0.11	0.11	0.11	0.00	0.00	0.00	0.00
Morocco	0.02	0.02	0.02	0.02	0.40	0.40	0.40	0.40	0.01	0.01	0.01	0.01	0.00	0.00	0.00	0.00
South Africa	0.03	0.03	0.03	0.04	1.46	1.39	1.50	1.71	0.04	0.04	0.05	0.06	0.02	33.33	0.02	39.53
Other Europe																
United Kingdom	0.17	0.20	0.20	0.20	4.97	4.93	5.00	5.00	0.83	0.99	1.00	1.00	0.00	0.00	0.01	1.42
Norway	0.07	0.07	0.07	0.07	4.29	4.29	4.29	4.29	0.30	0.30	0.30	0.30	0.00	0.00	0.00	0.00
Serbia	0.02	0.02	0.02	0.02	3.00	3.00	3.00	3.00	0.06	0.06	0.06	0.06	0.00	0.00	0.00	0.00
Albania	0.02	0.02	0.02	0.02	2.27	2.27	2.27	2.27	0.03	0.03	0.03	0.03	0.00	0.00	0.00	0.00
Bosnia and Herzegovina	0.01	0.01	0.01	0.01	3.43	3.43	3.38	3.38	0.02	0.02	0.03	0.03	0.00	0.00	0.00	12.50
Turkey	0.13	0.13	0.14	0.14	2.60	2.62	2.59	2.59	0.33	0.34	0.35	0.35	0.00	0.00	0.01	2.94
Mexico	0.03	0.04	0.04	0.04	2.40	2.00	2.00	2.00	0.06	0.08	0.08	0.08	0.00	0.00	0.00	0.00
Others	0.05	0.05	0.06	0.06	1.65	1.78	1.67	1.67	0.08	0.08	0.10	0.10	0.00	0.00	0.02	18.29

World and Selected Countries and Regions

Table 07 Rye Area, Yield, and Production

Country / Region	Area (Million hectares)				Yield (Metric tons per hectare)				Production (Million metric tons)				Change in Production						
	2023/24	Prel.		2025/26 Proj.		2023/24	Prel.		2025/26 Proj.		2023/24	Prel.		2025/26 Proj.		From last month		From last year	
		2024/25	Aug	Sep	2024/25		Aug	Sep	2024/25	Aug		Sep	MMT	Percent	MMT	Percent			
World	3.66	3.33	3.37	3.28	3.21	3.18	3.30	3.32	11.72	10.60	11.11	10.90	-0.21	-1.92	0.29	2.76			
United States	0.13	0.16	0.16	0.16	2.03	2.29	2.27	2.27	0.26	0.37	0.35	0.35	0.00	0.00	-0.02	-5.35			
Total Foreign	3.53	3.17	3.22	3.13	3.25	3.23	3.34	3.37	11.45	10.23	10.75	10.54	-0.21	-1.98	0.31	3.06			
European Union	1.88	1.73	1.78	1.78	4.07	3.98	4.16	4.16	7.65	6.90	7.40	7.40	0.00	0.00	0.50	7.31			
Former Soviet Union - 12																			
Russia	0.79	0.58	0.51	0.44	2.15	2.07	2.16	2.16	1.70	1.20	1.10	0.95	-0.15	-13.64	-0.25	-20.83			
Belarus	0.31	0.34	0.34	0.34	2.52	2.35	2.24	2.24	0.78	0.80	0.76	0.76	0.00	0.00	-0.04	-5.00			
Ukraine	0.08	0.07	0.07	0.07	3.00	3.14	3.15	3.15	0.24	0.22	0.21	0.21	0.00	0.00	-0.02	-6.82			
Kazakhstan	0.02	0.02	0.03	0.02	0.86	1.55	1.20	1.20	0.02	0.03	0.03	0.02	-0.01	-40.00	-0.01	-41.94			
Turkey	0.11	0.11	0.11	0.11	2.91	2.91	2.86	2.86	0.32	0.32	0.30	0.30	0.00	0.00	-0.02	-6.25			
Canada	0.12	0.12	0.18	0.18	3.09	3.60	3.33	3.17	0.36	0.42	0.60	0.56	-0.05	-7.50	0.13	31.83			
South America																			
Argentina	0.12	0.11	0.11	0.11	1.85	1.76	1.73	1.73	0.22	0.19	0.19	0.19	0.00	0.00	0.01	2.70			
Other Europe																			
Bosnia and Herzegovina	0.00	0.00	0.00	0.00	3.00	3.00	3.00	3.00	0.01	0.01	0.01	0.01	0.00	0.00	0.00	50.00			
Switzerland	0.00	0.00	0.00	0.00	5.00	5.00	5.00	5.00	0.01	0.01	0.01	0.01	0.00	0.00	0.00	0.00			
Serbia	0.01	0.01	0.01	0.01	3.33	3.00	3.00	3.00	0.02	0.02	0.02	0.02	0.00	0.00	0.00	0.00			
Australia	0.05	0.05	0.05	0.05	0.71	0.71	0.71	0.71	0.03	0.03	0.03	0.03	0.00	0.00	0.00	0.00			
Others	0.04	0.04	0.04	0.04	2.32	2.12	2.27	2.29	0.10	0.09	0.10	0.09	-0.01	-6.00	0.01	5.62			

World and Selected Countries and Regions

Table 08 Sorghum Area, Yield, and Production

Country / Region	Area (Million hectares)				Yield (Metric tons per hectare)				Production (Million metric tons)				Change in Production			
	Prel.		2025/26 Proj.		Prel.		2025/26 Proj.		Prel.		2025/26 Proj.		From last month		From last year	
	2023/24	2024/25	Aug	Sep	2023/24	2024/25	Aug	Sep	2023/24	2024/25	Aug	Sep	MMT	Percent	MMT	Percent
World	40.03	41.47	40.71	40.73	1.48	1.53	1.53	1.54	59.06	63.42	62.40	62.67	0.27	0.44	-0.76	-1.19
United States	2.48	2.27	2.30	2.31	3.26	3.85	4.33	4.42	8.07	8.73	9.94	10.22	0.27	2.75	1.48	16.98
Total Foreign	37.55	39.20	38.42	38.42	1.36	1.40	1.37	1.37	50.99	54.69	52.45	52.45	0.00	0.00	-2.24	-4.09
Africa																
Nigeria	5.70	6.10	6.10	6.10	1.12	1.07	1.13	1.13	6.40	6.50	6.90	6.90	0.00	0.00	0.40	6.15
Ethiopia	1.48	1.65	1.65	1.65	2.71	2.48	2.48	2.48	4.01	4.10	4.10	4.10	0.00	0.00	0.00	0.00
Sudan	5.99	6.00	6.00	6.00	0.51	0.55	0.55	0.55	3.06	3.30	3.30	3.30	0.00	0.00	0.00	0.00
Burkina Faso	1.79	1.90	1.90	1.90	0.99	1.00	1.00	1.00	1.77	1.90	1.90	1.90	0.00	0.00	0.00	0.00
Mali	1.63	1.50	1.60	1.60	0.94	1.09	0.94	0.94	1.53	1.64	1.50	1.50	0.00	0.00	-0.14	-8.54
Niger	3.70	3.70	3.70	3.70	0.46	0.51	0.52	0.52	1.70	1.90	1.91	1.91	0.00	0.00	0.01	0.37
Cameroon	0.74	0.74	0.74	0.74	1.62	1.62	1.62	1.62	1.20	1.20	1.20	1.20	0.00	0.00	0.00	0.00
Tanzania	0.68	0.75	0.75	0.75	1.08	1.07	1.00	1.00	0.74	0.80	0.75	0.75	0.00	0.00	-0.05	-6.25
Egypt	0.15	0.15	0.15	0.15	5.20	5.27	5.20	5.20	0.78	0.79	0.78	0.78	0.00	0.00	-0.01	-1.27
Uganda	0.32	0.32	0.32	0.32	0.83	0.84	0.84	0.84	0.27	0.27	0.27	0.27	0.00	0.00	0.00	0.00
Ghana	0.31	0.31	0.31	0.31	1.42	1.13	1.21	1.21	0.44	0.35	0.38	0.38	0.00	0.00	0.03	7.14
Mozambique	0.24	0.28	0.28	0.28	0.60	0.33	0.55	0.55	0.14	0.09	0.15	0.15	0.00	0.00	0.06	66.67
South Africa	0.04	0.04	0.04	0.04	2.33	3.50	3.50	3.50	0.10	0.14	0.14	0.14	0.00	0.00	0.00	0.00
Mexico	1.30	1.20	1.24	1.24	3.51	3.50	3.47	3.47	4.54	4.20	4.30	4.30	0.00	0.00	0.10	2.38
South America																
Argentina	0.62	0.85	0.78	0.78	3.99	4.12	3.85	3.85	2.49	3.50	3.00	3.00	0.00	0.00	-0.50	-14.29
Brazil	1.46	1.60	1.55	1.55	3.03	3.75	3.16	3.16	4.43	6.00	4.90	4.90	0.00	0.00	-1.10	-18.33
South Asia																
India	4.08	4.80	4.00	4.00	1.16	1.25	1.15	1.15	4.74	6.00	4.60	4.60	0.00	0.00	-1.40	-23.33
Pakistan	0.05	0.05	0.05	0.05	0.83	0.82	0.82	0.82	0.04	0.04	0.04	0.04	0.00	0.00	0.00	0.00
China	0.63	0.63	0.65	0.65	4.76	4.76	4.77	4.77	3.00	3.00	3.10	3.10	0.00	0.00	0.10	3.33
Australia	0.59	0.54	0.67	0.67	3.74	4.31	3.73	3.73	2.22	2.33	2.50	2.50	0.00	0.00	0.18	7.53
European Union	0.15	0.22	0.20	0.20	5.33	4.93	4.88	4.88	0.79	1.09	0.98	0.98	0.00	0.00	-0.11	-10.47
Others	5.91	5.87	5.74	5.74	1.12	0.95	1.00	1.00	6.63	5.56	5.76	5.76	0.00	0.00	0.21	3.76

World and Selected Countries and Regions

Table 09 Rice Area, Yield, and Production
World and Selected Countries and Regions

Country / Region	Area (Million hectares)				Yield (Metric tons per hectare)				Production (Million metric tons)				Change in Production			
	Prel.		2025/26 Proj.		Prel.		2025/26 Proj.		Prel.		2025/26 Proj.		From last month		From last year	
	2023/24	2024/25	Aug	Sep	2023/24	2024/25	Aug	Sep	2023/24	2024/25	Aug	Sep	MMT	Percent	MMT	Percent
World	167.51	172.21	171.82	171.72	4.67	4.70	4.71	4.71	523.73	540.93	541.46	541.07	-0.39	-0.07	0.14	0.03
United States	1.16	1.16	1.11	1.12	8.56	8.69	8.56	8.47	6.92	7.05	6.62	6.63	0.01	0.15	-0.42	-6.01
Total Foreign	166.36	171.05	170.71	170.60	4.64	4.67	4.68	4.68	516.81	533.88	534.84	534.44	-0.40	-0.07	0.56	0.11
East Asia																
China	28.95	29.01	29.00	29.00	7.14	7.15	7.19	7.19	144.62	145.28	146.00	146.00	0.00	0.00	0.73	0.50
Japan	1.48	1.46	1.45	1.45	6.78	6.87	6.88	6.88	7.30	7.29	7.28	7.28	0.00	0.00	-0.01	-0.19
Korea, South	0.71	0.70	0.66	0.66	6.92	6.85	6.91	6.91	3.70	3.59	3.44	3.44	0.00	0.00	-0.15	-4.04
Korea, North	0.53	0.54	0.54	0.54	4.18	4.18	4.18	4.18	1.45	1.48	1.48	1.48	0.00	0.00	0.00	0.00
South Asia																
India	47.83	51.42	51.50	51.50	4.32	4.38	4.40	4.40	137.83	150.00	151.00	151.00	0.00	0.00	1.00	0.67
Bangladesh	11.75	11.40	11.80	11.80	4.72	4.82	4.77	4.77	37.00	36.60	37.50	37.50	0.00	0.00	0.90	2.46
Pakistan	3.64	3.90	3.70	3.70	4.07	3.74	3.97	3.97	9.87	9.72	9.80	9.80	0.00	0.00	0.08	0.82
Nepal	1.44	1.45	1.46	1.46	3.98	3.80	3.91	3.91	3.81	3.67	3.80	3.80	0.00	0.00	0.13	3.66
Sri Lanka	1.14	1.10	1.15	1.15	3.97	4.18	4.22	4.22	3.09	3.13	3.30	3.30	0.00	0.00	0.18	5.60
Southeast Asia																
Indonesia	11.00	11.40	11.20	11.20	4.73	4.71	4.72	4.72	33.02	34.10	33.60	33.60	0.00	0.00	-0.50	-1.47
Vietnam	7.11	6.95	6.90	6.80	6.12	6.16	6.10	6.12	27.20	26.75	26.30	26.00	-0.30	-1.14	-0.75	-2.80
Thailand	10.65	10.88	10.80	10.80	2.85	2.86	2.86	2.86	20.00	20.55	20.40	20.40	0.00	0.00	-0.15	-0.71
Burma	6.80	6.86	6.80	6.80	2.83	2.71	2.76	2.76	12.30	11.90	12.00	12.00	0.00	0.00	0.10	0.84
Philippines	4.74	4.70	4.70	4.70	4.12	4.18	4.15	4.15	12.33	12.37	12.30	12.30	0.00	0.00	-0.07	-0.57
Cambodia	3.58	3.86	3.80	3.80	3.39	3.60	3.49	3.49	7.40	8.47	8.10	8.10	0.00	0.00	-0.37	-4.37
Laos	0.99	0.95	0.96	0.96	3.21	3.17	3.22	3.22	2.01	1.90	1.95	1.95	0.00	0.00	0.05	2.63
Malaysia	0.59	0.61	0.61	0.61	3.91	3.97	4.07	4.07	1.50	1.58	1.62	1.62	0.00	0.00	0.04	2.54
South America																
Brazil	1.61	1.75	1.60	1.60	6.58	7.05	6.99	6.99	7.20	8.38	7.60	7.60	0.00	0.00	-0.78	-9.29
Peru	0.42	0.43	0.43	0.43	8.10	8.21	8.76	8.76	2.33	2.46	2.60	2.60	0.00	0.00	0.14	5.82
Africa																
Egypt	0.63	0.67	0.67	0.67	8.70	8.44	8.44	8.44	3.78	3.90	3.90	3.90	0.00	0.00	0.00	0.00
Madagascar	1.60	1.65	1.67	1.67	3.20	3.15	3.41	3.41	3.28	3.33	3.65	3.65	0.00	0.00	0.32	9.62
Nigeria	4.51	4.50	4.50	4.50	1.97	2.03	1.96	1.96	5.61	5.77	5.54	5.54	0.00	0.00	-0.22	-3.83
European Union	0.35	0.39	0.42	0.42	6.19	6.32	6.66	6.66	1.37	1.60	1.77	1.77	0.00	0.00	0.18	10.97
Iran	0.57	0.57	0.57	0.57	5.30	5.32	5.32	5.32	2.00	2.00	2.00	2.00	0.00	0.00	0.00	0.00
Others	13.74	13.89	13.82	13.80	2.96	3.07	3.06	3.06	26.84	28.10	27.91	27.82	-0.10	-0.34	-0.29	-1.01

Yield is on a rough basis, before the milling process. Production is on a milled basis, after the milling process.

Table 10 Total Oilseed Area, Yield, and Production
World and Selected Countries and Regions

Country / Region	Area (Million hectares)				Yield (Metric tons per hectare)				Production (Million metric tons)				Change in Production			
	2023/24	Prel.	2025/26 Proj.		2023/24	Prel.	2025/26 Proj.		2023/24	Prel.	2025/26 Proj.		From last month		From last year	
		2024/25	Aug	Sep		2024/25	Aug	Sep		2024/25	Aug	Sep	MMT	Percent	MMT	Percent
World Total	--	--	--	--	--	--	--	--	657.45	682.07	690.11	691.55	1.44	0.21	9.48	1.39
Total Foreign	--	--	--	--	--	--	--	--	535.28	553.72	563.64	564.78	1.14	0.20	11.06	2.00
Oilseed, Copra	--	--	--	--	--	--	--	--	6.21	5.80	5.87	5.87	0.00	0.02	0.07	1.21
Oilseed, Palm Kernel	--	--	--	--	--	--	--	--	19.59	20.61	21.06	21.06	0.00	0.00	0.45	2.17
Major Oilseeds	271.67	277.07	275.09	276.05	2.33	2.37	2.41	2.41	631.65	655.67	663.18	664.63	1.44	0.22	8.96	1.37
United States	37.98	40.07	37.50	37.60	3.22	3.20	3.37	3.37	122.16	128.35	126.47	126.77	0.30	0.24	-1.59	-1.24
Foreign Oilseeds	233.69	237.00	237.59	238.45	2.18	2.22	2.26	2.26	509.48	527.31	536.71	537.86	1.14	0.21	10.54	2.00
South America	74.75	78.03	78.57	78.57	3.12	3.25	3.26	3.26	232.89	253.39	256.38	256.38	0.00	0.00	2.99	1.18
Brazil	48.13	49.69	51.25	51.25	3.33	3.54	3.56	3.56	160.14	175.90	182.31	182.31	0.00	0.00	6.41	3.64
Argentina	19.30	20.77	19.61	19.61	2.81	2.81	2.80	2.80	54.24	58.36	54.83	54.83	0.00	0.00	-3.53	-6.05
Paraguay	3.90	3.92	3.97	3.97	2.88	2.67	2.84	2.84	11.22	10.44	11.25	11.25	0.00	0.00	0.81	7.76
Bolivia	1.90	2.13	2.15	2.15	1.85	1.90	1.98	1.98	3.52	4.04	4.25	4.25	0.00	0.00	0.21	5.20
Uruguay	1.44	1.43	1.49	1.49	2.44	3.04	2.30	2.30	3.51	4.35	3.42	3.42	0.00	0.00	-0.93	-21.39
China	26.22	26.08	26.53	26.58	2.55	2.60	2.58	2.59	66.92	67.81	68.45	68.78	0.33	0.48	0.97	1.42
South Asia	44.54	43.39	43.29	42.49	1.03	1.06	1.08	1.08	45.84	46.04	46.63	45.95	-0.69	-1.48	-0.09	-0.20
India	40.28	39.58	39.43	38.63	1.00	1.05	1.06	1.07	40.37	41.50	41.94	41.25	-0.69	-1.64	-0.25	-0.61
Pakistan	3.01	2.60	2.59	2.59	1.25	1.11	1.13	1.13	3.75	2.88	2.94	2.94	0.00	0.00	0.06	1.91
European Union	12.23	11.97	12.10	12.02	2.75	2.40	2.69	2.64	33.68	28.71	32.48	31.68	-0.81	-2.48	2.97	10.33
United Kingdom	0.39	0.29	0.23	0.23	3.11	2.81	3.20	3.20	1.22	0.82	0.72	0.72	0.00	0.00	-0.10	-12.62
Former Soviet Union - 12	29.08	31.27	31.63	33.52	2.04	1.88	1.96	1.90	59.23	58.94	61.96	63.73	1.77	2.86	4.79	8.13
Russia	14.85	16.45	17.10	18.20	1.89	1.74	1.82	1.80	28.10	28.60	31.10	32.80	1.70	5.47	4.20	14.69
Ukraine	10.00	10.35	10.10	10.10	2.55	2.32	2.44	2.34	25.45	24.00	24.60	23.60	-1.00	-4.07	-0.40	-1.67
Uzbekistan	1.05	1.02	0.95	0.95	1.15	1.22	1.11	1.11	1.21	1.25	1.06	1.06	0.00	0.00	-0.19	-15.18
Canada	11.16	11.16	10.93	10.93	2.38	2.41	2.41	2.48	26.54	26.86	26.32	27.06	0.75	2.83	0.20	0.75
Africa	25.24	24.67	24.34	24.25	0.98	1.06	1.05	1.05	24.69	26.12	25.44	25.34	-0.10	-0.39	-0.77	-2.96
Nigeria	4.92	5.07	5.12	5.12	1.18	1.15	1.16	1.16	5.80	5.85	5.95	5.95	0.00	0.00	0.10	1.71
South Africa	1.87	1.94	1.92	1.92	1.51	2.00	1.89	1.89	2.82	3.86	3.64	3.64	0.00	0.00	-0.22	-5.75
Tanzania	1.13	1.39	1.39	1.39	0.70	0.66	0.67	0.67	0.79	0.91	0.93	0.93	0.00	0.00	0.02	2.41
Southeast Asia	3.07	3.04	3.01	3.01	1.39	1.39	1.39	1.39	4.27	4.24	4.20	4.20	0.00	0.00	-0.05	-1.06
Burma	1.97	1.98	1.98	1.98	1.24	1.27	1.27	1.27	2.45	2.52	2.52	2.52	0.00	0.00	0.01	0.20
Indonesia	0.84	0.81	0.78	0.78	1.49	1.46	1.45	1.45	1.26	1.18	1.13	1.13	0.00	0.00	-0.05	-4.23
Australia	4.07	4.08	3.92	3.94	1.82	1.86	1.86	1.94	7.42	7.60	7.29	7.63	0.34	4.67	0.02	0.32
Turkey	1.27	1.29	1.32	1.29	2.43	2.45	2.48	2.44	3.08	3.15	3.28	3.15	-0.13	-3.97	0.00	0.00
Others	1.69	1.74	1.72	1.63	2.20	2.09	2.08	1.99	3.72	3.63	3.57	3.25	-0.32	-8.96	-0.37	-10.29

World Total and Total Foreign: (Major Oilseeds plus copra and palm kernel) Major Oilseeds: (soybeans, sunflowerseeds, peanuts(inshell), cottonseed and rapeseed)

Table 11 Soybean Area, Yield, and Production

Country / Region	Area (Million hectares)				Yield (Metric tons per hectare)				Production (Million metric tons)				Change in Production			
	2023/24	Prel.	2025/26 Proj.		2023/24	Prel.	2025/26 Proj.		2023/24	Prel.	2025/26 Proj.		From last month		From last year	
		2024/25	Aug	Sep		2024/25	Aug	Sep		2024/25	Aug	Sep	MMT	Percent	MMT	Percent
World	140.66	146.81	145.15	144.67	2.82	2.89	2.94	2.94	396.36	424.20	426.39	425.87	-0.52	-0.12	1.67	0.39
United States	33.29	34.82	32.42	32.50	3.40	3.41	3.60	3.60	113.27	118.84	116.82	117.05	0.23	0.20	-1.79	-1.51
Total Foreign	107.37	111.99	112.73	112.17	2.64	2.73	2.75	2.75	283.08	305.36	309.58	308.82	-0.75	-0.24	3.46	1.13
South America																
Brazil	46.15	47.40	48.80	48.80	3.35	3.57	3.59	3.59	154.50	169.00	175.00	175.00	0.00	0.00	6.00	3.55
Argentina	16.37	17.30	16.50	16.50	2.95	2.94	2.94	2.94	48.21	50.90	48.50	48.50	0.00	0.00	-2.40	-4.72
Paraguay	3.75	3.75	3.80	3.80	2.93	2.72	2.89	2.89	11.00	10.20	11.00	11.00	0.00	0.00	0.80	7.84
Bolivia	1.69	1.88	1.90	1.90	1.91	1.97	2.05	2.05	3.22	3.70	3.90	3.90	0.00	0.00	0.20	5.41
Uruguay	1.31	1.35	1.30	1.30	2.51	3.12	2.38	2.38	3.29	4.20	3.10	3.10	0.00	0.00	-1.10	-26.19
East Asia																
China	10.47	10.33	10.50	10.50	1.99	2.00	2.00	2.00	20.84	20.65	21.00	21.00	0.00	0.00	0.35	1.69
Korea, South	0.07	0.07	0.08	0.08	2.07	2.09	2.03	2.03	0.14	0.16	0.16	0.16	0.00	0.00	0.01	3.23
Korea, North	0.16	0.16	0.16	0.16	1.15	1.15	1.15	1.15	0.18	0.18	0.18	0.18	0.00	0.00	0.00	0.00
Japan	0.16	0.15	0.16	0.16	1.59	1.77	1.61	1.61	0.25	0.27	0.25	0.25	0.00	0.00	-0.02	-8.42
India	13.20	13.50	13.30	12.50	0.90	0.93	0.94	0.93	11.88	12.58	12.50	11.60	-0.90	-7.20	-0.98	-7.80
Canada	2.26	2.29	2.30	2.30	3.09	3.30	3.04	3.04	6.98	7.57	7.00	7.00	0.00	0.00	-0.57	-7.51
Former Soviet Union - 12																
Russia	3.50	4.20	4.30	4.60	1.94	1.68	1.81	1.80	6.80	7.05	7.80	8.30	0.50	6.41	1.25	17.73
Ukraine	2.00	3.00	3.00	3.00	2.60	2.40	2.53	2.53	5.20	7.20	7.60	7.60	0.00	0.00	0.40	5.56
European Union	1.02	1.13	1.10	1.08	2.76	2.60	2.66	2.58	2.81	2.92	2.93	2.77	-0.16	-5.30	-0.15	-5.17
Southeast Asia																
Indonesia	0.32	0.31	0.29	0.29	1.17	1.13	1.10	1.10	0.38	0.35	0.32	0.32	0.00	0.00	-0.03	-8.57
Vietnam	0.03	0.03	0.03	0.03	1.67	1.62	1.62	1.62	0.05	0.04	0.04	0.04	0.00	0.00	0.00	0.00
Thailand	0.03	0.03	0.03	0.03	1.63	1.63	1.63	1.63	0.05	0.05	0.05	0.05	0.00	0.00	0.00	0.00
Burma	0.12	0.12	0.12	0.12	1.13	1.22	1.22	1.22	0.14	0.14	0.14	0.14	0.00	0.00	0.00	0.00
Serbia	0.24	0.24	0.24	0.18	2.77	2.00	2.13	1.67	0.65	0.47	0.50	0.30	-0.20	-40.00	-0.17	-36.17
Mexico	0.09	0.14	0.14	0.14	2.19	2.00	2.00	1.85	0.20	0.27	0.27	0.25	-0.02	-7.41	-0.02	-7.41
Africa																
South Africa	1.15	1.15	1.15	1.15	1.61	2.39	2.15	2.15	1.85	2.75	2.47	2.47	0.00	0.00	-0.28	-10.28
Nigeria	1.20	1.35	1.40	1.40	1.13	1.04	1.07	1.07	1.35	1.40	1.50	1.50	0.00	0.00	0.10	7.14
Zambia	0.60	0.59	0.59	0.59	1.26	1.31	1.31	1.31	0.76	0.77	0.77	0.77	0.00	0.00	0.00	0.00
Uganda	0.21	0.21	0.21	0.21	0.71	0.71	0.71	0.71	0.15	0.15	0.15	0.15	0.00	0.00	0.00	0.00
Middle East																
Iran	0.07	0.07	0.07	0.07	2.36	2.43	2.43	2.43	0.17	0.17	0.17	0.17	0.00	0.00	0.00	0.00
Turkey	0.04	0.04	0.04	0.04	4.00	3.95	3.95	3.95	0.14	0.15	0.15	0.15	0.00	0.00	0.00	0.00
Others	1.18	1.22	1.25	1.27	1.63	1.69	1.70	1.70	1.92	2.07	2.13	2.15	0.02	1.03	0.08	3.87

World and Selected Countries and Regions

Table 12 Cottonseed Area, Yield, and Production

Country / Region	Area (Million hectares)				Yield (Metric tons per hectare)				Production (Million metric tons)				Change in Production			
	Prel.		2025/26 Proj.		Prel.		2025/26 Proj.		Prel.		2025/26 Proj.		From last month		From last year	
	2023/24	2024/25	Aug	Sep	2023/24	2024/25	Aug	Sep	2023/24	2024/25	Aug	Sep	MMT	Percent	MMT	Percent
World	30.40	29.56	29.03	28.96	1.30	1.39	1.39	1.41	39.48	41.07	40.44	40.79	0.35	0.86	-0.28	-0.68
United States	2.61	3.16	2.98	2.98	1.27	1.22	1.22	1.22	3.31	3.87	3.63	3.63	0.00	0.03	-0.24	-6.13
Total Foreign	27.80	26.40	26.05	25.98	1.30	1.41	1.41	1.43	36.18	37.20	36.81	37.16	0.35	0.95	-0.04	-0.12
South Asia																
India	12.68	11.50	11.20	11.20	0.85	0.89	0.89	0.91	10.78	10.19	9.98	10.19	0.21	2.12	0.00	0.00
Pakistan	2.40	2.00	1.95	1.95	1.26	1.08	1.11	1.11	3.03	2.17	2.17	2.17	0.00	0.00	0.00	0.00
China	2.85	2.90	2.95	3.00	3.18	3.66	3.54	3.59	9.07	10.61	10.45	10.78	0.33	3.17	0.17	1.55
Former Soviet Union - 12																
Uzbekistan	1.03	1.00	0.93	0.93	1.10	1.18	1.07	1.07	1.14	1.18	1.00	1.00	0.00	0.00	-0.18	-14.98
Turkmenistan	0.50	0.50	0.52	0.52	0.63	0.63	0.64	0.64	0.31	0.31	0.33	0.33	0.00	0.00	0.02	6.39
Tajikistan	0.17	0.18	0.18	0.18	1.16	1.08	1.15	1.15	0.19	0.20	0.21	0.21	0.00	0.00	0.01	6.15
Kazakhstan	0.12	0.11	0.13	0.14	1.00	0.97	0.90	0.91	0.12	0.10	0.12	0.13	0.01	8.55	0.02	23.30
South America																
Brazil	1.66	1.95	2.10	2.10	2.91	2.90	2.89	2.89	4.84	5.64	6.06	6.06	0.00	0.00	0.42	7.35
Argentina	0.62	0.63	0.63	0.63	0.98	0.80	1.02	1.02	0.61	0.51	0.64	0.64	0.00	0.00	0.13	26.34
Middle East																
Turkey	0.44	0.47	0.43	0.40	2.37	2.77	2.73	2.61	1.04	1.29	1.18	1.05	-0.13	-11.06	-0.25	-18.99
Syria	0.03	0.03	0.03	0.03	2.23	2.23	2.23	2.23	0.07	0.07	0.07	0.07	0.00	0.00	0.00	0.00
Iran	0.10	0.10	0.10	0.10	1.18	1.35	1.35	1.35	0.12	0.14	0.14	0.14	0.00	0.00	0.00	0.00
Australia	0.51	0.60	0.46	0.48	2.48	2.34	2.23	2.35	1.25	1.40	1.03	1.13	0.10	9.74	-0.28	-19.67
European Union	0.25	0.28	0.27	0.27	1.35	1.44	1.53	1.53	0.34	0.40	0.41	0.41	0.00	0.00	0.01	2.25
Africa																
Burkina Faso	0.46	0.35	0.36	0.40	0.46	0.44	0.47	0.46	0.21	0.15	0.17	0.18	0.01	8.33	0.03	19.74
Mali	0.71	0.62	0.67	0.63	0.53	0.48	0.51	0.50	0.38	0.30	0.34	0.31	-0.03	-8.26	0.01	2.98
Cameroon	0.24	0.23	0.23	0.20	1.54	1.18	1.41	1.40	0.37	0.27	0.33	0.28	-0.05	-13.85	0.01	3.70
Cote d'Ivoire	0.40	0.36	0.35	0.32	0.44	0.44	0.53	0.52	0.17	0.16	0.19	0.17	-0.02	-10.70	0.01	5.70
Benin	0.51	0.54	0.54	0.52	0.73	0.74	0.74	0.73	0.37	0.40	0.40	0.38	-0.02	-4.28	-0.02	-4.28
Tanzania	0.47	0.44	0.44	0.44	0.44	0.35	0.40	0.40	0.21	0.15	0.17	0.17	0.00	0.00	0.02	14.47
Egypt	0.10	0.13	0.08	0.08	0.96	0.99	0.95	0.95	0.10	0.13	0.08	0.08	0.00	0.00	-0.05	-41.09
Nigeria	0.27	0.27	0.27	0.27	0.56	0.56	0.56	0.56	0.15	0.15	0.15	0.15	0.00	0.00	0.00	0.00
Uganda	0.06	0.07	0.07	0.07	1.51	1.48	1.20	1.20	0.08	0.10	0.08	0.08	0.00	0.00	-0.02	-18.75
Zimbabwe	0.24	0.24	0.24	0.24	0.34	0.34	0.35	0.35	0.08	0.08	0.09	0.09	0.00	0.00	0.00	3.66
Sudan	0.08	0.07	0.07	0.07	1.36	1.09	1.09	1.09	0.10	0.08	0.08	0.08	0.00	0.00	0.00	0.00
Mexico	0.13	0.12	0.11	0.08	2.25	2.65	2.60	2.64	0.30	0.33	0.27	0.20	-0.08	-27.47	-0.13	-39.82
Burma	0.18	0.19	0.19	0.19	1.24	1.24	1.25	1.25	0.23	0.24	0.23	0.23	0.00	0.00	-0.01	-2.12
Others	0.61	0.55	0.58	0.57	0.86	0.87	0.86	0.88	0.52	0.48	0.50	0.50	0.00	-0.80	0.02	3.55

World and Selected Countries and Regions

Table 13 Peanut Area, Yield, and Production

Country / Region	Area (Million hectares)				Yield (Metric tons per hectare)				Production (Million metric tons)				Change in Production			
	Prel.		2025/26 Proj.		Prel.		2025/26 Proj.		Prel.		2025/26 Proj.		From last month		From last year	
	2023/24	2024/25	Aug	Sep	2023/24	2024/25	Aug	Sep	2023/24	2024/25	Aug	Sep	MMT	Percent	MMT	Percent
World	29.81	30.04	29.55	29.56	1.67	1.74	1.75	1.75	49.85	52.24	51.67	51.74	0.07	0.13	-0.51	-0.97
United States	0.63	0.71	0.76	0.77	4.23	4.11	4.30	4.36	2.67	2.93	3.29	3.35	0.07	2.04	0.43	14.67
Total Foreign	29.18	29.33	28.79	28.79	1.62	1.68	1.68	1.68	47.18	49.32	48.39	48.39	0.00	0.00	-0.93	-1.89
China	4.80	4.85	4.86	4.86	4.01	3.92	3.91	3.91	19.23	19.00	19.00	19.00	0.00	0.00	0.00	0.00
Africa																
Nigeria	3.45	3.45	3.45	3.45	1.25	1.25	1.25	1.25	4.30	4.30	4.30	4.30	0.00	0.00	0.00	0.00
Sudan	3.01	2.43	2.00	2.00	0.46	0.69	0.50	0.50	1.39	1.68	1.00	1.00	0.00	0.00	-0.68	-40.62
Senegal	1.22	1.30	1.30	1.30	1.41	1.38	1.38	1.38	1.73	1.80	1.80	1.80	0.00	0.00	0.00	0.00
Cameroon	0.50	0.50	0.50	0.50	1.40	1.40	1.40	1.40	0.70	0.70	0.70	0.70	0.00	0.00	0.00	0.00
Ghana	0.37	0.37	0.37	0.37	1.72	1.69	1.62	1.62	0.64	0.63	0.60	0.60	0.00	0.00	-0.03	-4.00
Chad	0.75	0.75	0.75	0.75	1.04	0.92	1.00	1.00	0.78	0.69	0.75	0.75	0.00	0.00	0.06	8.23
Malawi	0.40	0.40	0.40	0.40	0.88	0.88	0.88	0.88	0.35	0.35	0.35	0.35	0.00	0.00	0.00	0.00
Congo (Kinshasa)	0.51	0.52	0.52	0.52	0.97	0.93	0.93	0.93	0.50	0.48	0.48	0.48	0.00	0.00	0.00	0.00
Niger	1.02	1.03	1.03	1.03	0.55	0.65	0.63	0.63	0.56	0.67	0.65	0.65	0.00	0.00	-0.02	-3.56
Mali	0.50	0.50	0.50	0.50	0.92	1.00	0.92	0.92	0.46	0.50	0.46	0.46	0.00	0.00	-0.04	-8.45
Uganda	0.33	0.33	0.33	0.33	0.42	0.53	0.53	0.53	0.14	0.18	0.18	0.18	0.00	0.00	0.00	0.00
Burkina Faso	0.75	0.75	0.75	0.75	0.91	0.91	0.91	0.91	0.68	0.68	0.68	0.68	0.00	0.00	0.00	0.00
Guinea	0.90	0.88	0.88	0.88	1.11	1.14	1.14	1.14	1.00	1.00	1.00	1.00	0.00	0.00	0.00	0.00
Egypt	0.06	0.06	0.06	0.06	3.20	3.20	3.20	3.20	0.21	0.21	0.21	0.21	0.00	0.00	0.00	0.00
Central African Republic	0.20	0.23	0.23	0.23	2.97	2.44	2.44	2.44	0.59	0.55	0.55	0.55	0.00	0.00	0.00	0.00
South Africa	0.04	0.05	0.05	0.05	1.68	1.77	1.90	1.90	0.07	0.09	0.10	0.10	0.00	0.00	0.01	11.76
Mozambique	0.58	0.45	0.45	0.45	0.39	0.39	0.39	0.39	0.23	0.18	0.18	0.18	0.00	0.00	0.00	0.00
Cote d'Ivoire	0.17	0.17	0.17	0.17	1.45	1.45	1.45	1.45	0.24	0.24	0.24	0.24	0.00	0.00	0.00	0.00
Benin	0.24	0.22	0.22	0.22	0.74	1.00	1.00	1.00	0.18	0.22	0.22	0.22	0.00	0.00	0.00	-0.45
South Asia																
India	5.00	5.50	5.50	5.50	1.20	1.29	1.34	1.34	6.00	7.10	7.35	7.35	0.00	0.00	0.25	3.52
Pakistan	0.14	0.14	0.14	0.14	0.85	0.89	0.89	0.89	0.12	0.12	0.12	0.12	0.00	0.00	0.00	0.00
Southeast Asia																
Indonesia	0.52	0.50	0.49	0.49	1.69	1.66	1.65	1.65	0.88	0.83	0.81	0.81	0.00	0.00	-0.02	-2.41
Burma	1.07	1.08	1.08	1.08	1.59	1.63	1.63	1.63	1.70	1.75	1.76	1.76	0.00	0.00	0.01	0.57
Vietnam	0.15	0.14	0.14	0.14	2.66	2.66	2.66	2.66	0.39	0.38	0.38	0.38	0.00	0.00	0.00	0.00
Thailand	0.02	0.02	0.02	0.02	1.67	1.67	1.67	1.67	0.04	0.04	0.04	0.04	0.00	0.00	0.00	0.00
South America																
Argentina	0.43	0.53	0.41	0.41	3.43	3.43	3.30	3.30	1.48	1.80	1.36	1.36	0.00	0.00	-0.45	-24.72
Brazil	0.26	0.28	0.28	0.28	2.88	4.14	4.11	4.11	0.73	1.16	1.15	1.15	0.00	0.00	-0.01	-0.86
Mexico	0.05	0.05	0.05	0.05	1.98	1.70	1.75	1.75	0.09	0.09	0.08	0.08	0.00	0.00	0.00	-1.18
Others	1.75	1.87	1.87	1.87	1.02	1.03	1.02	1.02	1.78	1.92	1.91	1.91	0.00	0.00	-0.01	-0.47

Table 14 Sunflowerseed Area, Yield, and Production

Country / Region	Area (Million hectares)				Yield (Metric tons per hectare)				Production (Million metric tons)				Change in Production			
	2023/24	Prel.		2025/26 Proj.		2023/24	Prel.		2025/26 Proj.		2023/24	Prel.		2025/26 Proj.		
		2024/25	Aug	Sep	2024/25		Aug	Sep	2024/25	Aug		Sep	MMT	Percent	MMT	Percent
World	27.81	28.22	28.31	29.51	2.01	1.86	1.95	1.87	55.97	52.43	55.10	55.27	0.17	0.30	2.84	5.42
United States	0.51	0.28	0.39	0.39	2.00	1.87	1.98	1.98	1.02	0.52	0.77	0.77	0.00	0.00	0.25	47.69
Total Foreign	27.30	27.94	27.93	29.12	2.01	1.86	1.95	1.87	54.95	51.91	54.33	54.50	0.17	0.31	2.59	5.00
Former Soviet Union - 12																
Russia	9.30	9.60	10.00	10.70	1.84	1.76	1.80	1.78	17.10	16.90	18.00	19.00	1.00	5.56	2.10	12.43
Ukraine	6.40	6.00	5.80	5.80	2.42	2.17	2.33	2.19	15.50	13.00	13.50	12.70	-0.80	-5.93	-0.30	-2.31
Kazakhstan	1.13	1.26	1.25	1.75	1.10	1.46	1.36	1.37	1.24	1.83	1.70	2.40	0.70	41.18	0.57	30.86
European Union	4.69	4.86	4.75	4.70	2.15	1.75	2.00	1.88	10.08	8.53	9.50	8.85	-0.65	-6.84	0.32	3.73
South America																
Argentina	1.84	2.28	2.05	2.05	2.11	2.24	2.10	2.10	3.90	5.10	4.30	4.30	0.00	0.00	-0.80	-15.69
Uruguay	0.00	0.01	0.01	0.01	1.25	1.86	1.20	1.20	0.01	0.01	0.01	0.01	0.00	0.00	0.00	-7.69
Bolivia	0.22	0.25	0.25	0.25	1.40	1.36	1.40	1.40	0.30	0.34	0.35	0.35	0.00	0.00	0.01	2.94
Brazil	0.06	0.06	0.07	0.07	1.18	1.60	1.54	1.54	0.07	0.10	0.10	0.10	0.00	0.00	0.00	1.01
Paraguay	0.02	0.03	0.03	0.03	1.63	1.60	1.60	1.60	0.04	0.04	0.04	0.04	0.00	0.00	0.00	0.00
China	0.70	0.60	0.72	0.72	2.83	2.92	2.92	2.92	1.98	1.75	2.10	2.10	0.00	0.00	0.35	20.00
South Asia																
India	0.15	0.18	0.18	0.18	0.75	0.63	0.63	0.63	0.11	0.11	0.11	0.11	0.00	0.00	0.00	0.00
Pakistan	0.08	0.07	0.07	0.07	1.35	1.32	1.32	1.32	0.11	0.09	0.09	0.09	0.00	0.00	0.00	0.00
Middle East																
Turkey	0.70	0.69	0.76	0.76	2.21	1.96	2.11	2.11	1.55	1.35	1.60	1.60	0.00	0.00	0.25	18.52
Iran	0.04	0.04	0.04	0.04	1.05	1.07	1.07	1.07	0.04	0.05	0.05	0.05	0.00	0.00	0.00	0.00
Israel	0.00	0.00	0.00	0.00	2.00	4.00	4.00	4.00	0.00	0.00	0.00	0.00	0.00	0.00	0.00	0.00
Africa																
Egypt	0.02	0.02	0.02	0.02	2.50	2.50	2.50	2.50	0.05	0.05	0.05	0.05	0.00	0.00	0.00	0.00
Morocco	0.02	0.02	0.02	0.02	1.27	1.17	1.17	1.17	0.03	0.03	0.03	0.03	0.00	0.00	0.00	0.00
South Africa	0.53	0.56	0.53	0.53	1.19	1.27	1.36	1.36	0.63	0.71	0.72	0.72	0.00	0.00	0.01	1.69
Burma	0.60	0.60	0.60	0.60	0.65	0.65	0.65	0.65	0.39	0.39	0.39	0.39	0.00	0.00	0.00	0.00
Canada	0.04	0.02	0.03	0.03	2.30	2.13	2.17	2.22	0.09	0.05	0.07	0.06	-0.01	-7.69	0.01	17.65
Australia	0.02	0.02	0.03	0.02	1.52	1.59	1.40	1.50	0.03	0.04	0.04	0.03	0.00	-5.71	0.00	-5.71
Others	0.73	0.78	0.73	0.78	2.33	1.84	2.19	1.95	1.70	1.44	1.59	1.52	-0.08	-4.71	0.08	5.56

World and Selected Countries and Regions

Table 15 Rapeseed Area, Yield, and Production

Country / Region	Area (Million hectares)				Yield (Metric tons per hectare)				Production (Million metric tons)				Change in Production			
	2023/24	Prel.		2025/26 Proj.		2023/24	Prel.		2025/26 Proj.		2023/24	Prel.		2025/26 Proj.		
		2024/25	Aug	Sep	2024/25		Aug	Sep	2024/25	Aug		Sep	MMT	Percent	MMT	Percent
World	42.99	42.44	43.05	43.36	2.09	2.02	2.08	2.10	89.99	85.73	89.58	90.96	1.38	1.54	5.24	6.11
United States	0.94	1.10	0.96	0.96	2.01	2.00	2.06	2.06	1.90	2.21	1.97	1.97	0.00	0.00	-0.24	-10.65
Total Foreign	42.04	41.34	42.09	42.40	2.10	2.02	2.08	2.10	88.10	83.52	87.61	88.99	1.38	1.58	5.47	6.55
European Union	6.27	5.70	5.98	5.98	3.26	2.96	3.29	3.29	20.45	16.86	19.65	19.65	0.00	0.00	2.79	16.54
United Kingdom	0.39	0.29	0.23	0.23	3.11	2.81	3.20	3.20	1.22	0.82	0.72	0.72	0.00	0.00	-0.10	-12.62
Switzerland	0.03	0.03	0.03	0.03	3.52	3.52	3.52	3.52	0.09	0.09	0.09	0.09	0.00	0.00	0.00	0.00
Canada	8.86	8.85	8.60	8.60	2.20	2.17	2.24	2.33	19.46	19.24	19.25	20.00	0.75	3.90	0.76	3.96
China	7.40	7.40	7.50	7.50	2.14	2.14	2.12	2.12	15.80	15.80	15.90	15.90	0.00	0.00	0.10	0.63
South Asia																
India	9.25	8.90	9.25	9.25	1.25	1.29	1.30	1.30	11.60	11.52	12.00	12.00	0.00	0.00	0.48	4.17
Pakistan	0.38	0.40	0.44	0.44	1.28	1.28	1.28	1.28	0.49	0.51	0.57	0.57	0.00	0.00	0.06	10.78
Bangladesh	1.10	1.04	1.10	1.10	1.30	1.30	1.32	1.32	1.43	1.35	1.45	1.45	0.00	0.00	0.10	7.41
Former Soviet Union - 12																
Russia	2.05	2.65	2.80	2.90	2.05	1.75	1.89	1.90	4.20	4.65	5.30	5.50	0.20	3.77	0.85	18.28
Ukraine	1.60	1.35	1.30	1.30	2.97	2.81	2.69	2.54	4.75	3.80	3.50	3.30	-0.20	-5.71	-0.50	-13.16
Belarus	0.40	0.48	0.50	0.50	2.25	2.25	2.20	2.20	0.90	1.08	1.10	1.10	0.00	0.00	0.02	1.85
Kazakhstan	0.09	0.15	0.18	0.33	1.32	1.92	1.54	1.54	0.12	0.29	0.27	0.50	0.23	85.19	0.21	74.83
Australia	3.51	3.42	3.40	3.40	1.73	1.79	1.81	1.88	6.05	6.10	6.15	6.40	0.25	4.07	0.30	4.87
South America																
Chile	0.03	0.04	0.04	0.04	4.39	3.86	4.00	4.00	0.12	0.14	0.14	0.14	0.00	0.00	0.01	3.70
Paraguay	0.07	0.08	0.08	0.08	1.50	1.53	1.56	1.56	0.11	0.12	0.13	0.13	0.00	0.00	0.01	8.70
Ethiopia	0.03	0.03	0.03	0.03	1.80	1.80	1.80	1.80	0.05	0.05	0.05	0.05	0.00	0.00	0.00	0.00
Others	0.60	0.55	0.66	0.72	2.11	2.01	2.06	2.10	1.27	1.11	1.36	1.51	0.15	11.06	0.39	35.31

World and Selected Countries and Regions

Table 16 Copra, Palm Kernel, and Palm Oil Production

Country / Region	Production (Million metric tons)				Change in Production			
	2023/24	Prel.	2025/26 Proj.		From last month		From last year	
		2024/25	Aug	Sep	MMT	Percent	MMT	Percent
Oilseed, Copra								
Philippines	2.90	2.56	2.60	2.60	0.00	0.00	0.04	1.56
Indonesia	1.69	1.61	1.64	1.64	0.00	0.00	0.03	1.86
India	0.94	0.94	0.94	0.94	0.00	0.00	0.00	0.00
Vietnam	0.29	0.29	0.29	0.29	0.00	0.00	0.00	0.00
Papua New Guinea	0.09	0.10	0.10	0.10	0.00	0.00	0.00	0.00
Sri Lanka	0.07	0.07	0.07	0.07	0.00	0.00	0.00	0.00
Thailand	0.07	0.07	0.07	0.07	0.00	0.00	0.00	0.00
Mexico	0.05	0.05	0.05	0.05	0.00	0.00	0.00	0.00
Cote d'Ivoire	0.03	0.03	0.03	0.03	0.00	0.00	0.00	0.00
Malaysia	0.03	0.03	0.03	0.03	0.00	0.00	0.00	0.00
World	6.21	5.80	5.87	5.87	0.00	0.00	0.07	1.21
Oilseed, Palm Kernel								
Indonesia	11.00	11.95	12.35	12.35	0.00	0.00	0.40	3.35
Malaysia	4.83	4.85	4.88	4.88	0.00	0.00	0.03	0.62
Nigeria	1.10	1.10	1.10	1.10	0.00	0.00	0.00	0.00
Thailand	0.85	0.87	0.89	0.89	0.00	0.00	0.01	1.15
Colombia	0.33	0.33	0.34	0.34	0.00	0.00	0.01	3.03
Guatemala	0.18	0.19	0.19	0.19	0.00	0.00	0.01	5.56
Papua New Guinea	0.18	0.18	0.18	0.18	0.00	0.00	0.00	0.00
Brazil	0.16	0.16	0.17	0.17	0.00	0.00	0.00	0.00
Honduras	0.16	0.16	0.16	0.16	0.00	0.00	0.00	0.00
Cameroon	0.15	0.15	0.15	0.15	0.00	0.00	0.00	0.00
World	19.59	20.61	21.06	21.06	0.00	0.00	0.45	2.18
Oil, Palm								
Indonesia	43.00	46.00	47.50	47.50	0.00	0.00	1.50	3.26
Malaysia	19.71	19.40	19.50	19.50	0.00	0.00	0.10	0.52
Thailand	3.27	3.33	3.38	3.38	0.00	0.00	0.05	1.50
Colombia	1.88	1.90	2.00	2.00	0.00	0.00	0.10	5.26
Nigeria	1.50	1.50	1.50	1.50	0.00	0.00	0.00	0.00
Guatemala	0.89	0.99	1.00	1.00	0.00	0.00	0.01	1.01
Papua New Guinea	0.82	0.83	0.83	0.83	0.00	0.00	0.00	0.00
Cote d'Ivoire	0.62	0.63	0.60	0.63	0.03	5.00	0.01	1.61
Brazil	0.59	0.60	0.65	0.65	0.00	0.00	0.05	8.33
Honduras	0.65	0.56	0.57	0.62	0.05	8.77	0.06	10.71
World	76.09	78.93	80.74	80.82	0.08	0.10	1.89	2.39

World and Selected Countries and Regions

Table 17 Cotton Area, Yield, and Production

Country / Region	Area (Million hectares)				Yield (Kilograms per hectare)				Production (Million 480 lb. bales)				Change in Production			
	Prel.		2025/26 Proj.		Prel.		2025/26 Proj.		Prel.		2025/26 Proj.		From last month		From last year	
	2023/24	2024/25	Aug	Sep	2023/24	2024/25	Aug	Sep	2023/24	2024/25	Aug	Sep	MBales	Percent	MBales	Percent
World	31.05	30.16	29.61	29.55	789	861	858	867	112.56	119.22	116.62	117.68	1.06	0.90	-1.54	-1.29
United States	2.61	3.16	2.98	2.98	1,008	993	966	966	12.07	14.41	13.21	13.22	0.01	0.08	-1.19	-8.25
Total Foreign	28.45	27.00	26.63	26.56	769	845	845	856	100.50	104.80	103.41	104.46	1.05	1.01	-0.35	-0.33
South Asia																
India	12.69	11.50	11.20	11.20	436	454	457	467	25.40	24.00	23.50	24.00	0.50	2.13	0.00	0.00
Pakistan	2.40	2.00	1.95	1.95	635	544	558	558	7.00	5.00	5.00	5.00	0.00	0.00	0.00	0.00
China	2.85	2.90	2.95	3.00	2,089	2,402	2,325	2,359	27.35	32.00	31.50	32.50	1.00	3.17	0.50	1.56
South America																
Brazil	1.66	1.95	2.10	2.10	1,911	1,903	1,892	1,892	14.57	17.00	18.25	18.25	0.00	0.00	1.25	7.35
Argentina	0.62	0.63	0.63	0.63	578	472	601	601	1.65	1.37	1.73	1.73	0.00	0.00	0.36	26.37
Paraguay	0.06	0.07	0.06	0.06	812	837	907	907	0.21	0.25	0.25	0.25	0.00	0.00	0.00	0.00
Africa																
Burkina Faso	0.46	0.35	0.36	0.40	361	345	369	359	0.77	0.55	0.61	0.66	0.05	8.20	0.11	20.00
Mali	0.71	0.62	0.67	0.63	407	374	390	383	1.33	1.07	1.20	1.10	-0.10	-8.33	0.03	2.80
Cote d'Ivoire	0.40	0.36	0.35	0.32	358	360	435	425	0.65	0.59	0.70	0.63	-0.08	-10.71	0.04	5.93
Benin	0.51	0.54	0.54	0.52	482	487	488	482	1.13	1.20	1.20	1.15	-0.05	-4.17	-0.05	-4.17
Egypt	0.10	0.13	0.08	0.08	686	712	680	680	0.32	0.43	0.25	0.25	0.00	0.00	-0.18	-41.18
Cameroon	0.24	0.23	0.23	0.20	671	513	615	610	0.74	0.54	0.65	0.56	-0.09	-13.85	0.02	3.70
Tanzania	0.47	0.44	0.44	0.44	220	173	198	198	0.47	0.35	0.40	0.40	0.00	0.00	0.05	14.29
Nigeria	0.27	0.27	0.27	0.27	282	282	282	282	0.35	0.35	0.35	0.35	0.00	0.00	0.00	0.00
Zimbabwe	0.24	0.24	0.24	0.24	195	195	204	204	0.22	0.22	0.23	0.23	0.00	0.00	0.01	4.65
Ethiopia	0.06	0.06	0.06	0.06	713	713	713	713	0.18	0.18	0.18	0.18	0.00	0.00	0.00	0.00
Former Soviet Union - 12																
Uzbekistan	1.03	1.00	0.93	0.93	613	653	597	597	2.90	3.00	2.55	2.55	0.00	0.00	-0.45	-15.00
Turkmenistan	0.50	0.50	0.52	0.52	348	348	356	356	0.80	0.80	0.85	0.85	0.00	0.00	0.05	6.25
Tajikistan	0.17	0.18	0.18	0.18	647	605	641	641	0.49	0.50	0.53	0.53	0.00	0.00	0.03	6.00
Kazakhstan	0.12	0.11	0.13	0.14	558	544	502	505	0.30	0.27	0.30	0.33	0.03	8.33	0.06	22.64
Middle East																
Turkey	0.44	0.47	0.43	0.40	1,580	1,850	1,823	1,742	3.19	3.95	3.60	3.20	-0.40	-11.11	-0.75	-18.99
Syria	0.03	0.03	0.03	0.03	1,161	1,161	1,161	1,161	0.16	0.16	0.16	0.16	0.00	0.00	0.00	0.00
Iran	0.10	0.10	0.10	0.10	762	871	871	871	0.35	0.40	0.40	0.40	0.00	0.00	0.00	0.00
Australia	0.51	0.60	0.46	0.48	2,156	2,032	1,941	2,041	5.00	5.60	4.10	4.50	0.40	9.76	-1.10	-19.64
Mexico	0.13	0.12	0.11	0.08	1,435	1,694	1,659	1,684	0.87	0.97	0.80	0.58	-0.22	-27.50	-0.39	-39.90
Burma	0.18	0.19	0.19	0.19	654	654	659	659	0.55	0.57	0.56	0.56	0.00	0.00	-0.01	-1.93
Others	1.53	1.44	1.45	1.44	510	532	538	541	3.57	3.51	3.57	3.58	0.01	0.14	0.07	1.91

World and Selected Countries and Regions

TABLE 18

The table below presents a record of the September projection and the final estimate. Using world wheat production as an example, the "root mean square error" means that chances are 2 out of 3 that the current forecast will not be above or below the final estimate by more than 1.8 percent. Chances are 9 out of 10 (90% confidence level) that the difference will not exceed 3.1 percent. The average difference between the September projection and the final estimate is 8.1 million tons, ranging from 0.9 million to 30.7 million tons. The September projection has been below the estimate 29 times and above 15 times.

RELIABILITY OF PRODUCTION PROJECTIONS 1/

COMMODITY AND REGION	Root mean square error	90 percent confidence interval	Difference between forecast and final estimate				
			Average	Smallest	Largest	Years	
						Below final	Above final
	Percent		---Million metric tons---				
WHEAT							
World	1.8	3.1	8.1	0.9	30.7	29	15
U.S.	2.3	3.9	0.9	0.0	3.6	17	27
Foreign	2.1	3.5	8.2	0.2	30.9	32	12
COARSE GRAINS 2/							
World	2.1	3.5	17.0	0.2	50.6	33	11
U.S.	4.0	6.8	7.7	0.2	26.0	27	17
Foreign	2.4	4.1	15.2	1.0	59.9	31	13
RICE (Milled)							
World	2.2	3.7	6.3	0.4	24.1	35	9
U.S.	4.1	7.0	0.2	0.0	0.5	24	19
Foreign	2.2	3.8	6.3	0.3	24.4	35	9
SOYBEANS							
World	4.6	7.7	7.9	0.4	31.7	23	21
U.S.	4.9	8.2	3.0	0.2	10.4	23	21
Foreign	7.4	12.5	7.2	0.7	33.3	19	25
COTTON			---Million 480-lb. bales---				
World	4.5	7.6	3.1	0.1	12.6	25	19
U.S.	6.6	11.2	0.9	0.0	2.5	20	23
Foreign	5.0	8.5	2.7	0.0	11.3	27	17
UNITED STATES			-----Million bushels-----				
CORN	4.2	7.1	293	15	885	27	17
SORGHUM	8.5	14.3	25	0	81	18	25
BARLEY	5.1	8.6	11	1	36	18	26
OATS	9.5	16.0	10	0	44	8	33

1/ Marketing years 1981/82 through 2024/25 for grains, soybeans, and cotton. Final for grains, soybeans, and cotton is defined as the first November estimate following the marketing year for 1981/82 through 2023/24, and for 2024/25 the last month's estimate.

2/ Includes corn, sorghum, barley, oats, rye, millet, and mixed grain